

PENN STATE LADY LION

BASKETBALL GAME NOTES

2014-2015

Penn State Athletic Communications: 101D Bryce Jordan Center, University Park, PA 16802 Office: 814-865-1757 Fax: 814-863-3165
 Women's Basketball Contact: Kristina Petersen Twitter: @ladylionsid Website: www.GoPSUsports.com Email: kap18@psu.edu Cell: 814-883-4581 Office: 814-865-1757

SCHEDULE/RESULTS

NOVEMBER

Sun. 2 INDIANA (PA.) (ex.) W, 75-71
Preseason WNIT

Fri. 14 TOWSON..... W, 71-64

Sun. 16 ALBANY L, 53-54

Sat. 22 SETON HALL L, 70-75

Tues. 25 ST. BONAVENTURE (BTN Plus) ... 5:30 p.m.

Georgia State Thanksgiving Tournament

Fri. 28 vs. Liberty 2 p.m.

Sun. 30 vs. GSU/Samford 12:30/2:30 p.m.

DECEMBER

Big Ten/ACC Challenge

Thurs. 4 at Syracuse 7 p.m.

Sun. 7 WAGNER (BTN Plus) 2 p.m.

Wed. 10 at Hartford 7 p.m.

Sun. 14 RIDER 2:30 p.m.

Sun. 21 USF (BTN Plus) 2 p.m.

Sun. 28 at Iowa * (BTN Plus) 3 p.m.

JANUARY

Thurs. 1 at Michigan * (BTN Plus) 1 p.m.

Sun. 4 ILLINOIS * (BTN Plus) 2 p.m.

Tues. 6 at Wisconsin * (BTN) 9 p.m.

Sat. 10 RUTGERS * (BTN) noon

Thurs. 15 at Nebraska * (BTN) 7 p.m.

Sun. 18 at Ohio State * (BTN Plus) 2 p.m.

Thurs. 22 INDIANA * (BTN Plus) 7 p.m.

Sun. 25 NORTHWESTERN * (BTN Plus) 2 p.m.

Wed. 28 at Minnesota * (BTN Plus) 8 p.m.

FEBRUARY

Sun. 1 at Rutgers * (BTN) noon

Thurs. 5 MARYLAND * (BTN Plus) 7 p.m.

Sun. 8 at Purdue * (BTN Plus) 2 p.m.

Wed. 11 MICHIGAN ST. * (BTN Plus) 7 p.m.

Sun. 15 MINNESOTA * (BTN Plus) 2 p.m.

Mon. 23 at Maryland * (BTN) 7 p.m.

Thurs. 26 OHIO STATE * (BTN Plus) 7 p.m.

MARCH

Ninth Annual Pink Zone at Penn State

Sun. 1 WISCONSIN * (BTN/BTN Plus) 1/3/5 p.m.

Wed.-Sun. 4-8 Big Ten Tourn. (BTN/ESPN2)
 Hoffman Estates, Ill.

Sat.-Tues. 20-23 .. NCAA Tourn. 1st & 2nd Round

Sat.-Tues. 27-30 NCAA Tourn. Regionals

APRIL

Sun./Tues. 5/7 NCAA Final Four (Tampa, Fla.)

BOLD CAPS indicates home game

* - indicates Big Ten game

All times are Eastern Time.



BTN - Big Ten Network BTN Plus - BTN.com

Schedule subject to change. Please visit www.

GoPSUsports.com for up-to-date tip times.

Game #4: St. Bonaventure at Penn State

Tues., Nov. 25 ▶ 5:30 p.m. ▶ Bryce Jordan Center ▶ University Park, Pa.

		SETTING THE SCENE
Penn State Lady Lions	St. Bonaventure Bonnies	The St. Bonaventure Game
Record: 1-2, 0-0 Big Ten	Record: 2-2, 0-0 Atlantic 10	Series: Penn State leads 10-0
Last Game: Seton Hall 75, PSU 70 (11/22)	Last Game: SBU 68, Detroit 56 (11/22)	Last Meeting: PSU 102, SBU 73 (2/2/91)
Head Coach: Coquese Washington	Head Coach: Jim Crowley	Streak: Penn State - 10 wins
Career Record: 143-83 (8th yr.)	Career Record: 260-247 (18th yr.)	Television: none
Record at PSU: 143-83 (8th yr.)	Record at SBU: 221-210 (15th yr.)	Radio: The game is on 1390 The Fanatic locally with Jerry Fisher calling the action. The audio feed is available at www.GoPSUsports.com.
Statistical Leaders	Statistical Leaders	Webstream: BTN Plus
Points Lindsey Spann (14.3)	Points Katie Healy (11.2)	Live Stats: GoPSUsports.com
Rebounds Tori Waldner (9.0)	Rebounds Little/Richmond (6.2)	
Assists Sierra Moore (4.0)	Assists Three with 1.5	

SERIES QUICK HITS

- ✓ The Lady Lions are a perfect 10-0 all-time against St. Bonaventure.
- ✓ Penn State is 5-0 versus the Bonnies in games played in Happy Valley.
- ✓ Penn State is averaging 96.5 points while giving up 64.7 points in 10 meetings with the Bonnies.
- ✓ The Lady Lions are 115-13 all-time against current Atlantic 10 schools.
- ✓ The squads last met on Feb. 2, 1991 when Penn State picked up a 102-73 win in Olean.
- ✓ Susan Robinson paced the Penn State effort in the win with 26 points, while Dana Eikenberg added a double-double with 20 points and 11 assists.
- ✓ Penn State shot 59 percent from the field on the game.

STORYLINES

- ✓ Senior **Tori Waldner** moved into ninth place on Penn State's career blocks with 96 rejections after a three-block performance vs. Seton Hall.
- ✓ Junior **Candice Agee** recorded a career-high 21 points on 9-of-15 shooting against Seton Hall.
- ✓ Sophomore **Sierra Moore** notched her first career double-double with personal bests of 14 points and 10 rebounds against Seton Hall.
- ✓ Freshman **Lindsey Spann** reached double figures for the third straight game with 12 points against Seton Hall.
- ✓ Sophomore **Keke Sevillian** made her first career start against Seton Hall.
- ✓ The Lady Lions have named senior **Tori Waldner**, sophomore **Sierra Moore** and freshman **Lindsey Spann** as the captains for the 2014-15 season.

UP NEXT

Penn State hit the road for the first time this season for the Georgia State Thanksgiving Tournament Friday and Sunday. The Lady Lions will meet Liberty on Friday at 2 p.m. in the first round game. Penn State will then square off against either the host Panthers or Samford on Sunday.

Table of Contents	PSU's Record When 5	Season Highs/Lows 9
Schedule, Results, Storylines 1	Notable Games 5	Miscellaneous Stats 10
Roster, Quick Facts 2	Lions in the Big Ten Stats 6	Coquese Washington 11
Team Comparison, Series History 2	The Last Time Penn State 7	Player Bios 12-23
What's at Stake 3	Record Book 8	2014-15 Box Scores 24
Big Ten Standings/Schedule 3	2015 Signing Class 8	2014-15 Stats 25
Possible Starters 3	Milestone Watch 8	Radio/TV Chart 26



2014-15 ROSTER

PENN STATE LADY LIONS

No.	Name	Pos.	Cl./Elg.	Ht.	Hometown/High School (Previous School)
1	Candice Agee **	C	Jr./Jr.	6-6	Victorville, Calif./Silverado
3	Brianna Banks	G	Sr./Sr. [^]	5-9	Newnan, Ga./Fayette County (Connecticut)
5	Sierra Moore	G	Jr./So.	5-11	Hanover, Pa./Delone Catholic (Duke)
10	Keke Sevillian *	G	So./So.	5-7	Goodrich, Mich./Goodrich
11	Alex Harris *	F	So./So.	6-3	Lorain, Ohio/Lorain
12	Lindsey Spann	G	So./Fr.	5-6	Laurel, Md./Good Counsel
14	Dominique Brooks	C	Jr./Jr.	6-4	Lansing, Ill./T.F. South (Trinity Valley C.C.)
15	Kalayah Mitchell *	F	So./So.	6-2	Stone Mountain, Ga./Stephenson
25	Peyton Whitted *	F	So./So.	6-3	Suwanee, Ga./North Gwinnett
34	Molly Dincher	G/F	Sr./Sr.	6-0	Williamsport, Pa./Williamsport Area (PSU Wilkes Barre)
41	Jenny DeGraaf *	F	So./So.	6-1	Springboro, Ohio/Springboro
44	Tori Waldner ***	F/C	Sr./Sr.	6-5	Milton, Ga./Milton

Head Coach: Coquese Washington (Notre Dame '92)

Asst. Coaches: Itoro Coleman, Kia Damon, Jocelyn Wyatt

Captains: Tori Waldner, Sierra Moore, Lindsey Spann

* Indicates letters earned

ST. BONAVENTURE BONNIES

No.	Name	Pos.	Cl.	Ht.	Hometown/High School (Previous School)
2	Mariah Ruff	G	Fr.	5-9	Oneonta, N.Y./Oneonta
4	Kelcie Rombach	G	Jr.	5-11	Ottawa, Ill./Ottawa Township
11	Hannah Little	F	Jr.	6-1	Rochester Hills, Mich./Auburn Hills Avondale
12	Ashley Zahn	G	Sr.	5-10	Canandaigua, N.Y./Canandaigua Academy
13	Taryne Shull	G/F	Fr.	6-0	Mount Pleasant, Iowa/Mount Pleasant
14	Gabby Richmond	F	So.	6-1	Chicago, Ill./Morgan Park
21	Nyla Rueter	G	Jr.	5-9	Hagerstown, Ind./Hagerstown
22	Imani Outlaw	G	So.	5-8	Cincinnati, Ohio/Sycamore
23	Matea Britvar	F	Fr.	6-1	Orlando, Fla./Dr. Phillips
32	Miranda Drummond	F	Fr.	6-1	Binghamton, N.Y./Harpurville
33	Emily Michael	G	Jr.	5-8	Clayton, Ohio/Chaminade Julianne
42	Katie Healy	F	Jr.	6-1	Lancaster, N.Y./Lancaster

Head Coach: Jim Crowley

Associate Head Coach: Kate Achter

Assistant Coaches: Andrea Mulcahy, Tiara Johnson

TEAM COMPARISON

PENN STATE		ST. BONAVENTURE	
Spann (14.3)	Scoring Leader	Healy (11.2)	
Waldner (9.0)	Rebounding Leader	Little/Richmond (6.2)	
Moore (4.0)	Assist Leader	Three with 1.5	
Mitchell (2.3)	Steals Leader	Little (1.5)	
Waldner (2.3)	Blocks Leader	Healy (1.5)	
64.7	Scoring Offense	57.8	
54.3	Scoring Defense	60.5	
+0.3	Scoring Margin	-2.7	
43.3	Rebounds Per Game	33.5	
+1.0	Rebound Margin	-5.2	
13.7	Assists Per Game	9.2	
9.3	Steals Per Game	7.2	
.407	Field Goal Pct.	.377	
.335	FG Defense Pct.	.350	
.306	3-pt. FG Pct.	.231	
.283	3-pt. FG Pct. Def.	.289	
.600	Free Throw Pct.	.776	
0.7	Assist/Turnover	0.6	
Lost 2	W/L Streak	Won 1	

SERIES HISTORY

Overall:	PSU leads 10-0
Last meeting:	2/2/91
Last result:	PSU, 102-73
Current streak:	PSU - 10 wins
Last 10:	PSU, 10-0
Last 10 meetings:	
1/17/87	H PSU, 96-71
2/14/87	A PSU, 86-66
1/23/88	A PSU, 89-45
2/28/88	H PSU, 89-57
12/10/88	A PSU, 103-60
1/28/89	H PSU, 104-64
12/9/89	A PSU, 106-86
1/20/90	H PSU, 103-57
12/3/90	H PSU, 87-68
2/2/91	A PSU, 102-73

QUICK FACTS

THE UNIVERSITY

Location: University Park, Pa.
 Founded: 1855
 Enrollment: 48,184 (as of fall 2013)
 Colors: Blue & White
 Nickname: Lady Lions
 Conference: Big Ten
 President: Eric Barron
 Director of Athletics: Sandy Barbour
 Senior Woman Administrator: Charmelle Green
 Asst. Athletic Director: Jenn James
 Facility (cap.): Bryce Jordan Center (15,104)
 All-Time Record at BJC: 216-55 (19 seasons)

ATHLETIC COMMUNICATIONS

WBB Contact: Kristina Petersen
 Phone/Fax: (814) 865-1757/(814) 863-3165
 E-mail: kap18@psu.edu
 Address: 101-D Bryce Jordan Center
 University Park, Pa. 16802
 Press Row Phone: 814-863-3294
 Website: www.GoPSUsports.com
 Twitter: @ladylionsid

TEAM INFORMATION

2014-15 Record: 1-2
 Home: 1-2 Away: 0-0 Neutral: 0-0
 Big Ten Record: 0-0
 Home: 0-0 Away: 0-0
 Letterwinners Returning/Lost: 6/5
 Starters Returning/Lost: 1/4
 Big Ten Tournament: Quarterfinals
 Postseason: NCAA Sweet Sixteen

THE HISTORY

First Year of Women's Basketball: 1965
 All-Time Record: 882-396 (50 seasons)
 All-Time Big Ten Rec.: 244-122 (22 seasons)
 NCAA Tournament Appearances: 25
 NCAA Tournament Record: 32-25

WOMEN'S BASKETBALL

Head Coach: Coquese Washington
 Alma Mater: Notre Dame '92
 Overall Record: 143-83 (eighth season)
 School Record: 143-83 (eighth season)
 Twitter: @coquesewashing
 Basketball Office Phone: 814-863-2672
 Basketball Office Fax: 814-863-1221
 Best Time To Reach Coach: Through SID
 Assistant Coaches (Alma Mater):
 Itoro Coleman (Clemson '00)
 Kia Damon (Millersville '97)
 Jocelyn Wyatt (Appalachian State '06)
 Twitter/Instagram: @pennstatewbb
 Facebook: facebook.com/pennstateladylions

PRONUNCIATIONS

Coquese	ko-KWEES
Itoro	E-tora
Agee	AYE-gee
DeGraaf	D-graph
Kalayah	kah-LEE-uh
Sevillian	sev-ILL-e-on
Whitted	wit-ED



STANDINGS (as of 11/23)

Team	Big Ten			Overall		
	W	L	Pct.	W	L	Pct.
Illinois	0	0	.000	4	0	1.000
Indiana	0	0	.000	4	0	1.000
Iowa	0	0	.000	4	0	1.000
Maryland	0	0	.000	4	0	1.000
Nebraska	0	0	.000	4	0	1.000
Minnesota	0	0	.000	3	0	1.000
Northwestern	0	0	.000	3	0	1.000
Rutgers	0	0	.000	3	0	1.000
Michigan	0	0	.000	3	1	.750
Michigan State	0	0	.000	2	1	.667
Purdue	0	0	.000	2	1	.667
Ohio State	0	0	.000	2	2	.500
Penn State	0	0	.000	1	2	.333
Wisconsin	0	0	.000	1	2	.333

BIG TEN SCHEDULE

NOVEMBER 24	
Loyola (Md.) at Maryland	7 p.m.
NOVEMBER 25	
St. Bonaventure at Penn State	5:30 p.m.
Rutgers at Wagner	7 p.m.
Northern Iowa at Iowa	8 p.m.
Southern at Minnesota	9 p.m.
NOVEMBER 26	
Illinois-Chicago at Northwestern	1 p.m.
East Tennessee State at Indiana	2 p.m.
Oakland at Michigan State	7:30 p.m.
NOVEMBER 27	
Clemson vs. Ohio State	1:15 p.m.
South Carolina vs. Wisconsin	4:15 p.m.
Kentucky vs. Illinois	6 p.m.
NOVEMBER 28	
Texas Tech vs. Purdue	1 p.m.
Wichita State vs. Ohio State	1:15 p.m.
Washington State vs. Michigan	2 p.m.
Liberty vs. Penn State	2 p.m.
Colgate at Rutgers	2 p.m.
James Madison vs. Maryland	3:30 p.m.
Arkansas vs. Iowa	4 p.m.
Nebraska at UCLA	4 p.m.
Syracuse/E. Carolina vs. Wisconsin	5:45 p.m.
Vanderbilt vs. Minnesota	7 p.m.
South Florida vs. Illinois	8:15 p.m.
NOVEMBER 29	
TBD vs. Minnesota	TBD
TBD vs. Purdue	1/3:15 p.m.
San Diego State vs. Michigan	2 p.m.
Washington State vs. Maryland	3:30 p.m.
Florida Gulf Coast vs. Ohio State	3:30 p.m.
Oklahoma vs. Illinois	6 p.m.
Gonzaga vs. Iowa	6:30 p.m.
Northwestern at DePaul	8 p.m.
NOVEMBER 30	
TBD vs. Minnesota	TBD
GA State/Samford vs. Penn State	12:30/2:30 p.m.
Davidson at Rutgers	1 p.m.
Indiana State at Indiana	2 p.m.
Miami (Ohio) at Michigan State	2 p.m.
Northern Colorado at Nebraska	3 p.m.

All times are Eastern.

POSSIBLE STARTERS



1 CANDICE AGEE C
Jr., 6-6, Victorville, Calif.
10.7 ppg, 6.3 rpg, 1.7 bpg, 1.3 spg

Notes: Had a career-high 21 points on a 9-of-15 shooting effort against Seton Hall ... Made first start of the season vs. SHU ... Ranks 20th on Penn State's career blocked shots average list (0.6).



5 SIERRA MOORE G
RS-So., 5-11, Hanover, Pa.
11.3 ppg, 6.0 rpg, 4.0 apg, 0.7 spg

Notes: Notched first career double-double with 14 points & 10 rebounds vs. Seton Hall ... Had 12 points, five rebounds and two blocks vs. Towson ... Broke the YAIAA high school scoring record (boys or girls).



10 KEKE SEVILIAN G
So., 5-7, Goodrich, Mich.
2.3 ppg, 2.3 apg, 1.0 spg

Notes: Made first career start against Seton Hall ... Third on the team in assists (2.3 apg) ... Had six points and five assists in the season-opening win over Towson.



12 LINDSEY SPANN G
RS-Fr., 5-6, Laurel, Md.
14.3 ppg, 2.7 rpg, 3.0 apg, .472 FG%

Notes: Recorded 12 points and 3 steals vs. Seton Hall ... Led the team in scoring with 14 points & 4 assts. vs. Albany ... Tallied 17 points, five rebounds and four assists in her debut vs. Towson ... Team captain.



15 KALIYAH MITCHELL F
So., 6-2, Stone Mountain, Ga.
9.0 ppg, 6.3 rpg, 2.3 SPG

Notes: Leads the team in steals (2.7) ... Pulled in 10 rebounds and eight rebounds versus Seton Hall ... Had 10 points and three steals in season opener vs. Towson ... Leads the returnees in steals with 20.

LAST TIME OUT

- The Lady Lions trailed by eight with 1:09 remaining in the game and had a chance to tie the game on a **Candice Agee** free throw with 11 seconds to go, but couldn't complete the comeback as the free throw caromed off the rim and was pulled in by the Pirates.
- Agee was efficient on the way to a career-high 21 points in just 17 minutes of action. Agee, who was 9-for-15 from the field, also had five rebounds, two blocks and two steals.
- Sophomore **Sierra Moore** notched her first career double-double with career highs of 14 points and 10 rebounds. She also dished out five assists and blocked a shot.
- Freshman **Lindsey Spann** tallied double figures for the third consecutive game, finishing with 12 points with three steals.

SCOUTING ST. BONAVENTURE

- The Bonnies evened their record at 2-2 with a 68-56 win over Detroit on Saturday to snap a two-game losing streak.
- Junior Katie Healy leads the SBU attack, averaging 11.2 points to go along with 4.2 rebounds and 1.5 blocks, while classmate Hannah Little accounts for 10.2 points and 6.2 rebounds per outing.
- Sophomore Gabby Richards is coming off of a 12-point, six-rebound performance against Detroit. She is averaging 8.8 points and 6.2 rebounds per game.

ALL-TIME VERSUS THE BONNIES

- The Lady Lions are a perfect 10-0 all-time against St. Bonaventure.
- Penn State is 5-0 versus the Bonnies in games played in Happy Valley.
- The squads last met on Feb. 2, 1991 when Penn State picked up a 102-73 win in Olean.
- The Lady Lions have reached the 100-point plateau five times against the Bonnies and have never scored less than 86 points against SBU.
- Penn State is averaging 96.5 points while giving up just 64.7 points in 10 meetings with St. Bonaventure.
- The Lady Lions are 115-13 all-time against current Atlantic 10 schools.

LAST TIME VERSUS SBU

- The Lady Lions earned a 102-73 win over the Bonnies on Feb. 2, 1991 in the last encounter between the teams.
- Penn State shot 59 percent from the field on the game.
- Susan Robinson paced the Penn State effort in the win with 26 points, while Dana Eikenberg added a double-double with 20 points and 11 assists.
- The Lady Lions took advantage at the free throw line, making 20 of their 24 attempts.
- The Bonnies were the first team to outrebound Penn State that season with a 36-26 margin.

WHAT'S AT STAKE

A Penn State Win Would:

- Make Penn State 11-0 all-time against St. Bonaventure.
- Snap the Lady Lions' two-game losing streak.
- Even the Lady Lions record at 2-2 on the season.
- Make Penn State 116-13 all-time against current Atlantic 10 schools.



PRESS CONFERENCE SCHEDULE

Coquese Washington will hold a weekly press conference and the Lady Lions will have media availability on a weekly basis throughout the season. All press conferences will begin at 2:30 p.m. (unless otherwise noted) and go for approximately 15-20 minutes, followed by a 15-minute open media session prior to practice. Press conference will be held in the Media Room at the Bryce Jordan Center (unless otherwise noted).

Press Conference Dates

Tuesday, Dec. 2	Wednesday, Feb. 4
Monday, Dec. 8	Tuesday, Feb. 10 (Practice Gym)
Wednesday, Dec. 17 (Time TBD)	Wednesday, Feb. 18
Tuesday, Dec. 30 (Time TBD)	Wednesday, Feb. 25
Thursday, Jan. 8 (Time TBD)	Tuesday, March 3 or Wednesday, March 4 (pending travel plans for BTT)
Wednesday, Jan. 14	
Wednesday, Jan. 21	
Tuesday, Jan. 27	

LADY LIONS GET SOCIAL: The Lady Lions are on several social media sites, including Twitter, Instagram and Facebook. Follow the Lady Lions and assistant coaches (@pennstatewbb), head coach Coquese Washington (@coquesewashing) and sports information contact Kris Petersen (@ladylionsid) on Twitter to get the inside scoop. The Lady Lions are also on Instagram (@pennstatewbb) and Facebook at www.facebook.com/pennstateladylions.



OF NOTE

- Sophomore **Keke Sevillian** made her first career start and junior **Candice Agee** made her fourth career start against Seton Hall (11/22).
- Sophomore **Kaliyah Mitchell** tied her career high with 10 rebounds against Seton Hall on Nov. 22.
- With the loss to Seton Hall, Penn State dropped to 1-2 to start a season for the first time since 2005-06, when the Lady Lions started 1-3.
- Freshman **Lindsey Spann** and sophomores **Kaliyah Mitchell**, **Sierra Moore** and **Peyton Whitted** all made their first career starts for the Lady Lions against Towson on Nov. 14.
- Junior **Candice Agee** tied her career high with nine rebounds against Towson Nov. 14. She also grabbed nine rebounds vs. Fairleigh Dickinson on Dec. 2, 2012.
- Sophomore **Keke Sevillian** reached a career high in assists with five in the season opener against Towson on Nov. 14.
- With the win over Towson on Nov. 14, **Coquese Washington** improved to a perfect 8-0 in the first game of the season since taking the helm of the Lady Lion program for the 2007-08 season.
- Head coach **Coquese Washington** has selected senior **Tori Waldner**, redshirt-sophomore **Sierra Moore** and redshirt-freshman **Lindsey Spann** as team captains for the 2014-15 season.
- Sophomore forward **Peyton Whitted's** father, Kevin, was recently named the head coach of the NBA Developmental League's Westchester Knicks.

AGGRESSIVE AGEE

- Junior center **Candice Agee** was a dominant force in the post for the Lady Lions against Seton Hall, connecting on 9-of-15 shots en route to a career-high 21 points.
- The performance marked the first time that Agee has surpassed the 20-point plateau in her career.
- Agee's previous personal best was 16 points set against Bucknell on Nov. 20, 2013.
- Additionally, Agee, who made her first start of the season and fourth of her career, tied her personal best with three blocked shots.

"SIE"-ING DOUBLE

- Sophomore **Sierra Moore** posted her first career double-double with personal bests of 14 points and 10 rebounds against Seton Hall on Nov. 22.
- Moore's 14 points surpasses her previous career high of 12 set against Towson in the season opener.
- Her 10 boards double her previous personal best of five caroms accomplished twice during her collegiate career against Towson and Iona, while she was at Duke.
- Moore also established a career high with five assists against the Pirates.

TORI'S REJECTING ROLE

- Senior center **Tori Waldner** moved into ninth place in program history with 96 career blocks after a three-block performance against Seton Hall on Nov. 22.
- With her performance against the Pirates, she passed Jess Brungo (94; 2001-04) for the ninth spot.
- Waldner needs six rejections to tie Talia East (102; 2011-14) for eighth place.
- Waldner also needs four rejections to become the ninth player in program history with 100 blocked shots.
- She would also be the third Lady Lion in the last three years to reach the 100-block mark, joining Nikki Greene (215; 2010-13) and Talia East (102; 2011-14).

PENN STATE'S OVERALL/BIG TEN YEAR-BY-YEAR REVIEW

Year	Overall	Big Ten	Home	BT Home	Road	BT Road	Neutral
1992-93	22-6	14-4	12-2	9-0	9-4	5-4	0-0
1993-94	28-3	16-2	14-0	9-0	11-2	7-2	3-1
1994-95	26-5	13-3	14-2	8-0	9-3	5-3	3-0
1995-96*	27-7	13-3	14-2	8-0	8-4	5-3	5-1
1996-97	15-12	8-8	9-3	5-3	5-6	3-5	1-3
1997-98	21-13	8-8	10-5	4-4	6-6	4-4	5-2
1998-99	22-8	12-4	9-2	6-2	9-4	6-2	4-2
1999-00	30-5	15-1	14-0	8-0	9-2	7-1	7-3
2000-01	19-10	11-5	11-2	7-1	6-5	4-4	2-3
2001-02	23-12	11-5	10-4	6-2	9-5	5-3	4-3
2002-03	26-9	13-3	16-0	8-0	7-7	5-3	2-2
2003-04	28-6	15-1	12-1	8-0	9-3	7-1	6-2
2004-05	19-11	13-3	12-0	8-0	6-9	5-3	1-2
2005-06	13-16	6-10	8-6	5-3	3-8	1-7	2-2
2006-07	15-16	7-9	12-1	7-1	2-12	0-7	1-3
2007-08	13-18	4-14	10-6	3-6	3-11	1-8	0-1
2008-09	11-18	6-12	8-6	4-5	2-9	2-7	1-3
2009-10	17-14	8-10	9-6	5-4	5-7	3-6	3-1
2010-11	25-10	11-5	14-4	6-2	7-4	5-3	4-2
2011-12	26-7	13-3	12-2	6-2	11-3	7-1	3-2
2012-13	26-6	14-2	14-0	8-0	9-5	6-2	3-1
2013-14	24-8	13-3	14-4	6-2	8-3	7-1	2-1
2014-15	1-2	0-0	1-2	0-0	0-0	0-0	0-0

* First season at the Bryce Jordan Center



PENN STATE-ST. BONAVENTURE NOTABLE GAMES

Dec. 3, 1990 - Penn State 87, St. Bonaventure 68

After St. Bonaventure hit a jumper to close within two midway through the first half, senior Tanya Garner and the reserves sparked a 22-5 Lady Lion run to take a 42-25 lead with less than a minute left in the first half and Penn State never looked back on the way to an 87-68 win. Garner finished with 20 points, while Dana Eikenberg scored 11 of her 13 points in the opening half. Tina Henry had six points, six rebounds and six blocks off of the bench.

Jan. 23, 1988 - Penn State 89, St. Bonaventure 45

The Lady Lions used a 36-3 run in the first half to take a 51-11 lead at halftime. Penn State shot 63 percent in the first half against the Bonnies. Suzie McConnell had 28 points in the game to pass Vicki Link for second place on Penn State's career scoring list. Bethany Collins posted a double-double with 16 points and 12 rebounds in just 21 minutes of action, while Adrie DeVries added 11 boards and seven points.

Jan. 28, 1989 - Penn State 104, St. Bonaventure 64

Senior Lisa Lambert and freshman Kathy Phillips combined for 41 points to lead the Lady Lions to the 40-point win over the Bonnies (104-64). Phillips made the most of her first career start with 13 points, 10 rebounds and two blocks. Lambert added a career-high 18 points and eight rebounds. Susan Robinson posted a double-double with 24 points and 16 rebounds with five steals. Penn State excelled at the free throw line, hitting 92.1 percent (35-38) from the stripe.

BOUNCEBACK-ABILITY

- With losses to Albany and Seton Hall in the WNIT, Penn State lost back-to-back games for the first time since 2011.
- Penn State had shown its resiliency after a loss, winning 20 games following a loss, dating back to the 2010-11 season.
- The Lady Lions last lost consecutive games on Feb. 17 and Feb. 24, 2011.
- Penn State last lost three consecutive games since 2009-10 when the Lady Lions lost five straight games from Jan. 31-Feb.14.

SCORING SPANN

- Freshman guard **Lindsey Spann** led the Lady Lions in scoring for the second straight game with 14 points against Albany on Nov. 16.
- This marks the first time a Penn State freshman has led the team in scoring in consecutive games since Maggie Lucas did so versus Minnesota (1/13/11) and versus Illinois (1/16/11).
- Spann handed out four assists for the second straight game.

DeGRAAF FROM DEEP

- Sophomore forward **Jenny DeGraaf** went 4-for-4 from beyond the arc en route to a career-high 12 points against Albany on Nov. 15.
- She is the first Lady Lion to connect on all of her three-point attempts in a game (min. 4 attempts) since Maggie Lucas also netted four shots on four attempts vs. Bucknell on Dec. 21, 2011.
- The four three pointers made are a career-high for DeGraaf, who had made one three pointer on two occasions entering the game.
- DeGraaf's 12 points are a career-high, passing her two five point efforts from last season. She scored five points vs. Ohio State (1/16/14) and vs. Alcorn State (12/22/13).
- She also tied her personal mark with three rebounds against the Great Danes.

STELLAR DEBUT

- Freshman **Lindsey Spann** made her long-awaited Lady Lion debut with the start against Towson on Nov. 14.
- Spann, who missed last season with an ACL injury, had a team-high 17 points on 7-of-14 shooting.
- She also grabbed five rebounds and dished out four assists versus the Tigers.
- Spann is the first Penn State freshman to lead the team in scoring since Maggie Lucas did so 13 times during her rookie season in 2010-11.

DOUBLING UP

- Senior post player **Tori Waldner** recorded the first double-double of her Penn State career with 11 points and 11 rebounds in the season opener against Towson on Nov. 14.
- She tied her career high with 11 boards, equaling the mark she set against Texas A&M on Dec. 15, 2013.
- Waldner's double-double was the first since Talia East scored 13 points and grabbed 13 rebounds vs. Wichita State, Mar. 23, 2014.

PENN STATE'S RECORD WHEN...

Playing at home	1-2
Playing on the road	0-0
Playing at a neutral site	0-0
vs. Top 10 teams	0-0
vs. Top 25 teams	0-0
Games decided by 3 points or less	0-1
Games decided by 4-10 points	1-1
Games decided by 11-19 points	0-0
Games decided by 20 points or more	0-0
Leading at the half	1-0
Tied at the half	0-1
Trailing at the half	0-1
Leading with 5:00 remaining	1-0
Trailing with 5:00 remaining	0-2
Tied with 5:00 remaining	0-0
In overtime	0-0
PSU scores 40-49 points	0-0
PSU scores 50-59 points	0-1
PSU scores 60-69 points	0-0
PSU scores 70-79 points	1-1
PSU scores 80 points or more	0-0
PSU shoots 45% or better	1-0
PSU shoots less than 45%	0-2
PSU shoots better than opponent	1-2
Opponent shoots better than PSU or tied	0-0
Opponent scores less than 39 points	0-0
Opponent scores 40-49 points	0-0
Opponent scores 50-59 points	0-1
Opponent scores 60-69 points	1-0
Opponent scores more than 70 points	0-1
Opponent shoots better than 45%	0-0
Opponent shoots less than 45%	1-2
PSU outrebounds opponent	1-1
Opponent outrebounds PSU or tied	0-1
PSU commits 14 or less turnovers	1-0
PSU commits 15 or more turnovers	0-2
PSU makes at least 5 3-pointers	0-1
PSU makes four 3-pointers or less	1-1
Recording 7 or more steals	1-2
Recording 6 or less steals	0-0
Wearing white uniforms	1-2
Wearing blue uniforms	0-0
Wearing white and pink uniforms	0-0
Penn State wins the tip	0-0
Penn State loses the tip	1-2
Penn State scores first	1-1
Opponent scores first	0-0
Playing during the day (before 5 p.m.)	1-1
Playing at night	0-1
On Monday	0-0
On Tuesday	0-0
On Wednesday	0-0
On Thursday	0-0
On Friday	1-0
On Saturday	0-1
On Sunday	0-1
In November	1-2
In December	0-0
In January	0-0
In February	0-0
In March	0-0



LIONS IN THE BIG TEN STATS

A breakdown of where Penn State ranks in the Big Ten's overall statistical categories. Through games of Nov. 23.

TEAM	
Scoring Offense.....	13th (64.7)
Scoring Defense.....	10th (64.3)
Scoring Margin.....	13th (+0.3)
Free Throw Percentage.....	14th (.600)
FG Percentage.....	12th (.407)
FG Percentage Defense.....	6th (.335)
3-point FG Percentage.....	11th (.306)
3-point FG Pct. Defense.....	6th (.283)
3-point FG Made.....	12th (3.7)
Rebounding Offense.....	8th (43.3)
Rebounding Defense.....	12th (42.3)
Rebounding Margin.....	11th (+1.0)
Offensive Rebounds.....	T9th- (13.3)
Defensive Rebounds.....	6th (30.0)
Blocked Shots.....	T-3rd (6.3)
Assists.....	12th (13.7)
Steals.....	9th (9.3)
Turnover Margin.....	11th (-0.7)
Assist to Turnover Ratio.....	13th (0.7)
INDIVIDUAL	
Scoring.....	19th - Lindsey Spann (14.3)
Rebounding.....	T-9th - Tori Waldner (9.0)
Assists.....	T-10th - Sierra Moore (4.0)
Steals.....	T-8th - Kaliyah Mitchell (2.3)
3FG Percentage.....	2nd - Jenny DeGraaf (.667)
Blocked Shots.....	4th - Tori Waldner (2.3)
.....	T-7th - Candice Agee (1.7)
.....	T-14th - Sierra Moore (1.3)
Off. Reb.....	9th - Sierra Moore (3.3)
Def. Reb.....	11th - Tori Waldner (6.7)
Minutes.....	6th - Sierra Moore (35.3)

2014-15 GAME-BY-GAME STARTING LINEUPS

Date	Opponent	Pt Guard	Guard	Guard/Forward	Forward	Center
11/2	INDIANA (PA.)	Spann	Moore	Mitchell	Whitted	Waldner
11/14	TOWSON	Spann	Moore	Mitchell	Whitted	Waldner
11/16	TOWSON	Spann	Moore	Mitchell	Whitted	Waldner
11/22	SETON HALL	Spann	Moore	Sevillian	Mitchell	Agee

GIVING MOORE

- After sitting out last season due to NCAA Transfer Rules, sophomore **Sierra Moore** suited up for the Blue & White for the first time against Towson on Nov. 14.
- She set career highs in points (12), assists (4), blocks (2) and equaled her personal best in rebounds with five.
- All of her previous career-best efforts came during the 2012-13 season at Duke.

MEETING MOLLY

- The Lady Lions announced the addition of walk-on **Molly Dincher** to the roster prior to the season-opener against Towson.
- Dincher served as a Lady Lion manager for a year and a half.
- Dincher also played at Penn State Wilkes-Barre for two seasons where she helped the Mountain Lions to the 2011-12 PSUAC North Division Championship.
- She averaged 7.3 points and 8.6 rebounds that season for Wilkes-Barre, her final season for the Mountain Lions.
- She also rejected 33 shots and had 27 assists in 21 appearances that included 16 starts.
- Since coming to University Park, Dincher played for the Penn State women's club basketball team that took second in the National Championships in 2012-13.
- A three-year letterwinner, Dincher played her high school basketball at Williamsport Area High School. In her final season, the Millionaires were 12-8.

TORI EXTRA CURRICULAR

- Senior post player **Tori Waldner** has shown that she is more than just a basketball player as she competes in the classroom and gives back tirelessly to the community.
- Waldner is currently the president of the Penn State Student-Athlete Advisory Board (SAAB). As part of her duties as SAAB president, she is involved in the community services efforts and creating programming for Penn State student-athletes on topics of diversity and inclusion.
- She is also involved in Penn State Life Link, a program in which State College Area School District special-needs students between the ages of 18 and 21 are given an opportunity to interact with students of their own age in an environment that is socially and academically conducive to continued growth with the hope of future independent living.
- Waldner regularly meets these students for lunch, swims with the students as a physical activity and provides guidance to help them on their road to independence.
- She is also involved in the "It's on Us" initiative- an awareness campaign to help put an end to sexual assault on college campuses.
- As part of her involvement, Waldner was part of a meeting with other universities at the White House.
- Waldner is also stellar in the classroom, collecting two Academic All-Big Ten honors.

2015 PINK ZONE AT PENN STATE

- The Ninth Annual Pink Zone at Penn State will be held Sunday, March 1 in the Bryce Jordan Center when the Lady Lions take on Wisconsin. The time for the game will be determined later in the season.
- Last year, the Lady Lions donated a record \$310,000 to breast cancer causes.
- All totalled, the Lady Lions have donated more than \$1.135 million for breast cancer research and awareness in the first eight years.
- This year's fundraising efforts will benefit the Mount Nittany Medical Center, Penn State Hershey Cancer Institute, Pennsylvania Breast Cancer Coalition, the Kay Yow Cancer Fund, J.C. Blair Memorial Hospital and Lewistown Hospital.
- For more information on the Pink Zone at Penn State, visit the official Pink Zone website at www.pennsylvaniapinkzone.org.



THE LAST TIME PENN STATE...

SCORING

Player scored 20 points: vs. Seton Hall (21, Candice Agee), 11/22/14
 Player scored 25 points: vs. Ohio State (29, Ariel Edwards), 3/7/14
 Player scored 30 points: at Indiana (32, Maggie Lucas), 2/13/14
 Player scored 35 points: vs. Georgetown (39, Maggie Lucas), 12/9/12
 Player scored 40 points: vs. Minnesota (49, Kelly Mazzante), 12/28/01
 Two players scored 20 points: vs. Florida (22, Maggie Lucas; 22 Dara Taylor), 3/25/14
 Three players scored 20 pts.: at Nevada (26, Maggie Lucas; 23, Alex Bentley; 21, Zhaque Gray), 11/26/11
 Two players scored 25 points: at Boston College (28, Alex Bentley; 28, Maggie Lucas), 12/2/10
 Player scored 25 points/3 consecutive games: Maggie Lucas (32, at Indiana, 2/13/14; 25 vs. Wisconsin, 2/16/14; 26 vs. Northwestern, 2/20/14)
 Five in double figures: at Northwestern (19, Maggie Lucas; 15, Ariel Edwards; 11, Dara Taylor; 11, Talia East; 11, Peyton Whitted), 2/2/14
 Six in double figures: at Oakland (15, Alex Bentley; 16, Ariel Edwards; 16, Zhaque Gray; 13, Maggie Lucas; 10, Mia Nickson; 10, Gizelle Studevent; 10, Julia Trogele), 11/18/10
 Seven in double figures: at Oakland (15, Alex Bentley; 16, Ariel Edwards; 16, Zhaque Gray; 13, Maggie Lucas; 10, Mia Nickson; 10, Gizelle Studevent; 10, Julia Trogele), 11/18/10
 PSU scored 50 points in a half: at Illinois (51, second half), 1/9/14
 PSU scored 50 points in both halves: vs. St. Francis (Pa.) (55, first half; 62, second half), 11/8/13
 PSU scored 55 points in a half: vs. St. Francis (Pa.) (55, first half; 62, second half), 11/8/13
 PSU scored 60 points in a half: vs. St. Francis (Pa.) (62, second half), 11/8/13
 PSU scored 100 points: vs. St. Francis (Pa.) (W, 117-77), 11/8/13
 PSU scored 100 points in Big Ten game: vs. Illinois (W, 101-80), 2/15/01
 PSU scored 100 points in a home game: vs. St. Francis (Pa.) (W, 117-77), 11/8/13
 PSU scored fewer than 15 points in a half: vs. Wisconsin (13, first half), 2/25/10
 PSU scored fewer than 20 points in a half: vs. Michigan State (19, first half), 3/9/13
 PSU scored fewer than 40 points in a game: vs. Wisconsin (L, 39-71), 2/25/10
 PSU scored fewer than 50 points in a game: vs. Michigan State (L, 46-54), 3/9/13
 PSU scored fewer than 50 points in a Big Ten game: vs. Purdue (L, 49-60), 2/24/11
 OPP scored 50 points in a half: vs. Ohio State (58, first half), 3/7/14
 OPP scored 100 points: at Boston College (Lot, 113-104), 12/2/10
 OPP scored fewer than 20 points in a game: at Dickinson (W, 57-16), 3/6/71
 OPP scored fewer than 30 points in a game: vs. Virginia Tech (W, 66-28), 12/6/11
 OPP scored fewer than 40 points in a game: vs. Wisconsin (W, 84-40), 1/17/13
 OPP scored fewer than 50 points in a game: vs. Ohio State (W, 66-42), 1/16/14
 OPP scored fewer than 50 points in a Big Ten game: vs. Ohio State (W, 66-42), 1/16/14

FIELD GOAL SHOOTING

Player made every shot from the field (min. 7): vs. Michigan St. (Amanda Brown, 8-8), 1/25/07
 PSU shot 55% or better in a game: vs. Illinois (.611), 2/20/13
 PSU shot 55% or better in consecutive games: vs. Northwestern (.682), 3/2/96; vs. Ohio St. (.585), 3/3/96
 PSU shot 60% in a game: vs. Illinois (.611), 2/20/13
 PSU shot below 25% in a game: vs. Michigan State (.224), 3/9/13
 PSU shot below 30% in a game: vs. Michigan State (.224), 3/9/13
 PSU shot below 35% in a game and won: vs. Michigan State (.333), 1/19/14
 PSU shot below 30% in a game and won: vs. Northwestern (.299), 1/3/13
 PSU shot 55% in a half: vs. Towson (.556, second half), 11/14/14
 PSU shot 60% in a half: at Illinois (.630, second half), 1/9/14
 PSU shot 65% in a half: at Georgetown (.680, second half), 12/8/13
 PSU shot 70% in a half: vs. Virginia Tech (.714, second half), 12/6/11
 PSU shot 55% in both halves: vs. Illinois (.586, first half; .640, second half), 2/20/13
 PSU shot 20% or below in a half: vs. Michigan State (.200, first half), 3/9/13
 PSU shot below 25% in a half: at Georgetown (.206, first half), 12/8/13

THREE-POINT SHOOTING

Player made every shot from the field (min. 4): vs. Albany (4-4, Jenny DeGraaf), 11/16/14
 Player made 4 three-pointers in a half: vs. Connecticut (4 in the second, Maggie Lucas), 11/17/13
 Player made 5 three-pointers in a half: vs. Michigan State (5 in the second, Maggie Lucas), 3/9/13
 Player made 6 three-pointers in a half: vs. Michigan State (5 in the second, Maggie Lucas), 3/9/13
 Player made 5 three-pointers in a game: vs. Northwestern (5, Maggie Lucas), 2/20/14
 Player made 6 three-pointers in a game: vs. Michigan State (7, Maggie Lucas), 3/9/13
 Player made 7 three-pointers in a game: vs. Michigan State (7, Maggie Lucas), 3/9/13
 Player made 8 three-pointers in a game: at Nebraska (8, Maggie Lucas), 3/3/13
 Player attempted 10 three-pointers in a game: at Illinois (11, Maggie Lucas), 1/9/14
 PSU made 10 three-pointers: vs. North Carolina (14), 11/30/11
 PSU did not make a three-pointer: vs. Hartford (0-8), 12/29/13
 PSU attempted 20 three-pointers: vs. Connecticut (21), 11/17/13
 PSU shot 60% 3FG (min. 5 att.): vs. Illinois (.667; 6-9), 2/20/13

FREE THROW SHOOTING

Player made every shot from FT line (min. 10): at Illinois (10-10, Maggie Lucas), 1/9/14
 PSU shot 90% (min. 10 att.): vs. Michigan (18-19, .947), 3/1/14
 PSU shot below 50% (min. 10 att.): at Purdue (8-21, .381), 1/30/14
 PSU made 30 free throws: vs. St. Francis (Pa.) (37), 11/8/13
 PSU made fewer than five FTs: at Michigan (3), 2/3/11
 PSU attempted 40 free throws: vs. St. Francis (Pa.) (43), 11/8/13
 PSU attempted fewer than five FTs: at Michigan (4), 2/3/11

REBOUNDS

Player had 15 rebounds: at LSU (16, Nikki Greene), 3/26/13
 Player had 20 rebounds: at Cal State Northridge (20, Nikki Greene), 11/24/12
 Two players with double-digit rebs.: at Illinois (11, Ariel Edwards; 10, Peyton Whitted), 1/9/14
 Three players had double-digit rebounds: vs. Ohio State (15, Nikki Greene; 15, Mia Nickson; 10, Maggie Lucas), 2/20/12
 PSU had 60 rebounds: vs. Ohio State (60), 2/20/12
 PSU had 50 rebounds: vs. Seton Hall (50), 11/22/14
 PSU had 20 or fewer rebounds: vs. Michigan State (20), 1/19/03
 OPP had 20 or fewer rebounds: at Indiana (20), 2/13/11
 PSU had 20 offensive rebounds: vs. Seton Hall (21), 11/22/14
 PSU had 25 offensive rebounds: vs. Ohio State (29), 2/20/12

ASSISTS

Player had 10 assists: vs. Minnesota (10, Dara Taylor), 1/26/14
 Player had 10 assists/consecutive games: Helen Darling (12 at LaSalle, 12/8/99; 11 vs. Auburn, 12/11/99; 10 vs. Clemson, 12/19/99)
 Player had 15 assists: vs. North Carolina (15, Alex Bentley), 11/30/11
 PSU had 30 assists: vs. St. Francis (Pa.) (32), 12/2/99
 PSU had fewer than 10 assists: at Stanford (6), 3/30/14
 PSU had fewer than 5 assists: at Michigan State (4), 2/4/10

BLOCKED SHOTS

Player blocked 5 shots: vs. Northwestern (5, Tori Waldner), 2/20/14
 Player blocked 6 shots: vs. Purdue (7, Talia East), 1/12/14
 PSU blocked 10 shots: vs. Purdue (14), 1/12/14
 PSU blocked 0 shots: at Illinois, 1/9/14

STEALS

Player had 7 steals: vs. Alcorn State (7, Dara Taylor), 12/22/13
 Player had 8 steals: vs. NJIT (8, Alex Bentley), 12/23/12
 PSU had 20 steals: vs. Bucknell (21), 12/28/10

TURNOVERS

PSU committed 25 or more: at Illinois (27), 1/9/14
 PSU committed 25 or more and won: at Illinois (27), 1/9/14
 PSU committed 10 or fewer: vs. Wisconsin (7), 2/16/14
 PSU committed 10 or fewer in consecutive games: vs. Minnesota (9), 1/22/04; at Ohio St. (9), 1/25/04
 OPP committed 25 or more: vs. Oregon State (26), 11/30/13

DOUBLE-DOUBLES

Points & rebounds: vs. Seton Hall (Sierra Moore, 14 points, 10 rebounds), 11/22/14
 Points & rebounds/consecutive games: Nikki Greene (12 points, 10 rebounds vs. Ohio State, 1/30/11; 16 points, 14 rebounds at Illinois, 1/27/11)
 Points & rebounds/3 consecutive games: Amanda Brown (19 pts., 17 rebs. at Northwestern, 2/11/07; 14 pts., 10 rebs. vs. Minnesota, 2/15/07; 14 pts., 11 rebs. at Iowa, 2/18/07)
 Points & rebounds/4 consecutive games: Angie Potthoff (vs. Northwestern, 1/31/97; at Illinois, 2/2/97; vs. Michigan, 2/7/97; vs. Indiana, 2/9/97; vs. Iowa, 2/16/97; vs. Michigan State, 2/21/97)
 Points & rebounds/5 consecutive games: Angie Potthoff (vs. Northwestern, 1/31/97; at Illinois, 2/2/97; vs. Michigan, 2/7/97; vs. Indiana, 2/9/97; vs. Iowa, 2/16/97; vs. Michigan State, 2/21/97)
 Points & assists: vs. Minnesota (Dara Taylor, 15 points, 10 assists), 1/26/14
 Points & assists/consecutive games: Helen Darling (12 pts., 12 assts. at La Salle, 12/8/99; 10 pts., 11 assts. vs. Auburn, 12/11/99)
 Two players had double-doubles: vs. Ohio State (Nikki Greene, 25 pts., 15 rebs.; Mia Nickson, 18 pts., 15 rebs.; Maggie Lucas, 12 pts., 10 rebs.), 2/20/12
 Three players had double-doubles: vs. Ohio State (Nikki Greene, 25 pts., 15 rebs.; Mia Nickson, 18 pts., 15 rebs.; Maggie Lucas, 12 pts., 10 rebs.), 2/20/12
 15 points & 15 rebounds: at LSU (Nikki Greene, 16 pts., 16 rebs), 3/26/13
 20 points and 10 rebounds: vs. Ohio State (Ariel Edwards, 29 points, 10 rebounds), 3/7/14

MARGIN OF VICTORY

PSU won by 20-30 points: vs. Florida (22), 3/25/14
 PSU won by 20-30 points in a Big Ten game: at Ohio State (20), 2/9/14
 PSU won consecutive Big Ten games by 20+ pts.: vs. Wisconsin (44), 1/17/13; vs. Nebraska (22), 1/13/13; at Michigan St. (21), 1/6/13
 PSU won by 31-40 points: vs. Bucknell (43), 11/20/13
 PSU won by 41-50 points: vs. Bucknell (43), 11/20/13
 PSU won by 51+ points: vs. Fairleigh Dickinson (57), 12/2/12
 PSU lost by 20-30 points: at Stanford (25, 82-57), 3/30/14
 PSU lost by 20-30 points in a Big Ten game: at Nebraska (20; 94-74), 2/24/14
 PSU lost by 31+ points: vs. Wisconsin (32), 2/25/10

MISCELLANEOUS

Led PSU in points/rebounds/assists: Dara Taylor vs. Florida (22 pts., 8 rebs., 4 asst.), 3/25/14
 Hit "final seconds" (under 10 seconds) game-winning shot: Julia Trogele at Illinois (9 sec.), 1/27/11
 Hit "final minute" game-winning shot: Alex Bentley at Minnesota (3-pt. with :38.9 remaining), 2/5/12
 Player played every minute: at Nebraska (Dara Taylor), 2/24/14
 Player played more than 40 min.: at Dayton (Alex Bentley, 46; Zhaque Gray, 44; Mia Nickson, 41), 11/12/10
 Committed 10 or fewer fouls: vs. Virginia Tech (9), 12/6/11
 Committed 30 or more fouls: vs. Iowa State (32), 11/25/11
 PSU rallied from a 10-pt. deficit to win: vs. Wichita State (down by 11 at 6:39 in 1st, won 62-56), 3/23/14
 PSU rallied from a 15-pt. deficit to win: at CS-Northridge (down by 17 at 5:52 in 1st half, won 85-73), 11/24/12
 PSU had a 5-game winning streak: 6 games, 1/16/14-2/2/14
 PSU had a 10-game winning streak: 11 games, 12/9/12 - 1/27/13
 PSU had a 5-game losing streak: 6 games, 1/28/10 - 2/14/10
 PSU went undefeated at home: 2012-13 season
 PSU sold out the BJC: Purdue, 2/29/04

OVERTIME

PSU played an OT game: at Boston College (L, 113-104), 12/2/10
 PSU won an OT game: at Oakland (96-89), 11/18/10
 PSU lost an OT game: at Boston College (L, 113-104), 12/2/10
 PSU played two or more OT games in a season: 2010-11 season (three)
 PSU won two or more OT games in a season: 2010-11 season (two)

RANKINGS

Played the No. 1 team in the AP poll: vs. Connecticut (L, 71-52), 11/17/13
 Played the No. 1 team in the Coaches poll: vs. Connecticut (L, 71-52), 11/17/13
 Defeated the No. 1 team in the AP poll: at Virginia (73-71), 1/3/91
 Defeated Top 10 opponent: vs. #8/11 Ohio State (84-66), 2/20/12
 Defeated Top 10 opponent on the road: at #7 Purdue (47-42), 1/2/04
 Defeated Top 10 opponent by double digits: vs. #8/11 Ohio State (84-66), 2/20/12
 Played consecutive Top 10 teams: at #2/3 Texas 11/14/04, at #6/6 Duke 11/19/04
 Defeated Top 25 opponent: at #16/19 Purdue (75-72), 1/30/14
 Defeated Top 25 opponent on the road: at #16/19 Purdue (75-72), 1/30/14
 Defeated Top 25 opponent by double digits: at #23/22 Iowa (87-71), 1/5/14



2015 RECRUITING CLASS

LADY LIONS SECURE TOP 10 CLASS

- The four-player class is ranked eighth by Prospect Nation, ninth by All-Star Girls Report, 10th by Blue Star Basketball and 11th by ESPN/HoopGuriz and Collegiate Girls Basketball Report.
- The class features two Top 20 players and three Top 100 signees in both the Blue Star Basketball and Prospect Nation rankings.
- This is believed to be the highest-ranked class in program history.
- This is the third Top 15 class to sign under Washington, joining the 2009 and 2013 classes that were ranked 14th by ESPN/Hoopguriz.
- It is also the fourth Top 25 recruiting class for Washington (2010 class was 22nd).

AMARI CARTER * 5-8 * Guard * Washington, D.C. * St. John's College

- A 5-7 guard, Carter is ranked as the #31 overall recruit by both ESPN/HoopGuriz and Collegiate Girls Basketball Report.
- She is also rated 19th by Prospect Nation and Blue Star Basketball and 32nd by All Star Girls Report.
- She averaged 17.5 points, 4.0 rebounds, 4.0 assists and 2.0 steals for St. John's College High School in Washington, D.C.
- She led the team to a 25-7 overall record and the 2014 DC State Athletic Association championship.
- Last season, Carter was named to the Washington Post All-Metropolitan first team and All-WCAC first team.
- As a sophomore, Carter helped the Cadets to the 2013 WCAC Championship en route to collecting second team All-WCAC honors and an All-Metropolitan honorable mention selection.
- She is a 2014-15 Sporting News Preseason High School All-America honorable mention choice.
- Carter has participated in USA Basketball U16 (2013) and U17 (2014) Trials.
- She plays her AAU ball with the Maryland Lady Terps.

TENIYA PAGE * 5-7 * Point Guard * Chicago Heights, Ill. * Marian Catholic

- Page, a 5-7 point guard out of Marian Catholic in Chicago, Ill., is the 21st-ranked prospect by both ESPN/HoopGuriz and Collegiate Girls Basketball Report.
- She also comes in ranked 17th by Blue Star Basketball, 20th by Prospect Nation and 26th by All Star Girls Report.
- A 2014-15 Sporting News Preseason High School All-America honorable mention selection, Page has 1,135 career points entering her final season for the Spartans.
- Last season, she accounted for 14.4 points, 4.7 assists, 3.5 rebounds and 1.8 steals per game to help Marian Catholic to a 28-5 overall record, a East Suburban Catholic Conference championship and a third-place finish in the Illinois High School Association Class 4A Basketball Tournament.
- Page was selected first team All-State by the Illinois Basketball Coaches Association, second team All-State by the Associated Press, first team All-State by The Northwest Indiana Times and third team All-State by the Chicago Tribune in 2014.
- As a sophomore, Page guided Marian Catholic to the IHSA 4A State Championship with a 33-1 record on the season.
- Page has participated in USA Basketball U16 (2013) and U17 (2014) Trials.
- She plays AAU basketball for Midwest Elite.

ASHANTI THOMAS * 6-5 * Post * Lexington, Ky. * Lafayette

- Thomas, a 6-2 post player out of Lexington, Ky., is the 87th-ranked recruit by Prospect Nation and is ranked 106th and 109th by All-Star Girls Report and Blue Star Basketball, respectively.
- She is a candidate for Kentucky Miss Basketball entering her senior season.
- As a junior, she led the Generals to a 29-4 overall record with a 9-1 mark in districts en route to a District and Regional championships.
- Thomas averaged 9.2 points and 8.2 rebounds per game last season on the way to All-State third team accolades from KySports.tv.
- During her sophomore campaign, Thomas accounted for 10.3 points and 9.5 rebounds per outing on the way to claiming Fayette County Public Schools All-City first team.
- Thomas plays AAU basketball for Mac Irvin Lady Fire.

JAYLEN WILLIAMS * 6-4 * Post * Braintree, Mass. * Archbishop Williams

- A 6-4 post player, Williams is the ranked 80th by Blue Star Basketball Report after missing her junior campaign at Archbishop Williams due to a knee injury.
- The 2014-15 Sporting News Preseason High School All-America honorable mention honoree accounted for 8.5 points, a team-best 11.6 rebounds, 3.5 blocks and 4.3 assists per game as a sophomore.
- Williams helped the Bishops to the 2013 Massachusetts Interscholastic Athletic Association (MIAA) Division 3 State Championship with a 23-5 record.
- She played her AAU basketball for Lady Rivals AAU select team under the guidance of Scott Hazelton. Williams and the Rivals squad have won two state championships.
- She also has a strong athletic background in her family as her father, Brent, played in the NFL for 11 years with the Jets, Seahawks and Patriots. Her brother, Brennan, has played for the Houston Texans and her other brother, Camren, is a junior linebacker for the Ohio State football team.

RECORD BOOK

CAREER BLOCKS

1.	268	Kim Calhoun, 1993-96
2.	215	Nikki Greene, 2010-13
3.	192	Mary Donovan, 1977-81
4.	189	Rashana Barnes, 1999-02
5.	185	Andrea Garner, 1997-00
6.	172	Amanda Brown, 2004-07
7.	140	Tina Henry, 1990-93
8.	102	Talia East, 2011-14
9.	96	Tori Waldner, 2012-present
10.	94	Jess Brungo, 2001-04

as of Nov. 22.

MILESTONE WATCH

Milestone Watch

Milestone	Player	Current Total
300 points	Tori Waldner	219
200 points	Candice Agee	182
	Kalayah Mitchell	171
	Peyton Whitted	103
100 points	Sierra Moore (career)	97
	Alex Harris	57
400 rebounds	Tori Waldner	358
200 rebounds	Kalayah Mitchell	159
	Candice Agee	141
	Peyton Whitted	108
100 rebounds	Alex Harris	96
50 assists	Kalayah Mitchell	28
100 blocks	Tori Waldner	96
50 blocks	Candice Agee	39
50 steals	Tori Waldner	47

Milestone Reached

Milestone	Player	Reached
100 points	Peyton Whitted	11/22
100 rebounds	Peyton Whitted	11/16

LADY LIONS BY THE NUMBERS

DOUBLE FIGURE PERFORMANCES

Lindsey Spann - 3
Sierra Moore - 2
Kalayah Mitchell - 1
Candice Agee - 1
Tori Waldner - 1
Jenny DeGraaf - 1

20-POINT PERFORMANCES

Candice Agee - 1

30-POINT PERFORMANCES

none

DOUBLE-DOUBLE PERFORMANCES

Tori Waldner - 1
Candice Agee - 1

DOUBLE-DIGIT REBOUNDING PERFORMANCES

Tori Waldner - 1
Candice Agee - 1



2014-15 SINGLE GAME HIGHS & LOWS

Team Superlatives

Penn State High	Penn State Low	Category	Opponent High	Opponent Low
75, vs. Seton Hall (11/22)	53, vs. Albany (11/16)	Points/Game	75, Seton Hall (11/22)	54, Albany (11/16)
41, vs. Seton Hall (11/22)	25, vs. Albany (11/16)	Points/Half	38, Seton Hall (11/22)	26, Albany (11/16)
27, vs. Towson (11/14)	19, vs. Albany (11/16)	Field Goals Made	22, Towson (11/14)	18, Albany (11/16)
66, vs. Seton Hall (11/22)	51, vs. Albany (11/16)	Field Goal Attempts	69, Towson (11/14)	56, Seton Hall (11/22)
.450, vs. Towson (11/14)	.373, vs. Albany (11/16)	FG Percentage	.375, Seton Hall (11/22)	.316, Albany (11/16)
6, vs. Albany (11/16)	2, Seton Hall (11/22)	3-pt. FG Made	9, Towson (11/14)	2, Albany (11/16)
13, vs. Albany (11/16)	11, vs. Seton Hall (11/22)	3-pt. FG Attempts	30, Towson (11/14)	15, twice (MR: Seton Hall, 11/22)
.462, vs. Albany (11/16)	.182, vs. Seton Hall (11/22)	3-pt. FG Percentage	.440, Seton Hall (11/22)	.133, Albany (11/16)
16, vs. Seton Hall (11/22)	9, vs. Albany (11/16)	Free Throws Made	27, Seton Hall (11/22)	11, Towson (11/14)
28, vs. Seton Hall (11/22)	13, vs. Albany (11/16)	Free Throw Attempts	37, Seton Hall (11/22)	17, Towson (11/14)
.692, vs. Albany (11/16)	.571, vs. Seton Hall (11/22)	Free Throw Percentage	.730, Seton Hall (11/22)	.647, Towson (11/14)
50, vs. Seton Hall (11/22)	31, vs. Albany (11/16)	Rebounds	49, Albany (11/16)	38, Towson (11/14)
15, vs. Towson (11/14)	13, twice (MR: vs. Seton Hall, 11/22)	Assists	14, Seton Hall (11/22)	12, Towson (11/14)
11, vs. Albany (11/16)	7, vs. Towson (11/14)	Steals	12, Seton Hall (11/22)	6, Towson (11/14)
9, vs. Seton Hall (11/22)	2, vs. Towson (11/14)	Blocked Shots	4, twice (MR: Seton Hall, 11/22)	3, Albany (11/16)
23, vs. Albany (11/16)	14, vs. Towson (11/14)	Turnovers	24, Albany (11/16)	13, Towson (11/14)
29, vs. Albany (11/16)	16, vs. Towson (11/14)	Fouls	25, Seton Hall (11/22)	18, twice (MR: Albany, 11/16)

Individual Superlatives

	Penn State	Opponent
Points	21, Candice Agee vs. Seton Hall (11/22)	32, Dominique Johnson, Towson (11/14)
Field Goals Made	9, Candice Agee vs. Seton Hall (11/22)	12, Dominique Johnson, Towson (11/14)
Field Goal Attempts	15, Candice Agee vs. Seton Hall (11/22)	30, Dominique Johnson, Towson (11/14)
Field Goal Pct. (min. 5 made)	.714, Tori Waldner vs. Towson (11/14)	.625, Shereesha Richards, Albany (11/16)
3-pt. Field Goals Made	4, Jenny DeGraaf vs. Albany (11/16)	6, Dominique Johnson, Towson (11/14)
3-pt. Field Goal Attempts	5, Keke Sevillian vs. Towson (11/14)	16, Dominique Johnson, Towson (11/14)
3-pt. Field Goal Pct. (min. 2 made)	1.000, twice (MR: , Jenny DeGraaf vs. Albany, 11/16)	.667, Tara Inman, Seton Hall (11/22)
Free Throws Made	4, 5x (MR: Moore/Mitchell vs. Seton Hall, 11/22)	9, Ka-Deidre Simmons, Seton Hall (11/22)
Free Throw Attempts	6, 4x (MR: Agee/Moore/Mitchell/Whitted vs. Seton Hall, 11/22)	12, twice (MR: Ka-Deidre Simmons, Seton Hall, 11/22)
Free Throw Percentage (min. 3 made)	1.000, 3x (MR: Lindsey Spann vs. Seton Hall, 11/22)	1.000, 4x (MR: Egan/Gordon, Seton Hall, 11/22)
Rebounds	11, Tori Waldner vs. Towson (11/14)	15, Imani Tate, Albany (11/16)
Assists	5, twice (MR: Sierra Moore vs. Seton Hall, 11/22)	7, Breonn Hughey, Towson (11/14)
Steals	4, Kaliyah Mitchell vs. Albany (11/16)	3, 4x (MR: Tara Inman, Seton Hall, 11/22)
Blocked Shots	4, Tori Waldner vs. Albany (11/16)	2, 3x (MR: Lubirdia Gordon, Seton Hall, 11/22)
Turnovers	5, twice (MR: Lindsey Spann vs. Seton Hall, 11/22)	7, Shereesha Richards, Albany (11/16)



MISCELLANEOUS STATS

LEADING SCORER

Lindsey Spann	2
Candice Agee	1

LEADING REBOUNDER

Tori Waldner	2
Sierra Moore	1
Kalayah Mitchell	1

LEADER IN ASSISTS

Keke Sevillian	1
Lindsey Spann	1
Sierra Moore	1

LEADER IN STEALS

Kalayah Mitchell	2
Lindsey Spann	1

LEADER IN BLOCKS

Sierra Moore	1
Tori Waldner	2

GAMES STARTED

Sierra Moore	3
Lindsey Spann	3
Kalayah Mitchell	3
Peyton Whitted	2
Tori Waldner	2
Candice Agee	1
Keke Sevillian	1

20-POINT SCORING GAMES

Penn State	1
Opponents	3
Candice Agee	1

30-POINT SCORING GAMES

Penn State	0
Opponents	1

TECHNICAL FOULS

Penn State	1
Opponents	1

FOUR-POINT PLAYS

Penn State	0
Opponents	0

THREE-POINT PLAYS

Penn State	1
Opponents	0
Candice Agee	1

PSU'S FIRST SUBSTITUTION

Keke Sevillian	1
Candice Agee	1
Tori Waldner	1

BENCH POINTS

Penn State	45 (15.0 ppg)
Opponents	30 (10.0 ppg)

JUMP BALLS CONTROLLED

Penn State	0
Opponents	3

FIRST SCORE OF GAME

Penn State	2
Opponents	1

Sierra Moore	2
--------------	---

RUNS OF 10-0 OR BETTER

Penn State	0
Opponents	1

LARGEST HALFTIME LEAD

2, vs. Towson (31-29) (11/14)

LARGEST HALFTIME DEFICIT

8, vs. Seton Hall (37-29) (11/22)

LARGEST LEAD

16, vs. Towson (11/14)

LARGEST DEFICIT

14, vs. Seton Hall (11/22)

LARGEST DEFICIT OVERCOME TO WIN

8, vs. Towson (12:50 in 2nd half) (11/14)

LARGEST LEAD GIVEN UP IN LOSS

7, vs. Albany (17:12 in 1st half) (11/16)

LARGEST WIN

7, vs. Towson (71-64) (11/14)

LARGEST DEFEAT

5, vs. Seton Hall (75-70) (11/22)

MOST CONSECUTIVE POINTS

9, vs. Towson (10:29 to 6:02, 1st half) (1/14)
--

MOST CONSECUTIVE POINTS BY OPP

12, Towson (1:38, first half to 19:50, second half) (11/14)

LONGEST WINNING STREAK

1, 11/14

LONGEST LOSING STREAK

2, 11/16-present

CLUTCH FREE THROWS

(FINAL 5 MIN. & OT)

Kalayah Mitchell	2-2	1.000
Lindsey Spann	2-2	1.000
Keke Sevillian	1-2	.500
Candice Agee	2-5	.400
Sierra Moore	1-3	.333

NOTE: Totals may not add up to games played due to ties.

SPECIALITY STATS (PSU/OPP)

	Paint	Off TO	2nd	FastBr	Bench
Towson	30/14	13/16	5/9	13/4	17/7
Albany	22/30	14/17	6/12	10/4	14/12
Seton Hall	40/26	18/22	22/10	8/12	14/11





COQUESE WASHINGTON

Head Coach
8th Season

PENN STATE
LADY LION BASKETBALL

Coquese Washington was introduced as the fifth head coach of the Penn State women's basketball program on April 23, 2007. Washington is the first female African-American head coach in Penn State history.

Washington led the 2013-14 Lady Lion squad to a feat that no other Penn State team has accomplished, winning three consecutive conference regular-season titles with a 13-3 record in Big Ten action. Led by the play of a strong senior class, the Lady Lions advanced to the NCAA Sweet Sixteen for the second time in three years. The graduating class of Maggie Lucas, Ariel Edwards, Dara Taylor and Talia East produced 101 wins, which is the second-highest total by a Lady Lion class.

Along the way to collecting her second Big Ten Player of the Year award, Lucas finished second in school history and fourth in Big Ten history in scoring (2,510) and broke the Penn State and Big Ten records for career three-pointers made (365) and career free throw percentage (.907). She was selected in the second round of the 2014 WNBA Draft by the Phoenix

Mercury. Edwards became the 36th member of the 1,000-point club en route to collecting All-Big Ten first team accolades. She finished seventh in the Big Ten in scoring (15.7) and was 11th in free throw percentage (.814). Edwards signed a free agent contract with the WNBA's Tulsa Shock. Taylor also had a stellar senior campaign and collected the Big Ten Defensive Player of the Year award after leading the conference in steals. East also earned postseason honors as she was named All-Big Ten honorable mention. In addition, Washington was honored with her third consecutive Big Ten Coach of the Year honor.

The Lady Lions continued their run in the national spotlight in 2012-13 as they collected their second-straight Big Ten regular-season title and seventh overall with a 26-6 overall record and 14-2 mark in conference play. In each of Washington's first six years, Penn State improved its Big Ten win total. The Lady Lions posted their third consecutive 25-win season, joining the 1993-94, 1994-95 and 1995-96 squads as the only teams in program history to accomplish the feat. The Lady Lions were consistently ranked in the Top 10 for most of the season and finished eighth in the Associated Press Top 25 and 12th in the USA Today Sports Coaches' Poll.

With another stellar campaign, the accolades continued to roll in for the Lady Lions. Washington was selected as the Big Ten Coach of the Year by the media for the second-straight season and became just the fifth mentor in Big Ten history to win back-to-back Coach of the Year accolades. She was also the WBCA Region 6 Coach of the Year and a finalist for WBCA National Coach of the Year for the second-straight season.

The awards also piled up for Penn State's dynamic backcourt of Lucas and Alex Bentley. Lucas was selected as the Big Ten Player of the Year, was a Wade Trophy Finalist and was an All-America choice by four outlets, including the WBCA (honorable mention), Associated Press (second team), USBWA (first team) and Full Court (second team). She is just the third Lady Lion in program history to win Big Ten Player of the Year honors. Bentley earned her third-straight first team All-Big Ten award and honorable mention All-America bids from the WBCA and Associated Press. She was also selected as the 2013 recipient of the Frances Pomeroy Naismith Award, which is presented to the nation's outstanding female collegian 5-8 and under. Nikki Greene also capped a stellar career for the Lady Lions with third team All-Big Ten accolades. She also became the first player in school history to accumulate 1,000 points, 900 rebounds and 200 blocks.

Both Bentley and Greene heard their names called on WNBA Draft night. Bentley was selected with the 13th overall pick by the Atlanta Dream to become the highest draft pick for the Lady Lions since Tanisha Wright (12th) in 2005. Greene was the 26th overall selection by the Phoenix Mercury.

For her efforts in rebuilding the Penn State program, Washington was honored as the Big Ten Coach of the Year and the WBCA Region 6 Coach of the Year, making her a finalist for WBCA National Coach of the Year. The accolades were not just limited to Washington; all five Lady Lion starters earned All-Big Ten recognition, including first team bids for Bentley and Lucas. Both Bentley and Lucas also garnered honorable mention All-America honors from the WBCA and Associated Press, respectively.

The Lady Lions returned to the national stage in Washington's fourth year with a second-place finish in the Big Ten regular season standings, a runner-up finish in the Big Ten

THE WASHINGTON FILE

COACHING RESUME

2007-pres. - Head Coach, Penn State
2013 - Asst. Coach, USA Basketball World U. Games
2013-pres. - Vice President/President-Elect, WBCA
2012-pres. - Kay Yow Cancer Fund Board of Directors
2011-pres. - NCAA WBB Issues Committee
2010-13 - Treasurer, WBCA Executive Committee
2008-pres. - WBCA Board of Directors
2009-12 - USA Basketball Women's Jr. National Comm.
2005-07 - Associate Head Coach, Notre Dame
1999-05 - Assistant Coach, Notre Dame

PLAYING EXPERIENCE

2002-03 - WNBA's Indiana Fever
2000-02 - WNBA's Houston Comets
1998-99 - WNBA's New York Liberty
1997-98 - ABL's Portland Power
1989-93 - University of Notre Dame

EDUCATION

Notre Dame '92, B.A. History
Notre Dame Law School '97, Juris Doctorate

AWARDS

- ❖ 2012, 2013, 2014 Big Ten Coach of the Year
- ❖ 2012, 2013 WBCA Region 6 Coach of the Year
- ❖ 2012, 2013 WBCA National Coach of the Year Finalist
- ❖ 2011, 2013 BCA Female Coach of the Year
- ❖ 2009 Greater Flint Hall of Fame Inductee

FAMILY

Husband: Raynell Brown
Children: Quenton (9), Rhaiyna (5)

Washington vs. Opponents

Albany.....	0-1	Michigan.....	10-3
Alcorn State.....	1-0	Michigan State.....	5-8
Arizona.....	1-0	Middle Tennessee.....	1-0
Army.....	1-0	Minnesota.....	7-7
Boston College.....	0-1	Mississippi.....	1-0
Bucknell.....	6-0	Monmouth.....	1-0
Buffalo.....	1-0	Nebraska.....	3-2
Cal Poly.....	1-0	Nevada.....	1-0
CS-Northridge.....	1-0	NJIT.....	2-0
Charlotte.....	1-0	North Carolina.....	1-0
Connecticut.....	0-4	Notre Dame.....	0-1
Coppin State.....	1-0	Northwestern.....	9-1
Dayton.....	2-1	Oakland.....	2-0
Delaware.....	1-1	Ohio State.....	6-7
DePaul.....	0-1	Old Dominion.....	0-1
Detroit.....	1-0	Oregon State.....	1-0
Drexel.....	2-1	Pittsburgh.....	2-1
Duke.....	1-0	Prairie View A&M.....	1-0
Fair, Dickinson.....	1-0	Purdue.....	4-9
Florida.....	1-0	Rider.....	1-0
Fordham.....	1-0	Seton Hall.....	0-1
Florida State.....	0-1	St. Francis (Pa.).....	1-0
Georgetown.....	3-0	South Carolina.....	4-1
Georgia Tech.....	0-1	South Dakota St.....	1-1
Hartford.....	2-0	Stanford.....	0-1
Hofstra.....	0-1	Stony Brook.....	1-0
Holy Cross.....	1-0	Syracuse.....	0-1
Howard.....	1-0	Texas A&M.....	2-1
Illinois.....	10-3	UTEP.....	1-0
Illinois State.....	1-0	Texas Tech.....	1-1
Indiana.....	7-4	Towson.....	1-0
Iowa.....	7-6	Utah.....	1-0
Iowa State.....	1-0	Virginia Tech.....	2-0
Lafayette.....	1-0	Wagner.....	1-0
LSU.....	1-1	Washington State.....	1-0
Maine.....	1-0	Wichita State.....	1-0
UMES.....	1-0	Wisconsin.....	6-6
Miami (Fla.).....	0-1	UW-Green Bay.....	0-1
		Xavier.....	0-1

Tournament and a berth in the NCAA Tournament. Penn State tallied its 23rd 20-win season with a 25-10 overall record and an 11-5 mark in conference play. The Lady Lions worked their way back to the "Big Dance" for the first time since 2004-05.

Washington came to Happy Valley after eight seasons as an associate head coach and assistant coach under Muffet McGraw at Notre Dame, her alma mater. During Washington's eight years on the bench, Notre Dame amassed a 188-69 record with eight NCAA Tournament appearances, including four Sweet Sixteen runs and a National Championship in 2001.

Washington was a four-year starting point guard for Notre Dame under McGraw and was the team captain on Notre Dame's first-ever NCAA Tournament team. She was a two-time All-Midwestern Collegiate Conference (MCC) selection and led Notre Dame to three MCC Tournament titles.

The epitome of a student-athlete, Washington graduated from Notre Dame in 1992, a full year ahead of schedule, with a bachelor's degree in history. She went on to attain "Double Domer" status in 1997 after earning her Juris Doctorate from the Notre Dame Law School.

Washington juggled finishing her law degree with the start of her professional basketball career. She returned to the hardwood as a professional in 1997-98, playing for the ABL's Portland Power before spending a two-year stint with the WNBA's New York Liberty (1998-99). Washington moved to Houston for the 2000 season, where she played an instrumental role in leading the Comets to the WNBA title. Washington guided the Fever to their first-ever playoff berth and became the first player in WNBA history to lead three different teams to the postseason.

In addition to assisting with the efforts of the Pink Zone at Penn State to raise money and awareness for breast cancer, Washington created Coquese's Drive for the Women's Resource Center. Coquese's Drive for the Women's Resource Center has raised more than \$118,000 to aid in the fight against domestic violence.

Washington is currently serving on the 29-member WBCA Board of Directors, where she is the Vice President/President-Elect of the Executive Committee.

A native of Flint, Mich., Washington and her husband, Raynell Brown, have a son, Quenton (9), and a daughter, Rhaiyna (5). They reside in Port Matilda, Pa.





#1 Candice Agee

Jr. * C * 6-6 * Victorville, Calif./Silverado

Highlights:

- Ranks 20th in program history in blocked shots per game (0.6 bpg).
- Made her first start of the season and fourth of her career versus Seton Hall (11/22).

2014-15 Season Notes:

- Went 9-for-15 from the field en route to a career-high 21 points with five rebounds, two blocks and two steals in just 17 minutes against Seton Hall (11/22).
- Blocked three shots and had two steals against Albany (11/16).
- Nearly posted a double-double with nine points and nine rebounds, which tied her career high, in the season-opening win over Towson (11/14).

Notable:

- 2012 McDonald's High School All-American.
- Competed for the United States in the FIBA U19 World Championship (July 2013) and FIBA Americas U18 Championship (August 2012).

14-15 GAME-BY-GAME

OPPONENT	Min.	FG	3FG	FT	O-D-R	PF	A	TO	B	S	Pts
TOWSON	18	3-6	0-0	3-6	4-5-9	1	0	0	0	0	9
ALBANY	19	1-6	0-0	0-0	1-4-5	4	2	1	3	2	4
SETON HALL	17	9-15	0-0	3-6	3-2-5	4	1	1	2	2	21
ST. BONA											
vs. Liberty											
vs. Georgia State/Samford											
at Syracuse											
WAGNER											
at Hartford											
RIDER											
USF											
at Iowa											
at Michigan											
ILLINOIS											
at Wisconsin											
RUTGERS											
at Nebraska											
at Ohio State											
INDIANA											
NORTHWESTERN											
at Minnesota											
at Rutgers											
MARYLAND											
at Purdue											
MICHIGAN ST.											
MINNESOTA											
at Maryland											
OHIO STATE											
WISCONSIN											

AGEE'S CAREER/SEASON HIGHS

	SEASON HIGHS	CAREER HIGHS
Points	21 vs. Seton Hall (11/22/14)	21 vs. Seton Hall (11/22/14)
Rebs.	9 vs. Towson (11/14/14)	9 vs. Towson (11/14/14)
		9 vs. Fairleigh Dickinson (12/2/12)
Assists	2 vs. Albany (11/16/14)	2 vs. Albany (11/16/14)
Steals	2 vs. Seton Hall (11/22/14)	2 3x last vs. Seton Hall (11/22/14)
	2 vs. Albany (11/16/14)	
Blocks	3 vs. Albany (11/16/14)	3 vs. Albany (11/16/14)
		3 vs. Illinois (2/20/13)
Minutes	19 vs. Albany (11/16/14)	21 vs. Bucknell (11/20/13)
FGM	9 vs. Seton Hall (11/22/14)	9 vs. Seton Hall (11/22/14)
FGA	15 vs. Seton Hall (11/22/14)	15 vs. Seton Hall (11/22/14)
3FGM	n/a	n/a
3FGA	n/a	n/a
FTM	3 vs. Seton Hall (11/22/14)	4 vs. Illinois (2/20/13)
	3 vs. Towson (11/14/14)	
FTA	6 vs. Seton Hall (11/22/14)	8 vs. Illinois (2/20/13)
	6 vs. Towson (11/14/14)	

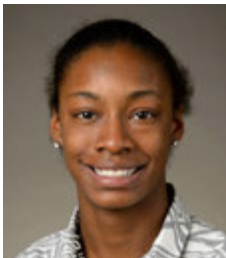
AGEE'S MISCELLANEOUS STATS

Category	Season	Career	Last Time
Double Figure Scoring	1	2	21 vs. Seton Hall (11/22/14)
20-point games	1	1	21 vs. Seton Hall (11/22/14)
Double Figure Rebounds	n/a	n/a	
5-plus Rebounds	3	10	5 vs. Seton Hall (11/22/14)
5-plus Assists	n/a	n/a	
3-plus Blocks	1	2	3 vs. Albany (11/16/14)
Double-Doubles	1	1	vs. Seton Hall (11/22/14)

AGEE'S CAREER STATS

Year	GP-GS	MIN	FG-A	PCT	3FG-A	PCT	FT-A	PCT	REB	AVG	PF-O	A	TO	B	S	PTS	AVG
2012-13	26-0	204	20-54	.370	0-0	.000	11-20	.550	17-31-48	1.8	33-0	2	13	13	4	51	2.0
2013-14	32-3	330	34-84	.405	0-0	.000	31-61	.508	31-43-74	2.3	54-1	8	28	21	4	99	3.1
2014-15	3-1	54	13-27	.481	0-0	.000	6-12	.500	8-11-19	6.3	9-0	3	2	5	4	32	10.7
TOTAL	61-4	588	67-165	.406	0-0	.000	48-93	.516	56-85-141	2.3	96-1	13	43	39	12	182	3.0





#3 Brianna Banks

RS-Sr. * G * 5-9 * Newnan, Ga./Fayette County (Connecticut)

2014-15 Season:

- Will sit out the 2014-15 season due to NCAA Transfer Rules after transferring from Connecticut.
- Has one year of eligibility remaining.

2013-14 Season (at Connecticut):

- Started eight-straight games (November 20 - December 22).
- Dished out five assists to go with four points and three steals against UCF (2/19).
- Notched three steals to compliment four points, three assists and five rebounds at Cincinnati (2/1).
- Registered seven points three assists and three steals at UCF (1/1).
- Connected on three of her four shots from the field en route to eight points, five rebounds, four assists and three steals against UC Davis (12/5).
- Had a season-high 12 points with a career-best seven rebounds in the win over Ohio State (12/1).
- Was 4-for-5 from the field, including 3-for-3 from three-point range, on the way to 12 points against Monmouth (11/23).
- Chipped in with 10 points on 4-6 shooting in a season-high 31-minutes of action against Oregon (11/20).
- Had nine points and three rebounds at #8/7 Maryland (11/15).

2012-13 Season (at Connecticut):

- Finished sixth on the team in scoring (7.3).
- Had 12 points to go along with four rebounds at Marquette (1/12).
- Tallied 18 points on 8-of-13 shooting and pulled in six rebounds against Oakland (12/19).
- Registered 10 points and two steals against #10/10 Penn State (12/6).
- Connected on three of her four three-point attempts en route to 11 points against #9/10 Maryland (12/3).
- Had a career-high 20 points thanks to a 6-for-10 shooting night, including a 4-for-5 effort from beyond the arc, against Colgate (11/28).
- Had a balanced statistical night with 12 points, six assists, two rebounds and a steal with only one turnover in 20 minutes against Wake Forest (11/22).
- Opened the season with a perfect 5-for-5 shooting night for 10 points against Charleston (11/11).

2011-12 Season (at Connecticut):

- Shot 50.5 percent from the field.
- Hit on all three of her shots from the field en route to eight points with four assists and two steals at Marquette (2/25).
- Was 5-for-5 from the field and finished with 12 points, two rebounds and two steals against Fairfield (12/29).
- Collected 17 points via a 7-for-10 shooting effort and 3-for-3 night at the free throw line against Fairleigh Dickinson (11/25).
- Tallied 12 points thanks to a 5-for-7 shooting night against Pacific (11/15).

High School:

- Averaged 16.2 points, 5.5 rebounds, 5.1 assists and 5.0 steals per game in her final season at Fayette County High School, which ended in a State Championship.
- Honored as a 2011 McDonald's All-American and WBCA Honorable Mention All-American in addition to being named "Miss Basketball" in the state of Georgia.
- Honored as the Fayette County Player of the Year by the *Fayette County News* and selected to the All-State first team in 2011.
- Led the West Team with 17 points on 7-of-12 shooting in the 2011 McDonald's All-American Game.
- Was a second team All-State selection and the Coweta County Player of the year during her junior season.
- Rated as the No. 24 overall recruit by ESPN Hoopgurlz and the No. 15 overall prospect by the All-Star Girls Report.
- Tabbed as the No. 11 recruit nationally by Blue Star.
- Honored as a first team All-Metro selection by the *Atlanta Journal-Constitution* in 2009-10.
- Selected as the 2010 Coweta County Player of the Year by the *Times-Herald*.

BANKS' CAREER STATS

Year	GP-GS	MIN	FG-A	PCT	3FG-A	PCT	FT-A	PCT	REB	AVG	PF-O	A	TO	B	S	PTS	AVG
2011-12*	32-0	393	46-91	.505	3-24	.125	19-27	.704	5-30-35	1.1	27-0	32	31	3	25	114	3.6
2012-13*	21-0	359	56-117	.479	18-52	.346	23-33	.697	6-30-36	1.7	22-0	35	22	4	25	153	7.3
2013-14*	37-8	527	49-103	.476	13-44	.295	19-29	.655	20-37-57	1.5	42-1	45	27	6	34	130	3.5
CAREER	90-8	1279	151-311	.486	34-120	.283	61-89	.685	31-97-128	1.4	91-1	112	80	13	84	397	4.4

* - at Connecticut

10-Time Big Ten Champions • Two-Time Big Ten Tournament Champions • 2000 NCAA Final Four • 25 NCAA Tournament Appearances





#5 Sierra Moore

RS-So. * G * 5-11 * Hanover, Pa./Delone Catholic (Duke)

Highlights:

- Sat out the 2013-14 season due to NCAA Transfer Rules.
- Selected as a team tri-captain.
- Posted first career double-double with personal bests of 14 points and 10 rebounds against Seton Hall (11/22).

2014-15 Season Notes:

- Tallied eight points to go along with three rebounds, three assists and a steal versus Albany (11/16).
- Filled the stats sheet with 12 points, five rebounds, four assists, two blocks and a steal in the win over Towson (11/14).
- Scored 15 of her team-best 18 points over the final 11:44 of the contest to propel the Lady Lions to an exhibition win over IUP (11/2).

Notable:

- Appeared in 25 games as a freshman at Duke.
- Garnered Gatorade Player of the Year and Associated Press Class AA Player of the Year honors in the state of Pennsylvania as a high school senior year.
- Was a McDonald's High School All-American in 2011-12.
- Holds the York-Adams Interscholastic Athletic Association (YAIAA) scoring record with 2,595 points at Delone Catholic.
- Was also a track standout, finishing in the Top 10 in the State Championships in the 200-meters (7th in 2009 and 2010) and 4x100 relay (4th in 2009).

14-15 GAME-BY-GAME

OPPONENT	Min.	FG	3FG	FT	O-D-R	PF	A	TO	B	S	Pts
TOWSON	39	5-12	1-1	1-3	1-4-5	0	4	4	2	1	12
ALBANY	30	4-8	0-0	0-1	2-1-3	4	3	4	1	1	8
SETON HALL	37	5-12	0-0	4-6	7-3-10	1	5	3	1	0	14
ST. BONA											
vs. Liberty											
vs. Georgia State/Samford											
at Syracuse											
WAGNER											
at Hartford											
RIDER											
USF											
at Iowa											
at Michigan											
ILLINOIS											
at Wisconsin											
RUTGERS											
at Nebraska											
at Ohio State											
INDIANA											
NORTHWESTERN											
at Minnesota											
at Rutgers											
MARYLAND											
at Purdue											
MICHIGAN ST.											
MINNESOTA											
at Maryland											
OHIO STATE											
WISCONSIN											

MOORE'S CAREER/SEASON HIGHS

	SEASON HIGHS	CAREER HIGHS
Points	14 vs. Seton Hall (11/22/14)	14 vs. Seton Hall (11/22/14)
Rebs.	10 vs. Seton Hall (11/22/14)	10 vs. Seton Hall (11/22/14)
Assists	5 vs. Seton Hall (11/22/14)	5 vs. Seton Hall (11/22/14)
Steals	1 vs. Albany (11/16/14) 1 vs. Towson (11/14/14)	3 vs. Iona (11/18/12)
Blocks	2 vs. Towson (11/14/14)	2 vs. Towson (11/14/14)
Minutes	39 vs. Towson (11/14/14)	39 vs. Towson (11/14/14)
FGM	5 vs. Seton Hall (11/22/14) 5 vs. Towson (11/14/14)	5 vs. Seton Hall (11/22/14) 5 vs. Towson (11/14/14)
FGA	12 vs. Seton Hall (11/22/14) 12 vs. Towson (11/14/14)	12 vs. Seton Hall (11/22/14) 12 vs. Towson (11/14/14)
3FGM	1 vs. Towson (11/14/14)	1 vs. Towson (11/14/14)
3FGA	1 vs. Towson (11/14/14)	1 vs. Towson (11/14/14)
FTM	4 vs. Seton Hall (11/22/14)	4 vs. Seton Hall (11/22/14) 4 vs. CSU-Bakersfield (12/21/13)
FTA	6 vs. Seton Hall (11/22/14)	6 vs. Seton Hall (11/22/14) 6 vs. CSU-Bakersfield (12/21/13)

italics indicate at Duke

MOORE'S MISCELLANEOUS STATS

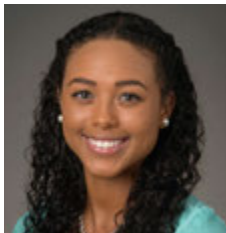
Category	Season	Career	Last Time
Double Figure Scoring	2	3	14 vs. Seton Hall (11/22/14)
20-point games	n/a	n/a	
Double Figure Rebounds	1	1	10 vs. Seton Hall (11/22/14)
5-plus Rebounds	2	3	10 vs. Seton Hall (11/22/14)
5-plus Assists	1	1	5 vs. Seton Hall (11/22/14)
3-plus Steals	n/a	1	3 vs. Iona (11/18/12)
Double-Doubles	1	1	14 p, 10 r vs. Seton Hall (11/22/14)

MOORE'S CAREER STATS

Year	GP-GS	MIN	FG-A	PCT	3FG-A	PCT	FT-A	PCT	REB	AVG	PF-O	A	TO	B	S	PTS	AVG
2012-13*	25-0	194	26-58	.448	0-0	.000	11-22	.500	11-13-24	1.0	21-0	12	6	2	11	63	2.5
2014-15	3-3	106	14-32	.438	1-1	1.000	5-10	.500	10-8-18	6.0	5-0	12	11	4	2	34	11.3
PSU	3-3	106	14-32	.438	1-1	1.000	5-10	.500	10-8-18	6.0	5-0	12	11	4	2	34	11.3
TOTAL	28-3	300	40-90	.444	1-1	1.000	16-32	.500	21-21-42	1.5	26-0	24	17	6	13	97	3.5

* - at Duke





#10 Keke Sevillian

So. * G * 5-7 * Goodrich, Mich./Goodrich

Highlights:

- Made first career start against Seton Hall (11/22).

2014-15 Season Notes:

- Knocked down a pair of three-pointers and dished out a career-high five assists in the season-opener against Towson (11/14).
- Tallied four points, four rebounds, three assists and three steals in the exhibition win over IUP (11/2).

Notable:

- Led Goodrich High School in Michigan to its first-ever Class B State Championship in 2011-12 with a perfect 28-0 record.
- Holds the Goodrich High School record in the 300-meter hurdles and 200-meter dash and finished second in the state championships in the 300-meters hurdles her freshman and sophomore seasons.
- Father, Clarence, was a wide receiver for the Vanderbilt football team from 1989-92 and ranks in the school's Top 10 in career receiving yards.
- Aunt, Nicole Hendrix, played basketball at Stanford from 1991-94, winning a National Championship in 1992.

14-15 GAME-BY-GAME

OPPONENT	Min.	FG	3FG	FT	O-D-R	PF	A	TO	B	S	Pts
TOWSON	19	2-6	2-5	0-1	0-1-1	2	5	0	0	0	6
ALBANY	13	0-5	0-3	0-0	0-0-0	4	1	1	0	2	0
SETON HALL	14	0-5	0-2	1-2	0-0-0	2	1	2	0	1	1
ST. BONA											
vs. Liberty											
vs. Georgia State/Samford											
at Syracuse											
WAGNER											
at Hartford											
RIDER											
USF											
at Iowa											
at Michigan											
ILLINOIS											
at Wisconsin											
RUTGERS											
at Nebraska											
at Ohio State											
INDIANA											
NORTHWESTERN											
at Minnesota											
at Rutgers											
MARYLAND											
at Purdue											
MICHIGAN ST.											
MINNESOTA											
at Maryland											
OHIO STATE											
WISCONSIN											

SEVILLIAN'S CAREER/SEASON HIGHS

	SEASON HIGHS	CAREER HIGHS
Points	6 vs. Towson (11/14/14)	8 vs. St. Francis (Pa.) (11/8/13)
Rebs.	1 vs. Towson (11/14/14)	3 vs. St. Francis (Pa.) (11/8/13)
Assists	5 vs. Towson (11/14/14)	5 vs. Towson (11/14/14)
Steals	2 vs. Albany (11/16/14)	4 vs. St. Francis (Pa.) (11/8/13)
Blocks	n/a	n/a
Minutes	19 vs. Towson (11/14/14)	19 vs. Towson (11/14/14)
FGM	2 vs. Towson (11/14/14)	2 (3x) last vs. Towson (11/14/14)
FGA	6 vs. Towson (11/14/14)	6 vs. Towson (11/14/14)
		6 vs. St. Francis (Pa.) (11/8/13)
3FGM	2 vs. Towson (11/14/14)	2 vs. Towson (11/14/14)
3FGA	5 vs. Towson (11/14/14)	5 vs. Towson (11/14/14)
FTM	1 vs. Seton Hall (11/22/14)	4 vs. St. Francis (Pa.) (11/8/13)
FTA	2 vs. Seton Hall (11/22/14)	4 vs. St. Francis (Pa.) (11/8/13)

SEVILLIAN'S MISCELLANEOUS STATS

Category	Season	Career	Last Time
Double Figure Scoring	n/a	n/a	
20-point games	n/a	n/a	
Double Figure Rebounds	n/a	n/a	
5-plus Rebounds	n/a	n/a	
5-plus Assists	1	1	5 vs. Towson (11/14)
3-plus Steals	n/a	n/a	
Double-Doubles	n/a	n/a	

SEVILLIAN'S CAREER STATS

Year	GP-GS	MIN	FG-A	PCT	3FG-A	PCT	FT-A	PCT	REB	AVG	PF-O	A	TO	B	S	PTS	AVG
2013-14	22-0	120	8-28	.286	4-13	.308	11-13	.846	1-11-12	0.5	19-0	5	15	0	8	31	1.4
2014-15	3-1	46	2-16	.125	2-10	.200	1-3	.333	0-1-1	0.3	8-0	7	3	0	3	7	2.3
TOTAL	25-1	166	10-44	.227	6-23	.261	12-16	.750	1-12-13	0.5	27-0	12	18	0	11	38	1.5

10-Time Big Ten Champions • Two-Time Big Ten Tournament Champions • 2000 NCAA Final Four • 25 NCAA Tournament Appearances





#11 Alex Harris

So. * F * 6-3 * Lorain, Ohio/Lorain

Notable:

- ♦ Appeared in 29 contests as a freshman.
- ♦ Had three double-digit rebounding performances as a freshman and 10 outings with five or more rebounds.
- ♦ Collegiate Girls Basketball Report and All-Star Girls Report both rated her as the 49th-ranked recruit .
- ♦ Named 2012-13 Division 1 Lorain County Player of the Year.

14-15 GAME-BY-GAME

OPPONENT	Min.	FG	3FG	FT	O-D-R	PF	A	TO	B	S	Pts
TOWSON		DNP									
ALBANY		DNP									
SETON HALL		DNP									
ST. BONA											
vs. Liberty											
vs. Georgia State/Samford											
at Syracuse											
WAGNER											
at Hartford											
RIDER											
USF											
at Iowa											
at Michigan											
ILLINOIS											
at Wisconsin											
RUTGERS											
at Nebraska											
at Ohio State											
INDIANA											
NORTHWESTERN											
at Minnesota											
at Rutgers											
MARYLAND											
at Purdue											
MICHIGAN ST.											
MINNESOTA											
at Maryland											
OHIO STATE											
WISCONSIN											

HARRIS' CAREER/SEASON HIGHS

	SEASON HIGHS	CAREER HIGHS
Points	n/a	8 vs. Bucknell (11/20/13)
Rebs.	n/a	11 vs. Illinois State (11/30/13) 11 vs. Bucknell (11/20/13)
Assists	n/a	2 vs. Illinois State (11/30/13)
Steals	n/a	1 (6x) last at Indiana (2/13/14)
Blocks	n/a	3 at Purdue (1/30/14) 3 vs. St. Francis (Pa.) (11/8/13)
Minutes	n/a	22 vs. Fordham (11/10/13)
FGM	n/a	3 vs. Bucknell (11/20/13)
FGA	n/a	5 vs. Purdue (1/12/14) 5 vs. Oregon State (11/29/13)
3FGM	n/a	n/a
3FGA	n/a	n/a
FTM	n/a	2 (5x) last vs. Notre Dame (12/4/13)
FTA	n/a	5 vs. Bucknell (11/20/13)

HARRIS' MISCELLANEOUS STATS

Category	Season	Career	Last Time
Double Figure Scoring	n/a	n/a	
20-point games	n/a	n/a	
Double Figure Rebounds	n/a	3	11 vs. Illinois State (11/30/13)
5-plus Rebounds	n/a	10	5 vs. Minnesota (1/26/14)
5-plus Blocks	n/a	n/a	
3-plus Blocks	n/a	1	3 at Purdue (1/30/14)
Double-Doubles	n/a	n/a	

HARRIS' CAREER STATS

Year	GP-GS	MIN	FG-A	PCT	3FG-A	PCT	FT-A	PCT	REB	AVG	PF-O	A	TO	B	S	PTS	AVG
2013-14	29-0	256	20-50	.400	0-0	.000	17-34	.500	39-57-96	3.3	33-0	5	19	15	6	57	2.0
CAREER	29-0	256	20-50	.400	0-0	.000	17-34	.500	39-57-96	3.3	33-0	5	19	15	6	57	2.0





#12 Lindsey Spann

RS-Fr. * G * 5-6 * Laurel, Md./Good Counsel

Highlights:

- ♦ Missed the 2013-14 season after tearing her right ACL.
- ♦ Selected as a team tri-captain.

2014-15 Season Notes:

- ♦ Chipped in 12 points and three steals against Seton Hall (11/22).
- ♦ Led the Lady Lions in scoring for the second straight game with 14 points against Albany (11/16), marking the first time a freshman has been the team's leading scorer in two straight games since Maggie Lucas did so vs. Minnesota (1/13/11) and vs. Illinois (1/16/11).
- ♦ Went 7-for-14 from the field for a team-high 17 points in her collegiate debut against Towson (11/14).
- ♦ Also tallied five rebounds and four assists against the Tigers.
- ♦ Recorded 14 points and dished out four assists in the exhibition win over IUP (11/2).

Notable:

- ♦ Ranked as the 22nd-best player by Collegiate Girls Basketball Report and 88th-rated player by Blue Star Basketball.
- ♦ Guided Good Counsel to a 25-5 overall record and 16-3 mark in league play.
- ♦ Participated in USA Basketball's U16 Trials in May 2011.

14-15 GAME-BY-GAME

OPPONENT	Min.	FG	3FG	FT	O-D-R	PF	A	TO	B	S	Pts
TOWSON	32	7-14	0-2	3-4	0-5-5	2	4	4	0	0	17
ALBANY	31	6-12	1-3	1-2	0-1-1	3	4	3	0	0	14
SETON HALL	27	4-10	2-4	2-2	0-2-2	5	1	5	0	3	12
ST. BONA											
vs. Liberty											
vs. Georgia State/Samford											
at Syracuse											
WAGNER											
at Hartford											
RIDER											
USF											
at Iowa											
at Michigan											
ILLINOIS											
at Wisconsin											
RUTGERS											
at Nebraska											
at Ohio State											
INDIANA											
NORTHWESTERN											
at Minnesota											
at Rutgers											
MARYLAND											
at Purdue											
MICHIGAN ST.											
MINNESOTA											
at Maryland											
OHIO STATE											
WISCONSIN											

SPANN'S CAREER/SEASON HIGHS			
	SEASON HIGHS	CAREER HIGHS	
Points	17 vs. Towson (11/14/14)	17 vs. Towson (11/14/14)	
Rebs.	5 vs. Towson (11/14/14)	5 vs. Towson (11/14/14)	
Assists	4 vs. Albany (11/16/14)	4 vs. Albany (11/16/14)	
	4 vs. Towson (11/14/14)	4 vs. Towson (11/14/14)	
Steals	3 vs. Seton Hall (11/22/14)	3 vs. Seton Hall (11/22/14)	
Blocks	n/a	n/a	
Minutes	32 vs. Towson (11/14/14)	32 vs. Towson (11/14/14)	
FGM	7 vs. Towson (11/14/14)	7 vs. Towson (11/14/14)	
FGA	14 vs. Towson (11/14/14)	14 vs. Towson (11/14/14)	
3FGM	2 vs. Seton Hall (11/22/14)	2 vs. Seton Hall (11/22/14)	
3FGA	4 vs. Seton Hall (11/22/14)	4 vs. Seton Hall (11/22/14)	
FTM	3 vs. Towson (11/14/14)	3 vs. Towson (11/14/14)	
FTA	4 vs. Towson (11/14/14)	4 vs. Towson (11/14/14)	

SPANN'S MISCELLANEOUS STATS			
Category	Season	Career	Last Time
Double Figure Scoring	3	3	12 vs. Seton Hall (11/22/14)
20-point games	n/a	n/a	
Double Figure Rebounds	n/a	n/a	
5-plus Rebounds	1	1	5 vs. Towson (11/14/14)
5-plus Assists	n/a	n/a	
3-plus Steals	1	1	3 vs. Seton Hall (11/22/14)
Double-Doubles	n/a	n/a	

SPANN'S CAREER STATS																	
Year	GP-GS	MIN	FG-A	PCT	3FG-A	PCT	FT-A	PCT	REB	AVG	PF-O	A	TO	B	S	PTS	AVG
2014-15	3-3	90	17-36	.472	3-9	.333	6-8	.750	0-8-8	2.7	10-1	9	12	0	3	43	14.3
TOTAL	3-3	90	17-36	.472	3-9	.333	6-8	.750	0-8-8	2.7	10-1	9	12	0	3	43	14.3

10-Time Big Ten Champions • Two-Time Big Ten Tournament Champions • 2000 NCAA Final Four • 25 NCAA Tournament Appearances





#14 Dominique Brooks

Jr. * C * 6-4 * Lansing, Ill./T.F. South (Trinity Valley C.C.)

2014-15 Season Notes:

- ♦ Hit a pair of free throws in her Penn State debut in the win over Towson (11/14)
- ♦ Had four rebounds and a blocked shot in the exhibition win against IUP (11/2).

Notable:

- ♦ Won two NJCAA National Championships while at Trinity Valley Community College.
- ♦ Participated in USA Basketball U18 Trials in 2012

14-15 GAME-BY-GAME

OPPONENT	Min.	FG	3FG	FT	O-D-R	PF	A	TO	B	S	Pts
TOWSON	3	0-0	0-0	2-2	0-0-0	1	0	0	0	0	2
ALBANY	2	0-0	0-0	0-0	0-0-0	1	0	1	0	0	0
SETON HALL	3	0-0	0-0	0-0	0-0-0	2	0	0	0	0	0
ST. BONA											
vs. Liberty											
vs. Georgia State/Samford											
at Syracuse											
WAGNER											
at Hartford											
RIDER											
USF											
at Iowa											
at Michigan											
ILLINOIS											
at Wisconsin											
RUTGERS											
at Nebraska											
at Ohio State											
INDIANA											
NORTHWESTERN											
at Minnesota											
at Rutgers											
MARYLAND											
at Purdue											
MICHIGAN ST.											
MINNESOTA											
at Maryland											
OHIO STATE											
WISCONSIN											

BROOKS' CAREER/SEASON HIGHS

	SEASON HIGHS	CAREER HIGHS
Points	2 vs. Towson (11/14/14)	2 vs. Towson (11/14/14)
Rebs.	n/a	n/a
Assists	n/a	n/a
Steals	n/a	n/a
Blocks	n/a	n/a
Minutes	3 vs. Seton Hall (11/22/14) 3 vs. Towson (11/14/14)	3 vs. Seton Hall (11/22/14) 3 vs. Towson (11/14/14)
FGM	n/a	n/a
FGA	n/a	n/a
3FGM	n/a	n/a
3FGA	n/a	n/a
FTM	2 vs. Towson (11/14/14)	2 vs. Towson (11/14/14)
FTA	2 vs. Towson (11/14/14)	2 vs. Towson (11/14/14)

BROOKS' MISCELLANEOUS STATS

Category	Season	Career	Last Time
Double Figure Scoring	n/a	n/a	
20-point games	n/a	n/a	
Double Figure Rebounds	n/a	n/a	
5-plus Rebounds	n/a	n/a	
5-plus Assists	n/a	n/a	
3-plus Steals	n/a	n/a	
Double-Doubles	n/a	n/a	

BROOKS' CAREER STATS

Year	GP-GS	MIN	FG-A	PCT	3FG-A	PCT	FT-A	PCT	REB	AVG	PF-O	A	TO	B	S	PTS	AVG
2014-15	3-0	8	0-0	.000	0-0	.000	2-2	1.000	0-0-0	0.0	4-0	0	1	0	0	2	0.7
TOTAL	3-0	8	0-0	.000	0-0	.000	2-2	1.000	0-0-0	0.0	4-0	0	1	0	0	2	0.7





#15 Kaliyah Mitchell

So. * F * 6-2 * Stone Mountain, Ga./Stephenson

Highlights:

- ♦ Second-leading returning scorer and rebounder from 2013-14.
- ♦ Made 16-straight free throw attempts from 2/20/14 until 11/14/14.

2014-15 Season Notes:

- ♦ Registered eight points and tied her career high with 10 rebounds against Seton Hall (11/22).
- ♦ Chipped in nine points, six rebounds and tied her career high with four steals against Albany (11/16).
- ♦ Accounted for 10 points and a team-best three steals against Towson (11/14).
- ♦ Posted a near double-double with 12 points, nine rebounds and three steals in the exhibition win versus IUP (11/2).

Notable:

- ♦ Was the 54th-ranked recruit by Collegiate Girls Basketball Report and 40th-ranked recruit by All-Star Girls Report.
- ♦ Brother, Kenny, was an all-conference basketball player at Virginia State University.

14-15 GAME-BY-GAME

OPPONENT	Min.	FG	3FG	FT	O-D-R	PF	A	TO	B	S	Pts
TOWSON	25	3-8	0-2	4-6	2-3-4	4	0	3	0	3	10
ALBANY	30	2-7	1-2	4-5	1-5-6	4	0	5	0	4	9
SETON HALL	32	2-9	0-1	4-6	3-7-10	2	0	1	1	0	8
ST. BONA											
vs. Liberty											
vs. Georgia State/Samford											
at Syracuse											
WAGNER											
at Hartford											
RIDER											
USF											
at Iowa											
at Michigan											
ILLINOIS											
at Wisconsin											
RUTGERS											
at Nebraska											
at Ohio State											
INDIANA											
NORTHWESTERN											
at Minnesota											
at Rutgers											
MARYLAND											
at Purdue											
MICHIGAN ST.											
MINNESOTA											
at Maryland											
OHIO STATE											
WISCONSIN											

MITCHELL'S CAREER/SEASON HIGHS

	SEASON HIGHS	CAREER HIGHS
Points	10 vs. Towson (11/14/14)	14 vs. Bucknell (11/20/13)
Rebs.	10 vs. Seton Hall (11/22/14)	10 vs. Seton Hall (11/22/14) 10 at Michigan State (1/19/14)
Assists	n/a	2 (6x) last vs. Florida (3/25/14)
Steals	4 vs. Albany (11/16/14)	4 vs. Albany (11/16/14) 4 vs. Florida (3/25/14)
Blocks	1 vs. Seton Hall (11/22/14)	2 at Iowa (1/5/14)
Minutes	32 vs. Seton Hall (11/22/14)	32 vs. Seton Hall (11/22/14)
FGM	3 vs. Towson (11/14/14)	5 vs. St. Francis (Pa.) (11/8/13)
FGA	9 vs. Seton Hall (11/22/14)	9 vs. Seton Hall (11/22/14)
3FGM	1 vs. Albany (11/16/14)	1 vs. Albany (11/16/14) 1 vs. Illinois State (11/30/13)
3FGA	2 vs. Albany (11/16/14) 2 vs. Towson (11/14/14)	3 at Nebraska (2/24/14)
FTM	4 3x last vs. Seton Hall (11/22/14)	7 vs. Northwestern (2/20/14)
FTA	6 vs. Towson (11/14/14)	7 (3x) last vs. Northwestern (2/20/14)

MITCHELL'S MISCELLANEOUS STATS

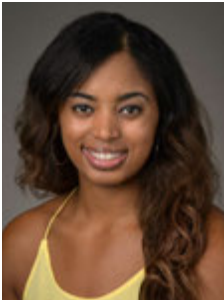
Category	Season	Career	Last Time
Double Figure Scoring	1	3	10 vs. Towson (11/14/14)
20-point games	n/a	n/a	
Double Figure Rebounds	1	2	10 vs. Seton Hall (11/22/14)
5-plus Rebounds	2	15	10 vs. Seton Hall (11/22/14)
5-plus Assists	n/a	n/a	
3-plus Steals	2	4	4 vs. Albany (11/14/15)
Double-Doubles	n/a	n/a	

MITCHELL'S CAREER STATS

Year	GP-GS	MIN	FG-A	PCT	3FG-A	PCT	FT-A	PCT	REB	AVG	PF-O	A	TO	B	S	PTS	AVG
2013-14	32-0	546	41-114	.360	1-14	.071	61-83	.735	40-100-140	4.4	64-2	28	26	5	20	144	4.5
2014-15	3-3	87	7-24	.292	1-5	.200	12-17	.706	5-14-19	6.3	10-0	0	9	1	7	27	9.0
TOTAL	35-3	633	48-138	.348	2-19	.105	73-100	.730	45-114-159	4.5	74-2	28	35	6	27	171	4.9

10-Time Big Ten Champions • Two-Time Big Ten Tournament Champions • 2000 NCAA Final Four • 25 NCAA Tournament Appearances





#25 Peyton Whitted

So. * F * 6-3 * Suwanee, Ga./North Gwinnett

2014-15 Season Notes:

- ♦ Tallied six points, seven rebounds and two assists against Seton Hall (11/22).
- ♦ Grabbed nine rebounds with four points and two assists in the win over Towson (11/14).
- ♦ Pulled in 10 rebounds to go along with eight points and five assists in the exhibition win over IUP (11/2).

Notable:

- ♦ Led North Gwinnett to the Georgia State Championship game after averaging 13.7 points, 5.7 rebounds, 1.4 steals and 2.0 assists per game as a senior.
- ♦ Participated in USA Basketball's U16 Trials in May 2011.
- ♦ Father, Kevin, played basketball at Tennessee from 1993-95.
- ♦ Kevin is currently the head coach of the NBA D-League's Westchester Knicks.
- ♦ Kevin broke Michael Jordan's Laney High School scoring record with 1,554 points.

14-15 GAME-BY-GAME

OPPONENT	Min.	FG	3FG	FT	O-D-R	PF	A	TO	B	S	Pts
TOWSON	23	2-5	0-0	0-0	3-6-9	3	2	3	0	1	4
ALBANY	19	1-5	0-1	0-1	1-3-4	4	1	3	0	1	2
SETON HALL	23	2-6	0-3	2-6	1-6-7	3	2	4	1	1	6
ST. BONA											
vs. Liberty											
vs. Georgia State/Samford											
at Syracuse											
WAGNER											
at Hartford											
RIDER											
USF											
at Iowa											
at Michigan											
ILLINOIS											
at Wisconsin											
RUTGERS											
at Nebraska											
at Ohio State											
INDIANA											
NORTHWESTERN											
at Minnesota											
at Rutgers											
MARYLAND											
at Purdue											
MICHIGAN ST.											
MINNESOTA											
at Maryland											
OHIO STATE											
WISCONSIN											

WHITTED'S CAREER/SEASON HIGHS

	SEASON HIGHS	CAREER HIGHS
Points	6 vs. Seton Hall (11/22/14)	11 at Northwestern (2/2/14)
Rebs.	9 vs. Towson (11/14/14)	10 at Illinois (1/9/14)
Assists	2 vs. Seton Hall (11/22/14) 2 vs. Towson (11/14/14)	2 (4x) last vs. Seton Hall (11/22/14)
Steals	1 (3x) last vs. Seton Hall (11/22/14)	2 (3x) last vs. Ohio State (3/7/14)
Blocks	1 vs. Seton Hall (11/22/14)	3 at South Dakota St. (12/11/13)
Minutes	23 vs. Seton Hall (11/22/14) 23 vs. Towson (11/14/14)	24 at Illinois (1/9/14)
FGM	2 vs. Seton Hall (11/22/14) 2 vs. Towson (11/14/14)	5 at Northwestern (2/2/14)
FGA	6 vs. Seton Hall (11/22/14)	7 vs. Alcorn State (12/22/13)
3FGM	n/a	1 vs. Ohio State (3/7/14)
3FGA	3 vs. Seton Hall (11/22/14)	3 vs. Seton Hall (11/22/14) 3 vs. Bucknell (11/20/13)
FTM	2 vs. Seton Hall (11/22/14)	5 at Illinois (1/9/14)
FTA	6 vs. Seton Hall (11/22/14)	6 vs. Seton Hall (11/22/14)

WHITTED'S MISCELLANEOUS STATS

Category	Season	Career	Last Time
Double Figure Scoring	n/a	1	11 at Northwestern (2/2/14)
20-point games	n/a	n/a	
Double Figure Rebounds	n/a	1	10 at Illinois (1/9/14)
5-plus Rebounds	2	7	7 vs. Seton Hall (11/22/14)
5-plus Assists	n/a	n/a	
3-plus Steals	n/a	n/a	
Double-Doubles	n/a	n/a	

WHITTED'S CAREER STATS

Year	GP-GS	MIN	FG-A	PCT	3FG-A	PCT	FT-A	PCT	REB	AVG	PF-O	A	TO	B	S	PTS	AVG
2013-14	31-0	344	37-80	.463	1-17	.059	16-23	.696	35-53-88	2.8	58-0	8	26	5	12	91	2.9
2014-15	3-2	65	5-16	.313	0-4	.000	2-7	.286	5-15-20	6.7	10-0	5	10	1	3	12	4.0
TOTAL	34-2	409	42-96	.438	1-21	.048	18-30	.600	40-68-108	3.2	68-0	13	36	6	15	103	3.0





#34 Molly Dincher

Sr. * G/F * 6-0 * Williamsport, Pa./Williamsport Area (Penn State Wilkes-Barre)

Highlights:

- ♦ Added to the Lady Lion roster as a walk-on on November 14.
- ♦ Served as a Lady Lion manager for a year and a half.

Notable:

- ♦ Dincher played at Penn State Wilkes-Barre for two seasons where she helped the Mountain Lions to the 2011-12 PSUAC North Division Championship.
- ♦ She averaged 7.3 points and 8.6 rebounds that season for Wilkes-Barre, her final season for the Mountain Lions.
- ♦ She also rejected 33 shots and had 27 assists in 21 appearances that included 16 starts.
- ♦ As a freshman at Wilke-Barre, Dincher finished seventh in the United States Collegiate Athletic Associations USCAA) in blocked shots, averaging 1.5 per game.
- ♦ Since coming to University Park, Dincher played for the Penn State women's club basketball team that took second in the National Championships in 2012-13.
- ♦ She also served as a manager for the Lady Lions for the last year and a half.
- ♦ A three-year letterwinner, Dincher played her high school basketball at Williamsport Area High School. In her final season, the Millionaires were 12-8.

14-15 GAME-BY-GAME

OPPONENT	Min.	FG	3FG	FT	O-D-R	PF	A	TO	B	S	Pts
TOWSON	DNP										
ALBANY	DNP										
SETON HALL	DNP										
ST. BONA											
vs. Liberty											
vs. Georgia State/Samford											
at Syracuse											
WAGNER											
at Hartford											
RIDER											
USF											
at Iowa											
at Michigan											
ILLINOIS											
at Wisconsin											
RUTGERS											
at Nebraska											
at Ohio State											
INDIANA											
NORTHWESTERN											
at Minnesota											
at Rutgers											
MARYLAND											
at Purdue											
MICHIGAN ST.											
MINNESOTA											
at Maryland											
OHIO STATE											
WISCONSIN											

DINCHER'S CAREER/SEASON HIGHS

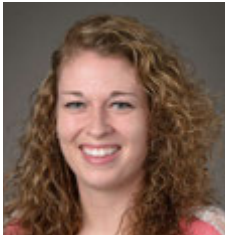
	SEASON HIGHS	CAREER HIGHS
Points	n/a	n/a
Rebs.	n/a	n/a
Assists	n/a	n/a
Steals	n/a	n/a
Blocks	n/a	n/a
Minutes	n/a	n/a
FGM	n/a	n/a
FGA	n/a	n/a
3FGM	n/a	n/a
3FGA	n/a	n/a
FTM	n/a	n/a
FTA	n/a	n/a

DINCHER'S MISCELLANEOUS STATS

Category	Season	Career	Last Time
Double Figure Scoring	n/a	n/a	
20-point games	n/a	n/a	
Double Figure Rebounds	n/a	n/a	
5-plus Rebounds	n/a	n/a	
5-plus Assists	n/a	n/a	
3-plus Steals	n/a	n/a	
Double-Doubles	n/a	n/a	

10-Time Big Ten Champions • Two-Time Big Ten Tournament Champions • 2000 NCAA Final Four • 25 NCAA Tournament Appearances





#41 Jenny DeGraaf

So. * F * 6-1 * Springboro, Ohio/Springboro

2014-15 Season Notes:

- ♦ Posted six points on 3-for-5 shooting and five rebounds against Seton Hall (11/22).
- ♦ Connected on all four of her three-point attempts en route to a career-high 12 points in a personal-best 22 minutes against Albany (11/16).
- ♦ Hit 4-of-5 shots from the field, including two attempts from long range, en route to 11 points in the exhibition against IUP (11/2).

Notable:

- ♦ Set the Springboro High School single-season record for free throws made with 121, including 25 consecutive makes from the charity stripe in 2013.

14-15 GAME-BY-GAME

OPPONENT	Min.	FG	3FG	FT	O-D-R	PF	A	TO	B	S	Pts
TOWSON	15	0-2	0-2	0-0	0-3-3	1	0	0	0	1	0
ALBANY	22	4-4	4-4	0-0	0-0-0	1	0	1	0	0	12
SETON HALL	24	3-5	0-0	0-0	2-3-5	1	1	1	1	1	6
ST. BONA											
vs. Liberty											
vs. Georgia State/Samford											
at Syracuse											
WAGNER											
at Hartford											
RIDER											
USF											
at Iowa											
at Michigan											
ILLINOIS											
at Wisconsin											
RUTGERS											
at Nebraska											
at Ohio State											
INDIANA											
NORTHWESTERN											
at Minnesota											
at Rutgers											
MARYLAND											
at Purdue											
MICHIGAN ST.											
MINNESOTA											
at Maryland											
OHIO STATE											
WISCONSIN											

DeGRAAF'S CAREER/SEASON HIGHS

	SEASON HIGHS	CAREER HIGHS
Points	12 vs. Albany (11/16/14)	12 vs. Albany (11/16/14)
Rebs.	5 vs. Seton Hall (11/22/14)	5 vs. Seton Hall (11/22/14)
Assists	1 vs. Seton Hall (11/22/14)	2 (2x) last vs. Bucknell (11/20/13)
Steals	1 vs. Seton Hall (11/22/14)	1 vs. Seton Hall (11/22/14) 1 vs. Alcorn State (12/22/13)
Blocks	1 vs. Seton Hall (11/22/14)	1 vs. Seton Hall (11/22/14)
Minutes	24 vs. Seton Hall (11/22/14)	24 vs. Seton Hall (11/22/14)
FGM	4 vs. Albany (11/16/14)	4 vs. Albany (11/16/14)
FGA	5 vs. Seton Hall (11/22/14)	5 vs. Seton Hall (11/22/14)
3FGM	4 vs. Albany (11/16/14)	4 vs. Albany (11/16/14)
3FGA	4 vs. Albany (11/16/14)	4 vs. Albany (11/16/14)
FTM	n/a	n/a
FTA	n/a	n/a

DeGRAAF'S MISCELLANEOUS STATS

Category	Season	Career	Last Time
Double Figure Scoring	1	1	12 vs. Albany (11/16/14)
20-point games	n/a	n/a	
Double Figure Rebounds	n/a	n/a	
5-plus Rebounds	1	1	5 vs. Seton Hall (11/22/14)
5-plus Assists	n/a	n/a	
3-plus Steals	n/a	n/a	
Double-Doubles	n/a	n/a	

DeGRAAF'S CAREER STATS

Year	GP-GS	MIN	FG-A	PCT	3FG-A	PCT	FT-A	PCT	REB	AVG	PF-O	A	TO	B	S	PTS	AVG
2013-14	17-0	76	7-20	.350	2-7	.286	0-0	.000	3-6-9	0.5	5-0	4	5	0	1	16	0.9
2014-15	3-0	61	7-11	.636	4-6	.667	0-0	.000	2-6-8	2.7	3-0	1	2	1	2	18	6.0
TOTAL	20-0	137	14-31	.452	6-13	.462	0-0	.000	5-12-17	0.9	8-0	5	7	1	3	34	1.7





#44 Tori Waldner

Sr. * F/C * 6-5 * Milton, Ga./Milton

Highlights:

- ♦ Ranks ninth on Penn State's career blocks list (96).
- ♦ Selected as a team tri-captain.

2014-15 Season Notes:

- ♦ Tallied seven rebounds, three blocks and a pair of steals versus Seton Hall (11/22).
- ♦ Recorded four blocked shots and nine rebounds against Albany (11/16).
- ♦ Notched her first career double-double with 11 points on 5-of-7 shooting and 11 rebounds, which tied her career high, in the season-opening win over Towson (11/14).
- ♦ Had four points and five rebounds in the exhibition against IUP (11/2).

Notable:

- ♦ President of the Penn State Student-Athlete Advisory Board (SAAB).
- ♦ Was a member of the 2014 Penn State Homecoming Court.
- ♦ Participates in LifeLink, which is program in which State College Area School District special-needs students between the ages of 18 and 21 are given an opportunity to interact with students of their own age in an environment that is socially and academically conducive to continued growth with the hope of future independent living.
- ♦ Became just the 15th player in Lady Lion program history to record 80 or more blocks in a career.
- ♦ Had a streak of 12-straight games with at least one block (11/10/13-1/5/14).
- ♦ Mother, Diane, played basketball and lacrosse at Russell Sage College in Troy, New York.

14-15 GAME-BY-GAME

OPPONENT	Min.	FG	3FG	FT	O-D-R	PF	A	TO	B	S	Pts
TOWSON	26	5-7	0-0	1-2	2-9-11	2	0	0	0	1	11
ALBANY	19	1-4	0-0	4-4	2-7-9	4	2	4	4	1	6
SETON HALL	23	1-4	0-1	0-0	3-4-7	4	2	1	3	2	2
ST. BONA											
vs. Liberty											
vs. Georgia State/Samford											
at Syracuse											
WAGNER											
at Hartford											
RIDER											
USF											
at Iowa											
at Michigan											
ILLINOIS											
at Wisconsin											
RUTGERS											
at Nebraska											
at Ohio State											
INDIANA											
NORTHWESTERN											
at Minnesota											
at Rutgers											
MARYLAND											
at Purdue											
MICHIGAN ST.											
MINNESOTA											
at Maryland											
OHIO STATE											
WISCONSIN											

WALDNER'S CAREER/SEASON HIGHS

	SEASON HIGHS	CAREER HIGHS
Points	11 vs. Towson (11/14/14)	14 vs. Northwestern (2/20/14)
Rebs.	11 vs. Towson (11/14/14)	11 vs. Towson (11/14/14)
		11 vs. Texas A&M (12/15/13)
Assists	2 vs. Seton Hall (11/22/14)	5 vs. Illinois State (11/30/13)
	2 vs. Albany (11/16/14)	
Steals	2 vs. Seton Hall (11/22/14)	3 vs. Michigan State (2/10/13)
Blocks	4 vs. Albany (11/16/14)	5 vs. Northwestern (2/20/14)
		5 vs. Minnesota (1/24/13)
Minutes	26 vs. Towson (11/14/14)	33 vs. Texas A&M (12/15/13)
FGM	5 vs. Towson (11/14/14)	6 vs. Northwestern (2/20/14)
FGA	7 vs. Towson (11/14/14)	13 vs. Wisconsin (2/16/14)
3FGM	n/a	1 vs. Connecticut (11/17/13)
3FGA	n/a	2 vs. Connecticut (11/17/13)
FTM	4 vs. Albany (11/16/14)	6 vs. Howard (11/11/12)
FTA	4 vs. Albany (11/16/14)	6 vs. Howard (11/11/12)

WALDNER'S MISCELLANEOUS STATS

Category	Season	Career	Last Time
Double Figure Scoring	1	7	11 vs. Towson (11/14/14)
20-point games	n/a	n/a	
Double Figure Rebounds	1	5	11 vs. Towson (11/14/14)
5-plus Rebounds	2	31	7 vs. Seton Hall (11/22/14)
5-plus Assists	n/a	1	5 vs. Illinois State (11/30/13)
3-plus Steals	n/a	1	3 vs. Michigan State (2/10/13)
5-plus Blocks	n/a	2	5 vs. Northwestern (2/20/14)
Double-Doubles	1	1	11 p, 11 r vs. Towson (11/14/14)

WALDNER'S CAREER STATS

Year	GP-GS	MIN	FG-A	PCT	3FG-A	PCT	FT-A	PCT	REB	AVG	PF-O	A	TO	B	S	PTS	AVG
2011-12	31-0	272	25-56	.446	0-1	.000	13-23	.565	13-54-67	2.2	50-0	15	24	18	16	63	2.0
2012-13	30-0	275	19-59	.322	0-1	.000	10-13	.769	31-54-85	2.8	47-0	8	22	32	11	48	1.6
2013-14	32-32	677	67-159	.421	1-3	.333	20-33	.606	48-131-179	5.6	83-1	32	39	39	16	155	4.8
2014-15	3-2	83	7-15	.467	0-1	.000	5-6	.833	7-20-27	9.0	10-0	4	5	7	4	19	6.3
TOTAL	96-34	1307	118-289	.408	1-6	.167	48-75	.640	99-259-358	3.7	190-1	59	90	96	47	285	3.0

10-Time Big Ten Champions • Two-Time Big Ten Tournament Champions • 2000 NCAA Final Four • 25 NCAA Tournament Appearances



**2014-15 Penn State Lady Lion Basketball
Penn State Combined Team Statistics (as of Nov 22, 2014)
All games**

RECORD:	OVERALL	HOME	AWAY	NEUTRAL
ALL GAMES	1-2	1-2	0-0	0-0
CONFERENCE	0-0	0-0	0-0	0-0
NON-CONFERENCE	1-2	1-2	0-0	0-0

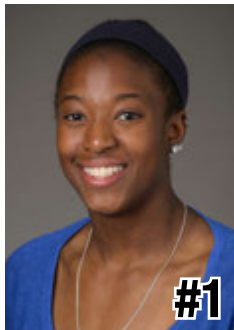
#	Player	gp-gs	min	avg	Total		3-Point		F-Throw		Rebounds				pf	dq	a	to	blk	stl	pts	avg
					fg-fga	fg%	3fg-fga	3fg%	ft-fga	ft%	off	def	tot	avg								
12	Spann, Lindsey	3-3	90	30.0	17-36	.472	3-9	.333	6-8	.750	0	8	8	2.7	10	1	9	12	0	3	43	14.3
05	Moore, Sierra	3-3	106	35.3	14-32	.438	1-1	1.000	5-10	.500	10	8	18	6.0	5	0	12	11	4	2	34	11.3
01	Agee, Candice	3-1	54	18.0	13-27	.481	0-0	.000	6-12	.500	8	11	19	6.3	9	0	3	2	5	4	32	10.7
15	Mitchell, Kaliyah	3-3	87	29.0	7-24	.292	1-5	.200	12-17	.706	5	14	19	6.3	10	0	0	9	1	7	27	9.0
44	Waldner, Tori	3-2	83	27.7	7-15	.467	0-1	.000	5-6	.833	7	20	27	9.0	10	0	4	5	7	4	19	6.3
41	DeGraaf, Jenny	3-0	61	20.3	7-11	.636	4-6	.667	0-0	.000	2	6	8	2.7	3	0	1	2	1	2	18	6.0
25	Whitted, Peyton	3-2	65	21.7	5-16	.313	0-4	.000	2-7	.286	5	15	20	6.7	10	0	5	10	1	3	12	4.0
10	Sevillian, Keke	3-1	46	15.3	2-16	.125	2-10	.200	1-3	.333	0	1	1	0.3	8	0	7	3	0	3	7	2.3
14	Brooks, Dominique	3-0	8	2.7	0-0	.000	0-0	.000	2-2	1.000	0	0	0	0.0	4	0	0	1	0	0	2	0.7
Team											3	7	10				1					
Total.....		3	600		72-177	.407	11-36	.306	39-65	.600	40	90	130	43.3	69	1	41	56	19	28	194	64.7
Opponents.....		3	600		61-182	.335	17-60	.283	54-78	.692	45	82	127	42.3	61	-	39	54	11	27	193	64.3

TEAM STATISTICS	PSU	OPP	Date	Opponent	Score	Att.
SCORING	194	193	11/14/14	TOWSON	W 71-64	3123
Points per game	64.7	64.3	11/16/14	ALBANY	L 53-54	8607
Scoring margin	+0.3	-	11/22/14	SETON HALL	L 70-75	3114
FIELD GOALS-ATT	72-177	61-182	* - Conference game			
Field goal pct	.407	.335				
3 POINT FG-ATT	11-36	17-60				
3-point FG pct	.306	.283				
3-pt FG made per game	3.7	5.7				
FREE THROWS-ATT	39-65	54-78				
Free throw pct	.600	.692				
F-Throws made per game	13.0	18.0				
REBOUNDS	130	127				
Rebounds per game	43.3	42.3				
Rebounding margin	+1.0	-				
ASSISTS	41	39				
Assists per game	13.7	13.0				
TURNOVERS	56	54				
Turnovers per game	18.7	18.0				
Turnover margin	-0.7	-				
Assist/turnover ratio	0.7	0.7				
STEALS	28	27				
Steals per game	9.3	9.0				
BLOCKS	19	11				
Blocks per game	6.3	3.7				
ATTENDANCE	14844	0				
Home games-Avg/Game	3-4948	0-0				
Neutral site-Avg/Game	-	0-0				

Score by Periods	1st	2nd	Totals
Penn State	88	106	194
Opponents	94	99	193



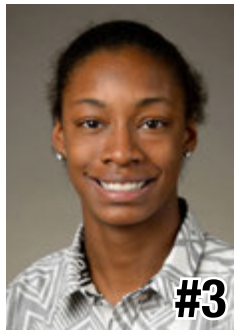
2014-15 RADIO/TV CHART



#1

Candice Agee

6-6 * Jr./Jr. * C
Victorville, Calif.
Silverado



#3

Brianna Banks

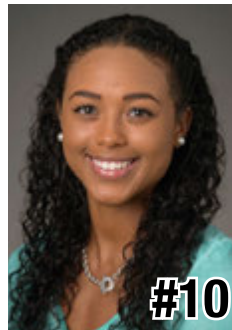
5-9 * Sr./-- * G
Newnan, Ga.
Fayette County
(Connecticut)



#5

Sierra Moore

5-11 * Jr./So. * G
Hanover, Pa.
Delone Catholic
(Duke)



#10

Keke Sevillian

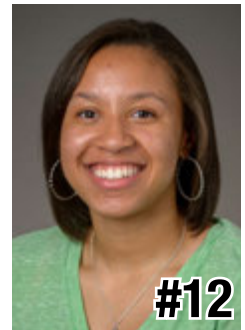
5-7 * So./So. * G
Goodrich, Mich.
Goodrich



#11

Alex Harris

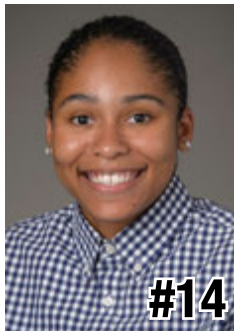
6-3 * So./So. * F
Lorain, Ohio
Lorain



#12

Lindsey Spann

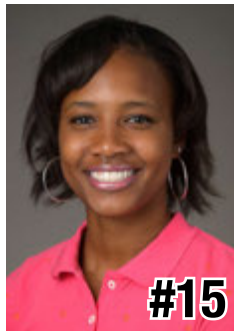
5-6 * So./Fr. * G
Laurel, Md.
Good Counsel



#14

Dominique Brooks

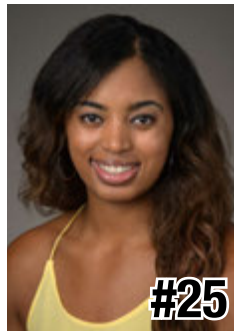
6-4 * Jr./Jr. * C
Lansing, Ill.
T.F. South
(Trinity Valley C.C.)



#15

Kaliyah Mitchell

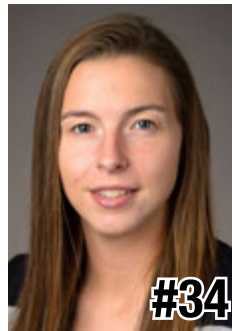
6-2 * So./So. * F
Stone Mountain, Ga.
Stephenson



#25

Peyton Whitted

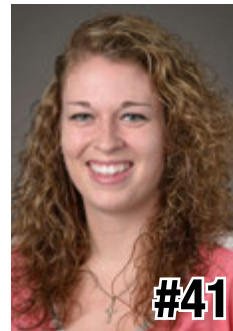
6-3 * So./So. * F
Suwanee, Ga.
North Gwinnett



#34

Molly Dincher

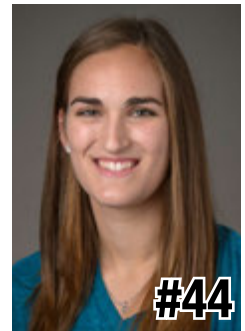
6-0 * Sr./Sr. * G/F
Williamsport, Pa.
Williamsport Area
(PSU Wilkes-Barre)



#41

Jenny DeGraaf

6-1 * So./So. * F
Springboro, Ohio
Springboro



#44

Tori Waldner

6-5 * Sr./Sr. * F/C
Milton, Ga.
Milton



HC

Coquese Washington

Head Coach
Notre Dame '92
Eighth Season



AC

Ito Coleman

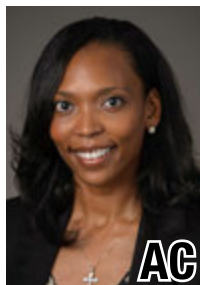
Assistant Coach
Clemson '00
First Season
Fourth Overall



AC

Kia Damon

Assistant Coach
Millersville '97
Eighth Season



AC

Jocelyn Wyatt

Assistant Coach
Appalachian State '06
First Season



DO

Ethan Gelfand

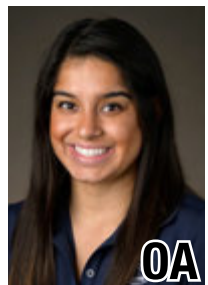
Director of Operations
Wake Forest '06
Fourth Season



VO

Mike Miller

Director of Video &
Technology Ops
High Point '02
10th Season



OA

Jennifer Montoya

Operations Assistant
Penn State '14
First Season

