

PENN STATE

WOMEN'S SOCCER



2015

GoPSUsports.com

| Twitter: @PennStateWSOC

Instagram: PennStateWSOC

| Facebook: PSUWomensSoccer

WSOC Contact: Will Rottler • wdr13@psu.edu O: (814) 865-2498 • C: (814) 441-9130

2015 SCHEDULE

AUGUST			
Sat. 15	ARMY WEST POINT (EX.)		1 p.m.
<i>PENN STATE TOURNAMENT (Aug. 21-23)</i>			
Fri. 21	HOFSTRA	University Park, Pa.	7:30 p.m.
Sun. 23	LOYOLA MARYMOUNT	University Park, Pa.	Noon
Fri. 28	DUKE	University Park, Pa.	8 p.m.
Sun. 30	ARKANSAS	University Park, Pa.	6 p.m.
SEPTEMBER			
Fri. 4	at West Virginia	Morgantown, W.Va.	7 p.m.
Fri. 11	at Stanford	Palo Alto, Calif.	11 p.m.
Sun. 13	at Santa Clara	Santa Clara, Calif.	4 p.m.
Thu. 17	WISCONSIN*	University Park, Pa.	7 p.m.
Sun. 20	MINNESOTA*	University Park, Pa.	1 p.m.
Fri. 25	at Nebraska*	Lincoln, Neb.	8 p.m.
Sun. 27	at Iowa*	Iowa City, Iowa	2 p.m.
OCTOBER			
Sun. 4	at Northwestern*	Evanston, Ill.	1 p.m.
Thu. 8	MARYLAND*	University Park, Pa.	7 p.m.
Sun. 11	INDIANA*	University Park, Pa.	1 p.m.
Thu. 15	at Purdue*	West Lafayette, Ind.	7 p.m.
Sun. 18	at Rutgers*	Piscataway, N.J.	1 p.m.
Sat. 24	at Ohio State*	Columbus, Ohio	6 p.m.
Wed. 28	MICHIGAN*	University Park, Pa.	7 p.m.
NOVEMBER			
<i>BIG TEN TOURNAMENT (Nov. 1-8)</i>			
Sun. 1	Big Ten Quarterfinals	Campus Sites	TBA
Fri. 6	Big Ten Semifinals	Campus Sites	TBA
Sun. 8	Big Ten Championship	Campus Sites	TBA
<i>NCAA TOURNAMENT (Nov. 13-29)</i>			
Fri.-Sun. 13-15	NCAA First Round	Campus Sites	TBA
Fri. 20	NCAA Second Round	Campus Sites	TBA
Sun. 22	NCAA Third Round	Campus Sites	TBA
Fri.-Sun. 27-29	NCAA Quarterfinals	Campus Sites	TBA
DECEMBER			
<i>NCAA WOMEN'S COLLEGE CUP (Dec. 4-6)</i>			
Fri. 4	College Cup Semifinals	Cary, N.C.	TBA
Sun. 6	College Cup Championship	Cary, N.C.	TBA

* - Big Ten match; Home matches in **CAPS** at Jeffrey Field;
All times Eastern

2015 PENN STATE INVITATIONAL

#6 PENN STATE NITTANY LIONS

(0-0)



HOFSTRA PRIDE

(0-0)



Match 1: Aug. 21, 2015 • 7:30 p.m. • Jeffrey Field • University Park, Pa.

MATCH DAY (HOFSTRA)

VENUE Jeffrey Field (5,000)
 PROMOTIONAL EVENT Team Poster Giveaway; Free Pizza for Students
 SERIES RECORD Penn State Leads, 3-0
 LAST MEETING August 25, 2013 (PSU Won, 2-1)

#6 PENN STATE NITTANY LIONS

(0-0)



LOYOLA MARYMOUNT LIONS

(0-0)



Match 2: Aug. 23, 2015 • Noon • Jeffrey Field • University Park, Pa.

MATCH DAY (LMU)

VENUE Jeffrey Field (5,000)
 PROMOTIONAL EVENT Sunday Fun Day; Post-match Autographs
 SERIES RECORD First Meeting
 LAST MEETING First Meeting

2014 STAT LEADERS

POINTS		ASSISTS	
Frannie Crouse	22	Emily Hurd	8
Mallory Weber	22	Emily Ogle	6
Raquel Rodriguez	17	Mallory Weber	6
Megan Schafer	17		
GOALS		SAVES	
Frannie Crouse	10	Britt Eckerstrom	66
Mallory Weber	8	Meghan Kaminski	6
Raquel Rodriguez	7		



CAREER CHARTS

POINTS

- 11. 80 - Courtney Lawson (30g 20a) - 1996-99
- 12. 74 - Mallory Weber (28g 18a) - 2012-**
- 13. 71 - Stephanie Smith (21g 29a) - 2000-03

GOALS

- 8. 31 - Bonnie Young - 1998-01
- 9. 30 - Courtney Lawson - 1996-99
- 10. 29 - Christine Nairn - 2009-12
- 11. 28 - Mallory Weber - 2012-14**
- 28 - Kelly Convey - 1996-99

ASSISTS

- 8. 26 - Kelly Convey - 1996-99
- 26 - Heidi Drummond - 2000-03
- 10. 25 - Liz Villamil - 1994-97
- 11. 23 - Taylor Schram - 2010-13
- 12. 22 - Raquel Rodriguez - 2012-**

SAVES

- 3. 217 - Alyssa Naeher (54 GA, 217 saves) - 2006-09
- 4. 195 - Robyn Van Praag (32 GA, 195 saves) - 1994-96
- 5. 187 - Britt Eckerstrom (50 GA, 187 saves) - 2011-**

GAME-WINNING GOALS

- 5. 17 - Carole Dutchka - 1995-98
- 17 - Maya Hayes - 2010-13
- 7. 15 - Joanna Lohman - 2000-03
- 8. 12 - Bonnie Young - 1998-01
- 9. 10 - Mallory Weber - 2012-**
- 10 - Kelly Convey - 1996-99

MINUTES PLAYED

- 12. 5102 - Bri Hovington - 2010-13
- 13. 4952 - Mallory Weber - 2012-**
- 14. 4898 - Maddy Evans - 2009-12
- 15. 4767 - Raquel Rodriguez - 2012-**
- 16. 4596 - Britt Eckerstrom - 2011-**

OPENING AT HOME

The season-opening match against Hofstra marks the 22nd season of Penn State women's soccer. All-time, the Nittany Lions are 14-6-1 in season-openers, and 10-0-1 when beginning the year at the home.

PENN STATE INVITATIONAL HISTORY

This is the 10th-annual Penn State Invitational. Overall, the Nittany Lions sport an all-time record of 12-3-4 in their tournament.

The Penn State Invitational started in 2005 with the Nittany Lions notching a pair of wins over No. 20 Washington (3-2) and No. 9 Connecticut (2-1).

NO. 6 IN THE LAND

The National Soccer Coaches Association of America (NSCAA) released its 2015 Coaches' Preseason Poll and the Nittany Lions are ranked sixth.

BACK-TO-BACK NO. 2 CLASSES

According to TopDrawerSoccer.com, the Nittany Lions have signed the number two recruiting class in the last two years.

The 2014 class featured the 2014 Big Ten Freshman of the Year Emily Ogle and Frannie Crouse, who led the Nittany Lions with 10 goals.

The 2015 class features nine newcomers, including eight freshmen and one transfer.

SWEET 16

Penn State's regular season Big Ten title last year was the 16th in program history. The Nittany Lions have won 16 out of the last 17 titles.

Since 1992-93, the 16 Big Ten titles won by women's soccer is tied for third for the most titles won by any one women's sport program in the Big Ten (Penn State women's volleyball).

PRESEASON FAVORITES

According to the 2015 Big Ten Women's Soccer Preseason Coaches' Poll, the Penn State women's soccer team was selected to finish first.

The Nittany Lions have sat atop the Big Ten preseason poll every season since the poll began in 2003.

PLAYERS TO WATCH

Three players from each Big Ten team were named Big Ten Women's Soccer Preseason Players to Watch, with seniors Britt Eckerstrom, Raquel Rodriguez and Mallory Weber representing the Nittany Lion Blue and White.

This is Rodriguez's third-straight appearance on the Preseason Players to Watch list.

HOME SWEET HOME

Jeffery Field has been a tough place for opponents to play as the Nittany Lions boast an all-time record of 204-23-9 at home.

In Big Ten play at Jeffrey Field, the Nittany Lions own a record of 109-5-4.

The Nittany Lions have tallied seven undefeated seasons at Jeffrey Field.

PRESEASON HONORS

TopDrawerSoccer.com released its Women's College Preseason Best XI with three Nittany Lions making the list.

Senior midfielder Raquel Rodriguez was named to the second team, sophomore midfielder Emily Ogle was named to the third team and defender Kaleigh Riehl was named to the freshmen team.

Five Nittany Lions were named to TopDrawerSoccer's Preseason Top-100 Player Rankings.

Rodriguez and Ogle are ranked 13th and 27th, respectively.

Frannie Crouse (61st), Mallory Weber (67th) and Maddie Elliston (71st) are ranked in the top-75.

WATCH OUT FOR ROCKY

Senior midfielder Raquel Rodriguez was named to the MAC Hermann Trophy Watch List, as announced by the NSCAA in early August.

The 28 candidates named to the watch list in August will be narrowed down throughout the season with the winner being announced on Jan. 8, 2016.

PSWS IN THE #2015WWC

The Penn State women's soccer program was represented by five Nittany Lions representing three countries in the 2015 Women's World Cup.

Former Penn State women's soccer players, Ali Krieger '06 and Alyssa Naeher '09 became the first Nittany Lions to win a World Cup as part of a senior national team as they helped the U.S. to a 5-2 victory over Japan in the 2015 FIFA Women's World Cup final.

Carmelina Moscato '05 and Erin McLeod '05 helped Canada to reach the quarterfinal round before being eliminated by England. The pair helped the host country to advance out of Group A and defeat Switzerland in the Round of 16.

Raquel Rodriguez won't forget about the summer of 2015 for quite some time.

During the summer of 2015, Rodriguez represented her home country of Costa Rica in the Women's World Cup.

In Costa Rica's debut at the Women's World Cup, Costa Rican and Penn State women's soccer history was made just 74 seconds after Spain scored its first World Cup goal. In the 14th minute, Rodriguez received a cross in the box from Lixy Rodriguez, and she lobbed in a left footed shot at the right post for the 1-1 equalizer. Rodriguez's goal was her 24th as a member of Costa Rican's Women's National Team, a team-best.

OH CAPTAIN, MY CAPTAIN!

Seniors Britt Eckerstrom, Raquel Rodriguez and Mallory Weber have been named team captains for the 2015 season.

A three-time Academic All-Big Ten honoree, Eckerstrom, a red-shirt senior, sits second among Penn State goalkeepers with 57 games played and her 39 career wins is tied for third.

Rodriguez, the 2014 Big Ten Midfielder of the Year, a NSCAA Scholar All-America pick, NSCAA All-Great Lakes Region first team member and Academic All-Big Ten honoree, posted 17 points in 18 games played.

Weber, also an Academic All-Big Ten selection, tied for the team lead with 22 points last season, scoring eight goals and dishing out six assists.

HOMETOWN TIES

Senior Megan Ritchey and freshman Taylor Campbell-Phipps didn't have to travel a long distance as they made the transition from high school to college.

Both Ritchey and Campbell-Phipps call State College, Pa., home as they both attended State College Area high school.

WATCH THE LIONS ON BTN

The Penn State women's soccer team will make one appearance on BTN (Sept. 17 vs. Wisconsin), but will be featured nine times on BTNPlus on BTN2GO.

The Nittany Lions are featured on BTN Plus on BTN2Go in three-straight matches when they take on Minnesota, Sept. 20 at Jeffrey Field before traveling to Nebraska, Sept. 25, and Iowa, Sept. 27. Following the two away matches, Penn State will play two contests at Jeffrey Field against Maryland, Oct. 8 and Indiana, Oct. 11, before going on the road for three-straight matches against Purdue, Oct. 15, Rutgers, Oct. 18, and Ohio State, Oct. 24. Finally, the Nittany Lions will close out the regular season Wednesday, Oct. 28 against Michigan at Jeffrey Field.

TOUGH ROAD AHEAD

The Nittany Lions scheduled an outstanding non-conference slate as they seek their 21st-straight NCAA Tournament appearance and 17th Big Ten title.

During the non-conference portion of its season, Penn State takes on No. 3 Stanford, No. 12 West Virginia, Duke (RV) and Santa Clara (RV).

The Big Ten conference slate features the 12th-ranked Wisconsin Badgers, No. 24 Rutgers, Michigan (RV) and Minnesota (RV).

Against the 2015 field, the Nittany Lions hold an all-time record of 185-42-17 (.793).

SOCIAL MEDIA

Keep up with the Nittany Lions on Instagram ([PennStateWSOC](#)), Facebook ([PennStateWomensSoccer](#)) and Twitter ([PennStateWSOC](#)).

UP NEXT

The Nittany Lions continue their season-opening homestand as they play host to Duke on Friday, August 28 and Arkansas on Sunday, August 30.

NSCAA COACHES POLL

(as of Aug. 3)

#	Team	W-L-T	1st Votes
1	Florida State	0-0-0	25
2	Virginia	0-0-0	3
3	Stanford	0-0-0	1
4	UCLA	0-0-0	3
5	Texas A&M	0-0-0	0
6	Penn State	0-0-0	0
7	North Carolina	0-0-0	0
8	Florida	0-0-0	0
9	Notre Dame	0-0-0	0
10	Pepperdine	0-0-0	0
11	South Carolina	0-0-0	0
12	West Virginia	0-0-0	0
13	Virginia Tech	0-0-0	0
14	Wisconsin	0-0-0	0
15	Texas Tech	0-0-0	0
16	Kentucky	0-0-0	0
17	Central Florida	0-0-0	0
18	California	0-0-0	0
19	Brigham Young	0-0-0	0
20	Washington	0-0-0	0
21	DePaul	0-0-0	0
22	Clemson	0-0-0	0
23	Kansas	0-0-0	0
24	Rutgers	0-0-0	0
25	Georgetown	0-0-0	0

Also receiving votes: Duke (42), Connecticut (33), Southern California (27), Arizona State (22), Washington State (20), Marquette (20), Auburn (10), Michigan (10), Colorado (10), Northeastern (10), Santa Clara (9), Boston College (7), Missouri (6), Minnesota (5), Arizona (4), Maryland (4), South Florida (3), Texas (2), North Texas (2), Harvard (1), Furman (1), Oklahoma (1), Tennessee (1), San Diego State (1)

GAMEDAY CENTRAL

SCOUTING THE PRIDE

- Offensively, the Pride is lead by senior Leah Galton. All-time in the Hofstra record books, Galton ranks second in points (92) third in goals (36) and tied for fourth in assists (20).
- In a 2013 matchup at the Penn State Invitational, Galton tallied Hofstra's lone goal in a 2-1 loss.
- All-time, Hofstra is 12-11 in opening day contests.
- In the CAA Preseason Coaches' Poll, Hofstra was picked to finish second, three points shy of defending champion Northeastern.

SCOUTING THE LIONS

- Loyola Marymount is coming off a 9-8-2 record last season, including a record of 2-6-1 in West Coast Conference play.
- Jocelyn Blankenship was named to her second-straight All-West Coast Conference Preseason Team. She tallied a team-high six assists in 2014.



THE LAST TIME

PENN STATE...

Scored 3 goals	10/24/14	Allowed 10-15 shots	11/29/14
	vs. Nebraska (3-1)	15 at #5 Texas A&M (1-2)	
Scored 4 goals	11/14/14	Allowed 16+ shots	9/7/14
	vs. Buffalo (4-1)	20 at Duke (4-3)	
Scored 5 goals	9/19/14	Scored 15-24 points	9/23/14
	vs. Ohio State (5-1)	18 vs. Bucknell (7-0)	
Scored 6 goals	9/26/13	Scored 25+ points	9/25/01
	vs. Purdue (6-1)	26 vs. Bucknell (9-2)	
Scored 7 goals	9/23/14	Made 10-14 saves	9/5/14
	vs. Bucknell (7-0)	10 vs. #14 UNC (1-0, 2OT)	
Scored 8 goals	10/9/05	Made 15+ saves	9/2/95
	vs. Iowa (8-0)	17 vs. James Madison (4-2)	
Scored 9 goals	9/25/01	Had 10+ corner kicks	11/14/14
	vs. Bucknell (9-2)	11 vs. Buffalo (4-1)	
Allowed 0 goals	11/21/14	Allowed 10+ corner kicks	9/12/10
	vs. UConn (1-0)	10 at #4 Portland (2-4)	
Allowed 1 goal	11/23/14	Tallied 5-7 assists	11/7/12
	vs. Virginia Tech (2-1)	5 vs. Buffalo (4-1)	
Allowed 2 goals	11/29/14	Tallied 8+ assists	11/14/14
	at Texas A&M (1-2)	8 at Bucknell (6-0)	
Allowed 3 goals	9/7/14	Won NCAA Tourney game	11/23/14
	at Duke (4-3)	vs. Virginia Tech (2-1)	
Allowed 4 goals	12/2/12	Lost an NCAA Tourney game	11/29/14
	vs. #13 UNC (1-4)	vs. #5 Texas A&M (1-2)	
Allowed 5+ goals	8/30/13	Won road NCAA Tourney game	11/30/02
	vs. Virginia (1-5)	at Connecticut (2-1)	
Won in overtime	11/30/12	Won neutral NCAA Tourney game	11/30/12
	vs. #7 Florida State (2-1)	vs. #7 Florida State (2-1)	
Lost in overtime	11/6/11	Won PK shootout	11/18/12
	vs. #18 Illinois (1-2)	vs. Michigan (1-1, 3-2 PKs)	
Won in double overtime	9/20/13	Lost PK shootout	11/9/07
	vs. Northwestern (3-2)	vs. Ohio State (2-2, 4-5 PKs)	
Lost in double overtime	9/5/14		
	vs. #14 UNC (0-1, 2OT)		
Tied after double overtime	8/23/12		
	vs. West Virginia (2-2, 2OT)		
Ranked in the NSCAA Top 25	11/11/14		
	8th		
Ranked in the NSCAA Top 10	11/11/14		
	8th		
Played an NSCAA Top 10 Team	11/29/14		
	at #5 Texas A&M (1-2)		
Played an NSCAA Top 25 Team	10/11/14		
	vs. #20 Rutgers (0-1)		
Defeated an NSCAA Top 10 Team	11/30/12		
	vs. #7 Florida State (2-1)		
Defeated an NSCAA Top 25 Team	8/22/14		
	vs. #13 Wisconsin (2-0)		
Attempted less than 10 shots	8/22/14		
	9 vs. # 12 West Virginia (3-1)		
Attempted 10-19 shots	11/23/14		
	11 vs. Virginia Tech (2-1)		
Attempted 20-29 shots	11/29/14		
	20 vs. #5 Texas A&M (1-2)		
Attempted 30-39 shots	9/10/13		
	30 at Bucknell (6-0)		
Attempted 40+ shots	11/7/10		
	42 vs. Michigan (1-0)		
Allowed 4 or less shots	9/19/14		
	4 vs. Ohio State (5-1)		
Allowed 5-9 shots	11/14/14		
	5 vs. Buffalo (4-1)		

MISCELLANEOUS STATISTICS

PENN STATE is...

204-23-9 All-time at Jeffrey Field
 109-5-4 .. All-time vs. Big Ten at Jeffrey Field

In 2015...

0-0-0 at home
 0-0-0 on the road
 0-0-0 at neutral site
 0-0-0 in overtime
 0-0-0 when leading at halftime
 0-0-0 when trailing at halftime
 0-0-0 when tied at halftime
 0-0-0 when scoring first goal
 0-0-0 when opponent scores first goal
 0-0-0 when out-shooting opponent
 0-0-0 when out-shot by opponent
 0-0-0 when posting the same # of shots
 0-0-0 when taking more corner kicks
 0-0-0 when allowing more corner kicks
 0-0-0 when taking the same corner kicks
 0-0-0 against ranked opponents
 0-0-0 against unranked opponents
 0-0-0 against higher-ranked opponents
 0-0-0 against lower-ranked opponents
 0-0-0 when scoring 0 goals
 0-0-0 when scoring 1 goal
 0-0-0 when scoring 2 goals
 0-0-0 when scoring 3+ goals
 0-0-0 when allowing 0 goals
 0-0-0 when allowing 1 goal
 0-0-0 when allowing 2 goals
 0-0-0 when allowing 3+ goals
 0-0-0 on Wednesday
 0-0-0 on Thursday
 0-0-0 on Friday
 0-0-0 on Saturday
 0-0-0 on Sunday
 0-0-0 at night
 0-0-0 during the day
 0-0-0 vs. CAA
 0-0-0 vs. Big 12
 0-0-0 vs. Big Ten
 0-0-0 vs. PAC 12
 0-0-0 vs. SEC
 0-0-0 vs. WCC
 0-0-0 when a freshman scores
 0-0-0 in one-goal games

A PENN STATE PLAYER...

Scored 2 goals	10/26/14
	Kori Chapic vs. Iowa (2-1)
Scored 3 goals	9/4/11
	Maya Hayes at Pittsburgh (3-0)
Scored 4 goals	10/7/01
	Christie Welsh vs. Michigan (6-2)
Had 2 assists	11/14/14
	Salina Williford vs. Buffalo (4-1)
Had 3 assists	9/13/13
	Tani Costa at Oklahoma St. (4-2)
Had 4 assists	9/17/03
	Ali Krieger vs. Bucknell (6-0)
Had 5-9 points	9/23/14
	Frannie Crouse 5 vs. Bucknell (7-0)
Had 10+ points	10/7/01
	10, Christie Welsh vs. Michigan (6-2)
Attempted 10+ shots	11/11/11
	10, Christine Nairn vs. Army (1-0)
Made 10-14 saves	9/5/14
	10, Britt Eckerstrom vs. # 14 UNC (1-0, 2OT)
Made 15+ saves	9/3/94
	15, Robin Van Praag at Minnesota (3-2)
Scored in the Big Ten Tourney	11/6/13
	Mallory Weber vs. Wisconsin (2-0)
Had a Big Ten Tourney shutout	11/6/13
	Britt Eckerstrom vs. Wisconsin (2-0)
Scored in an NCAA game	11/29/14
	Salina Williford at #5 Texas A&M (2-1)
Had an NCAA game shutout	11/21/13
	Britt Eckerstrom vs. UConn (1-0)

Final 2014 Penn State Women's Soccer Penn State Combined Team Statistics (as of Aug 17, 2015) All games

RECORD:	OVERALL	HOME	AWAY	NEUTRAL
ALL GAMES	20-4	13-1	7-1	0-2
CONFERENCE	12-1	6-1	6-0	0-0
NON-CONFERENCE	8-3	7-0	1-1	0-2

Date	Opponent		Score	Att.	#	Player	gp	g	a	pts	sh	sh%	sog	sog%	qw	pk-att
Aug 22	#12 WVU	w	3-1	3007	9	Crouse, Frannie	24	10	2	22	55	.182	26	.473	3	0-0
Aug 24	SYRACUSE	w	2-0	1278	16	Weber, Mallory	24	8	6	22	50	.160	25	.500	3	0-0
Aug 29	UCONN	w	3-1	2013	11	Rodriguez, Raquel	18	7	3	17	37	.189	16	.432	3	0-1
Sep 05	vs #14 North Carolina	Lo2	0-1	1249	4	Schafer, Megan	24	6	5	17	27	.222	15	.556	2	0-0
^ Sep 07	at #22/-- Duke	w	4-3	1405	20	Williford, Salina	24	5	5	15	55	.091	24	.436	2	0-0
* Sep 12	at Purdue	w	1-0	383	14	Chapic, Kori	24	5	5	15	25	.200	8	.320	3	0-0
* Sep 14	at Indiana	w	3-0	513	10	Ogle, Emily	24	3	6	12	18	.167	8	.444	1	1-1
* Sep 19	OHIO STATE	w	5-1	2021	3	Hurd, Emily	24	2	8	12	30	.067	15	.500	1	0-0
Sep 23	BUCKNELL	w	7-0	684	25	Peterson, Mallory	13	3	0	6	9	.333	6	.667	0	0-0
* Sep 26	NORTHWESTERN	w	4-1	1741	15	Echard, Haleigh	24	1	4	6	22	.045	11	.500	0	0-0
* Sep 28	ILLINOIS	w	2-1	1602	17	Church, Whitney	24	1	1	3	11	.091	3	.273	0	0-0
* Oct. 3	at Minnesota	w	1-0	954	6	Witte, Anna	6	1	1	3	2	.500	2	1.000	0	0-0
* Oct 05	at #13 Wisconsin	w	2-0	598	7	Ball, Elizabeth	24	1	0	2	4	.250	2	.500	1	0-0
* Oct 11	#20 RUTGERS	L	0-1	1651	8	Keen, Katy	22	0	2	2	10	.000	1	.100	0	0-0
* Oct 16	at #24 Michigan	w	1-0	927	5	Elliston, Maddie	24	0	2	2	2	.000	1	.500	0	0-0
* Oct 19	at Michigan State	w	2-1	1112	12	Kohne, Kindrah	15	0	1	1	4	.000	0	.000	0	0-0
* Oct 24	NEBRASKA	w	3-1	1276	2	Ritchey, Megan	6	0	0	0	1	.000	1	1.000	0	0-0
* Oct 26	IOWA	w	2-1	0	28	Eckerstrom, Britt	24	0	0	0	0	.000	0	.000	0	0-0
* Oct 30	MARYLAND	w	1-0	620	24	Holderby, Britne	4	0	0	0	0	.000	0	.000	0	0-0
Nov 05	vs Northwestern	L	0-1	0	22	Clauss, Isabelle	3	0	0	0	0	.000	0	.000	0	0-0
Nov 14	BUFFALO	w	4-1	633	21	Chase, Teddy	5	0	0	0	0	.000	0	.000	0	0-0
Nov 23	VIRGINIA TECH	w	2-1	653	0	Kaminski, Meghan	5	0	0	0	0	.000	0	.000	0	0-0
Nov 21	UCONN	w	1-0	468		Total	24	54	51	159	362	.149	165	.456	20	1-2
Nov 29	at #5 Texas A&M	L	1-2	3161		Opponents	24	18	12	48	207	.087	91	.440	4	2-2

TEAM STATISTICS	PSU	OPP
SHOT STATISTICS		
Goals-Shot attempts	54-362	18-207
Goals scored per game	2.25	0.75
Shot pct.	.149	.087
Shots on goal-Attempts	165-362	91-207
SOG pct.	.456	.440
Shots/Game	15.1	8.6
CORNER KICKS	120	80
PENALTY KICKS	1-2	2-2
PENALTIES		
Yellow cards	7	7
Red cards	0	0
ATTENDANCE		
Total	17647	9053
Dates/Avg Per Date	14/1260	8/1132
Neutral Site #/Avg	2/624	

#	Goalie	GP	Min.	GA	GAAvg	Saves	Pct	W-L-T	Sho
28	Eckerstrom, Britt	24	2053:27	15	0.51	66	.815	20-4-0	8/1
0	Kaminski, Meghan	5	118:40	3	1.77	6	.667	0-0-0	0/1
	Total	24	2172:07	18	0.58	73	.802	20-4-0	9
	Opponents	24	2172:07	54	1.74	111	.673	4-20-0	3

Goals by Period	1st	2nd	OT	OT2	Total
Penn State	25	29	0	0	54
Opponents	6	11	0	1	18

Shots by Period	1st	2nd	OT	OT2	Total
Penn State	175	185	2	0	362
Opponents	104	97	5	1	207

Saves by Period	1st	2nd	OT	OT2	Total
Penn State	40	31	2	0	73
Opponents	53	58	0	0	111

Corners by Period	1st	2nd	OT	OT2	Total
Penn State	51	68	1	0	120
Opponents	41	37	2	0	80

Fouls by Period	1st	2nd	OT	OT2	Total
Penn State	71	92	1	0	164
Opponents	94	81	1	0	176



ERICA WALSH

Head Coach • Ninth Year
WILLIAM & MARY '97

RECORD AT PSU: 135-47-8 (.732)
Overall Record: 175-75-11 (.692)

2012 NSCAA NATIONAL COACH OF THE YEAR
THREE-TIME BIG TEN COACH OF THE YEAR (2009, 2012, 2014)

Head coach Erica Walsh enters her ninth season at the helm of the Penn State women's soccer program in 2015.

In 2014, Walsh led the Blue and White to its 10th NCAA Tournament semifinal appearance and the seventh 20-win season in program history. Penn State, which had an 11-member freshman class, earned its third outright conference title in four years, maintaining a top-11 national ranking throughout the season and defeating five top-25 opponents.

Under the director of the three-time Big Ten Coach of the Year, Penn State collected three of four Player of the Year awards. Whitney Church, the conference's Defender of the Year, was named a M.A.C. Hermann Trophy semifinalist and an NSCAA All-America first team selection before she became the 30th overall pick in the National Women's Soccer League (NWSL) draft by the Washington Spirit. Also earning individual Big Ten awards were Raquel Rodriguez, who bagged Midfielder of the Year honors and Emily Ogle, the Freshman of the Year.

The Nittany Lions appeared in their 19th-straight NCAA Tournament in 2013, due in part to the success of senior Maya Hayes. The sixth-overall selection in the WPSL draft, Hayes set Penn State's single season record for points (79) and finished her career ranked third in goals scored (71) and points (163), sixth in game-winning goals (17) and seventh in shots (291). Hayes also became the seventh M.A.C. Hermann Award Trophy semifinalist in program history.

Walsh's 2012 Nittany Lions were the most successful team in program history after advancing to their first-ever national title game. The Nittany Lions won 21 of 27 games and were unbeaten in Big Ten action with a 10-0-1 record. The Lions registered their 15th consecutive Big Ten title and 18th-straight NCAA Tournament appearance. The 15-title mark stands as the most consecutive Big Ten Championships by a women's program, along with the present Northwestern tennis team.

Senior Christine Nairn became just the seventh Nittany Lion to finish as a finalist for the prestigious Missouri Athletic Club's Hermann Trophy in 2012 under Walsh's tutelage while junior Maya Hayes was named a semifinalist for the award.

Walsh's success was recognized at the conference and national level as she earned Big Ten Coach of the Year and NSCAA National Coach of the Year honors.

Her 2011 team was a dominant force, winning 21 of 26 matches, while outscoring opponents 70-24. The Nittany Lions were 10-1-0 in Big Ten action and posted the seventh undefeated season at Jeffrey Field (9-0). Walsh helped

guide the Lions to their 14th-straight Big Ten title and a spot to the NCAA Sweet Sixteen for the first time since 2007.

With Walsh's guidance, sophomore Maya Hayes became the nation's most prolific scorer in soccer in 2011 and was a finalist for the M.A.C. Hermann Trophy. Hayes led the nation with 31 goals and 70 points, breaking the Penn State single-season record for points.

During the 2011 summer, Walsh had an extraordinary experience of being one of the top assistants to Pia Sundhage and the 2011 United State women's national team at the FIFA World Cup in Germany. The U.S. made a sparkling run through knockout play to the final, falling to eventual champion Japan.

In the 2010 campaign, Walsh's young club made a remarkable turnaround mid-season, overcoming a two-game deficit in the league standings over the final weeks to capture a share of its 13th straight Big Ten title.

After a tough 2-4 start to the 2009 season, Walsh led the Nittany Lions to a remarkable turnaround, going 10-1-2 in the last 13 games of the regular season, earning her the 2009 Big Ten Coach of the Year Award for her efforts.

With the impressive end to the season, Walsh and her charges captured the program's 12th-straight Big Ten Championship. By winning the Big Ten, the Nittany Lions continued their string of NCAA Tournament berths, making their 15th-straight appearance in the 64-team field in 2009. For the second time in three years, Penn State hosted the first and second rounds of tournament play.

WALSH'S COLLEGIATE RÉSUMÉ

Head Coach	
Penn State	2007-present
	<i>2012 NSCAA National Coach of the Year</i>
	<i>2012 Big Ten Coach of the Year</i>
	<i>2009 Big Ten Coach of the Year</i>
Harvard	2006
Dartmouth	2000-02
Assistant Coach	
Florida State	2005-06
Dartmouth	1998-99
Graduate Assistant	
Lehigh	2003-04
Dartmouth	1997
Student-Athlete	
William & Mary	1993-97
	<i>William & Mary Hall of Fame Inductee</i>

WALSH'S NATIONAL RÉSUMÉ

Head Coach	
U.S. Women's Under-17	2004-07
Assistant Coach	
U.S. Women's National Team	2008-11
	<i>2008 Olympic Gold Medalists</i>
	<i>2011 World Cup Silver Medalists</i>
U.S. Women's Under-19	2004
U.S. Women's Under-20	2013-Present

WALSH'S ACCOLADES

- 12 YEARS OF COLLEGE HEAD COACHING EXPERIENCE**
- 1 COLLEGE CUP APPEARANCE**
- 1 NATIONAL CHAMPIONSHIP GAME APPEARANCE**
- 17 NCAA TOURNAMENT WINS**
- 11 NCAA TOURNAMENT APPEARANCES**
- 11 ALL-AMERICA HONORS**
- 7 BIG TEN CHAMPIONSHIPS**
- 1 OLYMPIC GOLD MEDAL**
- 1 NATIONAL COACH OF THE YEAR AWARD**
- 3 BIG TEN COACH OF THE YEAR AWARDS**

Walsh also orchestrated one of the finest awards seasons in Penn State history when Katie Schoepfer, Alyssa Naeher and Christine Nairn swept the year-end Big Ten Player of the Year awards. Schoepfer was named the Offensive Player of the Year, Naeher the Defensive Player of the Year and Nairn the Freshman of the Year. Danielle Toney was named to the All-Big Ten first team, while Lexi Marton garnered second team mention. Walsh has now coached two players of the year to three awards as Naeher was also the 2007 recipient of the Defensive Player of the Year honors in Walsh's first year in Happy Valley.

Walsh continued her success from the 2007 campaign into a 16-8-0 record that saw Penn State capture its 11th-straight Big Ten Championship and the 2008 Big Ten Tournament crown.

Her transition to Penn State was quite smooth as the 2007 team finished 18-4-2, including a 9-1-0 mark in conference play, and was ranked 12th in the final NSCAA poll of the season.

When she came to Penn State, Walsh brought with her a wealth of experience at both the international and collegiate levels. She already has coached at six different universities, including three stints as head coach as well as serving as an assistant for the U.S. U-19 team in 2004. Walsh served as head coach of the U-17 team from December 2004 until her hire at Penn State in February 2007.

As of January 2009, Walsh was appointed as a member of the Panel of Instructors and Lecturers for FIFA Courses. In addition, she was appointed as the Chairman of the Women's Technical Committee for the period of January 1, 2009 to June 30, 2011.

In January of 2008, Walsh was named as the assistant coach by Pia Sundhage for the U.S. National Team. With Walsh's help, the U.S. team completed its

historic run with a gold medal at the 2008 Olympic Games in Beijing, China. Even sweeter was that Walsh's main responsibility was the U.S. Team's defense, which held fellow world power Brazil scoreless in the gold medal game.

The head coach at Harvard University as well as the U.S. Under-17 team prior to her hiring at Penn State, Walsh has consistently been active among the coaching ranks both at the Division I level and the U.S. Youth National Team program for nearly a decade. Prior to her time with the Crimson, she was part of a Florida State staff that led the Seminoles to one of its most successful year to date. FSU joined Penn State in the 2005 Women's Soccer College Cup, with both programs reaching the national semifinals.

Walsh's coaching path began in 1997 as a graduate assistant with Bucknell University. In 1998, she accepted a position at Dartmouth, where she was an assistant coach for two seasons. After helping the team to a final NSCAA ranking of No. 8 at the conclusion of the team's 1998 NCAA quarterfinal run as well as an Ivy League championship in 1999, Walsh assumed head coaching duties before the 2000 season.

As head coach, Walsh led the Big Green to back-to-back Ivy League co-championships in 2000 and 2001. Her squad was ranked in the NSCAA's top 25 each year, rising as high as No. 13 in 2001. In her three seasons as head coach, Dartmouth was invited to the NCAA Tournament each season and reached the round of 16 twice. All three of her teams earned the NSCAA's Academic Team Award.

Beginning in the spring of 2004, Walsh joined the United States Under-19 team as an assistant coach where she helped with preparations for the Under-19 World Cup. The U.S. finished with the bronze medal in Thailand after defeating Brazil in the third place match. After the World Cup, Walsh was appointed the U.S. National Team's U-17 head coach, a position which she held for three years.

As a player, Walsh was an NSCAA All-Region selection at William & Mary. A two-time first team All-CAA pick, she propelled her team to four NCAA Tournament appearances as well as two CAA regular season and two CAA league championships. In March of 2010, Walsh's alma mater, William & Mary, honored her by inducting her into the W&M Athletics Hall of Fame.

A high school All-American at Lower Moreland, she was also a member of the U.S. Under-17 National Team.

Walsh earned her Bachelor of Science degree with a concentration in biology from William & Mary in 1997. The Huntingdon Valley, Pa., native holds an NSCAA Advanced National Degree and a USSF "A" Coaching License.

WALSH'S CAREER AT PENN STATE

Season	Overall	Pct.	Big Ten	Pct.	Finish	NCAA
2007	18-4-2	.792	9-1-0	.900	1st	Third Round
2008	16-8-0	.667	8-2-0	.800	T-1st	First Round
2009	13-6-2	.667	8-1-1	.850	1st	Second Round
2010	11-9-1	.548	8-2-0	.800	T-1st	Second Round
2011	21-5-0	.808	10-1-0	.909	1st	Third Round
2012	21-4-2	.815	10-0-1	.955	1st	Runner-Up
2013	15-7-1	.674	7-4-0	.636	3rd	Second Round
2014	20-4-0	.833	12-1-0	.923	1st	Quarterfinals
Penn State	135-47-8	.732	73-12-2	.851	8 NCAAAs (14-8)	
Career	175-75-11	.692			11 NCAAAs (17-11)	



2015 PENN STATE WOMEN'S SOCCER

2015 PENN STATE WOMEN'S SOCCER NUMERICAL ROSTER

No.	Name.	Pos.	Elig.	Ht.	Hometown	High School (Last College)
1	Brittany Basinger	D	RS SO	5-7	Purcellville, Va.	Woodgrove
2	Megan Ritchey	M	SR	5-3	State College, Pa.	State College Area
3	Kaleigh Riehl	D	FR	5-8	Fairfax Station, Va.	South County
4	Megan Schafer	F	SO	5-7	Langhorne, Pa.	Neshaminy
5	Maddie Elliston	D	SO	5-3	Omaha, Neb.	Marian
6	Anna Witte	D	JR	5-4	Morrisville, N.C.	Cary
7	Elizabeth Ball	D	SO	5-6	Richmond, Va.	Deep Run
8	Kristin Schnurr	F	FR	5-7	Bristow, Va.	Patriot
9	Frannie Crouse	F	SO	5-7	Greensburg, Pa.	Greensburg Catholic
10	Emily Ogle	M	SO	5-5	Strongsville, Ohio	Strongsville
11	Raquel Rodriguez	F/M	SR	5-6	San Jose, Costa Rica	International Christian
12	Charlotte Williams	F	FR	5-4	Rochester, N.Y.	Brighton
14	Ellie Jean	D	FR	5-6	Coventry, Conn.	Coventry
15	Haleigh Echard	M	SO	5-4	Lebanon, Pa.	Cedar Crest
16	Mallory Weber	F	SR	5-6	Novi, Mich.	Northville
17	Alina Ortega-Jurado	F/M	FR	5-6	Wetzlar, Germany	
18	Angela Widlacki	D	RS SO	5-5	Naperville, Ill.	Naperville North
19	Liisi Vink-Lainas	M	SO	5-5	Wynantskill, N.Y.	Troy
20	Salina Williford	M	JR	5-4	Wayne, Pa.	Conestoga
21	Teddy Chase	D	SR	5-7	Wayne, Pa.	The Shipley School
22	Isabelle Clauss	D	SO	5-6	Clarks Summit, Pa.	Abington Heights
23	Nickolette Driesse	MF	JR	5-5	Wayne, N.J.	Wayne Hills (Florida State)
24	Cecilia Knaub	M	FR	5-10	Phoenixville, Pa.	Phoenixville
25	Taylor Campbell-Phipps	D	FR	5-6	State College, Pa.	State College Area
27	Marissa Sheva	M	FR	5-3	Sellersville, Pa.	Penridge
28	Britt Eckerstrom	GK	RS SR	5-10	Germantown, Md.	Northwest
30	Rose Chandler	GK	RS FR	5-7	Atlanta, Ga.	Atlanta Country Day

2015 PENN STATE WOMEN'S SOCCER ALPHABETICAL ROSTER

No.	Name.	Pos.	Elig.	Ht.	Hometown	High School (Last College)
7	Elizabeth Ball	D	SO	5-6	Richmond, Va.	Deep Run
1	Brittany Basinger	D	RS SO	5-7	Purcellville, Va.	Woodgrove
25	Taylor Campbell-Phipps	D	FR	5-6	State College, Pa.	State College Area
30	Rose Chandler	GK	RS FR	5-7	Atlanta, Ga.	Atlanta Country Day
21	Teddy Chase	D	SR	5-7	Wayne, Pa.	The Shipley School
22	Isabelle Clauss	D	SO	5-6	Clarks Summit, Pa.	Abington Heights
9	Frannie Crouse	F	SO	5-7	Greensburg, Pa.	Greensburg Catholic
23	Nickolette Driesse	MF	JR	5-5	Wayne, N.J.	Wayne Hills (Florida State)
15	Haleigh Echard	M	SO	5-4	Lebanon, Pa.	Cedar Crest
28	Britt Eckerstrom	GK	RS SR	5-10	Germantown, Md.	Northwest
5	Maddie Elliston	D	SO	5-3	Omaha, Neb.	Marian
14	Ellie Jean	D	FR	5-6	Coventry, Conn.	Coventry
24	Cecilia Knaub	M	FR	5-10	Phoenixville, Pa.	Phoenixville
10	Emily Ogle	M	SO	5-5	Strongsville, Ohio	Strongsville
17	Alina Ortega-Jurado	F/M	FR	5-6	Wetzlar, Germany	
3	Kaleigh Riehl	D	FR	5-8	Fairfax Station, Va.	South County
2	Megan Ritchey	M	SR	5-3	State College, Pa.	State College Area
11	Raquel Rodriguez	F/M	SR	5-6	San Jose, Costa Rica	International Christian
4	Megan Schafer	F	SO	5-7	Langhorne, Pa.	Neshaminy
8	Kristin Schnurr	F	FR	5-7	Bristow, Va.	Patriot
27	Marissa Sheva	M	FR	5-3	Sellersville, Pa.	Penridge
19	Liisi Vink-Lainas	M	SO	5-5	Wynantskill, N.Y.	Troy
16	Mallory Weber	F	SR	5-6	Novi, Mich.	Northville
18	Angela Widlacki	D	RS SO	5-5	Naperville, Ill.	Naperville North
12	Charlotte Williams	F	FR	5-4	Rochester, N.Y.	Brighton
20	Salina Williford	M	JR	5-4	Wayne, Pa.	Conestoga
6	Anna Witte	D	JR	5-4	Morrisville, N.C.	Cary

Head Coach: Erica Walsh (Ninth year)

Associate Head Coach: Ann Cook (Ninth year)

Assistant Coach: Tim Wassell (Sixth year)

Director of Operations: Kara Lowery (Third year)

Volunteer Assistant Coach: Nick Stirrett

2015 PENN STATE WOMEN'S SOCCER



BRITTANY BASINGER
R- Sophomore • D
Fairfax, Va.



MEGAN RITCHEY
Senior • M
State College, Pa.



KALEIGH RIEHL
Freshman • D
Fairfax Station, Va.



MEGAN SCHAFER
Sophomore • F
Langhorne, Pa.



MADDIE ELLISTON
Sophomore • D
Omaha, Neb.



ANNA WITTE
Junior • D
Morrisville, N.C.



ELIZABETH BALL
Sophomore • D
Richmond, Va.



KRISTIN SCHNURR
Freshman • F
Bristow, Va.



FRANNIE CROUSE
Sophomore • F
Greensburg, Pa.



EMILY OGLE
Sophomore • M
Strongsville, Ohio



RAQUEL RODRIGUEZ
Senior • F/M
San Jose, Costa Rica



CHARLOTTE WILLIAMS
Freshman • F
Rochester, N.Y.



ELLIE JEAN
Freshman • D
Coventry, Conn.



HALEIGH ECHARD
Sophomore • M
Lebanon, Pa.



MALLORY WEBER
Senior • F
Novi, Mich.



ALINA ORTEGA-JURADO
Freshman • M
Wetzlar, Germany



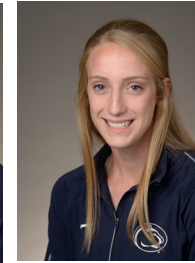
ANGELA WIDLACKI
R - Sophomore • D
Naperville, Ill.



LIISI VINK-LAINAS
Sophomore • M
Wynantskill, N.Y.



SALINA WILLIFORD
Junior • M/D
Wayne, Pa.



TEDDY CHASE
Senior • D
Wayne, Pa.



ISABELLE CLAUSS
Sophomore • D
Clarks Summit, Pa.



NICOLETTE DRIESSE
Junior • M
Wayne, Pa.



CECILIA KNAUB
Freshman • M
Phoenixville, Pa.



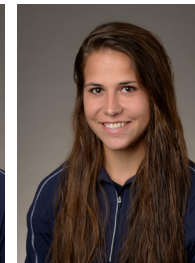
TAYLOR CAMPBELL-PHIPPS
Freshman • D
State College, Pa.



MARISSA SHEVA
Freshman • M
Sellersville, Pa.



BRITT ECKERSTROM
R - Senior • GK
Germantown, Md.



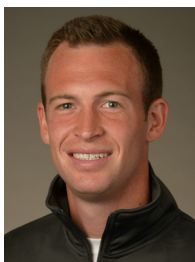
ROSE CHANDLER
R - Freshman • GK
Atlanta, Ga.



ERICA WALSH
Head Coach • 9th Year
William & Mary '97



ANN COOK
Assistant Coach • 9th year
William & Mary '97



TIM WASSELL
Assistant Coach • 6th Year
PSU Altoona '06



KARA LOWERY
Director of Ops. • 3rd Year
Southern Nazarene '97



NICK STIRRETT
Volunteer Assistant Coach • 1st Year
Augustana College '06