



# PENN STATE WOMEN'S HOCKEY

## 2012-13 NITTANY LIONS

GoPSUsports.com // @PennStateWHKY // Facebook.com/PennStateWomensHockey  
 Contact: **Jeremy Fallis** // jeremy.fallis@psu.edu // O: (814) 865-3613 // C: (814) 206-6544

### 2012-13 SCHEDULE

Overall: 7-17-1 // Home: 4-6-1 // Away: 3-11-0  
 CHA: 1-10-1 // Home: 0-5-1 // Away: 1-5-0

Date	Opponent	Result/Time
Oct. 6	at Vermont	W 5-3
Oct. 7	at Vermont	L 1-3
Oct. 13 *	SYRACUSE	L 0-4
Oct. 14 *	SYRACUSE	L 0-6
Oct. 19	at Sacred Heart	L 1-2
Oct. 20	at Sacred Heart	W 6-1
Oct. 25 *	RIT	L 1-4
Oct. 26 *	RIT	T (OT) 2-2
Nov. 2	SACRED HEART	W 6-0
Nov. 3	SACRED HEART	W 8-2
Nov. 10 *	ROBERT MORRIS	L 1-7
Nov. 11 *	ROBERT MORRIS	L 1-4
Nov. 16 *	at Lindenwood	L 1-5
Nov. 17 *	at Lindenwood	W 3-2
Nov. 30 *	at #4 Mercyhurst	L 0-5
Dec. 1 *	at #4 Mercyhurst	L 1-7
Dec. 7	at St. Lawrence	L 1-3
Dec. 8	at St. Lawrence	L 2-4
Jan. 4	CHATHAM	W 10-0
Jan. 5	CHATHAM	W 4-0
Jan. 11	at Union	L 0-1
Jan. 12	at Union	L 1-2
Jan. 25 *	at Syracuse	L 0-1
Jan. 26 *	at Syracuse	L 1-4
Jan. 29	PRINCETON	L 0-3

Feb. 1 *	#7 MERCYHURST	7:00 p.m.
Feb. 2 *	#7 MERCYHURST	2:00 p.m.
Feb. 8 *	LINDENWOOD	2:00 p.m.
Feb. 9 *	LINDENWOOD	2:00 p.m.
Feb. 15 *	at RIT	7:00 p.m.
Feb. 16 *	at RIT	7:00 p.m.
Feb. 22 *	at Robert Morris	7:00 p.m.
Feb. 23 *	at Robert Morris	3:00 p.m.

#### 2013 CHA TOURNAMENT

Mar. 1	^ First Round - Game 1	TBA
Mar. 2	^ First Round - Game 2	TBA
Mar. 3	^ First Round - Game 3 (if necessary)	TBA
Mar. 8	% Semifinals	TBA
Mar. 9	% Final	TBA

All Times Eastern

Home games in **CAPS** at Greenberg Ice Pavilion

\* - College Hockey America games

^ - CHA First Round at higher seed

% - CHA Semifinals & Final hosted by No. 1 seed

Rankings based on USA Today/USA Hockey poll



### PENN STATE NITTANY LIONS

(7-17-1, 1-10-1 CHA)

### #7 MERCYHURST LAKERS

(19-5-1, 10-2-0 CHA)

Games 26-27: Feb. 1-2, 2013 • 7 p.m. // 2 p.m. • Greenberg Ice Pavilion • University Park, Pa.

#### GAME DAY

VENUE  
 STREAMING COVERAGE  
 SERIES RECORD  
 LAST MEETING  
 NEXT SERIES

Greenberg Ice Pavilion (1,300)  
 AmericaOneSports.com (\$) 0-2-0  
 12/1/12, Mercyhurst 7-1  
 Feb. 8-9 vs. Lindenwood

#### GAME NOTES

- Penn State hosts its first ranked opponent this weekend vs. No. 7 Mercyhurst
- Nittany Lions fell to the Princeton Tigers, 3-0, on Tuesday
- Penn State has THON Night on Friday, raising money for the Four Diamonds Fund
- Mercyhurst is coming off a 4-0 loss at No. 5 Cornell on Tuesday
- The Lakers are 2-0-0 against Penn State this season
- PSU hosts **Skate for the Cure** on Friday, Feb. 8 vs. Lindenwood

#### ON THE INSIDE

Page 2: **CHA Standings and Team Comparison**

Pages 8-11: **2012-13 Penn State Women's Hockey Stats**

Page 12: \$90 million **Pegula Ice Arena** is on target for a Sept. 2013 opening

Pages 13-14: **The Nittany Lion Roster & TV/Radio Roster**

#### SEASON STATISTICAL LEADERS

FORWARDS		GP	G	A	PTS	SH	+/-	GWG
40	Shannon Yoxheimer	24	12	12	24	129	0	3
24	Taylor Gross	24	4	14	18	65	0	0
15	Jess Desorcie	24	5	11	16	37	+2	0
16	Hannah Hoenshell	19	7	3	10	45	+5	1
19	Jill Holdcroft	25	8	2	10	37	-8	0
20	Emily Laurenzi	25	2	5	7	26	+6	1
22	Jenna Welch	25	2	5	7	33	-3	0
23	Birdie Shaw	23	2	3	5	44	-4	0
10	Micayla Catanzariti	25	3	2	5	41	-7	0
DEFENSE		GP	G	A	PTS	SH	+/-	BLK
33	Madison Smiddy	15	1	6	7	13	+3	14
4	Jordin Pardoski	25	2	4	6	21	0	22
17	Paige Jahnke	25	0	6	6	24	-4	34
2	Jeanette Bateman	25	1	4	5	20	-5	27
8	Taylor McGee	18	0	2	2	11	-2	16
GOALTENDER		GP-GS	Record	MIN	GA	GAA	SV	SV%
37	Nicole Paniccia	19-19	6-12-1	1059:45	56	3.17	666	.922
30	Celine Whitlinger	8-6	1-5-0	389:36	16	2.46	265	.943



@PennStateWHKY



PennStateWomensHockey



GoPSUTV



# NITTANY LION WOMEN'S HOCKEY

## GAME NOTES VS. MERCYHURST (FEB. 1-2)

### THON NIGHT, SKATE FOR THE CURE ON TAP FOR NEXT TWO FRIDAYS

Penn State women's hockey will host two charity events in conjunction with games on the next two Fridays. The Nittany Lions will hold THON Night this Friday against No. 7 Mercyhurst (7 p.m.), while hosting Skate for the Cure on Friday, Feb. 8 against Lindenwood (2 p.m.).

The Nittany Lion women's hockey program will be collecting donations during its game against Mercyhurst this Friday at Greenberg Ice Pavilion. Aside from donations that fans can give, they can also bid on a special hockey jersey from the ECHL's Reading Royals. All proceeds from the auction will go directly to THON.

On Feb. 8, Penn State will take part in a conference-wide event for breast cancer awareness: Skate for the Cure. Penn State will collect funds at Greenberg Ice Pavilion for the 2 p.m. game against Lindenwood. The money raised for Skate for the Cure will benefit Penn State Milton S. Hershey Cancer Institute. Fans attending the game are also encouraged to wear pink.

### SCOUTING THE LAKERS

Seventh-ranked Mercyhurst (19-5-1, 10-2-0 CHA) had its three-game winning streak snapped by No. 5 Cornell, 4-0, in Ithaca on Tuesday night. While the shot count was tight, 22-19 in favor of the Big Red, Laker goaltender Amanda Makela allowed three goals on 11 shots in the first period, giving way to Stephanie Ciampa. The Lakers also went 0-for-8 on the power play, registering seven shots.

Despite the setback, Mercyhurst is among the most powerful offenses in women's hockey. The Lakers rank third in the nation scoring 4.2 goals per game, while its defense allows only 1.6 goals a game.

Ciampa (11-1-0) and Makela (8-4-1) have split time in net with Ciampa posting better numbers (1.19 GAA, .945 save percentage). Makela has a 2.01 GAA and .915 save percentage). The defense has posted eight shutouts this season.

On offense, Christine Bestland is fourth in the nation in points per game (2.08) behind 15 goals and 37 assists in 25 games. Mercyhurst's leading scorer is freshman Emily Janiga with 17 goals and 17 assists. The Lakers boast nine skaters with double-digit points and four with double-digit goals.

### LAST TIME VS. MERCYHURST

Penn State fell twice to the Lakers in Erie back on Nov. 30-Dec. 1 by scores of 5-0 and 7-1. **Nicole Paniccia** stopped 29 shots in the opener and **Celine Whitlinger** had 26 in the third period, allowing just one goal. Mercyhurst used five different scorers in the game, while Bestland notched three points as did Vailla Higston behind a goal and two assists.

The next day, Penn State took a surprising 1-0 lead thanks to **Jess Desorcie** on assists from **Shannon Yoxheimer** and **Taylor Gross**. The lead lasted four minutes and the teams went into the first intermission tied 1-1. The Lakers added two in the second period and capped the game with four tallies for the final 7-1 win. Paniccia was outstanding in net, thwarting 64 Laker attempts and setting a school record for saves in a game. MU's Jaclyn Arbour scored twice and Molly Byrne had three points to pace the Lakers.

### LIONS FALL PREY TO TIGERS

Penn State skated against Princeton for the first time on Tuesday night (Jan. 29) and dropped a 3-0 decision at Greenberg Ice Pavilion. The Tigers tallied a goal in each period, while goaltender **Nicole Paniccia** made 27 saves for the Nittany Lions. Princeton out-shot Penn State 30-19 for the game.

### COMMON ENEMIES

Penn State and Mercyhurst have four common opponents this season, all their fellow CHA foes. PSU has gone 1-8-1 in those games, while Mercyhurst is 8-2-0.

	Penn State	Mercyhurst
Lindenwood	1-1-0	4-0-0
RIT	0-1-1	2-0-0
Robert Morris	0-2-0	0-2-0
Syracuse	0-4-0	2-0-0
	<b>1-8-1</b>	<b>8-2-0</b>

### YOUTH MOVEMENT

As is expected with a brand new varsity program, there are many freshmen on the team—17 in all. All 17 freshmen have made an appearance on the ice this season and have accounted for 73.2% of the goals scored (41 of 55).

### GAMEDAY COMPARISON

TEAM STATS	PSU	MU
Overall record	7-17-1	19-5-1
Conference record	1-10-1	10-2-0
Goals scored	56	105
Goals scored per game	2.2	4.2
Goals allowed	75	40
Goals allowed per game	3.0	1.6
First period goals	19	28
Second period goals	18	42
Third period goals	19	35
Overtime goals	0	0
Shots	673	952
Shots per game	26.9	38.2
Shot pct.	.083	.110
Assists	85	189
Penalties per game	3.9	5.5
Power plays	12-88	35-141
Power-play pct.	.136	.248
Penalty kills	23-96	17-123
Penalty-kill pct.	.760	.862
Saves	948	525
Shutouts	3	8

LEADERS	PSU	MU
Points	Yoxheimer (24)	Bestland (52)
Goals	Yoxheimer (12)	Janiga (17)
Assists	Gross (14)	Bestland (37)
Shots	Yoxheimer (129)	Cicero (110)
Shot Pct.	Holdcroft (.216)	Janiga (.193)
+/-	Laurenzi (+6)	Luczak (+25)
Faceoff Pct.	Holdcroft (.516)	Bram (.592)
Saves	Paniccia (666)	Ciampa (259)
Save Pct.	Whitlinger (.943)	Ciampa (.945)
GAA	Whitlinger (2.46)	Ciampa (1.19)
Record	Paniccia (6-12-1)	Ciampa (11-1-0)

### 2012-13 COLLEGE HOCKEY AMERICA STANDINGS

(as of Jan. 31, 2013)

	Pts.	CHA	GF	GA	Overall	GF	GA	Last 10
Mercyhurst (7/7)	20	10-2-0	59	11	19-5-1	105	40	6-4-0
Syracuse	17	8-3-1	35	16	14-11-1	75	53	5-5-0
RIT	14	5-3-4	25	26	12-10-4	75	56	6-2-2
Robert Morris	13	6-5-1	32	24	10-9-3	56	48	3-6-1
Lindenwood	5	2-9-1	20	54	2-23-1	39	130	1-9-0
<b>PENN STATE</b>	<b>3</b>	<b>1-10-1</b>	<b>11</b>	<b>51</b>	<b>7-17-1</b>	<b>56</b>	<b>75</b>	<b>2-8-0</b>

### PAST RESULTS & UPCOMING SCHEDULE

**Friday, Jan. 25**  
Mercyhurst\* 10, Lindenwood 0  
**Syracuse\* 1, PENN STATE 0**

**Saturday, Jan. 26**  
Mercyhurst\* 5, Lindenwood 1  
**Syracuse\* 4, PENN STATE 1**  
RIT\* 2, Robert Morris 2 (OT)

**Sunday, Jan. 27**  
RIT\* 2, Robert Morris 0

**Tuesday, Jan. 29**  
Cornell 4, Mercyhurst\* 0  
**Princeton 3, PENN STATE\* 0**

**Friday, Feb. 1**  
RIT at Lindenwood, 3 p.m.  
Syracuse at Robert Morris, 3 p.m.  
**Mercyhurst at PENN STATE, 7 p.m.**

**Saturday, Feb. 2**  
**Mercyhurst at PENN STATE, 2 p.m.**  
RIT at Lindenwood, 3 p.m.  
Syracuse at Robert Morris, 3 p.m.

**Friday, Feb. 8**  
**Lindenwood at PENN STATE, 2 p.m.**  
Robert Morris at Mercyhurst, 3 p.m.  
Syracuse at RIT, 7 p.m.

**Saturday, Feb. 9**  
Robert Morris at Mercyhurst, 2 p.m.  
**Lindenwood at PENN STATE, 2 p.m.**  
RIT at Syracuse, 7 p.m.



# NITTANY LION WOMEN'S HOCKEY

	GP	G	A	Pts.
Jeanette Bateman	25	1	4	5
Micayla Catanzariti	25	3	2	5
Hannah Hoenshell	19	7	3	10
Jill Holdcroft	25	8	2	10
Paige Jahnke	25	0	6	6
Darby Kern	11	0	1	1
Emily Laurenzi	25	2	5	7
Taylor McGee	18	0	2	2
Jordin Pardoski	25	2	4	6
Kendra Rasmussen	24	3	1	4
Birdie Shaw	23	2	3	5
Stephanie Walkom	1	0	0	0
Sarah Wilkie	17	0	0	0
Shannon Yoxheimer	24	12	12	24
Katie Zinn	12	1	3	4

	GP	GAA	SV	Pct.
Brooke Meyer	3	0.00	17	1.000
Celine Whitlinger	8	2.46	265	.943

## LIONS FALL IN SYRACUSE

Penn State dropped both games to Syracuse in its return to CHA play. In the Friday, Jan. 25 matchup, Nicole Paniccia's 45-save performance wasn't enough as a first-period Orange goal was the difference, 1-0. The next day, Celine Whitlinger had to stand tall in net, making 51 saves in a 4-1 loss to Syracuse. The Orange opened the

game with three goals in the first 11:29, but Penn State outscored the Orange 1-0 until a last-minute empty-netter capped the scoring. **Jill Holdcroft** tallied her eighth of the year and her team-leading fourth power-play goal. **Shannon Yoxheimer** and **Jess Desorcie** fed the Holdcroft goal.

## LIONS DROP ONE GOAL GAMES AT UNION

Penn State dropped both ends of a two-game series (Jan. 11-12) at Union in one-goal fashion, 1-0 and 2-1. **Celine Whitlinger's** career-high 48-save performance kept PSU in the opener before a late third-period goal propelled the Dutchwomen. Union took a 2-0 lead in the series finale, but **Jess Desorcie** cut the lead in half. Nevertheless, the Dutchwomen held on for the slim win.

## PENN STATE SWEEPS CHATHAM

The Nittany Lions trounced an overmatched Chatham team on Friday-Saturday, Jan. 4-5, winning 10-0 and 4-0. The weekend saw every Nittany Lion see ice time as PSU out-shot Chatham 119-33, scoring 14 times, tallying 22 assists, 36 points

## PENN STATE'S RECORD IS...

4-6-1	..... at home
3-11-0	..... on the road
0-0-1	..... in overtime
5-3-1	..... when scoring first
2-15-0	..... when opponent scores first
5-0-1	.....when leading after the 1st period
1-10-0	..... when trailing after the 1st period
1-7-0	..... when tied after the 1st period
6-0-1	..... when leading after the 2nd period
0-14-0	.....when trailing after the 2nd period
1-3-0	..... when tied after the 2nd period
6-1-0	.....when out-shooting opponent
1-16-1	.....when out-shot by opponent
0-0-0	..... when taking same # of shots
7-2-0	.....when winning more faceoffs
0-15-1	..... when losing more faceoffs
0-0-0	..... when tied in faceoffs
1-9-0	..... when taking more penalties
3-5-0	.....when taking fewer penalties
3-3-1	... when taking the same # of penalties
4-4-1	..... when scoring a power play goal
3-13-0	.. when not scoring a power play goal
4-10-1	..... when allowing a power play goal
3-7-0	...when not allowing a power play goal
0-6-0	..... when scoring 0 goals
0-10-0	..... when scoring 1 goal
0-1-1	..... when scoring 2 goals
1-0-0	..... when scoring 3 goals
6-0-0	..... when scoring 4+ goals
3-0-0	..... when allowing 0 goals
1-2-0	.....when allowing 1 goal
2-2-1	..... when allowing 2 goals
1-3-0	..... when allowing 3 goals
0-10-0	..... when allowing 4+ goals
2-5-1	..... in October
3-4-0	..... in November
0-3-0	..... in December
2-5-0	..... in January
0-0-0	.....in February
0-0-0	.....in March
0-1-0	..... on Tuesday
0-1-0	.....on Thursday
2-6-1	..... on Friday
5-6-0	..... on Saturday
0-3-0	..... on Sunday
4-8-0	..... during the day
3-9-1	..... at night
1-1-0	.....vs. Hockey East
1-10-1	.....vs. College Hockey America
0-5-0	..... vs. ECAC Hockey
3-1-0	.....vs. D-I Independents
2-0-0	.....vs. Division III
0-2-0	..... vs. ranked opponents
7-15-1	.....vs. unranked opponents
5-3-1	..... when Shannon Yoxheimer scores
6-12-1	..... when Nicole Paniccia starts
1-4-1	..... games decided by a goal or less

## 2012-13 MEDIA INFORMATION

### Penn State Athletic Communications

Primary Contact: Jeremy Fallis  
 Email: jeremy.fallis@psu.edu  
 Secondary Contact: Brian Hoerst  
 Email: bjh33@psu.edu  
 Office: 814-865-1757

### Interviews

Penn State student-athletes and coaches are available for interviews after practice each day. Please contact Jeremy Fallis in advance.

### Credentials

Contact Jeremy Fallis for home game credentials at Greenberg Ice Pavilion.

### Postgame

Head coach Josh Brandwene and requested student-athletes are available to the media following each game in the studio rink. Please alert Jeremy Fallis or Brian Hoerst during the game of any requests.

### Yearbook

The 2012-13 Penn State women's hockey yearbook will be made available to media members at the first home game on Oct. 13. The public may purchase copies for \$6 online.

[GoPSUsports.com](http://GoPSUsports.com)

[Facebook.com/PennStateWomensHockey](https://www.facebook.com/PennStateWomensHockey)

[@PennStateWHKY](https://twitter.com/PennStateWHKY)

## 2012-13 WOMEN'S HOCKEY POLLS

### USA Today/USA Hockey

(as of Jan. 30, 2013)

1	Minnesota	24-0-0	1
2	Boston College	17-4-2	3
3	Boston University	15-3-3	5
4	Harvard	16-1-1	2
5	Cornell	14-4-0	4
6	Clarkson	18-6-0	7
<b>7</b>	<b>Mercyhurst</b>	<b>17-4-1</b>	<b>6</b>
8	Wisconsin	15-7-2	8
9	North Dakota	14-10-0	9
10	Minnesota-Duluth	13-8-3	RV

Others: Northeastern

### USCHO.com

(as of Jan. 28, 2013)

1	Minnesota	26-0-0	1
2	Boston College	19-4-2	3
3	Harvard	17-2-1	2
4	Boston University	16-4-3	5
5	Cornell	16-4-0	4
6	Clarkson	20-6-0	7
<b>7</b>	<b>Mercyhurst</b>	<b>19-4-1</b>	<b>6</b>
8	Wisconsin	15-9-2	8
9	North Dakota	16-10-0	10
10	Minnesota-Duluth	13-8-3	RV

Others: Northeastern

**Bold indicates 2012-13 opponent**



# NITTANY LION WOMEN'S HOCKEY

and a plus-65 rating. Additionally, Penn State posted back-to-back shutouts for the first time in the young history of the program.

In Friday's game, Penn State scored five in the first, four in the second and added one more for the 10 spot. **Shannon Yoxheimer** scored the first two goals of the game and **Hannah Hoenshell** tallied a school-record four points as Penn State eased by the Division III Cougars.

Penn State set new records for most goals in a game (10), most goals in a period (5, in the first) and most assists in a game (17). Hoenshell tallied a two-goal, two-assist effort, while **Jeanette Bateman** became the first Nittany Lion to register three assists. **Jordin Pardoski** added a three-point game of her own behind a goal and two assists to celebrate her 19th birthday.

The game also featured a couple of firsts as **Tess Weaver** scored her first varsity goal at the end of the first period and freshman **Darby Kern** notched her first point on an assist in the first period. In all, 15 Nittany Lions earned a point.

**Kendra Rasmussen** tallied her first multi-goal game of her career and **Jill Holdcroft** tallied two points on a goal and an assist. In all, 16 of 18 Nittany Lion skaters tallied a point.

The goaltending trio of **Nicole Paniccia**, **Celine Whitlinger** and **Brooke Meyer** combined for Penn State's second shutout of the year. Paniccia and Meyer made six stops, while Whitlinger saved five.

On Saturday, Junior assistant captain **Jenna Welch** scored twice and linemate **Katie Zinn** posted three points behind her first collegiate goal and two assists.

Penn State out-shot Chatham, 71-16, peppering the Cougar net. Zinn scored the opening goal in the first, Welch doubled the lead in the second and added another in the third before Holdcroft finished off the scoring. **Paige Jahnke** had two helpers and **Madison Smiddy** added her sixth assist of the season in the game.

Whitlinger won her first collegiate game with 12 saves in 52:34 of game time. Meyer polished off the shutout with four stops in the final 7:26.

**HOENSHHELL EARNS ROOKIE OF THE WEEK**  
Freshman forward **Hannah Hoenshell** collected College Hockey America Rookie of the Week laurels, the conference office announced Monday, Jan. 7. The award is the first of her career for the Plano, Texas, native, who tallied four points on a pair of goals and assists in a 10-0 win over Chatham Jan. 4.

**STROEMEL TO LEAD USA UNIVERSITY TEAM**  
Penn State women's hockey director of operations and video coach **Mo Stroemel** will lead the 2013 U.S. Women's National University Team

at the 2013 World University Games in Italy announced on Jan. 9. Stroemel was also in charge of the inaugural 2011 team that placed fourth in Turkey. Stroemel's 2011 squad featured current Nittany Lion assistant captain **Lindsay Reihl** and current equipment manager **Graham Pepperman**.

**SAINTS ESCAPE NITTANY LIONS**  
Penn State battled St. Lawrence Friday night (Dec. 7), but ultimately fell to the Saints, 3-1, on the road in Canton, N.Y. Freshman **Jill Holdcroft** netted her fifth goal of the season on a power play in the second period, but St. Lawrence responded with a two-goal final frame to put away the Nittany Lions. **Celine Whitlinger**, in her third start of the season, denied a career-high 45 shots in goal, besting her previous record of 40 set against Vermont Oct. 7. Whitlinger was aided by a stingy Nittany Lion defense that totaled 17 blocked shots to hold St. Lawrence to just a pair of goals before an empty-netter sealed the final score at 3-1. **Jenna Welch** led the way by getting in front of three attempts.

On Saturday, Dec. 8, Penn State pulled within one late in the third period, but could not complete the comeback against St. Lawrence as the Saints skated to a 4-2 victory to earn the series sweep. **Jess Desorcie** scored early, assisted by **Taylor Gross** and **Shannon Yoxheimer** for a 1-0 lead. Down 3-1, **Hanna Hoenshell** scored her fifth of the season midway through the third period. SLU managed a power-play goal with less than two minutes to play for the 4-2 final. **Nicole Paniccia** made 54 saves in goal for the Lions.

**WHITLINGER NAMED ROOKIE OF THE WEEK**  
Freshman netminder **Celine Whitlinger's** career night at St. Lawrence on Friday, Dec. 7, translated into her first collegiate honor: College Hockey America Rookie of the Week. Whitlinger earned Penn State's second CHA Rookie of the Week this season after **Micayla Catanzariti's** honor on Oct. 8.

Whitlinger made stop after stop on as the Nittany Lions looked to upset established St. Lawrence. The California native posted 45 saves in all as Penn State fell 3-1. St. Lawrence went to the NCAA Tournament last season and is among the best teams in the ECAC Hockey.

**SET TO JOIN THE NITTANY LIONS**  
On Nov. 14, head coach **Josh Brandwene** welcomed next year's Nittany Lions. Minnesota natives **Laura Bowman** (Minnetonka, Minn.), **Sarah Nielsen** (Edina, Minn.), **Amy Petersen** (Minnetonka, Minn.) and **New York** product **Kelly Seward** (Williamsville, N.Y.). Bowman and Petersen have led Minnetonka to the last two Minnesota high school state titles.

**CHA ROOKIE OF THE MONTH HONORS TO YOXHEIMER**  
Freshman forward **Shannon Yoxheimer** was named College Hockey America's Rookie of the

Month for her performance during November. Yoxheimer led the Nittany Lions with nine points and helped lead Penn State to a 3-4-0 record last month.

Yoxheimer was Penn State's most powerful weapon offensively, accounting for 39 shots, four goals, five points and nine points during the varsity program's second month. Her four goals were tied for a team-high, while her five assists and nine points were each team bests.

**AT THE MERCY OF THE LAKERS**  
Penn State dropped both games at No. 4 Mercyhurst last weekend (Nov. 30-Dec. 1), but still put forth positive efforts. Friday night's 5-0 loss highlight was **Celine Whitlinger's** strong third period that yielded one goal in 29 shots as the freshman netminder made her return to the ice. Her last appearance was Oct. 14 vs. Syracuse.

In Saturday's game, Penn State took a 1-0 lead on a **Jess Desorcie** marker off **Taylor Gross's** breakaway attempt 8:29 into the contest. The play was set up by **Shannon Yoxheimer**, who caused a turnover at the blue line and allowed Gross to streak in uncontested for the second time in minutes. Mercyhurst tied the game 1-1 before the period was out and held a 3-1 advantage after two periods as the Lakers won 7-1. **Nicole Paniccia** was named third star of the game by setting a new school record with 64 saves.

**CHA SPLIT AT LINDENWOOD**  
Penn State women's hockey earned another in-

## HONORS & AWARDS

**Micayla Catanzariti**  
CHA Rookie of the Week (10/8)  
Penn State Student-Athlete of the Week (10/9)

**Hannah Hoenshell**  
CHA Rookie of the Week (1/6)

**Celine Whitlinger**  
CHA Rookie of the Week (12/10)

**Shannon Yoxheimer**  
CHA November Rookie of the Month (12/4)  
CHA Player of the Week (10/22)  
Penn State Student-Athlete of the Week (10/23)

## OVER THE AIR

**The CHA on AmericaOneSports.com**  
All Penn State games during CHA play will be streamed live on AmericaOneSports.com. Subscribers can purchase a 1-day package for \$8, 30-day packages for \$30 or a season pass for \$125.

Penn State home games will have Ryan Smith and Jared Abbott on the call.

# NITTANY LION WOMEN'S HOCKEY



augural milestone on Saturday, Nov. 17, defeating Lindenwood 3-2 for its first College Hockey America victory. Freshman forward **Emily Laurenzi** struck for the game-winning goal to complete a comeback at Lindenwood Ice Arena. Fellow classmate **Jill Holdcroft** and junior captain **Taylor Gross** each notched their fourth goals of the season for the Nittany Lions. Freshman forward **Shannon Yoxheimer** had two assists to aid the Nittany Lion attack.

Penn State found itself down twice to Lindenwood and each time fought back to knot the game. With 5:50 left in the third period in a 2-2 game, Laurenzi tucked home her second goal of the season as the Nittany Lions held off LU for the final portions of the game. **Paige Jahnke** and **Hannah Hoenshell** assisted on the power-play goal.

The previous day did not go as well for the Nittany Lions. Lindenwood scored twice in the second period to break a 1-1 deadlock and went on to win, 5-1, for the Lions' first win of the season. Holdcroft scored a power-play goal from Yoxheimer and Gross.

## WEEKEND SWEEP BY RMU

Penn State faced the 2012 CHA Tournament champion Robert Morris in a two-game series (Nov. 10-11), falling 7-1 and 4-1. **Shannon Yoxheimer** scored in the opener off a **Taylor Gross** faceoff win, but RMU's Rebecca Vint scored five times to pace the Colonials.

In the second game, it was more of the same early as Robert Morris staked out a 3-0 lead through two periods, but Penn State held the Colonials scoreless in the second. That turned the momentum around as Penn State went toe-to-toe with the defending champions in the third. **Micayla Catanzariti** scored a goal with 6:19 remaining to spark the Lions. **Birdie Shaw** and **Jill Holdcroft** were credited with assists. Twenty-three seconds later, Yoxheimer's shot was saved by Delayne Brian and Taylor Gross's attempt was stopped by Brian to keep it a two-goal game. With 2:23 left, RMU took an interference penalty as Penn State had a 6-on-4, but couldn't convert before RMU tallied an empty-net goal with 13 second remaining. **Nicole Paniccia** made 49 saves in Sunday's loss.

## YOXHEIMER FINALLY STOPPED

Penn State's leading scorer, **Shannon Yoxheimer**, has been on a roll over the past four weeks, scoring eight of her team-high 10 goals. In that stretch, Yoxheimer scored in seven-straight games after a three-game drought. The seven-game streak started at Sacred Heart as she scored PSU's only goal and has continued with a career day vs. SHU on Nov. 3 as she scored a goal and career-high two assists. Yoxheimer also accounted for Penn State's first two game-winning goals, notching two goals at Vermont (Oct. 6) and the go-ahead goal at SHU (Oct. 20). Yoxheimer scored against Robert Morris on Saturday, but we held scoreless for the first time since Oct. 14 in the Sunday matchup.

## EIGHT FROM EIGHT IN WIN OVER SHU

Penn State earned its first series sweep in program history, defeating Sacred Heart, 8-2, on Saturday (Nov. 3) afternoon at Greenberg Ice Pavilion. Eight different Nittany Lions tallied a goal with **Jess Desorcie**, **Taylor Gross** and **Shannon Yoxheimer** notching three-point days.

## NCAA TEAM RANKS

(As of Jan. 28, 2013)

Goals Per Game	21st
Goals Against Per Game	21st
Scoring Margin	21st
Most Penalty Minutes Per Game	25th
Power-Play Percentage	26th
Penalty-Kill Percentage	30th
Combined Special Teams	27th
Winning Percentage	T-28th

## NCAA INDIVIDUAL RANKS

(Top 100 as of Jan. 28, 2013)

<b>Jess Desorcie</b>	
Assists Per Game	T-88th

<b>Taylor Gross</b>	
Points Per Game	T-83rd
Assists Per Game	T-48th

<b>Jill Holdcroft</b>	
Goals Per Game	T-89th
Power-Play Goals Per Game	T-32nd
Points Per Game (Rookies)	T-48th

<b>Hannah Hoenshell</b>	
Goals Per Game	T-68th
Points Per Game (Rookies)	T-29th

<b>Nicole Paniccia</b>	
Goals-Against Average	35th
Save Percentage	12th
Winning Percentage	31st

<b>Shannon Yoxheimer</b>	
Points Per Game	T-42nd
Goals Per Game	28th
Game-Winning Goals	T-18th
Assists Per Game	T-69th
Points Per Game (Rookies)	9th

## CHA TEAM RANKS

(As of Jan. 28, 2013)

Goals	4th
Assists	4th
Goals Per Game	5th
Goals Against	5th
Goals-Against Average	5th
Saves	2nd
Save Percentage	2nd
Shots on Goal	5th
<b>Least Penalty Minutes</b>	<b>1st</b>
Power-Play Goals	6th
Power-Play Percentage	4th
Power-Play Goals Against	4th
Penalty-Kill Percentage	5th

## CHA INDIVIDUAL RANKS

(Top 10 as of Jan. 28, 2013)

<b>Taylor Gross</b>	
Assists	T-7th

<b>Jill Holdcroft</b>	
Power-Play Goals	T-4th

<b>Nicole Paniccia</b>	
Games Played	4th
Games Started	2nd
Minutes Played	3rd
Goals-Against Average	7th
Saves	2nd
Save Percentage	4th
Wins	T-5th
Win Percentage	7th

<b>Jordin Pardoski</b>	
Goals (D)	T-8th
Penalty Minutes	T-8th
Penalty Minutes (D)	T-4th

<b>Celine Whitlinger</b>	
Games Played	11th
Games Started	11th
Minutes Played	11th
Saves	7th
Wins	11th

<b>Shannon Yoxheimer</b>	
Points	T-7th
Goals	T-4th
Assists	T-9th
Power-Play Goals	T-10th
Game-Winning Goals	T-3rd
<b>Shots</b>	<b>1st</b>





# NITTANY LION WOMEN'S HOCKEY

Yoxheimer opened the scoring before SHU tied it up early in the second period before Gross, **Kendra Rasmussen** and **Jill Holdcroft** scored successive goals for a 4-1 lead midway through the period.

After another SHU tally, PSU would rally off the last four goals, this time coming from Desorcie, **Jenna Welch**, **Madison Smiddy** and **Emily Laurenzi**. Welch, Smiddy and Laurenzi scored their first goals of the season for Penn State.

**Nicole Paniccia** made 23 saves in net for the Nittany Lions to improve to 4-3-1 on the season. Penn State dominated the game in the faceoff circle, 54-25, which led to a 64-25 shot advantage.

### FIRST HOME WIN, SHUTOUT & HAT TRICK

Friday night, Nov. 2 at Greenberg Ice Pavilion was historic for Penn State as the women's hockey team won its first home game, 6-0, over Sacred Heart. The program's first shutout featured the first hat trick by **Hannah Hoenshell**. **Shannon Yoxheimer** scored twice and **Jill Holdcroft** scored her first ever goal in the rout.

Hoenshell opened the game's scoring seven minutes into the contest, which highlighted a 22-2 Penn State advantage in shots over the Pioneers.

The Nittany Lions would light the lamp three times in the second as Hoenshell, Yoxheimer and Holdcroft stretched the lead to 4-0.

In the third, Penn State would make it 5-0 just 10 seconds into the period on a Yoxheimer laser from the left wing and Hoenshell would cap her hat trick five minutes later for the 6-0 final score.

The Nittany Lions out-shot the Pioneers 66-18 as goaltenders **Nicole Paniccia** (11 saves) and **Brooke Meyer** (7 saves) combined for the school's first shutout.

### PSU EARNS FIRST CHA POINT

Penn State was 89 seconds away from its first CHA victory on Friday, Oct. 26 vs. RIT, but had to settle with a hard-fought 2-2 tie. After a 4-1 loss to RIT on Thursday, Penn State fell to 0-3-1 in CHA play. Goaltender **Nicole Paniccia** and forward **Shannon Yoxheimer** shined for Penn State, providing outstanding defense and offense, respectively. Paniccia made 93 saves last week, including a school-record 59 stops in the 2-2 tie. Paniccia finished the weekend with a .939 save percentage after a 34-save effort in Thursday's matchup.

Yoxheimer scored Penn State's lone goal in the opener and opened the scoring on Friday before Taylor Gross made it 2-0 just seconds later. **Paige Jahnke**, **Madison Smiddy**, Yoxheimer and Gross each had an assist in the tie as the Tigers scored once in the first and another in the third. RIT held a 99-36 shot advantage in the series.

### YOX NAMED CHA PLAYER OF THE WEEK

For her efforts against Sacred Heart, **Shannon Yoxheimer** was named CHA Player of the Week for a three-point weekend and a game-winning goal over the Pioneers (Oct. 19-20). Yoxheimer leads the team with four goals and is tied with Taylor Gross for points with five. Yoxheimer is the first Nittany Lion to receive CHA Offensive Player of the Weeks honors and joins fellow classmate **Micayla Catanzariti** (Rookie of the

## THE LAST TIME

### PENN STATE...

Scored 0 goals	11/29/13 . . . . . vs. Princeton (0-3)
Scored 3 goals	11/17/12 . . . . . at Lindenwood (3-2)
Scored 4 goals	1/5/13 . . . . . vs. Chatham (4-0)
Scored 5 goals	10/6/12 . . . . . at Vermont (5-3)
Scored 6 goals	11/2/12 . . . . . vs. Sacred Heart (6-0)
Scored 7 goals	Never
Scored 8 goals	11/3/12 . . . . . vs. Sacred Heart (8-2)
Scored 9 goals	Never
Scored 10 goals	1/4/13 . . . . . vs. Chatham (10-0)
Allowed 0 goals	1/5/13 . . . . . vs. Chatham (4-0)
Allowed 1 goal	1/25/13 . . . . . at Syracuse (0-1)
Allowed 2 goals	1/12/13 . . . . . at Union (1-2)
Allowed 3 goals	1/29/13 . . . . . vs. Princeton (0-3)
Allowed 4 goals	1/26/13 . . . . . at Syracuse (1-4)
Allowed 5 goals	11/30/12 . . . . . at #4 Mercyhurst (0-5)
Allowed 6+ goals	12/1/12 . . . . . at #4 Mercyhurst (1-7)
Won in overtime	Never
Lost in overtime	Never
Tied in overtime	10/26/12 . . . . . vs. RIT (2-2)
Played a ranked team	12/1/12 . . . . . at #4 Mercyhurst (1-7)
Attempted 10-19 shots	1/29/13 . . . . . 19 vs. Princeton (0-3)
Attempted 20-29 shots	1/12/13 . . . . . 26 at Union (1-2)
Attempted 30-39 shots	11/17/12 . . . . . 33 at Lindenwood (3-2)
Attempted 40-49 shots	1/4/13 . . . . . 48 vs. Chatham (10-0)
Attempted 50-59 shots	Never
Attempted 60-69 shots	11/3/12 . . . . . 64 vs. Sacred Heart (8-2)
Attempted 70+ shots	1/5/13 . . . . . 71 vs. Chatham (4-0)
Allowed 10-19 shots	1/5/13 . . . . . 16 vs. Chatham (4-0)
Allowed 20-29 shots	11/3/12 . . . . . 25 vs. Sacred Heart (8-2)
Allowed 30-39 shots	1/29/13 . . . . . 30 vs. Princeton (0-3)
Allowed 40-49 shots	1/25/13 . . . . . 44 at Syracuse (0-1)
Allowed 50-59 shots	1/26/13 . . . . . 55 at Syracuse (1-4)
Allowed 60-69 shots	11/30/12 . . . . . 60 at #4 Mercyhurst (0-5)
Allowed 70+ shots	12/1/12 . . . . . 71 at #4 Mercyhurst (1-7)
Tallied 5-9 assists	1/5/13 . . . . . 5 vs. Chatham (4-0)
Tallied 10-15 assists	11/3/12 . . . . . 12 vs. Sacred Heart (8-2)
Tallied 15+ assists	1/4/13 . . . . . 17 vs. Chatham (10-0)
Scored 10-19 points	11/2/12 . . . . . 12 vs. Sacred Heart (6-0)
Scored 20+ points	1/4/13 . . . . . 27 vs. Chatham (10-0)
Scored 2 power-play goals	11/17/12 . . . . . at Lindenwood (3-2)
Scored 3 power-play goals	10/20/12 . . . . . at Sacred Heart (6-1)
Allowed 0 power-play goals	1/12/13 . . . . . at Union (1-2)
Allowed 2 power-play goals	12/8/12 . . . . . at St. Lawrence (2-4)
Had 5 different goal scorers	Never
Had 6 different goal scorers	10/20/12 . . . . . at Sacred Heart (6-1)
Had 7 different goal scorers	1/4/13 . . . . . vs. Chatham (10-0)
Had 8 different goal scorers	11/3/12 . . . . . vs. Sacred Heart (8-2)

### A PENN STATE PLAYER...

Scored 2 goals	1/5/13 . . . . . J. Welch vs. Chatham (4-0)
Scored 3 goals	11/2/12 . . . . . H. Hoenshell vs. Sacred Heart (6-0)
Scored 4 goals	Never
Had 3 assists	1/4/13 . . . . . J. Bateman vs. Chatham (10-0)
Had 5 points	Never
Had 10+ shots	1/5/13 . . . . . 12, T. Weaver vs. Chatham (4-0)
Saved 40-49 shots	1/25/13 . . . . . 45, N. Paniccia at Syracuse (0-1)
Saved 50-59 shots	1/26/13 . . . . . 51, C. Whittinger at Syracuse (1-4)
Saved 60+ shots	12/1/12 . . . . . 64, N. Paniccia at #4 Mercyhurst (1-7)
Had a shutout	1/5/13 . . . . . C. Whittinger/B. Meyer vs. Chatham (4-0)
Scored an empty-net goal	10/6/12 . . . . . B. Shaw at Vermont (5-3)
Scored a short-handed goal	Never

# NITTANY LION WOMEN'S HOCKEY



Week, Oct. 8) on the honor roll.

## ANOTHER WEEKEND OF FIRSTS

The second road trip in Penn State women's hockey history resulted in another split result, but it was not without some firsts. The Nittany Lions tallied six goals in a victory at Sacred Heart (Oct. 20), the most in the short history of the program and the largest margin of victory (5). Additionally, the Lions tallied eight assists, which matched the inaugural game.

Individually, **Jeanette Bateman**, **Jordin Pardoski** and **Hannah Hoenshell** scored their first collegiate goals on Oct. 20. **Jess Desorcie** tallied her first Penn State varsity goal, while **Lindsay Reihl** and **Jenna Welch** recorded their first Penn State points on assists. Welch had a two-helper game as did **Madison Smiddy**, who notched her first multi-point game. **Cara Mendelson** and Hoenshell hit the ice for the first time, bringing the total number of Nittany Lions to see ice time to 23.

## HISTORIC FIRST WIN

Penn State women's hockey made history on Saturday, Oct. 6 at Vermont's Gutterson Fieldhouse by winning its inaugural game, 5-3. The Nittany Lions scored five goals from three freshmen making their respective debuts as junior goaltender **Nicole Paniccia** made 31 saves in her PSU opener. **Shannon Yoxheimer** and **Micayla Catanzariti** each scored twice for the Nittany Lions.

Down 2-1, Penn State was not to be deterred, reeling off three straight goals to take a 4-2 lead midway through the third period. Despite a Vermont goal with 6:34 left in the third, **Birdie Shaw** scored an empty-net goal to seal the Nittany Lion victory. Junior captain **Taylor Gross** made her Penn State debut known with two assists and was named the first star of the game, Yoxheimer was second.

## FIRST TIME FOR EVERYTHING

Penn State had a varsity team debut for the first time since 1994 (women's soccer) when the women's hockey team defeated Vermont, 5-3 on Oct. 6. The successful debut was the first since 1977 when the men's volleyball team defeated East Stroudsburg.

**Game:** Oct. 6, 2012 at Vermont, 2:00 p.m.

**Win:** Nicole Paniccia, Oct. 6 at Vermont, 5-3

**Goal:** Shannon Yoxheimer

**Multi-Goal Game:** Micayla Catanzariti

**Game-Winning Goal:** Shannon Yoxheimer

**Assists:** Taylor Gross, Emily Laurenzi

**Multi-Assist Game:** Jess Desorcie

**Faceoff:** Emily Laurenzi

**Faceoff win:** Emily Laurenzi

**Shot:** Katie Zinn

**Save:** Nicole Paniccia

**Empty-Net Goal:** Birdie Shaw

## CATANZARITI HONORED

Freshman forward **Micayla Catanzariti** was named College Hockey America's Rookie of the

Week on Oct. 8. Catanzariti led the Nittany Lions to a win in their inaugural opener on Saturday with two goals and an assist at Vermont. Catanzariti was also named Highmark's Penn State Women's Student-Athlete of the Week.

## FIRST HEAD COACH

A 1991 graduate of Penn State, head coach **Josh Brandwene** is the first to lead the Nittany Lions. A four-year hockey player at PSU, Brandwene brings 20 years of coaching experience to Happy Valley. Brandwene picked up his first win in the team's debut on Saturday, Oct. 6 at Vermont.

## CAPTAIN, OUR CAPTAIN

Junior forward **Taylor Gross** leads Penn State as its first captain. The University of Connecticut transfer appeared in 48 games for the Huskies before joining Penn State's club side in January 2012. In September, the team voted fellow UConn transfer **Jenna Welch** and senior defender **Lindsay Reihl** as assistant captains.

## CONTINUING PENN STATE HOCKEY

Eight members of the current varsity team played for the women's club team at some point. Seniors **Lindsay Reihl** and **Kate Christoffersen** and sophomores **Cara Mendelson**, **Katie Murphy**, **Madison Smiddy** and **Tess Weaver** played all of last season for head coach **Josh Brandwene** in Penn State's last year at the club level. Reihl and Christoffersen played three years for the PSU club team as well. **Taylor Gross** and **Jess Desorcie** joined the six players midway through the season in preparation of the 2012-13 season.

## ON SCHEDULE

**Pegula Ice Arena**, a \$90 million state-of-the-art facility, will serve as the home of the Penn State hockey programs in 2012-13. As of Jan. 10, 2013, all the steel has been put in place for the project with installation of glass and some brick on the outside. Additionally, portions of the center-hung scoreboard have been assembled.

The building held its official topping off ceremony on Friday, Nov. 9, 2012. Construction is set to conclude in time for the 2012-13 season as the building will open Sept. 5, 2013.

*For more information on Pegula Ice Arena, visit page 12 of the game notes.*

## NEXT TIME OUT

The Nittany Lions cap their five-game home stand by hosting Lindenwood on Friday (2 p.m.) and Saturday (2 p.m.). Friday is Penn State's Skate for the Cure event and Saturday is senior day.



# NITTANY LION WOMEN'S HOCKEY

## LAST TWO GAMES

### SYRACUSE 4, PENN STATE 1 (Jan. 26, 2013)

Penn State (7-16-1, 1-10-1 CHA) vs. Syracuse (14-11-1, 8-3-1 CHA)  
 Date: Jan 26, 2013 • Location: Syracuse, N.Y. • Arena: Tennity Ice Pavilion  
 Attendance: 257 • Start time: 2:00 PM • End time: 3:57 • Total time: 1:57

Prd	Time	Team	Scored by	Assists	Vis. on ice	Home on ice
1st	03:04	SU	EV FERRARA, Nicole/6	CARRIE-MATTIMOE, 20,22,17,24,4 SCHARFE, Margot	12,7,19,16,4	
2nd	04:56	SU	EV GOODNOUGH, Kaillie/2	KREBS, Brittney	14,23,36,4,33	16,11,19,8,14
3rd	11:29	SU	PP GRECO, Jacquie/8	PIACENTINI, Meli RENAULT, Nicole	20,22,17,2	15,14,2,27,8
4th	02:37	PSU	PP Holdcroft, Jill/8	Yoxheimer, Shann Desorcie, Jess	19,40,15,17,20	5,14,8,16
5th	19:36	SU	EN KNERR, Julie/3	KREBS, Brittney	24,15,17,19,10,40	3,8,15,2,5

Goals by Period				
Team	1	2	3	Tot
PSU	0	1	0	1
SU	3	0	1	4

Shots by Period				
Team	1	2	3	Tot
PSU	4	5	6	15
SU	22	13	20	55

#### TEAM SUMMARY

#	Penn State	G	A	Pi	Sh +/-	BI	#	Syracuse	G	A	Pi	Sh +/-	BI		
2	Bateman, Jeanet	0	0	0	0	0	2	RENAULT, Nicole	0	1	0	5	+1	0	
4	Pardosi, Jordin	0	0	0	0	-2	1	3	KNERR, Julie	1	0	0	2	+1	0
6	Reihl, Lindsay	0	0	0	0	0	2	4	HOSOYAMADA,	0	0	0	4	+1	0
8	McGee, Taylor	0	0	2	1	0	3	5	ST. GERMAIN, S	0	0	0	7	+1	0
10	Catanzariti, Mica	0	0	2	1	-1	1	6	LESLIE, Danielle	0	0	2	0	0	0
13	Rasmussen, Ken	0	0	0	1	0	0	7	CARRIE-MATTIM	0	1	0	2	+1	0
14	Kern, Darby	0	0	0	0	-1	0	8	KREBS, Brittney	0	2	0	0	+2	0
15	Desorcie, Jess	0	1	2	1	-1	1	9	LACOMBE, Allie	0	0	0	3	0	0
16	Hoenshell, Hann	0	0	0	4	0	1	11	JOHNSON, Cara	0	0	0	1	+1	0
17	Jahnke, Paige	0	0	0	1	-2	3	12	FERRARA, Nicole	1	0	0	4	+1	0
19	Holdcroft, Jill	1	0	0	3	-1	0	14	PIACENTINI, Mel	0	1	0	4	+1	0
20	Laurenzi, Emily	0	0	0	0	-1	1	15	GRECO, Jacquie	1	0	2	5	+1	0
22	Welch, Jenna	0	0	0	0	-1	0	16	GOODNOUGH, K	1	0	0	4	+2	0
23	Shaw, Birdie	0	0	0	0	-1	1	19	SCHARFE, Margot	0	1	2	6	+2	0
24	Gross, Taylor	0	0	2	1	-2	0	21	THOMAS, Mari	0	0	0	0	0	0
33	Smiddy, Madison	0	0	2	0	-1	1	22	AUERBACHER, E	0	0	0	1	0	0
36	Weaver, Tess	0	0	0	0	-1	2	27	DARKANGELO, S	0	0	2	7	0	0
40	Yoxheimer, Shan	0	1	0	2	-1	1	1	BENGIS, Julie	dnp					
T	TEAM	0	0	0	0	0	8	32	BILLADEAU, Kalli	dnp					
31	Meyer, Brooke	dnp						Totals	4	6	8	55	+1	0	
37	Paniccia, Nicole	dnp						Totals	1	2	10	15	-16	28	

Power Play Goals-Att (Sh)			
Prd	PSU	SU	
1st	0-0 (1)	1-2 (6)	
2nd	1-3 (2)	0-1 (1)	
3rd	0-1 (1)	0-2 (1)	
Total	1-4 (4)	1-5 (8)	

Penalties-Minutes by Prd			
Prd	PSU	SU	
1st	2-4	1-2	
2nd	2-4	2-4	
3rd	1-2	1-2	
Total	5-10	4-8	

Three stars:  
 1. GOODNOUGH, Kaillie  
 2. SCHARFE, Margot  
 3. Holdcroft, Jill

Officials:  
 Referee: John Quigley  
 Linesman: Aaron Belair  
 Linesman: Adam Bell  
 Goal judge: Justin Loomis

#### GOALTENDERS

##	Penn State	Dec	Min	GA	1	2	3	Saves	##	Syracuse	Dec	Min	GA	1	2	3	Saves
30	Whitlinger, Celine	L	59:43	3	19	13	19	51	29	DRINKWATER, Jen	W	59:53	1	4	4	6	14
	EMPTY NET		0:17	1	0	0	0	0		EMPTY NET		0:07	0	0	0	0	0

#### PENALTY SUMMARY

Prd	Player	Team	Min/Offense	Time	Prd	Player	Team	Min/Offense	Time
1st	Catanzariti, Mica	PSU	2.Tripping	00:56 PP	2nd	GRECO, Jacquie	SU	2.Elbowing	17:03 PP
1st	McGee, Taylor	PSU	2.Checking	09:53 PP	2nd	Desorcie, Jess	PSU	2.Hooking	18:31 PP
1st	SCHARFE, Margot	SU	2.Cross-Checking	18:15 PP	3rd	Gross, Taylor	PSU	2.Tripping	00:39 PP
2nd	LESLIE, Danielle	SU	2.Slashing	01:41 PP	3rd	DARKANGELO, Shian	SU	2.Hooking	04:03 PP
2nd	Smiddy, Madison	PSU	2.Tripping	11:35 PP					

Win-DRINKWATER, Jenesica (4-5-1). Loss-Whitlinger, Celine (1-5-0).

### PRINCETON 3, PENN STATE 0 (Jan. 29, 2013)

Princeton (7-12-2) vs. Penn State (7-17-1)  
 Date: Jan 29, 2013 • Location: University Park, Pa. • Arena: Greenberg Pavilion  
 Attendance: 237 • Start time: 7:00 pm • End time: 8:53 • Total time: 1:53

Prd	Time	Team	Scored by	Assists	Vis. on ice	Home on ice
1st	15:32	PRIN	EV MacDonald, Karen	Stearns, Corey	16,4,3,9,2	22,10,13,2,17
2nd	00:39	PRIN	EV Butler, Sally	Laing, Denna Mucha, Olivia	10,14,3,17,22	40,24,15,2,17
3rd	09:16	PRIN	EV Contini, Molly	Cooke, Kelly Stearns, Corey	9,2,4,3,17	24,40,15,8,6

Goals by Period				
Team	1	2	3	Tot
PRIN	1	1	1	3
PSU	0	0	0	0

Shots by Period				
Team	1	2	3	Tot
PRIN	6	14	10	30
PSU	5	6	8	19

#### TEAM SUMMARY

#	Princeton	G	A	Pi	Sh +/-	BI	#	Penn State	G	A	Pi	Sh +/-	BI	
2	Cooke, Kelly	0	1	0	2	+2	0	2	Bateman, Jeanet	0	0	0	-2	-2
3	Pankowski, Ali	0	0	0	3	+3	1	4	Pardosi, Jordin	0	0	0	1	0
4	Stearns, Corey	0	2	0	3	+2	0	6	Reihl, Lindsay	0	0	0	-1	-1
6	Peake, Maddie	0	0	0	1	0	0	8	McGee, Taylor	0	0	0	0	-1
9	Contini, Molly	1	0	0	2	+2	0	10	Catanzariti, Mica	0	0	3	-1	1
10	Butler, Sally	1	0	0	2	+1	0	13	Rasmussen, Ken	0	0	0	-1	0
12	Kinney, Alex	0	0	0	2	0	0	14	Kern, Darby	0	0	0	0	0
14	Laing, Denna	0	1	0	2	+1	0	15	Desorcie, Jess	0	0	0	1	-2
15	Leahy, Brianna	0	0	0	5	0	1	16	Hoenshell, Hann	0	0	0	2	0
16	MacDonald, Kare	1	0	0	2	+1	0	17	Jahnke, Paige	0	0	0	1	-2
17	Mahoney, Briann	0	0	0	1	+2	2	19	Holdcroft, Jill	0	0	0	0	1
19	Shanahan, Cristi	0	0	0	2	0	0	20	Laurenzi, Emily	0	0	2	1	0
21	Figueras, Gabe	0	0	4	0	0	0	21	Wilkie, Sarah	0	0	0	0	1
22	Mucha, Olivia	0	1	2	1	+1	0	22	Welch, Jenna	0	0	0	0	-1
25	Allewa, Rose	0	0	0	2	0	0	23	Shaw, Birdie	0	0	0	0	0
Totals		3	5	6	30	+1	4	Totals	0	0	2	19	-15	11

Power Play Goals-Att (Sh)			
Prd	PRIN	PSU	
1st	0-0 (0)	0-0 (0)	
2nd	0-1 (1)	0-1 (5)	
3rd	0-0 (0)	0-2 (5)	
Total	0-1 (1)	0-3 (10)	

Penalties-Minutes by Prd			
Prd	PRIN	PSU	
1st	0-0	0-0	
2nd	1-2	1-2	
3rd	2-4	0-0	
Total	3-6	1-2	

Three stars:  
 1. Pankowski, Ali  
 2. Stearns, Corey  
 3. Newell, Kimberly

Officials:  
 Referee: Aaron Blair  
 Referee: Adam Bell  
 Linesman: Justin Pisano  
 Linesman: Dorsey Dick  
 Pen timekeeper: Ben Thomas  
 Game timekeeper: Tom Stroemel  
 Scorer: Jeremy Fallis

#### GOALTENDERS

##	Princeton	Dec	Min	GA	1	2	3	Saves	##	Penn State	Dec	Min	GA	1	2	3	Saves
33	Newell, Kimberly	W	40:00	0	5	6	0	11	37	Paniccia, Nicole	L	60:00	3	5	13	9	27
30	Holt, Ashley		20:00	0	0	0	8	8									

#### PENALTY SUMMARY

Prd	Player	Team	Min/Offense	Time	Prd	Player	Team	Min/Offense	Time
2nd	Laurenzi, Emily	PSU	2.Hooking	12:40 PP	2nd	Mucha, Olivia	PRIN	2.Tripping	10:19 PP
2nd	Figueras, Gabe	PRIN	2.Holding	15:20 PP	3rd	Figueras, Gabe	PRIN	2.Holding	11:16

Win-Newell, Kimberly (6-10-2). Loss-Paniccia, Nicole (6-12-1).



# NITTANY LION WOMEN'S HOCKEY



## 2012-13 Penn State Women's Hockey Penn State Combined Team Statistics (as of Jan 30, 2013) All games

Date	Opponent	Score	Att.	Record:	Overall	Home	Away	Neutral
Oct 06	at Vermont	w 5-3	785	ALL GAMES	7-17-1	4-6-1	3-11-0	0-0-0
Oct 07	at Vermont	L 1-3	326	CONFERENCE	1-10-1	0-5-1	1-5-0	0-0-0
* Oct 13	SYRACUSE	L 0-4	408	NON-CONFERENCE	6-7-0	4-1-0	2-6-0	0-0-0
* Oct 14	SYRACUSE	L 0-6	285					
Oct 19	at Sacred Heart	L 1-2	123					
Oct 20	at Sacred Heart	w 6-1	213					
* Oct 25	RIT	L 1-4	229					
* Oct 26	RIT	Tot 2-2	238					
Nov 02	SACRED HEART	w 6-0	231					
Nov 03	SACRED HEART	w 8-2	127					
* Nov 10	ROBERT MORRIS	L 1-7	152					
* Nov 11	ROBERT MORRIS	L 1-4	127					
* Nov 16	at Lindenwood	L 1-5	150					
* Nov 17	at Lindenwood	w 3-2	122					
* Nov 30	at #4 Mercyhurst	L 0-5	925					
* Dec 01	at #4 Mercyhurst	L 1-7	725					
Dec 07	at St. Lawrence	L 1-3	236					
Dec 08	at St. Lawrence	L 2-4	244					
Jan 04	CHATHAM	w 10-0	293					
Jan 05	CHATHAM	w 4-0	207					
Jan 11	at Union	L 0-1	106					
Jan 12	at Union	L 1-2	131					
* Jan 25	at Syracuse	L 0-1	132					
* Jan 26	at Syracuse	L 1-4	257					
Jan 29	PRINCETON	L 0-3	237					

	PSU	OPP
<b>TEAM STATISTICS</b>		
<b>SHOT STATISTICS</b>		
Goals-Shot attempts	56-673	75-1023
Shot pct.	.083	.073
Goals/Game	2.2	3.0
Shots/Game	26.9	40.9
<b>POWER PLAYS</b>		
Goals-Power Plays	12-88	23-96
Conversion Percent	.136	.240
<b>GOAL BREAKDOWN</b>		
Power Play	12	23
Short-handed	0	2
Empty net	1	3
Penalty	0	0
Unassisted	6	7
Overtime	0	0
<b>PENALTIES</b>		
Number	98	92
Minutes	196	184
Penalties/Game	3.9	3.7
Pen minutes/Game	7.8	7.4
<b>FACEOFFS (W-L)</b>	680-763	763-680
Faceoff W-L Pct.	.471	.529

#	Player	gp	g	a	pts	sh	sh%	pen-min	pp	sh
40	Yoxheimer, Shannon	24	12	12	24	129	.093	5-10	3	0
24	Gross, Taylor	24	4	14	18	65	.062	3-6	2	0
15	Desorcie, Jess	24	5	11	16	37	.135	4-8	0	0
19	Holdcroft, Jill	25	8	2	10	37	.216	1-2	4	0
16	Hoenshell, Hannah	19	7	3	10	45	.156	3-6	0	0
22	Welch, Jenna	25	4	3	7	33	.121	9-18	0	0
20	Laurenzi, Emily	25	2	5	7	26	.077	4-8	1	0
33	Smiddy, Madison	15	1	6	7	13	.077	5-10	1	0
4	Pardoski, Jordin	25	2	4	6	21	.095	13-26	0	0
17	Jahnke, Paige	25	0	6	6	24	.000	8-16	0	0
10	Catanzariti, Micayla	25	3	2	5	44	.068	9-18	0	0
23	Shaw, Birdie	23	2	3	5	44	.045	10-20	0	0
2	Bateman, Jeanette	25	1	4	5	20	.050	3-6	1	0
13	Rasmussen, Kendra	24	3	1	4	37	.081	2-4	0	0
11	Zinn, Katie	12	1	3	4	18	.056	1-2	0	0
21	Weaver, Tess	21	1	2	3	34	.029	2-4	0	0
8	McGee, Taylor	18	0	2	2	11	.000	8-16	0	0
14	Kern, Darby	11	0	1	1	6	.000	1-2	0	0
6	Reihl, Lindsay	25	0	1	1	11	.000	4-8	0	0
12	Christoffersen, Kate	1	0	0	0	4	.000	0-0	0	0
3	Mendelson, Cara	2	0	0	0	3	.000	0-0	0	0
25	Murphy, Katie	9	0	0	0	2	.000	0-0	0	0
5	Walkom, Stephanie	1	0	0	0	3	.000	0-0	0	0
21	Wilkie, Sarah	17	0	0	0	6	.000	1-2	0	0
TM	TEAM	13	0	0	0	0	.000	2-4	0	0
	Total	25	56	85	141	673	.083	98-196	12	0
	Opponents	25	75	124	199	1023	.073	92-184	23	2

#	Goalie	gp	min	ga	gaavg	saves	save%	w-l-t
31	Meyer, Brooke	3	47:26	0	0.00	17	1.000	0-0-0
30	Whitlinger, Celine	8	389:36	16	2.46	265	.943	1-5-0
37	Paniccia, Nicole	19	1059:45	56	3.17	666	.922	6-12-1
TM	EMPTY NET	13	8:13	3	-	0	.000	0-0-0
	Total	25	1505:00	75	2.99	948	.927	7-17-1
	Opponents	25	1505:00	56	2.23	617	.917	17-7-1

	PSU	Opponent
<b>Attendance Summary</b>		
Total	2534	4475
Dates/Avg Per Date	11/230	14/320
Neutral Site #/Avg	0/0	

Goals by Period	1st	2nd	3rd	Total
Penn State	19	18	19	56
Opponents	25	21	29	75

Saves by Period	1st	2nd	3rd	Total
Penn State	288	321	334	948
Opponents	208	200	209	617



# NITTANY LION WOMEN'S HOCKEY

Opponent	Date	Score	2	3	4	5	6	8	10	11	12	13	14
			BATEMAN,JE	MENDELSON,	PARDOSKI,J	WALKOM,STE	REIHL,LINDS	MC GEE,TAYL	CATANZARITI	ZINN,KATIE	CHRISTOFFE	RASMUSSEN,	KERN,DARBY
at UVM	Oct 06	5-3 W	0-0-0	DNP	0-0-0	DNP	0-0-0	0-0-0	2-1-3	0-0-0	DNP	DNP	DNP
at UVM	Oct 07	1-3 L	0-0-0	DNP	0-0-0	DNP	0-0-0	0-1-1	0-0-0	0-0-0	DNP	0-0-0	DNP
SU	Oct 13	0-4 L	0-0-0	DNP	0-0-0	DNP	0-0-0	0-0-0	0-0-0	0-0-0	DNP	0-0-0	DNP
SU	Oct 14	0-6 L	0-0-0	DNP	0-0-0	DNP	0-0-0	0-0-0	0-0-0	0-0-0	DNP	0-0-0	DNP
at SHU	Oct 19	1-2 L	0-0-0	DNP	0-0-0	DNP	0-0-0	DNP	0-0-0	0-0-0	DNP	0-0-0	DNP
at SHU	Oct 20	6-1 W	1-0-1	0-0-0	1-0-1	DNP	0-1-1	DNP	0-0-0	DNP	DNP	0-0-0	DNP
RIT	Oct 25	1-4 L	0-0-0	DNP	0-0-0	DNP	0-0-0	0-0-0	0-0-0	DNP	DNP	0-0-0	DNP
RIT	Oct 26	2-2 T	0-0-0	DNP	0-0-0	DNP	0-0-0	0-0-0	0-0-0	0-0-0	DNP	0-0-0	DNP
SHU	Nov 02	6-0 W	0-0-0	DNP	0-0-0	DNP	0-0-0	0-0-0	0-0-0	0-1-1	DNP	0-0-0	DNP
SHU	Nov 03	8-2 W	0-1-1	DNP	0-0-0	DNP	0-0-0	0-0-0	0-0-0	0-0-0	DNP	1-1-2	DNP
RMU	Nov 10	1-7 L	0-0-0	DNP	0-0-0	DNP	0-0-0	0-0-0	0-0-0	0-0-0	DNP	0-0-0	DNP
RMU	Nov 11	1-4 L	0-0-0	DNP	0-0-0	DNP	0-0-0	DNP	1-0-1	DNP	DNP	0-0-0	DNP
at LU	Nov 16	1-5 L	0-0-0	DNP	0-1-1	DNP	0-0-0	DNP	0-0-0	DNP	DNP	0-0-0	DNP
at LU	Nov 17	3-2 W	0-0-0	DNP	0-1-1	DNP	0-0-0	DNP	0-0-0	DNP	DNP	0-0-0	DNP
at MU	Nov 30	0-5 L	0-0-0	DNP	0-0-0	DNP	0-0-0	DNP	0-0-0	DNP	DNP	0-0-0	0-0-0
at MU	Dec 01	1-7 L	0-0-0	DNP	0-0-0	DNP	0-0-0	0-0-0	0-0-0	DNP	DNP	0-0-0	0-0-0
at SLU	Dec 07	1-3 L	0-0-0	DNP	0-0-0	DNP	0-0-0	0-0-0	0-0-0	DNP	DNP	0-0-0	0-0-0
at SLU	Dec 08	2-4 L	0-0-0	DNP	0-0-0	DNP	0-0-0	0-0-0	0-0-0	DNP	DNP	0-0-0	0-0-0
CHA	Jan 04	10-0 W	0-3-3	DNP	1-2-3	DNP	0-0-0	0-1-1	0-1-1	DNP	DNP	2-0-2	0-1-1
CHA	Jan 05	4-0 W	0-0-0	0-0-0	0-0-0	0-0-0	0-0-0	DNP	0-0-0	1-2-3	0-0-0	0-0-0	0-0-0
at UNION	Jan 11	0-1 L	0-0-0	DNP	0-0-0	DNP	0-0-0	0-0-0	0-0-0	0-0-0	DNP	0-0-0	0-0-0
at UNION	Jan 12	1-2 L	0-0-0	DNP	0-0-0	DNP	0-0-0	0-0-0	0-0-0	0-0-0	DNP	0-0-0	0-0-0
at SU	Jan 25	0-1 L	0-0-0	DNP	0-0-0	DNP	0-0-0	0-0-0	0-0-0	DNP	DNP	0-0-0	0-0-0
at SU	Jan 26	1-4 L	0-0-0	DNP	0-0-0	DNP	0-0-0	0-0-0	0-0-0	DNP	DNP	0-0-0	0-0-0
PRIN	Jan 29	0-3 L	0-0-0	DNP	0-0-0	DNP	0-0-0	0-0-0	0-0-0	DNP	DNP	0-0-0	0-0-0
Opponent	Date	Score	15	16	17	19	20	21	22	23	24	25	30
			DESORCIE,JE	HOENSHELL,	JAHNKE,PAIG	HOLDCROFT,	LAURENZI,EM	WILKIE,SARA	WELCH,JENN	SHAW,BIRDIE	GROSS,TAYL	MURPHY,KAT	WHITLINGER,
at UVM	Oct 06	5-3 W	0-2-2	DNP	0-0-0	0-0-0	0-1-1	DNP	0-0-0	1-1-2	0-2-2	DNP	DNP
at UVM	Oct 07	1-3 L	0-1-1	DNP	0-0-0	0-0-0	0-0-0	DNP	0-0-0	1-0-1	0-0-0	DNP	0-0-0
SU	Oct 13	0-4 L	0-0-0	DNP	0-0-0	0-0-0	0-0-0	0-0-0	0-0-0	0-0-0	0-0-0	0-0-0	DNP
SU	Oct 14	0-6 L	0-0-0	DNP	0-0-0	0-0-0	0-0-0	0-0-0	0-0-0	0-0-0	0-0-0	0-0-0	0-0-0
at SHU	Oct 19	1-2 L	0-0-0	DNP	0-0-0	0-0-0	0-0-0	0-0-0	0-0-0	0-1-1	0-1-1	0-0-0	DNP
at SHU	Oct 20	6-1 W	1-0-1	1-0-1	0-0-0	0-0-0	0-1-1	0-0-0	0-2-2	DNP	1-1-2	0-0-0	DNP
RIT	Oct 25	1-4 L	0-0-0	0-0-0	0-1-1	0-0-0	0-0-0	0-0-0	0-0-0	0-0-0	0-1-1	0-0-0	DNP
RIT	Oct 26	2-2 T	0-1-1	0-0-0	0-0-0	0-0-0	0-0-0	DNP	0-0-0	0-0-0	1-1-2	DNP	DNP
SHU	Nov 02	6-0 W	0-2-2	3-0-3	0-0-0	1-0-1	0-2-2	DNP	0-0-0	0-0-0	0-1-1	DNP	DNP
SHU	Nov 03	8-2 W	1-2-3	0-0-0	0-1-1	1-0-1	1-0-1	DNP	1-1-2	0-0-0	1-2-3	DNP	DNP
RMU	Nov 10	1-7 L	0-0-0	0-0-0	0-0-0	0-0-0	0-0-0	DNP	0-0-0	0-0-0	0-1-1	DNP	DNP
RMU	Nov 11	1-4 L	0-0-0	0-0-0	0-0-0	0-1-1	0-0-0	0-0-0	0-0-0	0-1-1	0-0-0	0-0-0	DNP
at LU	Nov 16	1-5 L	0-0-0	0-0-0	0-0-0	1-0-1	0-0-0	0-0-0	0-0-0	0-0-0	0-0-0	0-0-0	DNP
at LU	Nov 17	3-2 W	0-0-0	0-1-1	0-1-1	1-0-1	1-0-1	0-0-0	0-0-0	0-0-0	1-0-1	0-0-0	DNP
at MU	Nov 30	0-5 L	0-0-0	0-0-0	0-0-0	0-0-0	0-0-0	0-0-0	0-0-0	0-0-0	0-0-0	DNP	0-0-0
at MU	Dec 01	1-7 L	1-0-1	0-0-0	0-0-0	0-0-0	0-0-0	0-0-0	0-0-0	0-0-0	0-1-1	DNP	DNP
at SLU	Dec 07	1-3 L	0-0-0	0-0-0	0-0-0	1-0-1	0-0-0	0-0-0	0-0-0	0-0-0	0-0-0	DNP	0-0-0
at SLU	Dec 08	2-4 L	1-0-1	1-0-1	0-0-0	0-0-0	0-0-0	0-0-0	0-0-0	0-0-0	0-1-1	DNP	DNP
CHA	Jan 04	10-0 W	0-2-2	2-2-4	0-1-1	1-1-2	0-1-1	DNP	1-0-1	0-0-0	0-1-1	DNP	0-0-0
CHA	Jan 05	4-0 W	DNP	DNP	0-2-2	1-0-1	0-0-0	DNP	2-0-2	0-0-0	DNP	0-0-0	0-0-0
at UNION	Jan 11	0-1 L	0-0-0	0-0-0	0-0-0	0-0-0	0-0-0	0-0-0	0-0-0	0-0-0	0-0-0	DNP	0-0-0
at UNION	Jan 12	1-2 L	1-0-1	0-0-0	0-0-0	0-0-0	0-0-0	0-0-0	0-0-0	DNP	0-1-1	DNP	DNP
at SU	Jan 25	0-1 L	0-0-0	0-0-0	0-0-0	0-0-0	0-0-0	0-0-0	0-0-0	0-0-0	0-0-0	DNP	DNP
at SU	Jan 26	1-4 L	0-1-1	0-0-0	0-0-0	1-0-1	0-0-0	DNP	0-0-0	0-0-0	0-0-0	DNP	0-0-0
PRIN	Jan 29	0-3 L	0-0-0	0-0-0	0-0-0	0-0-0	0-0-0	0-0-0	0-0-0	0-0-0	0-0-0	DNP	DNP
Opponent	Date	Score	31	33	36	37	40						
			MEYER,BROO	SMIDDY,MADI	WEAVER,TES	PANICCIA,NIC	YOXHEIMER,						
at UVM	Oct 06	5-3 W	DNP	0-1-1	DNP	0-0-0	2-0-2						
at UVM	Oct 07	1-3 L	DNP	0-0-0	DNP	DNP	0-0-0						
SU	Oct 13	0-4 L	DNP	DNP	0-0-0	0-0-0	0-0-0						
SU	Oct 14	0-6 L	DNP	DNP	0-0-0	DNP	0-0-0						
at SHU	Oct 19	1-2 L	DNP	0-0-0	0-0-0	0-0-0	1-0-1						
at SHU	Oct 20	6-1 W	DNP	0-2-2	0-0-0	0-0-0	1-1-2						
RIT	Oct 25	1-4 L	DNP	0-0-0	DNP	0-0-0	1-0-1						
RIT	Oct 26	2-2 T	DNP	0-1-1	0-0-0	0-0-0	1-1-2						
SHU	Nov 02	6-0 W	0-0-0	0-0-0	0-0-0	0-0-0	2-0-2						
SHU	Nov 03	8-2 W	DNP	1-1-2	0-1-1	0-0-0	1-2-3						
RMU	Nov 10	1-7 L	DNP	0-0-0	0-0-0	0-0-0	1-0-1						
RMU	Nov 11	1-4 L	DNP	0-0-0	0-0-0	0-0-0	0-0-0						
at LU	Nov 16	1-5 L	DNP	0-0-0	0-0-0	0-0-0	0-1-1						
at LU	Nov 17	3-2 W	DNP	0-0-0	0-0-0	0-0-0	0-2-2						
at MU	Nov 30	0-5 L	DNP	0-0-0	0-0-0	0-0-0	0-0-0						
at MU	Dec 01	1-7 L	DNP	DNP	0-0-0	0-0-0	0-1-1						
at SLU	Dec 07	1-3 L	DNP	DNP	0-0-0	DNP	0-1-1						
at SLU	Dec 08	2-4 L	DNP	DNP	0-0-0	0-0-0	0-1-1						
CHA	Jan 04	10-0 W	0-0-0	DNP	1-1-2	0-0-0	2-0-2						
CHA	Jan 05	4-0 W	0-0-0	0-1-1	0-0-0	DNP	DNP						
at UNION	Jan 11	0-1 L	DNP	DNP	DNP	DNP	0-0-0						
at UNION	Jan 12	1-2 L	DNP	DNP	0-0-0	0-0-0	0-1-1						
at SU	Jan 25	0-1 L	DNP	DNP	0-0-0	0-0-0	0-0-0						
at SU	Jan 26	1-4 L	DNP	0-0-0	0-0-0	DNP	0-1-1						
PRIN	Jan 29	0-3 L	DNP	DNP	0-0-0	0-0-0	0-0-0						

# NITTANY LION WOMEN'S HOCKEY



## 2012-13 Penn State Women's Hockey Penn State High/Low Analysis (as of Jan 30, 2013) All games

### Penn State - TEAM GAME HIGHS

POINTS	27	vs Chatham (Jan 04, 2013)
GOALS	10	vs Chatham (Jan 04, 2013)
ASSISTS	17	vs Chatham (Jan 04, 2013)
SHOTS ON GOAL	71	vs Chatham (Jan 05, 2013)
SAVES	64	at Mercyhurst (Dec 01, 2012)
PENALTIES	8	vs RIT (Oct 25, 2012)
PENALTY MINUTES	16	vs RIT (Oct 25, 2012)

### Opponent - GAME HIGHS

POINTS	19	at Mercyhurst (Dec 01, 2012)
GOALS	7	at Mercyhurst (Dec 01, 2012)
ASSISTS	12	at Mercyhurst (Dec 01, 2012)
SHOTS ON GOAL	71	at Mercyhurst (Dec 01, 2012)
SAVES	67	vs Chatham (Jan 05, 2013)
PENALTIES	10	at Lindenwood (Nov 17, 2012)
PENALTY MINUTES	20	at Lindenwood (Nov 17, 2012)

### Penn State - GAME LOWS

POINTS	0	vs Syracuse (Oct 13, 2012)
	0	vs Syracuse (Oct 14, 2012)
	0	at Mercyhurst (Nov 30, 2012)
	0	at Union (Jan 11, 2013)
	0	at Syracuse (Jan 25, 2013)
	0	vs Princeton (Jan 29, 2013)
	0	vs Syracuse (Oct 13, 2012)
	0	vs Syracuse (Oct 14, 2012)
	0	at Mercyhurst (Nov 30, 2012)
	0	at Union (Jan 11, 2013)
	0	at Syracuse (Jan 25, 2013)
	0	vs Princeton (Jan 29, 2013)
	0	vs Syracuse (Oct 13, 2012)
	0	vs Syracuse (Oct 14, 2012)
	0	at Mercyhurst (Nov 30, 2012)
	0	at Union (Jan 11, 2013)
	0	at Syracuse (Jan 25, 2013)
	0	vs Princeton (Jan 29, 2013)
SHOTS ON GOAL	10	at Mercyhurst (Nov 30, 2012)
	10	at Mercyhurst (Dec 01, 2012)
SAVES	16	vs Chatham (Jan 05, 2013)
PENALTIES	1	vs Chatham (Jan 05, 2013)
	1	at Union (Jan 12, 2013)
	1	vs Princeton (Jan 29, 2013)
PENALTY MINUTES	2	vs Chatham (Jan 05, 2013)
	2	at Union (Jan 12, 2013)
	2	vs Princeton (Jan 29, 2013)

### Opponent - GAME LOWS

POINTS	0	vs Sacred Heart (Nov 02, 2012)
	0	vs Chatham (Jan 04, 2013)
	0	vs Chatham (Jan 05, 2013)
GOALS	0	vs Sacred Heart (Nov 02, 2012)
	0	vs Chatham (Jan 04, 2013)
	0	vs Chatham (Jan 05, 2013)
ASSISTS	0	vs Sacred Heart (Nov 02, 2012)
	0	vs Chatham (Jan 04, 2013)
	0	vs Chatham (Jan 05, 2013)
SHOTS ON GOAL	16	vs Chatham (Jan 05, 2013)
SAVES	9	at Mercyhurst (Dec 01, 2012)
PENALTIES	1	at Mercyhurst (Nov 30, 2012)
	1	vs Chatham (Jan 05, 2013)
	1	at Union (Jan 12, 2013)
PENALTY MINUTES	2	at Mercyhurst (Nov 30, 2012)
	2	vs Chatham (Jan 05, 2013)
	2	at Union (Jan 12, 2013)



# NITTANY LION WOMEN'S HOCKEY

## PEGULA ICE ARENA FUTURE HOME OF PENN STATE HOCKEY

### FACTS

**Construction Groundbreaking:** January 2012

**Ceremonial Groundbreaking:** April 20, 2012

**Projected Opening:** September 5, 2013

**Capacity:** 6,000 (Arena rink); 300 (Community rink)

**Size:** 200,000 square feet

### AMENITIES

*Two NHL-sized (200' x 85') ice surfaces*

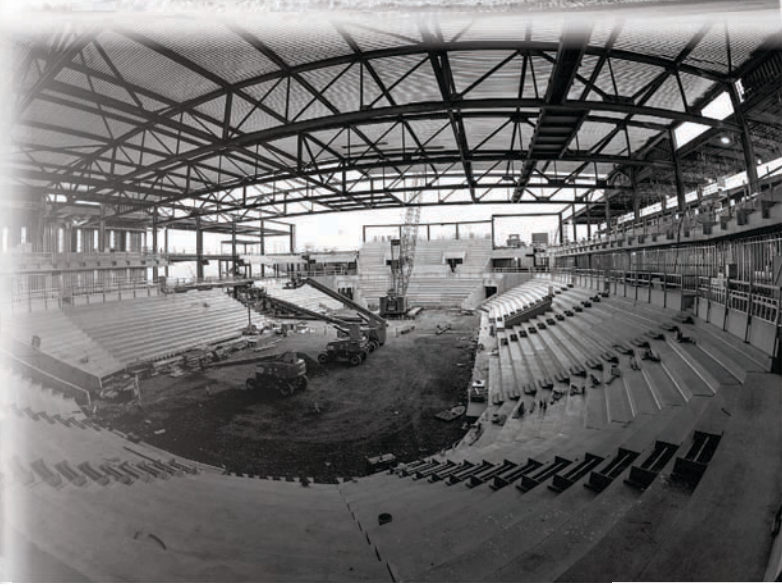
#### **Arena rink will offer:**

- 6,000-seat overall capacity
- 1,000-seat student section
- First-rate varsity locker rooms
- Team lounges and dry changing room
- Strength and conditioning center
- Shooting gallery
- Suites, loge boxes and club seats
- State-of-the-art television and radio broadcasting facilities
- Press box and media center
- Concession stands with café
- Videoboard

#### **Community rink will offer:**

- 300-seat capacity
- Eight locker rooms
- Skate rental center

Pegula Ice Arena will have the ability to host National Hockey League and American Hockey League games, as well as professional ice shows, local hockey and figure skating programs.



*Left to Right: Kim and Terry Pegula, Dr. Rodney Erickson, The Nittany Lion, Joe Battista and Karen Peetz at the Pegula Ice Arena ceremonial groundbreaking.*



# NITTANY LION WOMEN'S HOCKEY



## 2012-13 PENN STATE WOMEN'S HOCKEY NUMERICAL ROSTER

No.	Name	Yr.	Pos.	Ht.	S/C	Hometown	Last Team
2	Jeanette Bateman	Fr.	F/D	5-6	R	Greeley, Colo.	Colorado Select
3	Cara Mendelson	So.	F/D	5-6	R	Pittsburgh, Pa.	Steel City Selects
4	Jordin Pardoski	Fr.	D	5-5	R	Rochester Hills, Mich.	Detroit Honeybaked
5	Stephanie Walkom	Fr.	D	5-7	R	Moon Township, Pa.	Pittsburgh Penguins Elite
6	Lindsay Reihl	Sr.	D	5-4	R	Cheshire, Conn.	Connecticut Polar Bears
8	Taylor McGee	Fr.	D	5-3	R	Pearl River, N.Y.	Taft School (Conn.)
10	Micayla Catanzariti	Fr.	F	5-4	R	Rancho Santa Margarita, Calif.	Gilmour Academy (Ohio)
11	Katie Zinn	Fr.	F	5-7	R	Coquitlam, B.C.	Gilmour Academy (Ohio)
12	Kate Christoffersen	Sr.	F	5-3	R	Trumbull, Conn.	Connecticut Polar Bears
13	Kendra Rasmussen	Fr.	F	5-5	L	Sartell, Minn.	Sartell/Sauk Rapids HS
14	Darby Kern	Fr.	F	5-11	R	Venetia, Pa.	Pittsburgh Penguins Elite
15	Jess Desorcie	So.	F	5-4	L	Westford, Vt.	Connecticut College
16	Hannah Hoenshell	Fr.	F	5-3	R	Plano, Texas	Texas Alliance
17	Paige Jahnke	Fr.	D	5-6	R	Oakdale, Minn.	Roseville HS/Minnesota Jr. Whitecaps
19	Jill Holdcroft	Fr.	F	5-1	R	Pennsylvania Furnace, Pa.	Pittsburgh Penguins Elite
20	Emily Laurenzi	Fr.	F	5-2	R	Townsend, Del.	National Sports Academy (N.Y.)
21	Sarah Wilkie	Fr.	D	5-6	R	Ashby, Mass.	Williston Northampton School
22	Jenna Welch	Jr.	F	5-8	R	Austin, Texas	Connecticut
23	Birdie Shaw	Fr.	F	5-2	L	Troy, Mich.	Detroit Honeybaked
24	Taylor Gross	Jr.	F	5-1	R	Colorado Springs, Colo.	Connecticut
25	Katie Murphy	So.	F	5-4	L	Novi, Mich.	Detroit Honeybaked
30	Celine Whitlinger	Fr.	G	5-8	L	Garden Grove, Calif.	Gilmour Academy (Ohio)
31	Brooke Meyer	Fr.	G	5-7	L	Naperville, Ill.	Chicago Huskies
33	Madison Smiddy	So.	D	5-7	L	Grand Rapids, Mich.	Detroit Honeybaked
36	Tess Weaver	So.	F	5-5	R	Windber, Pa.	Pittsburgh Penguins Elite
37	Nicole Paniccia	Jr.	G	5-5	L	Oakville, Ont.	Connecticut
40	Shannon Yoxheimer	Fr.	F	5-7	L	Jackson, Mich.	North American Hockey Academy (Vt.)

**Head Coach:** Josh Brandwene (First Year)

**Assistant Coaches:** Gina Kearns (First Year), Casey McCullion (First Year); **Director of Operations/Video Coach:** Mo Stroemel (First Year)

**Captain:** Taylor Gross; **Assistant Captains:** Lindsay Reihl, Jenna Welch

ALPHABETICAL ROSTER		PRONUNCIATION GUIDE		LIONS BY STATE		LIONS BY POSITION	
<b>No.</b>	<b>Name</b>	<b>Brandwene</b>	BRAND-ween	<b>California (2):</b>	Catanzariti, Whitlinger	<b>Forward (17):</b>	Bateman, Catanzariti
2	Jeanette Bateman	<b>Catanzariti</b>	Cah-TAN-zah-REE-tee	<b>Colorado (2):</b>	Bateman, Gross		Christoffersen, Desorcie, Gross,
10	Micayla Catanzariti	<b>Jahnke</b>	YAWN-kee	<b>Connecticut (2):</b>	Christoffersen, Reihl		Hoenshell, Holdcroft, Kern, Laurenzi,
12	Kate Christoffersen	<b>Jeanette</b>	Jeh-NETT				Mendelson, Murphy, Rasmussen,
15	Jess Desorcie	<b>Kearns</b>	KERNS	<b>Delaware (1):</b>	Laurenzi		Shaw, Weaver, Welch, Yoxheimer,
24	Taylor Gross	<b>McCullion</b>	Mick-CULL-yon	<b>Illinois (1):</b>	Meyer		Zinn
16	Hannah Hoenshell	<b>Paniccia</b>	Pah-NEE-cha	<b>Massachusetts (1):</b>	Wilkie		
19	Jill Holdcroft	<b>Reihl</b>	RILE	<b>Michigan (5):</b>	Murphy, Pardoski, Shaw, Smiddy, Yoxheimer	<b>Defense (9):</b>	Bateman, Jahnke, McGee, Mendelson, Pardoski, Reihl, Smiddy, Walkom, Wilkie
17	Paige Jahnke	<b>Stroemel</b>	STRAW-mull	<b>Minnesota (2):</b>	Jahnke, Rasmussen		
14	Darby Kern			<b>New York (1):</b>	McGee		
20	Emily Laurenzi			<b>Pennsylvania (5):</b>	Holdcroft, Kern, Mendelson, Walkom, Weaver	<b>Goalie (3):</b>	Meyer, Paniccia, Whitlinger
8	Taylor McGee			<b>Texas (2):</b>	Hoenshell, Welch		
3	Cara Mendelson			<b>Vermont (1):</b>	Desorcie		
31	Brooke Meyer						
25	Katie Murphy						
37	Nicole Paniccia						
4	Jordin Pardoski						
13	Kendra Rasmussen						
6	Lindsay Reihl						
23	Birdie Shaw						
33	Madison Smiddy						
5	Stephanie Walkom						
36	Tess Weaver						
22	Jenna Welch						
30	Celine Whitlinger						
21	Sara Wilkie						
40	Shannon Yoxheimer						
11	Katie Zinn						





# NITTANY LION WOMEN'S HOCKEY



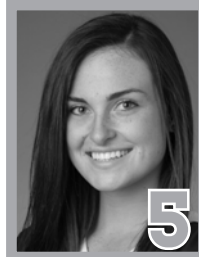
**2**  
**JEANNETTE BATEMAN**  
Freshman • F/D  
Greeley, Colo.



**3**  
**CARA MENDELSON**  
Sophomore • F/D  
Pittsburgh, Pa.



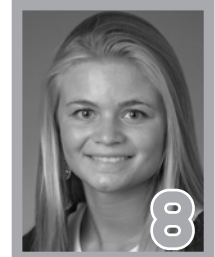
**4**  
**JORDIN PARDOSKI**  
Freshman • D  
Rochester Hills, Mich.



**5**  
**STEPHANIE WALKOM**  
Freshman • D  
Moon Township, Pa.



**6** **A**  
**LINDSAY REIHL**  
Senior • D  
Cheshire, Conn.



**8**  
**TAYLOR MCGEE**  
Freshman • D  
Pearl River, N.Y.



**10**  
**MICAYLA CATANZARITI**  
Freshman • F  
Rancho Santa Margarita, Calif.



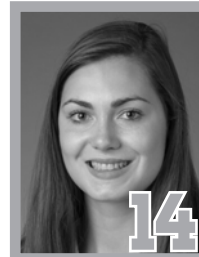
**11**  
**KATIE ZINN**  
Freshman • F  
Coquitlam, B.C.



**12**  
**KATE CHRISTOFFERSEN**  
Senior • F  
Trumbull, Conn.



**13**  
**KENDRA RASMUSSEN**  
Freshman • F  
Sartell, Minn.



**14**  
**DARBY KERN**  
Freshman • F  
Venetia, Pa.



**15**  
**JESS DESORCIE**  
Sophomore • F  
Westford, Vt.



**16**  
**HANNAH HOENSHELL**  
Freshman • F  
Plano, Texas



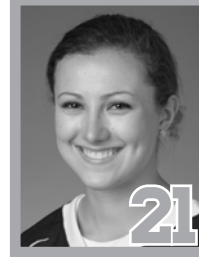
**17**  
**PAIGE JAHNKE**  
Freshman • D  
Oakdale, Minn.



**19**  
**JILL HOLDCROFT**  
Freshman • F  
Pennsylvania Furnace, Pa.



**20**  
**EMILY LAURENZI**  
Freshman • F  
Townsend, Del.



**21**  
**SARAH WILKIE**  
Freshman • D  
Ashby, Mass.



**22** **A**  
**JENNA WELCH**  
Junior • F  
Austin, Texas



**23**  
**BIRDIE SHAW**  
Freshman • F  
Troy, Mich.



**24** **C**  
**TAYLOR GROSS**  
Junior • F  
Colorado Springs, Colo.



**25**  
**KATIE MURPHY**  
Sophomore • F  
Novi, Mich.



**30**  
**CELINE WHITLINGER**  
Freshman • G  
Garden Grove, Calif.



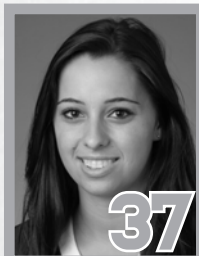
**31**  
**BROOKE MEYER**  
Freshman • G  
Naperville, Ill.



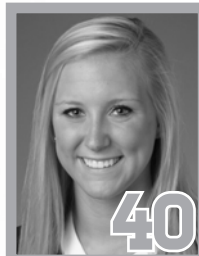
**33**  
**MADISON SMIDDY**  
Sophomore • D  
Grand Rapids, Mich.



**36**  
**TESS WEAVER**  
Sophomore • F  
Windber, Pa.



**37**  
**NICOLE PANICCIA**  
Junior • G  
Oakville, Ont.



**40**  
**SHANNON YOXHEIMER**  
Freshman • F  
Jackson, Mich.