

# 2011-12 NITTANY LION BASKETBALL PENN STATE

## GAME 6

### GAME INFO

**TELEVISION:** BTN.com (on-line) with play-by-play from radio network feed  
**RADIO:** Penn State Sports Network  
 Local: 1450 AM; Sirius: CH134 XM: Steve Jones (p-by-p) & Dick Jerardi (analyst)  
**WEB:** Gametracker & Audio at: GoPSUsports.com  
**COACHES:**  
 PENN STATE: Patrick Chambers – 4-1 (1st at PSU); 46-29 (3rd Overall)  
 YSU: Jerry Slocum – 61-121 (7th year at YSU); 641-446 (37th Overall)  
**NEXT UP:** Penn State will travel to Saint Joseph's for a Saturday afternoon match-up. The Lions lead the series 14-9 and won the last meeting 66-57 at the Jordan Center. PSU lost in its last trip to face St. Joe's in Philadelphia, 79-67, falling in 2007 at the Palestra. PSU is 6-5 at St. Joe's. Saturday's game will be played on campus at Hagan Arena (4,200) and will be the Hawks' first official game there this season.

### 2011-12 SCHEDULE

**Record:** 4-1 (0-0 Big Ten) **Home:** 3-0; **Road:** 0-0; **N:** 1-1

Date	Opponent	Time (ET)	TV/Result
<b>NOVEMBER</b>			
Sat. 5	SLIPPERY ROCK (ex.)	BTN.com	W, 64-47
Sat. 12	HARTFORD	BTN.com	W, 70-55
Mon. 14	RADFORD (HOFT)	BTN.com	W, 62-46
Wed. 16	LONG ISLAND (HOFT)	BTN.com	W, 77-68
<i>@ Hall of Fame Tip-off Tournament, Mohegan Sun, Uncasville, Conn.</i>			
Sat. 19	vs. #2/2 Kentucky	ESPN3	L, 85-47
Sun. 20	vs. S. Florida/Old Dominion	ESPN3	W, 53-49
Wed. 23	YOUNGSTOWN STATE	7:00 p.m.	BTN.com
Sat. 26	@ Saint Joseph's	3:30 p.m.	
Wed. 30	@ Boston College	7:15 p.m.	ESPNU
<b>DECEMBER</b>			
Sun. 4	MISSISSIPPI	6:00 p.m.	BTN
Wed. 7	LAFAYETTE	7:00 p.m.	BTN.com
Sat. 10	@ Duquesne (Consol Energy)	7:00 p.m.	
Sun. 18	MOUNT ST. MARY'S	4:00 p.m.	BTN
Wed. 21	CORNELL	7:30 p.m.	TBA
Thur. 29	@Michigan	7:30 p.m.	BTN
<b>JANUARY</b>			
Sun. 1	@Northwestern	7:00 p.m.	ESPNU
Thur. 5	PURDUE	8:00 p.m.	BTN
Sun. 8	INDIANA	12:00 p.m.	BTN
Wed. 11	@Nebraska	8:30 p.m.	BTN
Sun. 15	MINNESOTA	4:00 p.m.	BTN
Thur. 19	ILLINOIS	9:00 p.m.	ESPN2
Sun. 22	@Indiana	12:00 p.m.	BTN
Wed. 25	@Ohio State	6:30 p.m.	BTN
Tues. 31	WISCONSIN	8:00 p.m.	BTN
<b>FEBRUARY</b>			
Sat. 4	@Iowa	3:00 p.m.	ESPNU
Wed. 8	@Michigan State	6:30 p.m.	BTN
Sat. 11	NEBRASKA (CVC Day)	1:00 p.m.	ESPNU
Thur. 16	IOWA	8:00 p.m.	ESPNU
Sun. 19	@Wisconsin	1/4/6 p.m.	CBS/BTN
Sat. 25	NORTHWESTERN	9:00 p.m.	ESPNU
Wed. 29	@Purdue	6:30 p.m.	BTN
<b>MARCH</b>			
Sun. 4	MICHIGAN (Senior Day)	12/1/4 p.m.	TBA
<b>2012 Big Ten Tournament, Indianapolis, Ind.</b>			
Thur. 8	First Round		
Fri. 9	Quarterfinals		
Sat. 10	Semifinals		
Sun. 11	Championship		

All times Eastern; BTN: Big Ten Network;  
 Rank: #AP/ESPN/USATODAY

### PENN STATE (4-1; 0-0 Big Ten) vs. YOUNGSTOWN ST. (3-0; 0-0 Horizon)

WEDNESDAY, NOV. 23, 2011 @ 7:00 P.M. (ET)  
 BRYCEJORDAN CENTER (15,261), UNIVERSITY PARK, PA.  
**Frazier 4th in Big Ten in scoring, 1st in assists**



Follow Nittany Lion Basketball on Twitter: [twitter.com/GoPSUHoops](http://twitter.com/GoPSUHoops)



Follow Nittany Lion Basketball on Facebook: [facebook.com/pennstatebasketball](http://facebook.com/pennstatebasketball)

**THE GAME VS. YOUNGSTOWN STATE:** Penn State and YSU have never met. The Lions are 3-3 all-time vs. Horizon League teams. Penn State's students are on Thanksgiving break with no classes until Nov. 28. Penn State is 3-0 at home on the year and 32-4 at home vs. non-conference teams the last five seasons, with losses coming to Temple (2008), Virginia Tech (2009), Maryland (2010) and Maine (2010). The Lions are in the midst of a stretch of 4-of-5 games away from home with Wednesday's contest being the lone home game until Dec. 4.

**SHOOTING NUMBERS:** Penn State equaled its best shooting half of the season hitting 52.2 percent in the second stanza vs. South Florida, including 6-of-11 for Tim Frazier, to pull out the win. The Lions are shooting 45.8 percent from the field and 42 percent from three in the second half of games this season, led by Tim Frazier (18-34; 52.9%) and Trey Lewis (10-17; 58.8%). The Lions are struggling in the first half of games hitting just 28.9 percent, 19 percent from three, on the season, including 16.2 percent in the first half in a loss to Kentucky and 22.7 percent vs. South Florida. Jon Graham (8-15; 53.3%) and Frazier (16-38; 42.1%) are the only Lions hitting better than 30 percent in the first half. Frazier is shooting 47.2 percent on the year. The only other Lion hitting at better than 40 percent is Sasa Borovnjak (42.1%).

**FRAZIER NAMED TO TIP-OFF TOURNAMENT ALL-TOURNEY TEAM:** Tim Frazier averaged 21.0 ppg, 6.7 apg and 5.8 rpg while posting three 20-point games, two career-high points totals, back-to-back doubles and two career-best assist totals (10) in four games while leading the Lions in scoring in every game to earn All-Tournament Team honors in the Basketball Hall of Fame Tip-off Tournament the week of Nov. 14-20. Frazier logged a then career-high 26 points to go with 10 assists in a win over Long Island, his second-straight 20 & 10 double-double, before bettering his scoring mark with 27 points, 19 in the second half, in a come-from behind win over South Florida. Penn State went 3-1 in the tournament, playing in its first pre-season tournament since the 2009 Charleston Classic. The Lions opened play with victories over Radford and Long Island at home before advancing to the Mohegan Sun Arena in Connecticut where they fell to No. 2 Kentucky but bounced back to down South Florida. Penn State holds a 67-83 all-time record in in-season tournaments, claiming 10 titles and 11 second-place finishes.

**FRAZIER IN THE BIG TEN RANKINGS:** Junior guard Tim Frazier ranks fourth in the Big Ten in scoring (20.0), first in assists (6.6) and fourth in steals (2.6). He has scored in double-digits in six straight games, dating to last season, and in seven of his last eight.

**MARSHALL PROVIDES SPARK:** Jermaine Marshall came off the bench to post eight first half points on his way to a season-best 14 in Penn State's victory over South Florida. Marshall had a pair of driving three-point plays in the first half to give Penn State its first lead. He hit a pair of second-half threes to finish 5-of-8 from the floor and 2-of-5 from three while adding three steals a pair of rebounds and a block. The sophomore returned to practice on Nov. 10 and saw action in his first game of the season in Penn State's second contest vs. Radford on Nov. 14. Marshall was suspended prior to the start of pre-season practice due to a violation of team rules and had not participated in any practices or team functions prior to Nov. 10.

**TICKETS:** Nittany Lion Basketball single-game tickets can be purchased by calling 1-800-NITTANY, visiting [GoPSUsports.com](http://GoPSUsports.com) or through Ticketmaster. Single-game tickets are \$18 for the lower bowl and \$15 for upper level tickets for adults. Youth tickets (18 and under) are \$7 for the lower bowl and \$5 for upper level seating, while Penn State student tickets (University Park or branch campus) are \$5.

#### PENN STATE ATHLETIC COMMUNICATIONS:

Brian Siegrist, Associate Director of Athletic Communications/BASKETBALL  
**E-mail:** [tbs1@psu.edu](mailto:tbs1@psu.edu) **Cell Phone:** 814-777-5126 **Office:** 814-865-1757  
**Press Row:** 814-863-3294 **Twitter:** @PSUSTRETCH **Website:** [GoPSUsports.com](http://GoPSUsports.com)  
**Address:** 101 D. Bryce Jordan Center, University Park, Pa., 16802



## LAST TIME OUT

### PENN STATE'S LAST GAME SUMMARY

**Penn State 53, South Florida 49  
Nov. 20, Uncasville, Conn.**

Trailing 43-38 with 5:07 to play, Penn State employed a trapping 1-2-2 press to create a pair of turnovers and reel of a 12-1 run to seize a 50-44 lead after a Billy Oliver top of the key three with 3:03 left. USF got back within three, 50-47, with 1:47 to go but would get no closer. Tim Frazier led Penn State with a career-high 27 points, 19 in the second half. Jermaine Marshall sparked PSU with eight first half points on his way to 14. The Lions shot 52 percent in the second half after both teams struggled at less than 30 percent shooting in the first. Penn State logged 12 steals, led by three each from Frazier and Marshall, and caused 19 USF turnovers. Victor Rudd, Jr. entered the game leading USF averaging 16.5 ppg but was held to just four on 2-of-10 shooting.


## OUTLET PASSES

- Penn State is in the midst of a stretch of 4-of-5 games on the road. Wednesday's match-up with YSU will be the lone home game in that stretch.
- Tim Frazier is third in the Big Ten in scoring (20.0), first in assists (6.6), and fourth in steals (2.6). Frazier led Penn State last season with 35 steals and 173 assists. He stands 14th all-time at Penn State in career assists, 8 assists shy of 13th place.
- Frazier has scored in double-digits in every game this season and in six straight and seven of his last eight dating to last year.
- Jermaine Marshall provided a big spark in the Lions win over USF posting 8 first half points before finishing with 14 pts and three steals on 5-of-9 shooting. After a pre-season suspension, he returned to practice Nov. 10 and suited up and saw action in his first game on Nov. 14.
- Penn State's 38-point loss to Kentucky on Saturday was its worst since falling by 43 at Illinois in 2004 to a future Final Four team led by future NBA All-Star Deron Williams.
- Penn State's 26.9% shooting vs Kentucky was its lowest since hitting 20.6% in a loss to Maryland at the BJC last December.
- Penn State posted its fourth 3-0 start in the last 12 years and eighth since joining the Big Ten in 1993. The Lions have reached the post-season following each of their previous 3-0 starts since joining the Big Ten.
- Frazier posted his second-straight double-double with a career-best 26 points and career-best equaling 10 assists in Penn State's win over LIU. He is the first PSU player to post back-to-back double-doubles since Geary Claxton posted three straight in January of 2008. Frazier now has three career double-doubles, all coming with 10 assists.
- Freshman Trey Lewis led the Lions with 17 points on 3-of-6 from three in his collegiate debut.
- Senior Cam Woodyard posted career highs in points (14), rebounds (7), threes (4) and steals (4) in the season opener.
- Penn State logged 15 steals and caused 26 turnovers in the season opener, the most steals for a PSU team since 2001 and the most turnovers by a PSU opponent since 2005. Tim Frazier (5) and Cam Woodyard (4) both posted career highs in steals.
- Penn State has a 160-74 record in games vs. teams from outside of the Big Ten Conference since joining the Big Ten in the 1992-93 season.
- Patrick Chambers, 40, is the youngest coach in the Big Ten edging out Purdue's Matt Painter by about three months. Both were born in 1970 - Painter on Aug. 27 and Chambers on Dec. 13.

## GAME SET

Website: GoPSUsports.com; Roster Size: 15; Letterman Returning/Lost: 5/4; Starters Returning/Lost: 1/4


### PENN STATE PROJECTED STARTERS:

**5 MATT GLOVER** **G** 

So. ■ 6-4 ■ 210 ■ Orange, Calif.

PTS	REB	AST	MIN
5.2	2.8	0.8	24.0


**NOTES:** Started vs. South Florida...9 pts on 3 treys vs. Kentucky. Hit big 3 with 5:00 to play vs. LIU...7 points & 6 rebounds in 31 minutes in opener vs. Hartford...Transfer from Sheridan CC (Wyo)...Leads team with 27 reps on 185-pound bench press...Posted 11.8 ppg, 5.3 rpg & 3.8 apg at Sheridan CC last year.

**23 Tim Frazier** **G** 

Jr. ■ 6-1 ■ 170 ■ Houston, Texas

PTS	REB	AST	MIN
20.0	5.4	6.6	34.2
<b>CAREER</b>	468	231	279 (14th)


**NOTES:** 3rd in Big Ten in scoring, 1st in assists and 4th in steals... Career-high 27 pts vs. USF...26 pts vs. LIU...Back-to-back double-doubles & career high assist totals (26/10 asst vs. LIU & 20/10 asst. vs. Radford)...14th all-time at PSU in assists... Ranked 4th in the Big Ten in assists last year...173 assists last year are 5th best total in PSU history...Led team in steals last two years...Played in every game the last three years...3.2 GPA.

**24 Cammeron Woodyard** **G** 

Sr. ■ 6-5 ■ 210 ■ Westminster, Md.

PTS	REB	AST	MIN
6.8	5.8	0.4	26.0


**NOTES:** Leads team posting 5.8 rpg...3rd leading scorer...Has played in 81 career games with 7 career starts and 34 career threes...Posted career highs in points (14), rebounds (7), threes (4) and steals (4) in season-opener...13 points and six rebs in win over LIU...Led team in rebounding with seven vs. Radford...missed first 2 weeks of practice after having left knee scoped Oct. 3.

**35 Billy Oliver** **F** 

Jr. ■ 6-8 ■ 230 ■ Chatham, N.J.

PTS	REB	AST	MIN
5.8	4.6	0.6	25.6

**NOTES:** Career high 10 rebounds in win over LIU...16 points (4-8 from three) in exhibition win...Played in 32 games last year, his first healthy season...In 4th year with program after missing two seasons with concussions and chronic headaches...Has added 30 pounds since freshman year...Owns a 3.2 GPA in Finance...An accomplished piano player...Scored a school-record 1,300 points at Chatham HS.

**21 Sasa Borovnjak** **F** 

So. ■ 6-9 ■ 240 ■ Belgrade, Serbia

PTS	REB	AST	MIN
3.6	3.8	0.4	19.2

**NOTES:** Career-high 6 rebounds vs. Kentucky...career-best 9 pts in win over LIU...Missed 2010-11 season with a torn ACL (right knee) suffered in the first pre-season practice...Saw action in 18 games as a true-freshman, scoring in eight games...Added five pounds of muscle and is in the best shape of his career...skilled big man with a strong face-up game...Owns better than a 3.2 GPA in Marketing.

### OFF THE BENCH

#	PLAYER	P	CL	HT	PPG	RPG/APG	NOTES
3	Trey Lewis	G	Fr.	6-1	7.4	1.4/1.0	Started first four games... Led team with 17 points in season opener second on team in scoring...2011 Ohio Division I Co-Player-of-the-Year...Runner-up for "Mr. Basketball" in Ohio.
11	Jermaine Marshall	G	So.	6-4	5.0	1.0/0.6	14 pts (8 in 1st half) vs. USF Career-high 18 pts vs. Purdue last year...28 games last year (2.5 ppg)...suspended in pre-season for violation of team rules...returned to practice Nov. 10...suited up for first time on season and played in first game vs. Radford (11/14)
25	Jon Graham	F	Fr.	6-8	4.4	3.8/0.0	Best games: 6 pts & 5 rebs vs. Kentucky & LIU...2010-11 redshirt Calvert Hall's second all-time career scorer (1,670)...son of Maryland great and Philadelphia 76er Ernest Graham
43	Ross Travis	F	Fr.	6-6	3.6	5.2/0.6	Career highs 10 pts, 8 rebs vs. UK...tied for team lead in rebs... Started season-opener, led team with 7 boards...Led Chaska HS to a 24-5 record and Minnesota Section 2 finals as a senior... Rated a three-star recruit by ESPN.com and Rivals.com...Has added 20 pounds of muscle since arriving on campus
20	Nick Colella	G	Jr.	6-3	0.8	0.8/0.0	Walk-on, played two years at Penn State-Behrend played 14 minutes and scored 3 points in season-opener
32	Patrick Ackerman	F	Fr.	6-11	0.0	0.0/0.0	Ranked a three-star recruit by Rivals.com
14	Kevin Montminy	G	Fr.	6-3	20.7*	4.4*	Walk-on from nearby Penns Valley HS
34	Alan Wisniewski	F	So.	6-9	0.0	0/0	Walk-on, joined the team in October of 2010
52	Peter Alexis	F	Fr.	6-10	20.2*	10.4	Set Holy Redeemer HS records for career and game scoring (41)
2	D.J. Newbill	G	So.	6-4	9.2*	6.2*	Transfer from Southern Mississippi sitting out 2011-12 season

\* High school or previous school stats

## TEAM STATISTICAL COMPARISONS

## SERIES VS YSU

PENN STATE		YOUNGSTOWN ST
Frazier (20.0)	<b>SCORING LEADER</b>	Perry (18.7)
Woodyard (5.8)	<b>REBOUND LEADER</b>	Eargle (9.0)
Frazier (6.6)	<b>ASSIST LEADER</b>	Perry (3.7)
61.8	<b>SCORING OFFENSE</b>	69.7
60.6	<b>SCORING DEFENSE</b>	60.0
+1.2	<b>SCORING MARGIN</b>	+9.7
36.8	<b>REBOUNDS PER GAME</b>	41.7
+3.4	<b>REBOUND MARGIN</b>	+3.0
11.0	<b>ASSISTS PER GAME</b>	13.0
9.2	<b>STEALS PER GAME</b>	9.0
37.1	<b>FIELD GOAL %</b>	35.4
40.5	<b>FG% DEFENSE</b>	38.7
31.1	<b>3PT FG%</b>	36.8
34.8	<b>3PT FG% DEFENSE</b>	38.9
59.6	<b>FREE THROW %</b>	63.0
0.9	<b>ASSIST TO TURNOVER</b>	1.3
W1	<b>W/L STREAK</b>	W3

<b>OVERALL:</b>	1st Meeting
<b>LAST MEETING:</b>	-
<b>LAST RESULT:</b>	-
<b>CURRENT STREAK:</b>	-
<b>AT PSU:</b>	0-0
<b>AT USF:</b>	0-0
<b>NEUTRAL SITE:</b>	0-0
<b>CHAMBERS VS. USF:</b>	first meeting
<b>LAST 10 MEETINGS:</b>	-





**SCOUTING YSU:** The Penguins are unbeaten at 3-0 having won at Samford (76-69) and downed Notre Dame College (80-62) and UC-Riverside (53-49 OT) at home. Sophomore guard Kendrick Perry leads YSU posting 18.7 ppg. Junior 6-7 forward Damian Eargle posts 13.3 ppg and 9.0 rpg. Three YSU players posted double-digit boards in their last win over UC-Riverside led by DuShawn Brooks' 14. Ashen Ward led YSU with 15 points in that game. YSU is shooting 35.4 percent from the floor while posting 69.7 ppg. YSU opponents have hit 38.7 percent. The Penguins posted a 9-21 record last year, going 2-16 in the Horizon League.

**BOARDIN':** Penn State leads the Big Ten posting 15.2 offensive rebounds per game, nearly two more than second place Iowa (13.8). Penn State had a season-high 18 offensive rebounds vs. Kentucky.

**TRAVIS & GLOVER SHINE IN SECOND HALF VS UK:** Penn State struggled in the game, but saw two newcomers shine in the second half of the Lions' loss to Kentucky on Saturday. Freshman Ross Travis and sophomore transfer Matt Glover scored all of their career high point totals in the second half vs. Kentucky. Glover hit his first three three-point attempts of the second half before finishing 3-of-4 from three for nine points in 21 minutes. Ross Travis hit a pair of threes in the second half on his way to a career-best 10 points and eight rebounds to lead the Lions on the boards.

**3-0 START:** Penn State posted a 3-0 start for the second-straight year, but for just the fourth time in the last 12 years and eighth since joining the Big Ten conference in 1993. The Lions have reached the post season every year they have started a season 3-0 since joining the Big Ten including 2011 (NCAA), 2009 (NIT title), 2006 (NIT) and 2000 (NIT) since 2000. Penn State began last season with a 4-0 start.

**FRAZIER POSTS BACK-TO-BACK DOUBLE-DOUBLES:** Junior guard Tim Frazier posted back-to-back double-doubles, 20-point games and career-best assist totals in two outings vs. Radford and LIU. He was the first PSU player to post back-to-back double-doubles since Geary Claxton posted three straight in January of 2008. Frazier was spectacular in the Lions' win over Long Island posting a then career-high 26 points on 9-of-18 shooting and logging a career-best 10 assists for the second-straight game. Frazier went for 20 points, 10 assists, six rebounds and three steals in the Lions previous victory vs. Radford.

**FIVE GAMES IN NINE DAYS TO START:** Penn State got the 2011-12 season started with a flurry of games, plating its first five games of the season in nine days, including four as part of the Basketball Hall of Fame Tip-Off Tournament. Penn State faced two teams (Long Island and Kentucky) that played in the 2011 NCAA Tournament during that stretch.

**PENN STATE VS. THE NON-CON:** Penn State posted a 7-5 record vs. non-conference teams last year, including a 66-64 loss to Temple in the NCAA Tournament. Penn State has a 160-74 record in games vs. teams from outsiders of the Big Ten Conference since joining the Big Ten in the 1992-93 season. The Lions posted a best-ever 16-2 record vs. non-conference teams during the 2008-09 season, which included a run to the 2009 NIT title.

**FRAZIER LOOKING TO SCORE/3RD IN BIG TEN:** Tim Frazier finished fifth in the Big Ten last year averaging 5.1 assists per game while taking just 4.8 shot attempts per contest to average 6.3 ppg. Frazier averaged just 4.6 shots per game while playing in every one of Penn State's 65 games over his first two seasons. That changed in his junior campaign as the previously pass-first point-guard has been looked toward as the Lions' most potent scoring option. Frazier currently stands 3RD the Big Ten scoring 20.0 ppg and posting three 20-point games (4 career) while leading the Lions in scoring in every game. Frazier is averaging 14.4 shots and 6.8 field goals made per game while shooting a team-best 47.2 percent thus far on the season. He showed glimpses of his scoring ability in the Lions' run to the 2011 NCAA Tournament, including posting a career-high 22 points on a career most nine field goals and 13 field goal attempts vs. Michigan State in a Big Ten Tournament semifinal victory. Frazier followed that up with 15 points vs. Temple in the Lions' NCAA Tournament loss to the Owls.

**STEALING:** Penn State posted 15 steals in its season opening win vs. Hartford, the most for a Lion team since logging 18 in a 2001 NCAA Tournament victory over North Carolina. Penn State forced Hartford into 26 turnovers, the second most-ever in the Bryce Jordan Center and the most since Nicholls State had 27 in 2005. Tim Frazier (5) and Cammeron Woodyard (4) both posted career highs in steals to lead six Lions who logged a steal.

**FRAZIER GOES FOR 20 & 10:** Junior guard Tim Frazier posted his second career double-double in the Lions' victory over Radford (11/14) as he logged his second career 20-point game and equaled a career high assist total leading the team with 20 points and 10 assists and adding six rebounds and three steals. Frazier equaled his career-best 10 assists posted at Northwestern last year, also his first double-double. The 6-1, guard hit 9-of-14 from the floor. Frazier scored 11 of the Lions' final 19 points in the first half and assisted for two others as Penn State went from trailing 10-11 to a 29-20 halftime lead.

**LEWIS LEADS TEAM IN DEBUT:** Freshman Trey Lewis, the runner-up for Ohio's "Mr. Basketball" award in 2011, was outstanding in his first collegiate game leading Penn State to a season-opening victory with a team-high 17 points on 3-of-6 from three. Lewis also added four assists, two boards and two steals in the game in 31 minutes of action after starting the contest. Lewis scored 14 of his 17 points in the second half as Penn State pushed a 10-point halftime lead to as much as 26 and junior guard Tim Frazier spent much of the half on the bench with four fouls. Lewis scored 10-straight points hitting a pair of threes and two lay-ups beginning midway through the half to push Penn State's lead to 18. Lewis finished 7-of-13 from the floor.



**STANDINGS (NOV. 21)**

Team	BIG TEN		OVERALL	
	W-L	%	W-L	%
Indiana	0-0	.000	4-0	1.000
Northwestern	0-0	.000	4-0	1.000
Minnesota	0-0	.000	3-0	1.000
Illinois	0-0	.000	3-0	1.000
Michigan	0-0	.000	3-0	1.000
Wisconsin	0-0	.000	3-0	1.000
Ohio State	0-0	.000	3-0	1.000
Nebraska	0-0	.000	3-0	1.000
Penn State	0-0	.000	4-1	1.000
Purdue	0-0	.000	4-1	1.000
Iowa	0-0	.000	3-1	1.000
Michigan State	0-0	.000	2-2	.000

**BIG TEN SCHEDULE:**

**NOV. 21**

Memphis vs. Michigan 3 p.m. ESPN2  
 Gardner Webb at Indiana 6:30 p.m. BTN  
 Mount St. Mary's at Minnesota 8 p.m. BTN.com  
 North Florida at Ohio State [2] 8:30 p.m. BTN

**NOV. 22**

Duke/Tennessee vs. Michigan [10] 2/7 p.m. ESPN2  
 UMKC at Wisconsin [8] 8 p.m. BTN/BTN.com  
 Richmond vs. Illinois [4a] TBD

**NOV. 23**

Milwaukee at Michigan State 7 p.m. BTN.com  
 VMI at Ohio State 7 p.m. BTN  
 Youngstown State at Penn State 7 p.m. BTN.com  
 Western Michigan at Purdue TBD BTN.com  
 Campbell at Iowa [9] 8 p.m. BTN.com  
 Oregon at Nebraska 9 p.m. BTN  
 Rutgers/Illinois State vs. Illinois [4a] TBD  
 TBD vs. Michigan [10] TBD TBD

**SUNDAY RESULTS**

NEBRASKA def. Rhode Island, 83-63  
 PENN STATE def. South Florida, 53-49  
 Creighton def. IOWA, 82-59  
 MICHIGAN ST. (rv/rv) def. Ark-Little Rock, 69-47  
 #16/16 Alabama def. PURDUE (rv/rv), 65-56  
 NORTHWESTERN def. Seton Hall, 80-73

**2011-12 Players/Freshmen of the Week**

Nov. 14 P: Victor Oladipo, So., IND  
 F: Cody Zeller, IND & Aaron White, IOWA  
 Nov. 21 P: Drew Crawford, Jr., NU  
 F: Cody Zeller, IND

**PENN STATE IN THE BIG TEN**

**FIRST YEAR:** 1992-93 Season  
**REGULAR SEASON RECORD:** 103-218 (20th Season)  
**ROAD RECORD:** 32-129  
**HOME RECORD:** 71-89  
**MOST WINS IN A SEASON:** 12-6 (1996), 10-8 (2009), 9-9 (2011), 9-9 (1995), 8-8 (1998), 7-9 (2001), 7-11 (2008), 6-10 (2006)  
**BEST SEASON:** 12-6 mark and second place conference finish in the 1995-96 season.  
**.500+ SEASONS:** 5, last coming in 2010-11  
**LAST YEAR:** 9-9 (T4th)  
**BEST START:** 4-0 in 1995-96 season.  
**LONGEST WIN STREAK:** 4, twice, 1996 & 2009  
**LONGEST HOME WIN STREAK:** 9 (one season), 1996, 12 (two seasons) 1995 & 1996  
**MOST ROAD WINS IN A SEASON:** 3, 7 times, last 2011  
**LONGEST ROAD WIN STREAK:** 2, 3 times, last 2010

**NITTANY LIONS DID YOU KNOW?**

- Three Nittany Lions own a 3.2 GPA or better (Tim Frazier, Billy Oliver & Sasa Borovnjak)
- Tim Frazier owns a team-best 34-inch vertical
- Nittany Lions Billy Oliver and Trey Lewis are both accomplished piano players. Oliver is partial to Billy Joel tunes while Lewis is partial to jazz and classical.
- Jon Graham is the son of Maryland great and former Philadelphia 76er, Ernest Graham.
- Tim Frazier's sister, Krystal, was an All-Conference USA selection in basketball at Rice.
- Matt Glover is the fifth junior college player to play for Penn State in the last decade.
- Sasa Borovnjak's father, Zoran, played professionally in Europe and his brother, Dejan, currently plays professionally in Italy



## MEDIA INFORMATION

Penn State will hold in-person press conferences with head coach **Patrick Chambers** at **2:30 p.m. on Mondays** (with some exceptions) and **phone only teleconferences at 11:00 a.m. on Fridays** throughout the year. **Penn State players** will be available immediately following most Monday press conferences for 15-20 minutes prior to practice and at selected times throughout the week. Coach Chambers will also be available **Monday mornings at 10:40 a.m. (ET) via the Big Ten teleconference.**

## PRESS CONFERENCES

Thur. Nov. 10	2:30 p.m.	BJC Green Room
Mon. Nov. 21	2:30 p.m.	BJC Green Room
Mon. Nov. 28	2:30 p.m.	BJC Green Room
Mon. Dec. 5	2:30 p.m.	BJC Green Room
Fri. Dec. 16	2:30 p.m.	BJC Green Room
Mon. Jan. 9	2:30 p.m.	BJC Green Room
Mon. Jan. 16	2:30 p.m.	BJC Green Room
Mon. Jan. 23	2:30 p.m.	BJC Green Room
Mon. Jan. 30	2:30 p.m.	BJC Green Room
Mon. Feb. 6	2:30 p.m.	(Location TBA)
Mon. Feb. 13	2:30 p.m.	BJC Green Room
Thur. Feb. 23	2:30 p.m.	BJC Green Room
Mon. Feb. 27	2:30 p.m.	BJC Green Room
Mon. March 5	2:30 p.m.	BJC Green Room

## TELECONFERENCES

### CALL IN #: 1-866-493-5099

Fri. Nov. 18	1:00 p.m.
Fri. Nov. 25	10:00 a.m.
Fri. Dec. 2	11:00 a.m.
Fri. Dec. 9	11:00 a.m.
Fri. Dec. 30	11:00 a.m.
Wed. Jan. 4	11:00 a.m.
Fri. Jan. 13	11:00 a.m.
Fri. Jan. 20	11:00 a.m.
Fri. Feb. 3	11:00 a.m.
Fri. Feb. 10	11:00 a.m.
Fri. Feb. 17	11:00 a.m.
Fri. March 2	11:00 a.m.

### BIG TEN COACHES TELECONFERENCES

WEEKLY: Monday's 10 a.m. - 11:50 a.m ET  
**Coach Chambers @ 10:40 a.m. (ET)**  
 Call In#: 1-800-762-8779.  
 Weekly passcode e-mailed each Sunday.  
 Calls are available for play-back for 24 hours following each call.

To access the play-back, dial: 1-800-406-7325;  
 PASSCODE: 121473#

**SENIOR SUCCESS:** Penn State's lone senior, Cammeron Woodyard, spent his first three seasons playing an average of just 8.7 minutes per game (including a high of 10.4 mpg last year) and never averaged more than the 2.2 ppg he posted in 24 contests as a freshman. He showed that will all change this year when he posted career highs in points (14), rebounds (7), threes (4) and steals (4) in 27 minutes of action off the bench in Penn State's season opening victory over Hartford. This despite missing the first two weeks of practice after having minor surgery on his left knee. Woodyard hit 4-of-7 from three in the contest and tied for the team lead in rebounding. He has led Penn State in rebounding in three games this season, posting a career-best equaling seven on each occasion, and currently leads the team posting 5.8 rpg while ranking third in scoring at 6.8 ppg.

**OLIVER TWIST:** After missing his first two seasons as a Nittany Lion due to concussions and chronic exercise induced headaches and taking a total of 76 shots last year, his first full healthy season, Billy Oliver steps into a much more integral offensive role in his junior campaign and fourth season in the program. That was clearly evident in the Lions' exhibition game win as Oliver hit 4-of-8 from three and 6-of-11 from the floor to score 16 points. He hit two clutch threes late in the second half to finish with nine points and a career-high 10 rebounds in PSU's win over LIU (11/16) and made a big three to give the Lions a 50-44 lead with 3:00 to play vs. USF (11/20). Oliver entered the season as a career 23.9 percent shooter from three having hit 11-of-46 career three-point attempts. However, his confidence soared during off-season and pre-season practices spent getting numerous shot opportunities and constant encouragement to shoot from the coaching staff. Oliver posted a career-best 10 points on six shots in the Lions' season-opening win vs. Lehigh last year, but only reached that career-high shot total twice more the rest of the year.

**CHAMBERS WINS PENN STATE DEBUT:** Patrick Chambers won the first season opener of his career in his Penn State debut as the Lions downed Hartford 70-55 on Nov. 12. The 12th head coach in Penn State history, Chambers became just the second of the last six Nittany Lion coaches to win his Penn State debut joining Jerry Dunn (1996) and Bruce Parkhill (1983). Coaches Ed DeChellis (2003), Dick Harter (1978) and John Bach (1968) all fell in their debuts. Eight of Penn State's 12 head coaches have won their debut, including the Lions' first coach Burke Hermann in 1916. Chambers had been 0-2 in season opening games - having lost a pair of road season opening contests in his two seasons as head coach at Boston University.

**20th BIG TEN SEASON:** Penn State will open its 20th season of Big Ten Conference play with a pair of road games at Michigan (Dec. 29) and at Northwestern (Jan. 1). It marks the second straight season Penn State will open the Big Ten with a pair of road games (winning at Indiana and falling at Michigan last year) and the third straight season opening the Big Ten with a road game (falling at Minnesota in 2009-10). Penn State posted a 9-9 mark during

## DOUBLE-FIGURE SCORING

### Career Double-Figure games by Penn State players

Tim Frazier	15
Cammeron Woodyard	3
Jermaine Marshall	2
Billy Oliver	1
Trey Lewis	1
Ross Travis	1

## CAREER HIGHS

### SCORING

Tim Frazier	27
Jermaine Marshall	18
Trey Lewis	17
Cammeron Woodyard	14
Billy Oliver	10
Ross Travis	10
Sasa Borovnjak	9
Matt Glover	9
Jon Graham	7
Nick Colella	3
Kevin Montminy	2

### REBOUNDING

Billy Oliver	10
Tim Frazier	8
Ross Travis	8
Cammeron Woodyard	7
Matt Glover	6
Sasa Borovnjak	6
Jon Graham	5
Jermaine Marshall	3
Trey Lewis	3
Nick Colella	1
Kevin Montminy	1

### ASSISTS

Tim Frazier	10
Trey Lewis	4
Ross Travis	2
Billy Oliver	2
Sasa Borovnjak	2
Jermaine Marshall	2
Cammeron Woodyard	2
Matt Glover	1

### CHAMBERS' FORMER BU TEAM PICKED TO WIN AMERICA EAST:

The America East Conference coaches voted Boston University as the favorite to repeat as league champion in 2011-12 with six of eight possible first-place votes and 62 points in a pre-season poll. Patrick Chambers led BU to a 21-14 record last season as the Terriers captured their first league title and made their first NCAA appearance since 2002.

## LOOKING AHEAD

Mon. Nov. 21	Wed. Nov. 23	Fri. Nov. 25	Sat., Nov. 26	Mon. Nov. 28	Tue., Nov. 29	Wed., Nov. 30
Chambers Weekly Press Conference 2:30 p.m. BJC	vs. Youngstown St. @ 7:00 p.m. BTN.com	Chambers Weekly Teleconference 10 a.m.	vs. St. Joseph's @ 3:30 p.m.	Chambers Weekly Press Conference 2:30 p.m. BJC	Depart for Boston	at Boston College @ 7:25 p.m. ESPNU





# 2011-12 NITTANY LION ROSTER

## NUMERICAL

NO.	NAME	POS.	HT.	WT.	YR./ELIG.	HOMETOWN/HIGH SCHOOL
2	D.J. Newbill**	G	6-4	210	So./So.	Philadelphia, Pa./Strawberry Mansion
3	Trey Lewis	G	6-1	180	Fr./Fr.	Garfield Heights, Ohio/Garfield Heights
5	Matt Glover	G	6-4	210	So./So.	Orange, Calif./Sheridan CC/Tustin
11	Jermaine Marshall•	G/F	6-4	200	Jr./So.	Etters, Pa./Red Land
14	Kevin Montminy	G	6-3	185	Fr./Fr.	Centre Hall, Pa./Penns Valley Area
20	Nick Colella	G	6-3	195	Sr./Jr.	New Castle, Pa./New Castle/PSU-Behrend
21	Sasa Borovnjak•	F	6-9	240	Jr./So.	Belgrade, Serbia/Veritas Christian (N.C.)
23	Tim Frazier••	G	6-1	170	Jr./Jr.	Houston, Texas/Strake Jesuit
24	Cammeron Woodyard•••	G	6-5	210	Sr./Sr.	Westminster, Md./Winters Mill
25	Jon Graham	F	6-8	240	So./Fr.	Baltimore, Md./Calvert Hall
32	Patrick Ackerman	F	6-11	230	Fr./Fr.	Rutland, Mass./Worcester Academy
34	Alan Wisniewski	F	6-9	230	So./So.	Sterling Heights, Mich./Bishop Foley
35	Billy Oliver•	F	6-8	230	Sr./Jr.	Chatham, N.J./Chatham
43	Ross Travis	F	6-6	220	Fr./Fr.	Chaska, Minn./Chaska
52	Peter Alexis	F	6-10	255	Fr./Fr.	Wilkes-Barre, Pa./Holy Redeemer

• = Letters Earned

\*\* = Transfer sitting out 2011-12 season

## ALPHABETICAL

NO.	NAME	POS.	HT.	WT.	YR./ELIG.	HOMETOWN/HIGH SCHOOL
32	Patrick Ackerman	F	6-11	230	Fr./Fr.	Rutland, Mass./Worcester Academy
52	Peter Alexis	F	6-10	255	Fr./Fr.	Wilkes-Barre, Pa./Holy Redeemer
21	Sasa Borovnjak•	F	6-9	240	Jr./So.	Belgrade, Serbia/Veritas Christian (N.C.)
20	Nick Colella	G	6-3	195	Sr./Jr.	New Castle, Pa./New Castle/PSU-Behrend
23	Tim Frazier••	G	6-1	170	Jr./Jr.	Houston, Texas/Strake Jesuit
5	Matt Glover	G	6-4	210	So./So.	Orange, Calif./Sheridan CC/Tustin
25	Jonathan Graham	F	6-8	240	So./Fr.	Baltimore, Md./Calvert Hall
3	Trey Lewis	G	6-1	180	Fr./Fr.	Garfield Heights, Ohio/Garfield Heights
11	Jermaine Marshall•	G/F	6-4	200	Jr./So.	Etters, Pa./Red Land
14	Kevin Montminy	G	6-3	185	Fr./Fr.	Centre Hall, Pa./Penns Valley Area
2	D.J. Newbill**	G	6-4	210	So./So.	Philadelphia, Pa./Strawberry Mansion
35	Billy Oliver•	F	6-8	230	Sr./Jr.	Chatham, N.J./Chatham
43	Ross Travis	F	6-6	220	Fr./Fr.	Chaska, Minn./Chaska
34	Alan Wisniewski	F	6-9	230	So./So.	Sterling Heights, Mich./Bishop Foley
24	Cammeron Woodyard•••	G	6-5	210	Sr./Sr.	Westminster, Md./Winters Mill

## COACHING & SUPPORT STAFF

**Head Coach:** Patrick Chambers (1st at PSU, 3rd overall, Philadelphia University, '94)

**Associate Head Coach:** Eugene Burroughs (Richmond, '94)

**Assistant Coaches:** Keith Urgo (Fairfield, '02) & Brian Daly (Saint Joseph's, '92)

**Director of Basketball Operations:** Ross Condon (Villanova, '07)

**Strength Coach:** Brad Pantall (Penn State, '96)

**Athletic Trainer:** Jon Salazer (Penn State, '93)

**Video Coordinator:** Adam Fisher (Penn State, '06)

## BY ELIGIBILITY

**SENIORS (1)**  
24 Cammeron Woodyard••• \_\_\_\_\_ G

**JUNIORS (3)**  
20 Nick Colella \_\_\_\_\_ G  
23 Tim Frazier•• \_\_\_\_\_ G  
35 Billy Oliver• \_\_\_\_\_ F

**SOPHOMORES (5)**  
2 D.J. Newbill \_\_\_\_\_ G  
5 Matt Glover \_\_\_\_\_ G  
11 Jermaine Marshall• \_\_\_\_\_ G/F  
21 Sasa Borovnjak• \_\_\_\_\_ F  
34 Alan Wisniewski \_\_\_\_\_ F

**FRESHMEN (6)**  
5 Trey Lewis \_\_\_\_\_ G  
14 Kevin Montminy \_\_\_\_\_ G  
25 Jonathan Graham \_\_\_\_\_ F  
32 Patrick Ackerman \_\_\_\_\_ F  
43 Ross Travis \_\_\_\_\_ F  
52 Peter Alexis \_\_\_\_\_ F

## BY STATE (COUNTRY)

### PENNSYLVANIA (5)

2 D.J. Newbill  
11 Jermaine Marshall  
14 Kevin Montminy  
20 Nick Colella  
52 Peter Alexis

### MARYLAND (2)

24 Cammeron Woodyard  
25 Jon Graham

### CALIFORNIA (1)

5 Matt Glover

### OHIO (1)

3 Trey Lewis

### MASSACHUSETTS (1)

32 Patrick Ackerman

### MICHIGAN (1)

34 Alan Wisniewski

### MINNESOTA (1)

43 Ross Travis

### NEW JERSEY (1)

35 Billy Oliver

### NORTH CAROLINA (SERBIA) (1)

21 Sasa Borovnjak

### TEXAS(1)

23 Tim Frazier

## PRONUNCIATIONS

### SASA BOROVNJAK

SAW-sha BOE-rov-KNEE-yak

### CAMMERON WOODYARD

WOOD-yard

### ALAN WISNIEWSKI

WIZ-new-SKI

## QUICK FACTS

### UNIVERSITY

**Name:** The Pennsylvania State University  
**Location:** University Park, Pa. 16802  
**Founded:** 1855  
**Enrollment:** 44,034 (38,594 undergraduate)  
**Nickname:** Nittany Lions  
**Colors:** Blue & White  
**Conference:** Big Ten Conference  
**Division:** NCAA Division I  
**Home Court:** Bryce Jordan Center (15,261)  
**Interim President:** Dr. Rodney Erickson  
**Athletic Director:** Tim Curley  
**Acting Director of Athletics:** Dave Joyner, Penn State BS '71, MD '76  
**Ticket Office Phone:** 800-863-3336

### BASKETBALL HISTORY

**First Year of Basketball:** 1897  
**All-time MBB Record:** 1,354-1,046 (116th Season)  
**Record in Jordan Center:** 158-93 (16th Season)  
**NCAA Tourn.Years (Record)/Last:** 9 (9-11), 2011  
**NIT Years (Record)/Last:** 10 (22-9), 2009 NIT Champions

### COACHING STAFF

**Head Coach:** Patrick Chambers (Philadelphia U. '94)  
**Overall Record (yrs):** 46-29 (3rd year)  
**Record at Penn State:** 4-1 (1st year)  
**Basketball Office Phone:** 814-865-5494  
**Best To Reach Coach:** Through SID (814-865-1757)  
**Associate Head Coach (alma mater):** Eugene Burroughs (Richmond, '94)  
**Assistant Coaches (alma mater):** Keith Urgo (Fairfield, '02) Brian Daly (Saint Joseph's, '92)

### 2011-12 TEAM

**Letterwinners Returning/Lost:** 5/4  
**Starters Returning/Lost:** 1/4  
**Captains:** Cammeron Woodyard (Sr.), Tim Frazier (Jr.) & Billy Oliver (Jr.)

**2010-11:** 19-15 (H: 13-5; A: 3-8; N: 3-2); NCAA Rd. of 64  
**2011 Big Ten Finish:** T4th (9-9)  
**2011 Big Ten Tournament:** 3-1; Reached Final;  
**2011 NCAA Tournament:** 0-1; L, 64-66 (7) Temple  
**Notable:** Reached program's first-ever Big Ten Tournament championship game and made first NCAA Tournament appearance since 2001.



# NATIONAL RANKINGS

## AP TOP 25 (Nov. 14)

1	N. Carolina (62)	2-0	1,620
2	Kentucky	1-0	1,519
3	Ohio State (1)	1-0	1,486
4	Connecticut (2)	1-0	1,429
5	Syracuse	1-0	1,358
6	Duke	2-0	1,274
7	Florida	1-0	1,132
8	Louisville	2-0	1,122
9	Pittsburgh	2-0	1,084
10	Memphis	0-0	1,017
11	Baylor	2-0	962
12	Kansas	1-0	835
13	Xavier	1-0	806
14	Wisconsin	1-0	801
15	Arizona	3-0	607
16	Alabama	1-0	497
17	Michigan	1-0	475
18	Vanderbilt	1-1	454
19	Texas A&M	2-0	444
20	Cincinnati	1-0	410
21	Marquette	1-0	406
22	Gonzaga	1-0	311
23	California	2-0	295
24	Missouri	1-0	200
25	Florida State	1-0	132

## USA TODAY/ESPN TOP 25

1	N. Carolina (30)	2-0	774
2	Kentucky (1)	1-0	732
3	Ohio State	1-0	701
4	Connecticut	1-0	669
5	Syracuse	1-0	654
6	Duke	2-0	632
7	Louisville	2-0	538
8	Florida	1-0	519
9	Pittsburgh	2-0	502
10	Memphis	0-0	452
11	Kansas	1-0	393
12	Baylor	2-0	390
13	Wisconsin	1-0	359
14	Xavier	1-0	333
15	Alabama	1-0	261
16	Arizona	3-0	254
17	Michigan	1-0	240
18	Texas A&M	2-0	218
19	Marquette	1-0	182
20	Cincinnati	1-0	176
20	Vanderbilt	1-1	176
22	California	2-0	145
23	Gonzaga	1-0	126
24	Florida State	1-0	103
25	Missouri	1-0	88



## PENN STATE IN THE RPI

Date	Rank	RPI	SOS
-			

## PENN STATE IN THE RANKINGS

**Date**      **AP**      **COACHES**  
 Last ranked 25th in the final ESPN/USA Today Coaches Poll of the 2000-01 season (April 4, 2001). Penn State received votes in the national polls on Feb. 2, 2009. The Lions got votes in the Coaches Poll each of the four following weeks.

## PENN STATE VS. RANKED

**ON THE YEAR:** 0-1  
**2010-11:** 4-8 (wins over: #18 MSU, #16 ILL, #15 WISC, #13 WISC)  
**Last WIN vs. RANKED team:** 36-33 vs. #13 Wisconsin (3/11/11)  
**Last ROAD win:** 38-33 @ #16/18 Illinois (2/18/09)  
**Last HOME win:** 56-52 vs. #15 Wisconsin (1/29/11)  
**In the Jordan Center:** 14-31  
**Last NEUTRAL win:** 36-33 vs. #13 Wisconsin (3/11/11)  
**WIN vs. Highest Ranked in BJC:** #5 Purdue, 74-63, 2/21/98)  
**WIN vs. Highest Ranked On Road:** 66-65 at #6/6 Illinois (2/4/06)  
**WIN vs. Highest Ranked Overall:** 65-63 vs. #2/3 Michigan State (3/9/01) Big Ten Tourn.  
**Under Patrick Chambers:** 0-1 (1st season)  
**Since joining BIG TEN (1992-93):** 26-101  
**OVERALL Streak:** Lost 2  
**HOME Streak:** Lost 1

# STARTS CHART

## CAREER STARTS

PLAYER	09-10	10-11	11-12	CAREER	CONS	GAMES
#23 Tim Frazier	10	33	5	48	11	70
#24 Cammeron Woodyard	--	3	4	7	4	81
#35 Billy Oliver			5	5	5	42
#21 Sasa Borovnjak			5	5	5	23
#3 Trey Lewis			4	4	1	45
#43 Ross Travis			1	1	-	5
#5 Matt Glover			1	1	1	5

## 2011-12 SEASON

GAME	POSITION					LINE-UP
	1	2	3	4	5	RECORD
HARTFORD	23	3	43	35	21	1-0
RADFORD	23	3	24	35	21	
LONG ISLAND	23	3	24	35	21	
vs Kentucky	23	3	24	35	21	2-1
vs. South Florida	23	5	24	35	21	1-0

## FIRST SUBSTITUTION

Hartford: 19:24 (Woodyard)  
 Radford: 16:47 (Glover)  
 Long Island: 15:50 (Graham)  
 Kentucky: 17:05 (Glover)  
 South Florida: 16:46 (Marshall)

**NINE MAN ROTATION:** Patrick Chambers has been playing a nine-man rotation in Penn State's first five games with nine Lions averaging 16.0 minutes per game or better on the season.

the Big Ten regular season last year to finish in a tie for fourth place. The nine wins marked the fifth time Penn State posted a .500 or better record in Big Ten play and tied for Penn State's third best Big Ten record ever. It marked the second time in the last three seasons Penn State finished fourth in the Big Ten regular season. Penn State's best Big Ten finish came in 1996 as the Lions went 12-6 to finish second in the conference.

**CHAMBERS ERA BEGINS:** Patrick Chambers was introduced as the 12th head coach in Nittany Lion basketball history on Monday, June 6, shortly after the departure of Penn State alumnus and eight-year head coach Ed DeChellis for the Navy head job in late May. Chambers' introduction took place in front of more than 300 fans and supporters described a "less an introduction than a passionate call to arms," by local media. Chambers wasted little time connecting with the Penn State fan base far and wide. He ordered a pair of golf carts and began making spur-of-the-moment trips around the Penn State campus distributing t-shirts and his infectious energy. He visited amusement parks, pep rallies, student groups, classes, threw out the first pitch for the State College Spikes and even donned a Penn State football jersey and helmet to fire up the famed "Paternoville" student campout just prior to the clash of Joe Paterno's football team with Alabama. He was seemingly everywhere in his first four months on the job, most importantly the recruiting trail, and showed no signs of slowing down.

**CLIMBING CAREER CHARTS:** Tim Frazier's back-to-back games with 10 assists vs. Radford and Long Island moved him into 14th all-time in Penn State history. He passed Mike Walker's mark of 258 (2005-08) and Mike Lang (267, 1980-83) to move into 14th place. He is on pace to rank among the top 10 all-time in assists at Penn State by the end of his junior season.

## PENN STATE CAREER ASSISTS

ASST	APG	
1.	600	4.7 _____ Freddie Barnes, 1989-92
7.	443	3.4 _____ Titus Ivory, 1997-2001
8.	418	3.9 _____ Ben Luber, 2004-07
9.	385	3.7 _____ Dwight Gibson, 1982-85
10.	350	4.8 _____ Ron Brown, 1972-74
11.	331	3.6 _____ Tony Ward, 1985-88
12.	291	2.5 _____ Pete Lisicky, 1994-98
13.	287	2.3 _____ Brandon Watkins, 2000-03
14.	279	- _____ <b>TIM FRAZIER, 2010-12</b>
15.	267	4.2 _____ Mike Lang, 1980-83





**STILL DISHIN':** Despite a new emphasis on scoring, Tim Frazier posted career-best equaling 10 assist outings in Penn State's victories over Radford (11/14) and Long Island (11/16) and leads the Big Ten posting 6.6 apg. He has led Penn State in assists in each of the first five games. Entering the season, he ranked third among Big Ten returners in assists after posting an average of 5.1 per game last year. Frazier's 173 assists last year rank as the fifth best season mark in Penn State history and

**FRAZIER & OLIVER LEAD LIONS' EXHIBITION WIN:** Juniors Tim Frazier and Billy Oliver paced the Nittany Lions with 19 and 16 points, respectively, in Penn State's 64-47 exhibition game victory over Slippery Rock last Saturday. However, what first-year head coach Patrick Chambers was more concerned with was the Lions' hustle and energy and he was pleased to see his Nittany Lions record 18 charted dives in the game. The Lions recorded 13 of those 18 dives in the second half as Penn State picked up the defensive intensity. Penn State recorded 13 steals in the game and caused 25 Slippery Rock turnovers helping the Lions pull-away to as much as a 21-point second half lead despite shooting just 40 percent from the floor and 7-of-26 from three. The Lions scored 24 points off turnovers, out-scored SRU 16-0 on second chance points, and got 18 more field goal attempts (57-39) in the game. Frazier added a team-high seven assists and six rebounds to his point total. Oliver hit 4-of-8 from three. Freshman guard Trey Lewis added 10 points, while fellow freshman Ross Travis led the team with eight rebounds and numerous hustle plays.

**FRAZIER STEPS INTO LEADERSHIP ROLE:** Junior guard Tim Frazier took his game to a higher level in Penn State's 2011 run to the NCAA Tournament as he averaged 10.0 ppg, 5.9 apg and 4.6 rpg over the final 11 games, including a career-best 22-point, eight-rebound, six-assist effort in the Lions' Big Ten Tournament semifinal win over Michigan State. With the graduation of four senior starters, Frazier entered the season the most experienced Nittany Lion having played in every game over the previous two seasons and started 43.

**CAPTAINS:** Penn State named senior Cammeron Woodyard and juniors Tim Frazier and Billy Oliver captains at the beginning of pre-season practice.

**WOODYARD RETURNS TO ACTION:** Cammeron Woodyard was sidelined for four weeks after undergoing arthroscopic surgery to clean up loose material in his left knee on Oct. 3. Woodyard returned to full participation in Penn State practices on Monday, Oct. 31. He posted career highs in points (14), rebounds (7), threes (4) and steals (4) in Penn State's opener.

**PENN STATE RECORD WHEN:**

	09-10	10-11	11-12	Last 5 Yrs
At Home	7-9	13-5	3-0	53-21
Road	3-8	3-8	-	14-30
Neutral	1-3	3-2	1-1	9-12
vs. Ranked	0-8	3-6	-	9-23
Decided by 3 points or less	2-7	4-4	-	13-13
Decided by 4-10 points	1-7	7-4	2-0	28-21
Decided by 11-19 points	6-4	6-5	2-0	23-18
Decided by 20+ points	2-2	2-2	0-1	12-11
Overtime/Double OT (0-1)	0-1	0-0	-	3-2
Leading at HALF	9-4	13-1	2-0	57-8
Tied at HALF	1-2	2-1	2-0	8-6
Trailing at HALF	1-14	4-12	0-1	11-48
Leading with 5:00 TO PLAY	11-4	17-1	3-0	62-8
Tied with 5:00 TO PLAY	0-0	0-1	-	0-1
Trailing with 5:00 TO PLAY	0-16	0-13	1-1	12-53
PSU SHOOTS 45%+	8-5	10-6	1-0	44-15
PSU SHOOTS Less Than 45%	3-15	9-9	3-1	31-49
PSU SHOOTS better than OPP	10-4	14-2	3-0	60-7
OPP SHOOTS 45%+	2-11	2-12	0-1	18-46
OPP SHOOTS Less Than 45%	9-8	17-1	4-0	48-15
PSU SHOOTS 40%+ FROM 3PT	6-5	5-3	1-0	31-13
PSU OUT-REBOUNDS Opp	9-11	15-4	4-0	56-24
OPP OUT-REBOUNDS or EVEN	2-9	4-11	0-1	20-39
PSU FREE THROW% 70%+	4-10	10-8	-	28-27
PSU Has MORE FT ATTS	8-8	15-4	3-0	66-19
OPP Has MORE OR = FT ATTS	3-12	4-11	1-1	10-44
PSU Has 15 OR FEWER TOs	11-17	18-15	4-1	73-55
PSU Has LESS TOs THAN OPP	4-5	9-8	4-0	36-23
PSU SCORES 70+	7-2	4-1	2-0	33-7
PSU SCORES 69 OR LESS	4-18	14-14	2-1	42-56
OPP SCORES 70+	2-7	1-9	0-1	9-34
OPP SCORES 69 OR LESS	7-11	18-6	3-0	62-27
OPP SCORES 59 OR LESS	5-0	11-0	2-0	37-2
OPP SCORES 49 OR LESS	1-1	5-0	2-0	15-1
In NOVEMBER	5-2	5-1	4-1	23-8
In DECEMBER	3-3	3-3	-	17-8
In JANUARY	0-8	5-4	-	10-21
In FEBRUARY	3-4	3-5	-	13-17
In MARCH	0-3	4-3	-	12-10
In APRIL	0-0	0-0	-	1-0
In TOURNAMENTS	0-1	3-2	1-1	13-9
ON TELEVISION	8-18	15-12	-	59-55
vs. BIG TEN	3-16	12-10	-	33-47
vs. ACC	1-1	0-2	-	-
vs. A-10	0-1	2-1	-	-
vs. AMERICAN EAST	1-0	0-1	1-0	-
vs. BIG EAST	0-0	0-0	1-0	-
vs. BIG SOUTH	0-0	0-0	1-0	-
vs. BIG 12	0-0	0-0	-	-
vs. COLONIAL	0-1	0-0	-	-
vs. CONFERENCE USA	0-1	0-0	-	-
vs. HORIZON	0-0	0-0	-	-
vs. IVY LEAGUE	1-0	0-0	-	-
vs. MID AMERICAN	0-0	0-0	-	-
vs. METRO ATLANTIC	0-0	1-0	-	-
vs. MCC	0-0	0-0	-	-
vs. MID EASTERN ATHLETIC	0-0	0-0	-	-
vs. MOUNTAIN WEST	0-0	0-0	-	-
vs. NEC	2-0	2-0	1-0	-
vs. OHIO VALLEY	0-0	0-0	-	-
vs. PATRIOT	1-0	1-0	-	-
vs. SOUTHEASTERN	0-0	0-1	0-1	-
vs. SOUTHLAND	1-0	0-0	-	-
vs. SOUTHERN	1-0	1-0	-	-
vs. SUN BELT	0-0	0-0	-	-

**NOTING  
THE JORDAN CENTER**

**RECORD IN BJC:** 158-92 (17th Season) (62%) (250 games)

**OPENED:** January 11, 1996 vs. Minnesota (W, 76-51)

**CAPACITY:** 15,261

**MOST CONTESTS IN A SEASON:** 20 (2008-09)

**100TH WIN:** 56-55 over Hartford, Dec. 6, 2006

**LONGEST WIN STREAK:** 14; Jan. 11, 1996-Dec. 27, 1996

**SEASON HOME WINS RECORD:** 17-3 (2008-09)

**SEASON BEST START:** 8-0, 2007-08 & 1996

**TOP SEASON WIN MARKS:** 17-3 (2008-09); 13-4 (2007-08); 13-4 (1999-2000); 13-5 (2010-11); 12-2 (1997-98);

**TOP SEASON WIN PERCENTAGES:** 100.0, 8-0 (1996); .862, 17-3 (2008-09); .857, 12-2 (1997-98);

**TOP 10 CROWDS:**

- 15,472 vs. Purdue, 2/1/1997
- 15,464 vs. Indiana, 1/26/1997
- 15,455 vs. Ohio State, 3/1/1999
- 15,435 vs. Ohio State, 2/27/1999
- 15,420 vs. Indiana, 1/8/2000
- 15,403 vs. No. 1 Ohio State 3/1/2011
- 15,389 vs. Northwestern, 2/15/1997
- 15,377 vs. Michigan State, 2/24/2001
- 15,355 vs. Indiana, 1/31/1999
- 15,232 vs. Indiana, 2/3/2001

**TOP 2010-11 CROWD:** 15,403 vs. No. 1 Ohio State, 3/1

**TOP 2009-10 CROWD:** 14,017 vs. Michigan State, 2/13

**TOP 2008-09 CROWD:** 15,035 vs. Indiana, 2/28

**TOP 2007-08 CROWD:** 11,159 vs. Michigan State, 2/2

**TOP 2006-07 CROWD:** 13,347 vs. Michigan State, 1/20



**THE LAST TIME:**

BEAT at TOP 25 Team	3/11/11 vs. #13 Wisconsin (36-33)
BEAT at TOP 10 Team	2/1/09 @#9 Michigan State (72-68)
BEAT at TOP 5 Team	3/18/01 vs. #5 North Carolina (NCAA) (82-74)
BEAT a BIG TEN TEAM by 20+	2/13/11 vs. Northwestern (65-41)
WON in OVERTIME	3/17/09 vs. George Mason (77-73)
LOST in OVERTIME	1/24/10 @Wisconsin (79-71)
PLAYED DOUBLE OVERTIME	3/7/09 @Iowa (L, 75-67)
Came From 10+DOWN TO WIN	1/29/11 vs. #15 Wisconsin (-13) (56-52)
SCORED 100+	12/19/09 vs. Gardner-Webb (104)
ALLOWED 100+	12/3/06 vs. VMI (111)
SCORED 90+	12/19/09 vs. Gardner-Webb (104)
ALLOWED 90+	3/3/07 @Indiana (94)
SCORED 80+	2/17/10 @Northwestern (81)
SCORED 80+ IN BIG TEN	2/17/10 @Northwestern (81)
SCORED UNDER 50	11/20/11 vs. Kentucky (47)
SCORED UNDER 40	3/11/11 @ BTT v. Wisconsin (36)
SCORED 60+ IN A HALF	12/19/09 vs. Gardner-Webb (60 2nd)
SCORED 50+ IN A HALF	12/19/09 vs. Gardner-Webb (60 2nd)
BENCH Scored 50+	12/7/05 vs. UMKC (50)
OPP SCORED 50 OR LESS	11/20/11 vs. USF (49)
CONSECUTIVE OPP BELOW 50	2009 @Temple (45) & UMBC (42)
OPP SCORED 40 OR LESS	3/11/11 @ BTT v. #13 Wisconsin (33)
CONSECUTIVE OPP BELOW 40	2007 vs. Princeton (38) & Denver (39)
OPP SCORED 10 OR LESS IN HALF	12/15/07 Denver (10)
OPP SHOT BELOW 30%	11/29/08 vs. Towson (29.4)
SHOT 60%+ FG	11/25/09 vs. Sacred Heart (63.8)
SHOT 60%+ FG IN BIG TEN	1/3/06 vs Northwestern (64.0)
SHOT 50%+ FG IN BIG TEN	2/24/11 @ Northwestern (56.5)
OPP SHOT 60%+	1/11/09 @Minnesota (62.5)
SHOT 70% IN HALF	12/30/06 vs. VMI (70.3, 26-37)
SHOT UNDER 30%	11/19/11 vs. Kentucky (26.9%, 18-67)
SHOT 70%+ FROM 3PT	12/28/05 vs. St. Francis (75.0, 9-12)
SHOT 60%+ FROM 3PT	11/28/10 vs. Furman (12-19, 63.2%)
SHOT 50%+ FROM 3PT	2/20/11 @Wisconsin (11-22, 50%)
SHOT 95%+ FROM FT	3/13/11 vs Ohio State (9-9, 100%)
SHOT 85%+ FROM FT	3/11/11 vs. Wisconsin (87.5, 7-8)
SHOT 50% OR LESS FT	2/10/11 @Michigan State (36.4, 4-11)
50+ REBOUNDS	11/28/09 vs. UMBC (52)
45+ REBOUNDS	11/16/10 vs. St. Joe's (45)
20+ OFFENSIVE REBS	12/1/10 vs. Maryland (20)
20 OR LESS REBOUNDS	1/20/07 vs. Michigan State (19)
OPP LESS THAN 20 REBS	1/19/11 vs. Purdue (19)
15+ STEALS	11/12/11 vs. Hartford (15)
10+ STEALS	11/20/11 vs. USF (12)
30+ ASSISTS	12/30/06 vs. VMI (36)
20+ ASSISTS	2/17/10 @Northwestern (21)
5 OR LESS TURNOVERS	2/17/11 vs. Minnesota (5)
20 + TURNOVERS	3/1/08 vs. Michigan (20)
OPP 25+ TURNOVERS	11/12/11 vs. Hartford (26)
WON NON-CON ROAD	11/30/09 @Virginia (69-66)
WON BIG TEN ROAD	3/6/11 @Minnesota (66-63)
LOST AT HOME	3/1/11 vs. #1 Ohio State (82-61)
LOST NON-CON HOME	12/21/10 vs. Maine (74-64)
PLAYER 40+ POINTS	Jesse Arnelle (40) vs. Temple, 1/29/1955
PLAYER 35+ POINTS	Pete Lisicky (35) vs. Penn, 12/9/1995
PLAYER 30+ POINTS	Talor Battle (31), vs. Michigan, 2/6/11
3 PLAYERS 20+ POINTS	Claxton, Cornley, Hassell vs. VMI, 12/30/06
2 PLAYERS 20+ POINTS	Battle & Frazier @BTT v. MSU (3/12/11)
6+ PLAYERS 10+ POINTS	12/19/09 vs. Gardner-Webb (6)
4+ PLAYERS 10+ POINTS	2/24/11 @ Northwestern (4)
10 PLAYERS 10+ MINUTES	12/19/09 vs. Gardner-Webb (10)
PLAYER 20+ REBOUNDS	A. Johnson (20) vs. Sacred Heart, 11/27/04
PLAYER 15+ REBOUNDS	G. Claxton (15) @Purdue, 2/18/06
PLAYER 10+ ASSISTS	Tim Frazier (10) vs. Long Island (11/16/11)
PLAYER 5+ STEALS	Tim Frazier (5) vs. Hartford, 11/12/11
PLAYER 5+ BLOCKS	Jeff Brooks (5) vs. Lehigh, 11/12/10

**CHAMBERS' FIRST TEAM:** Penn State coach Patrick Chambers will look to mesh seven Nittany Lion newcomers who could see action this year (including five true freshmen, a transfer and a redshirt freshman) with seven returners, five of which have previously seen action in a Penn State uniform. Just four returning players (Tim Frazier, Billy Oliver, Cammeron Woodyard and Jermaine Marshall) saw action last year. Redshirt sophomore Sasa Borovnjak will return after missing last year with a torn ACL. Penn State will look to replace nearly 80 percent of its scoring and 70 percent of its rebounding lost when five seniors graduated from a team that went 19-15 last year and reached the NCAA Tournament for the first time since 2001. Frazier leads the returners having started 43 career games and played in every game the last two years. Frazier averaged 6.3 points and 3.9 rebounds per game last year and ranked fourth in the Big Ten with 5.1 assists per game. Frazier was big in Penn State's run to the 2011 Big Ten Tournament championship game and NCAA Tournament as he averaged 10 points, 5.9 assists and 4.6 rebounds per game over the final 11 games of 2010-11.

**"HOOPS MADNESS" ROCKS REC HALL:** It was a fabulous night in Rec Hall on Wednesday, Nov. 2 when the Nittany Lion and Lady Lion basketball teams hosted "Hoops Madness" with a special performance by top selling rap artist *Fabulous*. The Brooklyn-born *Fabulous* has twice been nominated for a Grammy and has sold more than three million albums with numerous chart topping hits since his debut release in 2001. The venerable former home of Penn State basketball once again shook with hoops hysteria as a large crowd turned out to see New Nittany Lion coach Patrick Chambers and the 2011-12 Nittany Lions and fifth-year Lady Lion coach Coquese Washington and a 2011-12 Lady Lion teams introduced. Fans were treated to numerous contests, highlight videos, a slam-dunk contest and one fan in attendance was given a chance to make a half court shot to win \$10,000. Nittany Lion guard Tim Frazier and Lady Lion Maggie Lucas helped instruct the contestant and made back-to-back half court shots on their first attempts to electrify the crowd.

**CHAMBERS HITS THE GROUND RUNNING:** Coach Chambers wasted no time in getting to know his first Penn State team as he logged 10,500 miles in his first eight days on the job traveling from coast-to-coast to visit current Penn State players and incoming freshmen and their families. Chambers traveled from Massachusetts to California, Minnesota to Texas as he met with every player except Sasa Borovnjak who was at home in Serbia.

**GET ON THE FLOOR:** Patrick Chambers places an emphasis on "dives" during a basketball game and has his staff chart them with a goal of achieving at least 14 "dives" per game. The Nittany Lions achieved that goal in their exhibition game recording 18 "dives," 13 of which came in the second half. Chambers has established an "Attitude Club" in which players attempt to record enough hustle points during practices to become a member. Penn State charts "Attitude Points" during every practice and announces winners at the end of every practice. Modeled after similar programs used by longtime NBA coach Pat Riley and Chambers' mentor, Villanova's Jay Wright, the club charts hustle plays, extra passes, charges drawn, dives on the floor.

**BJC GETS NEW SCOREBOARD:** Penn State partnered with ANC Sports Enterprises to place a new state-of-the-art center hung scoreboard in the Bryce Jordan Center. The board, weighing approximately 22,000 pounds, features high-definition quality visuals across approximately half a million pixels. The new scoreboard, which was installed in October, features four Mitsubishi Electric 10mm Diamond Vision video screens each measuring approximately 12' high x 16' wide and two 16mm Diamond Vision ribbon displays, one on top of the video screens and one at the bottom of the structure. The new center-hung system will include over 1100 square feet of dynamic video capabilities which will provide real-time statistics, team logos, crowd prompts, animated team introductions, student athlete videos and live footage of events at the arena.

**STAFF TIES:** Patrick Chambers began forming his first Penn State coaching staff by naming his former Episcopal Academy high school teammate Eugene Burroughs as associate head coach, the first of three assistants with strong ties to Philadelphia. Chambers and Burroughs both played for legendary coach Dan Dougherty in Philadelphia in the late 80's early 90's. Burroughs previously had worked as associate head coach at Navy. Former Villanova assistant Keith Urgo also joined the staff as an assistant. The pair worked together on Villanova's 2009 NCAA Final Four staff and Urgo worked under Jay Wright for four seasons. Brian Daly followed Chambers from Boston University where he was associate head coach under Chambers. Daly is a former Philadelphia high school standout and player at Saint Joseph's and was a highly successful high school coach at his alma mater, Monsignor Bonner HS in Philadelphia.

**FAMILIAR FOES IN 2011-12:** Penn State will face four teams on the 2011-12 season that head coach Patrick Chambers faced last year while leading Boston University. The Nittany Lions will begin the Chambers' Era by facing a very familiar foe in Hartford at the Bryce Jordan Center. Chambers and BU posted a 2-1 mark in three meetings vs. Hartford last year posting victories of 61-50 and 55-49 later in the year after falling, 59-55, in the initial meeting. Chambers went 5-1 in six meetings with Hartford while at BU. The Lions will also face 2011 NCAA Final Four participant Kentucky in the Hall of Fame Tip-off Classic. Chambers and BU fell to Kentucky, 91-57, last year in Lexington. BU also downed Cornell (66-61) and Saint Joseph's (85-79), which appear on the Lions' 2011-12 schedule.





# PATRICK CHAMBERS

**HEAD COACH**  
**1ST SEASON**  
**PHILADELPHIA UNIVERSITY, '94**

## WHAT THEY ARE SAYING

### CAREER HIGHLIGHTS

- Led Boston University to the 2011 NCAA Tournament – the program's first NCAA berth since 2002.
- Led BU to the 2011 America East Tournament Title.
- Posted back-to-back 21-win seasons at BU – the only coach in BU history to earn 20 wins in each of his first two seasons and the fastest to earn a conference championship.
- 42-28 record in two seasons as head coach at BU, leading the Terriers into the post-season both years.
- Associate head coach at Villanova's during the Wildcats 2009 NCAA Final Four run.
- Five seasons on Villanova staff under Jay Wright – helped lead the Wildcats to a 126-45 record (.737), five NCAA Tournament appearances, four NCAA Sweet 16 appearances, a school record 30 wins in 2008-09, won at least 22 games every year.
- Instrumental in building Villanova's 2009 recruiting class which was ranked No. 3 in the nation by ESPN.com.
- Four players coached at Villanova played in the NBA.
- Recruited four McDonald's All-Americans to Villanova.

### NOTABLE

- The youngest of 12 siblings (nine boys, three girls)
- The youngest coach in the Big Ten.
- Three siblings are Penn State graduates
- Worked for 10 years in family printing business in Philadelphia.
- Played for 2011 Naismith Basketball Hall of Fame inductee Herb Magee at Philadelphia University. Magee, also known as "The Shot Doctor," is college basketball's all-time victories leader (922).
- Began his career at Philadelphia U. as a walk-on and went on to become the school's all-time leader in assists.
- Played for legendary Philadelphia coach Dan Dougherty at Episcopal Academy. Dougherty posted 621 victories at Episcopal, the most of any high school coach in Philadelphia history.

"Penn State and Pat Chambers are a perfect match - class, pride and integrity. Pat is a talented coach and an outstanding recruiter.

I watched him interact with people and I just liked him, liked his energy. I remember seeing him come in from work and into practice in his shirt and tie (at Episcopal). I remember thinking, 'Man, this guy's rushing in from work, coming on the court, bringing energy.' I just really like his passion. As soon as we got him in here, I could tell he was gonna be outstanding. Very detailed, very organized, a relentless worker and a lot of passion."

**- Jay Wright, Villanova Head Basketball Coach**

"It was clear right away he had a little something extra you don't find in a lot of guys. He wasn't a scoring threat at all. But, I had scorers. But, his ability to lead and defend and do all the things on and off the court that coaches need made me fall in love with the kid. Once he got the job, he never relinquished it."

**- Herb Magee, Philadelphia University Head Basketball Coach, NCAA All-time Victories Leader 2011 Naismith Basketball Hall of Fame inductee**

"He was selling for the family business and doing well. But, I just had that feeling he would make a great coach. He was one of those people who love the game so much and know the game so well. He had that Philly ability to recognize situations and know what people should be doing and know what to do with the ball and that intense desire to win. I loved the way he interacted with the players. He's quick to jump on them if they're not doing everything exactly the right way. There are no short-cuts with him."

**- Dan Dougherty, Former Episcopal Academy Head Coach**

"Pat Chambers has been fortunate enough to play for and work for some of the most successful coaches in the Philadelphia area – long-time coach Dan Dougherty at celebrated Episcopal Academy, Naismith Hall of Fame coach Herb Magee from Philadelphia University and 2008 NABC National Coach of the Year Jay Wright from Villanova.

**- Dick "Hoops" Weiss, New York Daily News**

"It's hard to imagine Penn State finding a more promising coach and better fit than Patrick Chambers. It certainly helps that he worked for one of the best, classiest coaches in Jay Wright, but Patrick showed in his two years at BU that he could stand on his own as a coach. Penn State has every reason to be thrilled about its basketball future."

**- Mike DeCourcy, Sporting News/Big Ten Network**

"Before I joined ESPN.com, I worked in Philadelphia and watched Chambers tutor alongside Villanova coach Jay Wright. His passion for basketball and his eagerness was so overwhelming that more than one person asked, 'Is this guy for real?' The implication being that Chambers' personality might be somewhat disingenuous. It is not. It is who he is.

**- Dana O'Neil, ESPN.com**

"Chambers to Penn State' is bigger news in Philadelphia than just a Philly guy getting a job – and relevant right now, not just in the winter – because every Division I coach in Philadelphia knows Chambers is at Penn State...Chambers can walk into any gym in this city and find people he knows. He has relationships with virtually all the AAU movers and shakers."

**- Mike Jensen, Philadelphia Inquirer**

## CHAMBERS COACHING RECORD

YEAR	OVERALL	PCT.	CONF.	PCT.	FINISH	POST-SEASON
<b>BOSTON UNIVERSITY</b>						
2009-10	21-14	.600	11-5	.688	4th/2nd in Tourn.	CBI Semifinals
2010-11	21-14	.600	12-4	.750	2nd/Won Tourn.	NCAA 2nd Round
<b>PENN STATE</b>						
2011-12	4-1	1.000	-	-	-	-
<b>TOTALS</b>						
2 Years	46-29	.600	23-9	.718	1 Tournament Title	1 NCAA

## CHAMBERS FILE

**Family:** Wife: Courtney; Daughter: Grace; Son: Ryan  
**Hometown:** Newtown Square, Pa.  
**College:** Philadelphia University, 1994  
**Date of Birth:** Dec. 13, 1970  
**Hired At Penn State:** June 6, 2011  
**Overall Record:** 46-29 (2 years)  
**Post-Season Appearances:** 2  
**Record At Penn State:** First Year

**Collegiate Coaching Experience:**  
 1995-96 Delaware Valley (PA) College (Asst)  
 2004-05 Villanova (Dir. Ops)  
 2005-08 Villanova (Asst.)  
 2008-09 Villanova (Assoc. Head Coach)  
 2009-11 Boston University (Head Coach)  
 2011-present Penn State (Head Coach)

**Playing Experience:**  
 1991-94 Philadelphia University  
 All-time career assist record

- Patrick Chambers traveled 10,500 miles visiting players in his first eight days on the job at Penn State
- Patrick Chambers is the youngest of 12 children
- Three of Patrick Chambers 11 siblings graduated from Penn State and he has a nephew, Patrick Flanagan, on the Nittany Lion football team.
- Patrick Chambers spent 10 years as a highly successful salesman and part owner of his family's printing business in Philadelphia.
- Patrick Chambers was in collegiate coaching just five years before earning his first head coaching position at Boston University.
- Patrick Chambers played in college for 2011 Naismith Hall of Fame inductee Herb Magee, also known as "The Shot Doctor."
- Patrick Chambers helped lead Villanova to five straight NCAA Tournament appearances and the 2009 Final Four.
- Patrick Chambers was instrumental in bringing the No. 3 ranked recruiting class in the nation, according to ESPN.com, to Villanova in 2009
- Patrick Chambers older brother, Tim, was the 1984 Ivy League Player of the Year in football and led Penn to three-straight Ivy League titles. He is now a writer, producer and director and just released the film "Mighty Macs" about the Immaculata women's 1972 NCAA championship team.
- Patrick Chambers older brother, Paul, was a three-year starter at point guard for the Penn Quakers.



## PENN STATE RADIO NETWORK

Entering his 29th season, Steve Jones handles the play-by-play for Nittany Lion basketball and is joined by nationally respected Philadelphia Daily News sportswriter Dick Jerardi. Broadcasts begin 30 minutes prior to tipoff with the "Patrick Chambers Pregame Show." Game telecasts as well as "The Nittany Lion Hotline" call-in show, which airs each Thursday during basketball season, can both also be heard via [GoPSUsports.com](http://GoPSUsports.com)

WEAB (790 AM)	Allentown/Bethlehem/Easton
WVAM (1430 AM)	Altoona
WILK (103.1 FM)	Avoca
WAYC (1600 AM)	Bedford
WISR (680 AM)	Butler**
WCPA (900 AM)	Clearfield
WZDB (95.9 FM)	DuBois/Sykesville
WPSE (1450 AM)	Erie
WFRA (1450 AM)	Franklin
WGET (1320 AM)	Gettysburg
WHVR (1280 AM)	Hanover**
WHGB (1400 AM)	Harrisburg
ESPN RADIO (95.3 FM)	Harrisburg
WKZN (1300 AM)	Hazleton
WLAK (103.5 FM)	Huntingdon
WLPA (1490 AM)	Lancaster
WNPV (1440 AM)	Lansdale
WLBR (1270 AM)	Lebanon
WMRF (95.7 FM)	Lewiston
WMGW (1490 AM)	Meadville
WJST (1280 AM)	New Castle/Sharon**
WVNJ (1160 AM)	New York Metro**
WBYP (96.7 FM)	Olean, NY
WNTP (990 AM)	Philadelphia
KQV (1410 AM)	Pittsburgh
WPPA (1360 AM)	Pottsville
WRAW (1340 AM)	Reading
WBZU (910 AM)	Scranton
WYGL (1240 AM)	Selinsgrove
WBYP (95.3 FM)	Smethport
WQWK (1450 AM)	State College
WKOK (1070 AM)	Sunbury
WTIV (1230 AM)	Titusville
WTZN (1310 AM)	Troy
WTRN (1304 AM)	Tyrone
WTRN (100.7 FM)	Tyrone
WNAE (1301 AM)	Warren
WNBT (104.5 FM)	Wellsboro
WNBQ (92.3 FM)	Wellsboro/Mansfield
WILK (980 AM)	Wilkes-Barre
WRAK (1400 AM)	Williamsport
WRKK (1200 AM)	Williamsport/Hughesville
WSBA (910 AM)	York
WJST (1280 AM)	Youngstown, Ohio

\*\* Carries only partial schedule

## SEASON SUPERLATIVES

- Penn State posted its seventh-straight season opening win a victory over Hartford.
- Penn State posted its fourth 3-0 start in the last 12 years and eighth since joining the Big Ten in 1993. The Lions have reached the post-season following each of their previous 3-0 starts since joining the Big Ten.

## SEASON OUTLOOK NOTES

- Juniors Tim Frazier and Billy Oliver are expected to step to the forefront as scoring options for Penn State after averaging 6.3 and 2.3 ppg, respectively, last season.
- Penn State graduated players that accounted for 80% of the scoring and nearly 70% of the rebounding from last year's NCAA Tournament team.
- Five senior graduates from the 2010-11 team accounted for 432 career starts and 581 career games played. Among them was all-time leading scorer Talor Battle who posted 2,213 points on his career and led the Lions in scoring each of the past four seasons.
- Tim Frazier leads all returners having started 45 career games (33 of 34 games last year) and played in every game in the last three seasons.
- Penn State returns five players with experience in a Penn State uniform (Frazier, Sasa Borovnjak, Jermaine Marshall, Billy Oliver and Cammeron Woodyard).





PENN STATE SEASON HIGHS

**SCORING**

Frazier	27 vs. USF
Lewis	17 vs. Hartford
Marshall	14 vs. USF
Woodyard	14 vs. Hartford
Travis	10 vs. Kentucky
Oliver	9 vs. LIU
Borovnjak	9 vs. LIU
Glover	9 vs. Kentucky
Graham	7 vs. Radford
Colella	3 vs. Hartford
Travis	2 vs. LIU
Montminy	2 vs. Kentucky

**REBOUNDING**

Oliver	10 vs. LIU
Travis	8 vs. Kentucky
Woodyard	7 (3x) last vs. USF
Borovnjak	6 vs. Kentucky
Glover	6 vs. Hartford
Frazier	6 (2X) vs. USF
Graham	5 (2x) last vs. Kentucky
Lewis	3 vs. Radford
Marshall	2 vs. USF
Colella	1 (3x) last vs. Kentucky
Montminy	1 vs. Kentucky

**ASSISTS**

Frazier	10 (2x) last vs. LIU
Lewis	4 vs. Hartford
Woodyard	2 vs. Hartford
Travis	2 vs. Kentucky
Oliver	2 vs. LIU
Marshall	2 vs. LIU
Borovnjak	1 (2x) last vs. LIU
Glover	1 (4x) last vs. USF
Travis	1 vs. USF

**STEALS**

Frazier	5 vs. Hartford
Woodyard	4 vs. Hartford
Marshall	3 vs. USF
Travis	2 vs. USF
Lewis	2 vs. Hartford
Glover	2 vs. Hartford
Graham	2 vs. Radford
Borovnjak	2 vs. LIU
Oliver	1 (2x) last vs. LIU
Colella	1 (2x) last vs. Kentucky

2011 EARLY SIGNEE

Penn State signed one player in the 2011 NCAA Early Signing Period that began Nov. 9

**BRANDON TAYLOR** 6-8, 235, F, Tabernacle, N.J., Trenton Catholic Academy (N.J.)

"Brandon is a great kid who comes from a great family and is serious about his academics and getting his degree. Basketball wise, he is a terrific player who can post-up, shoot threes, has a very high basketball IQ and has a Big Ten ready body. He will make an immediate impact in our program." – Patrick Chambers

Taylor helped lead his AAU squad, Team Philly, to several tournament titles over the summer and saw his stock rise as he diversified his game and excelled in several head-to-head battles with other high Division I recruits. His size and strength on the block as well as his ability to stretch defenses on the perimeter and score off the dribble or from the three-point line were on display. He is described as a "prototypical mismatch problem" with "the physical tools and basketball skills to score both inside and out" by ESPN.com. Dave Telep of ESPN.com added, "Penn State has itself a legitimate scoring option on its way to Happy Valley."

Taylor helped Trenton Catholic Academy (N.J.) to a 2010 New Jersey Non-Public B State Championship with a victory over perennial powerhouse St. Anthony and an eventual championship crown in the NJSIAA (all classes) Tournament of Champions as a sophomore. He averaged 11.7 points per game last year as a junior at Trenton Catholic as he helped lead the team to a 19-6 record. The Iron Mikes fell in the semifinals of the NJSIAA Non-Public South B Tournament in a two-point game in which Taylor recorded 14 points and had 15 rebounds. He posted a season high 25 points earlier in the year in a victory over West Windsor South.

IN THE BIG TEN STAT RANKINGS

INDIVIDUAL (NOV. 21)

SCORING:	OVERALL	Big Ten
Tim Frazier	3rd, 20.0	
REBOUNDING:		
Cam Woodyard	14th, 5.8	
Ross Travis	20th, 5.2	
FIELD GOAL %:		
-		
ASSISTS		
Tim Frazier	1st, 6.6	
FREE THROW %:		
-		
3-POINT %:		
-		
BLOCKED SHOTS:		
-		
STEALS:		
Tim Frazier	4th, 2.6	
3-POINTERS MADE:		
-		
ASSIST TO TURNOVER:		
Tim Frazier	11th, 1.9	
OFFENSIVE REBOUNDS:		
Jon Graham	4th, 2.8	
Sasa Borovnjak	8th, 2.4	
DEFENSIVE REBOUNDS:		
Cam Woodyard	11th, 4.4	
Tim Frazier	15th, 4.2	
MINUTES PLAYED:		
Tim Frazier	4th, 34.2	

TEAM RANKINGS

SCORING OFFENSE:	11th, 61.8
SCORING DEFENSE:	8th, 60.6
FREE THROW %:	10th, 59.6
FIELD GOAL %:	12th, 37.1
FIELD GOAL% DEFENSE:	9th, 40.5
3-POINT FG % :	8th, 31.1
3-POINT FG % DEFENSE:	10th, 34.8
REBOUNDING OFFENSE:	7th, 36.8
REBOUNDING DEFENSE:	9th, 33.4
ASSISTS:	12th, 11.0
ASSIST TO TURNOVER:	8th, 0.9
STEALS:	6th, 9.2
TURNOVER MARGIN:	7th, +4.8
OFFENSIVE REBOUNDS:	1st, 15.2
DEFENSIVE REBOUNDS:	11th, 21.6
3-POINT FG MADE:	6th, 7.6



## 2011-12 PENN STATE RESULTS

DATE	RANK	RANK	W/L	SCORE	RECORD	PSU HIGH SCORER	OPP HIGH SCORER	HIGH REBS	HIGH ASST	ATTENDANCE
11/12	HARTFORD	-	-	W 70-55	1-0	Lewis (17)	Cole (12)	Travie & Woodyard (7)	Frazier (6)	4,152
11/14	RADFORD	-	-	W 62-46	2-0	Frazier (20)	Smith (16)	Woodyard (7)	Frazier (10)	4,916
11/16	LONG ISLAND	-	-	W 77-68	3-0	Frazier (26)	Boyd & Culpo (15)	Oliver (10)	Frazier (10)	5,258
11/19	vs Kentucky	-	2	L 47-85	3-1	Frazier (11)	Lamb (26)	Travis (8)	Frazier (6)	4,755
11/20	vs. South Florida	-	-	W 53-49	4-1	Frazier (27)	Blake (14)	Woodyard (7)	5 with (1)	4,755

## DOUBLE-FIGURE SCORING

POINTS	11-12	CAREER	CONSECUTIVE
Frazier	5	15	6 (incl last year)
Lewis	1	1	-
Woodyard	2	3	-
Marshall	1	2	1
Oliver	1	2	-
Travis	1	1	-

REBOUNDS	11-12	CAREER	CONSECUTIVE
Oliver	1	1	-

## DOUBLE-DOUBLES

POINTS	11-12	CAREER	CONSECUTIVE
Frazier	2	3	1

Last: 26 pts, 10 asst vs. LIU (11/16/11)

## 20-POINT GAMES

POINTS	11-12	CAREER	CONSECUTIVE
Frazier	3	4	1

Last: 27 pts vs. South Florida (11/20)

## 30-POINT GAMES

POINTS	11-12	CAREER	CONSECUTIVE
-	-	-	-

Last: -

## 2011-12 RECORD

	OVERALL	HOME	AWAY	NEUTRAL
ALL GAMES	4-1	3-0	-	1-1
CONFERENCE	-	-	-	-
NON-CON	4-1	3-0	-	1-1
TOURNAMENT	-	-	-	-

## SCORE BY PERIODS

	1ST	2ND	OT	2OT	TOTAL
PENN STATE	129	180	-	-	309
OPPONENTS	142	161	-	-	303

## MARGINS OF VICTORY

1	2	3	4	5	6	7	8	9	10	11	12	13	14	15+
	1						1							2

LARGEST: 16 vs. Radford (11/14)

## MARGINS OF DEFEAT

1	2	3	4	5	6	7	8	9	10	11	12	13	14	15+
														1

LARGEST: 38 vs. Kentucky (11/19)

LARGEST NON-CON LEAD: 26 (2nd) vs. Hartford

LARGEST NON-CON DEFICIT: 41 (2nd) vs. Kentucky

LARGEST BIG TEN LEAD: -

LARGEST BIG TEN DEFICIT: -

LARGEST DEFICIT OVERCOME TO WIN: 6 vs. Radford &amp; South Florida

LARGEST BIG TEN DEFICIT OVERCOME TO WIN: -

## 2011-12 ATTENDANCE

	G	TOTAL	HIGH	AVERAGE
HOME	3	14,326	5,258	4,775
AWAY	-	-	-	-
NEUTRAL	2	9,510	4,755	4,755
TOTAL	5	23,836	5,258	4,767

## LED PENN STATE IN:

POINTS	10-11	11-12	CAREER
Frazier	1	4	7
Lewis	-	1	1
REBOUNDS	10-11	11-12	CAREER
Frazier	8	-	8
Woodyard	1	3	4
Oliver	-	1	1
Travis	-	1	1
ASSISTS	10-11	11-12	CAREER
Frazier	28	5	40
Glover	-	1	1
Oliver	-	1	1
Marshall	-	1	1
Travis	-	1	1
STEALS	10-11	11-12	CAREER
Frazier	15	4	28
Marshall	5	1	6
Oliver	3	1	4
Woodyard	1	1	3
Borovnjak	-	1	1
Travis	-	1	1
Graham	-	1	1
Colella	-	1	1
BLOCKS	10-11	11-12	CAREER
Oliver	4	1	5
Frazier	2	1	4
Woodyard	-	2	3
Graham	-	2	2
Marshall	-	1	1
Borovnjak	-	1	1
Glover	-	1	1
Colella	-	1	1





# 2011-12 GAME-BY-GAME STATISTICS

OPPONENT	DATE	TOTAL		3-POINT				REBOUNDS				PF	ASST	TO	BLK	STL	POINTS
		SCORE	W/L	FG-FGA	PCT	FG-FGA	PCT	FT-FTA	PCT	OFF-DEF	TOTAL						
PENN STATE	11/12	70-55	W	23-64	.359	10-23	.435	14-26	.538	17-23	40	22	12	12	1	15	70
HARTFORD				19-44	.432	8-26	.308	9-16	.563	6-28	34	24	13	26	6	5	55
PENN STATE	11/14	62-46	W	24-53	.453	7-25	.280	7-12	.583	15-23	38	15	11	12	4	7	62
RADFORD				16-47	.340	9-26	.346	5-8	.625	9-16	25	16	9	16	3	3	46
PENN STATE	11/16	77-68	W	27-65	.415	9-27	.333	14-18	.778	15-22	37	25	17	8	5	8	77
LONG ISLAND				17-47	.362	7-20	.350	27-35	.772	11-23	34	19	11	13	2	6	68
PENN STATE	11/19	47-85	L	18-16	.269	7-27	.259	4-12	.333	18-21	39	22	9	12	3	4	47
vs Kentucky				28-53	.528	10-20	.500	19-29	.655	10-35	45	16	19	10	8	7	85
PENN STATE	11/20	53-49	W	17-45	.378	5-20	.250	14-21	.667	11-19	30	19	5	15	1	12	53
vs. S. Florida				14-41	.341	5-20	.250	16-20	.800	11-18	29	23	4	19	2	6	49



# #3 • TREY LEWIS

Fr. • GUARD • 6-1 • 180  
GARFIELD HEIGHTS, OHIO • GARFIELD HEIGHTS  
UNDECIDED

DOUBLE-DOUBLES: -	10+ REBOUNDS: -
20-POINT GAMES: -	5+ ASSISTS: -
30-POINT GAMES:-	3+ STEALS: -
DOUBLE-DIGITS:1	40-MINUTES: -



## NOTABLE/CAREER HIGHLIGHTS

- Started first collegiate game and led Penn State with 17 points on 3-of-6 from three in the 2011 season opener vs. Hartford.
- 2011 Division I Co-Player-of-the-Year in Ohio
- Runner-up for 2011 Ohio "Mr. Basketball" honors
- 2011 Cleveland Plain Dealer Player-of-the-Year
- Scored 33 points and hit state tournament record eight threes in state semifinals

## 2011-12 SEASON HIGHLIGHTS

- Led Penn State with 17 points on 3-of-6 from three in a season-opening victory over Hartford (11/12).

## CAREER HIGHS

<b>POINTS:</b>	17
	vs. Hartford (11/12/11)
<b>REBOUNDS:</b>	3
	vs. Radford (11/14/11)
<b>ASSISTS:</b>	4
	vs. Hartford (11/12/11)
<b>STEALS:</b>	2
	vs. Hartford (11/12/11)
<b>BLOCKS:</b>	-
	-
<b>MINUTES:</b>	31
	vs. Hartford (11/12/11)
<b>FIELD GOALS:</b>	7
	vs. Hartford (11/12/11)
<b>FG ATTEMPTS:</b>	13
	vs. Hartford (11/12/11)
<b>FG PERCENTAGE:</b>	.538 (7-13)
	vs. Hartford (11/12/11)
<b>3-POINTERS:</b>	3
	vs. Hartford (11/12/11)
<b>3PT ATTEMPTS:</b>	6
	vs. Hartford (11/12/11)
<b>3PT PERCENTAGE:</b>	.500 (3-6)
	vs. Hartford (11/12/11)
<b>FREE THROWS:</b>	3
	vs. Radford (11/14/11)
<b>FT ATTEMPTS:</b>	4
	vs. Radford (11/14/11)
<b>FT PERCENTAGE:</b>	.750
	vs. Radford (11/14/11)

## 2011-12 GAME-BY-GAME

OPPONENT	DATE	GS	MIN	TOTAL		3-POINT		FREE THROWS		REBOUNDS		PF	A	TO	BLK	STL	PTS
				FG-FGA	PCT	FG-FGA	PCT	FT-FTA	PCT	O-D	TOTAL						
HARTFORD	11/12	*	31	7-13	.538	3-6	.500	0-1	.000	1-1	2	2	4	2	0	2	17
RADFORD	11/14	*	23	2-5	.400	2-5	.400	3-4	.750	2-1	3	1	0	2	0	0	9
LONG ISLAND	11/16	*	15	1-5	.200	1-2	.500	0-0	.000	0-0	0	3	1	0	0	0	3
vs. Kentucky	11/19	*	20	1-9	.111	1-6	.166	0-0	.000	1-1	2	2	0	0	0	0	3
vs. S. Florida	11/20		15	2-4	.500	1-3	.333	0-0	.000	0-0	0	2	0	2	0	0	5

## PERSONAL FILE

<b>BIRTHDAY:</b>	10/18/1992
<b>FAMILY:</b>	Nina (Mother), Joe (Father); Sisters: Aja and Jazmine

## CAREER STATISTICS

Season	gp-gs	min/avg	Total		3-Point		F-Throws		Rebounds				Scoring							
			fg-fga	pct	fg-fga	pct	ft-fta	pct	off	def	tot	avg	pf	fo	ast	to	blk	stl	pts	avg
2011-12	5-4	104/20.8	13-36	.361	8-22	.364	3-5	.600	4	3	7	1.4	10	0	5	6	0	2	37	7.4
TOTAL	5-4	104/20.8	13-36	.361	8-22	.364	3-5	.600	4	3	7	1.4	10	0	5	6	0	2	37	7.4











# #20 • NICK COLELLA

Jr. • GUARD • 6-3 • 195  
 NEW CASTLE, PA. • NEW CASTLE HS  
 PENN STATE - BEHREND



## NOTABLE/CAREER HIGHLIGHTS

- Played two seasons at the Penn State - Behrend campus before transferring to the main campus.
- Averaged 9.8 ppg and 4.4 rpg playing in 16 games as a sophomore at Penn State - Behrend.

- --
- --
- --

## 2011-12 SEASON HIGHLIGHTS

- Played in his first career game in the season-opening win over Hartford, scoring three points and grabbing one rebound in 14 minutes.

- --
- --
- --
- --
- --
- --

## CAREER HIGHS

**POINTS:** 3  
vs. Hartford (11/12/11)

**REBOUNDS:** 1, twice  
last vs. Radford (11/14/11)

**ASSISTS:** -

**STEALS:** 1  
vs. Hartford (11/12/11)

**BLOCKS:** 1  
vs. Radford (11/14/11)

**MINUTES:** 14  
vs. Hartford (11/12/11)

**FIELD GOALS:** 1  
vs. Hartford (11/12/11)

**FG ATTEMPTS:** 4  
vs. Hartford (11/12/11)

**FG PERCENTAGE:** .250 (1-4)  
vs. Hartford (11/12/11)

**3-POINTERS:** 1  
vs. Hartford (11/12/11)

**3PT ATTEMPTS:** 2  
vs. Hartford (11/12/11)

**3PT PERCENTAGE:** -

**FREE THROWS:** -

**FT ATTEMPTS:** -

**FT PERCENTAGE:** -

## PERSONAL FILE

**BIRTHDAY:** 11/10/1989

**FAMILY:** Linda (mother), David (father);  
Brothers: David Jr. & Michael

## 2011-12 GAME-BY-GAME

OPPONENT	DATE	GS	MIN	TOTAL		3-POINT		FREE THROWS		REBOUNDS		PF	A	TO	BLK	STL	PTS
				FG-FGA	PCT	FG-FGA	PCT	FT-FTA	PCT	O-D	TOTAL						
HARTFORD	11/12	14	1-4	.250	1-2	.500	0-0	.000	0-1	1	0	0	1	0	1	0	3
RADFORD	11/14	2	0-0	.000	0-0	.000	0-0	.000	1-0	1	0	0	0	1	0	0	0
LONG ISLAND	11/16	1	0-0	.000	0-0	.000	0-0	.000	0-0	0	0	0	0	0	0	0	0
vs. Kentucky	11/19	9	0-2	.000	0-1	.000	0-0	.000	1-0	1	2	0	0	0	1	0	0
vs. S. Florida	11/20		DNP														

## CAREER STATISTICS

Season	gp-gs	min/avg	Total		3-Point		F-Throws		Rebounds				Scoring							
			fg-fga	pct	fg-fga	pct	ft-fa	pct	off	def	tot	avg	pf	fo	ast	to	blk	stl	pts	avg
2011-12	4-0	26/6.5	1-6	.167	1-3	.333	0-0	.000	2	1	3	0.8	2	0	0	1	1	2	3	0.8
TOTAL	4-0	26/6.5	1-6	.167	1-3	.333	0-0	.000	2	1	3	0.8	2	0	0	1	1	2	3	0.8







# #23 • TIM FRAZIER

Jr. • GUARD • 6-1 • 170  
HOUSTON, TEXAS • STRAKE JESUIT  
SUPPLY CHAIN & INFORMATION SYSTEMS

DOUBLE-DOUBLES: 3	10+ REBOUNDS: -
20-POINT GAMES: 4	5+ ASSISTS: 16
30-POINT GAMES: -	3+ STEALS: 5
DOUBLE-DIGITS: 15	40-MINUTES: 2



## NOTABLE/CAREER HIGHLIGHTS

- 3rd the Big Ten in scoring (20.0), 1st in assists (6.6) and 4th in steals (2.6).
- Has 279 career assists to rank 14th all-time in Penn State history.
- Ranked 5th in Big Ten with 5.1 assists per game in 2010-11
- His 173 assists in 2010-11 rank as the fifth-best season mark in Penn State history.
- Averaged 10 ppg, 5.9 apg and 4.6 rpg over final 11 games of 2010-11 season as PSU reached NCAA Tournament.
- Posted then career-best 22 points and had 8 boards and 6 assists in 2011 Big Ten Tourn. semifinal win over Michigan State.
- Has played in every game the last three seasons.
- Started 33 of 34 games last year.
- 3.2 grade-point average

## 2011-12 SEASON HIGHLIGHTS

- 16 points, team-high six assists and career-best five steals in season opener despite foul trouble limiting him to 28 minutes.
- Posted his second career double-double and tied his career record in assists with a 20-point, 10-assist, 6-rebound effort in Penn State's victory over Radford (11/14).
- Posted a then career-high 26 points on 9-of-18 shooting and equaled his career-best 10 assists to log his second-straight double-double and lead Penn State over LIU (11/16).
- Scored 19 of his career-high 27 points in the second half to lead Penn State from behind to a victory over S. Florida (11/20).

- --
- --
- --
- --
- --
- --
- --
- --
- --
- --

## CAREER HIGHS

<b>POINTS:</b>	27
	vs. S. Florida (11/20/11)
<b>REBOUNDS:</b>	8, twice,
	vs. Michigan St. (BTT) (3/11/11)
<b>ASSISTS:</b>	10, three times,
	vs. LIU (11/16/11)
<b>STEALS:</b>	5
	vs. Hartford (11/12/11)
<b>BLOCKS:</b>	1, seven times
	vs. LIU (11/16/11)
<b>MINUTES:</b>	40
	@ Minnesota (3/6/11)
<b>FIELD GOALS:</b>	9, three
	vs. LIU (11/16/11)
<b>FG ATTEMPTS:</b>	18
	vs. LIU (11/16/11)
<b>FG PERCENTAGE:</b>	.833 (5-6)
	vs. Temple (NCAA) (3/17/11)
<b>3-POINTERS:</b>	4
	vs. Robert Morris (11/16/09)
<b>3PT ATTEMPTS:</b>	5
	vs. Robert Morris (11/16/09)
<b>3PT PERCENTAGE:</b>	80.0 (4-5)
	vs. Robert Morris (11/16/09)
<b>FREE THROWS:</b>	10
	vs. Northwestern, (2/13/11)
<b>FT ATTEMPTS:</b>	15
	vs. S. Florida (11/20/11)
<b>FT PERCENTAGE:</b>	1.000 (6-6)
	@ Northwestern (2/24/11)

## 2011-12 GAME-BY-GAME

OPPONENT	DATE	GS	MIN	TOTAL		3-POINT		FREE THROWS		REBOUNDS		PF	A	TO	BLK	STL	PTS
				FG-FGA	PCT	FG-FGA	PCT	FT-FTA	PCT	O-D	TOTAL						
HARTFORD	11/12	*	28	4-11	.364	0-1	.000	8-9	.889	0-4	4	4	6	4	0	5	16
RADFORD	11/14	*	34	9-14	.643	0-0	.000	2-3	.667	2-4	6	2	10	3	1	3	20
LONG ISLAND	11/16	*	35	9-18	.500	3-4	.750	5-6	.833	1-4	5	3	10	4	1	2	26
vs. Kentucky	11/19	*	36	4-14	.286	0-1	.000	3-9	.333	1-5	6	3	6	2	0	0	11
vs. S. Florida	11/20	*	38	8-15	.533	1-3	.333	10-15	.667	2-4	6	3	1	4	0	3	27

## PERSONAL FILE

<b>BIRTHDAY:</b>	11/1/1990
<b>FAMILY:</b>	Janice (mother), Billy (father), William (brother), Krystal (sister)

## CAREER STATISTICS

Season	gp-gs	min/avg	Total		3-Point		F-I hrows		Rebounds				Scoring							
			fg-fga	pct	fg-fga	pct	ft-fta	pct	off	def	tot	avg	pf	fo	ast	to	blk	stl	pts	avg
2009-10	31-10	570/18.4	51-132	.386	9-24	.375	43-64	.672	11	61	72	2.3	64	0	73	52	2	23	154	5.0
2010-11	34-33	1048/30.8	71-165	.430	11-32	.344	61-81	.753	21	111	132	3.9	89	1	173	82	4	35	214	6.3
2011-12	5-5	171/34.2	34-72	.472	4-9	.444	28-42	.667	6	21	27	5.4	15	0	33	17	2	13	100	20.0
TOTAL	70-48	1789/25.6	156-369	.423	24-65	.369	132-187	.706	38	193	231	3.3	168	1	279	151	8	71	468	6.7

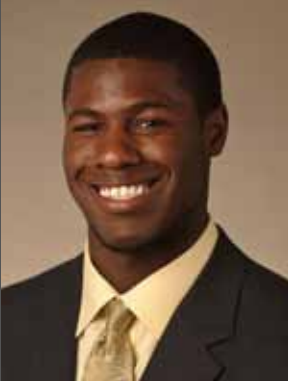






# #25 • JON GRAHAM

R-Fr. • FORWARD • 6-8 • 240  
BALTIMORE, MD. • CALVERT HALL  
UNDECIDED



## NOTABLE/CAREER HIGHLIGHTS

- The son of Maryland great and former Philadelphia 76er Ernest Graham.
- Two-time All-Metro selection
- Calvert Hall's second all-time leading scorer with 1,670 points
- Added 30 pounds of muscle during his redshirt season.
- --
- --

- --
- --
- --
- --

## 2011-12 SEASON HIGHLIGHTS

- Posted seven points and four rebounds in a career high 20 minutes in a victory over Radford (11/14)
- Recorded a career-best three blocks and recorded six points and five rebounds, all in the first half, in a victory over LIU (11/16).

- --
- --
- --
- --

## CAREER HIGHS

**POINTS:** 7  
vs. Radford (11/14/11)

**REBOUNDS:** 4  
vs. Radford (11/14/11)

**ASSISTS:** -

**STEALS:** 2  
vs. Radford (11/14/11)

**BLOCKS:** 3  
vs. LIU (11/16/11)

**MINUTES:** 20  
vs. Radford (11/14/11)

**FIELD GOALS:** 3, twice  
vs. LIU (11/16/11)

**FG ATTEMPTS:** 6, twice  
last vs. Kentucky (11/19/11)

**FG PERCENTAGE:** .600 (3-5), twice  
vs. LIU (11/16/11)

**3-POINTERS:** -

**3PT ATTEMPTS:** -

**3PT PERCENTAGE:** -

**FREE THROWS:** 1, twice  
vs. Radford (11/14/11)

**FT ATTEMPTS:** 3  
vs. Radford (11/14/11)

**FT PERCENTAGE:** -

## PERSONAL FILE

**BIRTHDAY:** 10/15/1991

**FAMILY:** Karen (mother), Ernest (father); Brother: Ernest, Jr.

## 2011-12 GAME-BY-GAME

OPPONENT	DATE	GS	MIN	TOTAL		3-POINT		FREE THROWS		REBOUNDS						
				FG-FGA	PCT	FG-FGA	PCT	FT-FTA	PCT	O-D	TOTAL	PF	A	TO	BLK	STL
HARTFORD	11/12	9	0-6	.000	0-0	.000	1-2	.500	3-0	3	2	0	2	0	0	1
RADFORD	11/14	20	3-5	.600	0-0	.000	1-3	.333	3-1	4	1	0	1	0	2	7
LONG ISLAND	11/16	13	3-5	.600	0-0	.000	0-0	.000	3-2	5	2	0	0	3	0	6
vs. Kentucky	11/19	19	3-6	.500	0-0	.000	0-0	.000	3-2	5	1	0	0	1	1	6
vs. S.Florida	11/20	11	1-3	.333	0-0	.000	0-0	.000	2-0	2	2	0	0	0	0	2

## CAREER STATISTICS

Season	gp-gs	min/avg	Total		3-Point		F-Throws		Rebounds				Scoring							
			fg-fga	pct	fg-fga	pct	ft-fa	pct	off	def	tot	avg	pf	fo	ast	to	blk	stl	pts	avg
2011-12	5-0	72/14.4	10-25	.400	0-0	.000	2-5	.400	14	5	19	3.8	8	0	0	3	4	3	22	4.4
TOTAL	5-0	72/14.4	10-25	.400	0-0	.000	2-5	.400	14	5	19	3.8	8	0	0	3	4	3	22	4.4



# #35 • BILLY OLIVER

R-Jr. • FORWARD • 6-8 • 230  
CHATHAM, N.J. • CHATHAM HS  
FINANCE



## NOTABLE/CAREER HIGHLIGHTS

■ --Redshirted two seasons due to head injuries. A pair of pre-season concussions sidelined him and moved him to redshirt his true-freshman year. Chronic exercise induced headaches caused him to miss all but five games of the 2009-10 season and to be held out of all physical activity from late December through April.  
■ Eligible to apply for another year of eligibility through a med-

ical-redshirt following the completion of his current eligibility.  
■ Has added 30 pounds of muscle since arriving on campus.

## 2011-12 SEASON HIGHLIGHTS

■ Hit two big second half threes to finish with nine points and added a career-best 10 rebounds and two assists in a victory over LIU (11/16).

## CAREER HIGHS

**POINTS:** 12  
vs. Radford (11/14/11)

**REBOUNDS:** 10  
vs. LIU (11/16/11)

**ASSISTS:** 2, three  
vs. LIU (11/16/11)

**STEALS:** 2  
vs. Ohio State (3/1/11)

**BLOCKS:** 2  
vs. Illinois (11/11/11)

**MINUTES:** 37  
vs. LIU (11/16/11)

**FIELD GOALS:** 3, four times  
vs. LIU (11/16/11)

**FG ATTEMPTS:** 11, twice  
last vs. Radford (11/14/11)

**FG PERCENTAGE:** 50.0 (3-6), twice  
@ Virginia Tech (12/12/10)

**3-POINTERS:** 3  
vs. LIU (11/16/11)

**3PT ATTEMPTS:** 11  
vs. Radford (11/14/11)

**3PT PERCENTAGE:** 40.0 (2-5)  
vs. Lehigh (11/12/10)

**FREE THROWS:** 3  
at Michigan (1/2/11)

**FT ATTEMPTS:** 5  
at Michigan (1/2/11)

**FT PERCENTAGE:** .600 (3-5)  
at Michigan (1/2/11)

## PERSONAL FILE

**BIRTHDAY:** 5/12/1990

**FAMILY:** Laura (mother), Bill (father), Brian (brother), Kate (sister), Sarah (sister).

## 2011-12 GAME-BY-GAME

OPPONENT	DATE	GS	MIN	TOTAL		3-POINT		FREE THROWS		REBOUNDS		PF	A	TO	BLK	STL	PTS
				FG-FGA	PCT	FG-FGA	PCT	FT-FTA	PCT	O-D	TOTAL						
HARTFORD	11/12	*	20	2-4	.500	1-3	.333	1-1	1.000	0-3	3	4	0	0	0	1	6
RADFORD	11/14	*	26	3-11	.272	2-10	.200	0-0	.000	0-2	2	3	0	1	0	0	8
LONG ISLAND	11/16	*	37	3-10	.300	3-8	.375	0-0	.000	5-5	10	1	2	1	0	1	9
vs. Kentucky	11/19	*	16	1-5	.200	1-4	.250	0-0	.000	3-3	6	4	0	1	1	0	3
vs. S. Florida	11/20	*	28	1-4	.250	1-3	.333	0-0	.000	0-2	2	2	1	1	0	0	3

## CAREER STATISTICS

Season	gp-gs	min/avg	Total		3-Point		F-Throws		Rebounds				Scoring							
			fg-fga	pct	fg-fga	pct	ft-fta	pct	off	def	tot	avg	pf	fo	ast	to	blk	stl	pts	avg
2009-10	5-0	24/4.8	1-4	.250	0-2	.000	1-4	.250	3	3	6	1.2	3	0	2	0	0	1	3	0.6
2010-11	32-0	457/14.3	24-76	.316	11-44	.250	16-24	.667	24	21	45	1.4	74	1	13	24	9	9	75	2.3
2011-12	5-5	128/25.6	10-34	.294	8-28	.286	1-1	1.000	8	15	23	4.6	14	0	3	4	1	2	29	5.8
TOTAL	42-5	609/14.5	35-114	.307	19-74	.257	18-29	.621	35	39	74	1.8	91	1	18	28	10	12	107	2.5





# #43 • ROSS TRAVIS

Fr. • FORWARD • 6-6 • 220  
CHASKA, MINN. • CHASKA HS



## NOTABLE/CAREER HIGHLIGHTS

- Added 20 pounds of muscle since arriving on campus.
- Tabbed as the top prospect in Minnesota for the class of 2011
- 20 ppg, 12 rpg in senior season of HS
- --
- --
- --
- --
- --
- --

## 2011-12 SEASON HIGHLIGHTS

- Started in his first collegiate game and tied for the team lead with seven rebounds in Penn State's season-opening victory over Hartford (11/12).
- Scored all of his career-high 10 points in the second half on a career-best two threes and added a career-best eight rebounds vs. Kentucky (11/19).
- --
- --
- --
- --
- --
- --
- --

## CAREER HIGHS

- POINTS:** 10  
vs. Kentucky (11/19/11)
- REBOUNDS:** 8  
vs. Kentucky (11/19/11)
- ASSISTS:** 2  
vs. Kentucky (11/19/11)
- STEALS:** 2  
vs. S. Florida (11/20/11)
- BLOCKS:** 1  
vs. LIU (11/16/11)
- MINUTES:** 25  
vs. Kentucky (11/19/11)
- FIELD GOALS:** 4  
vs. Kentucky (11/19/11)
- FG ATTEMPTS:** 10  
vs. Kentucky (11/19/11)
- FG PERCENTAGE:** .400 (4-10)  
vs. Kentucky (11/19/11)
- 3-POINTERS:** 2  
vs. Kentucky (11/19/11)
- 3PT ATTEMPTS:** 5  
vs. Kentucky (11/19/11)
- 3PT PERCENTAGE:** .400 (2-5)  
vs. Kentucky (11/19/11)
- FREE THROWS:** -
- FT ATTEMPTS:** 1, twice  
last vs. Kentucky (11/19/11)
- FT PERCENTAGE:** -

## 2011-12 GAME-BY-GAME

OPPONENT	DATE	GS	MIN	TOTAL		3-POINT		FREE THROWS		REBOUNDS					BLK	STL	PTS
				FG-FGA	PCT	FG-FGA	PCT	FT-FTA	PCT	O-D	TOTAL	PF	A	TO			
HARTFORD	11/12	13	1-3	.333	0-0	.000	0-0	.000	3-4	7	5	0	1	0	0	2	
RADFORD	11/14	18	2-4	.500	0-2	.000	0-0	.000	1-4	5	2	0	0	0	0	4	
LONG ISLAND	11/16	10	1-2	.500	0-1	.000	0-1	.000	0-2	2	1	0	0	1	0	2	
vs. Kentucky	11/19	25	4-10	.400	2-5	.400	0-1	.000	2-6	8	1	2	1	0	1	10	
vs. S. Florida	11/20	14	0-3	.000	0-1	.000	0-0	.000	2-2	4	2	1	1	0	2	0	

## PERSONAL FILE

**BIRTHDAY:** 1/9/1993  
**FAMILY:** Debbie (mother), John (father); Sister: Brittany

## CAREER STATISTICS

Season	gp-gs	min/avg	Total		3-Point		F-Throws		Rebounds				Scoring							
			fg-fga	pct	fg-fga	pct	ft-fta	pct	off	def	tot	avg	pf	fo	ast	to	blk	stl	pts	avg
2011-12	5-1	80/16.0	8-22	.364	2-9	.222	0-2	.000	8	18	26	5.2	11	1	3	3	1	3	18	3.6
TOTAL	5-1	80/16.0	8-22	.364	2-9	.222	0-2	.000	8	18	26	5.2	11	1	3	3	1	3	18	3.6



PENN STATE 70 HARTFORD 55

PENN STATE LEADERS Scoring Leader: Lewis (17) Rebounding Leader: Woodyard/Travis (7) Assist Leader: Frazier (6)

Freshman Trey Lewis led Penn State with 17 points, 14 in the second half, in his first career game as the Lions extended a 10-point halftime lead (32-22) to as much as 26 with 2:21 to play. Tim Frazier added 16 points and Cammeron Woodyard posted career highs in points (14), rebounds (7), threes (4) and steals (4). Frazier's career-best five steals led a 15 steal effort for the Lions, the most by a PSU team since 2001, and helped cause 26 Hartford turnovers, the most for a PSU team since 2005. Penn State shot just 36 percent but turned 17 offensive rebounds into a 20-2 edge in second chance points and got 20 more shots (64-44) than Hartford, which was led by 12 points from Wes Cole.

Hartford 55 - 0-2

Table with columns: #, Player, FG-FGA, 3-FGA, FT-FTA, Rebounds (Off, Def, Tot), PF, TP, A TO, Blk, Stl, Min. Includes totals and game statistics.

FG % 1st Half: 8-17 47.1% 2nd half: 11-27 40.7% Game: 19-44 43.2% Deadball Rebounds: 1.1

Penn State 70 - 1-0

Table with columns: #, Player, FG-FGA, 3-FGA, FT-FTA, Rebounds (Off, Def, Tot), PF, TP, A TO, Blk, Stl, Min. Includes totals and game statistics.

FG % 1st Half: 9-32 28.1% 2nd half: 14-32 43.8% Game: 23-64 35.9% Deadball Rebounds: 7.2

Officials: Ed Hightower, Larry Sciorotto, Ron Tyburski Technical fouls: Hartford-None, Penn State-None. Attendance: 4152

Score by periods table with columns: 1st, 2nd, Total. Shows Penn State leading 32-38-70.

Points in Paint table with columns: In, Off, 2nd, Fast, Bench. Shows PSU leading 22-21-9-30-25.

PENN STATE 62 RADFORD 46

PENN STATE LEADERS Scoring Leader: Frazier (20) Rebounding Leader: Woodyard (7) Assist Leader: Frazier (10)

Junior Tim Frazier posted his second career double-double and equaled a career high in assists as he led Penn State with 20 points and 10 assists and added six rebounds and three steals. Frazier was the only Lion in double-figures. Penn State used a 14-0 run and an 8:25 Radford drought to come from 11-5 down to a 19-11 lead in the first half and would never trail again. Leading 29-20 at the half, Penn State got three straight treys from Billy Oliver, Trey Lewis and Cam Woodyard to push it's lead to 16. Penn State led by double-digits the rest of the way and by as much as 22. Radford shot just 26.9 percent in the first half and 34 percent for the game and was led by 16 points from Jareal Smith who scored the Highlanders' first 11 points of the game.

RADFORD 46 - 2-1

Table with columns: #, Player, FG-FGA, 3-FGA, FT-FTA, Rebounds (Off, Def, Tot), PF, TP, A TO, Blk, Stl, Min. Includes totals and game statistics.

FG % 1st Half: 7-26 26.9% 2nd half: 9-21 42.9% Game: 16-47 34.0% Deadball Rebounds: 1

Penn State 62 - 2-0

Table with columns: #, Player, FG-FGA, 3-FGA, FT-FTA, Rebounds (Off, Def, Tot), PF, TP, A TO, Blk, Stl, Min. Includes totals and game statistics.

FG % 1st Half: 11-28 39.3% 2nd half: 13-25 52.0% Game: 24-53 45.3% Deadball Rebounds: 3.1

Officials: Lamont Simpson, Terry Oglesby, Gerald Williams Technical fouls: Radford-None, Penn State-None. Attendance: 4916

Score by periods table with columns: 1st, 2nd, Total. Shows Penn State leading 20-26-46.

Points in Paint table with columns: In, Off, 2nd, Fast, Bench. Shows PSU leading 14-14-10-17.

PENN STATE 77 LONG ISLAND 68

PENN STATE LEADERS Scoring Leader: Frazier (26) Rebounding Leader: Oliver (10) Assist Leader: Frazier (10)

Trailing 60-56 with 8:22 to play and threatened for the first time on the year, Penn State responded with a 16-4 run to seize control and outscored LIU 21-8 the rest of the way to improve to 3-0. Tim Frazier was again spectacular posting his second-straight double-double with a career-best 26 points and career-best equaling 10 assists. Senior Cam Woodyard added 13 points and six boards and scored seven straight midway through the second half to steady the Penn State ship. Billy Oliver had a career-high 10 rebounds and nine points, including two big threes late. The Lions held LIU to 36% shooting, but LIU hit 27-of-35 at the foul line for a 13-point advantage at the charity stripe. Julian Boyd (15) and Michael Culp (15) led LIU. Penn State shot 41.5% and 9-of-27 from three.

Long Island 68 - 0-3

Table with columns: #, Player, FG-FGA, 3-FGA, FT-FTA, Rebounds (Off, Def, Tot), PF, TP, A TO, Blk, Stl, Min. Includes totals and game statistics.

FG % 1st Half: 9-23 39.1% 2nd half: 8-24 33.3% Game: 17-47 36.2% Deadball Rebounds: 4.1

Penn State 77 - 3-0

Table with columns: #, Player, FG-FGA, 3-FGA, FT-FTA, Rebounds (Off, Def, Tot), PF, TP, A TO, Blk, Stl, Min. Includes totals and game statistics.

FG % 1st Half: 13-33 39.4% 2nd half: 14-32 43.8% Game: 27-65 41.5% Deadball Rebounds: 3.1

Officials: Mike Eades, Gene Stratoro, Steve McClunkins Technical fouls: Long Island-None, Penn State-TEAM. Attendance: 6524

Score by periods table with columns: 1st, 2nd, Total. Shows Penn State leading 36-32-68.

Points in Paint table with columns: In, Off, 2nd, Fast, Bench. Shows PSU leading 18-16-9-17.

#2 KENTUCKY 85 PENN STATE 47

PENN STATE LEADERS Scoring Leader: Frazier (11) Rebounding Leader: Travis (8) Assist Leader: Frazier (6)

Penn State missed 25 straight shots over 11 minutes of the first half and hit just 16 percent in the first stanza vs. a Kentucky team that was shooting 68 percent midway through the first 20 and raced to a 47-15 halftime lead. Penn State hit just 27 percent for the game, including 7-of-27 from three, and 4-of-12 from the foul line and trailed by as much as 41 midway through the second half. Tim Frazier led Penn State with 11 points and six assists and added six boards, but went 4-of-14 from the floor and 3-of-9 from the line. Freshman Ross Travis had career highs of 10 points, all in the second half, and eight rebounds. Doron Lamb led UK with 26 points and Kyle Wiltjer put in 19 off the bench as Kentucky shot 53 percent and 10-of-20 from three. The 38-point loss marked the Lions' largest since falling by 43 at Illinois in 2004.

Penn State 47 - 3-1

Table with columns: #, Player, FG-FGA, 3-FGA, FT-FTA, Rebounds (Off, Def, Tot), PF, TP, A TO, Blk, Stl, Min. Includes totals and game statistics.

FG % 1st Half: 6-37 16.2% 2nd half: 12-30 40.0% Game: 18-67 26.9% Deadball Rebounds: 3.1

KENTUCKY 85 - 3-0

Table with columns: #, Player, FG-FGA, 3-FGA, FT-FTA, Rebounds (Off, Def, Tot), PF, TP, A TO, Blk, Stl, Min. Includes totals and game statistics.

FG % 1st Half: 15-28 53.6% 2nd half: 13-25 52.0% Game: 28-53 52.8% Deadball Rebounds: 3.1

Officials: Bob Adams, Gary Tracy, Kevin Ferguson Technical fouls: Penn State-None, KENTUCKY-None. Attendance: 2011 Hall of Fame Tip-Off Tournament

Score by periods table with columns: 1st, 2nd, Total. Shows Kentucky leading 15-32-47.





### PENN STATE 53 SOUTH FLORIDA 49

Nov. 20, 2011 @ Uncasville, Conn.

#### PENN STATE LEADERS

Scoring Leader: Battle (26)  
Rebounding Leader: Brooks (9)  
Assist Leader: Frazier (6)

### PENN STATE YOUNGSTOWN STATE

Nov. 23, 2011 @ University Park, Pa.

#### PENN STATE LEADERS

Scoring Leader: -  
Rebounding Leader: -  
Assist Leader: -

Trailing 43-38 with 5:07 to play, Penn State employed a trapping 1-2-2 press to create a pair of turnovers and reel of a 12-1 run to seize a 50-44 lead after a Billy Oliver top of the key three with 3:03 left. USF got back within three, 50-47, with 1:47 to go but would get no closer. Tim Frazier led Penn State with a career-high 27 points, 19 in the second half. Jermaine Marshall sparked PSU with eight first half points on his way to 14. The Lions shot 52 percent in the second half after both teams struggled at less than 30 percent shooting in the first. Penn State logged 12 steals, led by three each from Frazier and Marshall, and caused 19 USF turnovers. Victor Rudd, Jr. entered the game leading USF averaging 16.5 ppg but was held to just four on 2-of-10 shooting.

#### SOUTH FLORIDA 49 • 3-2

#	Player	Total		3-Ptr		Rebounds			PF	TP	A	TO	Blk	Stl	Min
		FG	FGA	FG	FGA	FT	FTA	Off							
01	ANDERSON Jr, Ron	* 1-1	0-0	4-5	4 0 4	4	6	0	2	1	0	31			
02	RUDD Jr., Victor	* 2-10	0-6	0-0	2 2 4	4	4	1	4	0	2	33			
03	DORITY, LaVonte	* 1-3	1-2	0-0	0 1 1	1	3	0	3	0	0	15			
24	GILCHRIST, Augustus	* 0-4	0-1	2-3	1 1 2	1	2	0	0	0	0	13			
34	ROBERTSON, Hugh	* 1-4	0-0	2-3	0 4 4	4	4	2	4	0	1	26			
15	NASH, Blake	5-9	3-7	1-2	0 1 1	3	14	0	3	0	2	25			
22	NORIEGA, Shaun	0-2	0-2	5-5	0 1 1	2	5	1	0	0	0	28			
32	FITZPATRICK, Toarlyn	4-8	1-2	2-2	4 6 10	4	11	0	3	1	1	29			
Team					0 2 2										
Totals		14-41	5-20	16-20	11 18 29	23	49	4	19	2	6	200			

FG % 1st Half: 4-15 26.7% 2nd half: 10-26 38.5% Game: 14-41 34.1% Deadball Rebounds 1.1  
3FG % 1st Half: 1-5 20.0% 2nd half: 4-15 26.7% Game: 5-20 25.0%  
FT % 1st Half: 8-10 80.0% 2nd half: 8-10 80.0% Game: 16-20 80.0%

#### Penn State 53 • 4-1

#	Player	Total		3-Ptr		Rebounds			PF	TP	A	TO	Blk	Stl	Min
		FG	FGA	FG	FGA	FT	FTA	Off							
05	Glover, Matt	* 0-2	0-2	1-2	0 2 2	3	1	1	0	0	1	27			
21	Borovnjak, Sasa	* 0-0	0-0	0-0	0 2 2	2	0	0	4	0	1	24			
23	Frazier, Tim	* 8-15	1-3	10-15	2 4 6	3	27	1	4	0	3	38			
24	Woodyard, Cammeron	* 0-5	0-3	1-2	3 4 7	0	1	0	0	0	2	24			
35	Oliver, Billy	* 1-4	1-3	0-0	0 2 2	2	3	1	1	0	0	28			
03	Lewis, Trey	2-4	1-3	0-0	0 0 0	2	5	0	2	0	0	15			
11	Marshall, Jermaine	5-9	2-5	2-2	0 2 2	3	14	1	1	1	3	19			
25	Graham, Jon	1-3	0-0	0-0	2 0 2	2	2	0	0	0	0	11			
34	Wisniewski, Alan	0-0	0-0	0-0	0 0 0	0	0	0	1	0	0	0			
43	Travis, Ross	0-3	0-1	0-0	2 2 4	2	0	1	1	0	2	14			
Team					2 1 3										
Totals		17-45	5-20	14-21	11 19 30	19	53	5	15	1	12	200			

FG % 1st Half: 5-22 22.7% 2nd half: 12-23 52.2% Game: 17-45 37.8% Deadball Rebounds 5  
3FG % 1st Half: 1-12 8.3% 2nd half: 4-8 50.0% Game: 5-20 25.0%  
FT % 1st Half: 6-8 75.0% 2nd half: 8-13 61.5% Game: 14-21 66.7%

Officials: Paul Fala, John Gaffney, Ken Clark  
Technical Fouls: SOUTH FLORIDA-None. Penn State-None.  
Attendance:

Score by periods	1st	2nd	Total
SOUTH FLORIDA	17	32	49
Penn State	17	36	53

### PENN STATE @ ST. JOSEPH'S

Nov. 26, 2011 @ Philadelphia, Pa.

#### PENN STATE LEADERS

Scoring Leader: -  
Rebounding Leader: -  
Assist Leader: -

### PENN STATE @ BOSTON COLLEGE

Nov. 30, 2011 @ Chestnut Hill, Mass.

#### PENN STATE LEADERS

Scoring Leader: -  
Rebounding Leader: -  
Assist Leader: -

2011-12 Penn State Men's Basketball  
Penn State Combined Team Statistics (as of Nov 20, 2011)  
All games

RECORD:	OVERALL	HOME	AWAY	NEUTRAL
ALL GAMES	4-1	3-0	0-0	1-1
CONFERENCE	0-0	0-0	0-0	0-0
NON-CONFERENCE	4-1	3-0	0-0	1-1

##	Player	gp-gs	min	avg	Total		3-Point		F-Throw		Rebounds				pf	dq	a	to	blk	stl	pts	avg
					fg-fga	fg%	3fg-fga	3fg%	ft-fta	ft%	off	def	tot	avg								
23	Frazier, Tim	5-5	171	34.2	34-72	.472	4-9	.444	28-42	.667	6	21	27	5.4	15	0	33	17	2	13	100	20.0
03	Lewis, Trey	5-4	104	20.8	13-36	.361	8-22	.364	3-5	.600	4	3	7	1.4	10	0	5	6	0	2	37	7.4
24	Woodyard, Cammeron	5-4	130	26.0	10-39	.256	7-24	.292	7-10	.700	7	22	29	5.8	9	0	2	1	2	9	34	6.8
35	Oliver, Billy	5-5	128	25.6	10-34	.294	8-28	.286	1-1	1.000	8	15	23	4.6	14	0	3	4	1	2	29	5.8
05	Glover, Matt	5-1	120	24.0	8-22	.364	5-15	.333	5-12	.417	5	9	14	2.8	13	0	4	8	1	4	26	5.2
11	Marshall, Jermaine	4-0	65	16.3	6-18	.333	3-12	.250	5-6	.833	2	2	4	1.0	8	0	3	6	1	5	20	5.0
25	Graham, Jon	5-0	72	14.4	10-25	.400	0-0	.000	2-5	.400	14	5	19	3.8	8	0	0	3	4	3	22	4.4
43	Travis, Ross	5-1	80	16.0	8-22	.364	2-9	.222	0-2	.000	8	18	26	5.2	11	1	3	3	1	3	18	3.6
21	Borovnjak, Sasa	5-5	96	19.2	8-19	.421	0-0	.000	2-6	.333	12	7	19	3.8	12	1	2	8	1	3	18	3.6
14	Montminy, Kevin	2-0	3	1.5	1-1	1.000	0-0	.000	0-0	.000	1	0	1	0.5	0	0	0	0	0	0	2	1.0
20	Colella, Nick	4-0	26	6.5	1-6	.167	1-3	.333	0-0	.000	2	1	3	0.8	2	0	0	1	1	2	3	0.8
34	Wisniewski, Alan	1-0	0	0.0	0-0	.000	0-0	.000	0-0	.000	0	0	0	0.0	0	0	0	1	0	0	0	0.0
32	Ackerman, Pat	3-0	4	1.3	0-0	.000	0-0	.000	0-0	.000	0	0	0	0.0	0	0	0	1	0	0	0	0.0
Team											7	5	12		1		1					
Total.....		5	999		109-294	.371	38-122	.311	53-89	.596	76	108	184	36.8	103	2	55	60	14	46	309	61.8
Opponents.....		5	1000		94-232	.405	39-112	.348	76-108	.704	47	120	167	33.4	98	0	56	84	21	27	303	60.6

TEAM STATISTICS	PSU	OPP	Date	Opponent	Score	Att.
SCORING	309	303	11/12/11	HARTFORD	w 70-55	4152
Points per game	61.8	60.6	11/14/11	RADFORD	w 62-46	4916
Scoring margin	+1.2	-	11/16/11	LONG ISLAND	w 77-68	5258
FIELD GOALS-ATT	109-294	94-232	11/19/11	vs KENTUCKY	L 47-85	0
Field goal pct	.371	.405	11/20/11	vs SOUTH FLORIDA	w 53-49	0
3 POINT FG-ATT	38-122	39-112	* - Conference game			
3-point FG pct	.311	.348				
3-pt FG made per game	7.6	7.8				
FREE THROWS-ATT	53-89	76-108				
Free throw pct	.596	.704				
F-Throws made per game	10.6	15.2				
REBOUNDS	184	167				
Rebounds per game	36.8	33.4				
Rebounding margin	+3.4	-				
ASSISTS	55	56				
Assists per game	11.0	11.2				
TURNOVERS	60	84				
Turnovers per game	12.0	16.8				
Turnover margin	+4.8	-				
Assist/turnover ratio	0.9	0.7				
STEALS	46	27				
Steals per game	9.2	5.4				
BLOCKS	14	21				
Blocks per game	2.8	4.2				
ATTENDANCE	14326	0				
Home games-Avg/Game	3-4775	0-0				
Neutral site-Avg/Game	-	2-0				

Score by Periods	1st	2nd	Totals
Penn State	129	180	309
Opponents	142	161	303