

PENN STATE

WOMEN'S LACROSSE

2012 SCHEDULE

February

15	at Bucknell	W, 19-3
19	No. 2 MARYLAND	L, 16-6
22	DUQUESNE	W, 16-5
25	at Lafayette	W, 14-10

March

4	No. 6 VIRGINIA	W, 14-7
7	No. 17 LOYOLA	L, 12-10 (OT)
10	at Delaware	W, 12-6
14	at Hofstra	W, 11-9
18	at No. 8 Vanderbilt*	W, 12-11 (OT)
25	WILLIAM & MARY	W, 9-7

April

1	at No. 4 Florida*	L, 20-11
6	No. 1 NORTHWESTERN*	L, 14-7
11	at Lehigh	W, 15-3
15	at No. 10 Ohio State*	W, 15-12
21	No. 18 JOHNS HOPKINS*	W, 12-9
28	No. 17 PRINCETON	L, 13-12 (OT)

May

3	vs. Johns Hopkins (1)	4:30
---	-----------------------	------

*ALC games

(1) 2012 ALC Championship First Round, Gainesville, Fla.

TEAM INFORMATION

Head Coach	Missy Doherty (Second year)
Penn State Record	21-13
Career Record	100-59
Assistant Coach	Tara Hohenshelt (13th year)
Assistant Coach	Amy Altig (Second year)
2012 Overall Record	11-5
2012 ALC Record (Finish)	3-2 (3rd)
2012 Team Captains	Dana Cahill Theresa Zichelli
All-Time Record	455-220-5
All-Time ALC Record	30-26
NCAA Postseason Appearances	17
National Championships	5
All-Americans	98

ATHLETIC COMMUNICATIONS

Women's lacrosse contact	John Regenfuss
Office phone	814-865-1757
Cell phone	814-876-0824
Office fax	814-863-3165
Email	jmr49@psu.edu
Twitter	@GoPSUWLaxr



PENN STATE NITTANY LIONS

No. 3 seed
11-5

JOHNS HOPKINS BLUE JAYS

No. 6 seed
8-8

First Round | Thursday, May 3 | 4:30 p.m. | Disney Stadium | Gainesville, Fla.

SETTING THE SCENE

• The third-seeded Penn State women's lacrosse team will begin play at the 2012 ALC Championship on Thursday at 4:30 p.m. when it meets No. 6 seed Johns Hopkins (8-8) in a first round match-up in Gainesville, Fla.

• The sixth annual conference tournament will be hosted by the University of Florida.

TOURNAMENT SCHEDULE

• Should the Nittany Lions get past Johns Hopkins, they will advance to face No. 2 seed Northwestern (16-1) on Friday, May 4 at 4:30 p.m. in the semifinals.

• In the other quarterfinal contest on Thursday, fourth-seeded Ohio State (10-5) will meet No. 5 seed Vanderbilt (8-7) at 7 p.m.

• The winner will square off with the championship's No. 1 seed, Florida (15-2), at 7 p.m. on Friday.

• The ALC Championship title game is scheduled for 12:30 p.m. on Saturday, May 5.

• All tournament games will be played at the home of the Gators, Donald R. Disney Stadium.

LAST TIME OUT

• Despite a furious second half rally, Penn State (11-5) had a three-game winning streak snapped in last weekend's regular season finale, falling to No. 17 Princeton, 13-12, in overtime at Penn State Lacrosse Field.

• Freshman Maggie McCormick led the Nittany Lions with six points, equaling her season high of four goals to go along with two assists.

• Sophomore Mackenzie Cyr added three points (2 goals, 1 assist) while junior Molly Fernandez and freshman Kelly Lechner contributed two goals each.

CHAMPIONSHIP COVERAGE

• Fans can follow all of the action as Penn State pursues its first conference title with live stats from GameTracker or receive game updates through the official Twitter account of the Penn State women's lacrosse team, @GoPSUWLax.

• In addition, all Nittany Lion contests at the ALC Championship will also be streamed live online for free.

• Find links on the front page (click on Schedule/Results) of the official website of

Nittany Lion athletics, www.GoPSUsports.com, and on the women's lacrosse schedule page.

PENN STATE-JOHNS HOPKINS SERIES

• Penn State owns a 9-3 record in its series with Johns Hopkins, including the Nittany Lions' 17-11 victory in the first round of the 2011 ALC Championship.

• Less than two weeks ago, in the teams' regular season meeting, Penn State bested the Blue Jays, 12-9, in Happy Valley.

• Johns Hopkins finished the regular season with a 12-9 upset of No. 13 Ohio State in Baltimore, ending a six-game losing skid.

PREVIEWING PENN STATE

• For the second consecutive year, Penn State enters the ALC Championship as the No. 3 seed and coming off a regular-season ending loss to Princeton.

• The Nittany Lions have four wins against ranked opponents this season, including three versus top 10 teams.

• Penn State excelled on the road in 2012, posting a 7-1 record.

• The Lions have played three overtime games this year, their most since 2004, going 1-2.

• The Penn State offense features two 30-goal scorers for the first time since the 2006 season in sophomore Mackenzie Cyr (32) and freshman Tatum Coffey (31).

• Freshman Maggie McCormick leads the Lions in assists with 26 and is tied with Cyr for the team lead with 51 points.

• McCormick and Cyr have combined to account for 45 of Penn State's 67 assists.

• Junior Molly Fernandez is second on the team in goals with a career high 29.

• Senior Theresa Zichelli and freshman Kelly Lechner each have contributed 19 goals and four assists while freshman Haley Ford came on strong at the end of the year, totaling 10 goals.

• The Nittany Lion defense, ranked No. 22 in the nation, is anchored by Tewaaron Award nominee goalkeeper Dana Cahill.

• The senior is ranked in the top 20 nationally in save percentage (No. 4, .505), saves (No. 7, 157), and goals against average (No. 19, 9.74).

• Senior Colleen Shea, junior Katie Guy, and sophomore Lizzy Carney are Penn State's top

2012 PENN STATE ROSTER

No.	Name	Pos.	Yr.	Ht.	Hometown/High School	Notes
1	Avery Curley	A	So.	5-5	Berwyn, Pa./Episcopal Academy	Played in 4 games, scored 2 goals
2	Shannon Lechner	A/M	So.	5-5	Silver Spring, Md./Our Lady of Good Counsel	Played in 10 games, totaled 3 points
3	Haley Ford	M	Fr.	5-7	White Hall, Md./North Harford	Ranks 7th on team with 10 goals
5	Lizzy Carney	D	So.	5-5	West Chester, Pa./Unionville	Top 1-v-1 defender, started all 16 games
6	Elaine Welch	A	Sr.	5-10	Bernardsville, N.J./Kent Place	Made 3 starts, scored six goals
7	Tatum Coffey	M	Fr.	5-6	Toms River, N.J./Toms River	Scored 31 goals, team leader in draws (49)
8	Brittaney Chamberlain	D	Sr.	5-3	Finksburg, Md./Westminster	Started all 8 games in which she played
9	Katie Guy	M	Jr.	5-8	Whitby, Ontario/Anderson C.V.I.	Defensive stopper, also takes draws
10	Lauren Purvis	M	So.	5-7	Maple Glen, Pa./Hatboro-Horsham	Played in 15 games, scored 3 goals
12	Molly Fernandez	A	Jr.	5-2	Baltimore, Md./McDonogh School	Team leader in shots (67), scored 29 goals
14	Ali Foulsham	D	So.	5-6	Madison, N.J./Madison	Played in 2 games, twin sister of Evan
15	Mackenzie Cyr	A	So.	5-6	Westminster, Md./Winters Mill	Team leader with 32 goals, 51 points
16	Kelsey Hughes	D	Sr./Jr.	5-7	Severna Park, Md./Severn School	Played in 5 games
17	Erin McAfee	D	Fr.	5-8	Moorestown, N.J./Moorestown	Played in 7 games
18	Cat Layne	D	Fr.	5-4	Downingtown, Pa./Villa Maria Academy	Started 7 games, including last 5
19	Carly Bitzer	D	So.	5-8	Doylestown, Pa./Central Bucks East	Played in 4 games
20	Evan Foulsham	M	So.	5-6	Madison, N.J./Madison	Played in 14 games with 8 starts
21	Kelly Lechner	M	Fr.	5-6	Silver Spring, Md./Our Lady of Good Counsel	19 goals, 4 assists, 23 points
22	Alyssa Semones	M	Fr.	5-8	Westminster, Md./Westminster	Played in 3 games
23	Theresa Zichelli	M	Sr.	5-6	Severna Park, Md./Severna Park	23 points (19g, 4a), 22 gb, 19 dc, 11 ct
24	Maggie McCormick	A	Fr.	5-10	Eldersburg, Md./Liberty	Team leader with 26 assists, 51 points
28	Aly Adams	M	Sr.	5-6	Springfield, Pa./Springfield	Made 8 starts, scored 6 goals
30	Colleen Shea	D	Sr.	5-4	Baltimore, Md./Seton Keough	Backline anchor, started all 16 games
32	Kristin Brent	A	Fr.	5-9	Rockville Centre, N.Y./Sacred Heart Academy	Played in 3 games
33	Melissa Lloyd	GK	So.	5-0	West Chester, Pa./Unionville	Back-up GK, played in 1 game
34	Dana Cahill	GK	Sr.	5-7	Towson, Md./Mercy	Tewaaraton candidate, .505 save pct.

Head Coach: Missy Doherty (Second Year at Penn State, Ninth Career)
Assistant Coaches: Tara Hohenshelt (13th Year), Amy Altig (Second Year)
Captains: Dana Cahill, Theresa Zichelli

defensive stoppers.

- Tatum Coffey is also a presence on defense, leading the team with 17 caused turnovers.

SCOUTING JOHNS HOPKINS

- Johns Hopkins halted a six-game slide in its regular season finale by defeating No. 13 Ohio State, 12-9, at Homewood Field in Baltimore.
- The Blue Jays boast a trio of 30-goal scorers, led by Colleen McCaffrey with 39.
- Taylor D'Amore tops the team in both assists (33) and points (63).
- Candace Rossi has also reached double digits in goals and assists, recording 32 and 20, respectively.
- Sammy Cermack (21 goals, 9 assists) and Rachel Ballatori (19 goals, 11 assists) have also been key contributors.
- The Johns Hopkins defense is backstopped by ALC Rookie of the Year candidate KC Emerson.
- The freshman owns a 9.74 goals against average and a .452 save percentage.

PENN STATE AT THE ALC CHAMPIONSHIP

- Penn State is undefeated in opening round games of the conference tournament, posting a 5-0 record.
- Overall, the Nittany Lions are 5-5 in ALC Championship play, with four of five their victories coming against Ohio State and all five of their losses dealt by Northwestern.

ALC CHAMPIONSHIP HISTORY

2007	at Johns Hopkins, Baltimore, Md.	
	Penn State - No. 5 seed	
	vs. Ohio State	W, 9-7
	vs. Northwestern	L, 19-7
2008	at Northwestern, Evanston, Ill.	
	Penn State - No. 5 seed	
	vs. Ohio State	W, 13-5
	vs. Northwestern	L, 15-7
2009	at Penn State, University Park, Pa.	
	Penn State - No. 2 seed	
	vs. Ohio State	W, 11-7
	vs. Northwestern	L, 13-3
2010	at Ohio State, Columbus, Ohio	
	Penn State - No. 4 seed	
	vs. Ohio State	W, 14-12
	vs. Northwestern	L, 15-9
2011	at Vanderbilt, Nashville, Tenn.	
	Penn State - No. 3 seed	
	vs. Johns Hopkins	W, 17-11
	vs. Northwestern	L, 14-3

PRONUNCIATION GUIDE

Amy ALTIG	ALL-tig
Dana CAHILL	CAY-hill
Mackenzie CYR	SEAR
Ali/Evan FOULSHAM	FOAL-shum
Tara HOHENSHELT	HOE-in-shelt
Shannon/Kelly LECHNER	LECK-nur
Erin MCAFFEE	MACK-ah-fee
Alyssa SEMONES	SIH-mo-nees
Theresa ZICHELLI	Zih-KELLY

DOHERTY COLLECTS 100TH WIN

- Head coach Missy Doherty earned her 100th career win on April 21 when the Nittany Lions defeated Johns Hopkins, 12-9, at Penn State Lacrosse Field.
- Doherty, in her second year at the helm of the program, owns a 100-59 (.629) career record, including a 21-13 mark in Happy Valley.
- The milestone win for Doherty was also significant in that it pushed Penn State past the 10-win plateau for the first time since 2005, the last year it earned a berth to the NCAA Championship, and clinched a second consecutive winning conference record for the Nittany Lions.
- Prior to taking over the reins at Penn State, Doherty served as the head coach at Towson for seven years, where she compiled a 79-46 record and led the Tigers to the program's first ever berth in the NCAA postseason.

ROAD WARRIORS

- Penn State has excelled away from home in 2012, posting a 7-1 record.
- The seven road victories are the most by a Nittany Lion team since 1989, the year of the program's last national championship, when it won eight.
- The Penn State record is nine wins, set in 1987 by another national championship team.

CAHILL NAMED TEWAARATON NOMINEE

- Senior goalkeeper Dana Cahill is a nominee for the 2012 Tewaaraton Award, an honor presented to the nation's top female collegiate lacrosse player.
- The veteran anchor of the Nittany Lions' 22nd-ranked defense, Cahill has played an instrumental role in Penn State posting its most wins since 2005, including three against top 10 opponents, and earning as high as a No. 8 team national ranking.
- A starter of all 16 games thus far in 2012 and 34 straight overall, she is positioned in the top 20 nationally in saves, save percentage, and goals against average.
- Cahill has recorded double digit saves in a total of nine games this game, including five of the last six.
- She earned ALC Defensive Player of the Week honors on March 5 for her standout play in Penn State's 14-7 upset win over No. 6 Virginia.
- In 2011, Cahill established herself as one of the nation's top goalkeepers, earning First Team All-West/Midwest Region and All-ALC honors in addition to being named ALC Goalkeeper of the Year.

FRESHMEN IMPACT

- The Penn State freshman class has made an immediate impact on the program and has had a major influence on the fortunes of the 2012 Nittany Lions.
- Maggie McCormick and Tatum Coffey, who have each started every game this season, are receiving mention for national rookie of the year honors.
- McCormick, a three-time ALC Rookie of the Week honoree, is the team's quarterback behind the net on the attacking end.
- She tops Penn State with 26 assists and is tied for the lead team with 51 points.
- Coffey has quickly established herself as a force in the midfield.
- She ranks second on the team with 31 goals and leads PSU in draw controls (49) and caused turnovers (17).
- Kelly Lechner (19 goals, 4 assists) and Haley Ford (10 goals, 1 assist) have also been key offensive contributors.
- On defense, Cat Layne has emerged as a dependable part of the back line, starting the last five games and seven overall.

SOPHOMORE SUCCESS

- Penn State's stellar freshman class is not the only component of the program's youth movement.
- The play of sophomores Mackenzie Cyr and Lizzy Carney is another main reason for the Nittany Lions' success in 2012.
- Cyr tops PSU in goals with 32 and shares the team lead in points with 51, despite missing time with an injury.
- Carney, who often draws the assignment of getting matched up with opponents' primary offensive weapon, has quickly developed into a top defensive stopper.
- She ranks second on the team in ground balls (31) and caused turnovers (14) and has also scored three goals.

2012 AWARDS

Dana Cahill

- Tewaaraton Award nominee
- ALC Goalkeeper of the Year
- First Team All-ALC
- ALC Defensive Player of the Week (March 5)

Lizzy Carney

- First Team All-ALC

Maggie McCormick

- Second Team All-ALC
- ALC Rookie of the Week (March 5, April 16, April 30)
- SynapseSports.com National Rookie of the Week (March 6, April 17)
- WomensLax.com National Rookie of the Week (April 17)

Tatum Coffey

- Second Team All-ALC
- ALC Offensive Player of the Week (March 19)
- ALC Rookie of the Week (February 27)
- Nike Player of the Week (March 19)
- SynapseSports.com National Offensive Player of the Week
- WomensLax.com National Rookie of the Week

Theresa Zichelli

- Second Team All-ALC

IWLCA DIVISION I POLL

April 30, 2012

1. Northwestern	16-1 (397)
2. Syracuse	15-2 (373)
3. Florida	15-2 (355)
4. Maryland	17-3 (340)
5. North Carolina	14-3 (335)
6. Notre Dame	13-3 (285)
7. Duke	11-6 (275)
8. Virginia	11-7 (251)
9. Penn	8-6 (222)
10. Cornell	11-4 (201)
11. PENN STATE	11-5 (193)
12. Loyola	11-5 (175)
13. Dartmouth	10-4 (163)
14. Ohio State	10-5 (125)
15. Massachusetts	18-1 (115)
16. Georgetown	9-7 (112)
17. Princeton	8-7 (77)
18. Boston College	9-8 (54)
19. Johns Hopkins	8-8 (52)
20. Towson	15-3 (44)

deBEER/ILWOMEN.COM MEDIA POLL

April 30, 2012

1. Northwestern	158
2. Florida	149
2. Syracuse	149
4. Maryland	134
5. North Carolina	128
6. Notre Dame	110
7. Duke	108
8. Massachusetts	107
9. PENN STATE	72
10. Loyola	70
11. Dartmouth	67
11. Virginia	67
13. Towson	54
14. Cornell	52
15. Georgetown	51
16. Penn	50
17. Ohio State	42
18. Navy	20
18. Princeton	20
20. Vanderbilt	15

**2012 Penn State Women's Lacrosse
Penn State Overall Team Statistics
All games (as of Apr 30, 2012)**

Overall: 11-5 Conf: 3-2 Home: 4-4 Away: 7-1 Neut: 0-0

TEAM STATISTICS	PSU	OPP
SHOT STATISTICS		
Goals-Shot attempts	195-433	157-405
Goals scored per game	12.19	9.81
Shot pct.	.450	.388
Shots on goal-Attempts	328-433	316-405
SOG pct.	.758	.780
Shots/Game	27.1	25.3
Assists	67	53
Free position made-Att	41-82	32-82
Free position pct.	.500	.390
GOAL BREAKDOWN		
Total Goals	195	157
Free-position	41	32
Unassisted	128	104
Overtime	2	4
Goals scored average	11.96	9.63
GROUND BALLS		
	259	244
DRAW CONTROLS		
	174	212
TURNOVERS		
	212	229
CAUSED TURNOVERS		
	114	116
ATTENDANCE		
Total	2671	2783
Dates/Avg Per Date	8/334	8/348
Neutral Site #/Avg	0/0	

Goals by Period	1st	2nd	OT	Total
Penn State	105	88	2	195
Opponents	79	74	4	157

Shots by Period	1st	2nd	OT	Total
Penn State	233	194	6	433
Opponents	210	188	7	405

Saves by Period	1st	2nd	OT	Total
Penn State	83	74	2	159
Opponents	69	62	2	133

Shots on Goal	1st	2nd	OT	Total
Penn State	174	150	4	328
Opponents	162	148	6	316

**2012 Penn State Women's Lacrosse
Penn State Overall Individual Statistics
All games (as of Apr 30, 2012)**

Overall: 11-5 Conf: 3-2 Home: 4-4 Away: 7-1 Neut: 0-0

##	Player	gp-gs	g	a	pts	sh	sh%	sog	sog%	fpg-fps	gb	dc	t/o	ct
15	Cyr, Mackenzie	15-14	32	19	51	58	.552	48	.828	6-10	11	7	19	10
24	McCormick, Maggie	16-16	25	26	51	53	.472	43	.811	2-4	8	8	29	2
7	Coffey, Tatum	16-16	31	5	36	65	.477	49	.754	8-14	22	49	20	17
12	Fernandez, Molly	15-14	29	4	33	67	.433	48	.716	6-11	11	12	16	1
23	Zichelli, Theresa	16-16	19	4	23	51	.373	35	.686	3-8	24	23	18	13
21	Lechner, Kelly	15-14	19	4	23	39	.487	31	.795	6-9	22	16	19	3
3	Ford, Haley	10-4	10	1	11	17	.588	14	.824	1-3	8	3	5	3
6	Welch, Elaine	12-3	6	0	6	18	.333	11	.611	1-4	4	3	8	1
28	Adams, Aly	13-8	6	0	6	15	.400	10	.667	3-6	7	8	12	2
9	Guy, Katie	16-16	5	1	6	11	.455	7	.636	2-3	22	19	12	11
10	Purvis, Lauren	15-0	3	0	3	9	.333	8	.889	2-5	6	2	9	2
20	Foulsham, Evan	14-8	3	0	3	8	.375	6	.750	1-2	4	6	7	2
5	Carney, Lizzy	16-16	3	0	3	8	.375	7	.875	0-2	31	7	10	14
2	Lechner, Shannon	10-0	2	1	3	6	.333	3	.500	-	2	1	11	2
1	Curley, Avery	4-0	2	0	2	4	.500	4	1.000	-	2	0	2	1
22	Semones, Alyssa	3-0	0	1	1	3	.000	3	1.000	-	1	1	1	0
30	Shea, Colleen	16-16	0	1	1	0	.000	0	.000	-	22	7	4	14
32	Brent, Kristin	3-0	0	0	0	1	.000	1	1.000	0-1	2	0	0	1
34	Cahill, Dana	16-16	0	0	0	0	.000	0	.000	-	33	0	6	8
33	Lloyd, Melissa	1-0	0	0	0	0	.000	0	.000	-	0	0	0	0
31	Halus, Ayla	1-0	0	0	0	0	.000	0	.000	-	1	0	0	0
19	Bitzer, Carly	4-0	0	0	0	0	.000	0	.000	-	0	0	0	0
18	Layne, Cat	12-7	0	0	0	0	.000	0	.000	-	9	1	2	2
17	McAfee, Erin	7-0	0	0	0	0	.000	0	.000	-	0	0	0	1
16	Hughes, Kelsey	5-0	0	0	0	0	.000	0	.000	-	2	0	0	1
14	Foulsham, Ali	2-0	0	0	0	0	.000	0	.000	-	0	0	1	0
8	Chamberlain, Brittan	8-8	0	0	0	0	.000	0	.000	-	5	1	1	3
Total		16	195	67	262	433	.450	328	.758	41-82	259	174	212	114
Opponents		16	157	53	210	405	.388	316	.780	32-82	244	212	229	116

##	Goalie	gp-gs	min	ga	gaavg	saves	pct	w	l	t	shots faced
31	Halus, Ayla	1-0	21:33	2	5.57	1	.333	0	0	0	5
33	Lloyd, Melissa	1-0	7:37	1	7.88	1	.500	0	0	0	2
34	Cahill, Dana	16-16	948:50	154	9.74	157	.505	11	5	0	398
Total		16	978:00	157	9.63	159	.503	11	5	0	405
Opponents		16	978:00	195	11.96	133	.405	5	11	0	433

Goals by Period	1st	2nd	OT	Total
Penn State	105	88	2	195
Opponents	79	74	4	157

Saves by Period	1st	2nd	OT	Total
Penn State	83	74	2	159
Opponents	69	62	2	133

Shots by Period	1st	2nd	OT	Total
Penn State	233	194	6	433
Opponents	210	188	7	405

Attendance Summary	PSU	Opponent
Total	2671	2783
Dates/Avg Per Date	8/334	8/348
Neutral Site #/Avg	0/0	

Shots on Goal	1st	2nd	OT	Total
Penn State	174	150	4	328
Opponents	162	148	6	316

2012 Penn State Women's Lacrosse
 Penn State Category Leaders
 All games (as of Apr 30, 2012)

##	Points	GP	G	A	Pts	Shots
15	Cyr, Mackenzie	15	32	19	51	58
24	McCormick, Maggie	16	25	26	51	53
7	Coffey, Tatum	16	31	5	36	65
12	Fernandez, Molly	15	29	4	33	67
23	Zichelli, Theresa	16	19	4	23	51

##	Goals	GP	G	A	Pts	Shots
15	Cyr, Mackenzie	15	32	19	51	58
7	Coffey, Tatum	16	31	5	36	65
12	Fernandez, Molly	15	29	4	33	67
24	McCormick, Maggie	16	25	26	51	53
23	Zichelli, Theresa	16	19	4	23	51

##	Assists	GP	G	A	Pts	Shots
24	McCormick, Maggie	16	25	26	51	53
15	Cyr, Mackenzie	15	32	19	51	58
7	Coffey, Tatum	16	31	5	36	65
23	Zichelli, Theresa	16	19	4	23	51
12	Fernandez, Molly	15	29	4	33	67

##	Ground Balls	GP	No.
34	Cahill, Dana	16	33
5	Carney, Lizzy	16	31
23	Zichelli, Theresa	16	24
30	Shea, Colleen	16	22
21	Lechner, Kelly	15	22

##	Draw Controls	GP	No.
7	Coffey, Tatum	16	49
23	Zichelli, Theresa	16	23
9	Guy, Katie	16	19
21	Lechner, Kelly	15	16
12	Fernandez, Molly	15	12

##	Free-position Goals	GP	No.
7	Coffey, Tatum	16	8
15	Cyr, Mackenzie	15	6
12	Fernandez, Molly	15	6
21	Lechner, Kelly	15	6
23	Zichelli, Theresa	16	3

##	Shots	GP	G	A	Shots	Shot%
12	Fernandez, Molly	15	29	4	67	.433
7	Coffey, Tatum	16	31	5	65	.477
15	Cyr, Mackenzie	15	32	19	58	.552
24	McCormick, Maggie	16	25	26	53	.472
23	Zichelli, Theresa	16	19	4	51	.373

##	Shot Pct.	GP	G	A	Shots	Shot%
3	Ford, Haley	10	10	1	17	.588
15	Cyr, Mackenzie	15	32	19	58	.552
1	Curley, Avery	4	2	0	4	.500
21	Lechner, Kelly	15	19	4	39	.487
7	Coffey, Tatum	16	31	5	65	.477

##	Shots on Goal	GP	G	A	Shots	SOG	SOG%
7	Coffey, Tatum	16	31	5	65	49	.754
12	Fernandez, Molly	15	29	4	67	48	.716
15	Cyr, Mackenzie	15	32	19	58	48	.828
24	McCormick, Maggie	16	25	26	53	43	.811
23	Zichelli, Theresa	16	19	4	51	35	.686

##	Shots on Goal Pct.	GP	G	A	Shots	SOG	SOG%
1	Curley, Avery	4	2	0	4	4	1.000
22	Semones, Alyssa	3	0	1	3	3	1.000
32	Brent, Kristin	3	0	0	1	1	1.000
10	Purvis, Lauren	15	3	0	9	8	.889
5	Carney, Lizzy	16	3	0	8	7	.875

##	Caused Turnovers	GP	No.
7	Coffey, Tatum	16	17
30	Shea, Colleen	16	14
5	Carney, Lizzy	16	14
23	Zichelli, Theresa	16	13
9	Guy, Katie	16	11

**2012 Penn State Women's Lacrosse
Penn State Game Results
All games (as of Apr 30, 2012)**

Date	Opponent	Score	Overall	Conf	Site	Att.	Goalie
Feb 15	at Bucknell	W 19-3	1-0-0	0-0-0	Lewisburg, Pa.	140	Cahill, Dana (1-0)
Feb 19	#2 MARYLAND	L 6-16	1-1-0	0-0-0	University Park, Pa.	438	Cahill, Dana (1-1)
Feb 22	DUQUESNE	W 16-5	2-1-0	0-0-0	University Park, Pa.	223	Cahill, Dana (2-1)
Feb 25	at Lafayette	W 14-10	3-1-0	0-0-0	Easton, Pa.	185	Cahill, Dana (3-1)
Mar 04	#6 VIRGINIA	W 14-7	4-1-0	0-0-0	University Park, Pa.	157	Cahill, Dana (4-1)
Mar 07	#17 LOYOLA	LOT 10-12	4-2-0	0-0-0	University Park, Pa.	288	Cahill, Dana (4-2)
Mar 10	at Delaware	W 12-6	5-2-0	0-0-0	Newark, Del.	527	Cahill, Dana (5-2)
Mar 14	at Hofstra	W 11-9	6-2-0	0-0-0	Hempstead, New York	222	Cahill, Dana (6-2)
* Mar 18	at #8 Vanderbilt	WOT 12-11	7-2-0	1-0-0	Nashville, Tenn.	204	Cahill, Dana (7-2)
Mar 25	WILLIAM & MARY	W 9-7	8-2-0	1-0-0	University Park, Pa.	294	Cahill, Dana (8-2)
* Apr 01	at #4 Florida	L 11-20	8-3-0	1-1-0	Gainesville, Fla.	840	Cahill, Dana (8-3)
* Apr 06	#1 NORTHWESTERN	L 7-14	8-4-0	1-2-0	University Park, Pa.	393	Cahill, Dana (8-4)
Apr 11	at Lehigh	W 15-3	9-4-0	1-2-0	Bethlehem, Pa.	222	Cahill, Dana (9-4)
* Apr 15	at #10 Ohio State	W 15-12	10-4-0	2-2-0	Columbus, Ohio	443	Cahill, Dana (10-4)
* Apr 21	#18 JOHNS HOPKINS	W 12-9	11-4-0	3-2-0	University Park, Pa.	389	Cahill, Dana (11-4)
Apr 28	#17 PRINCETON	LOT 12-13	11-5-0	3-2-0	University Park, Pa.	489	Cahill, Dana (11-5)

Team Record	W-L-T	Attendance	Dates	Total	Average
Overall:	11-5	Total:	16	5454	341
Conference:	3-2	Home:	8	2671	334
Home:	4-4	Away:	8	2783	348
Away:	7-1	Neutral:	0	0	0
Neutral:	0-0				
Overtime:	1-2				



Avery Curley
So./Fr. | A | Berwyn, Pa.



Shannon Lechner
So. | A/M | Silver Spring, Md.



Haley Ford
Fr. | A | White Hall, Md.



Lizzy Carney
So. | M | West Chester, Pa.



Elaine Welch
Sr. | A | Bernardsville, N.J.



Tatum Coffey
Fr. | M | Toms River, N.J.



Brittanny Chamberlain
Sr. | D | Finksburg, Md.



Katie Guy
Jr. | M | Whitby, Ont.



Lauren Purvis
So. | M | Maple Glen, Pa.



Molly Fernandez
Jr. | A | Baltimore, Md.



Ali Foulsham
So. | D | Madison, N.J.



Mackenzie Cyr
So. | A | Westminster, Md.



Kelsey Hughes
Sr. | D | Severna Park, Md.



Erin McAfee
Fr. | D | Moorestown, N.J.



Cat Layne
Fr. | D | Downingtown, Pa.



Carly Bitzer
So. | D | Doylestown, Pa.



Evan Foulsham
So. | M | Madison, N.J.



Kelly Lechner
Fr. | M | Silver Spring, Md.



Alyssa Semones
Fr. | M | Westminster, Md.



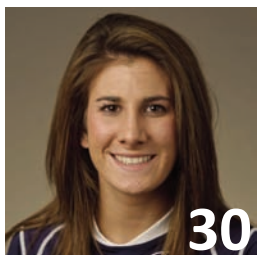
Theresa Zichelli
Sr. | M | Severna Park, Md.



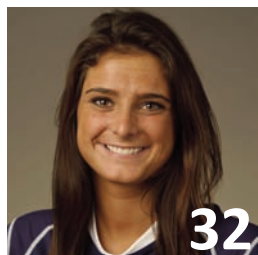
Maggie McCormick
Fr. | A | Eldersburg, Md.



Aly Adams
Sr. | M | Springfield, Pa.



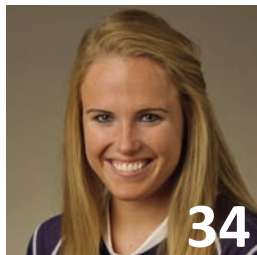
Colleen Shea
Sr. | D | Baltimore, Md.



Kristin Brent
Fr. | A | Rockville Centre, N.Y.



Melissa Lloyd
So. | GK | West Chester, Pa.



Dana Cahill
Sr. | GK | Towson, Md.



Missy Doherty
Second year



Tara Hohenshelt
13th year



Amy Altig
Second year