



PENN STATE WOMEN'S HOCKEY

2012-13 NITTANY LIONS

GoPSUsports.com // @PennStateWHKY // Facebook.com/PennStateWomensHockey
 Contact: **Jeremy Fallis** // jeremy.fallis@psu.edu // O: (814) 865-3613 // C: (814) 206-6544

2012-13 SCHEDULE

Overall: 7-12-1 // Home: 4-5-1 // Away: 3-7-0
 CHA: 1-8-1 // Home: 0-5-1 // Away: 1-3-0

| Date | Opponent | | Time |
|----------------------------|---------------------------------------|---|-----------|
| Oct. 6 | at Vermont | W | 5-3 |
| Oct. 7 | at Vermont | L | 1-3 |
| Oct. 13 * | SYRACUSE | L | 0-4 |
| Oct. 14 * | SYRACUSE | L | 0-6 |
| Oct. 19 | at Sacred Heart | L | 1-2 |
| Oct. 20 | at Sacred Heart | W | 6-1 |
| Oct. 25 * | RIT | L | 1-4 |
| Oct. 26 * | RIT | T | (OT) 2-2 |
| Nov. 2 | SACRED HEART | W | 6-0 |
| Nov. 3 | SACRED HEART | W | 8-2 |
| Nov. 10 * | ROBERT MORRIS | L | 1-7 |
| Nov. 11 * | ROBERT MORRIS | L | 1-4 |
| Nov. 16 * | at Lindenwood | L | 1-5 |
| Nov. 17 * | at Lindenwood | W | 3-2 |
| Nov. 30 * | at #4 Mercyhurst | L | 0-5 |
| Dec. 1 * | at #4 Mercyhurst | L | 1-7 |
| Dec. 7 | at St. Lawrence | L | 1-3 |
| Dec. 8 | at St. Lawrence | L | 2-4 |
| Jan. 4 | CHATHAM | W | 10-0 |
| Jan. 5 | CHATHAM | W | 4-0 |
| Jan. 11 | at Union | | 7:00 p.m. |
| Jan. 12 | at Union | | 4:00 p.m. |
| Jan. 25 * | at Syracuse | | 7:00 p.m. |
| Jan. 26 * | at Syracuse | | 2:00 p.m. |
| Jan. 29 | PRINCETON | | 7:00 p.m. |
| Feb. 1 * | #7 MERCYHURST | | 7:00 p.m. |
| Feb. 2 * | #7 MERCYHURST | | 2:00 p.m. |
| Feb. 8 * | LINDENWOOD | | 2:00 p.m. |
| Feb. 9 * | LINDENWOOD | | 2:00 p.m. |
| Feb. 15 * | at RIT | | 7:00 p.m. |
| Feb. 16 * | at RIT | | 7:00 p.m. |
| Feb. 22 * | at Robert Morris | | 7:00 p.m. |
| Feb. 23 * | at Robert Morris | | 3:00 p.m. |
| 2013 CHA TOURNAMENT | | | |
| Mar. 1 | ^ First Round - Game 1 | | TBA |
| Mar. 2 | ^ First Round - Game 2 | | TBA |
| Mar. 3 | ^ First Round - Game 3 (if necessary) | | TBA |
| Mar. 8 | % Semifinals | | TBA |
| Mar. 9 | % Final | | TBA |

All Times Eastern

Home games in **CAPS** at Greenberg Ice Pavilion

* - College Hockey America games

^ - CHA First Round at higher seed

% - CHA Semifinals & Final hosted by No. 1 seed

Rankings based on USA Today/USA Hockey poll



PENN STATE NITTANY LIONS
 (7-12-1, 1-8-1 CHA)

UNION DUTCHWOMEN
 (5-11-3, 0-7-3 ECAC Hockey)

Games 21-22: Jan. 11-12, 2013 • 7 p.m. // 4 p.m. • Messa Ice Rink • Schenectady, N.Y.

GAME DAY

VENUE
 STREAMING COVERAGE
 SERIES RECORD
 LAST VARSITY MEETING
 NEXT SERIES

Messa Ice Rink (2,200)
 UnionAthletics.TV
 0-0-0
 n/a, First Meeting, Jan. 11
 Jan. 25-26 at Syracuse

GAME NOTES

- Penn State journeys to ECAC Hockey foe Union for a two-game series
- Nittany Lions and Dutchwomen have not met in women's hockey
- PSU coming off weekend sweep of Chatham, 10-0 and 4-0
- Every Nittany Lion played last weekend, out-shooting Chatham 119-33
- Union fell to No. 4 Harvard (9-0) and Dartmouth (6-0) last weekend
- **Hannah Hoenshell** was named CHA Rookie of the Week on Monday
- Director of Ops **Mo Stroemel** was tapped to lead USA Hockey's University Team

ON THE INSIDE

Page 2: **CHA Standings and Team Comparison**
 Page 12: \$90 million **Pegula Ice Arena** is on target for a Sept. 2013 opening
 Pages 8-11: **2012-13 Penn State Women's Hockey Stats**
 Pages 13-14: **The Nittany Lion Roster & TV/Radio Roster**

SEASON STATISTICAL LEADERS

| OFFENSE | | GP | G | A | PTS | SH | +/- | GWG |
|------------|---------------------|-------|--------|--------|-----|------|-----|------|
| 40 | Shannon Yoxheimer | 19 | 12 | 10 | 22 | 108 | +4 | 3 |
| 24 | Taylor Gross | 19 | 4 | 13 | 17 | 53 | +5 | 0 |
| 15 | Jess Desorcie | 19 | 4 | 10 | 14 | 34 | +6 | 0 |
| 16 | Hannah Hoenshell | 14 | 7 | 3 | 10 | 34 | +5 | 1 |
| 20 | Emily Laurenzi | 20 | 2 | 5 | 7 | 21 | +7 | 1 |
| 19 | Jill Holdcroft | 20 | 7 | 2 | 9 | 29 | -6 | 0 |
| 22 | Jenna Welch | 20 | 2 | 5 | 7 | 32 | -1 | 0 |
| 23 | Birdie Shaw | 19 | 2 | 3 | 5 | 43 | -2 | 0 |
| 10 | Micayla Catanzariti | 20 | 3 | 2 | 5 | 38 | -7 | 0 |
| DEFENSE | | GP | G | A | PTS | SH | +/- | BLK |
| 33 | Madison Smiddy | 14 | 1 | 6 | 7 | 13 | +3 | 13 |
| 4 | Jordin Pardoski | 20 | 2 | 4 | 6 | 19 | +3 | 17 |
| 17 | Paige Jahnke | 20 | 0 | 6 | 6 | 20 | +2 | 26 |
| 2 | Jeanette Bateman | 20 | 1 | 4 | 5 | 17 | -1 | 21 |
| 8 | Taylor McGee | 13 | 0 | 2 | 2 | 10 | -1 | 11 |
| GOALTENDER | | GP-GS | Record | MIN | GA | GAA | SV | SV% |
| 37 | Nicole Paniccia | 16-16 | 6-9-1 | 881:31 | 50 | 3.40 | 560 | .918 |
| 30 | Celine Whitlinger | 6-4 | 1-3-0 | 270:49 | 12 | 2.66 | 166 | .933 |



@PennStateWHKY



PennStateWomensHockey



GoPSUTV



NITTANY LION WOMEN'S HOCKEY

GAME NOTES VS. UNION (JAN. 11-12)

SCOUTING THE DUTCHWOMEN

Last weekend, Union (5-9-3, 0-5-3 ECAC) were shut out 9-0 by No. 4 Harvard and 6-0 by Dartmouth. Despite the setbacks, the Dutchwomen are enjoying their best season in Division I, already matching their program-best mark for wins (5) through 17 games. Union joined Division I in 2003-04 and went 4-26-4 overall with a 2-18-2 ECAC Hockey mark.

Goaltender Shenae Lundberg (4-6-3) has held steady between the pipes, posting a 2.49 GAA and .917 save percentage. Alana Marcinko (1-3-0, 4.82 GAA, .864) backs Lundberg.

On offense, Christine Valente leads all Dutchwomen with 10 points on five goals and five assists, while Courtney Turner has nine points with four goals and five assists. Out of the 19 Union players to play five or more games, 18 have tallied a point. Stephanie Thomson has a plus-1 rating to lead the team on two goals and five assists.

The two teams have never met before and have had two common opponents: Syracuse and St. Lawrence. PSU went 0-4-0, while Union is 1-3-0 against those teams.

PENN STATE SWEEPS CHATHAM

The Nittany Lions trounced an overmatched Chatham team on Friday-Saturday, Jan. 4-5, winning 10-0 and 4-0. The weekend saw every Nittany Lion see ice time as PSU out-shot Chatham 119-33, scoring 14 times, tallying 22 assists, 36 points and a plus-65 rating. Additionally, Penn State posted back-to-back shutouts for the first time in the young history of the program.

In Friday's game, Penn State scored five in the first, four in the second and added one more for the 10 spot. **Shannon Yoxheimer** scored the first two goals of the game and **Hannah Hoenshell** tallied a school-record four points as Penn State eased by the Division III Cougars.

Penn State set new records for most goals in a game (10), most goals in a period (5, in the first) and most assists in a game (17). Hoenshell tallied a two-goal, two-assist effort, while **Jeanette Bateman** became the first Nittany Lion to register three assists. **Jordin Pardoski** added a three-point game of her own behind a goal and two assists to celebrate her 19th birthday.

The game also featured a couple of firsts as **Tess Weaver** scored her first varsity goal at the end of the first period and freshman **Darby Kern** notched her first point on an assist in the first period. In all, 15 Nittany Lions earned a point.

Kendra Rasmussen tallied her first multi-goal game of her career and **Jill Holdcroft** tallied two points on a goal and an assist. In all, 16 of 18 Nittany Lion skaters tallied a point.

The goaltending trio of **Nicole Paniccia**, **Celine**

Whitlinger and **Brooke Meyer** combined for Penn State's second shutout of the year. Paniccia and Meyer made six stops, while Whitlinger saved five.

On Saturday, Junior assistant captain **Jenna Welch** scored twice and linemate **Katie Zinn** posted three points behind her first collegiate goal and two assists.

Penn State out-shot Chatham, 71-16, peppering the Cougar net. Zinn scored the opening goal in the first, Welch doubled the lead in the second and added another in the third before Holdcroft finished off the scoring. **Paige Jahnke** had two helpers and **Madison Smiddy** added her sixth assist of the season in the game.

Whitlinger won her first collegiate game with 12 saves in 52:34 of game time. Meyer polished off the shutout with four stops in the final 7:26.

HOENSHHELL EARNS ROOKIE OF THE WEEK

Freshman forward **Hannah Hoenshell** collected College Hockey America Rookie of the Week laurels, the conference office announced Monday. The award is the first of her career for the Plano, Texas, native, who tallied four points on a pair of goals and assists in a 10-0 win over Chatham Jan. 4.

STROEMEL TO LEAD USA UNIVERSITY TEAM

Penn State women's hockey director of operations and video coach **Mo Stroemel** will lead the 2013 U.S. Women's National University Team at the 2013 World University Games in Italy. Stroemel was also in charge of the inaugural 2011 team that placed fourth in Turkey. Stroemel's 2011 squad featured current Nittany Lion assistant cap-

GAMEDAY COMPARISON

TEAM STATS

| | PSU | UNI |
|------------------------|--------|-------|
| Overall record | 7-12-1 | 5-9-3 |
| Conference record | 1-8-1 | 0-5-3 |
| Goals scored | 54 | 27 |
| Goals scored per game | 2.7 | 1.6 |
| Goals allowed | 64 | 51 |
| Goals allowed per game | 3.2 | 3.0 |
| First period goals | 19 | 9 |
| Second period goals | 17 | 6 |
| Third period goals | 18 | 12 |
| Overtime goals | 0 | 0 |
| Shots | 586 | 409 |
| Shots per game | 29.3 | 24.1 |
| Shot pct. | .092 | .066 |
| Assists | 81 | 46 |
| Penalties per game | 4.2 | 3.5 |
| Power plays | 11-75 | 12-72 |
| Power-play pct. | .147 | .167 |
| Penalty kills | 22-84 | 13-55 |
| Penalty-kill pct. | .738 | .764 |
| Saves | 743 | 485 |
| Shutouts | 3 | 0 |

LEADERS

| | PSU | UNI |
|--------------|-------------------|------------------|
| Points | Yoxheimer (22) | Valentine (10) |
| Goals | Yoxheimer (12) | Valentine (10) |
| Assists | Gross (13) | Three with 5 |
| Shots | Yoxheimer (108) | Valentine (57) |
| Shot Pct. | Holdcroft (.241) | Tomaselli (.188) |
| +/- | Desorcie (+6) | Thompson (+1) |
| Faceoff Pct. | Holdcroft (.520) | Babiak (.508) |
| Saves | Paniccia (560) | Lundberg (366) |
| Save Pct. | Whitlinger (.933) | Lundberg (.917) |
| GAA | Whitlinger (2.66) | Lundberg (2.49) |
| Record | Paniccia (6-9-1) | Lundberg (4-6-3) |

2012-13 COLLEGE HOCKEY AMERICA STANDINGS

(as of Jan. 10, 2013)

| | Pts. | CHA | GF | GA | Overall | GF | GA | Last 10 |
|-------------------|----------|--------------|-----------|-----------|---------------|-----------|-----------|--------------|
| Mercyhurst (7/7) | 12 | 6-2-0 | 39 | 9 | 14-3-1 | 81 | 27 | 8-2-0 |
| RIT | 11 | 4-3-3 | 21 | 24 | 9-9-3 | 52 | 51 | 4-5-1 |
| Robert Morris | 10 | 5-3-0 | 23 | 13 | 9-5-2 | 44 | 32 | 6-3-1 |
| Syracuse | 9 | 4-1-1 | 19 | 8 | 10-8-1 | 58 | 37 | 5-4-1 |
| PENN STATE | 3 | 1-8-1 | 10 | 46 | 7-12-1 | 54 | 64 | 3-7-0 |
| Lindenwood | 3 | 1-4-1 | 10 | 22 | 1-18-1 | 29 | 98 | 1-8-1 |

PAST RESULTS & UPCOMING SCHEDULE

Tuesday, Jan. 1
Minnesota St. 6, Lindenwood* 1

Wednesday, Jan. 2
Minnesota St. 6, Lindenwood* 0

Friday, Jan. 4
RIT 2, Robert Morris* 1
PENN STATE* 10, Chatham 0
North Dakota 7, Lindenwood* 3

Saturday, Jan. 5
RIT 2, Robert Morris* 1
PENN STATE* 4, Chatham 0
North Dakota 8, Lindenwood* 4

Tuesday, Jan. 8
Syracuse* 6, Colgate 0

Friday, Jan. 11
Syracuse at Mercyhurst, 3 p.m.
Lindenwood at Robert Morris, 3 p.m.
PENN STATE at Union, 7

Saturday, Jan. 12
Colgate at RIT, 2 p.m.
Syracuse at Mercyhurst, 2 p.m.
Lindenwood at Robert Morris, 3 p.m.
PENN STATE at Union, 4 p.m.

Tuesday, Jan. 15
Syracuse at Cornell, 7 p.m.

* home team

NITTANY LION WOMEN'S HOCKEY



tain **Lindsay Reihl** and current equipment manager **Graham Pepperman**.

NEW YORK STATE OF MIND

The Nittany Lions travel to New York for the second straight road trip after a visit to Canton, N.Y. to face St. Lawrence (Dec. 7-8). In all, Penn State will make at least four trips to the State of New York including future trips to CHA rivals Syracuse (Jan. 25-26) and RIT (Feb. 15-16). Penn State could potentially make a fifth trip depend on seeding for the 2013 CHA Tournament.

SAINTS ESCAPE NITTANY LIONS

Penn State battled St. Lawrence Friday night (Dec. 7), but ultimately fell to the Saints, 3-1, on the road in Canton, N.Y. Freshman **Jill Holdcroft** netted her fifth goal of the season on a power play in the second period, but St. Lawrence responded with a two-goal final frame to put away the Nittany Lions. **Celine Whitlinger**, in her third start of the season, denied a career-high 45 shots in goal, besting her previous record of 40 set against Vermont Oct. 7. Whitlinger was aided by a stingy Nittany Lion defense that totaled 17 blocked shots to hold St. Lawrence to just a pair of goals before an empty-netter sealed the final score at 3-1. **Jenna Welch** led the way by getting in front of three attempts.

On Saturday, Dec. 8, Penn State pulled within one late in the third period, but could not complete the comeback against St. Lawrence as the Saints skated to a 4-2 victory to earn the series sweep. **Jess Desorcie** scored early, assisted by **Taylor Gross** and **Shannon Yoxheimer** for a 1-0 lead. Down 3-1, **Hanna Hoenshell** scored her fifth of the season midway through the third period. SLU managed a power-play goal with less than two minutes to play for the 4-2 final. **Nicole Paniccia** made 54 saves in goal for the Lions.

WHITLINGER NAMED ROOKIE OF THE WEEK

Freshman netminder **Celine Whitlinger's** career night at St. Lawrence on Friday, Dec. 7, translated into her first collegiate honor: College Hockey America Rookie of the Week. Whitlinger earned Penn State's second CHA Rookie of the Week this season after **Micayla Catanzariti's** honor on Oct. 8.

PENN STATE'S RECORD IS...

| | |
|--------|--|
| 4-5-1 | at home |
| 3-7-0 | on the road |
| 0-0-1 | in overtime |
| 5-3-1 | when scoring first |
| 2-9-0 | when opponent scores first |
| 5-0-1 |when leading after the 1st period |
| 1-6-0 | when trailing after the 1st period |
| 1-6-0 | when tied after the 1st period |
| 6-0-1 | when leading after the 2nd period |
| 0-10-0 |when trailing after the 2nd period |
| 1-2-0 | when tied after the 2nd period |
| 6-1-0 |when out-shooting opponent |
| 1-11-1 |when out-shot by opponent |
| 0-0-0 | when taking same # of shots |
| 7-1-0 |when winning more faceoffs |
| 0-11-1 | when losing more faceoffs |
| 0-0-0 | when tied in faceoffs |
| 1-7-0 | when taking more penalties |
| 3-3-0 |when taking fewer penalties |
| 3-2-1 | ... when taking the same # of penalties |
| 4-3-1 | when scoring a power play goal |
| 3-9-0 | ... when not scoring a power play goal |
| 4-9-1 |when allowing a power play goal |
| 3-3-0 | ...when not allowing a power play goal |
| 0-3-0 | when scoring 0 goals |
| 0-8-0 | when scoring 1 goal |
| 0-1-1 | when scoring 2 goals |
| 1-0-0 | when scoring 3 goals |
| 6-0-0 | when scoring 4+ goals |
| 3-0-0 | when allowing 0 goals |
| 1-0-0 |when allowing 1 goal |
| 2-1-1 | when allowing 2 goals |
| 1-2-0 | when allowing 3 goals |
| 0-9-0 | when allowing 4+ goals |
| 2-5-1 | in October |
| 3-4-0 | in November |
| 0-3-0 | in December |
| 2-0-0 | in January |
| 0-0-0 |in February |
| 0-0-0 |in March |
| 0-0-0 | on Tuesday |
| 0-1-0 |on Thursday |
| 2-4-1 | on Friday |
| 5-4-0 | on Saturday |
| 0-3-0 | on Sunday |
| 4-6-0 | during the day |
| 3-6-1 | at night |
| 1-1-0 |vs. Hockey East |
| 1-8-1 |vs. College Hockey America |
| 0-2-0 | vs. ECAC Hockey |
| 3-1-0 |vs. D-I Independents |
| 2-0-0 |vs. Division III |
| 0-2-0 | vs. ranked opponents |
| 7-10-1 |vs. unranked opponents |
| 5-3-1 | when Shannon Yoxheimer scores |
| 6-9-1 | when Nicole Paniccia starts |
| 1-1-1 | games decided by a goal or less |

2012-13 WOMEN'S HOCKEY POLLS (as of Jan. 8, 2013)

USA Today/USA Hockey Poll

| | | | |
|----------|-------------------|---------------|----------|
| 1 | Minnesota | 20-0-0 | 1 |
| 2 | Harvard | 11-1-1 | 4 |
| 3 | Boston College | 13-3-2 | 5 |
| 4 | Cornell | 10-3-0 | 3 |
| 6 | Boston University | 11-3-3 | 6 |
| 5 | Clarkson | 15-5-0 | 2 |
| 7 | Mercyhurst | 14-3-1 | 7 |
| 8 | Wisconsin | 12-6-2 | 8 |
| 9 | Ohio State | 14-5-1 | RV |
| 10 | Northeastern | 11-6-2 | 10 |

Others: North Dakota

USCHO.com Poll

| | | | |
|----------|-------------------|---------------|----------|
| 1 | Minnesota | 20-0-0 | 1 |
| 2 | Harvard | 11-1-1 | 4 |
| 3 | Boston College | 13-3-2 | 5 |
| 4 | Cornell | 10-3-0 | 3 |
| 5 | Clarkson | 15-5-0 | 2 |
| 6 | Boston University | 11-3-3 | 6 |
| 7 | Mercyhurst | 14-3-1 | 7 |
| 8 | Wisconsin | 12-6-2 | 8 |
| 9 | Northeastern | 11-6-2 | 9 |
| 10 | Ohio State | 14-5-1 | 10 |

Others: North Dakota, St. Lawrence

Bold indicates 2012-13 opponent

2012-13 MEDIA INFORMATION

Penn State Athletic Communications

| | |
|-------------------|-----------------------|
| Primary Contact | Jeremy Fallis |
| Email | jeremy.fallis@psu.edu |
| Secondary Contact | Brian Hoerst |
| Email | bjh33@psu.edu |
| Office | 814-865-1757 |

Interviews

Penn State student-athletes and coaches are available for interviews after practice each day. Please contact Jeremy Fallis in advance.

Credentials

Contact Jeremy Fallis for home game credentials at Greenberg Ice Pavilion.

Postgame

Head coach Josh Brandwene and requested student-athletes are available to the media following each game in the studio rink. Please alert Jeremy Fallis or Brian Hoerst during the game of any requests.

Yearbook

The 2012-13 Penn State women's hockey yearbook will be made available to media members at the first home game on Oct. 13. The public may purchase copies for \$6 online.

GoPSUsports.com

Facebook.com/PennStateWomensHockey

[@PennStateWHKY](https://twitter.com/PennStateWHKY)



NITTANY LION WOMEN'S HOCKEY

Whitlinger made stop after stop on as the Nittany Lions looked to upset established St. Lawrence. The California native posted 45 saves in all as Penn State fell 3-1. St. Lawrence went to the NCAA Tournament last season and is among the best teams in the ECAC Hockey.

YOUTH MOVEMENT

As is expected with a brand new varsity program, there are many freshmen on the team—17 in all. Thus far, 16 freshmen have made an appearance on the ice. The Nittany Lion freshmen have accounted for 74.1% of the goals scored (40 of 54).

| | GP | G | A | Pts. |
|---------------------|----|------|-----|-------|
| Jeanette Bateman | 20 | 1 | 4 | 5 |
| Micayla Catanzariti | 20 | 3 | 2 | 5 |
| Hannah Hoenshell | 14 | 7 | 3 | 10 |
| Jill Holdcroft | 20 | 7 | 3 | 10 |
| Paige Jahnke | 20 | 0 | 6 | 6 |
| Darby Kern | 6 | 0 | 1 | 1 |
| Emily Laurenzi | 20 | 2 | 5 | 7 |
| Taylor McGee | 13 | 0 | 2 | 2 |
| Jordin Pardoski | 20 | 2 | 4 | 6 |
| Kendra Rasmussen | 19 | 3 | 1 | 4 |
| Birdie Shaw | 19 | 2 | 3 | 5 |
| Stephanie Walkom | 1 | 0 | 0 | 0 |
| Sarah Wilkie | 13 | 0 | 0 | 0 |
| Shannon Yoxheimer | 19 | 12 | 10 | 20 |
| Katie Zinn | 10 | 1 | 3 | 4 |
| | GP | GAA | SV | Pct. |
| Brooke Meyer | 3 | 0.00 | 17 | 1.000 |
| Celine Whitlinger | 6 | 2.66 | 166 | .933 |

SET TO JOIN THE NITTANY LIONS

On Nov. 14, head coach **Josh Brandwene** welcomed next year's Nittany Lions. Minnesota natives **Laura Bowman** (Minnetonka, Minn.), **Sarah Nielsen** (Edina, Minn.), **Amy Petersen** (Minnetonka, Minn.) and **New York** product **Kelly Seward** (Williamsville, N.Y.). Bowman and Petersen have led Minnetonka to the last two Minnesota high school state titles.

CHA ROOKIE OF THE MONTH HONORS TO YOXHEIMER

Freshman forward **Shannon Yoxheimer** was named College Hockey America's Rookie of the Month for her performance during November. Yoxheimer led the Nittany Lions with nine points and helped lead Penn State to a 3-4-0 record last month.

Yoxheimer was Penn State's most powerful weapon offensively, accounting for 39 shots, four goals, five points and nine points during the varsity program's second month. Her four goals were tied for a team-high, while her five assists and nine points were each team bests.

AT THE MERCY OF THE LAKERS

Penn State dropped both games at No. 4 Mercyhurst last weekend (Nov. 30-Dec. 1), but still put forth positive efforts. Friday night's 5-0 loss highlight was **Celine Whitlinger's** strong third period that yielded one goal in 29 shots as the freshman

netminder made her return to the ice. Her last appearance was Oct. 14 vs. Syracuse.

In Saturday's game, Penn State took a 1-0 lead on a **Jess Desorcie** marker off **Taylor Gross's** breakout attempt 8:29 into the contest. The play was set up by **Shannon Yoxheimer**, who caused a turnover at the blue line and allowed Gross to streak in uncontested for the second time in minutes. Mercyhurst tied the game 1-1 before the period was out and held a 3-1 advantage after two periods as the Lakers won 7-1. **Nicole Paniccia** was named third star of the game by setting a new school record with 64 saves.

CHA SPLIT AT LINDENWOOD

Penn State women's hockey earned another inaugural milestone on Saturday, Nov. 17, defeating Lindenwood 3-2 for its first College Hockey America victory. Freshman forward **Emily Laurenzi** struck for the game-winning goal to complete a comeback at Lindenwood Ice Arena. Fellow classmate **Jill Holdcroft** and junior captain **Taylor Gross** each notched their fourth goals of the season for the Nittany Lions. Freshman forward **Shannon Yoxheimer** had two assists to aid the Nittany Lion attack.

Penn State found itself down twice to Lindenwood and each time fought back to knot the game. With 5:50 left in the third period in a 2-2 game, Laurenzi tucked home her second goal of the season as the Nittany Lions held off LU for the final portions of the game. **Paige Jahnke** and **Hannah Hoenshell** assisted on the power-play goal.

The previous day did not go as well for the Nittany Lions. Lindenwood scored twice in the second period to break a 1-1 dealock and went on to win, 5-1, for the Lions' first win of the season. Holdcroft scored a power-play goal from Yoxheimer and Gross.

WEEKEND SWEEP BY RMU

Penn State faced the 2012 CHA Tournament champion Robert Morris in a two-game series (Nov. 10-11), falling 7-1 and 4-1. **Shannon Yoxheimer** scored in the opener off a **Taylor Gross** faceoff win, but RMU's Rebecca Vint scored five times to pace the Colonials.

In the second game, it was more of the same early as Robert Morris staked out a 3-0 lead through two periods, but Penn State held the Colonials scoreless in the second. That turned the momentum around as Penn State went toe-to-toe with the defending champions in the third. **Micayla Catanzariti** scored a goal with 6:19 remaining to spark the Lions. **Birdie Shaw** and **Jill Holdcroft** were credited with assists. Twenty-three seconds later, Yoxheimer's shot was saved by Delayne Brian and Taylor Gross's attempt was stopped by Brian to keep it a two-goal game. With 2:23 left, RMU took an interference penalty as Penn State had a 6-on-4, but couldn't convert before RMU tallied an empty-net goal with 13 second remain-

ing. **Nicole Paniccia** made 49 saves in Sunday's loss.

YOXHEIMER FINALLY STOPPED

Penn State's leading scorer, **Shannon Yoxheimer**, has been on a roll over the past four weeks, scoring eight of her team-high 10 goals. In that stretch, Yoxheimer scored in seven-straight games after a three-game drought. The seven-game streak started at Sacred Heart as she scored PSU's only goal and has continued with a career day vs. SHU on Nov. 3 as she scored a goal and career-high two assists. Yoxheimer also accounted for Penn State's first two game-winning goals, notching two goals at Vermont (Oct. 6) and the go-ahead goal at SHU (Oct. 20). Yoxheimer scored against Robert Morris on Saturday, but we held scoreless for the first time since Oct. 14 in the Sunday matchup.

EIGHT FROM EIGHT IN WIN OVER SHU

Penn State earned its first series sweep in program history, defeating Sacred Heart, 8-2, on Saturday (Nov. 3) afternoon at Greenberg Ice Pavilion. Eight different Nittany Lions tallied a goal with **Jess Desorcie**, **Taylor Gross** and **Shannon Yoxheimer** notching three-point days.

HONORS & AWARDS

Micayla Catanzariti

CHA Rookie of the Week (10/8)
Penn State Student-Athlete of the Week (10/9)

Hannah Hoenshell

CHA Rookie of the Week (1/6)

Celine Whitlinger

CHA Rookie of the Week (12/10)

Shannon Yoxheimer

CHA November Rookie of the Month (12/4)
CHA Player of the Week (10/22)
Penn State Student-Athlete of the Week (10/23)

OVER THE AIR

This Week

AmericaOneSports.com will air live video and audio of this weekend's games. Ryan Smith and Pat White will deliver the call. Packages cost \$8 a day, \$30 a month or \$125 for the entire season for all CHA games.

The CHA on AmericaOneSports.com

All Penn State games during CHA play will be streamed live on AmericaOneSports.com. Subscribers can purchase 30-day packages for \$30 or a season pass for \$125.

Non-Conference Home Action

Penn State's non-conference home games will be shown on a game-to-game basis.

NITTANY LION WOMEN'S HOCKEY



Yoxheimer opened the scoring before SHU tied it up early in the second period before Gross, **Kendra Rasmussen** and **Jill Holdcroft** scored successive goals for a 4-1 lead midway through the period.

After another SHU tally, PSU would rally off the last four goals, this time coming from Desorcie, **Jenna Welch**, **Madison Smiddy** and **Emily Laurenzi**. Welch, Smiddy and Laurenzi scored their first goals of the season for Penn State.

Nicole Paniccia made 23 saves in net for the Nittany Lions to improve to 4-3-1 on the season. Penn State dominated the game in the faceoff circle, 54-25, which led to a 64-25 shot advantage.

FIRST HOME WIN, SHUTOUT & HAT TRICK

Friday night, Nov. 2 at Greenberg Ice Pavilion was historic for Penn State as the women's hockey team won its first home game, 6-0, over Sacred Heart. The program's first shutout featured the first hat trick by **Hannah Hoenshell**. **Shannon Yoxheimer** scored twice and **Jill Holdcroft** scored her first ever goal in the rout.

Hoenshell opened the game's scoring seven minutes into the contest, which highlighted a 22-2 Penn State advantage in shots over the Pioneers.

The Nittany Lions would light the lamp three times in the second as Hoenshell, Yoxheimer and Holdcroft stretched the lead to 4-0.

In the third, Penn State would make it 5-0 just 10 seconds into the period on a Yoxheimer laser from the left wing and Hoenshell would cap her hat trick five minutes later for the 6-0 final score.

The Nittany Lions out-shot the Pioneers 66-18 as goal-tenders **Nicole Paniccia** (11 saves) and **Brooke Meyer** (7 saves) combined for the school's first shutout.

PSU EARNS FIRST CHA POINT

Penn State was 89 seconds away from its first CHA victory on Friday, Oct. 26 vs. RIT, but had to settle with a hard-fought 2-2 tie. After a 4-1 loss to RIT on Thursday, Penn State fell to 0-3-1 in CHA play. Goaltender **Nicole Paniccia** and forward **Shannon Yoxheimer** shined for Penn State, providing outstanding defense and offense, respectively. Paniccia made 93 saves last week, including a school-record 59 stops in the 2-2 tie. Paniccia finished the weekend with a .939 save percentage after a 34-save effort in Thursday's matchup.

Yoxheimer scored Penn State's lone goal in the opener and opened the scoring on Friday before Taylor Gross made it 2-0 just seconds later. **Paige Jahnke**, **Madison Smiddy**, Yoxheimer and Gross each had an assist in the tie as the Tigers scored once in the first and another in the third. RIT held a 99-36 shot advantage in the series.

LAST TIME AGAINST SACRED HEART

The Nittany Lions split a weekend series (Oct. 19-20) at Sacred Heart, falling in the opener 2-1 and winning the finale 6-1. Penn State was led by freshman forward **Shannon Yoxheimer** with two goals and an assist.

NCAA TEAM RANKS

(As of Jan. 9, 2013)

| | |
|-------------------------|--------|
| Goals Per Game | 18th |
| Goals Against Per Game | 24th |
| Scoring Margin | 20th |
| Most Penalty Minutes | 22nd |
| Power-Play Percentage | T-26th |
| Penalty-Kill Percentage | 31st |
| Combined Special Teams | 28th |
| Winning Percentage | 26th |

NCAA INDIVIDUAL RANKS

(Top 100 as of Jan. 9, 2013)

Jess Desorcie

| | |
|------------------|--------|
| Points Per Game | T-95th |
| Assists Per Game | T-71st |

Taylor Gross

| | |
|------------------|--------|
| Points Per Game | 66th |
| Assists Per Game | T-43rd |

Jill Holdcroft

| | |
|---------------------------|--------|
| Goals Per Game | T-81st |
| Power-Play Goals Per Game | T-39th |
| Points Per Game (Rookies) | T-42nd |

Nicole Paniccia

| | |
|-----------------------|------|
| Goals-Against Average | 37th |
| Save Percentage | 19th |
| Winning Percentage | 30th |

Shannon Yoxheimer

| | |
|---------------------------|--------|
| Points Per Game | 34th |
| Goals Per Game | T-17th |
| Game-Winning Goals | T-10th |
| Assists Per Game | T-71st |
| Power-Play Goals Per Game | T-39th |
| Points Per Game (Rookies) | 7th |

CHA TEAM RANKS

(As of Jan. 10, 2013)

| | |
|--------------------------|-------|
| Goals | 3rd |
| Assists | 3rd |
| Goals Per Game | 3rd |
| Goals Against | 5th |
| Goals-Against Average | 5th |
| Saves | 2nd |
| Save Percentage | 3rd |
| Shots on Goal | 4th |
| Least Penalty Minutes | 2nd |
| Power-Play Goals | T-4th |
| Power-Play Percentage | 4th |
| Power-Play Goals Against | 5th |
| Penalty-Kill Percentage | 5th |

CHA INDIVIDUAL RANKS

(Top 10 as of Jan. 10, 2013)

Jess Desorcie

| | |
|---------|-------|
| Assists | T-8th |
|---------|-------|

Taylor Gross

| | |
|---------|------|
| Points | 10th |
| Assists | 5th |

Hannah Hoenshell

| | |
|-------|-------|
| Goals | T-9th |
|-------|-------|

Jill Holdcroft

| | |
|------------------|-------|
| Goals | T-9th |
| Power-Play Goals | T-7th |

Paige Jahnke

| | |
|-------------|-------|
| Assists (D) | T-9th |
|-------------|-------|

Nicole Paniccia

| | |
|-----------------------|-------|
| Games Played | T-1st |
| Minutes Played | 1st |
| Goals-Against Average | 8th |
| Saves | 2nd |
| Save Percentage | 5th |
| Wins | T-4th |
| Win Percentage | 8th |

Jordin Pardoski

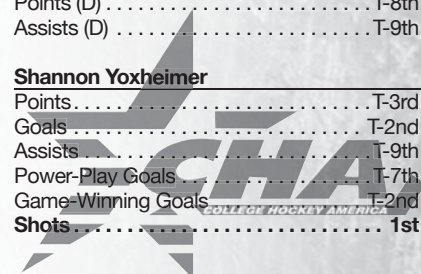
| | |
|-----------|-------|
| Goals (D) | T-7th |
|-----------|-------|

Madison Smiddy

| | |
|-------------|-------|
| Points (D) | T-8th |
| Assists (D) | T-9th |

Shannon Yoxheimer

| | |
|--------------------|-------|
| Points | T-3rd |
| Goals | T-2nd |
| Assists | T-9th |
| Power-Play Goals | T-7th |
| Game-Winning Goals | T-2nd |
| Shots | 1st |





NITTANY LION WOMEN'S HOCKEY

In the opener, the Pioneers opened a 2-0 lead through two periods and didn't allow the Nittany Lions on the board until Yoxheimer slammed home a scramble in front of the net with 2:31 left in the game and an extra skater on the ice. **Taylor Gross** and **Birdie Shaw** were credited with assists as junior goaltender **Nicole Paniccia** made 26 saves in the loss.

The following day Penn State came out firing, scoring on three straight power-plays en route to a 6-1 rout. Gross, Yoxheimer and **Jeanette Bateman** tallied each of the power play goals for a 3-1 lead through two periods. **Jess Desorcie**, **Hannah Hoenshell** and **Jordin Pardoski** added a trio of third-period goals as Penn State featured six different goal scorers. **Jenna Welch**, **Madison Smiddy**, Gross and Yoxheimer had multi-point days. Paniccia had 25 saves for a 51-save weekend.

YOX NAMED CHA PLAYER OF THE WEEK

For her efforts against Sacred Heart, **Shannon Yoxheimer** was named CHA Player of the Week for a three-point weekend and a game-winning goal over the Pioneers (Oct. 19-20). Yoxheimer leads the team with four goals and is tied with Taylor Gross for points with five. Yoxheimer is the first Nittany Lion to receive CHA Offensive Player of the Weeks honors and joins fellow classmate **Micayla Catanzariti** (Rookie of the Week, Oct. 8) on the honor roll.

ANOTHER WEEKEND OF FIRSTS

The second road trip in Penn State women's hockey history resulted in another split result, but it was not without some firsts. The Nittany Lions tallied six goals in a victory at Sacred Heart (Oct. 20), the most in the short history of the program and the largest margin of victory (5). Additionally, the Lions tallied eight assists, which matched the inaugural game.

Individually, **Jeanette Bateman**, **Jordin Pardoski** and **Hannah Hoenshell** scored their first collegiate goals on Oct. 20. **Jess Desorcie** tallied her first Penn State varsity goal, while **Lindsay Reihl** and **Jenna Welch** recorded their first Penn State points on assists. Welch had a two-helper game as did **Madison Smiddy**, who notched her first multi-point game. **Cara Mendelson** and Hoenshell hit the ice for the first time, bringing the total number of Nittany Lions to see ice time to 23.

HISTORIC FIRST WIN

Penn State women's hockey made history on Saturday, Oct. 6 at Vermont's Gutterson Fieldhouse by winning its inaugural game, 5-3. The Nittany Lions scored five goals from three freshmen making their respective debuts as junior goaltender **Nicole Paniccia** made 31 saves in her PSU opener. **Shannon Yoxheimer** and **Micayla Catanzariti** each scored twice for the Nittany Lions.

Down 2-1, Penn State was not to be deterred, reeling off three straight goals to take a 4-2 lead midway through the third period. Despite a Vermont goal with 6:34 left in the third, **Birdie Shaw** scored an empty-net goal to seal the Nittany Lion victory. Junior captain **Taylor Gross** made her Penn State debut known with two assists and was named the first star of the game, Yoxheimer was second.

FIRST TIME FOR EVERYTHING

Penn State had a varsity team debut for the first time since 1994 (women's soccer) when the women's hockey team defeated Vermont, 5-3 on Oct. 6. The successful debut was the

THE LAST TIME

PENN STATE...

| | |
|------------------------------|---|
| Scored 0 goals | 11/30/12 at #4 Mercyhurst (0-5) |
| Scored 3 goals | 11/17/12 at Lindenwood (3-2) |
| Scored 4 goals | 1/5/13 vs. Chatham (4-0) |
| Scored 5 goals | 10/6/12 at Vermont (5-3) |
| Scored 6 goals | 11/2/12 vs. Sacred Heart (6-0) |
| Scored 7 goals | Never |
| Scored 8 goals | 11/3/12 vs. Sacred Heart (8-2) |
| Scored 9 goals | Never |
| Scored 10 goals | 1/4/13 vs. Chatham (10-0) |
| Allowed 0 goals | 1/5/13 vs. Chatham (4-0) |
| Allowed 1 goal | 10/20/12 at Sacred Heart (6-1) |
| Allowed 2 goals | 11/17/12 at Lindenwood (3-2) |
| Allowed 3 goals | 12/7/12 at St. Lawrence (1-3) |
| Allowed 4 goals | 12/8/12 at St. Lawrence (2-4) |
| Allowed 5 goals | 11/30/12 at #4 Mercyhurst (0-5) |
| Allowed 6+ goals | 12/1/12 at #4 Mercyhurst (1-7) |
| Won in overtime | Never |
| Lost in overtime | Never |
| Tied in overtime | 10/26/12 vs. RIT (2-2) |
| Played a ranked team | 12/1/12 at #4 Mercyhurst (1-7) |
| Attempted 10-19 shots | 12/8/12 17 at St. Lawrence (2-4) |
| Attempted 20-29 shots | 11/11/12 20 vs. Robert Morris (1-4) |
| Attempted 30-39 shots | 11/17/12 33 at Lindenwood (3-2) |
| Attempted 40-49 shots | 1/4/13 48 vs. Chatham (10-0) |
| Attempted 50-59 shots | Never |
| Attempted 60-69 shots | 11/3/12 64 vs. Sacred Heart (8-2) |
| Attempted 70+ shots | 1/5/13 71 vs. Chatham (4-0) |
| Allowed 10-19 shots | 1/5/13 16 vs. Chatham (4-0) |
| Allowed 20-29 shots | 11/3/12 25 vs. Sacred Heart (8-2) |
| Allowed 30-39 shots | 11/17/12 30 at Lindenwood (3-2) |
| Allowed 40-49 shots | 12/7/12 48 at St. Lawrence (1-3) |
| Allowed 50-59 shots | 12/8/12 58 at St. Lawrence (2-4) |
| Allowed 60-69 shots | 11/30/12 60 at #4 Mercyhurst (0-5) |
| Allowed 70+ shots | 12/1/12 71 at #4 Mercyhurst (1-7) |
| Tallied 5-9 assists | 1/5/13 5 vs. Chatham (4-0) |
| Tallied 10-15 assists | 11/3/12 12 vs. Sacred Heart (8-2) |
| Tallied 15+ assists | 1/4/13 17 vs. Chatham (10-0) |
| Scored 10-19 points | 11/2/12 12 vs. Sacred Heart (6-0) |
| Scored 20+ points | 1/4/13 27 vs. Chatham (10-0) |
| Scored 2 power-play goals | 11/17/12 at Lindenwood (3-2) |
| Scored 3 power-play goals | 10/20/12 at Sacred Heart (6-1) |
| Allowed 0 power-play goals | 1/5/13 vs. Chatham (4-0) |
| Allowed 2 power-play goals | 12/8/12 at St. Lawrence (2-4) |
| Had 5 different goal scorers | Never |
| Had 6 different goal scorers | 10/20/12 at Sacred Heart (6-1) |
| Had 7 different goal scorers | 1/4/13 vs. Chatham (10-0) |
| Had 8 different goal scorers | 11/3/12 vs. Sacred Heart (8-2) |

A PENN STATE PLAYER...

| | |
|----------------------------|--|
| Scored 2 goals | 1/5/13 J. Welch vs. Chatham (4-0) |
| Scored 3 goals | 11/2/12 H. Hoenshell vs. Sacred Heart (6-0) |
| Scored 4 goals | Never |
| Had 3 assists | 1/4/13 J. Bateman vs. Chatham (10-0) |
| Had 5 points | Never |
| Had 10+ shots | 1/5/13 12, J. Weaver vs. Chatham (4-0) |
| Saved 40-49 shots | 11/11/12 49, N. Paniccia vs. Robert Morris (1-4) |
| Saved 50-59 shots | 10/26/12 59, N. Paniccia vs. RIT (2-2) |
| Saved 60+ shots | 12/1/12 64, N. Paniccia at #4 Mercyhurst (1-7) |
| Had a shutout | 1/5/13 C. Whitlinger/B. Meyer vs. Chatham (4-0) |
| Scored an empty-net goal | 10/6/12 B. Shaw at Vermont (5-3) |
| Scored a short-handed goal | Never |

NITTANY LION WOMEN'S HOCKEY



first since 1977 when the men's volleyball team defeated East Stroudsburg.

Game: Oct. 6, 2012 at Vermont, 2:00 p.m.
Win: Nicole Paniccia, Oct. 6 at Vermont, 5-3
Goal: Shannon Yoxheimer
Multi-Goal Game: Micayla Catanzariti
Game-Winning Goal: Shannon Yoxheimer
Assists: Taylor Gross, Emily Laurenzi
Multi-Assist Game: Jess Desorcie
Faceoff: Emily Laurenzi
Faceoff win: Emily Laurenzi
Shot: Katie Zinn
Save: Nicole Paniccia
Empty-Net Goal: Birdie Shaw

CATANZARITI HONORED

Freshman forward **Micayla Catanzariti** was named College Hockey America's Rookie of the Week on Oct. 8. Catanzariti led the Nittany Lions to a win in their inaugural opener on Saturday with two goals and an assist at Vermont. Catanzariti was also named Highmark's Penn State Women's Student-Athlete of the Week.

FIRST HEAD COACH

A 1991 graduate of Penn State, head coach **Josh Brandwene** is the first to lead the Nittany Lions. A four-year hockey player at PSU, Brandwene brings 20 years of coaching experience to Happy Valley. Brandwene picked up his first win in the team's debut on Saturday, Oct. 6 at Vermont.

CAPTAIN, OUR CAPTAIN

Junior forward **Taylor Gross** leads Penn State as its first captain. The University of Connecticut transfer appeared in 48 games for the Huskies before joining Penn State's club side in January 2012. In September, the team voted fellow UConn transfer **Jenna Welch** and senior defender **Lindsay Reihl** as assistant captains.

CONTINUING PENN STATE HOCKEY

Eight members of the current varsity team played for the women's club team at some point. Seniors **Lindsay Reihl** and **Kate Christoffersen** and sophomores **Cara Mendelson**, **Katie Murphy**, **Madison Smiddy** and **Tess Weaver** played all of last season for head coach **Josh Brandwene** in Penn State's last year at the club level. Reihl and Christoffersen played three years for the PSU club team as well. **Taylor Gross** and **Jess Desorcie** joined the six players midway through the season in preparation of the 2012-13 season.

ON SCHEDULE

Pegula Ice Arena, a \$90 million state-of-the-art facility, will serve as the home of the Penn State hockey programs in 2012-13. As of Jan. 10, 2013, all the steel has been put in place for the project with installation of glass and some brick on the outside. Additionally, portions of the center-hung scoreboard have been assembled.

The building held its official topping off ceremony on Friday, Nov. 9, 2012. Construction is set to

conclude in time for the 2012-13 season as the building will open Sept. 5, 2013.

For more information on Pegula Ice Arena, visit page 12 of the game notes.

NEXT TIME OUT

Penn State takes next weekend off before traveling to Syracuse for a two-game set. Those games are set for Friday, Jan. 25 (7 p.m.) and Saturday, Jan. 26 (2 p.m.). The Nittany Lions return home on Tuesday, Jan. 29 vs. Princeton (7 p.m.), opening a five-game home stand.



NITTANY LION WOMEN'S HOCKEY

LAST TWO GAMES

PENN STATE 10, CHATHAM 0 (Jan. 4, 2013)

Chatham (1-8-0) vs. Penn State (6-12-0)
 Date: Jan 04, 2013 • Location: University Park, Pa. • Arena: Greenberg Pavilion
 Attendance: 293 • Start time: 7:30 pm • End time: 9:23 pm • Total time: 1:53

| Prd | Time | Team | Scored by | Assists | Vis. on ice | Home on ice | Goals by Period |
|---------------|------|------|----------------------|---------------------|--------------------|------------------------------|-----------------------------|
| Team | 1 | 2 | 3 | Tot | | | |
| 1. 1st 08:39 | PSU | PP | Yoxheimer, Shannon/1 | Desorcie, Jess/9 | 11,16,9,13 | 40,15,4,24,19 | CHA 0 0 0 0 PSU 5 4 1 10 |
| 2. 1st 12:20 | PSU | EV | Yoxheimer, Shannon/1 | Pardoski, Jordyn/3 | 16,11,7,5,24 | 40,15,6,8,24 | |
| 3. 1st 12:46 | PSU | EV | Hoenshell, Hannah/6 | Desorcie, Jess/10 | 9,24,13,4,21 | 16,20,17,2,22 | |
| 4. 1st 13:48 | PSU | EV | Rasmussen, Kendra/2 | Bateman, Jeanett/2 | Jahnke, Paige/4 | 16,25,5,11,7 13,14,36,4,21 | |
| 5. 1st 17:06 | PSU | EV | Weaver, Tess/1 | Kern, Darby/1 | Pardoski, Jordyn/4 | 25,11,7,5,16 36,21,14,4,13 | |
| 6. 2nd 00:21 | PSU | EV | Holdcroft, Jill/6 | Gross, Taylor/13 | - | 7,25,16,11,5 19,23,10,21,4 | |
| 7. 2nd 07:54 | PSU | EV | Pardoski, Jordyn/2 | Holdcroft, Jill/2 | 24,25,16,13,11 | 4,16,21,19,23 | |
| 8. 2nd 14:35 | PSU | EV | Rasmussen, Kendra/3 | Hoenshell, Hannah/2 | Catanzariti, Mic/2 | 25,16,11,24,13 13,10,2,17,14 | |
| 9. 2nd 16:36 | PSU | EV | Hoenshell, Hannah/7 | Bateman, Jeanette/3 | McCee, Taylor/2 | 11,25,5,4,13 16,20,8,6,22 | |
| 10. 3rd 18:02 | PSU | EV | Welch, Jenna/2 | Bateman, Jeanette/4 | Laurenzi, Emily/5 | 9,13,11,24,16 22,20,6,8,16 | |
| | | | | Hoenshell, Hannah/3 | | | |

Shots by Period
 Team 1 2 3 Tot
 CHA 6 5 6 17
 PSU 26 9 13 48

Power Play Goals-Att (Sh)
 Prd CHA PSU
 1st 0-0 (0) 1-2 (5)
 2nd 0-2 (1) 0-0 (0)
 3rd 0-0 (0) 0-0 (0)
 Total 0-2 (1) 1-2 (5)

Penalties-Minutes by Prd
 Prd CHA PSU
 1st 2-4 0-0
 2nd 0-0 2-4
 3rd 0-0 0-0
 Total 2-4 2-4

Three stars:
 1. Pardoski, Jordyn
 2. Hoenshell, Hannah
 3. Weaver, Tess

Officials:
 Referee: Gui Bradshaw
 Linesman: Scott Bell
 Linesman: John Quigley
 Goal judge: Jared Gregor
 Pen timekeeper: Ben Thomas
 Game timekeeper: Tom Stroemel
 Scorer: Jeremy Fallis

TEAM SUMMARY

| # | Chatham | G | A | PI | Sh +/- | BI | # | Penn State | G | A | PI | Sh +/- | BI | |
|--------|------------------|---|---|----|--------|-----|---|------------|-------------------|----|----|--------|----|----|
| 4 | Marie Soukup | 0 | 0 | 0 | 2 | -2 | 1 | 2 | Bateman, Jeanet | 0 | 3 | 0 | 0 | +2 |
| 5 | Brittany Yoisten | 0 | 0 | 0 | 1 | -5 | 1 | 4 | Pardoski, Jordyn | 1 | 2 | 0 | 3 | +4 |
| 7 | Abby Maier | 0 | 0 | 0 | 1 | -4 | 1 | 6 | Reihl, Lindsay | 0 | 0 | 0 | 0 | +3 |
| 9 | Julia Hunter | 0 | 0 | 0 | 0 | -2 | 1 | 8 | McCee, Taylor | 0 | 1 | 0 | 1 | +3 |
| 11 | Maikie Blakely | 0 | 0 | 0 | 0 | -8 | 0 | 10 | Catanzariti, Mica | 0 | 1 | 2 | 7 | +2 |
| 13 | Nicole Beaudoin | 0 | 0 | 0 | 0 | -5 | 0 | 13 | Rasmussen, Ken | 2 | 0 | 0 | 3 | +3 |
| 16 | Erika Bronk | 0 | 0 | 0 | 1 | -7 | 0 | 14 | Kern, Darby | 0 | 1 | 0 | 1 | +3 |
| 19 | Casey Morfeld | 0 | 0 | 0 | 6 | 0 | 1 | 15 | Desorcie, Jess | 0 | 2 | 0 | 0 | +1 |
| 21 | Katrina Hawkins | 0 | 0 | 2 | 2 | -1 | 1 | 16 | Hoenshell, Hann | 2 | 2 | 0 | 5 | +4 |
| 24 | Katie Perrine | 0 | 0 | 2 | 1 | -5 | 2 | 17 | Jahnke, Paige | 0 | 1 | 0 | 1 | +2 |
| 25 | Morgan Becer | 0 | 0 | 0 | 3 | -6 | 0 | 19 | Holdcroft, Jill | 1 | 1 | 0 | 4 | +2 |
| Totals | | 0 | 0 | 4 | 17 | -45 | 8 | 20 | Laurenzi, Emily | 0 | 1 | 0 | 2 | +3 |
| | | | | | | | | 21 | Wilkie, Sarah | 0 | 0 | 0 | 0 | +4 |
| | | | | | | | | 22 | Welch, Jenna | 1 | 0 | 0 | 3 | +3 |
| | | | | | | | | 23 | Shaw, Birdie | 0 | 0 | 2 | 5 | +2 |
| | | | | | | | | 24 | Gross, Taylor | 0 | 1 | 0 | 0 | +1 |
| | | | | | | | | 36 | Weaver, Tess | 1 | 1 | 0 | 3 | +2 |
| | | | | | | | | 40 | Yoxheimer, Shan | 2 | 0 | 0 | 10 | +1 |
| | | | | | | | | Totals | | 10 | 17 | 4 | 48 | +4 |

GOALTENDERS

| # | Chatham | Dec | Min | GA | 1 | 2 | 3 | Saves | # | Penn State | Dec | Min | GA | 1 | 2 | 3 | Saves |
|----|----------------|-----|-------|----|----|---|----|-------|----|--------------------|-----|-------|----|---|---|---|-------|
| 39 | Megan Buchanan | L | 40:00 | 9 | 21 | 5 | 0 | 26 | 37 | Paniccia, Nicole | W | 20:00 | 0 | 6 | 0 | 0 | 6 |
| 35 | Kaitlynn Smith | | 20:00 | 1 | 0 | 0 | 12 | 12 | 30 | Whitlinger, Celine | | 20:00 | 0 | 0 | 5 | 0 | 5 |
| | | | | | | | | | 31 | Meyer, Brooke | | 20:00 | 0 | 0 | 0 | 6 | 6 |

PENALTY SUMMARY

| Prd | Player | Team | MinOffense | Time | Prd | Player | Team | MinOffense | Time |
|-----|-----------------|------|----------------|----------|-----|----------------------|------|------------|----------|
| 1st | Katrina Hawkins | CHA | 2.Checking | 05:54 PP | 2nd | Catanzariti, Micayla | PSU | 2.Hooking | 02:59 PP |
| 1st | Katie Perrine | CHA | 2.Interference | 07:35 | 2nd | Shaw, Birdie | PSU | 2.Hooking | 08:13 PP |

Win-Paniccia, Nicole (6-9-1). Loss-Megan Buchanan (1-8-0).

PENN STATE 4, CHATHAM 0 (Jan. 5, 2013)

Chatham (1-9-0) vs. Penn State (7-12-1)
 Date: Jan 05, 2013 • Location: University Park, Pa. • Arena: Greenberg Pavilion
 Attendance: 207 • Start time: 7:00 pm • End time: 8:45 • Total time: 1:45

| Prd | Time | Team | Scored by | Assists | Vis. on ice | Home on ice | Goals by Period |
|--------------|------|------|-------------------|-------------------|----------------|---------------|----------------------------|
| Team | 1 | 2 | 3 | Tot | | | |
| 1. 1st 05:07 | PSU | EV | Zinn, Katie/1 | Jahnke, Paige/5 | 24,16,21,25,13 | 11,17,22,20,2 | CHA 0 0 0 0 PSU 1 1 2 4 |
| 2. 2nd 01:46 | PSU | EV | Welch, Jenna/3 | Smiddy, Madison/6 | 16,11,5,25,7 | 22,33,11,20,5 | |
| 3. 3rd 09:13 | PSU | EV | Welch, Jenna/4 | Zinn, Katie/3 | 11,25,4,16,7 | 22,11,20,5,33 | |
| 4. 3rd 10:11 | PSU | EV | Holdcroft, Jill/7 | Jahnke, Paige/6 | 18,9,4,5,7 | 19,23,17,12 | |

TEAM SUMMARY

| # | Chatham | G | A | PI | Sh +/- | BI | # | Penn State | G | A | PI | Sh +/- | BI | |
|--------|------------------|-----|---|----|--------|-----|----|------------|-------------------|-----|----|--------|----|----|
| 4 | Marie Soukup | 0 | 0 | 0 | 1 | -2 | 2 | 2 | Bateman, Jeanet | 0 | 0 | 0 | 0 | +2 |
| 5 | Brittany Yoisten | 0 | 0 | 0 | 2 | -2 | 5 | 3 | Mendelson, Cara | 0 | 0 | 0 | 3 | 0 |
| 7 | Abby Maier | 0 | 0 | 2 | 1 | -3 | 1 | 4 | Pardoski, Jordyn | 0 | 0 | 0 | 4 | 0 |
| 9 | Julia Hunter | 0 | 0 | 0 | 1 | -1 | 1 | 5 | Walkom, Stepha | 0 | 0 | 0 | 3 | +2 |
| 11 | Maikie Blakely | 0 | 0 | 0 | 2 | -2 | 6 | 6 | Reihl, Lindsay | 0 | 0 | 0 | 6 | 0 |
| 13 | Nicole Beaudoin | 0 | 0 | 0 | 1 | -1 | 7 | 10 | Catanzariti, Mica | 0 | 0 | 0 | 7 | +1 |
| 16 | Erika Bronk | 0 | 0 | 0 | 0 | -3 | 1 | 11 | Zinn, Katie | 1 | 2 | 0 | 6 | +3 |
| 18 | Casey Morfeld | 0 | 0 | 0 | 3 | -1 | 1 | 12 | Christoffersen, K | 0 | 0 | 0 | 4 | 0 |
| 21 | Katrina Hawkins | 0 | 0 | 0 | 0 | -1 | 2 | 13 | Rasmussen, Ken | 0 | 0 | 0 | 6 | 0 |
| 24 | Katie Perrine | 0 | 0 | 0 | 0 | -1 | 5 | 14 | Kern, Darby | 0 | 0 | 0 | 2 | 0 |
| 25 | Morgan Becer | 0 | 0 | 0 | 5 | -3 | 1 | 17 | Jahnke, Paige | 0 | 2 | 0 | 1 | +2 |
| 39 | Megan Buchanan | dnp | | | | | | 19 | Holdcroft, Jill | 1 | 0 | 0 | 1 | +1 |
| Totals | | 0 | 0 | 2 | 16 | -20 | 32 | 20 | Laurenzi, Emily | 0 | 0 | 0 | 4 | +3 |
| | | | | | | | | 22 | Welch, Jenna | 2 | 0 | 0 | 5 | +3 |
| | | | | | | | | 23 | Shaw, Birdie | 0 | 0 | 2 | 4 | +1 |
| | | | | | | | | 25 | Murphy, Katie | 0 | 0 | 0 | 1 | 0 |
| | | | | | | | | 33 | Smiddy, Madison | 0 | 1 | 0 | 2 | +2 |
| | | | | | | | | 36 | Weaver, Tess | 0 | 0 | 0 | 12 | 0 |
| | | | | | | | | 37 | Paniccia, Nicole | dnp | | | | |
| | | | | | | | | Totals | | 4 | 5 | 2 | 71 | +2 |

Shots by Period
 Team 1 2 3 Tot
 CHA 4 5 7 16
 PSU 19 27 25 71

Power Play Goals-Att (Sh)
 Prd CHA PSU
 1st 0-1 (1) 0-1 (3)
 2nd 0-0 (0) 0-0 (0)
 3rd 0-0 (0) 0-0 (0)
 Total 0-1 (1) 0-1 (3)

Penalties-Minutes by Prd
 Prd CHA PSU
 1st 1-2 1-2
 2nd 0-0 0-0
 3rd 0-0 0-0
 Total 1-2 1-2

Three stars:
 1. Welch, Jenna
 2. Zinn, Katie
 3. Kaitlynn Smith

Officials:
 Referee: Gui Bradshaw
 Linesman: Scott Bell
 Linesman: John Quigley
 Goal judge: Jared Gregor
 Pen timekeeper: Ben Thomas
 Game timekeeper: Tom Stroemel
 Scorer: Jeremy Fallis

GOALTENDERS

| # | Chatham | Dec | Min | GA | 1 | 2 | 3 | Saves | # | Penn State | Dec | Min | GA | 1 | 2 | 3 | Saves |
|----|----------------|-----|-------|----|----|----|----|-------|----|--------------------|-----|-------|----|---|---|---|-------|
| 35 | Kaitlynn Smith | L | 60:00 | 4 | 18 | 26 | 23 | 67 | 30 | Whitlinger, Celine | W | 52:34 | 0 | 4 | 5 | 3 | 12 |
| | | | | | | | | | 31 | Meyer, Brooke | | 7:26 | 0 | 0 | 0 | 4 | 4 |

PENALTY SUMMARY

| Prd | Player | Team | MinOffense | Time | Prd | Player | Team | MinOffense | Time |
|-----|--------------|------|------------|----------|-----|------------|------|-----------------|----------|
| 1st | Shaw, Birdie | PSU | 2.Hooking | 08:01 PP | 1st | Abby Maier | CHA | 2.High Sticking | 15:33 PP |

Win-Whitlinger, Celine (1-3-0). Loss-Kaitlynn Smith (0-1-0).

NITTANY LION WOMEN'S HOCKEY



2012-13 Penn State Women's Hockey Penn State Combined Team Statistics (as of Jan 10, 2013) All games

| Date | Opponent | Score | Att. | Record: | Overall | Home | Away | Neutral |
|----------|------------------|---------|------|----------------|---------|-------|-------|---------|
| Oct 06 | at Vermont | w 5-3 | 785 | ALL GAMES | 7-12-1 | 4-5-1 | 3-7-0 | 0-0-0 |
| Oct 07 | at Vermont | L 1-3 | 326 | CONFERENCE | 1-8-1 | 0-5-1 | 1-3-0 | 0-0-0 |
| * Oct 13 | SYRACUSE | L 0-4 | 408 | NON-CONFERENCE | 6-4-0 | 4-0-0 | 2-4-0 | 0-0-0 |
| * Oct 14 | SYRACUSE | L 0-6 | 285 | | | | | |
| Oct 19 | at Sacred Heart | L 1-2 | 123 | | | | | |
| Oct 20 | at Sacred Heart | w 6-1 | 213 | | | | | |
| * Oct 25 | RIT | L 1-4 | 229 | | | | | |
| * Oct 26 | RIT | Tot 2-2 | 238 | | | | | |
| Nov 02 | SACRED HEART | w 6-0 | 231 | | | | | |
| Nov 03 | SACRED HEART | w 8-2 | 127 | | | | | |
| * Nov 10 | ROBERT MORRIS | L 1-7 | 152 | | | | | |
| * Nov 11 | ROBERT MORRIS | L 1-4 | 127 | | | | | |
| * Nov 16 | at Lindenwood | L 1-5 | 150 | | | | | |
| * Nov 17 | at Lindenwood | w 3-2 | 122 | | | | | |
| * Nov 30 | at #4 Mercyhurst | L 0-5 | 925 | | | | | |
| * Dec 01 | at #4 Mercyhurst | L 1-7 | 725 | | | | | |
| Dec 07 | at St. Lawrence | L 1-3 | 236 | | | | | |
| Dec 08 | at St. Lawrence | L 2-4 | 244 | | | | | |
| Jan 04 | CHATHAM | w 10-0 | 293 | | | | | |
| Jan 05 | CHATHAM | w 4-0 | 207 | | | | | |

| TEAM STATISTICS | | PSU | OPP |
|------------------------|--|---------|---------|
| SHOT STATISTICS | | | |
| Goals-Shot attempts | | 54-586 | 64-807 |
| Shot pct. | | .092 | .079 |
| Goals/Game | | 2.7 | 3.2 |
| Shots/Game | | 29.3 | 40.3 |
| POWER PLAYS | | | |
| Goals-Power Plays | | 11-75 | 22-84 |
| Conversion Percent | | .147 | .262 |
| GOAL BREAKDOWN | | | |
| Power Play | | 11 | 22 |
| Short-handed | | 0 | 2 |
| Empty net | | 1 | 2 |
| Penalty | | 0 | 0 |
| Unassisted | | 6 | 7 |
| Overtime | | 0 | 0 |
| PENALTIES | | | |
| Number | | 85 | 78 |
| Minutes | | 170 | 156 |
| Penalties/Game | | 4.2 | 3.9 |
| Pen minutes/Game | | 8.5 | 7.8 |
| FACEOFFS (W-L) | | 566-632 | 632-566 |
| Faceoff W-L Pct. | | .472 | .528 |

| ## | Player | gp | g | a | pts | sh | sh% | pen-min | pp | sh |
|----|----------------------|----|----|-----|-----|-----|------|---------|----|----|
| 40 | Yoxheimer, Shannon | 19 | 12 | 10 | 22 | 108 | .111 | 5-10 | 3 | 0 |
| 24 | Gross, Taylor | 19 | 4 | 13 | 17 | 53 | .075 | 2-4 | 2 | 0 |
| 15 | Desorcie, Jess | 19 | 4 | 10 | 14 | 34 | .118 | 2-4 | 0 | 0 |
| 16 | Hoenshell, Hannah | 14 | 7 | 3 | 10 | 34 | .206 | 3-6 | 0 | 0 |
| 19 | Holdcroft, Jill | 20 | 7 | 2 | 9 | 29 | .241 | 1-2 | 3 | 0 |
| 22 | Welch, Jenna | 20 | 4 | 3 | 7 | 32 | .125 | 7-14 | 0 | 0 |
| 20 | Laurenzi, Emily | 20 | 2 | 5 | 7 | 21 | .095 | 3-6 | 1 | 0 |
| 33 | Smiddy, Madison | 14 | 1 | 6 | 7 | 13 | .077 | 4-8 | 1 | 0 |
| 4 | Pardoski, Jordin | 20 | 2 | 4 | 6 | 19 | .105 | 13-26 | 0 | 0 |
| 17 | Jahnke, Paige | 20 | 0 | 6 | 6 | 20 | .000 | 8-16 | 0 | 0 |
| 10 | Catanzariti, Micayla | 20 | 3 | 2 | 5 | 38 | .079 | 8-16 | 0 | 0 |
| 23 | Shaw, Birdie | 19 | 2 | 3 | 5 | 43 | .047 | 9-18 | 0 | 0 |
| 2 | Bateman, Jeanette | 20 | 1 | 4 | 5 | 17 | .059 | 3-6 | 1 | 0 |
| 13 | Rasmussen, Kendra | 19 | 3 | 1 | 4 | 32 | .094 | 2-4 | 0 | 0 |
| 11 | Zinn, Katie | 10 | 1 | 3 | 4 | 17 | .059 | 1-2 | 0 | 0 |
| 36 | Weaver, Tess | 17 | 1 | 2 | 3 | 32 | .031 | 2-4 | 0 | 0 |
| 8 | McGee, Taylor | 13 | 0 | 2 | 2 | 10 | .000 | 5-10 | 0 | 0 |
| 14 | Kern, Darby | 6 | 0 | 1 | 1 | 5 | .000 | 1-2 | 0 | 0 |
| 6 | Reihl, Lindsay | 20 | 0 | 1 | 1 | 11 | .000 | 3-6 | 0 | 0 |
| 12 | Christoffersen, Kate | 1 | 0 | 0 | 0 | 4 | .000 | 0-0 | 0 | 0 |
| 3 | Mendelson, Cara | 2 | 0 | 0 | 0 | 3 | .000 | 0-0 | 0 | 0 |
| 25 | Murphy, Katie | 9 | 0 | 0 | 0 | 2 | .000 | 0-0 | 0 | 0 |
| 5 | Walkom, Stephanie | 1 | 0 | 0 | 0 | 3 | .000 | 0-0 | 0 | 0 |
| 21 | Wilkie, Sarah | 13 | 0 | 0 | 0 | 6 | .000 | 1-2 | 0 | 0 |
| TM | TEAM | 9 | 0 | 0 | 0 | 0 | .000 | 2-4 | 0 | 0 |
| | Total | 20 | 54 | 81 | 135 | 586 | .092 | 85-170 | 11 | 0 |
| | Opponents | 20 | 64 | 107 | 171 | 807 | .079 | 78-156 | 22 | 2 |

| ## | Goalie | gp | min | ga | gaavg | saves | save% | w-l-t |
|----|--------------------|----|---------|----|-------|-------|-------|--------|
| 31 | Meyer, Brooke | 3 | 47:26 | 0 | 0.00 | 17 | 1.000 | 0-0-0 |
| 30 | Whitlinger, Celine | 6 | 270:49 | 12 | 2.66 | 166 | .933 | 1-3-0 |
| 37 | Paniccia, Nicole | 16 | 881:31 | 50 | 3.40 | 560 | .918 | 6-9-1 |
| TM | EMPTY NET | 9 | 5:14 | 2 | - | 0 | .000 | 0-0-0 |
| | Total | 20 | 1205:00 | 64 | 3.19 | 743 | .921 | 7-12-1 |
| | Opponents | 20 | 1205:00 | 54 | 2.69 | 532 | .908 | 12-7-1 |

| Attendance Summary | | PSU | Opponent |
|--------------------|--|--------|----------|
| Total | | 2297 | 3849 |
| Dates/Avg Per Date | | 10/230 | 10/385 |
| Neutral Site #/Avg | | 0/0 | |

| Goals by Period | 1st | 2nd | 3rd | Total |
|-----------------|-----|-----|-----|-------|
| Penn State | 19 | 17 | 18 | 54 |
| Opponents | 19 | 20 | 25 | 64 |

| Saves by Period | 1st | 2nd | 3rd | Total |
|-----------------|-----|-----|-----|-------|
| Penn State | 222 | 259 | 257 | 743 |
| Opponents | 178 | 175 | 179 | 532 |



NITTANY LION WOMEN'S HOCKEY

| Opponent | Date | Score | 2 | 3 | 4 | 5 | 6 | 8 | 10 | 11 | 12 | 13 | 14 | | | |
|----------|--------|--------|---------|-----------|----------|-----------|----------|-------|-------|------------|------|-------|------------|-----------|-------|-------|
| at UVM | Oct 06 | 5-3 W | BATEMUN | MENDELSON | PARDOSKI | WALKOMSTE | REHLINDS | MCGEE | TAVL | CATANZARIT | ZINN | KATIE | CHRISTOFFE | RASMUSSEN | KERN | DARBY |
| at UVM | Oct 07 | 1-3 L | 0-0-0 | DNP | 0-0-0 | DNP | 0-0-0 | 0-0-0 | 2-1-3 | 0-0-0 | DNP | DNP | DNP | 0-0-0 | DNP | DNP |
| SU | Oct 13 | 0-4 L | 0-0-0 | DNP | 0-0-0 | DNP | 0-0-0 | 0-0-0 | 0-0-0 | 0-0-0 | DNP | 0-0-0 | DNP | 0-0-0 | DNP | DNP |
| SU | Oct 14 | 0-6 L | 0-0-0 | DNP | 0-0-0 | DNP | 0-0-0 | 0-0-0 | 0-0-0 | 0-0-0 | DNP | 0-0-0 | DNP | 0-0-0 | DNP | DNP |
| at SHU | Oct 19 | 1-2 L | 0-0-0 | DNP | 0-0-0 | DNP | 0-0-0 | DNP | 0-0-0 | 0-0-0 | DNP | 0-0-0 | DNP | 0-0-0 | DNP | DNP |
| at SHU | Oct 20 | 6-1 W | 1-0-1 | 0-0-0 | 1-0-1 | 0-0-0 | 0-1-1 | DNP | 0-0-0 | DNP | DNP | 0-0-0 | DNP | 0-0-0 | DNP | DNP |
| RIT | Oct 25 | 1-4 L | 0-0-0 | DNP | 0-0-0 | DNP | 0-0-0 | 0-0-0 | 0-0-0 | 0-0-0 | DNP | 0-0-0 | DNP | 0-0-0 | DNP | DNP |
| RIT | Oct 26 | 2-2 T | 0-0-0 | DNP | 0-0-0 | DNP | 0-0-0 | 0-0-0 | 0-0-0 | 0-1-1 | DNP | 0-0-0 | DNP | 0-0-0 | DNP | DNP |
| SHU | Nov 02 | 6-0 W | 0-0-0 | DNP | 0-0-0 | DNP | 0-0-0 | 0-0-0 | 0-0-0 | 0-0-0 | DNP | 0-0-0 | DNP | 0-0-0 | DNP | DNP |
| SHU | Nov 03 | 8-2 W | 0-1-1 | DNP | 0-0-0 | DNP | 0-0-0 | 0-0-0 | 0-0-0 | 0-0-0 | DNP | 0-0-0 | DNP | 0-0-0 | DNP | DNP |
| SHU | Nov 10 | 1-7 L | 0-0-0 | DNP | 0-0-0 | DNP | 0-0-0 | 0-0-0 | 0-0-0 | 0-0-0 | DNP | 0-0-0 | DNP | 0-0-0 | DNP | DNP |
| RMU | Nov 11 | 1-4 L | 0-0-0 | DNP | 0-0-0 | DNP | 0-0-0 | 0-0-0 | 0-0-0 | 0-0-0 | DNP | 0-0-0 | DNP | 0-0-0 | DNP | DNP |
| at LU | Nov 16 | 1-5 L | 0-0-0 | DNP | 0-0-0 | DNP | 0-0-0 | 0-0-0 | 0-0-0 | 0-0-0 | DNP | 0-0-0 | DNP | 0-0-0 | DNP | DNP |
| at LU | Nov 17 | 3-2 W | 0-0-0 | DNP | 0-0-0 | DNP | 0-0-0 | 0-0-0 | 0-0-0 | 0-0-0 | DNP | 0-0-0 | DNP | 0-0-0 | DNP | DNP |
| at MU | Nov 30 | 0-5 L | 0-0-0 | DNP | 0-0-0 | DNP | 0-0-0 | 0-0-0 | 0-0-0 | 0-0-0 | DNP | 0-0-0 | DNP | 0-0-0 | DNP | DNP |
| at MU | Dec 01 | 1-7 L | 0-0-0 | DNP | 0-0-0 | DNP | 0-0-0 | 0-0-0 | 0-0-0 | 0-0-0 | DNP | 0-0-0 | DNP | 0-0-0 | DNP | DNP |
| at SLU | Dec 07 | 1-3 L | 0-0-0 | DNP | 0-0-0 | DNP | 0-0-0 | 0-0-0 | 0-0-0 | 0-0-0 | DNP | 0-0-0 | DNP | 0-0-0 | DNP | DNP |
| at SLU | Dec 08 | 2-4 L | 0-0-0 | DNP | 0-0-0 | DNP | 0-0-0 | 0-0-0 | 0-0-0 | 0-0-0 | DNP | 0-0-0 | DNP | 0-0-0 | DNP | DNP |
| CHA | Jan 04 | 10-0 W | 0-3-3 | DNP | 1-2-3 | DNP | 0-0-0 | 0-0-0 | 0-1-1 | 0-1-1 | DNP | 2-0-2 | 0-0-0 | 0-0-0 | 0-0-0 | 0-0-0 |
| CHA | Jan 05 | 4-0 W | 0-0-0 | 0-0-0 | 0-0-0 | 0-0-0 | 0-0-0 | 0-0-0 | 0-0-0 | 1-2-3 | DNP | 0-0-0 | 0-0-0 | 0-0-0 | 0-0-0 | 0-0-0 |

| Opponent | Date | Score | 15 | 16 | 17 | 19 | 20 | 21 | 22 | 23 | 24 | 25 | 30 | | | | | | |
|----------|--------|--------|----------|-----------|--------|-------|----------|-----------|--------|-------|-------|-------|------|--------|-------|-------|--------|------|------------|
| at UVM | Oct 06 | 5-3 W | DESORCIE | HOENSHILL | JAHNKE | PAIG | HOLDROFT | LAURENZEM | WILKIE | SARA | WELCH | JENN | SHAW | BIRDIE | GROSS | TAVL | MURPHY | KATI | WHITTINGER |
| at UVM | Oct 07 | 1-3 L | 0-1-1 | DNP | 0-0-0 | 0-0-0 | 0-1-1 | DNP | 0-0-0 | 0-0-0 | 1-1-2 | 0-0-0 | DNP | DNP | 0-0-0 | DNP | DNP | DNP | DNP |
| SU | Oct 13 | 0-4 L | 0-0-0 | DNP | 0-0-0 | 0-0-0 | 0-0-0 | 0-0-0 | 0-0-0 | 0-0-0 | 0-0-0 | 0-0-0 | DNP | 0-0-0 | DNP | 0-0-0 | DNP | DNP | DNP |
| SU | Oct 14 | 0-6 L | 0-0-0 | DNP | 0-0-0 | 0-0-0 | 0-0-0 | 0-0-0 | 0-0-0 | 0-0-0 | 0-0-0 | 0-0-0 | DNP | 0-0-0 | DNP | 0-0-0 | DNP | DNP | DNP |
| at SHU | Oct 19 | 1-2 L | 0-0-0 | DNP | 0-0-0 | 0-0-0 | 0-0-0 | 0-0-0 | 0-0-0 | 0-0-0 | 0-0-0 | 0-0-0 | DNP | 0-0-0 | DNP | 0-0-0 | DNP | DNP | DNP |
| at SHU | Oct 20 | 6-1 W | 1-0-1 | 0-0-0 | 0-0-0 | 0-0-0 | 0-0-0 | 0-0-0 | 0-0-0 | 0-0-0 | 0-0-0 | 0-0-0 | DNP | 0-0-0 | DNP | 0-0-0 | DNP | DNP | DNP |
| RIT | Oct 25 | 1-4 L | 0-0-0 | 0-0-0 | 0-1-1 | 0-0-0 | 0-0-0 | 0-0-0 | 0-0-0 | 0-0-0 | 0-0-0 | 0-0-0 | DNP | 0-0-0 | DNP | 0-0-0 | DNP | DNP | DNP |
| RIT | Oct 26 | 2-2 T | 0-1-1 | 0-0-0 | 0-0-0 | 0-0-0 | 0-0-0 | 0-0-0 | 0-0-0 | 0-0-0 | 0-0-0 | 0-0-0 | DNP | 0-0-0 | DNP | 0-0-0 | DNP | DNP | DNP |
| SHU | Nov 02 | 6-0 W | 0-1-1 | 3-0-3 | 0-0-0 | 0-0-0 | 0-0-0 | 0-0-0 | 0-0-0 | 0-0-0 | 0-0-0 | 0-0-0 | DNP | 0-0-0 | DNP | 0-0-0 | DNP | DNP | DNP |
| SHU | Nov 03 | 8-2 W | 1-2-3 | 0-0-0 | 0-1-1 | 0-0-0 | 1-0-1 | 0-0-0 | 1-1-2 | 0-0-0 | 0-0-0 | 0-0-0 | DNP | 0-0-0 | DNP | 0-0-0 | DNP | DNP | DNP |
| SHU | Nov 10 | 1-7 L | 0-0-0 | 0-0-0 | 0-0-0 | 0-0-0 | 0-0-0 | 0-0-0 | 0-0-0 | 0-0-0 | 0-0-0 | 0-0-0 | DNP | 0-0-0 | DNP | 0-0-0 | DNP | DNP | DNP |
| RMU | Nov 11 | 1-4 L | 0-0-0 | 0-0-0 | 0-0-0 | 0-0-0 | 0-0-0 | 0-0-0 | 0-0-0 | 0-0-0 | 0-0-0 | 0-0-0 | DNP | 0-0-0 | DNP | 0-0-0 | DNP | DNP | DNP |
| at LU | Nov 16 | 1-5 L | 0-0-0 | 0-0-0 | 0-0-0 | 0-0-0 | 0-0-0 | 0-0-0 | 0-0-0 | 0-0-0 | 0-0-0 | 0-0-0 | DNP | 0-0-0 | DNP | 0-0-0 | DNP | DNP | DNP |
| at LU | Nov 17 | 3-2 W | 0-0-0 | 0-0-0 | 0-0-0 | 0-0-0 | 0-0-0 | 0-0-0 | 0-0-0 | 0-0-0 | 0-0-0 | 0-0-0 | DNP | 0-0-0 | DNP | 0-0-0 | DNP | DNP | DNP |
| at MU | Nov 30 | 0-5 L | 0-0-0 | 0-0-0 | 0-0-0 | 0-0-0 | 0-0-0 | 0-0-0 | 0-0-0 | 0-0-0 | 0-0-0 | 0-0-0 | DNP | 0-0-0 | DNP | 0-0-0 | DNP | DNP | DNP |
| at MU | Dec 01 | 1-7 L | 0-0-0 | 0-0-0 | 0-0-0 | 0-0-0 | 0-0-0 | 0-0-0 | 0-0-0 | 0-0-0 | 0-0-0 | 0-0-0 | DNP | 0-0-0 | DNP | 0-0-0 | DNP | DNP | DNP |
| at SLU | Dec 07 | 1-3 L | 0-0-0 | 0-0-0 | 0-0-0 | 0-0-0 | 0-0-0 | 0-0-0 | 0-0-0 | 0-0-0 | 0-0-0 | 0-0-0 | DNP | 0-0-0 | DNP | 0-0-0 | DNP | DNP | DNP |
| at SLU | Dec 08 | 2-4 L | 1-0-1 | 0-0-0 | 0-0-0 | 0-0-0 | 0-0-0 | 0-0-0 | 0-0-0 | 0-0-0 | 0-0-0 | 0-0-0 | DNP | 0-0-0 | DNP | 0-0-0 | DNP | DNP | DNP |
| CHA | Jan 04 | 10-0 W | 0-2-2 | 2-2-4 | 0-1-1 | 1-1-2 | 0-0-0 | 0-0-0 | 0-0-0 | 0-0-0 | 0-0-0 | 0-0-0 | DNP | 0-0-0 | DNP | 0-0-0 | DNP | DNP | DNP |
| CHA | Jan 05 | 4-0 W | DNP | DNP | 0-2-2 | 1-0-1 | 0-0-0 | 0-0-0 | 2-0-2 | 0-0-0 | 0-0-0 | 0-0-0 | DNP | 0-0-0 | DNP | 0-0-0 | DNP | DNP | DNP |

| Opponent | Date | Score | 31 | 33 | 36 | 37 | 40 | | | | |
|----------|--------|--------|-------|-------|--------|-------|--------|-------|---------|-------|------------|
| at UVM | Oct 06 | 5-3 W | MEYER | BROO | SMIDDY | MADI | WEAVER | TES | PANICCA | NIC | YOSHEIMERS |
| at UVM | Oct 07 | 1-3 L | DNP | DNP | 0-1-1 | DNP | DNP | DNP | 0-0-0 | 0-0-0 | 2-0-2 |
| SU | Oct 13 | 0-4 L | DNP | DNP | 0-0-0 | DNP | DNP | DNP | 0-0-0 | 0-0-0 | 0-0-0 |
| SU | Oct 14 | 0-6 L | DNP | DNP | 0-0-0 | DNP | DNP | DNP | 0-0-0 | 0-0-0 | 0-0-0 |
| at SHU | Oct 19 | 1-2 L | DNP | 0-0-0 | 0-0-0 | DNP | DNP | DNP | 0-0-0 | 0-0-0 | 1-0-1 |
| at SHU | Oct 20 | 6-1 W | DNP | 0-2-2 | 0-0-0 | DNP | DNP | DNP | 0-0-0 | 0-0-0 | 1-1-2 |
| RIT | Oct 25 | 1-4 L | DNP | 0-0-0 | 0-0-0 | DNP | DNP | DNP | 0-0-0 | 0-0-0 | 1-0-1 |
| RIT | Oct 26 | 2-2 T | DNP | 0-1-1 | 0-0-0 | DNP | DNP | DNP | 0-0-0 | 0-0-0 | 1-1-2 |
| SHU | Nov 02 | 6-0 W | 0-0-0 | 0-0-0 | 0-0-0 | DNP | DNP | DNP | 0-0-0 | 0-0-0 | 2-0-2 |
| SHU | Nov 03 | 8-2 W | DNP | 1-1-2 | 0-0-0 | DNP | DNP | DNP | 0-0-0 | 0-0-0 | 1-2-3 |
| SHU | Nov 10 | 1-7 L | DNP | 0-0-0 | 0-0-0 | DNP | DNP | DNP | 0-0-0 | 0-0-0 | 1-0-1 |
| RMU | Nov 11 | 1-4 L | DNP | 0-0-0 | 0-0-0 | DNP | DNP | DNP | 0-0-0 | 0-0-0 | 0-0-0 |
| at LU | Nov 16 | 1-5 L | DNP | 0-0-0 | 0-0-0 | DNP | DNP | DNP | 0-0-0 | 0-0-0 | 0-0-0 |
| at LU | Nov 17 | 3-2 W | DNP | 0-0-0 | 0-0-0 | DNP | DNP | DNP | 0-0-0 | 0-0-0 | 0-0-0 |
| at MU | Nov 30 | 0-5 L | DNP | 0-0-0 | 0-0-0 | DNP | DNP | DNP | 0-0-0 | 0-0-0 | 0-0-0 |
| at MU | Dec 01 | 1-7 L | DNP | 0-0-0 | 0-0-0 | DNP | DNP | DNP | 0-0-0 | 0-0-0 | 0-0-0 |
| at SLU | Dec 07 | 1-3 L | DNP | DNP | 0-0-0 | DNP | DNP | DNP | 0-0-0 | 0-0-0 | 0-0-0 |
| at SLU | Dec 08 | 2-4 L | DNP | DNP | 0-0-0 | DNP | DNP | DNP | 0-0-0 | 0-0-0 | 0-0-0 |
| CHA | Jan 04 | 10-0 W | 0-0-0 | DNP | 1-1-2 | 0-0-0 | 0-0-0 | 0-0-0 | 0-0-0 | 0-0-0 | 0-0-0 |
| CHA | Jan 05 | 4-0 W | 0-0-0 | 0-1-1 | 0-0-0 | DNP | DNP | DNP | 0-0-0 | 0-0-0 | 2-0-2 |

NITTANY LION WOMEN'S HOCKEY



2012-13 Penn State Women's Hockey Penn State High/Low Analysis (as of Jan 10, 2013) All games

Penn State - TEAM GAME HIGHS

| | | |
|-----------------|----|------------------------------|
| POINTS | 27 | vs Chatham (Jan 04, 2013) |
| GOALS | 10 | vs Chatham (Jan 04, 2013) |
| ASSISTS | 17 | vs Chatham (Jan 04, 2013) |
| SHOTS ON GOAL | 71 | vs Chatham (Jan 05, 2013) |
| SAVES | 64 | at Mercyhurst (Dec 01, 2012) |
| PENALTIES | 8 | vs RIT (Oct 25, 2012) |
| PENALTY MINUTES | 16 | vs RIT (Oct 25, 2012) |

Opponent - GAME HIGHS

| | | |
|-----------------|----|---------------------------------|
| POINTS | 19 | at Mercyhurst (Dec 01, 2012) |
| | 19 | vs Robert Morris (Nov 10, 2012) |
| GOALS | 7 | at Mercyhurst (Dec 01, 2012) |
| | 7 | vs Robert Morris (Nov 10, 2012) |
| ASSISTS | 12 | at Mercyhurst (Dec 01, 2012) |
| | 12 | vs Robert Morris (Nov 10, 2012) |
| SHOTS ON GOAL | 71 | at Mercyhurst (Dec 01, 2012) |
| SAVES | 67 | vs Chatham (Jan 05, 2013) |
| PENALTIES | 10 | at Lindenwood (Nov 17, 2012) |
| PENALTY MINUTES | 20 | at Lindenwood (Nov 17, 2012) |

Penn State - GAME LOWS

| | | |
|-----------------|----|------------------------------|
| POINTS | 0 | vs Syracuse (Oct 13, 2012) |
| | 0 | vs Syracuse (Oct 14, 2012) |
| | 0 | at Mercyhurst (Nov 30, 2012) |
| GOALS | 0 | vs Syracuse (Oct 13, 2012) |
| | 0 | vs Syracuse (Oct 14, 2012) |
| | 0 | at Mercyhurst (Nov 30, 2012) |
| ASSISTS | 0 | vs Syracuse (Oct 13, 2012) |
| | 0 | vs Syracuse (Oct 14, 2012) |
| | 0 | at Mercyhurst (Nov 30, 2012) |
| SHOTS ON GOAL | 10 | at Mercyhurst (Nov 30, 2012) |
| | 10 | at Mercyhurst (Dec 01, 2012) |
| SAVES | 16 | vs Chatham (Jan 05, 2013) |
| PENALTIES | 1 | vs Chatham (Jan 05, 2013) |
| PENALTY MINUTES | 2 | vs Chatham (Jan 05, 2013) |

Opponent - GAME LOWS

| | | |
|-----------------|----|--------------------------------|
| POINTS | 0 | vs Sacred Heart (Nov 02, 2012) |
| | 0 | vs Chatham (Jan 04, 2013) |
| | 0 | vs Chatham (Jan 05, 2013) |
| GOALS | 0 | vs Sacred Heart (Nov 02, 2012) |
| | 0 | vs Chatham (Jan 04, 2013) |
| | 0 | vs Chatham (Jan 05, 2013) |
| ASSISTS | 0 | vs Sacred Heart (Nov 02, 2012) |
| | 0 | vs Chatham (Jan 04, 2013) |
| | 0 | vs Chatham (Jan 05, 2013) |
| SHOTS ON GOAL | 16 | vs Chatham (Jan 05, 2013) |
| SAVES | 9 | at Mercyhurst (Dec 01, 2012) |
| PENALTIES | 1 | at Mercyhurst (Nov 30, 2012) |
| | 1 | vs Chatham (Jan 05, 2013) |
| PENALTY MINUTES | 2 | at Mercyhurst (Nov 30, 2012) |
| | 2 | vs Chatham (Jan 05, 2013) |



NITTANY LION WOMEN'S HOCKEY

PEGULA ICE ARENA FUTURE HOME OF PENN STATE HOCKEY

FACTS

Construction Groundbreaking: January 2012
Ceremonial Groundbreaking: April 20, 2012
Projected Opening: September 5, 2013
Capacity: 6,000 (Arena rink); 300 (Community rink)
Size: 200,000 square feet

AMENITIES

Two NHL-sized (200' x 85') ice surfaces

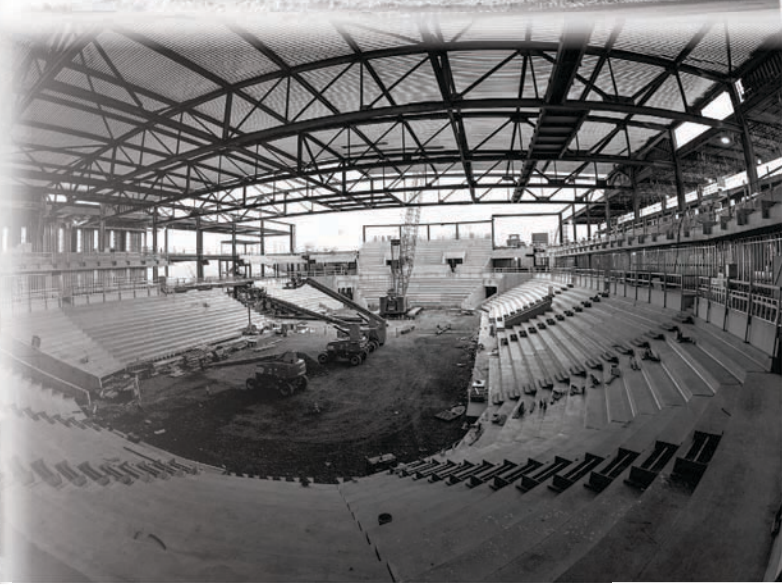
Arena rink will offer:

- 6,000-seat overall capacity
- 1,000-seat student section
- First-rate varsity locker rooms
- Team lounges and dry changing room
- Strength and conditioning center
- Shooting gallery
- Suites, loge boxes and club seats
- State-of-the-art television and radio broadcasting facilities
- Press box and media center
- Concession stands with café
- Videoboard

Community rink will offer:

- 300-seat capacity
- Eight locker rooms
- Skate rental center

Pegula Ice Arena will have the ability to host National Hockey League and American Hockey League games, as well as professional ice shows, local hockey and figure skating programs.



Left to Right: Kim and Terry Pegula, Dr. Rodney Erickson, The Nittany Lion, Joe Battista and Karen Peetz at the Pegula Ice Arena ceremonial groundbreaking.



NITTANY LION WOMEN'S HOCKEY



2012-13 PENN STATE WOMEN'S HOCKEY NUMERICAL ROSTER

| No. | Name | Yr. | Pos. | Ht. | S/C | Hometown | Last Team |
|-----|---------------------|-----|------|------|-----|--------------------------------|--------------------------------------|
| 2 | Jeanette Bateman | Fr. | F/D | 5-6 | R | Greeley, Colo. | Colorado Select |
| 3 | Cara Mendelson | So. | F/D | 5-6 | R | Pittsburgh, Pa. | Steel City Selects |
| 4 | Jordin Pardoski | Fr. | D | 5-5 | R | Rochester Hills, Mich. | Detroit Honeybaked |
| 5 | Stephanie Walkom | Fr. | D | 5-7 | R | Moon Township, Pa. | Pittsburgh Penguins Elite |
| 6 | Lindsay Reihl | Sr. | D | 5-4 | R | Cheshire, Conn. | Connecticut Polar Bears |
| 8 | Taylor McGee | Fr. | D | 5-3 | R | Pearl River, N.Y. | Taft School (Conn.) |
| 10 | Micayla Catanzariti | Fr. | F | 5-4 | R | Rancho Santa Margarita, Calif. | Gilmour Academy (Ohio) |
| 11 | Katie Zinn | Fr. | F | 5-7 | R | Coquitlam, B.C. | Gilmour Academy (Ohio) |
| 12 | Kate Christoffersen | Sr. | F | 5-3 | R | Trumbull, Conn. | Connecticut Polar Bears |
| 13 | Kendra Rasmussen | Fr. | F | 5-5 | L | Sartell, Minn. | Sartell/Sauk Rapids HS |
| 14 | Darby Kern | Fr. | F | 5-11 | R | Venetia, Pa. | Pittsburgh Penguins Elite |
| 15 | Jess Desorcie | So. | F | 5-4 | L | Westford, Vt. | Connecticut College |
| 16 | Hannah Hoenshell | Fr. | F | 5-3 | R | Plano, Texas | Texas Alliance |
| 17 | Paige Jahnke | Fr. | D | 5-6 | R | Oakdale, Minn. | Roseville HS/Minnesota Jr. Whitecaps |
| 19 | Jill Holdcroft | Fr. | F | 5-1 | R | Pennsylvania Furnace, Pa. | Pittsburgh Penguins Elite |
| 20 | Emily Laurenzi | Fr. | F | 5-2 | R | Townsend, Del. | National Sports Academy (N.Y.) |
| 21 | Sarah Wilkie | Fr. | D | 5-6 | R | Ashby, Mass. | Williston Northampton School |
| 22 | Jenna Welch | Jr. | F | 5-8 | R | Austin, Texas | Connecticut |
| 23 | Birdie Shaw | Fr. | F | 5-2 | L | Troy, Mich. | Detroit Honeybaked |
| 24 | Taylor Gross | Jr. | F | 5-1 | R | Colorado Springs, Colo. | Connecticut |
| 25 | Katie Murphy | So. | F | 5-4 | L | Novi, Mich. | Detroit Honeybaked |
| 30 | Celine Whitlinger | Fr. | G | 5-8 | L | Garden Grove, Calif. | Gilmour Academy (Ohio) |
| 31 | Brooke Meyer | Fr. | G | 5-7 | L | Naperville, Ill. | Chicago Huskies |
| 33 | Madison Smiddy | So. | D | 5-7 | L | Grand Rapids, Mich. | Detroit Honeybaked |
| 36 | Tess Weaver | So. | F | 5-5 | R | Windber, Pa. | Pittsburgh Penguins Elite |
| 37 | Nicole Paniccia | Jr. | G | 5-5 | L | Oakville, Ont. | Connecticut |
| 40 | Shannon Yoxheimer | Fr. | F | 5-7 | L | Jackson, Mich. | North American Hockey Academy (Vt.) |

Head Coach: Josh Brandwene (First Year)

Assistant Coaches: Gina Kearns (First Year), Casey McCullion (First Year); **Director of Operations/Video Coach:** Mo Stroemel (First Year)

Captain: Taylor Gross; **Assistant Captains:** Lindsay Reihl, Jenna Welch

| ALPHABETICAL ROSTER | | PRONUNCIATION GUIDE | | LIONS BY STATE | | LIONS BY POSITION | |
|---------------------|---------------------|---------------------|---------------------|---------------------------|--|----------------------|--|
| No. | Name | Brandwene | BRAND-ween | California (2): | Catanzariti, Whitlinger | Forward (17): | Bateman, Catanzariti |
| 2 | Jeanette Bateman | Catanzariti | Cah-TAN-zah-REE-tee | Colorado (2): | Bateman, Gross | | Christoffersen, Desorcie, Gross, |
| 10 | Micayla Catanzariti | Jahnke | YAWN-kee | Connecticut (2): | Christoffersen, Reihl | | Hoenshell, Holdcroft, Kern, Laurenzi, |
| 12 | Kate Christoffersen | Jeanette | Jeh-NETT | | | | Mendelson, Murphy, Rasmussen, |
| 15 | Jess Desorcie | Kearns | KERNS | Delaware (1): | Laurenzi | | Shaw, Weaver, Welch, Yoxheimer, |
| 24 | Taylor Gross | McCullion | Mick-CULL-yon | Illinois (1): | Meyer | | Zinn |
| 16 | Hannah Hoenshell | Paniccia | Pah-NEE-cha | Massachusetts (1): | Wilkie | | |
| 19 | Jill Holdcroft | Reihl | RILE | Michigan (5): | Murphy, Pardoski, Shaw, Smiddy, Yoxheimer | Defense (9): | Bateman, Jahnke, McGee, Mendelson, Pardoski, Reihl, Smiddy, Walkom, Wilkie |
| 17 | Paige Jahnke | Stroemel | STRAW-mull | Minnesota (2): | Jahnke, Rasmussen | | |
| 14 | Darby Kern | | | New York (1): | McGee | | |
| 20 | Emily Laurenzi | | | Pennsylvania (5): | Holdcroft, Kern, Mendelson, Walkom, Weaver | Goalie (3): | Meyer, Paniccia, Whitlinger |
| 8 | Taylor McGee | | | Texas (2): | Hoenshell, Welch | | |
| 3 | Cara Mendelson | | | Vermont (1): | Desorcie | | |
| 31 | Brooke Meyer | | | | | | |
| 25 | Katie Murphy | | | | | | |
| 37 | Nicole Paniccia | | | | | | |
| 4 | Jordin Pardoski | | | | | | |
| 13 | Kendra Rasmussen | | | | | | |
| 6 | Lindsay Reihl | | | | | | |
| 23 | Birdie Shaw | | | | | | |
| 33 | Madison Smiddy | | | | | | |
| 5 | Stephanie Walkom | | | | | | |
| 36 | Tess Weaver | | | | | | |
| 22 | Jenna Welch | | | | | | |
| 30 | Celine Whitlinger | | | | | | |
| 21 | Sara Wilkie | | | | | | |
| 40 | Shannon Yoxheimer | | | | | | |
| 11 | Katie Zinn | | | | | | |





NITTANY LION WOMEN'S HOCKEY



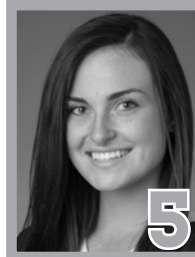
2
JEANNETTE BATEMAN
Freshman • F/D
Greeley, Colo.



3
CARA MENDELSON
Sophomore • F/D
Pittsburgh, Pa.



4
JORDYN PARDOSKI
Freshman • D
Rochester Hills, Mich.



5
STEPHANIE WALKOM
Freshman • D
Moon Township, Pa.



6 **A**
LINDSAY REIHL
Senior • D
Cheshire, Conn.



8
TAYLOR MCGEE
Freshman • D
Pearl River, N.Y.



10
MICAYLA CATANZARITI
Freshman • F
Rancho Santa Margarita, Calif.



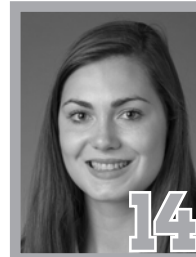
11
KATIE ZINN
Freshman • F
Coquitlam, B.C.



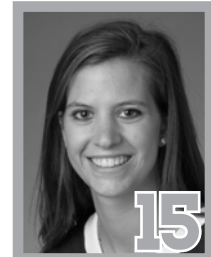
12
KATE CHRISTOFFERSEN
Senior • F
Trumbull, Conn.



13
KENDRA RASMUSSEN
Freshman • F
Sartell, Minn.



14
DARBY KERN
Freshman • F
Venetia, Pa.



15
JESS DESORCIE
Sophomore • F
Westford, Vt.



16
HANNAH HOENSHELL
Freshman • F
Plano, Texas



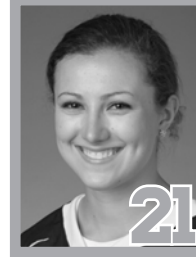
17
PAIGE JAHNKE
Freshman • D
Oakdale, Minn.



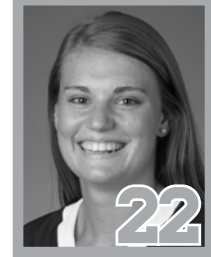
19
JILL HOLDCROFT
Freshman • F
Pennsylvania Furnace, Pa.



20
EMILY LAURENZI
Freshman • F
Townsend, Del.



21
SARAH WILKIE
Freshman • D
Ashby, Mass.



22 **A**
JENNA WELCH
Junior • F
Austin, Texas



23
BIRDIE SHAW
Freshman • F
Troy, Mich.



24 **C**
TAYLOR GROSS
Junior • F
Colorado Springs, Colo.



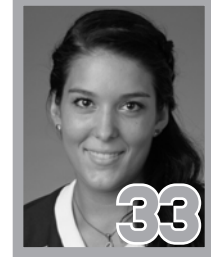
25
KATIE MURPHY
Sophomore • F
Novi, Mich.



30
CELINE WHITLINGER
Freshman • G
Garden Grove, Calif.



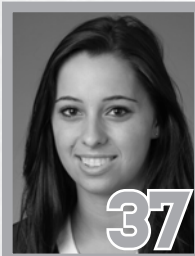
31
BROOKE MEYER
Freshman • G
Naperville, Ill.



33
MADISON SMIDDY
Sophomore • D
Grand Rapids, Mich.



36
TESS WEAVER
Sophomore • F
Windber, Pa.



37
NICOLE PANICCIA
Junior • G
Oakville, Ont.



40
SHANNON YOXHEIMER
Freshman • F
Jackson, Mich.