



2011-12 PENN STATE LADY LION BASKETBALL

WOMEN'S BASKETBALL CONTACT:
 Kristina Petersen
 Twitter: @ladylionsid
 Website: www.GoPSUsports.com
 Email: kap18@psu.edu
 Cell: 814-883-4581
 Office: 814-865-1757

Penn State Athletic Communications: 101D Bryce Jordan Center, University Park, PA 16802 ♦ Office: 814-865-1757 ♦ Fax: 814-863-3165

SCHEDULE/RESULTS

NOVEMBER

Sat. 5 BLOOMSBURG (exh.).....W, 101-81
 Lady Lion Classic (University Park, Pa.)

Fri. 11 WASHINGTON STATE..... W, 72-60

Sun. 13 MIDDLE TENN. (BTN.com)... W, 65-49

Thurs. 17 at DelawareL, 71-80

Sun. 20 at South Carolina (SportSouth).W, 55-50

John Ascuaga's Nugget Classic (Reno, Nev.)

Fri. 25 vs. Iowa StateW, 66-59

Sat. 26 at NevadaW, 103-65

Big Ten/ACC Challenge

Wed. 30 #14/13 N. CAROLINA (BTN)..W, 103-84

DECEMBER

Big 12/Big Ten Challenge

Sat. 3 at Texas Tech..... 3 p.m.

Tues. 6 VIRGINIA TECH (BTN.com)..... 7 p.m.

Sun. 11 UMES (BTN.com)..... 2 p.m.

Sun. 18 WAGNER (BTN.com) 1 p.m.

Wed. 21 at Bucknell..... 7 p.m.

Fri. 30 NEBRASKA * (BTN.com)..... 7 p.m.

JANUARY

Mon. 2 at Wisconsin * (BTN-WC) 1/3 p.m.

Sat. 7 MICHIGAN STATE * (CBS)..... 2 p.m.

Thurs. 12 MICHIGAN * (BTN) 6 p.m.

Sun. 15 at Nebraska * (BTN.com)..... 3:05 p.m.

Thurs. 19 at Illinois * (BTN.com)..... 8 p.m.

Sun. 22 IOWA * (ESPN2) 3 p.m.

Thurs. 26 at Michigan * (BTN.com)..... 7 p.m.

Sun. 29 at Michigan State * (ESPN2) 3 p.m.

FEBRUARY

Thurs. 2 INDIANA * (BTN.com) 7 p.m.

Sun. 5 at Minnesota * (BTN.com) 3 p.m.

Thurs. 9 WISCONSIN * (BTN.com) 7 p.m.

Sun. 12 at Northwestern * (BTN) 1 p.m.

Thurs. 16 at Purdue * (BTN) 6 p.m.

Mon. 20 OHIO STATE * (ESPN2)..... 7 p.m.

WBCA Pink Zone at Penn State

Sun. 26 MINNESOTA * (BTN-WC) ...12/2/4 p.m.

MARCH

Thur.-Sun. 1-4 Big Ten Tournament (Indianapolis)

Sat.-Tues. 17-20 NCAA Tourn. 1st & 2nd Round

Sat.-Tues. 24-27 NCAA Tournament Regionals

APRIL

Sun./Tues. 1/3 NCAA Final Four (Denver, Colo.)

BOLD CAPS indicates home game.

* - indicates Big Ten game.

All times are Eastern Time.

BTN - Big Ten Network

BTN.com - BigTenNetwork.com

Schedule subject to change. Please visit www.GoPSUsports.com

for up-to-date tip times.

Game #8: #16/15 Penn State at #19/25 Texas Tech

Sat., Dec. 3 ▶ 3 p.m. (ET) ▶ United Spirit Arena ▶ Lubbock, Texas

		SETTING THE SCENE
Penn State Lady Lions	Texas Tech Red Raiders	The Texas Tech Game
Record: 6-1, 0-0 Big Ten	Record: 6-0, 0-0 Big 12	Series: PSU leads 3-2
Last Game: PSU 103, UNC 84 (11/30)	Last Game: TTU 85, Texas State 40 (11/30)	Last Meeting: PSU 76, TTU 68 (12/5/10)
Head Coach: Coquese Washington	Head Coach: Kristy Curry	Streak: Penn State - 2 wins
Career Record: 72-61 (5th yr.)	Career Record: 273-124 (13th yr.)	Television: none
Record at PSU: 72-61 (5th yr.)	Record at TTU: 91-73 (6th yr.)	Radio: The game is on the Penn State Sports Network and ESPN 1450 locally with Jerry Fisher and calling the action. The audio feed is available at www.GoPSUsports.com .
Statistical Leaders	Statistical Leaders	Webstream: None
Points Maggie Lucas (18.7)	Points Kierra Mallard (14.2)	Live Stats: GoPSUsports.com
Rebounds Mia Nickson (7.8)	Rebounds Kierra Mallard (10.7)	
Assists Alex Bentley (6.3)	Assists Two with 6.0	

GAME DAY INFORMATION

SCOUTING TEXAS TECH

The Red Raiders are a perfect 6-0 on the season and are 19th in this week's Associated Press poll and 25th in the ESPN/USA Today Coaches' Poll. Kierra Mallard paces Texas Tech, averaging a double-double with 14.2 points and 10.7 rebounds per game. She also has a team-best 14 blocks. Chynna Brown (10.2) and Kelsi Baker (10.0) also average double figures for TTU.

ALL-TIME VS. THE RED RAIDERS

The Lady Lions are 3-2 all-time against Texas Tech. Penn State picked up a 76-68 win over the Red Raiders last year in the inaugural Big Ten/Big 12 Challenge. The Lady Lions have only visited Lubbock once, dropping a 79-65 decision to TTU on Dec. 21, 2004. Penn State is 14-16 all-time against Big 12 foes.

LAST TIME VS. TTU

The Lady Lions led wire-to-wire on the way to a 76-68 win over Texas Tech in the inaugural Big Ten/Big 12 Challenge on Dec. 5, 2010. **Mia Nickson** tallied her first career double-double with personal bests of 26 points and 14 rebounds/ **Alex Bentley** added 16 points, eight assists, four rebounds and three steals in the win.

STORYLINES

- ✓ The Lady Lions broke the school record with 14 three-points in the win over #14/13 North Carolina Wednesday.
- ✓ **Alex Bentley** is 23 points away from becoming the 33rd member of a Penn State's 1,000-point club.
- ✓ Penn State scored 100 or more points in consecutive games for the first time since 1992-93 with a 103-84 win over North Carolina and a 103-65 victory at Nevada.
- ✓ Lucas moved into sixth place on Penn State's career three-pointers list (129).
- ✓ Penn State's 19-point win over #14/13 North Carolina was the biggest margin of victory over a ranked opponent since a 73-56 win over #8 Michigan State on Jan. 23, 2005.
- ✓ Penn State is 16th in Associated Press poll and 15th in the ESPN/USA Today Coaches Poll.
- ✓ The Lady Lions were picked to finish first in the Big Ten in a vote of the coaches and media.
- ✓ Bentley was selected as the Big Ten Preseason Player of the Year in a vote of the league's coaches and media.

UP NEXT

The Lady Lions begin a three-game homestand against ACC foe Virginia Tech Tuesday. It's Toys for Tots night at the BJC and fans that bring a new, unwrapped toy to the game will get a voucher to participate in a postgame autograph session with four Lady Lions. Tuesday will also be Dollar Dog Night.



2011-12 ROSTER

PENN STATE LADY LIONS

No.	Name	Pos.	Cl./Elg.	Ht.	Hometown/High School (Previous School)
2	Dara Taylor	G	Jr./Jr.#	5-8	Wilmington, Del./Caravel Academy (Maryland)
5	Talia East *	F/C	So./So.	6-3	Philadelphia, Pa./Friends' Central School
12	Zhaque Gray ***	G	Sr./Sr.	5-8	Chicago, Ill./Prep John Hope
15	Renee Womack ***	G	Sr./Sr.	5-10	Lansdale, Pa./Methacton
20	Alex Bentley **	G	Jr./Jr.	5-7	Indianapolis, Ind./Ben Davis
23	Ariel Edwards *	F	So./So.	6-2	Elmont, N.Y./Christ the King
24	Mia Nickson *	F	Sr./Jr.	6-2	Ashburn, Va./Notre Dame Acad. (Boston College)
25	Gizelle Studevent **	G	Jr./Jr.	5-11	La Jolla, Calif./The Bishop's School
33	Maggie Lucas *	G	So./So.	5-10	Narberth, Pa./Germantown Academy
40	Marisa Wolfe **	F	Jr./Jr.	6-2	Ford City, Pa./Ford City
44	Tori Waldner	F	Fr./Fr.	6-5	Milton, Ga./Milton
54	Nikki Greene **	F/C	Jr./Jr.	6-4	Diboll, Texas/Diboll

Head Coach: Coquese Washington (Notre Dame '92)

Assistant Coaches: Fred Chmiel, Kia Damon, Maren Walseth

Captains: Mia Nickson, Marisa Wolfe

* Indicates letters earned # - Taylor will sit out the 2011-12 season due to NCAA transfer rules.

TEXAS TECH RED RAIDERS

No.	Name	Pos.	Cl.	Ht.	Hometown/High School (Previous School)
00	Chynna Brown	G	Jr.	5-8	Dallas, Texas/Lincoln
1	Jordan Barncastle	F	Sr.	6-2	Martin's Mill, Texas/Martin's Mill
5	Christine Hyde	G	Jr.	5-10	Brampton, Ontario/Ascension of Our Lord
12	Amber Battle	G	Fr.	5-9	Albuquerque, N.M./Cibola
15	Casey Morris	G	Jr.	5-9	Fairfield, Calif./Piedmont
20	Kierra Mallard	F/C	Sr.	6-3	Dallas, Texas/Frisco
23	Monique Smalls	G	Jr.	5-6	The Woodlands, Texas/College Park
24	Mary Bokenkamp	G	Jr.	5-9	Parker, Colo./Regis Jesuit
31	Haley Schneider	C	So.	6-5	Lubbock, Texas/Monterey
33	Shauntal Nobles	F/C	So.	6-3	Haslet, Texas/Northwest
41	Kelsi Baker	F	So.	6-0	Mesquite, Texas/John Horn
42	Ebony Walker	F	So.	6-2	Albuquerque, N.M./Sandia

Head Coach: Kristy Curry

Assistant Coaches: Kelly Curry, Brooke Stoehr, Shereka Wright

TEAM COMPARISON

PENN STATE		TEXAS TECH
Lucas (18.7)	Scoring Leader	Mallard (14.2)
Nickson (7.8)	Rebounding Leader	Mallard (10.7)
Bentley (6.3)	Assist Leader	Two with 4.0
Bentley (2.9)	Steals Leader	Smalls (4.2)
East (1.7)	Blocks Leader	Mallard (2.3)
76.4	Scoring Offense	84.3
63.9	Scoring Defense	50.8
+12.6	Scoring Margin	+33.5
43.9	Rebounds Per Game	51.0
+2.0	Rebound Margin	+18.2
14.0	Assists Per Game	16.7
8.7	Steals Per Game	16.7
.432	Field Goal Pct.	.442
.332	FG Defense Pct.	.316
.373	3-pt. FG Pct.	.264
.265	3-pt. FG Pct. Def.	.247
.743	Free Throw Pct.	.710
0.9	Assist/Turnover	1.0
Won 4	W/L Streak	Won 6

SERIES HISTORY

Overall:	PSU lead 3-2
Last meeting:	12/5/10
Last result:	PSU, 76-68
Current streak:	PSU - 2 wins
Last 10:	PSU, 3-2
Last 10 meetings:	
12/19/87	H W, 85-80
11/24/00	N L, 71-79
12/21/04	A L, 65-79
12/4/05	H W/2OT, 78-72
12/5/10	H W, 76-68

QUICK FACTS

THE UNIVERSITY

Location: University Park, Pa.
 Founded: 1855
 Enrollment: 42,294
 Colors: Blue & White
 Nickname: Lady Lions
 Conference: Big Ten
 President: Dr. Rodney Erickson
 Director of Athletics: Tim Curley
 Acting Director of Athletics: David Joyner
 Senior Woman Administrator: Charmelle Green
 Facility (cap.): Bryce Jordan Center (15,261)
 All-Time Record at BJC: 178-47 (16 seasons)

ATHLETIC COMMUNICATIONS

WBB Contact: Kristina Petersen
 Phone/Fax: (814) 865-1757/(814) 863-3165
 E-mail: kap18@psu.edu
 Address: 101-D Bryce Jordan Center
 University Park, Pa. 16802
 Press Row Phone: 814-863-3294
 Website: www.GoPSUsports.com
 Twitter: @ladylionsid

TEAM INFORMATION

2011-12 Record: 6-1
 Home: 3-0 Away: 2-1 Neutral: 1-0
 Big Ten Record: 0-0
 Home: 0-0 Away: 0-0
 Letterwinners Returning/Lost: 10/1
 Starters Returning/Lost: 4/1
 Big Ten Tournament: Runner-up
 Postseason: NCAA Second Round

THE HISTORY

First Year of Women's Basketball: 1965
 All-Time Record: 811-374 (47 seasons)
 All-Time Big Ten Rec.: 204-110 (19 seasons)
 NCAA Tournament Appearances: 22
 NCAA Tournament Record: 27-22

WOMEN'S BASKETBALL

Head Coach: Coquese Washington
 Alma Mater: Notre Dame '92
 Overall Record: 72-61 (fifth season)
 School Record: 72-61 (fifth season)
 Basketball Office Phone: 814-863-2672
 Best Time To Reach Coach: Through SID
 Assistant Coaches (Alma Mater):
 Fred Chmiel (Excelsior College)
 Kia Damon (Millersville '97)
 Maren Walseth (Penn State '02)
 Twitter: @pennstatewbb
 Facebook: facebook.com/pennstateladylions

PRONUNCIATIONS

Coquese	ko-KWEES
Chmiel	shuh-MEAL
Maren Walseth	MARR-en WALL-seth
Zhaque	Jacque-QWAY
Gizelle Studevent	juh-ZELL STEW-duh-vent
Talia	tah-LEE-uh
Ariel	AIR-e-I
Dara	DAR-uh



STANDINGS (thru games of 12/1)

Team	Big Ten			Overall		
	W	L	Pct.	W	L	Pct.
Ohio State	0	0	.000	6	0	1.000
Michigan	0	0	.000	7	1	.875
Nebraska	0	0	.000	6	1	.857
PENN STATE	0	0	.000	6	1	.857
Purdue	0	0	.000	6	1	.857
Northwestern	0	0	.000	5	1	.833
Iowa	0	0	.000	5	2	.714
Michigan State	0	0	.000	5	3	.625
Minnesota	0	0	.000	4	4	.500
Illinois	0	0	.000	3	5	.375
Wisconsin	0	0	.000	3	5	.375
Indiana	0	0	.000	2	4	.333

BIG TEN SCHEDULE

NOVEMBER 30

at Iowa 58, Virginia Tech 47
at Maryland 74, Michigan 25
at Georgia Tech 73, Nebraska 57
at Northwestern 76, NC State 59
at Ohio State 78, Florida State 75 (OT)
at Penn State 103, North Carolina 84
at Wisconsin 58, Boston College 50

DECEMBER 1

Illinois 61, at Clemson 50
at Virginia 65, Indiana 49
Miami (Fla.) 76, at Michigan State 60
at Wake Forest 82, Minnesota 65
at Duke 64, Purdue 53

DECEMBER 3

Iowa at Kansas State 8 p.m.
Eastern Michigan at Michigan State 3 p.m.
Northwestern at Missouri 5 p.m.
Penn State at Texas Tech 3 p.m.
Ohio State at Oklahoma 3 p.m.

DECEMBER 4

Oklahoma State at Indiana noon
Iowa State at Michigan 2 p.m.
Baylor at Minnesota 2 p.m.
Texas-Pan America at Nebraska 3 p.m.
Texas A&M at Purdue noon

All times are Eastern.

PROJECTED STARTERS



12 ZHAQUE GRAY G
Sr., 5-8, Chicago, Ill.
14.7 pts., 4.0 rebs., 2.3 asst., .429 3FG%

Notes: Was 8-for-16 from the field en route to team-best 25 pts. vs. #13 UNC ... Notched 21 points and two steals at Nevada ... Had 14 points vs. Iowa St. ... Named to Lady Lion Classic All-Tournament Team.



20 ALEX BENTLEY G
Jr., 5-7, Indianapolis, Ind.
15.3 ppg, 6.3 apg, 2.9 spg, .923 FT%

Notes: First career double-double with 15 pts., 15 assts. ... Nugget Classic Tournament MVP ... Tallied 23 pts., 6 assts. at Nevada ... Wade Trophy, Naismith Award and Wooden Award watch lists.



33 MAGGIE LUCAS G
So., 5-10, Narberth, Pa.
18.7 ppg, 4.4 rpg, .347 3FG%, .818 FT%

Notes: Had 21 points in 22 minutes vs. #13 UNC ... Nugget Classic All-Tournament team ... Tallied 26 pts. and 7 rebs. at Nevada ... Naismith Award watch list ... 2011 Big Ten Freshman of the Year.



23 ARIEL EDWARDS F
So., 6-2, Elmont, N.Y.
6.7 ppg, 4.4 rpg, 1.0 apg

Notes: Recorded 13 points, 8 rebs., 3 assts. in win over #13 UNC ... Was 5-for-7 from the field en route to 10 pts., 7 rebs. at South Carolina ... Accounted for 8 points and 8 rebounds in 1st start at Delaware.



54 NIKKI GREENE C
Jr., 6-4, Diboll, Texas
7.7 ppg, 7.1 rpg, 1.1 bpg, .778 FT%

Notes: Notched 13 pts., 6 rebs. and 3 blks. in win over #13 UNC ... Had 11 points and 7 rebounds in Nugget Classic title game ... 2011 All-Big Ten honorable mention selection.

SCOUTING TEXAS TECH: The Red Raiders are a perfect 6-0 on the season and are 19th in this week's Associated Press poll and 25th in the ESPN/USA Today Coaches' Poll. Kierra Mallard paces Texas Tech, averaging a double-double with 14.2 points and 10.7 rebounds per game. She also has a team-best 14 blocks. Chynna Brown (10.2) and Kelsi Baker (10.0) also average double figures for TTU.

ALL-TIME VS. THE RED RAIDERS: The Lady Lions are 3-2 all-time against Texas Tech. Penn State picked up a 76-68 win over the Red Raiders last year in the inaugural Big Ten/Big 12 Challenge. The Lady Lions have only visited Lubbock once, dropping a 79-65 decision to TTU on Dec. 21, 2004. Penn State is 14-16 all-time against Big 12 foes.

LAST TIME VS. TTU: The Lady Lions led wire-to-wire on the way to a 76-68 win over Texas Tech in the inaugural Big Ten/Big 12 Challenge on Dec. 5, 2010. **Mia Nickson** tallied her first career double-double with personal bests of 26 points and 14 rebounds/**Alex Bentley** added 16 points, eight assists, four rebounds and three steals in the win, while **Maggie Lucas** accounted for 10 points on 4-of-8 shooting.

BIG TEN/BIG 12 CHALLENGE: Penn State earned a win in the inaugural Big Ten/Big 12 Challenge last season against Texas Tech. The Lady Lions defeated the Red Raiders, 76-68, at home. The Big Ten claimed the inaugural challenge, 7-5.

WHAT'S AT STAKE

A Penn State Win Would:

- Make Penn State 7-1 on the season.
- Improve the Lady Lions to 4-2 all-time vs. TTU.
- Make the Lady Lions 2-0 all-time in Big Ten/Big 12 Challenge games.
- Be PSU's first back-to-back wins over ranked opponents since Jan. 20 & 23, 2005.

BENTLEY CLOSING IN ON 1,000: Junior guard **Alex Bentley** needs 23 points to become the 33rd player in school history with 1,000 points. She will be the 15th junior to reach the milestone and first Lady Lion to accomplish the feat since Tyra Grant reached the 1,000-point plateau in 2008.

TOPPLING TOP 15 FOE: The Lady Lions shot 48.7% from the field and 58.3% from three-point range en route to a 103-84 win over #14/13 North Carolina in the Big Ten/ACC Challenge Nov. 30. It was the first win over a ranked opponent for Penn State since topping No. 14/13 Iowa (68-59) on Dec. 30, 2010. The 19-point win was the biggest margin of victory over a ranked opponent since a 73-56 win over #8 Michigan State on Jan. 23, 2005.

LAST TIME VS. TEXAS TECH DEC. 5, 2010 • UNIVERSITY PARK, PA.

Texas Tech 68 - 81																													
#	Player	Total			3-Ptr			Rebounds			PF	TP	A TO	BK	SB	Min													
		FG	FGA	FT	FTA	CF	DF	RF	DF	RF																			
27	Barnes, Jordan	1	4-8	1-1	0-0	1	0	11	9	1	1	0	0	0	25														
34	Wickert, Teana	0	0-0	0-1	0-0	2	2	4	3	0	3	5	0	2	29														
15	Morris, Casey	0	3-13	3-0	2-4	0	1	1	2	11	2	0	0	3	32														
30	Mohr, Kiera	0	0-0	0-0	0-0	4	5	10	5	12	1	1	0	3	27														
23	Smalls, Monique	0	3-9	1-2	2-3	0	1	1	1	9	3	4	0	6	32														
30	Brown, Chynna	1	2	0	2-2	1	0	1	0	4	0	0	0	0	7														
25	Hyde, Christine	0	3-7	0-1	3-4	1	2	3	0	6	0	1	0	0	17														
24	Sokorump, Mary	1	1-4	1-4	0-0	0	0	0	0	0	0	0	0	0	13														
33	Nobles, Shauntal	1	2	0	2-2	0	2	2	2	4	0	0	0	0	9														
41	Baker, Kelsi	0	2-2	0-0	1-2	0	2	2	3	1	0	1	0	0	9														
Team		22-50		6-18		18-23		11		19		30		17		68		11		15		0		14		200			
FG % 1st half:		33.3%		2nd half:		41.4%		Game:		29.9		37.3%		Double															
3FG % 1st half:		1.8		22.2%		5.0		30.0%		Game:		5.9		33.3%		Rebounds		1											
FT % 1st half:		50.0%		2nd half:		8.0		30.0%		Game:		18.3		78.3%															
Penn State 76 - 72																													
#	Player	Total			3-Ptr			Rebounds			PF	TP	A TO	BK	SB	Min													
		FG	FGA	FT	FTA	CF	DF	RF	DF	RF																			
11	Trogolo, Julia	0	3-3	1-1	0-0	0	3	0	4	7	1	5	0	0	19														
22	Gray, Zhaque	1	2-5	1-3	0-0	0	1	1	0	7	0	1	0	0	19														
20	Bentley, Alex	0	7-16	0-1	2-2	1	3	4	2	16	8	2	0	3	37														
34	Nickson, Mia	0	8-10	0-0	10-11	3	11	14	2	26	1	2	0	0	37														
14	Greene, Nikki	0	3-5	0-0	0-3	0	3	3	5	6	1	0	2	0	18														
13	Worack, Renee	0	0-1	0-0	0-0	1	2	3	1	0	2	1	0	0	13														
25	Edwards, Ariel	0	1	0	0-0	0	1	1	0	0	0	0	0	0	8														
33	Lucas, Maggie	0	4-8	2-3	0-0	1	0	1	1	2	3	0	5	0	28														
40	Watts, Marissa	1	1-4	0-3	2-2	2	3	3	4	4	0	4	2	0	19														
Team		0		3		3		1		0		3		1															
Totals		29-50		4-11		14-18		8		30		20		7		13		21		4		6		200					
FG % 1st half:		14.2%		21.9%		15.2%		57.7%		Game:		29.6		54.7%		Double		1											
3FG % 1st half:		0.0		22.2%		2.2		30.0%		Game:		4.1		39.4%		Rebounds		1											
FT % 1st half:		8.0		66.7%		6.0		66.7%		Game:		14.1		77.8%															
Score by periods:		1st		2nd		Total																							
Texas Tech		31		37		68																							
Penn State		38		38		76																							
Last FG - TTU 2nd-00:28, PSU 2nd-00:36		Lead FG - TTU 2nd-00:28, PSU 2nd-00:36		Lead changed - TTU 2nd-00:36		Lead changed - 0 times																							



CONSECUTIVE 100s: The Lady Lions reached 100 points for the second consecutive game with a 103-84 win over #14/13 North Carolina Nov. 30 and a 103-65 victory at Nevada Nov. 26. The last time Penn State scored 100 points in back-to-back games was in 1993 when the Lady Lions defeated Nebraska, 102-66, on Jan. 2 and Illinois, 101-71, on Jan. 7. The Lady Lions have never scored 100 points in three consecutive games.

SCHOOL RECORD FROM DEEP: The Lady Lions connected on a school record 14 three-pointers in the 103-84 win over North Carolina Nov. 30. Penn State breaks the mark of 13 makes from beyond the arc, which was accomplished twice (at Dayton, 11/21/10; vs. St. Francis (12/2/99). The 14 threes by PSU also tie for the most by a North Carolina opponent.

BENTLEY'S DOUBLE VISION: Junior **Alex Bentley** posted the first double-double of her career with 15 points and a personal-best 15 assists in the upset win over #14/13 North Carolina Nov. 30. Bentley's 15 assists are a career high and are tied for 11th on Penn State's single-game chart.

BACK-TO-BACK 20s FOR ZHA ZHA: Senior guard **Zhaque Gray** reached the 20-point for the second-straight game with 25 points on 6-of-10 shooting from long range in the win over #14/13 North Carolina Nov. 30. This is the second time in her career that she had back-to-back 20-point games with the first coming last year against Dayton (27) and Rider (22).

HIGH SCORING HALF: The Lady Lions scored 58 points in the first half of the win over #14/13 North Carolina, marking the first time the Lions have scored more than 55 points in a half since tallying 55 in the second half at Boston College on Dec. 2, 2010.

BACK-TO-BACK TOP 20 GAMES: The Lady Lions defeated #14/13 North Carolina, 103-84, at home Wednesday and now travels to #19/25 Texas Tech Saturday. Penn State meets back-to-back Top 20 opponents for the first time since squaring off against #20 Iowa (W, 82-75) and #13 Michigan State (L, 60-49) on Feb. 6 and 10 of last year. However, this is the first time that the Lady Lions were also ranked in the Top 20 since meeting #12 Louisiana Tech (L, 87-84), #14 North Carolina (L, 73-60) and #7 Purdue (W, 47-42) during the 2003-04 season. Additionally, the Lady Lions last beat ranked opponents in back-to-back games in 2004-05 when they topped #23 Purdue (77-54) and #8 Michigan State (73-56).

STELLAR DOWN THE STRETCH: The Lady Lions have been stellar in the last five minutes of games this season, outscoring their opponents, 10-5.7, and forcing an average of 2.9 turnovers per game. In PSU's six wins, the Lady Lions have outscored their opponents by a 11.2-4.3 count.

NUGGET CROWN: Penn State claimed the Nugget Classic title with Thanksgiving weekend wins over Iowa State (66-59) and host Nevada (103-65). It is the 28th all-time regular-season tournament title for the Lady Lions and the second this season (Lady Lion Classic). Junior guard **Alex Bentley** was selected as the Tournament MVP after averaging 18.0 points, 4.5 assists and 4.5 steals in two games. She also shot 57.1% from the field. Sophomore guard **Maggie Lucas** also collected All-Tournament team accolades as she averaged 22.0 points, 6.5 rebounds and 3.0 assists in the Nugget Classic.

STEALING BENTLEY: Junior guard **Alex Bentley** worked on her pick-pocketing skills in Nevada with a career-best five steals against the Wolf Pack in the Nugget Classic title game. She also nabbed four steals in the opening round win over Iowa State.

NEWEST 500 BOARD MEMBER: Junior center **Nikki Greene** became the 27th player in school history to reach 500 rebounds with seven caroms against Iowa State on Nov. 25. She joins an elite list that it topped by Kahadeejah Herbert (1,103) and Susan Robinson (1,070).

WALDNER ON THE BOARD: Freshman post player **Tori Waldner** scored her first collegiate points with a 15-foot jumper at Iowa State Nov. 25. She finished the contest with five points and connected on both of her shots from the field. Waldner also blocked her first career shot.

NICKSON RETURNS: Junior post player **Mia Nickson** returned after missing two games with concussion-like symptoms. She hauled in 13 rebounds to go along with five points and two assists in the win over Iowa State in the Nugget Classic.

FOUL FACTOR: The Lady Lions were charged with 32 fouls in the win over Iowa State, its most fouls in a game since they committed 30 fouls against UCSB Nov. 20, 2001.

LUCAS INTO 6TH ON 3S LIST: Sophomore guard **Maggie Lucas** moved into sixth place on Penn State's career three-pointers list with five triples versus North Carolina Nov. 30. She passed Tina Nicholson (1993-96) with her effort versus the Tar Heels.

Career Three-Point Field Goals Made

1. 357 Kelly Mazzante, 2001-04
2. 230 Lisa Shepherd, 1998-01
3. 191 Jess Strom, 2002-05
4. 179 Tyra Grant, 2007-10
5. 175 Tiffany Longworth, 1994-97
6. 129 Maggie Lucas, 2011-pres.

PSU 16TH IN AP POLL: The Penn State Lady Lions moved up one spot to 16th in the Nov. 28 Associated Press poll. The Lady Lions peaked at No. 11 in the Nov. 14 poll, their highest ranking in the AP poll since they were fifth in the final 2004 poll. Additionally, Penn State made its first appearance in the preseason AP poll since the 2003-04 campaign.

LIONS RANKED 15TH IN COACHES POLL: The Lady Lions moved up one spot to 15th in the Nov. 29 ESPN/USA Today coaches poll. Penn State peaked at 12th, the highest ranking in the ESPN/USA Today Coaches' Poll for the Lady Lions since they were seventh in the final 2004 poll. Additionally, Penn State appeared in the preseason coaches' poll since starting the 2003-04 campaign eighth.

PENN STATE'S OVERALL/BIG TEN YEAR-BY-YEAR REVIEW

Year	Overall	Big Ten	Home	BT Home	Road	BT Road	Neutral
1992-93	22-6	14-4	12-2	9-0	9-4	5-4	0-0
1993-94	28-3	16-2	14-0	9-0	11-2	7-2	3-1
1994-95	26-5	13-3	14-2	8-0	9-3	5-3	3-0
1995-96*	27-7	13-3	14-2	8-0	8-4	5-3	5-1
1996-97	15-12	8-8	9-3	5-3	5-6	3-5	1-3
1997-98	21-13	8-8	10-5	4-4	6-6	4-4	5-2
1998-99	22-8	12-4	9-2	6-2	9-4	6-2	4-2
1999-00	30-5	15-1	14-0	8-0	9-2	7-1	7-3
2000-01	19-10	11-5	11-2	7-1	6-5	4-4	2-3
2001-02	23-12	11-5	10-4	6-2	9-5	5-3	4-3
2002-03	26-9	13-3	16-0	8-0	7-7	5-3	2-2
2003-04	28-6	15-1	12-1	8-0	9-3	7-1	6-2
2004-05	19-11	13-3	12-0	8-0	6-9	5-3	1-2
2005-06	13-16	6-10	8-6	5-3	3-8	1-7	2-2
2006-07	15-16	7-9	12-1	7-1	2-12	0-7	1-3
2007-08	13-18	4-14	10-6	3-6	3-11	1-8	0-1
2008-09	11-18	6-12	8-6	4-5	2-9	2-7	1-3
2009-10	17-14	8-10	9-6	5-4	5-7	3-6	3-1
2010-11	25-10	11-5	14-4	6-2	7-4	5-3	4-2
2011-12	6-1	0-0	3-0	0-0	2-1	0-0	1-0

* First season at the Bryce Jordan Center



PENN STATE'S RECORD WHEN...

Playing at home	3-0
Playing on the road	2-1
Playing at a neutral site	1-0
vs. Top 10 teams	0-0
vs. Top 25 teams	1-0
Games decided by 3 points or less	0-0
Games decided by 4-10 points	2-1
Games decided by 11-19 points	3-0
Games decided by 20 points or more	1-0
Leading at the half	4-1
Tied at the half	0-0
Trailing at the half	2-0
Leading with 5:00 remaining	5-0
Trailing with 5:00 remaining	1-1
Tied with 5:00 remaining	0-0
In overtime	0-0
PSU scores 40-49 points	0-0
PSU scores 50-59 points	1-0
PSU scores 60-69 points	2-0
PSU scores 70-79 points	1-1
PSU scores 80 points or more	2-0
PSU shoots 45% or better	3-0
PSU shoots less than 45%	3-1
PSU shoots better than opponent	6-0
Opponent shoots better than PSU	0-1
Opponent scores less than 39 points	0-0
Opponent scores 40-49 points	1-0
Opponent scores 50-59 points	2-0
Opponent scores 60-69 points	2-0
Opponent scores more than 70 points	1-1
Opponent shoots better than 45%	0-1
Opponent shoots less than 45%	6-0
PSU outrebounds opponent	4-0
Opponent outrebounds PSU or tied	2-1
PSU commits 14 or less turnovers	4-1
PSU commits 15 or more turnovers	2-0
PSU makes at least 5 3-pointers	4-1
PSU makes four 3-pointers or less	2-0
Recording 7 or more steals	5-0
Recording 6 or less steals	1-1
Wearing white uniforms	4-0
Wearing blue uniforms	2-1
Wearing gray uniforms	0-0
Wearing pink uniforms	0-0
Penn State wins the tip	4-0
Penn State loses the tip	2-1
Penn State scores first	4-0
Opponent scores first	2-1
Playing during the day (before 5 p.m.)	3-0
Playing at night	3-1
On Monday	0-0
On Tuesday	0-0
On Wednesday	1-0
On Thursday	0-1
On Friday	2-0
On Saturday	1-0
On Sunday	2-0
In November	6-1
In December	0-0
In January	0-0
In February	0-0
In March	0-0

LATE RALLIES: The Lady Lions used late runs to claim each of their first three wins this season. Penn State needed a 13-0 run against South Carolina (Nov. 20), a 19-0 run against Middle Tennessee (Nov. 13) and a 13-0 spurt versus Washington State (Nov. 11). In the final five minutes of their three wins, the Lady Lions are outscoring their opponents an average of 10-0 and holding them to an 0-for-26 effort from the field.

LATE RALLIES

Team	Run	Length	Deficit
Washington State	13-0	6:53	1
Middle Tennessee	19-0	6:45	3
South Carolina	13-0	5:22	8

A BLOCK EAST: Sophomore center **Talia East** rejected seven shots in the win at South Carolina Nov. 20. The seven blocks are tied for third on Penn State's single-game charts and are the most since **Nikki Greene** blocked seven shots against Purdue on Jan. 28, 2010. Additionally, East hauled in 15 rebounds against the Gamecocks, the most rebounds for a Penn State player since **Mia Nickson** had 15 caroms at Iowa on Feb. 6, 2011.

THREES STRING STOPPED: The Lady Lions were held without a three-pointer for the first time under Coquese Washington at South Carolina Nov. 20. The last time Penn State did not connect from downtown was Jan. 7, 2007 at Michigan, a string of 143 games.

WOLFE RETURNS: After missing the first three games of the season due to concussion-like symptoms, junior post player **Marisa Wolfe** returned to go 2-for-3 from the field and tally four points in the win at South Carolina Nov. 20.

EAST HAULS IN BOARDS: **Talia East** continued her solid play with another career-best rebounding effort at Delaware Thursday. The sophomore center snared a personal-best 11 rebounds for the first double figure rebounding performance of her career. She also added eight rebounds and a pair of blocked shots versus the Blue Hens.

EDWARDS GETS THE NOD: Sophomore **Ariel Edwards** earned her first career start at Delaware Thursday in place of an ailing Mia Nickson. Edwards responded with a solid eight-point, eight-rebound night against the Blue Hens. The eight caroms tie her career high set last year against Hartford in the Caribbean Challenge.

PAIR REACHES 600 POINTS: Senior guard **Zhaque Gray** and sophomore guard **Maggie Lucas** both reached the 600-point plateau for their careers at Delaware Thursday. Gray's 15 points brought her career total to 601, while Lucas' 12 tallies gave her an even 600 markers for her career. Lucas reached 600 points in 38 games, making her the third-fastest player in school history to reach 600 points (Kelly Mazzante and Susan Robinson, 33 games).

LIONS IN THE BIG TEN STATS

A breakdown of where Penn State ranks in the Big Ten's statistical categories. Through games of Dec. 1.

TEAM

Scoring Offense.....	2nd (76.4)
Scoring Defense.....	10th (63.9)
Scoring Margin.....	5th (+12.6)
Free Throw Percentage.....	5th (.743)
FG Percentage.....	3rd (.432)
FG Percentage Defense.....	2nd (.332)
3-point FG Percentage.....	1st (.373)
3-point FG Pct. Defense.....	4th (.265)
3-point FG Made.....	T-3rd (5.9)
Rebounding Offense.....	3rd (43.9)
Rebounding Defense.....	12th (41.9)
Rebounding Margin.....	9th (+2.0)
Offensive Rebounds.....	7th (13.6)
Defensive Rebounds.....	2nd (30.3)
Blocked Shots.....	8th (4.0)
Assists.....	6th (14.0)
Steals.....	7th (8.7)
Turnover Margin.....	4th (+1.6)
Assist to Turnover Ratio.....	4th (0.9)

INDIVIDUAL

Scoring.....	2nd - Maggie Lucas (18.7)
.....	9th - Alex Bentley (15.3)
.....	11th - Zhaque Gray (14.7)
Rebounding.....	8th - Talia East (7.6)
.....	12th - Nikki Greene (7.1)
FG Percentage.....	13th - Zhaque Gray (.463)
Assists.....	4th - Alex Bentley (6.3)
FT Percentage.....	4th - Alex Bentley (.923)
.....	5th - Zhaque Gray (.875)
.....	T-11th - Maggie Lucas (.818)
Steals.....	T-4th - Alex Bentley (2.9)
3FG Percentage.....	3rd - Alex Bentley (.438)
.....	6th - Zhaque Gray (.429)
.....	14th - Maggie Lucas (.347)
3FG Made.....	3rd - Maggie Lucas (2.4)
.....	6th - Zhaque Gray (2.1)
Blocked Shots.....	4th - Talia East (1.7)
.....	12th - Nikki Greene (1.1)
Assist-to-TO Ratio.....	4th - Alex Bentley (1.8)
Off. Reb.	T-9th - Nikki Greene (2.9)
Def. Reb.....	4th - Talia East (5.4)
Minutes.....	4th - Maggie Lucas (34.6)
.....	8th - Alex Bentley (33.7)



MILESTONE WATCH

Milestone Watch

Milestone	Player	Current Total
1,000 points	Alex Bentley	977
700 points	Maggie Lucas	683
	Zhaque Gray	667
600 points	Nikki Greene	570
500 points	Mia Nickson (career)	429
400 points	Mia Nickson (PSU)	384
200 points	Marisa Wolfe	182
	Renee Womack	164
	Ariel Edwards	144
100 points	Gizelle Studevent	92
600 rebounds	Nikki Greene	514
400 rebounds	Mia Nickson (career)	322
300 rebounds	Mia Nickson (PSU)	265
200 rebounds	Alex Bentley	199
	Renee Womack	174
	Zhaque Gray	172
	Marisa Wolfe	161
	Maggie Lucas	139
100 rebounds	Ariel Edwards	93
400 assists	Alex Bentley	343
200 assists	Zhaque Gray	105
100 assists	Maggie Lucas	74
150 steals	Alex Bentley	138
100 steals	Maggie Lucas	63
150 blocks	Nikki Greene	138
150 3-pointers	Maggie Lucas	129
	Zhaque Gray	116

Milestone Reached

Milestone	Player	Reached
100 assists	Zhaque Gray	11/30/11
500 rebounds	Nikki Greene	11/25/11
600 points	Zhaque Gray	11/17/11
600 points	Maggie Lucas	11/17/11
900 points	Alex Bentley	11/13/11
400 rebounds	Mia Nickson (career)	11/13/11
300 assists	Alex Bentley	11/11/11
100 points	Ariel Edwards	11/11/11

BENTLEY TIES PERSONAL ASSISTS MARK:

Junior guard **Alex Bentley** narrowly missed out on her first career double-double with 20 points and nine assists at Delaware Thursday. The nine helpers tie Bentley's career high, which she has reached four times in her career. She also added three steals and three rebounds on the night.

LADY LION CLASSIC CROWN: Penn State picked up its 27th regular-season title with wins over Washington State (72-60) and Middle Tennessee (65-49) in the Lady Lion Classic. It is the third regular-season title acquired under Coquese Washington (2006 WBCA Classic, 2009 Dead River Company Classic and 2011 Lady Lion Classic).

LUCAS TABBED TOURNAMENT MVP: Sophomore guard **Maggie Lucas** was selected as the Lady Lion Classic Tournament MVP after averaging 18.0 points, 5.5 rebounds and 3.5 assists in two games. Additionally senior guard **Zhaque Gray** and junior guard **Alex Bentley** were named to the Lady Lion Classic All-Tournament team.

BENTLEY REACHES MILESTONES: Junior guard **Alex Bentley** reached the 900-point plateau with eight tallies against Middle Tennessee Nov. 13. Additionally, Bentley became the 14th player in school history with 300 assists as she dished out four helpers against Washington State Nov. 11.

EAST'S CAREER NIGHT: Sophomore center **Talia East** turned in a career performance in the season-opening win over Washington State. She was a perfect 3-for-3 from the field on the way to a career-high six points. She also hauled in a personal-best eight rebounds against the Cougars.

ANOTHER SEASON-OPENING WIN: The Lady Lions collected their fifth-straight season-opening win under head coach Coquese Washington with a 72-60 come-from-behind win over Washington State Nov. 11. Penn State has started each of Washington's four seasons with at least three wins.

AGEE SIGNS NLI: ESPN/HoopGurlz 34th-ranked recruit **Candice Agee** signed a National Letter of Intent (NLI) to play of the Lady Lions beginning in the 2012-13 season. The signing of Agee and addition of transfer **Dara Taylor**, the Lady Lions have the 18th-ranked recruiting class by Dan Olson's Collegiate Girls Basketball Report. Agee is the first commit in the Lady Lions' 2012 recruiting class, averaged 17.0 points, 10.9 rebounds, 7.3 blocks and 2.7 steals per game for the Hawks as a junior. The native of Victorville, Calif. is a highly touted recruit, ranking 34th by ESPN/HoopGurlz, 38th by Collegiate Girls Report, 17th by Blue Star Basketball and 40th by All-Star Girls Report and Peach State. The Hawks finished the season with a 22-6 record with a perfect conference record en route to the Desert Sky title.

PENN STATE BIG TEN FAVORITES: With 10 returning letterwinners from a team that posted a second place regular-season finish and a runner-up effort in the Big Ten Tournament, the Lady Lions were selected to finish first in the Big Ten Conference in a vote of the league's coaches and media. PSU finished ahead of Purdue and Iowa in the coaches' vote and Purdue and Michigan State in the media poll.

BENTLEY BIG TEN PRESEASON POY: Junior point guard Alex Bentley was selected as the conference's Preseason Player of the Year by both the coaches and the media. She shared the coaches' Preseason Player of the Year with Ohio State's Samantha Prahalis.

PRESS CONFERENCES

Coquese Washington will hold a weekly press conference and the Lady Lions will have media availability on a weekly basis throughout the season. All press conferences will begin at 2:45 p.m. (unless otherwise noted) and go for approximately 15-20 minutes, followed by an open media session prior to practice from 3-3:20 p.m. Press conference will be held in the Media Room at the Bryce Jordan Center (unless otherwise noted).

Press Conference Dates

Wednesday, Dec. 7
 Wednesday, Dec. 14
 Tuesday, Dec. 20
 Thursday, Dec. 29
 Wednesday, Jan. 4
 Wednesday, Jan. 11
 Wednesday, Jan. 18
 Wednesday, Jan. 25
 Wednesday, Feb. 1 (location TBA)
 Wednesday, Feb. 8 (location TBA)
 Wednesday, Feb. 15
 Wednesday, Feb. 22
 Wednesday, Feb. 29 (time TBA)

VETERANS RETURN: The Lady Lions return 10 letterwinners and four starters, including All-Big Ten first team selection **Alex Bentley**, Big Ten Freshman of the Year and Sixth Player of the Year **Maggie Lucas** and Big Ten All-Defensive choice **Nikki Greene**.

LADY LIONS 12TH IN SPORTING NEWS PRESEASON POLL: The Lady Lions are ranked 12th in the "Sporting News" preseason poll and sophomore guard **Maggie Lucas** is a preseason third team All-American, according to the magazine. Penn State is the highest ranked of the three Big Ten teams (Purdue, Michigan State) in the preseason Top 25.

NCAA STATS

TEAM	
Scoring Offense	58th (72.0)
Scoring Margin	65th (+11.5)
Field Goal Percentage	83rd (.421)
Field Goal Pct. Defense	24th (.323)
Free Throw Percentage	83rd (.722)
Winning Percentage	35th (.833)
Turnovers	91st (16.3)
3-pt. Field Goal Pct. Defense	61st (.243)
Assist to Turnover Ratio	4th (0.84)
INDIVIDUAL	
Scoring	63rd - Maggie Lucas (18.3)
Assists	61st - Alex Bentley (4.8)
Blocked Shots	53rd - Talia East (2.0)
Steals	65th - Alex Bentley (3.0)
FT Percentage	37th - Alex Bentley (.909)
NCAA Statistics as of 11/27	



THE LAST TIME PENN STATE...

SCORING

Player scored 20 points: vs. North Carolina (25, Zhaque Gray; 21, Maggie Lucas), 11/30/11
Player scored 25 points: vs. North Carolina (25, Zhaque Gray), 11/30/11
Player scored 30 points: vs. Iowa (32, Tyra Grant), 3/5/10
Player scored 35 points: vs. Wisconsin (35, Kelly Mazzante), 3/2/03
Player scored 40 points: vs. Minnesota (49, Kelly Mazzante), 12/28/01
Two players scored 20 points: vs. North Carolina (25, Zhaque Gray; 21, Maggie Lucas), 11/30/11
Three players scored 20 pts.: at Nevada (26, Maggie Lucas; 23, Alex Bentley; 21, Zhaque Gray), 11/26/11
Two players scored 25 points: at Boston College (28, Alex Bentley; 28, Maggie Lucas), 12/2/10
Player scored 25 points/3 consecutive games: Kelly Mazzante (31, vs. Baylor, 12/9/03; 31, vs. Pittsburgh, 12/14/03; 29, Louisiana Tech, 12/21/03)
Five in double figures: vs. North Carolina (25, Zhaque Gray; 21, Maggie Lucas; 15, Alex Bentley; 13, Nikki Greene; 13, Ariel Edwards), 11/30/11
Six in double figures: at Oakland (15, Alex Bentley; 16, Ariel Edwards; 16, Zhaque Gray; 13, Maggie Lucas; 10, Mia Nickson; 10, Gizelle Studevent; 10, Julia Trogele), 11/18/10
Seven in double figures: at Oakland (15, Alex Bentley; 16, Ariel Edwards; 16, Zhaque Gray; 13, Maggie Lucas; 10, Mia Nickson; 10, Gizelle Studevent; 10, Julia Trogele), 11/18/10
PSU scored 50 points in a half: vs. North Carolina (58 points, first half), 11/30/11
PSU scored 55 points in a half: vs. North Carolina (58 points, first half), 11/30/11
PSU scored 60 points in a half: vs. Northwestern (65 points, first half), 1/2/00
PSU scored 100 points: vs. North Carolina (W, 103-84), 11/30/11
PSU scored 100 points in Big Ten game: vs. Illinois (W, 101-80), 2/15/01
PSU scored 100 points in a home game: vs. Maryland (W, 101-74), 12/4/02
PSU scored fewer than 15 points in a half: vs. Wisconsin (13, first half), 2/25/10
PSU scored fewer than 20 points in a half: vs. Michigan State (18, first half), 2/10/11
PSU scored fewer than 40 points in a game: vs. Wisconsin (L, 39-71), 2/25/10
PSU scored fewer than 50 points in a game: vs. Purdue (L, 49-60), 2/24/11
PSU scored fewer than 50 points in a Big Ten game: vs. Purdue (L, 49-60), 2/24/11
OPP scored 50 points in a half: vs. Duke (50, second half), 11/18/05
OPP scored 100 points: at Boston College (Lot, 113-104), 12/2/10
OPP scored fewer than 20 points in a game: at Dickinson (W, 57-16), 3/6/71
OPP scored fewer than 30 points in a game: vs. Rider (W, 95-21), 11/14/10
OPP scored fewer than 40 points in a game: vs. Rider (W, 95-21), 11/14/10
OPP scored fewer than 50 points in a game: vs. Middle Tennessee State (W, 65-49), 11/13/11
OPP scored fewer than 50 points in a Big Ten game: at Wisconsin (W, 54-43), 1/21/10

FIELD GOAL SHOOTING

Player made every shot from the field (min. 7): vs. Michigan St. (Amanda Brown, 8-8), 1/25/07
PSU shot 55% in a game: at Nevada (.573), 11/26/11
PSU shot 55% in consecutive games: vs. Northwestern (.682), 3/2/96; vs. Ohio St. (.585), 3/3/96
PSU shot 60% in a game: vs. Michigan State (.608), 2/23/96
PSU shot below 25% in a game: at Alabama (.230), 12/19/96
PSU shot below 30% in a game: vs. Wisconsin (.273), 2/25/10
PSU shot below 35% in a game and won: vs. Indiana (.321), 1/10/10
PSU shot 55% in a half: at Nevada (.629, second half), 11/26/11
PSU shot 60% in a half: at Nevada (.629, second half), 11/26/11
PSU shot 65% in a half: at Michigan (.679, second half), 2/3/11
PSU shot 70% in a half: vs. Ohio State (.704, second half), 3/4/07
PSU shot 55% in both halves: vs. Iowa (.552, first half, .565, second half), 1/26/06
PSU shot below 20% in a half: at Indiana (.231, first half), 2/28/10
PSU shot below 25% in a half: at Pittsburgh (.188, first half), 11/24/08

THREE-POINT SHOOTING

Player made every shot from the field (min. 4): at Clemson (5-5, Jessica Brungo), 12/7/02
Player made 4 three-pointers in a half: vs. North Carolina (4, Maggie Lucas), 11/30/11
Player made 5 three-pointers in a half: vs. Bucknell (6, Maggie Lucas), 12/28/10
Player made 6 three-pointers in a half: vs. Bucknell (6, Maggie Lucas), 12/28/10
Player made 5 three-pointers in a game: vs. North Carolina (6, Zhaque Gray; 5, Maggie Lucas), 11/30/11
Player made 6 three-pointers in a game: vs. North Carolina (6, Zhaque Gray), 11/30/11
Player made 7 three-pointers in a game: vs. Hartford (7, Maggie Lucas), 11/27/10
Player made 8 three-pointers in a game: at Minnesota (8, Kelly Mazzante), 12/28/01
Player attempted 10 three-pointers in a game: vs. North Carolina (10, Zhaque Gray), 11/30/11
PSU made 10 three-pointers: vs. North Carolina (14), 11/30/11
PSU did not make a three-pointer: at South Carolina (0-6), 11/20/11
PSU attempted 20 three-pointers: vs. North Carolina (24), 11/30/11
PSU shot 60% 3FG (min. 5 att.): vs. Illinois (12-20, .600), 1/16/11

FREE THROW SHOOTING

Player made every shot from FT line (min. 10): vs. Illinois (Julia Trogele, 12-12), 3/5/11
PSU shot 90% (min. 10 att.): vs. North Carolina (14-24, .929), 11/30/11
PSU shot below 50% (min. 10 att.): vs. Holy Cross (9-20, .450), 11/28/09
PSU made 30 free throws: vs. Pittsburgh (34), 11/11/07
PSU made fewer than five FTs: at Michigan (3), 2/3/11
PSU attempted 40 free throws: vs. Pittsburgh (41), 11/11/07
PSU attempted fewer than 5 FTs: at Michigan (4), 2/3/11

REBOUNDS

Player had 15 rebounds: at South Carolina (15, Talia East), 11/20/11
Player had 20 rebounds: vs. Indiana (20, Nikki Greene), 1/23/11
Two players with double-digit rebs.: vs. Middle Tennessee St. (10, Nikki Greene; 10, Mia Nickson), 11/13/11
Three players had double-digit rebounds: at Indiana (11, Nikki Greene; 10, Meredith Monroe; 11, Julia Trogele), 1/10/10
PSU had 60 rebounds: vs. Indiana (61), 1/23/11
PSU had 50 rebounds: vs. Middle Tennessee State (50), 11/13/11
PSU had 20 or fewer rebounds: vs. Michigan State (20), 1/19/03
OPP had 20 or fewer rebounds: at Indiana (20), 2/13/11
PSU had 20 offensive rebounds: vs. Middle Tennessee State (21), 11/13/11
PSU had 25 offensive rebounds: vs. Indiana (33), 1/23/11

ASSISTS

Player had 10 assists: vs. North Carolina (15, Alex Bentley), 11/30/11
Player had 10 assists/consecutive games: Helen Darling, three games (12 at LaSalle, 12/8/99; 11 vs. Auburn, 12/11/99; 10 vs. Clemson, 12/19/99)
Player had 15 assists: vs. North Carolina (15, Alex Bentley), 11/30/11
PSU had 30 assists: vs. St. Francis (Pa.) (32), 12/2/99
PSU had fewer than 10 assists: vs. Washington State (9), 11/11/11
PSU had fewer than 5 assists: at Michigan State (4), 2/4/10

BLOCKED SHOTS

Player blocked 5 shots: at South Carolina (7, Talia East), 11/20/11
Player blocked 6 shots: at South Carolina (7, Talia East), 11/20/11
PSU blocked 10 shots: vs. Purdue (11), 1/28/10
PSU blocked 0 shots: vs. Purdue, 2/19/09

STEALS

Player had 7 steals: vs. Michigan (7, Brianne O'Rourke), 2/2/06
Player had 8 steals: vs. Fairfield (8, Kelly Mazzante), 12/2/01
PSU had 20 steals: vs. Bucknell (21), 12/28/10

TURNOVERS

PSU committed 25 or more: at Ohio State (27), 2/17/11
PSU committed 25 or more and won: vs. Minnesota (26), 1/13/11
PSU committed 10 or fewer: vs. North Carolina (10), 11/30/11
PSU committed 10 or fewer in consecutive games: vs. Minnesota (9), 1/22/04; at Ohio St. (9), 1/25/04
OPP committed 25 or more: Maine (26), 12/12/10

DOUBLE-DOUBLES

Points & rebounds: vs. DePaul (Julia Trogele; 14 points, 11 rebounds), 3/21/11
Points & rebounds/consecutive games: Nikki Greene (12 points, 10 rebounds vs. Ohio State, 1/30/11; 16 points, 14 rebounds at Illinois, 1/27/11)
Points & rebounds/3 consecutive games: Amanda Brown (19 pts., 17 rebs. at Northwestern, 2/11/07; 14 pts., 10 rebs. vs. Minnesota, 2/15/07; 14 pts., 11 rebs. at Iowa, 2/18/07)
Points & rebounds/4 consecutive games: Angie Potthoff (vs. Northwestern, 1/31/97; at Illinois, 2/2/97; vs. Michigan, 2/7/97; vs. Indiana, 2/9/97; vs. Iowa, 2/16/97; vs. Michigan State, 2/21/97)
Points & rebounds/5 consecutive games: Angie Potthoff (vs. Northwestern, 1/31/97; at Illinois, 2/2/97; vs. Michigan, 2/7/97; vs. Indiana, 2/9/97; vs. Iowa, 2/16/97; vs. Michigan State, 2/21/97)
Points & assists: vs. North Carolina (Alex Bentley; 15 points, 15 assists), 11/30/11
Points & assists/consecutive games: Helen Darling (12 points, 12 assists at La Salle, 12/8/99; 10 points, 11 assists vs. Auburn, 12/11/99)
Two plyrs. w/double-doubles: at Illinois (Nikki Greene, 16 pts., 14 rebs.; Julia Trogele, 19 pts., 11 rebs.), 1/27/11
Three players had double-doubles: vs. Coppin State (Brianne O'Rourke, 12 points, 13 assists; Julia Trogele, 12 points, 13 rebounds; Janessa Wolff, 15 points, 10 rebounds), 11/29/08
15 points and 15 rebounds: vs. Indiana (Mia Nickson; 25 points, 17 rebounds), 1/23/11
20 points and 10 rebounds: vs. Indiana (Mia Nickson; 25 points, 17 rebounds), 1/23/11

MARGIN OF VICTORY

PSU won by 20-30 points: vs. Illinois (21), 1/16/11
PSU won by 20-30 points in a Big Ten game: vs. Illinois (21), 1/16/11
PSU won by 31-40 points: at Nevada (38), 11/26/11
PSU won by 41-50 points: vs. Bucknell (48), 12/28/10
PSU won by 51+ points: vs. Rider (74), 11/14/10
PSU lost by 20-30 points: at Ohio State (22), 2/17/11
PSU lost by 20-30 points in a Big Ten game: at Ohio State (22), 2/17/11
PSU lost by 31+ points: vs. Wisconsin (32), 2/25/10

MISCELLANEOUS

Led PSU in points/rebounds/assists: Tyra Grant vs. Michigan (25 pts., 9 rebs., 4 asst.), 2/18/10
Hit "final seconds" (under 10 seconds) game-winning shot: Julia Trogele at Illinois (9 sec.), 1/27/11
Hit "final minute" game-winning shot: Nikki Greene vs. Indiana (40 seconds remaining), 2/13/11
Player played every minute: at Illinois (Tyra Grant), 12/31/09
Player played more than 40 min.: at Dayton (Alex Bentley, 46; Zhaque Gray, 44; Mia Nickson, 41), 11/12/10
Committed 10 or fewer fouls: vs. Wisconsin (10), 2/25/10
Committed 30 or more fouls: vs. Iowa State (32), 11/25/11
PSU rallied from a 10-point deficit to win: vs. Middle Tenn. St. (down 10 15:38 2nd half, won 65-49), 11/13/11
PSU rallied from a 15-point deficit to win: at Indiana (down by 16 at 10:02 in 1st half, won 80-77), 2/13/11
PSU had a 5-game winning streak: 5 games, 1/23/11 - 2/6/11
PSU had a 5-game losing streak: 6 games, 1/28/10 - 2/14/10
PSU went undefeated at home: 2004-05 season
PSU sold out the BJC: Purdue, 2/29/04

OVERTIME

PSU played an OT game: at Boston College (L, 113-104), 12/2/10
PSU won an OT game: at Oakland (96-89), 11/18/10
PSU lost an OT game: at Boston College (L, 113-104), 12/2/10
PSU played two or more OT games in a season: 2010-11 season (three)
PSU won two or more OT games in a season: 2010-11 season (two)

RANKINGS

Played the No. 1 team in the AP poll: vs. Connecticut (L, 77-63), 12/14/08
Played the No. 1 team in the Coaches poll: vs. Connecticut (L, 77-63), 12/14/08
Defeated the No. 1 team in the AP poll: at Virginia (73-71), 1/3/91
Defeated Top 10 opponent: vs. #11/10 Duke (86-84), 12/2/07
Defeated Top 10 opponent on the road: at #7 Purdue (47-42), 1/2/04
Defeated Top 10 opponent by double digits: vs. #10 Minnesota (81-68), 1/30/05
Played consecutive Top 10 teams: at #2/3 Texas 11/14/04, at #6/6 Duke 11/19/04
Defeated Top 25 opponent: vs. #14/13 North Carolina (103-84), 11/30/11
Defeated Top 25 opponent on the road: at No. 20/22 Iowa (82-75), 2/6/11
Defeated Top 25 opponent by double digits: vs. #14/13 North Carolina (103-84), 11/30/11



2011-12 GAME-BY-GAME STARTING LINEUPS

Date	Opponent	Pt Guard	Guard	Guard	Forward	Center
11/5	BLOOMSBURG	Bentley	Gray	Lucas	Nickson	Greene
11/11	WASHINGTON ST.	Bentley	Gray	Lucas	Nickson	Greene
11/13	MIDDLE TENNESSEE	Bentley	Gray	Lucas	Nickson	Greene
11/17	at Delaware	Bentley	Gray	Lucas	Edwards	Greene
11/20	at South Carolina	Bentley	Gray	Lucas	Edwards	Greene
11/25	vs. Iowa State	Bentley	Gray	Lucas	Nickson	Greene
11/26	at Nevada	Bentley	Gray	Lucas	Nickson	Greene
11/30	NORTH CAROLINA	Bentley	Gray	Lucas	Edwards	Greene

BENTLEY NAMED TO PAIR OF WATCH LISTS:

Junior point guard **Alex Bentley** as been named to a pair of preseason watch lists for National Player of the Year. Bentley is one of 25 players on the WBCA's Wade Trophy Watch List and is among the 30 players on the Wooden Award preseason chart. Bentley was instrumental in helping the Lady Lions return NCAA Tournament for the first time since 2005 with a 25-10 record. She became the 11th different Lady Lion to garner All-Big Ten first team honors last season after finishing in the Top 15 in the Big Ten in scoring (12th/14.4), assists (2nd/5.0), field goal percentage (14th/.446), free throw percentage (11th/.798) and assist-to-turnover ratio (4th/1.7). Bentley, who participated in USA Basketball World University Games trials in Colorado this summer, is the 14th player in school history with 300 career assists.

LIONS ARE 16TH IN ATHLON PRESEASON POLL:

In addition to their #12 ranking in the "Sporting News" preseason poll, the Lady Lions are 16th in the "Athlon" preseason rankings. Penn State is the highest ranked of the two Big Ten teams (Ohio State) in the preseason Top 25.

BENTLEY AND LUCAS PARTICIPATE IN USA BASKETBALL TRIALS:

Guards **Alex Bentley** and **Maggie Lucas** participated in the 2011 USA Basketball World University Game Trials this past spring. The pair were part of the group of 35 of the nation's top collegiate players that accepted invitations to attend the 2011 USA Basketball Women's World University Games Team Trials. Former Lady Lion standouts Terri Williams-Flournoy and Suzie McConnell-Serio were assistant coaches for the World University Games team.

TEAM CAPTAINS: Junior Mia Nickson and Marisa Wolfe

have been selected as the team captains for the 2011-12 Lady Lions. Nickson, who is a team captain for the second consecutive year, accounted for 10.5 points and 6.7 rebounds per game. She was ninth in the Big Ten in rebounding and 14th in free throw percentage (.795). Nickson finished second in the league in field goal percentage with a .521 effort on the year and was third in offensive rebounds (3.2). Wolfe earned her first eight collegiate starts last season and finished the year averaging 2.6 points and 2.4 rebounds per game. The junior was outstanding from the free throw line, going 17-for-20 (.850). Wolfe also tallied a career-best eight assists, 12 steals and five blocked shots.

TAYLOR TRANSFERS TO PSU:

The Lady Lions added 5-7 transfer **Dara Taylor** to the roster during the summer. Taylor, who will sit out the 2011-12 season due to NCAA transfer rules, will have two years of eligibility remaining when she begins competing for the Lady Lions in 2012-13. Taylor comes to Penn State after playing the first two years of her collegiate career at Maryland. As a freshman, she accounted for 5.5 points and 5.0 assists per game. Taylor, who broke the Maryland freshman season record for assists with 171 helpers, finished third in the ACC in assists and sixth in assist-to-turnover ratio (1.2) as a rookie. Last season, Taylor appeared in 32 games and tallied 1.7 points and 2.2 assists per game.

2012 RECRUITING CLASS

ESPN/HoopGurlz 34th-ranked recruit Candice Agee signed a National Letter of Intent (NLI) to play of the Lady Lions beginning in the 2012-13 season. The 6-6 center from Silverado High School in Victorville, Calif. signed her NLI in November in a ceremony at her high school. The signing of Agee and addition of transfer Dara Taylor, the Lady Lions have the 18th-ranked recruiting class by Dan Olson's Collegiate Girls Basketball Report.

"We are so excited to have Candice join the Penn State family," Washington said. "She is a very talented player and will complement our current post players in a lot of ways. She adds size, skill and athleticism to our front line, and she has a competitive streak that you love to see. She will definitely be an impact player for us on the court. In addition, she comes from a delightful family and her mom, dad and younger brother will also be wonderful additions to Lady Lion basketball."

Agee is the first commit in the Lady Lions' 2012 recruiting class, averaged 17.0 points, 10.9 rebounds, 7.3 blocks and 2.7 steals per game for the Hawks as a junior. The native of Victorville, Calif. is a highly touted recruit, ranking 34th by ESPN/HoopGurlz, 38th by Collegiate Girls Report, 17th by Blue Star Basketball and 40th by All-Star Girls Report and Peach State. The Hawks finished the season with a 22-6 record with a perfect conference record en route to the Desert Sky title.

Agee is a three-time Desert Sky League first team selection and was the league's Most Valuable Player as a junior. Additionally, she was the Daily Press Girls' Athlete of the Year. Agee begins her senior season with 991 career points, 649 rebounds and 390 blocks. was named to the All-Region first team as a junior. The center plays her AAU ball with West Coast Premier. Agee also plays volleyball at Silverado High School. Agee chose Penn State over Kansas State, Miami, UNLV, UCLA, USC, Tennessee, Vanderbilt, North Carolina, Georgetown, Georgia, Oregon, Oregon State, Washington and Washington State.

LADY LIONS SEASON BESTS

Player	Points	Rebounds	Assists	Blocks	Steals
Alex Bentley	23 (Nevada)	5 (N. Carolina)	15 (N. Carolina)	1 (Delaware)	5 (Nevada)
Talia East	8 (Nevada)	15 (S. Carolina)	-	7 (S. Carolina)	1 (4X)
Ariel Edwards	13 (N. Carolina)	8 (2X)	3 (N. Carolina)	-	2 (2X)
Zhaque Gray	25 (N. Carolina)	6 (Mid. Tenn.)	6 (N. Carolina)	1 (S. Carolina)	2 (2X)
Nikki Greene	13 (N. Carolina)	12 (Wash. St.)	1 (3X)	3 (N. Carolina)	3 (Wash. St.)
Maggie Lucas	26 (Nevada)	9 (Wash. St.)	5 (2X)	1 (2X)	2 (2X)
Mia Nickson	6 (Wash. St.)	13 (Iowa State)	2 (Iowa State)	1 (Nevada)	1 (2X)
Gizelle Studevent	6 (Nevada)	3 (2X)	3 (Nevada)	-	1 (2X)
Tori Waldner	6 (N. Carolina)	3 (Nevada)	1 (Nevada)	2 (N. Carolina)	2 (Nevada)
Marisa Wolfe	7 (N. Carolina)	2 (3X)	1 (2X)	-	3 (N. Carolina)
Renee Womack	-	-	-	-	-

PSU IN THE POLLS

	AP	Coaches
Preseason	12	14
Nov. 14/15	11	12
Nov. 21/22	17	16
Nov. 28/29	16	15



NATIONAL POLLS

ASSOCIATED PRESS (NOV. 28)

No.	Team (1st)	Rec.	Pts.	LW
1.	Baylor (39)	6-0	999	1
2.	Connecticut	6-0	946	2
3.	Notre Dame	5-1	902	4
4.	Texas A&M (1)	6-0	888	5
5.	Stanford	4-1	851	3
6.	Maryland	7-0	763	8
7.	Duke	4-1	726	7
8.	Tennessee	2-2	725	6
9.	Miami (Fla.)	5-1	671	9
10.	Louisville	6-1	645	11
11.	Rutgers	6-0	562	13
12.	Kentucky	7-0	527	14
13.	Purdue	6-0	503	15
14.	North Carolina	5-0	449	16
15.	Georgia	5-1	408	10
16.	PENN STATE	5-1	347	17
17.	Ohio State	5-0	332	18
18.	Oklahoma	3-1	306	12
19.	Texas Tech	5-0	262	19
20.	Georgetown	5-2	244	21
21.	Texas	5-1	185	24
22.	DePaul	5-1	181	23
23.	UW-Green Bay	5-0	146	NR
24.	Delaware	4-0	117	NR
25.	Vanderbilt	6-0	77	NR

Others receiving votes: Gonzaga 73; **Nebraska 55**; LSU 27; USC 17; Virginia 15; **Michigan 11**; Florida State 10; Princeton 9; Georgia Tech 8; Tulane 6; California 3; **Northwestern 2**; **Iowa State 1**; Arkansas 1.

ESPN/USA TODAY TOP 25 (NOV. 29)

No.	Team (1st)	Rec.	Pts.	LW
1.	Baylor (29)	6-0	773	1
2.	Connecticut (2)	6-0	744	2
3.	Notre Dame	5-1	704	3
4.	Texas A&M	6-0	688	4
5.	Stanford	4-1	655	5
6.	Duke	4-1	597	6
7.	Maryland	7-0	582	8
8.	Tennessee	2-2	561	7
9.	Miami (Fla.)	5-1	520	9
10.	Kentucky	7-0	481	11
11.	Louisville	6-1	461	12
12.	Rutgers	6-0	441	13
13.	North Carolina	5-0	369	15
14.	Georgia	5-1	364	10
15.	PENN STATE	5-1	297	16
16.	Purdue	6-0	293	17
17.	UW-Green Bay	5-0	262	18
18t.	Ohio State	5-0	228	19
18t.	Oklahoma	3-1	228	14
20.	Georgetown	5-2	172	21
21.	DePaul	5-1	170	20
22t.	Texas	5-1	139	22
22t.	Vanderbilt	6-0	139	NR
24.	Gonzaga	3-1	42	NR
25.	Texas Tech	5-0	37	NR

Others receiving votes: Georgia Tech 21; **Delaware 16**; **Iowa State 15**; **Michigan 15**; Syracuse 15; **Nebraska 13**; Kansas 11; Princeton 11; LSU 4; Tulane 2; UNLV 2; **Iowa 1**; James Madison 1; **Middle Tennessee 1**.

*Bold type indicates 2011-12 Penn State opponent.

STATISTICAL LEADERS

Check here throughout the season for a breakdown of how many times a player leads Penn State in the following statistical categories. (First number is solo, the second is shared.)

Points	Lucas (3/1), Bentley (1/1), Gray (2)
Rebounds	Greene (1/1), East (2), Nickson (1/2), Edwards (1), Lucas (-/1)
Assists	Bentley (6), Lucas (1)
Steals	Bentley (4/1), Greene (1), Wolfe (1), Edwards (-/1), Gray (-/1), Lucas (-/1), East (-/1), Studevent (-/1)
Blocks	Greene (1/3), East (2/2), Waldner (-/1), Nickson (-/1), Lucas (-/1)
FG % (min. 4 attempts)	Bentley (1), Gray (2), Edwards (1), East (-/1), Greene (-/1), Studevent (1), Waldner (1)
FT % (min 4 attempts)	Bentley (3/2), Lucas (2/2), Gray (-/1)
3FG % (min. 2 att.)	Bentley (2/1), Lucas (1/1), Gray (2)

PENN STATE VS. THE BIG TEN

Illinois	Overall	27-14	Nebraska	Overall	2-0
	Big Ten Games	20-11		Big Ten Games	0-0
	Big Ten Tournament	4-2		Big Ten Tournament	0-0
	Home	15-2		Home	1-0
	Away	8-10		Away	0-0
	Neutral	4-2		Neutral	1-0
Indiana	Overall	27-9	Northwestern	Overall	29-7
	Big Ten Games	22-8		Big Ten Games	26-6
	Big Ten Tournament	3-1		Big Ten Tournament	2-0
	Home	15-2		Home	16-1
	Away	9-6		Away	11-5
	Neutral	3-1		Neutral	2-1
Iowa	Overall	23-17	Ohio State	Overall	31-21
	Big Ten Games	18-14		Big Ten Games	18-14
	Big Ten Tournament	2-1		Big Ten Tournament	4-5
	Home	13-5		Home	16-6
	Away	7-11		Away	11-9
	Neutral	3-1		Neutral	4-6
Michigan	Overall	26-9	Purdue	Overall	15-25
	Big Ten Games	24-7		Big Ten Games	13-19
	Big Ten Tournament	1-2		Big Ten Tournament	2-3
	Home	13-2		Home	9-8
	Away	12-5		Away	4-14
	Neutral	1-2		Neutral	2-3
Michigan State	Overall	24-11	Wisconsin	Overall	25-10
	Big Ten Games	21-10		Big Ten Games	22-10
	Big Ten Tournament	2-1		Big Ten Tournament	2-0
	Home	14-3		Home	15-2
	Away	8-7		Away	8-8
	Neutral	2-1		Neutral	2-0
Minnesota	Overall	22-11			
	Big Ten Games	20-11			
	Big Ten Tournament	1-0			
	Home	13-3			
	Away	8-8			
	Neutral	1-0			





COQUESE WASHINGTON

Head Coach
5th Season

PENN STATE LADY LION BASKETBALL

Coquese Washington, who helped lead Notre Dame to the 2001 NCAA Championship, was introduced as the fifth head coach of the Penn State women's basketball program on April 23, 2007. Washington is the first female African-American head coach in Penn State history.

The Lady Lions returned to the national stage in Washington's fourth year with a second-place finish in the Big Ten regular season standings, a runner-up finish in the Big Ten Tournament and a berth in the NCAA Tournament. Penn State tallied its most victories since the 2003-04 campaign and 23rd 20-win season with a 25-10 overall record and an 11-5 mark in conference play. The Lady Lions worked their way back to the "Big Dance" for the first time since 2004-05 and advanced to the second round for the first time in seven years with a win over Dayton in the first round in front of a raucous Bryce Jordan Center crowd. After a remarkable season in the books and steps toward returning the Lady Lions to national prominence, Washington was selected as the 2011 BCA Female Coach of the Year.

Penn State was a dominating force from the perimeter as the Lady Lions tied the school record with 228 three-pointers and led NCAA Division I from deep with a .415 three-point field goal percentage. Pacing the Lady Lions from downtown was Maggie Lucas, who broke the Big Ten three-pointers record with 112 triples to go along with a .426 shooting percentage. For her efforts, Lucas was selected as the Big Ten Freshman of the Year and Big Ten Sixth Player of the Year while breaking the Penn State freshman season scoring record (552 pts.). Additionally with Washington's guidance, Alex Bentley became the 11th different player in school history to take home first team All-Big Ten accolades after finishing second in the conference in assists. After outstanding seasons, both Lucas and Bentley were invited to the USA Basketball World University Games Trials.

Washington's third season saw the Lady Lions return to the postseason for the first time since 2004-05 with a WNIT berth. The Lions earned their most overall wins (17) and conference wins (8) since the 2004-05 campaign en route to a sixth-place finish in the Big Ten.

Washington led Tyra Grant to back-to-back first team All-Big Ten honors and *Associated Press* Honorable Mention All-America accolades in her senior season. Grant capped off her career by being selected by the Phoenix Mercury in the second round of the WNBA Draft. The four-time all-

conference pick left Penn State third in school history in scoring with 2,044 points. Washington also guided Bentley to third team All-Big Ten honors, as well as a unanimous selection to the Big Ten All-Freshman team.

That year, Washington and the Lady Lions garnered one of the top recruiting classes in the country, finishing 22nd on the ESPN/HoopGurlz recruiting chart. The class included just the second McDonald's High School All-American in Penn State history in Lucas, WBCA High School All-American Ariel Edwards and All-State selection Talia East.

In Washington's second season, the Lady Lions moved up three positions in the Big Ten standings, finishing in a tie for seventh place. Under Washington's guidance in 2008-09, Grant became the 10th different player in school history to earn first team All-Big Ten honors.

The Coquese Washington era started in style as the Lady Lions won their first three games of the season, including a win over #20/21 Pittsburgh, to claim the WBCA Classic title. Just three weeks later, Washington guided the Lady Lions to their first ever win over perennial contender and 10th-ranked Duke in the inaugural Big Ten/ACC Challenge, a game that was televised on ESPN2.

Washington came to Happy Valley after eight seasons as an associate head coach and assistant coach under Muffet McGraw at Notre Dame, her alma mater. During Washington's eight years on the bench, Notre Dame amassed a 188-69 record with eight NCAA Tournament appearances, including four Sweet Sixteen runs and a National Championship in 2001.

Washington was a four-year starting point guard for Notre Dame under McGraw and was the team captain on Notre Dame's first-ever NCAA Tournament team. She was a two-time All-Midwestern Collegiate Conference (MCC) selection and led Notre Dame to three MCC Tournament titles.

The epitome of a student-athlete, Washington graduated from Notre Dame in 1992, a full year ahead of schedule, with a bachelor's degree in history. She went on to attain "Double Domer" status in 1997 after earning her Juris Doctorate from the Notre Dame Law School.

In addition to assisting with the efforts of the WBCA Pink Zone at Penn State to raise money and awareness for breast cancer, Washington created Coquese's Drive for the Women's Resource Center. The first four Coquese's Drives raised more than \$56,869 for the Centre County Women's

THE WASHINGTON FILE

COACHING RESUME

2007-pres. - Head Coach, Penn State University
 2011-pres. - President, NCAA Women's Basketball Issues Committee
 2010-pres. - Treasurer, WBCA Executive Committee
 2008-pres. - Member, WBCA Board of Directors
 2009-pres. - Member, USA Basketball Women's Junior National Committee
 2005-07 - Assoc. Head Coach, Univ. of Notre Dame
 1999-05 - Assistant Coach, Univ. of Notre Dame

PLAYING EXPERIENCE

2002-03 - WNBA's Indiana Fever
 2000-02 - WNBA's Houston Comets
 1998-99 - WNBA's New York Liberty
 1997-98 - ABL's Portland Power
 1989-93 - University of Notre Dame

EDUCATION

Notre Dame '92, B.A. History
 Notre Dame Law School '97, Juris Doctorate

NOTABLE

- ❖ 2011 BCA Female Coach of the Year.
- ❖ Helped guide Notre Dame to the 2001 NCAA Championship.
- ❖ Eight consecutive recruiting classes at Notre Dame ranked in the Top 25 nationally.
- ❖ Notre Dame had four Sweet Sixteen appearances and eight NCAA Tournament berths during Washington's tenure.
- ❖ Point guard for the 2000 WNBA Champion Houston Comets.
- ❖ Founding President, WNBA Players Association, 1999-01.
- ❖ Actively negotiated first two collective bargaining agreements for the WNBPA.
- ❖ Inducted into the Greater Flint Area Sports Hall of Fame in Dec. 2009.

FAMILY

Husband: Raynell Brown
 Children: Quenton (6), Rhaiyna (2)

Resource Center to aid in the fight against domestic violence.

Washington is currently serving on the 29-member WBCA Board of Directors, where she is the Treasurer of the Executive Committee. Washington is also a member of the USA Basketball Women's Junior National Team Selection Committee.

A native of Flint, Mich., Washington and her husband, Raynell Brown, have a son, Quenton (6), and a daughter, Rhaiyna (2). They reside in Port Matilda, Pa.

Washington's Coaching Record vs. Opponents

Arizona 1-0	Delaware 1-1	Holy Cross 1-0	Minnesota 2-6	Old Dominion 0-1	Texas Tech 1-0
Army 1-0	DePaul 0-1	Illinois 7-3	Mississippi 1-0	Pittsburgh 2-1	Utah 1-0
Boston College 0-1	Drexel 2-1	Indiana 3-4	Monmouth 1-0	Prairie View A&M 1-0	Washington State 1-0
Bucknell 4-0	Duke 1-0	Iowa 4-5	Nevada 1-0	Purdue 1-7	Wisconsin 2-5
Buffalo 1-0	Florida State 0-1	Iowa State 1-0	NJIT 1-0	Rider 1-0	UW-Green Bay 0-1
Charlotte 1-0	Georgetown 1-0	Maine 1-0	North Carolina 1-0	South Carolina 4-1	Xavier 0-1
Connecticut 0-1	Georgia Tech 0-1	Michigan 5-3	Northwestern 5-1	Stony Brook 1-0	
Coppin State 1-0	Hartford 1-0	Michigan State 2-5	Oakland 2-0	Syracuse 0-1	
Dayton 2-1	Hofstra 0-1	Middle Tennessee 1-0	Ohio State 1-6	Texas A&M 0-1	





#2 Dara Taylor

Jr. * G * 5-8 * Wilmington, Del./Caraval Acad. (Maryland)

2011-12 Season Notes:

Will sit out the 2011-12 season due to NCAA Transfer policy.

2010-11 (at Maryland):

Had two points, two steals and four assists in the NCAA Tournament game against Georgetown (3/22) ... Registered six points, four steals and four assists in the win over Saint Joseph's (1/2)

... Dished out four assists against La Salle (12/28) ... Notched five dimes against Delaware State (12/19) ... Was 3-for-4 from the field and finished with seven points and three assists in the win over UMBC (12/10) ... Accounted for four assists and four steals at Purdue (12/2) ... Tallied six points, five assists, four rebounds and a steal in the win over East Carolina (11/26) ... Recorded five points and five assists in the victory over Towson (11/18).

2009-10 (at Maryland)

Broke Maryland's freshman season assists record with 171 helpers Recorded more than six assists in 15 of 27 starts ... Finished third in the ACC in assists and sixth in assist-to-turnover ratio (1.2) ... Grabbed career-high eight rebounds in WNIT Second Round win over East Carolina (3/21) ... Contributed 10 points in ACC Tournament win over North Carolina (3/4) ... Netted a career-high 17 points on 7-of-12 shooting against Clemson (2/14) ... Made 7-of-10 free throws to help clinch the win over Wake Forest (2/11) ... Finished the game with nine points and two steals against the Demon Deacons

... Accounted for nine assists at Virginia Tech (1/28) ... Had six points, eight assists and seven rebounds versus Boston College (1/14) ... Notched first career double-double with 10 points and career-high 11 assists at No. 19/21 Virginia (1/11) ... Dished out eight assists versus Saint Joseph's (1/3) ... Notched nine points, eight assists and four rebounds versus UNC-Wilmington (12/29) ... Accounted for 11 points with seven assists in a win over Samford (11/24) ... Chipped in six points, nine assists and five rebounds against Old Dominion (11/19) ... Had 10 points with five assists in win against New Hampshire (11/16).

CAREER HIGHS

Points 17 vs. Clemson (2/14/10)
Rebs. 8 vs. East Carolina (3/21/10)
Assists 11 at American (12/20/09)
..... 11 at Virginia (1/11/10)
Steals 6 vs. N.C. Central (11/14/09)
Blocks 1 (3x) last at St. Joseph's 1/2/11
Minutes 38 at American (12/20/09)
FGM 7 vs. Clemson (2/14/10)
FGA 14 at N.C. State (1/17/10)
FG% 1.000 (3x)
..... last vs. N.C. State (2-2) (2/6/11)
3FGM 2 vs. Samford (1/24/09)
..... 2 vs. Clemson (2/14/10)
3FGA 5 at Mississippi State (11/22/09)
3PT % 1.000 (1-1) at Longwood (1/31/10)
..... 1.000 (1-1) vs. Providence (3/25/10)
FTM 7 at Wake Forest (2/11/10)
FTA 10 at Wake Forest (2/11/10)
..... 10 vs. North Carolina (3/4/10)
FT % 1.000 (7x)
..... last vs. Georgetown (2-2) (3/22/11)
Career Double-Doubles 1

HIGH SCHOOL

McDonald's High School All-American ... 52nd-ranked player by ESPN/HoopGurlz out of Caravel Academy ... 2009 Delaware Gatorade Player of the Year ... Two-time All-State selection with a first team berth as a senior and a second team nod as a junior ... 1,192 career points at Caravel Academy ... Averaged 17.8 points, 5.5 assists, 5.0 rebounds and 5.0 steals per game as a senior ... Selected to the Delaware's Finest third team All-Decade (2000-09) team ... Played AAU for the Philly Belles alongside Lady Lion teammate Maggie Lucas.



#5 Talia East

So. * F/C * 6-3 * Philadelphia, Pa./The Friends School

2011-12 Highlights:

- Had arguably the best game of her career, registering in personal bests of 15 rebounds and seven blocks to go along with six points at South Carolina (11/20).
- Her seven blocks at South Carolina are tied for

the third on the PSU single-game charts and are the most for a Lady Lion since Nikki Greene blocked seven shots against Purdue on Jan. 28, 2010.

2011-12 Season Notes:

- Registered a career-best eight points on 4-of-6 shooting to go along with six rebounds in the Nugget Classic Championship game win over Nevada (11/26).
- Turned in her first career double-digit rebounding performance as she hauled in a personal-best 11 caroms at Delaware (11/17). Also equalled her career scoring mark with six points against the Blue Hens.
- Notched two points, six rebounds and a blocked shot in the Lady Lion Classic Championship game win over Middle Tennessee (11/13).
- Had a career night in the season-opening win over Washington State (11/11) with personal bests of six points via a 3-for-3 shooting effort and eight rebounds.
- Tallied four points, five rebounds and two steals in the exhibition win over Bloomsburg (11/5).

CAREER HIGHS

Points 8 at Nevada (11/26/11)
Rebs. 15 at South Carolina (11/20/11)
Assists n/a
Steals 1 (7x)
..... last at Nevada (11/26/11)
Blocks 7 at South Carolina (11/20/11)
Minutes 29 at South Carolina (11/20/11)
FGM 4 at Nevada (11/26/11)
FGA 6 at Nevada (11/26/11)
..... 6 at South Carolina (11/20/11)
FG% 1.000 (5x)
..... last vs. Washington State (3-3) (11/11/11)
3FGM n/a
3FGA n/a
3PT % n/a
FTM 2 at Delaware (11/17/11)
FTA 4 at Nevada (11/26/11)
FT % 1.000 (2-2) at Delaware (11/17/11)
Career Double-Doubles n/a

GAME-BY-GAME

	P	R	B
WASH. STATE	6	8	2
MID. TENN.	2	6	1
at Delaware	6	11	2
at South Carolina	6	15	7
vs. Iowa State	0	3	0
at Nevada	8	6	0
NORTH CAROLINA	3	4	0
at Texas Tech			
VIRGINIA TECH			
UMES			
WAGNER			
at Bucknell			
NEBRASKA			
at Wisconsin			
MICHIGAN ST.			
MICHIGAN			
at Nebraska			
at Illinois			
IOWA			
at Michigan			
at Michigan State			
INDIANA			
at Minnesota			
WISCONSIN			
at Northwestern			
at Purdue			
OHIO STATE			
MINNESOTA			

Five-Time Big Ten Champions • Two-Time Big Ten Tournament Champions • 2000 NCAA Final Four • 22 NCAA Tournament Appearances





#12 Zhaque Gray

Sr. * G * 5-8 * Chicago, Ill./Prep John Hope

2011-12 Highlights:

- Surpassed the 600-point plateau for her career with 15 tallies at Delaware (11/17).
- Named to Lady Lion Classic All-Tournament team after averaging 11.0 points, 5.0 rebounds in two games.

2011-12 Season Notes:

- Notched back-to-back 20-point games for the second time in her career with 25 points, four rebounds and a career-high six assists in the upset win over #14/13 North Carolina (11/30).
- Accounted for 21 points, four rebounds, three assists and two steals in the win at Nevada (11/26).
- Was 5-for-7 from the field, including makes on both of her three-point attempts, en route to 14 points in the win over Iowa State (11/25).
- Had a team-best 15 points to go along with six rebounds and two assists in the Lady Lion Classic title game win over Middle Tennessee (11/13).
- Registered seven points and four rebounds against Washington State (11/11).

CAREER HIGHS

Points	27 at Dayton (11/12/10)
Rebs.	6 at South Carolina (11/22/09)
	6 vs. NJIT (11/15/09)
Assists	6 vs. North Carolina (11/30/11)
Steals	3 vs. Bucknell (12/28/10)
	3 vs. Michigan State (12/21/08)
Blocks	1 at South Carolina (11/20/11)
	1 at Iowa (2/6/11)
Minutes	44 at Dayton (11/12/10)
FGM	10 at Dayton (11/12/10)
FGA	17 at Dayton (11/12/10)
FG%	1.000 (3-3) at Indiana (2/13/11)
	1.000 (4-4) at Michigan (2/9/09)
3FGM	7 at Dayton (11/12/10)
3FGA	11 at Dayton (11/12/10)
3PT%	1.000 (5x)
	last vs. Iowa State (2-2) (11/25/11)
FTM	5 at Ohio State (2/17/11)
FTA	6 at Ohio State (2/17/11)
FT%	1.000 (21x)
	last vs. North Carolina (3-3) (11/30/11)
Career Double-Doubles	n/a

GAME-BY-GAME

	P	R	A
WASH. STATE	7	4	1
MID. TENN.	15	6	2
at Delaware	15	3	4
at South Carolina	6	4	2
vs. Iowa State	14	3	2
at Nevada	21	4	3
NORTH CAROLINA	25	4	6
at Texas Tech			
VIRGINIA TECH			
UMES			
WAGNER			
at Bucknell			
NEBRASKA			
at Wisconsin			
MICHIGAN ST.			
MICHIGAN			
at Nebraska			
at Illinois			
IOWA			
at Michigan			
at Michigan State			
INDIANA			
at Minnesota			
WISCONSIN			
at Northwestern			
at Purdue			
OHIO STATE			
MINNESOTA			



#15 Renee Womack

Sr. * G * 5-10 * Lansdale, Pa./Methacton

CAREER HIGHS

Points	10 at Wisconsin (1/2/11)
Rebs.	8 (2x) last vs. Iowa (12/28/09)
Assists	4 vs. Iowa (12/28/09)
Steals	4 vs. Bucknell (12/28/10)
Blocks	3 vs. Iowa (12/28/09)
Minutes	30 vs. Iowa (12/28/09)
FGM	4 at Wisconsin (1/2/11)
	4 vs. Stony Brook (11/19/08)
FGA	8 vs. Army (12/8/10)
	8 vs. Stony Brook (11/19/08)
FG%	1.000 (8x)
	last vs. Illinois (2-2) (3/5/11)
3FGM	1 (7x) last at Indiana (2/13/11)
3FGA	2 (4x) last at Indiana (2/13/11)
3PT%	1.000 (3x)
	last vs. Illinois (2-2) (1/16/11)
FTM	3 at Dayton (11/12/10)
FTA	4 at Ohio State (2/17/11)
	4 at Dayton (11/12/10)
FT%	1.000 (4x)
	last at Iowa (2-2) (2/6/11)
Career Double-Doubles	n/a

GAME-BY-GAME

	P	R	A
WASH. STATE	DNP		
MID. TENN.	DNP		
at Delaware	DNP		
at South Carolina	DNP		
vs. Iowa State	DNP		
at Nevada	DNP		
NORTH CAROLINA	DNP		
at Texas Tech			
VIRGINIA TECH			
UMES			
WAGNER			
at Bucknell			
NEBRASKA			
at Wisconsin			
MICHIGAN ST.			
MICHIGAN			
at Nebraska			
at Illinois			
IOWA			
at Michigan			
at Michigan State			
INDIANA			
at Minnesota			
WISCONSIN			
at Northwestern			
at Purdue			
OHIO STATE			
MINNESOTA			





#20 Alex Bentley

Jr. * G * 5-7 * Indianapolis, Ind./Ben Davis

2011-12 Highlights:

- Needs 23 points to become the 33rd Lady Lion to score 1,000 career points.
- On Wade Trophy, Wooden Award and Naimsmith Award watch lists.
- Big Ten Preseason Player of the Year (coaches and media).
- Selected as Nugget Classic Tournament MVP after averaging 18.0 points, 4.5 assists and 4.5 steals in two games.
- Named to Lady Lion Classic All-Tournament team after averaging 15.0 points, 3.0 rebounds, 4.0 assists and 2.5 steals in two games.

2011-12 Season Notes:

- Posted her first career double-double with 15 points and a personal-best 15 assist in the win over #14/13 North Carolina (11/30).
- Had a solid all-around game with 23 points on 11-of-15 shooting, six assists and a career-best five steals in the win over Nevada (11/26).
- Tallied 13 points to go along with three rebounds, three assists and four steals versus Iowa State (11/25).
- Narrowly missed her first career double-double with a team-best 20 points and a career-high tying nine assists at Delaware (11/17).
- Surpassed the 900-point mark for her career with eight tallies in the win over Middle Tennessee (11/13).
- Accounted for 22 points, four rebounds, four assists and a pair of steals in the win over Washington State (11/11).
- Became the 14th player in school history to record 300 career assists against the Cougars.

CAREER HIGHS

Points.....	28 at Boston College (12/2/10)
Rebs.....	7 vs. Iowa (12/28/09)
Assists.....	15 vs. North Carolina (11/30/11)
Steals.....	5 at Nevada (11/26/11)
Blocks.....	2 (3X) last vs. Drexel (12/21/10)
Minutes.....	46 at Dayton (11/12/10)
FGM.....	12 vs. Dayton (3/19/11)
FGA.....	28 vs. Dayton (3/19/11)
FG%.....	.833 (5-6) at Illinois (12/31/09)
3FGM.....	4 at Purdue (2/14/10)
3FGA.....	6 (3x) last at Purdue (2/14/10)
3PT%.....	1.000 (6x)
.....last vs. Washington State (2-2) (11/11/11)	
FTM.....	10 at Northwestern (1/6/11)
FTA.....	12 at Northwestern (1/6/11)
FT%.....	1.000 (22x)
.....last vs. North Carolina (4-4) (11/30/11)	
Career Double-Doubles.....	1

GAME-BY-GAME

	P	R	A
WASH. STATE	22	4	4
MID. TENN.	8	2	4
at Delaware	20	3	9
at South Carolina	6	2	3
vs. Iowa State	13	3	3
at Nevada	23	0	6
NORTH CAROLINA	15	5	15
at Texas Tech			
VIRGINIA TECH			
UMES			
WAGNER			
at Bucknell			
NEBRASKA			
at Wisconsin			
MICHIGAN ST.			
MICHIGAN			
at Nebraska			
at Illinois			
IOWA			
at Michigan			
at Michigan State			
INDIANA			
at Minnesota			
WISCONSIN			
at Northwestern			
at Purdue			
OHIO STATE			
MINNESOTA			



#23 Ariel Edwards

So. * G/F * 6-2 * Elmont, N.Y./Christ the King

2011-12 Highlights:

- Accounted for 13 points and career highs of eight rebounds and three assists in the win over #14/13 North Carolina (11/30).
- In her first collegiate start, tallied eight points and equalled her career high with eight rebounds at Delaware (11/17).

2011-12 Season Notes:

- Had two points, four rebounds and a pair of steals in the Nugget Classic Championship game win over Nevada (11/26).
- Was 5-for-7 from the field en route to 10 points, seven rebounds and an assist at South Carolina (11/20).
- Scored five of her 10 points in a key Lady Lion run that gave Penn State its first lead of the game against Middle Tennessee (11/13). Also notched a pair of steals against the Blue Raiders.
- Tallied four points and two rebounds in the season-opening win over Washington State (11/11).

CAREER HIGHS

Points.....	16 at Oakland (11/18/10)
Rebs.....	8 (3x)
.....last vs. North Carolina (11/30/11)	
Assists.....	3 vs. North Carolina (11/30/11)
Steals.....	2 (4X)
.....last at Nevada (11/26/11)	
Blocks.....	2 at Oakland (11/18/10)
Minutes.....	38 at Delaware (11/17/11)
FGM.....	6 vs. North Carolina (11/30/11)
FGA.....	11 vs. North Carolina (11/30/11)
.....11 at Delaware (11/17/11)	
FG%.....	1.000 (3X)
.....last vs. DePaul (1-1) (3/21/11)	
3FGM.....	2 vs. Army (12/8/10)
.....2 vs. Hartford (11/27/10)	
3FGA.....	4 vs. Army (12/8/10)
.....4 vs. Hartford (11/27/10)	
3PT %.....	1.000 (3X)
.....last vs. North Carolina (1-1) (11/30/11)	
FTM.....	7 at Oakland (11/18/10)
FTA.....	8 at Oakland (11/18/10)
FT %.....	1.000 (5x)
.....last vs. Illinois (2-2) (3/5/11)	
Career Double-Doubles.....	n/a

GAME-BY-GAME

	P	R	A
WASH. STATE	4	2	1
MID. TENN.	10	1	1
at Delaware	8	8	0
at South Carolina	10	7	1
vs. Iowa State	0	1	0
at Nevada	2	4	1
NORTH CAROLINA	13	8	3
at Texas Tech			
VIRGINIA TECH			
UMES			
WAGNER			
at Bucknell			
NEBRASKA			
at Wisconsin			
MICHIGAN ST.			
MICHIGAN			
at Nebraska			
at Illinois			
IOWA			
at Michigan			
at Michigan State			
INDIANA			
at Minnesota			
WISCONSIN			
at Northwestern			
at Purdue			
OHIO STATE			
MINNESOTA			





#24 Mia Nickson

RS-Jr. * F * 6-2 * Ashburn, Va./Notre Dame Acad. (BC)

2011-12 Highlights:

- ♦ Hauled in 10 rebounds, including five on the offensive glass against Middle Tennessee (11/13).

2011-12 Season Notes:

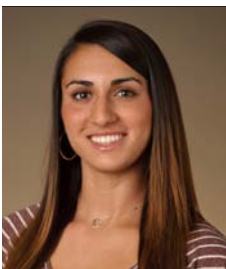
- ♦ Returned after missing two games to pull down a team-best 13 rebounds with five points and two assists against Iowa State (11/25).
- ♦ Had six points and seven rebounds in the win over Washington State (11/13) in the opening round of the Lady Lion Classic.

CAREER HIGHS

Points 26 vs. Texas Tech (12/5/10)
Rebs. 17 vs. Indiana (1/23/11)
Assists 4 vs. Maine (12/12/10)
Steals 6 vs. Indiana (1/23/11)
..... 6 vs. Bucknell (12/28/10)
Blocks 1 (4x) last at Nevada (11/26/11)
Minutes 41 at Dayton (11/12/10)
FGM 9 vs. Indiana (1/23/11)
FGA 16 vs. Indiana (1/23/11)
FG% 1.000 (4X)
..... last vs. Minnesota (5-5) (1/13/11)
3FGM n/a
3FGA n/a
3PT % n/a
FTM 10 vs. Michigan State (2/10/11)
..... 10 vs. Texas Tech (12/5/10)
FTA 11 vs. Michigan State (2/10/11)
..... 11 vs. Texas Tech (12/5/10)
FT % 1.000 (12X)
..... last vs. Dayton (6-6) (3/19/11)
Career Double-Doubles 6

GAME-BY-GAME

	P	R	A
WASH. STATE	6	7	0
MID. TENN.	3	10	0
at Delaware	DNP		
at South Carolina	DNP		
vs. Iowa State	5	13	2
at Nevada	2	1	0
NORTH CAROLINA	DNP		
at Texas Tech			
VIRGINIA TECH			
UMES			
WAGNER			
at Bucknell			
NEBRASKA			
at Wisconsin			
MICHIGAN ST.			
MICHIGAN			
at Nebraska			
at Illinois			
IOWA			
at Michigan			
at Michigan State			
INDIANA			
at Minnesota			
WISCONSIN			
at Northwestern			
at Purdue			
OHIO STATE			
MINNESOTA			



#25 Gizelle Studevent

Jr. * G * 5-11 * La Jolla, Calif./The Bishop's School

2011-12 Highlights:

- ♦ Hit a pair of key jumpers en route to four points and three rebounds against Middle Tennessee (11/13).

2011-12 Season Notes:

- ♦ Connected on three of her four shots from the field on the way to six points, three rebounds and a career-high three assists at Nevada (11/26).
- ♦ Was 2-for-3 from the field and finished with four points at Delaware (11/17).
- ♦ Notched two points and a rebound against Washington State (11/11).
- ♦ Had four points and two rebounds in the exhibition win over Bloomsburg (11/5).

CAREER HIGHS

Points 10 at Oakland (11/18/10)
Rebs. 3 (6x)
..... last at Nevada (11/26/11)
Assists 3 at Nevada (11/26/11)
Steals 2 vs. Rider (11/14/10)
Blocks 1 (2x) last vs. Minnesota (2/11/10)
Minutes 20 (2x) last vs. Hofstra (3/18/10)
FGM 3 (3X) last at Nevada (11/26/11)
FGA 8 vs. Monmouth (12/9/09)
FG% 1.000 (3x)
..... last at Ohio State (1-1) (2/17/11)
3FGM 1 (4x) last vs. Minnesota (1/13/11)
3FGA 3 vs. Monmouth (12/9/09)
3PT% 1.000 (4x)
..... last vs. Minnesota (1-1) (1/13/11)
FTM 3 vs. Maine (12/12/10)
..... 3 at Oakland (11/18/10)
FTA 4 vs. Maine (12/12/10)
..... 4 at Oakland (11/18/10)
FT% 1.000 (3x)
..... last vs. Army (2-2) (12/8/10)
Career Double-Doubles n/a

GAME-BY-GAME

	P	R	A
WASH. STATE	2	1	0
MID. TENN.	4	3	1
at Delaware	4	1	0
at South Carolina	0	1	1
vs. Iowa State	0	0	0
at Nevada	6	3	3
NORTH CAROLINA	0	0	0
at Texas Tech			
VIRGINIA TECH			
UMES			
WAGNER			
at Bucknell			
NEBRASKA			
at Wisconsin			
MICHIGAN ST.			
MICHIGAN			
at Nebraska			
at Illinois			
IOWA			
at Michigan			
at Michigan State			
INDIANA			
at Minnesota			
WISCONSIN			
at Northwestern			
at Purdue			
OHIO STATE			
MINNESOTA			





#33 Maggie Lucas

So. * G * 5-10 * Narberth, Pa./Germantown Academy

2011-12 Highlights:

- On the Naismith Award early-season watch list.
- Tied for sixth on Penn State's career three-pointers list (129).
- Named to the Nugget Classic All-Tournament team after averaging 22.0 points, 6.5 rebounds and 3.0 assists in two wins.
- Selected as Lady Lion Classic MVP after averaging 18.0 points, 5.5 rebounds, 3.5 assists and 1.0 steals in a pair of wins.

2011-12 Season Notes:

- Posted 21 points in 22 minutes, including five three-pointers, in the win over #14/13 North Carolina (11/30).
- Tallied 26 points to go along with seven rebounds and a career-high five assists in the Nugget Classic title game against Nevada (11/26).
- Accounted for a game-high 18 points, including six of Penn State's final nine points, with six rebounds and two steals in the win over Iowa State (11/25).
- Tallied a team-best 18 points with two assists and two rebounds at South Carolina (11/20).
- Reached the 600-point plateau with 12 points to go along with three rebounds and two assists at Delaware (11/17). She reaches 600 points in the third-fewest games in school history (Kelly Mazzante & Susan Robinson; 33 games).
- Connected on a trio of three-pointers en route to 14 points and a career-high five assists in the victory over Middle Tennessee (11/13).
- Tied for team scoring honors with 22 points, including an 11-for-13 effort from the free throw line, in the season-opening win over Washington State (11/11).
- Pulled in a personal-best nine rebounds in the win over the Cougars.

CAREER HIGHS

Points.....	28 at Boston College (12/2/10)
Rebs.	9 vs. Washington State (11/11/11)
Assists	5 at Nevada (11/26/11)
.....	5 vs. Middle Tennessee (11/13/11)
Steals.....	4 (3x) last vs. Iowa (12/30/10)
Blocks	2 vs. Purdue (2/24/11)
Minutes	39 at Delaware (11/17/11)
.....	39 at Boston College (12/2/10)
FGM.....	9 (3x) last at Michigan (2/3/11)
FGA	18 at Boston College (12/2/10)
FG%714 (5-7) at Northwestern (1/6/11)
3FGM.....	7 vs. Hartford (11/27/10)
3FGA	16 at Boston College (12/2/10)
3PT %833 (5-6) at Northwestern (1/6/11)
FTM	11 vs. Washington State (11/11/11)
FTA	13 vs. Washington State (11/11/11)
FT %	1.000 (17x)
.....	last at South Carolina (4-4) (11/20/11)
Career Double-Doubles	n/a

GAME-BY-GAME

	P	R	A
WASH. STATE	22	9	2
MID. TENN.	14	2	5
at Delaware	12	3	2
at South Carolina	18	2	2
vs. Iowa State	18	6	1
at Nevada	26	7	5
NORTH CAROLINA	21	2	1
at Texas Tech			
VIRGINIA TECH			
UMES			
WAGNER			
at Bucknell			
NEBRASKA			
at Wisconsin			
MICHIGAN ST.			
MICHIGAN			
at Nebraska			
at Illinois			
IOWA			
at Michigan			
at Michigan State			
INDIANA			
at Minnesota			
WISCONSIN			
at Northwestern			
at Purdue			
OHIO STATE			
MINNESOTA			



#40 Marisa Wolfe

Jr. * F * 6-2 * Ford City, Pa./Ford City

2011-12 Season Notes:

- Drained her fourth career three-pointer and finished the game with seven points, two rebounds and a personal-best three steals versus #14/13 North Carolina (11/30).
- Notched four points with a pair of rebounds and an assist in the win at Nevada (11/26).
- Scored four points to go along with two offensive rebounds and a pair of steals in the win over Iowa State (11/25).
- Was 2-for-3 from the field and finished with four points in her first game of the season at South Carolina (11/20).
- Missed the first three games of the season due to concussion-like symptoms.

CAREER HIGHS

Points.....	13 vs. Michigan (2/18/10)
Rebs.	7 vs. Green Bay (11/26/10)
Assists	1 (11x)
.....	last at Nevada (11/26/11)
Steals.....	3 vs. North Carolina (11/30/11)
.....	3 at Northwestern (1/3/10)
Blocks	2 (4x)
.....	last at Northwestern (1/6/11)
Minutes	30 vs. Green Bay (11/26/10)
FGM.....	5 vs. Michigan (2/18/10)
.....	5 at Northwestern (1/3/10)
FGA	8 vs. North Carolina (11/30/11)
FG%	1.000 (7x)
.....	last at Iowa (1-1) (2/6/11)
3FGM.....	2 vs. Illinois (1/24/10)
3FGA	3 vs. Illinois (1/24/10)
3PT%667 (2-3) vs. Illinois (1/24/10)
FTM	4 vs. South Carolina (11/21/10)
FTA	4 (3x)
.....	last vs. Green Bay (11/26/10)
FT%	1.000 (12x)
.....	last at Nevada (2-2) (11/26/11)
Career Double-Doubles	n/a

GAME-BY-GAME

	P	R	A
WASH. STATE	DNP		
MID. TENN.	DNP		
at Delaware	DNP		
at South Carolina	4	0	0
vs. Iowa State	4	2	1
at Nevada	4	2	1
NORTH CAROLINA	7	2	0
at Texas Tech			
VIRGINIA TECH			
UMES			
WAGNER			
at Bucknell			
NEBRASKA			
at Wisconsin			
MICHIGAN ST.			
MICHIGAN			
at Nebraska			
at Illinois			
IOWA			
at Michigan			
at Michigan State			
INDIANA			
at Minnesota			
WISCONSIN			
at Northwestern			
at Purdue			
OHIO STATE			
MINNESOTA			





#44 Tori Waldner

Fr. * F/C * 6-5 * Milton, Ga./Milton

2011-12 Season Notes:

- Was 3-for-4 from the field and finished with a career-high six points with two rebounds and two blocked shots in the win over #14/13 North Carolina (11/30).
- Scored her first collegiate points on a 15-footer in the first half en route to five points and a blocked shot in the Nugget Classic win over Iowa State (11/25).
- Saw her first action of the season at Delaware (11/17) and pulled in a pair of rebounds in eight minutes on the court.
- Had three points and a rebound in four minutes of action in the exhibition win over Bloomsburg (11/5).

CAREER HIGHS

Points.....	6 vs. North Carolina (11/30/11)
Rebs.....	3 at Nevada (11/26/11)
Assists.....	1 at Nevada (11/26/11)
Steals.....	2 at Nevada (11/26/11)
Blocks.....	2 vs. North Carolina (11/30/11)
Minutes.....	17 vs. North Carolina (11/30/11)
FGM.....	3 vs. North Carolina (11/30/11)
FGA.....	4 vs. North Carolina (11/30/11)
FG%.....	1.000 (2-2) vs. Iowa St. (11/25/11)
3FGM.....	n/a
3FGA.....	n/a
3PT %.....	n/a
FTM.....	1 vs. Iowa State (11/25/11)
FTA.....	2 vs. Iowa State (11/25/11)
FT %.....	500 (1-2) vs. Iowa State (11/25/11)
Career Double-Doubles.....	n/a

GAME-BY-GAME

	P	R	B
WASH. STATE	DNP		
MID. TENN.	DNP		
at Delaware	0	2	0
at South Carolina	0	0	0
vs. Iowa State	5	1	1
at Nevada	0	3	0
NORTH CAROLINA	6	2	2
at Texas Tech			
VIRGINIA TECH			
UMES			
WAGNER			
at Bucknell			
NEBRASKA			
at Wisconsin			
MICHIGAN ST.			
MICHIGAN			
at Nebraska			
at Illinois			
IOWA			
at Michigan			
at Michigan State			
INDIANA			
at Minnesota			
WISCONSIN			
at Northwestern			
at Purdue			
OHIO STATE			
MINNESOTA			



#54 Nikki Greene

Jr. * C * 6-4 * Diboll, Texas/Diboll

2011-12 Highlights:

- Seventh on Penn State's career blocks list with 138 rejections.
- Became the 27th member of the Lady Lions' 500-rebound club with seven caroms against Iowa State (11/25).

CAREER HIGHS

Points.....	24 vs. Utah (11/25/10)
Rebs.....	20 vs. Indiana (1/23/11)
Assists.....	2 (2x) last vs. Purdue (1/28/10)
Steals.....	4 vs. Maine (12/12/10)
.....	4 vs. Hofstra (3/18/10)
Blocks.....	7 vs. Purdue (1/28/10)
Minutes.....	32 vs. Purdue (1/28/10)
FGM.....	9 vs. Utah (11/25/10)
.....	9 at Dayton (11/12/10)
FGA.....	17 at Dayton (11/12/10)
FG%.....	1.000 (1-1) at Minnesota (12/6/09)
3FGM.....	n/a
3FGA.....	n/a
3PT%.....	n/a
FTM.....	8 vs. Pittsburgh (12/12/09)
FTA.....	13 vs. Monmouth (12/9/09)
FT%.....	1.000 (10x)
.....	last vs. North Carolina (1-1) (11/30/11)
Career Double-Doubles.....	7

GAME-BY-GAME

	P	R	B
WASH. STATE	3	12	2
MID. TENN.	9	10	1
at Delaware	6	4	0
at South Carolina	5	4	1
vs. Iowa State	7	7	1
at Nevada	11	7	0
NORTH CAROLINA	13	6	3
at Texas Tech			
VIRGINIA TECH			
UMES			
WAGNER			
at Bucknell			
NEBRASKA			
at Wisconsin			
MICHIGAN ST.			
MICHIGAN			
at Nebraska			
at Illinois			
IOWA			
at Michigan			
at Michigan State			
INDIANA			
at Minnesota			
WISCONSIN			
at Northwestern			
at Purdue			
OHIO STATE			
MINNESOTA			

2011-12 Season Notes:

- Accounted for 13 points, six rebounds and three blocked shots in the win over #14/13 North Carolina (11/30).
- Chipped in 11 points and seven rebounds in 16 minutes of action at Nevada (11/26).
- Narrowly missed a double-double with nine points, 10 rebounds and blocked shot in the Lady Lion Classic Championship game win over Middle Tennessee (11/13).
- Snared a team-best 12 rebounds to go along with three points, two blocks and three steals against Washington State (11/11).



#12/14 Penn State 101, Bloomsburg 81

Exhibition Game * Nov. 5, 2011 * University Park, Pa.

Bloomsburg 81

#	Player	Total			3-Ptr			Rebounds			PF	TP	A	TO	Blk	Stl	Min
		FG-FGA	FG-FGA	FT-FTA	FG-FGA	FG-FGA	FT-FTA	Off	Def	Tot							
03	GALLAGHER, Kelsey	* 8-15	4-5	2-2	1	3	4	1	22	1	4	1	1	25			
20	FLANAGAN, Alyssa	* 0-2	0-1	2-4	1	3	4	2	2	6	4	2	1	28			
22	OXENRIDER, Kayla	* 4-11	1-3	5-6	0	3	3	2	14	2	7	1	2	33			
34	ELLIS, Lauren	* 1-2	0-0	0-0	2	7	9	4	2	3	0	0	0	32			
31	WIELLE, Dana	* 5-10	3-5	3-4	1	3	4	1	16	0	4	0	0	23			
04	DUDECK, Brianna	* 0-3	0-0	0-0	1	0	1	0	0	0	1	0	0	6			
10	NYCE, Courtney	* 0-3	0-2	0-0	0	1	1	2	0	0	2	0	0	5			
15	NOACK, Catherine	* 6-8	5-6	2-2	2	2	4	0	19	1	2	0	0	26			
30	SIMMONS, Marla	* 2-4	0-1	2-2	1	3	4	1	6	1	2	0	0	11			
32	BORSKI, Maggie	* 0-0	0-0	0-0	0	0	0	0	0	1	0	0	0	11			
	Team				1	0	1										
	Totals	26-58	13-23	16-20	10	25	35	17	81	15	26	4	4	200			
	FG % 1st Half: 11-26	42.3%	2nd half: 15-32	46.9%	Game: 26-58	44.8%											
	3FG % 1st Half: 7-10	70.0%	2nd half: 6-13	46.2%	Game: 13-23	56.5%											
	FT % 1st Half: 6-9	66.7%	2nd half: 10-11	90.9%	Game: 16-20	80.0%											

Penn State 101

#	Player	Total			3-Ptr			Rebounds			PF	TP	A	TO	Blk	Stl	Min
		FG-FGA	FG-FGA	FT-FTA	FG-FGA	FG-FGA	FT-FTA	Off	Def	Tot							
12	Gray, Zhaque	* 4-12	1-4	0-0	0	1	1	4	9	0	1	0	2	30			
20	Bentley, Alex	* 7-12	0-2	2-2	2	6	8	2	16	9	2	0	7	30			
24	Nickson, Mia	* 5-9	0-0	4-4	3	1	4	3	14	0	0	1	1	22			
33	Lucas, Maggie	* 10-15	7-8	8-9	0	3	3	2	35	1	1	0	1	35			
04	Greene, Nikki	* 6-8	0-0	0-2	4	3	7	3	12	0	2	0	0	16			
05	East, Talia	* 2-3	0-0	0-0	2	3	5	2	4	0	1	0	2	13			
23	Edwards, Ariel	* 1-10	0-1	2-3	3	3	6	3	4	0	2	0	1	30			
25	Studevent, Gizelle	* 2-8	0-1	0-0	1	2	3	1	4	0	2	0	0	20			
44	Waldner, Tori	* 1-1	0-0	1-1	0	1	1	0	3	0	0	0	0	4			
	Team				2	1	3			1							
	Totals	38-78	8-16	17-21	17	23	40	20	101	10	12	1	14	200			
	FG % 1st Half: 18-41	43.9%	2nd half: 20-37	54.1%	Game: 38-78	48.7%											
	3FG % 1st Half: 4-11	36.4%	2nd half: 4-5	80.0%	Game: 8-16	50.0%											
	FT % 1st Half: 7-9	77.8%	2nd half: 10-12	83.3%	Game: 17-21	81.0%											

Officials: Kevin Pethel, Kathy Ridilla, Shannon Fack
 Technical fouls: Bloomsburg-None, Penn State-None.
 Attendance: 7742

Score by periods	1st	2nd	Total
Bloomsburg	35	46	81
Penn State	47	54	101

Last FG - BLOOM 2nd-01:25, PSU 11:22 2nd-01:08.
 Largest lead - BLOOM by 5 1st-16:42, PSU 11:12 by 20 2nd-11:10.

	In	Off	2nd	Fast	Bench
Points	20	20	18	3	15
PSU 11:12	52	33	23	16	15

Score tied - 4 times.
 Lead changed - 3 times.

Notable

- Sophomore guard **Maggie Lucas** led the Lady Lions' offensive outburst with 35 points, including a 7-for-8 effort from three-point range.
- Alex Bentley** had an all-around performance with 16 points, eight rebounds, nine assists and seven steals.
- Junior forward **Mia Nickson** also reached double figures with 14 points and four rebounds.

#12/14 Penn State 65, Middle Tennessee State 49

Game #2 * Nov. 13, 2011 * University Park, Pa.

Middle Tennessee 49 - 1-1

#	Player	Total			3-Ptr			Rebounds			PF	TP	A	TO	Blk	Stl	Min
		FG-FGA	FG-FGA	FT-FTA	FG-FGA	FG-FGA	FT-FTA	Off	Def	Tot							
01	Brinkley, Janay	* 0-8	0-3	0-0	1	3	4	1	0	3	0	0	2	24			
13	Ellie, Icelyn	* 5-10	1-4	2-2	3	7	10	5	13	0	1	0	3	37			
21	Rowe, Ebony	* 4-12	0-0	4-6	5	8	13	1	12	2	3	1	0	40			
24	Jones, Kortni	* 4-14	3-10	2-2	0	4	4	0	13	3	4	0	0	40			
42	Stewart, KeKe	* 2-7	2-6	1-2	0	3	3	4	7	2	2	3	0	28			
05	Cason, Shanice	* 0-3	0-3	2-2	1	1	2	3	2	1	5	0	1	19			
11	Ajanaku, Jamila	* 1-2	0-1	0-0	1	0	1	1	2	0	1	0	0	5			
23	March, Lauren	* 0-0	0-0	0-0	0	0	0	0	0	0	0	0	0	2			
52	Leonard, Laken	* 0-0	0-0	0-0	0	0	0	2	0	1	0	0	0	5			
	Team				1	2	3			2							
	Totals	16-56	6-27	11-14	12	28	40	17	49	12	18	4	6	200			
	FG % 1st Half: 10-30	33.3%	2nd half: 6-26	23.1%	Game: 16-56	28.6%											
	3FG % 1st Half: 3-17	17.6%	2nd half: 3-10	30.0%	Game: 6-27	22.2%											
	FT % 1st Half: 9-10	90.0%	2nd half: 2-4	50.0%	Game: 11-14	78.6%											

Penn State 65 - 2-0

#	Player	Total			3-Ptr			Rebounds			PF	TP	A	TO	Blk	Stl	Min
		FG-FGA	FG-FGA	FT-FTA	FG-FGA	FG-FGA	FT-FTA	Off	Def	Tot							
12	Gray, Zhaque	* 6-13	2-7	1-1	2	4	6	0	15	2	3	0	0	29			
20	Bentley, Alex	* 2-10	0-3	4-4	1	1	2	2	8	4	3	0	3	30			
24	Nickson, Mia	* 1-6	0-0	1-2	5	5	10	2	3	0	0	0	1	35			
33	Lucas, Maggie	* 4-12	3-9	3-4	1	1	2	2	14	5	3	0	2	35			
04	Greene, Nikki	* 4-9	0-0	1-3	5	5	10	4	9	0	2	1	1	19			
05	East, Talia	* 1-4	0-0	0-1	2	4	6	3	2	0	0	1	1	19			
23	Edwards, Ariel	* 4-10	0-2	2-3	0	1	1	1	10	1	1	0	2	22			
25	Studevent, Gizelle	* 2-5	0-0	0-0	0	3	3	0	4	1	0	0	0	11			
	Team				5	5	10										
	Totals	24-69	5-21	12-18	21	29	50	14	65	13	12	2	10	200			
	FG % 1st Half: 9-33	27.3%	2nd half: 15-36	41.7%	Game: 24-69	34.8%											
	3FG % 1st Half: 0-10	0.0%	2nd half: 5-11	45.5%	Game: 5-21	23.8%											
	FT % 1st Half: 8-11	72.7%	2nd half: 4-7	57.1%	Game: 12-18	66.7%											

Officials: Mark Zentz, Jennifer Rezac, Kathy Ridilla
 Technical fouls: Middle Tennessee-None, Penn State-None.
 Attendance: 3238

Score by periods	1st	2nd	Total
Middle Tennessee	32	17	49
Penn State	26	39	65

Last FG - MT 2nd-08:29, PSU 2nd-00:29.
 Largest lead - MT by 10 1st-16:57, PSU by 16 2nd-00:29.

Score tied - 3 times.
 Lead changed - 3 times.

Notable

- The Lady Lions used a 30-6 run, including a 19-0 spurt in the final seven minutes to erase a 10-point second-half deficit.
- The Lady Lions win their 27th regular-season tournament title and third under head coach **Coquese Washington**.
- Junior guard **Alex Bentley** surpassed the 900-point mark for her career with eight points.

#12/14 Penn State 72, Washington 60

Game #1 * Nov. 11, 2011 * University Park, Pa.

Washington State 60 - 0-1

#	Player	Total			3-Ptr			Rebounds			PF	TP	A	TO	Blk	Stl	Min
		FG-FGA	FG-FGA	FT-FTA	FG-FGA	FG-FGA	FT-FTA	Off	Def	Tot							
01	Cook, April	* 1-5	0-1	0-0	0	3	3	2	1	1	1	1	1	18			
03	Adzasu, Rosetta	* 2-6	0-0	0-0	1	2	3	3	4	5	4	1	1	22			
11	Perkins, Jazmine	* 4-17	1-0	1-1	0	9	13	2	9	2	1	0	4	28			
21	Tarnowski, Rosie	* 3-8	1-4	3-3	1	2	3	3	10	0	0	0	1	18			
33	Noyes, Carly	* 3-6	0-0	0-0	3	1	4	4	6	3	2	0	0	27			
02	Amajo, Ireti	* 3-15	2-7	1-2	0	1	1	1	9	1	2	0	0	25			
10	Presley, Tia	* 1-5	0-2	0-0	0	0	0	1	2	4	2	0	0	14			
22	Romberg, Sage	* 5-8	2-2	0-0	2	5	7	4	12	0	1	0	1	15			
23	Dheensaw, Shalie	* 0-1	0-0	0-0	0	2	2	0	0	0	0	0	0	5			
24	Thomas, Brandi	* 1-4	0-2	0-0	3	2	5	1	2	0	2	0	0	13			
42	Potter, Hana	* 2-7	0-0	0-1	3	1	4	4	4	0	2	0	1	15			
	Team				2	1	3										
	Totals	25-82	6-23	4-7	19												

#11/12 Penn State 55, South Carolina 50

Game #4 * Nov. 20, 2011 * Columbia, S.C.

Penn State 55 • 3-1

#	Player	Total			3-Ptr			Rebounds			PF	TP	A	TO	Blk	Stl	Min
		FG-FGA	FT-FTA	Reb Tot	FG-FGA	FT-FTA	Off	Def	Off	Def							
23	Edwards, Ariel	f	5-7	0-1	0-0	1	6	7	3	10	1	4	0	1	31		
54	Greene, Nikki	c	2-4	0-0	1-2	1	3	4	4	5	1	3	1	0	19		
12	Gray, Zhaque	g	1-5	0-1	4-4	0	4	4	2	6	2	1	1	1	38		
20	Bentley, Alex	g	1-4	0-0	4-4	0	2	2	2	6	3	7	0	1	32		
33	Lucas, Maggie	g	7-13	0-4	4-4	0	2	2	2	18	2	2	0	1	38		
05	East, Talia	g	3-6	0-0	0-0	1	14	15	2	6	0	3	7	1	29		
25	Studevent, Gizelle	g	2-3	0-0	0-0	0	1	1	0	0	1	2	0	1	5		
40	Wolfe, Marisa	g	2-3	0-0	0-0	0	0	0	1	4	0	0	0	0	7		
44	Waldner, Tori	g	0-0	0-0	0-0	0	0	0	0	0	0	1	0	0	1		
Team						2	2	4									
Totals			21-42	0-6	13-14	5	34	39	16	55	10	23	9	6	200		

FG % 1st Half: 11-22 50.0% 2nd half: 10-20 50.0% Game: 21-42 50.0%
 3FG % 1st Half: 0-2 0.0% 2nd half: 0-4 0.0% Game: 0-6 0.0%
 FT % 1st Half: 4-4 100.0% 2nd half: 9-10 90.0% Game: 13-14 92.9%

South Carolina 50 • 3-1

#	Player	Total			3-Ptr			Rebounds			PF	TP	A	TO	Blk	Stl	Min
		FG-FGA	FT-FTA	Reb Tot	FG-FGA	FT-FTA	Off	Def	Off	Def							
03	STEPHENS, Charenee	f	1-3	0-0	2-3	5	3	8	0	4	0	2	0	1	19		
12	WALKER, Ieasia	g	6-20	3-9	0-0	0	3	4	1	15	2	1	0	5	38		
05	GRANT, Markeshia	g	3-12	1-8	0-0	0	0	0	3	7	2	0	0	1	33		
22	SUTTON, La'Keisha	g	2-17	1-4	2-2	2	0	0	1	0	3	2	1	0	30		
05	NEWTON, Courtney	g	0-1	0-1	0-0	0	0	0	1	0	0	1	0	0	10		
01	WILSON, Ebony	g	0-0	0-0	0-0	0	0	0	2	0	0	0	0	0	1		
20	WHITE, Sancheon	g	0-4	0-1	1-2	2	0	2	2	1	0	0	0	1	12		
21	BRUNER, Ashley	g	4-8	0-0	1-3	9	9	18	3	9	2	2	2	1	30		
23	ROY, Tina	g	2-7	1-6	0-0	0	0	0	0	5	0	0	0	0	7		
24	WELCH, Aleighsa	g	1-4	0-0	0-0	6	0	6	2	2	0	0	0	1	20		
Team						0	0	0			2						
Totals			19-76	6-29	6-10	25	15	40	15	50	8	10	3	10	200		

FG % 1st Half: 9-38 23.7% 2nd half: 10-38 26.3% Game: 19-76 25.0%
 3FG % 1st Half: 2-12 16.7% 2nd half: 4-17 23.5% Game: 6-29 20.7%
 FT % 1st Half: 2-3 66.7% 2nd half: 4-7 57.1% Game: 6-10 60.0%

Officials: Beverly Roberts, Eric Brewton, Felicia Grinter
 Technical fouls: Penn State-None, South Carolina-None.
 Attendance: 2391

Score by periods	1st	2nd	Total
Penn State	26	29	55
South Carolina	22	28	50

Last FG - PSU 2nd-00:23, SC 2nd-05:47.
 Largest lead - PSU by 6 1st-00:50, SC by 8 2nd-06:40.

Points	In	Off	2nd	Fast	Bench
PSU	26	8	3	4	10
SC	20	17	16	2	17

Score tied - 4 times.
 Lead changed - 14 times.

Notable

- The Lady Lions used a 13-0 run, including the final six tallies coming from Maggie Lucas, over the final 5:22 to earn the come-from-behind win.
- Talia East rejected a career-high seven shots, which ties her for the third-highest single-game total in school history.
- PSU was held without a three-point field goal for the first time since Jan. 7, 2007 (vs. Michigan).

#17/16 Penn State 103, Nevada 65

Game #6 * Nov. 26, 2011 * Reno, Nev.

Penn State 103 • 5-1

#	Player	Total			3-Ptr			Rebounds			PF	TP	A	TO	Blk	Stl	Min
		FG-FGA	FT-FTA	Reb Tot	FG-FGA	FT-FTA	Off	Def	Off	Def							
12	Gray, Zhaque	*	9-15	1-4	2-3	3	1	4	2	21	3	1	0	2	35		
20	Bentley, Alex	*	11-15	1-2	0-0	0	0	0	2	23	6	1	0	5	29		
24	Nickson, Mia	*	1-3	0-0	0-0	1	0	1	0	2	0	0	1	0	7		
33	Lucas, Maggie	*	9-16	2-4	6-7	1	6	7	3	26	5	4	1	0	35		
54	Greene, Nikki	*	4-9	0-0	3-3	3	4	7	3	11	0	1	0	0	16		
05	East, Talia	*	4-6	0-0	0-4	3	3	6	1	8	0	1	0	1	14		
23	Edwards, Ariel	*	1-3	0-0	0-0	0	4	4	1	2	1	2	0	2	22		
25	Studevent, Gizelle	*	3-4	0-0	0-0	1	2	3	0	6	3	0	0	0	22		
40	Wolfe, Marisa	*	1-2	0-0	2-2	0	2	2	3	4	1	2	0	0	8		
44	Waldner, Tori	*	0-2	0-0	0-0	1	2	3	3	0	1	2	0	2	12		
Team						1	4	5									
Totals			43-75	4-10	13-19	14	28	42	18	103	20	14	2	12	200		

FG % 1st Half: 21-40 52.5% 2nd half: 22-35 62.9% Game: 43-75 57.3%
 3FG % 1st Half: 3-7 42.9% 2nd half: 1-3 33.3% Game: 4-10 40.0%
 FT % 1st Half: 4-7 57.1% 2nd half: 9-12 75.0% Game: 13-19 68.4%

Nevada 65 • 2-3

#	Player	Total			3-Ptr			Rebounds			PF	TP	A	TO	Blk	Stl	Min
		FG-FGA	FT-FTA	Reb Tot	FG-FGA	FT-FTA	Off	Def	Off	Def							
03	Sharp, Danika	*	5-13	2-3	2-2	1	1	2	2	14	1	3	0	0	28		
21	Keovorken, Kate	*	3-10	3-7	5-6	0	2	2	1	4	4	2	0	1	30		
23	Johnson, Amanda	*	3-14	0-5	2-2	0	5	5	3	8	4	5	0	1	39		
32	Wideman, Arielle	*	2-7	1-2	0-0	2	0	2	2	5	2	7	0	0	28		
34	Williams, Kayla	*	5-9	0-1	4-4	1	4	5	5	14	0	3	3	1	20		
05	Brennan, Chanelle	*	0-0	0-0	0-0	2	1	3	1	0	0	2	0	0	11		
12	Lois, Faith	*	0-0	0-0	0-0	0	0	0	0	0	0	1	0	0	3		
14	Johnson, Aja	*	1-2	0-0	0-0	2	3	5	0	2	0	1	0	0	8		
24	Burns, Emily	*	0-2	0-0	0-1	0	1	1	1	0	0	0	0	0	4		
25	Cough, Christina	*	2-4	2-4	0-0	0	0	0	0	6	0	0	0	0	6		
44	Smith, Amber	*	0-1	0-1	0-0	0	1	1	0	0	0	1	0	1	6		
55	Mungedi, Mimi	*	1-2	0-0	0-0	2	0	2	2	2	0	0	0	0	17		
Team						4	1	5									
Totals			22-64	8-23	13-15	14	19	33	17	65	11	25	3	4	200		

FG % 1st Half: 14-34 41.2% 2nd half: 8-30 26.7% Game: 22-64 34.4%
 3FG % 1st Half: 3-9 33.3% 2nd half: 5-14 35.7% Game: 8-23 34.8%
 FT % 1st Half: 3-5 60.0% 2nd half: 10-10 100.0% Game: 8-23 86.7%

Officials: Kyle Bacon, Shelley Nakasone, Rick Morris
 Technical fouls: Penn State-None, Nevada-None.
 Attendance: 759
 John Ascuaga's Nugget Classic - Championship

Score by periods	1st	2nd	Total
Penn State	49	54	103
Nevada	34	31	65

Last FG - PSU 2nd-01:05, NEVADA 2nd-00:02.
 Largest lead - PSU by 42 2nd-07:06, NEVADA None.

Score tied - 1 time.
 Lead changed - 9 times.

Notable

- The Lady Lions won their 28th regular-season tournament title with the win in the Nugget Classic title game and the second this season (Lady Lion Classic).
- Alex Bentley was selected as the Tournament MVP and Maggie Lucas was named to the All-Tournament team.
- The Lady Lions had three 20-point scorers for the first time since a win at Dayton on Nov. 12, 2010.

#17/16 Penn State 66 Iowa State 59

Game #5 * Nov. 25, 2011 * Reno, Nev.

Iowa State 59 • 3-1

#	Player	Total			3-Ptr			Rebounds			PF	TP	A	TO	Blk	Stl	Min
		FG-FGA	FT-FTA	Reb Tot	FG-FGA	FT-FTA	Off	Def	Off	Def							
04	Moody, Nikki	*	1-11	1-7	4-6	1	3	4	0	7	1	3	0	0	33		
05	Christofferson, H.	*	1-5	0-4	4-5	3	2	5	3	6	0	3	2	0	23		
10	Mansfield, Lauren	*	2-6	1-3	0-0	0	4	4	3	5	1	2	0	1	34		
12	Schroll, Jessica	*	3-7	1-2	1-2	1	2	3	3	7	2	1	1	1	29		
33	Poppens, Chelsea	*	3-8	0-0	5-13	4	11	17	4	11	1	3	1	1	16		
03	Harris, Kelsey	*	0-0	0-0	1-2	0	0	0	1	1	1	1	0	0	5		
21	Mays, Kileah	*	2-4	0-0	1-2	1	3	4	2	5	0	0	1	0	12		
22	Williamson, Brynn	*	5-10	4-9	1-2	0	2	2	1	15	0	0	1	1	29		
23	Cole, Chassidy	*	0-1	0-1	2-3	0	0	0	1	2	1	1	0	0	12		
32	Ellis, Fallon	*	0-1	0-1	0-0	0	1	1	0	0	0	0	0	0	4		
42	Zimmerman, Amanda	*	0-0	0-0	0-0	0	1	1	0	0	0	1	0	0	3		
Team						1	2	3									
Totals			17-53	6-26	19-35	13	31	44	18	59	7	16	6	4	200		

FG % 1st Half: 7-25 28.0% 2nd half: 10-28 35.7% Game: 17-53 32.1%
 3FG % 1st Half: 2-10 20.0% 2nd half: 4-16 25.0% Game: 6-26 23.1%
 FT % 1st Half: 12-24 50.0% 2nd half: 7-11 63.6% Game: 19-35 54.3%

Penn State 66 • 4-1

#	Player	Total			3-Ptr			Rebounds			PF	TP	A	TO	Blk	Stl	Min
		FG-FGA	FT-FTA	Reb Tot	FG-FGA	FT-FTA	Off	Def	Off	Def							
12	Gray, Zhaque	*	5-7	2-2	2-2	0	3	3	4	14	2	0	0	1	30		
20	Bentley, Alex	*	5-13	2-5	1-2	0	3	3	4	13	3	0	0	4	31		
24	Nickson, Mia	*	2-8	0-0	1-4	4	9	13	4	5	2	1	0	0	26		
33	Lucas, Maggie	*	5-15	1-5	7-10	2	4	6	4	18	1	4	0	2	35		
54	Greene, Nikki	*	2-8	0-0	3-3	3	4	7	3	7	0	0	1	0	15		
05	East, Talia	*	0-1	0-0	0-0	1	2	3	2	0	0	2	0	0	7		
23	Edwards, Ariel	*	0-2	0-1	0-1	0	1	1	4	0	1	0	0	0	18		
25	Studevent, Gizelle	*	0-2	0-0	0-0	0	0	0	2	0	0	1	0	0	12		
40	Wolfe, Marisa	*	2-5	0-1	0-2	2	0	2	2	4	1	0	0	2	18		
44	Waldner, Tori	*	2-2	0-0	1-2	0	1	1	3	5	0	1	1	0	8		
Team						3	4	7									
Totals			23-63	5-14	15-26	15	31	46	32	66	9	11	2	9	2		

2011-12 RADIO/TV CHART



#2

Dara Taylor
5-8 * Jr./Jr. * G
Wilmington, Del.
Caravel Academy
(Maryland)



#5

Talia East
6-3 * So./So. * F/C
Philadelphia, Pa.
Friends' Central School



#12

Zhaque Gray
5-8 * Sr./Sr. * G
Chicago, Ill.
Prep John Hope



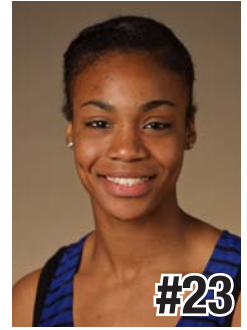
#15

Renee Womack
5-10 * Sr./Sr. * G
Lansdale, Pa.
Methacton



#20

Alex Bentley
5-7 * Jr./Jr. * G
Indianapolis, Ind.
Ben Davis



#23

Ariel Edwards
6-2 * So./So. * F
Elmont, N.Y.
Christ the King



#24

Mia Nickson
6-2 * Sr./Jr. * F
Ashburn, Va.
Notre Dame Academy
(Boston College)



#25

Gizelle Studevent
5-11 * Jr./Jr. * G
La Jolla, Calif.
The Bishop's School



#33

Maggie Lucas
5-10 * So./So. * G
Narberth, Pa.
Germantown Academy



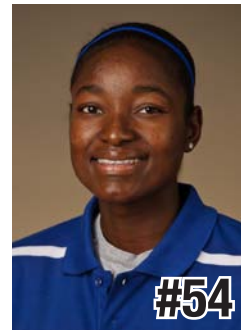
#40

Marisa Wolfe
6-2 * Jr./Jr. * F
Ford City, Pa.
Ford City



#44

Tori Waldner
6-5 * Fr./Fr. * F/C
Milton, Ga.
Milton



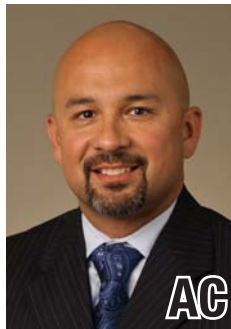
#54

Nikki Greene
6-4 * Jr./Jr. * F/C
Diboll, Texas
Diboll



HC

Coquese Washington
Head Coach
Notre Dame '92
Fifth Season



AC

Fred Chmiel
Assistant Coach
Excelsior College
Second Season



AC

Kia Damon
Assistant Coach
Millersville '97
Fifth Season



AC

Maren Walseth
Assistant Coach
Penn State '02
Fifth Season



DO

Ethan Gelfand
Director of Basketball
Operations
First Season



VO

Mike Miller
Director of Video &
Technology Operations
Seventh Season





**2011-12 Penn State Lady Lions
Penn State Combined Team Statistics (as of Nov 30, 2011)
All games**



RECORD:	OVERALL	HOME	AWAY	NEUTRAL
ALL GAMES	6-1	3-0	2-1	1-0
CONFERENCE	0-0	0-0	0-0	0-0
NON-CONFERENCE	6-1	3-0	2-1	1-0

#	Player	gp-gs	min	avg	Total		3-Point		F-Throw		Rebounds			pf	dq	a	to	blk	stl	pts	avg			
					fg-fga	fg%	3fg-fga	3fg%	ft-fta	ft%	off	def	tot									avg		
33	Lucas, Maggie	7-7	242	34.6	39-95	.411	17-49	.347	36-44	.818	7	24	31	4.4	18	0	18	18	2	6	131	18.7		
20	Bentley, Alex	7-7	236	33.7	38-85	.447	7-16	.438	24-26	.923	4	15	19	2.7	17	0	44	25	1	20	107	15.3		
12	Gray, Zhaque	7-7	229	32.7	37-80	.463	15-35	.429	14-16	.875	7	21	28	4.0	16	0	16	12	1	8	103	14.7		
54	Greene, Nikki	7-7	123	17.6	20-49	.408	0-0	.000	14-18	.778	20	30	50	7.1	26	0	3	15	8	5	54	7.7		
23	Edwards, Ariel	7-3	186	26.6	21-49	.429	1-7	.143	4-8	.500	8	23	31	4.4	19	1	7	15	0	6	47	6.7		
40	Wolfe, Marisa	4-0	52	13.0	8-18	.444	1-3	.333	2-4	.500	3	3	6	1.5	10	0	2	2	0	5	19	4.8		
05	East, Talia	7-0	115	16.4	14-26	.538	0-0	.000	3-9	.333	15	38	53	7.6	17	1	0	8	12	4	31	4.4		
24	Nickson, Mia	4-4	95	23.8	5-24	.208	0-0	.000	6-13	.462	12	19	31	7.8	10	0	2	3	1	2	16	4.0		
25	Studevent, Gizelle	7-0	76	10.9	8-16	.500	0-0	.000	0-0	.000	2	7	9	1.3	2	0	5	5	0	2	16	2.3		
44	Waldner, Tori	5-0	46	9.2	5-9	.556	0-0	.000	1-2	.500	1	7	8	1.6	9	0	1	4	3	3	11	2.2		
Team											16	25	41											
Total.....		7	1400		195-451	.432	41-110	.373	104-140	.743	95	212	307	43.9	144	2	98	108	28	61	535	76.4		
Opponents.....		7	1400		154-464	.332	43-162	.265	96-135	.711	118	175	293	41.9	122	2	83	119	25	44	447	63.9		

TEAM STATISTICS	PSU	OPP	Date	Opponent	Score	Att.
SCORING	535	447	11/11/11	WASHINGTON STATE	w 72-60	3807
Points per game	76.4	63.9	11/13/11	MIDDLE TENNESSEE	w 65-49	3238
Scoring margin	+12.6	-	11/17/11	at Delaware	L 71-80	3352
FIELD GOALS-ATT	195-451	154-464	11/20/11	at South Carolina	w 55-50	2391
Field goal pct	.432	.332	11/25/11	vs Iowa State	w 66-59	1089
3 POINT FG-ATT	41-110	43-162	11/26/11	at Nevada	w 103-65	759
3-point FG pct	.373	.265	11/30/11	NORTH CAROLINA	w 103-84	3963
3-pt FG made per game	5.9	6.1	* - Conference game			
FREE THROWS-ATT	104-140	96-135				
Free throw pct	.743	.711				
F-Throws made per game	14.9	13.7				
REBOUNDS	307	293				
Rebounds per game	43.9	41.9				
Rebounding margin	+2.0	-				
ASSISTS	98	83				
Assists per game	14.0	11.9				
TURNOVERS	108	119				
Turnovers per game	15.4	17.0				
Turnover margin	+1.6	-				
Assist/turnover ratio	0.9	0.7				
STEALS	61	44				
Steals per game	8.7	6.3				
BLOCKS	28	25				
Blocks per game	4.0	3.6				
ATTENDANCE	11008	7591				
Home games-Avg/Game	3-3669	3-2167				
Neutral site-Avg/Game	-	1-1089				

Score by Periods	1st	2nd	Totals
Penn State	266	269	535
Opponents	237	210	447



**2011-12 Penn State Lady Lions
Penn State Category Leaders (as of Nov 30, 2011)
All games**



Points	G	Pts	Pts/G
Lucas, Maggie	7	131	18.7
Bentley, Alex	7	107	15.3
Gray, Zhaque	7	103	14.7
Greene, Nikki	7	54	7.7
Edwards, Ariel	7	47	6.7
East, Talia	7	31	4.4
Wolfe, Marisa	4	19	4.8
Nickson, Mia	4	16	4.0
Studevent, Gizelle	7	16	2.3
Waldner, Tori	5	11	2.2

FG Percentage	FG	Att	Pct
Waldner, Tori	5	9	.556
East, Talia	14	26	.538
Studevent, Gizelle	8	16	.500
Gray, Zhaque	37	80	.463
Bentley, Alex	38	85	.447
Wolfe, Marisa	8	18	.444
Edwards, Ariel	21	49	.429
Lucas, Maggie	39	95	.411
Greene, Nikki	20	49	.408
Nickson, Mia	5	24	.208

3-Point Percentage	3FG	Att	Pct
Bentley, Alex	7	16	.438
Gray, Zhaque	15	35	.429
Lucas, Maggie	17	49	.347
Wolfe, Marisa	1	3	.333
Edwards, Ariel	1	7	.143

Free Throw Percent	FG	Att	Pct
Bentley, Alex	24	26	.923
Gray, Zhaque	14	16	.875
Lucas, Maggie	36	44	.818
Greene, Nikki	14	18	.778
Waldner, Tori	1	2	.500
Wolfe, Marisa	2	4	.500
Edwards, Ariel	4	8	.500
Nickson, Mia	6	13	.462
East, Talia	3	9	.333

Scoring Average	G	Pts	Avg/G
Lucas, Maggie	7	131	18.7
Bentley, Alex	7	107	15.3
Gray, Zhaque	7	103	14.7
Greene, Nikki	7	54	7.7
Edwards, Ariel	7	47	6.7
Wolfe, Marisa	4	19	4.8
East, Talia	7	31	4.4
Nickson, Mia	4	16	4.0
Studevent, Gizelle	7	16	2.3
Waldner, Tori	5	11	2.2

Field Goal Attempts	G	Att	Att/G
Lucas, Maggie	7	95	13.6
Bentley, Alex	7	85	12.1
Gray, Zhaque	7	80	11.4
Edwards, Ariel	7	49	7.0
Greene, Nikki	7	49	7.0

Field Goals Made	G	Made	Made/G
Lucas, Maggie	7	39	5.6
Bentley, Alex	7	38	5.4
Gray, Zhaque	7	37	5.3
Edwards, Ariel	7	21	3.0
Greene, Nikki	7	20	2.9

3-Point FG Attempts	G	Att	Att/G
Lucas, Maggie	7	49	7.0
Gray, Zhaque	7	35	5.0
Bentley, Alex	7	16	2.3
Edwards, Ariel	7	7	1.0
Wolfe, Marisa	4	3	0.8

3-Point FG Made	G	Made	Made/G
Lucas, Maggie	7	17	2.4
Gray, Zhaque	7	15	2.1
Bentley, Alex	7	7	1.0
Wolfe, Marisa	4	1	0.3
Edwards, Ariel	7	1	0.1

Free Throw Attempts	G	Att	Att/G
Lucas, Maggie	7	44	6.3
Bentley, Alex	7	26	3.7
Greene, Nikki	7	18	2.6
Gray, Zhaque	7	16	2.3
Nickson, Mia	4	13	3.3

Free Throws Made	G	Made	Made/G
Lucas, Maggie	7	36	5.1
Bentley, Alex	7	24	3.4
Greene, Nikki	7	14	2.0
Gray, Zhaque	7	14	2.0
Nickson, Mia	4	6	1.5



**2011-12 Penn State Lady Lions
Penn State Category Leaders (as of Nov 30, 2011)
All games**



Rebounds	G	Reb	Reb/G
East, Talia	7	53	7.6
Greene, Nikki	7	50	7.1
Nickson, Mia	4	31	7.8
Edwards, Ariel	7	31	4.4
Lucas, Maggie	7	31	4.4

Rebound Average	G	Reb	Avg/G
Nickson, Mia	4	31	7.8
East, Talia	7	53	7.6
Greene, Nikki	7	50	7.1
Edwards, Ariel	7	31	4.4
Lucas, Maggie	7	31	4.4

Offensive Rebounds	G	No.	Avg/G
Greene, Nikki	7	20	2.9
East, Talia	7	15	2.1
Nickson, Mia	4	12	3.0
Edwards, Ariel	7	8	1.1
Gray, Zhaque	7	7	1.0
Lucas, Maggie	7	7	1.0

Defensive Rebounds	G	No.	Avg/G
East, Talia	7	38	5.4
Greene, Nikki	7	30	4.3
Lucas, Maggie	7	24	3.4
Edwards, Ariel	7	23	3.3
Gray, Zhaque	7	21	3.0

Fouls	G	No.	Per/G
Greene, Nikki	7	26	3.7
Edwards, Ariel	7	19	2.7
Lucas, Maggie	7	18	2.6
Bentley, Alex	7	17	2.4
East, Talia	7	17	2.4

Foulsouts	G	No.
East, Talia	7	1
Edwards, Ariel	7	1

Assists	G	No.	Ast/G
Bentley, Alex	7	44	6.3
Lucas, Maggie	7	18	2.6
Gray, Zhaque	7	16	2.3
Edwards, Ariel	7	7	1.0
Studevent, Gizelle	7	5	0.7

Steals	G	No.	Stl/G
Bentley, Alex	7	20	2.9
Gray, Zhaque	7	8	1.1
Lucas, Maggie	7	6	0.9
Edwards, Ariel	7	6	0.9
Wolfe, Marisa	4	5	1.3
Greene, Nikki	7	5	0.7

Blocked Shots	G	No.	Blk/G
East, Talia	7	12	1.7
Greene, Nikki	7	8	1.1
Waldner, Tori	5	3	0.6
Lucas, Maggie	7	2	0.3
Nickson, Mia	4	1	0.3
Bentley, Alex	7	1	0.1
Gray, Zhaque	7	1	0.1

Minutes	G	No.	Min/G
Lucas, Maggie	7	242	34.6
Bentley, Alex	7	236	33.7
Gray, Zhaque	7	229	32.7
Edwards, Ariel	7	186	26.6
Greene, Nikki	7	123	17.6

Turnovers	G	No.	TO/G
Bentley, Alex	7	25	3.6
Lucas, Maggie	7	18	2.6
Greene, Nikki	7	15	2.1
Edwards, Ariel	7	15	2.1
Gray, Zhaque	7	12	1.7