

PENN STATE LADY LION

BASKETBALL GAME NOTES

2014-2015

Penn State Athletic Communications: 101D Bryce Jordan Center, University Park, PA 16802 Office: 814-865-1757 Fax: 814-863-3165
 Women's Basketball Contact: Kristina Petersen Twitter: @ladylionsid Website: www.GoPSUsports.com Email: kap18@psu.edu Cell: 814-883-4581 Office: 814-865-1757

SCHEDULE/RESULTS

NOVEMBER

Sun. 2 INDIANA (PA.) (ex.) W, 75-71
Preseason WNIT

Fri. 14 TOWSON W, 71-64

Sun. 16 ALBANY L, 53-54

Sat. 22 SETON HALL L, 70-75

Tues. 25 ST. BONAVENTURE (BTN Plus) .. L, 54-56

Georgia State Thanksgiving Tournament

Fri. 28 vs. Liberty L, 68-80

Sun. 30 vs. Samford L, 56-59 (OT)

DECEMBER

Big Ten/ACC Challenge

Thurs. 4 at #21/22 Syracuse L, 39-61

Sun. 7 WAGNER (BTN Plus) W, 96-66

Wed. 10 at Hartford L, 57-62

Sun. 14 RIDER W, 85-51

Sun. 21 USF (BTN Plus) L, 87-90 (OT)

Sun. 28 at #23/20 Iowa * (BTN Plus) .. L, 52-77

JANUARY

Thurs. 1 at Michigan * (BTN Plus) L, 53-89

Sun. 4 ILLINOIS * (BTN Plus) L, 76-91

Tues. 6 at Wisconsin * (BTN) 9 p.m.

Sat. 10 RUTGERS * (BTN) noon

Thurs. 15 at Nebraska * (BTN) 7 p.m.

Sun. 18 at Ohio State * (BTN Plus) 2 p.m.

Thurs. 22 INDIANA * (BTN Plus) 7 p.m.

Sun. 25 NORTHWESTERN * (BTN Plus) .. 2 p.m.

Wed. 28 at Minnesota * (BTN Plus) 8 p.m.

FEBRUARY

Sun. 1 at Rutgers * (BTN) noon

Thurs. 5 MARYLAND * (BTN Plus) 7 p.m.

Sun. 8 at Purdue * (BTN Plus) 2 p.m.

Wed. 11 MICHIGAN ST. * (BTN Plus) ... 7 p.m.

Sun. 15 MINNESOTA * (BTN Plus) 2 p.m.

Mon. 23 at Maryland * (BTN) 7 p.m.

Thurs. 26 OHIO STATE * (BTN Plus) 7 p.m.

MARCH

Ninth Annual Pink Zone at Penn State

Sun. 1 WISCONSIN * (BTN/BTN+) .. 1/3/5 p.m.

Wed.-Sun. 4-8 Big Ten Tour. (BTN/ESPN2)
 Hoffman Estates, Ill.

Sat.-Tues. 20-23 .. NCAA Tour. 1st & 2nd Round

Sat.-Tues. 27-30 NCAA Tour. Regionals

APRIL

Sun./Tues. 5/7 NCAA Final Four (Tampa, Fla.)

BOLD CAPS indicates home game

* - indicates Big Ten game

All times are Eastern Time.



BTN - Big Ten Network BTN Plus - BTN.com

Schedule subject to change. Please visit www.

GoPSUsports.com for up-to-date tip times.

Game #15: Penn State at Wisconsin

Tues., Jan. 6 ▶ 9 p.m. (ET) ▶ Kohl Center ▶ Madison, Wis.

		SETTING THE SCENE
Penn State Lady Lions	Wisconsin Badgers	The Wisconsin Game
Record: 3-11, 0-3 Big Ten	Record: 5-8, 1-2 Big Ten	Series: Penn State leads 29-11
Last Game: Illinois 91, PSU 76 (1/4)	Last Game: Minnesota 72, UW 60 (1/4)	Last Meeting: PSU 78, WIS 68 (2/16/14)
Head Coach: Coquese Washington	Head Coach: Bobbie Kelsey	Streak: PSU - 1 win
Career Record: 145-92 (8th yr.)	Career Record: 36-56 (4th yr.)	Television: Big Ten Network - Eric Collins (PBP) & Shelly Till (Analyst)
Record at PSU: 145-92 (8th yr.)	Record at UW: 36-56 (4th yr.)	Radio: The game is on WRSC 1390 The Fanatic locally with Jerry Fisher and Julia Trogele calling the action. The audio feed is available at www.GoPSUsports.com.
Statistical Leaders	Statistical Leaders	Webstream: BTN2GO
Points Lindsey Spann (16.4)	Points Nicole Bauman (13.0)	Live Stats: GoPSUsports.com
Rebounds Kaliyah Mitchell (6.7)	Rebounds Cassie Rochel (6.3)	
Assists Sierra Moore (3.8)	Assists Nicole Bauman (4.2)	

SERIES QUICK HITS

- ✓ The Badgers are 5-8 on the season and 1-2 in Big Ten play.
- ✓ Nicole Bauman leads the way for the Badgers with a 13.0 scoring average to go along with 3.8 assists per game and 1.2 steals.
- ✓ Jacki Gulczynski accounts for 8.4 points and 4.8 rebounds per game, while Dakota Whyte adds 8.1 tallies and 3.8 rebounds.
- ✓ The Lady Lions are 29-11 all-time against Wisconsin but are just 9-9 in games played in Madison.
- ✓ Penn State has won four of the last five meetings with the Badgers, including a 78-68 win in the only meeting between the squads last season.
- ✓ PSU is just 2-5 in the last seven games played at the Kohl Center.

STORYLINES

- ✓ Lady Lion head coach **Coquese Washington** has used six different starting lineups in the first 14 games.
- ✓ Washington has also used a different starting five in each of the three Big Ten contests.
- ✓ Spann recorded her fifth 20-point game of the season with 20 tallies against Illinois Sunday.
- ✓ Guard **Lindsey Spann** was selected as the Dec. 30 Big Ten Freshman of the Week after scoring 22 points in the Big Ten opener at Iowa.
- ✓ Sophomore **Alex Harris** tied her career-high with 11 rebounds at Iowa on Dec. 28.
- ✓ **Candice Agee** posted her first career double-double with 21 points and 11 rebounds vs. USF.

UP NEXT

The Lady Lions return to the BJC to face Rutgers on Saturday at noon. It's another Subway Full Court 4 Pack game where fans get four tickets, four 6" subs and four 21 oz. drinks at a State College Subway for just \$40. It's also Penn State Alumni Association Day, fans that present their Alumni Association membership card and receive a \$5 ticket.

Table of Contents	PSU's Record When.....5	Season Highs/Lows.....10
Schedule, Results, Storylines.....1	Notable Games.....5	Miscellaneous Stats.....11
Roster, Quick Facts.....2	Lions in the Big Ten Stats.....6	Coquese Washington.....12
Team Comparison, Series History.....2	The Last Time Penn State.....8	Player Bios.....13-24
What's at Stake.....3	Record Book.....9	2014-15 Box Scores.....25-28
Big Ten Standings/Schedule.....3	2015 Signing Class.....9	2014-15 Stats.....29-30
Possible Starters.....3	Milestone Watch.....9	Radio/TV Chart.....31



2014-15 ROSTER

PENN STATE LADY LIONS

No.	Name	Pos.	Cl./Elg.	Ht.	Hometown/High School (Previous School)
1	Candice Agee **	C	Jr./Jr.	6-6	Victorville, Calif./Silverado
3	Brianna Banks	G	Sr./Sr. [^]	5-9	Newnan, Ga./Fayette County (Connecticut)
5	Sierra Moore	G	Jr./So.	5-11	Hanover, Pa./Delone Catholic (Duke)
10	Keke Sevillian *	G	So./So.	5-7	Goodrich, Mich./Goodrich
11	Alex Harris *	F	So./So.	6-3	Lorain, Ohio/Lorain
12	Lindsey Spann	G	So./Fr.	5-6	Laurel, Md./Good Counsel
14	Dominique Brooks	C	Jr./Jr.	6-4	Lansing, Ill./T.F. South (Trinity Valley C.C.)
15	Kalayah Mitchell *	F	So./So.	6-2	Stone Mountain, Ga./Stephenson
25	Peyton Whitted *	F	So./So.	6-3	Suwanee, Ga./North Gwinnett
34	Molly Dincher	G/F	Sr./Sr.	6-0	Williamsport, Pa./Williamsport Area (PSU Wilkes Barre)
41	Jen N.Y. DeGraaf *	F	So./So.	6-1	Springboro, Ohio/Springboro
44	Tori Waldner ***	F/C	Sr./Sr.	6-5	Milton, Ga./Milton

Head Coach: Coquese Washington (Notre Dame '92)

Asst. Coaches: Itoro Coleman, Kia Damon, Jocelyn Wyatt

Captains: Tori Waldner, Sierra Moore, Lindsey Spann

* Indicates letters earned

WISCONSIN BADGERS

No.	Name	Pos.	Cl.	Ht.	Hometown/High School (Previous School)
00	Shannon Malone	F	Jr.	6-1	Flower Mound, Texas/Marcus
1	Dakota Whyte	G	Jr.	5-8	Toronto, Ontario/Notre Dame Catholic
3	AnnMarie Brown	G/F	Sr.	6-0	St. Peter, Minn./St. Peter
4	Nicole Bauman	G	Jr.	5-10	New Berlin, Wis./Eisenhower
5	Roichelle Marble	G	Fr.	5-7	Des Moines, Iowa/East
22	Tessa Cichy	G	Jr.	6-0	Somerset, Wis./Hill-Murray (Minn.)
23	Cayla McMorris	G	Fr.	6-0	Brooklyn, Minn./Park Center
24	Malayna Johnson	F/C	So.	6-4	Bellwood, Ill./Montini Catholic
25	Michala Johnson	F/C	RS-Sr.	6-3	Bellwood, Ill./Montoni (Connecticut)
30	Carly Truesdale	G	So.	5-9	San Antonio, Texas/Westbury Christian
32	Michaela Crall	F	RS-Fr.	6-3	Olathe, Kansas/Olathe Northwest
35	Jacki Gulczynski	F	Sr.	6-2	Carol Stream, Ill./Bartlett
40	Avyanna Young	F	Jr.	6-1	Milwaukee, Wis./Rufus King (Milwaukee)
41	Rosanna Gambino	C	RS-Jr.	6-4	Oswego, Ill./Oswego (Kishwaukee College)
43	Cassie Rochel	F/C	RS-Sr.	6-4	Lakeville, Minn./Lakeville North

Head Coach: Bobbie Kelsey

Assistant Coaches: Jayme Stewart, Stacy Cantley, Alysiah Bond

TEAM COMPARISON

PENN STATE		WISCONSIN	
Spann (16.4)	Scoring Leader	Bauman (13.0)	
Mitchell (6.7)	Rebounding Leader	Rochel (6.3)	
Moore (3.8)	Assist Leader	Bauman (4.2)	
Mitchell (1.8)	Steals Leader	Whyte (1.5)	
Agee (1.8)	Blocks Leader	Rochel (1.8)	
65.5	Scoring Offense	59.2	
69.6	Scoring Defense	63.1	
-4.1	Scoring Margin	-3.9	
41.2	Rebounds Per Game	36.9	
+1.0	Rebound Margin	+0.4	
13.2	Assists Per Game	14.8	
8.1	Steals Per Game	5.2	
.409	Field Goal Pct.	.418	
.385	FG Defense Pct.	.387	
.235	3-pt. FG Pct.	.335	
.334	3-pt. FG Pct. Def.	.287	
.629	Free Throw Pct.	.711	
0.7	Assist/Turnover	0.8	
Lost 4	W/L Streak	Lost 2	

SERIES HISTORY

Overall:	PSU leads 29-11
Last meeting:	Feb. 16, 2014
Last result:	PSU, 78-68
Current streak:	PSU - 1 win
Last 10:	PSU, 6-4
Last 10 meetings:	
1/22/09	H PSU, 58-56 (OT)
2/12/09	A WIS, 52-58
1/21/10	A PSU, 54-43
2/25/10	H WIS, 39-71
1/2/11	A WIS, 62-77
1/2/12	A PSU, 82-49
2/9/12	H PSU, 69-54
1/17/13	H PSU, 84-40
1/31/13	A WIS, 61-63
2/16/14	H PSU, 78-68

QUICK FACTS

THE UNIVERSITY

Location: University Park, Pa.
 Founded: 1855
 Enrollment: 48,184 (as of fall 2013)
 Colors: Blue & White
 Nickname: Lady Lions
 Conference: Big Ten
 President: Eric Barron
 Director of Athletics: Sandy Barbour
 Senior Woman Administrator: Charmelle Green
 Asst. Athletic Director: Jenn James
 Facility (cap.): Bryce Jordan Center (15,104)
 All-Time Record at BJC: 218-58 (19 seasons)

ATHLETIC COMMUNICATIONS

WBB Contact: Kristina Petersen
 Phone/Fax: (814) 865-1757/(814) 863-3165
 E-mail: kap18@psu.edu
 Address: 101-D Bryce Jordan Center
 University Park, Pa. 16802
 Press Row Phone: 814-863-3294
 Website: www.GoPSUsports.com
 Twitter: @ladylionsid

TEAM INFORMATION

2014-15 Record: 3-11
 Home: 3-5 Away: 0-4 Neutral: 0-2
 Big Ten Record: 0-3
 Home: 0-1 Away: 0-2
 Letterwinners Returning/Lost: 6/5
 Starters Returning/Lost: 1/4
 2014 Postseason: NCAA Sweet Sixteen

THE HISTORY

First Year of Women's Basketball: 1965
 All-Time Record: 884-405 (51 seasons)
 All-Time Big Ten Rec.: 244-125 (23 seasons)
 NCAA Tournament Appearances: 25
 NCAA Tournament Record: 32-25

WOMEN'S BASKETBALL

Head Coach: Coquese Washington
 Alma Mater: Notre Dame '92
 Overall Record: 145-92 (eighth season)
 School Record: 145-92 (eighth season)
 Twitter: @coquesewashing
 Basketball Office Phone: 814-863-2672
 Basketball Office Fax: 814-863-1221
 Best Time To Reach Coach: Through SID
 Assistant Coaches (Alma Mater):
 Itoro Coleman (Clemson '00)
 Kia Damon (Millersville '97)
 Jocelyn Wyatt (Appalachian State '06)
 Twitter/Instagram: @pennstatewbb
 Facebook: facebook.com/pennstateladylions

PRONUNCIATIONS

Coquese	ko-KWEES
Itoro	E-tora
Agee	A-gee
DeGraaf	D-graph
Kalayah	kah-LEE-uh
Sevillian	civilian
Spann	span
Whitted	WIT-tid



STANDINGS (as of 1/4)

Team	Big Ten			Overall		
	W	L	Pct.	W	L	Pct.
Minnesota	3	0	1.000	14	1	.933
Iowa	2	0	1.000	11	2	.846
Maryland	2	0	1.000	11	2	.846
Northwestern	2	1	.667	12	2	.857
Michigan	2	1	.667	10	4	.714
Ohio State	2	1	.667	10	5	.667
Purdue	2	1	.667	9	5	.643
Illinois	1	1	.500	10	4	.714
Indiana	1	2	.333	11	3	.786
Rutgers	1	2	.333	10	4	.714
Wisconsin	1	2	.333	5	8	.385
Nebraska	0	2	.000	10	3	.769
Michigan State	0	3	.000	8	6	.571
PENN STATE	0	3	.000	3	11	.214

BIG TEN SCHEDULE

JANUARY 6

Penn State at Wisconsin 9 p.m.

JANUARY 7

Michigan at Rutgers 7 p.m.

JANUARY 8

Purdue at Maryland 6:30 p.m.

Ohio State at Indiana 7 p.m.

Iowa at Illinois 8 p.m.

Nebraska at Michigan State 8:30 p.m.

JANUARY 10

Rutgers at Penn State noon

JANUARY 11

Purdue at Iowa 2 p.m.

Ohio State at Michigan 2 p.m.

Wisconsin at Indiana 2 p.m.

Maryland at Minnesota 3 p.m.

Michigan State at Northwestern 3 p.m.

Nebraska at Illinois 3 p.m.

All times are Eastern.

POSSIBLE STARTERS



1 CANDICE AGEE C
Jr., 6-6, Victorville, Calif.
10.2 ppg, 5.3 rpg, 1.8 bpg, .561 FG%

Notes: Recorded first career double-double (21 p, 11 r) vs. USF ... Registered 19 points, 9 rebounds and a career-high 5 blocks versus Rider ... Posted 20 points and 8 rebounds at Hartford.



5 SIERRA MOORE G
RS-So., 5-11, Hanover, Pa.
11.9 ppg, 4.7 rpg, 3.8 apg, 1.2 spg

Notes: Registered 14 pts. with 6 rebs., 5 assists and 2 steals vs. Illinois ... Notched 11 pts. and 2 blocks at Michigan ... Had second double-double (17 p, 10 r) vs. USF ... Dished out a career-high 7 assists vs. Rider.



10 KEKE SEVILLIAN G
So., 5-7, Goodrich, Mich.
2.6 ppg, 1.7 rpg, 1.2 spg

Notes: Has three career starts, all this season ... Had four points via 2-for-3 shooting effort with three rebounds vs. Illinois ... Grabbed a career-high four rebounds at Iowa.



12 LINDSEY SPANN G
RS-Fr., 5-6, Laurel, Md.
16.4 ppg, 3.2 rpg, 3.6 apg, 1.4 spg

Notes: Leads team in scoring (16.4) ... Tallied 20 points with 6 rebs. & 4 assists vs. Illinois ... Had 15 points at Michigan ... Registered 22 points and 4 assists at Iowa ... Posted a career-high 28 points vs. USF.



44 TORI WALDNER F
Sr., 6-5, Milton, Ga.
4.9 ppg, 6.5 rpg, 1.7 bpg

Notes: Had nine points and seven rebounds vs. Illinois ... Nominee for the Allstate WBCA Good Works Team ... Ranks eighth on Penn State's career blocks list (108) ... SAAB President.

LAST TIME OUT

- Penn State outscored Illinois, 49-44, in the second half, but it wasn't enough for the Lady Lions to overcome a 20-point halftime deficit in their 91-76 setback to the Illini on Sunday.
- Freshman **Lindsey Spann** and sophomore **Sierra Moore** each reached double figures in the game, with 20 and 14 points, respectively.
- For Spann, she has scored 20-plus points in five of her last seven games and also added two steals, four assists and a career-best six rebounds versus the Illini.
- In addition to her 14 points, Moore finished the game with six rebounds, five assists and two steals.
- Sophomore **Kaliyah Mitchell** also reached double figures in the scoring column, with all 11 of her points coming in the second half.

SCOUTING WISCONSIN

- The Badgers are 5-8 on the season and 1-2 in Big Ten play. However UW has notable wins over Marquette, Florida and Michigan on the year.
- Nicole Bauman leads the way for the Badgers with a 13.0 scoring average to go along with 3.8 assists per game and 1.2 steals.
- Jacki Gulczynski accounts for 8.4 points and 4.8 rebounds per game, while Dakota Whyte adds 8.1 tallies and 3.8 rebounds.
- Cassie Rochel leads the Badgers in rebounding (6.3 rpg) and blocks (21).

ALL-TIME VERSUS THE BADGERS

- The Lady Lions are 29-11 all-time against Wisconsin but are just 9-9 in games played in Madison.
- Penn State has won four of the last five meetings with the Badgers, including a 78-68 win in the only meeting between the squads last season.
- PSU is just 2-5 in the last seven games at the Kohl Center.
- The Lady Lions did not visit Wisconsin last season. In the last game in Madison, the Badgers posted a thrilling 63-61 win on Jan. 31, 2013.

WHAT'S AT STAKE

A Penn State Win at Wisconsin Would:

- Make Penn State 29-11 all-time against the Badgers.
- Make the Lady Lions record at 4-10 on the season.
- Improve PSU to 1-3 in Big Ten play.
- Give Penn State its first win at the Kohl Center since Jan. 2, 2012.

LAST TIME VS. WISCONSIN

FEB. 16, 2014 • UNIVERSITY PARK, PA.

Wisconsin 68 • 10-15, 3-10															
#	Player	FG	FGA	FT	FTA	3-PT	3-PTA	Rebounds	PF	TP	A	To	Blk	Stl	Min
2	Wurtz, Taylor	6-14	1-6	3-5	2-6	8	2	16	2	1	1	0	3	38	
25	Johnson, Michala	8-14	0-0	3-5	3-5	8	3	19	0	4	0	0	35		
35	Gulczynski, Jacki	1-4	0-1	0-0	3-4	7	1	2	0	1	1	0	33		
4	Bauman, Nicole	6-10	5-8	0-0	1-3	4	3	17	3	2	0	0	30		
5	Palge, Moran	3-10	0-3	2-2	1-1	2	5	8	7	5	2	0	37		
18	Whyte, Dakota	0-2	0-1	0-0	0-1	1	1	0	1	2	0	0	14		
22	Cichy, Tess	0-1	0-0	0-0	0-0	0	1	0	0	0	0	0	1		
24	Johnson, Malayna	1-2	0-0	4-4	0-3	2	6	0	0	0	1	1	10		
3	Brown, AnnMarie	0-0	0-0	0-0	0-0	0	0	0	0	0	0	0	2		
Team		2-2		4-4		2-2		18		13		15		4	
Totals		25-57		6-19		12-16		12		25		37		18	
FG % 1st Half:		12-30 40.0%		2nd half:		13-27 48.1%		Game:		25-57 43.9%		Deadball		Rebounds	
3FG % 1st Half:		3-10 30.0%		2nd half:		3-9 33.3%		Game:		6-19 31.6%		1			
FT % 1st Half:		3-9 77.8%		2nd half:		5-7 71.4%		Game:		12-16 75.0%					
Penn State 78 • 20-5, 11-2															
#	Player	FG	FGA	FT	FTA	3-PT	3-PTA	Rebounds	PF	TP	A	To	Blk	Stl	Min
02	Taylor, Dara	4-11	1-2	1-2	0-2	2	3	10	4	0	0	0	3	40	
05	East, Talia	4-6	0-0	0-0	2-4	6	4	8	0	3	2	2	21		
23	Edwards, Ariel	5-13	0-0	6-6	7-10	1	16	0	1	1	0	37			
33	Lucas, Maggie	8-17	1-3	8-8	2-3	5	3	25	5	1	0	1	38		
44	Waldner, Tori	5-13	0-0	2-2	4-2	10	0	0	2	0	0	28			
01	Agee, Candice	0-0	0-0	0-0	0-1	1	1	0	1	0	0	0	4		
11	Harris, Alex	0-0	0-0	0-0	0-1	2	0	0	0	0	0	0	5		
15	Mitchell, Kaliyah	2-3	0-0	3-5	0-4	1	7	1	0	1	0	1	20		
25	Whitted, Peyton	1-2	0-0	0-0	0-1	2	2	0	2	0	0	0	7		
Team		0-2		0-2		0-2		19		78		10		7	
Totals		29-65		2-5		18-21		13		23		36		19	
FG % 1st Half:		15-36 41.7%		2nd half:		14-29 48.3%		Game:		29-65 44.6%		Deadball		Rebounds	
3FG % 1st Half:		2-5 40.0%		2nd half:		0-0 0.0%		Game:		2-5 40.0%		1			
FT % 1st Half:		8-9 88.9%		2nd half:		10-12 83.3%		Game:		18-21 85.7%					
Officials: Felicia Grinter, Dawn Marsh, Kevin Dillard															
Technical fouls: Wisconsin-None, Penn State-None															
Attendance: 12385															
Score by periods				1st	2nd	Total									
Wisconsin				34	34	68									
Penn State				40	38	78									
Last FG - WIS 2nd-01:38, PSU 2nd-00:46										Score tied - 3 times.					
Largest lead - WIS by 9 1st-16:43, PSU by 12 1st-06:33										Last changed - 3 times.					



PRESS CONFERENCE SCHEDULE

Coquese Washington will hold a weekly press conference and the Lady Lions will have media availability on a weekly basis throughout the season. All press conferences will begin at 2:30 p.m. (unless otherwise noted) and go for approximately 15-20 minutes, followed by a 15-minute open media session prior to practice. Press conference will be held in the Media Room at the Bryce Jordan Center (unless otherwise noted).

Press Conference Dates

Thursday, Jan. 8 (noon)	Wednesday, Feb. 18
Wednesday, Jan. 14	Wednesday, Feb. 25
Wednesday, Jan. 21	Tuesday, March 3 or Wednesday,
Tuesday, Jan. 27	March 4 (pending travel plans for
Wednesday, Feb. 4	BTT)
Tuesday, Feb. 10 (Practice Gym)	

LAST TIME VERSUS UW

- The Lady Lions used a 9-0 run late in the second half to post a 78-68 win over Wisconsin in the Eighth Annual Pink Zone at Penn State game in front of 12,585 fans, including 698 breast cancer survivors.
- Senior guard **Maggie Lucas** continued her stellar play with a game-high 25 points on 8-of-17 shooting to go along with five rebounds, five assists and a steal.
- Fellow senior **Ariel Edwards** posted her third double-double of the season with 16 points to go along with 10 rebounds, including seven on the offensive glass.
- Dara Taylor** also reached double figures with 10 points, four assists and three steals.
- Junior **Tori Waldner** also reached double-digits with 10 tallies to go along with four rebounds and two blocks, while senior **Talia East**, who keyed the Lions' late run, ended with eight points, six rebounds, two blocks and two steals.

LOOKING FOR THE RIGHT COMBO

- Lady Lion head coach **Coquese Washington** has used six different starting lineups in the first 14 games.
- She has also used a different starting five in each of the three Big Ten contests.
- Only **Lindsey Spann** and **Sierra Moore** are the only players to have started every game for Penn State this season.

#12 HITS 20 AGAIN

- Freshman guard **Lindsey Spann** hit the 20-point mark for the fifth time this season with a 20-point effort against Illinois on Jan. 4.
- Spann has hit the plateau in five of her last seven games.
- She has the most 20-point outings for a Penn State freshman since Maggie Lucas had 13 in 2010-11. Kelly Mazzante in second in that category with 10 games with 20 or more points as a rookie.

SPANN EARNS FRESHMAN WEEKLY HONORS

- Freshman guard **Lindsey Spann** was selected as the Big Ten Freshman of the Week for the week-ending Dec. 29.
- She is the first Lady Lion to win Freshman of the Week accolades since Maggie Lucas earned the honor on Feb. 28, 2011.
- Spann had a game-high 22 points in Penn State's Big Ten opener at Iowa on Dec. 28.
- She connected on a career-high four three-pointers and six free throws for her fourth 20-point performance in her last five games.
- Spann also pulled in five rebounds and dished out four assists against the Hawkeyes.

LADY LIONS GET SOCIAL: The Lady Lions are on several social media sites, including Twitter, Instagram and Facebook. Follow the Lady Lions and assistant coaches (@pennstatewbb), head coach Coquese Washington (@coquesewashing) and sports information contact Kris Petersen (@ladylionsid) on Twitter to get the inside scoop. The Lady Lions are also on Instagram (@pennstatewbb) and Facebook at www.facebook.com/pennstateladylions.



FORCE IN THE POST

- Junior center **Candice Agee** has proven to be a force in the post this season.
- In fact with one swat at Michigan on Jan. 1, Agee now has 25 blocks on the season, surpassing her career-best season total of 21 from 2013-14.
- Agee ranks tied for seventh in the Big Ten in blocked shots with a 1.8 per game average.

THREE-STRAIGHT 20s FOR SPANN

- Freshman guard **Lindsey Spann** posted her third consecutive game with 20 or more points with a 22-point effort at Iowa to open Big Ten play on Dec. 28.
- It is the fourth 20-point performance of the season for the rookie.
- Spann is the first Lady Lion freshman with three-straight 20-point outings since Maggie Lucas accomplished the feat from Jan. 6 to Jan. 16.
- Spann netted a career-high four three-point field goals and six free throws vs. the Hawkeyes. She also tied her career-best with five rebounds.
- Spann leads the team in double-digit performances and has now earned 11 or more points in 10 of her first 12 career games. She has netted 20 points in four of those contests.

HARRIS PULLING IN THE BOARDS

- Sophomore **Alex Harris** tied her career-high with 11 rebounds in the Big Ten opener at Iowa on Dec. 28.
- Her effort equals the mark set twice last season against Illinois State on Nov. 30, 2013 and versus Bucknell on Nov. 20, 2013.
- In her first two games of the season, Harris has pulled in 19 rebounds for a 9.5 per game average.

PENN STATE'S OVERALL/BIG TEN YEAR-BY-YEAR REVIEW

Year	Overall	Big Ten	Home	BT Home	Road	BT Road	Neutral
1992-93	22-6	14-4	12-2	9-0	9-4	5-4	0-0
1993-94	28-3	16-2	14-0	9-0	11-2	7-2	3-1
1994-95	26-5	13-3	14-2	8-0	9-3	5-3	3-0
1995-96*	27-7	13-3	14-2	8-0	8-4	5-3	5-1
1996-97	15-12	8-8	9-3	5-3	5-6	3-5	1-3
1997-98	21-13	8-8	10-5	4-4	6-6	4-4	5-2
1998-99	22-8	12-4	9-2	6-2	9-4	6-2	4-2
1999-00	30-5	15-1	14-0	8-0	9-2	7-1	7-3
2000-01	19-10	11-5	11-2	7-1	6-5	4-4	2-3
2001-02	23-12	11-5	10-4	6-2	9-5	5-3	4-3
2002-03	26-9	13-3	16-0	8-0	7-7	5-3	2-2
2003-04	28-6	15-1	12-1	8-0	9-3	7-1	6-2
2004-05	19-11	13-3	12-0	8-0	6-9	5-3	1-2
2005-06	13-16	6-10	8-6	5-3	3-8	1-7	2-2
2006-07	15-16	7-9	12-1	7-1	2-12	0-7	1-3
2007-08	13-18	4-14	10-6	3-6	3-11	1-8	0-1
2008-09	11-18	6-12	8-6	4-5	2-9	2-7	1-3
2009-10	17-14	8-10	9-6	5-4	5-7	3-6	3-1
2010-11	25-10	11-5	14-4	6-2	7-4	5-3	4-2
2011-12	26-7	13-3	12-2	6-2	11-3	7-1	3-2
2012-13	26-6	14-2	14-0	8-0	9-5	6-2	3-1
2013-14	24-8	13-3	14-4	6-2	8-3	7-1	2-1
2014-15	3-11	0-3	3-5	0-1	0-4	0-2	0-2

* First season at the Bryce Jordan Center



PENN STATE-WISCONSIN NOTABLE GAMES

Feb. 4, 2007 - Penn State 70, Wisconsin 61

Pink was the color of the day at the Bryce Jordan Center on Feb. 4, 2007, but it was the Lady Lions who left the Wisconsin Badgers blue after a 70-61 victory in front of 8,808 fans at the inaugural THINK PINK Day. Freshman guard **Tyra Grant** netted a game-high 28 points on 9-of-17 shooting and was a perfect 6-for-6 from the free throw line. Junior guard **Kam Gissendanner** also reached double figures with 16 points and grabbed six rebounds, while sophomore guard **Brianne O'Rourke** added 16 points, six rebounds and four assists.

Jan. 22, 2009 - Penn State 58, Wisconsin 56 (OT)

Tyra Grant scored 32 of Penn State's 58 points and connected on the game-winning jumper at the overtime buzzer to help the Lady Lions erase a 17-point second-half deficit en route to a 58-56 overtime win versus Wisconsin on Jan. 22, 2009. The junior guard scored 12 of PSU's 13 points in overtime. Grant's effort was the second-highest scoring performance of her career, trailing only her 33-point game at Iowa (Feb. 18, 2007) her freshman year. Sophomore **Julia Trogele** was the only other Lady Lion in double figures with 10 points on 5-of-9 shooting.

Jan. 31, 2013 - Wisconsin 63, Penn State 61

The Lady Lions had their 11-game winning streak snapped as Tiera Stephen converted on a rebound and layup with five seconds left to lift Wisconsin to a 63-61 on Jan. 31, 2013. **Alex Bentley** had a chance to tie the game at the buzzer but her attempt lipped out. **Maggie Lucas** was 7-for-12 from the field, including 4-of-6 from three-point range, en route to 18 points. She also had three rebounds and a pair of steals.

OF NOTE

- Sophomore **Alex Harris** earned her first career start at Michigan on Jan. 1.
- Sophomore **Keke Sevellian** scored a career-best nine points on 3-of-3 shooting from the field and 3-of-7 shooting from the free throw line in the win over Rider on Dec. 14. Her previous career-high was eight points vs. St. Francis (Pa.) on Nov. 8, 2013.
- The Lady Lions scored a season-low 39 points Syracuse on Dec. 4, their lowest point total since scoring 39 points in a loss to Wisconsin on Feb. 25, 2010.
- Penn State held Samford 13 points in the first half on Nov. 30, which are the fewest points allowed by PSU in a half since NJIT scored nine points in the first half on Dec. 23, 2012.
- Sophomore **Keke Sevellian** made her first career start and junior **Candice Agee** made her fourth career start against Seton Hall (11/22).
- Sophomore **Kalayah Mitchell** tied her career high with 10 rebounds against Seton Hall on Nov. 22.
- With the loss to Seton Hall, Penn State dropped to 1-2 to start a season for the first time since 2005-06, when the Lady Lions started 1-3.
- Freshman **Lindsey Spann** and sophomores **Kalayah Mitchell**, **Sierra Moore** and **Peyton Whitted** all made their first career starts for the Lady Lions against Towson on Nov. 14.
- Junior **Candice Agee** tied her career high with nine rebounds against Towson Nov. 14. She also grabbed nine rebounds vs. Fairleigh Dickinson on Dec. 2, 2012.
- Sophomore **Keke Sevellian** reached a career high in assists with five in the season opener against Towson on Nov. 14.
- With the win over Towson on Nov. 14, **Coquese Washington** improved to a perfect 8-0 in the first game of the season since taking the helm of the Lady Lion program for the 2007-08 season.
- Head coach **Coquese Washington** has selected senior **Tori Waldner**, redshirt-sophomore **Sierra Moore** and redshirt-freshman **Lindsey Spann** as team captains for the 2014-15 season.
- Sophomore forward **Peyton Whitted's** father, Kevin, was recently named the head coach of the NBA Developmental League's Westchester Knicks.

ANOTHER SCORING MARK FOR SPANN

- Freshman **Lindsey Spann** finished with a career-best 28 points against USF on Dec. 21.
- Her performance tops her previous career high of 23 set against Rider on Dec. 14.
- Spann's 28 points vs. USF are the most by a Penn State player since Ariel Edwards netted 29 points vs. Ohio State in the Big Ten Tournament on March 7, 2014.
- The 28 tallies are the most by a Penn State freshman since Maggie Lucas had 28 in the overtime loss at Boston College on Dec. 2, 2010.
- Spann tied her career-high with 11 field goals made and set career-best marks in field goals attempted (22), along with free throws made (5) and attempted (9) against the Bulls.

HARRIS' CAREER DAY

- Playing in her first game this season against USF on Dec. 21, sophomore **Alex Harris** set career-highs in points (9), free throws made (3) and attempted (8), and minutes played (31).
- She also tied her career-best marks in field goals made (3) and attempted (5), assists (2) and blocked shots (3).
- Harris also pulled down eight rebounds to push her career total over the century mark.

PENN STATE'S RECORD WHEN...

Playing at home	3-5
Playing on the road	0-4
Playing at a neutral site	0-2
vs. Top 10 teams	0-0
vs. Top 25 teams	0-2
Games decided by 3 points or less	0-4
Games decided by 4-10 points	1-2
Games decided by 11-19 points	0-2
Games decided by 20 points or more	2-3
Leading at the half	3-3
Tied at the half	0-2
Trailing at the half	0-6
Leading with 5:00 remaining	3-2
Trailing with 5:00 remaining	0-9
Tied with 5:00 remaining	0-0
In overtime	0-0
PSU scores less than 49 points	0-1
PSU scores 50-59 points	0-5
PSU scores 60-69 points	0-2
PSU scores 70-79 points	1-2
PSU scores 80 points or more	2-1
PSU shoots 45% or better	3-1
PSU shoots less than 45%	0-10
PSU shoots better than opponent	3-5
Opponent shoots better than PSU or tied	0-6
Opponent scores less than 39 points	0-0
Opponent scores 40-49 points	0-0
Opponent scores 50-59 points	1-3
Opponent scores 60-69 points	2-2
Opponent scores more than 70 points	0-6
Opponent shoots better than 45%	0-3
Opponent shoots less than 45%	3-8
PSU outrebounds opponent	3-4
Opponent outrebounds PSU or tied	0-7
PSU commits 14 or less turnovers	2-2
PSU commits 15 or more turnovers	1-9
PSU makes at least 5 3-pointers	0-1
PSU makes four 3-pointers or less	3-10
Recording 7 or more steals	3-8
Recording 6 or less steals	0-3
Wearing white uniforms	3-5
Wearing blue uniforms	0-6
Wearing white and pink uniforms	0-0
Penn State wins the tip	2-8
Penn State loses the tip	1-3
Penn State scores first	3-3
Opponent scores first	0-8
Playing during the day (before 5 p.m.)	3-7
Playing at night	0-4
On Monday	0-0
On Tuesday	0-1
On Wednesday	0-1
On Thursday	0-2
On Friday	1-1
On Saturday	0-1
On Sunday	2-5
In November	1-5
In December	2-4
In January	0-2
In February	0-0
In March	0-0



LIONS IN THE BIG TEN STATS

A breakdown of where Penn State ranks in the Big Ten's overall statistical categories. Through games of Jan. 4.

TEAM	
Scoring Offense.....	13th (65.5)
Scoring Defense.....	13th (69.6)
Scoring Margin.....	14th (-4.1)
Free Throw Percentage.....	14th (.629)
FG Percentage.....	13th (.409)
FG Percentage Defense.....	10th (.385)
3-point FG Percentage.....	14th (.235)
3-point FG Pct. Defense.....	13th (.334)
3-point FG Made.....	T-13th (2.5)
Rebounding Offense.....	7th (41.2)
Rebounding Defense.....	9th (40.2)
Rebounding Margin.....	9th (+1.0)
Offensive Rebounds.....	6th (13.4)
Defensive Rebounds.....	9th (27.9)
Blocked Shots.....	4th (5.3)
Assists.....	14th (13.2)
Steals.....	9th (8.1)
Turnover Margin.....	12th (-1.0)
Assist to Turnover Ratio.....	14th (0.7)
INDIVIDUAL	
Scoring.....	8th - Lindsey Spann (16.4) 29th - Sierra Moore (11.9)
Rebounding.....	16th - Kaliyah Mitchell (6.7) 19th - Tori Waldner (6.5)
Field Goal Pct.....	8th - Candice Agee (.561)
Assists.....	12th - Sierra Moore (3.8) T-15th - Lindsey Spann (3.6)
Blocked Shots.....	T-7th - Candice Agee (1.8) 12th - Tori Waldner (1.4)
Def. Reb.....	13th - Tori Waldner (4.9) 15th - Kaliyah Mitchell (4.7)
Minutes.....	8th - Lindsey Spann (33.9) 10th - Sierra Moore (33.1)

2014-15 GAME-BY-GAME STARTING LINEUPS

Date	Opponent	Pt Guard	Guard	Guard/Forward	Forward	Center
11/2	INDIANA (PA.) (ex.)	Spann	Moore	Mitchell	Whitted	Waldner
11/14	TOWSON	Spann	Moore	Mitchell	Whitted	Waldner
11/16	ALBANY	Spann	Moore	Mitchell	Whitted	Waldner
11/22	SETON HALL	Spann	Moore	Sevillian	Mitchell	Agee
11/25	ST. BONAVENTURE	Spann	Moore	Mitchell	Whitted	Agee
11/28	vs. Liberty	Spann	Moore	Mitchell	Waldner	Agee
11/30	vs. Samford	Spann	Moore	Mitchell	Whitted	Waldner
12/4	at Syracuse	Spann	Moore	Mitchell	Waldner	Agee
12/7	WAGNER	Spann	Moore	Mitchell	Waldner	Agee
12/10	at Hartford	Spann	Moore	Mitchell	Waldner	Agee
12/14	RIDER	Spann	Moore	Mitchell	Whitted	Agee
12/21	USF	Spann	Moore	Mitchell	Waldner	Agee
12/28	at Iowa	Spann	Moore	Mitchell	Whitted	Agee
1/1	at Michigan	Spann	Moore	Sevillian	Harris	Waldner
1/4	ILLINOIS	Spann	Moore	Sevillian	Waldner	Agee

DOUBLE DOUBLE-DOUBLES

- Junior **Candice Agee** and sophomore **Sierra Moore** each recorded double-doubles in the overtime loss to USF on Dec. 21.
- Agee posted her first career double-double with 21 points and 11 boards. She is the fifth different Lady Lion to accomplish the feat this season, joining **Tori Waldner**, **Moore**, **Jenny DeGraaf** and **Kaliyah Mitchell**.
- Agee's 21 points equaled her career-high which came against Seton Hall on Nov. 22, and her 11 rebounds are a career best, surpassing her previous high of nine, which she accomplished four times previously.
- Moore earned her second career double-double with a 17-point, 10-rebound performance against the Bulls.
- Her previous double-double came earlier this season vs. Seton Hall (14 pts., 10 rebs.) on Nov. 22.
- Moore moved past the 200-career point plateau with her 17-point effort against USF.
- Moore equaled her career high in boards with 10, the last time she accomplished that feat was Nov. 22 versus Seton Hall.

LINDSEY LIGHTS IT UP AGAIN

- Freshman **Lindsey Spann** recorded her ninth double-digit scoring outing with her second 20-point game of the year with 23 points versus Rider on Dec. 14.
- Her other 20-point performance was a 22-point effort against Wagner on Dec. 7.
- Spann connected on a career-high 11 field goals to account for her 23 points.
- Spann dished out five assists to match her career high and earn her seventh game of the season with four or more assists (third consecutive) versus the Broncs.

K's D-D

- Sophomore forward **Kaliyah Mitchell** earned her first career double-double, tallying 12 points and 10 rebounds against Rider on Dec. 14.
- The 10 rebounds tied her career-high, also accomplished this season vs. Seton Hall (11/22/14) and last season at Michigan State (1/19/14).
- Mitchell is the fourth Lady Lion to post a double-double this season, joining **Tori Waldner**, **Sierra Moore** and **Jenny DeGraaf**.

CAN CAN BLOCK

- Junior center **Candice Agee** recorded a career-high five blocks in the win over Rider on Dec. 14.
- The performance marked the ninth time this season she has blocked at least one shot in a game.
- With the effort against the Broncs, Agee surpassed the 50-block mark for her career.
- Agee ranks 21st in program history with 59 blocks.

WALDNER MOVES UP BLOCKS CHART

- Senior center **Tori Waldner** moved into sole possession of eighth place on Penn State's career blocks list with one rejection versus Rider on Dec. 14.
- Waldner has 108 career blocks to break a tie with former teammate Talia East (102; 2011-14) for eighth.
- Next up on the list for Waldner is Tina Henry, who had 140 blocks from 1990-93.
- She became the ninth player in school history to record 100 career blocks with one rejection against Liberty on Nov. 28.
- She is the third Lady Lion in the last three years to reach the 100-block mark, joining Nikki Greene (215; 2010-13) and Talia East (102; 2011-14).



SCORING OUTBURST

- One game after posting its lowest scoring output since 2010, the Lady Lions lit up the scoreboard for 96 points, the highest total since the 2013 season opener, in a 96-66 win over Wagner Dec. 7.
- The 96 points versus the Seahawks are the most points scored by the Lady Lions since scoring a Bryce Jordan Center record 117 points vs. St. Francis (Pa.) in the 2013-14 season opener on Nov. 8, 2013.
- The point total is also tied for 13th in BJC history.
- The Lady Lions set season highs for points (96), points in a half (54), field goals made (34), field goal percentage (.531), free throws made (25) and attempted (33) and assists (19) versus Wagner.
- Penn State also committed a season-low 12 turnovers, which are also the fewest turnover since March 7, 2014 vs. Ohio State (9).
- Additionally, the Lady Lions dished out 19 assists, the highest total since handing out 22 helpers against Purdue on Jan. 30, 2014.
- Penn State shot 53.1 percent versus the Seahawks, marking the first time that the Lions shot better than 50 percent since Michigan (.538) on March 1, 2014.

20 POINTS TIMES THREE

- The Lady Lions had three players reach the 20-point plateau in a 96-66 win over Wagner Dec. 7.
- Freshman **Lindsey Spann** (22) and sophomores **Sierra Moore** (21) and **Kalayah Mitchell** (20) all reached the mark.
- It was the first time since Nov. 26, 2011 vs. Nevada that three Lady Lions all cracked the 20-point mark in the same game: Maggie Lucas (26), Alex Bentley (23) and Zhaque Gray (21).

SPANN'S SCORING STREAK

- Freshman guard **Lindsey Spann** saw her streak of eight consecutive games with double figures to collegiate career come to an end at Hartford on Dec. 10.
- Spann's streak of eight consecutive double-digit scoring performances to start a career is a feat that was not accomplished by Maggie Lucas nor Kelly Mazzante, Penn State's two all-time leading scorers.
- The only Penn State freshman to score in double figures every game of their freshman season was Susan Robinson, who did so in 28 games in 1988-89.

HOLY CAREER HIGHS BATMAN!

- The 96-66 win over Wagner Dec. 7 produced plenty of career highs for the Lady Lions, including five players earning or tying personal scoring bests.
- Freshman guard **Lindsey Spann** set her then-career high with 22 points, topping her previous best of 17 points versus Liberty (11/28/14) and Towson (11/14/14).
- Additionally, Spann netted her 100th career point in just her eighth game in the Blue and White.
- Spann also tied her personal mark with five rebounds.
- Sophomore forward **Kalayah Mitchell** tallied a career-high 20 points, besting her previous high of 14 points versus Bucknell on Nov. 20, 2013.
- With her performance, Mitchell notched her 200th career point with a lay-up early in the first half.
- Sophomore guard **Sierra Moore** netted a career-high 20 points and handed out a career-best seven assists. Moore's previous highs were 17 points vs. Samford (11/30/14) and five assists vs. Seton Hall (11/22/14).
- Moore also made a career-high 11-of-12 attempts from the free throw stripe versus the Seahawks.
- Sophomore **Jenny DeGraaf** tied her career high with 12 points, equalling the mark that she set with four three-pointers against Albany on Nov. 16, 2014.
- Junior **Dominique Brooks** set a personal best with four points and one blocked shot against the Seahawks. Her previous high for points was two on two occasions, vs. Liberty (11/28/14) and Towson (11/14/14).

TORI GOOD WORKS

- Senior **Tori Waldner** is among the nominees for the Allstate WBCA Good Works Team award.
- This prestigious community service award recognizes a distinguished group of student-athletes who have demonstrated a commitment to enriching the lives of others and contributing to the greater good in their communities.
- From the 93 WBCA nominees, a distinguished voting panel will select two 10-member teams comprised of five student-athletes from the NCAA® Division I level and five student-athletes from NCAA Divisions II, III and the NAIA.
- The final roster of 20 award recipients will be unveiled in February.
- Former Lady Lion Gizelle Studevent was a member of the inaugural Allstate WBCA Good Works team in 2013.

ALL-TOURNEY NOD FOR MOORE

- Sophomore guard **Sierra Moore** was selected to the Georgia State Thanksgiving Tournament All-Tournament team.
- She averaged 15.5 points, 3.0 rebounds, 3.5 assists and 1.5 steals in two games for the Lady Lions.
- Moore tied her career high with 17 points in 40 minutes of action against Samford.

MILESTONE WATCH

Milestone Watch

Milestone	Player	Current Total
300 points	Candice Agee	293
	Tori Waldner	269
	Kalayah Mitchell	260
	Sierra Moore (career)	229
	Lindsey Spann	229
200 points	Sierra Moore (PSU)	166
	Peyton Whitted	149
100 points	Alex Harris	75
500 rebounds	Tori Waldner	422
300 rebounds	Kalayah Mitchell	234
200 rebounds	Candice Agee	196
	Peyton Whitted	141
	Alex Harris	117
100 assists	Sierra Moore (career)	65
	Sierra Moore (PSU)	53
	Lindsey Spann	50
50 assists	Kalayah Mitchell	37
150 blocks	Tori Waldner	108
75 blocks	Candice Agee	59
75 steals	Tori Waldner	52
50 steals	Kalayah Mitchell	45

Milestone Reached

Milestone	Player	Reached
50 assists	Sierra Moore (PSU)	1/4
50 assists	Lindsey Spann	1/4
200 points	Lindsey Spann	1/1
200 points	Sierra Moore (career)	12/21
100 rebounds	Alex Harris	12/21
400 rebounds	Tori Waldner	12/14
50 blocks	Candice Agee	12/14
200 rebounds	Kalayah Mitchell	12/10
100 points	Sierra Moore (PSU)	12/7
200 points	Candice Agee	12/4
100 blocks	Tori Waldner	11/28
100 points	Sierra Moore (career)	11/25
100 points	Peyton Whitted	11/22
100 rebounds	Peyton Whitted	11/16
200 points	Kalayah Mitchell	12/7
100 points	Lindsey Spann	12/7
50 steals	Tori Waldner	12/7



THE LAST TIME PENN STATE...

SCORING

Player scored 20 points: vs. Illinois (20, Lindsey Spann), 1/4/15
 Player scored 25 points: vs. USF (28, Lindsey Spann), 12/21/14
 Player scored 30 points: at Indiana (32, Maggie Lucas), 2/13/14
 Player scored 35 points: vs. Georgetown (39, Maggie Lucas), 12/9/12
 Player scored 40 points: vs. Minnesota (49, Kelly Mazzante), 12/28/01
 Two players scored 20 points: vs. USF (28, Lindsey Spann; 21, Candice Agee), 12/21/14
 Three players scored 20 pts.: vs. Wagner (22, Lindsey Spann; 21, Sierra Moore; 20, Kaliyah Mitchell), 12/7/14
 Two players scored 25 points: at Boston College (28, Alex Bentley; 28, Maggie Lucas), 12/2/10
 Player scored 25 points/3 consecutive games: Maggie Lucas (32, at Indiana, 2/13/14; 25 vs. Wisconsin, 2/16/14; 26 vs. Northwestern, 2/20/14)
 Five in double figures: at Northwestern (19, Maggie Lucas; 15, Ariel Edwards; 11, Dara Taylor; 11, Talia East; 11, Peyton Whitted), 2/2/14
 Six in double figures: at Oakland (15, Alex Bentley; 16, Ariel Edwards; 16, Zhaque Gray; 13, Maggie Lucas; 10, Mia Nickson; 10, Gizelle Studevent; 10, Julia Trogele), 11/18/10
 Seven in double figures: at Oakland (15, Alex Bentley; 16, Ariel Edwards; 16, Zhaque Gray; 13, Maggie Lucas; 10, Mia Nickson; 10, Gizelle Studevent; 10, Julia Trogele), 11/18/10
 PSU scored 50 points in a half: vs. Rider (50, first half), 12/14/14
 PSU scored 50 points in both halves: vs. St. Francis (Pa.) (55, first half; 62, second half), 11/8/13
 PSU scored 55 points in a half: vs. St. Francis (Pa.) (55, first half; 62, second half), 11/8/13
 PSU scored 60 points in a half: vs. St. Francis (Pa.) (62, second half), 11/8/13
 PSU scored 100 points: vs. St. Francis (Pa.) (W, 117-77), 11/8/13
 PSU scored 100 points in Big Ten game: vs. Illinois (W, 101-80), 2/15/01
 PSU scored 100 points in a home game: vs. St. Francis (Pa.) (W, 117-77), 11/8/13
 PSU scored fewer than 15 points in a half: vs. Wisconsin (13, first half), 2/25/10
 PSU scored fewer than 20 points in a half: at Hartford (18, first half), 12/10/14
 PSU scored fewer than 40 points in a game: at Syracuse (L, 39-61), 12/4/14
 PSU scored fewer than 50 points in a game: at Syracuse (L, 39-61), 12/4/14
 PSU scored fewer than 50 points in a Big Ten game: vs. Purdue (L, 49-60), 2/24/11
 OPP scored 50 points in a half: at Michigan (53, first half), 1/1/15
 OPP scored 100 points: at Boston College (Lot, 113-104), 12/2/10
 OPP scored fewer than 20 points in a game: at Dickinson (W, 57-16), 3/6/71
 OPP scored fewer than 30 points in a game: vs. Virginia Tech (W, 66-28), 12/6/11
 OPP scored fewer than 40 points in a game: vs. Wisconsin (W, 84-40), 1/17/13
 OPP scored fewer than 50 points in a game: vs. Ohio State (W, 66-42), 1/16/14
 OPP scored fewer than 50 points in a Big Ten game: vs. Ohio State (W, 66-42), 1/16/14

FIELD GOAL SHOOTING

Player made every shot from the field (min. 7): vs. Michigan St. (Amanda Brown, 8-8), 1/25/07
 PSU shot 55% or better in a game: vs. Illinois (.611), 2/20/13
 PSU shot 55% or better in consecutive games: vs. Northwestern (.682), 3/2/96; vs. Ohio St. (.585), 3/3/96
 PSU shot 60% in a game: vs. Illinois (.611), 2/20/13
 PSU shot below 25% in a game: vs. Michigan State (.224), 3/9/13
 PSU shot below 30% in a game: at Syracuse (.278), 12/4/14
 PSU shot below 35% in a game and won: vs. Michigan State (.333), 1/19/14
 PSU shot below 30% in a game and won: vs. Northwestern (.299), 1/3/13
 PSU shot 55% in a half: vs. Illinois (.595, second half), 1/4/15
 PSU shot 60% in a half: vs. Wagner (.625, second half), 12/7/14
 PSU shot 65% in a half: at Georgetown (.680, second half), 12/8/13
 PSU shot 70% in a half: vs. Virginia Tech (.714, second half), 12/6/11
 PSU shot 55% in both halves: vs. Illinois (.586, first half; .640, second half), 2/20/13
 PSU shot 20% or below in a half: vs. Michigan State (.200, first half), 3/9/13
 PSU shot below 25% in a half: at Georgetown (.206, first half), 12/8/13

THREE-POINT SHOOTING

Player made every shot from the field (min. 4): vs. Albany (4-4, Jenny DeGraaf), 11/16/14
 Player made 4 three-pointers in a half: vs. Connecticut (4 in the second, Maggie Lucas), 11/17/13
 Player made 5 three-pointers in a half: vs. Michigan State (5 in the second, Maggie Lucas), 3/9/13
 Player made 6 three-pointers in a half: vs. Michigan State (5 in the second, Maggie Lucas), 3/9/13
 Player made 5 three-pointers in a game: vs. Northwestern (5, Maggie Lucas), 2/20/14
 Player made 6 three-pointers in a game: vs. Michigan State (7, Maggie Lucas), 3/9/13
 Player made 7 three-pointers in a game: vs. Michigan State (7, Maggie Lucas), 3/9/13
 Player made 8 three-pointers in a game: at Nebraska (8, Maggie Lucas), 3/3/13
 Player attempted 10 three-pointers in a game: at Illinois (11, Maggie Lucas), 1/9/14
 PSU made 10 three-pointers: vs. North Carolina (14), 11/30/11
 PSU did not make a three-pointer: vs. Hartford (0-8), 12/29/13
 PSU attempted 20 three-pointers: vs. Connecticut (21), 11/17/13
 PSU shot 60% 3FG (min. 5 att.): vs. Illinois (.667; 6-9), 2/20/13

FREE THROW SHOOTING

Player made every shot from FT line (min. 10): at Illinois (10-10, Maggie Lucas), 1/9/14
 PSU shot 90% (min. 10 att.): vs. Michigan (18-19, .947), 3/1/14
 PSU shot below 50% (min. 10 att.): at Purdue (8-21, .381), 1/30/14
 PSU made 30 free throws: vs. St. Francis (Pa.) (37), 11/8/13
 PSU made fewer than five FTs: at Michigan (3), 2/3/11
 PSU attempted 40 free throws: vs. USF (40), 12/21/14
 PSU attempted fewer than five FTs: at Michigan (4), 2/3/11

REBOUNDS

Player had 15 rebounds: at LSU (16, Nikki Greene), 3/26/13
 Player had 20 rebounds: at Cal State Northridge (20, Nikki Greene), 11/24/12
 Two players with double-digit rebs.: vs. USF (11, Candice Agee; 10, Sierra Moore), 12/21/14
 Three players had double-digit rebounds: vs. Ohio State (15, Nikki Greene; 15, Mia Nickson; 10, Maggie Lucas), 2/20/12
 PSU had 60 rebounds: vs. Ohio State (60), 2/20/12
 PSU had 50 rebounds: vs. USF (54), 12/21/14
 PSU had 20 or fewer rebounds: vs. Michigan State (20), 1/19/03
 OPP had 20 or fewer rebounds: at Indiana (20), 2/13/11
 PSU had 20 offensive rebounds: vs. Seton Hall (21), 11/22/14
 PSU had 25 offensive rebounds: vs. Ohio State (29), 2/20/12

ASSISTS

Player had 10 assists: vs. Minnesota (10, Dara Taylor), 1/26/14
 Player had 10 assists/consecutive games: Helen Darling (12 at LaSalle, 12/8/99; 11 vs. Auburn, 12/11/99; 10 vs. Clemson, 12/19/99)
 Player had 15 assists: vs. North Carolina (15, Alex Bentley), 11/30/11
 PSU had 30 assists: vs. St. Francis (Pa.) (32), 12/2/99
 PSU had fewer than 10 assists: at Syracuse (9), 12/4/14
 PSU had fewer than 5 assists: at Michigan State (4), 2/4/10

BLOCKED SHOTS

Player blocked 5 shots: vs. Rider (5, Candice Agee), 12/14/14
 Player blocked 6 shots: vs. Purdue (7, Talia East), 1/12/14
 PSU blocked 10 shots: vs. Purdue (14), 1/12/14
 PSU blocked 0 shots: at Illinois, 1/9/14

STEALS

Player had 7 steals: vs. Alcorn State (7, Dara Taylor), 12/22/13
 Player had 8 steals: vs. NJIT (8, Alex Bentley), 12/23/12
 PSU had 20 steals: vs. Bucknell (21), 12/28/10

TURNOVERS

PSU committed 25 or more: at Illinois (27), 1/9/14
 PSU committed 25 or more and won: at Illinois (27), 1/9/14
 PSU committed 10 or fewer: vs. Ohio State (9), 3/7/14
 PSU committed 10 or fewer in consecutive games: vs. Minnesota (9), 1/22/04; at Ohio St. (9), 1/25/04
 OPP committed 25 or more: vs. Oregon State (26), 11/30/13

DOUBLE-DOUBLES

Points & rebounds: vs. USF (Candice Agee, 21 pts., 11 rebs.; Sierra Moore, 17 pts., 10 rebs.), 12/21/14
 Points & rebounds/consecutive games: Nikki Greene (12 points, 10 rebounds vs. Ohio State, 1/30/11; 16 points, 14 rebounds at Illinois, 1/27/11)
 Points & rebounds/3 consecutive games: Amanda Brown (19 pts., 17 rebs. at Northwestern, 2/11/07; 14 pts., 10 rebs. vs. Minnesota, 2/15/07; 14 pts., 11 rebs. at Iowa, 2/18/07)
 Points & rebounds/4 consecutive games: Angie Potthoff (vs. Northwestern, 1/31/97; at Illinois, 2/2/97; vs. Michigan, 2/7/97; vs. Indiana, 2/9/97; vs. Iowa, 2/16/97; vs. Michigan State, 2/21/97)
 Points & rebounds/5 consecutive games: Angie Potthoff (vs. Northwestern, 1/31/97; at Illinois, 2/2/97; vs. Michigan, 2/7/97; vs. Indiana, 2/9/97; vs. Iowa, 2/16/97; vs. Michigan State, 2/21/97)
 Points & assists: vs. Minnesota (Dara Taylor, 15 points, 10 assists), 1/26/14
 Points & assists/consecutive games: Helen Darling (12 pts., 12 assts. at La Salle, 12/8/99; 10 pts., 11 assts. vs. Auburn, 12/11/99)
 Two players had double-doubles: vs. USF (Candice Agee, 21 pts., 11 rebs.; Sierra Moore, 17 pts., 10 rebs.), 12/21/14
 Three players had double-doubles: vs. Ohio State (Nikki Greene, 25 pts., 15 rebs.; Mia Nickson, 18 pts., 15 rebs.; Maggie Lucas, 12 pts., 10 rebs.), 2/20/12
 15 points & 15 rebounds: at LSU (Nikki Greene, 16 pts., 16 rebs), 3/26/13
 20 points and 10 rebounds: vs. USF (Candice Agee, 21 points, 11 rebounds), 12/21/14

MARGIN OF VICTORY

PSU won by 20-30 points: vs. Rider (34), 12/14/14
 PSU won by 20-30 points in a Big Ten game: at Ohio State (20), 2/9/14
 PSU won consecutive Big Ten games by 20+ pts.: vs. Wisconsin (44), 1/17/13; vs. Nebraska (22), 1/13/13; at Michigan St. (21), 1/6/13
 PSU won by 31-40 points: vs. Rider (34), 12/14/14
 PSU won by 41-50 points: vs. Bucknell (43), 11/20/13
 PSU won by 51+ points: vs. Fairleigh Dickinson (57), 12/2/12
 PSU lost by 20-30 points: at Michigan (36), 1/1/15
 PSU lost by 20-30 points in a Big Ten game: at Michigan (36), 1/1/15
 PSU lost by 31+ points: at Michigan (36), 1/1/15

MISCELLANEOUS

Led PSU in points/rebounds/assists: Dara Taylor vs. Florida (22 pts., 8 rebs., 4 asst.), 3/25/14
 Hit "final seconds" (under 10 seconds) game-winning shot: Julia Trogele at Illinois (9 sec.), 1/27/11
 Hit "final minute" game-winning shot: Alex Bentley at Minnesota (3-ptr. with :38.9 remaining), 2/5/12
 Player played every minute: at Nebraska (Dara Taylor), 2/24/14
 Player played more than 40 min.: vs. USF (Lindsey Spann, 41; Sierra Moore, 41), 12/21/14
 Committed 10 or fewer fouls: vs. Virginia Tech (9), 12/6/11
 Committed 30 or more fouls: vs. USF (30), 12/21/14
 PSU rallied from a 10-pt. deficit to win: vs. Wichita State (down by 11 at 6:39 in 1st, won 62-56), 3/23/14
 PSU rallied from a 15-pt. deficit to win: at CS-Northridge (down by 17 at 5:52 in 1st half, won 85-73), 11/24/12
 PSU had a 5-game winning streak: 6 games, 1/16/14-2/2/14
 PSU had a 10-game winning streak: 11 games, 12/9/12 - 1/27/13
 PSU had a 5-game losing streak: 6 games, 11/16/14-12/4/14
 PSU went undefeated at home: 2012-13 season
 PSU sold out the BJC: Purdue, 2/29/04

OVERTIME

PSU played an OT game: vs. USF (L, 90-87), 12/21/14
 PSU won an OT game: at Oakland (96-89), 11/18/10
 PSU lost an OT game: vs. USF (L, 90-87), 12/21/14
 PSU played two or more OT games in a season: 2014-15 season (two)
 PSU won two or more OT games in a season: 2010-11 season (two)

RANKINGS

Played the No. 1 team in the AP poll: vs. Connecticut (L, 71-52), 11/17/13
 Played the No. 1 team in the Coaches poll: vs. Connecticut (L, 71-52), 11/17/13
 Defeated the No. 1 team in the AP poll: at Virginia (73-71), 1/3/91
 Defeated Top 10 opponent: vs. #8/11 Ohio State (84-66), 2/20/12
 Defeated Top 10 opponent on the road: at #7 Purdue (47-42), 1/2/04
 Defeated Top 10 opponent by double digits: vs. #8/11 Ohio State (84-66), 2/20/12
 Played consecutive Top 10 teams: at #2/3 Texas 11/14/04, at #6/6 Duke 11/19/04
 Defeated Top 25 opponent: at #16/19 Purdue (75-72), 1/30/14
 Defeated Top 25 opponent on the road: at #16/19 Purdue (75-72), 1/30/14
 Defeated Top 25 opponent by double digits: at #23/22 Iowa (87-71), 1/5/14



2015 RECRUITING CLASS

LADY LIONS SECURE TOP 10 CLASS

- The four-player class is ranked eighth by Prospect Nation, ninth by All-Star Girls Report, 10th by Blue Star Basketball and 11th by ESPN/HoopGurlz and Collegiate Girls Basketball Report.
- The class features two Top 20 players and three Top 100 signees in both the Blue Star Basketball and Prospect Nation rankings.
- This is believed to be the highest-ranked class in program history.
- This is the third Top 15 class to sign under Washington, joining the 2009 and 2013 classes that were ranked 14th by ESPN/Hoopgurlz.
- It is also the fourth Top 25 recruiting class for Washington (2010 class was 22nd).

AMARI CARTER * 5-8 * Guard * Washington, D.C. * St. John's College

- A 5-7 guard, Carter is ranked as the #31 overall recruit by both ESPN/HoopGurlz and Collegiate Girls Basketball Report.
- She is also rated 19th by Prospect Nation and Blue Star Basketball and 32nd by All Star Girls Report.
- She averaged 17.5 points, 4.0 rebounds, 4.0 assists and 2.0 steals for St. John's College High School in Washington, D.C.
- She led the team to a 25-7 overall record and the 2014 DC State Athletic Association championship.
- Last season, Carter was named to the Washington Post All-Metropolitan first team and All-WCAC first team.
- As a sophomore, Carter helped the Cadets to the 2013 WCAC Championship en route to collecting second team All-WCAC honors and an All-Metropolitan honorable mention selection.
- She is a 2014-15 Sporting News Preseason High School All-America honorable mention choice.
- Carter has participated in USA Basketball U16 (2013) and U17 (2014) Trials.
- She plays her AAU ball with the Maryland Lady Terps.

TENIYA PAGE * 5-7 * Point Guard * Chicago Heights, Ill. * Marian Catholic

- Page, a 5-7 point guard out of Marian Catholic in Chicago, Ill., is the 21st-ranked prospect by both ESPN/HoopGurlz and Collegiate Girls Basketball Report.
- She also comes in ranked 17th by Blue Star Basketball, 20th by Prospect Nation and 26th by All Star Girls Report.
- A 2014-15 Sporting News Preseason High School All-America honorable mention selection, Page has 1,135 career points entering her final season for the Spartans.
- Last season, she accounted for 14.4 points, 4.7 assists, 3.5 rebounds and 1.8 steals per game to help Marian Catholic to a 28-5 overall record, a East Suburban Catholic Conference championship and a third-place finish in the Illinois High School Association Class 4A Basketball Tournament.
- Page was selected first team All-State by the Illinois Basketball Coaches Association, second team All-State by the Associated Press, first team All-State by The Northwest Indiana Times and third team All-State by the Chicago Tribune in 2014.
- As a sophomore, Page guided Marian Catholic to the IHSA 4A State Championship with a 33-1 record on the season.
- Page has participated in USA Basketball U16 (2013) and U17 (2014) Trials.
- She plays AAU basketball for Midwest Elite.

ASHANTI THOMAS * 6-5 * Post * Lexington, Ky. * Lafayette

- Thomas, a 6-2 post player out of Lexington, Ky., is the 87th-ranked recruit by Prospect Nation and is ranked 106th and 109th by All-Star Girls Report and Blue Star Basketball, respectively.
- She is a candidate for Kentucky Miss Basketball entering her senior season.
- As a junior, she led the Generals to a 29-4 overall record with a 9-1 mark in districts en route to a District and Regional championships.
- Thomas averaged 9.2 points and 8.2 rebounds per game last season on the way to All-State third team accolades from KySports.tv.
- During her sophomore campaign, Thomas accounted for 10.3 points and 9.5 rebounds per outing on the way to claiming Fayette County Public Schools All-City first team.
- Thomas plays AAU basketball for Mac Irvin Lady Fire.

JAYLEN WILLIAMS * 6-4 * Post * Braintree, Mass. * Archbishop Williams

- A 6-4 post player, Williams is the ranked 80th by Blue Star Basketball Report after missing her junior campaign at Archbishop Williams due to a knee injury.
- The 2014-15 Sporting News Preseason High School All-America honorable mention honoree accounted for 8.5 points, a team-best 11.6 rebounds, 3.5 blocks and 4.3 assists per game as a sophomore.
- Williams helped the Bishops to the 2013 Massachusetts Interscholastic Athletic Association (MIAA) Division 3 State Championship with a 23-5 record.
- She played her AAU basketball for Lady Rivals AAU select team under the guidance of Scott Hazelton. Williams and the Rivals squad have won two state championships.
- She also has a strong athletic background in her family as her father, Brent, played in the NFL for 11 years with the Jets, Seahawks and Patriots. Her brother, Brennan, has played for the Houston Texans and her other brother, Camren, is a junior linebacker for the Ohio State football team.

RECORD BOOK

CAREER BLOCKS

1. 268 Kim Calhoun, 1993-96
2. 215 Nikki Greene, 2010-13
3. 192 Mary Donovan, 1977-81
4. 189 Rashana Barnes, 1999-02
5. 185 Andrea Garner, 1997-00
6. 172 Amanda Brown, 2004-07
7. 140 Tina Henry, 1990-93
8. **108** **Tori Waldner, 2012-present**
9. 102 Talia East, 2011-14
10. 94 Jess Brungo, 2001-04
11. 92 Bethany Collins, 1985-88
12. 89 Kathy Phillips, 1989-92
13. 87 Reicina Russell, 2003-04
- 87 Vicki Link, 1984-87
15. 81 Kahadeejah Herbert, 1982-85
16. 75 Tyra Grant, 2007-10
17. 68 Kelly Mazzante, 2001-04
18. 67 Janessa Wolff, 2008-10
19. 66 Adrie DeVries, 1987-90
20. 61 Tanisha Wright, 2002-05
21. **59** **Candice Agee, 2013-present**

as of Jan. 4

LADY LIONS BY THE NUMBERS

DOUBLE FIGURE PERFORMANCES

Lindsey Spann - 13
Sierra Moore - 10
Kaliyah Mitchell - 5
Candice Agee - 4
Jenny DeGraaf - 3
Tori Waldner - 2

20-POINT PERFORMANCES

Lindsey Spann - 5
Candice Agee - 3
Sierra Moore - 1
Kaliyah Mitchell - 1

30-POINT PERFORMANCES

none

DOUBLE-DOUBLE PERFORMANCES

Sierra Moore - 2
Tori Waldner - 1
Candice Agee - 1
Jenny DeGraaf - 1
Kaliyah Mitchell - 1

DOUBLE-DIGIT REBOUNDING PERFORMANCES

Tori Waldner - 2
Sierra Moore - 2
Candice Agee - 1
Jenny DeGraaf - 1
Kaliyah Mitchell - 1
Alex Harris - 1

DOUBLE-DIGIT ASSIST PERFORMANCES

none



2014-15 SINGLE GAME HIGHS & LOWS

Team Superlatives

Penn State High	Penn State Low	Category	Opponent High	Opponent Low
96, vs. Wagner (12/7)	39, at Syracuse (12/4)	Points/Game	91, Illinois (1/4)	51, Rider (12/14)
54, vs. Wagner (12/7)	18, at Hartford (12/10)	Points/Half	53, Michigan (1/1)	13, vs. Samford (11/30)
36, vs. Rider (12/14)	15, at Syracuse (12/4)	Field Goals Made	35, Michigan (1/1)	18, twice (MR: St. Bona., 11/25)
71, vs. USF (12/21)	51, vs. Albany (11/16)	Field Goal Attempts	80, USF (12/21)	47, Hartford (12/10)
.537, vs. Rider (12/14)	.278, at Syracuse (12/4)	FG Percentage	.500, Illinois (1/4)	.292, Rider (12/14)
6, vs. Albany (11/16)	1, twice (MR: at Michigan, 1/1)	3-pt. FG Made	12, Illinois (1/4)	2, Albany (11/16)
15, vs. Liberty (11/28)	5, vs. USF (12/21)	3-pt. FG Attempts	40, Syracuse (12/4)	15, 3x (MR: Rider; 12/14)
.462, vs. Albany (11/16)	.091, at Michigan (1/1)	3-pt. FG Percentage	.478, Hartford (12/10)	.133, Albany (11/16)
25, vs. Wagner (12/7)	6, twice (MR: at Syracuse, 12/4)	Free Throws Made	27, Seton Hall (11/22)	8, twice (MR; Rider; 12/14)
40, vs. USF (12/21)	11, vs. St. Bonaventure (11/25)	Free Throw Attempts	38, USF (12/21)	12, Syracuse (12/4)
.762, vs. Samford (11/30)	.471, at Michigan (1/1)	Free Throw Percentage	.833, Syracuse (12/4)	.381, Rider (12/14)
54, vs. USF (12/21)	31, vs. Albany (11/16)	Rebounds	56, USF (12/21)	28, Hartford (12/10)
19, twice (MR: vs. Rider; 12/14)	9, 3x (MR: at Michigan, 1/1)	Assists	24, Michigan (1/1)	7, USF (12/21)
12, vs. Liberty (11/28)	3, at Syracuse (12/4)	Steals	14, Syracuse (12/4)	4, Wagner (12/7)
9, 3x (MR: at Michigan, 1/1)	1, vs. Illinois (1/4)	Blocked Shots	7, Syracuse (12/4)	2, twice (MR: Michigan, 1/1)
24, twice (MR: at Michigan, 1/1)	12, vs. Wagner (12/7)	Turnovers	24, Albany (11/16)	9, USF (12/21)
30, vs. USF (12/21)	13, at Syracuse (12/4)	Fouls	28, USF (12/21)	13, Syracuse (12/4)

Individual Superlatives

	Penn State	Opponent
Points	28, Lindsey Spann vs. USF (12/21)	34, Courtney Williams, USF (12/21)
Field Goals Made	11, twice (MR: Lindsey Spann vs. USF, 12/21)	12, Dominique Johnson, Towson (11/14)
Field Goal Attempts	22, Lindsey Spann vs. USF (12/21)	30, Dominique Johnson, Towson (11/14)
Field Goal Pct. (min. 5 made)	.800, Candice Agee vs. USF (12/21)	.727, twice (MR: Ivory Crawford, Illinois, 1/4)
3-pt. Field Goals Made	4, twice (MR: Lindsey Spann at Iowa, 12/28)	6, 3x (MR: Deanna Mayza, Hartford, 12/10)
3-pt. Field Goal Attempts	9, Lindsey Spann at Iowa (12/28)	19, Brianna Butler, Syracuse (12/4)
3-pt. Field Goal Pct. (min. 2 made)	1.000, twice (MR: Jenny DeGraaf vs. Albany, 11/16)	.750, twice (MR: Deanna Mayza, Hartford, 12/10)
Free Throws Made	11, Sierra Moore vs. Wagner (12/7)	11, Alisia Jenkins, USF (12/21)
Free Throw Attempts	12, Sierra Moore vs. Wagner (12/7)	13, Alisia Jenkins, USF (12/21)
Free Throw Percentage (min. 3 made)	1.000, 7x (MR: Kaliyah Mitchell vs. USF, 12/21)	1.000, 8x (MR: Chatrice White, Illinois, 1/4)
Rebounds	12, Tori Waldner vs. Samford (11/30)	21, Alisia Jenkins, USF (12/21)
Assists	7, twice (MR: Sierra Moore vs. Rider; 12/14)	10, Kyley Simmons, Illinois (1/4)
Steals	5, Kaliyah Mitchell vs. Liberty (11/28)	3, 13x (MR: Simmons/Carter/White, Illinois, 1/4)
Blocked Shots	5, Candice Agee vs. Rider (12/14)	6, twice (MR: Bethany Doolittle, Iowa, 12/28)
Turnovers	7, twice (MR: Lindsey Spann at Michigan, 1/1)	9, Jasmine Nwajei, Wagner, 12/7



MISCELLANEOUS STATS

LEADING SCORER Lindsey Spann 10 Sierra Moore 2 Candice Agee 2	20-POINT SCORING GAMES Penn State 10 Opponents 14 Lindsey Spann 5 Candice Agee 3 Sierra Moore 1 Kaliyah Mitchell 1	BENCH POINTS Penn State 227 (16.2 ppg) Opponents 188 (13.4 ppg) JUMP BALLS CONTROLLED Penn State 10 Opponents 4	LARGEST WIN 34, vs. Rider (85-51) (12/14) LARGEST DEFEAT 36, at Michigan (89-53) (1/1)																														
LEADING REBOUNDER Tori Waldner 6 Kaliyah Mitchell 4 Candice Agee 3 Sierra Moore 1 Alex Harris 1	30-POINT SCORING GAMES Penn State 0 Opponents 1	FIRST SCORE OF GAME Penn State 6 Opponents 8	MOST CONSECUTIVE POINTS 14, vs. Rider (6:40 to 1:31 in second half) (12/14)																														
LEADER IN ASSISTS Sierra Moore 7 Lindsey Spann 6 Keke Sevellian 1 Tori Waldner 1 Kaliyah Mitchell 1	TECHNICAL FOULS Penn State 2 Opponents 1	RUNS OF 10-0 OR BETTER Penn State 3 Opponents 7	MOST CONSECUTIVE POINTS BY OPP 15, at Michigan 9:42 to 6:27 in first half (1/1)																														
LEADER IN STEALS Kaliyah Mitchell 5 Sierra Moore 4 Keke Sevellian 3 Lindsey Spann 3 Candice Agee 1 Peyton Whitted 1	FOUR-POINT PLAYS Penn State 0 Opponents 0	LARGEST HALFTIME LEAD 17, vs. Rider (50-23) (12/14)	LONGEST WINNING STREAK 1, 3x (MR: 12/14)																														
LEADER IN BLOCKS Tori Waldner 7 Candice Agee 6 Kaliyah Mitchell 3 Sierra Moore 2 Jenny DeGraaf 1	THREE-POINT PLAYS Penn State 15 Opponents 14 Lindsey Spann 4 Sierra Moore 4 Kaliyah Mitchell 3 Candice Agee 2 Peyton Whitted 1 Alex Harris 1	LARGEST HALFTIME DEFICIT 20, 3x (MR: vs. Illinois (47-27), 1/4)	LONGEST LOSING STREAK 6, 11/16-12/4																														
GAMES STARTED Sierra Moore 14 Lindsey Spann 14 Kaliyah Mitchell 12 Candice Agee 10 Tori Waldner 10 Peyton Whitted 6 Keke Sevellian 3 Alex Harris 1	PSU'S FIRST SUBSTITUTION Keke Sevellian 7 Jenny DeGraaf 3 Tori Waldner 2 Candice Agee 2 Peyton Whitted 2 Kaliyah Mitchell 1	LARGEST LEAD 40, vs. Rider (12/14)	CLUTCH FREE THROWS (FINAL 5 MIN. & OT) <table border="0" style="width: 100%; font-size: small;"> <tr><td>Peyton Whitted</td><td>2-2</td><td>1.000</td></tr> <tr><td>Dominique Brooks</td><td>1-1</td><td>1.000</td></tr> <tr><td>Alex Harris</td><td>1-1</td><td>1.000</td></tr> <tr><td>Kaliyah Mitchell</td><td>7-8</td><td>.875</td></tr> <tr><td>Sierra Moore</td><td>12-14</td><td>.857</td></tr> <tr><td>Keke Sevellian</td><td>3-4</td><td>.750</td></tr> <tr><td>Lindsey Spann</td><td>13-19</td><td>.684</td></tr> <tr><td>Tori Waldner</td><td>4-6</td><td>.667</td></tr> <tr><td>Jenny DeGraaf</td><td>1-2</td><td>.500</td></tr> <tr><td>Candice Agee</td><td>7-15</td><td>.467</td></tr> </table>	Peyton Whitted	2-2	1.000	Dominique Brooks	1-1	1.000	Alex Harris	1-1	1.000	Kaliyah Mitchell	7-8	.875	Sierra Moore	12-14	.857	Keke Sevellian	3-4	.750	Lindsey Spann	13-19	.684	Tori Waldner	4-6	.667	Jenny DeGraaf	1-2	.500	Candice Agee	7-15	.467
Peyton Whitted	2-2	1.000																															
Dominique Brooks	1-1	1.000																															
Alex Harris	1-1	1.000																															
Kaliyah Mitchell	7-8	.875																															
Sierra Moore	12-14	.857																															
Keke Sevellian	3-4	.750																															
Lindsey Spann	13-19	.684																															
Tori Waldner	4-6	.667																															
Jenny DeGraaf	1-2	.500																															
Candice Agee	7-15	.467																															
		LARGEST DEFICIT 40, at Michigan (1/1)	NOTE: Totals may not add up to games played due to ties.																														
		LARGEST DEFICIT OVERCOME TO WIN 8, vs. Towson (12:50 in 2nd half) (11/14)																															
		LARGEST LEAD GIVEN UP IN LOSS 16, vs. Samford, 9:59 in second half, 11/30)																															

SPECIALITY STATS (PSU/OPP)

	Paint	Off TO	2nd	FastBr	Bench		Paint	Off TO	2nd	FastBr	Bench
Towson	30/14	13/16	5/9	13/4	17/7	Wagner	54/16	24/13	13/6	24/6	24/19
Albany	22/30	14/17	6/12	10/4	14/12	Hartford	30/4	23/19	12/8	6/0	13/12
Seton Hall	40/26	18/22	22/10	8/12	14/11	Rider	56/22	13/11	14/7	19/8	19/17
St. Bonaventure	28/20	14/7	6/9	6/0	12/3	USF	42/40	7/13	17/26	4/12	11/15
Liberty	36/26	13/21	11/13	20/6	11/16	Iowa	22/26	6/26	20/14	7/10	19/14
Samford	28/22	11/13	4/4	6/0	11/10	Michigan	34/42	12/25	12/18	15/12	23/34
Syracuse	18/24	6/16	8/10	4/14	10/13	Illinois	38/34	13/13	15/5	16/11	25/9





COQUESE WASHINGTON

Head Coach
8th Season

PENN STATE LADY LION BASKETBALL

Coquese Washington was introduced as the fifth head coach of the Penn State women's basketball program on April 23, 2007. Washington is the first female African-American head coach in Penn State history.

Washington led the 2013-14 Lady Lion squad to a feat that no other Penn State team has accomplished, winning three consecutive conference regular-season titles with a 13-3 record in Big Ten action. Led by the play of a strong senior class, the Lady Lions advanced to the NCAA Sweet Sixteen for the second time in three years. The graduating class of Maggie Lucas, Ariel Edwards, Dara Taylor and Talia East produced 101 wins, which is the second-highest total by a Lady Lion class.

Along the way to collecting her second Big Ten Player of the Year award, Lucas finished second in school history and fourth in Big Ten history in scoring (2,510) and broke the Penn State and Big Ten records for career three-pointers made (365) and career free throw percentage (.907). She was selected in the second round of the 2014 WNBA Draft by the Phoenix Mercury. Edwards became the 36th member of the 1,000-point club en route to collecting All-Big Ten first team accolades. She finished seventh in the Big Ten in scoring (15.7) and was 11th in free throw percentage (.814). Edwards signed a free agent contract with the WNBA's Tulsa Shock. Taylor also had a stellar senior campaign and collected the Big Ten Defensive Player of the Year award after leading the conference in steals. East also earned postseason honors as she was named All-Big Ten honorable mention. In addition, Washington was honored with her third consecutive Big Ten Coach of the Year honor.

The Lady Lions continued their run in the national spotlight in 2012-13 as they collected their second-straight Big Ten regular-season title and seventh overall with a 26-6

overall record and 14-2 mark in conference play. In each of Washington's first six years, Penn State improved its Big Ten win total. The Lady Lions posted their third consecutive 25-win season, joining the 1993-94, 1994-95 and 1995-96 squads as the only teams in program history to accomplish the feat. The Lady Lions were consistently ranked in the Top 10 for most of the season and finished eighth in the Associated Press Top 25 and 12th in the USA Today Sports Coaches' Poll.

With another stellar campaign, the accolades continued to roll in for the Lady Lions. Washington was selected as the Big Ten Coach of the Year by the media for the second-straight season and became just the fifth mentor in Big Ten history to win back-to-back Coach of the Year accolades. She was also the WBCA Region 6 Coach of the Year and a finalist for WBCA National Coach of the Year for the second-straight season.

The awards also piled up for Penn State's dynamic backcourt of Lucas and Alex Bentley. Lucas was selected as the Big Ten Player of the Year, was a Wade Trophy Finalist and was an All-America choice by four outlets, including the WBCA (honorable mention), Associated Press (second team), USBWA (first team) and Full Court (second team). She is just the third Lady Lion in program history to win Big Ten Player of the Year honors. Bentley earned her third-straight first team All-Big Ten award and honorable mention All-America bids from the WBCA and Associated Press. She was also selected as the 2013 recipient of the Frances Pomeroy Naismith Award, which is presented to the nation's outstanding female collegian 5-8 and under. Nikki Greene also capped a stellar career for the Lady Lions with third team All-Big Ten accolades. She also became the first player in school history to accumulate 1,000 points, 900 rebounds and 200 blocks.

Both Bentley and Greene heard their names called on WNBA Draft night. Bentley was selected with the 13th overall pick by the Atlanta Dream to become the highest draft pick for the Lady Lions since Tanisha Wright (12th) in 2005. Greene was the 26th overall selection by the Phoenix Mercury.

For her efforts in rebuilding the Penn State program, Washington was honored as the Big Ten Coach of the Year and the WBCA Region 6 Coach of the Year, making her a finalist for WBCA National Coach of the Year. The accolades were not just limited to Washington; all five Lady Lion starters earned All-Big Ten recognition, including first team bids for Bentley and Lucas. Both Bentley and Lucas also garnered honorable mention All-America honors from the WBCA and Associated Press, respectively.

Washington vs. Opponents

Albany.....	0-1	Howard.....	1-0	Oregon State.....	1-0
Alcorn State.....	1-0	Illinois.....	10-4	Pittsburgh.....	2-1
Arizona.....	1-0	Illinois State.....	1-0	Prairie View A&M.....	1-0
Army.....	1-0	Indiana.....	7-4	Purdue.....	4-9
Boston College.....	0-1	Iowa.....	7-7	Rider.....	2-0
Bucknell.....	6-0	Iowa State.....	1-0	Samford.....	0-1
Buffalo.....	1-0	Lafayette.....	1-0	Seton Hall.....	0-1
Cal Poly.....	1-0	Liberty.....	0-1	St. Bonaventure.....	0-1
CS-Northridge.....	1-0	LSU.....	1-1	St. Francis (Pa.).....	1-0
Charlotte.....	1-0	Maine.....	1-0	South Carolina.....	4-1
Connecticut.....	0-4	UMES.....	1-0	South Dakota St.....	1-1
Coppin State.....	1-0	Miami (Fla.).....	0-1	USF.....	0-1
Dayton.....	2-1	Michigan.....	10-4	Stanford.....	0-1
Delaware.....	1-1	Michigan State.....	5-8	Stony Brook.....	1-0
DePaul.....	0-1	Middle Tennessee.....	1-0	Syracuse.....	0-2
Detroit.....	1-0	Minnesota.....	7-7	Texas A&M.....	2-1
Drexel.....	2-1	Mississippi.....	1-0	UTEP.....	1-0
Duke.....	1-0	Monmouth.....	1-0	Texas Tech.....	1-1
Fair Dickinson.....	1-0	Nebraska.....	3-2	Towson.....	1-0
Florida.....	1-0	Nevada.....	1-0	Utah.....	1-0
Fordham.....	1-0	NJIT.....	2-0	Virginia Tech.....	2-0
Florida State.....	0-1	North Carolina.....	1-0	Wagner.....	2-0
Georgetown.....	3-0	Notre Dame.....	0-1	Washington State.....	1-0
Georgia Tech.....	0-1	Northwestern.....	9-1	Wichita State.....	1-0
Hartford.....	2-1	Oakland.....	2-0	Wisconsin.....	6-6
Hofstra.....	0-1	Ohio State.....	6-7	UW-Green Bay.....	0-1
Holy Cross.....	1-0	Old Dominion.....	0-1	Xavier.....	0-1

THE WASHINGTON FILE

COACHING RESUME

2007-pres. - Head Coach, Penn State
 2013 - Asst. Coach, USA Basketball World U. Games
 2013-pres. - Vice President/President-Elect, WBCA
 2012-pres. - Kay Yow Cancer Fund Board of Directors
 2011-pres. - NCAA WBB Issues Committee
 2010-13 - Treasurer, WBCA Executive Committee
 2008-pres. - WBCA Board of Directors
 2009-12 - USA Basketball Women's Jr. National Comm.
 2005-07 - Associate Head Coach, Notre Dame
 1999-05 - Assistant Coach, Notre Dame

PLAYING EXPERIENCE

2002-03 - WNBA's Indiana Fever
 2000-02 - WNBA's Houston Comets
 1998-99 - WNBA's New York Liberty
 1997-98 - ABL's Portland Power
 1989-93 - University of Notre Dame

EDUCATION

Notre Dame '92, B.A. History
 Notre Dame Law School '97, Juris Doctorate

AWARDS

- ❖ 2012, 2013, 2014 Big Ten Coach of the Year
- ❖ 2012, 2013 WBCA Region 6 Coach of the Year
- ❖ 2012, 2013 WBCA National Coach of the Year Finalist
- ❖ 2011, 2013 BCA Female Coach of the Year
- ❖ 2009 Greater Flint Hall of Fame Inductee

FAMILY

Husband: Raynell Brown
 Children: Quenton (9), Rhaiyna (5)

The Lady Lions returned to the national stage in Washington's fourth year with a second-place finish in the Big Ten regular season standings, a runner-up finish in the Big Ten Tournament and a berth in the NCAA Tournament. Penn State tallied its 23rd 20-win season with a 25-10 overall record and an 11-5 mark in conference play. The Lady Lions worked their way back to the "Big Dance" for the first time since 2004-05.

Washington came to Happy Valley after eight seasons as an associate head coach and assistant coach under Muffet McGraw at Notre Dame, her alma mater. During Washington's eight years on the bench, Notre Dame amassed a 188-69 record with eight NCAA Tournament appearances, including four Sweet Sixteen runs and a National Championship in 2001.

Washington was a four-year starting point guard for Notre Dame under McGraw and was the team captain on Notre Dame's first-ever NCAA Tournament team. She was a two-time All-Midwestern Collegiate Conference (MCC) selection and led Notre Dame to three MCC Tournament titles.

The epitome of a student-athlete, Washington graduated from Notre Dame in 1992, a full year ahead of schedule, with a bachelor's degree in history. She went on to attain "Double Domer" status in 1997 after earning her Juris Doctorate from the Notre Dame Law School.

Washington juggled finishing her law degree with the start of her professional basketball career. She returned to the hardwood as a professional in 1997-98, playing for the ABL's Portland Power before spending a two-year stint with the WNBA's New York Liberty (1998-99). Washington moved to Houston for the 2000 season, where she played an instrumental role in leading the Comets to the WNBA title. Washington guided the Fever to their first-ever playoff berth and became the first player in WNBA history to lead three different teams to the postseason.

In addition to assisting with the efforts of the Pink Zone at Penn State to raise money and awareness for breast cancer, Washington created Coquese's Drive for the Women's Resource Center. Coquese's Drive for the Women's Resource Center has raised more than \$118,000 to aid in the fight against domestic violence.

Washington is currently serving on the 29-member WBCA Board of Directors, where she is the Vice President/President-Elect of the Executive Committee.





#1 Candice Agee

Jr. * C * 6-6 * Victorville, Calif./Silverado

Highlights:

- Ranks 12th in program history in blocked shots per game (0.8 bpg).
- Ranks 21st in Penn State history in blocked shots (54).
- Made her first start of the season and fourth of her career versus Seton Hall (11/22).
- Reached the 200 career point mark with her second basket of the game at Syracuse.
- Posted her first career double-double with a career-high 11 rebounds and a career-best-tying 21 points vs. USF (12/21).

2014-15 Season Notes:

- Connected on 4-of-5 field goal attempts to tally nine points at Iowa (12/28) in the Big Ten opener.
- Became the fifth Lady Lion to collect their first career double-double vs. USF (12/21) with a career-high-tying 21 points and a personal-best 11 rebounds. She also set new career marks in minutes played (33) and free throws made (5) and attempted (9).
- Contributed 19 points, tied her then-career-high with nine rebounds and blocked career-high five shots vs. Rider (12/14). She also tied her career-high with nine made field goals.
- Logged her second career 20-point game at Hartford (12/10), connecting on 8-of-13 shots from the field, and pulled down eight rebounds.
- Scored eight points on 4-of-8 shooting to reach the 200 career point mark at Syracuse (12/4) in the ACC/Big Ten Challenge. She added nine rebounds and blocked two shots vs. the Orange.
- Notched a then-career-high four blocks to go along with six points and five rebounds vs. Liberty (11/28).
- Had eight points, four rebounds and two blocks against St. Bonaventure (11/25).
- Went 9-for-15 from the field en route to a career-high 21 points with five rebounds, two blocks and two steals in just 17 minutes against Seton Hall (11/22).
- Blocked three shots and had two steals against Albany (11/16).
- Nearly posted a double-double with nine points and nine rebounds, which tied her then-career high, in the season-opening win over Towson (11/14).

Notable:

- 2012 McDonald's High School All-American.
- Competed for the United States in the FIBA U19 World Championship (July 2013) and FIBA Americas U18 Championship (August 2012).

14-15 GAME-BY-GAME

OPPONENT	Min.	FG	3FG	FT	O-D-R	PF	A	TO	B	S	Pts
TOWSON	18	3-6	0-0	3-6	4-5-9	1	0	0	0	0	9
ALBANY	19	1-6	0-0	0-0	1-4-5	4	2	1	3	2	4
SETON HALL	17	9-15	0-0	3-6	3-2-5	4	1	1	2	2	21
ST. BONA	24	4-8	0-0	0-0	1-3-4	3	2	3	2	1	8
vs. Liberty	22	2-4	0-0	2-4	2-3-5	1	0	2	4	1	6
vs. Samford	2	0-1	0-0	0-0	0-0-0	0	0	1	0	0	0
at Syracuse	28	4-8	0-0	0-0	1-8-9	2	0	1	2	1	8
WAGNER	23	4-7	0-0	1-3	2-2-4	3	1	3	1	1	9
at Hartford	26	8-13	0-0	4-6	4-4-8	1	1	5	1	0	20
RIDER	24	9-13	0-0	1-2	6-3-9	3	1	2	5	1	19
USF	33	8-10	0-0	5-9	2-9-11	3	1	1	4	0	21
at Iowa	9	4-5	0-0	1-2	1-0-1	2	0	1	0	1	9
at Michigan	21	3-9	0-0	1-4	3-0-3	2	1	0	1	0	7
ILLINOIS	13	1-2	0-0	2-4	0-1-1	0	0	0	0	0	4
at Wisconsin											
RUTGERS											
at Nebraska											
at Ohio State											
INDIANA											
NORTHWESTERN											
at Minnesota											
at Rutgers											
MARYLAND											
at Purdue											
MICHIGAN ST.											
MINNESOTA											
at Maryland											
OHIO STATE											
WISCONSIN											

AGEE'S CAREER/SEASON HIGHS

	SEASON HIGHS	CAREER HIGHS
Points	21 vs. USF (12/21/14) 21 vs. Seton Hall (11/22/14)	21 vs. USF (12/21/14) 21 vs. Seton Hall (11/22/14)
Rebs.	11 vs. USF (12/21/14)	11 vs. USF (12/21/14)
Assists	2 vs. St. Bonaventure (11/25/14) 2 vs. Albany (11/16/14)	2 vs. St. Bonaventure (11/25/14) 2 vs. Albany (11/16/14)
Steals	2 vs. Seton Hall (11/22/14) 2 vs. Albany (11/16/14)	2 3x last vs. Seton Hall (11/22/14)
Blocks	5 vs. Rider (12/14/14)	5 vs. Rider (12/14/14)
Minutes	33 vs. USF (12/21/14)	33 vs. USF (12/21/14)
FGM	9 vs. Rider (12/14/14) 9 vs. Seton Hall (11/22/14)	9 vs. Rider (12/14/14) 9 vs. Seton Hall (11/22/14)
FGA	15 vs. Seton Hall (11/22/14)	15 vs. Seton Hall (11/22/14)
3FGM	n/a	n/a
3FGA	n/a	n/a
FTM	5 vs. USF (12/21/14)	5 vs. USF (12/21/14)
FTA	9 vs. USF (12/21/14)	9 vs. USF (12/21/14)

AGEE'S MISCELLANEOUS STATS

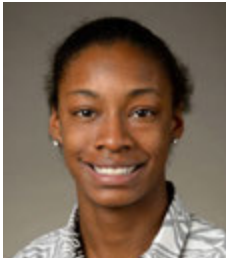
Category	Season	Career	Last Time
Double Figure Scoring	4	5	21 vs. USF (12/21/14)
20-point games	3	3	21 vs. USF (12/21/14)
Double Figure Rebounds	1	1	11 vs. USF (12/21/14)
5-plus Rebounds	8	15	11 vs. USF (12/21/14)
5-plus Assists	n/a	n/a	
3-plus Blocks	4	5	4 vs. USF (12/21/14)
Double-Doubles	1	1	21 p, 11 r vs. USF (12/21/14)

AGEE'S CAREER STATS

Year	GP-GS	MIN	FG-A	PCT	3FG-A	PCT	FT-A	PCT	REB	AVG	PF-O	A	TO	B	S	PTS	AVG
2012-13	26-0	204	20-54	.370	0-0	.000	11-20	.550	17-31-48	1.8	33-0	2	13	13	4	51	2.0
2013-14	32-3	330	34-84	.405	0-0	.000	31-61	.508	31-43-74	2.3	54-1	8	28	21	4	99	3.1
2014-15	14-10	279	60-107	.561	0-0	.000	23-46	.500	30-44-74	5.3	29-0	10	21	25	10	143	10.2
TOTAL	72-13	813	114-245	.465	0-0	.000	65-127	.512	78-118-196	2.7	116-1	20	62	59	18	293	4.1

10-Time Big Ten Champions • Two-Time Big Ten Tournament Champions • 2000 NCAA Final Four • 25 NCAA Tournament Appearances





#3 Brianna Banks

RS-Sr. * G * 5-9 * Newnan, Ga./Fayette County (Connecticut)

2014-15 Season:

- Will sit out the 2014-15 season due to NCAA Transfer Rules after transferring from Connecticut.
- Has one year of eligibility remaining.

2013-14 Season (at Connecticut):

- Started eight-straight games (November 20 - December 22).
- Dished out five assists to go with four points and three steals against UCF (2/19).
- Notched three steals to compliment four points, three assists and five rebounds at Cincinnati (2/1).
- Registered seven points three assists and three steals at UCF (1/1).
- Connected on three of her four shots from the field en route to eight points, five rebounds, four assists and three steals against UC Davis (12/5).
- Had a season-high 12 points with a career-best seven rebounds in the win over Ohio State (12/1).
- Was 4-for-5 from the field, including 3-for-3 from three-point range, on the way to 12 points against Monmouth (11/23).
- Chipped in with 10 points on 4-6 shooting in a season-high 31-minutes of action against Oregon (11/20).
- Had nine points and three rebounds at #8/7 Maryland (11/15).

2012-13 Season (at Connecticut):

- Finished sixth on the team in scoring (7.3).
- Had 12 points to go along with four rebounds at Marquette (1/12).
- Tallied 18 points on 8-of-13 shooting and pulled in six rebounds against Oakland (12/19).
- Registered 10 points and two steals against #10/10 Penn State (12/6).
- Connected on three of her four three-point attempts en route to 11 points against #9/10 Maryland (12/3).
- Had a career-high 20 points thanks to a 6-for-10 shooting night, including a 4-for-5 effort from beyond the arc, against Colgate (11/28).
- Had a balanced statistical night with 12 points, six assists, two rebounds and a steal with only one turnover in 20 minutes against Wake Forest (11/22).
- Opened the season with a perfect 5-for-5 shooting night for 10 points against Charleston (11/11).

2011-12 Season (at Connecticut):

- Shot 50.5 percent from the field.
- Hit on all three of her shots from the field en route to eight points with four assists and two steals at Marquette (2/25).
- Was 5-for-5 from the field and finished with 12 points, two rebounds and two steals against Fairfield (12/29).
- Collected 17 points via a 7-for-10 shooting effort and 3-for-3 night at the free throw line against Fairleigh Dickinson (11/25).
- Tallied 12 points thanks to a 5-for-7 shooting night against Pacific (11/15).

High School:

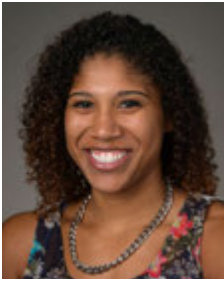
- Averaged 16.2 points, 5.5 rebounds, 5.1 assists and 5.0 steals per game in her final season at Fayette County High School, which ended in a State Championship.
- Honored as a 2011 McDonald's All-American and WBCA Honorable Mention All-American in addition to being named "Miss Basketball" in the state of Georgia.
- Honored as the Fayette County Player of the Year by the *Fayette County News* and selected to the All-State first team in 2011.
- Led the West Team with 17 points on 7-of-12 shooting in the 2011 McDonald's All-American Game.
- Was a second team All-State selection and the Coweta County Player of the year during her junior season.
- Rated as the No. 24 overall recruit by ESPN Hoopgurlz and the No. 15 overall prospect by the All-Star Girls Report.
- Tabbed as the No. 11 recruit nationally by Blue Star.
- Honored as a first team All-Metro selection by the *Atlanta Journal-Constitution* in 2009-10.
- Selected as the 2010 Coweta County Player of the Year by the *Times-Herald*.

BANKS' CAREER STATS

Year	GP-GS	MIN	FG-A	PCT	3FG-A	PCT	FT-A	PCT	REB	AVG	PF-O	A	TO	B	S	PTS	AVG
2011-12*	32-0	393	46-91	.505	3-24	.125	19-27	.704	5-30-35	1.1	27-0	32	31	3	25	114	3.6
2012-13*	21-0	359	56-117	.479	18-52	.346	23-33	.697	6-30-36	1.7	22-0	35	22	4	25	153	7.3
2013-14*	37-8	527	49-103	.476	13-44	.295	19-29	.655	20-37-57	1.5	42-1	45	27	6	34	130	3.5
CAREER	90-8	1279	151-311	.486	34-120	.283	61-89	.685	31-97-128	1.4	91-1	112	80	13	84	397	4.4

* - at Connecticut





#5 Sierra Moore

RS-So. * G * 5-11 * Hanover, Pa./Delone Catholic (Duke)

Highlights:

- ♦ Sat out the 2013-14 season due to NCAA Transfer Rules.
- ♦ Selected as a team tri-captain.
- ♦ Named to the Georgia State Thanksgiving Tournament All-Tournament team.
- ♦ Posted first career double-double with 14 points and a personal-best 10 rebounds against Seton Hall (11/22).
- ♦ Recorded her first career 20-point game vs. Wagner (12/7). Her 21 points helped her eclipse the 100-point mark in her Penn State career.
- ♦ That three games with at least 14 points, five rebounds and five assists this season.

2014-15 Season Notes:

- ♦ Scored 14 points with six rebounds, five assists and two steals vs. Illinois (1/4). She tied her career-high with six made field goals vs. the Illini.
- ♦ Ranked second on the team with 11 points at Michigan (1/1) and added three rebounds, two steals and tied a career-best with two blocked shots.
- ♦ Posted her second career double-double vs. USF (12/21) with 17 points and a career-high tying 10 rebounds. She also tied her career-bests in steals (2) and field goals made (6) and attempted (19), while playing a career-high 41 minutes vs. the Bulls.
- ♦ Had seven points, four rebounds and tied her career-high with seven assists vs. Rider (12/14).
- ♦ Scored 10 points and handed out a game-high five assists at Hartford (12/10).
- ♦ Eclipsed the 100-point mark for her Penn State career with her first career 20-point effort vs. Wagner (12/7). Her 21 points are a career-high and she added a personal-best seven assists vs. the Seahawks.
- ♦ Poured in a team- and then-career-high 17 points for her fourth straight double-digit scoring effort vs. Samford (11/30), adding three assists and two steals against the Bulldogs.
- ♦ Scored 14 points, grabbed five rebounds and handed out four assists vs. Liberty (11/28).
- ♦ Had a game- and then-career-high 15 points via a 6-for-12 shooting performance versus St. Bonaventure (11/25).
- ♦ Tallied eight points to go along with three rebounds, three assists and a steal versus Albany (11/16).
- ♦ Filled the stats sheet with 12 points, five rebounds, four assists, two blocks and a steal in the win over Towson (11/14).
- ♦ Scored 15 of her team-best 18 points over the final 11:44 of the contest to propel the Lady Lions to an exhibition win over IUP (11/2).

Notable:

- ♦ Appeared in 25 games as a freshman at Duke.
- ♦ Garnered Gatorade Player of the Year and Associated Press Class AA Player of the Year honors in the state of Pennsylvania as a high school senior year.
- ♦ Was a McDonald's High School All-American in 2011-12.
- ♦ Holds the York-Adams Interscholastic Athletic Association (YAIAA) scoring record with 2,595 points at Delone Catholic.
- ♦ Was also a track standout, finishing in the Top 10 in the State Championships in the 200-meters (7th in 2009 and 2010) and 4x100 relay (4th in 2009).

14-15 GAME-BY-GAME

OPPONENT	Min.	FG	3FG	FT	O-D-R	PF	A	TO	B	S	Pts
TOWSON	39	5-12	1-1	1-3	1-4-5	0	4	4	2	1	12
ALBANY	30	4-8	0-0	0-1	2-1-3	4	3	4	1	1	8
SETON HALL	37	5-12	0-0	4-6	7-3-10	1	5	3	1	0	14
ST. BONA	37	6-12	0-0	3-6	1-4-5	3	3	3	0	0	15
vs. Liberty	33	5-10	0-0	4-7	2-3-5	5	4	3	0	1	14
vs. Samford	40	4-10	1-2	8-10	1-0-1	5	3	3	0	2	17
at Syracuse	37	2-11	0-0	0-0	1-4-5	2	2	5	2	1	4
WAGNER	31	5-9	0-0	11-12	1-4-5	0	7	0	0	2	21
at Hartford	29	4-9	0-0	2-2	0-2-2	4	5	4	0	2	10
RIDER	29	3-11	0-0	1-2	0-4-4	0	7	1	1	0	7
USF	41	6-19	1-1	4-6	3-7-10	3	3	4	0	2	17
at Iowa	18	1-7	0-1	0-0	2-0-2	1	1	2	0	1	2
at Michigan	30	5-10	0-0	1-4	1-2-3	2	1	5	2	2	11
ILLINOIS	32	6-14	0-1	2-6	3-3-6	2	5	4	0	2	14
at Wisconsin											
RUTGERS											
at Nebraska											
at Ohio State											
INDIANA											
NORTHWESTERN											
at Minnesota											
at Rutgers											
MARYLAND											
at Purdue											
MICHIGAN ST.											
MINNESOTA											
at Maryland											
OHIO STATE											
WISCONSIN											

MOORE'S CAREER/SEASON HIGHS

	SEASON HIGHS	CAREER HIGHS
Points	21 vs. Wagner (12/7/14)	21 vs. Wagner (12/7/14)
Rebs.	10 vs. USF (12/21/14) 10 vs. Seton Hall (11/22/14)	10 vs. USF (12/21/14) 10 vs. Seton Hall (11/22/14)
Assists	7 vs. Rider (12/14/14) 7 vs. Wagner (12/7/14)	7 vs. Rider (12/14/14) 7 vs. Wagner (12/7/14)
Steals	2 (6x) last vs. Illinois (1/4/15)	3 vs. Iona (11/18/12)
Blocks	2 (3x) last at Michigan (1/1/15)	2 (3x) last at Michigan (1/1/15)
Minutes	41 vs. USF (12/21/14)	41 vs. USF (12/21/14)
FGM	6 (3x) last vs. Illinois (1/4/15)	6 (3x) last vs. Illinois (1/4/15)
FGA	19 vs. USF (12/21/14)	19 vs. USF (12/21/14)
3FGM	1 (3x) last vs. USF (12/21/14)	1 (3x) last vs. USF (12/21/14)
3FGA	2 vs. Samford (11/30/14)	2 vs. Samford (11/30/14)
FTM	11 vs. Wagner (12/7/14)	11 vs. Wagner (12/7/14)
FTA	12 vs. Wagner (12/7/14)	12 vs. Wagner (12/7/14)

italics indicate at Duke

MOORE'S MISCELLANEOUS STATS

Category	Season	Career	Last Time
Double Figure Scoring	10	11	14 vs. Illinois (1/4/15)
20-point games	1	1	21 vs. Wagner (12/7/14)
Double Figure Rebounds	2	2	10 vs. USF (12/21/14)
5-plus Rebounds	8	9	6 vs. Illinois (1/4/15)
5-plus Assists	5	5	5 vs. Illinois (1/4/15)
3-plus Steals	n/a	1	3 vs. Iona (11/18/12)
Double-Doubles	2	2	17p, 10r vs. USF (12/21/14)

MOORE'S CAREER STATS

Year	GP-GS	MIN	FG-A	PCT	3FG-A	PCT	FT-A	PCT	REB	AVG	PF-O	A	TO	B	S	PTS	AVG
2012-13*	25-0	194	26-58	.448	0-0	.000	11-22	.500	11-13-24	1.0	21-0	12	6	2	11	63	2.5
2014-15	14-14	463	61-154	.396	3-6	.500	41-65	.631	25-41-66	4.7	32-2	53	45	9	17	166	11.9
PSU	14-14	463	61-154	.396	3-6	.500	41-65	.631	25-41-66	4.7	32-2	53	45	9	17	166	11.9
TOTAL	39-14	657	87-212	.410	3-6	.500	52-87	.598	36-54-90	2.3	53-2	65	51	11	28	229	5.9

* - at Duke

10-Time Big Ten Champions • Two-Time Big Ten Tournament Champions • 2000 NCAA Final Four • 25 NCAA Tournament Appearances





#10 Keke Sevillian

So. * G * 5-7 * Goodrich, Mich./Goodrich

Highlights:

- Made first career start against Seton Hall (11/22).

2014-15 Season Notes:

- Tied her career-high with 36 minutes in her second straight start vs. Illinois (1/4), scoring four points with three rebounds.
- Made her second career start at Michigan (1/1).
- Had four points, four rebounds and two steals in the Big Ten opener at Iowa (12/28).
- Came off the bench to provide two assists, one steal, one blocked shot and two points vs. USF (12/21).
- Tallied a career-high nine points on 3-of-3 shooting from the field and a career-best three free throws made. Also tied her career-best with four rebounds vs. the Broncs.
- Converted her only field goal attempt, a three pointer, at Hartford (12/10).
- Nabbed a season-high three steals in a career-best 27 minutes of action and added four assists and four points vs. Wagner (12/7).
- Blocked her first career shot and grabbed a career-high three rebounds vs. Syracuse (12/4) in the ACC/Big Ten Challenge.
- Knocked down a pair of three-pointers and dished out a career-high five assists in the season-opener against Towson (11/14).
- Tallied four points, four rebounds, three assists and three steals in the exhibition win over IUP (11/2).

Notable:

- Led Goodrich High School in Michigan to its first-ever Class B State Championship in 2011-12 with a perfect 28-0 record.
- Holds the Goodrich High School record in the 300-meter hurdles and 200-meter dash and finished second in the state championships in the 300-meters hurdles her freshman and sophomore seasons.
- Father, Clarence, was a wide receiver for the Vanderbilt football team from 1989-92 and ranks in the school's Top 10 in career receiving yards.
- Aunt, Nicole Hendrix, played basketball at Stanford from 1991-94, winning a National Championship in 1992.

14-15 GAME-BY-GAME

OPPONENT	Min.	FG	3FG	FT	O-D-R	PF	A	TO	B	S	Pts
TOWSON	19	2-6	2-5	0-1	0-1-1	2	5	0	0	0	6
ALBANY	13	0-5	0-3	0-0	0-0-0	4	1	1	0	2	0
SETON HALL	14	0-5	0-2	1-2	0-0-0	2	1	2	0	1	1
ST. BONA	10	0-4	0-0	0-0	0-0-0	0	1	1	0	1	0
vs. Liberty	7	0-0	0-0	0-0	0-0-0	4	1	0	0	1	0
vs. Samford	9	0-1	0-0	0-0	0-0-0	2	1	2	0	0	0
at Syracuse	21	1-3	1-1	0-0	2-2-4	0	0	1	1	1	3
WAGNER	27	2-6	0-2	0-2	2-1-3	1	4	1	0	3	4
at Hartford	13	1-1	1-1	0-0	1-0-1	3	0	0	0	0	3
RIDER	27	3-3	0-0	3-7	1-3-4	2	4	2	0	3	9
USF	20	1-4	0-1	0-1	1-1-2	2	2	1	1	1	2
at Iowa	36	1-2	0-0	2-2	0-4-4	1	1	1	0	2	4
at Michigan	22	0-1	0-1	0-0	0-2-2	4	1	2	0	1	0
ILLINOIS	36	2-3	0-1	0-0	1-2-3	3	1	2	0	1	4
at Wisconsin											
RUTGERS											
at Nebraska											
at Ohio State											
INDIANA											
NORTHWESTERN											
at Minnesota											
at Rutgers											
MARYLAND											
at Purdue											
MICHIGAN ST.											
MINNESOTA											
at Maryland											
OHIO STATE											
WISCONSIN											

SEVILLIAN'S CAREER/SEASON HIGHS

	SEASON HIGHS	CAREER HIGHS
Points	9 vs. Rider (12/14/14)	9 vs. Rider (12/14/14)
Rebs.	4 (3x) last at Iowa (12/28)	4 (3x) last at Iowa (12/28)
Assists	5 vs. Towson (11/14/14)	5 vs. Towson (11/14/14)
Steals	3 vs. Rider (12/14/14) 3 vs. Wagner (12/7/14)	4 vs. St. Francis (Pa.) (11/8/13)
Blocks	1 vs. USF (12/21/14) 1 at Syracuse (12/4/14)	1 vs. USF (12/21/14) 1 at Syracuse (12/4/14)
Minutes	36 vs. Illinois (1/4/15) 36 at Iowa (12/28/14)	36 vs. Illinois (1/4/15) 36 at Iowa (12/28/14)
FGM	3 vs. Rider (12/14/14)	3 vs. Rider (12/14/14)
FGA	6 vs. Wagner (12/7/14) 6 vs. Towson (11/14/14)	6 (3x) last vs. Wagner (12/7/14)
3FGM	2 vs. Towson (11/14/14)	2 vs. Towson (11/14/14)
3FGA	5 vs. Towson (11/14/14)	5 vs. Towson (11/14/14)
FTM	3 vs. Rider (12/14/14)	4 vs. St. Francis (Pa.) (11/8/13)
FTA	7 vs. Rider (12/14/14)	7 vs. Rider (12/14/14)

SEVILLIAN'S MISCELLANEOUS STATS

Category	Season	Career	Last Time
Double Figure Scoring	n/a	n/a	
20-point games	n/a	n/a	
Double Figure Rebounds	n/a	n/a	
5-plus Rebounds	n/a	n/a	
5-plus Assists	1	1	5 vs. Towson (11/14)
3-plus Steals	2	3	3 vs. Rider (12/14/14)
Double-Doubles	n/a	n/a	

SEVILLIAN'S CAREER STATS

Year	GP-GS	MIN	FG-A	PCT	3FG-A	PCT	FT-A	PCT	REB	AVG	PF-O	A	TO	B	S	PTS	AVG
2013-14	22-0	120	8-28	.286	4-13	.308	11-13	.846	1-11-12	0.5	19-0	5	15	0	8	31	1.4
2014-15	14-3	274	13-44	.295	4-17	.235	6-15	.400	8-16-24	1.7	30-0	23	16	2	17	36	2.6
TOTAL	36-3	394	21-72	.292	8-30	.267	17-28	.607	9-27-36	1.0	49-0	28	31	2	25	67	1.9





#11 Alex Harris

So. * F * 6-3 * Lorain, Ohio/Lorain

Highlights:

- ♦ Made her first career start at Michigan (1/1).

2014-15 Season Notes:

- ♦ Scored five points on 2-of-2 shooting from the field, going 1-of-1 from the free throw line, with two rebounds in seven minutes vs. Illinois (1/4).
- ♦ Tied her career-high with 11 rebounds in the Big Ten opener at Iowa (12/28) and added four points.
- ♦ Made her season debut vs. USF (12/21), setting career-highs for minutes played (31), points (9) and free throws made (3) and attempted (8). She also tied her career-best marks in blocked shots (3), assists (2) and field goals made (3) and attempted (5).

Notable:

- ♦ Appeared in 29 contests as a freshman.
- ♦ Had three double-digit rebounding performances as a freshman and 10 outings with five or more rebounds.
- ♦ Collegiate Girls Basketball Report and All-Star Girls Report both rated her as the 49th-ranked recruit.
- ♦ Named 2012-13 Division 1 Lorain County Player of the Year.

14-15 GAME-BY-GAME

OPPONENT	Min.	FG	3FG	FT	O-D-R	PF	A	TO	B	S	Pts
TOWSON	DNP										
ALBANY	DNP										
SETON HALL	DNP										
ST. BONA	DNP										
vs. Liberty	DNP										
vs. Samford	DNP										
at Syracuse	DNP										
WAGNER	DNP										
at Hartford	DNP										
RIDER	DNP										
USF	31	3-5	0-0	3-8	5-3-8	3	2	1	3	0	9
at Iowa	18	2-5	0-0	0-0	7-4-11	3	1	5	0	1	4
at Michigan	12	0-0	0-0	0-0	0-0-0	0	0	0	2	0	0
ILLINOIS	7	2-2	0-0	1-1	1-1-2	2	0	0	0	0	5
at Wisconsin											
RUTGERS											
at Nebraska											
at Ohio State											
INDIANA											
NORTHWESTERN											
at Minnesota											
at Rutgers											
MARYLAND											
at Purdue											
MICHIGAN ST.											
MINNESOTA											
at Maryland											
OHIO STATE											
WISCONSIN											

HARRIS' CAREER/SEASON HIGHS		
	SEASON HIGHS	CAREER HIGHS
Points	9 vs. USF (12/21/14)	9 vs. USF (12/21/14)
Rebs.	11 at Iowa (12/28/14)	11 (3x) last at Iowa (12/28/14)
Assists	2 vs. USF (12/21/14)	2 vs. USF (12/21/14) 2 vs. Illinois State (11/30/13)
Steals	1 at Iowa (12/28/14)	1 (7x) last at Iowa (12/28/14)
Blocks	3 vs. USF (12/21/14)	3 (3x) last vs. USF (12/21/14)
Minutes	31 vs. USF (12/21/14)	31 vs. USF (12/21/14)
FGM	3 vs. USF (12/21/14)	3 vs. USF (12/21/14) 3 vs. Bucknell (11/20/13)
FGA	5 at Iowa (12/28/14) 5 vs. USF (12/21/14)	5 (4x) last at Iowa (12/28/14)
3FGM	n/a	n/a
3FGA	n/a	n/a
FTM	3 vs. USF (12/21/14)	3 vs. USF (12/21/14)
FTA	8 vs. USF (12/21/14)	8 vs. USF (12/21/14)

HARRIS' MISCELLANEOUS STATS			
Category	Season	Career	Last Time
Double Figure Scoring	n/a	n/a	
20-point games	n/a	n/a	
Double Figure Rebounds	n/a	3	11 vs. Illinois State (11/30/13)
5-plus Rebounds	1	11	8 vs. USF (12/21/14)
5-plus Blocks	n/a	n/a	
3-plus Blocks	1	2	3 vs. USF (12/21/14)
Double-Doubles	n/a	n/a	

HARRIS' CAREER STATS																	
Year	GP-GS	MIN	FG-A	PCT	3FG-A	PCT	FT-A	PCT	REB	AVG	PF-O	A	TO	B	S	PTS	AVG
2013-14	29-0	256	20-50	.400	0-0	.000	17-34	.500	39-57-96	3.3	33-0	5	19	15	6	57	2.0
2014-15	4-1	68	7-12	.583	0-0	.000	4-9	.444	13-8-21	5.3	8-0	3	6	5	1	18	4.5
TOTAL	33-1	324	27-62	.435	0-0	.000	21-43	.488	52-65-117	3.5	41-0	8	25	20	7	75	2.3

10-Time Big Ten Champions • Two-Time Big Ten Tournament Champions • 2000 NCAA Final Four • 25 NCAA Tournament Appearances



#12 Lindsey Spann

RS-Fr. * G * 5-6 * Laurel, Md./Good Counsel

Highlights:

- Named Dec. 30 Big Ten Freshman of the Week.
- Selected as a team tri-captain.
- Reached double-figure in scoring in each of her first eight career games, a feat not accomplished by Penn State's top two career scoring leaders, Kelly Mazzante and Maggie Lucas.
- Reached the 100 career point plateau in just her eighth career game (Wagner, 12/7) and moved past the 200 career point mark in her 13th career contest (at Michigan; 1/1).

2014-15 Season Notes:

- Paced the team with 20 points and added four assists and a career-high six rebounds vs. Illinois (1/4).
- Led the team with 15 points at Michigan (1/1), making 6-of-12 shots from the field.
- Notched her third straight 20-point game in the Big Ten opener at Iowa (12/28), and added five rebounds and four assists. She netted a career-high four three pointers and six free throws vs. the Hawkeyes.
- Poured in a career-high 28 points vs. USF (12/14), tying her career-high with 11 made field goals and adding a career-best five made three throws.
- Filled the stat sheet vs. Rider (12/14), posting her second career 20-point game with a then-career-high 23 tallies on a career-best 11 made field goals. Also added five rebounds and five assists.
- Scored five points, snapping her streak of eight straight games in double figure to start her career, and handed out four assists at Hartford (12/10).
- Tallied a then-career-best 22 points for her eighth straight double-figure scoring game vs. Wagner (12/7), pushing her over the 100 career point mark. She set a then-career-best with eight made field goals, while tying her then-personal-high with five rebounds.
- Netted 11 points at Syracuse (12/4) in the ACC/Big Ten Challenge, adding three assists and three rebounds.
- Reached double figures with 10 points vs. Samford (11/30), adding five assists and three steals in 41 minutes of action in the overtime loss.
- Scored a team-best and tied her then-career-high with 17 points and seven field goals vs. Liberty (11/28), to go along with three assists and two steals.
- Reached double figures with 13 points to go along with five assists and two steals against St. Bonaventure (11/25).
- Chipped in 12 points and three steals against Seton Hall (11/22).
- Led the Lady Lions in scoring for the second straight game with 14 points against Albany (11/16), marking the first time a freshman has been the team's leading scorer in two straight games since Maggie Lucas did so vs. Minnesota (1/13/11) and vs. Illinois (1/16/11).
- Went 7-for-14 from the field for a team-high 17 points in her collegiate debut against Towson (11/14). Also tallied five rebounds and four assists against the Tigers.
- Recorded 14 points and dished out four assists in the exhibition win over IUP (11/2).

Notable:

- Missed the 2013-14 season after tearing her right ACL.
- Ranked as the 22nd-best player by Collegiate Girls Basketball Report and 88th-rated player by Blue Star Basketball.
- Guided Good Counsel to a 25-5 overall record and 16-3 mark in league play.
- Participated in USA Basketball's U16 Trials in May 2011.

14-15 GAME-BY-GAME

OPPONENT	Min.	FG	3FG	FT	O-D-R	PF	A	TO	B	S	Pts
TOWSON	32	7-14	0-2	3-4	0-5-5	2	4	4	0	0	17
ALBANY	31	6-12	1-3	1-2	0-1-1	3	4	3	0	0	14
SETON HALL	27	4-10	2-4	2-2	0-2-2	5	1	5	0	3	12
ST. BONA	34	4-14	2-6	3-4	1-1-2	3	5	1	0	2	13
vs. Liberty	37	7-21	0-7	3-3	0-0-0	3	3	7	0	2	17
vs. Samford	41	3-13	0-2	4-6	1-1-2	4	5	4	0	3	10
at Syracuse	29	4-11	1-4	2-4	0-3-3	1	3	6	0	0	11
WAGNER	30	8-15	2-5	4-4	2-3-5	3	4	2	0	2	22
at Hartford	31	1-6	0-1	3-4	0-4-4	3	4	2	0	1	5
RIDER	35	11-20	1-4	0-2	0-5-5	2	5	2	0	2	23
USF	41	11-22	1-3	5-9	0-3-3	5	3	1	0	1	28
at Iowa	39	6-21	4-9	6-8	1-4-5	3	4	5	0	1	22
at Michigan	28	6-12	1-3	2-4	0-2-2	4	1	7	0	1	15
ILLINOIS	39	8-19	2-6	2-2	1-5-6	2	4	3	0	2	20
at Wisconsin											
RUTGERS											
at Nebraska											
at Ohio State											
INDIANA											
NORTHWESTERN											
at Minnesota											
at Rutgers											
MARYLAND											
at Purdue											
MICHIGAN ST.											
MINNESOTA											
at Maryland											
OHIO STATE											
WISCONSIN											

SPANN'S CAREER/SEASON HIGHS

	SEASON HIGHS	CAREER HIGHS
Points	28 vs. USF (12/21/14)	28 vs. USF (12/21/14)
Rebs.	6 vs. Illinois (1/1/15)	6 vs. Illinois (1/1/15)
Assists	5 (3x) last vs. Rider (12/14/14)	5 (3x) last vs. Rider (12/14/14)
Steals	3 vs. Samford (11/30/14) 3 vs. Seton Hall (11/22/14)	3 vs. Samford (11/30/14) 3 vs. Seton Hall (11/22/14)
Blocks	n/a	n/a
Minutes	41 vs. USF (12/21/14) 41 vs. Samford (11/30/14)	41 vs. USF (12/21/14) 41 vs. Samford (11/30/14)
FGM	11 vs. USF (12/21/14) 11 vs. Rider (12/14/14)	11 vs. USF (12/21/14) 11 vs. Rider (12/14/14)
FGA	22 vs. USF (12/21/14)	22 vs. USF (12/21/14)
3FGM	4 at Iowa (12/28/14)	4 at Iowa (12/28/14)
3FGA	9 at Iowa (12/28/14)	9 at Iowa (12/28/14)
FTM	6 at Iowa (12/28/14)	6 at Iowa (12/28/14)
FTA	9 vs. USF (12/21/14)	9 vs. USF (12/21/14)

SPANN'S MISCELLANEOUS STATS

Category	Season	Career	Last Time
Double Figure Scoring	13	13	20 vs. Illinois (1/1/15)
20-point games	5	5	20 vs. Illinois (1/1/15)
Double Figure Rebounds	n/a	n/a	
5-plus Rebounds	5	5	6 vs. Illinois (1/1/15)
5-plus Assists	3	3	5 vs. Rider (12/14/14)
3-plus Steals	2	2	3 vs. Samford (11/30/14)
Double-Doubles	n/a	n/a	

SPANN'S CAREER STATS

Year	GP-GS	MIN	FG-A	PCT	3FG-A	PCT	FT-A	PCT	REB	AVG	PF-O	A	TO	B	S	PTS	AVG
2014-15	14-14	474	86-210	.410	17-59	.288	40-58	.690	6-39-45	3.2	43-2	50	52	0	20	229	16.4
TOTAL	14-14	474	86-210	.410	17-59	.288	40-58	.690	6-39-45	3.2	43-2	50	52	0	20	229	16.4





#14 Dominique Brooks

Jr. * C * 6-4 * Lansing, Ill./T.F. South (Trinity Valley C.C.)

2014-15 Season Notes:

- ♦ Converted on an old-fashioned three-point play at Michigan (1/1).
- ♦ Made her only field goal attempt vs. Rider (12/14).
- ♦ Scored a career-best four points and recorded her first career blocked shot vs. Wagner (12/7).
- ♦ Pulled down her first rebound as a Lady Lion vs. Syracuse (12/4) in the ACC/Big Ten Challenge.
- ♦ Connected on her lone field goal attempt vs. Liberty (11/28).
- ♦ Hit a pair of free throws in her Penn State debut in the win over Towson (11/14)
- ♦ Had four rebounds and a blocked shot in the exhibition win against IUP (11/2).

Notable:

- ♦ Won two NJCAA National Championships while at Trinity Valley Community College.
- ♦ Participated in USA Basketball U18 Trials in 2012

14-15 GAME-BY-GAME

OPPONENT	Min.	FG	3FG	FT	O-D-R	PF	A	TO	B	S	Pts
TOWSON	3	0-0	0-0	2-2	0-0-0	1	0	0	0	0	2
ALBANY	2	0-0	0-0	0-0	0-0-0	1	0	1	0	0	0
SETON HALL	3	0-0	0-0	0-0	0-0-0	2	0	0	0	0	0
ST. BONA	1	0-0	0-0	0-0	0-0-0	0	0	1	0	0	0
vs. Liberty	2	1-1	0-0	0-0	0-0-0	0	0	0	0	0	2
vs. Samford	DNP										
at Syracuse	3	0-0	0-0	0-0	0-1-1	1	0	1	0	0	0
WAGNER	9	1-3	0-0	2-2	0-0-0	1	0	0	1	0	4
at Hartford	DNP										
RIDER	6	1-1	0-0	0-0	0-0-0	1	0	1	0	0	2
USF	DNP										
at Iowa	1	0-0	0-0	0-0	0-0-0	0	0	0	0	0	0
at Michigan	2	1-1	0-0	1-1	0-0-0	0	0	0	0	0	3
ILLINOIS	DNP										
at Wisconsin											
RUTGERS											
at Nebraska											
at Ohio State											
INDIANA											
NORTHWESTERN											
at Minnesota											
at Rutgers											
MARYLAND											
at Purdue											
MICHIGAN ST.											
MINNESOTA											
at Maryland											
OHIO STATE											
WISCONSIN											

BROOKS' CAREER/SEASON HIGHS

	SEASON HIGHS	CAREER HIGHS
Points	4 vs. Wagner (12/7/14)	4 vs. Wagner (12/7/14)
Rebs.	1 at Syracuse (12/4/14)	1 at Syracuse (12/4/14)
Assists	n/a	n/a
Steals	n/a	n/a
Blocks	1 vs. Wagner (12/7/14)	1 vs. Wagner (12/7/14)
Minutes	9 vs. Wagner (12/7/14)	9 vs. Wagner (12/7/14)
FGM	1 (3x) last vs. Rider (12/14/14)	1 (3x) last vs. Rider (12/14/14)
FGA	3 vs. Wagner (12/7/14)	3 vs. Wagner (12/7/14)
3FGM	n/a	n/a
3FGA	n/a	n/a
FTM	2 vs. Wagner (12/7/14) 2 vs. Towson (11/14/14)	2 vs. Wagner (12/7/14) 2 vs. Towson (11/14/14)
FTA	2 vs. Wagner (12/7/14) 2 vs. Towson (11/14/14)	2 vs. Wagner (12/7/14) 2 vs. Towson (11/14/14)

BROOKS' MISCELLANEOUS STATS

Category	Season	Career	Last Time
Double Figure Scoring	n/a	n/a	
20-point games	n/a	n/a	
Double Figure Rebounds	n/a	n/a	
5-plus Rebounds	n/a	n/a	
5-plus Assists	n/a	n/a	
3-plus Steals	n/a	n/a	
Double-Doubles	n/a	n/a	

BROOKS' CAREER STATS

Year	GP-GS	MIN	FG-A	PCT	3FG-A	PCT	FT-A	PCT	REB	AVG	PF-O	A	TO	B	S	PTS	AVG
2014-15	10-0	32	4-6	.667	0-0	.000	5-5	1.000	0-1-1	0.1	7-0	0	4	1	0	13	1.3
TOTAL	10-0	32	4-6	.667	0-0	.000	5-5	1.000	0-1-1	0.1	7-0	0	4	1	0	13	1.3

10-Time Big Ten Champions • Two-Time Big Ten Tournament Champions • 2000 NCAA Final Four • 25 NCAA Tournament Appearances





#15 Kaliyah Mitchell

So. * F * 6-2 * Stone Mountain, Ga./Stephenson

Highlights:

- Second-leading returning scorer and rebounder from 2013-14.
- Eclipsed the 200 career point mark with an early three point basket in the first half vs. Wagner (12/7)
- Posted her first career double-double vs. Rider (12/14) with 12 points and 10 rebounds.

2014-15 Season Notes:

- Scored 11 points - all in the second half - and added five rebounds and a career-high-tying two assists vs. Illinois (1/4) off the bench.
- Came off the bench to score nine points with six rebounds and tied a career-high with two assists at Michigan (1/1).
- Equaled her career-high with two blocked shots in the Big Ten opener at Iowa (12/28), adding four rebounds and one steal.
- Posted her 10th straight game with at least five rebounds vs. USF, pulling down eight caroms. She added six points, one assist and one steal vs. the Bulls.
- Notched her first career double-double vs. Rider (12/14) with 12 points and career-high-tying 10 rebounds. She was an efficient 4-of-7 from the field and 4-of-6 from the free throw line, while adding four steals vs. the Broncs.
- Grabbed seven rebounds with nine points and a blocked shot at Hartford (12/10).
- Eclipsed the 200 career point mark with an early first half three pointer vs. Wagner and tallied her first ever 20-point game. She logged 20 points with a career-high eight made field goals, her third career three pointer and three free throws. She also added seven rebounds.
- Hauled in five rebounds vs. Syracuse (12/4) in the ACC/Big Ten Challenge.
- Narrowly missed a double-double with eight points and nine rebounds vs. Samford (11/30), adding one assist, two steals and a career-high tying two blocks.
- Logged 10 points, five rebounds and a career-high five steals vs. Liberty (11/28).
- Pulled in nine rebounds against St. Bonaventure (11/25).
- Registered eight points and tied her career high with 10 rebounds against Seton Hall (11/22).
- Chipped in nine points, six rebounds and tied her career high with four steals against Albany (11/16).
- Accounted for 10 points and a team-best three steals against Towson (11/14).
- Posted a near double-double with 12 points, nine rebounds and three steals in the exhibition win versus IUP (11/2).

Notable:

- Was the 54th-ranked recruit by Collegiate Girls Basketball Report and 40th-ranked recruit by All-Star Girls Report.
- Brother, Kenny, was an all-conference basketball player at Virginia State University.

14-15 GAME-BY-GAME

OPPONENT	Min.	FG	3FG	FT	O-D-R	PF	A	TO	B	S	Pts
TOWSON	25	3-8	0-2	4-6	2-3-4	4	0	3	0	3	10
ALBANY	30	2-7	1-2	4-5	1-5-6	4	0	5	0	4	9
SETON HALL	32	2-9	0-1	4-6	3-7-10	2	0	1	1	0	8
ST. BONA	29	1-7	0-1	0-1	1-8-9	3	1	3	0	4	2
vs. Liberty	27	4-12	0-3	2-3	1-4-5	4	0	3	0	5	10
at Samford	38	3-10	0-1	2-3	1-8-9	5	1	2	2	2	8
at Syracuse	27	0-6	0-4	2-4	1-4-5	3	1	1	1	0	2
WAGNER	28	8-11	1-2	3-4	3-4-7	1	0	1	0	0	20
at Hartford	31	2-13	1-3	4-6	4-3-7	5	0	4	1	0	9
RIDER	29	4-7	0-1	4-6	4-6-10	3	1	1	1	4	12
USF	26	1-5	0-0	4-4	4-4-8	5	1	2	0	1	6
at Iowa	21	0-2	0-0	0-2	2-2-4	4	0	2	2	1	0
at Michigan	28	3-7	0-2	3-4	1-5-6	1	2	2	0	0	9
ILLINOIS	29	5-9	0-1	1-1	1-4-5	3	2	2	0	1	11
at Wisconsin											
RUTGERS											
at Nebraska											
at Ohio State											
INDIANA											
NORTHWESTERN											
at Minnesota											
at Rutgers											
MARYLAND											
at Purdue											
MICHIGAN ST.											
MINNESOTA											
at Maryland											
OHIO STATE											
WISCONSIN											

MITCHELL'S CAREER/SEASON HIGHS

	SEASON HIGHS	CAREER HIGHS
Points	20 vs. Wagner (12/7/14)	20 vs. Wagner (12/7/14)
Rebs.	10 vs. Rider (12/14/14) 10 vs. Seton Hall (11/22/14)	10 (3x) last vs. Rider (12/14/14)
Assists	2 vs. Illinois (1/4/15) 2 at Michigan (1/1/15)	2 (8x) last vs. Illinois (1/4/15)
Steals	5 vs. Liberty (11/28/14)	5 vs. Liberty (11/28/14)
Blocks	2 at Iowa (12/28/14) 2 vs. Samford (11/30/14)	2 (3x) last at Iowa (12/28/14)
Minutes	38 vs. Samford (11/30/14)	38 vs. Samford (11/30/14)
FGM	8 vs. Wagner (12/7/14)	8 vs. Wagner (12/7/14)
FGA	13 at Hartford (12/10/14)	13 at Hartford (12/10/14)
3FGM	1 (3x) last at Hartford (12/10/14)	1 (3x) last at Hartford (12/10/14)
3FGA	4 at Syracuse (12/4/14)	4 at Syracuse (12/4/14)
FTM	4 (6x) last vs. USF (12/21/14)	7 vs. Northwestern (2/20/14)
FTA	6 (3x) last vs. Rider (12/14/14)	7 (3x) last vs. Northwestern (2/20/14)

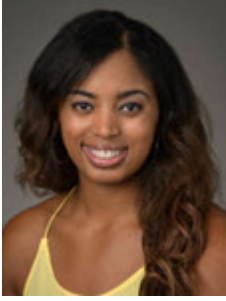
MITCHELL'S MISCELLANEOUS STATS

Category	Season	Career	Last Time
Double Figure Scoring	5	7	11 vs. Illinois (1/4/15)
20-point games	1	1	20 vs. Wagner (12/7/14)
Double Figure Rebounds	2	3	10 vs. Rider (12/14/14)
5-plus Rebounds	12	25	5 vs. Illinois (1/4/15)
5-plus Assists	n/a	n/a	
3-plus Steals	5	7	4 vs. Rider (12/14/14)
Double-Doubles	1	1	12 pts, 10 reb. vs. Rider (12/14/14)

MITCHELL'S CAREER STATS

Year	GP-GS	MIN	FG-A	PCT	3FG-A	PCT	FT-A	PCT	REB	AVG	PF-O	A	TO	B	S	PTS	AVG
2013-14	32-0	546	41-114	.360	1-14	.071	61-83	.735	40-100-140	4.4	64-2	28	26	5	20	144	4.5
2014-15	14-12	400	38-113	.336	3-23	.130	37-55	.673	28-66-94	6.7	47-3	9	32	8	25	116	8.3
TOTAL	46-12	946	79-227	.348	4-37	.108	98-138	.710	68-166-234	5.1	111-5	37	58	13	45	260	5.7





#25 Peyton Whitted

So. * F * 6-3 * Suwanee, Ga./North Gwinnett

2014-15 Season Notes:

- ♦ Added seven points off the bench vs. Illinois (1/4).
- ♦ Collected a career-high three steals with two points and three rebounds at Michigan (1/1).
- ♦ Played a career-high 27 minutes in the Big Ten opener at Iowa (12/28), tying her career-high with two assists.
- ♦ Handed out a career-high-tying two assists, adding four points and three rebounds, vs. USF (12/21).
- ♦ Set a season-high with eight points and grabbed five rebounds at Hartford (12/10).
- ♦ Scored seven points and had five rebounds vs. Liberty (11/28).
- ♦ Tallied six points, seven rebounds and two assists against Seton Hall (11/22).
- ♦ Grabbed nine rebounds with four points and two assists in the win over Towson (11/14).
- ♦ Pulled in 10 rebounds to go along with eight points and five assists in the exhibition win over IUP (11/2).

Notable:

- ♦ Led North Gwinnett to the Georgia State Championship game after averaging 13.7 points, 5.7 rebounds, 1.4 steals and 2.0 assists per game as a senior.
- ♦ Participated in USA Basketball's U16 Trials in May 2011.
- ♦ Father, Kevin, played basketball at Tennessee from 1993-95.
- ♦ Kevin is currently the head coach of the NBA D-League's Westchester Knicks.
- ♦ Kevin broke Michael Jordan's Laney High School scoring record with 1,554 points.

14-15 GAME-BY-GAME

OPPONENT	Min.	FG	3FG	FT	O-D-R	PF	A	TO	B	S	Pts
TOWSON	23	2-5	0-0	0-0	3-6-9	3	2	3	0	1	4
ALBANY	19	1-5	0-1	0-1	1-3-4	4	1	3	0	1	2
SETON HALL	23	2-6	0-3	2-6	1-6-7	3	2	4	1	1	6
ST. BONA	9	2-3	0-1	0-0	1-0-1	2	0	0	0	1	4
vs. Liberty	18	3-6	1-1	0-0	3-2-5	5	0	2	0	0	7
vs. Samford	23	1-7	0-1	0-0	1-4-5	4	0	1	1	1	2
at Syracuse	12	1-3	0-0	1-2	0-1-1	1	0	3	0	0	3
WAGNER	16	2-4	0-0	0-0	1-1-2	2	0	1	0	1	4
at Hartford	23	3-7	0-1	2-2	2-3-5	4	0	2	0	0	8
RIDER	14	2-4	0-0	1-2	0-2-2	3	1	3	0	0	5
USF	18	1-4	0-0	2-2	1-2-3	4	2	1	0	0	4
at Iowa	27	0-6	0-2	0-0	0-4-4	2	2	2	0	1	0
at Michigan	24	1-6	0-2	0-0	1-2-3	1	1	7	0	3	2
ILLINOIS	15	3-6	0-0	1-1	1-1-2	3	0	1	0	0	7
at Wisconsin											
RUTGERS											
at Nebraska											
at Ohio State											
INDIANA											
NORTHWESTERN											
at Minnesota											
at Rutgers											
MARYLAND											
at Purdue											
MICHIGAN ST.											
MINNESOTA											
at Maryland											
OHIO STATE											
WISCONSIN											

WHITTED'S CAREER/SEASON HIGHS

	SEASON HIGHS	CAREER HIGHS
Points	8 at Hartford (12/10/14)	11 at Northwestern (2/2/14)
Rebs.	9 vs. Towson (11/14/14)	10 at Illinois (1/9/14)
Assists	2 (4x) last at Iowa (12/28/14)	2 (6x) last at Iowa (12/28/14)
Steals	3 at Michigan (1/1/15)	3 at Michigan (1/1/15)
Blocks	1 vs. Samford (11/30/14) 1 vs. Seton Hall (11/22/14)	3 at South Dakota St. (12/11/13)
Minutes	27 at Iowa (12/28/14)	27 at Iowa (12/28/14)
FGM	3 (3x) last vs. Illinois (1/4/15)	5 at Northwestern (2/2/14)
FGA	7 at Hartford (12/10/14) 7 vs. Samford (11/30/14)	7 (3x) last at Hartford (12/10/14)
3FGM	1 vs. Samford (11/30/14)	1 vs. Samford (11/30/14) 1 vs. Ohio State (3/7/14)
3FGA	3 vs. Seton Hall (11/22/14)	3 vs. Seton Hall (11/22/14) 3 vs. Bucknell (11/20/13)
FTM	2 (3x) last vs. USF (12/21/14)	5 at Illinois (1/9/14)
FTA	6 vs. Seton Hall (11/22/14)	6 vs. Seton Hall (11/22/14)

WHITTED'S MISCELLANEOUS STATS

Category	Season	Career	Last Time
Double Figure Scoring	n/a	1	11 at Northwestern (2/2/14)
20-point games	n/a	n/a	
Double Figure Rebounds	n/a	1	10 at Illinois (1/9/14)
5-plus Rebounds	5	10	5 at Hartford (12/10/14)
5-plus Assists	n/a	n/a	
3-plus Steals	1	1	3 at Michigan (1/1/15)
Double-Doubles	n/a	n/a	

WHITTED'S CAREER STATS

Year	GP-GS	MIN	FG-A	PCT	3FG-A	PCT	FT-A	PCT	REB	AVG	PF-O	A	TO	B	S	PTS	AVG
2013-14	31-0	344	37-80	.463	1-17	.059	16-23	.696	35-53-88	2.8	58-0	8	26	5	12	91	2.9
2014-15	14-6	264	24-72	.333	1-12	.083	9-16	.563	16-37-53	3.8	41-1	11	33	2	10	58	4.1
TOTAL	45-6	608	61-152	.401	2-29	.069	25-39	.641	51-90-141	3.1	99-1	19	59	7	22	149	3.3

10-Time Big Ten Champions • Two-Time Big Ten Tournament Champions • 2000 NCAA Final Four • 25 NCAA Tournament Appearances





#34 Molly Dincher

Sr. * G/F * 6-0 * Williamsport, Pa./Williamsport Area (Penn State Wilkes-Barre)

Highlights:

- ♦ Added to the Lady Lion roster as a walk-on on November 14.
- ♦ Served as a Lady Lion manager for a year and a half.

14-15 GAME-BY-GAME

OPPONENT	Min.	FG	3FG	FT	O-D-R	PF	A	TO	B	S	Pts
TOWSON	DNP										
ALBANY	DNP										
SETON HALL	DNP										
ST. BONA	DNP										
vs. Liberty	DNP										
vs. Samford	DNP										
at Syracuse	DNP										
WAGNER	2	0-0	0-0	0-0	0-0-0	0	0	0	0	0	0
at Hartford	DNP										
RIDER	3	0-0	0-0	0-0	0-0-0	0	0	2	0	0	0
USF	DNP										
at Iowa	DNP										
at Michigan	DNP										
ILLINOIS	DNP										
at Wisconsin	DNP										
RUTGERS	DNP										
at Nebraska	DNP										
at Ohio State	DNP										
INDIANA	DNP										
NORTHWESTERN	DNP										
at Minnesota	DNP										
at Rutgers	DNP										
MARYLAND	DNP										
at Purdue	DNP										
MICHIGAN ST.	DNP										
MINNESOTA	DNP										
at Maryland	DNP										
OHIO STATE	DNP										
WISCONSIN	DNP										

2014-15 Season Notes:

- ♦ Played three minutes vs. Rider (12/14) in the 85-51 victory.
- ♦ Made her first appearance for the Lady Lions vs. Wagner (12/7).

Notable:

- ♦ Dincher played at Penn State Wilkes-Barre for two seasons where she helped the Mountain Lions to the 2011-12 PSUAC North Division Championship.
- ♦ She averaged 7.3 points and 8.6 rebounds that season for Wilkes-Barre, her final season for the Mountain Lions.
- ♦ She also rejected 33 shots and had 27 assists in 21 appearances that included 16 starts.
- ♦ As a freshman at Wilke-Barre, Dincher finished seventh in the United States Collegiate Athletic Associations USCAA) in blocked shots, averaging 1.5 per game.
- ♦ Since coming to University Park, Dincher played for the Penn State women's club basketball team that took second in the National Championships in 2012-13.
- ♦ She also served as a manager for the Lady Lions for the last year and a half.
- ♦ A three-year letterwinner, Dincher played her high school basketball at Williamsport Area High School. In her final season, the Millionaires were 12-8.

DINCHER'S CAREER/SEASON HIGHS

	SEASON HIGHS	CAREER HIGHS
Points	n/a	n/a
Rebs.	n/a	n/a
Assists	n/a	n/a
Steals	n/a	n/a
Blocks	n/a	n/a
Minutes	3 vs. Rider (12/14/14)	3 vs. Rider (12/14/14)
FGM	n/a	n/a
FGA	n/a	n/a
3FGM	n/a	n/a
3FGA	n/a	n/a
FTM	n/a	n/a
FTA	n/a	n/a

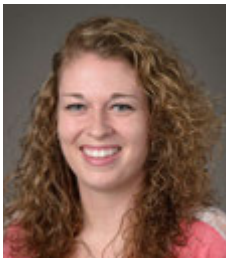
DINCHER'S MISCELLANEOUS STATS

Category	Season	Career	Last Time
Double Figure Scoring	n/a	n/a	
20-point games	n/a	n/a	
Double Figure Rebounds	n/a	n/a	
5-plus Rebounds	n/a	n/a	
5-plus Assists	n/a	n/a	
3-plus Steals	n/a	n/a	
Double-Doubles	n/a	n/a	

DINCHER'S CAREER STATS

Year	GP-GS	MIN	FG-A	PCT	3FG-A	PCT	FT-A	PCT	REB	AVG	PF-O	A	TO	B	S	PTS	AVG
2014-15	2-0	5	0-0	.000	0-0	.000	0-0	.000	0-0-0	0.0	1-0	0	2	0	0	0	0.0
TOTAL	2-0	5	0-0	.000	0-0	.000	0-0	.000	0-0-0	0.0	1-0	0	2	0	0	0	0.0





#41 Jenny DeGraaf

So. * F * 6-1 * Springboro, Ohio/Springboro

Highlights:

- ♦ Posted her first career double-double with 11 points and 11 rebounds vs. Samford (11/30).

2014-15 Season Notes:

- ♦ Converted both of her field goal attempts and grabbed one rebound in the Big Ten opener at Iowa (12/28).
- ♦ Pulled down seven rebounds and scored four points vs. Rider (12/14).
- ♦ Equaled her career-high with 12 points on 4-of-8 shooting, along with a career-best 4-of-4 effort from the free throw line vs. Wagner (12/7).
- ♦ Handed out a career-best three assists and made her first career free throw at Syracuse (12/4) in the ACC/Big Ten Challenge.
- ♦ Set career-highs with 33 minutes, five field goals made, nine field goals attempted and 10 rebounds vs. Samford (11/30), adding 11 points for her first career double-double.
- ♦ Registered eight points on a 4-of-7 effort with four rebounds in a career-high 27 minutes against St. Bonaventure (11/25).
- ♦ Posted six points on 3-for-5 shooting and five rebounds against Seton Hall (11/22).
- ♦ Connected on all four of her three-point attempts en route to a career-high 12 points in a personal-best 22 minutes against Albany (11/16).
- ♦ Hit 4-of-5 shots from the field, including two attempts from long range, en route to 11 points in the exhibition against IUP (11/2).

Notable:

- ♦ Set the Springboro High School single-season record for free throws made with 121, including 25 consecutive makes from the charity stripe in 2013.

14-15 GAME-BY-GAME

OPPONENT	Min.	FG	3FG	FT	O-D-R	PF	A	TO	B	S	Pts
TOWSON	15	0-2	0-2	0-0	0-3-3	1	0	0	0	1	0
ALBANY	22	4-4	4-4	0-0	0-0-0	1	0	1	0	0	12
SETON HALL	24	3-5	0-0	0-0	2-3-5	1	1	1	1	1	6
ST. BONA	27	4-7	0-2	0-0	0-4-4	1	0	0	0	0	8
vs. Liberty	20	1-3	0-2	0-0	1-2-3	0	1	0	0	1	2
vs. Samford	33	5-9	1-2	0-0	1-9-10	1	1	0	0	0	11
at Syracuse	25	1-5	1-5	1-2	1-3-4	0	3	1	0	0	4
WAGNER	19	4-8	0-2	4-4	1-2-3	2	1	0	1	0	12
at Hartford	24	1-6	0-3	0-0	2-0-2	1	2	2	0	1	2
RIDER	23	2-6	0-2	0-0	0-7-7	2	0	2	0	0	4
USF	5	0-1	0-0	0-0	0-0-0	0	0	1	0	0	0
at Iowa	9	2-2	0-0	0-0	0-1-1	2	0	1	0	0	4
at Michigan	13	1-5	0-2	0-0	0-2-2	2	0	0	1	0	2
ILLINOIS	4	1-2	0-0	0-0	0-0-0	0	0	1	0	1	2
at Wisconsin											
RUTGERS											
at Nebraska											
at Ohio State											
INDIANA											
NORTHWESTERN											
at Minnesota											
at Rutgers											
MARYLAND											
at Purdue											
MICHIGAN ST.											
MINNESOTA											
at Maryland											
OHIO STATE											
WISCONSIN											

DeGRAAF'S CAREER/SEASON HIGHS

	SEASON HIGHS	CAREER HIGHS
Points	12 vs. Wagner (12/7/14) 12 vs. Albany (11/16/14)	12 vs. Wagner (12/7/14) 12 vs. Albany (11/16/14)
Rebs.	10 vs. Samford (11/30/14)	10 vs. Samford (11/30/14)
Assists	3 at Syracuse (12/4/14)	3 at Syracuse (12/4/14)
Steals	1 (4x) last vs. Illinois (1/4/15)	1 (5x) last vs. Illinois (1/4/15)
Blocks	1 (3x) last at Michigan (1/1/15)	1 (3x) last at Michigan (1/1/15)
Minutes	33 vs. Samford (11/30/14)	33 vs. Samford (11/30/14)
FGM	5 vs. Samford (11/30/14)	5 vs. Samford (11/30/14)
FGA	9 vs. Samford (11/30/14)	9 vs. Samford (11/30/14)
3FGM	4 vs. Albany (11/16/14)	4 vs. Albany (11/16/14)
3FGA	5 at Syracuse (12/4/14)	5 at Syracuse (12/4/14)
FTM	4 vs. Wagner (12/7/14)	4 vs. Wagner (12/7/14)
FTA	4 vs. Wagner (12/7/14)	4 vs. Wagner (12/7/14)

DeGRAAF'S MISCELLANEOUS STATS

Category	Season	Career	Last Time
Double Figure Scoring	3	3	12 vs. Wagner (12/7/14)
20-point games	n/a	n/a	
Double Figure Rebounds	1	1	10 vs. Samford (11/30/14)
5-plus Rebounds	3	3	7 vs. Rider (12/14/14)
5-plus Assists	n/a	n/a	
3-plus Steals	n/a	n/a	
Double-Doubles	1	1	11p, 10r vs. Samford (11/30/14)

DeGRAAF'S CAREER STATS

Year	GP-GS	MIN	FG-A	PCT	3FG-A	PCT	FT-A	PCT	REB	AVG	PF-O	A	TO	B	S	PTS	AVG
2013-14	17-0	76	7-20	.350	2-7	.286	0-0	.000	3-6-9	0.5	5-0	4	5	0	1	16	0.9
2014-15	14-0	263	29-65	.446	6-26	.231	5-6	.833	8-36-44	3.1	14-0	9	10	3	5	69	4.9
TOTAL	31-0	339	36-85	.424	8-33	.242	5-6	.833	11-42-53	1.7	19-0	13	15	3	6	85	2.7

10-Time Big Ten Champions • Two-Time Big Ten Tournament Champions • 2000 NCAA Final Four • 25 NCAA Tournament Appearances





#44 Tori Waldner

Sr. * F/C * 6-5 * Milton, Ga./Milton

Highlights:

- Ranks eighth on Penn State's career blocks list (108).
- Nominee for Allstate WBCA Good Works Team.
- Selected as a team tri-captain.

2014-15 Season Notes:

- Pulled down seven rebounds and added nine points vs. Illinois (1/4), including a season-best five free throws made on a career-high-tying six attempts.
- Grabbed seven rebounds, blocked three shots and added two assists at Michigan (1/1).
- Scored seven points and grabbed four rebounds in the Big Ten opener at Iowa (12/28).
- Took over eighth on the Penn State career blocked shots list with one rejection vs. Rider (12/14). It was her 103rd career block and moved her past Talia East (102; 2011-14).
- Blocked one shot and hauled in five rebounds vs. Wagner (12/7).
- Hauled in six rebounds at Syracuse (12/4) in the ACC/Big Ten Challenge.
- Grabbed a career-high 12 rebounds and scored eight points vs. Samford (11/30).
- Had 10 points, including her second career three pointer, eight rebounds and three assists vs. Liberty (11/28).
- Logged four points, six rebounds and three blocks against St. Bonaventure (11/25).
- Tallied seven rebounds, three blocks and a pair of steals versus Seton Hall (11/22).
- Recorded four blocked shots and nine rebounds against Albany (11/16).
- Notched her first career double-double with 11 points on 5-of-7 shooting and 11 rebounds, which tied her then-career high, in the season-opening win over Towson (11/14).
- Had four points and five rebounds in the exhibition against IUP (11/2).

Notable:

- President of the Penn State Student-Athlete Advisory Board (SAAB).
- Was a member of the 2014 Penn State Homecoming Court.
- Participates in LifeLink, which is program in which State College Area School District special-needs students between the ages of 18 and 21 are given an opportunity to interact with students of their own age in an environment that is socially and academically conducive to continued growth with the hope of future independent living.
- Is one of just nine players with 100-plus career blocks and one of just 15 Lady Lions in program history to record 80 or more blocks in a career.
- Had a streak of 12-straight games with at least one block (11/10/13-1/5/14).
- Mother, Diane, played basketball and lacrosse at Russell Sage College in Troy, New York.

14-15 GAME-BY-GAME

OPPONENT	Min.	FG	3FG	FT	O-D-R	PF	A	TO	B	S	Pts
TOWSON	26	5-7	0-0	1-2	2-9-11	2	0	0	0	1	11
ALBANY	19	1-4	0-0	4-4	2-7-9	4	2	4	4	1	6
SETON HALL	23	1-4	0-1	0-0	3-4-7	4	2	1	3	2	2
ST. BONA	29	2-4	0-0	0-0	1-5-6	3	1	2	3	0	4
vs. Liberty	34	3-8	1-2	3-4	3-5-8	2	3	1	1	1	10
vs. Samford	39	3-7	0-1	2-2	1-11-12	4	0	3	0	1	8
at Syracuse	18	2-7	0-0	0-0	3-3-6	3	0	1	0	0	4
WAGNER	15	0-1	0-0	0-2	0-5-5	3	2	2	1	1	0
at Hartford	23	0-2	0-0	0-0	0-4-4	1	2	2	1	0	0
RIDER	10	1-2	0-0	2-2	1-1-2	4	0	1	1	0	4
USF	10	0-1	0-0	0-1	0-3-3	5	1	1	1	0	0
at Iowa	22	2-7	0-0	3-4	3-1-4	1	0	4	0	1	7
at Michigan	20	2-4	0-1	0-0	4-3-7	2	1	5	2	2	4
ILLINOIS	25	2-5	0-1	5-6	0-7-7	2	2	3	1	0	9
at Wisconsin											
RUTGERS											
at Nebraska											
at Ohio State											
INDIANA											
NORTHWESTERN											
at Minnesota											
at Rutgers											
MARYLAND											
at Purdue											
MICHIGAN ST.											
MINNESOTA											
at Maryland											
OHIO STATE											
WISCONSIN											

WALDNER'S CAREER/SEASON HIGHS

	SEASON HIGHS	CAREER HIGHS
Points	11 vs. Towson (11/14/14)	14 vs. Northwestern (2/20/14)
Rebs.	12 vs. Samford (11/30/14)	12 vs. Samford (11/30/14)
Assists	3 vs. Liberty (11/28/14)	5 vs. Illinois State (11/30/13)
Steals	2 vs. Seton Hall (11/22/14)	3 vs. Michigan State (2/10/13)
Blocks	4 vs. Albany (11/16/14)	5 vs. Northwestern (2/20/14) 5 vs. Minnesota (1/24/13)
Minutes	39 vs. Samford (11/30/14)	39 vs. Samford (11/30/14)
FGM	5 vs. Towson (11/14/14)	6 vs. Northwestern (2/20/14)
FGA	8 vs. Liberty (11/28/14)	13 vs. Wisconsin (2/16/14)
3FGM	1 vs. Liberty (11/28/14)	1 vs. Liberty (11/28/14) 1 vs. Connecticut (11/17/13)
3FGA	2 vs. Liberty (11/28/14)	2 vs. Liberty (11/28/14) 2 vs. Connecticut (11/17/13)
FTM	5 vs. Illinois (1/4/15)	6 vs. Howard (11/11/12)
FTA	6 vs. Illinois (1/4/15)	6 vs. Illinois (1/4/15) 6 vs. Howard (11/11/12)

WALDNER'S MISCELLANEOUS STATS

Category	Season	Career	Last Time
Double Figure Scoring	2	8	10 vs. Liberty (11/28/14)
20-point games	n/a	n/a	
Double Figure Rebounds	2	6	12 vs. Samford (11/30/14)
5-plus Rebounds	9	38	7 vs. Illinois (1/4/15)
5-plus Assists	n/a	1	5 vs. Illinois State (11/30/13)
3-plus Steals	n/a	1	3 vs. Michigan State (2/10/13)
5-plus Blocks	n/a	2	5 vs. Northwestern (2/20/14)
Double-Doubles	1	1	11 p, 11 r vs. Towson (11/14/14)

WALDNER'S CAREER STATS

Year	GP-GS	MIN	FG-A	PCT	3FG-A	PCT	FT-A	PCT	REB	AVG	PF-O	A	TO	B	S	PTS	AVG
2011-12	31-0	272	25-56	.446	0-1	.000	13-23	.565	13-54-67	2.2	50-0	15	24	18	16	63	2.0
2012-13	30-0	275	19-59	.322	0-1	.000	10-13	.769	31-54-85	2.8	47-0	8	22	32	11	48	1.6
2013-14	32-32	677	67-159	.421	1-3	.333	20-33	.606	48-131-179	5.6	83-1	32	39	39	16	155	4.8
2014-15	14-10	328	24-63	.381	1-6	.167	20-27	.741	23-68-91	6.5	40-1	17	25	19	9	69	4.9
TOTAL	107-42	1552	135-337	.401	2-11	.182	63-96	.656	115-307-422	3.9	220-2	72	110	108	52	335	3.1



Penn State 75, Indiana (Pa.) 71

Exhibition Game * Nov. 2, 2014 * University Park, Pa.

IUP 71 • 0-0

#	Player	Total		3-Ptr		Rebounds		PF	TP	A	TO	Blk	Stl	Min
		FG-FGA	FT-FTA	FG-FGA	FT-FTA	Off	Def							
00	STONER, Ashley	* 4-9	0-0	0-0	3	2	5	4	8	0	3	0	0	26
03	STAMP, Lindsay	* 0-6	0-3	3-6	1	3	4	2	3	2	1	0	0	22
05	MATHE, Marita	* 4-13	4-9	0-1	0	3	3	2	12	5	3	0	0	35
12	STAPLETON, Leslie	* 2-10	1-7	0-0	0	0	0	0	2	0	0	0	0	29
24	FAIRMAN, Amy	* 8-13	6-8	4-6	1	3	4	4	26	6	1	0	2	30
10	WAREHAM, Marina	1-1	1-1	0-0	0	0	0	0	3	1	2	0	0	5
11	GRAHAM, Amy	0-0	0-0	0-0	1	0	1	0	0	0	0	1	0	2
13	BURNS, Monica	0-0	0-0	0-0	0	0	0	0	0	0	0	0	0	2
14	AIKEN, Alexis	0-0	0-0	0-0	0	0	0	0	0	0	0	0	0	3
15	BROOKS, Zhane	* 2-5	0-0	4-6	2	3	5	4	8	2	0	1	2	25
20	LIVINGSTON, Mackenzie	0-0	0-0	0-0	0	0	0	0	0	0	0	0	0	1
23	DENMAN, Halle	0-1	0-0	0-0	1	0	1	0	0	0	0	0	0	2
42	SMITH, Megan	2-6	2-4	0-0	1	0	1	0	6	1	1	0	0	18
	Team				2	1	3							
	Totals	23-64	14-32	11-19	12	15	27	16	71	20	12	2	5	200

FG % 1st Half: 10-36 27.8% 2nd half: 13-28 46.4% Game: 23-64 35.9%
 3FG % 1st Half: 7-18 38.9% 2nd half: 7-14 50.0% Game: 14-32 43.8%
 FT % 1st Half: 6-12 50.0% 2nd half: 5-7 71.4% Game: 11-19 57.9%

Penn State 75 • 0-0

#	Player	Total		3-Ptr		Rebounds		PF	TP	A	TO	Blk	Stl	Min
		FG-FGA	FT-FTA	FG-FGA	FT-FTA	Off	Def							
05	Moore, Sierra	* 8-13	0-0	2-3	4	3	7	4	18	0	4	0	0	27
12	Spann, Lindsey	* 5-12	0-3	4-4	1	2	3	2	14	4	2	0	0	37
15	Mitchell, Kaliyah	* 5-10	0-2	2-2	3	6	9	4	12	2	3	0	3	36
25	Whitted, Peyton	* 4-7	0-0	0-0	4	6	10	3	8	5	2	1	0	24
44	Waldner, Tori	* 2-10	0-0	0-0	3	2	5	3	4	1	4	2	0	21
10	Sevillian, Keke	2-4	0-1	0-0	1	3	4	3	4	3	1	0	3	19
14	Brooks, Dominique	2-4	0-0	0-0	0	1	1	1	4	0	2	1	0	12
41	DeGraaf, Jenny	4-5	2-3	1-2	0	4	4	4	11	0	2	0	0	24
	Team				2	3	5							
	Totals	32-65	2-9	9-11	18	30	48	24	75	15	20	4	6	200

FG % 1st Half: 17-32 53.1% 2nd half: 15-33 45.5% Game: 32-65 49.2%
 3FG % 1st Half: 1-3 33.3% 2nd half: 1-6 16.7% Game: 2-9 22.2%
 FT % 1st Half: 2-4 50.0% 2nd half: 7-7 100.0% Game: 9-11 81.8%

Officials: Frank Steratore, Kevin Pethell, Shannon Feck
 Technical fouls: IUP-None. Penn State-None.
 Attendance: 3327

Score by periods	1st	2nd	Total
IUP	33	38	71
Penn State	37	38	75

Notable

- With the Crimson Hawks leading, sophomore **Sierra Moore** led the Penn State rally with 15 of her team-best 18 points over the final 11:44 of the contest.
- Sophomore **Jenny DeGraaf** had a solid outing, connecting on 4-of-5 shots from the field, including 2-of-3 from three point range, for 11 points.

Albany 54, Penn State 53

Game #2 * Nov. 16, 2014 * University Park, Pa.

Albany 54 • 2-0

#	Player	Total		3-Ptr		Rebounds		PF	TP	A	TO	Blk	Stl	Min
		FG-FGA	FT-FTA	FG-FGA	FT-FTA	Off	Def							
03	ROSARIO, Margarita	* 2-9	2-8	0-0	0	3	3	2	6	2	0	0	1	26
04	ROYALS, Sarah	* 0-8	0-0	7-12	1	0	1	2	7	5	4	0	1	40
23	SAUNDERS, Zakia	* 1-4	0-0	0-0	0	0	0	3	2	2	2	0	1	13
25	RICHARDS, Shereesha	* 10-16	0-1	7-10	6	8	14	4	27	3	7	1	3	40
34	EDWARDS, Cassandra	* 0-1	0-0	0-0	1	0	1	0	0	0	1	0	0	6
01	COUGHLIN, Erin	0-1	0-1	0-0	0	0	0	0	0	0	1	0	0	9
12	TATE, Imani	2-10	0-0	2-2	6	9	15	3	6	1	6	0	3	32
33	CARTER, Tiana-Jo	3-8	0-0	0-0	3	8	11	3	6	0	3	2	0	34
	Team				3	1	4							
	Totals	18-57	2-15	16-24	20	29	49	18	54	13	24	3	9	200

FG % 1st Half: 8-28 28.6% 2nd half: 10-29 34.5% Game: 18-57 31.6%
 3FG % 1st Half: 1-5 20.0% 2nd half: 1-10 10.0% Game: 2-15 13.3%
 FT % 1st Half: 11-17 64.7% 2nd half: 5-7 71.4% Game: 16-24 66.7%

Penn State 53 • 1-1

#	Player	Total		3-Ptr		Rebounds		PF	TP	A	TO	Blk	Stl	Min
		FG-FGA	FT-FTA	FG-FGA	FT-FTA	Off	Def							
05	Moore, Sierra	* 4-8	0-0	1-1	2	1	3	4	8	3	4	1	1	30
12	Spann, Lindsey	* 6-12	1-3	1-2	0	1	1	3	14	4	3	0	0	31
15	Mitchell, Kaliyah	* 2-7	1-2	4-5	1	5	6	4	9	0	5	0	4	30
25	Whitted, Peyton	* 1-4	0-1	0-1	1	3	4	4	2	1	3	0	1	19
44	Waldner, Tori	* 1-4	0-0	4-4	2	7	9	4	6	2	4	4	1	34
01	Agee, Candice	1-6	0-0	0-0	1	4	5	4	2	2	1	3	2	19
10	Sevillian, Keke	0-5	0-3	0-0	0	0	0	4	0	1	1	0	2	13
14	Brooks, Dominique	0-0	0-0	0-0	0	0	0	1	0	0	1	0	0	2
41	DeGraaf, Jenny	4-4	4-4	0-0	0	0	0	1	12	0	1	0	0	22
	Team				0	3	3							
	Totals	19-51	6-13	9-13	7	24	31	29	53	13	23	8	11	200

FG % 1st Half: 9-25 36.0% 2nd half: 10-26 38.5% Game: 19-51 37.3%
 3FG % 1st Half: 4-8 50.0% 2nd half: 2-5 40.0% Game: 6-13 46.2%
 FT % 1st Half: 6-8 75.0% 2nd half: 3-5 60.0% Game: 9-13 69.2%

Officials: An-Jamilah Gregory, Ron Leads, Althea Buford
 Technical fouls: Albany-TATE, Imani. Penn State-Agee, Candice.
 Attendance: 8607
 WNIT Second Round

Score by periods	1st	2nd	Total
Albany	28	26	54
Penn State	28	25	53

Last FG - ALBANY 2nd-01:49, PSU 2nd-01:28.
 Largest lead - ALBANY by 4 2nd-11:47, PSU by 7 1st-17:12.
 ALBANY led for 14:05. PSU led for 18:50. Game was tied for 06:55.

Notable

- Senior **Tori Waldner** passed Bethany Collins (1985-88) for 10th on the Penn State career blocks list with four blocks vs. Albany to bring her career total to 93.
- Freshman **Lindsey Spann** led the Lady Lions in scoring for the second straight game, marking the first time a freshman has been the team's leading scorer in two straight games since Maggie Lucas did so vs. Minnesota (1/13/11) and vs. Illinois (1/16/11).

Penn State 71, Towson 64

Game #1 * Nov. 14, 2014 * University Park, Pa.

Towson 64 • 0-1

#	Player	Total		3-Ptr		Rebounds		PF	TP	A	TO	Blk	Stl	Min
		FG-FGA	FT-FTA	FG-FGA	FT-FTA	Off	Def							
00	Hines-Allen, LaTorri	* 5-10	0-0	2-5	1	5	6	2	12	1	0	1	1	25
01	Johnson, Dominique	* 12-30	6-16	2-2	0	1	1	3	32	1	2	0	3	36
02	Hughey, Breonn	* 2-15	2-7	2-2	2	4	6	2	8	7	3	0	1	40
13	Alberston, Camille	* 1-5	1-4	0-0	0	4	4	3	3	2	2	0	1	33
20	Smith, Markell	* 1-3	0-0	0-0	2	3	5	2	0	1	0	0	0	24
03	Webb, Ciara	* 1-3	0-2	0-0	0	1	1	0	2	1	1	2	0	16
05	Smith, Jordyn	0-0	0-0	3-4	5	4	9	1	3	0	1	0	0	8
14	Bush, Brianna	0-0	0-0	0-0	1	0	1	0	0	0	1	0	0	3
32	Butler, Shanea	0-1	0-1	0-0	0	0	0	0	0	0	1	0	0	3
33	Thomas, Daijha	0-2	0-0	2-4	1	3	4	2	2	0	0	1	0	12
	Team				0	1	1							
	Totals	22-69	9-30	11-17	12	26	38	18	64	12	13	4	6	200

FG % 1st Half: 9-37 24.3% 2nd half: 13-32 40.6% Game: 22-69 31.9%
 3FG % 1st Half: 4-15 26.7% 2nd half: 5-15 33.3% Game: 9-30 30.0%
 FT % 1st Half: 7-10 70.0% 2nd half: 4-7 57.1% Game: 11-17 64.7%

Penn State 71 • 1-0

#	Player	Total		3-Ptr		Rebounds		PF	TP	A	TO	Blk	Stl	Min
		FG-FGA	FT-FTA	FG-FGA	FT-FTA	Off	Def							
05	Moore, Sierra	* 5-12	1-1	1-3	1	4	5	0	12	4	4	2	1	39
12	Spann, Lindsey	* 7-14	0-2	3-4	0	5	5	2	17	4	4	0	0	32
15	Mitchell, Kaliyah	* 3-8	0-2	4-6	1	2	3	4	10	0	3	0	3	25
25	Whitted, Peyton	* 2-5	0-0	0-0	3	6	9	3	4	2	3	0	1	23
44	Waldner, Tori	* 5-7	0-0	1-2	2	9	11	2	11	0	0	0	1	26
01	Agee, Candice	3-6	0-0	3-6	4	5	9	1	9	0	0	0	0	18
10	Sevillian, Keke	2-6	2-5	0-1	0	1	1	2	6	5	0	0	0	19
14	Brooks, Dominique	0-0	0-0	2-2	0	0	0	1	2	0	0	0	0	3
41	DeGraaf, Jenny	0-2	0-2	0-0	0	3	3	1	0	0	0	0	1	15
	Team				1	2	3							
	Totals	27-60	3-12											

St. Bonaventure 56, Penn State 54

Game #4 * Nov. 25, 2014 * University Park, Pa.

St. Bonaventure 56 • 3-2

#	Player	Total			3-Ptr			Rebounds			PF	TP	A	TO	Bk	Stl	Min
		FG-FGA	FG-FGA	FT-FTA	FG-FGA	FG-FGA	FT-FTA	Off	Def	Tot							
11	LITTLE, Hannah	* 2-6	0-0	5-8	3	2	5	1	9	2	4	1	1	35			
14	RICHMOND, Gabby	* 3-8	0-0	2-4	4	2	6	5	8	0	3	0	0	19			
21	RUETER, Nyia	* 4-11	3-7	2-2	1	3	4	1	13	3	1	0	3	36			
33	MICHAEL, Emily	* 4-5	3-4	0-0	0	5	5	1	11	1	2	0	0	33			
42	HEALY, Katie	* 4-10	0-0	4-6	1	10	11	4	12	3	3	1	2	28			
02	RUFF, Mariah	0-2	0-2	0-0	1	0	1	2	0	0	4	0	1	12			
12	ZAHN, Ashley	0-3	0-2	0-0	0	3	3	1	0	0	0	0	0	11			
22	OUTLAW, Imani	0-2	0-0	0-0	0	1	1	0	0	0	1	0	0	8			
23	BRITVAR, Matea	1-4	0-1	1-2	0	2	2	1	3	0	0	2	0	18			
	Team				1	2	3										
	Totals	18-51	6-16	14-22	11	30	41	16	56	9	19	4	7	200			

FG % 1st Half: 6-27 22.2% 2nd half: 12-24 50.0% Game: 18-51 35.3% Deadball Rebounds 4.1
 3FG % 1st Half: 4-9 44.4% 2nd half: 2-7 28.6% Game: 6-16 37.5%
 FT % 1st Half: 7-13 53.8% 2nd half: 7-9 77.8% Game: 14-22 63.6%

Penn State 54 • 1-3

#	Player	Total			3-Ptr			Rebounds			PF	TP	A	TO	Bk	Stl	Min
		FG-FGA	FG-FGA	FT-FTA	FG-FGA	FG-FGA	FT-FTA	Off	Def	Tot							
01	Agee, Candice	* 4-8	0-0	0-0	1	3	4	3	8	2	3	2	1	24			
05	Moore, Sierra	* 6-12	0-0	3-6	1	4	5	3	15	3	3	0	0	37			
12	Spann, Lindsey	* 4-14	2-6	3-4	1	1	2	3	13	5	1	0	2	34			
15	Mitchell, Kaliyah	* 1-7	0-1	0-1	1	8	9	3	2	1	3	0	4	29			
25	Whitted, Peyton	* 2-3	0-1	0-0	1	0	1	2	4	0	0	0	1	9			
10	Sevillian, Keke	0-4	0-0	0-0	0	0	0	0	0	1	1	0	1	10			
14	Brooks, Dominique	0-0	0-0	0-0	0	0	0	0	0	0	1	0	0	1			
41	DeGraaf, Jenny	2-4	0-2	0-0	0	4	4	1	8	0	0	0	0	27			
44	Waldner, Tori	2-4	0-0	0-0	1	5	6	3	4	1	2	3	0	29			
	Team				2	1	3										
	Totals	23-59	2-10	6-11	8	26	34	18	54	13	14	5	9	200			

FG % 1st Half: 11-27 40.7% 2nd half: 12-32 37.5% Game: 23-59 39.0% Deadball Rebounds 2
 3FG % 1st Half: 2-6 33.3% 2nd half: 0-4 0.0% Game: 2-10 20.0%
 FT % 1st Half: 0-1 0.0% 2nd half: 6-10 60.0% Game: 6-11 54.5%

Officials: Frank Storateo, Kevin Pettel, Shannon Feck
 Technical fouls: St. Bonaventure-None. Penn State-None.
 Attendance: 6703

Score by periods	1st	2nd	Total
St. Bonaventure	23	33	56
Penn State	24	30	54

Points	In	Off	2nd	Fast	Bench
PSU	Paint	T/O	Chance	Break	
SBU	20	7	9	0	3
PSU	28	14	6	6	12

Last FG - SBU 2nd-00:02, PSU 2nd-07:08.
 Largest lead - SBU by 3 2nd-13:38, PSU by 9 2nd-07:08.
 SBU led for 04:24. PSU led for 31:03. Game was tied for 04:32.

Score tied - 6 times.
 Lead changed - 9 times.

Notable

- Penn State dropped to 1-3 to start a season for the first time since 2005-06, when the Lady Lions also started 1-3.
- Freshman **Lindsey Spann** posted 13 points, her team-best fourth double-digit scoring game of the season.
- **Sierra Moore** had a career-high 15 points and surpassed the 100-point plateau for her collegiate career.

Samford 59, Penn State 56 (OT)

Game #6 * Nov. 30, 2014 * Atlanta, Ga.

Penn State 56 • 1-5

#	Player	Total			3-Ptr			Rebounds			PF	TP	A	TO	Bk	Stl	Min
		FG-FGA	FG-FGA	FT-FTA	FG-FGA	FG-FGA	FT-FTA	Off	Def	Tot							
15	Mitchell, Kaliyah	r 3-10	0-1	2-3	1	8	9	5	8	1	2	2	2	38			
25	Whitted, Peyton	r 1-7	0-1	0-0	1	4	5	4	2	0	1	1	1	23			
44	Waldner, Tori	c 3-7	0-1	2-2	1	11	12	4	18	0	3	0	1	39			
05	Moore, Sierra	g 4-10	1-2	8-10	1	0	1	5	17	3	3	0	2	40			
12	Spann, Lindsey	g 3-13	0-2	4-6	1	1	2	4	10	5	4	0	3	41			
01	Agee, Candice	0-1	0-0	0-0	0	0	0	0	0	0	1	0	0	2			
10	Sevillian, Keke	0-1	0-0	0-0	0	0	0	0	0	0	1	2	0	9			
41	DeGraaf, Jenny	5-9	1-2	0-0	1	9	10	1	11	1	1	0	0	33			
	Team				1	0	1										
	Totals	19-58	2-9	16-21	7	33	40	25	56	11	16	3	9	225			

FG % 1st Half: 7-27 25.9% 2nd half: 10-24 41.7% OT: 2-7 28.6% Game: 19-58 32.8% Deadball Rebounds 2
 3FG % 1st Half: 0-4 0.0% 2nd half: 1-3 33.3% OT: 1-2 50.0% Game: 2-9 22.2%
 FT % 1st Half: 7-10 70.0% 2nd half: 4-5 80.0% OT: 5-6 83.3% Game: 16-21 76.2%

Samford 59 • 4-2

#	Player	Total			3-Ptr			Rebounds			PF	TP	A	TO	Bk	Stl	Min
		FG-FGA	FG-FGA	FT-FTA	FG-FGA	FG-FGA	FT-FTA	Off	Def	Tot							
03	ELLIOTT, Destiney	r 2-5	0-1	1-7	2	6	8	2	5	2	2	2	2	35			
10	RECE, Taylor	r 8-17	4-7	2-4	1	5	6	4	22	0	2	1	1	39			
02	NICHOLS, Hannah	g 5-12	2-7	1-2	2	5	7	3	13	0	2	0	0	39			
11	MAYERS, Amara	g 0-5	0-0	0-0	1	5	6	2	0	0	3	0	0	23			
12	STRICKLIN, Krista	g 3-7	0-2	3-5	0	4	4	3	9	3	3	0	0	31			
05	BLEVINS, Kassidy	0-2	0-1	0-0	0	4	4	2	0	4	2	0	2	23			
21	FLETCHER, Keke	0-3	0-2	1-2	0	0	0	1	1	0	1	0	0	6			
22	RIGGINS, Ellen	2-4	0-1	5-5	0	3	3	2	9	1	3	0	0	29			
	Team				2	2	4										
	Totals	20-55	6-21	13-25	8	34	42	19	59	10	19	4	5	225			

FG % 1st Half: 6-21 28.6% 2nd half: 10-28 35.7% OT: 4-6 66.7% Game: 20-55 36.4% Deadball Rebounds 6.1
 3FG % 1st Half: 0-5 0.0% 2nd half: 1-3 33.3% OT: 1-3 33.3% Game: 6-21 28.6%
 FT % 1st Half: 1-5 20.0% 2nd half: 8-10 80.0% OT: 4-10 40.0% Game: 13-25 52.0%

Officials: Meadow Overstreet, Kristin McKinnon, Mike Riggs
 Technical fouls: Penn State-None. Samford-None.
 Attendance: 522

Score by periods	1st	2nd	OT	Total
Penn State	21	25	10	56
Samford	13	33	13	59

Points	In	Off	2nd	Fast	Bench
PSU	Paint	T/O	Chance	Break	
PSU	28	11	4	6	11
SAM	22	13	4	0	10

Last FG - PSU OT-00:25, SAM OT-01:48.
 Largest lead - PSU by 16 2nd-09:59, SAM by 6 OT-01:48.
 PSU led for 36:49. SAM led for 04:26. Game was tied for 03:40.

Score tied - 1 time.
 Lead changed - 1 time.

Notable

- Penn State held Samford 13 points in the first half, the fewest allowed by PSU this season. It was the lowest scoring output for a Lady Lion's opponent since NJIT scored nine points in the first half on Dec. 23, 2012.
- Sophomore **Jenny DeGraaf** posted her first career double-double with 11 points and a career-high 10 rebounds.

Liberty 80, Penn State 68

Game #5 * Nov. 28, 2014 * Atlanta, Ga.

Penn State 68 • 1-4

#	Player	Total			3-Ptr			Rebounds			PF	TP	A	TO	Bk	Stl	Min
		FG-FGA	FG-FGA	FT-FTA	FG-FGA	FG-FGA	FT-FTA	Off	Def	Tot							
15	Mitchell, Kaliyah	f 4-12	0-3	2-3	1	4	5	4	10	0	3	0	5	27			
44	Waldner, Tori	f 3-8	1-2	3-4	3	5	8	2	10	3	1	1	1	34			
01	Agee, Candice	c 2-4	0-0	2-4	2	3	5	1	6	0	2	4	1	22			
05	Moore, Sierra	g 5-10	0-0	4-7	2	3	5	5	14	4	3	0	0	33			
12	Spann, Lindsey	g 7-21	0-7	3-3	0	0	0	3	17	3	7	0	2	37			
10	Sevillian, Keke	0-0	0-0	0-0	0	0	0	4	0	1	0	0	1	7			
14	Brooks, Dominique	1-1	0-0	0-0	0	0	0	0	2	0	0	0	0	2			
25	Whitted, Peyton	3-6	1-1	0-0	3	2	5	5	7	0	2	0	0	18			
41	DeGraaf, Jenny	1-3	0-2	0-0	1	2	3	0	2	1	0	0	1	20			
	Team				3	1	4										
	Totals	26-65	2-15	14-21	15	20	35	24	68	12	18	5	12	200			

FG % 1st Half: 14-31 45.2% 2nd half: 12-34 35.3% Game: 26-65 40.0% Deadball Rebounds 5
 3FG % 1st Half: 1-5 20.0% 2nd half: 1-10 10.0% Game: 2-15 13.3%
 FT % 1st Half: 6-8 75.0% 2nd half: 8-13 61.5% Game: 14-21 66.7%

Liberty 80 • 3-2

#	Player	Total			3-Ptr			Rebounds			PF	TP	A	TO	Bk	Stl	Min
		FG-FGA	FG-FGA	FT-FTA	FG-FGA	FG-FGA	FT-FTA	Off	Def	Tot							
15	BROWN, Simone	f 8-11	5-8	2-2	2	4	6	3	23	0	4	1	3	34			
55	RINGER, Ashley	f 5-12	0-0	3-5	2	6	8	1	13	1	1	3	0	29			
34	ADAMS, Katelyn	c 2-6	0-0	2-2	4	7	11	3	6	3	2	1	2	29			
03	ELLIS, Sadalia	g 3-5	0-0	3-4	0	0	0	4	9	5	4	1	3	21			
14	BUER, Karly	g 3-7	2-5	5-6	2	1	3	4	13	2	4	0	0	25			
02	LEATHERWOOD, Candic	0-2	0-1	0-0	0	0	0	1	0	0	0	0	0	3			
04	ROLLINS, Ferra	1-3	1-2	0-0	1	1	2	0	3	0	0	0	0	7			
10	FISHER-DAVIS, Jaymee	2-5	2-5	0-0	0	0	0	0	6	1	2	0	0	15			
21	FRAZIER, Emily	0-2	0-1	4-4	0	1	1	1	4	3	1	0	0	16			
24	GARDNER, Jasmine	0-2	0-0	0-0	1	1	2	0	0	0	2	0	0	11			
44	KEARNEY, Catherine	1-3	0-0	1-2	1	0	1	4	3	2	0	0	0	10			
	Team				1	3	4										
	Totals	25-58	10-22	20-25	14	24	38	21	80	17	20	6	8	200			

FG % 1st Half: 10-32 31.3% 2nd half: 15-26 57.7% Game: 25-58 43.1% Deadball Rebounds 4.2
 3FG % 1st Half: 4-15 26.7% 2nd half: 6-7 85.7% Game: 10-22 45.5%
 FT % 1st Half: 4-5 80.0% 2nd half: 16-20 80.0% Game: 20-25 80.0%

Officials: Natasha Harris, Cole Womack, David Scroggins
 Technical fouls: Penn State-None. Liberty-None.
 Attendance: 645

Score by periods	1st	2nd	Total
Penn State	35	33	68
Liberty			

Penn State 96, Wagner 66

Game #8 * Dec. 7, 2014 * University Park, Pa.

Wagner 66 • 0-7

#	Player	Total		3-Ptr		Rebounds			PF	TP	A	TO	Bk	Stl	Min
		FG-FGA	FG-FGA	FT-FTA	Off	Def	Tot								
01	NWAJEI, Jasmine	* 7-17	0-2	0-0	1	5	6	4	14	7	9	0	2	34	
14	ROWE, Lyndsay	* 0-5	0-3	0-0	1	1	2	2	0	2	0	0	0	25	
20	DLUHI, Jackie	* 2-3	0-0	0-0	0	0	0	5	4	1	3	1	0	14	
24	PECK, Jordyn	* 9-16	6-13	3-5	0	0	0	0	27	0	1	0	1	37	
25	CONYERS-JORDAN, M.	* 1-4	0-1	0-0	1	4	5	2	2	1	2	0	0	26	
03	RUSSELL, Tanasia	* 2-2	0-0	0-0	0	0	0	1	4	0	0	1	0	6	
05	WADE, Tessa	* 0-0	0-0	0-0	1	0	1	0	0	0	1	0	0	5	
13	ROMA, Sofia	* 0-1	0-0	1-2	0	2	2	4	1	0	2	0	0	10	
15	HAMLET, Jazmine	* 1-3	0-0	0-1	2	5	7	4	2	1	3	0	0	19	
21	SULLIVAN, Samantha	* 1-2	0-0	0-0	1	1	2	3	0	2	1	0	0	9	
32	BUTIGIAN, Taylor	* 2-3	2-3	4-6	1	1	2	3	10	1	0	1	0	15	
	Team				3	1	4								
	Totals	25-56	8-22	8-14	10	19	29	66	12	23	2	4	200		

FG % 1st Half: 10-25 40.0% 2nd half: 15-31 48.4% Game: 25-56 44.6% Deadball Rebounds
 3FG % 1st Half: 6-12 50.0% 2nd half: 2-10 20.0% Game: 8-22 36.4% 2
 FT % 1st Half: 2-4 50.0% 2nd half: 6-10 60.0% Game: 8-14 57.1%

Penn State 96 • 2-6

#	Player	Total		3-Ptr		Rebounds			PF	TP	A	TO	Bk	Stl	Min
		FG-FGA	FG-FGA	FT-FTA	Off	Def	Tot								
01	Agee, Candice	* 4-7	0-0	1-3	2	2	4	3	9	1	3	1	1	23	
05	Moore, Sierra	* 5-9	0-0	11-12	1	4	5	0	21	7	0	0	2	31	
12	Spann, Lindsey	* 8-15	2-5	4-4	2	3	5	3	22	4	2	0	2	30	
15	Mitchell, Kaliyah	* 8-11	1-2	3-4	3	4	7	1	20	0	1	0	0	28	
44	Waldner, Tori	* 0-1	0-0	0-2	0	5	5	3	0	2	2	1	1	15	
10	Sevillian, Keke	* 2-6	0-2	0-2	2	1	3	1	4	4	1	0	3	27	
14	Brooks, Dominique	* 1-3	0-0	2-2	0	0	0	1	4	0	0	1	0	9	
25	Whitted, Peyton	* 2-4	0-0	0-0	1	1	2	4	0	1	0	1	0	16	
34	Dincher, Molly	* 0-0	0-0	0-0	0	0	0	1	0	0	0	0	0	2	
41	DeGraaf, Jenny	* 4-8	0-2	4-4	1	2	3	2	12	1	0	1	0	19	
	Team				3	3	6								
	Totals	34-64	3-11	25-33	15	25	40	17	96	19	12	4	10	200	

FG % 1st Half: 14-32 43.8% 2nd half: 20-32 62.5% Game: 34-64 53.1% Deadball Rebounds
 3FG % 1st Half: 3-8 37.5% 2nd half: 0-3 0.0% Game: 3-11 27.3% 4
 FT % 1st Half: 11-16 68.8% 2nd half: 14-17 82.4% Game: 25-33 75.8%

Officials: Frank Steratore, Shannon Feck, An-Jamilah Gregory
 Technical fouls: Wagner-None. Penn State-None.
 Attendance: 3657

Score by periods	1st	2nd	Total
Wagner	28	38	66
Penn State	42	54	96

Last FG - WAGNER 2nd-03:43, PSU 2nd-03:13.
 Largest lead - WAGNER None, PSU by 31 2nd-07:48.
 WAGNER led for 00:00. PSU led for 39:28. Game was tied for 00:18.

Notable

- The 96 points vs. the Seahawks were the most for the Lady Lions since scoring a Bryce Jordan Center record 117 points vs. St. Francis (Pa.) in the 2013-14 season opener on Nov. 8, 2013.
- **Lindsey Spann** (22), **Sierra Moore** (21) and **Kaliyah Mitchell** (20) all reached the 20-point mark vs. Wagner. It was the first time since Nov. 26, 2011 vs. Nevada that three Lady Lions all cracked the 20 point mark in the same game; Maggie Lucas (26), Alex Bentley (23) and Zhaque Gray (21).

Penn State 85, Rider 51

Game #10 * Dec. 14, 2014 * University Park, Pa.

Rider 51 • 2-7

#	Player	Total		3-Ptr		Rebounds			PF	TP	A	TO	Bk	Stl	Min
		FG-FGA	FG-FGA	FT-FTA	Off	Def	Tot								
05	Fazzini, Emily	* 5-13	4-9	0-0	1	1	2	14	0	3	0	2	2	24	
11	Pellet, Manon	* 0-0	0-0	0-2	0	2	2	4	0	6	2	0	1	25	
23	Banks, Lashay	* 2-5	0-0	3-4	3	3	6	2	7	1	3	0	2	20	
25	Perkins, Robin	* 3-10	0-2	1-4	2	3	5	3	7	0	2	2	0	23	
45	Duggan, Julia	* 3-8	0-0	0-2	1	2	3	2	6	1	1	0	1	22	
03	Hoskova, Kamila	* 0-3	0-1	0-0	0	1	1	1	2	0	1	0	0	11	
04	Valiuskyte, Kornelija	* 0-4	0-0	0-0	0	0	0	1	0	0	1	0	0	13	
05	Wentzel, Taylor	* 0-4	0-0	1-2	0	0	0	2	1	1	3	0	0	15	
13	Houghton, C'quoya	* 0-1	0-0	0-0	1	0	1	0	0	0	0	0	0	4	
20	Mason, Stephanie	* 0-1	0-1	0-3	0	1	1	0	0	0	0	0	0	8	
31	Wallace, Jessie	* 4-11	1-1	2-3	3	2	5	0	11	1	1	0	2	16	
25	Gillcrease, Marritta	* 1-4	0-0	1-1	3	5	8	1	3	0	1	1	2	16	
50	Loutzenhiser, Janine	* 0-1	0-1	0-0	0	0	0	0	0	0	0	0	0	3	
	Team				1	0	1								
	Totals	19-65	5-15	8-21	15	20	35	18	51	11	19	7	3	100	

FG % 1st Half: 9-37 24.3% 2nd half: 10-28 35.7% Game: 19-65 29.2% Deadball Rebounds
 3FG % 1st Half: 2-7 28.6% 2nd half: 3-8 37.5% Game: 5-15 33.3% 6,1
 FT % 1st Half: 3-5 60.0% 2nd half: 5-16 31.3% Game: 8-21 38.1%

Penn State 85 • 3-7

#	Player	Total		3-Ptr		Rebounds			PF	TP	A	TO	Bk	Stl	Min
		FG-FGA	FG-FGA	FT-FTA	Off	Def	Tot								
01	Agee, Candice	* 9-13	0-0	1-2	6	3	9	3	19	1	2	5	1	24	
05	Moore, Sierra	* 3-11	0-0	1-2	0	4	4	0	7	1	1	1	0	29	
12	Spann, Lindsey	* 11-20	1-4	0-2	0	5	5	2	23	5	2	0	2	35	
15	Mitchell, Kaliyah	* 4-7	0-1	4-6	4	6	10	3	12	1	1	1	4	29	
25	Whitted, Peyton	* 2-4	0-0	1-2	0	2	2	3	5	1	3	0	0	14	
10	Sevillian, Keke	* 3-3	0-0	3-7	1	3	4	2	9	4	2	0	0	27	
14	Brooks, Dominique	* 1-1	0-0	0-0	0	0	0	1	2	0	1	0	0	6	
34	Dincher, Molly	* 0-0	0-0	0-0	0	0	0	0	0	0	0	0	0	3	
41	DeGraaf, Jenny	* 2-6	0-2	0-0	0	7	7	2	4	0	2	0	0	23	
44	Waldner, Tori	* 1-2	0-0	2-2	1	1	2	4	0	1	1	0	1	10	
	Team				3	7	10								
	Totals	36-67	1-7	12-23	15	38	53	20	85	19	17	8	10	200	

FG % 1st Half: 20-36 55.6% 2nd half: 16-31 51.6% Game: 36-67 53.7% Deadball Rebounds
 3FG % 1st Half: 0-4 0.0% 2nd half: 1-3 33.3% Game: 1-7 14.3% 6
 FT % 1st Half: 10-17 58.8% 2nd half: 2-6 33.3% Game: 12-23 52.2%

Officials: Maj Forsberg, Roy Gulbeyan, Erika Herriman
 Technical fouls: Rider-None. Penn State-None.
 Attendance: 9991

Score by periods	1st	2nd	OT	Total
Rider	23	28	51	
Penn State	50	35	85	

Last FG - RID 2nd-00:26, PSU 2nd-01:31.
 Largest lead - RID None, PSU by 40 2nd-01:31.
 RID led for 00:00. PSU led for 39:57. Game was tied for 00:03.

Notable

- Sophomore forward **Kaliyah Mitchell** earned her first career double-double, tallying 12 points and 10 rebounds.
- Sophomore **Sierra Moore** matched a career-high with seven assists and notched her sixth game with four or more assists (third consecutive).
- Center **Candice Agee** recorded a career-high five blocks.

Hartford 62, Penn State 57

Game #9 * Dec. 10, 2014 * Hartford, Conn.

Penn State 57 • 2-7

#	Player	Total		3-Ptr		Rebounds			PF	TP	A	TO	Bk	Stl	Min
		FG-FGA	FG-FGA	FT-FTA	Off	Def	Tot								
44	Waldner, Tori	f 0-2	0-0	0-0	0	4	4	1	0	2	2	1	0	23	
01	Agee, Candice	c 8-13	0-0	4-6	4	4	8	1	20	1	5	1	0	26	
05	Moore, Sierra	g 4-9	0-0	2-2	0	2	2	4	10	5	4	0	2	29	
12	Spann, Lindsey	g 1-6	0-1	3-4	0	4	4	3	5	4	2	0	1	31	
15	Mitchell, Kaliyah	g 2-13	1-3	4-6	4	3	7	5	9	0	4	1	0	31	
10	Sevillian, Keke	g 1-1	1-1	0-0	1	0	1	3	3	0	0	0	0	13	
25	Whitted, Peyton	g 3-7	0-1	2-2	2	3	5	4	8	0	2	0	0	23	
41	DeGraaf, Jenny	g 1-6	0-3	0-0	2	0	2	1	2	2	2	0	1	24	
	Team				4	2	6								
	Totals	20-57	2-9	15-20	17	22	39	22	57	14	21	3	4	200	

FG % 1st Half: 7-24 29.2% 2nd half: 13-33 39.4% Game: 20-57 35.1% Deadball Rebounds
 3FG % 1st Half: 1-3 33.3% 2nd half: 1-6 16.7% Game: 2-9 22.2% 3,1
 FT % 1st Half: 3-6 50.0% 2nd half: 12-14 85.7% Game: 15-20 75.0%

HARTFORD 62 • 4-6

#	Player	Total		3-Ptr		Rebounds			PF	TP	A	TO	Bk	Stl	Min
		FG-FGA	FG-FGA	FT-FTA	Off	Def	Tot								
31	Cherelle Moore	f 7-15	0-1	0-0	1	7	8	3	14	3	7	0	3	34	
33	Janelle Harrison	f 1-1	0-0	0-0	0	1	1	2	2	0	2	0	1	20	
04	Deanna Mayza	g 6-10	6-8	7-8	0	2	2	1	25	1	5	0	1	40	
21	Shanise Bultron	g 1-1	1-1	0-0	0	1	1	2	3	2	1	0	2	17	
25	Amber Bepko	g 2-8	2-7	0-0	0	4	3	6	4	2	1				

#23/20 Iowa 77, Penn State 52

Game #12 * Dec. 28, 2014 * Iowa City, Iowa

Penn State 52 • 3-9, 0-1

#	Player	Total			3-Ptr			Rebounds			PF	TP	A	TO	Blk	Stl	Min
		FG-FGA	FG-FGA	FT-FTA	FG-FGA	FG-FGA	FT-FTA	Off	Def	Tot							
15	Mitchell, Kalyiah	r	0-2	0-0	0-2	2	2	4	4	0	0	2	2	1	21		
25	Whitted, Peyton	r	0-6	0-2	0-0	0	4	4	2	0	2	2	0	1	27		
01	Agee, Candice	c	4-5	0-0	1-2	1	0	1	2	9	0	1	0	1	9		
05	Moore, Sierra	g	1-7	0-1	0-0	2	2	2	1	2	1	2	0	1	18		
12	Spann, Lindsey	g	6-21	4-9	6-8	1	4	5	3	22	4	5	0	1	39		
10	Sevillian, Keke	g	1-2	0-0	2-2	0	4	4	1	4	1	1	0	2	36		
11	Harris, Alex	g	2-5	0-0	0-0	7	4	11	3	4	1	5	0	1	18		
14	Brooks, Dominique	g	0-0	0-0	0-0	0	0	0	0	0	0	0	0	1	18		
41	DeGraaf, Jenny	g	2-2	0-0	0-0	3	1	4	4	0	1	0	0	1	9		
44	Waldner, Tori	g	2-7	0-0	3-4	3	1	4	1	7	0	4	0	1	22		
	Team					2	2	4			1						
	Totals		18-57	4-12	12-18	18	22	40	19	52	9	24	2	9	200		

FG % 1st Half: 10-30 33.3% 2nd half: 8-27 29.6% Game: 18-57 31.6% Deadball Rebounds 3
 3FG % 1st Half: 1-4 25.0% 2nd half: 3-8 37.5% Game: 4-12 33.3%
 FT % 1st Half: 3-6 50.0% 2nd half: 9-12 75.0% Game: 12-18 66.7%

Iowa 77 • 10-2, 1-0

#	Player	Total			3-Ptr			Rebounds			PF	TP	A	TO	Blk	Stl	Min
		FG-FGA	FG-FGA	FT-FTA	FG-FGA	FG-FGA	FT-FTA	Off	Def	Tot							
51	Doolittle, Bethany	c	6-10	0-0	0-1	5	6	11	4	12	1	4	6	1	29		
02	Disterhoft, Ally	g	3-5	1-2	4-7	4	1	5	0	11	8	2	0	1	28		
15	Jennings, Whitney	g	3-9	0-1	5-6	1	1	2	11	4	2	0	1	35			
21	Dixon, Melissa	g	7-16	5-12	2-2	1	3	4	1	21	0	2	0	3	29		
22	Logic, Samantha	g	3-6	1-2	1-2	0	6	6	1	8	5	0	2	35			
01	Kastanek, Alexa	g	1-2	1-2	0-0	0	0	1	3	0	0	0	0	3			
03	Till, Claire	g	0-0	0-0	0-0	0	0	2	0	1	0	0	0	4			
04	Coley, Chase	g	0-1	0-0	0-0	1	2	3	1	0	1	0	0	6			
23	Buttenham, Christina	g	5-8	1-2	0-0	0	2	2	1	11	2	0	0	1	15		
25	Peschel, Kall	g	0-3	0-1	0-0	0	0	0	3	0	2	0	0	12			
34	Mohs, Carly	g	0-0	0-0	0-0	0	0	0	0	0	0	0	1	4			
	Team					2	3	5			16						
	Totals		28-60	9-22	12-18	14	24	38	16	77	21	18	6	10	200		

FG % 1st Half: 15-30 50.0% 2nd half: 13-30 43.3% Game: 28-60 46.7% Deadball Rebounds 2
 3FG % 1st Half: 7-13 53.8% 2nd half: 2-9 22.2% Game: 9-22 40.9%
 FT % 1st Half: 4-6 66.7% 2nd half: 8-12 66.7% Game: 12-18 66.7%

Officials: Bryan Enterline, Billy Smith, Angie Enlund
 Technical fouls: Penn State-None. Iowa-None.
 Attendance: 5411
 Big Ten Opener

Score by periods	1st	2nd	Total
Penn State	24	28	52
Iowa	41	36	77

Points	In	Off	2nd	Fast	Bench
PSU	Point	T/O	Chance	Break	
IOWA	26	26	14	10	14

Last FG - PSU 2nd-07:04, IOWA 2nd-01:08.
 Largest lead - PSU None, IOWA by 25 2nd-01:08.
 PSU led for 00:00, IOWA led for 39:20, Game was tied for 00:33.

Notable

- Freshman **Lindsey Spann** posted her third straight 20-point game with 22 points at Iowa. She now has a team-high 11 double-digit scoring games this season, with four of those 20-point efforts.
- Sophomore **Alex Harris** tied her career-high with 11 rebounds, a feat she has accomplished twice; last vs. Illinois State on Nov. 20, 2013.
- Sophomore **Kalyiah Mitchell** tied her career-high with two blocked shots.

Michigan 89, Penn State 53

Game #13 * Jan. 1, 2015 * Ann Arbor, Mich.

Penn State 53 • 3-10, 0-2

#	Player	Total			3-Ptr			Rebounds			PF	TP	A	TO	Blk	Stl	Min
		FG-FGA	FG-FGA	FT-FTA	FG-FGA	FG-FGA	FT-FTA	Off	Def	Tot							
11	Harris, Alex	r	0-0	0-0	0-0	0	0	0	0	0	0	0	2	0	12		
44	Waldner, Tori	c	2-4	0-1	0-0	4	3	7	2	4	2	0	3	1	20		
05	Moore, Sierra	g	5-10	0-0	1-4	1	2	3	2	11	5	2	2	30			
10	Sevillian, Keke	g	0-1	0-0	0-0	0	2	2	4	0	1	2	0	1	22		
12	Spann, Lindsey	g	6-12	1-3	2-4	0	2	2	4	15	1	7	0	1	28		
01	Agee, Candice	g	3-9	0-0	1-4	3	0	3	2	7	1	0	1	0	21		
14	Brooks, Dominique	g	1-1	0-0	1-1	0	0	0	3	0	0	0	0	2			
15	Mitchell, Kalyiah	g	3-7	0-2	3-4	1	5	6	1	9	2	2	0	0	28		
25	Whitted, Peyton	g	1-6	0-2	0-0	1	2	3	1	2	1	7	0	3	24		
41	DeGraaf, Jenny	g	1-5	0-2	0-0	0	2	2	2	2	0	1	0	1	13		
	Team					4	1	5			1						
	Totals		22-55	1-11	8-17	14	19	33	18	53	9	24	9	8	200		

FG % 1st Half: 11-29 37.9% 2nd half: 11-26 42.3% Game: 22-55 40.0% Deadball Rebounds 2
 3FG % 1st Half: 1-5 20.0% 2nd half: 0-6 0.0% Game: 1-11 9.1%
 FT % 1st Half: 0-3 0.0% 2nd half: 8-14 57.1% Game: 8-17 47.1%

Michigan 89 • 9-4, 1-1

#	Player	Total			3-Ptr			Rebounds			PF	TP	A	TO	Blk	Stl	Min
		FG-FGA	FG-FGA	FT-FTA	FG-FGA	FG-FGA	FT-FTA	Off	Def	Tot							
22	Goree, Cyesha	r	8-10	0-0	4-6	4	8	12	0	20	5	1	1	1	30		
02	Thompson, Sierra	g	3-14	2-8	2-2	4	2	6	1	10	6	1	0	2	31		
05	Smith, Shannon	g	7-12	0-2	3-4	4	1	5	3	17	6	2	0	1	27		
14	Emblad, Nicole	g	4-7	0-0	0-0	2	3	5	1	8	2	4	1	1	28		
20	Williams, Danielle	g	0-0	0-0	0-0	0	1	1	4	0	0	0	1	8			
01	Ristovski, Madison	g	0-4	0-2	0-0	3	1	4	0	0	1	0	0	1	16		
03	Flaherty, Katelynn	g	7-12	4-6	3-4	0	2	2	2	21	1	1	0	0	23		
04	Wangler, Halle	g	0-0	0-0	0-0	0	0	0	0	0	0	0	0	1			
11	Dunston, Jillian	g	2-3	0-0	1-3	2	0	2	1	5	1	0	0	1	11		
12	Stapleton, Terra	g	3-3	0-0	0-0	1	0	1	2	6	0	1	0	0	3		
15	Rakers, Paige	g	0-0	0-0	0-0	0	1	1	0	0	0	0	0	0	4		
23	Backman, Maria	g	0-3	0-0	0-0	0	0	0	2	0	1	0	0	0	8		
24	Jackson, Emoni	g	0-2	0-0	0-0	0	0	0	1	0	2	0	0	0	3		
32	Mitchell, Kemoni	g	1-4	0-0	0-0	4	0	4	1	2	0	1	0	0	7		
	Team					0	4	4			1						
	Totals		35-74	6-18	13-19	24	23	47	18	89	24	13	2	8	200		

FG % 1st Half: 19-38 50.0% 2nd half: 16-36 44.4% Game: 35-74 47.3% Deadball Rebounds 2
 3FG % 1st Half: 5-11 45.5% 2nd half: 1-7 14.3% Game: 6-18 33.3%
 FT % 1st Half: 10-15 66.7% 2nd half: 3-4 75.0% Game: 13-19 68.4%

Officials: Barb Smith, Cameron Inouye, Michael McConnell
 Technical fouls: Penn State-None. Michigan-None.
 Attendance: 3034
 Game Time: 1:47

Score by periods	1st	2nd	Total
Penn State	23	30	53
Michigan	53	36	89

Points	In	Off	2nd	Fast	Bench
PSU	Point	T/O	Chance	Break	
MICH	42	25	18	12	34

Last FG - PSU 2nd-00:26, MICH 2nd-00:29.
 Largest lead - PSU None, MICH by 40 2nd-06:32.
 PSU led for 00:00, MICH led for 39:42, Game was tied for 00:18.

Notable

- With 15 points, freshman **Lindsey Spann** eclipsed the 200-point mark in just 13 career games.
- Sophomore **Sierra Moore** posted her ninth double-digit scoring game of the season with 11 points.
- The Lady Lions used their fifth different starting lineup vs. the Wolverines. The Lady Lions made the last career start, while Keke Sevillian made her second.
- Sophomore **Alex Harris** made her first career start, while Keke Sevillian made her second.
- The loss snapped a seven-game winning streak for Penn State in the series.

Illinois 91, Penn State 76

Game #14 * Jan. 4, 2015 * University Park, Pa.

Illinois 91 • 10-4 (1-1)

#	Player	Total			3-Ptr			Rebounds			PF	TP	A	TO	Blk	Stl	Min
		FG-FGA	FG-FGA	FT-FTA	FG-FGA	FG-FGA	FT-FTA	Off	Def	Tot							
15	Simmons, Kyle	*	3-7	2-6	2-3	0	2	2	2	10	10	1	0	3	39		
20	Carter, Brittany	*	1-7	0-4	2-2	1	5	6	4	4	5	1	0	3	27		
22	Crawford, Ivory	*	8-11	3-4	3-5	2	4	6	4	22	5	6	0	1	39		
32	White, Chatrice	*	7-15	0-2	3-3	2	0	2	4	17	2	2	2	3	31		
34	Grant, Jacqui	*	10-15	5-9	4-5	1	7	8	2	29	0	2	2	0	34		
00	Hartwell, Sarah		0-0	0-0	0-0	0	0	0	0	0	0	0	0	0	1		
02	Gleason, Taylor		0-0	0-0	0-0	0	0	0	0	0	0	0	0	0	1		
03	Tuck, Taylor		2-6	1-3	1-2	0	3	3	1	6	0	1	0	0	18		
05	Oden, Nita		0-0	0-0	0-0	0	0	0	0	0	0	0	0	0	1		
12	McConnell, Ashley		0-0	0-0	0-0	0	0	0	0	0	0	0	0	0	1		
21	Kissinger, Brooke		1-3	1-1	0-0	1	1	2	1	3	0	0	1	0	7		
25	Cattenhead, Kennedy		0-0	0-0	0-0	0	0	0	0	0	0	0	0	0	1		
	Team					2	0	2									
	Totals		32-64	12-29	15-20	9	22	31	18	91	22	13	5	10	200		

FG % 1st Half: 17-38 44.7% 2nd half: 15-26 57.7% Game: 32-64 50.0% Deadball Rebounds 2,1
 3FG % 1st Half: 7-16 43.8% 2nd half: 5-13 38.5% Game: 12-29 41.4%
 FT % 1st Half: 6-9 66.7% 2nd half: 9-11 81.8% Game: 15-20 75.0%

Penn State 76 • 3-11 (0-3)

#	Player	Total			3-Ptr			Rebounds			PF	TP	A	TO	Blk	Stl	Min
		FG-FGA	FG-FGA	FT-FTA	FG-FGA	FG-FGA	FT-FTA	Off	Def	Tot							
01	Agee, Candice	*	1-2	0-0	2-4	0	1	1	0	4	0	0	0	0	13		
05	Moore, Sierra	*	6-14	0-1	2-6	3	3	6	2	14	5	4	0	2	32		
10	Sevillian, Keke	*	2-3	0-1	0-0	1	2	3	3	4	1	2	0	1	36		
1																	

**2014-15 Penn State Lady Lion Basketball
Penn State Combined Team Statistics (as of Jan 04, 2015)
All games**

RECORD:	OVERALL	HOME	AWAY	NEUTRAL
ALL GAMES	3-11	3-5	0-4	0-2
CONFERENCE	0-3	0-1	0-2	0-0
NON-CONFERENCE	3-8	3-4	0-2	0-2

#	Player	gp-gs	min	avg	Total		3-Point		F-Throw		Rebounds				pf	dq	a	to	blk	stl	pts	avg
					fg-fga	fg%	3fg-fga	3fg%	ft-fa	ft%	off	def	tot	avg								
12	Spann, Lindsey	14-14	474	33.9	86-210	.410	17-59	.288	40-58	.690	6	39	45	3.2	43	2	50	52	0	20	229	16.4
05	Moore, Sierra	14-14	463	33.1	61-154	.396	3-6	.500	41-65	.631	25	41	66	4.7	32	2	53	45	9	17	166	11.9
01	Agee, Candice	14-10	279	19.9	60-107	.561	0-0	.000	23-46	.500	30	44	74	5.3	29	0	10	21	25	10	143	10.2
15	Mitchell, Kaliyah	14-12	400	28.6	38-113	.336	3-23	.130	37-55	.673	28	66	94	6.7	47	3	9	32	8	25	116	8.3
44	Waldner, Tori	14-10	328	23.4	24-63	.381	1-6	.167	20-27	.741	23	68	91	6.5	40	1	17	25	19	9	69	4.9
41	DeGraaf, Jenny	14-0	263	18.8	29-65	.446	6-26	.231	5-6	.833	8	36	44	3.1	14	0	9	10	3	5	69	4.9
11	Harris, Alex	4-1	68	17.0	7-12	.583	0-0	.000	4-9	.444	13	8	21	5.3	8	0	3	6	5	1	18	4.5
25	Whitted, Peyton	14-6	264	18.9	24-72	.333	1-12	.083	9-16	.563	16	37	53	3.8	41	1	11	33	2	10	58	4.1
10	Sevillian, Keke	14-3	274	19.6	13-44	.295	4-17	.235	6-15	.400	8	16	24	1.7	30	0	23	16	2	17	36	2.6
14	Brooks, Dominique	10-0	32	3.2	4-6	.667	0-0	.000	5-5	1.000	0	1	1	0.1	7	0	0	4	1	0	13	1.3
34	Dincher, Molly	2-0	5	2.5	0-0	.000	0-0	.000	0-0	.000	0	0	0	0.0	1	0	0	2	0	0	0	0.0
Team																						
Total.....		14	2850		346-846	.409	35-149	.235	190-302	.629	187	390	577	41.2	292	9	185	253	74	114	917	65.5
Opponents.....		14	2850		333-865	.385	103-308	.334	206-310	.665	199	364	563	40.2	274	-	201	239	60	120	975	69.6

TEAM STATISTICS	PSU	OPP	Date	Opponent	Score	Att.
SCORING	917	975	11/14/14	TOWSON	W 71-64	3123
Points per game	65.5	69.6	11/16/14	ALBANY	L 53-54	8607
Scoring margin	-4.1	-	11/22/14	SETON HALL	L 70-75	3114
FIELD GOALS-ATT	346-846	333-865	11/25/14	ST. BONAVENTURE	L 54-56	6703
Field goal pct	.409	.385	11/28/14	vs Liberty	L 68-80	645
3 POINT FG-ATT	35-149	103-308	11/30/14	vs Samford	Lot 56-59	522
3-point FG pct	.235	.334	12/04/14	at Syracuse	L 39-61	258
3-pt FG made per game	2.5	7.4	12/7/14	WAGNER	W 96-66	3657
FREE THROWS-ATT	190-302	206-310	12/10/14	at HARTFORD	L 57-62	1467
Free throw pct	.629	.665	12/14/14	RIDER	W 85-51	9991
F-Throws made per game	13.6	14.7	12/21/14	USF	Lot 87-90	3429
REBOUNDS	577	563	* 12/28/14	at Iowa	L 52-77	5411
Rebounds per game	41.2	40.2	* 01/01/15	at Michigan	L 53-89	3034
Rebounding margin	+1.0	-	* 1/4/15	ILLINOIS	L 76-91	3933
ASSISTS	185	201				
Assists per game	13.2	14.4				
TURNOVERS	253	239				
Turnovers per game	18.1	17.1				
Turnover margin	-1.0	-				
Assist/turnover ratio	0.7	0.8				
STEALS	114	120				
Steals per game	8.1	8.6				
BLOCKS	74	60				
Blocks per game	5.3	4.3				
ATTENDANCE	42557	11337				
Home games-Avg/Game	8-5320	4-2542				
Neutral site-Avg/Game	-	2-584				

Score by Periods	1st	2nd	OT	Totals
Penn State	408	489	20	917
Opponents	460	489	26	975

* = Conference game

10-Time Big Ten Champions • Two-Time Big Ten Tournament Champions • 2000 NCAA Final Four • 25 NCAA Tournament Appearances



**2014-15 Penn State Lady Lion Basketball
Penn State Combined Team Statistics (as of Jan 04, 2015)
Conference games**

RECORD:	OVERALL	HOME	AWAY	NEUTRAL
ALL GAMES	0-3	0-1	0-2	0-0
CONFERENCE	0-3	0-1	0-2	0-0
NON-CONFERENCE	0-0	0-0	0-0	0-0

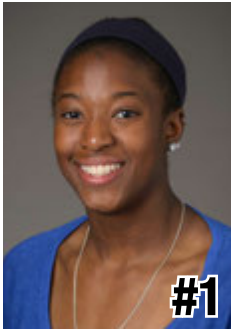
#	Player	gp-gs	min	avg	Total		3-Point		F-Throw		Rebounds				pf	dq	a	to	blk	stl	pts	avg
					fg-fga	fg%	3fg-fga	3fg%	ft-fga	ft%	off	def	tot	avg								
12	Spann, Lindsey	3-3	106	35.3	20-52	.385	7-18	.389	10-14	.714	2	11	13	4.3	9	0	9	15	0	4	57	19.0
05	Moore, Sierra	3-3	80	26.7	12-31	.387	0-2	.000	3-10	.300	6	5	11	3.7	5	0	7	11	2	5	27	9.0
01	Agee, Candice	3-2	43	14.3	8-16	.500	0-0	.000	4-10	.400	4	1	5	1.7	4	0	1	1	1	1	20	6.7
15	Mitchell, Kaliyah	3-1	78	26.0	8-18	.444	0-3	.000	4-7	.571	4	11	15	5.0	8	0	4	6	2	2	20	6.7
44	Waldner, Tori	3-2	67	22.3	6-16	.375	0-2	.000	8-10	.800	7	11	18	6.0	5	0	4	7	4	2	20	6.7
11	Harris, Alex	3-1	37	12.3	4-7	.571	0-0	.000	1-1	1.000	8	5	13	4.3	5	0	1	5	2	1	9	3.0
25	Whitted, Peyton	3-1	66	22.0	4-18	.222	0-4	.000	1-1	1.000	2	7	9	3.0	6	0	3	10	0	4	9	3.0
10	Sevillian, Keke	3-2	94	31.3	3-6	.500	0-2	.000	2-2	1.000	1	8	9	3.0	8	0	3	5	0	4	8	2.7
41	DeGraaf, Jenny	3-0	26	8.7	4-9	.444	0-2	.000	0-0	.000	0	3	3	1.0	4	0	0	2	1	1	8	2.7
14	Brooks, Dominique	2-0	3	1.5	1-1	1.000	0-0	.000	1-1	1.000	0	0	0	0.0	0	0	0	0	0	0	3	1.5
Team											8	5	13				3					
Total.....		3	600		70-174	.402	7-33	.212	34-56	.607	42	67	109	36.3	54	0	32	65	12	24	181	60.3
Opponents.....		3	600		95-198	.480	27-69	.391	40-57	.702	47	69	116	38.7	52	-	67	44	13	28	257	85.7

TEAM STATISTICS	PSU	OPP	Date	Opponent	Score	Att.
SCORING	181	257	* 12/28/14	at Iowa	L 52-77	5411
Points per game	60.3	85.7	* 01/01/15	at Michigan	L 53-89	3034
Scoring margin	-25.3	-	* 1/4/15	ILLINOIS	L 76-91	3933
FIELD GOALS-ATT	70-174	95-198	* = Conference game			
Field goal pct	.402	.480				
3 POINT FG-ATT	7-33	27-69				
3-point FG pct	.212	.391				
3-pt FG made per game	2.3	9.0				
FREE THROWS-ATT	34-56	40-57				
Free throw pct	.607	.702				
F-Throws made per game	11.3	13.3				
REBOUNDS	109	116				
Rebounds per game	36.3	38.7				
Rebounding margin	-2.3	-				
ASSISTS	32	67				
Assists per game	10.7	22.3				
TURNOVERS	65	44				
Turnovers per game	21.7	14.7				
Turnover margin	-7.0	-				
Assist/turnover ratio	0.5	1.5				
STEALS	24	28				
Steals per game	8.0	9.3				
BLOCKS	12	13				
Blocks per game	4.0	4.3				
ATTENDANCE	3933	8445				
Home games-Avg/Game	1-3933	2-4222				
Neutral site-Avg/Game	-	0-0				

Score by Periods	1st	2nd	Totals
Penn State	74	107	181
Opponents	141	116	257



2014-15 RADIO/TV CHART



#1

Candice Agee

6-6 * Jr./Jr. * C
Victorville, Calif.
Silverado



#3

Brianna Banks

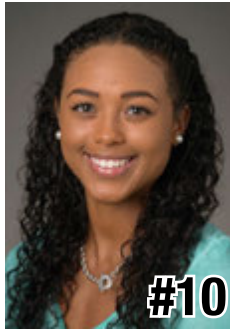
5-9 * Sr./-- * G
Newnan, Ga.
Fayette County
(Connecticut)



#5

Sierra Moore

5-11 * Jr./So. * G
Hanover, Pa.
Delone Catholic
(Duke)



#10

Keke Sevillian

5-7 * So./So. * G
Goodrich, Mich.
Goodrich



#11

Alex Harris

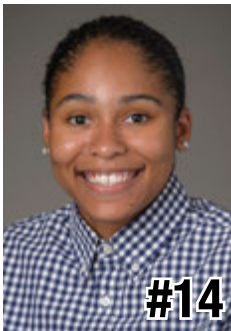
6-3 * So./So. * F
Lorain, Ohio
Lorain



#12

Lindsey Spann

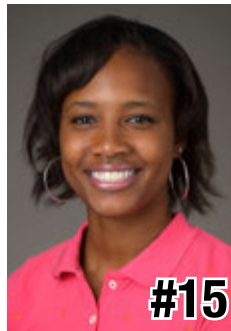
5-6 * So./Fr. * G
Laurel, Md.
Good Counsel



#14

Dominique Brooks

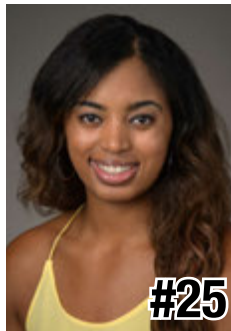
6-4 * Jr./Jr. * C
Lansing, Ill.
T.F. South
(Trinity Valley C.C.)



#15

Kaliyah Mitchell

6-2 * So./So. * F
Stone Mountain, Ga.
Stephenson



#25

Peyton Whitted

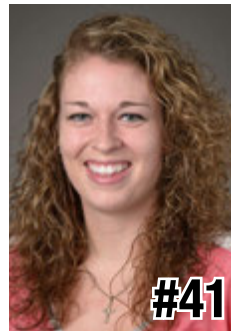
6-3 * So./So. * F
Suwanee, Ga.
North Gwinnett



#34

Molly Dincher

6-0 * Sr./Sr. * G/F
Williamsport, Pa.
Williamsport Area
(PSU Wilkes-Barre)



#41

Jenny DeGraaf

6-1 * So./So. * F
Springboro, Ohio
Springboro



#44

Tori Waldner

6-5 * Sr./Sr. * F/C
Milton, Ga.
Milton



HC

Coquese Washington

Head Coach
Notre Dame '92
Eighth Season



AC

Ito Coleman

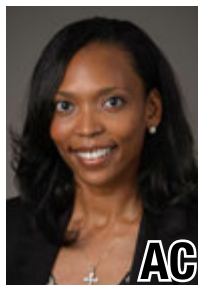
Assistant Coach
Clemson '00
First Season
Fourth Overall



AC

Kia Damon

Assistant Coach
Millersville '97
Eighth Season



AC

Jocelyn Wyatt

Assistant Coach
Appalachian State '06
First Season



DO

Ethan Gelfand

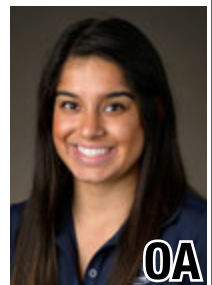
Director of Operations
Wake Forest '06
Fourth Season



VO

Mike Miller

Director of Video &
Technology Ops
High Point '02
10th Season



OA

Jennifer Montoya

Operations Assistant
Penn State '14
First Season

10-Time Big Ten Champions • Two-Time Big Ten Tournament Champions • 2000 NCAA Final Four • 25 NCAA Tournament Appearances

