

PENN STATE

FIELD HOCKEY



2013

GoPSUsports.com // ONE TEAM

Penn State Athletic Communications • Robby Hamman • Athletic Communications Assistant/FH Contact
E-Mail - rdh18@psu.edu • Office - (814) 865-3613 • Cell - (814) 441-9145 • GoPSUSports.com



NCAA TOURNAMENT

No. 9 Penn State (13-5)
Saturday, Nov. 16, 2013
2:00 p.m. - College Park, Md.
Coverage: Gametracker



**2013 FIELD HOCKEY
CHAMPIONSHIP**
DIVISION I

Penn State Schedule (13-5, 5-1)

Date	Opponent	Result/Time
Aug. 30	at No. 8 Old Dominion	W, 3-1
Sep. 1	at No. 7 Virginia	L, 2-4
Sep. 6	TEMPLE	L, 0-3
Sep. 8	NO. 4 UCONN	L, 3-4 OT
Sep. 11	at Lock Haven	W, 3-0
Sep. 15	at No. 3 Princeton	W, 4-3
Sep. 20	No. 16 DELAWARE	W, 5-0
Sep. 22	at Lafayette	W, 3-0
Sep. 28	vs. Miami (Ohio)	W, 2-1
Sep. 29	at Indiana *	W, 4-0
Oct. 5	NO. 10 NORTHWESTERN *	W, 2-0
Oct. 11	OHIO STATE *	W, 6-1
Oct. 13	at Bucknell	W, 2-0
Oct. 19	MICH. ST. *	W, 4-3 SO
Oct. 25	at No. 19 Iowa *	W, 2-1
Oct. 26	vs. UC Davis	W, 5-0
Nov. 1	at Michigan *	L, 1-2 OT
Nov. 8	vs. Iowa	L, 3-4 OT
Nov. 16	vs. No. 8 Princeton	2 p.m.
Nov. 17	NCAA Tourney 2nd Round	TBA
Nov. 22-23	NCAA Semifinals & Final	TBA

Setting the Scene: Penn State travels to College Park, Md. for the first two rounds of the NCAA Tournament, as the Blue and White is set to face Princeton, the defending national champion, in the first round on Saturday at 2 p.m. The winner of the match will face winner of the Maryland vs. American first round matchup on Sunday at 2 p.m. at Maryland.

All-Time in the NCAA Tourney: The Nittany Lions are no stranger to postseason play, as the program has qualified for the NCAA Tournament 29 out of a possible 32 seasons. Penn State's 29th appearance ranks third for all-time NCAA Tournament berths. The first round match will be the program's 56th, which places PSU fourth in tourney games played. The Lions all-time NCAA Tournament record is 23-32.

Head coach Charlene Morett is a huge reason for all of Penn State's success. The coach is tied for fourth in all of Division I for most NCAA Tournament qualifications from a head coach with 24 and has led the Nittany Lions to the postseason in 24 of her 27 seasons at the helm. Morett has guided the Blue and White to two National Championship games and three Final Fours. A season ago, the team won its first round match vs. Albany by a final of 2-1 before falling to Syracuse in the quarterfinals, just one step away from the Final Four.

PSU vs. Princeton: Saturday's match between Princeton and Penn State will be the 33rd meeting in the series between the two sides and 10th in postseason play. Historically, The Nittany Lions have a 24-8 overall record and a 6-3 postseason advantage over the Tigers heading into Saturday's showdown. However, the matchup has been much more competitive in recent years. Penn State held on to a thrilling 4-3 win earlier this season at

Princeton, snapping the Tigers' 17-match winning streak. PSU received goals from Ashtin Klingler, Taylor Herold, Lauren Purvis and Brittany Grzywacz in the win. Princeton claimed victories in the 2011 and 2012 meetings, winning a 3-2 overtime thriller in University Park a season ago. Each of the last four matches has been decided by one goal. In postseason action, Princeton won the latest meeting between the two sides, earning a 2-0 victory in the first round of the 2008 tournament. The last Penn State NCAA Tournament win came in 2003, as the Nittany Lions won their first round matchup 3-1 over the Tigers in a contest that was played in College Park, Md.



@PennStateFH



PENNSTATEFIELDHOCKEY

Final Big Ten Standings

Team	Conf.	Ovr.
PENN STATE	5-1	13-5
Northwestern	5-1	15-5
Michigan State	4-2	13-9
Michigan	4-2	12-8
Iowa	2-4	13-8
Indiana	1-5	9-10
Ohio State	0-6	5-13



Grzywacz Goes Back-to-Back:

Brittany Grzywacz captured her second consecutive Big Ten Defensive Player of the Year honor, winning as a unanimous selection from the conference coaches. The defender becomes just the second Nittany Lion to earn the award in back-to-back seasons, joining Jen Long who accomplished the feat in 2007 and 2008. Grzywacz turned in a stellar senior season for the Blue and White, ranking second on the team in goals with 11, including leading the Big Ten with seven game-winning scores. The senior anchors the Nittany Lion back line that allowed just seven goals in Big

Ten play, tied for fewest in the conference.

Hoarding the Hardware: Brittany Grzywacz, Laura Gebhart and Kylie Licata each were placed on the first team All-Big Ten list, while Taylor Herold and Ashtin Klingler gained second team All-Big Ten recognition. Senior defender Abby Fuhrman was Penn State's recipient of the Sportsmanship Award Honorees. Penn State's six award winners were more than any other team in the conference, with Michigan State earning five recipients. With Grzywacz's Big Ten Defensive Player of the Year award, Penn State has now received the honor 10 times since joining the conference in 1992, five more than the next closest program.

NFHCA POLL

(As of 11/12)

Team	Record
1. Maryland	20-1
2. Syracuse	16-3
3. North Carolina	16-5
4. UConn*	17-4
5. Duke	14-6
6. Old Dominion*	13-7
7. Virginia*	15-5
8. Princeton*	13-4
9. PENN STATE	13-5
10. Massachusetts	18-4
11. Boston College	12-7
12. Stanford	16-5
13. Wake Forest	11-8
14. Delaware*	16-4
15. Louisville	15-5
16. New Hampshire	15-6
17. Northwestern**	15-5
18. American	14-5
19. Iowa**	13-8
20. Michigan State**	12-9

* Indicates 2013 opponent

** Indicates 2013 Big Ten opponent

QUICK FACTS

TEAM INFORMATION

2013 Record	13-5
2013 Big Ten Record/Finish	5-1/1st
2012 Record	18-4
2012 Big Ten Record/Finish	5-1/1st
2012 Postseason	NCAA Quarterfinals
Letterwinners Returning/Lost	17/5
Starters Returning/Lost	8/3
Newcomers	5
All-Time Record	622-237-37
All-Time Big Ten Record	112-50-1
All-Time Big Ten Tournament Record	24-14
NCAA Tournament Appearances	29
NCAA Tournament Record	23-32
NCAA Semifinal Appearances	7
NCAA Championship Game Appearances	2
Last NCAA Tournament Appearance	2012

COACHING STAFF

Head Coach	Charlene Morett (Penn State, 1979)
Career Record/Years	458-177-17/30
Record at Penn State/Years	424-162-8/27
Assistant Coach ...	Lisa Bervinchak-Love (Penn State, 1989)
Assistant Coach	Stuart Smith (Ohio State, 2008)

Helping Hands:

The Nittany Lions boast two of the top assist leaders in the nation

in Whitney Reddig and Laura Gebhart. Reddig is the active career leader in the nation with 45 assists, four more than anyone else in the country. The senior has set up nine scores this season and ranks tied for fourth in the Big Ten for assists per match. Gebhart, another PSU midfielder, currently leads the conference in assists with 12 on the season, equaling the amount she had during both her sophomore and freshman campaigns. The midfielder ranks tied for fourth on the NCAA active career list with 36 assists.

Start Me Up:

A key stat in determining the outcome of Penn State's matches this season has been the halftime score. The Nittany Lions are 9-1 when leading at the half and a perfect 3-0 when tied at the break. However, the team's record drops to just 1-4 when entering the final 35 minutes trailing its opponent. The Lions are 10-1 when scoring the first goal of the match and 3-4 when the opposition finds the back of the cage first.

Journey to the Tourney:

The Nittany Lions claimed a share of the Big Ten regular season crown with a 5-1 record on the way to earning the No. 1 seed in the Big Ten Tournament. Penn State played seven teams who qualified for the NCAA Tourney, going 5-2 in those matches. Against teams ranked in the top-10 at the time of the match, the Blue and White has a record of 3-2.



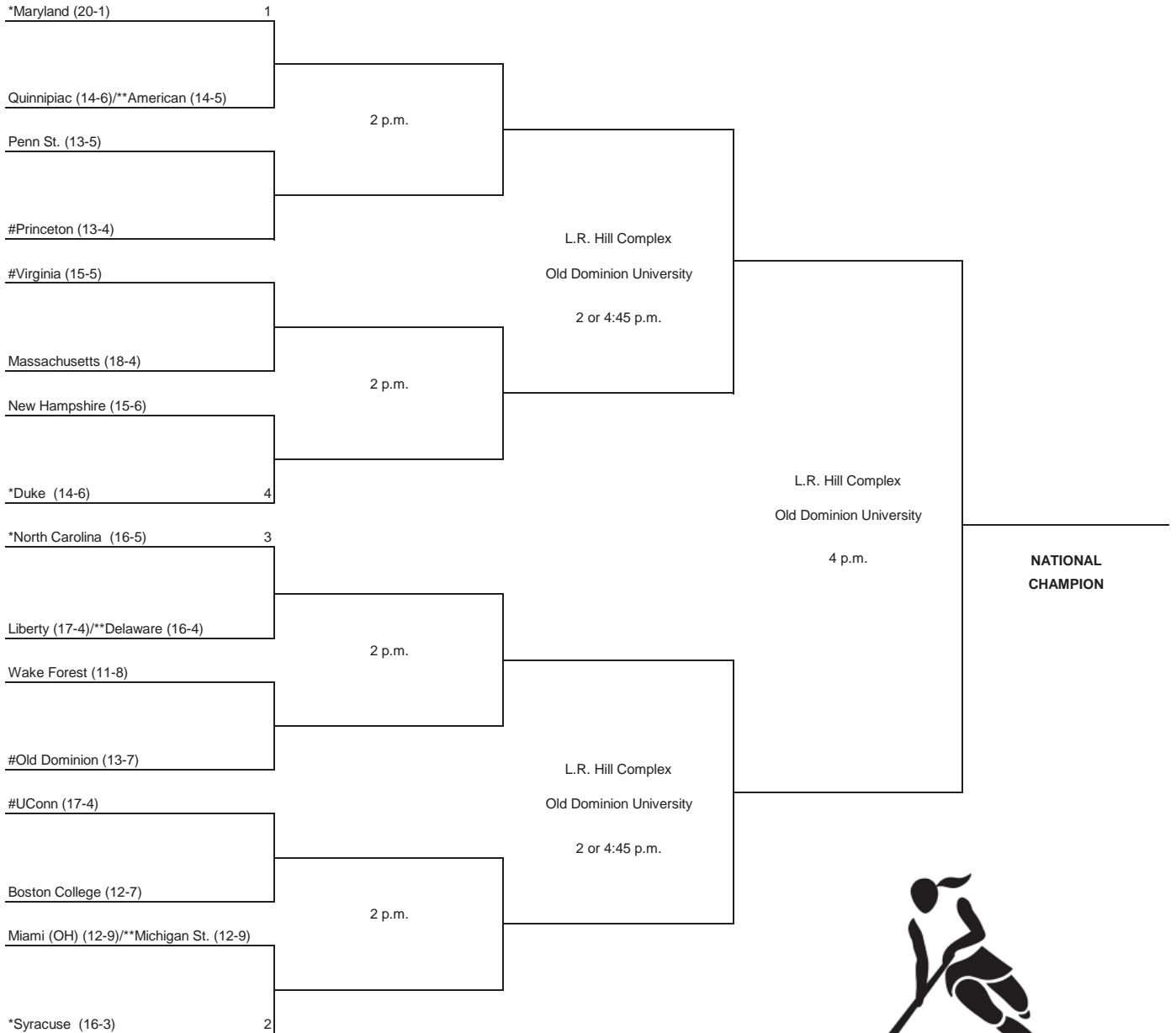
2013 Division I Field Hockey

First Round
November 16

Second Round
November 17

Semifinals
November 22

Championship
November 24



*Denotes host institution for first- and second-round games.
 **Denotes host institution for play-in games.
 Home team is the seeded team in the seeded game.
 #Home team in the non-seeded game.

Game times for first-round games:
 11:30 a.m. for seeded games.
 2 p.m. for non-seeded games.
 Game times for play-ins are 2 p.m., November 13.

ALL TIMES LOCAL



NCAA FIELD HOCKEY

Numerical Roster

No.	Name	Yr.	Pos.	Ht.	Hometown/High School
1	Brooke Birosik	Fr.	F/M	5-4	Harrisburg, Pa./West Perry
2	Kylie Licata	R-Jr.	GK	5-3	Mountain Top, Pa./Crestwood
3	Ashtin Klingler	Sr.	F	5-1	Selinsgrove, Pa./Selinsgrove (Syracuse)
4	Kirsten Gochnauer	Fr.	F/M	5-5	Mount Joy, Pa./Donegal
5	Laura Gebhart	Jr.	F/M	5-2	Mount Joy, Pa./Donegal
6	Carly Celkos	Fr.	M	5-6	Voorhees, N.J./Eastern
8	Taylor Herold	Jr.	F/M	5-6	Fredericksburg, Va./James Monroe
9	Jenna Chrismer	Jr.	F/M	5-3	Mountain Top, Pa./Crestwood
10	Lauren Purvis	Sr.	F/M	5-7	Maple Glen, Pa./Hatboro-Horsham
11	Brittany Grzywacz	Sr.	M/B	5-6	Collegeville, Pa./Methacton
12	Emilee Ehret	Fr.	B	5-9	Philadelphia, Pa./Mt. St. Joseph Acad.
13	Whitney Reddig	Sr.	F/M	5-7	Lititz, Pa./Warwick
14	Katie Breneman	Jr.	M/B	5-8	Washington Boro, Pa./Penn Manor
16	Abby Fuhrman	Sr.	B	5-7	Bainbridge, Pa./Elizabethtown
17	Bethany Mink	So.	F	5-2	Allentown, Pa./William Allen
19	Natalie Buttinger	Sr.	F/M	5-8	Kitchener, Ontario/Resurrection
21	Jacqueline Kenney	Sr.	B	5-7	State College, Pa./State College Area
22	Casey Haegele	Jr.	F	5-4	Warrington, Pa./Central Bucks
24	Katie Andrews	Jr.	B	5-5	Lancaster, Pa./Lancaster Mennonite
26	Haley Kerstetter	So.	B	5-4	Selinsgrove, Pa./Selinsgrove
29	Sarah Bates	Fr.	GK	5-2	Highland, Md./Glenelg Country School
33	Amanda Dinunzio	Jr.	M/B	5-5	State College, Pa./State College

Head Coach: Charlene Morett (Penn State '79), 27th Season

Associate Head Coach: Lisa Bervinchak-Love (Penn State '89), 19th Season

Assistant Coach: Stuart Smith (Ohio State '08), Fourth Season

2013 B1G Statistical Rankings

Category	Stat	Big Ten Rank
Scoring Average	2.94	2nd
Goals Against Average	1.43	2nd
Scoring Margin	1.50	1st
Shots Per Game	18.33	1st
Assists Per Game	2.11	4th
Penalty Corners Per Game	9.89	1st
Points Per Game	8.00	T-1st

Points Per Game	Stat	Big Ten Rank
Taylor Herold	1.56	5th
Brittany Grzywacz	1.39	9th

Goals Per Game	Stat	Big Ten Rank
Taylor Herold	0.67	4th
Brittany Grzywacz	0.61	7th

Assists Per Game	Stat	Big Ten Rank
Laura Gebhart	0.67	1st
Whitney Reddig	0.50	T-3rd

Shutouts Per Game	Stat	Big Ten Rank
Kylie Licata	0.39	1st

Nittany Lions By...

CLASS

Seniors (7): Natalie Buttinger, Abby Fuhrman, Brittany Grzywacz, Jacqueline Kenney, Ashtin Klingler, Lauren Purvis, Whitney Reddig

Juniors (8): Katie Andrews, Katie Breneman, Jenna Chrismer, Amanda Dinunzio, Laura Gebhart, Casey Haegele, Taylor Herold, Kylie Licata

Sophomores (2): Haley Kerstetter, Bethany Mink

Freshmen (5): Sarah Bates, Brooke Birosik, Carly Celkos, Emilee Ehret, Kirsten Gochnauer

STATE

Maryland (1): Sarah Bates

New Jersey (1): Carly Celkos

Ontario (1): Natalie Buttinger

Pennsylvania (18): Katie Andrews, Brooke Birosik, Katie Breneman, Jenna Chrismer, Amanda Dinunzio, Emilee Ehret, Abby Fuhrman, Laura Gebhart, Kirsten Gochnauer, Brittany Grzywacz, Casey Haegele, Jacqueline Kenney, Haley Kerstetter, Ashtin Klingler, Kylie Licata, Bethany Mink, Lauren Purvis, Whitney Reddig

Virginia (1): Taylor Herold

POSITION

Goalkeeper (2): Sarah Bates, Kylie Licata

Back (7): Katie Andrews, Katie Breneman, Emilee Ehret, Abby Fuhrman, Brittany Grzywacz, Jacqueline Kenney, Haley Kerstetter

Midfield (7): Natalie Buttinger, Carly Celkos, Jenna Chrismer, Amanda Dinunzio, Laura Gebhart, Lauren Purvis, Whitney Reddig

Forward (6): Brooke Birosik, Kirsten Gochnauer, Casey Haegele, Taylor Herold, Ashtin Klingler, Bethany Mink

Pronunciation Guide

Lisa Bervinchak-Love: BUR-vin-Chalk

Natalie Buttinger: BUT-in-jur

Kirsten Gochnauer: GOKE-now-er

Brittany Grzywacz: GRIZ-wack

Charlene Morett: More-ETT

Support Staff

Sports Nutritionist: Kristine Clark

Strength & Conditioning Coach: Mike Chatham

Marketing: Kathy Drysdale, Loren Crispell

Athletic Game Management: Amy Ridenour

Athletic Communications: Robby Hamman

Athletic Trainer: Renee Messina

Academic Advisor: Sandy Meyer

Booster Club President: Sandy Rogus

Associate A.D./SWA: Charmelle Green

Staff Assistant: Vickie Taylor

Sports Psychologist: Dave Yukelson

**Follow Penn State
Field Hockey
on Twitter and
Instagram!
@PennStateFH**



The longest tenured coach in the Big Ten and sixth-longest tenured at a single school in Division I field hockey history, Charlene Morett enters her 27th season as head coach of the Penn State field hockey program. Morett boasts a remarkable resume covering her time as the leader of the Nittany Lions. Over the last five years, Morett has led the Nittany Lions to two Big Ten regular season titles, two Big Ten Tournament championships and four NCAA Tournament appearances.

Morett currently ranks fourth all-time in Division I history in wins with 445 and is one of just five DI coaches to accumulate 400 career wins. She has led the Nittany Lions to the NCAA Tournament in 23 of her 26 years as head coach of Penn State and has helped maintain Penn State's distinction as the No. 3 ranked school in all-time NCAA Tournament appearances with 28.

A seven-time NFHCA Midwest Region Coach of the Year, Morett is an excellent teacher of field hockey. Her players earn national recognition on a yearly basis, 11 of whom have been named two-time first team All-Americans with Kelsey Amy being the most recent. Her teams dominate the national scene, consistently ranking among the Top 10 in the national polls. Penn State was ranked in the Top 10 of the STX/NFHCA poll for 32 consecutive weeks from the first poll of the 2005 season ending with the second poll of 2008. The squad achieved a No. 1 ranking in the STX/NFHCA poll for the first time in program history. From 2005-08, Penn State finished eighth, sixth, ninth and 11th respectively, in the final poll of the season.

Under Morett's tutelage, five of her players have been named Big Ten Athlete of the Year -- Traci Anselmo, Jen Coletta, Heather Gorklaski, Tracey Larson and Kiley Kulina. Seven players have been voted the Big Ten Offensive Player of the Year -- Natalie Berrena, Coletta, Dawn Lammey, Larson, Tara Maguire, Allison Scola and Kelsey Amy. In 2012, Brittany Grzywacz was named the Big Ten Defensive Player of the Year, becoming the ninth Big Ten Defensive Player of the Year from Penn State, joining Anselmo, Gorklaski, Becca Main, Jill Martz, Jill Pearsall and Jen Long. Long and Anselmo are the only Lions to be named Defensive Player of the Year twice.

Since Penn State's entry into the Big Ten in 1992, Morett's program has produced more first team All-Big Ten selections, Big Ten Defensive Players of the Year, Big Ten Athletes of the Year and Big Ten Freshmen of the Year than any other program. Penn State's nine Big Ten Defensive Player of the Year honorees are four more than any other school.

With Amy, Laura Gebhart, Lauren Purvis, Grzywacz and Ashtin Klinger earning All-Big Ten laurels last season, Penn State has now totaled 89 All-Big Ten selections since 1992, including 62 first team All-Conference choices, the most of any Big Ten school since Penn State moved to the Big Ten in 1992.

**CHARLENE MORETT
YEAR-BY-YEAR**

At Boston College (3 years, 34-16-8, .655)

1984	13-4-1	.750
1985	10-5-5	.625
1986	11-7-2	.600

At Penn State (26 years, 411-158-8, .719)

1987	14-5-2	.714	NCAA Tournament
1988	15-6-1	.705	NCAA Quarterfinals Atlantic 10 West Champions
1989	18-3-1	.841	NCAA Tournament Atlantic 10 Regular Season Champions Atlantic 10 Tournament Champions
1990	21-4	.840	NCAA Semifinals Atlantic 10 Regular Season Champions Atlantic 10 Tournament Champions
1991	18-3-1	.841	NCAA Semifinals
1992	16-5-1	.750	NCAA Quarterfinals
1993	20-2	.909	NCAA Semifinals Big Ten Regular Season Champions
1994	13-7-2	.636	NCAA Quarterfinals
1995	15-9	.625	NCAA Quarterfinals Big Ten Tournament Champions
1996	14-9	.609	NCAA Tournament Big Ten Tournament Champions
1997	18-6	.750	NCAA Quarterfinals Big Ten Regular Season Champions Big Ten Tournament Champions
1998	18-5	.783	NCAA Quarterfinals Big Ten Regular Season Champions Big Ten Tournament Champions
1999	17-5	.773	NCAA Tournament
2000	17-6	.739	NCAA Tournament
2001	12-7	.632	
2002	19-5	.792	NCAA National Finalist
2003	18-7	.720	NCAA Quarterfinals
2004	10-10	.500	
2005	17-4	.810	NCAA Tournament Big Ten Regular Season Champions
2006	16-6	.727	NCAA Quarterfinals
2007	16-8	.667	NCAA National Finalist
2008	13-7	.650	NCAA Tournament Big Ten Regular Season Champions
2009	7-13	.350	
2010	14-6	.700	NCAA Tournament
2011	17-6	.739	Big Ten Tournament Champions NCAA Quarterfinals
2012	18-4	.818	NCAA Quarterfinals Big Ten Regular Season Champions Big Ten Tournament Champions
29 Yrs	445-173-17	.714	23 NCAA Appearances

During Morett's tenure, Penn State has produced 37 first team All-America choices with at least one player earning the honor in 24 of the coach's 26 seasons. Overall, Penn State has had at least one first team All-American in 26 of the last 29 years, including every year from 1975-08. In 2007, for the first time since 2002, Penn State had two first team All-Americans in Long and Kiersten Wood.

PLAYER PROFILES



#1 - Brooke Birosik
5-4
Freshman • F/M
Harrisburg, Pa. • West Perry HS

CAREER MATCH HIGHS

	SEASON	CAREER
Goals	-----	-----
Assists	-----	-----
Points	-----	-----
Shots	2 - vs. UC Davis 10/26	2 - vs. UC Davis 10/26
Multi-Goal Gms.	-----	-----

Birosik's Career Statistics

Season	GP-GS	G	A	Pts.	Shots	GWG
2013	2-0	-	-	-	2	-
Career	2-0	0	0	0	2	0



#4 - Kirsten Gochnauer
5-5
Freshman • F/M
Mount Joy, Pa. • Donegal HS

CAREER MATCH HIGHS

	SEASON	CAREER
Goals	-----	-----
Assists	-----	-----
Points	-----	-----
Shots	-----	-----
Multi-Goal	-----	-----

Gochnauer's Career Statistics

Season	GP-GS	G	A	Pts.	Shots	GWG
2013	1-1	-	-	-	-	-
Career	1-1	0	0	0	0	0



#2 - Kylie Licata
5-3
RS Junior • GK
Mountain Top, Pa. • Crestwood HS

CAREER MATCH HIGHS

	SEASON	CAREER
Saves	7, three times - last at Princeton 9/15	7, three times - last at Princeton 9/15/13
Shutouts	7 - last vs. UC Davis 10/26	7 - last vs. UC Davis 10/26

Licata's Career Statistics

Season	GP-GS	Min.	GA	GAA	Saves	Pct.	W-L	SHO
2010	Redshirt Season							
2011	8-0	188:15	3	1.12	5	.625	0-0	0
2012	6-0	107:40	1	0.65	9	.900	0-0	0
2013	18-18	1317:13	27	1.43	64	.703	13-5	7
Career	31-17	1613:08	31	1.35	73	.702	13-5	7



#5 - Laura Gebhart
5-2
Junior • M
Mount Joy, Pa. • Donegal HS

CAREER MATCH HIGHS

	SEASON	CAREER
Goals	1 - vs. UC Davis 10/26	2 - vs. Villanova 10/4/11
Assists	2, four times - last vs. Ohio State 9/20	3 - vs. Indiana 9/21/12
Points	2, five times - last vs. Ohio State 9/20	5, twice - last vs. Indiana 9/21/12
Shots	7, vs. MSU 10/19	9 - vs. Temple 9/8/12
Multi-Goal Gms.	-----	1

Gebhart's Career Statistics

Season	GP-GS	G	A	Pts.	Shots	GWG
2011	22-22	6	12	24	43	0
2012	22-22	6	12	24	53	0
2013	18-18	1	12	14	44	1
Career	62-62	13	36	62	140	1



#3 - Ashtin Klingler
5-1
Senior • F
Selinsgrove, Pa. • Selinsgrove HS

CAREER MATCH HIGHS

	SEASON	CAREER
Goals	2 - at Indiana 9/29	2, five times - last at Indiana 9/29/13
Assists	3 - vs. UC Davis 10/26	3 - vs. UC Davis 10/26
Points	4 - at Indiana 9/29	4, five times - last at Indiana 9/29/13
Shots	3, three times - last vs. MSU 10/19	4, twice - last vs. Monmouth 9/15/12
Multi-Goal Gms.	1 - at Indiana 9/29	5 - last at Indiana 9/29/13

Klingler's Career Statistics

Season	GP-GS	G	A	Pts.	Shots	GWG
2010	21-4	3	0	6	26	0
2011	23-0	6	0	12	21	0
2012	22-22	11	2	24	35	4
2013	18-18	7	3	17	26	2
Career	84-44	27	5	59	108	6



#6 - Carly Celkos
5-6
Freshman • M
Voorhees, N.J. • Eastern HS

CAREER MATCH HIGHS

	SEASON	CAREER
Goals	-----	-----
Assists	1 - at Lock Haven 9/11	1 - at Lock Haven 9/11/13
Points	1 - at Lock Haven 9/11	1 - at Lock Haven 9/11/13
Shots	2, twice - last vs. UC Davis 10/26	2, twice - last vs. UC Davis 10/26
Multi-Goal Gms.	-----	-----

Celkos's Career Statistics

Season	GP-GS	G	A	Pts.	Shots	GWG
2013	14-0	-	1	1	8	-
Career	14-0	0	1	1	8	0

PLAYER PROFILES



#8 - Taylor Herold

5-6

Junior • F

Fredericksburg, Va. • James Monroe HS

CAREER MATCH HIGHS

	SEASON	CAREER
Goals	2, twice- last vs. MSU 10/19	2, six times - last vs. MSU 10/19/13
Assists	1, four times - last vs. OSU 10/11	1, nine times - last vs. OSU 10/11/2013
Points	4, twice- last vs. MSU 10/19	4, six times - last vs. MSU 10/19/13
Shots	10 - vs. MSU 10/19/13	10 - vs. MSU 10/19/13
Multi-Goal Gms.	2 - last vs. MSU 10/19	6 - last vs. MSU 10/19/13

Herold's Career Statistics

Season	GP-GS	G	A	Pts.	Shots	GWG
2011	23-0	10	4	24	22	3
2012	22-13	11	1	23	42	3
2013	18-17	12	4	28	65	1
Career	63-30	33	9	75	129	7



#11 - Brittany Grzywacz

5-6

Freshman • B

Collegeville, Pa. • Methacon HS

CAREER MATCH HIGHS

	SEASON	CAREER
Goals	2 - vs. Ohio State 10/11	2, three times - last vs. OSU 10/11/13
Assists	2 - at Bucknell 10/13/13	2 - at Bucknell 10/13/13
Points	4 - vs. Ohio State 10/11	5 - vs. VCU 9/18/12
Shots	10 - vs. UConn 9/8	10 - vs. UConn 9/8/13
Multi-Goal Gms.	1 - vs. Ohio State 10/11	3 - last vs. Ohio State 10/11/13

Grzywacz' Career Statistics

Season	GP-GS	G	A	Pts.	Shots	GWG
2010	20-20	4	2	10	35	1
2011	23-23	8	3	19	41	2
2012	22-22	12	2	26	52	2
2013	18-18	11	3	25	81	7
Career	83-83	35	10	80	209	12



#9 - Jenna Chrismer

5-3

Junior • F

Mountain Top, Pa. • Crestwood HS

CAREER MATCH HIGHS

	SEASON	CAREER
Goals	1, seven times - last vs. Iowa 11/8	2 - vs. California 10/7/12
Assists	1, twice - last vs. UC Davis 10/26	1, five times - last vs. UC Davis 10/26/13
Points	3 - vs. Ohio State 10/11	4 - vs. California 10/7/12
Shots	5 - vs. Ohio State 10/11	5 - vs. Ohio State 10/11/13
Multi-Goal Gms.	-----	1

Chrismer's Career Statistics

Season	GP-GS	G	A	Pts.	Shots	GWG
2011	23-6	5	1	11	28	0
2012	22-9	5	2	12	25	2
2013	18-17	7	2	16	33	1
Career	63-32	17	5	39	86	3



#12 - Emilee Ehret

5-9

Freshman • B

Philadelphia, Pa. • Mt. St. Joseph Aca.

CAREER MATCH HIGHS

	SEASON	CAREER
Goals	-----	-----
Assists	-----	-----
Points	-----	-----
Shots	-----	-----
Multi-Goal Gms.	-----	-----

Ehret's Career Statistics

Season	GP-GS	G	A	Pts.	Shots	GWG
2013	3-0	-	-	-	-	-
Career	3-0	0	0	0	0	0



#10 - Lauren Purvis

5-7

Senior • F/M

Maple Glen, Pa. • Hatboro-Horsham HS

CAREER MATCH HIGHS

	SEASON	CAREER
Goals	1, five times - last at Michigan 11/2	1, 19 times - last at Michigan 11/2/13
Assists	1 - at Lock Haven 9/8	2 - vs. Northwestern 10/11/11
Points	2, five times - last at Michigan 11/2	3, three times - last vs. MSU 10/27/12
Shots	3 - vs. Temple 9/6	4 - at Lock Haven 9/2/11
Multi-Goal Gms.	-----	-----

Purvis' Career Statistics

Season	GP-GS	G	A	Pts.	Shots	GWG
2010	20-20	5	2	12	29	2
2011	23-23	5	2	12	26	4
2012	22-22	4	3	11	14	0
2013	18-18	5	1	11	15	1
Career	83-83	19	8	46	84	7



#13 - Whitney Reddig

5-7

Senior • M/F

Lititz, Pa. • Warwick HS

CAREER MATCH HIGHS

	SEASON	CAREER
Goals	1, five times - last vs. UC Davis 10/26	2 - vs. Syracuse 11/11/12
Assists	2 - vs. Ohio State 10/11	3, twice - last vs. Ohio State 10/19/12
Points	3, twice- last vs. MSU 10/19	4, - vs. Syracuse 11/11/12
Shots	3, twice - last vs. UC Davis 10/26	4, twice - last at Lehigh 9/14/12
Multi-Goal Gms.	-----	1 - vs. Syracuse 11/11/12

Reddig's Career Statistics

Season	GP-GS	G	A	Pts.	Shots	GWG
2010	17-0	1	0	2	9	1
2011	23-23	4	20	28	19	2
2012	21-21	6	16	28	18	0
2013	18-18	5	9	19	16	0
Career	79-62	16	45	77	62	3

PLAYER PROFILES



#14 - Katie Breneman
5-8
Junior • B
Washington Boro, Pa. • Penn Manor HS

CAREER MATCH HIGHS

	SEASON	CAREER
Goals	-----	-----
Assists	-----	-----
Points	-----	-----
Shots	1 - at Lock Haven 9/11/13	1, twice - last at Lock Haven 9/11/13
Multi-Goal Gms.	-----	-----

Breneman's Career Statistics

Season	GP-GS	G	A	Pts.	Shots	GWG
2011	13-0	0	0	0	0	0
2012	22-22	0	0	0	1	0
2013	18-18	-	-	-	1	-
Career	53-40	0	0	0	2	0



#19 - Natalie Buttinger
5-8
RS Junior • F/M
Kitchener, Ontario • Resurrection HS

CAREER MATCH HIGHS

	SEASON	CAREER
Goals	-----	-----
Assists	1 - vs. Ohio State 10/11/13	1 - vs. Ohio State 10/11/13
Points	1 - vs. Ohio State 10/11/13	1 - vs. Ohio State 10/11/13
Shots	-----	1 - at Temple 9/8/12
Multi-Goal Gms.	-----	-----

Buttinger's Career Statistics

Season	GP-GS	G	A	Pts.	Shots	GWG
2010	5-0	0	0	0	0	0
2011	Medical Redshirt					
2012	7-0	0	0	0	1	0
2013	12-1	-	1	1	-	-
Career	23-1	0	1	1	1	0



#16 - Abby Fuhrman
5-7
Senior • B
Bainbridge, Pa. • Elizabethtown HS

CAREER MATCH HIGHS

	SEASON	CAREER
Goals	1, twice - last vs. UC Davis 10/26	1, twice - last vs. UC Davis 10/26
Assists	-----	-----
Points	2, twice - last vs. UC Davis 10/26	2, twice - last vs. UC Davis 10/26
Shots	5 - vs. UC Davis 10/26	5 - vs. UC Davis 10/26
Multi-Goal Gms.	-----	-----

Fuhrman's Career Statistics

Season	GP-GS	G	A	Pts.	Shots	GWG
2010	14-3	0	0	0	1	0
2011	23-23	0	0	0	1	0
2012	22-22	0	0	0	0	0
2013	18-18	2	-	4	19	-
Career	77-66	2	0	4	21	0



#21 - Jacqueline Kenney
5-7
Senior • B
State College, Pa. • State College HS

CAREER MATCH HIGHS

	SEASON	CAREER
Goals	-----	-----
Assists	1 - at Michigan 11/2	1 - at Michigan 11/2/13
Points	1 - at Michigan 11/2	1 - at Michigan 11/2/13
Shots	-----	1 - vs. Monmouth 10/3/10
Multi-Goal Gms.	-----	-----

Kenney's Career Statistics

Season	GP-GS	G	A	Pts.	Shots	GWG
2010	7-0	0	0	0	1	0
2011	6-0	0	0	0	0	0
2012	7-0	0	0	0	0	0
2013	8-2	-	1	1	-	-
Career	27-1	0	1	1	1	0



#17 - Bethany Mink
5-2
Sophomore • F
Allentown, Pa. • William Allen HS

CAREER MATCH HIGHS

	SEASON	CAREER
Goals	-----	-----
Assists	-----	-----
Points	-----	-----
Shots	1 - vs. Ohio State 10/11	1, twice - last vs. OSU 10/11/13
Multi-Goal Gms.	-----	-----

Mink's Career Statistics

Season	GP-GS	G	A	Pts.	Shots	GWG
2012	4-0	0	0	0	1	0
2013	2-0	-	-	-	1	-
Career	6-0	0	0	0	2	0



#22 - Casey Haegele
5-4
Junior • F
Warrington, Pa. • Central Bucks HS

CAREER MATCH HIGHS

	SEASON	CAREER
Goals	1 - UC Davis 10/26	1, twice - last vs. UC Davis 10/26/13
Assists	-----	-----
Points	2 - UC Davis 10/26	2, twice - last vs. UC Davis 10/26/13
Shots	1, four times - last vs. UC Davis 10/26	1, eight times - last vs. UC Davis 10/26/13
Multi-Goal Gms.	-----	-----

Haegele's Career Statistics

Season	GP-GS	G	A	Pts.	Shots	GWG
2011	6-0	0	0	0	2	0
2012	9-0	1	0	2	2	0
2013	9-0	1	-	2	4	-
Career	24-0	1	0	4	8	0

PLAYER PROFILES



#24 - Katie Andrews
 5-5
 Junior • B
 Lancaster, Pa. • Lancaster Mennonite HS

CAREER MATCH HIGHS

	SEASON		CAREER
Goals	-----		1 - vs. Princeton 9/6/12
Assists	-----		-----
Points	-----		2 - vs. Princeton 9/6/12
Shots	1 - at Indiana 9/29		2, three times - last vs. Lehigh 9/14/12
Multi-Goal Gms.	-----		-----

Andrews' Career Statistics

Season	GP-GS	G	A	Pts.	Shots	GWG
2011	16-12	0	0	0	0	0
2012	21-1	1	0	2	8	0
2013	16-16	-	-	-	1	-
Career	51-27	1	0	2	9	0



#33 - Amanda Dinunzio
 5-5
 RS Junior • F/M
 State College, Pa. • State College HS

CAREER MATCH HIGHS

	SEASON		CAREER
Goals	1, twice - last vs. Ohio State 10/11		1, twice - last vs. Ohio State 10/11/13
Assists	1 - vs. Delaware 9/20		1 - vs. Delaware 9/20/13
Points	2, twice - last vs. Ohio State 10/11		2, twice - last vs. Ohio State 10/11/13
Shots	4 - vs. Delaware 9/20		4 - vs. Delaware 9/20/13
Multi-Goal Gms.	-----		-----

Dinunzio's Career Statistics

Season	GP-GS	G	A	Pts.	Shots	GWG
2011	8-0	0	0	0	3	0
2012	12-0	0	0	0	5	0
2013	18-1	2	1	5	14	-
Career	38-1	2	1	5	22	0



#26 - Haley Kerstetter
 5-7
 Sophomore • B
 Selinsgrove, Pa. • Selinsgrove HS

CAREER MATCH HIGHS

	SEASON		CAREER
Goals	-----		-----
Assists	-----		-----
Points	-----		-----
Shots	-----		-----
Multi-Goal Gms.	-----		-----

Kerstetter's Career Statistics

Season	GP-GS	G	A	Pts.	Shots	GWG
2012	4-0	0	0	0	0	0
2013	2-0	-	-	-	-	-
Career	6-0	0	0	0	0	0



#29 - Sarah Bates
 5-2
 Freshman • GK
 Highland, Md. • Glenelg Country HS

CAREER MATCH HIGHS

	SEASON		CAREER
Saves	-----		-----
Shutouts	-----		-----

Bates' Career Statistics

Season	GP-GS	Min.	GA	GAA	Saves	Pct.	W-L	SHO
2013	-	-	-	-	-	-	-	-
Career	-	-	-	-	-	-	-	-

PSU's 2013 Record When

Playing At Home	4-2
Playing On The Road	7-2
Playing On A Neutral Field	2-1
Leading At The Half	9-1
Trailing At The Half	1-4
Tied At Halftime	3-0
PSU Scores First	10-1
Opponent Scores First	3-4
In Overtime Matches	1-3
Scoring At Least 3 Goals	9-2
Scoring At Least 4 Goals	6-0
Scoring Fewer Than 4 Goals	7-5
Scoring Fewer Than 3 Goals	4-3
Holding Opponents To Fewer Than 4 Goals	13-2
Holding Opponents To Fewer Than 3 Goals	11-1
Allowing 4 or More Goals	0-3
Outshooting An Opponent	11-4
Being Outshot	2-1
Even Shots With An Opponent	0-0
Attempting At Least 5 Penalty Corners	11-4
Attempting At Least 10 Penalty Corners	6-3
Attempting Fewer Than 5 Penalty Corners	2-1
Allowing Fewer than 10 Penalty Corners	13-5
Allowing Fewer than 5 Penalty Corners	10-3
Allowing 10 or More Penalty Corners	0-0

PSU's 2013 Monthly Record

August	1-0
September	6-3
October	6-0
November	0-2

2013 PENN STATE SEASON STATS

RECORD:	OVERALL	HOME	AWAY	NEUTRAL
ALL GAMES	13-5	4-2	7-2	2-1
CONFERENCE	5-1	3-0	2-1	0-0
NON-CONFERENCE	8-4	1-2	5-1	2-1

Date	Opponent	Score	Att.	#	Player	gp	g	a	pts	sh	sh%	sog	sog%	gw	ps-att	dsv	
Aug 30	at #8 Old Dominion	w	3-1	328	8	Herold,Taylor	18	12	4	28	65	.185	35	.538	1	0-0	0
Sep 01	at #7 Virginia	L	2-4	246	11	Grzywacz,Brittany	18	11	3	25	81	.136	53	.654	7	3-4	1
Sep 06	TEMPLE	L	0-3	412	13	Reddig,Whitney	18	5	9	19	16	.312	13	.812	0	0-0	0
Sep 08	#4 CONNECTICUT	Lot	3-4	589	3	Klingler,Ashtin	18	7	3	17	26	.269	14	.538	2	0-0	0
Sep 30	at Lock Haven	w	3-0	307	9	Chrismer,Jenna	18	7	2	16	33	.212	24	.727	1	0-0	0
Sep 15	at #3 Princeton	w	4-3	278	5	Gebhart,Laura	18	1	12	14	44	.023	22	.500	1	0-0	0
Sep 20	#16 DELAWARE	w	5-0	284	10	Purvis,Lauren	18	5	1	11	15	.333	9	.600	1	0-0	0
Sep 22	at Lafayette	w	3-0	164	33	Dinunzio,Amanda	18	2	1	5	14	.143	10	.714	0	0-0	0
Sep 28	vs Miami	w	2-1	103	16	Fuhrman,Abby	18	2	0	4	19	.105	5	.263	0	0-0	0
* Sep 29	at Indiana	w	4-0	125	22	Haegele,Casey	9	1	0	2	4	.250	2	.500	0	0-0	0
* Oct 05	#10 NORTHWESTERN	w	2-0	417	6	Celkos,Carly	14	0	1	1	8	.000	3	.375	0	0-0	0
* Oct 11	OHIO STATE	w	6-1	289	21	Kenney,Jacqueline	8	0	1	1	0	.000	0	.000	0	0-0	0
Oct 13	at Bucknell	w	2-0	530	19	Buttinger,Natalie	12	0	1	1	0	.000	0	.000	0	0-0	0
* Oct 19	MICHIGAN STATE	wo3	4-3	417	1	Birosik,Brooke	2	0	0	0	2	.000	0	.000	0	0-0	0
* Oct 25	at #19 Iowa	w	2-1	403	24	Andrews,Katie	16	0	0	0	1	.000	0	.000	0	0-0	0
Oct 26	vs UC Davis	w	5-0	45	17	Mink,Bethany	2	0	0	0	1	.000	0	.000	0	0-0	0
* Nov 01	at Michigan	Lot	1-2	193	14	Breneman,Katie	18	0	0	0	1	.000	0	.000	0	0-0	0
Nov 08	vs Iowa	Lot	3-4	0	26	Kerstetter,Haley	2	0	0	0	0	.000	0	.000	0	0-0	0
					12	Ehret,Emilee	3	0	0	0	0	.000	0	.000	0	0-0	0
					4	Gochnauer,Kirsten	1	0	0	0	0	.000	0	.000	0	0-0	0
						Total	18	53	38	144	330	.161	190	.576	13	3-4	1
						Opponents	18	27	22	76	162	.167	94	.580	5	1-2	2

TEAM STATISTICS	PSU	OPP
SHOT STATISTICS		
Goals-Shot attempts	53-330	27-162
Goals scored per game	2.94	1.50
Shot pct.	.161	.167
Shots on goal-Attempts	190-330	94-162
SOG pct.	.576	.580
Shots/Game	18.3	9.0
PENALTY CORNERS	178	68
PENALTY STROKES	3-4	1-2
PENALTIES		
Green cards	15	13
Yellow cards	4	8
Red cards	0	0
ATTENDANCE		
Total	2408	2574
Dates/Avg Per Date	6/401	9/286
Neutral Site #/Avg	3/49	

#	Goalie	GP	Min.	GA	GAAvg	Saves	Pct	W-L-T	Sho
2	Licata,Kylie	18	1317:13	27	1.43	64	.703	13-5-0	7/0
	Total	18	1317:13	27	1.43	67	.713	13-5-0	7
	Opponents	18	1317:13	53	2.82	137	.721	5-13-0	1

Goals by Period	1st	2nd	OT	OT2	OT3	Total
Penn State	25	28	0	0	1	54
Opponents	10	14	3	0	0	27

Shots by Period	1st	2nd	OT	OT2	OT3	Total
Penn State	147	170	6	7	0	330
Opponents	69	83	8	2	0	162

Saves by Period	1st	2nd	OT	OT2	OT3	Total
Penn State	31	32	3	1	0	67
Opponents	58	73	3	3	0	137

Corners by Period	1st	2nd	OT	OT2	OT3	Total
Penn State	77	95	4	2	0	178
Opponents	26	42	0	0	0	68

2013 PENN STATE BIG TEN STATS

RECORD:	OVERALL	HOME	AWAY	NEUTRAL
ALL GAMES	5-1	3-0	2-1	0-0
CONFERENCE	5-1	3-0	2-1	0-0
NON-CONFERENCE	0-0	0-0	0-0	0-0

Date	Opponent	Score	Att.
* Sep 29	at Indiana	w 4-0	125
* Oct 05	#10 NORTHWESTERN	w 2-0	417
* Oct 11	OHIO STATE	w 6-1	289
* Oct 19	MICHIGAN STATE	w _{o3} 4-3	417
* Oct 25	at #19 Iowa	w 2-1	403
* Nov 01	at Michigan	Lot 1-2	193

TEAM STATISTICS	PSU	OPP
SHOT STATISTICS		
Goals-Shot attempts	18-112	7-63
Goals scored per game	3.00	1.17
Shot pct.	.161	.111
Shots on goal-Attempts	59-112	34-63
SOG pct.	.527	.540
Shots/Game	18.7	10.5
PENALTY CORNERS	62	22
PENALTY STROKES	1-1	0-0
PENALTIES		
Green cards	4	4
Yellow cards	2	4
Red cards	0	0
ATTENDANCE		
Total	1123	721
Dates/Avg Per Date	3/374	3/240
Neutral Site #/Avg	0/0	

#	Player	gp	g	a	pts	sh	sh%	sog	sog%	gw	ps-att	dsv
11	Grzywacz,Brittany	6	4	1	9	26	.154	13	.500	2	1-1	0
8	Herold,Taylor	6	4	1	9	26	.154	10	.385	1	0-0	0
13	Reddig,Whitney	6	1	4	6	3	.333	2	.667	0	0-0	0
9	Chrismer,Jenna	6	2	1	5	12	.167	11	.917	0	0-0	0
3	Klingler,Ashtin	6	2	0	4	10	.200	4	.400	1	0-0	0
10	Purvis,Lauren	6	2	0	4	5	.400	3	.600	1	0-0	0
33	Dinunzio,Amanda	6	2	0	4	3	.667	3	1.000	0	0-0	0
5	Gebhart,Laura	6	0	4	4	15	.000	9	.600	0	0-0	0
16	Fuhrman,Abby	6	1	0	2	8	.125	2	.250	0	0-0	0
21	Kenney,Jacqueline	3	0	1	1	0	.000	0	.000	0	0-0	0
19	Buttinger,Natalie	5	0	1	1	0	.000	0	.000	0	0-0	0
6	Celkos,Carly	4	0	0	0	2	.000	2	1.000	0	0-0	0
24	Andrews,Katie	5	0	0	0	1	.000	0	.000	0	0-0	0
17	Mink,Bethany	1	0	0	0	1	.000	0	.000	0	0-0	0
26	Kerstetter,Haley	1	0	0	0	0	.000	0	.000	0	0-0	0
22	Haegele,Casey	3	0	0	0	0	.000	0	.000	0	0-0	0
14	Breneman,Katie	6	0	0	0	0	.000	0	.000	0	0-0	0
12	Ehret,Emilee	2	0	0	0	0	.000	0	.000	0	0-0	0
4	Gochnauer,Kirsten	1	0	0	0	0	.000	0	.000	0	0-0	0
1	Birosik,Brooke	1	0	0	0	0	.000	0	.000	0	0-0	0
Total		6	18	13	49	112	.161	59	.527	5	1-1	0
Opponents		6	7	5	19	63	.111	34	.540	1	0-0	0

#	Goalie	GP	Min.	GA	GAAvg	Saves	Pct	W-L-T	Sho
2	Licata,Kylie	6	473:10	7	1.04	26	.788	5-1-0	2/0
Total		6	473:10	7	1.04	27	.794	5-1-0	2
Opponents		6	473:10	18	2.66	41	.695	1-5-0	0

Goals by Period	1st	2nd	OT	OT2	OT3	Total
Penn State	9	9	0	0	1	19
Opponents	2	4	1	0	0	7

Shots by Period	1st	2nd	OT	OT2	OT3	Total
Penn State	48	52	5	7	0	112
Opponents	24	34	3	2	0	63

Saves by Period	1st	2nd	OT	OT2	OT3	Total
Penn State	11	14	1	1	0	27
Opponents	20	16	2	3	0	41

Corners by Period	1st	2nd	OT	OT2	OT3	Total
Penn State	29	28	3	2	0	62
Opponents	7	15	0	0	0	22

2013 RADIO/TV ROSTER



BROOKE BIROSIK
Freshman • F/M
Harrisburg, Pa.



KYLIE LICATA
Redshirt Junior • GK
Mountain Top, Pa.



ASHTIN KLINGLER
Senior • F
Selinsgrove, Pa.



KIRSTEN GOCHNAUER
Freshman • F/M
Mount Joy, Pa.



LAURA GEBHART
Junior • F/M
Mount Joy, Pa.



CARLY CELKOS
Freshman • M
Voorhees, N.J.



TAYLOR HEROLD
Junior • F/M
Fredericksburg, Va.



JENNA CHRIMER
Junior • F/M
Mountain Top, Pa.



LAUREN PURVIS
Senior • F/M
Maple Glen, Pa.



BRITTANY GRZYWACZ
Senior • M/B
Collegeville, Pa.



EMILEE EHRET
Freshman • B
Philadelphia, Pa.



WHITNEY REDDIG
Senior • F/M
Lititz, Pa.



KATIE BRENEMAN
Junior • M/B
Washington Boro, Pa.



ABBY FUHRMAN
Senior • B
Bainbridge, Pa.



BETHANY MINK
Sophomore • M
Allentown, Pa.



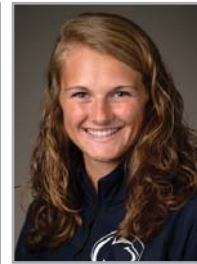
NATALIE BUTTINGER
Redshirt Junior • F/M
Kitchener, Ontario



JACQUELINE KENNEY
Senior • B
State College, Pa.



CASEY HAEGELE
Junior • F
Warrington, Pa.



KATIE ANDREWS
Junior • B
Lancaster, Pa.



HALEY KERSTETTER
Sophomore • B
Selinsgrove, Pa.



SARAH BATES
Freshman • GK
Highland, Md.



AMANDA DINUNZIO
Junior • M/B
State College, Pa.



CHARLENE MORETT
Head Coach • 27th Year
Penn State '79



LISA BERVINCHAK-LOVE
Assistant Coach • 19th year
Penn State '89



STUART SMITH
Assistant Coach • 4th Year
Ohio State '08