



2011-12 PENN STATE LADY LION BASKETBALL

WOMEN'S BASKETBALL CONTACT:
 Kristina Petersen
 Twitter: @ladylionsid
 Website: www.GoPSUsports.com
 Email: kap18@psu.edu
 Cell: 814-883-4581
 Office: 814-865-1757

Penn State Athletic Communications: 101D Bryce Jordan Center, University Park, PA 16802 ♦ Office: 814-865-1757 ♦ Fax: 814-863-3165

SCHEDULE/RESULTS

NOVEMBER	
Sat. 5	BLOOMSBURG (exh.).....W, 101-81 Lady Lion Classic (University Park, Pa.)
Fri. 11	WASHINGTON STATE..... W, 72-60
Sun. 13	MIDDLE TENN. (BTN.com)... W, 65-49
Thurs. 17	at DelawareL, 71-80
Sun. 20	at South Carolina (SportSouth).W, 55-50 John Ascuaga's Nugget Classic (Reno, Nev.)
Fri. 25	vs. Iowa StateW, 66-59
Sat. 26	at NevadaW, 103-65

Big Ten/ACC Challenge	
Wed. 30	#14/13 N. CAROLINA (BTN)..W, 103-84

DECEMBER	
Big 12/Big Ten Challenge	
Sat. 3	at #19/25 Texas Tech.....L, 66-70
Tues. 6	VIRGINIA TECH (BTN.com).. W, 66-28
Sun. 11	UMES (BTN.com)..... W, 76-51
Sun. 18	WAGNER (BTN.com)W, 103-42
Wed. 21	at Bucknell.....W, 78-54
Fri. 30	NEBRASKA * (BTN.com)..... L, 63-71

JANUARY	
Mon. 2	at Wisconsin *W, 82-49
Sat. 7	MICHIGAN STATE * (CBS)..... 2 p.m.
Thurs. 12	MICHIGAN * (BTN) 6 p.m.
Sun. 15	at Nebraska * (BTN.com)..... 3:05 p.m.
Thurs. 19	at Illinois * (BTN.com)..... 8 p.m.
Sun. 22	IOWA * (ESPN2) 3 p.m.
Thurs. 26	at Michigan * (BTN.com)..... 7 p.m.
Sun. 29	at Michigan State * (ESPN2) 3 p.m.

FEBRUARY	
Thurs. 2	INDIANA * (BTN.com) 7 p.m.
Sun. 5	at Minnesota * (BTN.com) 3 p.m.
Thurs. 9	WISCONSIN * (BTN.com) 7 p.m.
Sun. 12	at Northwestern * (BTN) 1 p.m.
Thurs. 16	at Purdue * (BTN) 6 p.m.
Mon. 20	OHIO STATE * (ESPN2)..... 7 p.m.

WBCA Pink Zone at Penn State	
Sun. 26	MINNESOTA * (BTN-WC) ...12/2/4 p.m.

MARCH	
Thur.-Sun. 1-4	Big Ten Tournament (Indianapolis)
Sat.-Tues. 17-20	NCAA Tourn. 1st & 2nd Round
Sat.-Tues. 24-27	NCAA Tournament Regionals

APRIL	
Sun./Tues. 1/3	NCAA Final Four (Denver, Colo.)

BOLD CAPS indicates home game.
 * - indicates Big Ten game.
 All times are Eastern Time.
 BTN - Big Ten Network
 BTN.com - BigTenNetwork.com
 Schedule subject to change. Please visit www.GoPSUsports.com for up-to-date tip times.

Game #15: Michigan State at #22/19 Penn State

Sat., Jan. 7 ▶ 2 p.m. ▶ Bryce Jordan Center ▶ University Park, Pa.

		SETTING THE SCENE
Penn State Lady Lions	Michigan State Spartans	The Michigan State Game
Record: 11-3, 1-1 Big Ten Last Game: PSU 82, Wisconsin 49 (1/2) Head Coach: Coquese Washington Career Record: 77-63 (5th yr.) Record at PSU: 77-63 (5th yr.)	Record: 10-5, 2-0 Big Ten Last Game: MSU 60, Michigan 55 (1/4) Head Coach: Suzy Merchant Career Record: 306-166 (17th yr.) Record at MSU: 105-46 (5th yr.)	Series: Penn State leads 24-11 Last Meeting: MSU 60, PSU 49 (2/10/11) Streak: MSU - 2 wins Television: CBS - Dave Ryan (PBP) and Debbie Antonelli (color) Radio: The game is on the Penn State Sports Network and ESPN 1450 locally with Jerry Fisher and Brian Tripp calling the action. The audio feed is available at www.GoPSUsports.com . Webstream: none Live Stats: GoPSUsports.com
Statistical Leaders Points Maggie Lucas (19.1) Rebounds Mia Nickson (8.7) Assists Alex Bentley (5.8)	Statistical Leaders Points Porsche Poole (10.8) Rebounds Lykendra Johnson (9.0) Assists Kiana Johnson (3.7)	

GAME DAY INFORMATION

SCOUTING MICHIGAN STATE

The Spartans are 10-5 overall and a perfect 2-0 in Big Ten play with wins over Indiana and Michigan. Lykendra Johnson has been solid for Michigan State, averaging 9.5 points and a team-best 9.0 rebounds per game. Porsche Poole paces the balanced MSU scoring attack with a 10.8 scoring average.

ALL-TIME VS. THE SPARTANS

The Lady Lions are 24-11 all-time against the Spartans, including a stellar 14-3 record in home games. However, Michigan State has had the upper hand recently, winning eight of the last 11 match ups. In the only contests between the squads last year, the Spartans handed Penn State a 60-49 loss at the BJC.

LAST TIME VS. MSU

The Lady Lions shot a season-worst 32.7% (17-52) and turned the ball over 24 times in a 60-49 loss to Michigan State on Feb. 10, 2011. **Mia Nickson** paced Penn State with 22 points on 6-of-12 shooting from the field and 10-for-11 from the free throw line. She also pulled in six rebounds and had a steal. **Maggie Lucas** added 15 points, three rebounds, two assists and three steals, while **Julia Trogele** pulled in a game-best 14 rebounds.

STORYLINES

- ✓ This is Alumni Weekend for the Lady Lions. Lady Lion legends expected to return are Helen Darling, Andrea Garner and Kim Calhoun.
- ✓ This is PSU's first appearance on CBS since defeating the Spartans, 69-57, in East Lansing on Jan. 5, 2008.
- ✓ The last time the Lady Lions hosted a CBS game was when they earned a 91-67 win over Florida on Jan. 8, 2000.
- ✓ With a pair of blocks at Wisconsin Jan. 2, junior center **Nikki Greene** became the sixth player in school history with 150 career blocks.
- ✓ **Alex Bentley** moved into 11th place on PSU's career assists list with eight helpers at Wisconsin.
- ✓ Sophomore guard **Maggie Lucas** was in a giving mood to start the New Year with a career-high seven assists in the win at Wisconsin Jan. 2.
- ✓ Penn State is 22nd in Associated Press poll and 19th in the ESPN/USA Today Coaches Poll.
- ✓ The Lady Lions were picked to finish first in the Big Ten in a vote of the coaches and media.
- ✓ Bentley was selected as the Big Ten Preseason Player of the Year in a vote of the league's coaches and media.

UP NEXT

The Lady Lions continue their two-game homestand against Michigan on Thursday, Jan. 12 at 6 p.m. It will be Dollar Dog Night at the BJC. Penn State then heads on the road for a pair of games at Nebraska (Jan. 15) and at Illinois (Jan. 19).



2011-12 ROSTER

PENN STATE LADY LIONS

No.	Name	Pos.	Cl./Elg.	Ht.	Hometown/High School (Previous School)
2	Dara Taylor	G	Jr./Jr.#	5-8	Wilmington, Del./Caravel Academy (Maryland)
5	Talia East *	F/C	So./So.	6-3	Philadelphia, Pa./Friends' Central School
12	Zhaque Gray ***	G	Sr./Sr.	5-8	Chicago, Ill./Prep John Hope
15	Renee Womack ***	G	Sr./Sr.	5-10	Lansdale, Pa./Methacton
20	Alex Bentley **	G	Jr./Jr.	5-7	Indianapolis, Ind./Ben Davis
23	Ariel Edwards *	F	So./So.	6-2	Elmont, N.Y./Christ the King
24	Mia Nickson *	F	Sr./Jr.	6-2	Ashburn, Va./Notre Dame Acad. (Boston College)
25	Gizelle Studevent **	G	Jr./Jr.	5-11	La Jolla, Calif./The Bishop's School
33	Maggie Lucas *	G	So./So.	5-10	Narberth, Pa./Germantown Academy
40	Marisa Wolfe **	F	Jr./Jr.	6-2	Ford City, Pa./Ford City
44	Tori Waldner	F	Fr./Fr.	6-5	Milton, Ga./Milton
54	Nikki Greene **	F/C	Jr./Jr.	6-4	Diboll, Texas/Diboll

Head Coach: Coquese Washington (Notre Dame '92)

Assistant Coaches: Fred Chmiel, Kia Damon, Maren Walseth

Captains: Mia Nickson, Marisa Wolfe

* Indicates letters earned # - Taylor will sit out the 2011-12 season due to NCAA transfer rules.

MICHIGAN STATE SPARTANS

No.	Name	Pos.	Cl.	Ht.	Hometown/High School (Previous School)
0	Kiana Johnson	G	Fr.	5-7	Chicago, Ill./Whitney Young
1	Jasmine Thomas	G	Jr.	5-7	Flint, Mich./Flint Hamady
3	Porschè Poole	G	Sr.	5-8	Canton, Ohio/McKinley
4	Jasmine Hines	C	Fr.	6-3	Central Lake, Mich./Central Lake
11	Annalise Pickrel	F	So.	6-3	Grand Rapids, Mich./Grand Rapids Cath. Cent.
12	Tracy Nogle	G	Jr.	5-11	Okemos, Mich./Okemos
14	Anna Morrissey	G	Fr.	5-10	Lincolnshire, Ill./Stevenson
21	Klarissa Bell	G	So.	5-11	East Lansing, Mich./East Lansing
22	Bryonna Davis	G	So.	5-7	Merrillville, Ind./Merrillville
24	Courtney Schiffauer	F	RS Jr.	6-1	Boardman, Ohio/Boardman
25	Akyah Taylor	F	Fr.	5-11	Elkhart, Ind./Elkhart Memorial
30	Lykendra Johnson	F	RS Sr.	6-1	Chicago, Ill./Trinity
33	Taylor Alton	G	Sr.	5-11	Highlands Ranch, Colo./Highlands Ranch
40	Madison Williams	C	RS Fr.	6-7	Berkley, Mich./Detroit Country Day
52	Becca Mills	F	Fr.	6-4	Midland, Mich./Midland Dow

Head Coach: Suzy Merchant

Associate Head Coach: Shane Clipfell

Assistant Coaches: Tempie Brown, Nckell Copeland

TEAM COMPARISON

PENN STATE		MICHIGAN STATE	
Lucas (19.1)	Scoring Leader	Poole (10.8)	
Nickson (8.7)	Rebounding Leader	L. Johnson (9.0)	
Bentley (5.8)	Assist Leader	K. Johnson (3.7)	
Bentley (3.2)	Steals Leader	K. Johnson (2.1)	
East/Greene (1.4)	Blocks Leader	L. Johnson (1.6)	
76.4	Scoring Offense	66.7	
58.0	Scoring Defense	56.3	
+18.4	Scoring Margin	+10.4	
43.6	Rebounds Per Game	42.2	
+2.3	Rebound Margin	+9.1	
15.0	Assists Per Game	14.1	
10.3	Steals Per Game	10.2	
.442	Field Goal Pct.	.419	
.319	FG Defense Pct.	.356	
.364	3-pt. FG Pct.	.311	
.247	3-pt. FG Pct. Def.	.295	
.716	Free Throw Pct.	.650	
1.0	Assist/Turnover	0.8	
Won 1	W/L Streak	Won 2	

SERIES HISTORY

Overall:	PSU leads 24-11	
Last meeting:	Feb. 10, 2011	
Last result:	MSU, 60-49	
Current streak:	MSU - 2 wins	
Last 10:	MSU, 7-3	
Last 10 meetings:		
1/5/06	A	L, 53-75
1/25/07	H	W, 69-58
2/1/07	A	L, 49-76
1/5/08	A	W, 69-57
2/17/08	H	L, 50-66
12/21/08	H	L, 60-67
1/18/09	A	L, 59-70
1/17/10	H	W, 68-60
2/4/10	A	L, 44-65
2/10/11	H	L, 49-60

QUICK FACTS

THE UNIVERSITY

Location: University Park, Pa.
 Founded: 1855
 Enrollment: 42,294
 Colors: Blue & White
 Nickname: Lady Lions
 Conference: Big Ten
 President: Dr. Rodney Erickson
 Director of Athletics: Tim Curley
 Acting Director of Athletics: Dr. David Joyner
 Senior Woman Administrator: Charmelle Green
 Facility (cap.): Bryce Jordan Center (15,261)
 All-Time Record at BJC: 181-48 (16 seasons)

ATHLETIC COMMUNICATIONS

WBB Contact: Kristina Petersen
 Phone/Fax: (814) 865-1757/(814) 863-3165
 E-mail: kap18@psu.edu
 Address: 101-D Bryce Jordan Center
 University Park, Pa. 16802
 Press Row Phone: 814-863-3294
 Website: www.GoPSUsports.com
 Twitter: @ladylionsid

TEAM INFORMATION

2011-12 Record: 11-3
 Home: 6-1 Away: 4-2 Neutral: 1-0
 Big Ten Record: 1-1
 Home: 0-1 Away: 1-0
 Letterwinners Returning/Lost: 10/1
 Starters Returning/Lost: 4/1
 Big Ten Tournament: Runner-up
 Postseason: NCAA Second Round

THE HISTORY

First Year of Women's Basketball: 1965
 All-Time Record: 816-376 (47 seasons)
 All-Time Big Ten Rec.: 205-111 (19 seasons)
 NCAA Tournament Appearances: 22
 NCAA Tournament Record: 27-22

WOMEN'S BASKETBALL

Head Coach: Coquese Washington
 Alma Mater: Notre Dame '92
 Overall Record: 77-63 (fifth season)
 School Record: 77-63 (fifth season)
 Basketball Office Phone: 814-863-2672
 Best Time To Reach Coach: Through SID
 Assistant Coaches (Alma Mater):
 Fred Chmiel (Excelsior College)
 Kia Damon (Millersville '97)
 Maren Walseth (Penn State '02)
 Twitter: @pennstatewbb
 Facebook: facebook.com/pennstateladylions

PRONUNCIATIONS

Coquese ko-KWEES
 Chmiel shuh-MEAL
 Maren Walseth MARR-en WALL-seth
 Zhaque Jacque-QWAY
 Gizelle Studevent juh-ZELL STEW-duh-vent
 Talia tah-LEE-uh
 Ariel AIR-e-I
 Dara DAR-uh





STANDINGS (thru games of 1/4)

Team	Big Ten			Overall		
	W	L	Pct.	W	L	Pct.
Ohio State	2	0	1.000	15	0	1.000
Purdue	2	0	1.000	12	3	.800
Michigan State	2	0	1.000	10	5	.667
Nebraska	1	0	1.000	12	1	.923
Michigan	1	1	.500	12	3	.800
PENN STATE	1	1	.500	11	3	.786
Iowa	1	1	.500	9	6	.600
Minnesota	1	1	.500	9	7	.562
Northwestern	0	1	.000	10	4	.714
Illinois	0	2	.000	6	9	.400
Indiana	0	2	.000	5	10	.333
Wisconsin	0	2	.000	4	10	.286

BIG TEN SCHEDULE

JANUARY 2

at Minnesota 84, Indiana 43 *
Purdue 64, at Illinois 63 *
at Ohio State 84, Iowa 71 *
Penn State 82, at Wisconsin 49 *

JANUARY 4

at Michigan State 60, Michigan 55 *

JANUARY 5

Wisconsin at Purdue 6 p.m.
Illinois at Iowa 8 p.m.
Indiana at Nebraska 8 p.m.
Minnesota at Northwestern 8 p.m.

JANUARY 7

Michigan State at Penn State 2 p.m.
Ohio State at Michigan 5 p.m.

JANUARY 8

Northwestern at Indiana 2 p.m.
Nebraska at Iowa 4 p.m.
Wisconsin at Illinois 8 p.m.

All times are Eastern.

PROJECTED STARTERS



12 ZHAQUE GRAY G
Sr., 5-8, Chicago, Ill.
11.0 pts., 2.9 rebs., 2.1 asst., .389 3FG%

Notes: Had 13 points & 3 assists in win over Wagner ... Was 8-for-16 from the field en route to team-best 25 pts. vs. #13 UNC ... Notched 21 points & two steals at Nevada ... Had 14 points vs. Iowa St.



20 ALEX BENTLEY G
Jr., 5-7, Indianapolis, Ind.
15.1 ppg, 5.8 apg, 3.2 spg, .804 FT%

Notes: Nabbed a career-high 8 steals with 22 pts. vs. Nebraska ... Tallied 23 pts. & 5 steals in win over Wagner ... Wade Trophy, Naismith Award & Wooden Award watch lists.



33 MAGGIE LUCAS G
So., 5-10, Narberth, Pa.
19.1 ppg, 4.6 rpg, .371 3FG%, .857 FT%

Notes: Registered 18 pts. & career-best 7 assts. at Wisconsin ... Tallied 22 points with 5 rebounds and 3 assists at Bucknell ... Posted 23 points and four rebs. in win over Wagner ... Naismith Award watch list.



24 MIA NICKSON F
Jr., 6-2, Ashburn, Va.
5.0 ppg, 8.7 rpg, .308 FG%

Notes: Posted a double-double with 10 points and 14 rebounds at Wisconsin ... Had 4 pts. and 7 rebs. vs. Nebraska ... Missed six consecutive games with a concussion (eight overall).



54 NIKKI GREENE C
Jr., 6-4, Diboll, Texas
9.6 ppg, 7.6 rpg, 1.4 bpg, .505 FG%

Notes: Notched 14 pts. & 7 rebs. at Wisconsin ... Had 9 pts. and 15 rebounds against Nebraska ... Registered 11 points and 9 rebounds at Bucknell ... Posted 9 pts., 8 rebs. in win over Wagner.

LAST TIME OUT: Coming off of a season-low shooting percentage, the Lady Lions rebounded to connect on 52.3% (34-65) of its shots on the way to an 82-49 win at Wisconsin Monday. The Lady Lions moved the ball well with 26 assists on 34 baskets. Sophomore **Maggie Lucas** accounted for a game-high 18 points with a career-best seven assists and a steal to pace Penn State. Junior post player **Mia Nickson** posted her first double-double of the season and seventh of her career with 10 points on 5-of-6 shooting and a season-high 14 rebounds, including eight on the offensive glass. Junior **Nikki Greene** also reached double figures with 14 points.

SCOUTING MICHIGAN STATE: The Spartans are 10-5 overall and a perfect 2-0 in Big Ten play with wins over Indiana and Michigan. Lykendra Johnson has been solid for Michigan State, averaging 9.5 points and a team-best 9.0 rebounds per game. Porshce Poole paces the balanced MSU scoring attack with a 10.8 scoring average. The Spartans are dangerous on the boards with a +9.1 rebounding margin.

ALL-TIME VS. THE SPARTANS: The Lady Lions are 24-11 all-time against the Spartans, including a stellar 14-3 record in home games. However, Michigan State has had the upper hand recently, winning eight of the last 11 match ups. In the only contests between the squads last year, the Spartans handed Penn State a 60-49 loss at the BJC.

WHAT'S AT STAKE

A Penn State Win Would:

- Make Penn State 12-3 on the season.
- Improve the Lady Lions to 2-1 in Big Ten play.
- Make Penn State 25-11 all-time vs. Wisconsin.
- Made the Lady Lions 15-3 all-time vs. MSU in Happy Valley.
- Snap a two-game losing streak to the Spartans.

LAST TIME VS. MSU: The Lady Lions shot a season-worst 32.7% (17-52) and turned the ball over 24 times in a 60-49 loss to Michigan State on Feb. 10, 2011. **Mia Nickson** paced Penn State with 22 points on 6-of-12 shooting from the field and 10-for-11 from the free throw line. She also pulled in six rebounds and had a steal. **Maggie Lucas** added 15 points, three rebounds, two assists and three steals, while **Julia Trogele** pulled in a game-best 14 rebounds.

LADY LION LEGENDS RETURN: This weekend marks Alumni Weekend for the Lady Lions. Many Lady Lion legends are expected to return, including Helen Darling, Andrea Garner, Kim Calhoun and Carla Coleman. The 1995 and 1996 Big Ten Tournament Championship teams will be honored at halftime of the Michigan State game.

LAST TIME VS. MICHIGAN STATE FEB. 10, 2011 • UNIVERSITY PARK, PA.

Michigan State 60 • 21-3, 9-2		Total		3-Pt		Rebounds		PF		FTA		FT		A TO Blk		Stk		Min			
#	Player	FG	FGA	FG%	3P	3PA	3P%	REB	OFF	DEF	FT	FTA	FT%	A	TO	Blk	Stk	Min			
15	Washington, Celera	0-3	0-1	0-0	1-2	1-5	6	1	1	4	1	2	2	1	1	0	0	19			
20	Thomas, Brittany	2-0	0-0	0-0	0-2	0-2	0	2	3	4	1	0	1	0	1	0	0	31			
10	Johnson, Lykendra	0-15	2-3	0-5	5-7	12	3	24	0	3	2	0	3	2	0	0	37				
32	Koane, Kalisha	1-9	1-5	5-6	0-4	4	4	8	2	1	0	1	0	1	0	1	26				
33	Alton, Taylor	4-14	4-12	0-0	3-3	6	0	12	1	2	0	0	0	0	0	0	36				
24	Thomas, Jasmine	2-8	0-2	0-0	0-1	1	2	4	3	2	0	0	2	0	0	0	22				
25	Poole, Porshce	0-0	0-0	0-0	0-0	0	0	0	0	0	0	0	0	0	0	0	5				
11	Pickrel, Annalisse	3-6	0-0	1-2	2-3	5	3	7	1	2	0	0	0	0	0	0	20				
24	Schiffman, Courtney	0-0	0-0	0-0	0-1	1	1	0	0	1	0	0	0	0	0	0	7				
54	Smith, Kelsay	0-0	0-0	0-0	0-0	0	0	0	0	0	0	0	0	0	0	0	1				
Team		3		4																	
Totals		21-58	7-23	11-17	14	27	41	17	60	12	21	5	13	200							
FG % 1st Half		9-20	31%	2nd half	12-29	41%	Game	21-58	36.2%												
3FG % 1st Half		4-15	26.7%	2nd half	3-8	37.5%	Game	7-23	30.4%												
FT % 1st Half		4-8	50%	2nd half	6-11	54.5%	Game	11-17	64.7%												
Rebounds																					
Defensive																					
Offensive																					

Penn State 49 • 20-6, 9-3		Total		3-Pt		Rebounds		PF		FTA		FT		A TO Blk		Stk		Min			
#	Player	FG	FGA	FG%	3P	3PA	3P%	REB	OFF	DEF	FT	FTA	FT%	A	TO	Blk	Stk	Min			
11	Trogele, Julia	0-6	0-0	0-0	1-12	13	5	0	1	4	0	1	0	1	0	1	30				
12	Gray, Zhaque	1-5	0-1	0-0	2-1	3	1	2	0	1	0	1	0	1	0	1	26				
20	Bentley, Alex	3-8	0-0	2-2	0-5	0	0	4	2	0	0	0	1	0	1	30					
24	Nickson, Mia	6-12	0-0	10-11	3-3	6	3	22	0	0	0	0	1	0	1	35					
54	Greene, Nikki	0-4	0-0	0-2	3-4	7	4	0	0	3	1	0	1	0	1	14					
25	East, Talia	1-1	0-0	0-0	0-0	0	0	0	0	0	0	0	0	0	0	7					
15	Wormack, Henoe	0-0	0-0	0-0	0-1	1	0	0	0	1	0	0	0	0	0	8					
23	Edwards, Ariel	0-0	0-0	0-0	0-0	0	0	0	0	0	0	0	0	0	0	3					
25	Stokelmeier, Czarlette	0-3	0-1	0-0	0-0	0	0	0	0	0	0	0	0	0	0	6					
33	Lucas, Maggie	6-15	3-9	0-2	0-3	3	1	16	2	2	0	3	35								
40	Wright, Marissa	0-0	0-0	0-0	0-0	0	0	2	0	1	0	0	0	0	0	8					
Totals		17-52	3-11	12-17	10	29	39	16	40	6	24	1	7	200							
FG % 1st Half		7-27	25.9%	2nd half	10-25	40.0%	Game	17-52	32.7%												
3FG % 1st Half		2-4	50.0%	2nd half	1-7	14.3%	Game	3-11	27.3%												
FT % 1st Half		2-2	100.0%	2nd half	10-15	66.7%	Game	15-17	88.2%												
Rebounds																					
Defensive																					
Offensive																					

Points	In	OF	2nd	Fast
Michigan State	27	23	60	11
Utah State	18	31	49	7
Loss FG: MSU 2nd-03; PSU 2nd-03	Stole: 2 Bins.			
Longest lead: MSU by 18 2nd 10:47; PSU by 21 1st 18:01	Last on target: 2 Bins.			



PRESS CONFERENCES

Coquese Washington will hold a weekly press conference and the Lady Lions will have media availability on a weekly basis throughout the season. All press conferences will begin at 2:45 p.m. (unless otherwise noted) and go for approximately 15-20 minutes, followed by an open media session prior to practice from 3-3:20 p.m. Press conference will be held in the Media Room at the Bryce Jordan Center (unless otherwise noted).

Press Conference Dates

- Wednesday, Jan. 11
- Wednesday, Jan. 18
- Wednesday, Jan. 25
- Wednesday, Feb. 1 (location TBA)
- Wednesday, Feb. 8 (location TBA)
- Wednesday, Feb. 15
- Wednesday, Feb. 22
- Wednesday, Feb. 29 (time TBA)

CBS RETURN: The Lady Lions will be on CBS for Saturday's clash against Michigan State. It will be the first time on CBS for Penn State since defeating the Spartans, 69-57, in East Lansing on Jan. 5, 2008. The last time the Lady Lions hosted a CBS game was when they earned a 91-67 win over Florida on Jan. 8, 2000. Saturday will mark Penn State's 11th all-time appearance on CBS (4-6 in those games) and just the fourth CBS home game for the Lady Lions.

GREENE GET REJECTION #150: With a pair of blocks at Wisconsin Jan. 2, junior center **Nikki Greene** became the sixth player in school history with 150 career blocks. She joins a list that includes Kim Calhoun, Mary Donovan, Rashana Barnes, Andrea Garner and Amanda Brown. Greene is currently sixth on Penn State's career blocks list and needs 22 rejections to move into the Top 5.

BENTLEY MOVES UP HELPERS CHART: Junior guard **Alex Bentley** moved into 11th place on Penn State's career assists chart with eight helpers at Wisconsin Jan. 2. With 380 career assists, Bentley moves past Corinne Gulas (379).

LUCAS LENDS HELPING HAND: Sophomore guard **Maggie Lucas** was in a giving mood to start the New Year with a career-high seven assists in the win at Wisconsin Jan. 2. The seven helpers pass her previous career high of five set against Nevada and Middle Tennessee State earlier this year.

DOUBLE TROUBLE FOR MIA: In just her second game back after missing six games due to a mild concussion, junior **Mia Nickson** posted her first double-double of the season and seventh of her career with 10 points and 14 rebounds at Wisconsin Jan. 2. Nickson dominated the offensive glass, hauling in eight caroms. After struggling from the field early in the season, Nickson was efficient against the Badgers, going 5-for-6 from the floor.

LUCAS CHANGES HER GAME: Sophomore guard **Maggie Lucas** has become more than just a three-point threat for the Lady Lions. In a comparison of the first 14 games of her rookie campaign and 14 games this year, Lucas has scored more points (267-243) despite making 16 less three-pointers than a year ago (33-49). Additionally, Lucas has been more of a threat off the dribble, making twice as many free throws as she did last season through 14 games (66-32). Here is a 14-game comparison of Lucas' key stats:

Year	Pts.	3FGM	3FGA	FTM	Reb.	Asst.
Frosh.	243	49	109	32	47	20
Soph.	267	33	89	66	65	36

TWO TICKET PACKAGES: The Lady Lions have made two additional ticket packages available for fans to enjoy this season with the Michigan 2-Play and the Starting 5 Pack. Both packages, in addition to PNC Flex Books and single-game tickets, are available by calling 800-NITTANY. The Michigan 2-Play will give fans tickets to see the Lady Lion face perennial Big Ten contender Michigan State on Saturday, Jan. 7 at 2 p.m. and an up-and-coming Michigan team on Thursday, Jan. 12 at 6 p.m. for just \$18. The Starting 5 Pack is \$49 and features tickets to three games of the buyer's choice, a ticket for the Ohio State ESPN2 Big Monday game on Monday, Feb. 20 and a ticket for the Pink Zone game against Minnesota on Sunday, Feb. 26.

GRAY INTO TOP 10: Senior **Zhaque Gray** moved into eighth place in the Penn State three-point field goals record books with a pair of triples at Wisconsin Jan. 2. Gray passed Brianne O'Rourke for eighth place in all-time three-point field goals made (122). She needs a two triples to tie Tina Nicholson (124) for seventh place.

LADY LIONS ON TWITTER & FACEBOOK: The Lady Lions are on Twitter. Follow the Lady Lions and assistant coaches (@pennstatewbb) and sports information contact Kris Petersen (@ladylionsid) to get the inside scoop. The Lady Lions are also on Facebook at www.facebook.com/pennstateladylions.



GREENE MOVING UP CHARTS: Junior center **Nikki Greene** is steadily moving up the career charts after pulling in seven rebounds at Wisconsin. Greene now has 570 career rebounds and is 23rd on the all-time chart. Greene needs 14 rebounds to move past Kim Calhoun (583; 1993-96) for 22nd place. Additionally, Greene is in sixth place on the Penn State career blocks list with 150 rejections. She needs 23 blocks to move into the Top 5 all-time.

A THIEF NAMED ALEX: Junior guard **Alex Bentley** registered a career-high eight steals in the Big Ten opener against Nebraska Dec. 30. Her eight thefts are the most by a Lady Lion since Kelly Mazzante had eight steals against Fairfield on Dec. 2, 2001 and were just two shy of the school's single-game record set three times by Suzie McConnell.

LUCAS SURPASSES 800 POINTS: Sophomore guard **Maggie Lucas** reached the 800-point mark for her career with 18 tallies against Nebraska on Dec. 30. It took Lucas just for games to get from 700 points to 800 markers.

PENN STATE'S OVERALL/BIG TEN YEAR-BY-YEAR REVIEW

Year	Overall	Big Ten	Home	BT Home	Road	BT Road	Neutral
1992-93	22-6	14-4	12-2	9-0	9-4	5-4	0-0
1993-94	28-3	16-2	14-0	9-0	11-2	7-2	3-1
1994-95	26-5	13-3	14-2	8-0	9-3	5-3	3-0
1995-96*	27-7	13-3	14-2	8-0	8-4	5-3	5-1
1996-97	15-12	8-8	9-3	5-3	5-6	3-5	1-3
1997-98	21-13	8-8	10-5	4-4	6-6	4-4	5-2
1998-99	22-8	12-4	9-2	6-2	9-4	6-2	4-2
1999-00	30-5	15-1	14-0	8-0	9-2	7-1	7-3
2000-01	19-10	11-5	11-2	7-1	6-5	4-4	2-3
2001-02	23-12	11-5	10-4	6-2	9-5	5-3	4-3
2002-03	26-9	13-3	16-0	8-0	7-7	5-3	2-2
2003-04	28-6	15-1	12-1	8-0	9-3	7-1	6-2
2004-05	19-11	13-3	12-0	8-0	6-9	5-3	1-2
2005-06	13-16	6-10	8-6	5-3	3-8	1-7	2-2
2006-07	15-16	7-9	12-1	7-1	2-12	0-7	1-3
2007-08	13-18	4-14	10-6	3-6	3-11	1-8	0-1
2008-09	11-18	6-12	8-6	4-5	2-9	2-7	1-3
2009-10	17-14	8-10	9-6	5-4	5-7	3-6	3-1
2010-11	25-10	11-5	14-4	6-2	7-4	5-3	4-2
2011-12	11-3	1-1	6-1	0-1	4-2	1-0	1-0

* First season at the Bryce Jordan Center



PENN STATE'S RECORD WHEN...

Playing at home	6-1
Playing on the road	4-2
Playing at a neutral site	1-0
vs. Top 10 teams	0-0
vs. Top 25 teams	1-2
Games decided by 3 points or less	0-0
Games decided by 4-10 points	2-3
Games decided by 11-19 points	3-0
Games decided by 20 points or more	6-0
Leading at the half	9-3
Tied at the half	0-0
Trailing at the half	2-0
Leading with 5:00 remaining	10-0
Trailing with 5:00 remaining	1-2
Tied with 5:00 remaining	0-1
In overtime	0-0
PSU scores 40-49 points	0-0
PSU scores 50-59 points	1-0
PSU scores 60-69 points	3-2
PSU scores 70-79 points	3-1
PSU scores 80 points or more	4-0
PSU shoots 45% or better	8-0
PSU shoots less than 45%	3-3
PSU shoots better than opponent	11-1
Opponent shoots better than PSU	0-2
Opponent scores less than 39 points	1-0
Opponent scores 40-49 points	3-0
Opponent scores 50-59 points	4-0
Opponent scores 60-69 points	2-0
Opponent scores more than 70 points	1-3
Opponent shoots better than 45%	0-1
Opponent shoots less than 45%	11-2
PSU outrebounds opponent	7-0
Opponent outrebounds PSU or tied	4-3
PSU commits 14 or less turnovers	5-3
PSU commits 15 or more turnovers	6-0
PSU makes at least 5 3-pointers	5-2
PSU makes four 3-pointers or less	6-1
Recording 7 or more steals	9-2
Recording 6 or less steals	2-1
Wearing white uniforms	7-1
Wearing blue uniforms	4-2
Wearing gray uniforms	0-0
Wearing pink uniforms	0-0
Penn State wins the tip	8-1
Penn State loses the tip	3-2
Penn State scores first	8-2
Opponent scores first	3-1
Playing during the day (before 5 p.m.)	6-1
Playing at night	5-2
On Monday	1-0
On Tuesday	1-0
On Wednesday	2-0
On Thursday	0-1
On Friday	2-1
On Saturday	1-1
On Sunday	4-0
In November	6-1
In December	4-2
In January	1-0
In February	0-0
In March	0-0

BENTLEY MOVES INTO TOP 30: With 22 points against Nebraska Dec. 30, junior guard **Alex Bentley** moved into the Top 30 on Penn State's career scoring list. She passed Nancy Kuhl (1,061; 1975-79) for 30th place on Penn State's career scoring list. Bentley now has 1,081 career points. She needs three points to tie Brianne O'Rourke (1,084; 2005-09) for 29th place.

LADY LIONS IN THE RPI: The Lady Lions are highly ranked in many of the RPI reports across the country. Penn State is 26th in the Jan. 1 NCAA RPI report. The Lady Lions have or will play four teams in the RPI top 25 this season, including top-ranked Delaware.

STRUGGLES FROM THE FIELD: The Lady Lions were held to just seven points in the final 12:50 in the loss to Nebraska in the Big Ten opener Dec. 30. Penn State shot just 29.4% from the field, including a 23.3% effort in the second half. It was the worst shooting percentage since the Lady Lions connected on just 27.3% of their shots against Wisconsin on Feb. 25, 2010.

NICKSON RETURNS: After missing the six games with a concussion, junior **Mia Nickson** returned to the Lady Lion lineup against Nebraska Dec. 30. She accounted for four points, seven rebounds and a steal against the Cornhuskers. Nickson also missed a pair of games earlier in the season with concussion-like symptoms.

20-POINT STREAK FOR LUCAS: Sophomore guard **Maggie Lucas** had her string of four consecutive 20-point games snapped against Nebraska Dec. 30. Lucas had 22 points at Bucknell Dec. 21, 23 markers against Wagner Dec. 18, 20 points each against UMES (Dec. 11) and Virginia Tech (Dec. 6).

LUCAS NOTCHES ANOTHER 3S RECORD: **Maggie Lucas** added her name to another Penn State three-pointers record with a perfect 4-for-4 effort from long range against Bucknell Dec. 21 to tie the school record for three-point field goal percentage (min. 4 att.). It was the first perfect performance from downtown (min. 4 att.) for the Lady Lions since Jess Brungo was 5-for-5 at Clemson on Dec. 7, 2002. Lucas shares the record with Brungo's Clemson performance and a 4-for-4 mark versus Illinois (2/15/01) and Lisa Faloon's 4-for-4 day versus Rhode Island (2/28/87).

SOLID NON-CON SEASON: The Lady Lions posted their second consecutive double-digit non-conference win total with a victory at Bucknell Dec. 21. Penn State finished 10-2 in the non-conference slate to post just their third non-conference double figure win total since joining the Big Ten in 1992-93 (10 - 2002-03; 11 - 2010-11).

LIONS IN THE BIG TEN STATS

A breakdown of where Penn State ranks in the Big Ten's statistical categories. Through games of Jan. 4.

TEAM	
Scoring Offense.....	3rd (76.4)
Scoring Defense.....	5th (58.0)
Scoring Margin.....	3rd (+18.4)
Free Throw Percentage.....	6th (.716)
FG Percentage.....	2nd (.442)
FG Percentage Defense.....	1st (.319)
3-point FG Percentage.....	2nd (.364)
3-point FG Pct. Defense.....	1st (.247)
3-point FG Made.....	8th (4.8)
Rebounding Offense.....	2nd (43.6)
Rebounding Defense.....	11th (41.4)
Rebounding Margin.....	4th (+2.3)
Offensive Rebounds.....	6th (13.6)
Defensive Rebounds.....	2nd (30.1)
Blocked Shots.....	6th (4.6)
Assists.....	5th (15.0)
Steals.....	3rd (10.3)
Turnover Margin.....	3rd (+3.3)
Assist to Turnover Ratio.....	4th (1.0)

INDIVIDUAL	
Scoring.....	3rd - Maggie Lucas (19.1)
.....	9th - Alex Bentley (15.1)
.....	22nd - Zhaque Gray (11.0)
.....	27th - Nikki Greene (9.6)
Rebounding.....	6th - Nikki Greene (7.6)
.....	8th - Talia East (6.7)
FG Percentage.....	6th - Nikki Greene (.505)
.....	12th - Alex Bentley (.462)
Assists.....	3rd - Alex Bentley (5.8)
FT Percentage.....	5th - Maggie Lucas (.857)
.....	13th - Alex Bentley (.804)
Steals.....	2nd - Alex Bentley (3.2)
3FG Percentage.....	8th - Zhaque Gray (.389)
.....	11th - Maggie Lucas (.371)
3FG Made.....	3rd - Maggie Lucas (2.4)
Blocked Shots.....	T-8th - Talia East (1.4)
.....	T-8th - Nikki Greene (1.4)
Assist-to-TO Ratio.....	3rd - Alex Bentley (1.7)
Off. Reb.....	4th - Nikki Greene (2.7)
Def. Reb.....	T-8th - Nikki Greene (4.9)
.....	T-8th - Talia East (4.9)
Minutes.....	6th - Maggie Lucas (33.8)
.....	10th - Alex Bentley (33.2)



MILESTONE WATCH

Milestone Watch

Milestone	Player	Current Total
1,100 points	Alex Bentley	1,081
900 points	Maggie Lucas	819
800 points	Zhaque Gray	718
700 points	Nikki Greene	651
500 points	Mia Nickson (career)	443
400 points	Mia Nickson (PSU)	398
300 points	Marisa Wolfe	209
200 points	Ariel Edwards	187
	Renee Womack	164
	Gizelle Studevent	110
600 rebounds	Nikki Greene	570
400 rebounds	Mia Nickson (career)	343
300 rebounds	Mia Nickson (PSU)	286
	Alex Bentley	214
200 rebounds	Zhaque Gray	185
	Marisa Wolfe	183
	Renee Womack	174
	Maggie Lucas	173
	Ariel Edwards	123
400 assists	Alex Bentley	380
200 assists	Zhaque Gray	118
100 assists	Maggie Lucas	94
200 steals	Alex Bentley	163
100 steals	Maggie Lucas	73
200 blocks	Nikki Greene	150
150 3-pointers	Maggie Lucas	145
	Zhaque Gray	122

Milestone Reached

Milestone	Player	Reached
150 blocks	Nikki Greene	1/2/12
800 points	Maggie Lucas	12/30/11
200 points	Marisa Wolfe	12/21/11
150 steals	Alex Bentley	12/21/11
700 points	Zhaque Gray	12/18/11
600 points	Nikki Greene	12/11/11
100 points	Gizelle Studevent	12/11/11
1,000 points	Alex Bentley	12/6/11
700 points	Maggie Lucas	12/6/11
100 rebounds	Ariel Edwards	12/6/11
200 rebounds	Alex Bentley	12/3/11
100 assists	Zhaque Gray	11/30/11
500 rebounds	Nikki Greene	11/25/11
600 points	Zhaque Gray	11/17/11
600 points	Maggie Lucas	11/17/11
900 points	Alex Bentley	11/13/11
400 rebounds	Mia Nickson (career)	11/13/11
300 assists	Alex Bentley	11/11/11
100 points	Ariel Edwards	11/11/11

PERFECT HOME NON-CON SLATE: The Lady Lions completed a perfect home non-conference schedule with a dominating 103-42 win over Wagner Dec. 18. Penn State was victorious in all six home non-conference games for the first time since going 7-0 in the 2007-08 campaign, **Coquese Washington's** first season.

CENTURY MARK TIMES THREE: The Lady Lions reach the 100-point mark for the third time this season with a 103-42 victory over Wagner Dec. 18. Penn State also posted 103 tallies in wins over North Carolina (103-84) and Nevada (103-65). The three 100-point games are tied for the fourth-most 100-point games in a season in school history. The record for 100-point contests is six by the 1984-85 squad. The 1992-93, 1980-81 and 1978-79 teams each reached the century mark three times in their respective seasons.

WALDNER WAILS ON BOARDS: Freshman post player **Tori Waldner** posted the first double-digit rebounding performance of her career with 10 caroms against Wagner Dec. 18. The rookie hauled in three offensive boards and seven defensive caroms to lead all players. Her previous personal best was nine rebounds against UMES.

GRAY TO 700: With 13 tallies against Wagner Dec. 18, senior guard **Zhaque Gray** reached the 700-point mark for her career. After scoring just 233 markers in her first two seasons in Happy Valley, Gray has become a solid third scorer for the Lady Lions alongside **Maggie Lucas** and **Alex Bentley**.

PERFECT FROM THE FIELD: Junior center **Nikki Greene** made consecutive last 11 shots from the field after going 5-for-5 in the second half against Virginia Tech and 6-for-6 versus UMES. The performance against the Lady Lions was just the second perfect effort from the field by Greene. Her other perfect outing was when she made her only shot from the field against Minnesota her freshman season (Dec. 6, 2009).

THE NICKSON FACTOR: Both the of Lady Lions' non-conference losses came without junior forward **Mia Nickson** in the lineup. In the eight games that PSU has played without Nickson, Penn State has been outrebounded or tied in rebounding in six contests and has a -0.4 rebounding margin in those games (41.2-41.6). The Lions were 6-2 without Nickson.

GRABBING BOARDS: Freshman **Tori Waldner** and sophomore **Ariel Edwards** each snared a career-high nine rebounds in the win over UMES Dec. 11. In addition to her nine caroms, Waldner tied her career-high two blocks and played a personal-best 21 minutes. Edwards also dished out a career-best three assists in the win.

PSU 22ND IN AP POLL: The Penn State Lady Lions dropped six spots after the loss to Nebraska to 22nd place in the Jan. 2 Associated Press poll. The Lady Lions peaked at No. 11 in the Nov. 14 poll, their highest ranking in the AP poll since they were fifth in the final 2004 poll. Additionally, Penn State made its first appearance in the preseason AP poll since the 2003-04 campaign.

LIONS RANKED 19TH IN COACHES POLL: The Lady Lions move down two spots to 19th in the Jan. 3 ESPN/USA Today coaches poll. Penn State peaked at 12th, the highest ranking in the ESPN/USA Today Coaches' Poll for the Lady Lions since they were seventh in the final 2004 poll. Additionally, Penn State appeared in the preseason coaches' poll since starting the 2003-04 campaign eighth.

BENTLEY JOINS 1,000-POINT CLUB: With 11 points versus Virginia Tech Dec. 6, junior guard **Alex Bentley** became the 33rd player in school history with 1,000 points. She is also the 15th junior to reach the milestone and first Lady Lion to accomplish the feat since Tyra Grant reached the 1,000-point plateau in 2008.

STIFLING D: The Lady Lions turned in a stellar defensive performance in a 66-28 win over Virginia Tech Dec. 6. The 28 points were the fewest scored by the Hokies in program history, surpassing the 33 points scored against Tennessee during the 1995 campaign. It is also the fewest points scored by a Penn State opponent since giving up 21 tallies to Rider on Nov. 14, 2010.

NCAA STATS

TEAM

Scoring Offense	24th (75.9)
Scoring Margin	26th (+17.2)
Field Goal Percentage	36th (.436)
Field Goal Pct. Defense	10th (.318)
Free Throw Percentage	83rd (.716)
3-pt. Field Goal Percentage	22nd (.364)
3-pt. Field Goal Pct. Defense	35th (.255)
Winning Percentage	49th (.769)
Assists	79th (14.2)
Blocked Shots	50th (4.8)
Turnovers	45th (15.2)
Assist-to-Turnover Ratio	48th (0.93)
Turnover Margin	55th (3.46)

INDIVIDUAL

Scoring	24th - Maggie Lucas (19.2)
Assists	23rd - Alex Bentley (5.6)
Steals	31st - Alex Bentley (3.2)
FT Percentage	56th - Maggie Lucas (.849)
	97th - Alex Bentley (.820)
3-pt. Field Goals/Game	62nd - Maggie Lucas (2.4)
3-pt. Field Goal Pct.	59th - Maggie Lucas (.373)
Assist-to-TO Ratio	85th - Alex Bentley (1.59)

SINGLE-GAME

Points	T-25th - vs. North Carolina (103)
	T-25th - at Nevada (103)
	T-25th - vs. Wagner (103)
3-pt. Field Goals	T-19th - vs. North Carolina (14)
3-pt. FG Pct.	T-22nd - vs. North Carolina (.583)
Assists	T-1st - Alex Bentley (15 vs. North Carolina)
Blocked Shots	T-12th - Talia East (7 at S. Carolina)
Steals	T-10th - Alex Bentley (8 vs. Nebraska)

NCAA Statistics as of 1/1



THE LAST TIME PENN STATE...

SCORING

Player scored 20 points: vs. Nebraska (22, Alex Bentley), 12/30/11
Player scored 25 points: vs. North Carolina (25, Zhaque Gray), 11/30/11
Player scored 30 points: vs. Iowa (32, Tyra Grant), 3/5/10
Player scored 35 points: vs. Wisconsin (35, Kelly Mazzante), 3/2/03
Player scored 40 points: vs. Minnesota (49, Kelly Mazzante), 12/28/01
Two players scored 20 points: vs. Wagner (23, Maggie Lucas; 23, Alex Bentley), 12/18/11
Three players scored 20 pts.: at Nevada (26, Maggie Lucas; 23, Alex Bentley; 21, Zhaque Gray), 11/26/11
Two players scored 25 points: at Boston College (28, Alex Bentley; 28, Maggie Lucas), 12/2/10
Player scored 25 points/3 consecutive games: Kelly Mazzante (31, vs. Baylor, 12/9/03; 31, vs. Pittsburgh, 12/14/03; 29, Louisiana Tech, 12/21/03)
Five in double figures: vs. North Carolina (25, Zhaque Gray; 21, Maggie Lucas; 15, Alex Bentley; 13, Nikki Greene; 13, Ariel Edwards), 11/30/11
Six in double figures: at Oakland (15, Alex Bentley; 16, Ariel Edwards; 16, Zhaque Gray; 13, Maggie Lucas; 10, Mia Nickson; 10, Gizelle Studevent; 10, Julia Trogele), 11/18/10
Seven in double figures: at Oakland (15, Alex Bentley; 16, Ariel Edwards; 16, Zhaque Gray; 13, Maggie Lucas; 10, Mia Nickson; 10, Gizelle Studevent; 10, Julia Trogele), 11/18/10
PSU scored 50 points in a half: vs. Wagner (57, first half), 12/18/11
PSU scored 55 points in a half: vs. Wagner (57, first half), 12/18/11
PSU scored 60 points in a half: vs. Northwestern (65 points, first half), 1/2/00
PSU scored 100 points: vs. Wagner (W, 103-42), 12/18/11
PSU scored 100 points in Big Ten game: vs. Illinois (W, 101-80), 2/15/01
PSU scored 100 points in a home game: vs. Wagner (W, 103-42), 12/18/11
PSU scored fewer than 15 points in a half: vs. Wisconsin (13, first half), 2/25/10
PSU scored fewer than 20 points in a half: vs. Michigan State (18, first half), 2/10/11
PSU scored fewer than 40 points in a game: vs. Wisconsin (L, 39-71), 2/25/10
PSU scored fewer than 50 points in a game: vs. Purdue (L, 49-60), 2/24/11
PSU scored fewer than 50 points in a Big Ten game: vs. Purdue (L, 49-60), 2/24/11
OPP scored 50 points in a half: vs. Duke (50, second half), 11/18/05
OPP scored 100 points: at Boston College (L, 113-104), 12/2/10
OPP scored fewer than 20 points in a game: at Dickinson (W, 57-16), 3/6/71
OPP scored fewer than 30 points in a game: vs. Virginia Tech (W, 66-28), 12/6/11
OPP scored fewer than 40 points in a game: vs. Virginia Tech (W, 66-28), 12/6/11
OPP scored fewer than 50 points in a game: at Wisconsin (W, 82-49), 1/2/12
OPP scored fewer than 50 points in a Big Ten game: at Wisconsin (W, 82-49), 1/2/12

FIELD GOAL SHOOTING

Player made every shot from the field (min. 7): vs. Michigan St. (Amanda Brown, 8-8), 1/25/07
PSU shot 55% in a game: at Nevada (.573), 11/26/11
PSU shot 55% in consecutive games: vs. Northwestern (.682), 3/2/96; vs. Ohio St. (.585), 3/3/96
PSU shot 60% in a game: vs. Michigan State (.608), 2/23/96
PSU shot below 25% in a game: at Alabama (.230), 12/19/96
PSU shot below 30% in a game: vs. Nebraska (.294), 12/30/11
PSU shot below 35% in a game and won: vs. Indiana (.321), 1/10/10
PSU shot 55% in a half: at Wisconsin (.563, second half), 1/2/12
PSU shot 60% in a half: vs. Virginia Tech (.714, second half), 12/6/11
PSU shot 65% in a half: vs. Virginia Tech (.714, second half), 12/6/11
PSU shot 70% in a half: vs. Virginia Tech (.714, second half), 12/6/11
PSU shot 55% in both halves: vs. Iowa (.552, first half, .565, second half), 1/26/06
PSU shot below 20% in a half: at Indiana (.231, first half), 2/28/10
PSU shot below 25% in a half: vs. Nebraska (.233, second half), 12/30/11

THREE-POINT SHOOTING

Player made every shot from the field (min. 4): at Bucknell (4-4, Maggie Lucas), 12/21/11
Player made 4 three-pointers in a half: vs. North Carolina (4, Maggie Lucas), 11/30/11
Player made 5 three-pointers in a half: vs. Bucknell (6, Maggie Lucas), 12/28/10
Player made 6 three-pointers in a half: vs. Bucknell (6, Maggie Lucas), 12/28/10
Player made 5 three-pointers in a game: vs. North Carolina (6, Zhaque Gray; 5, Maggie Lucas), 11/30/11
Player made 6 three-pointers in a game: vs. North Carolina (6, Zhaque Gray), 11/30/11
Player made 7 three-pointers in a game: vs. Hartford (7, Maggie Lucas), 11/27/10
Player made 8 three-pointers in a game: at Minnesota (8, Kelly Mazzante), 12/28/01
Player attempted 10 three-pointers in a game: vs. North Carolina (10, Zhaque Gray), 11/30/11
PSU made 10 three-pointers: vs. North Carolina (14), 11/30/11
PSU did not make a three-pointer: at South Carolina (0-6), 11/20/11
PSU attempted 20 three-pointers: vs. North Carolina (24), 11/30/11
PSU shot 60% 3FG (min. 5 att.): at Bucknell (8-13, .615), 12/21/11

FREE THROW SHOOTING

Player made every shot from FT line (min. 10): vs. Illinois (Julia Trogele, 12-12), 3/5/11
PSU shot 90% (min. 10 att.): vs. North Carolina (14-24, .929), 11/30/11
PSU shot below 50% (min. 10 att.): vs. Holy Cross (9-20, .450), 11/28/09
PSU made 30 free throws: vs. Pittsburgh (34), 11/11/07
PSU made fewer than five FTs: at Michigan (3), 2/3/11
PSU attempted 40 free throws: vs. Pittsburgh (41), 11/11/07
PSU attempted fewer than five FTs: at Michigan (4), 2/3/11

REBOUNDS

Player had 15 rebounds: vs. Nebraska (15, Nikki Greene), 12/30/11
Player had 20 rebounds: vs. Indiana (20, Nikki Greene), 1/23/11
Two players with double-digit rebs.: vs. Middle Tennessee St. (10, Nikki Greene; 10, Mia Nickson), 11/13/11
Three players had double-digit rebounds: at Indiana (11, Nikki Greene; 10, Meredith Monroe; 11, Julia Trogele), 1/10/10
PSU had 60 rebounds: vs. Indiana (61), 1/23/11
PSU had 50 rebounds: vs. Wagner (54), 12/18/11
PSU had 20 or fewer rebounds: vs. Michigan State (20), 1/19/03
OPP had 20 or fewer rebounds: at Indiana (20), 2/13/11
PSU had 20 offensive rebounds: vs. Nebraska (25), 12/30/11
PSU had 25 offensive rebounds: vs. Nebraska (25), 12/30/11

ASSISTS

Player had 10 assists: vs. North Carolina (15, Alex Bentley), 11/30/11
Player had 10 assists/consecutive games: Helen Darling, three games (12 at LaSalle, 12/8/99; 11 vs. Auburn, 12/11/99; 10 vs. Clemson, 12/19/99)
Player had 15 assists: vs. North Carolina (15, Alex Bentley), 11/30/11
PSU had 30 assists: vs. St. Francis (Pa.) (32), 12/2/99
PSU had fewer than 10 assists: vs. Nebraska (8), 12/30/11
PSU had fewer than 5 assists: at Michigan State (4), 2/4/10

BLOCKED SHOTS

Player blocked 5 shots: at South Carolina (7, Talia East), 11/20/11
Player blocked 6 shots: at South Carolina (7, Talia East), 11/20/11
PSU blocked 10 shots: vs. Purdue (11), 1/28/10
PSU blocked 0 shots: vs. Purdue, 2/19/09

STEALS

Player had 7 steals: vs. Nebraska (8, Alex Bentley), 12/30/11
Player had 8 steals: vs. Nebraska (8, Alex Bentley), 12/30/11
PSU had 20 steals: vs. Bucknell (21), 12/28/10

TURNOVERS

PSU committed 25 or more: at Ohio State (27), 2/17/11
PSU committed 25 or more and won: vs. Minnesota (26), 1/13/11
PSU committed 10 or fewer: vs. North Carolina (10), 11/30/11
PSU committed 10 or fewer in consecutive games: vs. Minnesota (9), 1/22/04; at Ohio St. (9), 1/25/04
OPP committed 25 or more: vs. Nebraska (26), 12/30/11

DOUBLE-DOUBLES

Points & rebounds: at Wisconsin (Mia Nickson; 10 points, 14 rebounds), 1/2/12
Points & rebounds/consecutive games: Nikki Greene (12 points, 10 rebounds vs. Ohio State, 1/30/11; 16 points, 14 rebounds at Illinois, 1/27/11)
Points & rebounds/3 consecutive games: Amanda Brown (19 pts., 17 rebs. at Northwestern, 2/11/07; 14 pts., 10 rebs. vs. Minnesota, 2/15/07; 14 pts., 11 rebs. at Iowa, 2/18/07)
Points & rebounds/4 consecutive games: Angie Potthoff (vs. Northwestern, 1/31/97; at Illinois, 2/2/97; vs. Michigan, 2/7/97; vs. Indiana, 2/9/97; vs. Iowa, 2/16/97; vs. Michigan State, 2/21/97)
Points & rebounds/5 consecutive games: Angie Potthoff (vs. Northwestern, 1/31/97; at Illinois, 2/2/97; vs. Michigan, 2/7/97; vs. Indiana, 2/9/97; vs. Iowa, 2/16/97; vs. Michigan State, 2/21/97)
Points & assists: vs. North Carolina (Alex Bentley; 15 points, 15 assists), 11/30/11
Points & assists/consecutive games: Helen Darling (12 points, 12 assists at La Salle, 12/8/99; 10 points, 11 assists vs. Auburn, 12/11/99)
Two plyrs. w/double-doubles: at Illinois (Nikki Greene, 16 pts., 14 rebs.; Julia Trogele, 19 pts., 11 rebs.), 1/27/11
Three players had double-doubles: vs. Coppin State (Brienne O'Rourke, 12 points, 13 assists; Julia Trogele, 12 points, 13 rebounds; Janessa Wolff, 15 points, 10 rebounds), 11/29/08
15 points and 15 rebounds: vs. Indiana (Mia Nickson; 25 points, 17 rebounds), 1/23/11
20 points and 10 rebounds: vs. Indiana (Mia Nickson; 25 points, 17 rebounds), 1/23/11

MARGIN OF VICTORY

PSU won by 20-30 points: at Wisconsin (33), 1/2/12
PSU won by 20-30 points in a Big Ten game: at Wisconsin (33), 1/2/12
PSU won by 31-40 points: at Wisconsin (33), 1/2/12
PSU won by 41-50 points: vs. Wagner (61), 12/18/11
PSU won by 51+ points: vs. Wagner (61), 12/18/11
PSU lost by 20-30 points: at Ohio State (22), 2/17/11
PSU lost by 20-30 points in a Big Ten game: at Ohio State (22), 2/17/11
PSU lost by 31+ points: vs. Wisconsin (32), 2/25/10

MISCELLANEOUS

Led PSU in points/rebounds/assists: Tyra Grant vs. Michigan (25 pts., 9 rebs., 4 asst.), 2/18/10
Hit "final seconds" (under 10 seconds) game-winning shot: Julia Trogele at Illinois (9 sec.), 1/27/11
Hit "final minute" game-winning shot: Nikki Greene vs. Indiana (40 seconds remaining), 2/13/11
Player played every minute: at Illinois (Tyra Grant), 12/31/09
Player played more than 40 min.: at Dayton (Alex Bentley, 46; Zhaque Gray, 44; Mia Nickson, 41), 11/12/10
Committed 10 or fewer fouls: vs. Virginia Tech (9), 12/6/11
Committed 30 or more fouls: vs. Iowa State (32), 11/25/11
PSU rallied from a 10-point deficit to win: vs. Middle Tenn. St. (down 10 15:38 2nd half, won 65-49), 11/13/11
PSU rallied from a 15-point deficit to win: at Indiana (down by 16 at 10:02 in 1st half, won 80-77), 2/13/11
PSU had a 5-game winning streak: 5 games, 1/23/11 - 2/6/11
PSU had a 5-game losing streak: 6 games, 1/28/10 - 2/14/10
PSU went undefeated at home: 2004-05 season
PSU sold out the BJC: Purdue, 2/29/04

OVERTIME

PSU played an OT game: at Boston College (L, 113-104), 12/2/10
PSU won an OT game: at Oakland (96-89), 11/18/10
PSU lost an OT game: at Boston College (L, 113-104), 12/2/10
PSU played two or more OT games in a season: 2010-11 season (three)
PSU won two or more OT games in a season: 2010-11 season (two)

RANKINGS

Played the No. 1 team in the AP poll: vs. Connecticut (L, 77-63), 12/14/08
Played the No. 1 team in the Coaches poll: vs. Connecticut (L, 77-63), 12/14/08
Defeated the No. 1 team in the AP poll: at Virginia (73-71), 1/3/91
Defeated Top 10 opponent: vs. #11/10 Duke (86-84), 12/2/07
Defeated Top 10 opponent on the road: at #7 Purdue (47-42), 1/2/04
Defeated Top 10 opponent by double digits: vs. #10 Minnesota (81-68), 1/30/05
Played consecutive Top 10 teams: at #2/3 Texas 11/14/04, at #6/6 Duke 11/19/04
Defeated Top 25 opponent: vs. #14/13 North Carolina (103-84), 11/30/11
Defeated Top 25 opponent on the road: at No. 20/22 Iowa (82-75), 2/6/11
Defeated Top 25 opponent by double digits: vs. #14/13 North Carolina (103-84), 11/30/11



2011-12 GAME-BY-GAME STARTING LINEUPS

Date	Opponent	Pt Guard	Guard	Guard	Forward	Center
11/5	BLOOMSBURG	Bentley	Gray	Lucas	Nickson	Greene
11/11	WASHINGTON ST.	Bentley	Gray	Lucas	Nickson	Greene
11/13	MIDDLE TENNESSEE	Bentley	Gray	Lucas	Nickson	Greene
11/17	at Delaware	Bentley	Gray	Lucas	Edwards	Greene
11/20	at South Carolina	Bentley	Gray	Lucas	Edwards	Greene
11/25	vs. Iowa State	Bentley	Gray	Lucas	Nickson	Greene
11/26	at Nevada	Bentley	Gray	Lucas	Nickson	Greene
11/30	NORTH CAROLINA	Bentley	Gray	Lucas	Edwards	Greene
12/3	at Texas Tech	Bentley	Gray	Lucas	Edwards	Greene
12/6	VIRGINIA TECH	Bentley	Gray	Lucas	Edwards	Greene
12/11	UMES	Bentley	Gray	Lucas	Edwards	Greene
12/18	WAGNER	Bentley	Gray	Lucas	Edwards	Greene
12/21	at Bucknell	Bentley	Gray	Lucas	Edwards	Greene
12/30	NEBRASKA	Bentley	Gray	Lucas	Nickson	Greene
1/2	at Wisconsin	Bentley	Gray	Lucas	Nickson	Greene

STELLAR SHOOTING: The Lady Lions shot a sizzling 71.4% (15-21) from the field in the second half in the win over Virginia Tech Dec. 6. It is the first time a Penn State team shot better than 70% in a half since shooting 70.4% against Ohio State in the Big Ten Tournament on March 4, 2007. It was also the best shooting effort for the Lady Lions in a half since connecting on 72.7% (16-22) in the first half against Northwestern on Jan. 4, 2007.

BENTLEY NAMED TO TRIO OF WATCH LISTS:

Junior point guard **Alex Bentley** as been named to a pair of watch lists for National Player of the Year. Bentley is one of 25 players on the WBCA's Wade Trophy Watch List, is among the 30 players on the Wooden Award preseason chart and is on the Naismith Award watch list. Additionally, Maggie Lucas is also on the Naismith Award chart, making the Lady Lions one of 11 schools with multiple players on the list.

OFFICIAL PINK ZONE T-SHIRTS: The Official 2012 WBCA Pink Zone at Penn State t-shirt is available at all Penn State Bookstore location. This year, there is an official adult shirt that is \$15 with \$5 of every shirt going to the Pink Zone fundraising efforts, as well as an official youth shirt that is \$10 with \$2 of every shirt going to Pink Zone.

2012 WBCA PINK ZONE: The 2012 WBCA Pink Zone at Penn State will take place on Sunday, Feb. 26 as the Lady Lions take on Minnesota in the Bryce Jordan Center. Last year, the Lady Lions donated nearly \$200,000 for breast cancer causes. This year's fundraising efforts will benefit the Mount Nittany Medical Center, Penn State Hershey Cancer Institute, Pennsylvania Breast Cancer Coalition, the Kay Yow Cancer Fund, J.C. Blair Memorial Hospital and Lewistown Hospital. For more information on the Pink Zone at Penn State, visit the official Pink Zone website at www.gopsusports.com/pinkzone or on Facebook at www.facebook.com/pinkzoneatpennstate.

TOPPLING TOP 15 FOE: The Lady Lions shot 48.7% from the field and 58.3% from three-point range en route to a 103-84 win over #14/13 North Carolina in the Big Ten/ACC Challenge Nov. 30. It was the first win over a ranked opponent for Penn State since topping No. 14/13 Iowa (68-59) on Dec. 30, 2010. The 19-point win was the biggest margin of victory over a ranked opponent since a 73-56 win over #8 Michigan State on Jan. 23, 2005.

2012 RECRUITING CLASS

ESPN/HoopGurlz 34th-ranked recruit Candice Agee signed a National Letter of Intent (NLI) to play of the Lady Lions beginning in the 2012-13 season. The 6-6 center from Silverado High School in Victorville, Calif. signed her NLI in November in a ceremony at her high school. The signing of Agee and addition of transfer Dara Taylor, the Lady Lions have the 18th-ranked recruiting class by Dan Olson's Collegiate Girls Basketball Report.

"We are so excited to have Candice join the Penn State family," Washington said. "She is a very talented player and will complement our current post players in a lot of ways. She adds size, skill and athleticism to our front line, and she has a competitive streak that you love to see. She will definitely be an impact player for us on the court. In addition, she comes from a delightful family and her mom, dad and younger brother will also be wonderful additions to Lady Lion basketball."

Agee is the first commit in the Lady Lions' 2012 recruiting class, averaged 17.0 points, 10.9 rebounds, 7.3 blocks and 2.7 steals per game for the Hawks as a junior. The native of Victorville, Calif. is a highly touted recruit, ranking 34th by ESPN/HoopGurlz, 38th by Collegiate Girls Report, 17th by Blue Star Basketball and 40th by All-Star Girls Report and Peach State. The Hawks finished the season with a 22-6 record with a perfect conference record en route to the Desert Sky title.

Agee is a three-time Desert Sky League first team selection and was the league's Most Valuable Player as a junior. Additionally, she was the Daily Press Girls' Athlete of the Year. Agee begins her senior season with 991 career points, 649 rebounds and 390 blocks. was named to the All-Region first team as a junior. The center plays her AAU ball with West Coast Premier. Agee also plays volleyball at Silverado High School. Agee chose Penn State over Kansas State, Miami, UNLV, UCLA, USC, Tennessee, Vanderbilt, North Carolina, Georgetown, Georgia, Oregon, Oregon State, Washington and Washington State.

LADY LIONS SEASON BESTS

Player	Points	Rebounds	Assists	Blocks	Steals
Alex Bentley	23 (2X)	5 (N. Carolina)	15 (N. Carolina)	1 (2X)	8 (Nebraska)
Talia East	8 (2X)	15 (S. Carolina)	2 (Bucknell)	7 (S. Carolina)	2 (Texas Tech)
Ariel Edwards	13 (N. Carolina)	9 (UMES)	3 (4X)	1 (3X)	3 (Texas Tech)
Zhaque Gray	25 (N. Carolina)	6 (Mid. Tenn.)	6 (N. Carolina)	1 (S. Carolina)	2 (4X)
Nikki Greene	14 (2X)	15 (Nebraska)	1 (5X)	3 (3X)	4 (Nebraska)
Maggie Lucas	26 (Nevada)	9 (Wash. St.)	7 (Wisconsin)	1 (2X)	3 (2X)
Mia Nickson	10 (Wisconsin)	14 (Wisconsin)	2 (Iowa State)	1 (Nevada)	1 (4X)
Gizelle Studevent	8 (UMES)	3 (5X)	4 (Wagner)	-	2 (Va. Tech)
Tori Waldner	6 (2X)	10 (Wagner)	2 (2X)	3 (Wagner)	2 (2X)
Marisa Wolfe	9 (2X)	7 (Wagner)	1 (5X)	2 (UMES)	3 (N. Carolina)
Renee Womack	-	-	-	-	-

PSU IN THE POLLS

	AP	Coaches
Preseason	12	14
Nov. 14/15	11	12
Nov. 21/22	17	16
Nov. 28/29	16	15
Dec. 5/6	17	18
Dec. 12/13	16	17
Dec. 19/20	16	16
Dec. 26/27	16	17
Jan. 2/3	22	19



NATIONAL POLLS

ASSOCIATED PRESS (JAN. 2)

No.	Team (1st)	Rec.	Pts.	LW
1.	Baylor (39)	13-0	975	1
2.	Connecticut	11-1	925	2
3.	Notre Dame	13-1	903	3
4.	Stanford	11-1	860	4
5.	Maryland	13-0	818	5
6.	Tennessee	9-3	745	7
7.	Duke	9-2	717	8
8.	Ohio State	15-0	670	9
9.	Texas A&M	9-2	647	10
10.	Rutgers	11-2	586	11
11.	Kentucky	12-2	560	6
12.	Miami (Fla.)	11-2	540	12
13.	Texas Tech	12-0	522	13
14.	Louisville	12-2	487	14
15.	Georgetown	12-2	481	15
16.	Georgia	12-2	356	17
17.	UW-Green Bay	12-0	337	18
18.	Purdue	12-3	233	20
19.	Nebraska	12-1	224	23
20.	DePaul	13-2	222	21
21.	Delaware	10-1	201	19
22.	PENN STATE	11-3	188	16
23.	Texas	10-2	175	22
24.	Vanderbilt	12-1	102	25
25.	North Carolina	10-2	99	24

Others Receiving Votes: Gonzaga 12; Virginia 11; LSU 6; **South Carolina 3**; Georgia Tech 2; Colorado 1; Kansas 1; **Michigan 1**.

ESPN/USA TODAY TOP 25 (JAN. 3)

No.	Team (1st)	Rec.	Pts.	LW
1.	Baylor (29)	13-0	773	1
2.	Connecticut (2)	11-1	742	2
3.	Notre Dame	13-1	714	3
4.	Stanford	11-1	684	4
5.	Maryland	14-0	650	5
6.	Duke	10-2	611	7
7.	Tennessee	9-3	590	8
8.	Texas A&M	9-2	543	9
9.	Kentucky	12-2	509	6
10.	Rutgers	11-2	482	11
11.	Ohio State	15-0	478	12
12.	Louisville	12-2	411	13
13.	Miami (Fla.)	11-3	394	10
14.	UW-Green Bay	12-0	378	14
15.	Georgia	12-2	341	15
16.	Georgetown	12-2	321	16
17.	Texas Tech	12-0	261	18
18.	DePaul	13-2	236	19
19.	PENN STATE	11-3	182	17
20.	Delaware	10-1	153	20
21.	Vanderbilt	12-1	146	21t
22.	Purdue	12-3	136	21t
23.	North Carolina	11-2	130	23
24.	Gonzaga	12-2	68	24
25.	Texas	10-2	64	25

Others receiving votes: **Nebraska 50**; Georgia Tech 12; Kansas 10; **Michigan 4**; **South Carolina 2**.

*Bold type indicates 2011-12 Penn State opponent.

STATISTICAL LEADERS

Check here throughout the season for a breakdown of how many times a player leads Penn State in the following statistical categories. (First number is solo, the second is shared.)

Points	Lucas (7/2), Bentley (3/2), Gray (2)
Rebounds	Greene (3/2), East (2/1), Nickson (2/2), Edwards (1/1), Lucas (1/1), Waldner (1/1)
Assists	Bentley (11/1), Lucas (1), Studevent (1), Gray (-/1)
Steals	Bentley (8/2), Greene (1/1), Wolfe (1), Edwards (-/2), Gray (-/1), Lucas (1/2), East (-/1), Studevent (-/1)
Blocks	Greene (4/6), East (3/4), Waldner (-/3), Nickson (-/1), Lucas (-/1), Edwards (-/1), Bentley (-/1)
FG % (min. 4 attempts)	Bentley (2), Gray (2), Edwards (1), East (1/1), Greene (3/1), Studevent (1), Waldner (1), Lucas (1), Nickson (1)
FT % (min 4 attempts)	Bentley (4/2), Lucas (6/2), Gray (1/1), East (1)
3FG % (min. 2 att.)	Bentley (3/2), Lucas (4/2), Gray (4)

PENN STATE VS. THE BIG TEN

Illinois	Overall	27-14	Nebraska	Overall	2-1
	Big Ten Games	20-11		Big Ten Games	0-1
	Big Ten Tournament	4-2		Big Ten Tournament	0-0
	Home	15-2		Home	1-1
	Away	8-10		Away	0-0
	Neutral	4-2		Neutral	1-0
Indiana	Overall	27-9	Northwestern	Overall	29-7
	Big Ten Games	22-8		Big Ten Games	26-6
	Big Ten Tournament	3-1		Big Ten Tournament	2-0
	Home	15-2		Home	16-1
	Away	9-6		Away	11-5
	Neutral	3-1		Neutral	2-1
Iowa	Overall	23-17	Ohio State	Overall	31-21
	Big Ten Games	18-14		Big Ten Games	18-14
	Big Ten Tournament	2-1		Big Ten Tournament	4-5
	Home	13-5		Home	16-6
	Away	7-11		Away	11-9
	Neutral	3-1		Neutral	4-6
Michigan	Overall	26-9	Purdue	Overall	15-25
	Big Ten Games	24-7		Big Ten Games	13-19
	Big Ten Tournament	1-2		Big Ten Tournament	2-3
	Home	13-2		Home	9-8
	Away	12-5		Away	4-14
	Neutral	1-2		Neutral	2-3
Michigan State	Overall	24-11	Wisconsin	Overall	26-10
	Big Ten Games	21-10		Big Ten Games	23-10
	Big Ten Tournament	2-1		Big Ten Tournament	2-0
	Home	14-3		Home	15-2
	Away	8-7		Away	9-8
	Neutral	2-1		Neutral	2-0
Minnesota	Overall	22-11			
	Big Ten Games	20-11			
	Big Ten Tournament	1-0			
	Home	13-3			
	Away	8-8			
	Neutral	1-0			



RECORD BOOK

CAREER SCORING

1. 2,919 Kelly Mazzante, 2001-04
2. 2,253 Susan Robinson, 1989-92
3. 2,044 Tyra Grant, 2007-10
4. 2,025 Kahadeejah Herbert, 1982-85
5. 1,995 Tanisha Wright, 2002-05
6. 1,897 Suzie McConnell, 1985-88
7. 1,725 Angie Potthoff, 1993-97
8. 1,663 Lisa Shepherd, 1998-01
9. 1,619 Andrea Garner, 1997-00
10. 1,538 Tanya Garner, 1988-91
11. 1,514 Vicki Link, 1984-87
12. 1,466 Jess Strom, 2002-05
13. 1,463 Katina Mack, 1992-96
14. 1,428 Jen Bednarek, 1980-83
15. 1,328 Maren Walseth, 1998-01
16. 1,320 Cheryl Ellison, 1980-83
17. 1,295 Kathy Phillips, 1989-92
18. 1,294 Helen Darling, 1997-00
19. 1,288 Carol Walderman, 1981-83
20. 1,280 Louise Leimkuhler, 1980-82
21. 1,240 Tina Nicholson, 1993-96
22. 1,238 Kam Gissendanner, 2006-08
23. 1,233 Amanda Brown, 2004-07
24. 1,186 Bethany Collins, 1985-88
25. 1,162 Lisa Faloon, 1984-87
26. 1,142 Jess Brungo, 2001-04
27. 1,135 Sue Martin, 1976-80
28. 1,106 Missy Masley, 1992-95
29. 1,084 Brianne O'Rourke, 2005-09
30. **1,081 Alex Bentley, 2010-present**
31. 1,061 Nancy Kuhl, 1975-79
32. 1,024 Rashana Barnes, 1999-02
33. 1,022 Helen Holloway, 1991-94

CAREER REBOUNDS

1. 1,103 Kahadeejah Herbert, 1982-85
2. 1,070 Susan Robinson, 1989-92
3. 1,016 Andrea Garner, 1997-00
4. 943 Vicki Link, 1984-87
5. 918 Angie Potthoff, 1993-97
6. 820 Mag Strittmatter, 1975-78
7. 818 Cheryl Ellison, 1980-83
8. 808 Amanda Brown, 2004-07
9. 773 Mary Donovan, 1978-81
10. 757 Bethany Collins, 1985-88
11. 728 Rashana Barnes, 1999-02
12. 721 Missy Masley, 1992-95
13. 719 Louise Leimkuhler, 1980-83
14. 717 Kathy Phillips, 1989-92
15. 690 Julia Trogele, 2008-11
16. 672 Helen Darling, 1997-00
17. 649 Jess Brungo, 2001-04
18. 645 Maren Walseth, 1998-01
19. 621 Tanisha Wright, 2002-05
20. 598 Helen Holloway, 1991-94
21. 595 Sue Martin, 1977-80
22. 583 Kim Calhoun, 1993-96
23. **570 Nikki Greene, 2010-present**

CAREER THREE-POINT FIELD GOALS MADE

1. 357 Kelly Mazzante, 2001-04
2. 230 Lisa Shepherd, 1998-01
3. 191 Jess Strom, 2002-05
4. 179 Tyra Grant, 2007-10
5. 175 Tiffany Longworth, 1994-97
6. **145 Maggie Lucas, 2011-present**
7. 124 Tina Nicholson, 1993-96
8. **122 Zhaque Gray, 2009-present**

CAREER ASSISTS

1. 1,307* Suzie McConnell, 1984-88
2. 826 Tina Nicholson, 1993-96
3. 791 Helen Darling, 1997-00
4. 776 Jess Strom, 2002-05
5. 632 Annie Troyan, 1981-83
6. 567 Dana Eikenberg, 1989-92
7. 560 Brianne O'Rourke, 2006-09
8. 528 Nancy Kuhl, 1975-79
9. 484 Tanisha Wright, 2002-05
10. 411 Tanya Garner, 1988-91
11. **380 Alex Bentley, 2010-present**

CAREER BLOCKS

1. 268 Kim Calhoun, 1993-96
2. 192 Mary Donovan, 1977-81
3. 189 Rashana Barnes, 1999-02
4. 185 Andrea Garner, 1997-00
5. 172 Amanda Brown, 2004-07
6. **150 Nikki Greene, 2010-present**

CONSECUTIVE 100s: The Lady Lions reached 100 points for the second consecutive game with a 103-84 win over #14/13 North Carolina Nov. 30 and a 103-65 victory at Nevada Nov. 26. The last time Penn State scored 100 points in back-to-back games was in 1993 when the Lady Lions defeated Nebraska, 102-66, on Jan. 2 and Illinois, 101-71, on Jan. 7.

SCHOOL RECORD FROM DEEP: The Lady Lions connected on a school record 14 three-pointers in the 103-84 win over North Carolina Nov. 30. Penn State breaks the mark of 13 makes from beyond the arc, which was accomplished twice (at Dayton, 11/21/10; vs. St. Francis (12/2/99)). The 14 threes by PSU also tie for the most by a North Carolina opponent.

LUCAS INTO 6TH ON 3S LIST: Sophomore guard **Maggie Lucas** moved into sixth place on Penn State's career three-pointers list with five triples versus North Carolina Nov. 30. She passed Tina Nicholson (1993-96) with her effort versus the Tar Heels.

Career Three-Point Field Goals Made

1. 357 Kelly Mazzante, 2001-04
2. 230 Lisa Shepherd, 1998-01
3. 191 Jess Strom, 2002-05
4. 179 Tyra Grant, 2007-10
5. 175 Tiffany Longworth, 1994-97
6. **143 Maggie Lucas, 2011-pres.**

BENTLEY'S DOUBLE VISION: Junior **Alex Bentley** posted the first double-double of her career with 15 points and a personal-best 15 assists in the upset win over #14/13 North Carolina Nov. 30. Bentley's 15 assist are a career high and are tied for 11th on Penn State's single-game chart. The 15 helpers also tie the Bryce Jordan Center record, also set by Helen Darling versus Wisconsin on Jan. 29, 1999.

BACK-TO-BACK 20s FOR ZHA ZHA: Senior guard **Zhaque Gray** reached the 20-point for the second-straight game with 25 points on 6-of-10 shooting from long range in the win over #14/13 North Carolina Nov. 30. This is the second time in her career that she had back-to-back 20-point games with the first coming last year against Dayton (27) and Rider (22).

HIGH SCORING HALF: The Lady Lions scored 58 points in the first half of the win over #14/13 North Carolina, marking the first time the Lions have scored more than 55 points in a half since tallying 55 in the second half at Boston College on Dec. 2, 2010.

STEALING A BENTLEY: Junior guard **Alex Bentley** worked on her pick-pocketing skills in Nevada with a career-best five steals against the Wolf Pack in the Nugget Classic title game. She also nabbed four steals in the opening round win over Iowa State.

NUGGET CROWN: Penn State claimed the Nugget Classic title over Thanksgiving with wins over Iowa State (66-59) and Nevada (103-65). It is the 28th regular-season tournament title for PSU and the second this season (Lady Lion Classic). **Alex Bentley** was selected as the Tournament MVP after averaging 18.0 points, 4.5 assists and 4.5 steals in two games. She also shot 57.1% from the field. **Maggie Lucas** also collected All-Tournament team accolades as she averaged 22.0 points, 6.5 rebounds and 3.0 assists in the Nugget Classic.

NEWEST 500 BOARD MEMBER: Junior center **Nikki Greene** became the 27th player in school history to reach 500 rebounds with seven caroms against Iowa State on Nov. 25. She joins an elite list that it topped by Kahadeejah Herbert (1,103) and Susan Robinson (1,070).

WALDNER ON THE BOARD: Freshman post player **Tori Waldner** scored her first collegiate points with a 15-foot jumper at Iowa State Nov. 25. She finished the contest with five points and connected on both of her shots from the field. Waldner also blocked her first career shot.

FOUL FACTOR: The Lady Lions were charged with 32 fouls in the win over Iowa State, its most fouls in a game since they committed 30 fouls against UCSB Nov. 20, 2001.



COURTSIDE WITH COQUESE

Courtside with Coquese, a show that follows the Penn State women's basketball team during the season and takes viewers on an all-access tour of the team. All episodes of Courtside with Coquese can also be viewed online at LadyLions.com. Episodes will also be available on Comcast Video On Demand on Comcast in Pennsylvania on Fridays.

Courtside with Coquese Air Dates

Ep. 2	Thurs., 1/12	6:15 p.m.	PBS World
	Thurs., 1/12	10:30 a.m.	BTN
	Fri., 1/13	8:30 p.m.	WPSU
Ep. 3	Sat., 1/14	11 a.m.	WPSU
	Thurs., 1/19	6:15 p.m.	PBS World
	Thurs., 1/19	10:30 a.m.	BTN
Ep. 4	Fri., 1/20	8:30 p.m.	WPSU
	Sat., 1/21	11 a.m.	WPSU
	Thurs., 1/26	6:15 p.m.	PBS World
Ep. 5	Thurs., 1/26	10:30 a.m.	BTN
	Fri., 1/27	8:30 p.m.	WPSU
	Sat., 1/28	11 a.m.	WPSU
Ep. 6	Thurs., 2/2	6:15 p.m.	PBS World
	Thurs., 2/2	TBA	BTN
	Fri., 2/3	8:30 p.m.	WPSU
Ep. 7	Sat., 2/4	11 a.m.	WPSU
	Thurs., 2/9	6:15 p.m.	PBS World
	Thurs., 2/9	TBA	BTN
Ep. 8	Fri., 2/10	8:30 p.m.	WPSU
	Sat., 2/11	11 a.m.	WPSU
	Thurs., 2/16	6:15 p.m.	PBS World
Ep. 9	Thurs., 2/16	TBA	BTN
	Fri., 2/17	8:30 p.m.	WPSU
	Sat., 2/18	11 a.m.	WPSU
Ep. 10	Thurs., 2/23	6:15 p.m.	PBS World
	Thurs., 2/23	TBA	BTN
	Fri., 2/24	8:30 p.m.	WPSU
Ep. 11	Sat., 2/25	11 a.m.	WPSU
	TBA		

LADYLIONS.COM: LadyLions.com is a website dedicated exclusively to women's basketball at Penn State. The website gives the Lady Lions a chance to showcase the Penn State women's basketball program to potential recruits and fans. The site has been recently enhanced with the addition of a team blog, live chats and an "Ask Coach Quese" mailbag. The team blog has been up and running since August. The blog is regularly updated with entries from Lady Lion basketball players, coaches and staff members. The Lady Lions and the coaching staff interact with fans during a weekly live chat on Mondays from 12:15-1:15. The final new feature on LadyLions.com for this season is the Ask Coach Quese mailbag. Coach Quese will answer fan questions each Tuesday throughout the season. Questions can be submitted to Coach Quese by emailing them to askcoachquese@gmail.com. Be sure to include your name and hometown when submitting a question.

A BLOCK EAST: Sophomore center **Talia East** rejected seven shots in the win at South Carolina Nov. 20. The seven blocks are tied for third on Penn State's single-game charts and are the most since **Nikki Greene** blocked seven shots against Purdue on Jan. 28, 2010. Additionally, East hauled in 15 rebounds against the Gamecocks, the most rebounds for a Penn State player since **Mia Nickson** had 15 caroms at Iowa on Feb. 6, 2011.

THREES STRING STOPPED: The Lady Lions were held without a three-pointer for the first time under Coquese Washington at South Carolina Nov. 20. The last time Penn State did not connect from downtown was Jan. 7, 2007 at Michigan, a string of 143 games.

LATE RALLIES: The Lady Lions used late runs to claim each of their first three wins this season. Penn State needed a 13-0 run against South Carolina (Nov. 20), a 19-0 run against Middle Tennessee (Nov. 13) and a 13-0 spurt versus Washington State (Nov. 11). In the final five minutes of their three wins, the Lady Lions are outscoring their opponents an average of 10-0 and holding them to an 0-for-26 effort from the field.

LATE RALLIES

Team	Run	Length	Deficit
Washington State	13-0	6:53	1
Middle Tennessee	19-0	6:45	3
South Carolina	13-0	5:22	8

EAST HAULS IN BOARDS: **Talia East** continued her solid play with another career-best rebounding effort at Delaware Nov. 17. The sophomore center snared a personal-best 11 rebounds for the first double figure rebounding performance of her career. She also added eight rebounds and a pair of blocked shots versus the Blue Hens.

PAIR REACHES 600 POINTS: Senior guard **Zhaque Gray** and sophomore guard **Maggie Lucas** both reached the 600-point plateau for their careers at Delaware Nov. 17. Gray's 15 points brought her career total to 601, while Lucas' 12 tallies gave her an even 600 markers for her career. Lucas reached 600 points in 38 games, making her the third-fastest player in school history to reach 600 points (Kelly Mazzante and Susan Robinson, 33 games).

EDWARDS GETS THE NOD: Sophomore **Ariel Edwards** earned her first career start at Delaware Nov. 17 in place of an ailing Mia Nickson. Edwards responded with a solid eight-point, eight-rebound night against the Blue Hens. The eight caroms tie her career high set last year against Hartford in the Caribbean Challenge.

LADY LION CLASSIC CROWN: Penn State picked up its 27th regular-season title with wins over Washington State (72-60) and Middle Tennessee (65-49) in the Lady Lion Classic. It is the third regular-season title acquired under Coquese Washington (2006 WBCA Classic, 2009 Dead River Company Classic and 2011 Lady Lion Classic).

LUCAS TABBED TOURNEY MVP: Sophomore guard **Maggie Lucas** was selected as the Lady Lion Classic Tournament MVP after averaging 18.0 points, 5.5 rebounds and 3.5 assists in two games. Additionally senior guard **Zhaque Gray** and junior guard **Alex Bentley** were named to the Lady Lion Classic All-Tournament team.

BENTLEY REACHES MILESTONES: Junior guard **Alex Bentley** reached the 900-point plateau with eight tallies against Middle Tennessee Nov. 13. Additionally, Bentley became the 14th player in school history with 300 assists as she dished out four helpers against Washington State Nov. 11.

EAST'S CAREER NIGHT: Sophomore center **Talia East** turned in a career performance in the season-opening win over Washington State. She was a perfect 3-for-3 from the field on the way to a career-high six points. She also hauled in eight rebounds.

ANOTHER SEASON-OPENING WIN: The Lady Lions collected their fifth-straight season-opening win under head coach Coquese Washington with a 72-60 come-from-behind win over Washington State Nov. 11. Penn State has started each of Washington's four seasons with at least three wins.

PENN STATE BIG TEN FAVORITES: With 10 returning letterwinners from a team that posted a second place regular-season finish and a runner-up effort in the Big Ten Tournament, the Lady Lions were selected to finish first in the Big Ten Conference in a vote of the league's coaches and media. PSU finished ahead of Purdue and Iowa in the coaches' vote and Purdue and Michigan State in the media poll.

BENTLEY BIG TEN PRESEASON POY: Junior point guard **Alex Bentley** was selected as the conference's Preseason Player of the Year by both the coaches and the media. She shared the coaches' Preseason Player of the Year with Ohio State's Samantha Prahalis.

AGEE SIGNS NLI: ESPN/HoopGuriz 34th-ranked recruit **Candice Agee** signed a National Letter of Intent (NLI) to play of the Lady Lions beginning in the 2012-13 season. The signing of Agee and addition of transfer **Dara Taylor**, the Lady Lions have the 18th-ranked recruiting class by Dan Olson's Collegiate Girls Basketball Report. Agee is the first commit in the Lady Lions' 2012 recruiting class, averaged 17.0 points, 10.9 rebounds, 7.3 blocks and 2.7 steals per game for the Hawks as a junior. The native of Victorville, Calif. is a highly touted recruit, ranking 34th by ESPN/HoopGuriz, 38th by Collegiate Girls Report, 17th by Blue Star Basketball and 40th by All-Star Girls Report and Peach State. The Hawks finished the season with a 22-6 record with a perfect conference record en route to the Desert Sky title.





COQUESE WASHINGTON

**Head Coach
5th Season**

PENN STATE LADY LION BASKETBALL

Coquese Washington, who helped lead Notre Dame to the 2001 NCAA Championship, was introduced as the fifth head coach of the Penn State women's basketball program on April 23, 2007. Washington is the first female African-American head coach in Penn State history.

The Lady Lions returned to the national stage in Washington's fourth year with a second-place finish in the Big Ten regular season standings, a runner-up finish in the Big Ten Tournament and a berth in the NCAA Tournament. Penn State tallied its most victories since the 2003-04 campaign and 23rd 20-win season with a 25-10 overall record and an 11-5 mark in conference play. The Lady Lions worked their way back to the "Big Dance" for the first time since 2004-05 and advanced to the second round for the first time in seven years with a win over Dayton in the first round in front of a raucous Bryce Jordan Center crowd. After a remarkable season in the books and steps toward returning the Lady Lions to national prominence, Washington was selected as the 2011 BCA Female Coach of the Year.

Penn State was a dominating force from the perimeter as the Lady Lions tied the school record with 228 three-pointers and led NCAA Division I from deep with a .415 three-point field goal percentage. Pacing the Lady Lions from downtown was Maggie Lucas, who broke the Big Ten three-pointers record with 112 triples to go along with a .426 shooting percentage. For her efforts, Lucas was selected as the Big Ten Freshman of the Year and Big Ten Sixth Player of the Year while breaking the Penn State freshman season scoring record (552 pts.). Additionally with Washington's guidance, Alex Bentley became the 11th different player in school history to take home first team All-Big Ten accolades after finishing second in the conference in assists. After outstanding seasons, both Lucas and Bentley were invited to the USA Basketball World University Games Trials.

Washington's third season saw the Lady Lions return to the postseason for the first time since 2004-05 with a WNIT berth. The Lions earned their most overall wins (17) and conference wins (8) since the 2004-05 campaign en route to a sixth-place finish in the Big Ten.

Washington led Tyra Grant to back-to-back first team All-Big Ten honors and *Associated Press* Honorable Mention All-America accolades in her senior season. Grant capped off her career by being selected by the Phoenix Mercury

in the second round of the WNBA Draft. The four-time all-conference pick left Penn State third in school history in scoring with 2,044 points. Washington also guided Bentley to third team All-Big Ten honors, as well as a unanimous selection to the Big Ten All-Freshman team.

That year, Washington and the Lady Lions garnered one of the top recruiting classes in the country, finishing 22nd on the ESPN/HoopGuriz recruiting chart. The class included just the second McDonald's High School All-American in Penn State history in Lucas, WBCA High School All-American Ariel Edwards and All-State selection Talia East.

In Washington's second season, the Lady Lions moved up three positions in the Big Ten standings, finishing in a tie for seventh place. Under Washington's guidance in 2008-09, Grant became the 10th different player in school history to earn first team All-Big Ten honors.

The Coquese Washington era started in style as the Lady Lions won their first three games of the season, including a win over #20/21 Pittsburgh, to claim the WBCA Classic title. Just three weeks later, Washington guided the Lady Lions to their first ever win over perennial contender and 10th-ranked Duke in the inaugural Big Ten/ACC Challenge, a game that was televised on ESPN2.

Washington came to Happy Valley after eight seasons as an associate head coach and assistant coach under Muffet McGraw at Notre Dame, her alma mater. During Washington's eight years on the bench, Notre Dame amassed a 188-69 record with eight NCAA Tournament appearances, including four Sweet Sixteen runs and a National Championship in 2001.

Washington was a four-year starting point guard for Notre Dame under McGraw and was the team captain on Notre Dame's first-ever NCAA Tournament team. She was a two-time All-Midwestern Collegiate Conference (MCC) selection and led Notre Dame to three MCC Tournament titles.

The epitome of a student-athlete, Washington graduated from Notre Dame in 1992, a full year ahead of schedule, with a bachelor's degree in history. She went on to attain "Double Domer" status in 1997 after earning her Juris Doctorate from the Notre Dame Law School.

In addition to assisting with the efforts of the WBCA Pink Zone at Penn State to raise money and awareness for breast cancer, Washington created Coquese's Drive for the

THE WASHINGTON FILE

COACHING RESUME

2007-pres. - Head Coach, Penn State University
 2011-pres. - President, NCAA Women's Basketball Issues Committee
 2010-pres. - Treasurer, WBCA Executive Committee
 2008-pres. - Member, WBCA Board of Directors
 2009-pres. - Member, USA Basketball Women's Junior National Committee
 2005-07 - Assoc. Head Coach, Univ. of Notre Dame
 1999-05 - Assistant Coach, Univ. of Notre Dame

PLAYING EXPERIENCE

2002-03 - WNBA's Indiana Fever
 2000-02 - WNBA's Houston Comets
 1998-99 - WNBA's New York Liberty
 1997-98 - ABL's Portland Power
 1989-93 - University of Notre Dame

EDUCATION

Notre Dame '92, B.A. History
 Notre Dame Law School '97, Juris Doctorate

NOTABLE

- ❖ 2011 BCA Female Coach of the Year.
- ❖ Helped guide Notre Dame to the 2001 NCAA Championship.
- ❖ Eight consecutive recruiting classes at Notre Dame ranked in the Top 25 nationally.
- ❖ Notre Dame had four Sweet Sixteen appearances and eight NCAA Tournament berths during Washington's tenure.
- ❖ Point guard for the 2000 WNBA Champion Houston Comets.
- ❖ Founding President, WNBA Players Association, 1999-01.
- ❖ Actively negotiated first two collective bargaining agreements for the WNBPA.
- ❖ Inducted into the Greater Flint Area Sports Hall of Fame in Dec. 2009.

FAMILY

Husband: Raynell Brown
 Children: Quenton (6), Rhaiyna (2)

Women's Resource Center. The first four Coquese's Drives raised more than \$56,869 for the Centre County Women's Resource Center to aid in the fight against domestic violence.

Washington is currently serving on the 29-member WBCA Board of Directors, where she is the Treasurer of the Executive Committee. Washington is also a member of the USA Basketball Women's Junior National Team Selection Committee.

A native of Flint, Mich., Washington and her husband, Raynell Brown, have a son, Quenton (6), and a daughter, Rhaiyna (2). They reside in Port Matilda, Pa.

Washington's Coaching Record vs. Opponents

Arizona 1-0	DePaul.....0-1	Indiana..... 3-4	Monmouth 1-0	Prairie View A&M 1-0	Wagner 1-0
Army 1-0	Drexel 2-1	Iowa 4-5	Nebraska 0-1	Purdue 1-7	Washington State 1-0
Boston College.....0-1	Duke 1-0	Iowa State..... 1-0	Nevada 1-0	Rider 1-0	Wisconsin 3-5
Bucknell 5-0	Florida State 0-1	Maine 1-0	NJIT 1-0	South Carolina..... 4-1	UW-Green Bay 0-1
Buffalo 1-0	Georgetown 1-0	UMES 1-0	North Carolina 1-0	Stony Brook 1-0	Xavier 0-1
Charlotte 1-0	Georgia Tech 0-1	Michigan 5-3	Northwestern 5-1	Syracuse 0-1	
Connecticut 0-1	Hartford 1-0	Michigan State..... 2-5	Oakland 2-0	Texas A&M 0-1	
Coppin State..... 1-0	Hofstra 0-1	Middle Tennessee 1-0	Ohio State..... 1-6	Texas Tech 1-1	
Dayton 2-1	Holy Cross 1-0	Minnesota 2-6	Old Dominion..... 0-1	Utah 1-0	
Delaware 1-1	Illinois 7-3	Mississippi 1-0	Pittsburgh 2-1	Virginia Tech..... 1-0	





#2 Dara Taylor

Jr. * G * 5-8 * Wilmington, Del./Caraval Acad. (Maryland)

2011-12 Season Notes:

Will sit out the 2011-12 season due to NCAA Transfer policy.

2010-11 (at Maryland):

Had two points, two steals and four assists in the NCAA Tournament game against Georgetown (3/22) ... Tallied three points, three steals and two assists in the NCAA Tournament win over St. Francis (Pa.) ... Made both of her shots from the field en route to four points and two steals versus North Carolina State (2/6) ... Registered six points, four steals and four assists in the win over Saint Joseph's (1/2) ... Dished out four assists against La Salle (12/28) ... Notched five dimes against Delaware State (12/19) ... Was 3-for-4 from the field and finished with seven points and three assists in the win over UMBC (12/10) ... Accounted for four assists and four steals at Purdue (12/2) ... Tallied six points, five assists, four rebounds and a steal in the win over East Carolina (11/26) ... Recorded five points and five assists in the victory over Towson (11/18) ... Opened the season with two points, three assists and a steal in the win over Monmouth (11/13).

2009-10 (at Maryland)

Broke Maryland's freshman season assists record with 171 helpers Recorded more than six assists in 15 of 27 starts ... Finished third in the ACC in assists and sixth in assist-to-turnover ratio (1.2) ... Grabbed career-high eight rebounds in WNIT Second Round win over East Carolina (3/21) ... Contributed 10 points in ACC Tournament win over North Carolina (3/4) ... Netted a career-high 17 points on 7-of-12 shooting against Clemson (2/14) ... Made 7-of-10 free throws to help clinch the win over Wake Forest (2/11) ... Finished the game with nine points and two steals against the Demon Deacons ... Accounted for nine assists at Virginia Tech (1/28) ... Had six points, eight assists and seven rebounds versus Boston College (1/14) ... Notched first career double-double with 10 points and career-high 11 assists at No. 19/21 Virginia (1/11) ... Also added three steals and four rebounds versus the Cavaliers ... Dished out eight assists versus Saint Joseph's (1/3) ... Notched nine points, eight assists and four rebounds versus UNC-Wilmington (12/29) ... Recorded nine points and three rebounds versus Minnesota (12/3) in the Big Ten/ACC Challenge ... Had six points and six assists in the win over Howard (11/27) ... Accounted for 11 points with seven assists in a win over Samford (11/24) ... Tallied nine points, two steals and an assist in her first career start at Mississippi State (11/22) ... Chipped in six points, nine assists and five rebounds against Old Dominion (11/19) ... Had 10 points with five assists in win against New Hampshire (11/16) ... Posted nine points, five assists and career-high six steals in collegiate debut against North Carolina Central (11/14).

HIGH SCHOOL

McDonald's High School All-American ... 52nd-ranked player by ESPN/HoopGurlz out of Caravel Academy ... 2009 Delaware Gatorade Player of the Year ... Two-time All-State selection with a first team berth as a senior and a second team nod as a junior ... 1,192 career points at Caravel Academy ... Averaged 17.8 points, 5.5 assists, 5.0 rebounds and 5.0 steals per game as a senior ... Led the Buccaneers to the Delaware State Quarterfinals as a senior ... Named to the DelawareGirlsBasketball.com All-Decade (2000-09) visitor's poll first team ... Selected to the Delaware's Finest third team All-Decade (2000-09) team ... Played AAU for the Philly Belles alongside Lady Lion teammate Maggie Lucas ... AAU team won the 2007 USJN in Cincinnati and were the 15u and 16u Mid-Atlantic Champions ... Also participated in track & field at Caravel Academy, finishing fifth in the state in the high jump, long jump and 4x100 relay in 2009.

PERSONAL

Full name is Dara Nailah Taylor ... Born January 16, 1991 in Manhattan, New York ... Parents are Jo and Ron Taylor ... Has one brother, Ron Jr. (17) ... Majoring in communication, arts and sciences.

CAREER HIGHS

Points.....	17 vs. Clemson (2/14/10)
Rebs.	8 vs. East Carolina (3/21/10)
Assists	11 at American (12/20/09)
.....	11 at Virginia (1/11/10)
Steals.....	6 vs. N.C. Central (11/14/09)
Blocks....	1 (3x) last at St. Joseph's 1/2/11
Minutes	38 at American (12/20/09)
FGM.....	7 vs. Clemson (2/14/10)
FGA.....	14 at N.C. State (1/17/10)
FG%	1.000 (3x)
.....	last vs. N.C. State (2-2) (2/6/11)
3FGM.....	2 vs. Samford (1/24/09)
.....	2 vs. Clemson (2/14/10)
3FGA	5 at Mississippi State (11/22/09)
3PT %	1.000 (1-1) at Longwood (1/31/10)
.....	1.000 (1-1) vs. Providence (3/25/10)
FTM	7 at Wake Forest (2/11/10)
FTA	10 at Wake Forest (2/11/10)
.....	10 vs. North Carolina (3/4/10)
FT %	1.000 (7x)
.....	last vs. Georgetown (2-2) (3/22/11)
Career Double-Doubles	1

Five-Time Big Ten Champions • Two-Time Big Ten Tournament Champions • 2000 NCAA Final Four • 22 NCAA Tournament Appearances





#5 Talia East

So. * F/C * 6-3 * Philadelphia, Pa./The Friends School

2011-12 Highlights:

- ♦ Had arguably the best game of her career, registering in personal bests of 15 rebounds and seven blocks to go along with six points at South Carolina (11/20).
- ♦ Her seven blocks at South Carolina are tied

for the third on the PSU single-game charts and are the most for a Lady Lion since Nikki Greene blocked seven shots against Purdue on Jan. 28, 2010.

2011-12 Season Notes:

- ♦ Grabbed seven rebounds to go along with four points at Wisconsin (1/2).
- ♦ Chipped in six points, eight rebounds, a career-best two assists and three blocks in the win at Bucknell (12/21).
- ♦ Equalled her career high with eight points to compliment six rebounds, two blocks and an assists in the win over Wagner (12/18).
- ♦ Snared five rebounds in eight minutes against UMES (12/11).
- ♦ Had a solid night off the bench with six points, three rebounds, a block and a steal in the win over Virginia Tech (12/6).
- ♦ Accounted for six points, eight rebounds, a blocked shot and a career-high two steals at #19/25 Texas Tech (12/3).
- ♦ Registered a career-best eight points on 4-of-6 shooting to go along with six rebounds in the Nugget Classic Championship game win over Nevada (11/26).
- ♦ Turned in her first career double-digit rebounding performance as she hauled in a personal-best 11 caroms at Delaware (11/17). Also equalled her career scoring mark with six points against the Blue Hens.
- ♦ Notched two points, six rebounds and a blocked shot in the Lady Lion Classic Championship game win over Middle Tennessee (11/13).
- ♦ Had a career night in the season-opening win over Washington State (11/11) with personal bests of six points via a 3-for-3 shooting effort and eight rebounds.
- ♦ Tallied four points, five rebounds and two steals in the exhibition win over Bloomsburg (11/5).

CAREER HIGHS

Points	8 vs. Wagner (12/18/11)
	8 at Nevada (11/26/11)
Rebs.	15 at South Carolina (11/20/11)
Assists	2 at Bucknell (12/21/11)
Steals	2 at Texas Tech (12/3/11)
Blocks	7 at South Carolina (11/20/11)
Minutes	29 at South Carolina (11/20/11)
FGM	4 at Nevada (11/26/11)
FGA	7 at Bucknell (12/21/11)
	7 vs. Wagner (12/18/11)
FG%	1.000 (6x)
	last at Wisconsin (2-2) (1/2/12)
3FGM	n/a
3FGA	n/a
3PT %	n/a
FTM	4 vs. Nebraska (12/30/11)
FTA	4 (3x) last vs. Nebraska (12/30/11)
FT %	4 (3x)
	last vs. Nebraska (4-4) (12/30/11)
Career Double-Doubles	n/a

GAME-BY-GAME

	P	R	B
WASH. STATE	6	8	2
MID. TENN.	2	6	1
at Delaware	6	11	2
at South Carolina	6	15	7
vs. Iowa State	0	3	0
at Nevada	8	6	0
NORTH CAROLINA	3	4	0
at Texas Tech	6	8	1
VIRGINIA TECH	6	3	1
UMES	2	5	0
WAGNER	8	6	2
at Bucknell	6	8	3
NEBRASKA	4	4	1
at Wisconsin	4	7	0
MICHIGAN ST.			
MICHIGAN			
at Nebraska			
at Illinois			
IOWA			
at Michigan			
at Michigan State			
INDIANA			
at Minnesota			
WISCONSIN			
at Northwestern			
at Purdue			
OHIO STATE			
MINNESOTA			

East vs. the Big Ten

Team	G	Pts.-Avg.	Rebs.-Avg.	Assts.-Avg.	Blks.-Avg.
Illinois	3	0-0.0	4-1.3	0-0.0	0-0.0
Indiana	2	4-2.0	2-1.0	0-0.0	0-0.0
Iowa	-	-	-	-	-
Michigan	1	0-0.0	0-0.0	0-0.0	0-0.0
Michigan State	1	2-2.0	0-0.0	0-0.0	0-0.0
Minnesota	-	-	-	-	-
Nebraska	1	4-4.0	4-4.0	0-0.0	1-1.0
Northwestern	2	2-1.0	4-2.0	0-0.0	0-0.0
Ohio State	3	2-0.7	2-0.7	0-0.0	2-0.7
Purdue	2	1-0.5	4-2.0	0-0.0	0-0.0
Wisconsin	1	4-4.0	7-7.0	0-0.0	0-0.0





#12 Zhaque Gray

Sr. * G * 5-8 * Chicago, Ill./Prep John Hope

2011-12 Highlights:

- Surpassed the 600-point plateau for her career with 15 tallies at Delaware (11/17).
- Named to Lady Lion Classic All-Tournament team after averaging 11.0 points, 5.0 rebounds in two games.

CAREER HIGHS

Points.....	27 at Dayton (11/12/10)
Rebs.....	6 at South Carolina (11/22/09)
.....	6 vs. NJIT (11/15/09)
Assists.....	6 vs. North Carolina (11/30/11)
Steals.....	3 vs. Bucknell (12/28/10)
.....	3 vs. Michigan State (12/21/08)
Blocks.....	1 at South Carolina (11/20/11)
.....	1 at Iowa (2/6/11)
Minutes.....	44 at Dayton (11/12/10)
FGM.....	10 at Dayton (11/12/10)
FGA.....	17 at Dayton (11/12/10)
FG%.....	1.000 (3-3) at Indiana (2/13/11)
.....	1.000 (4-4) at Michigan (2/9/09)
3FGM.....	7 at Dayton (11/12/10)
3FGA.....	11 at Dayton (11/12/10)
3PT%.....	1.000 (5x)
.....	last vs. Iowa State (2-2) (11/25/11)
FTM.....	5 at Ohio State (2/17/11)
FTA.....	6 at Ohio State (2/17/11)
FT%.....	1.000 (23x)
.....	last vs. Virginia Tech (4-4) (12/6/11)
Career Double-Doubles.....	n/a

GAME-BY-GAME

	P	R	A
WASH. STATE	7	4	1
MID. TENN.	15	6	2
at Delaware	15	3	4
at South Carolina	6	4	2
vs. Iowa State	14	3	2
at Nevada	21	4	3
NORTH CAROLINA	25	4	6
at Texas Tech	8	2	3
VIRGINIA TECH	6	5	2
UMES	8	0	1
WAGNER	13	3	3
at Bucknell	8	0	2
NEBRASKA	0	2	1
at Wisconsin	8	1	1
MICHIGAN ST.			
MICHIGAN			
at Nebraska			
at Illinois			
IOWA			
at Michigan			
at Michigan State			
INDIANA			
at Minnesota			
WISCONSIN			
at Northwestern			
at Purdue			
OHIO STATE			
MINNESOTA			

2011-12 Season Notes:

- Recorded eight points at Wisconsin (1/2).
- Had eight points in the win at Bucknell (12/21).
- Scored 13 points to go along with three rebounds, three assists and a pair of steals in the win over Wagner (12/18).
- Chipped in eight points and an assist against UMES (12/11).
- Tallied eight points and three assists at Texas Tech (12/3).
- Notched back-to-back 20-point games for the second time in her career with 25 points, four rebounds and a career-high six assists in the upset win over #14/13 North Carolina (11/30).
- Accounted for 21 points, four rebounds, three assists and two steals in the win at Nevada (11/26).
- Was 5-for-7 from the field, including makes on both of her three-point attempts, en route to 14 points in the win over Iowa State (11/25).
- Had a team-best 15 points to go along with six rebounds and two assists in the Lady Lion Classic title game win over Middle Tennessee (11/13).
- Registered seven points and four rebounds against Washington State (11/11).

Gray vs. the Big Ten

Team	G	Pts.-Avg.	Rebs.-Avg.	Assts.-Avg.	Stls.-Avg.
Illinois	8	40-5.0	11-1.4	6-0.8	3-0.4
Indiana	6	39-6.5	9-1.5	6-1.0	2-0.3
Iowa	6	28-4.7	12-2.0	5-0.8	1-0.2
Michigan	5	32-6.4	6-1.2	6-1.2	0-0.0
Michigan State	5	7-1.4	8-1.6	1-0.2	4-0.8
Minnesota	5	21-4.2	5-1.0	4-0.8	0-0.0
Nebraska	1	0-0.0	2-2.0	1-1.0	0-0.0
Northwestern	4	37-9.3	8-2.0	6-1.5	1-0.3
Ohio State	5	37-7.4	8-1.6	7-1.4	3-0.6
Purdue	7	33-4.7	5-0.7	3-0.4	1-0.1
Wisconsin	6	37-6.2	8-1.3	1-0.2	3-0.5

Five-Time Big Ten Champions • Two-Time Big Ten Tournament Champions • 2000 NCAA Final Four • 22 NCAA Tournament Appearances





#15 Renee Womack

Sr. * G * 5-10 * Lansdale, Pa./Methacton

CAREER HIGHS

Points 10 at Wisconsin (1/2/11)
 Rebs. 8 (2x) last vs. Iowa (12/28/09)
 Assists 4 vs. Iowa (12/28/09)
 Steals 4 vs. Bucknell (12/28/10)
 Blocks 3 vs. Iowa (12/28/09)
 Minutes 30 vs. Iowa (12/28/09)
 FGM 4 at Wisconsin (1/2/11)
 4 vs. Stony Brook (11/19/08)
 FGA 8 vs. Army (12/8/10)
 8 vs. Stony Brook (11/19/08)
 FG% 1.000 (8x)
 last vs. Illinois (2-2) (3/5/11)
 3FGM 1 (7x) last at Indiana (2/13/11)
 3FGA 2 (4x) last at Indiana (2/13/11)
 3PT% 1.000 (3x)
 last vs. Illinois (2-2) (1/16/11)
 FTM 3 at Dayton (11/12/10)
 FTA 4 at Ohio State (2/17/11)
 4 at Dayton (11/12/10)
 FT% 1.000 (4x)
 last at Iowa (2-2) (2/6/11)
 Career Double-Doubles n/a

GAME-BY-GAME

	P	R	A
WASH. STATE	DNP		
MID. TENN.	DNP		
at Delaware	DNP		
at South Carolina	DNP		
vs. Iowa State	DNP		
at Nevada	DNP		
NORTH CAROLINA	DNP		
at Texas Tech	DNP		
VIRGINIA TECH	DNP		
UMES	DNP		
WAGNER	DNP		
at Bucknell	DNP		
NEBRASKA	DNP		
at Wisconsin	DNP		
MICHIGAN ST.			
MICHIGAN			
at Nebraska			
at Illinois			
IOWA			
at Michigan			
at Michigan State			
INDIANA			
at Minnesota			
WISCONSIN			
at Northwestern			
at Purdue			
OHIO STATE			
MINNESOTA			

Womack vs. the Big Ten

Team	G	Pts.-Avg.	Rebs.-Avg.	Assts.-Avg.	Stls.-Avg.
Illinois	7	15-2.1	14-2.0	4-0.6	5-0.7
Indiana	3	3-1.0	6-2.0	0-0.0	1-0.3
Iowa	5	16-3.2	23-4.6	5-1.0	7-1.4
Michigan	2	7-3.5	5-2.5	0-0.0	3-1.5
Michigan State	3	2-0.7	1-0.3	1-0.3	1-0.3
Minnesota	3	2-0.7	2-0.7	1-0.3	0-0.0
Nebraska	-	-	-	-	-
Northwestern	4	6-1.5	7-1.8	2-0.5	2-0.5
Ohio State	4	7-1.8	6-1.5	3-0.8	1-0.3
Purdue	4	6-1.5	2-0.5	1-0.3	3-0.8
Wisconsin	3	13-4.3	7-2.3	0-0.0	3-1.0





#20 Alex Bentley

Jr. * G * 5-7 * Indianapolis, Ind./Ben Davis

2011-12 Highlights:

- ◆ Became the 33rd Lady Lion and 15th junior to score 1,000 career points with 11 tallies against Virginia Tech (12/6).
- ◆ 11th on Penn State's all-time assists list (380).
- ◆ On Wade Trophy, Wooden Award and Naimsmith Award watch lists.
- ◆ Big Ten Preseason Player of the Year (coaches and media).
- ◆ Selected as Nugget Classic Tournament MVP after averaging 18.0 points, 4.5 assists and 4.5 steals in two games.
- ◆ Named to Lady Lion Classic All-Tournament team after averaging 15.0 points, 3.0 rebounds, 4.0 assists and 2.5 steals in two games.

2011-12 Season Notes:

- ◆ Nabbed a career-high eight steals to go along with 22 points in the Big Ten opener against Nebraska. The eight thefts are the most for a Lady Lion since Kelly Mazzante had eight steals vs. Fairfield on Dec. 2, 2001.
- ◆ Chipped in 11 points, seven assists and four steals in the non-conference finale at Bucknell (12/21).
- ◆ Was 10-for-14 from the field on the way to 23 points and a personal-best five steals against Wagner (12/18).
- ◆ Just missed out on a double-double with 11 points and nine assists in the win over UMES (12/11).
- ◆ Paced the Lady Lions with 18 points, three assists and a steal at #19/25 Texas Tech (12/3).
- ◆ Posted her first career double-double with 15 points and a personal-best 15 assists in the win over #14/13 North Carolina (11/30).
- ◆ Had a solid all-around game with 23 points on 11-of-15 shooting, six assists and a career-best five steals in the win over Nevada (11/26).
- ◆ Tallied 13 points to go along with three rebounds, three assists and four steals versus Iowa State (11/25).
- ◆ Narrowly missed her first career double-double with a team-best 20 points and a career-high tying nine assists at Delaware (11/17).
- ◆ Surpassed the 900-point mark for her career with eight tallies in the win over Middle Tennessee (11/13).
- ◆ Accounted for 22 points, four rebounds, four assists and a pair of steals in the win over Washington State (11/11).
- ◆ Became the 14th player in school history to record 300 career assists against the Cougars.

CAREER HIGHS

Points 28 at Boston College (12/2/10)
Rebs 7 vs. Iowa (12/28/09)
Assists 15 vs. North Carolina (11/30/11)
Steals 8 vs. Nebraska (12/30/11)
Blocks 2 (3X) last vs. Drexel (12/21/10)
Minutes 46 at Dayton (11/12/10)
FGM 12 vs. Dayton (3/19/11)
FGA 28 vs. Dayton (3/19/11)
FG% 833 (5-6) at Illinois (12/31/09)
3FGM 4 at Purdue (2/14/10)
3FGA 6 (3x) last at Purdue (2/14/10)
3PT% 1.000 (6x)
..... last vs. Washington State (2-2) (11/11/11)	
FTM 10 at Northwestern (1/6/11)
FTA 12 at Northwestern (1/6/11)
FT% 1.000 (22x)
..... last vs. North Carolina (4-4) (11/30/11)	
Career Double-Doubles 1

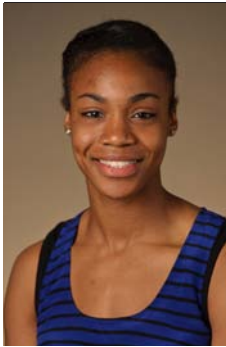
GAME-BY-GAME

	P	R	A
WASH. STATE	22	4	4
MID. TENN.	8	2	4
at Delaware	20	3	9
at South Carolina	6	2	3
vs. Iowa State	13	3	3
at Nevada	23	0	6
NORTH CAROLINA	15	5	15
at Texas Tech	18	2	3
VIRGINIA TECH	11	2	5
UMES	11	4	9
WAGNER	23	2	2
at Bucknell	11	0	7
NEBRASKA	22	3	3
at Wisconsin	8	2	8
MICHIGAN ST.			
MICHIGAN			
at Nebraska			
at Illinois			
IOWA			
at Michigan			
at Michigan State			
INDIANA			
at Minnesota			
WISCONSIN			
at Northwestern			
at Purdue			
OHIO STATE			
MINNESOTA			

Bentley vs. the Big Ten

Team	G	Pts.-Avg.	Rebs.-Avg.	Assts.-Avg.	Stls.-Avg.
Illinois	5	65-13.0	14-2.8	22-4.4	8-1.6
Indiana	4	50-12.5	7-1.8	17-4.3	4-1.0
Iowa	5	87-17.4	18-3.6	24-4.8	6-1.2
Michigan	3	28-9.3	9-3.0	13-4.3	6-2.0
Michigan State	3	33-11.3	7-2.3	7-2.3	5-1.7
Minnesota	4	38-9.5	9-2.3	18-4.5	11-2.8
Nebraska	1	22-22.0	3-3.0	3-3.0	8-8.0
Northwestern	3	45-15.0	8-2.7	14-4.7	6-2.0
Ohio State	4	61-15.3	6-1.5	18-4.5	7-1.8
Purdue	5	84-16.8	14-2.8	19-3.8	13-2.6
Wisconsin	4	28-7.0	8-2.0	16-4.0	5-1.3





#23 Ariel Edwards

So. * G/F * 6-2 * Elmont, N.Y./Christ the King

2011-12 Highlights:

- Accounted for 13 points and career highs of eight rebounds and three assists in the win over #14/13 North Carolina (11/30).
- In her first collegiate start, tallied eight points and equalled her career high with eight rebounds at Delaware (11/17).

CAREER HIGHS

Points	16 at Oakland (11/18/10)
Rebs.	9 vs. UMES (12/11/11)
Assists	4 at Wisconsin (1/2/12)
Steals	3 at Texas Tech (12/3/11)
Blocks	2 at Oakland (11/18/10)
Minutes	38 at Delaware (11/17/11)
FGM	6 vs. North Carolina (11/30/11)
FGA	11 (3x) last vs. UMES (12/11/11)
FG%	1.000 (3x)
.....	last vs. DePaul (1-1) (3/21/11)
3FGM	2 vs. Army (12/8/10)
.....	2 vs. Hartford (11/27/10)
3FGA	4 vs. Army (12/8/10)
.....	4 vs. Hartford (11/27/10)
3PT %	1.000 (3x)
.....	last vs. North Carolina (1-1) (11/30/11)
FTM	7 at Oakland (11/18/10)
FTA	8 at Oakland (11/18/10)
FT %	1.000 (6x)
.....	last vs. Wagner (5-5) (12/18/11)
Career Double-Doubles	n/a

GAME-BY-GAME

	P	R	A
WASH. STATE	4	2	1
MID. TENN.	10	1	1
at Delaware	8	8	0
at South Carolina	10	7	1
vs. Iowa State	0	1	0
at Nevada	2	4	1
NORTH CAROLINA	13	8	3
at Texas Tech	3	5	2
VIRGINIA TECH	3	3	0
UMES	7	9	3
WAGNER	11	6	3
at Bucknell	7	2	3
NEBRASKA	6	2	0
at Wisconsin	6	4	4
MICHIGAN ST.			
MICHIGAN			
at Nebraska			
at Illinois			
IOWA			
at Michigan			
at Michigan State			
INDIANA			
at Minnesota			
WISCONSIN			
at Northwestern			
at Purdue			
OHIO STATE			
MINNESOTA			

2011-12 Season Notes:

- Dished out a career-high four assists to go along with six points, four rebounds and a steal at Wisconsin (1/2).
- Notched six points with two rebounds and two steals against Nebraska (12/30).
- Tallied 11 points via a 5-for-5 free throw shooting effort, six rebounds and three steals in the win over Wagner (12/18).
- Hauled in a career-high nine rebounds to go along with seven points and three assists in the win over UMES (12/11).
- Registered three points to go along with five rebounds, two assists and a personal-best three steals at #19/25 Texas Tech (12/3).
- Had two points, four rebounds and a pair of steals in the Nugget Classic Championship game win over Nevada (11/26).
- Was 5-for-7 from the field en route to 10 points, seven rebounds and an assist at South Carolina (11/20).
- Scored five of her 10 points in a key Lady Lion run that gave Penn State its first lead of the game against Middle Tennessee (11/13). Also notched a pair of steals against the Blue Raiders.
- Tallied four points and two rebounds in the season-opening win over Washington State (11/11).

Edwards vs. the Big Ten

Team	G	Pts.-Avg.	Rebs.-Avg.	Assts.-Avg.	Stls.-Avg.
Illinois	3	6-2.0	2-0.7	2-0.7	0-0.0
Indiana	2	0-0.0	5-2.5	1-0.5	2-1.0
Iowa	2	4-2.0	0-0.0	0-0.0	0-0.0
Michigan	1	2-2.0	2-2.0	0-0.0	1-1.0
Michigan State	1	0-0.0	0-0.0	0-0.0	0-0.0
Minnesota	1	0-0.0	2-2.0	0-0.0	0-0.0
Nebraska	1	6-6.0	2-2.0	0-0.0	2-2.0
Northwestern	2	0-0.0	2-1.0	0-0.0	0-0.0
Ohio State	1	1-1.0	0-0.0	0-0.0	0-0.0
Purdue	3	2-0.7	2-0.7	1-0.3	0-0.0
Wisconsin	2	6-3.0	4-2.0	4-2.0	1-0.5





#24 Mia Nickson

RS-Jr. * F * 6-2 * Ashburn, Va./Notre Dame Acad. (BC)

2011-12 Highlights:

- ♦ Posted first double-double of the season and seventh of her career with 10 points and 14 rebounds, including eight offensive boards, at Wisconsin (1/2).

- ♦ Missed eight games with concussion-like symptoms.
- ♦ Hauled in 10 rebounds, including five on the offensive glass against Middle Tennessee (11/13).

2011-12 Season Notes:

- ♦ Was back in the lineup after missing six games and contributed four points and seven rebounds against Nebraska (12/30).
- ♦ Returned after missing two games to pull down a team-best 13 rebounds with five points and two assists against Iowa State (11/25).
- ♦ Had six points and seven rebounds in the win over Washington State (11/13) in the opening round of the Lady Lion Classic.

CAREER HIGHS

Points.....	26 vs. Texas Tech (12/5/10)
Rebs.....	17 vs. Indiana (1/23/11)
Assists.....	4 vs. Maine (12/12/10)
Steals.....	6 vs. Indiana (1/23/11)
.....	6 vs. Bucknell (12/28/10)
Blocks.....	1 (4x) last at Nevada (11/26/11)
Minutes.....	41 at Dayton (11/12/10)
FGM.....	9 vs. Indiana (1/23/11)
FGA.....	16 vs. Indiana (1/23/11)
FG%.....	1.000 (4X)
.....	last vs. Minnesota (5-5) (1/13/11)
3FGM.....	n/a
3FGA.....	n/a
3PT %.....	n/a
FTM.....	10 vs. Michigan State (2/10/11)
.....	10 vs. Texas Tech (12/5/10)
FTA.....	11 vs. Michigan State (2/10/11)
.....	11 vs. Texas Tech (12/5/10)
FT %.....	1.000 (12X)
.....	last vs. Dayton (6-6) (3/19/11)
Career Double-Doubles.....	7

GAME-BY-GAME

	P	R	A
WASH. STATE	6	7	0
MID. TENN.	3	10	0
at Delaware	DNP		
at South Carolina	DNP		
vs. Iowa State	5	13	2
at Nevada	2	1	0
NORTH CAROLINA	DNP		
at Texas Tech	DNP		
VIRGINIA TECH	DNP		
UMES	DNP		
WAGNER	DNP		
at Bucknell	DNP		
NEBRASKA	4	7	1
at Wisconsin	10	14	1
MICHIGAN ST.			
MICHIGAN			
at Nebraska			
at Illinois			
IOWA			
at Michigan			
at Michigan State			
INDIANA			
at Minnesota			
WISCONSIN			
at Northwestern			
at Purdue			
OHIO STATE			
MINNESOTA			

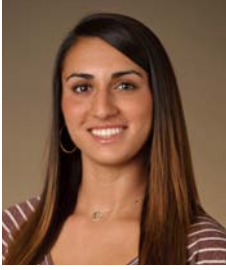
Nickson vs. the Big Ten

Team	G	Pts.-Avg.	Rebs.-Avg.	Assts.-Avg.	Stls.-Avg.
Illinois	3	14-4.7	21-7.0	2-0.7	4-1.3
Indiana	2	37-18.5	23-11.5	2-1.0	7-3.5
Iowa	2	16-8.0	20-10.0	2-1.0	0-0.0
Michigan	1	0-0.0	5-5.0	2-2.0	0-0.0
Michigan State	1	22-2.0	6-6.0	0-0.0	1-1.0
Minnesota *	2	12-6.0	11-5.5	0-0.0	1-0.5
Nebraska	1	4-4.0	7-7.0	1-1.0	1-1.0
Northwestern	2	15-7.5	18-9.0	1-0.5	1-0.5
Ohio State	3	41-13.7	19-6.3	0-0.0	3-1.0
Purdue	3	24-8.0	15-5.0	0-0.0	1-0.3
Wisconsin	2	16-8.0	18-9.0	1-0.5	1-0.5

* - Nickson played vs. Minnesota at Boston College in 2008-09

Five-Time Big Ten Champions • Two-Time Big Ten Tournament Champions • 2000 NCAA Final Four • 22 NCAA Tournament Appearances





#25 Gizelle Studevent

Jr. * G * 5-11 * La Jolla, Calif./The Bishop's School

2011-12 Highlights:

- ♦ Hit a pair of key jumpers en route to four points and three rebounds against Middle Tennessee (11/13).

2011-12 Season Notes:

- ♦ Accounted for four points and three assists at Wisconsin (1/2).
- ♦ Dished out a career-high four assists with two points and three rebounds in the victory over Wagner (12/18).
- ♦ Celebrated her 21st birthday with eight points, three rebounds and an assist in 19 minutes of action in the win over UMES (12/11).
- ♦ Tallied two points and two steals in the win over Virginia Tech (12/6).
- ♦ Nabbed a steal at Texas Tech (12/3).
- ♦ Connected on three of her four shots from the field on the way to six points, three rebounds and a career-high three assists at Nevada (11/26).
- ♦ Was 2-for-3 from the field and finished with four points at Delaware (11/17).
- ♦ Notched two points and a rebound against Washington State (11/11).
- ♦ Had four points and two rebounds in the exhibition win over Bloomsburg (11/5).

CAREER HIGHS

Points.....	10 at Oakland (11/18/10)
Rebs.....	3 (8x) last vs. Wagner (12/17/11)
Assists.....	4 vs. Wagner (12/18/11)
Steals.....	2 vs. Virginia Tech (12/6/11)
Blocks...1 (2x)	last vs. Minnesota (2/11/10)
Minutes....	20 (2x) last vs. Hofstra (3/18/10)
FGM.....	3 (4x) last vs. UMES (12/11/11)
FGA.....	8 vs. Monmouth (12/9/09)
FG%.....	1.000 (3x) last at Ohio State (1-1) (2/17/11)
3FGM....	1 (4x) last vs. Minnesota (1/13/11)
3FGA.....	3 vs. Monmouth (12/9/09)
3PT%.....	1.000 (4x) last vs. Minnesota (1-1) (1/13/11)
FTM.....	3 vs. Maine (12/12/10)
FTA.....	4 vs. Maine (12/12/10)
FT%.....	1.000 (4x) last vs. UMES (2-2) (12/11/11)
Career Double-Doubles	n/a

GAME-BY-GAME

	P	R	A
WASH. STATE	2	1	0
MID. TENN.	4	3	1
at Delaware	4	1	0
at South Carolina	0	1	1
vs. Iowa State	0	0	0
at Nevada	6	3	3
NORTH CAROLINA	0	0	0
at Texas Tech	0	0	0
VIRGINIA TECH	2	0	0
UMES	8	3	1
WAGNER	2	3	4
at Bucknell	2	3	0
NEBRASKA	0	0	0
at Wisconsin	4	1	3
MICHIGAN ST.			
MICHIGAN			
at Nebraska			
at Illinois			
IOWA			
at Michigan			
at Michigan State			
INDIANA			
at Minnesota			
WISCONSIN			
at Northwestern			
at Purdue			
OHIO STATE			
MINNESOTA			

Studevent vs. the Big Ten

Team	G	Pts.-Avg.	Rebs.-Avg.	Assts.-Avg.	Stls.-Avg.
Illinois	3	0-0.0	3-1.0	0-0.0	0-0.0
Indiana	4	2-0.5	0-0.0	0-0.0	0-0.0
Iowa	3	7-2.3	0-0.0	0-0.0	0-0.0
Michigan	3	1-0.3	4-1.3	1-0.3	0-0.0
Michigan State	2	0-0.0	0-0.0	0-0.0	0-0.0
Minnesota	4	15-3.8	1-0.3	0-0.0	1-0.3
Nebraska	1	0-0.0	0-0.0	0-0.0	0-0.0
Northwestern	1	0-0.0	1-1.0	2-2.0	0-0.0
Ohio State	2	2-1.0	0-0.0	0-0.0	0-0.0
Purdue	2	0-0.0	1-0.5	0-0.0	2-1.0
Wisconsin	4	4-1.0	1-0.3	3-0.8	1-0.3





#33 Maggie Lucas

So. * G * 5-10 * Narberth, Pa./Germantown Academy

2011-12 Highlights:

- ♦ On the Naismith Award early-season watch list.
- ♦ Sixth on Penn State's career three-pointers list (145).
- ♦ Named to the Nugget Classic All-Tournament team after averaging 22.0 points, 6.5 rebounds and 3.0 assists in two wins.
- ♦ Selected as Lady Lion Classic MVP after averaging 18.0 points, 5.5 rebounds, 3.5 assists and 1.0 steals in a pair of wins.

2011-12 Season Notes:

- ♦ Handed out a career-high seven assists to compliment 18 points and four rebounds at Wisconsin (1/2).
- ♦ Recorded 18 points, seven rebounds and a pair of assists against Nebraska (12/30).
- ♦ Dropped in 22 points on 7-of-10 shooting to go along with five rebounds, three assists and a steal in a road win over Bucknell (12/21).
- ♦ Posted third-straight 20-point game with 23 tallies that included an 8-for-8 day at the free throw line in the win over Wagner (12/18).
- ♦ Reached the 20-point mark for the fourth time in five games with 20 tallies and five rebounds in the win over UMES (12/11).
- ♦ Had a game-high 20 points on 8-of-16 shooting to go along with eight rebounds and a pair of assists in the win over Virginia Tech (12/6).
- ♦ Chipped in 15 points, two assists and three steals at #19/25 Texas Tech (12/3).
- ♦ Posted 21 points in 22 minutes, including five three-pointers, in the win over #14/13 North Carolina (11/30).
- ♦ Tallied 26 points to go along with seven rebounds and a career-high five assists in the Nugget Classic title game against Nevada (11/26).
- ♦ Accounted for a game-high 18 points, including six of Penn State's final nine points, with six rebounds and two steals in the win over Iowa State (11/25).
- ♦ Tallied a team-best 18 points with two assists and two rebounds at South Carolina (11/20).
- ♦ Reached the 600-point plateau with 12 points to go along with three rebounds and two assists at Delaware (11/17). She reaches 600 points in the third-fewest games in school history (Kelly Mazzante & Susan Robinson; 33 games).
- ♦ Connected on a trio of three-pointers en route to 14 points and a career-high five assists in the victory over Middle Tennessee (11/13).
- ♦ Tied for team scoring honors with 22 points, including an 11-for-13 effort from the free throw line, in the season-opening win over Washington State (11/11).
- ♦ Pulled in a personal-best nine rebounds in the win over the Cougars.

CAREER HIGHS

Points.....	28 at Boston College (12/2/10)
Rebs.	9 vs. Washington State (11/11/11)
Assists	7 at Wisconsin (1/2/12)
Steals.....	4 (3x) last vs. Iowa (12/30/10)
Blocks	2 vs. Purdue (2/24/11)
Minutes	39 at Delaware (11/17/11)
.....	39 at Boston College (12/2/10)
FGM.....	9 (3x) last at Michigan (2/3/11)
FGA	18 at Boston College (12/2/10)
FG%714 (5-7) at Northwestern (1/6/11)
3FGM.....	7 vs. Hartford (11/27/10)
3FGA.....	16 at Boston College (12/2/10)
3PT %...	1.000 (4-4) at Bucknell (12/21/11)
FTM	11 vs. Washington State (11/11/11)
FTA	13 vs. Washington State (11/11/11)
FT %	1.000 (22x)
.....	last at Wisconsin (4-4) (1/2/12)
Career Double-Doubles	n/a

GAME-BY-GAME

	P	R	A
WASH. STATE	22	9	2
MID. TENN.	14	2	5
at Delaware	12	3	2
at South Carolina	18	2	2
vs. Iowa State	18	6	1
at Nevada	26	7	5
NORTH CAROLINA	21	2	1
at Texas Tech	15	1	2
VIRGINIA TECH	20	8	2
UMES	20	5	1
WAGNER	23	4	1
at Bucknell	22	5	3
NEBRASKA	18	7	2
at Wisconsin	18	4	7
MICHIGAN ST.			
MICHIGAN			
at Nebraska			
at Illinois			
IOWA			
at Michigan			
at Michigan State			
INDIANA			
at Minnesota			
WISCONSIN			
at Northwestern			
at Purdue			
OHIO STATE			
MINNESOTA			

Lucas vs. the Big Ten

Team	G	Pts.-Avg.	Rebs.-Avg.	Assts.-Avg.	Stls.-Avg.
Illinois	3	55-18.3	13-4.3	4-1.3	3-1.0
Indiana	2	34-17.0	7-3.5	2-1.0	1-0.5
Iowa	2	27-13.5	6-3.0	2-1.0	5-2.5
Michigan	1	23-23.0	4-0	0-0.0	1-1.0
Michigan State	1	15-15.0	3-3.0	2-2.0	3-3.0
Minnesota	1	20-20.0	3-3.0	1-1.0	3-3.0
Nebraska	1	18-18.0	7-7.0	2-2.0	0-0.0
Northwestern	2	41-20.5	3-1.5	7-3.5	3--1.5
Ohio State	3	34-11.3	6-2.0	6-2.0	4-1.3
Purdue	3	35-11.7	6-2.0	6-2.0	6-2.0
Wisconsin	2	24-12.0	6-3.0	9-4.5	1-0.5





#40 Marisa Wolfe

Jr. * F * 6-2 * Ford City, Pa./Ford City

2011-12 Season Notes:

- ♦ Had four points and two rebounds at Wisconsin (1/2).
- ♦ Was 3-for-5 from the field and 3-for-3 from the free throw line to finish with nine points at Bucknell (12/21).
- ♦ Registered nine points on 4-of-6 shooting to compliment seven rebounds, one block and two steals in the win over Wagner (12/18).
- ♦ Had two points and three rebounds in the win over Virginia Tech (12/6).
- ♦ Drained her fourth career three-pointer and finished the game with seven points, two rebounds and a personal-best three steals versus #14/13 North Carolina (11/30).
- ♦ Notched four points with a pair of rebounds and an assist in the win at Nevada (11/26).
- ♦ Scored four points to go along with two offensive rebounds and a pair of steals in the win over Iowa State (11/25).
- ♦ Was 2-for-3 from the field and finished with four points in her first game of the season at South Carolina (11/20).
- ♦ Missed the first three games of the season due to concussion-like symptoms.

CAREER HIGHS

Points	13 vs. Michigan (2/18/10)
Rebs.	7 vs. Wagner (12/18/11)
	7 vs. Green Bay (11/26/10)
Assists	1 (13x)
	last vs. Wagner (12/18/11)
Steals	3 vs. North Carolina (11/30/11)
	3 at Northwestern (1/3/10)
Blocks	2 (4x)
	last at Northwestern (1/6/11)
Minutes	30 vs. Green Bay (11/26/10)
FGM	5 vs. Michigan (2/18/10)
	5 at Northwestern (1/3/10)
FGA	8 vs. North Carolina (11/30/11)
FG%	1.000 (8x)
	last vs. Virginia Tech (1-1) (12/6/11)
3FGM	2 vs. Illinois (1/24/10)
3FGA	3 vs. Illinois (1/24/10)
3PT%	.667 (2-3) vs. Illinois (1/24/10)
FTM	4 vs. South Carolina (11/21/10)
FTA	4 (3x)
	last vs. Green Bay (11/26/10)
FT%	1.000 (15x)
	last at Wisconsin (2-2) (1/2/12)
Career Double-Doubles	n/a

GAME-BY-GAME

	P	R	A
WASH. STATE	DNP		
MID. TENN.	DNP		
at Delaware	DNP		
at South Carolina	4	0	0
vs. Iowa State	4	2	1
at Nevada	4	2	1
NORTH CAROLINA	7	2	0
at Texas Tech	0	4	0
VIRGINIA TECH	2	3	1
UMES	3	3	1
WAGNER	9	7	1
at Bucknell	9	3	0
NEBRASKA	0	0	1
at Wisconsin	4	2	0
MICHIGAN ST.			
MICHIGAN			
at Nebraska			
at Illinois			
IOWA			
at Michigan			
at Michigan State			
INDIANA			
at Minnesota			
WISCONSIN			
at Northwestern			
at Purdue			
OHIO STATE			
MINNESOTA			

Wolfe vs. the Big Ten

Team	G	Pts.-Avg.	Rebs.-Avg.	Assts.-Avg.	Stls.-Avg.
Illinois	5	15-3.0	10-2.0	1-0.2	5-1.0
Indiana	3	11-3.7	12-4.0	0-0.0	0-0.0
Iowa	4	10-2.5	12-3.0	0-0.0	2-0.5
Michigan	3	15-5.0	8-2.7	0-0.0	0-0.0
Michigan State	3	4-1.3	5-1.7	0-0.0	1-0.3
Minnesota	4	2-0.5	8-2.0	2-0.5	2-0.5
Nebraska	1	0-0.0	0-0.0	1-1.0	0-0.0
Northwestern	3	18-6.0	9-3.0	1-0.3	4-1.3
Ohio State	4	9-2.3	7-1.8	2-0.5	1-0.3
Purdue	5	10-2.0	12-2.4	0-0.0	1-0.2
Wisconsin	3	4-1.3	8-2.7	0-0.0	1-0.3





#44 Tori Waldner

Fr. * F/C * 6-5 * Milton, Ga./Milton

GAME-BY-GAME

	P	R	B
WASH. STATE ^a	DNP		
MID. TENN.	DNP		
at Delaware	0	2	0
at South Carolina	0	0	0
vs. Iowa State	5	1	1
at Nevada	0	3	0
NORTH CAROLINA	6	2	2
at Texas Tech	5	3	1
VIRGINIA TECH	2	5	0
UMES	4	9	2
WAGNER	5	10	3
at Bucknell	2	3	1
NEBRASKA	0	0	0
at Wisconsin	6	2	0
MICHIGAN ST.			
MICHIGAN			
at Nebraska			
at Illinois			
IOWA			
at Michigan			
at Michigan State			
INDIANA			
at Minnesota			
WISCONSIN			
at Northwestern			
at Purdue			
OHIO STATE			
MINNESOTA			

2011-12 Season Notes:

- ♦ Tied her career high with six points and two assists at Wisconsin (1/2).
- ♦ Snared a career-best 10 rebounds to go along with five points, two assists and a pair of blocks in the win over Wagner (12/18).
- ♦ Pulled in nine rebounds and made both of her shots from the field en route to four points in the win over UMES (12/11).
- ♦ Had five rebounds versus Virginia Tech (12/6).
- ♦ Accounted for five points, three rebounds, an assist and a blocked shot at #19/25 Texas Tech (12/3).
- ♦ Was 3-for-4 from the field and finished with a career-high six points with two rebounds and two blocked shots in the win over #14/13 North Carolina (11/30).
- ♦ Scored her first collegiate points on a 15-footer in the first half en route to five points and a blocked shot in the Nugget Classic win over Iowa State (11/25).
- ♦ Saw her first action of the season at Delaware (11/17) and pulled in a pair of rebounds in eight minutes on the court.
- ♦ Had three points and a rebound in four minutes of action in the exhibition win over Bloomsburg (11/5).

CAREER HIGHS

Points	6 at Wisconsin (1/2/12)
.....6 vs. North Carolina (11/30/11)	
Rebs.	10 vs. Wagner (12/18/11)
Assists	2 at Wisconsin (1/2/12)
.....2 vs. Wagner (12/18/11)	
Steals	2 at Nevada (11/26/11)
Blocks	3 vs. Wagner (12/18/11)
Minutes	21 vs. UMES (12/11/11)
FGM	3 at Wisconsin (1/2/12)
.....3 vs. North Carolina (11/30/11)	
FGA	5 at Texas Tech (12/3/11)
FG%	1.000 (2-2) vs. UMES (12/11/11)
.....1.000 (2-2) vs. Iowa St. (11/25/11)	
3FGM	n/a
3FGA	n/a
3PT %	n/a
FTM	3 vs. Wagner (12/18/11)
FTA	4 vs. Wagner (12/18/11)
FT %	.750 (3-4) vs. Wagner (12/18/11)
Career Double-Doubles	n/a

Waldner vs. the Big Ten

Team	G	Pts.-Avg.	Rebs.-Avg.	Assts.-Avg.	Stls.-Avg.
Illinois	-	-	-	-	-
Indiana	-	-	-	-	-
Iowa	-	-	-	-	-
Michigan	-	-	-	-	-
Michigan State	-	-	-	-	-
Minnesota	-	-	-	-	-
Nebraska	1	0-0.0	0-0.0	0-0.0	2-2.0
Northwestern	-	-	-	-	-
Ohio State	-	-	-	-	-
Purdue	-	-	-	-	-
Wisconsin	1	6-6.0	2-2.0	2-2.0	1-1.0





#54 Nikki Greene

Jr. * C * 6-4 * Diboll, Texas/Diboll

2011-12 Highlights:

- ♦ Sixth on Penn State's career blocks list with 150 rejections.
- ♦ Tied for 23rd on Penn State's career rebounding list (570).
- ♦ Became the 27th member of the Lady Lions' 500-rebound club with seven caroms against Iowa State (11/25).

2011-12 Season Notes:

- ♦ Registered 14 points, seven rebounds and two blocks at Wisconsin (1/2).
- ♦ Pulled in a season-best 15 rebounds to go along with nine points, a career-high four steals and two blocks in the Big Ten opener versus Nebraska (12/30).
- ♦ Just missed out on a double-double with 11 points and nine rebounds at Bucknell (12/21).
- ♦ Was a perfect 6-for-6 from the field on the way to 13 points, four rebounds and three blocks in the win over UMES (12/11).
- ♦ Tallied 14 points on 6-of-8 shooting with five rebounds, a block and three steals in the win over Virginia Tech (12/6).
- ♦ Playing in her home state of Texas for the first time, tallied 11 points, eight rebounds and a block at #19/25 Texas Tech (12/3).
- ♦ Accounted for 13 points, six rebounds and three blocked shots in the win over #14/13 North Carolina (11/30).
- ♦ Chipped in 11 points and seven rebounds in 16 minutes of action at Nevada (11/26).
- ♦ Narrowly missed a double-double with nine points, 10 rebounds and a blocked shot in the Lady Lion Classic Championship game win over Middle Tennessee (11/13).
- ♦ Snared a team-best 12 rebounds to go along with three points, two blocks and three steals against Washington State (11/11).

CAREER HIGHS

Points.....	24 vs. Utah (11/25/10)
Rebs.....	20 vs. Indiana (1/23/11)
Assists.....	2 (2x) last vs. Purdue (1/28/10)
Steals... 4 (3x) last vs. Nebraska (12/30/11)	
Blocks.....	7 vs. Purdue (1/28/10)
Minutes.....	32 vs. Purdue (1/28/10)
FGM.....	9 vs. Utah (11/25/10)
.....	9 at Dayton (11/12/10)
FGA.....	17 at Dayton (11/12/10)
FG%.....	1.000 (6-6) vs. UMES (12/11/11)
.....	1.000 (1-1) at Minnesota (12/6/09)
3FGM.....	n/a
3FGA.....	n/a
3PT%.....	n/a
FTM.....	8 vs. Pittsburgh (12/12/09)
FTA.....	13 vs. Monmouth (12/9/09)
FT%.....	1.000 (10x)
.....	last vs. North Carolina (1-1) (11/30/11)
Career Double-Doubles.....	7

GAME-BY-GAME

	P	R	B
WASH. STATE	3	12	2
MID. TENN.	9	10	1
at Delaware	6	4	0
at South Carolina	5	4	1
vs. Iowa State	7	7	1
at Nevada	11	7	0
NORTH CAROLINA	13	6	3
at Texas Tech	11	8	1
VIRGINIA TECH	14	5	1
UMES	13	4	3
WAGNER	9	8	3
at Bucknell	11	9	0
NEBRASKA	9	15	2
at Wisconsin	14	7	2
MICHIGAN ST.			
MICHIGAN			
at Nebraska			
at Illinois			
IOWA			
at Michigan			
at Michigan State			
INDIANA			
at Minnesota			
WISCONSIN			
at Northwestern			
at Purdue			
OHIO STATE			
MINNESOTA			

Greene vs. the Big Ten

Team	G	Pts.-Avg.	Rebs.-Avg.	Assts.-Avg.	Blks.-Avg.
Illinois	5	50-10.0	39-7.8	0-0.0	12-2.4
Indiana	4	24-6.0	44-11.0	0-0.0	12-3.0
Iowa	5	33-6.6	35-7.0	1-0.2	11-2.2
Michigan	3	22-7.3	19-6.3	2-0.7	5-1.7
Michigan State	3	18-6.0	21-7.0	0-0.0	1-0.3
Minnesota	4	20-5.0	18-4.5	1-0.3	2-0.5
Nebraska	1	9-9.0	15-15.0	0-0.0	2-2.0
Northwestern	3	14-4.7	18-6.0	2-0.7	4-1.3
Ohio State	4	40-10.0	30-7.5	2-0.5	8-2.0
Purdue	5	34-6.8	41-8.2	3-0.6	14-2.8
Wisconsin	4	50-12.5	27-6.8	2-0.5	9-2.3



#12/14 Penn State 101, Bloomsburg 81

Exhibition Game * Nov. 5, 2011 * University Park, Pa.

Bloomsburg 81

#	Player	Total		3-Ptr		Rebounds			PF	TP	A	TO	Blk	Stl	Min
		FG-FGA	FG-FGA	FT-FTA	Off	Def	Tot								
03	GALLAGHER, Kelsey	8-15	4-5	2-2	1	3	4	1	22	1	4	1	1	25	
20	FLANAGAN, Alyssa	0-2	0-1	2-4	1	3	4	2	2	6	4	2	1	28	
22	OYENRIDER, Kayla	4-11	1-3	5-6	0	3	3	2	14	2	7	1	2	32	
31	ELLIS, Lauren	1-2	0-0	0-0	2	7	9	4	2	3	0	0	0	32	
34	WELLER, Dana	5-10	3-5	3-4	1	3	4	5	16	0	4	0	0	23	
05	DUDECK, Brianna	0-3	0-0	0-0	1	0	1	0	0	0	1	0	0	6	
10	NYCE, Courtney	0-3	0-2	0-0	0	1	1	2	0	0	2	0	0	5	
15	NOACK, Catherine	6-8	5-6	2-2	2	2	4	0	19	1	2	0	0	26	
30	SIMMONS, Marla	2-4	0-1	2-2	1	3	4	1	6	1	2	0	0	11	
32	BORSKI, Maggie	0-0	0-0	0-0	0	0	0	0	1	0	0	0	0	11	
Team				1			0								
Totals		26-58	13-23	16-20	10	25	35	17	81	15	26	4	4	200	
FG % 1st Half: 11-26		42.3%	2nd half: 15-32	46.9%	Game: 26-58	44.8%						Deadball			
3FG % 1st Half: 7-10		70.0%	2nd half: 6-13	46.2%	Game: 13-23	56.5%						Rebounds		3	
FT % 1st Half: 6-9		66.7%	2nd half: 10-11	90.9%	Game: 16-20	80.0%									

Penn State 101

#	Player	Total		3-Ptr		Rebounds			PF	TP	A	TO	Blk	Stl	Min
		FG-FGA	FG-FGA	FT-FTA	Off	Def	Tot								
12	Gray, Zhaque	4-12	1-4	0-0	0	1	1	4	9	0	1	0	2	30	
20	Bentley, Alex	7-12	0-2	2-2	2	6	8	2	16	9	2	0	7	30	
24	Nickson, Mia	5-9	0-0	4-4	3	1	4	3	14	0	0	1	1	22	
33	Lucas, Maggie	10-15	7-8	8-9	0	3	3	2	35	1	1	0	1	35	
54	Greene, Nikki	6-8	0-0	0-2	4	3	7	3	12	0	2	0	0	16	
05	East, Talia	2-3	0-0	0-0	2	3	5	2	4	0	1	0	2	13	
23	Edwards, Ariel	1-10	0-1	2-3	3	3	6	3	4	0	2	0	1	30	
25	Studevent, Gizelle	2-8	0-1	0-0	1	1	2	1	4	0	2	0	0	20	
44	Waldner, Tori	1-1	0-0	1-1	0	1	1	0	3	0	0	0	0	4	
Team				2			1								
Totals		38-78	8-16	17-21	17	23	40	20	101	10	12	1	14	200	
FG % 1st Half: 18-41		43.9%	2nd half: 20-37	54.1%	Game: 38-78	48.7%						Deadball			
3FG % 1st Half: 4-11		36.4%	2nd half: 4-5	80.0%	Game: 8-16	50.0%						Rebounds		2	
FT % 1st Half: 7-9		77.8%	2nd half: 10-12	83.3%	Game: 17-21	81.0%									

Officials: Kevin Pethel, Kathy Ridilla, Shannon Feck
 Technical fouls: Bloomsburg-None, Penn State-None.
 Attendance: 7742

Score by periods	1st	2nd	Total
Bloomsburg	35	46	81
Penn State	47	54	101

Last FG - BLOOM 2nd-01:25, PSU11:12 2nd-01:08.
 Largest lead - BLOOM by 5 1st-18:42, PSU11:12 by 20 2nd-11:10.

Score tied - 4 times.
 Lead changed - 3 times.

Notable

- Sophomore guard **Maggie Lucas** led the Lady Lions' offensive outburst with 35 points, including a 7-for-8 effort from three-point range.
- **Alex Bentley** had an all-around performance with 16 points, eight rebounds, nine assists and seven steals.
- Junior forward **Mia Nickson** also reached double figures with 14 points and four rebounds.

#12/14 Penn State 65, Middle Tennessee State 49

Game #2 * Nov. 13, 2011 * University Park, Pa.

Middle Tennessee 49 - 1-1

#	Player	Total		3-Ptr		Rebounds			PF	TP	A	TO	Blk	Stl	Min
		FG-FGA	FG-FGA	FT-FTA	Off	Def	Tot								
01	Brinkley, Janay	0-8	0-3	0-0	1	3	4	1	0	3	0	0	2	24	
13	Elie, Icelyn	5-10	1-4	2-2	3	7	10	5	13	0	1	0	3	37	
21	Rowe, Ebony	4-12	0-0	4-6	5	8	13	1	12	2	3	1	0	40	
24	Jones, Kortni	4-14	3-10	2-2	0	4	4	0	13	3	4	0	0	40	
42	Stewart, KeKe	2-7	2-6	1-2	0	3	3	4	7	2	2	3	0	18	
05	Cason, Shanice	0-3	0-3	2-2	1	1	2	3	2	1	5	0	1	29	
11	Ajanaku, Jamila	1-2	0-1	0-0	1	0	1	1	2	0	1	0	0	5	
23	March, Lauren	0-0	0-0	0-0	0	0	0	0	0	0	0	0	0	2	
52	Leonard, Laken	0-0	0-0	0-0	0	0	0	2	0	1	0	0	0	5	
Team				1			2								
Totals		16-56	6-27	11-14	12	28	40	17	49	12	18	4	6	200	
FG % 1st Half: 10-30		33.3%	2nd half: 6-26	23.1%	Game: 16-56	28.6%						Deadball			
3FG % 1st Half: 3-17		17.6%	2nd half: 3-10	30.0%	Game: 6-27	22.2%						Rebounds		2	
FT % 1st Half: 9-10		90.0%	2nd half: 3-4	50.0%	Game: 11-14	78.6%									

Penn State 65 - 2-0

#	Player	Total		3-Ptr		Rebounds			PF	TP	A	TO	Blk	Stl	Min
		FG-FGA	FG-FGA	FT-FTA	Off	Def	Tot								
12	Gray, Zhaque	6-13	2-7	1-1	2	4	6	0	15	2	3	0	0	29	
20	Bentley, Alex	2-10	0-3	4-4	1	1	2	2	8	4	3	0	3	35	
24	Nickson, Mia	1-6	0-0	1-2	5	10	2	3	0	0	0	0	1	30	
33	Lucas, Maggie	4-12	3-9	3-4	1	1	2	2	14	5	3	0	2	35	
54	Greene, Nikki	4-9	0-0	1-3	5	5	10	4	9	0	2	1	1	19	
05	East, Talia	1-4	0-0	0-1	2	4	6	3	2	0	0	1	1	19	
23	Edwards, Ariel	4-10	0-2	2-3	0	1	1	1	10	1	1	0	2	22	
25	Studevent, Gizelle	2-5	0-0	0-0	0	3	3	0	4	1	0	0	0	11	
Team				5			10								
Totals		24-69	5-21	12-18	21	29	50	14	65	13	12	2	10	200	
FG % 1st Half: 9-33		27.3%	2nd half: 15-36	41.7%	Game: 24-69	34.8%						Deadball			
3FG % 1st Half: 0-10		0.0%	2nd half: 5-11	45.5%	Game: 5-21	23.8%						Rebounds		2	
FT % 1st Half: 8-11		72.7%	2nd half: 4-7	57.1%	Game: 12-18	66.7%									

Officials: Mark Zentz, Jennifer Rezac, Kathy Ridilla
 Technical fouls: Middle Tennessee-None, Penn State-None.
 Attendance: 3238

Score by periods	1st	2nd	Total
Middle Tennessee	32	17	49
Penn State	26	39	65

Last FG - MT 2nd-08:29, PSU 2nd-00:29.
 Largest lead - MT by 10 1st-16:57, PSU by 16 2nd-00:29.

Score tied - 3 times.
 Lead changed - 3 times.

Notable

- The Lady Lions used a 30-6 run, including a 19-0 spurt in the final seven minutes to erase a 10-point second-half deficit.
- The Lady Lions win their 27th regular-season tournament title and third under head coach **Coquese Washington**.
- Junior guard **Alex Bentley** surpassed the 900-point mark for her career with eight points.

#12/14 Penn State 72, Washington 60

Game #1 * Nov. 11, 2011 * University Park, Pa.

Washington State 60 - 0-1

#	Player	Total		3-Ptr		Rebounds			PF	TP	A	TO	Blk	Stl	Min
		FG-FGA	FG-FGA	FT-FTA	Off	Def	Tot								
01	Cook, April	1-5	0-1	0-0	0	3	3	3	2	1	1	1	1	18	
03	Adzasaw, Rosetta	2-6	0-0	0-0	1	2	3	3	4	5	4	1	1	22	
11	Perkins, Jazmine	4-17	1-5	0-1	4	9	13	2	9	2	1	0	4	28	
21	Tarnowski, Rosie	3-8	1-4	3-3	1	2	3	3	10	0	0	0	1	18	
33	Noyes, Carly	3-6	0-0	0-0	3	1	4	4	6	3	2	0	0	27	
02	Amojo, Ireti	3-15	2-7	1-2	0	1	1	1	9	1	2	0	0	25	
10	Presley, Tia	1-5	0-2	0-0	0	0	0	1	2	4	2	0	0	14	
22	Romberg, Sage	5-8	2-2	0-0	2	5	7	4	12	0	1	0	1	15	
23	Dheensaw, Shalie	0-1	0-0	0-0	0	2	2	0	0	0	0	0	0	5	
24	Thomas, Brandi	1-4	0-2	0-0	3	2	5	1	2	0	2	0	0	13	
42	Potter, Hana	2-7	0-0	0-1	3	1	4	4	4	0	2	0	1	15	
Team				2			1								
Totals		25-82	6-23	4-7	19	29	48	26	60	16	17	2	9	200	
FG % 1st Half: 17-39		43.6%	2nd half: 8-43	18.6%	Game: 25-82	30.5%						Deadball			
3FG % 1st Half: 1-8		12.5%	2nd half: 5-15	33.3%	Game: 6-23	26.1%						Rebounds		3	
FT % 1st Half: 3-4		75.0%	2nd half: 1-3	33.3%	Game: 4-7	57.1%									

Penn State 72 - 1-0

#	Player	Total		3-Ptr		Rebounds			PF	TP	A	TO	Blk	Stl	Min
		FG-FGA	FG-FGA	FT-FTA	Off	Def	Tot								
12	Gray, Zhaque	3-11	1-4	0-1	0	4	4	4	7	1	2	0	1	28	
20	Bentley, Alex	7-13	2-2	6-6	0	4	4	3	22	4	8	0	2	36	
24	Nickson, Mia	1-7	0-0	4-7	2	5	7	4	6	0	2	0	1	32	
33	Lucas, Maggie	4-10	3-7	11-13	2	7	9	1	22	2	3	1	0	38	
54	Greene, Nikki	0-5	0-0	3-4	3	9	12	4	3	1	4				

2011-12 RADIO/TV CHART



#2

Dara Taylor
5-8 * Jr./Jr. * G
Wilmington, Del.
Caravel Academy
(Maryland)



#5

Talia East
6-3 * So./So. * F/C
Philadelphia, Pa.
Friends' Central School



#12

Zhaque Gray
5-8 * Sr./Sr. * G
Chicago, Ill.
Prep John Hope



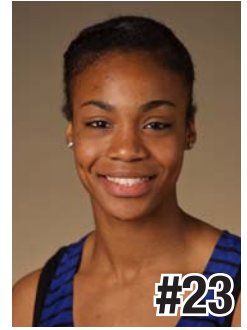
#15

Renee Womack
5-10 * Sr./Sr. * G
Lansdale, Pa.
Methacton



#20

Alex Bentley
5-7 * Jr./Jr. * G
Indianapolis, Ind.
Ben Davis



#23

Ariel Edwards
6-2 * So./So. * F
Elmont, N.Y.
Christ the King



#24

Mia Nickson
6-2 * Sr./Jr. * F
Ashburn, Va.
Notre Dame Academy
(Boston College)



#25

Gizelle Studevent
5-11 * Jr./Jr. * G
La Jolla, Calif.
The Bishop's School



#33

Maggie Lucas
5-10 * So./So. * G
Narberth, Pa.
Germantown Academy



#40

Marisa Wolfe
6-2 * Jr./Jr. * F
Ford City, Pa.
Ford City



#44

Tori Waldner
6-5 * Fr./Fr. * F/C
Milton, Ga.
Milton



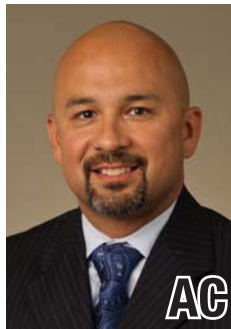
#54

Nikki Greene
6-4 * Jr./Jr. * F/C
Diboll, Texas
Diboll



HC

Coquese Washington
Head Coach
Notre Dame '92
Fifth Season



AC

Fred Chmiel
Assistant Coach
Excelsior College
Second Season



AC

Kia Damon
Assistant Coach
Millersville '97
Fifth Season



AC

Maren Walseth
Assistant Coach
Penn State '02
Fifth Season



DO

Ethan Gelfand
Director of Basketball
Operations
First Season



VO

Mike Miller
Director of Video &
Technology Operations
Seventh Season



2011-12 Penn State Lady Lions
Penn State Combined Team Statistics (as of Jan 02, 2012)
All games

RECORD:	OVERALL	HOME	AWAY	NEUTRAL
ALL GAMES	11-3	6-1	4-2	1-0
CONFERENCE	1-1	0-1	1-0	0-0
NON-CONFERENCE	10-2	6-0	3-2	1-0

##	Player	gp-gs	min	avg	Total		3-Point		F-Throw		Rebounds				pf	dq	a	to	blk	stl	pts	avg		
					fg-fga	fg%	3fg-fga	3fg%	ft-fa	ft%	off	def	tot	avg										
33	Lucas, Maggie	14-14	473	33.8	84-195	.431	33-89	.371	66-77	.857	16	49	65	4.6	27	0	36	36	2	16	267	19.1		
20	Bentley, Alex	14-14	465	33.2	80-173	.462	10-24	.417	41-51	.804	5	29	34	2.4	27	0	81	49	3	45	211	15.1		
12	Gray, Zhaque	14-14	413	29.5	55-133	.414	21-54	.389	23-26	.885	10	31	41	2.9	29	0	29	25	1	14	154	11.0		
54	Greene, Nikki	14-14	257	18.4	51-101	.505	0-0	.000	33-54	.611	38	68	106	7.6	44	0	6	25	20	15	135	9.6		
23	Edwards, Ariel	14-8	378	27.0	36-90	.400	2-13	.154	16-28	.571	15	47	62	4.4	28	1	22	20	3	17	90	6.4		
24	Nickson, Mia	6-6	153	25.5	12-39	.308	0-0	.000	6-13	.462	24	28	52	8.7	16	0	4	6	1	4	30	5.0		
05	East, Talia	14-0	214	15.3	28-54	.519	0-0	.000	11-23	.478	26	68	94	6.7	26	1	5	18	20	8	67	4.8		
40	Wolfe, Marisa	11-0	138	12.5	18-39	.462	1-3	.333	9-12	.750	9	19	28	2.5	22	0	6	9	4	9	46	4.2		
44	Waldner, Tori	12-0	139	11.6	15-30	.500	0-0	.000	5-10	.500	7	33	40	3.3	23	0	8	16	10	8	35	2.9		
25	Studevent, Gizelle	14-0	170	12.1	16-39	.410	0-1	.000	2-2	1.000	5	14	19	1.4	8	0	13	7	0	8	34	2.4		
Team											35	35	70											
Total.....		14	2800		395-893	.442	67-184	.364	212-296	.716	190	421	611	43.6	250	2	210	212	64	144	1069	76.4		
Opponents.....		14	2800		289-907	.319	73-296	.247	161-233	.691	231	348	579	41.4	243	4	163	258	49	88	812	58.0		

TEAM STATISTICS	PSU	OPP	Date	Opponent	Score	Att.
SCORING	1069	812	11/11/11	WASHINGTON STATE	w 72-60	3807
Points per game	76.4	58.0	11/13/11	MIDDLE TENNESSEE	w 65-49	3238
Scoring margin	+18.4	-	11/17/11	at Delaware	L 71-80	3352
FIELD GOALS-ATT	395-893	289-907	11/20/11	at South Carolina	w 55-50	2391
Field goal pct	.442	.319	11/25/11	vs Iowa State	w 66-59	1089
3 POINT FG-ATT	67-184	73-296	11/26/11	at Nevada	w 103-65	759
3-point FG pct	.364	.247	11/30/11	NORTH CAROLINA	w 103-84	3963
3-pt FG made per game	4.8	5.2	12-03-11	at TTU	L 66-70	8923
FREE THROWS-ATT	212-296	161-233	12/6/11	VIRGINIA TECH	w 66-28	3236
Free throw pct	.716	.691	12/11/11	UMES	w 76-51	3386
F-Throws made per game	15.1	11.5	12/18/11	WAGNER	w 103-42	7202
REBOUNDS	611	579	12/21/11	at BUCKNELL	w 78-54	1490
Rebounds per game	43.6	41.4	* 12/30/11	NEBRASKA	L 63-71	5116
Rebounding margin	+2.3	-	* 01/02/12	at Wisconsin	w 82-49	4171
ASSISTS	210	163				
Assists per game	15.0	11.6	* - Conference game			
TURNOVERS	212	258				
Turnovers per game	15.1	18.4				
Turnover margin	+3.3	-				
Assist/turnover ratio	1.0	0.6				
STEALS	144	88				
Steals per game	10.3	6.3				
BLOCKS	64	49				
Blocks per game	4.6	3.5				
ATTENDANCE	29948	22175				
Home games-Avg/Game	7-4278	6-3514				
Neutral site-Avg/Game	-	1-1089				

Score by Periods	1st	2nd	Totals
Penn State	538	531	1069
Opponents	416	396	812

2011-12 Penn State Lady Lions
Penn State Category Leaders (as of Jan 02, 2012)
All games

Points	G	Pts	Pts/G
Lucas, Maggie	14	267	19.1
Bentley, Alex	14	211	15.1
Gray, Zhaque	14	154	11.0
Greene, Nikki	14	135	9.6
Edwards, Ariel	14	90	6.4
East, Talia	14	67	4.8
Wolfe, Marisa	11	46	4.2
Waldner, Tori	12	35	2.9
Studevent, Gizelle	14	34	2.4
Nickson, Mia	6	30	5.0

FG Percentage	FG	Att	Pct
East, Talia	28	54	.519
Greene, Nikki	51	101	.505
Waldner, Tori	15	30	.500
Bentley, Alex	80	173	.462
Wolfe, Marisa	18	39	.462
Lucas, Maggie	84	195	.431
Gray, Zhaque	55	133	.414
Studevent, Gizelle	16	39	.410
Edwards, Ariel	36	90	.400
Nickson, Mia	12	39	.308

3-Point Percentage	3FG	Att	Pct
Bentley, Alex	10	24	.417
Gray, Zhaque	21	54	.389
Lucas, Maggie	33	89	.371
Wolfe, Marisa	1	3	.333
Edwards, Ariel	2	13	.154
Studevent, Gizelle	0	1	.000

Free Throw Percent	FG	Att	Pct
Studevent, Gizelle	2	2	1.000
Gray, Zhaque	23	26	.885
Lucas, Maggie	66	77	.857
Bentley, Alex	41	51	.804
Wolfe, Marisa	9	12	.750
Greene, Nikki	33	54	.611
Edwards, Ariel	16	28	.571
Waldner, Tori	5	10	.500
East, Talia	11	23	.478
Nickson, Mia	6	13	.462

Scoring Average	G	Pts	Avg/G
Lucas, Maggie	14	267	19.1
Bentley, Alex	14	211	15.1
Gray, Zhaque	14	154	11.0
Greene, Nikki	14	135	9.6
Edwards, Ariel	14	90	6.4
Nickson, Mia	6	30	5.0
East, Talia	14	67	4.8
Wolfe, Marisa	11	46	4.2
Waldner, Tori	12	35	2.9
Studevent, Gizelle	14	34	2.4

Field Goal Attempts	G	Att	Att/G
Lucas, Maggie	14	195	13.9
Bentley, Alex	14	173	12.4
Gray, Zhaque	14	133	9.5
Greene, Nikki	14	101	7.2
Edwards, Ariel	14	90	6.4

Field Goals Made	G	Made	Made/G
Lucas, Maggie	14	84	6.0
Bentley, Alex	14	80	5.7
Gray, Zhaque	14	55	3.9
Greene, Nikki	14	51	3.6
Edwards, Ariel	14	36	2.6

3-Point FG Attempts	G	Att	Att/G
Lucas, Maggie	14	89	6.4
Gray, Zhaque	14	54	3.9
Bentley, Alex	14	24	1.7
Edwards, Ariel	14	13	0.9
Wolfe, Marisa	11	3	0.3

3-Point FG Made	G	Made	Made/G
Lucas, Maggie	14	33	2.4
Gray, Zhaque	14	21	1.5
Bentley, Alex	14	10	0.7
Edwards, Ariel	14	2	0.1
Wolfe, Marisa	11	1	0.1

Free Throw Attempts	G	Att	Att/G
Lucas, Maggie	14	77	5.5
Greene, Nikki	14	54	3.9
Bentley, Alex	14	51	3.6
Edwards, Ariel	14	28	2.0
Gray, Zhaque	14	26	1.9

Free Throws Made	G	Made	Made/G
Lucas, Maggie	14	66	4.7
Bentley, Alex	14	41	2.9
Greene, Nikki	14	33	2.4
Gray, Zhaque	14	23	1.6
Edwards, Ariel	14	16	1.1

2011-12 Penn State Lady Lions
 Penn State Category Leaders (as of Jan 02, 2012)
 All games

<u>Rebounds</u>	<u>G</u>	<u>Reb</u>	<u>Reb/G</u>
Greene, Nikki	14	106	7.6
East, Talia	14	94	6.7
Lucas, Maggie	14	65	4.6
Edwards, Ariel	14	62	4.4
Nickson, Mia	6	52	8.7

<u>Assists</u>	<u>G</u>	<u>No.</u>	<u>Ast/G</u>
Bentley, Alex	14	81	5.8
Lucas, Maggie	14	36	2.6
Gray, Zhaque	14	29	2.1
Edwards, Ariel	14	22	1.6
Studevent, Gizelle	14	13	0.9

<u>Rebound Average</u>	<u>G</u>	<u>Reb</u>	<u>Avg/G</u>
Nickson, Mia	6	52	8.7
Greene, Nikki	14	106	7.6
East, Talia	14	94	6.7
Lucas, Maggie	14	65	4.6
Edwards, Ariel	14	62	4.4

<u>Steals</u>	<u>G</u>	<u>No.</u>	<u>Stl/G</u>
Bentley, Alex	14	45	3.2
Edwards, Ariel	14	17	1.2
Lucas, Maggie	14	16	1.1
Greene, Nikki	14	15	1.1
Gray, Zhaque	14	14	1.0

<u>Offensive Rebounds</u>	<u>G</u>	<u>No.</u>	<u>Avg/G</u>
Greene, Nikki	14	38	2.7
East, Talia	14	26	1.9
Nickson, Mia	6	24	4.0
Lucas, Maggie	14	16	1.1
Edwards, Ariel	14	15	1.1

<u>Blocked Shots</u>	<u>G</u>	<u>No.</u>	<u>Blk/G</u>
Greene, Nikki	14	20	1.4
East, Talia	14	20	1.4
Waldner, Tori	12	10	0.8
Wolfe, Marisa	11	4	0.4
Bentley, Alex	14	3	0.2
Edwards, Ariel	14	3	0.2

<u>Defensive Rebounds</u>	<u>G</u>	<u>No.</u>	<u>Avg/G</u>
Greene, Nikki	14	68	4.9
East, Talia	14	68	4.9
Lucas, Maggie	14	49	3.5
Edwards, Ariel	14	47	3.4
Waldner, Tori	12	33	2.8

<u>Minutes</u>	<u>G</u>	<u>No.</u>	<u>Min/G</u>
Lucas, Maggie	14	473	33.8
Bentley, Alex	14	465	33.2
Gray, Zhaque	14	413	29.5
Edwards, Ariel	14	378	27.0
Greene, Nikki	14	257	18.4

<u>Fouls</u>	<u>G</u>	<u>No.</u>	<u>Per/G</u>
Greene, Nikki	14	44	3.1
Gray, Zhaque	14	29	2.1
Edwards, Ariel	14	28	2.0
Bentley, Alex	14	27	1.9
Lucas, Maggie	14	27	1.9

<u>Turnovers</u>	<u>G</u>	<u>No.</u>	<u>TO/G</u>
Bentley, Alex	14	49	3.5
Lucas, Maggie	14	36	2.6
Gray, Zhaque	14	25	1.8
Greene, Nikki	14	25	1.8
Edwards, Ariel	14	20	1.4

<u>Foulouts</u>	<u>G</u>	<u>No.</u>
Edwards, Ariel	14	1
East, Talia	14	1

2011-12 Penn State Lady Lions
Penn State Combined Team Statistics (as of Jan 02, 2012)
Conference games

RECORD:	OVERALL	HOME	AWAY	NEUTRAL
ALL GAMES	1-1	0-1	1-0	0-0
CONFERENCE	1-1	0-1	1-0	0-0
NON-CONFERENCE	0-0	0-0	0-0	0-0

##	Player	gp-gs	min	avg	Total		3-Point		F-Throw		Rebounds				pf	dq	a	to	blk	stl	pts	avg
					fg-fga	fg%	3fg-fga	3fg%	ft-fta	ft%	off	def	tot	avg								
33	Lucas, Maggie	2-2	67	33.5	13-35	.371	3-13	.231	7-7	1.000	6	5	11	5.5	4	0	9	6	0	1	36	18.0
20	Bentley, Alex	2-2	67	33.5	13-35	.371	1-4	.250	3-6	.500	0	5	5	2.5	3	0	11	8	1	12	30	15.0
54	Greene, Nikki	2-2	41	20.5	10-18	.556	0-0	.000	3-7	.429	8	14	22	11.0	5	0	0	0	4	5	23	11.5
24	Nickson, Mia	2-2	58	29.0	7-15	.467	0-0	.000	0-0	.000	12	9	21	10.5	6	0	2	3	0	2	14	7.0
23	Edwards, Ariel	2-0	51	25.5	5-11	.455	0-0	.000	2-5	.400	2	4	6	3.0	3	0	4	1	1	3	12	6.0
05	East, Talia	2-0	21	10.5	2-3	.667	0-0	.000	4-4	1.000	3	8	11	5.5	0	0	0	2	1	0	8	4.0
12	Gray, Zhaque	2-2	42	21.0	3-17	.176	2-8	.250	0-0	.000	1	2	3	1.5	1	0	2	4	0	1	8	4.0
44	Waldner, Tori	2-0	19	9.5	3-6	.500	0-0	.000	0-0	.000	0	2	2	1.0	3	0	2	2	0	3	6	3.0
40	Wolfe, Marisa	2-0	14	7.0	1-3	.333	0-0	.000	2-2	1.000	0	2	2	1.0	2	0	1	2	0	0	4	2.0
25	Studevent, Gizelle	2-0	20	10.0	2-7	.286	0-0	.000	0-0	.000	0	1	1	0.5	0	0	3	0	0	1	4	2.0
Team											5	2	7									
Total.....		2	400		59-150	.393	6-25	.240	21-31	.677	37	54	91	45.5	27	0	34	28	7	28	145	72.5
Opponents.....		2	400		44-116	.379	8-40	.200	24-31	.774	22	59	81	40.5	27	0	26	41	7	9	120	60.0

TEAM STATISTICS	PSU	OPP	Date	Opponent	Score	Att.
SCORING	145	120	* 12/30/11	NEBRASKA	L 63-71	5116
Points per game	72.5	60.0	* 01/02/12	at Wisconsin	w 82-49	4171
Scoring margin	+12.5	-	* - Conference game			
FIELD GOALS-ATT	59-150	44-116				
Field goal pct	.393	.379				
3 POINT FG-ATT	6-25	8-40				
3-point FG pct	.240	.200				
3-pt FG made per game	3.0	4.0				
FREE THROWS-ATT	21-31	24-31				
Free throw pct	.677	.774				
F-Throws made per game	10.5	12.0				
REBOUNDS	91	81				
Rebounds per game	45.5	40.5				
Rebounding margin	+5.0	-				
ASSISTS	34	26				
Assists per game	17.0	13.0				
TURNOVERS	28	41				
Turnovers per game	14.0	20.5				
Turnover margin	+6.5	-				
Assist/turnover ratio	1.2	0.6				
STEALS	28	9				
Steals per game	14.0	4.5				
BLOCKS	7	7				
Blocks per game	3.5	3.5				
ATTENDANCE	5116	4171				
Home games-Avg/Game	1-5116	1-4171				
Neutral site-Avg/Game	-	0-0				

Score by Periods	1st	2nd	Totals
Penn State	78	67	145
Opponents	63	57	120

2011-12 Penn State Lady Lions
Penn State Category Leaders (as of Jan 02, 2012)
Conference games

Points	G	Pts	Pts/G
Lucas, Maggie	2	36	18.0
Bentley, Alex	2	30	15.0
Greene, Nikki	2	23	11.5
Nickson, Mia	2	14	7.0
Edwards, Ariel	2	12	6.0
Gray, Zhaque	2	8	4.0
East, Talia	2	8	4.0
Waldner, Tori	2	6	3.0
Studevent, Gizelle	2	4	2.0
Wolfe, Marisa	2	4	2.0

FG Percentage	FG	Att	Pct
East, Talia	2	3	.667
Greene, Nikki	10	18	.556
Waldner, Tori	3	6	.500
Nickson, Mia	7	15	.467
Edwards, Ariel	5	11	.455
Bentley, Alex	13	35	.371
Lucas, Maggie	13	35	.371
Wolfe, Marisa	1	3	.333
Studevent, Gizelle	2	7	.286
Gray, Zhaque	3	17	.176

3-Point Percentage	3FG	Att	Pct
Gray, Zhaque	2	8	.250
Bentley, Alex	1	4	.250
Lucas, Maggie	3	13	.231

Free Throw Percent	FG	Att	Pct
Lucas, Maggie	7	7	1.000
East, Talia	4	4	1.000
Wolfe, Marisa	2	2	1.000
Bentley, Alex	3	6	.500
Greene, Nikki	3	7	.429
Edwards, Ariel	2	5	.400

Scoring Average	G	Pts	Avg/G
Lucas, Maggie	2	36	18.0
Bentley, Alex	2	30	15.0
Greene, Nikki	2	23	11.5
Nickson, Mia	2	14	7.0
Edwards, Ariel	2	12	6.0
East, Talia	2	8	4.0
Gray, Zhaque	2	8	4.0
Waldner, Tori	2	6	3.0
Studevent, Gizelle	2	4	2.0
Wolfe, Marisa	2	4	2.0

Field Goal Attempts	G	Att	Att/G
Lucas, Maggie	2	35	17.5
Bentley, Alex	2	35	17.5
Greene, Nikki	2	18	9.0
Gray, Zhaque	2	17	8.5
Nickson, Mia	2	15	7.5

Field Goals Made	G	Made	Made/G
Lucas, Maggie	2	13	6.5
Bentley, Alex	2	13	6.5
Greene, Nikki	2	10	5.0
Nickson, Mia	2	7	3.5
Edwards, Ariel	2	5	2.5

3-Point FG Attempts	G	Att	Att/G
Lucas, Maggie	2	13	6.5
Gray, Zhaque	2	8	4.0
Bentley, Alex	2	4	2.0

3-Point FG Made	G	Made	Made/G
Lucas, Maggie	2	3	1.5
Gray, Zhaque	2	2	1.0
Bentley, Alex	2	1	0.5

Free Throw Attempts	G	Att	Att/G
Lucas, Maggie	2	7	3.5
Greene, Nikki	2	7	3.5
Bentley, Alex	2	6	3.0
Edwards, Ariel	2	5	2.5
East, Talia	2	4	2.0

Free Throws Made	G	Made	Made/G
Lucas, Maggie	2	7	3.5
East, Talia	2	4	2.0
Greene, Nikki	2	3	1.5
Bentley, Alex	2	3	1.5
Edwards, Ariel	2	2	1.0
Wolfe, Marisa	2	2	1.0

2011-12 Penn State Lady Lions
Penn State Category Leaders (as of Jan 02, 2012)
Conference games

<u>Rebounds</u>	<u>G</u>	<u>Reb</u>	<u>Reb/G</u>
Greene, Nikki	2	22	11.0
Nickson, Mia	2	21	10.5
East, Talia	2	11	5.5
Lucas, Maggie	2	11	5.5
Edwards, Ariel	2	6	3.0

<u>Rebound Average</u>	<u>G</u>	<u>Reb</u>	<u>Avg/G</u>
Greene, Nikki	2	22	11.0
Nickson, Mia	2	21	10.5
Lucas, Maggie	2	11	5.5
East, Talia	2	11	5.5
Edwards, Ariel	2	6	3.0

<u>Offensive Rebounds</u>	<u>G</u>	<u>No.</u>	<u>Avg/G</u>
Nickson, Mia	2	12	6.0
Greene, Nikki	2	8	4.0
Lucas, Maggie	2	6	3.0
East, Talia	2	3	1.5
Edwards, Ariel	2	2	1.0

<u>Defensive Rebounds</u>	<u>G</u>	<u>No.</u>	<u>Avg/G</u>
Greene, Nikki	2	14	7.0
Nickson, Mia	2	9	4.5
East, Talia	2	8	4.0
Lucas, Maggie	2	5	2.5
Bentley, Alex	2	5	2.5

<u>Fouls</u>	<u>G</u>	<u>No.</u>	<u>Per/G</u>
Nickson, Mia	2	6	3.0
Greene, Nikki	2	5	2.5
Lucas, Maggie	2	4	2.0
Bentley, Alex	2	3	1.5
Edwards, Ariel	2	3	1.5
Waldner, Tori	2	3	1.5

<u>Fouls</u>	<u>G</u>	<u>No.</u>
--------------	----------	------------

<u>Assists</u>	<u>G</u>	<u>No.</u>	<u>Ast/G</u>
Bentley, Alex	2	11	5.5
Lucas, Maggie	2	9	4.5
Edwards, Ariel	2	4	2.0
Studevent, Gizelle	2	3	1.5
Waldner, Tori	2	2	1.0
Gray, Zhaque	2	2	1.0
Nickson, Mia	2	2	1.0

<u>Steals</u>	<u>G</u>	<u>No.</u>	<u>Stl/G</u>
Bentley, Alex	2	12	6.0
Greene, Nikki	2	5	2.5
Waldner, Tori	2	3	1.5
Edwards, Ariel	2	3	1.5
Nickson, Mia	2	2	1.0

<u>Blocked Shots</u>	<u>G</u>	<u>No.</u>	<u>Blk/G</u>
Greene, Nikki	2	4	2.0
East, Talia	2	1	0.5
Bentley, Alex	2	1	0.5
Edwards, Ariel	2	1	0.5

<u>Minutes</u>	<u>G</u>	<u>No.</u>	<u>Min/G</u>
Lucas, Maggie	2	67	33.5
Bentley, Alex	2	67	33.5
Nickson, Mia	2	58	29.0
Edwards, Ariel	2	51	25.5
Gray, Zhaque	2	42	21.0

<u>Turnovers</u>	<u>G</u>	<u>No.</u>	<u>TO/G</u>
Bentley, Alex	2	8	4.0
Lucas, Maggie	2	6	3.0
Gray, Zhaque	2	4	2.0
Nickson, Mia	2	3	1.5
Wolfe, Marisa	2	2	1.0
East, Talia	2	2	1.0
Waldner, Tori	2	2	1.0