



# PENN STATE WOMEN'S HOCKEY

## 2013-14 NITTANY LIONS

GoPSUsports.com • Twitter & Instagram: [PennStateWHKY](#) • Facebook.com/PennStateWomensHockey  
 Contact: **Jeremy Fallis** • [jeremy.fallis@psu.edu](mailto:jeremy.fallis@psu.edu) • O: (814) 863-1388 • C: (814) 206-6544

### 2013-14 SCHEDULE

Overall: 3-12-2 • Home: 1-7-1 • Away: 2-5-1  
 CHA: 1-7-0 • Home: 0-4-0 • Away: 1-3-0

Date	Opponent	Result/Time
Oct. 4	at Vermont	T (OT) 3-3
Oct. 5	at Vermont	W 4-2
Oct. 11	at Quinnipiac	L 1-5
Oct. 12	at Quinnipiac	L 0-4
Oct. 18	UNION	L 1-2
Oct. 19	UNION	W 2-1
Oct. 26	NEW HAMPSHIRE	L 5-8
Oct. 27	NEW HAMPSHIRE	L 1-3
Oct. 31	* ROBERT MORRIS	L 0-4
Nov. 1	* ROBERT MORRIS	L 0-6
Nov. 9	* SYRACUSE	L 1-2
Nov. 10	* SYRACUSE	L (OT) 3-4
Nov. 15	* at RIT	L 1-2
Nov. 16	* at RIT	L 2-3
Nov. 22	* at Lindenwood	L 1-2
Nov. 23	* at Lindenwood	W 4-1
Nov. 30	MAINE	T (OT) 1-1
Dec. 6	* at Mercyhurst	3:00 p.m.
Dec. 7	* at Mercyhurst	2:00 p.m.
Jan. 3	at Ohio State	7:07 p.m.
Jan. 4	at Ohio State	4:07 p.m.
Jan. 10	COLGATE	7:00 p.m.
Jan. 11	COLGATE	2:00 p.m.
Jan. 24	* at Syracuse	7:00 p.m.
Jan. 25	* at Syracuse	2:00 p.m.
Jan. 28	at Princeton	7:00 p.m.
Jan. 31	* RIT	7:00 p.m.
Feb. 1	* RIT	2:00 p.m.
Feb. 8	* LINDENWOOD	Noon
Feb. 9	* LINDENWOOD	Noon
Feb. 15	* MERCYHURST	8:00 p.m.
Feb. 16	* MERCYHURST	1:00 p.m.
Feb. 21	* at #10 Robert Morris	3:00 p.m.
Feb. 22	* at #10 Robert Morris	3:00 p.m.
<b>2014 CHA TOURNAMENT</b>		
Feb. 28	^ CHA First Round - Game 1	TBA
March 1	^ CHA First Round - Game 2	TBA
March 2	^ CHA First Round - Game 3	TBA
March 7	% CHA Semifinals	TBA
March 8	% CHA Final	TBA

All Times Eastern

Home games in **CAPS** at Pegula Ice Arena

\* - College Hockey America games

^ - CHA First Round at higher seed

% - CHA Semifinals & Final hosted by No. 1 seed

Rankings based on USA Today/USA Hockey poll

Streaming on AmericaOneSports.com; live stream



**PENN STATE NITTANY LIONS**  
 (3-12-2, 1-7-0 CHA)

**MERCYHURST LAKERS**  
 (10-5-2, 3-2-1 CHA)

Games 18-19: Dec. 6-7, 2013 • Mercyhurst Ice Center • Erie, Pa.

### GAME DAY

VENUE  
 STREAMING COVERAGE  
 SERIES RECORD  
 LAST MEETING  
 NEXT TIME OUT

Mercyhurst Ice Center (1,500)  
 AmericaOneSports.com (\$) 0-4-0  
 Mercyhurst 4-1, 2/2/13  
 Jan. 3-4 at Ohio State

### GAME NOTES

- Penn State travels to perennial CHA power Mercyhurst for only series of December
- Nittany Lions are 1-0-1 in their past two games following 1-1 tie vs. Maine
- Five different goal scorers contributed in series split at Lindenwood
- **Shannon Yoxheimer** scored off assists from **Hannah Hoenshell**, **Jordin Pardoski**
- **Nicole Paniccia** has stopped 95.6 percent of all shots in her past four games
- Nittany Lion freshmen & sophomores have tallied 59 of team's 74 points
- Penn State's power kill has not allowed a goal in four of the past five games
- Mercyhurst swept St. Lawrence the last time out and is 3rd in the CHA standings

### ON THE INSIDE

- Page 2: **CHA Standings and Team Comparison**
- Page 6: **The Nittany Lion Roster & Pronunciation Guide**
- Page 7-12: **2013-14 Penn State Box Scores**
- Page 13: **2013-14 Penn State Women's Hockey Stats**
- Page 12: **The Nittany Lion TV/Radio Roster**

### STATISTICAL LEADERS

FORWARDS		GP	G	A	PTS	SH	+/-	GWG
40	Shannon Yoxheimer	17	5	6	11	88	0	0
24	Taylor Gross	17	6	4	10	49	-3	1
16	Hannah Hoenshell	17	2	7	9	38	-5	1
18	Laura Bowman	17	5	2	7	43	-4	1
12	Sarah Nielsen	17	1	5	6	13	-2	0
9	Amy Petersen	17	1	5	6	21	-3	0
19	Jill Holdcroft	17	3	2	5	25	-4	0
20	Emily Laurenzi	17	0	3	3	12	-6	0
15	Jess Desorcie	17	1	1	2	19	-8	0
DEFENSE		GP	G	A	PTS	SH	+/-	BLK
4	Jordin Pardoski	17	2	4	6	13	-3	22
27	Kelly Seward	17	3	0	3	14	0	35
6	Lindsay Reihl	17	0	1	1	3	-1	32
17	Paige Jahnke	15	0	1	1	6	-8	21
2	Jeanette Bateman	16	0	1	1	8	-12	21
21	Sarah Wilkie	14	0	0	0	14	-1	17
GOALTENDER		GP-GS	Record	MIN	GA	GAA	SV	SV%
30	Celine Whitlinger	8-8	3-5-0	477:56	24	3.01	311	.928
37	Nicole Paniccia	9-9	0-7-2	544:23	28	3.09	319	.919



@PennStateWHKY



PennStateWomensHockey



GoPSUTV





# NITTANY LION WOMEN'S HOCKEY

## GAME NOTES VS. MERCYHURST (DEC. 6-7)

**LIONS AND BLACK BEARS KNOTTED UP**  
Penn State fought a gritty Maine squad on Saturday afternoon (Nov. 30) at Pegula Ice Arena as the two teams tied 1-1. **Shannon Yoxheimer** scored for the second straight game and **Nicole Paniccia** saved 44 shots. Yoxheimer broke the scoreless game off a feed from **Hannah Hoenshell** and **Jordin Pardoski** with 5:15 left in the second period. The goal was Yoxheimer's fifth of the season, while Hoenshell and Pardoski notched their seventh and fourth assists, respectively. The action-packed second period, which featured 32 shots, wouldn't conclude in Penn State's favor. Maine's Brianna Kilgour bagged her third goal of the year with just nine seconds remaining. Neither team could find the game-winner in the third period or overtime.

### PANICCIA BOUNCING BACK

Senior netminder **Nicole Paniccia** is returning to her stellar form following a pair of tough efforts. In her last four outings against Syracuse, RIT, Lindenwood and Maine, Paniccia has a goals-against average of 1.74 with 151 saves and a .956 save percentage. In her previous two outings against New Hampshire and Robert Morris, Paniccia had a goals-against average of 5.58 with 61 saves and an .847 save percentage.

### YOUTH SUPPLIES THE OFFENSE

The addition of four freshmen: **Laura Bowman**, **Amy Petersen**, **Sarah Nielsen** and **Kelly Seward** have injected an instant bump in scoring production with 20 of the team's 74 points. To prove the youth of the team, 59 of the team's 74 points (79.7%) were collectively tallied by freshmen and sophomores. Eight of the team's top nine point scorers are underclassmen.

### WHITLINGER STANDS TALL

**Celine Whitlinger**, a 5-8 Californian goaltender, has been outstanding in net for Penn State. Whitlinger (3-5-0) has already surpassed her win total from a year ago and has stopped 92.8 percent of the shots she's seen. In 18 appearances for Penn State, Whitlinger has a career .934 save percentage, while averaging 38.2 saves per game.

### PICK YOUR POISON

Penn State has had the fortune of multiple contributors on the offensive end. Eleven Nittany Lions have scored a goal this season, while 17 have registered a point. **Shannon Yoxheimer** leads the team with 11 points, **Taylor Gross** has 10 points, while **Hannah Hoenshell** and **Laura Bowman** have nine and seven points, respectively.

### PSU'S POWERFUL PENALTY KILLING

The Nittany Lions have been efficient in their

penalty killing of late, shutting out their opponents in four of the past five games. RIT, Lindenwood and Maine went a combined 2-for-16 (12.5%) on the power play. Prior to the RIT series, opponents went 15-for-47 (31.9%).

### UPGRADED SCHEDULE

For the fifth time this season, the Nittany Lions faced a team receiving votes in the national rankings in Mercyhurst. Quinnipiac and Robert Morris are now ranked in both polls, while Syracuse and New Hampshire were both receiving votes when the teams visited Hockey Valley. Last season, Penn State played just one ranked opponent, Mercyhurst (four times), while Robert Morris earned votes during the first series in Nov. 2012, falling in all eight games. Penn State has dropped all eight games against teams who are in the polls or received votes this season.

### IN THE THICK OF THINGS

Penn State's record of 7-26-2 last season is a little deceiving when considering how close the Nittany Lions were in many of their losses. In fact, 12 of the 26 losses were decided by two goals or less. This year, six of 12 losses are by a goal and Penn State is 1-6-2 in games decided by one goal or less, including the past five losses against Syracuse, RIT and Lindenwood. PSU is 2-12-3 all-time in games decided by less than a goal.

### SCOUTING MERCYHURST

Mercyhurst (10-5-2, 3-2-1 CHA) enters this series with Penn State having received votes in both the USCHO.com and USA Today/USA Hockey polls each of the past two weeks. De-

## GAMEDAY COMPARISON

TEAM STATS	PSU	MERCYHURST
Overall record	3-12-2	10-5-2
Conference record	1-7-0	3-2-1
Goals scored	30	47
Goals scored per game	1.8	2.8
Goals allowed	53	32
Goals allowed per game	3.1	1.9
First period goals	11	11
Second period goals	11	19
Third period goals	8	17
Overtime goals	0	0
Shots	396	638
Shots per game	23.3	37.5
Shot pct.	.076	.074
Assists	44	80
Penalties per game	3.9	7.7
Power plays	9-61	14-93
Power-play pct.	.148	.151
Penalty kills	17-63	14-111
Penalty-kill pct.	.730	.874
Saves	630	411
Shutouts	0	4

## LEADERS

Points	Yoxheimer (11)	Bestland (23)
Goals	Gross (6)	Cicero (8)
Assists	Hoenshell (7)	Bestland (16)
Shots	Yoxheimer (88)	Cicero (107)
Shot Pct.	Rasmussen (.250)	Rothgery (.188)
+/-	Two at 0	Byrne (+17)
Faceoff Pct.	Yoxheimer (.707)	n/a
Saves	Paniccia (319)	Makela (383)
Save Pct.	Whitlinger (.928)	Makela (.927)
GAA	Whitlinger (3.01)	Makela (1.94)
Record	Whitlinger (3-5-0)	Makela (9-5-2)

## 2013-14 COLLEGE HOCKEY AMERICA STANDINGS

(as of Dec. 2, 2013)

	Pts.	CHA	GF	GA	Overall	GF	GA	Last 10
Robert Morris (10/10)	13	6-1-1	22	9	14-3-1	51	30	8-1-1
RIT	9	4-1-1	13	8	9-7-1	39	48	6-3-1
Mercyhurst (rv/rv)	7	3-2-1	16	13	10-5-2	47	32	7-2-1
Syracuse	6	2-2-2	14	15	7-7-2	39	37	6-2-2
Lindenwood	3	1-4-1	7	15	1-13-2	17	58	1-8-1
<b>PENN STATE</b>	<b>2</b>	<b>1-7-0</b>	<b>12</b>	<b>24</b>	<b>3-12-2</b>	<b>30</b>	<b>53</b>	<b>1-8-1</b>

## PAST RESULTS & UPCOMING SCHEDULE

### Friday, Nov. 29

Robert Morris\* 4, Maine 2  
Quinnipiac\* 8, RIT 0

### Saturday, Nov. 30

**PENN STATE\* 1, Maine 1 (OT)**  
RIT 4, UConn.3 (OT at Quinnipiac)

### Wednesday, Dec. 3

Cornell 5, Syracuse\* 2

### Friday, Dec. 6

**PENN STATE at Mercyhurst, 3 p.m.**  
RIT at Robert Morris, 7 p.m.  
Lindenwood at Syracuse, 7 p.m.

### Friday, Dec. 6

**PENN STATE at Mercyhurst, 2 p.m.**  
Lindenwood at Syracuse, 2 p.m.  
RIT at Robert Morris, 3 p.m.

### Saturday, Dec. 14

Clarkson at RIT, Noon (at Frontier Field)  
Mercyhurst at Lindenwood, 3 p.m.

### Sunday, Dec. 15

Mercyhurst at Lindenwood, 3 p.m.

\* home team





# NITTANY LION WOMEN'S HOCKEY

spite trailing Robert Morris and RIT in College Hockey America, Mercyhurst earned splits in each series against the two teams. The Lakers also defeated and tied the current No. 6/7 ranked Clarkson squad back in October. Mercyhurst is led by Christine Bestland who ranks 10th in the nation with 23 points on the season. Christie Cicero leads the Lakers who average just under three goals a game with eight goals on the campaign. Amanda Makela has started 16 of the 17 games for the Lakers this season sporting a 1.954 GAA, ninth best in the nation.

## SERIES HISTORY vs. MU

All-Time Series	MU leads 4-0-0
PSU Streak	4 losses
First Meeting	11/30/12, MU, 5-0
Last Meeting	2/2/13, MU 4-1
Last PSU Win	n/a
Last MU Win	2/2/13, MU 4-1
Largest PSU Win	n/a
Largest MU Win	7-1, 12/1/12

## LAST FOUR MEETINGS vs. MU

2/2/13	L	1-4	H
2/1/13	L	2-5	H
12/1/12	L	1-7	A
11/30/12	L	0-5	A

## 2013-14 WOMEN'S HOCKEY POLLS

### USA Today/USA Hockey (Dec. 3, 2013)

1	Minnesota	17-1-0	1
2	Wisconsin	12-2-2	2
3	Cornell	9-1-2	3
4	Harvard	8-1-1	5
5	North Dakota	9-3-2	4
6	Clarkson	12-3-2	6
7	Boston College	<b>12-4-1</b>	<b>8</b>
8	<b>Quinnipiac</b>	12-2-5	7
9	Boston University	11-3-1	9
10	<b>Robert Morris</b>	<b>14-3-1</b>	<b>10</b>

Others: *Mercyhurst, Minnesota Duluth*

### USCHO.com (Dec. 2, 2013)

1	Minnesota	17-1-0	1
2	Wisconsin	12-2-2	2
3	Cornell	9-1-2	3
4	North Dakota	9-3-2	4
5	Harvard	8-1-1	5
6	Boston College	12-4-1	7
7	Clarkson	<b>12-3-2</b>	<b>6</b>
8	<b>Quinnipiac</b>	<b>12-2-5</b>	<b>8</b>
9	Boston University	11-3-1	9
10	<b>Robert Morris</b>	<b>14-3-1</b>	<b>10</b>

Others: *Minnesota Duluth, Mercyhurst*

**Bold indicates 2013-14 opponent**

## COMMON ENEMIES

Penn State and Mercyhurst have four common opponents thus far in the season. The Nittany Lions are 0-6-1 against Maine, RIT, Robert Morris and Syracuse, while Mercyhurst is 5-2-1.

	PSU	MERCYHURST
<b>Maine</b>	T, 1-1	W, 2-1; W, 5-0
<b>RIT</b>	L, 1-2; L, 2-3	L, 1-2; W, 3-2
<b>Robert Morris</b>	L, 0-4; L, 0-6	W, 2-0; L, 2-3
<b>Syracuse</b>	L, 1-2; OTL, 3-4	T, 3-3; W, 5-3

## PENN STATE HAS A #NEWDEN

The Nittany Lions opened its new \$90 million home, Pegula Ice Arena, on Oct. 18 against Union in a 2-1 loss. The next day, PSU would earn a 2-1 victory for the program's first win at Pegula. In all, Penn State will host 17 games in the state-of-the-art arena that seats 5,782. The team's first season at PIA began with an eight-game home stand over 23 days. The Maine contest is the first game at PIA for the Nittany Lions since Nov. 9 against Syracuse.

## 2013-14 MEDIA INFORMATION

### Penn State Athletic Communications

Primary Contact	Jeremy Fallis
Email	jeremy.fallis@psu.edu
Office	814-865-1757

### Interviews

Penn State student-athletes and coaches are available for interviews after practice each day. Please contact Jeremy Fallis in advance.

### Credentials

Contact Jeremy Fallis for home game credentials at Pegula Ice Arena.

### Postgame

Head coach Josh Brandwene and requested student-athletes are available to the media following each game in the studio rink. Please alert Jeremy Fallis during the game of any requests.

### Yearbook

A complimentary copy of the 2013-14 Penn State women's hockey yearbook will be made available to members of the media. The public may purchase copies for \$6 online.

[GoPSUsports.com](http://GoPSUsports.com)

[Facebook.com/PennStateWomensHockey](https://www.facebook.com/PennStateWomensHockey)

@PennStateWHKY

## PENN STATE'S RECORD IS...

1-7-1	..... at home
2-5-1	..... on the road
0-1-2	..... in overtime
2-5-2	..... when scoring first
1-7-0	..... when opponent scores first
3-3-0	..... when leading after the 1st period
0-5-0	..... when trailing after the 1st period
0-4-2	..... when tied after the 1st period
2-2-0	..... when leading after the 2nd period
0-6-0	..... when trailing after the 2nd period
1-4-2	..... when tied after the 2nd period
1-0-0	..... when out-shooting opponent
2-12-2	..... when out-shot by opponent
0-0-0	..... when taking same # of shots
2-3-1	..... when winning more faceoffs
1-9-1	..... when losing more faceoffs
0-0-0	..... when tied in faceoffs
1-4-1	..... when taking more penalties
2-3-1	..... when taking fewer penalties
0-5-0	..... when taking the same # of penalties
2-5-1	..... when scoring a power play goal
1-7-1	..... when not scoring a power play goal
1-9-1	..... when allowing a power play goal
2-3-1	..... when not allowing a power play goal
0-3-0	..... when scoring 0 goals
0-6-1	..... when scoring 1 goal
1-1-0	..... when scoring 2 goals
0-1-1	..... when scoring 3 goals
2-1-0	..... when scoring 4+ goals
0-0-0	..... when allowing 0 goals
2-0-1	..... when allowing 1 goal
1-4-0	..... when allowing 2 goals
0-2-1	..... when allowing 3 goals
0-6-0	..... when allowing 4+ goals
2-6-1	..... in October
1-6-1	..... in November
0-0-0	..... in December
0-0-0	..... in January
0-0-0	..... in February
0-0-0	..... in March
0-0-0	..... on Tuesday
0-1-0	..... on Thursday
0-5-1	..... on Friday
3-5-1	..... on Saturday
0-2-0	..... on Sunday
3-6-1	..... during the day
0-6-1	..... at night
1-2-2	..... vs. Hockey East
1-7-0	..... vs. College Hockey America
1-3-0	..... vs. ECAC Hockey
0-0-0	..... vs. WCHA
0-0-0	..... vs. ranked opponents
3-12-2	..... vs. unranked opponents
1-2-2	..... when Shannon Yoxheimer scores
3-5-0	..... when Celine Whitlinger starts
3-2-1	..... when a freshman scores
1-5-2	..... games decided by a goal or less





# NITTANY LION WOMEN'S HOCKEY

## HOENSHELL, SEWARD EARN CHA AWARDS

Penn State forward **Hannah Hoenshell** and defender **Kelly Seward** were named College Hockey America's Player and Rookie of the Week, respectively, on Monday, Oct. 7.

A crafty forward with incredible stick skills, Hoenshell propelled Penn State to an undefeated weekend at Vermont, supplying three points and a game-high plus-four rating in Saturday's 4-2 win. Hoenshell was involved in three of Penn State's four goals, tallying a goal and two assists. Her goal was her second career game-winning goal.

Seward was fantastic on both sides of the ice this weekend as she tallied two goals, which ties for the team high after two games. Seward posted a plus-two rating and seven blocked shots for the weekend as well. In both games, Seward scored Penn State's first goal. On Friday it was a power-play tally and Saturday it was a game-tying goal in the first period.

## BRING 'EM BACK

Penn State brings back 24 of its 27 members from last year's team. In those 24 student-athletes, Penn State returns its top 14 scorers and almost 99 percent of its offense along with every member of its stout goaltending corps.

## YOXHEIMER MAKES HER MARK

Leading the team in scoring last season was **Shannon Yoxheimer**, a left-handed forward. Yoxheimer buried 14 goals with 17 assists for a grand total of 31 points, all team highs. She led College Hockey America in shots (169) and put away three power play goals as well as a team-high three game-winning goals. Yoxheimer's numbers ranked her in the top 10 nationally in goals, points and assists for rookies. The CHA coaches named Yoxheimer to the All-Rookie team.

## THE PANICCIA WALL

Senior goaltender **Nicole Paniccia** excelled between the pipes for the Blue and White last year, stopping 1,028 shots with a 92.8 save percentage. Paniccia's save tally was second in all of NCAA Division I, topped only by fellow CHA upstart Lindenwood's Nicole Hensley. Paniccia was in net for six of PSU's seven victories last year as well as both of Penn State's ties.

## POWER-PLAY HOLDCROFT

Sophomore forward **Jill Holdcroft** was lethal on the power play last season, scoring six of her 10 goals last year on the advantage. Despite missing the CHA playoffs at RIT, Holdcroft still ranked second on the team in scoring (10 goals) and added two assists for good measure.

## CAPTAINS' CORNER

Senior forward **Taylor Gross** once again leads Penn State as its first captain following her first year with the letter in 2012-13. Gross was second on the team in points (22) and assists (15) last season with 34 appearances. The University of Connecticut transfer appeared in 48 games for the Huskies before joining Penn State's club side in January 2012. Senior forward **Jenna Welch** and **Lindsay Reihl**, a graduate student defender, reprise their roles as assistant captains this year. Joining the veteran trio is **Jordin Pardoski**, a vocal sophomore defender who is a first-year assistant captain.

## NEW NITTANY LIONS

Four freshmen join the Nittany Lions for the 2013-14 campaign. Minnesota forwards **Laura Bowman**, **Amy Petersen** and **Sarah Nielsen** provide an instant dose of goal scoring from their high school success. Defender **Kelly Seward** of New York is the tallest Nittany Lion blueliner.

## FIRST HEAD COACH

A 1991 graduate of Penn State, head coach **Josh Brandwene** is the first to lead the Nittany Lions. Brandwene compiled a 7-26-2 record last season with 17 freshmen on the team. A four-year hockey player at PSU, Brandwene brings 20 years of coaching experience to Happy Valley.

## CONTINUING PENN STATE HOCKEY

Seven members of the current varsity team played for the women's club team at some point. Graduate student **Lindsay Reihl** along with juniors **Cara Mendelson**, **Katie Murphy**, **Madison Smiddy** and **Tess Weaver** played all of the 2011-12 season for head coach **Josh Brandwene** in Penn State's last year at the club level. **Taylor Gross** and **Jess Desorcie** joined the five aforementioned players midway through the season in preparation of the 2012-13 season.

## NEXT TIME OUT

Penn State will head back out on the road when they visit Columbus, Ohio to face the Ohio State Buckeyes on Jan. 3-4 after almost a month off from games. The meeting will be the first between these two programs.

## 2013-14 HONORS & AWARDS

**Hannah Hoenshell**  
CHA Player of the Week (10/7)

**Kelly Seward**  
CHA Rookie of the Week (10/7)

## OVER THE AIR

Both games this weekend at Mercyhurst will be featured on AmericaOneSports.com.

**The CHA on AmericaOneSports.com**  
Penn State home & away games during CHA play will be streamed live on AmericaOneSports.com. Subscribers can purchase a 1-day package for \$8, 30-day packages for \$30 or a season pass for \$125.



# NITTANY LION WOMEN'S HOCKEY



## THE LAST TIME

### PENN STATE...

Scored 0 goals  
 Scored 3 goals  
 Scored 4 goals  
 Scored 5 goals  
 Scored 6 goals  
 Scored 7 goals  
 Scored 8 goals  
 Scored 9 goals  
 Scored 10 goals  
 Allowed 0 goals  
 Allowed 1 goal  
 Allowed 2 goals  
 Allowed 3 goals  
 Allowed 4 goals  
 Allowed 5 goals  
 Allowed 6+ goals  
 Won in overtime  
 Lost in overtime  
 Tied in overtime  
 Played a ranked team  
 Attempted 10-19 shots  
 Attempted 20-29 shots  
 Attempted 30-39 shots  
 Attempted 40-49 shots  
 Attempted 50-59 shots  
 Attempted 60-69 shots  
 Attempted 70+ shots  
 Allowed 10-19 shots  
 Allowed 20-29 shots  
 Allowed 30-39 shots  
 Allowed 40-49 shots  
 Allowed 50-59 shots  
 Allowed 60-69 shots  
 Allowed 70+ shots  
 Tallied 5-9 assists  
 Tallied 10-15 assists  
 Tallied 15+ assists  
 Scored 10-19 points  
 Scored 20+ points  
 Scored 2 power-play goals  
 Scored 3 power-play goals  
 Allowed 0 power-play goals  
 Allowed 2 power-play goals  
 Had 5 different goal scorers  
 Had 6 different goal scorers  
 Had 7 different goal scorers  
 Had 8 different goal scorers

11/1/13 ..... vs. Robert Morris (0-6)  
 11/10/13 ..... vs. Syracuse (3-4)  
 11/23/13 ..... at Lindenwood (4-1)  
 10/26/13 ..... vs. New Hampshire (5-8)  
 11/2/12 .....vs. Sacred Heart (6-0)  
 Never  
 11/3/12 .....vs. Sacred Heart (8-2)  
 Never  
 1/4/13 ..... vs. Chatham (10-0)  
 1/5/13 ..... vs. Chatham (4-0)  
 11/30/13 .....vs. Maine (1-1)  
 11/22/13 ..... at Lindenwood (1-2)  
 11/16/13 ..... at RIT (2-3)  
 11/10/13 ..... vs. Syracuse (3-4)  
 10/11/13 ..... at Quinnipiac (1-5)  
 11/1/13 ..... vs. Robert Morris (0-6)  
 Never  
 11/10/13 ..... vs. Syracuse (3-4)  
 11/30/13 ..... vs. Maine (1-1)  
 2/2/13 .....vs. #7 Mercyhurst (1-4)  
 11/9/13 ..... 18 vs. Syracuse (1-2)  
 11/22/13 ..... 23 at Lindenwood (1-2)  
 11/30/13 ..... vs. Maine (1-1)  
 1/4/13 ..... 48 vs. Chatham (10-0)  
 Never  
 11/3/12 ..... 64 vs. Sacred Heart (8-2)  
 1/5/13 ..... 71 vs. Chatham (4-0)  
 1/5/13 ..... 16 vs. Chatham (4-0)  
 10/19/13 ..... 21 vs. Union (2-1)  
 11/23/13 ..... 37 at Lindenwood (4-1)  
 11/30/13 ..... 45 vs. Maine (1-1)  
 11/10/13 ..... 55 vs. Syracuse (3-4)  
 2/22/13 ..... 63 at Robert Morris (1-4)  
 12/1/12 ..... 71 at #4 Mercyhurst (1-7)  
 11/23/13 ..... 5 at Lindenwood (4-1)  
 11/3/12 ..... 12 vs. Sacred Heart (8-2)  
 1/4/13 ..... 17 vs. Chatham (10-0)  
 10/26/13 ..... 13 vs. New Hampshire (5-8)  
 1/4/13 ..... 27 vs. Chatham (10-0)  
 10/26/13 ..... vs. New Hampshire (5-8)  
 10/20/12 ..... at Sacred Heart (6-1)  
 11/30/13 ..... vs. Maine (1-1)  
 11/16/13 ..... at RIT (2-3)  
 10/26/13 ..... vs. New Hampshire (5-8)  
 10/20/12 ..... at Sacred Heart (6-1)  
 1/4/13 ..... vs. Chatham (10-0)  
 11/3/12 .....vs. Sacred Heart (8-2)

### A PENN STATE PLAYER...

Scored 2 goals  
 Scored 3 goals  
 Scored 4 goals  
 Had 3 assists  
 Had 5 points  
 Had 10+ shots  
 Saved 40-49 shots  
 Saved 50-59 shots  
 Saved 60+ shots  
 Had a shutout  
 Scored an empty-net goal  
 Scored a short-handed goal

11/16/13 ..... J. Holdcroft at RIT (2-3)  
 11/2/12 ..... H. Hoenshell vs. Sacred Heart (6-0)  
 Never  
 1/4/13 .....J. Bateman vs. Chatham (10-0)  
 Never  
 1/5/13 ..... 12, T. Weaver vs. Chatham (4-0)  
 11/30/13 ..... 44, N. Paniccia vs. Maine (1-1)  
 11/10/13 ..... 51, C. Whitlinger vs. Syracuse (3-4)  
 12/1/12 ..... 64, N. Paniccia at #4 Mercyhurst (1-7)  
 1/5/13 ..... C. Whitlinger/B. Meyer vs. Chatham (4-0)  
 10/6/12 ..... B. Shaw at Vermont (5-3)  
 11/16/13 ..... J. Holdcroft at RIT (2-3)





# NITTANY LION WOMEN'S HOCKEY

## 2013-14 PENN STATE WOMEN'S HOCKEY NUMERICAL ROSTER

No.	Name	Yr.	Pos.	Ht.	S/C	Hometown	Last Team
2	Jeanette Bateman	So.	D	5-6	R	Greeley, Colo.	Colorado Select
3	Cara Mendelson	Jr.	F	5-6	R	Pittsburgh, Pa.	Steel City Selects
4	Jordin Pardoski	So.	D	5-5	R	Rochester Hills, Mich.	Detroit Honeybaked
5	Stephanie Walkom	So.	D	5-7	R	Moon Township, Pa.	Pittsburgh Penguins Elite
6	Lindsay Reihl	Gr.	D	5-4	R	Cheshire, Conn.	Connecticut Polar Bears
9	Amy Petersen	Fr.	F	5-4	R	Minnetonka, Minn.	Minnetonka HS
10	Micayla Catanzariti	So.	F	5-4	R	Rancho Santa Margarita, Calif.	Gilmour Academy (Ohio)
12	Sarah Nielsen	Fr.	F	5-6	L	Edina, Minn.	Edina HS
13	Kendra Rasmussen	So.	F	5-5	L	Sartell, Minn.	Sartell/Sauk Rapids HS
14	Darby Kern	So.	F	5-11	R	Venetia, Pa.	Pittsburgh Penguins Elite
15	Jess Desorcie	Jr.	F	5-4	L	Westford, Vt.	Connecticut College
16	Hannah Hoenshell	So.	F	5-3	R	Plano, Texas	Texas Alliance
17	Paige Jahnke	So.	D	5-6	R	Oakdale, Minn.	Roseville HS / Minnesota Jr. Whitecaps
18	Laura Bowman	Fr.	F	5-7	R	Minnetonka, Minn.	Minnetonka HS
19	Jill Holdcroft	So.	F	5-1	R	Pennsylvania Furnace, Pa.	Pittsburgh Penguins Elite
20	Emily Laurenzi	So.	F	5-2	R	Townsend, Del.	National Sports Academy (N.Y.)
21	Sarah Wilkie	So.	D	5-6	R	Ashby, Mass.	Williston Northampton School
22	Jenna Welch	Sr.	F	5-8	R	Austin, Texas	Connecticut
23	Birdie Shaw	So.	F	5-2	L	Troy, Mich.	Detroit Honeybaked
24	Taylor Gross	Sr.	F	5-1	R	Colorado Springs, Colo.	Connecticut
25	Katie Murphy	Jr.	F	5-4	L	Novi, Mich.	Detroit Honeybaked
27	Kelly Seward	Fr.	D	5-9	L	Williamsville, N.Y.	Nichols School / Buffalo Bisons
30	Celine Whitlinger	So.	G	5-8	L	Garden Grove, Calif.	Gilmour Academy (Ohio)
31	Brooke Meyer	So.	G	5-7	L	Naperville, Ill.	Chicago Huskies
33	Madison Smiddy	Jr.	D	5-7	L	Grand Rapids, Mich.	Detroit Honeybaked
36	Tess Weaver	Jr.	F	5-5	R	Windber, Pa.	Pittsburgh Penguins Elite
37	Nicole Paniccia	Sr.	G	5-5	L	Oakville, Ont.	Connecticut
40	Shannon Yoxheimer	So.	F	5-7	L	Jackson, Mich.	North American Hockey Academy (Vt.)

**Head Coach:** Josh Brandwene (Second Year)

**Assistant Coaches:** Gina Kearns (Second Year), Casey McCullion (Second Year); **Director of Operations** Alex Dawes (First Year)

**Captain:** Taylor Gross; **Assistant Captains:** Jordin Pardoski, Lindsay Reihl, Jenna Welch

ALPHABETICAL ROSTER		PRONUNCIATION GUIDE		LIONS BY STATE		LIONS BY POSITION	
<b>No.</b>	<b>Name</b>	<b>Brandwene</b>	BRAND-ween	<b>California (2):</b>	Catanzariti, Whitlinger	<b>Forward (17):</b>	Bowman, Catanzariti, Desorcie, Gross, Hoenshell, Holdcroft, Kern, Laurenzi, Mendelson, Murphy, Nielsen, Petersen, Rasmussen, Shaw, Weaver, Welch, Yoxheimer
2	Jeanette Bateman	<b>Catanzariti</b>	Cah-TAN-zah-REE-tee	<b>Colorado (2):</b>	Bateman, Gross	<b>Defense (8):</b>	Bateman, Jahnke, Pardoski, Reihl, Seward, Smiddy, Walkom, Wilkie
18	Laura Bowman	<b>Desorcie</b>	Deh-SORE-see	<b>Connecticut (1):</b>	Reihl	<b>Goalie (3):</b>	Meyer, Paniccia, Whitlinger
10	Micayla Catanzariti	<b>Jahnke</b>	YAWN-kee	<b>Delaware (1):</b>	Laurenzi		
15	Jess Desorcie	<b>Jeanette</b>	Jeh-NETT	<b>Illinois (1):</b>	Meyer		
24	Taylor Gross	<b>Kearns</b>	KERNS	<b>Massachusetts (1):</b>	Wilkie		
16	Hannah Hoenshell	<b>McCullion</b>	Mick-CULL-yon	<b>Michigan (5):</b>	Murphy, Pardoski, Shaw, Smiddy, Yoxheimer		
19	Jill Holdcroft	<b>Paniccia</b>	Pah-NEE-cha	<b>Minnesota (5):</b>	Bowman, Jahnke, Nielsen, Petersen, Rasmussen		
17	Paige Jahnke	<b>Reihl</b>	RILE	<b>New York (1):</b>	Seward		
14	Darby Kern	<b>LIONS BY ELIGIBILITY</b>		<b>Pennsylvania (5):</b>	Holdcroft, Kern, Mendelson, Walkom, Weaver		
20	Emily Laurenzi	<b>Graduate Student (1):</b>	Reihl	<b>Texas (2):</b>	Hoenshell, Welch		
3	Cara Mendelson	<b>Seniors (3):</b>	Gross, Paniccia, Welch	<b>Vermont (1):</b>	Desorcie		
31	Brooke Meyer	<b>Juniors (5):</b>	Desorcie, Mendelson, Murphy, Smiddy, Weaver	<b>LIONS BY PROVINCE</b>			
25	Katie Murphy	<b>Sophomores (15):</b>	Bateman, Catanzariti, Hoenshell, Holdcroft, Jahnke, Kern, Laurenzi, Meyer, Pardoski, Rasmussen, Shaw, Walkom, Whitlinger, Wilkie, Yoxheimer	<b>Ontario (1):</b>	Paniccia		
12	Sarah Nielsen						
37	Nicole Paniccia						
4	Jordin Pardoski						
9	Amy Petersen						
13	Kendra Rasmussen						
6	Lindsay Reihl						
27	Kelly Seward						
23	Birdie Shaw						
33	Madison Smiddy						
5	Stephanie Walkom						
36	Tess Weaver						
22	Jenna Welch						
30	Celine Whitlinger						
21	Sarah Wilkie						
40	Shannon Yoxheimer						













# NITTANY LION WOMEN'S HOCKEY



## NOV. 30, 2013: PENN STATE 1, MAINE 1 (OT)

Maine (0-12-4) vs. Penn State (3-12-2)  
 Date: Nov 30, 2013 • Location: University Park, Pa. • Arena: Pegula Ice Arena  
 Attendance: 510 • Start time: 2:00 pm • End time: 4:04 pm • Total time: 2:04

Prd	Time	Team	Scored by	Assists	Vis. on ice	Home on ice	Goals by Period
Team	1	2	3	OT	Tot		
1. 2nd 14:45	PSU	EV	Yoxheimer, Shannon/5	Hoenshell, Hanna/7 Pardoski, Jordin/4	4,16,11,33,26	40,16,4,12,17	MAIN 0 1 0 0 1 PSU 0 1 0 0 1
2. 2nd 19:51	MAINE	EV	Brianne Kilgour/3	Karissa Kirkup/1 Audra Richards/1	22,11,21,14,4	9,22,18,6,27	

### TEAM SUMMARY

#	Maine	G	A	Pi	Sh +/-	BI	#	Penn State	G	A	Pi	Sh +/-	BI
4	Jess Vallotton	0	0	0	2	0	2	Bateman, Jeanet	0	0	0	0	0
6	Brittney Huneke	0	0	0	2	0	4	Pardoski, Jordin	0	1	0	0	+1
8	Brooklyn Langlois	0	0	0	1	0	1	6	Reihl, Lindsay	0	0	0	-1
10	Jillian Langtry	0	0	0	0	0	0	9	Petersen, Amy	0	0	0	4
11	Karissa Kirkup	0	1	0	3	0	0	12	Nielsen, Sarah	0	0	0	1
12	Emilie Bringham	0	0	0	5	0	1	13	Rasmussen, Ken	0	0	0	0
14	Kelly McDonald	0	0	2	7	+1	2	15	Desorcie, Jess	0	0	0	3
15	Kayla Kaluzny	0	0	0	0	0	0	16	Hoenshell, Hann	0	1	0	4
16	Kelsey MacSorle	0	0	2	0	-1	0	17	Jahnke, Paige	0	0	0	1
18	Katy Massey	0	0	0	1	0	0	18	Bowman, Laura	0	0	0	4
19	Eve Boissonneau	0	0	0	4	0	0	19	Holdcroft, Jill	0	0	0	0
20	Morgan Sakundi	0	0	0	2	0	0	20	Laurenzi, Emily	0	0	0	0
21	Audra Richards	0	1	0	4	+1	3	21	Wilkie, Sarah	0	0	0	4
22	Brianne Kilgour	1	0	0	5	+1	2	22	Welch, Jenna	0	0	0	3
26	Abbey Cook	0	0	2	3	-1	0	23	Shaw, Birdie	0	0	2	0
28	Shawna Lespera	0	0	0	1	0	0	24	Gross, Taylor	0	0	0	1
29	Kristin Gilmour	0	0	0	4	0	1	27	Seward, Kelly	0	0	0	0
33	Missy Denk	0	0	0	1	-1	0	40	Yoxheimer, Shan	1	0	0	5
30	Natalie Robinson	dnp						30	Whitlinger, Celin	dnp			
31	Meghann Treacy	dnp						Totals	1	2	2	30	0
Totals		1	2	6	45	0	15						

### Shots by Period

Team	1	2	3	OT	Tot
MAIN	14	17	8	6	45
PSU	5	15	10	0	30

### Power Play Goals-Att (Sh)

Prd	MAINE	PSU
1st	0-1 (3)	0-2 (0)
2nd	0-0 (0)	0-0 (0)
3rd	0-0 (0)	0-1 (2)
OT	0-0 (0)	0-0 (0)
Total	0-1 (3)	0-3 (2)

### Penalties-Minutes by Prd

Prd	MAINE	PSU
1st	2-4	1-2
2nd	0-0	0-0
3rd	1-2	0-0
OT	0-0	0-0
Total	3-6	1-2

### Three stars:

1. Paniccia, Nicole
2. Mariah Fujimagari
3. Yoxheimer, Shannon

### Officials:

Referee: Erik Geller  
 Referee: Justin Pisano  
 Linesman: Garrett Gaydash  
 Linesman: Kyler Speice  
 Scorer: Matt Caracappa

### GOALTENDERS

#	Maine	Dec	Min	GA	1	2	3	OT	Saves	#	Penn State	Dec	Min	GA	1	2	3	OT	Saves
27	Mariah Fujimagari	T	65:00	1	5	14	10	0	29	37	Paniccia, Nicole	T	65:00	1	14	16	8	6	44

### PENALTY SUMMARY

Prd	Player	Team	Min	Offense	Time	Prd	Player	Team	Min	Offense	Time	
1st	Shaw, Birdie	PSU	2:06	Bc	10:06	PP	1st	Kelsey MacSorley	Maine	2:09	Tripping	16:40
1st	Kelly McDonald	Maine	2:09	Cross-Checking	16:15	PP	3rd	Abbey Cook	Maine	2:09	Interference	12:09

Maine-Mariah Fujimagari (0-2-1). Penn State-Paniccia, Nicole (0-7-2).  
 Maine timeout at 1:56 of 2nd period.  
 PSU timeout at 17:36 of 3rd period.





# NITTANY LION WOMEN'S HOCKEY



## 2013-14 Penn State Women's Hockey Penn State Combined Team Statistics (as of Dec 05, 2013) All games

Date	Opponent	Score	Att.
Oct 04	at Vermont	Tot 3-3	435
Oct 05	at Vermont	W 4-2	760
Oct 11	at Quinnipiac	L 1-5	505
Oct 12	at Quinnipiac	L 0-4	213
Oct 18	UNION	L 1-2	1424
Oct 19	UNION	W 2-1	814
Oct 26	NEW HAMPSHIRE	L 5-8	493
Oct 27	NEW HAMPSHIRE	L 1-3	552
* Oct 31	ROBERT MORRIS	L 0-4	513
* Nov 01	ROBERT MORRIS	L 0-6	771
* Nov 09	SYRACUSE	L 1-2	691
* Nov 10	SYRACUSE	Lot 3-4	516
* Nov 15	at RIT	L 1-2	1170
* Nov 16	at RIT	L 2-3	588
* Nov 22	at Lindenwood	L 1-2	102
* Nov 23	at Lindenwood	W 4-1	85
Nov 30	MAINE	Tot 1-1	510

TEAM STATISTICS	PSU	OPP
<b>SHOT STATISTICS</b>		
Goals-Shot attempts	30-396	53-683
Shot pct.	.076	.078
Goals/Game	1.8	3.1
Shots/Game	23.3	40.2
<b>POWER PLAYS</b>		
Goals-Power Plays	9-61	17-63
Conversion Percent	.148	.270
<b>GOAL BREAKDOWN</b>		
Power Play	9	17
Short-handed	1	0
Empty net	0	1
Penalty	0	0
Unassisted	3	4
Overtime	0	1
<b>PENALTIES</b>		
Number	66	63
Minutes	132	126
Penalties/Game	3.9	3.7
Pen minutes/Game	7.8	7.4
FACEOFFS (W-L)	465-498	498-465
Faceoff W-L Pct.	.483	.517

Record:	Overall	Home	Away	Neutral
ALL GAMES	3-12-2	1-7-1	2-5-1	0-0-0
CONFERENCE	1-7-0	0-4-0	1-3-0	0-0-0
NON-CONFERENCE	2-5-2	1-3-1	1-2-1	0-0-0

#	Player	gp	g	a	pts	sh	sh%	pen-min	pp	sh
40	Yoxheimer, Shannon	17	5	6	11	88	.057	3-6	1	0
24	Gross, Taylor	17	6	4	10	49	.122	0-0	2	0
16	Hoenshell, Hannah	17	2	7	9	38	.053	2-4	0	0
18	Bowman, Laura	17	5	2	7	43	.116	6-12	1	0
4	Pardoski, Jordin	17	2	4	6	13	.154	4-8	1	0
12	Nielsen, Sarah	17	1	5	6	13	.077	6-12	0	0
9	Petersen, Amy	17	1	5	6	21	.048	0-0	1	0
19	Holdcroft, Jill	17	3	2	5	25	.120	3-6	1	1
27	Seward, Kelly	17	3	0	3	14	.214	2-4	2	0
20	Laurenzi, Emily	17	0	3	3	12	.000	5-10	0	0
15	Desorcie, Jess	17	1	1	2	19	.053	3-6	0	0
13	Rasmussen, Kendra	11	1	0	1	4	.250	0-0	0	0
2	Bateman, Jeanette	16	0	1	1	8	.000	2-4	0	0
17	Jahnke, Paige	15	0	1	1	6	.000	8-16	0	0
6	Reihl, Lindsay	17	0	1	1	3	.000	2-4	0	0
23	Shaw, Birdie	16	0	1	1	3	.000	5-10	0	0
33	Smiddy, Madison	5	0	1	1	0	.000	1-2	0	0
10	Catanzariti, Micayla	4	0	0	0	1	.000	1-2	0	0
5	Walkom, Stephanie	1	0	0	0	0	.000	0-0	0	0
36	Weaver, Tess	3	0	0	0	1	.000	1-2	0	0
22	Welch, Jenna	17	0	0	0	21	.000	6-12	0	0
21	Wilkie, Sarah	14	0	0	0	14	.000	2-4	0	0
TM	TEAM	8	0	0	0	0	.000	4-8	0	0
Total		17	30	44	74	396	.076	66-132	9	1
Opponents		17	53	86	139	683	.078	63-126	17	0

#	Goalie	gp	min	ga	gaavg	saves	save%	w-l-t
30	Whitlinger, Celine	8	477:56	24	3.01	311	.928	3-5-0
37	Paniccia, Nicole	9	544:23	28	3.09	319	.919	0-7-2
TM	EMPTY NET	8	9:08	1	-	0	.000	0-0-0
Total		17	1031:27	53	3.08	630	.922	3-12-2
Opponents		17	1031:27	30	1.75	366	.924	12-3-2

Attendance Summary	PSU	Opponent
Total	6284	3858
Dates/Avg Per Date	9/698	8/482
Neutral Site #/Avg	0/0	

Goals by Period	1st	2nd	3rd	OT	Total
Penn State	11	11	8	0	30
Opponents	9	20	23	1	53

Saves by Period	1st	2nd	3rd	OT	Total
Penn State	209	219	190	12	630
Opponents	110	118	136	2	366



# NITTANY LION WOMEN'S HOCKEY



**2**  
**JEANNETTE BATEMAN**  
Sophomore • D  
Greeley, Colo.



**3**  
**CARA MENDELSON**  
Junior • F  
Pittsburgh, Pa.



**4**  
**JORDIN PARDOSKI**<sup>A</sup>  
Sophomore • D  
Rochester Hills, Mich.



**5**  
**STEPHANIE WALKOM**  
Sophomore • D  
Moon Township, Pa.



**6**  
**LINDSAY REIHL**<sup>A</sup>  
Grad Student • D  
Cheshire, Conn.



**9**  
**AMY PETERSEN**  
Freshman • F  
Minnetonka, Minn.



**10**  
**MICAYLA CATANZARITI**  
Sophomore • F  
Rancho Santa Margarita, Calif.



**12**  
**SARAH NIELSEN**  
Freshman • F  
Edina, Minn.



**13**  
**KENDRA RASMUSSEN**  
Sophomore • F  
Sartell, Minn.



**14**  
**DARBY KERN**  
Sophomore • F  
Venetia, Pa.



**15**  
**JESS DESORCIE**  
Junior • F  
Westford, Vt.



**16**  
**HANNAH HOENSHELL**  
Sophomore • F  
Plano, Texas



**17**  
**PAIGE JAHNKE**  
Sophomore • D  
Oakdale, Minn.



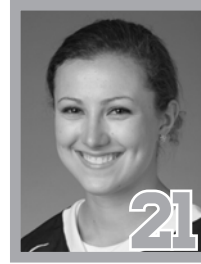
**18**  
**LAURA BOWMAN**  
Freshman • F  
Minnetonka, Minn.



**19**  
**JILL HOLDCROFT**  
Sophomore • F  
Pennsylvania Furnace, Pa.



**20**  
**EMILY LAURENZI**  
Sophomore • F  
Townsend, Del.



**21**  
**SARAH WILKIE**  
Sophomore • D  
Ashby, Mass.



**22**  
**JENNA WELCH**<sup>A</sup>  
Senior • F  
Austin, Texas



**23**  
**BIRDIE SHAW**  
Sophomore • F  
Troy, Mich.



**24**  
**TAYLOR GROSS**<sup>C</sup>  
Senior • F  
Colorado Springs, Colo.



**25**  
**KATIE MURPHY**  
Junior • F  
Novi, Mich.



**27**  
**KELLY SEWARD**  
Freshman • D  
Williamsville, N.Y.



**30**  
**CELINE WHITLINGER**  
Sophomore • G  
Garden Grove, Calif.



**31**  
**BROOKE MEYER**  
Sophomore • G  
Naperville, Ill.



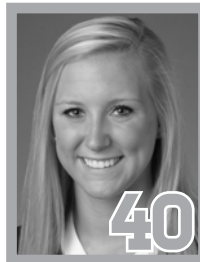
**33**  
**MADISON SMIDDY**  
Junior • D  
Grand Rapids, Mich.



**36**  
**TESS WEAVER**  
Junior • F  
Windber, Pa.



**37**  
**NICOLE PANICCIA**  
Senior • G  
Oakville, Ont.



**40**  
**SHANNON YOXHEIMER**  
Sophomore • F  
Jackson, Mich.

