



# PENN STATE WOMEN'S HOCKEY

## 2012-13 NITTANY LIONS

GoPSUsports.com // @PennStateWHKY // Facebook.com/PennStateWomensHockey  
 Contact: **Jeremy Fallis** // jeremy.fallis@psu.edu // O: (814) 865-3613 // C: (814) 206-6544

### 2012-13 SCHEDULE

Overall: 5-8-1 // Home: 2-5-1 // Away: 3-3-0  
 CHA: 1-6-1 // Home: 0-5-1 // Away: 1-1-0

Date	Opponent		Time
Oct. 6	at Vermont	W	5-3
Oct. 7	at Vermont	L	1-3
Oct. 13 *	SYRACUSE	L	0-4
Oct. 14 *	SYRACUSE	L	0-6
Oct. 19	at Sacred Heart	L	1-2
Oct. 20	at Sacred Heart	W	6-1
Oct. 25 *	RIT	L	1-4
Oct. 26 *	RIT	T	(OT) 2-2
Nov. 2	SACRED HEART	W	6-0
Nov. 3	SACRED HEART	W	8-2
Nov. 10 *	ROBERT MORRIS	L	1-7
Nov. 11 *	ROBERT MORRIS	L	1-4
Nov. 16 *	at Lindenwood	L	1-5
Nov. 17 *	at Lindenwood	W	3-2
Nov. 30 *	at #4 Mercyhurst		7:00 p.m.
Dec. 1 *	at #4 Mercyhurst		2:00 p.m.
Dec. 7	at St. Lawrence		7:00 p.m.
Dec. 8	at St. Lawrence		2:00 p.m.
Jan. 4	CHATHAM		7:30 p.m.
Jan. 5	CHATHAM		7:00 p.m.
Jan. 11	at Union		7:00 p.m.
Jan. 12	at Union		4:00 p.m.
Jan. 25 *	at Syracuse		7:00 p.m.
Jan. 26 *	at Syracuse		2:00 p.m.
Jan. 29	PRINCETON		7:00 p.m.
Feb. 1 *	#4 MERCYHURST		7:00 p.m.
Feb. 2 *	#4 MERCYHURST		2:00 p.m.
Feb. 8 *	LINDENWOOD		2:00 p.m.
Feb. 9 *	LINDENWOOD		2:00 p.m.
Feb. 15 *	at RIT		7:00 p.m.
Feb. 16 *	at RIT		7:00 p.m.
Feb. 22 *	at Robert Morris		7:00 p.m.
Feb. 23 *	at Robert Morris		3:00 p.m.
<b>2013 CHA TOURNAMENT</b>			
Mar. 1	^ First Round - Game 1		TBA
Mar. 2	^ First Round - Game 2		TBA
Mar. 3	^ First Round - Game 3 (if necessary)		TBA
Mar. 8	% Semifinals		TBA
Mar. 9	% Final		TBA

All Times Eastern

Home games in **CAPS** at Greenberg Ice Pavilion

\* - College Hockey America games

^ - CHA First Round at higher seed

% - CHA Semifinals & Final hosted by No. 1 seed

Rankings based on USA Today/USA Hockey poll



### PENN STATE NITTANY LIONS

(5-8-1, 1-6-1 CHA)

### #4 MERCYHURST LAKERS

(12-1-1, 4-0-0 CHA)

Games 15-16: Nov. 30-Dec. 1, 2012 • 7 p.m. // 2 p.m. ET • Mercyhurst Ice Center • Erie, Pa.

#### GAME DAY

VENUE  
 STREAMING COVERAGE  
 SERIES RECORD  
 LAST MEETING  
 NEXT SERIES

Mercyhurst Ice Center (1,500)  
 AmericaOneSports.com Video  
 0-0-0  
 n/a, First Meeting, Nov. 30  
 Dec. 7-8 at St. Lawrence

#### GAME NOTES

- Penn State travels to Mercyhurst for two-game set on Friday and Saturday
- The Nittany Lions and Mercyhurst meet for the first time in women's hockey
- Penn State split two weekends ago at Lindenwood (5-1 loss, 3-2 win)
- **Emily Laurenzi** netted the team's first CHA game-winning goal at LU
- Mercyhurst is on a 7-game winning streak, outscoring opponents 35-6 in that span
- **Shannon Yoxheimer** leads the CHA in shots (86), third in goals (10) and points (17)
- **Nicole Paniccia** has started 10-straight games dating to Oct. 14 vs. Syracuse
- Paniccia is second in the conference in saves (407) and third in save pct. (.921)

#### ON THE INSIDE

Page 2: **CHA Standings and Team Comparison**

Page 8: \$90 million **Pegula Ice Arena** is on target for a Sept. 2013 opening

Pages 9-10: **2012-13 Penn State Women's Hockey Stats**

Pages 11-12: **The Nittany Lion Roster & TV/Radio Roster**

#### SEASON STATISTICAL LEADERS

OFFENSE		GP	G	A	PTS	SH	+/-	GWG
40	Shannon Yoxheimer	14	10	7	17	86	+4	2
24	Taylor Gross	14	4	10	14	44	+6	0
15	Jess Desorcie	14	2	8	10	31	+5	0
20	Emily Laurenzi	14	2	4	6	14	+3	1
16	Hannah Hoenshell	9	4	1	5	23	+2	1
19	Jill Holdcroft	14	4	1	5	21	-2	0
23	Birdie Shaw	13	2	3	5	28	0	0
10	Micayla Catanzariti	14	3	1	4	23	-1	0
22	Jenna Welch	14	1	3	4	21	-4	0
DEFENSE		GP	G	A	PTS	SH	+/-	BLK
33	Madison Smiddy	12	1	5	6	10	+3	11
2	Jeanette Bateman	14	1	1	2	17	+1	16
17	Paige Jahnke	14	0	3	3	16	+5	16
4	Jordin Pardoski	14	1	2	3	11	+2	11
6	Lindsay Reihl	14	0	1	1	5	-9	17
GOALTENDER		GP-GS	Record	MIN	GA	GAA	SV	SV%
37	Nicole Paniccia	12-12	5-6-1	701:31	35	2.99	407	.921
30	Celine Whittinger	2-2	0-2-0	118:40	9	4.55	78	.897



@PennStateWHKY



PennStateWomensHockey



GoPSUTV



# NITTANY LION WOMEN'S HOCKEY

## GAME NOTES AT MERCYHURST (NOV. 30-DEC. 1)

### SCOUTING THE LAKERS

Winners of 10 consecutive regular-season CHA titles, No. 4 Mercyhurst (12-1-1, 4-0-0 CHA) is on track for its 11th when it hosts Penn State this weekend. The Lakers have won seven in a row by a combined score of 35-6. Entering Friday's game, Mercyhurst is riding a three-game shutout streak and hasn't allowed a goal in over 234 minutes, dating back to Nov. 2.

Anchoring the defensive ranks is goaltender Stephanie Ciampa, who ranks fourth in save percentage (.951) and fourth in the nation in goals-against average (1.00), allowing just 8 in 478 minutes of work with four shutouts.

Offensively, Mercyhurst is even more impressive, making second in the nation in goals per game (4.79) and scoring margin (+3.29). Junior Christine Bestland is third in the country with 2.43 points per game, tallying 11 goals and 23 assists thus far. Freshman Emily Janiga has been a force with Bestland, scoring 11 times with 11 assists. Capping the Mercyhurst offensive force is freshman Jenna Dingeldein (5g, 12a) and sophomore Molly Byrne (6g, 11a).

On special teams, Mercyhurst is fifth in the nation in scoring percentage, tallying 21 goals on 76 attempts (27.6%). On the penalty kill, Mercyhurst ranks 11th (60-71, 84.5%), while adding two short handed goals.

### CHA SPLIT AT LINDENWOOD

Penn State women's hockey earned another inaugural milestone on Saturday, Nov. 17, defeating Lindenwood 3-2 for its first College Hockey America victory. Freshman forward **Emily Laurenzi** struck for the game-winning goal to complete a comeback at Lindenwood Ice Arena. Fellow classmate **Jill Holdcroft** and junior captain **Taylor Gross** each notched their fourth goals of the season for the Nittany Lions. Freshman forward **Shannon Yoxheimer** had two assists to aid the Nittany Lion attack.

Penn State found itself down twice to Lindenwood and each time fought back to knot the game. With 5:50 left in the third period in a 2-2 game, Laurenzi tucked home her second goal of the season as the Nittany Lions held off LU for the final portions of the game. **Paige Jahnke** and **Hannah Hoenshell** assisted on the power-play goal.

The previous day did not go as well for the Nittany Lions. Lindenwood scored twice in the second period to break a 1-1 deadlock and went on to win, 5-1, for the Lions' first win of the season. Holdcroft scored a power-play goal from Yoxheimer and Gross.

### YOUTH MOVEMENT

As is expected with a brand new varsity program, there are many freshmen on the team—17 in all. Thus far, 15 freshman have made an appearance on the ice. The Nittany Lion freshmen have accounted for 73.7% of the goals scored (28 of 38).

	GP	G	A	Pts.
<b>Jeanette Bateman</b>	14	1	1	2
<b>Micayla Catanzariti</b>	14	3	1	4
<b>Hannah Hoenshell</b>	9	4	1	5
<b>Jill Holdcroft</b>	14	4	1	4
<b>Paige Jahnke</b>	14	0	3	3
<b>Darby Kern</b>	-	-	-	-
<b>Emily Laurenzi</b>	14	2	4	6
<b>Taylor McGee</b>	9	0	1	1
<b>Jordin Pardoski</b>	14	1	2	3
<b>Kendra Rasmussen</b>	13	1	1	2
<b>Birdie Shaw</b>	13	2	3	5
<b>Stephanie Walkom</b>	-	-	-	-
<b>Sarah Wilkie</b>	8	0	0	0
<b>Shannon Yoxheimer</b>	14	10	7	17
<b>Katie Zinn</b>	9	0	1	1
	GP	GAA	SV	Pct.
<b>Brooke Meyer</b>	1	0.00	7	1.000
<b>Celine Whitlinger</b>	2	4.55	78	.897

### GAMEDAY COMPARISON

TEAM STATS	MERCYHURST	PENN STATE
Overall record	5-8-1	12-1-1
Conference record	1-6-1	4-0-0
Goals scored	36	67
Goals scored per game	2.6	4.8
Goals allowed	45	21
Goals allowed per game	3.2	1.5
First period goals	11	20
Second period goals	11	27
Third period goals	14	20
Overtime goals	0	-
Shots	414	548
Shots per game	29.6	39.1
Shot pct.	.150	.122
Assists	54	118
Penalties per game	4.6	5.3
Power plays	9-60	22-75
Power-play pct.	.150	.293
Penalty kills	17-63	11-68
Penalty-kill pct.	.730	.838
Saves	492	280
Shutouts	1	5

LEADERS	MERCYHURST	PENN STATE
Points	Yoxheimer (17)	Bestland (23)
Goals	Yoxheimer (10)	Two with 11
Assists	Gross (10)	Bestland (23)
Shots	Yoxheimer (86)	Cicero (69)
Shot Pct.	Hoenshell (.174)	Janiga (.208)
+/-	Gross (+6)	Bestland (+21)
Faceoff Pct.	Holdcroft (.580)	Bestland (.605)
Saves	Paniccia (407)	Ciampa (155)
Save Pct.	Paniccia (.921)	Ciampa (.951)
GAA	Paniccia (2.99)	Ciampa (1.00)
Record	Paniccia (5-6-1)	Ciampa (8-0-0)

### 2012-13 COLLEGE HOCKEY AMERICA STANDINGS

(as of Nov. 25, 2012)

	Pts.	CHA	GF	GA	Overall	GF	GA	Last 10
Mercyhurst (4/4)	8	4-0-0	25	3	12-1-1	67	21	9-1-0
Syracuse	7	3-0-1	14	3	8-5-1	41	24	6-3-1
Robert Morris	4	2-0-0	11	2	6-2-2	32	21	6-2-2
RIT	4	1-3-2	11	20	6-5-2	35	27	5-3-2
<b>PENN STATE</b>	<b>3</b>	<b>1-6-1</b>	<b>9</b>	<b>34</b>	<b>5-8-1</b>	<b>36</b>	<b>45</b>	<b>4-5-1</b>
Lindenwood	2	1-3-0	8	16	1-11-0	16	59	1-9-0

### UPCOMING SCHEDULE

#### Friday, Nov. 30

Robert Morris at Syracuse, 7 p.m.  
**PENN STATE at Mercyhurst, 7 p.m.**  
 St. Cloud State at Lindenwood, 8 p.m.  
 RIT at North Dakota, 8 p.m.

#### Saturday, Dec. 1

Robert Morris at Syracuse, 2 p.m.  
**PENN STATE at Mercyhurst, 2 p.m.**  
 St. Cloud State at Lindenwood, 3 p.m.  
 RIT at North Dakota, 8 p.m.



# NITTANY LION WOMEN'S HOCKEY

## SET TO JOIN THE NITTANY LIONS

On Nov. 14, head coach **Josh Brandwene** welcomed next year's Nittany Lions. Minnesota natives **Laura Bowman** (Minnetonka, Minn.), **Sarah Nielsen** (Edina, Minn.), **Amy Petersen** (Minnetonka, Minn.) and **New York** product **Kelly Seward** (Williamsville, N.Y.). Bowman and Petersen have led Minnetonka to the last two Minnesota high school state titles.

## WEEKEND SWEEP BY RMU

Penn State faced the 2012 CHA Tournament champion Robert Morris in a two-game series (Nov. 10-11), falling 7-1 and 4-1. **Shannon Yoxheimer** scored in the opener off a **Taylor Gross** faceoff win, but RMU's Rebecca Vint scored five times to pace the Colonials.

In the second game, it was more of the same early as Robert Morris staked out a 3-0 lead through two periods, but Penn State held the Colonials scoreless in the second. That turned the momentum around as Penn State went toe-to-toe with the defending champions in the third. **Micayla Catanzariti** scored

a goal with 6:19 remaining to spark the Lions. **Birdie Shaw** and **Jill Holdcroft** were credited with assists. Twenty-three seconds later, Yoxheimer's shot was saved by Delayne Brian and Taylor Gross's attempt was stopped by Brian to keep it a two-goal game. With 2:23 left, RMU took an interference penalty as Penn State had a 6-on-4, but couldn't convert before RMU tallied an empty-net goal with 13 second remaining. **Nicole Paniccia** made 49 saves in Sunday's loss.

## YOXHEIMER FINALLY STOPPED

Penn State's leading scorer, **Shannon Yoxheimer**, has been on a roll over the past four weeks, scoring eight of her team-high 10 goals. In that stretch, Yoxheimer scored in seven-straight games after a three-game drought. The seven-game streak started at Sacred Heart as she scored PSU's only goal

## PENN STATE'S RECORD IS...

2-5-1	..... at home
3-3-0	..... on the road
0-0-1	..... in overtime
3-1-1	..... when scoring first
2-7-0	..... when opponent scores first
3-0-1	..... when leading after the 1st period
1-5-0	..... when trailing after the 1st period
1-3-0	..... when tied after the 1st period
4-0-1	..... when leading after the 2nd period
0-7-0	..... when trailing after the 2nd period
1-1-0	..... when tied after the 2nd period
4-1-0	..... when out-shooting opponent
1-7-1	..... when out-shot by opponent
0-0-0	..... when taking same # of shots
5-1-0	..... when winning more faceoffs
0-7-1	..... when losing more faceoffs
0-0-0	..... when tied in faceoffs
1-4-0	..... when taking more penalties
3-2-0	..... when taking fewer penalties
1-2-1	... when taking the same # of penalties
3-2-1	..... when scoring a power play goal
2-6-0	... when not scoring a power play goal
4-6-1	..... when allowing a power play goal
1-2-0	... when not allowing a power play goal
0-2-0	..... when scoring 0 goals
0-6-0	..... when scoring 1 goal
0-0-1	..... when scoring 2 goals
1-0-0	..... when scoring 3 goals
4-0-0	..... when scoring 4+ goals
1-0-0	..... when allowing 0 goals
1-0-0	..... when allowing 1 goal
2-1-1	..... when allowing 2 goals
1-1-0	..... when allowing 3 goals
0-6-0	..... when allowing 4+ goals
2-5-1	..... in October
3-3-0	..... in November
0-0-0	..... in December
0-0-0	..... in January
0-0-0	..... in February
0-0-0	..... in March
0-0-0	..... on Tuesday
0-1-0	..... on Thursday
1-2-1	..... on Friday
4-2-0	..... on Saturday
0-3-0	..... on Sunday
4-4-0	..... during the day
1-4-1	..... at night
1-1-0	..... vs. Hockey East
1-6-1	..... vs. College Hockey America
0-0-0	..... vs. ECAC Hockey
3-1-0	..... vs. D-I Independents
0-0-0	..... vs. ranked opponents
4-7-1	..... vs. unranked opponents
4-3-1	..... when Shannon Yoxheimer scores
5-6-1	..... when Nicole Paniccia starts
1-1-1	..... games decided by a goal or less

## 2012-13 WOMEN'S HOCKEY POLLS (as of Nov. 27, 2012)

### USA Today/USA Hockey Poll

1	Minnesota	16-0-0	1
2	Clarkson	12-2-0	3
3	Cornell	9-2-0	2
4	<b>Mercyhurst</b>	<b>12-1-1</b>	<b>4</b>
5	Harvard	6-1-0	7
6	Boston College	8-3-2	6
7	Boston University	9-3-1	5
8	North Dakota	9-5-0	10
9	Northeastern	8-3-2	9
10	Ohio State	11-5-0	8

Others: Wisconsin

### USCHO.com Poll

1	Minnesota	16-0-0	1
2	Clarkson	12-2-0	3
3	Cornell	9-2-0	2
4	<b>Mercyhurst</b>	<b>12-1-1</b>	<b>4</b>
5	Boston College	8-3-2	5
6	Harvard	6-1-0	7
7	Boston University	9-3-1	6
8	North Dakota	9-5-0	10
9	Northeastern	8-3-2	9
10	Wisconsin	10-4-2	RV

Others: Ohio State, Providence, St. Lawrence

**Bold indicates 2012-13 opponent**

## 2012-13 MEDIA INFORMATION

### Penn State Athletic Communications

Primary Contact	Jeremy Fallis
Email	jeremy.fallis@psu.edu
Secondary Contact	Brian Hoerst
Email	bjh33@psu.edu
Office	814-865-1757

### Interviews

Penn State student-athletes and coaches are available for interviews after practice each day. Please contact Jeremy Fallis in advance.

### Credentials

Contact Jeremy Fallis for home game credentials at Greenberg Ice Pavilion.

### Postgame

Head coach Josh Brandwene and requested student-athletes are available to the media following each game in the studio rink. Please alert Jeremy Fallis or Brian Hoerst during the game of any requests.

### Yearbook

The 2012-13 Penn State women's hockey yearbook will be made available to media members at the first home game on Oct. 13. The public may purchase copies for \$6 online.

[GoPSUsports.com](http://GoPSUsports.com)

[Facebook.com/PennStateWomensHockey](https://www.facebook.com/PennStateWomensHockey)

[@PennStateWHKY](https://twitter.com/PennStateWHKY)



# NITTANY LION WOMEN'S HOCKEY

and has continued with a career day vs. SHU on Nov. 3 as she scored a goal and career-high two assists. Yoxheimer also accounted for Penn State's first two game-winning goals, notching two goals at Vermont (Oct. 6) and the go-ahead goal at SHU (Oct. 20). Yoxheimer scored against Robert Morris on Saturday, but we held scoreless for the first time since Oct. 14 in the Sunday matchup.

## EIGHT FROM EIGHT IN WIN OVER SHU

Penn State earned its first series sweep in program history, defeating Sacred Heart, 8-2, on Saturday (Nov. 3) afternoon at Greenberg Ice Pavilion. Eight different Nittany Lions tallied a goal with **Jess Desorcie**, **Taylor Gross** and **Shannon Yoxheimer** notching three-point days.

Yoxheimer opened the scoring before SHU tied it up early in the second period before Gross, **Kendra Rasmussen** and **Jill Holdcroft** scored successive goals for a 4-1 lead midway through the period.

After another SHU tally, PSU would rally off the last four goals, this time coming from Desorcie, **Jenna Welch**, **Madison Smiddy** and **Emily Laurenzi**. Welch, Smiddy and Laurenzi scored their first goals of the season for Penn State.

**Nicole Paniccia** made 23 saves in net for the Nittany Lions to improve to 4-3-1 on the season. Penn State dominated the game in the faceoff circle, 54-25, which led to a 64-25 shot advantage.

## FIRST HOME WIN, SHUTOUT & HAT TRICK

Friday night, Nov. 2 at Greenberg Ice Pavilion was historic for Penn State as the women's hockey team won its first home game, 6-0, over Sacred Heart. The program's first shutout featured the first hat trick by **Hannah Hoenshell**. **Shannon Yoxheimer** scored twice and **Jill Holdcroft** scored her first ever goal in the rout.

Hoenshell opened the game's scoring seven minutes into the contest, which highlighted a 22-2 Penn State advantage in shots over the Pioneers.

The Nittany Lions would light the lamp three times in the second as Hoenshell, Yoxheimer and Holdcroft stretched the lead to 4-0.

In the third, Penn State would make it 5-0 just

10 seconds into the period on a Yoxheimer laser from the left wing and Hoenshell would cap her hat trick five minutes later for the 6-0 final score.

The Nittany Lions out-shot the Pioneers 66-18 as goaltenders **Nicole Paniccia** (11 saves) and **Brooke Meyer** (7 saves) combined for the school's first shutout.

## PSU EARNS FIRST CHA POINT

Penn State was 89 seconds away from its first CHA victory on Friday, Oct. 26 vs. RIT, but had to settle with a hard-fought 2-2 tie. After a 4-1 loss to RIT on Thursday, Penn State fell to 0-3-1 in CHA play. Goaltender **Nicole Paniccia** and forward **Shannon Yoxheimer** shined for Penn State, providing outstanding defense and offense, respectively. Paniccia made 93 saves last week, including a school-record 59 stops in the 2-2 tie. Paniccia finished the weekend with a .939 save percentage after a 34-save effort in Thursday's matchup.

Yoxheimer scored Penn State's lone goal in the opener and opened the scoring on Friday before Taylor Gross made it 2-0 just seconds later. **Paige Jahnke**, **Madison Smiddy**, Yoxheimer and Gross each had an assist in the tie as the Tigers scored once in the first and another in the third. RIT held a 99-36 shot advantage in the series.

## LAST TIME AGAINST SACRED HEART

The Nittany Lions split a weekend series (Oct. 19-20) at Sacred Heart, falling in the opener 2-1 and winning the finale 6-1. Penn State was led by freshman forward **Shannon Yoxheimer** with two goals and an assist.

In the opener, the Pioneers opened a 2-0 lead through two periods and didn't allow the Nittany Lions on the board until Yoxheimer slammed home a scramble in front of the net with 2:31 left in the game and an extra skater on the ice. **Taylor Gross** and **Birdie Shaw** were credited with assists as junior goaltender **Nicole Paniccia** made 26 saves in the loss.

The following day Penn State came out firing, scoring on three straight power-plays en route to a 6-1 rout. Gross, Yoxheimer and **Jeanette Bateman** tallied each of the power play goals for a 3-1 lead through two periods. **Jess Desorcie**, **Hannah Hoenshell** and **Jordin Pardoski** added a trio of third-period goals as Penn State featured six different goal scorers.

**Jenna Welch**, **Madison Smiddy**, Gross and Yoxheimer had multi-point days. Paniccia had 25 saves for a 51-save weekend.

## YOX NAMED CHA PLAYER OF THE WEEK

For her efforts against Sacred Heart, **Shannon Yoxheimer** was named CHA Player of the Week for a three-point weekend and a game-winning goal over the Pioneers (Oct. 19-20). Yoxheimer leads the team with four goals and is tied with Taylor Gross for points with five. Yoxheimer is the first Nittany Lion to receive CHA Offensive Player of the Weeks honors and joins fellow classmate **Micayla Catanzariti** (Rookie of the Week, Oct. 8) on the honor roll.

## ANOTHER WEEKEND OF FIRSTS

The second road trip in Penn State women's hockey history resulted in another split result, but it was not without some firsts. The Nittany Lions tallied six goals in a victory at Sacred Heart (Oct. 20), the most in the short history of the program and the largest margin of victory (5). Additionally, the Lions tallied eight assists, which matched the inaugural game.

Individually, **Jeanette Bateman**, **Jordin Par-**

## HONORS & AWARDS

### Micayla Catanzariti

CHA Rookie of the Week (10/8)  
Penn State Student-Athlete of the Week (10/9)

### Shannon Yoxheimer

CHA Player of the Week (10/22)  
Penn State Student-Athlete of the Week (10/23)

## OVER THE AIR

### This Week

AmericaOneSports.com will air live video and audio of this weekend's games. Packages cost \$8 a day, \$30 a month or \$125 for the entire season for all CHA games.

### The CHA on AmericaOneSports.com

All Penn State games during CHA play will be streamed live on AmericaOneSports.com. Subscribers can purchase 30-day packages for \$30 or a season pass for \$125.

### Non-Conference Home Action

Penn State's non-conference home games will be shown on a game-to-game basis.

# NITTANY LION WOMEN'S HOCKEY



**doski** and **Hannah Hoenshell** scored their first collegiate goals on Oct. 20. **Jess Desorcie** tallied her first Penn State varsity goal, while **Lindsay Reihl** and **Jenna Welch** recorded their first Penn State points on assists. Welch had a two-helper game as did **Madison Smiddy**, who notched her first multi-point game. **Cara Mendelson** and Hoenshell hit the ice for the first time, bringing the total number of Nittany Lions to see ice time to 23.

## HISTORIC FIRST WIN

Penn State women's hockey made history on Saturday, Oct. 6 at Vermont's Gutterson Fieldhouse by winning its inaugural game, 5-3. The Nittany Lions scored five goals from three freshmen making their respective debuts as junior goaltender **Nicole Pan-iccia** made 31 saves in her PSU opener. **Shannon Yoxheimer** and **Micayla Catanzariti** each scored twice for the Nittany Lions.

Down 2-1, Penn State was not to be deterred, reeling off three straight goals to take a 4-2 lead midway through the third period. Despite a Vermont goal with 6:34 left in the third, **Birdie Shaw** scored an empty-net goal to seal the Nittany Lion victory. Junior captain **Taylor Gross** made her Penn State debut known with two assists and was named the first star of the game, Yoxheimer was second.

## FIRST TIME FOR EVERYTHING

Penn State had a varsity team debut for the first time since 1994 (women's soccer) when the women's hockey team defeated Vermont, 5-3 on Oct. 6. The successful debut was the first since 1977 when the men's volleyball team defeated East Stroudsburg.

- Game:** Oct. 6, 2012 at Vermont, 2:00 p.m.
- Win:** Nicole Pan-iccia, Oct. 6 at Vermont, 5-3
- Goal:** Shannon Yoxheimer
- Multi-Goal Game:** Micayla Catanzariti
- Game-Winning Goal:** Shannon Yoxheimer
- Assists:** Taylor Gross, Emily Laurenzi
- Multi-Assist Game:** Jess Desorcie
- Faceoff:** Emily Laurenzi
- Faceoff win:** Emily Laurenzi
- Shot:** Katie Zinn
- Save:** Nicole Pan-iccia
- Empty-Net Goal:** Birdie Shaw

## CATANZARITI HONORED

Freshman forward **Micayla Catanzariti** was named College Hockey America's Rookie of the Week on Oct. 8. Catanzariti led the Nittany Lions to a win in their inaugural opener on Saturday with two goals and an assist at Vermont. Catanzariti was also named Highmark's Penn State Women's Student-Athlete of the Week.

## NCAA TEAM RANKS

(As of Nov. 28, 2012)

Goals Per Game	19th
Goals Against Per Game	T-23rd
Scoring Margin	20th
Most Penalty Minutes	19th
Power-Play Percentage	23rd
Penalty-Kill Percentage	30th
Combined Special Teams	28th
Winning Percentage	T-21st

## NCAA INDIVIDUAL RANKS

(Top 100 as of Nov. 28, 2012)

**Jess Desorcie**

Assists Per Game	T-61st
------------------	--------

**Taylor Gross**

Points Per Game	T-49th
Assists Per Game	T-39th
Power-Play Goals	T-49th

**Jill Holdcroft**

Power-Play Goals	T-49th
------------------	--------

**Emily Laurenzi**

Points Per Game (Rookies)	T-42nd
---------------------------	--------

**Nicole Pan-iccia**

Goals-Against Average	32nd
Save Percentage	16th
Winning Percentage	24th

**Birdie Shaw**

Points Per Game (Rookies)	T-46th
---------------------------	--------

**Madison Smiddy**

Points Per Game (D)	T-34th
---------------------	--------

**Shannon Yoxheimer**

Points Per Game	T-28th
Goals Per Game	T-15th
Game-Winning Goals	T-14th
Power-Play Goals	T-49th
Assists Per Game	T-72nd
Points Per Game (Rookies)	T-6th



## CHA TEAM RANKS

(As of Nov. 15, 2012)

Goals	2nd
Goals Against	5th
Assists	3rd
Goals Per Game	5th
Goals-Against Average	5th
Saves	2nd
Save Percentage	3rd
Shots on Goal	3rd
Least Penalty Minutes	2nd
Power-Play Goals	T-3rd
Power-Play Percentage	4th
Power-Play Goals Against	5th
Penalty-Kill Percentage	5th

## CHA INDIVIDUAL RANKS

(Top 10 as of Nov. 28, 2012)

**Jess Desorcie**

Assists	T-7th
---------	-------

**Taylor Gross**

Points	T-7th
Assists	T-5th
Power-Play Goals	T-7th

**Taylor Gross**

Power-Play Goals	T-7th
------------------	-------

**Nicole Pan-iccia**

Games Played	1st
Games Started	1st
Minutes Played	1st
Goals-Against Average	8th
Saves	2nd
Save Percentage	3rd
Wins	3rd
Ties	T-2nd
Win Percentage	7th

**Madison Smiddy**

Points (D)	T-6th
Assists (D)	T-5th
Power-Play Goals (D)	T-3rd

**Shannon Yoxheimer**

Points	T-3rd
Goals	3rd
Assists	T-10th
Power-Play Goals	T-7th
Game-Winning Goals	T-3rd
Shots	1st





# NITTANY LION WOMEN'S HOCKEY

## FIRST HEAD COACH

A 1991 graduate of Penn State, head coach **Josh Brandwene** is the first to lead the Nittany Lions. A four-year hockey player at PSU, Brandwene brings 20 years of coaching experience to Happy Valley. Brandwene picked up his first win in the team's debut on Saturday, Oct. 6 at Vermont.

## CAPTAIN, OUR CAPTAIN

Junior forward **Taylor Gross** leads Penn State as its first captain. The University of Connecticut transfer appeared in 48 games for the Huskies before joining Penn State's club side in January 2012. In September, the team voted fellow UConn transfer **Jenna Welch** and senior defender **Lindsay Reihl** as assistant captains.

## CONTINUING PENN STATE HOCKEY

Eight members of the current varsity team played for the women's club team at some point. Seniors **Lindsay Reihl** and **Kate Christoffersen** and sophomores **Cara Mendelson**, **Katie Murphy**, **Madison Smiddy** and **Tess Weaver** played all of last season for head coach **Josh Brandwene** in Penn State's last year at the club level. Reihl and Christoffersen played three years for the PSU club team as well. **Taylor Gross** and **Jess Desorcie** joined the six players midway through the season in preparation of the 2012-13 season.

## ON SCHEDULE

**Pegula Ice Arena**, a \$90 million state-of-the-art facility, will serve as the home of the Penn State hockey programs in 2012-13. As of Nov. 25, 2012, all the steel has been put in place for the project and the building held its official topping off ceremony on Friday, Nov. 9, 2012. Construction is set to conclude in time for the 2012-13 season as the building will open Sept. 5, 2013.

*For more information on Pegula Ice Arena, visit page 8 of the game notes.*

## NEXT TIME OUT

Penn State finishes its season-long six-game road swing at St. Lawrence on Dec. 7-8. Friday's game has a 7 p.m. opening face-off and Saturday's game will begin at 2 p.m.

## THE LAST TIME

### PENN STATE...

Scored 0 goals  
 Scored 3 goals  
 Scored 4 goals  
 Scored 5 goals  
 Scored 6 goals  
 Scored 7 goals  
 Scored 8 goals  
 Allowed 0 goals  
 Allowed 1 goal  
 Allowed 2 goals  
 Allowed 3 goals  
 Allowed 4 goals  
 Allowed 5 goals  
 Allowed 6+ goals  
 Won in overtime  
 Lost in overtime  
 Tied in overtime  
 Played a ranked team  
 Attempted 10-19 shots  
 Attempted 20-29 shots  
 Attempted 30-39 shots  
 Attempted 40-49 shots  
 Attempted 50-59 shots  
 Attempted 60+ shots  
 Allowed 10-19 shots  
 Allowed 20-29 shots  
 Allowed 30-39 shots  
 Allowed 40-49 shots  
 Allowed 50-59 shots  
 Allowed 60+ shots  
 Tallied 5-9 assists  
 Tallied 10+ assists  
 Scored 10-19 points  
 Scored 20+ points  
 Scored 2 power-play goals  
 Scored 3 power-play goals  
 Allowed 0 power-play goals  
 Allowed 2 power-play goals  
 Had 5 different goal scorers  
 Had 6 different goal scorers  
 Had 7 different goal scorers  
 Had 8 different goal scorers

10/14/12 ..... vs. Syracuse (0-6)  
 11/17/12 ..... at Lindenwood (3-2)  
 Never  
 10/6/12 ..... at Vermont (5-3)  
 11/2/12 ..... vs. Sacred Heart (6-0)  
 Never  
 11/3/12 ..... vs. Sacred Heart (8-2)  
 11/2/12 ..... vs. Sacred Heart (6-0)  
 10/20/12 ..... at Sacred Heart (6-1)  
 11/17/12 ..... at Lindenwood (3-2)  
 10/7/12 ..... at Vermont (1-3)  
 11/11/12 ..... vs. Robert Morris (1-4)  
 11/16/12 ..... at Lindenwood (1-5)  
 11/10/12 ..... vs. Robert Morris (1-7)  
 Never  
 Never  
 10/26/12 ..... vs. RIT (2-2)  
 Never  
 11/16/12 ..... 16 at Lindenwood (1-5)  
 11/11/12 ..... 20 vs. Robert Morris (1-4)  
 11/17/12 ..... 33 at Lindenwood (3-2)  
 10/19/12 ..... 42 at Sacred Heart (1-2)  
 Never  
 11/3/12 ..... 64 vs. Sacred Heart (8-2)  
 11/2/12 ..... 18 vs. Sacred Heart (6-0)  
 11/3/12 ..... 25 vs. Sacred Heart (8-2)  
 11/17/12 ..... 30 at Lindenwood (3-2)  
 11/10/12 ..... 43 vs. Robert Morris (1-7)  
 11/11/12 ..... 53 vs. Robert Morris (1-4)  
 10/26/12 ..... 61 vs. RIT (2-2)  
 11/17/12 ..... 5 at Lindenwood (3-2)  
 11/3/12 ..... 12 vs. Sacred Heart (8-2)  
 11/2/12 ..... 12 vs. Sacred Heart (6-0)  
 11/3/12 ..... 20 vs. Sacred Heart (8-2)  
 11/17/12 ..... at Lindenwood (3-2)  
 10/20/12 ..... at Sacred Heart (6-1)  
 11/11/12 ..... vs. Robert Morris (1-4)  
 11/16/12 ..... at Lindenwood (1-5)  
 Never  
 10/20/12 ..... at Sacred Heart (6-1)  
 Never  
 11/3/12 ..... vs. Sacred Heart (8-2)

### A PENN STATE PLAYER...

Scored 2 goals  
 Scored 3 goals  
 Scored 4 goals  
 Had 3 assists  
 Had 5 points  
 Had 10+ shots  
 Saved 40-49 shots  
 Saved 50-59 shots  
 Saved 60+ shots  
 Had a shutout  
 Scored an empty-net goal  
 Scored a short-handed goal

11/2/12 ..... S. Yoxheimer vs. Sacred Heart (6-0)  
 11/2/12 ..... H. Hoenshell vs. Sacred Heart (6-0)  
 Never  
 Never  
 Never  
 11/3/12 ..... 11, S. Yoxheimer vs. Sacred Heart (8-2)  
 11/11/12 ..... 49, N. Paniccia vs. Robert Morris (1-4)  
 10/26/12 ..... 59, N. Paniccia vs. RIT (2-2)  
 Never  
 11/2/12 ... N. Paniccia/B. Meyer vs. Sacred Heart (6-0)  
 10/6/12 ..... B. Shaw at Vermont (5-3)  
 Never





# NITTANY LION WOMEN'S HOCKEY

## PEGULA ICE ARENA FUTURE HOME OF PENN STATE HOCKEY

### FACTS

**Construction Groundbreaking:** January 2012

**Ceremonial Groundbreaking:** April 20, 2012

**Projected Opening:** September 5, 2013

**Capacity:** 6,000 (Arena rink); 300 (Community rink)

**Size:** 200,000 square feet

### AMENITIES

*Two NHL-sized (200' x 85') ice surfaces*

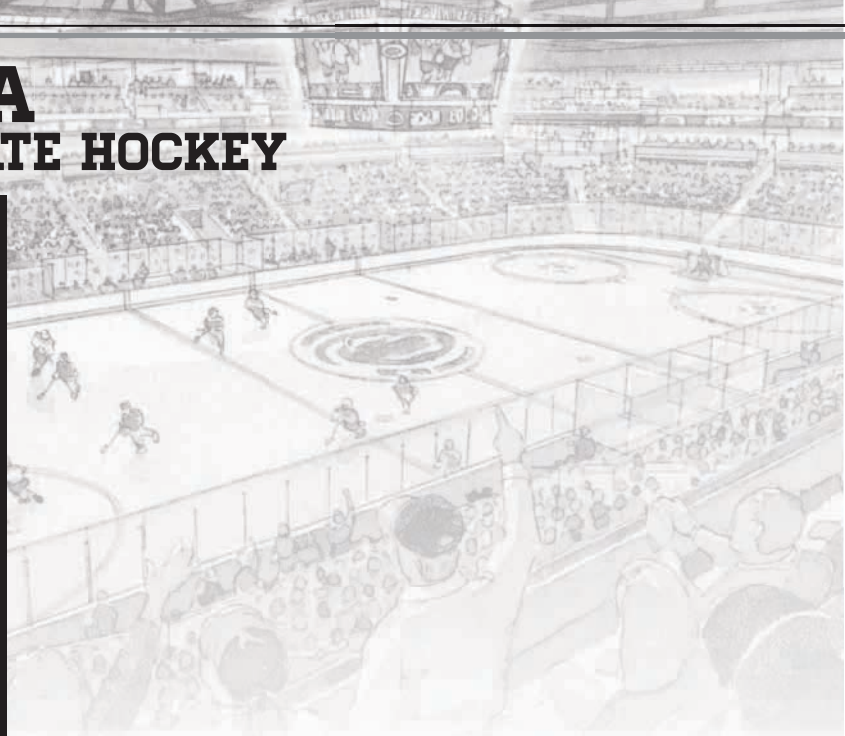
#### Arena rink will offer:

- 6,000-seat overall capacity
- 1,000-seat student section
- First-rate varsity locker rooms
- Team lounges and dry changing room
- Strength and conditioning center
- Shooting gallery
- Suites, loge boxes and club seats
- State-of-the-art television and radio broadcasting facilities
- Press box and media center
- Concession stands with café
- Videoboard

#### Community rink will offer:

- 300-seat capacity
- Eight locker rooms
- Skate rental center

Pegula Ice Arena will have the ability to host National Hockey League and American Hockey League games, as well as professional ice shows, local hockey and figure skating programs.



*Left to Right: Kim and Terry Pegula, Dr. Rodney Erickson, The Nittany Lion, Joe Battista and Karen Peetz at the Pegula Ice Arena ceremonial groundbreaking.*





# NITTANY LION WOMEN'S HOCKEY



## 2012-13 Penn State Women's Hockey Penn State Combined Team Statistics (as of Nov 26, 2012) All games

Date	Opponent	Score	Att.
Oct 06	at Vermont	w 5-3	785
Oct 07	at Vermont	L 1-3	326
* Oct 13	SYRACUSE	L 0-4	408
* Oct 14	SYRACUSE	L 0-6	285
Oct 19	at Sacred Heart	L 1-2	123
Oct 20	at Sacred Heart	w 6-1	213
* Oct 25	RIT	L 1-4	229
* Oct 26	RIT	Tot 2-2	238
Nov 02	SACRED HEART	w 6-0	231
Nov 03	SACRED HEART	w 8-2	127
* Nov 10	ROBERT MORRIS	L 1-7	152
* Nov 11	ROBERT MORRIS	L 1-4	127
* Nov 16	at Lindenwood	L 1-5	150
* Nov 17	at Lindenwood	w 3-2	122

TEAM STATISTICS	PSU	OPP
<b>SHOT STATISTICS</b>		
Goals-Shot attempts	36-414	45-537
Shot pct.	.087	.084
Goals/Game	2.6	3.2
Shots/Game	29.6	38.4
<b>POWER PLAYS</b>		
Goals-Power Plays	9-60	17-63
Conversion Percent	.150	.270
<b>GOAL BREAKDOWN</b>		
Power Play	9	17
Short-handed	0	3
Empty net	1	1
Penalty	0	0
Unassisted	4	6
Overtime	0	0
<b>PENALTIES</b>		
Number	64	63
Minutes	128	126
Penalties/Game	4.6	4.5
Pen minutes/Game	9.1	9.0
FACEOFFS (W-L)	417-456	456-417
Faceoff W-L Pct.	.478	.522

Record:	Overall	Home	Away	Neutral
ALL GAMES	5-8-1	2-5-1	3-3-0	0-0-0
CONFERENCE	1-6-1	0-5-1	1-1-0	0-0-0
NON-CONFERENCE	4-2-0	2-0-0	2-2-0	0-0-0

#	Player	gp	g	a	pts	sh	sh%	pen-min	pp	sh
40	Yoxheimer, Shannon	14	10	7	17	86	.116	4-8	2	0
24	Gross, Taylor	14	4	10	14	44	.091	2-4	2	0
15	Desorcie, Jess	14	2	8	10	31	.065	2-4	0	0
20	Laurenzi, Emily	14	2	4	6	14	.143	2-4	1	0
33	Smiddy, Madison	12	1	5	6	11	.091	4-8	1	0
16	Hoenshell, Hannah	9	4	1	5	23	.174	1-2	0	0
19	Holdcroft, Jill	14	4	1	5	21	.190	1-2	2	0
23	Shaw, Birdie	13	2	3	5	28	.071	7-14	0	0
10	Catanzariti, Micayla	14	3	1	4	23	.130	5-10	0	0
22	Welch, Jenna	14	1	3	4	21	.048	6-12	0	0
4	Pardoski, Jordin	14	1	2	3	11	.091	10-20	0	0
17	Jahnke, Paige	14	0	3	3	16	.000	6-12	0	0
2	Bateman, Jeanette	14	1	1	2	17	.059	1-2	1	0
13	Rasmussen, Kendra	13	1	1	2	20	.050	1-2	0	0
8	McGee, Taylor	9	0	1	1	8	.000	5-10	0	0
6	Reihl, Lindsay	14	0	1	1	5	.000	3-6	0	0
36	Weaver, Tess	11	0	1	1	17	.000	1-2	0	0
11	Zinn, Katie	9	0	1	1	11	.000	1-2	0	0
3	Mendelson, Cara	1	0	0	0	0	.000	0-0	0	0
25	Murphy, Katie	8	0	0	0	1	.000	0-0	0	0
21	Wilkie, Sarah	8	0	0	0	6	.000	0-0	0	0
TM	TEAM	6	0	0	0	0	.000	2-4	0	0
Total		14	36	54	90	414	.087	64-128	9	0
Opponents		14	45	72	117	537	.084	63-126	17	3

#	Goalie	gp	min	ga	gaavg	saves	save%	w-l-t
31	Meyer, Brooke	1	20:00	0	0.00	7	1.000	0-0-0
37	Paniccia, Nicole	12	701:31	35	2.99	407	.921	5-6-1
30	Whitlinger, Celine	2	117:57	9	4.58	78	.897	0-2-0
TM	EMPTY NET	6	4:49	1	-	0	.000	0-0-0
Total		14	844:17	45	3.20	492	.916	5-8-1
Opponents		14	844:17	36	2.56	378	.913	8-5-1

Attendance Summary	PSU	Opponent
Total	1797	1719
Dates/Avg Per Date	8/225	6/286
Neutral Site #/Avg	0/0	

Goals by Period	1st	2nd	3rd	Total
Penn State	11	11	14	36
Opponents	16	13	16	45

Saves by Period	1st	2nd	3rd	Total
Penn State	146	173	168	492
Opponents	117	133	128	378



# NITTANY LION WOMEN'S HOCKEY



2012-13 Penn State Women's Hockey  
 Penn State Game-by-Game Goals-Assists-Points (as of Nov 26, 2012)  
 All games

Opponent	Date	Score	2	3	4	6	8	10	11	13	15	16	17
at UVM	Oct 06	5-3 W	0-0-0	DNP	0-0-0	0-0-0	0-0-0	2-1-3	0-0-0	DNP	0-2-2	DNP	0-0-0
at UVM	Oct 07	1-3 L	0-0-0	DNP	0-0-0	0-0-0	0-1-1	0-0-0	0-0-0	0-0-0	0-1-1	DNP	0-0-0
SU	Oct 13	0-4 L	0-0-0	DNP	0-0-0	0-0-0	0-0-0	0-0-0	0-0-0	0-0-0	0-0-0	DNP	0-0-0
SU	Oct 14	0-6 L	0-0-0	DNP	0-0-0	0-0-0	0-0-0	0-0-0	0-0-0	0-0-0	0-0-0	DNP	0-0-0
at SHU	Oct 19	1-2 L	0-0-0	DNP	0-0-0	0-0-0	DNP	0-0-0	0-0-0	0-0-0	0-0-0	DNP	0-0-0
at SHU	Oct 20	6-1 W	1-0-1	0-0-0	1-0-1	0-0-0	DNP	0-0-0	DNP	0-0-0	1-0-1	0-0-0	0-0-0
RIT	Oct 25	1-4 L	0-0-0	DNP	0-0-0	0-0-0	0-0-0	0-0-0	0-0-0	0-0-0	0-0-0	0-0-0	0-0-0
RIT	Oct 26	2-2 T	0-0-0	DNP	0-0-0	0-0-0	0-0-0	0-0-0	0-0-0	0-0-0	0-1-1	0-0-0	0-0-0
SHU	Nov 02	6-0 W	1-0-1	0-2-2	DNP	0-0-0	0-0-0	0-1-1	DNP	DNP	0-0-0	0-0-0	0-0-0
SHU	Nov 03	8-2 W	1-0-1	0-0-0	DNP	1-1-2	0-0-0	0-1-1	DNP	DNP	DNP	DNP	0-0-0
RMU	Nov 10	1-7 L	0-0-0	0-0-0	DNP	0-0-0	0-0-0	0-1-1	DNP	DNP	DNP	DNP	0-0-0
at LU	Nov 11	1-4 L	0-0-0	0-0-0	0-0-0	0-0-0	0-1-1	0-0-0	0-0-0	DNP	DNP	DNP	0-0-0
at LU	Nov 16	1-5 L	1-0-1	0-0-0	0-0-0	0-0-0	0-0-0	0-0-0	0-0-0	DNP	DNP	DNP	0-0-0
at LU	Nov 17	3-2 W	1-0-1	1-0-1	0-0-0	0-0-0	0-0-0	1-0-1	0-0-0	DNP	DNP	DNP	0-0-0
Opponent	Date	Score	19	20	21	22	23	24	25	30	31	33	36
at UVM	Oct 06	5-3 W	0-0-0	0-1-1	DNP	0-0-0	1-1-2	0-2-2	DNP	DNP	DNP	0-1-1	DNP
at UVM	Oct 07	1-3 L	0-0-0	0-0-0	DNP	0-0-0	1-0-1	0-0-0	DNP	0-0-0	DNP	0-0-0	DNP
SU	Oct 13	0-4 L	0-0-0	0-0-0	0-0-0	0-0-0	0-0-0	0-0-0	0-0-0	DNP	DNP	DNP	0-0-0
SU	Oct 14	0-6 L	0-0-0	0-0-0	0-0-0	0-0-0	0-0-0	0-0-0	0-0-0	0-0-0	DNP	DNP	0-0-0
at SHU	Oct 19	1-2 L	0-0-0	0-0-0	0-0-0	0-0-0	0-1-1	0-1-1	0-0-0	DNP	DNP	0-0-0	0-0-0
at SHU	Oct 20	6-1 W	0-0-0	0-1-1	0-0-0	0-2-2	DNP	1-1-2	0-0-0	DNP	DNP	0-2-2	0-0-0
RIT	Oct 25	1-4 L	0-0-0	0-0-0	0-0-0	0-0-0	0-0-0	0-1-1	0-0-0	DNP	DNP	0-0-0	DNP
RIT	Oct 26	2-2 T	0-0-0	0-0-0	0-0-0	0-0-0	0-0-0	1-1-2	0-0-0	DNP	DNP	0-0-0	0-0-0
SHU	Nov 02	6-0 W	1-0-1	0-2-2	DNP	0-0-0	0-0-0	0-1-1	DNP	DNP	0-0-0	0-0-0	0-0-0
SHU	Nov 03	8-2 W	1-0-1	0-0-0	DNP	1-1-2	0-0-0	1-2-3	DNP	DNP	DNP	1-1-2	0-0-0
RMU	Nov 10	1-7 L	0-0-0	0-0-0	DNP	0-0-0	0-0-0	0-1-1	DNP	DNP	DNP	DNP	0-0-0
at LU	Nov 11	1-4 L	0-0-0	0-0-0	0-0-0	0-0-0	0-1-1	0-0-0	0-0-0	DNP	DNP	DNP	0-0-0
at LU	Nov 16	1-5 L	1-0-1	0-0-0	0-0-0	0-0-0	0-0-0	0-0-0	0-0-0	DNP	DNP	DNP	0-0-0
at LU	Nov 17	3-2 W	1-0-1	1-0-1	0-0-0	0-0-0	0-0-0	1-0-1	0-0-0	DNP	DNP	DNP	0-0-0
Opponent	Date	Score	37	40									
at UVM	Oct 06	5-3 W	0-0-0	2-0-2									
at UVM	Oct 07	1-3 L	DNP	0-0-0									
SU	Oct 13	0-4 L	0-0-0	0-0-0									
SU	Oct 14	0-6 L	DNP	0-0-0									
at SHU	Oct 19	1-2 L	0-0-0	1-0-1									
at SHU	Oct 20	6-1 W	0-0-0	1-1-2									
RIT	Oct 25	1-4 L	0-0-0	1-0-1									
RIT	Oct 26	2-2 T	0-0-0	1-1-2									
SHU	Nov 02	6-0 W	0-0-0	2-0-2									
SHU	Nov 03	8-2 W	0-0-0	1-2-3									
RMU	Nov 10	1-7 L	0-0-0	0-0-0									
RMU	Nov 11	1-4 L	0-0-0	0-0-0									
at LU	Nov 16	1-5 L	0-0-0	0-1-1									
at LU	Nov 17	3-2 W	0-0-0	0-2-2									

# NITTANY LION WOMEN'S HOCKEY



## 2012-13 PENN STATE WOMEN'S HOCKEY NUMERICAL ROSTER

No.	Name	Yr.	Pos.	Ht.	S/C	Hometown	Last Team
2	Jeanette Bateman	Fr.	F/D	5-6	R	Greeley, Colo.	Colorado Select
3	Cara Mendelson	So.	F/D	5-6	R	Pittsburgh, Pa.	Steel City Selects
4	Jordin Pardoski	Fr.	D	5-5	R	Rochester Hills, Mich.	Detroit Honeybaked
5	Stephanie Walkom	Fr.	D	5-7	R	Moon Township, Pa.	Pittsburgh Penguins Elite
6	Lindsay Reihl	Sr.	D	5-4	R	Cheshire, Conn.	Connecticut Polar Bears
8	Taylor McGee	Fr.	D	5-3	R	Pearl River, N.Y.	Taft School (Conn.)
10	Micayla Catanzariti	Fr.	F	5-4	R	Rancho Santa Margarita, Calif.	Gilmour Academy (Ohio)
11	Katie Zinn	Fr.	F	5-7	R	Coquitlam, B.C.	Gilmour Academy (Ohio)
12	Kate Christoffersen	Sr.	F	5-3	R	Trumbull, Conn.	Connecticut Polar Bears
13	Kendra Rasmussen	Fr.	F	5-5	L	Sartell, Minn.	Sartell/Sauk Rapids HS
14	Darby Kern	Fr.	F	5-11	R	Venetia, Pa.	Pittsburgh Penguins Elite
15	Jess Desorcie	So.	F	5-4	L	Westford, Vt.	Connecticut College
16	Hannah Hoenshell	Fr.	F	5-3	R	Plano, Texas	Texas Alliance
17	Paige Jahnke	Fr.	D	5-6	R	Oakdale, Minn.	Roseville HS/Minnesota Jr. Whitecaps
19	Jill Holdcroft	Fr.	F	5-1	R	Pennsylvania Furnace, Pa.	Pittsburgh Penguins Elite
20	Emily Laurenzi	Fr.	F	5-2	R	Townsend, Del.	National Sports Academy (N.Y.)
21	Sarah Wilkie	Fr.	D	5-6	R	Ashby, Mass.	Williston Northampton School
22	Jenna Welch	Jr.	F	5-8	R	Austin, Texas	Connecticut
23	Birdie Shaw	Fr.	F	5-2	L	Troy, Mich.	Detroit Honeybaked
24	Taylor Gross	Jr.	F	5-1	R	Colorado Springs, Colo.	Connecticut
25	Katie Murphy	So.	F	5-4	L	Novi, Mich.	Detroit Honeybaked
30	Celine Whitlinger	Fr.	G	5-8	L	Garden Grove, Calif.	Gilmour Academy (Ohio)
31	Brooke Meyer	Fr.	G	5-7	L	Naperville, Ill.	Chicago Huskies
33	Madison Smiddy	So.	D	5-7	L	Grand Rapids, Mich.	Detroit Honeybaked
36	Tess Weaver	So.	F	5-5	R	Windber, Pa.	Pittsburgh Penguins Elite
37	Nicole Paniccia	Jr.	G	5-5	L	Oakville, Ont.	Connecticut
40	Shannon Yoxheimer	Fr.	F	5-7	L	Jackson, Mich.	North American Hockey Academy (Vt.)

**Head Coach:** Josh Brandwene (First Year)

**Assistant Coaches:** Gina Kearns (First Year), Casey McCullion (First Year); **Director of Operations/Video Coach:** Mo Stroemel (First Year)

**Captain:** Taylor Gross; **Assistant Captains:** Lindsay Reihl, Jenna Welch

ALPHABETICAL ROSTER		PRONUNCIATION GUIDE		LIONS BY STATE		LIONS BY POSITION	
<b>No.</b>	<b>Name</b>	<b>Brandwene</b>	BRAND-ween	<b>California (2):</b>	Catanzariti, Whitlinger	<b>Forward (17):</b>	Bateman*, Catanzariti
2	Jeanette Bateman	<b>Catanzariti</b>	Cah-TAN-zah-REE-tee	<b>Colorado (2):</b>	Bateman, Gross		Christoffersen, Desorcie, Gross,
10	Micayla Catanzariti	<b>Jahnke</b>	YAWN-kee	<b>Connecticut (2):</b>	Christoffersen, Reihl		Hoenshell, Holdcroft, Kern, Laurenzi,
12	Kate Christoffersen	<b>Jeanette</b>	Jeh-NETT				Mendelson, Murphy, Rasmussen,
15	Jess Desorcie	<b>Kearns</b>	KERNS	<b>Delaware (1):</b>	Laurenzi		Shaw, Weaver, Welch, Yoxheimer,
24	Taylor Gross	<b>McCullion</b>	Mick-CULL-yon	<b>Illinois (1):</b>	Meyer		Zinn
16	Hannah Hoenshell	<b>Paniccia</b>	Pah-NEE-cha	<b>Massachusetts (1):</b>	Wilkie		
19	Jill Holdcroft	<b>Reihl</b>	RILE	<b>Michigan (5):</b>	Murphy, Pardoski, Shaw, Smiddy, Yoxheimer	<b>Defense (9):</b>	Bateman, Jahnke, McGee, Mendelson*, Pardoski, Reihl, Smiddy, Walkom, Wilkie
17	Paige Jahnke	<b>Stroemel</b>	STRAW-mull	<b>Minnesota (2):</b>	Jahnke, Rasmussen		
14	Darby Kern			<b>New York (1):</b>	McGee	<b>Goalie (3):</b>	Meyer, Paniccia, Whitlinger
20	Emily Laurenzi			<b>Pennsylvania (5):</b>	Holdcroft, Kern, Mendelson, Walkom, Weaver		
8	Taylor McGee			<b>Texas (2):</b>	Hoenshell, Welch		
3	Cara Mendelson			<b>Vermont (1):</b>	Desorcie		
31	Brooke Meyer						
25	Katie Murphy						
37	Nicole Paniccia						
4	Jordin Pardoski						
13	Kendra Rasmussen						
6	Lindsay Reihl						
23	Birdie Shaw						
33	Madison Smiddy						
5	Stephanie Walkom						
36	Tess Weaver						
22	Jenna Welch						
30	Celine Whitlinger						
21	Sara Wilkie						
40	Shannon Yoxheimer						
11	Katie Zinn						





# NITTANY LION WOMEN'S HOCKEY



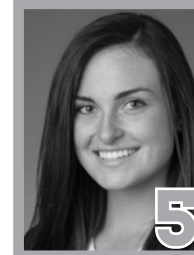
**JEANNETTE BATEMAN**  
Freshman • F/D  
Greeley, Colo.



**CARA MENDELSON**  
Sophomore • F/D  
Pittsburgh, Pa.



**JORDIN PARDOSKI**  
Freshman • D  
Rochester Hills, Mich.



**STEPHANIE WALKOM**  
Freshman • D  
Moon Township, Pa.



**LINDSAY REIHL** **A**  
Senior • D  
Cheshire, Conn.



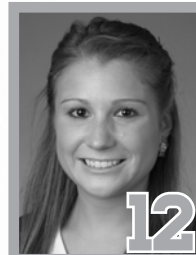
**TAYLOR MCGEE**  
Freshman • D  
Pearl River, N.Y.



**MICAYLA CATANARITTI**  
Freshman • F  
Rancho Santa Margarita, Calif.



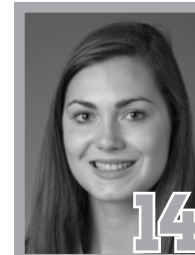
**KATIE ZINN**  
Freshman • F  
Coquitlam, B.C.



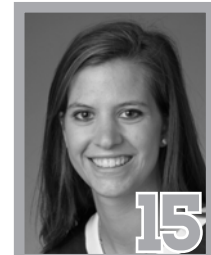
**KATE CHRISTOFFERSEN**  
Senior • F  
Trumbull, Conn.



**KENDRA RASMUSSEN**  
Freshman • F  
Sartell, Minn.



**DARBY KERN**  
Freshman • F  
Venetia, Pa.



**JESS DESORCIE**  
Sophomore • F  
Westford, Vt.



**HANNAH HOENSHELL**  
Freshman • F  
Plano, Texas



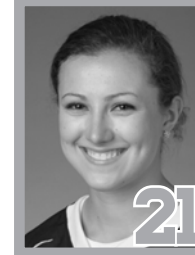
**PAIGE JAHNKE**  
Freshman • D  
Oakdale, Minn.



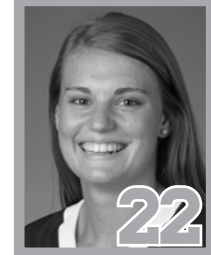
**JILL HOLDCROFT**  
Freshman • F  
Pennsylvania Furnace, Pa.



**EMILY LAURENZI**  
Freshman • F  
Townsend, Del.



**SARAH WILKIE**  
Freshman • D  
Ashby, Mass.



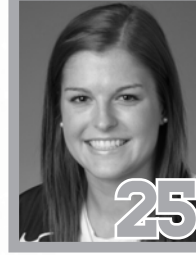
**JENNA WELCH** **A**  
Junior • F  
Austin, Texas



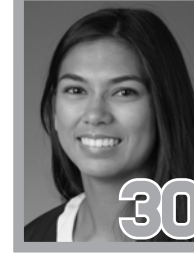
**BIRDIE SHAW**  
Freshman • F  
Troy, Mich.



**TAYLOR GROSS** **C**  
Junior • F  
Colorado Springs, Colo.



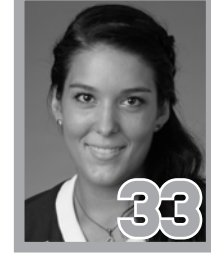
**KATIE MURPHY**  
Sophomore • F  
Novi, Mich.



**CELINE WHITLINGER**  
Freshman • G  
Garden Grove, Calif.



**BROOKE MEYER**  
Freshman • G  
Naperville, Ill.



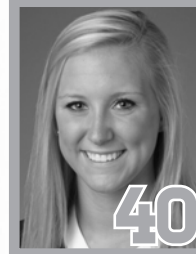
**MADISON SMIDDY**  
Sophomore • D  
Grand Rapids, Mich.



**TESS WEAVER**  
Sophomore • F  
Windber, Pa.



**NICOLE PANICCIA**  
Junior • G  
Oakville, Ont.



**SHANNON YOXHEIMER**  
Freshman • F  
Jackson, Mich.