



# 2011-12 PENN STATE LADY LION BASKETBALL

**WOMEN'S BASKETBALL CONTACT:**  
 Kristina Petersen  
 Twitter: @ladylionsid  
 Website: www.GoPSUsports.com  
 Email: kap18@psu.edu  
 Cell: 814-883-4581  
 Office: 814-865-1757

Penn State Athletic Communications: 101D Bryce Jordan Center, University Park, PA 16802 ♦ Office: 814-865-1757 ♦ Fax: 814-863-3165

## SCHEDULE/RESULTS

### NOVEMBER

Sat. 5 BLOOMSBURG (exh.).....W, 101-81  
 Lady Lion Classic (University Park, Pa.)

Fri. 11 WASHINGTON STATE..... W, 72-60

Sun. 13 MIDDLE TENN. (BTN.com)... W, 65-49

Thurs. 17 at Delaware .....L, 71-80

Sun. 20 at South Carolina (SportSouth).W, 55-50

John Ascuaga's Nugget Classic (Reno, Nev.)

Fri. 25 vs. Iowa State .....W, 66-59

Sat. 26 at Nevada .....W, 103-65

### Big Ten/ACC Challenge

Wed. 30 #14/13 N. CAROLINA (BTN)..W, 103-84

### DECEMBER

### Big 12/Big Ten Challenge

Sat. 3 at #19/25 Texas Tech.....L, 66-70

Tues. 6 VIRGINIA TECH (BTN.com).. W, 66-28

Sun. 11 UMES (BTN.com)..... W, 76-51

Sun. 18 WAGNER (BTN.com) .....W, 103-42

Wed. 21 at Bucknell.....W, 78-54

Fri. 30 NEBRASKA \* (BTN.com)..... 7 p.m.

### JANUARY

Mon. 2 at Wisconsin \* ..... 1 p.m.

Sat. 7 MICHIGAN STATE \* (CBS)..... 2 p.m.

Thurs. 12 MICHIGAN \* (BTN) ..... 6 p.m.

Sun. 15 at Nebraska \* (BTN.com)..... 3:05 p.m.

Thurs. 19 at Illinois \* (BTN.com)..... 8 p.m.

Sun. 22 IOWA \* (ESPN2) ..... 3 p.m.

Thurs. 26 at Michigan \* (BTN.com)..... 7 p.m.

Sun. 29 at Michigan State \* (ESPN2) ..... 3 p.m.

### FEBRUARY

Thurs. 2 INDIANA \* (BTN.com) ..... 7 p.m.

Sun. 5 at Minnesota \* (BTN.com) ..... 3 p.m.

Thurs. 9 WISCONSIN \* (BTN.com) ..... 7 p.m.

Sun. 12 at Northwestern \* (BTN) ..... 1 p.m.

Thurs. 16 at Purdue \* (BTN) ..... 6 p.m.

Mon. 20 OHIO STATE \* (ESPN2)..... 7 p.m.

### WBCA Pink Zone at Penn State

Sun. 26 MINNESOTA \* (BTN-WC) ...12/2/4 p.m.

### MARCH

Thur.-Sun. 1-4 Big Ten Tournament (Indianapolis)

Sat.-Tues. 17-20 NCAA Tourn. 1st & 2nd Round

Sat.-Tues. 24-27 NCAA Tournament Regionals

### APRIL

Sun./Tues. 1/3 NCAA Final Four (Denver, Colo.)

BOLD CAPS indicates home game.

\* - indicates Big Ten game.

All times are Eastern Time.

BTN - Big Ten Network

BTN.com - BigTenNetwork.com

Schedule subject to change. Please visit [www.GoPSUsports.com](http://www.GoPSUsports.com)

for up-to-date tip times.

## Game #13: #23/RV Nebraska at #16/17 Penn State

Fri., Dec. 30 ▶ 7 p.m. ▶ Bryce Jordan Center ▶ University Park, Pa.

		<b>SETTING THE SCENE</b>
<b>Penn State Lady Lions</b>	<b>Nebraska Cornhuskers</b>	<b>The Nebraska Game</b>
<b>Record:</b> 10-2, 0-0 Big Ten	<b>Record:</b> 11-1, 0-0 Big Ten	<b>Series:</b> Penn State leads 2-0
<b>Last Game:</b> PSU 78, Bucknell 54 (12/21)	<b>Last Game:</b> Nebraska 80, SDSU 71 (12/21)	<b>Last Meeting:</b> PSU 83, Nebraska 64 (12/30/02)
<b>Head Coach:</b> Coquese Washington	<b>Head Coach:</b> Connie Yori	<b>Streak:</b> PSU - 2 wins
<b>Career Record:</b> 76-62 (5th yr.)	<b>Career Record:</b> 372-258 (22nd yr.)	<b>Television:</b> none
<b>Record at PSU:</b> 76-62 (5th yr.)	<b>Record at UN:</b> 177-118 (10th yr.)	<b>Radio:</b> The game is on the Penn State Sports Network and ESPN 1450 locally with Jerry Fisher and Brian Tripp calling the action. The audio feed is available at <a href="http://www.GoPSUsports.com">www.GoPSUsports.com</a> .
<b>Statistical Leaders</b>	<b>Statistical Leaders</b>	<b>Webstream:</b> BTN.com
<b>Points</b> Maggie Lucas (19.3)	<b>Points</b> Jordan Hooper (20.4)	<b>Live Stats:</b> GoPSUsports.com
<b>Rebounds</b> Mia Nickson (7.8)	<b>Rebounds</b> Jordan Hooper (9.0)	
<b>Assists</b> Alex Bentley (5.8)	<b>Assists</b> Lindsey Moore (5.9)	

## GAME DAY INFORMATION

### SCOUTING NEBRASKA

The Cornhuskers are 11-1 overall and ranked 24th in the Associated Press poll. Jordan Hooper leads the strong Nebraska offensive attack with a 20.4 scoring average to go along with 9.0 rebounds per game. Lindsey Moore is connecting on 50.0% of her shots while chipping in 16.3 points per game. The Huskers are outscoring their opponents by 20.9 points and forcing 11.0 steals per game.

### ALL-TIME VS. THE CORNHUSKERS

The Lady Lions are 2-0 all-time against Nebraska with a 102-66 win in University Park on Jan. 2, 1993 and an 83-64 decision over the Cornhuskers at the Surf & Slam Tournament in San Diego on Dec. 30, 2002.

### LAST TIME VS. UN

Ironically, the last meeting between the Lady Lions and Huskers took place nine years ago to the day when Kelly Mazzante scored 24 points and pulled in seven rebounds to lead Penn State to the Surf & Slam title with an 83-64 victory over Nebraska on Dec. 30, 2002. Jess Strom also added 20 points to go along with seven assists and four steals.

## STORYLINES

- ✓ Sophomore guard **Maggie Lucas** has reached the 20-point mark in four straight games and six of her last seven contests.
- ✓ Lucas tied the school record for three-point field goal percentage in a game with 4-for-4 effort against Bucknell. It was the best performance from downtown (min. 4 att.) since Jess Brungo was 5-for-5 at Clemson on Dec. 7, 2002.
- ✓ Penn State notched its second-straight double-digit non-conference win total and third since joining the Big Ten with a 10-2 record.
- ✓ The Lady Lions completed a perfect home non-conference schedule for the first time since 2007-08 with a 103-42 win over Wagner Dec. 18.
- ✓ The Lady Lions reached the century mark for the third time this year with a 103-42 win over Wagner Dec. 18. The three 100-point games are tied for the fourth-most 100-point games in a season in school history.
- ✓ Penn State is 16th in Associated Press poll and 17th in the ESPN/USA Today Coaches Poll.
- ✓ The Lady Lions were picked to finish first in the Big Ten in a vote of the coaches and media.

## UP NEXT

The Lady Lions visit Wisconsin on Jan. 2 before returning home to meet Michigan State on Jan. 7 at 2 p.m. in a CBS game. The game is a Subway Full Court 4-Pack where fans can get four tickets, a voucher for four Subway subs and four sodas for \$40. Also, Penn State Alumni Association members can get tickets for \$5.



# 2011-12 ROSTER

## PENN STATE LADY LIONS

No.	Name	Pos.	Cl./Elg.	Ht.	Hometown/High School (Previous School)
2	Dara Taylor	G	Jr./Jr.#	5-8	Wilmington, Del./Caravel Academy (Maryland)
5	Talia East *	F/C	So./So.	6-3	Philadelphia, Pa./Friends' Central School
12	Zhaque Gray ***	G	Sr./Sr.	5-8	Chicago, Ill./Prep John Hope
15	Renee Womack ***	G	Sr./Sr.	5-10	Lansdale, Pa./Methacton
20	Alex Bentley **	G	Jr./Jr.	5-7	Indianapolis, Ind./Ben Davis
23	Ariel Edwards *	F	So./So.	6-2	Elmont, N.Y./Christ the King
24	Mia Nickson *	F	Sr./Jr.	6-2	Ashburn, Va./Notre Dame Acad. (Boston College)
25	Gizelle Studevent **	G	Jr./Jr.	5-11	La Jolla, Calif./The Bishop's School
33	Maggie Lucas *	G	So./So.	5-10	Narberth, Pa./Germantown Academy
40	Marisa Wolfe **	F	Jr./Jr.	6-2	Ford City, Pa./Ford City
44	Tori Waldner	F	Fr./Fr.	6-5	Milton, Ga./Milton
54	Nikki Greene **	F/C	Jr./Jr.	6-4	Diboll, Texas/Diboll

**Head Coach:** Coquese Washington (Notre Dame '92)

**Assistant Coaches:** Fred Chmiel, Kia Damon, Maren Walseth

**Captains:** Mia Nickson, Marisa Wolfe

\* Indicates letters earned # - Taylor will sit out the 2011-12 season due to NCAA transfer rules.

## NEBRASKA CORNHUSKERS

No.	Name	Pos.	Cl.	Ht.	Hometown/High School (Previous School)
00	Lindsey Moore	G	Jr.	5-9	Covington, Wash./Kentwood
3	Hailie Sample	F	Fr.	6-1	Flower Mound, Texas/Marcus
5	Kaitlyn Burke	G	Sr.	5-7	N. Vancouver, B.C./National Elite Dev. Academy
10	Meghin Williams	F	Jr.	6-1	Rancho Cucamonga, Calif./Summit
11	Tear'a Laudermill	G	Fr.	5-9	Riverside, Calif./Canyon Springs
13	Brandi Jeffery	G	Fr.	5-7	Vacherie, La./St. James
14	Katie Simon	F	RS-Fr.	6-2	Roseville, Calif./Roseville
21	Harleen Sidhu	F	Sr.	6-1	Surrey, B.C./Fleetwood
23	Emily Cady	F	Fr.	6-2	Seward, Neb./Seward
33	Rebecca Woodberry	G	RS-Fr.	5-10	Phoenix, Ariz./Tolleson Union
35	Jordan Hooper	F	So.	6-2	Alliance, Neb./Alliance
55	Adrianna Maurer	C	So.	6-3	Shawnee Mission, Kan./Bishop Miege

**Head Coach:** Connie Yori

**Associate Head Coach:** Sunny Smallwood

**Assistant Coaches:** Kellie Lewis-Jay, Dayna Finch

## TEAM COMPARISON

PENN STATE		NEBRASKA
Lucas (19.3)	Scoring Leader	Hooper (20.4)
Nickson (7.8)	Rebounding Leader	Hooper (9.0)
Bentley (5.8)	Assist Leader	Moore (5.9)
Bentley (2.8)	Steals Leader	Moore (2.8)
East (1.6)	Blocks Leader	Cady (0.8)
77.0	Scoring Offense	77.4
57.7	Scoring Defense	56.5
+19.3	Scoring Margin	+20.9
43.3	Rebounds Per Game	46.7
+1.8	Rebound Margin	+9.0
14.7	Assists Per Game	15.5
9.7	Steals Per Game	11.0
.452	Field Goal Pct.	.411
.310	FG Defense Pct.	.348
.384	3-pt. FG Pct.	.338
.254	3-pt. FG Pct. Def.	.305
.721	Free Throw Pct.	.714
1.0	Assist/Turnover	0.8
Won 4	W/L Streak	Won 5

## SERIES HISTORY

Overall:	PSU lead 2-0
Last meeting:	Dec. 30, 2002
Last result:	PSU, 83-64
Current streak:	PSU - 2 wins
Last 10:	PSU, 2-0
Last 10 meetings:	
1/2/93	H W, 102-66
12/30/02	N W, 83-64

## QUICK FACTS

### THE UNIVERSITY

Location: University Park, Pa.  
 Founded: 1855  
 Enrollment: 42,294  
 Colors: Blue & White  
 Nickname: Lady Lions  
 Conference: Big Ten  
 President: Dr. Rodney Erickson  
 Director of Athletics: Tim Curley  
 Acting Director of Athletics: Dr. David Joyner  
 Senior Woman Administrator: Charmelle Green  
 Facility (cap.): Bryce Jordan Center (15,261)  
 All-Time Record at BJC: 181-47 (16 seasons)

### ATHLETIC COMMUNICATIONS

WBB Contact: Kristina Petersen  
 Phone/Fax: (814) 865-1757/(814) 863-3165  
 E-mail: kap18@psu.edu  
 Address: 101-D Bryce Jordan Center  
 University Park, Pa. 16802  
 Press Row Phone: 814-863-3294  
 Website: www.GoPSUsports.com  
 Twitter: @ladylionsid

### TEAM INFORMATION

2011-12 Record: 10-2  
 Home: 6-0 Away: 3-2 Neutral: 1-0  
 Big Ten Record: 0-0  
 Home: 0-0 Away: 0-0  
 Letterwinners Returning/Lost: 10/1  
 Starters Returning/Lost: 4/1  
 Big Ten Tournament: Runner-up  
 Postseason: NCAA Second Round

### THE HISTORY

First Year of Women's Basketball: 1965  
 All-Time Record: 815-375 (47 seasons)  
 All-Time Big Ten Rec.: 204-110 (19 seasons)  
 NCAA Tournament Appearances: 22  
 NCAA Tournament Record: 27-22

### WOMEN'S BASKETBALL

Head Coach: Coquese Washington  
 Alma Mater: Notre Dame '92  
 Overall Record: 76-62 (fifth season)  
 School Record: 76-62 (fifth season)  
 Basketball Office Phone: 814-863-2672  
 Best Time To Reach Coach: Through SID  
 Assistant Coaches (Alma Mater):  
 Fred Chmiel (Excelsior College)  
 Kia Damon (Millersville '97)  
 Maren Walseth (Penn State '02)  
 Twitter: @pennstatewbb  
 Facebook: facebook.com/pennstateladylions

### PRONUNCIATIONS

Coquese	ko-KWEES
Chmiel	shuh-MEAL
Maren Walseth	MARR-en WALL-seth
Zhaque	Jacque-QWAY
Gizelle Studevent	juh-ZELL STEW-duh-vent
Talia	tah-LEE-uh
Ariel	AIR-e-I
Dara	DAR-uh





## PROJECTED STARTERS



**12 ZHAQUE GRAY** G  
Sr., 5-8, Chicago, Ill.  
12.2 pts., 3.2 rebs., 2.3 asst., .413 3FG%

**Notes:** Had 13 points & 3 assists in win over Wagner ... Was 8-for-16 from the field en route to team-best 25 pts. vs. #13 UNC ... Notched 21 points & two steals at Nevada ... Had 14 points vs. Iowa St..



**20 ALEX BENTLEY** G  
Jr., 5-7, Indianapolis, Ind.  
15.1 ppg, 5.8 apg, 2.8 spg, .844 FT%

**Notes:** Had 11 points with 7 assists & 4 steals at Bucknell ... Tallied 23 pts. & 5 steals in win over Wagner ... Wade Trophy, Naismith Award & Wooden Award watch lists.



**33 MAGGIE LUCAS** G  
So., 5-10, Narberth, Pa.  
19.3 ppg, 4.5 rpg, .395 3FG%, .843 FT%

**Notes:** Tallied 22 points with 5 rebounds and 3 assists at Bucknell ... Posted 23 points and four rebounds in win over Wagner ... Registered 20 pts. & 3 steals vs. UMES ... Naismith Award watch list.



**23 ARIEL EDWARDS** F  
So., 6-2, Elmont, N.Y.  
6.5 ppg, 4.7 rpg, 1.5 apg

**Notes:** Accounted for 11 points, 3 assists & 6 rebs. in win over Wagner ... Grabbed career-high 9 rebs. to go with 7 points vs. UMES ... Recorded 13 points, 8 rebs., 3 assts. in win over #13 UNC.



**54 NIKKI GREENE** C  
Jr., 6-4, Diboll, Texas  
9.3 ppg, 7.0 rpg, 1.3 bpg, .494 FG%

**Notes:** Registered 11 points and 9 rebounds at Bucknell ... Posted 9 pts., 8 rebs. in win over Wagner ... Tallied 13 points & 3 blocks vs. UMES ... Had 14 points, 5 rebs. & 3 steals vs. Va. Tech.

## STANDINGS (thru games of 12/27)

Team	Big Ten			Overall		
	W	L	Pct.	W	L	Pct.
Ohio State	0	0	.000	13	0	1.000
Nebraska	0	0	.000	11	1	.917
Michigan	0	0	.000	11	2	.846
<b>PENN STATE</b>	<b>0</b>	<b>0</b>	<b>.000</b>	<b>10</b>	<b>2</b>	<b>.833</b>
Northwestern	0	0	.000	10	3	.769
Purdue	0	0	.000	10	3	.769
Iowa	0	0	.000	8	5	.615
Michigan State	0	0	.000	8	5	.615
Minnesota	0	0	.000	8	6	.571
Illinois	0	0	.000	5	7	.417
Indiana	0	0	.000	5	8	.385
Wisconsin	0	0	.000	4	8	.333

## BIG TEN SCHEDULE

### DECEMBER 27

Texas A&M-CC at Indiana 7 p.m.  
Toledo at Northwestern 7 p.m.

### DECEMBER 28

Alabama A&M at Illinois 8 p.m.

### DECEMBER 30

Michigan State at Indiana\* 6 p.m.  
Nebraska at Penn State\* 7 p.m.  
Michigan at Illinois\* 8 p.m.  
Northwestern at Iowa\* 8 p.m.  
Minnesota at Purdue\* 8 p.m.  
Ohio State at Wisconsin\* 8 p.m.

### JANUARY 2

Indiana at Minnesota\* 3 p.m.  
Purdue at Illinois\* 2 p.m.  
Iowa at Ohio State\* Noon  
Penn State at Wisconsin\* 1 p.m.

### JANUARY 4

Michigan at Michigan State\* 7 p.m.

All times are Eastern.

**LAST TIME OUT:** The #16/16 Lady Lions shot 50% (30-60) from the field and had all nine players score for the fourth consecutive game as the Lady Lions posted a 78-54 win over Bucknell to close the non-conference schedule. Sophomore guard **Maggie Lucas** was 7-for-10 from the field and a perfect 4-for-4 from three-point range on the way to a game-best 22 points. Junior center **Nikki Greene** narrowly missed a double-double with 11 points and nine rebounds, while fellow junior **Alex Bentley** added 11 tallies, seven assists and four steals.

**SCOUTING NEBRASKA:** The Cornhuskers are 11-1 overall and ranked 24th in the Associated Press poll. Jordan Hooper leads the strong Nebraska offensive attack with a 20.4 scoring average to go along with 9.0 rebounds per game. Lindsey Moore is connecting on 50.0% of her shots while chipping in 16.3 points per game. The Huskers are outscoring their opponents by 20.9 points and forcing 11.0 steals per game.

**ALL-TIME VS. THE CORNHUSKERS:** The Lady Lions are 2-0 all-time against Nebraska with a 102-66 win in University Park on Jan. 2, 1993 and an 83-64 decision over the Cornhuskers at the Surf & Slam Tournament in San Diego on Dec. 30, 2002.

**LAST TIME VS. UN:** Ironically, the last meeting between the Lady Lions and Huskers took place nine years ago to the day when Kelly Mazzante scored 24 points and pulled in seven rebounds to lead Penn State to the Surf & Slam title with an 83-64 victory over Nebraska on Dec. 30, 2002. Jess Strom also added 20 points to go along with seven assists and four steals.

**BIG TEN BEGINNERS:** The Lady Lions kick off their 20th Big Ten Conference slate against conference newcomer Nebraska. The Lady Lions are 11-8 all-time in Big Ten openers. Penn State snapped a five-game losing streak in Big Ten openers with a 68-59 win over Iowa last season. The Lady Lions own a 14-5 mark in conference home openers.

## LAST TIME VS. NEBRASKA DEC. 30, 2002 • SAN DIEGO, CALIF.

Nebraska 64 - 73		Total	3-Pr	Rebounds		FT-FTA		PF	TP	A	TO	Bk	Stl	Min
#	Player	FG	FGA	FG	FGA	Off	Def	Total						
24	Roberts, Shahidrah	f	6-15	3-9	0-0	1	3	4	1	15	2	0	1	26
42	Johnson, Alexa	f	6-16	0-0	5-5	1	3	4	2	17	0	2	0	39
12	Cleveland, Amanda	c	4-11	0-0	3-4	2	4	6	4	11	0	3	2	32
20	Johansen, Tina	g	4-9	0-3	1-1	0	2	3	5	8	4	0	5	40
22	Richards, Margaret	g	3-4	2-3	2-2	1	1	2	2	10	2	4	0	19
05	Hanson, Lacey	g	0-3	0-1	0-0	1	1	2	0	2	1	0	0	19
10	Sledge, Kala	g	0-0	0-0	1	0	1	1	0	0	0	0	0	3
11	Rutty, Jessie	f	1-2	0-1	0-0	0	1	1	0	2	0	0	0	12
Team				1		2		3						
Totals		24-60	5-17	11-12	8	17	25	13	64	14	14	3	9	200
FG % 1st Half:		13-30	43.3%	2nd half:		11-30	36.7%	Game:		24-60	40.0%		Deadball	
3FG % 1st Half:		3-8	37.5%	2nd half:		2-9	22.2%	Game:		5-17	29.4%		Rebounds	
FT % 1st Half:		2-2	100.0%	2nd half:		9-10	90.0%	Game:		11-12	91.7%		0	

#17 Penn State 83 - 92		Total	3-Pr	Rebounds		FT-FTA		PF	TP	A	TO	Bk	Stl	Min
#	Player	FG	FGA	FG	FGA	Off	Def	Total						
22	Brunno, Jessica	f	2-3	1-2	0-0	1	6	7	2	5	7	2	0	2
33	Wright, Tanisha	f	8-13	0-0	0-0	1	3	4	1	16	2	4	1	2
51	Schwab, Ashli	c	4-7	0-0	2-2	3	4	7	2	10	0	1	3	30
13	Mazzante, Kelly	g	10-17	2-7	2-3	1	6	7	3	24	3	5	0	31
23	Strom, Jess	g	6-11	4-5	4-4	0	0	0	1	20	7	2	0	4
05	Brenden, Jennifer	g	2-6	1-4	2-2	0	2	2	0	7	2	0	0	1
20	Joseph, Hazel	g	0-0	0-0	1-2	0	0	0	2	1	0	1	0	0
25	Tomlinson, Tiffany	g	0-0	0-0	0-0	0	3	3	0	0	1	0	0	4
Team				3		5		8						
Totals		32-57	8-18	11-13	9	29	38	14	83	21	16	4	12	200
FG % 1st Half:		18-29	62.1%	2nd half:		14-28	50.0%	Game:		32-57	56.1%		Deadball	
3FG % 1st Half:		6-8	75.0%	2nd half:		2-10	20.0%	Game:		8-18	44.4%		Rebounds	
FT % 1st Half:		6-6	100.0%	2nd half:		5-7	71.4%	Game:		11-12	91.7%		0	

Officials: Shelley Nakasone, Joe Thompson, Jeanene Pence  
 Technical fouls: Nebraska-None #17 Penn State-None  
 Attendance: 458

Score by periods	1st	2nd	Total
Nebraska	31	33	64
#17 Penn State	40	35	75

Last FG - NEB 2nd 02:01, PSU 2nd 00:11.  
 Largest lead - NEB by 3 1st 03:08, PSU by 25 1st 04:07.

Score tied - 0 times.  
 Lead changed - 4 times.

## WHAT'S AT STAKE

A Penn State Win Would:

- Make Penn State 11-2 on the season.
- Improve the Lady Lions to 1-0 in Big Ten play.
- Make Penn State 3-0 all-time vs. Nebraska.
- Improve the Lady Lions to 12-8 all-time in Big Ten openers.
- Make the Lady Lions 15-5 all-time in Big Ten home openers.





## PRESS CONFERENCES

Coquese Washington will hold a weekly press conference and the Lady Lions will have media availability on a weekly basis throughout the season. All press conferences will begin at 2:45 p.m. (unless otherwise noted) and go for approximately 15-20 minutes, followed by an open media session prior to practice from 3-3:20 p.m. Press conference will be held in the Media Room at the Bryce Jordan Center (unless otherwise noted).

### Press Conference Dates

Thursday, Dec. 29  
 Wednesday, Jan. 4  
 Wednesday, Jan. 11  
 Wednesday, Jan. 18  
 Wednesday, Jan. 25  
 Wednesday, Feb. 1 (location TBA)  
 Wednesday, Feb. 8 (location TBA)  
 Wednesday, Feb. 15  
 Wednesday, Feb. 22  
 Wednesday, Feb. 29 (time TBA)

**BIG TEN NEWBIES MEET:** Friday's game features a meeting between the two newest additions to the Big Ten Conference. The Lady Lions were added to the league in the 1992-93 season, while the Cornhuskers became the 12th member of the Big Ten this year.

**SOLID NON-CON SEASON:** The Lady Lions posted their second consecutive double-digit non-conference win total with a victory at Bucknell Dec. 21. Penn State finished 10-2 in the non-conference slate to post just their third non-conference double figure win total since joining the Big Ten in 1992-93 (10 - 2002-03; 11 - 2010-11).

**LUCAS NOTCHES ANOTHER 3S RECORD:** Maggie Lucas added her name to another Penn State three-pointers record with a perfect 4-for-4 effort from long range against Bucknell Dec. 21 to tie the school record for three-point field goal percentage (min. 4 att.). It was the first perfect performance from downtown (min. 4 att.) for the Lady Lions since Jess Brungo was 5-for-5 at Clemson on Dec. 7, 2002. Lucas shares the record with Brungo's Clemson performance and a 4-for-4 mark versus Illinois (2/15/01) and Lisa Faloon's 4-for-4 day versus Rhode Island (2/28/87).

**ANOTHER 20-POINTER FOR LUCAS:** Sophomore guard Maggie Lucas posted her fourth consecutive 20-point game with a game-high 22 points on 7-of-10 shooting at Bucknell Dec. 28. Lucas has also reached at least 20 tallies in six of the last seven games.

**TWO TICKET PACKAGES:** The Lady Lions have made two additional ticket packages available for fans to enjoy this season with the Michigan 2-Play and the Starting 5 Pack. Both packages, in addition to PNC Flex Books and single-game tickets, are available by calling 800-NITTANY. The Michigan 2-Play will give fans tickets to see the Lady Lion face perennial Big Ten contender Michigan State on Saturday, Jan. 7 at 2 p.m. and an up-and-coming Michigan team on Thursday, Jan. 12 at 6 p.m. for just \$18. The Starting 5 Pack is \$49 and features tickets to three games of the buyer's choice, a ticket for the Ohio State ESPN2 Big Monday game on Monday, Feb. 20 and a ticket for the Pink Zone game against Minnesota on Sunday, Feb. 26.

**PERFECT HOME NON-CON SLATE:** The Lady Lions completed a perfect home non-conference schedule with a dominating 103-42 win over Wagner Dec. 18. Penn State was victorious in all six home non-conference games for the first time since going 7-0 in the 2007-08 campaign, **Coquese Washington's** first season.

**CENTURY MARK TIMES THREE:** The Lady Lions reach the 100-point mark for the third time this season with a 103-42 victory over Wagner Dec. 18. Penn State also posted 103 tallies in wins over North Carolina (103-84) and Nevada (103-65). The three 100-point games are tied for the fourth-most 100-point games in a season in school history. The record for 100-point contests is six by the 1984-85 squad. The 1992-93, 1980-81 and 1978-79 teams each reached the century mark three times in their respective seasons.

**LADY LIONS ON TWITTER & FACEBOOK:** The Lady Lions are on Twitter. Follow the Lady Lions and assistant coaches (@pennstatewbb) and sports information contact Kris Petersen (@ladylionsid) to get the inside scoop. The Lady Lions are also on Facebook at [www.facebook.com/pennstateladylions](http://www.facebook.com/pennstateladylions).



**WALDNER WAILS ON BOARDS:** Freshman post player **Tori Waldner** posted the first double-digit rebounding performance of her career with 10 caroms against Wagner Dec. 18. The rookie hauled in three offensive boards and seven defensive caroms to lead all players. Her previous personal best was nine rebounds against UMES.

**GRAY TO 700:** With 13 tallies against Wagner Dec. 18, senior guard **Zhaque Gray** reached the 700-point mark for her career. After scoring just 233 markers in her first two seasons in Happy Valley, Gray has become a solid third scorer for the Lady Lions alongside **Maggie Lucas** and **Alex Bentley**.

**GRAY INTO TOP 10:** Senior **Zhaque Gray** moved into a tie for eighth place in the Penn State three-point field goals record books with a pair of triples at Bucknell Dec. 21. Gray is tied with Brianne O'Rourke for eighth place in all-time three-point field goals made (120). She needs a four triples to tie Tina Nicholson (124) for seventh place.

## PENN STATE'S OVERALL/BIG TEN YEAR-BY-YEAR REVIEW

Year	Overall	Big Ten	Home	BT Home	Road	BT Road	Neutral
1992-93	22-6	14-4	12-2	9-0	9-4	5-4	0-0
1993-94	28-3	16-2	14-0	9-0	11-2	7-2	3-1
1994-95	26-5	13-3	14-2	8-0	9-3	5-3	3-0
1995-96*	27-7	13-3	14-2	8-0	8-4	5-3	5-1
1996-97	15-12	8-8	9-3	5-3	5-6	3-5	1-3
1997-98	21-13	8-8	10-5	4-4	6-6	4-4	5-2
1998-99	22-8	12-4	9-2	6-2	9-4	6-2	4-2
1999-00	30-5	15-1	14-0	8-0	9-2	7-1	7-3
2000-01	19-10	11-5	11-2	7-1	6-5	4-4	2-3
2001-02	23-12	11-5	10-4	6-2	9-5	5-3	4-3
2002-03	26-9	13-3	16-0	8-0	7-7	5-3	2-2
2003-04	28-6	15-1	12-1	8-0	9-3	7-1	6-2
2004-05	19-11	13-3	12-0	8-0	6-9	5-3	1-2
2005-06	13-16	6-10	8-6	5-3	3-8	1-7	2-2
2006-07	15-16	7-9	12-1	7-1	2-12	0-7	1-3
2007-08	13-18	4-14	10-6	3-6	3-11	1-8	0-1
2008-09	11-18	6-12	8-6	4-5	2-9	2-7	1-3
2009-10	17-14	8-10	9-6	5-4	5-7	3-6	3-1
2010-11	25-10	11-5	14-4	6-2	7-4	5-3	4-2
2011-12	10-2	0-0	6-0	0-0	3-2	0-0	1-0

\* First season at the Bryce Jordan Center



## PENN STATE'S RECORD WHEN...

Playing at home	6-0
Playing on the road	3-2
Playing at a neutral site	1-0
vs. Top 10 teams	0-0
vs. Top 25 teams	1-1
Games decided by 3 points or less	0-0
Games decided by 4-10 points	2-2
Games decided by 11-19 points	3-0
Games decided by 20 points or more	5-0
Leading at the half	8-2
Tied at the half	0-0
Trailing at the half	2-0
Leading with 5:00 remaining	9-0
Trailing with 5:00 remaining	1-2
Tied with 5:00 remaining	0-0
In overtime	0-0
PSU scores 40-49 points	0-0
PSU scores 50-59 points	1-0
PSU scores 60-69 points	3-1
PSU scores 70-79 points	3-1
PSU scores 80 points or more	3-0
PSU shoots 45% or better	7-0
PSU shoots less than 45%	3-2
PSU shoots better than opponent	10-1
Opponent shoots better than PSU	0-1
Opponent scores less than 39 points	1-0
Opponent scores 40-49 points	2-0
Opponent scores 50-59 points	4-0
Opponent scores 60-69 points	2-0
Opponent scores more than 70 points	1-2
Opponent shoots better than 45%	0-1
Opponent shoots less than 45%	10-1
PSU outrebounds opponent	6-0
Opponent outrebounds PSU or tied	4-2
PSU commits 14 or less turnovers	4-2
PSU commits 15 or more turnovers	6-0
PSU makes at least 5 3-pointers	5-2
PSU makes four 3-pointers or less	5-0
Recording 7 or more steals	8-1
Recording 6 or less steals	2-1
Wearing white uniforms	7-0
Wearing blue uniforms	3-2
Wearing gray uniforms	0-0
Wearing pink uniforms	0-0
Penn State wins the tip	7-0
Penn State loses the tip	3-2
Penn State scores first	7-1
Opponent scores first	3-1
Playing during the day (before 5 p.m.)	5-1
Playing at night	5-1
On Monday	0-0
On Tuesday	1-0
On Wednesday	2-0
On Thursday	0-1
On Friday	2-0
On Saturday	1-1
On Sunday	4-0
In November	6-1
In December	4-1
In January	0-0
In February	0-0
In March	0-0

**GREENE MOVING UP CHARTS:** Junior center **Nikki Greene** is steadily moving up the career charts after pulling in eight rebounds and blocking three shots against Wagner Dec. 18. Greene now has 548 career rebounds and is 24th on the all-time chart. Greene needs 16 rebounds to move past Kelly Mazzante (563; 2001-04) for 23rd place. Additionally, Greene is in sixth place on the Penn State career blocks list with 146 rejections. She needs 27 blocks to move into the Top 5 all-time.

**LUCAS CHANGES HER GAME:** Sophomore guard **Maggie Lucas** has become more than just a three-point threat for the Lady Lions. In a comparison of the first 12 games of her rookie campaign and 12 games this year, Lucas has scored more points (231-203) despite making nine less three-pointers than a year ago (30-39). Additionally, Lucas has been more of a threat off the dribble, heading to the free throw line twice as often as she did last season through 12 games (70-32). Here is a 12-game comparison of Lucas' key stats:

Year	Pts.	3FGM	3FGA	FTM	Reb.	Asst.
Frosh.	203	39	87	30	40	17
Soph.	231	30	76	59	54	27

**PERFECT FROM THE FIELD:** Junior center **Nikki Greene** made consecutive last 11 shots from the field after going 5-for-5 in the second half against Virginia Tech and 6-for-6 versus UMES. The performance against the Lady Lions was just the second perfect effort from the field by Greene. Her other perfect outing was when she made her only shot from the field against Minnesota her freshman season (Dec. 6, 2009).

**LADY LIONS IN THE RPI:** The Lady Lions are highly ranked in many of the RPI reports across the country. Penn State is 19th in the Collegiate Basketball News RPI and is 14th in the Jeff Sagarin Ratings with a strength of schedule that is 86th in the country. The Lady Lions are also 19th in the Real Time RPI poll with the 53rd-ranked strength of schedule.

**THE NICKSON FACTOR:** Both the of Lady Lions' losses this season have come without junior forward **Mia Nickson** in the lineup. In the eight games that PSU has played without Nickson, Penn State has been outrebounded or tied in rebounding in six contests and has a -0.4 rebounding margin in those games (41.2-41.6). The Lions are 6-2 without Nickson. With Nickson in the lineup, the Lady Lions have a +6.3 rebounding margin (47.5-41.2).

**GRABBING BOARDS:** Freshman **Tori Waldner** and sophomore **Ariel Edwards** each snared a career-high nine rebounds in the win over UMES Dec. 11. In addition to her nine caroms, Waldner tied her career-high two blocks and played a personal-best 21 minutes. Edwards also dished out a career-best three assists in the win.

## LIONS IN THE BIG TEN STATS

A breakdown of where Penn State ranks in the Big Ten's statistical categories. Through games of Dec. 27.

TEAM	
Scoring Offense.....	3rd (77.0)
Scoring Defense.....	6th (57.7)
Scoring Margin.....	3rd (+19.3)
Free Throw Percentage.....	6th (.721)
FG Percentage.....	2nd (.452)
FG Percentage Defense.....	1st (.310)
3-point FG Percentage.....	1st (.384)
3-point FG Pct. Defense.....	1st (.254)
3-point FG Made.....	8th (5.1)
Rebounding Offense.....	2nd (43.3)
Rebounding Defense.....	11th (41.5)
Rebounding Margin.....	7th (+1.8)
Offensive Rebounds.....	8th (12.8)
Defensive Rebounds.....	1st (30.6)
Blocked Shots.....	T-4th (4.8)
Assists.....	5th (14.7)
Steals.....	6th (9.7)
Turnover Margin.....	5th (+2.8)
Assist to Turnover Ratio.....	3rd (1.0)

INDIVIDUAL	
Scoring.....	3rd - Maggie Lucas (19.3)
.....	10th - Alex Bentley (15.1)
.....	19th - Zhaque Gray (12.2)
.....	30th - Nikki Greene (9.3)
Rebounding.....	7th - Nikki Greene (7.0)
.....	8th - Talia East (6.9)
FG Percentage.....	6th - Nikki Greene (.494)
.....	9th - Alex Bentley (.486)
.....	12th - Zhaque Gray (.448)
Assists.....	4th - Alex Bentley (5.8)
FT Percentage.....	9th - Alex Bentley (.844)
.....	10th - Maggie Lucas (.843)
Steals.....	3rd - Alex Bentley (2.8)
3FG Percentage.....	5th - Zhaque Gray (.413)
.....	7th - Maggie Lucas (.395)
3FG Made.....	3rd - Maggie Lucas (2.5)
.....	15th - Zhaque Gray (1.6)
Blocked Shots.....	4th - Talia East (1.6)
.....	8th - Nikki Greene (1.3)
.....	T-14th - Tori Waldner (1.0)
Assist-to-TO Ratio.....	4th - Alex Bentley (1.7)
Off. Reb.....	T-9th - Nikki Greene (2.5)
Def. Reb.....	T-4th - Talia East (5.0)
.....	T-13th - Nikki Greene (4.5)
Minutes.....	6th - Maggie Lucas (33.8)



## MILESTONE WATCH

### Milestone Watch

Milestone	Player	Current Total
1,100 points	Alex Bentley	1,051
800 points	Maggie Lucas	783
	Zhaque Gray	710
700 points	Nikki Greene	628
500 points	Mia Nickson (career)	429
400 points	Mia Nickson (PSU)	384
300 points	Marisa Wolfe	205
200 points	Ariel Edwards	175
	Renee Womack	164
	Gizelle Studevent	106
600 rebounds	Nikki Greene	548
400 rebounds	Mia Nickson (career)	322
300 rebounds	Mia Nickson (PSU)	265
	Alex Bentley	209
200 rebounds	Zhaque Gray	182
	Marisa Wolfe	181
	Renee Womack	174
	Maggie Lucas	162
	Ariel Edwards	117
400 assists	Alex Bentley	369
200 assists	Zhaque Gray	116
100 assists	Maggie Lucas	85
200 steals	Alex Bentley	151
100 steals	Maggie Lucas	72
150 blocks	Nikki Greene	146
150 3-pointers	Maggie Lucas	142
	Zhaque Gray	120

### Milestone Reached

Milestone	Player	Reached
200 points	Marisa Wolfe	12/21/11
150 steals	Alex Bentley	12/21/11
700 points	Zhaque Gray	12/18/11
600 points	Nikki Greene	12/11/11
100 points	Gizelle Studevent	12/11/11
1,000 points	Alex Bentley	12/6/11
700 points	Maggie Lucas	12/6/11
100 rebounds	Ariel Edwards	12/6/11
200 rebounds	Alex Bentley	12/3/11
100 assists	Zhaque Gray	11/30/11
500 rebounds	Nikki Greene	11/25/11
600 points	Zhaque Gray	11/17/11
600 points	Maggie Lucas	11/17/11
900 points	Alex Bentley	11/13/11
400 rebounds	Mia Nickson (career)	11/13/11
300 assists	Alex Bentley	11/11/11
100 points	Ariel Edwards	11/11/11

**PSU 16TH IN AP POLL:** The Penn State Lady Lions held steady in 16th place in the Dec. 26 Associated Press poll. The Lady Lions peaked at No. 11 in the Nov. 14 poll, their highest ranking in the AP poll since they were fifth in the final 2004 poll. Additionally, Penn State made its first appearance in the preseason AP poll since the 2003-04 campaign.

**LIONS RANKED 17TH IN COACHES POLL:** The Lady Lions down a one spot to 17th in the Dec. 27 ESPN/USA Today coaches poll. Penn State peaked at 12th, the highest ranking in the ESPN/USA Today Coaches' Poll for the Lady Lions since they were seventh in the final 2004 poll. Additionally, Penn State appeared in the preseason coaches' poll since starting the 2003-04 campaign eighth.

**BENTLEY JOINS 1,000-POINT CLUB:** With 11 points versus Virginia Tech Dec. 6, junior guard **Alex Bentley** became the 33rd player in school history with 1,000 points. She is also the 15th junior to reach the milestone and first Lady Lion to accomplish the feat since Tyra Grant reached the 1,000-point plateau in 2008.

**STIFLING D:** The Lady Lions turned in a stellar defensive performance in a 66-28 win over Virginia Tech Dec. 6. The 28 points were the fewest scored by the Hokies in program history, surpassing the 33 points scored against Tennessee during the 1995 campaign. It is also the fewest points scored by a Penn State opponent since giving up 21 tallies to Rider on Nov. 14, 2010.

**LUCAS TO 700:** With 20 points against Virginia Tech Dec. 6, sophomore guard **Maggie Lucas** reached the 700-point mark for her career. It was the 14th 20-point performance of Lucas' career.

**STELLAR SHOOTING:** The Lady Lions shot a sizzling 71.4% (15-21) from the field in the second half in the win over Virginia Tech Dec. 6. It is the first time a Penn State team shot better than 70% in a half since shooting 70.4% against Ohio State in the Big Ten Tournament on March 4, 2007. It was also the best shooting effort for the Lady Lions in a half since connecting on 72.7% (16-22) in the first half against Northwestern on Jan. 4, 2007.

**BENTLEY NAMED TO TRIO OF WATCH LISTS:** Junior point guard **Alex Bentley** as been named to a pair of watch lists for National Player of the Year. Bentley is one of 25 players on the WBCA's Wade Trophy Watch List, is among the 30 players on the Wooden Award preseason chart and is on the Naismith Award watch list. Additionally, Maggie Lucas is also on the Naismith Award chart, making the Lady Lions one of 11 schools with multiple players on the list.

**2012 WBCA PINK ZONE:** The 2012 WBCA Pink Zone at Penn State will take place on Sunday, Feb. 26 as the Lady Lions take on Minnesota in the Bryce Jordan Center. Last year, the Lady Lions donated nearly \$200,000 for breast cancer causes. This year's fundraising efforts will benefit the Mount Nittany Medical Center, Penn State Hershey Cancer Institute, Pennsylvania Breast Cancer Coalition, the Kay Yow Cancer Fund, J.C. Blair Memorial Hospital and Lewistown Hospital. For more information on the Pink Zone at Penn State, visit the official Pink Zone website at [www.gopsusports.com/pinkzone](http://www.gopsusports.com/pinkzone) or on Facebook at [www.facebook.com/pinkzoneatpennstate](http://www.facebook.com/pinkzoneatpennstate).

**OFFICIAL PINK ZONE T-SHIRTS:** The Official 2012 WBCA Pink Zone at Penn State t-shirt is available at all Penn State Bookstore location. This year, there is an official adult shirt that is \$15 with \$5 of every shirt going to the Pink Zone fundraising efforts, as well as an official youth shirt that is \$10 with \$2 of every shirt going to Pink Zone.

**TOPPLING TOP 15 FOE:** The Lady Lions shot 48.7% from the field and 58.3% from three-point range en route to a 103-84 win over #14/13 North Carolina in the Big Ten/ACC Challenge Nov. 30. It was the first win over a ranked opponent for Penn State since topping No. 14/13 Iowa (68-59) on Dec. 30, 2010. The 19-point win was the biggest margin of victory over a ranked opponent since a 73-56 win over #8 Michigan State on Jan. 23, 2005.

**CONSECUTIVE 100s:** The Lady Lions reached 100 points for the second consecutive game with a 103-84 win over #14/13 North Carolina Nov. 30 and a 103-65 victory at Nevada Nov. 26. The last time Penn State scored 100 points in back-to-back games was in 1993 when the Lady Lions defeated Nebraska, 102-66, on Jan. 2 and Illinois, 101-71, on Jan. 7.

## NCAA STATS

### TEAM

Scoring Offense	22nd (76.9)
Scoring Margin	22nd (+18.9)
Field Goal Percentage	21st (.448)
Field Goal Pct. Defense	6th (.306)
Free Throw Percentage	83rd (.718)
3-pt. Field Goal Percentage	26th (.363)
3-pt. Field Goal Pct. Defense	48th (.256)
Winning Percentage	35th (.818)
Assists	85th (14.3)
Blocked Shots	61st (4.7)
Turnovers	51st (15.3)
Assist-to-Turnover Ratio	48th (0.93)
Turnover Margin	82nd (2.64)

### INDIVIDUAL

Scoring	27th - Maggie Lucas (19.0)
Assists	16th - Alex Bentley (5.7)
Steals	87th - Alex Bentley (2.6)
FG Percentage	88th - Alex Bentley (.488)
FT Percentage	75th - Alex Bentley (.844)
	83rd - Maggie Lucas (.833)
3-pt. Field Goals/Game	66th - Maggie Lucas (2.4)
3-pt. Field Goal Pct.	84 - Maggie Lucas (.361)
Assist-to-TO Ratio	78th - Alex Bentley (1.70)

### SINGLE-GAME

Points	T-23rd - vs. North Carolina (103)
	T-23rd - at Nevada (103)
	T-23rd - vs. Wagner (103)
3-pt. Field Goals	T-17th - vs. North Carolina (14)
3-pt. FG Pct.	T-17th - vs. North Carolina (.583)
Assists	1st - Alex Bentley (15 vs. North Carolina)
Blocked Shots	T-11th - Talia East (7 at S. Carolina)
3-pt. FGs	T-24th - Zhaque Gray (6 vs. N. Carolina)

NCAA Statistics as of 12/19





# THE LAST TIME PENN STATE...

## SCORING

**Player scored 20 points:** at Bucknell (22, Maggie Lucas), 12/21/11  
**Player scored 25 points:** vs. North Carolina (25, Zhaque Gray), 11/30/11  
**Player scored 30 points:** vs. Iowa (32, Tyra Grant), 3/5/10  
**Player scored 35 points:** vs. Wisconsin (35, Kelly Mazzante), 3/2/03  
**Player scored 40 points:** vs. Minnesota (49, Kelly Mazzante), 12/28/01  
**Two players scored 20 points:** vs. Wagner (23, Maggie Lucas; 23, Alex Bentley), 12/18/11  
**Three players scored 20 pts.:** at Nevada (26, Maggie Lucas; 23, Alex Bentley; 21, Zhaque Gray), 11/26/11  
**Two players scored 25 points:** at Boston College (28, Alex Bentley; 28, Maggie Lucas), 12/2/10  
**Player scored 25 points/3 consecutive games:** Kelly Mazzante (31, vs. Baylor, 12/9/03; 31, vs. Pittsburgh, 12/14/03; 29, Louisiana Tech, 12/21/03)  
**Five in double figures:** vs. North Carolina (25, Zhaque Gray; 21, Maggie Lucas; 15, Alex Bentley; 13, Nikki Greene; 13, Ariel Edwards), 11/30/11  
**Six in double figures:** at Oakland (15, Alex Bentley; 16, Ariel Edwards; 16, Zhaque Gray; 13, Maggie Lucas; 10, Mia Nickson; 10, Gizelle Studevent; 10, Julia Trogele), 11/18/10  
**Seven in double figures:** at Oakland (15, Alex Bentley; 16, Ariel Edwards; 16, Zhaque Gray; 13, Maggie Lucas; 10, Mia Nickson; 10, Gizelle Studevent; 10, Julia Trogele), 11/18/10  
**PSU scored 50 points in a half:** vs. Wagner (57, first half), 12/18/11  
**PSU scored 55 points in a half:** vs. Wagner (57, first half), 12/18/11  
**PSU scored 60 points in a half:** vs. Northwestern (65 points, first half), 1/2/00  
**PSU scored 100 points:** vs. Wagner (W, 103-42), 12/18/11  
**PSU scored 100 points in Big Ten game:** vs. Illinois (W, 101-80), 2/15/01  
**PSU scored 100 points in a home game:** vs. Wagner (W, 103-42), 12/18/11  
**PSU scored fewer than 15 points in a half:** vs. Wisconsin (13, first half), 2/25/10  
**PSU scored fewer than 20 points in a half:** vs. Michigan State (18, first half), 2/10/11  
**PSU scored fewer than 40 points in a game:** vs. Wisconsin (L, 39-71), 2/25/10  
**PSU scored fewer than 50 points in a game:** vs. Purdue (L, 49-60), 2/24/11  
**PSU scored fewer than 50 points in a Big Ten game:** vs. Purdue (L, 49-60), 2/24/11  
**OPP scored 50 points in a half:** vs. Duke (50, second half), 11/18/05  
**OPP scored 100 points:** at Boston College (Lot, 113-104), 12/2/10  
**OPP scored fewer than 20 points in a game:** at Dickinson (W, 57-16), 3/6/71  
**OPP scored fewer than 30 points in a game:** vs. Virginia Tech (W, 66-28), 12/6/11  
**OPP scored fewer than 40 points in a game:** vs. Virginia Tech (W, 66-28), 12/6/11  
**OPP scored fewer than 50 points in a game:** vs. Wagner (W, 103-42), 12/18/11  
**OPP scored fewer than 50 points in a Big Ten game:** at Wisconsin (W, 54-43), 1/21/10

## FIELD GOAL SHOOTING

**Player made every shot from the field (min. 7):** vs. Michigan St. (Amanda Brown, 8-8), 1/25/07  
**PSU shot 55% in a game:** at Nevada (.573), 11/26/11  
**PSU shot 55% in consecutive games:** vs. Northwestern (.682), 3/2/96; vs. Ohio St. (.585), 3/3/96  
**PSU shot 60% in a game:** vs. Michigan State (.608), 2/23/96  
**PSU shot below 25% in a game:** at Alabama (.230), 12/19/96  
**PSU shot below 30% in a game:** vs. Wisconsin (.273), 2/25/10  
**PSU shot below 35% in a game and won:** vs. Indiana (.321), 1/10/10  
**PSU shot 55% in a half:** vs. Virginia Tech (.714, second half), 12/6/11  
**PSU shot 60% in a half:** vs. Virginia Tech (.714, second half), 12/6/11  
**PSU shot 65% in a half:** vs. Virginia Tech (.714, second half), 12/6/11  
**PSU shot 70% in a half:** vs. Virginia Tech (.714, second half), 12/6/11  
**PSU shot 55% in both halves:** vs. Iowa (.552, first half, .565, second half), 1/26/06  
**PSU shot below 20% in a half:** at Indiana (.231, first half), 2/28/10  
**PSU shot below 25% in a half:** at Texas Tech (.250, second half), 12/3/11

## THREE-POINT SHOOTING

**Player made every shot from the field (min. 4):** at Bucknell (4-4, Maggie Lucas), 12/21/11  
**Player made 4 three-pointers in a half:** vs. North Carolina (4, Maggie Lucas), 11/30/11  
**Player made 5 three-pointers in a half:** vs. Bucknell (6, Maggie Lucas), 12/28/10  
**Player made 6 three-pointers in a half:** vs. Bucknell (6, Maggie Lucas), 12/28/10  
**Player made 5 three-pointers in a game:** vs. North Carolina (6, Zhaque Gray; 5, Maggie Lucas), 11/30/11  
**Player made 6 three-pointers in a game:** vs. North Carolina (6, Zhaque Gray), 11/30/11  
**Player made 7 three-pointers in a game:** vs. Hartford (7, Maggie Lucas), 11/27/10  
**Player made 8 three-pointers in a game:** at Minnesota (8, Kelly Mazzante), 12/28/01  
**Player attempted 10 three-pointers in a game:** vs. North Carolina (10, Zhaque Gray), 11/30/11  
**PSU made 10 three-pointers:** vs. North Carolina (14), 11/30/11  
**PSU did not make a three-pointer:** at South Carolina (0-6), 11/20/11  
**PSU attempted 20 three-pointers:** vs. North Carolina (24), 11/30/11  
**PSU shot 60% 3FG (min. 5 att.):** at Bucknell (8-13, .615), 12/21/11

## FREE THROW SHOOTING

**Player made every shot from FT line (min. 10):** vs. Illinois (Julia Trogele, 12-12), 3/5/11  
**PSU shot 90% (min. 10 att.):** vs. North Carolina (14-24, .929), 11/30/11  
**PSU shot below 50% (min. 10 att.):** vs. Holy Cross (9-20, .450), 11/28/09  
**PSU made 30 free throws:** vs. Pittsburgh (34), 11/11/07  
**PSU made fewer than five FTs:** at Michigan (3), 2/3/11  
**PSU attempted 40 free throws:** vs. Pittsburgh (41), 11/11/07  
**PSU attempted fewer than five FTs:** at Michigan (4), 2/3/11

## REBOUNDS

**Player had 15 rebounds:** at South Carolina (15, Talia East), 11/20/11  
**Player had 20 rebounds:** vs. Indiana (20, Nikki Greene), 1/23/11  
**Two players with double-digit rebs.:** vs. Middle Tennessee St. (10, Nikki Greene; 10, Mia Nickson), 11/13/11  
**Three players had double-digit rebounds:** at Indiana (11, Nikki Greene; 10, Meredith Monroe; 11, Julia Trogele), 1/10/10  
**PSU had 60 rebounds:** vs. Indiana (61), 1/23/11  
**PSU had 50 rebounds:** vs. Wagner (54), 12/18/11  
**PSU had 20 or fewer rebounds:** vs. Michigan State (20), 1/19/03  
**OPP had 20 or fewer rebounds:** at Indiana (20), 2/13/11  
**PSU had 20 offensive rebounds:** vs. Middle Tennessee State (21), 11/13/11  
**PSU had 25 offensive rebounds:** vs. Indiana (33), 1/23/11

## ASSISTS

**Player had 10 assists:** vs. North Carolina (15, Alex Bentley), 11/30/11  
**Player had 10 assists/consecutive games:** Helen Darling, three games (12 at LaSalle, 12/8/99; 11 vs. Auburn, 12/11/99; 10 vs. Clemson, 12/19/99)  
**Player had 15 assists:** vs. North Carolina (15, Alex Bentley), 11/30/11  
**PSU had 30 assists:** vs. St. Francis (Pa.) (32), 12/2/99  
**PSU had fewer than 10 assists:** vs. Washington State (9), 11/11/11  
**PSU had fewer than 5 assists:** at Michigan State (4), 2/4/10

## BLOCKED SHOTS

**Player blocked 5 shots:** at South Carolina (7, Talia East), 11/20/11  
**Player blocked 6 shots:** at South Carolina (7, Talia East), 11/20/11  
**PSU blocked 10 shots:** vs. Purdue (11), 1/28/10  
**PSU blocked 0 shots:** vs. Purdue, 2/19/09

## STEALS

**Player had 7 steals:** vs. Michigan (7, Brianne O'Rourke), 2/2/06  
**Player had 8 steals:** vs. Fairfield (8, Kelly Mazzante), 12/2/01  
**PSU had 20 steals:** vs. Bucknell (21), 12/28/10

## TURNOVERS

**PSU committed 25 or more:** at Ohio State (27), 2/17/11  
**PSU committed 25 or more and won:** vs. Minnesota (26), 1/13/11  
**PSU committed 10 or fewer:** vs. North Carolina (10), 11/30/11  
**PSU committed 10 or fewer in consecutive games:** vs. Minnesota (9), 1/22/04; at Ohio St. (9), 1/25/04  
**OPP committed 25 or more:** Maine (26), 12/12/10

## DOUBLE-DOUBLES

**Points & rebounds:** vs. DePaul (Julia Trogele; 14 points, 11 rebounds), 3/21/11  
**Points & rebounds/consecutive games:** Nikki Greene (12 points, 10 rebounds vs. Ohio State, 1/30/11; 16 points, 14 rebounds at Illinois, 1/27/11)  
**Points & rebounds/3 consecutive games:** Amanda Brown (19 pts., 17 rebs. at Northwestern, 2/11/07; 14 pts., 10 rebs. vs. Minnesota, 2/15/07; 14 pts., 11 rebs. at Iowa, 2/18/07)  
**Points & rebounds/4 consecutive games:** Angie Potthoff (vs. Northwestern, 1/31/97; at Illinois, 2/2/97; vs. Michigan, 2/7/97; vs. Indiana, 2/9/97; vs. Iowa, 2/16/97; vs. Michigan State, 2/21/97)  
**Points & rebounds/5 consecutive games:** Angie Potthoff (vs. Northwestern, 1/31/97; at Illinois, 2/2/97; vs. Michigan, 2/7/97; vs. Indiana, 2/9/97; vs. Iowa, 2/16/97; vs. Michigan State, 2/21/97)  
**Points & assists:** vs. North Carolina (Alex Bentley; 15 points, 15 assists), 11/30/11  
**Points & assists/consecutive games:** Helen Darling (12 points, 12 assists at La Salle, 12/8/99; 10 points, 11 assists vs. Auburn, 12/11/99)  
**Two plyrs. w/double-doubles:** at Illinois (Nikki Greene, 16 pts., 14 rebs.; Julia Trogele, 19 pts., 11 rebs.), 1/27/11  
**Three players had double-doubles:** vs. Coppin State (Brianne O'Rourke, 12 points, 13 assists; Julia Trogele, 12 points, 13 rebounds; Janessa Wolff, 15 points, 10 rebounds), 11/29/08  
**15 points and 15 rebounds:** vs. Indiana (Mia Nickson; 25 points, 17 rebounds), 1/23/11  
**20 points and 10 rebounds:** vs. Indiana (Mia Nickson; 25 points, 17 rebounds), 1/23/11

## MARGIN OF VICTORY

**PSU won by 20-30 points:** at Bucknell (24), 12/21/11  
**PSU won by 20-30 points in a Big Ten game:** vs. Illinois (21), 1/16/11  
**PSU won by 31-40 points:** vs. Wagner (61), 12/18/11  
**PSU won by 41-50 points:** vs. Wagner (61), 12/18/11  
**PSU won by 51+ points:** vs. Wagner (61), 12/18/11  
**PSU lost by 20-30 points:** at Ohio State (22), 2/17/11  
**PSU lost by 20-30 points in a Big Ten game:** at Ohio State (22), 2/17/11  
**PSU lost by 31+ points:** vs. Wisconsin (32), 2/25/10

## MISCELLANEOUS

**Led PSU in points/rebounds/assists:** Tyra Grant vs. Michigan (25 pts., 9 rebs., 4 asst.), 2/18/10  
**Hit "final seconds" (under 10 seconds) game-winning shot:** Julia Trogele at Illinois (9 sec.), 1/27/11  
**Hit "final minute" game-winning shot:** Nikki Greene vs. Indiana (40 seconds remaining), 2/13/11  
**Player played every minute:** at Illinois (Tyra Grant), 12/31/09  
**Player played more than 40 min.:** at Dayton (Alex Bentley, 46; Zhaque Gray, 44; Mia Nickson, 41), 11/12/10  
**Committed 10 or fewer fouls:** vs. Virginia Tech (9), 12/6/11  
**Committed 30 or more fouls:** vs. Iowa State (32), 11/25/11  
**PSU rallied from a 10-point deficit to win:** vs. Middle Tenn. St. (down 10 15:38 2nd half, won 65-49), 11/13/11  
**PSU rallied from a 15-point deficit to win:** at Indiana (down by 16 at 10:02 in 1st half, won 80-77), 2/13/11  
**PSU had a 5-game winning streak:** 5 games, 1/23/11 - 2/6/11  
**PSU had a 5-game losing streak:** 6 games, 1/28/10 - 2/14/10  
**PSU went undefeated at home:** 2004-05 season  
**PSU sold out the BJC:** Purdue, 2/29/04

## OVERTIME

**PSU played an OT game:** at Boston College (L, 113-104), 12/2/10  
**PSU won an OT game:** at Oakland (96-89), 11/18/10  
**PSU lost an OT game:** at Boston College (L, 113-104), 12/2/10  
**PSU played two or more OT games in a season:** 2010-11 season (three)  
**PSU won two or more OT games in a season:** 2010-11 season (two)

## RANKINGS

**Played the No. 1 team in the AP poll:** vs. Connecticut (L, 77-63), 12/14/08  
**Played the No. 1 team in the Coaches poll:** vs. Connecticut (L, 77-63), 12/14/08  
**Defeated the No. 1 team in the AP poll:** at Virginia (73-71), 1/3/91  
**Defeated Top 10 opponent:** vs. #11/10 Duke (86-84), 12/2/07  
**Defeated Top 10 opponent on the road:** at #7 Purdue (47-42), 1/2/04  
**Defeated Top 10 opponent by double digits:** vs. #10 Minnesota (81-68), 1/30/05  
**Played consecutive Top 10 teams:** at #2/3 Texas 11/14/04, at #6/6 Duke 11/19/04  
**Defeated Top 25 opponent:** vs. #14/13 North Carolina (103-84), 11/30/11  
**Defeated Top 25 opponent on the road:** at No. 20/22 Iowa (82-75), 2/6/11  
**Defeated Top 25 opponent by double digits:** vs. #14/13 North Carolina (103-84), 11/30/11



## 2011-12 GAME-BY-GAME STARTING LINEUPS

Date	Opponent	Pt Guard	Guard	Guard	Forward	Center
11/5	BLOOMSBURG	Bentley	Gray	Lucas	Nickson	Greene
11/11	WASHINGTON ST.	Bentley	Gray	Lucas	Nickson	Greene
11/13	MIDDLE TENNESSEE	Bentley	Gray	Lucas	Nickson	Greene
11/17	at Delaware	Bentley	Gray	Lucas	Edwards	Greene
11/20	at South Carolina	Bentley	Gray	Lucas	Edwards	Greene
11/25	vs. Iowa State	Bentley	Gray	Lucas	Nickson	Greene
11/26	at Nevada	Bentley	Gray	Lucas	Nickson	Greene
11/30	NORTH CAROLINA	Bentley	Gray	Lucas	Edwards	Greene
12/3	at Texas Tech	Bentley	Gray	Lucas	Edwards	Greene
12/6	VIRGINIA TECH	Bentley	Gray	Lucas	Edwards	Greene
12/11	UMES	Bentley	Gray	Lucas	Edwards	Greene
12/18	WAGNER	Bentley	Gray	Lucas	Edwards	Greene
12/21	at Bucknell	Bentley	Gray	Lucas	Edwards	Greene

**SCHOOL RECORD FROM DEEP:** The Lady Lions connected on a school record 14 three-pointers in the 103-84 win over North Carolina Nov. 30. Penn State breaks the mark of 13 makes from beyond the arc, which was accomplished twice (at Dayton, 11/21/10; vs. St. Francis (12/2/99). The 14 threes by PSU also tie for the most by a North Carolina opponent.

**BENTLEY'S DOUBLE VISION:** Junior **Alex Bentley** posted the first double-double of her career with 15 points and a personal-best 15 assists in the upset win over #14/13 North Carolina Nov. 30. Bentley's 15 assists are a career high and are tied for 11th on Penn State's single-game chart. The 15 helpers also tie the Bryce Jordan Center record, also set by Helen Darling versus Wisconsin on Jan. 29, 1999.

**LUCAS INTO 6TH ON 3S LIST:** Sophomore guard **Maggie Lucas** moved into sixth place on Penn State's career three-pointers list with five triples versus North Carolina Nov. 30. She passed Tina Nicholson (1993-96) with her effort versus the Tar Heels.

### Career Three-Point Field Goals Made

- 357 Kelly Mazzante, 2001-04
- 230 Lisa Shepherd, 1998-01
- 191 Jess Strom, 2002-05
- 179 Tyra Grant, 2007-10
- 175 Tiffany Longworth, 1994-97
- 142 Maggie Lucas, 2011-pres.**

**BACK-TO-BACK 20s FOR ZHA ZHA:** Senior guard **Zhaque Gray** reached the 20-point for the second-straight game with 25 points on 6-of-10 shooting from long range in the win over #14/13 North Carolina Nov. 30. This is the second time in her career that she had back-to-back 20-point games with the first coming last year against Dayton (27) and Rider (22).

**HIGH SCORING HALF:** The Lady Lions scored 58 points in the first half of the win over #14/13 North Carolina, marking the first time the Lions have scored more than 55 points in a half since tallying 55 in the second half at Boston College on Dec. 2, 2010.

**STEALING A BENTLEY:** Junior guard **Alex Bentley** worked on her pick-pocketing skills in Nevada with a career-best five steals against the Wolf Pack in the Nugget Classic title game. She also nabbed four steals in the opening round win over Iowa State.

**NUGGET CROWN:** Penn State claimed the Nugget Classic title over Thanksgiving with wins over Iowa State (66-59) and Nevada (103-65). It is the 28th regular-season tournament title for PSU and the second this season (Lady Lion Classic). **Alex Bentley** was selected as the Tournament MVP after averaging 18.0 points, 4.5 assists and 4.5 steals in two games. She also shot 57.1% from the field. **Maggie Lucas** also collected All-Tournament team accolades as she averaged 22.0 points, 6.5 rebounds and 3.0 assists in the Nugget Classic.

## LADY LIONS SEASON BESTS

Player	Points	Rebounds	Assists	Blocks	Steals
Alex Bentley	23 (2X)	5 (N. Carolina)	15 (N. Carolina)	1 (Delaware)	5 (2X)
Talia East	8 (2X)	15 (S. Carolina)	2 (Bucknell)	7 (S. Carolina)	2 (Texas Tech)
Ariel Edwards	13 (N. Carolina)	9 (UMES)	3 (4X)	1 (2X)	3 (Texas Tech)
Zhaque Gray	25 (N. Carolina)	6 (Mid. Tenn.)	6 (N. Carolina)	1 (S. Carolina)	2 (4X)
Nikki Greene	14 (Va. Tech)	12 (Wash. St.)	1 (5X)	3 (3X)	3 (2X)
Maggie Lucas	26 (Nevada)	9 (Wash. St.)	5 (2X)	1 (2X)	3 (2X)
Mia Nickson	6 (Wash. St.)	13 (Iowa State)	2 (Iowa State)	1 (Nevada)	1 (2X)
Gizelle Studevent	8 (UMES)	3 (5X)	4 (Wagner)	-	2 (Va. Tech)
Tori Waldner	6 (N. Carolina)	10 (Wagner)	2 (Wagner)	3 (Wagner)	2 (Nevada)
Marisa Wolfe	9 (2X)	7 (Wagner)	1 (5X)	2 (UMES)	3 (N. Carolina)
Renee Womack	-	-	-	-	-

## 2012 RECRUITING CLASS

ESPN/HoopGurlz 34th-ranked recruit Candice Agee signed a National Letter of Intent (NLI) to play of the Lady Lions beginning in the 2012-13 season. The 6-6 center from Silverado High School in Victorville, Calif. signed her NLI in November in a ceremony at her high school. The signing of Agee and addition of transfer Dara Taylor, the Lady Lions have the 18th-ranked recruiting class by Dan Olson's Collegiate Girls Basketball Report.

"We are so excited to have Candice join the Penn State family," Washington said. "She is a very talented player and will complement our current post players in a lot of ways. She adds size, skill and athleticism to our front line, and she has a competitive streak that you love to see. She will definitely be an impact player for us on the court. In addition, she comes from a delightful family and her mom, dad and younger brother will also be wonderful additions to Lady Lion basketball."

Agee is the first commit in the Lady Lions' 2012 recruiting class, averaged 17.0 points, 10.9 rebounds, 7.3 blocks and 2.7 steals per game for the Hawks as a junior. The native of Victorville, Calif. is a highly touted recruit, ranking 34th by ESPN/HoopGurlz, 38th by Collegiate Girls Report, 17th by Blue Star Basketball and 40th by All-Star Girls Report and Peach State. The Hawks finished the season with a 22-6 record with a perfect conference record en route to the Desert Sky title.

Agee is a three-time Desert Sky League first team selection and was the league's Most Valuable Player as a junior. Additionally, she was the Daily Press Girls' Athlete of the Year. Agee begins her senior season with 991 career points, 649 rebounds and 390 blocks. was named to the All-Region first team as a junior. The center plays her AAU ball with West Coast Premier. Agee also plays volleyball at Silverado High School. Agee chose Penn State over Kansas State, Miami, UNLV, UCLA, USC, Tennessee, Vanderbilt, North Carolina, Georgetown, Georgia, Oregon, Oregon State, Washington and Washington State.

## PSU IN THE POLLS

	AP	Coaches
Preseason	12	14
Nov. 14/15	11	12
Nov. 21/22	17	16
Nov. 28/29	16	15
Dec. 5/6	17	18
Dec. 12/13	16	17
Dec. 19/20	16	16
Dec. 26/27	16	17





## NATIONAL POLLS

### ASSOCIATED PRESS (DEC. 26)

No.	Team (1st)	Rec.	Pts.	LW
1.	Baylor (40)	12-0	1000	1
2.	Connecticut	10-1	949	2
3.	Notre Dame	11-1	927	3
4.	Stanford	9-1	881	4
5.	Maryland	12-0	837	5
6.	Kentucky	11-1	756	8
7.	Tennessee	7-3	728	6
8.	Duke	8-2	703	9
9.	<b>Ohio State</b>	<b>13-0</b>	<b>651</b>	<b>11</b>
10.	Texas A&M	8-2	639	10
11.	Rutgers	10-2	578	12
12.	Miami (Fla.)	9-2	521	7
13.	<b>Texas Tech</b>	<b>10-0</b>	<b>510</b>	<b>15</b>
14.	Louisville	12-2	491	14
15.	Georgetown	10-2	487	17
16.	<b>PENN STATE</b>	<b>10-2</b>	<b>401</b>	<b>16</b>
17.	Georgia	10-2	339	13
18.	UW-Green Bay	10-0	323	18
19.	<b>Delaware</b>	<b>9-0</b>	<b>262</b>	<b>19</b>
20.	<b>Purdue</b>	<b>10-3</b>	<b>212</b>	<b>20</b>
21.	DePaul	12-2	211	21
22.	Texas	9-2	166	22
23.	<b>Nebraska</b>	<b>11-1</b>	<b>110</b>	<b>24</b>
24.	<b>North Carolina</b>	<b>8-2</b>	<b>106</b>	<b>23</b>
25.	Vanderbilt	11-1	94	25

Others Receiving Votes: Virginia 28; Gonzaga 28; California 22; LSU 14; **South Carolina 10**; Arkansas 7; Georgia Tech 4; BYU 2; St. Bonaventure 1; Kansas 1; **Northwestern 1**.

### ESPN/USA TODAY TOP 25 (DEC. 27)

No.	Team (1st)	Rec.	Pts.	LW
1.	Baylor (30)	12-0	774	1
2.	Connecticut (1)	10-1	741	2
3.	Notre Dame	11-1	715	3
4.	Stanford	9-1	683	4
5.	Maryland	11-0	648	5
6.	Kentucky	11-1	605	8
7.	Duke	8-2	568	9
8.	Tennessee	7-3	561	6
9.	Texas A&M	8-2	512	10
10.	Miami (Fla.)	9-2	468	7
11.	Rutgers	10-2	465	11
12.	<b>Ohio State</b>	<b>13-0</b>	<b>429</b>	<b>13</b>
13.	Louisville	11-2	413	12
14.	UW-Green Bay	10-0	355	14
15.	Georgia	10-2	317	15
16.	Georgetown	10-2	311	17
17.	<b>PENN STATE</b>	<b>10-2</b>	<b>286</b>	<b>16</b>
18.	<b>Texas Tech</b>	<b>10-0</b>	<b>259</b>	<b>18</b>
19.	DePaul	12-2	207	19
20.	<b>Delaware</b>	<b>9-0</b>	<b>179</b>	<b>20</b>
21t.	<b>Purdue</b>	<b>10-3</b>	<b>134</b>	<b>21</b>
21t.	Vanderbilt	11-1	134	23
23.	<b>North Carolina</b>	<b>8-2</b>	<b>81</b>	<b>22</b>
24.	Gonzaga	10-2	74	24
25.	Texas	9-2	72	25

Others receiving votes: **Nebraska 32**; Kansas 15; Georgia Tech 13; California 10; **Michigan 8**; **South Carolina 3**; Brigham Young 1; Duquesne 1; Villanova 1.

\*Bold type indicates 2011-12 Penn State opponent.

## STATISTICAL LEADERS

Check here throughout the season for a breakdown of how many times a player leads Penn State in the following statistical categories. (First number is solo, the second is shared.)

<b>Points</b> .....	Lucas (6/2), Bentley (2/2), Gray (2)
<b>Rebounds</b> .....	Greene (2/2), East (2/1), Nickson (1/2), Edwards (1/1), Lucas (1/1), Waldner (1/1)
<b>Assists</b> .....	Bentley (9/1), Lucas (1), Studevent (1), Gray (-/1)
<b>Steals</b> .....	Bentley (6/2), Greene (1/1), Wolfe (1), Edwards (-/2), Gray (-/1), Lucas (1/2), East (-/1), Studevent (-/1)
<b>Blocks</b> .....	Greene (2/6), East (3/4), Waldner (-/3), Nickson (-/1), Lucas (-/1), Edwards (-/1), Bentley (-/1)
<b>FG % (min. 4 attempts)</b> .....	Bentley (2), Gray (2), Edwards (1), East (1/1), Greene (2/1), Studevent (1), Waldner (1), Lucas (1)
<b>FT % (min 4 attempts)</b> .....	Bentley (4/2), Lucas (5/2), Gray (1/1)
<b>3FG % (min. 2 att.)</b> .....	Bentley (2/2), Lucas (4/2), Gray (3)

## PENN STATE VS. THE BIG TEN

Illinois	Overall .....	27-14	Nebraska	Overall .....	2-0
	Big Ten Games .....	20-11		Big Ten Games .....	0-0
	Big Ten Tournament .....	4-2		Big Ten Tournament .....	0-0
	Home .....	15-2		Home .....	1-0
	Away .....	8-10		Away .....	0-0
	Neutral .....	4-2		Neutral .....	1-0
Indiana	Overall .....	27-9	Northwestern	Overall .....	29-7
	Big Ten Games .....	22-8		Big Ten Games .....	26-6
	Big Ten Tournament .....	3-1		Big Ten Tournament .....	2-0
	Home .....	15-2		Home .....	16-1
	Away .....	9-6		Away .....	11-5
	Neutral .....	3-1		Neutral .....	2-1
Iowa	Overall .....	23-17	Ohio State	Overall .....	31-21
	Big Ten Games .....	18-14		Big Ten Games .....	18-14
	Big Ten Tournament .....	2-1		Big Ten Tournament .....	4-5
	Home .....	13-5		Home .....	16-6
	Away .....	7-11		Away .....	11-9
	Neutral .....	3-1		Neutral .....	4-6
Michigan	Overall .....	26-9	Purdue	Overall .....	15-25
	Big Ten Games .....	24-7		Big Ten Games .....	13-19
	Big Ten Tournament .....	1-2		Big Ten Tournament .....	2-3
	Home .....	13-2		Home .....	9-8
	Away .....	12-5		Away .....	4-14
	Neutral .....	1-2		Neutral .....	2-3
Michigan State	Overall .....	24-11	Wisconsin	Overall .....	25-10
	Big Ten Games .....	21-10		Big Ten Games .....	22-10
	Big Ten Tournament .....	2-1		Big Ten Tournament .....	2-0
	Home .....	14-3		Home .....	15-2
	Away .....	8-7		Away .....	8-8
	Neutral .....	2-1		Neutral .....	2-0
Minnesota	Overall .....	22-11			
	Big Ten Games .....	20-11			
	Big Ten Tournament .....	1-0			
	Home .....	13-3			
	Away .....	8-8			
	Neutral .....	1-0			



# RECORD BOOK

## CAREER SCORING

1. 2,919 Kelly Mazzante, 2001-04
2. 2,253 Susan Robinson, 1989-92
3. 2,044 Tyra Grant, 2007-10
4. 2,025 Kahadeejah Herbert, 1982-85
5. 1,995 Tanisha Wright, 2002-05
6. 1,897 Suzie McConnell, 1985-88
7. 1,725 Angie Potthoff, 1993-97
8. 1,663 Lisa Shepherd, 1998-01
9. 1,619 Andrea Garner, 1997-00
10. 1,538 Tanya Garner, 1988-91
11. 1,514 Vicki Link, 1984-87
12. 1,466 Jess Strom, 2002-05
13. 1,463 Katina Mack, 1992-96
14. 1,428 Jen Bednarek, 1980-83
15. 1,328 Maren Walseth, 1998-01
16. 1,320 Cheryl Ellison, 1980-83
17. 1,295 Kathy Phillips, 1989-92
18. 1,294 Helen Darling, 1997-00
19. 1,288 Carol Walderman, 1981-83
20. 1,280 Louise Leimkuhler, 1980-82
21. 1,240 Tina Nicholson, 1993-96
22. 1,238 Kam Gissendanner, 2006-08
23. 1,233 Amanda Brown, 2004-07
24. 1,186 Bethany Collins, 1985-88
25. 1,162 Lisa Faloon, 1984-87
26. 1,142 Jess Brungo, 2001-04
27. 1,135 Sue Martin, 1976-80
28. 1,106 Missy Masley, 1992-95
29. 1,084 Brianne O'Rourke, 2005-09
30. 1,061 Nancy Kuhl, 1975-79
31. **1,051 Alex Bentley, 2010-present**
32. 1,024 Rashana Barnes, 1999-02
33. 1,022 Helen Holloway, 1991-94

## CAREER REBOUNDS

1. 1,103 Kahadeejah Herbert, 1982-85
2. 1,070 Susan Robinson, 1989-92
3. 1,016 Andrea Garner, 1997-00
4. 943 Vicki Link, 1984-87
5. 918 Angie Potthoff, 1993-97
6. 820 Mag Strittmatter, 1975-78
7. 818 Cheryl Ellison, 1980-83
8. 808 Amanda Brown, 2004-07
9. 773 Mary Donovan, 1978-81
10. 757 Bethany Collins, 1985-88
11. 728 Rashana Barnes, 1999-02
12. 721 Missy Masley, 1992-95
13. 719 Louise Leimkuhler, 1980-83
14. 717 Kathy Phillips, 1989-92
15. 690 Julia Trogele, 2008-11
16. 672 Helen Darling, 1997-00
17. 649 Jess Brungo, 2001-04
18. 645 Maren Walseth, 1998-01
19. 621 Tanisha Wright, 2002-05
20. 598 Helen Holloway, 1991-94
21. 595 Sue Martin, 1977-80
22. 583 Kim Calhoun, 1993-96
23. 563 Kelly Mazzante, 2001-04
24. **548 Nikki Greene, 2010-present**

## CAREER THREE-POINT FIELD GOALS MADE

1. 357 Kelly Mazzante, 2001-04
2. 230 Lisa Shepherd, 1998-01
3. 191 Jess Strom, 2002-05
4. 179 Tyra Grant, 2007-10
5. 175 Tiffany Longworth, 1994-97
6. **142 Maggie Lucas, 2011-present**
7. 124 Tina Nicholson, 1993-96
8. **120 Zhaque Gray, 2009-present**
- 120 Brianne O'Rourke, 2006-09

## CAREER ASSISTS

1. 1,307\* Suzie McConnell, 1984-88
2. 826 Tina Nicholson, 1993-96
3. 791 Helen Darling, 1997-00
4. 776 Jess Strom, 2002-05
5. 632 Annie Troyan, 1981-83
6. 567 Dana Eikenberg, 1989-92
7. 560 Brianne O'Rourke, 2006-09
8. 528 Nancy Kuhl, 1975-79
9. 484 Tanisha Wright, 2002-05
10. 411 Tanya Garner, 1988-91
11. 379 Corinne Gulas, 1980-81
12. **369 Alex Bentley, 2010-present**

## CAREER BLOCKS

1. 268 Kim Calhoun, 1993-96
2. 192 Mary Donovan, 1977-81
3. 189 Rashana Barnes, 1999-02
4. 185 Andrea Garner, 1997-00
5. 172 Amanda Brown, 2004-07
6. **146 Nikki Greene, 2010-present**

**NEWEST 500 BOARD MEMBER:** Junior center **Nikki Greene** became the 27th player in school history to reach 500 rebounds with seven caroms against Iowa State on Nov. 25. She joins an elite list that it topped by Kahadeejah Herbert (1,103) and Susan Robinson (1,070).

**WALDNER ON THE BOARD:** Freshman post player **Tori Waldner** scored her first collegiate points with a 15-foot jumper at Iowa State Nov. 25. She finished the contest with five points and connected on both of her shots from the field. Waldner also blocked her first career shot.

**NICKSON RETURNS:** Junior post player **Mia Nickson** returned after missing two games with concussion-like symptoms. She hauled in 13 rebounds to go along with five points and two assists in the win over Iowa State in the Nugget Classic.

**FOUL FACTOR:** The Lady Lions were charged with 32 fouls in the win over Iowa State, its most fouls in a game since they committed 30 fouls against UCSB Nov. 20, 2001.

**LADYLIONS.COM:** LadyLions.com is a website dedicated exclusively to women's basketball at Penn State. The website gives the Lady Lions a chance to showcase the Penn State women's basketball program to potential recruits and fans. The site has been recently enhanced with the addition of a team blog, live chats and an "Ask Coach Quese" mailbag. The team blog has been up and running since August. The blog is regularly updated with entries from Lady Lion basketball players, coaches and staff members. The Lady Lions and the coaching staff interact with fans during a weekly live chat on Mondays from 12:15-1:15. The final new feature on LadyLions.com for this season is the Ask Coach Quese mailbag. Coach Quese will answer fan questions each Tuesday throughout the season. Questions can be submitted to Coach Quese by emailing them to askcoachquese@gmail.com. Be sure to include your name and hometown when submitting a question.

**A BLOCK EAST:** Sophomore center **Talia East** rejected seven shots in the win at South Carolina Nov. 20. The seven blocks are tied for third on Penn State's single-game charts and are the most since **Nikki Greene** blocked seven shots against Purdue on Jan. 28, 2010. Additionally, East hauled in 15 rebounds against the Gamecocks, the most rebounds for a Penn State player since **Mia Nickson** had 15 caroms at Iowa on Feb. 6, 2011.

**THREES STRING STOPPED:** The Lady Lions were held without a three-pointer for the first time under Coquese Washington at South Carolina Nov. 20. The last time Penn State did not connect from downtown was Jan. 7, 2007 at Michigan, a string of 143 games.

**LATE RALLIES:** The Lady Lions used late runs to claim each of their first three wins this season. Penn State needed a 13-0 run against South Carolina (Nov. 20), a 19-0 run against Middle Tennessee (Nov. 13) and a 13-0 spurt versus Washington State (Nov. 11). In the final five minutes of their three wins, the Lady Lions are outscoring their opponents an average of 10-0 and holding them to an 0-for-26 effort from the field.

### LATE RALLIES

Team	Run	Length	Deficit
Washington State	13-0	6:53	1
Middle Tennessee	19-0	6:45	3
South Carolina	13-0	5:22	8

**WOLFE RETURNS:** After missing the first three games of the season due to concussion-like symptoms, junior post player **Marisa Wolfe** returned to go 2-for-3 from the field and tally four points in the win at South Carolina Nov. 20.



## COURTSIDE WITH COQUESE

Courtside with Coquese, a show that follows the Penn State women's basketball team during the season and takes viewers on an all-access tour of the team. All episodes of Courtside with Coquese can also be viewed online at LadyLions.com. Episodes will also be available on Comcast Video On Demand on Comcast in Pennsylvania on Fridays.

### Courtside with Coquese Air Dates

Ep. 1	Fri., 12/23	6:15 p.m.	PBS World
	Fri., 12/23	8:30 p.m.	WPSU
	Sat., 12/24	11 a.m.	WPSU
Ep. 2	Wed., 12/28	10:30 a.m.	BTN
	Thurs., 1/12	6:15 p.m.	PBS World
	Thurs., 1/12	TBA	BTN
Ep. 3	Fri., 1/13	8:30 p.m.	WPSU
	Sat., 1/14	11 a.m.	WPSU
	Thurs., 1/19	6:15 p.m.	PBS World
Ep. 4	Thurs., 1/19	TBA	BTN
	Fri., 1/20	8:30 p.m.	WPSU
	Sat., 1/21	11 a.m.	WPSU
Ep. 5	Thurs., 1/26	6:15 p.m.	PBS World
	Thurs., 1/26	TBA	BTN
	Fri., 1/27	8:30 p.m.	WPSU
Ep. 6	Sat., 1/28	11 a.m.	WPSU
	Thurs., 2/2	6:15 p.m.	PBS World
	Thurs., 2/2	TBA	BTN
Ep. 7	Fri., 2/3	8:30 p.m.	WPSU
	Sat., 2/4	11 a.m.	WPSU
	Thurs., 2/9	6:15 p.m.	PBS World
Ep. 8	Thurs., 2/9	TBA	BTN
	Fri., 2/10	8:30 p.m.	WPSU
	Sat., 2/11	11 a.m.	WPSU
Ep. 9	Thurs., 2/16	6:15 p.m.	PBS World
	Thurs., 2/16	TBA	BTN
	Fri., 2/17	8:30 p.m.	WPSU
Ep. 10	Sat., 2/18	11 a.m.	WPSU
	Thurs., 2/23	6:15 p.m.	PBS World
	Thurs., 2/23	TBA	BTN
Ep. 11	Fri., 2/24	8:30 p.m.	WPSU
	Sat., 2/25	11 a.m.	WPSU
	Ep. 12	TBA	

**EAST HAULS IN BOARDS:** Talia East continued her solid play with another career-best rebounding effort at Delaware Thursday. The sophomore center snared a personal-best 11 rebounds for the first double figure rebounding performance of her career. She also added eight rebounds and a pair of blocked shots versus the Blue Hens.

**EDWARDS GETS THE NOD:** Sophomore Ariel Edwards earned her first career start at Delaware Thursday in place of an ailing Mia Nickson. Edwards responded with a solid eight-point, eight-rebound night against the Blue Hens. The eight caroms tie her career high set last year against Hartford in the Caribbean Challenge.

**PAIR REACHES 600 POINTS:** Senior guard Zhaque Gray and sophomore guard Maggie Lucas both reached the 600-point plateau for their careers at Delaware Thursday. Gray's 15 points brought her career total to 601, while Lucas' 12 tallies gave her an even 600 markers for her career. Lucas reached 600 points in 38 games, making her the third-fastest player in school history to reach 600 points (Kelly Mazzante and Susan Robinson, 33 games).

**LADY LION CLASSIC CROWN:** Penn State picked up its 27th regular-season title with wins over Washington State (72-60) and Middle Tennessee (65-49) in the Lady Lion Classic. It is the third regular-season title acquired under Coquese Washington (2006 WBCA Classic, 2009 Dead River Company Classic and 2011 Lady Lion Classic).

**LUCAS TABBED TOURNEY MVP:** Sophomore guard Maggie Lucas was selected as the Lady Lion Classic Tournament MVP after averaging 18.0 points, 5.5 rebounds and 3.5 assists in two games. Additionally senior guard Zhaque Gray and junior guard Alex Bentley were named to the Lady Lion Classic All-Tournament team.

**BENTLEY REACHES MILESTONES:** Junior guard Alex Bentley reached the 900-point plateau with eight tallies against Middle Tennessee Nov. 13. Additionally, Bentley became the 14th player in school history with 300 assists as she dished out four helpers against Washington State Nov. 11.

**EAST'S CAREER NIGHT:** Sophomore center Talia East turned in a career performance in the season-opening win over Washington State. She was a perfect 3-for-3 from the field on the way to a career-high six points. She also hauled in eight rebounds.

**ANOTHER SEASON-OPENING WIN:** The Lady Lions collected their fifth-straight season-opening win under head coach Coquese Washington with a 72-60 come-from-behind win over Washington State Nov. 11. Penn State has started each of Washington's four seasons with at least three wins.

**PENN STATE BIG TEN FAVORITES:** With 10 returning letterwinners from a team that posted a second place regular-season finish and a runner-up effort in the Big Ten Tournament, the Lady Lions were selected to finish first in the Big Ten Conference in a vote of the league's coaches and media. PSU finished ahead of Purdue and Iowa in the coaches' vote and Purdue and Michigan State in the media poll.

**BENTLEY BIG TEN PRESEASON POY:** Junior point guard Alex Bentley was selected as the conference's Preseason Player of the Year by both the coaches and the media. She shared the coaches' Preseason Player of the Year with Ohio State's Samantha Prahalis.

**AGEE SIGNS NLI:** ESPN/HoopGurlz 34th-ranked recruit Candice Agee signed a National Letter of Intent (NLI) to play of the Lady Lions beginning in the 2012-13 season. The signing of Agee and addition of transfer Dara Taylor, the Lady Lions have the 18th-ranked recruiting class by Dan Olson's Collegiate Girls Basketball Report. Agee is the first commit in the Lady Lions' 2012 recruiting class, averaged 17.0 points, 10.9 rebounds, 7.3 blocks and 2.7 steals per game for the Hawks as a junior. The native of Victorville, Calif. is a highly touted recruit, ranking 34th by ESPN/HoopGurlz, 38th by Collegiate Girls Report, 17th by Blue Star Basketball and 40th by All-Star Girls Report and Peach State. The Hawks finished the season with a 22-6 record with a perfect conference record en route to the Desert Sky title.

**LADY LIONS 12TH IN SPORTING NEWS PRESEASON POLL:** The Lady Lions are ranked 12th in the "Sporting News" preseason poll and sophomore guard Maggie Lucas is a preseason third team All-American, according to the magazine. Penn State is the highest ranked of the three Big Ten teams (Purdue, Michigan State) in the preseason Top 25.

**VETERANS RETURN:** The Lady Lions return 10 letterwinners and four starters, including All-Big Ten first team selection Alex Bentley, Big Ten Freshman of the Year and Sixth Player of the Year Maggie Lucas and Big Ten All-Defensive choice Nikki Greene.

**LIONS ARE 16TH IN ATHLON PRESEASON POLL:** In addition to their #12 ranking in the "Sporting News" preseason poll, the Lady Lions are 16th in the "Athlon" preseason rankings. Penn State is the highest ranked of the two Big Ten teams (Ohio State) in the preseason Top 25.

**BENTLEY AND LUCAS PARTICIPATE IN USA BASKETBALL TRIALS:** Guards Alex Bentley and Maggie Lucas participated in the 2011 USA Basketball World University Game Trials this past spring. The pair were part of the group of 35 of the nation's top collegiate players that accepted invitations to attend the 2011 USA Basketball Women's World University Games Team Trials. Former Lady Lion standouts Terri Williams-Flournoy and Suzie McConnell-Serio were assistant coaches for the World University Games team.

**TEAM CAPTAINS:** Junior Mia Nickson and Marisa Wolfe have been selected as the team captains for the 2011-12 Lady Lions. Nickson, who is a team captain for the second consecutive year, accounted for 10.5 points and 6.7 rebounds per game. She was ninth in the Big Ten in rebounding and 14th in free throw percentage (.795). Wolfe earned her first eight collegiate starts last season and finished the year averaging 2.6 points and 2.4 rebounds per game. The junior was outstanding from the free throw line, going 17-for-20 (.850). Wolfe also tallied 12 steals.







# COQUESE WASHINGTON

Head Coach  
5th Season

## PENN STATE LADY LION BASKETBALL

Coquese Washington, who helped lead Notre Dame to the 2001 NCAA Championship, was introduced as the fifth head coach of the Penn State women's basketball program on April 23, 2007. Washington is the first female African-American head coach in Penn State history.

The Lady Lions returned to the national stage in Washington's fourth year with a second-place finish in the Big Ten regular season standings, a runner-up finish in the Big Ten Tournament and a berth in the NCAA Tournament. Penn State tallied its most victories since the 2003-04 campaign and 23rd 20-win season with a 25-10 overall record and an 11-5 mark in conference play. The Lady Lions worked their way back to the "Big Dance" for the first time since 2004-05 and advanced to the second round for the first time in seven years with a win over Dayton in the first round in front of a raucous Bryce Jordan Center crowd. After a remarkable season in the books and steps toward returning the Lady Lions to national prominence, Washington was selected as the 2011 BCA Female Coach of the Year.

Penn State was a dominating force from the perimeter as the Lady Lions tied the school record with 228 three-pointers and led NCAA Division I from deep with a .426 shooting percentage. Pacing the Lady Lions from downtown was Maggie Lucas, who broke the Big Ten three-pointers record with 112 triples to go along with a .426 shooting percentage. For her efforts, Lucas was selected as the Big Ten Freshman of the Year and Big Ten Sixth Player of the Year while breaking the Penn State freshman season scoring record (552 pts.). Additionally with Washington's guidance, Alex Bentley became the 11th different player in school history to take home first team All-Big Ten accolades after finishing second in the conference in assists. After outstanding seasons, both Lucas and Bentley were invited to the USA Basketball World University Games Trials.

Washington's third season saw the Lady Lions return to the postseason for the first time since 2004-05 with a WNIT berth. The Lions earned their most overall wins (17) and conference wins (8) since the 2004-05 campaign en route to a sixth-place finish in the Big Ten.

Washington led Tyra Grant to back-to-back first team All-Big Ten honors and *Associated Press* Honorable Mention All-America accolades in her senior season. Grant capped off her career by being selected by the Phoenix Mercury in the second round of the WNBA Draft. The four-time all-

conference pick left Penn State third in school history in scoring with 2,044 points. Washington also guided Bentley to third team All-Big Ten honors, as well as a unanimous selection to the Big Ten All-Freshman team.

That year, Washington and the Lady Lions garnered one of the top recruiting classes in the country, finishing 22nd on the ESPN/HoopGurlz recruiting chart. The class included just the second McDonald's High School All-American in Penn State history in Lucas, WBCA High School All-American Ariel Edwards and All-State selection Talia East.

In Washington's second season, the Lady Lions moved up three positions in the Big Ten standings, finishing in a tie for seventh place. Under Washington's guidance in 2008-09, Grant became the 10th different player in school history to earn first team All-Big Ten honors.

The Coquese Washington era started in style as the Lady Lions won their first three games of the season, including a win over #20/21 Pittsburgh, to claim the WBCA Classic title. Just three weeks later, Washington guided the Lady Lions to their first ever win over perennial contender and 10th-ranked Duke in the inaugural Big Ten/ACC Challenge, a game that was televised on ESPN2.

Washington came to Happy Valley after eight seasons as an associate head coach and assistant coach under Muffet McGraw at Notre Dame, her alma mater. During Washington's eight years on the bench, Notre Dame amassed a 188-69 record with eight NCAA Tournament appearances, including four Sweet Sixteen runs and a National Championship in 2001.

Washington was a four-year starting point guard for Notre Dame under McGraw and was the team captain on Notre Dame's first-ever NCAA Tournament team. She was a two-time All-Midwestern Collegiate Conference (MCC) selection and led Notre Dame to three MCC Tournament titles.

The epitome of a student-athlete, Washington graduated from Notre Dame in 1992, a full year ahead of schedule, with a bachelor's degree in history. She went on to attain "Double Domer" status in 1997 after earning her Juris Doctorate from the Notre Dame Law School.

In addition to assisting with the efforts of the WBCA Pink Zone at Penn State to raise money and awareness for breast cancer, Washington created Coquese's Drive for the Women's Resource Center. The first four Coquese's Drives raised more than \$56,869 for the Centre County Women's

## THE WASHINGTON FILE

### COACHING RESUME

2007-pres. - Head Coach, Penn State University  
 2011-pres. - President, NCAA Women's Basketball Issues Committee  
 2010-pres. - Treasurer, WBCA Executive Committee  
 2008-pres. - Member, WBCA Board of Directors  
 2009-pres. - Member, USA Basketball Women's Junior National Committee  
 2005-07 - Assoc. Head Coach, Univ. of Notre Dame  
 1999-05 - Assistant Coach, Univ. of Notre Dame

### PLAYING EXPERIENCE

2002-03 - WNBA's Indiana Fever  
 2000-02 - WNBA's Houston Comets  
 1998-99 - WNBA's New York Liberty  
 1997-98 - ABL's Portland Power  
 1989-93 - University of Notre Dame

### EDUCATION

Notre Dame '92, B.A. History  
 Notre Dame Law School '97, Juris Doctorate

### NOTABLE

- ❖ 2011 BCA Female Coach of the Year.
- ❖ Helped guide Notre Dame to the 2001 NCAA Championship.
- ❖ Eight consecutive recruiting classes at Notre Dame ranked in the Top 25 nationally.
- ❖ Notre Dame had four Sweet Sixteen appearances and eight NCAA Tournament berths during Washington's tenure.
- ❖ Point guard for the 2000 WNBA Champion Houston Comets.
- ❖ Founding President, WNBA Players Association, 1999-01.
- ❖ Actively negotiated first two collective bargaining agreements for the WNBPA.
- ❖ Inducted into the Greater Flint Area Sports Hall of Fame in Dec. 2009.

### FAMILY

Husband: Raynell Brown  
 Children: Quenton (6), Rhaiyna (2)

Resource Center to aid in the fight against domestic violence.

Washington is currently serving on the 29-member WBCA Board of Directors, where she is the Treasurer of the Executive Committee. Washington is also a member of the USA Basketball Women's Junior National Team Selection Committee.

A native of Flint, Mich., Washington and her husband, Raynell Brown, have a son, Quenton (6), and a daughter, Rhaiyna (2). They reside in Port Matilda, Pa.

### Washington's Coaching Record vs. Opponents

Arizona..... 1-0	Delaware..... 1-1	Holy Cross..... 1-0	Middle Tennessee..... 1-0	Ohio State..... 1-6	Texas A&M..... 0-1
Army..... 1-0	DePaul..... 0-1	Illinois..... 7-3	Minnesota..... 2-6	Old Dominion..... 0-1	Texas Tech..... 1-1
Boston College..... 0-1	Drexel..... 2-1	Indiana..... 3-4	Mississippi..... 1-0	Pittsburgh..... 2-1	Utah..... 1-0
Bucknell..... 5-0	Duke..... 1-0	Iowa..... 4-5	Monmouth..... 1-0	Prairie View A&M..... 1-0	Virginia Tech..... 1-0
Buffalo..... 1-0	Florida State..... 0-1	Iowa State..... 1-0	Nevada..... 1-0	Purdue..... 1-7	Wagner..... 1-0
Charlotte..... 1-0	Georgetown..... 1-0	Maine..... 1-0	NJIT..... 1-0	Rider..... 1-0	Washington State..... 1-0
Connecticut..... 0-1	Georgia Tech..... 0-1	UMES..... 1-0	North Carolina..... 1-0	South Carolina..... 4-1	Wisconsin..... 2-5
Coppin State..... 1-0	Hartford..... 1-0	Michigan..... 5-3	Northwestern..... 5-1	Stony Brook..... 1-0	UW-Green Bay..... 0-1
Dayton..... 2-1	Hofstra..... 0-1	Michigan State..... 2-5	Oakland..... 2-0	Syracuse..... 0-1	Xavier..... 0-1





# #2 Dara Taylor

Jr. \* G \* 5-8 \* Wilmington, Del./Caraval Acad. (Maryland)

## 2011-12 Season Notes:

Will sit out the 2011-12 season due to NCAA Transfer policy.

## 2010-11 (at Maryland):

Had two points, two steals and four assists in the NCAA Tournament game against Georgetown (3/22) ... Tallied three points, three steals and two assists in the NCAA Tournament win over St. Francis (Pa.) ... Made both of her shots from the field en route to four points and two steals versus North Carolina State (2/6) ... Registered six points, four steals and four assists in the win over Saint Joseph's (1/2) ... Dished out four assists against La Salle (12/28) ... Notched five dimes against Delaware State (12/19) ... Was 3-for-4 from the field and finished with seven points and three assists in the win over UMBC (12/10) ... Accounted for four assists and four steals at Purdue (12/2) ... Tallied six points, five assists, four rebounds and a steal in the win over East Carolina (11/26) ... Recorded five points and five assists in the victory over Towson (11/18) ... Opened the season with two points, three assists and a steal in the win over Monmouth (11/13).

## 2009-10 (at Maryland)

Broke Maryland's freshman season assists record with 171 helpers .... Recorded more than six assists in 15 of 27 starts ... Finished third in the ACC in assists and sixth in assist-to-turnover ratio (1.2) ... Grabbed career-high eight rebounds in WNIT Second Round win over East Carolina (3/21) ... Contributed 10 points in ACC Tournament win over North Carolina (3/4) ... Netted a career-high 17 points on 7-of-12 shooting against Clemson (2/14) ... Made 7-of-10 free throws to help clinch the win over Wake Forest (2/11) ... Finished the game with nine points and two steals against the Demon Deacons ... Accounted for nine assists at Virginia Tech (1/28) ... Had six points, eight assists and seven rebounds versus Boston College (1/14) ... Notched first career double-double with 10 points and career-high 11 assists at No. 19/21 Virginia (1/11) ... Also added three steals and four rebounds versus the Cavaliers ... Dished out eight assists versus Saint Joseph's (1/3) ... Notched nine points, eight assists and four rebounds versus UNC-Wilmington (12/29) ... Recorded nine points and three rebounds versus Minnesota (12/3) in the Big Ten/ACC Challenge ... Had six points and six assists in the win over Howard (11/27) ... Accounted for 11 points with seven assists in a win over Samford (11/24) ... Tallied nine points, two steals and an assist in her first career start at Mississippi State (11/22) ... Chipped in six points, nine assists and five rebounds against Old Dominion (11/19) ... Had 10 points with five assists in win against New Hampshire (11/16) ... Posted nine points, five assists and career-high six steals in collegiate debut against North Carolina Central (11/14).

## HIGH SCHOOL

McDonald's High School All-American ... 52nd-ranked player by ESPN/HoopGurlz out of Caravel Academy ... 2009 Delaware Gatorade Player of the Year ... Two-time All-State selection with a first team berth as a senior and a second team nod as a junior ... 1,192 career points at Caravel Academy ... Averaged 17.8 points, 5.5 assists, 5.0 rebounds and 5.0 steals per game as a senior ... Led the Buccaneers to the Delaware State Quarterfinals as a senior ... Named to the DelawareGirlsBasketball.com All-Decade (2000-09) visitor's poll first team ... Selected to the Delaware's Finest third team All-Decade (2000-09) team ... Played AAU for the Philly Belles alongside Lady Lion teammate Maggie Lucas ... AAU team won the 2007 USJN in Cincinnati and were the 15u and 16u Mid-Atlantic Champions ... Also participated in track & field at Caravel Academy, finishing fifth in the state in the high jump, long jump and 4x100 relay in 2009.

## PERSONAL

Full name is Dara Nailah Taylor ... Born January 16, 1991 in Manhattan, New York ... Parents are Jo and Ron Taylor ... Has one brother, Ron Jr. (17) ... Majoring in communication, arts and sciences.

## CAREER HIGHS

Points.....	17 vs. Clemson (2/14/10)
Rebs. ....	8 vs. East Carolina (3/21/10)
Assists .....	11 at American (12/20/09)
.....	11 at Virginia (1/11/10)
Steals.....	6 vs. N.C. Central (11/14/09)
Blocks ....	1 (3x) last at St. Joseph's 1/2/11
Minutes .....	38 at American (12/20/09)
FGM.....	7 vs. Clemson (2/14/10)
FGA .....	14 at N.C. State (1/17/10)
FG% .....	1.000 (3x)
.....	last vs. N.C. State (2-2) (2/6/11)
3FGM.....	2 vs. Samford (1/24/09)
.....	2 vs. Clemson (2/14/10)
3FGA .....	5 at Mississippi State (11/22/09)
3PT % .....	1.000 (1-1) at Longwood (1/31/10)
.....	1.000 (1-1) vs. Providence (3/25/10)
FTM .....	7 at Wake Forest (2/11/10)
FTA .....	10 at Wake Forest (2/11/10)
.....	10 vs. North Carolina (3/4/10)
FT % .....	1.000 (7x)
.....	last vs. Georgetown (2-2) (3/22/11)
Career Double-Doubles .....	1





# #5 Talia East

So. \* F/C \* 6-3 \* Philadelphia, Pa./The Friends School

## 2011-12 Highlights:

- ♦ Had arguably the best game of her career, registering in personal bests of 15 rebounds and seven blocks to go along with six points at South Carolina (11/20).
- ♦ Her seven blocks at South Carolina are tied

for the third on the PSU single-game charts and are the most for a Lady Lion since Nikki Greene blocked seven shots against Purdue on Jan. 28, 2010.

## 2011-12 Season Notes:

- ♦ Chipped in six points, eight rebounds, a career-best two assists and three blocks in the win at Bucknell (12/21).
- ♦ Equalled her career high with eight points to compliment six rebounds, two blocks and an assists in the win over Wagner (12/18).
- ♦ Snared five rebounds in eight minutes against UMES (12/11).
- ♦ Had a solid night off the bench with six points, three rebounds, a block and a steal in the win over Virginia Tech (12/6).
- ♦ Accounted for six points, eight rebounds, a blocked shot and a career-high two steals at #19/25 Texas Tech (12/3).
- ♦ Registered a career-best eight points on 4-of-6 shooting to go along with six rebounds in the Nugget Classic Championship game win over Nevada (11/26).
- ♦ Turned in her first career double-digit rebounding performance as she hauled in a personal-best 11 caroms at Delaware (11/17). Also equalled her career scoring mark with six points against the Blue Hens.
- ♦ Notched two points, six rebounds and a blocked shot in the Lady Lion Classic Championship game win over Middle Tennessee (11/13).
- ♦ Had a career night in the season-opening win over Washington State (11/11) with personal bests of six points via a 3-for-3 shooting effort and eight rebounds.
- ♦ Tallied four points, five rebounds and two steals in the exhibition win over Bloomsburg (11/5).

## CAREER HIGHS

Points	8 vs. Wagner (12/18/11)
	8 at Nevada (11/26/11)
Rebs.	15 at South Carolina (11/20/11)
Assists	2 at Bucknell (12/21/11)
Steals	2 at Texas Tech (12/3/11)
Blocks	7 at South Carolina (11/20/11)
Minutes	29 at South Carolina (11/20/11)
FGM	4 at Nevada (11/26/11)
FGA	7 at Bucknell (12/21/11)
	7 vs. Wagner (12/18/11)
FG%	1.000 (5x)
	..last vs. Washington State (3-3) (11/11/11)
3FGM	n/a
3FGA	n/a
3PT %	n/a
FTM	2 (3x) last vs. Wagner (12/18/11)
FTA	4 vs. Wagner (12/18/11)
	4 at Nevada (11/26/11)
FT %	1.000 (2-2) vs. UMES (12/11/11)
	1.000 (2-2) at Delaware (11/17/11)
Career Double-Doubles	n/a

## GAME-BY-GAME

	P	R	B
WASH. STATE	6	8	2
MID. TENN.	2	6	1
at Delaware	6	11	2
at South Carolina	6	15	7
vs. Iowa State	0	3	0
at Nevada	8	6	0
NORTH CAROLINA	3	4	0
at Texas Tech	6	8	1
VIRGINIA TECH	6	3	1
UMES	2	5	0
WAGNER	8	6	2
at Bucknell	6	8	3
NEBRASKA			
at Wisconsin			
MICHIGAN ST.			
MICHIGAN			
at Nebraska			
at Illinois			
IOWA			
at Michigan			
at Michigan State			
INDIANA			
at Minnesota			
WISCONSIN			
at Northwestern			
at Purdue			
OHIO STATE			
MINNESOTA			

## East vs. the Big Ten

Team	G	Pts.-Avg.	Rebs.-Avg.	Assts.-Avg.	Stls.-Avg.
Illinois	3	0-0.0	4-1.3	0-0.0	0-0.0
Indiana	2	4-2.0	2-1.0	0-0.0	0-0.0
Iowa	-	-	-	-	-
Michigan	1	0-0.0	0-0.0	0-0.0	0-0.0
Michigan State	1	2-2.0	0-0.0	0-0.0	0-0.0
Minnesota	-	-	-	-	-
Nebraska	-	-	-	-	-
Northwestern	2	2-1.0	4-2.0	0-0.0	0-0.0
Ohio State	3	2-0.7	2-0.7	0-0.0	2-0.7
Purdue	2	1-0.5	4-2.0	0-0.0	0-0.0
Wisconsin	-	-	-	-	-







# #12 Zhaque Gray

Sr. \* G \* 5-8 \* Chicago, Ill./Prep John Hope

## 2011-12 Highlights:

- Surpassed the 600-point plateau for her career with 15 tallies at Delaware (11/17).
- Named to Lady Lion Classic All-Tournament team after averaging 11.0 points, 5.0 rebounds in two games.

## CAREER HIGHS

Points.....	27 at Dayton (11/12/10)
Rebs.....	6 at South Carolina (11/22/09)
.....	6 vs. NJIT (11/15/09)
Assists.....	6 vs. North Carolina (11/30/11)
Steals.....	3 vs. Bucknell (12/28/10)
.....	3 vs. Michigan State (12/21/08)
Blocks.....	1 at South Carolina (11/20/11)
.....	1 at Iowa (2/6/11)
Minutes.....	44 at Dayton (11/12/10)
FGM.....	10 at Dayton (11/12/10)
FGA.....	17 at Dayton (11/12/10)
FG%.....	1.000 (3-3) at Indiana (2/13/11)
.....	1.000 (4-4) at Michigan (2/9/09)
3FGM.....	7 at Dayton (11/12/10)
3FGA.....	11 at Dayton (11/12/10)
3PT%.....	1.000 (5x)
.....	last vs. Iowa State (2-2) (11/25/11)
FTM.....	5 at Ohio State (2/17/11)
FTA.....	6 at Ohio State (2/17/11)
FT%.....	1.000 (23x)
.....	last vs. Virginia Tech (4-4) (12/6/11)
Career Double-Doubles.....	n/a

## GAME-BY-GAME

	P	R	A
WASH. STATE	7	4	1
MID. TENN.	15	6	2
at Delaware	15	3	4
at South Carolina	6	4	2
vs. Iowa State	14	3	2
at Nevada	21	4	3
NORTH CAROLINA	25	4	6
at Texas Tech	8	2	3
VIRGINIA TECH	6	5	2
UMES	8	0	1
WAGNER	13	3	3
at Bucknell	8	0	2
NEBRASKA			
at Wisconsin			
MICHIGAN ST.			
MICHIGAN			
at Nebraska			
at Illinois			
IOWA			
at Michigan			
at Michigan State			
INDIANA			
at Minnesota			
WISCONSIN			
at Northwestern			
at Purdue			
OHIO STATE			
MINNESOTA			

## 2011-12 Season Notes:

- Had eight points in the win at Bucknell (12/21).
- Scored 13 points to go along with three rebounds, three assists and a pair of steals in the win over Wagner (12/18).
- Chipped in eight points and an assist against UMES (12/11).
- Tallied eight points and three assists at Texas Tech (12/3).
- Notched back-to-back 20-point games for the second time in her career with 25 points, four rebounds and a career-high six assists in the upset win over #14/13 North Carolina (11/30).
- Accounted for 21 points, four rebounds, three assists and two steals in the win at Nevada (11/26).
- Was 5-for-7 from the field, including makes on both of her three-point attempts, en route to 14 points in the win over Iowa State (11/25).
- Had a team-best 15 points to go along with six rebounds and two assists in the Lady Lion Classic title game win over Middle Tennessee (11/13).
- Registered seven points and four rebounds against Washington State (11/11).

## Gray vs. the Big Ten

Team	G	Pts.-Avg.	Rebs.-Avg.	Assts.-Avg.	Stls.-Avg.
Illinois	8	40-5.0	11-1.4	6-0.8	3-0.4
Indiana	6	39-6.5	9-1.5	6-1.0	2-0.3
Iowa	6	28-4.7	12-2.0	5-0.8	1-0.2
Michigan	5	32-6.4	6-1.2	6-1.2	0-0.0
Michigan State	5	7-1.4	8-1.6	1-0.2	4-0.8
Minnesota	5	21-4.2	5-1.0	4-0.8	0-0.0
Nebraska	-	-	-	-	-
Northwestern	4	37-9.3	8-2.0	6-1.5	1-0.3
Ohio State	5	37-7.4	8-1.6	7-1.4	3-0.6
Purdue	7	33-4.7	5-0.7	3-0.4	1-0.1
Wisconsin	5	29-5.8	7-1.4	0-0.0	2-0.4

Five-Time Big Ten Champions • Two-Time Big Ten Tournament Champions • 2000 NCAA Final Four • 22 NCAA Tournament Appearances





# #15 Renee Womack

Sr. \* G \* 5-10 \* Lansdale, Pa./Methacton

## CAREER HIGHS

Points ..... 10 at Wisconsin (1/2/11)  
 Rebs. .... 8 (2x) last vs. Iowa (12/28/09)  
 Assists ..... 4 vs. Iowa (12/28/09)  
 Steals ..... 4 vs. Bucknell (12/28/10)  
 Blocks ..... 3 vs. Iowa (12/28/09)  
 Minutes ..... 30 vs. Iowa (12/28/09)  
 FGM ..... 4 at Wisconsin (1/2/11)  
 ..... 4 vs. Stony Brook (11/19/08)  
 FGA ..... 8 vs. Army (12/8/10)  
 ..... 8 vs. Stony Brook (11/19/08)  
 FG% ..... 1.000 (8x)  
 ..... last vs. Illinois (2-2) (3/5/11)  
 3FGM ..... 1 (7x) last at Indiana (2/13/11)  
 3FGA ..... 2 (4x) last at Indiana (2/13/11)  
 3PT% ..... 1.000 (3x)  
 ..... last vs. Illinois (2-2) (1/16/11)  
 FTM ..... 3 at Dayton (11/12/10)  
 FTA ..... 4 at Ohio State (2/17/11)  
 ..... 4 at Dayton (11/12/10)  
 FT% ..... 1.000 (4x)  
 ..... last at Iowa (2-2) (2/6/11)  
 Career Double-Doubles ..... n/a

## GAME-BY-GAME

	P	R	A
WASH. STATE	DNP		
MID. TENN.	DNP		
at Delaware	DNP		
at South Carolina	DNP		
vs. Iowa State	DNP		
at Nevada	DNP		
NORTH CAROLINA	DNP		
at Texas Tech	DNP		
VIRGINIA TECH	DNP		
UMES	DNP		
WAGNER	DNP		
at Bucknell	DNP		
NEBRASKA			
at Wisconsin			
MICHIGAN ST.			
MICHIGAN			
at Nebraska			
at Illinois			
IOWA			
at Michigan			
at Michigan State			
INDIANA			
at Minnesota			
WISCONSIN			
at Northwestern			
at Purdue			
OHIO STATE			
MINNESOTA			

## Womack vs. the Big Ten

Team	G	Pts.-Avg.	Rebs.-Avg.	Assts.-Avg.	Stls.-Avg.
Illinois	7	15-2.1	14-2.0	4-0.6	5-0.7
Indiana	3	3-1.0	6-2.0	0-0.0	1-0.3
Iowa	5	16-3.2	23-4.6	5-1.0	7-1.4
Michigan	2	7-3.5	5-2.5	0-0.0	3-1.5
Michigan State	3	2-0.7	1-0.3	1-0.3	1-0.3
Minnesota	3	2-0.7	2-0.7	1-0.3	0-0.0
Nebraska	-	-	-	-	-
Northwestern	4	6-1.5	7-1.8	2-0.5	2-0.5
Ohio State	4	7-1.8	6-1.5	3-0.8	1-0.3
Purdue	4	6-1.5	2-0.5	1-0.3	3-0.8
Wisconsin	3	13-4.3	7-2.3	0-0.0	3-1.0





# #20 Alex Bentley

Jr. \* G \* 5-7 \* Indianapolis, Ind./Ben Davis

## 2011-12 Highlights:

- ◆ Became the 33rd Lady Lion and 15th junior to score 1,000 career points with 11 tallies against Virginia Tech (12/6).
- ◆ On Wade Trophy, Wooden Award and Naimsmith Award watch lists.
- ◆ Big Ten Preseason Player of the Year (coaches and media).
- ◆ Selected as Nugget Classic Tournament MVP after averaging 18.0 points, 4.5 assists and 4.5 steals in two games.
- ◆ Named to Lady Lion Classic All-Tournament team after averaging 15.0 points, 3.0 rebounds, 4.0 assists and 2.5 steals in two games.

## 2011-12 Season Notes:

- ◆ Chipped in 11 points, seven assists and four steals in the non-conference finale at Bucknell (12/21).
- ◆ Was 10-for-14 from the field on the way to 23 points and a personal-best five steals against Wagner (12/18).
- ◆ Just missed out on a double-double with 11 points and nine assists in the win over UMES (12/11).
- ◆ Paced the Lady Lions with 18 points, three assists and a steal at #19/25 Texas Tech (12/3).
- ◆ Posted her first career double-double with 15 points and a personal-best 15 assist in the win over #14/13 North Carolina (11/30).
- ◆ Had a solid all-around game with 23 points on 11-of-15 shooting, six assists and a career-best five steals in the win over Nevada (11/26).
- ◆ Tallied 13 points to go along with three rebounds, three assists and four steals versus Iowa State (11/25).
- ◆ Narrowly missed her first career double-double with a team-best 20 points and a career-high tying nine assists at Delaware (11/17).
- ◆ Surpassed the 900-point mark for her career with eight tallies in the win over Middle Tennessee (11/13).
- ◆ Accounted for 22 points, four rebounds, four assists and a pair of steals in the win over Washington State (11/11).
- ◆ Became the 14th player in school history to record 300 career assists against the Cougars.

## CAREER HIGHS

Points	28 at Boston College (12/2/10)
Rebs	7 vs. Iowa (12/28/09)
Assists	15 vs. North Carolina (11/30/11)
Steals	5 vs. Wagner (12/18/11)
	5 at Nevada (11/26/11)
Blocks	2 (3X) last vs. Drexel (12/21/10)
Minutes	46 at Dayton (11/12/10)
FGM	12 vs. Dayton (3/19/11)
FGA	28 vs. Dayton (3/19/11)
FG%	833 (5-6) at Illinois (12/31/09)
3FGM	4 at Purdue (2/14/10)
3FGA	6 (3x) last at Purdue (2/14/10)
3PT%	1.000 (6x)
	..last vs. Washington State (2-2) (11/11/11)
FTM	10 at Northwestern (1/6/11)
FTA	12 at Northwestern (1/6/11)
FT%	1.000 (22x)
	.....last vs. North Carolina (4-4) (11/30/11)
Career Double-Doubles	1

## GAME-BY-GAME

	P	R	A
WASH. STATE	22	4	4
MID. TENN.	8	2	4
at Delaware	20	3	9
at South Carolina	6	2	3
vs. Iowa State	13	3	3
at Nevada	23	0	6
NORTH CAROLINA	15	5	15
at Texas Tech	18	2	3
VIRGINIA TECH	11	2	5
UMES	11	4	9
WAGNER	23	2	2
at Bucknell	11	0	7
NEBRASKA			
at Wisconsin			
MICHIGAN ST.			
MICHIGAN			
at Nebraska			
at Illinois			
IOWA			
at Michigan			
at Michigan State			
INDIANA			
at Minnesota			
WISCONSIN			
at Northwestern			
at Purdue			
OHIO STATE			
MINNESOTA			

## Bentley vs. the Big Ten

Team	G	Pts.-Avg.	Rebs.-Avg.	Assts.-Avg.	Stls.-Avg.
Illinois	5	65-13.0	14-2.8	22-4.4	8-1.6
Indiana	4	50-12.5	7-1.8	17-4.3	4-1.0
Iowa	5	87-17.4	18-3.6	24-4.8	6-1.2
Michigan	3	28-9.3	9-3.0	13-4.3	6-2.0
Michigan State	3	33-11.3	7-2.3	7-2.3	5-1.7
Minnesota	4	38-9.5	9-2.3	18-4.5	11-2.8
Nebraska	-	-	-	-	-
Northwestern	3	45-15.0	8-2.7	14-4.7	6-2.0
Ohio State	4	61-15.3	6-1.5	18-4.5	7-1.8
Purdue	5	84-16.8	14-2.8	19-3.8	13-2.6
Wisconsin	3	20-6.7	6-2.0	8-2.7	1-0.3

Five-Time Big Ten Champions • Two-Time Big Ten Tournament Champions • 2000 NCAA Final Four • 22 NCAA Tournament Appearances







# #23 Ariel Edwards

So. \* G/F \* 6-2 \* Elmont, N.Y./Christ the King

## 2011-12 Highlights:

- Accounted for 13 points and career highs of eight rebounds and three assists in the win over #14/13 North Carolina (11/30).
- In her first collegiate start, tallied eight points and equalled her career high with eight rebounds at Delaware (11/17).

## CAREER HIGHS

Points	16 at Oakland (11/18/10)
Rebs.	9 vs. UMES (12/11/11)
Assists	3 (4x) last at Bucknell (12/21/11)
Steals	3 at Texas Tech (12/3/11)
Blocks	2 at Oakland (11/18/10)
Minutes	38 at Delaware (11/17/11)
FGM	6 vs. North Carolina (11/30/11)
FGA	11 (3x) last vs. UMES (12/11/11)
FG%	1.000 (3x)
	last vs. DePaul (1-1) (3/21/11)
3FGM	2 vs. Army (12/8/10)
	2 vs. Hartford (11/27/10)
3FGA	4 vs. Army (12/8/10)
	4 vs. Hartford (11/27/10)
3PT %	1.000 (3x)
	last vs. North Carolina (1-1) (11/30/11)
FTM	7 at Oakland (11/18/10)
FTA	8 at Oakland (11/18/10)
FT %	1.000 (6x)
	last vs. Wagner (5-5) (12/18/11)
Career Double-Doubles	n/a

## GAME-BY-GAME

	P	R	A
WASH. STATE	4	2	1
MID. TENN.	10	1	1
at Delaware	8	8	0
at South Carolina	10	7	1
vs. Iowa State	0	1	0
at Nevada	2	4	1
NORTH CAROLINA	13	8	3
at Texas Tech	3	5	2
VIRGINIA TECH	3	3	0
UMES	7	9	3
WAGNER	11	6	3
at Bucknell	7	2	3
NEBRASKA			
at Wisconsin			
MICHIGAN ST.			
MICHIGAN			
at Nebraska			
at Illinois			
IOWA			
at Michigan			
at Michigan State			
INDIANA			
at Minnesota			
WISCONSIN			
at Northwestern			
at Purdue			
OHIO STATE			
MINNESOTA			

## 2011-12 Season Notes:

- Tallied 11 points via a 5-for-5 free throw shooting effort, six rebounds and three steals in the win over Wagner (12/18).
- Hauled in a career-high nine rebounds to go along with seven points and three assists in the win over UMES (12/11).
- Registered three points to go along with five rebounds, two assists and a personal-best three steals at #19/25 Texas Tech (12/3).
- Had two points, four rebounds and a pair of steals in the Nugget Classic Championship game win over Nevada (11/26).
- Was 5-for-7 from the field en route to 10 points, seven rebounds and an assist at South Carolina (11/20).
- Scored five of her 10 points in a key Lady Lion run that gave Penn State its first lead of the game against Middle Tennessee (11/13). Also notched a pair of steals against the Blue Raiders.
- Tallied four points and two rebounds in the season-opening win over Washington State (11/11).

## Edwards vs. the Big Ten

Team	G	Pts.-Avg.	Rebs.-Avg.	Assts.-Avg.	Stls.-Avg.
Illinois	3	6-2.0	2-0.7	2-0.7	0-0.0
Indiana	2	0-0.0	5-2.5	1-0.5	2-1.0
Iowa	2	4-2.0	0-0.0	0-0.0	0-0.0
Michigan	1	2-2.0	2-2.0	0-0.0	1-1.0
Michigan State	1	0-0.0	0-0.0	0-0.0	0-0.0
Minnesota	1	0-0.0	2-2.0	0-0.0	0-0.0
Nebraska	-	-	-	-	-
Northwestern	2	0-0.0	2-1.0	0-0.0	0-0.0
Ohio State	1	1-1.0	0-0.0	0-0.0	0-0.0
Purdue	3	2-0.7	2-0.7	1-0.3	0-0.0
Wisconsin	1	0-0.0	0-0.0	0-0.0	0-0.0





# #24 Mia Nickson

RS-Jr. \* F \* 6-2 \* Ashburn, Va./Notre Dame Acad. (BC)

## 2011-12 Highlights:

- ♦ Hauled in 10 rebounds, including five on the offensive glass against Middle Tennessee (11/13).

## 2011-12 Season Notes:

- ♦ Returned after missing two games to pull down a team-best 13 rebounds with five points and two assists against Iowa State (11/25).
- ♦ Had six points and seven rebounds in the win over Washington State (11/13) in the opening round of the Lady Lion Classic.

## CAREER HIGHS

Points.....	26 vs. Texas Tech (12/5/10)
Rebs.....	17 vs. Indiana (1/23/11)
Assists.....	4 vs. Maine (12/12/10)
Steals.....	6 vs. Indiana (1/23/11)
.....	6 vs. Bucknell (12/28/10)
Blocks.....	1 (4x) last at Nevada (11/26/11)
Minutes.....	41 at Dayton (11/12/10)
FGM.....	9 vs. Indiana (1/23/11)
FGA.....	16 vs. Indiana (1/23/11)
FG%.....	1.000 (4X)
.....	last vs. Minnesota (5-5) (1/13/11)
3FGM.....	n/a
3FGA.....	n/a
3PT %.....	n/a
FTM.....	10 vs. Michigan State (2/10/11)
.....	10 vs. Texas Tech (12/5/10)
FTA.....	11 vs. Michigan State (2/10/11)
.....	11 vs. Texas Tech (12/5/10)
FT %.....	1.000 (12X)
.....	last vs. Dayton (6-6) (3/19/11)
Career Double-Doubles.....	6

## GAME-BY-GAME

	P	R	A
WASH. STATE	6	7	0
MID. TENN.	3	10	0
at Delaware	DNP		
at South Carolina	DNP		
vs. Iowa State	5	13	2
at Nevada	2	1	0
NORTH CAROLINA	DNP		
at Texas Tech	DNP		
VIRGINIA TECH	DNP		
UMES	DNP		
WAGNER	DNP		
at Bucknell	DNP		
NEBRASKA	DNP		
at Wisconsin	DNP		
MICHIGAN ST.	DNP		
MICHIGAN	DNP		
at Nebraska	DNP		
at Illinois	DNP		
IOWA	DNP		
at Michigan	DNP		
at Michigan State	DNP		
INDIANA	DNP		
at Minnesota	DNP		
WISCONSIN	DNP		
at Northwestern	DNP		
at Purdue	DNP		
OHIO STATE	DNP		
MINNESOTA	DNP		

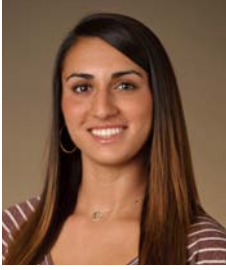
## Nickson vs. the Big Ten

Team	G	Pts.-Avg.	Rebs.-Avg.	Assts.-Avg.	Stls.-Avg.
Illinois	3	14-4.7	21-7.0	2-0.7	4-1.3
Indiana	2	37-18.5	23-11.5	2-1.0	7-3.5
Iowa	2	16-8.0	20-10.0	2-1.0	0-0.0
Michigan	1	0-0.0	5-5.0	2-2.0	0-0.0
Michigan State	1	22-2.0	6-6.0	0-0.0	1-1.0
Minnesota *	2	12-6.0	11-5.5	0-0.0	1-0.5
Nebraska	-	-	-	-	-
Northwestern	2	15-7.5	18-9.0	1-0.5	1-0.5
Ohio State	3	41-13.7	19-6.3	0-0.0	3-1.0
Purdue	3	24-8.0	15-5.0	0-0.0	1-0.3
Wisconsin	1	6-6.0	4-4.0	0-0.0	0-0.0

\* - Nickson played vs. Minnesota at Boston College in 2008-09

Five-Time Big Ten Champions • Two-Time Big Ten Tournament Champions • 2000 NCAA Final Four • 22 NCAA Tournament Appearances





# #25 Gizelle Studevent

Jr. \* G \* 5-11 \* La Jolla, Calif./The Bishop's School

## 2011-12 Highlights:

- ♦ Hit a pair of key jumpers en route to four points and three rebounds against Middle Tennessee (11/13).

## 2011-12 Season Notes:

- ♦ Dished out a career-high four assists with two points and three rebounds in the victory over Wagner (12/18).
- ♦ Celebrated her 21st birthday with eight points, three rebounds and an assist in 19 minutes of action in the win over UMES (12/11).
- ♦ Tallied two points and two steals in the win over Virginia Tech (12/6).
- ♦ Nabbed a steal at Texas Tech (12/3).
- ♦ Connected on three of her four shots from the field on the way to six points, three rebounds and a career-high three assists at Nevada (11/26).
- ♦ Was 2-for-3 from the field and finished with four points at Delaware (11/17).
- ♦ Notched two points and a rebound against Washington State (11/11).
- ♦ Had four points and two rebounds in the exhibition win over Bloomsburg (11/5).

## CAREER HIGHS

Points.....	10 at Oakland (11/18/10)
Rebs.....	3 (8x) last vs. Wagner (12/17/11)
Assists.....	4 vs. Wagner (12/18/11)
Steals.....	2 vs. Virginia Tech (12/6/11)
Blocks...1 (2x)	last vs. Minnesota (2/11/10)
Minutes.....	20 (2x) last vs. Hofstra (3/18/10)
FGM.....	3 (4x) last vs. UMES (12/11/11)
FGA.....	8 vs. Monmouth (12/9/09)
FG%.....	1.000 (3x) last at Ohio State (1-1) (2/17/11)
3FGM.....	1 (4x) last vs. Minnesota (1/13/11)
3FGA.....	3 vs. Monmouth (12/9/09)
3PT%.....	1.000 (4x) last vs. Minnesota (1-1) (1/13/11)
FTM.....	3 vs. Maine (12/12/10)
FTA.....	4 vs. Maine (12/12/10)
FT%.....	1.000 (4x) last vs. UMES (2-2) (12/11/11)
Career Double-Doubles.....	n/a

## GAME-BY-GAME

	P	R	A
WASH. STATE	2	1	0
MID. TENN.	4	3	1
at Delaware	4	1	0
at South Carolina	0	1	1
vs. Iowa State	0	0	0
at Nevada	6	3	3
NORTH CAROLINA	0	0	0
at Texas Tech	0	0	0
VIRGINIA TECH	2	0	0
UMES	8	3	1
WAGNER	2	3	4
at Bucknell	2	3	0
NEBRASKA			
at Wisconsin			
MICHIGAN ST.			
MICHIGAN			
at Nebraska			
at Illinois			
IOWA			
at Michigan			
at Michigan State			
INDIANA			
at Minnesota			
WISCONSIN			
at Northwestern			
at Purdue			
OHIO STATE			
MINNESOTA			

## Studevent vs. the Big Ten

Team	G	Pts.-Avg.	Rebs.-Avg.	Assts.-Avg.	Stls.-Avg.
Illinois	3	0-0.0	3-1.0	0-0.0	0-0.0
Indiana	4	2-0.5	0-0.0	0-0.0	0-0.0
Iowa	3	7-2.3	0-0.0	0-0.0	0-0.0
Michigan	3	1-0.3	4-1.3	1-0.3	0-0.0
Michigan State	2	0-0.0	0-0.0	0-0.0	0-0.0
Minnesota	4	15-3.8	1-0.3	0-0.0	1-0.3
Nebraska	-	-	-	-	-
Northwestern	1	0-0.0	1-1.0	2-2.0	0-0.0
Ohio State	2	2-1.0	0-0.0	0-0.0	0-0.0
Purdue	2	0-0.0	1-0.5	0-0.0	2-1.0
Wisconsin	3	0-0.0	0-0.0	0-0.0	0-0.0







# #33 Maggie Lucas

So. \* G \* 5-10 \* Narberth, Pa./Germantown Academy

## 2011-12 Highlights:

- ♦ On the Naismith Award early-season watch list.
- ♦ Sixth on Penn State's career three-pointers list (142).
- ♦ Named to the Nugget Classic All-Tournament team after averaging 22.0 points, 6.5 rebounds and 3.0 assists in two wins.
- ♦ Selected as Lady Lion Classic MVP after averaging 18.0 points, 5.5 rebounds, 3.5 assists and 1.0 steals in a pair of wins.

## 2011-12 Season Notes:

- ♦ Dropped in 22 points on 7-of-10 shooting to go along with five rebounds, three assists and a steal in a road win over Bucknell (12/21).
- ♦ Posted third-straight 20-point game with 23 tallies that included an 8-for-8 day at the free throw line in the win over Wagner (12/18).
- ♦ Reached the 20-point mark for the fourth time in five games with 20 tallies and five rebounds in the win over UMES (12/11).
- ♦ Had a game-high 20 points on 8-of-16 shooting to go along with eight rebounds and a pair of assists in the win over Virginia Tech (12/6).
- ♦ Chipped in 15 points, two assists and three steals at #19/25 Texas Tech (12/3).
- ♦ Posted 21 points in 22 minutes, including five three-pointers, in the win over #14/13 North Carolina (11/30).
- ♦ Tallied 26 points to go along with seven rebounds and a career-high five assists in the Nugget Classic title game against Nevada (11/26).
- ♦ Accounted for a game-high 18 points, including six of Penn State's final nine points, with six rebounds and two steals in the win over Iowa State (11/25).
- ♦ Tallied a team-best 18 points with two assists and two rebounds at South Carolina (11/20).
- ♦ Reached the 600-point plateau with 12 points to go along with three rebounds and two assists at Delaware (11/17). She reaches 600 points in the third-fewest games in school history (Kelly Mazzante & Susan Robinson; 33 games).
- ♦ Connected on a trio of three-pointers en route to 14 points and a career-high five assists in the victory over Middle Tennessee (11/13).
- ♦ Tied for team scoring honors with 22 points, including an 11-for-13 effort from the free throw line, in the season-opening win over Washington State (11/11).
- ♦ Pulled in a personal-best nine rebounds in the win over the Cougars.

## CAREER HIGHS

Points.....	28 at Boston College (12/2/10)
Rebs. ....	9 vs. Washington State (11/11/11)
Assists .....	5 at Nevada (11/26/11)
.....	5 vs. Middle Tennessee (11/13/11)
Steals.....	4 (3x) last vs. Iowa (12/30/10)
Blocks .....	2 vs. Purdue (2/24/11)
Minutes .....	39 at Delaware (11/17/11)
.....	39 at Boston College (12/2/10)
FGM.....	9 (3x) last at Michigan (2/3/11)
FGA .....	18 at Boston College (12/2/10)
FG% ....	.714 (5-7) at Northwestern (1/6/11)
3FGM.....	7 vs. Hartford (11/27/10)
3FGA .....	16 at Boston College (12/2/10)
3PT %...	1.000 (4-4) at Bucknell (12/21/11)
FTM ....	11 vs. Washington State (11/11/11)
FTA .....	13 vs. Washington State (11/11/11)
FT % .....	1.000 (20x)
.....	last at Bucknell (4-4) (12/21/11)
Career Double-Doubles .....	n/a

## GAME-BY-GAME

	P	R	A
WASH. STATE	22	9	2
MID. TENN.	14	2	5
at Delaware	12	3	2
at South Carolina	18	2	2
vs. Iowa State	18	6	1
at Nevada	26	7	5
NORTH CAROLINA	21	2	1
at Texas Tech	15	1	2
VIRGINIA TECH	20	8	2
UMES	20	5	1
WAGNER	23	4	1
at Bucknell	22	5	3
NEBRASKA			
at Wisconsin			
MICHIGAN ST.			
MICHIGAN			
at Nebraska			
at Illinois			
IOWA			
at Michigan			
at Michigan State			
INDIANA			
at Minnesota			
WISCONSIN			
at Northwestern			
at Purdue			
OHIO STATE			
MINNESOTA			

## Lucas vs. the Big Ten

Team	G	Pts.-Avg.	Rebs.-Avg.	Assts.-Avg.	Stls.-Avg.
Illinois	3	55-18.3	13-4.3	4-1.3	3-1.0
Indiana	2	34-17.0	7-3.5	2-1.0	1-0.5
Iowa	2	27-13.5	6-3.0	2-1.0	5-2.5
Michigan	1	23-23.0	4-0	0-0.0	1-1.0
Michigan State	1	15-15.0	3-3.0	2-2.0	3-3.0
Minnesota	1	20-20.0	3-3.0	1-1.0	3-3.0
Nebraska	-	-	-	-	-
Northwestern	2	41-20.5	3-1.5	7-3.5	3--1.5
Ohio State	3	34-11.3	6-2.0	6-2.0	4-1.3
Purdue	3	35-11.7	6-2.0	6-2.0	6-2.0
Wisconsin	1	6-6.0	2-2.0	2-2.0	0-0.0





# #40 Marisa Wolfe

Jr. \* F \* 6-2 \* Ford City, Pa./Ford City

## 2011-12 Season Notes:

- ♦ Was 3-for-5 from the field and 3-for-3 from the free throw line to finish with nine points at Bucknell (12/21).
- ♦ Registered nine points on 4-of-6 shooting to compliment seven rebounds, one block and two steals in the win over Wagner (12/18).
- ♦ Had two points and three rebounds in the win over Virginia Tech (12/6).
- ♦ Drained her fourth career three-pointer and finished the game with seven points, two rebounds and a personal-best three steals versus #14/13 North Carolina (11/30).
- ♦ Notched four points with a pair of rebounds and an assist in the win at Nevada (11/26).
- ♦ Scored four points to go along with two offensive rebounds and a pair of steals in the win over Iowa State (11/25).
- ♦ Was 2-for-3 from the field and finished with four points in her first game of the season at South Carolina (11/20).
- ♦ Missed the first three games of the season due to concussion-like symptoms.

## CAREER HIGHS

Points	.....13 vs. Michigan (2/18/10)
Rebs.	..... 7 vs. Wagner (12/18/11)
.....	7 vs. Green Bay (11/26/10)
Assists	..... 1 (13x)
.....	last vs. Wagner (12/18/11)
Steals	.....3 vs. North Carolina (11/30/11)
.....	3 at Northwestern (1/3/10)
Blocks	..... 2 (4x)
.....	last at Northwestern (1/6/11)
Minutes	.....30 vs. Green Bay (11/26/10)
FGM	.....5 vs. Michigan (2/18/10)
.....	5 at Northwestern (1/3/10)
FGA	.....8 vs. North Carolina (11/30/11)
FG%	..... 1.000 (8x)
.....	last vs. Virginia Tech (1-1) (12/6/11)
3FGM	.....2 vs. Illinois (1/24/10)
3FGA	..... 3 vs. Illinois (1/24/10)
3PT%	.....667 (2-3) vs. Illinois (1/24/10)
FTM	..... 4 vs. South Carolina (11/21/10)
FTA	..... 4 (3x)
.....	last vs. Green Bay (11/26/10)
FT%	..... 1.000 (14x)
.....	last at Bucknell (3-3) (12/21/11)
Career Double-Doubles	..... n/a

## GAME-BY-GAME

	P	R	A
WASH. STATE	DNP		
MID. TENN.	DNP		
at Delaware	DNP		
at South Carolina	4	0	0
vs. Iowa State	4	2	1
at Nevada	4	2	1
NORTH CAROLINA	7	2	0
at Texas Tech	0	4	0
VIRGINIA TECH	2	3	1
UMES	3	3	1
WAGNER	9	7	1
at Bucknell	9	3	0
NEBRASKA			
at Wisconsin			
MICHIGAN ST.			
MICHIGAN			
at Nebraska			
at Illinois			
IOWA			
at Michigan			
at Michigan State			
INDIANA			
at Minnesota			
WISCONSIN			
at Northwestern			
at Purdue			
OHIO STATE			
MINNESOTA			

## Wolfe vs. the Big Ten

Team	G	Pts.-Avg.	Rebs.-Avg.	Assts.-Avg.	Stls.-Avg.
Illinois	5	15-3.0	10-2.0	1-0.2	5-1.0
Indiana	3	11-3.7	12-4.0	0-0.0	0-0.0
Iowa	4	10-2.5	12-3.0	0-0.0	2-0.5
Michigan	3	15-5.0	8-2.7	0-0.0	0-0.0
Michigan State	3	4-1.3	5-1.7	0-0.0	1-0.3
Minnesota	4	2-0.5	8-2.0	2-0.5	2-0.5
Nebraska	-	-	-	-	-
Northwestern	3	18-6.0	9-3.0	1-0.3	4-1.3
Ohio State	4	9-2.3	7-1.8	2-0.5	1-0.3
Purdue	5	10-2.0	12-2.4	0-0.0	1-0.2
Wisconsin	2	0-0.0	6-3.0	0-0.0	1-1.0





# #44 Tori Waldner

Fr. \* F/C \* 6-5 \* Milton, Ga./Milton

## 2011-12 Season Notes:

- ♦ Snared a career-best 10 rebounds to go along with five points, two assists and a pair of blocks in the win over Wagner (12/18).
- ♦ Pulled in nine rebounds and made both of her shots from the field en route to four points in the win over UMES (12/11).
- ♦ Had five rebounds versus Virginia Tech (12/6).
- ♦ Accounted for five points, three rebounds, an assist and a blocked shot at #19/25 Texas Tech (12/3).
- ♦ Was 3-for-4 from the field and finished with a career-high six points with two rebounds and two blocked shots in the win over #14/13 North Carolina (11/30).
- ♦ Scored her first collegiate points on a 15-footer in the first half en route to five points and a blocked shot in the Nugget Classic win over Iowa State (11/25).
- ♦ Saw her first action of the season at Delaware (11/17) and pulled in a pair of rebounds in eight minutes on the court.
- ♦ Had three points and a rebound in four minutes of action in the exhibition win over Bloomsburg (11/5).

## CAREER HIGHS

Points.....	6 vs. North Carolina (11/30/11)
Rebs.....	10 vs. Wagner (12/18/11)
Assists.....	2 vs. Wagner (12/18/11)
Steals.....	2 at Nevada (11/26/11)
Blocks.....	3 vs. Wagner (12/18/11)
Minutes.....	21 vs. UMES (12/11/11)
FGM.....	3 vs. North Carolina (11/30/11)
FGA.....	5 at Texas Tech (12/3/11)
FG%.....	1.000 (2-2) vs. UMES (12/11/11)
.....	1.000 (2-2) vs. Iowa St. (11/25/11)
3FGM.....	n/a
3FGA.....	n/a
3PT %.....	n/a
FTM.....	3 vs. Wagner (12/18/11)
FTA.....	4 vs. Wagner (12/18/11)
FT %.....	.750 (3-4) vs. Wagner (12/18/11)
Career Double-Doubles.....	n/a

## GAME-BY-GAME

	P	R	B
WASH. STATE <sup>a</sup>	DNP		
MID. TENN.	DNP		
at Delaware	0	2	0
at South Carolina	0	0	0
vs. Iowa State	5	1	1
at Nevada	0	3	0
NORTH CAROLINA	6	2	2
at Texas Tech	5	3	1
VIRGINIA TECH	2	5	0
UMES	4	9	2
WAGNER	5	10	3
at Bucknell	2	3	1
NEBRASKA			
at Wisconsin			
MICHIGAN ST.			
MICHIGAN			
at Nebraska			
at Illinois			
IOWA			
at Michigan			
at Michigan State			
INDIANA			
at Minnesota			
WISCONSIN			
at Northwestern			
at Purdue			
OHIO STATE			
MINNESOTA			

## Waldner vs. the Big Ten

Team	G	Pts.-Avg.	Rebs.-Avg.	Assts.-Avg.	Stls.-Avg.
Illinois	-	-	-	-	-
Indiana	-	-	-	-	-
Iowa	-	-	-	-	-
Michigan	-	-	-	-	-
Michigan State	-	-	-	-	-
Minnesota	-	-	-	-	-
Nebraska	-	-	-	-	-
Northwestern	-	-	-	-	-
Ohio State	-	-	-	-	-
Purdue	-	-	-	-	-
Wisconsin	-	-	-	-	-

Five-Time Big Ten Champions • Two-Time Big Ten Tournament Champions • 2000 NCAA Final Four • 22 NCAA Tournament Appearances







# #54 Nikki Greene

Jr. \* C \* 6-4 \* Diboll, Texas/Diboll

## 2011-12 Highlights:

- ♦ Sixth on Penn State's career blocks list with 146 rejections.
- ♦ 24th on Penn State's career rebounding list (548).
- ♦ Became the 27th member of the Lady Lions' 500-rebound club with seven caroms against Iowa State (11/25).

## CAREER HIGHS

Points	24 vs. Utah (11/25/10)
Rebs.	20 vs. Indiana (1/23/11)
Assists	2 (2x) last vs. Purdue (1/28/10)
Steals	4 vs. Maine (12/12/10)
	4 vs. Hofstra (3/18/10)
Blocks	7 vs. Purdue (1/28/10)
Minutes	32 vs. Purdue (1/28/10)
FGM	9 vs. Utah (11/25/10)
	9 at Dayton (11/12/10)
FGA	17 at Dayton (11/12/10)
FG%	1.000 (6-6) vs. UMES (12/11/11)
	1.000 (1-1) at Minnesota (12/6/09)
3FGM	n/a
3FGA	n/a
3PT%	n/a
FTM	8 vs. Pittsburgh (12/12/09)
FTA	13 vs. Monmouth (12/9/09)
FT%	1.000 (10x)
	last vs. North Carolina (1-1) (11/30/11)
Career Double-Doubles	7

## GAME-BY-GAME

	P	R	B
WASH. STATE	3	12	2
MID. TENN.	9	10	1
at Delaware	6	4	0
at South Carolina	5	4	1
vs. Iowa State	7	7	1
at Nevada	11	7	0
NORTH CAROLINA	13	6	3
at Texas Tech	11	8	1
VIRGINIA TECH	14	5	1
UMES	13	4	3
WAGNER	9	8	3
at Bucknell	11	9	0
NEBRASKA			
at Wisconsin			
MICHIGAN ST.			
MICHIGAN			
at Nebraska			
at Illinois			
IOWA			
at Michigan			
at Michigan State			
INDIANA			
at Minnesota			
WISCONSIN			
at Northwestern			
at Purdue			
OHIO STATE			
MINNESOTA			

## 2011-12 Season Notes:

- ♦ Just missed out on a double-double with 11 points and nine rebounds at Bucknell (12/21).
- ♦ Was a perfect 6-for-6 from the field on the way to 13 points, four rebounds and three blocks in the win over UMES (12/11).
- ♦ Tallied 14 points on 6-of-8 shooting with five rebounds, a block and three steals in the win over Virginia Tech (12/6).
- ♦ Playing in her home state of Texas for the first time, tallied 11 points, eight rebounds and a block at #19/25 Texas Tech (12/3).
- ♦ Accounted for 13 points, six rebounds and three blocked shots in the win over #14/13 North Carolina (11/30).
- ♦ Chipped in 11 points and seven rebounds in 16 minutes of action at Nevada (11/26).
- ♦ Narrowly missed a double-double with nine points, 10 rebounds and a blocked shot in the Lady Lion Classic Championship game win over Middle Tennessee (11/13).
- ♦ Snared a team-best 12 rebounds to go along with three points, two blocks and three steals against Washington State (11/11).

## Greene vs. the Big Ten

Team	G	Pts.-Avg.	Rebs.-Avg.	Assts.-Avg.	Stls.-Avg.
Illinois	5	50-10.0	39-7.8	0-0.0	12-2.4
Indiana	4	24-6.0	44-11.0	0-0.0	12-3.0
Iowa	5	33-6.6	35-7.0	1-0.2	11-2.2
Michigan	3	22-7.3	19-6.3	2-0.7	5-1.7
Michigan State	3	18-6.0	21-7.0	0-0.0	1-0.3
Minnesota	4	20-5.0	18-4.5	1-0.3	2-0.5
Nebraska	-	-	-	-	-
Northwestern	3	14-4.7	18-6.0	2-0.7	4-1.3
Ohio State	4	40-10.0	30-7.5	2-0.5	8-2.0
Purdue	5	34-6.8	41-8.2	3-0.6	14-2.8
Wisconsin	3	26-8.7	20-6.7	2-0.7	7-2.3











# #16/16 Penn State 78, Bucknell 54

## Game #12 \* Dec. 21, 2011 \* Lewisburg, Pa.

### Penn State 78 • 10-2

##	Player	Total		3-Ptr	Rebounds			PF	TP	A	TO	Blk	Stl	Min	
		FG-FGA	FG-FGA	FT-FTA	Off	Def	Tot								
23	Edwards, Ariel	f	2-4	1-2	2-4	0	2	2	0	7	3	2	0	2	21
54	Greene, Nikki	f	5-9	0-0	1-2	3	6	9	1	11	1	1	0	1	21
12	Gray, Zhaque	g	3-8	2-4	0-0	0	0	0	3	8	2	1	0	1	30
20	Bentley, Alex	g	5-11	1-2	0-0	0	0	0	1	11	7	4	0	4	32
33	Lucas, Maggie	g	7-10	4-4	4-4	0	5	5	2	22	3	2	0	4	32
05	East, Talia	g	3-7	0-0	0-0	3	5	8	2	6	2	1	3	1	18
25	Studevent, Gizelle		1-3	0-1	0-0	1	2	3	0	2	0	0	0	1	15
40	Wolfe, Marisa		3-5	0-0	3-3	0	3	3	3	9	0	2	1	2	18
44	Waldner, Tori		1-3	0-0	0-0	0	3	3	1	2	1	3	1	1	13
	Team					3	2	5							
	Totals		30-60	8-13	10-13	10	28	38	13	78	19	16	5	14	200

FG % 1st Half: 13-29 44.8% 2nd half: 17-31 54.8% Game: 30-60 50.0% Deadball Rebounds 2  
 3FG % 1st Half: 4-5 80.0% 2nd half: 4-8 50.0% Game: 8-13 61.5%  
 FT % 1st Half: 4-4 100.0 2nd half: 6-9 66.7% Game: 10-13 76.9%

### BUCKNELL 54 • 2-10

##	Player	Total		3-Ptr	Rebounds			PF	TP	A	TO	Blk	Stl	Min	
		FG-FGA	FG-FGA	FT-FTA	Off	Def	Tot								
00	Mgbada, Felicia	f	6-10	0-0	0-0	2	2	4	3	12	0	4	0	0	23
12	Voss, Rachel	f	5-9	1-2	0-0	3	2	5	0	11	0	5	0	1	26
55	Horbatuck, Lindsay	f	1-4	0-0	3-6	4	6	10	2	5	3	4	0	1	29
15	Romine, Shelby	g	3-16	1-8	0-0	1	1	2	1	7	4	0	1	0	36
22	Chukwudo, Christina	g	3-8	1-2	0-0	2	1	3	0	7	2	3	0	1	32
13	Dunn, Alyssa		2-7	0-0	0-0	0	2	2	0	4	2	0	1	0	14
20	Baxter, Ashley		0-0	0-0	0-0	0	0	0	0	0	0	0	0	1	
31	Harris, Katherine		1-5	1-3	0-0	0	0	0	1	3	0	2	0	0	13
32	Trotter, Shelby		0-4	0-3	1-2	1	3	4	1	1	1	2	1	0	12
33	Heider, Jen		1-1	0-0	0-0	0	2	2	0	2	0	0	0	0	3
44	Dotson, Audrey		1-2	0-0	0-0	0	1	1	0	2	1	0	0	1	11
	Team					4	1	5							
	Totals		23-66	4-18	4-8	17	21	38	8	54	13	20	3	4	200

FG % 1st Half: 8-34 23.5% 2nd half: 15-32 46.9% Game: 23-66 34.8% Deadball Rebounds 2  
 3FG % 1st Half: 1-10 10.0% 2nd half: 3-8 37.5% Game: 4-18 22.2%  
 FT % 1st Half: 1-2 50.0% 2nd half: 3-6 50.0% Game: 4-8 50.0%

Officials: Joseph Vaszily, Mark Resch, Michael Schmidt  
 Technical fouls: Penn State-None, BUCKNELL-None.  
 Attendance: 1490

Score by periods	1st	2nd	Total
Penn State	34	44	78
BUCKNELL	18	36	54

Points	In Paint	Off T/O	2nd Chance	Fast Break	Bench
PSU	32	21	10	12	19
BUCKNE	26	11	13	2	12

Last FG - PSU 2nd-01:02, BUCKNELL 2nd-00:13.  
 Largest lead - PSU by 28 2nd-01:02, BUCKNELL None.

Score tied - 1 time.  
 Lead changed - 0 times.

#### Notable

- The Lady Lions finish the non-conference portion of their schedule with a 10-2 mark, it is the second consecutive year that Penn State has 10 or more non-conference wins.
- Sophomore guard **Maggie Lucas** posted her fourth consecutive 20-point game and sixth in her last seven games with 22 markers .
- All nine Lady Lions scored for the fourth consecutive game.



## 2011-12 RADIO/TV CHART



#2

**Dara Taylor**  
5-8 \* Jr./Jr. \* G  
Wilmington, Del.  
Caravel Academy  
(Maryland)



#5

**Talia East**  
6-3 \* So./So. \* F/C  
Philadelphia, Pa.  
Friends' Central School



#12

**Zhaque Gray**  
5-8 \* Sr./Sr. \* G  
Chicago, Ill.  
Prep John Hope



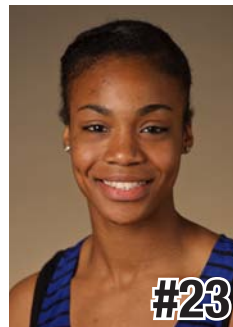
#15

**Renee Womack**  
5-10 \* Sr./Sr. \* G  
Lansdale, Pa.  
Methacton



#20

**Alex Bentley**  
5-7 \* Jr./Jr. \* G  
Indianapolis, Ind.  
Ben Davis



#23

**Ariel Edwards**  
6-2 \* So./So. \* F  
Elmont, N.Y.  
Christ the King



#24

**Mia Nickson**  
6-2 \* Sr./Jr. \* F  
Ashburn, Va.  
Notre Dame Academy  
(Boston College)



#25

**Gizelle Studevent**  
5-11 \* Jr./Jr. \* G  
La Jolla, Calif.  
The Bishop's School



#33

**Maggie Lucas**  
5-10 \* So./So. \* G  
Narberth, Pa.  
Germantown Academy



#40

**Marisa Wolfe**  
6-2 \* Jr./Jr. \* F  
Ford City, Pa.  
Ford City



#44

**Tori Waldner**  
6-5 \* Fr./Fr. \* F/C  
Milton, Ga.  
Milton



#54

**Nikki Greene**  
6-4 \* Jr./Jr. \* F/C  
Diboll, Texas  
Diboll



HC

**Coquese Washington**  
Head Coach  
Notre Dame '92  
Fifth Season



AC

**Fred Chmiel**  
Assistant Coach  
Excelsior College  
Second Season



AC

**Kia Damon**  
Assistant Coach  
Millersville '97  
Fifth Season



AC

**Maren Walseth**  
Assistant Coach  
Penn State '02  
Fifth Season



DO

**Ethan Gelfand**  
Director of Basketball  
Operations  
First Season



VO

**Mike Miller**  
Director of Video &  
Technology Operations  
Seventh Season



2011-12 Penn State Lady Lions  
Penn State Combined Team Statistics (as of Dec 21, 2011)  
All games

RECORD:	OVERALL	HOME	AWAY	NEUTRAL
ALL GAMES	10-2	6-0	3-2	1-0
CONFERENCE	0-0	0-0	0-0	0-0
NON-CONFERENCE	10-2	6-0	3-2	1-0

##	Player	gp-gs	min	avg	Total		3-Point		F-Throw		Rebounds				pf	dq	a	to	blk	stl	pts	avg		
					fg-fga	fg%	3fg-fga	3fg%	ft-fa	ft%	off	def	tot	avg										
33	Lucas, Maggie	12-12	406	33.8	71-160	.444	30-76	.395	59-70	.843	10	44	54	4.5	23	0	27	30	2	15	231	19.3		
20	Bentley, Alex	12-12	398	33.2	67-138	.486	9-20	.450	38-45	.844	5	24	29	2.4	24	0	70	41	2	33	181	15.1		
12	Gray, Zhaque	12-12	371	30.9	52-116	.448	19-46	.413	23-26	.885	9	29	38	3.2	28	0	27	21	1	13	146	12.2		
54	Greene, Nikki	12-12	216	18.0	41-83	.494	0-0	.000	30-47	.638	30	54	84	7.0	39	0	6	25	16	10	112	9.3		
23	Edwards, Ariel	12-8	327	27.3	31-79	.392	2-13	.154	14-23	.609	13	43	56	4.7	25	1	18	19	2	14	78	6.5		
05	East, Talia	12-0	193	16.1	26-51	.510	0-0	.000	7-19	.368	23	60	83	6.9	26	1	5	16	19	8	59	4.9		
40	Wolfe, Marisa	9-0	124	13.8	17-36	.472	1-3	.333	7-10	.700	9	17	26	2.9	20	0	5	7	4	9	42	4.7		
24	Nickson, Mia	4-4	95	23.8	5-24	.208	0-0	.000	6-13	.462	12	19	31	7.8	10	0	2	3	1	2	16	4.0		
44	Waldner, Tori	10-0	120	12.0	12-24	.500	0-0	.000	5-10	.500	7	31	38	3.8	20	0	6	14	10	5	29	2.9		
25	Studevent, Gizelle	12-0	150	12.5	14-32	.438	0-1	.000	2-2	1.000	5	13	18	1.5	8	0	10	7	0	7	30	2.5		
Team											30	33	63											
Total.....		12	2400		336-743	.452	61-159	.384	191-265	.721	153	367	520	43.3	223	2	176	184	57	116	924	77.0		
Opponents.....		12	2400		245-791	.310	65-256	.254	137-202	.678	209	289	498	41.5	216	4	137	217	42	79	692	57.7		

TEAM STATISTICS	PSU	OPP	Date	Opponent	Score	Att.
SCORING	924	692	11/11/11	WASHINGTON STATE	w 72-60	3807
Points per game	77.0	57.7	11/13/11	MIDDLE TENNESSEE	w 65-49	3238
Scoring margin	+19.3	-	11/17/11	at Delaware	L 71-80	3352
FIELD GOALS-ATT	336-743	245-791	11/20/11	at South Carolina	w 55-50	2391
Field goal pct	.452	.310	11/25/11	vs Iowa State	w 66-59	1089
3 POINT FG-ATT	61-159	65-256	11/26/11	at Nevada	w 103-65	759
3-point FG pct	.384	.254	11/30/11	NORTH CAROLINA	w 103-84	3963
3-pt FG made per game	5.1	5.4	12-03-11	at TTU	L 66-70	8923
FREE THROWS-ATT	191-265	137-202	12/6/11	VIRGINIA TECH	w 66-28	3236
Free throw pct	.721	.678	12/11/11	UMES	w 76-51	3386
F-Throws made per game	15.9	11.4	12/18/11	WAGNER	w 103-42	7202
REBOUNDS	520	498	12/21/11	at BUCKNELL	w 78-54	1490
Rebounds per game	43.3	41.5	* - Conference game			
Rebounding margin	+1.8	-				
ASSISTS	176	137				
Assists per game	14.7	11.4				
TURNOVERS	184	217				
Turnovers per game	15.3	18.1				
Turnover margin	+2.8	-				
Assist/turnover ratio	1.0	0.6				
STEALS	116	79				
Steals per game	9.7	6.6				
BLOCKS	57	42				
Blocks per game	4.8	3.5				
ATTENDANCE	24832	18004				
Home games-Avg/Game	6-4139	5-3383				
Neutral site-Avg/Game	-	1-1089				

Score by Periods	1st	2nd	Totals
Penn State	460	464	924
Opponents	353	339	692

2011-12 Penn State Lady Lions  
Penn State Category Leaders (as of Dec 21, 2011)  
All games

Points	G	Pts	Pts/G
Lucas, Maggie	12	231	19.3
Bentley, Alex	12	181	15.1
Gray, Zhaque	12	146	12.2
Greene, Nikki	12	112	9.3
Edwards, Ariel	12	78	6.5
East, Talia	12	59	4.9
Wolfe, Marisa	9	42	4.7
Studevent, Gizelle	12	30	2.5
Waldner, Tori	10	29	2.9
Nickson, Mia	4	16	4.0

FG Percentage	FG	Att	Pct
East, Talia	26	51	.510
Waldner, Tori	12	24	.500
Greene, Nikki	41	83	.494
Bentley, Alex	67	138	.486
Wolfe, Marisa	17	36	.472
Gray, Zhaque	52	116	.448
Lucas, Maggie	71	160	.444
Studevent, Gizelle	14	32	.438
Edwards, Ariel	31	79	.392
Nickson, Mia	5	24	.208

3-Point Percentage	3FG	Att	Pct
Bentley, Alex	9	20	.450
Gray, Zhaque	19	46	.413
Lucas, Maggie	30	76	.395
Wolfe, Marisa	1	3	.333
Edwards, Ariel	2	13	.154
Studevent, Gizelle	0	1	.000

Free Throw Percent	FG	Att	Pct
Studevent, Gizelle	2	2	1.000
Gray, Zhaque	23	26	.885
Bentley, Alex	38	45	.844
Lucas, Maggie	59	70	.843
Wolfe, Marisa	7	10	.700
Greene, Nikki	30	47	.638
Edwards, Ariel	14	23	.609
Waldner, Tori	5	10	.500
Nickson, Mia	6	13	.462
East, Talia	7	19	.368

Scoring Average	G	Pts	Avg/G
Lucas, Maggie	12	231	19.3
Bentley, Alex	12	181	15.1
Gray, Zhaque	12	146	12.2
Greene, Nikki	12	112	9.3
Edwards, Ariel	12	78	6.5
East, Talia	12	59	4.9
Wolfe, Marisa	9	42	4.7
Nickson, Mia	4	16	4.0
Waldner, Tori	10	29	2.9
Studevent, Gizelle	12	30	2.5

Field Goal Attempts	G	Att	Att/G
Lucas, Maggie	12	160	13.3
Bentley, Alex	12	138	11.5
Gray, Zhaque	12	116	9.7
Greene, Nikki	12	83	6.9
Edwards, Ariel	12	79	6.6

Field Goals Made	G	Made	Made/G
Lucas, Maggie	12	71	5.9
Bentley, Alex	12	67	5.6
Gray, Zhaque	12	52	4.3
Greene, Nikki	12	41	3.4
Edwards, Ariel	12	31	2.6

3-Point FG Attempts	G	Att	Att/G
Lucas, Maggie	12	76	6.3
Gray, Zhaque	12	46	3.8
Bentley, Alex	12	20	1.7
Edwards, Ariel	12	13	1.1
Wolfe, Marisa	9	3	0.3

3-Point FG Made	G	Made	Made/G
Lucas, Maggie	12	30	2.5
Gray, Zhaque	12	19	1.6
Bentley, Alex	12	9	0.8
Edwards, Ariel	12	2	0.2
Wolfe, Marisa	9	1	0.1

Free Throw Attempts	G	Att	Att/G
Lucas, Maggie	12	70	5.8
Greene, Nikki	12	47	3.9
Bentley, Alex	12	45	3.8
Gray, Zhaque	12	26	2.2
Edwards, Ariel	12	23	1.9

Free Throws Made	G	Made	Made/G
Lucas, Maggie	12	59	4.9
Bentley, Alex	12	38	3.2
Greene, Nikki	12	30	2.5
Gray, Zhaque	12	23	1.9
Edwards, Ariel	12	14	1.2



2011-12 Penn State Lady Lions  
Penn State Category Leaders (as of Dec 21, 2011)  
All games

<u>Rebounds</u>	<u>G</u>	<u>Reb</u>	<u>Reb/G</u>
Greene, Nikki	12	84	7.0
East, Talia	12	83	6.9
Edwards, Ariel	12	56	4.7
Lucas, Maggie	12	54	4.5
Gray, Zhaque	12	38	3.2
Waldner, Tori	10	38	3.8

<u>Rebound Average</u>	<u>G</u>	<u>Reb</u>	<u>Avg/G</u>
Nickson, Mia	4	31	7.8
Greene, Nikki	12	84	7.0
East, Talia	12	83	6.9
Edwards, Ariel	12	56	4.7
Lucas, Maggie	12	54	4.5

<u>Offensive Rebounds</u>	<u>G</u>	<u>No.</u>	<u>Avg/G</u>
Greene, Nikki	12	30	2.5
East, Talia	12	23	1.9
Edwards, Ariel	12	13	1.1
Nickson, Mia	4	12	3.0
Lucas, Maggie	12	10	0.8

<u>Defensive Rebounds</u>	<u>G</u>	<u>No.</u>	<u>Avg/G</u>
East, Talia	12	60	5.0
Greene, Nikki	12	54	4.5
Lucas, Maggie	12	44	3.7
Edwards, Ariel	12	43	3.6
Waldner, Tori	10	31	3.1

<u>Fouls</u>	<u>G</u>	<u>No.</u>	<u>Per/G</u>
Greene, Nikki	12	39	3.3
Gray, Zhaque	12	28	2.3
East, Talia	12	26	2.2
Edwards, Ariel	12	25	2.1
Bentley, Alex	12	24	2.0

<u>Foulsouts</u>	<u>G</u>	<u>No.</u>
East, Talia	12	1
Edwards, Ariel	12	1

<u>Assists</u>	<u>G</u>	<u>No.</u>	<u>Ast/G</u>
Bentley, Alex	12	70	5.8
Gray, Zhaque	12	27	2.3
Lucas, Maggie	12	27	2.3
Edwards, Ariel	12	18	1.5
Studevent, Gizelle	12	10	0.8

<u>Steals</u>	<u>G</u>	<u>No.</u>	<u>Stl/G</u>
Bentley, Alex	12	33	2.8
Lucas, Maggie	12	15	1.3
Edwards, Ariel	12	14	1.2
Gray, Zhaque	12	13	1.1
Greene, Nikki	12	10	0.8

<u>Blocked Shots</u>	<u>G</u>	<u>No.</u>	<u>Blk/G</u>
East, Talia	12	19	1.6
Greene, Nikki	12	16	1.3
Waldner, Tori	10	10	1.0
Wolfe, Marisa	9	4	0.4
Lucas, Maggie	12	2	0.2
Bentley, Alex	12	2	0.2
Edwards, Ariel	12	2	0.2

<u>Minutes</u>	<u>G</u>	<u>No.</u>	<u>Min/G</u>
Lucas, Maggie	12	406	33.8
Bentley, Alex	12	398	33.2
Gray, Zhaque	12	371	30.9
Edwards, Ariel	12	327	27.3
Greene, Nikki	12	216	18.0

<u>Turnovers</u>	<u>G</u>	<u>No.</u>	<u>TO/G</u>
Bentley, Alex	12	41	3.4
Lucas, Maggie	12	30	2.5
Greene, Nikki	12	25	2.1
Gray, Zhaque	12	21	1.8
Edwards, Ariel	12	19	1.6