



PENN STATE WOMEN'S HOCKEY

2012-13 NITTANY LIONS

GoPSUsports.com // @PennStateWHKY // Facebook.com/PennStateWomensHockey
 Contact: **Jeremy Fallis** // jeremy.fallis@psu.edu // O: (814) 865-3613 // C: (814) 206-6544

2012-13 SCHEDULE

Overall: 4-7-1 // Home: 2-5-1 // Away: 2-4-0
 CHA: 0-5-1 // Home: 0-5-1 // Away: 0-0-0

Date	Opponent		Time
Oct. 6	at Vermont	W	5-3
Oct. 7	at Vermont	L	1-3
Oct. 13	* SYRACUSE	L	0-4
Oct. 14	* SYRACUSE	L	0-6
Oct. 19	at Sacred Heart	L	1-2
Oct. 20	at Sacred Heart	W	6-1
Oct. 25	* RIT	L	1-4
Oct. 26	* RIT	T	(OT) 2-2
Nov. 2	SACRED HEART	W	6-0
Nov. 3	SACRED HEART	W	8-2
Nov. 10	* ROBERT MORRIS	L	1-7
Nov. 11	* ROBERT MORRIS	L	1-4
Nov. 16	* at Lindenwood		8:00 p.m.
Nov. 17	* at Lindenwood		3:00 p.m.
Nov. 30	* at #4 Mercyhurst		7:00 p.m.
Dec. 1	* at #4 Mercyhurst		2:00 p.m.
Dec. 7	at St. Lawrence		7:00 p.m.
Dec. 8	at St. Lawrence		2:00 p.m.
Jan. 4	CHATHAM		7:30 p.m.
Jan. 5	CHATHAM		7:00 p.m.
Jan. 11	at Union		7:00 p.m.
Jan. 12	at Union		4:00 p.m.
Jan. 25	* at Syracuse		7:00 p.m.
Jan. 26	* at Syracuse		2:00 p.m.
Jan. 29	PRINCETON		7:00 p.m.
Feb. 1	* #4 MERCYHURST		2:00 p.m.
Feb. 2	* #4 MERCYHURST		2:00 p.m.
Feb. 8	* LINDENWOOD		2:00 p.m.
Feb. 9	* LINDENWOOD		2:00 p.m.
Feb. 15	* at RIT		7:00 p.m.
Feb. 16	* at RIT		7:00 p.m.
Feb. 22	* at Robert Morris		7:00 p.m.
Feb. 23	* at Robert Morris		3:00 p.m.
2013 CHA TOURNAMENT			
Mar. 1	^ First Round - Game 1		TBA
Mar. 2	^ First Round - Game 2		TBA
Mar. 3	^ First Round - Game 3 (if necessary)		TBA
Mar. 8	% Semifinals		TBA
Mar. 9	% Final		TBA

All Times Eastern

Home games in **CAPS** at Greenberg Ice Pavilion

* - College Hockey America games

^ - CHA First Round at higher seed

% - CHA Semifinals & Final hosted by No. 1 seed

Rankings based on USA Today/USA Hockey poll



PENN STATE NITTANY LIONS

(4-7-1, 0-5-1 CHA)

LINDENWOOD LIONS

(0-10-0, 0-2-0 CHA)

Games 13-14: November 16-17, 2012 • 8 p.m. ET // 3 p.m. ET • Lindenwood Ice Arena • Wentzville, Mo.

GAME DAY

VENUE
 STREAMING COVERAGE
 SERIES RECORD
 LAST MEETING
 NEXT SERIES

Lindenwood Ice Arena (1,000)
 AmericaOneSports.com Video
 0-0-0
 n/a, First Meeting, Nov. 16
 Nov. 30-Dec. 1 at No. 4 Mercyhurst

GAME NOTES

- Penn State travels to Lindenwood for two-game set on Friday and Saturday
- The Nittany Lions and Lindenwood meet for the first time in women's hockey
- Penn State fell to Robert Morris, 7-1 and 4-1, at home last weekend
- LU is enduring a 10-game losing streak after 2-0 and 7-1 losses at St. Cloud
- **Shannon Yoxheimer** had her seven-game scoring streak snapped on Sunday
- Yoxheimer is first in the CHA for shots (78) and tied for first in goals (10)
- **Nicole Paniccia** has started eight-straight games dating to Oct. 14 vs. Syracuse
- Paniccia is second in the conference in saves (347) and third in save pct. (.925)

ON THE INSIDE

Page 2: **CHA Standings and Team Comparison**
 Page 8: \$90 million **Pegula Ice Arena** is on target for a Sept. 2013 opening
 Page 9-10: **2012-13 Penn State Women's Hockey Stats**
 Pages 11-12: **The Nittany Lion Roster & TV/Radio Roster**

SEASON STATISTICAL LEADERS

OFFENSE		GP	G	A	PTS	SH	+/-	GWG
40	Shannon Yoxheimer	12	10	4	14	78	+4	2
24	Taylor Gross	12	3	10	13	32	+6	0
15	Jess Desorcie	12	2	8	10	28	+7	0
20	Emily Laurenzi	12	1	4	5	12	+6	0
23	Birdie Shaw	11	2	3	5	26	0	0
16	Hannah Hoenshell	7	4	0	4	22	+2	1
10	Micayla Catanzariti	12	3	1	4	20	-1	0
22	Jenna Welch	12	1	3	4	20	-1	0
DEFENSE		GP	G	A	PTS	SH	+/-	BLK
33	Madison Smiddy	10	1	5	6	10	+3	9
2	Jeanette Bateman	12	1	1	2	13	+4	14
17	Paige Jahnke	12	0	2	2	16	+7	14
4	Jordin Pardoski	12	1	0	1	9	+2	10
6	Lindsay Reihl	12	0	1	1	5	-8	13
GOALTENDER		GP-GS	Record	MIN	GA	GAA	SV	SV%
37	Nicole Paniccia	10-10	4-5-1	581:44	28	2.89	347	.925
30	Celine Whitlinger	2-2	0-2-0	118:40	9	4.55	78	.897



@PennStateWHKY



PennStateWomensHockey



GoPSUTV



NITTANY LION WOMEN'S HOCKEY

GAME NOTES VS. LINDENWOOD (NOV. 16-17)

SCOUTING THE LINDENWOOD LIONS

Penn State plays its first road CHA games in program history when it takes on Lindenwood (0-10-0, 0-2-0 CHA) on Friday and Saturday. Lindenwood has played one of the tougher schedules in the nation, playing eight games against the Western Collegiate Hockey Association, the toughest conference in women's hockey, and CHA favorite Mercyhurst. In those games, Lindenwood has been outscored by a combined 55-9.

Of Lindenwood's nine goals, five have come on the power play with the Lions going 5-for-46 (10.9 percent). On the other hand, Lindenwood has given up 52 power-play opportunities but has allowed 18 goals. The penalty-kill percentage is .654, the worst in the CHA.

Goaltender Nicole Hensley has been remarkable in net, turning away 365 shots (leads CHA) with a .908 save percentage in nine games. Of the 37 goals allowed (4.87 GAA), Hensley has allowed only 21 even-strength goals to help the Lions. Her backup, Taylor Fairchild, has seen time in three games with an .862 save percentage and a 7.89 GAA.

Alison Wickenheiser is Lindenwood's offensive spark, leading the team in shots (38), points (3) and tied for first in assists (2). Lindenwood has a pair of two-goal scorers in Allysson Arcibal and Lyndsay Kirkham. Both of Kirkham's goal has come on the power play, while one of Arcibal's goals is the same.

Lindenwood is in its second year of varsity women's hockey, going 8-21-0 in all games last season. Lindenwood is one of three first-year teams in the CHA with Penn State and RIT. The Nittany Lions went 0-1-1 vs. RIT earlier this season. Both Penn State and Lindenwood are looking for their first CHA wins.

WEEKEND SWEEP BY RMU

Penn State faced the 2012 CHA Tournament champion Robert Morris in a two-game series (Nov. 10-11), falling 7-1 and 4-1. **Shannon Yoxheimer** scored in the opener off a **Taylor Gross** faceoff win, but RMU's Rebecca Vint scored five times to pace the Colonials.

In the second game, it was more of the same early as Robert Morris staked out a 3-0 lead through two periods, but Penn State held the Colonials scoreless in the second. That turned the momentum around as Penn State went toe-to-toe with the defending champi-

ons in the third. **Micayla Catanzariti** scored a goal with 6:19 remaining to spark the Lions. **Birdie Shaw** and **Jill Holdcroft** were credited with assists. Twenty-three seconds later, Yoxheimer's shot was saved by Delayne Brian and Taylor Gross's attempt was stopped by Brian to keep it a two-goal game. With 2:23 left, RMU took an interference penalty as Penn State had a 6-on-4, but couldn't convert before RMU tallied an empty-net goal with 13 second remaining. **Nicole Paniccia** made 49 saves in Sunday's loss.

YOXHEIMER FINALLY STOPPED

Penn State's leading scorer, **Shannon Yoxheimer**, has been on a roll over the past four weeks, scoring eight of her team-high 10 goals. In that stretch, Yoxheimer scored in seven-straight games after a three-game drought. The seven-game streak started at Sacred Heart as she scored PSU's only goal and has continued with a career day vs. SHU on Nov. 3 as she scored a goal and career-high two assists. Yoxheimer also accounted for Penn State's first two game-winning goals, notching two goals at Vermont (Oct. 6) and the go-ahead goal at SHU (Oct. 20). Yoxheimer scored against Robert Morris on Saturday, but we held scoreless for the first time since Oct. 14 in the Sunday matchup.

EIGHT FROM EIGHT IN WIN OVER SHU

Penn State earned its first series sweep in program history, defeating Sacred Heart, 8-2,

GAMEDAY COMPARISON

TEAM STATS

Overall record	4-7-1	0-10-0
Conference record	0-5-1	0-2-0
Goals scored	32	9
Goals scored per game	2.7	0.9
Goals allowed	38	55
Goals allowed per game	3.2	5.5
First period goals	9	3
Second period goals	11	6
Third period goals	12	0
Overtime goals	0	-
Shots	365	217
Shots per game	30.4	21.7
Shot pct.	.125	.041
Assists	47	14
Penalties per game	4.3	6.1
Power plays	6-48	5-46
Power-play pct.	.125	.109
Penalty kills	14-52	18-52
Penalty-kill pct.	.731	.654
Saves	432	477
Shutouts	1	0

LEADERS

Points	Yoxheimer (14)	Wickenheiser (3)
Goals	Yoxheimer (10)	Two with 2
Assists	Gross (10)	Four with 2
Shots	Yoxheimer (78)	Wickenheiser (38)
Shot Pct.	Hoenshell (.182)	Kirkham (.250)
+/-	Jahnke (+7)	Talbot (-2)
Faceoff Pct.	Zinn (.521)	West (.455)
Saves	Paniccia (347)	Hensley (365)
Save Pct.	Paniccia (.925)	Hensley (.908)
GAA	Paniccia (2.89)	Hensley (4.87)
Record	Paniccia (4-5-1)	Fairchild (0-2-0)

2012-13 COLLEGE HOCKEY AMERICA STANDINGS

(as of Nov. 15, 2012)

	Pts.	CHA	GF	GA	Overall	GF	GA	Last 10
Mercyhurst (4/4)	8	4-0-0	25	3	10-1-1	59	21	8-1-1
Syracuse	5	2-0-1	12	2	5-5-1	31	23	5-4-1
Robert Morris	4	2-0-0	11	2	5-2-1	28	18	5-2-1
RIT	4	1-2-2	10	18	4-4-2	30	24	4-4-2
PENN STATE	1	0-5-1	5	27	4-7-1	32	38	3-6-1
Lindenwood	0	0-2-0	1	12	0-10-0	9	55	0-10-0

UPCOMING SCHEDULE

Friday, Nov. 16

Robert Morris at RPI, 3 p.m.

Mercyhurst at Yale, 7 p.m.

RIT at Brown, 7 p.m.

PENN STATE at Lindenwood, 8 p.m. ET

Saturday, Nov. 17

Mercyhurst at Yale, 2 p.m.

Robert Morris at RPI, 3 p.m.

PENN STATE at Lindenwood, 3 p.m. ET

RIT at Brown, 4 p.m.

Tuesday, Nov. 20

RIT at Syracuse, 7 p.m.

NITTANY LION WOMEN'S HOCKEY



on Saturday (Nov. 3) afternoon at Greenberg Ice Pavilion. Eight different Nittany Lions tallied a goal with **Jess Desorcie**, **Taylor Gross** and **Shannon Yoxheimer** notching three-point days.

Yoxheimer opened the scoring before SHU tied it up early in the second period before Gross, **Kendra Rasmussen** and **Jill Holdcroft** scored successive goals for a 4-1 lead midway through the period.

After another SHU tally, PSU would rally off the last four goals, this time coming from Desorcie, **Jenna Welch**, **Madison Smiddy** and **Emily Laurenzi**. Welch, Smiddy and Laurenzi scored their first goals of the season for Penn State.

Nicole Paniccia made 23 saves in net for the Nittany Lions to improve to 4-3-1 on the season. Penn State dominated the game in the faceoff circle, 54-25, which led to a 64-25 shot advantage.

FIRST HOME WIN, SHUTOUT & HAT TRICK
Friday night, Nov. 2 at Greenberg Ice Pavilion was historic for Penn State as the women's hockey team won its first home game, 6-0, over Sacred Heart. The program's first shut-out featured the first hat trick by **Hannah Hoenshell**. **Shannon Yoxheimer** scored twice and **Jill Holdcroft** scored her first ever goal in the rout.

Hoenshell opened the game's scoring seven minutes into the contest, which highlighted a 22-2 Penn State advantage in shots over the Pioneers.

The Nittany Lions would light the lamp three times in the second as Hoenshell, Yoxheimer and Holdcroft stretched the lead to 4-0.

In the third, Penn State would make it 5-0 just

PENN STATE'S RECORD IS...

2-5-1 at home
2-2-0 on the road
0-0-1 in overtime
3-1-1 when scoring first
1-6-0 when opponent scores first
3-0-1 when leading after the 1st period
1-5-0 when trailing after the 1st period
0-2-0 when tied after the 1st period
4-0-1 when leading after the 2nd period
0-6-0 when trailing after the 2nd period
0-1-0 when tied after the 2nd period
3-1-0 when out-shooting opponent
1-6-1 when out-shot by opponent
0-0-0 when taking same # of shots
4-1-0 when winning more faceoffs
0-6-1 when losing more faceoffs
0-0-0 when tied in faceoffs
1-3-0 when taking more penalties
2-2-0 when taking fewer penalties
1-2-1	... when taking the same # of penalties
2-1-1 when scoring a power play goal
2-6-0	... when not scoring a power play goal
3-5-1 when allowing a power play goal
1-2-0	... when not allowing a power play goal
0-2-0 when scoring 0 goals
0-5-0 when scoring 1 goal
0-0-1 when scoring 2 goals
0-0-0 when scoring 3 goals
4-0-0 when scoring 4+ goals
1-0-0 when allowing 0 goals
1-0-0 when allowing 1 goal
1-1-1 when allowing 2 goals
1-1-0 when allowing 3 goals
0-5-0 when allowing 4+ goals
2-5-1 in October
2-2-0 in November
0-0-0 in December
0-0-0 in January
0-0-0 in February
0-0-0 in March
0-0-0 on Tuesday
0-1-0 on Thursday
1-1-1 on Friday
3-2-0 on Saturday
0-3-0 on Sunday
3-4-0 during the day
1-3-1 at night
1-1-0 vs. Hockey East
0-5-1 vs. College Hockey America
0-0-0 vs. ECAC Hockey
3-1-0 vs. D-I Independents
0-0-0 vs. ranked opponents
4-7-1 vs. unranked opponents
4-3-1 when Shannon Yoxheimer scores
4-5-1 when Nicole Paniccia starts
0-1-1 games decided by a goal or less

2012-13 WOMEN'S HOCKEY POLLS (as of Nov. 13, 2012)

USA Today/USA Hockey Poll

1	Minnesota	12-0-0	1
2	Cornell	6-1-0	2
3	Clarkson	10-2-0	3
4	Mercyhurst	10-1-1	4
5	Harvard	4-0-0	6
6	Boston College	4-3-2	7
7	Boston University	7-3-1	5
8	Northeastern	8-1-2	8
9	Ohio State	9-3-0	9
10	North Dakota	5-5-0	10

Others: Wisconsin, Minnesota Duluth, Dartmouth, St. Lawrence, Providence

USCHO.com Poll

1	Minnesota	12-0-0	1
2	Cornell	6-1-0	2
3	Clarkson	10-2-0	3
4	Mercyhurst	10-1-1	4
5	Boston College	4-3-1	7
6	Harvard	4-0-0	6
7	Boston University	7-3-1	5
8	Ohio State	9-3-0	9
9	Northeastern	8-1-2	8
10	North Dakota	5-5-0	10

Others: Wisconsin, New Hampshire, Providence

Bold indicates 2012-13 opponent

2012-13 MEDIA INFORMATION

Penn State Athletic Communications

Primary Contact	Jeremy Fallis
Email	jeremy.fallis@psu.edu
Secondary Contact	Brian Hoerst
Email	bjh33@psu.edu
Office	814-865-1757

Interviews

Penn State student-athletes and coaches are available for interviews after practice each day. Please contact Jeremy Fallis in advance.

Credentials

Contact Jeremy Fallis for home game credentials at Greenberg Ice Pavilion.

Postgame

Head coach Josh Brandwene and requested student-athletes are available to the media following each game in the studio rink. Please alert Jeremy Fallis or Brian Hoerst during the game of any requests.

Yearbook

The 2012-13 Penn State women's hockey yearbook will be made available to media members at the first home game on Oct. 13. The public may purchase copies for \$6 online.

GoPSUsports.com

[Facebook.com/PennStateWomensHockey](https://www.facebook.com/PennStateWomensHockey)

[@PennStateWHKY](https://twitter.com/PennStateWHKY)



NITTANY LION WOMEN'S HOCKEY

10 seconds into the period on a Yoxheimer laser from the left wing and Hoenshell would cap her hat trick five minutes later for the 6-0 final score.

The Nittany Lions out-shot the Pioneers 66-18 as goaltenders **Nicole Paniccia** (11 saves) and **Brooke Meyer** (7 saves) combined for the school's first shutout.

PSU EARNS FIRST CHA POINT

Penn State was 89 seconds away from its first CHA victory on Friday, Oct. 26 vs. RIT, but had to settle with a hard-fought 2-2 tie. After a 4-1 loss to RIT on Thursday, Penn State fell to 0-3-1 in CHA play. Goaltender **Nicole Paniccia** and forward **Shannon Yoxheimer** shined for Penn State, providing outstanding defense and offense, respectively. Paniccia made 93 saves last week, including a school-record 59 stops in the 2-2 tie. Paniccia finished the weekend with a .939 save percentage after a 34-save effort in Thursday's matchup.

Yoxheimer scored Penn State's lone goal in the opener and opened the scoring on Friday before Taylor Gross made it 2-0 just seconds later. **Paige Jahnke**, **Madison Smiddy**, Yoxheimer and Gross each had an assist in the tie as the Tigers scored once in the first and another in the third. RIT held a 99-36 shot advantage in the series.

LAST TIME AGAINST SACRED HEART

The Nittany Lions split a weekend series (Oct. 19-20) at Sacred Heart, falling in the opener 2-1 and winning the finale 6-1. Penn State was led by freshman forward **Shannon Yoxheimer** with two goals and an assist.

In the opener, the Pioneers opened a 2-0 lead through two periods and didn't allow the Nittany Lions on the board until Yoxheimer slammed home a scramble in front of the net with 2:31 left in the game and an extra skater on the ice. **Taylor Gross** and **Birdie Shaw** were credited with assists as junior goaltender **Nicole Paniccia** made 26 saves in the loss.

The following day Penn State came out firing, scoring on three straight power-plays en route to a 6-1 rout. Gross, Yoxheimer and **Jeanette Bateman** tallied each of the power play goals for a 3-1 lead through two periods. **Jess Desorcie**, **Hannah Hoenshell** and **Jordin Pardoski** added a trio of third-period goals as Penn State featured six different goal scorers.

Jenna Welch, **Madison Smiddy**, Gross and Yoxheimer had multi-point days. Paniccia had 25 saves for a 51-save weekend.

YOX NAMED CHA PLAYER OF THE WEEK

For her efforts against Sacred Heart, **Shannon Yoxheimer** was named CHA Player of the Week for a three-point weekend and a game-winning goal over the Pioneers (Oct. 19-20). Yoxheimer leads the team with four goals and is tied with Taylor Gross for points with five. Yoxheimer is the first Nittany Lion to receive CHA Offensive Player of the Weeks honors and joins fellow classmate **Micayla Catanzariti** (Rookie of the Week, Oct. 8) on the honor roll.

ANOTHER WEEKEND OF FIRSTS

The second road trip in Penn State women's hockey history resulted in another split result, but it was not without some firsts. The Nittany Lions tallied six goals in a victory at Sacred Heart (Oct. 20), the most in the short history of the program and the largest margin of victory (5). Additionally, the Lions tallied eight assists, which matched the inaugural game.

Individually, **Jeanette Bateman**, **Jordin Pardoski** and **Hannah Hoenshell** scored their first collegiate goals on Oct. 20. **Jess Desorcie** tallied her first Penn State varsity goal, while **Lindsay Reihl** and **Jenna Welch** recorded their first Penn State points on assists. Welch had a two-helper game as did **Madison Smiddy**, who notched her first multi-point game. **Cara Mendelson** and Hoenshell hit the ice for the first time, bringing the total number of Nittany Lions to see ice time to 23.

HISTORIC FIRST WIN

Penn State women's hockey made history on Saturday, Oct. 6 at Vermont's Gutterson Fieldhouse by winning its inaugural game, 5-3. The Nittany Lions scored five goals from three freshmen making their respective debuts as junior goaltender **Nicole Paniccia** made 31 saves in her PSU opener. **Shannon Yoxheimer** and **Micayla Catanzariti** each scored twice for the Nittany Lions.

Down 2-1, Penn State was not to be deterred, reeling off three straight goals to take a 4-2 lead midway through the third period. Despite a Vermont goal with 6:34 left in the third, **Birdie Shaw** scored an empty-net goal to seal the Nittany Lion victory. Junior captain **Taylor Gross** made her Penn State debut known with two assists and was named the first star

of the game, Yoxheimer was second.

FIRST TIME FOR EVERYTHING

Penn State had a varsity team debut for the first time since 1994 (women's soccer) when the women's hockey team defeated Vermont, 5-3 on Oct. 6. The successful debut was the first since 1977 when the men's volleyball team defeated East Stroudsburg.

Game: Oct. 6, 2012 at Vermont, 2:00 p.m.
Win: Nicole Paniccia, Oct. 6 at Vermont, 5-3
Goal: Shannon Yoxheimer
Multi-Goal Game: Micayla Catanzariti
Game-Winning Goal: Shannon Yoxheimer
Assists: Taylor Gross, Emily Laurenzi
Multi-Assist Game: Jess Desorcie
Faceoff: Emily Laurenzi
Faceoff win: Emily Laurenzi
Shot: Katie Zinn
Save: Nicole Paniccia
Empty-Net Goal: Birdie Shaw

CATANZARITI HONORED

Freshman forward **Micayla Catanzariti** was named College Hockey America's Rookie of the Week on Oct. 8. Catanzariti led the Nittany Lions to a win in their inaugural opener on

HONORS & AWARDS

Micayla Catanzariti
CHA Rookie of the Week (10/8)
Penn State Student-Athlete of the Week (10/9)

Shannon Yoxheimer
CHA Player of the Week (10/22)
Penn State Student-Athlete of the Week (10/23)

OVER THE AIR

This Week
AmericaOneSports.com will air live video and audio of this weekend's games. Packages cost \$8 a day, \$30 a month or \$125 for the entire season for all CHA games.

The CHA on AmericaOneSports.com
All Penn State games during CHA play will be streamed live on AmericaOneSports.com. Subscribers can purchase 30-day packages for \$30 or a season pass for \$125.

Non-Conference Home Action
Penn State's non-conference home games will be shown on a game-to-game basis.

NITTANY LION WOMEN'S HOCKEY



Saturday with two goals and an assist at Vermont. Catanzariti was also named Highmark's Penn State Women's Student-Athlete of the Week.

FIRST HEAD COACH

A 1991 graduate of Penn State, head coach **Josh Brandwene** is the first to lead the Nittany Lions. A four-year hockey player at PSU, Brandwene brings 20 years of coaching experience to Happy Valley. Brandwene picked up his first win in the team's debut on Saturday, Oct. 6 at Vermont.

CAPTAIN, OUR CAPTAIN

Junior forward **Taylor Gross** leads Penn State as its first captain. The University of Connecticut transfer appeared in 48 games for the Huskies before joining Penn State's club side in January 2012. In September, the team voted fellow UConn transfer **Jenna Welch** and senior defender **Lindsay Reihl** as assistant captains.

YOUTH MOVEMENT

As is expected with a brand new varsity program, there are many freshmen on the team—17 in all. Thus far, 15 freshman have made an appearance on the ice. The Nittany Lion freshmen have accounted for 78.1% of the goals scored (25 of 32).

	GP	G	A	Pts.
Jeanette Bateman	12	1	1	2
Micayla Catanzariti	12	3	1	4
Hannah Hoenshell	7	4	0	4
Jill Holdcroft	12	2	1	3
Paige Jahnke	12	0	2	2
Darby Kern	-	-	-	-
Emily Laurenzi	12	1	4	5
Taylor McGee	9	0	1	1
Jordin Pardoski	12	1	0	1
Kendra Rasmussen	11	1	1	2
Birdie Shaw	11	2	3	5
Stephanie Walkom	-	-	-	-
Sarah Wilkie	6	0	0	0
Shannon Yoxheimer	12	10	4	14
Katie Zinn	9	0	1	1
	GP	GAA	SV	Pct.
Brooke Meyer	1	0.00	7	1.000
Celine Whitlinger	2	4.55	78	.897

CONTINUING PENN STATE HOCKEY

Eight members of the current varsity team played for the women's club team at some point. Seniors **Lindsay Reihl** and **Kate Christoffersen** and sophomores **Cara Mendelson**, **Katie Murphy**, **Madison Smiddy** and **Tess Weaver** played all of last season for head coach **Josh Brandwene** in Penn State's last year at the club level. Reihl and Christoffersen played three years for the PSU club team as well. **Taylor Gross** and **Jess Desorcie** joined the six

NCAA TEAM RANKS

(As of Nov. 15, 2012)

Goals Per Game	18th
Goals Against Per Game	24th
Scoring Margin	20th
Penalty Minutes	25th
Power-Play Percentage	29th
Penalty-Kill Percentage	33rd
Combined Special Teams	31st
Winning Percentage	T-22nd

NCAA INDIVIDUAL RANKS

(As of Nov. 15, 2012)

Jess Desorcie	
Assists Per Game	T-44th

Taylor Gross	
Points Per Game	T-45th
Assists Per Game	T-26th

Nicole Paniccia	
Goals-Against Average	31st
Save Percentage	17th
Winning Percentage	25th

Madison Smiddy	
Points Per Game (D)	T-25th

Shannon Yoxheimer	
Points Per Game	T-36th
Goals Per Game	T-10th
Game-Winning Goals	T-10th
Points Per Game (Rookies)	7th

CHA TEAM RANKS

(As of Nov. 15, 2012)

Goals	2nd
Goals Against	5th
Assists	3rd
Goals Per Game	5th
Goals-Against Average	5th
Saves	2nd
Save Percentage	3rd
Shots on Goal	3rd
Least Penalty Minutes	2nd
Power-Play Goals	T-3rd
Power-Play Percentage	4th
Power-Play Goals Against	5th
Penalty-Kill Percentage	5th

CHA INDIVIDUAL RANKS

(As of Nov. 15, 2012)

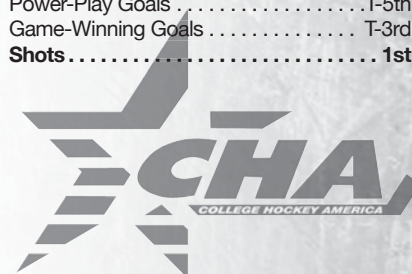
Jess Desorcie	
Points	11th
Assists	T-6th

Taylor Gross	
Points	T-6th
Assists	3rd
Power-Play Goals	T-5th
+/-	T-8th

Nicole Paniccia	
Games Played	1st
Games Started	1st
Minutes Played	1st
Goals-Against Average	7th
Saves	2nd
Save Percentage	3rd
Wins	T-2nd
Ties	T-1st
Win Percentage	7th

Madison Smiddy	
Points (D)	T-4th
Assists (D)	T-4th
Power-Play Goals (D)	T-3rd

Shannon Yoxheimer	
Points	5th
Goals	T-1st
Power-Play Goals	T-5th
Game-Winning Goals	T-3rd
Shots	1st





NITTANY LION WOMEN'S HOCKEY

players midway through the season in preparation of the 2012-13 season.

ON SCHEDULE

Pegula Ice Arena, a \$90 million state-of-the-art facility, will serve as the home of the Penn State hockey programs in 2012-13. As of Nov. 14, 2012, all the steel has been put in place for the project and the building held its official topping off ceremony on Friday, Nov. 9, 2012. Construction is set to conclude in time for the 2012-13 season as the building will open Sept. 5, 2013.

For more information on Pegula Ice Arena, visit page 8 of the game notes.

NEXT TIME OUT

The Nittany Lions are off during Thanksgiving week and will return to action at Mercyhurst on Nov. 30-Dec. 1. The two-game series against the 10-time defending regular-season CHA champion is set for a pair of 2 p.m. matchups in Erie, Pa. The games will have live streaming through **AmericaOneSports.com** and updates through Twitter (@PennStateWHKY).

THE LAST TIME

PENN STATE...

Scored 0 goals	10/14/12 vs. Syracuse (0-6)
Scored 3 goals	Never
Scored 4 goals	Never
Scored 5 goals	10/6/12 at Vermont (5-3)
Scored 6 goals	11/2/12 vs. Sacred Heart (6-0)
Scored 7 goals	Never
Scored 8 goals	11/3/12 vs. Sacred Heart (8-2)
Allowed 0 goals	11/2/12 vs. Sacred Heart (6-0)
Allowed 1 goal	10/20/12 at Sacred Heart (6-1)
Allowed 2 goals	11/3/12 vs. Sacred Heart (8-2)
Allowed 3 goals	10/7/12 at Vermont (1-3)
Allowed 4 goals	11/11/12 vs. Robert Morris (1-4)
Allowed 5 goals	Never
Allowed 6+ goals	11/10/12 vs. Robert Morris (1-7)
Won in overtime	Never
Lost in overtime	Never
Tied in overtime	10/26/12 vs. RIT (2-2)
Played a ranked team	Never
Attempted 10-19 shots	11/10/12 15 vs. Robert Morris (1-7)
Attempted 20-29 shots	11/11/12 20 vs. Robert Morris (1-4)
Attempted 30-39 shots	10/20/12 38 at Sacred Heart (6-1)
Attempted 40-49 shots	10/19/12 42 at Sacred Heart (1-2)
Attempted 50-59 shots	Never
Attempted 60+ shots	11/3/12 64 vs. Sacred Heart (8-2)
Allowed 10-19 shots	11/2/12 18 vs. Sacred Heart (6-0)
Allowed 20-29 shots	11/3/12 25 vs. Sacred Heart (8-2)
Allowed 30-39 shots	10/25/12 38 vs. RIT (1-4)
Allowed 40-49 shots	11/10/12 43 vs. Robert Morris (1-7)
Allowed 50-59 shots	11/11/12 53 vs. Robert Morris (1-4)
Allowed 60+ shots	10/26/12 61 vs. RIT (2-2)
Tallied 5-9 assists	11/2/12 6 vs. Sacred Heart (6-0)
Tallied 10+ assists	11/3/12 12 vs. Sacred Heart (8-2)
Scored 10-19 points	11/2/12 12 vs. Sacred Heart (6-0)
Scored 20+ points	11/3/12 20 vs. Sacred Heart (8-2)
Scored 2 power-play goals	Never
Scored 3 power-play goals	10/20/12 at Sacred Heart (6-1)
Allowed 0 power-play goals	11/11/12 vs. Robert Morris (1-4)
Allowed 2 power-play goals	11/10/12 vs. Robert Morris (1-7)
Had 5 different goal scorers	Never
Had 6 different goal scorers	10/20/12 at Sacred Heart (6-1)
Had 7 different goal scorers	Never
Had 8 different goal scorers	11/3/12 vs. Sacred Heart (8-2)

A PENN STATE PLAYER...

Scored 2 goals	11/2/12 S. Yoxheimer vs. Sacred Heart (6-0)
Scored 3 goals	11/2/12 H. Hoenshell vs. Sacred Heart (6-0)
Scored 4 goals	Never
Had 3 assists	Never
Had 5 points	Never
Had 10+ shots	11/3/12 11, S. Yoxheimer vs. Sacred Heart (8-2)
Saved 40-49 shots	11/11/12 49, N. Paniccia vs. Robert Morris (1-4)
Saved 50-59 shots	10/26/12 59, N. Paniccia vs. RIT (2-2)
Saved 60+ shots	Never
Had a shutout	11/2/12 ... N. Paniccia/B. Meyer vs. Sacred Heart (6-0)
Scored an empty-net goal	10/6/12 B. Shaw at Vermont (5-3)
Scored a short-handed goal	Never

NITTANY LION WOMEN'S HOCKEY



Hockey Game Box Score (Final)

Sacred Heart vs Penn State (Nov 02, 2012 at University Park, Pa.)



Hockey Game Box Score (Final)

Sacred Heart vs Penn State (Nov 03, 2012 at University Park, Pa.)

Sacred Heart (1-5-0) vs. Penn State (3-5-1)
 Date: Nov 02, 2012 • Location: University Park, Pa. • Arena: Greenberg Pavilion
 Attendance: 231 • Start time: 7:30 pm • End time: 9:26 pm • Total time: 1:56

Prd	Time	Team	Scored by	Assists	Vis. on ice	Home on ice
1	07:16	PSU	EV Hoenshell, Hannah/2	Zinn, Katie/1	5,66,13,19,20	16,11,20,17,2
2	02:32	PSU	EV Hoenshell, Hannah/3	Laurenzi, Emily/3	5,20,66,2,29	16,20,2,17,11
3	06:36	PSU	EV Yoheimer, Shannon/7	Gross, Taylor/7	5,20,66,8,10	40,24,15,17,2
4	08:07	PSU	EV Holdcroft, Jill/1	-	18,27,11,13,10	4,23,10,33,19
5	09:10	PSU	EV Yoheimer, Shannon/8	Desorcie, Jess/6	18,27,11,10,8	40,15,6,24,8
6	06:54	PSU	EV Hoenshell, Hannah/4	Laurenzi, Emily/4	5,20,66,19,8	16,20,17,13,11

TEAM SUMMARY														
#	Sacred Heart	G	A	PI	Sh +/-	BI	#	Penn State	G	A	PI	Sh +/-	BI	
2	DELANEY, Sarah	0	0	2	0	-1	4	2	Bateman, Jeanet	0	0	0	0	+3
4	WOODFORD, Ala	0	0	0	1	0	0	4	Pardoski, Jordin	0	0	2	2	+1
5	CONNOLLY, Bria	0	0	0	0	-4	0	6	Reihl, Lindsay	0	0	0	1	+1
6	HENDERSON, W	0	0	0	0	0	0	8	McGee, Taylor	0	0	0	2	+1
8	CHITTIK, Cathie	0	0	0	-1	0	0	10	Catanzanti, Mica	0	0	0	3	+1
10	ROBINSON, Jenn	0	0	0	-3	0	0	11	Zinn, Katie	0	1	4	4	+2
11	ROBBINS, Melissa	0	0	0	-2	2	2	13	Rasmussen, Ken	0	0	0	8	+1
13	LEAHY, Maura	0	0	0	3	-2	2	15	Desorcie, Jess	0	2	0	4	+2
15	SOUZA, Meaghan	0	0	0	2	0	0	16	Hoenshell, Hann	3	0	0	11	+3
16	KLINOFF, Natash	0	0	0	3	0	0	17	Jahkne, Paige	0	0	0	2	+4
18	STATHOPOULOS	0	0	0	-2	-1	1	19	Holdcroft, Jill	1	0	0	3	+1
19	OFNER, Megan	0	0	0	-2	0	0	20	Laurenzi, Emily	0	2	0	1	+3
20	DAVIS, Alex	0	0	0	-4	0	0	22	Welch, Jenna	0	0	0	5	0
21	GOMOLINSKI, A	0	0	0	0	0	0	23	Shaw, Birdie	0	0	0	4	+1
22	HANNA, Sara	0	0	2	-1	1	1	24	Gross, Taylor	0	1	0	4	+2
28	HASSON, Jennife	0	2	0	0	0	0	33	Smiddy, Madison	0	0	0	0	+1
29	LADNER, Catie	0	0	0	-2	-2	2	36	Weaver, Tess	0	0	0	4	0
66	CURRAN, Cara	0	0	0	-1	-4	1	40	Yoheimer, Shan	2	0	0	8	+2
31	FONTAINE, Ama	dnp												
Totals		0	0	6	18	-30	13	Totals		6	6	4	66	+3

Power Play Goals-Att (Sh)		
Prd	SHU	PSU
1st	0-0 (0)	0-2 (4)
2nd	0-1 (4)	0-0 (0)
3rd	0-1 (0)	0-1 (4)
Total	0-2 (4)	0-3 (8)

Penalties-Minutes by Prd		
Prd	SHU	PSU
1st	2-4	0-0
2nd	0-0	1-2
3rd	1-2	1-2
Total	3-6	2-4

Three stars:
 1. Hoenshell, Hannah
 2. Yoheimer, Shannon
 3. Holdcroft, Jill

Officials:
 Referee: Adam Bell
 Referee: Aaron Belair
 Linesman: Justin Pisanio
 Linesman: Justin Loomis
 Pen timekeeper: Ben Thomas
 Game timekeeper: Tom Stroemel
 Scorer: Jeremy Fallis

GOALTENDERS

#	Sacred Heart	Dec	Min	GA	1	2	3	Saves	#	Penn State	Dec	Min	GA	1	2	3	Saves
30	SCHUTT, Alexius	L	46:54	6	21	16	9	46	37	Paniccia, Nicole	W	39:55	0	2	9	0	11
32	MONTGOMERY, Ma		13:06	0	0	0	14	14		EMPTY NET		0:05	0	0	0	0	0
										31 Meyer, Brooke		20:00	0	0	0	7	7

PENALTY SUMMARY

Prd	Player	Team	Min	Offense	Time	Prd	Player	Team	Min	Offense	Time
1st	HANNA, Sara	SHU	2:00	PP	02:38	3rd	DELANEY, Sarah	SHU	2:00	H	10:17
1st	HASSON, Jennifer	PSU	2:00	B	13:05	3rd	Pardoski, Jordin	PSU	2:00	H	18:52
2nd	Zinn, Katie	PSU	2:00	B	13:15						

Win-Paniccia, Nicole (3-3-1). Loss-SCHUTT, Alexius (0-2-0).

Referee's signature



Hockey Game Box Score (Final)

Robert Morris vs Penn State (Nov 10, 2012 at University Park, Pa.)



Hockey Game Box Score (Final)

Robert Morris vs Penn State (Nov 11, 2012 at University Park, Pa.)

Robert Morris (4-2-1, 1-0-0 CHA) vs. Penn State (4-6-1, 0-4-1 CHA)
 Date: Nov 10, 2012 • Location: University Park, Pa. • Arena: Greenberg Pavilion
 Attendance: 152 • Start time: 2:00 pm • End time: 3:52 pm • Total time: 1:52

Prd	Time	Team	Scored by	Assists	Vis. on ice	Home on ice
1	09:58	RMU	EV Rebecca Vint/3	Kelsey Thomas/2	24,17,25,28,26	36,15,40,6,8
2	12:21	RMU	PP Rebecca Vint/3	Brandi Pollock/3	24,25,28,17,26	24,40,6,8
3	13:56	RMU	EV Kylie St. Louis/3	Jamie Joslin/2	9,5,24,17,26	43,20,14,11
4	14:18	RMU	EV Rebecca Vint/5	Kelsey Thomas/3	24,17,26,25,26	23,10,6,8,19
5	2nd 08:32	RMU	EV Thea Imbrogno/2	Maddie Collias/4	19,11,21,6,16	8,6,13,24,15
6	2nd 16:05	PSU	EV Yoheimer, Shannon/1	Gross, Taylor/10	26,17,24,25,28	40,24,15,33
7	2nd 18:04	RMU	PP Rebecca Vint/6	Thea Imbrogno/3	24,19,25,11,17	19,20,33
8	3rd 16:06	RMU	EV Rebecca Vint/7	Kelsey Thomas/4	24,26,17,28,25	22,6,20,16,8

TEAM SUMMARY														
#	Robert Morris	G	A	PI	Sh +/-	BI	#	Penn State	G	A	PI	Sh +/-	BI	
3	Dayna Newsom	0	0	0	1	0	0	2	Bateman, Jeanet	0	0	0	0	0
5	Annelise Lauzier	0	0	0	1	+1	2	4	Pardoski, Jordin	0	0	2	0	0
6	Kelsey Gunn	0	0	0	1	+1	0	6	Reihl, Lindsay	0	0	0	-4	-2
9	Kylie St. Louis	1	0	0	6	+1	3	8	McGee, Taylor	0	0	0	-4	0
11	Kristen Richards	0	0	1	1	+1	2	10	Catanzanti, Mica	0	0	0	1	-2
14	Jennifer Kindret	0	0	0	1	0	0	11	Zinn, Katie	0	0	0	-1	0
16	Erin Staniewski	0	0	0	0	+1	0	13	Rasmussen, Ken	0	0	0	-2	-1
17	Kelsey Thomas	0	4	2	3	+1	1	15	Desorcie, Jess	0	0	0	1	-1
19	Anissa Gamble	0	0	0	0	0	0	16	Hoenshell, Hann	0	0	0	-1	-2
19	Thea Imbrogno	1	1	0	4	+1	1	17	Jahkne, Paige	0	0	4	1	0
20	Courtney Langst	0	0	0	0	0	0	19	Holdcroft, Jill	0	0	0	-1	-2
21	Maddie Collias	0	1	2	2	+1	1	20	Laurenzi, Emily	0	0	0	-2	0
22	Ashley Vesci	0	0	0	1	0	0	22	Welch, Jenna	0	0	2	0	-1
24	Rebecca Vint	5	0	0	8	+3	1	23	Shaw, Birdie	0	2	0	-1	-2
25	Jamie Joslin	0	1	0	7	+2	0	24	Gross, Taylor	0	1	0	3	0
26	Cobina Delaney	0	3	0	6	+3	2	33	Smiddy, Madison	0	0	0	1	0
22	Katie Fergus	0	0	1	0	0	0	36	Weaver, Tess	0	0	0	-2	0
28	Brandi Pollock	0	0	1	0	+2	2	40	Yoheimer, Shan	0	0	0	7	0
1	Delayne Brian	dnp						30	Whitlinger, Celin	dnp				
Totals		7	12	8	43	+25	15	Totals		1	2	8	20	-16

GOALTENDERS																	
#	Robert Morris	Dec	Min	GA	1	2	3	Saves	#	Penn State	Dec	Min	GA	1	2	3	Saves
29	Kristen DiCiccio	W	39:58	1	6	5	0	11	37	Paniccia, Nicole	L	60:00	7	10	13	13	36
	EMPTY NET		0:02	0	0	0	0	0		EMPTY NET		0:21	0	0	0	0	0
31	Courtney Vint		20:00	0	0	0	3	3				2:10	1	0	0	0	0

PENALTY SUMMARY

Prd	Player	Team	Min	Offense	Time	Prd	Player	Team	Min	Offense	Time
1st	Jahkne, Paige	PSU	2:00	I	04:04	2nd	Shaw, Birdie	PSU	2:00	T	17:32
1st	Welch, Jenna	PSU	2:00	S	10:36	3rd	Kristen Richards	RMU	2:00	S	05:24
2nd	Kelsey Thomas	RMU	2:00	I	10:57	3rd	Jahkne, Paige	PSU	2:00	H	12:05
2nd	Kristen Richards	RMU	2:00	T	11:56	3rd	Maddie Collias	RMU	2:00	R	16:41
2nd	Pardoski, Jordin	PSU	2:00	I	16:26						

Win-Kristen DiCiccio (4-2-1). Loss-Paniccia, Nicole (4-4-1).
 Penn State timeout at 14:18 of 1st.

Referee's signature

Robert Morris (5-2-1, 2-0-0 CHA) vs. Penn State (4-7-1, 0-5-1 CHA)
 Date: Nov 11, 2012 • Location: University Park, Pa. • Arena: Greenberg Pavilion
 Attendance: 127 • Start time: 2:00 pm • End time: 3:54 pm • Total time: 1:54

Prd	Time	Team	Scored by	Assists	Vis. on ice	Home on ice
1	01:55	RMU	SH Dayna Newsom/1	Jennifer Kindret/2	3,28,25,14	23,36,22,17
2	12:40	RMU	EV Rebecca Vint/8	Brandi Pollock/3	24,6,17,16,26	23,15,24,33,6
3	16:50	RMU	EV Cobina Delaney/1	Kelsey Gunn/1	26,17,24,25,28	6,13,22,36,33
4	13:41	PSU	EV Catanzanti, Micayla	Jahkne, Paige	19,9,25,20,11	10,23,33,19,17
5	19:47	RMU	EN Jamie Joslin/2	-	25,19,28,24,11	17,10,23,21,6,20

TEAM SUMMARY														
#	Robert Morris	G	A	PI	Sh +/-	BI	#	Penn State	G	A	PI	Sh +/-	BI	
2	Leah Carlson	0	0	2	0	0	0	2	Bateman, Jeanet	0	0	0	-1	-2
3	Dayna Newsom	1	0	0	3	+1	0	4	Pardoski, Jordin	0	0	4	0	0
5	Annelise Lauzier	0	0	0	2	0	0	6	Reihl, Lindsay	0	0	0	-2	0
6	Kelsey Gunn	0	1	0	1	+1	1	8	McGee, Taylor	0	0	0	1	0
8	Megan Eady	0	0	0	0	0	0	13	Rasmussen, Ken	0	0	0	-2</	



NITTANY LION WOMEN'S HOCKEY

PEGULA ICE ARENA FUTURE HOME OF PENN STATE HOCKEY

FACTS

Construction Groundbreaking: January 2012

Ceremonial Groundbreaking: April 20, 2012

Projected Opening: September 5, 2013

Capacity: 6,000 (Arena rink); 300 (Community rink)

Size: 200,000 square feet

AMENITIES

Two NHL-sized (200' x 85') ice surfaces

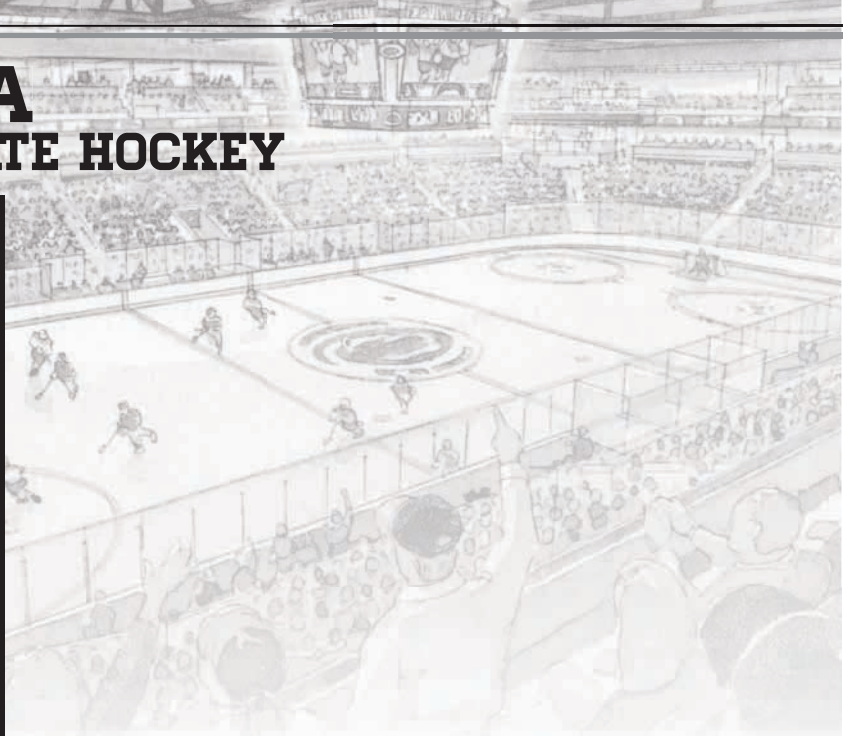
Arena rink will offer:

- 6,000-seat overall capacity
- 1,000-seat student section
- First-rate varsity locker rooms
- Team lounges and dry changing room
- Strength and conditioning center
- Shooting gallery
- Suites, loge boxes and club seats
- State-of-the-art television and radio broadcasting facilities
- Press box and media center
- Concession stands with café
- Videoboard

Community rink will offer:

- 300-seat capacity
- Eight locker rooms
- Skate rental center

Pegula Ice Arena will have the ability to host National Hockey League and American Hockey League games, as well as professional ice shows, local hockey and figure skating programs.



Left to Right: Kim and Terry Pegula, Dr. Rodney Erickson, The Nittany Lion, Joe Battista and Karen Peetz at the Pegula Ice Arena ceremonial groundbreaking.



NITTANY LION WOMEN'S HOCKEY



2012-13 Penn State Women's Hockey Penn State Combined Team Statistics (as of Nov 13, 2012) All games

Date	Opponent	Score	Att.
Oct 06	at Vermont	W 5-3	785
Oct 07	at Vermont	L 1-3	326
* Oct 13	SYRACUSE	L 0-4	408
* Oct 14	SYRACUSE	L 0-6	285
Oct 19	at Sacred Heart	L 1-2	123
Oct 20	at Sacred Heart	W 6-1	213
* Oct 25	RIT	L 1-4	229
* Oct 26	RIT	Tot 2-2	238
Nov 02	SACRED HEART	W 6-0	231
Nov 03	SACRED HEART	W 8-2	127
* Nov 10	ROBERT MORRIS	L 1-7	152
* Nov 11	ROBERT MORRIS	L 1-4	127

TEAM STATISTICS	PSU	OPP
SHOT STATISTICS		
Goals-Shot attempts	32-365	38-470
Shot pct.	.088	.081
Goals/Game	2.7	3.2
Shots/Game	30.4	39.2
POWER PLAYS		
Goals-Power Plays	6-48	14-52
Conversion Percent	.125	.269
GOAL BREAKDOWN		
Power Play	6	14
Short-handed	0	3
Empty net	1	1
Penalty	0	0
Unassisted	4	5
Overtime	0	0
PENALTIES		
Number	52	50
Minutes	104	100
Penalties/Game	4.3	4.2
Pen minutes/Game	8.7	8.3
FACEOFFS (W-L)		
Faceoff W-L Pct.	354-394	394-354
	.473	.527

Record:	Overall	Home	Away	Neutral
ALL GAMES	4-7-1	2-5-1	2-2-0	0-0-0
CONFERENCE	0-5-1	0-5-1	0-0-0	0-0-0
NON-CONFERENCE	4-2-0	2-0-0	2-2-0	0-0-0

##	Player	gp	g	a	pts	sh	sh%	pen-min	pp	sh
40	Yoxheimer, Shannon	12	10	4	14	78	.128	3-6	2	0
24	Gross, Taylor	12	3	10	13	32	.094	1-2	2	0
15	Desorcie, Jess	12	2	8	10	28	.071	2-4	0	0
33	Smiddy, Madison	10	1	5	6	10	.100	3-6	1	0
23	Shaw, Birdie	11	2	3	5	26	.077	5-10	0	0
20	Laurenzi, Emily	12	1	4	5	12	.083	1-2	0	0
16	Hoenshell, Hannah	7	4	0	4	22	.182	0-0	0	0
10	Catanzariti, Micayla	12	3	1	4	20	.150	5-10	0	0
22	Welch, Jenna	12	1	3	4	20	.050	5-10	0	0
19	Holdcroft, Jill	12	2	1	3	17	.118	1-2	0	0
2	Bateman, Jeanette	12	1	1	2	13	.077	1-2	1	0
13	Rasmussen, Kendra	11	1	1	2	18	.056	1-2	0	0
17	Jahnke, Paige	12	0	2	2	16	.000	6-12	0	0
4	Pardoski, Jordin	12	1	0	1	9	.111	8-16	0	0
8	McGee, Taylor	9	0	1	1	8	.000	5-10	0	0
6	Reihl, Lindsay	12	0	1	1	5	.000	2-4	0	0
36	Weaver, Tess	9	0	1	1	17	.000	1-2	0	0
11	Zinn, Katie	9	0	1	1	11	.000	1-2	0	0
3	Mendelson, Cara	1	0	0	0	0	.000	0-0	0	0
25	Murphy, Katie	6	0	0	0	0	.000	0-0	0	0
21	Wilkie, Sarah	6	0	0	0	3	.000	0-0	0	0
TM	TEAM	5	0	0	0	0	.000	1-2	0	0
Total		12	32	47	79	365	.088	52-104	6	0
Opponents		12	38	61	99	470	.081	50-100	14	3

##	Goalie	gp	min	ga	gaavg	saves	save%	w-l-t
31	Meyer, Brooke	1	20:00	0	0.00	7	1.000	0-0-0
37	Paniccia, Nicole	10	581:44	28	2.89	347	.925	4-5-1
30	Whitlinger, Celine	2	117:57	9	4.58	78	.897	0-2-0
TM	EMPTY NET	5	4:36	1	-	0	.000	0-0-0
Total		12	724:17	38	3.15	432	.919	4-7-1
Opponents		12	724:17	32	2.65	333	.912	7-4-1

Attendance Summary	PSU	Opponent
Total	1797	1447
Dates/Avg Per Date	8/225	4/362
Neutral Site #/Avg	0/0	

Goals by Period	1st	2nd	3rd	Total
Penn State	9	11	12	32
Opponents	14	11	13	38

Saves by Period	1st	2nd	3rd	Total
Penn State	132	147	148	432
Opponents	101	119	113	333



NITTANY LION WOMEN'S HOCKEY



2012-13 Penn State Women's Hockey
 Penn State Game-by-Game Goals-Assists-Points (as of Nov 13, 2012)
 All games

Opponent	Date	Score	2	3	4	6	8	10	11	13	15	16	17
at UVM	Oct 06	5-3 W	BATEMAN, J	MENDELSON, DNP	PARDOSKI, DNP	REHL, LINDS	MCGEETAY, L	CATANZARITI, 2-1-3	ZINN, KATIE	RASMUSSEN, DNP	DESORCIE, J	HOENSHELL, DNP	JAHNKE, PAIG
at UVM	Oct 07	1-3 L	0-0-0	DNP	0-0-0	0-0-0	0-1-1	0-0-0	0-0-0	DNP	0-2-2	DNP	0-0-0
SU	Oct 13	0-4 L	0-0-0	DNP	0-0-0	0-0-0	0-0-0	0-0-0	0-0-0	0-0-0	0-0-0	DNP	0-0-0
SU	Oct 14	0-6 L	0-0-0	DNP	0-0-0	0-0-0	0-0-0	0-0-0	0-0-0	0-0-0	0-0-0	DNP	0-0-0
at SHU	Oct 19	1-2 L	0-0-0	DNP	0-0-0	0-0-0	DNP	0-0-0	0-0-0	0-0-0	0-0-0	DNP	0-0-0
at SHU	Oct 20	6-1 W	1-0-1	0-0-0	1-0-1	0-1-1	DNP	0-0-0	DNP	0-0-0	1-0-1	1-0-1	0-0-0
RIT	Oct 25	1-4 L	0-0-0	DNP	0-0-0	0-0-0	0-0-0	0-0-0	0-0-0	DNP	0-1-1	0-0-0	0-0-0
RIT	Oct 26	2-2 T	0-0-0	DNP	0-0-0	0-0-0	0-0-0	0-0-0	0-0-0	DNP	0-1-1	0-0-0	0-0-0
SHU	Nov 02	6-0 W	1-0-1	0-2-2	DNP	0-0-0	0-0-0	0-1-1	DNP	DNP	0-0-0	0-0-0	0-0-0
SHU	Nov 03	8-2 W	1-0-1	1-0-1	DNP	1-1-2	0-0-0	1-2-3	DNP	DNP	DNP	1-1-2	0-1-1
RMU	Nov 10	1-7 L	0-0-0	0-0-0	DNP	0-0-0	0-0-0	0-1-1	DNP	DNP	DNP	0-0-0	0-0-0
RMU	Nov 11	1-4 L	0-1-1	0-0-0	0-0-0	0-0-0	0-1-1	0-0-0	0-0-0	DNP	DNP	0-0-0	0-0-0
Opponent	Date	Score	19	20	21	22	23	24	25	30	31	33	36
at UVM	Oct 06	5-3 W	HOLDROFT, 0-0-0	LAURENZIEM, 0-1-1	WILKIE, SARA DNP	WELCH, JENNI	SHAW, BRIDIE	GROSS, TAYL	MURPHY, KAT	WHITLINGER, DNP	MEYER, BROO	SMIDDY, MADI	WEAVER, TES
at UVM	Oct 07	1-3 L	0-0-0	0-0-0	DNP	0-0-0	1-0-1	0-0-0	DNP	0-0-0	DNP	0-1-1	DNP
SU	Oct 13	0-4 L	0-0-0	0-0-0	DNP	0-0-0	0-0-0	0-0-0	DNP	0-0-0	DNP	0-0-0	DNP
SU	Oct 14	0-6 L	0-0-0	0-0-0	0-0-0	0-0-0	0-0-0	0-0-0	0-0-0	0-0-0	DNP	DNP	0-0-0
at SHU	Oct 19	1-2 L	0-0-0	0-0-0	0-0-0	0-0-0	0-1-1	0-1-1	0-0-0	DNP	DNP	0-0-0	0-0-0
at SHU	Oct 20	6-1 W	0-0-0	0-1-1	0-0-0	0-2-2	DNP	1-1-2	0-0-0	DNP	DNP	0-2-2	0-0-0
RIT	Oct 25	1-4 L	0-0-0	0-0-0	0-0-0	0-0-0	0-0-0	0-1-1	0-0-0	DNP	DNP	0-0-0	0-0-0
RIT	Oct 26	2-2 T	0-0-0	0-0-0	DNP	0-0-0	0-0-0	1-1-2	0-0-0	DNP	DNP	0-1-1	0-0-0
SHU	Nov 02	6-0 W	1-0-1	0-2-2	DNP	0-0-0	0-0-0	0-1-1	DNP	DNP	0-0-0	0-0-0	0-0-0
SHU	Nov 03	8-2 W	1-0-1	1-0-1	DNP	1-1-2	0-0-0	1-2-3	DNP	DNP	DNP	1-1-2	0-1-1
RMU	Nov 10	1-7 L	0-0-0	0-0-0	DNP	0-0-0	0-0-0	0-1-1	DNP	DNP	DNP	0-0-0	0-0-0
RMU	Nov 11	1-4 L	0-1-1	0-0-0	0-0-0	0-0-0	0-1-1	0-0-0	0-0-0	DNP	DNP	0-0-0	0-0-0
Opponent	Date	Score	37	40									
at UVM	Oct 06	5-3 W	0-0-0	0-0-2									
at UVM	Oct 07	1-3 L	DNP	0-0-0									
SU	Oct 13	0-4 L	0-0-0	0-0-0									
SU	Oct 14	0-6 L	DNP	0-0-0									
at SHU	Oct 19	1-2 L	0-0-0	1-0-1									
at SHU	Oct 20	6-1 W	0-0-0	1-1-2									
RIT	Oct 25	1-4 L	0-0-0	1-0-1									
RIT	Oct 26	2-2 T	0-0-0	1-1-2									
SHU	Nov 02	6-0 W	0-0-0	2-0-2									
SHU	Nov 03	8-2 W	0-0-0	1-2-3									
RMU	Nov 10	1-7 L	0-0-0	1-0-1									
RMU	Nov 11	1-4 L	0-0-0	0-0-0									

NITTANY LION WOMEN'S HOCKEY



2012-13 PENN STATE WOMEN'S HOCKEY NUMERICAL ROSTER

No.	Name	Yr.	Pos.	Ht.	S/C	Hometown	Last Team
2	Jeanette Bateman	Fr.	F/D	5-6	R	Greeley, Colo.	Colorado Select
3	Cara Mendelson	So.	F/D	5-6	R	Pittsburgh, Pa.	Steel City Selects
4	Jordin Pardoski	Fr.	D	5-5	R	Rochester Hills, Mich.	Detroit Honeybaked
5	Stephanie Walkom	Fr.	D	5-7	R	Moon Township, Pa.	Pittsburgh Penguins Elite
6	Lindsay Reihl	Sr.	D	5-4	R	Cheshire, Conn.	Connecticut Polar Bears
8	Taylor McGee	Fr.	D	5-3	R	Pearl River, N.Y.	Taft School (Conn.)
10	Micayla Catanzariti	Fr.	F	5-4	R	Rancho Santa Margarita, Calif.	Gilmour Academy (Ohio)
11	Katie Zinn	Fr.	F	5-7	R	Coquitlam, B.C.	Gilmour Academy (Ohio)
12	Kate Christoffersen	Sr.	F	5-3	R	Trumbull, Conn.	Connecticut Polar Bears
13	Kendra Rasmussen	Fr.	F	5-5	L	Sartell, Minn.	Sartell/Sauk Rapids HS
14	Darby Kern	Fr.	F	5-11	R	Venetia, Pa.	Pittsburgh Penguins Elite
15	Jess Desorcie	So.	F	5-4	L	Westford, Vt.	Connecticut College
16	Hannah Hoenshell	Fr.	F	5-3	R	Plano, Texas	Texas Alliance
17	Paige Jahnke	Fr.	D	5-6	R	Oakdale, Minn.	Roseville HS/Minnesota Jr. Whitecaps
19	Jill Holdcroft	Fr.	F	5-1	R	Pennsylvania Furnace, Pa.	Pittsburgh Penguins Elite
20	Emily Laurenzi	Fr.	F	5-2	R	Townsend, Del.	National Sports Academy (N.Y.)
21	Sarah Wilkie	Fr.	D	5-6	R	Ashby, Mass.	Williston Northampton School
22	Jenna Welch	Jr.	F	5-8	R	Austin, Texas	Connecticut
23	Birdie Shaw	Fr.	F	5-2	L	Troy, Mich.	Detroit Honeybaked
24	Taylor Gross	Jr.	F	5-1	R	Colorado Springs, Colo.	Connecticut
25	Katie Murphy	So.	F	5-4	L	Novi, Mich.	Detroit Honeybaked
30	Celine Whitlinger	Fr.	G	5-8	L	Garden Grove, Calif.	Gilmour Academy (Ohio)
31	Brooke Meyer	Fr.	G	5-7	L	Naperville, Ill.	Chicago Huskies
33	Madison Smiddy	So.	D	5-7	L	Grand Rapids, Mich.	Detroit Honeybaked
36	Tess Weaver	So.	F	5-5	R	Windber, Pa.	Pittsburgh Penguins Elite
37	Nicole Paniccia	Jr.	G	5-5	L	Oakville, Ont.	Connecticut
40	Shannon Yoxheimer	Fr.	F	5-7	L	Jackson, Mich.	North American Hockey Academy (Vt.)

Head Coach: Josh Brandwene (First Year)

Assistant Coaches: Gina Kearns (First Year), Casey McCullion (First Year); **Director of Operations/Video Coach:** Mo Stroemel (First Year)

Captain: Taylor Gross; **Assistant Captains:** Lindsay Reihl, Jenna Welch

ALPHABETICAL ROSTER		PRONUNCIATION GUIDE		LIONS BY STATE		LIONS BY POSITION	
No.	Name	Brandwene	BRAND-ween	California (2):	Catanzariti, Whitlinger	Forward (17):	Bateman*, Catanzariti
2	Jeanette Bateman	Catanzariti	Cah-TAN-zah-REE-tee	Colorado (2):	Bateman, Gross		Christoffersen, Desorcie, Gross,
10	Micayla Catanzariti	Jahnke	YAWN-kee	Connecticut (2):	Christoffersen, Reihl		Hoenshell, Holdcroft, Kern, Laurenzi,
12	Kate Christoffersen	Jeanette	Jeh-NETT	Delaware (1):	Laurenzi		Mendelson, Murphy, Rasmussen,
15	Jess Desorcie	Kearns	KERNS	Illinois (1):	Meyer		Shaw, Weaver, Welch, Yoxheimer,
24	Taylor Gross	McCullion	Mick-CULL-yon	Massachusetts (1):	Wilkie		Zinn
16	Hannah Hoenshell	Paniccia	Pah-NEE-cha	Michigan (5):	Murphy, Pardoski, Shaw, Smiddy, Yoxheimer	Defense (9):	Bateman, Jahnke,
19	Jill Holdcroft	Reihl	RILE	Minnesota (2):	Jahnke, Rasmussen		McGee, Mendelson*, Pardoski, Reihl,
17	Paige Jahnke	Stroemel	STRAW-mull	New York (1):	McGee		Smiddy, Walkom, Wilkie
14	Darby Kern			Pennsylvania (5):	Holdcroft, Kern, Mendelson, Walkom, Weaver	Goalie (3):	Meyer, Paniccia, Whitlinger
20	Emily Laurenzi			Texas (2):	Hoenshell, Welch		
8	Taylor McGee			Vermont (1):	Desorcie		
3	Cara Mendelson						
31	Brooke Meyer						
25	Katie Murphy						
37	Nicole Paniccia						
4	Jordin Pardoski						
13	Kendra Rasmussen						
6	Lindsay Reihl						
23	Birdie Shaw						
33	Madison Smiddy						
5	Stephanie Walkom						
36	Tess Weaver						
22	Jenna Welch						
30	Celine Whitlinger						
21	Sara Wilkie						
40	Shannon Yoxheimer						
11	Katie Zinn						





NITTANY LION WOMEN'S HOCKEY



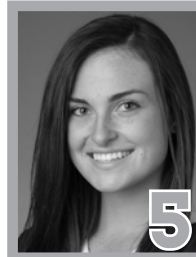
JEANNETTE BATEMAN
Freshman • F/D
Greeley, Colo.



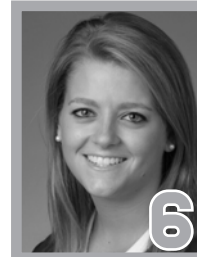
CARA MENDELSON
Sophomore • F/D
Pittsburgh, Pa.



JORDIN PARDOSKI
Freshman • D
Rochester Hills, Mich.



STEPHANIE WALKOM
Freshman • D
Moon Township, Pa.



LINDSAY REIHL **A**
Senior • D
Cheshire, Conn.



TAYLOR MCGEE
Freshman • D
Pearl River, N.Y.



MICAYLA CATAZARITTI
Freshman • F
Rancho Santa Margarita, Calif.



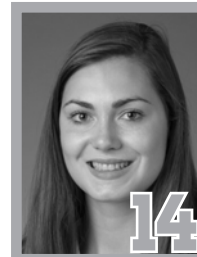
KATIE ZINN
Freshman • F
Coquitlam, B.C.



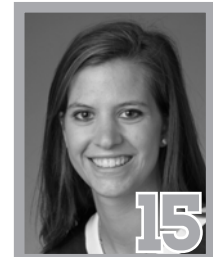
KATE CHRISTOFFERSEN
Senior • F
Trumbull, Conn.



KENDRA RASMUSSEN
Freshman • F
Sartell, Minn.



DARBY KERN
Freshman • F
Venetia, Pa.



JESS DESORCIE
Sophomore • F
Westford, Vt.



HANNAH HOENSHELL
Freshman • F
Plano, Texas



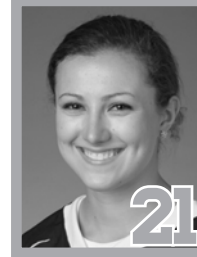
PAIGE JAHNKE
Freshman • D
Oakdale, Minn.



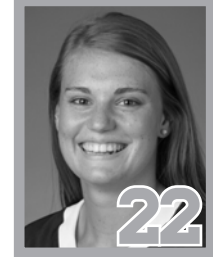
JILL HOLDCROFT
Freshman • F
Pennsylvania Furnace, Pa.



EMILY LAURENZI
Freshman • F
Townsend, Del.



SARAH WILKIE
Freshman • D
Ashby, Mass.



JENNA WELCH **A**
Junior • F
Austin, Texas



BIRDIE SHAW
Freshman • F
Troy, Mich.



TAYLOR GROSS **C**
Junior • F
Colorado Springs, Colo.



KATIE MURPHY
Sophomore • F
Novi, Mich.



CELINE WHITLINGER
Freshman • G
Garden Grove, Calif.



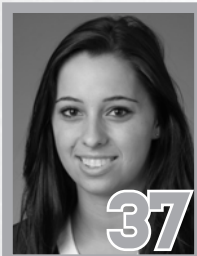
BROOKE MEYER
Freshman • G
Naperville, Ill.



MADISON SMIDDY
Sophomore • D
Grand Rapids, Mich.



TESS WEAVER
Sophomore • F
Windber, Pa.



NICOLE PANICCIA
Junior • G
Oakville, Ont.



SHANNON YOXHEIMER
Freshman • F
Jackson, Mich.