

# PENN STATE

## WOMEN'S LACROSSE

### 2012 SCHEDULE

#### February

15	at Bucknell	W, 19-3
19	No. 2 MARYLAND	L, 16-6
22	DUQUESNE	W, 16-5
25	at Lafayette	W, 14-10

#### March

4	No. 6 VIRGINIA	W, 14-7
7	No. 17 LOYOLA	L, 12-10 (OT)
10	at Delaware	W, 12-6
14	at Hofstra	W, 11-9
18	at No. 8 Vanderbilt*	W, 12-11 (OT)
25	WILLIAM & MARY	W, 9-7

#### April

1	at No. 4 Florida*	L, 20-11
6	No. 1 NORTHWESTERN*	L, 14-7
11	at Lehigh	W, 15-3
15	at No. 10 Ohio State*	W, 15-12
21	No. 18 JOHNS HOPKINS*	W, 12-9
28	No. 17 PRINCETON	L, 13-12 (OT)

#### May

3	vs. No. 19 Johns Hopkins (1)	L, 13-12
12	at No. 16 Towson (2)	3:00

\*ALC games

(1) 2012 ALC Championship First Round, Gainesville, Fla.  
 (2) 2012 NCAA Championship, First Round, Towson, Md.

### TEAM INFORMATION

<b>Head Coach</b>	Missy Doherty (Second year)
<b>Penn State Record</b>	21-14
<b>Career Record</b>	100-60
<b>Assistant Coach</b>	Tara Hohenshelt (13th year)
<b>Assistant Coach</b>	Amy Altig (Second year)
<b>2012 Overall Record</b>	11-6
<b>2012 ALC Record (Finish)</b>	3-2 (3rd)
<b>2012 Team Captains</b>	Dana Cahill Theresa Zichelli
<b>All-Time Record</b>	455-221-5
<b>All-Time ALC Record</b>	30-26
<b>NCAA Postseason Appearances</b>	18
<b>National Championships</b>	5
<b>All-Americans</b>	98

### ATHLETIC COMMUNICATIONS

<b>Women's lacrosse contact</b>	John Regenfuss
<b>Office phone</b>	814-865-1757
<b>Cell phone</b>	814-876-0824
<b>Office fax</b>	814-863-3165
<b>Email</b>	jmr49@psu.edu
<b>Twitter</b>	@GoPSUWLaxr



## PENN STATE NITTANY LIONS

At-large  
11-6

## TOWSON TIGERS

No. 8 seed  
16-3



First Round | Saturday, May 12 | 3:00 p.m. | Johnny Unitas Stadium | Towson, Md.

### SETTING THE SCENE

- Thirteenth-ranked Penn State will open NCAA postseason play on Saturday when it meets No. 16 Towson (16-3) at 3 p.m. in a first round match-up of the 2012 NCAA Women's Lacrosse Championship.
- The Nittany Lions, which earned an at-large berth, will square off with the eighth-seeded Tigers at Johnny Unitas Stadium in Towson

### STORYLINES AROUND

- Penn State's opponent is a familiar one for second-year head coach Missy Doherty, as she came to Happy Valley after serving as the head coach at Towson for seven years, where she led the Tigers to a 79-46 record, three Colonial Athletic Association titles, and four NCAA Championship appearances, including the program's first ever at-large berth in 2010.
- The contest will pit against one another the only two goalkeepers to be nominated for the 2012 Tewaaraton Award – Penn State's Dana Cahill and Towson's Mary Teeters.
- Strength versus strength will be on display on the national stage, as Penn State was stellar on the road in 2012, posting a 7-1 record, while Towson went unbeaten at home, going 11-0, including a 9-0 mark at Johnny Unitas Stadium.
- Penn State will not have the only coaching staff member familiar with its opponent, as current Towson assistant Hannah Nielsen served in the same capacity for the Nittany Lions during the 2010 season.

### CHAMPIONSHIP COVERAGE

- Fans can follow all of the action of the Penn State-Towson contest with live stats from GameTracker or receive game updates through the official Twitter account of the Penn State women's lacrosse team, @GoPSUWLax.
- The NCAA Championship first round battle will also be streamed live online for free.
- Find links on the front page (click on Schedule/Results) of the official website of Nittany Lion athletics, www.GoPSUsports.com, and on the women's lacrosse schedule page.

### PREVIEWING PENN STATE

- In 2012, Penn State (11-6) had a breakout season, recording the program's most wins, including three over top 10 opponents, since 2005.
- The Nittany Lions finished third in American Lacrosse Conference, a league which regularly placed all six of its members in the national rankings, with a 3-2 mark.
- On offense, Penn State features three 30-goal scorers in sophomore Mackenzie Cyr (33), freshman Tatum Coffey (33), and junior Molly Fernandez (31).
- Freshman Maggie McCormick tops the Lions with 27 assists and is tied with Cyr for the team lead in points with 55.
- McCormick and Cyr have combined to account for 49 of Penn State's 74 assists (66%).
- Coffey, McCormick, and senior Theresa Zichelli, who has 24 points (20 goals, 4 assists) in 2012, were named Second Team All-ALC.
- The Penn State defense, ranked No. 26 in the nation, is headlined by First Team All-ALC selection sophomore Lizzy Carney and two-time ALC Goalkeeper of the Year Dana Cahill.
- Cahill is ranked nationally No. 5 in saves (161), No. 10 in save percentage (.491), and No. 26 in goals against average (9.93)
- Tatum Coffey is also a presence on defense, leading the team with 17 caused turnovers.

### PENN STATE POSTSEASON HISTORY

- Penn State's NCAA postseason berth is its first since the 2005 season and the 18th in program history.
- In 2005, the Nittany Lions fell in heartbreaking fashion in the first round, dropping a 7-6 triple overtime decision at home to North Carolina.
- Penn State has not won an NCAA Championship contest since 1999, when it downed Princeton, 9-7, in overtime on the road in the quarterfinals.
- Overall, the Nittany Lions possess a 29-17 record in postseason play, which includes USWLA, AIAW, and NCAA games.



AMERICAN LACROSSE CONFERENCE

**2012 PENN STATE ROSTER**

No.	Name	Pos.	Yr.	Ht.	Hometown/High School	Notes
1	Avery Curley	A	So.	5-5	Berwyn, Pa./Episcopal Academy	Played in 4 games, scored 2 goals
2	Shannon Lechner	A/M	So.	5-5	Silver Spring, Md./Our Lady of Good Counsel	Towson transfer, played in 10 games
3	Haley Ford	M	Fr.	5-7	White Hall, Md./North Harford	Ranks 7th on team with 11 goals, 14 points
5	Lizzy Carney	D	So.	5-5	West Chester, Pa./Unionville	Top 1-v-1 defender, started all 17 games
6	Elaine Welch	A	Sr.	5-10	Bernardsville, N.J./Kent Place	Made 3 starts, scored 7 goals
7	Tatum Coffey	M	Fr.	5-6	Toms River, N.J./Toms River	Scored 33 goals, team leader in draws (51)
8	Brittaney Chamberlain	D	Sr.	5-3	Finksburg, Md./Westminster	Started all 8 games in which she played
9	Katie Guy	D	Jr.	5-8	Whitby, Ontario/Anderson C.V.I.	Started all 17 games; also takes draws
10	Lauren Purvis	M	So.	5-7	Maple Glen, Pa./Hatboro-Horsham	Played in 16 games, scored 3 goals
12	Molly Fernandez	A	Jr.	5-2	Baltimore, Md./McDonogh School	Team leader in shots (72), scored 31 goals
14	Ali Foulsham	D	So.	5-6	Madison, N.J./Madison	Played in 2 games, twin sister of Evan
15	Mackenzie Cyr	A	So.	5-6	Westminster, Md./Winters Mill	Team leader with 33 goals, 55 points
16	Kelsey Hughes	D	Sr./Jr.	5-7	Severna Park, Md./Severn School	Played in 5 games
17	Erin McAfee	D	Fr.	5-8	Moorestown, N.J./Moorestown	Played in 7 games
18	Cat Layne	D	Fr.	5-4	Downingtown, Pa./Villa Maria Academy	Started 8 games, including last 6
19	Carly Bitzer	D	So.	5-8	Doylestown, Pa./Central Bucks East	Played in 4 games
20	Evan Foulsham	M	So.	5-6	Madison, N.J./Madison	Played in 14 games with 8 starts
21	Kelly Lechner	M	Fr.	5-6	Silver Spring, Md./Our Lady of Good Counsel	20 goals, 5 assists, 25 points
23	Theresa Zichelli	M	Sr.	5-6	Severna Park, Md./Severna Park	24 points (20g, 4a), 26 gb, 26 dc, 13 ct
24	Maggie McCormick	A	Fr.	5-10	Eldersburg, Md./Liberty	Team leader with 27 assists, 55 points
28	Aly Adams	M	Sr.	5-6	Springfield, Pa./Springfield	Made 9 starts, scored 6 goals
30	Colleen Shea	D	Sr.	5-4	Baltimore, Md./Seton Keough	Started all 17 games on back line
32	Kristin Brent	A	Fr.	5-9	Rockville Centre, N.Y./Sacred Heart Academy	Played in 3 games
33	Melissa Lloyd	GK	So.	5-0	West Chester, Pa./Unionville	Back-up GK, played in 1 game
34	Dana Cahill	GK	Sr.	5-7	Towson, Md./Mercy	Tewaaraton candidate, ALC GK of the year

**Head Coach:** Missy Doherty (Second Year at Penn State, Ninth Career)  
**Assistant Coaches:** Tara Hohenshelt (13th Year), Amy Altig (Second Year)  
**Captains:** Dana Cahill, Theresa Zichelli

**SCOUTING TOWSON**

- Towson, which will be hosting an NCAA postseason contest for the first time in program history, earned its bid by defeating Northeast Conference winner Monmouth, 15-5, on May 5 in a play-in game.
- The Tigers ended the regular season with a perfect 7-0 record in Colonial Athletic Association play and then defeated Drexel and James Madison to claim the 2012 CAA title.
- Sophomore Andi Raymond leads Towson with 66 points (33 goals, 33 assists) but Ashleigh Rohrback (26 goals, 22 assists), Kelly Custer (33 goals, 9 assists), and Sarah Appelt (19 goals, 15 assists) also help fuel the Tigers attack.
- Anchoring the nation's No. 7 defense is senior goalkeeper Mary Teeters, who ranks third nationally with a .513 save percentage and seventh with a 8.13 goals against average.

**PENN STATE-TOWSON SERIES**

- Penn State owns a 6-0 record in its all-time series versus Towson, but the teams have not played since 1983.
- Meeting each year during the regular season between 1978 and 1983, the Nittany Lions outscored the Tigers by a 90-15 margin during the unbeaten stretch.
- Penn State and Towson have never met in the postseason.

**SHARED OPPONENTS**

- Penn State and Towson shared six opponents during the 2012 season - Loyola, Johns Hopkins, Maryland, Delaware, William & Mary, and Hofstra.
- Penn State posted a 4-3 record versus those foes, having played Johns Hopkins twice, while Towson earned a 4-2 mark.

**CLOSE CALLS**

- The likelihood of a close game between Penn State and Towson is high, as both teams were involved in numerous in 2012.
- Penn State participated in three overtime contests and dropped its last two by a single goal.
- Towson was a part of nine games decided by one goal, posting an 8-1 record.

**WHAT'S AT STAKE**

- Should Penn State advance, it will face the winner of the Florida-Albany game on Saturday, May 19 in the NCAA Championship quarterfinal round.
- The Nittany Lions are 0-3 all-time versus the Gators, including this year's 20-11 setback in Gainesville on April 1.
- Penn State has met Albany just once in program history, a narrow 8-7 home loss early in the 2011 season.

**PRONUNCIATION GUIDE**

Amy ALTIG	ALL-tig
Dana CAHILL	CAY-hill
Mackenzie CYR	SEAR
Ali/Evan FOULSHAM	FOAL-shum
Tara HOHENSHELT	HOE-in-shelt
Shannon/Kelly LECHNER	LECK-nur
Erin MCAFFEE	MACK-ah-fee
Theresa ZICHELLI	Zih-KELLY

**DOHERTY COLLECTS 100TH WIN**

- Head coach Missy Doherty earned her 100th career win on April 21 when the Nittany Lions defeated Johns Hopkins, 12-9, at Penn State Lacrosse Field.
- Doherty, in her second year at the helm of the program, owns a 100-60 (.625) career record, including a 21-14 mark in Happy Valley.
- The milestone win for Doherty was also significant in that it pushed Penn State past the 10-win plateau for the first time since 2005, the last year it earned a berth to the NCAA Championship, and clinched a second consecutive winning conference record for the Nittany Lions.
- Prior to taking over the reins at Penn State, Doherty served as the head coach at Towson for seven years, where she compiled a 79-46 record and led the Tigers to the program's first ever at-large berth in the NCAA postseason.

**ROAD WARRIORS**

- Penn State has excelled away from home in 2012, posting a 7-1 record.
- The seven road victories are the most by a Nittany Lion team since 1989, the year of the program's last national championship, when it won eight.
- The Penn State record is nine wins, set in 1987 by another national championship team.

**CAHILL NAMED TEWAARATON NOMINEE**

- Senior goalkeeper Dana Cahill is a nominee for the 2012 Tewaaraton Award, an honor presented to the nation's top female collegiate lacrosse player.
- The veteran anchor of the Nittany Lions' 26th-ranked defense, Cahill has played an instrumental role in Penn State posting its most wins since 2005, including three against top 10 opponents, and earning as high as a No. 8 team national ranking.
- A starter of all 17 games in 2012 and 35 straight overall, she is highly ranked in the top 20 nationally in saves, save percentage, and goals against average.
- Cahill has recorded double digit saves in a total of nine games this game, including five of the last seven.
- She earned ALC Defensive Player of the Week honors on March 5 for her standout play in Penn State's 14-7 upset win over No. 6 Virginia.
- In 2011, Cahill established herself as one of the nation's top goalkeepers, earning First Team All-West/Midwest Region and All-ALC honors in addition to being named ALC Goalkeeper of the Year.

**FRESHMEN IMPACT**

- The Penn State freshman class has made an immediate impact on the program and has had a major influence on the fortunes of the 2012 Nittany Lions.
- Maggie McCormick and Tatum Coffey, who have each started every game this season, are receiving mention for national rookie of the year honors.
- McCormick, a three-time ALC Rookie of the Week and Second Team All-ALC honoree, is the team's quarterback behind the net on the attacking end.
- She tops Penn State with 27 assists and is tied for the lead team with 55 points.
- Coffey has quickly established herself as a force in the midfield.
- She is tied for first on the team with 33 goals and leads PSU in draw controls (51) and caused turnovers (17).
- Kelly Lechner (20 goals, 5 assists) and Haley Ford (11 goals, 3 assists) have also been key offensive contributors.
- On defense, Cat Layne has emerged as a dependable part of the back line, starting the last six games and eight overall.

**SOPHOMORE SUCCESS**

- Penn State's stellar freshman class is not the only component of the program's youth movement.
- The play of sophomores Mackenzie Cyr and Lizzy Carney is another main reason for the Nittany Lions' success in 2012.
- Cyr shares the team lead with 33 goals and 55 points, despite missing time with an injury.
- Carney, who often draws the assignment of getting matched up with opponents' primary offensive weapon, has quickly developed into a top defensive stopper.
- She shares the team lead in ground balls (34) and ranks tied for second in caused turnovers (15) and has also scored three goals.

**2012 AWARDS**

- Dana Cahill**
- Tewaaraton Award nominee
  - ALC Goalkeeper of the Year
  - First Team All-ALC
  - ALC Defensive Player of the Week (March 5)
- Lizzy Carney**
- First Team All-ALC
  - ALC Championship All-Tournament Team
- Maggie McCormick**
- Second Team All-ALC
  - ALC Rookie of the Week (March 5, April 16, April 30)
  - SynapseSports.com National Rookie of the Week (March 6, April 17)
  - WomensLax.com National Rookie of the Week (April 17)
- Tatum Coffey**
- Second Team All-ALC
  - ALC Offensive Player of the Week (March 19)
  - ALC Rookie of the Week (February 27)
  - Nike Player of the Week (March 19)
  - SynapseSports.com National Offensive Player of the Week
  - WomensLax.com National Rookie of the Week
- Theresa Zichelli**
- Second Team All-ALC

**IWLCA DIVISION I POLL**

May 7, 2012

1. Florida	17-2 (400)
2. Northwestern	17-2 (378)
3. Maryland	17-3 (356)
4. Syracuse	16-3 (338)
5. North Carolina	14-3 (325)
6. Duke	11-6 (284)
7. Loyola	13-5 (276)
8. Notre Dame	13-4 (257)
9. Dartmouth	12-4 (231)
10. Virginia	11-7 (219)
11. Penn	9-7 (210)
12. Cornell	11-5 (154)
<b>13. PENN STATE</b>	<b>11-6 (133)</b>
13. Ohio State	11-6 (133)
15. Massachusetts	19-1 (120)
16. Towson	16-3 (103)
17. Georgetown	9-8 (84)
18. Johns Hopkins	9-9 (63)
19. Princeton	8-7 (56)
20. Boston College	10-8 (28)

**deBEER/ILWOMEN.COM MEDIA POLL**

May 7, 2012

1. Florida	198
2. Northwestern	192
3. Maryland	184
4. Syracuse	174
5. North Carolina	161
6. Loyola	145
7. Duke	126
8. Notre Dame	125
9. Dartmouth	116
10. Massachusetts	110
11. Virginia	86
<b>12. PENN STATE</b>	<b>80</b>
12. Penn	80
14. Cornell	76
15. Towson	65
16. Ohio State	62
17. Johns Hopkins	59
18. Georgetown	44
19. Navy	26
20. Boston College	19

## USWLA/AIAW/NCAA POSTSEASON HISTORY

<b>1978 National Champions</b> USWLA at James Madison W, 18-0 vs. Rutgers (quarterfinals) W, 9-3 vs. Massachusetts (semifinals) W, 9-3 vs. Maryland (championship)	<b>1988 Second Place</b> NCAA at Penn State W, 12-6 vs. Northwestern (quarterfinals) NCAA at Lafayette W, 8-6 vs. Lafayette (semifinals) NCAA at Haverford L, 15-7 vs. Temple (championship)	<b>2005 First Round</b> NCAA at Penn State L, 7-6 (3OT) vs. North Carolina (first round)
<b>1979 National Champions</b> USWLA at Penn State W, 23-2 vs. Brown (quarterfinals) W, 9-2 vs. Yale (semifinals) W, 8-5 vs. Massachusetts (championship)	<b>1989 National Champions</b> NCAA at West Chester W, 9-3 vs. Temple (semifinals) W, 7-6 vs. Harvard (championship)	<b>Overall postseason record: 29-17</b>
<b>1980 National Champions</b> USWLA at Princeton W, 12-6 vs. Harvard (quarterfinals) W, 8-3 vs. Massachusetts (semifinals) W, 3-1 vs. Maryland (championship)	<b>1990 Quarterfinal Round</b> NCAA at Temple L, 9-4 vs. Temple (quarterfinals)	
<b>1981 Fifth Place</b> AIAW at Penn State L, 12-8 vs. Maryland (first round) W, 16-3 vs. James Madison (consolations) W, 14-8 vs. Massachusetts (5th place)	<b>1991 Semifinal Round</b> NCAA at Lafayette W, 11-9 vs. Lafayette (quarterfinals) NCAA at Trenton State L, 10-5 vs. Virginia (semifinals)	
<b>1982 Third Place</b> EAIAW Regionals at Maryland L, 7-6 vs. Pennsylvania W, 9-2 vs. Maryland (3rd place) AIAW at West Chester W, 29-7 vs. Ohio (quarterfinals) L, 6-5 (OT) vs. Temple (semifinals) W, 4-3 vs. Pennsylvania (3rd place)	<b>1992 Quarterfinal Round</b> NCAA at Virginia L, 11-5 vs. Virginia (quarterfinals)	
<b>1983 Third Place</b> NCAA First Round at Penn State W, 12-2 vs. Pennsylvania NCAA at Pennsylvania L, 7-5 vs. Delaware (semifinals) W, 7-6 (OT) vs. Massachusetts (3rd place)	<b>1993 Quarterfinal Round</b> NCAA at Princeton L, 11-7 vs. Princeton (quarterfinals)	
<b>1984 Quarterfinal Round</b> NCAA at Penn State L, 10-9 vs. Delaware	<b>1995 Semifinal Round</b> NCAA at Penn State W, 11-7 vs. James Madison NCAA at Trenton State L, 12-7 vs. Maryland (semifinals)	
<b>1985 Third Place</b> NCAA at Maryland L, 12-11 (3OT) vs. Maryland	<b>1996 Quarterfinal Round</b> NCAA at Princeton L, 13-9 vs. Princeton (quarterfinals)	
<b>1986 Second Place</b> NCAA at Temple W, 8-6 vs. Temple (semifinals) NCAA at Maryland L, 11-0 vs. Maryland (championship)	<b>1997 First Round</b> NCAA at Maryland L, 6-2 vs. Maryland	
<b>1987 National Champions</b> NCAA at Penn State W, 14-9 vs. Virginia (semifinals) NCAA at Maryland W, 7-6 vs. Temple (championship)	<b>1998 ECAC Champions</b> ECAC at Penn State W, 14-13 vs. Massachusetts (semifinals) W, 14-9 Rutgers (champions)	
	<b>1999 Semifinal Round</b> NCAA at Penn State W, 23-7 vs. West Chester (first round) NCAA at Princeton W, 9-7 (OT) vs. Princeton (quarterfinals) NCAA at Johns Hopkins L, 17-13 vs. Maryland (semifinals)	
	<b>2001 First Round</b> NCAA at Dartmouth L, 9-7 vs. Dartmouth (first round)	

**2012 Penn State Women's Lacrosse  
Penn State Overall Team Statistics  
All games (as of May 06, 2012)**

Overall: 11-6 Conf: 3-2 Home: 4-4 Away: 7-1 Neut: 0-1

<b>TEAM STATISTICS</b>	<b>PSU</b>	<b>OPP</b>
<b>SHOT STATISTICS</b>		
Goals-Shot attempts	207-461	170-426
Goals scored per game	12.18	10.00
Shot pct.	.449	.399
Shots on goal-Attempts	347-461	333-426
SOG pct.	.753	.782
Shots/Game	27.1	25.1
Assists	74	61
Free position made-Att	41-84	34-85
Free position pct.	.488	.400
<b>GOAL BREAKDOWN</b>		
Total Goals	207	170
Free-position	41	34
Unassisted	133	109
Overtime	2	4
Goals scored average	11.97	9.83
<b>GROUND BALLS</b>		
	274	255
<b>DRAW CONTROLS</b>		
	189	224
<b>TURNOVERS</b>		
	218	236
<b>CAUSED TURNOVERS</b>		
	117	120
<b>ATTENDANCE</b>		
Total	2671	2783
Dates/Avg Per Date	8/334	8/348
Neutral Site #/Avg	1/0	

<b>Goals by Period</b>	<b>1st</b>	<b>2nd</b>	<b>OT</b>	<b>Total</b>
Penn State	113	92	2	207
Opponents	88	78	4	170

<b>Shots by Period</b>	<b>1st</b>	<b>2nd</b>	<b>OT</b>	<b>Total</b>
Penn State	247	208	6	461
Opponents	226	193	7	426

<b>Saves by Period</b>	<b>1st</b>	<b>2nd</b>	<b>OT</b>	<b>Total</b>
Penn State	86	75	2	163
Opponents	72	66	2	140

<b>Shots on Goal</b>	<b>1st</b>	<b>2nd</b>	<b>OT</b>	<b>Total</b>
Penn State	185	158	4	347
Opponents	174	153	6	333



**2012 Penn State Women's Lacrosse  
Penn State Overall Individual Statistics  
All games (as of May 06, 2012)**

Overall: 11-6 Conf: 3-2 Home: 4-4 Away: 7-1 Neut: 0-1

##	Player	gp-gs	g	a	pts	sh	sh%	sog	sog%	fpg-fps	gb	dc	t/o	ct
15	Cyr, Mackenzie	16-15	33	22	55	61	.541	49	.803	6-10	11	7	20	10
24	McCormick, Maggie	17-17	28	27	55	57	.491	46	.807	2-4	10	9	29	2
7	Coffey, Tatum	17-17	33	5	38	69	.478	53	.768	8-14	23	51	20	17
12	Fernandez, Molly	16-15	31	4	35	72	.431	52	.722	6-11	11	12	16	1
21	Lechner, Kelly	16-15	20	5	25	41	.488	32	.780	6-9	22	17	20	3
23	Zichelli, Theresa	17-17	20	4	24	55	.364	36	.655	3-9	26	26	19	13
3	Ford, Haley	11-4	11	3	14	20	.550	17	.850	1-3	9	4	5	4
6	Welch, Elaine	13-3	7	0	7	21	.333	13	.619	1-5	4	3	8	1
28	Adams, Aly	14-9	6	0	6	15	.400	10	.667	3-6	8	9	12	2
9	Guy, Katie	17-17	5	1	6	11	.455	7	.636	2-3	22	23	12	11
10	Purvis, Lauren	16-0	3	0	3	9	.333	8	.889	2-5	7	2	10	2
20	Foulsham, Evan	14-8	3	0	3	8	.375	6	.750	1-2	4	6	7	2
5	Carney, Lizzy	17-17	3	0	3	8	.375	7	.875	0-2	34	8	12	15
2	Lechner, Shannon	10-0	2	1	3	6	.333	3	.500	-	2	1	11	2
1	Curley, Avery	4-0	2	0	2	4	.500	4	1.000	-	2	0	2	1
22	Semones, Alyssa	3-0	0	1	1	3	.000	3	1.000	-	1	1	1	0
30	Shea, Colleen	17-17	0	1	1	0	.000	0	.000	-	24	8	4	15
32	Brent, Kristin	3-0	0	0	0	1	.000	1	1.000	0-1	2	0	0	1
34	Cahill, Dana	17-17	0	0	0	0	.000	0	.000	-	34	0	6	8
33	Lloyd, Melissa	1-0	0	0	0	0	.000	0	.000	-	0	0	0	0
31	Halus, Ayla	1-0	0	0	0	0	.000	0	.000	-	1	0	0	0
19	Bitzer, Carly	4-0	0	0	0	0	.000	0	.000	-	0	0	0	0
18	Layne, Cat	13-8	0	0	0	0	.000	0	.000	-	10	1	2	2
17	McAfee, Erin	8-0	0	0	0	0	.000	0	.000	-	0	0	0	1
16	Hughes, Kelsey	5-0	0	0	0	0	.000	0	.000	-	2	0	0	1
14	Foulsham, Ali	2-0	0	0	0	0	.000	0	.000	-	0	0	1	0
8	Chamberlain, Brittan	8-8	0	0	0	0	.000	0	.000	-	5	1	1	3
Total		17	207	74	281	461	.449	347	.753	41-84	274	189	218	117
Opponents		17	170	61	231	426	.399	333	.782	34-85	255	224	236	120

##	Goalie	gp-gs	min	ga	gaavg	saves	pct	w	l	t	shots faced
31	Halus, Ayla	1-0	21:33	2	5.57	1	.333	0	0	0	5
33	Lloyd, Melissa	1-0	7:37	1	7.88	1	.500	0	0	0	2
34	Cahill, Dana	17-17	1008:50	167	9.93	161	.491	11	6	0	419
Total		17	1038:00	170	9.83	163	.489	11	6	0	426
Opponents		17	1038:00	207	11.97	140	.403	6	11	0	461

Goals by Period	1st	2nd	OT	Total
Penn State	113	92	2	207
Opponents	88	78	4	170

Saves by Period	1st	2nd	OT	Total
Penn State	86	75	2	163
Opponents	72	66	2	140

Shots by Period	1st	2nd	OT	Total
Penn State	247	208	6	461
Opponents	226	193	7	426

Attendance Summary	PSU	Opponent
Total	2671	2783
Dates/Avg Per Date	8/334	8/348
Neutral Site #/Avg	1/0	

Shots on Goal	1st	2nd	OT	Total
Penn State	185	158	4	347
Opponents	174	153	6	333

**2012 Penn State Women's Lacrosse  
Penn State Category Leaders  
All games (as of May 06, 2012)**

##	Points	GP	G	A	Pts	Shots
15	Cyr, Mackenzie	16	33	22	55	61
24	McCormick, Maggie	17	28	27	55	57
7	Coffey, Tatum	17	33	5	38	69
12	Fernandez, Molly	16	31	4	35	72
21	Lechner, Kelly	16	20	5	25	41

##	Goals	GP	G	A	Pts	Shots
7	Coffey, Tatum	17	33	5	38	69
15	Cyr, Mackenzie	16	33	22	55	61
12	Fernandez, Molly	16	31	4	35	72
24	McCormick, Maggie	17	28	27	55	57
21	Lechner, Kelly	16	20	5	25	41

##	Assists	GP	G	A	Pts	Shots
24	McCormick, Maggie	17	28	27	55	57
15	Cyr, Mackenzie	16	33	22	55	61
7	Coffey, Tatum	17	33	5	38	69
21	Lechner, Kelly	16	20	5	25	41
23	Zichelli, Theresa	17	20	4	24	55

##	Ground Balls	GP	No.
34	Cahill, Dana	17	34
5	Carney, Lizzy	17	34
23	Zichelli, Theresa	17	26
30	Shea, Colleen	17	24
7	Coffey, Tatum	17	23

##	Draw Controls	GP	No.
7	Coffey, Tatum	17	51
23	Zichelli, Theresa	17	26
9	Guy, Katie	17	23
21	Lechner, Kelly	16	17
12	Fernandez, Molly	16	12

##	Free-position Goals	GP	No.
7	Coffey, Tatum	17	8
12	Fernandez, Molly	16	6
15	Cyr, Mackenzie	16	6
21	Lechner, Kelly	16	6
23	Zichelli, Theresa	17	3

##	Shots	GP	G	A	Shots	Shot%
12	Fernandez, Molly	16	31	4	72	.431
7	Coffey, Tatum	17	33	5	69	.478
15	Cyr, Mackenzie	16	33	22	61	.541
24	McCormick, Maggie	17	28	27	57	.491
23	Zichelli, Theresa	17	20	4	55	.364

##	Shot Pct.	GP	G	A	Shots	Shot%
3	Ford, Haley	11	11	3	20	.550
15	Cyr, Mackenzie	16	33	22	61	.541
1	Curley, Avery	4	2	0	4	.500
24	McCormick, Maggie	17	28	27	57	.491
21	Lechner, Kelly	16	20	5	41	.488

##	Shots on Goal	GP	G	A	Shots	SOG	SOG%
7	Coffey, Tatum	17	33	5	69	53	.768
12	Fernandez, Molly	16	31	4	72	52	.722
15	Cyr, Mackenzie	16	33	22	61	49	.803
24	McCormick, Maggie	17	28	27	57	46	.807
23	Zichelli, Theresa	17	20	4	55	36	.655

##	Shots on Goal Pct.	GP	G	A	Shots	SOG	SOG%
1	Curley, Avery	4	2	0	4	4	1.000
22	Semones, Alyssa	3	0	1	3	3	1.000
32	Brent, Kristin	3	0	0	1	1	1.000
10	Purvis, Lauren	16	3	0	9	8	.889
5	Carney, Lizzy	17	3	0	8	7	.875

##	Caused Turnovers	GP	No.
7	Coffey, Tatum	17	17
5	Carney, Lizzy	17	15
30	Shea, Colleen	17	15
23	Zichelli, Theresa	17	13
9	Guy, Katie	17	11

**2012 Penn State Women's Lacrosse  
Penn State Game Results  
All games (as of May 06, 2012)**

Date	Opponent	Score	Overall	Conf	Site	Att.	Goalie
Feb 15	at Bucknell	W 19-3	1-0-0	0-0-0	Lewisburg, Pa.	140	Cahill, Dana (1-0)
Feb 19	#2 MARYLAND	L 6-16	1-1-0	0-0-0	University Park, Pa.	438	Cahill, Dana (1-1)
Feb 22	DUQUESNE	W 16-5	2-1-0	0-0-0	University Park, Pa.	223	Cahill, Dana (2-1)
Feb 25	at Lafayette	W 14-10	3-1-0	0-0-0	Easton, Pa.	185	Cahill, Dana (3-1)
Mar 04	#6 VIRGINIA	W 14-7	4-1-0	0-0-0	University Park, Pa.	157	Cahill, Dana (4-1)
Mar 07	#17 LOYOLA	LOT 10-12	4-2-0	0-0-0	University Park, Pa.	288	Cahill, Dana (4-2)
Mar 10	at Delaware	W 12-6	5-2-0	0-0-0	Newark, Del.	527	Cahill, Dana (5-2)
Mar 14	at Hofstra	W 11-9	6-2-0	0-0-0	Hempstead, New York	222	Cahill, Dana (6-2)
* Mar 18	at #8 Vanderbilt	WOT 12-11	7-2-0	1-0-0	Nashville, Tenn.	204	Cahill, Dana (7-2)
Mar 25	WILLIAM & MARY	W 9-7	8-2-0	1-0-0	University Park, Pa.	294	Cahill, Dana (8-2)
* Apr 01	at #4 Florida	L 11-20	8-3-0	1-1-0	Gainesville, Fla.	840	Cahill, Dana (8-3)
* Apr 06	#1 NORTHWESTERN	L 7-14	8-4-0	1-2-0	University Park, Pa.	393	Cahill, Dana (8-4)
Apr 11	at Lehigh	W 15-3	9-4-0	1-2-0	Bethlehem, Pa.	222	Cahill, Dana (9-4)
* Apr 15	at #10 Ohio State	W 15-12	10-4-0	2-2-0	Columbus, Ohio	443	Cahill, Dana (10-4)
* Apr 21	#18 JOHNS HOPKINS	W 12-9	11-4-0	3-2-0	University Park, Pa.	389	Cahill, Dana (11-4)
Apr 28	#17 PRINCETON	LOT 12-13	11-5-0	3-2-0	University Park, Pa.	489	Cahill, Dana (11-5)
@ May 3	vs #19 Johns Hopkins	L 12-13	11-6-0	3-2-0	Gainesville, Fla.		Cahill, Dana (11-6)

Team Record	W-L-T	Attendance	Dates	Total	Average
Overall:	11-6	Total:	17	5454	321
Conference:	3-2	Home:	8	2671	334
Home:	4-4	Away:	8	2783	348
Away:	7-1	Neutral:	1	0	0
Neutral:	0-1				
Overtime:	1-2				





**1**  
**Avery Curley**  
So./Fr. | A | Berwyn, Pa.



**2**  
**Shannon Lechner**  
So. | A/M | Silver Spring, Md.



**3**  
**Haley Ford**  
Fr. | A | White Hall, Md.



**5**  
**Lizzy Carney**  
So. | D | West Chester, Pa.



**6**  
**Elaine Welch**  
Sr. | A | Bernardsville, N.J.



**7**  
**Tatum Coffey**  
Fr. | M | Toms River, N.J.



**8**  
**Brittanny Chamberlain**  
Sr. | D | Finksburg, Md.



**9**  
**Katie Guy**  
Jr. | D | Whitby, Ont.



**10**  
**Lauren Purvis**  
So. | M | Maple Glen, Pa.



**12**  
**Molly Fernandez**  
Jr. | A | Baltimore, Md.



**14**  
**Ali Foulsham**  
So. | D | Madison, N.J.



**15**  
**Mackenzie Cyr**  
So. | A | Westminster, Md.



**16**  
**Kelsey Hughes**  
Sr. | D | Severna Park, Md.



**17**  
**Erin McAfee**  
Fr. | D | Moorestown, N.J.



**18**  
**Cat Layne**  
Fr. | D | Downingtown, Pa.



**19**  
**Carly Bitzer**  
So. | D | Doylestown, Pa.



**20**  
**Evan Foulsham**  
So. | M | Madison, N.J.



**21**  
**Kelly Lechner**  
Fr. | M | Silver Spring, Md.



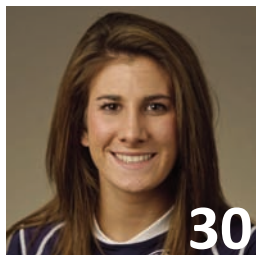
**23**  
**Theresa Zichelli**  
Sr. | M | Severna Park, Md.



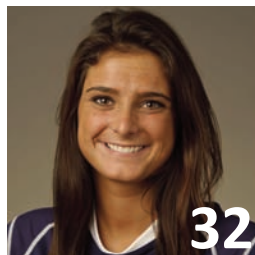
**24**  
**Maggie McCormick**  
Fr. | A | Eldersburg, Md.



**28**  
**Aly Adams**  
Sr. | M | Springfield, Pa.



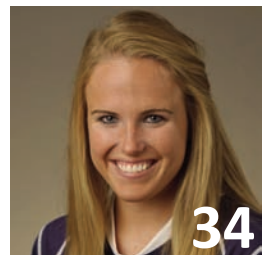
**30**  
**Colleen Shea**  
Sr. | D | Baltimore, Md.



**32**  
**Kristin Brent**  
Fr. | A | Rockville Centre, N.Y.



**33**  
**Melissa Lloyd**  
So. | GK | West Chester, Pa.



**34**  
**Dana Cahill**  
Sr. | GK | Towson, Md.



**HC**  
**Missy Doherty**  
Second year



**AC**  
**Tara Hohenshelt**  
13th year



**AC**  
**Amy Altig**  
Second year



# 2012 NCAA Division I Women's LACROSSE CHAMPIONSHIP



\* - Host Institution for Preliminary-Round Games  
 All Times are Eastern time  
 Semifinal #1 - 5:30 p.m.  
 Semifinal #2 - 37-39 minutes after the conclusion of Semifinal #1

