



PENN STATE WOMEN'S HOCKEY

2012-13 NITTANY LIONS

GoPSUsports.com // @PennStateWHKY // Facebook.com/PennStateWomensHockey
 Contact: **Jeremy Fallis** // jeremy.fallis@psu.edu // O: (814) 865-3613 // C: (814) 206-6544

2012-13 SCHEDULE

Overall: 5-12-1 // Home: 2-5-1 // Away: 3-7-0
 CHA: 1-8-1 // Home: 0-5-1 // Away: 1-3-0

Date	Opponent	Time
Oct. 6	at Vermont	W 5-3
Oct. 7	at Vermont	L 1-3
Oct. 13 *	SYRACUSE	L 0-4
Oct. 14 *	SYRACUSE	L 0-6
Oct. 19	at Sacred Heart	L 1-2
Oct. 20	at Sacred Heart	W 6-1
Oct. 25 *	RIT	L 1-4
Oct. 26 *	RIT	T (OT) 2-2
Nov. 2	SACRED HEART	W 6-0
Nov. 3	SACRED HEART	W 8-2
Nov. 10 *	ROBERT MORRIS	L 1-7
Nov. 11 *	ROBERT MORRIS	L 1-4
Nov. 16 *	at Lindenwood	L 1-5
Nov. 17 *	at Lindenwood	W 3-2
Nov. 30 *	at #4 Mercyhurst	L 0-5
Dec. 1 *	at #4 Mercyhurst	L 1-7
Dec. 7	at St. Lawrence	L 1-3
Dec. 8	at St. Lawrence	L 2-4
Jan. 4	CHATHAM	7:30 p.m.
Jan. 5	CHATHAM	7:00 p.m.
Jan. 11	at Union	7:00 p.m.
Jan. 12	at Union	4:00 p.m.
Jan. 25 *	at Syracuse	7:00 p.m.
Jan. 26 *	at Syracuse	2:00 p.m.
Jan. 29	PRINCETON	7:00 p.m.
Feb. 1 *	#7 MERCYHURST	7:00 p.m.
Feb. 2 *	#7 MERCYHURST	2:00 p.m.
Feb. 8 *	LINDENWOOD	2:00 p.m.
Feb. 9 *	LINDENWOOD	2:00 p.m.
Feb. 15 *	at RIT	7:00 p.m.
Feb. 16 *	at RIT	7:00 p.m.
Feb. 22 *	at Robert Morris	7:00 p.m.
Feb. 23 *	at Robert Morris	3:00 p.m.
2013 CHA TOURNAMENT		
Mar. 1	^ First Round - Game 1	TBA
Mar. 2	^ First Round - Game 2	TBA
Mar. 3	^ First Round - Game 3 (if necessary)	TBA
Mar. 8	% Semifinals	TBA
Mar. 9	% Final	TBA

All Times Eastern

Home games in **CAPS** at Greenberg Ice Pavilion

* - College Hockey America games

^ - CHA First Round at higher seed

% - CHA Semifinals & Final hosted by No. 1 seed

Rankings based on USA Today/USA Hockey poll



PENN STATE NITTANY LIONS

(5-12-1, 1-8-1 CHA)

CHATHAM COUGARS

(1-7-0, 0-6-0 ECAC West*) * NCAA games only

Games 19-20: Jan. 4-5, 2013 • 7:30 p.m. // 7:00 p.m. • Greenberg Ice Pavilion • University Park, Pa.

GAME DAY

VENUE
 STREAMING COVERAGE
 SERIES RECORD
 LAST VARSITY MEETING
 NEXT SERIES

Greenberg Ice Pavilion (1,300)
 AmericaOneSports.com Video (\$)
 0-0-0
 n/a, First Meeting, Jan. 4
 Jan. 11-12 at Union

GAME NOTES

- Penn State kicks off 2013 by hosting Chatham on Friday and Saturday
- Nittany Lions and Chatham have not met as varsity programs
- Chatham tied Penn State's club team twice in 2011 in Pittsburgh
- Penn State coming off 26-day layoff and hasn't played at home since Nov. 11
- Last time out, PSU fell to 2011 NCAA Tournament team St. Lawrence, 3-1 and 4-2
- **Celine Whitlinger** was named CHA Rookie of the Week for making 45 saves at SLU

ON THE INSIDE

Page 2: **CHA Standings and Team Comparison**
 Page 8: \$90 million **Pegula Ice Arena** is on target for a Sept. 2013 opening
 Pages 9-10: **2012-13 Penn State Women's Hockey Stats**
 Pages 11-12: **The Nittany Lion Roster & TV/Radio Roster**

SEASON STATISTICAL LEADERS

OFFENSE		GP	G	A	PTS	SH	+/-	GWG
40	Shannon Yoxheimer	18	10	10	20	98	+3	2
24	Taylor Gross	18	4	12	16	53	+4	0
15	Jess Desorcie	18	4	8	12	34	+5	0
16	Hannah Hoenshell	13	5	1	6	29	+1	1
20	Emily Laurenzi	18	2	4	6	15	+1	1
19	Jill Holdcroft	18	5	1	6	24	-9	0
23	Birdie Shaw	17	2	3	5	34	-5	0
10	Micayla Catanzariti	18	3	1	4	24	-7	0
22	Jenna Welch	18	1	3	4	24	-7	0
DEFENSE		GP	G	A	PTS	SH	+/-	BLK
33	Madison Smiddy	13	1	5	6	11	+2	13
2	Jeanette Bateman	18	1	1	2	17	-5	21
17	Paige Jahnke	18	0	3	3	18	-2	26
4	Jordin Pardoski	18	1	2	3	12	-1	16
6	Lindsay Reihl	18	0	1	1	5	-11	20
GOALTENDER		GP-GS	Record	MIN	GA	GAA	SV	SV%
37	Nicole Paniccia	15-15	5-9-1	861:31	50	3.48	554	.917
30	Celine Whitlinger	4-3	0-4-0	198:15	12	3.63	149	.925



@PennStateWHKY



PennStateWomensHockey



GoPSUTV



NITTANY LION WOMEN'S HOCKEY

GAME NOTES VS. CHATHAM (JAN. 4-5)

SCOUTING THE COUGARS

Chatham (1-7-0, 0-6-0 ECAC West) is coming off a 5-0 exhibition win over California (Pa.) on Dec. 8. Previously, the Cougars dropped a series at Oswego State, 6-1 and 4-0. On Nov. 17, Chatham broke a 40-game losing streak by defeating Buffalo State, 5-2.

Chatham has been outscored 41-7 by its opponents as sophomore goaltender Megan Buchanan leads the team in minutes (452:17), saves (322), save percentage (.904) and goals-against average (4.51). Offensively, junior forward Morgan Becer paces the Cougars with two goals and two assists. Becer has the most career points of any Cougar with 10. Sophomore defender Gina Abrego has a goal and three assists and leads the team in penalties (8 for 16 minutes).

Last season, the Cougars faced Penn State's club side in Pittsburgh, earning two draws. The opening matchup was a 0-0 stalemate with Chatham's Buchanan making 45 saves. The next day, the two teams again skated to a tie, this time 2-2. Defender **Lindsay Reihl** tallied an assist in that game for the Nittany Lions.

TIME OFF

Both Penn State and Chatham have not played a game since Dec. 8, a span of 26 days. For the Nittany Lions, PSU hasn't hosted a home game since Nov. 11, when it fell 4-1 to Robert Morris. In all, it will be a 44-day break for Penn State between home games. After this weekend's series, the Nittany Lions won't host another home game for three weeks when they welcome Princeton to Greenberg Ice Pavilion on Jan. 29 (7 p.m.).

SAINTS ESCAPE NITTANY LIONS

Penn State battled St. Lawrence Friday night (Dec. 7), but ultimately fell to the Saints, 3-1, on the road in Canton, N.Y. Freshman **Jill Holdcroft** netted her fifth goal of the season on a power play in the second period, but St. Lawrence responded with a two-goal final frame to put away the Nittany Lions. **Celine Whitlinger**, in her third start of the season, denied a career-high 45 shots in goal, besting her previous record of 40 set against Vermont Oct. 7. Whitlinger was aided by a stingy Nittany Lion defense that totaled 17 blocked shots to hold St. Lawrence to just a pair of goals before an empty-netter sealed the final score at 3-1. **Jenna Welch** led the way by getting in front of three attempts.

On Saturday, Dec. 8, Penn State pulled within one late in the third period, but could not complete the comeback against St. Lawrence as the Saints skated to a 4-2 victory to earn the series sweep. **Jess Desorcie** scored early, assisted by **Taylor Gross** and **Shannon Yoxheimer** for a 1-0 lead. Down 3-1, **Hanna Hoenshell** scored her fifth of the season midway through the third period. SLU managed a power-play goal with less than two minutes to play for the 4-2 final. **Nicole Paniccia**

made 54 saves in goal for the Lions.

WHITLINGER NAMED ROOKIE OF THE WEEK

Freshman netminder **Celine Whitlinger's** career night at St. Lawrence on Friday, Dec. 7, translated into her first collegiate honor: College Hockey America Rookie of the Week. Whitlinger earned Penn State's second CHA Rookie of the Week this season after **Micayla Catanzariti's** honor on Oct. 8.

Whitlinger made stop after stop on as the Nittany Lions looked to upset established St. Lawrence. The California native posted 45 saves in all as Penn State fell 3-1. St. Lawrence went to the NCAA Tournament last season and is among the best teams in the ECAC Hockey.

YOUTH MOVEMENT

As is expected with a brand new varsity program, there are many freshmen on the team—17 in all. Thus far, 16 freshmen have made an appearance on the ice. The Nittany Lion freshmen have accounted for 77.5% of the goals scored (31 of 40).

	GP	G	A	Pts.
Jeanette Bateman	18	1	1	2
Micayla Catanzariti	18	3	1	4
Hannah Hoenshell	13	5	1	6
Jill Holdcroft	18	5	1	6
Paige Jahnke	18	0	3	3
Darby Kern	4	0	0	0
Emily Laurenzi	18	2	4	6
Taylor McGee	12	0	1	1
Jordin Pardoski	18	1	2	3
Kendra Rasmussen	17	1	1	2
Birdie Shaw	17	2	3	5
Stephanie Walkom	-	-	-	-
Sarah Wilkie	12	0	0	0

GAMEDAY COMPARISON

TEAM STATS		
Overall record	5-12-1	1-7-0
Conference record	1-8-1	0-6-0
Goals scored	40	7
Goals scored per game	2.2	0.9
Goals allowed	64	44
Goals allowed per game	3.6	5.1
First period goals	13	4
Second period goals	12	1
Third period goals	15	2
Overtime goals	0	n/a
Shots	467	92
Shots per game	25.9	11.5
Shot pct.	.086	.076
Assists	59	11
Penalties per game	4.6	3.8
Power plays	10-72	3-29
Power-play pct.	.139	.103
Penalty kills	22-81	11-37
Penalty-kill pct.	.272	.295
Saves	710	344
Shutouts	1	0

LEADERS		
Points	Yoxheimer (20)	Two at 4
Goals	Yoxheimer (10)	Becer (2)
Assists	Gross (12)	Abrego (3)
Shots	Yoxheimer (98)	n/a
Shot Pct.	Holdcroft (.208)	n/a
+/-	Desorcie (+5)	n/a
Faceoff Pct.	Yoxheimer (.482)	n/a
Saves	Paniccia (554)	Buchanan (322)
Save Pct.	Whitlinger (.925)	Buchanan (.904)
GAA	Paniccia (3.48)	Buchanan (4.51)
Record	Paniccia (5-9-1)	Buchanan (1-7-0)

2012-13 COLLEGE HOCKEY AMERICA STANDINGS

(as of Jan. 2, 2013)

	Pts.	CHA	GF	GA	Overall	GF	GA	Last 10
Mercyhurst (7/7)	12	6-2-0	39	9	14-3-1	81	27	8-2-0
Robert Morris (rv/rv)	10	5-1-0	21	9	9-3-2	42	28	8-1-1
Syracuse	9	4-1-1	19	8	9-8-1	52	37	5-4-1
RIT	7	2-3-3	17	22	7-9-3	48	49	3-5-2
PENN STATE	3	1-8-1	10	46	5-12-1	40	64	3-7-0
Lindenwood	3	1-4-1	10	22	1-16-1	22	83	1-8-1

UPCOMING SCHEDULE

Thursday, Jan. 3
Buffalo at Mercyhurst, 7 p.m. (Exhibition)

Friday, Jan. 4
RIT at Robert Morris, 7 p.m.
Chatham at PENN STATE, 7:30 p.m.
North Dakota at Lindenwood, 8 p.m. ET

Saturday, Jan. 5
RIT at Robert Morris, 2 p.m.
North Dakot at Lindenwood, 3 p.m.
Chatham at PENN STATE, 7 p.m.

Tuesday, Jan. 8
Colgate at Syracuse, 7 p.m.



NITTANY LION WOMEN'S HOCKEY

Shannon Yoxheimer	18	10	10	18
Katie Zinn	9	0	1	1
	GP	GAA	SV	Pct.
Brooke Meyer	1	0.00	7	1.000
Celine Whitlinger	4	3.63	149	.925

SET TO JOIN THE NITTANY LIONS

On Nov. 14, head coach **Josh Brandwene** welcomed next year's Nittany Lions. Minnesota natives **Laura Bowman** (Minnetonka, Minn.), **Sarah Nielsen** (Edina, Minn.), **Amy Petersen** (Minnetonka, Minn.) and **New York** product **Kelly Seward** (Williamsville, N.Y.). Bowman and Petersen have led Minnetonka to the last two Minnesota high school state titles.

CHA ROOKIE OF THE MONTH HONORS TO YOXHEIMER

Freshman forward **Shannon Yoxheimer** was named College Hockey America's Rookie of the Month for her performance during November. Yoxheimer led the Nittany Lions with nine points and helped lead Penn State to a 3-4-0 record last month.

Yoxheimer was Penn State's most powerful weapon offensively, accounting for 39 shots, four goals, five points and nine points during the varsity program's second month. Her four goals were

tied for a team-high, while her five assists and nine points were each team bests.

AT THE MERCY OF THE LAKERS

Penn State dropped both games at No. 4 Mercyhurst last weekend (Nov. 30-Dec. 1), but still put forth positive efforts. Friday night's 5-0 loss highlight was **Celine Whitlinger's** strong third period that yielded one goal in 29 shots as the freshman netminder made her return to the ice. Her last appearance was Oct. 14 vs. Syracuse.

In Saturday's game, Penn State took a 1-0 lead on a **Jess Desorcie** marker off **Taylor Gross's** breakaway attempt 8:29 into the contest. The play was set up by **Shannon Yoxheimer**, who caused a turnover at the blue line and allowed Gross to streak in uncontested for the second time in minutes. Mercyhurst tied the game 1-1 before the period was out and held a 3-1 advantage after two periods as the Lakers won 7-1. **Nicole Paniccia** was named third star of the game by setting a

PENN STATE'S RECORD IS...

2-5-1	at home
3-7-0	on the road
0-0-1	in overtime
3-3-1	when scoring first
2-9-0	when opponent scores first
3-0-1	when leading after the 1st period
1-6-0	when trailing after the 1st period
1-6-0	when tied after the 1st period
4-0-1	when leading after the 2nd period
0-10-0	when trailing after the 2nd period
1-2-0	when tied after the 2nd period
4-1-0	when out-shooting opponent
1-11-1	when out-shot by opponent
0-0-0	when taking same # of shots
5-1-0	when winning more faceoffs
0-11-1	when losing more faceoffs
0-0-0	when tied in faceoffs
1-7-0	when taking more penalties
3-3-0	when taking fewer penalties
1-2-1	...	when taking the same # of penalties
3-3-1	when scoring a power play goal
2-9-0	...	when not scoring a power play goal
4-9-1	when allowing a power play goal
1-3-0	...	when not allowing a power play goal
0-3-0	when scoring 0 goals
0-8-0	when scoring 1 goal
0-1-1	when scoring 2 goals
1-0-0	when scoring 3 goals
4-0-0	when scoring 4+ goals
1-0-0	when allowing 0 goals
1-0-0	when allowing 1 goal
2-1-1	when allowing 2 goals
1-2-0	when allowing 3 goals
0-9-0	when allowing 4+ goals
2-5-1	in October
3-4-0	in November
0-3-0	in December
0-0-0	in January
0-0-0	in February
0-0-0	in March
0-0-0	on Tuesday
0-1-0	on Thursday
1-4-1	on Friday
4-4-0	on Saturday
0-3-0	on Sunday
4-6-0	during the day
1-6-1	at night
1-1-0	vs. Hockey East
1-8-1	vs. College Hockey America
0-2-0	vs. ECAC Hockey
3-1-0	vs. D-I Independents
0-2-0	vs. ranked opponents
5-10-1	vs. unranked opponents
4-3-1	when Shannon Yoxheimer scores
5-9-1	when Nicole Paniccia starts
1-1-1	games decided by a goal or less

2012-13 MEDIA INFORMATION

Penn State Athletic Communications

Primary Contact	Jeremy Fallis
Email	jeremy.fallis@psu.edu
Secondary Contact	Brian Hoerst
Email	bjh33@psu.edu
Office	814-865-1757

Interviews

Penn State student-athletes and coaches are available for interviews after practice each day. Please contact Jeremy Fallis in advance.

Credentials

Contact Jeremy Fallis for home game credentials at Greenberg Ice Pavilion.

Postgame

Head coach Josh Brandwene and requested student-athletes are available to the media following each game in the studio rink. Please alert Jeremy Fallis or Brian Hoerst during the game of any requests.

Yearbook

The 2012-13 Penn State women's hockey yearbook will be made available to media members at the first home game on Oct. 13. The public may purchase copies for \$6 online.

GoPSUsports.com

[Facebook.com/PennStateWomensHockey](https://www.facebook.com/PennStateWomensHockey)

[@PennStateWHKY](https://twitter.com/PennStateWHKY)

2012-13 WOMEN'S HOCKEY POLLS (as of Dec. 11, 2012)

USA Today/USA Hockey Poll

1	Minnesota	20-0-0	1
2	Clarkson	15-3-0	2
3	Cornell	10-3-0	3
4	Harvard	9-1-1	4
5	Boston College	11-3-2	6
6	Boston University	11-3-3	7
7	Mercyhurst	14-3-1	5
8	Wisconsin	12-6-2	9
9	North Dakota	11-7-0	8
10	Northeastern	10-5-2	10

Others: Ohio State, Minnesota Duluth, Robert Morris

USCHO.com Poll

1	Minnesota	20-0-0	1
2	Clarkson	15-3-0	2
3	Cornell	10-3-0	3
4	Harvard	9-1-1	5
5	Boston College	11-3-2	6
6	Boston University	11-3-3	7
7	Mercyhurst	14-3-1	4
8	Wisconsin	12-6-2	9
9	Northeastern	10-5-2	10
10	Ohio State	14-5-1	RV

Others: North Dakota, Robert Morris

Bold indicates 2012-13 opponent



NITTANY LION WOMEN'S HOCKEY

new school record with 64 saves.

CHA SPLIT AT LINDENWOOD

Penn State women's hockey earned another inaugural milestone on Saturday, Nov. 17, defeating Lindenwood 3-2 for its first College Hockey America victory. Freshman forward **Emily Laurenzi** struck for the game-winning goal to complete a comeback at Lindenwood Ice Arena. Fellow classmate **Jill Holdcroft** and junior captain **Taylor Gross** each notched their fourth goals of the season for the Nittany Lions. Freshman forward **Shannon Yoxheimer** had two assists to aid the Nittany Lion attack.

Penn State found itself down twice to Lindenwood and each time fought back to knot the game. With 5:50 left in the third period in a 2-2 game, Laurenzi tucked home her second goal of the season as the Nittany Lions held off LU for the final portions of the game. **Paige Jahnke** and **Hannah Hoenshell** assisted on the power-play goal.

The previous day did not go as well for the Nittany Lions. Lindenwood scored twice in the second period to break a 1-1 deadlock and went on to win, 5-1, for the Lions' first win of the season. Holdcroft scored a power-play goal from Yoxheimer and Gross.

WEEKEND SWEEP BY RMU

Penn State faced the 2012 CHA Tournament champion Robert Morris in a two-game series (Nov. 10-11), falling 7-1 and 4-1. **Shannon Yoxheimer** scored in the opener off a **Taylor Gross** faceoff win, but RMU's Rebecca Vint scored five times to pace the Colonials.

In the second game, it was more of the same early as Robert Morris staked out a 3-0 lead through two periods, but Penn State held the Colonials scoreless in the second. That turned the momentum around as Penn State went toe-to-toe with the defending champions in the third. **Micayla Catanzariti** scored a goal with 6:19 remaining to spark the Lions. **Birdie Shaw** and **Jill Holdcroft** were credited with assists. Twenty-three seconds later, Yoxheimer's shot was saved by Delayne Brian and Taylor Gross's attempt was stopped by Brian to keep it a two-goal game. With 2:23 left, RMU took an interference penalty as Penn State had a 6-on-4, but couldn't convert before RMU tallied an empty-net goal with 13 second remaining. **Nicole Paniccia** made 49 saves in Sunday's loss.

YOXHEIMER FINALLY STOPPED

Penn State's leading scorer, **Shannon Yoxheimer**, has been on a roll over the past four weeks, scoring eight of her team-high 10 goals. In that stretch, Yoxheimer scored in seven-straight games after a three-game drought. The seven-game streak started at Sacred Heart as she scored PSU's only goal and has continued with a career day vs. SHU on Nov. 3 as she scored a goal and career-high two assists. Yoxheimer also accounted for Penn

State's first two game-winning goals, notching two goals at Vermont (Oct. 6) and the go-ahead goal at SHU (Oct. 20). Yoxheimer scored against Robert Morris on Saturday, but we held scoreless for the first time since Oct. 14 in the Sunday matchup.

EIGHT FROM EIGHT IN WIN OVER SHU

Penn State earned its first series sweep in program history, defeating Sacred Heart, 8-2, on Saturday (Nov. 3) afternoon at Greenberg Ice Pavilion. Eight different Nittany Lions tallied a goal with **Jess Desorcie**, **Taylor Gross** and **Shannon Yoxheimer** notching three-point days.

Yoxheimer opened the scoring before SHU tied it up early in the second period before Gross, **Kendra Rasmussen** and **Jill Holdcroft** scored successive goals for a 4-1 lead midway through the period.

After another SHU tally, PSU would rally off the last four goals, this time coming from Desorcie, **Jenna Welch**, **Madison Smiddy** and **Emily Laurenzi**. Welch, Smiddy and Laurenzi scored their first goals of the season for Penn State.

Nicole Paniccia made 23 saves in net for the Nittany Lions to improve to 4-3-1 on the season. Penn State dominated the game in the faceoff circle, 54-25, which led to a 64-25 shot advantage.

FIRST HOME WIN, SHUTOUT & HAT TRICK

Friday night, Nov. 2 at Greenberg Ice Pavilion was historic for Penn State as the women's hockey team won its first home game, 6-0, over Sacred Heart. The program's first shutout featured the first hat trick by **Hannah Hoenshell**. **Shannon Yoxheimer** scored twice and **Jill Holdcroft** scored her first ever goal in the rout.

Hoenshell opened the game's scoring seven minutes into the contest, which highlighted a 22-2 Penn State advantage in shots over the Pioneers.

The Nittany Lions would light the lamp three times in the second as Hoenshell, Yoxheimer and Holdcroft stretched the lead to 4-0.

In the third, Penn State would make it 5-0 just 10 seconds into the period on a Yoxheimer laser from the left wing and Hoenshell would cap her hat trick five minutes later for the 6-0 final score.

The Nittany Lions out-shot the Pioneers 66-18 as goaltenders **Nicole Paniccia** (11 saves) and **Brooke Meyer** (7 saves) combined for the school's first shutout.

PSU EARNS FIRST CHA POINT

Penn State was 89 seconds away from its first CHA victory on Friday, Oct. 26 vs. RIT, but had to settle with a hard-fought 2-2 tie. After a 4-1 loss to RIT on Thursday, Penn State fell to 0-3-1 in CHA play. Goaltender **Nicole Paniccia** and forward **Shannon Yoxheimer** shined for Penn

State, providing outstanding defense and offense, respectively. Paniccia made 93 saves last week, including a school-record 59 stops in the 2-2 tie. Paniccia finished the weekend with a .939 save percentage after a 34-save effort in Thursday's matchup.

Yoxheimer scored Penn State's lone goal in the opener and opened the scoring on Friday before Taylor Gross made it 2-0 just seconds later. **Paige Jahnke**, **Madison Smiddy**, Yoxheimer and Gross each had an assist in the tie as the Tigers scored once in the first and another in the third. RIT held a 99-36 shot advantage in the series.

LAST TIME AGAINST SACRED HEART

The Nittany Lions split a weekend series (Oct. 19-20) at Sacred Heart, falling in the opener 2-1 and winning the finale 6-1. Penn State was led by freshman forward **Shannon Yoxheimer** with two goals and an assist.

In the opener, the Pioneers opened a 2-0 lead through two periods and didn't allow the Nittany Lions on the board until Yoxheimer slammed home a scramble in front of the net with 2:31 left in the game and an extra skater on the ice. **Taylor Gross** and **Birdie Shaw** were credited with assists as junior goaltender **Nicole Paniccia** made 26 saves in the loss.

HONORS & AWARDS

Micayla Catanzariti

CHA Rookie of the Week (10/8)
Penn State Student-Athlete of the Week (10/9)

Celine Whitlinger

CHA Rookie of the Week (12/10)

Shannon Yoxheimer

CHA November Rookie of the Month (12/4)
CHA Player of the Week (10/22)
Penn State Student-Athlete of the Week (10/23)

OVER THE AIR

This Week

AmericaOneSports.com will air live video and audio of this weekend's games. Ryan Smith and Pat White will deliver the call. Packages cost \$8 a day, \$30 a month or \$125 for the entire season for all CHA games.

The CHA on AmericaOneSports.com

All Penn State games during CHA play will be streamed live on AmericaOneSports.com. Subscribers can purchase 30-day packages for \$30 or a season pass for \$125.

Non-Conference Home Action

Penn State's non-conference home games will be shown on a game-to-game basis.

NITTANY LION WOMEN'S HOCKEY



The following day Penn State came out firing, scoring on three straight power-plays en route to a 6-1 rout. Gross, Yoxheimer and **Jeanette Bateman** tallied each of the power play goals for a 3-1 lead through two periods. **Jess Desorcie**, **Hannah Hoenshell** and **Jordin Pardoski** added a trio of third-period goals as Penn State featured six different goal scorers. **Jenna Welch**, **Madison Smiddy**, Gross and Yoxheimer had multi-point days. Paniccia had 25 saves for a 51-save weekend.

YOX NAMED CHA PLAYER OF THE WEEK

For her efforts against Sacred Heart, **Shannon Yoxheimer** was named CHA Player of the Week for a three-point weekend and a game-winning goal over the Pioneers (Oct. 19-20). Yoxheimer leads the team with four goals and is tied with Taylor Gross for points with five. Yoxheimer is the first Nittany Lion to receive CHA Offensive Player of the Weeks honors and joins fellow classmate **Micayla Catanzariti** (Rookie of the Week, Oct. 8) on the honor roll.

ANOTHER WEEKEND OF FIRSTS

The second road trip in Penn State women's hockey history resulted in another split result, but it was not without some firsts. The Nittany Lions tallied six goals in a victory at Sacred Heart (Oct. 20), the most in the short history of the program and the largest margin of victory (5). Additionally, the Lions tallied eight assists, which matched the inaugural game.

Individually, **Jeanette Bateman**, **Jordin Pardoski** and **Hannah Hoenshell** scored their first collegiate goals on Oct. 20. **Jess Desorcie** tallied her first Penn State varsity goal, while **Lindsay Reihl** and **Jenna Welch** recorded their first Penn State points on assists. Welch had a two-helper game as did **Madison Smiddy**, who notched her first multi-point game. **Cara Mendelson** and Hoenshell hit the ice for the first time, bringing the total number of Nittany Lions to see ice time to 23.

HISTORIC FIRST WIN

Penn State women's hockey made history on Saturday, Oct. 6 at Vermont's Gutterson Fieldhouse by winning its inaugural game, 5-3. The Nittany Lions scored five goals from three freshmen making their respective debuts as junior goaltender **Nicole Paniccia** made 31 saves in her PSU opener. **Shannon Yoxheimer** and **Micayla Catanzariti** each scored twice for the Nittany Lions.

Down 2-1, Penn State was not to be deterred, reeling off three straight goals to take a 4-2 lead midway through the third period. Despite a Vermont goal with 6:34 left in the third, **Birdie Shaw** scored an empty-net goal to seal the Nittany Lion victory. Junior captain **Taylor Gross** made her Penn State debut known with two assists and was named the first star of the game, Yoxheimer was second.

FIRST TIME FOR EVERYTHING

Penn State had a varsity team debut for the first time since 1994 (women's soccer) when the women's hockey team defeated Vermont, 5-3 on Oct. 6. The successful debut was the first since 1977 when the men's volleyball team defeated East Stroudsburg.

Game: Oct. 6, 2012 at Vermont, 2:00 p.m.

NCAA TEAM RANKS

(As of Jan. 1, 2013)

Goals Per Game	22nd
Goals Against Per Game	29th
Scoring Margin	27th
Most Penalty Minutes	20th
Power-Play Percentage	26th
Penalty-Kill Percentage	31st
Combined Special Teams	29th
Winning Percentage	28th

NCAA INDIVIDUAL RANKS

(Top 100 as of Jan. 1, 2013)

Jess Desorcie

Assists Per Game	98th
------------------	------

Taylor Gross

Points Per Game	T-64th
Assists Per Game	T-42nd

Jill Holdcroft

Power-Play Goals Per Game	T-37th
---------------------------	--------

Nicole Paniccia

Goals-Against Average	36th
Save Percentage	20th
Winning Percentage	33rd

Shannon Yoxheimer

Points Per Game	T-38th
Goals Per Game	T-28th
Game-Winning Goals	T-19th
Assists Per Game	T-63rd
Points Per Game (Rookies)	7th

CHA TEAM RANKS

(As of Jan. 3, 2013)

Goals	4th
Goals Against	5th
Assists	4th
Goals Per Game	5th
Goals-Against Average	5th
Saves	2nd
Save Percentage	4th
Shots on Goal	4th
Least Penalty Minutes	2nd
Power-Play Goals	T-4th
Power-Play Percentage	5th
Power-Play Goals Against	5th
Penalty-Kill Percentage	5th

CHA INDIVIDUAL RANKS

(Top 10 as of Jan. 3, 2013)

Taylor Gross

Points	T-10th
Assists	T-5th

Jill Holdcroft

Power-Play Goals	T-5th
------------------	-------

Nicole Paniccia

Games Played	1st
Games Started	1st
Minutes Played	1st
Goals-Against Average	8th
Saves	1st
Save Percentage	4th
Wins	4th
Ties	T-3rd
Win Percentage	8th

Madison Smiddy

Points (D)	T-9th
Assists (D)	T-10th
Power-Play Goals (D)	T-3rd

Shannon Yoxheimer

Points	T-6th
Goals	3rd
Assists	T-9th
Game-Winning Goals	T-4th
Shots	1st





NITTANY LION WOMEN'S HOCKEY

Win: Nicole Paniccia, Oct. 6 at Vermont, 5-3
Goal: Shannon Yoxheimer
Multi-Goal Game: Micayla Catanzariti
Game-Winning Goal: Shannon Yoxheimer
Assists: Taylor Gross, Emily Laurenzi
Multi-Assist Game: Jess Desorcie
Faceoff: Emily Laurenzi
Faceoff win: Emily Laurenzi
Shot: Katie Zinn
Save: Nicole Paniccia
Empty-Net Goal: Birdie Shaw

CATANZARITI HONORED

Freshman forward **Micayla Catanzariti** was named College Hockey America's Rookie of the Week on Oct. 8. Catanzariti led the Nittany Lions to a win in their inaugural opener on Saturday with two goals and an assist at Vermont. Catanzariti was also named Highmark's Penn State Women's Student-Athlete of the Week.

FIRST HEAD COACH

A 1991 graduate of Penn State, head coach **Josh Brandwene** is the first to lead the Nittany Lions. A four-year hockey player at PSU, Brandwene brings 20 years of coaching experience to Happy Valley. Brandwene picked up his first win in the team's debut on Saturday, Oct. 6 at Vermont.

CAPTAIN, OUR CAPTAIN

Junior forward **Taylor Gross** leads Penn State as its first captain. The University of Connecticut transfer appeared in 48 games for the Huskies before joining Penn State's club side in January 2012. In September, the team voted fellow UConn transfer **Jenna Welch** and senior defender **Lindsay Reihl** as assistant captains.

CONTINUING PENN STATE HOCKEY

Eight members of the current varsity team played for the women's club team at some point. Seniors **Lindsay Reihl** and **Kate Christoffersen** and sophomores **Cara Mendelson**, **Katie Murphy**, **Madison Smiddy** and **Tess Weaver** played all of last season for head coach **Josh Brandwene** in Penn State's last year at the club level. Reihl and Christoffersen played three years for the PSU club team as well. **Taylor Gross** and **Jess Desorcie** joined the six players midway through the season in preparation of the 2012-13 season.

ON SCHEDULE

Pegula Ice Arena, a \$90 million state-of-the-art facility, will serve as the home of the Penn State hockey programs in 2012-13. As of Jan. 2, 2013, all the steel has been put in place for the project with installation of glass and some brick on the outside.

The building held its official topping off ceremony on Friday, Nov. 9, 2012. Construction is set to conclude in time for the 2012-13 season as the building will open Sept. 5, 2013.

For more information on Pegula Ice Arena, visit page 8 of the game notes.

NEXT TIME OUT

Penn State hits the road when it travels to Schenectady, N.Y. on Jan. 11-12 to face Union. Game times are 7 p.m. on Friday and 4 p.m. on Saturday. The Nittany Lions then take a week off before returning to conference play at Syracuse (Jan. 25-26).

THE LAST TIME

PENN STATE...

Scored 0 goals	11/30/12	at #4 Mercyhurst (0-5)
Scored 3 goals	11/17/12	at Lindenwood (3-2)
Scored 4 goals	Never	
Scored 5 goals	10/6/12	at Vermont (5-3)
Scored 6 goals	11/2/12	vs. Sacred Heart (6-0)
Scored 7 goals	Never	
Scored 8 goals	11/3/12	vs. Sacred Heart (8-2)
Allowed 0 goals	11/2/12	vs. Sacred Heart (6-0)
Allowed 1 goal	10/20/12	at Sacred Heart (6-1)
Allowed 2 goals	11/17/12	at Lindenwood (3-2)
Allowed 3 goals	12/7/12	at St. Lawrence (1-3)
Allowed 4 goals	12/8/12	at St. Lawrence (2-4)
Allowed 5 goals	11/30/12	at #4 Mercyhurst (0-5)
Allowed 6+ goals	12/1/12	at #4 Mercyhurst (1-7)
Won in overtime	Never	
Lost in overtime	Never	
Tied in overtime	10/26/12	vs. RIT (2-2)
Played a ranked team	12/1/12	at #4 Mercyhurst (1-7)
Attempted 10-19 shots	12/8/12	at St. Lawrence (2-4)
Attempted 20-29 shots	11/11/12	vs. Robert Morris (1-4)
Attempted 30-39 shots	11/17/12	33 at Lindenwood (3-2)
Attempted 40-49 shots	10/19/12	42 at Sacred Heart (1-2)
Attempted 50-59 shots	Never	
Attempted 60+ shots	11/3/12	64 vs. Sacred Heart (8-2)
Allowed 10-19 shots	11/2/12	18 vs. Sacred Heart (6-0)
Allowed 20-29 shots	11/3/12	25 vs. Sacred Heart (8-2)
Allowed 30-39 shots	11/17/12	30 at Lindenwood (3-2)
Allowed 40-49 shots	12/7/12	48 at St. Lawrence (1-3)
Allowed 50-59 shots	12/8/12	58 at St. Lawrence (2-4)
Allowed 60-69 shots	11/30/12	60 at #4 Mercyhurst (0-5)
Allowed 70+ shots	12/1/12	71 at #4 Mercyhurst (1-7)
Tallied 5-9 assists	11/17/12	.5 at Lindenwood (3-2)
Tallied 10+ assists	11/3/12	12 vs. Sacred Heart (8-2)
Scored 10-19 points	11/2/12	12 vs. Sacred Heart (6-0)
Scored 20+ points	11/3/12	20 vs. Sacred Heart (8-2)
Scored 2 power-play goals	11/17/12	at Lindenwood (3-2)
Scored 3 power-play goals	10/20/12	at Sacred Heart (6-1)
Allowed 0 power-play goals	11/11/12	vs. Robert Morris (1-4)
Allowed 2 power-play goals	12/8/12	at St. Lawrence (2-4)
Had 5 different goal scorers	Never	
Had 6 different goal scorers	10/20/12	at Sacred Heart (6-1)
Had 7 different goal scorers	Never	
Had 8 different goal scorers	11/3/12	vs. Sacred Heart (8-2)

A PENN STATE PLAYER...

Scored 2 goals	11/2/12	S. Yoxheimer vs. Sacred Heart (6-0)
Scored 3 goals	11/2/12	H. Hoenshell vs. Sacred Heart (6-0)
Scored 4 goals	Never	
Had 3 assists	Never	
Had 5 points	Never	
Had 10+ shots	11/3/12	11, S. Yoxheimer vs. Sacred Heart (8-2)
Saved 40-49 shots	11/11/12	49, N. Paniccia vs. Robert Morris (1-4)
Saved 50-59 shots	10/26/12	59, N. Paniccia vs. RIT (2-2)
Saved 60+ shots	12/1/12	64, N. Paniccia at #4 Mercyhurst (1-7)
Had a shutout	11/2/12	N. Paniccia/B. Meyer vs. Sacred Heart (6-0)
Scored an empty-net goal	10/6/12	B. Shaw at Vermont (5-3)
Scored a short-handed goal	Never	



NITTANY LION WOMEN'S HOCKEY

PEGULA ICE ARENA FUTURE HOME OF PENN STATE HOCKEY

FACTS

Construction Groundbreaking: January 2012

Ceremonial Groundbreaking: April 20, 2012

Projected Opening: September 5, 2013

Capacity: 6,000 (Arena rink); 300 (Community rink)

Size: 200,000 square feet

AMENITIES

Two NHL-sized (200' x 85') ice surfaces

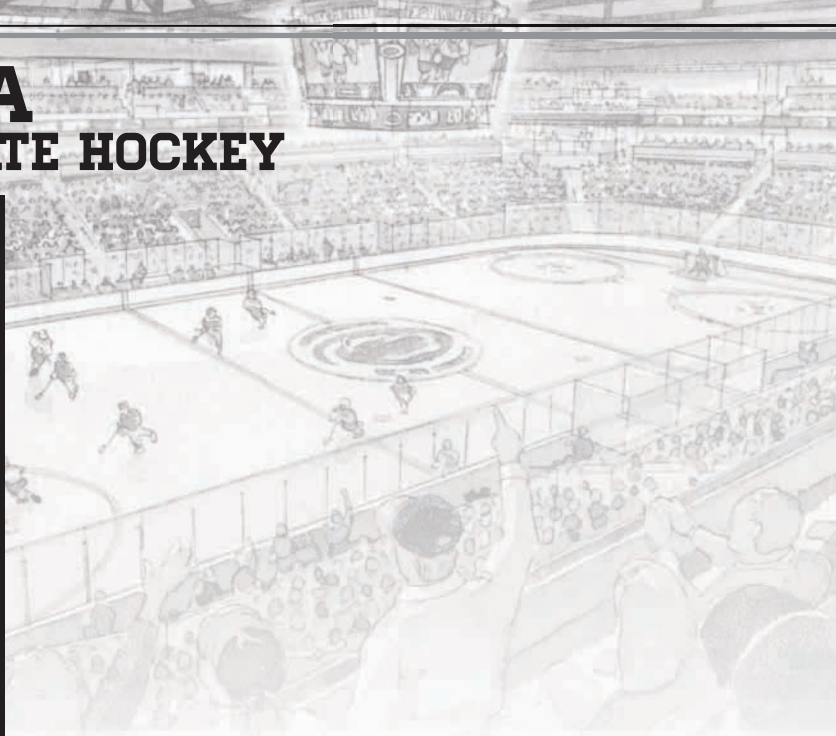
Arena rink will offer:

- 6,000-seat overall capacity
- 1,000-seat student section
- First-rate varsity locker rooms
- Team lounges and dry changing room
- Strength and conditioning center
- Shooting gallery
- Suites, loge boxes and club seats
- State-of-the-art television and radio broadcasting facilities
- Press box and media center
- Concession stands with café
- Videoboard

Community rink will offer:

- 300-seat capacity
- Eight locker rooms
- Skate rental center

Pegula Ice Arena will have the ability to host National Hockey League and American Hockey League games, as well as professional ice shows, local hockey and figure skating programs.



Left to Right: Kim and Terry Pegula, Dr. Rodney Erickson, The Nittany Lion, Joe Battista and Karen Peetz at the Pegula Ice Arena ceremonial groundbreaking.



NITTANY LION WOMEN'S HOCKEY



2012-13 Penn State Women's Hockey Penn State Combined Team Statistics (as of Jan 01, 2013) All games

Date	Opponent	Score	Att.	Record:	Overall	Home	Away	Neutral
Oct 06	at Vermont	w 5-3	785	ALL GAMES	5-12-1	2-5-1	3-7-0	0-0-0
Oct 07	at Vermont	L 1-3	326	CONFERENCE	1-8-1	0-5-1	1-3-0	0-0-0
* Oct 13	SYRACUSE	L 0-4	408	NON-CONFERENCE	4-4-0	2-0-0	2-4-0	0-0-0
* Oct 14	SYRACUSE	L 0-6	285					
Oct 19	at Sacred Heart	L 1-2	123					
Oct 20	at Sacred Heart	w 6-1	213					
* Oct 25	RIT	L 1-4	229					
* Oct 26	RIT	Tot 2-2	238					
Nov 02	SACRED HEART	w 6-0	231					
Nov 03	SACRED HEART	w 8-2	127					
* Nov 10	ROBERT MORRIS	L 1-7	152					
* Nov 11	ROBERT MORRIS	L 1-4	127					
* Nov 16	at Lindenwood	L 1-5	150					
* Nov 17	at Lindenwood	w 3-2	122					
* Nov 30	at #4 Mercyhurst	L 0-5	925					
* Dec 01	at #4 Mercyhurst	L 1-7	725					
Dec 07	at St. Lawrence	L 1-3	236					
Dec 08	at St. Lawrence	L 2-4	244					

TEAM STATISTICS	PSU	OPP
SHOT STATISTICS		
Goals-Shot attempts	40-467	64-774
Shot pct.	.086	.083
Goals/Game	2.2	3.6
Shots/Game	25.9	43.0
POWER PLAYS		
Goals-Power Plays	10-72	22-81
Conversion Percent	.139	.272
GOAL BREAKDOWN		
Power Play	10	22
Short-handed	0	3
Empty net	1	2
Penalty	0	0
Unassisted	5	7
Overtime	0	0
PENALTIES		
Number	82	75
Minutes	164	150
Penalties/Game	4.6	4.2
Pen minutes/Game	9.1	8.3
FACEOFFS (W-L)	491-611	611-491
Faceoff W-L Pct.	.446	.554

#	Player	gp	g	a	pts	sh	sh%	pen-min	pp	sh
40	Yoxheimer, Shannon	18	10	10	20	98	.102	5-10	2	0
24	Gross, Taylor	18	4	12	16	53	.075	2-4	2	0
15	Desorcie, Jess	18	4	8	12	34	.118	2-4	0	0
16	Hoenshell, Hannah	13	5	1	6	29	.172	3-6	0	0
19	Holdcroft, Jill	18	5	1	6	24	.208	1-2	3	0
20	Laurenzi, Emily	18	2	4	6	15	.133	3-6	1	0
33	Smiddy, Madison	13	1	5	6	11	.091	4-8	1	0
23	Shaw, Birdie	17	2	3	5	34	.059	7-14	0	0
10	Catanzariti, Micayla	18	3	1	4	24	.125	7-14	0	0
22	Welch, Jenna	18	1	3	4	24	.042	7-14	0	0
17	Pardoski, Jordin	18	1	2	3	12	.083	13-26	0	0
4	Jahnke, Paige	18	0	3	3	18	.000	8-16	0	0
2	Bateman, Jeanette	18	1	1	2	17	.059	3-6	1	0
13	Rasmussen, Kendra	17	1	1	2	23	.043	2-4	0	0
8	McGee, Taylor	12	0	1	1	9	.000	5-10	0	0
6	Reihl, Lindsay	18	0	1	1	5	.000	3-6	0	0
36	Weaver, Tess	15	0	1	1	17	.000	2-4	0	0
11	Zinn, Katie	9	0	1	1	11	.000	1-2	0	0
14	Kern, Darby	4	0	0	0	2	.000	1-2	0	0
3	Mendelson, Cara	1	0	0	0	0	.000	0-0	0	0
25	Murphy, Katie	8	0	0	0	1	.000	0-0	0	0
21	Wilkie, Sarah	12	0	0	0	6	.000	1-2	0	0
TM	TEAM	7	0	0	0	0	.000	2-4	0	0
Total		18	40	59	99	467	.086	82-164	10	0
Opponents		18	64	107	171	774	.083	75-150	22	3

#	Goalie	gp	min	ga	gaavg	saves	save%	w-l-t
31	Meyer, Brooke	1	20:00	0	0.00	7	1.000	0-0-0
37	Paniccia, Nicole	15	861:31	50	3.48	554	.917	5-9-1
30	Whittinger, Celine	4	198:15	12	3.63	149	.925	0-3-0
TM	EMPTY NET	7	5:14	2	-	0	.000	0-0-0
Total		18	1085:00	64	3.54	710	.917	5-12-1
Opponents		18	1085:00	40	2.21	427	.914	12-5-1

Attendance Summary	PSU	Opponent
Total	1797	3849
Dates/Avg Per Date	8/225	10/385
Neutral Site #/Avg	0/0	

Goals by Period	1st	2nd	3rd	Total
Penn State	13	12	15	40
Opponents	19	20	25	64

Saves by Period	1st	2nd	3rd	Total
Penn State	212	249	244	710
Opponents	139	144	144	427



NITTANY LION WOMEN'S HOCKEY

Opponent	Date	Score	2	3	4	6	8	10	11	13	14	15	16
at UVM	Oct 06	5-3 W	0-0-0	DNP	0-0-0	0-0-0	0-0-0	2-1-3	0-0-0	DNP	DNP	0-2-2	DNP
at UVM	Oct 07	1-3 L	0-0-0	DNP	0-0-0	0-0-0	0-1-1	0-0-0	0-0-0	0-0-0	DNP	0-1-1	DNP
SU	Oct 13	0-4 L	0-0-0	DNP	0-0-0	0-0-0	0-0-0	0-0-0	0-0-0	0-0-0	DNP	0-0-0	DNP
SU	Oct 14	0-6 L	0-0-0	DNP	0-0-0	0-0-0	0-0-0	0-0-0	0-0-0	0-0-0	DNP	0-0-0	DNP
at SHU	Oct 19	1-2 L	0-0-0	DNP	0-0-0	0-0-0	DNP	0-0-0	0-0-0	0-0-0	DNP	0-0-0	DNP
at SHU	Oct 20	6-1 W	1-0-1	0-0-0	1-0-1	0-1-1	DNP	0-0-0	DNP	0-0-0	DNP	1-0-1	1-0-1
RIT	Oct 25	1-4 L	0-0-0	DNP	0-0-0	0-0-0	0-0-0	0-0-0	DNP	0-0-0	DNP	0-0-0	0-0-0
RIT	Oct 26	2-2 T	0-0-0	DNP	0-0-0	0-0-0	0-0-0	0-0-0	0-0-0	0-0-0	DNP	0-1-1	0-0-0
SHU	Nov 02	6-0 W	0-0-0	DNP	0-0-0	0-0-0	0-0-0	0-0-0	0-1-1	0-0-0	DNP	0-2-2	3-0-3
SHU	Nov 03	8-2 W	0-0-0	DNP	0-0-0	0-0-0	0-0-0	0-0-0	0-1-1	1-1-2	DNP	1-2-3	0-0-0
RMU	Nov 03	1-7 L	0-0-0	DNP	0-0-0	0-0-0	0-0-0	0-0-0	0-0-0	0-0-0	DNP	0-0-0	0-0-0
RMU	Nov 11	1-4 L	0-0-0	DNP	0-0-0	0-0-0	DNP	1-0-1	DNP	0-0-0	DNP	0-0-0	0-0-0
at LU	Nov 16	1-5 L	0-0-0	DNP	0-1-1	0-0-0	DNP	0-0-0	DNP	0-0-0	DNP	0-0-0	0-0-0
at LU	Nov 17	3-2 W	0-0-0	DNP	0-0-0	0-0-0	0-0-0	0-0-0	DNP	0-0-0	DNP	0-0-0	0-0-0
at MU	Nov 30	0-5 L	0-0-0	DNP	0-0-0	0-0-0	0-0-0	0-0-0	DNP	0-0-0	DNP	0-0-0	0-0-0
at MU	Dec 01	1-7 L	0-0-0	DNP	0-0-0	0-0-0	0-0-0	0-0-0	DNP	0-0-0	DNP	1-0-1	0-0-0
at SLU	Dec 07	1-3 L	0-0-0	DNP	0-0-0	0-0-0	0-0-0	0-0-0	DNP	0-0-0	DNP	0-0-0	0-0-0
at SLU	Dec 08	2-4 L	0-0-0	DNP	0-0-0	0-0-0	0-0-0	0-0-0	DNP	0-0-0	DNP	1-0-1	1-0-1

Opponent	Date	Score	17	19	20	21	22	23	24	25	30	31	33
at UVM	Oct 06	5-3 W	0-0-0	0-0-0	0-1-1	DNP	0-0-0	1-1-2	0-2-2	DNP	DNP	DNP	0-1-1
at UVM	Oct 07	1-3 L	0-0-0	0-0-0	0-0-0	DNP	0-0-0	1-0-1	0-0-0	DNP	DNP	DNP	0-0-0
SU	Oct 13	0-4 L	0-0-0	0-0-0	0-0-0	0-0-0	0-0-0	0-0-0	0-0-0	0-0-0	DNP	DNP	0-0-0
SU	Oct 14	0-6 L	0-0-0	0-0-0	0-0-0	0-0-0	0-0-0	0-0-0	0-0-0	0-0-0	DNP	DNP	DNP
at SHU	Oct 19	1-2 L	0-0-0	0-0-0	0-0-0	0-0-0	0-0-0	0-1-1	0-1-1	0-0-0	DNP	DNP	0-0-0
at SHU	Oct 20	6-1 W	0-0-0	0-0-0	0-1-1	0-0-0	0-2-2	DNP	1-1-2	0-0-0	DNP	DNP	0-2-2
RIT	Oct 25	1-4 L	0-1-1	0-0-0	0-0-0	0-0-0	0-0-1	0-0-0	0-1-1	0-0-0	DNP	DNP	0-0-0
RIT	Oct 26	2-2 T	0-0-0	0-0-0	0-0-0	DNP	0-0-0	0-0-0	1-1-2	0-0-0	DNP	DNP	0-1-1
SHU	Nov 02	6-0 W	0-0-0	1-0-1	0-2-2	DNP	0-0-0	0-0-0	0-1-1	DNP	DNP	0-0-0	0-0-0
SHU	Nov 03	8-2 W	0-1-1	1-0-1	1-0-1	DNP	1-1-2	0-0-0	1-2-3	DNP	DNP	DNP	1-1-2
RMU	Nov 10	1-7 L	0-0-0	0-0-0	0-0-0	0-0-0	0-0-0	0-0-0	0-1-1	DNP	DNP	DNP	0-0-0
RMU	Nov 11	1-4 L	0-0-0	0-0-0	0-0-0	DNP	0-0-0	0-1-1	0-0-0	0-0-0	DNP	DNP	0-0-0
at LU	Nov 16	1-5 L	0-0-0	1-0-1	0-0-0	0-0-0	0-0-0	0-1-1	0-0-0	0-0-0	DNP	DNP	0-0-0
at LU	Nov 17	3-2 W	0-1-1	1-0-1	0-0-0	0-0-0	0-0-0	0-0-0	1-0-1	0-0-0	DNP	DNP	0-0-0
at MU	Nov 30	0-5 L	0-0-0	0-0-0	0-0-0	0-0-0	0-0-0	0-0-0	0-0-0	0-0-0	DNP	DNP	0-0-0
at MU	Dec 01	1-7 L	0-0-0	0-0-0	0-0-0	0-0-0	0-0-0	0-0-0	0-1-1	DNP	DNP	DNP	0-0-0
at SLU	Dec 07	1-3 L	0-0-0	1-0-1	0-0-0	0-0-0	0-0-0	0-0-0	0-0-0	DNP	DNP	DNP	0-0-0
at SLU	Dec 08	2-4 L	0-0-0	0-0-0	0-0-0	0-0-0	0-0-0	0-0-0	0-1-1	DNP	DNP	DNP	DNP

Opponent	Date	Score	36	37	40
at UVM	Oct 06	5-3 W	DNP	0-0-0	2-0-2
at UVM	Oct 07	1-3 L	DNP	DNP	0-0-0
SU	Oct 13	0-4 L	0-0-0	0-0-0	0-0-0
SU	Oct 14	0-6 L	0-0-0	DNP	0-0-0
at SHU	Oct 19	1-2 L	0-0-0	0-0-0	1-0-1
at SHU	Oct 20	6-1 W	0-0-0	0-0-0	1-1-2
RIT	Oct 25	1-4 L	DNP	0-0-0	1-0-1
RIT	Oct 26	2-2 T	0-0-0	0-0-0	1-1-2
SHU	Nov 02	6-0 W	0-0-0	0-0-0	2-0-2
SHU	Nov 03	8-2 W	0-1-1	0-0-0	1-2-3
RMU	Nov 10	1-7 L	0-0-0	0-0-0	1-0-1
RMU	Nov 11	1-4 L	0-0-0	0-0-0	0-0-0
at LU	Nov 16	1-5 L	0-0-0	0-0-0	0-1-1
at LU	Nov 17	3-2 W	0-0-0	0-0-0	0-2-2
at MU	Nov 30	0-5 L	0-0-0	0-0-0	0-0-0
at MU	Dec 01	1-7 L	0-0-0	0-0-0	0-0-0
at SLU	Dec 07	1-3 L	0-0-0	DNP	0-1-1
at SLU	Dec 08	2-4 L	0-0-0	0-0-0	0-1-1

NITTANY LION WOMEN'S HOCKEY



2012-13 PENN STATE WOMEN'S HOCKEY NUMERICAL ROSTER

No.	Name	Yr.	Pos.	Ht.	S/C	Hometown	Last Team
2	Jeanette Bateman	Fr.	F/D	5-6	R	Greeley, Colo.	Colorado Select
3	Cara Mendelson	So.	F/D	5-6	R	Pittsburgh, Pa.	Steel City Selects
4	Jordin Pardoski	Fr.	D	5-5	R	Rochester Hills, Mich.	Detroit Honeybaked
5	Stephanie Walkom	Fr.	D	5-7	R	Moon Township, Pa.	Pittsburgh Penguins Elite
6	Lindsay Reihl	Sr.	D	5-4	R	Cheshire, Conn.	Connecticut Polar Bears
8	Taylor McGee	Fr.	D	5-3	R	Pearl River, N.Y.	Taft School (Conn.)
10	Micayla Catanzariti	Fr.	F	5-4	R	Rancho Santa Margarita, Calif.	Gilmour Academy (Ohio)
11	Katie Zinn	Fr.	F	5-7	R	Coquitlam, B.C.	Gilmour Academy (Ohio)
12	Kate Christoffersen	Sr.	F	5-3	R	Trumbull, Conn.	Connecticut Polar Bears
13	Kendra Rasmussen	Fr.	F	5-5	L	Sartell, Minn.	Sartell/Sauk Rapids HS
14	Darby Kern	Fr.	F	5-11	R	Venetia, Pa.	Pittsburgh Penguins Elite
15	Jess Desorcie	So.	F	5-4	L	Westford, Vt.	Connecticut College
16	Hannah Hoenshell	Fr.	F	5-3	R	Plano, Texas	Texas Alliance
17	Paige Jahnke	Fr.	D	5-6	R	Oakdale, Minn.	Roseville HS/Minnesota Jr. Whitecaps
19	Jill Holdcroft	Fr.	F	5-1	R	Pennsylvania Furnace, Pa.	Pittsburgh Penguins Elite
20	Emily Laurenzi	Fr.	F	5-2	R	Townsend, Del.	National Sports Academy (N.Y.)
21	Sarah Wilkie	Fr.	D	5-6	R	Ashby, Mass.	Williston Northampton School
22	Jenna Welch	Jr.	F	5-8	R	Austin, Texas	Connecticut
23	Birdie Shaw	Fr.	F	5-2	L	Troy, Mich.	Detroit Honeybaked
24	Taylor Gross	Jr.	F	5-1	R	Colorado Springs, Colo.	Connecticut
25	Katie Murphy	So.	F	5-4	L	Novi, Mich.	Detroit Honeybaked
30	Celine Whitlinger	Fr.	G	5-8	L	Garden Grove, Calif.	Gilmour Academy (Ohio)
31	Brooke Meyer	Fr.	G	5-7	L	Naperville, Ill.	Chicago Huskies
33	Madison Smiddy	So.	D	5-7	L	Grand Rapids, Mich.	Detroit Honeybaked
36	Tess Weaver	So.	F	5-5	R	Windber, Pa.	Pittsburgh Penguins Elite
37	Nicole Paniccia	Jr.	G	5-5	L	Oakville, Ont.	Connecticut
40	Shannon Yoxheimer	Fr.	F	5-7	L	Jackson, Mich.	North American Hockey Academy (Vt.)

Head Coach: Josh Brandwene (First Year)

Assistant Coaches: Gina Kearns (First Year), Casey McCullion (First Year); **Director of Operations/Video Coach:** Mo Stroemel (First Year)

Captain: Taylor Gross; **Assistant Captains:** Lindsay Reihl, Jenna Welch

ALPHABETICAL ROSTER		PRONUNCIATION GUIDE		LIONS BY STATE		LIONS BY POSITION	
No.	Name	Brandwene	BRAND-ween	California (2):	Catanzariti, Whitlinger	Forward (17):	Bateman, Catanzariti
2	Jeanette Bateman	Catanzariti	Cah-TAN-zah-REE-tee	Colorado (2):	Bateman, Gross		Christoffersen, Desorcie, Gross,
10	Micayla Catanzariti	Jahnke	YAWN-kee	Connecticut (2):	Christoffersen, Reihl		Hoenshell, Holdcroft, Kern, Laurenzi,
12	Kate Christoffersen	Jeanette	Jeh-NETT	Delaware (1):	Laurenzi		Mendelson, Murphy, Rasmussen,
15	Jess Desorcie	Kearns	KERNS	Illinois (1):	Meyer		Shaw, Weaver, Welch, Yoxheimer,
24	Taylor Gross	McCullion	Mick-CULL-yon	Massachusetts (1):	Wilkie		Zinn
16	Hannah Hoenshell	Paniccia	Pah-NEE-cha	Michigan (5):	Murphy, Pardoski, Shaw, Smiddy, Yoxheimer	Defense (9):	Bateman, Jahnke,
19	Jill Holdcroft	Reihl	RILE	Minnesota (2):	Jahnke, Rasmussen		McGee, Mendelson, Pardoski, Reihl,
17	Paige Jahnke	Stroemel	STRAW-mull	New York (1):	McGee		Smiddy, Walkom, Wilkie
14	Darby Kern			Pennsylvania (5):	Holdcroft, Kern, Mendelson, Walkom, Weaver	Goalie (3):	Meyer, Paniccia, Whitlinger
20	Emily Laurenzi			Texas (2):	Hoenshell, Welch		
8	Taylor McGee			Vermont (1):	Desorcie		
3	Cara Mendelson						
31	Brooke Meyer						
25	Katie Murphy						
37	Nicole Paniccia						
4	Jordin Pardoski						
13	Kendra Rasmussen						
6	Lindsay Reihl						
23	Birdie Shaw						
33	Madison Smiddy						
5	Stephanie Walkom						
36	Tess Weaver						
22	Jenna Welch						
30	Celine Whitlinger						
21	Sara Wilkie						
40	Shannon Yoxheimer						
11	Katie Zinn						





NITTANY LION WOMEN'S HOCKEY



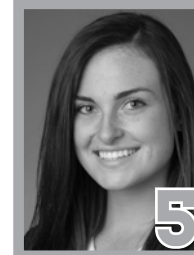
JEANNETTE BATEMAN
Freshman • F/D
Greeley, Colo.



CARA MENDELSON
Sophomore • F/D
Pittsburgh, Pa.



JORDIN PARDOSKI
Freshman • D
Rochester Hills, Mich.



STEPHANIE WALKOM
Freshman • D
Moon Township, Pa.



LINDSAY REIHL **A**
Senior • D
Cheshire, Conn.



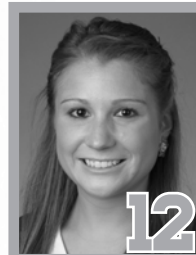
TAYLOR MCGEE
Freshman • D
Pearl River, N.Y.



MICAYLA CATANARITTI
Freshman • F
Rancho Santa Margarita, Calif.



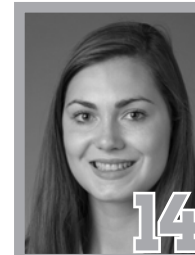
KATIE ZINN
Freshman • F
Coquitlam, B.C.



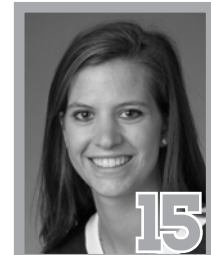
KATE CHRISTOFFERSEN
Senior • F
Trumbull, Conn.



KENDRA RASMUSSEN
Freshman • F
Sartell, Minn.



DARBY KERN
Freshman • F
Venetia, Pa.



JESS DESORCIE
Sophomore • F
Westford, Vt.



HANNAH HOENSHELL
Freshman • F
Plano, Texas



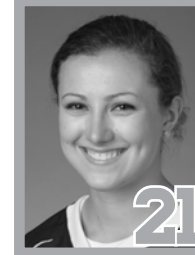
PAIGE JAHNKE
Freshman • D
Oakdale, Minn.



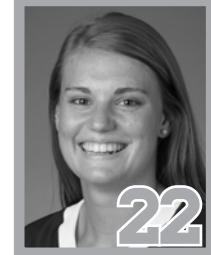
JILL HOLDCROFT
Freshman • F
Pennsylvania Furnace, Pa.



EMILY LAURENZI
Freshman • F
Townsend, Del.



SARAH WILKIE
Freshman • D
Ashby, Mass.



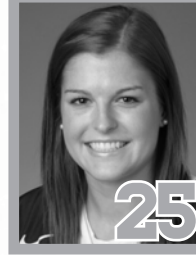
JENNA WELCH **A**
Junior • F
Austin, Texas



BIRDIE SHAW
Freshman • F
Troy, Mich.



TAYLOR GROSS **C**
Junior • F
Colorado Springs, Colo.



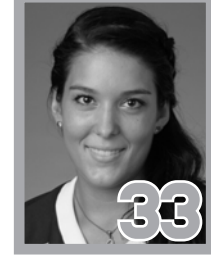
KATIE MURPHY
Sophomore • F
Novi, Mich.



CELINE WHITLINGER
Freshman • G
Garden Grove, Calif.



BROOKE MEYER
Freshman • G
Naperville, Ill.



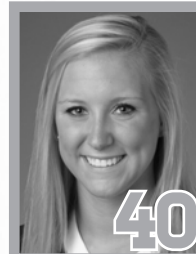
MADISON SMIDDY
Sophomore • D
Grand Rapids, Mich.



TESS WEAVER
Sophomore • F
Windber, Pa.



NICOLE PANICCIA
Junior • G
Oakville, Ont.



SHANNON YOXHEIMER
Freshman • F
Jackson, Mich.