

# PENN STATE WOMEN'S VOLLEYBALL

## 2013 PSU MATCH NOTES

Arielle Sargent, Assistant Dir. of Athletic Communications • O: 814-865-8139 • C: 814-321-8286 • ans26@psu.edu • @PennStateVBALL

### BIG TEN WEEK TWO: MATCH DETAILS



#### NO. 5 PSU VS. INDIANA

TV: ESPN2  
Thursday, Oct. 3  
7 p.m.  
University Gym  
Bloomington, Ind.



#### NO. 5 PSU VS. NO. 24 PURDUE

Saturday, Oct.  
7:30 p.m.  
Mackey Arena  
West Lafayette, Ind.



### PENN STATE VS. INDIANA

The Nittany Lions own a 45-1 record in the all-time series against the Hoosiers. The two clubs met twice during the 2012 season, with Penn State capturing a 3-1 win Oct. 13 and a 3-0 victory Nov. 16. The only loss to Indiana came on the road in 2010, when PSU dropped a tough five-setter to IU. Prior to that match, Penn State had posted wins in 40 straight games.

### SCOUTING THE HOOSIERS

Indiana enters the week looking to snap a four-game skid that features back-to-back Big Ten losses against then-No. 9 Minnesota and Wisconsin on the road. Despite the outcome, the Hoosiers are still 8-5 on the year.

Four Hoosiers have posted more than 100 kills so far this season, led by Morgan Leach, who's tallied 128, averaging 2.84 per set. Jordan Haverly is close behind with 116, having also recently notched her 1,500th career kill against the Badgers. Awele Nwaeze is leading IU above the net with 37 total blocks, averaging a team-high 0.82 per set. At the service line, Taylor Lebo is averaging 0.33 aces per frame, which ranks seventh in the Big Ten.

### PENN STATE VS. PURDUE

Penn State owns a 48-5 record against the Boilermakers in one of the longest standing Big Ten series. The Nittany Lions posted wins in both outings during the 2012 season, including a 3-0 win Oct. 12 and a 3-1 triumph, Nov. 17th. The most recent victory marked PSU's fifth consecutive since losing to Purdue in five sets Oct. 10, 2008. Before the loss, the Lions had posted wins in 42 straight matches against Purdue.

### SCOUTING THE BOILERMAKERS

After a 2012 season that brought a trip to the NCAA Regional Semifinals, No. 24 Purdue is out to a 9-4 start in 2013. The Boilermakers recently concluded the non-conference portion of the schedule on an 8-0 winning streak, before losing to Wisconsin and then-No. 9 Minnesota on the road.

Val Nichol is leading the Boilermaker offense with 122 kills, averaging 2.60 kills per set. Kiki Jones has registered 97 kills, while leading the squad with a team-high .413 hitting clip, which ranks fourth in the Big Ten. Faye Adelaja is leading the team in blocking with 61 total blocks, including 10 solo stuffs. Her 1.30 blocks per frame is tied for fifth in the conference.

### BIG TEN OPENING WEEKEND IN REVIEW

PSU went 1-1 in the opening weekend of Big Ten play with a 3-2 loss to then-No. 15 Michigan State and a 3-1 win against No. 10 Michigan. With the bounce-back win against the Wolverines, the Nittany Lions improved to 24-0 all-time at home in Rec Hall versus Michigan. The last time Penn State opened the conference slate with a 1-1 record was in 2011, with a win against Iowa after a loss to Nebraska on the road.



Thurs. Oct. 3, 2013 - vs. Indiana  
Talent: Sam Gore, Kelli Tennant

### 2013 SCHEDULE

#### AUGUST

##### 30-31 Penn State Invitational

- 30 vs. Dabrowa (Exhibition) ..... W, 3-0
- 31 vs. No. 19 Louisville ..... W, 3-0
- 31 vs. Syracuse ..... W, 3-0

#### SEPTEMBER

##### 7-8 Nike Big Four Volleyball Classic

- 7 vs. No. 1 Texas ..... L, 3-2
- 8 vs. No. 9 Florida ..... W, 3-0

##### 13-14 Florida Gulf Coast Tournament

- 13 vs. Marquette ..... W, 3-0
- 14 vs. Central Arkansas ..... W, 3-0
- 14 vs. Florida Gulf Coast ..... W, 3-0

##### 20-21 Penn State Classic

- 20 vs. Albany ..... W, 3-0
- 21 vs. Eastern Kentucky ..... W, 3-0
- 21 vs. Yale ..... W, 3-0
- 27 vs. Michigan State\* ..... L, 3-2
- 28 vs. Michigan\*# ..... W, 3-1

#### OCTOBER

- 3 at Indiana\*# ..... 7 p.m.
- 5 at Purdue\* ..... 7:30 p.m.
- 9 vs. Minnesota\*# ..... 7 p.m.
- 12 vs. Wisconsin\* ..... 8:30 p.m.
- 18 at Illinois\*# ..... 8 p.m.
- 20 at Northwestern\* ..... 2 p.m.
- 23 vs. Ohio State\*# ..... 7 p.m.
- 26 vs. Iowa\* ..... 7 p.m.

#### NOVEMBER

- 1 at Michigan\*# ..... 8 p.m.
- 2 at Michigan State\*# ..... 8:30 p.m.
- 8 vs. Purdue\* ..... 7 p.m.
- 9 vs. Indiana\* ..... 7 p.m.
- 15 at Wisconsin\* ..... 8 p.m.
- 16 at Minnesota\* ..... 8 p.m.
- 22 vs. Northwestern\* ..... 7 p.m.
- 23 vs. Illinois\* ..... 7 p.m.
- 27 at Ohio State\*# ..... 8 p.m.
- 30 at Nebraska\*# ..... 8 p.m.

#### DECEMBER

- 6 NCAA First and Second Rounds ..... Campus Sites
- 7 NCAA First and Second Rounds ..... Campus Sites
- 13 NCAA Regionals ..... Campus Sites
- 14 NCAA Regionals ..... Campus Sites
- 20 NCAA National Championship ..... Seattle, WA.
- 21 NCAA National Championship ..... Seattle, WA.

Home matches played at Rec Hall in bold • All times ET and subject to change •  
\* Indicates Big Ten match • # indicates match will be aired on TV



# 2013 PENN STATE WOMEN'S VOLLEYBALL

## PSU AT A GLANCE

### THE UNIVERSITY

Location:.....University Park, Pa. 16802  
 Founded:..... 1855  
 Enrollment:.....44,112  
 Colors:..... Blue & White  
 Nickname:..... Nittany Lions  
 Conference:..... Big Ten  
 President:..... Dr. Rodney Erickson  
 Acting Director of Athletics:..... Dr. Dave Joyner  
 Assoc. A.D./SWA.....Charmelle Greene  
 Facility (capacity):.....Rec Hall (5,812)

### VOLLEYBALL STAFF

Head Coach:.....Russ Rose (35th season)  
 Alma Mater:.....George Williams, 1975  
 Overall Record (Yrs/Pct):.....1,091-175 (34/.862)  
 School Record:.....same  
 Asst. Coaches:..... Steve Aird (2nd season)  
 .....Kaleena Davidson (5th season)  
 Dir. of VB Operations:.. Adam Hughes (4th season)  
 Office Phone:.....(814) 863-7475 or (814) 863-7474  
 Office Fax:.....(814) 865-1746  
 Office Address:.....235 Rec Hall

### SEASON IN REVIEW

2012 Record:..... 33-3  
 Home:..... 17-0  
 Away:..... 10-1  
 Neutral:.....6-2  
 Big Ten record (finish):..... 19-1 (1st)  
 Home: 10-0..... Away: 9-1  
 Final AVCA Ranking:..... No. 3  
 Postseason Play:..... NCAA National Semifinals  
 First Round:..... def. Binghamton, 3-0  
 Second Round:..... def. Bowling Green, 3-0  
 Regional Semifinal:..... def. No. 16 Kentucky, 3-0  
 Regional Final..... def. No. 11 Minnesota, 3-1  
 National Semifinal:.....lost to No. 5 Oregon, 3-1

### NITTANY LION HISTORY

First Year of Volleyball:..... 1976  
 All-Time Record (Years):..... 1,142-218-4 (37)  
 All-Time Big Ten Record:..... 388-52  
 Years/Win Pct:..... 22/.882  
 Big Ten Titles: (14) '92, '93, '96, '97, '98, '99, '03,  
 ..... '04, '05, '06, '07, '08, '09, '10, '12)  
 NCAA Tournament Appearances:..... 32  
 NCAA Tournament Record:.....78-27  
 NCAA National Championships:.....5  
 (1999, 2007, 2008, 2009, 2010)

## 2013 PENN STATE NUMERICAL ROSTER

NO.	NAME	YR.	POS.	HT.	HOMETOWN/HIGH SCHOOL
1	Ariel Scott	Sr.	RS	6-4	Ridgewood, N.J.
2	Lara Caraway	So.	DS	5-4	Evans City, Pa.
3	Kendall Pierce	So.	DS	5-6	Eden, N.Y.
4	Dominique Gonzalez	Jr.	L	5-6	San Antonio, Texas
6	Maddie Martin	Sr.	OH	6-1	Tampa, Fla.
7	Nia Grant	Jr.	OH	6-2	Warren, Ohio
8	Erica Denney	RS-Jr.	MH	6-5	Aurora, Colo.
9	Paulina Prieto Cerame	RS-Fr.	OH	6-2	Miami, Fla.
10	Carley Muller	Fr.	DS	5-7	Manhattan Beach, Calif.
12	Micha Hancock	Jr.	S	5-11	Edmond, Okla.
13	Taylor Krause	Fr.	DS/S	5-6	Allentown, Pa.
14	Aiyana Whitney	RS-So.	OH	6-5	Norwood, N.J.
15	Maggie Harding	Sr.	DS	5-6	State College, Pa.
16	Katie Slay	Sr.	MH	6-6	Raleigh, N.C.
17	Megan Courtney	So.	S/OH	6-2	Dayton, Ohio
18	Deja McClendon	Sr.	OH	6-1	Louisville, Ky
23	Kelly Robertson	Fr.	MH	6-0	Allentown, Pa./Parkland High
24	Laura Broerman	Fr.	DS	5-4	Colorado Springs, Colo.
33	Lacey Fuller	Jr.	DS	5-6	San Diego, Calif.

**Head Coach:** Russ Rose (George Williams, 1975), 35th year

**Assistant Coaches:** Steve Aird (Penn State, 2001), 2nd year

Kaleena Davidson (Penn State, 2006), 5th year

**Director of Volleyball Operations:** Adam Hughes (Penn State, 2006), 4th year

## ALPHABETICAL ROSTER

NO.	NAME	YR.	POS.	HT.	HOMETOWN/HIGH SCHOOL
24	Laura Broerman	Fr.	DS	5-4	Colorado Springs, Colo.
2	Lara Caraway	So.	DS	5-4	Evans City, Pa.
17	Megan Courtney	So.	S/OH	6-2	Dayton, Ohio
8	Erica Denney	RS-Jr.	MH	6-5	Aurora, Colo.
33	Lacey Fuller	Jr.	DS	5-6	San Diego, Calif.
4	Dominique Gonzalez	Jr.	L	5-6	San Antonio, Texas
7	Nia Grant	Jr.	OH	6-2	Warren, Ohio
12	Micha Hancock	Jr.	S	5-11	Edmond, Okla.
15	Maggie Harding	Sr.	DS	5-6	State College, Pa.
13	Taylor Krause	Fr.	DS/S	5-6	Allentown, Pa.
6	Maddie Martin	Sr.	OH	6-1	Tampa, Fla.
18	Deja McClendon	Sr.	OH	6-1	Louisville, Ky.
10	Carley Muller	Fr.	DS	5-7	Manhattan Beach, Calif.
3	Kendall Pierce	So.	DS	5-6	Eden, N.Y.
9	Paulina Prieto Cerame	RS-Fr.	OH	6-2	Miami, Fla.
23	Kelly Robertson	Fr.	MH	6-0	Allentown, Pa.
1	Ariel Scott	Sr.	RS	6-4	Ridgewood, N.J.
16	Katie Slay	Sr.	MH	6-6	Raleigh, N.C.
14	Aiyana Whitney	RS-So.	OH	6-5	Norwood, N.J.

## PRONUNCIATIONS

Aiyana.....	l-yahn-uh	Broerman.....	Bra-er-man
Ariel.....	Air-ee-el	Micha.....	Mike-uh
Aird.....	Air-d	Nia.....	Nee-uh
Kaleena.....	KA-lee-na	Muller.....	Muh-ler
Lacey.....	Lace-ee	Paulina.....	Paul-ee-na
Lara.....	Lar-uh	Prieto.....	Pre-eh-toe



# TV/RADIO ROSTER



**1** Ariel Scott  
Sr., RS, 6-4  
Ridgewood, N.J.



**2** Lara Caraway  
So., DS, 5-4  
Evans City, Pa.



**3** Kendall Pierce  
So., DS, 5-6  
Eden, N.Y.



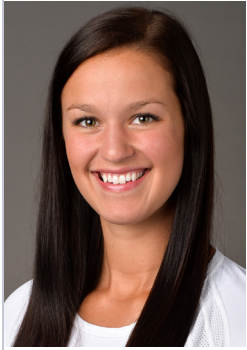
**4** Dominique Gonzalez  
Jr., DS, 5-6  
San Antonio, Texas



**6** Maddie Martin  
Sr., OH, 6-1  
Tampa, Fla.



**7** Nia Grant  
r., OH, 6-2  
Warren, Ohio



**8** Erica Denney  
RS-Jr., MH, 6-3  
Aurora, Colo.



**9** Paulina P. Cerame  
RS-Fr., OH, 6-2  
San Juan, Puerto Rico



**10** Carley Muller  
Fr., DS, 5-7  
Manhattan Beach, Calif.



**12** Micha Hancock  
Jr., S, 5-11  
Edmond, Okla.



**13** Taylor Krause  
Fr., DS/S, 5-6  
Allentown, Pa.



**14** Aiyana Whitney  
RS-So., OH, 6-4  
Norwood, N.J.



**15** Maggie Harding  
Sr., DS, 5-6  
State College, Pa.



**16** Katie Slay  
Sr., MH, 6-6  
Raleigh, N.C.



**17** Megan Courtney  
So., S/OH, 6-2  
Dayton, Ohio



**18** Deja McClendon  
Sr., OH, 6-1  
Louisville, Ky.



**23** Kelly Robertson  
Fr., MH, 6-0  
Allentown, Pa.



**24** Laura Broerman  
Fr., DS, 5-4  
Colorado Springs, Colo.



**33** Lacey Fuller  
Jr., DS, 5-6  
San Diego, Calif.



Russ Rose  
Head Coach



Steve Aird  
Assistant Coach



Kaleena Davidson  
Assistant Coach



Adam Hughes  
Director of  
Operations



JJ Goddu  
Volunteer  
Assistant Coach



## AROUND THE BIG TEN



### 2013 BIG TEN STANDINGS

Team	Big Ten Record	Overall Pct.	Record	Pct.
Minnesota	2-0	1.000	14-1	.933
Wisconsin	2-0	1.000	13-1	.929
Michigan State	2-0	1.000	13-1	.929
Nebraska	2-0	1.000	9-2	.818
Ohio State	1-1	.500	13-1	.929
Penn State	1-1	.500	10-2	.833
Northwestern	1-1	.500	9-5	.643
Illinois	1-1	.500	5-7	.417
Michigan	0-2	.000	10-3	.769
Purdue	0-2	.000	9-4	.692
Iowa	0-2	.000	9-5	.643
Indiana	0-2	.000	8-5	.615

### THIS WEEK IN THE BIG TEN

#### OCTOBER 2

#23 WISCONSIN at IOWA - 7:30 p.m.

#### OCTOBER 3

#5 PENN STATE at INDIANA 7 p.m.

#### OCTOBER 4

ILLINOIS (rv) at #9 MICHIGAN STATE - 7 p.m.

NORTHWESTERN at #14 MICHIGAN - 7 p.m.

#12 OHIO STATE at #24 PURDUE - 7 p.m.

#8 MINNESOTA at #10 NEBRASKA - 8 p.m.

#### OCTOBER 5

ILLINOIS (rv) at #14 MICHIGAN - 7 p.m.

NORTHWESTERN at #9 MICHIGAN STATE - 7 p.m.

#12 OHIO STATE at INDIANA - 7 p.m.

#5 PENN STATE at #24 PURDUE - 7 p.m.

#8 MINNESOTA at IOWA - 8 p.m.

#23 WISCONSIN at #10 NEBRASKA - 8 p.m.

### #BIG WEEKLY HIGHLIGHT

Numerous Big Ten standouts appear among the top 10 of the NCAA statistical leaders, which were released on Monday. Penn State's Micha Hancock tops the nation in aces per set (0.83), while Ohio State's Kaitlyn Leary ranks fourth in kills per set (5.21). Leary is also fourth in points per set (5.59), while Minnesota's Tori Dixon is 10th (5.27). Penn State's Katie Slay is third in hitting percentage (.494), followed by Dixon in sixth (.476) and Michigan State's Alexis Mathews in ninth (.452). Ohio State's Taylor Sherwin averages 12.19 assists per set, good for fourth in the country, while Northwestern's Caleigh Ryan is seventh (11.84). As a team, Penn State is fourth in the nation in percentage (.333) and Minnesota is fifth (.330).

### HANCOCK STILL LEADING THE NATION IN ACES PER SET

Junior Micha Hancock is leading the nation in aces per set for the fourth straight week, according to the third NCAA DI stats release. With a total of 34 aces this season, Hancock is averaging 0.83 per frame, which both ranks first in the Big Ten.

With four aces against Eastern Kentucky, Hancock notched her 200th career service ace. Since matching the mark, she's tallied six more to move her just 29 aces away from tying Ellen Hensler (1983-86) for first on the PSU all-time list.

As a team, Penn State is averaging 1.68 aces per set, which ranks 24th nationally and ranks second in the conference. Aside from Hancock, Dominique Gonzalez has also recorded 11 aces, which is tied for second on the squad.

### PENN STATES MOVES TO NO. 5 IN LATEST AVCA POLL

After a 1-1 start in Big Ten conference play, the Nittany Lions moved to No. 5 in the latest AVCA Top 25 Coaches' Poll. PSU received one first-place vote in this weekend's poll as well. Additionally, Penn State received a third-place ranking in the Volleyball Magazine Poll and a fourth-place ranking in the RichKern Poll.

### THAT'S SOME HEAVY HITTING

After hitting .394 this week, senior Katie Slay is ranked third nationally in hitting percentage with a .510 clip on the year. She is one of only two in the country with a .500 or better hitting percentage and her mark also leads all student-athletes in the Big Ten Conference. As a team, the Nittany Lions are hitting .333 which ranks fourth in the country and first in the Big Ten.

### BLOCK IT UP

The Nittany Lions have combined for 109.5 total blocks in 2013, including 34 solo blocks. As a team, the 2.67 average per set ranks 27th nationally and second in the league. Katie Slay is leading the PSU blocking effort with 1.44 per frame, which leads the Big Ten and ranks 11th nationally.

### PSU SPENDS TWO WEEKS AT NO. 1 IN TOP 25 RANKINGS

After posting two back-to-back undefeated weekends, PSU spent its second week at No. 1 in the AVCA weekly Top 25 Coaches' Poll last week, while also picking up top rankings in the RichKern.com and Volleyball Magazine polls. Last year, Penn State spent six weeks atop the standings, including five consecutive weeks from Sept. 24 to Oct. 22, before earning the No. 1 overall seed in the NCAA Tournament, Nov. 9. The No. 1 ranking marks the 78th time in program history that Penn State has reached the top of the polls, having earned its first-ever No. 1 ranking Sept. 2, 1997.

### TRIO EARNS PENN STATE CLASSIC ALL-TOURNAMENT HONORS

Seniors Katie Slay and Deja McClendon and junior Dominique Gonzalez all earned Penn State Classic all-tournament team honors for their performances on the court last weekend.

Slay earned her third all-tournament honor after combining for 27 kills on the weekend, posting a team-high .649 hitting clip. Slay highlighted the weekend with 11 kills against Eastern Kentucky. She also led the team in blocking with 13 total blocks, averaging 1.44 per set.

McClendon finished the weekend with 24 kills, 16 digs and seven blocks, while also hitting .300 or better. She posted double-digit kills against Eastern Kentucky (10) and ranked second on the team with nine kills against Yale. Gonzalez led the squad with 44 digs on the week, including a season-high 20 against ECU.

### ROSE HITS 1,100 WINS: QUICKLY APPROACHING HISTORIC MARK

The Penn State win against Yale marked head coach Russ Rose's 1,100th career victory. With the win against No. 10 Michigan this past weekend, Rose improves to 1,101 - 176 all-time, which puts him just five wins shy of tying UCLA head coach, Andy Banachowski's mark of 1,106 for second on the all-time list, behind Hawaii head coach, Dave Shoji.

Earlier this season, Shoji surpassed Banachowski's mark, to become the all-time leader in the category. With Banachowski no longer active, both Rose and Shoji will continue to go head-to-head, battling for the top spot.



## AVCA TOP 25 COACHES' POLL

As of Sept. 30, 2013

NO.	SCHOOL	PTS.	RECORD	PW
1	Washington (38)	1455	10-0	2
2	USC (12)	1395	12-1	4
3	Florida (2)	1355	13-1	3
4	Texas (2)	1284	8-2	5
5	<b>PENN STATE (1)</b>	<b>1267</b>	<b>10-2</b>	<b>1</b>
6	Hawai'i (3)	1233	13-1	6
7	Stanford	1163	9-2	7
8	Minnesota	1084	14-1	9
9	Michigan State (2)	1037	13-1	15
10	Nebraska	931	9-2	12
11	North Carolina	843	13-0	14
12	Ohio State	804	13-1	13
13	San Diego	795	9-3	8
14	Michigan	655	10-3	10
15	Arizona State	600	12-2	16
16	UCLA	555	9-3	11
17	Colorado State	538	12-0	19
18	Florida State	526	9-4	17
19	Kentucky	497	10-3	18
20	Ohio	263	12-2	22
21	Oregon	231	8-4	21
22	Creighton	216	9-3	23
23	Wisconsin	208	13-1	NR
24	Purdue	104	9-4	20
25	Iowa State	97	7-4	25

**RECEIVING VOTES:** BYU 66; *Illinois* 53; Western Kentucky 45; Duke 43; St. Mary's (CA) 33; Oklahoma 25; Texas A&M 25; Kansas State 18; California 17; Missouri 10; Kansas 9; Cal State Northridge 8; Miami (FL) 8

\*2013 opponents in *italics*

## PSU PRESENCE IN THE COACHES' POLL

Aug. 12: #2  
 Sept. 2 #1  
 Sept. 7 #3  
 Sept. 9 #3  
 Sept. 16 #1  
 Sept. 23 #1  
 Sept. 30 #5  
 Next Poll: Oct. 7

## PSU EARNS NO. 2 RANKING IN PRESEASON COACHES' POLL

The defending Big Ten Champion Nittany Lions enter the 2013 season with the No. 2 ranking, according to the 2013 AVCA Preseason Coaches' Poll. The Lions are among Big Ten teams to break into the top 10, with Minnesota and Michigan coming in at No. 6 and No. 7 and Nebraska at No. 10.

Defending NCAA Champion Texas nabbed the top spot, earning 55 of 60 possible first-place votes. The Nittany Lions received three first place votes, while third-ranked Stanford earned two. Rounding out the top five is USC and Washington, who are ranked fourth and fifth, respectively.

## SLAY EARNS HGIHS CLASSIC ALL-TOURNAMENT MVP HONORS

Senior Katie Slay earned her second all-tournament honor of the season after being selected as the MVP in the Hilton Garden Inn Homewood Suites Classic. Slay recorded two season-high marks in the 3-0 weekend, registering a team-high eight blocks against Central Arkansas and a squad-best .818 hitting percentage at FGCU. She also combined for 23 kills on the week, with only one error while leading the team with a .667 hitting percentage. Slay also averaged 1.78 blocks per set across all three matches and extended her streak to seven straight games with at least one block.

## COURTNEY AND HANCOCK NAB SPOTS ON ALL-TOURNAMENT TEAM

Junior Micha Hancock and sophomore Megan Courtney both earned spots on the all-tournament team last weekend. The honor was Hancock's second of the season.

Hancock dished out more than 30 assists in all three PSU victories this weekend, while pacing tournament MVP, Katie Slay to a season-high .818 hitting clip against FGCU. She notched three aces against both Central Arkansas and FGCU for an 0.67 average per frame on the week.

Courtney tied for first on the team in kills against Marquette and FCGU while leading the squad with double-digit kills (10) against Central Arkansas last weekend. She combined for 28 total kills in all three matches, adding 17 digs.

## HANCOCK TABBED PENN STATE INVITATIONAL MVP

Micha Hancock earned Penn State Invitational MVP honors for a pair of outstanding performances last weekend. Hancock tied for third on the squad in kills with five against Syracuse, on 556 hitting. She also dished out 30 assists, while pacing the team to a .313 hitting clip. Against Louisville, Hancock registered eight service aces, which is just two shy of her career-high mark of 10 that she set against Binghamton in the NCAA Tournament last season. She also tallied two kills and seven digs against the Cardinals to round out the weekend.

## PREITO CERAME AND SLAY EARN PSU INVITE ALL-TOURNAMENT

Redshirt freshman Paulina Prieto Cerame and senior Katie Slay also earned Penn State Invitational All-Tournament team honors in the Penn State Invitational. In her first season in the blue and white, Preto Cerame recorded a team-high nine kills against Syracuse and hit double-digits with 10 against No. 19 Louisville. Slay led the squad with a team-best five blocks against Syracuse, including two solo blocks. She also tied for third on the team with five kills. Against the Cardinals, she posted three blocks, including one solo block, adding three kills.

## NITTANY LIONS IMPROVE TO 29-6 IN SEASON-OPENERS

With a victory against Syracuse, Penn State improved to 29-6 all-time in season-openers. The win marks the second-straight season opening triumph for the Lions after knocking off Morehead State 3-0 in the first match of the 2012 season. Penn State has not lost a season-opener since Aug. 26, 2011, when PSU lost to Oregon, marking the first season-opening loss since 2005.

The Penn State Invitational also marked the first time the Nittany Lions opened the season at home in six years. The last time PSU opened at Rec Hall was in 2007, when Penn State defeated Texas, 3-1, on Aug. 24 and 25 to kick off the start of an eventual national championship campaign.

## SCOTT SELECTED AS CANDIDATE FOR SENIOR CLASS AWARD

Penn State women's volleyball senior Ariel Scott has been selected as a candidate for the 2013 Senior CLASS Award, as announced today. Scott is one of 30 to earn a spot on the ballot, along with four others from the Big Ten conference.

Scott, a unanimous Preseason All-Big Ten selection, helped guide PSU to a spot in the NCAA National Semifinals, picking up numerous honors along the way. The 2012 First Team AVCA All-American and 2012 Big Ten Player of the Year returns to the court in 2013 for her final season after starting all 36 games last year. She led the squad with a team-best, 469 kills, averaging 3.75 per set with a .308 hitting clip. The NCAA West Lafayette Regional Championship MVP recorded double-digit kills in 24-of-26 matches.

## SISTER, SISTER!

In Penn State's final matchup of the Penn State Invitational, three-time AVCA All-American Deja McClendon lined up against her sister, Maya McClendon, who is currently an outside hitter for the No. 19-ranked Louisville Cardinals. Deja led with a team-high 17 digs, while Maya led the Cards offense with eight kills.



## DOUBLE - DOUBLES

### DEJA MCCLENDON (25 CAREER)

- at Texas, 9/7/13 (20 kills, 17 digs)
- vs. Michigan, 9/28/13 (15 kills, 13 digs)

### MEGAN COURTNEY (5 CAREER)

- vs. Florida , 9/8/13 (11 kills, 12 digs)
- vs. Michigan State , 9/27/13 (15 kills, 14 digs)

## 2013 HONORS

### DEJA MCCLENDON

- Preseason All-Big Ten
- Penn State Classic All-Tournament

### MEGAN COURTNEY

- Preseason All-Big Ten
- Hilton Garden Inn Homewood Suites All-Tournament

### MICHA HANCOCK

- Preseason All-Big Ten
- Penn State Invitational MVP
- Hilton Garden Inn Homewood Suites All-Tournament
- Penn State Classic All-Tournament

### KATIE SLAY

- Preseason All-Big Ten
- Penn State Invitational All-Tournament
- Hilton Garden Inn Homewood Suites Classic MVP

### ARIEL SCOTT

- Unanimous Preseason All-Big Ten
- Senior CLASS Award candidate

### PAULINA PREITO CERAME

- Penn State Invitational All-Tournament

### DOMINIQUE GONZALEZ

- Penn State Classic All-Tournament

## ALL-BIG TEN PRESEASON INFO

### PRESEASON POLL

1. Penn State
2. Minnesota
3. Michigan
4. Nebraska
5. Michigan State
6. Illinois

### ALL-BIG TEN TEAM

Name, School Yr. Pos.	Ashley Wittman, MINN
Jocelynn Birks, ILL	Stephanie Holthus, NU
Liz McMahon, ILL	Megan Courtney, PSU
Jennifer Cross, MICH	Micha Hancock, PSU
Lexi Dannemiller, MICH	Deja McClendon, PSU
Lexi Erwin, MICH	ARIEL SCOTT, PSU
LAUREN WICINSKI, MSU	Katie Slay, PSU
TORI DIXON, MINN	*Unanimous in all caps

## NITTANY LIONS ON TV

There's no need to worry this year if you can't follow Penn State on the road or make it to every home match. As one of the nation's top volleyball programs, Penn State has earned regional and national exposure. This year, the Nittany Lions will be on television at least eight times between the Big Ten Network and ESPN. All other matches will be streamed live on GoPSUsports.com via All-Access or on BigTenNetwork.com. All schools will provide live scoring via the web, as well.

### PENN STATE WOMEN'S VOLLEYBALL TV SCHEDULE

Date	Opponent	Air Time
Sept. 28	vs. Michigan	BTN - live
Oct. 3	at Indiana	ESPN2 - live
Oct. 9	vs. Minnesota	BTN - live
Oct. 18	at Illinois	BTN - live
Oct. 23	vs. Ohio State	ESPN2 - delay
Nov. 1	at Michigan	BTN - live
Nov. 2	at Michigan State	BTN - live
Nov. 27	at Ohio State	BTN - live
Nov. 30	at Nebraska	BTN - live

## INTERNATIONAL INFLUENCE

Over the weekend, Dabrowa hit the court in Rec Hall, making its first stop on a tour throughout the United States. Dabrowa is a top professional team from Poland that reached the title match of the CEV Women's Volleyball Cup in 2010-11. The CEV is the governing body of 55 national federation teams from across Europe, and the highest level of competition for professional clubs. This year, Dabrowa captured the Polish Cup, qualifying the team for its fifth appearance in the CEV Women's Volleyball Cup since 2009. Dabrowa's lineup consists of athletes from four different countries including Belgium, Czech Republic, Italy and Poland.

Current player, Maja Tokarska also played on the 2012 Olympic team for Poland. The club will tour the United States for three weeks, taking on other collegiate teams such as Kent State, Pittsburgh, Ohio State, Purdue, Bowling Green, Notre Dame and Northwestern.

## PENN STATE PICKED TO FINISH FIRST IN BIG TEN PRESEASON POLL

PSU was picked as the Big Ten preseason favorite in the 2013 Preseason Coaches' Poll, marking the Lions' eighth first-place nod within the last nine years. Following Penn State in the No. 2 slot is Minnesota, followed by Michigan, Nebraska and Michigan State. Illinois rounds out the group, slated at sixth.

## FIVE EARN BIG TEN PRESEASON HONORS

Penn State dominated the Preseason All-Big Ten honors this year with five Nittany Lions earning honors. Ariel Scott led the group with a unanimous selection, marking her second straight appearance on the list. Deja McClendon earned her third consecutive nod, while Katie Slay also notched her second straight. Micha Hancock and Megan Courtney also earned spots on the list.

## LEADER OF THE PACK

Team captains for the 2013-14 year include junior Dominique Gonzalez and senior Maggie Harding. Gonzalez is no stranger to the leadership role, having served as a team captain during the 2012-13 season.

## JUST LIONS, PLEASE

When referring to the Penn State women's volleyball team please use only the terms Nittany Lions or just Lions. Both Penn State and PSU are also acceptable.

## WHAT'S NEXT?

Penn State returns home from a week on the road, hosting Minnesota and Wisconsin during the week. The Nittany Lions will host the Gophers in a mid-week match slated for Wednesday, Oct. 9 at 7:30 p.m. before taking on the Badgers, Saturday, Oct. 12 at 8:30 p.m. Wednesday's match will be broadcast live on the Big Ten Network.



# 2013 PENN STATE WOMEN'S VOLLEYBALL

## RICKKERN.COM TOP 30

Poll #5 • Sept. 30, 2013

NO.	SCHOOL	POINTS
1	Florida	564
2	USC	561
3	Texas	554
<b>4</b>	<b>PENN STATE</b>	<b>541</b>
5	Hawaii	525
6	Washington	501
7	Stanford	500
8	Minnesota	458
9	Michigan State	450
10	Nebraska	419
11	Ohio State	386
12	San Diego	363
13	Michigan	362
14	North Carolina	337
15	UCLA	295
16	Arizona State	286
17	Florida State	271
18	Kentucky	223
19	Oregon	221
20	Wisconsin	192
21	Iowa State	190
22	Ohio	178
23	Colorado State	174
24	Creighton	152
25	Purdue	114
26	Western Kentucky	93
27	Missouri	77
28	Texas A&M	73
29	Illinois	55
30	Cal	35

**Receiving Votes:** Kansas, BYU, Saint Marys, Duke, Wichita State, Oklahoma, Louisville, Miami - Fla., Western Michigan and Tulsa.

## VOLLEYBALL MAGAZINE TOP 20

Poll #4 • Sept. 24, 2013

NO.	SCHOOL	POINTS	PREVIOUS
1.	Washington (7)	192	2
2.	USC (1)	182	3
<b>3.</b>	<b>PENN STATE</b>	<b>169</b>	<b>1</b>
4.	Texas	167	4
5.	Florida (1)	165	6
6.	Hawaii (1)	162	5
7.	Stanford	141	7
8.	Minnesota	133	9
9.	Michigan State	115	16
10.	Nebraska	102	14
11.	North Carolina	96	13
12.	Ohio State	87	12
13.	Michigan	75	10
14.	San Diego	73	7
15.	Arizona State	60	15
16.	UCLA	53	11
17.	Colorado State	38	18
18.	Florida State	35	17
19.	Kentucky	15	20
20.	Wisconsin	14	RV

**Receiving Votes:** Oregon, BYU, Missouri, Creighton, Iowa State, Ohio

## NISSANY LIONS BY MONTH

Penn State is 37-5 (.881) all-time during the month of August, including the pair of victories this weekend against Syracuse and No. 19 Louisville. Its first two losses came during the inaugural NACWAA in 1995 when Nebraska swept the Lions, and in the 1999 NACWAA when Florida outlasted Penn State, 3-2, in the opening round. Most recently, the Nittany Lions suffered a season opening loss to Oregon in 2011 before rebounding with a hard fought 3-2 win against nationally-ranked USC.

Penn State is 358-56-4 (.856) all-time during the month of September. The Lions are 183-17 (.915) during September dating back to the 1995 season and 41-8 (.837) within the last five years.

PSU is 379-67 (.850) all-time during the month of October. Penn State has posted a 79-11 (.878) mark in October across the last 10 seasons, a record of 43-3 (.935) in the last five years and did not lose a match during the month from 2007 to 2010.

Penn State is 275-57 (.828) all-time during the month of November, including a 77-8 (.918) mark over the last 10 seasons. The Lions had a six-year streak from 1995-2000 where they did not lose a match in the month, and in the last five seasons, Penn State has a 38-3 (.927) mark in November.

## QUICK SETS

From Oct. 16, 1996 to Nov. 9, 2001, Penn State won 139 consecutive matches when taking a 2-0 lead. Since joining the Big Ten in 1991, Penn State has played in 740 total matches, winning 653. Additionally, 519 of those 652 wins, or 79%, have been three-game sweeps. Across the last seven years, Penn State has won 194 of its 238 victories in three games (81%), including 37-of-38 (98%) in 2008 and 32-of-38 in 2009 (84%).

In the last 15 years, the Lions have lost only 58 matches. And of those 22 teams that defeated the Lions – BYU, Florida, Illinois, Indiana, Long Beach State, Michigan, Michigan State, Minnesota, Nebraska, Northwestern, Ohio State, Oregon, Oregon State, Purdue, USC, Stanford, Temple, Tennessee, Texas, UCLA, Washington and Wisconsin – only nine of these teams (Nebraska, Stanford, Ohio State, Illinois, Wisconsin, UCLA, Minnesota, Michigan State and Florida) have been able to beat Penn State a third time. The Lions have compiled a 275-56 mark in the last 15 years versus these teams.

vs. Michigan	28-2	vs. Stanford	5-5
vs. Northwestern	28-2	vs. Michigan State	26-3
vs. Wisconsin	24-6	vs. Ohio State	25-5
vs. Florida	4-2	vs. UCLA	3-3
vs. Nebraska	5-4	vs. Minnesota	26-6
vs. LBSU	0-1	vs. USC	2-1
vs. Illinois	26-5	vs. Temple	2-1
vs. Brigham Young	3-1	vs. Tennessee	0-1
vs. Purdue	30-1	vs. Indiana	29-1
vs. Washington	0-1	vs. Texas	9-2
		vs. Oregon	0-2
		vs. Oregon State	0-1

## PENN STATE BY THE NUMBERS

5	Number of NCAA National Championships (1999, 2007, 2008, 2009, 2010)
15	Number of Big Ten titles in 22 seasons in the league
21	Number of Conference Players of the Year
32	Number of NCAA Tournaments PSU has participated in, one of two to play in all 32
36	Number of consecutive 20-win seasons
37	Seasons of Penn State women's volleyball, which started in 1976 under Tom Tait
65	Longest Big Ten winning streak recorded by Penn State from 11/11/06 to 9/24/10
76	Number of polls in which Penn State was ranked No. 1
94	Number of consecutive home match wins from 9/1/06 to 12/11/10
109	Number of consecutive matches wins between 9/21/07 to 9/11/10
142	Number of Academic All-Big Ten honorees in 21 years
1,091	Number of wins by head coach Russ Rose prior to entering his 35th season in 2013
1,145	Number of wins in Penn State women's volleyball history



## RUSS ROSE AT A GLANCE ...

- 2007 AVCA Hall of Fame Inductee
- 2005 USA Volleyball All-Time Great Coach Honoree
- 2000 US Olympic Committee Coach of the Year
- Four-time AVCA Coach of the Year  
1997, 1999, 2007, 2008
- Six-time AVCA Mid-east Region Coach of the Year  
1996, 2007, 2008, 2009, 2010, 2012
- Three-time Volleyball Monthly Coach of the Year  
1990, 1993, 1999
- Seven-time Mid-east Region Coach of the Year  
1990, 1992, 1993, 1994, 2007, 2008, 2012
- Thirteen-time Big Ten Conference Coach of the Year  
1992, 1993, 1996, 1997 (co), 1998, 2003 (co),  
2005, 2006, 2007, 2008, 2009, 2010, 2012
- 1996 District II Coach of the Year
- Six-Time Atlantic 10 Coach of the Year
- Four-time Northeast Region Coach of the Year
- National Jewish Sports Hall of Fame
- 2010 USAV Leader in Volleyball

## BY THE NUMBERS ...

### 1999, 2007, 2008, 2009 & 2010

NCAA National Champions

### NO. 1

All-Time Winning Percentage (.862) among active DI coaches

### 1,091

Career wins in 34 seasons, the highest win total ever for a Penn State head coach

### 3

Number of active coaches in NCAA Division I history with 1,000 career wins

### 32

Straight NCAA Tournament appearances

### 15

Big Ten titles in 22 years

### 8

Consecutive Atlantic 10 titles

### 150

Academic All-Big Ten selections in 22 years

### 21

Conference Players of the Year in last 28 years

At least **1** All-American in 33-of-34 seasons

## THE LAST TIME A LION...

Had 30 or more kills ..... 31 - Nicole Fawcett vs. Cal Poly (8/31/07)  
 Had 10 or more blocks..... 12 - Katie Slay at Michigan (10/20/12)  
 Had five or more aces ..... 5 - Micha Hancock vs. Texas (9/7/13)  
 Had 25 or more digs ..... 35 - Alyssa D'Errico at Minnesota (11/27/10)  
 Had 80 or more assists.....82 - Samatha Spink vs. Illinois (11/24/95)  
 Hit .800 or better (min. 12 kills).929 (13-0-14) A. Wilson vs. St. Francis (9/19/09)

## THE LAST TIME PENN STATE...

### VS. NON-CONFERENCE OPPONENTS (REGULAR-SEASON MATCHES)

Won a match ..... vs. Yale, 9/21/13 (25-16, 25-17, 25-6)  
 Lost a match.....vs. Texas, 9/7/13 (27-25, 17-25, 25-1, 21-25, 10-15)  
 Won at home ..... vs. Yale, 9/21/13 (25-16, 25-17, 25-6)  
 Lost at home.....vs. Oregon, 8/26/11 (25-16, 25-21, 25-20, 25-22)  
 Won 3-0 at home ..... vs. Yale, 9/21/13 (25-16, 25-17, 25-6)  
 Lost 3-0 at home ..... vs. UC-Santa Barbara, 9/18/86 (1-15, 7-15, 13-15)  
 Won 3-0 on the road..... vs. FGCU, 9/14/13 (25-8, 25-15, 25-17)  
 Lost 3-0 on the road.....vs. Stanford, 9/11/10 (26-28, 12-25, 18-25)

### VS. BIG TEN OPPONENTS (REGULAR-SEASON MATCHES)

Won a match ..... vs. Michigan, 9/28/13 (25-16, 20-25, 25-19, 25-17))  
 Lost a match..... vs. Michigan State, 2/27/13 (23-25, 24-26, 25-19, 25-19, 9-15))  
 Won at home ..... vs. Michigan, 9/28/13 (25-16, 20-25, 25-19, 25-17))  
 Lost at home..... vs. Michigan State, 2/27/13 (23-25, 24-26, 25-19, 25-19, 9-15))  
 Won 3-0 at home ..... vs. Michigan State, 11/24/12 (25-13, 25-21, 25-15)  
 Lost 3-0 at home ..... vs. Minnesota, 10/18/03 (26-30, 18-30, 21-30)  
 Won 3-0 on the road..... at Indiana, 11/16/12 (25-12, 25-18, 25-22)  
 Lost 3-0 on the road..... at Illinois, 11/11/11 (21-25, 23-25, 26-28)

## ALL MATCHES

Won a match ..... vs. Michigan, 9/28/13 (25-16, 20-25, 25-19, 25-17))  
 Lost a match..... vs. Michigan State, 2/27/13 (23-25, 24-26, 25-19, 25-19, 9-15))  
 Won at home ..... vs. Michigan, 9/28/13 (25-16, 20-25, 25-19, 25-17))  
 Lost at home..... vs. Michigan State, 2/27/13 (23-25, 24-26, 25-19, 25-19, 9-15))  
 Won 3-0 at home ..... vs. Yale, 9/21/13 (25-16, 25-17, 25-6)  
 Lost 3-0 at home ..... vs. Minnesota, 10/18/03 (26-30, 18-30, 21-30)  
 Won 3-0 on the road..... vs. FGCU, 9/14/13 (25-8, 25-15, 25-17)  
 Lost 3-0 on the road.....vs. Texas, 9/7/13 (27-25, 17-25, 25-1, 21-25, 10-15)

## STREAKS

Penn State holds the top three winning streaks in Big Ten history. Penn State's most recent streak of 65 consecutive matches began on Nov. 11, 2006 and ended on Sept. 24, 2010 at Illinois. It is the longest streak in league history. Penn State's other two conference winning streaks were 49 matches and 41. Illinois owns the fourth (40) and fifth (25) longest conference winning streaks.

## TOP FIVE BIG TEN STREAKS

- 65 - Penn State (11/11/06 - 9/18/10)  
- snapped at Illinois (9/24/10)
- 49 - Penn State (11/1/97 - 11/27/99)  
- snapped at Wisconsin (9/22/00)
- 41 - Penn State (10/22/04 - 10/21/06)  
- snapped at Wisconsin (10/27/06)
- 40 - Illinois (11/15/85 - 11/20/87)  
- snapped at Purdue (11/27/87)
- 25 - Illinois (10/2/92 - 10/9/93)  
- snapped vs. Penn State (10/15/93)





# 2013 PENN STATE WOMEN'S VOLLEYBALL

## 2013 PENN STATE SUPERLATIVES

<u>THREE SETS</u>	<u>INDIVIDUAL</u>	<u>TEAM</u>
Kills:.....	13 - Ariel Scott vs. Yale (9/21).....	44 - vs. Yale (9/21)
Attacks:.....	26 - Ariel Scott vs. Louisville (8/31).....	99, 2x last vs. Florida (9/8)
Attack Percentage*:	.833 (15-2-30) - Nia Grant vs. Eastern Kentucky (9/21).....	.522 (40-4-69) - vs. Albany (9/20)
Assists:.....	33 - Micha Hancock vs. Marquette (9/13).....	41 - vs. Marquette (9/13)
Aces:.....	8 - Micha Hancock vs. Syracuse (8/31).....	9, 2x last vs. Florida (9/8)
Digs:.....	20 - Dominique Gonzalez vs. Eastern Kentucky (9/21).....	47 - vs. Louisville (8/31)
Solo Blocks:.....	2, 3x, last Deja McClendon vs. FGCU (9/14).....	6 - vs. Central Arkansas (9/14)
Block Assists:.....	6 - Katie Slay vs. Central Arkansas (9/14).....	12, 2x last vs. FGCU (9/14)
Total Blocks:.....	8 - Katie Slay vs. Central Arkansas (9/14).....	15.0 - vs. FGCU (9/14)

## 2013 PENN STATE SUPERLATIVES

<u>FOUR SETS</u>	<u>INDIVIDUAL</u>	<u>TEAM</u>
Kills:.....	15 - Ariel Scott and Deja McClendon vs. Michigan (9/28).....	57 - vs. Michigan (9/28)
Attacks:.....	35 - Ariel Scott vs. Michigan (9/28).....	131 - vs. Michigan (9/28)
Attack Percentage*:	.433 (15-2-30) - Deja McClendon vs. Michigan (9/28).....	.313 (57-16-131) - vs. Michigan (9/28)
Assists:.....	44 - Micha Hancock vs. Michigan (9/28).....	53 - vs. Michigan (9/28)
Aces:.....	4 - Micha Hancock vs. Michigan (9/28).....	7 - vs. Michigan (9/28)
Digs:.....	13 - Deja McClendon vs. Michigan (9/28).....	54 - vs. Michigan (9/28)
Solo Blocks:.....	2 - Deja McClendon and Megan Courtney vs. Michigan (9/28).....	5 - vs. Michigan (9/28)
Block Assists:.....	8 - Katie Slay vs. Michigan (9/28).....	9 - vs. Michigan (9/28)
Total Blocks:.....	9 - Katie Slay vs. Michigan (9/28).....	14.5 - vs. Michigan (9/28)

<u>FIVE SETS</u>	<u>INDIVIDUAL</u>	<u>TEAM</u>
Kills:.....	20 - Deja McClendon at Texas (9/7).....	73 - vs. Michigan State (9/27)
Attacks:.....	48 - 2x, last Ariel Scott vs. Michigan State (9/27).....	179 - at Texas (9/7)
Attack Percentage*:	.667 (9-1-12) - Nia Grant vs. Michigan State (9/27).....	.307 (73-22-166) - vs. Michigan State (9/28)
Assists:.....	57 - Micha Hancock vs. Michigan State (9/27).....	68 - vs. Michigan State (9/27)
Aces:.....	3 - Nia Grant at Texas (9/7).....	6 - at Texas (9/7)
Digs:.....	17 - Deja McClendon at Texas (9/7).....	65 - at Texas (9/7)
Solo Blocks:.....	2 - Katie Slay vs. Michigan State (9/27).....	5 - vs. Michigan State (9/27)
Block Assists:.....	4 - 3x, last Ariel Scott and Katie Slay vs. Michigan State (9/27).....	14 - at Texas (9/7)
Total Blocks:.....	6 - Katie Slay vs. Michigan State (9/27).....	15.0 - at Texas (9/7)

## 2013 OPPONENT SUPERLATIVES

<u>THREE SETS</u>	<u>INDIVIDUAL</u>	<u>TEAM</u>
Kills:.....	13 - Autumn Bailey, Marquette (9/13).....	35 - Central Arkansas (9/14)
Attacks:.....	37 - Jessica Nagy, Central Arkansas (9/14).....	106 - Central Arkansas (9/14)
Attack Percentage*:	.350 (10-3-20) - Chlose Mann, Florida (9/8).....	.194 (34-16-93) - Florida (9/8)
Assists:.....	30, 2x, last Marissa Collins, Central Arkansas (9/14).....	34, 2x last Central Arkansas (9/14)
Aces:.....	1 - Taylor Brauneis, Florida (9/8).....	1 - Florida (9/8)
Digs:.....	15 - Shelbee Berringer, Central Arkansas (9/8).....	39 - Florida (9/8)
Solo Blocks:.....	1, 5x, last Rachel Vick, Eastern Kentucky (9/21).....	1, 5x last, Eastern Kentucky (9/21)
Block Assists:.....	1, 12x, last Rachel Vick, Eastern Kentucky (9/21).....	11 - Louisville (8/31)
Total Blocks:.....	2, 3x - last Rachel Vick, Eastern Kentucky (9/21).....	9.0 - Syracuse (8/31)

## 2013 PENN STATE SUPERLATIVES

<u>FOUR SETS</u>	<u>INDIVIDUAL</u>	<u>TEAM</u>
Kills:.....	19 - Molly Toon, Michigan (9/28).....	51 - Michigan (9/28)
Attacks:.....	28 - Lexi Erwin, Michigan (9/28).....	131 - Michigan (9/28)
Attack Percentage*:	.364 (11-3-22) - Jennifer Cross, Michigan (9/28).....	.229 (51-21-131) - Michigan (9/28)
Assists:.....	43 - Lexi Dannemiller, Michigan (9/28).....	49 - Michigan (9/28)
Aces:.....	1 - Molly Toon, Michigan (9/28).....	1 - Michigan (9/28)
Digs:.....	12 - Lexi Dannimiller, Michigan (9/28).....	53 - Michigan (9/28)
Solo Blocks:.....	2 - Molly Toon, Michigan (9/28).....	3 - Michigan (9/28)
Block Assists:.....	5 - Abby Cole, Michigan (9/28).....	12 - Michigan (9/28)
Total Blocks:.....	5 - Abby Cole, Michigan (9/28).....	9.0 - Michigan (9/28)

<u>FIVE SETS</u>	<u>INDIVIDUAL</u>	<u>TEAM</u>
Kills:.....	21 - Lauren Wicinski, Michigan State (9/27).....	61 - Michigan State (9/27)
Attacks:.....	55 - Lauren Wicinski, Michigan State (9/27).....	160 - Michigan State (9/27)
Attack Percentage*:	.462 (6-0-13) Molly McCage, Texas (9/7).....	.262 (52-15-141) - Texas (9/7)
Assists:.....	27 - Kristen Kelsay (9/27).....	57 - Michigan State (9/27)
Aces:.....	2 - Kristen Kelsay and Ryan Hubbard, Michigan State (9/27).....	5 - Michigan State (9/27)
Digs:.....	20 - Amy Neal, Texas (9/7).....	73 - Texas (9/7)
Solo Blocks:.....	1, 4x last, Molly McCage, Texas (9/7).....	4 - Texas (9/7)
Block Assists:.....	6 - Alexis Mathews, Michigan State (9/27).....	22 - Michigan State (9/27)
Total Blocks:.....	6 - 2x last Alexis Mathews, Michigan State (9/27).....	22.0 - Texas (9/7)



# 2013 PENN STATE WOMEN'S VOLLEYBALL

## INDIANA HOOSIERS, BLOOMINGTON, IND.

### QUICK FACTS

School.....Indiana University  
 Location.....Bloomington, Ind.  
 Enrollment ..... 42,731  
 Nickname.....Hoosiers  
 Color .....Crimson&Cream  
 Affiliation.....NCAA Division I  
 Conference.....Big Ten  
 President ..... Michael McRobbie  
 Athletics Director.....Fred Glass  
 SWA.....Julie Cromer  
 Athletics Website: .....www.iuhoosiers.com  
 Twitter.....@IUVolleyball  
 Facebook.....Indiana Volleyball

### THE STATISTICAL STORY

**I-U** ..... **vs.** ..... **PSU**  
 8-5 ..... Record .....10-2  
 612 ..... Kills..... 579  
 1411 ..... Total Attacks.....1279  
 .235 ..... Attack Percentage..... 333  
 13.60..... Kills Per Set.....14.12  
 555 ..... Assists..... 517  
 12.33..... Assists Per Set.....12.61  
 529 ..... Digs..... 543  
 11.76..... Digs Per Set.....13.24  
 9 ..... Block Solos .....34  
 133 ..... Block Assists..... 151  
 75.5 ..... Total Blocks.....109.5

### LAST 10 VS. INDIANA

YEAR	LOCATION	RESULT	SCORE
2012	Home	W	3-1
2012	Away	W	3-0
2011	Away	W	3-0
2011	Home	W	3-0
2010	Away	L	3-1
2010	Home	W	3-0
2009	Home	W	3-0
2009	Away	W	3-0
2008	Away	W	3-0
2008	Home	W	3-0

NO.	NAME	POS.	HT.	YR/ELG.	HOMETOWN/PREVIOUS SCHOOL
1	Harnish Courtney	DS	5-3	So.	Muncie, Ind./Burriss
2	Jordan Haverly	OH	6-1	R-Sr.	Cherry Valley, Ill./Rockford Keith Country Day
3	Kyndall Merritt	MB	4-11	So.	Georgetown, Ind./Floyd Central
4	Chante George	M/OH	6-0	R-So.	San Antonio, Texas/Earl Warren
5	Jazzmine McDonald	MB	6-2	Fr.	Indianapolis, Ind./Cathedral
6	Taylor Lebo	DS	5-9	Fr.	LaPorte, Ind./LaPorte)
7	Melanie Hicks	DS	5-7	Sr.	Louisville, Ky./Assumption
8	Amelia Anderson	OH	6-1	So.	Lake in the Hills, Ill./Crystal Lake Central
9	Megan Tallman	S	5-9	Fr.	Island Lake, Ill./Wauconda
10	Katie Gallagher	S	5-8	So.	Elmhurst, Ill./York
11	Allison Hammond	OH	6-0	Fr.	French Lick, Ind./Springs Valley
12	Caitlin Hansen	DS	5-4	Sr.	Indianapolis, Ind./Roncalli
13	Mariah Coleman	OH	6-2	R-Sr.	Longview, Ill./Heritage
15	Jade Henderson	OH	5-10	Sr.	Cincinnati, Ohio/Ursuline Assumption
17	Morgan Leach	MB	6-3	Jr.	Champaign, Ill./Centennial
20	Awele Nwaeze	MB	6-1	So.	Raleigh, N.C./Millbrook

### COACHING STAFF »

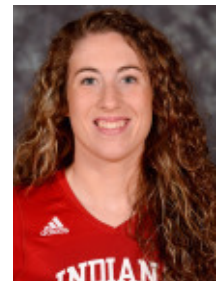
Head Coach..... Sherry Dunbar  
 Alma Mater..... Ball State  
 Overall Record..... 206/126  
 Record at U-M..... 319-148  
 Associate Head Coach..... Nancy Mueller  
 Alma Mater..... Tennessee  
 Assistant Coach..... Paul Koncir  
 Alma Mater..... George Mason



**SHERRY DUNBAR**  
HEAD COACH

### PLAYER TO WATCH »

Jordan Haverly ranks second on the squad in 2013 with 116 kills, after having registered her 1,500th career kill last weekend against the Badgers. She also ranks second on the team with 2.76 kills per set.



**JORDAN HAVERLY**  
OH - SR. - 6-1



# 2013 PENN STATE WOMEN'S VOLLEYBALL

## PURDUE BOILERMAKERS, WEST LAFAYETTE, IND.

### QUICK FACTS

School..... Purdue University  
 Location..... West Lafayette, Ind.  
 Enrollment ..... 39,637  
 Nickname..... Boilermakers  
 Color..... Black & Old Gold  
 Affiliation..... NCAA Division I  
 Conference..... Big Ten  
 Arena .....Holloway Gymnasium  
 Capacity .....2,288  
 President.....Mitch Daniels  
 Athletics Director ..... Morgan J. Burke  
 Athletics Website: ..... purduesports.com  
 Twitter ..... @PurdueVB  
 Facebook.....PurdueVB

### THE STATISTICAL STORY

**PURDUE** ..... vs. .... **PSU**  
 9-4..... Record ..... 10-2  
 607 ..... Kills.....579  
 1483 ..... Total Attacks..... 1279  
 .235..... Attack Percentage.....333  
 12.91 ..... Kills Per Set..... 14.12  
 562..... Assists.....517  
 11.96 ..... Assists Per Set..... 12.61  
 662..... Digs .....543  
 14.09 ..... Digs Per Set ..... 13.24  
 26..... Block Solos ..... 34  
 189..... Block Assists ..... 151  
 120.5 ..... Total Blocks..... 109.5

### LAST 10 VS. PURDUE

YEAR	LOCATION	RESULT	SCORE
2012	Home	W	3-0
2012	Away	W	3-1
2011	Away	W	3-1
2011	Home	W	3-1
2010	Away	L	3-2
2010	Home	W	3-1
2009	Home	W	3-0
2009	Away	W	3-1
2008	Home	W	3-0
2008	Away	W	3-0

NO.	NAME	POS.	HT.	YR.	HOMETOWN/PREVIOUS SCHOOL
1	Rachel Davis	S	6-0	R-Sr.	Kalamazoo, Mich./Plainwell
2	Val Nichol	S/OH	6-1	Jr.	Normal, Ill./University
3	Hilliary Fox	OH/DS	6-1	Sr.	Montgomery, Ind./Barr Reeve
4	Sam Epenesa	OH	6-0	So.	Glen Carbon, Ill./Edwardsville
5	Ashley Evans	S	6-1	Fr.	Liberty Township, Ohio/Lakota East
6	Kate Workman	DS	5-6	R-Fr.	Valparaiso, Ind./Valparaiso
7	Amanda Neil	DS	5-8	Jr.	Lafayette, Ind./McCutcheon
10	Katie Griffin	OH	6-2	R-Sr.	Avon, Ind./Avon
11	Carly Cramer	DS	5-6	R-Sr.	Martinsville, Ind./Martinsville
12	Kierra Jones	MB	6-1	Jr.	Fishers, Ind./Hamilton Southeastern
13	Faye Adelaja	MB	6-1	R-Sr.	Baton Rouge, La./Parkview Baptist
16	Kaisley Fisher	MB	6-3	R-So.	Plain eld, Ill./Plain eld North
17	Catherine Rebarchak	OH	6-2	R-Sr.	Mobile, Ala./St. Paul's Episcopal
18	Annie Drews	OH	6-4	So.	Elkhart, Ind./Penn
19	Bridget Powell	DS	5-6	R-Fr.	Oak Lawn, Ill./Mother McCauley

### COACHING STAFF »

Head Coach..... Dave Shondell  
 Alma Mater .....Ball State  
 Overall Record ..... 214-119  
 Record at MSU ..... 214-119  
 Associate Head Coach..... John Shondell  
 Alma Mater .....Ball State  
 Assistant Coach.....Kathy Jewell  
 Alma Mater .....Northern Michigan



**DAVE SHONDELL**  
HEAD COACH

### PLAYER TO WATCH »

Val Nichol is leading the Boilermaker offense with 122 kills, averaging 2.60 kills per set. Kiki Jones has registered 97 kills, while leading the squad with a team-high .413 hitting clip, which ranks fourth in the Big Ten.



**VAL NICHOL**  
S/OH - JR. - 6-1



# 2013 PENN STATE WOMEN'S VOLLEYBALL

## 2013 SCHEDULE AND RESULTS

DATE	OPPONENT	W/L	SCORE	SET SCORES	SITE	ATT.	RECORD	TIME
Aug. 30	Dabrowa (EXHIB.)	W	3-0	28-26, 25-21, 25-20	University Park, Pa.	2246	---	1:39
Aug. 31	Syracuse	W	3-0	25-16, 25-15, 25-17	University Park, Pa.	3141	1-0	1:13
Aug. 31	Louisville	W	3-0	25-15, 25-16, 25-13	University Park, Pa.	3141	2-0	1:23
Sept. 7	Texas	L	3-2	27-25, 17-25, 25-13, 21-25, 10-15	Austin, Texas	4373	2-1	2:31
Sept. 8	Florida	W	3-0	25-18, 25-17, 25-20	Austin, Texas	---	3-1	1:32
Sept. 13	Marquette	W	3-0	25-17, 25-12, 25-17	Fort Myers, Fla.	127	4-1	1:20
Sept. 14	Central Arkansas	W	3-0	25-20, 25-22, 25-10	Fort Myers, Fla.	89	5-1	1:25
Sept. 15	FGCU	W	3-0	25-8, 25-15, 25-17	Fort Myers, Fla.	2,006	6-1	1:23
Sept. 20	Albany	W	3-0	25-8, 25-6, 25-4	University Park, Pa.	2,811	7-1	1:05
Sept. 21	Eastern Kentucky	W	3-0	25-10, 5-8, 25-19	University Park, Pa.	3,722	8-1	1:01
Sept. 21	Yale	W	3-0	25-16, 25-17, 25-6	University Park, Pa.	3,722	9-1	1:15
Sept. 27	Michigan State	L	3-2	23-25, 24-26, 25-19, 25-19, 9-15	University Park, Pa.	3,625	9-2	2:16
Sept. 28	Michigan	W	3-1	25-16, 20-25, 25-19, 25-17	University Park, Pa.	3,506	10-2	1:58

## TEAM MATCH-BY-MATCH STAT COMPARISON

DATE	OPPONENT	SETS	KILLS	HITTING %	ACES	DIGS	TOTAL TEAM BLOCKS	TOTAL PTS SCORED*
Aug. 31	Syracuse/PSU	3	26/43	.102/.313	0/4	36/39	5.0/6.0	31.0/53.0
Aug. 31	Louisville/PSU	3	25/34	.020/.247	0/9	32/47	3.0/7.5	28.0/50.5
Sept. 7	Texas/PSU	5	52/69	.262/.246	3/6	73/65	22.0/15.0	68.0/83.0
Sept. 8	Florida/PSU	3	42/34	.194/.303	1/9	35/39	3.0/10.0	37.0/57.0
Sept. 13	Marquette/PSU	3	43/34	.163/.414	0/3	32/41	4.0/13.0	36.0/53.0
Sept. 14	UCA/PSU	3	35/39	.151/.247	0/8	36/37	5.0/18.0	38.0/59.0
Sept. 14	FGCU/PSU	3	24/39	.000/.381	0/4	33/42	3.0/15.0	26.0/53.0
Sept. 20	Albany/PSU	3	10/40	-.233/.522	5/1	22/33	2.0/11.5	13.0/56.5
Sept. 21	EKU/PSU	3	23/46	.045/.440	2/7	28/43	2.0/8.5	27.0/61.5
Sept. 21	Yale/PSU	3	23/54	.088/.427	0/4	31/45	0.0/8.0	23.0/66.0
Sept. 27	MSU/PSU	5	61/73	.244/.307	5/3	54/62	11.0/10.5	77.0/86.5
Sept. 28	Michigan/PSU	4	51/57	.229/.313	1/7	53/54	9.0/14.5	61.0/78.5

\* indicates total points scored by a team (kills, aces, blocks), not the cumulative total game scores, which also take into account opponent errors

## DOUBLE FIGURE CLUB

	KILLS	DIGS	BLOCKS
# 1 Ariel Scott	1 (8/31) 2 (9/21) 3 (9/21) 4 (9/27) 5 (9/28)	--	--
#9 Paulina Prieto Cerame	1 (8/31) 2 (9/7)	--	--
#18 Deja McClendon	1 (9/7) 2 (9/21) 3 (9/28)	1 (8/31) 2 (9/7) 3 (9/27) 4 (9/28)	--
#17 Megan Courtney	1 (9/8) 2 (9/14) 3 (9/21) 4 (9/27) 5 (9/28)	1 (9/8) 2 (9/14) 3 (9/27)	--
#16 Katie Slay	1 (9/7) 2 (9/21) 3 (9/27)	--	--
#6 Maddie Martin	--	1 (9/7)	--
#4 Dominique Gonzalez	--	1 (9/7) 2 (9/13) 3 (9/14) 4 (9/14) 5 (9/21) 6 (9/21) 7 (9/27) 8 (9/28)	--



# 2013 PENN STATE WOMEN'S VOLLEYBALL

## INDIVIDUAL PLAYER MATCH-BY-MATCH HIGHS

DATE	OPPONENT	KILLS	ATTACKS	ASSISTS	DIGS	TOTAL BLOCKS
Aug. 31	Syracuse	Prieto Cerame - 9	Prieto Cerame - 17	Hancock - 30	Gonzalez - 7 Hancock - 7	Slay - 5
Aug. 31	Louisville	Scott - 11	Scott - 26	Hancock - 28	McClendon - 17	Grant - 3 Slay - 3 Prieto Cerame - 3
Sept. 7	Texas	McClendon - 20	McClendon - 46	Hancock - 51	McClendon - 17	Hancock - 4 Slay - 4
Sept. 8	Florida	Courtney - 11	McClendon - 25	Hancock - 29	Courtney - 12	Hancock - 3 Slay - 3
Sept. 13	Marquette	Courtney - 9 McClendon - 9	McClendon - 22	Hancock - 33	Gonzalez - 11	Courtney - 4
Sept. 14	FGCU	Slay - 9 Courtney - 9	McClendon - 15	Hancock - 31	Gonzalez - 11	Slay - 4
Sept. 14	Central Arkansas	Courtney - 10	Courtney - 21 McClendon - 21	Hancock - 30	Gonzalez - 14	Slay - 8
Sept. 20	Albany	Scott - 8 Slay - 8	Scott - 25	Hancock - 29	Gonzalez - 8	Scott - 4 Whitney - 4 McClendon - 4
Sept. 21	Eastern Kentucky	Slay - 11	McClendon - 22	Hancock - 29	Gonzalez - 20	Slay - 5
Sept. 21	Yale	Scott - 13	Courtney - 25	Hancock - 32	Gonzalez - 16	Slay - 5
Sept. 27	Michigan State	Scott - 18	Scott - 46	Hancock - 57	Courtney - 14 McClendon - 14	Slay - 6 Slay - 9
Sept. 28	Michigan	Scott - 15 McClendon - 15	Scott - 35	Hancock - 44	McClendon - 13	
<b>TOTALS (INCLUDING TIES)</b>		Prieto Cerame - 1 Scott - 5  McClendon - 3 Courtney - 4 Slay - 3	Prieto Cerame - 1  Scott - 4 McClendon - 6 Courtney - 2	Hancock - 12	Gonzalez - 7  Hancock - 1 McClendon - 4 Courtney - 2	Slay - 10  Hancock - 2 Grant - 1 Prieto Cerame - 1 Courtney - 1 Whitney - 1 McClendon - 1



# 2013 PENN STATE WOMEN'S VOLLEYBALL



**MAGGIE  
HARDING**  
SENIOR  
STATE COLLEGE, PA.  
DEFENSIVE SPECIALIST

## 2013 MATCH-BY-MATCH

OPP.	K	E	TA	PCT.	A	SA	D	TB
Syracuse	0	0	0	0	0	0	0	0
Louisville	0	0	0	0	0	0	0	0
Texas	0	0	0	0	0	0	0	0
Florida	0	0	0	0	0	0	0	0
Marquette	0	0	0	0	0	0	0	0
Central Arkansas	0	0	0	0	1	0	0	0
FGCU	0	0	0	0	0	0	0	0
Albany	0	0	0	0	0	1	0	0
Eastern Kentucky	0	0	0	0	0	0	0	0
Yale	0	0	0	0	0	0	0	0
MSU	0	0	0	0	0	0	0	0
Michigan	0	0	0	0	0	0	0	0

**2013 (Senior):** One of two team captains ... Saw action on the court against No. 19 Louisville (8/31) ... Recorded one assists against Central Arkansas (9/14) ... Tallied one service ace against Albany (9/20) ... Saw action against Eastern Kentucky (9/21).

**2012 (Redshirt Sophomore):** Recipient of the Elite 89 Award ... Academic All-Big Ten ... Saw action in eight matches and eight sets as a serving and defensive specialist ... Made 2012 debut vs. Morehead State (8/24).

## HARDINGS CAREER STATS

SEASON	MP-SP	K	E	TA	PCT.	ASSISTS	ACES	DIGS	BS	BA	TB	KPS	APS	SAPS	DPS	BPS
2010	Redshirt season															
2011	4-4	0	0	0	.000	0	0	0	0	0	0	0.00	0.00	0.00	0.00	0.00
2012	9-9	0	0	0	.000	0	2	0	0	0	0	0.00	0.00	0.00	0.00	0.00
2013	4-5	0	0	0	.000	1	1	0	0	0	0	0.00	0.20	0.20	0.00	0.00
<b>CAREER</b>	<b>17-18</b>	<b>0</b>	<b>0</b>	<b>0</b>	<b>.000</b>	<b>1</b>	<b>2</b>	<b>0</b>	<b>0</b>	<b>0</b>	<b>0</b>	<b>0.00</b>	<b>0.06</b>	<b>0.06</b>	<b>0.00</b>	<b>0.00</b>

2013 SEASON HIGHS	CATEGORY	CAREER HIGH
N/A	Kills	N/A
N/A	Attacks	N/A
N/A	Hitting Percentage	N/A
1 vs. Central Arkansas (9/14)	Assists	1 vs. Central Arkansas (9/14)
1 vs. Albany (9/20)	Aces	1 vs. Albany (9/20)
N/A	Digs	N/A
N/A	Blocks	N/A



# 2013 PENN STATE WOMEN'S VOLLEYBALL



**MADDIE  
MARTIN**

SENIOR  
TAMPA, FLA.

OUTSIDE HITTER

## 2013 MATCH-BY-MATCH

OPP.	K	E	TA	PCT.	A	SA	D	TB
Syracuse	1	0	6	.167	2	0	7	0
Louisville	0	0	0	0	0	0	0	0
Texas	0	0	1	0	0	1	10	0
Florida	0	0	0	0	0	0	0	0
Marquette	0	0	0	0	0	0	1	0
Central Arkansas	0	0	0	0	0	0	0	0
FGCU	1	1	3	0	0	0	1	0
Albany	2	0	4	.500	1	0	4	0
Eastern Kentucky	2	0	4	.500	0	0	1	0
Yale	0	0	0	0	0	0	0	0
MSU	0	0	0	0	0	0	0	0
Michigan	0	0	0	0	0	0	0	0

**2013 (Senior):** Recorded one kill, two assists and seven digs against Syracuse (8/31) ... Saw action on the court against No. 19 Louisville (8/31). Recorded 10 digs and a service ace against No. 6 Texas (9/7). Played against No. 8 Florida (9/8) ... Posted one dig against Marquette (9/13) ... Saw action against Central Arkansas (9/14) ... Tallied one kill and one dig at FGCU (9/14) ... Played against Albany notching two kills, one assist and four digs (9/20) ... Tallied two kills and one dig against Eastern Kentucky (9/21) ... Saw action on the court against No. 10 Michigan (9/28).

**2012 (Junior):** Academic All-Big Ten ... Played in 30 matches and 62 sets at outside hitter ... Totaled 51 kills, 14 aces, 71 digs and eight blocks during the 2012 season ... Posted five kills and eight digs vs. Stanford (8/31) ... Pounded four kills and had seven digs vs. DePaul (9/8) ... Recorded five kills vs. Nebraska (9/19) ... Notched five kills at Northwestern (10/5) ... Tallied four kills and nine digs vs. Indiana (10/13) ... Had two aces at Ohio State (10/17) ... Registered an ace and five digs vs. Illinois (11/8).

## MARTIN'S CAREER STATS

SEASON	MP-SP	K	E	TA	PCT.	ASSISTS	ACES	DIGS	BS	BA	TB	KPS	APS	SAPS	DPS	BPS
2010	20-29	22	10	62	.194	1	3	15	0	6	6.0	0.76	0.03	0.10	0.52	0.21
2011	33-98	141	60	410	.198	20	17	156	5	34	39.0	1.44	0.20	0.17	1.59	0.40
2012	30-62	51	21	129	.233	3	14	71	0	8	8.0	0.82	0.05	0.23	1.15	0.13
2013	10-17	6	1	18	.278	3	1	24	0	0	0.0	0.38	0.19	0.06	1.50	0.00
<b>CAREER</b>	<b>93-206</b>	<b>220</b>	<b>92</b>	<b>619</b>	<b>.207</b>	<b>27</b>	<b>35</b>	<b>261</b>	<b>5</b>	<b>48</b>	<b>53.0</b>	<b>1.07</b>	<b>0.13</b>	<b>0.17</b>	<b>1.30</b>	<b>0.26</b>

2013 SEASON HIGHS	CATEGORY	CAREER HIGH
2, 2x last vs. Eastern Kentucky (9/21)	Kills	13 at Michigan State (11/26/11)
6 vs. Syracuse (8/31)	Attacks	44 at Stanford (9/9/11)
.500, 2x (2-0-4) last vs. Eastern Kentucky (9/21)	Hitting Percentage	.600 (6-0-10) at Indiana (10/9/10)
2 vs. Syracuse (8/31)	Assists	3 at Michigan State (11/26/11)
1 vs. Texas (9/7)	Aces	3 vs. Eastern Illinois (9/15/12)
10 vs. Texas (9/7)	Digs	14 vs. Iowa (10/28/11)
N/A	Blocks	5 at Michigan State (11/26/11)



# 2013 PENN STATE WOMEN'S VOLLEYBALL



## DEJA McCLENDON

SENIOR  
LOUISVILLE, KY.

OUTSIDE HITTER

**2013 (Senior):** Posted three kills, four digs and a solo block against Syracuse (8/31) ... Notched two kills, two assists, a block assist and a team-high 17 kills against No. 19 Louisville (8/31 ... Led the team with 20 kills and a squad-best 17 digs to match her season high mark against No. 6 Texas (9/7) ... Tallied five kills, five digs and a solo block against No. 8 Florida (9/8) ... Tied for team-best with nine kills against Marquette (9/13) on .318 hitting, adding two assists, five digs and two block assists ... Registered six kills, one assist, three digs and a season-high two solo blocks against Central Arkansas (9/14) ... Pounded five kills and recorded six digs and three blocks, including two solo stuffs at FGCU (9/15) ... Recorded six digs, five kills, two assists and four total blocks against Albany (9/20) ... Had ten kills, three digs and three blocks against Eastern Kentucky (9/21) ... Logged nine kills, two assists and seven digs against Yale (9/21) ... Tied for team lead with 14 digs against MSU, adding seven kills, two assists and a block (9/27) ... Recorded her second double-double of the season with 15 kills, 13 digs against No. 10 Michigan (9/28), adding three blocks, including two solo stuffs.

### ACTIVE NCAA CAREER KILLS

1. Megan Devine , East Tenn. St.	1,523
2. Ashley Wittman , Minnesota	1,432
3. Taylor Akana , Siena	1,412
4. Lisa Henning , Missouri	1,400
5. Stephanie Holthus , Northwestern	1,388
6. Paige Penrod , Bowling Green	1,301
7. <b>Deja McClendon , Penn St.</b>	<b>1,283</b>
8. Katilynn Pelger , Kansas St.	1,250
9. Leah Sully , UC Santa Barbara	1,242
10. Juliette Thevenin , Sout Carolina	1,241

### PSU ALL-TIME KILLS LEADERS

1. 2,282	Lori Barberich, 1981-84
2. 2,142	Megan Hodge, 2006-09
3. 1,944	Nicole Fawcett, 2005-08
4. 1,842	Terri Zemaitis, 1994-97
5. 1,750	Lauren Cacciamani, 1996-99
6. 1,573	JoAnn Elwell, 1987-90
7. 1,482	Marcia Leap, 1982-85
8. 1,468	Mishka Levy, 1999-02
9. 1,438	Noelle Zientara, 1987-90
10. 1,393	Elizabeth Ramirez, 1986-89
11. <b>1,349</b>	<b>Deja McClendon, 2010-present</b>

### McCLENDON'S CAREER STATS

SEASON	MP-SP	K	E	TA	PCT.	ASSISTS	ACES	DIGS	BS	BA	TB	KPS	APS	SAPS	DPS	BPS
2010	37-122	418	112	925	.331	15	20	229	8	76	84	3.43	0.12	0.16	1.88	0.69
2011	33-122	432	144	1,090	.264	27	13	245	13	48	61	3.54	0.22	0.11	2.01	0.50
2012	36-124	403	131	1,106	.246	42	18	339	23	47	70	3.25	0.34	0.15	2.73	0.56
2013	12-40	96	31	260	.250	16	1	100	10	11	21	2.40	0.40	0.03	2.50	0.53
<b>CAREER</b>	<b>118-408</b>	<b>1,349</b>	<b>418</b>	<b>3,381</b>	<b>.275</b>	<b>100</b>	<b>52</b>	<b>913</b>	<b>54</b>	<b>182</b>	<b>236</b>	<b>3.31</b>	<b>0.25</b>	<b>0.13</b>	<b>2.24</b>	<b>0.58</b>

2013 SEASON HIGHS	CATEGORY	CAREER HIGH
20 vs. Texas (9/7)	Kills	25, 2x, last vs. Texas (9/10/11)
46, vs. Texas (9/7)	Attacks	64 at Nebraska (10/28/12)
.433 (15-2-30) va. Michigan (9/28)	Hitting Percentage	.800 (12-0-15) vs. Binghamton (11/30/12)
2, 7x last vs. Michigan (9/28)	Assists	4, 3x, last at Michigan (10/20/12)
1 vs. Eastern Kentucky (9/21)	Aces	3 vs. Wisconsin (9/30/11)
17, 2x s vs. Texas (9/7)	Digs	29 at Michigan (10/20/12)
4 vs. Albany (9/20)	Blocks	7 vs. Minnesota (12/8/12)

### 2013 MATCH-BY-MATCH

OPP.	K	E	TA	PCT.	A	SA	D	TB
Syracuse	3	2	10	.100	0	0	4	1
Louisville	2	3	10	-.100	2	0	17	1
Texas	20	3	46	.370	0	0	17	0
Florida	5	4	25	.040	2	0	5	1
Marquette	3	2	22	.318	2	0	5	2
Central Arkansas	6	4	21	.095	1	0	3	2
FGCU	5	2	15	.200	0	0	6	3
Albany	5	0	14	.357	2	0	6	4
Eastern Kentucky	10	2	22	.364	1	0	3	3
Yale	9	3	20	.300	2	1	7	0
MSU	7	4	25	.120	2	0	14	1
Michigan	15	2	30	.433	2	0	13	3

### CAREER HONORS

#### 2013

Preseason All-Big Ten  
Penn State Classic All-Tournament

#### 2012

AVCA Third Team All-America  
West Lafayette Regional All-Tournament  
AVCA Mideast Region  
Unanimous All-Big Ten  
Preseason All-Big Ten  
Active Ankle Challenge All-Tournament  
Big Four Volleyball Classic  
All-Tournament  
Chicago Classic All-Tournament

#### 2011

AVCA First Team All-America  
NCAA Lexington Regional  
All-Tournament  
AVCA All-Mideast Region  
First Team All-Big Ten  
Big Ten Player of the Week (11/14)  
Nike Big Four All-Tournament Team  
Pittsburgh Invitational All-Tournament  
AVCA Showcase All-Tournament  
Unanimous Preseason All-Big Ten

#### 2010

AVCA Division I National Freshman of the Year  
AVCA Second Team All-America  
NCAA Championship Most Outstanding Player  
NCAA Championship All-Tournament  
AVCA All-Mideast Region  
AVCA Mideast Region Freshman of the Year  
Unanimous Big Ten All-Freshman  
First Team All-Big Ten  
Big Ten Freshman of the Year  
Five-time Big Ten Freshman of the Week  
Hampton Inn Classic All-Tournament  
Carolina Classic All-Tournament





# 2013 PENN STATE WOMEN'S VOLLEYBALL



## ARIEL SCOTT

SENIOR  
RIDGEWOOD, N.J.

OUTSIDE HITTER

**2013 (Senior):** Unanimous Preseason All-Big Ten ... Candidate for Senior CLASS Award ... Tied for third on the team with five kills against Syracuse (8/31) ... Notched her first double-digit kills performance of the season, recording a team-high 11 kills against No. 19 Louisville (8/31), adding two block assists ... Recorded five kills and five digs against No. 8 Florida (9/8) ... Had one dig against Marquette (9/13) ... Ranked second on the squad with eight kills, notching a season-high .412 hitting clip, adding an ace and a dig against Central Arkansas (9/14) ... Had one kills against FGCU (9/14) ... Recorded a season high in blocks with four along with eight kills and a dig against Albany (9/20) ... Logged 10 kills, two digs and a block against Eastern Kentucky (9/21) ... Set a new season high in kills and hitting percentage with, 13 and .550 respectively, against Yale (9/21), where she also had two blocks ... Led the squad with 18 kills against No. 15 Michigan State (9/27), contributing eight digs and five blocks including her first solo stop of the season ... Tied for team leader with 15 kills against No. 10 Michigan (9/28), while also tallying on dig and five blocks one dig.

### 2013 MATCH-BY-MATCH

OPP.	K	E	TA	PCT.	A	SA	D	TB
Syracuse	5	2	11	.273	0	0	0	0
Louisville	11	5	26	.231	0	0	6	2
Texas	5	7	23	-.087	0	0	5	0
Florida	0	0	0	0	0	0	0	0
Marquette	0	1	3	-.333	0	0	1	0
Central Arkansas	8	1	17	.412	0	1	1	0
FGCU	1	1	7	0	0	0	0	0
Albany	8	0	15	.533	0	0	1	4
Eastern Kentucky	10	1	19	.474	0	0	2	1
Yale	13	2	20	.550	0	0	0	2
MSU	18	7	46	.239	0	0	8	5
Michigan	15	3	35	.343	0	0	1	5

### CAREER HONORS

#### 2013

Unanimous Preseason All-Big Ten  
Senior CLASS Award candidate

#### 2011

AVCA Third Team All-America  
AVCA All-Mideast Region  
Unanimous First Team All-Big Ten  
Hampton Inn Classic All-Tournament

#### 2012

AVCA First Team All-America  
Big Ten Player of the Year  
Unanimous All-Big Ten  
West Lafayette Regional MVP  
AVCA Mideast Region  
Preseason All-Big Ten  
Active Ankle Challenge MVP  
Big Four Volleyball Classic MVP  
Big Ten Player of the Week (11/5)

### SCOTT'S CAREER STATS

SEASON	MP-SP	K	E	TA	PCT.	ASSISTS	ACES	DIGS	BS	BA	TB	KPS	APS	SAPS	DPS	BPS
2010	21-64	143	57	414	.208	0	0	29	3	40	43	2.23	0.00	0.00	0.45	0.67
2011	33-118	418	136	1,083	.260	14	8	143	5	81	86	3.54	0.12	0.07	1.21	0.73
2012	36-125	469	127	1,110	.308	12	3	105	11	91	102	3.75	0.10	0.02	0.84	0.82
2013	11-29	94	30	222	.288	0	1	25	1	18	9	3.24	0.00	0.03	0.86	0.66
<b>CAREER</b>	<b>101-336</b>	<b>1,124</b>	<b>350</b>	<b>2,829</b>	<b>.274</b>	<b>26</b>	<b>12</b>	<b>302</b>	<b>12</b>	<b>230</b>	<b>240</b>	<b>3.35</b>	<b>0.08</b>	<b>0.04</b>	<b>0.90</b>	<b>0.74</b>

2013 SEASON HIGHS	CATEGORY	CAREER HIGH
18 vs. MSU (9/27)	Kills	28 vs. Illinois (10/8/11)
46 vs. MSU (9/27)	Attacks	85 vs. Stanford (8/31/12)
.550 (13-2-20) vs. Yale (9/21)	Hitting Percentage	.571 (8-0-14) vs. Binghamton (11/30/12)
N/A	Assists	2, 3x, last vs. Illinois (10/8/11)
1 vs. Central Arkansas (9/14)	Aces	2, 2x, last at Ohio State (11/23/11)
8 vs. MSU (9/27)	Digs	13 vs. Northwestern (10/5/11)
5, 2x last vs. Michigan (9/28)	Blocks	8 vs. Minnesota (11/4/11)



# 2013 PENN STATE WOMEN'S VOLLEYBALL



## KATIE SLAY

SENIOR  
RALEIGH, N.C.

MIDDLE HITTER

**2013 (Senior):** Preseason All-Big Ten team ... Earned Penn State Invitational All-Tournament team honors ... Tied for second on the squad with five kills against Syracuse (8/31), while also recording a team-high five blocks, including two solo blocks ... Notched three kills against No. 19 Louisville (8/31), adding one dig and tying for first on the team with three blocks, including one solo block. Recorded double-digit kills with 12 against No. 6 Texas (9/7) and tied for second on the team in blocking with four blocks, including one solo block. Had four kills, tallying a season-best .400 hitting clip, while tying for second on the squad with three blocks against No. 8 Florida (9/8) ... Ranked second on the team with eight kills with no errors on .800 hitting against Marquette (9/13), adding one dig and a team-high four block assists ... Pounded six kills, two assists, one dig and a squad-best eight blocks, including two solo stuffs against Central Arkansas (9/14) ... Tied for first on the team with nine kills on 11 perfect swings for a season-high .818 hitting percentage against FGCU (9/14), while also tallying one assist and four blocks ... Tied for team lead with eight kills adding three assisted blocks against Albany (9/20) ... Led the squad in kills with 11 recording one dig and five blocks against Eastern Kentucky (9/21) ... Logged eight kills, two assists, two digs and five blocks against Yale (9/21) ... Logged 11 kills, one assist, two digs, and six blocks including two solo stuffs against No. 15 Michigan State (9/27) ... Set a season-high with nine blocks against No. 10 Michigan (9/28), adding six kills, an assist and a dig.

### 2013 MATCH-BY-MATCH

OPP.	K	E	TA	PCT.	A	SA	D	TB
Syracuse	5	1	12	.333	2	0	2	6
Louisville	3	1	7	.286	0	0	1	3
Texas	12	3	26	.346	0	0	0	5
Florida	4	0	10	.400	2	0	0	3
Marquette	8	0	10	.800	0	0	1	4
Central Arkansas	6	1	2	.417	2	0	1	8
FGCU	9	0	11	.818	1	0	0	4
Albany	8	1	10	.700	0	0	0	3
Eastern Kentucky	11	1	16	.625	0	0	1	5
Yale	8	1	11	.636	2	0	2	5
MSU	11	2	20	.450	1	0	2	6
Michigan	6	2	13	.308	1	0	1	9

### PSU ALL-TIME HITTING %

1. Arielle Wilson, 2007-10	.468
2. Christa Harmotto, 2005-08	.433
3. Melissa Walbridge, 2004-07	.412
4. <b>KATIE SLAY, 2010-present</b>	<b>.411</b>
5. Lauren Cacciamani, 1996-99	.391
6. Lori Barberich, 1981-84	.386
7. JoAnn Elwell, 1987-1990	.385
8. Cara Smith, 2000-03	.367
9. Cassie Salyer 2003-06	.340
10. Alisha Glass 2006-2009	.336

### NCAA LEADERS: HITTING%

1. Whitney Little, Miss.	0.588
2. Chloe Mann, Florida	0.510
3. KATIE SLAY, PSU	0.494
4. Carly Wopat, Stanford	0.485
5. Brea Muhle, Denver	0.480
6. Tori Dixon, Minn.	0.476
7. Sallie McLaurin, Oklahoma	0.453
8. Delaina Sarden, UCF	0.453
9. Alexis Mathews, MSU	0.452
10. Paige Wessel, W.Ky.	0.452

### CAREER HONORS

#### 2013

Preseason All-Big Ten  
Penn State Invitational All Tournament  
Hilton Garden Inn MVP  
Penn State Classic All Tournament

#### 2012

AVCA Second Team All-America  
AVCA Midwest Region  
All-Big Ten  
Preseason All-Big Ten  
Active Ankle Challenge All-Tournament Team  
Big Ten Defensive Player of the Week (8/27, 10/8, 11/26)  
Penn State Classic MVP

#### 2011

AVCA Second Team All-America  
AVCA All-Midwest Region  
Big Ten Defensive Player of the Year  
First Team All-Big Ten  
Academic All-Big Ten  
Two-time Big Ten Defensive Player of the Week  
Hampton Inn Classic MVP  
Preseason All-Big Ten

### SLAY'S CAREER STATS

SEASON	MP-SP	K	E	TA	PCT.	ASSISTS	ACES	DIGS	BS	BA	TB	KPS	APS	SAPS	DPS	BPS
2010	23-52	54	12	104	.404	7	0	5	9	74	83	1.04	0.13	0.00	0.10	1.60
2011	33-122	257	63	502	.386	14	2	44	27	146	173	2.11	0.11	0.02	0.36	1.42
2012	35-122	279	58	537	.412	9	0	15	19	145	164	2.29	0.07	0.00	0.12	1.34
2013	12-41	91	13	158	.494	11	0	11	10	49	59	2.22	0.27	0.00	0.27	1.44
<b>CAREER</b>	<b>103-337</b>	<b>681</b>	<b>146</b>	<b>1,301</b>	<b>.411</b>	<b>41</b>	<b>2</b>	<b>75</b>	<b>65</b>	<b>414</b>	<b>479</b>	<b>2.02</b>	<b>0.12</b>	<b>0.01</b>	<b>0.22</b>	<b>1.42</b>

2013 SEASON HIGHS	CATEGORY	CAREER HIGH
12 vs. Texas (9/7)	Kills	16 at Wisconsin (11/6/11)
26 vs. Texas (9/8)	Attacks	28, 2x, last at Illinois (10/6/12)
.818 (9-0-11) at FGCU (9/14)	Hitting Percentage	.889 (8-0-9), 2x, last vs. Portland (9/14/12)
2, 2x last vs. Florida (9/8)	Assists	3 vs. Long Island (9/16/11)
N/A	Aces	1, 2x, last vs. Wisconsin (9/30/11)
4 vs. Albany (9/21)	Digs	6 vs. Oregon (8/26/11)
9 vs. Michigan (9/28)	Blocks	12 at Michigan (10/20/12)



## ERICA DENNEY

REDSHIRT JUNIOR  
AURORA, COLO.

MIDDLE HITTER

**2013 (Redshirt Junior):** Has not played in any matches this season.

**2012 (Redshirt Sophomore):** Academic All-Big Ten ... Appeared in six matches and nine sets ... Made her 2012 debut vs. Stanford (8/31) ... Recorded her first career start against DePaul (9/8) and had a team-best five blocks ... Posted a block vs. Northwestern (11/10).

### DENNEY'S CAREER STATS

SEASON	MP-SP	K	E	TA	PCT.	ASSISTS	ACES	DIGS	BS	BA	TB	KPS	APS	SAPS	DPS	BPS
2010	Redshirt season															
2011	2-2	1	1	6	.000	0	0	0	0	0	0	0.50	0.00	0.00	0.00	0.00
2012	6-9	7	1	13	.462	0	0	2	0	7	0	0.78	0.00	0.00	0.22	0.78
2013	0-0	0	0	0	-.000	0	0	0	0	0	0	0.00	0.00	0.00	0.00	0.00
<b>CAREER</b>	<b>8-11</b>	<b>8</b>	<b>2</b>	<b>19</b>	<b>.316</b>	<b>0</b>	<b>0</b>	<b>2</b>	<b>0</b>	<b>7</b>	<b>0</b>	<b>0.73</b>	<b>0.00</b>	<b>0.00</b>	<b>0.18</b>	<b>0.64</b>

2013 SEASON HIGHS	CATEGORY	CAREER HIGH
N/A	Kills	4 vs. DePaul (9/8/12)
N/A	Attacks	7 vs. DePaul (9/8/12)
N/A	Hitting Percentage	.600 (3-0-5) vs. Eastern Illinois (9/15/12)
N/A	Assists	N/A
N/A	Aces	N/A
N/A	Digs	1, 2x, last vs. Eastern Illinois (9/15/12)
N/A	Blocks	5 vs. DePaul (9/8/12)



# 2013 PENN STATE WOMEN'S VOLLEYBALL



## LACEY FULLER

JUNIOR  
SAN DIEGO, CALIF.

DEFENSIVE SPECIALIST

### 2013 MATCH-BY-MATCH

OPP.	K	E	TA	PCT.	A	SA	D	TB
Syracuse	0	0	0	0	0	1	3	0
Louisville	0	0	0	0	0	0	4	0
Texas	0	0	0	0	0	0	0	0
Florida	0	0	0	0	1	1	2	0
Marquette	0	0	0	0	0	0	3	0
Central Arkansas	0	0	0	0	0	2	7	0
FGCU	0	0	0	0	0	0	6	0
Albany	0	0	0	0	0	0	3	0
Eastern Kentucky	0	0	0	0	0	0	3	0
Yale	0	0	0	0	0	0	2	0
MSU	0	0	0	0	0	0	0	0
Michigan	0	0	0	0	1	1	7	0

**2013 (Junior):** Recorded one ace and three digs against Syracuse (8/31) ... Notched four digs against No. 19 Louisville (8/31). Saw action on the court against No. 6 Texas (9/7) ... Had an assist, an ace and two digs against No. 8 Florida (9/8) ... Registered three digs against Marquette (9/13) ... Matched a career-high mark with two aces against Central Arkansas (9/14), adding a season-high seven digs ... Posted six digs against FGCU (9/14) ... Notched three digs against Albany (9/20) and Eastern Kentucky (9/21) ... Registered two digs against Yale (9/21) ... Saw action on the court against No. 15 Michigan State (9/27) ... Recorded seven digs, an assist and a service ace against Michigan (9/28).

### FULLER'S CAREER STATS

SEASON	MP-SP	K	E	TA	PCT.	ASSISTS	ACES	DIGS	BS	BA	TB	KPS	APS	SAPS	DPS	BPS
2011	30-67	0	0	0	.000	4	7	59	0	0	0	0.00	0.06	0.10	0.88	0.00
2012	36-119	0	2	4	-.500	15	19	169	0	0	0	0.00	0.13	0.16	1.42	0.00
2013	12-34	0	0	0	.000	2	5	40	0	0	0	0.00	0.06	0.15	1.18	0.00
<b>CAREER</b>	<b>70-196</b>	<b>0</b>	<b>2</b>	<b>4</b>	<b>-.500</b>	<b>21</b>	<b>31</b>	<b>268</b>	<b>0</b>	<b>0</b>	<b>0</b>	<b>0.00</b>	<b>0.10</b>	<b>0.14</b>	<b>1.22</b>	<b>0.00</b>

### 2013 SEASON HIGHS ..... CATEGORY ..... CAREER HIGH

N/A.....	Kills.....	N/A
N/A.....	Attacks.....	1, 34x, last vs. Minnesota (12/8/12)
N/A.....	Hitting Percentage.....	N/A
1, 2x last vs. Michigan (9/28) .....	Assists.....	2, 2x, last vs. Texas (9/1/12)
2 vs. Central Arkansas (9/22).....	Aces.....	2, 4x, last vs. Bowling Green (12/1/12)
7, 2x last vs. Michigan (9/28).....	Digs .....	13 vs. Texas (9/9/11)
N/A.....	Blocks.....	N/A



# 2013 PENN STATE WOMEN'S VOLLEYBALL



## DOMINIQUE GONZALEZ

JUNIOR  
SAN ANTONIO, TEXAS

DEFENSIVE SPECIALIST

### 2013 MATCH-BY-MATCH

OPP.	K	E	TA	PCT.	A	SA	D	TB
Syracuse	0	0	0	0	1	0	3	0
Louisville	0	0	1	0	0	0	9	0
Texas	0	0	2	0	7	0	13	0
Florida	0	1	1	-1.00	2	1	11	0
Marquette	0	0	0	0	4	2	11	0
Central Arkansas	0	0	0	0	0	1	14	0
FGCU	0	0	1	0	3	0	11	0
Albany	0	0	0	0	2	1	8	0
Eastern Kentucky	0	0	0	0	2	2	20	0
Yale	0	0	0	0	5	2	16	0
MSU	0	0	0	0	6	1	10	0
Michigan	0	0	0	0	4	1	12	0

**2013 (Junior):** Tied for team-best with seven digs against Syracuse (8/31) ... Notched nine digs in her second start for the Lions against No. 19 Louisville (8/31) ... Ranked second on the team with a season-high 13 digs against No. 6 Texas (9/7) ... Posted 11 digs, an ace and two assists against No. 8 Florida (9/8) ... Logged four assists, two service aces and 11 digs against Marquette (9/13) ... Posted 14 digs adding a service ace against Central Arkansas (9/14) ... Registered 11 digs and three assists against FGCU (9/14). ... Tallied eight digs, two assists and one service ace against Albany (9/20) ... Reached a season high with 20 digs against Eastern Kentucky, adding two assists and two aces in the match (9/21) ... Totaled five assists, two aces and 16 digs against Yale (9/21).

### CAREER HONORS

#### 2013

Penn State Classic All-Tournament Team

#### 2012

Chicago Classic All-Tournament Team

### GONZALEZ'S CAREER STATS

SEASON	MP-SP	K	E	TA	PCT.	ASSISTS	ACES	DIGS	BS	BA	TB	KPS	APS	SAPS	DPS	BPS
2011	29-84	0	0	4	.000	19	8	123	0	0	0	0.00	0.23	0.10	1.46	0.00
2012	36-125	5	1	14	.286	96	26	457	0	0	0	0.04	0.77	0.21	3.66	0.00
2013	12-41	0	1	4	-.250	36	11	138	0	0	0	0.00	0.88	0.27	3.37	0.00
<b>CAREER</b>	<b>77-250</b>	<b>5</b>	<b>2</b>	<b>22</b>	<b>0.136</b>	<b>151</b>	<b>45</b>	<b>718</b>	<b>0</b>	<b>0</b>	<b>0</b>	<b>0.02</b>	<b>0.60</b>	<b>0.18</b>	<b>2.87</b>	<b>0.00</b>

2013 SEASON HIGHS	CATEGORY	CAREER HIGH
N/A	Kills	1, 4x, last at Purdue (11/17/12)
1, 3x last vs. Florida (9/8)	Attacks	2, 2x, last vs. DePaul (9/8/12)
N/A	Hitting Percentage	N/A
7 vs. Texas (9/7)	Assists	7, 2x last vs. Texas (9/7/13)
2, 3x last vs. Yale (9/22)	Aces	2, 7x last vs. Yale (9/22/13)
20 vs. Eastern Kentucky (9/22)	Digs	29 at Nebraska (10/29/12)
N/A	Blocks	N/A



# 2013 PENN STATE WOMEN'S VOLLEYBALL



## NIA GRANT

JUNIOR  
WARREN, OHIO

MIDDLE HITTER

### 2013 MATCH-BY-MATCH

OPP.	K	E	TA	PCT.	A	SA	D	TB
Syracuse	6	1	16	.312	0	1	3	1
Louisville	5	2	11	.231	0	0	6	2
Texas	4	2	8	.250	0	3	4	4
Florida	8	3	16	.312	1	1	1	2
Marquette	5	1	9	.444	0	1	2	2
Central Arkansas	6	2	11	.364	0	1	3	1
FGCU	6	1	12	.417	0	0	1	2
Albany	0	0	0	0	0	0	0	0
Eastern Kentucky	5	0	6	.833	1	1	0	3
Yale	8	2	13	.462	0	0	1	2
MSU	9	1	12	.667	1	0	2	2
Michigan	8	4	17	.235	0	0	1	1

**2013 (Junior):** Ranked second on the team with six kills against Syracuse (8/31), adding one service ace and three digs ... Posted five kills, one assist, a service ace and three block assists against No. 19 Louisville (8/31) ... Tallied four kills, three aces, four digs and three block assists against No. 6 Texas (9/7) ... Ranked third on the squad with eight kills, one assist, an ace, one dig and a block against No. 8 Florida (9/8) ... Registered five kills, an ace, two digs and two blocks against Marquette (9/13) ... Tied for second on the team with six kills also tallying a service ace, three digs and a block against Central Arkansas (9/14) ... Logged six kills, one dig and one block at FGCU (9/14) ... Ranked third on the team with five kills against Eastern Kentucky along with one assist, one service ace and three blocks (9/21) ... Recorded eight kills, one dig and two blocks against Yale (9/21).

### GRANT'S CAREER STATS

SEASON	MP-SP	K	E	TA	PCT.	ASSISTS	ACES	DIGS	BS	BA	TB	KPS	APS	SAPS	DPS	BPS
2011	32-117	151	44	309	.346	7	13	43	13	94	107	1.29	0.06	0.11	0.37	0.91
2012	36-124	205	52	407	.376	5	0	13	9	111	120	1.65	0.04	0.00	0.10	0.97
2013	9-27	53	14	102	.382	4	9	15	3	14	17	1.96	0.15	0.33	0.56	0.63
<b>CAREER</b>	<b>77-268</b>	<b>409</b>	<b>110</b>	<b>818</b>	<b>.366</b>	<b>16</b>	<b>22</b>	<b>71</b>	<b>25</b>	<b>219</b>	<b>244</b>	<b>1.53</b>	<b>0.06</b>	<b>0.08</b>	<b>0.26</b>	<b>0.91</b>

2013 SEASON HIGHS	CATEGORY	CAREER HIGH
9 vs. MSU (9/27)	Kills	11, 2x, last vs. Iowa (9/22/12)
17 vs. Michigan (9/27)	Attacks	20 vs. Iowa (9/22/12)
.833, (5-0-6) vs. Eastern Kentucky (9/21)	Hitting Percentage	.818 (9-0-11) vs. Ohio State (10/19/11)
1, 3x last vs. MSU (9/27)	Assists	2 vs. Texas (9/10/11)
3 vs. Texas (9/7)	Aces	3 vs. Texas (9/7/13)
6 vs. Louisville (8/31)	Digs	6 vs. Louisville (8/31/13)
4 vs. Texas (9/7)	Blocks	9 at Minnesota (11/4/11)



# 2013 PENN STATE WOMEN'S VOLLEYBALL



## MICHA HANCOCK

JUNIOR  
EDMOND, OKLA.

SETTER

**2013 (Junior):** Earned Penn State Invitational MVP honors ... Tied for third on the team with five kills against Syracuse (8/31), adding 30 assists a service ace and seven digs ... Also paced the squad to a .313 hitting clip against the Orange ... Recorded a team-high eight service aces against No. 19 Louisville (8/31), tallying two kills, 28 assists, seven digs and one block assist ... Hit .500 with four kills on eight errorless swings, while dishing out 51 assists and notching two aces, eight digs and four blocks against No. 6 Texas (9/7) ... Had five kills without a single error on .833 hitting, adding five aces, three digs and three blocks against No. 8 Florida (9/8) ... Paced the offense to a .303 hitting percentage against the Gators, including a .500 mark in the opening set ... Posted 33 assists while adding seven digs, three blocks and four kills against Marquette (9/13) ... Notched one kill, 30 assists, three service aces, five digs and one block against Central Arkansas (9/14) ... Logged two kills, 31 assists, three service aces five digs and one block at FGCU (9/14) ... Posted three kills, 29 assists, two service aces, one dig and four blocks against Albany (9/20) ... Set a season high in assists against Eastern Kentucky with 39, adding two kills, four aces, four digs and three blocks ... Recorded three kills, 32 assists, one ace, six digs and one block against Yale (9/21) ... Set a career-high mark with nine kills against No. 15 Michigan State, while tallying a season-high 57 assists, adding a service ace and nine digs against MSU ... Served up four aces adding two kills, 44 assists, 11 digs and two blocks against No. 10 Michigan (9/28).

### 2013 MATCH-BY-MATCH

OPP.	K	E	TA	PCT.	A	SA	D	TB
Syracuse	5	0	9	.556	30	1	7	0
Louisville	2	0	5	.400	28	8	7	1
Texas	4	0	8	.500	51	2	8	4
Florida	5	0	6	.833	29	5	3	4
Marquette	4	0	8	.500	33	0	7	3
Central Arkansas	1	2	7	-.143	30	3	5	1
FGCU	2	0	5	.400	31	3	5	1
Albany	3	0	3	1.00	29	2	1	4
Eastern Kentucky	2	2	4	.000	39	4	4	3
Yale	3	1	5	.400	32	1	6	1
MSU	9	2	13	.538	57	1	9	0
Michigan	2	2	9	.000	44	4	11	2

### CAREER HONORS

#### 2013

Preseason All-Big Ten  
Penn State Invitational MVP  
Hilton Garden Inn All-Tournament

#### 2012

AVCA First Team All-American  
West Lafayette Regional All-Tournament  
AVCA Mideast Region  
Big Ten Setter of the Year  
First Team All-Big Ten  
Big Four Volleyball Classic  
All-Tournament  
Big Ten Player of the Week (9/3)  
Big Ten Setter of the Week (9/3, 9/24, 10/1, 10/22, 11/5, 11/19)  
AVCA National Player of the Week (11/6)

#### 2011

AVCA Mideast Region  
Freshman of the Year  
Unanimous Big Ten All-Freshman Team  
Big Ten Freshman of the Year  
Co-Big Ten Freshman of the Week (11/14, 11/21, 11/28)  
Pittsburgh Invitational MVP  
AVCA Showcase All Tournament

### NCAA LEADERS: ACES PER SET

1. MICHA HANCOCK, PSU	0.83
2. Betsi Metter, Loy.Marymt.	0.83
3. Samantha Bricio, USC	0.73
4. Corinne Baine, Harvard	0.63
5. Lindsey Gosh, Marquette	0.60
6. Breanna Homer, SamHou.St.	0.60
- Kendall Polan, Yale	0.60
8. Kellie Culbertson, Tulsa	0.57
9. Lexi Millington, Marist	0.56
10. Lindsey Owens, VA Tech.	0.56

### PSU ALL-TIME SERVICE ACES

1.	235	Ellen Hensler, 1983-86
2.	206	MICHA HANCOCK, 2011-present
3.	183	Vida Kernich, 1983-86
4.	175	Lori Barberich, 1981-84
5.	163	Michelle Jaworski, 1987-90
6.	155	Noelle Zientara, 1987-90
7.	151	Elizabeth Ramirez, 1986-89
8.	146	Alyssa D'Errico, 2007-10
9.	134	Roberta Holehouse, 2005-08
10.	127	Nicole Fawcett, 2005-08

### HANCOCK'S CAREER STATS

SEASON	MP-SP	K	E	TA	PCT.	ASSISTS	ACES	DIGS	BS	BA	TB	KPS	APS	SAPS	DPS	BPS
2011	33-121	110	34	246	.309	1,275	91	279	5	54	59	0.91	10.54	0.75	2.31	0.49
2012	36-125	125	32	260	.358	1,403	81	298	8	68	76	1.00	11.22	0.65	2.38	0.61
2013	12-41	42	9	82	.402	433	34	78	1	20	21	1.02	10.56	0.83	1.90	0.51
<b>CAREER</b>	<b>81-287</b>	<b>277</b>	<b>75</b>	<b>588</b>	<b>.344</b>	<b>3,111</b>	<b>206</b>	<b>655</b>	<b>14</b>	<b>142</b>	<b>156</b>	<b>0.97</b>	<b>10.84</b>	<b>0.72</b>	<b>2.28</b>	<b>0.54</b>

### 2013 SEASON HIGHS ..... CATEGORY ..... CAREER HIGH

9 vs. MSU (9/27) .....	Kills.....	9 vs. MSU (9/27/13)
13 vs. MSU (9/27) .....	Attacks.....	15 vs. Illinois (10/8/11)
.833 (5-0-6) vs. Florida (9/8) .....	Hitting Percentage.....	.875 (7-0-8) vs. USC (8/27/11)
57 vs. MSU (9/27) .....	Assists.....	60 at Wisconsin (11/6/11)
8 vs. Louisville (8/31) .....	Aces.....	10 vs. Binghamton (11/30/12)
11 vs. Michigan (9/28) .....	Digs .....	23 vs. Stanford (8/31/12)
4, 3x last vs. Albany (9/20) .....	Blocks.....	8 at Nebraska (10/28/12)



# 2013 PENN STATE WOMEN'S VOLLEYBALL



## AIYANA WHITNEY

REDSHIRT SOPHOMORE  
NORWOOD, N.J.

OUTSIDE HITTER

### 2013 MATCH-BY-MATCH

OPP.	K	E	TA	PCT.	A	SA	D	TB
Syracuse	6	1	11	.455	0	0	3	2
Louisville	1	0	2	.500	0	0	0	0
Texas	1	1	5	0	1	0	7	1
Florida	0	0	0	0	0	0	0	0
Marquette	1	0	1	1.000	0	0	0	0
Central Arkansas	0	0	0	0	0	0	0	0
FGCU	1	0	3	.333	0	0	1	1
Albany	7	1	9	.667	1	0	1	4
Eastern Kentucky	2	1	4	.250	0	0	0	0
Yale	2	1	9	.111	0	0	0	0
MSU	0	0	1	.000	0	0	0	0
Michigan	0	0	0	0	0	0	0	0

**2013 (Redshirt sophomore):** Tied for second on the team with six kills against Syracuse (8/31), tallying a .455 hitting clip and recording three digs and two block assists ... Had one kill against No. 19 Louisville (8/31) ... Recorded one kill and a block at No. 6 Texas (9/7) ... Recorded one kill against Marquette (9/13) ... Saw time on the court against Central Arkansas (9/14) ... Registered one kill, one dig and one block at FGCU (9/14) ... Set a season high in kills with seven against Albany (9/20) adding one dig and four blocks ... Notched two kills against Eastern Kentucky (9/21) and Yale (9/21) ... Saw action on the court against No. 15 Michigan State (9/27).

**2012 (Sophomore):** Redshirt season.

### WHITNEY'S CAREER STATS

SEASON	MP-SP	K	E	TA	PCT.	ASSISTS	ACES	DIGS	BS	BA	TB	KPS	APS	SAPS	DPS	BPS
2011	24-65	113	51	320	.194	0	0	14	3	22	25	1.74	0.00	0.00	0.22	0.38
2012	Redshirt season															
2013	10-12	21	5	45	.356	1	0	5	0	8	4	1.75	0.08	0.00	0.42	0.67
<b>CAREER</b>	<b>34-77</b>	<b>134</b>	<b>56</b>	<b>365</b>	<b>.214</b>	<b>1</b>	<b>0</b>	<b>19</b>	<b>3</b>	<b>30</b>	<b>33</b>	<b>1.74</b>	<b>0.01</b>	<b>0.00</b>	<b>0.25</b>	<b>0.43</b>

2013 SEASON HIGHS	CATEGORY	CAREER HIGH
7 vs. Albany (9/20)	Kills	15 vs. Texas 9/10/11)
11 vs. Syracuse (8/31)	Attacks	30 vs. Texas (9/10/11)
.667 vs. Albany (9/20)	Hitting Percentage	.500 (8-0-16) vs. Delaware (12/3/11)
1 vs. Albany (9/20)	Assists	1 vs. Albany (9/20)
N/A	Aces	N/A
3 vs. Syracuse (8/31)	Digs	5 at Wisconsin (11/6/11)
4 vs. Albany (9/20)	Blocks	4 vs. Nebraska (10/29/11)





# 2013 PENN STATE WOMEN'S VOLLEYBALL



## LARA CARAWAY

SOPHOMORE  
EVANS CITY, PA.

DEFENSIVE SPECIALIST

### 2013 MATCH-BY-MATCH

OPP.	K	E	TA	PCT.	A	SA	D	TB
Syracuse	0	0	0	0	0	0	0	0
Louisville	0	0	0	0	0	0	0	0
Texas	0	0	0	0	0	0	0	0
Florida	0	0	0	0	0	0	0	0
Marquette	0	0	1	0	0	0	1	0
Central Arkansas	0	0	0	0	0	0	0	0
FGCU	0	0	0	0	1	0	2	0
Albany	0	0	0	0	0	0	0	0
Eastern Kentucky	0	0	0	0	0	0	0	0
Yale	0	0	0	0	0	0	2	0
MSU	0	0	0	0	0	0	0	0
Michigan	0	0	0	0	0	0	0	0

**2013 (Sophomore):** Saw action on the court for the first time this season against Syracuse (8/31) ... Saw the court against Marquette (9/13) and Central Arkansas (9/14) ... Notched one assist and two digs at FGCU (9/14) ... Saw action against Albany (9/20) ... Totaled two digs against Yale (9/21) ... Played against No. 15 Michigan State (9/27) and No. 10 Michigan (9/27).

**2012 (Freshman):** Made her collegiate debut vs. Morehead State (8/24) ...had an ace vs. DePaul (9/8) ... posted two digs vs. Iowa (9/22) ... recorded an ace vs. Minnesota (11/2).

### CARAWAY'S CAREER STATS

SEASON	MP-SP	K	E	TA	PCT.	ASSISTS	ACES	DIGS	BS	BA	TB	KPS	APS	SAPS	DPS	BPS
2012	16-24	0	0	0	.000	1	3	5	0	0	0	0.00	0.04	0.12	0.21	0.00
2013	8-10	0	0	1	.000	1	0	4	0	0	0	0.00	0.10	0.00	0.40	0.00
<b>CAREER</b>	<b>24-34</b>	<b>0</b>	<b>0</b>	<b>1</b>	<b>.000</b>	<b>2</b>	<b>3</b>	<b>9</b>	<b>0</b>	<b>0</b>	<b>0</b>	<b>0.00</b>	<b>0.06</b>	<b>0.09</b>	<b>0.26</b>	<b>0.00</b>

2013 SEASON HIGHS	CATEGORY	CAREER HIGH
N/A	Kills	N/A
1 vs. Marquette (9/13)	Attacks	1 vs. Marquette (9/13)
N/A	Hitting Percentage	N/A
1 at FGCU (9/14)	Assists	, 2x last at FGCU (9/14)
N/A	Aces	1, 3x, last vs. Minnesota (11/2)
2, 2x last vs. Albany (9/20)	Digs	2, 3x last vs. Albany (9/20)
N/A	Blocks	N/A



# 2013 PENN STATE WOMEN'S VOLLEYBALL



## MEGAN COURTNEY

SOPHOMORE  
DAYTON, OHIO

OUTSIDE HITTER

### 2013 MATCH-BY-MATCH

OPP.	K	E	TA	PCT.	A	SA	D	TB
Syracuse	3	2	7	.143	0	0	3	2
Louisville	0	0	0	0	0	0	0	0
Texas	5	1	14	.286	1	0	7	1
Florida	11	3	24	.333	0	0	12	1
Marquette	9	1	7	.471	1	0	10	1
Central Arkansas	10	2	21	.381	0	0	2	5
FGCU	9	0	14	.643	0	0	5	1
Albany	2	2	7	.000	1	0	3	2
Eastern Kentucky	4	2	9	.222	0	0	6	3
Yale	11	0	25	.440	2	0	5	4
MSU	15	4	39	.282	1	1	14	2
Michigan	11	3	26	.308	0	0	8	4

**2013 (Sophomore):** Earned Preseason All-Big Ten honors ... Had three kills, three digs and a block assist against Syracuse (8/31) ... Recorded five kills, seven digs, one assist and one block assist against No. 6 Texas (9/7) ... Registered a double-double against No. 8 Florida (9/8) with 11 kills and 12 digs on .333 hitting, adding one block assist ... Tallied nine kills, one assist, ten digs and one block against Marquette (9/13) ... Registered 10 kills, two digs and five blocks against Central Arkansas (9/14) ... Notched nine kills, five digs, and one block at FGCU (9/14) ... Recorded two kills, one assist, three digs and two blocks against Albany (9/20) ... Posted four kills, six digs and three blocks against Eastern Kentucky ... Matched her season-high mark of 11 kills against Yale adding two assists, five digs and four blocks (9/21) ... Recorded her second double-double of the season with a career-high 15 kills and 14 digs against No. 15 Michigan State (9/27) ... Tallied 11 kills, eight digs and four blocks against No. 10 Michigan (9/28).

### CAREER HONORS

#### 2013

Preseason All-Big Ten  
Hilton Garden Inn Homewood Suites Classic All-Tournament

#### 2012

AVCA Mid-east Regional Freshman of the Year  
Unanimous Big Ten All-Freshman Team  
Big Ten Freshman of the Year  
Big Ten Co-Freshman of the Week (11/14, 11/21, 11/28)  
Pittsburgh Invitational MVP

### COURTNEY'S CAREER STATS

SEASON	MP-SP	K	E	TA	PCT.	ASSISTS	ACES	DIGS	BS	BA	TB	KPS	APS	SAPS	DPS	BPS
2012	36-120	240	88	632	.241	33	13	237	32	69	101	2.00	0.28	0.11	1.98	0.84
2013	11-34	90	20	203	.345	6	1	75	4	20	24	2.61	0.18	0.03	2.21	0.71
<b>CAREER</b>	<b>42-138</b>	<b>330</b>	<b>108</b>	<b>835</b>	<b>.266</b>	<b>39</b>	<b>14</b>	<b>312</b>	<b>36</b>	<b>89</b>	<b>125</b>	<b>2.08</b>	<b>0.25</b>	<b>0.09</b>	<b>2.03</b>	<b>0.81</b>

2013 SEASON HIGHS	CATEGORY	CAREER HIGH
15 vs. MSU (9/27)	Kills	15 vs. MSU (9/27/13)
39 vs. MSU (9/27)	Attacks	47 at Michigan (10/20/12)
.471 (9-1-17) vs. Marquette (9/13)	Hitting Percentage	.533 (8-0-15) vs. Texas (9/1/12)
2 vs. Yale (9/21)	Assists	4 vs. Morehead State (8/24/12)
1 vs. MSU (9/27)	Aces	2, 3x, last at Purdue (11/17/12)
14 vs. MSU (9/27)	Digs	15, 2x, last at Wisconsin (9/28/12)
4, 2x last vs. Michigan (9/28)	Blocks	8 at Michigan (10/20/12)



# 2013 PENN STATE WOMEN'S VOLLEYBALL



## PAULINA PRIETO CERAME

REDSHIRT FRESHMAN  
SAN JUAN, PUERTO RICO

OUTSIDE HITTER

### 2013 MATCH-BY-MATCH

OPP.	K	E	TA	PCT.	A	SA	D	TB
Syracuse	9	3	17	.353	0	0	2	0
Louisville	10	3	19	.368	0	0	3	3
Texas	18	8	47	.213	0	0	0	2
Florida	9	1	17	.471	0	0	1	1
Marquette	7	2	16	.312	1	0	0	1
Central Arkansas	2	3	8	-.125	0	0	1	1
FGCU	5	2	13	.231	1	0	2	3
Albany	2	0	2	1.00	0	0	0	0
Eastern Kentucky	0	0	0	0	0	0	0	0
Yale	0	0	0	0	0	0	0	0
MSU	4	2	10	.200	0	0	1	0
Michigan	0	0	1	.000	0	0	0	0

**2013 (Redshirt Freshman):** Earned Penn State Invitational All-Tournament Team honors for her performance on the court ... Registered nine kills and two digs in her first collegiate appearance for the Nittany Lions against Syracuse (8/31) ... Hit double-digits against No. 19 Louisville (8/31), posting 10 kills, while also racking up three digs and three blocks, including one solo block ... Ranked second on the team with 18 kills at No. 6 Texas (9/8), adding two block assists ... Recorded nine kills on .471 hitting with one dig and a block assist against No. 8 Florida (9/8) ... Recorded seven kills, one assist and one block against Marquette (9/13) ... Totaled two kills, one dig and one block against Central Arkansas (9/14) ... Registered five kills, one assist, two digs and three blocks at FGCU (9/14) ... Tallied two kills against Albany (9/20) ... Pounded two kills and one dig against No. 15 Michigan State (9/27) ... Saw action on the court against Michigan (9/28).

**2012 (Freshman):** Redshirt Season.

### CAREER HONORS

2013

Penn State Invitational All-Tournament team

### PRIETO CERAME'S CAREER STATS

SEASON	MP-SP	K	E	TA	PCT.	ASSISTS	ACES	DIGS	BS	BA	TB	KPS	APS	SAPS	DPS	BPS
2012	Redshirt season															
2013	10-24	66	24	150	.280	2	0	10	4	7	11	2.75	0.08	0.00	0.42	0.46
<b>CAREER</b>	<b>10-24</b>	<b>66</b>	<b>24</b>	<b>150</b>	<b>.280</b>	<b>2</b>	<b>0</b>	<b>10</b>	<b>4</b>	<b>7</b>	<b>11</b>	<b>2.75</b>	<b>0.08</b>	<b>0.00</b>	<b>0.42</b>	<b>0.46</b>

2013 SEASON HIGHS	CATEGORY	CAREER HIGH
18 vs. Texas (9/7)	Kills	18 vs. Texas (9/7/13)
47 vs. Texas (9/7)	Attacks	47 vs. Texas (9/7/13)
.471 (9-1-17) vs. Florida (9/8)	Hitting Percentage	.471 (9-1-17) vs. Florida (9/8/13)
1, 2x last vs. FGCU (9/14)	Assists	1, 2x last vs. FGCU (9/14)
N/A	Aces	N/A
3 vs. Louisville (8/31)	Digs	3 vs. Louisville (8/31/13)
3, 2x last vs. FGCU (9/14)	Blocks	3, 2x last vs. FGCU (9/14)



# 2013 PENN STATE WOMEN'S VOLLEYBALL



## KENDALL PIERCE

SOPHOMORE  
EDEN, N.Y.

DEFENSIVE SPECIALIST

### 2013 MATCH-BY-MATCH

OPP.	K	E	TA	PCT.	A	SA	D	TB
Syracuse	0	0	0	0	0	1	0	0
Louisville	0	0	0	0	0	0	0	0
Texas	0	0	0	0	0	0	1	0
Florida	0	0	0	0	0	1	0	0
Marquette	0	0	0	0	0	0	0	0
Central Arkansas	0	0	0	0	0	0	0	0
FGCU	0	0	0	0	0	1	2	0
Albany	0	0	0	0	0	1	0	0
Eastern Kentucky	0	0	0	0	0	0	1	0
Yale	0	0	0	0	0	0	3	0
MSU	0	0	0	0	0	0	2	0
Michigan	0	0	0	0	0	1	0	0

**2013 (Sophomore):** Recorded an ace against Syracuse (8/31) ... Saw action on the court against No. 19 Louisville (8/31) ... Had one dig against No. 6 Texas (9/7) ... Notched one service ace against No. 8 Florida (9/8) ... Saw the court in matches against Marquette (9/13) and Central Arkansas (9/14) ... Tallied an ace and two digs at FGCU (9/14) ... Picked up her fourth ace of the season against Albany (9/20) ... Registered a dig against Eastern Kentucky (9/21) ... Recorded three digs against Yale (9/21) ... Notched two digs against No. 15 Michigan State (9/27) and one service ace against No. 10 Michigan (9/28).

### PIERCE'S CAREER STATS

SEASON	MP-SP	K	E	TA	PCT.	ASSISTS	ACES	DIGS	BS	BA	TB	KPS	APS	SAPS	DPS	BPS
2012	18-29	0	0	0	.000	2	9	7	0	0	0	0.00	0.07	0.31	0.24	0.00
2013	12-27	0	0	0	.000	0	5	9	0	0	0	0.00	0.00	0.19	0.33	0.00
<b>CAREER</b>	<b>30-56</b>	<b>0</b>	<b>0</b>	<b>0</b>	<b>.000</b>	<b>2</b>	<b>14</b>	<b>16</b>	<b>0</b>	<b>0</b>	<b>0</b>	<b>0.00</b>	<b>0.04</b>	<b>0.25</b>	<b>0.29</b>	<b>0.00</b>

### 2013 SEASON HIGHS ..... CATEGORY ..... CAREER HIGH

N/A	Kills	N/A
N/A	Attacks	N/A
N/A	Hitting Percentage	N/A
N/A	Assists	1, 2x, last vs. Binghamton (11/30/12)
1, 5x last vs. Michigan (9/28)	Aces	2, 2x, last vs. Bowling Green (12/1/12)
3 vs. Yale (9/21)	Digs	3 vs. Yale (9/21)
N/A	Blocks	N/A



# 2013 PENN STATE WOMEN'S VOLLEYBALL



## LAURA BROERMAN

FRESHMAN  
COLORADO SPRINGS, COLO.

DEFENSIVE SPECIALIST

### 2013 MATCH-BY-MATCH

OPP.	K	E	TA	PCT.	A	SA	D	TB
Syracuse	0	0	0	0	0	0	1	0
Louisville	0	0	0	0	0	0	0	0
Texas	0	0	0	0	0	0	0	0
Florida	0	0	0	0	0	0	0	0
Marquette	0	0	0	0	0	0	0	0
Central Arkansas	0	0	0	0	0	0	0	0
FGCU	0	0	0	0	0	0	0	0
Albany	0	0	0	0	0	0	1	0
Eastern Kentucky	0	0	0	0	0	0	0	0
Yale	0	0	0	0	0	0	0	0

**2013 (Freshman):** Made her collegiate debut for the Nittany Lions against Syracuse (8/31), tallying one dig ... Saw action at FGCU (9/14) ... Tallied one dig against Albany (9/20).

### BROERMAN'S CAREER STATS

SEASON	MP-SP	K	E	TA	PCT.	ASSISTS	ACES	DIGS	BS	BA	TB	KPS	APS	SAPS	DPS	BPS
2013	3-3	0	0	0	.000	0	0	2	0	0	0	0.00	0.00	0.00	.67	0.00
<b>CAREER</b>	<b>3-3</b>	<b>0</b>	<b>0</b>	<b>0</b>	<b>.000</b>	<b>0</b>	<b>0</b>	<b>2</b>	<b>0</b>	<b>0</b>	<b>0</b>	<b>0.00</b>	<b>0.00</b>	<b>0.00</b>	<b>.67</b>	<b>0.00</b>

2013 SEASON HIGHS	CATEGORY	CAREER HIGH
N/A	Kills	N/A
N/A	Attacks	N/A
N/A	Hitting Percentage	N/A
N/A	Assists	N/A
N/A	Aces	N/A
1, 2x last vs. Albany (9/20)	Digs	1, 2x last vs. Albany (9/20)



# 2013 PENN STATE WOMEN'S VOLLEYBALL



## TAYLOR KRAUSE

FRESHMAN  
ALLENTOWN, PA.

DEFENSIVE SPECIALIST

### 2013 MATCH-BY-MATCH

OPP.	K	E	TA	PCT.	A	SA	D	TB
Syracuse	0	0	0	0	0	0	1	0
Louisville	0	0	0	0	0	0	0	0
Texas	0	0	0	0	0	0	0	0
Florida	0	0	0	0	0	0	0	0
Marquette	0	0	0	0	0	0	0	0
Central Arkansas	0	0	0	0	0	0	0	0
FGCU	0	0	0	0	0	0	0	0
Albany	0	0	0	0	0	0	0	0
Eastern Kentucky	0	0	0	0	0	0	2	0
Yale	0	0	0	0	0	0	1	0

**2013 (Freshman):** Made her collegiate debut for Penn State against Syracuse (8/31), notching on dig ... Saw action at FGCU (9/14) as well as against Albany (9/20) ... Tallied two digs against Eastern Kentucky (9/21) ... Registered one dig against Yale (9/21).

### KRAUSE'S CAREER STATS

SEASON	MP-SP	K	E	TA	PCT.	ASSISTS	ACES	DIGS	BS	BA	TB	KPS	APS	SAPS	DPS	BPS
2013	5-5	0	0	0	.000	0	0	4	0	0	0	0.00	0.00	0.00	0.80	0.00
<b>CAREER</b>	<b>5-5</b>	<b>0</b>	<b>0</b>	<b>0</b>	<b>.000</b>	<b>0</b>	<b>0</b>	<b>4</b>	<b>0</b>	<b>0</b>	<b>0</b>	<b>0.00</b>	<b>0.00</b>	<b>0.00</b>	<b>0.80</b>	<b>0.00</b>

### 2013 SEASON HIGHS ..... CATEGORY ..... CAREER HIGH

N/A	Kills	N/A
N/A	Attacks	N/A
N/A	Hitting Percentage	N/A
N/A	Assists	N/A
N/A	Aces	N/A
2 vs. Eastern Kentucky (9/21)	Digs	2 vs. Eastern Kentucky (9/21)
N/A	Blocks	N/A



# 2013 PENN STATE WOMEN'S VOLLEYBALL



## CARLEY MULLER

FRESHMAN  
MANHATTAN BEACH, CALIF.

DEFENSIVE SPECIALIST

### 2013 MATCH-BY-MATCH

OPP.	K	E	TA	PCT.	A	SA	D	TB
Syracuse	0	0	0	0	0	0	0	0
Louisville	0	0	0	0	0	0	0	0
Texas	0	0	0	0	0	0	0	0
Florida	0	0	0	0	0	0	0	0
Marquette	0	0	0	0	0	0	0	0
Central Arkansas	0	0	0	0	0	0	0	0
FGCU	0	0	0	0	0	0	0	0
Albany	0	0	0	0	0	0	0	0
Eastern Kentucky	0	0	0	0	0	0	0	0
Yale	0	0	0	0	0	0	0	0

**2013 (Freshman):** Made her collegiate debut on the court against Syracuse (8/31) ... Saw the court against Central Arkansas (9/14) as well as against Albany (9/20) and Central Arkansas (9/21).

### MULLER'S CAREER STATS

SEASON	MP-SP	K	E	TA	PCT.	ASSISTS	ACES	DIGS	BS	BA	TB	KPS	APS	SAPS	DPS	BPS
2013	4-4	0	0	0	.000	0	0	0	0	0	0	0.00	0.00	0.00	0.00	0.00
<b>CAREER</b>	<b>4-4</b>	<b>0</b>	<b>0</b>	<b>0</b>	<b>.000</b>	<b>0</b>	<b>0</b>	<b>0</b>	<b>0</b>	<b>0</b>	<b>0</b>	<b>0.00</b>	<b>0.00</b>	<b>0.00</b>	<b>0.00</b>	<b>0.00</b>

2013 SEASON HIGHS	CATEGORY	CAREER HIGH
N/A	Kills	N/A
N/A	Attacks	N/A
N/A	Hitting Percentage	N/A
N/A	Assists	N/A
N/A	Aces	N/A
N/A	Digs	N/A
N/A	Blocks	N/A



# 2013 PENN STATE WOMEN'S VOLLEYBALL



## KELLY ROBERTSON

FRESHMAN  
ALLENTOWN, PA.

MIDDLE BLOCKER

### 2013 MATCH-BY-MATCH

OPP.	K	E	TA	PCT.	A	SA	D	TB
Syracuse	0	0	0	0	0	0	0	0
Louisville	0	0	0	0	0	0	0	0
Texas	0	0	0	0	0	0	0	0
Florida	0	0	0	0	0	0	0	0
Marquette	0	0	0	0	0	0	0	0
Central Arkansas	0	0	0	0	0	0	0	0
FGCU	0	0	0	0	0	0	0	0
Albany	3	0	5	0.600	0	0	0	2
Eastern Kentucky	0	0	0	0	0	0	0	0
Yale	0	0	0	0	0	0	0	0

**2013 (Freshman):** Made her collegiate debut for Penn State against Albany (9/20) notching three kills and two blocks.

### ROBERTSON'S CAREER STATS

SEASON	MP-SP	K	E	TA	PCT.	ASSISTS	ACES	DIGS	BS	BA	TB	KPS	APS	SAPS	DPS	BPS
2013	1-1	3	0	5	.600	0	0	0	0	2	2	3.00	0.00	0.00	0.80	2.00
<b>CAREER</b>	<b>1-1</b>	<b>3</b>	<b>0</b>	<b>5</b>	<b>.600</b>	<b>0</b>	<b>0</b>	<b>0</b>	<b>0</b>	<b>2</b>	<b>2</b>	<b>3.00</b>	<b>0.00</b>	<b>0.00</b>	<b>0.80</b>	<b>2.00</b>

2013 SEASON HIGHS	CATEGORY	CAREER HIGH
3 vs. Albany (9/20)	Kills	3 vs. Albany (9/20)
5 vs. Albany (9/20)	Attacks	5 vs. Albany (9/20)
N/A	Hitting Percentage	N/A
N/A	Assists	N/A
N/A	Aces	N/A
N/A	Digs	N/A
2 vs. Albany (9/20)	Blocks	2 vs. Albany (9/20)





# 2013 PENN STATE MATCH SUMMARIES



## PSU 3, SYRACUSE 0 University Park, Pa. (Rec Hall) Aug. 31, 2013

The No. 2 Penn State women's volleyball team officially opened 2013 with a 3-0 (25-16, 25-15, 25-17) victory against Syracuse in the Penn State Invitational. With the win, the Lions improve to 29-6 in season-openers under the guidance of head coach Russ Rose.

Following an early Penn State 4-1 lead, the Orange fought within two, 12-10, following a kill from junior Nicolette Serratore and an attacking error on senior Deja McClendon. The Lions regained momentum though, and increased its advantage to as many as nine points, 23-14, before a kill from junior Nia Grant sent McClendon to the service line for match point. Grant followed with a kill to secure the opening set, 25-16.

Tied at 6-all in set two, the Lions went on a 7-3 run and didn't relinquish control for the remainder of the set, finishing the frame with a kill from Prieto Cerame and an ace from Hancock to go up 2-0.

Syracuse made one final attempt to hold off PSU, 24-17, in set three following a kill by Monika Salkute, but an Orange service error ended the attack, giving the Lions a 25-17 win in set three and the victory.

### NO. 2 PENN STATE (1-0, 0-0)

Name	SP	K	E	TA	PCT	A	SA	SE	RE	D	BS	BA	BE
Grant	3	6	1	16	.312	0	1	1	0	3	0	0	1
P. Cerame	3	9	3	17	.353	0	0	0	0	2	0	0	0
Hancock	3	5	0	9	.556	30	1	2	0	7	0	0	0
Slay	3	5	1	12	.333	2	0	0	0	2	2	3	1
Courtney	1	3	2	7	.143	0	0	0	0	3	0	1	1
McClendon	2	3	2	10	.100	0	0	0	0	4	1	0	0
Scott	1	5	2	11	.273	0	0	1	0	0	0	0	0
Caraway	1	0	0	0	.000	0	0	0	0	0	0	0	0
Pierce	1	0	0	0	.000	0	1	0	0	0	0	0	0
Gonzalez	3	0	0	0	.000	1	0	1	0	3	0	0	0
Martin	2	1	0	6	.167	2	0	2	0	7	0	0	0
Krause	1	0	0	0	.000	0	0	0	0	1	0	0	0
Whitney	1	6	1	11	.455	0	0	0	0	3	0	2	0
Broerman	1	0	0	0	.000	0	0	0	0	1	0	0	0
Fuller	2	0	0	0	.000	0	1	1	0	3	0	0	0
<b>TOTALS</b>	<b>3</b>	<b>43</b>	<b>12</b>	<b>99</b>	<b>.313</b>	<b>35</b>	<b>4</b>	<b>8</b>	<b>0</b>	<b>39</b>	<b>3</b>	<b>6</b>	<b>3</b>

Set	K	E	TA	PCT	Sideout	PCT
1	16	4	29	.414	12-17	70%
2	12	4	34	.235	12-15	80%
3	15	4	36	.306	13-18	72%

Syracuse	16	15	17
Penn State	25	25	25

### SYRACUSE (0-1, 0-0)

Name	SP	K	E	TA	PCT	A	SA	SE	RE	D	BS	BA	BE
Wlasczuc	3	4	2	7	.286	4	0	3	2	8	1	0	2
Handley	3	4	3	14	.071	16	0	0	0	0	0	0	1
McCabe	3	3	4	11	-.091	0	0	0	0	0	0	0	2
Salkute	3	3	1	10	.200	0	0	1	0	3	0	2	0
Serratore	3	6	1	20	.250	0	0	2	1	7	0	3	1
Uattara	3	6	4	21	.095	1	0	1	0	5	0	0	1
Timberlake	3	0	0	1	.000	0	0	2	0	11	0	0	0
Clarey	1	0	0	0	.000	0	0	0	0	0	0	0	0
Shaipova	1	0	2	4	-.500	0	0	0	0	1	0	1	0
Humes	2	0	0	0	.000	1	0	0	0	1	0	0	0
Violas	3	0	0	0	.000	0	0	0	0	1	0	0	0
<b>TOTALS</b>	<b>3</b>	<b>26</b>	<b>17</b>	<b>88</b>	<b>.102</b>	<b>22</b>	<b>0</b>	<b>9</b>	<b>4</b>	<b>36</b>	<b>1</b>	<b>8</b>	<b>5</b>

Set	K	E	TA	PCT	Sideout	PCT
1	10	4	29	.207	11-24	45%
2	8	7	29	.034	12-25	47%
3	8	6	30	.067	12-24	50%

	1	2	3	Total
Tie Scores	1	4	2	7
Lead Changes	1	1	1	3



## PSU 3, LOUISVILLE 0 University Park, Pa. (Rec Hall) Aug. 31, 2013

In a matchup that featured sisters Deja and Maya McClendon on opposite sides of the net, No. 2 Penn State women's volleyball swept past No. 19 Louisville (1-1) in straight sets (25-15, 25-16, 25-13) in the finale of the Penn State Invitational. Hancock earned Penn State Invitational MVP honors for her efforts this weekend, while senior Katie Slay and Prieto Cerame joined her on the All-Tournament Team.

The Nittany Lions got out to a hot start against the Cardinals, using a 6-0 run to construct an early advantage. With a steady 19-12 lead, Hancock connected on two straight aces to increase the Nittany Lion advantage to 21-12. Penn State rallied to finish the frame, as Deja pounded one final kill to give PSU the first set, 25-15.

In set two, Hancock followed with her fifth ace of the match to give Penn State a 11-10 lead. Continuing the momentum, Penn State closed out the set on an 11-4 run to improve to 2-0 in the match. Penn State used a 5-0 spurt in the third set to secure a 13-5 lead. The Nittany Lions did not let the lead dip below 10 points for the rest of the match as Penn State cruised to a 25-13 victory in set three and a 2-0 record on the weekend.

### NO. 19 LOUISVILLE (1-1, 0-0)

Name	SP	K	E	TA	PCT	A	SA	SE	RE	D	BS	BA	BE
Mattingly	3	3	2	8	.125	0	0	0	0	0	1	0	0
Kvittle	3	1	0	4	.250	10	0	0	0	3	0	2	0
Juhl	3	7	5	28	.071	0	0	2	2	3	0	1	0
Pouliezios	3	0	0	0	.000	1	0	0	3	3	0	0	0
McClendon	3	8	9	36	.028	0	0	3	1	8	0	0	0
Ewing	3	4	1	7	.429	0	0	0	1	0	2	0	0
Welch	3	0	0	0	.000	1	0	1	110	0	0	0	0
George	3	0	0	1	.000	10	0	0	4	0	0	0	0
Faucette	1	0	1	4	-.250	0	0	0	1	0	0	0	0
Sahagian	1	0	1	2	-.500	0	0	0	0	0	0	0	0
Jenkins	3	2	4	11	-.182	0	0	0	1	0	0	0	0
<b>TOTALS</b>	<b>3</b>	<b>25</b>	<b>23</b>	<b>101</b>	<b>.020</b>	<b>22</b>	<b>0</b>	<b>6</b>	<b>9</b>	<b>32</b>	<b>0</b>	<b>6</b>	<b>0</b>

Set	K	E	TA	PCT	Sideout	PCT
1	10	5	38	.132	9-25	36%
2	6	12	34	-.176	11-24	45%
3	9	6	29	.103	12-25	47%

Louisville	15	16	13
Penn State	25	25	25

### NO. 2 PENN STATE (2-0, 0-0)

Name	SP	K	E	TA	PCT	A	SA	SE	RE	D	BS	BA	BE
Scott	3	11	5	26	.231	0	0	0	0	6	0	2	0
Grant	3	5	2	11	.273	1	1	0	0	0	0	3	0
P. Cerame	3	10	3	19	.368	0	0	0	0	3	1	2	0
Hancock	3	2	0	5	.400	28	8	1	0	7	0	1	0
Slay	3	3	1	7	.286	0	0	0	0	1	1	2	0
McClendon	3	2	3	10	-.100	2	0	1	0	17	0	1	0
Pierce	1	0	0	0	.000	0	0	0	0	0	0	0	0
Gonzalez	3	0	0	1	.000	0	0	2	0	9	0	0	0
Martin	1	0	0	0	.000	0	0	0	0	0	0	0	0
Whitney	1	1	0	2	.500	0	0	0	0	0	0	0	0
Harding	1	0	0	0	.000	0	0	0	0	0	0	0	0
Fuller	3	0	0	0	.000	0	0	1	0	4	0	0	0
<b>TOTALS</b>	<b>3</b>	<b>34</b>	<b>14</b>	<b>81</b>	<b>.247</b>	<b>31</b>	<b>9</b>	<b>5</b>	<b>0</b>	<b>47</b>	<b>2</b>	<b>11</b>	<b>0</b>

Set	K	E	TA	PCT	Sideout	PCT
1	13	5	34	.235		
2	10	6	28	.143		
3	11	3	19	.421		

	1	2	3	Total
Tie Scores	0	5	2	7
Lead Changes	0	1	0	1



## TEXAS 3, PSU 2 Austin, Texas (Gregory Gym) Sept. 7, 2013

No. 1 Penn State women's volleyball came up just short in a close 3-2 loss to No. 6 Texas in the opening match of the Nike Big Four Classic.

Leading 11-9 in set one, PSU held on to a one-point advantage, until a Penn State attacking error and a kill from Texas put UT in front, 18-16. The set remained tight up until McClendon and Hancock fired back-to-back kills to secure a 27-25 victory in the first game.

After dropping set two, PSU came out of the locker room strong and opened set three on a 9-4 run. Later in the frame, Texas closed the gap to four, 14-10, helped out by two PSU serving aces, but the Lions closed out the set on an 11-3 streak to go up 2-1 in the match.

Heading into the fifth and final set after a loss in set four, both teams battled point-for-point. A Nittany Lion service ace and kill from Molly McCage put Texas up by three, 11-8, but PSU fought back within one, 11-10. From there, the Lions couldn't continue the momentum, as Texas capitalized on two PSU attacking errors, following with two kills to take the set, 15-10 and the match.

### NO. 6 TEXAS (0-1, 0-0)

Name	SP	K	E	TA	PCT	A	SA	SE	RE	D	BS	BA	BE
Bell	5	9	2	21	.333	1	0	0	0	1	1	3	0
Victoria	5	3	2	13	.077	3	0	1	2	9	1	3	1
Neal	5	10	2	23	.348	2	1	4	1	20	1	2	0
Eckerman	5	15	3	39	.308	0	1	1	0	4	0	2	0
Collins	5	0	0	0	.000	22	0	1	0	16	0	0	0
Webster	5	9	6	32	.094	0	0	0	0	6	0	3	0
McCage	5	6	0	13	.462	0	0	0	0	0	1	5	1
Brooks	1	0	0	0	.000	0	0	0	0	0	0	0	0
Allison	5	0	0	0	.000	19	0	0	0	5	0	0	1
Palmer	5	0	0	0	.000	2	1	2	0	12	0	0	0
<b>TOTALS</b>	<b>5</b>	<b>52</b>	<b>11</b>	<b>141</b>	<b>.262</b>	<b>49</b>	<b>9</b>	<b>6</b>	<b>7</b>	<b>3</b>	<b>4</b>	<b>18</b>	<b>3</b>

Set	K	E	TA	PCT	Sideout	PCT
1	13	3	35	.286	17-27	62%
2	12	4	28	.286	12-17	70%
3	7	5	28	.071	12-25	47%
4	14	3	35	.314	14-21	66%
5	6	0	15	.400	9-11	81%

Penn State	27	17	25	21	10
Texas	25	25	13	25	15

### NO. 1 PENN STATE (2-0, 0-0)

Name	SP	K	E	TA	PCT	A	SA	SE	RE	D	BS	BA	BE
Scott	4	5	7	23	-.087	0	0	0	0	5	0	0	0
Grant	5	4	2	8	.250	0	3	3	0	4	0	3	1
P. Cerame	5	18	8	47	.213	0	0	0	0	0	0	2	0
Hancock	5	4	0	8	.500	51	2	6	0	8	0	4	0
Slay	5	12	3	26	.346	0	0	0	0	0	1	3	1
McClendon	5	20	3	46	.370	0	0	3	0	17	0	0	0
Pierce	5	0	0	0	.000	0	0	0	0	1	0	0	0
Gonzalez	5	0	0	1	.000	7	0	2	0	13	0	0	0
Martin	5	0	1	0	.000	0	1	5	0	10	0	0	0
Whitney	2	11	5	0	.000	0	0	0	0	0	0	1	0
Courtney	5	5	1	14	.286	1	0	2	1	7	0	1	0
Fuller	2	0	0	0	.000	0	0						



# 2013 PENN STATE MATCH SUMMARIES



## PSU 3, FLORIDA 0 Austin, Texas (Gregory Gym) Sept. 8, 2013

No. 1 Penn State topped No. 8 Florida in straight sets in the final match of the Nike Big Four Classic Sunday afternoon. With the victory, the Nittany Lions improve to 8-3 all-time against the Gators and 2-0 in the event.

Late in the opening set, PSU used a 9-4 streak to construct a 19-12 advantage, forcing the Gators to call two timeouts. Following the break, UF used three consecutive kills and a service ace to attempt a comeback, 23-18, but was unable to mount a run as a Gator service error put Dominique Gonzalez at the line for set-point, 24-18. Gonzalez connected on an ace to seal the set, 25-18.

Penn State used an 11-1 stretch for a double-digit advantage, 19-9, in set two. The Gators couldn't find any momentum to regain control though, as a service error from Ziva Recek gave the Lions set two.

Knotted at 9-all in set three both teams continued to trade the lead throughout the remainder of the set before UF smacked a kill to put the Gators up by one, 20-19. Penn State responded with a 5-0 run to close out the third set, as Grant, Courtney and Hancock all pounded kills to secure a 25-20 victory.

### NO. 8 FLORIDA (5-0, 0-0)

Name	SP	K	E	TA	PCT	A	SA	SE	RE	D	BS	BA	BE
Mallette	3	6	7	19	.053	0	0	0	1	0	0	0	1
Brauneis	2	0	0	2	.000	1	4	1	2	0	4	0	1
Recek	3	7	1	24	.250	1	0	2	2	4	0	0	0
Mann	3	10	3	20	.350	0	0	0	0	1	0	0	0
Antwi	3	5	3	15	.133	0	0	0	0	1	1	1	0
Pole	3	0	0	0	.000	0	0	0	1	1	0	0	0
Holston	3	5	2	10	.300	0	0	0	1	1	0	0	0
Unroe	3	0	0	0	.000	2	0	0	3	1	4	0	0
Dagostino	3	1	0	3	.333	1	5	0	0	0	6	0	0
Monserrez	3	0	0	0	.000	0	0	0	0	4	0	0	0
O'Rourke	2	0	0	0	.000	0	0	1	1	3	0	0	0

**TOTALS 3 34 16 93.19432 1 5 9 39 1 2 2**

Set	K	E	TA	PCT	Sideout	PCT
1	14	5	31	.290	14-25	56%
2	6	5	27	.037	10-24	41%
3	14	6	35	.229	15-25	60%

Florida	18	17	20
Penn State	25	25	25

### NO. 1 PENN STATE (2-1, 0-0)

Name	SP	K	E	TA	PCT	A	SA	SE	RE	D	BS	BA	BE
Grant	3	8	3	16	.312	1	1	0	0	1	0	1	1
P.Cerame	3	9	1	17	.471	0	0	0	0	0	1	0	1
Hancock	3	5	0	6	.833	2	5	4	0	3	1	2	1
Slay	3	4	0	10	.400	2	0	0	0	0	0	3	0
Courtney	3	11	3	24	.333	0	0	1	0	1	2	0	1
McClendon	3	5	2	5	.400	2	0	0	0	5	1	0	1
Pierce	1	0	0	0	.000	0	1	0	0	0	0	0	0
Gonzalez	3	0	1	1	.000	2	1	0	0	1	1	0	0
Martin	1	0	0	0	.000	0	0	0	1	0	0	0	0
Fuller	3	0	0	0	.000	1	1	1	0	2	0	0	0

**TOTALS 3 26 17 88.10222 0 9 4 36 1 8 5**

Set	K	E	TA	PCT	Sideout	PCT
1	14	2	24	.500	14-18	77%
2	15	7	37	.216	11-8	61%
3	13	3	38	.263	15-20	75%

	1	2	3	Total
Tie Scores	4	7	13	24
Lead Changes	1	4	3	8



## PSU 3, MARQUETTE 0 Fort Myers, Florida (Alico Arena) Sept. 13, 2013

No. 3 Penn State went into their opening match of the Florida Gulf Coast Tournament against new opponent Marquette. Last season Marquette made the NCAA tournament led by a strong, young core. However the veteran leadership of Penn State found a way to win and took the match in three sets (25-17, 25-12, 25-17) lead by senior Katie Slay with a .800 hitting percentage.

The lions led the first set 8-3 at the first time out riding a 4-0 run after kills from McClendon and Courtney and two attacking errors by the Golden Eagles. Grant ended the first set with a kill.

In the second set the Nittany Lions held the Golden Eagles to 12 and a .000 clip (9-9-35) while hitting .444 (13-1-27).

The third saw back-to-back kills by Prieto Cerame before the winning kill was scored by Whitney securing the set 25-17 and the teams first match of the weekend.

### NO. 3 PENN STATE (3-1, 0-0)

Name	SP	K	E	TA	PCT	A	SA	SE	RE	D	BS	BA	BE
Grant	3	5	1	9	.444	0	1	0	0	2	0	2	0
P.Cerame	3	7	2	16	.312	1	0	1	0	0	1	0	0
Hancock	3	4	0	8	.500	3	0	0	0	7	0	3	0
Slay	3	8	0	10	.800	0	0	0	0	1	0	4	0
Courtney	3	9	1	17	.471	1	0	1	0	10	0	1	1
McClendon	3	9	2	22	.318	2	0	1	0	5	0	2	1
Scott	1	0	1	3	.333	0	0	0	0	1	0	0	0
Caraway	3	0	0	1	.000	0	0	0	0	0	0	0	0
Pierce	1	0	0	0	.000	0	0	0	0	0	0	0	0
Gonzalez	3	0	0	0	.000	4	2	0	0	11	0	0	0
Martin	2	0	0	0	.000	0	0	1	0	1	0	0	0
Whitney	1	1	0	1	1.000	0	0	0	0	0	0	0	0
Fuller	3	0	0	0	.000	0	0	1	0	3	0	0	0

**TOTALS 3 43 7 87.41441 3 5 0 41 1 12 2**

Set	K	E	TA	Pct
1	14	3	30	.367
2	13	1	27	.444
3	16	3	30	.433

PSU	25	25	25
Marquette	17	12	17

### MARQUETTE (2-2, 0-0)

Name	SP	K	E	TA	PCT	A	SA	SE	RE	D	BS	BA	BE
Bailey	3	13	4	28	.321	0	1	0	4	0	0	0	1
Rauch	3	0	0	0	.000	0	0	1	4	0	0	0	0
Niemann	3	5	2	13	.231	0	0	0	0	0	0	1	0
Gosh	3	5	2	21	.143	0	3	0	1	0	0	0	0
Kocken	3	4	2	12	.167	2	0	4	0	0	0	1	1
Koberstien	3	0	1	3	.333	3	0	0	5	0	1	0	1
Lehman	3	7	6	19	.053	1	0	0	0	1	0	1	0
Jezirowski	3	0	0	0	.000	1	0	1	1	9	0	0	0
Stier	3	0	1	2	.500	0	0	0	0	8	0	0	0

**TOTALS 3 34 18 98.16334 0 9 3 32 0 4 2**

Set	K	E	TA	Pct
1	14	6	34	.235
2	9	9	35	.000
3	11	3	29	.276

	1	2	3	Total
Tie scores	2	1	10	13
Lead changes	1	0	5	6



## PSU 3, CENTRAL ARKANSAS 0 Fort Myers, Florida (Alico Arena) Sept. 14, 2013

Central Arkansas came into the Florida Gulf Coast Tournament hot. Having not lost a match yet this season the Sugar Bears were on a roll but Penn State stopped them in just three sets to sweep them to their first loss of the season (20-25, 22-25, 10-25).

In the first set the Sugar Bears never tied or took the lead from the Nittany Lions. Penn State led 22-16, following a solo stuff from Slay, when Central Arkansas called their first timeout of the match but it was too little too late as Prieto Cerame ended the set on a jumping block just a few minutes later.

Penn State opened the second set on a 5-0 run with two kills each by Courtney and Slay. At the first time-out the Nittany Lions led 14-9 over the Sugar Bears before closing out the second frame with a 4-1 run.

The third saw Penn State go on a 7-0 run to start and after a kill and an ace by Scott the Lions went up 22-7 before closing out 25-10 on a serving error by the Sugar Bears, completing the sweep.

### CENTRAL ARKANSAS (5-0, 0-0)

Name	SP	K	E	TA	PCT	A	SA	SE	RE	D	BS	BA	BE
Collins	3	3	0	5	.600	3	0	0	0	8	0	0	0
Brooks	3	6	4	19	.105	2	0	2	2	6	0	1	0
Rogers	3	0	0	1	.000	0	0	0	2	4	0	0	0
Nagy	3	9	7	37	.054	0	0	0	0	0	0	1	0
Gantar	3	5	4	13	.077	0	0	0	0	1	1	0	0
Dittrich	3	5	3	11	.182	0	0	2	0	1	0	1	0
Petties	1	0	0	0	.000	0	0	0	0	0	0	0	0
Singleton	1	0	0	1	.000	0	0	1	0	0	0	0	0
Berringer	3	0	0	1	.000	2	0	2	1	15	0	0	0
South	2	0	0	0	.000	0	0	0	0	1	0	0	0
Schnars	3	7	1	17	.353	0	0	0	0	1	0	0	0
Hunt	3	0	0	1	.000	0	0	1	0	0	0	0	0

**TOTALS 3 35 19 106.15134 0 8 8 36 1 4 0**

Set	K	E	TA	Pct
1	13	8	37	.135
2	15	4	39	.282
3	7	7	30	.000

Central Arkansas	20	22	10
Penn State	25	25	25

### NO. 3 PENN STATE (4-1, 0-0)

Name	SP	K	E	TA	PCT	A	SA	SE	RE	D	BS	BA	BE
Grant	3	6	2	11	.364	0	1	0	0	3	1	0	0
P.Cerame	1	2	3	8	.125	0	0	0	0	1	1	0	0
Hancock	3	1	2	7	.143	3	0	0	0	5	0	1	0
Slay	3	6	1	12	.417	2	0	0	0	1	2	6	0
Courtney	3	10	2	21	.381	0	0	0	0	2	0	5	4
McClendon	3	6	4	21	.095	1	0	0	0	3	2	0	0
Scott	2	8	1	17	.412	0	1	0	0	1	0	0	1
Caraway	1	0	0	0	.000	0	0	0	0	0	0	0	0
Pierce	2	0	0	0	.000	0	0	0	0	0	0	0	0
Gonzalez	3	0	0	0	.000	0	1	0	0	14	0	0	0
Martin	1	0	0	0	.000	0	0	0	0	0	0	0	0
Muller	1	0	0	0	.000	0	0	0	0	0	0	0	0
Whitney	1	0	0	0	.000	0	0	0	0	0	0	0	0
Harding	2	0	0	0	.000	1	0	0	0	0	0	0	0
Fuller	3	0	0	0	.000	0	2	1	0	7	0	0	0

**TOTALS 3 39 15 97.24734 8 1 0 37 6 12 5**

Set	K	E	TA	Pct
1	11	6	29	.172
2	16	6	42	.238
3	12	3	26	.346

	1	2	3	Total
Tie scores	1	1	0	2
Lead changes	0	0	0	0



# 2013 PENN STATE MATCH SUMMARIES



## PSU 3, FGCU 0

Fort Myers, Florida (Alico Arena)  
Sept. 14, 2013

Penn State closed out the Florida Gulf Coast Tournament with a sweep of the host school (25-8, 25-15, 25-17).

In the first set the Nittany Lions jumped out to an early lead on back-to-back kills by Slay then pushed to 16-4 on a Pierce ace while cruising to a 25-7 victory.

The second set featured another set of back-to-back kills by Slay and another by Scott while the Nittany Lions took a 2-0 lead into set three on score of 25-15.

Early in the third Penn State and FGCU had a little bit of back and forth action before the Nittany Lions began to pull away with kills from Hancock and McClendon. Hancock added an ace before Prieto Cerame secured the sweep with a kill.

### NO. 3 PENN STATE (5-1, 0-0)

Name	SP	K	E	TA	PCT	A	SA	SE	RE	D	BS	BA	BE
Grant	2	6	1	12	.417	0	0	0	0	1	1	1	0
P. Cerame	3	5	2	13	.231	1	0	0	0	2	1	2	0
Hancock	3	2	0	5	.400	3	3	2	0	5	0	1	0
Slay	3	9	0	11	.818	1	0	0	0	0	1	3	0
Courtney	3	9	0	14	.643	0	0	0	0	5	0	1	0
McClendon	3	5	2	15	.200	0	0	0	0	6	2	1	0
Scott	1	1	1	7	.000	0	0	0	0	0	0	0	0
Caraway	1	0	0	0	.000	1	0	1	0	2	0	0	0
Pierce	2	0	0	0	.000	0	1	1	0	2	0	0	0
Gonzalez	3	0	0	1	.000	3	0	1	0	11	0	0	0
Martin	1	1	1	3	.000	0	0	2	0	1	0	0	0
Krause	1	0	0	0	.000	0	0	0	0	0	0	0	0
Whitney	1	1	0	3	.333	0	0	0	0	1	0	1	0
Broerman	1	0	0	0	.000	0	0	0	0	0	0	0	0
Fuller	3	0	0	0	.000	0	0	1	0	6	0	0	0
<b>TOTALS</b>	<b>3</b>	<b>39</b>	<b>7</b>	<b>84</b>	<b>.381</b>	<b>37</b>	<b>4</b>	<b>8</b>	<b>0</b>	<b>42</b>	<b>5</b>	<b>10</b>	<b>0</b>

Set	K	E	TA	Pct
1	11	1	24	.417
2	14	2	35	.343
3	14	4	25	.400

Penn State	25	25	25
Florida Gulf Coast	8	15	17

### FLORIDA GULF COAST UNIVERSITY (1-9, 0-0)

Name	SP	K	E	TA	PCT	A	SA	SE	RE	D	BS	BA	BE
Mesner	3	2	5	11	-.273	0	0	0	0	0	0	1	0
Holm	3	4	8	22	-.182	0	0	0	0	0	0	0	1
Meyer	3	0	0	0	.000	20	0	1	0	6	0	0	1
Pinder	3	6	3	25	.120	1	0	0	2	14	0	0	0
Mambuca	3	3	0	10	.300	1	0	0	0	4	0	1	1
Barnes	3	9	7	31	.065	0	0	3	0	3	0	0	1
Moeller	2	0	0	0	.000	0	0	0	0	0	0	0	0
Jordan	1	0	0	0	.000	0	0	0	0	0	0	0	0
Masters	3	0	1	2	-.500	2	0	0	1	6	0	0	0
<b>TOTAL</b>	<b>3</b>	<b>24</b>	<b>21</b>	<b>101</b>	<b>.000</b>	<b>24</b>	<b>0</b>	<b>4</b>	<b>4</b>	<b>33</b>	<b>1</b>	<b>2</b>	<b>3</b>

Set	K	E	TA	Pct
1	5	12	33	-.212
2	10	5	41	.122
3	9	7	27	.074

	1	2	3	Total
Tie score	0	3	5	8
Lead changes	0	1	1	2



## PSU 3, ALBANY 0

University Park, Pa. (Rec Hall)  
Sept. 20, 2013

The No. 1 Penn State women's volleyball team limited Albany to less than nine points in each set, cruising to a 3-0 victory against the Great Danes in the first PSU match of the Penn State Classic.

Penn State opened the contest with an early 6-0 run, 3-4, to grab a six-point advantage, 9-3. The Great Danes looked to spark momentum with a block following the break, but the Nittany Lions answered back with an 8-3 streak to secure a double-digit advantage, 17-7. PSU continued to pull away, delivering another 9-1 strike to secure the set.

The Nittany Lions continued the balanced attack in the second frame, jumping out to a 12-2 lead for an early advantage in the second frame. From there, Penn State allowed just four more points from the Great Danes, cruising to a 25-6 win to go up 2-0 in the match.

Penn State finished off the balance attack with 12-0 streak to capture the final frame, 25-4, notching the Nittany Lions' seventh sweep of the season. PSU was helped out by 27 Albany attacking errors as the Great Danes combined for a -.233 hitting percentage.

### NO. 1 PENN STATE (6-1, 0-0)

Name	SP	K	E	TA	PCT	A	SA	SE	RE	D	BS	BA	BE
Scott	3	8	0	15	.533	0	0	0	0	1	0	4	0
Hancock	3	3	0	31	.000	29	2	1	0	6	0	2	0
Whitney	2	7	1	9	.667	1	0	0	0	1	0	4	0
Slay	3	8	1	10	.700	0	0	0	0	0	3	0	0
Courtney	2	2	2	7	.000	1	0	0	0	3	1	1	0
McClendon	3	5	0	14	.357	2	0	0	1	6	1	3	0
Caraway	1	0	0	0	.000	0	0	0	0	0	0	0	0
Pierce	1	0	0	0	.000	0	1	0	0	0	0	0	0
Gonzalez	3	0	0	0	.000	2	1	1	0	8	0	0	0
Martin	1	2	0	4	.500	1	0	0	0	4	0	0	0
P. Cerame	1	2	0	21	.000	0	0	0	0	0	0	0	0
Harding	1	0	0	0	.000	0	1	0	0	0	0	0	0
Robertson	1	3	0	5	.600	0	0	0	0	0	0	2	0
Broerman	1	0	0	0	.000	0	0	0	0	1	0	0	0
Fuller	2	0	0	0	.000	0	0	0	0	3	0	0	0
<b>TOTALS</b>	<b>3</b>	<b>40</b>	<b>4</b>	<b>69</b>	<b>.522</b>	<b>36</b>	<b>5</b>	<b>2</b>	<b>1</b>	<b>33</b>	<b>2</b>	<b>19</b>	<b>0</b>

Set	K	E	TA	Pct
1	15	2	27	.481
2	12	1	21	.524
3	13	1	21	.571

PSU	25	25	25
Albany	8	6	4

### ALBANY (0-9, 0-0)

Name	SP	K	E	TA	PCT	A	SA	SE	RE	D	BS	BA	BE
Schonewise	3	2	9	16	-.438	1	0	2	0	4	0	1	0
Leindecker	3	0	0	0	.000	3	1	0	3	4	0	0	0
Jungsten	3	1	4	13	-.231	0	0	0	0	0	0	1	0
McCauley	3	1	6	11	-.455	1	0	0	0	3	0	0	0
Rivera	3	0	1	1	-.100	3	0	0	0	4	0	0	0
Dolan	3	2	2	7	.000	0	0	0	0	0	0	1	0
Spreen	3	0	0	0	.000	1	0	0	0	6	0	0	0
Dardelet	3	0	1	9	-.111	0	0	0	0	1	0	0	1
Hunter	2	1	4	9	-.333	0	0	0	0	0	0	0	0
Stroilo	2	0	0	1	.000	0	0	0	2	0	0	0	0
Furlong	3	3	0	6	.500	1	0	0	0	0	0	1	1
<b>TOTALS</b>	<b>3</b>	<b>10</b>	<b>27</b>	<b>73</b>	<b>-.233</b>	<b>10</b>	<b>1</b>	<b>2</b>	<b>5</b>	<b>22</b>	<b>0</b>	<b>4</b>	<b>2</b>

Set	K	E	TA	Pct
1	5	7	24	-.083
2	3	10	23	-.304
3	2	10	26	-.308

	1	2	3	Total
Tie scores	1	2	0	3
Lead changes	0	0	0	0



## PSU 3, EASTERN KENTUCKY 0

University Park, Pa. (Rec Hall)  
Sept. 21, 2013

Behind double-digit kill contributions from seniors Katie Slay, Deja McClendon and Ariel Scott, the top-ranked Penn State women's volleyball team knocked off Eastern Kentucky in three straight sets Saturday morning in the Penn State Classic.

Penn State bolted out to an early 13-4 lead helped out by a steady offensive momentum. The Nittany Lions continued to dominate at the net, embarking on an 8-2 run to make it 20-6. PSU continued to rally, taking a 25-10 win in the first set.

With the second frame tied up at 3-all, Scott, Grant and Martin lifted the Lions ahead with a trio of consecutive kills, 6-3. The Colonels answered back with a kill and an ace, but Penn State responded with an 8-2 stretch to double the advantage once more, 14-7. The Lions closed out the set on an 8-1 run for a 2-0 advantage in the match.

Both teams kept it tight early in the third set, with EKU moving ahead by one three times. With the game knotted, 12-12, Penn State pulled ahead with a kill from Slay and an ace from Gonzalez, 14-12. EKU still remained within range but PSU stayed in control, capturing a 25-10 win in the final period.

### EASTERN KENTUCKY (4-6, 0-0)

Name	SP	K	E	TA	PCT	A	SA	SE	RE	D	BS	BA	BE
Plagens	3	12	2	25	.400	0	0	1	1	0	0	1	0
Moffat	3	1	0	1	1.00	12	0	0	0	6	0	0	0
Boyer	3	3	7	16	.250	0	0	0	0	1	0	0	0
Vick	3	1	0	2	.500	0	0	0	0	1	1	1	0
Anderson	3	1	2	6	-.167	0	0	0	0	0	0	0	0
Edmond	3	3	3	25	.000	1	1	0	4	5	0	0	0
Ott	3	0	0	1	.000	1	0	0	0	9	0	0	0
Mindlina	3	0	1	1	-.100	0	0	2	1	4	0	0	0
Cvelbar	3	0	0	0	.000	8	1	1	0	2	0	0	0
Tashenberg	3	2	4	12	-.167	0	0	0	0	0	1	1	0
<b>TOTALS</b>	<b>3</b>	<b>23</b>	<b>19</b>	<b>89</b>	<b>.045</b>	<b>22</b>	<b>2</b>	<b>3</b>	<b>7</b>	<b>28</b>	<b>1</b>	<b>2</b>	<b>2</b>

Set	K	E	TA	Pct
1	5	7	29	-.069
2	5	8	24	-.125
3	13	4	36	.250

Eastern Kentucky	10	8	19
Penn State	25	25	25

### NO. 1 PENN STATE (7-1, 0-0)

Name	SP	K	E	TA	PCT	A	SA	SE	RE	D	BS	BA	BE
Scott	3	10	1	19	.474	0	0	0	0	2	0	1	0
Grant	2	5	0	6	.833	1	1	0	0	0	0	3	0
Hancock	3	2	2	4	.000	39	4	0	0	4	0	3	0
Slay	3	11	1	16	.625	0	0	0	0	1	0	5	0
Courtney	2	4	2	9	.222	0	0	0	0	6	0	2	1
McClendon	3	10	2	22	.364	1	0	1	0	3	0	3	0
Pierce	1	0	0	0	.000	0	0	0	0	1	0	0	0
Gonzalez	3	0	0	0	.000	2	2	0	0	20	0	0	0
Martin	2	2	0	4	.500	0	0	0	2	1	0	0	0
Muller	1	0	0	0	.000	0	0	1	0	0	0	0	0
Krause	1	0	0	0	.000	0	0	0	0	2	0	0	0
Whitney	1	2	1	4	.250	0	0	0	0	0	0	0	1
Harding	1	0	0	0	.000	0	0	1	0	0	0	0	0
Fuller	2	0	0	0	.000	0	0	0	0	3	0	0	0
<b>TOTALS</b>	<b>3</b>	<b>46</b>	<b>9</b>	<b>84</b>	<b>.440</b>	<b>43</b>	<b>7</b>	<b>3</b>	<b>2</b>	<b>43</b>	<b>0</b>	<b>17</b>	<b>2</b>



# 2013 PENN STATE MATCH SUMMARIES



## PSU 3, YALE 0 University Park, Pa. (Rec Hall) Sept. 21, 2013

Senior Ariel Scott led the No. 1 Penn State women's volleyball team to the Penn State Classic title with a season-high 13 kills in a 3-0 victory against Yale on Saturday night in Rec Hall. Deja McClendon and Katie Slay and Dominique Gonzalez earned Penn State Classic All-Tournament team honors for their performances this weekend.

Capitalizing on a PSU serving error and three straight attacking errors, the Bulldogs climbed back within three, 17-14, in set one before the Lions called a timeout to regroup. PSU came out of the break firing, delivering an 8-2 streak to take a 25-16 win in the first.

Leading 12-10 in set two, PSU responded with a 12-2 stretch to put Gonzalez at the line for set-point, 24-12, after Courtney capped off the run with a kill. Yale attempted to stay in the game, using four kills and PSU attacking error to make it 24-17, but PSU closed out the set, 25-17.

Up by two in the match, the Nittany Lions got out to a hot start in the third set, using an 11-1 run to construct an early advantage before ultimately taking the set, 25-6.

### YALE (4-2, 0-0)

Name	SP	K	E	TA	PCT	A	SA	SE	RE	D	BS	BA	BE
Ebner	3	4	2	12	.167	0	0	0	0	0	0	0	1
Carter	2	1	1	5	.000	0	0	0	0	0	0	0	0
Rogers	3	6	0	28	.214	1	0	0	2	3	0	0	0
Johnson	3	4	4	12	.000	4	0	1	0	2	0	0	1
Polan	3	0	0	3	.000	14	0	0	0	8	0	0	0
Steinberg	3	4	5	18	-.056	0	0	1	1	6	0	0	1
Rudnick	3	0	0	0	.000	1	0	0	1	8	0	0	0
Reetz	1	0	0	0	.000	0	0	0	0	0	0	0	0
Shepherd	2	0	0	0	.000	1	0	0	0	2	0	0	0
Midzik	2	3	2	10	.100	0	0	0	0	2	0	0	1
Fuller	1	1	1	3	.000	0	0	0	0	0	0	0	0
<b>TOTALS</b>	<b>3</b>	<b>23</b>	<b>15</b>	<b>91</b>	<b>.088</b>	<b>21</b>	<b>0</b>	<b>2</b>	<b>4</b>	<b>31</b>	<b>0</b>	<b>0</b>	<b>4</b>

Set	K	E	TA	Pct
1	11	1	24	.417
2	14	2	35	.343
3	14	4	25	.400

Penn State	25	25	25
Yale	16	17	16

### NO.1 PENN STATE (8-1, 0-0)

Name	SP	K	E	TA	PCT	A	SA	SE	RE	D	BS	BA	BE
Scott	2	13	2	20	.550	0	0	0	0	0	0	0	2
Grant	3	8	2	13	.462	1	0	0	0	1	1	1	0
Hancock	3	3	1	5	.400	32	1	3	0	6	0	1	0
Slay	3	8	1	11	.636	2	0	0	0	2	0	5	1
Courtney	3	11	0	25	.440	2	0	0	0	5	1	3	0
McClendon	3	9	3	20	.300	2	1	0	0	7	0	0	1
Caraway	1	0	0	0	.000	0	0	0	0	2	0	0	0
Pierce	3	0	0	0	.000	0	0	1	0	3	0	0	0
Gonzalez	3	0	0	0	.000	5	2	1	0	16	0	0	0
Krause	1	0	0	0	.000	0	0	0	0	1	0	0	0
Whitney	1	2	1	9	.111	0	0	0	0	0	0	0	0
Fuller	2	0	0	0	.000	0	0	1	0	2	0	0	0
<b>TOTALS</b>	<b>3</b>	<b>54</b>	<b>10</b>	<b>103</b>	<b>.427</b>	<b>44</b>	<b>6</b>	<b>0</b>	<b>45</b>	<b>2</b>	<b>12</b>	<b>2</b>	<b>2</b>

Set	K	E	TA	Pct
1	21	5	36	.444
2	14	4	36	.278
3	19	1	31	.581

	1	2	3	Total
Tie score	1	3	0	4
Lead changes	1	2	0	3



## MICHIGAN STATE 3, PSU 2 University Park, Pa. (Rec Hall) Sept. 27, 2013

Despite career high efforts from junior Micha Hancock and sophomore Megan Courtney, the No. 1 Penn State women's volleyball team lost a tough five-set battle to No. 15 Michigan State.

Leading by five, 20-15 in set one, MSU answered back with a 7-3 stretch, to come within one point of the lead 22-21. From there, MSU closed out the set on a 4-1 run to claim the opening frame.

With a slim, 23-19 PSU lead in set two, the Spartans stormed back with a kill and a pair of blocks to make it 23-22. Both clubs traded points before MSU grabbed set two, 26-24.

PSU used a 4-0 run early in the third frame, capped off by an ace from Gonzalez and a kill from Courtney to go up 6-2. The Nittany Lions did not relinquish control, securing a 25-19 win stay alive in the match. Building on the advantage in set four, PSU used a 7-3 streak to go up five. PSU didn't let MSU any closer than four points, rallying to a 25-19 win.

Trailing by two early in the fifth frame, Slay slammed a kill to put Penn State within one, but attacking errors hindered PSU from moving ahead, giving MSU the set 15-9, and the match.

### NO. 1 PENN STATE (9-1, 0-0)

Name	SP	K	E	TA	PCT	A	SA	SE	RE	D	BS	BA	BE
Scott	5	18	7	46	.239	0	0	1	0	8	1	4	0
Grant	5	9	11	22	.667	1	0	2	0	2	1	1	0
Hancock	5	9	2	13	.538	57	1	6	1	9	0	0	1
Slay	5	11	2	20	.450	1	0	0	0	2	2	4	1
Courtney	5	15	4	39	.282	1	1	0	2	14	0	2	0
McClendon	5	7	4	25	.120	2	0	0	2	14	1	0	0
Caraway	1	0	0	0	.000	0	0	1	0	0	0	0	0
Pierce	5	0	0	0	.000	0	0	0	0	2	0	0	0
Gonzalez	5	0	0	0	.000	6	1	1	0	10	0	0	0
P. Cerame	1	4	2	10	.200	0	0	1	0	1	0	0	0
Whitney	1	0	0	1	.000	0	0	0	0	0	0	0	0
Fuller	5	0	0	0	.000	0	0	1	0	0	0	0	0
<b>TOTALS</b>	<b>5</b>	<b>73</b>	<b>22</b>	<b>166</b>	<b>.307</b>	<b>68</b>	<b>3</b>	<b>13</b>	<b>5</b>	<b>62</b>	<b>5</b>	<b>11</b>	<b>2</b>

Set	K	E	TA	Pct
1	13	4	40	.225
2	18	7	45	.244
3	19	2	39	.436
4	17	3	27	.519
5	6	6	15	.000

MSU	25	26	19	19	15
Penn State	23	24	25	25	9

### NO. 15 MICHIGAN STATE (11-1, 0-0)

Name	SP	K	E	TA	PCT	A	SA	SE	RE	D	BS	BA	BE
Fitterer	5	8	4	16	.250	0	1	2	0	2	0	3	1
Galloway	5	10	3	29	.241	0	0	0	3	9	0	3	0
Reinig	5	12	5	31	.226	0	0	0	0	0	0	4	1
Kelsay	5	1	0	4	.250	27	0	0	0	11	0	0	0
Wicinski	5	2	1	5	.250	51	2	3	0	9	0	2	0
Mathews	5	4	2	13	.154	0	0	0	0	0	0	6	1
Moster	5	0	0	0	.000	3	0	0	0	18	0	0	0
Peterson	5	0	0	1	.000	26	0	3	0	4	0	0	0
Hubbard	5	0	0	0	.000	0	2	0	0	0	0	0	0
Kuipers	5	5	1	11	.364	0	0	0	0	1	0	4	0
<b>TOTALS</b>	<b>5</b>	<b>61</b>	<b>22</b>	<b>160</b>	<b>.244</b>	<b>57</b>	<b>5</b>	<b>8</b>	<b>3</b>	<b>54</b>	<b>0</b>	<b>22</b>	<b>3</b>

Set	K	E	TA	Pct
1	17	6	42	.262
2	16	4	42	.286
3	13	3	36	.278
4	9	6	26	.115
5	6	3	14	.214

	1	2	3	4	5	Total
Tie Scores	12	9	2	5	0	28
Lead Changes	6	2	0	1	0	9



## PSU 3, MICHIGAN 1 University Park, Pa. (Rec Hall) Sept. 28, 2013

Deja McClendon and Ariel Scott led the top-ranked Penn State women's volleyball team to a Big Ten victory against No. 10 Michigan. With the 3-1 win, the Nittany Lions improve to 24-0 at home in Rec Hall against the Wolverines.

Leading by four in set one, Hancock, Grant and Courtney came out of the huddle with three consecutive kills to push Penn State ahead, 22-14. The Wolverines attempted to get back on top, but PSU answered back with two kills, and an ace to secure a 25-16 win in set one.

Down 19-15, Penn State stormed back with a 5-0 run to knot the score, 19-19. The Wolverines jumped back on top, capitalizing on a PSU attack error and four kills to make it set-point, 24-19 before, tying the match, 1-1 with a 25-20 win.

Penn State and Michigan kept it close in the third period before the Nittany Lions cracked open an 8-all tie with a 7-3 run to claim a four-point lead, 15-1 before capturing a 25-19 win to take a 2-1 lead in the match. PSU jumped out to a 10-6 advantage in set four and never looked back. Powering ahead, the Nittany Lions went on a 7-1 run for a double-digit lead, 17-7 before completing the set, 25-17 to secure the win.

### NO. 1 PENN STATE (9-2, 0-1)

Name	SP	K	E	TA	PCT	A	SA	SE	RE	D	BS	BA	BE
Scott	4	15	3	35	.343	0	0	0	0	1	0	5	2
Grant	4	8	4	17	.235	0	0	1	0	1	0	1	0
Hancock	4	2	2	9	.000	44	4	3	0	11	0	2	1
Slay	4	6	2	13	.308	1	0	0	0	1	1	8	0
Courtney	4	11	3	26	.308	0	0	1	0	8	2	2	0
McClendon	4	15	2	30	.433	2	0	0	0	13	2	1	0
Caraway	1	0	0	0	.000	0	0	0	0	0	0	0	0
Pierce	4	0	0	0	.000	0	1	0	0	0	0	0	0
Gonzalez	4	0	0	0	.000	4	1	3	1	12	0	0	0
Martin	1	0	0	0	.000	0	0	0	0	0	0	0	0
P. Cerame	1	0	0	1	.000	0	0	0	0	0	0	0	0
Fuller	4	0	0	0	.000	1	1	1	0	7	0	0	0
<b>TOTALS</b>	<b>4</b>	<b>57</b>	<b>16</b>	<b>131</b>	<b>.313</b>	<b>52</b>	<b>7</b>	<b>9</b>	<b>1</b>	<b>54</b>	<b>5</b>	<b>19</b>	<b>3</b>

Set	K	E	TA	Pct
1	16	4	36	.333
2	15	7	33	.242
3	12	4	30	.267
4	14	1	32	.406

Michigan	16	25	19	17
Penn State	25	20	25	25

### NO. 10 MICHIGAN (10-1, 0-1)

Name	SP	K	E	TA	PCT	A	SA	SE	RE	D	BS	BA	BE
Toon	4	19	7	41	.293	1	1	3	0	5	2	1	0
Cross	4	11	3	22	.364	0	0	1	0	7	1	1	0
Dannemiller	4	2	3	6	.167	43	0	2	0	12	0	0	1
Erwin	4	11	5	28	.214	1	0	0	2	9	0	2	0
Goode	4	6	3	20	.150	0	0	0	0	0	0	3	0
Sabot	4	0	0	1	.000	1	0	0	1	9	0	0	0
Lerg	2	0	0	0	.000	0	0	1	1	0	0	0	0
Morales	4	0	0	0	.000	3	0	1	3	10	0	0	0
Lee	1	0	0	0	.000	0	0	1	0	0	0	0	0
Cole	4	2	0	13	.154	0	0	0	0	1	0	5	1
<b>TOTALS</b>	<b>4</b>	<b>51</b>	<b>21</b>	<b>131</b>	<b>.229</b>	<b>49</b>	<b>1</b>	<b>9</b>	<b>7</b>	<b>53</b>	<b>3</b>	<b>12</b>	<b>2</b>

Set	K	E	TA	Pct
1	9	3	34	.176
2	16	4	30	.400
3	11	9	31	.065
4	15	5	36	.278