

PENN STATE LADY LION

BASKETBALL GAME NOTES

2014-2015

Penn State Athletic Communications: 101D Bryce Jordan Center, University Park, PA 16802 Office: 814-865-1757 Fax: 814-863-3165
 Women's Basketball Contact: Kristina Petersen Twitter: @ladyionsid Website: www.GoPSUsports.com Email: kap18@psu.edu Cell: 814-883-4581 Office: 814-865-1757

SCHEDULE/RESULTS

NOVEMBER

Sun. 2 INDIANA (PA.) (ex.) W, 75-71
Preseason WNIT

Fri. 14 TOWSON..... W, 71-64

Sun. 16 ALBANY L, 53-54

Sat. 22 SETON HALL 7 p.m.

Tues. 25 ST. BONAVENTURE (BTN Plus) ...5:30 p.m.

Georgia State Thanksgiving Tournament

Fri. 28 vs. Liberty 2 p.m.

Sun. 30 vs. GSU/Samford 12:30/2:30 p.m.

DECEMBER

Big Ten/ACC Challenge

Thurs. 4 at Syracuse 7 p.m.

Sun. 7 WAGNER (BTN Plus) 2 p.m.

Wed. 10 at Hartford 7 p.m.

Sun. 14 RIDER..... 2:30 p.m.

Sun. 21 USF (BTN Plus) 2 p.m.

Sun. 28 at Iowa * (BTN Plus) 3 p.m.

JANUARY

Thurs. 1 at Michigan * (BTN Plus) 1 p.m.

Sun. 4 ILLINOIS * (BTN Plus) 2 p.m.

Tues. 6 at Wisconsin * (BTN) 9 p.m.

Sat. 10 RUTGERS * (BTN) noon

Thurs. 15 at Nebraska * (BTN) 7 p.m.

Sun. 18 at Ohio State * (BTN Plus) 2 p.m.

Thurs. 22 INDIANA * (BTN Plus) 7 p.m.

Sun. 25 NORTHWESTERN * (BTN Plus) 2 p.m.

Wed. 28 at Minnesota * (BTN Plus) 8 p.m.

FEBRUARY

Sun. 1 at Rutgers * (BTN) noon

Thurs. 5 MARYLAND * (BTN Plus) 7 p.m.

Sun. 8 at Purdue * (BTN Plus) 2 p.m.

Wed. 11 MICHIGAN ST. * (BTN Plus) 7 p.m.

Sun. 15 MINNESOTA * (BTN Plus) 2 p.m.

Mon. 23 at Maryland * (BTN) 7 p.m.

Thurs. 26 OHIO STATE * (BTN Plus) 7 p.m.

MARCH

Ninth Annual Pink Zone at Penn State

Sun. 1 WISCONSIN * (BTN/BTN Plus) 1/3/5 p.m.

Wed.-Sun. 4-8 Big Ten Tournament (BTN/ESPN2)
 Hoffman Estates, Ill.

Sat.-Tues. 20-23.. NCAA Tourn. 1st & 2nd Round

Sat.-Tues. 27-30..... NCAA Tourn. Regionals

APRIL

Sun./Tues. 5/7..... NCAA Final Four (Tampa, Fla.)

BOLD CAPS indicates home game

* - indicates Big Ten game

All times are Eastern Time.



BTN - Big Ten Network BTN Plus - BTN.com

Schedule subject to change. Please visit www.

GoPSUsports.com for up-to-date tip times.

Game #3: Seton Hall at Penn State

Sat., Nov. 22 ▶ 7 p.m. ▶ Bryce Jordan Center ▶ University Park, Pa.

		SETTING THE SCENE
Penn State Lady Lions	Seton Hall Pirates	The Seton Hall Game
Record: 1-1, 0-0 Big Ten	Record: 1-1, 0-0 Big East	Series: Penn State leads 9-0
Last Game: Albany 54, PSU 53 (11/16)	Last Game: W. Virginia 89, SHU 87 (11/17)	Last Meeting: PSU 81, SHU 48 (11/22/98)
Head Coach: Coquese Washington	Head Coach: Anthony Bozzella	Streak: Penn State - 9 wins
Career Record: 143-82 (8th yr.)	Career Record: 327-333 (22nd yr.)	Television: none
Record at PSU: 143-82 (8th yr.)	Record at SHU: 21-15 (2nd yr.)	Radio: The game is on the Penn State Sports Network and 1390 The Fanatic locally with Jerry Fisher and Julia Trogele calling the action. The audio feed is available at www.GoPSUsports.com.
Statistical Leaders	Statistical Leaders	Webstream: GoPSUsports.com
Points Lindsey Spann (15.5)	Points T. Richardson-Smith (25.5)	Live Stats: GoPSUsports.com
Rebounds Tori Waldner (10.0)	Rebounds Bra'Shey Ali (8.5)	
Assists Lindsey Spann (4.0)	Assists Ka-Deidre Simmons (8.0)	

SERIES QUICK HITS

- ✓ The Lady Lions are a perfect 9-0 all-time against Seton Hall.
- ✓ Penn State is 4-0 versus the Pirates in games played in Happy Valley.
- ✓ Their 1994 meeting came in the Sweet 16 where PSU collected a 64-60 win in Austin, Texas.
- ✓ The last meeting came exactly 16 years ago when the Lady Lions grabbed an 81-48 decision.
- ✓ The Lady Lions are 31-10 all-time against current Big East schools.
- ✓ The Pirates fell to 1-1 on the season after an 89-87 setback at West Virginia in their Preseason WNIT second round game on Monday.
- ✓ Seton Hall is led by Tabatha Richardson-Smith, who is averaging 25.5 points per game after netting 32 points in the loss at WVU.

STORYLINES

- ✓ Senior **Tori Waldner** moved into 10th place on Penn State's career blocks with 93 rejections after a four-block performance versus Albany.
- ✓ Freshman **Lindsey Spann** led the Lady Lions in scoring for the second straight game with 14 tallies versus Albany, marking the first time a freshman has been the team's leading scorer in consecutive games since Maggie Lucas in 2011.
- ✓ Freshman **Lindsey Spann** and sophomores **Kaliyah Mitchell**, **Sierra Moore** and **Peyton Whitted** all made their first career starts for the Lady Lions against Towson.
- ✓ The Lady Lions have named senior **Tori Waldner**, sophomore **Sierra Moore** and freshman **Lindsey Spann** as the captains for the 2014-15 season.

UP NEXT

Penn State closes out its four-game homestand to open the season against St. Bonaventure on Tuesday at 5:30 p.m. as part of a doubleheader with the men's team (Akron). Tickets for the doubleheader are \$5 general admission. The Lady Lions then hit the road for the Georgia State Thanksgiving Tournament Friday and Sunday.

Table of Contents

Schedule, Results, Storylines.....1	PSU's Record When.....5	Season Highs/Lows.....9
Roster, Quick Facts2	Notable Games.....5	Miscellaneous Stats.....10
Team Comparison, Series History.....2	Lions in the Big Ten Stats6	Coquese Washington 11
What's at Stake3	The Last Time Penn State7	Player Bios12-23
Big Ten Standings/Schedule.....3	Record Book.....8	2014-15 Box Scores.....24
Possible Starters3	2015 Signing Class.....8	2014-15 Stats25
	Milestone Watch8	Radio/TV Chart.....26



2014-15 ROSTER

PENN STATE LADY LIONS

No.	Name	Pos.	Cl./Elg.	Ht.	Hometown/High School (Previous School)
1	Candice Agee **	C	Jr./Jr.	6-6	Victorville, Calif./Silverado
3	Brianna Banks	G	Sr./Sr.^	5-9	Newnan, Ga./Fayette County (Connecticut)
5	Sierra Moore	G	Jr./So.	5-11	Hanover, Pa./Delone Catholic (Duke)
10	Keke Sevillian *	G	So./So.	5-7	Goodrich, Mich./Goodrich
11	Alex Harris *	F	So./So.	6-3	Lorain, Ohio/Lorain
12	Lindsey Spann	G	So./Fr.	5-6	Laurel, Md./Good Counsel
14	Dominique Brooks	C	Jr./Jr.	6-4	Lansing, Ill./T.F. South (Trinity Valley C.C.)
15	Kalayah Mitchell *	F	So./So.	6-2	Stone Mountain, Ga./Stephenson
25	Peyton Whitted *	F	So./So.	6-3	Suwanee, Ga./North Gwinnett
34	Molly Dincher	G/F	Sr./Sr.	6-0	Williamsport, Pa./Williamsport Area (PSU Wilkes Barre)
41	Jenny DeGraaf *	F	So./So.	6-1	Springboro, Ohio/Springboro
44	Tori Waldner ***	F/C	Sr./Sr.	6-5	Milton, Ga./Milton

Head Coach: Coquese Washington (Notre Dame '92)

Asst. Coaches: Itoro Coleman, Kia Damon, Jocelyn Wyatt

Captains: Tori Waldner, Sierra Moore, Lindsey Spann

* Indicates letters earned

SETON HALL PIRATES

No.	Name	Pos.	Cl.	Ht.	Hometown/High School (Previous School)
0	Daisha Simmons	G	Gr.	5-10	Jersey City, N.J./Gill St. Bernards (Alabama)
1	Tabatha Richardson-Smith	F	Jr.	6-0	Bay City, Texas/Bay City
2	Tiffany Jones	F	Jr.	6-3	New York, N.Y. (ASA)/Nazareth
3	Chizoba Ekedigwe	C	Sr.	6-5	Laurel, Md./St. Vincent Pallotti
10	Jordan Mosley	G	RS-Jr.	5-10	Orlando, Fla./Timber Creek (La Salle)
11	Ka-Deidre Simmons	G	Gr.	5-8	Newark, N.J./Malcolm X. Shabazz
13	Samantha Bozzella	G	Fr.	5-4	West Orange, N.J./Half Hollow Hills East
15	Aleesha Powell	G	Sr.	5-6	Philadelphia, Pa./William Penn (Iona)
21	Kathleen Egan	G/F	So.	5-10	Aberdeen, N.J./St. John Vianney
22	Teresa Kucera	F/G	So.	6-2	Schwabisch Hall, Germany/Theodor Heuss Gym.
23	Tara Inman	G	So.	5-9	Holmdel, N.J./Holmdel
24	Bra'Shey Ali	F	RS-Jr.	6-0	Plainfield, N.J./Nazareth (N.Y.)
25	Jordan Molyneaux	C	Fr.	6-2	Denver, Colo./Regis Jesuit
30	Claire Lundberg	G/F	Fr.	6-1	Andover, Minn./Anoka
35	Lubirdia Gordon	C	So.	6-4	Mount Vernon, N.Y. /Mt. Vernon (West Virginia)
44	Janee Johnson	F	Gr.	6-1	Matthews, N.C. /Providence Day (Gulf Coast C.C.)

Head Coach: Anthony Bozzella

Assistant Coaches: Stephanie Oliver, Lauren DeFalco, Tiffany Jones-Smart

TEAM COMPARISON

PENN STATE		SETON HALL
Spann (15.5)	Scoring Leader	Richardson-Smith (25.5)
Waldner (10.0)	Rebounding Leader	Ali (8.5)
Spann (4.0)	Assist Leader	Simmons (8.0)
Mitchell (3.5)	Steals Leader	Simmons (3.0)
Waldner (2.0)	Blocks Leader	Ali (2.0)
62.0	Scoring Offense	76.5
59.0	Scoring Defense	68.0
+3.0	Scoring Margin	+8.5
40.0	Rebounds Per Game	39.0
-3.5	Rebound Margin	-5.5
14.0	Assists Per Game	13.0
9.0	Steals Per Game	10.5
.414	Field Goal Pct.	.411
.317	FG Defense Pct.	.405
.360	3-pt. FG Pct.	.436
.244	3-pt. FG Pct. Def.	.344
.622	Free Throw Pct.	.732
0.8	Assist/Turnover	0.8
Lost 1	W/L Streak	Lost 1

SERIES HISTORY

Overall:	PSU leads 9-0
Last meeting:	11/22/98
Last result:	PSU, 81-48
Current streak:	PSU - 9 wins
Last 10:	PSU, 9-0
Last 10 meetings:	
1/30/82	H PSU, 82-72
1/24/83	A PSU, 78-64
1/24/84	H PSU, 85-68
2/11/85	A PSU, 107-52
3/24/94	N PSU, 64-60
12/22/95	A PSU, 59-53
11/26/96	H PSU, 76-62
12/21/97	A PSU, 71-55
11/22/98	H PSU, 81-48

QUICK FACTS

THE UNIVERSITY

Location: University Park, Pa.
 Founded: 1855
 Enrollment: 48,184 (as of fall 2013)
 Colors: Blue & White
 Nickname: Lady Lions
 Conference: Big Ten
 President: Eric Barron
 Director of Athletics: Sandy Barbour
 Senior Woman Administrator: Charmelle Green
 Asst. Athletic Director: Jenn James
 Facility (cap.): Bryce Jordan Center (15,104)
 All-Time Record at BJC: 216-54 (19 seasons)

ATHLETIC COMMUNICATIONS

WBB Contact: Kristina Petersen
 Phone/Fax: (814) 865-1757/(814) 863-3165
 E-mail: kap18@psu.edu
 Address: 101-D Bryce Jordan Center
 University Park, Pa. 16802
 Press Row Phone: 814-863-3294
 Website: www.GoPSUsports.com
 Twitter: @ladylionsid

TEAM INFORMATION

2014-15 Record: 1-1
 Home: 1-1 Away: 0-0 Neutral: 0-0
 Big Ten Record: 0-0
 Home: 0-0 Away: 0-0
 Letterwinners Returning/Lost: 6/5
 Starters Returning/Lost: 1/4
 Big Ten Tournament: Quarterfinals
 Postseason: NCAA Sweet Sixteen

THE HISTORY

First Year of Women's Basketball: 1965
 All-Time Record: 882-395 (50 seasons)
 All-Time Big Ten Rec.: 244-122 (22 seasons)
 NCAA Tournament Appearances: 25
 NCAA Tournament Record: 32-25

WOMEN'S BASKETBALL

Head Coach: Coquese Washington
 Alma Mater: Notre Dame '92
 Overall Record: 143-82 (eighth season)
 School Record: 143-82 (eighth season)
 Twitter: @coquesewashing
 Basketball Office Phone: 814-863-2672
 Basketball Office Fax: 814-863-1221
 Best Time To Reach Coach: Through SID
 Assistant Coaches (Alma Mater):
 Itoro Coleman (Clemson '00)
 Kia Damon (Millersville '97)
 Jocelyn Wyatt (Appalachian State '06)
 Twitter/Instagram: @pennstatewbb
 Facebook: facebook.com/pennstateladylions

PRONUNCIATIONS

Coquese	ko-KWEES
Itoro	E-tora
Agee	AYE-gee
DeGraaf	D-graph
Kalayah	kah-LEE-uh
Sevillian	sev-ILL-e-on
Whitted	wit-ED



STANDINGS (as of 11/19)

Team	Big Ten			Overall		
	W	L	Pct.	W	L	Pct.
Maryland	0	0	.000	3	0	1.000
Nebraska	0	0	.000	3	0	1.000
Illinois	0	0	.000	2	0	1.000
Indiana	0	0	.000	2	0	1.000
Iowa	0	0	.000	2	0	1.000
Michigan	0	0	.000	2	0	1.000
Minnesota	0	0	.000	2	0	1.000
Northwestern	0	0	.000	2	0	1.000
Rutgers	0	0	.000	2	0	1.000
Wisconsin	0	0	.000	1	0	1.000
Michigan State	0	0	.000	1	1	.500
Ohio State	0	0	.000	1	1	.500
Penn State	0	0	.000	1	1	.500
Purdue	0	0	.000	1	1	.500

BIG TEN SCHEDULE

NOVEMBER 18

at Indiana 81, Valparaiso 49
at Rutgers 74, Northeastern 60
at Illinois 66, Robert Morris 48

NOVEMBER 19

at Minnesota 93, Cleveland State 76
UW-Green Bay 81, at Purdue 78 (OT)
at Maryland 85, South Florida 67
Notre Dame 71, at Michigan State 63
Georgia 67, at Ohio State 59
Nebraska 82, at Washington State 61

NOVEMBER 20

Michigan at Pittsburgh 7 p.m.
Memphis at Illinois 8 p.m.
Vanderbilt at Wisconsin 8 p.m.

NOVEMBER 21

Morehead State at Indiana 7 p.m.
Kent State at Northwestern 8 p.m.
Pepperdine at Iowa 8:30 p.m.

NOVEMBER 22

Maryland at George Washington 2 p.m.
Rutgers at LSU 2 p.m.
Seton Hall at Penn State 7 p.m.
UT-Martin/Dayton at Iowa 8:30 p.m.

NOVEMBER 23

Utah at Nebraska 1 p.m.
Incarnate Word at Indiana 2 p.m.
Western Michigan at Michigan 2 p.m.
IUPUI at Michigan State 2 p.m.
Virginia Commonwealth at Ohio State 2 p.m.
Toledo at Purdue 2 p.m.
Wisconsin at Drake 3 p.m.
Southern at Illinois 3 p.m.
Minnesota at Memphis 4 p.m.

All times are Eastern.

POSSIBLE STARTERS



5 SIERRA MOORE G
RS-So., 5-11, Hanover, Pa.
10.0 ppg, 4.0 rpg, 3.5 apg, 1.0 spg

Notes: Had career highs of 12 points, five rebounds and two blocks vs. Towson ... Sat out 2013-14 season due to NCAA transfer rules ... Broke the YAIAA high school scoring record (boys or girls).



12 LINDSEY SPANN G
RS-Fr., 5-6, Laurel, Md.
15.5 ppg, 3.0 rpg, 4.0 apg, .500 FG%

Notes: Led the team in scoring with 14 points & 4 assts. vs. Albany ... Tallied 17 points, five rebounds and four assists in her debut vs. Towson ... Shooting 50% from the field ... Team captain.



15 KALIYAH MITCHELL G
So., 6-2, Stone Mountain, Ga.
9.5 ppg, 4.5 rpg, 3.5 SPG

Notes: Leads the team in steals (3.5) ... Had 10 points and three steals in season opener vs. Towson ... Leads the returnees in steals with 20 ... Second-best scoring average among returning players (4.5).



25 PEYTON WHITTED F
So., 6-3, Suwanee, Ga.
3.0 ppg, 6.5 rpg, 1.5 apg, 1.0 spg

Notes: Led the team in field goal percentage as a freshman (.463) ... Averaged 2.9 points and 2.8 rebounds per game last season ... Had a career-high 11 points and six rebounds at Northwestern.



44 TORI WALDNER C
Sr., 6-5, Milton, Ga.
8.5 ppg, 10.0 rpg, 2.0 bpg, .545 FG%

Notes: Recorded four blocks vs. Albany ... Posted first career double-double with 11 points and a career-best 11 rebounds vs. Towson ... Ranks 10th on Penn State's all-time blocked shots list (93).

LAST TIME OUT

- Penn State and Albany played a back-and-forth contest in the second round of the Preseason WNIT, with the Great Danes eventually claiming a 54-53 decision at the Bryce Jordan Center Sunday.
- The game featured 10 ties and 11 lead changes, with the final tie coming on a **Jenny DeGraaf** three-pointer with 1:28 left in the game to knot the score at 53-53.
- Albany's Sarah Royals made one of two free throws with 8.4 seconds left to give the Great Danes the lead and Penn State's final shot caromed off the iron as time expired.
- Freshman **Lindsey Spann** led the team in scoring for the second straight game with 14 points, adding four assists, and DeGraaf added a career-high 12 points on 4-of-4 shooting from three point range.

SCOUTING SETON HALL

- The Pirates fell to 1-1 on the season after an 89-87 setback at West Virginia in their Preseason WNIT second round game on Monday.
- Seton Hall is led in the scoring column by Tabatha Richardson-Smith, who is averaging 25.5 points per game after netting 32 points in the loss at WVU.
- Ka-Deidre Simmons and Janee Johnson are also averaging in double figures, with 17.0 and 13.5 points per game, respectively.
- Simmons also leads the squad with 16 assists and six steals in 2014-15.
- Bra'Shey Ali paces the roster with 8.5 rebounds per game.
- As a team, Seton Hall has forced 46 turnovers with 21 steals in two games.

ALL-TIME VERSUS THE PIRATES

- The Lady Lions are a perfect 9-0 all-time against Seton Hall.
- Penn State is 4-0 versus the Pirates in games played in Happy Valley.
- Their 1994 meeting came in the Sweet 16 where Penn State collected a 64-60 win in Austin, Texas.
- The last meeting came exactly 16 years ago today when the Lady Lions grabbed an 81-48 decision at the Bryce Jordan Center.
- The Lady Lions are 31-10 all-time against current Big East schools.

LAST TIME VERSUS SHU

- The last time the Lady Lions and Pirates squared off was exactly 16 years ago on Nov. 22, 1998 when Penn State picked up an 81-48 victory at the BJC.
- The Lions jumped out to a 24-6 first half lead that included an 18-0 run and never looked back.
- Andrea Garner posted a double-double with 21 points and 12 rebounds to pace the Lions. She also added five blocks.
- Helen Darling posted her third career double-double with 15 points and 10 assists.

WHAT'S AT STAKE

A Penn State Win Would:

- Make Penn State 10-0 all-time against Seton Hall.
- Improve the Lady Lions to 2-1 on the season.
- Make Penn State 32-10 all-time against current Big East schools.



PRESS CONFERENCE SCHEDULE

Coquese Washington will hold a weekly press conference and the Lady Lions will have media availability on a weekly basis throughout the season. All press conferences will begin at 2:30 p.m. (unless otherwise noted) and go for approximately 15-20 minutes, followed by a 15-minute open media session prior to practice. Press conference will be held in the Media Room at the Bryce Jordan Center (unless otherwise noted).

Press Conference Dates

Tuesday, Dec. 2	Wednesday, Feb. 4
Monday, Dec. 8	Tuesday, Feb. 10 (Practice Gym)
Wednesday, Dec. 17 (Time TBD)	Wednesday, Feb. 18
Tuesday, Dec. 30 (Time TBD)	Wednesday, Feb. 25
Thursday, Jan. 8 (Time TBD)	Tuesday, March 3 or Wednesday, March 4 (pending travel plans for BTT)
Wednesday, Jan. 14	
Wednesday, Jan. 21	
Tuesday, Jan. 27	

LADY LIONS GET SOCIAL: The Lady Lions are on several social media sites, including Twitter, Instagram and Facebook. Follow the Lady Lions and assistant coaches (@pennstatewbb), head coach Coquese Washington (@coquesewashing) and sports information contact Kris Petersen (@ladylionsid) on Twitter to get the inside scoop. The Lady Lions are also on Instagram (@pennstatewbb) and Facebook at www.facebook.com/pennstateladylions.



DeGRAAF FROM DEEP

- Sophomore forward **Jenny DeGraaf** went 4-for-4 from beyond the arc en route to a career-high 12 points against Albany on Nov. 15.
- She is the first Lady Lion to connect on all of her three-point attempts in a game (min. 4 attempts) since Maggie Lucas also netted four shots on four attempts vs. Bucknell on Dec. 21, 2011.
- The four three pointers made are a career-high for DeGraaf, who had made one three pointer on two occasions entering the game.
- DeGraaf's 12 points are a career-high, passing her two five point efforts from last season. She scored five points vs. Ohio State (1/16/14) and vs. Alcorn State (12/22/13).
- She also tied her personal mark with three rebounds against the Great Danes.

STELLAR DEBUT

- Freshman **Lindsey Spann** made her long-awaited Lady Lion debut with the start against Towson on Nov. 14.
- Spann, who missed last season with an ACL injury, had a team-high 17 points on 7-of-14 shooting.
- She also grabbed five rebounds and dished out four assists versus the Tigers.
- Spann is the first Penn State freshman to lead the team in scoring since Maggie Lucas did so 13 times during her rookie season in 2010-11.

PRESEASON WNIT

- The Lady Lions are participating in the Preseason WNIT for the second time in program history.
- Penn State made its first appearance in 2002, finishing second in the tournament after an 88-66 loss at Kansas State in the Championship game.
- The Lady Lions are 4-2 all-time in the Preseason WNIT.

BOUNCEBACK-ABILITY

- Penn State has shown that it is resilient after a loss. The Lady Lions have won their last 20 games following a loss, dating back to the 2010-11 season.
- The Lady Lions last lost consecutive games on Feb. 17 and Feb. 24, 2011.
- Senior forward/center **Tori Waldner** has never lost consecutive games in her collegiate career.

TORI'S REJECTING ROLE

- Senior center **Tori Waldner** moved into 10th place in program history with 93 career blocks after a four-block performance against Albany on Nov. 16.
- With her performance against the Great Danes, she passed Bethany Collins (92; 1985-88) for a spot in the Top 10.
- Waldner needs one rejection to tie Jess Brungo (94; 2001-04) for ninth place.
- Waldner also needs seven rejections to become the ninth player in program history with 100 blocked shots.
- She would also be the third Lady Lion in the last three years to reach the 100-block mark, joining Nikki Greene (215; 2010-13) and Talia East (102; 2011-14).

SCORING SPANN

- Freshman guard **Lindsey Spann** led the Lady Lions in scoring for the second straight game with 14 points against Albany on Nov. 16.
- This marks the first time a Penn State freshman has led the team in scoring in consecutive games since Maggie Lucas did so versus Minnesota (1/13/11) and versus Illinois (1/16/11).
- Spann handed out four assists for the second straight game.

PENN STATE'S OVERALL/BIG TEN YEAR-BY-YEAR REVIEW

Year	Overall	Big Ten	Home	BT Home	Road	BT Road	Neutral
1992-93	22-6	14-4	12-2	9-0	9-4	5-4	0-0
1993-94	28-3	16-2	14-0	9-0	11-2	7-2	3-1
1994-95	26-5	13-3	14-2	8-0	9-3	5-3	3-0
1995-96*	27-7	13-3	14-2	8-0	8-4	5-3	5-1
1996-97	15-12	8-8	9-3	5-3	5-6	3-5	1-3
1997-98	21-13	8-8	10-5	4-4	6-6	4-4	5-2
1998-99	22-8	12-4	9-2	6-2	9-4	6-2	4-2
1999-00	30-5	15-1	14-0	8-0	9-2	7-1	7-3
2000-01	19-10	11-5	11-2	7-1	6-5	4-4	2-3
2001-02	23-12	11-5	10-4	6-2	9-5	5-3	4-3
2002-03	26-9	13-3	16-0	8-0	7-7	5-3	2-2
2003-04	28-6	15-1	12-1	8-0	9-3	7-1	6-2
2004-05	19-11	13-3	12-0	8-0	6-9	5-3	1-2
2005-06	13-16	6-10	8-6	5-3	3-8	1-7	2-2
2006-07	15-16	7-9	12-1	7-1	2-12	0-7	1-3
2007-08	13-18	4-14	10-6	3-6	3-11	1-8	0-1
2008-09	11-18	6-12	8-6	4-5	2-9	2-7	1-3
2009-10	17-14	8-10	9-6	5-4	5-7	3-6	3-1
2010-11	25-10	11-5	14-4	6-2	7-4	5-3	4-2
2011-12	26-7	13-3	12-2	6-2	11-3	7-1	3-2
2012-13	26-6	14-2	14-0	8-0	9-5	6-2	3-1
2013-14	24-8	13-3	14-4	6-2	8-3	7-1	2-1
2014-15	1-1	0-0	1-1	0-0	0-0	0-0	0-0

* First season at the Bryce Jordan Center



PENN STATE-SETON HALL NOTABLE GAMES

Mar. 24, 1994 - Penn State 64, Seton Hall 60

Missy Masley hit a pair of free throws late to seal the 64-60 win to help the Lady Lions advance to the NCAA Elite Eight for the second time in school history. Katina Mack tied the game at 56-56 with 4:09 remaining and the Lady Lions clicked off a 6-2 run to take the 62-58 lead. SHU's Dana Wynnes converted on a layup to make it a 62-60 game with 1:15 left before Masley secured the win with a pair of freebies. Helen Holloway led the Penn State offensive attack with 14 points.

Jan. 24, 1984 - Penn State 86, Seton Hall 68

The Lady Lions battled through injuries to post a dominating 86-68 win over Seton Hall on Jan. 24, 1986. Reserve guard Lisa Faloon had 14 points as she and fellow freshmen Vicki Link and Jane Gilpin combined for 36 points. Kahadeejah Herbert led all scorers and rebounders with 18 points and nine boards, while Lorraine McGirt added 15 points and eight rebounds.

Nov. 27, 1996 - Penn State 76, Seton Hall 62

Penn State improved to 3-0 to start the 1996-97 season with a 76-62 win over Seton Hall, led by 17 points and six rebounds from sophomore Shauntai Hall. The Lady Lions would go on to win their first seven games of the campaign. Senior Angie Potthoff had 21 points in 23 minutes against the Pirates, while Andrea Garner added 10 points and eight boards.

DOUBLING UP

- Senior post player **Tori Waldner** recorded the first double-double of her Penn State career with 11 points and 11 rebounds in the season opener against Towson on Nov. 14.
- She tied her career high with 11 boards, equaling the mark she set against Texas A&M on Dec. 15, 2013.
- Waldner's double-double was the first since Talia East scored 13 points and grabbed 13 rebounds vs. Wichita State, Mar. 23, 2014.

GIVING MOORE

- After sitting out last season due to NCAA Transfer Rules, sophomore **Sierra Moore** suited up for the Blue & White for the first time against Towson on Nov. 14.
- She set career highs in points (12), assists (4), blocks (2) and equaled her personal best in rebounds with five.
- All of her previous career-best efforts came during the 2012-13 season at Duke.

MEETING MOLLY

- The Lady Lions announced the addition of walk-on Molly Dincher to the roster prior to the season-opener against Towson.
- Dincher served as a Lady Lion manager for a year and a half.
- Dincher also played at Penn State Wilkes-Barre for two seasons where she helped the Mountain Lions to the 2011-12 PSUAC North Division Championship.
- She averaged 7.3 points and 8.6 rebounds that season for Wilkes-Barre, her final season for the Mountain Lions.
- She also rejected 33 shots and had 27 assists in 21 appearances that included 16 starts.
- Since coming to University Park, Dincher played for the Penn State women's club basketball team that took second in the National Championships in 2012-13.
- A three-year letterwinner, Dincher played her high school basketball at Williamsport Area High School. In her final season, the Millionaires were 12-8.

OF NOTE

- Freshman **Lindsey Spann** and sophomores **Kaliyah Mitchell**, **Sierra Moore** and **Peyton Whitted** all made their first career starts for the Lady Lions against Towson on Nov. 14.
- Junior **Candice Agee** tied her career high with nine rebounds against Towson Nov. 14. She also grabbed nine rebounds vs. Fairleigh Dickinson on Dec. 2, 2012.
- Sophomore **Keke Sevellian** reached a career high in assists with five in the season opener against Towson on Nov. 14.
- With the win over Towson on Nov. 14, **Coquese Washington** improved to a perfect 8-0 in the first game of the season since taking the helm of the Lady Lion program for the 2007-08 season.
- Head coach **Coquese Washington** has selected senior **Tori Waldner**, redshirt-sophomore **Sierra Moore** and redshirt-freshman **Lindsey Spann** as team captains for the 2014-15 season.
- Sophomore forward **Peyton Whitted's** father, Kevin, was recently named the head coach of the NBA Developmental League's Westchester Knicks.

PENN STATE'S RECORD WHEN...

Playing at home	1-1
Playing on the road	0-0
Playing at a neutral site	0-0
vs. Top 10 teams	0-0
vs. Top 25 teams	0-0
Games decided by 3 points or less	0-1
Games decided by 4-10 points	1-0
Games decided by 11-19 points	0-0
Games decided by 20 points or more	0-0
Leading at the half	1-0
Tied at the half	0-1
Trailing at the half	0-0
Leading with 5:00 remaining	1-0
Trailing with 5:00 remaining	0-1
Tied with 5:00 remaining	0-0
In overtime	0-0
PSU scores 40-49 points	0-0
PSU scores 50-59 points	0-1
PSU scores 60-69 points	0-0
PSU scores 70-79 points	1-0
PSU scores 80 points or more	0-0
PSU shoots 45% or better	1-0
PSU shoots less than 45%	0-1
PSU shoots better than opponent	1-1
Opponent shoots better than PSU or tied	0-0
Opponent scores less than 39 points	0-0
Opponent scores 40-49 points	0-0
Opponent scores 50-59 points	0-1
Opponent scores 60-69 points	1-0
Opponent scores more than 70 points	0-0
Opponent shoots better than 45%	0-0
Opponent shoots less than 45%	1-1
PSU outrebounds opponent	1-0
Opponent outrebounds PSU or tied	0-1
PSU commits 14 or less turnovers	1-0
PSU commits 15 or more turnovers	0-1
PSU makes at least 5 3-pointers	0-1
PSU makes four 3-pointers or less	1-0
Recording 7 or more steals	1-1
Recording 6 or less steals	0-0
Wearing white uniforms	1-1
Wearing blue uniforms	0-0
Wearing white and pink uniforms	0-0
Penn State wins the tip	0-0
Penn State loses the tip	1-1
Penn State scores first	1-1
Opponent scores first	0-0
Playing during the day (before 5 p.m.)	1-1
Playing at night	0-0
On Monday	0-0
On Tuesday	0-0
On Wednesday	0-0
On Thursday	0-0
On Friday	1-0
On Saturday	0-0
On Sunday	0-1
In November	1-1
In December	0-0
In January	0-0
In February	0-0
In March	0-0



LIONS IN THE BIG TEN STATS

A breakdown of where Penn State ranks in the Big Ten's overall statistical categories. Through games of Nov. 19.

TEAM

Scoring Offense.....	14th (62.0)
Scoring Defense.....	T-7th (59.0)
Scoring Margin.....	11th (+3.0)
Free Throw Percentage.....	12th (.622)
FG Percentage.....	10th (.414)
FG Percentage Defense.....	4th (.317)
3-point FG Percentage.....	8th (.360)
3-point FG Pct. Defense.....	5th (.244)
3-point FG Made.....	T-11th (4.5)
Rebounding Offense.....	11th (40.0)
Rebounding Defense.....	13th (43.5)
Rebounding Margin.....	13th (-3.5)
Offensive Rebounds.....	13th (9.5)
Defensive Rebounds.....	7th (30.5)
Blocked Shots.....	T-6th (5.0)
Assists.....	12th (14.0)
Steals.....	T-9th (9.0)
Turnover Margin.....	T-12th (+0.0)
Assist to Turnover Ratio.....	12th (0.8)

INDIVIDUAL

Scoring.....	18th - Lindsey Spann (15.5)
Rebounding.....	T-7th - Tori Waldner (10.0)
.....	T-19th - Candice Agee (7.0)
Assists.....	12th - Lindsey Spann (4.0)
Steals.....	4th - Kaliyah Mitchell (3.5)
3FG Percentage.....	T8th - Jenny DeGraaf (.667)
3FG Made.....	T-13th - Jenny DeGraaf (2.0)
Blocked Shots.....	T-6th - Tori Waldner (2.0)
.....	T-11th - Candice Agee (1.5)
.....	T-11th - Sierra Moore (1.5)
Assist/TO Ratio.....	T-6th - Keke Sevillian (6.0)
Def. Reb.	T-6th - Tori Waldner (8.0)
Minutes.....	9th - Sierra Moore (34.5)

2014-15 GAME-BY-GAME STARTING LINEUPS

Date	Opponent	Pt Guard	Guard	Forward	Forward	Center
11/2	INDIANA (PA.)	Spann	Moore	Mitchell	Whitted	Waldner
11/14	TOWSON	Spann	Moore	Mitchell	Whitted	Waldner
11/16	TOWSON	Spann	Moore	Mitchell	Whitted	Waldner

TORI EXTRA CURRICULAR

- Senior post player **Tori Waldner** has shown that she is more than just a basketball player as she competes in the classroom and gives back tirelessly to the community.
- Waldner is currently the president of the Penn State Student-Athlete Advisory Board (SAAB). As part of her duties as SAAB president, she is involved in the community services efforts and creating programming for Penn State student-athletes on topics of diversity and inclusion.
- She is also involved in Penn State Life Link, a program in which State College Area School District special-needs students between the ages of 18 and 21 are given an opportunity to interact with students of their own age in an environment that is socially and academically conducive to continued growth with the hope of future independent living.
- Waldner regularly meets these students for lunch, swims with the students as a physical activity and provides guidance to help them on their road to independence.
- She is also involved in the "It's on Us" initiative- an awareness campaign to help put an end to sexual assault on college campuses.
- As part of her involvement, Waldner was part of a meeting with other universities at the White House.
- Waldner is also stellar in the classroom, collecting two Academic All-Big Ten honors.

FUN FOUR YEARS

- The Lady Lions have put together quite a four-year run that includes three Big Ten Championships, two NCAA Sweet Sixteen appearances and four NCAA Tournament berths.
- During the last four years, Penn State has also collected 101 wins (25.3 wins per season) and has been ranked for 62 weeks in the Top 25, including 21 weeks in the Top 10.
- Additionally, the Lady Lions have churned out three WNBA Draft Picks, five McDonald's All-Americans, 16 All-Big Ten performers, two Big Ten Players of the Year and one Big Ten Defensive Player of the Year, all while posting a 100% Graduation Rate.

2015 PINK ZONE AT PENN STATE

- The Ninth Annual Pink Zone at Penn State will be held Sunday, March 1 in the Bryce Jordan Center when the Lady Lions take on Wisconsin. The time for the game will be determined later in the season.
- Last year, the Lady Lions donated a record \$310,000 to breast cancer causes.
- All totalled, the Lady Lions have donated more than \$1.135 million for breast cancer research and awareness in the first eight years.
- This year's fundraising efforts will benefit the Mount Nittany Medical Center, Penn State Hershey Cancer Institute, Pennsylvania Breast Cancer Coalition, the Kay Yow Cancer Fund, J.C. Blair Memorial Hospital and Lewistown Hospital.
- For more information on the Pink Zone at Penn State, visit the official Pink Zone website at www.pennsylvaniapinkzone.org.

GETTING ON THE COURT

- The Lady Lions may not have any true freshmen on the roster, but there will be a pair of Lady Lions that will don a Penn State uniform for the first time this season after sitting out the 2013-14 campaign.
- Redshirt-sophomore **Sierra Moore** returns to the court after missing last season due to NCAA Transfer Rules.
- She excelled in high school at Delone Catholic, where she broke the York-Adams Interscholastic Athletic Association (YAIAA) scoring record with 2,595 points.
- Redshirt-freshman **Lindsey Spann** hits the hardwood after missing last year with a torn ACL.
- She was the 22nd-ranked player by Collegiate Girls Basketball Report out of high school. She averaged 15.9 points, 5.3 assists and 2.4 steals at Good Counsel her senior year.

FRESH FACES

- The Lady Lions have added a pair of transfers to the roster in junior college transfer **Dominique Brooks** and UConn transfer **Brianna Banks**.
- Brooks comes to the Lady Lions after a two-year career at Trinity Valley Community College.
- She was efficient from the field at TVCC as she connected on 51.1% of her shots to help the Cardinals to back-to-back NJCAA National Championships.
- Banks will have to sit out the 2014-15 season after transferring from Connecticut.
- She will have one year of eligibility remaining after competing for three seasons at UConn where she won a pair of National Championships.



THE LAST TIME PENN STATE...

SCORING

Player scored 20 points: at Stanford (22, Ariel Edwards), 3/30/14
 Player scored 25 points: vs. Ohio State (29, Ariel Edwards), 3/7/14
 Player scored 30 points: at Indiana (32, Maggie Lucas), 2/13/14
 Player scored 35 points: vs. Georgetown (39, Maggie Lucas), 12/9/12
 Player scored 40 points: vs. Minnesota (49, Kelly Mazzante), 12/28/01
 Two players scored 20 points: vs. Florida (22, Maggie Lucas; 22 Dara Taylor), 3/25/14
 Three players scored 20 pts.: at Nevada (26, Maggie Lucas; 23, Alex Bentley; 21, Zhaque Gray), 11/26/11
 Two players scored 25 points: at Boston College (28, Alex Bentley; 28, Maggie Lucas), 12/2/10
 Player scored 25 points/3 consecutive games: Maggie Lucas (32, at Indiana, 2/13/14; 25 vs. Wisconsin, 2/16/14; 26 vs. Northwestern, 2/20/14)
 Five in double figures: at Northwestern (19, Maggie Lucas; 15, Ariel Edwards; 11, Dara Taylor; 11, Talia East; 11, Peyton Whitted), 2/2/14
 Six in double figures: at Oakland (15, Alex Bentley; 16, Ariel Edwards; 16, Zhaque Gray; 13, Maggie Lucas; 10, Mia Nickson; 10, Gizelle Studevent; 10, Julia Trogele), 11/18/10
 Seven in double figures: at Oakland (15, Alex Bentley; 16, Ariel Edwards; 16, Zhaque Gray; 13, Maggie Lucas; 10, Mia Nickson; 10, Gizelle Studevent; 10, Julia Trogele), 11/18/10
 PSU scored 50 points in a half: at Illinois (51, second half), 1/9/14
 PSU scored 50 points in both halves: vs. St. Francis (Pa.) (55, first half; 62, second half), 11/8/13
 PSU scored 55 points in a half: vs. St. Francis (Pa.) (55, first half; 62, second half), 11/8/13
 PSU scored 60 points in a half: vs. St. Francis (Pa.) (62, second half), 11/8/13
 PSU scored 100 points: vs. St. Francis (Pa.) (W, 117-77), 11/8/13
 PSU scored 100 points in Big Ten game: vs. Illinois (W, 101-80), 2/15/01
 PSU scored 100 points in a home game: vs. St. Francis (Pa.) (W, 117-77), 11/8/13
 PSU scored fewer than 15 points in a half: vs. Wisconsin (13, first half), 2/25/10
 PSU scored fewer than 20 points in a half: vs. Michigan State (19, first half), 3/9/13
 PSU scored fewer than 40 points in a game: vs. Wisconsin (L, 39-71), 2/25/10
 PSU scored fewer than 50 points in a game: vs. Michigan State (L, 46-54), 3/9/13
 PSU scored fewer than 50 points in a Big Ten game: vs. Purdue (L, 49-60), 2/24/11
 OPP scored 50 points in a half: vs. Ohio State (58, first half), 3/7/14
 OPP scored 100 points: at Boston College (Lot, 113-104), 12/2/10
 OPP scored fewer than 20 points in a game: at Dickinson (W, 57-16), 3/6/71
 OPP scored fewer than 30 points in a game: vs. Virginia Tech (W, 66-28), 12/6/11
 OPP scored fewer than 40 points in a game: vs. Wisconsin (W, 84-40), 1/17/13
 OPP scored fewer than 50 points in a game: vs. Ohio State (W, 66-42), 1/16/14
 OPP scored fewer than 50 points in a Big Ten game: vs. Ohio State (W, 66-42), 1/16/14

FIELD GOAL SHOOTING

Player made every shot from the field (min. 7): vs. Michigan St. (Amanda Brown, 8-8), 1/25/07
 PSU shot 55% or better in a game: vs. Illinois (.611), 2/20/13
 PSU shot 55% or better in consecutive games: vs. Northwestern (.682), 3/2/96; vs. Ohio St. (.585), 3/3/96
 PSU shot 60% in a game: vs. Illinois (.611), 2/20/13
 PSU shot below 25% in a game: vs. Michigan State (.224), 3/9/13
 PSU shot below 30% in a game: vs. Michigan State (.224), 3/9/13
 PSU shot below 35% in a game and won: vs. Michigan State (.333), 1/19/14
 PSU shot below 30% in a game and won: vs. Northwestern (.299), 1/3/13
 PSU shot 55% in a half: vs. Towson (.556, second half), 11/14/14
 PSU shot 60% in a half: at Illinois (.630, second half), 1/9/14
 PSU shot 65% in a half: at Georgetown (.680, second half), 12/8/13
 PSU shot 70% in a half: vs. Virginia Tech (.714, second half), 12/6/11
 PSU shot 55% in both halves: vs. Illinois (.586, first half; .640, second half), 2/20/13
 PSU shot 20% or below in a half: vs. Michigan State (.200, first half), 3/9/13
 PSU shot below 25% in a half: at Georgetown (.206, first half), 12/8/13

THREE-POINT SHOOTING

Player made every shot from the field (min. 4): vs. Albany (4-4, Jenny DeGraaf), 11/16/14
 Player made 4 three-pointers in a half: vs. Connecticut (4 in the second, Maggie Lucas), 11/17/13
 Player made 5 three-pointers in a half: vs. Michigan State (5 in the second, Maggie Lucas), 3/9/13
 Player made 6 three-pointers in a half: vs. Michigan State (5 in the second, Maggie Lucas), 3/9/13
 Player made 5 three-pointers in a game: vs. Northwestern (5, Maggie Lucas), 2/20/14
 Player made 6 three-pointers in a game: vs. Michigan State (7, Maggie Lucas), 3/9/13
 Player made 7 three-pointers in a game: vs. Michigan State (7, Maggie Lucas), 3/9/13
 Player made 8 three-pointers in a game: at Nebraska (8, Maggie Lucas), 3/3/13
 Player attempted 10 three-pointers in a game: at Illinois (11, Maggie Lucas), 1/9/14
 PSU made 10 three-pointers: vs. North Carolina (14), 11/30/11
 PSU did not make a three-pointer: vs. Hartford (0-8), 12/29/13
 PSU attempted 20 three-pointers: vs. Connecticut (21), 11/17/13
 PSU shot 60% 3FG (min. 5 att.): vs. Illinois (.667; 6-9), 2/20/13

FREE THROW SHOOTING

Player made every shot from FT line (min. 10): at Illinois (10-10, Maggie Lucas), 1/9/14
 PSU shot 90% (min. 10 att.): vs. Michigan (18-19, .947), 3/1/14
 PSU shot below 50% (min. 10 att.): at Purdue (8-21, .381), 1/30/14
 PSU made 30 free throws: vs. St. Francis (Pa.) (37), 11/8/13
 PSU made fewer than five FTs: at Michigan (3), 2/3/11
 PSU attempted 40 free throws: vs. St. Francis (Pa.) (43), 11/8/13
 PSU attempted fewer than five FTs: at Michigan (4), 2/3/11

REBOUNDS

Player had 15 rebounds: at LSU (16, Nikki Greene), 3/26/13
 Player had 20 rebounds: at Cal State Northridge (20, Nikki Greene), 11/24/12
 Two players with double-digit rebs.: at Illinois (11, Ariel Edwards; 10, Peyton Whitted), 1/9/14
 Three players had double-digit rebounds: vs. Ohio State (15, Nikki Greene; 15, Mia Nickson; 10, Maggie Lucas), 2/20/12
 PSU had 60 rebounds: vs. Ohio State (60), 2/20/12
 PSU had 50 rebounds: vs. Indiana (54), 1/22/14
 PSU had 20 or fewer rebounds: vs. Michigan State (20), 1/19/03
 OPP had 20 or fewer rebounds: at Indiana (20), 2/13/11
 PSU had 20 offensive rebounds: vs. Ohio State (20), 1/16/14
 PSU had 25 offensive rebounds: vs. Ohio State (29), 2/20/12

ASSISTS

Player had 10 assists: vs. Minnesota (10, Dara Taylor), 1/26/14
 Player had 10 assists/consecutive games: Helen Darling (12 at LaSalle, 12/8/99; 11 vs. Auburn, 12/11/99; 10 vs. Clemson, 12/19/99)
 Player had 15 assists: vs. North Carolina (15, Alex Bentley), 11/30/11
 PSU had 30 assists: vs. St. Francis (Pa.) (32), 12/2/99
 PSU had fewer than 10 assists: at Stanford (6), 3/30/14
 PSU had fewer than 5 assists: at Michigan State (4), 2/4/10

BLOCKED SHOTS

Player blocked 5 shots: vs. Northwestern (5, Tori Waldner), 2/20/14
 Player blocked 6 shots: vs. Purdue (7, Talia East), 1/12/14
 PSU blocked 10 shots: vs. Purdue (14), 1/12/14
 PSU blocked 0 shots: at Illinois, 1/9/14

STEALS

Player had 7 steals: vs. Alcorn State (7, Dara Taylor), 12/22/13
 Player had 8 steals: vs. NJIT (8, Alex Bentley), 12/23/12
 PSU had 20 steals: vs. Bucknell (21), 12/28/10

TURNOVERS

PSU committed 25 or more: at Illinois (27), 1/9/14
 PSU committed 25 or more and won: at Illinois (27), 1/9/14
 PSU committed 10 or fewer: vs. Wisconsin (7), 2/16/14
 PSU committed 10 or fewer in consecutive games: vs. Minnesota (9), 1/22/04; at Ohio St. (9), 1/25/04
 OPP committed 25 or more: vs. Oregon State (26), 11/30/13

DOUBLE-DOUBLES

Points & rebounds: vs. Towson (Tori Waldner, 11 points, 11 rebounds), 11/14/14
 Points & rebounds/consecutive games: Nikki Greene (12 points, 10 rebounds vs. Ohio State, 1/30/11; 16 points, 14 rebounds at Illinois, 1/27/11)
 Points & rebounds/3 consecutive games: Amanda Brown (19 pts., 17 rebs. at Northwestern, 2/11/07; 14 pts., 10 rebs. vs. Minnesota, 2/15/07; 14 pts., 11 rebs. at Iowa, 2/18/07)
 Points & rebounds/4 consecutive games: Angie Potthoff (vs. Northwestern, 1/31/97; at Illinois, 2/2/97; vs. Michigan, 2/7/97; vs. Indiana, 2/9/97; vs. Iowa, 2/16/97; vs. Michigan State, 2/21/97)
 Points & rebounds/5 consecutive games: Angie Potthoff (vs. Northwestern, 1/31/97; at Illinois, 2/2/97; vs. Michigan, 2/7/97; vs. Indiana, 2/9/97; vs. Iowa, 2/16/97; vs. Michigan State, 2/21/97)
 Points & assists: vs. Minnesota (Dara Taylor, 15 points, 10 assists), 1/26/14
 Points & assists/consecutive games: Helen Darling (12 pts., 12 assts. at La Salle, 12/8/99; 10 pts., 11 assts. vs. Auburn, 12/11/99)
 Two players had double-doubles: vs. Ohio State (Nikki Greene, 25 pts., 15 rebs.; Mia Nickson, 18 pts., 15 rebs.; Maggie Lucas, 12 pts., 10 rebs.), 2/20/12
 Three players had double-doubles: vs. Ohio State (Nikki Greene, 25 pts., 15 rebs.; Mia Nickson, 18 pts., 15 rebs.; Maggie Lucas, 12 pts., 10 rebs.), 2/20/12
 15 points & 15 rebounds: at LSU (Nikki Greene, 16 pts., 16 rebs), 3/26/13
 20 points and 10 rebounds: vs. Ohio State (Ariel Edwards, 29 points, 10 rebounds), 3/7/14

MARGIN OF VICTORY

PSU won by 20-30 points: vs. Florida (22), 3/25/14
 PSU won by 20-30 points in a Big Ten game: at Ohio State (20), 2/9/14
 PSU won consecutive Big Ten games by 20+ pts.: vs. Wisconsin (44), 1/17/13; vs. Nebraska (22), 1/13/13; at Michigan St. (21), 1/6/13
 PSU won by 31-40 points: vs. Bucknell (43), 11/20/13
 PSU won by 41-50 points: vs. Bucknell (43), 11/20/13
 PSU won by 51+ points: vs. Fairleigh Dickinson (57), 12/2/12
 PSU lost by 20-30 points: at Stanford (25, 82-57), 3/30/14
 PSU lost by 20-30 points in a Big Ten game: at Nebraska (20; 94-74), 2/24/14
 PSU lost by 31+ points: vs. Wisconsin (32), 2/25/10

MISCELLANEOUS

Led PSU in points/rebounds/assists: Dara Taylor vs. Florida (22 pts., 8 rebs., 4 asst.), 3/25/14
 Hit "final seconds" (under 10 seconds) game-winning shot: Julia Trogele at Illinois (9 sec.), 1/27/11
 Hit "final minute" game-winning shot: Alex Bentley at Minnesota (3-pt. with :38.9 remaining), 2/5/12
 Player played every minute: at Nebraska (Dara Taylor), 2/24/14
 Player played more than 40 min.: at Dayton (Alex Bentley, 46; Zhaque Gray, 44; Mia Nickson, 41), 11/12/10
 Committed 10 or fewer fouls: vs. Virginia Tech (9), 12/6/11
 Committed 30 or more fouls: vs. Iowa State (32), 11/25/11
 PSU rallied from a 10-pt. deficit to win: vs. Wichita State (down by 11 at 6:39 in 1st, won 62-56), 3/23/14
 PSU rallied from a 15-pt. deficit to win: at CS-Northridge (down by 17 at 5:52 in 1st half, won 85-73), 11/24/12
 PSU had a 5-game winning streak: 6 games, 1/16/14-2/2/14
 PSU had a 10-game winning streak: 11 games, 12/9/12 - 1/27/13
 PSU had a 5-game losing streak: 6 games, 1/28/10 - 2/14/10
 PSU went undefeated at home: 2012-13 season
 PSU sold out the BJC: Purdue, 2/29/04

OVERTIME

PSU played an OT game: at Boston College (L, 113-104), 12/2/10
 PSU won an OT game: at Oakland (96-89), 11/18/10
 PSU lost an OT game: at Boston College (L, 113-104), 12/2/10
 PSU played two or more OT games in a season: 2010-11 season (three)
 PSU won two or more OT games in a season: 2010-11 season (two)

RANKINGS

Played the No. 1 team in the AP poll: vs. Connecticut (L, 71-52), 11/17/13
 Played the No. 1 team in the Coaches poll: vs. Connecticut (L, 71-52), 11/17/13
 Defeated the No. 1 team in the AP poll: at Virginia (73-71), 1/3/91
 Defeated Top 10 opponent: vs. #8/11 Ohio State (84-66), 2/20/12
 Defeated Top 10 opponent on the road: at #7 Purdue (47-42), 1/2/04
 Defeated Top 10 opponent by double digits: vs. #8/11 Ohio State (84-66), 2/20/12
 Played consecutive Top 10 teams: at #2/3 Texas 11/14/04, at #6/6 Duke 11/19/04
 Defeated Top 25 opponent: at #16/19 Purdue (75-72), 1/30/14
 Defeated Top 25 opponent on the road: at #16/19 Purdue (75-72), 1/30/14
 Defeated Top 25 opponent by double digits: at #23/22 Iowa (87-71), 1/5/14



2015 RECRUITING CLASS

LADY LIONS SECURE TOP 10 CLASS

- The four-player class is ranked eighth by Prospect Nation, ninth by All-Star Girls Report, 10th by Blue Star Basketball and 11th by ESPN/HoopGurlz and Collegiate Girls Basketball Report.
- The class features two Top 20 players and three Top 100 signees in both the Blue Star Basketball and Prospect Nation rankings.
- This is believed to be the highest-ranked class in program history.
- This is the third Top 15 class to sign under Washington, joining the 2009 and 2013 classes that were ranked 14th by ESPN/Hoopgurlz.
- It is also the fourth Top 25 recruiting class for Washington (2010 class was 22nd).

AMARI CARTER * 5-8 * Guard * Washington, D.C. * St. John's College

- A 5-7 guard, Carter is ranked as the #31 overall recruit by both ESPN/HoopGurlz and Collegiate Girls Basketball Report.
- She is also rated 19th by Prospect Nation and Blue Star Basketball and 32nd by All Star Girls Report.
- She averaged 17.5 points, 4.0 rebounds, 4.0 assists and 2.0 steals for St. John's College High School in Washington, D.C.
- She led the team to a 25-7 overall record and the 2014 DC State Athletic Association championship.
- Last season, Carter was named to the Washington Post All-Metropolitan first team and All-WCAC first team.
- As a sophomore, Carter helped the Cadets to the 2013 WCAC Championship en route to collecting second team All-WCAC honors and an All-Metropolitan honorable mention selection.
- She is a 2014-15 Sporting News Preseason High School All-America honorable mention choice.
- Carter has participated in USA Basketball U16 (2013) and U17 (2014) Trials.
- She plays her AAU ball with the Maryland Lady Terps.

TENIYA PAGE * 5-7 * Point Guard * Chicago Heights, Ill. * Marian Catholic

- Page, a 5-7 point guard out of Marian Catholic in Chicago, Ill., is the 21st-ranked prospect by both ESPN/HoopGurlz and Collegiate Girls Basketball Report.
- She also comes in ranked 17th by Blue Star Basketball, 20th by Prospect Nation and 26th by All Star Girls Report.
- A 2014-15 Sporting News Preseason High School All-America honorable mention selection, Page has 1,135 career points entering her final season for the Spartans.
- Last season, she accounted for 14.4 points, 4.7 assists, 3.5 rebounds and 1.8 steals per game to help Marian Catholic to a 28-5 overall record, a East Suburban Catholic Conference championship and a third-place finish in the Illinois High School Association Class 4A Basketball Tournament.
- Page was selected first team All-State by the Illinois Basketball Coaches Association, second team All-State by the Associated Press, first team All-State by The Northwest Indiana Times and third team All-State by the Chicago Tribune in 2014.
- As a sophomore, Page guided Marian Catholic to the IHSA 4A State Championship with a 33-1 record on the season.
- Page has participated in USA Basketball U16 (2013) and U17 (2014) Trials.
- She plays AAU basketball for Midwest Elite.

ASHANTI THOMAS * 6-5 * Post * Lexington, Ky. * Lafayette

- Thomas, a 6-2 post player out of Lexington, Ky., is the 87th-ranked recruit by Prospect Nation and is ranked 106th and 109th by All-Star Girls Report and Blue Star Basketball, respectively.
- She is a candidate for Kentucky Miss Basketball entering her senior season.
- As a junior, she led the Generals to a 29-4 overall record with a 9-1 mark in districts en route to a District and Regional championships.
- Thomas averaged 9.2 points and 8.2 rebounds per game last season on the way to All-State third team accolades from KySports.tv.
- During her sophomore campaign, Thomas accounted for 10.3 points and 9.5 rebounds per outing on the way to claiming Fayette County Public Schools All-City first team.
- Thomas plays AAU basketball for Mac Irvin Lady Fire.

JAYLEN WILLIAMS * 6-4 * Post * Braintree, Mass. * Archbishop Williams

- A 6-4 post player, Williams is the ranked 80th by Blue Star Basketball Report after missing her junior campaign at Archbishop Williams due to a knee injury.
- The 2014-15 Sporting News Preseason High School All-America honorable mention honoree accounted for 8.5 points, a team-best 11.6 rebounds, 3.5 blocks and 4.3 assists per game as a sophomore.
- Williams helped the Bishops to the 2013 Massachusetts Interscholastic Athletic Association (MIAA) Division 3 State Championship with a 23-5 record.
- She played her AAU basketball for Lady Rivals AAU select team under the guidance of Scott Hazelton. Williams and the Rivals squad have won two state championships.
- She also has a strong athletic background in her family as her father, Brent, played in the NFL for 11 years with the Jets, Seahawks and Patriots. Her brother, Brennan, has played for the Houston Texans and her other brother, Camren, is a junior linebacker for the Ohio State football team.

RECORD BOOK

CAREER BLOCKS

1.	268	Kim Calhoun, 1993-96
2.	215	Nikki Greene, 2010-13
3.	192	Mary Donovan, 1977-81
4.	189	Rashana Barnes, 1999-02
5.	185	Andrea Garner, 1997-00
6.	172	Amanda Brown, 2004-07
7.	140	Tina Henry, 1990-93
8.	102	Talia East, 2011-14
9.	94	Jess Brungo, 2001-04
10.	93	Tori Waldner, 2012-present
11.	92	Bethany Collins, 1985-88

as of Nov. 16.

MILESTONE WATCH

Milestone Watch

Milestone	Player	Current Total
300 points	Tori Waldner	217
200 points	Kalayah Mitchell	163
	Candice Agee	161
100 points	Peyton Whitted	97
	Sierra Moore (career)	83
	Alex Harris	57
400 rebounds	Tori Waldner	351
200 rebounds	Kalayah Mitchell	149
	Candice Agee	136
	Peyton Whitted	101
100 rebounds	Alex Harris	96
50 assists	Kalayah Mitchell	28
100 blocks	Tori Waldner	93
50 blocks	Candice Agee	37
50 steals	Tori Waldner	45

Milestone Reached

Milestone	Player	Reached
100 rebounds	Peyton Whitted	11/16

LADY LIONS BY THE NUMBERS

DOUBLE FIGURE PERFORMANCES

Lindsey Spann - 2
Kalayah Mitchell - 1
Sierra Moore - 1
Tori Waldner - 1
Jenny DeGraaf - 1

20-POINT PERFORMANCES

none

30-POINT PERFORMANCES

none

DOUBLE-DOUBLE PERFORMANCES

Tori Waldner - 1

DOUBLE-DIGIT REBOUNDING PERFORMANCES

Tori Waldner - 1

DOUBLE-DIGIT ASSIST PERFORMANCES

none



2014-15 SINGLE GAME HIGHS & LOWS

Team Superlatives

Penn State High	Penn State Low	Category	Opponent High	Opponent Low
71, vs. Towson (11/14)	53, vs. Albany (11/16)	Points/Game	64, Towson (11/14)	54, Albany (11/16)
40, vs. Towson (11/14)	25, vs. Albany (11/16)	Points/Half	35, Towson (11/14)	26, Albany (11/16)
27, vs. Towson (11/14)	19, vs. Albany (11/16)	Field Goals Made	22, Towson (11/14)	18, Albany (11/16)
60, vs. Towson (11/14)	51, vs. Albany (11/16)	Field Goal Attempts	69, Towson (11/14)	57, Albany (11/16)
.450, vs. Towson (11/14)	.373, vs. Albany (11/16)	FG Percentage	.319, Towson (11/14)	.316, Albany (11/16)
6, vs. Albany (11/16)	3, vs. Towson (11/14)	3-pt. FG Made	9, Towson (11/14)	2, Albany (11/16)
13, vs. Albany (11/16)	12, vs. Towson (11/14)	3-pt. FG Attempts	30, Towson (11/14)	15, Albany (11/16)
.462, vs. Albany (11/16)	.250, vs. Towson (11/14)	3-pt. FG Percentage	.300, Towson (11/14)	.133, Albany (11/16)
14, vs. Towson (11/14)	9, vs. Albany (11/16)	Free Throws Made	16, Albany (11/16)	11, Towson (11/14)
24, vs. Towson (11/14)	13, vs. Albany (11/16)	Free Throw Attempts	24, Albany (11/16)	17, Towson (11/14)
.692, vs. Albany (11/16)	.583, vs. Towson (11/14)	Free Throw Percentage	.667, Albany (11/16)	.647, Towson (11/14)
49, vs. Towson (11/14)	31, vs. Albany (11/16)	Rebounds	49, Albany (11/16)	38, Towson (11/14)
15, vs. Towson (11/14)	13, vs. Albany (11/16)	Assists	13, Albany (11/16)	12, Towson (11/14)
11, vs. Albany (11/16)	7, vs. Towson (11/14)	Steals	9, Albany (11/16)	6, Towson (11/14)
8, vs. Albany (11/16)	2, vs. Towson (11/14)	Blocked Shots	4, Towson (11/14)	3, Albany (11/16)
23, vs. Albany (11/16)	14, vs. Towson (11/14)	Turnovers	24, Albany (11/16)	13, Towson (11/14)
29, vs. Albany (11/16)	16, vs. Towson (11/14)	Fouls	18, twice (MR: , Albany, 11/16)	18, twice (MR: Albany, 11/16)

Individual Superlatives

	Penn State	Opponent
Points	17, Lindsey Spann vs. Towson (11/14)	32, Dominique Johnson, Towson (11/14)
Field Goals Made	7, Lindsey Spann vs. Towson (11/14)	12, Dominique Johnson, Towson (11/14)
Field Goal Attempts	14, Lindsey Spann vs. Towson (11/14)	30, Dominique Johnson, Towson (11/14)
Field Goal Pct. (min. 5 made)	.714, Tori Waldner vs. Towson (11/14)	.625, Shereesha Richards, Albany (11/16)
3-pt. Field Goals Made	4, Jenny DeGraaf vs. Albany (11/16)	6, Dominique Johnson, Towson (11/14)
3-pt. Field Goal Attempts	5, Keke Sevillian vs. Towson (11/14)	16, Dominique Johnson, Towson (11/14)
3-pt. Field Goal Pct. (min. 2 made)	1.000, twice (MR: , Jenny DeGraaf vs. Albany, 11/16)	.375, Dominique Johnson, Towson (11/14)
Free Throws Made	4, 3x (MR: Mitchell/Waldner vs. Albany, 11/16)	7, twice (MR: Royals/Richards, Albany, 11/16)
Free Throw Attempts	6, twice (MR: Mitchell/Agee vs. Towson, 11/14)	12, Sarah Royals, Albany (11/16)
Free Throw Percentage (min. 3 made)	1.000, twice (MR: Tori Waldner vs. Albany, 11/16)	1.000, twice (MR: Johnson/Hughey, Towson, 11/14)
Rebounds	11, Tori Waldner vs. Towson (11/14)	15, Imani Tate, Albany (11/16)
Assists	5, Keke Sevillian vs. Towson (11/14)	7, Breonn Hughey, Towson (11/14)
Steals	4, Kaliyah Mitchell vs. Albany (11/16)	3, 3x (MR: Richards/Tate, Albany, 11/16)
Blocked Shots	4, Tori Waldner vs. Albany (11/16)	2, twice (MR: Tiana-Jo Carter, Albany, 11/16)
Turnovers	5, Kaliyah Mitchell vs. Albany (11/16)	7, Shereesha Richards, Albany (11/16)



MISCELLANEOUS STATS

LEADING SCORER Lindsey Spann 2	PSU'S FIRST SUBSTITUTION Keke Sevillian 1 Candice Agee 1	LARGEST LEAD 16, vs. Towson (11/14)	CLUTCH FREE THROWS (FINAL 5 MIN. & OT) Lindsey Spann 2-2 1.000 Sierra Moore 1-3 .333 Candice Agee 1-2 .500
LEADING REBOUNDER Tori Waldner 2	BENCH POINTS Penn State 31 (15.5 ppg) Opponents 19 (9.5 ppg)	LARGEST DEFICIT 9, vs. Towson (11/14)	NOTE: Totals may not add up to games played due to ties.
LEADER IN ASSISTS Keke Sevillian 1 Lindsey Spann 1	JUMP BALLS CONTROLLED Penn State 0 Opponents 2	LARGEST DEFICIT OVERCOME TO WIN 8, vs. Towson (12:50 in 2nd half (11/14))	
LEADER IN STEALS Kaliyah Mitchell 2	FIRST SCORE OF GAME Penn State 2 Opponents 0	LARGEST LEAD GIVEN UP IN LOSS 7, vs. Albany (17:12 in 1st half (11/16))	
LEADER IN BLOCKS Sierra Moore 1 Tori Waldner 1	Sierra Moore 2	LARGEST WIN 7, vs. Towson (71-64) (11/14)	
GAMES STARTED Sierra Moore 2 Lindsey Spann 2 Kaliyah Mitchell 2 Peyton Whitted 2 Tori Waldner 2	RUNS OF 10-0 OR BETTER Penn State Opponents 1	LARGEST DEFEAT 1, vs. Albany (54-53) (11/16)	
20-POINT SCORING GAMES Penn State 0 Opponents 2	LARGEST HALFTIME LEAD 2, vs. Towson (31-29) (11/14)	MOST CONSECUTIVE POINTS 9, vs. Towson (10:29 to 6:02, 1st half (1/14))	
30-POINT SCORING GAMES Penn State 0 Opponents 1	LARGEST HALFTIME DEFICIT none	MOST CONSECUTIVE POINTS BY OPP 12, Towson (1:38, first half to 19:50, second half (11/14))	
TECHNICAL FOULS Penn State 1 Opponents 1		LONGEST WINNING STREAK 1, 11/14	
FOUR-POINT PLAYS Penn State 0 Opponents 0		LONGEST LOSING STREAK 1, 11/16	
THREE-POINT PLAYS Penn State 0 Opponents 0			

SPECIALITY STATS (PSU/OPP)

	Paint	Off TO	2nd	FastBr	Bench
Towson	30/14	13/16	5/9	13/4	17/7
Albany	22/30	14/17	6/12	10/4	14/12





COQUESE WASHINGTON

Head Coach 8th Season

PENN STATE LADY LION BASKETBALL

Coquese Washington was introduced as the fifth head coach of the Penn State women's basketball program on April 23, 2007. Washington is the first female African-American head coach in Penn State history.

Washington led the 2013-14 Lady Lion squad to a feat that no other Penn State team has accomplished, winning three consecutive conference regular-season titles with a 13-3 record in Big Ten action. Led by the play of a strong senior class, the Lady Lions advanced to the NCAA Sweet Sixteen for the second time in three years. The graduating class of Maggie Lucas, Ariel Edwards, Dara Taylor and Talia East produced 101 wins, which is the second-highest total by a Lady Lion class.

Along the way to collecting her second Big Ten Player of the Year award, Lucas finished second in school history and fourth in Big Ten history in scoring (2,510) and broke the Penn State and Big Ten records for career three-pointers made (365) and career free throw percentage (.907). She was selected in the second round of the 2014 WNBA Draft by the Phoenix Mercury. Edwards became the 36th member of the 1,000-point

club en route to collecting All-Big Ten first team accolades. She finished seventh in the Big Ten in scoring (15.7) and was 11th in free throw percentage (.814). Edwards signed a free agent contract with the WNBA's Tulsa Shock. Taylor also had a stellar senior campaign and collected the Big Ten Defensive Player of the Year award after leading the conference in steals. East also earned postseason honors as she was named All-Big Ten honorable mention. In addition, Washington was honored with her third consecutive Big Ten Coach of the Year honor.

The Lady Lions continued their run in the national spotlight in 2012-13 as they collected their second-straight Big Ten regular-season title and seventh overall with a 26-6 overall record and 14-2 mark in conference play. In each of Washington's first six years, Penn State improved its Big Ten win total. The Lady Lions posted their third consecutive 25-win season, joining the 1993-94, 1994-95 and 1995-96 squads as the only teams in program history to accomplish the feat. The Lady Lions were consistently ranked in the Top 10 for most of the season and finished eighth in the Associated Press Top 25 and 12th in the USA Today Sports Coaches' Poll.

With another stellar campaign, the accolades continued to roll in for the Lady Lions. Washington was selected as the Big Ten Coach of the Year by the media for the second-straight season and became just the fifth mentor in Big Ten history to win back-to-back Coach of the Year accolades. She was also the WBCA Region 6 Coach of the Year and a finalist for WBCA National Coach of the Year for the second-straight season.

The awards also piled up for Penn State's dynamic backcourt of Lucas and Alex Bentley. Lucas was selected as the Big Ten Player of the Year, was a Wade Trophy Finalist and was an All-America choice by four outlets, including the WBCA (honorable mention), Associated Press (second team), USBWA (first team) and Full Court (second team). She is just the third Lady Lion in program history to win Big Ten Player of the Year honors. Bentley earned her third-straight first team All-Big Ten award and honorable mention All-America bids from the WBCA and Associated Press. She was also selected as the 2013 recipient of the Frances Pomeroy Naismith Award, which is presented to the nation's outstanding female collegian 5-8 and under. Nikki Greene also capped a stellar career for the Lady Lions with third team All-Big Ten accolades. She also became the first player in school history to accumulate 1,000 points, 900 rebounds and 200 blocks.

Both Bentley and Greene heard their names called on WNBA Draft night. Bentley was selected with the 13th overall pick by the Atlanta Dream to become the highest draft pick for the Lady Lions since Tanisha Wright (12th) in 2005. Greene was the 26th overall selection by the Phoenix Mercury.

For her efforts in rebuilding the Penn State program, Washington was honored as the Big Ten Coach of the Year and the WBCA Region 6 Coach of the Year, making her a finalist for WBCA National Coach of the Year. The accolades were not just limited to Washington; all five Lady Lion starters earned All-Big Ten recognition, including first team bids for Bentley and Lucas. Both Bentley and Lucas also garnered honorable mention All-America honors from the WBCA and Associated Press, respectively.

The Lady Lions returned to the national stage in Washington's fourth year with a second-place finish in the Big Ten regular season standings, a runner-up finish in the Big Ten Tournament and a berth in the NCAA Tournament. Penn State

THE WASHINGTON FILE

COACHING RESUME

2007-pres. - Head Coach, Penn State
 2013 - Asst. Coach, USA Basketball World U. Games
 2013-pres. - Vice President/President-Elect, WBCA
 2012-pres. - Kay Yow Cancer Fund Board of Directors
 2011-pres. - NCAA WBB Issues Committee
 2010-13 - Treasurer, WBCA Executive Committee
 2008-pres. - WBCA Board of Directors
 2009-12 - USA Basketball Women's Jr. National Comm.
 2005-07 - Associate Head Coach, Notre Dame
 1999-05 - Assistant Coach, Notre Dame

PLAYING EXPERIENCE

2002-03 - WNBA's Indiana Fever
 2000-02 - WNBA's Houston Comets
 1998-99 - WNBA's New York Liberty
 1997-98 - ABL's Portland Power
 1989-93 - University of Notre Dame

EDUCATION

Notre Dame '92, B.A. History
 Notre Dame Law School '97, Juris Doctorate

AWARDS

- ❖ 2012, 2013, 2014 Big Ten Coach of the Year
- ❖ 2012, 2013 WBCA Region 6 Coach of the Year
- ❖ 2012, 2013 WBCA National Coach of the Year Finalist
- ❖ 2011, 2013 BCA Female Coach of the Year
- ❖ 2009 Greater Flint Hall of Fame Inductee

FAMILY

Husband: Raynell Brown
 Children: Quenton (9), Rhaiyna (5)

Washington vs. Opponents

Albany.....	0-1	Michigan.....	10-3
Alcorn State.....	1-0	Michigan State.....	5-8
Arizona.....	1-0	Middle Tennessee.....	1-0
Army.....	1-0	Minnesota.....	7-7
Boston College.....	0-1	Mississippi.....	1-0
Bucknell.....	6-0	Monmouth.....	1-0
Buffalo.....	1-0	Nebraska.....	3-2
Cal Poly.....	1-0	Nevada.....	1-0
CS-Northridge.....	1-0	NJIT.....	2-0
Charlotte.....	1-0	North Carolina.....	1-0
Connecticut.....	0-4	Notre Dame.....	0-1
Coppin State.....	1-0	Northwestern.....	9-1
Dayton.....	2-1	Oakland.....	2-0
Delaware.....	1-1	Ohio State.....	6-7
DePaul.....	0-1	Old Dominion.....	0-1
Detroit.....	1-0	Oregon State.....	1-0
Drexel.....	2-1	Pittsburgh.....	2-1
Duke.....	1-0	Prairie View A&M.....	1-0
Fair. Dickinson.....	1-0	Purdue.....	4-9
Florida.....	1-0	Rider.....	1-0
Fordham.....	1-0	St. Francis (Pa.).....	1-0
Florida State.....	0-1	South Carolina.....	4-1
Georgetown.....	3-0	South Dakota St.....	1-1
Georgia Tech.....	0-1	Stanford.....	0-1
Hartford.....	2-0	Stony Brook.....	1-0
Hofstra.....	0-1	Syracuse.....	0-1
Holy Cross.....	1-0	Texas A&M.....	2-1
Howard.....	1-0	UTEP.....	1-0
Illinois.....	10-3	Texas Tech.....	1-1
Illinois State.....	1-0	Towson.....	1-0
Indiana.....	7-4	Utah.....	1-0
Iowa.....	7-6	Virginia Tech.....	2-0
Iowa State.....	1-0	Wagner.....	1-0
Lafayette.....	1-0	Washington State.....	1-0
LSU.....	1-1	Wichita State.....	1-0
Maine.....	1-0	Wisconsin.....	6-6
UMES.....	1-0	UW-Green Bay.....	0-1
Miami (Fla.).....	0-1	Xavier.....	0-1

tallied its 23rd 20-win season with a 25-10 overall record and an 11-5 mark in conference play. The Lady Lions worked their way back to the "Big Dance" for the first time since 2004-05.

Washington came to Happy Valley after eight seasons as an associate head coach and assistant coach under Muffet McGraw at Notre Dame, her alma mater. During Washington's eight years on the bench, Notre Dame amassed a 188-69 record with eight NCAA Tournament appearances, including four Sweet Sixteen runs and a National Championship in 2001.

Washington was a four-year starting point guard for Notre Dame under McGraw and was the team captain on Notre Dame's first-ever NCAA Tournament team. She was a two-time All-Midwestern Collegiate Conference (MCC) selection and led Notre Dame to three MCC Tournament titles.

The epitome of a student-athlete, Washington graduated from Notre Dame in 1992, a full year ahead of schedule, with a bachelor's degree in history. She went on to attain "Double Domer" status in 1997 after earning her Juris Doctorate from the Notre Dame Law School.

Washington juggled finishing her law degree with the start of her professional basketball career. She returned to the hardwood as a professional in 1997-98, playing for the ABL's Portland Power before spending a two-year stint with the WNBA's New York Liberty (1998-99). Washington moved to Houston for the 2000 season, where she played an instrumental role in leading the Comets to the WNBA title. Washington guided the Fever to their first-ever playoff berth and became the first player in WNBA history to lead three different teams to the postseason.

In addition to assisting with the efforts of the Pink Zone at Penn State to raise money and awareness for breast cancer, Washington created Coquese's Drive for the Women's Resource Center. Coquese's Drive for the Women's Resource Center has raised more than \$118,000 to aid in the fight against domestic violence.

Washington is currently serving on the 29-member WBCA Board of Directors, where she is the Vice President/President-Elect of the Executive Committee after a three-year stint as Treasurer.

A native of Flint, Mich., Washington and her husband, Raynell Brown, have a son, Quenton (9), and a daughter, Rhaiyna (5). They reside in Port Matilda, Pa.





#1 Candice Agee

Jr. * C * 6-6 * Victorville, Calif./Silverado

Highlights:

- ♦ Ranks 20th in program history in blocked shots per game (0.6 bpg).

2014-15 Season Notes:

- ♦ Blocked three shots and had two steals against Albany (11/16).
- ♦ Nearly posted a double-double with nine points and nine rebounds, which tied her career high, in the season-opening win over Towson (11/14).

Notable:

- ♦ 2012 McDonald's High School All-American.
- ♦ Competed for the United States in the FIBA U19 World Championship (July 2013) and FIBA Americas U18 Championship (August 2012).

14-15 GAME-BY-GAME

OPPONENT	Min.	FG	3FG	FT	O-D-R	PF	A	TO	B	S	Pts
TOWSON	18	3-6	0-0	3-6	4-5-9	1	0	0	0	0	9
ALBANY	19	1-6	0-0	0-0	1-4-5	4	2	1	3	2	4
SETON HALL											
ST. BONAVENTURE											
vs. Liberty											
vs. Georgia State/Samford											
at Syracuse											
WAGNER											
at Hartford											
RIDER											
USF											
at Iowa											
at Michigan											
ILLINOIS											
at Wisconsin											
RUTGERS											
at Nebraska											
at Ohio State											
INDIANA											
NORTHWESTERN											
at Minnesota											
at Rutgers											
MARYLAND											
at Purdue											
MICHIGAN ST.											
MINNESOTA											
at Maryland											
OHIO STATE											
WISCONSIN											

AGEE'S CAREER/SEASON HIGHS

	SEASON HIGHS	CAREER HIGHS
Points	9 vs. Towson (11/14/14)	16 vs. Bucknell (11/20/13)
Rebs.	9 vs. Towson (11/14/14)	9 vs. Towson (11/14/14)
		9 vs. Fairleigh Dickinson (12/2/12)
Assists	2 vs. Albany (11/16/14)	2 vs. Albany (11/16/14)
Steals	2 vs. Albany (11/16/14)	2 vs. Albany (11/16/14)
		2 vs. NJIT (12/23/12)
Blocks	3 vs. Albany (11/16/14)	3 vs. Albany (11/16/14)
		3 vs. Illinois (2/20/13)
Minutes	19 vs. Albany (11/16/14)	21 vs. Bucknell (11/20/13)
FGM	3 vs. Towson (11/14/14)	7 vs. Bucknell (11/20/13)
FGA	6 vs. Albany (11/16/14)	10 vs. Bucknell (11/20/13)
	6 vs. Towson (11/14/14)	
3FGM	n/a	n/a
3FGA	n/a	n/a
FTM	3 vs. Towson (11/14/14)	4 vs. Illinois (2/20/13)
FTA	6 vs. Towson (11/14/14)	8 vs. Illinois (2/20/13)

AGEE'S MISCELLANEOUS STATS

Category	Season	Career	Last Time
Double Figure Scoring	n/a	1	16 vs. Bucknell (11/20/13)
20-point games	n/a	n/a	
Double Figure Rebounds	n/a	n/a	
5-plus Rebounds	2	9	5 vs. Albany (11/16/14)
5-plus Assists	n/a	n/a	
3-plus Blocks	1	2	3 vs. Albany (11/16/14)
Double-Doubles	n/a	n/a	

AGEE'S CAREER STATS

Year	GP-GS	MIN	FG-A	PCT	3FG-A	PCT	FT-A	PCT	REB	AVG	PF-O	A	TO	B	S	PTS	AVG
2012-13	26-0	204	20-54	.370	0-0	.000	11-20	.550	17-31-48	1.8	33-0	2	13	13	4	51	2.0
2013-14	32-3	330	34-84	.405	0-0	.000	31-61	.508	31-43-74	2.3	54-1	8	28	21	4	99	3.1
2014-15	2-0	37	4-12	.333	0-0	.000	3-6	.500	5-9-14	7.0	5-0	2	1	3	2	11	5.5
TOTAL	60-3	571	58-150	.387	0-0	.000	45-87	.517	53-83-136	2.3	92-1	12	42	37	10	161	2.7





#3 Brianna Banks

RS-Sr. * G * 5-9 * Newnan, Ga./Fayette County (Connecticut)

2014-15 Season:

- Will sit out the 2014-15 season due to NCAA Transfer Rules after transferring from Connecticut.
- Has one year of eligibility remaining.

2013-14 Season (at Connecticut):

- Started eight-straight games (November 20 - December 22).
- Dished out five assists to go with four points and three steals against UCF (2/19).
- Notched three steals to compliment four points, three assists and five rebounds at Cincinnati (2/1).
- Registered seven points three assists and three steals at UCF (1/1).
- Connected on three of her four shots from the field en route to eight points, five rebounds, four assists and three steals against UC Davis (12/5).
- Had a season-high 12 points with a career-best seven rebounds in the win over Ohio State (12/1).
- Was 4-for-5 from the field, including 3-for-3 from three-point range, on the way to 12 points against Monmouth (11/23).
- Chipped in with 10 points on 4-6 shooting in a season-high 31-minutes of action against Oregon (11/20).
- Had nine points and three rebounds at #8/7 Maryland (11/15).

2012-13 Season (at Connecticut):

- Finished sixth on the team in scoring (7.3).
- Had 12 points to go along with four rebounds at Marquette (1/12).
- Tallied 18 points on 8-of-13 shooting and pulled in six rebounds against Oakland (12/19).
- Registered 10 points and two steals against #10/10 Penn State (12/6).
- Connected on three of her four three-point attempts en route to 11 points against #9/10 Maryland (12/3).
- Had a career-high 20 points thanks to a 6-for-10 shooting night, including a 4-for-5 effort from beyond the arc, against Colgate (11/28).
- Had a balanced statistical night with 12 points, six assists, two rebounds and a steal with only one turnover in 20 minutes against Wake Forest (11/22).
- Opened the season with a perfect 5-for-5 shooting night for 10 points against Charleston (11/11).

2011-12 Season (at Connecticut):

- Shot 50.5 percent from the field.
- Hit on all three of her shots from the field en route to eight points with four assists and two steals at Marquette (2/25).
- Was 5-for-5 from the field and finished with 12 points, two rebounds and two steals against Fairfield (12/29).
- Collected 17 points via a 7-for-10 shooting effort and 3-for-3 night at the free throw line against Fairleigh Dickinson (11/25).
- Tallied 12 points thanks to a 5-for-7 shooting night against Pacific (11/15).

High School:

- Averaged 16.2 points, 5.5 rebounds, 5.1 assists and 5.0 steals per game in her final season at Fayette County High School, which ended in a State Championship.
- Honored as a 2011 McDonald's All-American and WBCA Honorable Mention All-American in addition to being named "Miss Basketball" in the state of Georgia.
- Honored as the Fayette County Player of the Year by the *Fayette County News* and selected to the All-State first team in 2011.
- Led the West Team with 17 points on 7-of-12 shooting in the 2011 McDonald's All-American Game.
- Was a second team All-State selection and the Coweta County Player of the year during her junior season.
- Rated as the No. 24 overall recruit by ESPN Hoopgurlz and the No. 15 overall prospect by the All-Star Girls Report.
- Tabbed as the No. 11 recruit nationally by Blue Star.
- Honored as a first team All-Metro selection by the *Atlanta Journal-Constitution* in 2009-10.
- Selected as the 2010 Coweta County Player of the Year by the *Times-Herald*.

BANKS' CAREER STATS

Year	GP-GS	MIN	FG-A	PCT	3FG-A	PCT	FT-A	PCT	REB	AVG	PF-O	A	TO	B	S	PTS	AVG
2011-12*	32-0	393	46-91	.505	3-24	.125	19-27	.704	5-30-35	1.1	27-0	32	31	3	25	114	3.6
2012-13*	21-0	359	56-117	.479	18-52	.346	23-33	.697	6-30-36	1.7	22-0	35	22	4	25	153	7.3
2013-14*	37-8	527	49-103	.476	13-44	.295	19-29	.655	20-37-57	1.5	42-1	45	27	6	34	130	3.5
CAREER	90-8	1279	151-311	.486	34-120	.283	61-89	.685	31-97-128	1.4	91-1	112	80	13	84	397	4.4

* - at Connecticut





#5 Sierra Moore

RS-So. * G * 5-11 * Hanover, Pa./Delone Catholic (Duke)

Highlights:

- ♦ Sat out the 2013-14 season due to NCAA Transfer Rules.
- ♦ Selected as a team tri-captain.

2014-15 Season Notes:

- ♦ Tallied eight points to go along with three rebounds, three assists and a steal versus Albany (11/16).
- ♦ Filled the stats sheet with 12 points, five rebounds, four assists, two blocks and a steal in the win over Towson (11/14).
- ♦ Scored 15 of her team-best 18 points over the final 11:44 of the contest to propel the Lady Lions to an exhibition win over IUP (11/2).

Notable:

- ♦ Appeared in 25 games as a freshman at Duke.
- ♦ Garnered Gatorade Player of the Year and Associated Press Class AA Player of the Year honors in the state of Pennsylvania as a high school senior year.
- ♦ Was a McDonald's High School All-American in 2011-12.
- ♦ Holds the York-Adams Interscholastic Athletic Association (YAIAA) scoring record with 2,595 points at Delone Catholic.
- ♦ Was also a track standout, finishing in the Top 10 in the State Championships in the 200-meters (7th in 2009 and 2010) and 4x100 relay (4th in 2009).

14-15 GAME-BY-GAME

OPPONENT	Min.	FG	3FG	FT	O-D-R	PF	A	TO	B	S	Pts
TOWSON	39	5-12	1-1	1-3	1-4-5	0	4	4	2	1	12
ALBANY	30	4-8	0-0	0-1	2-1-3	4	3	4	1	1	8
SETON HALL											
ST. BONAVENTURE											
vs. Liberty											
vs. Georgia State/Samford											
at Syracuse											
WAGNER											
at Hartford											
RIDER											
USF											
at Iowa											
at Michigan											
ILLINOIS											
at Wisconsin											
RUTGERS											
at Nebraska											
at Ohio State											
INDIANA											
NORTHWESTERN											
at Minnesota											
at Rutgers											
MARYLAND											
at Purdue											
MICHIGAN ST.											
MINNESOTA											
at Maryland											
OHIO STATE											
WISCONSIN											

MOORE'S CAREER/SEASON HIGHS		
	SEASON HIGHS	CAREER HIGHS
Points	12 vs. Towson (11/14/14)	12 vs. Towson (11/14/14)
Rebs.	5 vs. Towson (11/14/14)	5 vs. Towson (11/14/14) 5 vs. Iona (11/18/12)
Assists	4 vs. Towson (11/14/14)	4 vs. Towson (11/14/14)
Steals	1 vs. Albany (11/16/14) 1 vs. Towson (11/14/14)	3 vs. Iona (11/18/12)
Blocks	2 vs. Towson (11/14/14)	2 vs. Towson (11/14/14)
Minutes	39 vs. Towson (11/14/14)	39 vs. Towson (11/14/14)
FGM	5 vs. Towson (11/14/14)	5 vs. Towson (11/14/14)
FGA	12 vs. Towson (11/14/14)	12 vs. Towson (11/14/14)
3FGM	1 vs. Towson (11/14/14)	1 vs. Towson (11/14/14)
3FGA	1 vs. Towson (11/14/14)	1 vs. Towson (11/14/14)
FTM	1 vs. Towson (11/14/14)	4 vs. CSU-Bakersfield (12/21/13)
FTA	3 vs. Towson (11/14/14)	6 vs. CSU-Bakersfield (12/21/13)

italics indicate at Duke

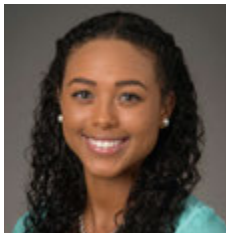
MOORE'S MISCELLANEOUS STATS			
Category	Season	Career	Last Time
Double Figure Scoring	1	2	12 vs. Towson (11/14/14)
20-point games	n/a	n/a	
Double Figure Rebounds	n/a	n/a	
5-plus Rebounds	1	2	5 vs. Towson (11/14/14)
5-plus Assists	n/a	n/a	
3-plus Steals	n/a	1	3 vs. Iona (11/18/12)
Double-Doubles	n/a	n/a	

MOORE'S CAREER STATS

Year	GP-GS	MIN	FG-A	PCT	3FG-A	PCT	FT-A	PCT	REB	AVG	PF-O	A	TO	B	S	PTS	AVG
2012-13*	25-0	194	26-58	.448	0-0	.000	11-22	.500	11-13-24	1.0	21-0	12	6	2	11	63	2.5
2014-15	2-2	69	9-20	.450	1-1	1.000	1-4	.250	3-5-8	4.0	4-0	7	8	3	2	20	10.0
PSU	2-2	69	9-20	.450	1-1	1.000	1-4	.250	3-5-8	4.0	4-0	7	8	3	2	20	10.0
CAREER	27-2	263	35-78	.449	1-1	1.000	12-26	.462	14-18-32	1.2	25-0	19	14	5	13	83	3.1

* - at Duke





#10 Keke Sevillian

So. * G * 5-7 * Goodrich, Mich./Goodrich

2014-15 Season Notes:

- Knocked down a pair of three-pointers and dished out a career-high five assists in the season-opener against Towson (11/14).
- Tallied four points, four rebounds, three assists and three steals in the exhibition win over IUP (11/2).

Notable:

- Led Goodrich High School in Michigan to its first-ever Class B State Championship in 2011-12 with a perfect 28-0 record.
- Holds the Goodrich High School record in the 300-meter hurdles and 200-meter dash and finished second in the state championships in the 300-meters hurdles her freshman and sophomore seasons.
- Father, Clarence, was a wide receiver for the Vanderbilt football team from 1989-92 and ranks in the school's Top 10 in career receiving yards.
- Aunt, Nicole Hendrix, played basketball at Stanford from 1991-94, winning a National Championship in 1992.

14-15 GAME-BY-GAME

OPPONENT	Min.	FG	3FG	FT	O-D-R	PF	A	TO	B	S	Pts
TOWSON	19	2-6	2-5	0-1	0-1-1	2	5	0	0	0	6
ALBANY	13	0-5	0-3	0-0	0-0-0	4	1	1	0	2	0
SETON HALL											
ST. BONAVENTURE											
vs. Liberty											
vs. Georgia State/Samford											
at Syracuse											
WAGNER											
at Hartford											
RIDER											
USF											
at Iowa											
at Michigan											
ILLINOIS											
at Wisconsin											
RUTGERS											
at Nebraska											
at Ohio State											
INDIANA											
NORTHWESTERN											
at Minnesota											
at Rutgers											
MARYLAND											
at Purdue											
MICHIGAN ST.											
MINNESOTA											
at Maryland											
OHIO STATE											
WISCONSIN											

SEVILLIAN'S CAREER/SEASON HIGHS

	SEASON HIGHS	CAREER HIGHS
Points	6 vs. Towson (11/14)	8 vs. St. Francis (Pa.) (11/8/13)
Rebs.	1 vs. Towson (11/14)	3 vs. St. Francis (Pa.) (11/8/13)
Assists	5 vs. Towson (11/14)	5 vs. Towson (11/14)
Steals	2 vs. Albany (11/16)	4 vs. St. Francis (Pa.) (11/8/13)
Blocks	n/a	n/a
Minutes	19 vs. Towson (11/14)	19 vs. Towson (11/14)
FGM	2 vs. Towson (11/14)	2 (3x) last vs. Towson (11/14)
FGA	6 vs. Towson (11/14)	6 vs. Towson (11/14) 6 vs. St. Francis (Pa.) (11/8/13)
3FGM	2 vs. Towson (11/14)	2 vs. Towson (11/14)
3FGA	5 vs. Towson (11/14)	5 vs. Towson (11/14)
FTM	n/a	4 vs. St. Francis (Pa.) (11/8/13)
FTA	1 vs. Towson (11/14)	4 vs. St. Francis (Pa.) (11/8/13)

SEVILLIAN'S MISCELLANEOUS STATS

Category	Season	Career	Last Time
Double Figure Scoring	n/a	n/a	
20-point games	n/a	n/a	
Double Figure Rebounds	n/a	n/a	
5-plus Rebounds	n/a	n/a	
5-plus Assists	1	1	5 vs. Towson (11/14)
3-plus Steals	n/a	n/a	
Double-Doubles	n/a	n/a	

SEVILLIAN'S CAREER STATS

Year	GP-GS	MIN	FG-A	PCT	3FG-A	PCT	FT-A	PCT	REB	AVG	PF-O	A	TO	B	S	PTS	AVG
2013-14	22-0	120	8-28	.286	4-13	.308	11-13	.846	1-11-12	0.5	19-0	5	15	0	8	31	1.4
2014-15	2-0	32	2-11	.182	2-8	.250	0-1	.000	0-1-1	0.5	6-0	6	1	0	2	6	3.0
TOTAL	24-0	152	10-39	.256	6-21	.286	11-14	.786	1-12-13	0.5	25-0	11	16	0	10	37	1.5

10-Time Big Ten Champions • Two-Time Big Ten Tournament Champions • 2000 NCAA Final Four • 25 NCAA Tournament Appearances





#11 Alex Harris

So. * F * 6-3 * Lorain, Ohio/Lorain

Notable:

- ♦ Appeared in 29 contests as a freshman.
- ♦ Had three double-digit rebounding performances as a freshman and 10 outings with five or more rebounds.
- ♦ Collegiate Girls Basketball Report and All-Star Girls Report both rated her as the 49th-ranked recruit .
- ♦ Named 2012-13 Division 1 Lorain County Player of the Year.

14-15 GAME-BY-GAME

OPPONENT	Min.	FG	3FG	FT	O-D-R	PF	A	TO	B	S	Pts
TOWSON											DNP
ALBANY											DNP
SETON HALL											
ST. BONAVENTURE											
vs. Liberty											
vs. Georgia State/Samford											
at Syracuse											
WAGNER											
at Hartford											
RIDER											
USF											
at Iowa											
at Michigan											
ILLINOIS											
at Wisconsin											
RUTGERS											
at Nebraska											
at Ohio State											
INDIANA											
NORTHWESTERN											
at Minnesota											
at Rutgers											
MARYLAND											
at Purdue											
MICHIGAN ST.											
MINNESOTA											
at Maryland											
OHIO STATE											
WISCONSIN											

HARRIS' CAREER/SEASON HIGHS

	SEASON HIGHS	CAREER HIGHS
Points	n/a	8 vs. Bucknell (11/20/13)
Rebs.	n/a	11 vs. Illinois State (11/30/13)
		11 vs. Bucknell (11/20/13)
Assists	n/a	2 vs. Illinois State (11/30/13)
Steals	n/a	1 (6x) last at Indiana (2/13/14)
Blocks	n/a	3 at Purdue (1/30/14)
		3 vs. St. Francis (Pa.) (11/8/13)
Minutes	n/a	22 vs. Fordham (11/10/13)
FGM	n/a	3 vs. Bucknell (11/20/13)
FGA	n/a	5 vs. Purdue (1/12/14)
		5 vs. Oregon State (11/29/13)
3FGM	n/a	n/a
3FGA	n/a	n/a
FTM	n/a	2 (5x) last vs. Notre Dame (12/4/13)
FTA	n/a	5 vs. Bucknell (11/20/13)

HARRIS' MISCELLANEOUS STATS

Category	Season	Career	Last Time
Double Figure Scoring	n/a	n/a	
20-point games	n/a	n/a	
Double Figure Rebounds	n/a	3	11 vs. Illinois State (11/30/13)
5-plus Rebounds	n/a	10	5 vs. Minnesota (1/26/14)
5-plus Blocks	n/a	n/a	
3-plus Blocks	n/a	1	3 at Purdue (1/30/14)
Double-Doubles	n/a	n/a	

HARRIS' CAREER STATS

Year	GP-GS	MIN	FG-A	PCT	3FG-A	PCT	FT-A	PCT	REB	AVG	PF-O	A	TO	B	S	PTS	AVG
2013-14	29-0	256	20-50	.400	0-0	.000	17-34	.500	39-57-96	3.3	33-0	5	19	15	6	57	2.0
CAREER	29-0	256	20-50	.400	0-0	.000	17-34	.500	39-57-96	3.3	33-0	5	19	15	6	57	2.0





#12 Lindsey Spann

RS-Fr. * G * 5-6 * Laurel, Md./Good Counsel

Highlights:

- ♦ Missed the 2013-14 season after tearing her right ACL.
- ♦ Selected as a team tri-captain.

2014-15 Season Notes:

- ♦ Led the Lady Lions in scoring for the second straight game with 14 points against Albany (11/16), marking the first time a freshman has been the team's leading scorer in two straight games since Maggie Lucas did so vs. Minnesota (1/13/11) and vs. Illinois (1/16/11).
- ♦ Went 7-for-14 from the field for a team-high 17 points in her collegiate debut against Towson (11/14).
- ♦ Also tallied five rebounds and four assists against the Tigers.
- ♦ Recorded 14 points and dished out four assists in the exhibition win over IUP (11/2).

Notable:

- ♦ Ranked as the 22nd-best player by Collegiate Girls Basketball Report and 88th-rated player by Blue Star Basketball.
- ♦ Guided Good Counsel to a 25-5 overall record and 16-3 mark in league play.
- ♦ Participated in USA Basketball's U16 Trials in May 2011.

14-15 GAME-BY-GAME

OPPONENT	Min.	FG	3FG	FT	O-D-R	PF	A	TO	B	S	Pts
TOWSON	32	7-14	0-2	3-4	0-5-5	2	4	4	0	0	17
ALBANY	31	6-12	1-3	1-2	0-1-1	3	4	3	0	0	14
SETON HALL											
ST. BONAVENTURE											
vs. Liberty											
vs. Georgia State/Samford											
at Syracuse											
WAGNER											
at Hartford											
RIDER											
USF											
at Iowa											
at Michigan											
ILLINOIS											
at Wisconsin											
RUTGERS											
at Nebraska											
at Ohio State											
INDIANA											
NORTHWESTERN											
at Minnesota											
at Rutgers											
MARYLAND											
at Purdue											
MICHIGAN ST.											
MINNESOTA											
at Maryland											
OHIO STATE											
WISCONSIN											

SPANN'S CAREER/SEASON HIGHS			
	SEASON HIGHS	CAREER HIGHS	
Points	17 vs. Towson (11/14/14)	17 vs. Towson (11/14/14)	
Rebs.	5 vs. Towson (11/14/14)	5 vs. Towson (11/14/14)	
Assists	4 vs. Albany (11/16/14)	4 vs. Albany (11/16/14)	
	4 vs. Towson (11/14/14)	4 vs. Towson (11/14/14)	
Steals	n/a	n/a	
Blocks	n/a	n/a	
Minutes	32 vs. Towson (11/14/14)	32 vs. Towson (11/14/14)	
FGM	7 vs. Towson (11/14/14)	7 vs. Towson (11/14/14)	
FGA	14 vs. Towson (11/14/14)	14 vs. Towson (11/14/14)	
3FGM	1 vs. Albany (11/16/14)	1 vs. Albany (11/16/14)	
3FGA	3 vs. Albany (11/16/14)	3 vs. Albany (11/16/14)	
FTM	3 vs. Towson (11/14/14)	3 vs. Towson (11/14/14)	
FTA	4 vs. Towson (11/14/14)	4 vs. Towson (11/14/14)	

SPANN'S MISCELLANEOUS STATS			
Category	Season	Career	Last Time
Double Figure Scoring	2	2	14 vs. Albany (11/16/14)
20-point games	n/a	n/a	
Double Figure Rebounds	n/a	n/a	
5-plus Rebounds	1	1	5 vs. Towson (11/14/14)
5-plus Assists	n/a	n/a	
3-plus Steals	n/a	n/a	
Double-Doubles	n/a	n/a	

SPANN'S CAREER STATS																	
Year	GP-GS	MIN	FG-A	PCT	3FG-A	PCT	FT-A	PCT	REB	AVG	PF-O	A	TO	B	S	PTS	AVG
2014-15	2-2	63	13-26	.500	1-5	.200	4-6	.667	0-6-6	3.0	5-0	8	7	0	0	31	15.5
TOTAL	2-2	63	13-26	.500	1-5	.200	4-6	.667	0-6-6	3.0	5-0	8	7	0	0	31	15.5

10-Time Big Ten Champions • Two-Time Big Ten Tournament Champions • 2000 NCAA Final Four • 25 NCAA Tournament Appearances





#14 Dominique Brooks

Jr. * C * 6-4 * Lansing, Ill./T.F. South (Trinity Valley C.C.)

2014-15 Season Notes:

- ♦ Hit a pair of free throws in her Penn State debut in the win over Towson (11/14)
- ♦ Had four rebounds and a blocked shot in the exhibition win against IUP (11/2).

Notable:

- ♦ Won two NJCAA National Championships while at Trinity Valley Community College.
- ♦ Participated in USA Basketball U18 Trials in 2012

14-15 GAME-BY-GAME

OPPONENT	Min.	FG	3FG	FT	O-D-R	PF	A	TO	B	S	Pts
TOWSON	3	0-0	0-0	2-2	0-0-0	1	0	0	0	0	2
ALBANY	2	0-0	0-0	0-0	0-0-0	1	0	1	0	0	0
SETON HALL											
ST. BONAVENTURE											
vs. Liberty											
vs. Georgia State/Samford											
at Syracuse											
WAGNER											
at Hartford											
RIDER											
USF											
at Iowa											
at Michigan											
ILLINOIS											
at Wisconsin											
RUTGERS											
at Nebraska											
at Ohio State											
INDIANA											
NORTHWESTERN											
at Minnesota											
at Rutgers											
MARYLAND											
at Purdue											
MICHIGAN ST.											
MINNESOTA											
at Maryland											
OHIO STATE											
WISCONSIN											

BROOKS' CAREER/SEASON HIGHS

	SEASON HIGHS	CAREER HIGHS
Points	2 vs. Towson (11/14/14)	2 vs. Towson (11/14/14)
Rebs.	n/a	n/a
Assists	n/a	n/a
Steals	n/a	n/a
Blocks	n/a	n/a
Minutes	3 vs. Towson (11/14/14)	3 vs. Towson (11/14/14)
FGM	n/a	n/a
FGA	n/a	n/a
3FGM	n/a	n/a
3FGA	n/a	n/a
FTM	2 vs. Towson (11/14/14)	2 vs. Towson (11/14/14)
FTA	2 vs. Towson (11/14/14)	2 vs. Towson (11/14/14)

BROOKS' MISCELLANEOUS STATS

Category	Season	Career	Last Time
Double Figure Scoring	n/a	n/a	
20-point games	n/a	n/a	
Double Figure Rebounds	n/a	n/a	
5-plus Rebounds	n/a	n/a	
5-plus Assists	n/a	n/a	
3-plus Steals	n/a	n/a	
Double-Doubles	n/a	n/a	

BROOKS' CAREER STATS

Year	GP-GS	MIN	FG-A	PCT	3FG-A	PCT	FT-A	PCT	REB	AVG	PF-O	A	TO	B	S	PTS	AVG
2014-15	2-0	5	0-0	.000	0-0	.000	2-2	1.000	0-0-0	0.0	2-0	0	1	0	0	2	1.0
TOTAL	2-0	5	0-0	.000	0-0	.000	2-2	1.000	0-0-0	0.0	2-0	0	1	0	0	2	1.0





#15 Kaliyah Mitchell

So. * F * 6-2 * Stone Mountain, Ga./Stephenson

Highlights:

- ♦ Second-leading returning scorer and rebounder from 2013-14.
- ♦ Made 16-straight free throw attempts from 2/20/14 until 11/14/14.

2014-15 Season Notes:

- ♦ Chipped in nine points, six rebounds and tied her career high with four steals against Albany (11/16).
- ♦ Accounted for 10 points and a team-best three steals against Towson (11/14).
- ♦ Posted a near double-double with 12 points, nine rebounds and three steals in the exhibition win versus IUP (11/2).

Notable:

- ♦ Was the 54th-ranked recruit by Collegiate Girls Basketball Report and 40th-ranked recruit by All-Star Girls Report.
- ♦ Brother, Kenny, was an all-conference basketball player at Virginia State University.

14-15 GAME-BY-GAME

OPPONENT	Min.	FG	3FG	FT	O-D-R	PF	A	TO	B	S	Pts
TOWSON	25	3-8	0-2	4-6	2-3-4	4	0	3	0	3	10
ALBANY	30	2-7	1-2	4-5	1-5-6	4	0	5	0	4	9
SETON HALL											
ST. BONAVENTURE											
vs. Liberty											
vs. Georgia State/Samford											
at Syracuse											
WAGNER											
at Hartford											
RIDER											
USF											
at Iowa											
at Michigan											
ILLINOIS											
at Wisconsin											
RUTGERS											
at Nebraska											
at Ohio State											
INDIANA											
NORTHWESTERN											
at Minnesota											
at Rutgers											
MARYLAND											
at Purdue											
MICHIGAN ST.											
MINNESOTA											
at Maryland											
OHIO STATE											
WISCONSIN											

MITCHELL'S CAREER/SEASON HIGHS

	SEASON HIGHS	CAREER HIGHS
Points	10 vs. Towson (11/14/14)	14 vs. Bucknell (11/20/13)
Rebs.	6 vs. Albany (11/16/14)	10 at Michigan State (1/19/14)
Assists	n/a	2 (6x) last vs. Florida (3/25/14)
Steals	4 vs. Albany (11/16/14)	4 vs. Albany (11/16/14) 4 vs. Florida (3/25/14)
Blocks	n/a	2 at Iowa (1/5/14)
Minutes	30 vs. Albany (11/16/14)	30 vs. Albany (11/16/14)
FGM	3 vs. Towson (11/14/14)	5 vs. St. Francis (Pa.) (11/8/13)
FGA	8 vs. Towson (11/14/14)	8 (3x) last vs. Towson (11/14/14)
3FGM	1 vs. Albany (11/16/14)	1 vs. Albany (11/16/14) 1 vs. Illinois State (11/30/13)
3FGA	2 vs. Albany (11/16/14) 2 vs. Towson (11/14/14)	3 at Nebraska (2/24/14)
FTM	4 vs. Albany (11/16/14) 4 vs. Towson (11/14/14)	7 vs. Northwestern (2/20/14)
FTA	6 vs. Towson (11/14/14)	7 (3x) last vs. Northwestern (2/20/14)

MITCHELL'S MISCELLANEOUS STATS

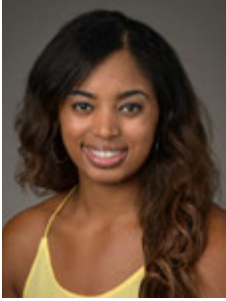
Category	Season	Career	Last Time
Double Figure Scoring	1	3	10 vs. Towson (11/14/14)
20-point games	n/a	n/a	
Double Figure Rebounds	n/a	1	10 at Michigan State (1/19/14)
5-plus Rebounds	n/a	13	7 vs. Ohio State (3/7/14)
5-plus Assists	n/a	n/a	
3-plus Steals	2	4	4 vs. Albany (11/14/15)
Double-Doubles	n/a	n/a	

MITCHELL'S CAREER STATS

Year	GP-GS	MIN	FG-A	PCT	3FG-A	PCT	FT-A	PCT	REB	AVG	PF-O	A	TO	B	S	PTS	AVG
2013-14	32-0	546	41-114	.360	1-14	.071	61-83	.735	40-100-140	4.4	64-2	28	26	5	20	144	4.5
2014-15	2-2	55	5-15	.333	1-4	.250	8-11	.727	2-7-9	4.5	8-0	0	8	0	7	19	9.5
TOTAL	34-2	601	46-129	.357	2-18	.111	69-94	.734	42-107-149	4.4	72-2	28	34	5	27	163	4.8

10-Time Big Ten Champions • Two-Time Big Ten Tournament Champions • 2000 NCAA Final Four • 25 NCAA Tournament Appearances





#25 Peyton Whitted

So. * F * 6-3 * Suwanee, Ga./North Gwinnett

2014-15 Season Notes:

- ♦ Grabbed nine rebounds with four points and two assists in the win over Towson (11/14).
- ♦ Pulled in 10 rebounds to go along with eight points and five assists in the exhibition win over IUP (11/2).

Notable:

- ♦ Led North Gwinnett to the Georgia State Championship game after averaging 13.7 points, 5.7 rebounds, 1.4 steals and 2.0 assists per game as a senior.
- ♦ Participated in USA Basketball's U16 Trials in May 2011.
- ♦ Father, Kevin, played basketball at Tennessee from 1993-95.
- ♦ Kevin is currently the head coach of the NBA D-League's Westchester Knicks.
- ♦ Kevin broke Michael Jordan's Laney High School scoring record with 1,554 points.

14-15 GAME-BY-GAME

OPPONENT	Min.	FG	3FG	FT	O-D-R	PF	A	TO	B	S	Pts
TOWSON	23	2-5	0-0	0-0	3-6-9	3	2	3	0	1	4
ALBANY	19	1-5	0-1	0-1	1-3-4	4	1	3	0	1	2
SETON HALL											
ST. BONAVENTURE											
vs. Liberty											
vs. Georgia State/Samford											
at Syracuse											
WAGNER											
at Hartford											
RIDER											
USF											
at Iowa											
at Michigan											
ILLINOIS											
at Wisconsin											
RUTGERS											
at Nebraska											
at Ohio State											
INDIANA											
NORTHWESTERN											
at Minnesota											
at Rutgers											
MARYLAND											
at Purdue											
MICHIGAN ST.											
MINNESOTA											
at Maryland											
OHIO STATE											
WISCONSIN											

WHITTED'S CAREER/SEASON HIGHS

	SEASON HIGHS	CAREER HIGHS
Points	4 vs. Towson (11/14/14)	11 at Northwestern (2/2/14)
Rebs.	9 vs. Towson (11/14/14)	10 at Illinois (1/9/14)
Assists	2 vs. Towson (11/14/14)	2 (3x) last vs. Towson (11/14/14)
Steals	1 vs. Albany (11/16/14) 1 vs. Towson (11/14/14)	2 (3x) last vs. Ohio State (3/7/14)
Blocks	n/a	3 at South Dakota St. (12/11/13)
Minutes	23 vs. Towson (11/14/14)	24 at Illinois (1/9/14)
FGM	2 vs. Towson (11/14/14)	5 at Northwestern (2/2/14)
FGA	5 vs. Albany (11/16/14) 5 vs. Towson (11/14/14)	7 vs. Alcorn State (12/22/13)
3FGM	n/a	1 vs. Ohio State (3/7/14)
3FGA	1 vs. Albany (11/16/14)	3 vs. Bucknell (11/20/13)
FTM	1 vs. Towson (11/14/14)	5 at Illinois (1/9/14)
FTA	2 vs. Towson (11/14/14)	5 at Illinois (1/9/14)

WHITTED'S MISCELLANEOUS STATS

Category	Season	Career	Last Time
Double Figure Scoring	n/a	1	11 at Northwestern (2/2/14)
20-point games	n/a	n/a	
Double Figure Rebounds	n/a	1	10 at Illinois (1/9/14)
5-plus Rebounds	1	6	9 vs. Towson (11/14/14)
5-plus Assists	n/a	n/a	
3-plus Steals	n/a	n/a	
Double-Doubles	n/a	n/a	

WHITTED'S CAREER STATS

Year	GP-GS	MIN	FG-A	PCT	3FG-A	PCT	FT-A	PCT	REB	AVG	PF-O	A	TO	B	S	PTS	AVG
2013-14	31-0	344	37-80	.463	1-17	.059	16-23	.696	35-53-88	2.8	58-0	8	26	5	12	91	2.9
2014-15	2-2	42	3-10	.300	0-1	.000	0-1	.000	4-9-13	6.5	7-0	3	6	0	2	6	3.0
TOTAL	33-2	386	40-90	.444	1-18	.056	16-24	.667	39-62-101	3.1	65-0	11	32	5	14	97	2.9





#34 Molly Dincher

Sr. * G/F * 6-0 * Williamsport, Pa./Williamsport Area (Penn State Wilkes-Barre)

Highlights:

- ♦ Added to the Lady Lion roster as a walk-on on November 14.
- ♦ Served as a Lady Lion manager for a year and a half.

Notable:

- ♦ Dincher played at Penn State Wilkes-Barre for two seasons where she helped the Mountain Lions to the 2011-12 PSUAC North Division Championship.
- ♦ She averaged 7.3 points and 8.6 rebounds that season for Wilkes-Barre, her final season for the Mountain Lions.
- ♦ She also rejected 33 shots and had 27 assists in 21 appearances that included 16 starts.
- ♦ As a freshman at Wilke-Barre, Dincher finished seventh in the United States Collegiate Athletic Associations USCAA) in blocked shots, averaging 1.5 per game.
- ♦ Since coming to University Park, Dincher played for the Penn State women's club basketball team that took second in the National Championships in 2012-13.
- ♦ She also served as a manager for the Lady Lions for the last year and a half.
- ♦ A three-year letterwinner, Dincher played her high school basketball at Williamsport Area High School. In her final season, the Millionaires were 12-8.

14-15 GAME-BY-GAME

OPPONENT	Min.	FG	3FG	FT	O-D-R	PF	A	TO	B	S	Pts
TOWSON		DNP									
ALBANY		DNP									
SETON HALL											
ST. BONAVENTURE											
vs. Liberty											
vs. Georgia State/Samford											
at Syracuse											
WAGNER											
at Hartford											
RIDER											
USF											
at Iowa											
at Michigan											
ILLINOIS											
at Wisconsin											
RUTGERS											
at Nebraska											
at Ohio State											
INDIANA											
NORTHWESTERN											
at Minnesota											
at Rutgers											
MARYLAND											
at Purdue											
MICHIGAN ST.											
MINNESOTA											
at Maryland											
OHIO STATE											
WISCONSIN											

DINCHER'S CAREER/SEASON HIGHS

	SEASON HIGHS	CAREER HIGHS
Points	n/a	n/a
Rebs.	n/a	n/a
Assists	n/a	n/a
Steals	n/a	n/a
Blocks	n/a	n/a
Minutes	n/a	n/a
FGM	n/a	n/a
FGA	n/a	n/a
3FGM	n/a	n/a
3FGA	n/a	n/a
FTM	n/a	n/a
FTA	n/a	n/a

DINCHER'S MISCELLANEOUS STATS

Category	Season	Career	Last Time
Double Figure Scoring	n/a	n/a	
20-point games	n/a	n/a	
Double Figure Rebounds	n/a	n/a	
5-plus Rebounds	n/a	n/a	
5-plus Assists	n/a	n/a	
3-plus Steals	n/a	n/a	
Double-Doubles	n/a	n/a	

10-Time Big Ten Champions • Two-Time Big Ten Tournament Champions • 2000 NCAA Final Four • 25 NCAA Tournament Appearances





#41 Jenny DeGraaf

So. * F * 6-1 * Springboro, Ohio/Springboro

2014-15 Season Notes:

- ♦ Connected on all four of her three-point attempts en route to a career-high 12 points in a personal-best 22 minutes against Albany (11/16).
- ♦ Hit 4-of-5 shots from the field, including two attempts from long range, en route to 11 points in the exhibition against IUP (11/2).

Notable:

- ♦ Set the Springboro High School single-season record for free throws made with 121, including 25 consecutive makes from the charity stripe in 2013.

14-15 GAME-BY-GAME

OPPONENT	Min.	FG	3FG	FT	O-D-R	PF	A	TO	B	S	Pts
TOWSON	15	0-2	0-2	0-0	0-3-3	1	0	0	0	1	0
ALBANY	22	4-4	4-4	0-0	0-0-0	1	0	1	0	0	12
SETON HALL											
ST. BONAVENTURE											
vs. Liberty											
vs. Georgia State/Samford											
at Syracuse											
WAGNER											
at Hartford											
RIDER											
USF											
at Iowa											
at Michigan											
ILLINOIS											
at Wisconsin											
RUTGERS											
at Nebraska											
at Ohio State											
INDIANA											
NORTHWESTERN											
at Minnesota											
at Rutgers											
MARYLAND											
at Purdue											
MICHIGAN ST.											
MINNESOTA											
at Maryland											
OHIO STATE											
WISCONSIN											

DeGRAAF'S CAREER/SEASON HIGHS

	SEASON HIGHS	CAREER HIGHS
Points	12 vs. Albany (11/16/14)	12 vs. Albany (11/16/14)
Rebs.	3 vs. Towson (11/14/14)	3 vs. Towson (11/14/14)
Assists	n/a	2 (2x) last vs. Bucknell (11/20/13)
Steals	n/a	1 vs. Alcorn State (12/22/13)
Blocks	n/a	n/a
Minutes	22 vs. Albany (11/16/14)	22 vs. Albany (11/16/14)
FGM	4 vs. Albany (11/16/14)	4 vs. Albany (11/16/14)
FGA	4 vs. Albany (11/16/14)	4 vs. Albany (11/16/14) 4 vs. Minnesota (1/26/14)
3FGM	4 vs. Albany (11/16/14)	4 vs. Albany (11/16/14)
3FGA	4 vs. Albany (11/16/14)	4 vs. Albany (11/16/14)
FTM	n/a	n/a
FTA	n/a	n/a

DeGRAAF'S MISCELLANEOUS STATS

Category	Season	Career	Last Time
Double Figure Scoring	1	1	12 vs. Albany (11/16/14)
20-point games	n/a	n/a	
Double Figure Rebounds	n/a	n/a	
5-plus Rebounds	n/a	n/a	
5-plus Assists	n/a	n/a	
3-plus Steals	n/a	n/a	
Double-Doubles	n/a	n/a	

DeGRAAF'S CAREER STATS

Year	GP-GS	MIN	FG-A	PCT	3FG-A	PCT	FT-A	PCT	REB	AVG	PF-O	A	TO	B	S	PTS	AVG
2013-14	17-0	76	7-20	.350	2-7	.286	0-0	.000	3-6-9	0.5	5-0	4	5	0	1	16	0.9
2014-15	2-0	37	4-6	.667	4-6	.667	0-0	.000	0-3-3	1.5	2-0	0	1	0	1	12	6.0
TOTAL	19-0	113	11-26	.423	6-13	.462	0-0	.000	3-9-12	0.6	7-0	4	6	0	2	28	1.5





#44 Tori Waldner

Sr. * F/C * 6-5 * Milton, Ga./Milton

Highlights:

- ♦ Ranks 10th on Penn State's career blocks list (93).
- ♦ Selected as a team tri-captain.

2014-15 Season Notes:

- ♦ Recorded four blocked shots and nine rebounds against Albany (11/16).
- ♦ Notched her first career double-double with 11 points on 5-of-7 shooting and 11 rebounds, which tied her career high, in the season-opening win over Towson (11/14).
- ♦ Had four points and five rebounds in the exhibition against IUP (11/2).

Notable:

- ♦ President of the Penn State Student-Athlete Advisory Board (SAAB).
- ♦ Was a member of the 2014 Penn State Homecoming Court.
- ♦ Participates in LifeLink, which is program in which State College Area School District special-needs students between the ages of 18 and 21 are given an opportunity to interact with students of their own age in an environment that is socially and academically conducive to continued growth with the hope of future independent living.
- ♦ Became just the 15th player in Lady Lion program history to record 80 or more blocks in a career.
- ♦ Had a streak of 12-straight games with at least one block (11/10/13-1/5/14).
- ♦ Mother, Diane, played basketball and lacrosse at Russell Sage College in Troy, New York.

14-15 GAME-BY-GAME

OPPONENT	Min.	FG	3FG	FT	O-D-R	PF	A	TO	B	S	Pts
TOWSON	26	5-7	0-0	1-2	2-9-11	2	0	0	0	1	11
ALBANY	19	1-4	0-0	4-4	2-7-9	4	2	4	4	1	6
SETON HALL											
ST. BONAVENTURE											
vs. Liberty											
vs. Georgia State/Samford											
at Syracuse											
WAGNER											
at Hartford											
RIDER											
USF											
at Iowa											
at Michigan											
ILLINOIS											
at Wisconsin											
RUTGERS											
at Nebraska											
at Ohio State											
INDIANA											
NORTHWESTERN											
at Minnesota											
at Rutgers											
MARYLAND											
at Purdue											
MICHIGAN ST.											
MINNESOTA											
at Maryland											
OHIO STATE											
WISCONSIN											

WALDNER'S CAREER/SEASON HIGHS

	SEASON HIGHS	CAREER HIGHS
Points	11 vs. Towson (11/14/14)	14 vs. Northwestern (2/20/14)
Rebs.	11 vs. Towson (11/14/14)	11 vs. Towson (11/14/14)
		11 vs. Texas A&M (12/15/13)
Assists	2 vs. Albany (11/16/14)	5 vs. Illinois State (11/30/13)
Steals	1 vs. Albany (11/16/14)	3 vs. Michigan State (2/10/13)
	1 vs. Towson (11/14/14)	
Blocks	4 vs. Albany (11/16/14)	5 vs. Northwestern (2/20/14)
		5 vs. Minnesota (1/24/13)
Minutes	26 vs. Towson (11/14/14)	33 vs. Texas A&M (12/15/13)
FGM	5 vs. Towson (11/14/14)	6 vs. Northwestern (2/20/14)
FGA	7 vs. Towson (11/14/14)	13 vs. Wisconsin (2/16/14)
3FGM	n/a	1 vs. Connecticut (11/17/13)
3FGA	n/a	2 vs. Connecticut (11/17/13)
FTM	4 vs. Albany (11/16/14)	6 vs. Howard (11/11/12)
FTA	4 vs. Albany (11/16/14)	6 vs. Howard (11/11/12)

WALDNER'S MISCELLANEOUS STATS

Category	Season	Career	Last Time
Double Figure Scoring	1	7	11 vs. Towson (11/14/14)
20-point games	n/a	n/a	
Double Figure Rebounds	1	5	11 vs. Towson (11/14/14)
5-plus Rebounds	1	30	11 vs. Towson (11/14/14)
5-plus Assists	n/a	1	5 vs. Illinois State (11/30/13)
3-plus Steals	n/a	1	3 vs. Michigan State (2/10/13)
5-plus Blocks	n/a	2	5 vs. Northwestern (2/20/14)
Double-Doubles	1	1	11 p, 11 r vs. Towson (11/14/14)

WALDNER'S CAREER STATS

Year	GP-GS	MIN	FG-A	PCT	3FG-A	PCT	FT-A	PCT	REB	AVG	PF-O	A	TO	B	S	PTS	AVG
2011-12	31-0	272	25-56	.446	0-1	.000	13-23	.565	13-54-67	2.2	50-0	15	24	18	16	63	2.0
2012-13	30-0	275	19-59	.322	0-1	.000	10-13	.769	31-54-85	2.8	47-0	8	22	32	11	48	1.6
2013-14	32-32	677	67-159	.421	1-3	.333	20-33	.606	48-131-179	5.6	83-1	32	39	39	16	155	4.8
2014-15	2-2	60	6-11	.545	0-0	.000	5-6	.833	4-16-20	10.0	6-0	2	4	4	2	17	8.5
TOTAL	95-34	1284	117-285	.411	1-5	.200	48-75	.640	96-255-351	3.7	186-1	57	89	93	45	283	3.0

10-Time Big Ten Champions • Two-Time Big Ten Tournament Champions • 2000 NCAA Final Four • 25 NCAA Tournament Appearances



Penn State 75, Indiana (Pa.) 71

Exhibition Game * Nov. 2, 2014 * University Park, Pa.

IUP 71 • 0-0

#	Player	Total		3-Ptr		Rebounds			PF	TP	A	TO	Blk	Stl	Min
		FG-FGA	FG-FGA	FT-FTA	Off	Def	Tot								
00	STONER, Ashley	* 4-9	0-0	0-0	3	2	5	4	8	0	3	0	0	0	22
03	STAMP, Lindsay	* 0-6	0-3	3-6	1	3	4	2	3	2	1	0	0	0	22
05	MATHE, Marita	* 4-13	4-9	0-1	0	3	3	2	12	5	3	0	0	0	35
12	STAPLETON, Leslie	* 2-10	1-7	0-0	0	0	0	0	5	2	0	0	1	0	29
24	FAIRMAN, Amy	* 8-13	6-8	4-6	1	3	4	26	6	1	0	2	0	0	30
10	WAREHAM, Marina	1-1	1-1	0-0	0	0	0	0	3	1	2	0	0	0	5
11	GRAHAM, Amy	0-0	0-0	0-0	1	0	1	0	0	0	0	1	0	2	2
13	BURNS, Monica	0-0	0-0	0-0	0	0	0	0	0	0	0	0	0	0	2
14	AIKEN, Alexis	0-0	0-0	0-0	0	0	0	0	0	0	0	0	0	0	3
15	BROOKS, Zhane	2-5	0-0	4-6	2	3	5	4	8	2	0	1	2	0	25
20	LIVINGSTON, Mackenzie	0-0	0-0	0-0	0	0	0	0	0	1	0	0	0	0	1
23	DENMAN, Halle	0-1	0-0	0-0	1	0	1	0	0	0	0	0	0	0	2
42	SMITH, Megan	2-6	2-4	0-0	1	0	1	0	6	1	1	0	0	0	18
	Team				2	1	3								
Totals		23-64	14-32	11-19	12	15	27	16	71	20	12	2	5	200	

FG % 1st Half: 10-36 27.8% 2nd half: 13-28 46.4% Game: 23-64 35.9%
 3FG % 1st Half: 7-18 38.9% 2nd half: 7-14 50.0% Game: 14-32 43.8%
 FT % 1st Half: 6-12 50.0% 2nd half: 5-7 71.4% Game: 11-19 57.9%

Penn State 75 • 0-0

#	Player	Total		3-Ptr		Rebounds			PF	TP	A	TO	Blk	Stl	Min
		FG-FGA	FG-FGA	FT-FTA	Off	Def	Tot								
05	Moore, Sierra	* 8-13	0-0	2-3	4	3	7	4	18	0	4	0	0	0	27
12	Spann, Lindsey	* 5-12	0-3	4-4	1	2	3	2	14	2	14	2	0	0	37
15	Mitchell, Kaliyah	* 5-10	0-2	2-2	3	6	9	4	12	2	3	0	3	0	36
25	Whitted, Peyton	* 4-7	0-0	0-0	4	6	10	3	8	5	2	1	0	0	24
44	Waldner, Tori	* 2-10	0-0	0-0	3	2	5	3	4	1	4	2	0	0	21
10	Sevillian, Keke	2-4	0-1	0-0	1	3	4	3	4	3	1	0	0	3	19
14	Brooks, Dominique	2-4	0-0	0-0	0	1	1	1	4	0	2	1	0	0	12
41	DeGraaf, Jenny	4-5	2-3	1-2	0	4	4	4	11	0	2	0	0	0	24
	Team				2	3	5								
Totals		32-65	2-9	9-11	18	30	48	24	75	15	20	4	6	200	

FG % 1st Half: 17-32 53.1% 2nd half: 15-33 45.5% Game: 32-65 49.2%
 3FG % 1st Half: 1-3 33.3% 2nd half: 1-6 16.7% Game: 2-9 22.2%
 FT % 1st Half: 2-4 50.0% 2nd half: 7-7 100.0% Game: 9-11 81.8%

Officials: Frank Steratore, Kevin Pethel, Shannon Feck
 Technical fouls: IUP-None. Penn State-None.
 Attendance: 3327

Score by periods	1st	2nd	Total
IUP	33	38	71
Penn State	37	38	75

Notable

- With the Crimson Hawks leading, sophomore **Sierra Moore** led the Penn State rally with 15 of her team-best 18 points over the final 11:44 of the contest.
- Sophomore **Jenny DeGraaf** had a solid outing, connecting on 4-of-5 shots from the field, including 2-of-3 from three point range, for 11 points.

Albany 54, Penn State 53

Game #2 * Nov. 16, 2014 * University Park, Pa.

Albany 54 • 2-0

#	Player	Total		3-Ptr		Rebounds			PF	TP	A	TO	Blk	Stl	Min
		FG-FGA	FG-FGA	FT-FTA	Off	Def	Tot								
03	ROSARIO, Margarita	* 2-9	2-8	0-0	0	3	3	2	6	2	0	0	1	0	26
04	ROYALS, Sarah	* 0-8	0-5	7-12	1	0	1	2	7	5	4	0	1	40	
23	SAUNDERS, Zakkiya	* 1-4	0-0	0-0	0	0	0	3	2	2	2	0	1	13	
25	RICHARDS, Shereesha	* 10-16	0-1	7-10	6	8	14	4	27	3	7	1	3	40	
34	EDWARDS, Cassandra	* 0-1	0-0	0-0	1	0	1	1	0	0	1	0	0	6	
01	COUGHLIN, Erin	0-1	0-1	0-0	0	0	0	0	0	0	1	0	0	9	
12	TATE, Imani	2-10	0-0	2-2	6	9	15	3	6	1	6	0	3	32	
33	CARTER, Tiana-Jo	3-8	0-0	0-0	3	8	11	3	6	0	3	2	0	34	
	Team				3	1	4								
Totals		18-57	2-15	16-24	20	29	49	18	54	13	24	3	9	200	

FG % 1st Half: 8-28 28.6% 2nd half: 10-29 34.5% Game: 18-57 31.6%
 3FG % 1st Half: 1-5 20.0% 2nd half: 1-10 10.0% Game: 2-15 13.3%
 FT % 1st Half: 11-17 64.7% 2nd half: 5-7 71.4% Game: 16-24 66.7%

Penn State 53 • 1-1

#	Player	Total		3-Ptr		Rebounds			PF	TP	A	TO	Blk	Stl	Min
		FG-FGA	FG-FGA	FT-FTA	Off	Def	Tot								
05	Moore, Sierra	* 4-8	0-0	0-1	2	1	3	4	8	3	4	1	1	30	
12	Spann, Lindsey	* 6-12	1-3	1-2	0	1	1	3	14	4	3	0	0	31	
15	Mitchell, Kaliyah	* 2-7	1-2	4-5	1	5	6	4	9	0	5	0	4	30	
25	Whitted, Peyton	* 1-5	0-0	0-1	1	3	4	4	2	1	3	0	1	19	
44	Waldner, Tori	* 1-4	0-0	4-4	2	7	9	4	6	2	4	4	1	34	
01	Agee, Candice	1-6	0-0	0-0	1	4	5	4	2	2	1	3	2	19	
10	Sevillian, Keke	0-5	0-3	0-0	0	0	0	4	0	1	1	0	2	13	
14	Brooks, Dominique	0-0	0-0	0-0	0	0	0	1	0	0	1	0	0	2	
41	DeGraaf, Jenny	4-4	4-4	0-0	0	0	0	1	12	0	1	0	0	22	
	Team				0	3	3								
Totals		19-51	6-13	9-13	7	24	31	29	53	13	23	8	11	200	

FG % 1st Half: 9-25 36.0% 2nd half: 10-26 38.5% Game: 19-51 37.3%
 3FG % 1st Half: 4-8 50.0% 2nd half: 2-5 40.0% Game: 6-13 46.2%
 FT % 1st Half: 6-8 75.0% 2nd half: 3-5 60.0% Game: 9-13 69.2%

Officials: An-Jamilah Gregory, Ron Leads, Althea Buford
 Technical fouls: Albany-TATE, Imani. Penn State-Agee, Candice.
 Attendance: 8607
 WNIT Second Round

Score by periods	1st	2nd	Total
Albany	28	26	54
Penn State	28	25	53

Last FG - ALBANY 2nd-01:49, PSU 2nd-01:28.
 Largest lead - ALBANY by 4 2nd-11:47, PSU by 7 1st-17:12.
 ALBANY led for 14:05. PSU led for 18:50. Game was tied for 06:55.

Notable

- Senior **Tori Waldner** passed Bethany Collins (1985-88) for 10th on the Penn State career blocks list with four blocks vs. Albany to bring her career total to 93.
- Freshman **Lindsey Spann** led the Lady Lions in scoring for the second straight game, marking the first time a freshman has been the team's leading scorer in two straight games since Maggie Lucas did so vs. Minnesota (1/13/11) and vs. Illinois (1/16/11).

Penn State 71, Towson 64

Game #1 * Nov. 14, 2014 * University Park, Pa.

Towson 64 • 0-1

#	Player	Total		3-Ptr		Rebounds			PF	TP	A	TO	Blk	Stl	Min
		FG-FGA	FG-FGA	FT-FTA	Off	Def	Tot								
00	Hines-Allen, LaTorri	* 5-10	0-0	2-5	1	5	6	2	12	1	0	1	1	25	
01	Johnson, Dominique	* 12-30	6-16	2-2	0	1	1	3	32	1	2	0	3	36	
02	Hughey, Breonn	* 2-15	2-7	2-2	2	4	6	2	8	7	3	0	1	40	
13	Alberson, Camille	* 1-5	1-4	0-0	0	4	4	3	3	2	2	0	1	33	
20	Smith, Markell	* 1-3	0-0	0-0	2	3	5	5	2	0	1	0	0	24	
03	Webb, Clara	* 1-3	0-2	0-0	0	1	1	0	2	1	1	2	0	16	
05	Smith, Jordyn	0-0	0-0	3-4	5	4	9	1	3	0	1	0	0	8	
14	Bush, Brianna	0-0	0-0	0-0	1	0	1	0	0	0	1	0	0	3	
32	Butler, Shanea	0-1	0-1	0-0	0	0	0	0	0	0	1	0	0	3	
33	Thomas, Daijha	0-2	0-0	2-4	1	3	4	2	2	0	0	1	0	12	
	Team				0	1	1								
Totals		22-69	9-30	11-17	18	26	38	18	64	12	13	4	6	200	

FG % 1st Half: 9-37 24.3% 2nd half: 13-32 40.6% Game: 22-69 31.9%
 3FG % 1st Half: 4-15 26.7% 2nd half: 5-15 33.3% Game: 9-30 30.0%
 FT % 1st Half: 7-10 70.0% 2nd half: 4-7 57.1% Game: 11-17 64.7%

Penn State 71 • 1-0

#	Player	Total		3-Ptr		Rebounds			PF	TP	A	TO	Blk	Stl	Min
		FG-FGA	FG-FGA	FT-FTA	Off	Def	Tot								
05	Moore, Sierra	* 5-12	1-1	1-3	1	4	5	0	12	4	4	2	1	39	
12	Spann, Lindsey	* 7-14	0-2	3-4	0	5	5	2	17	4	4	0	0	32	
15	Mitchell, Kaliyah	* 3-8	0-2	4-6	1	2	3	4	10	0	3	0	3	25	
25	Whitted, Peyton	* 2-5	0-0	0-0	3	6	9	3	4	2	3	0	1	23	
44	Waldner, Tori	* 5-7	0-0	1-2	2	9	11	2	11	0	0	0	1	26	
01	Agee, Candice	3-6	0-0	3-6	4	5	9	1	9	0	0	0	0	18	
10	Sevillian, Keke	2-6	2-5	0-1	0	1	1								

2014-15 Penn State Lady Lion Basketball
Penn State Combined Team Statistics (as of Nov 16, 2014)
All games

RECORD:	OVERALL	HOME	AWAY	NEUTRAL
ALL GAMES	1-1	1-1	0-0	0-0
CONFERENCE	0-0	0-0	0-0	0-0
NON-CONFERENCE	1-1	1-1	0-0	0-0

#	Player	gp-gs	min	avg	Total		3-Point		F-Throw		Rebounds				pf	dq	a	to	blk	stl	pts	avg
					fg-fga	fg%	3fg-fga	3fg%	ft-fga	ft%	off	def	tot	avg								
12	Spann, Lindsey	2-2	63	31.5	13-26	.500	1-5	.200	4-6	.667	0	6	6	3.0	5	0	8	7	0	0	31	15.5
05	Moore, Sierra	2-2	69	34.5	9-20	.450	1-1	1.000	1-4	.250	3	5	8	4.0	4	0	7	8	3	2	20	10.0
15	Mitchell, Kaliyah	2-2	55	27.5	5-15	.333	1-4	.250	8-11	.727	2	7	9	4.5	8	0	0	8	0	7	19	9.5
44	Waldner, Tori	2-2	60	30.0	6-11	.545	0-0	.000	5-6	.833	4	16	20	10.0	6	0	2	4	4	2	17	8.5
41	DeGraaf, Jenny	2-0	37	18.5	4-6	.667	4-6	.667	0-0	.000	0	3	3	1.5	2	0	0	1	0	1	12	6.0
01	Agee, Candice	2-0	37	18.5	4-12	.333	0-0	.000	3-6	.500	5	9	14	7.0	5	0	2	1	3	2	11	5.5
25	Whitted, Peyton	2-2	42	21.0	3-10	.300	0-1	.000	0-1	.000	4	9	13	6.5	7	0	3	6	0	2	6	3.0
10	Sevillian, Keke	2-0	32	16.0	2-11	.182	2-8	.250	0-1	.000	0	1	1	0.5	6	0	6	1	0	2	6	3.0
14	Brooks, Dominique	2-0	5	2.5	0-0	.000	0-0	.000	2-2	1.000	0	0	0	0.0	2	0	0	1	0	0	2	1.0
Team											1	5	6									
Total.....		2	400		46-111	.414	9-25	.360	23-37	.622	19	61	80	40.0	45	0	28	37	10	18	124	62.0
Opponents.....		2	400		40-126	.317	11-45	.244	27-41	.659	32	55	87	43.5	36	-	25	37	7	15	118	59.0

TEAM STATISTICS	PSU	OPP	Date	Opponent	Score	Att.
SCORING	124	118	11/14/14	TOWSON	W 71-64	3123
Points per game	62.0	59.0	11/16/14	ALBANY	L 53-54	8607
Scoring margin	+3.0	-	* - Conference game			
FIELD GOALS-ATT	46-111	40-126				
Field goal pct	.414	.317				
3 POINT FG-ATT	9-25	11-45				
3-point FG pct	.360	.244				
3-pt FG made per game	4.5	5.5				
FREE THROWS-ATT	23-37	27-41				
Free throw pct	.622	.659				
F-Throws made per game	11.5	13.5				
REBOUNDS	80	87				
Rebounds per game	40.0	43.5				
Rebounding margin	-3.5	-				
ASSISTS	28	25				
Assists per game	14.0	12.5				
TURNOVERS	37	37				
Turnovers per game	18.5	18.5				
Turnover margin	+0.0	-				
Assist/turnover ratio	0.8	0.7				
STEALS	18	15				
Steals per game	9.0	7.5				
BLOCKS	10	7				
Blocks per game	5.0	3.5				
ATTENDANCE	11730	0				
Home games-Avg/Game	2-5865	0-0				
Neutral site-Avg/Game	-	0-0				

Score by Periods	1st	2nd	Totals
Penn State	59	65	124
Opponents	57	61	118

10-Time Big Ten Champions • Two-Time Big Ten Tournament Champions • 2000 NCAA Final Four • 25 NCAA Tournament Appearances



2014-15 RADIO/TV CHART



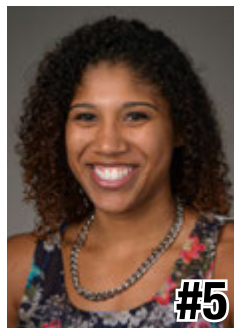
#1

Candice Agee
6-6 * Jr./Jr. * C
Victorville, Calif.
Silverado



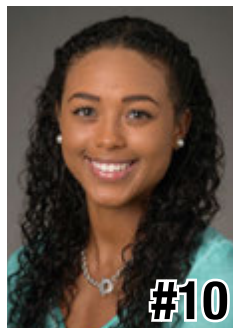
#3

Brianna Banks
5-9 * Sr./-- * G
Newnan, Ga.
Fayette County
(Connecticut)



#5

Sierra Moore
5-11 * Jr./So. * G
Hanover, Pa.
Delone Catholic
(Duke)



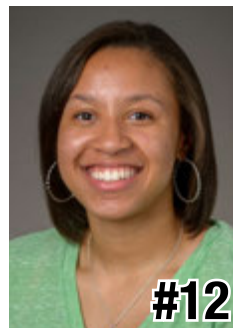
#10

Keke Sevillian
5-7 * So./So. * G
Goodrich, Mich.
Goodrich



#11

Alex Harris
6-3 * So./So. * F
Lorain, Ohio
Lorain



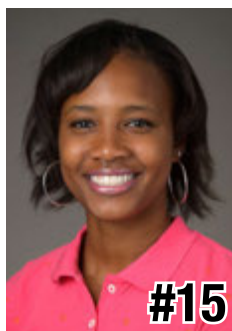
#12

Lindsey Spann
5-6 * So./Fr. * G
Laurel, Md.
Good Counsel



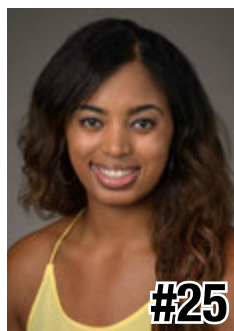
#14

Dominique Brooks
6-4 * Jr./Jr. * C
Lansing, Ill.
T.F. South
(Trinity Valley C.C.)



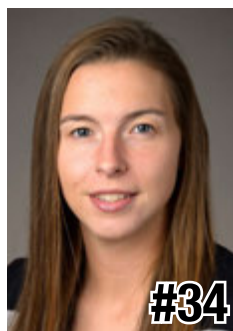
#15

Kaliyah Mitchell
6-2 * So./So. * F
Stone Mountain, Ga.
Stephenson



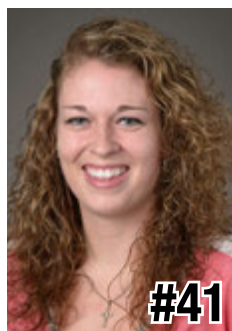
#25

Peyton Whitted
6-3 * So./So. * F
Suwanee, Ga.
North Gwinnett



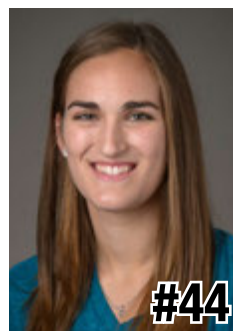
#34

Molly Dincher
6-0 * Sr./Sr. * G/F
Williamsport, Pa.
Williamsport Area
(PSU Wilkes-Barre)



#41

Jenny DeGraaf
6-1 * So./So. * F
Springboro, Ohio
Springboro



#44

Tori Waldner
6-5 * Sr./Sr. * F/C
Milton, Ga.
Milton



HC

Coquese Washington
Head Coach
Notre Dame '92
Eighth Season



AC

Ito Coleman
Assistant Coach
Clemson '00
First Season
Fourth Overall



AC

Kia Damon
Assistant Coach
Millersville '97
Eighth Season



AC

Jocelyn Wyatt
Assistant Coach
Appalachian State '06
First Season



DO

Ethan Gelfand
Director of Operations
Wake Forest '06
Fourth Season



VO

Mike Miller
Director of Video &
Technology Ops
High Point '02
10th Season



OA

Jennifer Montoya
Operations Assistant
Penn State '14
First Season

10-Time Big Ten Champions • Two-Time Big Ten Tournament Champions • 2000 NCAA Final Four • 25 NCAA Tournament Appearances

