

**NCAA
FINAL FOUR
1982 1986
1990 1991
1993 2002
2007**



**BIG TEN
CHAMPIONSHIPS
1993 1997
1998 2005
2008 2012
2013**

PENN STATE FIELD HOCKEY

30 NCAA Postseason Appearances

2016 SCHEDULE

AUGUST

26 No. 20 OLD DOMINION W, 6-2
28 No. 5 VIRGINIA W, 3-0

SEPTEMBER

2 at Temple W, 8-1
4 vs. No. 9 Albany+ W, 3-1
11 LOCK HAVEN 12:00 p.m.
13 BUCKNELL 7:00 p.m.
16 at Iowa* 3:00 p.m.
17 vs. Ball State 11:00 a.m.
23 at Northwestern* 3 p.m.
25 at Michigan* 1:00 p.m.
30 MICHIGAN STATE* 5:00 p.m.



OCTOBER

2 PRINCETON 12:00 p.m.
6 OHIO STATE* 4:00 p.m.
8 at Wake Forest 12:00 p.m.
16 MARYLAND* 4:00 p.m.
21 at Rutgers* 3:00 p.m.
28 INDIANA* 6:00 p.m.



NOVEMBER

3-6 Big Ten Championships% TBA
11 NCAA Tournament First-Round^ TBA
13 NCAA Tournament Quarterfinal^ TBA
18 NCAA Tournament Semifinal# TBA
20 NCAA Tournament Final# TBA

All times Eastern (ET)

Home Games in **BOLD**

* Big Ten Game

+ Neutral game to be played in Easton, Pa.

% B1G Tournament in College Park, MD

^ NCAA First-Round and Quarterfinals at campus sites

NCAA Semifinals and Final in Virginia Beach, VA

MEDIA INFORMATION

Field Hockey SID **Jeff Smith**
Office (814) 865-3613
Cell (940) 328-2198
E-mail jzs23@psu.edu

Contact Jeff Smith for credentials, releases, statistics or general field hockey info and for assistance in arranging interviews with coaches and student-athletes.

Live Stats GoPSUSports.com
Twitter @PennStateFH
Instagram @PennStateFH
Facebook /PennStateFieldHockey

WEEKEND MATCHUPS



No. 5 PENN STATE

(4-0, 0-0)



LOCK HAVEN

(2-0, 0-0)

Head Coach: Pat Rudy

Date: 9/11/16

Time: 12:00 p.m.

Series History: PSU Leads 19-15-1

Last Meeting: 10/11/15 - L, 1-0



BUCKNELL

(1-2, 0-0)

Head Coach: Jeremy Cook

Date: 9/13/16

Time: 7:00 p.m.

Series History: PSU Leads 38-2-2

Last Meeting: 9/16/15 - W, 3-1



NITTANY LION NOTES

WEEKEND RECAP

Penn State is 4-0 for the first time since 2003, following weekend wins over Temple and No. 9 Albany on the road. The Nittany Lions downed Temple 8-1 during the grand opening of Howarth Field before traveling to Easton, Pa. for a neutral game against the No. 9 UAlbany Great Danes. Penn State is the lone Big Ten team to sport an unblemished record through four games.

Penn State field hockey has started a season 5-0 on five different occasions ('81, '84, '93, '99, '02) and started a season 6-0 twice. The Nittany Lions began the 1993 season 15-0 before dropping a match 3-0 to Iowa on the road and began the 2002 season 7-0 before falling on the road to Michigan State by the same score 3-0.

LOCK HAVEN SERIES HISTORY

Penn State is 19-15-1 all-time in their series with the Bald Eagles dating back to 1964. Penn State dropped a game to Lock Haven for the first time in 30 years during the 2015 season with a 1-0 shutout in its last meeting on Oct. 11, 2015.

SCOUTING LOCK HAVEN

• The Bald Eagles are off to a red-hot 2-0 start and the offense has been the big story so far. In each of the first two games, LHU scored eight goals in lopsided wins over Sacred Heart (W, 8-1) and Towson (W, 8-0). The defense has been up to the task as well and allowed just one goal in 140 minutes of play. In the win over Towson, LHU allowed just one shot.

• Sunday marks the 44th meeting between LHU and PSU with less than 40 miles separating the central Pennsylvania Division I field hockey powers. Last season, LHU beat Penn State 1-0 for The Haven's first win over the Nittany Lions in 30 years. LHU leads the all-time series 22-18-3.

• The back-to-back eight goals games to start the 2016 season mark the most for LHU in a single game since Lock Haven beat Towson 7-0 on September 6, 2014.

• Dana-Lee De Gannes leads the eagles in scoring this season with three goals and one assist on the year.

"Every Rep, Every Drill, Every Day"



PENN STATE vs LOCK HAVEN, BUCKNELL

NFCA POLL

Team	Record	Points	LAST WEEK
1. Syracuse	4-0	788 (25)	2
2. Duke	4-0	712 (1)	4
3. North Carolina	3-1	707 (7)	1
4. UConn	3-0	697	3
5. PENN STATE	4-0	590 (8)	18
6. Michigan	3-1	501	10
7. Maryland	2-2	465	12
8. Louisville	4-0	438	6
9. Wake Forest	3-1	436	7
10. Delaware	3-1	401	14
11. Virginia	2-2	362	5
12. Albany	3-1	338	9
13. Boston University	4-0	298	17
14. Stanford	1-2	265	11
15. Old Dominion	2-1	242	20
16. Princeton	1-1	205	15
17. Northwestern	2-2	200	16
18. Boston College	1-2	192	8
19. Iowa	3-1	159	NR
20. Maine	4-0	156	NR

First place votes in parenthesis (x)

As of 9/6/16

BLUE & WHITE RECORD WHEN...

Overall	4-0
Home	2-0
Away	1-0
Neutral	1-0
vs. Ranked Opponents.....	3-0
In August	2-0
In September	2-0
In October.....	0-0
In November	0-0
In Overtime	0-0
Leading at Half.....	3-0
Trailing at Half	0-0
Tied at Half	1-0
Scoring First	3-0
Opponent Scores First	1-0
Following a Win	3-0
Following a Loss	0-0
Scoring One or Fewer Goals	0-0
Scoring Two Goals	0-0
Scoring Three Goals	2-0
Scoring Four-or-more Goals	2-0
Allowing One or Fewer Goals	3-0
Allowing Two Goals	1-0
Allowing Three Goals	0-0
Allowing Four-or-more Goals	0-0
Recording More Shots	4-0
Recording Fewer Shots	0-0
Tied in Shots	0-0

BUCKNELL SERIES HISTORY

Penn State is 38-2-2 all-time against the Bison in their series dating back to 1964. Penn State beat Bucknell 3-1 in their 2015 matchup in Lewisburg.

SCOUTING BUCKNELL

• Bucknell is 1-2 on the season, claiming a win over Rutgers 2-0 (Aug.26) and falling to St. Joseph's (Pa.) 4-0 (Sept.2) and Princeton 5-2 (Sept.4). The Bison also played an exhibition game against York (Toronto) dowing the Lions 1-0.

• Sunday marks the 43rd meeting between Bucknell and PSU. Last season, Penn State beat Bucknell 3-1 at Penn State field hockey complex. PSU leads the all-time series 38-2-2.

• Brittany Willwerth leads the squad with two goals through three games recording a team high shooting percentage of .286 for the Bison.

• Bucknell seniors Amy Mucelli and Anna Wills were voted to the Preseason All-Patriot League Field Hockey Team.

• Hannah Allison is set to begin her second season as an assistant coach at Bucknell. A 2013 graduate of Penn State with a degree in kinesiology, Allison was a four-year letter winner for the Nittany Lions and a team captain her senior season under current head coach Charlene Morett-Curtiss. She was a part of two Big Ten championship teams and was a recipient of the Big Ten Distinguished Scholar Award during her days as a Nittany Lion.

NFHCA RANKINGS

The biggest mover in the Sept. 6 NFHCA poll was No. 5 Penn State, which rose 13 spots from the preseason rankings after starting the year 4-0 with three wins over top-20 opponents. The Nittany Lions have defeated then-No. 20 Old Dominion, No. 5 Virginia and No. 9 Albany while opening a season at 4-0 for the first time since 2003.

Penn State is currently top-five in the nation in several key categories including No. 4 in the nation in goals per game (5.00), scoring average (5.00), scoring margin (4.00), No.5 in penalty corners (10.00), and points per game (13.75).

Defending NCAA champion Syracuse nabbed the top spot with 25 first-place votes over new No. 2 Duke and No. 3 North Carolina who fell two spots from the preseason poll.

CHALLENGING SCHEDULE

Penn State has again put together a top-tier schedule, facing eight teams that were ranked in the 2016 NFHCA Preseason Poll, including conference-foes Maryland (6), Michigan (10), and Northwestern (16). Along with the conference opponents, the squad also has matchups against Virginia (5), Wake Forest (7), Albany (9), Princeton (15) and Old Dominion (20). Six teams (Kent State, Princeton, Albany, Virginia, Michigan, Wake Forest) each made the 2015 NCAA Tournament.

IN THE SPOTLIGHT ON BTN

Field hockey will have its penultimate home game against Maryland broadcasted on BTN live Sunday, Oct. 16 starting at 4:00 p.m. The crucial contest will be the Nittany Lion's third to last before the Big Ten tournament. Penn State's game at Michigan (Sept. 25) will also be streamed on BTN.

BIG PLAYERS TO WATCH

Senior Kirsten Gochnauer and sophomores Aurelia Meijer and Jenny Rizzo were each named to the 2016 Big Ten Field Hockey Players to Watch List.

POSTSEASON TRADITION

The Nittany Lions return after making the NCAA Tournament field five of the last six seasons. Penn State has been at the top of the Big Ten in those seasons as well, being named co-conference regular season champions in 2013 and the outright winner in 2012. The squad won the Big Ten Tournament in 2011 and 2012.

ON THE TURF AND IN THE CLASSROOM

The Penn State field hockey program had two student-athletes recognized by Big Ten Distinguished Scholar Award. The list includes students from every institution and 38 different sports who have recorded a minimum grade-point average (GPA) of 3.7 or higher for the previous academic year.

Carly Celkos and Haley Kerstetter earned the accolade.



PENN STATE vs LOCK HAVEN, BUCKNELL

TEAMS AT A GLANCE

	Penn State	Lock Haven	Bucknell
Overall Record	4-0	2-0	1-2
Conference Record	0-0	0-0	0-0
Goals Scored	20	16	4
Goals Per Game	5.00	8.00	1.33
Goals Allowed	4	1	9
Goals Allowed Per Game	1.00	0.50	3.00
SOG-Attempts	49-83	33-45	30-47
Shots Per Game	20.8	22.5	6.0
Shots Allowed Per Game	6.5	4.5	15.7
Saves Per Game	2.25	2.0	7.0
Shutouts	1	0	0
Corners Per Game	10.0	11.5	7.0
Opp. Corners Per Game	1.5	1.5	5.3

2016 TEAM SEASON HIGHS

Points	
Sept. 2at Temple.....	21
Goals	
Sept. 2at Temple.....	8
Assists	
Aug. 26Old Dominion	5
Sept. 2at Temple.....	5
Shots on Goal	
Sept. 2at Temple.....	19
Saves	
Aug. 28Virginia.....	5
Penalty Corners	
Sept. 2at Temple.....	16

2016 INDIVIDUAL SEASON HIGHS

Points	
Sept. 2Brooke Birosik.....at Temple.....	8
Goals	
Sept. 2Brooke Birosik.....at Temple.....	4
Assist	
Sept. 2Madison Moranoat Temple.....	2
Aug. 26Maira PutschOld Dominion	2
Shots	
Sept. 2Brooke Birosik.....at Temple.....	11
Saves	
Aug. 28Jenny RizzoVirginia.....	4

QUICK FACTS

GENERAL INFORMATION

Location	University Park, Pa.
Founded	1855
Enrollment	46,848
Colors	Blue and White
Conference	Big Ten
Nickname	Nittany Lions
President	Eric J. Barron
Director of Athletics	Sandy Barbour
Home Field	Penn State Field Hockey Complex (750)

TEAM INFORMATION

2015 Record	9-10
2015 Big Ten Record/Finish	4-4/4th
Postseason	N/A
Letterwinners Returning/Lost	20/4
Starters Returning/Lost	10/1
Newcomers	7
All-Time Record	653-262-37
All-Time Big Ten Record	122-57-1
All-Time Big Ten Tournament Record	26-16
NCAA Tournament Appearances	30
NCAA Tournament Record	24-34
NCAA Semifinal Appearances	7
NCAA Championship Game Appearances	2
Last NCAA Tournament Appearance	2014

COACHING STAFF

Head Coach	Charlene Morett-Curtiss (Penn State, 1979)
Career Record/Years	487-196-17/32
Record at Penn State/Years	453-180-8/29
Associate Head Coach... Lisa Bervinchak-Love (Penn State, 1989)	
Assistant Coach	Stuart Smith (Ohio State, 2008)
Volunteer Assistant Coach	Simon Blanford
Volunteer Student Assistant Coach.....	Taylor Troutman

BIG TEN STANDINGS

Team	B1G	Overall
PENN STATE	0-0	4-0
Iowa	0-0	3-1
Michigan	0-0	3-1
Michigan State	0-0	2-1
Maryland	0-0	2-2
Rutgers	0-0	1-1
Indiana	0-0	1-2
Northwestern	0-0	1-2
Ohio State	0-0	1-3



PENN STATE vs LOCK HAVEN, BUCKNELL

PENN STATE NUMERICAL ROSTER

No.	Name	Pos.	Yr.	Ht.	Hometown/High School
1	Brooke Birosik	F/M	Sr.	5-4	Ickesburg, Pa./West Perry
2	Emily Klingler	F	So.	5-2	Selinsgrove, Pa./Selinsgrove
3	Alexis Horst	F	Fr.	5-4	Port Trevorton, Pa./Selinsgrove
4	Kirsten Gochnauer	F/M	Sr.	5-5	Mount Joy, Pa./Donegal
5	Jenny Rizzo	GK	So.	5-8	Hershey, Pa./Hershey
6	Carly Celkos	M	Sr.	5-6	Berlin, N.J./Eastern
7	Madison Morano	M	Fr.	5-4	Hammonton, N.J./Eastern Regional
8	Lisa Winters	F/M	So.	5-8	Hershey, Pa./Hershey
9	Lauren McNally	B	So.	5-9	Marmora, N.J./Ocean City
10	Kasey Morano	F	Jr.	5-5	Hammonton, N.J./Eastern Regional
11	Skyler Fretz	B	Jr.	5-5	Oley, Pa./Oley Valley
12	Emilee Ehret	B	Sr.	5-9	Philadelphia, Pa./Mt. Saint Joseph Acad.
13	Delani Higgins	M/B	Jr.	5-7	Hummelstown, Pa./Lower Dauphin
14	Cassie Kline	F/M	So.	5-3	Millersville, Pa./Penn Manor
15	Cori Conley	B	Jr.	5-5	Oak Park, Ill./Oak Park and River Forest
16	Shay Cannon	F	Jr.	5-8	Wilmington, Del./The Tatnall School
17	Bes Boveland	B	Fr.	5-7	Overveen, Netherlands/Kennemer Lyceum
18	Maira Putsch	F	Jr.	5-5	Media, Pa./Academy of Notre Dame
19	Mary Nell Smith	F/M	So.	5-2	Dauphin, Pa./Central Dauphin
20	Madison Hutson	M/D	Fr.	5-11	Gloucester Point, VA/Gloucester
21	Colleen Conway	GK	So.	5-8	Franklin Lakes, N.J./Oak Knoll School
22	Abby Myers	F/M	Fr.	5-7	Hartland, WI/Arrowhead
23	Aurelia Meijer	M/F	So.	5-7	Hattem, Netherlands/Gymnasium Celeanum
24	Sol Ortiz-Kreiner	F/M	Fr.	5-1	Manheim, Pa./Elizabethtown
25	Kristiina Castagnola	B	Fr.	5-1	Voorhees, N.J./Eastern Regional
28	Gini Bramley	M	So.	5-2	Elizabethtown, Pa./Lower Dauphin
33	Katie Dembrowski	M	So.	5-8	Palmyra, Pa./Palmyra

Head Coach: Charlene Morett-Curtiss (Penn State '79), 30th Season
Associate Head Coach: Lisa Bervinchak-Love (Penn State '89), 23rd Season
Assistant Coach: Stuart Smith (Ohio State '08), Seventh Season
Volunteer Assistant Coach: Simon Blanford, First Season

Nittany Lions By...

CLASS

Seniors (4): Brooke Birosik, Carly Celkos, Emilee Ehret, Kirsten Gochnauer

Juniors (6): Shay Cannon, Cori Conley, Skyler Fretz, Delani Higgins, Kasey Morano, Maira Putsch

Sophomore (10): Gini Bramley, Colleen Conway, Katie Dembrowski, Cassie Kline, Emily Klingler, Lauren McNally, Aurelia Meijer, Jenny Rizzo, Mary Nell Smith, Lisa Winters

Freshman (7): Bes Boveland, Madison Hutson, Abby Myers, Sol Ortiz-Kreiner, Madison Morano, Kristiina Castagnola, Alexis Horst

STATE/COUNTRY

Delaware (1): Shay Cannon

Illinois (1): Cori Conley

The Netherlands (2): Bes Boveland, Aurelia Meijer

New Jersey (6): Kristiina Castagnola, Carly Celkos, Colleen Conway, Lauren McNally, Kasey Morano, Madison Morano

Pennsylvania (15): Brooke Birosik, Gini Bramley, Katie Dembrowski, Emilee Ehret, Skyler Fretz, Kirsten Gochnauer, Delani Higgins, Alexis Horst, Cassie Kline, Emily Klingler, Sol Ortiz-Kreiner, Maira Putsch, Jenny Rizzo, Mary Nell Smith, Lisa Winters

Virginia (1): Madison Hutson

Wisconsin (1): Abby Myers

POSITION

Goalkeeper (2): Colleen Conway, Jenny Rizzo

Back (6): Bes Boveland, Kristiina Castagnola, Cori Conley, Emilee Ehret, Skyler Fretz, Lauren McNally

Midfield (9): Gini Bramley, Shay Cannon, Carly Celkos, Katie Dembrowski, Delani Higgins, Madison Hutson, Aurelia Meijer, Madison Moreno, Sol Ortiz-Kreiner

Forward (9): Brooke Birosik, Kirsten Gochnauer, Alexis Horst, Cassie Kline, Kasey Morano, Abby Myers, Mary Nell Smith, Lisa Winters

Pronunciation Guide

Lisa Bervinchak-Love: BUR-vin-Chalk

Kristiina Castagnola: CAST-a-NOla

Carly Celkos: Sell-KOHS

Kirsten Gochnauer: GOKE-now-er

Aurelia Meijer: Mayer

Charlene Morett: More-ETT

Sol Ortiz-Kreiner: CRY-ner

Support Staff

Sports Nutritionist: Kristine Clark

Strength Trainer: Anna Zamora

Marketing: Loren Crispell

Athletic Game Management: Amy Ridenour

Strategic Communications: Jeff Smith, Temi Bajulaiye

Athletic Trainer: Renee Messina

Academic Advisor: Liz Johnson

Booster Club: Cathi Alloway/Karen Dinunzio

Associate A.D./SWA: Charmelle Green

Staff Assistant: Vickie Taylor

Sports Psychologist: Dave Yukelson

Faculty Representative: Mike Poorman

NCAA FIELD HOCKEY

2016 STATISTICAL RANKINGS

CATEGORY	STAT	NCAA RANK	B1G RANK
TEAM			
Scoring Average	5.00	4th	2nd
GAA	1.00	10th	2nd
Scoring Margin	4.00	4th	1st
Goals Per Game	5.00	4th	2nd
Assists Per Game	3.75	7th	1st
Penalty Corners/G	10.00	5th	1st
INDIVIDUAL			
POINTS PER GAME	STAT	NCAA RANK	B1G RANK
Maira Putsch	3.00	11	2
GOALS PER GAME	STAT	NCAA RANK	B1G RANK
Brooke Birosik	1.25	10	2
ASSISTS PER GAME	STAT	NCAA RANK	B1G RANK
Maira Putsch	1.00	12	1
SAVE PERCENTAGE	STAT	NCAA RANK	B1G RANK
Jenny Rizzo	.667	39	4
GAA	STAT	NCAA RANK	B1G RANK
Jenny Rizzo	1.00	14	2



PENN STATE vs LOCK HAVEN, BUCKNELL

CHARLENE MORETT-CURTISS



Head Coach

Charlene MORETT-CURTISS

30th Season at Penn State
33rd Season Overall
Aldan, Pennsylvania

Penn State, 1979



MORETT-CURTISS YEAR-BY-YEAR

At Boston College (3 years, 34-16-8, .655)

1984	13-4-1	.750
1985	10-5-5	.625
1986	11-7-2	.600

At Penn State (30 years, 453-180-8, .716)

1987	14-5-2	.714	NCAA Tournament
1988	15-6-1	.705	NCAA Quarterfinals
			Atlantic 10 West Champions
1989	18-3-1	.841	NCAA Tournament
			Atlantic 10 Regular Season Champions
			Atlantic 10 Tournament Champions
1990	21-4	.840	NCAA Semifinals
			Atlantic 10 Regular Season Champions
			Atlantic 10 Tournament Champions
1991	18-3-1	.841	NCAA Semifinals
1992	16-5-1	.750	NCAA Quarterfinals
1993	20-2	.909	NCAA Semifinals
			Big Ten Regular Season Champions
1994	13-7-2	.636	NCAA Quarterfinals
1995	15-9	.625	NCAA Quarterfinals
			Big Ten Tournament Champions
1996	14-9	.609	NCAA Tournament
			Big Ten Tournament Champions
1997	18-6	.750	NCAA Quarterfinals
			Big Ten Regular Season Champions
			Big Ten Tournament Champions
1998	18-5	.783	NCAA Quarterfinals
			Big Ten Regular Season Champions
			Big Ten Tournament Champions
1999	17-5	.773	NCAA Tournament
2000	17-6	.739	NCAA Tournament
2001	12-7	.632	
2002	19-5	.792	NCAA National Finalist
2003	18-7	.720	NCAA Quarterfinals
2004	10-10	.500	
2005	17-4	.810	NCAA Tournament
			Big Ten Regular Season Champions
2006	16-6	.727	NCAA Quarterfinals
2007	16-8	.667	NCAA National Finalist
2008	13-7	.650	NCAA Tournament
			Big Ten Regular Season Champions
2009	7-13	.350	
2010	14-6	.700	NCAA Tournament
2011	17-6	.739	Big Ten Tournament Champions
			NCAA Quarterfinals
2012	18-4	.818	NCAA Quarterfinals
			Big Ten Regular Season Champions
			Big Ten Tournament Champions
2013	13-6	.684	NCAA Tournament
			Big Ten Regular Season Champions
2014	16-6	.727	NCAA Quarterfinals
2015	9-10	.385	
2016	4-0	1.000	
33 Yrs	487-196-17	.714	25 NCAA Appearances



PENN STATE vs LOCK HAVEN, BUCKNELL



1 BROOKE BIROSIK | SENIOR - F/M

5-4 | Ickesburg, Pa. (West Perry)



Penn State Individual Game-by-Game (as of Sep 06, 2016)

All games



1 Birosik, Brooke

Date	Opponent	Score	GP	GS	G	A	Pts	Sh	Sh%	Sog	Sog%	GW	PS-Att	Min	DSv
Aug 26, 2016	OLD DOMINION	6-2	*	*	1	1	3	1	1.000	1	1.000	0	0-0	48	0
Aug 28, 2016	VIRGINIA	3-0	*	*	0	1	1	4	.200	2	.600	0	0-0	56	0
Sept 2, 2016	at Temple	8-1	*	*	3	1	7	10	.267	6	.600	1	0-0	55	0
Sep 04, 2016	vs ALBANY	3-1	*	*	0	1	1	3	.222	0	.500	0	0-0	56	0
Totals		20-4	4	4	4	4	12	18	.222	9	.500	1	0-0	215	0

Games played: 4
Shots per game: 4.50;Goals per game: 1.00
Assists per game: 1.00;Points per game: 3.00

CAREER HIGHS

G..... 3, 2x last at Temple (9/2/16)
A..... 1, 6x last at Albany (9/4/16)
Pts..... 8 at Temple (9/2/16)



2 EMILY KLINGLER | SOPHOMORE - F

5-2 | Selinsgrove, Pa. (Selinsgrove)

Penn State Individual Game-by-Game (as of Sep 05, 2016)

All games

2 Klingler, Emily

Date	Opponent	Score	GP	GS	G	A	Pts	Sh	Sh%	Sog	Sog%	GW	PS-Att	Min	DSv
Aug 26, 2016	OLD DOMINION	6-2	*		0	0	0	0	.000	0	.000	0	0-0	22	0
Aug 28, 2016	VIRGINIA	3-0	*		0	0	0	1	.000	0	.000	0	0-0	13	0
Sept 2, 2016	at Temple	8-1	*		0	0	0	0	.000	0	.000	0	0-0	21	0
Sep 04, 2016	vs ALBANY	3-1	*		0	0	0	0	.000	0	.000	0	0-0	19	0
Totals		20-4	4	0	0	0	0	1	.000	0	.000	0	0-0	75	0

Games played: 4
Shots per game: 0.25;Goals per game: 0.00
Assists per game: 0.00;Points per game: 0.00

CAREER HIGHS

G..... 1 at Bucknell (9/6/15)
A..... 0
Pts..... 2 at Bucknell (9/6/15)



3 ALEXIS HORST | FRESHMAN - F

5-4 | Port Trevorton, Pa. (Selinsgrove)

Penn State Individual Game-by-Game (as of Sep 05, 2016)

All games

3 Horst, Alexis

Date	Opponent	Score	GP	GS	G	A	Pts	Sh	Sh%	Sog	Sog%	GW	PS-Att	Min	DSv
Aug 28, 2016	VIRGINIA	3-0	*		0	0	0	0	.000	0	.000	0	0-0	0	0
		3-0	1	0	0	0	0	0	.000	0	.000	0	0-0	0	0

Games played: 1
Shots per game: 0.00;Goals per game: 0.00
Assists per game: 0.00;Points per game: 0.00

CAREER HIGHS

G..... 0
A..... 0
Pts..... 0



PENN STATE vs LOCK HAVEN, BUCKNELL



4 KIRSTEN GOCHNAUER | SENIOR - F/M 5-5 | Mount Joy, Pa. (Donegal)

Penn State Individual Game-by-Game (as of Sep 05, 2016) All games

4 Gochnauer, Kirsten

Date	Opponent	Score	GP	GS	G	A	Pts	Sh	Sh%	Sog	Sog%	GW	PS-Att	Min	DSv
Aug 26, 2016	OLD DOMINION	6-2	*	*	1	1	3	2	.500	1	.500	0	0-0	54	0
Aug 28, 2016	VIRGINIA	3-0	*	*	0	0	0	0	.500	0	.500	0	0-0	65	0
Sept 2, 2016	at Temple	8-1	*	*	0	1	1	1	.333	1	.667	0	0-0	59	0
Sep 04, 2016	vs ALBANY	3-1	*	*	0	0	0	1	.250	0	.500	0	0-0	27	0
Totals		20-4	4	4	1	2	4	4	.250	2	.500	0	0-0	205	0

CAREER HIGHS

G 1, 3x last vs Old Dominion (8/26/16)

A 1, 3x last vs Old Dominion (8/26/16)

Pts 1, 3x last vs Old Dominion (8/26/16)

Games played: 4

Shots per game: 1.00;Goals per game: 0.25

Assists per game: 0.50;Points per game: 1.00



5 JENNY RIZZO | SOPHOMORE - GK 5-8 | Hershey, Pa. (Hershey)

Penn State Individual Game-by-Game (as of Sep 05, 2016) All games

5 Rizzo, Jenny

Date	Opponent	Score	GP	GS	G	A	Pts	Sh	Sh%	Sog	Sog%	GW	PS-Att	Min	DSv
Aug 26, 2016	OLD DOMINION	6-2	*	*	0	0	0	0	.000	0	.000	0	0-0	70	0
Aug 28, 2016	VIRGINIA	3-0	*	*	0	0	0	0	.000	0	.000	0	0-0	70	0
Sept 2, 2016	at Temple	8-1	*	*	0	0	0	0	.000	0	.000	0	0-0	70	0
Sep 04, 2016	vs ALBANY	3-1	*	*	0	0	0	0	.000	0	.000	0	0-0	70	0
Totals		20-4	4	0	0	0	0	0	.000	0	.000	0	0-0	280	0

Games played: 4

Shots per game: 0.00;Goals per game: 0.00

Assists per game: 0.00;Points per game: 0.00

CAREER HIGHS

Saves 15

Save%748

Shots Faced 21

Date	Opponent	Score	GP	GS	Minutes	GA	GA/Avg	Saves	Save%	W	L	T	Sho
Aug 26, 2016	OLD DOMINION	6-2	*	*	70:00	2	2.57	1	.333	1	0	0	-
Aug 28, 2016	VIRGINIA	3-0	*	*	70:00	0	1.29	4	.714	2	0	0	1
Sept 2, 2016	at Temple	8-1	*	*	70:00	1	1.29	3	.727	3	0	0	-
Sep 04, 2016	vs ALBANY	3-1	*	*	70:00	1	1.29	0	.667	4	0	0	-
Totals			4	4	280:00	4	1.29	8	.667	4	0	0	1



6 CARLY CELKOS | SENIOR - M 5-6 | Berlin, N.J. (Eastern)

Penn State Individual Game-by-Game (as of Sep 05, 2016) All games

6 Celkos, Carly

Date	Opponent	Score	GP	GS	G	A	Pts	Sh	Sh%	Sog	Sog%	GW	PS-Att	Min	DSv
Aug 26, 2016	OLD DOMINION	6-2	*	*	0	1	1	1	.000	1	1.000	0	0-0	70	0
Aug 28, 2016	VIRGINIA	3-0	*	*	0	0	0	1	.000	0	.500	0	0-0	30	0
Sept 2, 2016	at Temple	8-1	*	*	0	0	0	3	.000	0	.200	0	0-0	64	0
Sep 04, 2016	vs ALBANY	3-1	*	*	0	1	1	0	.000	0	.200	0	0-0	70	0
Totals		20-4	4	4	0	2	2	5	.000	1	.200	0	0-0	234	0

CAREER HIGHS

G 1, 2x last at Rutgers (10/16/15)

A 1, 7x last at Albany (9/4/16)

Pts 3 at Rutgers (10/16/15)

Games played: 4

Shots per game: 1.25;Goals per game: 0.00

Assists per game: 0.50;Points per game: 0.50



PENN STATE vs LOCK HAVEN, BUCKNELL



7 MADISON MORANO | FRESHMAN - M 5-4 | Hammonton, N.J. (Eastern Regional)

Penn State Individual Game-by-Game (as of Sep 05, 2016) All games

7 Morano, Madison

Date	Opponent	Score	GP	GS	G	A	Pts	Sh	Sh%	Sog	Sog%	GW	PS-Att	Min	DSv
Aug 26, 2016	OLD DOMINION	6-2	*		0	0	0	0	.000	0	.000	0	0-0	48	0
Aug 28, 2016	VIRGINIA	3-0	*		0	0	0	1	.000	1	1.000	0	0-0	46	0
Sept 2, 2016	at Temple	8-1	*		0	2	2	1	.000	0	.500	0	0-0	22	0
Sep 04, 2016	vs ALBANY	3-1	*		0	0	0	0	.000	0	.500	0	0-0	53	0
Totals		20-4		4	0	0	2	2	.000	1	.500	0	0-0	169	0

Games played: 4
 Shots per game: 0.50;Goals per game: 0.00
 Assists per game: 0.50;Points per game: 0.50

CAREER HIGHS

G..... 0
 A..... 2 at Temple (9/2/16)
 Pts..... 2 at Temple (9/2/16)



8 LISA WINTERS | SOPHOMORE - F/M 5-8 | Hershey, Pa. (Hershey)

Penn State Individual Game-by-Game (as of Sep 05, 2016) All games

8 Winters, Lisa

Date	Opponent	Score	GP	GS	G	A	Pts	Sh	Sh%	Sog	Sog%	GW	PS-Att	Min	DSv
Sept 2, 2016	at Temple	8-1	*		0	0	0	1	.000	1	1.000	0	0-0	5	0
		8-1		1	0	0	0	1	.000	1	1.000	0	0-0	5	0

Games played: 1
 Shots per game: 1.00;Goals per game: 0.00
 Assists per game: 0.00;Points per game: 0.00

CAREER HIGHS

G..... 0
 A..... 0
 Pts..... 0



9 LAUREN MCNALLY | SOPHOMORE - B 5-9 | Marmora, N.J. (Ocean City)

Penn State Individual Game-by-Game (as of Sep 05, 2016) All games

9 McNally, Lauren

Date	Opponent	Score	GP	GS	G	A	Pts	Sh	Sh%	Sog	Sog%	GW	PS-Att	Min	DSv
Aug 26, 2016	OLD DOMINION	6-2	*		0	0	0	0	.000	0	.000	0	0-0	6	0
Sept 2, 2016	at Temple	8-1	*		0	0	0	0	.000	0	.000	0	0-0	1	0
Totals		14-3		2	0	0	0	0	.000	0	.000	0	0-0	7	0

Games played: 2
 Shots per game: 0.00;Goals per game: 0.00
 Assists per game: 0.00;Points per game: 0.00

CAREER HIGHS

G..... 0
 A..... 0
 Pts..... 0



PENN STATE vs LOCK HAVEN, BUCKNELL



10 KASEY MORANO | JUNIOR - F 5-5 | Hammonton, N.J. (Eastern Regional)

Penn State Individual Game-by-Game (as of Sep 05, 2016)
All games

#10 Morano, Kasey

Date	Opponent	Score	GP	GS	G	A	Pts	Sh	Sh%	Sog	Sog%	GW	PS-Att	Min	DSv
Aug 26, 2016	OLD DOMINION	6-2	*		0	0	0	1	.000	1	1.000	0	0-0	39	0
Aug 28, 2016	VIRGINIA	3-0	*		0	0	0	1	.000	1	1.000	0	0-0	14	0
Sept 2, 2016	at Temple	8-1	*		1	0	2	1	.333	1	1.000	0	0-0	39	0
Sep 04, 2016	vs ALBANY	3-1	*		0	0	0	0	.333	0	1.000	0	0-0	16	0
Totals		20-4	4	0	1	0	2	3	.333	3	1.000	0	0-0	108	0

CAREER HIGHS

G..... 1 at Quinnipiac (9/7/14)
A..... 0
Pts..... 2 at Quinnipiac (9/7/14)

Games played: 4
Shots per game: 0.75;Goals per game: 0.25
Assists per game: 0.00;Points per game: 0.50



11 SKYLAR FRETZ | JUNIOR - B 5-5 | Oley, Pa. (Oley Valley)

Penn State Individual Game-by-Game (as of Sep 05, 2016)
All games

#11 Fretz, Skylar

Date	Opponent	Score	GP	GS	G	A	Pts	Sh	Sh%	Sog	Sog%	GW	PS-Att	Min	DSv
Aug 26, 2016	OLD DOMINION	6-2	*	*	0	0	0	0	.000	0	.000	0	0-0	70	0
Aug 28, 2016	VIRGINIA	3-0	*	*	0	0	0	0	.000	0	.000	0	0-0	70	1
Sept 2, 2016	at Temple	8-1	*	*	0	0	0	0	.000	0	.000	0	0-0	35	0
Sep 04, 2016	vs ALBANY	3-1	*	*	0	0	0	0	.000	0	.000	0	0-0	70	0
Totals		20-4	4	4	0	0	0	0	.000	0	.000	0	0-0	245	1

CAREER HIGHS

G..... 0
A..... 0
Pts..... 0

Games played: 4
Shots per game: 0.00;Goals per game: 0.00
Assists per game: 0.00;Points per game: 0.00



12 EMILEE EHRET | SENIOR - B 5-9 | Philadelphia, Pa. (Mount Saint Joseph Academy)

Penn State Individual Game-by-Game (as of Sep 05, 2016)
All games

#12 Ehret, Emilee

Date	Opponent	Score	GP	GS	G	A	Pts	Sh	Sh%	Sog	Sog%	GW	PS-Att	Min	DSv
Aug 26, 2016	OLD DOMINION	6-2	*	*	0	0	0	0	.000	0	.000	0	0-0	64	0
Aug 28, 2016	VIRGINIA	3-0	*	*	0	0	0	1	.000	1	1.000	0	0-0	70	0
Sept 2, 2016	at Temple	8-1	*	*	0	0	0	0	.000	0	1.000	0	0-0	50	0
Sep 04, 2016	vs ALBANY	3-1	*	*	0	1	1	0	.000	0	1.000	0	0-0	70	0
Totals		20-4	4	4	0	1	1	1	.000	1	1.000	0	0-0	254	0

CAREER HIGHS

G..... 1, 3x last at Bucknell (9/6/15)
A..... 1, 6x last at Albany (9/4/16)
Pts..... 3, 2x last vs. Lock Haven (9/23/14)

Games played: 4
Shots per game: 0.25;Goals per game: 0.00
Assists per game: 0.25;Points per game: 0.25



PENN STATE vs LOCK HAVEN, BUCKNELL



13 DELANI HIGGINS | JUNIOR - M/B 5-7 | Hummelstown, Pa. (Lower Dauphin)



CAREER HIGHS

G..... 0
A..... 0
Pts..... 0



14 CASSIE KLINE | SOPHOMORE - F/M 5-3 | Millersville, Pa. (Penn Manor)

Penn State Individual Game-by-Game (as of Sep 05, 2016) All games

#14 Kline, Cassie

Date	Opponent	Score	GP	GS	G	A	Pts	Sh	Sh%	Sog	Sog%	GW	PS-Att	Min	DSv
Aug 26, 2016	OLD DOMINION	6-2	*	*	0	0	0	0	.000	0	.000	0	0-0	36	0
Aug 28, 2016	VIRGINIA	3-0	*		0	0	0	0	.000	0	.000	0	0-0	20	0
Sept 2, 2016	at Temple	8-1	*		0	0	0	0	.000	0	.000	0	0-0	21	0
Totals		17-3	3	1	0	0	0	0	.000	0	.000	0	0-0	77	0

Games played: 3
Shots per game: 0.00;Goals per game: 0.00
Assists per game: 0.00;Points per game: 0.00

CAREER HIGHS

G..... 0
A..... 0
Pts..... 0



15 CORI CONLEY | JUNIOR - B 5-5 | Oak Park, Ill. (Oak Park and River Forest)

Penn State Individual Game-by-Game (as of Sep 05, 2016) All games

#15 Conley, Cori

Date	Opponent	Score	GP	GS	G	A	Pts	Sh	Sh%	Sog	Sog%	GW	PS-Att	Min	DSv
Aug 26, 2016	OLD DOMINION	6-2	*		0	0	0	0	.000	0	.000	0	0-0	7	0
Sept 2, 2016	at Temple	8-1	*		0	0	0	0	.000	0	.000	0	0-0	6	0
Totals		14-3	2	0	0	0	0	0	.000	0	.000	0	0-0	13	0

Games played: 2
Shots per game: 0.00;Goals per game: 0.00
Assists per game: 0.00;Points per game: 0.00

CAREER HIGHS

G..... 0
A..... 0
Pts..... 0



PENN STATE vs LOCK HAVEN, BUCKNELL



16 SHAY CANNON | JUNIOR - F

5-8 | Wilmington, Del. (The Tatnall School)

Penn State Individual Game-by-Game (as of Sep 05, 2016)
All games

#16 Cannon, Shay

Date	Opponent	Score	GP	GS	G	A	Pts	Sh	Sh%	Sog	Sog%	GW	PS-Att	Min	DSv
Aug 26, 2016	OLD DOMINION	6-2	*	*	0	0	0	3	.000	2	.667	0	0-0	31	0
Aug 28, 2016	VIRGINIA	3-0	*	*	1	0	2	3	.167	3	.833	0	0-0	56	0
Sept 2, 2016	at Temple	8-1	*	*	0	0	0	1	.143	0	.714	0	0-0	19	0
Sep 04, 2016	vs ALBANY	3-1	*	*	2	0	4	3	.300	2	.700	1	0-0	28	0
Totals		20-4	4	4	3	0	6	10	.300	7	.700	1	0-0	134	0

CAREER HIGHS

G.....2, 2x last at Albany (9/4/16)
A.....0
Pts.....4, 2x last at Albany (9/4/16)

Games played: 4
Shots per game: 2.50;Goals per game: 0.75
Assists per game: 0.00;Points per game: 1.50



17 BES BOVELANDER | FRESHMAN - B

5-7 | Overveen, Netherlands (Kennemer Lyceum)

Penn State Individual Game-by-Game (as of Sep 05, 2016)
All games

#17 Bes Boveler

Date	Opponent	Score	GP	GS	G	A	Pts	Sh	Sh%	Sog	Sog%	GW	PS-Att	Min	DSv
Sept 2, 2016	at Temple	8-1	*		0	0	0	0	.000	0	.000	0	0-0	20	0
Totals		8-1	1	0	0	0	0	0	.000	0	.000	0	0-0	20	0

CAREER HIGHS

G.....0
A.....0
Pts.....0

Games played: 1
Shots per game: 0.00;Goals per game: 0.00
Assists per game: 0.00;Points per game: 0.00



18 MOIRA PUTSCH | JUNIOR - F

5-5 | Media, Pa. (Academy of Notre Dame)

Penn State Individual Game-by-Game (as of Sep 05, 2016)
All games

#18 Putsch, Moira

Date	Opponent	Score	GP	GS	G	A	Pts	Sh	Sh%	Sog	Sog%	GW	PS-Att	Min	DSv
Aug 26, 2016	OLD DOMINION	6-2	*	*	2	2	6	3	.667	3	1.000	0	0-0	63	0
Aug 28, 2016	VIRGINIA	3-0	*	*	0	1	1	0	.667	0	1.000	0	0-0	64	0
Sept 2, 2016	at Temple	8-1	*	*	2	1	5	4	.571	2	.714	0	0-0	55	0
Sep 04, 2016	vs ALBANY	3-1	*	*	0	0	0	2	.444	0	.556	0	0-0	55	0
Totals		20-4	4	4	4	4	12	9	.444	5	.556	0	0-0	237	0

CAREER HIGHS

G.....2, 4x last at Temple (9/2/16)
A.....2, vs. Old Dominion (8/26/16)
Pts.....6 vs. Old Dominion (8/26/16)

Games played: 4
Shots per game: 2.25;Goals per game: 1.00
Assists per game: 1.00;Points per game: 3.00



Offensive Player of the Week
8/30



19 MARY NELL SMITH | SOPHOMORE - F/M
5-2 | Dauphin, Pa. (Central Dauphin)

Penn State Individual Game-by-Game (as of Sep 05, 2016)
All games

#19 Smith, Mary Nell

Date	Opponent	Score	GP	GS	G	A	Pts	Sh	Sh%	Sog	Sog%	GW	PS-Att	Min	DSv
Aug 26, 2016	OLD DOMINION	6-2	*		1	0	2	1	1.000	1	1.000	0	0-0	29	0
Sept 2, 2016	at Temple	8-1	*		0	0	0	1	.500	1	1.000	0	0-0	15	0
Sep 04, 2016	vs ALBANY	3-1	*		0	0	0	0	.500	0	1.000	0	0-0	51	0
		17-4	3	0	1	0	2	2	.500	2	1.000	0	0-0	95	0

CAREER HIGHS

G 1, 2x last vs Old Dominion (8/26/16)
A 0
Pts. 2, 2x last vs Old Dominion (8/26/16)

Games played: 3
Shots per game: 0.67;Goals per game: 0.33
Assists per game: 0.00;Points per game: 0.67



20 MADISON HUTSON | FRESHMAN - M/D
5-11 | Gloucester Point, VA (Gloucester)



CAREER HIGHS

G 0
A 0
Pts. 0



21 COLLEEN CONWAY | SOPHOMORE - GK
5-8 | Franklin Lakes, N.J. (Oak Knoll School)



CAREER HIGHS

Saves 0



PENN STATE vs LOCK HAVEN, BUCKNELL



22 **ABBY MYERS** | FRESHMAN - F/M
5-7 | Hartland, WI (Arrowhead)



CAREER HIGHS

G..... 0
A..... 0
Pts..... 0



23 **AURELIA MEIJER** | SOPHOMORE - M/F
5-7 | Hattem, Netherlands (Gymnasium Ceeleum)

**Penn State Individual Game-by-Game (as of Sep 05, 2016)
All games**

#23 Meijer, Aurelia

Date	Opponent	Score	GP	GS	G	A	Pts	Sh	Sh%	Sog	Sog%	GW	PS-Att	Min	DSv
Aug 28, 2016	VIRGINIA	3-0	*	*	1	0	2	5	.200	4	.800	1	0-0	32	0
Sept 2, 2016	at Temple	8-1	*	*	0	1	1	6	.091	1	.455	0	0-0	64	0
Sep 04, 2016	vs ALBANY	3-1	*	*	0	0	0	1	.083	0	.417	0	0-0	37	0
		14-2	3	3	1	1	3	12	.083	5	.417	1	0-0	133	0

CAREER HIGHS

G..... 3 vs. Iowa (10/23/15)
A..... 2, 2x last at Indiana (11/6/15)
Pts..... 6 vs. Iowa (10/23/15)

Games played: 3
Shots per game: 4.00;Goals per game: 0.33
Assists per game: 0.33;Points per game: 1.00



24 **SOL ORTIZ-KREINER** | FRESHMAN - F/M
5-1 | Manheim, Pa. (Elizabethtown)



CAREER HIGHS

G..... 0
A..... 0
Pts..... 0



PENN STATE vs LOCK HAVEN, BUCKNELL



25 KRISTIINA CASTAGNOLA | FR.- B 5-1 | Voorhees, N.J. (Eastern Regional)



CAREER HIGHS

G..... 0
A..... 0
Pts..... 0



28 GINI BRAMLEY | SOPHOMORE - M 5-2 | Elizabethtown, Pa. (Lower Dauphin)

Penn State Individual Game-by-Game (as of Sep 05, 2016)
All games

#28 Bramley, Gini

Date	Opponent	Score	GP	GS	G	A	Pts	Sh	Sh%	Sog	Sog%	GW	PS-Att	Min	DSv
Aug 26, 2016	OLD DOMINION	6-2	*	*	1	0	2	1	1.000	1	1.000	1	0-0	47	0
Aug 28, 2016	VIRGINIA	3-0	*	*	1	0	2	3	.500	2	.750	0	0-0	61	0
Sept 2, 2016	at Temple	8-1	*	*	1	0	2	4	.375	4	.875	0	0-0	66	0
Sep 04, 2016	vs ALBANY	3-1	*	*	0	0	0	1	.333	0	.778	0	0-0	58	0
Totals		20-4	4	4	3	0	6	9	.333	7	.778	1	0-0	232	0

Games played: 4
Shots per game: 2.25;Goals per game: 0.75
Assists per game: 0.00;Points per game: 1.50

CAREER HIGHS

G..... 1, 6x last at Temple (9/2/16)
A..... 1, 2x last vs. Iowa (10/23/15)
Pts.... 3 vs. Michigan State (9/25/15)



33 KATIE DEMBROWSKI | SOPHOMORE - F 5-8 | Palmyra, Pa. (Palmyra)

Penn State Individual Game-by-Game (as of Sep 06, 2016)
All games



#33 Dembrowski, Katie

Date	Opponent	Score	GP	GS	G	A	Pts	Sh	Sh%	Sog	Sog%	GW	PS-Att	Min	DSv
Aug 26, 2016	OLD DOMINION	6-2	*	*	0	0	0	1	.000	1	1.000	0	0-0	65	0
Aug 28, 2016	VIRGINIA	3-0	*	*	0	0	0	1	.000	1	1.000	0	0-0	62	0
Sept 2, 2016	at Temple	8-1	*	*	1	0	2	3	.200	2	.800	0	0-0	66	0
Sep 04, 2016	vs ALBANY	3-1	*	*	1	0	2	1	.333	1	.833	0	0-0	68	0
Totals		20-4	4	4	2	0	4	6	.333	5	.833	0	0-0	261	0

Games played: 4
Shots per game: 1.50;Goals per game: 0.50
Assists per game: 0.00;Points per game: 1.00

CAREER HIGHS

G..... 1, 4x last at Albany (9/4/16)
A..... 0
Pts..... 2, 3x last at Albany (9/4/16)



PENN STATE vs LOCK HAVEN, BUCKNELL

2016 Game-by-Game Starting Lineups

Date	Opponent	W/L	Score	Forward	Forward	Forward	Midfield	Midfield	Midfield	Midfield	Back	Back	Back	GK
8/26/16	No. 20 Old Dominion	W	6-2	Birosik	Putsch	Bramley	Dembrowski	Kline	Cannon	Gochnauer	Fretz	Celkos	Ehret	Rizzo
8/28/16	No. 5 Virginia	W	3-0	Birosik	Putsch	Bramley	Dembrowski	Meijer	Cannon	Gochnauer	Fretz	Celkos	Ehret	Rizzo
9/2/16	Temple	W	8-1	Birosik	Putsch	Bramley	Dembrowski	Meijer	Cannon	Gochnauer	Fretz	Celkos	Ehret	Rizzo
9/4/16	No. 9 Albany	W	3-1	Birosik	Putsch	Bramley	Dembrowski	Meijer	Cannon	Gochnauer	Fretz	Celkos	Ehret	Rizzo



PENN STATE vs LOCK HAVEN, BUCKNELL



Penn State Combined Team Statistics (as of Sep 06, 2016)

All games



RECORD:	OVERALL	HOME	AWAY	NEUTRAL
ALL GAMES	4-0	2-0	1-0	1-0
CONFERENCE	0-0	0-0	0-0	0-0
NON-CONFERENCE	4-0	2-0	1-0	1-0

Date	Opponent	Score	Att.
Aug 26	#20 OLD DOMINION	w 6-2	738
Aug 28	#5 VIRGINIA	w 3-0	538
Sept 2	at Temple	w 8-1	613
Sep 04	vs #9 ALBANY	w 3-1	207

TEAM STATISTICS	PSU	OPP
SHOT STATISTICS		
Goals-Shot attempts	20-83	4-26
Goals scored per game	5.00	1.00
Shot pct.	.241	.154
Shots on goal-Attempts	49-83	13-26
SOG pct.	.590	.500
Shots/Game	20.8	6.5
PENALTY CORNERS	40	6
PENALTY STROKES	0-0	0-0
PENALTIES		
Green cards	4	3
Yellow cards	2	1
Red cards	0	0
ATTENDANCE		
Total	1276	613
Dates/Avg Per Date	2/638	1/613
Neutral Site #/Avg	1/207	

#	Player	gp	g	a	pts	sh	sh%	sog	sog%	gw	ps-att	dsv
1	Birosik, Brooke	4	4	4	12	18	.222	9	.500	1	0-0	0
2	Klingler, Emily	4	0	0	0	1	1.000	0	.000	0	0-0	0
3	Horst, Alexis	1	0	0	0	0	0.000	0	.000	0	0-0	0
4	Gochnauer, Kirsten	4	1	2	4	4	.250	2	.500	0	0-0	0
6	Celkos, Carly	4	0	2	2	5	.000	1	.200	0	0-0	0
7	Morano, Madison	4	0	2	2	2	1.000	1	.500	0	0-0	0
8	Winters, Lisa	1	0	0	0	1	1.000	1	1.000	0	0-0	0
9	McNally, Lauren	2	0	0	0	0	0.000	0	.000	0	0-0	0
10	Morano, Kasey	4	1	0	2	3	.333	3	1.000	0	0-0	0
11	Fretz, Skyler	4	0	0	0	0	0.000	0	.000	0	0-0	1
12	Ehret, Emilee	4	0	1	1	1	1.000	1	1.000	0	0-0	0
14	Kline, Cassie	3	0	0	0	0	0.000	0	.000	0	0-0	0
15	Conley, Cori	2	0	0	0	0	0.000	0	.000	0	0-0	0
16	Cannon, Shay	4	3	0	6	10	.300	7	.700	1	0-0	0
17	Bes Boveland	1	0	0	0	0	0.000	0	.000	0	0-0	0
18	Putsch, Moira	4	4	4	12	9	.444	5	.556	0	0-0	0
19	Smith, Mary Nell	3	1	0	2	2	.500	2	1.000	0	0-0	0
23	Meijer, Aurelia	3	1	1	3	12	.083	5	.417	1	0-0	0
28	Bramley, Gini	4	3	0	6	9	.333	7	.778	1	0-0	0
33	Dembrowski, Katie	4	2	0	4	6	.333	5	.833	0	0-0	0
Total		4	20	16	56	83	.241	49	.590	4	0-0	1
Opponents		4	4	1	9	26	.154	13	.500	0	0-0	2

#	Goalie	GP	Min	GA	GAAvg	Saves	Pct	W-L-T	Sho
5	Rizzo, Jenny	4	277:42	4	1.30	8	.667	4-0-0	1/0
Total		4	277:42	4	1.30	9	.692	4-0-0	1
Opponents		4	277:42	20	6.48	29	.592	0-4-0	0

Goals by Period	1st	2nd	Total
Penn State	8	12	20
Opponents	4	0	4

Shots by Period	1st	2nd	Total
Penn State	47	36	83
Opponents	15	11	26

Saves by Period	1st	2nd	Total
Penn State	4	5	9
Opponents	17	12	29

Corners by Period	1st	2nd	Total
Penn State	23	17	40
Opponents	3	3	6



PENN STATE vs LOCK HAVEN, BUCKNELL

TV/RADIO ROSTER



BROOKE BIROSIK
Senior • F/M
Harrisburg, Pa.



EMILY KLINGLER
Sophomore • F
Selinsgrove, Pa.



ALEXIS HORST
Freshman • F
Port Trevorton, Pa.



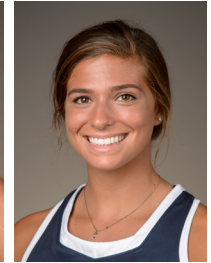
KIRSTEN GOCHNAUER
Senior • F/M
Mount Joy, Pa.



JENNY RIZZO
Sophomore • GK
Hershey, Pa.



CARLY CELKOS
Senior • M
Berlin, N.J.



MADISON MORANO
Freshman • M
Hammonton, N.J.



LISA WINTERS
Sophomore • F/M
Hershey, Pa.



LAUREN McNALLY
Sophomore • F/M
Marmora, N.J.



KASEY MORANO
Junior • F
Hammonton, N.J.



SKYLER FRETZ
Junior • B
Oley, Pa.



EMILEE EHRET
Senior • B
Philadelphia, Pa.



DELANI HIGGINS
Junior • M/B
Hummelstown, Pa.



CASSIE KLINE
Sophomore • F/M
Millersville, Pa.



CORI CONLEY
Junior • B
Oak Park, Ill.



SHAY CANNON
Junior • M/B
Wilmington, Del.



BES BOVELANDER
Freshman • F
Overveen, Netherlands



MOIRA PUTSCH
Junior • F
Media, Pa.



MARY NELL SMITH
Sophomore • F/M
Dauphin, Pa.



MADISON HUTSON
Freshman • M/D
Gloucester Point, VA



COLLEEN CONWAY
Sophomore • GK
Franklin Lakes, N.J.



ABBY MYRES
Freshman • F/M
Hartland, WI



AURELIA MEIJER
Sophomore • M/F
Hatten, Netherlands



SOL ORTIZ-KREINER
Freshman • F/M
Manheim, Pa.



KRISTINA CASTAGNOLA
Freshman • B
Voorhees, N.J.



GINI BRAMLEY
Sophomore • M
Elizabethtown, Pa.



KATIE DEMBROWSKI
Sophomore • M
Palmyra, Pa.



CHARLENE MORETT-CURTISS
Head Coach • 30th Year
Penn State '79



LISA BERVINCHAK-LOVE
Assoc. Head Coach • 23rd year
Penn State '89



STUART SMITH
Assistant Coach • Seventh Year
Ohio State '08