

PENN STATE

WOMEN'S SOCCER



2015

GoPSUsports.com

| Twitter: @PennStateWSOC

Instagram: PennStateWSOC

| Facebook: PSUWomensSoccer

WSOC Contact: Will Rottler • wdr13@psu.edu O: (814) 865-2498 • C: (814) 441-9130

2015 SCHEDULE

AUGUST

Sat. 15 ARMY WEST POINT (EX) ---

PENN STATE TOURNAMENT (Aug. 21-23)

Fri. 21 HOFSTRA University Park, Pa. W, 2-1

Sun. 23 LOYOLA MARYMOUNT University Park, Pa. W, 4-2

Fri. 28 No. 21 DUKE University Park, Pa. T, 0-0 (2OT)

Sun. 30 ARKANSAS University Park, Pa. W, 4-2

SEPTEMBER

Fri. 4 at No. 12 West Virginia Morgantown, W.Va. 7 p.m.

Fri. 11 at Stanford Palo Alto, Calif. 11 p.m.

Sun. 13 at Santa Clara Santa Clara, Calif. 4 p.m.

Thu. 17 WISCONSIN* University Park, Pa. 7 p.m.

Sun. 20 MINNESOTA* University Park, Pa. 1 p.m.

Fri. 25 at Nebraska* Lincoln, Neb. 8 p.m.

Sun. 27 at Iowa* Iowa City, Iowa 2 p.m.

OCTOBER

Sun. 4 at Northwestern* Evanston, Ill. 1 p.m.

Thu. 8 MARYLAND* University Park, Pa. 7 p.m.

Sun. 11 INDIANA* University Park, Pa. 1 p.m.

Thu. 15 at Purdue* West Lafayette, Ind. 7 p.m.

Sun. 18 at Rutgers* Piscataway, N.J. 1 p.m.

Sat. 24 at Ohio State* Columbus, Ohio 6 p.m.

Wed. 28 MICHIGAN* University Park, Pa. 7 p.m.

NOVEMBER

BIG TEN TOURNAMENT (Nov. 1-8)

Sun. 1 Big Ten Quarterfinals Campus Sites TBA

Fri. 6 Big Ten Semifinals Campus Sites TBA

Sun. 8 Big Ten Championship Campus Sites TBA

NCAA TOURNAMENT (Nov. 13-29)

Fri.-Sun. 13-15 NCAA First Round Campus Sites TBA

Fri. 20 NCAA Second Round Campus Sites TBA

Sun. 22 NCAA Third Round Campus Sites TBA

Fri.-Sun. 27-29 NCAA Quarterfinals Campus Sites TBA

DECEMBER

NCAA WOMEN'S COLLEGE CUP (Dec. 4-6)

Fri. 4 College Cup Semifinals Cary, N.C. TBA

Sun. 6 College Cup Championship Cary, N.C. TBA

* - Big Ten match; Home matches in **CAPS** at Jeffrey Field;

All times Eastern

NO. 7 PENN STATE TRAVELS TO NO. 12 WEST VIRGINIA

#7 PENN STATE NITTANY LIONS
(3-0-1)

#12 WEST VIRGINIA MOUNTAINEERS
(3-1-0)



Match 5: Sept. 4, 2015 • 7 p.m. • Dick Dlesk Soccer Stadium • Morgantown, W.Va.

MATCH DAY (WEST VIRGINIA)

VENUE
SERIES RECORD
LAST MEETING

Dick Dlesk Soccer Stadium
Penn State Leads, 6-5-1
August 22, 2014 (PSU Won, 3-1)

WEEKEND STORIES

- Penn State heads to Morgantown, W.Va., for a top-15 showdown with West Virginia
- The Nittany Lions take on their second ranked opponent of 2015 (No. 21 Duke, T, 0-0)
- Mallory Weber is tied for third in the Big Ten with eight points
- The Mountaineers fell to No. 13 Virginia Tech, 2-1, on Aug. 23
- Nine Nittany Lions have tallied at least one point

2015 STAT LEADERS

POINTS		ASSISTS	
Mallory Weber	8	Nickolette Driesse	2
Megan Schafer	6	Mallory Weber	2
Frannie Crouse	4	Four Tied	1
GOALS		SHOTS	
Mallory Weber	3	Charlotte Williams	14
Megan Schafer	3	Mallory Weber	10
Frannie Crouse	2	Megan Schafer	9



CAREER CHARTS

POINTS

- 8. 96 - Christine Nairn (29g 38a) - 2009-12
- 9. 82 - Kelly Convey (28g 26a) - 1996-99
- 82 - Bonnie Young (31g 20a) - 1998-01
- 82 - Mallory Weber (31g 20a) - 2012-**
- 11. 80 - Courtney Lawson (30g 20a) - 1996-99

GOALS

- 7. 41 - Joanna Lohman - 2000-03
- 8. 31 - Bonnie Young - 1998-01
- 31 - Mallory Weber - 2012-**

ASSISTS

- 8. 26 - Heidi Drummond - 2000-03
- 26 - Kelly Convey - 1996-99
- 10. 25 - Liz Villamil - 1994-97
- 11. 23 - Taylor Schram - 2010-13
- 23 - Raquel Rodriguez - 2012-**

SHOTS ON GOAL

- 6. 87 - Joanna Lohman - 2000-03
- 7. 78 - Mallory Weber - 2012-**
- 8. 61 - Heidi Drummond - 200-03
- 61 - Raquel Rodriguez - 2012-**
- 61 - Taylor Schram - 2010-13

GAME-WINNING GOALS

- 7. 15 - Joanna Lohman - 2000-03
- 8. 12 - Bonnie Young - 1998-01
- 9. 10 - Mallory Weber - 2012-**
- 10 - Kelly Convey - 1996-99

SAVES

- 3. 217 - Alyssa Naehner - 2006-09
- 4. 196 - Britt Eckerstrom - 2011-**
- 5. 195 - Robyn Van Praag - 1994-96

MINUTES PLAYED

- 8. 5875 - Maya Hayes - 2010-13
- 9. 5835 - Ali Krieger - 2003-06
- 10. 5225 - Mallory Weber - 2012-**
- 11. 5152 - Taylor Schram - 2010-13
- 12. 5143 - Stephanie Pezzullo - 2001-04
- 13. 5102 - Bri Hovington - 2010-13
- 14. 5088 - Raquel Rodriguez - 2012-**
- 15. 4955 - Britt Eckerstrom - 2011-**
- 16. 4898 - Maddy Evans - 2009-12

TOUGH TEST ON THE ROAD

The Penn State women's soccer team is heading on the road for a three-game trek. Following their trip to No. 12 West Virginia on Friday, the Nittany Lions travel to California for a pair of matches.

While on the west coast, Penn State visits No. 2 Stanford on Sept. 11 and Santa Clara on Sept. 13.

ACTIVE LEADERS

Among active players in the NCAA, Mallory Weber is tied for fifth in games played (76), 13th in points (82), 14th in assists (20) and she is also one of four student-athletes to have tallied 30 goals and 20 assists. Also in the active leaderboards, Raquel Rodriguez ranks eighth with her 23 assists.

OFF ON THE RIGHT FOOT

After posting a five-point weekend against Hofstra and LMU during the first weekend of the season, senior Mallory Weber followed up her performance with a three-point weekend against Duke and Arkansas.

Weber, held pointless against the Blue Devils, notched a goal and an assist in a 4-2 win over Arkansas. All-time at Penn State, Weber is tied for eighth in goals (31) and tied for ninth in points (82).

EXTRA TIME

In the hard fought double overtime match against the No. 21 Duke Blue Devils Friday night, seven Nittany Lions played the full 110 minutes.

POUNCING FIRST

During the first four matches of the season, the Nittany Lions have outscored their opponents 4-0 in the first 45 minutes of play and they have outshot the opposition, 39-6.

28 IN A ROW

With her four starts in the young 2015 season, sophomore Emily Ogle has started all 28 matches of her Nittany Lion career.

USUAL SUSPECTS

Out of the possible 380 minutes, five Nittany Lions have played at least 357 minutes (93 percent).

Freshman Kaleigh Riehl has been on the field for all but two minutes during the season.

THE POLLS

The Penn State women's soccer team currently ranks fifth in the TopDrawerSoccer Poll, seventh in the NSCAA Coaches' Poll and seventh in the Soccer America Top-25 Poll.

BACK-TO-BACK NO. 2 CLASSES

According to TopDrawerSoccer, the Nittany Lions have signed the number two recruiting class in the last two years. The 2014 class featured the 2014 Big Ten Freshman of the Year Emily Ogle and Frannie Crouse, who led the Nittany Lions with 10 goals. The 2015 class features nine newcomers, including eight freshmen and one transfer.

SWEET 16

Penn State's regular season Big Ten title last year was the 16th in program history. The Nittany Lions have won 16 out of the last 17 titles. Since 1992-93, the 16 Big Ten titles won by women's soccer is tied for third for the most titles won by any one women's sport program in the Big Ten (Penn State women's volleyball).

PRESEASON FAVORITES

According to the 2015 Big Ten Women's Soccer Preseason Coaches' Poll, the Penn State women's soccer team was selected to finish first. The Nittany Lions have sat atop the Big Ten preseason poll every season since the poll began in 2003.

WEEKLY RANKINGS

	PS	8/25	9/1
NCAA	6	6	7
NCAA RPI	-	-	-
Soccer America	5	4	7
Top Drawer Soccer	4	4	5

PLAYERS TO WATCH

Three players from each Big Ten team were named Big Ten Women's Soccer Preseason Players to Watch, with seniors Britt Eckerstrom, Raquel Rodriguez and Mallory Weber representing the Nittany Lion Blue and White. This is Rodriguez's third-straight appearance on the Preseason Players to Watch list.

HOME SWEET HOME

Jeffery Field has been a tough place for opponents to play as the Nittany Lions boast an all-time record of 207-23-10 at home. In Big Ten play at Jeffrey Field, the Nittany Lions own a record of 109-5-4. The Nittany Lions have tallied seven undefeated seasons at Jeffrey Field.

#PACKTHEJEFF

In their season-opening homestand, the Nittany Lions drew two top-10 crowds in program history.

In the season-opener, 3,175 fans made their way to Jeffrey Field to cheer on the Nittany Lions. At the time, that was fourth-largest crowd to attend a women's soccer game at Jeffrey Field.

A week later, against No. 21 Duke, 4,207 fans packed Jeffrey Field for the second-largest crowd in program history.

PRESEASON HONORS

TopDrawerSoccer.com released its Women's College Preseason Best XI with three Nittany Lions making the list. Senior midfielder Raquel Rodriguez was named to the second team, sophomore midfielder Emily Ogle was named to the third team and defender Kaleigh Riehl was named to the freshmen team. Five Nittany Lions were named to TopDrawerSoccer's Preseason Top-100 Player Rankings. Rodriguez and Ogle are ranked 13th and 27th, respectively. Frannie Crouse (61st), Mallory Weber (67th) and Maddie Elliston (71st) are ranked in the top-75.

WATCH OUT FOR ROCKY

Senior midfielder Raquel Rodriguez was named to the MAC Hermann Trophy Watch List, as announced by the NSCAA in early August.

The 28 candidates named to the watch list in August will be narrowed down throughout the season with the winner being announced on Jan. 8, 2016.

PSWS IN THE #2015WWC

The Penn State women's soccer program was represented by five Nittany Lions representing three countries in the 2015 Women's World Cup.

Former Penn State women's soccer players, Ali Krieger '06 and Alyssa Naeher '09 became the first Nittany Lions to win a World Cup as part of a senior national team as they helped the U.S. to a 5-2 victory over Japan in the 2015 FIFA Women's World Cup final.

Carmelina Moscato '05 and Erin McLeod '05 helped Canada to reach the quarterfinal round before being eliminated by England. The pair helped the host country to advance out of Group A and defeat Switzerland in the Round of 16.

Raquel Rodriguez won't forget about the summer of 2015 for quite some time.

During the summer of 2015, Rodriguez represented her home country of Costa Rica in the Women's World Cup.

In Costa Rica's debut at the Women's World Cup, Costa Rican and Penn State women's soccer history was made just 74 seconds after Spain scored its first World Cup goal. In the 14th minute, Rodriguez received a cross in the box from Lixy Rodriguez, and she lobbed in a left footed shot at the right post for the 1-1 equalizer. Rodriguez's goal was her 24th as a member of Costa Rican's Women's National Team, a team-best.

NSCAA COACHES POLL

(as of Sept. 1)

#	Team	W-L-T	1st Votes
1	Virginia	2-0-0	30
2	Stanford	2-0-0	2
3	Texas A&M	3-0-0	0
4	North Carolina	3-0-0	1
5	Florida State	3-1-0	0
6	Notre Dame	3-0-0	0
7	Penn State	3-0-1	0
8	Florida	2-1-0	0
9	Brigham Young	3-0-0	0
10	Virginia Tech	3-0-0	0
11	Auburn	3-0-0	0
12	West Virginia	3-1-0	0
13	Clemson	2-0-0	0
14	UCLA	1-1-0	0
15	Southern California	2-1-0	0
16	South Carolina	2-1-0	0
17	Ohio State	3-0-0	0
18	Duke	2-0-1	0
19	Pepperdine	3-0-0	0
20	DePaul	3-0-1	0
21	Texas Tech	2-1-0	0
22	Rutgers	3-0-0	0
23	Long Beach State	2-1-0	0
24	Arizona State	2-0-0	0
25	Connecticut	1-0-1	0

Also receiving votes: Wisconsin (75), California (59), Central Florida (22), Washington State (21), Kentucky (14), William & Mary (12), Arizona (11), South Florida (9), Maryland (9), Boston College (8), San Diego State (5), Illinois (5), South Alabama (3), Marquette (3), Oklahoma (3), California State-Fullerton (2), Washington (1), Arkansas (1)

GAMEDAY CENTRAL

SCOUTING THE MOUNTAINEERS

- Senior Kailey Utley leads the WVU attack with three goals on the year.
- WVU fell to No. 13 Virginia Tech, 2-1, but defeated Maryland, 1-0.
- Hannah Steadman has played 342 minutes in net for the Mountaineers and has only allowed two goals on the season.
- The 2014 Big 12 Newcomer of the Year, Michaela Abam, returns for WVU.
- WVU fell in the first round of the NCAA Tournament last season.
- The Mountaineers are the defending Big 12 champions.



PRONUNCIATION GUIDE

Brittany Basinger BAY-singer
 Nickolette Driesse DRICE
 Kaleigh Riehl REAL
 Kristin Schnurr SHNURR
 Liisi Vink-Lainas LEE-see Vink-LY-nus
 Anna Witte Witt-ee
 Alina Ortega-Jurado AH-lean-AH
 OR-TAY-GAH
 HER-RAH-DOH

LIONS BY ELIGIBILITY

Redshirt Senior (1): Eckerstrom
 Seniors (4): Chase, Ritchey, Rodriguez, Weber
 Juniors (3): Driesse, Williford, Witte
 Redshirt Sophomores (2): Basinger, Widlacki
 Sophomores (8): Ball, Clauss, Crouse, Echard, Elliston, Ogle, Schafer, Vink-Lainas
 Redshirt Freshman (1): Chandler
 Freshmen (8): Campbell-Phipps, Jean, Knaub, Ortega-Jurado, Riehl, Schnurr, Sheva, Williams

LIONS BY POSITION

Goalkeepers (2): Chandler, Eckerstrom
 Forwards (7): Crouse, Ortega-Jurado, Rodriguez, Schafer, Schnurr, Weber, Williams
 Midfielders (10): Driesse, Echard, Knaub, Ogle, Ortega-Jurado, Ritchey, Rodriguez, Sheva, Vink-Lainas, Williford
 Defenders (10): Ball, Basinger, Campbell-Phipps, Chase, Clauss, Elliston, Jean, Riehl, Widlacki, Witte

LIONS BY LOCATION

Connecticut (1): Jean
 Costa Rica (1): Rodriguez
 Georgia (1): Chandler
 Germany (1): Ortega-Jurado
 Illinois (1): Widlacki
 Maryland (1): Eckerstrom
 Michigan (1): Weber
 Nebraska (1): Elliston
 New Jersey (1): Driesse
 New York (2): Vink-Lainas, Williams
 North Carolina (1): Witte
 Ohio (1): Ogle
 Pennsylvania (10): Campbell-Phipps, Chase, Clauss, Crouse, Echard, Knaub, Ritchey, Schafer, Sheva, Williford
 Virginia (4): Ball, Basinger, Riehl, Schurr

OH CAPTAIN, MY CAPTAIN!

Seniors Britt Eckerstrom, Raquel Rodriguez and Mallory Weber have been named team captains for the 2015 season.

A three-time Academic All-Big Ten honoree, Eckerstrom, a red-shirt senior, sits second among Penn State goalkeepers with 57 games played and her 39 career wins is tied for third.

Rodriguez, the 2014 Big Ten Midfielder of the Year, a NSCAA Scholar All-America pick, NSCAA All-Great Lakes Region first team member and Academic All-Big Ten honoree, posted 17 points in 18 games played.

Weber, also an Academic All-Big Ten selection, tied for the team lead with 22 points last season, scoring eight goals and dishing out six assists.

HOMETOWN TIES

Senior Megan Ritchey and freshman Taylor Campbell-Phipps didn't have to travel a long distance as they made the transition from high school to college.

Both Ritchey and Campbell-Phipps call State College, Pa., home as they both attended State College Area high school.

WATCH THE LIONS ON BTN

The Penn State women's soccer team will make one appearance on BTN (Sept. 17 vs. Wisconsin), but will be featured nine times on BTNPlus on BTN2GO.

The Nittany Lions are featured on BTN Plus on BTN2Go in three-straight matches when they take on Minnesota, Sept. 20 at Jeffrey Field before traveling to Nebraska, Sept. 25, and Iowa, Sept. 27. Following the two away matches, Penn State will play two contests at Jeffrey Field against Maryland, Oct. 8 and Indiana, Oct. 11, before going on the road for three-straight matches against Purdue, Oct. 15, Rutgers, Oct. 18, and Ohio State, Oct. 24. Finally, the Nittany Lions will close out the regular season Wednesday, Oct. 28 against Michigan at Jeffrey Field.

SOCIAL MEDIA

Keep up with the Nittany Lions on Facebook (PennStateWomensSoccer), Instagram (PennStateWSOC) and Twitter (PennStateWSOC).

UP NEXT

The Nittany Lions continue their three-game road trip next week as they head to California for a pair of matches against No. 2 Stanford (Sept. 11) and Santa Clara (Sept. 13).

2015 BIG TEN STANDINGS

Team	Big Ten	Pts.	Pct.	GF	GA	GD	Overall	Pct.	GF	GA	GD
Rutgers	0-0-0	-	-	-	-	-	4-0-0	1.000	5	0	+5
Illinois	0-0-0	-	-	-	-	-	4-0-0	1.000	13	4	+9
Iowa	0-0-0	-	-	-	-	-	3-0-0	1.000	7	1	+6
Ohio State	0-0-0	-	-	-	-	-	3-0-1	.875	9	3	+6
Penn State	0-0-0	-	-	-	-	-	3-0-1	.875	10	5	+5
Michigan State	0-0-0	-	-	-	-	-	3-0-1	.875	7	3	+4
Maryland	0-0-0	-	-	-	-	-	3-1-0	.750	4	1	+3
Purdue	0-0-0	-	-	-	-	-	3-1-0	.750	11	7	+4
Michigan	0-0-0	-	-	-	-	-	3-1-0	.750	14	4	+10
Northwestern	0-0-0	-	-	-	-	-	3-1-0	.750	6	1	+5
Nebraska	0-0-0	-	-	-	-	-	2-1-0	.667	7	5	+2
Indiana	0-0-0	-	-	-	-	-	2-1-1	.625	3	2	+1
Minnesota	0-0-0	-	-	-	-	-	2-1-1	.625	4	1	+3
Wisconsin	0-0-0	-	-	-	-	-	2-2-0	.500	5	6	-1

THE LAST TIME

PENN STATE...

Scored 3 goals	10/24/14	Allowed 10-15 shots	8/28/15
	vs. Nebraska (3-1)		14 at #21 Duke (0-0)
Scored 4 goals	8/30/15	Allowed 16+ shots	9/7/14
	vs. Arkansas (4-2)		20 at Duke (4-3)
Scored 5 goals	9/19/14	Scored 15-24 points	9/23/14
	vs. Ohio State (5-1)		18 vs. Bucknell (7-0)
Scored 6 goals	9/26/13	Scored 25+ points	9/25/01
	vs. Purdue (6-1)		26 vs. Bucknell (9-2)
Scored 7 goals	9/23/14	Made 10-14 saves	9/5/14
	vs. Bucknell (7-0)		10 vs. #14 UNC (1-0, 2OT)
Scored 8 goals	10/9/05	Made 15+ saves	9/2/95
	vs. Iowa (8-0)		17 vs. James Madison (4-2)
Scored 9 goals	9/25/01	Had 10+ corner kicks	8/23/15
	vs. Bucknell (9-2)		12 vs. LMU (4-2)
Allowed 0 goals	8/28/15	Allowed 10+ corner kicks	9/12/10
	vs. #21 Duke (0-0)		10 at #4 Portland (2-4)
Allowed 1 goal	8/21/15	Tallied 5-7 assists	11/7/12
	vs. Hofstra (2-1)		5 vs. Buffalo (4-1)
Allowed 2 goals	8/30/15	Tallied 8+ assists	11/14/14
	vs. Arkansas (4-2)		8 at Bucknell (6-0)
Allowed 3 goals	9/7/14	Won NCAA Tourney game	11/23/14
	at Duke (4-3)		vs. Virginia Tech (2-1)
Allowed 4 goals	12/2/12	Lost an NCAA Tourney game	11/29/14
	vs. #13 UNC (1-4)		vs. #5 Texas A&M (1-2)
Allowed 5+ goals	8/30/13	Won road NCAA Tourney game	11/30/02
	vs. Virginia (1-5)		at Connecticut (2-1)
Won in overtime	11/30/12	Won neutral NCAA Tourney game	11/30/12
	vs. #7 Florida State (2-1)		vs. #7 Florida State (2-1)
Lost in overtime	11/6/11	Won PK shootout	11/18/12
	vs. #18 Illinois (1-2)		vs. Michigan (1-1, 3-2 PKs)
Won in double overtime	9/20/13	Lost PK shootout	11/9/07
	vs. Northwestern (3-2)		vs. Ohio State (2-2, 4-5 PKs)
Lost in double overtime	9/5/14		
	vs. #14 UNC (0-1, 2OT)		
Tied after double overtime	8/28/15		
	vs. #21 Duke (0-0, 2OT)		
Scoreless tie after double overtime	8/28/15		
	vs. #21 Duke (0-0, 2OT)		
Ranked in the NSCAA Top 25	9/1/15		
	7th		
Ranked in the NSCAA Top 10	9/1/15		
	7th		
Played an NSCAA Top 10 Team	11/29/14		
	at #5 Texas A&M (1-2)		
Played an NSCAA Top 25 Team	8/28/15		
	vs. #21 Duke (0-0)		
Defeated an NSCAA Top 10 Team	11/30/12		
	vs. #7 Florida State (2-1)		
Defeated an NSCAA Top 25 Team	8/22/14		
	vs. #13 Wisconsin (2-0)		
Attempted less than 10 shots	8/22/14		
	9 vs. # 12 West Virginia (3-1)		
Attempted 10-19 shots	8/21/15		
	18 vs. Hofstra (2-1)		
Attempted 20-29 shots	8/28/15		
	21 vs. #21 Duke (0-0)		
Attempted 30-39 shots	9/10/13		
	30 at Bucknell (6-0)		
Attempted 40+ shots	11/7/10		
	42 vs. Michigan (1-0)		
Allowed 4 or less shots	9/19/14		
	4 vs. Ohio State (5-1)		
Allowed 5-9 shots	8/30/15		
	7 vs. Arkansas (4-2)		

MISCELLANEOUS STATISTICS

PENN STATE is...

207-23-10 All-time at Jeffrey Field
 109-5-4 All-time vs. Big Ten at Jeffrey Field

In 2015...

3-0-1 at home
 0-0-0 on the road
 0-0-0 at neutral site
 0-0-1 in overtime
 3-0-0 when leading at halftime
 0-0-0 when trailing at halftime
 0-0-1 when tied at halftime
 3-0-0 when scoring first goal
 0-0-0 when opponent scores first goal
 3-0-1 when out-shooting opponent
 0-0-0 when out-shot by opponent
 0-0-0 when posting the same # of shots
 3-0-1 when taking more corner kicks
 0-0-0 when allowing more corner kicks
 0-0-0 when taking the same corner kicks
 0-0-1 against ranked opponents
 3-0-0 against unranked opponents
 0-0-0 against higher-ranked opponents
 0-0-1 against lower-ranked opponents
 0-0-1 when scoring 0 goals
 0-0-0 when scoring 1 goal
 1-0-0 when scoring 2 goals
 2-0-0 when scoring 3+ goals
 0-0-1 when allowing 0 goals
 1-0-0 when allowing 1 goal
 2-0-0 when allowing 2 goals
 0-0-0 when allowing 3+ goals
 0-0-0 on Wednesday
 0-0-0 on Thursday
 1-0-1 on Friday
 0-0-0 on Saturday
 2-0-0 on Sunday
 2-0-1 at night
 1-0-0 during the day
 0-0-1 vs. ACC
 1-0-0 vs. CAA
 0-0-0 vs. Big 12
 0-0-0 vs. Big Ten
 0-0-0 vs. PAC 12
 1-0-0 vs. SEC
 1-0-0 vs. WCC
 1-0-0 when a freshman scores
 1-0-0 in one-goal games

A PENN STATE PLAYER...

Scored 2 goals	8/30/15
	Megan Schafer vs. Arkansas (4-2)
Scored 3 goals	9/4/11
	Maya Hayes at Pittsburgh (3-0)
Scored 4 goals	10/7/01
	Christie Welsh vs. Michigan (6-2)
Had 2 assists	8/23/15
	Nicolette Driesse vs. LMU (4-2)
Had 3 assists	9/13/13
	Tani Costa at Oklahoma St. (4-2)
Had 4 assists	9/17/03
	Ali Krieger vs. Bucknell (6-0)
Had 5-9 points	9/23/14
	Frannie Crouse 5 vs. Bucknell (7-0)
Had 10+ points	10/7/01
	10, Christie Welsh vs. Michigan (6-2)
Attempted 10+ shots	11/11/11
	10, Christine Nairn vs. Army (1-0)
Made 10-14 saves	9/5/14
	10, Britt Eckerstrom vs. # 14 UNC (1-0, 2OT)
Made 15+ saves	9/3/94
	15, Robin Van Praag at Minnesota (3-2)
Scored in the Big Ten Tourney	11/6/13
	Mallory Weber vs. Wisconsin (2-0)
Had a Big Ten Tourney shutout	11/6/13
	Britt Eckerstrom vs. Wisconsin (2-0)
Scored in an NCAA game	11/29/14
	Salina Williford at #5 Texas A&M (2-1)
Had an NCAA game shutout	11/21/13
	Britt Eckerstrom vs. UConn (1-0)



**2015 Penn State Women's Soccer
Penn State Overall Individual Statistics (as of Sep 02, 2015)
All games**

Overall: 3-0-1 Conf: 0-0-0 Home: 3-0-1 Away: 0-0-0 Neut: 0-0-0

##	Player	gp-gs	min	g	a	pts	sh	sh%	sog	sog%	gwg	pk-att
16	Weber, Mallory	4-4	273	3	2	8	10	.300	4	.400	0	0-0
4	Schafer, Megan	4-2	231	3	0	6	9	.333	5	.556	1	0-0
9	Crouse, Frannie	4-2	242	2	0	4	8	.250	3	.375	0	0-0
10	Ogle, Emily	4-4	336	1	1	3	3	.333	3	1.000	1	0-0
12	Williams, Charlotte	4-3	218	1	0	2	14	.071	8	.571	1	0-0
23	Driesse, Nickolette	4-4	250	0	2	2	4	.000	1	.250	0	0-0
11	Rodriguez, Raquel	4-4	321	0	1	1	7	.000	2	.286	0	0-0
14	Jean, Ellie	4-4	361	0	1	1	2	.000	0	.000	0	0-0
17	Ortega-Jurado, Alina	4-1	131	0	1	1	1	.000	1	1.000	0	0-0
27	Sheva, Marissa	4-0	113	0	0	0	7	.000	3	.429	0	0-0
15	Echard, Haleigh	4-0	127	0	0	0	6	.000	5	.833	0	0-0
1	Basinger, Brittany	4-4	357	0	0	0	3	.000	1	.333	0	0-0
7	Ball, Elizabeth	4-4	370	0	0	0	2	.000	1	.500	0	0-0
30	Chandler, Rose	1-0	21	0	0	0	0	.000	0	.000	0	0-0
28	Eckerstrom, Britt	4-4	359	0	0	0	0	.000	0	.000	0	0-0
25	Campbell-Phipps, Tay	1-0	19	0	0	0	0	.000	0	.000	0	0-0
24	Knaub, Cecilia	1-0	20	0	0	0	0	.000	0	.000	0	0-0
22	Clauss, Isabelle	1-0	2	0	0	0	0	.000	0	.000	0	0-0
21	Chase, Teddy	1-0	28	0	0	0	0	.000	0	.000	0	0-0
6	Witte, Anna	1-0	10	0	0	0	0	.000	0	.000	0	0-0
3	Riehl, Kaleigh	4-4	378	0	0	0	0	.000	0	.000	0	0-0
2	Ritchey, Megan	1-0	13	0	0	0	0	.000	0	.000	0	0-0
Total		4	-	10	8	28	76	.132	37	.487	3	0-0
Opponents		4	-	5	5	15	32	.156	16	.500	0	0-0

#	Goalie	gp-gs	Goal Average			Saves		Record				Shots faced
			min	ga	gaavg	saves	pct	w	l	t	sho/cbo	
28	Eckerstrom, Britt	4-4	359:13	3	0.75	9	.750	3	0	1	1/0	26
30	Chandler, Rose	1-0	20:47	2	8.66	2	.500	0	0	0	0/0	6
Total		4	380:00	5	1.18	11	.688	3	0	1	1	32
Opponents		4	380:00	10	2.37	27	.730	0	3	1	1	75

Team saves: 0

Goals by Period	1st	2nd	OT	OT2	Total
Penn State	4	6	0	0	10
Opponents	0	5	0	0	5

Corners by Period	1st	2nd	OT	OT2	Total
Penn State	17	12	0	0	29
Opponents	2	11	0	0	13

Shots by Period	1st	2nd	OT	OT2	Total
Penn State	39	31	2	4	76
Opponents	6	24	1	1	32

Fouls by Period	1st	2nd	OT	OT2	Total
Penn State	11	13	1	0	25
Opponents	13	19	1	1	34

Saves by Period	1st	2nd	OT	OT2	Total
Penn State	5	5	1	0	11
Opponents	13	13	0	1	27

Attendance Summary	PSU	Opponent
Total	10514	0
Dates/Avg Per Date	4/2628	0/0
Neutral Site #/Avg	0/0	

2015 Penn State Women's Soccer Penn State Combined Team Statistics (as of Sep 02, 2015) All games

RECORD:	OVERALL	HOME	AWAY	NEUTRAL
ALL GAMES	3-0-1	3-0-1	0-0	0-0
CONFERENCE	0-0	0-0	0-0	0-0
NON-CONFERENCE	3-0-1	3-0-1	0-0	0-0

Date	Opponent	Score	Att.
Aug 21	HOFSTRA	w 2-1	3175
Aug 23	LOYOLA MARYMOUNT	w 4-2	1028
Aug 28	#21 DUKE	To2 0-0	4207
Aug 30	ARKANSAS	w 4-2	2104

TEAM STATISTICS	PSU	OPP
SHOT STATISTICS		
Goals-Shot attempts	10-76	5-32
Goals scored per game	2.50	1.25
Shot pct.	.132	.156
Shots on goal-Attempts	37-76	16-32
SOG pct.	.487	.500
Shots/Game	19.0	8.0
CORNER KICKS	29	13
PENALTY KICKS	0-0	0-0
PENALTIES		
Yellow cards	0	4
Red cards	0	0
ATTENDANCE		
Total	10514	0
Dates/Avg Per Date	4/2628	0/0
Neutral Site #/Avg	0/0	

#	Player	gp	g	a	pts	sh	sh%	sog	sog%	gw	pk-att
16	Weber, Mallory	4	3	2	8	10	.300	4	.400	0	0-0
4	Schafer, Megan	4	3	0	6	9	.333	5	.556	1	0-0
9	Crouse, Frannie	4	2	0	4	8	.250	3	.375	0	0-0
10	Ogle, Emily	4	1	1	3	3	.333	3	1.000	1	0-0
12	Williams, Charlotte	4	1	0	2	14	.071	8	.571	1	0-0
23	Driesse, Nickolette	4	0	2	2	4	.000	1	.250	0	0-0
11	Rodriguez, Raquel	4	0	1	1	7	.000	2	.286	0	0-0
14	Jean, Ellie	4	0	1	1	2	.000	0	.000	0	0-0
17	Ortega-Jurado, Alina	4	0	1	1	1	.000	1	1.000	0	0-0
27	Sheva, Marissa	4	0	0	0	7	.000	3	.429	0	0-0
15	Echard, Haleigh	4	0	0	0	6	.000	5	.833	0	0-0
1	Basinger, Brittany	4	0	0	0	3	.000	1	.333	0	0-0
7	Ball, Elizabeth	4	0	0	0	2	.000	1	.500	0	0-0
30	Chandler, Rose	1	0	0	0	0	.000	0	.000	0	0-0
28	Eckerstrom, Britt	4	0	0	0	0	.000	0	.000	0	0-0
25	Campbell-Phipps, Tay	1	0	0	0	0	.000	0	.000	0	0-0
24	Knaub, Cecilia	1	0	0	0	0	.000	0	.000	0	0-0
22	Clauss, Isabelle	1	0	0	0	0	.000	0	.000	0	0-0
21	Chase, Teddy	1	0	0	0	0	.000	0	.000	0	0-0
6	Witte, Anna	1	0	0	0	0	.000	0	.000	0	0-0
3	Riehl, Kaleigh	4	0	0	0	0	.000	0	.000	0	0-0
2	Ritchey, Megan	1	0	0	0	0	.000	0	.000	0	0-0
Total		4	10	8	28	76	.132	37	.487	3	0-0
Opponents		4	5	5	15	32	.156	16	.500	0	0-0

#	Goalie	GP	Min.	GA	GAAvg	Saves	Pct	W-L-T	Sho
28	Eckerstrom, Britt	4	359:13	3	0.75	9	.750	3-0-1	1/0
30	Chandler, Rose	1	20:47	2	8.66	2	.500	0-0-0	0/0
Total		4	380:00	5	1.18	11	.688	3-0-1	1
Opponents		4	380:00	10	2.37	27	.730	0-3-1	1

Goals by Period	1st	2nd	OT	OT2	Total
Penn State	4	6	0	0	10
Opponents	0	5	0	0	5

Shots by Period	1st	2nd	OT	OT2	Total
Penn State	39	31	2	4	76
Opponents	6	24	1	1	32

Saves by Period	1st	2nd	OT	OT2	Total
Penn State	5	5	1	0	11
Opponents	13	13	0	1	27

Corners by Period	1st	2nd	OT	OT2	Total
Penn State	17	12	0	0	29
Opponents	2	11	0	0	13

Fouls by Period	1st	2nd	OT	OT2	Total
Penn State	11	13	1	0	25
Opponents	13	19	1	1	34



ERICA WALSH

Head Coach • Ninth Year
WILLIAM & MARY '97

RECORD AT PSU: 138-47-9 (.734)
Overall Record: 178-75-12 (.694)

2012 NSCAA NATIONAL COACH OF THE YEAR
THREE-TIME BIG TEN COACH OF THE YEAR (2009, 2012, 2014)

Head coach Erica Walsh enters her ninth season at the helm of the Penn State women's soccer program in 2015.

In 2014, Walsh led the Blue and White to its 10th NCAA Tournament semifinal appearance and the seventh 20-win season in program history. Penn State, which had an 11-member freshman class, earned its third outright conference title in four years, maintaining a top-11 national ranking throughout the season and defeating five top-25 opponents.

Under the director of the three-time Big Ten Coach of the Year, Penn State collected three of four Player of the Year awards. Whitney Church, the conference's Defender of the Year, was named a M.A.C. Hermann Trophy semifinalist and an NSCAA All-America first team selection before she became the 30th overall pick in the National Women's Soccer League (NWSL) draft by the Washington Spirit. Also earning individual Big Ten awards were Raquel Rodriguez, who bagged Midfielder of the Year honors and Emily Ogle, the Freshman of the Year.

The Nittany Lions appeared in their 19th-straight NCAA Tournament in 2013, due in part to the success of senior Maya Hayes. The sixth-overall selection in the WPSL draft, Hayes set Penn State's single season record for points (79) and finished her career ranked third in goals scored (71) and points (163), sixth in game-winning goals (17) and seventh in shots (291). Hayes also became the seventh M.A.C. Hermann Award Trophy semifinalist in program history.

Walsh's 2012 Nittany Lions were the most successful team in program history after advancing to their first-ever national title game. The Nittany Lions won 21 of 27 games and were unbeaten in Big Ten action with a 10-0-1 record. The Lions registered their 15th consecutive Big Ten title and 18th-straight NCAA Tournament appearance. The 15-title mark stands as the most consecutive Big Ten Championships by a women's program, along with the present Northwestern tennis team.

Senior Christine Nairn became just the seventh Nittany Lion to finish as a finalist for the prestigious Missouri Athletic Club's Hermann Trophy in 2012 under Walsh's tutelage while junior Maya Hayes was named a semifinalist for the award.

Walsh's success was recognized at the conference and national level as she earned Big Ten Coach of the Year and NSCAA National Coach of the Year honors.

Her 2011 team was a dominant force, winning 21 of 26 matches, while outscoring opponents 70-24. The Nittany Lions were 10-1-0 in Big Ten action and posted the seventh undefeated season at Jeffrey Field (9-0). Walsh helped

guide the Lions to their 14th-straight Big Ten title and a spot to the NCAA Sweet Sixteen for the first time since 2007.

With Walsh's guidance, sophomore Maya Hayes became the nation's most prolific scorer in soccer in 2011 and was a finalist for the M.A.C. Hermann Trophy. Hayes led the nation with 31 goals and 70 points, breaking the Penn State single-season record for points.

During the 2011 summer, Walsh had an extraordinary experience of being one of the top assistants to Pia Sundhage and the 2011 United State women's national team at the FIFA World Cup in Germany. The U.S. made a sparkling run through knockout play to the final, falling to eventual champion Japan.

In the 2010 campaign, Walsh's young club made a remarkable turnaround mid-season, overcoming a two-game deficit in the league standings over the final weeks to capture a share of its 13th straight Big Ten title.

After a tough 2-4 start to the 2009 season, Walsh led the Nittany Lions to a remarkable turnaround, going 10-1-2 in the last 13 games of the regular season, earning her the 2009 Big Ten Coach of the Year Award for her efforts.

With the impressive end to the season, Walsh and her charges captured the program's 12th-straight Big Ten Championship. By winning the Big Ten, the Nittany Lions continued their string of NCAA Tournament berths, making their 15th-straight appearance in the 64-team field in 2009. For the second time in three years, Penn State hosted the first and second rounds of tournament play.

WALSH'S COLLEGIATE RÉSUMÉ

Head Coach	
Penn State	2007-present
	<i>2012 NSCAA National Coach of the Year</i>
	<i>2012 Big Ten Coach of the Year</i>
	<i>2009 Big Ten Coach of the Year</i>
Harvard	2006
Dartmouth	2000-02
Assistant Coach	
Florida State	2005-06
Dartmouth	1998-99
Graduate Assistant	
Lehigh	2003-04
Dartmouth	1997
Student-Athlete	
William & Mary	1993-97
	<i>William & Mary Hall of Fame Inductee</i>

WALSH'S NATIONAL RÉSUMÉ

Head Coach	
U.S. Women's Under-17	2004-07
Assistant Coach	
U.S. Women's National Team	2008-11
	<i>2008 Olympic Gold Medalists</i>
	<i>2011 World Cup Silver Medalists</i>
U.S. Women's Under-19	2004
U.S. Women's Under-20	2013-Present

WALSH'S ACCOLADES

- 12 YEARS OF COLLEGE HEAD COACHING EXPERIENCE**
- 1 COLLEGE CUP APPEARANCE**
- 1 NATIONAL CHAMPIONSHIP GAME APPEARANCE**
- 17 NCAA TOURNAMENT WINS**
- 11 NCAA TOURNAMENT APPEARANCES**
- 11 ALL-AMERICA HONORS**
- 7 BIG TEN CHAMPIONSHIPS**
- 1 OLYMPIC GOLD MEDAL**
- 1 NATIONAL COACH OF THE YEAR AWARD**
- 3 BIG TEN COACH OF THE YEAR AWARDS**

Walsh also orchestrated one of the finest awards seasons in Penn State history when Katie Schoepfer, Alyssa Naeher and Christine Nairn swept the year-end Big Ten Player of the Year awards. Schoepfer was named the Offensive Player of the Year, Naeher the Defensive Player of the Year and Nairn the Freshman of the Year. Danielle Toney was named to the All-Big Ten first team, while Lexi Marton garnered second team mention. Walsh has now coached two players of the year to three awards as Naeher was also the 2007 recipient of the Defensive Player of the Year honors in Walsh's first year in Happy Valley.

Walsh continued her success from the 2007 campaign into a 16-8-0 record that saw Penn State capture its 11th-straight Big Ten Championship and the 2008 Big Ten Tournament crown.

Her transition to Penn State was quite smooth as the 2007 team finished 18-4-2, including a 9-1-0 mark in conference play, and was ranked 12th in the final NSCAA poll of the season.

When she came to Penn State, Walsh brought with her a wealth of experience at both the international and collegiate levels. She already has coached at six different universities, including three stints as head coach as well as serving as an assistant for the U.S. U-19 team in 2004. Walsh served as head coach of the U-17 team from December 2004 until her hire at Penn State in February 2007.

As of January 2009, Walsh was appointed as a member of the Panel of Instructors and Lecturers for FIFA Courses. In addition, she was appointed as the Chairman of the Women's Technical Committee for the period of January 1, 2009 to June 30, 2011.

In January of 2008, Walsh was named as the assistant coach by Pia Sundhage for the U.S. National Team. With Walsh's help, the U.S. team completed its

historic run with a gold medal at the 2008 Olympic Games in Beijing, China. Even sweeter was that Walsh's main responsibility was the U.S. Team's defense, which held fellow world power Brazil scoreless in the gold medal game.

The head coach at Harvard University as well as the U.S. Under-17 team prior to her hiring at Penn State, Walsh has consistently been active among the coaching ranks both at the Division I level and the U.S. Youth National Team program for nearly a decade. Prior to her time with the Crimson, she was part of a Florida State staff that led the Seminoles to one of its most successful year to date. FSU joined Penn State in the 2005 Women's Soccer College Cup, with both programs reaching the national semifinals.

Walsh's coaching path began in 1997 as a graduate assistant with Bucknell University. In 1998, she accepted a position at Dartmouth, where she was an assistant coach for two seasons. After helping the team to a final NSCAA ranking of No. 8 at the conclusion of the team's 1998 NCAA quarterfinal run as well as an Ivy League championship in 1999, Walsh assumed head coaching duties before the 2000 season.

As head coach, Walsh led the Big Green to back-to-back Ivy League co-championships in 2000 and 2001. Her squad was ranked in the NSCAA's top 25 each year, rising as high as No. 13 in 2001. In her three seasons as head coach, Dartmouth was invited to the NCAA Tournament each season and reached the round of 16 twice. All three of her teams earned the NSCAA's Academic Team Award.

Beginning in the spring of 2004, Walsh joined the United States Under-19 team as an assistant coach where she helped with preparations for the Under-19 World Cup. The U.S. finished with the bronze medal in Thailand after defeating Brazil in the third place match. After the World Cup, Walsh was appointed the U.S. National Team's U-17 head coach, a position which she held for three years.

As a player, Walsh was an NSCAA All-Region selection at William & Mary. A two-time first team All-CAA pick, she propelled her team to four NCAA Tournament appearances as well as two CAA regular season and two CAA league championships. In March of 2010, Walsh's alma mater, William & Mary, honored her by inducting her into the W&M Athletics Hall of Fame.

A high school All-American at Lower Moreland, she was also a member of the U.S. Under-17 National Team.

Walsh earned her Bachelor of Science degree with a concentration in biology from William & Mary in 1997. The Huntingdon Valley, Pa., native holds an NSCAA Advanced National Degree and a USSF "A" Coaching License.

WALSH'S CAREER AT PENN STATE

Season	Overall	Pct.	Big Ten	Pct.	Finish	NCAA
2007	18-4-2	.792	9-1-0	.900	1st	Third Round
2008	16-8-0	.667	8-2-0	.800	T-1st	First Round
2009	13-6-2	.667	8-1-1	.850	1st	Second Round
2010	11-9-1	.548	8-2-0	.800	T-1st	Second Round
2011	21-5-0	.808	10-1-0	.909	1st	Third Round
2012	21-4-2	.815	10-0-1	.955	1st	Runner-Up
2013	15-7-1	.674	7-4-0	.636	3rd	Second Round
2014	20-4-0	.833	12-1-0	.923	1st	Quarterfinals
2015	3-0-1	.875	0-0-0	---		
Penn State	138-47-9	.734	73-12-2	.851		8 NCAAAs (14-8)
Career	178-75-12	.694				11 NCAAAs (17-11)



2015 PENN STATE WOMEN'S SOCCER

2015 PENN STATE WOMEN'S SOCCER NUMERICAL ROSTER

No.	Name.	Pos.	Elig.	Ht.	Hometown	High School (Last College)
1	Brittany Basinger	D	RS SO	5-7	Purcellville, Va.	Woodgrove
2	Megan Ritchey	M	SR	5-3	State College, Pa.	State College Area
3	Kaleigh Riehl	D	FR	5-8	Fairfax Station, Va.	South County
4	Megan Schafer	F	SO	5-7	Langhorne, Pa.	Neshaminy
5	Maddie Elliston	D	SO	5-3	Omaha, Neb.	Marian
6	Anna Witte	D	JR	5-4	Morrisville, N.C.	Cary
7	Elizabeth Ball	D	SO	5-6	Richmond, Va.	Deep Run
8	Kristin Schnurr	F	FR	5-7	Bristow, Va.	Patriot
9	Frannie Crouse	F	SO	5-7	Greensburg, Pa.	Greensburg Catholic
10	Emily Ogle	M	SO	5-5	Strongsville, Ohio	Strongsville
11	Raquel Rodriguez	F/M	SR	5-6	San Jose, Costa Rica	International Christian
12	Charlotte Williams	F	FR	5-4	Rochester, N.Y.	Brighton
14	Ellie Jean	D	FR	5-6	Coventry, Conn.	Coventry
15	Haleigh Echard	M	SO	5-4	Lebanon, Pa.	Cedar Crest
16	Mallory Weber	F	SR	5-6	Novi, Mich.	Northville
17	Alina Ortega-Jurado	F/M	FR	5-6	Wetzlar, Germany	
18	Angela Widlacki	D	RS SO	5-5	Naperville, Ill.	Naperville North
19	Liisi Vink-Lainas	M	SO	5-5	Wynantskill, N.Y.	Troy
20	Salina Williford	M	JR	5-4	Wayne, Pa.	Conestoga
21	Teddy Chase	D	SR	5-7	Wayne, Pa.	The Shipley School
22	Isabelle Clauss	D	SO	5-6	Clarks Summit, Pa.	Abington Heights
23	Nickolette Driesse	MF	JR	5-5	Wayne, N.J.	Wayne Hills (Florida State)
24	Cecilia Knaub	M	FR	5-10	Phoenixville, Pa.	Phoenixville
25	Taylor Campbell-Phipps	D	FR	5-6	State College, Pa.	State College Area
27	Marissa Sheva	M	FR	5-3	Sellersville, Pa.	Penridge
28	Britt Eckerstrom	GK	RS SR	5-10	Germantown, Md.	Northwest
30	Rose Chandler	GK	RS FR	5-7	Atlanta, Ga.	Atlanta Country Day

2015 PENN STATE WOMEN'S SOCCER ALPHABETICAL ROSTER

No.	Name.	Pos.	Elig.	Ht.	Hometown	High School (Last College)
7	Elizabeth Ball	D	SO	5-6	Richmond, Va.	Deep Run
1	Brittany Basinger	D	RS SO	5-7	Purcellville, Va.	Woodgrove
25	Taylor Campbell-Phipps	D	FR	5-6	State College, Pa.	State College Area
30	Rose Chandler	GK	RS FR	5-7	Atlanta, Ga.	Atlanta Country Day
21	Teddy Chase	D	SR	5-7	Wayne, Pa.	The Shipley School
22	Isabelle Clauss	D	SO	5-6	Clarks Summit, Pa.	Abington Heights
9	Frannie Crouse	F	SO	5-7	Greensburg, Pa.	Greensburg Catholic
23	Nickolette Driesse	MF	JR	5-5	Wayne, N.J.	Wayne Hills (Florida State)
15	Haleigh Echard	M	SO	5-4	Lebanon, Pa.	Cedar Crest
28	Britt Eckerstrom	GK	RS SR	5-10	Germantown, Md.	Northwest
5	Maddie Elliston	D	SO	5-3	Omaha, Neb.	Marian
14	Ellie Jean	D	FR	5-6	Coventry, Conn.	Coventry
24	Cecilia Knaub	M	FR	5-10	Phoenixville, Pa.	Phoenixville
10	Emily Ogle	M	SO	5-5	Strongsville, Ohio	Strongsville
17	Alina Ortega-Jurado	F/M	FR	5-6	Wetzlar, Germany	
3	Kaleigh Riehl	D	FR	5-8	Fairfax Station, Va.	South County
2	Megan Ritchey	M	SR	5-3	State College, Pa.	State College Area
11	Raquel Rodriguez	F/M	SR	5-6	San Jose, Costa Rica	International Christian
4	Megan Schafer	F	SO	5-7	Langhorne, Pa.	Neshaminy
8	Kristin Schnurr	F	FR	5-7	Bristow, Va.	Patriot
27	Marissa Sheva	M	FR	5-3	Sellersville, Pa.	Penridge
19	Liisi Vink-Lainas	M	SO	5-5	Wynantskill, N.Y.	Troy
16	Mallory Weber	F	SR	5-6	Novi, Mich.	Northville
18	Angela Widlacki	D	RS SO	5-5	Naperville, Ill.	Naperville North
12	Charlotte Williams	F	FR	5-4	Rochester, N.Y.	Brighton
20	Salina Williford	M	JR	5-4	Wayne, Pa.	Conestoga
6	Anna Witte	D	JR	5-4	Morrisville, N.C.	Cary

Head Coach: Erica Walsh (Ninth year)
Associate Head Coach: Ann Cook (Ninth year)
Assistant Coach: Tim Wassell (Sixth year)
Director of Operations: Kara Lowery (Third year)
Volunteer Assistant Coach: Nick Stirrett

2015 PENN STATE WOMEN'S SOCCER



BRITTANY BASINGER
R- Sophomore • D
Fairfax, Va.



MEGAN RITCHEY
Senior • M
State College, Pa.



KALEIGH RIEHL
Freshman • D
Fairfax Station, Va.



MEGAN SCHAFER
Sophomore • F
Langhorne, Pa.



MADDIE ELLISTON
Sophomore • D
Omaha, Neb.



ANNA WITTE
Junior • D
Morrisville, N.C.



ELIZABETH BALL
Sophomore • D
Richmond, Va.



KRISTIN SCHNURR
Freshman • F
Bristow, Va.



FRANNIE CROUSE
Sophomore • F
Greensburg, Pa.



EMILY OGLE
Sophomore • M
Strongsville, Ohio



RAQUEL RODRIGUEZ
Senior • F/M
San Jose, Costa Rica



CHARLOTTE WILLIAMS
Freshman • F
Rochester, N.Y.



ELLIE JEAN
Freshman • D
Coventry, Conn.



HALEIGH ECHARD
Sophomore • M
Lebanon, Pa.



MALLORY WEBER
Senior • F
Novi, Mich.



ALINA ORTEGA-JURADO
Freshman • M
Wetzlar, Germany



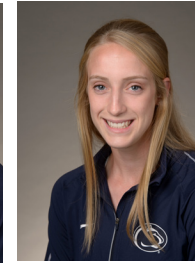
ANGELA WIDLACKI
R - Sophomore • D
Naperville, Ill.



LIISI VINK-LAINAS
Sophomore • M
Wynantskill, N.Y.



SALINA WILLIFORD
Junior • M/D
Wayne, Pa.



TEDDY CHASE
Senior • D
Wayne, Pa.



ISABELLE CLAUSS
Sophomore • D
Clarks Summit, Pa.



NICOLETTE DRIESSE
Junior • M
Wayne, Pa.



CECILIA KNAUB
Freshman • M
Phoenixville, Pa.



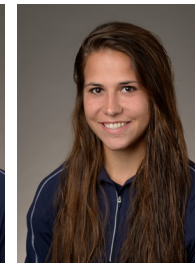
TAYLOR CAMPBELL-PHIPPS
Freshman • D
State College, Pa.



MARISSA SHEVA
Freshman • M
Sellersville, Pa.



BRITT ECKERSTROM
R - Senior • GK
Germantown, Md.



ROSE CHANDLER
R - Freshman • GK
Atlanta, Ga.



ERICA WALSH
Head Coach • 9th Year
William & Mary '97



ANN COOK
Assistant Coach • 9th year
William & Mary '97



TIM WASSELL
Assistant Coach • 6th Year
PSU Altoona '06



KARA LOWERY
Director of Ops. • 3rd Year
Southern Nazarene '97



NICK STIRRETT
Volunteer Assistant Coach • 1st Year
Augustana College '06