



PENN STATE WOMEN'S HOCKEY

2013-14 NITTANY LIONS

GoPSUsports.com • Twitter & Instagram: [PennStateWHKY](#) • Facebook.com/PennStateWomensHockey
 Contact: **Jeremy Fallis** • jeremy.fallis@psu.edu • O: (814) 863-1388 • C: (814) 206-6544

2013-14 SCHEDULE

Overall: 2-5-1 • Home: 1-3-0 • Away: 1-2-1
 CHA: 0-0-0 • Home: 0-0-0 • Away: 0-0-0

Date	Opponent	Result/Time
Oct. 4	at Vermont	T (OT) 3-3
Oct. 5	at Vermont	W 4-2
Oct. 11	at Quinnipiac	L 1-5
Oct. 12	at Quinnipiac	L 0-4
Oct. 18	UNION	L 1-2
Oct. 19	UNION	W 2-1
Oct. 26	NEW HAMPSHIRE	L 5-8
Oct. 27	NEW HAMPSHIRE	L 1-3
Oct. 31	* ROBERT MORRIS	7:00 p.m.
Nov. 1	* ROBERT MORRIS	4:00 p.m.
Nov. 9	* SYRACUSE	2:00 p.m.
Nov. 10	* SYRACUSE	2:00 p.m.
Nov. 15	* at RIT	7:00 p.m.
Nov. 16	* at RIT	3:00 p.m.
Nov. 22	* at Lindenwood	8:00 p.m.
Nov. 23	* at Lindenwood	3:00 p.m.
Nov. 30	MAINE	2:00 p.m.
Dec. 6	* at #8 Mercyhurst	3:00 p.m.
Dec. 7	* at #8 Mercyhurst	2:00 p.m.
Jan. 3	at Ohio State	7:07 p.m.
Jan. 4	at Ohio State	4:07 p.m.
Jan. 10	COLGATE	7:00 p.m.
Jan. 11	COLGATE	2:00 p.m.
Jan. 24	* at Syracuse	7:00 p.m.
Jan. 25	* at Syracuse	2:00 p.m.
Jan. 28	at Princeton	7:00 p.m.
Jan. 31	* RIT	7:00 p.m.
Feb. 1	* RIT	2:00 p.m.
Feb. 8	* LINDENWOOD	Noon
Feb. 9	* LINDENWOOD	Noon
Feb. 15	* #8 MERCYHURST	8:00 p.m.
Feb. 16	* #8 MERCYHURST	1:00 p.m.
Feb. 21	* at Robert Morris	3:00 p.m.
Feb. 22	* at Robert Morris	3:00 p.m.

2014 CHA TOURNAMENT

Feb. 28	^ CHA First Round - Game 1	TBA
March 1	^ CHA First Round - Game 2	TBA
March 2	^ CHA First Round - Game 3	TBA
March 7	% CHA Semifinals	TBA
March 8	% CHA Final	TBA

All Times Eastern

Home games in **CAPS** at Pegula Ice Arena

* - College Hockey America games

^ - CHA First Round at higher seed

% - CHA Semifinals & Final hosted by No. 1 seed

Rankings based on USA Today/USA Hockey poll

Streaming on AmericaOneSports.com; live stream



PENN STATE NITTANY LIONS
 (2-5-1, 0-0-0 CHA)

Games 9-10: Oct. 31-Nov. 1, 2013 • Pegula Ice Arena • University Park, Pa.

ROBERT MORRIS COLONIALS
 (6-2-0, 0-0-0 CHA)

GAME DAY

VENUE
 STREAMING COVERAGE
 SERIES RECORD
 LAST MEETING
 NEXT TIME OUT

Pegula Ice Arena (5,782)
 AmericaOneSports.com (\$) 0-4-0
 Feb. 23, 2013; RMU 4-2
 Nov. 9-10 vs. Syracuse at Pegula Ice Arena

GAME NOTES

- Penn State welcomes Robert Morris for the first conference game at PIA
- Nittany Lions fell in both games to New Hampshire last week
- Five Nittany Lions tallied six goals against UNH
- **Taylor Gross** and **Shannon Yoxheimer** led the Nittany Lions with three points each
- Balanced Nittany Lion offense touts eight different goal scorers this season
- Penn State's freshmen and sophomores have tallied 35 of team's 44 points
- RMU coming off two-game sweep of Vermont last week at home

ON THE INSIDE

Page 2: **CHA Standings and Team Comparison**
 Page 7: **The Nittany Lion Roster & Pronunciation Guide**
 Page 8: **2013-14 Penn State Box Scores**
 Page 9: **2013-14 Penn State Women's Hockey Stats**
 Page 10: **The Nittany Lion TV/Radio Roster**

STATISTICAL LEADERS

FORWARDS		GP	G	A	PTS	SH	+/-	GWG
40	Shannon Yoxheimer	8	3	5	8	40	0	0
24	Taylor Gross	8	3	4	7	25	-2	0
16	Hannah Hoenshell	8	1	4	5	16	+1	1
12	Sarah Nielsen	8	1	4	5	9	+2	0
18	Laura Bowman	8	4	0	4	21	0	1
9	Amy Petersen	8	0	3	3	5	+1	0
19	Jill Holdcroft	8	1	0	1	11	-3	0
15	Jess Desorcie	8	1	0	1	6	-3	0
DEFENSE		GP	G	A	PTS	SH	+/-	BLK
27	Kelly Seward	8	3	0	3	9	+2	19
4	Jordin Pardoski	8	0	3	3	5	+1	10
6	Lindsay Reihl	8	0	1	1	0	+1	17
21	Sarah Wilkie	8	0	0	0	8	+3	10
17	Paige Jahnke	7	0	1	1	3	-4	12
2	Jeanette Bateman	7	0	1	1	7	-8	11
GOALTENDER		GP-GS	Record	MIN	GA	GAA	SV	SV%
30	Celine Whitlinger	4-4	2-2-0	238:01	10	2.52	144	.935
37	Nicole Paniccia	4-4	0-3-1	242:29	17	4.21	135	.888



@PennStateWHKY



PennStateWomensHockey



GoPSUTV





NITTANY LION WOMEN'S HOCKEY

GAME NOTES VS. ROBERT MORRIS (OCT. 31-NOV. 1)

SCOUTING THE COLONIALS

Following an opening night loss to RPI, Robert Morris (6-2-0, 0-0-0 CHA) has ticked off six wins in its past seven games. Chief among the victories was a 3-0 win over previously unbeaten and ranked Boston University on Oct. 19. Last week, the Colonials swept Vermont, 4-3 and 6-4.

RMU has as new shot-stopper in freshman Jessica Dodds who has rattled off five wins and earned back-to-back CHA Rookie of the Week honors (Oct. 14, Oct. 21). Dodds has a goals-against average of 1.78, a .919 save percentage and two shutouts. Another freshman, Brittany Howard, has led the Colonial attack with three goals and nine assists, earning CHA Rookie of the Week honors on Monday. The balanced RMU offense sees 11 different Colonials bag goals led by Maeve Garvey (4) and Thea Imbrogno (4). Rebecca Vint has three goals and three assists as well. Last season, Vint tallied five goals in the first meeting between the two teams.

SERIES HISTORY vs. ROBERT MORRIS

All-Time Series	RMU leads 4-0-0
PSU Streak	4 losses
First Meeting	11/10/12, RMU 7-1
Last Meeting	2/23/13, RMU 4-2
Last PSU Win	n/a
Last RMU Win	2/23/13, 4-2
Largest PSU Win	n/a
Largest RMU Win	7-1, 11/10/12

LAST FOUR MEETINGS vs. RMU

2/23/13	L	2-4	A
2/22/13	L	1-4	A
11/11/12	L	1-4	H
11/10/12	L	1-7	H

COMMON ENEMY

Penn State and Robert Morris have both played Vermont twice this season. The Nittany Lions came away from their weekend in Burlington with a 1-0-1 record thanks to a 3-3 tie and a 4-2 win. The Colonials swept the Catamounts last weekend at home, 4-3 and 6-4.

NITTANY LIONS BATTLE, FALL TO UNH

Penn State dropped two games in hard-fought fashion to New Hampshire (Oct. 26-27) this past weekend, 8-5 and 3-1.

On Saturday night, five different Nittany Lions registered goals as the two teams combined to score 13 goals in the contest, the most in PSU program history. Penn State had leads of 1-0 and 4-3, but couldn't hold on as New Hampshire scored five of the final six goals in the game. UNH pulled away by breaking a 5-5 deadlock with three straight goals over the last 3:39. **Laura Bowman**, **Sarah Nielsen**, **Jess**

Desorcie, **Kelly Seward** and **Taylor Gross** tallied goals for Penn State.

Sunday's game was played at a completely different pace, which included scoreless periods in the first and third. All four goals by both teams came in the second as **Taylor Gross's** third goal of the year cut the UNH lead in half. The Wildcats increased its lead to two with 29 seconds left and held on for the sweep. **Celine Whitlinger** made 32 saves, her third game with at least 30 saves this season. **Shannon Yoxheimer** notched three points on three assists during the weekend set.

RECORD-SETTING SATURDAY

Multiple records were set at Pegula Ice Arena on Saturday night against New Hampshire.

Fastest goal by PSU: Laura Bowman, :40

Most combined goals in a game: 13

Most goals allowed in a game: 8

PICK YOUR POISON

Penn State has had the fortune of multiple contributors on the offensive end. Eight Nittany Lions have scored a goal this season, while 14 have registered a point. **Shannon Yoxheimer** leads the team with 8 points, while linemate **Taylor Gross** has 7 and **Sarah Nielsen** has 5. **Hannah Hoenshell** also has 5 points, including a two-assist game on Saturday against UNH. The Minnetonka connection of **Laura Bowman** and **Amy Petersen** have combined for 4 goals (Bowman) and 3 assists (Petersen), while defenders **Kelly Seward** (3 goals) and **Jordin Pardoski** (3 assists) have supplied some offense.

GAMEDAY COMPARISON

TEAM STATS	PSU	RMU
Overall record	2-5-1	6-2-0
Conference record	0-0-0	0-0-0
Goals scored	17	23
Goals scored per game	2.1	2.9
Goals allowed	28	18
Goals allowed per game	3.5	2.2
First period goals	4	10
Second period goals	7	10
Third period goals	5	2
Overtime goals	0	1
Shots	186	205
Shots per game	23.2	25.6
Shot pct.	.091	.112
Assists	27	38
Penalties per game	4.4	5.0
Power plays	5-31	5-35
Power-play pct.	.161	.143
Penalty kills	12-32	6-35
Penalty-kill pct.	.625	.829
Saves	279	170
Shutouts	0	2

LEADERS

Category	Player	Points
Points	Yoxheimer (8)	Howard (12)
Goals	Bowman (4)	Two with 4
Assists	Yoxheimer (5)	Howard (9)
Shots	Yoxheimer (40)	Vint (26)
Shot Pct.	Seward (.333)	Garvey (.286)
+/-	Wilkie (+3)	Garvey (+7)
Faceoff Pct.	Nielsen (.526)	Fergus (.657)
Saves	Whitlinger (144)	Dodds (102)
Save Pct.	Whitlinger (.935)	Dodds (.919)
GAA	Whitlinger (2.52)	Dodds (1.78)
Record	Whitlinger (2-2-0)	Dodds (5-0-0)

2013-14 COLLEGE HOCKEY AMERICA STANDINGS

(as of Oct. 28, 2013)

	Pts.	CHA	GF	GA	Overall	GF	GA	Last 10
Robert Morris (rv/rv)	0	0-0-0	0	0	6-2-0	23	18	6-2-0
Mercyhurst (8/8)	0	0-0-0	0	0	5-3-1	25	15	5-3-1
Syracuse (rv/rv)	0	0-0-0	0	0	4-4-0	21	16	4-4-0
RIT	0	0-0-0	0	0	4-5-0	22	29	4-5-0
PENN STATE	0	0-0-0	0	0	2-5-1	17	28	2-5-1
Lindenwood	0	0-0-0	0	0	0-9-1	10	43	0-9-1

PAST RESULTS & UPCOMING SCHEDULE

Friday, Oct. 25

Mercyhurst* 2, Maine 1
 Robert Morris* 4, Vermont 3
 Syracuse* 4, Boston College 1
 RIT* 2, Brown 1
 Wisconsin* 5, Lindenwood 1

Saturday, Oct. 26

Syracuse* 5, Union 2
 Mercyhurst* 5, Maine 0
 Brown 2, RIT* 1 (OT)
 Robert Morris* 6, Vermont 4
 Wisconsin* 4, Lindenwood 1
New Hampshire 8, PENN STATE* 5 *home team

Thursday, Oct. 31

Robert Morris at PENN STATE, 7 p.m.

Friday, Nov. 1

Robert Morris at PENN STATE, 4 p.m.

Sunday, Oct. 27

New Hampshire 3, PENN STATE* 1





NITTANY LION WOMEN'S HOCKEY

YOUTH SUPPLIES THE OFFENSE

The four additions of freshmen **Laura Bowman**, **Amy Petersen**, **Sarah Nielsen** and **Kelly Seward** have injected an instant bump in scoring production with 15 of the team's 44 points. Nielsen leads the newcomers with 5 points, Bowman has tallied 4 goals, Seward has notched 3 goals, while Petersen has dished 3 assists. To prove the youth of the team, 35 of the team's 44 points (79.6%) were collectively tallied by freshmen and sophomores.

WHITLINGER STANDS TALL

Celine Whitlinger, a 5-9 Californian goaltender, has been outstanding in net for Penn State. Whitlinger (2-2-0) has already surpassed her win total from a year ago and has stopped 93.5 percent of the shots she's seen. In 14 appearances for Penn State, Whitlinger has a career .939 save percentage and a 3-9-0 record.

UPGRADED SCHEDULE

For the third time in four weeks, the Nittany Lions will face a team receiving votes in the national rankings. Quinnipiac is now ranked in both polls, while New Hampshire and Robert Morris are both receiving votes this week. Next week's opponent, Syracuse, is also earn-

ing votes in the polls. Last season, Penn State played just one ranked opponent, Mercyhurst (four times), while Robert Morris earned votes during the first series in Nov. 2012.

PENN STATE HAS A #NEWDEN

The Nittany Lions opened its new \$90 million home, Pegula Ice Arena, on Oct. 18 against Union in a 2-1 loss. The next day, PSU would earn a 2-1 victory for the program's first win at Pegula. In all, Penn State will host 17 games in the state-of-the-art arena that seats 5,782. The team's first season at PIA begins with an eight-game home stand over 23 days.

HOENSHELL, SEWARD EARN CHA AWARDS

Penn State forward **Hannah Hoenshell** and defender **Kelly Seward** were named College Hockey America's Player and Rookie of the Week, respectively, on Monday, Oct. 7.

A crafty forward with incredible stick skills, Hoenshell propelled Penn State to an undefeated weekend at Vermont, supplying three points and a game-high plus-four rating in Saturday's 4-2 win. Hoenshell was involved in

PENN STATE'S RECORD IS...

1-3-0 at home
1-2-1 on the road
0-0-1 in overtime
1-1-1 when scoring first
1-4-0 when opponent scores first
2-0-0 when leading after the 1st period
0-3-0 when trailing after the 1st period
0-2-1 when tied after the 1st period
1-0-0 when leading after the 2nd period
0-3-0 when trailing after the 2nd period
1-2-1 when tied after the 2nd period
1-0-0 when out-shooting opponent
1-5-1 when out-shot by opponent
0-0-0 when taking same # of shots
1-1-0 when winning more faceoffs
1-4-1 when losing more faceoffs
0-0-0 when tied in faceoffs
1-2-1 when taking more penalties
1-2-0 when taking fewer penalties
0-1-0 when taking the same # of penalties
1-2-1 when scoring a power play goal
1-3-0 when not scoring a power play goal
1-5-1 when allowing a power play goal
1-0-0 when not allowing a power play goal
0-1-0 when scoring 0 goals
0-3-0 when scoring 1 goal
1-0-0 when scoring 2 goals
0-0-1 when scoring 3 goals
1-1-0 when scoring 4+ goals
0-0-0 when allowing 0 goals
1-0-0 when allowing 1 goal
1-1-0 when allowing 2 goals
0-1-1 when allowing 3 goals
0-3-0 when allowing 4+ goals
2-5-1 in October
0-0-0 in November
0-0-0 in December
0-0-0 in January
0-0-0 in February
0-0-0 in March
0-0-0 on Tuesday
0-0-0 on Thursday
0-2-1 on Friday
2-2-0 on Saturday
0-1-0 on Sunday
2-2-0 during the day
0-3-1 at night
1-2-1 vs. Hockey East
0-0-0 vs. College Hockey America
1-3-0 vs. ECAC Hockey
0-0-0 vs. WCHA
0-0-0 vs. ranked opponents
2-5-1 vs. unranked opponents
0-2-1 when Shannon Yoxheimer scores
0-3-1 when Nicole Paniccia starts
2-1-1 when a freshman scores
1-0-1 games decided by a goal or less

2013-14 WOMEN'S HOCKEY POLLS

USA Today/USA Hockey (Oct. 29, 2013)

1	Minnesota	8-0-0	1
2	Wisconsin	6-2-0	2
3	Cornell	4-0-0	4
4	North Dakota	6-1-1	6
5	Clarkson	6-2-1	5
6	Boston College	5-2-0	3
7	Harvard	2-0-0	7
8	Mercyhurst	5-3-1	9
9	Minnesota-Duluth	4-3-1	RV
10	Quinnipiac	6-1-1	8

Others: *Ohio State, Boston U., New Hampshire, Syracuse, Robert Morris*

USCHO.com (Oct. 28, 2013)

1	Minnesota	8-0-0	1
2	Wisconsin	6-2-0	2
3	Cornell	4-0-0	3
4	North Dakota	6-1-1	6
5	Clarkson	6-2-1	5
6	Boston College	5-2-0	4
7	Harvard	2-0-0	7
8	Mercyhurst	5-3-1	8
9	Quinnipiac	6-1-1	9
10	Ohio State	3-1-1	10

Others: *Minnesota-Duluth, Boston U., New Hampshire, Robert Morris, Syracuse*

Bold indicates 2013-14 opponent

2013-14 MEDIA INFORMATION

Penn State Athletic Communications

Primary Contact: Jeremy Fallis
 Email: jeremy.fallis@psu.edu
 Office: 814-865-1757

Interviews

Penn State student-athletes and coaches are available for interviews after practice each day. Please contact Jeremy Fallis in advance.

Credentials

Contact Jeremy Fallis for home game credentials at Pegula Ice Arena.

Postgame

Head coach Josh Brandwene and requested student-athletes are available to the media following each game in the studio rink. Please alert Jeremy Fallis during the game of any requests.

Yearbook

A complimentary copy of the 2013-14 Penn State women's hockey yearbook will be made available to members of the media. The public may purchase copies for \$6 online.

GoPSUsports.com

[Facebook.com/PennStateWomensHockey](https://www.facebook.com/PennStateWomensHockey)

[@PennStateWHKY](https://twitter.com/PennStateWHKY)





NITTANY LION WOMEN'S HOCKEY

three of Penn State's four goals, tallying a goal and two assists. Her goal was her second career game-winning goal.

Seward was fantastic on both sides of the ice this weekend as she tallied two goals, which ties for the team high after two games. Seward posted a plus-two rating and seven blocked shots for the weekend as well. In both games, Seward scored Penn State's first goal. On Friday it was a power-play tally and Saturday it was a game-tying goal in the first period.

BRING 'EM BACK

Penn State brings back 24 of its 27 members from last year's team. In those 24 student-athletes, Penn State returns its top 14 scorers and almost 99 percent of its offense along with every member of its stout goaltending corps.

YOXHEIMER MAKES HER MARK

Leading the team in scoring last season was **Shannon Yoxheimer**, a left-handed forward. Yoxheimer buried 14 goals with 17 assists for a grand total of 31 points, all team highs. She led College Hockey America in shots (169) and put away three power play goals as well as a team-high three game-winning goals. Yoxheimer's numbers ranked her in the top 10 nationally in goals, points and assists for rookies. The CHA coaches named Yoxheimer to the All-Rookie team.

THE PANICCIA WALL

Senior goaltender **Nicole Paniccia** excelled between the pipes for the Blue and White last year, stopping 1,028 shots with a 92.8 save percentage. Paniccia's save tally was second in all of NCAA Division I, topped only by fellow CHA upstart Lindenwood's Nicole Hensley. Paniccia was in net for six of PSU's seven victories last year as well as both of Penn State's ties.

POWER-PLAY HOLDCROFT

Sophomore forward **Jill Holdcroft** was lethal on the power play last season, scoring six of her 10 goals last year on the advantage. Despite missing the CHA playoffs at RIT, Holdcroft still ranked second on the team in scoring (10 goals) and added two assists for good measure.

IN THE THICK OF THINGS

Penn State's record of 7-26-2 last season is a little deceiving when considering how close the Nittany Lions were in many of their losses. In fact, 12 of the 26 losses were decided by two goals or less. This year, the Nittany Lions look to change their fortunes in spite of a 1-6-2 record games decided by less than a goal.

CAPTAINS' CORNER

Senior forward **Taylor Gross** once again leads Penn State as its first captain following her first year with the letter in 2012-13. Gross was second on the team in points (22) and assists (15) last season with 34 appearances. The University of Connecticut transfer appeared in 48 games for the Huskies before joining Penn State's club side in January 2012. Senior forward **Jenna Welch** and **Lindsay Reihl**, a graduate student defender, reprise their roles as assistant captains this year. Joining the veteran trio is **Jordin Pardoski**, a vocal sophomore defender who is a first-year assistant captain.

NEW NITTANY LIONS

Four freshmen join the Nittany Lions for the 2013-14 campaign. Minnesota forwards **Laura Bowman**, **Amy Petersen** and **Sarah Nielsen** provide an instant dose of goal scoring from their high school success. Defender **Kelly Seward** of New York is the tallest Nittany Lion blueliner.

FIRST HEAD COACH

A 1991 graduate of Penn State, head coach **Josh Brandwene** is the first to lead the Nittany Lions. Brandwene compiled a 7-26-2 record last season with 17 freshmen on the team. A four-year hockey player at PSU, Brandwene brings 20 years of coaching experience to Happy Valley.

CONTINUING PENN STATE HOCKEY

Seven members of the current varsity team played for the women's club team at some point. Graduate student **Lindsay Reihl** along with juniors **Cara Mendelson**, **Katie Murphy**, **Madison Smiddy** and **Tess Weaver** played all of the 2011-12 season for head coach **Josh Brandwene** in Penn State's last year at the club level. **Taylor Gross** and **Jess Desorcie** joined the five aforementioned players midway through the season in preparation of the 2012-13 season.

NEXT TIME OUT

Penn State concludes its eight-game home stand when it hosts Syracuse next week at Pegula Ice Arena. The first game will take place Saturday, Nov. 9 with the series finale set for Sunday, Nov. 10. Both games will begin at 2 p.m. Penn State is in search of its first point against the Orange.

2012-13 HONORS & AWARDS

Hannah Hoenshell
CHA Player of the Week (10/7)

Kelly Seward
CHA Rookie of the Week (10/7)

OVER THE AIR

Both games this weekend against Robert Morris will be featured on AmericaOneSports.com.

The CHA on AmericaOneSports.com
Penn State home & away games during CHA play will be streamed live on AmericaOneSports.com. Subscribers can purchase a 1-day package for \$8, 30-day packages for \$30 or a season pass for \$125.



NITTANY LION WOMEN'S HOCKEY



NCAA TEAM RANKS

(Out of 34 teams as of Oct. 28, 2013)

Goals Per Game	T-23rd
Goals Against Per Game	T-30th
Scoring Margin	T-28th
Power-Play Percentage	T-18th
Penalty-Kill Percentage	33rd
Winning Percentage	25th

NCAA INDIVIDUAL RANKS

(Top 100 as of Oct. 28, 2013)

Laura Bowman

Goals per game	T-32nd
Power play goals	T-45th
Game-winning goals	T-16th
Points per game (Rookies)	T-25th

Taylor Gross

Goals per game	T-70th
Points per game	T-56th
Assists per game	T-68th
Power play goals	T-7th

Hannah Hoenshell

Game-winning goals	T-16th
Assists per game	T-68th

Sarah Nielsen

Assists per game	T-68th
Points per game (Rookies)	T-18th

Nicole Paniccia

Goals-against average	37th
Save percentage	T-21st
Saves	T-21st
Minutes Played	26th

Amy Petersen

Points per game (Rookies)	T-45th
-------------------------------------	--------

Lindsay Reihl

Blocks	7th
------------------	-----

Kelly Seward

Goals per game	T-70th
Power-play goals	T-7th
Points per game (Rookies)	T-45th
Blocks	7th

Celine Whitlinger

Goals-against average	17th
Save percentage	10th
Saves	17th
Winning percentage	T-16th
Minutes Played	28th

Shannon Yoxheimer

Points per game	T-37th
Goals per game	T-30th
Assists per game	T-42nd

CHA TEAM RANKS

Goals	n/a
Assists	n/a
Goals Per Game	n/a
Goals Against	n/a
Goals-Against Average	n/a
Saves	n/a
Save Percentage	n/a
Shots on Goal	n/a
Least Penalty Minutes	n/a
Power-Play Goals	n/a
Power-Play Percentage	n/a
Power-Play Goals Against	n/a
Penalty-Kill Percentage	n/a

CHA INDIVIDUAL RANKS





NITTANY LION WOMEN'S HOCKEY

PREVIOUS RECAPS

LIONS OPEN PEGULA WITH SPLIT

The Nittany Lions used a late third-period goal from freshman **Laura Bowman** to defeat a stingy Union squad Saturday afternoon (Oct. 19) at Pegula Ice Arena. The win secured a split in the home opening series. **Celine Whitlinger** stopped 20 shots and **Jill Holdcroft** scored her first goal in of the season in the first period to pace Penn State. Whitlinger improved to 2-1-0 between the pipes.

With the game tied at one with 5:30 left in the third period, **Amy Petersen** sent the puck down low to Bowman. She slid a pass in front of net that got past **Sara Nielsen**. The puck bounced off the boards to **Jeanette Bateman** who rifled a shot off the pad of Lundberg where Bowman was able to clean up the game-winner. The assist for Petersen was her third of the year and Bateman notched her first point of the season.

On Friday, the largest crowd to see a Penn State women's hockey game saw a hard-fought contest that went the way of the Union Dutchwomen, 2-1, in front of 1,424 fans. Union scored on a pair of power plays to earn their first win in four games, while Penn State found the net on a **Shannon Yoxheimer** rocket in the second period assisted by **Taylor Gross** and **Jordin Pardoski**.

PENN STATE TRIPPED UP BY QUINNIPIAC

The Nittany Lions' first trip to Hamden, Conn., home of the 2014 Women's Frozen Four, ended in a pair of defeats to Quinnipiac on Oct. 11-12. The Bobcats pulled away from PSU late for a 5-1 win on Friday and shutout the Nittany Lions 4-0 the next day. **Nicole Paniccia** made 48 saves in the opener, which saw PSU down one midway through the second period following **Shannon Yoxheimer's** second goal of the season. Goaltender **Celine Whitlinger** did everything possible in Saturday's game, but her 55 saves weren't enough.

LIONS POST UNDEFEATED WEEKEND

The Nittany Lions opened their second season in impressive fashion with a 1-0-1 weekend at Vermont. **Shannon Yoxheimer** notched three points and the Nittany Lions played to a 3-3 tie with Vermont at Gutterson Fieldhouse on Friday night (Oct. 4). Twice Penn State trailed and each time PSU responded with a tying goal. Freshman **Kelly Seward** scored the game's opening goal and **Taylor Gross** tied things up at two in the third period. Senior goaltender **Nicole Paniccia** was spectacular in net making 35 saves to keep the dangerous Catamounts in check.

Penn State scored three of the game's final four goals to defeat Vermont, 4-2, on Saturday afternoon (Oct. 5) at Gutterson Fieldhouse. **Hannah Hoenshell** tallied a game-high three points on a goal and two excellent assists, while freshman **Laura Bowman** scored her first two collegiate goals. Hoenshell was a game-high plus-four, while Bowman and fellow linemate **Amy Petersen** carded plus-three ratings. Sophomore goaltender **Celine Whitlinger** saved 37 Catamount shots as Penn State went 1-0-1 in its season-opening series. The Nittany Lions improved to 2-1-1 all-time against Vermont.

THE LAST TIME

PENN STATE...

Scored 0 goals
Scored 3 goals
Scored 4 goals
Scored 5 goals
Scored 6 goals
Scored 7 goals
Scored 8 goals
Scored 9 goals
Scored 10 goals
Allowed 0 goals
Allowed 1 goal
Allowed 2 goals
Allowed 3 goals
Allowed 4 goals
Allowed 5 goals
Allowed 6+ goals
Won in overtime
Lost in overtime
Tied in overtime
Played a ranked team
Attempted 10-19 shots
Attempted 20-29 shots
Attempted 30-39 shots
Attempted 40-49 shots
Attempted 50-59 shots
Attempted 60-69 shots
Attempted 70+ shots
Allowed 10-19 shots
Allowed 20-29 shots
Allowed 30-39 shots
Allowed 40-49 shots
Allowed 50-59 shots
Allowed 60-69 shots
Allowed 70+ shots
Tallied 5-9 assists
Tallied 10-15 assists
Tallied 15+ assists
Scored 10-19 points
Scored 20+ points
Scored 2 power-play goals
Scored 3 power-play goals
Allowed 0 power-play goals
Allowed 2 power-play goals
Had 5 different goal scorers
Had 6 different goal scorers
Had 7 different goal scorers
Had 8 different goal scorers

10/12/13 at Quinnipiac (0-4)
10/4/13 at Vermont (3-3)
10/5/13 at Vermont (4-2)
10/26/13 vs. New Hampshire (5-8)
11/2/12 vs. Sacred Heart (6-0)
Never
11/3/12 vs. Sacred Heart (8-2)
Never
1/4/13 vs. Chatham (10-0)
1/5/13 vs. Chatham (4-0)
10/19/13 vs. Union (2-1)
10/18/13 vs. Union (1-2)
10/27/13 vs. New Hampshire (1-3)
10/12/13 at Quinnipiac (0-4)
10/11/13 at Quinnipiac (1-5)
10/26/13 vs. New Hampshire (5-8)
Never
3/2/13 at RIT (2-3)
10/4/13 at Vermont (3-3)
2/2/13 vs. #7 Mercyhurst (1-4)
10/27/13 18 vs. New Hampshire (1-3)
10/26/13 28 vs. New Hampshire (5-8)
10/19/13 34 vs. Union (2-1)
1/4/13 48 vs. Chatham (10-0)
Never
11/3/12 64 vs. Sacred Heart (8-2)
1/5/13 71 vs. Chatham (4-0)
1/5/13 16 vs. Chatham (4-0)
10/19/13 21 vs. Union (2-1)
10/27/13 35 vs. New Hampshire (1-3)
2/16/13 45 at RIT (0-4)
10/12/13 59 at Quinnipiac (0-4)
2/22/13 63 at Robert Morris (1-4)
12/1/12 71 at #4 Mercyhurst (1-7)
10/26/13 8 vs. New Hampshire (5-8)
11/3/12 12 vs. Sacred Heart (8-2)
1/4/13 17 vs. Chatham (10-0)
10/26/13 13 vs. New Hampshire (5-8)
1/4/13 27 vs. Chatham (10-0)
10/26/13 vs. New Hampshire (5-8)
10/20/12 at Sacred Heart (6-1)
10/5/13 at Vermont (4-2)
10/27/13 vs. New Hampshire (1-3)
10/26/13 vs. New Hampshire (5-8)
10/20/12 at Sacred Heart (6-1)
1/4/13 vs. Chatham (10-0)
11/3/12 vs. Sacred Heart (8-2)

A PENN STATE PLAYER...

Scored 2 goals
Scored 3 goals
Scored 4 goals
Had 3 assists
Had 5 points
Had 10+ shots
Saved 40-49 shots
Saved 50-59 shots
Saved 60+ shots
Had a shutout
Scored an empty-net goal
Scored a short-handed goal

10/5/13 L. Bowman at Vermont (4-2)
11/2/12 H. Hoenshell vs. Sacred Heart (6-0)
Never
1/4/13 J. Bateman vs. Chatham (10-0)
Never
1/5/13 12, T. Weaver vs. Chatham (4-0)
10/11/13 48, N. Paniccia at Quinnipiac (1-5)
10/12/13 55, C. Whitlinger at Quinnipiac (0-4)
12/1/12 64, N. Paniccia at #4 Mercyhurst (1-7)
1/5/13 C. Whitlinger/B. Meyer vs. Chatham (4-0)
10/6/12 B. Shaw at Vermont (5-3)
Never



NITTANY LION WOMEN'S HOCKEY



2013-14 PENN STATE WOMEN'S HOCKEY NUMERICAL ROSTER

No.	Name	Yr.	Pos.	Ht.	S/C	Hometown	Last Team
2	Jeanette Bateman	So.	D	5-6	R	Greeley, Colo.	Colorado Select
3	Cara Mendelson	Jr.	F	5-6	R	Pittsburgh, Pa.	Steel City Selects
4	Jordin Pardoski	So.	D	5-5	R	Rochester Hills, Mich.	Detroit Honeybaked
5	Stephanie Walkom	So.	D	5-7	R	Moon Township, Pa.	Pittsburgh Penguins Elite
6	Lindsay Reihl	Gr.	D	5-4	R	Cheshire, Conn.	Connecticut Polar Bears
9	Amy Petersen	Fr.	F	5-4	R	Minnetonka, Minn.	Minnetonka HS
10	Micayla Catanzariti	So.	F	5-4	R	Rancho Santa Margarita, Calif.	Gilmour Academy (Ohio)
12	Sarah Nielsen	Fr.	F	5-6	L	Edina, Minn.	Edina HS
13	Kendra Rasmussen	So.	F	5-5	L	Sartell, Minn.	Sartell/Sauk Rapids HS
14	Darby Kern	So.	F	5-11	R	Venetia, Pa.	Pittsburgh Penguins Elite
15	Jess Desorcie	Jr.	F	5-4	L	Westford, Vt.	Connecticut College
16	Hannah Hoenshell	So.	F	5-3	R	Plano, Texas	Texas Alliance
17	Paige Jahnke	So.	D	5-6	R	Oakdale, Minn.	Roseville HS / Minnesota Jr. Whitecaps
18	Laura Bowman	Fr.	F	5-7	R	Minnetonka, Minn.	Minnetonka HS
19	Jill Holdcroft	So.	F	5-1	R	Pennsylvania Furnace, Pa.	Pittsburgh Penguins Elite
20	Emily Laurenzi	So.	F	5-2	R	Townsend, Del.	National Sports Academy (N.Y.)
21	Sarah Wilkie	So.	D	5-6	R	Ashby, Mass.	Williston Northampton School
22	Jenna Welch	Sr.	F	5-8	R	Austin, Texas	Connecticut
23	Birdie Shaw	So.	F	5-2	L	Troy, Mich.	Detroit Honeybaked
24	Taylor Gross	Sr.	F	5-1	R	Colorado Springs, Colo.	Connecticut
25	Katie Murphy	Jr.	F	5-4	L	Novi, Mich.	Detroit Honeybaked
27	Kelly Seward	Fr.	D	5-9	L	Williamsville, N.Y.	Nichols School / Buffalo Bisons
30	Celine Whitlinger	So.	G	5-8	L	Garden Grove, Calif.	Gilmour Academy (Ohio)
31	Brooke Meyer	So.	G	5-7	L	Naperville, Ill.	Chicago Huskies
33	Madison Smiddy	Jr.	D	5-7	L	Grand Rapids, Mich.	Detroit Honeybaked
36	Tess Weaver	Jr.	F	5-5	R	Windber, Pa.	Pittsburgh Penguins Elite
37	Nicole Paniccia	Sr.	G	5-5	L	Oakville, Ont.	Connecticut
40	Shannon Yoxheimer	So.	F	5-7	L	Jackson, Mich.	North American Hockey Academy (Vt.)

Head Coach: Josh Brandwene (Second Year)

Assistant Coaches: Gina Kearns (Second Year), Casey McCullion (Second Year); **Director of Operations** Alex Dawes (First Year)

Captain: Taylor Gross; **Assistant Captains:** Jordin Pardoski, Lindsay Reihl, Jenna Welch

ALPHABETICAL ROSTER		PRONUNCIATION GUIDE		LIONS BY STATE		LIONS BY POSITION	
No.	Name	Brandwene	BRAND-ween	California (2):	Catanzariti, Whitlinger	Forward (17):	Bowman, Catanzariti, Desorcie, Gross, Hoenshell, Holdcroft, Kern, Laurenzi, Mendelson, Murphy, Nielsen, Petersen, Rasmussen, Shaw, Weaver, Welch, Yoxheimer
2	Jeanette Bateman	Catanzariti	Cah-TAN-zah-REE-tee	Colorado (2):	Bateman, Gross	Defense (8):	Bateman, Jahnke, Pardoski, Reihl, Seward, Smiddy, Walkom, Wilkie
18	Laura Bowman	Desorcie	Deh-SORE-see	Connecticut (1):	Reihl	Goalie (3):	Meyer, Paniccia, Whitlinger
10	Micayla Catanzariti	Jahnke	YAWN-kee	Delaware (1):	Laurenzi		
15	Jess Desorcie	Jeanette	Jeh-NETT	Illinois (1):	Meyer		
24	Taylor Gross	Kearns	KERNs	Massachusetts (1):	Wilkie		
16	Hannah Hoenshell	McCullion	Mick-CULL-yon	Michigan (5):	Murphy, Pardoski, Shaw, Smiddy, Yoxheimer		
19	Jill Holdcroft	Paniccia	Pah-NEE-cha	Minnesota (5):	Bowman, Jahnke, Nielsen, Petersen, Rasmussen		
17	Paige Jahnke	Reihl	RILE	New York (1):	Seward		
14	Darby Kern			Pennsylvania (5):	Holdcroft, Kern, Mendelson, Walkom, Weaver		
20	Emily Laurenzi			Texas (2):	Hoenshell, Welch		
3	Cara Mendelson			Vermont (1):	Desorcie		
31	Brooke Meyer						
25	Katie Murphy						
12	Sarah Nielsen						
37	Nicole Paniccia						
4	Jordin Pardoski						
9	Amy Petersen						
13	Kendra Rasmussen						
6	Lindsay Reihl						
27	Kelly Seward						
23	Birdie Shaw						
33	Madison Smiddy						
5	Stephanie Walkom						
36	Tess Weaver						
22	Jenna Welch						
30	Celine Whitlinger						
21	Sarah Wilkie						
40	Shannon Yoxheimer						





NITTANY LION WOMEN'S HOCKEY

OCT. 6, 2013: PENN STATE 3, VERMONT 3 (OT)

Penn State (0-0-1, 0-0-0 CHA) vs. Vermont (0-0-1, 0-0-0 WHEA)
Date: Oct 04, 2013 • Location: Burlington, Vt. • Arena: Gutterson Fieldhouse
Attendance: 435 • Start time: 7:00 pm • End time: 9:15 pm • Total time: 2:15

Table with columns: Prd Time, Team, Scored by, Assists, Vis. on ice, Home on ice, Goals by Period, Shots by Period, Power Play Goals-Att (Sh)

TEAM SUMMARY

Summary table for Penn State and Vermont with columns: #, G, A, PI, Sh +/-, BI

GOALTENDERS

Table for goalkeepers with columns: #, Penn State, Dec, Min, GA, 1, 2, 3, OT, Saves

PENALTY SUMMARY

Table for penalties with columns: Prd, Player, Team, Min/Offense, Time

Penn State-Paniccia, Nicole (0-0-1). Vermont-Douville, Roxanne (0-0-1).

OCT. 11, 2013: QUINNIPIAC 5, PENN STATE 1

Penn State (1-1-1, 0-0-0 CHA) vs. Quinnipiac (2-0-1, 0-0-0 ECAC)
Date: Oct 11, 2013 • Location: Hamden, Conn. • Arena: High Point Solutions
Attendance: 505 • Start time: 7:00 pm • End time: 8:47 pm • Total time: 1:47

Table with columns: Prd Time, Team, Scored by, Assists, Vis. on ice, Home on ice, Goals by Period, Shots by Period, Power Play Goals-Att (Sh)

TEAM SUMMARY

Summary table for Penn State and Quinnipiac with columns: #, G, A, PI, Sh +/-, BI

GOALTENDERS

Table for goalkeepers with columns: #, Penn State, Dec, Min, GA, 1, 2, 3, OT, Saves

PENALTY SUMMARY

Table for penalties with columns: Prd, Player, Team, Min/Offense, Time

Win-LADEN, Chelsea (2-0-1). Loss-Paniccia, Nicole (0-1-1).

OCT. 7, 2013: PENN STATE 4, VERMONT 2

Penn State (1-0-1, 0-0-0 CHA) vs. Vermont (0-1-1, 0-0-0 WHEA)
Date: Oct 05, 2013 • Location: Burlington, Vt. • Arena: Gutterson Fieldhouse
Attendance: 760 • Start time: 2:30 pm • End time: 4:25 pm • Total time: 1:55

Table with columns: Prd Time, Team, Scored by, Assists, Vis. on ice, Home on ice, Goals by Period, Shots by Period, Power Play Goals-Att (Sh)

TEAM SUMMARY

Summary table for Penn State and Vermont with columns: #, G, A, PI, Sh +/-, BI

GOALTENDERS

Table for goalkeepers with columns: #, Penn State, Dec, Min, GA, 1, 2, 3, OT, Saves

PENALTY SUMMARY

Table for penalties with columns: Prd, Player, Team, Min/Offense, Time

Win-Whitlinger, Celine (1-0-0). Loss-Douville, Roxanne (0-1-1).

OCT. 12, 2013: QUINNIPIAC 4, PENN STATE 0

Penn State (1-2-1, 0-0-0 CHA) vs. Quinnipiac (3-0-1, 0-0-0 ECAC)
Date: Oct 12, 2013 • Location: Hamden, Conn. • Arena: High Point Solutions
Attendance: 213 • Start time: 4:00 PM • End time: 5:48 PM • Total time: 1:48

Table with columns: Prd Time, Team, Scored by, Assists, Vis. on ice, Home on ice, Goals by Period, Shots by Period, Power Play Goals-Att (Sh)

TEAM SUMMARY

Summary table for Penn State and Quinnipiac with columns: #, G, A, PI, Sh +/-, BI

GOALTENDERS

Table for goalkeepers with columns: #, Penn State, Dec, Min, GA, 1, 2, 3, OT, Saves

PENALTY SUMMARY

Table for penalties with columns: Prd, Player, Team, Min/Offense, Time

Win-LADEN, Chelsea (3-0-1). Loss-Whitlinger, Celine (1-1-0).





NITTANY LION WOMEN'S HOCKEY



2013-14 Penn State Women's Hockey Penn State Combined Team Statistics (as of Oct 29, 2013) All games

Date	Opponent	Score	Att.
Oct 04	at Vermont	Tot 3-3	435
Oct 05	at Vermont	w 4-2	760
Oct 11	at Quinnipiac	L 1-5	505
Oct 12	at Quinnipiac	L 0-4	213
Oct 18	UNION	L 1-2	1424
Oct 19	UNION	w 2-1	814
Oct 26	NEW HAMPSHIRE	L 5-8	493
Oct 27	NEW HAMPSHIRE	L 1-3	552

TEAM STATISTICS	PSU	OPP
SHOT STATISTICS		
Goals-Shot attempts	17-186	28-307
Shot pct.	.091	.091
Goals/Game	2.1	3.5
Shots/Game	23.2	38.4
POWER PLAYS		
Goals-Power Plays	5-31	12-32
Conversion Percent	.161	.375
GOAL BREAKDOWN		
Power Play	5	12
Short-handed	0	0
Empty net	0	1
Penalty	0	0
Unassisted	1	3
Overtime	0	0
PENALTIES		
Number	35	32
Minutes	70	64
Penalties/Game	4.4	4.0
Pen minutes/Game	8.8	8.0
FACEOFFS (W-L)		
Faceoff W-L Pct.	202-240	240-202
	.457	.543

Record:	Overall	Home	Away	Neutral
ALL GAMES	2-5-1	1-3-0	1-2-1	0-0-0
CONFERENCE	0-0-0	0-0-0	0-0-0	0-0-0
NON-CONFERENCE	2-5-1	1-3-0	1-2-1	0-0-0

##	Player	gp	g	a	pts	sh	sh%	pen-min	pp	sh
40	Yoxheimer, Shannon	8	3	5	8	40	.075	2-4	0	0
24	Gross, Taylor	8	3	4	7	25	.120	0-0	2	0
16	Hoenshell, Hannah	8	1	4	5	16	.062	2-4	0	0
12	Nielsen, Sarah	8	1	4	5	9	.111	2-4	0	0
18	Bowman, Laura	8	4	0	4	21	.190	3-6	1	0
27	Seward, Kelly	8	3	0	3	9	.333	2-4	2	0
4	Pardoski, Jordin	8	0	3	3	5	.000	2-4	0	0
9	Petersen, Amy	8	0	3	3	5	.000	0-0	0	0
15	Desorcie, Jess	8	1	0	1	6	.167	1-2	0	0
19	Holdcroft, Jill	8	1	0	1	11	.091	1-2	0	0
2	Bateman, Jeanette	7	0	1	1	7	.000	1-2	0	0
17	Jahnke, Paige	7	0	1	1	3	.000	6-12	0	0
6	Reihl, Lindsay	8	0	1	1	0	.000	2-4	0	0
23	Shaw, Birdie	7	0	1	1	3	.000	0-0	0	0
10	Catanzariti, Micayla	4	0	0	0	1	.000	1-2	0	0
20	Laurenzi, Emily	8	0	0	0	7	.000	0-0	0	0
13	Rasmussen, Kendra	2	0	0	0	0	.000	0-0	0	0
33	Smiddy, Madison	1	0	0	0	0	.000	0-0	0	0
5	Walkom, Stephanie	1	0	0	0	0	.000	0-0	0	0
36	Weaver, Tess	3	0	0	0	1	.000	1-2	0	0
22	Welch, Jenna	8	0	0	0	9	.000	5-10	0	0
21	Wilkie, Sarah	8	0	0	0	8	.000	1-2	0	0
TM TEAM		3	0	0	0	0	.000	3-6	0	0
Total		8	17	27	44	186	.091	35-70	5	0
Opponents		8	28	44	72	307	.091	32-64	12	0

##	Goalie	gp	min	ga	gaavg	saves	save%	w-l-t
30	Whitlinger, Celine	4	238:01	10	2.52	144	.935	2-2-0
37	Paniccia, Nicole	4	242:29	17	4.21	135	.888	0-3-1
TM EMPTY NET		3	4:30	1	-	0	.000	0-0-0
Total		8	485:00	28	3.46	279	.909	2-5-1
Opponents		8	485:00	17	2.10	169	.909	5-2-1

Attendance Summary	PSU	Opponent
Total	3283	1913
Dates/Avg Per Date	4/821	4/478
Neutral Site #/Avg	0/0	

Goals by Period	1st	2nd	3rd	Total
Penn State	4	8	5	17
Opponents	5	10	13	28

Saves by Period	1st	2nd	3rd	Total
Penn State	99	89	87	279
Opponents	54	55	58	169



NITTANY LION WOMEN'S HOCKEY



2
JEANNETTE BATEMAN
Sophomore • D
Greeley, Colo.



3
CARA MENDELSON
Junior • F
Pittsburgh, Pa.



4
JORDIN PARDOSKI^A
Sophomore • D
Rochester Hills, Mich.



5
STEPHANIE WALKOM
Sophomore • D
Moon Township, Pa.



6
LINDSAY REIHL^A
Grad Student • D
Cheshire, Conn.



9
AMY PETERSEN
Freshman • F
Minnetonka, Minn.



10
MICAYLA CATANZARITI
Sophomore • F
Rancho Santa Margarita, Calif.



12
SARAH NIELSEN
Freshman • F
Edina, Minn.



13
KENDRA RASMUSSEN
Sophomore • F
Sartell, Minn.



14
DARBY KERN
Sophomore • F
Venetia, Pa.



15
JESS DESORCIE
Junior • F
Westford, Vt.



16
HANNAH HOENSHELL
Sophomore • F
Plano, Texas



17
PAIGE JAHNKE
Sophomore • D
Oakdale, Minn.



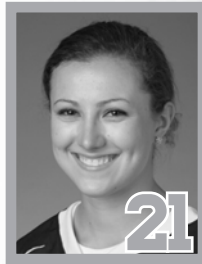
18
LAURA BOWMAN
Freshman • F
Minnetonka, Minn.



19
JILL HOLDCROFT
Sophomore • F
Pennsylvania Furnace, Pa.



20
EMILY LAURENZI
Sophomore • F
Townsend, Del.



21
SARAH WILKIE
Sophomore • D
Ashby, Mass.



22
JENNA WELCH^A
Senior • F
Austin, Texas



23
BIRDIE SHAW
Sophomore • F
Troy, Mich.



24
TAYLOR GROSS^C
Senior • F
Colorado Springs, Colo.



25
KATIE MURPHY
Junior • F
Novi, Mich.



27
KELLY SEWARD
Freshman • D
Williamsville, N.Y.



30
CELINE WHITLINGER
Sophomore • G
Garden Grove, Calif.



31
BROOKE MEYER
Sophomore • G
Naperville, Ill.



33
MADISON SMIDDY
Junior • D
Grand Rapids, Mich.



36
TESS WEAVER
Junior • F
Windber, Pa.



37
NICOLE PANICCIA
Senior • G
Oakville, Ont.



40
SHANNON YOXHEIMER
Sophomore • F
Jackson, Mich.





NITTANY LION WOMEN'S HOCKEY

