

PENN STATE



2013-14 LADY LION BASKETBALL

Penn State Athletic Communications: 101D Bryce Jordan Center, University Park, PA 16802 Office: 814-865-1757 Fax: 814-863-3165

Women's Basketball Contact: Kristina Petersen Twitter: @ladylionsid Website: www.GoPSUsports.com Email: kap18@psu.edu Cell: 814-883-4581 Office: 814-865-1757

SCHEDULE/RESULTS

OCTOBER
Sun. 27 LOCK HAVEN (exhibition)..... 2 p.m.

NOVEMBER

Fri. 8 ST. FRANCIS (PA.)..... 7 p.m.

Sun. 10 FORDHAM..... 2 p.m.

Sun. 17 CONNECTICUT (BTN)..... noon

Wed. 20 BUCKNELL 7 p.m.

Junkanoo Jam (Grand Island, Bahamas)

Fri. 29 vs. Oregon State 1 p.m.

Sat. 30 vs. Florida/Illinois St.... 11:30 a.m./1:45 p.m.

DECEMBER

Big Ten/ACC Challenge

Wed. 4 NOTRE DAME (BTN)..... 7:30 p.m.

Sun. 8 at Georgetown..... 2 p.m.

Wed. 11 at South Dakota State 8 p.m.

Sun. 15 TEXAS A&M..... 2 p.m.

Sun. 22 ALCORN STATE 11 a.m.

Sun. 29 HARTFORD 2 p.m.

JANUARY

Sun. 5 at Iowa * 3 p.m.

Thurs. 9 at Illinois * (BTN) 9 p.m.

Sun. 12 PURDUE * (ESPN2) 2 p.m.

Thurs. 16 OHIO STATE * (BTN) 7 p.m.

Sun. 19 at Michigan State * (ESPN2) 5 p.m.

Wed. 22 INDIANA * 7 p.m.

Sun. 26 MINNESOTA * (CBS) 1 p.m.

Thurs. 30 at Purdue * (BTN)..... 6 p.m.

FEBRUARY

Sun. 2 at Northwestern * 2 p.m.

Thurs. 6 IOWA * (BTN)..... 6 p.m.

Sun. 9 at Ohio State * (ESPN2)..... 2 p.m.

Thurs. 13 at Indiana * 7 p.m.

Eighth Annual Pink Zone at Penn State

Sun. 16 WISCONSIN * (ESPN2) 1 p.m.

Thurs. 20 NORTHWESTERN * (BTN)..... 7 p.m.

Mon. 24 at Nebraska * (ESPN2) 7 p.m.

MARCH

Sat. 1 MICHIGAN * (BTN) 3:30 p.m.

Th.-Su. 6-9 Big Ten Tournament (Indianapolis, Ind.)

Sa.-Tu. 22-25.. NCAA Tournament 1st & 2nd Round

..... (University Park, Pa.)

Sa.-Tu. 29-Apr. 1..... NCAA Tournament Regionals

APRIL

Su./Tu. 6/8 NCAA Final Four (Nashville, Tenn.)

BOLD CAPS indicates home game.

* - indicates Big Ten game.

All times are Eastern Time.

BTN - Big Ten Network

BTN.com - BigTenNetwork.com

Schedule subject to change. Please visit www.GoPSUsports.com

for up-to-date tip times.

Exhibition Game: Lock Haven (Pa.) at Penn State

Sun., Oct. 27 ▶ 2 p.m. ▶ Bryce Jordan Center ▶ University Park, Pa.



Penn State Lady Lions

Record: 26-6, 14-2 Big Ten

Last Game:

LSU 71, PSU 66 (3/26/13)

Head Coach: Coquese Washington

Career Record: 118-73 (7th yr.)

Record at PSU: 118-73 (7th yr.)

Returning Statistical Leaders

Points Maggie Lucas (20.1)

Rebounds Maggie Lucas (4.5)

Assists Dara Taylor (3.4)



Lock Haven Eagles

Record: 7-19, 4-18 PSAC

Last Game:

Indiana (Pa.) 87, LHU 49 (2/27/13)

Head Coach: Jennifer Smith

Career Record: 68-142 (9th yr.)

Record at LHU: 44-109 (7th yr.)

Returning Statistical Leaders

Points Marrysa Moyer (11.5)

Rebounds Marrysa Moyer (9.6)

Assists Sami Lane (2.5)

SETTING THE SCENE

The Lock Haven Game

Series: Lock Haven leads 9-8

Last Official Meeting:

PSU 94, LHU 54 (12/9/80)

Streak: Penn State - 5 wins

Television: none

Radio: none

Webstream: none

Live Stats: GoPSUsports.com

STORYLINES

- ✓ Penn State won its second-straight Big Ten regular season title since 2002-03 and 2003-04 and seventh overall with a 14-3 mark in conference play.
- ✓ The Lady Lions return six letterwinners, led by reigning Big Ten Player of the Year **Maggie Lucas** and Big Ten All-Defensive Team selection **Dara Taylor**.
- ✓ Penn State adds eighth newcomers that compiled the 14th-ranked recruiting class from last year.
- ✓ The Lady Lions made their 24th overall NCAA Tournament appearance. Penn State is one of only 11 teams to earn 24 or more NCAA Tournament berths.
- ✓ Senior guard **Maggie Lucas** is second on Penn State's career three-pointers list (292), eighth in career scoring list (1,838) and first in career free throw percentage list (.887) entering her senior year.
- ✓ Lucas is among 25 players named to the "Wade Watch" list for the State Farm® Wade Trophy.
- ✓ The Lady Lions enter the 2013-14 campaign riding a 20-game home court winning streak, which is tied for the third-longest active streak in NCAA Division I, behind Baylor (57) and Tennessee-Chattanooga (26).
- ✓ The Lady Lions have put together arguably one of the best non-conference schedules in Bryce Jordan Center history with previous National Champions Connecticut, Notre Dame and Texas A&M slated to visit Happy Valley this season.
- ✓ Penn State's non-conference opponents have a combined 109 NCAA Tournament appearances, 20 Final Four appearances and 10 National Championships.
- ✓ The Lady Lions are ranked is 14th in the Lindy's preview magazine, 16th by USA Today Sports, 18th by the Sporting News and 21st by Athlon Sports. Lucas was selected to the All-America first team in the Lindy's, Athlon Sports and Sporting News publications (USA Today Sports doesn't have an All-America team).
- ✓ The Lady Lions will make a school-record 14 appearances on national television in the regular season. PSU will appear on CBS once, ESPN2 five times and the Big Ten Network eight times during the 2013-14 slate.
- ✓ Senior center **Talia East** and junior center **Tori Waldner** have made it tough for opponents to find success in the lane as the pair have moved into the Top 20 in school history in blocks. East ranks 19th with 57 career rejections, while Waldner is 20th with 50 blocks.
- ✓ Last year, the Lady Lions posted their third consecutive season 25-win season. It is only the second time in program history that the Lady Lions have posted three-straight 25-win seasons (1993-94 - 1995-96).

UP NEXT

Penn State opens its season against St. Francis (Pa.) on Fri., Nov. 8 at 7 p.m. The Lady Lions will raise their 2013 Big Ten Championship banner and give away commemorative banks to celebrate back-to-back Big Ten titles. The Lady Lions also face Fordham on Sun., Nov. 10 at 2 p.m. to close out opening weekend.



2013-14 ROSTER

PENN STATE LADY LIONS

No.	Name	Pos.	Cl./Elg.	Ht.	Hometown/High School (Previous School)
1	Candice Agee *	C	So./So.	6-6	Victorville, Calif./Silverado
2	Dara Taylor *	G	5th/Sr.	5-8	Wilmington, Del./Caravel Academy (Maryland)
5	Talia East ***	F/C	Sr./Sr.	6-3	Philadelphia, Pa./Friends' Central School
10	Keke Sevillian	G	Fr./Fr.	5-7	Goodrich, Mich./Goodrich
11	Alex Harris	F	Fr./Fr.	6-3	Lorain, Ohio/Lorain
12	Lindsey Spann	G	Fr./Fr.	5-6	Laurel, Md./Good Counsel
15	Kalayah Mitchell	G/F	Fr./Fr.	6-2	Stone Mountain, Ga./Stephenson
20	Infiniti Alston	C	Fr./Fr.	6-6	Baltimore, Md./Digital Harbor
23	Ariel Edwards ***	G/F	Sr./Sr.	6-3	Elmont, N.Y./Christ the King
25	Peyton Whitted	G/F	Fr./Fr.	6-3	Suwanee, Ga./North Gwinnett
33	Maggie Lucas ***	G	Sr./Sr.	5-10	Narberth, Pa./Germantown Academy
35	Sierra Moore	G	So./--^	5-11	Hanover, Pa./Delone Catholic (Duke)
41	Jenny DeGraaf	G/F	Fr./Fr.	6-1	Springboro, Ohio/Springboro
44	Tori Waldner **	F	Jr./Jr.	6-5	Milton, Ga./Milton

Head Coach: Coquese Washington (Notre Dame '92)

Asst. Coaches: Fred Chmiel, Kia Damon, Maren Walseth

Captains: Talia East, Ariel Edwards, Maggie Lucas, Dara Taylor

* Indicates letters earned

LOCK HAVEN EAGLES

No.	Name	Pos.	Cl.	Ht.	Hometown/High School (Previous School)
1	Shaleta Heyward	G	Sr.	5-6	Upper Darby, Pa./Upper Darby (Mansfield)
2	Kelsey Ryan	F	Sr.	5-11	Levittown, Pa./Neshaminy
4	Marissa Ward	G	Fr.	6-4	Clearfield, Pa./Clearfield
12	Emily Daugherty	G	RS-Jr.	5-9	Laughlintown, Pa./Ligonier
15	Sami Lane	G	Jr.	5-6	Montoursville, Pa./Loyalsock
21	Syvae McDaniel	F	So.	5-10	Plainfield, N.J./Rutgers Prep (California (Pa.))
23	J.J. Hilliard	G	So.	5-7	Bethlehem, Pa./Liberty
24	Marrysa Moyer	F/G	So.	5-11	Altoona, Pa./Altoona (Mansfield)
25	Alex Brehony	F	Jr.	6-0	Mertztown, Pa./Brandywine Heights
30	Rachael McDaniel	G	So.	5-8	Plainfield, N.J./Rutgers Prep (California (Pa.))
32	Hannah Gildea	G	Jr.	5-8	Holidaysburg, Pa./Holidaysburg
40	Sydney Morse	F	Fr.	5-11	Norristown, Pa./Norristown
44	Dakota Farmery	F	Fr.	6-4	Clearfield, Pa./Clearfield

Head Coach: Jennifer Smith

Assistant Coach: Zack Smith

TEAM COMPARISON

PENN STATE		LOCK HAVEN
Lucas (20.1)	Returning Scoring Leader	Moyer (11.5)
Lucas (4.5)	Returning Rebounding Leader	Moyer (9.6)
Taylor (3.4)	Returning Assist Leader	Lane (2.5)
Taylor (2.4)	Returning Steals Leader	Moyer (1.9)
Waldner (1.1)	Returning Blocks Leader	Moyer (0.8)
73.6	Scoring Offense	66.2
59.1	Scoring Defense	70.6
+14.6	Scoring Margin	-4.4
41.5	Rebounds Per Game	44.5
+5.2	Rebound Margin	+5.0
12.1	Assists Per Game	11.2
11.3	Steals Per Game	9.5
.426	Field Goal Pct.	.372
.367	FG Defense Pct.	.390
.392	3-pt. FG Pct.	.251
.308	3-pt. FG Pct. Def.	.298
.735	Free Throw Pct.	.715
0.8	Assist/Turnover	0.5
Lost 1	W/L Streak	Lost 4

SERIES HISTORY

Overall:	LHU leads 8-9
Last meeting:	Dec. 9, 1980
Last result:	PSU, 94-54
Current streak:	PSU - 5 wins
Last 10:	PSU, 6-4
Last 10 meetings:	
2/26/72	A LHU, 28-72
2/27/73	H LHU, 40-64
1/29/74	A LHU, 47-57
2/13/75	H PSU, 60-46
2/24/76	A LHU, 72-75
2/23/77	H PSU, 87-56
2/28/78	A PSU, 82-60
2/27/79	H PSU, 100-56
12/11/79	A PSU, 82-42
12/9/80	A PSU, 94-54

QUICK FACTS

THE UNIVERSITY

Location: University Park, Pa.
 Founded: 1855
 Enrollment: 42,294
 Colors: Blue & White
 Nickname: Lady Lions
 Conference: Big Ten
 President: Dr. Rodney Erickson
 Director of Athletics: Dr. David Joyner
 Senior Woman Administrator: Charmelle Green
 Facility (cap.): Bryce Jordan Center (15,104)
 All-Time Record at BJC: 201-49 (19 seasons)

ATHLETIC COMMUNICATIONS

WBB Contact: Kristina Petersen
 Phone/Fax: (814) 865-1757/(814) 863-3165
 E-mail: kap18@psu.edu
 Press Row Phone: 814-863-3294
 Website: www.GoPSUsports.com
 Twitter: @ladylionsid

TEAM INFORMATION

2012-13 Record: 26-6
 Home: 14-0 Away: 9-5 Neutral: 3-1
 Big Ten Record (finish): 14-2 (1st)
 Home: 8-0 Away: 6-2
 Letterwinners Returning/Lost: 6/5
 Starters Returning/Lost: 2/3
 Big Ten Tournament: Semifinals
 Postseason: NCAA Second Round

THE HISTORY

First Year of Women's Basketball: 1965
 All-Time Record: 857-386 (49 seasons)
 All-Time Big Ten Rec.: 231-119 (21 seasons)
 NCAA Tournament Appearances: 24
 NCAA Tournament Record: 30-24

WOMEN'S BASKETBALL

Head Coach: Coquese Washington
 Alma Mater: Notre Dame '92
 Overall Record: 118-73 (six seasons)
 School Record: 118-73 (six seasons)
 Twitter: @coquesewashing
 Best Time To Reach Coach: Through SID
 Assistant Coaches (Alma Mater):
 Fred Chmiel (Excelsior College)
 Kia Damon (Millersville '97)
 Maren Walseth (Penn State '02)
 Twitter: @pennstatewbb
 Facebook: facebook.com/pennstateladylions
 YouTube: YouTube.com/pennstateladylions
 Instagram: pennstatewbb

PRONUNCIATIONS

Coquese	ko-KWEES
Chmiel	shuh-MEAL
Maren Walseth	MARR-en WALL-seth
Talia	tah-LEE-uh
Ariel	AIR-e-I
Dara	DAR-uh
Agee	AYE-gee
Kalayah	kah-LEE-uh
Sevillian	civilian
Whitted	WIT-tid





2012-13 STANDINGS (FINAL)

Team	Big Ten			Overall		
	W	L	Pct.	W	L	Pct.
PENN STATE	14	2	.875	26	6	.813
Nebraska	12	4	.750	25	9	.735
Purdue	10	6	.625	25	9	.735
Michigan State	10	6	.625	25	9	.735
Michigan	9	7	.563	22	11	.667
Illinois	9	7	.563	19	14	.576
Iowa	8	8	.500	21	13	.618
Ohio State	7	9	.438	18	13	.581
Minnesota	7	9	.438	18	14	.563
Northwestern	5	11	.313	13	17	.433
Wisconsin	3	13	.188	12	19	.387
Indiana	2	14	.125	11	19	.367

BIG TEN SCHEDULE

NOVEMBER 8

Illinois at Bradley	noon
UC Riverside at Iowa	7 p.m.
Bowling Green vs. Michigan	4 p.m.
UCLA at Nebraska	1 p.m.
Ohio State at West Virginia	5:30 p.m.
Saint Francis (Pa.) at Penn State	7 p.m.

NOVEMBER 9

Oakland at Indiana	7 p.m.
Arizona/Iona vs. Michigan	TBA
Minnesota at Northern Iowa	1 p.m.

NOVEMBER 10

Dayton at Iowa	1 p.m.
UIC at Northwestern	6 p.m.
Florida Atlantic at Ohio State	2 p.m.
Fordham at Penn State	2 p.m.
Ball State at Purdue	2 p.m.
Drake at Wisconsin	3 p.m.

All times are Eastern.

PROJECTED STARTERS



1 CANDICE AGEE C
So., 6-6, Victorville, Calif.
2.0 ppg, 1.8 rpg, 0.5 bpg

Notes: Won a gold medal with the U19 USA Basketball team in the FIBA U19 World Championship ... Had a career-high eight points and three blocks versus Illinois (2/20/13).



2 DARA TAYLOR G
Sr., 5-8, Wilmington, Del.
7.0 ppg, 3.2 rpg, 3.4 apg, 2.4 spg

Notes: Big Ten All-Defensive team ... Ranks seventh in PSU history in career steals average (2.4) ... Named team's Collegiate Pride Defensive Player of the Year ... Academic All-Big Ten selection.



23 ARIEL EDWARDS G/F
Sr., 6-3, Elmont, N.Y.
7.9 ppg, 3.2 rpg, .464 FG%, .746 FT%

Notes: Posted a career-best scoring average at 7.9 points per game last year ... Is tied for fifth on Penn State career three-point field goal percentage list (.400; 30-75) ... Academic All-Big Ten selection.



33 MAGGIE LUCAS G
Sr., 5-10, Narberth, Pa.
20.1 ppg, 4.5 rpg, .462 3FG%, .900 FT%

Notes: 2013 Big Ten Player of the Year ... Two-time first team All-Big Ten choice ... 7th on Penn State's career scoring list (1,838) ... 2nd in PSU history in 3-pointers (292) ... On preseason Wade Watch list.



44 TORI WALDNER F/C
Jr., 6-5, Diboll, Texas
1.6 ppg, 2.8 rpg, 1.1 bpg, .769 FT%

Notes: Ranks 20th on Penn State's all-time blocked shots list (50) ... Pulled in a career-best 85 rebounds last season ... Blocked five shots vs. Minnesota (1/24/13) ... Academic All-Big Ten choice.

SCOUTING LOCK HAVEN

- Lock Haven, which was 7-19 overall and 4-18 in PSAC play a year ago, returns its top scorer and rebound from a season ago in Marrysa Moyer.
- Moyer nearly averaged a double-double last season, accounting for 11.5 points and 9.6 rebounds per game.
- Kelsey Ryan also averaged double figures for the Eagles, chipping in 10.2 markers per outing.

ALL-TIME VERSUS THE EAGLES

- The Lady Lions are 8-9 all-time against Lock Haven in non-exhibition games.
- The teams last meet in a non-exhibition game on Dec. 9, 1980 with Penn State claiming a 94-54 win in Lock Haven.

"WATCHING" LUCAS

- Senior guard **Maggie Lucas** is among the 25 players that have been named to the preseason WBCA's Wade Watch list for National Player of the Year.
- Additionally, Lucas is among the honorees on the John R. Wooden Award preseason Top 30 list.
- Lucas was a finalist for both the WBCA's Wade Trophy and the John R. Wooden Award as a junior.

PRESEASON HONORS

- The Lady Lions are ranked in several preseason publications heading into the 2013-14 campaign.
- Penn State is 14th in the Lindy's preview, 16th by USA Today Sports, 18th by the Sporting News and 21st by Athlon Sports.
- Senior guard **Maggie Lucas** was selected to the All-America first team in the Lindy's, Athlon Sports and Sporting News publications (USA Today Sports did not have an All-America team).

FANTASTIC NON-CONFERENCE SLATE AWAITS

- The Lady Lions have put together arguably one of the best non-conference schedules in Bryce Jordan Center history with previous National Champions Connecticut, Notre Dame and Texas A&M slated to visit Happy Valley this season.
- Penn State's non-conference opponents have a combined 109 NCAA Tournament appearances, 20 Final Four appearances and 10 National Championships.
- Every PSU non-conference foe has made at least one NCAA Tournament appearance in their program history.
- The Lady Lions are 33-11 all-time against their 2013 non-conference opponents for a 75% winning percentage.
- Defending National Champion Connecticut will visit Penn State for Jan. 8, 1983, although the Huskies did play in the 2006 NCAA Tournament first and second rounds at the BJC.
- The non-conference slate will also mark the first time that head coach **Coquese Washington** will meet her mentor and former coach Muffet McGraw and Notre Dame in the Big Ten/ACC Challenge.



PROTECTING THE BJC

- The Lady Lions enter the 2013-14 campaign riding a 20-game home court winning streak, which is tied for the third-longest active streak in NCAA Division I, behind Baylor (57) and Tennessee-Chattanooga (26).
- Penn State last lost at home to Michigan State on Jan. 7, 2012.
- The home court win streak is also tied for the fifth-longest in school history.
- Additionally, Penn State has won its last 13 non-conference home games, dating back to Dec. 28, 2010.
- In 2012-13, the Lady Lions posted a perfect 14-0 record at home for the fourth unbeaten home campaign in BJC history.

LUCAS LOOKING FOR LONG RANGE RECORD

- Senior guard **Maggie Lucas** also ranks second in Penn State history and third in Big Ten history in three-point field goals made.
- Lucas has 292 triples in her collegiate career, trailing Kelly Mazzante's Big Ten and Penn State record of 357 three-pointers.
- Lucas needs a pair of three-pointers to tie Michigan State's Lindsey Bowen for second place on the Big Ten's career chart.
- Last season, Lucas tied the NCAA record for consecutive games with a made three-pointer in a season with 32.
- Lucas has made a triple in each of her last 35 contests, which is a school record.
- For her career, Lucas has connected on 43.3% of her shots from downtown, which ranks second in school history overall and first among Lady Lions with 75 or more career attempts.

LUCAS LOADING UP THE RECORD BOOKS

- In addition to her scoring and three-point prowess, senior guard **Maggie Lucas** has also etched her name on several other career charts for the Lady Lions.
- The Narberth, Pa. native starts her final season in Happy Valley atop the career free throw percentage list with an .887 mark.
- Lucas is also 10th in program history in free throws made with 362 shots made from the charity stripe.
- She needs nine makes from the free throw line to tie Suzie McConnell (371; 1985-88) for ninth place all-time.
- Lucas has also moved into the career steals list, where she ranks 19th with 176 career thefts.
- She needs four steals to move into a tie for 18th all-time with Susan Robinson (176; 1989-92) and six thefts to move into a tie for 16th with Dana Eikenberg (182; 1989-92) and Vanessa Paynter (182; 1984-87).

LADY LIONS ON TV

- The Lady Lions will make at least 14 appearances on national television this season.
- The Lady Lions will appear on CBS once, ESPN2 five times and the Big Ten Network eight times during the 2013-14 slate.
- The 14 regular-season national TV appearances are the most in program history.
- Penn State's first TV game of the season will air on the Big Ten Network when the Lady Lions host defending National Champion UConn on Sun., Nov. 17 at noon.
- The Lady Lions will have a game on CBS for the second time in three years when they host Minnesota on Jan. 26 at 1 p.m.
- Additionally, the Eighth Annual Pink Zone at Penn State will air on ESPN2 when the Lady Lions host Wisconsin on Sun., Feb. 16 at 1 p.m.

LADY LIONS GET SOCIAL: The Lady Lions are on several social media sites, including Twitter, Instagram and Facebook. Follow the Lady Lions and assistant coaches (@pennstatewbb), head coach Coquese Washington (@coquesewashing) and sports information contact Kris Petersen (@ladylionsid) on Twitter to get the inside scoop. The Lady Lions are also on Instagram (@pennstatewbb) and Facebook at www.facebook.com/pennstateladylions.



MAGGIE MARCHING UP CAREER SCORING LIST

- Senior guard **Maggie Lucas** starts her senior season seventh on Penn State's all-time scoring chart with 1,838 points.
- She needs 59 points to tie Suzie McConnell for sixth place.
- Lucas needs 162 tallies to become the fifth player in school history with 2,000 points, joining Kelly Mazzante, Susan Robinson, Tyra Grant and Kahadeejah Herbert.

14TH-RANKED RECRUITING CLASS JOINS LIONS

- The Lady Lions welcome eight newcomers to the fold this season in freshmen **Infiniti Alston, Jenny DeGraaf, Alex Harris, Kaliyah Mitchell, Keke Sevillian, Lindsey Spann** and **Peyton Whitted** and as well as Duke transfer **Sierra Moore**.
- The recruiting class was ranked 14th by ESPN/HoopGurlz.
- Spann was the highest ranked player in the class as she was the 22nd-rated recruit by Collegiate Girls Basketball.
- Harris was also in the Top 50, ranking 49th by both Collegiate Girls Basketball and All-Star Girls Report.
- Moore will have to sit out the 2013-14 season due to NCAA Transfer Rules, while Spann will likely miss the 2013-14 campaign after tearing her right ACL during a summer practice.

PENN STATE'S OVERALL/BIG TEN YEAR-BY-YEAR REVIEW

Year	Overall	Big Ten	Home	BT Home	Road	BT Road	Neutral
1992-93	22-6	14-4	12-2	9-0	9-4	5-4	0-0
1993-94	28-3	16-2	14-0	9-0	11-2	7-2	3-1
1994-95	26-5	13-3	14-2	8-0	9-3	5-3	3-0
1995-96*	27-7	13-3	14-2	8-0	8-4	5-3	5-1
1996-97	15-12	8-8	9-3	5-3	5-6	3-5	1-3
1997-98	21-13	8-8	10-5	4-4	6-6	4-4	5-2
1998-99	22-8	12-4	9-2	6-2	9-4	6-2	4-2
1999-00	30-5	15-1	14-0	8-0	9-2	7-1	7-3
2000-01	19-10	11-5	11-2	7-1	6-5	4-4	2-3
2001-02	23-12	11-5	10-4	6-2	9-5	5-3	4-3
2002-03	26-9	13-3	16-0	8-0	7-7	5-3	2-2
2003-04	28-6	15-1	12-1	8-0	9-3	7-1	6-2
2004-05	19-11	13-3	12-0	8-0	6-9	5-3	1-2
2005-06	13-16	6-10	8-6	5-3	3-8	1-7	2-2
2006-07	15-16	7-9	12-1	7-1	2-12	0-7	1-3
2007-08	13-18	4-14	10-6	3-6	3-11	1-8	0-1
2008-09	11-18	6-12	8-6	4-5	2-9	2-7	1-3
2009-10	17-14	8-10	9-6	5-4	5-7	3-6	3-1
2010-11	25-10	11-5	14-4	6-2	7-4	5-3	4-2
2011-12	26-7	13-3	12-2	6-2	11-3	7-1	3-2
2012-13	26-6	14-2	14-0	8-0	9-5	6-2	3-1
2013-14	0-0	0-0	0-0	0-0	0-0	0-0	0-0

* First season at the Bryce Jordan Center



PENN STATE'S RECORD WHEN...

Playing at home	0-0
Playing on the road	0-0
Playing at a neutral site	0-0
vs. Top 10 teams	0-0
vs. Top 25 teams	0-0
Games decided by 3 points or less	0-0
Games decided by 4-10 points	0-0
Games decided by 11-19 points	0-0
Games decided by 20 points or more	0-0
Leading at the half	0-0
Tied at the half	0-0
Trailing at the half	0-0
Leading with 5:00 remaining	0-0
Trailing with 5:00 remaining	0-0
Tied with 5:00 remaining	0-0
In overtime	0-0
PSU scores 40-49 points	0-0
PSU scores 50-59 points	0-0
PSU scores 60-69 points	0-0
PSU scores 70-79 points	0-0
PSU scores 80 points or more	0-0
PSU shoots 45% or better	0-0
PSU shoots less than 45%	0-0
PSU shoots better than opponent	0-0
Opponent shoots better than PSU or tied	0-0
Opponent scores less than 39 points	0-0
Opponent scores 40-49 points	0-0
Opponent scores 50-59 points	0-0
Opponent scores 60-69 points	0-0
Opponent scores more than 70 points	0-0
Opponent shoots better than 45%	0-0
Opponent shoots less than 45%	0-0
PSU outrebounds opponent	0-0
Opponent outrebounds PSU or tied	0-0
PSU commits 14 or less turnovers	0-0
PSU commits 15 or more turnovers	0-0
PSU makes at least 5 3-pointers	0-0
PSU makes four 3-pointers or less	0-0
Recording 7 or more steals	0-0
Recording 6 or less steals	0-0
Wearing white uniforms	0-0
Wearing blue uniforms	0-0
Wearing white and pink uniforms	0-0
Penn State wins the tip	0-0
Penn State loses the tip	0-0
Penn State scores first	0-0
Opponent scores first	0-0
Playing during the day (before 5 p.m.)	0-0
Playing at night	0-0
On Monday	0-0
On Tuesday	0-0
On Wednesday	0-0
On Thursday	0-0
On Friday	0-0
On Saturday	0-0
On Sunday	0-0
In November	0-0
In December	0-0
In January	0-0
In February	0-0
In March	0-0

DUO BLOCKING THE LANE

- Senior center **Talia East** and junior center **Tori Waldner** have made it tough for opponents to find success in the lane as the pair have moved into the Top 20 in school history in blocks.
- East ranks 19th in program history with 57 career rejections.
- She needs four blocks to move into a tie for 18th place with Tanisha Wright (61; 2002-05).
- Waldner has 50 career blocks to sit 20th on the Lady Lions' career blocks list.
- She needs seven rejections to tie East for 19th place.

FOUR McDONALD'S ALL-AMERICANS

- The Lady Lions tout four McDonald's High School All-Americans on their roster this season in **Maggie Lucas**, **Dara Taylor**, **Candice Agee** and **Sierra Moore**.
- Taylor played in the 2009 game, Lucas was in the 2010 contest and Agee and Moore were in the 2012 game.
- Lucas won the Powerade Three-Point Shootout as part of the McDonald's All-America celebration in 2010.
- Prior to **Coquese Washington** taking over the reigns, the Lady Lions only had one McDonald's High School All-American in program history.

HOOPIN' FOR THE USA

- Head coach **Coquese Washington** and sophomore center **Candice Agee** spent their summers winning gold medals with USA Basketball.
- Washington was an assistant coach on the USA Basketball Women's World University Games Team, serving under head coach Sherri Coale of Oklahoma.
- The United States took home the gold medal at the World University Games, which took place in Kazan, Russia July 8-15.
- Agee claimed her second gold medal as a member of USA Basketball, earning it at the FIBA U19 World Championship. She previously won a gold medal at the U18 FIBA Americas in the summer of 2012.

THE NCAA TOURNEY RETURNS TO THE BJC

- Penn State has been selected as one of 16 universities to host the 2014 NCAA Women's Basketball Championship First and Second Round games.
- The First Round will take place on Sunday, March 23 at 12:30 and 3 p.m., while the Second Round game will be played on Tuesday, March 25 at 7 p.m.
- This will be Penn State's 15th time hosting the NCAA First and Second Rounds.
- Penn State last hosted the First and Second Rounds in 2011 when the Lady Lions, DePaul, Dayton and Navy competed in the Bryce Jordan Center.
- The Lady Lions have won nine of its last 10 home NCAA Tournament games, posting a 17-5 overall record.

2014 PINK ZONE AT PENN STATE

- The Eighth Annual Pink Zone at Penn State will be held Sunday, Feb. 16 in the Bryce Jordan Center at 1 p.m. when the Lady Lions take on Wisconsin.
- Last year, the Lady Lions donated a record \$260,000 to breast cancer causes.
- All totalled, the Lady Lions have donated more than \$825,300 for breast cancer research and awareness in the first seven years.
- This year's fundraising efforts will benefit the Mount Nittany Medical Center, Penn State Hershey Cancer Institute, Pennsylvania Breast Cancer Coalition, the Kay Yow Cancer Fund, J.C. Blair Memorial Hospital and Lewistown Hospital.
- For more information on the Pink Zone at Penn State, visit the official Pink Zone website at www.pennsylvaniapinkzone.org.

LADY LIONS EXCELLING AT THE NEXT LEVEL

- Former Penn State Lady Lions Alex Bentley and Tanisha Wright were among the players honored by the WNBA this season. Bentley was part of the five-player WNBA All-Rookie Team, while Wright took home her fourth WNBA All-Defensive first team selection.
- In her first season in the WNBA, Bentley averaged 8.3 points, 2.8 assists and 1.0 steals per game for the Atlanta Dream.
- Bentley ranked third in the league in assists per turnover (2.4), 18th in total assists (95) and 19th in three-point field goal percentage (.329).
- Earlier in the season, Bentley broke the WNBA record for consecutive three-pointers made with 10.
- Wright, who finished her ninth season in the Seattle Storm, accounted for 11.9 points, 4.1 assists, 3.7 rebounds and 1.1 steals per game.
- She was eight in the league in total assists (130), sixth in total minutes played (1,016) and 10th in assists per game and 14th in free throw percentage (.855).
- Wright surpassed the 2,000-point mark for her WNBA career earlier this season.





COQUESE WASHINGTON

Head Coach
7th Season

PENN STATE LADY LION BASKETBALL

Coquese Washington was introduced as the fifth head coach of the Penn State women's basketball program on April 23, 2007. Washington is the first female African-American head coach in Penn State history.

The Lady Lions continued their return to the national spotlight in 2012-13 as they collected their second-straight Big Ten regular-season title and seventh overall with a 26-6 overall record and 14-2 mark in conference play. In each of Washington's first six years, Penn State has improved their Big Ten win total. The Lady Lions posted their third consecutive 25-win season, joining the 1993-94, 1994-95 and 1995-96 squads as the only teams in program history to accomplish the feat. Penn State also advanced to the second round of the NCAA Tournament with a win over Cal Poly. The Lady Lions were consistently ranked in the Top 10 for most of the season and finished eighth in the Associated Press Top 25 and 12th in the USA Today Sports Coaches' Poll.

With another stellar campaign, the accolades continued to roll in for the Lady Lions. Washington was selected as the Big Ten Coach of the Year by the media for the second-

straight season and became just the fifth mentor in Big Ten history to win back-to-back Coach of the Year accolades. She was also the WBCA Region 6 Coach of the Year and a finalist for WBCA National Coach of the Year for the second-straight season. The awards also piled up for Penn State's dynamic backcourt of Maggie Lucas and Alex Bentley. Lucas was selected as the Big Ten Player of the Year, was a Wade Trophy Finalist and was an All-America choice by four outlets, including the WBCA (honorable mention), Associated Press (second team), USBWA (first team) and Full Court (second team). She is just the third Lady Lion in program history to win Big Ten Player of the Year honors, joining Helen Darling and Kelly Mazzante. Bentley earned her third-straight first team All-Big Ten award and honorable mention All-America bids from the WBCA and Associated Press. She was also selected as the 2013 recipient of the Frances Pomeroy Naismith Award, which is presented to the nation's outstanding female collegian 5-8 and under. Bentley is the third Lady Lion to win the honor, joining Darling and Suzie McConnell. Nikki Greene also capped a stellar career for the Lady Lions with third team All-Big Ten accolades. She also became the first player in school history to accumulate 1,000 points, 900 rebounds and 200 blocks.

Both Bentley and Greene heard their names called on WNBA Draft night. Bentley was selected with the 13th overall pick by the Atlanta Dream to become the highest draft pick for the Lady Lions since Tanisha Wright (12th) in 2005. Greene was the 26th overall selection by the Phoenix Mercury to give Penn State two draft picks for the first time since 2004 (Mazzante, Jess Brungo).

With five graduating seniors in 2012-13, Penn State was stout on the recruiting trail, bringing in a seven-member class that was ranked 14th by ESPN/HoopGurlz. The Lady Lions also added transfer Sierra Moore from Duke to complete the eight-player class. The addition of Moore gives the Lady Lions four McDonald's All-Americans on the roster heading into the 2013-14 campaign, joining Dara Taylor (2009), Lucas (2010) and Candice Agee (2012).

Washington returned the Lady Lions to Big Ten prominence in her fifth season as she guided Penn State to the Big Ten regular-season title with a 13-3 record in conference play. Additionally, the Lady Lions advanced to the NCAA Tournament Sweet Sixteen with wins over UTEP and LSU en route to a 26-7 overall record. The Lady Lions posted back-to-back 20-win seasons for the first time since 2002-03 and 2003-04. It was also the first Big Ten crown and Sweet Sixteen berth for the Lady Lions since 2003-04. The Lady Lions were ranked throughout the season and finished ninth in the ESPN/USA Today Coaches' Poll and 11th in the Associated Press Top 25.

For her efforts in rebuilding the Penn State program, Washington was honored as the Big Ten Coach of the Year and the WBCA Region 6 Coach of the Year, making her a finalist for WBCA National Coach of the Year. The accolades were not just limited to Washington; all five Lady

THE WASHINGTON FILE

COACHING RESUME

2007-pres. - Head Coach, Penn State
2013 - Asst. Coach, USA Basketball World U. Games
2013-pres. - Vice President/President-Elect, WBCA
2012-pres. - Kay Yow Cancer Fund Board of Directors
2011-pres. - NCAA WBB Issues Committee
2010-13 - Treasurer, WBCA Executive Committee
2008-pres. - WBCA Board of Directors
2009-12 - USA Basketball Women's Jr. National Committee
2005-07 - Associate Head Coach, Notre Dame
1999-05 - Assistant Coach, Notre Dame

PLAYING EXPERIENCE

2002-03 - WNBA's Indiana Fever
2000-02 - WNBA's Houston Comets
1998-99 - WNBA's New York Liberty
1997-98 - ABL's Portland Power
1989-93 - University of Notre Dame

EDUCATION

Notre Dame '92, B.A. History
Notre Dame Law School '97, Juris Doctorate

AWARDS

- ❖ 2012, 2013 Big Ten Coach of the Year
- ❖ 2012, 2013 WBCA Region 6 Coach of the Year
- ❖ 2012, 2013 WBCA National Coach of the Year Finalist
- ❖ 2011, 2013 BCA Female Coach of the Year
- ❖ 2009 Greater Flint Hall of Fame Inductee
- ❖ 2008 WBCA "Rising Star" Award Winner

FAMILY

Husband: Raynell Brown
Children: Quenton (8), Rhaiyna (4)

Lion starters earned All-Big Ten recognition, including first team bids for Bentley and Lucas. Both Bentley and Lucas also garnered honorable mention All-America honors from the WBCA and Associated Press, respectively. Bentley became the 33rd player in school history to reach the 1,000-point plateau and just the 15th junior to reach the milestone. Lucas also joined the 1,000-point club in 2011-12, becoming just the third sophomore in program history to accomplish the feat.

On the recruiting trail, the Lady Lions' 2012 class earned a Top 20 class from Dan Olson's Collegiate Girls Basketball Report. The class included transfer Taylor, who sat out the 2011-12 season due to NCAA transfer rules, and McDonald's High School All-American Agee from California. Additionally, Agee earned a gold medal with the USA Basketball U18 National Team Trials at the 2012 FIBA Americas Championship in August.

Washington came to Happy Valley after eight seasons as an associate head coach and assistant coach under Muffet McGraw at Notre Dame, her alma mater. During Washington's eight years on the bench, Notre Dame amassed a 188-69 record with eight NCAA Tournament appearances, including four Sweet Sixteen runs and a National Championship in 2001.

Washington was a four-year starting point guard for Notre Dame under McGraw and was the team captain on Notre Dame's first-ever NCAA Tournament team. She was a two-time All-Midwestern Collegiate Conference (MCC) selection and led Notre Dame to three MCC Tournament titles.

The epitome of a student-athlete, Washington graduated from Notre Dame in 1992, a full year ahead of schedule, with a bachelor's degree in history. She went on to attain "Double Domer" status in 1997 after earning her Juris Doctorate from the Notre Dame Law School.

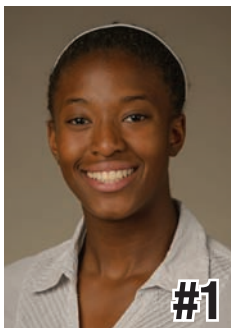
A native of Flint, Mich., Washington and her husband, Raynell Brown, have a son, Quenton (8), and a daughter, Rhaiyna (4). They reside in Port Matilda, Pa.

Washington's Coaching Record vs. Opponents

Arizona	1-0	Michigan	9-3
Army	1-0	Michigan State	4-8
Boston College	0-1	Middle Tennessee	1-0
Bucknell	5-0	Minnesota	6-7
Buffalo	1-0	Mississippi	1-0
Cal Poly	1-0	Monmouth	1-0
CS-Northridge	1-0	Nebraska	3-1
Charlotte	1-0	Nevada	1-0
Connecticut	0-3	NJIT	2-0
Coppin State	1-0	North Carolina	1-0
Dayton	2-1	Northwestern	7-1
Delaware	1-1	Oakland	2-0
DePaul	0-1	Ohio State	4-6
Detroit	1-0	Old Dominion	0-1
Drexel	2-1	Pittsburgh	2-1
Duke	1-0	Prairie View A&M	1-0
Fair Dickinson	1-0	Purdue	3-8
Florida State	0-1	Rider	1-0
Georgetown	2-0	South Carolina	4-1
Georgia Tech	0-1	South Dakota St.	1-0
Hartford	1-0	Stony Brook	1-0
Hofstra	0-1	Syracuse	0-1
Holy Cross	1-0	Texas A&M	1-1
Howard	1-0	UTEP	1-0
Illinois	9-3	Texas Tech	1-1
Indiana	5-4	Utah	1-0
Iowa	6-5	Virginia Tech	2-0
Iowa State	1-0	Wagner	1-0
Lafayette	1-0	Washington State	1-0
LSU	1-1	Wisconsin	5-6
Maine	1-0	UW-Green Bay	0-1
UMES	1-0	Xavier	0-1
Miami (Fla.)	0-1		



2013-14 RADIO/TV CHART



Candice Agee
6-6 * So./So. * F/C
Victorville, Calif.
Silverado



Dara Taylor
5-8 * 5th-Sr./Sr. * G
Wilmington, Del.
Caravel Academy
(Maryland)



Talia East
6-3 * Sr./Sr. * F/C
Philadelphia, Pa.
Friends' Central School



Keke Sevillian
5-7 * Fr./Fr. * G
Goodrich, Mich.
Goodrich



Alex Harris
6-3 * Fr./Fr. * F
Lorain, Ohio
Lorain Southview



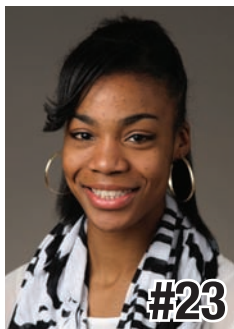
Lindsey Spann
5-6 * Fr./Fr. * G
Laurel, Md.
Good Counsel



Kaliyah Mitchell
6-2 * Fr./Fr. * G/F
Stone Mountain, Ga.
Stephenson



Infiniti Alston
6-6 * Fr./Fr. * C
Baltimore, Md.
Digital Harbor



Ariel Edwards
6-3 * Sr./Sr. * G/F
Elmont, N.Y.
Christ the King



Peyton Whitted
6-3 * Fr./Fr. * G/F
Suwanee, Ga.
North Gwinnett



Maggie Lucas
5-9 * Sr./Sr. * G
Narberth, Pa.
Germantown Academy



Sierra Moore
5-11 * So./-- * G
Hanover, Pa.
Delone Catholic
Duke



Jenny DeGraaf
6-1 * Fr./Fr. * G/F
Springboro, Ohio
Spring Boro



Tori Waldner
6-5 * Jr./Jr. * F/C
Milton, Ga.
Milton



Coquese Washington
Head Coach
Notre Dame '92
Seventh Season



Fred Chmiel
Assistant Coach
Excelsior College
Fourth Season



Kia Damon
Assistant Coach
Millersville '97
Seventh Season



Maren Walseth
Assistant Coach
Penn State '02
Seventh Season

Nine-Time Big Ten Champions • Two-Time Big Ten Tournament Champions • 2000 NCAA Final Four • 24 NCAA Tournament Appearances





2012-13 Penn State Lady Lions
Penn State Combined Team Statistics (FINAL)
All games



RECORD:	OVERALL	HOME	AWAY	NEUTRAL
ALL GAMES	26-6	14-0	9-5	3-1
CONFERENCE	14-2	8-0	6-2	0-0
NON-CONFERENCE	12-4	6-0	3-3	3-1

##	Player	gp-gs	min	avg	Total		3-Point		F-Throw		Rebounds			pf	dq	a	to	blk	stl	pts	avg	
					fg-fga	fg%	3fg-fga	3fg%	ft-fa	ft%	off	def	tot									avg
33	Lucas, Maggie	32-31	1106	34.6	210-476	.441	98-212	.462	126-140	.900	25	119	144	4.5	63	1	69	88	10	72	644	20.1
20	Bentley, Alex	32-32	996	31.1	180-440	.409	25-89	.281	66-81	.815	14	94	108	3.4	71	1	112	62	8	109	451	14.1
54	Greene, Nikki	32-32	695	21.7	112-231	.485	0-0	.000	69-106	.651	118	153	271	8.5	104	1	11	69	39	26	293	9.2
24	Nickson, Mia	31-31	902	29.1	93-218	.427	0-0	.000	78-113	.690	97	115	212	6.8	70	2	31	46	13	32	264	8.5
23	Edwards, Ariel	32-6	666	20.8	96-207	.464	13-26	.500	47-63	.746	25	77	102	3.2	71	2	23	48	10	10	252	7.9
02	Taylor, Dara	32-25	871	27.2	86-225	.382	18-61	.295	33-53	.623	28	73	101	3.2	80	1	108	89	4	77	223	7.0
05	East, Talia	31-1	387	12.5	23-51	.451	0-0	.000	23-40	.575	35	62	97	3.1	61	3	10	24	21	13	69	2.2
01	Agee, Candice	26-0	204	7.8	20-54	.370	0-0	.000	11-20	.550	17	31	48	1.8	33	0	2	13	13	4	51	2.0
25	Studevent, Gizelle	32-1	297	9.3	28-75	.373	0-4	.000	5-8	.625	2	19	21	0.7	10	0	13	13	2	6	61	1.9
44	Waldner, Tori	30-0	275	9.2	19-59	.322	0-1	.000	10-13	.769	31	54	85	2.8	47	0	8	22	32	11	48	1.6
40	Wolfe, Marisa	1-1	1	1.0	0-0	.000	0-0	.000	0-0	.000	0	0	0	0.0	0	0	0	0	0	0	0	0.0
Team											87	52	139				13					
Total.....		32	6400		867-2036	.426	154-393	.392	468-637	.735	479	849	1328	41.5	610	11	387	487	152	360	2356	73.6
Opponents.....		32	6400		658-1792	.367	152-494	.308	422-608	.694	384	777	1161	36.3	566	-	383	623	115	241	1890	59.1

TEAM STATISTICS	PSU	OPP	Date	Opponent	Score	Att.	
SCORING	2356	1890	11/11/12	HOWARD	w 72-61	3655	
Points per game	73.6	59.1	11/14/12	at Texas A&M	w 63-58	4756	
Scoring margin	+14.6	-	11/18/12	LAFAYETTE	w 75-34	3700	
FIELD GOALS-ATT	867-2036	658-1792	11/23/12	vs Detroit	w 80-72	479	
Field goal pct	.426	.367	11/24/12	at Cal State Northridge	w 85-73	568	
3 POINT FG-ATT	154-393	152-494	11/29/12	at Miami	L 65-69	1286	
3-point FG pct	.392	.308	12/2/12	FAIRLEIGH DICKINSON	w 101-44	4072	
3-pt FG made per game	4.8	4.8	12-06-12	at UCONN	L 52-67	8072	
FREE THROWS-ATT	468-637	422-608	12/9/12	GEORGETOWN	w 97-74	4059	
Free throw pct	.735	.694	12/12/12	at Virginia Tech	w 60-41	3587	
F-Throws made per game	14.6	13.2	12/16/12	SOUTH DAKOTA STATE	w 60-50	4747	
REBOUNDS	1328	1161	12/23/12	NJIT	w 82-37	7852	
Rebounds per game	41.5	36.3	* 1/3/13	NORTHWESTERN	w 73-69	3863	
Rebounding margin	+5.2	-	* 01/06/13	at Michigan State	w 76-55	6818	
ASSISTS	387	383	* 1/13/13	NEBRASKA	w 80-58	6098	
Assists per game	12.1	12.0	* 1/17/13	WISCONSIN	w 84-40	3848	
TURNOVERS	487	623	* 01/21/13	at Michigan	w 59-49	2842	
Turnovers per game	15.2	19.5	* 1/24/13	MINNESOTA	w 64-59	4089	
Turnover margin	+4.3	-	* 01/27/13	at Ohio State	w 71-56	6802	
Assist/turnover ratio	0.8	0.6	* 01/31/13	at Wisconsin	L 61-63	3602	
STEALS	360	241	* 2/4/13	PURDUE	w 69-61	5030	
Steals per game	11.3	7.5	* 2/7/13	at Indiana	w 76-54	1799	
BLOCKS	152	115	* 2/10/13	MICHIGAN STATE	w 71-56	6325	
Blocks per game	4.8	3.6	* 2/14/13	at Iowa	w 81-69	5783	
ATTENDANCE	76050	63089	* 2/20/13	ILLINOIS	w 95-62	4539	
Home games-Avg/Game	14-5432	14-4472	* 2/24/13	MICHIGAN	w 68-57	14173	
Neutral site-Avg/Game	-	4-120	* 02/28/13	at Minnesota	L 81-89	2808	
Score by Periods	1st	2nd	Totals	* 03/03/13	at Nebraska	w 82-67	10832
Penn State	1153	1203	2356	3/8/13	vs Ohio State	w 76-66	0
Opponents	905	985	1890	3/9/13	vs Michigan State	L 46-54	0
				03/24/13	vs Cal Poly	w 85-55	0
				03/26/13	at LSU	L 66-71	3055

* - Conference game



2012-13 Penn State Lady Lions
Penn State Combined Team Statistics (FINAL)
Conference games



RECORD:	OVERALL	HOME	AWAY	NEUTRAL
ALL GAMES	14-2	8-0	6-2	0-0
CONFERENCE	14-2	8-0	6-2	0-0
NON-CONFERENCE	0-0	0-0	0-0	0-0

##	Player	gp-gs	min	avg	Total		3-Point		F-Throw		Rebounds				pf	dq	a	to	blk	stl	pts	avg
					fg-fga	fg%	3fg-fga	3fg%	ft-fa	ft%	off	def	tot	avg								
33	Lucas, Maggie	16-15	561	35.1	104-243	.428	46-107	.430	70-77	.909	15	53	68	4.3	35	0	32	46	5	34	324	20.3
20	Bentley, Alex	16-16	504	31.5	101-247	.409	13-46	.283	27-34	.794	5	39	44	2.8	35	1	47	28	4	55	242	15.1
54	Greene, Nikki	16-16	353	22.1	57-110	.518	0-0	.000	33-57	.579	71	74	145	9.1	55	1	3	32	21	12	147	9.2
24	Nickson, Mia	16-16	489	30.6	50-111	.450	0-0	.000	46-64	.719	51	62	113	7.1	35	0	12	20	5	18	146	9.1
23	Edwards, Ariel	16-0	320	20.0	44-93	.473	7-12	.583	27-34	.794	13	30	43	2.7	31	0	11	20	4	7	122	7.6
02	Taylor, Dara	16-15	443	27.7	48-116	.414	11-29	.379	11-21	.524	12	35	47	2.9	37	1	52	47	2	50	118	7.4
05	East, Talia	16-0	181	11.3	9-16	.563	0-0	.000	12-20	.600	15	34	49	3.1	39	3	2	9	11	6	30	1.9
25	Studevent, Gizelle	16-1	130	8.1	12-31	.387	0-1	.000	2-4	.500	0	10	10	0.6	3	0	4	4	1	1	26	1.6
01	Agee, Candice	12-0	71	5.9	7-17	.412	0-0	.000	5-10	.500	5	8	13	1.1	17	0	0	6	5	0	19	1.6
44	Waldner, Tori	16-0	147	9.2	7-26	.269	0-1	.000	3-5	.600	15	30	45	2.8	28	0	4	11	22	5	17	1.1
40	Wolfe, Marisa	1-1	1	1.0	0-0	.000	0-0	.000	0-0	.000	0	0	0	0.0	0	0	0	0	0	0	0	0.0
Team											32	26	58				5					
Total.....		16	3200		439-1010	.435	77-196	.393	236-326	.724	234	401	635	39.7	315	6	167	228	80	188	1191	74.4
Opponents.....		16	3200		332-865	.384	84-266	.316	216-312	.692	185	386	571	35.7	293	-	195	315	46	106	964	60.2

TEAM STATISTICS	PSU	OPP	Date	Opponent	Score	Att.
SCORING	1191	964	* 1/3/13	NORTHWESTERN	w 73-69	3863
Points per game	74.4	60.2	* 01/06/13	at Michigan State	w 76-55	6818
Scoring margin	+14.2	-	* 1/13/13	NEBRASKA	w 80-58	6098
FIELD GOALS-ATT	439-1010	332-865	* 1/17/13	WISCONSIN	w 84-40	3848
Field goal pct	.435	.384	* 01/21/13	at Michigan	w 59-49	2842
3 POINT FG-ATT	77-196	84-266	* 1/24/13	MINNESOTA	w 64-59	4089
3-point FG pct	.393	.316	* 01/27/13	at Ohio State	w 71-56	6802
3-pt FG made per game	4.8	5.3	* 01/31/13	at Wisconsin	L 61-63	3602
FREE THROWS-ATT	236-326	216-312	* 2/4/13	PURDUE	w 69-61	5030
Free throw pct	.724	.692	* 2/7/13	at Indiana	w 76-54	1799
F-Throws made per game	14.8	13.5	* 2/10/13	MICHIGAN STATE	w 71-56	6325
REBOUNDS	635	571	* 2/14/13	at Iowa	w 81-69	5783
Rebounds per game	39.7	35.7	* 2/20/13	ILLINOIS	w 95-62	4539
Rebounding margin	+4.0	-	* 2/24/13	MICHIGAN	w 68-57	14173
ASSISTS	167	195	* 02/28/13	at Minnesota	L 81-89	2808
Assists per game	10.4	12.2	* 03/03/13	at Nebraska	w 82-67	10832
TURNOVERS	228	315	* - Conference game			
Turnovers per game	14.3	19.7				
Turnover margin	+5.4	-				
Assist/turnover ratio	0.7	0.6				
STEALS	188	106				
Steals per game	11.8	6.6				
BLOCKS	80	46				
Blocks per game	5.0	2.9				
ATTENDANCE	47965	41286				
Home games-Avg/Game	8-5996	8-5161				
Neutral site-Avg/Game	-	0-0				

Score by Periods	1st	2nd	Totals
Penn State	584	607	1191
Opponents	472	492	964