



PENN STATE WOMEN'S HOCKEY

2012-13 NITTANY LIONS

GoPSUsports.com // @PennStateWHKY // Facebook.com/PennStateWomensHockey
 Contact: **Jeremy Fallis** // jeremy.fallis@psu.edu // O: (814) 865-3613 // C: (814) 206-6544

2012-13 SCHEDULE

Overall: 1-3-0 // Home: 0-2-0 // Away: 1-1-0

CHA: 0-2-0 // Home: 0-2-0 // Away: 0-0-0

Date	Opponent	W	L	OT	Time
Oct. 6	at Vermont	W			5-3
Oct. 7	at Vermont	L			1-3
Oct. 13	* SYRACUSE	L			0-4
Oct. 14	* SYRACUSE	L			0-6
Oct. 19	at Sacred Heart				7:00 p.m.
Oct. 20	at Sacred Heart				2:00 p.m.
Oct. 25	* RIT				7:00 p.m.
Oct. 26	* RIT				7:30 p.m.
Nov. 2	SACRED HEART				7:30 p.m.
Nov. 3	SACRED HEART				2:00 p.m.
Nov. 10	* ROBERT MORRIS				2:00 p.m.
Nov. 11	* ROBERT MORRIS				2:00 p.m.
Nov. 16	* at Lindenwood				8:00 p.m.
Nov. 17	* at Lindenwood				3:00 p.m.
Nov. 30	* at #7 Mercyhurst				7:00 p.m.
Dec. 1	* at #7 Mercyhurst				2:00 p.m.
Dec. 7	at St. Lawrence				7:00 p.m.
Dec. 8	at St. Lawrence				2:00 p.m.
Jan. 4	CHATHAM				7:30 p.m.
Jan. 5	CHATHAM				7:00 p.m.
Jan. 11	at Union				7:00 p.m.
Jan. 12	at Union				4:00 p.m.
Jan. 25	* at Syracuse				7:00 p.m.
Jan. 26	* at Syracuse				2:00 p.m.
Jan. 29	PRINCETON				7:00 p.m.
Feb. 1	* #7 MERCYHURST				2:00 p.m.
Feb. 2	* #7 MERCYHURST				2:00 p.m.
Feb. 8	* LINDENWOOD				2:00 p.m.
Feb. 9	* LINDENWOOD				2:00 p.m.
Feb. 15	* at RIT				7:00 p.m.
Feb. 16	* at RIT				7:00 p.m.
Feb. 22	* at Robert Morris				7:00 p.m.
Feb. 23	* at Robert Morris				3:00 p.m.
2013 CHA TOURNAMENT					
Mar. 1	^ First Round - Game 1				TBA
Mar. 2	^ First Round - Game 2				TBA
Mar. 3	^ First Round - Game 3 (if necessary)				TBA
Mar. 8	% Semifinals				TBA
Mar. 9	% Final				TBA

All Times Eastern

Home games in **CAPS** at Greenberg Ice Pavilion

* - College Hockey America games

^ - CHA First Round at higher seed

% - CHA Semifinals & Final hosted by No. 1 seed

Rankings based on USA Today/USA Hockey poll



PENN STATE NITTANY LIONS

(1-3-0)

SACRED HEART PIONEERS

(0-2-0)*

* Only NCAA games

Games 5-6: October 19-20, 2012 • 7 p.m. // 2 p.m. • Wonderland of Ice • Bridgeport, Conn.

GAME DAY

VENUE

Wonderland of Ice (600)

STREAMING COVERAGE

None

SERIES RECORD

0-0-0

LAST MEETING

First Meeting, 10/19

NEXT SERIES

10/25-26 vs. RIT

GAME NOTES

- Penn State travels to Sacred Heart for two-game set on Friday and Saturday
- This is the first varsity meeting between the Lions and SHU; last season the Penn State club team split at Sacred Heart
- Nittany Lions dropped its home opening weekend to Syracuse
- **Nicole Paniccia** stopped a career-high 53 shots vs. Syracuse on Saturday
- Sacred Heart won two exhibition games over Rhode Island last weekend
- The Pioneers was swept in its opening weekend by RIT, falling 8-0 and 7-2

ON THE INSIDE

Page 2: **CHA Standings and Team Comparison**

Page 5: \$90 million **Pegula Ice Arena** is on target for a Sept. 2013 opening

Page 6: **2012-13 Penn State Women's Hockey Stats**

Pages 7-8: **The Nittany Lion Roster & TV/Radio Roster**

SEASON STATISTICAL LEADERS

OFFENSE		GP	G	A	PTS	SH	+/-	GWG
10	Micayla Catanzariti	4	2	1	3	4	-1	0
23	Birdie Shaw	4	2	1	3	10	-1	0
15	Jess Desorcie	4	0	3	3	4	0	0
40	Shannon Yoxheimer	4	2	0	2	23	0	1
24	Taylor Gross	4	0	2	2	8	0	0
DEFENSE		GP	G	A	PTS	SH	+/-	BLK
8	Taylor McGee	4	0	1	1	4	0	5
17	Paige Jahnke	4	0	0	0	1	0	5
2	Jeanette Bateman	4	0	0	0	0	-1	6
GOALTENDER		GP-GS	Record	MIN	GA	GAA	SV	SV%
37	Nicole Paniccia	2-2	1-1-0	120:00	7	3.50	84	.923
30	Celine Whitlinger	2-2	0-2-0	118:40	9	4.55	78	.897



@PennStateWHKY



PennStateWomensHockey



GoPSUTV



NITTANY LION WOMEN'S HOCKEY

GAME NOTES AT SACRED HEART (OCT. 19-20)

SCOUTING SACRED HEART

The Pioneers (0-2-0) are coming off two exhibition victories over the Rhode Island club team this past weekend, 7-3 and 4-1. The prior weekend, Sacred Heart lost 8-0 and 7-2 to RIT. In those two games against the Tigers, Sacred Heart was out-shot 98-25 as RIT scored the first 11 goals of the series.

Casey Stathopoulos and Natasha Klinoff tallied both of Sacred Heart's goals against RIT, while goaltender Mandy Montgomery took the loss with 28 saves. The previous night, Alexius Schutt allowed seven goals in 50 minutes of play while making 45 saves.

Against Rhode Island, the Pioneers held a 4-2 lead midway through the third period before scoring back-to-back short-handed goals to put the game away. The next game saw SHU jump out to a 3-0 lead through two periods.

Last year, the Pioneers faced the Penn State club team with a series split. Sacred Heart took the first game, 4-3, while Penn State won the second game, 3-2, in overtime.

LAST TIME OUT

Penn State was overmatched in a pair of shutout losses to CHA rival Syracuse this past weekend. The games served as Penn State's inaugural home opener and first CHA matchups. Syracuse took the first game 4-0 despite **Nicole Paniccia's** career-high 53 saves. Syracuse led 2-0 going into the third but pulled away late.

While Penn State came out with more energy in the second game, the score was 2-0 in favor of the visiting side after two. Syracuse put the game away with four third-period goals. Freshman goalie **Celine Whitlinger** made 38 saves.

HISTORIC FIRST WIN

Penn State women's hockey made history on Saturday, Oct. 6 at Vermont's Gutterson Fieldhouse by winning its inaugural game, 5-3. The Nittany Lions scored five goals from three freshmen making their respective debuts as junior goaltender **Nicole Paniccia** made 31 saves in her PSU opener. **Shannon Yoxheimer** and **Micayla Catanzariti** each scored twice for the Nittany Lions.

Down 2-1, Penn State was not to be deterred, reeling off three straight goals to take a 4-2 lead midway through the third period. Despite a Vermont goal with 6:34 left in the third, **Birdie Shaw** scored an empty-net goal to seal the Nittany Lion victory. Junior captain **Taylor Gross** made her Penn State debut known with two assists and was named the first star of the game, Yoxheimer was second.

FIRST TIME FOR EVERYTHING

Penn State had a varsity team debut for the first time since 1994 (women's soccer) when the women's hockey team defeated Vermont, 5-3. The successful debut was the first since 1977 when the men's volleyball team defeated East Stroudsburg.

Game: Oct. 6, 2012 at Vermont, 2:00 p.m.
Win: Nicole Paniccia, Oct. 6 at Vermont, 5-3
Goal: Shannon Yoxheimer
Multi-Goal Game: Micayla Catanzariti
Game-Winning Goal: Shannon Yoxheimer
Assists: Taylor Gross, Emily Laurenzi
Multi-Assist Game: Jess Desorcie
Faceoff: Emily Laurenzi
Faceoff win: Emily Laurenzi
Shot: Katie Zinn
Save: Nicole Paniccia
Empty-Net Goal: Birdie Shaw

CATANZARITI HONORED

Freshman forward **Micayla Catanzariti** was named College Hockey America's Rookie of the Week on Oct. 8. Catanzariti led the Nittany Lions to a win in their inaugural opener on Saturday with two goals and an assist at Vermont. Catanzariti was also named Highmark's Penn State Women's Student-Athlete of the Week.

PUCK STOPPERS

Penn State has relied on steady goaltending all season in the form of **Nicole Paniccia** and **Celine Whitlinger**. The duo saw 77 shots and made 71 saves (.922), paced by Whitlinger's 40 stops at Vermont. Paniccia picked up the first win in school history on Oct. 6. This past weekend, Paniccia made a school-record and career-high 53

GAMEDAY COMPARISON

TEAM STATS	PSU	SHU*
Overall record	1-3-0	0-2-0
Conference record	0-2-0	n/a
Goals scored	6	2
Goals scored per game	1.5	1.0
Goals allowed	16	15
Goals allowed per game	4.0	7.0
First period goals	2	1
Second period goals	2	1
Third period goals	2	0
Shots	84	25
Shots per game	21.0	12.5
Shot pct.	.071	.008
Assists	10	3
Power plays	0-16	0-10
Power-play pct.	.000	.000
Penalty kills	5-15	5-7
Penalty-kill pct.	.333	.286
Penalties per game	3.8	3.5
Saves	162	83
Shutouts	0	0

LEADERS	PSU	SHU
Points	Three with 3	Five with 1
Goals	Three with 2	Two with 1
Assists	Desorcie (2)	Three with 1
Shots	Yoxheimer (23)	Two with 4
Shot Pct.	Catanzariti (.500)	Klinoff (.333)
+/-	Two at +2	Briffett (0)
Saves	Paniccia (84)	Schutt (45)
Save Pct.	Paniccia (.923)	Schutt (.865)
GAA	Paniccia (3.50)	Montgomery (7.00)
Record	Paniccia (1-1-0)	Two at 1-1-0

* NCAA games only

2012-13 COLLEGE HOCKEY AMERICA STANDINGS

(as of Oct. 18, 2012)

	Pts.	CHA	GF	GA	Overall	GF	GA	Last 10
Mercyhurst (7/8)	4	2-0-0	13	2	5-0-1	32	12	5-0-1
Syracuse	4	2-0-0	10	0	2-2-0	15	9	2-2-0
Robert Morris	0	0-0-0	-	-	0-0-0	-	-	-
Lindenwood	0	0-0-0	-	-	0-6-0	6	34	0-6-0
PENN STATE	0	0-2-0	0	10	1-3-0	6	16	1-3-0
RIT	0	0-2-0	2	13	2-2-0	17	15	2-2-0

UPCOMING SCHEDULE

Friday, Oct. 19

Quinnipiac at Syracuse, 4 p.m.
PENN STATE at Sacred Heart, 7 p.m.
 Princeton at RIT, 7 p.m.
 Clarkson at Mercyhurst, 7 p.m.
 Yale at Robert Morris, 7 p.m.

Sunday, Oct. 20

PENN STATE at Sacred Heart, 2 p.m.
 Quinnipiac at Syracuse, 2 p.m.
 Yale at RIT, 2:30 p.m.
 Clarkson at Mercyhurst, 3 p.m.
 Princeton at Robert Morris, 4 p.m.

NITTANY LION WOMEN'S HOCKEY



saves against Syracuse while Whitlinger made 38 stops in Sunday's loss.

SCORING STREAK

Penn State opened its varsity account in scoring fashion, scoring in the first four periods. The Nittany Lions tallied one goal in the opening frame, then two in each of the next two periods before scoring once in the opening period of game two. Vermont held the Nittany Lions scoreless over the final 50:12 of Sunday's game. This past weekend Penn State was held scoreless by Syracuse.

FIRST HEAD COACH

A 1991 graduate of Penn State, head coach **Josh Brandwene** is the first to lead the Nittany Lions. A four-year hockey player at PSU, Brandwene brings 20 years of coaching experience to Happy Valley. Brandwene picked up his first win in the team's debut on Saturday, Oct. 6 at Vermont.

CAPTAIN, OUR CAPTAIN

Junior forward **Taylor Gross** will lead Penn State as its first captain. The University of Connecticut transfer appeared in 48 games for the Huskies before joining Penn State's club side in January 2012. In September, the team voted fellow UConn transfer **Jenna Welch** and senior defender **Lindsay Reihl** as assistant captains. Gross tallied two assists in the win over Vermont on Saturday.

PENN STATE'S RECORD IS...

0-2-0at home
1-1-0 on the road
0-0-0 in overtime
0-1-0 when scoring first
1-2-0 when opponent scores first
0-0-0when leading after the 1st period
1-1-0 when trailing after the 1st period
0-2-0when tied after the 1st period
1-0-0 when leading after the 2nd period
0-2-0when trailing after the 2nd period
0-1-0 when tied after the 2nd period
0-0-0 when out-shooting opponent
1-3-0 when out-shot by opponent
0-0-0 when taking same # of shots
1-0-0 when winning more face-offs
0-3-0 when losing more face-offs
0-0-0 when tied in face-offs
0-1-0 when taking more penalties
1-2-0when taking fewer penalties
0-0-0when scoring a power play goal
1-3-0 when not scoring a power play goal
1-2-0 when allowing a power play goal
0-1-0 when not allowing a power play goal
0-2-0 when scoring 0 goals
0-1-0 when scoring 1 goal
0-0-0 when scoring 2 goals
0-0-0 when scoring 3 goals
1-0-0 when scoring 4+ goals
0-0-0 when allowing 0 goals
0-0-0 when allowing 1 goal
0-0-0 when allowing 2 goals
1-1-0 when allowing 3 goals
0-2-0 when allowing 4+ goals
1-3-0in October
0-0-0 in November
0-0-0 in December
0-0-0 in January
0-0-0 in February
0-0-0 in March
0-0-0 on Tuesday
0-0-0 on Thursday
0-0-0on Friday
1-1-0 on Saturday
0-2-0on Sunday
1-2-0during the day
0-1-0 at night
1-1-0 vs. Hockey East
0-2-0vs. College Hockey America
0-0-0 vs. ECAC Hockey
0-0-0 vs. D-I Independents

2012-13 WOMEN'S HOCKEY POLLS

(as of Oct. 16, 2012)

USA Today/USA Hockey Poll

1	Minnesota	6-0-0	1
2	Cornell	0-0-0	2
3	Boston University	3-0-0	T3
4	Boston College	0-1-0	5
5	Clarkson	4-0-0	7
6	Wisconsin	3-2-1	T3
7	Ohio State	5-1-0	10
8	Mercyhurst	5-0-1	9
9	Northeastern	4-0-0	8
10	North Dakota	2-2-0	6

Others: Minnesota Duluth, Harvard

USCHO.com Poll

1	Minnesota	6-0-0	1
2	Cornell	0-0-0	2
3	Boston University	3-0-0	3
4	Boston College	0-1-0	5
5	Clarkson	4-0-0	7
6	Ohio State	5-1-0	10
7	Mercyhurst	5-0-1	9
8	Northeastern	4-0-0	8
9	Wisconsin	3-2-1	4
10	North Dakota	2-2-0	6

Others: Minnesota Duluth, Harvard

Bold indicates 2012-13 opponent

2012-13 MEDIA INFORMATION

Penn State Athletic Communications

Primary Contact	Jeremy Fallis
Email	jeremy.fallis@psu.edu
Secondary Contact	Brian Hoerst
Email	bjh33@psu.edu
Office	814-865-1757

Interviews

Penn State student-athletes and coaches are available for interviews after practice each day. Please contact Jeremy Fallis in advance.

Credentials

Contact Jeremy Fallis for home game credentials at Greenberg Ice Pavilion.

Postgame

Head coach Josh Brandwene and requested student-athletes are available to the media following each game, outside the locker room. Please alert Jeremy Fallis or Brian Hoerst during the game of any requests.

Yearbook

The 2012-13 Penn State women's hockey yearbook will be made available to media members at the first home game on Oct. 13. The public may purchase copies for \$6.

GoPSUsports.com

[Facebook.com/PennStateWomensHockey](https://www.facebook.com/PennStateWomensHockey)

[@PennStateWHKY](https://twitter.com/PennStateWHKY)



NITTANY LION WOMEN'S HOCKEY

YOUTH MOVEMENT

As is expected with a brand new varsity program, there are many freshmen on the team—17 in all. Thus far, 13 freshman have made an appearance on the ice.

	GP	G	A	Pts.
Jeanette Bateman	4	0	0	0
Micayla Catanzariti	4	2	1	3
Hannah Hoenshell	-	-	-	-
Jill Holdcroft	4	0	0	0
Paige Jahnke	4	0	0	0
Darby Kern	-	-	-	-
Emily Laurenzi	4	0	1	1
Taylor McGee	4	0	1	1
Jordin Pardoski	4	0	0	0
Kendra Rasmussen	3	0	0	0
Birdie Shaw	4	2	1	3
Stephanie Walkom	-	-	-	-
Sarah Wilkie	2	0	0	0
Shannon Yoxheimer	4	2	0	2
Katie Zinn	4	0	0	0
	GP	GAA	SV	Pct.
Brooke Meyer	-	-	-	-
Celine Whitlinger	2	4.55	78	.897

CONTINUING PENN STATE HOCKEY

Eight members of the current varsity team played for the women's club team at some point. Seniors **Lindsay Reihl** and **Kate Christoffersen** and sophomores **Cara Mendelson**, **Katie Murphy**, **Madison Smiddy** and **Tess Weaver** played all of last season for head coach **Josh Brandwene** in Penn State's last year at the club level. Reihl and Christoffersen played three years for the PSU club team as well. **Taylor Gross** and **Jess Desorcie** joined the six players midway through the season in preparation of the 2012-13 season.

ON SCHEDULE

Pegula Ice Arena, a \$90 million state-of-the-art facility, will serve as the home of the Penn State hockey programs in 2012-13. As of Oct. 1, 2012, almost all the steel has been put in place for the project. Construction is set to conclude in time for the 2012-13 season.

For more information on Pegula Ice Arena, visit page 5 of the game notes.

NEXT TIME OUT

The Nittany Lions return home for a two-game series beginning Thursday (7 p.m.) against RIT. The series will conclude on Friday (7:30 p.m.) ahead of the Penn State football weekend against Ohio State. Both games will be shown live on AmericaOneSports.com and have live stats through GameTracker on GoPSUsports.com.

OVER THE AIR

This Week

Sacred Heart will not be providing live stats a live stream of the game. **@PennStateWHKY** will have score updates throughout the series.

The CHA on AmericaOneSports.com

All Penn State games during CHA play will be streamed live on AmericaOneSports.com. Subscribers can purchase 30-day packages for \$30 or a season pass for \$125.

Non-Conference Home Action

Penn State's non-conference home games will be shown on a game-to-game basis.

NITTANY LION WOMEN'S HOCKEY



PEGULA ICE ARENA FUTURE HOME OF PENN STATE HOCKEY

FACTS

Construction Groundbreaking: February 2012
Ceremonial Groundbreaking: April 20, 2012
Projected Opening: September 2013
Capacity: 6,000 (Arena rink); 300 (Community rink)
Size: 200,000 square feet

AMENITIES

Two NHL-sized (200' x 85') ice surfaces

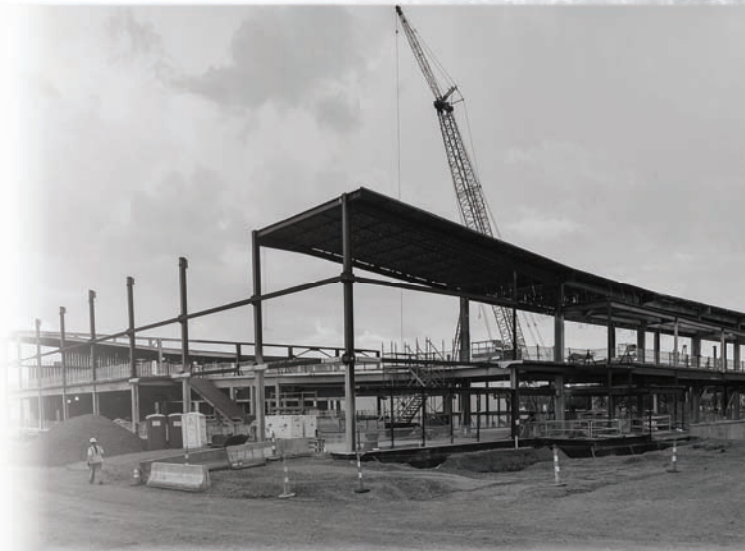
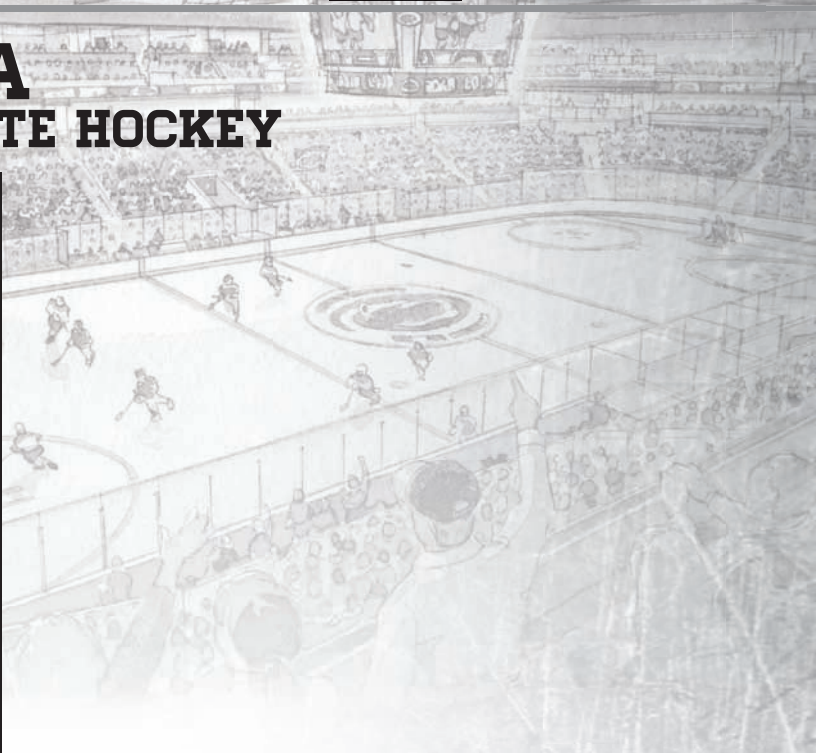
Arena rink will offer:

- 6,000-seat overall capacity
- 1,000-seat student section
- First-rate varsity locker rooms
- Team lounges and dry changing room
- Strength and conditioning center
- Shooting gallery
- Suites, loge boxes and club seats
- State-of-the-art television and radio broadcasting facilities
- Press box and media center
- Concession stands with café
- Videoboard

Community rink will offer:

- 300-seat capacity
- Eight locker rooms
- Skate rental center

Pegula Ice Arena will have the ability to host National Hockey League and American Hockey League games, as well as professional ice shows, local hockey and figure skating programs.



Left to Right: Kim and Terry Pegula, Dr. Rodney Erickson, The Nittany Lion, Joe Battista and Karen Peetz at the Pegula Ice Arena ceremonial groundbreaking.



NITTANY LION WOMEN'S HOCKEY



2012-13 Penn State Women's Hockey Penn State Combined Team Statistics (as of Oct 18, 2012) All games

Date	Opponent	Score	Att.	Record:	Overall	Home	Away	Neutral
Oct 06	at Vermont	w 5-3	785	ALL GAMES	1-3-0	0-2-0	1-1-0	0-0-0
Oct 07	at Vermont	L 1-3	326	CONFERENCE	0-2-0	0-2-0	0-0-0	0-0-0
* Oct 13	SYRACUSE	L 0-4	408	NON-CONFERENCE	1-1-0	0-0-0	1-1-0	0-0-0
* Oct 14	SYRACUSE	L 0-6	285					

TEAM STATISTICS			PSU	OPP	#	Player	gp	g	a	pts	sh	sh%	pen-min	pp	sh
SHOT STATISTICS					10	Catanzariti, Micayla	4	2	1	3	4	.500	4-8	0	0
Goals-Shot attempts	6-84	16-178			23	Shaw, Birdie	4	2	1	3	10	.200	2-4	0	0
Shot pct.	.071	.090			15	Desorcie, Jess	4	0	3	3	4	.000	1-2	0	0
Goals/Game	1.5	4.0			40	Yoxheimer, Shannon	4	2	0	2	23	.087	1-2	0	0
Shots/Game	21.0	44.5			24	Gross, Taylor	4	0	2	2	8	.000	0-0	0	0
POWER PLAYS					20	Laurenzi, Emily	4	0	1	1	4	.000	1-2	0	0
Goals-Power Plays	0-16	5-15			8	McGee, Taylor	4	0	1	1	4	.000	2-4	0	0
Conversion Percent	.000	.333			33	Smiddy, Madison	2	0	1	1	1	.000	1-2	0	0
GOAL BREAKDOWN					2	Bateman, Jeanette	4	0	0	0	0	.000	0-0	0	0
Power Play	0	5			19	Holdcroft, Jill	4	0	0	0	7	.000	0-0	0	0
Short-handed	0	0			17	Jahnke, Paige	4	0	0	0	3	.000	1-2	0	0
Empty net	1	0			25	Murphy, Katie	2	0	0	0	0	.000	0-0	0	0
Penalty	0	0			4	Pardoski, Jordan	4	0	0	0	3	.000	0-0	0	0
Unassisted	0	2			13	Rasmussen, Kendra	3	0	0	0	3	.000	0-0	0	0
Overtime	0	0			6	Reihl, Lindsay	4	0	0	0	1	.000	0-0	0	0
PENALTIES					2	Weaver, Tess	2	0	0	0	2	.000	1-2	0	0
Number	15	16			36	Welch, Jenna	4	0	0	0	5	.000	0-0	0	0
Minutes	30	32			21	Wilkie, Sarah	2	0	0	0	1	.000	0-0	0	0
Penalties/Game	3.8	4.0			11	Zinn, Katie	4	0	0	0	1	.000	0-0	0	0
Pen minutes/Game	7.5	8.0			TM	TEAM	1	0	0	0	0	.000	1-2	0	0
FACEOFFS (W-L)	101-147	147-101			Total		4	6	10	16	84	.071	15-30	0	0
Faceoff W-L Pct.	.407	.593			Opponents		4	16	26	42	178	.090	16-32	5	0

#	Goalie	gp	min	ga	gaavg	saves	save%	w-l-t
37	Paniccia, Nicole	2	120:00	7	3.50	84	.923	1-1-0
30	Whitlinger, Celine	2	117:57	9	4.58	78	.897	0-2-0
TM	EMPTY NET	1	1:20	0	-	0	.000	0-0-0
Total		4	239:17	16	4.01	162	.910	1-3-0
Opponents		4	239:17	6	1.50	78	.929	3-1-0

Attendance Summary		PSU	Opponent
Total		693	1111
Dates/Avg Per Date		2/346	2/556
Neutral Site #/Avg		0/0	

Goals by Period	1st	2nd	3rd	Total
Penn State	2	2	2	6
Opponents	4	3	9	16

Saves by Period	1st	2nd	3rd	Total
Penn State	66	50	46	162
Opponents	19	35	24	78

NITTANY LION WOMEN'S HOCKEY



2012-13 PENN STATE WOMEN'S HOCKEY NUMERICAL ROSTER

No.	Name	Yr.	Pos.	Ht.	S/C	Hometown	Last Team
2	Jeanette Bateman	Fr.	F/D	5-6	R	Greeley, Colo.	Colorado Select
3	Cara Mendelson	So.	F/D	5-6	R	Pittsburgh, Pa.	Steel City Selects
4	Jordin Pardoski	Fr.	D	5-5	R	Rochester Hills, Mich.	Detroit Honeybaked
5	Stephanie Walkom	Fr.	D	5-7	R	Moon Township, Pa.	Pittsburgh Penguins Elite
6	Lindsay Reihl	Sr.	D	5-4	R	Cheshire, Conn.	Connecticut Polar Bears
8	Taylor McGee	Fr.	D	5-3	R	Pearl River, N.Y.	Taft School (Conn.)
10	Micayla Catanzariti	Fr.	F	5-4	R	Rancho Santa Margarita, Calif.	Gilmour Academy (Ohio)
11	Katie Zinn	Fr.	F	5-7	R	Coquitlam, B.C.	Gilmour Academy (Ohio)
12	Kate Christoffersen	Sr.	F	5-3	R	Trumbull, Conn.	Connecticut Polar Bears
13	Kendra Rasmussen	Fr.	F	5-5	L	Sartell, Minn.	Sartell/Sauk Rapids HS
14	Darby Kern	Fr.	F	5-11	R	Venetia, Pa.	Pittsburgh Penguins Elite
15	Jess Desorcie	So.	F	5-4	L	Westford, Vt.	Connecticut College
16	Hannah Hoenshell	Fr.	F	5-3	R	Plano, Texas	Texas Alliance
17	Paige Jahnke	Fr.	D	5-6	R	Oakdale, Minn.	Roseville HS/Minnesota Jr. Whitecaps
19	Jill Holdcroft	Fr.	F	5-1	R	Pennsylvania Furnace, Pa.	Pittsburgh Penguins Elite
20	Emily Laurenzi	Fr.	F	5-2	R	Townsend, Del.	National Sports Academy (N.Y.)
21	Sarah Wilkie	Fr.	D	5-6	R	Ashby, Mass.	Williston Northampton School
22	Jenna Welch	Jr.	F	5-8	R	Austin, Texas	Connecticut
23	Birdie Shaw	Fr.	F	5-2	L	Troy, Mich.	Detroit Honeybaked
24	Taylor Gross	Jr.	F	5-1	R	Colorado Springs, Colo.	Connecticut
25	Katie Murphy	So.	F	5-4	L	Novi, Mich.	Detroit Honeybaked
30	Celine Whitlinger	Fr.	G	5-8	L	Garden Grove, Calif.	Gilmour Academy (Ohio)
31	Brooke Meyer	Fr.	G	5-7	L	Naperville, Ill.	Chicago Huskies
33	Madison Smiddy	So.	D	5-7	L	Grand Rapids, Mich.	Detroit Honeybaked
36	Tess Weaver	So.	F	5-5	R	Windber, Pa.	Pittsburgh Penguins Elite
37	Nicole Paniccia	Jr.	G	5-5	L	Oakville, Ont.	Connecticut
40	Shannon Yoxheimer	Fr.	F	5-7	L	Jackson, Mich.	North American Hockey Academy (Vt.)

Head Coach: Josh Brandwene (First Year)

Assistant Coaches: Gina Kearns (First Year), Casey McCullion (First Year); **Director of Operations/Video Coach:** Mo Stroemel (First Year)

Captain: Taylor Gross; **Assistant Captains:** Lindsay Reihl, Jenna Welch

ALPHABETICAL ROSTER		PRONUNCIATION GUIDE		LIONS BY STATE		LIONS BY POSITION	
No.	Name	Brandwene	BRAND-ween	California (2):	Catanzariti, Whitlinger	Forward (17):	Bateman*, Catanzariti
2	Jeanette Bateman	Catanzariti	Cah-TAN-zah-REE-tee	Colorado (2):	Bateman, Gross		Christoffersen, Desorcie, Gross,
10	Micayla Catanzariti	Jahnke	YAWN-kee	Connecticut (2):	Christoffersen, Reihl		Hoenshell, Holdcroft, Kern, Laurenzi,
12	Kate Christoffersen	Jeanette	Jeh-NETT				Mendelson, Murphy, Rasmussen,
15	Jess Desorcie	Kearns	KERNS	Delaware (1):	Laurenzi		Shaw, Weaver, Welch, Yoxheimer,
24	Taylor Gross	McCullion	Mick-CULL-yon	Illinois (1):	Meyer		Zinn
16	Hannah Hoenshell	Paniccia	Pah-NEE-cha	Massachusetts (1):	Wilkie		
19	Jill Holdcroft	Reihl	RILE	Michigan (5):	Murphy, Pardoski, Shaw, Smiddy, Yoxheimer	Defense (9):	Bateman, Jahnke, McGee, Mendelson*, Pardoski, Reihl, Smiddy, Walkom, Wilkie
17	Paige Jahnke	Stroemel	STRAW-mull	Minnesota (2):	Jahnke, Rasmussen		
14	Darby Kern			New York (1):	McGee	Goalie (3):	Meyer, Paniccia, Whitlinger
20	Emily Laurenzi			Pennsylvania (5):	Holdcroft, Kern, Mendelson, Walkom, Weaver		
8	Taylor McGee			Texas (2):	Hoenshell, Welch		
3	Cara Mendelson			Vermont (1):	Desorcie		
31	Brooke Meyer						
25	Katie Murphy						
37	Nicole Paniccia						
4	Jordin Pardoski						
13	Kendra Rasmussen						
6	Lindsay Reihl						
23	Birdie Shaw						
33	Madison Smiddy						
5	Stephanie Walkom						
36	Tess Weaver						
22	Jenna Welch						
30	Celine Whitlinger						
21	Sara Wilkie						
40	Shannon Yoxheimer						
11	Katie Zinn						





NITTANY LION WOMEN'S HOCKEY



2
JEANNETTE BATEMAN
Freshman • F/D
Greeley, Colo.



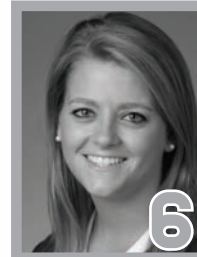
3
CARA MENDELSON
Sophomore • F/D
Pittsburgh, Pa.



4
JORDIN PARDOSKI
Freshman • D
Rochester Hills, Mich.



5
STEPHANIE WALKOM
Freshman • D
Moon Township, Pa.



6 **A**
LINDSAY REIHL
Senior • D
Cheshire, Conn.



8
TAYLOR MCGEE
Freshman • D
Pearl River, N.Y.



10
MICAYLA CATANZARITI
Freshman • F
Rancho Santa Margarita, Calif.



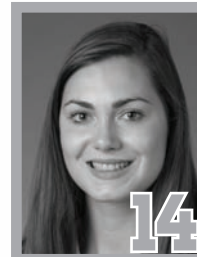
11
KATIE ZINN
Freshman • F
Coquitlam, B.C.



12
KATE CHRISTOFFERSEN
Senior • F
Trumbull, Conn.



13
KENDRA RASMUSSEN
Freshman • F
Sartell, Minn.



14
DARBY KERN
Freshman • F
Venetia, Pa.



15
JESS DESORCIE
Sophomore • F
Westford, Vt.



16
HANNAH HOENSHELL
Freshman • F
Plano, Texas



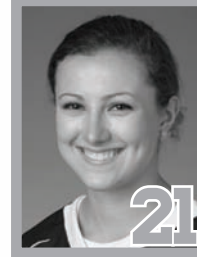
17
PAIGE JAHNKE
Freshman • D
Oakdale, Minn.



19
JILL HOLDCROFT
Freshman • F
Pennsylvania Furnace, Pa.



20
EMILY LAURENZI
Freshman • F
Townsend, Del.



21
SARAH WILKIE
Freshman • D
Ashby, Mass.



22 **A**
JENNA WELCH
Junior • F
Austin, Texas



23
BIRDIE SHAW
Freshman • F
Troy, Mich.



24 **C**
TAYLOR GROSS
Junior • F
Colorado Springs, Colo.



25
KATIE MURPHY
Sophomore • F
Novi, Mich.



30
CELINE WHITLINGER
Freshman • G
Garden Grove, Calif.



31
BROOKE MEYER
Freshman • G
Naperville, Ill.



33
MADISON SMIDDY
Sophomore • D
Grand Rapids, Mich.



36
TESS WEAVER
Sophomore • F
Windber, Pa.



37
NICOLE PANICCIA
Junior • G
Oakville, Ont.



40
SHANNON YOXHEIMER
Freshman • F
Jackson, Mich.