

PENN STATE LADY LION

BASKETBALL GAME NOTES

2014-2015

Penn State Athletic Communications: 101D Bryce Jordan Center, University Park, PA 16802 Office: 814-865-1757 Fax: 814-863-3165

Women's Basketball Contact: Kristina Petersen Twitter: @ladyionsid Website: www.GoPSUsports.com Email: kap18@psu.edu Cell: 814-883-4581 Office: 814-865-1757

SCHEDULE/RESULTS

NOVEMBER	
Sun. 2	INDIANA (PA.) (ex.) W, 75-71 <i>Preseason WNIT</i>
Fri. 14	TOWSON..... W, 71-64
Sun. 16	ALBANY..... L, 53-54
Sat. 22	SETON HALL..... L, 70-75
Tues. 25	ST. BONAVENTURE (BTN Plus)..... L, 54-56 <i>Georgia State Thanksgiving Tournament</i>
Fri. 28	vs. Liberty L, 68-80
Sun. 30	vs. Samford..... L, 56-59 (OT)

DECEMBER	
<i>Big Ten/ACC Challenge</i>	
Thurs. 4	at #21/22 Syracuse 7 p.m.
Sun. 7	WAGNER (BTN Plus) 2 p.m.
Wed. 10	at Hartford 7 p.m.
Sun. 14	RIDER..... 2:30 p.m.
Sun. 21	USF (BTN Plus) 2 p.m.
Sun. 28	at Iowa * (BTN Plus) 3 p.m.

JANUARY	
Thurs. 1	at Michigan * (BTN Plus) 1 p.m.
Sun. 4	ILLINOIS * (BTN Plus) 2 p.m.
Tues. 6	at Wisconsin * (BTN) 9 p.m.
Sat. 10	RUTGERS * (BTN) noon
Thurs. 15	at Nebraska * (BTN) 7 p.m.
Sun. 18	at Ohio State * (BTN Plus) 2 p.m.
Thurs. 22	INDIANA * (BTN Plus) 7 p.m.
Sun. 25	NORTHWESTERN * (BTN Plus) 2 p.m.
Wed. 28	at Minnesota * (BTN Plus) 8 p.m.



FEBRUARY	
Sun. 1	at Rutgers * (BTN) noon
Thurs. 5	MARYLAND * (BTN Plus) 7 p.m.
Sun. 8	at Purdue * (BTN Plus) 2 p.m.
Wed. 11	MICHIGAN ST. * (BTN Plus) 7 p.m.
Sun. 15	MINNESOTA * (BTN Plus) 2 p.m.
Mon. 23	at Maryland * (BTN) 7 p.m.
Thurs. 26	OHIO STATE * (BTN Plus) 7 p.m.

MARCH	
<i>Ninth Annual Pink Zone at Penn State</i>	
Sun. 1	WISCONSIN * (BTN/BTN Plus) 1/3/5 p.m.
Wed.-Sun. 4-8	Big Ten Tourn. (BTN/ESPN2) Hoffman Estates, Ill.
Sat.-Tues. 20-23	NCAA Tourn. 1st & 2nd Round
Sat.-Tues. 27-30	NCAA Tourn. Regionals

APRIL	
Sun./Tues. 5/7	NCAA Final Four (Tampa, Fla.)
BOLD CAPS indicates home game	
* - indicates Big Ten game	
All times are Eastern Time.	
BTN - Big Ten Network BTN Plus - BTN.com	
Schedule subject to change. Please visit www.GoPSUsports.com for up-to-date tip times.	

Game #7: Penn State at #21/22 Syracuse

Thurs., Dec. 4 ▶ 7 p.m. ▶ Carrier Dome ▶ Syracuse, N.Y.

		SETTING THE SCENE
Penn State Lady Lions	Syracuse Orange	The Syracuse Game
Record: 1-5, 0-0 Big Ten	Record: 5-1, 0-0 ACC	Series: Penn State leads 16-2
Last Game: Samford 59, PSU 56 (OT) (11/30)	Last Game: SU 94, Vermont 63 (12/1)	Last Meeting: SU 72, PSU 53 (12/6/07)
Head Coach: Coquese Washington	Head Coach: Quentin Hillsman	Streak: Syracuse - 1 win
Career Record: 143-86 (8th yr.)	Career Record: 172-99 (9th yr.)	Television: none
Record at PSU: 143-86 (8th yr.)	Record at SU: 172-99 (9th yr.)	Radio: The game is on the Penn State Sports Network and 1390 The Fanatic locally with Jerry Fisher calling the action. The audio feed is available at www.GoPSUsports.com.
Statistical Leaders	Statistical Leaders	Webstream: none
Points Lindsey Spann (13.8)	Points Alexis Peterson (14.2)	Live Stats: GoPSUsports.com
Rebounds Tori Waldner (8.8)	Rebounds Bria Day (11.2)	
Assists Spann & Moore (3.7)	Assists Alexis Peterson (5.5)	

SERIES QUICK HITS

- ✓ The Orange are 5-1 on the season with the lone loss coming to top-ranked South Carolina.
- ✓ Alexis Peterson leads the team in scoring (14.2) and assists (5.5).
- ✓ Brianna Butler accounts for 11.8 points and 2.5 rebounds per outing, while Bria Day averages a double-double with 11.2 points and a team-best 11.2 rebounds per game.
- ✓ The Lady Lions are 16-2 all-time against the Orange, including a 7-2 record in Syracuse.
- ✓ This is just Penn State's second trip to Syracuse in the last 20 years.
- ✓ SU snapped a six-game PSU winning streak with a 72-53 win at the Carrier Dome in 2007.
- ✓ Penn State is 72-45 all-time against current ACC schools.

STORYLINES

- ✓ The Lady Lions are 2-5 all-time in ACC/Big Ten Challenge games and are looking for their first road win in the challenge (0-3).
- ✓ **Sierra Moore** was selected to the Georgia State Thanksgiving Tournament All-Tournament team.
- ✓ Freshman guard **Lindsey Spann** has reached double figures in the first six games of her collegiate career.
- ✓ Spann's streak of six consecutive double-digit scoring performances to start a career is a feat that was not accomplished Maggie Lucas or Kelly Mazzante.
- ✓ Senior **Tori Waldner** became the ninth player in program history to reach the 100-block mark against Liberty.

UP NEXT

Penn State returns home to face Wagner on Sunday, Dec. 7 at 2 p.m. for the Lady Lions' annual Toys for Tots game. Fans that bring a new, unwrapped toy to the game will receive a \$5 ticket. The Lady Lions then hit the road and visit Hartford Wednesday at 7 p.m.

Table of Contents	PSU's Record When.....5	Season Highs/Lows.....9
Schedule, Results, Storylines.....1	Notable Games.....5	Miscellaneous Stats.....10
Roster, Quick Facts.....2	Lions in the Big Ten Stats.....6	Coquese Washington.....11
Team Comparison, Series History.....2	The Last Time Penn State.....7	Player Bios.....12-23
What's at Stake.....3	Record Book.....8	2014-15 Box Scores.....24
Big Ten Standings/Schedule.....3	2015 Signing Class.....8	2014-15 Stats.....25
Possible Starters.....3	Milestone Watch.....8	Radio/TV Chart.....26



2014-15 ROSTER

PENN STATE LADY LIONS

No.	Name	Pos.	Cl./Elg.	Ht.	Hometown/High School (Previous School)
1	Candice Agee **	C	Jr./Jr.	6-6	Victorville, Calif./Silverado
3	Brianna Banks	G	Sr./Sr. [^]	5-9	Newnan, Ga./Fayette County (Connecticut)
5	Sierra Moore	G	Jr./So.	5-11	Hanover, Pa./Delone Catholic (Duke)
10	Keke Sevillian *	G	So./So.	5-7	Goodrich, Mich./Goodrich
11	Alex Harris *	F	So./So.	6-3	Lorain, Ohio/Lorain
12	Lindsey Spann	G	So./Fr.	5-6	Laurel, Md./Good Counsel
14	Dominique Brooks	C	Jr./Jr.	6-4	Lansing, Ill./T.F. South (Trinity Valley C.C.)
15	Kalayah Mitchell *	F	So./So.	6-2	Stone Mountain, Ga./Stephenson
25	Peyton Whitted *	F	So./So.	6-3	Suwanee, Ga./North Gwinnett
34	Molly Dincher	G/F	Sr./Sr.	6-0	Williamsport, Pa./Williamsport Area (PSU Wilkes Barre)
41	Jenny DeGraaf *	F	So./So.	6-1	Springboro, Ohio/Springboro
44	Tori Waldner ***	F/C	Sr./Sr.	6-5	Milton, Ga./Milton

Head Coach: Coquese Washington (Notre Dame '92)

Asst. Coaches: Itoro Coleman, Kia Damon, Jocelyn Wyatt

Captains: Tori Waldner, Sierra Moore, Lindsey Spann

* Indicates letters earned

SYRACUSE ORANGE

No.	Name	Pos.	Cl.	Ht.	Hometown/High School (Previous School)
0	Diamond Henderson	G	Sr.	5-6	Kennesaw, Ga./St. Francis
1	Alexis Peterson	G	So.	5-7	Columbus, Ohio/Northland
4	Maggie Morrison	G	Sr.	5-8	Millersville, Md./Archbishop Spalding
10	Isabella Slim	F	So.	6-0	Amsterdam, Netherlands/CTO Amsterdam
11	Cornelia Fondren	G	Jr.	5-8	Memphis, Tenn./Overton
13	Brianna Butler	G	Jr.	5-11	King of Prussia, Pa./Nazareth Regional (N.Y.)
20	Brittney Sykes	G	Jr.	5-9	Newark, N.J./University
21	Danielle Minott	G	Fr.	5-8	Miami, Fla./Miami Country Day
22	Taylor Ford	F	Jr.	6-0	Bronx, N.Y./Nazareth Regional
25	Michelle Van Dyke	C	So.	6-6	Franklin Lakes, N.J./Eastern Christian
32	Tiara Butler	G	RS-Sr.	5-10	Waldorf, Md./North Point
44	Amber Witherspoon	C	Fr.	6-4	Chicago, Ill./Lincoln Park
50	Briana Day	C	So.	6-4	Raleigh, N.C./Millbrook
55	Bria Day	F	So.	6-4	Raleigh, N.C./Millbrook

Head Coach: Quentin Hillsman

Associate Head Coach: Vonn Read

Assistant Coaches: Kelley Gibson, Sasha Palmer

TEAM COMPARISON

PENN STATE		SYRACUSE	
Spann (13.8)	Scoring Leader	Peterson (14.2)	
Waldner (8.8)	Rebounding Leader	Briana Day (11.2)	
Spann/Moore (3.7)	Assist Leader	Peterson (5.5)	
Mitchell (3.0)	Steals Leader	Peterson (2.3)	
Agee/Waldner (1.8)	Blocks Leader	Bria Day (1.4)	
62.0	Scoring Offense	75.3	
64.7	Scoring Defense	62.5	
-2.7	Scoring Margin	+12.8	
39.8	Rebounds Per Game	42.2	
-1.5	Rebound Margin	+2.7	
12.8	Assists Per Game	14.5	
9.7	Steals Per Game	10.7	
.390	Field Goal Pct.	.413	
.358	FG Defense Pct.	.369	
.243	3-pt. FG Pct.	.321	
.328	3-pt. FG Pct. Def.	.371	
.636	Free Throw Pct.	.683	
0.7	Assist/Turnover	0.8	
Lost 5	W/L Streak	Won 1	

SERIES HISTORY

Overall:	PSU leads 16-2	
Last meeting:	12/6/07	
Last result:	SU, 72-53	
Current streak:	SU - 1 win	
Last 10:	PSU, 8-2	
Last 10 meetings:		
12/9/86	A	PSU, 61-58
12/8/87	H	PSU, 87-70
12/6/88	A	SU/OT, 76-82
11/29/89	H	PSU, 83-68
11/27/90	A	PSU, 98-64
12/2/91	H	PSU, 98-66
12/9/92	A	PSU, 67-43
11/30/93	H	PSU, 90-53
11/12/06	H	PSU, 71-46
12/6/07	A	SU, 53-72

QUICK FACTS

THE UNIVERSITY

Location: University Park, Pa.
 Founded: 1855
 Enrollment: 48,184 (as of fall 2013)
 Colors: Blue & White
 Nickname: Lady Lions
 Conference: Big Ten
 President: Eric Barron
 Director of Athletics: Sandy Barbour
 Senior Woman Administrator: Charmelle Green
 Asst. Athletic Director: Jenn James
 Facility (cap.): Bryce Jordan Center (15,104)
 All-Time Record at BJC: 216-56 (19 seasons)

ATHLETIC COMMUNICATIONS

WBB Contact: Kristina Petersen
 Phone/Fax: (814) 865-1757/(814) 863-3165
 E-mail: kap18@psu.edu
 Address: 101-D Bryce Jordan Center
 University Park, Pa. 16802
 Press Row Phone: 814-863-3294
 Website: www.GoPSUsports.com
 Twitter: @ladylionsid

TEAM INFORMATION

2014-15 Record: 1-5
 Home: 1-3 Away: 0-0 Neutral: 0-2
 Big Ten Record: 0-0
 Home: 0-0 Away: 0-0
 Letterwinners Returning/Lost: 6/5
 Starters Returning/Lost: 1/4
 Big Ten Tournament: Quarterfinals
 Postseason: NCAA Sweet Sixteen

THE HISTORY

First Year of Women's Basketball: 1965
 All-Time Record: 882-399 (50 seasons)
 All-Time Big Ten Rec.: 244-122 (22 seasons)
 NCAA Tournament Appearances: 25
 NCAA Tournament Record: 32-25

WOMEN'S BASKETBALL

Head Coach: Coquese Washington
 Alma Mater: Notre Dame '92
 Overall Record: 143-86 (eighth season)
 School Record: 143-86 (eighth season)
 Twitter: @coquesewashing
 Basketball Office Phone: 814-863-2672
 Basketball Office Fax: 814-863-1221
 Best Time To Reach Coach: Through SID
 Assistant Coaches (Alma Mater):
 Itoro Coleman (Clemson '00)
 Kia Damon (Millersville '97)
 Jocelyn Wyatt (Appalachian State '06)
 Twitter/Instagram: @pennstatewbb
 Facebook: facebook.com/pennstateladylions

PRONUNCIATIONS

Coquese	ko-KWEES
Itoro	E-tora
Agee	AYE-gee
DeGraaf	D-graph
Kalayah	kah-LEE-uh
Sevillian	sev-ILL-e-on
Whitted	wit-ED





STANDINGS (as of 11/30)

Team	Big Ten			Overall		
	W	L	Pct.	W	L	Pct.
Nebraska	0	0	.000	6	0	1.000
Rutgers	0	0	.000	6	0	1.000
Northwestern	0	0	.000	5	0	1.000
Iowa	0	0	.000	6	1	.857
Maryland	0	0	.000	6	1	.857
Minnesota	0	0	.000	6	1	.857
Indiana	0	0	.000	5	1	.833
Michigan	0	0	.000	5	1	.833
Michigan State	0	0	.000	4	1	.800
Illinois	0	0	.000	5	2	.714
Purdue	0	0	.000	3	2	.600
Ohio State	0	0	.000	4	3	.571
Wisconsin	0	0	.000	1	4	.200
Penn State	0	0	.000	1	5	.167

BIG TEN SCHEDULE

DECEMBER 3

Indiana at Boston College	7 p.m.
Maryland at Notre Dame	7 p.m.
Wake Forest at Michigan	7 p.m.
Pittsburgh at Ohio State	7 p.m.
Florida State at Purdue	7 p.m.
Duke at Nebraska	7:30 p.m.
Virginia at Illinois	8 p.m.
Minnesota at North Carolina State	8 p.m.

DECEMBER 4

Iowa at Louisville	7 p.m.
Georgia Tech at Michigan State	7 p.m.
Northwestern at Virginia Tech	7 p.m.
Penn State at Syracuse	7 p.m.
North Carolina at Rutgers	7 p.m.
Wisconsin at Miami (Fla.)	8 p.m.

DECEMBER 6

Marquette at Wisconsin	2 p.m.
Illinois at Southern Illinois	3:05 p.m.

DECEMBER 7

IUPUI at Indiana	2 p.m.
Towson at Maryland	2 p.m.
Winthrop at Ohio State	2 p.m.
Wagner at Penn State	2 p.m.
Purdue at Dayton	2 p.m.
Colorado at Iowa	3 p.m.
Nebraska at Alabama	3 p.m.
Rutgers at Arkansas	3 p.m.
Loyola (Ill.) at Northwestern	3 p.m.
Michigan State at Georgia	4 p.m.
Butler at Minnesota	8 p.m.

All times are Eastern.

POSSIBLE STARTERS



1 CANDICE AGEE C
 Jr., 6-6, Victorville, Calif.
 7.7 ppg, 4.7 rpg, 1.8 bpg, 1.0 spg

Notes: Registered 6 points, 5 rebounds and 4 blocks vs. Liberty ... Notched 8 pts., 2 blocks vs. St. Bonaventure ... Had a career-high 21 points on a 9-of-15 shooting effort against Seton Hall.



5 SIERRA MOORE G
 RS-So., 5-11, Hanover, Pa.
 13.3 ppg, 4.8 rpg, 3.7 apg, .453 FG%

Notes: Tallied a career-high 17 pts. vs. Samford ... Chipped in 14 pts. and four assts. vs. Liberty ... Had 15 pts. vs. St. Bonaventure ... Notched first career double-double with 14 pts. & 10 rebs. vs. Seton Hall.



12 LINDSEY SPANN G
 RS-Fr., 5-6, Laurel, Md.
 13.8 ppg, 2.0 rpg, 3.7 apg, 1.7 spg

Notes: Has reached double figures in all six games ... Accounted for 10 pts., 5 assists & 3 steals vs. Samford ... Had 14 pts., 4 assists & 5 steals vs. Liberty ... Had 13 points & 5 assists vs. St. Bonaventure.



15 KALIYAH MITCHELL G
 So., 6-2, Stone Mountain, Ga.
 7.8 ppg, 7.0 rpg, 3.0 spg

Notes: Leads the team in steals (3.0) and second in rebounding (7.0) ... Had 10 points and career-best five steals vs. Liberty ... Pulled in 10 rebounds and eight rebounds versus Seton Hall.



25 PEYTON WHITTED F
 So., 6-3, Suwanee, Ga.
 4.2 ppg, 5.2 rpg

Notes: Notched seven points and five rebounds vs. Liberty ... Had four points against St. Bonaventure ... Made first career start vs. Towson ... Led the team in field goal percentage as a freshman (.463).

LAST TIME OUT

- The Lady Lions led by as many as 16, but a 10-0 run to end regulation by Samford forced overtime where the Bulldogs claimed a 59-56 win.
- Sophomore **Sierra Moore** had a career-high 17 points with three assists and two steals to lead the Lady Lions.
- Freshman **Lindsey Spann** posted her sixth consecutive double-digit game with 10 points to go along with five assists and three steals.
- Sophomore **Jenny DeGraaf** was a spark off of the bench with her first career double-double with 11 points and a career-high 10 rebounds. DeGraaf was 5-for-9 from the field and sparked a 13-0 Penn State run in the second half with seven tallies in that stretch.

SCOUTING SYRACUSE

- The Orange, who are ranked 21st in the AP poll and 22nd in the USA Today Sports Coaches' poll, are 5-1 on the season with the lone loss coming in a hard-fought game with top-ranked South Carolina.
- Alexis Peterson leads the team in scoring (14.2) and assists (5.5). She is coming off of a performance with 13 points, six assists and five steals against Vermont Monday night.
- Brianna Butler accounts for 11.8 points and 2.5 rebounds per outing, while Bria Day averages a double-double with 11.2 points and a team-best 11.2 rebounds per game.
- Day has three double-doubles on the season, including a 13-point, 17-rebound effort against the top-ranked Gamecocks.

ALL-TIME VERSUS THE ORANGE

- The Lady Lions are 16-2 all-time against the Orange, including a 7-2 record in Syracuse.
- This is just Penn State's second trip to Syracuse in the last 20 years.
- SU snapped a six-game Penn State winning streak with a 72-53 win at the Carrier Dome in 2007.
- Penn State is 72-45 all-time against current ACC schools.

WHAT'S AT STAKE

A Penn State Win Versus Syracuse Would:

- Make Penn State 17-2 all-time against Syracuse.
- Snap the Lady Lions' five-game losing streak.
- Make the Lady Lions record at 2-5 on the season.

LAST TIME VS. SYRACUSE

DEC. 6, 2007 • SYRACUSE, N.Y.

rviv Penn State 53 • 6-3																	
#	Player	FG	FGA	FG%	FT	FTA	FT%	Off	Def	Total	PF	TP					
05	Williams, Mashae	f	7-15	1-2	3-4	2	3	5	3	18	3	3	0	33			
25	Gissendanner, Kamela	f	3-9	0-3	2-3	1	9	10	2	8	2	3	0	34			
24	Mark, Rashida	c	0-4	0-0	3-4	3	3	6	0	3	1	3	1	21			
01	Grant, Tyre	g	3-9	0-4	1-1	2	2	4	0	7	2	6	2	28			
01	O'Rourke, Brianne	g	2-11	1-6	2-2	0	1	1	3	7	0	2	0	38			
23	Quinn, Meggan	g	0-3	0-2	0-0	1	1	2	0	0	1	0	0	14			
32	Morrow, Meredith	g	2-4	0-0	2	2	0	2	1	4	0	0	0	8			
34	Lewis, Evelyn	g	2-2	0-0	2	2	0	2	3	4	0	0	0	9			
42	Wolf, Janessa	g	1-3	0-0	0-0	1	1	2	2	2	0	4	0	15			
Team				1-4		3		1		4		5		200			
Totals		19-60		2-17		13-18		15		24		39		14	53		
FG % 1st half:		6-28		21.4%		2nd half:		13-32		40.6%		Game:		19-60		31.7%	
3FG % 1st half:		0-9		0.0%		2nd half:		2-8		25.0%		Game:		2-17		11.8%	
FT % 1st half:		6-9		66.7%		2nd half:		7-7		100.0%		Game:		13-16		81.3%	
Syracuse 72 • 6-1																	
#	Player	FG	FGA	FG%	FT	FTA	FT%	Off	Def	Total	PF	TP					
24	JONES, Chandra	f	4-13	1-1	6-6	6	4	10	4	15	3	3	1	26			
32	MICHAEL, Nicole	f	6-9	1-3	3-4	2	2	4	4	16	0	0	0	26			
14	SIPAVICITE, Vaida	c	1-4	0-0	0-0	1	3	4	2	0	1	3	0	15			
11	HARRIS, Tasha	g	1-7	1-4	2-2	0	1	1	0	5	2	0	2	23			
21	MORROW, Erica	g	4-13	3-6	4-4	1	4	5	2	15	2	6	0	31			
02	GOSBURY, Marissa	g	0-0	0-0	0-0	0	0	0	0	0	0	0	0	1			
03	JOHNSON, Cintia	g	0-0	0-0	0-0	0	0	0	0	1	0	0	0	10			
04	MURRAY, Vionca	g	4-4	0-0	1-1	2	2	4	1	9	2	0	1	21			
13	BODDICK, Anne Marie	g	0-0	0-0	0-0	1	1	1	0	0	0	0	0	2			
20	GOODWIN, Fantasia	g	4-9	0-2	0-0	0	4	4	2	8	1	3	0	17			
25	HARBUT, Tracy	g	1-2	0-0	0-0	0	4	4	0	2	5	1	0	21			
33	RILEY, Mary Joe	g	0-0	0-0	0-0	0	0	0	0	0	0	0	0	1			
44	LISHERE, Lina	g	0-0	0-0	0-0	0	0	0	0	0	0	0	0	1			
Team				1		3		4		16		72		18			
Totals		25-61		6-16		16-17		13		28		41		16	72		
FG % 1st half:		13-35		37.1%		2nd half:		12-26		46.2%		Game:		25-61		41.0%	
3FG % 1st half:		5-13		38.5%		2nd half:		1-3		23.3%		Game:		5-16		31.3%	
FT % 1st half:		4-4		100.0%		2nd half:		12-13		92.3%		Game:		16-17		94.1%	
Officials:		Bill Titus, Kathleen Lynch, Laura Morris															
Technical fouls:		rviv Penn State:None, Syracuse:None															
Attendance:		514															
Score by periods		1st		2nd		Total											
rviv Penn State		18		35		53											
Syracuse		35		37		72											



PRESS CONFERENCE SCHEDULE

Coquese Washington will hold a weekly press conference and the Lady Lions will have media availability on a weekly basis throughout the season. All press conferences will begin at 2:30 p.m. (unless otherwise noted) and go for approximately 15-20 minutes, followed by a 15-minute open media session prior to practice. Press conference will be held in the Media Room at the Bryce Jordan Center (unless otherwise noted).

Press Conference Dates

Tuesday, Dec. 2	Wednesday, Feb. 4
Monday, Dec. 8	Tuesday, Feb. 10 (Practice Gym)
Wednesday, Dec. 17 (Time TBD)	Wednesday, Feb. 18
Tuesday, Dec. 30 (Time TBD)	Wednesday, Feb. 25
Thursday, Jan. 8 (Time TBD)	Tuesday, March 3 or Wednesday, March 4 (pending travel plans for BTT)
Wednesday, Jan. 14	
Wednesday, Jan. 21	
Tuesday, Jan. 27	

LAST TIME VERSUS SU

- The Lady Lions struggled from the field for a majority of the game on the way to a 72-53 loss at Syracuse on Dec. 6, 2007.
- Mashea Williams had a game-high 18 points with five rebounds and three steals.
- Kam Gissendanner added eight tallies and a game-best 10 rebounds.

ACC/BIG TEN CHALLENGE

- The Lady Lions are 2-5 all-time in ACC/Big Ten Challenge games and are looking for their first road win in the challenge (0-3).
- Penn State picked up Challenge wins over North Carolina (2011) and Duke (2007), but has suffered losses to Notre Dame (2013), Miami (2012), Boston College (2010), Georgia Tech (2009) and Florida State (2008).
- ACC/Big Ten Challenge has produced several high scoring affairs with the Lady Lions averaging 77.9 points per game, including a pair of 100-point outings.

SPANN'S SCORING STREAK

- Freshman guard **Lindsey Spann** has reached double figures in the first six games of her collegiate career and leads the team in scoring with a 13.8 average.
- Spann's streak of six consecutive double-digit scoring performances to start a career is a feat that was not accomplished by Maggie Lucas nor Kelly Mazzante, Penn State's two all-time leading scorers.

ALL-TOURNEY NOD FOR MOORE

- Sophomore guard **Sierra Moore** was selected to the Georgia State Thanksgiving Tournament All-Tournament team.
- She averaged 15.5 points, 3.0 rebounds, 3.5 assists and 1.5 steals in two games for the Lady Lions.
- Moore tied her career high with 17 points in 40 minutes of action against Samford.

FINDING THE RIGHT COMBO

- In their first six games, the Lady Lions have used four different starting lineup combinations.
- Sophomores **Sierra Moore** and **Kaliyah Mitchell** and freshman **Lindsey Spann** have started all six games for Penn State.

LADY LIONS GET SOCIAL: The Lady Lions are on several social media sites, including Twitter, Instagram and Facebook. Follow the Lady Lions and assistant coaches (@pennstatewbb), head coach Coquese Washington (@coquesewashing) and sports information contact Kris Petersen (@ladylionsid) on Twitter to get the inside scoop. The Lady Lions are also on Instagram (@pennstatewbb) and Facebook at www.facebook.com/pennstateladylions.



DeGRAAF'S DOUBLE

- Sophomore guard **Jenny DeGraaf** provided a spark off of the bench against Samford Nov. 30, posting her first career double-double.
- DeGraaf was 5-for-9 from the field en route to 11 points to compliment a career-high 10 rebounds.
- Her 10 boards surpass her previous personal best of five rebounds versus Seton Hall earlier this season.

MOORE CAREER MARKS

- Sophomore guard **Sierra Moore** continues to adapt quickly to her role with the Lady Lions.
- Moore posted her third double-digit scoring performance in the first four games of the season with 15 points on 6-of-12 shooting against St. Bonaventure.
- With her effort against the Bonnies, Moore surpassed the 100 point plateau for her career, scoring 15 in the contest. She scored 63 during her freshman season at Duke and has 49 through four games at Penn State for a career total of 112.

CLOSE, BUT NO CIGAR

- The Lady Lions' 1-5 record on the season is deceiving as Penn State's five losses are by a total of 23 points.
- In four of Penn State's five losses, the Lady Lions have had a chance to tie or take the lead in the final 11 seconds.
- Additionally, in four of the five losses, the Lady Lions have held the lead for more than 15 minutes and have also led for more than 30 minutes in two contests.

PENN STATE'S OVERALL/BIG TEN YEAR-BY-YEAR REVIEW

Year	Overall	Big Ten	Home	BT Home	Road	BT Road	Neutral
1992-93	22-6	14-4	12-2	9-0	9-4	5-4	0-0
1993-94	28-3	16-2	14-0	9-0	11-2	7-2	3-1
1994-95	26-5	13-3	14-2	8-0	9-3	5-3	3-0
1995-96*	27-7	13-3	14-2	8-0	8-4	5-3	5-1
1996-97	15-12	8-8	9-3	5-3	5-6	3-5	1-3
1997-98	21-13	8-8	10-5	4-4	6-6	4-4	5-2
1998-99	22-8	12-4	9-2	6-2	9-4	6-2	4-2
1999-00	30-5	15-1	14-0	8-0	9-2	7-1	7-3
2000-01	19-10	11-5	11-2	7-1	6-5	4-4	2-3
2001-02	23-12	11-5	10-4	6-2	9-5	5-3	4-3
2002-03	26-9	13-3	16-0	8-0	7-7	5-3	2-2
2003-04	28-6	15-1	12-1	8-0	9-3	7-1	6-2
2004-05	19-11	13-3	12-0	8-0	6-9	5-3	1-2
2005-06	13-16	6-10	8-6	5-3	3-8	1-7	2-2
2006-07	15-16	7-9	12-1	7-1	2-12	0-7	1-3
2007-08	13-18	4-14	10-6	3-6	3-11	1-8	0-1
2008-09	11-18	6-12	8-6	4-5	2-9	2-7	1-3
2009-10	17-14	8-10	9-6	5-4	5-7	3-6	3-1
2010-11	25-10	11-5	14-4	6-2	7-4	5-3	4-2
2011-12	26-7	13-3	12-2	6-2	11-3	7-1	3-2
2012-13	26-6	14-2	14-0	8-0	9-5	6-2	3-1
2013-14	24-8	13-3	14-4	6-2	8-3	7-1	2-1
2014-15	1-5	0-0	1-3	0-0	0-0	0-0	0-2

* First season at the Bryce Jordan Center



PENN STATE-SYRACUSE NOTABLE GAMES

Nov. 12, 2006 - Penn State 71, Syracuse 46

Freshman Tyra Grant connected on 5-of-10 from the field en route to a game-high 14 points to lead the Lady Lions to a 71-46 win over Syracuse in her first collegiate home game. The Lady Lions responded, connecting on nine three-pointers on the game, which were the most treys by a PSU team since March 6, 2005 when the Lady Lions made 10 shots from beyond the arc. Junior guard Adrienne Squire nearly posted her second career double-double with 11 points and nine rebounds in 19 minutes.

Dec. 9, 1986 - Penn State 61, Syracuse 58

Penn State jumped out to an early 11-point lead, but the Orange came back to tie the game at 31-31 heading into half. With Penn State leading by a single point with five seconds left, Vicki Link made a pair of free throws to seal the win for the Lions. Link notched a double-double with a team-best 24 points with 11 rebounds. Lisa Faloon added 16 points, while Suzie McConnell tied the Manley Fieldhouse record of 14 assists, to go with seven steals.

Dec. 6, 1988 - Syracuse 82, Penn State 76 (OT)

The Lady Lions committed 30 turnovers and led by seven with 1:51 to play, but the Orange went on a 9-2 run to take a two-point lead in the waning moments. Penn State's Dawn Chambers converted both free throws to tie the game 74-74 to force overtime. Tiffany Chill had 12 points and six assists, while Kathy Phillips chipped in 10 points and a team-high eight rebounds.

WALDNER HITS THE CENTURY MARK

- Senior center **Tori Waldner** became the ninth player in school history to record 100 career blocks with one rejection against Liberty on Nov. 28.
- Waldner ranks ninth in program history with 100 career blocks.
- With her performance against Seton Hall on Nov. 22, she passed Jess Brungo (94; 2001-04) for the ninth spot.
- Waldner needs two rejections to tie Talia East (102; 2011-14) for eighth place.
- She is the third Lady Lion in the last three years to reach the 100-block mark, joining Nikki Greene (215; 2010-13) and Talia East (102; 2011-14).

OF NOTE

- Penn State held Samford 13 points in the first half on Nov. 30, which are the fewest points allowed by PSU in a half since NJIT scored nine points in the first half on Dec. 23, 2012.
- Sophomore **Keke Sevillian** made her first career start and junior **Candice Agee** made her fourth career start against Seton Hall (11/22).
- Sophomore **Kalayah Mitchell** tied her career high with 10 rebounds against Seton Hall on Nov. 22.
- With the loss to Seton Hall, Penn State dropped to 1-2 to start a season for the first time since 2005-06, when the Lady Lions started 1-3.
- Freshman **Lindsey Spann** and sophomores **Kalayah Mitchell**, **Sierra Moore** and **Peyton Whitted** all made their first career starts for the Lady Lions against Towson on Nov. 14.
- Junior **Candice Agee** tied her career high with nine rebounds against Towson Nov. 14. She also grabbed nine rebounds vs. Fairleigh Dickinson on Dec. 2, 2012.
- Sophomore **Keke Sevillian** reached a career high in assists with five in the season opener against Towson on Nov. 14.
- With the win over Towson on Nov. 14, **Coquese Washington** improved to a perfect 8-0 in the first game of the season since taking the helm of the Lady Lion program for the 2007-08 season.
- Head coach **Coquese Washington** has selected senior **Tori Waldner**, redshirt-sophomore **Sierra Moore** and redshirt-freshman **Lindsey Spann** as team captains for the 2014-15 season.
- Sophomore forward **Peyton Whitted's** father, Kevin, was recently named the head coach of the NBA Developmental League's Westchester Knicks.

AGGRESSIVE AGEE

- Junior center **Candice Agee** was a dominant force in the post for the Lady Lions against Seton Hall, connecting on 9-of-15 shots en route to a career-high 21 points.
- The performance marked the first time that Agee has surpassed the 20-point plateau in her career.
- Agee's previous personal best was 16 points set against Bucknell on Nov. 20, 2013.
- Additionally, Agee, who made her first start of the season and fourth of her career, tied her personal best with three blocked shots.

PENN STATE'S RECORD WHEN...

Playing at home	1-3
Playing on the road	0-0
Playing at a neutral site	0-2
vs. Top 10 teams	0-0
vs. Top 25 teams	0-0
Games decided by 3 points or less	0-3
Games decided by 4-10 points	1-1
Games decided by 11-19 points	0-1
Games decided by 20 points or more	0-0
Leading at the half	1-3
Tied at the half	0-1
Trailing at the half	0-1
Leading with 5:00 remaining	1-2
Trailing with 5:00 remaining	0-3
Tied with 5:00 remaining	0-0
In overtime	0-0
PSU scores 40-49 points	0-0
PSU scores 50-59 points	0-3
PSU scores 60-69 points	0-1
PSU scores 70-79 points	1-1
PSU scores 80 points or more	0-0
PSU shoots 45% or better	1-0
PSU shoots less than 45%	0-5
PSU shoots better than opponent	1-4
Opponent shoots better than PSU or tied	0-1
Opponent scores less than 39 points	0-0
Opponent scores 40-49 points	0-0
Opponent scores 50-59 points	0-3
Opponent scores 60-69 points	1-0
Opponent scores more than 70 points	0-2
Opponent shoots better than 45%	0-0
Opponent shoots less than 45%	1-5
PSU outrebounds opponent	1-1
Opponent outrebounds PSU or tied	0-4
PSU commits 14 or less turnovers	1-1
PSU commits 15 or more turnovers	0-4
PSU makes at least 5 3-pointers	0-1
PSU makes four 3-pointers or less	1-4
Recording 7 or more steals	1-5
Recording 6 or less steals	0-0
Wearing white uniforms	1-3
Wearing blue uniforms	0-2
Wearing white and pink uniforms	0-0
Penn State wins the tip	0-3
Penn State loses the tip	1-2
Penn State scores first	1-3
Opponent scores first	0-1
Playing during the day (before 5 p.m.)	1-3
Playing at night	0-2
On Monday	0-0
On Tuesday	0-1
On Wednesday	0-0
On Thursday	0-0
On Friday	1-1
On Saturday	0-1
On Sunday	0-2
In November	1-5
In December	0-0
In January	0-0
In February	0-0
In March	0-0



LIONS IN THE BIG TEN STATS

A breakdown of where Penn State ranks in the Big Ten's overall statistical categories. Through games of Nov. 30.

TEAM	
Scoring Offense.....	13th (62.0)
Scoring Defense.....	11th (64.7)
Scoring Margin.....	13th (-2.7)
Free Throw Percentage.....	12th (.636)
FG Percentage.....	14th (.390)
FG Percentage Defense.....	8th (.358)
3-point FG Percentage.....	13th (.243)
3-point FG Pct. Defense.....	12th (.328)
3-point FG Made.....	13th (2.8)
Rebounding Offense.....	10th (39.8)
Rebounding Defense.....	12th (41.3)
Rebounding Margin.....	10th (-1.5)
Offensive Rebounds.....	9th (11.7)
Defensive Rebounds.....	8th (28.2)
Blocked Shots.....	4th (5.3)
Assists.....	14th (12.8)
Steals.....	7th (9.7)
Turnover Margin.....	11th (+1.3)
Assist to Turnover Ratio.....	13th (0.7)

INDIVIDUAL	
Scoring.....	20th - Lindsey Spann (13.8)23rd - Sierra Moore (13.3)
Rebounding.....	9th - Tori Waldner (8.8)15th - Kaliyah Mitchell (7.0)
Assists.....	T-14th - Sierra Moore (3.7)T-14th - Lindsey Spann (3.7)
Steals.....	T-4th - Kaliyah Mitchell (3.0)
Blocked Shots.....	T-6th - Tori Waldner (1.8)T-6th - Candice Agee (1.8)
Def. Reb.	T-7th - Tori Waldner (6.8)13th - Kaliyah Mitchell (5.7)
Minutes.....	5th - Sierra Moore (36.0)T-9th - Lindsey Spann (33.7)

2014-15 GAME-BY-GAME STARTING LINEUPS

Date	Opponent	Pt Guard	Guard	Guard/Forward	Forward	Center
11/2	INDIANA (PA.) (ex.)	Spann	Moore	Mitchell	Whitted	Waldner
11/14	TOWSON	Spann	Moore	Mitchell	Whitted	Waldner
11/16	ALBANY	Spann	Moore	Mitchell	Whitted	Waldner
11/22	SETON HALL	Spann	Moore	Sevillian	Mitchell	Agee
11/25	ST. BONAVENTURE	Spann	Moore	Mitchell	Whitted	Agee
11/28	vs. Liberty	Spann	Moore	Mitchell	Waldner	Agee
11/30	vs. Samford	Spann	Moore	Mitchell	Whitted	Waldner

"SIE"-ING DOUBLE

- Sophomore **Sierra Moore** posted her first career double-double with 14 points and a personal-best 10 rebounds against Seton Hall on Nov. 22.
- Moore's 14 points surpasses her previous career high of 12 set against Towson in the season opener.
- Her 10 boards double her previous personal best of five caroms accomplished twice during her collegiate career against Towson and Iona, while she was at Duke.
- Moore also established a career high with five assists against the Pirates.

SCORING SPANN

- Freshman guard **Lindsey Spann** led the Lady Lions in scoring for the second straight game with 14 points against Albany on Nov. 16.
- This marks the first time a Penn State freshman has led the team in scoring in consecutive games since Maggie Lucas did so versus Minnesota (1/13/11) and versus Illinois (1/16/11).
- Spann handed out four assists for the second straight game.

DeGRAAF FROM DEEP

- Sophomore forward **Jenny DeGraaf** went 4-for-4 from beyond the arc en route to a career-high 12 points against Albany on Nov. 15.
- She is the first Lady Lion to connect on all of her three-point attempts in a game (min. 4 attempts) since Maggie Lucas also netted four shots on four attempts vs. Bucknell on Dec. 21, 2011.
- The four three pointers made are a career-high for DeGraaf, who had made one three pointer on two occasions entering the game.
- DeGraaf's 12 points are a career-high, passing her two five point efforts from last season. She scored five points vs. Ohio State (1/16/14) and vs. Alcorn State (12/22/13).
- She also tied her personal mark with three rebounds against the Great Danes.

STELLAR DEBUT

- Freshman **Lindsey Spann** made her long-awaited Lady Lion debut with the start against Towson on Nov. 14.
- Spann, who missed last season with an ACL injury, had a team-high 17 points on 7-of-14 shooting.
- She also grabbed five rebounds and dished out four assists versus the Tigers.
- Spann is the first Penn State freshman to lead the team in scoring since Maggie Lucas did so 13 times during her rookie season in 2010-11.

DOUBLING UP

- Senior post player **Tori Waldner** recorded the first double-double of her Penn State career with 11 points and 11 rebounds in the season opener against Towson on Nov. 14.
- She tied her career high with 11 boards, equaling the mark she set against Texas A&M on Dec. 15, 2013.
- Waldner's double-double was the first since Talia East scored 13 points and grabbed 13 rebounds vs. Wichita State, Mar. 23, 2014.

MEETING MOLLY

- The Lady Lions announced the addition of walk-on **Molly Dincher** to the roster prior to the season-opener against Towson.
- Dincher served as a Lady Lion manager for a year and a half.
- Dincher also played at Penn State Wilkes-Barre for two seasons where she helped the Mountain Lions to the 2011-12 PSUAC North Division Championship.
- She averaged 7.3 points and 8.6 rebounds that season for Wilkes-Barre, her final season for the Mountain Lions.
- She also rejected 33 shots and had 27 assists in 21 appearances that included 16 starts.
- Since coming to University Park, Dincher played for the Penn State women's club basketball team that took second in the National Championships in 2012-13.
- A three-year letterwinner, Dincher played her high school basketball at Williamsport Area High School. In her final season, the Millionaires were 12-8.



THE LAST TIME PENN STATE...

SCORING

Player scored 20 points: vs. Seton Hall (21, Candice Agee), 11/22/14
 Player scored 25 points: vs. Ohio State (29, Ariel Edwards), 3/7/14
 Player scored 30 points: at Indiana (32, Maggie Lucas), 2/13/14
 Player scored 35 points: vs. Georgetown (39, Maggie Lucas), 12/9/12
 Player scored 40 points: vs. Minnesota (49, Kelly Mazzante), 12/28/01
 Two players scored 20 points: vs. Florida (22, Maggie Lucas; 22 Dara Taylor), 3/25/14
 Three players scored 20 pts.: at Nevada (26, Maggie Lucas; 23, Alex Bentley; 21, Zhaque Gray), 11/26/11
 Two players scored 25 points: at Boston College (28, Alex Bentley; 28, Maggie Lucas), 12/2/10
 Player scored 25 points/3 consecutive games: Maggie Lucas (32, at Indiana, 2/13/14; 25 vs. Wisconsin, 2/16/14; 26 vs. Northwestern, 2/20/14)
 Five in double figures: at Northwestern (19, Maggie Lucas; 15, Ariel Edwards; 11, Dara Taylor; 11, Talia East; 11, Peyton Whitted), 2/2/14
 Six in double figures: at Oakland (15, Alex Bentley; 16, Ariel Edwards; 16, Zhaque Gray; 13, Maggie Lucas; 10, Mia Nickson; 10, Gizelle Studevent; 10, Julia Trogele), 11/18/10
 Seven in double figures: at Oakland (15, Alex Bentley; 16, Ariel Edwards; 16, Zhaque Gray; 13, Maggie Lucas; 10, Mia Nickson; 10, Gizelle Studevent; 10, Julia Trogele), 11/18/10
 PSU scored 50 points in a half: at Illinois (51, second half), 1/9/14
 PSU scored 50 points in both halves: vs. St. Francis (Pa.) (55, first half; 62, second half), 11/8/13
 PSU scored 55 points in a half: vs. St. Francis (Pa.) (55, first half; 62, second half), 11/8/13
 PSU scored 60 points in a half: vs. St. Francis (Pa.) (62, second half), 11/8/13
 PSU scored 100 points: vs. St. Francis (Pa.) (W, 117-77), 11/8/13
 PSU scored 100 points in Big Ten game: vs. Illinois (W, 101-80), 2/15/01
 PSU scored 100 points in a home game: vs. St. Francis (Pa.) (W, 117-77), 11/8/13
 PSU scored fewer than 15 points in a half: vs. Wisconsin (13, first half), 2/25/10
 PSU scored fewer than 20 points in a half: vs. Michigan State (19, first half), 3/9/13
 PSU scored fewer than 40 points in a game: vs. Wisconsin (L, 39-71), 2/25/10
 PSU scored fewer than 50 points in a game: vs. Michigan State (L, 46-54), 3/9/13
 PSU scored fewer than 50 points in a Big Ten game: vs. Purdue (L, 49-60), 2/24/11
 OPP scored 50 points in a half: vs. Liberty (52, second half), 11/28/14
 OPP scored 100 points: at Boston College (Lot, 113-104), 12/2/10
 OPP scored fewer than 20 points in a game: at Dickinson (W, 57-16), 3/6/71
 OPP scored fewer than 30 points in a game: vs. Virginia Tech (W, 66-28), 12/6/11
 OPP scored fewer than 40 points in a game: vs. Wisconsin (W, 84-40), 1/17/13
 OPP scored fewer than 50 points in a game: vs. Ohio State (W, 66-42), 1/16/14
 OPP scored fewer than 50 points in a Big Ten game: vs. Ohio State (W, 66-42), 1/16/14

FIELD GOAL SHOOTING

Player made every shot from the field (min. 7): vs. Michigan St. (Amanda Brown, 8-8), 1/25/07
 PSU shot 55% or better in a game: vs. Illinois (.611), 2/20/13
 PSU shot 55% or better in consecutive games: vs. Northwestern (.682), 3/2/96; vs. Ohio St. (.585), 3/3/96
 PSU shot 60% in a game: vs. Illinois (.611), 2/20/13
 PSU shot below 25% in a game: vs. Michigan State (.224), 3/9/13
 PSU shot below 30% in a game: vs. Michigan State (.224), 3/9/13
 PSU shot below 35% in a game and won: vs. Michigan State (.333), 1/19/14
 PSU shot below 30% in a game and won: vs. Northwestern (.299), 1/3/13
 PSU shot 55% in a half: vs. Towson (.556, second half), 11/14/14
 PSU shot 60% in a half: at Illinois (.630, second half), 1/9/14
 PSU shot 65% in a half: at Georgetown (.680, second half), 12/8/13
 PSU shot 70% in a half: vs. Virginia Tech (.714, second half), 12/6/11
 PSU shot 55% in both halves: vs. Illinois (.586, first half; .640, second half), 2/20/13
 PSU shot 20% or below in a half: vs. Michigan State (.200, first half), 3/9/13
 PSU shot below 25% in a half: at Georgetown (.206, first half), 12/8/13

THREE-POINT SHOOTING

Player made every shot from the field (min. 4): vs. Albany (4-4, Jenny DeGraaf), 11/16/14
 Player made 4 three-pointers in a half: vs. Connecticut (4 in the second, Maggie Lucas), 11/17/13
 Player made 5 three-pointers in a half: vs. Michigan State (5 in the second, Maggie Lucas), 3/9/13
 Player made 6 three-pointers in a half: vs. Michigan State (5 in the second, Maggie Lucas), 3/9/13
 Player made 5 three-pointers in a game: vs. Northwestern (5, Maggie Lucas), 2/20/14
 Player made 6 three-pointers in a game: vs. Michigan State (7, Maggie Lucas), 3/9/13
 Player made 7 three-pointers in a game: vs. Michigan State (7, Maggie Lucas), 3/9/13
 Player made 8 three-pointers in a game: at Nebraska (8, Maggie Lucas), 3/3/13
 Player attempted 10 three-pointers in a game: at Illinois (11, Maggie Lucas), 1/9/14
 PSU made 10 three-pointers: vs. North Carolina (14), 11/30/11
 PSU did not make a three-pointer: vs. Hartford (0-8), 12/29/13
 PSU attempted 20 three-pointers: vs. Connecticut (21), 11/17/13
 PSU shot 60% 3FG (min. 5 att.): vs. Illinois (.667; 6-9), 2/20/13

FREE THROW SHOOTING

Player made every shot from FT line (min. 10): at Illinois (10-10, Maggie Lucas), 1/9/14
 PSU shot 90% (min. 10 att.): vs. Michigan (18-19, .947), 3/1/14
 PSU shot below 50% (min. 10 att.): at Purdue (8-21, .381), 1/30/14
 PSU made 30 free throws: vs. St. Francis (Pa.) (37), 11/8/13
 PSU made fewer than five FTs: at Michigan (3), 2/3/11
 PSU attempted 40 free throws: vs. St. Francis (Pa.) (43), 11/8/13
 PSU attempted fewer than five FTs: at Michigan (4), 2/3/11

REBOUNDS

Player had 15 rebounds: at LSU (16, Nikki Greene), 3/26/13
 Player had 20 rebounds: at Cal State Northridge (20, Nikki Greene), 11/24/12
 Two players with double-digit rebs.: vs. Samford (12, Tori Waldner; 10, Jenny DeGraaf), 11/30/14
 Three players had double-digit rebounds: vs. Ohio State (15, Nikki Greene; 15, Mia Nickson; 10, Maggie Lucas), 2/20/12
 PSU had 60 rebounds: vs. Ohio State (60), 2/20/12
 PSU had 50 rebounds: vs. Seton Hall (50), 11/22/14
 PSU had 20 or fewer rebounds: vs. Michigan State (20), 1/19/03
 OPP had 20 or fewer rebounds: at Indiana (20), 2/13/11
 PSU had 20 offensive rebounds: vs. Seton Hall (21), 11/22/14
 PSU had 25 offensive rebounds: vs. Ohio State (29), 2/20/12

ASSISTS

Player had 10 assists: vs. Minnesota (10, Dara Taylor), 1/26/14
 Player had 10 assists/consecutive games: Helen Darling (12 at LaSalle, 12/8/99; 11 vs. Auburn, 12/11/99; 10 vs. Clemson, 12/19/99)
 Player had 15 assists: vs. North Carolina (15, Alex Bentley), 11/30/11
 PSU had 30 assists: vs. St. Francis (Pa.) (32), 12/2/99
 PSU had fewer than 10 assists: at Stanford (6), 3/30/14
 PSU had fewer than 5 assists: at Michigan State (4), 2/4/10

BLOCKED SHOTS

Player blocked 5 shots: vs. Northwestern (5, Tori Waldner), 2/20/14
 Player blocked 6 shots: vs. Purdue (7, Talia East), 1/12/14
 PSU blocked 10 shots: vs. Purdue (14), 1/12/14
 PSU blocked 0 shots: at Illinois, 1/9/14

STEALS

Player had 7 steals: vs. Alcorn State (7, Dara Taylor), 12/22/13
 Player had 8 steals: vs. NJIT (8, Alex Bentley), 12/23/12
 PSU had 20 steals: vs. Bucknell (21), 12/28/10

TURNOVERS

PSU committed 25 or more: at Illinois (27), 1/9/14
 PSU committed 25 or more and won: at Illinois (27), 1/9/14
 PSU committed 10 or fewer: vs. Wisconsin (7), 2/16/14
 PSU committed 10 or fewer in consecutive games: vs. Minnesota (9), 1/22/04; at Ohio St. (9), 1/25/04
 OPP committed 25 or more: vs. Oregon State (26), 11/30/13

DOUBLE-DOUBLES

Points & rebounds: vs. Samford (Jenny DeGraaf, 11 points, 10 rebounds), 11/30/14
 Points & rebounds/consecutive games: Nikki Greene (12 points, 10 rebounds vs. Ohio State, 1/30/11; 16 points, 14 rebounds at Illinois, 1/27/11)
 Points & rebounds/3 consecutive games: Amanda Brown (19 pts., 17 rebs. at Northwestern, 2/11/07; 14 pts., 10 rebs. vs. Minnesota, 2/15/07; 14 pts., 11 rebs. at Iowa, 2/18/07)
 Points & rebounds/4 consecutive games: Angie Potthoff (vs. Northwestern, 1/31/97; at Illinois, 2/2/97; vs. Michigan, 2/7/97; vs. Indiana, 2/9/97; vs. Iowa, 2/16/97; vs. Michigan State, 2/21/97)
 Points & rebounds/5 consecutive games: Angie Potthoff (vs. Northwestern, 1/31/97; at Illinois, 2/2/97; vs. Michigan, 2/7/97; vs. Indiana, 2/9/97; vs. Iowa, 2/16/97; vs. Michigan State, 2/21/97)
 Points & assists: vs. Minnesota (Dara Taylor, 15 points, 10 assists), 1/26/14
 Points & assists/consecutive games: Helen Darling (12 pts., 12 assts. at La Salle, 12/8/99; 10 pts., 11 assts. vs. Auburn, 12/11/99)
 Two players had double-doubles: vs. Ohio State (Nikki Greene, 25 pts., 15 rebs.; Mia Nickson, 18 pts., 15 rebs.; Maggie Lucas, 12 pts., 10 rebs.), 2/20/12
 Three players had double-doubles: vs. Ohio State (Nikki Greene, 25 pts., 15 rebs.; Mia Nickson, 18 pts., 15 rebs.; Maggie Lucas, 12 pts., 10 rebs.), 2/20/12
 15 points & 15 rebounds: at LSU (Nikki Greene, 16 pts., 16 rebs), 3/26/13
 20 points and 10 rebounds: vs. Ohio State (Ariel Edwards, 29 points, 10 rebounds), 3/7/14

MARGIN OF VICTORY

PSU won by 20-30 points: vs. Florida (22), 3/25/14
 PSU won by 20-30 points in a Big Ten game: at Ohio State (20), 2/9/14
 PSU won consecutive Big Ten games by 20+ pts.: vs. Wisconsin (44), 1/17/13; vs. Nebraska (22), 1/13/13; at Michigan St. (21), 1/6/13
 PSU won by 31-40 points: vs. Bucknell (43), 11/20/13
 PSU won by 41-50 points: vs. Bucknell (43), 11/20/13
 PSU won by 51+ points: vs. Fairleigh Dickinson (57), 12/2/12
 PSU lost by 20-30 points: at Stanford (25, 82-57), 3/30/14
 PSU lost by 20-30 points in a Big Ten game: at Nebraska (20; 94-74), 2/24/14
 PSU lost by 31+ points: vs. Wisconsin (32), 2/25/10

MISCELLANEOUS

Led PSU in points/rebounds/assists: Dara Taylor vs. Florida (22 pts., 8 rebs., 4 asst.), 3/25/14
 Hit "final seconds" (under 10 seconds) game-winning shot: Julia Trogele at Illinois (9 sec.), 1/27/11
 Hit "final minute" game-winning shot: Alex Bentley at Minnesota (3-ptr. with :38.9 remaining), 2/5/12
 Player played every minute: at Nebraska (Dara Taylor), 2/24/14
 Player played more than 40 min.: at Dayton (Alex Bentley, 46; Zhaque Gray, 44; Mia Nickson, 41), 11/12/10
 Committed 10 or fewer fouls: vs. Virginia Tech (9), 12/6/11
 Committed 30 or more fouls: vs. Iowa State (32), 11/25/11
 PSU rallied from a 10-pt. deficit to win: vs. Wichita State (down by 11 at 6:39 in 1st, won 62-56), 3/23/14
 PSU rallied from a 15-pt. deficit to win: at CS-Northridge (down by 17 at 5:52 in 1st half, won 85-73), 11/24/12
 PSU had a 5-game winning streak: 6 games, 1/16/14-2/2/14
 PSU had a 10-game winning streak: 11 games, 12/9/12 - 1/27/13
 PSU had a 5-game losing streak: 5 games, 11/16/14-present
 PSU went undefeated at home: 2012-13 season
 PSU sold out the BJC: Purdue, 2/29/04

OVERTIME

PSU played an OT game: vs. Samford (L, 59-56), 11/30/14
 PSU won an OT game: at Oakland (96-89), 11/18/10
 PSU lost an OT game: vs. Samford (L, 59-56), 11/30/14
 PSU played two or more OT games in a season: 2010-11 season (three)
 PSU won two or more OT games in a season: 2010-11 season (two)

RANKINGS

Played the No. 1 team in the AP poll: vs. Connecticut (L, 71-52), 11/17/13
 Played the No. 1 team in the Coaches poll: vs. Connecticut (L, 71-52), 11/17/13
 Defeated the No. 1 team in the AP poll: at Virginia (73-71), 1/3/91
 Defeated Top 10 opponent: vs. #8/11 Ohio State (84-66), 2/20/12
 Defeated Top 10 opponent on the road: at #7 Purdue (47-42), 1/2/04
 Defeated Top 10 opponent by double digits: vs. #8/11 Ohio State (84-66), 2/20/12
 Played consecutive Top 10 teams: at #2/3 Texas 11/14/04, at #6/6 Duke 11/19/04
 Defeated Top 25 opponent: at #16/19 Purdue (75-72), 1/30/14
 Defeated Top 25 opponent on the road: at #16/19 Purdue (75-72), 1/30/14
 Defeated Top 25 opponent by double digits: at #23/22 Iowa (87-71), 1/5/14



2015 RECRUITING CLASS

LADY LIONS SECURE TOP 10 CLASS

- The four-player class is ranked eighth by Prospect Nation, ninth by All-Star Girls Report, 10th by Blue Star Basketball and 11th by ESPN/HoopGuriz and Collegiate Girls Basketball Report.
- The class features two Top 20 players and three Top 100 signees in both the Blue Star Basketball and Prospect Nation rankings.
- This is believed to be the highest-ranked class in program history.
- This is the third Top 15 class to sign under Washington, joining the 2009 and 2013 classes that were ranked 14th by ESPN/Hoopguriz.
- It is also the fourth Top 25 recruiting class for Washington (2010 class was 22nd).

AMARI CARTER * 5-8 * Guard * Washington, D.C. * St. John's College

- A 5-7 guard, Carter is ranked as the #31 overall recruit by both ESPN/HoopGuriz and Collegiate Girls Basketball Report.
- She is also rated 19th by Prospect Nation and Blue Star Basketball and 32nd by All Star Girls Report.
- She averaged 17.5 points, 4.0 rebounds, 4.0 assists and 2.0 steals for St. John's College High School in Washington, D.C.
- She led the team to a 25-7 overall record and the 2014 DC State Athletic Association championship.
- Last season, Carter was named to the Washington Post All-Metropolitan first team and All-WCAC first team.
- As a sophomore, Carter helped the Cadets to the 2013 WCAC Championship en route to collecting second team All-WCAC honors and an All-Metropolitan honorable mention selection.
- She is a 2014-15 Sporting News Preseason High School All-America honorable mention choice.
- Carter has participated in USA Basketball U16 (2013) and U17 (2014) Trials.
- She plays her AAU ball with the Maryland Lady Terps.

TENIYA PAGE * 5-7 * Point Guard * Chicago Heights, Ill. * Marian Catholic

- Page, a 5-7 point guard out of Marian Catholic in Chicago, Ill., is the 21st-ranked prospect by both ESPN/HoopGuriz and Collegiate Girls Basketball Report.
- She also comes in ranked 17th by Blue Star Basketball, 20th by Prospect Nation and 26th by All Star Girls Report.
- A 2014-15 Sporting News Preseason High School All-America honorable mention selection, Page has 1,135 career points entering her final season for the Spartans.
- Last season, she accounted for 14.4 points, 4.7 assists, 3.5 rebounds and 1.8 steals per game to help Marian Catholic to a 28-5 overall record, a East Suburban Catholic Conference championship and a third-place finish in the Illinois High School Association Class 4A Basketball Tournament.
- Page was selected first team All-State by the Illinois Basketball Coaches Association, second team All-State by the Associated Press, first team All-State by The Northwest Indiana Times and third team All-State by the Chicago Tribune in 2014.
- As a sophomore, Page guided Marian Catholic to the IHSA 4A State Championship with a 33-1 record on the season.
- Page has participated in USA Basketball U16 (2013) and U17 (2014) Trials.
- She plays AAU basketball for Midwest Elite.

ASHANTI THOMAS * 6-5 * Post * Lexington, Ky. * Lafayette

- Thomas, a 6-2 post player out of Lexington, Ky., is the 87th-ranked recruit by Prospect Nation and is ranked 106th and 109th by All-Star Girls Report and Blue Star Basketball, respectively.
- She is a candidate for Kentucky Miss Basketball entering her senior season.
- As a junior, she led the Generals to a 29-4 overall record with a 9-1 mark in districts en route to a District and Regional championships.
- Thomas averaged 9.2 points and 8.2 rebounds per game last season on the way to All-State third team accolades from KySports.tv.
- During her sophomore campaign, Thomas accounted for 10.3 points and 9.5 rebounds per outing on the way to claiming Fayette County Public Schools All-City first team.
- Thomas plays AAU basketball for Mac Irvin Lady Fire.

JAYLEN WILLIAMS * 6-4 * Post * Braintree, Mass. * Archbishop Williams

- A 6-4 post player, Williams is the ranked 80th by Blue Star Basketball Report after missing her junior campaign at Archbishop Williams due to a knee injury.
- The 2014-15 Sporting News Preseason High School All-America honorable mention honoree accounted for 8.5 points, a team-best 11.6 rebounds, 3.5 blocks and 4.3 assists per game as a sophomore.
- Williams helped the Bishops to the 2013 Massachusetts Interscholastic Athletic Association (MIAA) Division 3 State Championship with a 23-5 record.
- She played her AAU basketball for Lady Rivals AAU select team under the guidance of Scott Hazelton. Williams and the Rivals squad have won two state championships.
- She also has a strong athletic background in her family as her father, Brent, played in the NFL for 11 years with the Jets, Seahawks and Patriots. Her brother, Brennan, has played for the Houston Texans and her other brother, Camren, is a junior linebacker for the Ohio State football team.

RECORD BOOK

CAREER BLOCKS

1.	268	Kim Calhoun, 1993-96
2.	215	Nikki Greene, 2010-13
3.	192	Mary Donovan, 1977-81
4.	189	Rashana Barnes, 1999-02
5.	185	Andrea Garner, 1997-00
6.	172	Amanda Brown, 2004-07
7.	140	Tina Henry, 1990-93
8.	102	Talia East, 2011-14
9.	100	Tori Waldner, 2012-present
10.	94	Jess Brungo, 2001-04

as of Nov. 30

MILESTONE WATCH

Milestone Watch

Milestone	Player	Current Total
300 points	Tori Waldner	241
200 points	Candice Agee	196
	Kalayah Mitchell	191
	Sierra Moore (career)	143
	Peyton Whitted	116
100 points	Lindsey Spann	83
	Alex Harris	57
400 rebounds	Tori Waldner	384
200 rebounds	Kalayah Mitchell	182
	Candice Agee	150
	Peyton Whitted	119
100 rebounds	Alex Harris	96
50 assists	Kalayah Mitchell	30
150 blocks	Tori Waldner	100
50 blocks	Candice Agee	45
50 steals	Tori Waldner	49

Milestone Reached

Milestone	Player	Reached
100 blocks	Tori Waldner	11/28
100 points	Sierra Moore (career)	11/25
100 points	Peyton Whitted	11/22
100 rebounds	Peyton Whitted	11/16



2014-15 SINGLE GAME HIGHS & LOWS

Team Superlatives

Penn State High	Penn State Low	Category	Opponent High	Opponent Low
75, vs. Seton Hall (11/22)	53, vs. Albany (11/16)	Points/Game	80, Liberty (11/28)	54, Albany (11/16)
41, vs. Seton Hall (11/22)	21, vs. Samford (11/30)	Points/Half	52, Liberty (11/28)	13, vs. Samford (11/30)
27, vs. Towson (11/14)	19, twice (MR: vs. Samford, 11/30)	Field Goals Made	25, Liberty (11/28)	18, twice (MR: vs. St. Bona., 11/25)
66, vs. Seton Hall (11/22)	51, vs. Albany (11/16)	Field Goal Attempts	69, Towson (11/14)	51, vs. St. Bonaventure (11/25)
.450, vs. Towson (11/14)	.328, vs. Samford (11/30)	FG Percentage	.431, Liberty (11/28)	.316, Albany (11/16)
6, vs. Albany (11/16)	2, 4x (MR: vs. Samford, 11/30)	3-pt. FG Made	10, Liberty (11/28)	2, Albany (11/16)
15, vs. Liberty (11/28)	9, vs. Samford (11/30)	3-pt. FG Attempts	30, Towson (11/14)	15, twice (MR: Seton Hall, 11/22)
.462, vs. Albany (11/16)	.133, vs. Liberty (11/28)	3-pt. FG Percentage	.455, Liberty (11/28)	.133, Albany (11/16)
16, twice (MR: vs. Samford, 11/30)	6, vs. St. Bonaventure (11/25)	Free Throws Made	27, Seton Hall (11/22)	11, Towson (11/14)
28, vs. Seton Hall (11/22)	11, vs. St. Bonaventure (11/25)	Free Throw Attempts	37, Seton Hall (11/22)	17, Towson (11/14)
.762, vs. Samford (11/30)	.545, vs. St. Bonaventure (11/25)	Free Throw Percentage	.800, Liberty (11/28)	.520, vs. Samford (11/30)
50, vs. Seton Hall (11/22)	31, vs. Albany (11/16)	Rebounds	49, Albany (11/16)	38, twice (MR: Liberty, 11/28)
15, vs. Towson (11/14)	11, vs. Samford (11/30)	Assists	17, Liberty (11/28)	9, vs. St. Bonaventure (11/25)
12, vs. Liberty (11/28)	7, vs. Towson (11/14)	Steals	12, Seton Hall (11/22)	5, vs. Samford (11/30)
9, vs. Seton Hall (11/22)	2, vs. Towson (11/14)	Blocked Shots	6, Liberty (11/28)	3, Albany (11/16)
23, vs. Albany (11/16)	14, twice (MR: vs. St. Bonaventure, 11/25)	Turnovers	24, Albany (11/16)	13, Towson (11/14)
29, vs. Albany (11/16)	16, vs. Towson (11/14)	Fouls	25, Seton Hall (11/22)	16, vs. St. Bonaventure (11/25)

Individual Superlatives

	Penn State	Opponent
Points	21, Candice Agee vs. Seton Hall (11/22)	32, Dominique Johnson, Towson (11/14)
Field Goals Made	9, Candice Agee vs. Seton Hall (11/22)	12, Dominique Johnson, Towson (11/14)
Field Goal Attempts	21, Lindsey Spann vs. Liberty (11/28)	30, Dominique Johnson, Towson (11/14)
Field Goal Pct. (min. 5 made)	.714, Tori Waldner vs. Towson (11/14)	.727, Simone Brown, Liberty (11/28)
3-pt. Field Goals Made	4, Jenny DeGraaf vs. Albany (11/16)	6, Dominique Johnson, Towson (11/14)
3-pt. Field Goal Attempts	7, Lindsey Spann vs. Liberty (11/28)	16, Dominique Johnson, Towson (11/14)
3-pt. Field Goal Pct. (min. 2 made)	1.000, twice (MR: , Jenny DeGraaf vs. Albany, 11/16)	.750, Emily Michael, St. Bonaventure (11/25)
Free Throws Made	8, Sierra Moore vs. Samford (11/30)	9, Ka-Deidre Simmons, Seton Hall (11/22)
Free Throw Attempts	10, Sierra Moore vs. Samford (11/30)	12, twice (MR: Ka-Deidre Simmons, Seton Hall, 11/22)
Free Throw Percentage (min. 3 made)	1.000, 4x (MR: Lindsey Spann vs. Liberty, 11/28)	1.000, 6x (MR: Ellen Riggins, Samford, 11/30)
Rebounds	12, Tori Waldner vs. Samford (11/30)	15, Imani Tate, Albany (11/16)
Assists	5, 4x (MR: Lindsey Spann vs. Samford, 11/30)	7, Breonn Hughey, Towson (11/14)
Steals	5, Kaliyah Mitchell vs. Liberty (11/28)	3, 7x (MR: Brown/Ellis, Liberty, 11/28)
Blocked Shots	4, twice (MR: Candice Agee vs. Liberty, 11/28)	3, Ashley Ringer, Liberty, 11/28
Turnovers	7, Lindsey Spann vs. Liberty (11/28)	7, Shereesha Richards, Albany (11/16)



MISCELLANEOUS STATS

LEADING SCORER Lindsey Spann 3 Sierra Moore 2 Candice Agee 1	TECHNICAL FOULS Penn State 1 Opponents 1	RUNS OF 10-0 OR BETTER Penn State 1 Opponents 3	LONGEST WINNING STREAK 1, 11/14
LEADING REBOUNDER Tori Waldner 4 Kaliyah Mitchell 2 Sierra Moore 1	FOUR-POINT PLAYS Penn State 0 Opponents 0	LARGEST HALFTIME LEAD 8, vs. Samford (21-13) (11/30)	LONGEST LOSING STREAK 5, 11/16-present
LEADER IN ASSISTS Lindsey Spann 3 Sierra Moore 2 Keke Sevellian 1	THREE-POINT PLAYS Penn State 5 Opponents 2	LARGEST HALFTIME DEFICIT 8, vs. Seton Hall (37-29) (11/22)	CLUTCH FREE THROWS (FINAL 5 MIN. & OT) Kaliyah Mitchell 2-2 1.000 Lindsey Spann 8-10 .800 Tori Waldner 3-4 .750 Sierra Moore 5-7 .714 Keke Sevellian 1-2 .500 Candice Agee 4-9 .444
LEADER IN STEALS Kaliyah Mitchell 4 Lindsey Spann 2	PSU'S FIRST SUBSTITUTION Tori Waldner 2 Jenny DeGraaf 2 Keke Sevellian 2 Candice Agee 1 Peyton Whitted 1	LARGEST LEAD 16, twice (MR: vs. Samford, 11/30)	NOTE: Totals may not add up to games played due to ties.
LEADER IN BLOCKS Tori Waldner 3 Candice Agee 1 Sierra Moore 1 Kaliyah Mitchell 1	BENCH POINTS Penn State 79 (13.2 ppg) Opponents 59 (9.9 ppg)	LARGEST DEFICIT 16, vs. Liberty (11/28)	
GAMES STARTED Sierra Moore 6 Lindsey Spann 6 Kaliyah Mitchell 6 Peyton Whitted 4 Tori Waldner 4 Candice Agee 3 Keke Sevellian 1	JUMP BALLS CONTROLLED Penn State 3 Opponents 3	LARGEST DEFICIT OVERCOME TO WIN 8, vs. Towson (12:50 in 2nd half) (11/14)	
20-POINT SCORING GAMES Penn State 1 Opponents 5 Candice Agee 1	FIRST SCORE OF GAME Penn State 4 Opponents 2	LARGEST LEAD GIVEN UP IN LOSS 16, vs. Samford, 9:59 in second half, 11/30)	
30-POINT SCORING GAMES Penn State 0 Opponents 1	Sierra Moore 2 Candice Agee 1 Kaliyah Mitchell 1	LARGEST WIN 7, vs. Towson (71-64) (11/14)	

SPECIALITY STATS (PSU/OPP)

	Paint	Off TO	2nd	FastBr	Bench		Paint	Off TO	2nd	FastBr	Bench
Towson	30/14	13/16	5/9	13/4	17/7	St. Bonaventure	28/20	14/7	6/9	6/0	12/3
Albany	22/30	14/17	6/12	10/4	14/12	Liberty	36/26	13/21	11/13	20/6	11/16
Seton Hall	40/26	18/22	22/10	8/12	14/11	Samford	28/22	11/13	4/4	6/0	11/10

LADY LIONS BY THE NUMBERS

DOUBLE FIGURE PERFORMANCES

Lindsey Spann - 6
 Sierra Moore - 5
 Kaliyah Mitchell - 2
 Tori Waldner - 2
 Jenny DeGraaf - 2
 Candice Agee - 1

20-POINT PERFORMANCES

Candice Agee - 1

30-POINT PERFORMANCES

none

DOUBLE-DOUBLE PERFORMANCES

Tori Waldner - 1
 Candice Agee - 1
 Jenny DeGraaf - 1

DOUBLE-DIGIT REBOUNDING PERFORMANCES

Tori Waldner - 2
 Candice Agee - 1
 Jenny DeGraaf - 1

DOUBLE-DIGIT ASSIST PERFORMANCES

none





COQUESE WASHINGTON

Head Coach
8th Season

PENN STATE LADY LION BASKETBALL

Coquese Washington was introduced as the fifth head coach of the Penn State women's basketball program on April 23, 2007. Washington is the first female African-American head coach in Penn State history.

Washington led the 2013-14 Lady Lion squad to a feat that no other Penn State team has accomplished, winning three consecutive conference regular-season titles with a 13-3 record in Big Ten action. Led by the play of a strong senior class, the Lady Lions advanced to the NCAA Sweet Sixteen for the second time in three years. The graduating class of Maggie Lucas, Ariel Edwards, Dara Taylor and Talia East produced 101 wins, which is the second-highest total by a Lady Lion class.

Along the way to collecting her second Big Ten Player of the Year award, Lucas finished second in school history and fourth in Big Ten history in scoring (2,510) and broke the Penn State and Big Ten records for career three-pointers made (365) and career free throw percentage (.907). She was selected in the second round of the 2014 WNBA Draft by the Phoenix Mercury. Edwards became the 36th member of the 1,000-point club en route to collecting All-Big Ten first team accolades. She finished seventh in the Big Ten in scoring (15.7) and was 11th in free throw percentage (.814). Edwards signed a free agent contract with the WNBA's Tulsa Shock. Taylor also had a stellar senior campaign and collected the Big Ten Defensive Player of the Year award after leading the conference in steals. East also earned postseason honors as she was named All-Big Ten honorable mention. In addition, Washington was honored with her third consecutive Big Ten Coach of the Year honor.

The Lady Lions continued their run in the national spotlight in 2012-13 as they collected their second-straight Big Ten regular-season title and seventh overall with a 26-6

overall record and 14-2 mark in conference play. In each of Washington's first six years, Penn State improved its Big Ten win total. The Lady Lions posted their third consecutive 25-win season, joining the 1993-94, 1994-95 and 1995-96 squads as the only teams in program history to accomplish the feat. The Lady Lions were consistently ranked in the Top 10 for most of the season and finished eighth in the Associated Press Top 25 and 12th in the USA Today Sports Coaches' Poll.

With another stellar campaign, the accolades continued to roll in for the Lady Lions. Washington was selected as the Big Ten Coach of the Year by the media for the second-straight season and became just the fifth mentor in Big Ten history to win back-to-back Coach of the Year accolades. She was also the WBCA Region 6 Coach of the Year and a finalist for WBCA National Coach of the Year for the second-straight season.

The awards also piled up for Penn State's dynamic backcourt of Lucas and Alex Bentley. Lucas was selected as the Big Ten Player of the Year, was a Wade Trophy Finalist and was an All-America choice by four outlets, including the WBCA (honorable mention), Associated Press (second team), USBWA (first team) and Full Court (second team). She is just the third Lady Lion in program history to win Big Ten Player of the Year honors. Bentley earned her third-straight first team All-Big Ten award and honorable mention All-America bids from the WBCA and Associated Press. She was also selected as the 2013 recipient of the Frances Pomeroy Naismith Award, which is presented to the nation's outstanding female collegian 5-8 and under. Nikki Greene also capped a stellar career for the Lady Lions with third team All-Big Ten accolades. She also became the first player in school history to accumulate 1,000 points, 900 rebounds and 200 blocks.

Both Bentley and Greene heard their names called on WNBA Draft night. Bentley was selected with the 13th overall pick by the Atlanta Dream to become the highest draft pick for the Lady Lions since Tanisha Wright (12th) in 2005. Greene was the 26th overall selection by the Phoenix Mercury.

For her efforts in rebuilding the Penn State program, Washington was honored as the Big Ten Coach of the Year and the WBCA Region 6 Coach of the Year, making her a finalist for WBCA National Coach of the Year. The accolades were not just limited to Washington; all five Lady Lion starters earned All-Big Ten recognition, including first team bids for Bentley and Lucas. Both Bentley and Lucas also garnered honorable mention All-America honors from the WBCA and Associated Press, respectively.

THE WASHINGTON FILE

COACHING RESUME

2007-pres. - Head Coach, Penn State
2013 - Asst. Coach, USA Basketball World U. Games
2013-pres. - Vice President/President-Elect, WBCA
2012-pres. - Kay Yow Cancer Fund Board of Directors
2011-pres. - NCAA WBB Issues Committee
2010-13 - Treasurer, WBCA Executive Committee
2008-pres. - WBCA Board of Directors
2009-12 - USA Basketball Women's Jr. National Comm.
2005-07 - Associate Head Coach, Notre Dame
1999-05 - Assistant Coach, Notre Dame

PLAYING EXPERIENCE

2002-03 - WNBA's Indiana Fever
2000-02 - WNBA's Houston Comets
1998-99 - WNBA's New York Liberty
1997-98 - ABL's Portland Power
1989-93 - University of Notre Dame

EDUCATION

Notre Dame '92, B.A. History
Notre Dame Law School '97, Juris Doctorate

AWARDS

- ❖ 2012, 2013, 2014 Big Ten Coach of the Year
- ❖ 2012, 2013 WBCA Region 6 Coach of the Year
- ❖ 2012, 2013 WBCA National Coach of the Year Finalist
- ❖ 2011, 2013 BCA Female Coach of the Year
- ❖ 2009 Greater Flint Hall of Fame Inductee

FAMILY

Husband: Raynell Brown
Children: Quenton (9), Rhaiyna (5)

The Lady Lions returned to the national stage in Washington's fourth year with a second-place finish in the Big Ten regular season standings, a runner-up finish in the Big Ten Tournament and a berth in the NCAA Tournament. Penn State tallied its 23rd 20-win season with a 25-10 overall record and an 11-5 mark in conference play. The Lady Lions worked their way back to the "Big Dance" for the first time since 2004-05.

Washington came to Happy Valley after eight seasons as an associate head coach and assistant coach under Muffet McGraw at Notre Dame, her alma mater. During Washington's eight years on the bench, Notre Dame amassed a 188-69 record with eight NCAA Tournament appearances, including four Sweet Sixteen runs and a National Championship in 2001.

Washington was a four-year starting point guard for Notre Dame under McGraw and was the team captain on Notre Dame's first-ever NCAA Tournament team. She was a two-time All-Midwestern Collegiate Conference (MCC) selection and led Notre Dame to three MCC Tournament titles.

The epitome of a student-athlete, Washington graduated from Notre Dame in 1992, a full year ahead of schedule, with a bachelor's degree in history. She went on to attain "Double Domer" status in 1997 after earning her Juris Doctorate from the Notre Dame Law School.

Washington juggled finishing her law degree with the start of her professional basketball career. She returned to the hardwood as a professional in 1997-98, playing for the ABL's Portland Power before spending a two-year stint with the WNBA's New York Liberty (1998-99). Washington moved to Houston for the 2000 season, where she played an instrumental role in leading the Comets to the WNBA title. Washington guided the Fever to their first-ever playoff berth and became the first player in WNBA history to lead three different teams to the postseason.

In addition to assisting with the efforts of the Pink Zone at Penn State to raise money and awareness for breast cancer, Washington created Coquese's Drive for the Women's Resource Center. Coquese's Drive for the Women's Resource Center has raised more than \$118,000 to aid in the fight against domestic violence.

Washington is currently serving on the 29-member WBCA Board of Directors, where she is the Vice President/President-Elect of the Executive Committee.

Washington vs. Opponents

Albany.....	0-1	Holy Cross.....	1-0	Old Dominion.....	0-1
Alcorn State.....	1-0	Howard.....	1-0	Oregon State.....	1-0
Arizona.....	1-0	Illinois.....	10-3	Pittsburgh.....	2-1
Army.....	1-0	Illinois State.....	1-0	Prairie View A&M.....	1-0
Boston College.....	0-1	Indiana.....	7-4	Purdue.....	4-9
Bucknell.....	6-0	Iowa.....	7-6	Rider.....	1-0
Buffalo.....	1-0	Iowa State.....	1-0	Samford.....	0-1
Cal Poly.....	1-0	Lafayette.....	1-0	Seton Hall.....	0-1
CS-Northridge.....	1-0	Liberty.....	0-1	St. Bonaventure.....	0-1
Charlotte.....	1-0	LSU.....	1-1	St. Francis (Pa.).....	1-0
Connecticut.....	0-4	Maine.....	1-0	South Carolina.....	4-1
Coppin State.....	1-0	UMES.....	1-0	South Dakota St.....	1-1
Dayton.....	2-1	Miami (Fla.).....	0-1	Stanford.....	0-1
Delaware.....	1-1	Michigan.....	10-3	Stony Brook.....	1-0
DePaul.....	0-1	Michigan State.....	5-8	Syracuse.....	0-1
Detroit.....	1-0	Middle Tennessee.....	1-0	Texas A&M.....	2-1
Drexel.....	2-1	Minnesota.....	7-7	UTEP.....	1-0
Duke.....	1-0	Mississippi.....	1-0	Texas Tech.....	1-1
Fair Dickinson.....	1-0	Monmouth.....	1-0	Towson.....	1-0
Florida.....	1-0	Nebraska.....	3-2	Utah.....	1-0
Fordham.....	1-0	Nevada.....	1-0	Virginia Tech.....	2-0
Florida State.....	0-1	NJIT.....	2-0	Wagner.....	1-0
Georgetown.....	3-0	North Carolina.....	1-0	Washington State.....	1-0
Georgia Tech.....	0-1	Notre Dame.....	0-1	Wichita State.....	1-0
Hartford.....	2-0	Northwestern.....	9-1	Wisconsin.....	6-6
Hofstra.....	0-1	Oakland.....	2-0	UW-Green Bay.....	0-1
		Ohio State.....	6-7	Xavier.....	0-1





#1 Candice Agee

Jr. * C * 6-6 * Victorville, Calif./Silverado

Highlights:

- Ranks 19th in program history in blocked shots per game (0.7 bpg).
- Made her first start of the season and fourth of her career versus Seton Hall (11/22).

2014-15 Season Notes:

- Notched a career-high four blocks to go along with six points and five rebounds vs. Liberty (11/28).
- Had eight points, four rebounds and two blocks against St. Bonaventure (11/25).
- Went 9-for-15 from the field en route to a career-high 21 points with five rebounds, two blocks and two steals in just 17 minutes against Seton Hall (11/22).
- Blocked three shots and had two steals against Albany (11/16).
- Nearly posted a double-double with nine points and nine rebounds, which tied her career high, in the season-opening win over Towson (11/14).

Notable:

- 2012 McDonald's High School All-American.
- Competed for the United States in the FIBA U19 World Championship (July 2013) and FIBA Americas U18 Championship (August 2012).

14-15 GAME-BY-GAME

OPPONENT	Min.	FG	3FG	FT	O-D-R	PF	A	TO	B	S	Pts
TOWSON	18	3-6	0-0	3-6	4-5-9	1	0	0	0	0	9
ALBANY	19	1-6	0-0	0-0	1-4-5	4	2	1	3	2	4
SETON HALL	17	9-15	0-0	3-6	3-2-5	4	1	1	2	2	21
ST. BONA	24	4-8	0-0	0-0	1-3-4	3	2	3	2	1	8
vs. Liberty	22	2-4	0-0	2-4	2-3-5	1	0	2	4	1	6
vs. Samford	2	0-1	0-0	0-0	0-0-0	0	0	1	0	0	0
at Syracuse											
WAGNER											
at Hartford											
RIDER											
USF											
at Iowa											
at Michigan											
ILLINOIS											
at Wisconsin											
RUTGERS											
at Nebraska											
at Ohio State											
INDIANA											
NORTHWESTERN											
at Minnesota											
at Rutgers											
MARYLAND											
at Purdue											
MICHIGAN ST.											
MINNESOTA											
at Maryland											
OHIO STATE											
WISCONSIN											

AGEE'S CAREER/SEASON HIGHS

	SEASON HIGHS	CAREER HIGHS
Points	21 vs. Seton Hall (11/22/14)	21 vs. Seton Hall (11/22/14)
Rebs.	9 vs. Towson (11/14/14)	9 vs. Towson (11/14/14)
		9 vs. Fairleigh Dickinson (12/2/12)
Assists	2 vs. St. Bonaventure (11/25/14)	2 vs. St. Bonaventure (11/25/14)
	2 vs. Albany (11/16/14)	2 vs. Albany (11/16/14)
Steals	2 vs. Seton Hall (11/22/14)	2 3x last vs. Seton Hall (11/22/14)
	2 vs. Albany (11/16/14)	
Blocks	4 vs. Liberty (11/28/14)	4 vs. Liberty (11/28/14)
Minutes	24 vs. St. Bonaventure (11/25/14)	24 vs. St. Bonaventure (11/25/14)
FGM	9 vs. Seton Hall (11/22/14)	9 vs. Seton Hall (11/22/14)
FGA	15 vs. Seton Hall (11/22/14)	15 vs. Seton Hall (11/22/14)
3FGM	n/a	n/a
3FGA	n/a	n/a
FTM	3 vs. Seton Hall (11/22/14)	4 vs. Illinois (2/20/13)
	3 vs. Towson (11/14/14)	
FTA	6 vs. Seton Hall (11/22/14)	8 vs. Illinois (2/20/13)
	6 vs. Towson (11/14/14)	

AGEE'S MISCELLANEOUS STATS

Category	Season	Career	Last Time
Double Figure Scoring	1	2	21 vs. Seton Hall (11/22/14)
20-point games	1	1	21 vs. Seton Hall (11/22/14)
Double Figure Rebounds	n/a	n/a	
5-plus Rebounds	4	11	5 vs. Liberty (11/28/14)
5-plus Assists	n/a	n/a	
3-plus Blocks	2	3	4 vs. Liberty (11/28/14)
Double-Doubles	n/a	n/a	

AGEE'S CAREER STATS

Year	GP-GS	MIN	FG-A	PCT	3FG-A	PCT	FT-A	PCT	REB	AVG	PF-O	A	TO	B	S	PTS	AVG
2012-13	26-0	204	20-54	.370	0-0	.000	11-20	.550	17-31-48	1.8	33-0	2	13	13	4	51	2.0
2013-14	32-3	330	34-84	.405	0-0	.000	31-61	.508	31-43-74	2.3	54-1	8	28	21	4	99	3.1
2014-15	6-3	102	19-40	.475	0-0	.000	8-16	.500	11-17-28	4.7	13-0	5	8	11	6	46	7.7
TOTAL	64-6	636	73-178	.410	0-0	.000	50-97	.515	59-91-150	2.3	100-1	15	49	45	14	196	3.1





#3 Brianna Banks

RS-Sr. * G * 5-9 * Newnan, Ga./Fayette County (Connecticut)

2014-15 Season:

- Will sit out the 2014-15 season due to NCAA Transfer Rules after transferring from Connecticut.
- Has one year of eligibility remaining.

2013-14 Season (at Connecticut):

- Started eight-straight games (November 20 - December 22).
- Dished out five assists to go with four points and three steals against UCF (2/19).
- Notched three steals to compliment four points, three assists and five rebounds at Cincinnati (2/1).
- Registered seven points three assists and three steals at UCF (1/1).
- Connected on three of her four shots from the field en route to eight points, five rebounds, four assists and three steals against UC Davis (12/5).
- Had a season-high 12 points with a career-best seven rebounds in the win over Ohio State (12/1).
- Was 4-for-5 from the field, including 3-for-3 from three-point range, on the way to 12 points against Monmouth (11/23).
- Chipped in with 10 points on 4-6 shooting in a season-high 31-minutes of action against Oregon (11/20).
- Had nine points and three rebounds at #8/7 Maryland (11/15).

2012-13 Season (at Connecticut):

- Finished sixth on the team in scoring (7.3).
- Had 12 points to go along with four rebounds at Marquette (1/12).
- Tallied 18 points on 8-of-13 shooting and pulled in six rebounds against Oakland (12/19).
- Registered 10 points and two steals against #10/10 Penn State (12/6).
- Connected on three of her four three-point attempts en route to 11 points against #9/10 Maryland (12/3).
- Had a career-high 20 points thanks to a 6-for-10 shooting night, including a 4-for-5 effort from beyond the arc, against Colgate (11/28).
- Had a balanced statistical night with 12 points, six assists, two rebounds and a steal with only one turnover in 20 minutes against Wake Forest (11/22).
- Opened the season with a perfect 5-for-5 shooting night for 10 points against Charleston (11/11).

2011-12 Season (at Connecticut):

- Shot 50.5 percent from the field.
- Hit on all three of her shots from the field en route to eight points with four assists and two steals at Marquette (2/25).
- Was 5-for-5 from the field and finished with 12 points, two rebounds and two steals against Fairfield (12/29).
- Collected 17 points via a 7-for-10 shooting effort and 3-for-3 night at the free throw line against Fairleigh Dickinson (11/25).
- Tallied 12 points thanks to a 5-for-7 shooting night against Pacific (11/15).

High School:

- Averaged 16.2 points, 5.5 rebounds, 5.1 assists and 5.0 steals per game in her final season at Fayette County High School, which ended in a State Championship.
- Honored as a 2011 McDonald's All-American and WBCA Honorable Mention All-American in addition to being named "Miss Basketball" in the state of Georgia.
- Honored as the Fayette County Player of the Year by the *Fayette County News* and selected to the All-State first team in 2011.
- Led the West Team with 17 points on 7-of-12 shooting in the 2011 McDonald's All-American Game.
- Was a second team All-State selection and the Coweta County Player of the year during her junior season.
- Rated as the No. 24 overall recruit by ESPN Hoopgurlz and the No. 15 overall prospect by the All-Star Girls Report.
- Tabbed as the No. 11 recruit nationally by Blue Star.
- Honored as a first team All-Metro selection by the *Atlanta Journal-Constitution* in 2009-10.
- Selected as the 2010 Coweta County Player of the Year by the *Times-Herald*.

BANKS' CAREER STATS

Year	GP-GS	MIN	FG-A	PCT	3FG-A	PCT	FT-A	PCT	REB	AVG	PF-O	A	TO	B	S	PTS	AVG
2011-12*	32-0	393	46-91	.505	3-24	.125	19-27	.704	5-30-35	1.1	27-0	32	31	3	25	114	3.6
2012-13*	21-0	359	56-117	.479	18-52	.346	23-33	.697	6-30-36	1.7	22-0	35	22	4	25	153	7.3
2013-14*	37-8	527	49-103	.476	13-44	.295	19-29	.655	20-37-57	1.5	42-1	45	27	6	34	130	3.5
CAREER	90-8	1279	151-311	.486	34-120	.283	61-89	.685	31-97-128	1.4	91-1	112	80	13	84	397	4.4

* - at Connecticut

10-Time Big Ten Champions • Two-Time Big Ten Tournament Champions • 2000 NCAA Final Four • 25 NCAA Tournament Appearances





#5 Sierra Moore

RS-So. * G * 5-11 * Hanover, Pa./Delone Catholic (Duke)

Highlights:

- Sat out the 2013-14 season due to NCAA Transfer Rules.
- Selected as a team tri-captain.
- Named to the Georgia State Thanksgiving Tournament All-Tournament team.

- Posted first career double-double with 14 points and a personal-best 10 rebounds against Seton Hall (11/22).

2014-15 Season Notes:

- Poured in a team- and career-high 17 points for her fourth straight double-digit scoring effort vs. Samford (11/30), adding three assists and two steals against the Bulldogs.
- Scored 14 points, grabbed five rebounds and handed out four assists vs. Liberty (11/28).
- Had a game- and then-career-high 15 points via a 6-for-12 shooting performance versus St. Bonaventure (11/25).
- Tallied eight points to go along with three rebounds, three assists and a steal versus Albany (11/16).
- Filled the stats sheet with 12 points, five rebounds, four assists, two blocks and a steal in the win over Towson (11/14).
- Scored 15 of her team-best 18 points over the final 11:44 of the contest to propel the Lady Lions to an exhibition win over IUP (11/2).

Notable:

- Appeared in 25 games as a freshman at Duke.
- Garnered Gatorade Player of the Year and Associated Press Class AA Player of the Year honors in the state of Pennsylvania as a high school senior year.
- Was a McDonald's High School All-American in 2011-12.
- Holds the York-Adams Interscholastic Athletic Association (YAIAA) scoring record with 2,595 points at Delone Catholic.
- Was also a track standout, finishing in the Top 10 in the State Championships in the 200-meters (7th in 2009 and 2010) and 4x100 relay (4th in 2009).

14-15 GAME-BY-GAME

OPPONENT	Min.	FG	3FG	FT	O-D-R	PF	A	TO	B	S	Pts
TOWSON	39	5-12	1-1	1-3	1-4-5	0	4	4	2	1	12
ALBANY	30	4-8	0-0	0-1	2-1-3	4	3	4	1	1	8
SETON HALL	37	5-12	0-0	4-6	7-3-10	1	5	3	1	0	14
ST. BONA	37	6-12	0-0	3-6	1-4-5	3	3	3	0	0	15
vs. Liberty	33	5-10	0-0	4-7	2-3-5	5	4	3	0	1	14
vs. Samford	40	4-10	1-2	8-10	1-0-1	5	3	3	0	2	17
at Syracuse											
WAGNER											
at Hartford											
RIDER											
USF											
at Iowa											
at Michigan											
ILLINOIS											
at Wisconsin											
RUTGERS											
at Nebraska											
at Ohio State											
INDIANA											
NORTHWESTERN											
at Minnesota											
at Rutgers											
MARYLAND											
at Purdue											
MICHIGAN ST.											
MINNESOTA											
at Maryland											
OHIO STATE											
WISCONSIN											

MOORE'S CAREER/SEASON HIGHS

	SEASON HIGHS	CAREER HIGHS
Points	17 vs. Samford (11/30/14)	17 vs. Samford (11/30/14)
Rebs.	10 vs. Seton Hall (11/22/14)	10 vs. Seton Hall (11/22/14)
Assists	5 vs. Seton Hall (11/22/14)	5 vs. Seton Hall (11/22/14)
Steals	2 vs. Samford (11/30/14)	3 vs. Iowa (11/18/12)
Blocks	2 vs. Towson (11/14/14)	2 vs. Towson (11/14/14)
Minutes	40 vs. Samford (11/30/14)	40 vs. Samford (11/30/14)
FGM	6 vs. St. Bonaventure (11/25/14)	6 vs. St. Bonaventure (11/25/14)
FGA	12 (3x) last vs. St. Bonaventure (11/25/14)	12 (3x) vs. St. Bonaventure (11/25/14)
3FGM	1 vs. Samford (11/30/14) 1 vs. Towson (11/14/14)	1 vs. Samford (11/30/14) 1 vs. Towson (11/14/14)
3FGA	2 vs. Samford (11/30/14)	2 vs. Samford (11/30/14)
FTM	8 vs. Samford (11/30/14)	8 vs. Samford (11/30/14)
FTA	10 vs. Samford (11/30/14)	10 vs. Samford (11/30/14)

italics indicate at Duke

MOORE'S MISCELLANEOUS STATS

Category	Season	Career	Last Time
Double Figure Scoring	5	6	17 vs. Samford (11/30/14)
20-point games	n/a	n/a	
Double Figure Rebounds	1	1	10 vs. Seton Hall (11/22/14)
5-plus Rebounds	4	5	5 vs. Samford (11/30/14)
5-plus Assists	1	1	5 vs. Seton Hall (11/22/14)
3-plus Steals	n/a	1	3 vs. Iowa (11/18/12)
Double-Doubles	1	1	14p, 10r vs. Seton Hall (11/22/14)

MOORE'S CAREER STATS

Year	GP-GS	MIN	FG-A	PCT	3FG-A	PCT	FT-A	PCT	REB	AVG	PF-O	A	TO	B	S	PTS	AVG
2012-13*	25-0	194	26-58	.448	0-0	.000	11-22	.500	11-13-24	1.0	21-0	12	6	2	11	63	2.5
2014-15	6-6	216	29-64	.453	2-3	.667	20-33	.606	14-15-29	4.8	18-2	22	20	4	5	80	13.3
PSU	6-6	216	29-64	.453	2-3	.667	20-33	.606	14-15-29	4.8	18-2	22	20	4	5	80	13.3
TOTAL	31-6	410	55-122	.451	2-3	.667	31-55	.564	25-28-53	1.7	39-2	34	26	6	16	143	4.6

* - at Duke





#10 Keke Sevillian

So. * G * 5-7 * Goodrich, Mich./Goodrich

Highlights:

- Made first career start against Seton Hall (11/22).

2014-15 Season Notes:

- Knocked down a pair of three-pointers and dished out a career-high five assists in the season-opener against Towson (11/14).
- Tallied four points, four rebounds, three assists and three steals in the exhibition win over IUP (11/2).

Notable:

- Led Goodrich High School in Michigan to its first-ever Class B State Championship in 2011-12 with a perfect 28-0 record.
- Holds the Goodrich High School record in the 300-meter hurdles and 200-meter dash and finished second in the state championships in the 300-meters hurdles her freshman and sophomore seasons.
- Father, Clarence, was a wide receiver for the Vanderbilt football team from 1989-92 and ranks in the school's Top 10 in career receiving yards.
- Aunt, Nicole Hendrix, played basketball at Stanford from 1991-94, winning a National Championship in 1992.

14-15 GAME-BY-GAME

OPPONENT	Min.	FG	3FG	FT	O-D-R	PF	A	TO	B	S	Pts
TOWSON	19	2-6	2-5	0-1	0-1-1	2	5	0	0	0	6
ALBANY	13	0-5	0-3	0-0	0-0-0	4	1	1	0	2	0
SETON HALL	14	0-5	0-2	1-2	0-0-0	2	1	2	0	1	1
ST. BONA	10	0-4	0-0	0-0	0-0-0	0	1	1	0	1	0
vs. Liberty	7	0-0	0-0	0-0	0-0-0	4	1	0	0	1	0
vs. Samford	9	0-1	0-0	0-0	0-0-0	2	1	2	0	0	0
at Syracuse											
WAGNER											
at Hartford											
RIDER											
USF											
at Iowa											
at Michigan											
ILLINOIS											
at Wisconsin											
RUTGERS											
at Nebraska											
at Ohio State											
INDIANA											
NORTHWESTERN											
at Minnesota											
at Rutgers											
MARYLAND											
at Purdue											
MICHIGAN ST.											
MINNESOTA											
at Maryland											
OHIO STATE											
WISCONSIN											

SEVILLIAN'S CAREER/SEASON HIGHS

	SEASON HIGHS	CAREER HIGHS
Points	6 vs. Towson (11/14/14)	8 vs. St. Francis (Pa.) (11/8/13)
Rebs.	1 vs. Towson (11/14/14)	3 vs. St. Francis (Pa.) (11/8/13)
Assists	5 vs. Towson (11/14/14)	5 vs. Towson (11/14/14)
Steals	2 vs. Albany (11/16/14)	4 vs. St. Francis (Pa.) (11/8/13)
Blocks	n/a	n/a
Minutes	19 vs. Towson (11/14/14)	19 vs. Towson (11/14/14)
FGM	2 vs. Towson (11/14/14)	2 (3x) last vs. Towson (11/14/14)
FGA	6 vs. Towson (11/14/14)	6 vs. Towson (11/14/14) 6 vs. St. Francis (Pa.) (11/8/13)
3FGM	2 vs. Towson (11/14/14)	2 vs. Towson (11/14/14)
3FGA	5 vs. Towson (11/14/14)	5 vs. Towson (11/14/14)
FTM	1 vs. Seton Hall (11/22/14)	4 vs. St. Francis (Pa.) (11/8/13)
FTA	2 vs. Seton Hall (11/22/14)	4 vs. St. Francis (Pa.) (11/8/13)

SEVILLIAN'S MISCELLANEOUS STATS

Category	Season	Career	Last Time
Double Figure Scoring	n/a	n/a	
20-point games	n/a	n/a	
Double Figure Rebounds	n/a	n/a	
5-plus Rebounds	n/a	n/a	
5-plus Assists	1	1	5 vs. Towson (11/14)
3-plus Steals	n/a	n/a	
Double-Doubles	n/a	n/a	

SEVILLIAN'S CAREER STATS

Year	GP-GS	MIN	FG-A	PCT	3FG-A	PCT	FT-A	PCT	REB	AVG	PF-O	A	TO	B	S	PTS	AVG
2013-14	22-0	120	8-28	.286	4-13	.308	11-13	.846	1-11-12	0.5	19-0	5	15	0	8	31	1.4
2014-15	6-1	72	2-21	.095	2-10	.200	1-3	.333	0-1-1	0.2	14-0	10	6	0	5	7	1.2
TOTAL	28-1	192	10-49	.204	6-23	.261	12-16	.750	1-12-13	0.5	33-0	15	21	0	13	38	1.4

10-Time Big Ten Champions • Two-Time Big Ten Tournament Champions • 2000 NCAA Final Four • 25 NCAA Tournament Appearances





#11 Alex Harris

So. * F * 6-3 * Lorain, Ohio/Lorain

Notable:

- ♦ Appeared in 29 contests as a freshman.
- ♦ Had three double-digit rebounding performances as a freshman and 10 outings with five or more rebounds.
- ♦ Collegiate Girls Basketball Report and All-Star Girls Report both rated her as the 49th-ranked recruit .
- ♦ Named 2012-13 Division 1 Lorain County Player of the Year.

14-15 GAME-BY-GAME

OPPONENT	Min.	FG	3FG	FT	O-D-R	PF	A	TO	B	S	Pts
TOWSON	DNP										
ALBANY	DNP										
SETON HALL	DNP										
ST. BONA	DNP										
vs. Liberty	DNP										
vs. Samford	DNP										
at Syracuse											
WAGNER											
at Hartford											
RIDER											
USF											
at Iowa											
at Michigan											
ILLINOIS											
at Wisconsin											
RUTGERS											
at Nebraska											
at Ohio State											
INDIANA											
NORTHWESTERN											
at Minnesota											
at Rutgers											
MARYLAND											
at Purdue											
MICHIGAN ST.											
MINNESOTA											
at Maryland											
OHIO STATE											
WISCONSIN											

HARRIS' CAREER/SEASON HIGHS

	SEASON HIGHS	CAREER HIGHS
Points	n/a	8 vs. Bucknell (11/20/13)
Rebs.	n/a	11 vs. Illinois State (11/30/13)
		11 vs. Bucknell (11/20/13)
Assists	n/a	2 vs. Illinois State (11/30/13)
Steals	n/a	1 (6x) last at Indiana (2/13/14)
Blocks	n/a	3 at Purdue (1/30/14)
		3 vs. St. Francis (Pa.) (11/8/13)
Minutes	n/a	22 vs. Fordham (11/10/13)
FGM	n/a	3 vs. Bucknell (11/20/13)
FGA	n/a	5 vs. Purdue (1/12/14)
		5 vs. Oregon State (11/29/13)
3FGM	n/a	n/a
3FGA	n/a	n/a
FTM	n/a	2 (5x) last vs. Notre Dame (12/4/13)
FTA	n/a	5 vs. Bucknell (11/20/13)

HARRIS' MISCELLANEOUS STATS

Category	Season	Career	Last Time
Double Figure Scoring	n/a	n/a	
20-point games	n/a	n/a	
Double Figure Rebounds	n/a	3	11 vs. Illinois State (11/30/13)
5-plus Rebounds	n/a	10	5 vs. Minnesota (1/26/14)
5-plus Blocks	n/a	n/a	
3-plus Blocks	n/a	1	3 at Purdue (1/30/14)
Double-Doubles	n/a	n/a	

HARRIS' CAREER STATS

Year	GP-GS	MIN	FG-A	PCT	3FG-A	PCT	FT-A	PCT	REB	AVG	PF-O	A	TO	B	S	PTS	AVG
2013-14	29-0	256	20-50	.400	0-0	.000	17-34	.500	39-57-96	3.3	33-0	5	19	15	6	57	2.0
CAREER	29-0	256	20-50	.400	0-0	.000	17-34	.500	39-57-96	3.3	33-0	5	19	15	6	57	2.0





#12 Lindsey Spann

RS-Fr. * G * 5-6 * Laurel, Md./Good Counsel

Highlights:

- Selected as a team tri-captain.
- Has reached double-figure in scoring in each of her first six career games, a feat not accomplished by Penn State's top two career scoring leaders, Kelly Mazzante and Maggie Lucas.

2014-15 Season Notes:

- Posted her sixth consecutive game in double figures with 10 points vs. Samford (11/30), adding five assists and three steals in 41 minutes of action.
- Scored a team-best and tied her career-high with 17 points and seven field goals vs. Liberty (11/28), to go along with three assists and two steals.
- Reached double figures with 13 points to go along with five assists and two steals against St. Bonaventure (11/25).
- Chipped in 12 points and three steals against Seton Hall (11/22).
- Led the Lady Lions in scoring for the second straight game with 14 points against Albany (11/16), marking the first time a freshman has been the team's leading scorer in two straight games since Maggie Lucas did so vs. Minnesota (1/13/11) and vs. Illinois (1/16/11).
- Went 7-for-14 from the field for a team-high 17 points in her collegiate debut against Towson (11/14).
- Also tallied five rebounds and four assists against the Tigers.
- Recorded 14 points and dished out four assists in the exhibition win over IUP (11/2).

Notable:

- Missed the 2013-14 season after tearing her right ACL.
- Ranked as the 22nd-best player by Collegiate Girls Basketball Report and 88th-rated player by Blue Star Basketball.
- Guided Good Counsel to a 25-5 overall record and 16-3 mark in league play.
- Participated in USA Basketball's U16 Trials in May 2011.

14-15 GAME-BY-GAME

OPPONENT	Min.	FG	3FG	FT	O-D-R	PF	A	TO	B	S	Pts
TOWSON	32	7-14	0-2	3-4	0-5-5	2	4	4	0	0	17
ALBANY	31	6-12	1-3	1-2	0-1-1	3	4	3	0	0	14
SETON HALL	27	4-10	2-4	2-2	0-2-2	5	1	5	0	3	12
ST. BONA	34	4-14	2-6	3-4	1-1-2	3	5	1	0	2	13
vs. Liberty	37	7-21	0-7	3-3	0-0-0	3	3	7	0	2	17
vs. Samford	41	3-13	0-2	4-6	1-1-2	4	5	4	0	3	10
at Syracuse											
WAGNER											
at Hartford											
RIDER											
USF											
at Iowa											
at Michigan											
ILLINOIS											
at Wisconsin											
RUTGERS											
at Nebraska											
at Ohio State											
INDIANA											
NORTHWESTERN											
at Minnesota											
at Rutgers											
MARYLAND											
at Purdue											
MICHIGAN ST.											
MINNESOTA											
at Maryland											
OHIO STATE											
WISCONSIN											

SPANN'S CAREER/SEASON HIGHS

	SEASON HIGHS	CAREER HIGHS
Points	17 vs. Liberty (11/28/14) 17 vs. Towson (11/14/14)	17 vs. Liberty (11/28/14) 17 vs. Towson (11/14/14)
Rebs.	5 vs. Towson (11/14/14)	5 vs. Towson (11/14/14)
Assists	5 vs. Samford (11/30/14) 5 vs. St. Bonaventure (11/25/14)	5 vs. Samford (11/30/14) 5 vs. St. Bonaventure (11/25/14)
Steals	3 vs. Samford (11/30/14) 3 vs. Seton Hall (11/22/14)	3 vs. Samford (11/30/14) 3 vs. Seton Hall (11/22/14)
Blocks	n/a	n/a
Minutes	41 5 vs. Samford (11/30/14)	41 vs. Samford (11/30/14)
FGM	7 vs. Liberty (11/28/14) 7 vs. Towson (11/14/14)	7 vs. Liberty (11/28/14) 7 vs. Towson (11/14/14)
FGA	21 vs. Liberty (11/28/14)	21 vs. Liberty (11/28/14)
3FGM	2 vs. St. Bonaventure (11/25/14) 2 vs. Seton Hall (11/22/14)	2 vs. St. Bonaventure (11/25/14) 2 vs. Seton Hall (11/22/14)
3FGA	7 vs. Liberty (11/28/14)	7 vs. Liberty (11/28/14)
FTM	4 vs. Samford (11/30/14)	4 vs. Samford (11/30/14)
FTA	6 vs. Samford (11/30/14)	6 vs. Samford (11/30/14)

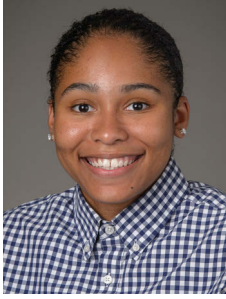
SPANN'S MISCELLANEOUS STATS

Category	Season	Career	Last Time
Double Figure Scoring	6	6	10 vs. Samford (11/30/14)
20-point games	n/a	n/a	
Double Figure Rebounds	n/a	n/a	
5-plus Rebounds	1	1	5 vs. Towson (11/14/14)
5-plus Assists	2	2	5 vs. Samford (11/30/14)
3-plus Steals	2	2	3 vs. Samford (11/30/14)
Double-Doubles	n/a	n/a	

SPANN'S CAREER STATS

Year	GP-GS	MIN	FG-A	PCT	3FG-A	PCT	FT-A	PCT	REB	AVG	PF-O	A	TO	B	S	PTS	AVG
2014-15	6-6	202	31-84	.369	5-24	.208	16-21	.762	2-10-12	2.0	20-1	22	24	0	10	83	13.8
TOTAL	6-6	202	31-84	.369	5-24	.208	16-21	.762	2-10-12	2.0	20-1	22	24	0	10	83	13.8





#14 Dominique Brooks

Jr. * C * 6-4 * Lansing, Ill./T.F. South (Trinity Valley C.C.)

2014-15 Season Notes:

- ♦ Connected on her lone field goal attempt vs. Liberty (11/28).
- ♦ Hit a pair of free throws in her Penn State debut in the win over Towson (11/14)
- ♦ Had four rebounds and a blocked shot in the exhibition win against IUP (11/2).

14-15 GAME-BY-GAME

OPPONENT	Min.	FG	3FG	FT	O-D-R	PF	A	TO	B	S	Pts
TOWSON	3	0-0	0-0	2-2	0-0-0	1	0	0	0	0	2
ALBANY	2	0-0	0-0	0-0	0-0-0	1	0	1	0	0	0
SETON HALL	3	0-0	0-0	0-0	0-0-0	2	0	0	0	0	0
ST. BONA	1	0-0	0-0	0-0	0-0-0	0	0	1	0	0	0
vs. Liberty	2	1-1	0-0	0-0	0-0-0	0	0	0	0	0	2
vs. Samford	DNP										
at Syracuse											
WAGNER											
at Hartford											
RIDER											
USF											
at Iowa											
at Michigan											
ILLINOIS											
at Wisconsin											
RUTGERS											
at Nebraska											
at Ohio State											
INDIANA											
NORTHWESTERN											
at Minnesota											
at Rutgers											
MARYLAND											
at Purdue											
MICHIGAN ST.											
MINNESOTA											
at Maryland											
OHIO STATE											
WISCONSIN											

Notable:

- ♦ Won two NJCAA National Championships while at Trinity Valley Community College.
- ♦ Participated in USA Basketball U18 Trials in 2012

BROOKS' CAREER/SEASON HIGHS

	SEASON HIGHS	CAREER HIGHS
Points	2 vs. Liberty (11/28/14) 2 vs. Towson (11/14/14)	2 vs. Liberty (11/28/14) 2 vs. Towson (11/14/14)
Rebs.	n/a	n/a
Assists	n/a	n/a
Steals	n/a	n/a
Blocks	n/a	n/a
Minutes	3 vs. Seton Hall (11/22/14) 3 vs. Towson (11/14/14)	3 vs. Seton Hall (11/22/14) 3 vs. Towson (11/14/14)
FGM	1 vs. Liberty (11/28/14)	1 vs. Liberty (11/28/14)
FGA	1 vs. Liberty (11/28/14)	1 vs. Liberty (11/28/14)
3FGM	n/a	n/a
3FGA	n/a	n/a
FTM	2 vs. Towson (11/14/14)	2 vs. Towson (11/14/14)
FTA	2 vs. Towson (11/14/14)	2 vs. Towson (11/14/14)

BROOKS' MISCELLANEOUS STATS

Category	Season	Career	Last Time
Double Figure Scoring	n/a	n/a	
20-point games	n/a	n/a	
Double Figure Rebounds	n/a	n/a	
5-plus Rebounds	n/a	n/a	
5-plus Assists	n/a	n/a	
3-plus Steals	n/a	n/a	
Double-Doubles	n/a	n/a	

BROOKS' CAREER STATS

Year	GP-GS	MIN	FG-A	PCT	3FG-A	PCT	FT-A	PCT	REB	AVG	PF-O	A	TO	B	S	PTS	AVG
2014-15	5-0	11	1-1	1.000	0-0	.000	2-2	1.000	0-0-0	0.0	4-0	0	2	0	0	4	0.8
TOTAL	5-0	11	1-1	1.000	0-0	.000	2-2	1.000	0-0-0	0.0	4-0	0	2	0	0	4	0.8





#15 Kaliyah Mitchell

So. * F * 6-2 * Stone Mountain, Ga./Stephenson

Highlights:

- ♦ Second-leading returning scorer and rebounder from 2013-14.
- ♦ Made 16-straight free throw attempts from 2/20/14 until 11/14/14.

2014-15 Season Notes:

- ♦ Narrowly missed a double-double with eight points and nine rebounds vs. Samford (11/30), adding one assist, two steals and a career-high tying two blocks.
- ♦ Logged 10 points, five rebounds and a career-high five steals vs. Liberty (11/28).
- ♦ Pulled in nine rebounds against St. Bonaventure (11/25).
- ♦ Registered eight points and tied her career high with 10 rebounds against Seton Hall (11/22).
- ♦ Chipped in nine points, six rebounds and tied her career high with four steals against Albany (11/16).
- ♦ Accounted for 10 points and a team-best three steals against Towson (11/14).
- ♦ Posted a near double-double with 12 points, nine rebounds and three steals in the exhibition win versus IUP (11/2).

Notable:

- ♦ Was the 54th-ranked recruit by Collegiate Girls Basketball Report and 40th-ranked recruit by All-Star Girls Report.
- ♦ Brother, Kenny, was an all-conference basketball player at Virginia State University.

14-15 GAME-BY-GAME

OPPONENT	Min.	FG	3FG	FT	O-D-R	PF	A	TO	B	S	Pts
TOWSON	25	3-8	0-2	4-6	2-3-4	4	0	3	0	3	10
ALBANY	30	2-7	1-2	4-5	1-5-6	4	0	5	0	4	9
SETON HALL	32	2-9	0-1	4-6	3-7-10	2	0	1	1	0	8
ST. BONA	29	1-7	0-1	0-1	1-8-9	3	1	3	0	4	2
vs. Liberty	27	4-12	0-3	2-3	1-4-5	4	0	3	0	5	10
vs. Samford	38	3-10	0-1	2-3	1-8-9	5	1	2	2	2	8
at Syracuse											
WAGNER											
at Hartford											
RIDER											
USF											
at Iowa											
at Michigan											
ILLINOIS											
at Wisconsin											
RUTGERS											
at Nebraska											
at Ohio State											
INDIANA											
NORTHWESTERN											
at Minnesota											
at Rutgers											
MARYLAND											
at Purdue											
MICHIGAN ST.											
MINNESOTA											
at Maryland											
OHIO STATE											
WISCONSIN											

MITCHELL'S CAREER/SEASON HIGHS

	SEASON HIGHS	CAREER HIGHS
Points	10 vs. Liberty (11/28/14) 10 vs. Towson (11/14/14)	14 vs. Bucknell (11/20/13)
Rebs.	10 vs. Seton Hall (11/22/14)	10 vs. Seton Hall (11/22/14) 10 at Michigan State (1/19/14)
Assists	1 vs. Samford (11/30/14) 1 vs. St. Bonaventure (11/25/14)	2 (6x) last vs. Florida (3/25/14)
Steals	5 vs. Liberty (11/28/14)	5 vs. Liberty (11/28/14)
Blocks	2 vs. Samford (11/30/14)	2 vs. Samford (11/30/14) 2 at Iowa (1/5/14)
Minutes	38 vs. Samford (11/30/14)	38 vs. Samford (11/30/14)
FGM	4 vs. Liberty (11/28/14)	5 vs. St. Francis (Pa.) (11/8/13)
FGA	12 vs. Liberty (11/28/14)	12 vs. Liberty (11/28/14)
3FGM	1 vs. Albany (11/16/14)	1 vs. Albany (11/16/14) 1 vs. Illinois State (11/30/13)
3FGA	3 vs. Liberty (11/28/14)	3 vs. Liberty (11/28/14) 3 at Nebraska (2/24/14)
FTM	4 3x last vs. Seton Hall (11/22/14)	7 vs. Northwestern (2/20/14)
FTA	6 vs. Towson (11/14/14)	7 (3x) last vs. Northwestern (2/20/14)

MITCHELL'S MISCELLANEOUS STATS

Category	Season	Career	Last Time
Double Figure Scoring	2	4	10 vs. Liberty (11/28/14)
20-point games	n/a	n/a	
Double Figure Rebounds	1	2	10 vs. Seton Hall (11/22/14)
5-plus Rebounds	4	17	9 vs. Samford (11/30/14)
5-plus Assists	n/a	n/a	
3-plus Steals	4	6	5 vs. Liberty (11/28/14)
Double-Doubles	n/a	n/a	

MITCHELL'S CAREER STATS

Year	GP-GS	MIN	FG-A	PCT	3FG-A	PCT	FT-A	PCT	REB	AVG	PF-O	A	TO	B	S	PTS	AVG
2013-14	32-0	546	41-114	.360	1-14	.071	61-83	.735	40-100-140	4.4	64-2	28	26	5	20	144	4.5
2014-15	6-6	181	15-53	.283	1-10	.100	16-24	.667	8-34-42	7.0	22-1	2	17	3	18	47	7.8
TOTAL	38-6	727	56-167	.335	2-24	.083	77-107	.720	48-134-182	4.8	86-3	30	43	8	38	191	5.0

10-Time Big Ten Champions • Two-Time Big Ten Tournament Champions • 2000 NCAA Final Four • 25 NCAA Tournament Appearances





#25 Peyton Whitted

So. * F * 6-3 * Suwanee, Ga./North Gwinnett

2014-15 Season Notes:

- Scored seven points and had five rebounds vs. Liberty (11/28).
- Tallied six points, seven rebounds and two assists against Seton Hall (11/22).
- Grabbed nine rebounds with four points and two assists in the win over Towson (11/14).
- Pulled in 10 rebounds to go along with eight points and five assists in the exhibition win over IUP (11/2).

Notable:

- Led North Gwinnett to the Georgia State Championship game after averaging 13.7 points, 5.7 rebounds, 1.4 steals and 2.0 assists per game as a senior.
- Participated in USA Basketball's U16 Trials in May 2011.
- Father, Kevin, played basketball at Tennessee from 1993-95.
- Kevin is currently the head coach of the NBA D-League's Westchester Knicks.
- Kevin broke Michael Jordan's Laney High School scoring record with 1,554 points.

14-15 GAME-BY-GAME

OPPONENT	Min.	FG	3FG	FT	O-D-R	PF	A	TO	B	S	Pts
TOWSON	23	2-5	0-0	0-0	3-6-9	3	2	3	0	1	4
ALBANY	19	1-5	0-1	0-1	1-3-4	4	1	3	0	1	2
SETON HALL	23	2-6	0-3	2-6	1-6-7	3	2	4	1	1	6
ST. BONA	9	2-3	0-1	0-0	1-0-1	2	0	0	0	1	4
vs. Liberty	18	3-6	1-1	0-0	3-2-5	5	0	2	0	0	7
vs. Samford	23	1-7	0-1	0-0	1-4-5	4	0	1	1	1	2
at Syracuse											
WAGNER											
at Hartford											
RIDER											
USF											
at Iowa											
at Michigan											
ILLINOIS											
at Wisconsin											
RUTGERS											
at Nebraska											
at Ohio State											
INDIANA											
NORTHWESTERN											
at Minnesota											
at Rutgers											
MARYLAND											
at Purdue											
MICHIGAN ST.											
MINNESOTA											
at Maryland											
OHIO STATE											
WISCONSIN											

WHITTED'S CAREER/SEASON HIGHS

	SEASON HIGHS	CAREER HIGHS
Points	7 vs. Liberty (11/28/14)	11 at Northwestern (2/2/14)
Rebs.	9 vs. Towson (11/14/14)	10 at Illinois (1/9/14)
Assists	2 vs. Seton Hall (11/22/14) 2 vs. Towson (11/14/14)	2 (4x) last vs. Seton Hall (11/22/14)
Steals	1 (5x) last vs. Samford (11/30/14)	2 (3x) last vs. Ohio State (3/7/14)
Blocks	1 vs. Samford (11/30/14) 1 vs. Seton Hall (11/22/14)	3 at South Dakota St. (12/11/13)
Minutes	23 (3x) 1st vs. Samford (11/30/14)	24 at Illinois (1/9/14)
FGM	3 vs. Liberty (11/28/14)	5 at Northwestern (2/2/14)
FGA	7 vs. Samford (11/30/14)	7 vs. Samford (11/30/14) 7 vs. Alcorn State (12/22/13)
3FGM	1 vs. Samford (11/30/14)	1 vs. Samford (11/30/14) 1 vs. Ohio State (3/7/14)
3FGA	3 vs. Seton Hall (11/22/14)	3 vs. Seton Hall (11/22/14) 3 vs. Bucknell (11/20/13)
FTM	2 vs. Seton Hall (11/22/14)	5 at Illinois (1/9/14)
FTA	6 vs. Seton Hall (11/22/14)	6 vs. Seton Hall (11/22/14)

WHITTED'S MISCELLANEOUS STATS

Category	Season	Career	Last Time
Double Figure Scoring	n/a	1	11 at Northwestern (2/2/14)
20-point games	n/a	n/a	
Double Figure Rebounds	n/a	1	10 at Illinois (1/9/14)
5-plus Rebounds	4	9	5 vs. Samford (11/30/14)
5-plus Assists	n/a	n/a	
3-plus Steals	n/a	n/a	
Double-Doubles	n/a	n/a	

WHITTED'S CAREER STATS

Year	GP-GS	MIN	FG-A	PCT	3FG-A	PCT	FT-A	PCT	REB	AVG	PF-O	A	TO	B	S	PTS	AVG
2013-14	31-0	344	37-80	.463	1-17	.059	16-23	.696	35-53-88	2.8	58-0	8	26	5	12	91	2.9
2014-15	6-4	115	11-32	.344	1-7	.143	2-7	.286	10-21-31	5.2	21-1	5	13	2	5	25	4.2
TOTAL	37-4	459	48-112	.429	2-24	.083	18-30	.600	45-74-119	3.2	79-1	13	39	7	17	116	3.1





#34 Molly Dincher

Sr. * G/F * 6-0 * Williamsport, Pa./Williamsport Area (Penn State Wilkes-Barre)

Highlights:

- ♦ Added to the Lady Lion roster as a walk-on on November 14.
- ♦ Served as a Lady Lion manager for a year and a half.

Notable:

- ♦ Dincher played at Penn State Wilkes-Barre for two seasons where she helped the Mountain Lions to the 2011-12 PSUAC North Division Championship.
- ♦ She averaged 7.3 points and 8.6 rebounds that season for Wilkes-Barre, her final season for the Mountain Lions.
- ♦ She also rejected 33 shots and had 27 assists in 21 appearances that included 16 starts.
- ♦ As a freshman at Wilke-Barre, Dincher finished seventh in the United States Collegiate Athletic Associations USCAA) in blocked shots, averaging 1.5 per game.
- ♦ Since coming to University Park, Dincher played for the Penn State women's club basketball team that took second in the National Championships in 2012-13.
- ♦ She also served as a manager for the Lady Lions for the last year and a half.
- ♦ A three-year letterwinner, Dincher played her high school basketball at Williamsport Area High School. In her final season, the Millionaires were 12-8.

14-15 GAME-BY-GAME

OPPONENT	Min.	FG	3FG	FT	O-D-R	PF	A	TO	B	S	Pts
TOWSON	DNP										
ALBANY	DNP										
SETON HALL	DNP										
ST. BONA	DNP										
vs. Liberty	DNP										
vs. Samford	DNP										
at Syracuse											
WAGNER											
at Hartford											
RIDER											
USF											
at Iowa											
at Michigan											
ILLINOIS											
at Wisconsin											
RUTGERS											
at Nebraska											
at Ohio State											
INDIANA											
NORTHWESTERN											
at Minnesota											
at Rutgers											
MARYLAND											
at Purdue											
MICHIGAN ST.											
MINNESOTA											
at Maryland											
OHIO STATE											
WISCONSIN											

DINCHER'S CAREER/SEASON HIGHS

	SEASON HIGHS	CAREER HIGHS
Points	n/a	n/a
Rebs.	n/a	n/a
Assists	n/a	n/a
Steals	n/a	n/a
Blocks	n/a	n/a
Minutes	n/a	n/a
FGM	n/a	n/a
FGA	n/a	n/a
3FGM	n/a	n/a
3FGA	n/a	n/a
FTM	n/a	n/a
FTA	n/a	n/a

DINCHER'S MISCELLANEOUS STATS

Category	Season	Career	Last Time
Double Figure Scoring	n/a	n/a	
20-point games	n/a	n/a	
Double Figure Rebounds	n/a	n/a	
5-plus Rebounds	n/a	n/a	
5-plus Assists	n/a	n/a	
3-plus Steals	n/a	n/a	
Double-Doubles	n/a	n/a	

10-Time Big Ten Champions • Two-Time Big Ten Tournament Champions • 2000 NCAA Final Four • 25 NCAA Tournament Appearances





#41 Jenny DeGraaf

So. * F * 6-1 * Springboro, Ohio/Springboro

Highlights:

- Posted her first career double-double with 11 points and 11 rebounds vs. Samford (11/30).

2014-15 Season Notes:

- Set career-highs with 33 minutes, five field goals made, nine field goals attempted and 10 rebounds vs. Samford (11/30), adding 11 points for her first career double-double.
- Registered eight points on a 4-of-7 effort with four rebounds in a career-high 27 minutes against St. Bonaventure (11/25).
- Posted six points on 3-for-5 shooting and five rebounds against Seton Hall (11/22).
- Connected on all four of her three-point attempts en route to a career-high 12 points in a personal-best 22 minutes against Albany (11/16).
- Hit 4-of-5 shots from the field, including two attempts from long range, en route to 11 points in the exhibition against IUP (11/2).

Notable:

- Set the Springboro High School single-season record for free throws made with 121, including 25 consecutive makes from the charity stripe in 2013.

14-15 GAME-BY-GAME

OPPONENT	Min.	FG	3FG	FT	O-D-R	PF	A	TO	B	S	Pts
TOWSON	15	0-2	0-2	0-0	0-3-3	1	0	0	0	1	0
ALBANY	22	4-4	4-4	0-0	0-0-0	1	0	1	0	0	12
SETON HALL	24	3-5	0-0	0-0	2-3-5	1	1	1	1	1	6
ST. BONA	27	4-7	0-2	0-0	0-4-4	1	0	0	0	0	8
vs. Liberty	20	1-3	0-2	0-0	1-2-3	0	1	0	0	1	2
vs. Samford	33	5-9	1-2	0-0	1-9-10	1	1	0	0	0	11
at Syracuse											
WAGNER											
at Hartford											
RIDER											
USF											
at Iowa											
at Michigan											
ILLINOIS											
at Wisconsin											
RUTGERS											
at Nebraska											
at Ohio State											
INDIANA											
NORTHWESTERN											
at Minnesota											
at Rutgers											
MARYLAND											
at Purdue											
MICHIGAN ST.											
MINNESOTA											
at Maryland											
OHIO STATE											
WISCONSIN											

DeGRAAF'S CAREER/SEASON HIGHS

	SEASON HIGHS	CAREER HIGHS
Points	12 vs. Albany (11/16/14)	12 vs. Albany (11/16/14)
Rebs.	10 vs. Samford (11/30/14)	10 vs. Samford (11/30/14)
Assists	1 (3x) Last vs. Samford (11/30/14)	2 (2x) last vs. Bucknell (11/20/13)
Steals	1 vs. Samford (11/30/14) 1 vs. Seton Hall (11/22/14)	1 (3x) Last vs. Samford (11/30/14)
Blocks	1 vs. Seton Hall (11/22/14)	1 vs. Seton Hall (11/22/14)
Minutes	33 vs. Samford (11/30/14)	33 vs. Samford (11/30/14)
FGM	5 vs. Samford (11/30/14)	5 vs. Samford (11/30/14)
FGA	9 vs. Samford (11/30/14)	9 vs. Samford (11/30/14)
3FGM	4 vs. Albany (11/16/14)	4 vs. Albany (11/16/14)
3FGA	4 vs. Albany (11/16/14)	4 vs. Albany (11/16/14)
FTM	n/a	n/a
FTA	n/a	n/a

DeGRAAF'S MISCELLANEOUS STATS

Category	Season	Career	Last Time
Double Figure Scoring	2	2	11 10 vs. Samford (11/30/14)
20-point games	n/a	n/a	
Double Figure Rebounds	1	1	10 vs. Samford (11/30/14)
5-plus Rebounds	2	2	10 vs. Samford (11/30/14)
5-plus Assists	n/a	n/a	
3-plus Steals	n/a	n/a	
Double-Doubles	1	1	11p, 10r vs. Samford (11/30/14)

DeGRAAF'S CAREER STATS

Year	GP-GS	MIN	FG-A	PCT	3FG-A	PCT	FT-A	PCT	REB	AVG	PF-O	A	TO	B	S	PTS	AVG
2013-14	17-0	76	7-20	.350	2-7	.286	0-0	.000	3-6-9	0.5	5-0	4	5	0	1	16	0.9
2014-15	6-0	141	17-30	.567	5-12	.417	0-0	.000	4-21-25	4.2	5-0	3	2	1	3	39	6.5
TOTAL	23-0	217	24-50	.480	7-19	.368	0-0	.000	7-27-34	1.5	10-0	7	7	1	4	55	2.4





#44 Tori Waldner

Sr. * F/C * 6-5 * Milton, Ga./Milton

Highlights:

- ♦ Ranks ninth on Penn State's career blocks list (100).
- ♦ Selected as a team tri-captain.

2014-15 Season Notes:

- ♦ Grabbed a career-high 12 rebounds and scored eight points vs. Samford (11/30).
- ♦ Had 10 points, including her second career three pointer, eight rebounds and three assists vs. Liberty (11/28).
- ♦ Logged four points, six rebounds and three blocks against St. Bonaventure (11/25).
- ♦ Tallied seven rebounds, three blocks and a pair of steals versus Seton Hall (11/22).
- ♦ Recorded four blocked shots and nine rebounds against Albany (11/16).
- ♦ Notched her first career double-double with 11 points on 5-of-7 shooting and 11 rebounds, which tied her then-career high, in the season-opening win over Towson (11/14).
- ♦ Had four points and five rebounds in the exhibition against IUP (11/2).

Notable:

- ♦ President of the Penn State Student-Athlete Advisory Board (SAAB).
- ♦ Was a member of the 2014 Penn State Homecoming Court.
- ♦ Participates in LifeLink, which is program in which State College Area School District special-needs students between the ages of 18 and 21 are given an opportunity to interact with students of their own age in an environment that is socially and academically conducive to continued growth with the hope of future independent living.
- ♦ Became just the 15th player in Lady Lion program history to record 80 or more blocks in a career.
- ♦ Had a streak of 12-straight games with at least one block (11/10/13-1/5/14).
- ♦ Mother, Diane, played basketball and lacrosse at Russell Sage College in Troy, New York.

14-15 GAME-BY-GAME

OPPONENT	Min.	FG	3FG	FT	O-D-R	PF	A	TO	B	S	Pts
TOWSON	26	5-7	0-0	1-2	2-9-11	2	0	0	0	1	11
ALBANY	19	1-4	0-0	4-4	2-7-9	4	2	4	4	1	6
SETON HALL	23	1-4	0-1	0-0	3-4-7	4	2	1	3	2	2
ST. BONA	29	2-4	0-0	0-0	1-5-6	3	1	2	3	0	4
vs. Liberty	34	3-8	1-2	3-4	3-5-8	2	3	1	1	1	10
vs. Samford	39	3-7	0-1	2-2	1-11-12	4	0	3	0	1	8
at Syracuse											
WAGNER											
at Hartford											
RIDER											
USF											
at Iowa											
at Michigan											
ILLINOIS											
at Wisconsin											
RUTGERS											
at Nebraska											
at Ohio State											
INDIANA											
NORTHWESTERN											
at Minnesota											
at Rutgers											
MARYLAND											
at Purdue											
MICHIGAN ST.											
MINNESOTA											
at Maryland											
OHIO STATE											
WISCONSIN											

WALDNER'S CAREER/SEASON HIGHS

	SEASON HIGHS	CAREER HIGHS
Points	11 vs. Towson (11/14/14)	14 vs. Northwestern (2/20/14)
Rebs.	12 vs. Samford (11/30/14)	12 vs. Samford (11/30/14)
Assists	3 vs. Liberty (11/28/14)	5 vs. Illinois State (11/30/13)
Steals	2 vs. Seton Hall (11/22/14)	3 vs. Michigan State (2/10/13)
Blocks	4 vs. Albany (11/16/14)	5 vs. Northwestern (2/20/14) 5 vs. Minnesota (1/24/13)
Minutes	39 vs. Samford (11/30/14)	39 vs. Samford (11/30/14)
FGM	5 vs. Towson (11/14/14)	6 vs. Northwestern (2/20/14)
FGA	85 vs. Liberty (11/28/14)	13 vs. Wisconsin (2/16/14)
3FGM	1 vs. Liberty (11/28/14)	1 vs. Liberty (11/28/14) 1 vs. Connecticut (11/17/13)
3FGA	2 vs. Liberty (11/28/14)	2 vs. Liberty (11/28/14) 2 vs. Connecticut (11/17/13)
FTM	4 vs. Albany (11/16/14)	6 vs. Howard (11/11/12)
FTA	4 vs. Liberty (11/28/14) 4 vs. Albany (11/16/14)	6 vs. Howard (11/11/12)

WALDNER'S MISCELLANEOUS STATS

Category	Season	Career	Last Time
Double Figure Scoring	2	8	10 vs. Liberty (11/28/14)
20-point games	n/a	n/a	
Double Figure Rebounds	2	6	12 vs. Samford (11/30/14)
5-plus Rebounds	5	34	12 vs. Samford (11/30/14)
5-plus Assists	n/a	1	5 vs. Illinois State (11/30/13)
3-plus Steals	n/a	1	3 vs. Michigan State (2/10/13)
5-plus Blocks	n/a	2	5 vs. Northwestern (2/20/14)
Double-Doubles	1	1	11 p, 11 r vs. Towson (11/14/14)

WALDNER'S CAREER STATS

Year	GP-GS	MIN	FG-A	PCT	3FG-A	PCT	FT-A	PCT	REB	AVG	PF-O	A	TO	B	S	PTS	AVG
2011-12	31-0	272	25-56	.446	0-1	.000	13-23	.565	13-54-67	2.2	50-0	15	24	18	16	63	2.0
2012-13	30-0	275	19-59	.322	0-1	.000	10-13	.769	31-54-85	2.8	47-0	8	22	32	11	48	1.6
2013-14	32-32	677	67-159	.421	1-3	.333	20-33	.606	48-131-179	5.6	83-1	32	39	39	16	155	4.8
2014-15	6-4	185	15-34	.441	1-4	.250	10-12	.833	12-41-53	8.8	19-0	8	11	11	6	41	6.8
TOTAL	99-36	1409	126-308	.409	2-9	.222	53-81	.654	104-280-384	3.9	199-1	63	96	100	49	307	3.1

10-Time Big Ten Champions • Two-Time Big Ten Tournament Champions • 2000 NCAA Final Four • 25 NCAA Tournament Appearances



Penn State 75, Indiana (Pa.) 71

Exhibition Game * Nov. 2, 2014 * University Park, Pa.

IUP 71 • 0-0

#	Player	Total		3-Ptr		Rebounds			PF	TP	A	TO	Bk	Stl	Min
		FG-FGA	FG-FGA	FT-FTA	Off	Def	Off	Def							
00	STONER, Ashley	* 4-9	0-0	0-0	3	2	5	4	8	0	3	0	0	0	26
03	STAMP, Lindsay	* 0-6	0-3	3-6	1	3	4	2	3	2	1	0	0	0	22
05	MATHE, Marita	* 4-13	4-9	0-1	0	3	4	2	12	5	3	0	0	0	35
12	STAPLETON, Leslie	* 2-10	1-7	0-0	0	0	0	0	5	2	0	0	1	0	29
24	FAIRMAN, Amy	* 8-13	6-8	4-6	1	3	4	26	6	1	0	2	0	0	30
10	WAREHAM, Marina	* 1-1	1-1	0-0	0	0	0	0	3	1	2	0	0	0	5
11	GRAHAM, Amy	* 0-0	0-0	0-0	1	0	1	0	0	0	0	1	0	0	2
13	BURNS, Monica	* 0-0	0-0	0-0	0	0	0	0	0	0	0	0	0	0	2
14	AIKEN, Alexis	* 0-0	0-0	0-0	0	0	0	0	0	0	0	0	0	0	3
15	BROOKS, Zhane	* 2-5	0-0	4-6	2	3	5	4	8	2	0	1	2	0	25
20	LIVINGSTON, Mackenzie	* 0-0	0-0	0-0	0	0	0	0	0	0	0	0	0	0	1
23	DENMAN, Halle	* 0-1	0-0	0-0	1	0	1	0	0	0	0	0	0	0	2
42	SMITH, Megan	* 2-6	2-4	0-0	1	0	1	0	6	1	1	0	0	0	18
	Team				2	1	3								
	Totals	23-64	14-32	11-19	12	15	27	16	71	20	12	2	5	200	

FG % 1st Half: 10-36 27.8% 2nd half: 13-28 46.4% Game: 23-64 35.9%
 3FG % 1st Half: 7-18 38.9% 2nd half: 7-14 50.0% Game: 14-32 43.8%
 FT % 1st Half: 6-12 50.0% 2nd half: 5-7 71.4% Game: 11-19 57.9%

Penn State 75 • 0-0

#	Player	Total		3-Ptr		Rebounds			PF	TP	A	TO	Bk	Stl	Min
		FG-FGA	FG-FGA	FT-FTA	Off	Def	Off	Def							
05	Moore, Sierra	* 8-13	0-0	2-3	4	3	7	4	18	0	4	0	0	0	27
12	Spann, Lindsey	* 5-12	0-3	4-4	1	2	3	2	14	4	2	0	0	0	37
15	Mitchell, Kaliyah	* 5-10	0-2	2-2	3	6	9	4	12	2	3	0	0	0	36
25	Whitted, Peyton	* 4-7	0-0	0-0	4	6	10	3	8	5	2	1	0	0	24
44	Waldner, Tori	* 2-10	0-0	0-0	3	2	5	3	4	1	4	2	0	0	21
10	Sevillian, Keke	* 2-4	0-1	0-0	1	3	4	3	4	3	1	0	3	0	19
14	Brooks, Dominique	* 2-4	0-0	0-0	0	1	1	1	4	0	2	1	0	0	12
41	DeGraaf, Jenny	* 4-5	2-3	1-2	0	4	4	4	11	0	2	0	0	0	24
	Team				2	3	5								
	Totals	32-65	2-9	9-11	18	30	48	24	75	15	20	4	6	200	

FG % 1st Half: 17-32 53.1% 2nd half: 15-33 45.5% Game: 32-65 49.2%
 3FG % 1st Half: 1-3 33.3% 2nd half: 1-6 16.7% Game: 2-9 22.2%
 FT % 1st Half: 2-4 50.0% 2nd half: 7-7 100.0% Game: 9-11 81.8%

Officials: Frank Steratore, Kevin Pethell, Shannon Feck
 Technical fouls: IUP-None. Penn State-None.
 Attendance: 3327

Score by periods	1st	2nd	Total
IUP	33	38	71
Penn State	37	38	75

Notable

- With the Crimson Hawks leading, sophomore **Sierra Moore** led the Penn State rally with 15 of her team-best 18 points over the final 11:44 of the contest.
- Sophomore **Jenny DeGraaf** had a solid outing, connecting on 4-of-5 shots from the field, including 2-of-3 from three point range, for 11 points.

Albany 54, Penn State 53

Game #2 * Nov. 16, 2014 * University Park, Pa.

Albany 54 • 2-0

#	Player	Total		3-Ptr		Rebounds			PF	TP	A	TO	Bk	Stl	Min
		FG-FGA	FG-FGA	FT-FTA	Off	Def	Off	Def							
03	ROSARIO, Margarita	* 2-9	2-8	0-0	0	3	3	2	6	2	0	0	1	0	26
03	ROYALS, Sarah	* 0-8	0-5	0-0	1	0	1	2	7	5	4	0	1	0	40
23	SAUNDERS, Zakia	* 1-4	0-0	0-0	0	0	0	3	2	2	2	0	1	0	13
25	RICHARDS, Shereesha	* 10-16	0-1	7-10	6	8	14	4	27	3	7	1	3	0	40
44	EDWARDS, Cassandra	* 0-1	0-0	0-0	1	0	1	1	0	0	1	0	0	0	6
01	COUGHLIN, Erin	* 0-1	0-1	0-0	0	0	0	0	0	0	1	0	0	0	9
12	TATE, Imani	* 2-10	0-0	2-2	6	9	15	3	6	1	6	0	3	0	32
33	CARTER, Tiana-Jo	* 3-8	0-0	0-0	3	8	11	3	6	0	3	2	0	0	34
	Team				3	1	4								
	Totals	18-57	2-15	16-24	20	29	49	18	54	13	24	3	9	200	

FG % 1st Half: 8-28 28.6% 2nd half: 10-29 34.5% Game: 18-57 31.6%
 3FG % 1st Half: 1-5 20.0% 2nd half: 1-10 10.0% Game: 2-15 13.3%
 FT % 1st Half: 11-17 64.7% 2nd half: 5-7 71.4% Game: 16-24 66.7%

Penn State 53 • 1-1

#	Player	Total		3-Ptr		Rebounds			PF	TP	A	TO	Bk	Stl	Min
		FG-FGA	FG-FGA	FT-FTA	Off	Def	Off	Def							
05	Moore, Sierra	* 4-8	0-0	0-1	2	1	3	4	8	3	4	1	1	0	30
12	Spann, Lindsey	* 6-12	1-3	1-2	0	1	1	3	14	4	3	0	0	0	31
15	Mitchell, Kaliyah	* 2-7	1-2	4-5	1	5	6	4	9	0	5	0	4	0	30
25	Whitted, Peyton	* 1-5	0-0	0-1	1	3	4	4	2	1	3	0	1	0	19
44	Waldner, Tori	* 1-4	0-0	4-4	2	7	9	4	6	2	4	4	1	0	34
01	Agee, Candice	* 1-6	0-0	0-0	1	4	5	4	2	2	1	3	2	0	19
10	Sevillian, Keke	* 0-5	0-3	0-0	0	0	0	4	0	1	1	0	2	0	13
14	Brooks, Dominique	* 0-0	0-0	0-0	0	0	0	1	0	0	1	0	0	0	2
41	DeGraaf, Jenny	* 4-4	4-4	0-0	0	0	0	1	12	0	1	0	0	0	22
	Team				0	3	3								
	Totals	19-51	6-13	9-13	7	24	31	29	53	13	23	8	11	200	

FG % 1st Half: 9-25 36.0% 2nd half: 10-26 38.5% Game: 19-51 37.3%
 3FG % 1st Half: 4-8 50.0% 2nd half: 2-5 40.0% Game: 6-13 46.2%
 FT % 1st Half: 6-8 75.0% 2nd half: 3-5 60.0% Game: 9-13 69.2%

Officials: An-Jamilah Gregory, Ron Leads, Althea Buford
 Technical fouls: Albany-TATE, Imani. Penn State-Agee, Candice.
 Attendance: 8607
 WNIT Second Round

Score by periods	1st	2nd	Total
Albany	28	26	54
Penn State	28	25	53

Last FG - ALBANY 2nd-01:49, PSU 2nd-01:28.
 Largest lead - ALBANY by 4 2nd-11:47, PSU by 7 1st-17:12.
 ALBANY led for 14:05. PSU led for 18:50. Game was tied for 06:55.

Notable

- Senior **Tori Waldner** passed Bethany Collins (1985-88) for 10th on the Penn State career blocks list with four blocks vs. Albany to bring her career total to 93.
- Freshman **Lindsey Spann** led the Lady Lions in scoring for the second straight game, marking the first time a freshman has been the team's leading scorer in two straight games since Maggie Lucas did so vs. Minnesota (1/13/11) and vs. Illinois (1/16/11).

Penn State 71, Towson 64

Game #1 * Nov. 14, 2014 * University Park, Pa.

Towson 64 • 0-1

#	Player	Total		3-Ptr		Rebounds			PF	TP	A	TO	Bk	Stl	Min
		FG-FGA	FG-FGA	FT-FTA	Off	Def	Off	Def							
00	Hines-Allen, LaTorri	* 5-10	0-0	2-5	1	5	6	2	12	1	0	1	1	0	25
01	Johnson, Dominique	* 12-30	6-16	2-2	0	1	1	3	32	1	2	0	3	0	36
02	Hughey, Breonn	* 2-15	2-7	2-2	2	4	6	2	8	7	3	0	1	0	40
13	Alberston, Camille	* 1-5	1-4	0-0	0	4	4	3	3	2	2	0	1	0	33
20	Smith, Markell	* 1-3	0-0	0-0	2	3	5	2	0	1	0	0	0	0	24
03	Webb, Ciara	* 1-3	0-2	0-0	0	1	1	0	2	1	1	2	0	0	16
05	Smith, Jordyn	* 0-0	0-0	3-4	5	4	9	1	3	0	1	0	0	0	8
14	Bush, Brianna	* 0-0	0-0	0-0	1	0	1	0	0	0	1	0	0	0	3
32	Butler, Shanea	* 0-1	0-1	0-0	0	0	0	0	0	0	1	0	0	0	3
33	Thomas, Daijha	* 0-2	0-0	2-4	1	3	4	2	2	0	0	1	0	0	12
	Team				0	1	1								
	Totals	22-69	9-30	11-17	12	26	38	18	64	12	13	4	6	200	

FG % 1st Half: 9-37 24.3% 2nd half: 13-32 40.6% Game: 22-69 31.9%
 3FG % 1st Half: 4-15 26.7% 2nd half: 5-15 33.3% Game: 9-30 30.0%
 FT % 1st Half: 7-10 70.0% 2nd half: 4-7 57.1% Game: 11-17 64.7%

Penn State 71 • 1-0

#	Player	Total		3-Ptr		Rebounds			PF	TP	A	TO	Bk	Stl	Min
		FG-FGA	FG-FGA	FT-FTA	Off	Def	Off	Def							
05	Moore, Sierra	* 5-12	1-1	1-3	1	4	5	0	12	4	4	2	1	0	39
12	Spann, Lindsey	* 7-14	0-2	3-4	0	5	5	2	17	4	4	0	0	0	32
15	Mitchell, Kaliyah	* 3-8	0-2	4-6	1	2	3	4	10	0	3	0	3	0	25
25	Whitted, Peyton	* 2-5	0-0	0-0	3	6	9	3	4	2	3	0	1	0	23
44	Waldner, Tori	* 5-7	0-0	1-2	2	9	11	2	11	0	0	0	0	0	26
01	Agee, Candice	* 3-6	0-0	3-6	4	5	9	1	9						

St. Bonaventure 56, Penn State 54

Game #4 * Nov. 25, 2014 * University Park, Pa.

St. Bonaventure 56 • 3-2

#	Player	Total			3-Ptr			Rebounds			PF	TP	A	TO	Blk	Stl	Min
		FG-FGA	FG-FGA	FT-FTA	FG-FGA	FG-FGA	FT-FTA	Off	Def	Tot							
11	LITTLE, Hannah	* 2-6	0-0	5-8	3	2	5	1	9	2	4	1	1	35			
14	RICHMOND, Gabby	* 3-8	0-0	2-4	4	2	6	5	8	0	3	0	0	19			
21	RUETER, Nyla	* 4-11	3-7	2-2	1	3	4	1	13	3	1	0	3	36			
33	MICHAEL, Emily	* 4-5	3-4	0-0	0	5	5	1	11	1	2	0	0	33			
42	HEALY, Katie	* 4-10	0-0	4-6	1	10	11	4	12	3	3	1	2	28			
02	RUFF, Mariah	* 0-2	0-2	0-0	1	0	1	2	0	0	4	0	1	12			
12	ZAHN, Ashley	* 0-3	0-2	0-0	0	3	3	1	0	0	0	0	0	11			
22	OUTLAW, Imani	* 0-2	0-0	0-0	0	1	1	0	0	0	1	0	0	8			
23	BRITVAR, Matea	* 1-4	0-1	1-2	0	2	2	1	3	0	0	2	0	18			
	Team				1	2	3										
	Totals	18-51	6-16	14-22	11	30	41	16	56	9	19	4	7	200			

FG % 1st Half: 6-27 22.2% 2nd half: 12-24 50.0% Game: 18-51 35.3% Deadball Rebounds 4.1
 3FG % 1st Half: 4-9 44.4% 2nd half: 2-7 28.6% Game: 6-16 37.5%
 FT % 1st Half: 7-13 53.8% 2nd half: 7-9 77.8% Game: 14-22 63.6%

Penn State 54 • 1-3

#	Player	Total			3-Ptr			Rebounds			PF	TP	A	TO	Blk	Stl	Min
		FG-FGA	FG-FGA	FT-FTA	FG-FGA	FG-FGA	FT-FTA	Off	Def	Tot							
01	Agee, Candice	* 4-8	0-0	0-0	1	3	4	3	8	2	3	2	1	24			
05	Moore, Sierra	* 6-12	0-0	3-6	1	4	5	3	15	3	3	0	0	37			
12	Spann, Lindsey	* 4-14	2-6	3-4	1	1	2	3	13	5	1	0	2	34			
15	Mitchell, Kaliyah	* 1-7	0-1	0-1	1	8	9	3	2	1	3	0	4	29			
25	Whitted, Peyton	* 2-3	0-1	0-0	1	0	1	2	4	0	0	0	1	9			
10	Sevillian, Keke	* 0-4	0-0	0-0	0	0	0	0	0	1	1	0	1	10			
14	Brooks, Dominique	* 0-0	0-0	0-0	0	0	0	0	0	0	1	0	0	1			
41	DeGraaf, Jenny	* 4-7	0-2	0-0	0	4	4	1	8	0	0	0	0	27			
44	Waldner, Tori	* 2-4	0-0	0-0	1	5	6	3	4	1	2	3	0	29			
	Team				2	1	3										
	Totals	23-59	2-10	6-11	8	26	34	18	54	13	14	5	9	200			

FG % 1st Half: 11-27 40.7% 2nd half: 12-32 37.5% Game: 23-59 39.0% Deadball Rebounds 2
 3FG % 1st Half: 2-6 33.3% 2nd half: 0-4 0.0% Game: 2-10 20.0%
 FT % 1st Half: 0-1 0.0% 2nd half: 6-10 60.0% Game: 6-11 54.5%

Officials: Frank Storateo, Kevin Petthel, Shannon Feck
 Technical fouls: St. Bonaventure-None. Penn State-None.
 Attendance: 6703

Score by periods	1st	2nd	Total
St. Bonaventure	23	33	56
Penn State	24	30	54

Points	In	Off	2nd	Fast	Bench
	Paint	T/O	Chance	Break	
PSU	28	7	9	0	3
PSU	20	14	6	6	12

Last FG - SBU 2nd-00:02, PSU 2nd-07:08.
 Largest lead - SBU by 3 2nd-13:38, PSU by 9 2nd-07:08.
 SBU led for 04:24. PSU led for 31:03. Game was tied for 04:32.

Notable

- Penn State dropped to 1-3 to start a season for the first time since 2005-06, when the Lady Lions also started 1-3.
- Freshman **Lindsey Spann** posted 13 points, her team-best fourth double-digit scoring game of the season.
- **Sierra Moore** had a career-high 15 points and surpassed the 100-point plateau for her collegiate career.

Liberty 80, Penn State 68

Game #5 * Nov. 28, 2014 * Atlanta, Ga.

Penn State 68 • 1-4

#	Player	Total			3-Ptr			Rebounds			PF	TP	A	TO	Blk	Stl	Min
		FG-FGA	FG-FGA	FT-FTA	FG-FGA	FG-FGA	FT-FTA	Off	Def	Tot							
15	Mitchell, Kaliyah	f 4-12	0-3	2-3	1	4	5	4	10	0	3	0	5	27			
44	Waldner, Tori	f 3-8	1-2	3-4	3	5	8	2	10	3	1	1	1	34			
01	Agee, Candice	c 2-4	0-0	2-4	2	3	5	1	6	0	2	4	1	22			
05	Moore, Sierra	g 5-10	0-0	4-7	2	3	5	5	14	4	3	0	1	33			
12	Spann, Lindsey	g 7-21	0-7	3-3	0	0	0	3	17	3	7	0	2	37			
10	Sevillian, Keke	g 0-0	0-0	0-0	0	0	0	4	0	1	0	0	1	7			
14	Brooks, Dominique	g 1-1	0-0	0-0	0	0	0	0	2	0	0	0	0	2			
25	Whitted, Peyton	g 3-6	1-1	0-0	3	2	5	5	7	0	2	0	0	18			
41	DeGraaf, Jenny	g 1-3	0-2	0-0	1	2	3	0	2	1	0	0	1	20			
	Team				3	1	4										
	Totals	26-65	2-15	14-21	15	20	35	24	68	12	18	5	12	200			

FG % 1st Half: 14-31 45.2% 2nd half: 12-34 35.3% Game: 26-65 40.0% Deadball Rebounds 5
 3FG % 1st Half: 1-5 20.0% 2nd half: 1-10 10.0% Game: 2-15 13.3%
 FT % 1st Half: 6-8 75.0% 2nd half: 8-13 61.5% Game: 14-21 66.7%

Liberty 80 • 3-2

#	Player	Total			3-Ptr			Rebounds			PF	TP	A	TO	Blk	Stl	Min
		FG-FGA	FG-FGA	FT-FTA	FG-FGA	FG-FGA	FT-FTA	Off	Def	Tot							
15	BROWN, Simone	f 8-11	5-8	2-2	2	4	6	3	23	0	4	1	3	34			
55	RNINGER, Ashley	f 5-12	0-0	3-5	2	6	8	1	13	1	1	3	0	29			
04	ADAMS, Katelyn	c 2-6	0-0	2-2	4	7	11	3	6	3	2	1	2	29			
03	ELLIS, Sadalia	g 3-5	0-0	3-4	0	0	0	4	9	5	4	1	3	21			
14	BUER, Karly	g 3-7	2-5	5-6	2	1	3	4	13	2	4	0	0	25			
02	LEATHERWOOD, Candic	g 0-2	0-1	0-0	0	0	0	1	0	0	0	0	0	3			
04	ROLLINS, Eilee	g 1-3	1-2	0-0	1	1	2	0	3	0	0	0	0	7			
10	FISHER-DAVIS, Jaymee	g 2-5	2-5	0-0	0	0	0	0	6	1	2	0	0	15			
21	FRAZIER, Emily	g 0-2	0-1	4-4	0	1	1	1	4	3	1	0	0	16			
24	GARDNER, Jasmine	g 0-2	0-0	0-0	1	1	2	0	0	0	2	0	0	11			
44	KEARNEY, Catherine	g 1-3	0-0	1-2	1	0	1	4	3	2	0	0	0	10			
	Team				1	3	4										
	Totals	25-58	10-22	20-25	14	24	38	21	80	17	20	6	8	200			

FG % 1st Half: 10-32 31.3% 2nd half: 15-26 57.7% Game: 25-58 43.1% Deadball Rebounds 4.2
 3FG % 1st Half: 4-15 26.7% 2nd half: 6-7 85.7% Game: 10-22 45.5%
 FT % 1st Half: 4-5 80.0% 2nd half: 16-20 80.0% Game: 20-25 80.0%

Officials: Natosha Harris, Cole Womack, David Scroggins
 Technical fouls: Penn State-None. Liberty-None.
 Attendance: 645

Score by periods	1st	2nd	Total
Penn State	35	33	68
Liberty	28	52	80

Points	In	Off	2nd	Fast	Bench
	Paint	T/O	Chance	Break	
PSU	36	13	11	20	11
LIBERTY	26	21	13	6	16

Last FG - PSU 2nd-00:06, LIBERTY 2nd-01:00.
 Largest lead - PSU by 9 2nd-19:42, LIBERTY by 16 2nd-00:16.
 PSU led for 15:12. LIBERTY led for 22:57. Game was tied for 01:51.

Notable

- With a second half blocked shot, senior **Tori Waldner** became just the ninth Lady Lion to collect 100 points in a career.
- Freshman guard **Lindsey Spann** tied her career-high with 17 points against Liberty. The 17-point effort led the team and is her fifth double-digit scoring game of the season.

Samford 59, Penn State 56 (OT)

Game #6 * Nov. 30, 2014 * Atlanta, Ga.

Penn State 56 • 1-5

#	Player	Total			3-Ptr			Rebounds			PF	TP	A	TO	Blk	Stl	Min
		FG-FGA	FG-FGA	FT-FTA	FG-FGA	FG-FGA	FT-FTA	Off	Def	Tot							
15	Mitchell, Kaliyah	r 3-10	0-1	2-3	1	8	9	5	8	1	2	2	2	38			
25	Whitted, Peyton	r 1-7	0-1	0-0	1	4	5	4	2	0	1	1	1	23			
44	Waldner, Tori	c 3-7	0-1	2-2	1	11	12	4	8	0	3	0	1	39			
05	Moore, Sierra	g 4-10	1-2	8-10	1	0	1	5	17	3	3	0	2	40			
12	Spann, Lindsey	g 3-13	0-2	4-6	1	1	2	4	10	5	4	0	3	41			
01	Agee, Candice	g 0-1	0-0	0-0	0	0	0	0	0	0	1	0	0	2			
10	Sevillian, Keke	g 0-1	0-0	0-0	0	0	0	0	2	0	2	0	0	9			
41	DeGraaf, Jenny	g 5-9	1-2	0-0	1	9	10	1	11	1	1	0	0	33			
	Team				1	0	1										
	Totals	19-58	2-9	16-21	7	33	40	25	56	11	16	3	9	225			

FG % 1st Half: 7-27 25.9% 2nd half: 10-24 41.7% OT: 2-7 28.6% Game: 19-58 32.8% Deadball Rebounds 2
 3FG % 1st Half: 0-4 0.0% 2nd half: 1-3 33.3% OT: 1-2 50.0% Game: 2-9 22.2%
 FT % 1st Half: 7-10 70.0% 2nd half: 4-5 80.0% OT: 5-6 83.3% Game: 16-21 76.2%

Samford 59 • 4-2

#	Player	Total			3-Ptr			Rebounds			PF	TP	A	TO	Blk	Stl	Min
		FG-FGA	FG-FGA	FT-FTA	FG-FGA	FG-FGA	FT-FTA	Off	Def	Tot							
03	ELLIOTT, Destiney	r 2-5	0-1	1-7	2	6	8	2	5	2	2	2	2	35			
10	REECE, Taylor	r 8-17	4-7	2-4	1	5	6	4	22	0	2	1	1	39			
02	NICHOLS, Hannah	g 5-12	2-7	1-2	2	5	7	3	13	0	2	0	0	39			
11	MAYERS, Amara	g 0-5	0-0	0-0	1	5	6	2	0	0	3	0	0	23			
12	STRICKLIN, Krista	g 3-7	0-2	3-5	0	4	4	3	9	3	3	0	0	31			
05	BLEVINS, Kassidy	g 0-2	0-1	0-0	0	4	4	2	0	4	2	0	2	23			
21	FLETCHER, Keke	g 0-3	0-2	1-2	0	0	0	1	1	0	0	1	0	6			
22	RIGGINS, Ellen	g 2-4	0-1	5-5	0	3	3	2	9	1	3	0	0	29			
	Team				2	2	4										
	Totals	20-55	6-21	13-25	8	34	42	19	59	10	19	4	5	225			

FG % 1st Half: 6-21 28.6% 2nd half: 10-28 35.7% OT: 4-6 66.7% Game: 20-55 36.4% Deadball Rebounds 6.1
 3FG % 1st Half: 0-5 0.0% 2nd half: 5-13 38.5% OT: 1-3 33.3% Game: 6-21 28.6%
 FT % 1st Half: 1-5 20.0% 2nd half: 8-10 80.0% OT: 4-10 40.0% Game: 13-25 52.0%

Officials: Meadow Overstreet, Kristin McKinnon, Mike Riggs
 Technical fouls: Penn State-None. Samford-None.
 Attendance: 522

Score by periods	1st	2nd	OT	Total
Penn State	21	25	10	56
Samford	13	33	13	59

Points	In	Off	2nd	Fast	Bench
	Paint	T/O	Chance	Break	
PSU	28	11	4	6	11
SAM	2				

**2014-15 Penn State Women's Basketball
Penn State Combined Team Statistics (as of Nov 30, 2014)
All games**

RECORD:	OVERALL	HOME	AWAY	NEUTRAL
ALL GAMES	1-5	1-3	0-0	0-2
CONFERENCE	0-0	0-0	0-0	0-0
NON-CONFERENCE	1-5	1-3	0-0	0-2

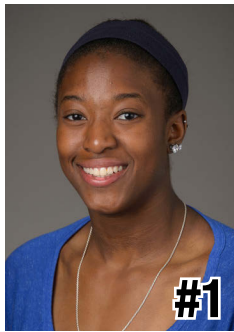
#	Player	gp-gs	min	avg	Total		3-Point		F-Throw		Rebounds				pf	dq	a	to	blk	stl	pts	avg
					fg-fga	fg%	3fg-fga	3fg%	ft-fa	ft%	off	def	tot	avg								
12	Spann, Lindsey	6-6	202	33.7	31-84	.369	5-24	.208	16-21	.762	2	10	12	2.0	20	1	22	24	0	10	83	13.8
05	Moore, Sierra	6-6	216	36.0	29-64	.453	2-3	.667	20-33	.606	14	15	29	4.8	18	2	22	20	4	5	80	13.3
15	Mitchell, Kaliyah	6-6	181	30.2	15-53	.283	1-10	.100	16-24	.667	8	34	42	7.0	22	1	2	17	3	18	47	7.8
01	Agee, Candice	6-3	102	17.0	19-40	.475	0-0	.000	8-16	.500	11	17	28	4.7	13	0	5	8	11	6	46	7.7
44	Waldner, Tori	6-4	185	30.8	15-34	.441	1-4	.250	10-12	.833	12	41	53	8.8	19	0	8	11	11	6	41	6.8
41	DeGraaf, Jenny	6-0	141	23.5	17-30	.567	5-12	.417	0-0	.000	4	21	25	4.2	5	0	3	2	1	3	39	6.5
25	Whitted, Peyton	6-4	115	19.2	11-32	.344	1-7	.143	2-7	.286	10	21	31	5.2	21	1	5	13	2	5	25	4.2
10	Sevillian, Keke	6-1	72	12.0	2-21	.095	2-10	.200	1-3	.333	0	1	1	0.2	14	0	10	6	0	5	7	1.2
14	Brooks, Dominique	5-0	11	2.2	1-1	1.000	0-0	.000	2-2	1.000	0	0	0	0.0	4	0	0	2	0	0	4	0.8
Team											9	9	18				1					
Total.....		6	1225		140-359	.390	17-70	.243	75-118	.636	70	169	239	39.8	136	5	77	104	32	58	372	62.0
Opponents.....		6	1225		124-346	.358	39-119	.328	101-150	.673	78	170	248	41.3	117	4	75	112	25	47	388	64.7

TEAM STATISTICS	PSU	OPP	Date	Opponent	Score	Att.
SCORING	372	388	11/14/14	TOWSON	W 71-64	3123
Points per game	62.0	64.7	11/16/14	ALBANY	L 53-54	8607
Scoring margin	-2.7	-	11/22/14	SETON HALL	L 70-75	3114
FIELD GOALS-ATT	140-359	124-346	11/25/14	ST. BONAVENTURE	L 54-56	6703
Field goal pct	.390	.358	11/28/14	vs Liberty	L 68-80	645
3 POINT FG-ATT	17-70	39-119	11/30/14	vs Samford	Lot 56-59	522
3-point FG pct	.243	.328	* - Conference game			
3-pt FG made per game	2.8	6.5				
FREE THROWS-ATT	75-118	101-150				
Free throw pct	.636	.673				
F-Throws made per game	12.5	16.8				
REBOUNDS	239	248				
Rebounds per game	39.8	41.3				
Rebounding margin	-1.5	-				
ASSISTS	77	75				
Assists per game	12.8	12.5				
TURNOVERS	104	112				
Turnovers per game	17.3	18.7				
Turnover margin	+1.3	-				
Assist/turnover ratio	0.7	0.7				
STEALS	58	47				
Steals per game	9.7	7.8				
BLOCKS	32	25				
Blocks per game	5.3	4.2				
ATTENDANCE	21547	1167				
Home games-Avg/Game	4-5387	0-0				
Neutral site-Avg/Game	-	2-584				

Score by Periods	1st	2nd	OT	Totals
Penn State	168	194	10	372
Opponents	158	217	13	388



2014-15 RADIO/TV CHART



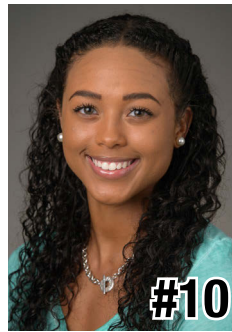
Candice Agee
6-6 * Jr./Jr. * C
Victorville, Calif.
Silverado



Brianna Banks
5-9 * Sr./-- * G
Newnan, Ga.
Fayette County
(Connecticut)



Sierra Moore
5-11 * Jr./So. * G
Hanover, Pa.
Delone Catholic
(Duke)



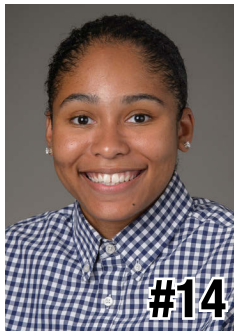
Keke Sevillian
5-7 * So./So. * G
Goodrich, Mich.
Goodrich



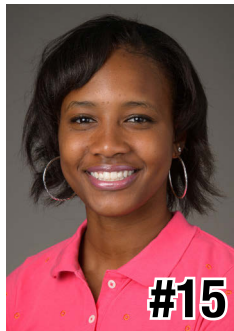
Alex Harris
6-3 * So./So. * F
Lorain, Ohio
Lorain



Lindsey Spann
5-6 * So./Fr. * G
Laurel, Md.
Good Counsel



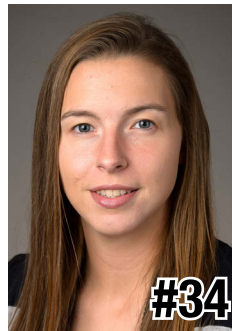
Dominique Brooks
6-4 * Jr./Jr. * C
Lansing, Ill.
T.F. South
(Trinity Valley C.C.)



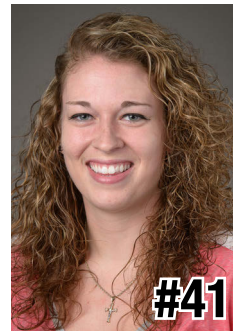
Kaliyah Mitchell
6-2 * So./So. * F
Stone Mountain, Ga.
Stephenson



Peyton Whitted
6-3 * So./So. * F
Suwanee, Ga.
North Gwinnett



Molly Dincher
6-0 * Sr./Sr. * G/F
Williamsport, Pa.
Williamsport Area
(PSU Wilkes-Barre)



Jenny DeGraaf
6-1 * So./So. * F
Springboro, Ohio
Springboro



Tori Waldner
6-5 * Sr./Sr. * F/C
Milton, Ga.
Milton



Coquese Washington
Head Coach
Notre Dame '92
Eighth Season



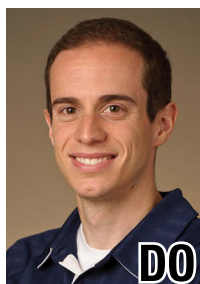
Ito Coleman
Assistant Coach
Clemson '00
First Season
Fourth Overall



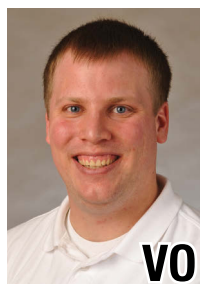
Kia Damon
Assistant Coach
Millersville '97
Eighth Season



Jocelyn Wyatt
Assistant Coach
Appalachian State '06
First Season



Ethan Gelfand
Director of Operations
Wake Forest '06
Fourth Season



Mike Miller
Director of Video &
Technology Ops
High Point '02
10th Season



Jennifer Montoya
Operations Assistant
Penn State '14
First Season

10-Time Big Ten Champions • Two-Time Big Ten Tournament Champions • 2000 NCAA Final Four • 25 NCAA Tournament Appearances

