



PENN STATE WOMEN'S HOCKEY

2013-14 NITTANY LIONS

GoPSUsports.com • Twitter & Instagram: [PennStateWHKY](#) • Facebook.com/PennStateWomensHockey
 Contact: **Jeremy Fallis** • jeremy.fallis@psu.edu • O: (814) 863-1388 • C: (814) 206-6544

2013-14 SCHEDULE

Overall: 4-23-3 • Home: 2-11-2 • Away: 2-12-1
 CHA: 1-14-1 • Home: 0-7-1 • Away: 1-7-0

Date	Opponent	Result/Time
Oct. 4	at Vermont	T (OT) 3-3
Oct. 5	at Vermont	W 4-2
Oct. 11	at Quinnipiac	L 1-5
Oct. 12	at Quinnipiac	L 0-4
Oct. 18	UNION	L 1-2
Oct. 19	UNION	W 2-1
Oct. 26	NEW HAMPSHIRE	L 5-8
Oct. 27	NEW HAMPSHIRE	L 1-3
Oct. 31	* ROBERT MORRIS	L 0-4
Nov. 1	* ROBERT MORRIS	L 0-6
Nov. 9	* SYRACUSE	L 1-2
Nov. 10	* SYRACUSE	L (OT) 3-4
Nov. 15	* at RIT	L 1-2
Nov. 16	* at RIT	L 2-3
Nov. 22	* at Lindenwood	L 1-2
Nov. 23	* at Lindenwood	W 4-1
Nov. 30	MAINE	T (OT) 1-1
Dec. 6	* at Mercyhurst	L 0-7
Dec. 7	* at Mercyhurst	L 0-8
Jan. 3	at Ohio State	L 0-8
Jan. 4	at Ohio State	L 0-4
Jan. 10	COLGATE	L (OT) 2-3
Jan. 11	COLGATE	W (OT) 2-1
Jan. 24	* at Syracuse	L (OT) 2-3
Jan. 25	* at Syracuse	L 0-3
Jan. 28	at Princeton	L 1-6
Jan. 31	* RIT	T (OT) 2-2
Feb. 1	* RIT	L 1-3
Feb. 8	* LINDENWOOD	L 1-2
Feb. 9	* LINDENWOOD	L (OT) 3-4
Feb. 15	* #8 MERCYHURST	8:00 p.m.
Feb. 16	* #8 MERCYHURST	1:00 p.m.
Feb. 21	* at #9 Robert Morris	3:00 p.m.
Feb. 22	* at #9 Robert Morris	3:00 p.m.

2014 CHA TOURNAMENT

Feb. 28	^ CHA First Round - Game 1	TBA
March 1	^ CHA First Round - Game 2	TBA
March 2	^ CHA First Round - Game 3	TBA
March 7	% CHA Semifinals	TBA
March 8	% CHA Final	TBA

All Times Eastern

Home games in CAPS at Pegula Ice Arena

* - College Hockey America games

^ - CHA First Round at higher seed

% - CHA Semifinals & Final hosted by No. 1 seed

Rankings based on USA Today/USA Hockey poll

Streaming on AmericaOneSports.com; live stream



PENN STATE NITTANY LIONS

(4-23-3, 1-14-1 CHA)

#8 MERCYHURST LAKERS

(19-7-3, 12-3-1 CHA)

Games 31-32: February 15-16, 2014 • Pegula Ice Arena • University Park, Pa.

GAME DAY

VENUE
 STREAMING COVERAGE
 SERIES RECORD
 LAST MEETING
 NEXT TIME OUT

Pegula Ice Arena (5,782)
 AmericaOnesports.com
 0-6-0
 Dec. 8, 2013; MU 8-0
 Feb. 21-22 at Robert Morris

GAME NOTES

- Penn State hosts Mercyhurst at Pegula Ice Arena for the first time
- Sunday represents PSU's Senior Day. **Taylor Gross, Lindsay Reihl, Nicole Paniccia, Jenna Welch** and **Tess Weaver** will be honored
- The Nittany Lions look to earn their first victory over the Lakers
- Penn State fell in both games against Mercyhurst in December
- PSU was swept by Lindenwood last weekend in a pair of one-goal games
- Nittany Lions freshmen have scored 26.5 percent of the team's points
- Penn State freshmen & sophomores have tallied 82 of team's 103 points
- Mercyhurst has won five in a row and is ranked eighth nationally

ON THE INSIDE

Page 2: CHA Standings & Team Comparison

Page 6: The Nittany Lion Roster & Pronunciation Guide

Page 7-13: 2013-14 Penn State Box Scores

Page 14: 2013-14 Penn State Women's Hockey Stats

Page 15: The Nittany Lion TV/Radio Roster

STATISTICAL LEADERS

FORWARDS		GP	G	A	PTS	SH	+/-	GWG
18	Laura Bowman	30	9	5	14	73	-9	1
24	Taylor Gross	30	7	7	14	81	-6	1
40	Laura Bowman	30	6	8	14	163	-5	0
18	Hannah Hoenshell	30	4	10	14	68	-8	2
9	Amy Petersen	30	4	9	13	44	-8	0
19	Jill Holdcroft	30	4	3	7	49	-17	0
12	Sarah Nielsen	30	1	5	6	29	-14	0
20	Emily Laurenzi	30	0	3	3	19	-14	0
15	Jess Desorcie	30	1	1	2	30	-14	0
DEFENSE		GP	G	A	PTS	SH	+/-	BLK
4	Jordin Pardoski	30	3	5	8	24	-12	42
27	Kelly Seward	29	3	1	4	22	-2	48
13	Kendra Rasmussen	24	1	0	1	16	-9	15
2	Jeanette Bateman	29	0	1	1	13	-26	43
17	Paige Jahnke	28	0	1	1	13	-18	29
6	Lindsay Reihl	30	0	1	1	10	-4	48
GOALTENDER		GP-GS	Record	MIN	GA	GAA	SV	SV%
30	Celine Whitlinger	14-13	3-9-1	829:35	49	3.54	529	.915
37	Nicole Paniccia	17-17	1-14-2	986:50	57	3.47	573	.910



@PennStateWHKY



PennStateWomensHockey



GoPSUTV





NITTANY LION WOMEN'S HOCKEY

GAME NOTES VS. #8 MERCYHURST (FEB. 15-16)

HOCKEY VALLEY SENIOR DAY

Penn State will honor five graduating Nittany Lions on Sunday's game against Mercyhurst. There will be a brief pre-game acknowledgement before a formal post-game ceremony. Sunday's game will be the last at Pegula Ice Arena for graduate student **Lindsay Reihl**, seniors **Taylor Gross**, **Nicole Paniccia** and **Jenna Welch**, while junior **Tess Weaver** also features in her final game for the Blue and White. Weaver will graduate a year early. Entering this weekend, the graduating class has combined for 260 games played in the Blue and White, while scoring 20 goals and 30 assists for 50 points. The quintet also saved/blocked a combined 1,822 shots while at Penn State.

	GP	G	A	PTS	BLK
Gross	64	14	22	36	64
Reihl	65	0	2	2	83
Welch	65	5	3	8	67
Weaver	32	1	2	3	7
	GP	SV	A		
Paniccia	34	1,601	1		

LINDENWOOD WINS BATTLE OF THE LIONS

Penn State dropped a pair of heartbreaking games to Lindenwood at Pegula Ice Arena, 2-1 and 4-3 (OT), Feb. 8-9. In both games Penn State trailed by two goals and staged a comeback. While the Lions didn't make it all the way back on Saturday in the 2-1 loss, they did on Sunday forcing OT after a 3-1 deficit. In the overtime session, PSU shot eight times on net, but all were saved before Lindenwood's only shot of overtime found the back of the net for the sweep.

Jenna Welch scored her first goal of year in Saturday's 2-1 loss, while **Laura Bowman**, **Amy Petersen** and **Jordin Pardoski** tallied goals for the Nittany Lions in Sunday's game. **Nicole Paniccia** was in net for both games, the first time Penn State went with the same goaltender in a single weekend as she made 48 saves in 121-plus minutes of action.

The sweep was the first by either team in the series as Lindenwood now leads 5-2-1 all-time. The difference in the series was the power play as Lindenwood went 3-for-5, while Penn State went 0-for-9.

SCOUTING MERCYHURST

The eighth-ranked Lakers (19-7-3, 12-3-1 CHA) have quietly ascended to the top of the CHA table on the heels of a five-game conference winning streak. In the CHA alone, Mercyhurst has gone 10-1-0 in its past 11 contests dating back to Nov. 23 following a 2-2-1 start. Last week, MU secured sole possession of first place with dominating wins over RIT, 5-1 and 5-2.

Mercyhurst's high-powered offense scores at a clip of 3.5 goals per game while firing nearly 38 shots on frame. The Lakers look to get ahead early as evidenced by a 36-13 edge in the first period. Five Lakers share the scoring wealth with **Christine Bestland** (15) leading the way followed by **Emily Janiga** (14), **Christine Cicero** (14), **Kaleigh Chippy** (13) and **Jenna Dingeldein** (12). Defender **Molly Byrne** ranks sixth on the team in points with 22 on the back of 20 assists and two goals, while posting a plus-29 rating. In net, **Amanda Makela** (17-6-3) has started 26 of 29 games with a 1.99 goals-against average and .924 save percentage.

SERIES HISTORY vs. MERCYHURST

All-Time Series	MU leads 6-0-0
PSU Streak	6 losses
First Meeting	11/30/12, MU, 5-0
Last Meeting	12/7/13, MU 8-0
Last PSU Win	n/a
Last MU Win	12/7/13, 8-0
Last Tie	n/a
Largest PSU Win	n/a
Largest MU Win	8-0, 12/7/13

LAST FOUR MEETINGS vs. MU

12/7/13	L	0-8	A
12/6/13	L	0-7	A
2/2/13	L	1-4	H
2/1/13	L	2-5	H

PICK YOUR POISON

Penn State has had the fortune of multiple contributors on the offensive end. Twelve Nittany Lions have scored a goal this season, while 19

GAMEDAY COMPARISON

TEAM STATS	PSU	Mercyhurst
Overall record	4-23-3	19-7-3
Conference record	1-14-1	12-3-1
Goals scored	44	102
Goals scored per game	1.5	3.5
Goals allowed	107	56
Goals allowed per game	3.6	1.9
First period goals	15	36
Second period goals	17	38
Third period goals	11	28
Overtime goals	1	0
Shots	725	1091
Shots per game	24.2	37.6
Shot pct.	.061	.093
Assists	63	178
Penalties per game	3.5	7.1
Power plays	9-107	30-146
Power-play pct.	.084	.205
Penalty kills	30-101	26-182
Penalty-kill pct.	.703	.857
Saves	1102	696
Shutouts	0	6

LEADERS

Points	Four with 14	Bestland (43)
Goals	Bowman (9)	Bestland (15)
Assists	Hoenshell (10)	Bestland (28)
Shots	Yoxheimer (163)	Cicero (171)
Shot Pct.	Seward (.136)	Rothgery (.235)
+/-	Two with -1	Two with +29
Faceoff Pct.	Yoxheimer (.608)	n/a
Saves	Paniccia (573)	Makela (610)
Save Pct.	Whitlinger (.915)	Makela (.924)
GAA	Paniccia (3.47)	DiTondo (1.36)
Record	Whitlinger (3-9-1)	Makela (17-6-3)

2013-14 COLLEGE HOCKEY AMERICA STANDINGS

(as of Feb. 11, 2013)

	Pts.	CHA	GF	GA	Overall	GF	GA	Last 10
Mercyhurst (8/8)	25	12-3-1	63	27	19-7-3	102	56	7-2-1
Robert Morris (9/9)	22	10-4-2	46	29	21-6-3	88	54	5-3-2
RIT	18	8-6-2	38	38	13-14-3	68	87	4-4-2
Syracuse (rv/rv)	17	7-6-3	42	37	16-11-3	79	64	6-3-1
Lindenwood	11	5-10-1	26	49	5-21-2	37	98	3-7-0
PENN STATE	3	1-14-1	21	56	4-23-3	44	107	1-8-1

PAST RESULTS & UPCOMING SCHEDULE

Tuesday, Feb. 4 Syracuse* 3, St. Lawrence 0	Friday, Feb. 14 Robert Morris at RIT, 2 PM Syracuse at Lindenwood, 8 PM	Friday, Feb. 21 Lindenwood at Mercyhurst, 3 PM PENN STATE at Robert Morris, 3 PM Syracuse at RIT, 7 PM
Friday, Feb. 7 Mercyhurst* 5, RIT 1 Robert Morris* 3, Syracuse 3 (OT)	Saturday, Feb. 15 Robert Morris at RIT, 2 PM Syracuse at Lindenwood, 3 PM Mercyhurst at PENN STATE, 8 PM	Saturday, Feb. 22 Lindenwood at Mercyhurst, 2 PM PENN STATE at Robert Morris, 3 PM RIT at Syracuse, 4 PM
Saturday, Feb. 8 Lindenwood 2, PENN STATE* 1 Mercyhurst* 5, RIT 2 Syracuse 3, Robert Morris* 1	Sunday, Feb. 16 Mercyhurst at PENN STATE, 1 PM	* home team
Sunday, Feb. 9 Lindenwood 4, PENN STATE* 3		



NITTANY LION WOMEN'S HOCKEY



have registered a point. A quartet of Nittany Lions lead with 14 points: **Shannon Yoxheimer, Taylor Gross, Hannah Hoenshell** and **Laura Bowman**. **Amy Petersen** closes out the double-digit point scorers with 13.

YOUTH SUPPLIES THE OFFENSE

The addition of four freshmen: **Laura Bowman, Amy Petersen, Sarah Nielsen** and **Kelly Seward** have injected an instant bump in scoring production with 32 of the team's 103 points (26.5%). To prove the youth of the team, 82 of the team's 103 points (79.6%) have been collectively tallied by freshmen and sophomores. Nine of the team's top 10 point scorers are underclassmen.

IN THE THICK OF THINGS

Penn State's record of 7-26-2 last season is a little deceiving when considering how close the Nittany Lions were in many of their losses. In fact, 12 of the 26 losses were decided by two goals or less. This year, 10 of 23 losses are by a goal and Penn State is 2-10-3 in games decided by one goal or less. PSU is 3-16-4 all-time in games decided by less than a goal.

RECORD CROWD PACKS PEGULA

Penn State's Feb. 1 game against RIT was the second annual **Skate for the Cure**, which proved to be a huge success. A crowd of 1,795, a record for a women's game at Pegula Ice Arena, saw the Nittany Lions and Tigers take the ice. Penn State donned specially made pink jerseys, which were auctioned off, while RIT sported pink tape on its sticks and socks. The program raised over \$5,000 in donations, which will benefit THON and Pink Zone.

PANICCIA, HOENSHHELL COLLECT CHA WEEKLY LAURELS

Senior goaltender **Nicole Paniccia** and sophomore forward **Hannah Hoenshell** were named College Hockey America's Goaltender and Player of the Week, respectively, Monday (Jan. 13) afternoon.

Paniccia had her best showing of the season on Saturday in a 2-1 overtime win over Colgate, stopping 39 of 40 attempts as Penn State broke a five-game losing streak. For Paniccia, she posted a .975 save percentage and won her

PENN STATE'S RECORD IS...

2-11-2 at home
2-12-1 on the road
1-4-3 in overtime
2-7-2 when scoring first
2-16-1 when opponent scores first
3-4-0 when leading after the 1st period
0-13-0 when trailing after the 1st period
1-6-3 when tied after the 1st period
2-3-0 when leading after the 2nd period
0-15-0 when trailing after the 2nd period
2-5-3 when tied after the 2nd period
1-2-0 when out-shooting opponent
3-20-3 when out-shot by opponent
0-1-0 when taking same # of shots
3-8-1 when winning more faceoffs
1-15-2 when losing more faceoffs
0-0-0 when tied in faceoffs
1-7-1 when taking more penalties
3-9-1 when taking fewer penalties
0-7-1 when taking the same # of penalties
2-5-1 when scoring a power play goal
2-18-2 when not scoring a power play goal
1-17-2 when allowing a power play goal
3-6-1 when not allowing a power play goal
0-8-0 when scoring 0 goals
0-9-1 when scoring 1 goal
2-3-1 when scoring 2 goals
0-2-1 when scoring 3 goals
2-1-0 when scoring 4+ goals
0-0-0 when allowing 0 goals
3-0-1 when allowing 1 goal
1-5-1 when allowing 2 goals
0-6-1 when allowing 3 goals
0-12-0 when allowing 4+ goals
2-6-1 in October
1-6-1 in November
0-2-0 in December
1-6-1 in January
0-3-0 in February
0-0-0 in March
0-1-0 on Tuesday
0-1-0 on Thursday
0-9-2 on Friday
4-10-1 on Saturday
0-3-0 on Sunday
4-13-1 during the day
0-10-2 at night
1-2-2 vs. Hockey East
1-14-1 vs. College Hockey America
2-5-0 vs. ECAC Hockey
0-2-0 vs. WCHA
0-0-0 vs. ranked opponents
4-23-3 vs. unranked opponents
1-2-3 when Shannon Yoxheimer scores
3-9-1 when Celine Whitlinger starts
4-6-2 when a freshman scores
2-10-3 games decided by a goal or less

2013-14 WOMEN'S HOCKEY POLLS

USA Today/USA Hockey (Feb. 11, 2014)

1	Minnesota	28-1-1	1
2	Wisconsin	23-3-2	2
3	Cornell	18-3-4	6
4	North Dakota	17-7-4	5
5	Clarkson	21-4-5	3
6	Harvard	18-3-3	4
7	Boston College	20-5-3	7
8	Mercyhurst	19-7-3	10
9	Robert Morris	21-6-3	8
10	Quinnipiac	17-5-8	9

Others: Boston University, Minnesota-Duluth, Northeastern, Syracuse

USCHO.com (Feb. 10, 2014)

1	Minnesota	28-1-1	1
2	Wisconsin	23-3-2	2
3	Cornell	18-3-4	5
4	North Dakota	17-7-4	4
5	Clarkson	21-4-5	3
6	Harvard	18-3-3	5
7	Boston College	20-5-3	7
8	Mercyhurst	19-7-3	10
9	Robert Morris	21-6-3	9
10	Quinnipiac	17-5-8	8

Others: Boston University, Minnesota-Duluth, Northeastern, Syracuse

Bold indicates 2013-14 opponent

2013-14 MEDIA INFORMATION

Penn State Athletic Communications

Primary Contact: Jeremy Fallis
 Email: jeremy.fallis@psu.edu
 Office: 814-865-1757

Interviews

Penn State student-athletes and coaches are available for interviews after practice each day. Please contact Jeremy Fallis in advance.

Credentials

Contact Jeremy Fallis for home game credentials at Pegula Ice Arena.

Postgame

Head coach Josh Brandwene and requested student-athletes are available to the media following each game in the studio rink. Please alert Jeremy Fallis during the game of any requests.

Yearbook

A complimentary copy of the 2013-14 Penn State women's hockey yearbook will be made available to members of the media. The public may purchase copies for \$6 online.

GoPSUsports.com

[Facebook.com/PennStateWomensHockey](https://www.facebook.com/PennStateWomensHockey)

[@PennStateWHKY](https://twitter.com/PennStateWHKY)





NITTANY LION WOMEN'S HOCKEY

first game of the season, snapping a 21-game winless drought. Paniccia posted double-digit save totals for the first three periods (13, 14 and 10), while stopping two more in OT. The award is the first for Paniccia in her collegiate career.

The hero in overtime was Hoenshell with her game-winning goal following an assist on the game-tying goal in the second period, which forced the extra frame. Hoenshell's pass across to **Laura Bowman** tied the game with 1:55 remaining in the second period before her tremendous stick handling gave PSU its first OT win in program history. Hoenshell posted a plus-two rating in the victory, which snapped a five-game skid for the Nittany Lions. The night before, Hoenshell tallied four shots and blocked two shots in a tough 3-2 overtime loss to the Raiders.

NITTANY LIONS SPLIT WITH THE RAIDERS

Following a tough 3-2 overtime loss Friday, Jan. 10, Penn State flipped the script to take a 2-1 game on Saturday, Jan. 11 over Colgate. In Friday's game, **Jill Holdcroft** and **Taylor Gross** scored second-period goals to give PSU a 2-1 lead, which broke a scoreless drought of 292 minutes. Despite **Celine Whitlinger's** 29 saves, the Raiders come back to force overtime and score a power-play goal in the extra frame for the win.

The next day was the **Hannah Hoenshell** and **Nicole Paniccia** show. Paniccia stopped 39 shots before **Laura Bowman** tied the game on a Hoenshell cross-ice pass in the second period. In OT, Hoenshell dazzled her way around the Raider defense for PSU's first overtime winner in program history, a 2-1 win.

THE NEXT NITTANY LIONS

Nittany Lion head coach **Josh Brandwene** officially announced a signing class of six student-athletes for the 2014-15 season on Tuesday, Nov. 19. Penn State welcomes **Hannah Ehresmann** (Minnetonka, Minn.), **Irene Kiroplis** (Georgetown, Ont.), **Remi Martin** (Littleton, Colo.), **Caitlin Reilly** (Chanhassen, Minn.), **Bella Sutton** (Shoreview, Minn.) and **Christi Vetter** (Lakeville, Minn.).

Included in the class are three forwards, a true defender and a goaltender, while Kiroplis can play at forward or defense. The class sees four Minnesotans join the squad to bring the projected total for 2014-15 to nine, which would be the highest representation from any state or province.

HOENSHHELL, SEWARD EARN CHA AWARDS

Penn State forward **Hannah Hoenshell** and defender **Kelly Seward** were named College Hockey America's Player and Rookie of the

Week, respectively, on Monday, Oct. 7.

A crafty forward with incredible stick skills, Hoenshell propelled Penn State to an undefeated weekend at Vermont, supplying three points and a game-high plus-four rating in Saturday's 4-2 win. Hoenshell was involved in three of Penn State's four goals, tallying a goal and two assists. Her goal was her second career game-winning goal.

Seward was fantastic on both sides of the ice this weekend as she tallied two goals, which ties for the team high after two games. Seward posted a plus-two rating and seven blocked shots for the weekend as well. In both games, Seward scored Penn State's first goal. On Friday it was a power-play tally and Saturday it was a game-tying goal in the first period.

BRING 'EM BACK

Penn State brings back 24 of its 27 members from last year's team. In those 24 student-athletes, Penn State returns its top 14 scorers and almost 99 percent of its offense along with every member of its stout goaltending corps.

YOXHEIMER MAKES HER MARK

Leading the team in scoring last season was **Shannon Yoxheimer**, a left-handed forward. Yoxheimer buried 14 goals with 17 assists for a grand total of 31 points, all team highs. She led College Hockey America in shots (169) and put away three power play goals as well as a team-high three game-winning goals. Yoxheimer's numbers ranked her in the top 10 nationally in goals, points and assists for rookies. The CHA coaches named Yoxheimer to the All-Rookie team.

THE PANICCIA WALL

Senior goaltender **Nicole Paniccia** excelled between the pipes for the Blue and White last year, stopping 1,028 shots with a 92.8 save percentage. Paniccia's save tally was second in all of NCAA Division I, topped only by fellow CHA upstart Lindenwood's Nicole Hensley. Paniccia was in net for six of PSU's seven victories last year as well as both of Penn State's ties.

POWER-PLAY HOLDCROFT

Sophomore forward **Jill Holdcroft** was lethal on the power play last season, scoring six of her 10 goals last year on the advantage. Despite missing the CHA playoffs at RIT, Holdcroft still ranked second on the team in scoring (10 goals) and added two assists for good measure.

CAPTAINS' CORNER

Senior forward **Taylor Gross** once again leads Penn State as its first captain following her first year with the letter in 2012-13. Gross was second on the team in points (22) and assists (15)

last season with 34 appearances. The University of Connecticut transfer appeared in 48 games for the Huskies before joining Penn State's club side in January 2012. Senior forward **Jenna Welch** and **Lindsay Reihl**, a graduate student defender, reprise their roles as assistant captains this year. Joining the veteran trio is **Jordin Pardoski**, a vocal sophomore defender who is a first-year assistant captain.

NEW NITTANY LIONS

Four freshmen join the Nittany Lions for the 2013-14 campaign. Minnesota forwards **Laura Bowman**, **Amy Petersen** and **Sarah Nielsen** provide an instant dose of goal scoring from their high school success. Defender **Kelly Seward** of New York is the tallest Nittany Lion blueliner.

2013-14 HONORS & AWARDS

Hannah Hoenshell

CHA Player of the Week (10/7, 1/13)

Nicole Paniccia

CHA Goaltender of the Week (1/13)
Penn State Student-Athlete of the Week (1/14)

Kelly Seward

CHA Rookie of the Week (10/7)

OVER THE AIR

Both games will be broadcast on AmericaOneSports.com with Alex Gilliland and Allie Rothman calling the play.

The CHA on AmericaOneSports.com

Penn State home & away games during CHA play will be streamed live on AmericaOneSports.com. Subscribers can purchase a 1-day package for \$8, 30-day packages for \$30 or a season pass for \$125.

Penn State & The Big Ten Network

The Big Ten Network televises and streams more Olympic sporting events and women's sports than has ever been aired on any other network. Original programming highlights activities and accomplishments of some of the nation's finest universities. The groundbreaking Student U initiative provides real-world experience for students interested in careers in sports television.





NITTANY LION WOMEN'S HOCKEY

FIRST HEAD COACH

A 1991 graduate of Penn State, head coach **Josh Brandwene** is the first to lead the Nittany Lions. Brandwene compiled a 7-26-2 record last season with 17 freshmen on the team. A four-year hockey player at PSU, Brandwene brings 20 years of coaching experience to Happy Valley.

CONTINUING PENN STATE HOCKEY

Seven members of the current varsity team played for the women's club team at some point. Graduate student **Lindsay Reihl** along with juniors **Cara Mendelson**, **Katie Murphy**, **Madison Smiddy** and **Tess Weaver** played all of the 2011-12 season for head coach **Josh Brandwene** in Penn State's last year at the club level. **Taylor Gross** and **Jess Desorcie** joined the five aforementioned players midway through the season in preparation of the 2012-13 season.

NEXT TIME OUT

Penn State finishes the regular season with a two-game road trip to second-place Robert Morris. Friday's game is set for a 3 p.m. opening faceoff at 84 Lumber Arena on Neville Island before Saturday's regular-season finale at 3 p.m.

CHA TOURNAMENT LOOMING

The Nittany Lions will take part in their second College Hockey America Tournament starting Feb. 28. Penn State will be the No. 6 seed for the second straight year, traveling to the yet-to-be determined No. 3 seed for a three-game series Feb. 28-March 2. The winning team will advance to the CHA Semifinals March 7 at the home of the No. 1 seeded team.

THE LAST TIME

PENN STATE...

Scored 0 goals	1/25/14 at Syracuse (0-3)
Scored 3 goals	2/9/14 vs. Lindenwood (3-4)
Scored 4 goals	11/23/13 at Lindenwood (4-1)
Scored 5 goals	10/26/13 vs. New Hampshire (5-8)
Scored 6 goals	11/2/12 vs. Sacred Heart (6-0)
Scored 7 goals	Never
Scored 8 goals	11/3/12 vs. Sacred Heart (8-2)
Scored 9 goals	Never
Scored 10 goals	1/4/13 vs. Chatham (10-0)
Allowed 0 goals	1/5/13 vs. Chatham (4-0)
Allowed 1 goal	1/11/14 vs. Colgate (2-1)
Allowed 2 goals	2/8/14 vs. Lindenwood (1-2)
Allowed 3 goals	2/1/14 vs. RIT (1-3)
Allowed 4 goals	2/9/14 vs. Lindenwood (3-4)
Allowed 5 goals	10/11/13 at Quinnipiac (1-5)
Allowed 6+ goals	1/28/14 at Princeton (1-6)
Won in overtime	1/11/14 vs. Colgate (2-1)
Lost in overtime	2/9/14 vs. Lindenwood (3-4)
Tied in overtime	1/31/14 vs. RIT (2-2)
Played a ranked team	2/2/13 vs. #7 Mercyhurst (1-4)
Attempted 10-19 shots	2/1/14 19 vs. RIT (1-3)
Attempted 20-29 shots	1/31/14 21 vs. RIT (2-2)
Attempted 30-39 shots	1/10/14 32 vs. Colgate (2-3)
Attempted 40-49 shots	2/9/14 47 vs. Lindenwood (3-4)
Attempted 50-59 shots	Never
Attempted 60-69 shots	11/3/12 64 vs. Sacred Heart (8-2)
Attempted 70+ shots	1/5/13 71 vs. Chatham (4-0)
Allowed 10-19 shots	1/5/13 16 vs. Chatham (4-0)
Allowed 20-29 shots	2/9/14 25 vs. Lindenwood (3-4)
Allowed 30-39 shots	1/31/14 36 vs. RIT (2-2)
Allowed 40-49 shots	1/24/14 47 vs. RIT (1-3)
Allowed 50-59 shots	1/28/14 50 at Princeton (1-6)
Allowed 60-69 shots	2/22/13 63 at Robert Morris (1-4)
Allowed 70+ shots	12/1/12 71 at #4 Mercyhurst (1-7)
Tallied 5-9 assists	2/9/14 6 vs. Lindenwood (3-4)
Tallied 10-15 assists	11/3/12 12 vs. Sacred Heart (8-2)
Tallied 15+ assists	1/4/13 17 vs. Chatham (10-0)
Scored 10-19 points	10/26/13 13 vs. New Hampshire (5-8)
Scored 20+ points	1/4/13 27 vs. Chatham (10-0)
Scored 2 power-play goals	10/26/13 vs. New Hampshire (5-8)
Scored 3 power-play goals	10/20/12 at Sacred Heart (6-1)
Allowed 0 power-play goals	1/25/14 at Syracuse (0-3)
Allowed 2 power-play goals	2/9/14 vs. Lindenwood (3-4)
Had 5 different goal scorers	10/26/13 vs. New Hampshire (5-8)
Had 6 different goal scorers	10/20/12 at Sacred Heart (6-1)
Had 7 different goal scorers	1/4/13 vs. Chatham (10-0)
Had 8 different goal scorers	11/3/12 vs. Sacred Heart (8-2)

A PENN STATE PLAYER...

Scored 2 goals	11/16/13 J. Holdcroft at RIT (2-3)
Scored 3 goals	11/2/12 H. Hoenshell vs. Sacred Heart (6-0)
Scored 4 goals	Never
Had 3 assists	1/4/13 J. Bateman vs. Chatham (10-0)
Had 5 points	Never
Had 10+ shots	2/9/14 10, S. Yoxheimer vs. Lindenwood (3-4)
Saved 40-49 shots	2/1/14 44, N. Paniccia vs. RIT (1-3)
Saved 50-59 shots	11/10/13 51, C. Whitlinger vs. Syracuse (3-4)
Saved 60+ shots	12/1/12 64, N. Paniccia at #4 Mercyhurst (1-7)
Had a shutout	1/5/13 C. Whitlinger/B. Meyer vs. Chatham (4-0)
Scored an empty-net goal	10/6/12 B. Shaw at Vermont (5-3)
Scored a short-handed goal	11/16/13 J. Holdcroft at RIT (2-3)





NITTANY LION WOMEN'S HOCKEY

2013-14 PENN STATE WOMEN'S HOCKEY NUMERICAL ROSTER

No.	Name	Yr.	Pos.	Ht.	S/C	Hometown	Last Team
2	Jeanette Bateman	So.	D	5-6	R	Greeley, Colo.	Colorado Select
3	Cara Mendelson	Jr.	F	5-6	R	Pittsburgh, Pa.	Steel City Selects
4	Jordin Pardoski	So.	D	5-5	R	Rochester Hills, Mich.	Detroit Honeybaked
5	Stephanie Walkom	So.	D	5-7	R	Moon Township, Pa.	Pittsburgh Penguins Elite
6	Lindsay Reihl	Gr.	D	5-4	R	Cheshire, Conn.	Connecticut Polar Bears
9	Amy Petersen	Fr.	F	5-4	R	Minnetonka, Minn.	Minnetonka HS
10	Micayla Catanzariti	So.	F	5-4	R	Rancho Santa Margarita, Calif.	Gilmour Academy (Ohio)
12	Sarah Nielsen	Fr.	F	5-6	L	Edina, Minn.	Edina HS
13	Kendra Rasmussen	So.	D/F	5-5	L	Sartell, Minn.	Sartell/Sauk Rapids HS
14	Darby Kern	So.	F	5-11	R	Venetia, Pa.	Pittsburgh Penguins Elite
15	Jess Desorcie	Jr.	F	5-4	L	Westford, Vt.	Connecticut College
16	Hannah Hoenshell	So.	F	5-3	R	Plano, Texas	Texas Alliance
17	Paige Jahnke	So.	D	5-6	R	Oakdale, Minn.	Roseville HS / Minnesota Jr. Whitecaps
18	Laura Bowman	Fr.	F	5-7	R	Minnetonka, Minn.	Minnetonka HS
19	Jill Holdcroft	So.	F	5-1	R	Pennsylvania Furnace, Pa.	Pittsburgh Penguins Elite
20	Emily Laurenzi	So.	F	5-2	R	Townsend, Del.	National Sports Academy (N.Y.)
21	Sarah Wilkie	So.	D	5-6	R	Ashby, Mass.	Williston Northampton School
22	Jenna Welch	Sr.	F	5-8	R	Austin, Texas	Connecticut
23	Birdie Shaw	So.	F	5-2	L	Troy, Mich.	Detroit Honeybaked
24	Taylor Gross	Sr.	F	5-1	R	Colorado Springs, Colo.	Connecticut
25	Katie Murphy	Jr.	F	5-4	L	Novi, Mich.	Detroit Honeybaked
27	Kelly Seward	Fr.	D	5-9	L	Williamsville, N.Y.	Nichols School / Buffalo Bisons
30	Celine Whitlinger	So.	G	5-8	L	Garden Grove, Calif.	Gilmour Academy (Ohio)
31	Brooke Meyer	So.	G	5-7	L	Naperville, Ill.	Chicago Huskies
33	Madison Smiddy	Jr.	D	5-7	L	Grand Rapids, Mich.	Detroit Honeybaked
36	Tess Weaver	Jr.	F	5-5	R	Windber, Pa.	Pittsburgh Penguins Elite
37	Nicole Paniccia	Sr.	G	5-5	L	Oakville, Ont.	Connecticut
40	Shannon Yoxheimer	So.	F	5-7	L	Jackson, Mich.	North American Hockey Academy (Vt.)

Head Coach: Josh Brandwene (Second Year)

Assistant Coaches: Gina Kearns (Second Year), Casey McCullion (Second Year); **Director of Operations** Alex Dawes (First Year)

Captain: Taylor Gross; **Assistant Captains:** Jordin Pardoski, Lindsay Reihl, Jenna Welch

ALPHABETICAL ROSTER		PRONUNCIATION GUIDE		LIONS BY STATE		LIONS BY POSITION	
No.	Name	Brandwene	BRAND-ween	California (2):	Catanzariti, Whitlinger	Forward (17):	Bowman, Catanzariti, Desorcie, Gross, Hoenshell, Holdcroft, Kern, Laurenzi, Mendelson, Murphy, Nielsen, Petersen, Rasmussen, Shaw, Weaver, Welch, Yoxheimer
2	Jeanette Bateman	Catanzariti	Cah-TAN-zah-REE-tee	Colorado (2):	Bateman, Gross	Defense (9):	Bateman, Jahnke, Pardoski, Rasmussen, Reihl, Seward, Smiddy, Walkom, Wilkie
18	Laura Bowman	Desorcie	Deh-SORE-see	Connecticut (1):	Reihl	Goalie (3):	Meyer, Paniccia, Whitlinger
10	Micayla Catanzariti	Jahnke	YAWN-kee	Delaware (1):	Laurenzi		
15	Jess Desorcie	Jeanette	Jeh-NETT	Illinois (1):	Meyer		
24	Taylor Gross	Kearns	KERNS	Massachusetts (1):	Wilkie		
16	Hannah Hoenshell	McCullion	Mick-CULL-yon	Michigan (5):	Murphy, Pardoski, Shaw, Smiddy, Yoxheimer		
19	Jill Holdcroft	Paniccia	Pah-NEE-cha	Minnesota (5):	Bowman, Jahnke, Nielsen, Petersen, Rasmussen		
17	Paige Jahnke	Reihl	RILE	New York (1):	Seward		
14	Darby Kern			Pennsylvania (5):	Holdcroft, Kern, Mendelson, Walkom, Weaver		
20	Emily Laurenzi			Texas (2):	Hoenshell, Welch		
3	Cara Mendelson			Vermont (1):	Desorcie		
31	Brooke Meyer						
25	Katie Murphy						
12	Sarah Nielsen						
37	Nicole Paniccia						
4	Jordin Pardoski						
9	Amy Petersen						
13	Kendra Rasmussen						
6	Lindsay Reihl						
27	Kelly Seward						
23	Birdie Shaw						
33	Madison Smiddy						
5	Stephanie Walkom						
36	Tess Weaver						
22	Jenna Welch						
30	Celine Whitlinger						
21	Sarah Wilkie						
40	Shannon Yoxheimer						





NITTANY LION WOMEN'S HOCKEY

OCT. 18, 2013: UNION 5, PENN STATE 1

Union (3-3-0) vs. Penn State (1-3-1)
Date: Oct 18, 2013 • Location: University Park, Pa. • Arena: Pegula Ice Arena
Attendance: 1424 • Start time: 7:00 pm • End time: 8:52 pm • Total time: 1:52

Prd Time Team Scored by Assists Vis. on ice Home on ice Goals by Period

TEAM SUMMARY # Union G A PI Sh +/- BI # Penn State G A PI Sh +/- BI

GOALTENDERS # Union Dec Min GA 1 2 3 Saves # Penn State Dec Min GA 1 2 3 Saves

PENALTY SUMMARY Prd Player Team MinOffense Time Prd Player Team MinOffense Time

Win-Lundberg, Shenae (3-3-0). Loss-Paniccia, Nicole (0-2-1).

OCT. 26, 2013: NEW HAMPSHIRE 8, PENN STATE 5

New Hampshire (4-2-1, 1-0-1 WHEA) vs. Penn State (2-4-1, 0-0-0 CHA)
Date: Oct 26, 2013 • Location: University Park, Pa. • Arena: Pegula Ice Arena
Attendance: 493 • Start time: 7:00 pm • End time: 9:01 pm • Total time: 2:01

Prd Time Team Scored by Assists Vis. on ice Home on ice Goals by Period

TEAM SUMMARY # New Hampshire G A PI Sh +/- BI # Penn State G A PI Sh +/- BI

GOALTENDERS # New Hampshire Dec Min GA 1 2 3 Saves # Penn State Dec Min GA 1 2 3 Saves

PENALTY SUMMARY Prd Player Team MinOffense Time Prd Player Team MinOffense Time

Win-Vaattovaara, Vilma (4-0-1). Loss-Paniccia, Nicole (0-3-1).

OCT. 19, 2013: PENN STATE 2, UNION 1

Union (3-4-0) vs. Penn State (2-3-1)
Date: Oct 19, 2013 • Location: University Park, Pa. • Arena: Pegula Ice Arena
Attendance: 814 • Start time: 2:00 pm • End time: 3:59 • Total time: 1:59

Prd Time Team Scored by Assists Vis. on ice Home on ice Goals by Period

TEAM SUMMARY # Union G A PI Sh +/- BI # Penn State G A PI Sh +/- BI

GOALTENDERS # Union Dec Min GA 1 2 3 Saves # Penn State Dec Min GA 1 2 3 Saves

PENALTY SUMMARY Prd Player Team MinOffense Time Prd Player Team MinOffense Time

Win-Whitlinger, Celine (2-1-0). Loss-Lundberg, Shenae (3-4-0).

OCT. 27, 2013: NEW HAMPSHIRE 3, PENN STATE 1

New Hampshire (5-2-1, 1-0-1 WHEA) vs. Penn State (2-5-1, 0-0-0 CHA)
Date: Oct 27, 2013 • Location: University Park, Pa. • Arena: Pegula Ice Arena
Attendance: 552 • Start time: 2:00 pm • End time: 4:00 pm • Total time: 2:00

Prd Time Team Scored by Assists Vis. on ice Home on ice Goals by Period

TEAM SUMMARY # New Hampshire G A PI Sh +/- BI # Penn State G A PI Sh +/- BI

GOALTENDERS # New Hampshire Dec Min GA 1 2 3 Saves # Penn State Dec Min GA 1 2 3 Saves

PENALTY SUMMARY Prd Player Team MinOffense Time Prd Player Team MinOffense Time

Win-Wilkes, Ashley (1-0-0). Loss-Whitlinger, Celine (2-2-0).
Penn State TO at 17:39 of 3rd period





NITTANY LION WOMEN'S HOCKEY

JAN. 4, 2014: OHIO STATE 4, PENN STATE 0

Penn State (3-16-2, 1-9-0 CHA) vs. Ohio State (7-11-2, 2-10-2 WCHA)
Date: Jan 04, 2014 • Location: Columbus, Ohio • Arena: OSU Ice Rink
Attendance: 292 • Start time: 4:07 pm • End time: 6:01 pm • Total time: 1:54

Table with columns: Prd Time, Team, Scored by, Assists, Vis. on ice, Home on ice, Goals by Period, Shots by Period, Power Play Goals-Att (Sh), Penalties-Minutes by Prd, and Totals.

GOALTENDERS table with columns: ##, Penn State, Dec, Min, GA, 1, 2, 3, Saves and ##, Ohio State, Dec, Min, GA, 1, 2, 3, Saves.

PENALTY SUMMARY table with columns: Prd, Player, Team, Min/Offense, Time, Prd, Player, Team, Min/Offense, Time.

Win-Lisa Steffes (5-5-1). Loss-Paniccia, Nicole (0-9-2).

JAN. 11, 2014: PENN STATE 2, COLGATE 1 (OT)

Colgate (5-14-2, 2-8-0 ECAC) vs. Penn State (4-17-2, 1-9-0 CHA)
Date: Jan 11, 2014 • Location: University Park, Pa. • Arena: Pegula Ice Arena
Attendance: 754 • Start time: 2:00 pm • End time: 3:53 pm • Total time: 1:53

Table with columns: Prd Time, Team, Scored by, Assists, Vis. on ice, Home on ice, Goals by Period, Shots by Period, Power Play Goals-Att (Sh), Penalties-Minutes by Prd, and Totals.

GOALTENDERS table with columns: ##, Penn State, Dec, Min, GA, 1, 2, 3, Saves and ##, Ohio State, Dec, Min, GA, 1, 2, 3, Saves.

PENALTY SUMMARY table with columns: Prd, Player, Team, Min/Offense, Time, Prd, Player, Team, Min/Offense, Time.

Win-Paniccia, Nicole (1-9-2). Loss-Brooks, Brittney (3-7-1).
Penn State Timeout, 16:59 -- 2nd Period
Colgate Timeout, 16:12 -- 3rd Period

JAN. 10, 2014: COLGATE 3, PENN STATE 2 (OT)

Colgate (5-13-2, 2-8-0 ECAC) vs. Penn State (3-17-2, 1-9-0 CHA)
Date: Jan 10, 2014 • Location: University Park, Pa. • Arena: Pegula Ice Arena
Attendance: 474 • Start time: 7:00 pm • End time: 9:01 • Total time: 2:01

Table with columns: Prd Time, Team, Scored by, Assists, Vis. on ice, Home on ice, Goals by Period, Shots by Period, Power Play Goals-Att (Sh), Penalties-Minutes by Prd, and Totals.

GOALTENDERS table with columns: ##, Colgate, Dec, Min, GA, 1, 2, 3, OT, Saves and ##, Penn State, Dec, Min, GA, 1, 2, 3, OT, Saves.

PENALTY SUMMARY table with columns: Prd, Player, Team, Min/Offense, Time, Prd, Player, Team, Min/Offense, Time.

Win-Brooks, Brittney (3-6-1). Loss-Whitlinger, Celine (3-8-0).

JAN. 24, 2014: SYRACUSE 3, PENN STATE 2 (OT)

Penn State (4-18-2, 1-10-0 CHA) vs. Syracuse (13-9-2, 5-4-2 CHA)
Date: Jan 24, 2014 • Location: Syracuse, N.Y. • Arena: Tennyis Ice Pavillion
Attendance: 424 • Start time: 7:00 PM • End time: 8:56 PM • Total time: 1:56

Table with columns: Prd Time, Team, Scored by, Assists, Vis. on ice, Home on ice, Goals by Period, Shots by Period, Power Play Goals-Att (Sh), Penalties-Minutes by Prd, and Totals.

GOALTENDERS table with columns: ##, Penn State, Dec, Min, GA, 1, 2, 3, OT, Saves and ##, Syracuse, Dec, Min, GA, 1, 2, 3, OT, Saves.

PENALTY SUMMARY table with columns: Prd, Player, Team, Min/Offense, Time, Prd, Player, Team, Min/Offense, Time.

Win-Drinkwater, Jenesis (9-2-0). Loss-Whitlinger, Celine (3-9-0).





NITTANY LION WOMEN'S HOCKEY

JAN. 25, 2014: SYRACUSE 3, PENN STATE 0

Penn State (4-19-2, 1-11-0 CHA) vs. Syracuse (14-9-2, 6-4-2 CHA)
 Date: Jan 25, 2014 • Location: Syracuse, N.Y. • Arena: Tennety Ice Pavilion
 Attendance: 302 • Start time: 2:00 PM • End time: 3:53 PM • Total time: 1:53

Prd	Time	Team	Scored by	Assists	Vis. on ice	Home on ice	Goals by Period	Shots by Period	Penalties
							1 2 3 Tot	1 2 3 Tot	PRN PSU
1.	1st	15:39	SU	EV Scharfe, Margot/7	Piacentini, Meli/9 Renault, Nicole/16	13,19,12,22,4	14,2,5,6,19	PSU 0 0 0 0 SU 1 1 1 3	0 0 0 0
2.	2nd	10:41	SU	EV Piacentini, Melissa/12	Scharfe, Margot/7 Leslie, Danielle/5	13,22,4,19,12	14,6,19,17,9	PSU 1 1 1 3 SU 0 0 0 0	0 0 0 0
3.	3rd	00:19	SU	EV Lacombe, Allie/7	Scharfe, Margot/7 Scharfe, Margot/8	18,9,17,12,4	9,8,14,2,19	PSU 5 7 4 16 SU 10 19 9 38	0 0 0 0

TEAM SUMMARY	#	Prd	Time	Team	Min/Offense	Time	Prd	Time	Team	Min/Offense	Time
1st	1	15:39	PRIN	EV	Leahy, Brianna	08:34 PP	3rd	18:29	PSU	2: Interference	05:53 PP
2nd	2	10:41	PSU	EV	Petersen, Amy	02:25 PP	3rd	13:25	PSU	2: Interference	10:23 PP
3rd	3	00:19	PRIN	PP	Pankowski, All	13:25 PP	3rd	01:35	SU	2: Tripping	18:53 PP

GOALTENDERS	#	Prd	Time	Team	Dec	Min	GA	1	2	3	Saves					
37	Paniccia, Nicole	L	59:50	3	9	18	8	35	29	Drinkwater, Jenesi	59:58	0	5	7	4	16
	EMPTY NET		0:10	0	0	0	0	0		EMPTY NET	0:02	0	0	0	0	0

JAN. 31, 2014: PENN STATE 2, RIT 2 (OT)

RIT (12-12-5, 7-4-2 CHA) vs. Penn State (4-20-3, 1-11-1 CHA)
 Date: Jan 31, 2014 • Location: University Park, Pa. • Arena: Pegula Ice Arena
 Attendance: 563 • Start time: 7:00 pm • End time: 9:04 pm • Total time: 2:04

Prd	Time	Team	Scored by	Assists	Vis. on ice	Home on ice	Goals by Period	Shots by Period	Penalties
							1 2 3 OT Tot	1 2 3 OT Tot	PRN PSU
1.	1st	13:17	RIT	PP Zach, Erin/5	Scoyne, Morgan/12 Brown, Celeste/4	20,3,24,27,19	13,18,24,4	RIT 0 0 0 0 PSU 1 0 1 0 2	0 0 0 0
2.	1st	18:15	PSU	EV Petersen, Amy/3	Bowman, Laura/4 Pardoski, Jordin/5	23,3,25,14,9	9,18,13,16,4	RIT 1 0 1 0 2 PSU 1 0 1 0 2	0 0 0 0
3.	3rd	02:41	PSU	EV Yoxheimer, Shannon/6	Gross, Taylor/6	19,15,20,2,3	40,24,17,2,20	RIT 0 0 0 0 PSU 2 2 2 2 6	0 0 0 0
4.	3rd	09:42	RIT	EV Brown, Celeste/8	Bulleid, Emilee/7 Grigg, Lindsay/11	24,21,23,9,26	18,9,6,13,2	RIT 1 1 1 1 4 PSU 7 6 8 0 21	0 0 0 0

TEAM SUMMARY	#	Prd	Time	Team	Min/Offense	Time	Prd	Time	Team	Min/Offense	Time
1st	1	13:17	RIT	PP	Zach, Erin/5	06:38 PP	3rd	01:35	SU	2: Interference	18:53 PP
2nd	2	18:15	PSU	EV	Petersen, Amy/3	02:25 PP	3rd	13:25	PSU	2: Interference	10:23 PP
3rd	3	02:41	PSU	EV	Yoxheimer, Shannon/6	01:35 PP	3rd	01:35	SU	2: Tripping	18:53 PP

GOALTENDERS	#	Prd	Time	Team	Dec	Min	GA	1	2	3	OT	Saves				
37	Paniccia, Nicole	L	59:50	3	9	18	8	35	29	Drinkwater, Jenesi	59:58	0	5	7	4	16
	EMPTY NET		0:10	0	0	0	0	0		EMPTY NET	0:02	0	0	0	0	0

JAN. 28, 2014: PRINCETON 6, PENN STATE 1

Penn State (4-20-2) vs. Princeton (10-8-3)
 Date: Jan 28, 2014 • Location: Princeton, N.J. • Arena: Hobey Baker Rink
 Attendance: 63 • Start time: 7:00 pm • End time: 8:49 pm • Total time: 1:49

Prd	Time	Team	Scored by	Assists	Vis. on ice	Home on ice	Goals by Period	Shots by Period	Penalties
							1 2 3 Tot	1 2 3 Tot	PRN PSU
1.	1st	03:07	PRIN	EV Leahy, Denna	Strabley, Molly Figuera, Gabie	23,15,10,27,6	14,2,7,15,21	PRN 1 0 0 1 PSU 1 0 0 1	0 0 0 0
2.	1st	07:21	PRIN	EV Leahy, Brianna	Figuera, Gabie	19,12,22,17	15,14,21,7,17	PRN 4 1 1 6 PSU 1 0 1 1	0 0 0 0
3.	1st	08:42	PSU	EV Petersen, Amy	Gross, Taylor Paniccia, Nicole	9,4,13,20,24	12,19,21,25,11	PRN 1 0 1 6 PSU 1 0 1 1	0 0 0 0
4.	1st	16:03	PRIN	PP Pankowski, All	Butler, Sally Tucker, Cassidy	18,22,4,13	3,25,18,10,5	PRN 1 0 1 6 PSU 1 0 1 1	0 0 0 0
5.	1st	18:31	PRIN	EV Leahy, Brianna	Koelzer, Kelsey Laign, Denna	19,12,24,13	15,11,14,21,7	PRN 19 20 11 50 PSU 5 5 6 16	0 0 0 0
6.	2nd	19:36	PRIN	PP Butler, Sally	Pankowski, All	9,18,4,13	10,3,25,5,18	PRN 19 20 11 50 PSU 5 5 6 16	0 0 0 0
7.	3rd	04:11	PRIN	EV Butler, Sally	Allewa, Rose Pankowski, All	24,40,27,2,18	10,5,19,3,16	PRN 19 20 11 50 PSU 5 5 6 16	0 0 0 0

TEAM SUMMARY	#	Prd	Time	Team	Min/Offense	Time	Prd	Time	Team	Min/Offense	Time
1st	1	03:07	PRIN	EV	Leahy, Denna	08:34 PP	3rd	18:29	PSU	2: Interference	05:53 PP
2nd	2	19:36	PRIN	PP	Butler, Sally	02:25 PP	3rd	13:25	PSU	2: Interference	10:23 PP
3rd	3	04:11	PRIN	EV	Butler, Sally	01:35 PP	3rd	01:35	SU	2: Tripping	18:53 PP

GOALTENDERS	#	Prd	Time	Team	Dec	Min	GA	1	2	3	Saves				
37	Paniccia, Nicole	L	20:00	4	15	0	15	33	Newell, Kimberly	60:00	1	4	5	6	15
30	Whitlinger, Celine	L	40:00	2	0	19	10	29							

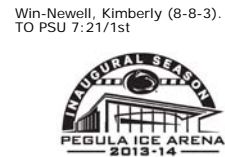
FEB. 1, 2014: RIT 3, PENN STATE 1

RIT (13-12-3, 8-4-2 CHA) vs. Penn State (4-21-3, 1-12-1 CHA)
 Date: Feb 01, 2014 • Location: University Park, Pa. • Arena: Pegula Ice Arena
 Attendance: 1795 • Start time: 2:00 pm • End time: 4:04 pm • Total time: 2:04

Prd	Time	Team	Scored by	Assists	Vis. on ice	Home on ice	Goals by Period	Shots by Period	Penalties
							1 2 3 Tot	1 2 3 Tot	PRN PSU
1.	1st	19:47	PSU	EV Bowman, Laura/8	Waits, Dakota/7	24,9,21,23,26	18,9,6,16,27	RIT 0 2 1 3 PSU 1 0 0 1	0 0 0 0
2.	2nd	09:46	RIT	PP Brown, Celeste/9	Waits, Dakota/7	24,7,19,2,20	13,9,18,4	RIT 0 2 1 3 PSU 1 0 0 1	0 0 0 0
3.	2nd	16:57	RIT	EV Stone, Mackenzie/5	Maugeri, Marissa/14	14,6,25,28,7	19,12,15,6,27	RIT 0 2 1 3 PSU 1 0 0 1	0 0 0 0
4.	3rd	10:02	RIT	EV McCrea, Kolbee/14	Zach, Erin/14	9,15,20,21,19	13,4,20,24,40	RIT 12 21 14 47 PSU 4 8 7 19	0 0 0 0

TEAM SUMMARY	#	Prd	Time	Team	Min/Offense	Time	Prd	Time	Team	Min/Offense	Time
1st	1	19:47	PSU	EV	Bowman, Laura/8	06:38 PP	3rd	01:35	SU	2: Interference	04:56 PP
2nd	2	09:46	RIT	PP	Brown, Celeste/9	11:40 PP	2nd	17:58	PSU	2: Interference	17:58 PP
3rd	3	10:02	RIT	EV	McCrea, Kolbee/14	14:15 PP	3rd	12:31	PSU	2: Tripping	12:31 PP

GOALTENDERS	#	Prd	Time	Team	Dec	Min	GA	1	2	3	Saves				
34	Stoddart, Brooke	W	59:50	1	3	8	18	37	Paniccia, Nicole	58:39	3	12	13	44	
	EMPTY NET		0:10	0	0	0	0		EMPTY NET	1:21	0	0	0	0	0



NITTANY LION WOMEN'S HOCKEY



2013-14 Penn State Women's Hockey Penn State Combined Team Statistics (as of Feb 12, 2014) All games

Date	Opponent	Score	Att.	Record:	Overall	Home	Away	Neutral					
Oct 04	at Vermont	Tot 3-3	435	ALL GAMES	4-23-3	2-11-2	2-12-1	0-0-0					
Oct 05	at Vermont	W 4-2	760	CONFERENCE	1-14-1	0-7-1	1-7-0	0-0-0					
Oct 11	at Quinnipiac	L 1-5	505	NON-CONFERENCE	3-9-2	2-4-1	1-5-1	0-0-0					
Oct 12	at Quinnipiac	L 0-4	213										
Oct 18	UNION	L 1-2	1424										
Oct 19	UNION	W 2-1	814										
Oct 26	NEW HAMPSHIRE	L 5-8	493	# Player	gp	g	a	pts	sh	sh%	pen-min	pp	sh
Oct 27	NEW HAMPSHIRE	L 1-3	552	18 Bowman, Laura	30	9	5	14	73	.123	10-20	1	0
* Oct 31	ROBERT MORRIS	L 0-4	513	24 Gross, Taylor	30	7	7	14	81	.086	0-0	2	0
* Nov 01	ROBERT MORRIS	L 0-6	771	40 Yoxheimer, Shannon	30	6	8	14	163	.037	5-10	1	0
* Nov 09	SYRACUSE	L 1-2	691	16 Hoenshell, Hannah	30	4	10	14	68	.059	2-4	0	0
* Nov 10	SYRACUSE	Lot 3-4	516	9 Petersen, Amy	30	4	9	13	44	.091	0-0	1	0
* Nov 15	at RIT	L 1-2	1170	4 Pardoski, Jordin	30	3	5	8	24	.125	9-18	1	0
* Nov 16	at RIT	L 2-3	588	19 Holdcroft, Jill	30	4	3	7	49	.082	6-12	1	1
* Nov 22	at Lindenwood	L 1-2	102	12 Nielsen, Sarah	30	1	5	6	29	.034	7-14	0	0
* Nov 23	at Lindenwood	W 4-1	85	27 Seward, Kelly	29	3	1	4	22	.136	8-16	2	0
Nov 30	MAINE	Tot 1-1	510	20 Laurenzi, Emily	30	0	3	3	19	.000	9-18	0	0
* Dec 06	at Mercyhurst	L 0-7	237	15 Desorcie, Jess	30	1	1	2	30	.033	3-6	0	0
* Dec 07	at Mercyhurst	L 0-8	537	13 Rasmussen, Kendra	24	1	1	2	16	.062	1-2	0	0
Jan 03	at Ohio State	L 0-8	249	22 Welch, Jenna	30	1	0	1	48	.021	11-22	0	0
Jan 04	at Ohio State	L 0-4	292	2 Bateman, Jeanette	29	0	1	1	13	.000	5-10	0	0
Jan 10	COLGATE	Lot 2-3	474	17 Jahnke, Paige	28	0	1	1	13	.000	9-18	0	0
Jan 11	COLGATE	Wot 2-1	754	37 Paniccia, Nicole	17	0	1	1	0	.000	0-0	0	0
* Jan 24	at Syracuse	Lot 2-3	424	6 Reihl, Lindsay	30	0	1	1	10	.000	4-8	0	0
* Jan 25	at Syracuse	L 0-3	302	23 Shaw, Birdie	21	0	1	1	4	.000	6-12	0	0
Jan 28	at Princeton	L 1-6	63	33 Smiddy, Madison	5	0	1	1	0	.000	1-2	0	0
* Jan 31	RIT	Tot 2-2	563	10 Catanzariti, Micayla	12	0	0	0	1	.000	1-2	0	0
* Feb 01	RIT	L 1-3	1795	5 Walkom, Stephanie	7	0	0	0	0	.000	0-0	0	0
* Feb 08	LINDENWOOD	L 1-2	611	36 Weaver, Tess	3	0	0	0	1	.000	1-2	0	0
* Feb 09	LINDENWOOD	Lot 3-4	487	21 Wilkie, Sarah	19	0	0	0	17	.000	3-6	0	0
				TM TEAM	13	0	0	0	0	.000	4-8	0	0
				Total	30	44	64	108	725	.061	105-210	9	1
				Opponents	30	107	173	280	1209	.089	109-218	30	1
				# Goalie	gp	min	ga	gaavg	saves	save%	w-l-t		
				37 Paniccia, Nicole	17	986:50	57	3.47	573	.910	1-14-2		
				30 Whitlinger, Celine	14	829:35	49	3.54	529	.915	3-9-1		
				TM EMPTY NET	13	12:45	1	-	0	.000	0-0-0		
				Total	30	1829:10	107	3.51	1102	.911	4-23-3		
				Opponents	30	1829:10	44	1.44	681	.939	23-4-3		
				Attendance Summary					PSU		Opponent		
				Total					10968		5962		
				Dates/Avg Per Date					15/731		15/397		
				Neutral Site #/Avg					0/0				
				Goals by Period	1st	2nd	3rd	OT	Total				
				Penn State	15	17	11	1	44				
				Opponents	32	37	34	4	107				
				Saves by Period	1st	2nd	3rd	OT	Total				
				Penn State	363	392	326	21	1102				
				Opponents	199	216	252	14	681				





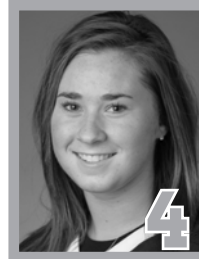
NITTANY LION WOMEN'S HOCKEY



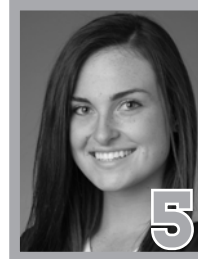
JEANNETTE BATEMAN
Sophomore • D
Greeley, Colo.



CARA MENDELSON
Junior • F
Pittsburgh, Pa.



JORDIN PARDOSKI **A**
Sophomore • D
Rochester Hills, Mich.



STEPHANIE WALKOM
Sophomore • D
Moon Township, Pa.



LINDSAY REIHL **A**
Grad Student • D
Cheshire, Conn.



AMY PETERSEN
Freshman • F
Minnetonka, Minn.



MICAYLA CATANZARITI
Sophomore • F
Rancho Santa Margarita, Calif.



SARAH NIELSEN
Freshman • F
Edina, Minn.



KENDRA RASMUSSEN
Sophomore • F
Sartell, Minn.



DARBY KERN
Sophomore • F
Venetia, Pa.



JESS DESORCIE
Junior • F
Westford, Vt.



HANNAH HOENSHELL
Sophomore • F
Plano, Texas



PAIGE JAHNKE
Sophomore • D
Oakdale, Minn.



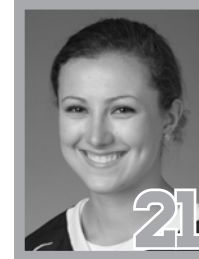
LAURA BOWMAN
Freshman • F
Minnetonka, Minn.



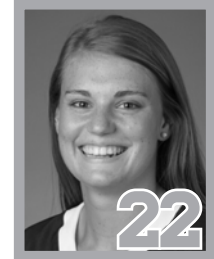
JILL HOLDCROFT
Sophomore • F
Pennsylvania Furnace, Pa.



EMILY LAURENZI
Sophomore • F
Townsend, Del.



SARAH WILKIE
Sophomore • D
Ashby, Mass.



JENNA WELCH **A**
Senior • F
Austin, Texas



BIRDIE SHAW
Sophomore • F
Troy, Mich.



TAYLOR GROSS **C**
Senior • F
Colorado Springs, Colo.



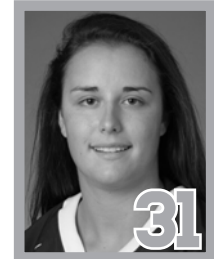
KATIE MURPHY
Junior • F
Novi, Mich.



KELLY SEWARD
Freshman • D
Williamsville, N.Y.



CELINE WHITLINGER
Sophomore • G
Garden Grove, Calif.



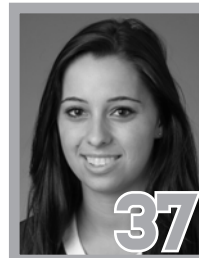
BROOKE MEYER
Sophomore • G
Naperville, Ill.



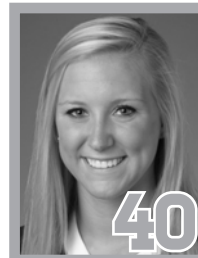
MADISON SMIDDY
Junior • D
Grand Rapids, Mich.



TESS WEAVER
Junior • F
Windber, Pa.



NICOLE PANICCIA
Senior • G
Oakville, Ont.



SHANNON YOXHEIMER
Sophomore • F
Jackson, Mich.

