

# PENN STATE LADY LION

## BASKETBALL GAME NOTES

2014-2015

Penn State Athletic Communications: 101D Bryce Jordan Center, University Park, PA 16802 Office: 814-865-1757 Fax: 814-863-3165  
 Women's Basketball Contact: Kristina Petersen Twitter: @ladylionsid Website: www.GoPSUsports.com Email: kap18@psu.edu Cell: 814-883-4581 Office: 814-865-1757

### SCHEDULE/RESULTS

NOVEMBER		
Sun. 2	INDIANA (PA.) (ex.)	W, 75-71
<i>Preseason WNIT</i>		
Fri. 14	TOWSON	W, 71-64
Sun. 16	ALBANY	L, 53-54
Sat. 22	SETON HALL	L, 70-75
Tues. 25	ST. BONAVENTURE (BTN Plus)	L, 54-56
<i>Georgia State Thanksgiving Tournament</i>		
Fri. 28	vs. Liberty	L, 68-80
Sun. 30	vs. Samford	L, 56-59 (OT)

DECEMBER		
<i>Big Ten/ACC Challenge</i>		
Thurs. 4	at #21/22 Syracuse	L, 39-61
Sun. 7	WAGNER (BTN Plus)	W, 96-66
Wed. 10	at Hartford	7 p.m.
Sun. 14	RIDER	2:30 p.m.
Sun. 21	USF (BTN Plus)	2 p.m.
Sun. 28	at Iowa * (BTN Plus)	3 p.m.

JANUARY		
Thurs. 1	at Michigan * (BTN Plus)	1 p.m.
Sun. 4	ILLINOIS * (BTN Plus)	2 p.m.
Tues. 6	at Wisconsin * (BTN)	9 p.m.
Sat. 10	RUTGERS * (BTN)	noon
Thurs. 15	at Nebraska * (BTN)	7 p.m.
Sun. 18	at Ohio State * (BTN Plus)	2 p.m.
Thurs. 22	INDIANA * (BTN Plus)	7 p.m.
Sun. 25	NORTHWESTERN * (BTN Plus)	2 p.m.
Wed. 28	at Minnesota * (BTN Plus)	8 p.m.



FEBRUARY		
Sun. 1	at Rutgers * (BTN)	noon
Thurs. 5	MARYLAND * (BTN Plus)	7 p.m.
Sun. 8	at Purdue * (BTN Plus)	2 p.m.
Wed. 11	MICHIGAN ST. * (BTN Plus)	7 p.m.
Sun. 15	MINNESOTA * (BTN Plus)	2 p.m.
Mon. 23	at Maryland * (BTN)	7 p.m.
Thurs. 26	OHIO STATE * (BTN Plus)	7 p.m.

MARCH		
<i>Ninth Annual Pink Zone at Penn State</i>		
Sun. 1	WISCONSIN * (BTN/BTN +)	11:30/5 p.m.
Wed.-Sun. 4-8	Big Ten Tourn. (BTN/ESPN2)	Hoffman Estates, Ill.
Sat.-Tues. 20-23	NCAA Tourn. 1st & 2nd Round	
Sat.-Tues. 27-30	NCAA Tourn. Regionals	

APRIL		
Sun./Tues. 5/7	NCAA Final Four (Tampa, Fla.)	

**BOLD CAPS** indicates home game  
 \* - indicates Big Ten game  
 All times are Eastern Time.  
 BTN - Big Ten Network ..... BTN Plus - BTN.com  
 Schedule subject to change. Please visit www.GoPSUsports.com for up-to-date tip times.

### Game #9: Penn State at Hartford Wed., Dec. 10 ▶ 7 p.m. ▶ Chase Family Arena ▶ Hartford, Conn.

		<h4>SETTING THE SCENE</h4>
<h4>Penn State Lady Lions</h4>	<h4>Hartford Hawks</h4>	<h4>The Hartford Game</h4>
<b>Record:</b> 2-6, 0-0 Big Ten <b>Last Game:</b> PSU 96, Wagner 66 (12/7) <b>Head Coach:</b> Coquese Washington <b>Career Record:</b> 144-87 (8th yr.) <b>Record at PSU:</b> 144-87 (8th yr.)	<b>Record:</b> 3-6, 0-0 America East <b>Last Game:</b> Boston College 73, UH (12/7) <b>Head Coach:</b> Jennifer Rizzotti <b>Career Record:</b> 292-186 (16th yr.) <b>Record at UH:</b> 292-186 (16th yr.)	<b>Series:</b> Penn State leads 2-0 <b>Last Meeting:</b> PSU 70, UH 56 (12/29/13) <b>Streak:</b> Penn State - 2 wins <b>Television:</b> none <b>Radio:</b> The game is on WRSC 1390 The Fanatic locally with Jerry Fisher calling the action. The audio feed is available at www.GoPSUsports.com. <b>Webstream:</b> HartfordHawks.com <b>Live Stats:</b> GoPSUsports.com
<b>Statistical Leaders</b>	<b>Statistical Leaders</b>	
<b>Points</b> Lindsey Spann (14.5) <b>Rebounds</b> Tori Waldner (8.0) <b>Assists</b> Sierra Moore (3.9)	<b>Points</b> Amber Bepko (14.2) <b>Rebounds</b> Cherelle Moore (7.3) <b>Assists</b> Deanna Mayza (5.6)	

### SERIES QUICK HITS

- ✓ The Lady Lions are 2-0 all-time against the Hawks with a 71-65 win in Mexico in 2011 and a 70-56 win in the BJC in 2013.
- ✓ Penn State is 5-1 against current America East Conference members.
- ✓ This is the second America East team that the Lady Lions have faced this season. Penn State squared off against Albany on Nov. 16 (L, 54-53).
- ✓ The Hawks are 3-6 on the season, but are in the midst of a six-game losing streak.
- ✓ Amber Bepko paces the Hartford offense with a 14.2 scoring average to go along with a team bests of 19 steals.
- ✓ Cherelle Moore accounts for 12.6 points and 7.3 rebounds per game, while Deanna Mayza chips in 10.9 points and 5.6 assists per outing.

### STORYLINES

- ✓ Freshman **Lindsey Spann** has reached double figures in the first eight games of her career. It also took Spann just eight contests to reach the 100-point mark for her career.
- ✓ The 96 points vs. Wagner were the highest point total for the Lions since scoring a Bryce Jordan Center record 117 points vs. St. Francis (Pa.) in the 2013-14 season opener on Nov. 8, 2013.
- ✓ Spann (22), **Sierra Moore** (21) and **Kaliyah Mitchell** (20) all reached the 20-point mark vs. Wagner. It was the first time since Nov. 26, 2011 vs. Nevada that three Lady Lions accomplished the feat - Maggie Lucas (26), Alex Bentley (23) and Zhaque Gray (21).
- ✓ All three players (Spann, Moore, Mitchell) established career highs against the Seahawks.

### UP NEXT

Penn State returns to the Bryce Jordan Center to host Rider on Sunday, Dec. 14 at 2:30 p.m. as part of a doubleheader with men's basketball. Tickets to the doubleheader are \$5. The Nittany Lions will face George Washington at noon.

<b>Table of Contents</b>	PSU's Record When.....5	Season Highs/Lows.....10
Schedule, Results, Storylines.....1	Notable Games.....5	Miscellaneous Stats.....11
Roster, Quick Facts.....2	Lions in the Big Ten Stats.....6	Coquese Washington.....12
Team Comparison, Series History.....2	The Last Time Penn State.....8	Player Bios.....13-24
What's at Stake.....3	Record Book.....9	2014-15 Box Scores.....25-27
Big Ten Standings/Schedule.....3	2015 Signing Class.....9	2014-15 Stats.....28
Possible Starters.....3	Milestone Watch.....9	Radio/TV Chart.....29



## 2014-15 ROSTER

### PENN STATE LADY LIONS

No.	Name	Pos.	Cl./Elg.	Ht.	Hometown/High School (Previous School)
1	Candice Agee **	C	Jr./Jr.	6-6	Victorville, Calif./Silverado
3	Brianna Banks	G	Sr./Sr. <sup>^</sup>	5-9	Newnan, Ga./Fayette County (Connecticut)
5	Sierra Moore	G	Jr./So.	5-11	Hanover, Pa./Delone Catholic (Duke)
10	Keke Sevillian *	G	So./So.	5-7	Goodrich, Mich./Goodrich
11	Alex Harris *	F	So./So.	6-3	Lorain, Ohio/Lorain
12	Lindsey Spann	G	So./Fr.	5-6	Laurel, Md./Good Counsel
14	Dominique Brooks	C	Jr./Jr.	6-4	Lansing, Ill./T.F. South (Trinity Valley C.C.)
15	Kalayah Mitchell *	F	So./So.	6-2	Stone Mountain, Ga./Stephenson
25	Peyton Whitted *	F	So./So.	6-3	Suwanee, Ga./North Gwinnett
34	Molly Dincher	G/F	Sr./Sr.	6-0	Williamsport, Pa./Williamsport Area (PSU Wilkes Barre)
41	Jen N.Y. DeGraaf *	F	So./So.	6-1	Springboro, Ohio/Springboro
44	Tori Waldner ***	F/C	Sr./Sr.	6-5	Milton, Ga./Milton

**Head Coach:** Coquese Washington (Notre Dame '92)

**Asst. Coaches:** Itoro Coleman, Kia Damon, Jocelyn Wyatt

**Captains:** Tori Waldner, Sierra Moore, Lindsey Spann

\* Indicates letters earned

### HARTFORD HAWKS

No.	Name	Pos.	Cl.	Ht.	Hometown/High School (Previous School)
3	Deanna Mayza	G	So.	5-7	Pennsburg, Pa./The Hill School
4	Christie Michals	F	Jr.	6-1	Fairfax, Va./Robinson Secondary
10	Mary Pattison	G	Fr.	5-9	Troy, N.Y./Troy
11	Katelyn Skinner	G	Jr.	5-10	Homer City, Pa./Homer Center
12	La'Trice Hall	F	So.	5-11	Buffalo, N.Y./Buffalo Acad. of the Sacred Heart
15	Darby Lee	F	Fr.	6-0	Altoona, Pa./Altoona Area
21	Shanise Bultron	G	Sr.	5-8	Watertown, Mass./Tabor Academy
22	Katie Roth	F	RS-So.	6-2	Castleton, N.Y./Maple Hill
23	Morgan Lumb	G	So.	5-8	North Andover, Mass./North Andover
24	Alyssa Reaves	F	So.	6-0	Bloomfield, Conn./Northwest Catholic
25	Amber Bepko	G	Sr.	5-9	Guilford, Conn./Mercy
30	Mallory Shickora	G	RS-So.	5-8	Little Falls, N.J./Mount Saint Dominic Acad.
31	Cherelle Moore	F	Sr.	6-0	Bridgeport, Conn./Kolbe Cathedral
32	Cassidy Bundy	F	Fr.	6-2	Montville, Conn./Montville Communication
33	Janelle Harrison	F	Fr.	6-0	Cromwell, Conn./Cromwell Liberal Studies

**Head Coach:** Jennifer Rizzotti

**Assistant Coaches:** Bill Sullivan, Jackie Smith, Sarah Eichler

### TEAM COMPARISON

PENN STATE		HARTFORD	
Spann (14.5)	Scoring Leader	Bepko (14.2)	
Waldner (8.0)	Rebounding Leader	Moore (7.3)	
Moore (3.9)	Assist Leader	Mayza (5.6)	
Mitchell (2.3)	Steals Leader	Bepko (2.1)	
Agee (1.8)	Blocks Leader	Moore (0.6)	
63.4	Scoring Offense	57.2	
64.4	Scoring Defense	62.4	
-1.0	Scoring Margin	-5.2	
40.2	Rebounds Per Game	34.7	
-0.7	Rebound Margin	-5.2	
13.1	Assists Per Game	12.9	
8.9	Steals Per Game	8.3	
.396	Field Goal Pct.	.353	
.360	FG Defense Pct.	.401	
.242	3-pt. FG Pct.	.297	
.298	3-pt. FG Pct. Def.	.285	
.650	Free Throw Pct.	.696	
0.8	Assist/Turnover	0.7	
Won 1	W/L Streak	Lost 6	

### SERIES HISTORY

Overall:	PSU leads 2-0
Last meeting:	12/29/13
Last result:	PSU, 70-56
Current streak:	PSU - 2 wins
Last 10:	PSU, 2-0
Last 10 meetings:	
11/27/10	N PSU, 71-65
12/29/13	H PSU, 70-56

## QUICK FACTS

### THE UNIVERSITY

Location: University Park, Pa.  
 Founded: 1855  
 Enrollment: 48,184 (as of fall 2013)  
 Colors: Blue & White  
 Nickname: Lady Lions  
 Conference: Big Ten  
 President: Eric Barron  
 Director of Athletics: Sandy Barbour  
 Senior Woman Administrator: Charmelle Green  
 Asst. Athletic Director: Jenn James  
 Facility (cap.): Bryce Jordan Center (15,104)  
 All-Time Record at BJC: 217-56 (19 seasons)

### ATHLETIC COMMUNICATIONS

WBB Contact: Kristina Petersen  
 Phone/Fax: (814) 865-1757/(814) 863-3165  
 E-mail: kap18@psu.edu  
 Address: 101-D Bryce Jordan Center  
 University Park, Pa. 16802  
 Press Row Phone: 814-863-3294  
 Website: www.GoPSUsports.com  
 Twitter: @ladylionsid

### TEAM INFORMATION

2014-15 Record: 2-6  
 Home: 2-3 Away: 0-1 Neutral: 0-2  
 Big Ten Record: 0-0  
 Home: 0-0 Away: 0-0  
 Letterwinners Returning/Lost: 6/5  
 Starters Returning/Lost: 1/4  
 Big Ten Tournament: Quarterfinals  
 Postseason: NCAA Sweet Sixteen

### THE HISTORY

First Year of Women's Basketball: 1965  
 All-Time Record: 883-400 (50 seasons)  
 All-Time Big Ten Rec.: 244-122 (22 seasons)  
 NCAA Tournament Appearances: 25  
 NCAA Tournament Record: 32-25

### WOMEN'S BASKETBALL

Head Coach: Coquese Washington  
 Alma Mater: Notre Dame '92  
 Overall Record: 144-87 (eighth season)  
 School Record: 144-87 (eighth season)  
 Twitter: @coquesewashing  
 Basketball Office Phone: 814-863-2672  
 Basketball Office Fax: 814-863-1221  
 Best Time To Reach Coach: Through SID  
 Assistant Coaches (Alma Mater):  
 Itoro Coleman (Clemson '00)  
 Kia Damon (Millersville '97)  
 Jocelyn Wyatt (Appalachian State '06)  
 Twitter/Instagram: @pennstatewbb  
 Facebook: facebook.com/pennstateladylions

### PRONUNCIATIONS

Coquese	ko-KWEES
Itoro	E-tora
Agee	AYE-gee
DeGraaf	D-graph
Kalayah	kah-LEE-uh
Sevillian	sev-ILL-e-on
Whitted	wit-ED



## STANDINGS (as of 12/7)

Team	Big Ten			Overall		
	W	L	Pct.	W	L	Pct.
Northwestern	0	0	.000	7	0	1.000
Minnesota	0	0	.000	8	1	.875
Indiana	0	0	.000	7	1	.875
Nebraska	0	0	.000	7	1	.875
Rutgers	0	0	.000	7	1	.875
Michigan	0	0	.000	6	1	.857
Maryland	0	0	.000	7	2	.778
Iowa	0	0	.000	7	2	.778
Illinois	0	0	.000	7	2	.778
Michigan State	0	0	.000	5	2	.714
Ohio State	0	0	.000	5	4	.556
Purdue	0	0	.000	3	4	.429
Wisconsin	0	0	.000	2	5	.286
<b>Penn State</b>	<b>0</b>	<b>0</b>	<b>.000</b>	<b>2</b>	<b>6</b>	<b>.250</b>

## BIG TEN SCHEDULE

### DECEMBER 9

Princeton at Michigan 6:30 p.m.  
Illinois at Seton Hall 7 p.m.

### DECEMBER 10

Rutgers at Temple 6 p.m.  
IPFW at Indiana 7 p.m.  
Penn State at Hartford 7 p.m.  
Wisconsin at Florida 7 p.m.  
Minnesota at North Dakota State 9 p.m.

### DECEMBER 11

Arkansas State at Ohio State 7 p.m.  
Kansas at Purdue 7 p.m.  
Iowa State at Iowa 8 p.m.  
Nebraska at Creighton 9:05 p.m.

### DECEMBER 12

American at Maryland 7 p.m.

### DECEMBER 13

Michigan at Notre Dame 1 p.m.  
Illinois at Valparaiso 2:30 p.m.  
Cal State Bakersfield at Nebraska 3 p.m.  
Wisconsin at UW-Green Bay 8 p.m.

### DECEMBER 14

Indiana at UW-Milwaukee 2 p.m.  
Western Michigan at Ohio State 2 p.m.  
Rider at Penn State 2:30 p.m.  
Michigan State at Loyola (Illinois) 3 p.m.  
Tennessee at Rutgers 3 p.m.

All times are Eastern.

## POSSIBLE STARTERS



**1 CANDICE AGEE** C  
Jr., 6-6, Victorville, Calif.  
7.9 ppg, 5.1 rpg, 1.8 bpg, 1.0 spg

**Notes:** Chipped in nine points vs. Wagner ... Had 8 pts. and 9 rebs. at #21 Syracuse ... Registered 6 pts., 5 rebs. & 4 blocks vs. Liberty ... Had a career-high 21 points vs. Seton Hall.



**5 SIERRA MOORE** G  
RS-So., 5-11, Hanover, Pa.  
13.1 ppg, 4.9 rpg, 3.9 apg, 1.0 spg

**Notes:** Poured in career highs of 21 pts. & 7 assts. vs. Wagner ... Tallied 17 pts. vs. Samford ... Chipped in 14 pts. & four assts. vs. Liberty ... Notched first career double-double with 14 pts. & 10 rebs. vs. Seton Hall.



**12 LINDSEY SPANN** G  
RS-Fr., 5-6, Laurel, Md.  
14.5 ppg, 2.5 rpg, 3.6 apg, 1.5 spg

**Notes:** Has reached double figures in all eight games ... Had a career-best 22 points with 5 rebs. & 4 assts. vs. Wagner ... Notched 11 points with 3 assists at Syracuse ... Accounted for 10 pts., 5 assists & 3 steals vs. Samford.



**15 KALIYAH MITCHELL** G  
So., 6-2, Stone Mountain, Ga.  
8.6 ppg, 6.8 rpg, 2.3 spg

**Notes:** Leads the team in steals (2.3) and second in rebounding (6.8) ... Recorded a career-high 20 points with 7 rebounds vs. Wagner ... Had 10 points and career-best five steals vs. Liberty.



**44 TORI WALDNER** F  
Sr., 6-5, Milton, Ga.  
5.6 ppg, 8.0 rpg, 1.5 bpg

**Notes:** Had four points and six rebounds at Syracuse ... Nominee for the Allstate WBCA Good Works Team ... Ranks ninth on Penn State's career blocks list (101) ... SAAB President.

## LAST TIME OUT

- A trio of players topped the 20-point mark and eight reached the scoring column in the Lady Lions' 96-66 victory over Wagner Sunday.
- The win marked the highest scoring output for Penn State since a 117-point outburst against St. Francis (Pa.) in the 2013 season opener and snapped a six-game losing streak.
- Lindsey Spann** (22), **Sierra Moore** (21) and **Kaliyah Mitchell** (20) all reached the 20-point mark and posted career highs versus the Seahawks.
- It was the first time since Nov. 26, 2011 vs. Nevada that three Lady Lions all cracked the 20 point mark in the same game; Maggie Lucas (26), Alex Bentley (23) and Zhaque Gray (21).
- The Lady Lions set season highs for points (96), points in a half (54), field goals made (34), field goal percentage (.531), free throws made (25) and attempted (33) and assists (19).

## SCOUTING HARTFORD

- The Hawks are 3-6 on the season, but are in the midst of a six-game losing streak.
- Amber Bepko paces the Hartford offense with a 14.2 scoring average to go along with a team bests of 19 steals and a 40.6 percent effort from three-point range.
- Bepko filled the stat sheet with 20 points, six rebounds, six assists and three steals in Sunday's loss to Boston College.
- Cherelle Moore accounts for 12.6 points and a team-high 7.3 rebounds per game, while Deanna Mayza chips in 10.9 points and 5.6 assists per outing.
- Morgan Lumb came off of the bench to go 5-for-8 from the field en route to 16 points and six rebounds versus BC.

## ALL-TIME VERSUS THE HAWKS

- The Lady Lions are 2-0 all-time against the Hawks with a 71-65 win in Mexico at the 2011 Caribbean Challenge and a 70-56 win in the BJC in 2013.
- Penn State is 5-1 against current America East Conference members.
- This is the second America East team the Lady Lions have faced this season (Albany - L, 54-53).

## WHAT'S AT STAKE

A Penn State Win at Hartford Would:

- Make Penn State 3-0 all-time against the Hawks.
- Make the Lady Lions record at 3-6 on the season.
- Improve PSU to 6-1 all-time against current America East members.

## LAST TIME VS. HARTFORD

DEC. 29, 2013 • UNIVERSITY PARK, PA.

Hartford 56 • 3-10													
#	Player	FG	3-PT	FT	Rebounds	PF	TP	A	To	Bk	Stl	Min.	
		%	%	%	Tot			M					
03	MAYZA, Deanna	2-8	2-6	3-5	0	1	2	9	3	3	0	34	
13	CLARK, Taylor	2-4	0-0	0-0	1	0	1	3	4	0	1	19	
21	BULTON, Shanise	1-9	1-6	2-2	0	2	1	5	0	1	0	24	
23	ENGLERT, Alyssa	2-4	0-0	0-0	0	3	2	4	9	1	1	29	
31	MOORE, Cherelle	5-12	0-1	1-2	1	8	9	2	11	0	2	25	
46	MICHALIS, Christie	1-1	1-1	0-0	0	0	0	0	3	0	0	1	
10	DOE, Diamond	0-0	0-0	0-0	0	0	0	1	0	0	0	1	
11	SKINNER, Katelyn	0-0	0-0	0-0	0	0	0	0	0	0	0	1	
12	HALL, LaTrice	2-3	0-0	2-2	1	3	4	1	6	0	0	20	
14	LUMB, Morgan	3-6	2-4	0-0	0	0	0	1	8	2	2	16	
15	GILBERT, Milana	0-0	0-0	0-0	0	0	0	0	0	0	0	1	
26	REAVES, Peyton	1-4	0-0	1-1	2	3	5	2	3	0	0	14	
25	BEPKO, Amber	1-6	1-5	0-0	0	2	2	3	1	1	0	15	
Team		20-57		7-23	9-12	6	24	30	17	56	15	12	5
Totals		20-57		7-23	9-12	6	24	30	17	56	15	12	5
FG % 1st Half:		11-27	40.7%	2nd half:	9-30	30.0%	Game:		20-57	35.1%	DeadBall		
3FG % 1st Half:		5-14	35.7%	2nd half:	2-9	22.2%	Game:		7-23	30.4%	Rebounds		
FT % 1st Half:		4-7	57.1%	2nd half:	5-5	100.0%	Game:		14-17	82.4%			
Penn State 70 • 9-3													
#	Player	FG	3-PT	FT	Rebounds	PF	TP	A	To	Bk	Stl	Min.	
		%	%	%	Tot			M					
02	Taylor, Dara	3-10	0-2	2-2	0	4	4	4	8	2	2	30	
05	East, Talia	1-5	0-0	1-2	3	5	8	0	3	0	1	21	
23	Edwards, Ariel	6-11	0-0	3-3	2	5	7	0	15	1	1	32	
33	Lucas, Maggie	7-22	0-5	4-4	0	5	1	18	2	3	0	36	
44	Waldner, Tori	3-5	0-0	0-0	3	1	4	4	6	0	0	7	
01	Agee, Candice	1-1	0-0	1-2	1	5	6	2	3	1	2	18	
10	Sevillian, Keke	0-0	0-0	2-2	0	1	1	2	2	0	1	0	
11	Harris, Alex	2-2	0-0	0-0	1	2	3	0	4	0	0	12	
15	Mitchell, Kaliyah	3-5	0-0	0-0	2	2	4	5	6	0	0	18	
26	Whitted, Peyton	2-4	0-1	3-2	0	1	2	4	5	0	1	18	
41	DeGraaf, Jenny	0-0	0-0	0-0	0	0	0	0	0	0	0	2	
Team		28-65		0-8	14-17	15	32	47	20	70	6	11	3
Totals		28-65		0-8	14-17	15	32	47	20	70	6	11	3
FG % 1st Half:		14-30	46.7%	2nd half:	14-35	40.0%	Game:		28-65	43.1%	DeadBall		
3FG % 1st Half:		0-4	0.0%	2nd half:	0-4	0.0%	Game:		0-8	0.0%	Rebounds		
FT % 1st Half:		9-11	81.8%	2nd half:	5-6	83.3%	Game:		14-17	82.4%			
Officials: Laura Morris, Frank Steratore, Shannon Fack													
Technical fouls: Hartford-None, Penn State-None.													
Attendance: 4629													
Score by periods			1st	2nd	Total	Points			In	Off	2nd	Fast	
Hartford			31	25	56	HARTFORD			14	9	14	23	
Penn State			37	33	70	PSU			40	16	14	20	
Last FG - HARTFORD 2nd-00:28, PSU 2nd-02:05. Largest lead - HARTFORD by 6:11-13:17, PSU by 17:2nd-02:03. Score tied - 4 times. Last changed - 1 time.													



## PRESS CONFERENCE SCHEDULE

Coquese Washington will hold a weekly press conference and the Lady Lions will have media availability on a weekly basis throughout the season. All press conferences will begin at 2:30 p.m. (unless otherwise noted) and go for approximately 15-20 minutes, followed by a 15-minute open media session prior to practice. Press conference will be held in the Media Room at the Bryce Jordan Center (unless otherwise noted).

### Press Conference Dates

Monday, Dec. 8	Wednesday, Feb. 4
Wednesday, Dec. 17 (Time TBD)	Tuesday, Feb. 10 (Practice Gym)
Tuesday, Dec. 30 (Time TBD)	Wednesday, Feb. 18
Thursday, Jan. 8 (Time TBD)	Wednesday, Feb. 25
Wednesday, Jan. 14	Tuesday, March 3 or Wednesday,
Wednesday, Jan. 21	March 4 (pending travel plans for
Tuesday, Jan. 27	BTT)

### LAST TIME VERSUS UH

- Senior guard **Maggie Lucas** scored a team-best 18 points as the Lady Lions recorded a 70-56 victory over Hartford on Dec. 29, 2013.
- Fellow senior **Ariel Edwards** also had a solid outing, scoring 15 points on an efficient 6-of-11 shooting from the field. She also grabbed seven boards and dished out an assist in the win.
- The Lady Lions had a very balanced offensive attack with 10 players finding their way into the scoring column, with six totaling five or more points.
- The Lady Lions finished 28-for-65 from the field (43.1 percent), while holding the Hawks to 20-for-57 shooting (35.1 percent).

### SCORING OUTBURST

- One game after posting its lowest scoring output since 2010, the Lady Lions lit up the scoreboard for 96 points, the highest total since the 2013 season opener, in a 96-66 win over Wagner Dec. 7.
- The 96 points versus the Seahawks are the most points scored by the Lady Lions since scoring a Bryce Jordan Center record 117 points vs. St. Francis (Pa.) in the 2013-14 season opener on Nov. 8, 2013.
- The point total is also tied for 13th in BJC history.
- The Lady Lions set season highs for points (96), points in a half (54), field goals made (34), field goal percentage (.531), free throws made (25) and attempted (33) and assists (19) versus Wagner.
- Penn State also committed a season-low 12 turnovers, which are also the fewest turnover since March 7, 2014 vs. Ohio State (9).
- Additionally, the Lady Lions dished out 19 assists, the highest total since handing out 22 helpers against Purdue on Jan. 30, 2014.
- Penn State shot 53.1 percent against the Seahawks, marking the first time that the Lady Lions shot better than 50 percent since shooting 53.8 percent against Michigan on March 1, 2014.

### 20 POINTS TIMES THREE

- The Lady Lions had three players reach the 20-point plateau in a 96-66 win over Wagner Dec. 7.
- Freshman **Lindsey Spann** (22) and sophomores **Sierra Moore** (21) and **Kaliyah Mitchell** (20) all reached the mark.
- It was the first time since Nov. 26, 2011 vs. Nevada that three Lady Lions all cracked the 20-point mark in the same game: Maggie Lucas (26), Alex Bentley (23) and Zhaque Gray (21).

**LADY LIONS GET SOCIAL:** The Lady Lions are on several social media sites, including Twitter, Instagram and Facebook. Follow the Lady Lions and assistant coaches (@pennstatewbb), head coach Coquese Washington (@coquesewashing) and sports information contact Kris Petersen (@ladylionsid) on Twitter to get the inside scoop. The Lady Lions are also on Instagram (@pennstatewbb) and Facebook at www.facebook.com/pennstateladylions.



### HOLY CAREER HIGHS BATMAN!

- The 96-66 win over Wagner Dec. 7 produced plenty of career highs for the Lady Lions, including five players earning or tying personal scoring bests.
- Freshman guard **Lindsey Spann** set her career high with 22 points, topping her previous best of 17 points versus Liberty (11/28/14) and Towson (11/14/14).
- Additionally, Spann netted her 100th career point in just her eighth game in the blue and white.
- Spann made a career-best eight field goal attempts and tied her career-high with two three pointers and four free throws.
- Spann also tied her personal mark with five rebounds.
- Sophomore forward **Kaliyah Mitchell** tallied a career-high 20 points, besting her previous high of 14 points versus Bucknell on Nov. 20, 2013.
- With her performance, Mitchell notched her 200th career point with a lay-up early in the first half.
- Sophomore guard **Sierra Moore** netted a career-high 20 points and handed out a career-best seven assists. Moore's previous highs were 17 points vs. Samford (11/30/14) and five assists vs. Seton Hall (11/22/14).
- Moore also made a career-high 11-of-12 attempts from the free throw stripe versus the Seahawks.
- Sophomore **Jenny DeGraaf** tied her career high with 12 points, equalling the mark that she set with four three-pointers against Albany on Nov. 16, 2014.
- Junior **Dominique Brooks** set a personal best with four points and one blocked shot against the Seahawks. Her previous high for points was two on two occasions, vs. Liberty (11/28/14) and Towson (11/14/14).

## PENN STATE'S OVERALL/BIG TEN YEAR-BY-YEAR REVIEW

Year	Overall	Big Ten	Home	BT Home	Road	BT Road	Neutral
1992-93	22-6	14-4	12-2	9-0	9-4	5-4	0-0
1993-94	28-3	16-2	14-0	9-0	11-2	7-2	3-1
1994-95	26-5	13-3	14-2	8-0	9-3	5-3	3-0
1995-96*	27-7	13-3	14-2	8-0	8-4	5-3	5-1
1996-97	15-12	8-8	9-3	5-3	5-6	3-5	1-3
1997-98	21-13	8-8	10-5	4-4	6-6	4-4	5-2
1998-99	22-8	12-4	9-2	6-2	9-4	6-2	4-2
1999-00	30-5	15-1	14-0	8-0	9-2	7-1	7-3
2000-01	19-10	11-5	11-2	7-1	6-5	4-4	2-3
2001-02	23-12	11-5	10-4	6-2	9-5	5-3	4-3
2002-03	26-9	13-3	16-0	8-0	7-7	5-3	2-2
2003-04	28-6	15-1	12-1	8-0	9-3	7-1	6-2
2004-05	19-11	13-3	12-0	8-0	6-9	5-3	1-2
2005-06	13-16	6-10	8-6	5-3	3-8	1-7	2-2
2006-07	15-16	7-9	12-1	7-1	2-12	0-7	1-3
2007-08	13-18	4-14	10-6	3-6	3-11	1-8	0-1
2008-09	11-18	6-12	8-6	4-5	2-9	2-7	1-3
2009-10	17-14	8-10	9-6	5-4	5-7	3-6	3-1
2010-11	25-10	11-5	14-4	6-2	7-4	5-3	4-2
2011-12	26-7	13-3	12-2	6-2	11-3	7-1	3-2
2012-13	26-6	14-2	14-0	8-0	9-5	6-2	3-1
2013-14	24-8	13-3	14-4	6-2	8-3	7-1	2-1
2014-15	2-6	0-0	2-3	0-0	0-1	0-0	0-2

\* First season at the Bryce Jordan Center



## PENN STATE-HARTFORD NOTABLE GAMES

### Dec. 29, 2013 - Penn State 70, Hartford 56

Senior guard Maggie Lucas scored a team-best 18 points as the Lady Lions recorded a 70-56 victory over Hartford. Fellow senior Ariel Edwards also had a solid outing, scoring 15 points on an efficient 6-of-11 shooting from the field. She also grabbed seven boards and dished out an assist in the win. The Lady Lions had a very balanced offensive attack with 10 players finding their way into the scoring column, with six totaling five or more points. The Lady Lions finished 28-for-65 from the field (43.1 percent), while holding the Hawks to 20-for-57 shooting (35.1 percent). Penn State also dominated the glass, outrebounding Hartford 47-30.

### Nov. 27, 2010 - Penn State 71, Hartford 65

The Lady Lions had their long range shoes on as they hit 10 three-pointers, including seven treys by freshman Maggie Lucas on the way to a 71-65 win over Hartford in the final game of the Caribbean Challenge. Lucas was 7-for-12 from beyond the arc and finished the game with 17 points, three rebounds and two steals. Freshman Ariel Edwards notched the second double-digit scoring performance of her career with 13 points and a career-high eight rebounds, while sophomore guard Alex Bentley added 12 points on 5-of-8 shooting and six assists.

### SPANN'S SCORING STREAK

- Freshman guard **Lindsey Spann** has reached double figures in the first eight games of her collegiate career and leads the team in scoring with a 14.5 average.
- Spann's streak of eight consecutive double-digit scoring performances to start a career is a feat that was not accomplished by Maggie Lucas nor Kelly Mazzante, Penn State's two all-time leading scorers.

### TORI GOOD WORKS

- Senior **Tori Waldner** is among the nominees for the Allstate WBCA Good Works Team award.
- This prestigious community service award recognizes a distinguished group of student-athletes who have demonstrated a commitment to enriching the lives of others and contributing to the greater good in their communities.
- From the 93 WBCA nominees, a distinguished voting panel will select two 10-member teams comprised of five student-athletes from the NCAA® Division I level and five student-athletes from NCAA Divisions II, III and the NAIA.
- The final roster of 20 award recipients will be unveiled in February.
- Former Lady Lion Gizelle Studevent was a member of the inaugural Allstate WBCA Good Works team in 2013.

### ALL-TOURNEY NOD FOR MOORE

- Sophomore guard **Sierra Moore** was selected to the Georgia State Thanksgiving Tournament All-Tournament team.
- She averaged 15.5 points, 3.0 rebounds, 3.5 assists and 1.5 steals in two games for the Lady Lions.
- Moore tied her career high with 17 points in 40 minutes of action against Samford.

### FINDING THE RIGHT COMBO

- In their first six games, the Lady Lions used four different starting lineup combinations.
- Head coach Coquese Washington has seemingly settled on the starting lineup of senior **Tori Waldner**, junior **Candice Agee**, sophomores **Sierra Moore** and **Kaliyah Mitchell** and freshman **Lindsey Spann**, who have started three of the eight games this season including three of the last four.
- Moore, Mitchell and Spann have started all eight games for Penn State.

### DeGRAAF'S DOUBLE

- Sophomore guard **Jenny DeGraaf** provided a spark off of the bench against Samford Nov. 30, posting her first career double-double.
- DeGraaf was 5-for-9 from the field en route to 11 points to compliment a career-high 10 rebounds.
- Her 10 boards surpass her previous personal best of five rebounds versus Seton Hall earlier this season.

### MOORE CAREER MARKS

- Sophomore guard **Sierra Moore** continues to adapt quickly to her role with the Lady Lions.
- Moore posted her third double-digit scoring performance in the first four games of the season with 15 points on 6-of-12 shooting against St. Bonaventure.
- With her effort against the Bonnies, Moore surpassed the 100 point plateau for her career, scoring 15 in the contest.

## PENN STATE'S RECORD WHEN...

Playing at home	2-3
Playing on the road	0-1
Playing at a neutral site	0-2
vs. Top 10 teams	0-0
vs. Top 25 teams	0-1
Games decided by 3 points or less	0-3
Games decided by 4-10 points	1-1
Games decided by 11-19 points	0-1
Games decided by 20 points or more	1-1
Leading at the half	2-3
Tied at the half	0-1
Trailing at the half	0-2
Leading with 5:00 remaining	2-2
Trailing with 5:00 remaining	0-4
Tied with 5:00 remaining	0-0
In overtime	0-0
PSU scores less than 49 points	0-1
PSU scores 50-59 points	0-3
PSU scores 60-69 points	0-1
PSU scores 70-79 points	1-1
PSU scores 80 points or more	1-0
PSU shoots 45% or better	2-0
PSU shoots less than 45%	0-6
PSU shoots better than opponent	2-4
Opponent shoots better than PSU or tied	0-2
Opponent scores less than 39 points	0-0
Opponent scores 40-49 points	0-0
Opponent scores 50-59 points	0-3
Opponent scores 60-69 points	2-1
Opponent scores more than 70 points	0-2
Opponent shoots better than 45%	0-0
Opponent shoots less than 45%	2-6
PSU outrebounds opponent	2-1
Opponent outrebounds PSU or tied	0-5
PSU commits 14 or less turnovers	2-1
PSU commits 15 or more turnovers	0-5
PSU makes at least 5 3-pointers	0-1
PSU makes four 3-pointers or less	2-5
Recording 7 or more steals	2-5
Recording 6 or less steals	0-1
Wearing white uniforms	2-3
Wearing blue uniforms	0-3
Wearing white and pink uniforms	0-0
Penn State wins the tip	1-4
Penn State loses the tip	1-2
Penn State scores first	2-3
Opponent scores first	0-3
Playing during the day (before 5 p.m.)	2-3
Playing at night	0-3
On Monday	0-0
On Tuesday	0-1
On Wednesday	0-0
On Thursday	0-1
On Friday	1-1
On Saturday	0-1
On Sunday	1-2
In November	1-5
In December	1-1
In January	0-0
In February	0-0
In March	0-0



## LIONS IN THE BIG TEN STATS

A breakdown of where Penn State ranks in the Big Ten's overall statistical categories. Through games of Dec. 7.

TEAM	
Scoring Offense.....	13th (63.4)
Scoring Defense.....	9th (64.4)
Scoring Margin.....	13th (-1.0)
Free Throw Percentage.....	12th (.650)
FG Percentage.....	13th (.396)
FG Percentage Defense.....	5th (.360)
3-point FG Percentage.....	14th (.242)
3-point FG Pct. Defense.....	8th (.298)
3-point FG Made.....	13th (2.9)
Rebounding Offense.....	T-7th (40.2)
Rebounding Defense.....	11th (41.0)
Rebounding Margin.....	9th (-0.8)
Offensive Rebounds.....	10th (11.9)
Defensive Rebounds.....	8th (28.4)
Blocked Shots.....	5th (5.3)
Assists.....	14th (13.1)
Steals.....	7th (8.9)
Turnover Margin.....	11th (+1.2)
Assist to Turnover Ratio.....	13th (0.8)

INDIVIDUAL	
Scoring.....	T-17th - Lindsey Spann (14.5)
.....	25th - Sierra Moore (13.1)
Rebounding.....	T-11th - Tori Waldner (8.0)
.....	16th - Kaliyah Mitchell (6.8)
Assists.....	11th - Sierra Moore (3.9)
.....	14th - Lindsey Spann (3.6)
Steals.....	8th - Kaliyah Mitchell (2.3)
Blocked Shots.....	9th - Candice Agee (1.8)
.....	10th - Tori Waldner (1.5)
Assist-to-Turnover Ratio..	15th - Sierra Moore (1.2)
Def. Reb. ....	9th - Tori Waldner (6.1)
.....	13th - Kaliyah Mitchell (5.3)
Minutes.....	6th - Sierra Moore (36.5)

## 2014-15 GAME-BY-GAME STARTING LINEUPS

Date	Opponent	Pt Guard	Guard	Guard/Forward	Forward	Center
11/2	INDIANA (PA.) (ex.)	Spann	Moore	Mitchell	Whitted	Waldner
11/14	TOWSON	Spann	Moore	Mitchell	Whitted	Waldner
11/16	ALBANY	Spann	Moore	Mitchell	Whitted	Waldner
11/22	SETON HALL	Spann	Moore	Sevillian	Mitchell	Agee
11/25	ST. BONAVENTURE	Spann	Moore	Mitchell	Whitted	Agee
11/28	vs. Liberty	Spann	Moore	Mitchell	Waldner	Agee
11/30	vs. Samford	Spann	Moore	Mitchell	Whitted	Waldner
12/4	at Syracuse	Spann	Moore	Mitchell	Waldner	Agee
12/7	WAGNER	Spann	Moore	Mitchell	Waldner	Agee

### CLOSE, BUT NO CIGAR

- The Lady Lions' 2-6 record on the season is deceiving as four of Penn State's five losses were by a total of 23 points.
- In four of Penn State's six losses, the Lady Lions have had a chance to tie or take the lead in the final 11 seconds.
- Additionally, in four of the six losses, the Lady Lions have held the lead for more than 15 minutes and have also led for more than 30 minutes in two contests.

### WALDNER HITS THE CENTURY MARK

- Senior center **Tori Waldner** became the ninth player in school history to record 100 career blocks with one rejection against Liberty on Nov. 28.
- Waldner ranks ninth in program history with 101 career blocks.
- With her performance against Seton Hall on Nov. 22, she passed Jess Brungo (94; 2001-04) for the ninth spot.
- Waldner needs one rejection to tie Talia East (102; 2011-14) for eighth place.
- She is the third Lady Lion in the last three years to reach the 100-block mark, joining Nikki Greene (215; 2010-13) and Talia East (102; 2011-14).

### OF NOTE

- The Lady Lions scored a season-low 39 points Syracuse on Dec. 4, their lowest point total since scoring 39 points in a loss to Wisconsin on Feb. 25, 2010.
- Penn State held Samford 13 points in the first half on Nov. 30, which are the fewest points allowed by PSU in a half since NJIT scored nine points in the first half on Dec. 23, 2012.
- Sophomore **Keke Sevillian** made her first career start and junior **Candice Agee** made her fourth career start against Seton Hall (11/22).
- Sophomore **Kaliyah Mitchell** tied her career high with 10 rebounds against Seton Hall on Nov. 22.
- With the loss to Seton Hall, Penn State dropped to 1-2 to start a season for the first time since 2005-06, when the Lady Lions started 1-3.
- Freshman **Lindsey Spann** and sophomores **Kaliyah Mitchell**, **Sierra Moore** and **Peyton Whitted** all made their first career starts for the Lady Lions against Towson on Nov. 14.
- Junior **Candice Agee** tied her career high with nine rebounds against Towson Nov. 14. She also grabbed nine rebounds vs. Fairleigh Dickinson on Dec. 2, 2012.
- Sophomore **Keke Sevillian** reached a career high in assists with five in the season opener against Towson on Nov. 14.
- With the win over Towson on Nov. 14, **Coquese Washington** improved to a perfect 8-0 in the first game of the season since taking the helm of the Lady Lion program for the 2007-08 season.
- Head coach **Coquese Washington** has selected senior **Tori Waldner**, redshirt-sophomore **Sierra Moore** and redshirt-freshman **Lindsey Spann** as team captains for the 2014-15 season.
- Sophomore forward **Peyton Whitted's** father, Kevin, was recently named the head coach of the NBA Developmental League's Westchester Knicks.

### AGGRESSIVE AGEE

- Junior center **Candice Agee** was a dominant force in the post for the Lady Lions against Seton Hall, connecting on 9-of-15 shots en route to a career-high 21 points.
- The performance marked the first time that Agee has surpassed the 20-point plateau in her career.
- Agee's previous personal best was 16 points set against Bucknell on Nov. 20, 2013.
- Additionally, Agee, who made her first start of the season and fourth of her career, tied her personal best with three blocked shots.



## “SIE”-ING DOUBLE

- Sophomore **Sierra Moore** posted her first career double-double with 14 points and a personal-best 10 rebounds against Seton Hall on Nov. 22.
- Moore’s 14 points surpasses her previous career high of 12 set against Towson in the season opener.
- Her 10 boards double her previous personal best of five caroms accomplished twice during her collegiate career against Towson and Iona, while she was at Duke.
- Moore also established a career high with five assists against the Pirates.

## SCORING SPANN

- Freshman guard **Lindsey Spann** led the Lady Lions in scoring for the second straight game with 14 points against Albany on Nov. 16.
- This marks the first time a Penn State freshman has led the team in scoring in consecutive games since Maggie Lucas did so versus Minnesota (1/13/11) and versus Illinois (1/16/11).
- Spann handed out four assists for the second straight game.

## DeGRAAF FROM DEEP

- Sophomore forward **Jenny DeGraaf** went 4-for-4 from beyond the arc en route to a career-high 12 points against Albany on Nov. 15.
- She is the first Lady Lion to connect on all of her three-point attempts in a game (min. 4 attempts) since Maggie Lucas also netted four shots on four attempts vs. Bucknell on Dec. 21, 2011.
- The four three pointers made are a career-high for DeGraaf, who had made one three pointer on two occasions entering the game.
- DeGraaf’s 12 points are a career-high, passing her two five point efforts from last season. She scored five points vs. Ohio State (1/16/14) and vs. Alcorn State (12/22/13).
- She also tied her personal mark with three rebounds against the Great Danes.

## STELLAR DEBUT

- Freshman **Lindsey Spann** made her long-awaited Lady Lion debut with the start against Towson on Nov. 14.
- Spann, who missed last season with an ACL injury, had a team-high 17 points on 7-of-14 shooting.
- She also grabbed five rebounds and dished out four assists versus the Tigers.
- Spann is the first Penn State freshman to lead the team in scoring since Maggie Lucas did so 13 times during her rookie season in 2010-11.

## DOUBLING UP

- Senior post player **Tori Waldner** recorded the first double-double of her Penn State career with 11 points and 11 rebounds in the season opener against Towson on Nov. 14.
- She tied her career high with 11 boards, equaling the mark she set against Texas A&M on Dec. 15, 2013.
- Waldner’s double-double was the first since Talia East scored 13 points and grabbed 13 rebounds vs. Wichita State, Mar. 23, 2014.

## MEETING MOLLY

- The Lady Lions announced the addition of walk-on **Molly Dincher** to the roster prior to the season-opener against Towson.
- Dincher served as a Lady Lion manager for a year and a half.
- Dincher also played at Penn State Wilkes-Barre for two seasons where she helped the Mountain Lions to the 2011-12 PSUAC North Division Championship.
- She averaged 7.3 points and 8.6 rebounds that season for Wilkes-Barre, her final season for the Mountain Lions.
- She also rejected 33 shots and had 27 assists in 21 appearances that included 16 starts.
- Since coming to University Park, Dincher played for the Penn State women’s club basketball team that took second in the National Championships in 2012-13.
- A three-year letterwinner, Dincher played her high school basketball at Williamsport Area High School. In her final season, the Millionaires were 12-8.

## TORI EXTRA CURRICULAR

- Senior post player **Tori Waldner** has shown that she is more than just a basketball player as she competes in the classroom and gives back tirelessly to the community.
- Waldner is currently the president of the Penn State Student-Athlete Advisory Board (SAAB). As part of her duties as SAAB president, she is involved in the community services efforts and creating programming for Penn State student-athletes on topics of diversity and inclusion.
- She is also involved in Penn State Life Link, a program in which State College Area School District special-needs students between the ages of 18 and 21 are given an opportunity to interact with students of their own age in an environment that is socially and academically conducive to continued growth with the hope of future independent living.
- Waldner regularly meets these students for lunch, swims with the students as a physical activity and provides guidance to help them on their road to independence.
- She is also involved in the “It’s on Us” initiative- an awareness campaign to help put an end to sexual assault on college campuses.
- As part of her involvement, Waldner was part of a meeting with other universities at the White House.
- Waldner is also stellar in the classroom, collecting two Academic All-Big Ten honors.

## 2015 PINK ZONE AT PENN STATE

- The Ninth Annual Pink Zone at Penn State will be held Sunday, March 1 in the Bryce Jordan Center when the Lady Lions take on Wisconsin. The time for the game will be determined later in the season.
- Last year, the Lady Lions donated a record \$310,000 to breast cancer causes.
- All totalled, the Lady Lions have donated more than \$1.135 million for breast cancer research and awareness in the first eight years.
- This year’s fundraising efforts will benefit the Mount Nittany Medical Center, Penn State Hershey Cancer Institute, Pennsylvania Breast Cancer Coalition, the Kay Yow Cancer Fund, J.C. Blair Memorial Hospital and Lewistown Hospital.
- For more information on the Pink Zone at Penn State, visit the official Pink Zone website at [www.pennsylvaniapinkzone.org](http://www.pennsylvaniapinkzone.org).



# THE LAST TIME PENN STATE...

## SCORING

Player scored 20 points: vs. Wagner (22, Lindsey Spann; 21, Sierra Moore; 20, Kaliyah Mitchell), 12/7/14  
 Player scored 25 points: vs. Ohio State (29, Ariel Edwards), 3/7/14  
 Player scored 30 points: at Indiana (32, Maggie Lucas), 2/13/14  
 Player scored 35 points: vs. Georgetown (39, Maggie Lucas), 12/9/12  
 Player scored 40 points: vs. Minnesota (49, Kelly Mazzante), 12/28/01  
 Two players scored 20 points: vs. Wagner (22, Lindsey Spann; 21, Sierra Moore; 20, Kaliyah Mitchell), 12/7/14  
 Three players scored 20 pts.: vs. Wagner (22, Lindsey Spann; 21, Sierra Moore; 20, Kaliyah Mitchell), 12/7/14  
 Two players scored 25 points: at Boston College (28, Alex Bentley; 28, Maggie Lucas), 12/2/10  
 Player scored 25 points/3 consecutive games: Maggie Lucas (32, at Indiana, 2/13/14; 25 vs. Wisconsin, 2/16/14; 26 vs. Northwestern, 2/20/14)  
 Five in double figures: at Northwestern (19, Maggie Lucas; 15, Ariel Edwards; 11, Dara Taylor; 11, Talia East; 11, Peyton Whitted), 2/2/14  
 Six in double figures: at Oakland (15, Alex Bentley; 16, Ariel Edwards; 16, Zhaque Gray; 13, Maggie Lucas; 10, Mia Nickson; 10, Gizelle Studevent; 10, Julia Trogele), 11/18/10  
 Seven in double figures: at Oakland (15, Alex Bentley; 16, Ariel Edwards; 16, Zhaque Gray; 13, Maggie Lucas; 10, Mia Nickson; 10, Gizelle Studevent; 10, Julia Trogele), 11/18/10  
 PSU scored 50 points in a half: vs. Wagner (54, second half), 12/7/14  
 PSU scored 50 points in both halves: vs. St. Francis (Pa.) (55, first half; 62, second half), 11/8/13  
 PSU scored 55 points in a half: vs. St. Francis (Pa.) (55, first half; 62, second half), 11/8/13  
 PSU scored 60 points in a half: vs. St. Francis (Pa.) (62, second half), 11/8/13  
 PSU scored 100 points: vs. St. Francis (Pa.) (W, 117-77), 11/8/13  
 PSU scored 100 points in Big Ten game: vs. Illinois (W, 101-80), 2/15/01  
 PSU scored 100 points in a home game: vs. St. Francis (Pa.) (W, 117-77), 11/8/13  
 PSU scored fewer than 15 points in a half: vs. Wisconsin (13, first half), 2/25/10  
 PSU scored fewer than 20 points in a half: at Syracuse (19, first half), 12/4/14  
 PSU scored fewer than 40 points in a game: at Syracuse (L, 39-61), 12/4/14  
 PSU scored fewer than 50 points in a game: at Syracuse (L, 39-61), 12/4/14  
 PSU scored fewer than 50 points in a Big Ten game: vs. Purdue (L, 49-60), 2/24/11  
 OPP scored 50 points in a half: vs. Liberty (52, second half), 11/28/14  
 OPP scored 100 points: at Boston College (Lot, 113-104), 12/2/10  
 OPP scored fewer than 20 points in a game: at Dickinson (W, 57-16), 3/6/71  
 OPP scored fewer than 30 points in a game: vs. Virginia Tech (W, 66-28), 12/6/11  
 OPP scored fewer than 40 points in a game: vs. Wisconsin (W, 84-40), 1/17/13  
 OPP scored fewer than 50 points in a game: vs. Ohio State (W, 66-42), 1/16/14  
 OPP scored fewer than 50 points in a Big Ten game: vs. Ohio State (W, 66-42), 1/16/14

## FIELD GOAL SHOOTING

Player made every shot from the field (min. 7): vs. Michigan St. (Amanda Brown, 8-8), 1/25/07  
 PSU shot 55% or better in a game: vs. Illinois (.611), 2/20/13  
 PSU shot 55% or better in consecutive games: vs. Northwestern (.682), 3/2/96; vs. Ohio St. (.585), 3/3/96  
 PSU shot 60% in a game: vs. Illinois (.611), 2/20/13  
 PSU shot below 25% in a game: vs. Michigan State (.224), 3/9/13  
 PSU shot below 30% in a game: at Syracuse (.278), 12/4/14  
 PSU shot below 35% in a game and won: vs. Michigan State (.333), 1/19/14  
 PSU shot below 30% in a game and won: vs. Northwestern (.299), 1/3/13  
 PSU shot 55% in a half: vs. Wagner (.625, second half), 12/7/14  
 PSU shot 60% in a half: vs. Wagner (.625, second half), 12/7/14  
 PSU shot 65% in a half: at Georgetown (.680, second half), 12/8/13  
 PSU shot 70% in a half: vs. Virginia Tech (.714, second half), 12/6/11  
 PSU shot 55% in both halves: vs. Illinois (.586, first half; .640, second half), 2/20/13  
 PSU shot 20% or below in a half: vs. Michigan State (.200, first half), 3/9/13  
 PSU shot below 25% in a half: at Georgetown (.206, first half), 12/8/13

## THREE-POINT SHOOTING

Player made every shot from the field (min. 4): vs. Albany (4-4, Jenny DeGraaf), 11/16/14  
 Player made 4 three-pointers in a half: vs. Connecticut (4 in the second, Maggie Lucas), 11/17/13  
 Player made 5 three-pointers in a half: vs. Michigan State (5 in the second, Maggie Lucas), 3/9/13  
 Player made 6 three-pointers in a half: vs. Michigan State (5 in the second, Maggie Lucas), 3/9/13  
 Player made 5 three-pointers in a game: vs. Northwestern (5, Maggie Lucas), 2/20/14  
 Player made 6 three-pointers in a game: vs. Michigan State (7, Maggie Lucas), 3/9/13  
 Player made 7 three-pointers in a game: vs. Michigan State (7, Maggie Lucas), 3/9/13  
 Player made 8 three-pointers in a game: at Nebraska (8, Maggie Lucas), 3/3/13  
 Player attempted 10 three-pointers in a game: at Illinois (11, Maggie Lucas), 1/9/14  
 PSU made 10 three-pointers: vs. North Carolina (14), 11/30/11  
 PSU did not make a three-pointer: vs. Hartford (0-8), 12/29/13  
 PSU attempted 20 three-pointers: vs. Connecticut (21), 11/17/13  
 PSU shot 60% 3FG (min. 5 att.): vs. Illinois (.667; 6-9), 2/20/13

## FREE THROW SHOOTING

Player made every shot from FT line (min. 10): at Illinois (10-10, Maggie Lucas), 1/9/14  
 PSU shot 90% (min. 10 att.): vs. Michigan (18-19, .947), 3/1/14  
 PSU shot below 50% (min. 10 att.): at Purdue (8-21, .381), 1/30/14  
 PSU made 30 free throws: vs. St. Francis (Pa.) (37), 11/8/13  
 PSU made fewer than five FTs: at Michigan (3), 2/3/11  
 PSU attempted 40 free throws: vs. St. Francis (Pa.) (43), 11/8/13  
 PSU attempted fewer than five FTs: at Michigan (4), 2/3/11

## REBOUNDS

Player had 15 rebounds: at LSU (16, Nikki Greene), 3/26/13  
 Player had 20 rebounds: at Cal State Northridge (20, Nikki Greene), 11/24/12  
 Two players with double-digit rebs.: vs. Samford (12, Tori Waldner; 10, Jenny DeGraaf), 11/30/14  
 Three players had double-digit rebounds: vs. Ohio State (15, Nikki Greene; 15, Mia Nickson; 10, Maggie Lucas), 2/20/12  
 PSU had 60 rebounds: vs. Ohio State (60), 2/20/12  
 PSU had 50 rebounds: vs. Seton Hall (50), 11/22/14  
 PSU had 20 or fewer rebounds: vs. Michigan State (20), 1/19/03  
 OPP had 20 or fewer rebounds: at Indiana (20), 2/13/11  
 PSU had 20 offensive rebounds: vs. Seton Hall (21), 11/22/14  
 PSU had 25 offensive rebounds: vs. Ohio State (29), 2/20/12

## ASSISTS

Player had 10 assists: vs. Minnesota (10, Dara Taylor), 1/26/14  
 Player had 10 assists/consecutive games: Helen Darling (12 at LaSalle, 12/8/99; 11 vs. Auburn, 12/11/99; 10 vs. Clemson, 12/19/99)  
 Player had 15 assists: vs. North Carolina (15, Alex Bentley), 11/30/11  
 PSU had 30 assists: vs. St. Francis (Pa.) (32), 12/2/99  
 PSU had fewer than 10 assists: at Syracuse (9), 12/4/14  
 PSU had fewer than 5 assists: at Michigan State (4), 2/4/10

## BLOCKED SHOTS

Player blocked 5 shots: vs. Northwestern (5, Tori Waldner), 2/20/14  
 Player blocked 6 shots: vs. Purdue (7, Talia East), 1/12/14  
 PSU blocked 10 shots: vs. Purdue (14), 1/12/14  
 PSU blocked 0 shots: at Illinois, 1/9/14

## STEALS

Player had 7 steals: vs. Alcorn State (7, Dara Taylor), 12/22/13  
 Player had 8 steals: vs. NJIT (8, Alex Bentley), 12/23/12  
 PSU had 20 steals: vs. Bucknell (21), 12/28/10

## TURNOVERS

PSU committed 25 or more: at Illinois (27), 1/9/14  
 PSU committed 25 or more and won: at Illinois (27), 1/9/14  
 PSU committed 10 or fewer: vs. Ohio State (9), 3/7/14  
 PSU committed 10 or fewer in consecutive games: vs. Minnesota (9), 1/22/04; at Ohio St. (9), 1/25/04  
 OPP committed 25 or more: vs. Oregon State (26), 11/30/13

## DOUBLE-DOUBLES

Points & rebounds: vs. Samford (Jenny DeGraaf, 11 points, 10 rebounds), 11/30/14  
 Points & rebounds/consecutive games: Nikki Greene (12 points, 10 rebounds vs. Ohio State, 1/30/11; 16 points, 14 rebounds at Illinois, 1/27/11)  
 Points & rebounds/3 consecutive games: Amanda Brown (19 pts., 17 rebs. at Northwestern, 2/11/07; 14 pts., 10 rebs. vs. Minnesota, 2/15/07; 14 pts., 11 rebs. at Iowa, 2/18/07)  
 Points & rebounds/4 consecutive games: Angie Potthoff (vs. Northwestern, 1/31/97; at Illinois, 2/2/97; vs. Michigan, 2/7/97; vs. Indiana, 2/9/97; vs. Iowa, 2/16/97; vs. Michigan State, 2/21/97)  
 Points & rebounds/5 consecutive games: Angie Potthoff (vs. Northwestern, 1/31/97; at Illinois, 2/2/97; vs. Michigan, 2/7/97; vs. Indiana, 2/9/97; vs. Iowa, 2/16/97; vs. Michigan State, 2/21/97)  
 Points & assists: vs. Minnesota (Dara Taylor, 15 points, 10 assists), 1/26/14  
 Points & assists/consecutive games: Helen Darling (12 pts., 12 assts. at La Salle, 12/8/99; 10 pts., 11 assts. vs. Auburn, 12/11/99)  
 Two players had double-doubles: vs. Ohio State (Nikki Greene, 25 pts., 15 rebs.; Mia Nickson, 18 pts., 15 rebs.; Maggie Lucas, 12 pts., 10 rebs.), 2/20/12  
 Three players had double-doubles: vs. Ohio State (Nikki Greene, 25 pts., 15 rebs.; Mia Nickson, 18 pts., 15 rebs.; Maggie Lucas, 12 pts., 10 rebs.), 2/20/12  
 15 points & 15 rebounds: at LSU (Nikki Greene, 16 pts., 16 rebs), 3/26/13  
 20 points and 10 rebounds: vs. Ohio State (Ariel Edwards, 29 points, 10 rebounds), 3/7/14

## MARGIN OF VICTORY

PSU won by 20-30 points: vs. Wagner (30), 12/7/14  
 PSU won by 20-30 points in a Big Ten game: at Ohio State (20), 2/9/14  
 PSU won consecutive Big Ten games by 20+ pts.: vs. Wisconsin (44), 1/17/13; vs. Nebraska (22), 1/13/13; at Michigan St. (21), 1/6/13  
 PSU won by 31-40 points: vs. Bucknell (43), 11/20/13  
 PSU won by 41-50 points: vs. Bucknell (43), 11/20/13  
 PSU won by 51+ points: vs. Fairleigh Dickinson (57), 12/2/12  
 PSU lost by 20-30 points: at Syracuse (22; 39-61), 12/4/14  
 PSU lost by 20-30 points in a Big Ten game: at Nebraska (20; 94-74), 2/24/14  
 PSU lost by 31+ points: vs. Wisconsin (32), 2/25/10

## MISCELLANEOUS

Led PSU in points/rebounds/assists: Dara Taylor vs. Florida (22 pts., 8 rebs., 4 asst.), 3/25/14  
 Hit "final seconds" (under 10 seconds) game-winning shot: Julia Trogele at Illinois (9 sec.), 1/27/11  
 Hit "final minute" game-winning shot: Alex Bentley at Minnesota (3-ptr. with :38.9 remaining), 2/5/12  
 Player played every minute: at Nebraska (Dara Taylor), 2/24/14  
 Player played more than 40 min.: vs. Samford (Lindsey Spann, 41; Sierra Moore, 40-), 11/30/14  
 Committed 10 or fewer fouls: vs. Virginia Tech (9), 12/6/11  
 Committed 30 or more fouls: vs. Iowa State (32), 11/25/11  
 PSU rallied from a 10-pt. deficit to win: vs. Wichita State (down by 11 at 6:39 in 1st, won 62-56), 3/23/14  
 PSU rallied from a 15-pt. deficit to win: at CS-Northridge (down by 17 at 5:52 in 1st half, won 85-73), 11/24/12  
 PSU had a 5-game winning streak: 6 games, 1/16/14-2/2/14  
 PSU had a 10-game winning streak: 11 games, 12/9/12 - 1/27/13  
 PSU had a 5-game losing streak: 6 games, 11/16/14-12/4/14  
 PSU went undefeated at home: 2012-13 season  
 PSU sold out the BJC: Purdue, 2/29/04

## OVERTIME

PSU played an OT game: vs. Samford (L, 59-56), 11/30/14  
 PSU won an OT game: at Oakland (96-89), 11/18/10  
 PSU lost an OT game: vs. Samford (L, 59-56), 11/30/14  
 PSU played two or more OT games in a season: 2010-11 season (three)  
 PSU won two or more OT games in a season: 2010-11 season (two)

## RANKINGS

Played the No. 1 team in the AP poll: vs. Connecticut (L, 71-52), 11/17/13  
 Played the No. 1 team in the Coaches poll: vs. Connecticut (L, 71-52), 11/17/13  
 Defeated the No. 1 team in the AP poll: at Virginia (73-71), 1/3/91  
 Defeated Top 10 opponent: vs. #8/11 Ohio State (84-66), 2/20/12  
 Defeated Top 10 opponent on the road: at #7 Purdue (47-42), 1/2/04  
 Defeated Top 10 opponent by double digits: vs. #8/11 Ohio State (84-66), 2/20/12  
 Played consecutive Top 10 teams: at #2/3 Texas 11/14/04, at #6/6 Duke 11/19/04  
 Defeated Top 25 opponent: at #16/19 Purdue (75-72), 1/30/14  
 Defeated Top 25 opponent on the road: at #16/19 Purdue (75-72), 1/30/14  
 Defeated Top 25 opponent by double digits: at #23/22 Iowa (87-71), 1/5/14





## 2015 RECRUITING CLASS

### LADY LIONS SECURE TOP 10 CLASS

- The four-player class is ranked eighth by Prospect Nation, ninth by All-Star Girls Report, 10th by Blue Star Basketball and 11th by ESPN/HoopGurlz and Collegiate Girls Basketball Report.
- The class features two Top 20 players and three Top 100 signees in both the Blue Star Basketball and Prospect Nation rankings.
- This is believed to be the highest-ranked class in program history.
- This is the third Top 15 class to sign under Washington, joining the 2009 and 2013 classes that were ranked 14th by ESPN/Hoopgurlz.
- It is also the fourth Top 25 recruiting class for Washington (2010 class was 22nd).

### AMARI CARTER \* 5-8 \* Guard \* Washington, D.C. \* St. John's College

- A 5-7 guard, Carter is ranked as the #31 overall recruit by both ESPN/HoopGurlz and Collegiate Girls Basketball Report.
- She is also rated 19th by Prospect Nation and Blue Star Basketball and 32nd by All Star Girls Report.
- She averaged 17.5 points, 4.0 rebounds, 4.0 assists and 2.0 steals for St. John's College High School in Washington, D.C.
- She led the team to a 25-7 overall record and the 2014 DC State Athletic Association championship.
- Last season, Carter was named to the Washington Post All-Metropolitan first team and All-WCAC first team.
- As a sophomore, Carter helped the Cadets to the 2013 WCAC Championship en route to collecting second team All-WCAC honors and an All-Metropolitan honorable mention selection.
- She is a 2014-15 Sporting News Preseason High School All-America honorable mention choice.
- Carter has participated in USA Basketball U16 (2013) and U17 (2014) Trials.
- She plays her AAU ball with the Maryland Lady Terps.

### TENIYA PAGE \* 5-7 \* Point Guard \* Chicago Heights, Ill. \* Marian Catholic

- Page, a 5-7 point guard out of Marian Catholic in Chicago, Ill., is the 21st-ranked prospect by both ESPN/HoopGurlz and Collegiate Girls Basketball Report.
- She also comes in ranked 17th by Blue Star Basketball, 20th by Prospect Nation and 26th by All Star Girls Report.
- A 2014-15 Sporting News Preseason High School All-America honorable mention selection, Page has 1,135 career points entering her final season for the Spartans.
- Last season, she accounted for 14.4 points, 4.7 assists, 3.5 rebounds and 1.8 steals per game to help Marian Catholic to a 28-5 overall record, a East Suburban Catholic Conference championship and a third-place finish in the Illinois High School Association Class 4A Basketball Tournament.
- Page was selected first team All-State by the Illinois Basketball Coaches Association, second team All-State by the Associated Press, first team All-State by The Northwest Indiana Times and third team All-State by the Chicago Tribune in 2014.
- As a sophomore, Page guided Marian Catholic to the IHSA 4A State Championship with a 33-1 record on the season.
- Page has participated in USA Basketball U16 (2013) and U17 (2014) Trials.
- She plays AAU basketball for Midwest Elite.

### ASHANTI THOMAS \* 6-5 \* Post \* Lexington, Ky. \* Lafayette

- Thomas, a 6-2 post player out of Lexington, Ky., is the 87th-ranked recruit by Prospect Nation and is ranked 106th and 109th by All-Star Girls Report and Blue Star Basketball, respectively.
- She is a candidate for Kentucky Miss Basketball entering her senior season.
- As a junior, she led the Generals to a 29-4 overall record with a 9-1 mark in districts en route to a District and Regional championships.
- Thomas averaged 9.2 points and 8.2 rebounds per game last season on the way to All-State third team accolades from KySports.tv.
- During her sophomore campaign, Thomas accounted for 10.3 points and 9.5 rebounds per outing on the way to claiming Fayette County Public Schools All-City first team.
- Thomas plays AAU basketball for Mac Irvin Lady Fire.

### JAYLEN WILLIAMS \* 6-4 \* Post \* Braintree, Mass. \* Archbishop Williams

- A 6-4 post player, Williams is the ranked 80th by Blue Star Basketball Report after missing her junior campaign at Archbishop Williams due to a knee injury.
- The 2014-15 Sporting News Preseason High School All-America honorable mention honoree accounted for 8.5 points, a team-best 11.6 rebounds, 3.5 blocks and 4.3 assists per game as a sophomore.
- Williams helped the Bishops to the 2013 Massachusetts Interscholastic Athletic Association (MIAA) Division 3 State Championship with a 23-5 record.
- She played her AAU basketball for Lady Rivals AAU select team under the guidance of Scott Hazelton. Williams and the Rivals squad have won two state championships.
- She also has a strong athletic background in her family as her father, Brent, played in the NFL for 11 years with the Jets, Seahawks and Patriots. Her brother, Brennan, has played for the Houston Texans and her other brother, Camren, is a junior linebacker for the Ohio State football team.

## RECORD BOOK

### CAREER BLOCKS

1.	268	Kim Calhoun, 1993-96
2.	215	Nikki Greene, 2010-13
3.	192	Mary Donovan, 1977-81
4.	189	Rashana Barnes, 1999-02
5.	185	Andrea Garner, 1997-00
6.	172	Amanda Brown, 2004-07
7.	140	Tina Henry, 1990-93
8.	102	Talia East, 2011-14
9.	101	<b>Tori Waldner, 2012-present</b>
10.	94	Jess Brungo, 2001-04

as of Dec. 7

## MILESTONE WATCH

### Milestone Watch

Milestone	Player	Current Total
300 points	Tori Waldner	245
	Candice Agee	213
	Kalayah Mitchell	213
200 points	Sierra Moore (career)	168
	Peyton Whitted	123
	Lindsey Spann	116
100 points	Alex Harris	57
400 rebounds	Tori Waldner	395
200 rebounds	Kalayah Mitchell	194
	Candice Agee	163
	Peyton Whitted	122
100 rebounds	Alex Harris	96
50 assists	Kalayah Mitchell	31
150 blocks	Tori Waldner	101
50 blocks	Candice Agee	48
75 steals	Tori Waldner	50

### Milestone Reached

Milestone	Player	Reached
200 points	Candice Agee	12/4
100 blocks	Tori Waldner	11/28
100 points	Sierra Moore (career)	11/25
100 points	Peyton Whitted	11/22
100 rebounds	Peyton Whitted	11/16
200 points	Kalayah Mitchell	12/7
100 points	Lindsey Spann	12/7
50 steals	Tori Waldner	12/7



## 2014-15 SINGLE GAME HIGHS & LOWS

### Team Superlatives

Penn State High	Penn State Low	Category	Opponent High	Opponent Low
96, Wagner (12/7)	39, at Syracuse (12/4)	<b>Points/Game</b>	80, Liberty (11/28)	54, Albany (11/16)
54, Wagner (12/7)	19, at Syracuse (12/4)	<b>Points/Half</b>	52, Liberty (11/28)	13, vs. Samford (11/30)
34, Wagner (12/7)	15, at Syracuse (12/4)	<b>Field Goals Made</b>	25, twice (MR: Wagner, 12/7)	18, twice (MR: St. Bona., 11/25)
66, vs. Seton Hall (11/22)	51, vs. Albany (11/16)	<b>Field Goal Attempts</b>	73, Syracuse (12/4)	51, vs. St. Bonaventure (11/25)
.531, Wagner (12/7)	.278, at Syracuse (12/4)	<b>FG Percentage</b>	.446, Wagner (12/7)	.301, Syracuse (12/4)
6, vs. Albany (11/16)	2, 4x (MR: vs. Samford, 11/30)	<b>3-pt. FG Made</b>	10, Liberty (11/28)	2, Albany (11/16)
15, vs. Liberty (11/28)	9, vs. Samford (11/30)	<b>3-pt. FG Attempts</b>	40, Syracuse (12/4)	15, twice (MR: Seton Hall, 11/22)
.462, vs. Albany (11/16)	.133, vs. Liberty (11/28)	<b>3-pt. FG Percentage</b>	.455, Liberty (11/28)	.133, Albany (11/16)
25, Wagner (12/7)	6, twice (MR: at Syracuse,)	<b>Free Throws Made</b>	27, Seton Hall (11/22)	8, Wagner (12/7)
33, Wagner (12/7)	11, vs. St. Bonaventure (11/25)	<b>Free Throw Attempts</b>	37, Seton Hall (11/22)	12, Syracuse (12/4)
.762, vs. Samford (11/30)	.500, at Syracuse (12/4)	<b>Free Throw Percentage</b>	.833, Syracuse (12/4)	.520, vs. Samford (11/30)
50, vs. Seton Hall (11/22)	31, vs. Albany (11/16)	<b>Rebounds</b>	51, Syracuse (12/4)	29, Wagner (12/7)
19, Wagner (12/7)	9, at Syracuse (12/4)	<b>Assists</b>	17, Liberty (11/28)	9, vs. St. Bonaventure (11/25)
12, vs. Liberty (11/28)	3, at Syracuse (12/4)	<b>Steals</b>	14, Syracuse (12/4)	4, Wagner (12/7)
9, vs. Seton Hall (11/22)	2, vs. Towson (11/14)	<b>Blocked Shots</b>	7, Syracuse (12/4)	2, Wagner (12/7)
23, vs. Albany (11/16)	12, Wagner (12/7)	<b>Turnovers</b>	24, Albany (11/16)	11, Syracuse (12/4)
29, vs. Albany (11/16)	13, at Syracuse (12/4)	<b>Fouls</b>	27, Wagner (12/7)	13, Syracuse (12/4)

### Individual Superlatives

	Penn State	Opponent
Points	22, Lindsey Spann vs. Wagner (12/7)	32, Dominique Johnson, Towson (11/14)
Field Goals Made	9, Candice Agee vs. Seton Hall (11/22)	12, Dominique Johnson, Towson (11/14)
Field Goal Attempts	21, Lindsey Spann vs. Liberty (11/28)	30, Dominique Johnson, Towson (11/14)
Field Goal Pct. (min. 5 made)	.727, Kaliyah Mitchell vs. Wagner (12/7)	.727, Simone Brown, Liberty (11/28)
3-pt. Field Goals Made	4, Jenny DeGraaf vs. Albany (11/16)	6, twice (MR: Jordyn Peck, Wagner, 12/7)
3-pt. Field Goal Attempts	7, Lindsey Spann vs. Liberty (11/28)	19, Brianna Butler, Syracuse (12/4)
3-pt. Field Goal Pct. (min. 2 made)	1.000, twice (MR: , Jenny DeGraaf vs. Albany, 11/16)	.750, Emily Michael, St. Bonaventure (11/25)
Free Throws Made	11, Sierra Moore vs. Wagner (12/7)	9, Ka-Deidre Simmons, Seton Hall (11/22)
Free Throw Attempts	12, Sierra Moore vs. Wagner (12/7)	12, twice (MR: Ka-Deidre Simmons, Seton Hall, 11/22)
Free Throw Percentage (min. 3 made)	1.000, 6x (MR: Spann/DeGraaf vs. Wagner, 12/7)	1.000, 7x (MR: Briana Day, Syracuse, 12/4)
Rebounds	12, Tori Waldner vs. Samford (11/30)	15, Imani Tate, Albany (11/16)
Assists	7, Sierra Moore vs. Wagner (12/7)	7, twice (MR: Jasmine Nwajei, Wagner, 12/7)
Steals	5, Kaliyah Mitchell vs. Liberty (11/28)	3, 8x (MR: Briana Day, Syracuse, 12/4)
Blocked Shots	4, twice (MR: Candice Agee vs. Liberty, 11/28)	6, Briana Day, Syracuse (12/4)
Turnovers	7, Lindsey Spann vs. Liberty (11/28)	9, Jasmine Nwajei, Wagner, 12/7



## MISCELLANEOUS STATS

<b>LEADING SCORER</b> Lindsey Spann 5 Sierra Moore 2 Candice Agee 1	<b>20-POINT SCORING GAMES</b> Penn State 4 Opponents 6  Candice Agee 1 Sierra Moore 1 Lindsey Spann 1 Kaliyah Mitchell 1	<b>BENCH POINTS</b> Penn State 113 (14.1 ppg) Opponents 91 (11.4 ppg)  <b>JUMP BALLS CONTROLLED</b> Penn State 5 Opponents 3	<b>LARGEST LEAD GIVEN UP IN LOSS</b> 16, vs. Samford, 9:59 in second half, 11/30  <b>LARGEST WIN</b> 30, vs. Wagner (96-66) (12/7)
<b>LEADING REBOUNDER</b> Tori Waldner 4 Kaliyah Mitchell 3 Candice Agee 1 Sierra Moore 1	<b>30-POINT SCORING GAMES</b> Penn State 0 Opponents 1	<b>FIRST SCORE OF GAME</b> Penn State 5 Opponents 3	<b>LARGEST DEFEAT</b> 22, at Syracuse (61-39) (12/4)
<b>LEADER IN ASSISTS</b> Lindsey Spann 4 Sierra Moore 3 Keke Sevellian 1	<b>TECHNICAL FOULS</b> Penn State 1 Opponents 1	<b>RUNS OF 10-0 OR BETTER</b> Penn State 2 Opponents 4	<b>MOST CONSECUTIVE POINTS</b> 13, vs. Samford (15:18 to 9:59, second half) (11/30)
<b>LEADER IN STEALS</b> Kaliyah Mitchell 4 Lindsey Spann 2 Keke Sevellian 2 Candice Agee 1 Sierra Moore 1	<b>FOUR-POINT PLAYS</b> Penn State 0 Opponents 0	<b>LARGEST HALFTIME LEAD</b> 14, vs. Wagner (42-28) (12/7)	<b>MOST CONSECUTIVE POINTS BY OPP</b> 14, at Syracuse (9:08 to 4:17 in first half) (12/4)
<b>LEADER IN BLOCKS</b> Tori Waldner 4 Candice Agee 3 Sierra Moore 2 Kaliyah Mitchell 1 Jenny DeGraaf 1	<b>THREE-POINT PLAYS</b> Penn State 6 Opponents 4	<b>LARGEST HALFTIME DEFICIT</b> 14, at Syracuse (35-19) (12/4)	<b>LONGEST WINNING STREAK</b> 1, twice (MR: present)
<b>GAMES STARTED</b> Sierra Moore 8 Lindsey Spann 8 Kaliyah Mitchell 8 Tori Waldner 6 Candice Agee 5 Peyton Whitted 4 Keke Sevellian 1	<b>PSU'S FIRST SUBSTITUTION</b> Jenny DeGraaf 3 Keke Sevellian 3 Tori Waldner 2 Candice Agee 1 Peyton Whitted 1	<b>LARGEST LEAD</b> 31, vs. Wagner (12/7)	<b>LONGEST LOSING STREAK</b> 6, 11/16-12/4
		<b>LARGEST DEFICIT</b> 22, at Syracuse (12/4)	<b>CLUTCH FREE THROWS (FINAL 5 MIN. &amp; OT)</b> Kaliyah Mitchell 2-2 1.000 Sierra Moore 9-11 .818 Lindsey Spann 9-12 .750 Tori Waldner 3-4 .750 Keke Sevellian 1-2 .500 Jenny DeGraaf 1-2 .500 Candice Agee 4-9 .444
		<b>LARGEST DEFICIT OVERCOME TO WIN</b> 8, vs. Towson (12:50 in 2nd half) (11/14)	NOTE: Totals may not add up to games played due to ties.

### SPECIALITY STATS (PSU/OPP)

	Paint	Off TO	2nd	FastBr	Bench		Paint	Off TO	2nd	FastBr	Bench
Towson	30/14	13/16	5/9	13/4	17/7	Samford	28/22	11/13	4/4	6/0	11/10
Albany	22/30	14/17	6/12	10/4	14/12	Syracuse	18/24	6/16	8/10	4/14	10/13
Seton Hall	40/26	18/22	22/10	8/12	14/11	Wagner	54/16	24/13	13/6	24/6	24/19
St. Bonaventure	28/20	14/7	6/9	6/0	12/3						
Liberty	36/26	13/21	11/13	20/6	11/16						

## LADY LIONS BY THE NUMBERS

### DOUBLE FIGURE PERFORMANCES

Lindsey Spann - 8  
 Sierra Moore - 6  
 Kaliyah Mitchell - 3  
 Jenny DeGraaf - 3  
 Tori Waldner - 2  
 Candice Agee - 1

### 20-POINT PERFORMANCES

Lindsey Spann - 1  
 Sierra Moore - 1  
 Kaliyah Mitchell - 1  
 Candice Agee - 1

### 30-POINT PERFORMANCES

none

### DOUBLE-DOUBLE PERFORMANCES

Tori Waldner - 1  
 Candice Agee - 1  
 Jenny DeGraaf - 1

### DOUBLE-DIGIT REBOUNDING PERFORMANCES

Tori Waldner - 2  
 Candice Agee - 1  
 Jenny DeGraaf - 1

### DOUBLE-DIGIT ASSIST PERFORMANCES

none





# COQUESE WASHINGTON

Head Coach  
8th Season

## PENN STATE LADY LION BASKETBALL

Coquese Washington was introduced as the fifth head coach of the Penn State women's basketball program on April 23, 2007. Washington is the first female African-American head coach in Penn State history.

Washington led the 2013-14 Lady Lion squad to a feat that no other Penn State team has accomplished, winning three consecutive conference regular-season titles with a 13-3 record in Big Ten action. Led by the play of a strong senior class, the Lady Lions advanced to the NCAA Sweet Sixteen for the second time in three years. The graduating class of Maggie Lucas, Ariel Edwards, Dara Taylor and Talia East produced 101 wins, which is the second-highest total by a Lady Lion class.

Along the way to collecting her second Big Ten Player of the Year award, Lucas finished second in school history and fourth in Big Ten history in scoring (2,510) and broke the Penn State and Big Ten records for career three-pointers made (365) and career free throw percentage (.907). She was selected in the second round of the 2014 WNBA Draft by the Phoenix Mercury. Edwards became the 36th member of the 1,000-point club en route to collecting All-Big Ten first team accolades. She finished seventh in the Big Ten in scoring (15.7) and was 11th in free throw percentage (.814). Edwards signed a free agent contract with the WNBA's Tulsa Shock. Taylor also had a stellar senior campaign and collected the Big Ten Defensive Player of the Year award after leading the conference in steals. East also earned postseason honors as she was named All-Big Ten honorable mention. In addition, Washington was honored with her third consecutive Big Ten Coach of the Year honor.

The Lady Lions continued their run in the national spotlight in 2012-13 as they collected their second-straight Big Ten regular-season title and seventh overall with a 26-6

overall record and 14-2 mark in conference play. In each of Washington's first six years, Penn State improved its Big Ten win total. The Lady Lions posted their third consecutive 25-win season, joining the 1993-94, 1994-95 and 1995-96 squads as the only teams in program history to accomplish the feat. The Lady Lions were consistently ranked in the Top 10 for most of the season and finished eighth in the Associated Press Top 25 and 12th in the USA Today Sports Coaches' Poll.

With another stellar campaign, the accolades continued to roll in for the Lady Lions. Washington was selected as the Big Ten Coach of the Year by the media for the second-straight season and became just the fifth mentor in Big Ten history to win back-to-back Coach of the Year accolades. She was also the WBCA Region 6 Coach of the Year and a finalist for WBCA National Coach of the Year for the second-straight season.

The awards also piled up for Penn State's dynamic backcourt of Lucas and Alex Bentley. Lucas was selected as the Big Ten Player of the Year, was a Wade Trophy Finalist and was an All-America choice by four outlets, including the WBCA (honorable mention), Associated Press (second team), USBWA (first team) and Full Court (second team). She is just the third Lady Lion in program history to win Big Ten Player of the Year honors. Bentley earned her third-straight first team All-Big Ten award and honorable mention All-America bids from the WBCA and Associated Press. She was also selected as the 2013 recipient of the Frances Pomeroy Naismith Award, which is presented to the nation's outstanding female collegian 5-8 and under. Nikki Greene also capped a stellar career for the Lady Lions with third team All-Big Ten accolades. She also became the first player in school history to accumulate 1,000 points, 900 rebounds and 200 blocks.

Both Bentley and Greene heard their names called on WNBA Draft night. Bentley was selected with the 13th overall pick by the Atlanta Dream to become the highest draft pick for the Lady Lions since Tanisha Wright (12th) in 2005. Greene was the 26th overall selection by the Phoenix Mercury.

For her efforts in rebuilding the Penn State program, Washington was honored as the Big Ten Coach of the Year and the WBCA Region 6 Coach of the Year, making her a finalist for WBCA National Coach of the Year. The accolades were not just limited to Washington; all five Lady Lion starters earned All-Big Ten recognition, including first team bids for Bentley and Lucas. Both Bentley and Lucas also garnered honorable mention All-America honors from the WBCA and Associated Press, respectively.

### Washington vs. Opponents

Albany.....	0-1	Holy Cross.....	1-0	Old Dominion.....	0-1
Alcorn State.....	1-0	Howard.....	1-0	Oregon State.....	1-0
Arizona.....	1-0	Illinois.....	10-3	Pittsburgh.....	2-1
Army.....	1-0	Illinois State.....	1-0	Prairie View A&M.....	1-0
Boston College.....	0-1	Indiana.....	7-4	Purdue.....	4-9
Bucknell.....	6-0	Iowa.....	7-6	Rider.....	1-0
Buffalo.....	1-0	Iowa State.....	1-0	Samford.....	0-1
Cal Poly.....	1-0	Lafayette.....	1-0	Seton Hall.....	0-1
CS-Northridge.....	1-0	Liberty.....	0-1	St. Bonaventure.....	0-1
Charlotte.....	1-0	LSU.....	1-1	St. Francis (Pa.).....	1-0
Connecticut.....	0-4	Maine.....	1-0	South Carolina.....	4-1
Coppin State.....	1-0	UMES.....	1-0	South Dakota St.....	1-1
Dayton.....	2-1	Miami (Fla.).....	0-1	Stanford.....	0-1
Delaware.....	1-1	Michigan.....	10-3	Stony Brook.....	1-0
DePaul.....	0-1	Michigan State.....	5-8	Syracuse.....	0-2
Detroit.....	1-0	Middle Tennessee.....	1-0	Texas A&M.....	2-1
Drexel.....	2-1	Minnesota.....	7-7	UTEP.....	1-0
Duke.....	1-0	Mississippi.....	1-0	Texas Tech.....	1-1
Fair Dickinson.....	1-0	Monmouth.....	1-0	Towson.....	1-0
Florida.....	1-0	Nebraska.....	3-2	Utah.....	1-0
Fordham.....	1-0	Nevada.....	1-0	Virginia Tech.....	2-0
Florida State.....	0-1	NJIT.....	2-0	Wagner.....	2-0
Georgetown.....	3-0	North Carolina.....	1-0	Washington State.....	1-0
Georgia Tech.....	0-1	Notre Dame.....	0-1	Wichita State.....	1-0
Hartford.....	2-0	Northwestern.....	9-1	Wisconsin.....	6-6
Hofstra.....	0-1	Oakland.....	2-0	UW-Green Bay.....	0-1
		Ohio State.....	6-7	Xavier.....	0-1

### THE WASHINGTON FILE

#### COACHING RESUME

2007-pres. - Head Coach, Penn State  
 2013 - Asst. Coach, USA Basketball World U. Games  
 2013-pres. - Vice President/President-Elect, WBCA  
 2012-pres. - Kay Yow Cancer Fund Board of Directors  
 2011-pres. - NCAA WBB Issues Committee  
 2010-13 - Treasurer, WBCA Executive Committee  
 2008-pres. - WBCA Board of Directors  
 2009-12 - USA Basketball Women's Jr. National Comm.  
 2005-07 - Associate Head Coach, Notre Dame  
 1999-05 - Assistant Coach, Notre Dame

#### PLAYING EXPERIENCE

2002-03 - WNBA's Indiana Fever  
 2000-02 - WNBA's Houston Comets  
 1998-99 - WNBA's New York Liberty  
 1997-98 - ABL's Portland Power  
 1989-93 - University of Notre Dame

#### EDUCATION

Notre Dame '92, B.A. History  
 Notre Dame Law School '97, Juris Doctorate

#### AWARDS

- ❖ 2012, 2013, 2014 Big Ten Coach of the Year
- ❖ 2012, 2013 WBCA Region 6 Coach of the Year
- ❖ 2012, 2013 WBCA National Coach of the Year Finalist
- ❖ 2011, 2013 BCA Female Coach of the Year
- ❖ 2009 Greater Flint Hall of Fame Inductee

#### FAMILY

Husband: Raynell Brown  
 Children: Quenton (9), Rhaiyna (5)

The Lady Lions returned to the national stage in Washington's fourth year with a second-place finish in the Big Ten regular season standings, a runner-up finish in the Big Ten Tournament and a berth in the NCAA Tournament. Penn State tallied its 23rd 20-win season with a 25-10 overall record and an 11-5 mark in conference play. The Lady Lions worked their way back to the "Big Dance" for the first time since 2004-05.

Washington came to Happy Valley after eight seasons as an associate head coach and assistant coach under Muffet McGraw at Notre Dame, her alma mater. During Washington's eight years on the bench, Notre Dame amassed a 188-69 record with eight NCAA Tournament appearances, including four Sweet Sixteen runs and a National Championship in 2001.

Washington was a four-year starting point guard for Notre Dame under McGraw and was the team captain on Notre Dame's first-ever NCAA Tournament team. She was a two-time All-Midwestern Collegiate Conference (MCC) selection and led Notre Dame to three MCC Tournament titles.

The epitome of a student-athlete, Washington graduated from Notre Dame in 1992, a full year ahead of schedule, with a bachelor's degree in history. She went on to attain "Double Domer" status in 1997 after earning her Juris Doctorate from the Notre Dame Law School.

Washington juggled finishing her law degree with the start of her professional basketball career. She returned to the hardwood as a professional in 1997-98, playing for the ABL's Portland Power before spending a two-year stint with the WNBA's New York Liberty (1998-99). Washington moved to Houston for the 2000 season, where she played an instrumental role in leading the Comets to the WNBA title. Washington guided the Fever to their first-ever playoff berth and became the first player in WNBA history to lead three different teams to the postseason.

In addition to assisting with the efforts of the Pink Zone at Penn State to raise money and awareness for breast cancer, Washington created Coquese's Drive for the Women's Resource Center. Coquese's Drive for the Women's Resource Center has raised more than \$118,000 to aid in the fight against domestic violence.

Washington is currently serving on the 29-member WBCA Board of Directors, where she is the Vice President/President-Elect of the Executive Committee.





# #1 Candice Agee

Jr. \* C \* 6-6 \* Victorville, Calif./Silverado

## Highlights:

- ♦ Ranks 19th in program history in blocked shots per game (0.7 bpg).
- ♦ Made her first start of the season and fourth of her career versus Seton Hall (11/22).
- ♦ Reached the 200 career point mark with her second basket of the game at Syracuse.

## 2014-15 Season Notes:

- ♦ Scored eight points on 4-of-8 shooting to reach the 200 career point mark at at Syracuse (12/4) in the ACC/Big Ten Challenge. She added nine rebounds and blocked two shots vs. the Orange.
- ♦ Notched a career-high four blocks to go along with six points and five rebounds vs. Liberty (11/28).
- ♦ Had eight points, four rebounds and two blocks against St. Bonaventure (11/25).
- ♦ Went 9-for-15 from the field en route to a career-high 21 points with five rebounds, two blocks and two steals in just 17 minutes against Seton Hall (11/22).
- ♦ Blocked three shots and had two steals against Albany (11/16).
- ♦ Nearly posted a double-double with nine points and nine rebounds, which tied her career high, in the season-opening win over Towson (11/14).

## Notable:

- ♦ 2012 McDonald's High School All-American.
- ♦ Competed for the United States in the FIBA U19 World Championship (July 2013) and FIBA Americas U18 Championship (August 2012).

## 14-15 GAME-BY-GAME

OPPONENT	Min.	FG	3FG	FT	O-D-R	PF	A	TO	B	S	Pts
TOWSON	18	3-6	0-0	3-6	4-5-9	1	0	0	0	0	9
ALBANY	19	1-6	0-0	0-0	1-4-5	4	2	1	3	2	4
SETON HALL	17	9-15	0-0	3-6	3-2-5	4	1	1	2	2	21
ST. BONA	24	4-8	0-0	0-0	1-3-4	3	2	3	2	1	8
vs. Liberty	22	2-4	0-0	2-4	2-3-5	1	0	2	4	1	6
vs. Samford	2	0-1	0-0	0-0	0-0-0	0	0	1	0	0	0
at Syracuse	28	4-8	0-0	0-0	1-8-9	2	0	1	2	1	8
WAGNER	23	4-7	0-0	1-3	2-2-4	3	1	3	1	1	9
at Hartford											
RIDER											
USF											
at Iowa											
at Michigan											
ILLINOIS											
at Wisconsin											
RUTGERS											
at Nebraska											
at Ohio State											
INDIANA											
NORTHWESTERN											
at Minnesota											
at Rutgers											
MARYLAND											
at Purdue											
MICHIGAN ST.											
MINNESOTA											
at Maryland											
OHIO STATE											
WISCONSIN											

AGEE'S CAREER/SEASON HIGHS			
	SEASON HIGHS	CAREER HIGHS	
Points	21 vs. Seton Hall (11/22/14)	21 vs. Seton Hall (11/22/14)	
Rebs.	9 at Syracuse (12/4/14) 9 vs. Towson (11/14/14)	9 (3x) last 9 at Syracuse (12/4/14)	
Assists	2 vs. St. Bonaventure (11/25/14) 2 vs. Albany (11/16/14)	2 vs. St. Bonaventure (11/25/14) 2 vs. Albany (11/16/14)	
Steals	2 vs. Seton Hall (11/22/14) 2 vs. Albany (11/16/14)	2 3x last vs. Seton Hall (11/22/14)	
Blocks	4 vs. Liberty (11/28/14)	4 vs. Liberty (11/28/14)	
Minutes	28 at Syracuse (12/4/14)	28 at Syracuse (12/4/14)	
FGM	9 vs. Seton Hall (11/22/14)	9 vs. Seton Hall (11/22/14)	
FGA	15 vs. Seton Hall (11/22/14)	15 vs. Seton Hall (11/22/14)	
3FGM	n/a	n/a	
3FGA	n/a	n/a	
FTM	3 vs. Seton Hall (11/22/14) 3 vs. Towson (11/14/14)	4 vs. Illinois (2/20/13)	
FTA	6 vs. Seton Hall (11/22/14) 6 vs. Towson (11/14/14)	8 vs. Illinois (2/20/13)	
AGEE'S MISCELLANEOUS STATS			
Category	Season	Career	Last Time
Double Figure Scoring	1	2	21 vs. Seton Hall (11/22/14)
20-point games	1	1	21 vs. Seton Hall (11/22/14)
Double Figure Rebounds	n/a	n/a	
5-plus Rebounds	5	12	9 at Syracuse (12/4/14)
5-plus Assists	n/a	n/a	
3-plus Blocks	2	3	4 vs. Liberty (11/28/14)
Double-Doubles	n/a	n/a	

## AGEE'S CAREER STATS

Year	GP-GS	MIN	FG-A	PCT	3FG-A	PCT	FT-A	PCT	REB	AVG	PF-O	A	TO	B	S	PTS	AVG
2012-13	26-0	204	20-54	.370	0-0	.000	11-20	.550	17-31-48	1.8	33-0	2	13	13	4	51	2.0
2013-14	32-3	330	34-84	.405	0-0	.000	31-61	.508	31-43-74	2.3	54-1	8	28	21	4	99	3.1
2014-15	8-5	153	27-55	.491	0-0	.000	9-19	.474	14-27-41	5.1	18-0	6	12	14	8	63	7.9
<b>TOTAL</b>	<b>66-8</b>	<b>687</b>	<b>81-193</b>	<b>.420</b>	<b>0-0</b>	<b>.000</b>	<b>51-100</b>	<b>.510</b>	<b>62-101-163</b>	<b>2.5</b>	<b>105-1</b>	<b>16</b>	<b>53</b>	<b>48</b>	<b>16</b>	<b>213</b>	<b>3.2</b>

10-Time Big Ten Champions • Two-Time Big Ten Tournament Champions • 2000 NCAA Final Four • 25 NCAA Tournament Appearances





# #3 Brianna Banks

RS-Sr. \* G \* 5-9 \* Newnan, Ga./Fayette County (Connecticut)

## 2014-15 Season:

- Will sit out the 2014-15 season due to NCAA Transfer Rules after transferring from Connecticut.
- Has one year of eligibility remaining.

## 2013-14 Season (at Connecticut):

- Started eight-straight games (November 20 - December 22).
- Dished out five assists to go with four points and three steals against UCF (2/19).
- Notched three steals to compliment four points, three assists and five rebounds at Cincinnati (2/1).
- Registered seven points three assists and three steals at UCF (1/1).
- Connected on three of her four shots from the field en route to eight points, five rebounds, four assists and three steals against UC Davis (12/5).
- Had a season-high 12 points with a career-best seven rebounds in the win over Ohio State (12/1).
- Was 4-for-5 from the field, including 3-for-3 from three-point range, on the way to 12 points against Monmouth (11/23).
- Chipped in with 10 points on 4-6 shooting in a season-high 31-minutes of action against Oregon (11/20).
- Had nine points and three rebounds at #8/7 Maryland (11/15).

## 2012-13 Season (at Connecticut):

- Finished sixth on the team in scoring (7.3).
- Had 12 points to go along with four rebounds at Marquette (1/12).
- Tallied 18 points on 8-of-13 shooting and pulled in six rebounds against Oakland (12/19).
- Registered 10 points and two steals against #10/10 Penn State (12/6).
- Connected on three of her four three-point attempts en route to 11 points against #9/10 Maryland (12/3).
- Had a career-high 20 points thanks to a 6-for-10 shooting night, including a 4-for-5 effort from beyond the arc, against Colgate (11/28).
- Had a balanced statistical night with 12 points, six assists, two rebounds and a steal with only one turnover in 20 minutes against Wake Forest (11/22).
- Opened the season with a perfect 5-for-5 shooting night for 10 points against Charleston (11/11).

## 2011-12 Season (at Connecticut):

- Shot 50.5 percent from the field.
- Hit on all three of her shots from the field en route to eight points with four assists and two steals at Marquette (2/25).
- Was 5-for-5 from the field and finished with 12 points, two rebounds and two steals against Fairfield (12/29).
- Collected 17 points via a 7-for-10 shooting effort and 3-for-3 night at the free throw line against Fairleigh Dickinson (11/25).
- Tallied 12 points thanks to a 5-for-7 shooting night against Pacific (11/15).

## High School:

- Averaged 16.2 points, 5.5 rebounds, 5.1 assists and 5.0 steals per game in her final season at Fayette County High School, which ended in a State Championship.
- Honored as a 2011 McDonald's All-American and WBCA Honorable Mention All-American in addition to being named "Miss Basketball" in the state of Georgia.
- Honored as the Fayette County Player of the Year by the *Fayette County News* and selected to the All-State first team in 2011.
- Led the West Team with 17 points on 7-of-12 shooting in the 2011 McDonald's All-American Game.
- Was a second team All-State selection and the Coweta County Player of the year during her junior season.
- Rated as the No. 24 overall recruit by ESPN Hoopgurlz and the No. 15 overall prospect by the All-Star Girls Report.
- Tabbed as the No. 11 recruit nationally by Blue Star.
- Honored as a first team All-Metro selection by the *Atlanta Journal-Constitution* in 2009-10.
- Selected as the 2010 Coweta County Player of the Year by the *Times-Herald*.

### BANKS' CAREER STATS

Year	GP-GS	MIN	FG-A	PCT	3FG-A	PCT	FT-A	PCT	REB	AVG	PF-O	A	TO	B	S	PTS	AVG
2011-12*	32-0	393	46-91	.505	3-24	.125	19-27	.704	5-30-35	1.1	27-0	32	31	3	25	114	3.6
2012-13*	21-0	359	56-117	.479	18-52	.346	23-33	.697	6-30-36	1.7	22-0	35	22	4	25	153	7.3
2013-14*	37-8	527	49-103	.476	13-44	.295	19-29	.655	20-37-57	1.5	42-1	45	27	6	34	130	3.5
<b>CAREER</b>	<b>90-8</b>	<b>1279</b>	<b>151-311</b>	<b>.486</b>	<b>34-120</b>	<b>.283</b>	<b>61-89</b>	<b>.685</b>	<b>31-97-128</b>	<b>1.4</b>	<b>91-1</b>	<b>112</b>	<b>80</b>	<b>13</b>	<b>84</b>	<b>397</b>	<b>4.4</b>

\* - at Connecticut





# #5 Sierra Moore

RS-So. \* G \* 5-11 \* Hanover, Pa./Delone Catholic (Duke)

## Highlights:

- Sat out the 2013-14 season due to NCAA Transfer Rules.
- Selected as a team tri-captain.
- Named to the Georgia State Thanksgiving Tournament All-Tournament team.
- Posted first career double-double with 14 points and a personal-best 10 rebounds against Seton Hall (11/22).
- Recorded her first career 20-point game vs. Wagner (12/7). Her 21 points helped her eclipse the 100-point mark in her Penn State career.

## 2014-15 Season Notes:

- Eclipsed the 100-point mark for her Penn State career with her first career 20-point effort vs. Wagner (12/7). Her 21 points are a career-high and she added a personal-best seven assists vs. the Seahawks.
- Poured in a team- and then-career-high 17 points for her fourth straight double-digit scoring effort vs. Samford (11/30), adding three assists and two steals against the Bulldogs.
- Scored 14 points, grabbed five rebounds and handed out four assists vs. Liberty (11/28).
- Had a game- and then-career-high 15 points via a 6-for-12 shooting performance versus St. Bonaventure (11/25).
- Tallied eight points to go along with three rebounds, three assists and a steal versus Albany (11/16).
- Filled the stats sheet with 12 points, five rebounds, four assists, two blocks and a steal in the win over Towson (11/14).
- Scored 15 of her team-best 18 points over the final 11:44 of the contest to propel the Lady Lions to an exhibition win over IUP (11/2).

## Notable:

- Appeared in 25 games as a freshman at Duke.
- Garnered Gatorade Player of the Year and Associated Press Class AA Player of the Year honors in the state of Pennsylvania as a high school senior year.
- Was a McDonald's High School All-American in 2011-12.
- Holds the York-Adams Interscholastic Athletic Association (YAIAA) scoring record with 2,595 points at Delone Catholic.
- Was also a track standout, finishing in the Top 10 in the State Championships in the 200-meters (7th in 2009 and 2010) and 4x100 relay (4th in 2009).

## 14-15 GAME-BY-GAME

OPPONENT	Min.	FG	3FG	FT	O-D-R	PF	A	TO	B	S	Pts	
TOWSON	39	5-12	1-1	1-3	1-4	5	0	4	4	2	1	12
ALBANY	30	4-8	0-0	0-1	2-1	3	4	3	4	1	1	8
SETON HALL	37	5-12	0-0	4-6	7-3	10	1	5	3	1	0	14
ST. BONA	37	6-12	0-0	3-6	1-4	5	3	3	3	0	0	15
vs. Liberty	33	5-10	0-0	4-7	2-3	5	5	4	3	0	1	14
vs. Samford	40	4-10	1-2	8-10	1-0	1	5	3	3	0	2	17
at Syracuse	37	2-11	0-0	0-0	1-4	5	2	2	5	2	1	4
WAGNER	31	5-9	0-0	11-12	1-4	5	0	7	0	0	2	21
at Hartford												
RIDER												
USF												
at Iowa												
at Michigan												
ILLINOIS												
at Wisconsin												
RUTGERS												
at Nebraska												
at Ohio State												
INDIANA												
NORTHWESTERN												
at Minnesota												
at Rutgers												
MARYLAND												
at Purdue												
MICHIGAN ST.												
MINNESOTA												
at Maryland												
OHIO STATE												
WISCONSIN												

## MOORE'S CAREER/SEASON HIGHS

	SEASON HIGHS	CAREER HIGHS
Points	21 vs. Wagner (12/7/14)	21 vs. Wagner (12/7/14)
Rebs.	10 vs. Seton Hall (11/22/14)	10 vs. Seton Hall (11/22/14)
Assists	7 vs. Wagner (12/7/14)	7 vs. Wagner (12/7/14)
Steals	2 vs. Wagner (12/7/14) 2 vs. Samford (11/30/14)	3 vs. Iona (11/18/12)
Blocks	2 at Syracuse (12/4/14) 2 vs. Towson (11/14/14)	2 at Syracuse (12/4/14) 2 vs. Towson (11/14/14)
Minutes	40 vs. Samford (11/30/14)	40 vs. Samford (11/30/14)
FGM	6 vs. St. Bonaventure (11/25/14)	6 vs. St. Bonaventure (11/25/14)
FGA	12 (3x) last vs. St. Bonaventure (11/25/14)	12 (3x) vs. St. Bonaventure (11/25/14)
3FGM	1 vs. Samford (11/30/14) 1 vs. Towson (11/14/14)	1 vs. Samford (11/30/14) 1 vs. Towson (11/14/14)
3FGA	2 vs. Samford (11/30/14)	2 vs. Samford (11/30/14)
FTM	11 vs. Wagner (12/7/14)	11 vs. Wagner (12/7/14)
FTA	12 vs. Wagner (12/7/14)	12 vs. Wagner (12/7/14)

*italics indicate at Duke*

## MOORE'S MISCELLANEOUS STATS

Category	Season	Career	Last Time
Double Figure Scoring	6	7	21 vs. Wagner (12/7/14)
20-point games	1	1	21 vs. Wagner (12/7/14)
Double Figure Rebounds	1	1	10 vs. Seton Hall (11/22/14)
5-plus Rebounds	6	7	5 vs. Wagner (12/7/14)
5-plus Assists	2	2	7 vs. Wagner (12/7/14)
3-plus Steals	n/a	1	3 vs. Iona (11/18/12)
Double-Doubles	1	1	14p, 10r vs. Seton Hall (11/22/14)

## MOORE'S CAREER STATS

Year	GP-GS	MIN	FG-A	PCT	3FG-A	PCT	FT-A	PCT	REB	AVG	PF-O	A	TO	B	S	PTS	AVG
2012-13*	25-0	194	26-58	.448	0-0	.000	11-22	.500	11-13-24	1.0	21-0	12	6	2	11	63	2.5
2014-15	8-8	284	36-84	.429	2-3	.667	31-45	.689	16-23-39	4.9	20-2	31	25	6	8	105	13.1
<b>PSU</b>	<b>8-8</b>	<b>284</b>	<b>36-84</b>	<b>.429</b>	<b>2-3</b>	<b>.667</b>	<b>31-45</b>	<b>.689</b>	<b>16-23-39</b>	<b>4.9</b>	<b>20-2</b>	<b>31</b>	<b>25</b>	<b>6</b>	<b>8</b>	<b>105</b>	<b>13.1</b>
<b>TOTAL</b>	<b>33-8</b>	<b>478</b>	<b>62-142</b>	<b>.437</b>	<b>2-3</b>	<b>.667</b>	<b>42-67</b>	<b>.627</b>	<b>27-36-63</b>	<b>1.9</b>	<b>41-2</b>	<b>43</b>	<b>31</b>	<b>8</b>	<b>19</b>	<b>168</b>	<b>5.1</b>

\* - at Duke

10-Time Big Ten Champions • Two-Time Big Ten Tournament Champions • 2000 NCAA Final Four • 25 NCAA Tournament Appearances





# #10 Keke Sevillian

So. \* G \* 5-7 \* Goodrich, Mich./Goodrich

## Highlights:

- Made first career start against Seton Hall (11/22).

## 2014-15 Season Notes:

- Nabbed a season-high three steals in a career-best 27 minutes of action and added four assists and four points vs. Wagner (12/7).
- Blocked her first career shot and grabbed a career-high three rebounds vs. Syracuse (12/4) in the ACC/Big Ten Challenge.
- Knocked down a pair of three-pointers and dished out a career-high five assists in the season-opener against Towson (11/14).
- Tallied four points, four rebounds, three assists and three steals in the exhibition win over IUP (11/2).

## Notable:

- Led Goodrich High School in Michigan to its first-ever Class B State Championship in 2011-12 with a perfect 28-0 record.
- Holds the Goodrich High School record in the 300-meter hurdles and 200-meter dash and finished second in the state championships in the 300-meters hurdles her freshman and sophomore seasons.
- Father, Clarence, was a wide receiver for the Vanderbilt football team from 1989-92 and ranks in the school's Top 10 in career receiving yards.
- Aunt, Nicole Hendrix, played basketball at Stanford from 1991-94, winning a National Championship in 1992.

## 14-15 GAME-BY-GAME

OPPONENT	Min.	FG	3FG	FT	O-D-R	PF	A	TO	B	S	Pts
TOWSON	19	2-6	2-5	0-1	0-1-1	2	5	0	0	0	6
ALBANY	13	0-5	0-3	0-0	0-0-0	4	1	1	0	2	0
SETON HALL	14	0-5	0-2	1-2	0-0-0	2	1	2	0	1	1
ST. BONA	10	0-4	0-0	0-0	0-0-0	0	1	1	0	1	0
vs. Liberty	7	0-0	0-0	0-0	0-0-0	4	1	0	0	1	0
vs. Samford	9	0-1	0-0	0-0	0-0-0	2	1	2	0	0	0
at Syracuse	21	1-3	1-1	0-0	2-2-4	0	0	1	1	1	3
WAGNER	27	2-6	0-2	0-2	2-1-3	1	4	1	0	3	4
at Hartford											
RIDER											
USF											
at Iowa											
at Michigan											
ILLINOIS											
at Wisconsin											
RUTGERS											
at Nebraska											
at Ohio State											
INDIANA											
NORTHWESTERN											
at Minnesota											
at Rutgers											
MARYLAND											
at Purdue											
MICHIGAN ST.											
MINNESOTA											
at Maryland											
OHIO STATE											
WISCONSIN											

## SEVILLIAN'S CAREER/SEASON HIGHS

	SEASON HIGHS	CAREER HIGHS
Points	6 vs. Towson (11/14/14)	8 vs. St. Francis (Pa.) (11/8/13)
Rebs.	4 at Syracuse (12/4/14)	4 at Syracuse (12/4/14)
Assists	5 vs. Towson (11/14/14)	5 vs. Towson (11/14/14)
Steals	3 vs. Wagner (12/7/14)	4 vs. St. Francis (Pa.) (11/8/13)
Blocks	1 at Syracuse (12/4/14)	1 at Syracuse (12/4/14)
Minutes	27 vs. Wagner (12/7/14)	27 vs. Wagner (12/7/14)
FGM	2 vs. Wagner (12/7/14) 2 vs. Towson (11/14/14)	2 (4x) last vs. Wagner (12/7/14)
FGA	6 vs. Wagner (12/7/14) 6 vs. Towson (11/14/14)	6 (3x) last vs. Wagner (12/7/14)
3FGM	2 vs. Towson (11/14/14)	2 vs. Towson (11/14/14)
3FGA	5 vs. Towson (11/14/14)	5 vs. Towson (11/14/14)
FTM	1 vs. Seton Hall (11/22/14)	4 vs. St. Francis (Pa.) (11/8/13)
FTA	2 vs. Wagner (12/7/14) 2 vs. Seton Hall (11/22/14)	4 vs. St. Francis (Pa.) (11/8/13)

## SEVILLIAN'S MISCELLANEOUS STATS

Category	Season	Career	Last Time
Double Figure Scoring	n/a	n/a	
20-point games	n/a	n/a	
Double Figure Rebounds	n/a	n/a	
5-plus Rebounds	n/a	n/a	
5-plus Assists	1	1	5 vs. Towson (11/14)
3-plus Steals	1	2	3 vs. Wagner (12/7/14)
Double-Doubles	n/a	n/a	

## SEVILLIAN'S CAREER STATS

Year	GP-GS	MIN	FG-A	PCT	3FG-A	PCT	FT-A	PCT	REB	AVG	PF-O	A	TO	B	S	PTS	AVG
2013-14	22-0	120	8-28	.286	4-13	.308	11-13	.846	1-11-12	0.5	19-0	5	15	0	8	31	1.4
2014-15	8-1	120	5-30	.167	3-13	.231	1-5	.200	4-4-8	1.0	15-0	14	8	1	9	14	1.8
<b>TOTAL</b>	<b>30-1</b>	<b>240</b>	<b>13-58</b>	<b>.224</b>	<b>7-26</b>	<b>.269</b>	<b>12-18</b>	<b>.667</b>	<b>5-15-20</b>	<b>0.7</b>	<b>34-0</b>	<b>19</b>	<b>23</b>	<b>1</b>	<b>17</b>	<b>45</b>	<b>1.5</b>







# #11 Alex Harris

So. \* F \* 6-3 \* Lorain, Ohio/Lorain

### Notable:

- ♦ Appeared in 29 contests as a freshman.
- ♦ Had three double-digit rebounding performances as a freshman and 10 outings with five or more rebounds.
- ♦ Collegiate Girls Basketball Report and All-Star Girls Report both rated her as the 49th-ranked recruit .
- ♦ Named 2012-13 Division 1 Lorain County Player of the Year.

### 14-15 GAME-BY-GAME

OPPONENT	Min.	FG	3FG	FT	O-D-R	PF	A	TO	B	S	Pts
TOWSON	DNP										
ALBANY	DNP										
SETON HALL	DNP										
ST. BONA	DNP										
vs. Liberty	DNP										
vs. Samford	DNP										
at Syracuse	DNP										
WAGNER	DNP										
at Hartford											
RIDER											
USF											
at Iowa											
at Michigan											
ILLINOIS											
at Wisconsin											
RUTGERS											
at Nebraska											
at Ohio State											
INDIANA											
NORTHWESTERN											
at Minnesota											
at Rutgers											
MARYLAND											
at Purdue											
MICHIGAN ST.											
MINNESOTA											
at Maryland											
OHIO STATE											
WISCONSIN											

### HARRIS' CAREER/SEASON HIGHS

	SEASON HIGHS	CAREER HIGHS
Points	n/a	8 vs. Bucknell (11/20/13)
Rebs.	n/a	11 vs. Illinois State (11/30/13)
		11 vs. Bucknell (11/20/13)
Assists	n/a	2 vs. Illinois State (11/30/13)
Steals	n/a	1 (6x) last at Indiana (2/13/14)
Blocks	n/a	3 at Purdue (1/30/14)
		3 vs. St. Francis (Pa.) (11/8/13)
Minutes	n/a	22 vs. Fordham (11/10/13)
FGM	n/a	3 vs. Bucknell (11/20/13)
FGA	n/a	5 vs. Purdue (1/12/14)
		5 vs. Oregon State (11/29/13)
3FGM	n/a	n/a
3FGA	n/a	n/a
FTM	n/a	2 (5x) last vs. Notre Dame (12/4/13)
FTA	n/a	5 vs. Bucknell (11/20/13)

### HARRIS' MISCELLANEOUS STATS

Category	Season	Career	Last Time
Double Figure Scoring	n/a	n/a	
20-point games	n/a	n/a	
Double Figure Rebounds	n/a	3	11 vs. Illinois State (11/30/13)
5-plus Rebounds	n/a	10	5 vs. Minnesota (1/26/14)
5-plus Blocks	n/a	n/a	
3-plus Blocks	n/a	1	3 at Purdue (1/30/14)
Double-Doubles	n/a	n/a	

### HARRIS' CAREER STATS

Year	GP-GS	MIN	FG-A	PCT	3FG-A	PCT	FT-A	PCT	REB	AVG	PF-O	A	TO	B	S	PTS	AVG
2013-14	29-0	256	20-50	.400	0-0	.000	17-34	.500	39-57-96	3.3	33-0	5	19	15	6	57	2.0
<b>CAREER</b>	<b>29-0</b>	<b>256</b>	<b>20-50</b>	<b>.400</b>	<b>0-0</b>	<b>.000</b>	<b>17-34</b>	<b>.500</b>	<b>39-57-96</b>	<b>3.3</b>	<b>33-0</b>	<b>5</b>	<b>19</b>	<b>15</b>	<b>6</b>	<b>57</b>	<b>2.0</b>

10-Time Big Ten Champions • Two-Time Big Ten Tournament Champions • 2000 NCAA Final Four • 25 NCAA Tournament Appearances





# #12 Lindsey Spann

RS-Fr. \* G \* 5-6 \* Laurel, Md./Good Counsel

## Highlights:

- Selected as a team tri-captain.
- Has reached double-figure in scoring in each of her first seven career games, a feat not accomplished by Penn State's top two career scoring leaders, Kelly Mazzante and Maggie Lucas.
- Reached the 100 career point mark in just her eighth career game. Hit the century mark with a lay up early in the first half vs. Wagner (12/7).

## 2014-15 Season Notes:

- Tallied a career-best 22 points for her eighth straight double-figure scoring game, pushing her over the 200 career point mark. She set a career-best with eight made field goals, while tying her personal-high with five rebounds, two made three pointers and four made free throws.
- Netted 11 points at Syracuse (12/4) in the ACC/Big Ten Challenge, adding three assists and three rebounds.
- Reached double figures with 10 points vs. Samford (11/30), adding five assists and three steals in 41 minutes of action in the overtime loss.
- Scored a team-best and tied her career-high with 17 points and seven field goals vs. Liberty (11/28), to go along with three assists and two steals.
- Reached double figures with 13 points to go along with five assists and two steals against St. Bonaventure (11/25).
- Chipped in 12 points and three steals against Seton Hall (11/22).
- Led the Lady Lions in scoring for the second straight game with 14 points against Albany (11/16), marking the first time a freshman has been the team's leading scorer in two straight games since Maggie Lucas did so vs. Minnesota (1/13/11) and vs. Illinois (1/16/11).
- Went 7-for-14 from the field for a team-high 17 points in her collegiate debut against Towson (11/14).
- Also tallied five rebounds and four assists against the Tigers.
- Recorded 14 points and dished out four assists in the exhibition win over IUP (11/2).

## Notable:

- Missed the 2013-14 season after tearing her right ACL.
- Ranked as the 22nd-best player by Collegiate Girls Basketball Report and 88th-rated player by Blue Star Basketball.
- Guided Good Counsel to a 25-5 overall record and 16-3 mark in league play.
- Participated in USA Basketball's U16 Trials in May 2011.

## 14-15 GAME-BY-GAME

OPPONENT	Min.	FG	3FG	FT	O-D-R	PF	A	TO	B	S	Pts
TOWSON	32	7-14	0-2	3-4	0-5-5	2	4	4	0	0	17
ALBANY	31	6-12	1-3	1-2	0-1-1	3	4	3	0	0	14
SETON HALL	27	4-10	2-4	2-2	0-2-2	5	1	5	0	3	12
ST. BONA	34	4-14	2-6	3-4	1-1-2	3	5	1	0	2	13
vs. Liberty	37	7-21	0-7	3-3	0-0-0	3	3	7	0	2	17
vs. Samford	41	3-13	0-2	4-6	1-1-2	4	5	4	0	3	10
at Syracuse	29	4-11	1-4	2-4	0-3-3	1	3	6	0	0	11
WAGNER	30	8-15	2-5	4-4	2-3-5	3	4	2	0	2	22
at Hartford											
RIDER											
USF											
at Iowa											
at Michigan											
ILLINOIS											
at Wisconsin											
RUTGERS											
at Nebraska											
at Ohio State											
INDIANA											
NORTHWESTERN											
at Minnesota											
at Rutgers											
MARYLAND											
at Purdue											
MICHIGAN ST.											
MINNESOTA											
at Maryland											
OHIO STATE											
WISCONSIN											

## SPANN'S CAREER/SEASON HIGHS

	SEASON HIGHS	CAREER HIGHS
Points	22 vs. Wagner (12/7/14)	22 vs. Wagner (12/7/14)
Rebs.	5 vs. Wagner (12/7/14) 5 vs. Towson (11/14/14)	5 vs. Wagner (12/7/14) 5 vs. Towson (11/14/14)
Assists	5 vs. Samford (11/30/14) 5 vs. St. Bonaventure (11/25/14)	5 vs. Samford (11/30/14) 5 vs. St. Bonaventure (11/25/14)
Steals	3 vs. Samford (11/30/14) 3 vs. Seton Hall (11/22/14)	3 vs. Samford (11/30/14) 3 vs. Seton Hall (11/22/14)
Blocks	n/a	n/a
Minutes	41 vs. Samford (11/30/14)	41 vs. Samford (11/30/14)
FGM	8 vs. Wagner (12/7/14)	8 vs. Wagner (12/7/14)
FGA	21 vs. Liberty (11/28/14)	21 vs. Liberty (11/28/14)
3FGM	2 (3x) last vs. Wagner (12/7/14)	2 (3x) last vs. Wagner (12/7/14)
3FGA	7 vs. Liberty (11/28/14)	7 vs. Liberty (11/28/14)
FTM	4 vs. Wagner (12/7/14) 4 vs. Samford (11/30/14)	4 vs. Wagner (12/7/14) 4 vs. Samford (11/30/14)
FTA	6 vs. Samford (11/30/14)	6 vs. Samford (11/30/14)

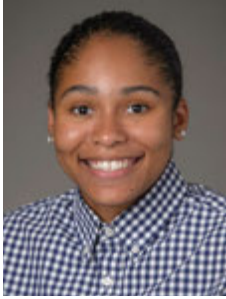
## SPANN'S MISCELLANEOUS STATS

Category	Season	Career	Last Time
Double Figure Scoring	8	8	22 vs. Wagner (12/7/14)
20-point games	1	1	22 vs. Wagner (12/7/14)
Double Figure Rebounds	n/a	n/a	
5-plus Rebounds	2	2	5 vs. Wagner (12/7/14)
5-plus Assists	3	3	4 vs. Wagner (12/7/14)
3-plus Steals	2	2	3 vs. Samford (11/30/14)
Double-Doubles	n/a	n/a	

## SPANN'S CAREER STATS

Year	GP-GS	MIN	FG-A	PCT	3FG-A	PCT	FT-A	PCT	REB	AVG	PF-O	A	TO	B	S	PTS	AVG
2014-15	8-8	261	43-110	.391	8-33	.242	22-29	.759	4-16-20	2.5	24-1	29	32	0	12	116	14.5
<b>TOTAL</b>	<b>8-8</b>	<b>261</b>	<b>43-110</b>	<b>.391</b>	<b>8-33</b>	<b>.242</b>	<b>22-29</b>	<b>.759</b>	<b>4-16-20</b>	<b>2.5</b>	<b>24-1</b>	<b>29</b>	<b>32</b>	<b>0</b>	<b>12</b>	<b>116</b>	<b>14.5</b>





# #14 Dominique Brooks

Jr. \* C \* 6-4 \* Lansing, Ill./T.F. South (Trinity Valley C.C.)

## 2014-15 Season Notes:

- ♦ Scored a career-best four points and recorded her first career blocked shot vs. Wagner (12/7).
- ♦ Pulled down her first rebound as a Lady Lion vs. Syracuse (12/4) in the ACC/Big Ten Challenge.
- ♦ Connected on her lone field goal attempt vs. Liberty (11/28).
- ♦ Hit a pair of free throws in her Penn State debut in the win over Towson (11/14)
- ♦ Had four rebounds and a blocked shot in the exhibition win against IUP (11/2).

## Notable:

- ♦ Won two NJCAA National Championships while at Trinity Valley Community College.
- ♦ Participated in USA Basketball U18 Trials in 2012

## 14-15 GAME-BY-GAME

OPPONENT	Min.	FG	3FG	FT	O-D-R	PF	A	TO	B	S	Pts
TOWSON	3	0-0	0-0	2-2	0-0-0	1	0	0	0	0	2
ALBANY	2	0-0	0-0	0-0	0-0-0	1	0	1	0	0	0
SETON HALL	3	0-0	0-0	0-0	0-0-0	2	0	0	0	0	0
ST. BONA	1	0-0	0-0	0-0	0-0-0	0	0	1	0	0	0
vs. Liberty	2	1-1	0-0	0-0	0-0-0	0	0	0	0	0	2
vs. Samford	DNP										
at Syracuse	3	0-0	0-0	0-0	0-1-1	1	0	1	0	0	0
WAGNER	9	1-3	0-0	2-2	0-0-0	1	0	0	1	0	4
at Hartford											
RIDER											
USF											
at Iowa											
at Michigan											
ILLINOIS											
at Wisconsin											
RUTGERS											
at Nebraska											
at Ohio State											
INDIANA											
NORTHWESTERN											
at Minnesota											
at Rutgers											
MARYLAND											
at Purdue											
MICHIGAN ST.											
MINNESOTA											
at Maryland											
OHIO STATE											
WISCONSIN											

## BROOKS' CAREER/SEASON HIGHS

	SEASON HIGHS	CAREER HIGHS
Points	4 vs. Wagner (12/7/14)	4 vs. Wagner (12/7/14)
Rebs.	1 at Syracuse (12/4/14)	1 at Syracuse (12/4/14)
Assists	n/a	n/a
Steals	n/a	n/a
Blocks	1 vs. Wagner (12/7/14)	1 vs. Wagner (12/7/14)
Minutes	9 vs. Wagner (12/7/14)	9 vs. Wagner (12/7/14)
FGM	1 vs. Wagner (12/7/14) 1 vs. Liberty (11/28/14)	1 vs. Wagner (12/7/14) 1 vs. Liberty (11/28/14)
FGA	3 vs. Wagner (12/7/14)	3 vs. Wagner (12/7/14)
3FGM	n/a	n/a
3FGA	n/a	n/a
FTM	2 vs. Wagner (12/7/14) 2 vs. Towson (11/14/14)	2 vs. Wagner (12/7/14) 2 vs. Towson (11/14/14)
FTA	2 vs. Wagner (12/7/14) 2 vs. Towson (11/14/14)	2 vs. Wagner (12/7/14) 2 vs. Towson (11/14/14)

## BROOKS' MISCELLANEOUS STATS

Category	Season	Career	Last Time
Double Figure Scoring	n/a	n/a	
20-point games	n/a	n/a	
Double Figure Rebounds	n/a	n/a	
5-plus Rebounds	n/a	n/a	
5-plus Assists	n/a	n/a	
3-plus Steals	n/a	n/a	
Double-Doubles	n/a	n/a	

## BROOKS' CAREER STATS

Year	GP-GS	MIN	FG-A	PCT	3FG-A	PCT	FT-A	PCT	REB	AVG	PF-O	A	TO	B	S	PTS	AVG
2014-15	7-0	23	2-4	.500	0-0	.000	4-4	1.000	0-1-1	0.1	6-0	0	3	1	0	8	1.1
<b>TOTAL</b>	<b>7-0</b>	<b>23</b>	<b>2-4</b>	<b>.500</b>	<b>0-0</b>	<b>.000</b>	<b>4-4</b>	<b>1.000</b>	<b>0-1-1</b>	<b>0.1</b>	<b>6-0</b>	<b>0</b>	<b>3</b>	<b>1</b>	<b>0</b>	<b>8</b>	<b>1.1</b>

10-Time Big Ten Champions • Two-Time Big Ten Tournament Champions • 2000 NCAA Final Four • 25 NCAA Tournament Appearances





# #15 Kaliyah Mitchell

So. \* F \* 6-2 \* Stone Mountain, Ga./Stephenson

## Highlights:

- ♦ Second-leading returning scorer and rebounder from 2013-14.
- ♦ Eclipsed the 200 career point mark with an early three point basket in the first half vs. Wagner (12/7)

## 2014-15 Season Notes:

- ♦ Eclipsed the 200 career point mark with an early first half three pointer vs. Wagner and tallied her first ever 20-point game. She logged 20 points with a career-high eight made field goals, her third career three pointer and three free throws. She also added seven rebounds for her seventh straight game with at least five boards.
- ♦ Hauled in five rebounds vs. Syracuse (12/4) in the ACC/Big Ten Challenge.
- ♦ Narrowly missed a double-double with eight points and nine rebounds vs. Samford (11/30), adding one assist, two steals and a career-high tying two blocks.
- ♦ Logged 10 points, five rebounds and a career-high five steals vs. Liberty (11/28).
- ♦ Pulled in nine rebounds against St. Bonaventure (11/25).
- ♦ Registered eight points and tied her career high with 10 rebounds against Seton Hall (11/22).
- ♦ Chipped in nine points, six rebounds and tied her career high with four steals against Albany (11/16).
- ♦ Accounted for 10 points and a team-best three steals against Towson (11/14).
- ♦ Posted a near double-double with 12 points, nine rebounds and three steals in the exhibition win versus IUP (11/2).

## Notable:

- ♦ Was the 54th-ranked recruit by Collegiate Girls Basketball Report and 40th-ranked recruit by All-Star Girls Report.
- ♦ Brother, Kenny, was an all-conference basketball player at Virginia State University.

## 14-15 GAME-BY-GAME

OPPONENT	Min.	FG	3FG	FT	O-D-R	PF	A	TO	B	S	Pts
TOWSON	25	3-8	0-2	4-6	2-3-4	4	0	3	0	3	10
ALBANY	30	2-7	1-2	4-5	1-5-6	4	0	5	0	4	9
SETON HALL	32	2-9	0-1	4-6	3-7-10	2	0	1	1	0	8
ST. BONA	29	1-7	0-1	0-1	1-8-9	3	1	3	0	4	2
vs. Liberty	27	4-12	0-3	2-3	1-4-5	4	0	3	0	5	10
vs. Samford	38	3-10	0-1	2-3	1-8-9	5	1	2	2	2	8
at Syracuse	27	0-6	0-4	2-4	1-4-5	3	1	1	1	0	2
WAGNER	28	8-11	1-2	3-4	3-4-7	1	0	1	0	0	20
at Hartford											
RIDER											
USF											
at Iowa											
at Michigan											
ILLINOIS											
at Wisconsin											
RUTGERS											
at Nebraska											
at Ohio State											
INDIANA											
NORTHWESTERN											
at Minnesota											
at Rutgers											
MARYLAND											
at Purdue											
MICHIGAN ST.											
MINNESOTA											
at Maryland											
OHIO STATE											
WISCONSIN											

## MITCHELL'S CAREER/SEASON HIGHS

	SEASON HIGHS	CAREER HIGHS
Points	20 vs. Wagner (12/7/14)	20 vs. Wagner (12/7/14)
Rebs.	10 vs. Seton Hall (11/22/14)	10 vs. Seton Hall (11/22/14) 10 at Michigan State (1/19/14)
Assists	1 (3x) last at Syracuse (12/4/14)	2 (6x) last vs. Florida (3/25/14)
Steals	5 vs. Liberty (11/28/14)	5 vs. Liberty (11/28/14)
Blocks	2 vs. Samford (11/30/14)	2 vs. Samford (11/30/14) 2 at Iowa (1/5/14)
Minutes	38 vs. Samford (11/30/14)	38 vs. Samford (11/30/14)
FGM	8 vs. Wagner (12/7/14)	8 vs. Wagner (12/7/14)
FGA	12 vs. Liberty (11/28/14)	12 vs. Liberty (11/28/14)
3FGM	1 vs. Wagner (12/7/14) 1 vs. Albany (11/16/14)	1 (3x) last vs. Wagner (12/7/14)
3FGA	4 at Syracuse (12/4/14)	4 at Syracuse (12/4/14)
FTM	4 (3x) last vs. Seton Hall (11/22/14)	7 vs. Northwestern (2/20/14)
FTA	6 vs. Towson (11/14/14)	7 (3x) last vs. Northwestern (2/20/14)

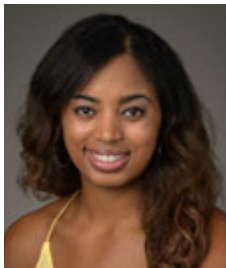
## MITCHELL'S MISCELLANEOUS STATS

Category	Season	Career	Last Time
Double Figure Scoring	3	5	20 vs. Wagner (12/7/14)
20-point games	1	1	20 vs. Wagner (12/7/14)
Double Figure Rebounds	1	2	10 vs. Seton Hall (11/22/14)
5-plus Rebounds	6	19	7 vs. Wagner (12/7/14)
5-plus Assists	n/a	n/a	
3-plus Steals	4	6	5 vs. Liberty (11/28/14)
Double-Doubles	n/a	n/a	

## MITCHELL'S CAREER STATS

Year	GP-GS	MIN	FG-A	PCT	3FG-A	PCT	FT-A	PCT	REB	AVG	PF-O	A	TO	B	S	PTS	AVG
2013-14	32-0	546	41-114	.360	1-14	.071	61-83	.735	40-100-140	4.4	64-2	28	26	5	20	144	4.5
2014-15	8-8	235	23-70	.329	2-16	.125	21-32	.656	12-42-54	6.8	26-1	3	19	4	18	69	8.6
<b>TOTAL</b>	<b>40-8</b>	<b>782</b>	<b>64-184</b>	<b>.348</b>	<b>3-30</b>	<b>.100</b>	<b>82-115</b>	<b>.713</b>	<b>52-142-194</b>	<b>4.9</b>	<b>90-3</b>	<b>31</b>	<b>45</b>	<b>9</b>	<b>38</b>	<b>213</b>	<b>5.3</b>





# #25 Peyton Whitted

So. \* F \* 6-3 \* Suwanee, Ga./North Gwinnett

## 2014-15 Season Notes:

- ♦ Scored seven points and had five rebounds vs. Liberty (11/28).
- ♦ Tallied six points, seven rebounds and two assists against Seton Hall (11/22).
- ♦ Grabbed nine rebounds with four points and two assists in the win over Towson (11/14).
- ♦ Pulled in 10 rebounds to go along with eight points and five assists in the exhibition win over IUP (11/2).

## Notable:

- ♦ Led North Gwinnett to the Georgia State Championship game after averaging 13.7 points, 5.7 rebounds, 1.4 steals and 2.0 assists per game as a senior.
- ♦ Participated in USA Basketball's U16 Trials in May 2011.
- ♦ Father, Kevin, played basketball at Tennessee from 1993-95.
- ♦ Kevin is currently the head coach of the NBA D-League's Westchester Knicks.
- ♦ Kevin broke Michael Jordan's Laney High School scoring record with 1,554 points.

## 14-15 GAME-BY-GAME

OPPONENT	Min.	FG	3FG	FT	O-D-R	PF	A	TO	B	S	Pts
TOWSON	23	2-5	0-0	0-0	3-6-9	3	2	3	0	1	4
ALBANY	19	1-5	0-1	0-1	1-3-4	4	1	3	0	1	2
SETON HALL	23	2-6	0-3	2-6	1-6-7	3	2	4	1	1	6
ST. BONA	9	2-3	0-1	0-0	1-0-1	2	0	0	0	1	4
vs. Liberty	18	3-6	1-1	0-0	3-2-5	5	0	2	0	0	7
vs. Samford	23	1-7	0-1	0-0	1-4-5	4	0	1	1	1	2
at Syracuse	12	1-3	0-0	1-2	0-1-1	1	0	3	0	0	3
WAGNER	16	2-4	0-0	0-0	1-1-2	2	0	1	0	1	4
at Hartford											
RIDER											
USF											
at Iowa											
at Michigan											
ILLINOIS											
at Wisconsin											
RUTGERS											
at Nebraska											
at Ohio State											
INDIANA											
NORTHWESTERN											
at Minnesota											
at Rutgers											
MARYLAND											
at Purdue											
MICHIGAN ST.											
MINNESOTA											
at Maryland											
OHIO STATE											
WISCONSIN											

## WHITTED'S CAREER/SEASON HIGHS

	SEASON HIGHS	CAREER HIGHS
Points	7 vs. Liberty (11/28/14)	11 at Northwestern (2/2/14)
Rebs.	9 vs. Towson (11/14/14)	10 at Illinois (1/9/14)
Assists	2 vs. Seton Hall (11/22/14) 2 vs. Towson (11/14/14)	2 (4x) last vs. Seton Hall (11/22/14)
Steals	1 (6x) last vs. Wagner (12/7/14)	2 (3x) last vs. Ohio State (3/7/14)
Blocks	1 vs. Samford (11/30/14) 1 vs. Seton Hall (11/22/14)	3 at South Dakota St. (12/11/13)
Minutes	23 (3x) 1st vs. Samford (11/30/14)	24 at Illinois (1/9/14)
FGM	3 vs. Liberty (11/28/14)	5 at Northwestern (2/2/14)
FGA	7 vs. Samford (11/30/14)	7 vs. Samford (11/30/14) 7 vs. Alcorn State (12/22/13)
3FGM	1 vs. Samford (11/30/14)	1 vs. Samford (11/30/14) 1 vs. Ohio State (3/7/14)
3FGA	3 vs. Seton Hall (11/22/14)	3 vs. Seton Hall (11/22/14) 3 vs. Bucknell (11/20/13)
FTM	2 vs. Seton Hall (11/22/14)	5 at Illinois (1/9/14)
FTA	6 vs. Seton Hall (11/22/14)	6 vs. Seton Hall (11/22/14)

## WHITTED'S MISCELLANEOUS STATS

Category	Season	Career	Last Time
Double Figure Scoring	n/a	1	11 at Northwestern (2/2/14)
20-point games	n/a	n/a	
Double Figure Rebounds	n/a	1	10 at Illinois (1/9/14)
5-plus Rebounds	4	9	5 vs. Samford (11/30/14)
5-plus Assists	n/a	n/a	
3-plus Steals	n/a	n/a	
Double-Doubles	n/a	n/a	

## WHITTED'S CAREER STATS

Year	GP-GS	MIN	FG-A	PCT	3FG-A	PCT	FT-A	PCT	REB	AVG	PF-O	A	TO	B	S	PTS	AVG
2013-14	31-0	344	37-80	.463	1-17	.059	16-23	.696	35-53-88	2.8	58-0	8	26	5	12	91	2.9
2014-15	8-4	143	14-39	.359	1-7	.143	3-9	.333	11-23-34	4.3	24-1	5	17	2	6	32	4.0
<b>TOTAL</b>	<b>39-4</b>	<b>487</b>	<b>51-119</b>	<b>.429</b>	<b>2-24</b>	<b>.083</b>	<b>19-32</b>	<b>.594</b>	<b>46-76-122</b>	<b>3.1</b>	<b>82-1</b>	<b>13</b>	<b>43</b>	<b>7</b>	<b>18</b>	<b>123</b>	<b>3.2</b>

10-Time Big Ten Champions • Two-Time Big Ten Tournament Champions • 2000 NCAA Final Four • 25 NCAA Tournament Appearances





# #34 Molly Dincher

Sr. \* G/F \* 6-0 \* Williamsport, Pa./Williamsport Area (Penn State Wilkes-Barre)

## Highlights:

- ♦ Added to the Lady Lion roster as a walk-on on November 14.
- ♦ Served as a Lady Lion manager for a year and a half.

## 2014-15 Season Notes:

- ♦ Made her first appearance for the Lady Lions vs. Wagner (12/7).

## Notable:

- ♦ Dincher played at Penn State Wilkes-Barre for two seasons where she helped the Mountain Lions to the 2011-12 PSUAC North Division Championship.
- ♦ She averaged 7.3 points and 8.6 rebounds that season for Wilkes-Barre, her final season for the Mountain Lions.
- ♦ She also rejected 33 shots and had 27 assists in 21 appearances that included 16 starts.
- ♦ As a freshman at Wilke-Barre, Dincher finished seventh in the United States Collegiate Athletic Associations USCAA in blocked shots, averaging 1.5 per game.
- ♦ Since coming to University Park, Dincher played for the Penn State women's club basketball team that took second in the National Championships in 2012-13.
- ♦ She also served as a manager for the Lady Lions for the last year and a half.
- ♦ A three-year letterwinner, Dincher played her high school basketball at Williamsport Area High School. In her final season, the Millionaires were 12-8.

## 14-15 GAME-BY-GAME

OPPONENT	Min.	FG	3FG	FT	O-D-R	PF	A	TO	B	S	Pts
TOWSON	DNP										
ALBANY	DNP										
SETON HALL	DNP										
ST. BONA	DNP										
vs. Liberty	DNP										
vs. Samford	DNP										
at Syracuse	DNP										
WAGNER	2	0-0	0-0	0-0	0-0-0	0	0	0	0	0	0
at Hartford											
RIDER											
USF											
at Iowa											
at Michigan											
ILLINOIS											
at Wisconsin											
RUTGERS											
at Nebraska											
at Ohio State											
INDIANA											
NORTHWESTERN											
at Minnesota											
at Rutgers											
MARYLAND											
at Purdue											
MICHIGAN ST.											
MINNESOTA											
at Maryland											
OHIO STATE											
WISCONSIN											

## DINCHER'S CAREER/SEASON HIGHS

	SEASON HIGHS	CAREER HIGHS
Points	n/a	n/a
Rebs.	n/a	n/a
Assists	n/a	n/a
Steals	n/a	n/a
Blocks	n/a	n/a
Minutes	2 vs. Wagner (12/7/14)	2 vs. Wagner (12/7/14)
FGM	n/a	n/a
FGA	n/a	n/a
3FGM	n/a	n/a
3FGA	n/a	n/a
FTM	n/a	n/a
FTA	n/a	n/a

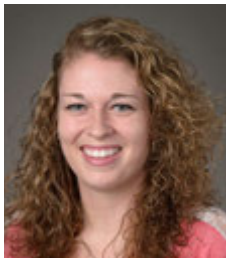
## DINCHER'S MISCELLANEOUS STATS

Category	Season	Career	Last Time
Double Figure Scoring	n/a	n/a	
20-point games	n/a	n/a	
Double Figure Rebounds	n/a	n/a	
5-plus Rebounds	n/a	n/a	
5-plus Assists	n/a	n/a	
3-plus Steals	n/a	n/a	
Double-Doubles	n/a	n/a	

## DINCHER'S CAREER STATS

Year	GP-GS	MIN	FG-A	PCT	3FG-A	PCT	FT-A	PCT	REB	AVG	PF-O	A	TO	B	S	PTS	AVG
2014-15	1-0	2	0-0	.000	0-0	.000	0-0	.000	0-0-0	0.0	1-0	0	0	0	0	0	0.0
<b>TOTAL</b>	<b>1-0</b>	<b>2</b>	<b>0-0</b>	<b>.000</b>	<b>0-0</b>	<b>.000</b>	<b>0-0</b>	<b>.000</b>	<b>0-0-0</b>	<b>0.0</b>	<b>1-0</b>	<b>0</b>	<b>0</b>	<b>0</b>	<b>0</b>	<b>0</b>	<b>0.0</b>





# #41 Jenny DeGraaf

So. \* F \* 6-1 \* Springboro, Ohio/Springboro

## Highlights:

- ♦ Posted her first career double-double with 11 points and 11 rebounds vs. Samford (11/30).

## 2014-15 Season Notes:

- ♦ Equaled her career-high with 12 points on 4-of-8 shooting, along with a career-best 4-of-4 effort from the free throw line vs. Wagner (12/7).
- ♦ Handed out a career-best three assists and made her first career free throw at Syracuse (12/4) in the ACC/Big Ten Challenge.
- ♦ Set career-highs with 33 minutes, five field goals made, nine field goals attempted and 10 rebounds vs. Samford (11/30), adding 11 points for her first career double-double.
- ♦ Registered eight points on a 4-of-7 effort with four rebounds in a career-high 27 minutes against St. Bonaventure (11/25).
- ♦ Posted six points on 3-for-5 shooting and five rebounds against Seton Hall (11/22).
- ♦ Connected on all four of her three-point attempts en route to a career-high 12 points in a personal-best 22 minutes against Albany (11/16).
- ♦ Hit 4-of-5 shots from the field, including two attempts from long range, en route to 11 points in the exhibition against IUP (11/2).

## Notable:

- ♦ Set the Springboro High School single-season record for free throws made with 121, including 25 consecutive makes from the charity stripe in 2013.

## 14-15 GAME-BY-GAME

OPPONENT	Min.	FG	3FG	FT	O-D-R	PF	A	TO	B	S	Pts
TOWSON	15	0-2	0-2	0-0	0-3-3	1	0	0	0	1	0
ALBANY	22	4-4	4-4	0-0	0-0-0	1	0	1	0	0	12
SETON HALL	24	3-5	0-0	0-0	2-3-5	1	1	1	1	1	6
ST. BONA	27	4-7	0-2	0-0	0-4-4	1	0	0	0	0	8
vs. Liberty	20	1-3	0-2	0-0	1-2-3	0	1	0	0	1	2
vs. Samford	33	5-9	1-2	0-0	1-9-10	1	1	0	0	0	11
at Syracuse	25	1-5	1-5	1-2	1-3-4	0	3	1	0	0	4
WAGNER	19	4-8	0-2	4-4	1-2-3	2	1	0	1	0	12
at Hartford											
RIDER											
USF											
at Iowa											
at Michigan											
ILLINOIS											
at Wisconsin											
RUTGERS											
at Nebraska											
at Ohio State											
INDIANA											
NORTHWESTERN											
at Minnesota											
at Rutgers											
MARYLAND											
at Purdue											
MICHIGAN ST.											
MINNESOTA											
at Maryland											
OHIO STATE											
WISCONSIN											

## DeGRAAF'S CAREER/SEASON HIGHS

	SEASON HIGHS	CAREER HIGHS
Points	12 vs. Wagner (12/7/14) 12 vs. Albany (11/16/14)	12 vs. Wagner (12/7/14) 12 vs. Albany (11/16/14)
Rebs.	10 vs. Samford (11/30/14)	10 vs. Samford (11/30/14)
Assists	3 at Syracuse (12/4/14)	3 at Syracuse (12/4/14)
Steals	1 vs. Samford (11/30/14) 1 vs. Seton Hall (11/22/14)	1 (3x) Last vs. Samford (11/30/14)
Blocks	1 vs. Wagner (12/7/14) 1 vs. Seton Hall (11/22/14)	1 vs. Wagner (12/7/14) 1 vs. Seton Hall (11/22/14)
Minutes	33 vs. Samford (11/30/14)	33 vs. Samford (11/30/14)
FGM	5 vs. Samford (11/30/14)	5 vs. Samford (11/30/14)
FGA	9 vs. Samford (11/30/14)	9 vs. Samford (11/30/14)
3FGM	4 vs. Albany (11/16/14)	4 vs. Albany (11/16/14)
3FGA	5 at Syracuse (12/4/14)	5 at Syracuse (12/4/14)
FTM	4 vs. Wagner (12/7/14)	4 vs. Wagner (12/7/14)
FTA	4 vs. Wagner (12/7/14)	4 vs. Wagner (12/7/14)

## DeGRAAF'S MISCELLANEOUS STATS

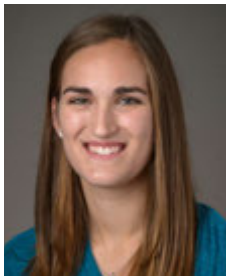
Category	Season	Career	Last Time
Double Figure Scoring	3	3	vs. Wagner (12/7/14)
20-point games	n/a	n/a	
Double Figure Rebounds	1	1	10 vs. Samford (11/30/14)
5-plus Rebounds	2	2	10 vs. Samford (11/30/14)
5-plus Assists	n/a	n/a	
3-plus Steals	n/a	n/a	
Double-Doubles	1	1	11p, 10r vs. Samford (11/30/14)

## DeGRAAF'S CAREER STATS

Year	GP-GS	MIN	FG-A	PCT	3FG-A	PCT	FT-A	PCT	REB	AVG	PF-O	A	TO	B	S	PTS	AVG
2013-14	17-0	76	7-20	.350	2-7	.286	0-0	.000	3-6-9	0.5	5-0	4	5	0	1	16	0.9
2014-15	8-0	185	22-43	.512	6-19	.316	5-6	.833	6-26-32	4.0	7-0	7	3	2	3	55	6.9
<b>TOTAL</b>	<b>25-0</b>	<b>261</b>	<b>29-63</b>	<b>.460</b>	<b>8-26</b>	<b>.308</b>	<b>5-6</b>	<b>.833</b>	<b>9-32-41</b>	<b>1.6</b>	<b>12-0</b>	<b>11</b>	<b>8</b>	<b>2</b>	<b>4</b>	<b>71</b>	<b>2.8</b>

10-Time Big Ten Champions • Two-Time Big Ten Tournament Champions • 2000 NCAA Final Four • 25 NCAA Tournament Appearances





# #44 Tori Waldner

Sr. \* F/C \* 6-5 \* Milton, Ga./Milton

## Highlights:

- ♦ Ranks ninth on Penn State's career blocks list (101).
- ♦ Nominee for Allstate WBCA Good Works Team.
- ♦ Selected as a team tri-captain.

## 2014-15 Season Notes:

- ♦ Blocked one shot and hauled in five rebounds vs. Wagner (12/7).
- ♦ Hauled in six rebounds at Syracuse (12/4) in the ACC/Big Ten Challenge.
- ♦ Grabbed a career-high 12 rebounds and scored eight points vs. Samford (11/30).
- ♦ Had 10 points, including her second career three pointer, eight rebounds and three assists vs. Liberty (11/28).
- ♦ Logged four points, six rebounds and three blocks against St. Bonaventure (11/25).
- ♦ Tallied seven rebounds, three blocks and a pair of steals versus Seton Hall (11/22).
- ♦ Recorded four blocked shots and nine rebounds against Albany (11/16).
- ♦ Notched her first career double-double with 11 points on 5-of-7 shooting and 11 rebounds, which tied her then-career high, in the season-opening win over Towson (11/14).
- ♦ Had four points and five rebounds in the exhibition against IUP (11/2).

## Notable:

- ♦ President of the Penn State Student-Athlete Advisory Board (SAAB).
- ♦ Was a member of the 2014 Penn State Homecoming Court.
- ♦ Participates in LifeLink, which is program in which State College Area School District special-needs students between the ages of 18 and 21 are given an opportunity to interact with students of their own age in an environment that is socially and academically conducive to continued growth with the hope of future independent living.
- ♦ Is one of just nine players with 100-plus career blocks and one of just 15 Lady Lions in program history to record 80 or more blocks in a career.
- ♦ Had a streak of 12-straight games with at least one block (11/10/13-1/5/14).
- ♦ Mother, Diane, played basketball and lacrosse at Russell Sage College in Troy, New York.

## 14-15 GAME-BY-GAME

OPPONENT	Min.	FG	3FG	FT	O-D-R	PF	A	TO	B	S	Pts
TOWSON	26	5-7	0-0	1-2	2-9-11	2	0	0	0	1	11
ALBANY	19	1-4	0-0	4-4	2-7-9	4	2	4	4	1	6
SETON HALL	23	1-4	0-1	0-0	3-4-7	4	2	1	3	2	2
ST. BONA	29	2-4	0-0	0-0	1-5-6	3	1	2	3	0	4
vs. Liberty	34	3-8	1-2	3-4	3-5-8	2	3	1	1	1	10
vs. Samford	39	3-7	0-1	2-2	1-11-12	4	0	3	0	1	8
at Syracuse	18	2-7	0-0	0-0	3-3-6	3	0	1	0	0	4
WAGNER	15	0-1	0-0	0-2	0-5-5	3	2	2	1	1	0
at Hartford											
RIDER											
USF											
at Iowa											
at Michigan											
ILLINOIS											
at Wisconsin											
RUTGERS											
at Nebraska											
at Ohio State											
INDIANA											
NORTHWESTERN											
at Minnesota											
at Rutgers											
MARYLAND											
at Purdue											
MICHIGAN ST.											
MINNESOTA											
at Maryland											
OHIO STATE											
WISCONSIN											

## WALDNER'S CAREER/SEASON HIGHS

	SEASON HIGHS	CAREER HIGHS
Points	11 vs. Towson (11/14/14)	14 vs. Northwestern (2/20/14)
Rebs.	12 vs. Samford (11/30/14)	12 vs. Samford (11/30/14)
Assists	3 vs. Liberty (11/28/14)	5 vs. Illinois State (11/30/13)
Steals	2 vs. Seton Hall (11/22/14)	3 vs. Michigan State (2/10/13)
Blocks	4 vs. Albany (11/16/14)	5 vs. Northwestern (2/20/14) 5 vs. Minnesota (1/24/13)
Minutes	39 vs. Samford (11/30/14)	39 vs. Samford (11/30/14)
FGM	5 vs. Towson (11/14/14)	6 vs. Northwestern (2/20/14)
FGA	8 vs. Liberty (11/28/14)	13 vs. Wisconsin (2/16/14)
3FGM	1 vs. Liberty (11/28/14)	1 vs. Liberty (11/28/14) 1 vs. Connecticut (11/17/13)
3FGA	2 vs. Liberty (11/28/14)	2 vs. Liberty (11/28/14) 2 vs. Connecticut (11/17/13)
FTM	4 vs. Albany (11/16/14)	6 vs. Howard (11/11/12)
FTA	4 vs. Liberty (11/28/14) 4 vs. Albany (11/16/14)	6 vs. Howard (11/11/12)

## WALDNER'S MISCELLANEOUS STATS

Category	Season	Career	Last Time
Double Figure Scoring	2	8	10 vs. Liberty (11/28/14)
20-point games	n/a	n/a	
Double Figure Rebounds	2	6	12 vs. Samford (11/30/14)
5-plus Rebounds	7	36	5 vs. Wagner (12/7/14)
5-plus Assists	n/a	1	5 vs. Illinois State (11/30/13)
3-plus Steals	n/a	1	3 vs. Michigan State (2/10/13)
5-plus Blocks	n/a	2	5 vs. Northwestern (2/20/14)
Double-Doubles	1	1	11 p, 11 r vs. Towson (11/14/14)

## WALDNER'S CAREER STATS

Year	GP-GS	MIN	FG-A	PCT	3FG-A	PCT	FT-A	PCT	REB	AVG	PF-O	A	TO	B	S	PTS	AVG
2011-12	31-0	272	25-56	.446	0-1	.000	13-23	.565	13-54-67	2.2	50-0	15	24	18	16	63	2.0
2012-13	30-0	275	19-59	.322	0-1	.000	10-13	.769	31-54-85	2.8	47-0	8	22	32	11	48	1.6
2013-14	32-32	677	67-159	.421	1-3	.333	20-33	.606	48-131-179	5.6	83-1	32	39	39	16	155	4.8
2014-15	8-6	218	17-42	.405	1-4	.250	10-14	.714	15-49-64	8.0	25-0	10	14	12	7	45	5.6
<b>TOTAL</b>	<b>101-38</b>	<b>1442</b>	<b>128-316</b>	<b>.405</b>	<b>2-9</b>	<b>.222</b>	<b>53-83</b>	<b>.639</b>	<b>107-288-395</b>	<b>3.9</b>	<b>205-1</b>	<b>65</b>	<b>99</b>	<b>101</b>	<b>50</b>	<b>311</b>	<b>3.1</b>





## Penn State 75, Indiana (Pa.) 71

### Exhibition Game \* Nov. 2, 2014 \* University Park, Pa.

IUP 71 • 0-0

#	Player	Total		3-Ptr		Rebounds		PF	TP	A	TO	Blk	Stl	Min
		FG-FGA	FG-FGA	FT-FTA	Off	Def	Off							
00	STONER, Ashley	* 4-9	0-0	0-0	3	2	5	4	8	0	3	0	0	26
03	STAMP, Lindsay	* 0-6	0-3	3-6	1	3	4	2	3	2	1	0	0	22
05	MATHE, Marita	* 4-13	4-9	0-1	0	3	4	2	12	5	3	0	0	35
12	STAPLETON, Leslie	* 2-10	1-7	0-0	0	0	0	0	2	0	0	0	0	29
24	FAIRMAN, Amy	* 8-13	6-8	4-6	1	3	4	4	26	6	1	0	2	30
10	WAREHAM, Marina	1-1	1-1	0-0	0	0	0	0	3	1	2	0	0	5
11	GRAHAM, Amy	0-0	0-0	0-0	1	0	1	0	0	0	0	1	0	2
13	BURNS, Monica	0-0	0-0	0-0	0	0	0	0	0	0	0	0	0	2
14	AIKEN, Alexis	0-0	0-0	0-0	0	0	0	0	0	0	0	0	0	3
15	BROOKS, Zhane	2-5	0-0	4-6	2	3	5	4	8	2	0	1	2	25
20	LIVINGSTON, Mackenzie	0-0	0-0	0-0	0	0	0	0	0	0	0	0	0	1
23	DENMAN, Halle	0-1	0-0	0-0	1	0	1	0	0	0	0	0	0	2
42	SMITH, Megan	2-6	2-4	0-0	1	0	1	0	6	1	1	0	0	18
	Team				2	1	3							
	Totals	23-64	14-32	11-19	12	15	27	16	71	20	12	2	5	200

FG % 1st Half: 10-36 27.8% 2nd half: 13-28 46.4% Game: 23-64 35.9%  
 3FG % 1st Half: 7-18 38.9% 2nd half: 7-14 50.0% Game: 14-32 43.8%  
 FT % 1st Half: 6-12 50.0% 2nd half: 5-7 71.4% Game: 11-19 57.9%

Penn State 75 • 0-0

#	Player	Total		3-Ptr		Rebounds		PF	TP	A	TO	Blk	Stl	Min
		FG-FGA	FG-FGA	FT-FTA	Off	Def	Off							
05	Moore, Sierra	* 8-13	0-0	2-3	4	3	7	4	18	0	4	0	0	27
12	Spann, Lindsey	* 5-12	0-3	4-4	1	2	3	2	14	4	2	0	0	37
15	Mitchell, Kaliyah	* 5-10	0-2	2-2	3	6	9	4	12	2	3	0	3	36
25	Whitted, Peyton	* 4-7	0-0	0-0	4	6	10	3	8	5	2	1	0	24
44	Waldner, Tori	* 2-10	0-0	0-0	3	2	5	3	4	1	4	2	0	21
10	Sevillian, Keke	2-4	0-1	0-0	1	3	4	3	4	3	1	0	3	19
14	Brooks, Dominique	2-4	0-0	0-0	0	1	1	1	4	0	2	1	0	12
41	DeGraaf, Jenny	4-5	2-3	1-2	0	4	4	4	11	0	2	0	0	24
	Team				2	3	5							
	Totals	32-65	2-9	9-11	18	30	48	24	75	15	20	4	6	200

FG % 1st Half: 17-32 53.1% 2nd half: 15-33 45.5% Game: 32-65 49.2%  
 3FG % 1st Half: 1-3 33.3% 2nd half: 1-6 16.7% Game: 2-9 22.2%  
 FT % 1st Half: 2-4 50.0% 2nd half: 7-7 100.0% Game: 9-11 81.8%

Officials: Frank Steratore, Kevin Pethell, Shannon Feck  
 Technical fouls: IUP-None. Penn State-None.  
 Attendance: 3327

Score by periods	1st	2nd	Total
IUP	33	38	71
Penn State	37	38	75

#### Notable

- With the Crimson Hawks leading, sophomore **Sierra Moore** led the Penn State rally with 15 of her team-best 18 points over the final 11:44 of the contest.
- Sophomore **Jenny DeGraaf** had a solid outing, connecting on 4-of-5 shots from the field, including 2-of-3 from three point range, for 11 points.

## Albany 54, Penn State 53

### Game #2 \* Nov. 16, 2014 \* University Park, Pa.

Albany 54 • 2-0

#	Player	Total		3-Ptr		Rebounds		PF	TP	A	TO	Blk	Stl	Min
		FG-FGA	FG-FGA	FT-FTA	Off	Def	Off							
03	ROSARIO, Margarita	* 2-9	2-8	0-0	0	3	3	2	6	2	0	0	1	26
04	ROYALS, Sarah	* 0-8	0-3	7-12	1	0	1	2	7	5	4	0	1	40
23	SAUNDERS, Zakia	* 1-4	0-0	0-0	0	0	0	3	2	2	2	0	1	13
25	RICHARDS, Shereesha	* 10-16	0-1	7-10	6	8	14	4	27	3	7	1	3	40
34	EDWARDS, Cassandra	* 1-1	0-0	0-0	1	0	1	1	0	0	1	0	0	6
01	COUGHLIN, Erin	0-1	0-1	0-0	0	0	0	0	0	0	1	0	0	9
12	TATE, Imani	2-10	0-0	2-2	6	9	15	3	6	1	6	0	3	32
33	CARTER, Tiana-Jo	3-8	0-0	0-0	3	8	11	3	6	0	3	2	0	34
	Team				3	1	4							
	Totals	18-57	2-15	16-24	20	29	49	18	54	13	24	3	9	200

FG % 1st Half: 8-28 28.6% 2nd half: 10-29 34.5% Game: 18-57 31.6%  
 3FG % 1st Half: 1-5 20.0% 2nd half: 1-10 10.0% Game: 2-15 13.3%  
 FT % 1st Half: 11-17 64.7% 2nd half: 5-7 71.4% Game: 16-24 66.7%

Penn State 53 • 1-1

#	Player	Total		3-Ptr		Rebounds		PF	TP	A	TO	Blk	Stl	Min
		FG-FGA	FG-FGA	FT-FTA	Off	Def	Off							
05	Moore, Sierra	* 4-8	0-0	1-1	2	1	3	4	8	3	4	1	1	30
12	Spann, Lindsey	* 6-12	1-3	1-2	0	1	1	3	14	4	3	0	0	31
15	Mitchell, Kaliyah	* 2-7	1-2	4-5	1	5	6	4	9	0	5	0	4	30
25	Whitted, Peyton	* 1-4	0-1	0-1	1	3	4	4	2	1	3	0	1	19
44	Waldner, Tori	* 1-4	0-0	4-4	2	7	9	4	6	2	4	4	1	34
01	Agee, Candice	1-6	0-0	0-0	1	4	5	4	2	2	1	3	2	19
10	Sevillian, Keke	0-5	0-3	0-0	0	0	0	4	0	1	1	0	2	13
14	Brooks, Dominique	0-0	0-0	0-0	0	0	0	1	0	0	1	0	0	2
41	DeGraaf, Jenny	4-4	4-4	0-0	0	0	0	1	12	0	1	0	0	22
	Team				0	3	3							
	Totals	19-51	6-13	9-13	7	24	31	29	53	13	23	8	11	200

FG % 1st Half: 9-25 36.0% 2nd half: 10-26 38.5% Game: 19-51 37.3%  
 3FG % 1st Half: 4-8 50.0% 2nd half: 2-5 40.0% Game: 6-13 46.2%  
 FT % 1st Half: 6-8 75.0% 2nd half: 3-5 60.0% Game: 9-13 69.2%

Officials: An-Jamilah Gregory, Ron Leads, Althea Buford  
 Technical fouls: Albany-TATE, Imani. Penn State-Agee, Candice.  
 Attendance: 8607  
 WNIT Second Round

Score by periods	1st	2nd	Total
Albany	28	26	54
Penn State	28	25	53

Last FG - ALBANY 2nd-01:49, PSU 2nd-01:28.  
 Largest lead - ALBANY by 4 2nd-11:47, PSU by 7 1st-17:12.  
 ALBANY led for 14:05. PSU led for 18:50. Game was tied for 06:55.

#### Notable

- Senior **Tori Waldner** passed Bethany Collins (1985-88) for 10th on the Penn State career blocks list with four blocks vs. Albany to bring her career total to 93.
- Freshman **Lindsey Spann** led the Lady Lions in scoring for the second straight game, marking the first time a freshman has been the team's leading scorer in two straight games since Maggie Lucas did so vs. Minnesota (1/13/11) and vs. Illinois (1/16/11).

## Penn State 71, Towson 64

### Game #1 \* Nov. 14, 2014 \* University Park, Pa.

Towson 64 • 0-1

#	Player	Total		3-Ptr		Rebounds		PF	TP	A	TO	Blk	Stl	Min
		FG-FGA	FG-FGA	FT-FTA	Off	Def	Off							
00	Hines-Allen, LaTorri	* 5-10	0-0	2-5	1	5	6	2	12	1	0	1	1	25
01	Johnson, Dominique	* 12-30	6-16	2-2	0	1	1	3	32	1	2	0	3	36
02	Hughey, Breonn	* 2-15	2-7	2-2	2	4	6	2	8	7	3	0	1	40
13	Alberston, Camille	* 1-5	1-4	0-0	0	4	4	3	3	2	2	0	1	33
20	Smith, Markell	* 1-3	0-0	0-0	2	3	5	2	0	1	0	0	0	24
03	Webb, Ciara	* 1-3	0-2	0-0	0	1	0	0	2	1	1	2	0	16
05	Smith, Jordyn	0-0	0-0	3-4	5	4	9	1	3	0	1	0	0	8
14	Bush, Brianna	0-0	0-0	0-0	1	0	1	0	0	0	1	0	0	3
32	Butler, Shanea	0-1	0-1	0-0	0	0	0	0	0	0	1	0	0	3
33	Thomas, Daijha	0-2	0-0	2-4	1	3	4	2	2	0	0	1	0	12
	Team				0	1	1							
	Totals	22-69	9-30	11-17	12	26	38	18	64	12	13	4	6	200

FG % 1st Half: 9-37 24.3% 2nd half: 13-32 40.6% Game: 22-69 31.9%  
 3FG % 1st Half: 4-15 26.7% 2nd half: 5-15 33.3% Game: 9-30 30.0%  
 FT % 1st Half: 7-10 70.0% 2nd half: 4-7 57.1% Game: 11-17 64.7%

Penn State 71 • 1-0

#	Player	Total		3-Ptr		Rebounds		PF	TP	A	TO	Blk	Stl	Min
		FG-FGA	FG-FGA	FT-FTA	Off	Def	Off							
05	Moore, Sierra	* 5-12	1-1	1-3	1	4	5	0	12	4	4	2	1	39
12	Spann, Lindsey	* 7-14	0-2	3-4	0	5	5	2	17	4	4	0	0	32
15	Mitchell, Kaliyah	* 3-8	0-2	4-6	1	2	3	4	10	0	3	0	3	25
25	Whitted, Peyton	* 2-5	0-0	0-0	3	6	9	3	4	2	3	0	1	23
44	Waldner, Tori	* 5-7	0-0	1-2	2	9	11	2	11	0	0	0	1	26
01	Agee, Candice	3-6	0-0	3-6	4	5	9	1	9	0	0	0	0	18
10	Sevillian, Keke	2-6	2-5	0-1	0	1	1	2	6	5	0	0	0	19
14	Brooks, Dominique	0-0	0-0	2-2	0	0	0	1	2	0	0	0	0	3
41	DeGraaf, Jenny	0-2	0-2	0-0	0	3	3	1	0	0	0	0	1	15
	Team				1	2	3							
	Totals	27-60	3-12	14-24</										

## St. Bonaventure 56, Penn State 54

### Game #4 \* Nov. 25, 2014 \* University Park, Pa.

#### St. Bonaventure 56 • 3-2

#	Player	Total			3-Ptr			Rebounds			PF	TP	A	TO	Bk	St	Min
		FG	FGA	FT	FTA	Off	Def	Tot	FG	FGA							
11	LITTLE, Hannah	2	6	0	0	5	3	2	5	1	9	2	4	1	1	35	
14	RICHMOND, Gabby	3	8	0	0	2	4	2	6	5	8	0	3	0	0	19	
21	RUETER, Nyia	4	11	3	7	2	1	3	4	1	13	3	1	0	3	36	
33	MICHAEL, Emily	4	5	3	4	0	0	5	5	1	11	1	2	0	0	33	
42	HEALY, Katie	4	10	0	0	4	6	1	10	11	4	12	3	3	1	27	
02	RUFF, Mariah	0	2	0	2	0	1	0	1	2	0	0	4	0	1	12	
12	ZAHN, Ashley	0	3	0	2	0	0	3	3	1	0	0	0	0	0	11	
22	OUTLAW, Imani	0	2	0	0	0	1	1	0	0	0	1	0	0	0	8	
23	BRITVAR, Matea	1	4	0	1	2	0	2	2	1	3	0	0	2	0	18	
	Team																
	Totals	18	51	6	16	14	22	11	30	41	16	56	9	19	4	200	

FG % 1st Half: 6-27 22.2% 2nd half: 12-24 50.0% Game: 18-51 35.3% Deadball Rebounds 4.1  
 3FG % 1st Half: 4-9 44.4% 2nd half: 2-7 28.6% Game: 6-16 37.5%  
 FT % 1st Half: 7-13 53.8% 2nd half: 7-9 77.8% Game: 14-22 63.6%

#### Penn State 54 • 1-3

#	Player	Total			3-Ptr			Rebounds			PF	TP	A	TO	Bk	St	Min
		FG	FGA	FT	FTA	Off	Def	Tot	FG	FGA							
01	Agee, Candice	4	8	0	0	1	3	4	3	8	2	3	2	1	24		
05	Moore, Sierra	6	12	0	0	3	6	1	4	5	3	15	3	3	0	37	
12	Spann, Lindsey	4	14	2	6	1	1	2	3	13	5	1	0	2	34		
15	Mitchell, Kaliyah	1	7	0	1	1	8	9	3	2	1	3	0	4	29		
25	Whitted, Peyton	2	3	0	1	0	1	0	1	2	4	0	0	0	1	9	
10	Sevillian, Keke	0	4	0	0	0	0	0	0	0	0	1	1	0	1	10	
14	Brooks, Dominique	0	0	0	0	0	0	0	0	0	0	0	1	0	0	1	
41	DeGraaf, Jenny	2	7	0	2	0	4	4	1	8	0	0	0	0	0	27	
44	Waldner, Tori	2	4	0	0	1	5	6	3	4	1	2	3	0	0	29	
	Team																
	Totals	23	59	2	10	6	11	8	26	34	18	54	13	14	5	200	

FG % 1st Half: 11-27 40.7% 2nd half: 12-32 37.5% Game: 23-59 39.0% Deadball Rebounds 2  
 3FG % 1st Half: 2-6 33.3% 2nd half: 0-4 0.0% Game: 2-10 20.0%  
 FT % 1st Half: 0-1 0.0% 2nd half: 6-10 60.0% Game: 6-11 54.5%

Officials: Frank Storateo, Kevin Pettel, Shannon Feck  
 Technical fouls: St. Bonaventure-None. Penn State-None.  
 Attendance: 6703

Score by periods	1st	2nd	Total
St. Bonaventure	23	33	56
Penn State	24	30	54

Points	In	Off	2nd	Fast	Bench
	Paint	T/O	Chance	Break	
SBU	20	7	9	0	3
PSU	28	14	6	6	12

Last FG - SBU 2nd-00:02, PSU 2nd-07:08.  
 Largest lead - SBU by 3 2nd-13:38, PSU by 9 2nd-07:08.  
 SBU led for 04:24. PSU led for 31:03. Game was tied for 04:32.

Score tied - 6 times.  
 Lead changed - 9 times.

#### Notable

- Penn State dropped to 1-3 to start a season for the first time since 2005-06, when the Lady Lions also started 1-3.
- Freshman **Lindsey Spann** posted 13 points, her team-best fourth double-digit scoring game of the season.
- **Sierra Moore** had a career-high 15 points and surpassed the 100-point plateau for her collegiate career.

## Samford 59, Penn State 56 (OT)

### Game #6 \* Nov. 30, 2014 \* Atlanta, Ga.

#### Penn State 56 • 1-5

#	Player	Total			3-Ptr			Rebounds			PF	TP	A	TO	Bk	St	Min
		FG	FGA	FT	FTA	Off	Def	Tot	FG	FGA							
15	Mitchell, Kaliyah	3	10	0	1	7	8	5	8	2	5	2	2	2	2	38	
25	Whitted, Peyton	1	7	0	1	4	5	4	2	0	1	1	1	1	23		
44	Waldner, Tori	3	7	0	1	1	12	4	18	0	3	0	1	1	39		
05	Moore, Sierra	4	10	1	2	8	10	1	0	1	5	7	3	3	0	40	
12	Spann, Lindsey	3	13	0	2	4	6	1	1	2	4	10	5	4	0	41	
01	Agee, Candice	0	1	0	0	0	0	0	0	0	0	0	1	0	0	2	
10	Sevillian, Keke	0	1	0	0	0	0	0	0	2	0	1	2	0	0	9	
41	DeGraaf, Jenny	5	9	1	2	0	0	1	9	10	1	11	1	0	0	33	
	Team																
	Totals	19	58	2	9	16	21	7	33	40	25	56	11	16	3	225	

FG % 1st Half: 7-27 25.9% 2nd half: 10-24 41.7% OT: 2-7 28.6% Game: 19-58 32.8% Deadball Rebounds 2  
 3FG % 1st Half: 0-4 0.0% 2nd half: 1-3 33.3% OT: 1-2 50.0% Game: 2-9 22.2%  
 FT % 1st Half: 7-10 70.0% 2nd half: 4-5 80.0% OT: 5-6 83.3% Game: 16-21 76.2%

#### Samford 59 • 4-2

#	Player	Total			3-Ptr			Rebounds			PF	TP	A	TO	Bk	St	Min
		FG	FGA	FT	FTA	Off	Def	Tot	FG	FGA							
03	ELLIOTT, Destiney	2	5	0	1	1	7	2	6	8	2	5	2	2	2	35	
10	REECE, Taylor	8	17	4	7	2	4	1	5	6	4	22	0	2	1	39	
02	NICHOLS, Hannah	5	12	2	7	1	2	2	5	7	3	13	0	2	0	39	
11	MAYERS, Amara	0	5	0	0	0	0	1	5	6	2	0	0	0	0	23	
12	STRICKLIN, Krista	3	7	0	2	3	5	0	4	4	3	9	3	3	0	31	
05	BLEVINS, Kassidy	0	2	0	1	0	0	0	4	4	2	0	4	2	0	23	
21	FLETCHER, Keke	0	3	0	2	1	2	0	0	3	1	1	0	0	1	6	
22	RIGGINS, Ellen	2	4	0	1	5	5	0	3	3	2	9	1	3	0	29	
	Team																
	Totals	20	55	6	21	13	25	8	34	42	19	59	10	19	4	225	

FG % 1st Half: 6-21 28.6% 2nd half: 10-28 35.7% OT: 4-6 66.7% Game: 20-55 36.4% Deadball Rebounds 6.1  
 3FG % 1st Half: 0-5 0.0% 2nd half: 1-3 33.3% OT: 1-3 33.3% Game: 6-21 28.6%  
 FT % 1st Half: 1-5 20.0% 2nd half: 8-10 80.0% OT: 4-10 40.0% Game: 13-25 52.0%

Officials: Meadow Overstreet, Kristin McKinnon, Mike Riggs  
 Technical fouls: Penn State-None. Samford-None.  
 Attendance: 522

Score by periods	1st	2nd	OT	Total
Penn State	21	25	10	56
Samford	13	33	13	59

Points	In	Off	2nd	Fast	Bench
	Paint	T/O	Chance	Break	
PSU	28	11	4	6	11
SAM	22	13	4	0	10

Last FG - PSU OT-00:25, SAM OT-01:48.  
 Largest lead - PSU by 16 2nd-09:59, SAM by 6 OT-01:48.  
 PSU led for 36:49. SAM led for 04:26. Game was tied for 03:40.

Score tied - 1 time.  
 Lead changed - 1 time.

#### Notable

- Penn State held Samford 13 points in the first half, the fewest allowed by PSU this season. It was the lowest scoring output for a Lady Lion's opponent since NJIT scored nine points in the first half on Dec. 23, 2012.
- Sophomore **Jenny DeGraaf** posted her first career double-double with 11 points and a career-high 10 rebounds.

## Liberty 80, Penn State 68

### Game #5 \* Nov. 28, 2014 \* Atlanta, Ga.

#### Penn State 68 • 1-4

#	Player	Total			3-Ptr			Rebounds			PF	TP	A	TO	Bk	St	Min
		FG	FGA	FT	FTA	Off	Def	Tot	FG	FGA							
15	Mitchell, Kaliyah	4	12	0	3	2	5	1	4	5	4	10	0	3	0	27	
44	Waldner, Tori	3	8	1	2	3	4	3	5	8	2	10	3	1	1	34	
01	Agee, Candice	2	4	0	0	2	4	2	3	5	1	6	0	2	4	22	
05	Moore, Sierra	5	10	0	0	4	7	2	3	5	5	14	4	3	0	33	
12	Spann, Lindsey	7	21	0	7	3	3	0	0	0	3	17	3	7	0	27	
10	Sevillian, Keke	0	0	0	0	0	0	0	0	0	4	0	1	0	1	7	
14	Brooks, Dominique	1	1	0	0	0	0	0	0	0	0	2	0	0	0	2	
25	Whitted, Peyton	3	6	1	1	0	0	3	2	5	7	7	0	2	0	18	
41	DeGraaf, Jenny	1	3	0	2	0	0	1	2	3	0	2	1	0	0	20	
	Team																
	Totals	26	65	2	15	14	21	15	20	35	24	68	12	18	5	200	

FG % 1st Half: 14-31 45.2% 2nd half: 12-34 35.3% Game: 26-65 40.0% Deadball Rebounds 5  
 3FG % 1st Half: 1-5 20.0% 2nd half: 1-10 10.0% Game: 2-15 13.3%  
 FT % 1st Half: 6-8 75.0% 2nd half: 8-13 61.5% Game: 14-21 66.7%

#### Liberty 80 • 3-2

#	Player	Total			3-Ptr			Rebounds			PF	TP	A	TO	Bk	St	Min
		FG	FGA	FT	FTA	Off	Def	Tot	FG	FGA							
15	BROWN, Simone	8	11	2	2	2	4	3	23	0	4	1	3	2	34		
55	RINGER, Ashley	5	12	0	0	3	5	2	6	8	1	13	1	1	0	29	
34	ADAMS, Katelyn	2	6	0	0	2	4	7	11	3	6	3	2	1	2	29	
03	ELLIS, Sadalia	3	5	0	0	3	4	0	0	4	9	5	4	1	3	21	
14	BUER, Karly	3	7	2	5	1	3	4	13	2	4	0	0	0	25		
02	LEATHERWOOD, Candice	0	2	0	1												

# Penn State 96, Wagner 66

## Game #8 \* Dec. 7, 2014 \* University Park, Pa.

### Wagner 66 • 0-7

#	Player	Total		3-Ptr		Rebounds			PF	TP	A	TO	Blk	Stl	Min
		FG-FGA	FG-FGA	FG-FGA	FT-FTA	Off	Def	Tot							
01	NWAJEI, Jasmine	* 7-17	0-2	0-0	1	5	6	4	14	7	9	0	2	34	
14	ROWE, Lyndsay	* 0-5	0-3	0-0	1	1	2	2	0	2	0	0	0	25	
20	DLUHL, Jackie	* 2-3	0-0	0-0	0	0	0	5	4	1	3	1	0	14	
24	PECK, Jordyn	* 9-16	6-13	3-5	0	0	0	0	27	0	1	0	1	37	
25	CONYERS-JORDAN, M.	* 1-4	0-1	0-0	1	4	5	2	2	1	2	0	0	26	
03	RUSSELL, Tanasia	2-2	0-0	0-0	0	0	0	1	4	0	0	1	0	6	
05	WADE, Tessa	0-0	0-0	0-0	1	0	1	0	0	0	1	0	0	5	
13	ROMA, Sofia	0-1	0-0	1-2	0	2	2	4	1	0	2	0	0	10	
15	HAMLET, Jazmine	1-3	0-0	0-1	2	5	7	4	2	1	3	0	0	19	
21	SULLIVAN, Samantha	1-2	0-0	0-0	0	0	0	2	2	0	1	0	0	9	
32	BUTIGIAN, Taylor	2-3	2-3	4-6	1	1	2	3	10	0	1	0	1	15	
	Team				3	1	4								
	Totals	25-56	8-22	8-14	10	19	29	27	66	12	23	2	4	200	

FG % 1st Half: 10-25 40.0% 2nd half: 15-31 48.4% Game: 25-56 44.6% Deadball Rebounds 2  
 3FG % 1st Half: 6-12 50.0% 2nd half: 2-10 20.0% Game: 8-22 36.4%  
 FT % 1st Half: 2-4 50.0% 2nd half: 6-10 60.0% Game: 8-14 57.1%

### Penn State 96 • 2-6

#	Player	Total		3-Ptr		Rebounds			PF	TP	A	TO	Blk	Stl	Min
		FG-FGA	FG-FGA	FG-FGA	FT-FTA	Off	Def	Tot							
01	Agee, Candice	* 4-7	0-0	1-3	2	2	4	3	9	1	3	1	1	23	
05	Moore, Sierra	* 5-9	0-0	11-12	1	4	5	0	21	7	0	0	2	31	
12	Spann, Lindsey	* 8-15	2-5	4-4	2	3	5	3	22	4	2	0	2	30	
15	Mitchell, Kaliyah	* 8-11	1-2	3-4	3	4	7	1	20	0	1	0	0	28	
44	Waldner, Tori	* 0-1	0-0	0-2	0	5	5	3	0	2	2	1	1	15	
10	Sevillian, Keke	2-6	0-2	0-2	2	1	3	1	4	4	1	0	3	27	
14	Brooks, Dominique	1-3	0-0	2-2	0	0	0	1	4	0	0	1	0	9	
25	Whitted, Peyton	2-4	0-0	0-0	1	1	2	2	4	0	1	0	1	16	
34	Dincher, Molly	0-0	0-0	0-0	0	0	0	1	0	0	0	0	0	2	
41	DeGraaf, Jenny	4-8	0-2	4-4	1	2	3	2	12	1	0	1	0	19	
	Team				3	3	6			2					
	Totals	34-64	3-11	25-33	15	25	40	17	96	19	12	4	10	200	

FG % 1st Half: 14-32 43.8% 2nd half: 20-32 62.5% Game: 34-64 53.1% Deadball Rebounds 4  
 3FG % 1st Half: 3-8 37.5% 2nd half: 0-3 0.0% Game: 3-11 27.3%  
 FT % 1st Half: 11-16 68.8% 2nd half: 14-17 82.4% Game: 25-33 75.8%

Officials: Frank Steratore, Shannon Feck, An-Jamilah Gregory  
 Technical fouls: Wagner-None. Penn State-None.  
 Attendance: 3657

Score by periods	1st	2nd	Total
Wagner	28	38	66
Penn State	42	54	96

Points	In Paint	Off T/O	2nd Chance	Fast Break	Bench
WAGNER	15	13	6	6	19
PSU	54	24	13	24	24

Last FG - WAGNER 2nd-03:43, PSU 2nd-03:13.  
 Largest lead - WAGNER None, PSU by 31 2nd-07:48.  
 WAGNER led for 00:00. PSU led for 39:28. Game was tied for 00:18.

Score tied - 0 times.  
 Lead changed - 0 times.

### Notable

- The 96 points vs. the Seahawks were the most for the Lady Lions since scoring a Bryce Jordan Center record 117 points vs. St. Francis (Pa.) in the 2013-14 season opener on Nov. 8, 2013.
- Lindsey Spann (22), Sierra Moore (21) and Kaliyah Mitchell (20)** all reached the 20-point mark vs. Wagner. It was the first time since Nov. 26, 2011 vs. Nevada that three Lady Lions all cracked the 20 point mark in the same game; Maggie Lucas (26), Alex Bentley (23) and Zhaque Gray (21).



**2014-15 Penn State Lady Lion Basketball**  
**Penn State Combined Team Statistics (as of Dec 07, 2014)**  
**All games**

<b>RECORD:</b>	<b>OVERALL</b>	<b>HOME</b>	<b>AWAY</b>	<b>NEUTRAL</b>
ALL GAMES	2-6	2-3	0-1	0-2
CONFERENCE	0-0	0-0	0-0	0-0
NON-CONFERENCE	2-6	2-3	0-1	0-2

#	Player	gp-gs	min	Total		3-Point		F-Throw		Rebounds				pf	dq	a	to	blk	stl	pts	avg	
				fg-fga	fg%	3fg-fga	3fg%	ft-fa	ft%	off	def	tot	avg									
12	Spann, Lindsey	8-8	261	32.6	43-110	.391	8-33	.242	22-29	.759	4	16	20	2.5	24	1	29	32	0	12	116	14.5
05	Moore, Sierra	8-8	284	35.5	36-84	.429	2-3	.667	31-45	.689	16	23	39	4.9	20	2	31	25	6	8	105	13.1
15	Mitchell, Kaliyah	8-8	236	29.5	23-70	.329	2-16	.125	21-32	.656	12	42	54	6.8	26	1	3	19	4	18	69	8.6
01	Agee, Candice	8-5	153	19.1	27-55	.491	0-0	.000	9-19	.474	14	27	41	5.1	18	0	6	12	14	8	63	7.9
41	DeGraaf, Jenny	8-0	185	23.1	22-43	.512	6-19	.316	5-6	.833	6	26	32	4.0	7	0	7	3	2	3	55	6.9
44	Waldner, Tori	8-6	218	27.3	17-42	.405	1-4	.250	10-14	.714	15	49	64	8.0	25	0	10	14	12	7	45	5.6
25	Whitted, Peyton	8-4	143	17.9	14-39	.359	1-7	.143	3-9	.333	11	23	34	4.3	24	1	5	17	2	6	32	4.0
10	Sevillian, Keke	8-1	120	15.0	5-30	.167	3-13	.231	1-5	.200	4	4	8	1.0	15	0	14	8	1	9	14	1.8
14	Brooks, Dominique	7-0	23	3.3	2-4	.500	0-0	.000	4-4	1.000	0	1	1	0.1	6	0	0	3	1	0	8	1.1
34	Dincher, Molly	1-0	2	2.0	0-0	.000	0-0	.000	0-0	.000	0	0	0	0.0	1	0	0	0	0	0	0	0.0
Team											13	16	29				3					
Total.....		8	1625		189-477	.396	23-95	.242	106-163	.650	95	227	322	40.2	166	5	105	136	42	71	507	63.4
Opponents.....		8	1625		171-475	.360	54-181	.298	119-176	.676	107	221	328	41.0	157	-	103	146	34	65	515	64.4

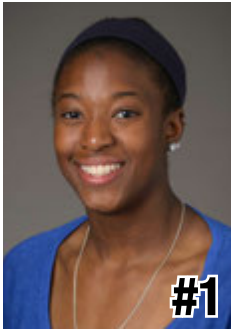
<b>TEAM STATISTICS</b>	<b>PSU</b>	<b>OPP</b>	<b>Date</b>	<b>Opponent</b>	<b>Score</b>	<b>Att.</b>
SCORING	507	515	11/14/14	TOWSON	W 71-64	3123
Points per game	63.4	64.4	11/16/14	ALBANY	L 53-54	8607
Scoring margin	-1.0	-	11/22/14	SETON HALL	L 70-75	3114
FIELD GOALS-ATT	189-477	171-475	11/25/14	ST. BONAVENTURE	L 54-56	6703
Field goal pct	.396	.360	11/28/14	vs Liberty	L 68-80	645
3 POINT FG-ATT	23-95	54-181	11/30/14	vs Samford	Lot 56-59	522
3-point FG pct	.242	.298	12/04/14	at Syracuse	L 39-61	258
3-pt FG made per game	2.9	6.8	12/7/14	WAGNER	W 96-66	3657
FREE THROWS-ATT	106-163	119-176				
Free throw pct	.650	.676				
F-Throws made per game	13.3	14.9				
REBOUNDS	322	328				
Rebounds per game	40.2	41.0				
Rebounding margin	-0.7	-				
ASSISTS	105	103				
Assists per game	13.1	12.9				
TURNOVERS	136	146				
Turnovers per game	17.0	18.3				
Turnover margin	+1.3	-				
Assist/turnover ratio	0.8	0.7				
STEALS	71	65				
Steals per game	8.9	8.1				
BLOCKS	42	34				
Blocks per game	5.3	4.3				
ATTENDANCE	25204	1425				
Home games-Avg/Game	5-5041	1-258				
Neutral site-Avg/Game	-	2-584				

\* - Conference game

<b>Score by Periods</b>	<b>1st</b>	<b>2nd</b>	<b>OT</b>	<b>Totals</b>
Penn State	229	268	10	507
Opponents	221	281	13	515



## 2014-15 RADIO/TV CHART



**#1**

**Candice Agee**  
6-6 \* Jr./Jr. \* C  
Victorville, Calif.  
Silverado



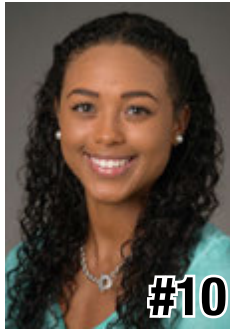
**#3**

**Brianna Banks**  
5-9 \* Sr./-- \* G  
Newnan, Ga.  
Fayette County  
(Connecticut)



**#5**

**Sierra Moore**  
5-11 \* Jr./So. \* G  
Hanover, Pa.  
Delone Catholic  
(Duke)



**#10**

**Keke Sevillian**  
5-7 \* So./So. \* G  
Goodrich, Mich.  
Goodrich



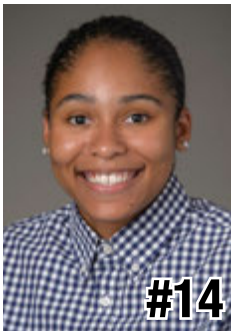
**#11**

**Alex Harris**  
6-3 \* So./So. \* F  
Lorain, Ohio  
Lorain



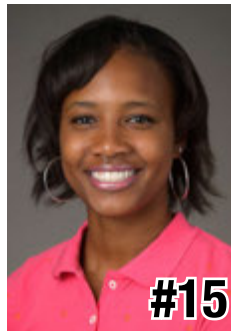
**#12**

**Lindsey Spann**  
5-6 \* So./Fr. \* G  
Laurel, Md.  
Good Counsel



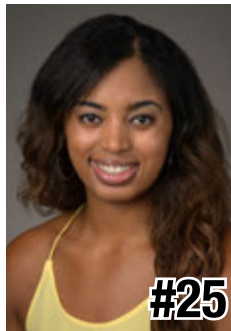
**#14**

**Dominique Brooks**  
6-4 \* Jr./Jr. \* C  
Lansing, Ill.  
T.F. South  
(Trinity Valley C.C.)



**#15**

**Kaliyah Mitchell**  
6-2 \* So./So. \* F  
Stone Mountain, Ga.  
Stephenson



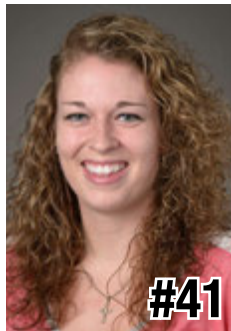
**#25**

**Peyton Whitted**  
6-3 \* So./So. \* F  
Suwanee, Ga.  
North Gwinnett



**#34**

**Molly Dincher**  
6-0 \* Sr./Sr. \* G/F  
Williamsport, Pa.  
Williamsport Area  
(PSU Wilkes-Barre)



**#41**

**Jenny DeGraaf**  
6-1 \* So./So. \* F  
Springboro, Ohio  
Springboro



**#44**

**Tori Waldner**  
6-5 \* Sr./Sr. \* F/C  
Milton, Ga.  
Milton



**HC**

**Coquese Washington**  
Head Coach  
Notre Dame '92  
Eighth Season



**AC**

**Ito Coleman**  
Assistant Coach  
Clemson '00  
First Season  
Fourth Overall



**AC**

**Kia Damon**  
Assistant Coach  
Millersville '97  
Eighth Season



**AC**

**Jocelyn Wyatt**  
Assistant Coach  
Appalachian State '06  
First Season



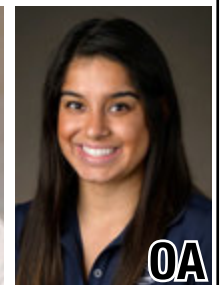
**DO**

**Ethan Gelfand**  
Director of Operations  
Wake Forest '06  
Fourth Season



**VO**

**Mike Miller**  
Director of Video &  
Technology Ops  
High Point '02  
10th Season



**OA**

**Jennifer Montoya**  
Operations Assistant  
Penn State '14  
First Season

10-Time Big Ten Champions • Two-Time Big Ten Tournament Champions • 2000 NCAA Final Four • 25 NCAA Tournament Appearances

