



2011-12 PENN STATE LADY LION BASKETBALL

WOMEN'S BASKETBALL CONTACT:
 Kristina Petersen
 Twitter: @ladylionsid
 Website: www.GoPSUSports.com
 Email: kap18@psu.edu
 Cell: 814-883-4581
 Office: 814-865-1757

Penn State Athletic Communications: 101D Bryce Jordan Center, University Park, PA 16802 ♦ Office: 814-865-1757 ♦ Fax: 814-863-3165

SCHEDULE/RESULTS

NOVEMBER	
Sat. 5	BLOOMSBURG (exh.).....W, 101-81 Lady Lion Classic (University Park, Pa.)
Fri. 11	WASHINGTON STATE..... W, 72-60
Sun. 13	MIDDLE TENN. (BTN.com)... W, 65-49
Thurs. 17	at DelawareL, 71-80
Sun. 20	at South Carolina (SportSouth)..W, 55-50 John Ascuaga's Nugget Classic (Reno, Nev.)
Fri. 25	vs. Iowa StateW, 66-59
Sat. 26	at NevadaW, 103-65

Big Ten/ACC Challenge	
Wed. 30	#14/13 N. CAROLINA (BTN)..W, 103-84

DECEMBER	
Big 12/Big Ten Challenge	
Sat. 3	at #19/25 Texas Tech.....L, 66-70
Tues. 6	VIRGINIA TECH (BTN.com).. W, 66-28
Sun. 11	UMES (BTN.com)..... W, 76-51
Sun. 18	WAGNER (BTN.com) 1 p.m.
Wed. 21	at Bucknell..... 7 p.m.
Fri. 30	NEBRASKA * (BTN.com)..... 7 p.m.

JANUARY	
Mon. 2	at Wisconsin * 1 p.m.
Sat. 7	MICHIGAN STATE * (CBS)..... 2 p.m.
Thurs. 12	MICHIGAN * (BTN) 6 p.m.
Sun. 15	at Nebraska * (BTN.com)..... 3:05 p.m.
Thurs. 19	at Illinois * (BTN.com)..... 8 p.m.
Sun. 22	IOWA * (ESPN2) 3 p.m.
Thurs. 26	at Michigan * (BTN.com)..... 7 p.m.
Sun. 29	at Michigan State * (ESPN2) 3 p.m.

FEBRUARY	
Thurs. 2	INDIANA * (BTN.com) 7 p.m.
Sun. 5	at Minnesota * (BTN.com) 3 p.m.
Thurs. 9	WISCONSIN * (BTN.com) 7 p.m.
Sun. 12	at Northwestern * (BTN) 1 p.m.
Thurs. 16	at Purdue * (BTN) 6 p.m.
Mon. 20	OHIO STATE * (ESPN2)..... 7 p.m.

WBCA Pink Zone at Penn State	
Sun. 26	MINNESOTA * (BTN-WC) ...12/2/4 p.m.

MARCH	
Thur.-Sun. 1-4	Big Ten Tournament (Indianapolis)
Sat.-Tues. 17-20	NCAA Tourn. 1st & 2nd Round
Sat.-Tues. 24-27	NCAA Tournament Regionals

APRIL	
Sun./Tues. 1/3	NCAA Final Four (Denver, Colo.)

BOLD CAPS indicates home game.
 * - indicates Big Ten game.
 All times are Eastern Time.
 BTN - Big Ten Network
 BTN.com - BigTenNetwork.com
 Schedule subject to change. Please visit www.GoPSUsports.com for up-to-date tip times.

Game #11: Wagner at #16/17 Penn State Sun., Dec. 18 ▶ 1 p.m. ▶ Bryce Jordan Center ▶ University Park, Pa.

		SETTING THE SCENE
Penn State Lady Lions	Wagner Seahawks	The Wagner Game
Record: 8-2, 0-0 Big Ten Last Game: PSU 76, UMES 51 (12/11) Head Coach: Coquese Washington Career Record: 74-62 (5th yr.) Record at PSU: 74-62 (5th yr.)	Record: 2-7, 1-1 NEC Last Game: Colgate 71, Wagner 59 (12/10) Head Coach: Gela Mikalauskas Career Record: 216-275 (18th yr.) Record at WC: 216-275 (18th yr.)	Series: First Meeting Last Meeting: First Meeting Streak: First Meeting Television: none Radio: The game is on the Penn State Sports Network and ESPN 1450 locally with Jerry Fisher and Brian Tripp calling the action. The audio feed is available at www.GoPSUsports.com . Webstream: BTN.com Live Stats: GoPSUsports.com
Statistical Leaders Points Maggie Lucas (18.6) Rebounds Mia Nickson (7.8) Assists Alex Bentley (6.1)	Statistical Leaders Points Kelly Clark (14.7) Rebounds Kelly Clark (7.4) Assists Jacque Thompson (3.6)	

GAME DAY INFORMATION

SCOUTING WAGNER

The Seahawks are 2-7 overall and 1-1 in conference play with wins over Columbia and St. Francis (N.Y.). Kelly Clark is the lone Wagner player averaging double figures with a 14.7 scoring average. She also pulls in a team-best 7.4 rebounds per game. Jacqui Thompson chips in 7.0 points per game, while Marie-Laurence Archambault accounts for 6.7 per outing.

ALL-TIME VS. THE SEAHAWKS

This is the first-ever meeting on the hardwood between the Lady Lions and Wagner. Penn State is 9-1 all-time against Northeast Conference opponents with the last game coming against Monmouth, a 67-42 Penn State win on Dec. 9, 2009.

PERFECT FROM THE FIELD

Junior center **Nikki Greene** has made her last 11 shots from the field after going 5-for-5 in the second half against Virginia Tech and 6-for-6 versus UMES. The performance against the Lady Lions was just the second perfect effort from the field by Greene (1-1 at Minnesota; Dec. 6, 2009).

STORYLINES

- ✓ With 143 rejections, **Nikki Greene** moved into sixth place on PSU's all-time blocks chart.
- ✓ Senior **Zhaque Gray** moved into a tie with Jess Brungo for 10th place in all-time three-point field goals made (117) with a triple vs. UMES.
- ✓ **Alex Bentley** is the 33rd member of a Penn State's 1,000-point club and 15th junior after scoring 11 points versus Virginia Tech (12/6).
- ✓ Penn State shot 71.4% (15-21) from the field in the second half, it's best-shooting half since shooting 70.4% against Ohio State in the Big Ten Tournament (3/4/07).
- ✓ The 28 points scored by VT on Dec. 6 were the fewest scored by the Hokies in program history.
- ✓ With 20 points against Virginia Tech Dec. 6, sophomore guard **Maggie Lucas** reached the 700-point mark for her career.
- ✓ Penn State is 16th in Associated Press poll and 17th in the ESPN/USA Today Coaches Poll.
- ✓ The Lady Lions were picked to finish first in the Big Ten in a vote of the coaches and media.
- ✓ Bentley was selected as the Big Ten Preseason Player of the Year in a vote of the league's coaches and media.

UP NEXT

The Lady Lions travel to Bucknell to meet the Bison in their non-conference finale Wednesday. Penn State returns to the BJC to face Big Ten newcomer Nebraska on Dec. 30 at 7 p.m. That game will be a Subway Full Court 4-Pack where fans can get four tickets, a voucher for four Subway subs and four sodas for \$40.



2011-12 ROSTER

PENN STATE LADY LIONS

No.	Name	Pos.	Cl./Elg.	Ht.	Hometown/High School (Previous School)
2	Dara Taylor	G	Jr./Jr.#	5-8	Wilmington, Del./Caravel Academy (Maryland)
5	Talia East *	F/C	So./So.	6-3	Philadelphia, Pa./Friends' Central School
12	Zhaque Gray ***	G	Sr./Sr.	5-8	Chicago, Ill./Prep John Hope
15	Renee Womack ***	G	Sr./Sr.	5-10	Lansdale, Pa./Methacton
20	Alex Bentley **	G	Jr./Jr.	5-7	Indianapolis, Ind./Ben Davis
23	Ariel Edwards *	F	So./So.	6-2	Elmont, N.Y./Christ the King
24	Mia Nickson *	F	Sr./Jr.	6-2	Ashburn, Va./Notre Dame Acad. (Boston College)
25	Gizelle Studevent **	G	Jr./Jr.	5-11	La Jolla, Calif./The Bishop's School
33	Maggie Lucas *	G	So./So.	5-10	Narberth, Pa./Germantown Academy
40	Marisa Wolfe **	F	Jr./Jr.	6-2	Ford City, Pa./Ford City
44	Tori Waldner	F	Fr./Fr.	6-5	Milton, Ga./Milton
54	Nikki Greene **	F/C	Jr./Jr.	6-4	Diboll, Texas/Diboll

Head Coach: Coquese Washington (Notre Dame '92)

Assistant Coaches: Fred Chmiel, Kia Damon, Maren Walseth

Captains: Mia Nickson, Marisa Wolfe

* Indicates letters earned # - Taylor will sit out the 2011-12 season due to NCAA transfer rules.

WAGNER SEAHAWKS

No.	Name	Pos.	Cl.	Ht.	Hometown/High School (Previous School)
3	Shawn-Marie Heiliger	G	Fr.	5-6	Charlotte, N.C./Charlotte Catholic
4	Kelly Clark	C	Sr.	6-3	Neptune, N.J./St. Rose
11	Veronick Fournier	G	Jr.	5-9	Gatineau, Quebec/Montmorency
12	Stephanie Blais	C/F	Fr.	6-2	Sherbrooke, Quebec/Montmorency
13	Jacqui Thompson	G	Fr.	5-3	Southampton, Pa./St. Basil Academy
14	Marie-Laurence Archambault	F	Jr.	6-0	Montreal, Quebec/Montmorency
22	Laura Amorosa	F	So.	5-11	Kirkland, Quebec/Phillips Academy (MA)
23	Chanez Robinson	F	RS-Jr.	6-2	Newark, N.J./Malcolm X Shabazz (Northeastern)
32	Kanifa Hicks	G	RS-Jr.	5-9	Paterson, N.J./Passaic County Tech
33	Ugo Nwaigwe	C	Fr.	6-3	Valley Stream, N.Y./Valley Stream South
42	Brittney Thorpe	F	Sr.	6-1	Newport News, Va./Heritage

Head Coach: Gela Mikalauskas

Assistant Coaches: Maureen Hannafin, Brett Self, Jen Derevjaniak

TEAM COMPARISON

PENN STATE		WAGNER
Lucas (18.6)	Scoring Leader	Clark (14.7)
Nickson (7.8)	Rebounding Leader	Clark (7.4)
Bentley (6.1)	Assist Leader	Thompson (3.6)
Bentley (2.4)	Steals Leader	Robinson (1.3)
East (1.4)	Blocks Leader	Clark (1.7)
74.3	Scoring Offense	51.0
59.6	Scoring Defense	62.6
+14.7	Scoring Margin	-11.6
42.8	Rebounds Per Game	35.8
+1.0	Rebound Margin	-1.2
14.0	Assists Per Game	10.6
9.0	Steals Per Game	7.7
.438	Field Goal Pct.	.367
.318	FG Defense Pct.	.400
.358	3-pt. FG Pct.	.262
.260	3-pt. FG Pct. Def.	.323
.706	Free Throw Pct.	.602
0.9	Assist/Turnover	0.5
Won 2	W/L Streak	Lost 2

SERIES HISTORY

Overall:	First Meeting
Last meeting:	n/a
Last result:	n/a
Current streak:	n/a

QUICK FACTS

THE UNIVERSITY

Location: University Park, Pa.
 Founded: 1855
 Enrollment: 42,294
 Colors: Blue & White
 Nickname: Lady Lions
 Conference: Big Ten
 President: Dr. Rodney Erickson
 Director of Athletics: Tim Curley
 Acting Director of Athletics: Dr. David Joyner
 Senior Woman Administrator: Charmelle Green
 Facility (cap.): Bryce Jordan Center (15,261)
 All-Time Record at BJC: 180-47 (16 seasons)

ATHLETIC COMMUNICATIONS

WBB Contact: Kristina Petersen
 Phone/Fax: (814) 865-1757/(814) 863-3165
 E-mail: kap18@psu.edu
 Address: 101-D Bryce Jordan Center
 University Park, Pa. 16802
 Press Row Phone: 814-863-3294
 Website: www.GoPSUsports.com
 Twitter: @ladylionsid

TEAM INFORMATION

2011-12 Record: 8-2
 Home: 5-0 Away: 2-2 Neutral: 1-0
 Big Ten Record: 0-0
 Home: 0-0 Away: 0-0
 Letterwinners Returning/Lost: 10/1
 Starters Returning/Lost: 4/1
 Big Ten Tournament: Runner-up
 Postseason: NCAA Second Round

THE HISTORY

First Year of Women's Basketball: 1965
 All-Time Record: 813-375 (47 seasons)
 All-Time Big Ten Rec.: 204-110 (19 seasons)
 NCAA Tournament Appearances: 22
 NCAA Tournament Record: 27-22

WOMEN'S BASKETBALL

Head Coach: Coquese Washington
 Alma Mater: Notre Dame '92
 Overall Record: 74-62 (fifth season)
 School Record: 74-62 (fifth season)
 Basketball Office Phone: 814-863-2672
 Best Time To Reach Coach: Through SID
 Assistant Coaches (Alma Mater):
 Fred Chmiel (Excelsior College)
 Kia Damon (Millersville '97)
 Maren Walseth (Penn State '02)
 Twitter: @pennstatewbb
 Facebook: facebook.com/pennstateladylions

PRONUNCIATIONS

Coquese	ko-KWEES
Chmiel	shuh-MEAL
Maren Walseth	MARR-en WALL-seth
Zhaque	Jacque-QWAY
Gizelle Studevent	juh-ZELL STEW-duh-vent
Talia	tah-LEE-uh
Ariel	AIR-e-I
Dara	DAR-uh





STANDINGS (thru games of 12/14)

Team	Big Ten			Overall		
	W	L	Pct.	W	L	Pct.
Ohio State	0	0	.000	9	0	1.000
Nebraska	0	0	.000	9	1	.900
Northwestern	0	0	.000	8	1	.889
Michigan	0	0	.000	9	2	.818
PENN STATE	0	0	.000	8	2	.800
Purdue	0	0	.000	7	3	.700
Michigan State	0	0	.000	7	4	.636
Iowa	0	0	.000	6	4	.600
Minnesota	0	0	.000	7	6	.538
Illinois	0	0	.000	4	5	.444
Wisconsin	0	0	.000	4	7	.364
Indiana	0	0	.000	3	6	.333

BIG TEN SCHEDULE

DECEMBER 13

at Ohio State 83, Southern 49

DECEMBER 14

at Denver 72, Minnesota 63
at Northwestern 87, Morgan State 74

DECEMBER 17

Texas Tech at Illinois 2 p.m.
Northern Illinois at Indiana 7 p.m.
Iowa at Bradley 8 p.m.
Indiana State at Michigan 7 p.m.
Ohio State at California 8 p.m.

DECEMBER 18

Northwestern at UNLV 8 p.m.
Vermont at Nebraska 3 p.m.
Wagner at Penn State 1 p.m.
Purdue at Auburn 3 p.m.

All times are Eastern.

PROJECTED STARTERS



12 ZHAQUE GRAY G
Sr., 5-8, Chicago, Ill.
12.5 pts., 3.5 rebs., 2.3 asst., .400 3FG%

Notes: Was 8-for-16 from the field en route to team-best 25 pts. vs. #13 UNC ... Notched 21 points and two steals at Nevada ... Had 14 points vs. Iowa St. ... Named to Lady Lion Classic All-Tournament Team.



20 ALEX BENTLEY G
Jr., 5-7, Indianapolis, Ind.
14.7 ppg, 6.1 apg, 2.4 spg, .854 FT%

Notes: Just missed a double-double with 11 pts. & 9 assts. vs. UMES ... Became 33rd member of the 1,000-point club with 11 tallies vs. VT ... Wade Trophy, Naismith Award & Wooden Award watch lists.



33 MAGGIE LUCAS G
So., 5-10, Narberth, Pa.
18.6 ppg, 4.5 rpg, .348 3FG%, .810 FT%

Notes: Registered 20 pts. & 3 steals vs. UMES ... Notched 20 points and 8 rebs. vs. Va. Tech ... Had 21 points in 22 minutes vs. #13 UNC ... Naismith Award watch list ... 2011 Big Ten Freshman of the Year.



23 ARIEL EDWARDS F
So., 6-2, Elmont, N.Y.
6.0 ppg, 4.8 rpg, 1.2 apg

Notes: Grabbed career-high 9 rebs. to go with 7 points vs. UMES ... Recorded 13 points, 8 rebs., 3 assts. in win over #13 UNC ... Was 5-for-7 from the field en route to 10 pts., 7 rebs. at South Carolina.



54 NIKKI GREENE C
Jr., 6-4, Diboll, Texas
9.2 ppg, 6.7 rpg, 1.3 bpg, .507 FG%

Notes: Tallied 13 points & 3 blocks vs. UMES ... Had 14 points, 5 rebs. & 3 steals vs. Va. Tech ... Recorded 11 pts. & 8 rebs. at Texas Tech ... Notched 13 pts., 6 rebs. & 3 blks. in win over #13 UNC.

LAST TIME OUT: The Lady Lions limited UMES to just a 17.9% (7-39) field goal percentage in the second half and held the Lady Hawks without a field goal for the final 3:59 to secure a 76-51 win Dec. 11. Sophomore guard **Maggie Lucas** led the way with a game-high 20 points, while also leading the team with three steals to go along with five rebounds. Junior **Nikki Greene** was a perfect 6-for-6 from the field on the way to 13 points, four rebounds and three blocks, while **Alex Bentley** narrowly missed her second career double-double with 11 points and nine assists. Freshman **Tori Waldner** and sophomore **Ariel Edwards** each posted career high in rebounds with nine apiece. Waldner also chipped in four points and a pair of blocks, while Edwards added seven points.

SCOUTING WAGNER: The Seahawks are 2-7 overall and 1-1 in conference play with wins over Columbia and St. Francis (N.Y.). Kelly Clark is the lone Wagner player averaging double figures with a 14.7 scoring average. She also pulls in a team-best 7.4 rebounds per game. Jacqui Thompson chips in 7.0 points per game, while Marie-Laurence Archambault accounts for 6.7 per outing.

ALL-TIME VS. THE SEAHAWKS: This is the first-ever meeting on the hardwood between the Lady Lions and Wagner. Penn State is 9-1 all-time against Northeast Conference opponents with the last game coming against Monmouth, a 67-42 Penn State win on Dec. 9, 2009.

WHAT'S AT STAKE

A Penn State Win Would:

- Make Penn State 9-2 on the season.
- Be PSU's first win over Wagner (1-0).
- Give Coquese Washington 75 career wins.
- Be PSU's first unbeaten non-conference home slate since 2007-08.

PERFECT FROM THE FIELD: Junior center **Nikki Greene** has made her last 11 shots from the field after going 5-for-5 in the second half against Virginia Tech and 6-for-6 versus UMES. The performance against the Lady Lions was just the second perfect effort from the field by Greene. Her other perfect outing was when she made her only shot from the field against Minnesota her freshman season (Dec. 6, 2009).

LUCAS CHANGES HER GAME: Sophomore guard **Maggie Lucas** has become more than just a three-point threat for the Lady Lions. In a comparison of the first 10 games of her rookie campaign and 10 games this year, Lucas has scored more points (186-165) despite making eight less three-pointers than a year ago (23-31). Additionally, Lucas has been more of a threat off the dribble, heading to the free throw line twice as often as she did last season through 10 games (58-29). Here is a 10-game comparison of Lucas' key stats:

Year	Pts.	3FGM	3FGA	FTM	Reb.	Asst.
Frosh.	165	31	73	28	32	14
Soph.	186	23	66	47	45	23

LADY LIONS IN THE RPI: The Lady Lions are highly ranked in many of the RPI reports across the country. Penn State is 11th in the Collegiate Basketball News RPI and is 13th in the Jeff Sagarin Ratings with a strength of schedule that is 40th in the country. The Lady Lions are also 11th in the Real Time RPI poll with the 27th-ranked strength of schedule.

GRAY INTO TOP 10: Senior **Zhaque Gray** moved into the Top 10 in the Penn State three-point field goals record books with a triple against UMES Dec. 11. Gray moved into a tie with Jess Brungo for 10th place in all-time three-point field goals made (117). She needs a pair of triples to move into ninth place.



PRESS CONFERENCES

Coquese Washington will hold a weekly press conference and the Lady Lions will have media availability on a weekly basis throughout the season. All press conferences will begin at 2:45 p.m. (unless otherwise noted) and go for approximately 15-20 minutes, followed by an open media session prior to practice from 3-3:20 p.m. Press conference will be held in the Media Room at the Bryce Jordan Center (unless otherwise noted).

Press Conference Dates

Thursday, Dec. 29
 Wednesday, Jan. 4
 Wednesday, Jan. 11
 Wednesday, Jan. 18
 Wednesday, Jan. 25
 Wednesday, Feb. 1 (location TBA)
 Wednesday, Feb. 8 (location TBA)
 Wednesday, Feb. 15
 Wednesday, Feb. 22
 Wednesday, Feb. 29 (time TBA)

GREENE MOVES UP CHARTS: Junior center **Nikki Greene** moved up a pair of career charts after pulling in four rebounds and blocking three shots against UMES Dec. 11. Greene now has 531 career rebounds to move into a tie with Lorraine McGirt for 24th place on the all-time chart. Greene needs 33 rebounds to move past Kelly Mazzante (563; 2001-04) for 23rd place. Additionally, Greene passed Tina Henry for sole possession of sixth place on the Penn State career blocks list with 143 rejections. She needs 30 blocks to move into the Top 5 all-time.

GRABBING BOARDS: Freshman Tori Waldner and sophomore Ariel Edwards each snared a career-high nine rebounds in the win over UMES Dec. 11. In addition to her nine caroms, Waldner tied her career-high two blocks and played a personal-best 21 minutes. Edwards also dished out a career-best three assists in the win.

BENTLEY JOINS 1,000-POINT CLUB: With 11 points versus Virginia Tech Dec. 6, junior guard **Alex Bentley** became the 33rd player in school history with 1,000 points. She is also the 15th junior to reach the milestone and first Lady Lion to accomplish the feat since Tyra Grant reached the 1,000-point plateau in 2008.

STIFLING D: The Lady Lions turned in a stellar defensive performance in a 66-28 win over Virginia Tech Dec. 6. The 28 points were the fewest scored by the Hokies in program history, surpassing the 33 points scored against Tennessee during the 1995 campaign. It is also the fewest points scored by a Penn State opponent since giving up 21 tallies to Rider on Nov. 14, 2010.

LUCAS TO 700: With 20 points against Virginia Tech Dec. 6, sophomore guard **Maggie Lucas** reached the 700-point mark for her career. It was the 14th 20-point performance of Lucas' career. She now has 738 points in her career.

STELLAR SHOOTING: The Lady Lions shot a sizzling 71.4% (15-21) from the field in the second half in the win over Virginia Tech Dec. 6. It is the first time a Penn State team shot better than 70% in a half since shooting 70.4% against Ohio State in the Big Ten Tournament on March 4, 2007. It was also the best shooting effort for the Lady Lions in a half since connecting on 72.7% (16-22) in the first half against Northwestern on Jan. 4, 2007.

THE NICKSON FACTOR: Both the of Lady Lions' losses this season have come without junior forward **Mia Nickson** in the lineup. In the six games that PSU has played without Nickson, Penn State has been outrebounded in four contests and has a -2.5 rebounding margin in those games (39.7-42.2). The Lions are 4-2 without Nickson. With Nickson in the lineup, the Lady Lions have a +6.3 rebounding margin (47.5-41.2).

BENTLEY NAMED TO TRIO OF WATCH LISTS: Junior point guard **Alex Bentley** as been named to a pair of watch lists for National Player of the Year. Bentley is one of 25 players on the WBCA's Wade Trophy Watch List, is among the 30 players on the Wooden Award preseason chart and is on the Naismith Award watch list. Additionally, Maggie Lucas is also on the Naismith Award chart, making the Lady Lions one of 11 schools with multiple players on the list.

LADY LIONS ON TWITTER & FACEBOOK: The Lady Lions are on Twitter. Follow the Lady Lions and assistant coaches (@pennstatewbb) and sports information contact Kris Petersen (@ladylionsid) to get the inside scoop. The Lady Lions are also on Facebook at www.facebook.com/pennstateladylions.



OFFICIAL PINK ZONE T-SHIRTS: The Official 2012 WBCA Pink Zone at Penn State t-shirt is available at all Penn State Bookstore location. This year, there is an official adult shirt that is \$15 with \$5 of every shirt going to the Pink Zone fundraising efforts, as well as an official youth shirt that is \$10 with \$2 of every shirt going to Pink Zone.

2012 WBCA PINK ZONE: The 2012 WBCA Pink Zone at Penn State will take place on Sunday, Feb. 26 as the Lady Lions take on Minnesota in the Bryce Jordan Center. Last year, the Lady Lions donated nearly \$200,000 for breast cancer causes. This year's fundraising efforts will benefit the Mount Nittany Medical Center, Penn State Hershey Cancer Institute, Pennsylvania Breast Cancer Coalition, the Kay Yow Cancer Fund, J.C. Blair Memorial Hospital and Lewistown Hospital. For more information on the Pink Zone at Penn State, visit the official Pink Zone website at www.gopsusports.com/pinkzone or on Facebook at www.facebook.com/pinkzoneatpennstate.

PENN STATE'S OVERALL/BIG TEN YEAR-BY-YEAR REVIEW

Year	Overall	Big Ten	Home	BT Home	Road	BT Road	Neutral
1992-93	22-6	14-4	12-2	9-0	9-4	5-4	0-0
1993-94	28-3	16-2	14-0	9-0	11-2	7-2	3-1
1994-95	26-5	13-3	14-2	8-0	9-3	5-3	3-0
1995-96*	27-7	13-3	14-2	8-0	8-4	5-3	5-1
1996-97	15-12	8-8	9-3	5-3	5-6	3-5	1-3
1997-98	21-13	8-8	10-5	4-4	6-6	4-4	5-2
1998-99	22-8	12-4	9-2	6-2	9-4	6-2	4-2
1999-00	30-5	15-1	14-0	8-0	9-2	7-1	7-3
2000-01	19-10	11-5	11-2	7-1	6-5	4-4	2-3
2001-02	23-12	11-5	10-4	6-2	9-5	5-3	4-3
2002-03	26-9	13-3	16-0	8-0	7-7	5-3	2-2
2003-04	28-6	15-1	12-1	8-0	9-3	7-1	6-2
2004-05	19-11	13-3	12-0	8-0	6-9	5-3	1-2
2005-06	13-16	6-10	8-6	5-3	3-8	1-7	2-2
2006-07	15-16	7-9	12-1	7-1	2-12	0-7	1-3
2007-08	13-18	4-14	10-6	3-6	3-11	1-8	0-1
2008-09	11-18	6-12	8-6	4-5	2-9	2-7	1-3
2009-10	17-14	8-10	9-6	5-4	5-7	3-6	3-1
2010-11	25-10	11-5	14-4	6-2	7-4	5-3	4-2
2011-12	8-2	0-0	5-0	0-0	2-2	0-0	1-0

* First season at the Bryce Jordan Center



PENN STATE'S RECORD WHEN...

Playing at home	5-0
Playing on the road	2-2
Playing at a neutral site	1-0
vs. Top 10 teams	0-0
vs. Top 25 teams	1-1
Games decided by 3 points or less	0-0
Games decided by 4-10 points	2-2
Games decided by 11-19 points	3-0
Games decided by 20 points or more	3-0
Leading at the half	6-2
Tied at the half	0-0
Trailing at the half	2-0
Leading with 5:00 remaining	7-0
Trailing with 5:00 remaining	1-2
Tied with 5:00 remaining	0-0
In overtime	0-0
PSU scores 40-49 points	0-0
PSU scores 50-59 points	1-0
PSU scores 60-69 points	3-1
PSU scores 70-79 points	2-1
PSU scores 80 points or more	2-0
PSU shoots 45% or better	5-0
PSU shoots less than 45%	3-2
PSU shoots better than opponent	8-1
Opponent shoots better than PSU	0-1
Opponent scores less than 39 points	1-0
Opponent scores 40-49 points	1-0
Opponent scores 50-59 points	3-0
Opponent scores 60-69 points	2-0
Opponent scores more than 70 points	1-2
Opponent shoots better than 45%	0-1
Opponent shoots less than 45%	8-1
PSU outrebounds opponent	5-0
Opponent outrebounds PSU or tied	3-2
PSU commits 14 or less turnovers	4-2
PSU commits 15 or more turnovers	4-0
PSU makes at least 5 3-pointers	4-2
PSU makes four 3-pointers or less	4-0
Recording 7 or more steals	6-1
Recording 6 or less steals	2-1
Wearing white uniforms	6-0
Wearing blue uniforms	2-2
Wearing gray uniforms	0-0
Wearing pink uniforms	0-0
Penn State wins the tip	6-0
Penn State loses the tip	2-2
Penn State scores first	6-1
Opponent scores first	2-1
Playing during the day (before 5 p.m.)	4-1
Playing at night	4-1
On Monday	0-0
On Tuesday	1-0
On Wednesday	1-0
On Thursday	0-1
On Friday	2-0
On Saturday	1-1
On Sunday	3-0
In November	6-1
In December	2-1
In January	0-0
In February	0-0
In March	0-0

PSU 16TH IN AP POLL: The Penn State Lady Lions move up one spot to 16th in the Dec. 12 Associated Press poll. The Lady Lions peaked at No. 11 in the Nov. 14 poll, their highest ranking in the AP poll since they were fifth in the final 2004 poll. Additionally, Penn State made its first appearance in the preseason AP poll since the 2003-04 campaign.

LIONS RANKED 17TH IN COACHES POLL: The Lady Lions moved up one spot to 17th in the Dec. 13 ESPN/USA Today coaches poll. Penn State peaked at 12th, the highest ranking in the ESPN/USA Today Coaches' Poll for the Lady Lions since they were seventh in the final 2004 poll. Additionally, Penn State appeared in the preseason coaches' poll since starting the 2003-04 campaign eighth.

TOPPLING TOP 15 FOE: The Lady Lions shot 48.7% from the field and 58.3% from three-point range en route to a 103-84 win over #14/13 North Carolina in the Big Ten/ACC Challenge Nov. 30. It was the first win over a ranked opponent for Penn State since topping No. 14/13 Iowa (68-59) on Dec. 30, 2010. The 19-point win was the biggest margin of victory over a ranked opponent since a 73-56 win over #8 Michigan State on Jan. 23, 2005.

CONSECUTIVE 100s: The Lady Lions reached 100 points for the second consecutive game with a 103-84 win over #14/13 North Carolina Nov. 30 and a 103-65 victory at Nevada Nov. 26. The last time Penn State scored 100 points in back-to-back games was in 1993 when the Lady Lions defeated Nebraska, 102-66, on Jan. 2 and Illinois, 101-71, on Jan. 7.

SCHOOL RECORD FROM DEEP: The Lady Lions connected on a school record 14 three-pointers in the 103-84 win over North Carolina Nov. 30. Penn State breaks the mark of 13 makes from beyond the arc, which was accomplished twice (at Dayton, 11/21/10; vs. St. Francis (12/2/99)). The 14 threes by PSU also tie for the most by a North Carolina opponent.

BENTLEY'S DOUBLE VISION: Junior **Alex Bentley** posted the first double-double of her career with 15 points and a personal-best 15 assists in the upset win over #14/13 North Carolina Nov. 30. Bentley's 15 assist are a career high and are tied for 11th on Penn State's single-game chart. The 15 helpers also tie the Bryce Jordan Center record, also set by Helen Darling versus Wisconsin on Jan. 29, 1999.

LUCAS INTO 6TH ON 3S LIST: Sophomore guard **Maggie Lucas** moved into sixth place on Penn State's career three-pointers list with five triples versus North Carolina Nov. 30. She passed Tina Nicholson (1993-96) with her effort versus the Tar Heels.

Career Three-Point Field Goals Made

1. 357 Kelly Mazzante, 2001-04
2. 230 Lisa Shepherd, 1998-01
3. 191 Jess Strom, 2002-05
4. 179 Tyra Grant, 2007-10
5. 175 Tiffany Longworth, 1994-97
6. 135 **Maggie Lucas, 2011-pres.**

LIONS IN THE BIG TEN STATS

A breakdown of where Penn State ranks in the Big Ten's statistical categories. Through games of Dec. 14.

TEAM	
Scoring Offense.....	3rd (74.3)
Scoring Defense.....	6th (59.6)
Scoring Margin.....	3rd (+14.7)
Free Throw Percentage.....	6th (.706)
FG Percentage.....	2nd (.438)
FG Percentage Defense.....	1st (.318)
3-point FG Percentage.....	1st (.358)
3-point FG Pct. Defense.....	2nd (.260)
3-point FG Made.....	8th (4.9)
Rebounding Offense.....	4th (42.8)
Rebounding Defense.....	12th (41.8)
Rebounding Margin.....	8th (+1.0)
Offensive Rebounds.....	8th (12.8)
Defensive Rebounds.....	1st (30.0)
Blocked Shots.....	8th (4.3)
Assists.....	6th (14.0)
Steals.....	7th (9.0)
Turnover Margin.....	5th (+2.1)
Assist to Turnover Ratio.....	4th (0.9)

INDIVIDUAL	
Scoring.....	3rd - Maggie Lucas (18.6)
.....	12th - Alex Bentley (14.7)
.....	20th - Zhaque Gray (12.5)
.....	29th - Nikki Greene (9.2)
Rebounding.....	T-8th - Talia East (6.9)
.....	11th - Nikki Greene (6.7)
FG Percentage.....	3th - Nikki Greene (.507)
.....	10th - Alex Bentley (.460)
.....	14th - Zhaque Gray (.439)
Assists.....	T-3rd - Alex Bentley (6.1)
FT Percentage.....	3rd - Zhaque Gray (.885)
.....	10th - Alex Bentley (.854)
.....	13th - Maggie Lucas (.810)
Steals.....	T-5th - Alex Bentley (2.4)
3FG Percentage.....	7th - Zhaque Gray (.400)
.....	15th - Maggie Lucas (.348)
3FG Made.....	4th - Maggie Lucas (2.3)
.....	T-14th - Zhaque Gray (1.6)
Blocked Shots.....	8th - Talia East (1.4)
.....	9th - Nikki Greene (1.3)
Assist-to-TO Ratio.....	T-4th - Alex Bentley (1.8)
Off. Reb.....	T-10th - Nikki Greene (2.4)
Def. Reb.....	8th - Talia East (5.1)
.....	15th - Nikki Greene (4.3)
Minutes.....	3rd - Maggie Lucas (34.5)
.....	7th - Alex Bentley (33.9)



MILESTONE WATCH

Milestone Watch

Milestone	Player	Current Total
1,100 points	Alex Bentley	1,017
800 points	Maggie Lucas	738
700 points	Zhaque Gray	689
	Nikki Greene	608
500 points	Mia Nickson (career)	429
400 points	Mia Nickson (PSU)	384
200 points	Marisa Wolfe	187
	Renee Womack	164
	Ariel Edwards	157
	Gizelle Studevent	102
600 rebounds	Nikki Greene	531
400 rebounds	Mia Nickson (career)	322
300 rebounds	Mia Nickson (PSU)	265
	Alex Bentley	207
200 rebounds	Zhaque Gray	179
	Renee Womack	174
	Marisa Wolfe	171
	Maggie Lucas	153
	Ariel Edwards	109
400 assists	Alex Bentley	360
200 assists	Zhaque Gray	111
100 assists	Maggie Lucas	81
150 steals	Alex Bentley	142
100 steals	Maggie Lucas	70
150 blocks	Nikki Greene	143
150 3-pointers	Maggie Lucas	135
	Zhaque Gray	117

Milestone Reached

Milestone	Player	Reached
600 points	Nikki Greene	12/11/11
100 points	Gizelle Studevent	12/11/11
1,000 points	Alex Bentley	12/6/11
700 points	Maggie Lucas	12/6/11
100 rebounds	Ariel Edwards	12/6/11
200 rebounds	Alex Bentley	12/3/11
100 assists	Zhaque Gray	11/30/11
500 rebounds	Nikki Greene	11/25/11
600 points	Zhaque Gray	11/17/11
600 points	Maggie Lucas	11/17/11
900 points	Alex Bentley	11/13/11
400 rebounds	Mia Nickson (career)	11/13/11
300 assists	Alex Bentley	11/11/11
100 points	Ariel Edwards	11/11/11

BACK-TO-BACK 20s FOR ZHA ZHA: Senior guard **Zhaque Gray** reached the 20-point for the second-straight game with 25 points on 6-of-10 shooting from long range in the win over #14/13 North Carolina Nov. 30. This is the second time in her career that she had back-to-back 20-point games with the first coming last year against Dayton (27) and Rider (22).

HIGH SCORING HALF: The Lady Lions scored 58 points in the first half of the win over #14/13 North Carolina, marking the first time the Lions have scored more than 55 points in a half since tallying 55 in the second half at Boston College on Dec. 2, 2010.

STEALING A BENTLEY: Junior guard **Alex Bentley** worked on her pick-pocketing skills in Nevada with a career-best five steals against the Wolf Pack in the Nugget Classic title game. She also nabbed four steals in the opening round win over Iowa State.

NUGGET CROWN: Penn State claimed the Nugget Classic title with Thanksgiving weekend wins over Iowa State (66-59) and host Nevada (103-65). It is the 28th all-time regular-season tournament title for the Lady Lions and the second this season (Lady Lion Classic). Junior guard **Alex Bentley** was selected as the Tournament MVP after averaging 18.0 points, 4.5 assists and 4.5 steals in two games. She also shot 57.1% from the field. Sophomore guard **Maggie Lucas** also collected All-Tournament team accolades as she averaged 22.0 points, 6.5 rebounds and 3.0 assists in the Nugget Classic.

NEWEST 500 BOARD MEMBER: Junior center **Nikki Greene** became the 27th player in school history to reach 500 rebounds with seven caroms against Iowa State on Nov. 25. She joins an elite list that it topped by Kahadeejah Herbert (1,103) and Susan Robinson (1,070).

WALDNER ON THE BOARD: Freshman post player **Tori Waldner** scored her first collegiate points with a 15-foot jumper at Iowa State Nov. 25. She finished the contest with five points and connected on both of her shots from the field. Waldner also blocked her first career shot.

NICKSON RETURNS: Junior post player **Mia Nickson** returned after missing two games with concussion-like symptoms. She hauled in 13 rebounds to go along with five points and two assists in the win over Iowa State in the Nugget Classic.

FOUL FACTOR: The Lady Lions were charged with 32 fouls in the win over Iowa State, its most fouls in a game since they committed 30 fouls against UCSB Nov. 20, 2001.

LADYLIONS.COM: LadyLions.com is a website dedicated exclusively to women's basketball at Penn State. The website gives the Lady Lions a chance to showcase the Penn State women's basketball program to potential recruits and fans. The site has been recently enhanced with the addition of a team blog, live chats and an "Ask Coach Quese" mailbag. The team blog has been up and running since August. The blog is regularly updated with entries from Lady Lion basketball players, coaches and staff members. The Lady Lions and the coaching staff interact with fans during a weekly live chat on Mondays from 12:15-1:15. The final new feature on LadyLions.com for this season is the Ask Coach Quese mailbag. Coach Quese will answer fan questions each Tuesday throughout the season. Questions can be submitted to Coach Quese by emailing them to askcoachquese@gmail.com. Be sure to include your name and hometown when submitting a question.

A BLOCK EAST: Sophomore center **Talia East** rejected seven shots in the win at South Carolina Nov. 20. The seven blocks are tied for third on Penn State's single-game charts and are the most since **Nikki Greene** blocked seven shots against Purdue on Jan. 28, 2010. Additionally, East hauled in 15 rebounds against the Gamecocks, the most rebounds for a Penn State player since **Mia Nickson** had 15 caroms at Iowa on Feb. 6, 2011.

THREES STRING STOPPED: The Lady Lions were held without a three-pointer for the first time under Coquese Washington at South Carolina Nov. 20. The last time Penn State did not connect from downtown was Jan. 7, 2007 at Michigan, a string of 143 games.

LATE RALLIES: The Lady Lions used late runs to claim each of their first three wins this season. Penn State needed a 13-0 run against South Carolina (Nov. 20), a 19-0 run against Middle Tennessee (Nov. 13) and a 13-0 spurt versus Washington State (Nov. 11). In the final five minutes of their three wins, the Lady Lions are outscoring their opponents an average of 10-0 and holding them to an 0-for-26 effort from the field.

LATE RALLIES

Team	Run	Length	Deficit
Washington State	13-0	6:53	1
Middle Tennessee	19-0	6:45	3
South Carolina	13-0	5:22	8

NCAA STATS

TEAM

Scoring Offense	41st (74.3)
Scoring Margin	42nd (+14.7)
Field Goal Percentage	36th (.438)
Field Goal Pct. Defense	10th (.318)
3-pt. Field Goal Percentage	29th (.358)
3-pt. Field Goal Pct. Defense	63rd (.260)
Winning Percentage	41st (.800)
Assists	90th (14.0)
Turnovers	46th (15.2)
Assist-to-Turnover Ratio	51st (0.92)

INDIVIDUAL

Scoring	35th - Maggie Lucas (18.6)
Assists	11th - Alex Bentley (6.1)
FT Percentage	76th - Alex Bentley (.854)
3-pt. Field Goals/Game	75th - Maggie Lucas (2.3)
3-pt. Field Goal Pct.	99th - Maggie Lucas (.348)
Assist-to-TO Ratio	71st - Alex Bentley (1.79)

SINGLE-GAME

Points	T-22nd - vs. North Carolina (103)
	T-22nd - at Nevada (103)
3-pt. Field Goals	T-15th - vs. North Carolina (14)
3-pt. FG Pct.	T-14th - vs. North Carolina (.583)
Assists	1st - Alex Bentley (15 vs. North Carolina)
Blocked Shots	T-10th - Talia East (7 at S. Carolina)
3-pt. FGs	T-21st - Zhaque Gray (6 vs. N. Carolina)

NCAA Statistics as of 12/12



THE LAST TIME PENN STATE...

SCORING

Player scored 20 points: vs. UMES (20, Maggie Lucas), 12/11/11
Player scored 25 points: vs. North Carolina (25, Zhaque Gray), 11/30/11
Player scored 30 points: vs. Iowa (32, Tyra Grant), 3/5/10
Player scored 35 points: vs. Wisconsin (35, Kelly Mazzante), 3/2/03
Player scored 40 points: vs. Minnesota (49, Kelly Mazzante), 12/28/01
Two players scored 20 points: vs. North Carolina (25, Zhaque Gray; 21, Maggie Lucas), 11/30/11
Three players scored 20 pts.: at Nevada (26, Maggie Lucas; 23, Alex Bentley; 21, Zhaque Gray), 11/26/11
Two players scored 25 points: at Boston College (28, Alex Bentley; 28, Maggie Lucas), 12/2/10
Player scored 25 points/3 consecutive games: Kelly Mazzante (31, vs. Baylor, 12/9/03; 31, vs. Pittsburgh, 12/14/03; 29, Louisiana Tech, 12/21/03)
Five in double figures: vs. North Carolina (25, Zhaque Gray; 21, Maggie Lucas; 15, Alex Bentley; 13, Nikki Greene; 13, Ariel Edwards), 11/30/11
Six in double figures: at Oakland (15, Alex Bentley; 16, Ariel Edwards; 16, Zhaque Gray; 13, Maggie Lucas; 10, Mia Nickson; 10, Gizelle Studevent; 10, Julia Trogele), 11/18/10
Seven in double figures: at Oakland (15, Alex Bentley; 16, Ariel Edwards; 16, Zhaque Gray; 13, Maggie Lucas; 10, Mia Nickson; 10, Gizelle Studevent; 10, Julia Trogele), 11/18/10
PSU scored 50 points in a half: vs. North Carolina (58 points, first half), 11/30/11
PSU scored 55 points in a half: vs. North Carolina (58 points, first half), 11/30/11
PSU scored 60 points in a half: vs. Northwestern (65 points, first half), 1/2/00
PSU scored 100 points: vs. North Carolina (W, 103-84), 11/30/11
PSU scored 100 points in Big Ten game: vs. Illinois (W, 101-80), 2/15/01
PSU scored 100 points in a home game: vs. Maryland (W, 101-74), 12/4/02
PSU scored fewer than 15 points in a half: vs. Wisconsin (13, first half), 2/25/10
PSU scored fewer than 20 points in a half: vs. Michigan State (18, first half), 2/10/11
PSU scored fewer than 40 points in a game: vs. Wisconsin (L, 39-71), 2/25/10
PSU scored fewer than 50 points in a game: vs. Purdue (L, 49-60), 2/24/11
PSU scored fewer than 50 points in a Big Ten game: vs. Purdue (L, 49-60), 2/24/11
OPP scored 50 points in a half: vs. Duke (50, second half), 11/18/05
OPP scored 100 points: at Boston College (Lot, 113-104), 12/2/10
OPP scored fewer than 20 points in a game: at Dickinson (W, 57-16), 3/6/71
OPP scored fewer than 30 points in a game: vs. Virginia Tech (W, 66-28), 12/6/11
OPP scored fewer than 40 points in a game: vs. Virginia Tech (W, 66-28), 12/6/11
OPP scored fewer than 50 points in a game: vs. Virginia Tech (W, 66-28), 12/6/11
OPP scored fewer than 50 points in a Big Ten game: at Wisconsin (W, 54-43), 12/1/10

FIELD GOAL SHOOTING

Player made every shot from the field (min. 7): vs. Michigan St. (Amanda Brown, 8-8), 1/25/07
PSU shot 55% in a game: at Nevada (.573), 11/26/11
PSU shot 55% in consecutive games: vs. Northwestern (.682), 3/2/96; vs. Ohio St. (.585), 3/3/96
PSU shot 60% in a game: vs. Michigan State (.608), 2/23/96
PSU shot below 25% in a game: at Alabama (.230), 12/19/96
PSU shot below 30% in a game: vs. Wisconsin (.273), 2/25/10
PSU shot below 35% in a game and won: vs. Indiana (.321), 1/10/10
PSU shot 55% in a half: vs. Virginia Tech (.714, second half), 12/6/11
PSU shot 60% in a half: vs. Virginia Tech (.714, second half), 12/6/11
PSU shot 65% in a half: vs. Virginia Tech (.714, second half), 12/6/11
PSU shot 70% in a half: vs. Virginia Tech (.714, second half), 12/6/11
PSU shot 55% in both halves: vs. Iowa (.552, first half, .565, second half), 1/26/06
PSU shot below 20% in a half: at Indiana (.231, first half), 2/28/10
PSU shot below 25% in a half: at Texas Tech (.250, second half), 12/3/11

THREE-POINT SHOOTING

Player made every shot from the field (min. 4): at Clemson (5-5, Jessica Brungo), 12/7/02
Player made 4 three-pointers in a half: vs. North Carolina (4, Maggie Lucas), 11/30/11
Player made 5 three-pointers in a half: vs. Bucknell (6, Maggie Lucas), 12/28/10
Player made 6 three-pointers in a half: vs. Bucknell (6, Maggie Lucas), 12/28/10
Player made 5 three-pointers in a game: vs. North Carolina (6, Zhaque Gray; 5, Maggie Lucas), 11/30/11
Player made 6 three-pointers in a game: vs. North Carolina (6, Zhaque Gray), 11/30/11
Player made 7 three-pointers in a game: vs. Hartford (7, Maggie Lucas), 11/27/10
Player made 8 three-pointers in a game: at Minnesota (8, Kelly Mazzante), 12/28/01
Player attempted 10 three-pointers in a game: vs. North Carolina (10, Zhaque Gray), 11/30/11
PSU made 10 three-pointers: vs. North Carolina (14), 11/30/11
PSU did not make a three-pointer: at South Carolina (0-6), 11/20/11
PSU attempted 20 three-pointers: vs. North Carolina (24), 11/30/11
PSU shot 60% 3FG (min. 5 att.): vs. Illinois (12-20, .600), 1/16/11

FREE THROW SHOOTING

Player made every shot from FT line (min. 10): vs. Illinois (Julia Trogele, 12-12), 3/5/11
PSU shot 90% (min. 10 att.): vs. North Carolina (14-24, .929), 11/30/11
PSU shot below 50% (min. 10 att.): vs. Holy Cross (9-20, .450), 11/28/09
PSU made 30 free throws: vs. Pittsburgh (34), 11/11/07
PSU made fewer than five FTs: at Michigan (3), 2/3/11
PSU attempted 40 free throws: vs. Pittsburgh (41), 11/11/07
PSU attempted fewer than 5 FTs: at Michigan (4), 2/3/11

REBOUNDS

Player had 15 rebounds: at South Carolina (15, Talia East), 11/20/11
Player had 20 rebounds: vs. Indiana (20, Nikki Greene), 1/23/11
Two players with double-digit rebs.: vs. Middle Tennessee St. (10, Nikki Greene; 10, Mia Nickson), 11/13/11
Three players had double-digit rebounds: at Indiana (11, Nikki Greene; 10, Meredith Monroe; 11, Julia Trogele), 1/10/10
PSU had 60 rebounds: vs. Indiana (61), 1/23/11
PSU had 50 rebounds: vs. Middle Tennessee State (50), 11/13/11
PSU had 20 or fewer rebounds: vs. Michigan State (20), 1/19/03
OPP had 20 or fewer rebounds: at Indiana (20), 2/13/11
PSU had 20 offensive rebounds: vs. Middle Tennessee State (21), 11/13/11
PSU had 25 offensive rebounds: vs. Indiana (33), 1/23/11

ASSISTS

Player had 10 assists: vs. North Carolina (15, Alex Bentley), 11/30/11
Player had 10 assists/consecutive games: Helen Darling, three games (12 at LaSalle, 12/8/99; 11 vs. Auburn, 12/11/99; 10 vs. Clemson, 12/19/99)
Player had 15 assists: vs. North Carolina (15, Alex Bentley), 11/30/11
PSU had 30 assists: vs. St. Francis (Pa.) (32), 12/2/99
PSU had fewer than 10 assists: vs. Washington State (9), 11/11/11
PSU had fewer than 5 assists: at Michigan State (4), 2/4/10

BLOCKED SHOTS

Player blocked 5 shots: at South Carolina (7, Talia East), 11/20/11
Player blocked 6 shots: at South Carolina (7, Talia East), 11/20/11
PSU blocked 10 shots: vs. Purdue (11), 1/28/10
PSU blocked 0 shots: vs. Purdue, 2/19/09

STEALS

Player had 7 steals: vs. Michigan (7, Brianne O'Rourke), 2/2/06
Player had 8 steals: vs. Fairfield (8, Kelly Mazzante), 12/2/01
PSU had 20 steals: vs. Bucknell (21), 12/28/10

TURNOVERS

PSU committed 25 or more: at Ohio State (27), 2/17/11
PSU committed 25 or more and won: vs. Minnesota (26), 1/13/11
PSU committed 10 or fewer: vs. North Carolina (10), 11/30/11
PSU committed 10 or fewer in consecutive games: vs. Minnesota (9), 1/22/04; at Ohio St. (9), 1/25/04
OPP committed 25 or more: Maine (26), 12/12/10

DOUBLE-DOUBLES

Points & rebounds: vs. DePaul (Julia Trogele; 14 points, 11 rebounds), 3/21/11
Points & rebounds/consecutive games: Nikki Greene (12 points, 10 rebounds vs. Ohio State, 1/30/11; 16 points, 14 rebounds at Illinois, 1/27/11)
Points & rebounds/3 consecutive games: Amanda Brown (19 pts., 17 rebs. at Northwestern, 2/11/07; 14 pts., 10 rebs. vs. Minnesota, 2/15/07; 14 pts., 11 rebs. at Iowa, 2/18/07)
Points & rebounds/4 consecutive games: Angie Potthoff (vs. Northwestern, 1/31/97; at Illinois, 2/2/97; vs. Michigan, 2/7/97; vs. Indiana, 2/9/97; vs. Iowa, 2/16/97; vs. Michigan State, 2/21/97)
Points & rebounds/5 consecutive games: Angie Potthoff (vs. Northwestern, 1/31/97; at Illinois, 2/2/97; vs. Michigan, 2/7/97; vs. Indiana, 2/9/97; vs. Iowa, 2/16/97; vs. Michigan State, 2/21/97)
Points & assists: vs. North Carolina (Alex Bentley; 15 points, 15 assists), 11/30/11
Points & assists/consecutive games: Helen Darling (12 points, 12 assists at La Salle, 12/8/99; 10 points, 11 assists vs. Auburn, 12/11/99)
Two plys. w/double-doubles: at Illinois (Nikki Greene, 16 pts., 14 rebs.; Julia Trogele, 19 pts., 11 rebs.), 1/27/11
Three players had double-doubles: vs. Coppin State (Brianne O'Rourke, 12 points, 13 assists; Julia Trogele, 12 points, 13 rebounds; Janessa Wolff, 15 points, 10 rebounds), 11/29/08
15 points and 15 rebounds: vs. Indiana (Mia Nickson; 25 points, 17 rebounds), 1/23/11
20 points and 10 rebounds: vs. Indiana (Mia Nickson; 25 points, 17 rebounds), 1/23/11

MARGIN OF VICTORY

PSU won by 20-30 points: vs. UMES (25), 12/11/11
PSU won by 20-30 points in a Big Ten game: vs. Illinois (21), 1/16/11
PSU won by 31-40 points: vs. Virginia Tech (38), 12/6/11
PSU won by 41-50 points: vs. Bucknell (48), 12/28/10
PSU won by 51+ points: vs. Rider (74), 11/14/10
PSU lost by 20-30 points: at Ohio State (22), 2/17/11
PSU lost by 20-30 points in a Big Ten game: at Ohio State (22), 2/17/11
PSU lost by 31+ points: vs. Wisconsin (32), 2/25/10

MISCELLANEOUS

Led PSU in points/rebounds/assists: Tyra Grant vs. Michigan (25 pts., 9 rebs., 4 asst.), 2/18/10
Hit "final seconds" (under 10 seconds) game-winning shot: Julia Trogele at Illinois (9 sec.), 1/27/11
Hit "final minute" game-winning shot: Nikki Greene vs. Indiana (40 seconds remaining), 2/13/11
Player played every minute: at Illinois (Tyra Grant), 12/31/09
Player played more than 40 min.: at Dayton (Alex Bentley, 46; Zhaque Gray, 44; Mia Nickson, 41), 11/12/10
Committed 10 or fewer fouls: vs. Virginia Tech (9), 12/6/11
Committed 30 or more fouls: vs. Iowa State (32), 11/25/11
PSU rallied from a 10-point deficit to win: vs. Middle Tenn. St. (down 10 15:38 2nd half, won 65-49), 11/13/11
PSU rallied from a 15-point deficit to win: at Indiana (down by 16 at 10:02 in 1st half, won 80-77), 2/13/11
PSU had a 5-game winning streak: 5 games, 1/23/11 - 2/6/11
PSU had a 5-game losing streak: 6 games, 1/28/10 - 2/14/10
PSU went undefeated at home: 2004-05 season
PSU sold out the BJC: Purdue, 2/29/04

OVERTIME

PSU played an OT game: at Boston College (L, 113-104), 12/2/10
PSU won an OT game: at Oakland (96-89), 11/18/10
PSU lost an OT game: at Boston College (L, 113-104), 12/2/10
PSU played two or more OT games in a season: 2010-11 season (three)
PSU won two or more OT games in a season: 2010-11 season (two)

RANKINGS

Played the No. 1 team in the AP poll: vs. Connecticut (L, 77-63), 12/14/08
Played the No. 1 team in the Coaches poll: vs. Connecticut (L, 77-63), 12/14/08
Defeated the No. 1 team in the AP poll: at Virginia (73-71), 1/3/91
Defeated Top 10 opponent: vs. #11/10 Duke (86-84), 12/2/07
Defeated Top 10 opponent on the road: at #7 Purdue (47-42), 1/2/04
Defeated Top 10 opponent by double digits: vs. #10 Minnesota (81-68), 1/30/05
Played consecutive Top 10 teams: at #2/3 Texas 11/14/04, at #6/6 Duke 11/19/04
Defeated Top 25 opponent: vs. #14/13 North Carolina (103-84), 11/30/11
Defeated Top 25 opponent on the road: at No. 20/22 Iowa (82-75), 2/6/11
Defeated Top 25 opponent by double digits: vs. #14/13 North Carolina (103-84), 11/30/11



2011-12 GAME-BY-GAME STARTING LINEUPS

Date	Opponent	Pt Guard	Guard	Guard	Forward	Center
11/5	BLOOMSBURG	Bentley	Gray	Lucas	Nickson	Greene
11/11	WASHINGTON ST.	Bentley	Gray	Lucas	Nickson	Greene
11/13	MIDDLE TENNESSEE	Bentley	Gray	Lucas	Nickson	Greene
11/17	at Delaware	Bentley	Gray	Lucas	Edwards	Greene
11/20	at South Carolina	Bentley	Gray	Lucas	Edwards	Greene
11/25	vs. Iowa State	Bentley	Gray	Lucas	Nickson	Greene
11/26	at Nevada	Bentley	Gray	Lucas	Nickson	Greene
11/30	NORTH CAROLINA	Bentley	Gray	Lucas	Edwards	Greene
12/3	at Texas Tech	Bentley	Gray	Lucas	Edwards	Greene
12/6	VIRGINIA TECH	Bentley	Gray	Lucas	Edwards	Greene
12/11	UMES	Bentley	Gray	Lucas	Edwards	Greene

WOLFE RETURNS: After missing the first three games of the season due to concussion-like symptoms, junior post player **Marisa Wolfe** returned to go 2-for-3 from the field and tally four points in the win at South Carolina Nov. 20.

EAST HAULS IN BOARDS: **Talia East** continued her solid play with another career-best rebounding effort at Delaware Thursday. The sophomore center snared a personal-best 11 rebounds for the first double figure rebounding performance of her career. She also added eight rebounds and a pair of blocked shots versus the Blue Hens.

EDWARDS GETS THE NOD: Sophomore **Ariel Edwards** earned her first career start at Delaware Thursday in place of an ailing Mia Nickson. Edwards responded with a solid eight-point, eight-rebound night against the Blue Hens. The eight caroms tie her career high set last year against Hartford in the Caribbean Challenge.

PAIR REACHES 600 POINTS: Senior guard **Zhaque Gray** and sophomore guard **Maggie Lucas** both reached the 600-point plateau for their careers at Delaware Thursday. Gray's 15 points brought her career total to 601, while Lucas' 12 tallies gave her an even 600 markers for her career. Lucas reached 600 points in 38 games, making her the third-fastest player in school history to reach 600 points (Kelly Mazzante and Susan Robinson, 33 games).

LADY LION CLASSIC CROWN: Penn State picked up its 27th regular-season title with wins over Washington State (72-60) and Middle Tennessee (65-49) in the Lady Lion Classic. It is the third regular-season title acquired under Coquese Washington (2006 WBCA Classic, 2009 Dead River Company Classic and 2011 Lady Lion Classic).

LUCAS TABBED TOURNAMENT MVP: Sophomore guard **Maggie Lucas** was selected as the Lady Lion Classic Tournament MVP after averaging 18.0 points, 5.5 rebounds and 3.5 assists in two games. Additionally senior guard **Zhaque Gray** and junior guard **Alex Bentley** were named to the Lady Lion Classic All-Tournament team.

BENTLEY REACHES MILESTONES: Junior guard **Alex Bentley** reached the 900-point plateau with eight tallies against Middle Tennessee Nov. 13. Additionally, Bentley became the 14th player in school history with 300 assists as she dished out four helpers against Washington State Nov. 11.

EAST'S CAREER NIGHT: Sophomore center **Talia East** turned in a career performance in the season-opening win over Washington State. She was a perfect 3-for-3 from the field on the way to a career-high six points. She also hauled in eight rebounds.

2012 RECRUITING CLASS

ESPN/HoopGurlz 34th-ranked recruit Candice Agee signed a National Letter of Intent (NLI) to play of the Lady Lions beginning in the 2012-13 season. The 6-6 center from Silverado High School in Victorville, Calif. signed her NLI in November in a ceremony at her high school. The signing of Agee and addition of transfer Dara Taylor, the Lady Lions have the 18th-ranked recruiting class by Dan Olson's Collegiate Girls Basketball Report.

"We are so excited to have Candice join the Penn State family," Washington said. "She is a very talented player and will complement our current post players in a lot of ways. She adds size, skill and athleticism to our front line, and she has a competitive streak that you love to see. She will definitely be an impact player for us on the court. In addition, she comes from a delightful family and her mom, dad and younger brother will also be wonderful additions to Lady Lion basketball."

Agee is the first commit in the Lady Lions' 2012 recruiting class, averaged 17.0 points, 10.9 rebounds, 7.3 blocks and 2.7 steals per game for the Hawks as a junior. The native of Victorville, Calif. is a highly touted recruit, ranking 34th by ESPN/HoopGurlz, 38th by Collegiate Girls Report, 17th by Blue Star Basketball and 40th by All-Star Girls Report and Peach State. The Hawks finished the season with a 22-6 record with a perfect conference record en route to the Desert Sky title.

Agee is a three-time Desert Sky League first team selection and was the league's Most Valuable Player as a junior. Additionally, she was the Daily Press Girls' Athlete of the Year. Agee begins her senior season with 991 career points, 649 rebounds and 390 blocks. was named to the All-Region first team as a junior. The center plays her AAU ball with West Coast Premier. Agee also plays volleyball at Silverado High School. Agee chose Penn State over Kansas State, Miami, UNLV, UCLA, USC, Tennessee, Vanderbilt, North Carolina, Georgetown, Georgia, Oregon, Oregon State, Washington and Washington State.

LADY LIONS SEASON BESTS

Player	Points	Rebounds	Assists	Blocks	Steals
Alex Bentley	23 (Nevada)	5 (N. Carolina)	15 (N. Carolina)	1 (Delaware)	5 (Nevada)
Talia East	8 (Nevada)	15 (S. Carolina)	1 (2X)	7 (S. Carolina)	2 (Texas Tech)
Ariel Edwards	13 (N. Carolina)	9 (UMES)	3 (2X)	1 (2X)	3 (Texas Tech)
Zhaque Gray	25 (N. Carolina)	6 (Mid. Tenn.)	6 (N. Carolina)	1 (S. Carolina)	2 (3X)
Nikki Greene	14 (Va. Tech)	12 (Wash. St.)	1 (4X)	3 (2X)	3 (2X)
Maggie Lucas	26 (Nevada)	9 (Wash. St.)	5 (2X)	1 (2X)	3 (2X)
Mia Nickson	6 (Wash. St.)	13 (Iowa State)	2 (Iowa State)	1 (Nevada)	1 (2X)
Gizelle Studevent	8 (UMES)	3 (3X)	3 (Nevada)	-	2 (Va. Tech)
Tori Waldner	6 (N. Carolina)	9 (UMES)	1 (3X)	2 (2X)	2 (Nevada)
Marisa Wolfe	7 (N. Carolina)	4 (Texas Tech)	1 (4X)	2 (UMES)	3 (N. Carolina)
Renee Womack	-	-	-	-	-

PSU IN THE POLLS

	AP	Coaches
Preseason	12	14
Nov. 14/15	11	12
Nov. 21/22	17	16
Nov. 28/29	16	15
Dec. 5/6	17	18
Dec. 12/13	16	17



NATIONAL POLLS

ASSOCIATED PRESS (DEC. 12)

No.	Team (1st)	Rec.	Pts.	LW
1.	Baylor (39)	10-0	975	1
2.	Connecticut	9-0	930	2
3.	Notre Dame	9-1	896	3
4.	Stanford	6-1	852	4
5.	Maryland	11-0	803	5
6.	Tennessee	5-2	773	7
7.	Miami (Fla.)	8-1	723	9
8.	Kentucky	10-0	717	10
9.	Duke	7-2	637	6
10.	Texas A&M	7-2	575	8
11.	Rutgers	9-1	560	11
12.	Ohio State	8-0	547	13
13.	Georgia	8-1	480	14
14.	Louisville	8-2	457	15
15.	Texas Tech	8-0	451	16
16.	PENN STATE	8-2	364	17
17.	Georgetown	9-2	316	19
18.	North Carolina	7-1	313	18
19.	UW-Green Bay	8-0	241	21
20.	Vanderbilt	10-0	220	23
21.	Delaware	8-0	209	22
22.	Purdue	7-3	206	12
23.	DePaul	8-2	166	20
24.	Texas	6-2	130	25
25.	Nebraska	9-1	54	NR

Others receiving votes: California 21; Virginia 11; Oklahoma 8; LSU 8; USC 7; Arizona State 4; Arkansas 4; **Northwestern 3**; Tulane 3; Georgia Tech 3; **Michigan 2**; Gonzaga 2; BYU 2; Kansas 1; Florida State 1.

ESPN/USA TODAY TOP 25 (DEC. 13)

No.	Team (1st)	Rec.	Pts.	LW
1.	Baylor (29)	10-0	773	1
2.	Connecticut (2)	9-0	745	2
3.	Notre Dame	9-1	713	3
4.	Stanford	6-1	679	4
5.	Maryland	11-0	639	6
6.	Tennessee	5-2	590	8
7.	Kentucky	10-0	582	10
8.	Miami (Fla.)	8-1	560	9
9.	Duke	7-2	524	5
10.	Texas A&M	7-2	516	7
11.	Rutgers	9-1	463	11
12.	Georgia	8-1	429	12
13.	Louisville	8-2	389	13
14.	Ohio State	8-0	348	15
15.	UW-Green Bay	8-0	321	16
16.	North Carolina	7-1	285	17
17.	PENN STATE	8-2	259	18
18.	Vanderbilt	10-0	255	19
19.	Georgetown	9-2	226	20
20.	Texas Tech	8-0	179	22
21.	DePaul	8-2	148	21
22.	Purdue	7-3	131	14
23.	Delaware	8-0	115	25
24.	Texas	6-2	109	24
25.	Gonzaga	7-2	28	NR

Others receiving votes: **Nebraska 19**; Georgia Tech 16; Kansas 12; **Michigan 6**; California 5; Oklahoma 4; Duquesne 2; Southern California 2; West Virginia 2; Villanova 1.

*Bold type indicates 2011-12 Penn State opponent.

STATISTICAL LEADERS

Check here throughout the season for a breakdown of how many times a player leads Penn State in the following statistical categories. (First number is solo, the second is shared.)

Points	Lucas (5/1), Bentley (2/1), Gray (2)
Rebounds	Greene (1/2), East (2/1), Nickson (1/2), Edwards (1/1), Lucas (1/1), Waldner (-/1)
Assists	Bentley (8/1), Lucas (1), Gray (-/1)
Steals	Bentley (4/2), Greene (1/1), Wolfe (1), Edwards (-/2), Gray (-/1), Lucas (1/2), East (-/1), Studevent (-/1)
Blocks	Greene (2/5), East (2/4), Waldner (-/2), Nickson (-/1), Lucas (-/1), Edwards (-/1), Bentley (-/1)
FG % (min. 4 attempts)	Bentley (1), Gray (2), Edwards (1), East (1/1), Greene (2/1), Studevent (1), Waldner (1)
FT % (min 4 attempts)	Bentley (4/2), Lucas (3/2), Gray (1/1)
3FG % (min. 2 att.)	Bentley (2/1), Lucas (3/1), Gray (3)

PENN STATE VS. THE BIG TEN

Illinois	Overall	27-14	Nebraska	Overall	2-0
	Big Ten Games	20-11		Big Ten Games	0-0
	Big Ten Tournament	4-2		Big Ten Tournament	0-0
	Home	15-2		Home	1-0
	Away	8-10		Away	0-0
	Neutral	4-2		Neutral	1-0
Indiana	Overall	27-9	Northwestern	Overall	29-7
	Big Ten Games	22-8		Big Ten Games	26-6
	Big Ten Tournament	3-1		Big Ten Tournament	2-0
	Home	15-2		Home	16-1
	Away	9-6		Away	11-5
	Neutral	3-1		Neutral	2-1
Iowa	Overall	23-17	Ohio State	Overall	31-21
	Big Ten Games	18-14		Big Ten Games	18-14
	Big Ten Tournament	2-1		Big Ten Tournament	4-5
	Home	13-5		Home	16-6
	Away	7-11		Away	11-9
	Neutral	3-1		Neutral	4-6
Michigan	Overall	26-9	Purdue	Overall	15-25
	Big Ten Games	24-7		Big Ten Games	13-19
	Big Ten Tournament	1-2		Big Ten Tournament	2-3
	Home	13-2		Home	9-8
	Away	12-5		Away	4-14
	Neutral	1-2		Neutral	2-3
Michigan State	Overall	24-11	Wisconsin	Overall	25-10
	Big Ten Games	21-10		Big Ten Games	22-10
	Big Ten Tournament	2-1		Big Ten Tournament	2-0
	Home	14-3		Home	15-2
	Away	8-7		Away	8-8
	Neutral	2-1		Neutral	2-0
Minnesota	Overall	22-11			
	Big Ten Games	20-11			
	Big Ten Tournament	1-0			
	Home	13-3			
	Away	8-8			
	Neutral	1-0			



RECORD BOOK

CAREER SCORING

1. 2,919 Kelly Mazzante, 2001-04
2. 2,253 Susan Robinson, 1989-92
3. 2,044 Tyra Grant, 2007-10
4. 2,025 Kahadeejah Herbert, 1982-85
5. 1,995 Tanisha Wright, 2002-05
6. 1,897 Suzie McConnell, 1985-88
7. 1,725 Angie Potthoff, 1993-97
8. 1,663 Lisa Shepherd, 1998-01
9. 1,619 Andrea Garner, 1997-00
10. 1,538 Tanya Garner, 1988-91
11. 1,514 Vicki Link, 1984-87
12. 1,466 Jess Strom, 2002-05
13. 1,463 Katina Mack, 1992-96
14. 1,428 Jen Bednarek, 1980-83
15. 1,328 Maren Walseth, 1998-01
16. 1,320 Cheryl Ellison, 1980-83
17. 1,295 Kathy Phillips, 1989-92
18. 1,294 Helen Darling, 1997-00
19. 1,288 Carol Walderman, 1981-83
20. 1,280 Louise Leimkuhler, 1980-82
21. 1,240 Tina Nicholson, 1993-96
22. 1,238 Kam Gissendanner, 2006-08
23. 1,233 Amanda Brown, 2004-07
24. 1,186 Bethany Collins, 1985-88
25. 1,162 Lisa Faloon, 1984-87
26. 1,142 Jess Brungo, 2001-04
27. 1,135 Sue Martin, 1976-80
28. 1,106 Missy Masley, 1992-95
29. 1,084 Brianne O'Rourke, 2005-09
30. 1,061 Nancy Kuhl, 1975-79
31. 1,024 Rashana Barnes, 1999-02
32. 1,022 Helen Holloway, 1991-94
33. **1,017 Alex Bentley, 2010-present**

CAREER REBOUNDS

1. 1,103 Kahadeejah Herbert, 1982-85
2. 1,070 Susan Robinson, 1989-92
3. 1,016 Andrea Garner, 1997-00
4. 943 Vicki Link, 1984-87
5. 918 Angie Potthoff, 1993-97
6. 820 Mag Strittmatter, 1975-78
7. 818 Cheryl Ellison, 1980-83
8. 808 Amanda Brown, 2004-07
9. 773 Mary Donovan, 1978-81
10. 757 Bethany Collins, 1985-88
11. 728 Rashana Barnes, 1999-02
12. 721 Missy Masley, 1992-95
13. 719 Louise Leimkuhler, 1980-83
14. 717 Kathy Phillips, 1989-92
15. 690 Julia Trogele, 2008-11
16. 672 Helen Darling, 1997-00
17. 649 Jess Brungo, 2001-04
18. 645 Maren Walseth, 1998-01
19. 621 Tanisha Wright, 2002-05
20. 598 Helen Holloway, 1991-94
21. 595 Sue Martin, 1977-80
22. 583 Kim Calhoun, 1993-96
23. 563 Kelly Mazzante, 2001-04
24. **531 Nikki Greene, 2010-present**
- 531 Lorraine McGirt, 1983-85

CAREER THREE-POINT FIELD GOALS MADE

1. 357 Kelly Mazzante, 2001-04
2. 230 Lisa Shepherd, 1998-01
3. 191 Jess Strom, 2002-05
4. 179 Tyra Grant, 2007-10
5. 175 Tiffany Longworth, 1994-97
6. **135 Maggie Lucas, 2011-present**
7. 124 Tina Nicholson, 1993-96
8. 120 Brianne O'Rourke, 2006-09
9. 118 Tanya Garner, 1988-91
10. **117 Zhaque Gray, 2009-present**
- 117 Jess Brungo, 2001-04

CAREER ASSISTS

1. 1,307* Suzie McConnell, 1984-88
2. 826 Tina Nicholson, 1993-96
3. 791 Helen Darling, 1997-00
4. 776 Jess Strom, 2002-05
5. 632 Annie Troyan, 1981-83
6. 567 Dana Eikenberg, 1989-92
7. 560 Brianne O'Rourke, 2006-09
8. 528 Nancy Kuhl, 1975-79
9. 484 Tanisha Wright, 2002-05
10. 411 Tanya Garner, 1988-91
11. 379 Corinne Gulas, 1980-81
12. **360 Alex Bentley, 2010-present**

CAREER BLOCKS

1. 268 Kim Calhoun, 1993-96
2. 192 Mary Donovan, 1977-81
3. 189 Rashana Barnes, 1999-02
4. 185 Andrea Garner, 1997-00
5. 172 Amanda Brown, 2004-07
6. **143 Nikki Greene, 2010-present**

ANOTHER SEASON-OPENING WIN: The Lady Lions collected their fifth-straight season-opening win under head coach Coquese Washington with a 72-60 come-from-behind win over Washington State Nov. 11. Penn State has started each of Washington's four seasons with at least three wins.

PENN STATE BIG TEN FAVORITES: With 10 returning letterwinners from a team that posted a second place regular-season finish and a runner-up effort in the Big Ten Tournament, the Lady Lions were selected to finish first in the Big Ten Conference in a vote of the league's coaches and media. PSU finished ahead of Purdue and Iowa in the coaches' vote and Purdue and Michigan State in the media poll.

BENTLEY BIG TEN PRESEASON POY: Junior point guard Alex Bentley was selected as the conference's Preseason Player of the Year by both the coaches and the media. She shared the coaches' Preseason Player of the Year with Ohio State's Samantha Prahalis.

AGEE SIGNS NLI: ESPN/HoopGurlz 34th-ranked recruit **Candice Agee** signed a National Letter of Intent (NLI) to play of the Lady Lions beginning in the 2012-13 season. The signing of Agee and addition of transfer **Dara Taylor**, the Lady Lions have the 18th-ranked recruiting class by Dan Olson's Collegiate Girls Basketball Report. Agee is the first commit in the Lady Lions' 2012 recruiting class, averaged 17.0 points, 10.9 rebounds, 7.3 blocks and 2.7 steals per game for the Hawks as a junior. The native of Victorville, Calif. is a highly touted recruit, ranking 34th by ESPN/HoopGurlz, 38th by Collegiate Girls Report, 17th by Blue Star Basketball and 40th by All-Star Girls Report and Peach State. The Hawks finished the season with a 22-6 record with a perfect conference record en route to the Desert Sky title.

LADY LIONS 12TH IN SPORTING NEWS PRESEASON POLL: The Lady Lions are ranked 12th in the "Sporting News" preseason poll and sophomore guard **Maggie Lucas** is a preseason third team All-American, according to the magazine. Penn State is the highest ranked of the three Big Ten teams (Purdue, Michigan State) in the preseason Top 25.

VETERANS RETURN: The Lady Lions return 10 letterwinners and four starters, including All-Big Ten first team selection **Alex Bentley**, Big Ten Freshman of the Year and Sixth Player of the Year **Maggie Lucas** and Big Ten All-Defensive choice **Nikki Greene**.

LIONS ARE 16TH IN ATHLON PRESEASON POLL: In addition to their #12 ranking in the "Sporting News" preseason poll, the Lady Lions are 16th in the "Athlon" preseason rankings. Penn State is the highest ranked of the two Big Ten teams (Ohio State) in the preseason Top 25.

BENTLEY AND LUCAS PARTICIPATE IN USA BASKETBALL TRIALS: Guards **Alex Bentley** and **Maggie Lucas** participated in the 2011 USA Basketball World University Game Trials this past spring. The pair were part of the group of 35 of the nation's top collegiate players that accepted invitations to attend the 2011 USA Basketball Women's World University Games Team Trials. Former Lady Lion standouts Terri Williams-Flournoy and Suzie McConnell-Serio were assistant coaches for the World University Games team.



COURTSIDE WITH COQUESE

Courtside with Coquese, a show that follows the Penn State women's basketball team during the season and takes viewers on an all-access tour of the team. All episodes of Courtside with Coquese can also be viewed online at LadyLions.com. Episodes will also be available on Comcast Video On Demand on Comcast in Pennsylvania on Fridays.

Courtside with Coquese Air Dates

Ep. 1	Fri., 12/23	6:15 p.m.	PBS World
	Fri., 12/23	8:30 p.m.	WPSU
	Sat., 12/24	11 a.m.	WPSU
Ep. 2	Wed., 12/28	10:30 a.m.	BTN
	Thurs., 1/12	6:15 p.m.	PBS World
	Thurs., 1/12	TBA	BTN
Ep. 3	Fri., 1/13	8:30 p.m.	WPSU
	Sat., 1/14	11 a.m.	WPSU
	Thurs., 1/19	6:15 p.m.	PBS World
Ep. 4	Thurs., 1/19	TBA	BTN
	Fri., 1/20	8:30 p.m.	WPSU
	Sat., 1/21	11 a.m.	WPSU
Ep. 5	Thurs., 1/26	6:15 p.m.	PBS World
	Thurs., 1/26	TBA	BTN
	Fri., 1/27	8:30 p.m.	WPSU
Ep. 6	Sat., 1/28	11 a.m.	WPSU
	Thurs., 2/2	6:15 p.m.	PBS World
	Thurs., 2/2	TBA	BTN
Ep. 7	Fri., 2/3	8:30 p.m.	WPSU
	Sat., 2/4	11 a.m.	WPSU
	Thurs., 2/9	6:15 p.m.	PBS World
Ep. 8	Thurs., 2/9	TBA	BTN
	Fri., 2/10	8:30 p.m.	WPSU
	Sat., 2/11	11 a.m.	WPSU
Ep. 9	Thurs., 2/16	6:15 p.m.	PBS World
	Thurs., 2/16	TBA	BTN
	Fri., 2/17	8:30 p.m.	WPSU
Ep. 10	Sat., 2/18	11 a.m.	WPSU
	Thurs., 2/23	6:15 p.m.	PBS World
	Thurs., 2/23	TBA	BTN
Ep. 11	Fri., 2/24	8:30 p.m.	WPSU
	Sat., 2/25	11 a.m.	WPSU
	TBA		

TEAM CAPTAINS: Junior **Mia Nickson** and **Marisa Wolfe** have been selected as the team captains for the 2011-12 Lady Lions. Nickson, who is a team captain for the second consecutive year, accounted for 10.5 points and 6.7 rebounds per game. She was ninth in the Big Ten in rebounding and 14th in free throw percentage (.795). Wolfe earned her first eight collegiate starts last season and finished the year averaging 2.6 points and 2.4 rebounds per game. The junior was outstanding from the free throw line, going 17-for-20 (.850). Wolfe also tallied 12 steals.

WALDNER LONE FRESHMAN: The lone freshman of the Lady Lions' roster this season is rookie post player **Tori Waldner** from Milton, Ga. Waldner earned All-Region 6AAAAA first team honors as a senior at Milton High School and was a 2011 McDonald's All-American nominee. She chipped in 12.0 points and 8.0 rebounds as a senior to lead the Eagles to a 22-5 record and the Elite 8 in the State Championship playoffs in 2011.

TAYLOR TRANSFERS TO PSU: The Lady Lions added 5-7 transfer **Dara Taylor** to the roster during the summer. Taylor, who will sit out the 2011-12 season due to NCAA transfer rules, will have two years of eligibility remaining when she begins competing for the Lady Lions in 2012-13. Taylor comes to Penn State after playing the first two years of her collegiate career at Maryland. As a freshman, she accounted for 5.5 points and 5.0 assists per game. Taylor, who broke the Maryland freshman season record for assists with 171 helpers, finished third in the ACC in assists and sixth in assist-to-turnover ratio (1.2) as a rookie. Last season, Taylor appeared in 32 games and tallied 1.7 points and 2.2 assists per game.

LADY LIONS ON THE TUBE & WEB: The Lady Lions will have at least eight games broadcast nationally on CBS, ESPN2 and the Big Ten Network. Additionally, Penn State will have 11 games streamed on www.btn.com, many of which will be rebroadcast on the Big Ten Network as "Student U" productions. Penn State will appear on CBS against Michigan State (Sat., Jan. 7), on ESPN2 versus Iowa (Sun., Jan. 22), at Michigan State (Jan. 29) and as part of Big Monday against Ohio State (Mon., Feb. 20). The Lions will also appear on the Big Ten Network against North Carolina (Wed., Nov. 30), Michigan (Thurs., Jan. 12), at Northwestern (Sun., Feb. 12) and at Purdue (Thurs., Feb. 16). Penn State also has a chance to be part of the Big Ten Network Wildcard games against Wisconsin (Mon., Jan. 2) and Minnesota (Sun., Feb. 26). Additionally, PSU appeared on SportSouth at South Carolina (Sun., Nov. 20).

COQUESE'S DRIVE A SUCCESS: The fourth annual Coquese's Drive for the Women's Resource Center golf tournament was another great fundraising event. The tournament, held on August 26, 2011, had 118 golfers participate and raised a record \$26,549.25 for the Centre County Women's Resource Center (CCWRC). The record-breaking day also featured a hole in one on #14 by Kim Filkins on her very first swing of the tournament.

2010-11 SEASON AT A GLANCE: There are several highlights for the Lady Lions to look back on following the 2010-11 season, a return to the NCAA Tournament and the most wins since the 2004-05 season. Let's take a look back at the 2010-11 campaign.

TROGELE WRAPS SOLID CAREER: **Julia Trogele** closed out an unsung career with a stellar senior season as she averaged personal bests of 9.3 points, 6.9 rebounds, 2.6 assists and 1.9 steals in 2010-11. She ranked seventh in the Big Ten in rebounding, field goal percentage and free throw percentage on the way to All-Big Ten honorable mention accolades. Trogele, who finished her career with 803 points and 690 rebounds, is fifth on the Lady Lions' all-time free throw shooting chart with an .817 effort from the charity stripe in four seasons. She is also 14th in rebounding average in program history with a 6.1 mark.

LUCAS FROSH ALL-AMERICAN: **Maggie Lucas** capped an outstanding freshman campaign by being named to the *Full Court Press* Freshman All-American second team. She is one of 15 players selected to the Freshman All-American squad and one of only two Big Ten players to earn the honor (Purdue's Courtney Moses – third team).

TEAM TRIPLES RECORDS FALL: Penn State's brilliant season from downtown led to a pair of school records last season. The Lady Lions broke the single-season school record for three-point field goal percentage (.4153), previously held by the 1986-87 team (.4146). Additionally, with 228 threes last year, the Lady Lions tied the single-season record for three-pointers made, equalling the mark set by the 2002-03 squad. The 228 triples are tied for the fourth-most in Big Ten history.

22ND NCAA TOURNAMENT BERTH: The Lady Lions made their 22nd overall NCAA Tournament appearance and first since dropping a first round decision to Liberty in the 2005 tourney. Penn State is one of only 12 teams to earn 22 or more NCAA Tournament berths. The Lady Lions posted a first round win over Dayton before falling to nationally-ranked and third-seeded DePaul in a thrilling second round contest.

LEADING THE NATION FROM DEEP: The Lady Lions led the NCAA in three-point field goal percentage (.415). It is the first time in school history that Penn State has led the country in three-point field goal percentage. It is also the first team statistics title for PSU since leading the NCAA in winning percentage, scoring margin and free throw percentage in 1991.

ALL-BIG TEN HONORS: After posting its best Big Ten campaign since 2003-04, the Lady Lions were rewarded by having four different players be honored with Big Ten postseason awards. Guard **Maggie Lucas** led the selections after winning both the Big Ten Freshman of the Year and Big Ten Sixth Player of the Year. Additionally, sophomore guard **Alex Bentley** garnered first team All-Big Ten honors for the first time in her career, while Lucas was an All-Big Ten choice (second – media; third – coaches) Senior guard/forward **Julia Trogele** and sophomore center **Nikki Greene** were honorable mention choices. Greene was also named to the Big Ten All-Defensive team.





COQUESE WASHINGTON

Head Coach
5th Season

PENN STATE LADY LION BASKETBALL

Coquese Washington, who helped lead Notre Dame to the 2001 NCAA Championship, was introduced as the fifth head coach of the Penn State women's basketball program on April 23, 2007. Washington is the first female African-American head coach in Penn State history.

The Lady Lions returned to the national stage in Washington's fourth year with a second-place finish in the Big Ten regular season standings, a runner-up finish in the Big Ten Tournament and a berth in the NCAA Tournament. Penn State tallied its most victories since the 2003-04 campaign and 23rd 20-win season with a 25-10 overall record and an 11-5 mark in conference play. The Lady Lions worked their way back to the "Big Dance" for the first time since 2004-05 and advanced to the second round for the first time in seven years with a win over Dayton in the first round in front of a raucous Bryce Jordan Center crowd. After a remarkable season in the books and steps toward returning the Lady Lions to national prominence, Washington was selected as the 2011 BCA Female Coach of the Year.

Penn State was a dominating force from the perimeter as the Lady Lions tied the school record with 228 three-pointers and led NCAA Division I from deep with a .415 three-point field goal percentage. Pacing the Lady Lions from downtown was Maggie Lucas, who broke the Big Ten three-pointers record with 112 triples to go along with a .426 shooting percentage. For her efforts, Lucas was selected as the Big Ten Freshman of the Year and Big Ten Sixth Player of the Year while breaking the Penn State freshman season scoring record (552 pts.). Additionally with Washington's guidance, Alex Bentley became the 11th different player in school history to take home first team All-Big Ten accolades after finishing second in the conference in assists. After outstanding seasons, both Lucas and Bentley were invited to the USA Basketball World University Games Trials.

Washington's third season saw the Lady Lions return to the postseason for the first time since 2004-05 with a WNIT berth. The Lions earned their most overall wins (17) and conference wins (8) since the 2004-05 campaign en route to a sixth-place finish in the Big Ten.

Washington led Tyra Grant to back-to-back first team All-Big Ten honors and *Associated Press* Honorable Mention All-America accolades in her senior season. Grant capped off her career by being selected by the Phoenix Mercury in the second round of the WNBA Draft. The four-time all-

conference pick left Penn State third in school history in scoring with 2,044 points. Washington also guided Bentley to third team All-Big Ten honors, as well as a unanimous selection to the Big Ten All-Freshman team.

That year, Washington and the Lady Lions garnered one of the top recruiting classes in the country, finishing 22nd on the ESPN/HoopGurlz recruiting chart. The class included just the second McDonald's High School All-American in Penn State history in Lucas, WBCA High School All-American Ariel Edwards and All-State selection Talia East.

In Washington's second season, the Lady Lions moved up three positions in the Big Ten standings, finishing in a tie for seventh place. Under Washington's guidance in 2008-09, Grant became the 10th different player in school history to earn first team All-Big Ten honors.

The Coquese Washington era started in style as the Lady Lions won their first three games of the season, including a win over #20/21 Pittsburgh, to claim the WBCA Classic title. Just three weeks later, Washington guided the Lady Lions to their first ever win over perennial contender and 10th-ranked Duke in the inaugural Big Ten/ACC Challenge, a game that was televised on ESPN2.

Washington came to Happy Valley after eight seasons as an associate head coach and assistant coach under Muffet McGraw at Notre Dame, her alma mater. During Washington's eight years on the bench, Notre Dame amassed a 188-69 record with eight NCAA Tournament appearances, including four Sweet Sixteen runs and a National Championship in 2001.

Washington was a four-year starting point guard for Notre Dame under McGraw and was the team captain on Notre Dame's first-ever NCAA Tournament team. She was a two-time All-Midwestern Collegiate Conference (MCC) selection and led Notre Dame to three MCC Tournament titles.

The epitome of a student-athlete, Washington graduated from Notre Dame in 1992, a full year ahead of schedule, with a bachelor's degree in history. She went on to attain "Double Domer" status in 1997 after earning her Juris Doctorate from the Notre Dame Law School.

In addition to assisting with the efforts of the WBCA Pink Zone at Penn State to raise money and awareness for breast cancer, Washington created Coquese's Drive for the Women's Resource Center. The first four Coquese's Drives raised more than \$56,869 for the Centre County Women's

THE WASHINGTON FILE

COACHING RESUME

2007-pres. - Head Coach, Penn State University
 2011-pres. - President, NCAA Women's Basketball Issues Committee
 2010-pres. - Treasurer, WBCA Executive Committee
 2008-pres. - Member, WBCA Board of Directors
 2009-pres. - Member, USA Basketball Women's Junior National Committee
 2005-07 - Assoc. Head Coach, Univ. of Notre Dame
 1999-05 - Assistant Coach, Univ. of Notre Dame

PLAYING EXPERIENCE

2002-03 - WNBA's Indiana Fever
 2000-02 - WNBA's Houston Comets
 1998-99 - WNBA's New York Liberty
 1997-98 - ABL's Portland Power
 1989-93 - University of Notre Dame

EDUCATION

Notre Dame '92, B.A. History
 Notre Dame Law School '97, Juris Doctorate

NOTABLE

- ❖ 2011 BCA Female Coach of the Year.
- ❖ Helped guide Notre Dame to the 2001 NCAA Championship.
- ❖ Eight consecutive recruiting classes at Notre Dame ranked in the Top 25 nationally.
- ❖ Notre Dame had four Sweet Sixteen appearances and eight NCAA Tournament berths during Washington's tenure.
- ❖ Point guard for the 2000 WNBA Champion Houston Comets.
- ❖ Founding President, WNBA Players Association, 1999-01.
- ❖ Actively negotiated first two collective bargaining agreements for the WNBPA.
- ❖ Inducted into the Greater Flint Area Sports Hall of Fame in Dec. 2009.

FAMILY

Husband: Raynell Brown
 Children: Quenton (6), Rhaiyna (2)

Resource Center to aid in the fight against domestic violence.

Washington is currently serving on the 29-member WBCA Board of Directors, where she is the Treasurer of the Executive Committee. Washington is also a member of the USA Basketball Women's Junior National Team Selection Committee.

A native of Flint, Mich., Washington and her husband, Raynell Brown, have a son, Quenton (6), and a daughter, Rhaiyna (2). They reside in Port Matilda, Pa.

Washington's Coaching Record vs. Opponents

Arizona 1-0	Delaware 1-1	Holy Cross 1-0	Middle Tennessee 1-0	Ohio State..... 1-6	Texas A&M 0-1
Army 1-0	DePaul 0-1	Illinois 7-3	Minnesota 2-6	Old Dominion..... 0-1	Texas Tech 1-1
Boston College 0-1	Drexel 2-1	Indiana 3-4	Mississippi 1-0	Pittsburgh 2-1	Utah 1-0
Bucknell 4-0	Duke 1-0	Iowa 4-5	Monmouth 1-0	Prairie View A&M 1-0	Virginia Tech 1-0
Buffalo 1-0	Florida State 0-1	Iowa State 1-0	Nevada 1-0	Purdue 1-7	Washington State 1-0
Charlotte 1-0	Georgetown 1-0	Maine 1-0	NJIT 1-0	Rider 1-0	Wisconsin 2-5
Connecticut 0-1	Georgia Tech 0-1	UMES 1-0	North Carolina 1-0	South Carolina..... 4-1	UW-Green Bay 0-1
Coppin State 1-0	Hartford 1-0	Michigan 5-3	Northwestern 5-1	Stony Brook 1-0	Xavier 0-1
Dayton 2-1	Hofstra 0-1	Michigan State 2-5	Oakland 2-0	Syracuse 0-1	





#2 Dara Taylor

Jr. * G * 5-8 * Wilmington, Del./Caraval Acad. (Maryland)

2011-12 Season Notes:

Will sit out the 2011-12 season due to NCAA Transfer policy.

2010-11 (at Maryland):

Had two points, two steals and four assists in the NCAA Tournament game against Georgetown (3/22) ... Registered six points, four steals and four assists in the win over Saint Joseph's (1/2)

... Dished out four assists against La Salle (12/28) ... Notched five dimes against Delaware State (12/19) ... Was 3-for-4 from the field and finished with seven points and three assists in the win over UMBC (12/10) ... Accounted for four assists and four steals at Purdue (12/2) ... Tallied six points, five assists, four rebounds and a steal in the win over East Carolina (11/26) ... Recorded five points and five assists in the victory over Towson (11/18).

2009-10 (at Maryland)

Broke Maryland's freshman season assists record with 171 helpers Recorded more than six assists in 15 of 27 starts ... Finished third in the ACC in assists and sixth in assist-to-turnover ratio (1.2) ... Grabbed career-high eight rebounds in WNIT Second Round win over East Carolina (3/21) ... Contributed 10 points in ACC Tournament win over North Carolina (3/4) ... Netted a career-high 17 points on 7-of-12 shooting against Clemson (2/14) ... Made 7-of-10 free throws to help clinch the win over Wake Forest (2/11) ... Finished the game with nine points and two steals against the Demon Deacons

... Accounted for nine assists at Virginia Tech (1/28) ... Had six points, eight assists and seven rebounds versus Boston College (1/14) ... Notched first career double-double with 10 points and career-high 11 assists at No. 19/21 Virginia (1/11) ... Dished out eight assists versus Saint Joseph's (1/3) ... Notched nine points, eight assists and four rebounds versus UNC-Wilmington (12/29) ... Accounted for 11 points with seven assists in a win over Samford (11/24) ... Chipped in six points, nine assists and five rebounds against Old Dominion (11/19) ... Had 10 points with five assists in win against New Hampshire (11/16).

CAREER HIGHS

Points	17 vs. Clemson (2/14/10)
Rebs.	8 vs. East Carolina (3/21/10)
Assists	11 at American (12/20/09)
	11 at Virginia (1/11/10)
Steals	6 vs. N.C. Central (11/14/09)
Blocks	1 (3x) last at St. Joseph's 1/2/11
Minutes	38 at American (12/20/09)
FGM	7 vs. Clemson (2/14/10)
FGA	14 at N.C. State (1/17/10)
FG%	1.000 (3x)
	last vs. N.C. State (2-2) (2/6/11)
3FGM	2 vs. Samford (1/24/09)
	2 vs. Clemson (2/14/10)
3FGA	5 at Mississippi State (11/22/09)
3PT %	1.000 (1-1) at Longwood (1/31/10)
	1.000 (1-1) vs. Providence (3/25/10)
FTM	7 at Wake Forest (2/11/10)
FTA	10 at Wake Forest (2/11/10)
	10 vs. North Carolina (3/4/10)
FT %	1.000 (7x)
	last vs. Georgetown (2-2) (3/22/11)
Career Double-Doubles	1

HIGH SCHOOL

McDonald's High School All-American ... 52nd-ranked player by ESPN/HoopGurlz out of Caravel Academy ... 2009 Delaware Gatorade Player of the Year ... Two-time All-State selection with a first team berth as a senior and a second team nod as a junior ... 1,192 career points at Caravel Academy ... Averaged 17.8 points, 5.5 assists, 5.0 rebounds and 5.0 steals per game as a senior ... Selected to the Delaware's Finest third team All-Decade (2000-09) team ... Played AAU for the Philly Belles alongside Lady Lion teammate Maggie Lucas.



#5 Talia East

So. * F/C * 6-3 * Philadelphia, Pa./The Friends School

2011-12 Highlights:

- Had arguably the best game of her career, registering in personal bests of 15 rebounds and seven blocks to go along with six points at South Carolina (11/20).
- Her seven blocks at South Carolina are tied for

the third on the PSU single-game charts and are the most for a Lady Lion since Nikki Greene blocked seven shots against Purdue on Jan. 28, 2010.

2011-12 Season Notes:

- Snared five rebounds in eight minutes against UMES (12/11).
- Had a solid night off the bench with six points, three rebounds, a block and a steal in the win over Virginia Tech (12/6).
- Accounted for six points, eight rebounds, a blocked shot and a career-high two steals at #19/25 Texas Tech (12/3).
- Registered a career-best eight points on 4-of-6 shooting to go along with six rebounds in the Nugget Classic Championship game win over Nevada (11/26).
- Turned in her first career double-digit rebounding performance as she hauled in a personal-best 11 caroms at Delaware (11/17). Also equalled her career scoring mark with six points against the Blue Hens.
- Notched two points, six rebounds and a blocked shot in the Lady Lion Classic Championship game win over Middle Tennessee (11/13).
- Had a career night in the season-opening win over Washington State (11/11) with personal bests of six points via a 3-for-3 shooting effort and eight rebounds.
- Tallied four points, five rebounds and two steals in the exhibition win over Bloomsburg (11/5).

CAREER HIGHS

Points	8 at Nevada (11/26/11)
Rebs.	15 at South Carolina (11/20/11)
Assists	1 vs. UMES (12/11/11)
	1 vs. Virginia Tech (12/6/11)
Steals	2 at Texas Tech (12/3/11)
Blocks	7 at South Carolina (11/20/11)
Minutes	29 at South Carolina (11/20/11)
FGM	4 at Nevada (11/26/11)
FGA	6 at Nevada (11/26/11)
	6 at South Carolina (11/20/11)
FG%	1.000 (5x)
	last vs. Washington State (3-3) (11/11/11)
3FGM	n/a
3FGA	n/a
3PT %	n/a
FTM	2 vs. UMES (12/11/11)
	2 at Delaware (11/17/11)
FTA	4 at Nevada (11/26/11)
FT %	1.000 (2-2) vs. UMES (12/11/11)
	1.000 (2-2) at Delaware (11/17/11)
Career Double-Doubles	n/a

GAME-BY-GAME

	P	R	B
WASH. STATE	6	8	2
MID. TENN.	2	6	1
at Delaware	6	11	2
at South Carolina	6	15	7
vs. Iowa State	0	3	0
at Nevada	8	6	0
NORTH CAROLINA	3	4	0
at Texas Tech	6	8	1
VIRGINIA TECH	6	3	1
UMES	2	5	0
WAGNER			
at Bucknell			
NEBRASKA			
at Wisconsin			
MICHIGAN ST.			
MICHIGAN			
at Nebraska			
at Illinois			
IOWA			
at Michigan			
at Michigan State			
INDIANA			
at Minnesota			
WISCONSIN			
at Northwestern			
at Purdue			
OHIO STATE			
MINNESOTA			





#12 Zhaque Gray

Sr. * G * 5-8 * Chicago, Ill./Prep John Hope

2011-12 Highlights:

- Surpassed the 600-point plateau for her career with 15 tallies at Delaware (11/17).
- Named to Lady Lion Classic All-Tournament team after averaging 11.0 points, 5.0 rebounds in two games.

2011-12 Season Notes:

- Chipped in eight points and an assist against UMES (12/11).
- Tallied eight points and three assists at Texas Tech (12/3).
- Notched back-to-back 20-point games for the second time in her career with 25 points, four rebounds and a career-high six assists in the upset win over #14/13 North Carolina (11/30).
- Accounted for 21 points, four rebounds, three assists and two steals in the win at Nevada (11/26).
- Was 5-for-7 from the field, including makes on both of her three-point attempts, en route to 14 points in the win over Iowa State (11/25).
- Had a team-best 15 points to go along with six rebounds and two assists in the Lady Lion Classic title game win over Middle Tennessee (11/13).
- Registered seven points and four rebounds against Washington State (11/11).

CAREER HIGHS

Points.....	27 at Dayton (11/12/10)
Rebs.....	6 at South Carolina (11/22/09)
.....	6 vs. NJIT (11/15/09)
Assists.....	6 vs. North Carolina (11/30/11)
Steals.....	3 vs. Bucknell (12/28/10)
.....	3 vs. Michigan State (12/21/08)
Blocks.....	1 at South Carolina (11/20/11)
.....	1 at Iowa (2/6/11)
Minutes.....	44 at Dayton (11/12/10)
FGM.....	10 at Dayton (11/12/10)
FGA.....	17 at Dayton (11/12/10)
FG%.....	1.000 (3-3) at Indiana (2/13/11)
.....	1.000 (4-4) at Michigan (2/9/09)
3FGM.....	7 at Dayton (11/12/10)
3FGA.....	11 at Dayton (11/12/10)
3PT%.....	1.000 (5x)
.....	last vs. Iowa State (2-2) (11/25/11)
FTM.....	5 at Ohio State (2/17/11)
FTA.....	6 at Ohio State (2/17/11)
FT%.....	1.000 (23x)
.....	last vs. Virginia Tech (4-4) (12/6/11)
Career Double-Doubles.....	n/a

GAME-BY-GAME

	P	R	A
WASH. STATE	7	4	1
MID. TENN.	15	6	2
at Delaware	15	3	4
at South Carolina	6	4	2
vs. Iowa State	14	3	2
at Nevada	21	4	3
NORTH CAROLINA	25	4	6
at Texas Tech	8	2	3
VIRGINIA TECH	6	5	2
UMES	8	0	1
WAGNER			
at Bucknell			
NEBRASKA			
at Wisconsin			
MICHIGAN ST.			
MICHIGAN			
at Nebraska			
at Illinois			
IOWA			
at Michigan			
at Michigan State			
INDIANA			
at Minnesota			
WISCONSIN			
at Northwestern			
at Purdue			
OHIO STATE			
MINNESOTA			



#15 Renee Womack

Sr. * G * 5-10 * Lansdale, Pa./Methacton

CAREER HIGHS

Points.....	10 at Wisconsin (1/2/11)
Rebs.....	8 (2x) last vs. Iowa (12/28/09)
Assists.....	4 vs. Iowa (12/28/09)
Steals.....	4 vs. Bucknell (12/28/10)
Blocks.....	3 vs. Iowa (12/28/09)
Minutes.....	30 vs. Iowa (12/28/09)
FGM.....	4 at Wisconsin (1/2/11)
.....	4 vs. Stony Brook (11/19/08)
FGA.....	8 vs. Army (12/8/10)
.....	8 vs. Stony Brook (11/19/08)
FG%.....	1.000 (8x)
.....	last vs. Illinois (2-2) (3/5/11)
3FGM.....	1 (7x) last at Indiana (2/13/11)
3FGA.....	2 (4x) last at Indiana (2/13/11)
3PT%.....	1.000 (3x)
.....	last vs. Illinois (2-2) (1/16/11)
FTM.....	3 at Dayton (11/12/10)
FTA.....	4 at Ohio State (2/17/11)
.....	4 at Dayton (11/12/10)
FT%.....	1.000 (4x)
.....	last at Iowa (2-2) (2/6/11)
Career Double-Doubles.....	n/a

GAME-BY-GAME

	P	R	A
WASH. STATE	DNP		
MID. TENN.	DNP		
at Delaware	DNP		
at South Carolina	DNP		
vs. Iowa State	DNP		
at Nevada	DNP		
NORTH CAROLINA	DNP		
at Texas Tech	DNP		
VIRGINIA TECH	DNP		
UMES	DNP		
WAGNER			
at Bucknell			
NEBRASKA			
at Wisconsin			
MICHIGAN ST.			
MICHIGAN			
at Nebraska			
at Illinois			
IOWA			
at Michigan			
at Michigan State			
INDIANA			
at Minnesota			
WISCONSIN			
at Northwestern			
at Purdue			
OHIO STATE			
MINNESOTA			





#20 Alex Bentley

Jr. * G * 5-7 * Indianapolis, Ind./Ben Davis

2011-12 Highlights:

- Became the 33rd Lady Lion and 15th junior to score 1,000 career points with 11 tallies against Virginia Tech (12/6).
- On Wade Trophy, Wooden Award and Naimsmith Award watch lists.
- Big Ten Preseason Player of the Year (coaches and media).
- Selected as Nugget Classic Tournament MVP after averaging 18.0 points, 4.5 assists and 4.5 steals in two games.
- Named to Lady Lion Classic All-Tournament team after averaging 15.0 points, 3.0 rebounds, 4.0 assists and 2.5 steals in two games.

2011-12 Season Notes:

- Just missed out on a double-double with 11 points and nine assists in the win over UMES (12/11).
- Paced the Lady Lions with 18 points, three assists and a steal at #19/25 Texas Tech (12/3).
- Posted her first career double-double with 15 points and a personal-best 15 assist in the win over #14/13 North Carolina (11/30).
- Had a solid all-around game with 23 points on 11-of-15 shooting, six assists and a career-best five steals in the win over Nevada (11/26).
- Tallied 13 points to go along with three rebounds, three assists and four steals versus Iowa State (11/25).
- Narrowly missed her first career double-double with a team-best 20 points and a career-high tying nine assists at Delaware (11/17).
- Surpassed the 900-point mark for her career with eight tallies in the win over Middle Tennessee (11/13).
- Accounted for 22 points, four rebounds, four assists and a pair of steals in the win over Washington State (11/11).
- Became the 14th player in school history to record 300 career assists against the Cougars.

CAREER HIGHS

Points.....	28 at Boston College (12/2/10)
Rebs.....	7 vs. Iowa (12/28/09)
Assists.....	15 vs. North Carolina (11/30/11)
Steals.....	5 at Nevada (11/26/11)
Blocks.....	2 (3x) last vs. Drexel (12/21/10)
Minutes.....	46 at Dayton (11/12/10)
FGM.....	12 vs. Dayton (3/19/11)
FGA.....	28 vs. Dayton (3/19/11)
FG%.....	.833 (5-6) at Illinois (12/31/09)
3FGM.....	4 at Purdue (2/14/10)
3FGA.....	6 (3x) last at Purdue (2/14/10)
3PT%.....	1.000 (6x)last vs. Washington State (2-2) (11/11/11)
FTM.....	10 at Northwestern (1/6/11)
FTA.....	12 at Northwestern (1/6/11)
FT%.....	1.000 (22x)last vs. North Carolina (4-4) (11/30/11)
Career Double-Doubles.....	1

GAME-BY-GAME

	P	R	A
WASH. STATE	22	4	4
MID. TENN.	8	2	4
at Delaware	20	3	9
at South Carolina	6	2	3
vs. Iowa State	13	3	3
at Nevada	23	0	6
NORTH CAROLINA	15	5	15
at Texas Tech	18	2	3
VIRGINIA TECH	11	2	5
UMES	11	4	9
WAGNER			
at Bucknell			
NEBRASKA			
at Wisconsin			
MICHIGAN ST.			
MICHIGAN			
at Nebraska			
at Illinois			
IOWA			
at Michigan			
at Michigan State			
INDIANA			
at Minnesota			
WISCONSIN			
at Northwestern			
at Purdue			
OHIO STATE			
MINNESOTA			



#23 Ariel Edwards

So. * G/F * 6-2 * Elmont, N.Y./Christ the King

2011-12 Highlights:

- Accounted for 13 points and career highs of eight rebounds and three assists in the win over #14/13 North Carolina (11/30).
- In her first collegiate start, tallied eight points and equalled her career high with eight rebounds at Delaware (11/17).

2011-12 Season Notes:

- Hauled in a career-high nine rebounds to go along with seven points and three assists in the win over UMES (12/11).
- Registered three points to go along with five rebounds, two assists and a personal-best three steals at #19/25 Texas Tech (12/3).
- Had two points, four rebounds and a pair of steals in the Nugget Classic Championship game win over Nevada (11/26).
- Was 5-for-7 from the field en route to 10 points, seven rebounds and an assist at South Carolina (11/20).
- Scored five of her 10 points in a key Lady Lion run that gave Penn State its first lead of the game against Middle Tennessee (11/13). Also notched a pair of steals against the Blue Raiders.
- Tallied four points and two rebounds in the season-opening win over Washington State (11/11).

CAREER HIGHS

Points.....	16 at Oakland (11/18/10)
Rebs.....	9 vs. UMES (12/11/11)
Assists.....	3 vs. UMES (12/11/11)
.....	3 vs. North Carolina (11/30/11)
Steals.....	3 at Texas Tech (12/3/11)
Blocks.....	2 at Oakland (11/18/10)
Minutes.....	38 at Delaware (11/17/11)
FGM.....	6 vs. North Carolina (11/30/11)
FGA.....	11 (3x) last vs. UMES (12/11/11)
FG%.....	1.000 (3x)last vs. DePaul (1-1) (3/21/11)
3FGM.....	2 vs. Army (12/8/10)
.....	2 vs. Hartford (11/27/10)
3FGA.....	4 vs. Army (12/8/10)
.....	4 vs. Hartford (11/27/10)
3PT %.....	1.000 (3x)last vs. North Carolina (1-1) (11/30/11)
FTM.....	7 at Oakland (11/18/10)
FTA.....	8 at Oakland (11/18/10)
FT %.....	1.000 (5x)last vs. Illinois (2-2) (3/5/11)
Career Double-Doubles.....	n/a

GAME-BY-GAME

	P	R	A
WASH. STATE	4	2	1
MID. TENN.	10	1	1
at Delaware	8	8	0
at South Carolina	10	7	1
vs. Iowa State	0	1	0
at Nevada	2	4	1
NORTH CAROLINA	13	8	3
at Texas Tech	3	5	2
VIRGINIA TECH	3	3	0
UMES	7	9	3
WAGNER			
at Bucknell			
NEBRASKA			
at Wisconsin			
MICHIGAN ST.			
MICHIGAN			
at Nebraska			
at Illinois			
IOWA			
at Michigan			
at Michigan State			
INDIANA			
at Minnesota			
WISCONSIN			
at Northwestern			
at Purdue			
OHIO STATE			
MINNESOTA			





#24 Mia Nickson

RS-Jr. * F * 6-2 * Ashburn, Va./Notre Dame Acad. (BC)

2011-12 Highlights:

- ♦ Hauled in 10 rebounds, including five on the offensive glass against Middle Tennessee (11/13).

2011-12 Season Notes:

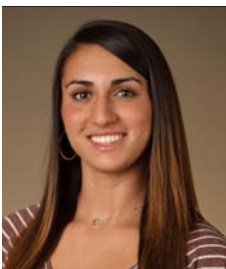
- ♦ Returned after missing two games to pull down a team-best 13 rebounds with five points and two assists against Iowa State (11/25).
- ♦ Had six points and seven rebounds in the win over Washington State (11/13) in the opening round of the Lady Lion Classic.

CAREER HIGHS

Points	26 vs. Texas Tech (12/5/10)
Rebs.	17 vs. Indiana (1/23/11)
Assists	4 vs. Maine (12/12/10)
Steals	6 vs. Indiana (1/23/11)
	6 vs. Bucknell (12/28/10)
Blocks	1 (4x) last at Nevada (11/26/11)
Minutes	41 at Dayton (11/12/10)
FGM	9 vs. Indiana (1/23/11)
FGA	16 vs. Indiana (1/23/11)
FG%	1.000 (4X)
	last vs. Minnesota (5-5) (1/13/11)
3FGM	n/a
3FGA	n/a
3PT %	n/a
FTM	10 vs. Michigan State (2/10/11)
	10 vs. Texas Tech (12/5/10)
FTA	11 vs. Michigan State (2/10/11)
	11 vs. Texas Tech (12/5/10)
FT %	1.000 (12X)
	last vs. Dayton (6-6) (3/19/11)
Career Double-Doubles	6

GAME-BY-GAME

	P	R	A
WASH. STATE	6	7	0
MID. TENN.	3	10	0
at Delaware	DNP		
at South Carolina	DNP		
vs. Iowa State	5	13	2
at Nevada	2	1	0
NORTH CAROLINA	DNP		
at Texas Tech	DNP		
VIRGINIA TECH	DNP		
UMES	DNP		
WAGNER			
at Bucknell			
NEBRASKA			
at Wisconsin			
MICHIGAN ST.			
MICHIGAN			
at Nebraska			
at Illinois			
IOWA			
at Michigan			
at Michigan State			
INDIANA			
at Minnesota			
WISCONSIN			
at Northwestern			
at Purdue			
OHIO STATE			
MINNESOTA			



#25 Gizelle Studevent

Jr. * G * 5-11 * La Jolla, Calif./The Bishop's School

2011-12 Highlights:

- ♦ Hit a pair of key jumpers en route to four points and three rebounds against Middle Tennessee (11/13).

2011-12 Season Notes:

- ♦ Celebrated her 21st birthday with eight points, three rebounds and an assist in 19 minutes of action in the win over UMES (12/11).
- ♦ Tallied two points and two steals in the win over Virginia Tech (12/6).
- ♦ Nabbed a steal at Texas Tech (12/3).
- ♦ Connected on three of her four shots from the field on the way to six points, three rebounds and a career-high three assists at Nevada (11/26).
- ♦ Was 2-for-3 from the field and finished with four points at Delaware (11/17).
- ♦ Notched two points and a rebound against Washington State (11/11).
- ♦ Had four points and two rebounds in the exhibition win over Bloomsburg (11/5).

CAREER HIGHS

Points	10 at Oakland (11/18/10)
Rebs.	3 (7x)
	last vs. UMES (12/11/11)
Assists	3 at Nevada (11/26/11)
Steals	2 vs. Virginia Tech (12/6/11)
	2 vs. Rider (11/14/10)
Blocks	1 (2x) last vs. Minnesota (2/11/10)
Minutes	20 (2x) last vs. Hofstra (3/18/10)
FGM	3 (4X) last vs. UMES (12/11/11)
FGA	8 vs. Monmouth (12/9/09)
FG%	1.000 (3x)
	last at Ohio State (1-1) (2/17/11)
3FGM	1 (4x) last vs. Minnesota (1/13/11)
3FGA	3 vs. Monmouth (12/9/09)
3PT%	1.000 (4x)
	last vs. Minnesota (1-1) (1/13/11)
FTM	3 vs. Maine (12/12/10)
	3 at Oakland (11/18/10)
FTA	4 vs. Maine (12/12/10)
	4 at Oakland (11/18/10)
FT%	1.000 (4x)
	last vs. UMES (2-2) (12/11/11)
Career Double-Doubles	n/a

GAME-BY-GAME

	P	R	A
WASH. STATE	2	1	0
MID. TENN.	4	3	1
at Delaware	4	1	0
at South Carolina	0	1	1
vs. Iowa State	0	0	0
at Nevada	6	3	3
NORTH CAROLINA	0	0	0
at Texas Tech	0	0	0
VIRGINIA TECH	2	0	0
UMES	8	3	1
WAGNER			
at Bucknell			
NEBRASKA			
at Wisconsin			
MICHIGAN ST.			
MICHIGAN			
at Nebraska			
at Illinois			
IOWA			
at Michigan			
at Michigan State			
INDIANA			
at Minnesota			
WISCONSIN			
at Northwestern			
at Purdue			
OHIO STATE			
MINNESOTA			





#33 Maggie Lucas

So. * G * 5-10 * Narberth, Pa./Germantown Academy

2011-12 Highlights:

- On the Naismith Award early-season watch list.
- Sixth on Penn State's career three-pointers list (135).
- Named to the Nugget Classic All-Tournament team after averaging 22.0 points, 6.5 rebounds and 3.0 assists in two wins.
- Selected as Lady Lion Classic MVP after averaging 18.0 points, 5.5 rebounds, 3.5 assists and 1.0 steals in a pair of wins.

2011-12 Season Notes:

- Reached the 20-point mark for the fourth time in five games with 20 tallies and five rebounds in the win over UMES (12/11).
- Had a game-high 20 points on 8-of-16 shooting to go along with eight rebounds and a pair of assists in the win over Virginia Tech (12/6).
- Chipped in 15 points, two assists and three steals at #19/25 Texas Tech (12/3).
- Posted 21 points in 22 minutes, including five three-pointers, in the win over #14/13 North Carolina (11/30).
- Tallied 26 points to go along with seven rebounds and a career-high five assists in the Nugget Classic title game against Nevada (11/26).
- Accounted for a game-high 18 points, including six of Penn State's final nine points, with six rebounds and two steals in the win over Iowa State (11/25).
- Tallied a team-best 18 points with two assists and two rebounds at South Carolina (11/20).
- Reached the 600-point plateau with 12 points to go along with three rebounds and two assists at Delaware (11/17). She reaches 600 points in the third-fewest games in school history (Kelly Mazzante & Susan Robinson; 33 games).
- Connected on a trio of three-pointers en route to 14 points and a career-high five assists in the victory over Middle Tennessee (11/13).
- Tied for team scoring honors with 22 points, including an 11-for-13 effort from the free throw line, in the season-opening win over Washington State (11/11).
- Pulled in a personal-best nine rebounds in the win over the Cougars.

CAREER HIGHS

Points.....	28 at Boston College (12/2/10)
Rebs.	9 vs. Washington State (11/11/11)
Assists	5 at Nevada (11/26/11)
.....	5 vs. Middle Tennessee (11/13/11)
Steals.....	4 (3x) last vs. Iowa (12/30/10)
Blocks	2 vs. Purdue (2/24/11)
Minutes	39 at Delaware (11/17/11)
.....	39 at Boston College (12/2/10)
FGM.....	9 (3x) last at Michigan (2/3/11)
FGA	18 at Boston College (12/2/10)
FG%714 (5-7) at Northwestern (1/6/11)
3FGM.....	7 vs. Hartford (11/27/10)
3FGA	16 at Boston College (12/2/10)
3PT %833 (5-6) at Northwestern (1/6/11)
FTM	11 vs. Washington State (11/11/11)
FTA	13 vs. Washington State (11/11/11)
FT %	1.000 (18x)
.....	last at Texas Tech (4-4) (12/3/11)
Career Double-Doubles	n/a

GAME-BY-GAME

	P	R	A
WASH. STATE	22	9	2
MID. TENN.	14	2	5
at Delaware	12	3	2
at South Carolina	18	2	2
vs. Iowa State	18	6	1
at Nevada	26	7	5
NORTH CAROLINA	21	2	1
at Texas Tech	15	1	2
VIRGINIA TECH	20	8	2
UMES	20	5	1
WAGNER			
at Bucknell			
NEBRASKA			
at Wisconsin			
MICHIGAN ST.			
MICHIGAN			
at Nebraska			
at Illinois			
IOWA			
at Michigan			
at Michigan State			
INDIANA			
at Minnesota			
WISCONSIN			
at Northwestern			
at Purdue			
OHIO STATE			
MINNESOTA			



#40 Marisa Wolfe

Jr. * F * 6-2 * Ford City, Pa./Ford City

2011-12 Season Notes:

- Had two points and three rebounds in the win over Virginia Tech (12/6).
- Drained her fourth career three-pointer and finished the game with seven points, two rebounds and a personal-best three steals versus #14/13 North Carolina (11/30).
- Notched four points with a pair of rebounds and an assist in the win at Nevada (11/26).
- Scored four points to go along with two offensive rebounds and a pair of steals in the win over Iowa State (11/25).
- Was 2-for-3 from the field and finished with four points in her first game of the season at South Carolina (11/20).
- Missed the first three games of the season due to concussion-like symptoms.

CAREER HIGHS

Points.....	13 vs. Michigan (2/18/10)
Rebs.	7 vs. Green Bay (11/26/10)
Assists	1 (12x)
.....	last vs. Virginia Tech (12/6/11)
Steals.....	3 vs. North Carolina (11/30/11)
.....	3 at Northwestern (1/3/10)
Blocks	2 (4x)
.....	last at Northwestern (1/6/11)
Minutes	30 vs. Green Bay (11/26/10)
FGM.....	5 vs. Michigan (2/18/10)
.....	5 at Northwestern (1/3/10)
FGA	8 vs. North Carolina (11/30/11)
FG%	1.000 (8x)
.....	last vs. Virginia Tech (1-1) (12/6/11)
3FGM.....	2 vs. Illinois (1/24/10)
3FGA	3 vs. Illinois (1/24/10)
3PT%667 (2-3) vs. Illinois (1/24/10)
FTM	4 vs. South Carolina (11/21/10)
FTA	4 (3x)
.....	last vs. Green Bay (11/26/10)
FT%	1.000 (12x)
.....	last at Nevada (2-2) (11/26/11)
Career Double-Doubles	n/a

GAME-BY-GAME

	P	R	A
WASH. STATE	DNP		
MID. TENN.	DNP		
at Delaware	DNP		
at South Carolina	4	0	0
vs. Iowa State	4	2	1
at Nevada	4	2	1
NORTH CAROLINA	7	2	0
at Texas Tech	0	4	0
VIRGINIA TECH	2	3	1
UMES	3	3	1
WAGNER			
at Bucknell			
NEBRASKA			
at Wisconsin			
MICHIGAN ST.			
MICHIGAN			
at Nebraska			
at Illinois			
IOWA			
at Michigan			
at Michigan State			
INDIANA			
at Minnesota			
WISCONSIN			
at Northwestern			
at Purdue			
OHIO STATE			
MINNESOTA			





#44 Tori Waldner

Fr. * F/C * 6-5 * Milton, Ga./Milton

2011-12 Season Notes:

- Pulled in a career-best nine rebounds and made both of her shots from the field en route to four points in the win over UMES (12/11).
- Had five rebounds versus Virginia Tech (12/6).
- Accounted for five points, three rebounds, an assist and a blocked shot at #19/25 Texas Tech (12/3).
- Was 3-for-4 from the field and finished with a career-high six points with two rebounds and two blocked shots in the win over #14/13 North Carolina (11/30).
- Scored her first collegiate points on a 15-footer in the first half en route to five points and a blocked shot in the Nugget Classic win over Iowa State (11/25).
- Saw her first action of the season at Delaware (11/17) and pulled in a pair of rebounds in eight minutes on the court.
- Had three points and a rebound in four minutes of action in the exhibition win over Bloomsburg (11/5).

CAREER HIGHS

Points.....	6 vs. North Carolina (11/30/11)
Rebs.....	9 vs. UMES (12/11/11)
Assists.....	1 (3x)
.....last vs. Virginia Tech (12/6/11)	
Steals.....	2 at Nevada (11/26/11)
Blocks.....	2 vs. UMES (12/11/11)
.....2 vs. North Carolina (11/30/11)	
Minutes.....	21 vs. UMES (12/11/11)
FGM.....	3 vs. North Carolina (11/30/11)
FGA.....	5 at Texas Tech (12/3/11)
FG%.....	1.000 (2-2) vs. UMES (12/11/11)
.....1.000 (2-2) vs. Iowa St. (11/25/11)	
3FGM.....	n/a
3FGA.....	n/a
3PT %.....	n/a
FTM.....	1 at Texas Tech (12/3/11)
.....1 vs. Iowa State (11/25/11)	
FTA.....	2 (2x) last vs. UMES (12/11/11)
FT %.....	.500 (1-2) at Texas Tech (12/3/11)
.....500 (1-2) vs. Iowa State (11/25/11)	
Career Double-Doubles.....	n/a

GAME-BY-GAME

	P	R	B
WASH. STATE ^a	DNP		
at Delaware	0	2	0
at South Carolina	0	0	0
vs. Iowa State	5	1	1
at Nevada	0	3	0
NORTH CAROLINA	6	2	2
at Texas Tech	5	3	1
VIRGINIA TECH	2	5	0
UMES	4	9	2
WAGNER			
at Bucknell			
NEBRASKA			
at Wisconsin			
MICHIGAN ST.			
MICHIGAN			
at Nebraska			
at Illinois			
IOWA			
at Michigan			
at Michigan State			
INDIANA			
at Minnesota			
WISCONSIN			
at Northwestern			
at Purdue			
OHIO STATE			
MINNESOTA			



#54 Nikki Greene

Jr. * C * 6-4 * Diboll, Texas/Diboll

2011-12 Highlights:

- Sixth on Penn State's career blocks list with 143 rejections.
- 25th on Penn State's career rebounding list (527).
- Became the 27th member of the Lady Lions' 500-rebound club with seven caroms against Iowa State (11/25).

2011-12 Season Notes:

- Was a perfect 6-for-6 from the field on the way to 13 points, four rebounds and three blocks in the win over UMES (12/11).
- Tallied 14 points on 6-of-8 shooting with five rebounds, a block and three steals in the win over Virginia Tech (12/6).
- Playing in her home state of Texas for the first time, tallied 11 points, eight rebounds and a block at #19/25 Texas Tech (12/3).
- Accounted for 13 points, six rebounds and three blocked shots in the win over #14/13 North Carolina (11/30).
- Chipped in 11 points and seven rebounds in 16 minutes of action at Nevada (11/26).
- Narrowly missed a double-double with nine points, 10 rebounds and a blocked shot in the Lady Lion Classic Championship game win over Middle Tennessee (11/13).
- Snared a team-best 12 rebounds to go along with three points, two blocks and three steals against Washington State (11/11).

CAREER HIGHS

Points.....	24 vs. Utah (11/25/10)
Rebs.....	20 vs. Indiana (1/23/11)
Assists.....	2 (2x) last vs. Purdue (1/28/10)
Steals.....	4 vs. Maine (12/12/10)
.....4 vs. Hofstra (3/18/10)	
Blocks.....	7 vs. Purdue (1/28/10)
Minutes.....	32 vs. Purdue (1/28/10)
FGM.....	9 vs. Utah (11/25/10)
.....9 at Dayton (11/12/10)	
FGA.....	17 at Dayton (11/12/10)
FG%.....	1.000 (6-6) vs. UMES (12/11/11)
.....1.000 (1-1) at Minnesota (12/6/09)	
3FGM.....	n/a
3FGA.....	n/a
3PT%.....	n/a
FTM.....	8 vs. Pittsburgh (12/12/09)
FTA.....	13 vs. Monmouth (12/9/09)
FT%.....1.000 (10x)
.....last vs. North Carolina (1-1) (11/30/11)	
Career Double-Doubles.....	7

GAME-BY-GAME

	P	R	B
WASH. STATE	3	12	2
MID. TENN.	9	10	1
at Delaware	6	4	0
at South Carolina	5	4	1
vs. Iowa State	7	7	1
at Nevada	11	7	0
NORTH CAROLINA	13	6	3
at Texas Tech	11	8	1
VIRGINIA TECH	14	5	1
UMES	13	4	3
WAGNER			
at Bucknell			
NEBRASKA			
at Wisconsin			
MICHIGAN ST.			
MICHIGAN			
at Nebraska			
at Illinois			
IOWA			
at Michigan			
at Michigan State			
INDIANA			
at Minnesota			
WISCONSIN			
at Northwestern			
at Purdue			
OHIO STATE			
MINNESOTA			



#12/14 Penn State 101, Bloomsburg 81

Exhibition Game * Nov. 5, 2011 * University Park, Pa.

Bloomsburg 81

#	Player	Total			3-Ptr			Rebounds			PF	TP	A	TO	Blk	Stl	Min
		FG-FGA	FG-FGA	FT-FTA	FG-FGA	FG-FGA	FT-FTA	Off	Def	Tot							
03	GALLAGHER, Kelsey	* 8-15	4-5	2-2	1	3	4	1	22	1	4	1	1	1	25		
20	FLANAGAN, Alyssa	* 0-2	0-1	2-4	1	3	4	2	2	6	4	2	1	28			
22	OYENRIDER, Kayla	* 4-11	1-3	5-6	0	3	3	2	14	2	7	1	2	32			
31	ELLIS, Lauren	* 1-2	0-0	0-0	2	7	9	4	2	3	0	0	0	32			
34	WIELER, Dana	* 5-10	3-5	3-4	1	3	4	5	16	0	4	0	0	23			
05	DUDECK, Brianna	* 0-3	0-0	0-0	1	0	1	0	0	0	1	0	0	6			
10	NYCE, Courtney	* 0-3	0-2	0-0	0	1	1	2	0	2	0	0	0	5			
15	NOACK, Catherine	* 6-8	5-6	2-2	2	2	4	0	19	1	2	0	0	26			
30	SIMMONS, Marla	* 2-4	0-1	2-2	1	3	4	1	6	1	2	0	0	11			
32	BORSKI, Maggie	* 0-0	0-0	0-0	0	0	0	0	1	0	0	0	0	11			
Team					1	0	1										
Totals		26-58	13-23	16-20	10	25	35	17	81	15	26	4	4	200			
FG % 1st Half: 11-26		42.3%	2nd half: 15-32	46.9%	Game: 26-58	44.8%	Deadball										
3FG % 1st Half: 7-10		70.0%	2nd half: 6-13	46.2%	Game: 13-23	56.5%	Rebounds										
FT % 1st Half: 6-9		66.7%	2nd half: 10-11	90.9%	Game: 16-20	80.0%	3										

Penn State 101

#	Player	Total			3-Ptr			Rebounds			PF	TP	A	TO	Blk	Stl	Min
		FG-FGA	FG-FGA	FT-FTA	FG-FGA	FG-FGA	FT-FTA	Off	Def	Tot							
12	Gray, Zhaque	* 4-12	1-4	0-0	0	1	1	4	9	0	1	0	2	30			
20	Bentley, Alex	* 7-12	0-2	2-2	2	6	8	2	16	9	2	0	7	30			
24	Nickson, Mia	* 5-9	0-0	4-4	3	1	4	3	14	0	0	1	1	22			
33	Lucas, Maggie	* 10-15	7-8	8-9	0	3	3	2	35	1	0	1	1	35			
54	Greene, Nikki	* 6-8	0-0	0-2	4	3	7	3	12	0	2	0	0	16			
05	East, Talia	* 2-3	0-0	0-0	2	3	5	2	4	0	1	0	2	13			
23	Edwards, Ariel	* 1-10	0-1	2-3	3	3	6	3	4	0	2	0	1	30			
25	Studevent, Gizelle	* 2-8	0-1	0-0	1	1	2	1	4	0	2	0	0	20			
44	Waldner, Tori	* 1-1	0-0	1-1	0	1	1	0	3	0	0	0	0	4			
Team					2	1	3										
Totals		38-78	8-16	17-21	17	23	40	20	101	10	12	1	14	200			
FG % 1st Half: 18-41		43.9%	2nd half: 20-37	54.1%	Game: 38-78	48.7%	Deadball										
3FG % 1st Half: 4-11		36.4%	2nd half: 4-5	80.0%	Game: 8-16	50.0%	Rebounds										
FT % 1st Half: 7-9		77.8%	2nd half: 10-12	83.3%	Game: 17-21	81.0%	2										

Officials: Kevin Pethel, Kathy Ridilla, Shannon Feck
 Technical fouls: Bloomsburg-None, Penn State-None.
 Attendance: 7742

Score by periods	1st	2nd	Total
Bloomsburg	35	46	81
Penn State	47	54	101

Last FG - BLOOM 2nd-01:25, PSU1112 2nd-01:08.
 Largest lead - BLOOM by 5 1st-18:42, PSU1112 by 2 2nd-11:10.

Score tied - 4 times.
 Lead changed - 3 times.

Notable

- Sophomore guard **Maggie Lucas** led the Lady Lions' offensive outburst with 35 points, including a 7-for-8 effort from three-point range.
- Alex Bentley** had an all-around performance with 16 points, eight rebounds, nine assists and seven steals.
- Junior forward **Mia Nickson** also reached double figures with 14 points and four rebounds.

#12/14 Penn State 65, Middle Tennessee State 49

Game #2 * Nov. 13, 2011 * University Park, Pa.

Middle Tennessee 49 • 1-1

#	Player	Total			3-Ptr			Rebounds			PF	TP	A	TO	Blk	Stl	Min
		FG-FGA	FG-FGA	FT-FTA	FG-FGA	FG-FGA	FT-FTA	Off	Def	Tot							
01	Brinkley, Janay	* 0-8	0-3	0-0	1	3	4	1	0	3	0	0	2	24			
13	Elie, Icelyn	* 5-10	1-4	2-2	3	7	10	5	13	0	1	0	3	37			
21	Rowe, Ebony	* 4-12	0-0	4-6	5	8	13	1	12	2	3	1	0	40			
24	Jones, Kortni	* 4-14	3-10	2-2	0	4	4	0	13	3	4	0	0	40			
42	Stewart, KeKe	* 2-7	2-6	1-2	0	3	3	4	7	2	2	3	0	28			
05	Cason, Shanice	* 0-3	0-3	2-2	1	1	2	3	2	1	5	0	1	19			
11	Ajanaku, Jamila	* 1-2	0-1	0-0	1	0	1	1	2	0	1	0	0	5			
23	March, Lauren	* 0-0	0-0	0-0	0	0	0	0	0	0	0	0	0	2			
52	Leonard, Laken	* 0-0	0-0	0-0	0	0	0	2	0	1	0	0	0	5			
Team					1	2	3										
Totals		16-56	6-27	11-14	12	28	40	17	49	12	18	4	6	200			
FG % 1st Half: 10-30		33.3%	2nd half: 6-26	23.1%	Game: 16-56	28.6%	Deadball										
3FG % 1st Half: 3-17		17.6%	2nd half: 3-10	30.0%	Game: 6-27	22.2%	Rebounds										
FT % 1st Half: 9-10		90.0%	2nd half: 2-4	50.0%	Game: 11-14	78.6%	2										

Penn State 65 • 2-0

#	Player	Total			3-Ptr			Rebounds			PF	TP	A	TO	Blk	Stl	Min
		FG-FGA	FG-FGA	FT-FTA	FG-FGA	FG-FGA	FT-FTA	Off	Def	Tot							
12	Gray, Zhaque	* 6-13	2-7	1-1	2	4	6	0	15	2	3	0	0	29			
20	Bentley, Alex	* 2-10	0-3	4-4	1	1	2	2	8	4	3	0	3	35			
24	Nickson, Mia	* 1-6	0-0	1-2	5	5	10	2	3	0	0	0	1	30			
33	Lucas, Maggie	* 4-12	3-9	3-4	1	1	2	2	14	5	3	0	2	35			
54	Greene, Nikki	* 4-9	0-0	1-3	5	5	10	4	9	0	2	1	1	19			
05	East, Talia	* 1-4	0-0	0-1	2	4	6	3	2	0	0	1	1	19			
23	Edwards, Ariel	* 4-10	0-2	2-3	0	1	1	1	10	1	1	0	2	22			
25	Studevent, Gizelle	* 2-5	0-0	0-0	0	3	3	0	4	1	0	0	0	11			
Team					5	5	10										
Totals		24-69	5-21	12-18	21	29	50	14	65	13	12	2	10	200			
FG % 1st Half: 9-33		27.3%	2nd half: 15-36	41.7%	Game: 24-69	34.8%	Deadball										
3FG % 1st Half: 0-10		0.0%	2nd half: 5-11	45.5%	Game: 5-21	23.8%	Rebounds										
FT % 1st Half: 8-11		72.7%	2nd half: 4-7	57.1%	Game: 12-18	66.7%	2										

Officials: Mark Zentz, Jennifer Rezac, Kathy Ridilla
 Technical fouls: Middle Tennessee-None, Penn State-None.
 Attendance: 3238

Score by periods	1st	2nd	Total
Middle Tennessee	32	17	49
Penn State	26	39	65

Last FG - MT 2nd-08:29, PSU 2nd-00:29.
 Largest lead - MT by 10 1st-16:57, PSU by 16 2nd-00:29.

Score tied - 3 times.
 Lead changed - 3 times.

Notable

- The Lady Lions used a 30-6 run, including a 19-0 spurt in the final seven minutes to erase a 10-point second-half deficit.
- The Lady Lions win their 27th regular-season tournament title and third under head coach **Coquese Washington**.
- Junior guard **Alex Bentley** surpassed the 900-point mark for her career with eight points.

#12/14 Penn State 72, Washington 60

Game #1 * Nov. 11, 2011 * University Park, Pa.

Washington State 60 • 0-1

#	Player	Total			3-Ptr			Rebounds			PF	TP	A	TO	Blk	Stl	Min
		FG-FGA	FG-FGA	FT-FTA	FG-FGA	FG-FGA	FT-FTA	Off	Def	Tot							
01	Cook, April	* 1-5	0-1	0-0	0	3	3	2	1	1	1	1	1	18			
03	Adzasu, Rosetta	* 2-6	0-0	0-0	1	2	3	4	5	4	1	1	2	22			
11	Perkins, Jazmine	* 4-17	1-5	0-1	4	9	13	2	9	2	1	0	4	28			
21	Tarnowski, Rosie	* 3-8	1-4	3-3	1	2	3	3	10	0	0	0	1	18			
33	Noyes, Carly	* 3-6	0-0	0-0	3	1	4	4	6	3	2	0	0	27			
02	Amojo, Ireti	* 3-15	2-7	1-2	0	1	1	1	9	1	2	0	0	25			
10	Presley, Tia	* 1-5	0-2	0-0	0	0	0	1	2	4	2	0	0	14			
22	Romberg, Sage	* 5-8	2-2	0-0	2	5	7	4	12	0	1	0	1	15			
23	Dheensaw, Shalie	* 0-1	0-0	0-0	0	2	2	0	0	0	0	0	0	5			
24	Thomas, Brandi	* 1-4	0-2	0-0	3	2	5	1	2	0	2	0	0	13			
42	Potter, Hana	* 2-7	0-0	0-1	3	1	4	4	4	0	2	0	1	15			
Team					2	1	3										
Totals		25-82	6-23	4-7	19	29	48	26	60	16	17	2	9	200			
FG % 1st Half: 17-39		43.6%	2nd half: 8-43	18.6%	Game: 25-82	30.5%	Deadball										
3FG % 1st Half: 1-8		12.5%	2nd half: 5-15	33.3%	Game: 6-23	26.1%	Rebounds										
FT % 1st Half: 3-4		75.0%	2nd half: 1-3	33.3%	Game: 4-7	57.1%	1										

Penn State 72 • 1-0

#	Player	Total			3-Ptr			Rebounds			PF	TP	A	TO	Blk	Stl	Min
		FG-FGA	FG-FGA	FT-FTA	FG-FGA	FG-FGA	FT-FTA	Off	Def	Tot							
12	Gray, Zhaque	* 3-11	1-4	0-1	0	4	4	4	7	1	2	0	1	28			
20	Bentley, Alex	* 7-13	2-2	6-6	0	4	4	3	22	4	8	0	2	36			

#11/12 Penn State 55, South Carolina 50

Game #4 * Nov. 20, 2011 * Columbia, S.C.

Penn State 55 • 3-1

#	Player	Total			3-Ptr			Rebounds			PF	TP	A	TO	Blk	Stl	Min
		FG-FGA	FG-FGA	FT-FTA	Off	Def	Total	Off	Def	Total							
23	Edwards, Ariel	f	5-7	0-1	0-0	1	6	7	3	10	1	4	0	1	31		
54	Greene, Nikki	c	2-4	0-0	1-2	1	3	4	4	5	1	3	1	0	19		
12	Gray, Zhaque	g	1-5	0-1	4-4	0	4	4	2	6	2	1	1	1	38		
20	Bentley, Alex	g	1-4	0-0	4-4	0	2	2	2	6	3	7	0	1	32		
33	Lucas, Maggie	g	7-13	0-4	4-4	0	2	2	2	18	2	2	0	1	38		
05	East, Talia		3-6	0-0	0-0	1	14	15	2	6	0	3	7	1	29		
25	Studevent, Gizelle		0-0	0-0	0-0	0	1	1	0	0	1	2	0	1	5		
40	Wolfe, Marisa		2-3	0-0	0-0	0	0	0	1	4	0	0	0	0	7		
44	Waldner, Tori		0-0	0-0	0-0	0	0	0	0	0	1	0	0	0	1		
Team						2	2	4									
Totals			21-42	0-6	13-14	5	34	39	16	55	10	23	9	6	200		
FG % 1st Half:		11-22	50.0%	2nd half:	10-20	50.0%	Game:		21-42	50.0%	Deadball						
3FG % 1st Half:		0-2	0.0%	2nd half:	0-4	0.0%	Game:		0-6	0.0%	Rebounds						
FT % 1st Half:		4-4	100.0%	2nd half:	9-9	90.0%	Game:		13-14	92.9%	0						

South Carolina 50 • 3-1

#	Player	Total			3-Ptr			Rebounds			PF	TP	A	TO	Blk	Stl	Min
		FG-FGA	FG-FGA	FT-FTA	Off	Def	Total	Off	Def	Total							
02	STEPHENS, Charenee	f	1-3	0-0	2-3	5	3	8	0	4	0	2	0	1	19		
13	WALKER, Ieasia	g	6-20	3-9	0-0	1	3	4	1	15	1	1	0	5	38		
05	GRANT, Markeshia	g	3-12	1-8	0-0	0	0	0	3	7	2	0	0	1	33		
11	SUTTON, LaKeisha	g	2-17	1-4	2-2	2	0	2	1	7	3	2	1	0	30		
22	NEWTON, Courtney	g	0-1	0-1	0-0	0	0	0	1	0	1	0	0	0	10		
01	WILSON, Ebony		0-0	0-0	0-0	0	0	0	2	0	0	0	0	0	1		
20	WHITE, Sancheon		0-4	0-1	1-2	2	0	2	2	1	0	0	0	0	12		
21	BRUNER, Ashley		4-8	0-0	1-3	9	9	18	3	9	2	2	2	1	30		
23	ROY, Tina		2-7	1-6	0-0	0	0	0	0	5	0	0	0	0	7		
24	WELCH, Aleighsa		1-4	0-0	0-0	6	0	6	2	2	0	0	0	1	20		
Team						0	0	0									
Totals			19-76	6-29	6-10	25	15	40	15	50	8	10	3	10	200		
FG % 1st Half:		9-38	23.7%	2nd half:	10-38	26.3%	Game:		19-76	25.0%	Deadball						
3FG % 1st Half:		2-12	16.7%	2nd half:	4-17	23.5%	Game:		6-29	20.7%	Rebounds						
FT % 1st Half:		2-3	66.7%	2nd half:	4-7	57.1%	Game:		6-10	60.0%	2.2						

Officials: Beverly Roberts, Eric Brewton, Felicia Grinter
 Technical fouls: Penn State-None, South Carolina-None.
 Attendance: 2391

Score by periods	1st	2nd	Total
Penn State	26	29	55
South Carolina	22	28	50

Last FG - PSU 2nd-00:23, SC 2nd-05:47.
 Largest lead - PSU by 6 1st-00:50, SC by 8 2nd-06:40.

Score tied - 4 times.
 Lead changed - 14 times.

Notable

- The Lady Lions used a 13-0 run, including the final six tallies coming from **Maggie Lucas**, over the final 5:22 to earn the come-from-behind win.
- Talia East** rejected a career-high seven shots, which ties her for the third-highest single-game total in school history.
- PSU was held without a three-point field goal for the first time since Jan. 7, 2007 (vs. Michigan).

#17/16 Penn State 103, Nevada 65

Game #6 * Nov. 26, 2011 * Reno, Nev.

Penn State 103 • 5-1

#	Player	Total			3-Ptr			Rebounds			PF	TP	A	TO	Blk	Stl	Min
		FG-FGA	FG-FGA	FT-FTA	Off	Def	Total	Off	Def	Total							
12	Gray, Zhaque	*	9-15	1-4	2-3	3	1	4	2	21	3	1	0	2	35		
20	Bentley, Alex	*	11-15	1-2	0-0	0	0	0	2	23	6	1	0	5	29		
24	Nickson, Mia	*	1-3	0-0	0-0	1	0	1	0	2	0	0	1	0	7		
33	Lucas, Maggie	*	9-16	2-4	6-7	1	6	7	3	26	5	4	1	0	35		
54	Greene, Nikki	*	4-9	0-0	3-3	3	4	7	3	11	0	1	0	0	16		
05	East, Talia		4-6	0-0	0-4	3	3	6	1	8	0	1	0	1	14		
23	Edwards, Ariel		1-3	0-0	0-0	0	4	4	1	2	1	2	0	2	22		
25	Studevent, Gizelle		3-4	0-0	1-2	2	3	5	0	6	3	0	0	0	22		
40	Wolfe, Marisa		1-2	0-0	2-2	0	2	2	3	4	1	2	0	0	8		
44	Waldner, Tori		0-2	0-0	0-0	1	2	3	3	0	1	2	0	2	12		
Team						1	4	5									
Totals			43-75	4-10	13-19	14	28	42	18	103	20	14	2	12	200		
FG % 1st Half:		21-40	52.5%	2nd half:	22-35	62.9%	Game:		43-75	57.3%	Deadball						
3FG % 1st Half:		3-7	42.9%	2nd half:	1-3	33.3%	Game:		4-10	40.0%	Rebounds						
FT % 1st Half:		4-7	57.1%	2nd half:	9-12	75.0%	Game:		13-19	68.4%	4.1						

Nevada 65 • 2-3

#	Player	Total			3-Ptr			Rebounds			PF	TP	A	TO	Blk	Stl	Min
		FG-FGA	FG-FGA	FT-FTA	Off	Def	Total	Off	Def	Total							
03	Sharp, Danika	*	5-13	2-3	2-2	1	1	2	2	14	1	3	0	0	28		
21	Kevoeken, Kate	*	3-10	3-7	5-6	0	2	2	1	14	4	2	0	1	30		
23	Johnson, Amanda	*	3-14	0-5	2-2	0	5	5	3	8	4	5	0	1	39		
32	Wideman, Arielle	*	2-7	1-2	0-0	2	0	2	2	5	2	7	0	0	28		
34	Williams, Kayla	*	5-9	0-1	4-4	1	4	5	14	0	3	3	1	0	20		
05	Brennan, Chanelle		0-0	0-0	0-0	2	1	3	1	0	0	2	0	0	11		
12	Lois, Faith		0-0	0-0	0-0	0	0	0	0	0	0	1	0	0	3		
14	Johnson, Aja		1-2	0-0	0-0	2	3	5	0	2	0	1	0	0	8		
24	Burns, Emily		0-2	0-0	0-1	0	1	1	0	0	0	0	0	0	4		
25	Gough, Christina		2-4	2-4	0-0	0	0	0	6	0	0	0	0	0	6		
44	Smith, Amber		0-1	0-1	0-0	0	1	1	0	0	1	0	1	0	6		
55	Mungedi, Mimi		1-2	0-0	0-0	2	0	2	2	2	0	0	0	0	17		
Team						4	1	5									
Totals			22-64	8-23	13-15	14	19	33	17	65	11	25	3	4	200		
FG % 1st Half:		14-34	41.2%	2nd half:	8-30	26.7%	Game:		22-64	34.4%	Deadball						
3FG % 1st Half:		3-9	33.3%	2nd half:	5-14	35.7%	Game:		8-23	34.8%	Rebounds						
FT % 1st Half:		3-5	60.0%	2nd half:	10-10	100.0%	Game:		13-15	86.7%	1.1						

Officials: Kyle Bacon, Shelley Nakasone, Rick Morris
 Technical fouls: Penn State-None, Nevada-None.
 Attendance: 759
 John Ascuaga's Nugget Classic - Championship

Score by periods	1st	2nd	Total
Penn State	49	54	103
Nevada	34	31	65

Last FG - PSU 2nd-01:05, NEVADA 2nd-00:02.
 Largest lead - PSU by 42 2nd-07:06, NEVADA None.

Score tied - 1 time.
 Lead changed - 0 times.

Notable

- The Lady Lions won their 28th regular-season tournament title with the win in the Nugget Classic title game and the second this season (Lady Lion Classic).
- Alex Bentley** was selected as the Tournament MVP and **Maggie Lucas** was named to the All-Tournament team.
- The Lady Lions had three 20-point scorers for the first time since a win at Dayton on Nov. 12, 2010.

#17/16 Penn State 66, Iowa State 59

Game #5 * Nov. 25, 2011 * Reno, Nev.

Iowa State 59 • 3-1

#	Player	Total			3-Ptr			Rebounds			PF	TP	A	TO	Blk	Stl	Min
		FG-FGA	FG-FGA	FT-FTA	Off	Def	Total	Off	Def	Total							
04	Moody, Nikki	*	1-11	1-7	4-6	1	3	4	0	7	1	3	0	0	33		
05	Christofferson, H.	*	1-5	0-4	4-5	3	2	5	3	6	0	3	2	0	23		
10	Marsfield, Lauren	*	2-6	1-3	0-0	0	4	4	3	5	1	2	0	1	34		
32	Schroll, Jessica	*	3-7	0-1	1-2	1	2	3	3	7	2	1	1	1	29		
33	Poppens, Chelsea	*	3-8	0-0	5-13	6	11	17	4	11	1	3	1	1	16		
03	Harris, Kelsey		0-0	0-0	1-2	0	0	0	1	1	1	1	0	0	5		
21	Mays, Kileah		2-4	0-0	1-2	1	3	4	2	5	0	0	1	0	12		
22	Williamson, Brynn		5-10	4-9	1-2	0	2	2	1	15	0	0	1	1	29		
23	Cole, Chassidy		0-1	0-1	2-3	0	0	0	1	2	1	1	0	0	12		
32	Ellis, Fallon		0-1	0-1	0-0	0	1	1	0	0	0	0	0	0	4		
42	Zimmerman, Amanda		0-0	0-0	0-0	0	1	1	0	0	0	1	0	0	3		
Team						1	2	3									
Totals			17-53	6-26	19-35	13	31	44	18	59	7	16	6	4	200		
FG % 1st Half:		7-25	28.0%	2nd half:	10-28	35.7%	Game:		17-53	32.1%	Deadball						
3FG % 1st Half:		2-10	20.0%	2nd half:	4-16	25.0%	Game:		6-26								

#19/25 Texas Tech 70, #16/15 Penn State 66

Game #8 * Dec. 3, 2011 * Lubbock, Texas

Penn State 66 • 6-2

#	Player	Total			3-Ptr			Rebounds			PF	TP	A	TO	Blk	Stl	Min				
		FG	FGA	FT	FTA	Off	Def	Total													
23	Edwards, Ariel	1-5	0-0	1-2	3	2	5	2	3	2	1	1	3	29							
54	Greene, Nikki	2-4	0-0	7-8	3	5	8	4	11	0	2	1	0	20							
12	Gray, Zhaque	3-8	0-2	2-2	0	2	2	1	8	3	2	0	0	33							
20	Bentley, Alex	6-15	1-2	5-6	0	2	2	3	18	3	2	0	1	38							
33	Lucas, Maggie	5-13	1-5	4-4	0	1	1	1	15	2	3	0	3	33							
05	East, Talia	3-5	0-0	0-2	2	6	8	4	6	0	2	1	2	20							
25	Studevent, Gizelle	0-1	0-0	0-0	0	0	0	1	0	0	0	0	1	8							
40	Wolfe, Marisa	0-2	0-0	0-0	2	2	4	3	0	0	0	0	0	7							
44	Waldner, Tori	2-5	0-0	1-2	1	2	3	4	5	1	1	1	0	12							
Team		2-1		3		3		23		66		11		13		4		10		200	

FG % 1st Half: 14-26 53.8% 2nd half: 8-32 25.0% Game: 22-58 37.9% Deadball Rebounds 3
 3FG % 1st Half: 0-2 0.0% 2nd half: 2-7 28.6% Game: 2-9 22.2%
 FT % 1st Half: 8-12 66.7% 2nd half: 12-14 85.7% Game: 20-26 76.9%

TTU 70 • 7-0

#	Player	Total			3-Ptr			Rebounds			PF	TP	A	TO	Blk	Stl	Min		
		FG	FGA	FT	FTA	Off	Def	Total											
20	MALLARD, KIERRA	6-18	2-4	4-4	9	6	15	4	18	3	7	1	3	31					
41	BAKER, KELSI	1-3	0-1	0-2	2	3	5	3	2	1	1	1	0	20					
05	HYDE, CHRISTINE	3-9	0-3	1-3	1	5	6	3	7	2	2	0	1	30					
15	MORRIS, CASEY	4-15	4-10	1-1	2	1	3	1	13	2	1	0	2	37					
23	SMALLS, MONIQUE	3-7	1-2	8-11	2	6	8	2	15	7	0	0	2	38					
00	BROWN, CHYNNIA	1-7	0-3	0-0	0	0	0	2	2	0	3	0	1	11					
01	BARNCASTLE, JORDAN	2-3	2-3	0-0	0	2	2	1	6	1	0	0	0	12					
12	BATTLE, AMBER	0-0	0-0	0-0	0	0	0	0	0	0	0	0	0	2					
24	BOKENKAMP, MARY	0-0	0-0	0-0	0	0	0	0	0	0	0	0	0	2					
33	NOBLES, SHAUNTAL	2-3	0-0	3-5	3	2	5	5	7	0	1	0	0	16					
42	WALKER, EBONY	0-0	0-0	0-0	0	0	0	1	0	0	1	0	0	1					
Team		3-1		4		22		70		16		18		2		9		200	

FG % 1st Half: 10-33 30.3% 2nd half: 12-32 37.5% Game: 22-65 33.8% Deadball Rebounds 7
 3FG % 1st Half: 5-15 33.3% 2nd half: 4-11 36.4% Game: 9-26 34.6%
 FT % 1st Half: 9-15 60.0% 2nd half: 8-11 72.7% Game: 17-26 65.4%

Officials: Tina Napier, Felicia Grinter, Jesse Dickerson
 Technical fouls: Penn State-Edwards, Ariel. TTU-BAKER, KELSI.
 Attendance: 8923

Score by periods	1st	2nd	Total
Penn State	36	30	66
TTU	34	36	70

	In	Off	2nd	Fast	Bench
Points	Paint	T/O	Chance	Break	
PSU	28	20	14	8	11
TTU	20	12	16	6	15

Last FG - PSU 2nd-00:36, TTU 2nd-00:03.
 Largest lead - PSU by 8 1st-09:56, TTU by 7 2nd-03:26.

Score tied - 13 times.
 Lead changed - 17 times.

Notable

- The Lady Lions shot just 25% (8-32) in the second half as the Lady Raiders rallied.
- Jordan Barncastle hit a three-pointer as the shot clock expired with three seconds remaining on the game to seal the win for TTU.
- Penn State falls to 1-1 in Big 12/Big Ten Challenge games.

#17/18 Penn State 66, Virginia Tech 28

Game #9 * Dec. 6, 2011 * University Park, Pa.

Virginia Tech 28 • 2-6

#	Player	Total			3-Ptr			Rebounds			PF	TP	A	TO	Blk	Stl	Min						
		FG	FGA	FT	FTA	Off	Def	Total															
03	Aerial Wilson	4-14	1-2	1-2	1	1	2	3	10	4	6	0	0	38									
21	Alyssa Fenyn	1-5	1-4	0-2	3	4	7	1	3	0	6	2	1	35									
13	Britni Montgomery	0-2	0-0	0-0	0	2	2	4	0	2	0	0	0	13									
31	Monet Tellier	2-11	0-3	0-0	1	0	1	3	4	1	5	1	2	27									
43	Latorri Hines-Allen	2-7	0-0	0-0	3	9	12	4	4	0	1	0	1	28									
02	Kerry Sarver	0-0	0-0	0-0	0	0	0	0	0	0	1	0	0	2									
20	Nia Evans	0-2	0-0	0-0	1	1	2	0	1	0	0	1	1	14									
22	Porschia Hadley	1-6	0-0	0-0	1	3	4	1	2	0	1	2	1	25									
27	Larryqua Hall	2-3	1-2	0-0	0	0	0	0	5	0	1	0	1	16									
33	Kelsey Conyers	0-1	0-1	0-0	0	0	0	1	0	0	0	0	0	2									
Team		1-1		2		10		21		19		28		6		23		5		7		200	

FG % 1st Half: 7-27 25.9% 2nd half: 5-24 20.8% Game: 12-51 23.5% Deadball Rebounds 1.1
 3FG % 1st Half: 1-5 20.0% 2nd half: 2-7 28.6% Game: 3-12 25.0%
 FT % 1st Half: 0-0 0.0% 2nd half: 1-4 25.0% Game: 1-4 25.0%

Penn State 66 • 7-2

#	Player	Total			3-Ptr			Rebounds			PF	TP	A	TO	Blk	Stl	Min												
		FG	FGA	FT	FTA	Off	Def	Total																					
12	Gray, Zhaque	1-4	0-1	4-4	1	4	5	3	6	2	3	0	2	28															
20	Bentley, Alex	4-6	0-0	3-5	0	2	2	1	11	5	1	1	3	31															
23	Edwards, Ariel	1-5	0-2	1-2	0	3	3	0	3	0	1	0	1	34															
33	Lucas, Maggie	8-16	2-5	2-4	1	7	8	0	20	2	2	0	1	35															
54	Greene, Nikki	6-8	0-0	2-8	1	4	5	2	14	1	2	1	3	21															
05	East, Talia	3-5	0-0	0-2	0	3	3	1	6	1	1	1	1	12															
25	Studevent, Gizelle	1-2	0-0	0-0	0	0	0	2	2	0	0	0	0	16															
40	Wolfe, Marisa	1-1	0-0	0-0	1	2	3	0	2	1	2	0	0	12															
44	Waldner, Tori	1-2	0-0	0-0	1	4	5	0	2	1	3	0	1	11															
Team		4-1		5		26		49		9		30		39		9		66		13		15		3		14		200	

FG % 1st Half: 11-28 39.3% 2nd half: 15-21 71.4% Game: 26-49 53.1% Deadball Rebounds 5.1
 3FG % 1st Half: 1-6 16.7% 2nd half: 1-2 50.0% Game: 2-8 25.0%
 FT % 1st Half: 4-8 50.0% 2nd half: 8-17 47.1% Game: 12-25 48.0%

Officials: Lisa Mattingly, Felicia Grinter, Sue Blauch
 Technical fouls: Virginia Tech-None. Penn State-None.
 Attendance: 3236

Score by periods	1st	2nd	Total
Virginia Tech	15	13	28
Penn State	27	39	66

	In	Off	2nd	Fast	Bench
Points	Paint	T/O	Chance	Break	
VT	8	7	3	2	7
PSU	42	27	10	22	12

Last FG - VT 2nd-13:55, PSU 2nd-01:13.
 Largest lead - VT None, PSU by 38 2nd-00:28.

Score tied - 2 times.
 Lead changed - 0 times.

Notable

- The Lady Lions went on a 26-0 run over the final 13 minutes to seal the win.
- Alex Bentley became the 33rd Lady Lion to reach 1,000 career points and the 15th to reach the milestone as a junior.
- The 28 points were the fewest scored by the Hokies in program history, surpassing the 33 points scored against Tennessee during the 1995 campaign.

#17/18 Penn State 76, UMES 51

Game #10 * Dec. 11, 2011 * University Park, Pa.

UMES 51 • 2-5

#	Player	Total			3-Ptr			Rebounds			PF	TP	A	TO	Blk	Stl	Min		
		FG	FGA	FT	FTA	Off	Def	Total											
15	MERCER, Kwinniyata	1-9	0-5	0-0	1	5	6	2	2	3	0	0	1	26					
21	COOK, Amber	4-12	0-1	4-6	5	4	9	0	12	1	6	0	0	28					
23	SANDERS, Chelsee	3-15	0-1	0-2	2	2	4	4	6	0	1	0	0	29					
24	ROACH, Karona	4-11	0-2	0-0	4	1	5	2	8	1	2	1	1	24					
25	STEWART, Shanyce	2-7	0-0	4-4	5	5	10	3	8	1	1	0	3	27					
01	AGBASI, Adobi	4-10	0-0	0-0	0	2	2	5	8	0	0	3	1	22					
03	SWEENEY, Shawnee	0-0	0-0	0-0	0	0	0	0	0	0	0	0	0	4					
04	FINNEY, Sha-Kiyia	2-6	1-5	0-0	0	3	3	1	5	0	0	0	0	15					
12	BRAXTON, Courtney	0-1	0-0	1-2	0	0	0	2	1	2	1	0	1	13					
13	LONG, Jessica	0-1	0-1	1-2	0	0	0	0	1	0	0	0	0	6					
22	BARR, Porsha	0-3	0-0	0-0	0	0	0	0	0	0	0	0	0	4					
35	COLEMAN, Saisha	0-0	0-0	0-0	0	0	0	1	0	0	0	0	0	2					
Team		5-2		7		20		51		8		13		4		7		200	

FG % 1st Half: 13-36 36.1% 2nd half: 7-39 17.9% Game: 20-75 26.7% Deadball Rebounds 4.1
 3FG % 1st Half: 1-6 16.7% 2nd half: 0-9 0.0% Game: 1-15 6.7%
 FT % 1st Half: 3-4 75.0% 2nd half: 7-12 58.3% Game: 10-16 62.5%

Penn State 76 • 8-3

#	Player	Total			3-Ptr			Rebounds			PF	TP	A	TO	Blk	Stl	Min
		FG	FGA	FT	FTA	Off	Def	Total									
12	Gray, Zhaque	2-6	1-2	3-4	0	0	0	4	8	1	0	0	0	22			
20	Bentley, Alex	4-7	0-0	3-4	1	3	4	1	11	9	6	0	0	34			
23	Edwards, Ariel	3-11	0-1	1-2	1	8	9	1	7	3	0	1	1	32			
33	Lucas, Maggie	6-14	3-7	5-6	1	4	5	1	20	1	4	0	3	35			
54	Greene, Nikki	6-6	0-0	1-3	0	4	4	3	13	1	3	3	1	16			
05	East, Talia	0-1	0-0	2-2	1	4	5	0	2	1	0	0	0	8			
25	Studevent, Gizelle	3-7	0-0														

2011-12 RADIO/TV CHART



#2

Dara Taylor

5-8 * Jr./Jr. * G
Wilmington, Del.
Caravel Academy
(Maryland)



#5

Talia East

6-3 * So./So. * F/C
Philadelphia, Pa.
Friends' Central School



#12

Zhaque Gray

5-8 * Sr./Sr. * G
Chicago, Ill.
Prep John Hope



#15

Renee Womack

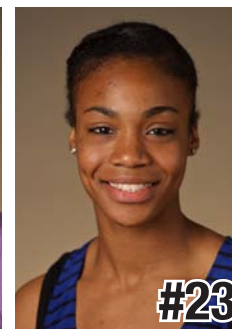
5-10 * Sr./Sr. * G
Lansdale, Pa.
Methacton



#20

Alex Bentley

5-7 * Jr./Jr. * G
Indianapolis, Ind.
Ben Davis



#23

Ariel Edwards

6-2 * So./So. * F
Elmont, N.Y.
Christ the King



#24

Mia Nickson

6-2 * Sr./Jr. * F
Ashburn, Va.
Notre Dame Academy
(Boston College)



#25

Gizelle Studevent

5-11 * Jr./Jr. * G
La Jolla, Calif.
The Bishop's School



#33

Maggie Lucas

5-10 * So./So. * G
Narberth, Pa.
Germantown Academy



#40

Marisa Wolfe

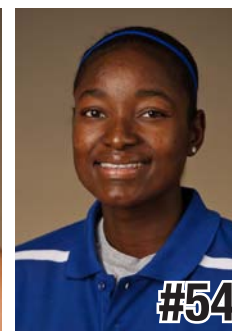
6-2 * Jr./Jr. * F
Ford City, Pa.
Ford City



#44

Tori Waldner

6-5 * Fr./Fr. * F/C
Milton, Ga.
Milton



#54

Nikki Greene

6-4 * Jr./Jr. * F/C
Diboll, Texas
Diboll



HC

Coquese Washington

Head Coach
Notre Dame '92
Fifth Season



AC

Fred Chmiel

Assistant Coach
Excelsior College
Second Season



AC

Kia Damon

Assistant Coach
Millersville '97
Fifth Season



AC

Maren Walseth

Assistant Coach
Penn State '02
Fifth Season



DO

Ethan Gelfand

Director of Basketball
Operations
First Season



VO

Mike Miller

Director of Video &
Technology Operations
Seventh Season





**2011-12 Penn State Lady Lions
Penn State Combined Team Statistics (as of Dec 11, 2011)
All games**



RECORD:	OVERALL	HOME	AWAY	NEUTRAL
ALL GAMES	8-2	5-0	2-2	1-0
CONFERENCE	0-0	0-0	0-0	0-0
NON-CONFERENCE	8-2	5-0	2-2	1-0

##	Player	gp-gs	min	avg	Total		3-Point		F-Throw		Rebounds				pf	dq	a	to	blk	stl	pts	avg		
					fg-fga	fg%	3fg-fga	3fg%	ft-fta	ft%	off	def	tot	avg										
33	Lucas, Maggie	10-10	345	34.5	58-138	.420	23-66	.348	47-58	.810	9	36	45	4.5	20	0	23	27	2	13	186	18.6		
20	Bentley, Alex	10-10	339	33.9	52-113	.460	8-18	.444	35-41	.854	5	22	27	2.7	22	0	61	34	2	24	147	14.7		
12	Gray, Zhaque	10-10	312	31.2	43-98	.439	16-40	.400	23-26	.885	8	27	35	3.5	24	0	22	17	1	10	125	12.5		
54	Greene, Nikki	10-10	180	18.0	34-67	.507	0-0	.000	24-37	.649	24	43	67	6.7	35	0	5	22	13	9	92	9.2		
23	Edwards, Ariel	10-6	281	28.1	26-70	.371	1-10	.100	7-14	.500	12	36	48	4.8	22	1	12	17	2	11	60	6.0		
05	East, Talia	10-0	155	15.5	20-37	.541	0-0	.000	5-15	.333	18	51	69	6.9	22	1	2	11	14	7	45	4.5		
24	Nickson, Mia	4-4	95	23.8	5-24	.208	0-0	.000	6-13	.462	12	19	31	7.8	10	0	2	3	1	2	16	4.0		
40	Wolfe, Marisa	7-0	84	12.0	10-25	.400	1-3	.333	3-6	.500	6	10	16	2.3	16	0	4	5	2	5	24	3.4		
44	Waldner, Tori	8-0	90	11.3	10-18	.556	0-0	.000	2-6	.333	4	21	25	3.1	16	0	3	9	6	4	22	2.8		
25	Studevent, Gizelle	10-0	119	11.9	12-26	.462	0-0	.000	2-2	1.000	4	8	12	1.2	7	0	6	6	0	5	26	2.6		
Team											26	27	53											
Total.....		10	2000	270-616		.438	49-137	.358	154-218	.706	128	300	428	42.8	194	2	140	152	43	90	743	74.3		
Opponents.....		10	2000	208-655		.318	56-215	.260	124-181	.685	172	246	418	41.8	183	4	113	173	36	67	596	59.6		

TEAM STATISTICS	PSU	OPP	Date	Opponent	Score	Att.
SCORING	743	596	11/11/11	WASHINGTON STATE	w 72-60	3807
Points per game	74.3	59.6	11/13/11	MIDDLE TENNESSEE	w 65-49	3238
Scoring margin	+14.7	-	11/17/11	at Delaware	L 71-80	3352
FIELD GOALS-ATT	270-616	208-655	11/20/11	at South Carolina	w 55-50	2391
Field goal pct	.438	.318	11/25/11	vs Iowa State	w 66-59	1089
3 POINT FG-ATT	49-137	56-215	11/26/11	at Nevada	w 103-65	759
3-point FG pct	.358	.260	11/30/11	NORTH CAROLINA	w 103-84	3963
3-pt FG made per game	4.9	5.6	12-03-11	at TTU	L 66-70	8923
FREE THROWS-ATT	154-218	124-181	12/6/11	VIRGINIA TECH	w 66-28	3236
Free throw pct	.706	.685	12/11/11	UMES	w 76-51	3386
F-Throws made per game	15.4	12.4	* - Conference game			
REBOUNDS	428	418				
Rebounds per game	42.8	41.8				
Rebounding margin	+1.0	-				
ASSISTS	140	113				
Assists per game	14.0	11.3				
TURNOVERS	152	173				
Turnovers per game	15.2	17.3				
Turnover margin	+2.1	-				
Assist/turnover ratio	0.9	0.7				
STEALS	90	67				
Steals per game	9.0	6.7				
BLOCKS	43	36				
Blocks per game	4.3	3.6				
ATTENDANCE	17630	16514				
Home games-Avg/Game	5-3526	4-3856				
Neutral site-Avg/Game	-	1-1089				

Score by Periods	1st	2nd	Totals
Penn State	369	374	743
Opponents	316	280	596



**2011-12 Penn State Lady Lions
Penn State Category Leaders (as of Dec 11, 2011)
All games**



Points	G	Pts	Pts/G
Lucas, Maggie	10	186	18.6
Bentley, Alex	10	147	14.7
Gray, Zhaque	10	125	12.5
Greene, Nikki	10	92	9.2
Edwards, Ariel	10	60	6.0
East, Talia	10	45	4.5
Studevent, Gizelle	10	26	2.6
Wolfe, Marisa	7	24	3.4
Waldner, Tori	8	22	2.8
Nickson, Mia	4	16	4.0

FG Percentage	FG	Att	Pct
Waldner, Tori	10	18	.556
East, Talia	20	37	.541
Greene, Nikki	34	67	.507
Studevent, Gizelle	12	26	.462
Bentley, Alex	52	113	.460
Gray, Zhaque	43	98	.439
Lucas, Maggie	58	138	.420
Wolfe, Marisa	10	25	.400
Edwards, Ariel	26	70	.371
Nickson, Mia	5	24	.208

3-Point Percentage	3FG	Att	Pct
Bentley, Alex	8	18	.444
Gray, Zhaque	16	40	.400
Lucas, Maggie	23	66	.348
Wolfe, Marisa	1	3	.333
Edwards, Ariel	1	10	.100

Free Throw Percent	FG	Att	Pct
Studevent, Gizelle	2	2	1.000
Gray, Zhaque	23	26	.885
Bentley, Alex	35	41	.854
Lucas, Maggie	47	58	.810
Greene, Nikki	24	37	.649
Edwards, Ariel	7	14	.500
Wolfe, Marisa	3	6	.500
Nickson, Mia	6	13	.462
Waldner, Tori	2	6	.333
East, Talia	5	15	.333

Scoring Average	G	Pts	Avg/G
Lucas, Maggie	10	186	18.6
Bentley, Alex	10	147	14.7
Gray, Zhaque	10	125	12.5
Greene, Nikki	10	92	9.2
Edwards, Ariel	10	60	6.0
East, Talia	10	45	4.5
Nickson, Mia	4	16	4.0
Wolfe, Marisa	7	24	3.4
Waldner, Tori	8	22	2.8
Studevent, Gizelle	10	26	2.6

Field Goal Attempts	G	Att	Att/G
Lucas, Maggie	10	138	13.8
Bentley, Alex	10	113	11.3
Gray, Zhaque	10	98	9.8
Edwards, Ariel	10	70	7.0
Greene, Nikki	10	67	6.7

Field Goals Made	G	Made	Made/G
Lucas, Maggie	10	58	5.8
Bentley, Alex	10	52	5.2
Gray, Zhaque	10	43	4.3
Greene, Nikki	10	34	3.4
Edwards, Ariel	10	26	2.6

3-Point FG Attempts	G	Att	Att/G
Lucas, Maggie	10	66	6.6
Gray, Zhaque	10	40	4.0
Bentley, Alex	10	18	1.8
Edwards, Ariel	10	10	1.0
Wolfe, Marisa	7	3	0.4

3-Point FG Made	G	Made	Made/G
Lucas, Maggie	10	23	2.3
Gray, Zhaque	10	16	1.6
Bentley, Alex	10	8	0.8
Wolfe, Marisa	7	1	0.1
Edwards, Ariel	10	1	0.1

Free Throw Attempts	G	Att	Att/G
Lucas, Maggie	10	58	5.8
Bentley, Alex	10	41	4.1
Greene, Nikki	10	37	3.7
Gray, Zhaque	10	26	2.6
East, Talia	10	15	1.5

Free Throws Made	G	Made	Made/G
Lucas, Maggie	10	47	4.7
Bentley, Alex	10	35	3.5
Greene, Nikki	10	24	2.4
Gray, Zhaque	10	23	2.3
Edwards, Ariel	10	7	0.7



**2011-12 Penn State Lady Lions
Penn State Category Leaders (as of Dec 11, 2011)
All games**



Rebounds	G	Reb	Reb/G
East, Talia	10	69	6.9
Greene, Nikki	10	67	6.7
Edwards, Ariel	10	48	4.8
Lucas, Maggie	10	45	4.5
Gray, Zhaque	10	35	3.5

Rebound Average	G	Reb	Avg/G
Nickson, Mia	4	31	7.8
East, Talia	10	69	6.9
Greene, Nikki	10	67	6.7
Edwards, Ariel	10	48	4.8
Lucas, Maggie	10	45	4.5

Offensive Rebounds	G	No.	Avg/G
Greene, Nikki	10	24	2.4
East, Talia	10	18	1.8
Nickson, Mia	4	12	3.0
Edwards, Ariel	10	12	1.2
Lucas, Maggie	10	9	0.9

Defensive Rebounds	G	No.	Avg/G
East, Talia	10	51	5.1
Greene, Nikki	10	43	4.3
Edwards, Ariel	10	36	3.6
Lucas, Maggie	10	36	3.6
Gray, Zhaque	10	27	2.7

Fouls	G	No.	Per/G
Greene, Nikki	10	35	3.5
Gray, Zhaque	10	24	2.4
Edwards, Ariel	10	22	2.2
Bentley, Alex	10	22	2.2
East, Talia	10	22	2.2

Foulsouts	G	No.
East, Talia	10	1
Edwards, Ariel	10	1

Assists	G	No.	Ast/G
Bentley, Alex	10	61	6.1
Lucas, Maggie	10	23	2.3
Gray, Zhaque	10	22	2.2
Edwards, Ariel	10	12	1.2
Studevent, Gizelle	10	6	0.6

Steals	G	No.	Stl/G
Bentley, Alex	10	24	2.4
Lucas, Maggie	10	13	1.3
Edwards, Ariel	10	11	1.1
Gray, Zhaque	10	10	1.0
Greene, Nikki	10	9	0.9

Blocked Shots	G	No.	Blk/G
East, Talia	10	14	1.4
Greene, Nikki	10	13	1.3
Waldner, Tori	8	6	0.8
Bentley, Alex	10	2	0.2
Lucas, Maggie	10	2	0.2
Edwards, Ariel	10	2	0.2
Wolfe, Marisa	7	2	0.3

Minutes	G	No.	Min/G
Lucas, Maggie	10	345	34.5
Bentley, Alex	10	339	33.9
Gray, Zhaque	10	312	31.2
Edwards, Ariel	10	281	28.1
Greene, Nikki	10	180	18.0

Turnovers	G	No.	TO/G
Bentley, Alex	10	34	3.4
Lucas, Maggie	10	27	2.7
Greene, Nikki	10	22	2.2
Edwards, Ariel	10	17	1.7
Gray, Zhaque	10	17	1.7