



2011-12 PENN STATE LADY LION BASKETBALL

WOMEN'S BASKETBALL CONTACT:
 Kristina Petersen
 Twitter: @ladylionsid
 Website: www.GoPSUsports.com
 Email: kap18@psu.edu
 Cell: 814-883-4581
 Office: 814-865-1757

Penn State Athletic Communications: 101D Bryce Jordan Center, University Park, PA 16802 ♦ Office: 814-865-1757 ♦ Fax: 814-863-3165

SCHEDULE/RESULTS

NOVEMBER	
Sat. 5	BLOOMSBURG (exh.)..... W, 101-81 Lady Lion Classic (University Park, Pa.)
Fri. 11	WASHINGTON STATE..... 6 p.m.
Sun. 13	MTSU/UNCW (BTN.com).... 12/2 p.m.
Thurs. 17	at Delaware 7 p.m.
Sun. 20	at South Carolina (SportSouth)... 3 p.m. John Ascuaga's Nugget Classic (Reno, Nev.)
Fri. 25	vs. Iowa State..... 6 p.m.
Sat. 26	vs. Butler/Nevada..... 7/9 p.m.

Big Ten/ACC Challenge	
Wed. 30	NORTH CAROLINA (BTN) .. 6:30 p.m.

DECEMBER	
Big 12/Big Ten Challenge	
Sat. 3	at Texas Tech 3 p.m.
Tues. 6	VIRGINIA TECH (BTN.com).... 7 p.m.
Sun. 11	UMES (BTN.com) 2 p.m.
Sun. 18	WAGNER (BTN.com) 1 p.m.
Wed. 21	at Bucknell..... 7 p.m.
Fri. 30	NEBRASKA * (BTN.com) 7 p.m.

JANUARY	
Mon. 2	at Wisconsin * (BTN-WC) 1/3 p.m.
Sat. 7	MICHIGAN STATE * (CBS)..... 2 p.m.
Thurs. 12	MICHIGAN * (BTN) 6 p.m.
Sun. 15	at Nebraska * (BTN.com)..... 3:05 p.m.
Thurs. 19	at Illinois * (BTN.com) 8 p.m.
Sun. 22	IOWA * (ESPN2)..... 3 p.m.
Thurs. 26	at Michigan * (BTN.com)..... 7 p.m.
Sun. 29	at Michigan State * (ESPN2)..... 3 p.m.

FEBRUARY	
Thurs. 2	INDIANA * (BTN.com) 7 p.m.
Sun. 5	at Minnesota * (BTN.com)..... 3 p.m.
Thurs. 9	WISCONSIN * (BTN.com) 7 p.m.
Sun. 12	at Northwestern * (BTN) 1 p.m.
Thurs. 16	at Purdue * (BTN)..... 6 p.m.
Mon. 20	OHIO STATE * (ESPN2)..... 7 p.m.

WBCA Pink Zone at Penn State	
Sun. 26	MINNESOTA * (BTN-WC) ... 12/2/4 p.m.

MARCH	
Thur.-Sun. 1-4	Big Ten Tournament (Indianapolis)
Sat.-Tues. 17-20	NCAA Tourn. 1st & 2nd Round
Sat.-Tues. 24-27	NCAA Tournament Regionals

APRIL	
Sun./Tues. 1/3	NCAA Final Four (Denver, Colo.)

BOLD CAPS indicates home game.

* - indicates Big Ten game.

All times are Eastern Time.

BTN - Big Ten Network

BTN.com - BigTenNetwork.com

Schedule subject to change. Please visit www.GoPSUsports.com

for up-to-date tip times.

Games #1 & 2: #12/14 Penn State at Lady Lion Classic

Fri., Nov. 11 ▶ 6 & 8 p.m. ▶ Sun., Nov. 13 ▶ 12 & 2 p.m. ▶ Bryce Jordan Center ▶ University Park, Pa.

		SETTING THE SCENE
Penn State Lady Lions	Washington State Cougars	Middle Tennessee Blue Raiders
2010-11 Record: 25-10, 11-5 Big Ten Last Game: PSU 101, Bloom 81 (11/5) Head Coach: Coquese Washington Career Record: 66-60 (5th yr.) Record at PSU: 66-60 (5th yr.)	2010-11 Record: 8-23, 6-12 Pac 10 Last Game: WSU 59, Lewis & Clark 53 (11/6) Head Coach: June Daugherty Career Record: 346-303 (23rd yr.)	2010-11 Record: 8-23, 6-12 Pac 10 Last Game: MT 127, Martin Meth. 55 (11/7) Head Coach: Rick Insell Career Record: 148-47 (7th yr.) Series: MT leads 1-0
Statistical Leaders Points Maggie Lucas (15.8) Rebounds Nikki Greene (7.8) Assists Alex Bentley (5.0)	Series: First Meeting Last Meeting: First Meeting Television: None Radio: Penn State Sports Network Webstream: None Live Stats: GoPSUsports.com	UNC-Wilmington Seahawks 2010-11 Record: 8-23, 6-12 Pac 10 Last Game: UNCW 55, Pembroke 26 (11/6) Head Coach: Cynthia Cooper-Dyke Career Record: 109-81 (7th yr.) Series: First Meeting

GAME DAY INFORMATION

OPENERS RECORD

The Lady Lions are 35-12 all-time in season openers, including wins to begin the last five seasons. Penn State has never lost a season-opener under Coquese Washington. Additionally, the Lady Lions are 39-8 all-time in home openers, including a 12-3 mark in the BJC.

TOURNEY HISTORY

Penn State is hosting a tournament for the first time since winning the WBCA Classic to open the 2007-08 campaign. The Lady Lions are 123-49 in regular-season tournament play with 26 titles.

SCOUTING WASHINGTON STATE

The Cougars were 8-23 overall and 6-12 in Pac-10 play a year ago. WSU posted its most conference wins and highest scoring average (63.0 ppg) since the 2000-01 campaign. Leading the list of returnees for the Cougars are all-conference honorable mention selections Jazmine Perkins and Sage Romberg.

ALL-TIME VS. THE COUGARS: This will be the first-ever meeting between the Lady Lions and the Cougars. Penn State is 12-6 all-time against current Pac-12 members.

STORYLINES

- ✓ Penn State is 35-12 all-time in season openers, including a perfect 4-0 under Coquese Washington.
- ✓ The Lady Lions are 123-49 in regular-season tournament play with 26 titles.
- ✓ The Lady Lions made their 22nd overall NCAA Tournament appearance and first since the 2005 tourney. Penn State is one of only 12 teams to earn 22 or more NCAA Tournament berths.
- ✓ Penn State is 12th in Associated Press poll, its highest ranking since the 2003-04 final poll.
- ✓ The Lady Lions are 14th in the ESPN/USA Today Coaches Poll, their highest ranking since the 2003-04 final poll.
- ✓ The Lady Lions were picked to finish first in the Big Ten in a vote of the league's coaches and media.
- ✓ Junior guard **Alex Bentley** was selected as the Big Ten Preseason Player of the Year in a vote of the league's coaches and media.
- ✓ The Lady Lions return 10 letterwinners from a year ago, including 2011 Big Ten Freshman of the Year **Maggie Lucas**.

UP NEXT

The Lady Lions begin a four-game road swing at Delaware on Thursday, before visiting South Carolina (Nov. 20). Penn State topped the Blue Hens last season, 64-55 in the Bryce Jordan Center, led by 16 points from **Maggie Lucas** off of the bench.



2011-12 ROSTER

PENN STATE LADY LIONS

No.	Name	Pos.	Cl./Elg.	Ht.	Hometown/High School (Previous School)
2	Dara Taylor	G	Jr./Jr.#	5-8	Wilmington, Del./Caravel Academy (Maryland)
5	Talia East *	F/C	So./So.	6-3	Philadelphia, Pa./Friends' Central School
12	Zhaque Gray ***	G	Sr./Sr.	5-8	Chicago, Ill./Prep John Hope
15	Renee Womack ***	G	Sr./Sr.	5-10	Lansdale, Pa./Methacton
20	Alex Bentley **	G	Jr./Jr.	5-7	Indianapolis, Ind./Ben Davis
23	Ariel Edwards *	F	So./So.	6-2	Elmont, N.Y./Christ the King
24	Mia Nickson *	F	Sr./Jr.	6-2	Ashburn, Va./Notre Dame Acad. (Boston College)
25	Gizelle Studevent **	G	Jr./Jr.	5-11	La Jolla, Calif./The Bishop's School
33	Maggie Lucas *	G	So./So.	5-10	Narberth, Pa./Germantown Academy
40	Marisa Wolfe **	F	Jr./Jr.	6-2	Ford City, Pa./Ford City
44	Tori Waldner	F	Fr./Fr.	6-5	Milton, Ga./Milton
54	Nikki Greene **	F/C	Jr./Jr.	6-4	Diboll, Texas/Diboll

Head Coach: Coquese Washington (Notre Dame '92)

Assistant Coaches: Fred Chmiel, Kia Damon, Maren Walseth

Captains: Mia Nickson, Marisa Wolfe

* Indicates letters earned # - Taylor will sit out the 2011-12 season due to NCAA transfer rules.

WASHINGTON STATE COUGARS

No.	Name	Pos.	Cl.	Ht.	Hometown/High School (Previous School)
1	April Cook	G	Sr.	5-8	Carson, Calif./Long Beach Poly
2	Ireti Amojó	G	RS-So.	5-10	Berlin, Germany/Coubertin Gymnasium
3	Rosetta Adzasu	G	Sr.	5-5	West Linn, Ore./W. Linn (Yakima Valley C.C.)
4	Katie Grad	G	RS-Jr.	5-8	Lake Tapps, Wash./Auburn-Riverside
10	Tia Presley	G	Fr.	5-8	Spokane, Wash./Gonzaga Prep
11	Jazmine Perkins	G	Sr.	5-10	Berkeley, Calif./Berkeley
12	Jordan Kelley	G	Fr.	5-10	Gillette, Wyo./Campbell County
21	Rosie Tarnowski	G/F	Sr.	6-1	Philadelphia, Pa./Archbishop Wood
22	Sage Romberg	G/F	So.	6-1	McKinleyville, Calif. (McKinleyville)
23	Shalie Dheensaw	F/C	Fr.	6-3	Victoria, B.C./Claremont Secondary
24	Brandi Thomas	G/F	So.	6-1	McCleary, Wash./Elma
33	Carly Noyes	C	Jr.	6-5	Moses Lake, Wash./Moses Lake
42	Hana Potter	F/C	So.	6-2	St. Louis Park, Minn./Hopkins

Head Coach: June Daugherty

Associate Head Coach: Mike Daugherty

Assistant Coaches: Mo Hines, Brian Holsinger

WASHINGTON STATE SERIES HISTORY

Overall:	First Meeting
Last meeting:	n/a
Last result:	n/a
Current streak:	First Meeting

MIDDLE TENNESSEE SERIES HISTORY

Overall:	MT leads 1-0
Last meeting:	Dec. 18, 2005
Last result:	MT, 79-65
Current streak:	MT - 1 win
Last 10:	MT, 1-0
Last 10 meetings:	12/18/05 MT, 79-65

UNC-WILMINGTON SERIES HISTORY

Overall:	First Meeting
Last meeting:	n/a
Last result:	n/a
Current streak:	First Meeting

QUICK FACTS

THE UNIVERSITY

Location: University Park, Pa.
 Founded: 1855
 Enrollment: 42,294
 Colors: Blue & White
 Nickname: Lady Lions
 Conference: Big Ten
 President: Dr. Graham Spanier
 Director of Athletics: Tim Curley
 Senior Woman Administrator: Charmelle Green
 Facility (cap.): Bryce Jordan Center (15,261)
 All-Time Record at BJC: 175-47 (16 seasons)

ATHLETIC COMMUNICATIONS

WBB Contact: Kristina Petersen
 Phone/Fax: (814) 865-1757/(814) 863-3165
 E-mail: kap18@psu.edu
 Address: 101-D Bryce Jordan Center
 University Park, Pa. 16802
 Press Row Phone: 814-863-3294
 Website: www.GoPSUsports.com
 Twitter: @ladylionsid

TEAM INFORMATION

2010-11 Record: 25-10
 Home: 14-4 Away: 7-4 Neutral: 4-2
 Big Ten Record (finish): 11-5 (2nd)
 Home: 6-2 Away: 5-3
 Letterwinners Returning/Lost: 10/1
 Starters Returning/Lost: 4/1
 Big Ten Tournament: Runner-up
 Postseason: NCAA Second Round

THE HISTORY

First Year of Women's Basketball: 1965
 All-Time Record: 805-373 (47 seasons)
 All-Time Big Ten Rec.: 204-110 (19 seasons)
 NCAA Tournament Appearances: 22
 NCAA Tournament Record: 27-22

WOMEN'S BASKETBALL

Head Coach: Coquese Washington
 Alma Mater: Notre Dame '92
 Overall Record: 66-60 (four seasons)
 School Record: 66-60 (four seasons)
 Basketball Office Phone: 814-863-2672
 Best Time To Reach Coach: Through SID
 Assistant Coaches (Alma Mater):
 Fred Chmiel (Excelsior College)
 Kia Damon (Millersville '97)
 Maren Walseth (Penn State '02)
 Twitter: @pennstatewbb
 facebook.com/pennstateladylions

PRONUNCIATIONS

Coquese	ko-KWEES
Chmiel	shuh-MEAL
Maren Walseth	MARR-en WALL-seth
Zhaque	Jacque-QWAY
Gizelle Studevent	juh-ZELL STEW-duh-vent
Talia	tah-LEE-uh
Ariel	AIR-e-I
Dara	DAR-uh





2010-11 STANDINGS (FINAL)

Team	Big Ten			Overall		
	W	L	Pct.	W	L	Pct.
Michigan State	13	3	.812	27	6	.818
PENN STATE	11	5	.688	25	10	.714
Michigan	10	6	.625	17	13	.567
Iowa	10	6	.625	22	9	.710
Ohio State	10	6	.625	24	10	.706
Wisconsin	10	6	.625	16	15	.516
Purdue	9	7	.562	21	12	.636
Northwestern	6	10	.375	19	14	.576
Minnesota	4	12	.250	12	18	.400
Indiana	3	13	.188	9	20	.310
Illinois	2	14	.125	9	23	.281

BIG TEN SCHEDULE

11/11/11

South Carolina at Illinois	6:30 p.m.
Indiana at Central Arkansas	7 p.m.
Michigan at Florida	4:30 p.m.
Villanova vs. Michigan State	1:45 p.m.
Minnesota vs. Arkansas	2 p.m.
Northwestern at Central Michigan	Noon
Washington State at Penn State	6 p.m.
Wisconsin at Milwaukee	8 p.m.

11/12/11

Harvard at Iowa	TBA
Iona/N.C. A&T vs. Michigan State	noon
Minnesota vs. Florida State	2 p.m.
Arkansas-Pine Bluff at Nebraska	TBA

11/13/11

Illinois at Cleveland State	2 p.m.
Butler/UNLV at Iowa	3:30 p.m.
Minnesota vs. South Florida	4:30 p.m.
Tennessee State at Ohio State	2 p.m.
MTSU/Wilmington at Penn State	12/2 p.m.
IUPUI at Purdue	2 p.m.
Oral Roberts at Wisconsin	3 p.m.

All times are Eastern.

PROJECTED STARTERS



12 ZHAQUE GRAY G
Sr., 5-8, Chicago, Ill.
9.5 pts., 2.2 rebs., 1.5 assts., .414 3FG%

Notes: 13th player in school history with 100 career three-pointers (101) ... Ninth on Penn State's single-season three-pointers list with 63 triples a year ago ... Third in the Big Ten in 3-pt. field goal pct. (.414).



20 ALEX BENTLEY G
Jr., 5-7, Indianapolis, Ind.
14.4 ppg, 5.0 apg, 2.0 spg, .446 FG%

Notes: Big Ten Preseason POY ... First team All-Big Ten choice ... Wade Trophy and Wooden Award preseason watch list ... 2nd in Big Ten in assists (5.0) ... Participated in USA Basketball Trials.



33 MAGGIE LUCAS G
So., 5-10, Narberth, Pa.
15.8 ppg, 3.1 rpg, .426 3FG%, .870 FT%

Notes: Big Ten Freshman of the Year ... Broke Big Ten single-season 3s record (112) ... Broke Kelly Mazzante's PSU freshman scoring record (552) ... Participated in USA Basketball Trials.



24 MIA NICKSON F
Jr., 6-2, Ashburn, Va.
10.5 ppg, 6.7 rpg, .521 FG%, .795 FT%

Notes: Second in the Big Ten in field goal percentage (.521) ... Six double-doubles ... Third on the team in scoring (10.5) ... Among Big Ten leaders in rebounding and field goal percentage.



54 NIKKI GREENE C
Jr., 6-4, Diboll, Texas
8.5 ppg, 7.8 rpg, 2.1 bpg, .432 FG%

Notes: All-Big Ten honorable mention selection ... Big Ten All-Defensive team ... Seventh on Penn State's blocked shots list (130) ... Sixth in Big Ten in rebounding (7.8).

OPENERS RECORD: The Lady Lions are 35-12 all-time in season openers, including wins to begin the last five seasons. Penn State has never lost a season-opener under Coquese Washington. Additionally, the Lady Lions are 39-8 all-time in home openers, including a 12-3 mark in the BJC.

TOURNEY HISTORY: Penn State is hosting a tournament for the first time since winning the WBCA Classic to open the 2007-08 campaign. The Lady Lions are 123-49 in regular-season tournament play with 26 titles. The Lady Lions have won a pair of tourney crowns under Coquese Washington in the WBCA Classic and the Dead River Company Classic.

SCOUTING WASHINGTON STATE: The Cougars were 8-23 overall and 6-12 in Pac-10 play a year ago. WSU posted its most conference wins and highest scoring average (63.0 ppg) since the 2000-01 campaign. Leading the list of returnees for the Cougars are all-conference honorable mention selections Jazmine Perkins and Sage Romberg.

ALL-TIME VS. THE COUGARS: This will be the first-ever meeting between the Lady Lions and the Cougars. Penn State is 12-6 all-time against current Pac-12 members, including a 70-58 win over Utah in the Caribbean Challenge last season.

SCOUTING MIDDLE TENNESSEE: The Blue Raiders were 23-8 overall with a 14-2 mark in conference en route to their 14th NCAA Tournament berth. MTSU returns 2011 Sun Belt Freshman of the Year Ebony Rowe, who averaged 17.1 points and 10.1 rebounds per game.

ALL-TIME VS. THE BLUE RAIDERS: Middle Tennessee took home a 79-65 win over the Lady Lions in the Blazer Invitational on Dec. 18, 2005. Adrienne Squire led Penn State with 19 points and five rebounds. The Lady Lions are 3-3 all-time against current Sun Belt members.

SCOUTING UNC-WILMINGTON: The Seahawks posted a school-record 24 victories and made their first postseason appearance in school history a year ago. Sophomore Alisha Andrews is a preseason All-CAA selection after averaging 10.8 points per game and 5.0 assists. Jessica Freeman also returns for the Seahawks after starting in 32 games last year.

ALL-TIME VS. THE SEAHAWKS: This will be the first-ever meeting between the Lady Lions and UNC-Wilmington. Penn State is 18-14 all-time against Colonial Athletic Association schools, including a 1-1 mark last season (defeated Delaware; lost to Drexel).

QUESE AND COOP: If Penn State meets UNC-Wilmington, Lady Lion head coach Coquese Washington will square off against one of her close friends and former WNBA teammate Cynthia Cooper-Dyke, who is now the Seahawks' head coach. The pair combined to lead the Houston Comets to the 200 WNBA Championship. They met once before in head coaching roles when Cooper was at Prairie View A&M, an 80-49 win for the Lions.

WHAT'S AT STAKE

A Penn State vs. WSU Win Would:

- Make Penn State 1-0 on the season.
- Improve the Lady Lions to 36-12 all-time in openers.
- Make PSU 40-8 all-time in home openers.
- Be the sixth-straight season-opening win under Coquese Washington.



2011-12 ROSTER

MIDDLE TENNESSEE BLUE RAIDERS

No.	Name	Pos.	Cl./Elg.	Ht.	Hometown/High School (Previous School)
1	Janay Brinkley	G	So.	5-8	Pasadena, Md./Digital Harbor
5	Shanice Cason	G	Fr.	5-6	Murfreesboro, Tenn./Siegel
11	Jamila Ajanaku	G	Jr.	6-1	Memphis, Tenn./Central
13	Icelyn Elie	F	Jr.	6-1	Lebanon, Tenn./Lebanon
14	Dymon Raynor	C	Jr.	6-3	La Vergne, Tenn./Smyrna
21	Ebony Rowe	F	So.	6-1	Lexington, Ky./Dunbar
23	Lauren March	F	RS-So.	6-2	Lewisburg, Tenn./Marshall County
24	Kortni Jones	G	Jr.	5-9	Oak Ridge, Tenn./Oak Ridge
30	Zantaya Davis	F	Fr.	6-1	Newark, N.J./Malcolm X Shabazz
34	Stephanie Myers	C	RS-Fr.	6-5	La Vergne, Tenn./La Vergne
42	KeKe Stewart	C	So.	6-1	Oak Ridge, Tenn./Oak Ridge
44	Molly McFadden	F	Sr.	6-1	Sparta, Tenn./White County
52	Laken Leonard	G	So.	5-10	Whitleyville, Tenn./Jackson County

Head Coach: Rick Insell

Assistant Coaches: Lynn Burkey, Kim Brewton, Alex Fuller

UNC-WILMINGTON SEAHAWKS

No.	Name	Pos.	Cl.	Ht.	Hometown/High School (Previous School)
2	Tawanna Lee	G	Jr.	5-6	St. Rose, La./Destrehan (Pensacola J.C.)
4	Alisha Andrews	G	So.	5-2	Stone Mountain, Ga./Redan
10	Abria Trice	G/F	So.	6-1	Atlanta, Ga./Dutchtown
13	Jovana Mandic	F/C	Fr.	6-4	Knin, Croatia/The Rock School
22	Brittany Gamby	G	Jr.	5-7	Pickerington, Ohio/Pickerington North
23	Diana Venezia	G	So.	5-10	Westfield, N.J./Westfield
24	Jessica Freeman	G	Jr.	5-6	Charlotte, N.C./West Charlotte
32	Ayoola Weaver	F	Jr.	6-3	Las Vegas, Nev./Cheyenne (Central Ariz. C.C.)
40	Karneshia Garrett	F	Jr.	6-2	Hoover, Ala./Hoover (Pensacola J.C.)
42	Chelsea McGowen	F/C	Jr.	6-2	Cedar Point, N.C./Croatan (Brunswick CC)
44	Theresa Jackson-Henderson	C	Sr.	6-3	Staten Island, N.Y./St. John Villa Academy

Head Coach: Cynthia Cooper-Dyke

Associate Head Coach: Jimmy Garrity

Assistant Coach: Ollin Dunford, Johnetta Hayes

PSU 12TH IN AP POLL: The Penn State Lady Lions are ranked 12th in the Associated Press preseason poll. It is the highest ranking in the AP poll for the Lady Lion since they were fifth in the final 2004 poll. Additionally, it is Penn State's first appearance in the preseason AP poll since the 2003-04 campaign.

LIONS RANKED 14TH IN COACHES POLL: The Lady Lions are ranked 14th in the ESPN/USA Today preseason coaches poll. It is the highest ranking in the ESPN/USA Today Coaches' Poll for the Lady Lion since they were seventh in the final 2004 poll. Additionally, it is Penn State's first appearance in the preseason coaches' poll since starting the 2003-04 campaign eighth.

PENN STATE BIG TEN FAVORITES: With 10 returning letterwinners from a team that posted a second place regular-season finish and a runner-up effort in the Big Ten Tournament, the Lady Lions were selected to finish first in the Big Ten Conference in a vote of the league's coaches and media. PSU finished ahead of Purdue and Iowa in the coaches' vote and Purdue and Michigan State in the media poll.

BENTLEY BIG TEN PRESEASON POY: Junior point guard Alex Bentley was selected as the conference's Preseason Player of the Year by both the coaches and the media. She shared the coaches' Preseason Player of the Year with Ohio State's Samantha Prahalis.

VETERANS RETURN: The Lady Lions return 10 letterwinners and four starters, including All-Big Ten first team selection **Alex Bentley**, Big Ten Freshman of the Year and Sixth Player of the Year **Maggie Lucas** and Big Ten All-Defensive choice **Nikki Greene**.

LADY LIONS 12TH IN SPORTING NEWS PRESEASON POLL: The Lady Lions are ranked 12th in the "Sporting News" preseason poll and sophomore guard **Maggie Lucas** is a preseason third team All-American, according to the magazine. Penn State is the highest ranked of the three Big Ten teams (Purdue, Michigan State) in the preseason Top 25.

LIONS ARE 16TH IN ATHLON PRESEASON POLL: In addition to their #12 ranking in the "Sporting News" preseason poll, the Lady Lions are 16th in the "Athlon" preseason rankings. Penn State is the highest ranked of the two Big Ten teams (Ohio State) in the preseason Top 25.

PENN STATE'S OVERALL/BIG TEN YEAR-BY-YEAR REVIEW

Year	Overall	Big Ten	Home	BT Home	Road	BT Road	Neutral
1992-93	22-6	14-4	12-2	9-0	9-4	5-4	0-0
1993-94	28-3	16-2	14-0	9-0	11-2	7-2	3-1
1994-95	26-5	13-3	14-2	8-0	9-3	5-3	3-0
1995-96*	27-7	13-3	14-2	8-0	8-4	5-3	5-1
1996-97	15-12	8-8	9-3	5-3	5-6	3-5	1-3
1997-98	21-13	8-8	10-5	4-4	6-6	4-4	5-2
1998-99	22-8	12-4	9-2	6-2	9-4	6-2	4-2
1999-00	30-5	15-1	14-0	8-0	9-2	7-1	7-3
2000-01	19-10	11-5	11-2	7-1	6-5	4-4	2-3
2001-02	23-12	11-5	10-4	6-2	9-5	5-3	4-3
2002-03	26-9	13-3	16-0	8-0	7-7	5-3	2-2
2003-04	28-6	15-1	12-1	8-0	9-3	7-1	6-2
2004-05	19-11	13-3	12-0	8-0	6-9	5-3	1-2
2005-06	13-16	6-10	8-6	5-3	3-8	1-7	2-2
2006-07	15-16	7-9	12-1	7-1	2-12	0-7	1-3
2007-08	13-18	4-14	10-6	3-6	3-11	1-8	0-1
2008-09	11-18	6-12	8-6	4-5	2-9	2-7	1-3
2009-10	17-14	8-10	9-6	5-4	5-7	3-6	3-1
2010-11	25-10	11-5	14-4	6-2	7-4	5-3	4-2
2011-12	0-0	0-0	0-0	0-0	0-0	0-0	0-0

* First season at the Bryce Jordan Center



PENN STATE'S RECORD WHEN...

Playing at home	0-0
Playing on the road	0-0
Playing at a neutral site	0-0
vs. Top 10 teams	0-0
vs. Top 25 teams	0-0
Games decided by 3 points or less	0-0
Games decided by 4-10 points	0-0
Games decided by 11-19 points	0-0
Games decided by 20 points or more	0-0
Leading at the half	0-0
Tied at the half	0-0
Trailing at the half	0-0
Leading with 5:00 remaining	0-0
Trailing with 5:00 remaining	0-0
Tied with 5:00 remaining	0-0
In overtime	0-0
PSU scores 40-49 points	0-0
PSU scores 50-59 points	0-0
PSU scores 60-69 points	0-0
PSU scores 70-79 points	0-0
PSU scores 80 points or more	0-0
PSU shoots 45% or better	0-0
PSU shoots less than 45%	0-0
PSU shoots better than opponent	0-0
Opponent shoots better than PSU	0-0
Opponent scores less than 39 points	0-0
Opponent scores 40-49 points	0-0
Opponent scores 50-59 points	0-0
Opponent scores 60-69 points	0-0
Opponent scores more than 70 points	0-0
Opponent shoots better than 45%	0-0
Opponent shoots less than 45%	0-0
PSU outrebounds opponent	0-0
Opponent outrebounds PSU or tied	0-0
PSU commits 14 or less turnovers	0-0
PSU commits 15 or more turnovers	0-0
PSU makes at least 5 3-pointers	0-0
PSU makes four 3-pointers or less	0-0
Recording 7 or more steals	0-0
Recording 6 or less steals	0-0
Wearing white uniforms	0-0
Wearing blue uniforms	0-0
Wearing gray uniforms	0-0
Wearing pink uniforms	0-0
Penn State wins the tip	0-0
Penn State loses the tip	0-0
Penn State scores first	0-0
Opponent scores first	0-0
Playing during the day (before 5 p.m.)	0-0
Playing at night	0-0
On Monday	0-0
On Tuesday	0-0
On Wednesday	0-0
On Thursday	0-0
On Friday	0-0
On Saturday	0-0
On Sunday	0-0
In November	0-0
In December	0-0
In January	0-0
In February	0-0
In March	0-0

BENTLEY NAMED TO PAIR OF WATCH LISTS:

Junior point guard **Alex Bentley** has been named to a pair of preseason watch lists for National Player of the Year. Bentley is one of 25 players on the WBCA's Wade Trophy Watch List and is among the 30 players on the Wooden Award preseason chart. Bentley was instrumental in helping the Lady Lions return NCAA Tournament for the first time since 2005 with a 25-10 record. She became the 11th different Lady Lion to garner All-Big Ten first team honors last season after finishing in the Top 15 in the Big Ten in scoring (12th/14.4), assists (2nd/5.0), field goal percentage (14th/.446), free throw percentage (11th/.798) and assist-to-turnover ratio (4th/1.7). Bentley was named to the Big Ten All-Tournament team after averaging 15.3 points, 3.3 assists and 3.0 steals in three tourney contests. Bentley, who participated in USA Basketball World University Games trials in Colorado this summer, is 14th in school history with 299 career assists. Her 174 helpers last year are 17th on Penn State's single-season charts.

BENTLEY AND LUCAS PARTICIPATE IN USA BASKETBALL TRIALS:

Guards **Alex Bentley** and **Maggie Lucas** participated in the 2011 USA Basketball World University Game Trials this past spring. The pair were part of the group of 35 of the nation's top collegiate players that accepted invitations to attend the 2011 USA Basketball Women's World University Games Team Trials. Former Lady Lion standouts Terri Williams-Flournoy and Suzie McConnell-Serio were assistant coaches for the World University Games team.

TEAM CAPTAINS: Junior Mia Nickson and Marisa Wolfe

have been selected as the team captains for the 2011-12 Lady Lions. Nickson, who is a team captain for the second consecutive year, accounted for 10.5 points and 6.7 rebounds per game. She was ninth in the Big Ten in rebounding and 14th in free throw percentage (.795). Nickson finished second in the league in field goal percentage with a .521 effort on the year and was third in offensive rebounds (3.2). Wolfe earned her first eight collegiate starts last season and finished the year averaging 2.6 points and 2.4 rebounds per game. The junior was outstanding from the free throw line, going 17-for-20 (.850). Wolfe also tallied a career-best eight assists, 12 steals and five blocked shots.

TAYLOR TRANSFERS TO PSU:

The Lady Lions added 5-7 transfer **Dara Taylor** to the roster during the summer. Taylor, who will sit out the 2011-12 season due to NCAA transfer rules, will have two years of eligibility remaining when she begins competing for the Lady Lions in 2012-13. Taylor comes to Penn State after playing the first two years of her collegiate career at Maryland. As a freshman, she accounted for 5.5 points and 5.0 assists per game. Taylor, who broke the Maryland freshman season record for assists with 171 helpers, finished third in the ACC in assists and sixth in assist-to-turnover ratio (1.2) as a rookie. Last season, Taylor appeared in 32 games and tallied 1.7 points and 2.2 assists per game.

NATIONAL POLLS

ASSOCIATED PRESS (PRESEASON)

No.	Team (1st)	Rec.	Pts.	LW
1.	Baylor (33)	0-0	988	--
2.	Notre Dame (6)	0-0	934	--
3.	Tennessee	0-0	906	--
4.	Connecticut	0-0	876	--
5.	Stanford	0-0	852	--
6.	Texas A&M (1)	0-0	772	--
7.	Miami (Fla.)	0-0	750	--
8.	Duke	0-0	705	--
9.	Louisville	0-0	690	--
10.	Georgetown	0-0	585	--
11.	Maryland	0-0	569	--
12.	PENN STATE	0-0	491	--
13.	Georgia	0-0	432	--
14.	Florida State	0-0	428	--
15.	Oklahoma	0-0	344	--
16.	Rutgers	0-0	283	--
17.	Purdue	0-0	277	--
18.	Kentucky	0-0	275	--
19.	DePaul	0-0	263	--
20.	North Carolina	0-0	261	--
21.	LSU	0-0	228	--
22.	UCLA	0-0	175	--
23.	USC	0-0	158	--
24.	Texas	0-0	152	--
25.	St. John's	0-0	151	--

Others receiving votes: **Ohio State 118; Michigan State 95; Gonzaga 57; Texas Tech 41; UW-Green Bay 32; Iowa 20; California 19; Georgia Tech 17; Kansas State 15; Iowa State 12; Xavier 6; Vanderbilt 4; Temple 4; Marist 4; Dayton 4; Oral Roberts 2; Florida 2; Marquette 1; Delaware 1; Pittsburgh 1.**

ESPN/USA TODAY TOP 25 (PRESEASON)

No.	Team (1st)	Rec.	Pts.	LW
1.	Baylor (17)	34-3	745	5
2.	Notre Dame (5)	31-8	728	2
3.	Tennessee (3)	34-3	686	6
4.	Connecticut (2)	36-2	683	3
5.	Stanford (2)	33-3	681	4
6.	Texas A&M (2)	33-5	635	1
7.	Miami (Fla.)	28-5	557	16
8.	Duke	32-4	553	7
9.	Louisville	22-13	482	19
10.	Maryland	24-8	416	23
11.	Georgetown	24-11	415	14
12.	Georgia	23-11	376	24
13.	Florida State	24-8	332	20
14.	PENN STATE	25-10	320	NR
15.	Kentucky	25-9	296	22
16.	Oklahoma	23-12	262	15
17.	Rutgers	20-13	245	NR
18.	DePaul	29-7	182	10
19.	North Carolina	28-9	172	12
20.	Texas	9-14	161	NR
21.	Purdue	21-12	149	NR
22.	LSU	19-13	143	NR
23.	Southern California	24-13	129	NR
24.	UW-Green Bay	34-2	127	9
25.	Michigan State	27-6	88	18

Others receiving votes: **Gonzaga 70; Ohio State 61; UCLA 59; St. John's 57; Marist 46; Xavier 41; Iowa 35; California 20; Iowa State 20; Vanderbilt 19; Georgia Tech 18; Dayton 16; Middle Tennessee 10; Temple 10; TCU 8; South Dakota State 7; Texas Tech 7; Marquette 3; Syracuse 2; Houston 1; Memphis 1; West Virginia 1.**

*Bold type indicates 2011-12 Penn State opponent.



MILESTONE WATCH

Milestone Watch

Milestone	Player	Current Total
900 points	Alex Bentley	870
600 points	Zhaque Gray	564
	Maggie Lucas	552
	Nikki Greene	516
500 points	Mia Nickson (career)	413
400 points	Mia Nickson (PSU)	368
200 points	Renee Womack	164
	Marisa Wolfe	163
100 points	Ariel Edwards	97
	Gizelle Studevent	76
500 rebounds	Nikki Greene	464
300 rebounds	Mia Nickson (career)	291
	Mia Nickson (PSU)	234
200 rebounds	Alex Bentley	180
	Renee Womack	174
	Marisa Wolfe	155
	Zhaque Gray	144
	Maggie Lucas	108
100 rebounds	Ariel Edwards	62
300 assists	Alex Bentley	299
100 assists	Zhaque Gray	89
	Maggie Lucas	56
150 steals	Alex Bentley	118
100 steals	Maggie Lucas	57
150 blocks	Nikki Greene	130
150 3-pointers	Maggie Lucas	112
	Zhaque Gray	101

WALDNER LONE FRESHMAN: The lone freshman of the Lady Lions' roster this season is rookie post player **Tori Waldner** from Milton, Ga. Waldner earned All-Region 6AAAAA first team honors as a senior at Milton High School and was a 2011 McDonald's All-American nominee. She chipped in 12.0 points and 8.0 rebounds as a senior to lead the Eagles to a 22-5 record and the Elite 8 in the State Championship playoffs in 2011.

2012 WBCA PINK ZONE: The 2012 WBCA Pink Zone at Penn State will take place on Sunday, Feb. 26 as the Lady Lions take on Minnesota in the Bryce Jordan Center. Last year, the Lady Lions donated nearly \$200,000 for breast cancer causes. This year's fundraising efforts will benefit the Mount Nittany Medical Center, Penn State Hershey Cancer Institute, Pennsylvania Breast Cancer Coalition, the Kay Yow Cancer Fund, J.C. Blair Memorial Hospital and Lewistown Hospital. For more information on the Pink Zone at Penn State, visit the official Pink Zone website at www.gopsusports.com/pinkzone. The WBCA Pink Zone at Penn State is also on Facebook at www.facebook.com/pinkzoneatpennstate.

LADY LIONS ON TWITTER & FACEBOOK: The Lady Lions are on Twitter. Follow the Lady Lions and assistant coaches (@pennstateladylions) and sports information contact Kris Petersen (@ladylionsid) to get the inside scoop. The Lady Lions are also on Facebook at www.facebook.com/pennstateladylions.

LADY LIONS ON THE TUBE & WEB: The Lady Lions will have at least eight games broadcast nationally on CBS, ESPN2 and the Big Ten Network. Additionally, Penn State will have 11 games streamed on www.btn.com, many of which will be rebroadcast on the Big Ten Network as "Student U" productions. Penn State will appear on CBS against Michigan State (Sat., Jan. 7), on ESPN2 versus Iowa (Sun., Jan. 22), at Michigan State (Jan. 29) and as part of Big Monday against Ohio State (Mon., Feb. 20). The Lions will also appear on the Big Ten Network against North Carolina (Wed., Nov. 30), Michigan (Thurs., Jan. 12), at Northwestern (Sun., Feb. 12) and at Purdue (Thurs., Feb. 16). Penn State also has a chance to be part of the Big Ten Network Wildcard games against Wisconsin (Mon., Jan. 2) and Minnesota (Sun., Feb. 26). Additionally, Penn State will appear on SportSouth when it travels to South Carolina (Sun., Nov. 20).

LADYLIONS.COM: LadyLions.com is a website dedicated exclusively to women's basketball at Penn State. The website gives the Lady Lions a chance to showcase the Penn State women's basketball program to potential recruits and fans. The site has been recently enhanced with the addition of a team blog, live chats and an "Ask Coach Quese" mailbag. The team blog has been up and running since August. The blog is regularly updated with entries from Lady Lion basketball players, coaches and staff members. The Lady Lions and the coaching staff interact with fans during a weekly live chat on Mondays from 12:15-1:15. The final new feature on LadyLions.com for this season is the Ask Coach Quese mailbag. Coach Quese will answer fan questions each Tuesday throughout the season. Questions can be submitted to Coach Quese by emailing them to askcoachquese@gmail.com. Be sure to include your name and hometown when submitting a question.

OFFICIAL PINK ZONE T-SHIRTS: The Official 2012 WBCA Pink Zone at Penn State t-shirt is available at all Penn State Bookstore location. This year, there is an official adult shirt that is \$15 with \$5 of every shirt going to the Pink Zone fundraising efforts, as well as an official youth shirt that is \$10 with \$2 of every shirt going to Pink Zone.

COQUESE'S DRIVE A SUCCESS: The fourth annual Coquese's Drive for the Women's Resource Center golf tournament was another great fundraising event. The tournament, held on August 26, 2011, had 118 golfers participate and raised a record \$26,549.25 for the Centre County Women's Resource Center (CCWRC). The record-breaking day also featured a hole in one on #14 by Kim Filkins on her very first swing of the tournament.

2010-11 SEASON AT A GLANCE: There are several highlights for the Lady Lions to look back on following the 2010-11 season, a return to the NCAA Tournament and the most wins since the 2004-05 season. Let's take a look back at the 2010-11 campaign.

PRESS CONFERENCES

Coquese Washington will hold a weekly press conference and the Lady Lions will have media availability on a weekly basis throughout the season. All press conferences will begin at 2:45 p.m. (unless otherwise noted) and go for approximately 15-20 minutes, followed by an open media session prior to practice from 3-3:20 p.m. Press conference will be held in the Media Room at the Bryce Jordan Center (unless otherwise noted).

Press Conference Dates

Wednesday, Nov. 16
 Tuesday, Nov. 29 (Coquese - 2:25 p.m.;
 players - 2:40-3 p.m.)
 Wednesday, Dec. 7 or Thursday, Dec. 8
 Wednesday, Dec. 14
 Tuesday, Dec. 20
 Thursday, Dec. 29
 Wednesday, Jan. 4
 Wednesday, Jan. 11
 Wednesday, Jan. 18
 Wednesday, Jan. 25
 Wednesday, Feb. 1 (location TBA)
 Wednesday, Feb. 8 (location TBA)
 Wednesday, Feb. 15
 Wednesday, Feb. 22
 Wednesday, Feb. 29 (time TBA)

TROGELE WRAPS SOLID CAREER: Julia Trogele closed out an unsung career with a stellar senior season as she averaged personal bests of 9.3 points, 6.9 rebounds, 2.6 assists and 1.9 steals in 2010-11. She ranked seventh in the Big Ten in rebounding, field goal percentage and free throw percentage on the way to All-Big Ten honorable mention accolades. Trogele, who finished her career with 803 points and 690 rebounds, is fifth on the Lady Lions' all-time free throw shooting chart with an .817 effort from the charity stripe in four seasons. She is also 14th in rebounding average in program history with a 6.1 mark.

LUCAS FROSH ALL-AMERICAN: Maggie Lucas capped a outstanding freshman campaign by being named to the *Full Court Press* Freshman All-American second team. She is one of 15 players selected to the Freshman All-American squad and one of only two Big Ten players to earn the honor (Purdue's Courtney Moses – third team).

TEAM TRIPLES RECORDS FALL: Penn State's brilliant season from downtown led to a pair of school records last season. The Lady Lions broke the single-season school record for three-point field goal percentage (.4153), previously held by the 1986-87 team (.4146). Additionally, with 228 threes last year, the Lady Lions tied the single-season record for three-pointers made, equalling the mark set by the 2002-03 squad. The 228 triples are tied for the fourth-most in Big Ten history.



THE LAST TIME PENN STATE...

SCORING

Player scored 20 points: vs. DePaul (21, Alex Bentley), 3/21/11
Player scored 25 points: vs. Dayton (25, Alex Bentley), 3/19/11
Player scored 30 points: vs. Iowa (32, Tyra Grant), 3/5/10
Player scored 35 points: vs. Wisconsin (35, Kelly Mazzante), 3/2/03
Player scored 40 points: vs. Minnesota (49, Kelly Mazzante), 12/28/01
Two players scored 20 points: vs. Illinois (23, Maggie Lucas; 20, Julia Trogele), 3/5/11
Three players scored 20 pts.: at Dayton (26, Alex Bentley; 27, Zhaque Gray; 20, Nikki Greene), 11/12/10
Two players scored 25 points: at Boston College (28, Alex Bentley; 28, Maggie Lucas), 12/2/10
Player scored 25 points/3 consecutive games: Kelly Mazzante (31, vs. Baylor, 12/9/03; 31, vs. Pittsburgh, 12/14/03; 29, Louisiana Tech, 12/21/03)
Five in double figures: at Michigan (11, Alex Bentley; 11, Zhaque Gray; 14, Nikki Greene; 23, Maggie Lucas; 10, Julia Trogele), 2/3/11
Six in double figures: at Oakland (15, Alex Bentley; 16, Ariel Edwards; 16, Zhaque Gray; 13, Maggie Lucas; 10, Mia Nickson; 10, Gizelle Studevent; 10, Julia Trogele), 11/18/10
Seven in double figures: at Oakland (15, Alex Bentley; 16, Ariel Edwards; 16, Zhaque Gray; 13, Maggie Lucas; 10, Mia Nickson; 10, Gizelle Studevent; 10, Julia Trogele), 11/18/10
PSU scored 50 points in a half: at Boston College (55 points, second half), 12/2/10
PSU scored 55 points in a half: at Boston College (55 points, second half), 12/2/10
PSU scored 60 points in a half: vs. Northwestern (65 points, first half), 1/2/00
PSU scored 100 points: at Boston College (Lot, 113-104), 12/2/10
PSU scored 100 points in Big Ten game: vs. Illinois (W, 101-80), 2/15/01
PSU scored 100 points in a home game: vs. Maryland (W, 101-74), 12/4/02
PSU scored fewer than 15 points in a half: vs. Wisconsin (13, first half), 2/25/10
PSU scored fewer than 20 points in a half: vs. Michigan State (18, first half), 2/10/11
PSU scored fewer than 40 points in a game: vs. Wisconsin (L, 39-71), 2/25/10
PSU scored fewer than 50 points in a game: vs. Purdue (L, 49-60), 2/24/11
PSU scored fewer than 50 points in a Big Ten game: vs. Purdue (L, 49-60), 2/24/11
OPP scored 50 points in a half: vs. Duke (50, second half), 11/18/05
OPP scored 100 points: at Boston College (Lot, 113-104), 12/2/10
OPP scored fewer than 20 points in a game: at Dickinson (W, 57-16), 3/6/71
OPP scored fewer than 30 points in a game: vs. Rider (W, 95-21), 11/14/10
OPP scored fewer than 40 points in a game: vs. Rider (W, 95-21), 11/14/10
OPP scored fewer than 50 points in a game: vs. Bucknell (W, 96-48), 12/28/10
OPP scored fewer than 50 points in a Big Ten game: at Wisconsin (W, 54-43), 1/21/10

FIELD GOAL SHOOTING

Player made every shot from the field (min. 7): vs. Michigan St. (Amanda Brown, 8-8), 1/25/07
PSU shot 55% in a game: at Michigan (.565), 2/3/11
PSU shot 55% in consecutive games: vs. Northwestern (.682), 3/2/96; vs. Ohio St. (.585), 3/3/96
PSU shot 60% in a game: vs. Michigan State (.608), 2/23/96
PSU shot below 25% in a game: at Alabama (.230), 12/19/96
PSU shot below 30% in a game: vs. Wisconsin (.273), 2/25/10
PSU shot below 35% in a game and won: vs. Indiana (.321), 1/10/10
PSU shot 55% in a half: vs. DePaul (.567, First Half), 3/21/11
PSU shot 60% in a half: at Indiana (.606, Second Half), 2/13/11
PSU shot 65% in a half: at Michigan (.679, Second Half), 2/3/11
PSU shot 70% in a half: vs. Ohio State (.704, Second Half), 3/4/07
PSU shot 55% in both halves: vs. Iowa (.552, First Half; .565, Second Half), 1/26/06
PSU shot below 20% in a half: at Indiana (.231, First Half), 2/28/10
PSU shot below 25% in a half: at Pittsburgh (.188, First Half), 11/24/08

THREE-POINT SHOOTING

Player made every shot from the field (min. 4): at Clemson (Jessica Brungo, 5-5), 12/7/02
Player made 4 three-pointers in a half: vs. Minnesota (Maggie Lucas, 4), 1/13/11
Player made 5 three-pointers in a half: vs. Bucknell (Maggie Lucas, 6), 12/28/10
Player made 6 three-pointers in a half: vs. Bucknell (Maggie Lucas, 6), 12/28/10
Player made 5 three-pointers in a game: vs. Illinois (Maggie Lucas, 5), 3/5/11
Player made 6 three-pointers in a game: at Indiana (Maggie Lucas, 6), 2/13/11
Player made 7 three-pointers in a game: vs. Hartford (Maggie Lucas, 7), 11/27/10
Player made 8 three-pointers in a game: at Minnesota (Kelly Mazzante, 8), 12/28/01
Player attempted 10 three-pointers in a game: at Indiana (Maggie Lucas, 10), 2/13/11
PSU made 10 three-pointers: at Indiana (11), 2/13/11
PSU did not make a three-pointer: at Michigan (0-7), 1/7/07
PSU attempted 20 three-pointers: vs. Illinois (20), 1/16/11
PSU shot 60% 3FG (min. 5 att.): vs. Illinois (12-20, .600), 1/16/11

FREE THROW SHOOTING

Player made every shot from FT line (min. 10): vs. Illinois (Julia Trogele, 12-12), 3/5/11
PSU shot 90% (min. 10 att.): at Purdue (10-11, .909), 1/20/11
PSU shot below 50% (min. 10 att.): vs. Holy Cross (9-20, .450), 11/28/09
PSU made 30 free throws: vs. Pittsburgh (34), 11/11/07
PSU made fewer than five FTs: at Michigan (3), 2/3/11
PSU attempted 40 free throws: vs. Pittsburgh (41), 11/11/07
PSU attempted fewer than 5 FTs: at Michigan (4), 2/3/11

REBOUNDS

Player had 15 rebounds: at Iowa (15, Mia Nickson), 2/6/11
Player had 20 rebounds: vs. Indiana (20, Nikki Greene), 1/23/11
Two plyrs. with double-digit rebounds: at Illinois (14, Nikki Greene; 11, Julia Trogele), 1/27/11
Three players had double-digit rebounds: at Indiana (11, Nikki Greene; 10, Meredith Monroe; 11, Julia Trogele), 1/10/10
PSU had 60 rebounds: vs. Indiana (61), 1/23/11
PSU had 50 rebounds: vs. Indiana (61), 1/23/11
PSU had 20 or fewer rebounds: vs. Michigan State (20), 1/19/03
OPP had 20 or fewer rebounds: at Indiana (20), 2/13/11
PSU had 20 offensive rebounds: vs. Indiana (33), 1/23/11
PSU had 25 offensive rebounds: vs. Indiana (33), 1/23/11

ASSISTS

Player had 10 assists: at Indiana (11, Julia Trogele), 2/13/11
Player had 10 assists/consecutive games: Helen Darling, three games (12 at LaSalle, 12/8/99; 11 vs. Auburn, 12/11/99; 10 vs. Clemson, 12/19/99)
Player had 15 assists: vs. Wisconsin (15, Helen Darling), 1/29/99
PSU had 30 assists: vs. St. Francis (Pa.) (32), 12/2/99
PSU had fewer than 10 assists: vs. Purdue (7), 2/24/11
PSU had fewer than 5 assists: at Michigan State (4), 2/4/10

BLOCKED SHOTS

Player blocked 5 shots: vs. Indiana (Nikki Greene, 5), 1/23/11
Player blocked 6 shots: vs. Purdue (Nikki Greene, 7), 1/28/10
PSU blocked 10 shots: vs. Purdue (11), 1/28/10
PSU blocked 0 shots: vs. Purdue, 2/19/09

STEALS

Player had 7 steals: vs. Michigan (Brienne O'Rourke, 7), 2/2/06
Player had 8 steals: vs. Fairfield (Kelly Mazzante, 8), 12/2/01
PSU had 20 steals: vs. Bucknell (21), 12/28/10

TURNOVERS

PSU committed 25 or more: at Ohio State (27), 2/17/11
PSU committed 25 or more and won: vs. Minnesota (26), 1/13/11
PSU committed 10 or fewer: vs. Ohio State (9), 3/6/11
PSU committed 10 or fewer in consecutive games: vs. Minnesota (9), 1/22/04; at Ohio State (9), 1/25/04
OPP committed 25 or more: Maine (26), 12/12/10

DOUBLE-DOUBLES

Points & rebounds: vs. DePaul (Julia Trogele; 14 points, 11 rebounds), 3/21/11
Points & rebounds/consecutive games: Nikki Greene (12 points, 10 rebounds vs. Ohio State, 1/30/11; 16 points, 14 rebounds at Illinois, 1/27/11)
Points & rebounds/3 consecutive games: Amanda Brown (19 pts., 17 rebs. at Northwestern, 2/11/07; 14 pts., 10 rebs. vs. Minnesota, 2/15/07; 14 pts., 11 rebs. at Iowa, 2/18/07)
Points & rebounds/4 consecutive games: Angie Potthoff (vs. Northwestern, 1/31/97; at Illinois, 2/2/97; vs. Michigan, 2/7/97; vs. Indiana, 2/9/97; vs. Iowa, 2/16/97; vs. Michigan State, 2/21/97)
Points & rebounds/5 consecutive games: Angie Potthoff (vs. Northwestern, 1/31/97; at Illinois, 2/2/97; vs. Michigan, 2/7/97; vs. Indiana, 2/9/97; vs. Iowa, 2/16/97; vs. Michigan State, 2/21/97)
Points & assists: at Indiana (Julia Trogele; 15 points, 11 assists), 2/13/11
Points & assists/consecutive games: Helen Darling (12 points, 12 assists at La Salle, 12/8/99; 10 points, 11 assists vs. Auburn, 12/11/99)
Two players had double-doubles: at Illinois (Nikki Greene, 16 pts., 14 rebs.; Julia Trogele, 19 pts., 11 rebs.), 1/27/11
Three players had double-doubles: vs. Coppin State (Brienne O'Rourke, 12 points, 13 assists; Julia Trogele, 12 points, 13 rebounds; Janessa Wolff, 15 points, 10 rebounds), 11/29/08
15 points and 15 rebounds: vs. Indiana (Mia Nickson; 25 points, 17 rebounds), 1/23/11
20 points and 10 rebounds: vs. Indiana (Mia Nickson; 25 points, 17 rebounds), 1/23/11

MARGIN OF VICTORY

PSU won by 20-30 points: vs. Illinois (21), 1/16/11
PSU won by 20-30 points in a Big Ten game: vs. Illinois (21), 1/16/11
PSU won by 31-40 points: vs. Bucknell (37), 12/9/08
PSU won by 41-50 points: vs. Bucknell (48), 12/28/10
PSU won by 51+ points: vs. Rider (74), 11/14/10
PSU lost by 20-30 points: at Ohio State (22), 2/17/11
PSU lost by 20-30 points in a Big Ten game: at Ohio State (22), 2/17/11
PSU lost by 31+ points: vs. Wisconsin (32), 2/25/10

MISCELLANEOUS

Led PSU in points/rebounds/assists: Tyra Grant vs. Michigan (25 pts., 9 rebs., 4 asst.), 2/18/10
Hit "final seconds" (under 10 seconds) game-winning shot: Julia Trogele at Illinois (9 sec.), 1/27/11
Hit "final minute" game-winning shot: Nikki Greene vs. Indiana (40 seconds remaining), 2/13/11
Played every minute: at Illinois (Tyra Grant), 12/31/09
Played more than 40 minutes: at Dayton (Alex Bentley, 46; Zhaque Gray, 44; Mia Nickson, 41), 11/12/10
PSU rallied from a 10-point deficit to win: at Indiana (down by 16 at 10:02 in 1st half, won 80-77), 2/13/11
PSU rallied from a 15-point deficit to win: at Indiana (down by 16 at 10:02 in 1st half, won 80-77), 2/13/11
PSU had a 5-game winning streak: 5 games, 1/23/11 - 2/6/11
PSU had a 5-game losing streak: 6 games, 1/28/10 - 2/14/10
PSU went undefeated at home: 2004-05 season
PSU sold out the BJC: Purdue, 2/29/04

OVERTIME

PSU played an OT game: at Boston College (L, 113-104), 12/2/10
PSU won an OT game: at Oakland (96-89), 11/18/10
PSU lost an OT game: at Boston College (L, 113-104), 12/2/10
PSU played two or more OT games in a season: 2010-11 season (three)
PSU won two or more OT games in a season: 2010-11 season (two)

RANKINGS

Played the No. 1 team in the AP poll: vs. Connecticut (L, 77-63), 12/14/08
Played the No. 1 team in the Coaches poll: vs. Connecticut (L, 77-63), 12/14/08
Defeated the No. 1 team in the AP poll: at Virginia (73-71), 1/3/91
Defeated Top 10 opponent: vs. #11/10 Duke (86-84), 12/2/07
Defeated Top 10 opponent on the road: at #7 Purdue (47-42), 1/2/04
Defeated Top 10 opponent by double digits: vs. #10 Minnesota (81-68), 1/30/05
Played consecutive Top 10 teams: at #2/3 Texas 11/14/04, at #6/6 Duke 11/19/04
Defeated Top 25 opponent: vs. #14/13 Iowa (68-59), 12/30/10
Defeated Top 25 opponent on the road: at No. 20/22 Iowa (82-75), 2/6/11
Defeated Top 25 opponent by double digits: vs. #21 Michigan State (69-58), 1/25/07



2011-12 GAME-BY-GAME STARTING LINEUPS

Date	Opponent	Pt Guard	Guard	Guard	Forward	Center
11/5	BLOOMSBURG	Bentley	Gray	Lucas	Nickson	Greene

22ND NCAA TOURNAMENT BERTH: The Lady Lions made their 22nd overall NCAA Tournament appearance and first since dropping a first round decision to Liberty in the 2005 tourney. Penn State is one of only 12 teams to earn 22 or more NCAA Tournament berths. The Lady Lions posted a first round win over Dayton before falling to nationally-ranked and third-seeded DePaul in a thrilling second round contest.

LEADING THE NATION FROM DEEP: The Lady Lions led the NCAA in three-point field goal percentage (.415). It is the first time in school history that Penn State has led the country in three-point field goal percentage. It is also the first team statistics title for PSU since leading the NCAA in winning percentage, scoring margin and free throw percentage in 1991.

ALL-BIG TEN HONORS: After posting its best Big Ten campaign since 2003-04, the Lady Lions were rewarded by having four different players be honored with Big Ten postseason awards. Guard **Maggie Lucas** led the selections after winning both the Big Ten Freshman of the Year and Big Ten Sixth Player of the Year. Additionally, sophomore guard **Alex Bentley** garnered first team All-Big Ten honors for the first time in her career, while Lucas was an All-Big Ten choice (second – media; third – coaches) Senior guard/forward **Julia Trogele** and sophomore center **Nikki Greene** were honorable mention choices. Greene was also named to the Big Ten All-Defensive team.

LUCAS IN NCAA SINGLE-SEASON 3s CHART: With 112 three-pointers on the season, freshman guard **Maggie Lucas** finished the year 12th on the NCAA's single-season three-pointers chart. She is tied with James Madison's Dawn Evans for the slot.

BENTLEY EARNS FIRST TEAM HONORS: Sophomore guard **Alex Bentley** became the 11th player in school history to claim first team All-Big Ten accolades from the coaches, joining the likes of Mazzante, Helen Darling and Tanisha Wright. She was also named to the All-Big Ten third team by the media. Bentley was in the Top 15 in the Big Ten in scoring (12th - 14.4), assists (2nd - 5.0), free throw percentage (11th - .798), steals (6th - 2.0) and assist-to-turnover ratio (4th - 1.7). She also ranks 14th in school history with 299 assists. The sophomore guard has had five 20-point games, including a career-high 28 points on 11-of-21 shooting that featured a game-tying scoop shot with 0.5 seconds remaining in regulation at Boston College Dec. 2.

LUCAS TABBED FRESHMAN OF THE YEAR: **Maggie Lucas** became just the second Lady Lion to win Big Ten Freshman of the Year honors, joining Kelly Mazzante, who won the award in 2001. She is also the first Penn State player to claim Sixth Player of the Year accolades. In addition to her major awards, Lucas was named to the All-Big Ten second team by the media and the third team by the coaches. Lucas made an immediate impact for the Lady Lions, as she was seventh in the Big Ten in scoring at a 15.8 per game rate. Lucas, who took home a conference-record eight Big Ten Freshman of the Week honors, leads the league and is second in the NCAA in three-pointers per game (3.2). The Narberth, Pa. native is also second in the Big Ten and in the Top 10 nationally in three-point field goal percentage (.426). Lucas' 13 games with 20 or more points this season are the most since Mazzante tallied 10 20-point outings as a rookie.

LUCAS BREAKS ROOKIE SCORING RECORD: With eight points against Ohio State in the Big Ten Championship game March 6, rookie guard **Maggie Lucas** broke the Penn State freshman season scoring record, previously held by Kelly Mazzante. Lucas' 552 tallies surpass Mazzante's 529-point rookie campaign in 2000-01.

LUCAS BREAKS BIG TEN THREES MARK:

With five three-pointers against Illinois in the Big Ten semifinal game March 5, freshman guard **Maggie Lucas** broke the Big Ten single-season three-pointers record. Lucas had 112 triples on the season, passing Ohio State's Caity Matter (106) for first place on the Big Ten list. Additionally, Lucas tied with Kelly Mazzante for second place with 53 three-pointers in Big Ten play last year.

GREENE GETS ON BLOCK LIST AGAIN:

Sophomore center **Nikki Greene** has etched her name on Penn State single-season blocks shot list for the second consecutive season. With 75 rejections last season, Greene finished sixth on the blocks chart.

LUCAS CLAIMS EIGHT FROSH AWARDS:

Maggie Lucas took home a conference-record eight Big Ten Freshman of the Week awards last season. The guard claimed the honor Feb. 28, Feb. 7, Jan. 17, Dec. 20, Dec. 13, Dec. 6, Nov. 29 and Nov. 22. The 2010-11 season was the second year for the Freshman of the Week award.

BEST BIG TEN FINISH SINCE 2004:

Penn State's win over Northwestern, coupled with Wisconsin's loss to Ohio State, meant that the Lady Lions finished in sole possession of second place. It was highest finish for a Penn State team since the 2003-04 squad won the Big Ten title.

BIG TEN WINS:

With a 66-56 win over Northwestern Feb. 27, the Lady Lions picked up their 11th Big Ten win of the year. Penn State's 11 wins are the most wins in conference play since the 2004-05 squad won 13 contests.

RECORD FOR 10+ THREE-POINT GAMES:

The Lady Lions had eight games with 10 three-pointers or more this season, which broke the school record for games with 10 or more three-pointers. The previous mark was four games with 10 or more threes set by the 2000-01 team.

13TH TO 800 WINS:

The Lady Lions' 82-75 upset win at #20/22 Iowa Feb. 6 marked the 800th win in program history. Penn State is one of 13 teams in NCAA Division I to accomplish the feat. The Lady Lions join the likes of Tennessee, Louisiana Tech, Old Dominion, Stephen F. Austin, James Madison, Texas, Ohio State, Tennessee Tech, Stanford, Long Beach State, Georgia and Kansas State.

200TH BIG TEN WIN:

Penn State picked up its 200th Big Ten win with an 80-71 win over #23/24 Ohio State on Jan. 30. The Lady Lions are the eighth team to get to the 200-win plateau in conference play. Penn State earned 200 wins in 307 games, making the Lady Lions the third-fastest team to reach the milestone, behind Ohio State (295) and Iowa (298).

LADY LIONS SEASON BESTS

Player	Points	Rebounds	Assists	Blocks	Steals
Alex Bentley	-	-	-	-	-
Talia East	-	-	-	-	-
Ariel Edwards	-	-	-	-	-
Zhaque Gray	-	-	-	-	-
Nikki Greene	-	-	-	-	-
Maggie Lucas	-	-	-	-	-
Mia Nickson	-	-	-	-	-
Gizelle Studevent	-	-	-	-	-
Tori Waldner	-	-	-	-	-
Marisa Wolfe	-	-	-	-	-
Renee Womack	-	-	-	-	-





COQUESE WASHINGTON

Head Coach
5th Season

PENN STATE LADY LION BASKETBALL

Coquese Washington, who helped lead Notre Dame to the 2001 NCAA Championship, was introduced as the fifth head coach of the Penn State women's basketball program on April 23, 2007. Washington is the first female African-American head coach in Penn State history.

The Lady Lions returned to the national stage in Washington's fourth year with a second-place finish in the Big Ten regular season standings, a runner-up finish in the Big Ten Tournament and a berth in the NCAA Tournament. Penn State tallied its most victories since the 2003-04 campaign and 23rd 20-win season with a 25-10 overall record and an 11-5 mark in conference play. The Lady Lions worked their way back to the "Big Dance" for the first time since 2004-05 and advanced to the second round for the first time in seven years with a win over Dayton in the first round in front of a raucous Bryce Jordan Center crowd. After a remarkable season in the books and steps toward returning the Lady Lions to national prominence, Washington was selected as the 2011 BCA Female Coach of the Year.

Penn State was a dominating force from the perimeter as the Lady Lions tied the school record with 228 three-pointers and led NCAA Division I from deep with a .415 three-point field goal percentage. Pacing the Lady Lions from downtown was Maggie Lucas, who broke the Big Ten three-pointers record with 112 triples to go along with a .426 shooting percentage. For her efforts, Lucas was selected as the Big Ten Freshman of the Year and Big Ten Sixth Player of the Year while breaking the Penn State freshman season scoring record (552 pts.). Additionally with Washington's guidance, Alex Bentley became the 11th different player in school history to take home first team All-Big Ten accolades after finishing second in the conference in assists. After outstanding seasons, both Lucas and Bentley were invited to the USA Basketball World University Games Trials.

Washington's third season saw the Lady Lions return to the postseason for the first time since 2004-05 with a WNIT berth. The Lions earned their most overall wins (17) and conference wins (8) since the 2004-05 campaign en route to a sixth-place finish in the Big Ten.

Washington led Tyra Grant to back-to-back first team All-Big Ten honors and *Associated Press* Honorable Mention All-America accolades in her senior season. Grant capped off her career by being selected by the Phoenix Mercury in the second round of the WNBA Draft. The four-time all-conference pick left Penn State third in school history in

scoring with 2,044 points. Washington also guided Bentley to third team All-Big Ten honors, as well as a unanimous selection to the Big Ten All-Freshman team.

That year, Washington and the Lady Lions garnered one of the top recruiting classes in the country, finishing 22nd on the ESPN/HoopGuriz recruiting chart. The class included just the second McDonald's High School All-American in Penn State history in Lucas, WBCA High School All-American Ariel Edwards and All-State selection Talia East.

In Washington's second season, the Lady Lions moved up three positions in the Big Ten standings, finishing in a tie for seventh place. Under Washington's guidance in 2008-09, Grant became the 10th different player in school history to earn first team All-Big Ten honors.

The Coquese Washington era started in style as the Lady Lions won their first three games of the season, including a win over #20/21 Pittsburgh, to claim the WBCA Classic title. Just three weeks later, Washington guided the Lady Lions to their first ever win over perennial contender and 10th-ranked Duke in the inaugural Big Ten/ACC Challenge, a game that was televised on ESPN2.

Washington came to Happy Valley after eight seasons as an associate head coach and assistant coach under Muffet McGraw at Notre Dame, her alma mater. During Washington's eight years on the bench, Notre Dame amassed a 188-69 record with eight NCAA Tournament appearances, including four Sweet Sixteen runs and a National Championship in 2001.

Washington was a four-year starting point guard for Notre Dame under McGraw and was the team captain on Notre Dame's first-ever NCAA Tournament team. She was a two-time All-Midwestern Collegiate Conference (MCC) selection and led Notre Dame to three MCC Tournament titles.

The epitome of a student-athlete, Washington graduated from Notre Dame in 1992, a full year ahead of schedule, with a bachelor's degree in history. She went on to attain "Double Domer" status in 1997 after earning her Juris Doctorate from the Notre Dame Law School.

In addition to assisting with the efforts of the WBCA Pink Zone at Penn State to raise money and awareness for breast cancer, Washington created Coquese's Drive for the Women's Resource Center. The first four Coquese's Drives raised more than \$56,869 for the Centre County Women's Resource Center to aid in the fight against domestic violence.

Washington's Coaching Record vs. Opponents

Arizona 1-0	Dayton 2-1	Hartford 1-0	Michigan State 2-5	Old Dominion 0-1	Texas A&M 0-1
Army 1-0	Delaware 1-0	Hofstra 0-1	Minnesota 2-6	Pittsburgh 2-1	Texas Tech 1-0
Boston College 0-1	DePaul 0-1	Holy Cross 1-0	Mississippi 1-0	Prairie View A&M 1-0	Utah 1-0
Bucknell 4-0	Drexel 2-1	Illinois 7-3	Monmouth 1-0	Purdue 1-7	Wisconsin 2-5
Buffalo 1-0	Duke 1-0	Indiana 3-4	NJIT 1-0	Rider 1-0	UW-Green Bay 0-1
Charlotte 1-0	Florida State 0-1	Iowa 4-5	Northwestern 5-1	South Carolina 3-1	Xavier 0-1
Connecticut 0-1	Georgetown 1-0	Maine 1-0	Oakland 2-0	Stony Brook 1-0	
Coppin State 1-0	Georgia Tech 0-1	Michigan 5-3	Ohio State 1-6	Syracuse 0-1	

THE WASHINGTON FILE

COACHING RESUME

2007-pres. - Head Coach, Penn State University
 2011-pres. - President, NCAA Women's Basketball Issues Committee
 2010-pres. - Treasurer, WBCA Executive Committee
 2008-pres. - Member, WBCA Board of Directors
 2009-pres. - Member, USA Basketball Women's Junior National Committee
 2005-07 - Assoc. Head Coach, Univ. of Notre Dame
 1999-05 - Assistant Coach, Univ. of Notre Dame

PLAYING EXPERIENCE

2002-03 - WNBA's Indiana Fever
 2000-02 - WNBA's Houston Comets
 1998-99 - WNBA's New York Liberty
 1997-98 - ABL's Portland Power
 1989-93 - University of Notre Dame

EDUCATION

Notre Dame '92, B.A. History
 Notre Dame Law School '97, Juris Doctorate

NOTABLE

- ❖ 2011 BCA Female Coach of the Year.
- ❖ Helped guide Notre Dame to the 2001 NCAA Championship.
- ❖ Eight consecutive recruiting classes at Notre Dame ranked in the Top 25 nationally.
- ❖ Notre Dame had four Sweet Sixteen appearances and eight NCAA Tournament berths during Washington's tenure.
- ❖ Point guard for the 2000 WNBA Champion Houston Comets.
- ❖ Founding President, WNBA Players Association, 1999-01.
- ❖ Actively negotiated first two collective bargaining agreements for the WNBPA.
- ❖ Inducted into the Greater Flint Area Sports Hall of Fame in Dec. 2009.

FAMILY

Husband: Raynell Brown
 Children: Quenton (6), Rhaiyna (2)

Washington is currently serving on the 29-member WBCA Board of Directors, where she is the Treasurer of the Executive Committee. Washington is also a member of the USA Basketball Women's Junior National Team Selection Committee and the president of the NCAA Women's Basketball Issues Committee.

A native of Flint, Mich., Washington and her husband, Raynell Brown, have a son, Quenton (6), and a daughter, Rhaiyna (2). They reside in Port Matilda, Pa.



2011-12 RADIO/TV CHART



#2

Dara Taylor
5-8 * Jr./Jr. * G
Wilmington, Del.
Caravel Academy
(Maryland)



#5

Talia East
6-3 * So./So. * F/C
Philadelphia, Pa.
Friends' Central School



#12

Zhaque Gray
5-8 * Sr./Sr. * G
Chicago, Ill.
Prep John Hope



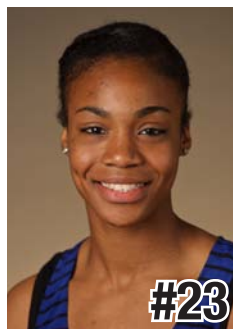
#15

Renee Womack
5-10 * Sr./Sr. * G
Lansdale, Pa.
Methacton



#20

Alex Bentley
5-7 * Jr./Jr. * G
Indianapolis, Ind.
Ben Davis



#23

Ariel Edwards
6-2 * So./So. * F
Elmont, N.Y.
Christ the King



#24

Mia Nickson
6-2 * Sr./Jr. * F
Ashburn, Va.
Notre Dame Academy
(Boston College)



#25

Gizelle Studevent
5-11 * Jr./Jr. * G
La Jolla, Calif.
The Bishop's School



#33

Maggie Lucas
5-10 * So./So. * G
Narberth, Pa.
Germantown Academy



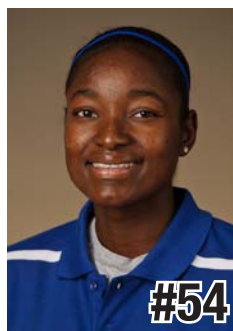
#40

Marisa Wolfe
6-2 * Jr./Jr. * F
Ford City, Pa.
Ford City



#44

Tori Waldner
6-5 * Fr./Fr. * F/C
Milton, Ga.
Milton



#54

Nikki Greene
6-4 * Jr./Jr. * F/C
Diboll, Texas
Diboll



HC

Coquese Washington
Head Coach
Notre Dame '92
Fifth Season



AC

Fred Chmiel
Assistant Coach
Excelsior College
Second Season



AC

Kia Damon
Assistant Coach
Millersville '97
Fifth Season



AC

Maren Walseth
Assistant Coach
Penn State '02
Fifth Season



DO

Ethan Gelfand
Director of Basketball
Operations
First Season



VO

Mike Miller
Director of Video &
Technology Operations
Seventh Season

Five-Time Big Ten Champions • Two-Time Big Ten Tournament Champions • 2000 NCAA Final Four • 22 NCAA Tournament Appearances





Official Basketball Box Score -- Game Totals -- Final Statistics
Bloomsburg vs Penn State
11/5/11 2:03 p.m. at University Park, Pa.



Bloomsburg 81

#	Player	*	Total		3-Ptr	Rebounds			PF	TP	A	TO	Blk	Stl	Min
			FG-FGA	FG-FGA	FT-FTA	Off	Def	Tot							
03	GALLAGHER, Kelsey	*	8-15	4-5	2-2	1	3	4	1	22	1	4	1	1	25
20	FLANAGAN, Alyssa	*	0-2	0-1	2-4	1	3	4	2	2	6	4	2	1	28
22	OXENRIDER, Kayla	*	4-11	1-3	5-6	0	3	3	2	14	2	7	1	2	33
31	ELLIS, Lauren	*	1-2	0-0	0-0	2	7	9	4	2	3	0	0	0	32
34	WIELLER, Dana	*	5-10	3-5	3-4	1	3	4	5	16	0	4	0	0	23
05	DUDECK, Brianna		0-3	0-0	0-0	1	0	1	0	0	0	1	0	0	6
10	NYCE, Courtney		0-3	0-2	0-0	0	1	1	2	0	0	2	0	0	5
15	NOACK, Catherine		6-8	5-6	2-2	2	2	4	0	19	1	2	0	0	26
30	SIMMONS, Marla		2-4	0-1	2-2	1	3	4	1	6	1	2	0	0	11
32	BORSKI, Maggie		0-0	0-0	0-0	0	0	0	0	0	1	0	0	0	11
Team						1	0	1							
Totals			26-58	13-23	16-20	10	25	35	17	81	15	26	4	4	200

FG % 1st Half: 11-26 42.3% 2nd half: 15-32 46.9% Game: 26-58 44.8% Deadball Rebounds 3
 3FG % 1st Half: 7-10 70.0% 2nd half: 6-13 46.2% Game: 13-23 56.5%
 FT % 1st Half: 6-9 66.7% 2nd half: 10-11 90.9% Game: 16-20 80.0%

Penn State 101

#	Player	*	Total		3-Ptr	Rebounds			PF	TP	A	TO	Blk	Stl	Min
			FG-FGA	FG-FGA	FT-FTA	Off	Def	Tot							
12	Gray, Zhaque	*	4-12	1-4	0-0	0	1	1	4	9	0	1	0	2	30
20	Bentley, Alex	*	7-12	0-2	2-2	2	6	8	2	16	9	2	0	7	30
24	Nickson, Mia	*	5-9	0-0	4-4	3	1	4	3	14	0	0	1	1	22
33	Lucas, Maggie	*	10-15	7-8	8-9	0	3	3	2	35	1	1	0	1	35
54	Greene, Nikki	*	6-8	0-0	0-2	4	3	7	3	12	0	2	0	0	16
05	East, Talia		2-3	0-0	0-0	2	3	5	2	4	0	1	0	2	13
23	Edwards, Ariel		1-10	0-1	2-3	3	3	6	3	4	0	2	0	1	30
25	Studevent, Gizelle		2-8	0-1	0-0	1	1	2	1	4	0	2	0	0	20
44	Waldner, Tori		1-1	0-0	1-1	0	1	1	0	3	0	0	0	0	4
Team						2	1	3				1			
Totals			38-78	8-16	17-21	17	23	40	20	101	10	12	1	14	200

FG % 1st Half: 18-41 43.9% 2nd half: 20-37 54.1% Game: 38-78 48.7% Deadball Rebounds 2
 3FG % 1st Half: 4-11 36.4% 2nd half: 4-5 80.0% Game: 8-16 50.0%
 FT % 1st Half: 7-9 77.8% 2nd half: 10-12 83.3% Game: 17-21 81.0%

Officials: Kevin Pethel, Kathy Ridilla, Shannon Feck
 Technical fouls: Bloomsburg-None. Penn State-None.
 Attendance: 7742

Score by periods	1st	2nd	Total
Bloomsburg	35	46	81
Penn State	47	54	101

	In Paint	Off T/O	2nd Chance	Fast Break	Bench
Points					
BLOOM	20	20	18	3	25
PSU1112	52	33	23	16	15

Last FG - BLOOM 2nd-01:25, PSU1112 2nd-01:08.
 Largest lead - BLOOM by 5 1st-18:42, PSU1112 by 20 2nd-11:10.

Score tied - 4 times.
 Lead changed - 3 times.

2010-11 Penn State Lady Lions
Penn State Combined Team Statistics (as of Mar 21, 2011)
All games

RECORD:	OVERALL	HOME	AWAY	NEUTRAL
ALL GAMES	25-10	14-4	7-4	4-2
CONFERENCE	11-5	6-2	5-3	0-0
NON-CONFERENCE	14-5	8-2	2-1	4-2

##	Player	gp-gs	min	avg	Total		3-Point		F-Throw		Rebounds				pf	dq	a	to	blk	stl	pts	avg		
					fg-fga	fg%	3fg-fga	3fg%	ft-fa	ft%	off	def	tot	avg										
33	Lucas, Maggie	35-1	991	28.3	180-424	.425	112-263	.426	80-92	.870	15	93	108	3.1	46	1	56	63	7	57	552	15.8		
20	Bentley, Alex	35-34	1106	31.6	204-457	.446	22-63	.349	75-94	.798	17	78	95	2.7	74	1	174	102	12	69	505	14.4		
24	Nickson, Mia	35-27	924	26.4	126-242	.521	0-0	.000	116-146	.795	113	121	234	6.7	80	1	21	60	3	38	368	10.5		
12	Gray, Zhaque	35-35	918	26.2	119-281	.423	63-152	.414	30-41	.732	17	61	78	2.2	67	1	53	58	1	19	331	9.5		
11	Trogele, Julia	35-35	950	27.1	117-232	.504	13-23	.565	80-97	.825	65	177	242	6.9	119	9	92	94	19	66	327	9.3		
54	Greene, Nikki	35-35	792	22.6	124-287	.432	0-0	.000	50-103	.485	97	175	272	7.8	114	5	8	74	75	40	298	8.5		
23	Edwards, Ariel	33-0	373	11.3	29-85	.341	9-22	.409	30-35	.857	27	35	62	1.9	22	0	13	26	4	9	97	2.9		
40	Wolfe, Marisa	31-8	358	11.5	32-79	.405	1-6	.167	17-20	.850	20	54	74	2.4	52	3	8	38	5	12	82	2.6		
15	Womack, Renee	33-0	423	12.8	31-76	.408	6-17	.353	16-23	.696	37	42	79	2.4	42	0	17	25	3	33	84	2.5		
25	Studevent, Gizelle	24-0	174	7.3	12-37	.324	2-3	.667	10-16	.625	6	17	23	1.0	5	0	5	20	0	4	36	1.5		
05	East, Talia	15-0	91	6.1	5-18	.278	0-0	.000	2-4	.500	8	11	19	1.3	8	0	0	8	2	2	12	0.8		
Team											65	69	134					16						
Total.....		35	7100		979-2218	.441	228-549	.415	506-671	.754	487	933	1420	40.6	629	21	447	584	131	349	2692	76.9		
Opponents.....		35	7100		826-2061	.401	241-701	.344	473-664	.712	403	826	1229	35.1	599	14	497	650	102	254	2366	67.6		

TEAM STATISTICS	PSU	OPP	Date	Opponent	Score	Att.
SCORING	2692	2366	11/12/10	at Dayton	Wo2 112-107	2141
Points per game	76.9	67.6	11/14/10	RIDER	w 95-21	3504
Scoring margin	+9.3	-	11/18/10	at Oakland	Wot 96-89	895
FIELD GOALS-ATT	979-2218	826-2061	11/21/10	SOUTH CAROLINA	w 78-48	3321
Field goal pct	.441	.401	11/25/10	vs Utah	w 70-58	402
3 POINT FG-ATT	228-549	241-701	11/26/10	vs UW-Green Bay	L 74-79	402
3-point FG pct	.415	.344	11/27/10	vs Hartford	w 71-65	402
3-pt FG made per game	6.5	6.9	12-02-10	at Boston College	Lot 104-113	557
FREE THROWS-ATT	506-671	473-664	12/5/10	TEXAS TECH	w 76-68	3941
Free throw pct	.754	.712	12/8/10	ARMY	w 95-65	3324
F-Throws made per game	14.5	13.5	12/12/10	MAINE	w 95-41	3534
REBOUNDS	1420	1229	12/19/10	DELAWARE	w 64-55	3279
Rebounds per game	40.6	35.1	12/21/10	DREXEL	L 73-84	5047
Rebounding margin	+5.5	-	12/28/10	BUCKNELL	w 96-48	3213
ASSISTS	447	497	* 12/30/10	IOWA	w 68-59	3576
Assists per game	12.8	14.2	* 01/02/11	at Wisconsin	L 62-77	4887
TURNOVERS	584	650	* 01/06/11	at Northwestern	w 80-68	543
Turnovers per game	16.7	18.6	* 1/13/11	MINNESOTA	w 58-54	3513
Turnover margin	+1.9	-	* 1/16/11	ILLINOIS	w 83-62	4131
Assist/turnover ratio	0.8	0.8	* 01/20/11	at Purdue	L 69-79	8372
STEALS	349	254	* 1/23/11	INDIANA	w 82-69	3856
Steals per game	10.0	7.3	* 01/27/11	at Illinois	w 67-65	867
BLOCKS	131	102	* 1/30/11	OHIO STATE	w 80-71	6618
Blocks per game	3.7	2.9	* 02/03/11	at Michigan	w 81-63	1789
ATTENDANCE	77483	52768	* 2/6/11	at Iowa	w 82-75	5830
Home games-Avg/Game	18-4305	11-2926	* 2/10/11	MICHIGAN STATE	L 49-60	4154
Neutral site-Avg/Game	-	6-3430	* 02/13/11	at Indiana	w 80-77	2810
Score by Periods	1st	2nd	OT	OT2	Totals	
Penn State	1232	1412	34	14	2692	
Opponents	1113	1208	36	9	2366	
						* 2/17/11
						at Ohio State
						L 67-89
						* 2/24/11
						PURDUE
						L 49-51
						* 2/27/11
						NORTHWESTERN
						w 66-56
						11288
						03/04/11
						vs Purdue
						w 73-61
						6390
						03/05/11
						vs Illinois
						w 79-64
						6757
						03/06/11
						vs Ohio State
						L 70-84
						6227
						3/19/11
						DAYTON
						w 75-66
						3997
						3/21/11
						DEPAUL
						L 73-75
						3276

* - Conference game

2010-11 Penn State Lady Lions
Penn State Category Leaders (as of Mar 21, 2011)
All games

Points	G	Pts	Pts/G	Scoring Average	G	Pts	Avg/G
Lucas, Maggie	35	552	15.8	Lucas, Maggie	35	552	15.8
Bentley, Alex	35	505	14.4	Bentley, Alex	35	505	14.4
Nickson, Mia	35	368	10.5	Nickson, Mia	35	368	10.5
Gray, Zhaque	35	331	9.5	Gray, Zhaque	35	331	9.5
Trogele, Julia	35	327	9.3	Trogele, Julia	35	327	9.3
Greene, Nikki	35	298	8.5	Greene, Nikki	35	298	8.5
Edwards, Ariel	33	97	2.9	Edwards, Ariel	33	97	2.9
Womack, Renee	33	84	2.5	Wolfe, Marisa	31	82	2.6
Wolfe, Marisa	31	82	2.6	Womack, Renee	33	84	2.5
Studevent, Gizelle	24	36	1.5	Studevent, Gizelle	24	36	1.5
East, Talia	15	12	0.8	East, Talia	15	12	0.8

FG Percentage	FG	Att	Pct	Field Goal Attempts	G	Att	Att/G
Nickson, Mia	126	242	.521	Bentley, Alex	35	457	13.1
Trogele, Julia	117	232	.504	Lucas, Maggie	35	424	12.1
Bentley, Alex	204	457	.446	Greene, Nikki	35	287	8.2
Greene, Nikki	124	287	.432	Gray, Zhaque	35	281	8.0
Lucas, Maggie	180	424	.425	Nickson, Mia	35	242	6.9
Gray, Zhaque	119	281	.423				
Womack, Renee	31	76	.408	Field Goals Made	G	Made	Made/G
Wolfe, Marisa	32	79	.405	Bentley, Alex	35	204	5.8
Edwards, Ariel	29	85	.341	Lucas, Maggie	35	180	5.1
Studevent, Gizelle	12	37	.324	Nickson, Mia	35	126	3.6
East, Talia	5	18	.278	Greene, Nikki	35	124	3.5
				Gray, Zhaque	35	119	3.4

3-Point Percentage	3FG	Att	Pct	3-Point FG Attempts	G	Att	Att/G
Studevent, Gizelle	2	3	.667	Lucas, Maggie	35	263	7.5
Trogele, Julia	13	23	.565	Gray, Zhaque	35	152	4.3
Lucas, Maggie	112	263	.426	Bentley, Alex	35	63	1.8
Gray, Zhaque	63	152	.414	Trogele, Julia	35	23	0.7
Edwards, Ariel	9	22	.409	Edwards, Ariel	33	22	0.7
Womack, Renee	6	17	.353				
Bentley, Alex	22	63	.349	3-Point FG Made	G	Made	Made/G
Wolfe, Marisa	1	6	.167	Lucas, Maggie	35	112	3.2
				Gray, Zhaque	35	63	1.8
				Bentley, Alex	35	22	0.6
				Trogele, Julia	35	13	0.4
				Edwards, Ariel	33	9	0.3

Free Throw Percent	FG	Att	Pct	Free Throw Attempts	G	Att	Att/G
Lucas, Maggie	80	92	.870	Nickson, Mia	35	146	4.2
Edwards, Ariel	30	35	.857	Greene, Nikki	35	103	2.9
Wolfe, Marisa	17	20	.850	Trogele, Julia	35	97	2.8
Trogele, Julia	80	97	.825	Bentley, Alex	35	94	2.7
Bentley, Alex	75	94	.798	Lucas, Maggie	35	92	2.6
Nickson, Mia	116	146	.795				
Gray, Zhaque	30	41	.732	Free Throws Made	G	Made	Made/G
Womack, Renee	16	23	.696	Nickson, Mia	35	116	3.3
Studevent, Gizelle	10	16	.625	Lucas, Maggie	35	80	2.3
East, Talia	2	4	.500	Trogele, Julia	35	80	2.3
Greene, Nikki	50	103	.485	Bentley, Alex	35	75	2.1
				Greene, Nikki	35	50	1.4

2010-11 Penn State Lady Lions
Penn State Category Leaders (as of Mar 21, 2011)
All games

Rebounds	G	Reb	Reb/G
Greene, Nikki	35	272	7.8
Trogele, Julia	35	242	6.9
Nickson, Mia	35	234	6.7
Lucas, Maggie	35	108	3.1
Bentley, Alex	35	95	2.7

Assists	G	No.	Ast/G
Bentley, Alex	35	174	5.0
Trogele, Julia	35	92	2.6
Lucas, Maggie	35	56	1.6
Gray, Zhaque	35	53	1.5
Nickson, Mia	35	21	0.6

Rebound Average	G	Reb	Avg/G
Greene, Nikki	35	272	7.8
Trogele, Julia	35	242	6.9
Nickson, Mia	35	234	6.7
Lucas, Maggie	35	108	3.1
Bentley, Alex	35	95	2.7

Steals	G	No.	Stl/G
Bentley, Alex	35	69	2.0
Trogele, Julia	35	66	1.9
Lucas, Maggie	35	57	1.6
Greene, Nikki	35	40	1.1
Nickson, Mia	35	38	1.1

Offensive Rebounds	G	No.	Avg/G
Nickson, Mia	35	113	3.2
Greene, Nikki	35	97	2.8
Trogele, Julia	35	65	1.9
Womack, Renee	33	37	1.1
Edwards, Ariel	33	27	0.8

Blocked Shots	G	No.	Blk/G
Greene, Nikki	35	75	2.1
Trogele, Julia	35	19	0.5
Bentley, Alex	35	12	0.3
Lucas, Maggie	35	7	0.2
Wolfe, Marisa	31	5	0.2

Defensive Rebounds	G	No.	Avg/G
Trogele, Julia	35	177	5.1
Greene, Nikki	35	175	5.0
Nickson, Mia	35	121	3.5
Lucas, Maggie	35	93	2.7
Bentley, Alex	35	78	2.2

Minutes	G	No.	Min/G
Bentley, Alex	35	1106	31.6
Lucas, Maggie	35	991	28.3
Trogele, Julia	35	950	27.1
Nickson, Mia	35	924	26.4
Gray, Zhaque	35	918	26.2

Fouls	G	No.	Per/G
Trogele, Julia	35	119	3.4
Greene, Nikki	35	114	3.3
Nickson, Mia	35	80	2.3
Bentley, Alex	35	74	2.1
Gray, Zhaque	35	67	1.9

Turnovers	G	No.	TO/G
Bentley, Alex	35	102	2.9
Trogele, Julia	35	94	2.7
Greene, Nikki	35	74	2.1
Lucas, Maggie	35	63	1.8
Nickson, Mia	35	60	1.7

Foulsouts	G	No.
Trogele, Julia	35	9
Greene, Nikki	35	5
Wolfe, Marisa	31	3
Gray, Zhaque	35	1
Bentley, Alex	35	1
Nickson, Mia	35	1
Lucas, Maggie	35	1

2010-11 Penn State Basketball
PSU Combined Team Statistics (FINAL)
Conference games

RECORD:	OVERALL	HOME	AWAY	NEUTRAL
ALL GAMES	11-5	6-2	5-3	0-0
CONFERENCE	11-5	6-2	5-3	0-0
NON-CONFERENCE	0-0	0-0	0-0	0-0

##	Player	gp-gs	min	avg	Total		3-Point		F-Throw		Rebounds			pf	dq	a	to	blk	stl	pts	avg			
					fg-fga	fg%	3fg-fga	3fg%	ft-fta	ft%	off	def	tot									avg		
33	Lucas, Maggie	16-1	474	29.6	84-196	.429	53-118	.449	26-32	.813	5	39	44	2.8	30	1	27	28	5	23	247	15.4		
20	Bentley, Alex	16-15	502	31.4	75-186	.403	9-27	.333	43-50	.860	10	37	47	2.9	36	0	76	62	4	26	202	12.6		
24	Nickson, Mia	16-16	470	29.4	53-111	.477	0-0	.000	55-73	.753	68	62	130	8.1	36	0	7	29	1	16	161	10.1		
12	Gray, Zhaque	16-16	430	26.9	50-122	.410	25-63	.397	20-25	.800	9	30	39	2.4	35	0	24	32	1	6	145	9.1		
11	Trogele, Julia	16-16	438	27.4	52-108	.481	2-7	.286	37-42	.881	26	77	103	6.4	54	4	39	42	7	34	143	8.9		
54	Greene, Nikki	16-16	380	23.8	59-140	.421	0-0	.000	13-33	.394	47	84	131	8.2	55	1	4	42	42	21	131	8.2		
15	Womack, Renee	16-0	165	10.3	14-28	.500	4-9	.444	8-12	.667	13	19	32	2.0	15	0	5	9	1	11	40	2.5		
40	Wolfe, Marisa	13-0	124	9.5	12-27	.444	0-0	.000	1-1	1.000	5	20	25	1.9	16	0	3	13	2	5	25	1.9		
5	East, Talia	11-0	60	5.5	5-7	.714	0-0	.000	0-0	.000	2	7	9	0.8	7	0	0	6	2	1	10	0.9		
25	Studevent, Gizelle	10-0	50	5.0	3-10	.300	1-2	.500	1-2	.500	0	5	5	0.5	1	0	2	3	0	0	8	0.8		
23	Edwards, Ariel	15-0	107	7.1	5-23	.217	0-2	.000	1-2	.500	7	6	13	0.9	6	0	2	10	1	3	11	0.7		
Team											32	28	60											
Total.....		16	3200		412-958	.430	94-228	.412	205-272	.754	224	414	638	39.9	291	6	189	287	66	146	1123	70.2		
Opponents.....		16	3200		370-907	.408	109-307	.355	226-297	.761	165	354	519	32.4	247	3	230	264	55	123	1075	67.2		

TEAM STATISTICS	PSU	OPP	Date	Opponent	Score	Att.
SCORING	1123	1075	* 12/30/10	IOWA	w 68-59	3576
Points per game	70.2	67.2	* 01/02/11	at Wisconsin	L 62-77	4887
Scoring margin	+3.0	-	* 01/06/11	at Northwestern	w 80-68	543
FIELD GOALS-ATT	412-958	370-907	* 1/13/11	MINNESOTA	w 58-54	3513
Field goal pct	.430	.408	* 1/16/11	ILLINOIS	w 83-62	4131
3 POINT FG-ATT	94-228	109-307	* 01/20/11	at Purdue	L 69-79	8372
3-point FG pct	.412	.355	* 1/23/11	INDIANA	w 82-69	3856
3-pt FG made per game	5.9	6.8	* 01/27/11	at Illinois	w 67-65	867
FREE THROWS-ATT	205-272	226-297	* 1/30/11	OHIO STATE	w 80-71	6618
Free throw pct	.754	.761	* 02/03/11	at Michigan	w 81-63	1789
F-Throws made per game	12.8	14.1	* 2/6/11	at Iowa	w 82-75	5830
REBOUNDS	638	519	* 2/10/11	MICHIGAN STATE	L 49-60	4154
Rebounds per game	39.9	32.4	* 02/13/11	at Indiana	w 80-77	2810
Rebounding margin	+7.4	-	* 2/17/11	at Ohio State	L 67-89	3497
ASSISTS	189	230	* 2/24/11	PURDUE	L 49-51	3911
Assists per game	11.8	14.4	* 2/27/11	NORTHWESTERN	w 66-56	11288
TURNOVERS	287	264	* - Conference game			
Turnovers per game	17.9	16.5				
Turnover margin	-1.4	-				
Assist/turnover ratio	0.7	0.9				
STEALS	146	123				
Steals per game	9.1	7.7				
BLOCKS	66	55				
Blocks per game	4.1	3.4				
ATTENDANCE	41047	28595				
Home games-Avg/Game	8-5131	8-3574				
Neutral site-Avg/Game	-	0-0				

Score by Periods	1st	2nd	Totals
PSU	506	617	1123
Opponents	515	560	1075

**2010-11 Penn State Basketball
PSU Category Leaders (FINAL)
Conference games**

Points	G	Pts	Pts/G	Scoring Average	G	Pts	Avg/G
Lucas, Maggie	16	247	15.4	Lucas, Maggie	16	247	15.4
Bentley, Alex	16	202	12.6	Bentley, Alex	16	202	12.6
Nickson, Mia	16	161	10.1	Nickson, Mia	16	161	10.1
Gray, Zhaque	16	145	9.1	Gray, Zhaque	16	145	9.1
Trogele, Julia	16	143	8.9	Trogele, Julia	16	143	8.9
Greene, Nikki	16	131	8.2	Greene, Nikki	16	131	8.2
Womack, Renee	16	40	2.5	Womack, Renee	16	40	2.5
Wolfe, Marisa	13	25	1.9	Wolfe, Marisa	13	25	1.9
Edwards, Ariel	15	11	0.7	East, Talia	11	10	0.9
East, Talia	11	10	0.9	Studevent, Gizelle	10	8	0.8
Studevent, Gizelle	10	8	0.8	Edwards, Ariel	15	11	0.7

FG Percentage	FG	Att	Pct	Field Goal Attempts	G	Att	Att/G
East, Talia	5	7	.714	Lucas, Maggie	16	196	12.3
Womack, Renee	14	28	.500	Bentley, Alex	16	186	11.6
Trogele, Julia	52	108	.481	Greene, Nikki	16	140	8.8
Nickson, Mia	53	111	.477	Gray, Zhaque	16	122	7.6
Wolfe, Marisa	12	27	.444	Nickson, Mia	16	111	6.9
Lucas, Maggie	84	196	.429				
Greene, Nikki	59	140	.421	Field Goals Made	G	Made	Made/G
Gray, Zhaque	50	122	.410	Lucas, Maggie	16	84	5.3
Bentley, Alex	75	186	.403	Bentley, Alex	16	75	4.7
Studevent, Gizelle	3	10	.300	Greene, Nikki	16	59	3.7
Edwards, Ariel	5	23	.217	Nickson, Mia	16	53	3.3
				Trogele, Julia	16	52	3.3

3-Point Percentage	3FG	Att	Pct	3-Point FG Attempts	G	Att	Att/G
Studevent, Gizelle	1	2	.500	Lucas, Maggie	16	118	7.4
Lucas, Maggie	53	118	.449	Gray, Zhaque	16	63	3.9
Womack, Renee	4	9	.444	Bentley, Alex	16	27	1.7
Gray, Zhaque	25	63	.397	Womack, Renee	16	9	0.6
Bentley, Alex	9	27	.333	Trogele, Julia	16	7	0.4
Trogele, Julia	2	7	.286				
Edwards, Ariel	0	2	.000	3-Point FG Made	G	Made	Made/G
				Lucas, Maggie	16	53	3.3
				Gray, Zhaque	16	25	1.6
				Bentley, Alex	16	9	0.6
				Womack, Renee	16	4	0.3
				Trogele, Julia	16	2	0.1

Free Throw Percent	FG	Att	Pct	Free Throw Attempts	G	Att	Att/G
Wolfe, Marisa	1	1	1.000	Nickson, Mia	16	73	4.6
Trogele, Julia	37	42	.881	Bentley, Alex	16	50	3.1
Bentley, Alex	43	50	.860	Trogele, Julia	16	42	2.6
Lucas, Maggie	26	32	.813	Greene, Nikki	16	33	2.1
Gray, Zhaque	20	25	.800	Lucas, Maggie	16	32	2.0
Nickson, Mia	55	73	.753				
Womack, Renee	8	12	.667	Free Throws Made	G	Made	Made/G
Edwards, Ariel	1	2	.500	Nickson, Mia	16	55	3.4
Studevent, Gizelle	1	2	.500	Bentley, Alex	16	43	2.7
Greene, Nikki	13	33	.394	Trogele, Julia	16	37	2.3
				Lucas, Maggie	16	26	1.6
				Gray, Zhaque	16	20	1.3

**2010-11 Penn State Basketball
PSU Category Leaders (FINAL)
Conference games**

Rebounds	G	Reb	Reb/G
Greene, Nikki	16	131	8.2
Nickson, Mia	16	130	8.1
Trogele, Julia	16	103	6.4
Bentley, Alex	16	47	2.9
Lucas, Maggie	16	44	2.8

Assists	G	No.	Ast/G
Bentley, Alex	16	76	4.8
Trogele, Julia	16	39	2.4
Lucas, Maggie	16	27	1.7
Gray, Zhaque	16	24	1.5
Nickson, Mia	16	7	0.4

Rebound Average	G	Reb	Avg/G
Greene, Nikki	16	131	8.2
Nickson, Mia	16	130	8.1
Trogele, Julia	16	103	6.4
Bentley, Alex	16	47	2.9
Lucas, Maggie	16	44	2.8

Steals	G	No.	Stl/G
Trogele, Julia	16	34	2.1
Bentley, Alex	16	26	1.6
Lucas, Maggie	16	23	1.4
Greene, Nikki	16	21	1.3
Nickson, Mia	16	16	1.0

Offensive Rebounds	G	No.	Avg/G
Nickson, Mia	16	68	4.3
Greene, Nikki	16	47	2.9
Trogele, Julia	16	26	1.6
Womack, Renee	16	13	0.8
Bentley, Alex	16	10	0.6

Blocked Shots	G	No.	Blk/G
Greene, Nikki	16	42	2.6
Trogele, Julia	16	7	0.4
Lucas, Maggie	16	5	0.3
Bentley, Alex	16	4	0.3
Wolfe, Marisa	13	2	0.2
East, Talia	11	2	0.2

Defensive Rebounds	G	No.	Avg/G
Greene, Nikki	16	84	5.3
Trogele, Julia	16	77	4.8
Nickson, Mia	16	62	3.9
Lucas, Maggie	16	39	2.4
Bentley, Alex	16	37	2.3

Minutes	G	No.	Min/G
Bentley, Alex	16	502	31.4
Lucas, Maggie	16	474	29.6
Nickson, Mia	16	470	29.4
Trogele, Julia	16	438	27.4
Gray, Zhaque	16	430	26.9

Fouls	G	No.	Per/G
Greene, Nikki	16	55	3.4
Trogele, Julia	16	54	3.4
Nickson, Mia	16	36	2.3
Bentley, Alex	16	36	2.3
Gray, Zhaque	16	35	2.2

Turnovers	G	No.	TO/G
Bentley, Alex	16	62	3.9
Greene, Nikki	16	42	2.6
Trogele, Julia	16	42	2.6
Gray, Zhaque	16	32	2.0
Nickson, Mia	16	29	1.8

Foulsouts	G	No.
Trogele, Julia	16	4
Lucas, Maggie	16	1
Greene, Nikki	16	1