



PENN STATE WOMEN'S HOCKEY

2013-14 NITTANY LIONS

GoPSUsports.com • Twitter & Instagram: [PennStateWHKY](#) • Facebook.com/PennStateWomensHockey
 Contact: **Jeremy Fallis** • jeremy.fallis@psu.edu • O: (814) 863-1388 • C: (814) 206-6544

2013-14 SCHEDULE

Overall: 3-14-2 • Home: 1-7-1 • Away: 2-7-1
 CHA: 1-9-0 • Home: 0-4-0 • Away: 1-5-0

Date	Opponent	Result/Time
Oct. 4	at Vermont	T (OT) 3-3
Oct. 5	at Vermont	W 4-2
Oct. 11	at Quinnipiac	L 1-5
Oct. 12	at Quinnipiac	L 0-4
Oct. 18	UNION	L 1-2
Oct. 19	UNION	W 2-1
Oct. 26	NEW HAMPSHIRE	L 5-8
Oct. 27	NEW HAMPSHIRE	L 1-3
Oct. 31	* ROBERT MORRIS	L 0-4
Nov. 1	* ROBERT MORRIS	L 0-6
Nov. 9	* SYRACUSE	L 1-2
Nov. 10	* SYRACUSE	L (OT) 3-4
Nov. 15	* at RIT	L 1-2
Nov. 16	* at RIT	L 2-3
Nov. 22	* at Lindenwood	L 1-2
Nov. 23	* at Lindenwood	W 4-1
Nov. 30	MAINE	T (OT) 1-1
Dec. 6	* at Mercyhurst	L 0-7
Dec. 7	* at Mercyhurst	L 0-8
Jan. 3	at Ohio State	7:07 p.m.
Jan. 4	at Ohio State	4:07 p.m.
Jan. 10	COLGATE	7:00 p.m.
Jan. 11	COLGATE	2:00 p.m.
Jan. 24	* at Syracuse	7:00 p.m.
Jan. 25	* at Syracuse	2:00 p.m.
Jan. 28	at Princeton	7:00 p.m.
Jan. 31	* RIT	7:00 p.m.
Feb. 1	* RIT	2:00 p.m.
Feb. 8	* LINDENWOOD	Noon
Feb. 9	* LINDENWOOD	Noon
Feb. 15	* MERCYHURST	8:00 p.m.
Feb. 16	* MERCYHURST	1:00 p.m.
Feb. 21	* at #10 Robert Morris	3:00 p.m.
Feb. 22	* at #10 Robert Morris	3:00 p.m.
2014 CHA TOURNAMENT		
Feb. 28	^ CHA First Round - Game 1	TBA
March 1	^ CHA First Round - Game 2	TBA
March 2	^ CHA First Round - Game 3	TBA
March 7	% CHA Semifinals	TBA
March 8	% CHA Final	TBA

All Times Eastern

Home games in **CAPS** at Pegula Ice Arena

* - College Hockey America games

^ - CHA First Round at higher seed

% - CHA Semifinals & Final hosted by No. 1 seed

Rankings based on USA Today/USA Hockey poll

Streaming on AmericaOneSports.com; live stream



PENN STATE NITTANY LIONS
 (3-14-2, 1-9-0 CHA)

OHIO STATE BUCKEYES
 (5-11-2, 2-9-2 WCHA)

Games 20-21: Jan. 3-4, 2014 • Ohio State Ice Rink • Columbus, Ohio

GAME DAY

VENUE
 STREAMING COVERAGE
 SERIES RECORD
 LAST MEETING
 NEXT TIME OUT

Ohio State Ice Rink (1,000)
OhioStateBuckeyes.com (\$)
 0-0-0
 n/a
 Jan. 10-11 vs. Colgate at Pegula Ice Arena

GAME NOTES

- Penn State travels to traditional Big Ten rival Ohio State in a non-conference battle
- Ohio State represents Penn State's first WCHA opponent
- Nittany Lions look to duplicate last year's New Year celebration with a pair of wins
- Penn State freshmen & sophomores have tallied 59 of team's 74 points
- OSU, like Penn State, has been off since the weekend of Dec. 6-8
- Buckeyes are 2-8-1 since Nov. 2, but 3-1-0 against non-conference opponents

ON THE INSIDE

- Page 2: **CHA Standings and Team Comparison**
- Page 6: **The Nittany Lion Roster & Pronunciation Guide**
- Page 7-12: **2013-14 Penn State Box Scores**
- Page 13: **2013-14 Penn State Women's Hockey Stats**
- Page 12: **The Nittany Lion TV/Radio Roster**

STATISTICAL LEADERS

FORWARDS		GP	G	A	PTS	SH	+/-	GWG
40	Shannon Yoxheimer	19	5	6	11	104	-3	0
24	Taylor Gross	19	6	4	10	51	-6	1
16	Hannah Hoenshell	19	2	7	9	48	-8	1
18	Laura Bowman	19	5	2	7	46	-10	1
12	Sarah Nielsen	19	1	5	6	14	-4	0
9	Amy Petersen	19	1	5	6	24	-9	0
19	Jill Holdcroft	19	3	2	5	28	-8	0
20	Emily Laurenzi	19	0	3	3	12	-10	0
15	Jess Desorcie	19	1	1	2	25	-9	0
DEFENSE		GP	G	A	PTS	SH	+/-	BLK
4	Jordin Pardoski	19	2	4	6	13	-8	23
27	Kelly Seward	19	3	0	3	16	-3	37
6	Lindsay Reihl	19	0	1	1	3	-5	34
17	Paige Jahnke	17	0	1	1	6	-11	22
2	Jeanette Bateman	18	0	1	1	8	-16	23
21	Sarah Wilkie	16	0	0	0	14	-7	21
GOALTENDER		GP-GS	Record	MIN	GA	GAA	SV	SV%
30	Celine Whitlinger	9-9	3-6-0	537:56	31	3.46	345	.918
37	Nicole Paniccia	10-10	0-8-2	604:23	36	3.57	364	.910



@PennStateWHKY



PennStateWomensHockey



GoPSUTV





NITTANY LION WOMEN'S HOCKEY

GAME NOTES AT OHIO STATE (JAN. 3-4)

NEW YEAR FOR THE NITTANY LIONS

Penn State opens the 2014 portion of the season against a traditional Big Ten rival in Ohio State. The Nittany Lions are searching for their third road victory of the season in the team's first meeting with a WCHA foe in program history. In last season's New Year's opening series, Penn State defeated Chatham 10-0 and 4-0 in Hockey Valley.

YOUTH SUPPLIES THE OFFENSE

The addition of four freshmen: **Laura Bowman**, **Amy Petersen**, **Sarah Nielsen** and **Kelly Seward** have injected an instant bump in scoring production with 20 of the team's 74 points. To prove the youth of the team, 59 of the team's 74 points (79.7%) were collectively tallied by freshmen and sophomores. Eight of the team's top nine point scorers are underclassmen.

PICK YOUR POISON

Penn State has had the fortune of multiple contributors on the offensive end. Eleven Nittany Lions have scored a goal this season, while 17 have registered a point. **Shannon Yoxheimer** leads the team with 11 points, **Taylor Gross** has 10 points, while **Hannah Hoenshell** and **Laura Bowman** have nine and seven points, respectively.

UPGRADED SCHEDULE

For the fifth time this season, the Nittany Lions faced a team receiving votes in the national rankings in Mercyhurst. Quinnipiac and Robert Morris are now ranked in both polls, while Syracuse and New Hampshire were both receiving votes when the teams visited Hockey Valley. Last season, Penn State played just one ranked opponent, Mercyhurst (four times), while Robert Morris earned votes during the first series in Nov. 2012, falling in all eight games. Penn State has dropped all eight games against teams who are in the polls or received votes this season. Earlier this season, Ohio State was ranked 10th in the polls following wins over then-No. 7 Mercyhurst at No. 4 North Dakota, but have fallen off in recent weeks, going 2-8-1 since Nov. 2.

SCOUTING THE BUCKEYES

Ohio State (5-11-2, 2-10-2 WCHA) looks to continue its dominance in non-conference play when the Nittany Lions visit OSU Ice Rink Friday-Saturday. The Buckeyes are 3-1-0 in non-conference play, while going 2-10-2 in the WCHA. Last time out, Ohio State dropped a pair of decisions two-time defending champion and No. 1 Minnesota, 9-2 and 5-1. Ohio State has struggled at times to score, registering just 34 goals in the first half of the season with five Buckeyes registering four goals for the team lead. Another four Buckeyes have scored at least two goals, while Sara Schmitt and Ally

Tarr lead the team with 10 assists apiece. Kari Schmitt has 12 points this season on four goals and eight assists. It has been a split net for Ohio State this season with Lisa Steffes earning more starts in net as the season has progressed. Steffes leads the team with a 3-4-1 record, a 2.01 GAA and .933 save percentage. Steffes has been the goalie of record in five of the past six games, while initial starter Chelsea Knapp (2-7-1, 3.75 GAA, .877 sv. pct.) started seven of the first eight games.

SERIES HISTORY vs. OSU

All-Time Series	0-0-0
PSU Streak	n/a
First Meeting	Friday, Jan. 3

COMMON ENEMIES

Penn State and Ohio State have three common opponents thus far in the season. The Nittany Lions are 0-6-0 against Mercyhurst, Robert Morris and New Hampshire, while Ohio State is 3-1-0.

	PENN STATE	OHIO STATE
Mercyhurst	L, 0-7; L, 0-8	W, 4-3 (OT)
UNH	L, 5-8; L, 1-3	W, 3-2; W, 2-0
Robert Morris	L, 0-4; L, 0-6	L, 1-2

IN THE THICK OF THINGS

Penn State's record of 7-26-2 last season is a little deceiving when considering how close the Nittany Lions were in many of their losses. In fact, 12 of the 26 losses were decided by two goals or less. This year, six of 12 losses are by a goal and Penn State is 1-6-2 in games decided by one goal or less, including the past five losses against Syracuse, RIT and Linden-

GAMEDAY COMPARISON

TEAM STATS	OHIO STATE
Overall record	3-14-2 5-11-2
Conference record	1-9-0 2-10-2
Goals scored	30 34
Goals scored per game	1.6 1.9
Goals allowed	68 54
Goals allowed per game	3.6 3.0
First period goals	11 13
Second period goals	11 13
Third period goals	8 7
Overtime goals	0 1
Shots	450 529
Shots per game	23.7 29.4
Shot pct.	.067 .064
Assists	44 55
Penalties per game	3.7 6.3
Power plays	9-72 12-78
Power-play pct.	.125 .154
Penalty kills	19-68 13-74
Penalty-kill pct.	.721 .824
Saves	709 494
Shutouts	0 1

LEADERS

Points	Yoxheimer (11)	S. Schmitt (14)
Goals	Gross (6)	Five with 4
Assists	Hoenshell (7)	Two with 10
Shots	Yoxheimer (104)	Tarr (60)
Shot Pct.	Seward (.188)	Gagne (.138)
+/-	Rasmussen (-2)	Curtis/Gust (+2)
Faceoff Pct.	Yoxheimer (.623)	n/a
Saves	Paniccia (364)	Knapp (256)
Save Pct.	Whitlinger (.918)	Steffes (.933)
GAA	Whitlinger (3.46)	Steffes (2.01)
Record	Whitlinger (3-6-0)	Steffes (3-4-1)

2013-14 COLLEGE HOCKEY AMERICA STANDINGS

(as of Dec. 30, 2013)

	Pts.	CHA	GF	GA	Overall	GF	GA	Last 10
Robert Morris (10/10)	17	8-1-1	28	12	16-3-1	57	33	8-1-1
Mercyhurst (rv/rv)	15	7-2-1	42	15	14-5-2	73	34	8-1-1
RIT	9	4-3-1	16	14	9-10-1	44	60	4-5-1
Syracuse	8	3-3-2	19	18	8-8-2	44	40	4-4-2
Lindenwood	5	2-7-1	12	31	2-16-2	22	74	2-7-1
PENN STATE	2	1-9-0	12	39	3-14-2	30	68	1-8-1

PAST RESULTS & UPCOMING SCHEDULE

Friday, Dec. 6 Mercyhurst* 7, PENN STATE 0 Robert Morris* 4, RIT 1 Lindenwood 2, Syracuse* 1	Sunday, Dec. 15 Mercyhurst 4, Lindenwood* 1	Saturday, Jan. 4 Syracuse at Vermont, 2 p.m. RIT at Union, 4 p.m. PENN STATE at Ohio State, 4:07 p.m. St. Lawrence at Robert Morris, 7 p.m.
Saturday, Dec. 7 Mercyhurst* 8, PENN STATE 0 Syracuse* 4, Lindenwood 1 Robert Morris 4, RIT 2	Tuesday, Dec. 31 Lindenwood at Minnesota State	Sunday, Jan. 5 Syracuse at Vermont, 2 p.m. St. Lawrence at Robert Morris, 3 p.m.
Saturday, Dec. 14 Clarkson 6, RIT* 2 (at Frontier Field) Mercyhurst 7, Lindenwood* 1	Wednesday, Jan. 1 Lindenwood at Minnesota State	Friday, Jan. 3 RIT at Union, 7 p.m. PENN STATE at Ohio State, 7:07 p.m.

* home team





NITTANY LION WOMEN'S HOCKEY

wood. PSU is 2-12-3 all-time in games decided by less than a goal.

PENN STATE HAS A #NEWDEN

The Nittany Lions opened its new \$90 million home, Pegula Ice Arena, on Oct. 18 against Union in a 2-1 loss. The next day, PSU would earn a 2-1 victory for the program's first win at Pegula. In all, Penn State will host 17 games in the state-of-the-art arena that seats 5,782. The team's first season at PIA began with an eight-game home stand over 23 days. The Nittany Lions host eight contests in 2014 beginning with next week's two-game series against Colgate Friday and Saturday.

THE NEXT NITTANY LIONS

Nittany Lion head coach **Josh Brandwene** officially announced a signing class of six student-athletes for the 2014-15 season on Tuesday, Nov. 19. Penn State welcomes **Hannah Ehresmann** (Minnetonka, Minn.), **Irene Kiroplis** (Georgetown, Ont.), **Remi Martin** (Littleton, Colo.), **Caitlin Reilly** (Chanhausen, Minn.), **Bella Sutton** (Shoreview, Minn.) and **Christi Vetter** (Lakeville, Minn.).

Included in the class are three forwards, a true

defender and a goaltender, while Kiroplis can play at forward or defense. The class sees four Minnesotans join the squad to bring the projected total for 2014-15 to nine, which would be the highest representation from any state or province.

LAKERS TAKE TWO FROM PENN STATE

Penn State went to perennial CHA champion Mercyhurst and dropped a pair of games, 7-0 and 8-0 on Dec. 6-7. In the opener, the Nittany Lions skated toe-to-toe with the Lakers, firing 35 shots, the most allowed by Mercyhurst all season, to 43 by the Lakers. Nevertheless, Mercyhurst capitalized on its scoring opportunities as Christine Bestland posted a hat trick. In the series finale, the Lakers dominated from beginning to end en route to an 8-0 win. **Nicole Panicia** made 45 saves in the loss.

LIONS AND BLACK BEARS KNOTTED UP

Penn State fought a gritty Maine squad on Saturday afternoon (Nov. 30) at Pegula Ice Arena as the two teams tied 1-1. **Shannon Yoxheimer** scored for the second straight game and **Nicole Panicia** saved 44 shots. Yoxheimer

PENN STATE'S RECORD IS...

1-7-1 at home
2-7-1 on the road
0-1-2 in overtime
2-5-2 when scoring first
1-9-0 when opponent scores first
3-3-0when leading after the 1st period
0-7-0 when trailing after the 1st period
0-4-2 when tied after the 1st period
2-2-0 when leading after the 2nd period
0-8-0when trailing after the 2nd period
1-4-2 when tied after the 2nd period
1-0-0when out-shooting opponent
2-14-2when out-shot by opponent
0-0-0 when taking same # of shots
2-3-1when winning more faceoffs
1-11-1 when losing more faceoffs
0-0-0 when tied in faceoffs
1-4-1 when taking more penalties
2-5-1when taking fewer penalties
0-5-0	... when taking the same # of penalties
2-5-1 when scoring a power play goal
1-9-1	... when not scoring a power play goal
1-10-1when allowing a power play goal
2-4-1	...when not allowing a power play goal
0-5-0 when scoring 0 goals
0-6-1 when scoring 1 goal
1-1-0 when scoring 2 goals
0-1-1 when scoring 3 goals
2-1-0 when scoring 4+ goals
0-0-0 when allowing 0 goals
2-0-1when allowing 1 goal
1-4-0 when allowing 2 goals
0-2-1 when allowing 3 goals
0-8-0 when allowing 4+ goals
2-6-1 in October
1-6-1 in November
0-2-0 in December
0-0-0 in January
0-0-0in February
0-0-0 in March
0-0-0 on Tuesday
0-1-0on Thursday
0-6-1 on Friday
3-6-1 on Saturday
0-2-0 on Sunday
3-8-1 during the day
0-6-1 at night
1-2-2vs. Hockey East
1-9-0vs. College Hockey America
1-3-0 vs. ECAC Hockey
0-0-0 vs. WCHA
0-0-0 vs. ranked opponents
3-14-2vs. unranked opponents
1-2-2 when Shannon Yoxheimer scores
3-6-0 when Celine Whitlinger starts
3-2-1when a freshman scores
1-5-2 games decided by a goal or less

2013-14 WOMEN'S HOCKEY POLLS

USA Today/USA Hockey (Dec. 15, 2013)

1	Minnesota	19-1-0	1
2	Wisconsin	14-2-2	2
3	Cornell	10-1-2	3
4	Harvard	9-1-1	4
5	North Dakota	12-4-2	5
6	Clarkson	14-4-2	7
7	Boston College	12-4-2	6
8	Boston University	14-3-1	8
9	Quinnipiac	14-2-5	9
10	Robert Morris	16-3-1	10

Others: **Mercyhurst**, **Minnesota Duluth**

USCHO.com (Dec. 16, 2013)

1	Minnesota	19-1-0	1
2	Wisconsin	14-2-2	2
3	Cornell	10-1-2	3
4	North Dakota	12-4-2	4
5	Harvard	9-1-2	5
6	Clarkson	14-4-2	6
7	Boston College	12-4-2	7
8	Boston University	14-3-1	8
9	Quinnipiac	14-2-5	9
10	Robert Morris	16-3-1	10

Others: **Mercyhurst**

Bold indicates 2013-14 opponent

2013-14 MEDIA INFORMATION

Penn State Athletic Communications

Primary Contact: Jeremy Fallis
 Email: jeremy.fallis@psu.edu
 Office: 814-865-1757

Interviews

Penn State student-athletes and coaches are available for interviews after practice each day. Please contact Jeremy Fallis in advance.

Credentials

Contact Jeremy Fallis for home game credentials at Pegula Ice Arena.

Postgame

Head coach Josh Brandwene and requested student-athletes are available to the media following each game in the studio rink. Please alert Jeremy Fallis during the game of any requests.

Yearbook

A complimentary copy of the 2013-14 Penn State women's hockey yearbook will be made available to members of the media. The public may purchase copies for \$6 online.

GoPSUsports.com

[Facebook.com/PennStateWomensHockey](https://www.facebook.com/PennStateWomensHockey)

[@PennStateWHKY](https://twitter.com/PennStateWHKY)





NITTANY LION WOMEN'S HOCKEY

broke the scoreless game off a feed from **Hannah Hoenshell** and **Jordin Pardoski** with 5:15 left in the second period. The goal was Yoxheimer's fifth of the season, while Hoenshell and Pardoski notched their seventh and fourth assists, respectively. The action-packed second period, which featured 32 shots, wouldn't conclude in Penn State's favor. Maine's Brianne Kilgour bagged her third goal of the year with just nine seconds remaining. Neither team could find the game-winner in the third period or overtime.

HOENSHELL, SEWARD EARN CHA AWARDS
Penn State forward **Hannah Hoenshell** and defender **Kelly Seward** were named College Hockey America's Player and Rookie of the Week, respectively, on Monday, Oct. 7.

A crafty forward with incredible stick skills, Hoenshell propelled Penn State to an undefeated weekend at Vermont, supplying three points and a game-high plus-four rating in Saturday's 4-2 win. Hoenshell was involved in three of Penn State's four goals, tallying a goal and two assists. Her goal was her second career game-winning goal.

Seward was fantastic on both sides of the ice this weekend as she tallied two goals, which ties for the team high after two games. Seward posted a plus-two rating and seven blocked shots for the weekend as well. In both games, Seward scored Penn State's first goal. On Friday it was a power-play tally and Saturday it was a game-tying goal in the first period.

BRING 'EM BACK
Penn State brings back 24 of its 27 members from last year's team. In those 24 student-athletes, Penn State returns its top 14 scorers and almost 99 percent of its offense along with every member of its stout goaltending corps.

YOXHEIMER MAKES HER MARK
Leading the team in scoring last season was **Shannon Yoxheimer**, a left-handed forward. Yoxheimer buried 14 goals with 17 assists for a grand total of 31 points, all team highs. She led College Hockey America in shots (169) and put away three power play goals as well as a team-high three game-winning goals. Yoxheimer's numbers ranked her in the top 10 nationally in goals, points and assists for rookies. The CHA coaches named Yoxheimer to the All-Rookie team.

THE PANICCIA WALL
Senior goaltender **Nicole Paniccia** excelled between the pipes for the Blue and White last year, stopping 1,028 shots with a 92.8 save percentage. Paniccia's save tally was second in all of NCAA Division I, topped only by fellow CHA upstart Lindenwood's Nicole Hensley. Paniccia

was in net for six of PSU's seven victories last year as well as both of Penn State's ties.

POWER-PLAY HOLDCROFT
Sophomore forward **Jill Holdcroft** was lethal on the power play last season, scoring six of her 10 goals last year on the advantage. Despite missing the CHA playoffs at RIT, Holdcroft still ranked second on the team in scoring (10 goals) and added two assists for good measure.

CAPTAINS' CORNER
Senior forward **Taylor Gross** once again leads Penn State as its first captain following her first year with the letter in 2012-13. Gross was second on the team in points (22) and assists (15) last season with 34 appearances. The University of Connecticut transfer appeared in 48 games for the Huskies before joining Penn State's club side in January 2012. Senior forward **Jenna Welch** and **Lindsay Reihl**, a graduate student defender, reprise their roles as assistant captains this year. Joining the veteran trio is **Jordin Pardoski**, a vocal sophomore defender who is a first-year assistant captain.

NEW NITTANY LIONS
Four freshmen join the Nittany Lions for the 2013-14 campaign. Minnesota forwards **Laura Bowman**, **Amy Petersen** and **Sarah Nielsen** provide an instant dose of goal scoring from their high school success. Defender **Kelly Seward** of New York is the tallest Nittany Lion blueliner.

FIRST HEAD COACH
A 1991 graduate of Penn State, head coach **Josh Brandwene** is the first to lead the Nittany Lions. Brandwene compiled a 7-26-2 record last season with 17 freshmen on the team. A four-year hockey player at PSU, Brandwene brings 20 years of coaching experience to Happy Valley.

CONTINUING PENN STATE HOCKEY
Seven members of the current varsity team played for the women's club team at some point. Graduate student **Lindsay Reihl** along with juniors **Cara Mendelson**, **Katie Murphy**, **Madison Smiddy** and **Tess Weaver** played all of the 2011-12 season for head coach **Josh Brandwene** in Penn State's last year at the club level. **Taylor Gross** and **Jess Desorcie** joined the five aforementioned players midway through the season in preparation of the 2012-13 season.

NEXT TIME OUT
Penn State returns to Pegula Ice Arena for its final non-conference home series as Colgate visits Hockey Valley. The series opener is set for Friday, Jan. 10 at 7 p.m., while the series finale will take place Saturday, Jan. 11 at 2 p.m. The meeting will be the first between these two programs.

2013-14 HONORS & AWARDS

Hannah Hoenshell
CHA Player of the Week (10/7)

Kelly Seward
CHA Rookie of the Week (10/7)

OVER THE AIR

Both games this weekend at Mercyhurst will be featured on AmericaOneSports.com.

The CHA on AmericaOneSports.com
Penn State home & away games during CHA play will be streamed live on AmericaOneSports.com. Subscribers can purchase a 1-day package for \$8, 30-day packages for \$30 or a season pass for \$125.



NITTANY LION WOMEN'S HOCKEY



THE LAST TIME

PENN STATE...

Scored 0 goals
 Scored 3 goals
 Scored 4 goals
 Scored 5 goals
 Scored 6 goals
 Scored 7 goals
 Scored 8 goals
 Scored 9 goals
 Scored 10 goals
 Allowed 0 goals
 Allowed 1 goal
 Allowed 2 goals
 Allowed 3 goals
 Allowed 4 goals
 Allowed 5 goals
 Allowed 6+ goals
 Won in overtime
 Lost in overtime
 Tied in overtime
 Played a ranked team
 Attempted 10-19 shots
 Attempted 20-29 shots
 Attempted 30-39 shots
 Attempted 40-49 shots
 Attempted 50-59 shots
 Attempted 60-69 shots
 Attempted 70+ shots
 Allowed 10-19 shots
 Allowed 20-29 shots
 Allowed 30-39 shots
 Allowed 40-49 shots
 Allowed 50-59 shots
 Allowed 60-69 shots
 Allowed 70+ shots
 Tallied 5-9 assists
 Tallied 10-15 assists
 Tallied 15+ assists
 Scored 10-19 points
 Scored 20+ points
 Scored 2 power-play goals
 Scored 3 power-play goals
 Allowed 0 power-play goals
 Allowed 2 power-play goals
 Had 5 different goal scorers
 Had 6 different goal scorers
 Had 7 different goal scorers
 Had 8 different goal scorers

12/7/13 at Mercyhurst (0-8)
 11/10/13 vs. Syracuse (3-4)
 11/23/13 at Lindenwood (4-1)
 10/26/13 vs. New Hampshire (5-8)
 11/2/12 vs. Sacred Heart (6-0)
 Never
 11/3/12 vs. Sacred Heart (8-2)
 Never
 1/4/13 vs. Chatham (10-0)
 1/5/13 vs. Chatham (4-0)
 11/30/13 vs. Maine (1-1)
 11/22/13 at Lindenwood (1-2)
 11/16/13 at RIT (2-3)
 11/10/13 vs. Syracuse (3-4)
 10/11/13 at Quinnipiac (1-5)
 12/7/13 at Mercyhurst (0-8)
 Never
 11/10/13 vs. Syracuse (3-4)
 11/30/13 vs. Maine (1-1)
 2/2/13 vs. #7 Mercyhurst (1-4)
 12/7/13 19 at Mercyhurst (0-8)
 11/22/13 23 at Lindenwood (1-2)
 12/6/13 35 at Mercyhurst (0-7)
 1/4/13 48 vs. Chatham (10-0)
 Never
 11/3/12 64 vs. Sacred Heart (8-2)
 1/5/13 71 vs. Chatham (4-0)
 1/5/13 16 vs. Chatham (4-0)
 10/19/13 21 vs. Union (2-1)
 11/23/13 37 at Lindenwood (4-1)
 12/6/13 41 at Mercyhurst (0-7)
 12/7/13 53 at Mercyhurst (0-8)
 2/22/13 63 at Robert Morris (1-4)
 12/1/12 71 at #4 Mercyhurst (1-7)
 11/23/13 5 at Lindenwood (4-1)
 11/3/12 12 vs. Sacred Heart (8-2)
 1/4/13 17 vs. Chatham (10-0)
 10/26/13 13 vs. New Hampshire (5-8)
 1/4/13 27 vs. Chatham (10-0)
 10/26/13 vs. New Hampshire (5-8)
 10/20/12 at Sacred Heart (6-1)
 11/30/13 vs. Maine (1-1)
 12/6/13 at Mercyhurst (0-7)
 10/26/13 vs. New Hampshire (5-8)
 10/20/12 at Sacred Heart (6-1)
 1/4/13 vs. Chatham (10-0)
 11/3/12 vs. Sacred Heart (8-2)

A PENN STATE PLAYER...

Scored 2 goals
 Scored 3 goals
 Scored 4 goals
 Had 3 assists
 Had 5 points
 Had 10+ shots
 Saved 40-49 shots
 Saved 50-59 shots
 Saved 60+ shots
 Had a shutout
 Scored an empty-net goal
 Scored a short-handed goal

11/16/13 J. Holdcroft at RIT (2-3)
 11/2/12 H. Hoenshell vs. Sacred Heart (6-0)
 Never
 1/4/13 J. Bateman vs. Chatham (10-0)
 Never
 1/5/13 12, T. Weaver vs. Chatham (4-0)
 12/7/13 45, N. Paniccia at Mercyhurst (0-8)
 11/10/13 51, C. Whitlinger vs. Syracuse (3-4)
 12/1/12 64, N. Paniccia at #4 Mercyhurst (1-7)
 1/5/13 C. Whitlinger/B. Meyer vs. Chatham (4-0)
 10/6/12 B. Shaw at Vermont (5-3)
 11/16/13 J. Holdcroft at RIT (2-3)





NITTANY LION WOMEN'S HOCKEY

2013-14 PENN STATE WOMEN'S HOCKEY NUMERICAL ROSTER

No.	Name	Yr.	Pos.	Ht.	S/C	Hometown	Last Team
2	Jeanette Bateman	So.	D	5-6	R	Greeley, Colo.	Colorado Select
3	Cara Mendelson	Jr.	F	5-6	R	Pittsburgh, Pa.	Steel City Selects
4	Jordin Pardoski	So.	D	5-5	R	Rochester Hills, Mich.	Detroit Honeybaked
5	Stephanie Walkom	So.	D	5-7	R	Moon Township, Pa.	Pittsburgh Penguins Elite
6	Lindsay Reihl	Gr.	D	5-4	R	Cheshire, Conn.	Connecticut Polar Bears
9	Amy Petersen	Fr.	F	5-4	R	Minnetonka, Minn.	Minnetonka HS
10	Micayla Catanzariti	So.	F	5-4	R	Rancho Santa Margarita, Calif.	Gilmour Academy (Ohio)
12	Sarah Nielsen	Fr.	F	5-6	L	Edina, Minn.	Edina HS
13	Kendra Rasmussen	So.	F	5-5	L	Sartell, Minn.	Sartell/Sauk Rapids HS
14	Darby Kern	So.	F	5-11	R	Venetia, Pa.	Pittsburgh Penguins Elite
15	Jess Desorcie	Jr.	F	5-4	L	Westford, Vt.	Connecticut College
16	Hannah Hoenshell	So.	F	5-3	R	Plano, Texas	Texas Alliance
17	Paige Jahnke	So.	D	5-6	R	Oakdale, Minn.	Roseville HS / Minnesota Jr. Whitecaps
18	Laura Bowman	Fr.	F	5-7	R	Minnetonka, Minn.	Minnetonka HS
19	Jill Holdcroft	So.	F	5-1	R	Pennsylvania Furnace, Pa.	Pittsburgh Penguins Elite
20	Emily Laurenzi	So.	F	5-2	R	Townsend, Del.	National Sports Academy (N.Y.)
21	Sarah Wilkie	So.	D	5-6	R	Ashby, Mass.	Williston Northampton School
22	Jenna Welch	Sr.	F	5-8	R	Austin, Texas	Connecticut
23	Birdie Shaw	So.	F	5-2	L	Troy, Mich.	Detroit Honeybaked
24	Taylor Gross	Sr.	F	5-1	R	Colorado Springs, Colo.	Connecticut
25	Katie Murphy	Jr.	F	5-4	L	Novi, Mich.	Detroit Honeybaked
27	Kelly Seward	Fr.	D	5-9	L	Williamsville, N.Y.	Nichols School / Buffalo Bisons
30	Celine Whitlinger	So.	G	5-8	L	Garden Grove, Calif.	Gilmour Academy (Ohio)
31	Brooke Meyer	So.	G	5-7	L	Naperville, Ill.	Chicago Huskies
33	Madison Smiddy	Jr.	D	5-7	L	Grand Rapids, Mich.	Detroit Honeybaked
36	Tess Weaver	Jr.	F	5-5	R	Windber, Pa.	Pittsburgh Penguins Elite
37	Nicole Paniccia	Sr.	G	5-5	L	Oakville, Ont.	Connecticut
40	Shannon Yoxheimer	So.	F	5-7	L	Jackson, Mich.	North American Hockey Academy (Vt.)

Head Coach: Josh Brandwene (Second Year)

Assistant Coaches: Gina Kearns (Second Year), Casey McCullion (Second Year); **Director of Operations** Alex Dawes (First Year)

Captain: Taylor Gross; **Assistant Captains:** Jordin Pardoski, Lindsay Reihl, Jenna Welch

ALPHABETICAL ROSTER		PRONUNCIATION GUIDE		LIONS BY STATE		LIONS BY POSITION	
No.	Name	Brandwene	BRAND-ween	California (2):	Catanzariti, Whitlinger	Forward (17):	Bowman, Catanzariti, Desorcie, Gross, Hoenshell, Holdcroft, Kern, Laurenzi, Mendelson, Murphy, Nielsen, Petersen, Rasmussen, Shaw, Weaver, Welch, Yoxheimer
2	Jeanette Bateman	Catanzariti	Cah-TAN-zah-REE-tee	Colorado (2):	Bateman, Gross	Defense (8):	Bateman, Jahnke, Pardoski, Reihl, Seward, Smiddy, Walkom, Wilkie
18	Laura Bowman	Desorcie	Deh-SORE-see	Connecticut (1):	Reihl	Goalie (3):	Meyer, Paniccia, Whitlinger
10	Micayla Catanzariti	Jahnke	YAWN-kee	Delaware (1):	Laurenzi		
15	Jess Desorcie	Jeanette	Jeh-NETT	Illinois (1):	Meyer		
24	Taylor Gross	Kearns	KERNS	Massachusetts (1):	Wilkie		
16	Hannah Hoenshell	McCullion	Mick-CULL-yon	Michigan (5):	Murphy, Pardoski, Shaw, Smiddy, Yoxheimer		
19	Jill Holdcroft	Paniccia	Pah-NEE-cha	Minnesota (5):	Bowman, Jahnke, Nielsen, Petersen, Rasmussen		
17	Paige Jahnke	Reihl	RILE	New York (1):	Seward		
14	Darby Kern	LIONS BY ELIGIBILITY		Pennsylvania (5):	Holdcroft, Kern, Mendelson, Walkom, Weaver		
20	Emily Laurenzi	Graduate Student (1): Reihl		Texas (2):	Hoenshell, Welch		
3	Cara Mendelson	Seniors (3): Gross, Paniccia, Welch		Vermont (1):	Desorcie		
31	Brooke Meyer	Juniors (5): Desorcie, Mendelson, Murphy, Smiddy, Weaver		LIONS BY PROVINCE			
25	Katie Murphy	Sophomores (15): Bateman, Catanzariti, Hoenshell, Holdcroft, Jahnke, Kern, Laurenzi, Meyer, Pardoski, Rasmussen, Shaw, Walkom, Whitlinger, Wilkie, Yoxheimer		Ontario (1):	Paniccia		
12	Sarah Nielsen	Freshmen (4): Bowman, Nielsen, Petersen, Seward					
37	Nicole Paniccia						
4	Jordin Pardoski						
9	Amy Petersen						
13	Kendra Rasmussen						
6	Lindsay Reihl						
27	Kelly Seward						
23	Birdie Shaw						
33	Madison Smiddy						
5	Stephanie Walkom						
36	Tess Weaver						
22	Jenna Welch						
30	Celine Whitlinger						
21	Sarah Wilkie						
40	Shannon Yoxheimer						





NITTANY LION WOMEN'S HOCKEY

OCT. 18, 2013: UNION 5, PENN STATE 1

Union (3-3-0) vs. Penn State (1-3-1)
Date: Oct 18, 2013 • Location: University Park, Pa. • Arena: Pegula Ice Arena
Attendance: 1424 • Start time: 7:00 pm • End time: 8:52 pm • Total time: 1:52

Prd Time Team Scored by Assists Vis. on ice Home on ice Goals by Period

TEAM SUMMARY

Union G A PI Sh +/- BI Penn State G A PI Sh +/- BI

GOALTENDERS

Union Dec Min GA 1 2 3 Saves Penn State Dec Min GA 1 2 3 Saves

PENALTY SUMMARY

Prd Player Team MinOffense Time Prd Player Team MinOffense Time

Win-Lundberg, Shenae (3-3-0). Loss-Paniccia, Nicole (0-2-1).

OCT. 26, 2013: NEW HAMPSHIRE 8, PENN STATE 5

New Hampshire (4-2-1, 1-0-1 WHEA) vs. Penn State (2-4-1, 0-0-0 CHA)
Date: Oct 26, 2013 • Location: University Park, Pa. • Arena: Pegula Ice Arena
Attendance: 493 • Start time: 7:00 pm • End time: 9:01 pm • Total time: 2:01

Prd Time Team Scored by Assists Vis. on ice Home on ice Goals by Period

TEAM SUMMARY

New Hampshire G A PI Sh +/- BI Penn State G A PI Sh +/- BI

GOALTENDERS

New Hampshire Dec Min GA 1 2 3 Saves Penn State Dec Min GA 1 2 3 Saves

PENALTY SUMMARY

Prd Player Team MinOffense Time Prd Player Team MinOffense Time

Win-Vaattovaara, Vilma (4-0-1). Loss-Paniccia, Nicole (0-3-1).

OCT. 19, 2013: PENN STATE 2, UNION 1

Union (3-4-0) vs. Penn State (2-3-1)
Date: Oct 19, 2013 • Location: University Park, Pa. • Arena: Pegula Ice Arena
Attendance: 814 • Start time: 2:00 pm • End time: 3:59 • Total time: 1:59

Prd Time Team Scored by Assists Vis. on ice Home on ice Goals by Period

TEAM SUMMARY

Union G A PI Sh +/- BI Penn State G A PI Sh +/- BI

GOALTENDERS

Union Dec Min GA 1 2 3 Saves Penn State Dec Min GA 1 2 3 Saves

PENALTY SUMMARY

Prd Player Team MinOffense Time Prd Player Team MinOffense Time

Win-Whitlinger, Celine (2-1-0). Loss-Lundberg, Shenae (3-4-0).

OCT. 27, 2013: NEW HAMPSHIRE 3, PENN STATE 1

New Hampshire (5-2-1, 1-0-1 WHEA) vs. Penn State (2-5-1, 0-0-0 CHA)
Date: Oct 27, 2013 • Location: University Park, Pa. • Arena: Pegula Ice Arena
Attendance: 552 • Start time: 2:00 pm • End time: 4:00 pm • Total time: 2:00

Prd Time Team Scored by Assists Vis. on ice Home on ice Goals by Period

TEAM SUMMARY

New Hampshire G A PI Sh +/- BI Penn State G A PI Sh +/- BI

GOALTENDERS

New Hampshire Dec Min GA 1 2 3 Saves Penn State Dec Min GA 1 2 3 Saves

PENALTY SUMMARY

Prd Player Team MinOffense Time Prd Player Team MinOffense Time

Win-Wilkes, Ashley (1-0-0). Loss-Whitlinger, Celine (2-2-0).
Penn State TH at 17:39 of 3rd period





NITTANY LION WOMEN'S HOCKEY



2013-14 Penn State Women's Hockey Penn State Combined Team Statistics (as of Dec 31, 2013) All games

Date	Opponent	Score	Att.	Record:	Overall	Home	Away	Neutral
Oct 04	at Vermont	Tot 3-3	435	ALL GAMES	3-14-2	1-7-1	2-7-1	0-0-0
Oct 05	at Vermont	W 4-2	760	CONFERENCE	1-9-0	0-4-0	1-5-0	0-0-0
Oct 11	at Quinnipiac	L 1-5	505	NON-CONFERENCE	2-5-2	1-3-1	1-2-1	0-0-0
Oct 12	at Quinnipiac	L 0-4	213					
Oct 18	UNION	L 1-2	1424					
Oct 19	UNION	W 2-1	814					
Oct 26	NEW HAMPSHIRE	L 5-8	493					
Oct 27	NEW HAMPSHIRE	L 1-3	552					
* Oct 31	ROBERT MORRIS	L 0-4	513					
* Nov 01	ROBERT MORRIS	L 0-6	771					
* Nov 09	SYRACUSE	L 1-2	691					
* Nov 10	SYRACUSE	Lot 3-4	516					
* Nov 15	at RIT	L 1-2	1170					
* Nov 16	at RIT	L 2-3	588					
* Nov 22	at Lindenwood	L 1-2	102					
* Nov 23	at Lindenwood	W 4-1	85					
Nov 30	MAINE	Tot 1-1	510					
* Dec 06	at Mercyhurst	L 0-7	237					
* Dec 07	at Mercyhurst	L 0-8	537					

	PSU	OPP
TEAM STATISTICS		
SHOT STATISTICS		
Goals-Shot attempts	30-450	68-777
Shot pct.	.067	.088
Goals/Game	1.6	3.6
Shots/Game	23.7	40.9
POWER PLAYS		
Goals-Power Plays	9-72	19-68
Conversion Percent	.125	.279
GOAL BREAKDOWN		
Power Play	9	19
Short-handed	1	1
Empty net	0	1
Penalty	0	0
Unassisted	3	4
Overtime	0	1
PENALTIES		
Number	71	74
Minutes	142	148
Penalties/Game	3.7	3.9
Pen minutes/Game	7.5	7.8
FACEOFFS (W-L)	519-562	562-519
Faceoff W-L Pct.	.480	.520

#	Player	gp	g	a	pts	sh	sh%	pen-min	pp	sh
40	Yoxheimer, Shannon	19	5	6	11	104	.048	4-8	1	0
24	Gross, Taylor	19	6	4	10	51	.118	0-0	2	0
16	Hoenshell, Hannah	19	2	7	9	48	.042	2-4	0	0
18	Bowman, Laura	19	5	2	7	46	.109	6-12	1	0
4	Pardoski, Jordin	19	2	4	6	13	.154	5-10	1	0
12	Nielsen, Sarah	19	1	5	6	14	.071	6-12	0	0
9	Petersen, Amy	19	1	5	6	24	.042	0-0	1	0
19	Holdcroft, Jill	19	3	2	5	28	.107	4-8	1	1
27	Seward, Kelly	19	3	0	3	16	.188	2-4	2	0
20	Laurenzi, Emily	19	0	3	3	12	.000	6-12	0	0
15	Desorcie, Jess	19	1	1	2	25	.040	3-6	0	0
13	Rasmussen, Kendra	13	1	0	1	7	.143	0-0	0	0
2	Bateman, Jeanette	18	0	1	1	8	.000	2-4	0	0
17	Jahnke, Paige	17	0	1	1	6	.000	8-16	0	0
6	Reihl, Lindsay	19	0	1	1	3	.000	2-4	0	0
23	Shaw, Birdie	18	0	1	1	4	.000	6-12	0	0
33	Smiddy, Madison	5	0	1	1	0	.000	1-2	0	0
10	Catanzariti, Micayla	4	0	0	0	1	.000	1-2	0	0
5	Walkom, Stephanie	1	0	0	0	0	.000	0-0	0	0
36	Weaver, Tess	3	0	0	0	1	.000	1-2	0	0
22	Welch, Jenna	19	0	0	0	25	.000	6-12	0	0
21	Wilkie, Sarah	16	0	0	0	14	.000	2-4	0	0
8	TM TEAM	8	0	0	0	0	.000	4-8	0	0
	Total	19	30	44	74	450	.067	71-142	9	1
	Opponents	19	68	113	181	777	.088	74-148	19	1

#	Goalie	gp	min	ga	gaavg	saves	save%	w-l-t
30	Whitlinger, Celine	9	537:56	31	3.46	345	.918	3-6-0
37	Paniccia, Nicole	10	604:23	36	3.57	364	.910	0-8-2
TM	EMPTY NET	8	9:08	1	-	0	.000	0-0-0
	Total	19	1151:27	68	3.54	709	.912	3-14-2
	Opponents	19	1151:27	30	1.56	420	.933	14-3-2

	PSU	Opponent
Attendance Summary		
Total	6284	4632
Dates/Avg Per Date	9/698	10/463
Neutral Site #/Avg	0/0	

Goals by Period	1st	2nd	3rd	OT	Total
Penn State	11	11	8	0	30
Opponents	18	23	26	1	68

Saves by Period	1st	2nd	3rd	OT	Total
Penn State	241	241	215	12	709
Opponents	122	134	162	2	420



NITTANY LION WOMEN'S HOCKEY



2
JEANNETTE BATEMAN
Sophomore • D
Greeley, Colo.



3
CARA MENDELSON
Junior • F
Pittsburgh, Pa.



4
JORDIN PARDOSKI^A
Sophomore • D
Rochester Hills, Mich.



5
STEPHANIE WALKOM
Sophomore • D
Moon Township, Pa.



6
LINDSAY REIHL^A
Grad Student • D
Cheshire, Conn.



9
AMY PETERSEN
Freshman • F
Minnetonka, Minn.



10
MICAYLA CATANZARITI
Sophomore • F
Rancho Santa Margarita, Calif.



12
SARAH NIELSEN
Freshman • F
Edina, Minn.



13
KENDRA RASMUSSEN
Sophomore • F
Sartell, Minn.



14
DARBY KERN
Sophomore • F
Venetia, Pa.



15
JESS DESORCIE
Junior • F
Westford, Vt.



16
HANNAH HOENSHELL
Sophomore • F
Plano, Texas



17
PAIGE JAHNKE
Sophomore • D
Oakdale, Minn.



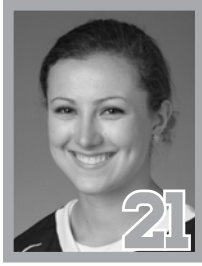
18
LAURA BOWMAN
Freshman • F
Minnetonka, Minn.



19
JILL HOLDCROFT
Sophomore • F
Pennsylvania Furnace, Pa.



20
EMILY LAURENZI
Sophomore • F
Townsend, Del.



21
SARAH WILKIE
Sophomore • D
Ashby, Mass.



22
JENNA WELCH^A
Senior • F
Austin, Texas



23
BIRDIE SHAW
Sophomore • F
Troy, Mich.



24
TAYLOR GROSS^C
Senior • F
Colorado Springs, Colo.



25
KATIE MURPHY
Junior • F
Novi, Mich.



27
KELLY SEWARD
Freshman • D
Williamsville, N.Y.



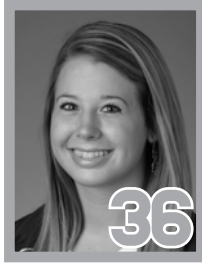
30
CELINE WHITLINGER
Sophomore • G
Garden Grove, Calif.



31
BROOKE MEYER
Sophomore • G
Naperville, Ill.



33
MADISON SMIDDY
Junior • D
Grand Rapids, Mich.



36
TESS WEAVER
Junior • F
Windber, Pa.



37
NICOLE PANICCIA
Senior • G
Oakville, Ont.



40
SHANNON YOXHEIMER
Sophomore • F
Jackson, Mich.

