



PENN STATE WOMEN'S HOCKEY

2013-14 NITTANY LIONS

GoPSUsports.com // Twitter & Instagram: **PennStateWHKY** // Facebook.com/PennStateWomensHockey
 Contact: **Jeremy Fallis** // jeremy.fallis@psu.edu // O: (814) 863-1388 // C: (814) 206-6544

2013-14 SCHEDULE

Overall: 0-0-0 // Home: 0-0-0 // Away: 0-0-0
 CHA: 0-0-0 // Home: 0-0-0 // Away: 0-0-0

| Date | Opponent | Result/Time |
|----------------------------|--------------------------|------------------|
| Oct. 4 | at Vermont | 7:00 p.m. |
| Oct. 5 | at Vermont | 2:30 p.m. |
| Oct. 11 | at Quinnipiac | 7:00 p.m. |
| Oct. 12 | at Quinnipiac | 4:00 p.m. |
| Oct. 18 | UNION | 7:00 p.m. |
| Oct. 19 | UNION | 2:00 p.m. |
| Oct. 26 | NEW HAMPSHIRE | 7:00 p.m. |
| Oct. 27 | NEW HAMPSHIRE | 7:00 p.m. |
| Oct. 31 * | ROBERT MORRIS | 7:00 p.m. |
| Nov. 1 * | ROBERT MORRIS | 4:00 p.m. |
| Nov. 9 * | SYRACUSE | 2:00 p.m. |
| Nov. 10 * | SYRACUSE | 2:00 p.m. |
| Nov. 15 * | at RIT | 7:00 p.m. |
| Nov. 16 * | at RIT | 3:00 p.m. |
| Nov. 22 * | at Lindenwood | 8:00 p.m. |
| Nov. 23 * | at Lindenwood | 3:00 p.m. |
| Nov. 30 | MAINE | 2:00 p.m. |
| Dec. 6 * | at #9 Mercyhurst | 3:00 p.m. |
| Dec. 7 * | at #9 Mercyhurst | 2:00 p.m. |
| Jan. 3 | at Ohio State | 7:07 p.m. |
| Jan. 4 | at Ohio State | 4:07 p.m. |
| Jan. 10 | COLGATE | 7:00 p.m. |
| Jan. 11 | COLGATE | 2:00 p.m. |
| Jan. 24 * | at Syracuse | 7:00 p.m. |
| Jan. 25 * | at Syracuse | 2:00 p.m. |
| Jan. 28 | at Princeton | 7:00 p.m. |
| Jan. 31 * | RIT | 7:00 p.m. |
| Feb. 1 * | RIT | 2:00 p.m. |
| Feb. 8 * | LINDENWOOD | Noon |
| Feb. 9 * | LINDENWOOD | Noon |
| Feb. 15 * | #9 MERCYHURST | 8:00 p.m. |
| Feb. 16 * | #9 MERCYHURST | 1:00 p.m. |
| Feb. 21 * | at Robert Morris | 3:00 p.m. |
| Feb. 22 * | at Robert Morris | 3:00 p.m. |
| 2014 CHA TOURNAMENT | | |
| Feb. 28 ^ | CHA First Round - Game 1 | TBA |
| March 1 ^ | CHA First Round - Game 2 | TBA |
| March 2 ^ | CHA First Round - Game 3 | TBA |
| March 7 % | CHA Semifinals | TBA |
| March 8 % | CHA Final | |

All Times Eastern
 Home games in **CAPS** at Pegula Ice Arena
 * - College Hockey America games
 ^ - CHA First Round at higher seed
 % - CHA Semifinals & Final hosted by No. 1 seed
 Rankings based on USA Today/USA Hockey poll



PENN STATE NITTANY LIONS
 (0-0-0)



VERMONT CATAMOUNTS
 (0-0-0)

GAMES 1-2: October 4-5, 2013 // Gutterson Fieldhouse // Burlington, Vt.

GAME DAY

VENUE Gutterson Fieldhouse (4,035)
 STREAMING COVERAGE CatamountTV.com
 SERIES RECORD Tied, 1-1-0
 LAST MEETING Oct. 7, 2012; Vermont, 3-1 at UVM
 NEXT TIME OUT Oct. 11-12 at Quinnipiac

GAME NOTES

- Penn State opens for the second straight year at Vermont, site of program's first game and first victory
- Vermont went 8-21-4 last season in coach Jim Plumer's first season at helm
- Nittany Lions return 24 of 27 letterwinners from last season, 99 percent of scoring
- Sophomore forward **Shannon Yoxheimer** led squad in scoring last season
- Senior **Nicole Paniccia** was second in NCAA Division I in saves during 2012-13
- Senior **Taylor Gross** serves as team captain for second straight year joined by assistants **Jordin Pardoski**, **Lindsay Reihl** and **Jenna Welch**

ON THE INSIDE

Page 2: **CHA Standings and Team Comparison**
 Page 7: **The Nittany Lion Roster & Pronunciation Guide**
 Page 8: **Last year's PSU-UVM box scores**
 Page 9: **2012-13 Penn State Women's Hockey Stats**
 Page 10: **The Nittany Lion TV/Radio Roster**

2012-13 SEASON STATISTICAL LEADERS

| FORWARDS | | GP | G | A | PTS | SH | +/- | GWG |
|------------|---------------------|-------|--------|---------|-----|------|------|------|
| 40 | Shannon Yoxheimer | 34 | 14 | 17 | 31 | 169 | -6 | 3 |
| 24 | Taylor Gross | 34 | 7 | 15 | 22 | 92 | -7 | 0 |
| 15 | Jess Desorcie | 34 | 5 | 13 | 18 | 48 | -6 | 0 |
| 16 | Hannah Hoenshell | 29 | 9 | 5 | 14 | 64 | +4 | 1 |
| 19 | Jill Holdcroft | 33 | 10 | 2 | 12 | 52 | -14 | 0 |
| 20 | Emily Laurenzi | 35 | 4 | 7 | 11 | 36 | +6 | 1 |
| 23 | Birdie Shaw | 33 | 3 | 5 | 8 | 55 | -5 | 0 |
| 22 | Jenna Welch | 35 | 4 | 3 | 7 | 44 | -12 | 0 |
| 10 | Micayla Catanzariti | 35 | 3 | 2 | 5 | 57 | -13 | 0 |
| DEFENSE | | GP | G | A | PTS | SH | +/- | BLK |
| 4 | Jordin Pardoski | 35 | 3 | 7 | 10 | 30 | -2 | 32 |
| 17 | Paige Jahnke | 35 | 0 | 8 | 8 | 30 | -10 | 38 |
| 33 | Madison Smiddy | 15 | 1 | 6 | 7 | 13 | +3 | 14 |
| 2 | Jeanette Bateman | 35 | 1 | 4 | 5 | 20 | -11 | 36 |
| 6 | Lindsay Reihl | 35 | 0 | 1 | 1 | 12 | -16 | 35 |
| GOALTENDER | | GP-GS | Record | MIN | GA | GAA | SV | SV% |
| 37 | Nicole Paniccia | 27-27 | 6-19-2 | 1543:22 | 80 | 3.11 | 1028 | .928 |
| 30 | Celine Whittinger | 10-8 | 1-7-0 | 506:04 | 25 | 2.96 | 377 | .938 |



@PennStateWHKY



PennStateWomensHockey



GoPSUTV



NITTANY LION WOMEN'S HOCKEY

GAME NOTES AT VERMONT (OCT. 4-5)

SCOUTING THE CATAMOUNTS

The Vermont Catamounts enter the second year under Jim Plumer following an 8-21-4 season in 2012-13. The season was a major improvement as the squad doubled its overall (8) and conference (6) win total from the year before Plumer's arrival. Vermont defeated the Nepean Wildcats, 5-1, in an exhibition on Sept. 28.

UVM returns its top three scorers from last season led by junior Brittany Zuback. She appeared in all 33 contests, scoring a team-high 14 goals, 12 assists and 26 points. Zuback recorded a hat trick in the win over Nepean. The most dangerous Catamount is USA Hockey member Amanda Pelkey, also a junior, who missed the beginning of last season with an injury, but returned to score nine goals, 11 assists and 20 points in 25 games. Rounding out the trio of Catamount junior forwards is Klara Myren who tallied 18 points on five goals and 13 assists.

In net, Roxanne Douville made 25 appearances last season and posted a 5-15-4 record with a 3.16 goals-against average and a .913 save percentage. Douville is 13-43-15 all-time for the Green and Gold with six shutouts and a 2.90 GAA. Freshman Madison Litchfield looks for time in the crease for the Catamounts following a successful season in the JWHL where she was voted goalie of the year. She was ranked as the No. 2 goaltender at USA Hockey's National Development Camp.

LAST YEAR VS. VERMONT

Penn State women's hockey made history on Saturday, Oct. 6, 2012 at Vermont's Gutterson Fieldhouse by winning its inaugural game, 5-3. The Nittany Lions scored five goals from three freshmen making their respective debuts as junior goaltender **Nicole Paniccia** made 31 saves in her PSU opener. **Shannon Yoxheimer** and **Micayla Catanzariti** each scored twice for the Nittany Lions.

Down 2-1, Penn State was not to be deterred, reeling off three straight goals to take a 4-2 lead midway through the third period. Despite a Vermont goal with 6:34 left in the third, **Birdie Shaw** scored an empty-net goal to seal the Nittany Lion victory. Junior captain **Taylor Gross** made her Penn State debut known with two assists and was named the first star of the game, Yoxheimer was second.

On Oct. 7, 2012, the Nittany Lions again took the lead over the Catamounts on a Shaw tally. Unfortunately, Vermont scored the next three

and split the weekend series with a 3-1 victory.

FIRST TIME FOR EVERYTHING

Penn State had a varsity team debut for the first time since 1994 (women's soccer) when the women's hockey team defeated Vermont, 5-3 on Oct. 6, 2012. The successful debut was the first since 1977 when the men's volleyball team defeated East Stroudsburg. The Penn State men's hockey team made its debut a week later than the women, but fell 3-2 to AIC in overtime. The Nittany Lions beat AIC the next night, also in overtime.

Game: Oct. 6, 2012 at Vermont, 2:00 p.m.
Win: Nicole Paniccia, Oct. 6 at Vermont, 5-3
Goal: Shannon Yoxheimer
Multi-Goal Game: Micayla Catanzariti
Game-Winning Goal: Shannon Yoxheimer
Assists: Taylor Gross, Emily Laurenzi
Multi-Assist Game: Jess Desorcie
Faceoff: Emily Laurenzi
Faceoff win: Emily Laurenzi
Save: Nicole Paniccia
Empty-Net Goal: Birdie Shaw

PENN STATE HAS A #NEWDEN

On Sept. 6, Mortensen Construction turned the keys over to Penn State and its new \$90 million home, Pegula Ice Arena. The Nittany Lions host 17 games in the state-of-the-art arena that seats 5,782 beginning with a series vs. Union (Oct. 18-19). That kicks off an eight-game home stand over 23 days.

GAMEDAY COMPARISON

| 2012-13 TEAM STATS | | |
|------------------------|--------|--------|
| Overall record | 7-26-2 | 8-21-4 |
| Conference record | 1-17-2 | 6-11-4 |
| Goals scored | 69 | 71 |
| Goals scored per game | 2.0 | 2.2 |
| Goals allowed | 109 | 106 |
| Goals allowed per game | 3.1 | 3.2 |
| First period goals | 24 | 24 |
| Second period goals | 20 | 22 |
| Third period goals | 25 | 25 |
| Overtime goals | 0 | 0 |
| Shots | 871 | 835 |
| Shots per game | 24.9 | 25.3 |
| Shot pct. | .079 | .085 |
| Assists | 105 | 115 |
| Penalties per game | 4.1 | 4.8 |
| Power plays | 17-132 | 21-145 |
| Power-play pct. | .129 | .145 |
| Penalty kills | 32-137 | 24-168 |
| Penalty-kill pct. | .766 | .834 |
| Saves | 1422 | 1191 |
| Shutouts | 3 | 3 |

| LEADERS | | |
|--------------|-------------------|-------------------|
| Points | Yoxheimer (31) | Zuback (26) |
| Goals | Yoxheimer (14) | Zuback (14) |
| Assists | Yoxheimer (17) | Two with 13 |
| Shots | Yoxheimer (169) | n/a |
| Shot Pct. | Holdcroft (.192) | n/a |
| +/- | Laurenzi (+6) | n/a |
| Faceoff Pct. | Holdcroft (.527) | n/a |
| Saves | Paniccia (1028) | Douville (824) |
| Save Pct. | Whitlinger (.938) | Douville (.913) |
| GAA | Whitlinger (2.96) | Douville (3.16) |
| Record | Paniccia (6-19-2) | Douville (5-15-4) |

2013-14 COLLEGE HOCKEY AMERICA STANDINGS

(as of Oct. 2, 2013)

| | Pts. | CHA | GF | GA | Overall | GF | GA | Last 10 |
|-------------------|----------|--------------|----------|----------|--------------|----------|----------|--------------|
| Mercyhurst (9/7) | 0 | 0-0-0 | 0 | 0 | 1-1-0 | 5 | 6 | 1-1-0 |
| Lindenwood | 0 | 0-0-0 | 0 | 0 | 0-1-1 | 3 | 4 | 0-1-1 |
| Robert Morris | 0 | 0-0-0 | 0 | 0 | 0-0-0 | 0 | 0 | 0-0-0 |
| PENN STATE | 0 | 0-0-0 | 0 | 0 | 0-0-0 | 0 | 0 | 0-0-0 |
| Syracuse | 0 | 0-0-0 | 0 | 0 | 0-0-0 | 0 | 0 | 0-0-0 |
| RIT | 0 | 0-0-0 | 0 | 0 | 0-1-0 | 1 | 12 | 0-1-0 |

PAST RESULTS & UPCOMING SCHEDULE

Friday, Sept. 27

Minnesota State* 4, Mercyhurst 2
 Bemidji State 3, Lindenwood* 2

Saturday, Sept. 28

Mercyhurst 3, Minnesota State* 2
 Bemidji State 1, Lindenwood* 1 (OT)
 Clarkson 12, RIT 1

Friday, Oct. 4

Syracuse at Northeastern, 7 p.m.
 RPI at Robert Morris, 7 p.m.

PENN STATE at Vermont, 7 p.m.

RIT at New Hampshire, 7 p.m.
 Lindenwood at North Dakota, 8:07 p.m.

Saturday, Oct. 5

RIT at New Hampshire, 2 p.m.
 Syracuse at Northeastern, 2 p.m.

PENN STATE at Vermont, 2:30 p.m.

RPI at Robert Morris, 3 p.m.
 Ohio State at Mercyhurst, 7 p.m.
 Lindenwood at North Dakota, 8:07 p.m.



NITTANY LION WOMEN'S HOCKEY

BRING 'EM BACK

Penn State brings back 24 of its 27 members from last year's team. In those 24 student-athletes, Penn State returns its top 14 scorers and almost 99 percent of its offense along with every member of its stout goaltending corps.

YOXHEIMER MAKES HER MARK

Leading the team in scoring last season was **Shannon Yoxheimer**, a left-handed forward. Yoxheimer buried 14 goals with 17 assists for a grand total of 31 points, all team highs. She led College Hockey America in shots (169) and put away three power play goals as well as a team-high three game-winning goals. Yoxheimer's numbers ranked her in the top 10 nationally in goals, points and assists for rookies. The CHA coaches named Yoxheimer to the All-Rookie team.

THE PANICCIA WALL

Senior goaltender **Nicole Paniccia** excelled between the pipes for the Blue and White last year, stopping 1,028 shots with a 92.8 save percentage. Paniccia's save tally was second in all of NCAA Division I, topped only by fellow CHA

upstart Lindenwood's Nicole Hensley. Paniccia was in net for six of PSU's seven victories last year as well as both of Penn State's ties.

POWER-PLAY HOLDCROFT

Sophomore forward **Jill Holdcroft** was lethal on the power play last season, scoring six of her 10 goals last year on the advantage. Despite missing the CHA playoffs at RIT, Holdcroft still ranked second on the team in scoring (10 goals) and added two assists for good measure.

IN THE THICK OF THINGS

Penn State's record of 7-26-2 last season is a little deceiving when considering how close the Nittany Lions were in many of their losses. In fact, 12 of the 26 losses were decided by two goals or less. This year, the Nittany Lions look to change their fortunes in spite of a 1-6-2 record games decided by less than a goal.

PENN STATE'S RECORD IS...

| | | |
|-------|-------|-------------------------------------|
| 1-1-0 | | all-time at Gutterson Fieldhouse |
| 0-0-0 | | at home |
| 0-0-0 | | on the road |
| 0-0-0 | | in overtime |
| 0-0-0 | | when scoring first |
| 0-0-0 | | when opponent scores first |
| 0-0-0 | | when leading after the 1st period |
| 0-0-0 | | when trailing after the 1st period |
| 0-0-0 | | when tied after the 1st period |
| 0-0-0 | | when leading after the 2nd period |
| 0-0-0 | | when trailing after the 2nd period |
| 0-0-0 | | when tied after the 2nd period |
| 0-0-0 | | when out-shooting opponent |
| 0-0-0 | | when out-shot by opponent |
| 0-0-0 | | when taking same # of shots |
| 0-0-0 | | when winning more faceoffs |
| 0-0-0 | | when losing more faceoffs |
| 0-0-0 | | when tied in faceoffs |
| 0-0-0 | | when taking more penalties |
| 0-0-0 | | when taking fewer penalties |
| 0-0-0 | | when taking the same # of penalties |
| 0-0-0 | | when scoring a power play goal |
| 0-0-0 | | when not scoring a power play goal |
| 0-0-0 | | when allowing a power play goal |
| 0-0-0 | | when not allowing a power play goal |
| 0-0-0 | | when scoring 0 goals |
| 0-0-0 | | when scoring 1 goal |
| 0-0-0 | | when scoring 2 goals |
| 0-0-0 | | when scoring 3 goals |
| 0-0-0 | | when scoring 4+ goals |
| 0-0-0 | | when allowing 0 goals |
| 0-0-0 | | when allowing 1 goal |
| 0-0-0 | | when allowing 2 goals |
| 0-0-0 | | when allowing 3 goals |
| 0-0-0 | | when allowing 4+ goals |
| 0-0-0 | | in October |
| 0-0-0 | | in November |
| 0-0-0 | | in December |
| 0-0-0 | | in January |
| 0-0-0 | | in February |
| 0-0-0 | | in March |
| 0-0-0 | | on Tuesday |
| 0-0-0 | | on Thursday |
| 0-0-0 | | on Friday |
| 0-0-0 | | on Saturday |
| 0-0-0 | | on Sunday |
| 0-0-0 | | during the day |
| 0-0-0 | | at night |
| 0-0-0 | | vs. Hockey East |
| 0-0-0 | | vs. College Hockey America |
| 0-0-0 | | vs. ECAC Hockey |
| 0-0-0 | | vs. WCHA |
| 0-0-0 | | vs. ranked opponents |
| 0-0-0 | | vs. unranked opponents |
| 0-0-0 | | when Shannon Yoxheimer scores |
| 0-0-0 | | when Nicole Paniccia starts |
| 0-0-0 | | games decided by a goal or less |

2013-14 WOMEN'S HOCKEY POLLS

USA Today/USA Hockey (Oct. 1, 2013)

| | | | |
|----------|-------------------|--------------|----------|
| 1 | Minnesota | 0-0-0 | 1 |
| 2 | Boston College | 0-0-0 | 2 |
| 3 | Clarkson | 1-0-0 | 3 |
| 4 | North Dakota | 0-0-0 | 5 |
| 5 | Boston University | 0-0-0 | 4 |
| 6 | Wisconsin | 0-0-0 | 7 |
| 7 | Cornell | 0-0-0 | 6 |
| 8 | Harvard | 0-0-0 | 9 |
| 9 | Mercyhurst | 1-1-0 | 8 |
| 10 | Minnesota-Duluth | 0-0-0 | RV |

Others: Northeastern, St. Lawrence, Providence, Robert Morris

USCHO.com (Sept. 23, 2013)

| | |
|----------|-------------------|
| 1 | Minnesota |
| 2 | Boston College |
| 3 | Clarkson |
| 4 | Cornell |
| 5 | Boston University |
| 6 | Wisconsin |
| 7 | Mercyhurst |
| 8 | North Dakota |
| 9 | Harvard |
| 10 | Northeastern |

Others: Minnesota-Duluth, Quinnipiac, Ohio State, Dartmouth

Bold indicates 2013-14 opponent

2013-14 MEDIA INFORMATION

Penn State Athletic Communications

Primary Contact: Jeremy Fallis
 Email: jeremy.fallis@psu.edu
 Office: 814-865-1757

Interviews

Penn State student-athletes and coaches are available for interviews after practice each day. Please contact Jeremy Fallis in advance.

Credentials

Contact Jeremy Fallis for home game credentials at Pegula Ice Arena.

Postgame

Head coach Josh Brandwene and requested student-athletes are available to the media following each game in the studio rink. Please alert Jeremy Fallis during the game of any requests.

Yearbook

A complimentary copy of the 2013-14 Penn State women's hockey yearbook will be made available to members of the media. The public may purchase copies for \$6 online.

GoPSUsports.com

[Facebook.com/PennStateWomensHockey](https://www.facebook.com/PennStateWomensHockey)

[@PennStateWHKY](https://twitter.com/PennStateWHKY)



NITTANY LION WOMEN'S HOCKEY

CAPTAINS' CORNER

Senior forward **Taylor Gross** once again leads Penn State as its first captain following her first year with the letter in 2012-13. Gross was second on the team in points (22) and assists (15) last season with 34 appearances. The University of Connecticut transfer appeared in 48 games for the Huskies before joining Penn State's club side in January 2012. Senior forward **Jenna Welch** and **Lindsay Reihl**, a graduate student defender, reprise their roles as assistant captains this year. Joining the veteran trio is **Jordin Pardoski**, a vocal sophomore defender who is a first-year assistant captain.

NEW NITTANY LIONS

Four freshmen join the Nittany Lions for the 2013-14 campaign. Minnesota forwards **Laura Bowman**, **Amy Petersen** and **Sarah Nielsen** provide an instant dose of goal scoring from their high school success. Defender **Kelly Seward** of New York is the tallest Nittany Lion blueliner.

FIRST HEAD COACH

A 1991 graduate of Penn State, head coach **Josh Brandwene** is the first to lead the Nittany Lions. Brandwene compiled a 7-26-2 record last season with 17 freshmen on the team. A four-year hockey player at PSU, Brandwene brings 20 years of coaching experience to Happy Valley.

CONTINUING PENN STATE HOCKEY

Seven members of the current varsity team played for the women's club team at some point. Graduate student **Lindsay Reihl** along with juniors **Cara Mendelson**, **Katie Murphy**, **Madison Smiddy** and **Tess Weaver** played all of the 2011-12 season for head coach **Josh Brandwene** in Penn State's last year at the club level. **Taylor Gross** and **Jess Desorcie** joined the five aforementioned players midway through the season in preparation of the 2012-13 season.

NEXT TIME OUT

Penn State travels to Quinnipiac, home of the 2014 NCAA Women's Frozen Four, for a two-game set against the Bobcats on Oct. 11-12. Game times are set for 7 p.m. and 4 p.m.

NITTANY LION WOMEN'S HOCKEY



NCAA TEAM RANKS

(As of Oct. 1, 2013)

| | |
|---|-----|
| Goals Per Game | n/a |
| Goals Against Per Game | n/a |
| Scoring Margin | n/a |
| Most Penalty Minutes Per Game | n/a |
| Power-Play Percentage | n/a |
| Penalty-Kill Percentage | n/a |
| Combined Special Teams | n/a |
| Winning Percentage | n/a |

CHA TEAM RANKS

(As of Oct. 1 2013)

| | |
|--|-----|
| Goals | n/a |
| Assists | n/a |
| Goals Per Game | n/a |
| Goals Against | n/a |
| Goals-Against Average | n/a |
| Saves | n/a |
| Save Percentage | n/a |
| Shots on Goal | n/a |
| Least Penalty Minutes | n/a |
| Power-Play Goals | n/a |
| Power-Play Percentage | n/a |
| Power-Play Goals Against | n/a |
| Penalty-Kill Percentage | n/a |

NCAA INDIVIDUAL RANKS

(Top 100 as of Oct. 1, 2013)

CHA INDIVIDUAL RANKS

(Top 10 as of Oct. 1, 2013)

2012-13 HONORS & AWARDS

Micayla Catanzariti

CHA Rookie of the Week (10/8)
Penn State Student-Athlete of the Week (10/9)

Hannah Hoenshell

CHA Rookie of the Week (1/6)

Celine Whitlinger

CHA Rookie of the Week (12/10)

Shannon Yoxheimer

All-CHA Rookie Team
CHA November Rookie of the Month (12/4)
CHA Player of the Week (10/22)
Penn State Student-Athlete of the Week (10/23)

OVER THE AIR

The CHA on AmericaOneSports.com

Penn State home & away games during CHA play will be streamed live on AmericaOneSports.com. Subscribers can purchase a 1-day package for \$8, 30-day packages for \$30 or a season pass for \$125.

This weekend's games will be streamed free of charge by UVMathletics.com & Catamount TV.





NITTANY LION WOMEN'S HOCKEY

THE LAST TIME

PENN STATE...

| | |
|------------------------------|---|
| Scored 0 goals | 3/1/13 at RIT (0-1) |
| Scored 3 goals | 2/9/13 vs. Lindenwood (3-3) |
| Scored 4 goals | 1/5/13 vs. Chatham (4-0) |
| Scored 5 goals | 10/6/12 at Vermont (5-3) |
| Scored 6 goals | 11/2/12 vs. Sacred Heart (6-0) |
| Scored 7 goals | Never |
| Scored 8 goals | 11/3/12 vs. Sacred Heart (8-2) |
| Scored 9 goals | Never |
| Scored 10 goals | 1/4/13 vs. Chatham (10-0) |
| Allowed 0 goals | 1/5/13 vs. Chatham (4-0) |
| Allowed 1 goal | 3/1/13 at RIT (0-1) |
| Allowed 2 goals | 1/12/13 at Union (1-2) |
| Allowed 3 goals | 3/2/13 at RIT (2-3) |
| Allowed 4 goals | 2/23/13 at Robert Morris (2-4) |
| Allowed 5 goals | 2/1/13 vs. #7 Mercyhurst (2-5) |
| Allowed 6+ goals | 12/1/12 at #4 Mercyhurst (1-7) |
| Won in overtime | Never |
| Lost in overtime | 3/2/13 at RIT (2-3) |
| Tied in overtime | 2/9/13 vs. Lindenwood (3-3) |
| Played a ranked team | 2/2/13 vs. #7 Mercyhurst (1-4) |
| Attempted 10-19 shots | 3/2/13 19 at RIT (2-3) |
| Attempted 20-29 shots | 2/16/13 20 at RIT (0-4) |
| Attempted 30-39 shots | 2/8/13 36 vs. Lindenwood (1-3) |
| Attempted 40-49 shots | 1/4/13 48 vs. Chatham (10-0) |
| Attempted 50-59 shots | Never |
| Attempted 60-69 shots | 11/3/12 64 vs. Sacred Heart (8-2) |
| Attempted 70+ shots | 1/5/13 71 vs. Chatham (4-0) |
| Allowed 10-19 shots | 1/5/13 16 vs. Chatham (4-0) |
| Allowed 20-29 shots | 11/3/12 25 vs. Sacred Heart (8-2) |
| Allowed 30-39 shots | 3/2/13 35 at RIT (2-3) |
| Allowed 40-49 shots | 2/16/13 45 at RIT (0-4) |
| Allowed 50-59 shots | 3/2/13 57 at RIT (2-3) |
| Allowed 60-69 shots | 2/22/13 63 at Robert Morris (1-4) |
| Allowed 70+ shots | 12/1/12 71 at #4 Mercyhurst (1-7) |
| Tallied 5-9 assists | 1/5/13 5 vs. Chatham (4-0) |
| Tallied 10-15 assists | 11/3/12 12 vs. Sacred Heart (8-2) |
| Tallied 15+ assists | 1/4/13 17 vs. Chatham (10-0) |
| Scored 10-19 points | 11/2/12 12 vs. Sacred Heart (6-0) |
| Scored 20+ points | 1/4/13 27 vs. Chatham (10-0) |
| Scored 2 power-play goals | 11/17/12 at Lindenwood (3-2) |
| Scored 3 power-play goals | 10/20/12 at Sacred Heart (6-1) |
| Allowed 0 power-play goals | 2/2/13 vs. #7 Mercyhurst (1-4) |
| Allowed 2 power-play goals | 2/23/13 at Robert Morris (2-4) |
| Had 5 different goal scorers | Never |
| Had 6 different goal scorers | 10/20/12 at Sacred Heart (6-1) |
| Had 7 different goal scorers | 1/4/13 vs. Chatham (10-0) |
| Had 8 different goal scorers | 11/3/12 vs. Sacred Heart (8-2) |

A PENN STATE PLAYER...

| | |
|----------------------------|---|
| Scored 2 goals | 1/5/13 J. Welch vs. Chatham (4-0) |
| Scored 3 goals | 11/2/12 H. Hoenshell vs. Sacred Heart (6-0) |
| Scored 4 goals | Never |
| Had 3 assists | 1/4/13 J. Bateman vs. Chatham (10-0) |
| Had 5 points | Never |
| Had 10+ shots | 1/5/13 12, T. Weaver vs. Chatham (4-0) |
| Saved 40-49 shots | 2/16/1341, N. Paniccia at RIT (0-4) |
| Saved 50-59 shots | 3/2/1354, N. Paniccia at RIT (2-3) |
| Saved 60+ shots | 12/1/12 64, N. Paniccia at #4 Mercyhurst (1-7) |
| Had a shutout | 1/5/13 C. Whitlinger/B. Meyer vs. Chatham (4-0) |
| Scored an empty-net goal | 10/6/12 B. Shaw at Vermont (5-3) |
| Scored a short-handed goal | Never |

NITTANY LION WOMEN'S HOCKEY



2013-14 PENN STATE WOMEN'S HOCKEY NUMERICAL ROSTER

| No. | Name | Yr. | Pos. | Ht. | S/C | Hometown | Last Team |
|-----|---------------------|-----|------|------|-----|--------------------------------|--|
| 2 | Jeanette Bateman | So. | D | 5-6 | R | Greeley, Colo. | Colorado Select |
| 3 | Cara Mendelson | Jr. | F | 5-6 | R | Pittsburgh, Pa. | Steel City Selects |
| 4 | Jordin Pardoski | So. | D | 5-5 | R | Rochester Hills, Mich. | Detroit Honeybaked |
| 5 | Stephanie Walkom | So. | D | 5-7 | R | Moon Township, Pa. | Pittsburgh Penguins Elite |
| 6 | Lindsay Reihl | Gr. | D | 5-4 | R | Cheshire, Conn. | Connecticut Polar Bears |
| 9 | Amy Petersen | Fr. | F | 5-4 | R | Minnetonka, Minn. | Minnetonka HS |
| 10 | Micayla Catanzariti | So. | F | 5-4 | R | Rancho Santa Margarita, Calif. | Gilmour Academy (Ohio) |
| 12 | Sarah Nielsen | Fr. | F | 5-6 | L | Edina, Minn. | Edina HS |
| 13 | Kendra Rasmussen | So. | F | 5-5 | L | Sartell, Minn. | Sartell/Sauk Rapids HS |
| 14 | Darby Kern | So. | F | 5-11 | R | Venetia, Pa. | Pittsburgh Penguins Elite |
| 15 | Jess Desorcie | Jr. | F | 5-4 | L | Westford, Vt. | Connecticut College |
| 16 | Hannah Hoenshell | So. | F | 5-3 | R | Plano, Texas | Texas Alliance |
| 17 | Paige Jahnke | So. | D | 5-6 | R | Oakdale, Minn. | Roseville HS / Minnesota Jr. Whitecaps |
| 18 | Laura Bowman | Fr. | F | 5-7 | R | Minnetonka, Minn. | Minnetonka HS |
| 19 | Jill Holdcroft | So. | F | 5-1 | R | Pennsylvania Furnace, Pa. | Pittsburgh Penguins Elite |
| 20 | Emily Laurenzi | So. | F | 5-2 | R | Townsend, Del. | National Sports Academy (N.Y.) |
| 21 | Sarah Wilkie | So. | D | 5-6 | R | Ashby, Mass. | Williston Northampton School |
| 22 | Jenna Welch | Sr. | F | 5-8 | R | Austin, Texas | Connecticut |
| 23 | Birdie Shaw | So. | F | 5-2 | L | Troy, Mich. | Detroit Honeybaked |
| 24 | Taylor Gross | Sr. | F | 5-1 | R | Colorado Springs, Colo. | Connecticut |
| 25 | Katie Murphy | Jr. | F | 5-4 | L | Novi, Mich. | Detroit Honeybaked |
| 27 | Kelly Seward | Fr. | D | 5-9 | L | Williamsville, N.Y. | Nichols School / Buffalo Bisons |
| 30 | Celine Whitlinger | So. | G | 5-8 | L | Garden Grove, Calif. | Gilmour Academy (Ohio) |
| 31 | Brooke Meyer | So. | G | 5-7 | L | Naperville, Ill. | Chicago Huskies |
| 33 | Madison Smiddy | Jr. | D | 5-7 | L | Grand Rapids, Mich. | Detroit Honeybaked |
| 36 | Tess Weaver | Jr. | F | 5-5 | R | Windber, Pa. | Pittsburgh Penguins Elite |
| 37 | Nicole Paniccia | Sr. | G | 5-5 | L | Oakville, Ont. | Connecticut |
| 40 | Shannon Yoxheimer | So. | F | 5-7 | L | Jackson, Mich. | North American Hockey Academy (Vt.) |

Head Coach: Josh Brandwene (Second Year)

Assistant Coaches: Gina Kearns (Second Year), Casey McCullion (Second Year); **Director of Operations** Alex Dawes (First Year)

Captain: Taylor Gross; **Assistant Captains:** Jordin Pardoski, Lindsay Reihl, Jenna Welch

| ALPHABETICAL ROSTER | | PRONUNCIATION GUIDE | | LIONS BY STATE | | LIONS BY POSITION | |
|---------------------|---------------------|---------------------|---------------------|---------------------------|--|----------------------|---|
| No. | Name | Brandwene | BRAND-ween | California (2): | Catanzariti, Whitlinger | Forward (17): | Bowman, Catanzariti, Desorcie, Gross, Hoenshell, Holdcroft, Kern, Laurenzi, Mendelson, Murphy, Nielsen, Petersen, Rasmussen, Shaw, Weaver, Welch, Yoxheimer |
| 2 | Jeanette Bateman | Catanzariti | Cah-TAN-zah-REE-tee | Colorado (2): | Bateman, Gross | Defense (8): | Bateman, Jahnke, Pardoski, Reihl, Seward, Smiddy, Walkom, Wilkie |
| 18 | Laura Bowman | Desorcie | Deh-SORE-see | Connecticut (1): | Reihl | Goalie (3): | Meyer, Paniccia, Whitlinger |
| 10 | Micayla Catanzariti | Jahnke | YAWN-kee | Delaware (1): | Laurenzi | | |
| 15 | Jess Desorcie | Jeanette | Jeh-NETT | Illinois (1): | Meyer | | |
| 24 | Taylor Gross | Kearns | KERNs | Massachusetts (1): | Wilkie | | |
| 16 | Hannah Hoenshell | McCullion | Mick-CULL-yon | Michigan (5): | Murphy, Pardoski, Shaw, Smiddy, Yoxheimer | | |
| 19 | Jill Holdcroft | Paniccia | Pah-NEE-cha | Minnesota (5): | Bowman, Jahnke, Nielsen, Petersen, Rasmussen | | |
| 17 | Paige Jahnke | Reihl | RILE | New York (1): | Seward | | |
| 14 | Darby Kern | | | Pennsylvania (5): | Holdcroft, Kern, Mendelson, Walkom, Weaver | | |
| 20 | Emily Laurenzi | | | Texas (2): | Hoenshell, Welch | | |
| 3 | Cara Mendelson | | | Vermont (1): | Desorcie | | |
| 31 | Brooke Meyer | | | | | | |
| 25 | Katie Murphy | | | | | | |
| 12 | Sarah Nielsen | | | | | | |
| 37 | Nicole Paniccia | | | | | | |
| 4 | Jordin Pardoski | | | | | | |
| 9 | Amy Petersen | | | | | | |
| 13 | Kendra Rasmussen | | | | | | |
| 6 | Lindsay Reihl | | | | | | |
| 27 | Kelly Seward | | | | | | |
| 23 | Birdie Shaw | | | | | | |
| 33 | Madison Smiddy | | | | | | |
| 5 | Stephanie Walkom | | | | | | |
| 36 | Tess Weaver | | | | | | |
| 22 | Jenna Welch | | | | | | |
| 30 | Celine Whitlinger | | | | | | |
| 21 | Sarah Wilkie | | | | | | |
| 40 | Shannon Yoxheimer | | | | | | |





NITTANY LION WOMEN'S HOCKEY

LAST TIME VS. VERMONT

PENN STATE 5, VERMONT 3 (Oct. 6, 2012)

Penn State (1-0-0, 0-0-0 CHA) vs. Vermont (0-1-0, 0-0-0 WHEA)
 Date: Oct 06, 2012 • Location: Burlington, Vt. • Arena: Gutterson Fieldhouse
 Attendance: 785 • Start time: 2:00 pm • End time: 3:55 pm • Total time: 1:55

| Prd | Time | Team | Scored by | Assists | Vis. on ice | Home on ice | Goals by Period | | | |
|--------|-------|------|-------------------------|--|---------------|------------------|-----------------|---|-----|---|
| Team | 1 | 2 | 3 | Tot | PSU | 1 | 2 | 3 | Tot | |
| 1. 1st | 14:41 | UVM | PP Zuback, Brittany/1 | Repaci, Gina/1 Vogl, Greer/1 | 4,10,33,23 | 19,13,4,26,33 | PSU | 1 | 2 | 5 |
| 2. 1st | 16:22 | PSU | EV Yoxheimer, Shannon/1 | Gross, Taylor/1 Laurenzi, Emily/1 | 40,24,20,8,17 | 9,17,19,25,26 | UVM | 2 | 0 | 1 |
| 3. 1st | 17:01 | UVM | PP McNally, Delia/1 | Walsh, Emily/1 Rancourt, Danielle/1 | 4,20,33,40 | 17,11,9,6,25 | | | | |
| 4. 2nd | 03:10 | PSU | EV Catanzariti, Micayla | Smiddy, Madison/1 Desorcie, Jess/1 | 10,33,15,4,11 | 4,6,9,17,33 | | | | |
| 5. 2nd | 17:21 | PSU | EV Catanzariti, Micayla | Shaw, Birdie/1 Desorcie, Jess/2 | 10,23,15,8,17 | 4,6,9,11,17 | | | | |
| 6. 3rd | 09:52 | PSU | EV Yoxheimer, Shannon/2 | Gross, Taylor/2 Myren, Klara/1 | 40,24,8,17,20 | 4,9,11,13,25 | | | | |
| 7. 3rd | 13:26 | UVM | EV Walsh, Emily/1 | Zuback, Brittany/1 Catanzariti, Mic/1 | 11,19,22,4,17 | 11,33,19,6,17 | | | | |
| 8. 3rd | 19:31 | PSU | EN Shaw, Birdie/1 | | 23,10,15,17,8 | 8,11,13,17,19,26 | | | | |

TEAM SUMMARY

| # | Penn State | 1 | 2 | 3 | Tot | +/- | BI | # | Vermont | 1 | 2 | 3 | Tot | +/- | BI |
|--------|-------------------|-----|----|---|-----|-----|----|--------|------------------|-----|----|----|-----|-----|----|
| 2 | Bateman, Jeanet | 0 | 0 | 0 | 0 | 0 | 3 | 4 | Vogl, Greer | 1 | 1 | 0 | 2 | -3 | 0 |
| 4 | Pardoski, Jordin | 0 | 0 | 0 | 0 | 0 | 0 | 6 | Colang, Dayna | 0 | 1 | 0 | 1 | -1 | 0 |
| 6 | Reihl, Lindsay | 0 | 0 | 0 | 0 | 0 | 1 | 8 | Stoul, Valerie | 0 | 2 | 0 | 2 | -1 | 0 |
| 8 | McGee, Taylor | 0 | 1 | 2 | +4 | 1 | | 9 | Rancourt, Daniel | 2 | 1 | 1 | 4 | -4 | 0 |
| 10 | Catanzariti, Mica | 0 | 2 | 0 | +2 | 0 | | 11 | Walsh, Emily | 1 | 0 | 3 | 4 | -2 | 1 |
| 11 | Zinn, Katie | 1 | 0 | 0 | 1 | 0 | 1 | 12 | Jensen, Linda | 0 | 0 | 0 | 0 | 0 | 0 |
| 15 | Desorcie, Jess | 0 | 1 | 0 | +1 | 0 | | 13 | Repaci, Gina | 2 | 1 | 1 | 4 | -2 | 1 |
| 17 | Jahnke, Paige | 0 | 0 | 0 | +3 | 0 | | 16 | Huertas, Meghan | 0 | 1 | 0 | 1 | 0 | 0 |
| 19 | Holdcroft, Jill | 1 | 2 | 2 | +5 | 1 | 0 | 17 | McNally, Delia | 2 | 0 | 2 | 4 | -3 | 0 |
| 20 | Laurenzi, Emily | 1 | 1 | 0 | +2 | 1 | | 19 | Zuback, Brittany | 2 | 0 | 0 | 2 | -1 | 0 |
| 22 | Welch, Jenna | 0 | 1 | 0 | +1 | 0 | | 23 | Ford, Emily | 0 | 1 | 1 | 2 | 0 | 0 |
| 23 | Shaw, Birdie | 1 | 1 | 2 | +4 | +2 | 0 | 25 | Dalbec, Megan | 0 | 2 | 2 | 4 | -2 | 0 |
| 24 | Gross, Taylor | 0 | 1 | 0 | +1 | 0 | | 26 | Campbell, Sarah | 1 | 1 | 0 | 2 | -2 | 0 |
| 33 | Smiddy, Madison | 1 | 0 | 0 | +1 | 1 | | 33 | Myren, Klara | 0 | 1 | 1 | 2 | 0 | 0 |
| 40 | Yoxheimer, Shan | 2 | 1 | 1 | +4 | +2 | 0 | 30 | Lanthier, Kelci | dnp | | | | | |
| 12 | Christoffersen, K | dnp | | | | | | Totals | | 11 | 12 | 11 | 34 | -21 | 2 |
| 13 | Rasmussen, Ken | dnp | | | | | | | | | | | | | |
| 30 | Whitinger, Celin | dnp | | | | | | | | | | | | | |
| 31 | Meyer, Brooke | dnp | | | | | | | | | | | | | |
| 36 | Weaver, Tess | dnp | | | | | | | | | | | | | |
| Totals | | 7 | 11 | 6 | 24 | +2 | 8 | | | | | | | | |

GOALTENDERS

| # | Penn State | Dec | Min | GA | 1 | 2 | 3 | Saves | # | Vermont | Dec | Min | GA | 1 | 2 | 3 | Saves |
|----|------------------|-----|-------|----|---|----|----|-------|----|-------------------|-----|-------|----|---|---|---|-------|
| 37 | Paniccia, Nicole | W | 60:00 | 3 | 9 | 12 | 10 | 31 | 34 | Douville, Roxanne | L | 59:14 | 4 | 6 | 9 | 4 | 19 |
| | | | | | | | | | | EMPTY NET | | 0:46 | 1 | 0 | 0 | 0 | 0 |

PENALTY SUMMARY

| Prd | Player | Team | Min | Offense | Time | Prd | Player | Team | Min | Offense | Time |
|-----|--------------------|------|------|------------|----------|-----|---------------|------|------|------------|----------|
| 1st | Rancourt, Danielle | UVM | 2:03 | 2.Checking | 10:03 PP | 2nd | Vogl, Greer | UVM | 2:03 | 2.Slashing | 01:03 PP |
| 1st | Laurenzi, Emily | PSU | 2:03 | 2.Tripping | 13:01 PP | 3rd | Dalbec, Megan | UVM | 2:03 | 2.Holding | 02:54 PP |
| 1st | McGee, Taylor | PSU | 2:03 | 2.Checking | 16:46 PP | | | | | | |

Win-Paniccia, Nicole (1-0-0). Loss-Douville, Roxanne (0-1-0).

VERMONT 3, PENN STATE 1 (Oct. 7, 2012)

Penn State (1-1-0, 0-0-0 CHA) vs. Vermont (1-1-0, 0-0-0 WHEA)
 Date: Oct 07, 2012 • Location: Burlington, Vt. • Arena: Gutterson Fieldhouse
 Attendance: 326 • Start time: 2:00 pm • End time: 3:55 pm • Total time: 1:55

| Prd | Time | Team | Scored by | Assists | Vis. on ice | Home on ice | Goals by Period | | | |
|--------|-------|------|-------------------------|---------------------------------------|---------------|----------------|-----------------|---|-----|---|
| Team | 1 | 2 | 3 | Tot | PSU | 1 | 2 | 3 | Tot | |
| 1. 1st | 09:48 | PSU | EV Shaw, Birdie/2 | McGee, Taylor/1 Desorcie, Jess/3 | 23,8,15,10,17 | 16,17,23,25,33 | PSU | 1 | 0 | 1 |
| 2. 1st | 16:59 | UVM | EV Myren, Klara/1 | Huertas, Meghan/1 McNally, Delia/1 | 2,6,10,15,23 | 33,16,17,23,25 | UVM | 1 | 0 | 2 |
| 3. 3rd | 04:51 | UVM | PP Rancourt, Danielle/1 | Dalbec, Megan/1 Colang, Dayna/1 | 2,4,20,24 | 9,25,6,11,13 | | | | |
| 4. 3rd | 18:04 | UVM | EV Huertas, Meghan/1 | Myren, Klara/2 | 4,6,11,13,19 | 16,33,13,17,23 | | | | |

TEAM SUMMARY

| # | Penn State | 1 | 2 | 3 | Tot | +/- | BI | # | Vermont | 1 | 2 | 3 | Tot | +/- | BI |
|--------|-------------------|-----|---|---|-----|-----|----|--------|------------------|-----|----|----|-----|-----|----|
| 2 | Bateman, Jeanet | 0 | 0 | 0 | 0 | -1 | 0 | 4 | Vogl, Greer | 0 | 4 | 1 | 5 | 0 | 1 |
| 4 | Pardoski, Jordin | 0 | 0 | 1 | 1 | -1 | 0 | 6 | Colang, Dayna | 1 | 1 | 2 | 4 | 0 | 1 |
| 6 | Reihl, Lindsay | 0 | 0 | 1 | 1 | -2 | 1 | 8 | Stoul, Valerie | 1 | 1 | 2 | 4 | 0 | 0 |
| 8 | McGee, Taylor | 1 | 1 | 0 | 2 | +1 | 2 | 9 | Rancourt, Daniel | 0 | 0 | 2 | 2 | 0 | 1 |
| 10 | Catanzariti, Mica | 0 | 0 | 0 | 0 | 0 | 4 | 11 | Walsh, Emily | 1 | 0 | 1 | 2 | 0 | 0 |
| 11 | Zinn, Katie | 0 | 0 | 0 | 0 | -1 | 0 | 12 | Jensen, Linda | 0 | 1 | 0 | 1 | 0 | 0 |
| 13 | Rasmussen, Ken | 0 | 0 | 0 | 0 | -1 | 0 | 13 | Repaci, Gina | 2 | 0 | 1 | 3 | +1 | 0 |
| 15 | Desorcie, Jess | 0 | 0 | 2 | 2 | 0 | 1 | 16 | Huertas, Meghan | 1 | 1 | 1 | 3 | +1 | 0 |
| 17 | Jahnke, Paige | 0 | 0 | 1 | 1 | +1 | 3 | 17 | McNally, Delia | 1 | 1 | 0 | 2 | +1 | 1 |
| 19 | Holdcroft, Jill | 0 | 0 | 0 | 0 | -1 | 1 | 19 | Zuback, Brittany | 0 | 1 | 0 | 1 | 0 | 0 |
| 20 | Laurenzi, Emily | 0 | 1 | 0 | 1 | 0 | 2 | 23 | Ford, Emily | 2 | 0 | 2 | 4 | +1 | 1 |
| 22 | Welch, Jenna | 1 | 0 | 1 | 0 | 0 | 4 | 25 | Dalbec, Megan | 4 | 2 | 0 | 6 | 0 | 0 |
| 23 | Shaw, Birdie | 1 | 1 | 1 | 3 | 0 | 0 | 26 | Campbell, Sarah | 1 | 2 | 2 | 5 | 0 | 1 |
| 24 | Gross, Taylor | 1 | 0 | 0 | 1 | 0 | 1 | 33 | Myren, Klara | 2 | 0 | 2 | 4 | +1 | 0 |
| 33 | Smiddy, Madison | 0 | 0 | 0 | 0 | 0 | 0 | T | TEAM | 0 | 0 | 0 | 0 | 0 | 0 |
| 40 | Yoxheimer, Shan | 1 | 3 | 2 | 6 | 0 | 1 | 34 | Douville, Roxann | dnp | | | | | |
| T | TEAM | 0 | 0 | 0 | 0 | 0 | 0 | Totals | | 16 | 14 | 13 | 43 | +5 | 6 |
| 25 | Murphy, Katie | dnp | | | | | | | | | | | | | |
| 31 | Meyer, Brooke | dnp | | | | | | | | | | | | | |
| 36 | Weaver, Tess | dnp | | | | | | | | | | | | | |
| 37 | Paniccia, Nicole | dnp | | | | | | | | | | | | | |
| Totals | | 5 | 6 | 8 | 19 | -5 | 20 | | | | | | | | |

Power Play Goals-Att (Sh)

| Prd | PSU | UVM |
|-------|---------|---------|
| 1st | 0-0 (0) | 0-0 (0) |
| 2nd | 0-2 (1) | 0-2 (4) |
| 3rd | 0-2 (2) | 1-1 (1) |
| Total | 0-4 (3) | 1-3 (5) |

Penalties-Minutes by Prd

| Prd | PSU | UVM |
|-------|-----|-----|
| 1st | 0-0 | 0-0 |
| 2nd | 2-4 | 2-4 |
| 3rd | 1-2 | 2-4 |
| Total | 3-6 | 4-8 |

Three stars:

1. Myren, Klara
2. Rancourt, Danielle
3. Yoxheimer, Shannon

Officials:

Referee: Scott Prim
 Referee: Michael Kimich
 Linesman: Larry Legault
 Linesman: Mike Lozette

GOALTENDERS

| # | Penn State | Dec | Min | GA | 1 | 2 | 3 | Saves | # | Vermont | Dec | Min | GA | 1 | 2 | 3 | Saves |
|----|-------------------|-----|-------|----|----|----|----|-------|----|-----------------|-----|-------|----|---|---|---|-------|
| 30 | Whitinger, Celine | L | 58:40 | 3 | 15 | 14 | 11 | 40 | 30 | Lanthier, Kelci | W | 60:00 | 1 | 4 | 6 | 8 | 18 |
| | EMPTY NET | | 1:20 | 0 | 0 | 0 | 0 | 0 | | | | | | | | | 0 |

PENALTY SUMMARY

| Prd | Player | Team | Min | Offense | Time | Prd | Player | Team | Min | Offense | Time |
|-----|-----------------|------|-------|-----------------------|----------|-----|-----------------|------|-------|----------------|----------|
| 2nd | Colang, Dayna | UVM | 01:21 | 2.Cross-Checking | 01:21 PP | 3rd | Repaci, Gina | UVM | 2:00 | 2.Interference | 02:50 PP |
| 2nd | Smiddy, Madison | PSU | 03:11 | 2.Tripping | 03:11 PP | 3rd | McGee, Taylor | PSU | 04:45 | 2.Checking | 04:45 PP |
| 2nd | TEAM | PSU | 08:06 | 2.Too Many Players On | 08:06 PP | 3rd | Campbell, Sarah | UVM | 07:48 | 2.Tripping | 07:48 PP |
| 2nd | Myren, Klara | UVM | 08:58 | 2.Holding | 08:58 PP | | | | | | |

Win-Lanthier, Kelci (1-0-0). Loss-Whitinger, Celine (0-1-0).

NITTANY LION WOMEN'S HOCKEY



2012-13 Penn State Women's Hockey Penn State Combined Team Statistics (as of Feb 26, 2013) All games

| Date | Opponent | Score | Att. | Record: | Overall | Home | Away | Neutral |
|----------|------------------|---------|------|----------------|---------|-------|--------|---------|
| Oct 06 | at Vermont | w 5-3 | 785 | ALL GAMES | 7-24-2 | 4-9-2 | 3-15-0 | 0-0-0 |
| Oct 07 | at Vermont | L 1-3 | 326 | CONFERENCE | 1-17-2 | 0-8-2 | 1-9-0 | 0-0-0 |
| * Oct 13 | SYRACUSE | L 0-4 | 408 | NON-CONFERENCE | 6-7-0 | 4-1-0 | 2-6-0 | 0-0-0 |
| * Oct 14 | SYRACUSE | L 0-6 | 285 | | | | | |
| Oct 19 | at Sacred Heart | L 1-2 | 123 | | | | | |
| Oct 20 | at Sacred Heart | w 6-1 | 213 | | | | | |
| * Oct 25 | RIT | L 1-4 | 229 | | | | | |
| * Oct 26 | RIT | Tot 2-2 | 238 | | | | | |
| Nov 02 | SACRED HEART | w 6-0 | 231 | | | | | |
| Nov 03 | SACRED HEART | w 8-2 | 127 | | | | | |
| * Nov 10 | ROBERT MORRIS | L 1-7 | 152 | | | | | |
| * Nov 11 | ROBERT MORRIS | L 1-4 | 127 | | | | | |
| * Nov 16 | at Lindenwood | L 1-5 | 150 | | | | | |
| * Nov 17 | at Lindenwood | w 3-2 | 122 | | | | | |
| * Nov 30 | at #4 Mercyhurst | L 0-5 | 925 | | | | | |
| * Dec 01 | at #4 Mercyhurst | L 1-7 | 725 | | | | | |
| Dec 07 | at St. Lawrence | L 1-3 | 236 | | | | | |
| Dec 08 | at St. Lawrence | L 2-4 | 244 | | | | | |
| Jan 04 | CHATHAM | w 10-0 | 293 | | | | | |
| Jan 05 | CHATHAM | w 4-0 | 207 | | | | | |
| Jan 11 | at Union | L 0-1 | 106 | | | | | |
| Jan 12 | at Union | L 1-2 | 131 | | | | | |
| * Jan 25 | at Syracuse | L 0-1 | 132 | | | | | |
| * Jan 26 | at Syracuse | L 1-4 | 257 | | | | | |
| Jan 29 | PRINCETON | L 0-3 | 237 | | | | | |
| * Feb 01 | #7 MERCYHURST | L 2-5 | 201 | | | | | |
| * Feb 02 | #7 MERCYHURST | L 1-4 | 251 | | | | | |
| * Feb 08 | LINDENWOOD | L 1-3 | 189 | | | | | |
| * Feb 09 | LINDENWOOD | Tot 3-3 | 388 | | | | | |
| * Feb 15 | at RIT | L 1-3 | 792 | | | | | |
| * Feb 16 | at RIT | L 0-4 | 650 | | | | | |
| * Feb 22 | at Robert Morris | L 1-4 | 257 | | | | | |
| * Feb 23 | at Robert Morris | L 2-4 | 237 | | | | | |

| TEAM STATISTICS | PSU | OPP |
|---------------------|----------|----------|
| SHOT STATISTICS | | |
| Goals-Shot attempts | 67-836 | 105-1439 |
| Shot pct. | .080 | .073 |
| Goals/Game | 2.0 | 3.2 |
| Shots/Game | 25.3 | 43.6 |
| POWER PLAYS | | |
| Goals-Power Plays | 17-125 | 32-134 |
| Conversion Percent | .136 | .239 |
| GOAL BREAKDOWN | | |
| Power Play | 17 | 32 |
| Short-handed | 0 | 2 |
| Empty net | 1 | 4 |
| Penalty | 0 | 0 |
| Unassisted | 7 | 10 |
| Overtime | 0 | 0 |
| PENALTIES | | |
| Number | 139 | 135 |
| Minutes | 278 | 286 |
| Penalties/Game | 4.2 | 4.1 |
| Pen minutes/Game | 8.4 | 8.7 |
| FACEOFFS (W-L) | 878-1050 | 1050-878 |
| Faceoff W-L Pct. | .455 | .545 |

| # | Player | gp | g | a | pts | sh | sh% | pen-min | pp | sh |
|----|----------------------|----|-----|-----|-----|------|------|---------|----|----|
| 40 | Yoxheimer, Shannon | 32 | 14 | 16 | 30 | 162 | .086 | 5-10 | 3 | 0 |
| 24 | Gross, Taylor | 32 | 6 | 15 | 21 | 86 | .070 | 5-10 | 4 | 0 |
| 15 | Desorcie, Jess | 32 | 5 | 13 | 18 | 48 | .104 | 6-12 | 0 | 0 |
| 27 | Hoenshell, Hannah | 27 | 8 | 5 | 13 | 61 | .131 | 5-10 | 0 | 0 |
| 19 | Holdcroft, Jill | 33 | 10 | 2 | 12 | 52 | .192 | 2-4 | 6 | 0 |
| 20 | Laurenzi, Emily | 33 | 4 | 6 | 10 | 32 | .125 | 6-12 | 1 | 0 |
| 4 | Pardoski, Jordin | 33 | 3 | 7 | 10 | 28 | .107 | 19-38 | 1 | 0 |
| 17 | Jahnke, Paige | 33 | 0 | 8 | 8 | 27 | .000 | 11-22 | 0 | 0 |
| 22 | Welch, Jenna | 33 | 4 | 3 | 7 | 43 | .093 | 15-30 | 0 | 0 |
| 31 | Shaw, Birdie | 31 | 3 | 4 | 7 | 53 | .057 | 10-20 | 0 | 0 |
| 33 | Smiddy, Madison | 15 | 1 | 6 | 7 | 13 | .077 | 5-10 | 1 | 0 |
| 10 | Catanzariti, Micayla | 33 | 3 | 2 | 5 | 53 | .057 | 15-30 | 0 | 0 |
| 2 | Bateman, Jeanette | 33 | 1 | 4 | 5 | 20 | .050 | 6-12 | 1 | 0 |
| 13 | Rasmussen, Kendra | 32 | 3 | 1 | 4 | 42 | .071 | 3-6 | 0 | 0 |
| 11 | Zinn, Katie | 12 | 1 | 3 | 4 | 18 | .056 | 1-2 | 0 | 0 |
| 36 | Weaver, Tess | 27 | 1 | 2 | 3 | 35 | .029 | 2-4 | 0 | 0 |
| 8 | McGee, Taylor | 21 | 0 | 2 | 2 | 12 | .000 | 8-16 | 0 | 0 |
| 14 | Kern, Darby | 16 | 0 | 1 | 1 | 9 | .000 | 2-4 | 0 | 0 |
| 6 | Reihl, Lindsay | 33 | 0 | 1 | 1 | 12 | .000 | 7-14 | 0 | 0 |
| 21 | Wilkie, Sarah | 25 | 0 | 1 | 1 | 14 | .000 | 2-4 | 0 | 0 |
| 12 | Christoffersen, Kate | 3 | 0 | 0 | 0 | 6 | .000 | 0-0 | 0 | 0 |
| 3 | Mendelson, Cara | 2 | 0 | 0 | 0 | 3 | .000 | 0-0 | 0 | 0 |
| 25 | Murphy, Katie | 12 | 0 | 0 | 0 | 4 | .000 | 0-0 | 0 | 0 |
| 5 | Walkom, Stephanie | 6 | 0 | 0 | 0 | 3 | .000 | 2-4 | 0 | 0 |
| TM | TEAM | 18 | 0 | 0 | 0 | 0 | .000 | 2-4 | 0 | 0 |
| | Total | 33 | 67 | 102 | 169 | 836 | .080 | 139-278 | 17 | 0 |
| | Opponents | 33 | 105 | 174 | 279 | 1439 | .073 | 135-286 | 32 | 2 |

| # | Goalie | gp | min | ga | gaavg | saves | save% | w-l-t |
|----|--------------------|----|---------|-----|-------|-------|-------|--------|
| 31 | Meyer, Brooke | 3 | 47:26 | 0 | 0.00 | 17 | 1.000 | 0-0-0 |
| 30 | Whitlinger, Celine | 10 | 506:04 | 25 | 2.96 | 377 | .938 | 1-7-0 |
| 37 | Paniccia, Nicole | 25 | 1423:13 | 76 | 3.20 | 940 | .925 | 6-17-2 |
| TM | EMPTY NET | 18 | 13:17 | 4 | - | 0 | .000 | 0-0-0 |
| | Total | 33 | 1990:00 | 105 | 3.17 | 1334 | .927 | 7-24-2 |
| | Opponents | 33 | 1990:00 | 67 | 2.02 | 769 | .920 | 24-7-2 |

| Attendance Summary | PSU | Opponent |
|--------------------|--------|----------|
| Total | 3563 | 6411 |
| Dates/Avg Per Date | 15/238 | 18/356 |
| Neutral Site #/Avg | 0/0 | |

| Goals by Period | 1st | 2nd | 3rd | Total |
|-----------------|-----|-----|-----|-------|
| Penn State | 23 | 20 | 24 | 67 |
| Opponents | 30 | 35 | 40 | 105 |

| Saves by Period | 1st | 2nd | 3rd | Total |
|-----------------|-----|-----|-----|-------|
| Penn State | 402 | 465 | 458 | 1334 |
| Opponents | 258 | 239 | 269 | 769 |



NITTANY LION WOMEN'S HOCKEY



JEANNETTE BATEMAN
Sophomore • D
Greeley, Colo.



CARA MENDELSON
Junior • F
Pittsburgh, Pa.



JORDYN PARDOSKI^A
Sophomore • D
Rochester Hills, Mich.



STEPHANIE WALKOM
Sophomore • D
Moon Township, Pa.



LINDSAY REIHL^A
Grad Student • D
Cheshire, Conn.



AMY PETERSEN
Freshman • F
Minnetonka, Minn.



MICAYLA CATANZARITI
Sophomore • F
Rancho Santa Margarita, Calif.



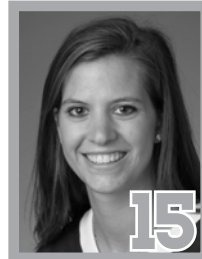
SARAH NIELSEN
Freshman • F
Edina, Minn.



KENDRA RASMUSSEN
Sophomore • F
Sartell, Minn.



DARBY KERN
Sophomore • F
Venetia, Pa.



JESS DESORCIE
Junior • F
Westford, Vt.



HANNAH HOENSHELL
Sophomore • F
Plano, Texas



PAIGE JAHNKE
Sophomore • D
Oakdale, Minn.



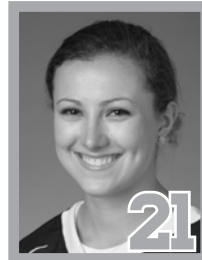
LAURA BOWMAN
Freshman • F
Minnetonka, Minn.



JILL HOLDCROFT
Sophomore • F
Pennsylvania Furnace, Pa.



EMILY LAURENZI
Sophomore • F
Townsend, Del.



SARAH WILKIE
Sophomore • D
Ashby, Mass.



JENNA WELCH^A
Senior • F
Austin, Texas



BIRDIE SHAW
Sophomore • F
Troy, Mich.



TAYLOR GROSS^C
Senior • F
Colorado Springs, Colo.



KATIE MURPHY
Junior • F
Novi, Mich.



KELLY SEWARD
Freshman • D
Williamsville, N.Y.



CELINE WHITLINGER
Sophomore • G
Garden Grove, Calif.



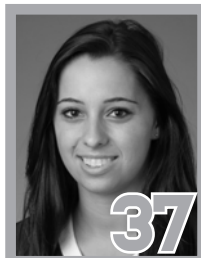
BROOKE MEYER
Sophomore • G
Naperville, Ill.



MADISON SMIDDY
Junior • D
Grand Rapids, Mich.



TESS WEAVER
Junior • F
Windber, Pa.



NICOLE PANICCIA
Senior • G
Oakville, Ont.



SHANNON YOXHEIMER
Sophomore • F
Jackson, Mich.