



2016 PENN STATE WOMEN'S SOCCER

2015 NCAA CHAMPIONS
21-STRAIGHT NCAA TOURNAMENT APPEARANCES
17-TIME BIG TEN REGULAR SEASON CHAMPIONS
SIX-TIME BIG TEN TOURNAMENT CHAMPIONS
FIVE COLLEGE CUP APPEARANCES

2016 SCHEDULE

AUGUST

| | | | |
|---------|---------------------|----------------------|-----|
| Wed. 10 | QUEBEC (Exhibition) | University Park, Pa. | --- |
| Sun. 14 | DREXEL (Exhibition) | University Park, Pa. | --- |

PENN STATE TOURNAMENT (Aug. 19-21)

| | | | |
|---------|---------------------------|----------------------|-------------|
| Fri. 19 | No. 6 WEST VIRGINIA (BTN) | University Park, Pa. | T, 1-1, 2OT |
| Sun. 21 | HOFSTRA | University Park, Pa. | W, 3-1 |
| Fri. 26 | No. 14 BYU | University Park, Pa. | L, 3-2 |

SEPTEMBER

| | | | |
|---------|----------------------------|-----------------------------|---------------|
| Fri. 2 | at No. 11 UCLA | Los Angeles, Calif. | L, 1-0 OT |
| Sun. 4 | at No. 18 Long Beach State | Long Beach, Calif. | W, 2-1 |
| Fri. 9 | SAN DIEGO STATE | University Park, Pa. | W, 3-0 |
| Sun. 11 | LA SALLE | University Park, Pa. | W, 2-0 |
| Fri. 16 | at No. 10 Minnesota* (BTN) | Falcon Heights, Minn. | T, 1-1 2OT |
| Sun. 18 | at Wisconsin* | Madison, Wis. | W, 1-0 |
| Fri. 23 | IOWA* | University Park, Pa. | W, 2-0 |
| Sun. 25 | NEBRASKA* | University Park, Pa. | W, 2-1 |
| Fri. 30 | ILLINOIS* | University Park, Pa. | W, 2-0 |

OCTOBER

| | | | |
|---------|-----------------------|-----------------------------|-------------------|
| Thu. 6 | at Indiana* | Bloomington, Ind. | T, 1-1 2OT |
| Sun. 9 | at Maryland* | College Park, Md. | W, 3-0 |
| Thu. 13 | RUTGERS* (BTN) | University Park, Pa. | T, 2-2 2OT |
| Sun. 16 | PURDUE* | University Park, Pa. | W, 1-0 |
| Sat. 22 | at Michigan State* | East Lansing, Mich. | Noon |
| Wed. 26 | OHIO STATE* | University Park, Pa. | 6 p.m. |

BIG TEN TOURNAMENT (Oct. 30-Nov. 6)

| | | | |
|---------|-----------------------|--------------|-----|
| Sun. 30 | Big Ten Quarterfinals | Campus Sites | TBA |
|---------|-----------------------|--------------|-----|

NOVEMBER

| | | | |
|--------|----------------------|--------------|-----|
| Fri. 4 | Big Ten Semifinals | Campus Sites | TBA |
| Sun. 6 | Big Ten Championship | Campus Sites | TBA |

NCAA TOURNAMENT (Nov. 12-25)

| | | | |
|---------|--------------------|--------------|-----|
| Sat. 12 | NCAA First Round | Campus Sites | TBA |
| Fri. 18 | NCAA Second Round | Campus Sites | TBA |
| Sun. 20 | NCAA Third Round | Campus Sites | TBA |
| Fri. 25 | NCAA Quarterfinals | Campus Sites | TBA |

DECEMBER

NCAA WOMEN'S COLLEGE CUP (Dec. 2-4)

| | | | |
|--------|--------------------------|------------------|-----|
| Fri. 2 | College Cup Semifinals | San Jose, Calif. | TBA |
| Sun. 4 | College Cup Championship | San Jose, Calif. | TBA |

All times are Eastern

Home matches are bold and played at Jeffrey Field

NITTANY LIONS TRAVEL TO MICHIGAN STATE



PENN STATE

RECORD
CONFERENCE RECORD
GOALS
GOALS/GAME
SOG-SHOTS
SHOTS/GAME
SV%
GA
GAA
SHUTOUTS

10-2-4
6-0-3
28
1.75
111-251
15.7
.797
12
0.71
7

MICHIGAN ST.

5-10-1
2-7-0
14
0.88
56-143
8.9
.817
23
1.39
4

MATCH DAY 17: NO. 16 PENN STATE AT MICHIGAN STATE

Oct. 22 • Noon • DeMartin Soccer Complex • East Lansing, Mich.

Watch: BTN2Go.com • Stats: GoPSUsports.com

NITTANY NOTES

- Penn State has a record of 9-0-3 in its last 12 matches
- The Nittany Lions own a record of 186-26-13 all-time in Big Ten conference play
- Penn State can clinch a share of the 2016 Big Ten regular season title Saturday
- Nittany Lions will not play Michigan or Northwestern in Big Ten action during the regular season
- Redshirt junior Brittany Basinger has started 66 of 66 matches on the Nittany Lion backline
- Junior Frannie Crouse is tied for 15th in points all-time at PSU with 74 (32g, 10a)
- The Nittany Lion defense has allowed one goal or less in 12 of the past 13 games
- The Penn State defense has recorded seven shutouts in the past 11 games
- Five Nittany Lions named to the U.S. U-20 Women's National Team for the 2016 FIFA U-20 World Cup
- Junior Megan Schafer became the 22nd Nittany Lion to tally 20 career goals on Sept. 9

2016 STAT LEADERS

| POINTS | | ASSISTS | | SHOTS ON GOAL | |
|--------------------|----|--------------------|----|--------------------|----|
| Frannie Crouse | 23 | Nicolette Driesse | 6 | Charlotte Williams | 23 |
| Megan Schafer | 13 | Charlotte Williams | 4 | Frannie Crouse | 22 |
| Charlotte Williams | 10 | Megan Schafer | 3 | Two Tied | 10 |
| GOALS | | SHOTS | | GAME-WINNING GOALS | |
| Frannie Crouse | 11 | Frannie Crouse | 46 | Frannie Crouse | 5 |
| Megan Schafer | 5 | Charlotte Williams | 46 | Five tied | 1 |
| Charlotte Williams | 3 | Megan Schafer | 26 | | |

2016 PENN STATE WOMEN'S SOCCER

NUMERICAL ROSTER

| No. | Name | Pos. | Elig. | Ht. | Hometown/High School (Last College) |
|-----|------------------------|------|-------|------|---|
| 0 | Sarafina Valenti | GK | FR | 5-6 | Bechtelsville, Pa./Boyertown |
| 00 | Amanda Dennis | GK | FR | 6-0 | San Diego, Calif./Murrieta Valley |
| 1 | Brittany Basinger | D | RS JR | 5-7 | Purcellville, Va./Woodgrove |
| 2 | Grace Fisk | D | FR | 5-7 | Bromley, London, England/Langley Park |
| 4 | Megan Schafer | F | JR | 5-7 | Langhorne, Pa./Neshaminy |
| 6 | Emma Hasco | M | FR | 5-8 | Upper St. Clair, Pa./Upper St. Clair |
| 7 | Elizabeth Ball | D | JR | 5-6 | Richmond, Va./Deep Run |
| 8 | Kristin Schnurr | F | RS FR | 5-7 | Bristow, Va./Patriot |
| 9 | Frannie Crouse | F | JR | 5-7 | Greensburg, Pa./Greensburg Central Catholic |
| 12 | Charlotte Williams | M | SO | 5-4 | Rochester, N.Y./Brighton |
| 15 | Haleigh Echard | M | JR | 5-4 | Lebanon, Pa./Cedar Crest |
| 16 | Becca Hamilton | D | FR | 5-8 | Howell, N.J./Howell |
| 17 | Alina Ortega Jurado | F/M | SO | 5-6 | Waldgirmes, Germany/Ricarda-Huch Schule |
| 18 | Angela Widlacki | D | RS JR | 5-5 | Naperville, Ill./Naperville North |
| 19 | Liisi Vink-Lainas | M | JR | 5-5 | Wynantskill, N.Y./Troy |
| 20 | Salina Williford | M | RS JR | 5-4 | Wayne, Pa./Conestoga |
| 21 | Laura Freigang | M/F | FR | 5-8 | Oppenheim, Germany/St. Katharinen Gymnasium Oppenheim |
| 22 | Isabelle Clauss | D | JR | 5-6 | Clarks Summit, Pa./Abington Heights |
| 23 | Nickolette Driesse | M | SR | 5-5 | Wayne, N.J./Wayne Hills (Florida State) |
| 24 | Cecilia Knaub | M | SO | 5-10 | Phoenixville, Pa./Phoenixville |
| 25 | Taylor Campbell-Phipps | D | SO | 5-6 | Orlando, Fla./State College Area |
| 27 | Marissa Sheva | M | SO | 5-3 | Sellersville, Pa./Pennridge |
| 28 | Bristol Pizzuto | GK | FR | 6-1 | Whitehouse Station, N.J./Hunterdon Central |
| 30 | Rose Chandler | GK | RS SO | 5-8 | Atlanta, Ga./Atlanta Country Day |
| 33 | Laura Suero | D | FR | 5-6 | Royersford, Pa./Spring-Ford |
| 34 | Madison Moroi | F | FR | 5-5 | New Albany, Ohio/New Albany |

ALPHABETICAL ROSTER

| No. | Name | Pos. |
|-----|------------------------|------|
| 7 | Elizabeth Ball | D |
| 1 | Brittany Basinger | D |
| 25 | Taylor Campbell-Phipps | D |
| 30 | Rose Chandler | GK |
| 22 | Isabelle Clauss | D |
| 9 | Frannie Crouse | F |
| 00 | Amanda Dennis | GK |
| 23 | Nickolette Driesse | M |
| 15 | Haleigh Echard | M |
| 2 | Grace Fisk | D |
| 21 | Laura Freigang | M/F |
| 16 | Becca Hamilton | D |
| 6 | Emma Hasco | M |
| 24 | Cecilia Knaub | M |
| 34 | Madison Moroi | F |
| 17 | Alina Ortega Jurado | F/M |
| 28 | Bristol Pizzuto | GK |
| 4 | Megan Schafer | F |
| 8 | Kristin Schnurr | F |
| 27 | Marissa Sheva | M |
| 33 | Laura Suero | D |
| 0 | Sarafina Valenti | GK |
| 19 | Liisi Vink-Lainas | M |
| 18 | Angela Widlacki | D |
| 12 | Charlotte Williams | M |
| 20 | Salina Williford | M |

POSITION BREAKDOWN

| GOALKEEPERS | DEFENDERS | MIDFIELDERS | FORWARDS |
|------------------|------------------------|---------------------|---------------------|
| Rose Chandler | Elizabeth Ball | Nickolette Driesse | Frannie Crouse |
| Amanda Dennis | Brittany Basinger | Haleigh Echard | Laura Freigang |
| Bristol Pizzuto | Taylor Campbell-Phipps | Laura Freigang | Madison Moroi |
| Sarafina Valenti | Isabelle Clauss | Emma Hasco | Alina Ortega Jurado |
| | Grace Fisk | Cecilia Knaub | Megan Schafer |
| | Becca Hamilton | Alina Ortega Jurado | Kristin Schnurr |
| | Laura Suero | Marissa Sheva | |
| | Angela Widlacki | Liisi Vink-Lainas | |
| | | Salina Williford | |
| | | Charlotte Williams | |

PENN STATE QUICK FACTS

Location..... University Park, Pa.
 Founded1855
 Enrollment46,606
 Nickname Nittany Lions
 Colors..... Blue and White
 ConferenceBig Ten
 Home Field Jeffrey Field (5,000)
 PresidentEric J. Barron
 Director of Athletics..... Sandy Barbour

PENN STATE STRATEGIC COMMUNICATIONS

Women's Soccer Contact..... Will Rottler
 Office Phone.....814-865-2498
 Cell Phone814-441-9130
 E-mailwdr13@psu.edu
 Fax.....814-863-3165
 Mailing Address..... 101 Bryce Jordan Center
 University Park, Pa. 16802

PENN STATE WOMEN'S SOCCER QUICK FACTS

2015 Overall Record. 22-3-2
 2015 Big Ten Record (Finish) 8-2-1 (T-1st)
 2015 NCAA Tournament. 6-0 (NCAA Champions)
 Letterwinners Returning/Lost. 15/9
 Starters Returning/Lost 5-6
 Newcomers 9
 2016 Captains Brittany Basinger,
 Nickolette Driesse, Megan Schafer
 First Varsity Year 1994
 All-Time Record 409-105-33 (.777)
 All-Time Big Ten Record. 186-26-13 (.855)
 Jeffrey Field Record 222-25-12 (.880)
 NCAA Postseason Appearances 21
 All-Time NCAA Tournament Record. 46-19-2
 NSCAA All-America Honors 33
 NSCAA First Team All-America Honors 24
 M.A.C. Hermann Trophy Winners. 2
 M.A.C. Hermann Trophy Finalists. 9
 M.A.C. Hermann Trophy Semifinalists 17
 Big Ten Players of the Year. 18
 First Team All-Big Ten Selections. 63
 Second Team All-Big Ten Selections 44
 All-Big Ten Freshman Team Selections 41
 Head Coach Erica Dambach (10th year)

PRONUNCIATION GUIDE

Brittany **Basinger**.....BAY-singer
 Taylor Campbell-Phipps..... Fips
 Isabelle **Clauss** Claws
 Erica **Dambach** Rhymes with Wambach
 Nickolette **Driesse** Drees
 Haleigh **Echard**..... ECK-erd
 Laura **Freigang**.....FRY-GANG
 Emma **Hasco**..... HAS-co
 Cecilia **Knaub** Knob
 Madison **Moroi** Ma-roy
 Alina Ortega Jurado AH-lean-AH
OR-tay-gah Her-rah-doh
 Bristol **Pizzuto** Piz-ZOOT-oh
 Kristin **Schnurr** SH-NUR
 Marissa **Sheva**SHE-va
 Laura **Suero**..... Swear-oh
 Sarafina Valenti Sara-V-Nah Va-lent-e
 Liisi Vink-Lainas..... LEE-see Vink-LYE-nuss
 Angela **Widlacki** Wid-lack-e
 Salina **Williford** Will-a-furd
 All Nittany Lion audio pronunciations can be heard
 on the individual bio pages on
 GoPSUsports.com.

2016 PENN STATE WOMEN'S SOCCER

FOLLOW ALONG

Saturday's game will be streamed online via BTN2Go.com, fans must have a BTN Plus account to access the video. Fans can follow along with live stats via GoP-SUsports.com.

LOOKING AT MICHIGAN STATE

Michigan State heads into the weekend against Penn State with an overall record of 5-10-1 and a record of 2-7-0 in conference play. Last weekend, the Spartans fell 2-1 to Minnesota and dropped a 1-0 decision to the Wisconsin Badgers.

Offensively, the Spartans are led by Marisa Oleksiak and Hannah Jones. On the year, Oleksiak has netted 10 points on four goals and two assists, while Jones has recorded nine points on four goals and one assist.

Kaitlyn Collin and Savanna Wojtanowski have split time in net on the year for Spartans. Collin has played the majority of time in net with 843:21 minutes played. In 2016, Collin has allowed 10 goals, recorded a goals against average of 1.07, tallied 58 saves, posted a save percentage of .853, owns a record of 4-4-1 and has four shutouts.

Wojtanowski has played in 650:21 minutes, allowed 13 goals, recorded a goals against average of 1.80, made 41 saves, posted a save percentage of .759 and has a record of 1-6-0.

WEEKEND REWIND

The Nittany Lions are coming off a 1-0-1 homestand last weekend against Rutgers and Purdue. Last Thursday, the Nittany Lions and Scarlet Knights battled to a 2-2 draw. In the game, Frannie Crouse and Megan Schafer each recorded one goal, while freshman goalkeeper Amanda Dennis recorded five saves in net.

The Nittany Lions closed out the weekend with a 1-0 win against Purdue on Senior Day. In the Purdue match, Crouse netted her team-leading 11th goal of the season and the 32nd goal of her career. In net for the Nittany Lions, Dennis posted a career-best seven saves on Sunday afternoon.

B1G STANDINGS AND RANKINGS

With two games remaining in the 2016 Big Ten regular season, the Nittany Lions currently lead the league with 21 points (6-0-3). Northwestern and Minnesota are tied for second in the conference standings with 20 points apiece. The Nittany Lions can clinch a share of the 2016 Big Ten regular season title with a win at Michigan State and Northwestern/Minnesota playing to a draw.

Statistically as a team in the Big Ten, the Nittany Lions rank fourth in shot attempts (251), fourth in points (83), fourth in goals (28) and second in assists (27). Individually, Frannie Crouse is tied for the league lead in goals (11), game-winning goals (five) and third in points (23). Also among the Big Ten leaders, Nickolette Driesse is tied for third in assists with six.

DEFENSIVE DOMINANCE

Heading into the weekend, the Nittany Lions have posted a record of 9-1-3 over the past 13 games. Over that span, the Nittany Lion defense has allowed one goal or less in 12 of the 13 games, which includes seven shutouts.

THE 2016 PSU BIG TEN SLATE

Penn State opens the 2016 Big Ten regular season at No. 10 Minnesota (Sept. 16) and the 2015 Big Ten regular season co-champion Wisconsin Badgers (Sept. 18). Following the trip to Minnesota and Wisconsin, Penn State returns home to host Iowa (Sept. 23), Nebraska (Sept. 25) and Illinois (Sept. 30).

Penn State then travels to Indiana (Oct. 6) and Maryland (Oct. 9) before returning home to Happy Valley to host Rutgers on BTN (Oct. 13) and Purdue (Oct. 16).

The Blue and White close out the 2016 Big Ten regular season at Michigan State (Oct. 22) and host Ohio State (Oct. 26) for the regular season finale.

Due to a rotating schedule, Penn State does not play Northwestern or Michigan during the regular season in 2016.

FOR CLUB AND COUNTRY

The 2016 Penn State women's soccer team will be without the services of five Nittany Lions as they prepare for the 2016 FIFA U-20 Women's World Cup, Nov. 13-Dec. 3. Maddie Elliston, Ellie Jean, Emily Ogle and Kaleigh Riehl will not be on the roster this fall, while Rose Chandler will continue to train with the Nittany Lions during the fall semester. The Nittany Lion quintet were named to the U.S. U-20 Women's National Team on Oct. 13.

B1G HONORS

Four Nittany Lions have garnered weekly honors from the Big Ten during the 2016 regular season. Laura Freigang received Big Ten Freshman of the Week honors on Aug. 23, Frannie Crouse was named the Big Ten Offensive Player of the Week on Sept. 13 and on Oct. 18, Laura Suero garnered Big Ten Co-Freshman of the Week honors on Sept. 20 and Amanda Dennis was named the Big Ten Freshman of the Week on Sept. 27.

NSCAA COACHES POLL

(Week Nine - Oct. 18)

| # | Team | 1st Votes | W-L-T |
|----|---------------------|-----------|---------------|
| 1 | West Virginia | 22 | 12-2-1 |
| 2 | South Carolina | 5 | 14-0-1 |
| 3 | Stanford | 2 | 12-1-1 |
| 4 | Duke | 0 | 11-2-2 |
| 5 | Southern California | 0 | 11-3-0 |
| 6 | Brigham Young | 1 | 12-2-1 |
| 7 | Georgetown | 0 | 12-1-2 |
| 8 | Virginia | 0 | 10-3-2 |
| 9 | Florida State | 0 | 10-2-2 |
| 10 | California | 0 | 12-2-1 |
| 11 | Auburn | 0 | 11-4-0 |
| 12 | UCLA | 0 | 10-3-1 |
| 13 | Minnesota | 0 | 12-3-2 |
| 14 | Notre Dame | 0 | 10-2-3 |
| 15 | Arkansas | 0 | 13-3-0 |
| 16 | PENN STATE | 0 | 10-2-4 |
| 17 | Clemson | 0 | 10-3-2 |
| 18 | North Carolina | 0 | 8-3-3 |
| 19 | Pepperdine | 0 | 9-3-3 |
| 20 | Florida | 0 | 10-4-0 |
| 21 | Connecticut | 0 | 13-2-1 |
| 22 | Colorado | 0 | 12-3-0 |
| 23 | Northwestern | 0 | 13-1-2 |
| 24 | Baylor | 0 | 11-4-1 |
| 25 | Virginia Tech | 0 | 10-4-2 |

Also receiving votes: Oklahoma (32), Utah (25), Michigan (23), Rutgers (21), Loyola Marymount (13), Missouri (9), Bucknell (7), Nebraska (7), North Carolina State (7), South Florida (2), Kansas (2), Memphis (1)

WEEKLY RANKINGS

| Poll | NSCAA | RPI | SA | TDS |
|------|-------|-----|----|-----|
| PS | 2 | - | 5 | 4 |
| 1 | 5 | - | 5 | 5 |
| 2 | 13 | - | 13 | 6 |
| 3 | 16 | - | 12 | 19 |
| 4 | 16 | - | 13 | 18 |
| 5 | 16 | 25 | 15 | 20 |
| 6 | 14 | 19 | 13 | 19 |
| 7 | 13 | 22 | 13 | 17 |
| 8 | 16 | 27 | 14 | 17 |
| 9 | 16 | 22 | 14 | 17 |
| 10 | - | - | - | - |
| 11 | - | - | - | - |
| 12 | - | - | - | - |

NSCAA - National Soccer Coaches Association of America

RPI - NCAA RPI

SA - Soccer America

TDS - TopDrawerSoccer.com

2016 PENN STATE WOMEN'S SOCCER

HONORS & AWARDS

BIG TEN

| | |
|---------------------------|---|
| Brittany Basinger | Preseason Honors List (Aug. 15) |
| Frannie Crouse | Offensive Player of the Week (Sept. 13) Offensive Player of the Week (Oct. 18) |
| Amanda Dennis | Freshman of the Week (Sept. 27) |
| Nickolette Driesse | Preseason Honors List (Aug. 15) |
| Laura Freigang | Freshman of the Week (Aug. 23) |
| Megan Schafer | Preseason Honors List (Aug. 15) |
| Laura Suero | Co-Freshman of the Week (Sept. 20) |

ESPNW

NSCAA

TOPDRAWERSOCCER

| | |
|---------------------------|--|
| Brittany Basinger | Preseason Top 100 - 88 Midseason Top 100 - 74 |
| Frannie Crouse | Preseason Top 100 - 56 Midseason Top 100 - 43 |
| Amanda Dennis | Midseason Freshmen Top 100 - 15 |
| Nickolette Driesse | Preseason Top 100 - 55 Midseason Top 100 - 58 |
| Grace Fisk | Midseason Freshmen Top 100 - 74 |
| Laura Freigang | Midseason Freshmen Top 100 - 35 |
| Megan Schafer | Preseason Top 100 - 42 Midseason Top 100 - 49 |

BIG TEN SUCCESS

Since joining the Big Ten conference in 1994, the Nittany Lions have amassed a record of 186-26-13 in Big Ten play, including a record of 101-6-5 at Jeffrey Field. Under Coach Dambach, the Nittany Lions have tallied a Big Ten record of 86-14-6.

PACING THE PRIDE

In 2016, junior Frannie Crouse leads the team in points (23), goals (11) and has recorded one assist. She also is tied for the team lead in shots (46) and ranks second in shots on goal (22).

Among the leaders in the NCAA, Crouse is tied for eighth in game-winning goals (five) and she is tied for 15th in goals scored with 11.

STANDOUT SOPHOMORE

On the year, sophomore Charlotte Williams has tallied 10 points on three goals and four assists. During her freshman season in 2015, Williams netted 13 points on three goals and seven assists.

Williams is tied for the team lead in shots attempted (46), leads the team in shots on goal (23), ranks second in assists (four), ranks third in goals (three) and points (10).

SHUTOUT SCORELESS STREAK SNAPPED

Penn State closed out the 2015 season with eight-straight shutouts, which spanned 733:32 of play. During the season opener against No. 6 West Virginia, the Nittany Lions kept the Mountaineers off the board until the 76:59 mark. The WVU goal at 76:59 snapped Penn State's shutout scoreless streak of 810:31, which was the second-best span in program history (1032:33, 2004).

HOME SWEET HOME

The Penn State women's soccer team has a record of 62-5-6 at Jeffrey Field since the start of the 2011 season.

Over the past six seasons, Penn State has not lost twice at home in a single season.

All-time at Jeffrey Field the Penn State women's soccer team has an overall record of 222-25-12.

Penn State kicked off the 2016 campaign setting an attendance record against No. 6 WVU. A Penn State women's soccer record 5,791 fans made their way to Jeffrey Field to watch the Nittany Lions and Mountaineers play to a 1-1 draw. The previous mark of 5,117 was set in 2012 against the top-ranked Stanford Cardinal.

As of Oct. 19, the Nittany Lions rank eighth in the nation in average attendance with 1,518 fans per game.

Last season, the Nittany Lions finished sixth in overall attendance in the nation with 21,856 fans, which was a program-best. The 2015 season featured two of the top-10 home field crowds in program history.

Penn State opened the 2015 season with a crowd of 3,175 against Hofstra and 4,207 fans packed into Jeffrey Field to watch the Nittany Lions host Duke.

NITTANY LIONS WELCOME NINE

Head coach Erica Dambach welcomed nine freshmen to the Penn State women's soccer family for the class of 2020.

Amanda Dennis and Emma Hasco enrolled early to Penn State during the spring of 2016.

2016 BIG TEN STANDINGS

| Standings | B1G Record | Pct. | Pts. | GF | GA | Overall | Pct. | GF | GA | Home | Away | Neutral | Last 10 |
|-------------------|--------------|-------------|-----------|-----------|----------|---------------|-------------|-----------|-----------|--------------|--------------|--------------|--------------|
| PENN STATE | 6-0-3 | .833 | 21 | 15 | 5 | 10-2-4 | .750 | 28 | 12 | 7-1-2 | 3-1-2 | 0-0-0 | 7-0-3 |
| Northwestern | 6-1-2 | .778 | 20 | 11 | 4 | 13-1-2 | .875 | 24 | 5 | 8-0-0 | 4-1-2 | 1-0-0 | 7-1-2 |
| Minnesota | 6-1-2 | .778 | 20 | 17 | 3 | 12-3-2 | .765 | 36 | 10 | 6-1-1 | 5-2-1 | 1-0-0 | 7-1-2 |
| Michigan | 5-2-2 | .667 | 17 | 12 | 10 | 9-3-3 | .700 | 27 | 15 | 7-0-3 | 2-3-0 | 0-0-0 | 6-2-2 |
| Rutgers | 4-1-4 | .667 | 16 | 14 | 9 | 9-2-5 | .719 | 30 | 13 | 6-1-2 | 3-1-3 | 0-0-0 | 5-1-4 |
| Wisconsin | 4-2-3 | .611 | 15 | 12 | 9 | 7-4-6 | .588 | 19 | 14 | 2-1-4 | 5-3-2 | 0-0-0 | 5-2-3 |
| Nebraska | 4-3-2 | .556 | 14 | 11 | 8 | 10-5-2 | .647 | 24 | 18 | 7-1-1 | 3-4-1 | 0-0-0 | 4-4-2 |
| Indiana | 4-3-2 | .556 | 14 | 11 | 12 | 7-7-3 | .500 | 21 | 25 | 2-4-3 | 4-3-0 | 1-0-0 | 5-3-2 |
| Ohio State | 3-3-3 | .500 | 12 | 15 | 12 | 9-5-3 | .618 | 30 | 22 | 4-3-2 | 5-2-1 | 0-0-0 | 3-4-3 |
| Illinois | 3-5-1 | .389 | 10 | 9 | 12 | 6-10-1 | .382 | 16 | 21 | 5-3-0 | 1-7-1 | 0-0-0 | 4-5-1 |
| Michigan State | 2-7-0 | .222 | 6 | 7 | 15 | 5-10-1 | .344 | 14 | 23 | 3-5-1 | 2-5-0 | 0-0-0 | 3-7-0 |
| Purdue | 2-7-0 | .222 | 6 | 6 | 15 | 4-11-0 | .267 | 12 | 29 | 3-4-0 | 1-7-0 | 0-0-0 | 2-8-0 |
| Iowa | 1-8-0 | .111 | 3 | 2 | 14 | 7-10-0 | .412 | 23 | 28 | 4-4-0 | 2-6-0 | 1-0-0 | 1-9-0 |
| Maryland | 1-8-0 | .111 | 3 | 7 | 21 | 3-13-1 | .206 | 21 | 40 | 1-7-1 | 2-6-0 | 0-0-0 | 1-9-0 |

2016 PENN STATE WOMEN'S SOCCER

Becca Hamilton, Madison Moroi, Bristol Pizzuto, Laura Suero and Sarafina Valenti joined the Nittany Lions back on signing day in February.

Grace Fisk and Laura Freigang were the last to join the Penn State women's soccer family as they joined the program in August.

NITTANY LION CAPTAINS

Brittany Basinger, Nickolette Driesse and Megan Schafer will captain the Nittany Lions for the 2016 season.

MILESTONE VICTORIES

The 2016 season marks the 23rd year of varsity women's soccer for Penn State. The Nittany Lions captured their 400th program victory with a 3-1 win over the Hofstra Pride on Aug. 21. Overall, the Nittany Lions boast a record of 409-105-33.

Coach Dambach captured her 200th win on Sept. 9 in a 3-0 victory against San Diego State. During her time as a head coach at Dartmouth (2000-02), Harvard (2006) and Penn State (2007-Present), Coach Dambach has tallied a record of 207-80-17.

MIDSEASON HONORS

Seven Nittany Lions were named to TopDrawerSoccer's Top 100 Midseason Lists. Amanda Dennis, Grace Fisk and Laura Freigang were named to the TopDrawerSoccer Freshmen Top 100 List. Dennis checks in at 15, followed by Freigang at 35 and Fisk at 74.

TopDrawerSoccer also released its midseason top 100 list featuring upper-classmen. Frannie Crouse leads a quartet of Nittany Lions at 43, followed by Megan Schafer (49), Nickolette Driesse (58) and Brittany Basinger (74).

PICKED TO DEFEND THE B1G

According to the 2016 Big Ten preseason coaches' poll, the Penn State women's soccer team was selected to defend its 2015 Big Ten regular season championship. Since the preseason poll started in 2003, the Nittany Lions have been named the preseason favorites every time.

YOUTH MOVEMENT

The 2016 Penn State women's soccer roster is comprised of nine freshmen, one redshirt freshman, five sophomores, one redshirt sophomore, six juniors, three redshirt juniors and one senior.

MAC HERMANN TROPHY WATCH LIST

Junior forward Megan Schafer was named to the 2016 MAC Hermann Trophy Watch List prior to the start of the 2016 campaign.

During her 2015 season, Schafer led the Nittany Lions in goals (13) and points (30). Six of her 13 goals during 2015 captured a victory for the Blue & White.

As a sophomore, she started 24 of 27 matches and netted at least one point in 11 of the final 17 matches on the year.

CLIMBING THE CHARTS

Heading into the weekend, Frannie Crouse is tied for 15th all-time in points scored at PSU with 74 (32g, 10a), while Megan Schafer ranks 21st with 60 (24g, 12a).

All-time in goals scored at PSU, Crouse ranks 12th with 32 and Schafer is tied for 18th with 24.

CAREER RANKINGS

POINTS

- 14. 80 - Courtney Lawson (30g, 20a) - 1996-99
- 15. 74 - Aubrey Aden-Buie (31g, 12a) - 2004-07
74 - Raquel Rodriguez (23g, 28a) - 2012-15
- 74 - **Frannie Crouse (32g, 10a) - 2014-**
- 18. 72 - Taylor Schram (24g, 24a) - 2010-13
- 19. 71 - Stephanie Smith (21g, 29a) - 2000-03
- 20. 68 - Tani Costa (25g, 18a) - 2009-13
- 21. **60 - Megan Schafer (24g, 12a) - 2014-**

GOALS

- 10. 36 - Mallory Weber - 2012-15
- 11. 34 - Christine Nairn - 2009-12
- 12. **32 - Frannie Crouse - 2014-**
- 13. 31 - Bonnie Young - 1998-01
31 - Aubrey Aden-Buie - 2004-07
- 15. 30 - Courtney Lawson - 1996-99
- 16. 28 - Kelly Convey - 1996-99
- 17. 25 - Tani Costa - 2009-13
- 18. 24 - Taylor Schram - 2010-13
- 24 - **Megan Schafer - 2014-**

GAME-WINNING GOALS

- 9. 14 - Mallory Weber - 2012-15
- 10. 12 - Christine Nairn - 2009-12
12 - Danielle Toney - 2007-10
12 - Bonnie Young - 1998-01
- 12 - **Frannie Crouse - 2014-**
- 14. 11 - Aubrey Aden-Buie - 2004-07
- 15. 10 - Kelly Convey - 1996-99
- 16. 9 - Raquel Rodriguez - 2012-15
9 - Stephanie Smith - 2000-03
- 9 - **Megan Schafer - 2014-**

SHOTS ATTEMPTED

- 12. 187 - Raquel Rodriguez - 2012-15
- 13. 186 - Mallory Weber - 2012-15
- 14. **178 - Frannie Crouse - 2014-**

SHOTS ON GOAL

- 6. 97 - Mallory Weber - 2012-15
- 7. **88 - Frannie Crouse - 2014-**

PENN STATE vs. MICHIGAN STATE Current Nittany Lion Leaders

| | | |
|---------------|---------|---|
| Points | Ball | 2 |
| Goals | Ball | 1 |
| Assists | Echard | 1 |
| Shots | Schafer | 3 |
| Shots on Goal | Ball | 2 |
| Wins | - | - |
| Saves | - | - |

2016 PENN STATE WOMEN'S SOCCER

SERIES HISTORY VS. MICHIGAN STATE

All-Time Series: PSU Leads, 19-4-0
Current Streak: Five Wins
First Meeting: MSU, 2-0 (10/23/94)
Last Meeting: PSU, 2-1 (10/19/14)
Last PSU Win: 2-1 (10/19/14)
Last MSU Win: 3-2 (OT) (9/27/09)
NCAA History: ---
PSU At Home: 8-0-0, PSU
PSU At MSU: 9-4-0, PSU
Neutral Site: 2-0-0, PSU

LAST FIVE MEETINGS

| | | | |
|----------|---|-----|---|
| 10/19/14 | W | 2-1 | A |
| 11/1/13 | W | 3-0 | A |
| 10/19/12 | W | 5-1 | H |
| 10/21/11 | W | 3-1 | A |
| 9/26/10 | W | 1-0 | H |

SCORING IN 2015

The Nittany Lion underclassmen accounted for 46 of the team's 64 goals last season, which also included 17 of the 20 goals scored in the NCAA Tournament.

2015 NCAA TOURNAMENT RUN

During Penn State's run to the National Title last season, the Nittany Lions outscored the opposition, 20-0, and outshot the opposition, 108-43. Only 13 of their opponent's shots during the NCAA Tournament were on goal.

WINNING TRADITION

Senior co-captain Nickolette Driesse has been a part of the last two NCAA champion women's soccer teams. Prior to transferring to Penn State in 2015, Driesse was a member of the Florida State Seminoles. The Seminoles were NCAA runner-ups in 2013 and won the NCAA title in 2014.

THE POLLS

The Nittany Lions rank 14th in the Soccer America poll, 16th in the NSCAA Poll, 17th in the TopDrawerSoccer poll and 22nd in the RPI.

YEAR 10

The 2016 season marks the 10th season for Erica Dambach at the helm of the Penn State women's soccer program. As the head coach of the Nittany Lions, Coach Dambach has an overall record of 167-52-14 and 86-14-6 in Big Ten play.

NITTANY LIONS ON BTN

The Penn State women's soccer team will be featured three times during the regular season on the Big Ten Network.

The BTN regular season matches for the Nittany Lions will be West Virginia (Aug. 19 - 7:30 p.m. EDT), Minnesota (Sept. 16 - 8 p.m. EDT) and Rutgers (Oct. 13 - 7:30 p.m. EDT).

THE TRIPLE CROWN

The 2015 season was a banner year for the Nittany Lions as they brought home the national championship along with both Big Ten titles.

NEXT UP

The Nittany Lions return home to Jeffrey Field for the 2016 regular season finale as Penn State hosts Ohio State Wednesday, Oct. 26, at 6 p.m.

2016 PENN STATE WOMEN'S SOCCER

THE LAST TIME

PENN STATE...

| | |
|-------------------------------------|----------|
| Scored 3 goals | 10/9/16 |
| Scored 4 goals | 11/22/15 |
| Scored 5 goals | 11/13/15 |
| Scored 6 goals | 11/20/15 |
| Scored 7 goals | 9/23/14 |
| Scored 8 goals | 10/9/05 |
| Scored 9 goals | 9/25/01 |
| Allowed 0 goals | 10/16/16 |
| Allowed 1 goal | 10/6/16 |
| Allowed 2 goals | 10/13/16 |
| Allowed 3 goals | 8/26/16 |
| Allowed 4 goals | 12/2/12 |
| Allowed 5+ goals | 8/30/13 |
| Won in overtime | 11/30/12 |
| Lost in overtime | 9/2/16 |
| Won in double overtime | 9/20/13 |
| Lost in double overtime | 9/5/14 |
| Tied after double overtime | 10/13/16 |
| Scoreless tie after double overtime | 8/28/15 |
| Won by multiple goals at home | 9/30/16 |
| Lost by multiple goals at home | 11/15/09 |
| Ranked in the NSCAA Top 25 | 10/18/16 |
| Ranked in the NSCAA Top 10 | 8/23/16 |
| Played an NSCAA Top 10 Team | 9/16/16 |
| Played an NSCAA Top 25 Team | 9/16/16 |
| Defeated an NSCAA Top 10 Team | 12/4/15 |
| Defeated an NSCAA Top 25 Team | 12/6/15 |
| Attempted less than 10 shots | 9/25/16 |
| Attempted 10-19 shots | 10/16/16 |
| Attempted 20-29 shots | 10/9/16 |
| Attempted 30-39 shots | 10/11/15 |
| Attempted 40+ shots | 11/7/10 |
| Allowed 4 or less shots | 10/9/16 |
| Allowed 5-9 shots | 10/6/16 |
| Allowed 10-15 shots | 10/16/16 |
| Allowed 16+ shots | 9/16/16 |
| Scored 15-24 points | 11/20/15 |
| Scored 25+ points | 9/25/01 |
| Made 10-14 saves | 9/5/14 |
| Made 15+ saves | 9/2/95 |
| Had 10+ corner kicks | 10/6/16 |
| Allowed 10+ corner kicks | 9/2/16 |
| Tallied 5-7 assists | 11/13/15 |
| Tallied 8+ assists | 11/20/15 |
| Won an NCAA Tourney game | 12/6/15 |
| Lost an NCAA Tourney game | 11/29/14 |
| Won road NCAA Tourney game | 11/30/02 |
| Won neutral NCAA Tourney game | 12/6/15 |
| Won PK shootout | 11/18/12 |
| Lost PK shootout | 11/9/07 |

A PENN STATE PLAYER...

| | |
|-------------------------------|----------|
| Scored 2 goals | 10/9/16 |
| Scored 3 goals | 10/4/11 |
| Scored 4 goals | 10/7/01 |
| Had 2 assists | 10/9/16 |
| Had 3 assists | 9/13/13 |
| Had 4 assists | 9/17/03 |
| Had 5-9 points | 11/13/15 |
| Had 10+ points | 10/7/01 |
| Attempted 10+ shots | 11/11/11 |
| Made 10-14 saves | 9/5/14 |
| Made 15+ saves | 9/3/94 |
| Scored in the Big Ten Tourney | 11/8/15 |
| Had a Big Ten Tourney shutout | 11/8/15 |
| Scored in an NCAA game | 12/6/15 |
| Had an NCAA game shutout | 12/6/15 |

| |
|--------------------------------|
| at Maryland (3-0) |
| vs. Ohio State (4-0) |
| vs. Albany (5-0) |
| vs. Boston University (6-0) |
| vs. Bucknell (7-0) |
| vs. Iowa (8-0) |
| vs. Bucknell (9-2) |
| vs. Purdue (1-0) |
| at Indiana (1-1, 2OT) |
| vs. Rutgers (2-2, 2OT) |
| vs. #14 BYU (2-3) |
| vs. #13 UNC (1-4) |
| vs. Virginia (1-5) |
| vs. #7 Florida State (2-1) |
| at #11 UCLA (0-1) |
| vs. Northwestern (3-2) |
| vs. #14 UNC (0-1) |
| vs. Rutgers (2-2) |
| vs. #21 Duke (0-0) |
| vs. Illinois (2-0) |
| Virginia (2-6) |
| 16th |
| 5th |
| at #10 Minnesota (1-1) |
| at #10 Minnesota (1-1) |
| vs. #9 Rutgers (2-0) |
| vs. #20 Duke (1-0) |
| 9 vs. Nebraska (2-1) |
| 13 vs. Purdue (2-1) |
| 21 at Maryland (3-0) |
| 35 vs. Indiana (4-0) |
| 42 vs. Michigan (1-0) |
| 4 at Maryland (3-0) |
| 9 at Indiana (1-1, 2OT) |
| 15 vs. Purdue (1-0) |
| 18 at #10 Minnesota (1-1) |
| 22 vs. Boston University (6-0) |
| 26 vs. Bucknell (9-2) |
| 10 vs. #14 UNC (1-0, 2OT) |
| 17 vs. James Madison (4-2) |
| 13 vs. Indiana (1-1, 2OT) |
| 11 at #11 UCLA (0-1, OT) |
| 5 vs. Albany (5-0) |
| 10 vs. Boston U (6-0) |
| vs. #20 Duke (1-0) |
| vs. #5 Texas A&M (1-2) |
| at Connecticut (2-1) |
| vs. #20 Duke (1-0) |
| vs. Michigan (1-1, 3-2 PKs) |
| vs. Ohio State (2-2, 4-5 PKs) |

| |
|--|
| Brittany Basinger at Maryland (3-0) |
| Maya Hayes at Pittsburgh (3-0) |
| Christie Welsh vs. Michigan (6-2) |
| Nickolette Driesse vs. Maryland (3-0) |
| Tani Costa at Oklahoma St. (4-2) |
| Ali Krieger vs. Bucknell (6-0) |
| 5, Emily Ogle vs. Albany (5-0) |
| 10, Christie Welsh vs. Michigan (6-2) |
| 10, Christine Naim vs. Army (1-0) |
| 10, Britt Eckerstrom vs. # 14 UNC (1-0, 2OT) |
| 15, Robin Van Praag at Minnesota (3-2) |
| Ball & Ogle vs. #7 Rutgers (2-0) |
| Eckerstrom vs. #7 Rutgers (2-0) |
| Raquel Rodriguez vs. #20 Duke (1-0) |
| Britt Eckerstrom vs. #20 Duke (1-0) |

MISCELLANEOUS STATISTICS

PENN STATE is...

| | |
|------------|---|
| 409-105-33 | All-time |
| 222-25-12 | All-time at Jeffrey Field |
| 101-6-5 | B1G Conference Record at Jeffrey Field |

In 2016...

| | |
|-------|---------------------------------------|
| 7-1-2 | at home |
| 3-1-2 | on the road |
| 0-0-0 | at neutral site |
| 0-1-4 | in overtime |
| 8-0-1 | when leading at halftime |
| 0-1-0 | when trailing at halftime |
| 2-1-3 | when tied at halftime |
| 9-0-4 | when scoring first goal |
| 1-2-0 | when opponent scores first goal |
| 6-1-3 | when out-shooting opponent |
| 3-0-1 | when out-shot by opponent |
| 1-1-0 | ... when posting the same # of shots |
| 6-0-2 | when taking more corner kicks |
| 3-2-2 | when allowing more corner kicks |
| 1-0-0 | ... when taking the same corner kicks |
| 9-0-2 | against unranked opponents |
| 1-2-2 | against ranked opponents |
| 0-1-1 | against higher-ranked opponents |
| 1-1-1 | against lower-ranked opponents |
| 0-1-0 | when scoring 0 goals |
| 2-0-3 | when scoring 1 goal |
| 5-1-1 | when scoring 2 goals |
| 3-0-0 | when scoring 3+ goals |
| 7-0-0 | when allowing 0 goals |
| 3-1-3 | when allowing 1 goal |
| 0-0-1 | when allowing 2 goals |
| 0-1-0 | when allowing 3+ goals |
| 0-0-0 | on Wednesday |
| 0-0-2 | on Thursday |
| 3-2-2 | on Friday |
| 0-0-0 | on Saturday |
| 7-0-0 | on Sunday |
| 3-2-4 | at night |
| 7-0-0 | during the day |
| 2-0-1 | when a freshman scores |
| 4-2-0 | in one-goal games |
| 1-0-0 | vs. Atlantic 10 |
| 0-0-1 | vs. Big 12 |
| 6-0-3 | vs. Big Ten |
| 1-0-0 | vs. Big West |
| 1-0-0 | vs. CAA |
| 1-0-0 | vs. Mountain West |
| 0-1-0 | vs. Pac-12 |
| 0-1-0 | vs. WCC |

2016 PENN STATE WOMEN'S SOCCER



**ERICA
DAMBACH**

Head Coach • Tenth Year
WILLIAM & MARY '97

RECORD AT PSU: 167-52-14 (.746)
Overall Record: 207-80-17 (.708)

2012 & 2015 NSCAA NATIONAL COACH OF THE YEAR
THREE-TIME BIG TEN COACH OF THE YEAR (2009, 2012, 2014)

Head coach Erica (Walsh) Dambach enters her 10th season at the helm of the Penn State women's soccer program in 2016.

Dambach and the Nittany Lions are coming off their best season in program history in 2015. During the fall of 2015, the Penn State women's soccer team recorded a 3.49 GPA in the classroom to go along with the program's first NCAA title and a pair of Big Ten titles.

In program history, the Nittany Lions have advanced to the NCAA Tournament in each of the past 21 seasons, won 17 of the last 18 Big Ten regular season titles and own six Big Ten Tournament titles.

Dambach's squad finished the 2015 season with a 22-3-2 record, its eighth 20-win season, by defeating No. 20 Duke 1-0 in the College Cup Final on Dec. 6, 2015, in Cary, N.C. The NCAA title was the first in program history and the first by a Big Ten women's soccer program.

The Nittany Lions outscored the opposition 20-0 during their 2015 NCAA Tournament run and the Nittany Lions did not allow a goal over the final 733:32 of the season.

Raquel Rodriguez capped off her historic Penn State career by scoring the lone goal in the NCAA title match in the 72nd minute. Rodriguez followed up her game-winner in the title match by claiming the second MAC Hermann Trophy in program history in January 2016 (Welsh – 2001).

To go along with the MAC Hermann Trophy, Rodriguez garnered NSCAA Scholar Player of the Year honors, the Honda Sport Award winner for women's soccer and was named a NSCAA First Team All-American.

Following the 2015 season, Dambach received NSCAA Coach of the Year honors for the second time in her Nittany Lion career (2012).

In January 2016, all three Nittany Lion captains were selected in the National Women's Soccer League (NWSL) draft. Rodriguez was selected with the No. 2 pick by Sky Blue FC, Mallory Weber went to the Western New York Flash at No. 14 and Britt Eckerstrom was the first goalkeeper selected at No. 26 by the Western New York Flash.

In 2014, Dambach led the Blue and White to its 10th NCAA Tournament semifinal appearance and the seventh 20-win season in program history. Penn State, which had an 11-member freshman class, earned its third outright conference title in four years, maintaining a top-11 national ranking throughout the season and defeating five top-25 opponents.

Under Dambach's direction, who picked up her third Big Ten Coach of the Year award, Penn State collected three of four Player of the Year awards. Whitney Church, the conference's Defender of the Year, was named a M.A.C. Hermann Trophy semifinalist and an NSCAA All-America first team selection before she became the 30th overall pick in the NWSL draft by the Washington Spirit. Also earning individual Big Ten awards were Raquel Rodriguez, who bagged Midfielder of the Year honors and Emily Ogle, the Freshman of the Year.

The Nittany Lions appeared in their 19th-straight NCAA Tournament in 2013, due in part to the success of senior Maya Hayes. The sixth-overall selection in the WPSL draft, Hayes set Penn State's single season record for points (79) and finished her career ranked third in goals scored (71) and points (163), sixth in game-winning goals (17) and seventh in shots (291). Hayes also became the seventh M.A.C. Hermann Award Trophy semifinalist in program history.

Dambach's 2012 Nittany Lions were the most successful team in program history after advancing to their first-ever national title game. The Nittany Lions won 21 of 27 games and were unbeaten in Big Ten action with a 10-0-1 record. The Lions registered their 15th consecutive Big Ten title and 18th-straight NCAA Tournament appearance. The 15-title mark stands as the most consecutive Big Ten Championships by a women's program, along with the present Northwestern tennis team.

Senior Christine Nairn became just the seventh Nittany Lion to finish as a finalist for the prestigious Missouri Athletic Club's Hermann Trophy in 2012 under Dambach's tutelage while junior Maya Hayes was named a semifinalist for the award.

Dambach's success was recognized at the conference and national level as she earned Big Ten Coach of the Year and NSCAA National Coach of the Year honors.

Her 2011 team was a dominant force, winning 21 of 26 matches, while outscoring opponents 70-24. The Nittany Lions were 10-1-0 in Big Ten action and posted the seventh undefeated season at Jeffrey Field (9-0). Dambach helped guide the Lions to their 14th-straight Big Ten title and a spot to the NCAA Sweet Sixteen for the first time since 2007.

With Dambach's guidance, sophomore Maya Hayes became the nation's most prolific scorer in soccer in 2011 and was a finalist for the M.A.C. Hermann Trophy. Hayes led the nation with 31 goals and 70 points, breaking the Penn State single-season record for points.

During the 2011 summer, Dambach had an extraordinary experience of being one of the top assistants to Pia Sundhage and the 2011 United States women's national team at the FIFA World Cup in Germany. The U.S. made a sparkling run through knockout play to the final, falling to eventual champion Japan.

During the 2010 season, Dambach's young club made a remarkable turnaround mid-season, overcoming a two-game deficit in the league standings over the final weeks to capture a share of its 13th straight Big Ten title.

DAMBACH'S COLLEGIATE RÉSUMÉ

| | |
|---------------------------|---|
| Head Coach | |
| Penn State | 2007-present <i>2012, 2015 NSCAA National Coach of the Year</i> <i>2009, 2012, 2014 Big Ten Coach of the Year</i> |
| Harvard | 2006 |
| Dartmouth | 2000-02 |
| Assistant Coach | |
| Florida State | 2005-06 |
| Dartmouth | 1998-99 |
| Graduate Assistant | |
| Lehigh | 2003-04 |
| Dartmouth | 1997 |
| Student-Athlete | |
| William & Mary | 1993-97 <i>William & Mary Hall of Fame Inductee</i> |

DAMBACH'S NATIONAL RÉSUMÉ

| | |
|----------------------------|---|
| Head Coach | |
| U.S. Women's Under-17 | 2004-07 |
| Assistant Coach | |
| U.S. Women's National Team | 2008-11 <i>2008 Olympic Gold Medalists</i> <i>2011 World Cup Silver Medalists</i> |
| U.S. Women's Under-19 | 2004 |
| U.S. Women's Under-20 | 2013-2014 |

2016 PENN STATE WOMEN'S SOCCER

DAMBACH'S ACCOLADES

- 23 NCAA TOURNAMENT WINS**
- 13 YEARS OF COLLEGE HEAD COACHING EXPERIENCE**
- 13 ALL-AMERICA HONORS**
- 12 NCAA TOURNAMENT APPEARANCES**
- 8 BIG TEN CHAMPIONSHIPS**
- 3 BIG TEN COACH OF THE YEAR AWARDS**
- 2 BIG TEN TOURNAMENT TITLES**
- 2 COLLEGE CUP APPEARANCES**
- 2 NATIONAL CHAMPIONSHIP GAME APPEARANCES**
- 2 NATIONAL COACH OF THE YEAR AWARDS**
- 1 NCAA COLLEGE CUP TITLE**
- 1 OLYMPIC GOLD MEDAL**

After a tough 2-4 start to the 2009 season, Dambach led the Nittany Lions to a remarkable turnaround, going 10-1-2 in the last 13 games of the regular season, earning her the 2009 Big Ten Coach of the Year Award for her efforts.

With the impressive end to the season, Dambach and her charges captured the program's 12th-straight Big Ten Championship. By winning the Big Ten, the Nittany Lions continued their string of NCAA Tournament berths, making their 15th-straight appearance in the 64-team field in 2009. For the second time in three years, Penn State hosted the first and second rounds of tournament play.

Dambach also orchestrated one of the finest awards seasons in Penn State history when Katie Schoepfer, Alyssa Naehner and Christine Nairn swept the year-end Big Ten Player of the Year awards. Schoepfer was named the Offensive Player of the Year, Naehner the Defensive Player of the Year and Nairn the Freshman of the Year. Danielle Toney was named to the All-Big Ten first team, while Lexi Marton garnered second team mention. Dambach has now coached two players of the year to three awards as Naehner was also the 2007 recipient of the Defensive Player of the Year honors in Dambach's first year in Happy Valley.

Dambach continued her success from the 2007 campaign into a 16-8-0 record that saw Penn State capture its 11th-straight Big Ten Championship and the 2008 Big Ten Tournament crown.

Her transition to Penn State was quite smooth as the 2007 team finished 18-4-2, including a 9-1-0 mark in conference play, and was ranked 12th in the final NSCAA poll of the season.

When she came to Penn State, Dambach brought with her a wealth of experience at both the international and collegiate levels. She already has coached at six different universities, including three stints as head coach as well as serving as an assistant for the U.S. U-19 team in 2004. Dambach served as head coach of the U-17 team from December 2004 until her hire at Penn State in February 2007.

As of January 2009, Dambach was appointed as a member of the Panel of Instructors and Lecturers for FIFA Courses. In addition, she was appointed as

the Chairman of the Women's Technical Committee for the period of January 1, 2009 to June 30, 2011.

In January of 2008, Dambach was named as the assistant coach by Pia Sundhage for the U.S. National Team. With Dambach's help and guidance the U.S. team completed its historic run with a gold medal at the 2008 Olympic Games in Beijing, China. Even sweeter was that Dambach's main responsibility was the U.S. Team's defense, which held fellow world power Brazil scoreless in the gold medal game.

The head coach at Harvard University as well as the U.S. Under-17 team prior to her hiring at Penn State, Dambach has consistently been active among the coaching ranks both at the Division I level and the U.S. Youth National Team program for nearly a decade. Prior to her time with the Crimson, she was part of a Florida State staff that led the Seminoles to one of its most successful year to date. FSU joined Penn State in the 2005 Women's Soccer College Cup, with both programs reaching the national semifinals.

Dambach's coaching path began in 1997 as a graduate assistant with Bucknell University. In 1998, she accepted a position at Dartmouth, where she was an assistant coach for two seasons. After helping the team to a final NSCAA ranking of No. 8 at the conclusion of the team's 1998 NCAA quarterfinal run as well as an Ivy League championship in 1999, Dambach assumed head coaching duties before the 2000 season.

As head coach, Dambach led the Big Green to back-to-back Ivy League co-championships in 2000 and 2001. Her squad was ranked in the NSCAA's top 25 each year, rising as high as No. 13 in 2001. In her three seasons as head coach, Dartmouth was invited to the NCAA Tournament each season and reached the round of 16 twice. All three of her teams earned the NSCAA's Academic Team Award.

Dambach left Dartmouth to earn her Master's in business administration at Lehigh University where she served as a graduate assistant from 2003-04.

Beginning in the spring of 2004, Dambach joined the United States Under-19 team as an assistant coach where she helped with preparations for the Under-19 World Cup. The U.S. finished with the bronze medal in Thailand after defeating Brazil in the third place match. After the World Cup, Dambach was appointed the U.S. National Team's U-17 head coach, a position which she held for three years.

As a player, Dambach was an NSCAA All-Region selection at William & Mary. A two-time first team All-CAA pick, she propelled her team to four NCAA Tournament appearances as well as two CAA regular season and two CAA league championships. In March of 2010, Dambach's alma mater, William & Mary, honored her by inducting her into the W&M Athletics Hall of Fame.

A high school All-American at Lower Moreland, she was also a member of the U.S. Under-17 National Team.

Dambach earned her Bachelor of Science degree with a concentration in biology from William & Mary in 1997. The Huntingdon Valley, Pennsylvania, native holds an NSCAA Advanced National Degree and a USSF "A" Coaching License.

The former Erica Walsh married Jason Dambach in January 2016 and they currently reside in State College, Pa.

DAMBACH'S CAREER AT PENN STATE

| Season | Overall | Pct. | Big Ten | Pct. | Big Ten Finish | NCAA Finish |
|-------------------|------------------|-------------|----------------|-------------|----------------------------|---------------|
| 2007 | 18-4-2 | .792 | 9-1-0 | .900 | 1st | Third Round |
| 2008 | 16-8-0 | .667 | 8-2-0 | .800 | T-1st | First Round |
| 2009 | 13-6-2 | .667 | 8-1-1 | .850 | 1st | Second Round |
| 2010 | 11-9-1 | .548 | 8-2-0 | .800 | T-1st | Second Round |
| 2011 | 21-5-0 | .808 | 10-1-0 | .909 | 1st | Third Round |
| 2012 | 21-4-2 | .815 | 10-0-1 | .955 | 1st | Runner-Up |
| 2013 | 15-7-1 | .674 | 7-4-0 | .636 | 3rd | Second Round |
| 2014 | 20-4-0 | .833 | 12-1-0 | .923 | 1st | Quarterfinals |
| 2015 | 22-3-2 | .851 | 8-2-1 | .773 | T-1st | Champions |
| 2016 | 10-2-4 | .750 | 6-0-3 | .833 | | |
| Penn State | 167-52-14 | .746 | 86-14-6 | .839 | 9 NCAAAs (20-8-1) | |
| Career | 207-80-17 | .708 | | | 12 NCAAAs (23-11-1) | |

2016 PENN STATE WOMEN'S SOCCER

2016 Penn State Women's Soccer Penn State Combined Team Statistics (as of Oct 17, 2016) All games

| RECORD: | OVERALL | HOME | AWAY | NEUTRAL |
|----------------|---------|-------|-------|---------|
| ALL GAMES | 10-2-4 | 7-1-2 | 3-1-2 | 0-0 |
| CONFERENCE | 6-0-3 | 4-0-1 | 2-0-2 | 0-0 |
| NON-CONFERENCE | 4-2-1 | 3-1-1 | 1-1 | 0-0 |

| Date | Opponent | Score | Att. | # | Player | gp | g | a | pts | sh | sh% | sog | sog% | qw | pk-att |
|----------|-------------------------|---------|------|----|----------------------|----|----|----|-----|-----|-------|-----|-------|----|--------|
| + Aug 19 | #6 WEST VIRGINIA | To2 1-1 | 5791 | 9 | Frannie Crouse | 16 | 11 | 1 | 23 | 46 | .239 | 22 | .478 | 5 | 0-0 |
| + Aug 21 | HOFSTRA | w 3-1 | 760 | 4 | Megan Schafer | 16 | 5 | 3 | 13 | 26 | .192 | 10 | .385 | 1 | 0-0 |
| Aug 26 | #14 BYU | L 2-3 | 1405 | 12 | Charlotte Williams | 16 | 3 | 4 | 10 | 46 | .065 | 23 | .500 | 1 | 0-0 |
| Sep 02 | at #11 UCLA | Lot 0-1 | 1308 | 1 | Brittany Basinger | 16 | 2 | 2 | 6 | 7 | .286 | 4 | .571 | 1 | 0-0 |
| Sep 04 | at #18 Long Beach State | w 2-1 | 1017 | 23 | Nickolette Driesse | 16 | 0 | 6 | 6 | 19 | .000 | 9 | .474 | 0 | 0-0 |
| Sep 09 | SAN DIEGO STATE | w 3-0 | 877 | 7 | Elizabeth Ball | 16 | 2 | 1 | 5 | 6 | .333 | 4 | .667 | 1 | 0-0 |
| Sep 11 | LA SALLE | w 2-0 | 889 | 20 | Salina Williford | 16 | 1 | 2 | 4 | 23 | .043 | 7 | .304 | 0 | 0-0 |
| * Sep 16 | at #10 Minnesota | To2 1-1 | 1758 | 27 | Marissa Sheva | 15 | 1 | 1 | 3 | 9 | .111 | 4 | .444 | 0 | 0-0 |
| * Sep 18 | at Wisconsin | w 1-0 | 620 | 33 | Laura Suero | 14 | 1 | 1 | 3 | 1 | 1.000 | 1 | 1.000 | 1 | 0-0 |
| * Sep 23 | IOWA | w 2-0 | 1664 | 21 | Laura Freigang | 12 | 1 | 0 | 2 | 24 | .042 | 7 | .292 | 0 | 0-0 |
| * Sep 25 | NEBRASKA | w 2-1 | 968 | 2 | Grace Fisk | 14 | 1 | 0 | 2 | 9 | .111 | 5 | .556 | 0 | 0-0 |
| * Sep 30 | ILLINOIS | w 2-0 | 831 | 15 | Haleigh Echard | 16 | 0 | 2 | 2 | 19 | .000 | 10 | .526 | 0 | 0-0 |
| * Oct 06 | at Indiana | To2 1-1 | 601 | 17 | Alina Ortega-Jurado | 16 | 0 | 2 | 2 | 4 | .000 | 1 | .250 | 0 | 0-0 |
| * Oct 09 | at Maryland | w 3-0 | 923 | 6 | Emma Hasco | 12 | 0 | 1 | 1 | 7 | .000 | 3 | .429 | 0 | 0-0 |
| * Oct 13 | RUTGERS | To2 2-2 | 870 | 8 | Kristin Schnurr | 13 | 0 | 1 | 1 | 2 | .000 | 0 | .000 | 0 | 0-0 |
| * Oct 16 | PURDUE | w 1-0 | 1122 | 24 | Cecilia Knaub | 8 | 0 | 0 | 0 | 1 | .000 | 1 | 1.000 | 0 | 0-0 |
| | | | | 22 | Isabelle Clauss | 2 | 0 | 0 | 0 | 1 | .000 | 0 | .000 | 0 | 0-0 |
| | | | | 19 | Liisi Vink-Lainas | 3 | 0 | 0 | 0 | 1 | .000 | 0 | .000 | 0 | 0-0 |
| | | | | 24 | Madison Moroi | 2 | 0 | 0 | 0 | 0 | .000 | 0 | .000 | 0 | 0-0 |
| | | | | 25 | Taylor Campbell-Phip | 4 | 0 | 0 | 0 | 0 | .000 | 0 | .000 | 0 | 0-0 |
| | | | | 18 | Angela Widlacki | 1 | 0 | 0 | 0 | 0 | .000 | 0 | .000 | 0 | 0-0 |
| | | | | 16 | Becca Hamilton | 4 | 0 | 0 | 0 | 0 | .000 | 0 | .000 | 0 | 0-0 |
| | | | | 00 | Amanda Dennis | 16 | 0 | 0 | 0 | 0 | .000 | 0 | .000 | 0 | 0-0 |
| | | | | 0 | Sarafina Valenti | 1 | 0 | 0 | 0 | 0 | .000 | 0 | .000 | 0 | 0-0 |
| | | | | | Total | 16 | 28 | 27 | 83 | 251 | .112 | 111 | .442 | 10 | 0-0 |
| | | | | | Opponents | 16 | 12 | 10 | 34 | 154 | .078 | 59 | .383 | 2 | 1-2 |

+ Penn State Invitational

| TEAM STATISTICS | PSU | OPP |
|------------------------|---------|--------|
| SHOT STATISTICS | | |
| Goals-Shot attempts | 28-251 | 12-154 |
| Goals scored per game | 1.75 | 0.75 |
| Shot pct. | .112 | .078 |
| Shots on goal-Attempts | 111-251 | 59-154 |
| SOG pct. | .442 | .383 |
| Shots/Game | 15.7 | 9.6 |
| CORNER KICKS | | |
| Goals off corners | 5 | 2 |
| PENALTY KICKS | 0-0 | 1-2 |
| PENALTIES | | |
| Yellow cards | 10 | 7 |
| Red cards | 0 | 1 |
| ATTENDANCE | | |
| Total | 15177 | 6227 |
| Dates/Avg Per Date | 10/1518 | 6/1038 |
| Neutral Site #/Avg | | 0/0 |

| # | Goalie | GP | Min. | GA | GAAvg | Saves | Pct | W-L-T | Sho |
|----|------------------|----|---------|----|-------|-------|-------|--------|-----|
| 0 | Sarafina Valenti | 1 | 10:12 | 0 | 0.00 | 1 | 1.000 | 0-0-0 | 0/1 |
| 00 | Amanda Dennis | 16 | 1517:49 | 12 | 0.71 | 46 | .793 | 10-2-4 | 6/1 |
| | Total | 16 | 1528:01 | 12 | 0.71 | 47 | .797 | 10-2-4 | 7 |
| | Opponents | 16 | 1528:01 | 28 | 1.65 | 83 | .748 | 2-10-4 | 1 |

| Goals by Period | 1st | 2nd | OT | OT2 | Total |
|-----------------|-----|-----|----|-----|-------|
| Penn State | 12 | 16 | 0 | 0 | 28 |
| Opponents | 5 | 6 | 1 | 0 | 12 |

| Shots by Period | 1st | 2nd | OT | OT2 | Total |
|-----------------|-----|-----|----|-----|-------|
| Penn State | 118 | 119 | 7 | 7 | 251 |
| Opponents | 61 | 81 | 8 | 4 | 154 |

| Saves by Period | 1st | 2nd | OT | OT2 | Total |
|-----------------|-----|-----|----|-----|-------|
| Penn State | 23 | 21 | 2 | 1 | 47 |
| Opponents | 38 | 39 | 5 | 1 | 83 |

| Corners by Period | 1st | 2nd | OT | OT2 | Total |
|-------------------|-----|-----|----|-----|-------|
| Penn State | 37 | 35 | 1 | 2 | 75 |
| Opponents | 21 | 36 | 4 | 3 | 64 |

| Fouls by Period | 1st | 2nd | OT | OT2 | Total |
|-----------------|-----|-----|----|-----|-------|
| Penn State | 39 | 59 | 4 | 4 | 106 |
| Opponents | 61 | 56 | 6 | 5 | 128 |

2016 PENN STATE WOMEN'S SOCCER

2016 Penn State Women's Soccer Penn State Overall Individual Statistics (as of Oct 17, 2016) All games

Overall: 10-2-4 Conf: 6-0-3 Home: 7-1-2 Away: 3-1-2 Neut: 0-0-0

| ## | Player | gp-gs | min | g | a | pts | sh | sh% | sog | sog% | yc | rc | gwg | pk-att | cnr |
|-----------|----------------------|-------|------|----|----|-----|-----|-------|-----|-------|----|----|-----|--------|-----|
| 9 | Frannie Crouse | 16-16 | 1212 | 11 | 1 | 23 | 46 | .239 | 22 | .478 | 0 | 0 | 5 | 0-0 | 1 |
| 4 | Megan Schafer | 16-16 | 1187 | 5 | 3 | 13 | 26 | .192 | 10 | .385 | 1 | 0 | 1 | 0-0 | 0 |
| 12 | Charlotte Williams | 16-16 | 1186 | 3 | 4 | 10 | 46 | .065 | 23 | .500 | 1 | 0 | 1 | 0-0 | 0 |
| 1 | Brittany Basinger | 16-16 | 1478 | 2 | 2 | 6 | 7 | .286 | 4 | .571 | 0 | 0 | 1 | 0-0 | 0 |
| 23 | Nicolette Driesse | 16-16 | 1280 | 0 | 6 | 6 | 19 | .000 | 9 | .474 | 2 | 0 | 0 | 0-0 | 62 |
| 7 | Elizabeth Ball | 16-16 | 1361 | 2 | 1 | 5 | 6 | .333 | 4 | .667 | 2 | 0 | 1 | 0-0 | 0 |
| 20 | Salina Williford | 16-14 | 1179 | 1 | 2 | 4 | 23 | .043 | 7 | .304 | 0 | 0 | 0 | 0-0 | 7 |
| 27 | Marissa Sheva | 15-9 | 877 | 1 | 1 | 3 | 9 | .111 | 4 | .444 | 0 | 0 | 0 | 0-0 | 0 |
| 33 | Laura Suero | 14-0 | 250 | 1 | 1 | 3 | 1 | 1.000 | 1 | 1.000 | 0 | 0 | 1 | 0-0 | 0 |
| 21 | Laura Freigang | 12-2 | 659 | 1 | 0 | 2 | 24 | .042 | 7 | .292 | 0 | 0 | 0 | 0-0 | 0 |
| 2 | Grace Fisk | 14-14 | 1280 | 1 | 0 | 2 | 9 | .111 | 5 | .556 | 0 | 0 | 0 | 0-0 | 0 |
| 15 | Haleigh Echard | 16-9 | 895 | 0 | 2 | 2 | 19 | .000 | 10 | .526 | 1 | 0 | 0 | 0-0 | 0 |
| 17 | Alina Ortega-Jurado | 16-16 | 1493 | 0 | 2 | 2 | 4 | .000 | 1 | .250 | 0 | 0 | 0 | 0-0 | 5 |
| 6 | Emma Hasco | 12-0 | 331 | 0 | 1 | 1 | 7 | .000 | 3 | .429 | 1 | 0 | 0 | 0-0 | 0 |
| 8 | Kristin Schnurr | 13-0 | 261 | 0 | 1 | 1 | 2 | .000 | 0 | .000 | 2 | 0 | 0 | 0-0 | 0 |
| 24 | Cecilia Knaub | 8-0 | 179 | 0 | 0 | 0 | 1 | .000 | 1 | 1.000 | 0 | 0 | 0 | 0-0 | 0 |
| 22 | Isabelle Clauss | 2-0 | 31 | 0 | 0 | 0 | 1 | .000 | 0 | .000 | 0 | 0 | 0 | 0-0 | 0 |
| 19 | Liisi Vink-Lainas | 3-0 | 26 | 0 | 0 | 0 | 1 | .000 | 0 | .000 | 0 | 0 | 0 | 0-0 | 0 |
| 34 | Madison Moroi | 2-0 | 8 | 0 | 0 | 0 | 0 | .000 | 0 | .000 | 0 | 0 | 0 | 0-0 | 0 |
| 25 | Taylor Campbell-Phip | 4-0 | 45 | 0 | 0 | 0 | 0 | .000 | 0 | .000 | 0 | 0 | 0 | 0-0 | 0 |
| 18 | Angela Widlacki | 1-0 | 0+ | 0 | 0 | 0 | 0 | .000 | 0 | .000 | 0 | 0 | 0 | 0-0 | 0 |
| 16 | Becca Hamilton | 4-0 | 50 | 0 | 0 | 0 | 0 | .000 | 0 | .000 | 0 | 0 | 0 | 0-0 | 0 |
| 0 | Sarafina Valenti | 1-0 | 10 | 0 | 0 | 0 | 0 | .000 | 0 | .000 | 0 | 0 | 0 | 0-0 | 0 |
| 00 | Amanda Dennis | 16-16 | 1518 | 0 | 0 | 0 | 0 | .000 | 0 | .000 | 0 | 0 | 0 | 0-0 | 0 |
| Total | | 16 | - | 28 | 27 | 83 | 251 | .112 | 111 | .442 | 10 | 0 | 10 | 0-0 | - |
| Opponents | | 16 | - | 12 | 10 | 34 | 154 | .078 | 59 | .383 | 7 | 1 | 2 | 1-2 | - |

| # | Goalie | gp-gs | Goal Average | | | Saves | | Record | | | | Shots faced |
|-----------|------------------|-------|--------------|----|-------|-------|-------|--------|----|---|---------|-------------|
| | | | min | ga | gaavg | saves | pct | w | l | t | sho/cbo | |
| 0 | Sarafina Valenti | 1-0 | 10:12 | 0 | 0.00 | 1 | 1.000 | 0 | 0 | 0 | 0/1 | 2 |
| 00 | Amanda Dennis | 16-16 | 1517:49 | 12 | 0.71 | 46 | .793 | 10 | 2 | 4 | 6/1 | 151 |
| TM | TEAM | - | 0:00 | 0 | 0.00 | 0 | .000 | 0 | 0 | 0 | 1/0 | 0 |
| Total | | 16 | 1528:01 | 12 | 0.71 | 47 | .797 | 10 | 2 | 4 | 7 | 153 |
| Opponents | | 16 | 1528:01 | 28 | 1.65 | 83 | .748 | 2 | 10 | 4 | 1 | 250 |

Team saves: 0

| Goals by Period | 1st | 2nd | OT | OT2 | Total |
|-----------------|-----|-----|----|-----|-------|
| Penn State | 12 | 16 | 0 | 0 | 28 |
| Opponents | 5 | 6 | 1 | 0 | 12 |

| Corners by Period | 1st | 2nd | OT | OT2 | Total |
|-------------------|-----|-----|----|-----|-------|
| Penn State | 37 | 35 | 1 | 2 | 75 |
| Opponents | 21 | 36 | 4 | 3 | 64 |

| Shots by Period | 1st | 2nd | OT | OT2 | Total |
|-----------------|-----|-----|----|-----|-------|
| Penn State | 118 | 119 | 7 | 7 | 251 |
| Opponents | 61 | 81 | 8 | 4 | 154 |

| Fouls by Period | 1st | 2nd | OT | OT2 | Total |
|-----------------|-----|-----|----|-----|-------|
| Penn State | 39 | 59 | 4 | 4 | 106 |
| Opponents | 61 | 56 | 6 | 5 | 128 |

| Saves by Period | 1st | 2nd | OT | OT2 | Total |
|-----------------|-----|-----|----|-----|-------|
| Penn State | 23 | 21 | 2 | 1 | 47 |
| Opponents | 38 | 39 | 5 | 1 | 83 |

| Attendance Summary | PSU | Opponent |
|--------------------|---------|----------|
| Total | 15177 | 6227 |
| Dates/Avg Per Date | 10/1518 | 6/1038 |
| Neutral Site #/Avg | 0/0 | |

2016 PENN STATE WOMEN'S SOCCER

Soccer Box Score (Final) 2016 Penn State Women's Soccer #6 West Virginia vs #2 Penn State (Aug 19, 2016 at University Park, Pa.)

West Virginia (0-0-1) vs. Penn State (0-0-1)
Date: Aug 19, 2016 • Attendance: 5791
Weather: 81 degrees, sunny

| Po # | Player | Sh | SO | G | A | Fo | Min |
|-------------------|--------------------|----|----|---|---|----|-----|
| qk 25 | Rylee Foster | - | - | - | - | - | 110 |
| d 4 | Bianca St. Georges | 2 | 1 | - | - | - | 110 |
| f 5 | Michaela Abam | 5 | 4 | 1 | - | - | 88 |
| m 10 | Carla Portillo | - | - | - | - | - | 79 |
| f 11 | A. Pierre-Louis | 1 | 1 | - | - | - | 110 |
| m 14 | Patricia Fernandez | - | - | - | - | - | 44 |
| d 16 | Easther Mayi Kith | - | - | - | - | - | 110 |
| d 20 | Hannah Abraham | - | - | - | - | - | 71 |
| m 22 | Alli Magaletta | 1 | - | - | - | - | 100 |
| d 24 | Carly Black | - | - | - | - | - | 110 |
| f 99 | SH N'ia Gordon | 3 | 1 | - | - | - | 95 |
| -- Substitutes -- | | | | | | | |
| 6 | Heather Kalehoi | 1 | - | - | - | - | 42 |
| 7 | Grace Cutler | - | - | - | - | - | 25 |
| 18 | Ashley Woolpert | - | - | - | - | - | 25 |
| 26 | Vanessa Flores | 1 | - | - | - | - | 64 |
| Totals | | 14 | 7 | 1 | 2 | 9 | |

| # | Goalkeepers | Min | GA | Saves |
|----|--------------|--------|----|-------|
| 25 | Rylee Foster | 110:00 | 1 | 9 |

| Shots by period | 1 | 2 | OT | O2 | Total |
|-----------------|---|---|----|----|-------|
| West Virginia | 5 | 7 | 1 | 1 | 14 |
| Penn State | 5 | 6 | 4 | 2 | 17 |

| Corner kicks | 1 | 2 | OT | O2 | Total |
|---------------|---|---|----|----|-------|
| West Virginia | 0 | 2 | 0 | 2 | 4 |
| Penn State | 2 | 0 | 0 | 1 | 3 |

| No. | Time | Team | Goal scorer | Assist | Description |
|-----|-------|------|--------------------|-----------------------------------|---|
| 1. | 50:50 | PSU | Laura Freigang (1) | (unassisted) | 16 yards out, center, hit left post and in |
| 2. | 76:59 | WVU | Michaela Abam (1) | Vanessa Flores A. Pierre-Louis | 6 yards out, from left side of the box, un-keeper |

Cautions and ejections:
YC-WVU #16 (98:06)

West Virginia-Rylee Foster (0-0-1). Penn State-Amanda Dennis (0-0-1).
Stadium: Jeffrey Field
Officials: Referee: Ron Dambrosia; Asst. Referee: Robert Sheker; Paul Wehrman;
Alt. Official: Kyle Petty; Scorer: Will Rottler;
Offsides: West Virginia 5, Penn State 3.

Official's signature

Soccer Box Score (Final) 2016 Penn State Women's Soccer Hofstra vs #2 Penn State (Aug 21, 2016 at University Park, Pa.)

Hofstra (1-1-0) vs. Penn State (1-0-1)
Date: Aug 21, 2016 • Attendance: 760
Weather: 75, cloudy

| Po # | Player | Sh | SO | G | A | Fo | Min |
|-------------------|--------------------|----|----|---|---|----|-----|
| qk 1 | Ashley Wilson | - | - | - | - | - | 45 |
| d 2 | Madeline Anderson | - | - | - | - | - | 90 |
| d 3 | Rhian Cleverly | - | - | - | - | - | 45 |
| m 5 | Jill Mulholland | 2 | 1 | - | - | - | 90 |
| d 7 | Emily Agudelo | - | - | - | - | - | 80 |
| f 8 | Kristin Desmond | - | - | - | - | - | 80 |
| d 11 | Emily Hulbert | - | - | - | - | - | 90 |
| f 12 | Kerri Baum | - | - | - | - | - | 21 |
| m 22 | Noriana Radwan | 1 | 1 | - | - | - | 59 |
| d 25 | Kelly Gerdes | - | - | - | - | - | 90 |
| f 26 | Katie Gerdes | - | - | - | - | - | 56 |
| -- Substitutes -- | | | | | | | |
| 6 | Jaimie Layfield | - | - | - | - | - | 31 |
| 13 | Maya Watkins | - | - | - | - | - | 50 |
| 14 | Jamie Delaney | - | - | - | - | - | 40 |
| 17 | Brianna Doran | - | - | - | - | - | 14 |
| 27 | Friederike Mehring | - | - | - | - | - | 45 |
| 28 | Sabrina Barton | - | - | - | - | - | 18 |
| Totals | | 3 | 2 | 1 | 0 | 9 | |

| # | Goalkeepers | Min | GA | Saves |
|----|--------------------|-------|----|-------|
| 1 | Ashley Wilson | 45:00 | 2 | 4 |
| 27 | Friederike Mehring | 45:00 | 1 | 3 |

| Shots by period | 1 | 2 | Total |
|-----------------|----|---|-------|
| Hofstra | 1 | 2 | 3 |
| Penn State | 12 | 9 | 21 |

| Corner kicks | 1 | 2 | Total |
|--------------|---|---|-------|
| Hofstra | 1 | 1 | 2 |
| Penn State | 3 | 1 | 4 |

| No. | Time | Team | Goal scorer | Assist | Description |
|-----|-------|--------|------------------------|------------------------------------|---|
| 1. | 7:12 | HOFSTR | Noriana Radwan (1) | Corner kick | Off a corner, misplayed and into the net |
| 2. | 23:22 | PSU | Charlotte Williams (1) | Nickolette Driesse (unassisted) | 12 with the rebound off of the post, 6 var |
| 3. | 38:03 | PSU | Charlotte Williams (2) | (unassisted) | Free kick, 20 yards out, bottom right cor |
| 4. | 83:02 | PSU | Salina Williford (1) | Laura Suero | from just inside the penalty area, right sid left side of goal |

Cautions and ejections:
YC-HOFSTRA #11 (28:58); RC-HOFSTRA #3 (38:00); YC-PSU #4 (80:48);
YC-PSU #6 (82:29)

Win-Amanda Dennis (1-0-1). Loss-Ashley Wilson (1-1-0).
Stadium: Jeffrey Field
Officials: Referee: Peter Dhima; Asst. Referee: Robert Sheker; Eric Samples;
Alt. Official: Sergio Gonzalez; Scorer: Will Rottler;
Offsides: Hofstra 6, Penn State 1.

Official's signature

Soccer Box Score (Final) 2016 Penn State Women's Soccer #14 BYU vs #5 Penn State (Aug 26, 2016 at University Park, Pa.)

BYU (2-1-0) vs. Penn State (1-1-1)
Date: Aug 26, 2016 • Attendance: 1405
Weather: 84, clear

| Po # | Player | Sh | SO | G | A | Fo | Min |
|-------------------|---------------------|----|----|---|---|----|-----|
| qk 1 | Rachel Boaz | - | - | - | - | - | 23 |
| d 2 | Taylor Isom | - | - | - | - | - | 90 |
| f 6 | Nadia Gomes | 1 | 1 | - | - | - | 72 |
| f 7 | Michele Vasconcelos | 2 | - | - | - | - | 74 |
| d 9 | Paige Barker | 1 | - | - | - | - | 59 |
| m 10 | Bizzy Bowen | - | - | - | - | - | 90 |
| d 14 | Danika Bowman | - | - | - | - | - | 90 |
| d 24 | Stephanie Ney | - | - | - | - | - | 68 |
| m 27 | Elena Medeiros | 2 | 1 | - | - | - | 75 |
| d 29 | Alyssa Jefferson | - | - | - | - | - | 83 |
| f 33 | Ashley Hatch | 6 | 5 | 3 | - | - | 76 |
| -- Substitutes -- | | | | | | | |
| 5 | Elise Flake | - | - | - | - | - | 22 |
| 11 | Hannah Clark | - | - | - | - | - | 67 |
| 19 | Lizzy Braby | - | - | - | - | - | 24 |
| 20 | Jocelyn Loomis | 1 | - | - | - | - | 16 |
| 21 | Madie Siddoway | - | - | - | - | - | 10 |
| 25 | Brynlee Welch | - | - | - | - | - | 28 |
| 26 | Madie Lyons | - | - | - | - | - | 21 |
| Totals | | 13 | 7 | 3 | 4 | | |

| # | Goalkeepers | Min | GA | Saves |
|----|--------------|-------|----|-------|
| 1 | Rachel Boaz | 22:53 | 0 | 2 |
| 11 | Hannah Clark | 67:07 | 2 | 4 |

| Shots by period | 1 | 2 | Total |
|-----------------|---|---|-------|
| BYU | 5 | 8 | 13 |
| Penn State | 9 | 7 | 16 |

| Corner kicks | 1 | 2 | Total |
|--------------|---|---|-------|
| BYU | 1 | 3 | 4 |
| Penn State | 0 | 1 | 1 |

| No. | Time | Team | Goal scorer | Assist | Description |
|-----|-------|------|------------------------|--------------------------------|--|
| 1. | 5:35 | BYU | Ashley Hatch (3) | Elena Medeiros Paige Barker | 33 from 27, 12 yards out, bottom left cor |
| 2. | 56:09 | BYU | Ashley Hatch (4) | Nadia Gomes | 33 from 6,10 yards out, left side of the bo bottom right corner |
| 3. | 61:11 | PSU | Frannie Crouse (1) | Haleigh Echard | Header, 6 yards out, top left corner |
| 4. | 65:29 | PSU | Charlotte Williams (3) | Frannie Crouse | 12 yards out, bottom left corner |
| 5. | 77:04 | BYU | Ashley Hatch (5) | Nadia Gomes | From 6 yards out, bottom right corner |

Cautions and ejections:

Win-Hannah Clark (1-0-0). Loss-Amanda Dennis (1-1-1).
Stadium: Jeffrey Field
Officials: Referee: Lee Suckle; Asst. Referee: Michael Matlock; Michael Gorsegner;
Alt. Official: Bruce Shanaman; Scorer: Will Rottler;
Offsides: BYU 4, Penn State 0.

Official's signature

Soccer Box Score (Final) 2016 Penn State Women's Soccer #13 Penn State vs #11 UCLA (Sep 02, 2016 at Los Angeles, Calif.)

Penn State (1-2-1) vs. UCLA (3-1-0)
Date: Sep 02, 2016 • Attendance: 1308
Weather: clear

| Po # | Player | Sh | SO | G | A | Fo | Min |
|-------------------|---------------------|----|----|---|---|----|-----|
| qk 00 | Amanda Dennis | - | - | - | - | - | 98 |
| d 1 | Brittany Basinger | 1 | 1 | - | - | - | 90 |
| d 2 | Grace Fisk | - | - | - | - | - | 90 |
| f 4 | Megan Schafer | - | - | - | - | - | 67 |
| d 7 | Elizabeth Ball | - | - | - | - | - | 70 |
| f 9 | Frannie Crouse | 3 | 2 | 1 | - | - | 68 |
| m 12 | Charlotte Williams | 4 | 3 | 1 | - | - | 81 |
| m 15 | Haleigh Echard | 2 | 1 | - | - | - | 70 |
| d 17 | Alina Ortega-Jurado | - | - | - | - | - | 90 |
| m 20 | Salina Williford | 2 | - | - | - | - | 67 |
| m 23 | Nickolette Driesse | - | - | - | - | - | 76 |
| -- Substitutes -- | | | | | | | |
| 8 | Kristin Schnurr | - | - | - | - | - | 20 |
| 21 | Laura Freigang | 4 | 1 | - | - | - | 67 |
| 24 | Cecilia Knaub | - | - | - | - | - | 10 |
| 33 | Laura Suero | - | - | - | - | - | 33 |
| Totals | | 16 | 8 | 2 | 2 | | |

| # | Goalkeepers | Min | GA | Saves |
|----|---------------|-------|----|-------|
| 00 | Amanda Dennis | 98:01 | 1 | 2 |

| Shots by period | 1 | 2 | OT | Total |
|-----------------|---|---|----|-------|
| Penn State | 6 | 4 | 0 | 10 |
| UCLA | 3 | 4 | 3 | 10 |

| Corner kicks | 1 | 2 | OT | Total |
|--------------|---|---|----|-------|
| Penn State | 1 | 0 | 0 | 1 |
| UCLA | 4 | 6 | 1 | 11 |

| No. | Time | Team | Goal scorer | Assist | Description |
|-----|-------|------|---------------------|------------------|------------------------|
| 1. | 98:01 | UCLA | Fleming, Jessie (3) | Cerda, MacKenzie | header off corner kick |

Cautions and ejections:
YC-UCLA #25 (80:43); YC-PSU #23 (83:04)

Win-Micah, Teagan. Loss-Amanda Dennis.
Stadium: Drake Stadium
Officials: Referee: Alex Chilowicz; Asst. Referee: Kristin Patterson; Michelle Provan;
Alt. Official: Ashbir Singh; Scorer: Tanner Koscinski;
Offsides: Penn State 0, UCLA 2.

Official's signature

2016 PENN STATE WOMEN'S SOCCER

Soccer Box Score (Final) 2016 Penn State Women's Soccer #13 Penn State vs #18 Long Beach State (Sep 04, 2016 at Long Beach, Calif.)

Penn State (2-2-1) vs.
Long Beach State (3-2-1)
Date: Sep 04, 2016 • Attendance: 1017
Weather: Clear, windy, 73 degrees

| Penn State | Sh | SO | G | A | Fo | Min |
|--------------------------|----|----|---|---|----|-----|
| gk 00 Amanda Dennis | - | - | - | - | - | 90 |
| d 1 Brittany Basinger | - | - | - | - | - | 90 |
| d 2 Grace Fisk | - | - | - | - | - | 45 |
| f 4 Megan Schaefer | 1 | - | - | 1 | - | 66 |
| d 7 Elizabeth Ball | - | - | - | - | - | 90 |
| f 9 Frannie Crouse | 5 | 3 | 2 | - | - | 73 |
| mf 12 Charlotte Williams | 1 | - | - | 2 | - | 77 |
| f 17 Alina Ortega-Jurado | - | - | - | - | - | 81 |
| mf 20 Salina Williford | - | - | - | - | - | 90 |
| mf 21 Laura Freigang | 1 | - | - | - | - | 75 |
| mf 23 Nickolette Driesse | - | - | - | - | - | 81 |
| -- Substitutes -- | | | | | | |
| 8 Kristin Schnurr | - | - | - | - | - | 17 |
| 15 Haleigh Echarh | - | - | - | - | - | 46 |
| 24 Cecilia Knaub | - | - | - | - | - | 9 |
| 27 Marissa Sheva | 2 | 1 | - | - | - | 51 |
| 33 Laura Suero | - | - | - | - | - | 10 |
| Totals | 10 | 4 | 2 | 3 | 5 | |

| # Goalkeepers | Min | GA | Saves |
|------------------|-------|----|-------|
| 00 Amanda Dennis | 90:00 | 1 | 2 |

| Shots by period | 1 | 2 | Total |
|------------------|---|---|-------|
| Penn State | 3 | 7 | 10 |
| Long Beach State | 5 | 5 | 10 |

| Corner kicks | 1 | 2 | Total |
|------------------|---|---|-------|
| Penn State | 1 | 3 | 4 |
| Long Beach State | 2 | 1 | 3 |

Scoring summary:

| No. | Time | Team | Goal scorer | Assist | Description |
|-----|-------|------|----------------------|--------------------|--|
| 1. | 26:14 | PSU | Frannie Crouse (2) | Charlotte Williams | Lead pass over back line, tapped past GK |
| 2. | 62:11 | PSU | Frannie Crouse (3) | Charlotte Williams | Upper left corner from left wing, 10 yds |
| 3. | 75:41 | LBSU | Gonzales, Ashley (4) | Megan Schaefer | Penalty kick |

Cautions and ejections:

YC-PSU #7 (13:24); YC-PSU #23 (60:06); YC-PSU #15 (74:30); YC-PSU #8 (75:41)

Win-Amanda Dennis (2-2-1). Loss-McDonald, Imani (0-2-0).

Stadium: George Allen Field

Officials: Referee: Ramon Hernandez; Asst. Referee: Trevor Rappleye; Israel Fernandez;

Alt. Official: Joshua Morales; Timekeeper: Luisa Deicid;

Offsides: Penn State 1, Long Beach State 4.

Official's signature

| Goals by period | 1 | 2 | Total |
|------------------|---|---|-------|
| Penn State | 1 | 1 | 2 |
| Long Beach State | 0 | 1 | 1 |

| Long Beach State | Sh | SO | G | A | Fo | Min |
|-------------------------|----|----|---|---|----|-----|
| gk 00 McDonald, Imani | - | - | - | - | - | 90 |
| d 4 Akaogi, Mimi | - | - | - | - | - | 71 |
| mf 6 Dominguez, Celeste | - | - | - | - | - | 70 |
| mf 7 Vincent, Jessica | 2 | 1 | - | - | - | 84 |
| mf 9 Fujikuni, Dana | 1 | - | - | - | - | 80 |
| d 10 Froment, Chloe | - | - | - | - | - | 90 |
| f 14 Gonzales, Ashley | 2 | 1 | 1 | - | - | 82 |
| mf 15 Rangel, Mimi | 2 | - | - | - | - | 56 |
| d 17 Maher, Sarah | - | - | - | - | - | 36 |
| f 20 Bolden, Tori | 2 | 1 | - | - | - | 52 |
| d 21 Alvarez, Alyssa | - | - | - | - | - | 70 |
| -- Substitutes -- | | | | | | |
| 2 Fregulia, Kaitlin | 1 | - | - | - | - | 49 |
| 3 Prescott, Kallee | - | - | - | - | - | 4 |
| 5 Rodriguez, Rocio | - | - | - | - | - | 20 |
| 8 Conway, Paige | - | - | - | - | - | 30 |
| 12 Emmons, Allie | - | - | - | - | - | 48 |
| 13 Bistine, Taylor | - | - | - | - | - | 21 |
| 23 Sanders, Jordan | - | - | - | - | - | 35 |
| Totals | 10 | 3 | 1 | 0 | 8 | |

| # Goalkeepers | Min | GA | Saves |
|--------------------|-------|----|-------|
| 00 McDonald, Imani | 90:00 | 2 | 2 |

| Saves by period | 1 | 2 | Total |
|------------------|---|---|-------|
| Penn State | 2 | 0 | 2 |
| Long Beach State | 1 | 1 | 2 |

| Fouls | 1 | 2 | Total |
|------------------|---|---|-------|
| Penn State | 2 | 3 | 5 |
| Long Beach State | 3 | 5 | 8 |

Soccer Box Score (Final) 2016 Penn State Women's Soccer San Diego State vs #16 Penn State (Sep 09, 2016 at University Park, Pa.)

San Diego State (0-4-0) vs.
Penn State (3-2-1)
Date: Sep 09, 2016 • Attendance: 877
Weather: 81, cloudy

| San Diego State | Sh | SO | G | A | Fo | Min |
|---------------------|----|----|---|---|----|-----|
| gk 1 ENGLISH, Gabby | - | - | - | - | - | 90 |
| m 3 MOSES, Milan | 1 | - | - | - | - | 83 |
| m 5 BARBA, Victoria | - | - | - | - | - | 25 |
| m 6 HUNTER, Xochi | - | - | - | - | - | 47 |
| f 8 REGEFALK, Hedda | - | - | - | - | - | 67 |
| d 13 MORAN, Stacie | - | - | - | - | - | 90 |
| d 14 PHARE, Zsuzsa | 1 | - | - | - | - | 66 |
| d 16 RUPEY, Jen | 1 | - | - | - | - | 71 |
| f 17 UTUSH, Allyah | 1 | 1 | - | - | - | 76 |
| d 20 ROBLES, Ariana | 1 | - | - | - | - | 70 |
| f 25 DEROSA, Dani | - | - | - | - | - | 54 |
| -- Substitutes -- | | | | | | |
| 4 COOK, Bailey | - | - | - | - | - | 28 |
| 10 CRAINE, Gemma | - | - | - | - | - | 9 |
| 18 SPEROS, Rachel | - | - | - | - | - | 65 |
| 19 KAWABE, Eden | - | - | - | - | - | 20 |
| 21 AHOOJA, Yasmin | - | - | - | - | - | 14 |
| 22 WEISER, Darcy | - | - | - | - | - | 10 |
| 23 BALMA, Hailey | - | - | - | - | - | 28 |
| 24 WENDLANDT, Camry | - | - | - | - | - | 32 |
| 26 SCUDDERO, Meghan | - | - | - | - | - | 44 |
| Totals | 5 | 1 | 0 | 0 | 6 | |

| # Goalkeepers | Min | GA | Saves |
|------------------|-------|----|-------|
| 1 ENGLISH, Gabby | 90:00 | 3 | 10 |

| Shots by period | 1 | 2 | Total |
|-----------------|----|----|-------|
| San Diego State | 2 | 3 | 5 |
| Penn State | 16 | 13 | 29 |

| Corner kicks | 1 | 2 | Total |
|-----------------|---|---|-------|
| San Diego State | 2 | 1 | 3 |
| Penn State | 4 | 1 | 5 |

Scoring summary:

| No. | Time | Team | Goal scorer | Assist | Description |
|-----|-------|------|--------------------|---------------------|--|
| 1. | 28:12 | PSU | Frannie Crouse (4) | (unassisted) | 6 yards out, bottom right corner |
| 2. | 51:50 | PSU | Megan Schaefer (1) | Alina Ortega-Jurado | 18 yards out, right side of the net |
| 3. | 55:39 | PSU | Frannie Crouse (5) | (unassisted) | Right side, 6 yards out to left corner |

Cautions and ejections:

YC-SDSU #3 (78:32)

Win-Amanda Dennis (3-2-1). Loss-ENGLISH, Gabby (0-4-0).

Stadium: Jeffrey Field

Officials: Referee: Ian Gut; Asst. Referee: Terrence Mull; Michael Donovan;

Alt. Official: Alan Robinson; Scorer: Will Rottler;

Offsides: San Diego State 1, Penn State 0.

Official's signature

| Goals by period | 1 | 2 | Total |
|-----------------|---|---|-------|
| San Diego State | 0 | 0 | 0 |
| Penn State | 1 | 2 | 3 |

| Penn State | Sh | SO | G | A | Fo | Min |
|--------------------------|----|----|---|---|----|-----|
| gk 00 Amanda Dennis | - | - | - | - | - | 80 |
| d 1 Brittany Basinger | 1 | - | - | - | - | 58 |
| f 4 Megan Schaefer | 3 | 1 | - | - | - | 51 |
| d 7 Elizabeth Ball | - | - | - | - | - | 61 |
| f 9 Frannie Crouse | 6 | 4 | 2 | - | - | 58 |
| m 12 Charlotte Williams | 5 | 2 | - | - | - | 61 |
| d 17 Alina Ortega-Jurado | 1 | - | - | - | - | 67 |
| d 20 Salina Williford | - | - | - | - | - | 76 |
| m 21 Laura Freigang | 1 | - | - | - | - | 53 |
| mf 23 Nickolette Driesse | 3 | 1 | - | - | - | 53 |
| m 27 Marissa Sheva | - | - | - | - | - | 50 |
| -- Substitutes -- | | | | | | |
| 0 Sarafina Valenti | - | - | - | - | - | 10 |
| 6 Emma Hasco | 1 | 1 | - | - | - | 36 |
| 8 Kristin Schnurr | - | - | - | - | - | 39 |
| 15 Haleigh Echarh | 5 | 3 | - | - | - | 50 |
| 16 Becca Hamilton | - | - | - | - | - | 29 |
| 19 Lisi Vink-Lainas | 1 | - | - | - | - | 19 |
| 22 Isabelle Clauss | 1 | - | - | - | - | 23 |
| 24 Cecilia Knaub | 1 | 1 | - | - | - | 57 |
| 25 Taylor Campbell-Philp | - | - | - | - | - | 28 |
| 33 Laura Suero | - | - | - | - | - | 32 |
| Totals | 29 | 13 | 3 | 1 | 8 | |

| # Goalkeepers | Min | GA | Saves |
|--------------------|-------|----|-------|
| 00 Amanda Dennis | 79:48 | 0 | 0 |
| 0 Sarafina Valenti | 10:12 | 0 | 1 |

| Saves by period | 1 | 2 | Total |
|-----------------|---|---|-------|
| San Diego State | 5 | 5 | 10 |
| Penn State | 0 | 1 | 1 |

| Fouls | 1 | 2 | Total |
|-----------------|---|---|-------|
| San Diego State | 4 | 2 | 6 |
| Penn State | 4 | 4 | 8 |

Soccer Box Score (Final) 2016 Penn State Women's Soccer La Salle vs #16 Penn State (Sep 11, 2016 at University Park, Pa.)

La Salle (2-4-0) vs.
Penn State (4-2-1)
Date: Sep 11, 2016 • Attendance: 889
Weather: 73 degrees, partly cloudy

| La Salle | Sh | SO | G | A | Fo | Min |
|-------------------------|----|----|---|---|----|-----|
| gk 4 ZAMBELLI, Larisa | - | - | - | - | - | 90 |
| f 10 BOWER, Maci | - | - | - | - | - | 64 |
| m 11 SHANAHAN, Jess | - | - | - | - | - | 58 |
| d 12 HENNESSEY, Katheri | - | - | - | - | - | 90 |
| d 13 FILIPPO, Hunter | - | - | - | - | - | 90 |
| m 17 KIRSCH-DOWNS, C. | - | - | - | - | - | 35 |
| m 20 MUHAMMAD, Najia | - | - | - | - | - | 78 |
| d 21 MCDOWELL, Paige | - | - | - | - | - | 90 |
| f 26 BATEMAN, Marykate | - | - | - | - | - | 71 |
| d 27 RUFE, Julia | 1 | 1 | - | - | - | 58 |
| d 29 DAVIS, Deja | 3 | 1 | - | - | - | 90 |
| -- Substitutes -- | | | | | | |
| 2 DEBERARDINIS, Sara | - | - | - | - | - | 11 |
| 5 BITTIGER, Bria | - | - | - | - | - | 15 |
| 7 HAUGSTAD, Kristin | 1 | - | - | - | - | 63 |
| 14 LEWIS, Chloe | - | - | - | - | - | 36 |
| 23 MARX, Danielle | - | - | - | - | - | 51 |
| Totals | 5 | 2 | 0 | 0 | 7 | |

| # Goalkeepers | Min | GA | Saves |
|--------------------|-------|----|-------|
| 4 ZAMBELLI, Larisa | 90:00 | 2 | 6 |

| Shots by period | 1 | 2 | Total |
|-----------------|----|----|-------|
| La Salle | 0 | 5 | 5 |
| Penn State | 10 | 11 | 21 |

| Corner kicks | 1 | 2 | Total |
|--------------|---|---|-------|
| La Salle | 0 | 0 | 0 |
| Penn State | 6 | 4 | 10 |

Scoring summary:

| No. | Time | Team | Goal scorer | Assist | Description |
|-----|-------|------|--------------------|---------------------|---|
| 1. | 18:37 | PSU | Frannie Crouse (6) | Brittany Basinger | 8 yards into bottom half of the net |
| 2. | 40:17 | PSU | Grace Fisk (1) | Kristin Schnurr | Off corner kick, 17 to 8 to 2, ball into both half of the net |
| | | | | Alina Ortega-Jurado | |

Cautions and ejections:

Win-Amanda Dennis (4-2-1). Loss-ZAMBELLI, Larisa (2-4-0).

Stadium: Jeffrey Field

Officials: Referee: Sergio Gonzalez; Asst. Referee: Michael Lukashunas;

Terrence Mull; Alt. Official: Dustin Killick; Scorer: Will Rottler;

Offsides: La Salle 2, Penn State 0.

Official's signature

| Goals by period | 1 | 2 | Total |
|-----------------|---|---|-------|
| La Salle | 0 | 0 | 0 |
| Penn State | 2 | 0 | 2 |

| Penn State | Sh | SO | G | A | Fo | Min |
|--------------------------|----|----|---|---|----|-----|
| gk 00 Amanda Dennis | - | - | - | - | - | 90 |
| d 1 Brittany Basinger | - | - | - | - | - | 90 |
| d 2 Grace Fisk | 3 | 1 | 1 | - | - | 67 |
| f 4 Megan Schaefer | 1 | 1 | - | - | - | 68 |
| d 7 Elizabeth Ball | - | - | - | - | - | 90 |
| f 9 Frannie Crouse | 4 | 1 | 1 | - | - | 76 |
| m 12 Charlotte Williams | 5 | 2 | - | - | - | 70 |
| d 17 Alina Ortega-Jurado | - | - | - | - | - | 90 |
| m 20 Salina Williford | 2 | 1 | - | - | - | 77 |
| mf 23 Nickolette Driesse | 3 | - | - | - | - | 84 |
| m 27 Marissa Sheva | - | - | - | - | - | 56 |
| -- Substitutes -- | | | | | | |
| 6 Emma Hasco | 1 | 1 | - | - | - | 37 |
| 8 Kristin Schnurr | - | - | - | - | - | 20 |
| 15 Haleigh Echarh | 2 | 1 | - | - | - | 50 |
| 24 Cecilia Knaub | - | - | - | - | - | 25 |
| Totals | 21 | 8 | 2 | 3 | 6 | |

| # Goalkeepers | Min | GA | Saves |
|------------------|-------|----|-------|
| 00 Amanda Dennis | 90:00 | 0 | 2 |

| Saves by period | 1 | 2 | Total |
|-----------------|---|---|-------|
| La Salle | 1 | 5 | 6 |
| Penn State | 0 | 2 | 2 |

| Fouls | 1 | 2 | Total |
|------------|---|---|-------|
| La Salle | 4 | 3 | 7 |
| Penn State | 1 | 5 | 6 |

Soccer Box Score (Final) 2016 Penn State Women's Soccer #16 Penn State vs #10 Minnesota (Sep 16, 2016 at St. Paul, Minn.)

Penn State

2016 PENN STATE WOMEN'S SOCCER

Soccer Box Score (Final) 2016 Penn State Women's Soccer #16 Penn State vs Wisconsin (Sep 18, 2016 at Madison, Wis.)

Penn State (5-2-2, 1-0-1) vs.
Wisconsin (3-3-4, 0-1-1)
Date: Sep 18, 2016 • Attendance: 620
Weather: Sunny, 76 degrees, light wind

| Penn State | Sh | SO | G | A | Fo | Min |
|--------------------------|----|----|---|---|----|-----|
| gk 00 Amanda Dennis | - | - | - | - | - | 90 |
| d 1 Brittany Basinger | - | - | - | - | - | 90 |
| d 2 Grace Fisk | 1 | 1 | - | - | - | 90 |
| f 4 Megan Schafer | - | - | - | - | - | 90 |
| d 7 Elizabeth Ball | - | - | - | 1 | - | 90 |
| f 9 Frannie Crouse | - | - | - | - | - | 55 |
| mf 12 Charlotte Williams | 2 | 1 | - | - | - | 75 |
| f 17 Alina Ortega-Jurado | 2 | 1 | - | - | - | 90 |
| mf 20 Salina Williford | 1 | 1 | - | - | - | 65 |
| mf 23 Nickolette Driesse | - | - | - | 1 | - | 71 |
| mf 27 Marissa Sheva | - | - | - | - | - | 55 |
| -- Substitutes -- | - | - | - | - | - | - |
| 6 Emma Hasco | - | - | - | - | - | 58 |
| 8 Kristin Schnurr | - | - | - | - | - | 23 |
| 15 Haleigh Echard | - | - | - | - | - | 45 |
| 33 Laura Suero | 1 | 1 | 1 | - | - | 26 |
| Totals | 7 | 5 | 1 | 2 | 7 | |

| Goals by period | 1 | 2 | Total |
|-----------------|---|---|-------|
| Penn State | 0 | 1 | 1 |
| Wisconsin | 0 | 0 | 0 |

| Wisconsin | Sh | SO | G | A | Fo | Min |
|------------------------|----|----|---|----|----|-----|
| gk 0 Caitlyn Clem | - | - | - | - | - | 90 |
| mf 3 Rose Lavelle | 2 | 1 | - | - | - | 90 |
| f 4 Sydney McGinnis | 2 | 1 | - | - | - | 73 |
| d 9 Morgan Taylor | - | - | - | - | - | 69 |
| mf 10 Allie Winterfeld | - | - | - | - | - | 64 |
| mf 12 Micaela Powers | 4 | - | - | - | - | 63 |
| mf 16 Alexis Tye | - | - | - | - | - | 90 |
| d 18 Kylie Schwarz | - | - | - | - | - | 90 |
| f 19 Emily Borgmann | 1 | 1 | - | - | - | 67 |
| d 22 Jamie Donohue | 1 | - | - | - | - | 90 |
| d 30 Camryn Biegalski | 1 | - | - | - | - | 88 |
| -- Substitutes -- | - | - | - | - | - | - |
| 5 Payton Wesley | - | - | - | - | - | 26 |
| 7 Holly Heckendorf | 1 | - | - | - | - | 23 |
| 13 Grace Bahr | 1 | - | - | - | - | 26 |
| 15 Dani Rhodes | - | - | - | - | - | 23 |
| 21 Becca Harrison | - | - | - | - | - | 1 |
| 23 Steph Fabry | - | - | - | - | - | 17 |
| Totals | 13 | 3 | 0 | 12 | 17 | |

| # Goalkeepers | Min | GA | Saves |
|------------------|-------|----|-------|
| 00 Amanda Dennis | 90:00 | 0 | 3 |

| Shots by period | 1 | 2 | Total |
|-----------------|---|----|-------|
| Penn State | 3 | 4 | 7 |
| Wisconsin | 3 | 10 | 13 |

| Corner kicks | 1 | 2 | Total |
|--------------|---|---|-------|
| Penn State | 2 | 1 | 3 |
| Wisconsin | 1 | 5 | 6 |

Scoring summary:

| No. | Time | Team | Goal scorer | Assist | Description |
|-----|-------|------|-----------------|--------------------------------------|------------------------|
| 1. | 71:46 | PSU | Laura Suero (1) | Elizabeth Ball Nickolette Driesse | Header into top corner |

Cautions and ejections:

Win-Amanda Dennis (5-2-2). Loss-Caitlyn Clem (3-3-4).
Stadium: McClimon Complex
Officials: Referee: Jorge Cuate; Asst. Referee: Eulogio Villalpando; Sergio Alvarez;
Alt. Official: Eric Bertun; Timekeeper: Neeraj Kulkarni; Scorer: AJ Harrison;
Offsides: Penn State 0, Wisconsin 1.

Official's signature

Soccer Box Score (Final) 2016 Penn State Women's Soccer IOWA vs #16 Penn State (Sep 23, 2016 at University Park, Pa.)

IOWA (6-5-0, 0-3-0) vs.
Penn State (6-2-2, 2-0-1)
Date: Sep 23, 2016 • Attendance: 1664
Weather: 70, cloudy

| IOWA | Sh | SO | G | A | Fo | Min |
|-----------------------|----|----|---|---|----|-----|
| gk 1 Claire Graves | - | - | - | - | - | 90 |
| d 3 Morgan Kemerling | - | - | - | - | - | 90 |
| m 8 Jenna Kentgen | 1 | 1 | - | - | - | 69 |
| d 9 Amanda Lulek | - | - | - | - | - | 43 |
| m 10 Natalie Winters | 2 | - | - | - | - | 76 |
| d 14 Leah Moss | - | - | - | - | - | 78 |
| f 15 Rose Ripslinger | - | - | - | - | - | 43 |
| d 16 Rachele Armand | - | - | - | - | - | 80 |
| m 19 Karly Stuenkel | - | - | - | - | - | 38 |
| f 30 Devin Burns | - | - | - | - | - | 49 |
| d 33 Corey Burns | - | - | - | - | - | 78 |
| -- Substitutes -- | - | - | - | - | - | - |
| 4 Kaleigh Haus | - | - | - | - | - | 11 |
| 6 Isabella Blackman | 1 | - | - | - | - | 47 |
| 11 Bri Toelle | 5 | 3 | - | - | - | 60 |
| 17 Hannah Drkulec | - | - | - | - | - | 35 |
| 18 Natalie Krygler | - | - | - | - | - | 52 |
| 21 Abbey Toureene | - | - | - | - | - | 8 |
| 23 Katharine Woodruff | - | - | - | - | - | 4 |
| 24 Sydney Blitchock | 1 | - | - | - | - | 20 |
| 25 Tory Harman | - | - | - | - | - | 21 |
| 99 Karsen Rauch | - | - | - | - | - | 4 |
| Totals | 10 | 4 | 0 | 5 | 5 | |

| Goals by period | 1 | 2 | Total |
|-----------------|---|---|-------|
| IOWA | 0 | 0 | 0 |
| Penn State | 0 | 2 | 2 |

| Penn State | Sh | SO | G | A | Fo | Min |
|--------------------------|----|----|---|---|----|-----|
| gk 00 Amanda Dennis | - | - | - | - | - | 90 |
| d 1 Brittany Basinger | - | - | - | 1 | - | 82 |
| d 2 Grace Fisk | - | - | - | - | - | 90 |
| f 4 Megan Schafer | - | - | - | - | - | 55 |
| d 7 Elizabeth Ball | 1 | 1 | 1 | - | - | 76 |
| f 9 Frannie Crouse | 1 | 1 | 1 | - | - | 73 |
| m 12 Charlotte Williams | 1 | 1 | - | - | - | 58 |
| d 17 Alina Ortega-Jurado | - | - | - | - | - | 87 |
| m 20 Salina Williford | 1 | - | - | - | - | 72 |
| mf 23 Nickolette Driesse | - | - | - | - | - | 45 |
| m 27 Marissa Sheva | - | - | - | - | - | 49 |
| -- Substitutes -- | - | - | - | - | - | - |
| 6 Emma Hasco | - | - | - | - | - | 25 |
| 8 Kristin Schnurr | 1 | - | - | - | - | 33 |
| 15 Haleigh Echard | 2 | 1 | - | - | - | 43 |
| 16 Becca Hamilton | - | - | - | - | - | 14 |
| 19 Lisi Vink-Laines | - | - | - | - | - | 4 |
| 21 Laura Freigang | 1 | - | - | - | - | 41 |
| 22 Isabelle Clauss | - | - | - | - | - | 8 |
| 24 Cecelia Knaub | - | - | - | - | - | 13 |
| 25 Taylor Campbell-Phip | - | - | - | - | - | 4 |
| 33 Laura Suero | - | - | - | - | - | 20 |
| 34 Madison Moroi | - | - | - | - | - | 4 |
| Totals | 8 | 4 | 2 | 3 | 2 | |

| # Goalkeepers | Min | GA | Saves |
|-----------------|-------|----|-------|
| 1 Claire Graves | 90:00 | 2 | 2 |

| Shots by period | 1 | 2 | Total |
|-----------------|---|---|-------|
| IOWA | 4 | 6 | 10 |
| Penn State | 5 | 3 | 8 |

| Corner kicks | 1 | 2 | Total |
|--------------|---|---|-------|
| IOWA | 1 | 5 | 6 |
| Penn State | 3 | 0 | 3 |

Scoring summary:

| No. | Time | Team | Goal scorer | Assist | Description |
|-----|-------|------|--------------------|------------------------------------|--|
| 1. | 54:18 | PSU | Elizabeth Ball (1) | Nickolette Driesse | Header 8 yards out off free kick |
| 2. | 62:22 | PSU | Frannie Crouse (7) | Brittany Basinger Megan Schafer | 6-yards out from the right side of the net |

Cautions and ejections:

Win-Amanda Dennis (6-2-2). Loss-Claire Graves (6-5-0).
Stadium: Jeffrey Field
Officials: Referee: Brian Miller; Asst. Referee: Robert Sheker; Terrence Mull;
Alt. Official: Tim Deljanovan; Scorer: Will Rotter;
Offsides: IOWA 0, Penn State 2.

Official's signature

Soccer Box Score (Final) 2016 Penn State Women's Soccer Nebraska vs #16 Penn State (Sep 25, 2016 at University Park, Pa.)

Nebraska (8-4-0, 2-2-0) vs.
Penn State (7-2-2, 3-0-1)
Date: Sep 25, 2016 • Attendance: 968
Weather: 66 degrees, sunny

| Nebraska | Sh | SO | G | A | Fo | Min |
|-------------------------|----|----|---|---|----|-----|
| gk 25 Corder, Aubrei | - | - | - | - | - | 90 |
| d 5 Miramonte, Sindair | 2 | - | - | - | - | 90 |
| m 8 Hanson, Haley | - | - | - | 1 | - | 90 |
| m 9 Miramonte, Sydney | - | - | - | - | - | 90 |
| m 10 Claassen, Courtney | - | - | - | - | - | 90 |
| m 17 Buelk, Caroline | 1 | - | - | - | - | 40 |
| d 18 Turney, Nikki | - | - | - | - | - | 66 |
| f 19 Johnson, Jaycie | 3 | 2 | 1 | - | - | 86 |
| m 21 Flynn, Caroline | 1 | 1 | - | - | - | 90 |
| m 28 Ochoa, Brenna | 1 | - | - | - | - | 86 |
| m 32 Brandt, Meg | - | - | - | - | - | 51 |
| -- Substitutes -- | - | - | - | - | - | - |
| 4 McClanahan, Amanda | 1 | 1 | - | - | - | 35 |
| 13 Rienks, Alexis | - | - | - | - | - | 28 |
| 16 Cincotta, Emilee | - | - | - | - | - | 1 |
| 22 Peterson, Alli | 1 | - | - | - | - | 57 |
| Totals | 10 | 4 | 1 | 2 | 12 | |

| Goals by period | 1 | 2 | Total |
|-----------------|---|---|-------|
| Nebraska | 1 | 0 | 1 |
| Penn State | 1 | 1 | 2 |

| Penn State | Sh | SO | G | A | Fo | Min |
|--------------------------|----|----|---|----|----|-----|
| gk 00 Amanda Dennis | - | - | - | - | - | 90 |
| d 1 Brittany Basinger | - | - | - | - | - | 90 |
| d 2 Grace Fisk | - | - | - | - | - | 90 |
| f 4 Megan Schafer | 4 | 2 | 2 | - | - | 76 |
| d 7 Elizabeth Ball | - | - | - | - | - | 90 |
| f 9 Frannie Crouse | 2 | - | - | - | - | 66 |
| m 12 Charlotte Williams | 2 | 1 | - | - | - | 70 |
| d 17 Alina Ortega-Jurado | - | - | - | - | - | 90 |
| m 20 Salina Williford | 1 | 1 | - | - | - | 80 |
| mf 23 Nickolette Driesse | - | - | - | - | - | 90 |
| m 27 Marissa Sheva | - | - | - | - | - | 44 |
| -- Substitutes -- | - | - | - | - | - | - |
| 6 Emma Hasco | - | - | - | - | - | 10 |
| 8 Kristin Schnurr | - | - | - | - | - | 7 |
| 15 Haleigh Echard | - | - | - | - | - | 51 |
| 21 Laura Freigang | - | - | - | - | - | 40 |
| 33 Laura Suero | - | - | - | - | - | 7 |
| Totals | 9 | 4 | 2 | 11 | 11 | |

| # Goalkeepers | Min | GA | Saves |
|-------------------|-------|----|-------|
| 25 Corder, Aubrei | 90:00 | 2 | 2 |

| Shots by period | 1 | 2 | Total |
|-----------------|---|---|-------|
| Nebraska | 4 | 6 | 10 |
| Penn State | 6 | 3 | 9 |

| Corner kicks | 1 | 2 | Total |
|--------------|---|---|-------|
| Nebraska | 1 | 1 | 2 |
| Penn State | 1 | 0 | 1 |

Scoring summary:

| No. | Time | Team | Goal scorer | Assist | Description |
|-----|-------|------|---------------------|---------------------------------|---|
| 1. | 15:02 | PSU | Megan Schafer (3) | Salina Williford | 12 yards out from right side of the box |
| 2. | 38:53 | NEB | Johnson, Jaycie (8) | Peterson, Alli Hanson, Haley | Beat keeper 6 yards out, left side of the b |
| 3. | 68:12 | PSU | Megan Schafer (4) | Nickolette Driesse | 6 yards out, left side of the box |

Cautions and ejections:

YC-NEB #13 (29:09); YC-PSU #7 (63:19)
Win-Amanda Dennis (7-2-2, 3-0-1). Loss-Corder, Aubrei (8-4-0, 2-2-0).
Stadium: Jeffrey Field
Officials: Referee: Sergio Gonzalez; Asst. Referee: Michael Lukashunas;
Paul Wehrman; Alt. Official: Michael Gorseger; Scorer: Will Rotter;
Offsides: Nebraska 3, Penn State 2.

Official's signature

Soccer Box Score (Final) 2016 Penn State Women's Soccer Illinois vs #14 Penn State (Sep 30, 2016 at University Park, Pa.)

Illinois (3-9-1, 0-4-1) vs.
Penn State (8-2-2, 4-0-1)
Date: Sep 30, 2016 • Attendance: 831
Weather: 55, rainy

| Illinois | Sh | SO | G | A | Fo | Min |
|------------------------|----|----|---|---|----|-----|
| gk 1 Wheatley, Claire | - | - | - | - | - | 90 |
| m 2 Sate, Katherine | - | - | - | - | - | 25 |
| d 3 Barker, Alicia | - | - | - | - | - | 90 |
| d 5 D'Addario, Hope | - | - | - | - | - | 90 |
| m 10 Stucky, Allison | - | - | - | - | - | 90 |
| m 13 Schafer, Summer | 1 | - | - | - | - | 84 |
| d 18 Maroney, Morgan | - | - | - | - | - | 90 |
| m 19 Abu-Douleh, Alia | - | - | - | - | - | 57 |
| f 20 Marbury, Kara | 1 | - | - | - | - | 65 |
| m 26 Murray, Katie | 1 | - | - | - | - | 68 |
| m 27 Peterson, Taylore | - | - | - | - | - | 90 |
| -- Substitutes -- | - | - | - | - | - | - |
| 6 Robishaw, Reagan | - | - | - | - | - | 39 |
| 9 Ciesla, Lauren | - | - | - | - | - | 31 |
| 11 George, Patricia | - | - | - | - | - | 47 |
| 15 Maday, Kelly | - | - | - | - | - | 16 |
| 16 Ordonez, Ellie | - | - | - | - | - | 9 |
| 23 Veland, Arianna | - | - | - | - | - | 10 |
| Totals | 3 | 0 | 0 | 7 | 7 | |

| Goals by period | 1 | 2 | Total |
|-----------------|---|---|-------|
| Illinois | 0 | 0 | 0 |
| Penn State | 1 | 1 | 2 |

| Penn State | Sh | SO | G | A | Fo | Min |
|--------------------------|----|----|---|---|----|-----|
| gk 00 Amanda Dennis | - | - | - | - | - | 90 |
| d 1 Brittany Basinger | 1 | 1 | - | - | - | 90 |
| d 2 Grace Fisk | 1 | - | - | - | - | 90 |
| f 4 Megan Schafer | 2 | - | - | - | - | 63 |
| d 7 Elizabeth Ball | 2 | 1 | - | - | - | 90 |
| f 9 Frannie Crouse | 2 | 1 | 1 | - | - | 57 |
| m 12 Charlotte Williams | 3 | 1 | - | - | - | 63 |
| m 15 Haleigh Echard | 3 | - | - | - | - | 60 |
| d 17 Alina Ortega-Jurado | 1 | - | - | - | - | 90 |
| m 20 Salina Williford | 3 | - | - | - | - | 60 |
| mf 23 Nickolette Driesse | - | - | - | - | - | 77 |
| -- Substitutes -- | - | - | - | - | - | - |
| 6 Emma Hasco | - | - | - | - | - | 28 |
| 8 Kristin Schnurr | - | - | - | - | - | 18 |
| 21 Laura Freigang | 2 | 1 | - | - | - | 41 |
| 27 Marissa Sheva | 1 | 1 | 1 | - | - | 45 |
| 33 Laura Suero | - | - | - | - | - | 27 |
| Totals | 21 | 6 | 2 | 2 | 3 | |

| # Goalkeepers | Min | GA | Saves |
|--------------------|-------|----|-------|
| 1 Wheatley, Claire | 90:00 | 2 | 3 |
| TM TEAM | 0:00 | 0 | 1 |

| Shots by period | 1 | 2 | Total |
|-----------------|----|----|-------|
| Illinois | 3 | 0 | 3 |
| Penn State | 11 | 10 | 21 |

| Corner kicks | 1 | 2 | Total |
|--------------|---|---|-------|
| Illinois | 1 | 0 | 1 |
| Penn State | 6 | 4 | 10 |

Scoring summary:

| No. | Time | Team | Goal scorer | Assist | Description |
|-----|------|------|-------------|--------|-------------|
| 1. | | | | | |

2016 PENN STATE WOMEN'S SOCCER

Soccer Box Score (Final) 2016 Penn State Women's Soccer

#13 Penn State vs Indiana (Oct 06, 2016 at Bloomington, Ind.)

Penn State (8-2-3, 4-0-2 B1G) vs.
Indiana (5-7-2, 2-3-1 B1G)
Date: Oct 06, 2016 • Attendance: 601
Weather: high 70s, clear

| Goals by period | 1 | 2 | OT | O2 | Total |
|-----------------|---|---|----|----|-------|
| Penn State | 1 | 0 | 0 | 0 | 1 |
| Indiana | 1 | 0 | 0 | 0 | 1 |

| Penn State | | Sh | SO | G | A | Fo | Min |
|-------------------|---------------------|----|----|---|---|----|-----|
| gk 00 | Amanda Dennis | - | - | - | - | - | 110 |
| d 1 | Brittany Basinger | 1 | - | - | - | - | 110 |
| d 2 | Grace Fisk | 1 | - | - | - | - | 110 |
| f 4 | Megan Schafer | - | - | 1 | - | - | 95 |
| f 7 | Elizabeth Ball | 1 | - | - | - | - | 110 |
| 9 | Frannie Crouse | 5 | 2 | 1 | - | - | 110 |
| 12 | Charlotte Williams | 4 | 3 | - | - | - | 81 |
| 15 | Haleigh Echard | - | - | - | - | - | 44 |
| 17 | Alina Ortega-Jurado | - | - | - | - | - | 110 |
| 20 | Salina Williford | 3 | 2 | - | 1 | - | 97 |
| 23 | Nickolette Driesse | - | - | - | - | - | 110 |
| -- Substitutes -- | | | | | | | |
| 6 | Emma Hasco | - | - | - | - | - | 13 |
| 21 | Laura Freigang | 2 | - | - | - | - | 44 |
| 27 | Marissa Sheva | 1 | 1 | - | - | - | 51 |
| 33 | Laura Suero | - | - | - | - | - | 16 |
| Totals | | 18 | 8 | 1 | 2 | 12 | |

| # | Goalkeepers | Min | GA | Saves |
|----|---------------|--------|----|-------|
| 00 | Amanda Dennis | 110:00 | 1 | 0 |

| Shots by period | 1 | 2 | OT | O2 | Total |
|-----------------|---|----|----|----|-------|
| Penn State | 2 | 12 | 2 | 2 | 18 |
| Indiana | 5 | 2 | 2 | 0 | 9 |

| Corner kicks | 1 | 2 | OT | O2 | Total |
|--------------|---|----|----|----|-------|
| Penn State | 1 | 10 | 1 | 1 | 13 |
| Indiana | 2 | 0 | 1 | 1 | 4 |

Scoring summary:

| No. | Time | Team | Goal scorer | Assist | Description |
|-----|-------|------|--------------------|-------------------------------|----------------------------|
| 1. | 7:53 | PSU | Frannie Crouse (9) | Megan Schafer | lower right |
| 2. | 41:15 | IND | OWN GOAL (1) | Salina Williford (unassisted) | own goal, deflected off 17 |

Cautions and ejections:

YC-PSU #12 (106:04)

Penn State-Amanda Dennis (8-2-3). Indiana-L'HOMMEDIEU,SARAH (5-6-2).
Stadium: Armstrong Stadium
Officials: Referee: Michael Allie; Asst. Referee: Jeff Swartzel; Sean West;
Alt. Official: Jacob Johnson; Scorer: Caitlin Davis;
Offsides: Penn State 1, Indiana 2.

Official's signature

Soccer Box Score (Final) 2016 Penn State Women's Soccer

#13 Penn State vs Maryland (Oct 09, 2016 at College Park, Md.)

Penn State (9-2-3, 5-0-2) vs.
Maryland (3-11-1, 1-6-0)
Date: Oct 09, 2016 • Attendance: 923
Weather:

| Goals by period | 1 | 2 | Total |
|-----------------|---|---|-------|
| Penn State | 1 | 2 | 3 |
| Maryland | 0 | 0 | 0 |

| Penn State | | Sh | SO | G | A | Fo | Min |
|-------------------|---------------------|----|----|---|---|----|-----|
| gk 00 | Amanda Dennis | - | - | - | - | - | 90 |
| d 1 | Brittany Basinger | 2 | 2 | 2 | - | - | 90 |
| d 2 | Grace Fisk | - | - | - | - | - | 90 |
| f 4 | Megan Schafer | 2 | - | - | - | - | 71 |
| d 7 | Elizabeth Ball | 1 | 1 | 1 | - | - | 90 |
| f 9 | Frannie Crouse | 2 | 2 | - | - | - | 62 |
| m 12 | Charlotte Williams | 1 | 1 | - | - | - | 40 |
| m 15 | Haleigh Echard | - | - | - | - | - | 67 |
| m 17 | Alina Ortega-Jurado | - | - | - | - | - | 90 |
| m 20 | Salina Williford | 3 | - | - | - | - | 54 |
| m 23 | Nickolette Driesse | 4 | 3 | - | 2 | - | 86 |
| -- Substitutes -- | | | | | | | |
| 6 | Emma Hasco | 2 | 1 | - | - | - | 21 |
| 8 | Kristin Schnurr | 1 | - | - | - | - | 13 |
| 16 | Becca Hamilton | - | - | - | - | - | 3 |
| 21 | Laura Freigang | 2 | 1 | - | - | - | 53 |
| 24 | Cecilia Knaub | - | - | - | - | - | 4 |
| 27 | Marissa Sheva | 1 | - | - | - | - | 60 |
| 33 | Laura Suero | - | - | - | - | - | 7 |
| Totals | | 21 | 11 | 3 | 2 | 3 | |

| # | Goalkeepers | Min | GA | Saves |
|----|---------------|-------|----|-------|
| 00 | Amanda Dennis | 90:00 | 0 | 1 |

| Shots by period | 1 | 2 | Total |
|-----------------|----|---|-------|
| Penn State | 14 | 7 | 21 |
| Maryland | 1 | 3 | 4 |

| Corner kicks | 1 | 2 | Total |
|--------------|---|---|-------|
| Penn State | 1 | 4 | 5 |
| Maryland | 2 | 2 | 4 |

Scoring summary:

| No. | Time | Team | Goal scorer | Assist | Description |
|-----|-------|------|-----------------------|--------------------|--|
| 1. | 12:04 | PSU | Brittany Basinger (1) | Nickolette Driesse | Deflected in off a corner |
| 2. | 59:58 | PSU | Brittany Basinger (2) | Nickolette Driesse | Headed in off a corner |
| 3. | 83:35 | PSU | Elizabeth Ball (2) | Corner kick | Close range after a scramble in the box corner |

Cautions and ejections:

YC-UMD #29 (59:18)

Win-Amanda Dennis (9-2-3). Loss-Rachel Egyed (1-4-1).
Stadium: Ludwig Field
Officials: Referee: George Evanego; Asst. Referee: Williams Paul; Jon Pitonzo;
Alt. Official: Matt Baren; Scorer: Taylor Smyth;
Offsides: Penn State 2, Maryland 2.

Official's signature

Soccer Box Score (Final) 2016 Penn State Women's Soccer

Rutgers vs #16 Penn State (Oct 13, 2016 at University Park, Pa.)

Rutgers (9-2-4, 4-1-3) vs.
Penn State (9-2-4, 5-0-3)
Date: Oct 13, 2016 • Attendance: 870
Weather: high 49 degrees, clear

| Goals by period | 1 | 2 | OT | O2 | Total |
|-----------------|---|---|----|----|-------|
| Rutgers | 1 | 1 | 0 | 0 | 2 |
| Penn State | 1 | 1 | 0 | 0 | 2 |

| Rutgers | | Sh | SO | G | A | Fo | Min |
|-------------------|--------------------|----|----|---|---|----|-----|
| gk 1 | Jimenez, Alana | - | - | - | - | - | 110 |
| d 3 | Swaby, Chantelle | - | - | - | - | - | 110 |
| f 4 | Ciarrocca, Colby | 3 | 2 | - | - | - | 107 |
| f 7 | Hendley, Carina | - | - | - | - | - | 16 |
| m 8 | Whitley, Nicole | 1 | 1 | - | - | - | 75 |
| d 9 | Wright, Kenie | - | - | - | - | - | 110 |
| d 15 | Smith, Erin | - | - | - | - | - | 110 |
| m 17 | Andresen, Jennifer | 2 | - | - | - | - | 110 |
| d 20 | Visco, Amanda | - | - | - | - | - | 110 |
| m 36 | Prager, Tori | 1 | 1 | - | - | - | 103 |
| f 73 | Tiernan, Madison | 4 | 2 | 1 | - | - | 100 |
| -- Substitutes -- | | | | | | | |
| 2 | Seddou, Jenna | - | - | - | - | - | 22 |
| 5 | Aylmer, Taylor | 1 | 1 | 1 | - | - | 42 |
| 6 | Ryan, Allison | - | - | - | - | - | 10 |
| 13 | Wiltshire, Tiernny | - | - | - | - | - | 34 |
| 18 | Murphy, Erica | - | - | - | - | - | 25 |
| 29 | Moneme, Adora | - | - | - | - | - | 7 |
| Totals | | 12 | 7 | 2 | | | |

| # | Goalkeepers | Min | GA | Saves |
|---|----------------|--------|----|-------|
| 1 | Jimenez, Alana | 110:00 | 2 | 3 |

| Shots by period | 1 | 2 | OT | O2 | Total |
|-----------------|---|---|----|----|-------|
| Rutgers | 3 | 6 | 1 | 2 | 12 |
| Penn State | 6 | 9 | 1 | 2 | 18 |

| Corner kicks | 1 | 2 | OT | O2 | Total |
|--------------|---|---|----|----|-------|
| Rutgers | 0 | 1 | 1 | 0 | 2 |
| Penn State | 4 | 3 | 0 | 0 | 7 |

Scoring summary:

| No. | Time | Team | Goal scorer | Assist | Description |
|-----|-------|------|----------------------|--------------------|---|
| 1. | 9:07 | PSU | Megan Schafer (5) | Charlotte Williams | Through ball from 12, 11-yards out left side of the net |
| 2. | 42:33 | RU | Tiernan, Madison (8) | (unassisted) | Top right corner, 27-yards out |
| 3. | 49:41 | RU | Aylmer, Taylor (1) | (unassisted) | 8-yards out |
| 4. | 66:56 | PSU | Frannie Crouse (10) | Emma Hasco | 20-yards out, bottom left corner |

Cautions and ejections:

YC-RU #20 (80:12)

Rutgers-Jimenez, Alana (9-2-4). Penn State-Amanda Dennis (9-2-4).
Stadium: Jeffrey Field
Officials: Referee: Cory Richardson; Asst. Referee: Ryan Slack; Michael Matlock;
Alt. Official: Justin Frear;
Offsides: Rutgers 1, Penn State 0.

Official's signature

Soccer Box Score (Final) 2016 Penn State Women's Soccer

Purdue vs #16 Penn State (Oct 16, 2016 at University Park, Pa.)

Purdue (4-11-0, 2-7-0) vs.
Penn State (10-2-4, 6-0-3)
Date: Oct 16, 2016 • Attendance: 1122
Weather: 72, partly cloudy

| Goals by period | 1 | 2 | Total |
|-----------------|---|---|-------|
| Purdue | 0 | 0 | 0 |
| Penn State | 1 | 0 | 1 |

| Purdue | | Sh | SO | G | A | Fo | Min |
|-------------------|-------------------|----|----|---|---|----|-----|
| gk 1 | GINTHER, Jordan | - | - | - | - | - | 90 |
| d 4 | KASER, Megan | - | - | - | - | - | 90 |
| f 7 | RILEY, Brady | - | - | - | - | - | 40 |
| d 17 | KOROLAS, Vanessa | 1 | 1 | - | - | - | 73 |
| m 18 | OLSON, Dagny | - | - | - | - | - | 64 |
| m 19 | PETRINA, Andrea | 6 | 1 | - | - | - | 64 |
| m 20 | WILLIAMS, Dannah | - | - | - | - | - | 60 |
| d 21 | MUSSALLEH, Hannah | - | - | - | - | - | 90 |
| d 25 | DUNCAN, Maddy | 1 | - | - | - | - | 90 |
| m 27 | SZALACH, Christa | 1 | 1 | - | - | - | 49 |
| m 77 | ARKANS, Erika | 3 | 2 | - | - | - | 78 |
| -- Substitutes -- | | | | | | | |
| 2 | MILARO, Gianna | 2 | 1 | - | - | - | 26 |
| 5 | BROSNAHAN, Lydia | - | - | - | - | - | 30 |
| 16 | ROBBINS, Breanna | - | - | - | - | - | 6 |
| 22 | BITTNER, Katie | - | - | - | - | - | 25 |
| 33 | LaMERE, Gabby | 1 | 1 | - | - | - | 73 |
| 35 | LASKY, Mikayla | - | - | - | - | - | 26 |
| Totals | | 15 | 7 | | | | |

| # | Goalkeepers | Min | GA | Saves |
|----|---------------|-------|----|-------|
| 00 | Amanda Dennis | 90:00 | 1 | 2 |

| Shots by period | 1 | 2 | Total |
|-----------------|---|---|-------|
| Purdue | 9 | 6 | 15 |
| Penn State | 8 | 5 | 13 |

| Corner kicks | 1 | 2 | Total |
|--------------|---|---|-------|
| Purdue | 0 | 3 | 3 |
| Penn State | 2 | 1 | 3 |

Scoring summary:

| No. | Time | Team | Goal scorer | Assist | Description |
|-----|-------|------|---------------------|--------------|---------------------------------|
| 1. | 37:40 | PSU | Frannie Crouse (11) | (unassisted) | 25 yards out, upper-left corner |

Cautions and ejections:

Win-Amanda Dennis (10-2-4). Loss-GINTHER, Jordan (2-8-0).

Officials: Referee: Jan Gut; Asst. Referee: Michael Gorseger; Eric Samples;
Alt. Official: Justin Frear; Scorer: Will Rottler;
Offsides: Purdue 3, Penn State 1.

Official's signature

2016 PENN STATE WOMEN'S SOCCER



SARAFINA VALENTI
Freshman • GK
Bechtelsville, Pa.



AMANDA DENNIS
Freshman • GK
San Diego, Calif.



BRITTANY BASINGER
RS-Junior • D
Fairfax, Va.



GRACE FISK
Freshman • D
Bromley, London, England



MEGAN SCHAFER
Junior • F
Langhorne, Pa.



EMMA HASCO
Freshman • M
Upper St. Clair, Pa.



ELIZABETH BALL
Junior • D
Richmond, Va.



KRISTIN SCHNURR
RS-Freshman • F
Bristow, Va.



FRANNIE CROUSE
Junior • F
Greensburg, Pa.



CHARLOTTE WILLIAMS
Sophomore • M
Rochester, N.Y.



HALEIGH ECHARD
Junior • M
Lebanon, Pa.



BECCA HAMILTON
Freshman • D
Howell, N.J.



ALINA ORTEGA JURADO
Sophomore • F/M
Waldgirmes, Germany



ANGELA WIDLACKI
RS-Junior • D
Naperville, Ill.



LIISI VINK-LAINAS
Junior • M
Wynantskill, N.Y.



SALINA WILLIFORD
RS-Junior • M
Wayne, Pa.



LAURA FREIGANG
Freshman • M/F
Oppenheim, Germany



ISABELLE CLAUSS
Junior • D
Clarks Summit, Pa.



NICKOLETTE DRIESSE
Senior • M
Wayne, N.J.



CECILIA KNAUB
Sophomore • M
Phoenixville, Pa.



TAYLOR CAMPBELL-PHIPPS
Sophomore • D
Orlando, Fla.



MARISSA SHEVA
Sophomore • M
Sellersville, Pa.



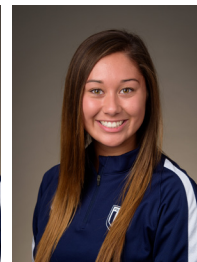
BRISTOL PIZZUTO
Freshman • GK
Whitehouse Station, N.J.



ROSE CHANDLER
RS-Sophomore • GK
Atlanta, Ga.



LAURA SUERO
Freshman • D
Royersford, Pa.



MADISON MOROI
Freshman • F
New Albany, Ohio



ERICA DAMBACH
Head Coach • 10th Year
William & Mary '97



ANN COOK
Associate Head Coach • 10th year
William & Mary '97



TIM WASSELL
Assistant Coach • 7th Year
PSU Altoona '06



KARA LOWERY
Director of Ops. • 4th Year
Southern Nazarene '97



Rafael Amaya, Jr.
Volunteer Assistant Coach • 1st Year
Liberty '13