

PENN STATE

FIELD HOCKEY



2012

GoPSUsports.com // ONE TEAM

Penn State Athletic Communications • Annie Plunkett • Athletic Communications Assistant/FH Contact
E-Mail - alp26@psu.edu • Office - (814) 865-1757 • Cell - (814) 441-9145 • GoPSUsports.com

Game #13



#6 Penn State (10-2, 2-0) at #10 Northwestern (9-2, 0-1)

Friday, Sept. 28, 2012

3 p.m. - Evanston, Ill.

Coverage: BTN, Gametracker



Penn State Schedule (10-2, 2-0)

Date	Opponent	Result/Time
Aug. 24	#3 ODU	W, 5-2
Aug. 26	#8 VIRGINIA	W, 3-2
Aug. 31	at #6 Connecticut	L, 1-2
Sep. 2	LAFAYETTE	W, 3-2
Sep. 6	#4 PRINCETON	L, 2-3 (OT)
Sep. 8	at Temple	W, 5-1
Sep. 9	CORNELL	W, 2-0
Sep. 12	LOCK HAVEN	W, 5-0
Sep. 14	at Lehigh	W, 8-0
Sep. 15	at Monmouth	W, 7-1
Sep. 21	INDIANA*	W, 7-1
Sep. 23	MICHIGAN*	W, 4-3
Sep. 28	at Northwestern*	3 p.m.
Oct. 7	CALIFORNIA	11 a.m.
Oct. 14	IOWA*	Noon
Oct. 19	at Ohio State*	2 p.m.
Oct. 23	BUCKNELL	6 p.m.
Oct. 27	at Michigan St.*	Noon
Nov. 1	Big Ten Quarterfinals	
Nov. 2	Big Ten Semifinals	
Nov. 4	Big Ten Championship	

*Indicates Big Ten Opponent

Setting the Scene: No. 6 Penn State travels to No. 10 Northwestern for a 3 p.m. Big Ten matchup. The contest will be aired by the Big Ten Network.

All-Time vs. Northwestern: Penn State leads Northwestern in the all-time series, holding a 26-4-1 advantage. Last season, the Nittany Lions faced the Wildcats twice, first earning a 4-3 victory at home on Oct. 1. The two squads met again in the Big Ten Tournament, with Penn State recording a 6-1 win on Nov. 3 to move into the semifinals and eventually claim the Big Ten Tournament Championship.

Scouting the Wildcats: Northwestern returns home after going 1-1 against Ohio State University and Ohio University this past weekend. The Wildcats dropped a surprising 3-2 loss to the Buckeyes, then rebounded with a 2-1 victory over the Bobcats. Currently 9-2 overall with a 0-1 mark in the Big Ten, the Wildcats were on a seven-game win streak before falling to Ohio State in their first conference match of the season. Chelsea Armstrong, a two-time Big Ten Offensive Player of the Year, currently leads the squad with 36 points on 16 goals and four assists. The senior, who has been named the Big Ten Offensive Player of the Week twice this season, tallied both goals against the Buckeyes and notched her 16th of the season against the Bobcats. In the Ohio State contest, Julia Retzky and Lisa McCarthy each assisted on both of Armstrong's goals, while Tara Puffenberger tallied the assist against Ohio. Puffenberger currently sits at 25 points behind Armstrong, netting 10 goals and recording five assists this season. McCarthy leads the team with eight assists, and recently earned Big Ten honors as Freshman of the Week. Caroline Troncelleti, who has also earned Big Ten Freshman of the Week this season, netted the game-winner against the Bobcats to move to 12 points. Backstopping the Wildcats is Maddy Carpenter, who boasts a 7-2 record with two shutouts. Carpenter currently owns a .721 save percentage with a 1.64 GAA.



PennStateFH



PENNSTATEFIELDHOCKEY

Big Ten Standings (As of 9/26)

Team	Conf.	Ovr.
PENN STATE	2-0	10-2
Iowa	1-0	7-2
Ohio State	1-0	8-3
Northwestern	0-1	9-2
Indiana	0-1	6-2
Michigan	0-1	6-4
Michigan State	0-1	5-5



Last Time Out: The Lions dominated the Big Ten opener against Indiana, downing the Hoosiers 7-1. The squad followed up with a 4-3 victory over Michigan to come away with its seventh consecutive win. Junior **Ashtin Klingler** had a tremendous weekend, recording both game-winning goals against the Big Ten foes. The Big Ten Co-Offensive Player of the Week came away with six points on three goals to bring her season total to 16. Klingler is currently amidst a five-game point streak.

Senior **Kelsey Amy** remains to be a driving force on Penn State's offense, recording nine points against the Hoosiers and the Wolverines. The forward notched three goals and three assists

to move to 36 points on the season. Amy leads the team in points, as well as in goals with 15. Sophomore **Laura Gebhart** recorded a career high of three assists against Indiana, as well as a goal, to move to 18 points. It was the second time the sophomore has recorded five points in a single game. Junior **Brittany Grzywacz**, junior **Lauren Purvis** and fifth-year senior **Hannah Allison** each tallied a goal against the Hoosiers, while sophomore **Jenna Chrimer** scored off of a stellar backhand shot against the Wolverines. Grzywacz's goal was her eighth of the season and Allison recorded an assist against Michigan to extend her five-game point streak. Chrimer and Purvis each sit at seven points with three goals and an assist.

QUICK FACTS

TEAM INFORMATION

2012 Record	10-2
2011 Record	17-6
2011 Big Ten Record/Finish	4-2/T-2nd
Postseason	Big Ten Tournament Champions NCAA Second Round
Letterwinners Returning/Lost	19/4
Starters Returning/Lost	9/2
Newcomers	4
All-Time Record	605-230-37
All-Time Big Ten Record	105-48-1
All-Time Big Ten Tournament Record	22-13
NCAA Tournament Appearances	27
NCAA Tournament Record	22-31
NCAA Semifinal Appearances	7
NCAA Championship Game Appearances	2
Last NCAA Tournament Appearance	2011

COACHING STAFF

Head Coach	Charlene Morett (Penn State, 1979)
Career Record/Years	437-171-17/29
Record at Penn State/Years	401-156-8/26
Assistant Coach	Lisa Bervinchak-Love (Penn State, 1989)
Assistant Coach	Stuart Smith (Penn State, 2008)
Vol. Assistant Coach	Jen Long (Penn State, 2009)

NFHCA POLL

(As of 9/25)

Team	Points
1. Syracuse	932
2. North Carolina	892
3. Princeton*	822
4. Maryland	784
5. Connecticut*	737
6. PENN STATE	691
7. Virginia*	646
8. Old Dominion*	611
9. Northeastern	525
10. Northwestern**	477
11. Iowa**	422
12. Boston	410
13. Stanford	317
14. Lafayette*	270
15. New Hampshire	218
15. Wake Forest	218
17. Michigan**	191
18. Ohio State**	160
19. William & Mary	129
20. Drexel	101
21. Duke	93
22. Michigan State**	90
23. Albany	80
24. Maine	41
25. Louisville	37

* Indicates 2012 opponent

** Indicates 2012 Big Ten opponent

Recording nine saves in the Michigan contest, goalkeeper **Ayla Halus** continues to defend the net for Penn State. Boasting a .754 save percentage and 49 saves, she has allowed only 16 goals in 741 minutes of play. Halus currently sits at 15th in the nation with a 1.51 GAA.

No. 6 in the Nation: The Penn State field hockey team remained at No. 6 in the NFHCA Poll this week after defeating then No. 24 Indiana and No. 17 Michigan.

Hitting 400: Head Coach Charlene Morett recorded her 400th Penn State victory on Sept. 21 in the 7-1 victory over #24 Indiana. The Penn State alum is in her 26th year at the helm of the Nittany Lions field hockey team, boasting a record of 401-156-8. Morett's overall record in her 29th year of coaching is 437-171-17. The three-time First Team All-American and two-time Olympian is currently the fourth all-time winningest coach in NCAA Division I Field Hockey.

Next Up: The Lions will return home on Sunday, Oct. 7, to host California for an 11 a.m. matchup at the Penn State Field Hockey Complex.

Numerical Roster

No.	Name	Yr.	Pos.	Ht.	Hometown/High School
1	Lauren Alwine	Gs.	F	5-9	Elizabethtown, Pa./Lower Dauphin
2	Kylie Licata	R-So.	GK	5-3	Mountain Top, Pa./Crestwood
3	Ashtin Klingler	Jr.	F	5-1	Selinsgrove, Pa./Selinsgrove
5	Laura Gebhart	So.	F/M	5-2	Mount Joy, Pa./Donegal
6	Hannah Allison	R-Sr.	F/M	5-6	Mifflinburg, Pa./Mifflinburg
7	Kelsey Amy	Sr.	F	5-4	Sweet Valley, Pa./Lake-Lehman
8	Taylor Herold	So.	F/M	5-6	Fredericksburg, Va./James Monroe
9	Jenna Chrismer	So.	F/M	5-3	Mountain Top, Pa./Crestwood
10	Lauren Purvis	Jr.	F/M	5-7	Maple Glen, Pa./Hatboro-Horsham
11	Brittany Grzywacz	Jr.	M/B	5-6	Collegeville, Pa./Methacton
13	Whitney Reddig	Jr.	F/M	5-7	Lititz, Pa./Warwick
14	Katie Breneman	So.	M/B	5-8	Washington Boro, Pa./Penn Manor
15	Annie Abdo	Jr.	F	5-2	Langhorne, Pa./Neshaminy
16	Abby Fuhrman	Jr.	B	5-7	Bainbridge, Pa./Elizabethtown
17	Bethany Mink	Fr.	F	5-6	Allentown, Pa./William Allen
19	Natalie Buttinger	Jr.	F/M	5-8	Kitchener, Ontario/Resurrection
21	Jacqueline Kenney	Jr.	B	5-7	State College, Pa./State College Area
22	Casey Haegele	So.	F	5-4	Warrington, Pa./Central Bucks South
24	Katie Andrews	So.	B	5-5	Lancaster, Pa./Lancaster Mennonite
26	Hayley Kerstetter	Fr.	B	5-4	Selinsgrove, Pa./Selinsgrove
33	Amanda Dinunzio	So.	M/B	5-5	State College, Pa./State College
34	Ally Lauth	Fr.	F	5-4	State College, Pa./State College
57	Ayla Halus	R-Sr.	GK	5-6	Hershey, Pa./Hershey

Head Coach: Charlene Morett (Penn State '79), 26th Season

Associate Head Coach: Lisa Bervinchak-Love (Penn State '89), 18th Season

Assistant Coach: Stuart Smith (Ohio State '08), Third Season

Volunteer Assistant Coach: Jen Long (Penn State '09), First Season

Statistical Rankings

(Big Ten as of 9/26/12, NCAA as of 9/24/12)

Category	Stat	Big Ten	NCAA
Scoring Average	4.32	1st	4th
Goals Per Game	4.33	1st	5th
Goals Against Average	1.41	4th	14th
Scoring Margin	2.91	1st	4th
Shots Per Game	22.08	1st	N/A
Assists Per Game	3.00	2nd	T-8th
Penalty Corners Per Game	8.92	1st	7th
Shutouts Per Game	0.25	T-3rd	17th

Points Per Game	Stat	Big Ten	NCAA
Kelsey Amy	3.00	2nd	T-5th
Goals Per Game	Stat	Big Ten	NCAA
Kelsey Amy	1.25	3rd	5th
Assists Per Game	Stat	Big Ten	NCAA
Laura Gebhart	0.83	1st	6th
Whitney Reddig	0.73	T-2nd	T-15th
GAA	Stat	Big Ten	NCAA
Ayla Halus	1.51	5th	15th

Nittany Lions By...

CLASS

Seniors (4): Hannah Allison, Lauren Alwine, Kelsey Amy, Ayla Halus

Juniors (8): Annie Abdo, Natalie Buttinger, Abby Fuhrman, Brittany Grzywacz, Jacqueline Kenney, Ashtin Klingler, Lauren Purvis, Whitney Reddig

Sophomores (8): Katie Andrews, Katie Breneman, Jenna Chrismer, Amanda Dinunzio, Laura Gebhart, Casey Haegele, Taylor Herold, Kylie Licata

Freshmen (3): Haley Kerstetter, Ally Lauth, Bethany Mink

STATE

Ontario (1): Natalie Buttinger

Pennsylvania (21): Annie Abdo, Hannah Allison, Lauren Alwine, Kelsey Amy, Katie Andrews, Katie Breneman, Jenna Chrismer, Amanda Dinunzio, Abby Fuhrman, Laura Gebhart, Brittany Grzywacz, Casey Haegele, Ayla Halus, Jacqueline Kenney, Haley Kerstetter, Ashtin Klingler, Ally Lauth, Kylie Licata, Bethany Mink, Lauren Purvis, Whitney Reddig

Virginia (1): Taylor Herold

POSITION

Goalkeeper (2): Ayla Halus, Kylie Licata

Back (6): Katie Andrews, Katie Breneman, Abby Fuhrman, Brittany Grzywacz, Jacqueline Kenney, Haley Kerstetter

Midfield (7): Hannah Allison, Natalie Buttinger, Jenna Chrismer, Amanda Dinunzio, Laura Gebhart, Lauren Purvis, Whitney Reddig

Forward (8): Annie Abdo, Lauren Alwine, Kelsey Amy, Casey Haegele, Taylor Herold, Ashtin Klingler, Ally Lauth, Bethany Mink

Pronunciation Guide

Annie Abdo: AB-doe

Lisa Bervinchak-Love: BUR-vin-Chalk

Natalie Buttinger: BUT-in-jur

Brittany Grzywacz: GRIZ-wack

Ayla Halus: HAL-iss

Charlene Morett: More-ETT

Support Staff

Sports Nutritionist: Kristine Clark

Strength & Conditioning Coach: Josh Davis

Marketing: Jeff Fisher

Athletic Game Management: Amy O'Neil

Athletic Communications: Annie Plunkett

Athletic Trainer: Sarah Leslie

Academic Advisor: Sandy Meyer

Booster Club President: Sandy Rogus

Associate A.D./SWA: Charmelle Green

Staff Assistant: Vickie Taylor

Sports Psychologist: Dave Yukelson

Follow Penn State
Field Hockey on
Twitter!

@PennStateFH

#1 Lauren Alwine F

Grad. Student // Elizabethtown, Pa.

Alwine's Career Highs:

Assists: 1, 2x, last at Lehigh (9/14/12)

Points: 1, 2x, last at Lehigh (9/14/12)

Shots: 1, 2x, last vs. Michigan (9/23/12)

Alwine's Career Statistics

Season	GP-GS	G	A	Pts.	Shots	GWG
2012	12-0	0	2	2	2	0
Career	12-0	0	2	2	2	0

#2 Kylie Licata GK

RS Sophomore // Mountain Top, Pa.

Licata's Career Highs:

Fewest Goals Allowed: 0, 7x, last vs. Michigan (9/23/12)

Saves: 5 at Lehigh (9/14/12)

Licata's Career Statistics

Season	GP-GS	Min.	GA	GAA	Saves	Pct.	W-L	SHO
2011	8-0	188:15	3	1.12	5	.625	0-0	0
2012	5-0	101:17	1	0.69	9	.900	0-0	0
Career	13-0	289:32	4	0.97	14	.778	0-0	0

#3 Ashtin Klingler F

Junior // Selinsgrove, Pa.

Klingler's Career Highs:

Goals: 2, 4x, last vs. Michigan (9/23/12)

Assists: 1, 2x, last at Monmouth (9/15/12)

Points: 4, 4x, last vs. Michigan (9/23/12)

Shots: 4, 3x, last at Monmouth (9/15/12)

Multi-Goal Games: 4

Klingler's Career Statistics

Season	GP-GS	G	A	Pts.	Shots	GWG
2010	21-4	3	0	6	26	0
2011	23-0	6	0	12	21	0
2012	12-12	7	2	16	22	3
Career	56-16	16	2	34	69	3

#5 Laura Gebhart F/M

Sophomore // Mount Joy, Pa.

Gebhart's Career Highs:

Goals: 2 vs. Villanova (10/4/11)

Assists: 3 vs. Indiana (9/21/12)

Points: 5, 2x, last vs. Indiana (9/21/12)

Shots: 9 shots vs. Tempe (9/8/12)

Multi-Goal Games: 1

Gebhart's Career Statistics

Season	GP-GS	G	A	Pts.	Shots	GWG
2011	22-22	6	12	24	43	0
2012	12-12	4	10	18	34	1
Career	34-34	10	22	42	77	1

#6 Hannah Allison F/M

RS Senior // Mifflinburg, Pa.

Allison's Career Highs:

Goals: 2, 3x, last at Lehigh (9/14/12)

Assists: 1, 6x, last vs Michigan (9/23/12)

Points: 5, 2x, last at Lehigh (9/14/12)

Shots: 8 vs. Lock Haven (9/4/09)

Multi-Goal Games: 3

Allison's Career Statistics

Season	GP-GS	G	A	Pts.	Shots	GWG
2009	19-15	5	2	12	45	1
2010	20-20	7	1	15	57	2
2011	23-23	8	0	16	60	1
2012	12-12	5	3	13	33	1
Career	74-70	25	6	56	195	5

#7 Kelsey Amy F

Senior // Sweet Valley, Pa.

Amy's Career Highs:

Goals: 4, 3x, last vs. Quinnipiac (9/11/11)

Assists: 2, 4x, last vs. Indiana (9/21/12)

Points: 8, 3x, last vs. Quinnipiac (9/11/11)

Shots: 12 vs. Northwestern (11/3/11)

Multi-Goal Games: 23

Amy's Career Statistics

Season	GP-GS	G	A	Pts.	Shots	GWG
2009	20-11	8	2	18	61	4
2010	20-19	19	3	41	81	3
2011	22-22	25	7	57	108	4
2012	12-12	15	6	36	75	2
Career	74-64	67	18	152	325	13

#8 Taylor Herold F/M

Sophomore // Fredericksburg, Va.

Herold's Career Highs:

Goals: 2 vs. Northwestern (11/3/11)

Assists: 1, 5x, last vs. Lafayette (9/2/12)

Points: 4 points vs Northwestern (11/3/11)

Shots: 5 shots vs. Cornell (9/9/12)

Multi-Goal Games: 1

Herold's Career Statistics

Season	GP-GS	G	A	Pts.	Shots	GWG
2011	23-0	10	4	24	22	3
2012	12-5	3	1	7	22	0
Career	35-5	13	5	31	44	3

#9 Jenna Chrismer **F/M**

Sophomore // Mountain Top, Pa.

Chrismer's Career Highs:

Goals: 1, 8x, last vs. Michigan (9/23/12)

Assists: 1, 2x, last vs. Virginia (8/26/12)

Points: 2, 8x, last vs. Michigan (9/23/12)

Shots: 4, 2x, last vs. Michigan (9/23/12)

Chrismer's Career Statistics

Season	GP-GS	G	A	Pts.	Shots	GWG
2011	23-6	5	1	11	28	0
2012	12-7	3	1	7	13	1
Career	35-13	8	2	18	41	1

#10 Lauren Purvis **F/M**

Junior // Maple Glen, Pa.

Purvis' Career Highs:

Goals: 1, 13x, last vs. Indiana (9/21/12)

Assists: 2 vs. Northwestern (10/1/11)

Points: 3 vs. Lock Haven (9/12/10)

Shots: 4 at Lock Haven (9/2/11)

Purvis' Career Statistics

Season	GP-GS	G	A	Pts.	Shots	GWG
2010	20-20	5	2	12	29	2
2011	23-23	5	2	12	26	4
2012	12-12	3	1	7	7	0
Career	55-55	13	5	31	62	6

#11 Brittany Grzywacz **B**

Junior // Collegeville, Pa.

Grzywacz's Career Highs:

Goals: 2, 2x, last vs. Cornell (9/9/12)

Assists: 1, 6x, last at Lehigh (9/14/12)

Points: 5 vs. VCU (9/18/11)

Shots: 8 vs. Villanova (10/4/11)

Multi-Goal Games: 2

Grzywacz's Career Statistics

Season	GP-GS	G	A	Pts.	Shots	GWG
2010	20-20	4	2	10	35	1
2011	23-23	8	3	19	41	2
2012	12-12	8	1	17	26	2
Career	55-55	20	6	46	102	5

#13 Whitney Reddig **F/M**

Junior // Lititz, Pa.

Reddig's Career Highs:

Goals: 1, 7x, last at Lehigh (9/14/12)

Assists: 3 at Indiana (10/7/11)

Points: 3, 3x, last at Lafayette (10/11/11)

Shots: 4, 2x, last at Lehigh (9/14/12)

Reddig's Career Statistics

Season	GP-GS	G	A	Pts.	Shots	GWG
2010	17-0	1	0	2	9	1
2011	23-23	4	20	28	19	2
2012	11-11	2	8	12	10	0
Career	49-32	7	28	42	38	3

#14 Katie Breneman **M/B**

Sophomore // Washington Boro, Pa.

Breneman's Career Statistics

Season	GP-GS	G	A	Pts.	Shots	GWG
2011	13-0	0	0	0	0	0
2012	12-12	0	0	0	0	0
Career	25-12	0	0	0	0	0

#15 Annie Abdo **F**

Junior // Langhorne, Pa.

Abdo's Career Highs:

Assists: 1 vs. Princeton (9/6/12)

Points: 1 vs. Princeton (9/6/12)

Shots: 2 at Lehigh (9/14/12)

Abdo's Career Statistics

Season	GP-GS	G	A	Pts.	Shots	GWG
2010	3-0	0	0	0	0	0
2011	7-0	0	0	0	0	0
2012	10-0	0	1	1	3	0
Career	20-0	0	1	1	3	0

#16 Abby Fuhrman **B**

Junior // Bainbridge, Pa.

Fuhrman's Career Highs:

Shots: 1, 2x, last vs. Ohio State (10/22/11)

Fuhrman's Career Statistics

Season	GP-GS	G	A	Pts.	Shots	GWG
2010	14-3	0	0	0	1	0
2011	23-23	0	0	0	1	0
2012	12-12	0	0	0	0	0
Career	49-38	0	0	0	2	0

#17 Bethany Mink **F**

Freshman // Allentown, Pa.

Mink's Career Highs:

Shots: 1 at Lehigh (9/15/12)

Mink's Career Statistics

Season	GP-GS	G	A	Pts.	Shots	GWG
2012	4-0	0	0	0	1	0
Career	4-0	0	0	0	1	0

#19 Natalie Buttinger F/M

Junior // Kitchener, Ontario

Buttinger's Career Highs:

Shots: 1 vs. Temple (9/8/12)

Buttinger's Career Statistics						
Season	GP-GS	G	A	Pts.	Shots	GWG
2010	5-0	0	0	0	0	0
2011	0-0	0	0	0	0	0
2012	5-0	0	0	0	1	0
Career	10-0	0	0	0	1	0

#21 Jacqueline Kenney B

Junior // State College, Pa.

Kenney's Career Highs:

Shots: 1 vs. Monmouth (10/3/10)

Kenney's Career Statistics						
Season	GP-GS	G	A	Pts.	Shots	GWG
2010	7-0	0	0	0	1	0
2011	6-0	0	0	0	0	0
2012	5-0	0	0	0	0	0
Career	18-0	0	0	0	1	0

#22 Casey Haegele F

Sophomore // Warrington, Pa.

Haegele's Career Highs:

Goals: 1 vs. Old Dominion (8/24/12)

Points: 2 vs. Old Dominion (8/24/12)

Shots: 1, 4x, last at Monmouth (9/15/12)

Haegele's Career Statistics						
Season	GP-GS	G	A	Pts.	Shots	GWG
2011	6-0	0	0	0	2	0
2012	7-0	1	0	2	2	0
Career	13-0	1	0	2	4	0

#24 Katie Andrews B

Sophomore // Lancaster, Pa.

Andrews' Career Highs:

Goals: 1 vs. Princeton (9/6/12)

Points: 2 vs. Princeton (9/6/12)

Shots: 2, 3x, last at Lehigh (9/14/12)

Andrews' Career Statistics						
Season	GP-GS	G	A	Pts.	Shots	GWG
2011	16-12	0	0	0	0	0
2012	12-1	1	0	2	8	0
Career	28-13	1	0	2	8	0

#26 Haley Kerstetter B

Freshman // Selinsgrove, Pa.

Kerstetter's Career Statistics

Season	GP-GS	G	A	Pts.	Shots	GWG
2012	4-0	0	0	0	0	0
Career	4-0	0	0	0	0	0

#33 Amanda Dinunzio M/B

Sophomore // State College, Pa.

Dinunzio's Career Highs:

Shots: 1, 6x, last at Monmouth (9/15/12)

Dinunzio's Career Statistics

Season	GP-GS	G	A	Pts.	Shots	GWG
2011	8-0	0	0	0	3	0
2012	9-0	0	0	0	3	0
Career	17-0	0	0	0	6	0

#34 Ally Lauth F

Freshman // State College, Pa.

Lauth's Career Highs:

Shots: 2 at Lehigh (9/14/12)

Lauth's Career Statistics

Season	GP-GS	G	A	Pts.	Shots	GWG
2012	5-0	0	0	0	3	0
Career	5-0	0	0	0	3	0

#57 Ayla Halus B

RS Junior // Hershey, Pa.

Halus' Career Highs:

Saves: 18 vs. Syracuse (11/13/10)

Goals allowed: 0, 20x, last vs. Indiana (9/21/12)

Halus' Career Statistics

Season	GP-GS	Min.	GA	GAA	Saves	Pct.	W-L	SHO
2009	4-2	190:41	6	2.20	15	.714	1-1	1
2010	20-20	1330:11	25	1.32	119	.826	14-6	6
2011	23-23	1432:04	32	1.56	92	.742	17-6	4
2012	12-12	741:00	16	1.51	49	.754	10-2	1
Career	59-57	3693:56	79	1.50	275	.777	42-15	12

PSU Overall Individual Statistics (as of Sep 24, 2012)
All games

Overall: 10-2-0 Conf: 2-0-0 Home: 7-1-0 Away: 3-1-0 Neut: 0-0-0

##	Player	gp-gs	min	g	a	pts	sh	sh%	sog	sog%	gwg	ps-att	dsv
7	Amy, Kelsey	12-12	528	15	6	36	75	.200	49	.653	2	0-0	0
5	Gebhart, Laura	12-12	759	4	10	18	34	.118	15	.441	1	0-0	1
11	Grzywacz, Brittany	12-12	772	8	1	17	26	.308	19	.731	2	4-4	2
3	Klingler, Ashtin	12-12	456	7	2	16	22	.318	12	.545	3	0-0	0
6	Allison, Hannah	12-12	644	5	3	13	33	.152	20	.606	1	0-0	1
13	Reddig, Whitney	11-11	499	2	8	12	10	.200	7	.700	0	0-0	0
8	Herold, Taylor	12-5	406	3	1	7	22	.136	16	.727	0	0-0	0
9	Chrismer, Jenna	12-7	448	3	1	7	13	.231	9	.692	1	0-0	0
10	Purvis, Lauren	12-12	544	3	1	7	7	.429	6	.857	0	0-0	0
24	Andrews, Katie	12-1	480	1	0	2	8	.125	4	.500	0	0-0	1
22	Haegele, Casey	7-0	109	1	0	2	2	.500	2	1.000	0	0-0	0
1	Alwine, Lauren	12-0	313	0	2	2	2	.000	0	.000	0	0-0	1
15	Abdo, Annie	10-0	256	0	1	1	3	.000	2	.667	0	0-0	0
34	LAUTH,ALLY	5-0	72	0	0	0	3	.000	1	.333	0	0-0	0
33	DINUNZIO,AMANDA	9-0	239	0	0	0	3	.000	1	.333	0	0-0	0
19	BUTTINGER,NATALIE	5-0	70	0	0	0	1	.000	1	1.000	0	0-0	0
17	MINK,BETHANY	4-0	61	0	0	0	1	.000	1	1.000	0	0-0	0
26	HALEY KERSTETTER	4-0	56	0	0	0	0	.000	0	.000	0	0-0	0
21	KENNEY,JACQUELINE	5-0	116	0	0	0	0	.000	0	.000	0	0-0	0
16	Fuhrman, Abby	12-12	760	0	0	0	0	.000	0	.000	0	0-0	0
14	Breneman, Katie	12-12	791	0	0	0	0	.000	0	.000	0	0-0	1
Total		12	-	52	36	140	265	.196	165	.623	10	4-4	7
Opponents		12	-	17	13	47	117	.145	82	.701	2	1-2	20

#	Goalie	gp-gs	Goal Average			Saves		Record			
			min	ga	gaavg	saves	pct	w	l	t	shutout
2	LICATA,KYLIE	5-0	101:17	1	0.69	9	.900	0	0	0	0.2
57	Halus, Ayla	12-12	741:00	16	1.51	49	.754	10	2	0	1.2
TM	TEAM	-	0:00	0	0.00	7	1.000	0	0	0	2.0
Total		12	842:17	17	1.41	65	.793	10	2	0	3
Opponents		12	842:17	52	4.32	113	.685	2	10	0	0

Team saves: 7

Goals by Period	1st	2nd	OT	Total
PSU	33	19	0	52
Opponents	7	9	1	17

Corners by Period	1st	2nd	OT	Total
PSU	55	52	0	107
Opponents	22	28	0	50

Shots by Period	1st	2nd	OT	Total
PSU	135	130	0	265
Opponents	54	61	2	117

Attendance Summary	PSU	Opponent
Total	2679	1123
Dates/Avg Per Date	8/335	4/281
Neutral Site #/Avg	0/0	

Saves by Period	1st	2nd	OT	Total
PSU	31	33	1	65
Opponents	55	58	0	113

2012 TV/RADIO CHART



1
Lauren Alwine
Gs. - F
Elizabethtown, Pa.



2
Kylie Licata
R-So. - GK
Mountain Top, Pa.



3
Ashtin Klingler
Jr. - F
Selinsgrove, Pa.



5
Laura Gebhart
So. - F/M
Mount Joy, Pa.



6
Hannah Allison
R-Sr. - F/M
Mifflinburg, Pa.



7
Kelsey Amy
Sr. - F
Sweet Valley, Pa.



8
Taylor Herold
So. - F/M
Fredericksburg, Va.



9
Jenna Chrimer
So. - F/M
Mountain Top, Pa.



10
Lauren Purvis
Jr. - F/M
Maple Glen, Pa.



11
Brittany Grzywacz
Jr. - M/B
Collegeville, Pa.



13
Whitney Reddig
Jr. - F/M
Lititz, Pa.



14
Katie Breneman
So. - M/F
Washington Boro, Pa.



15
Annie Abdo
Jr. - F
Langhorne, Pa.



16
Abby Fuhrman
Jr. - B
Bainbridge, Pa.



17
Bethany Mink
Fr. - F
Allentown, Pa.



19
Natalie Buttinger
Jr. - F/M
Kitchener, Ontario



21
Jacqueline Kenney
Jr. - B
State College, Pa.



22
Casey Haegele
So. - F
Warrington, Pa.



24
Katie Andrews
So. - B
Lancaster, Pa.



26
Haley Kerstetter
Fr. - B
Selinsgrove, Pa.



33
Amanda Dinunzio
So. - M/B
State College, Pa.



34
Ally Lauth
Fr. - F
State College, Pa.



57
Ayla Halus
RS Sr. - GK
Hershey, Pa.



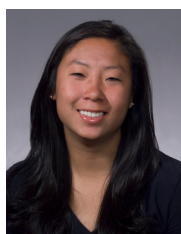
Charlene Morett
Head Coach
26th Season



Lisa Bervinchak-Love
Associate Head Coach
18th Season



Stuart Smith
Assistant Coach
Third Season



Jen Long
Volunteer Assistant
First Season