



2011-12 PENN STATE LADY LION BASKETBALL

WOMEN'S BASKETBALL CONTACT:
 Kristina Petersen
 Twitter: @ladylionsid
 Website: www.GoPSUsports.com
 Email: kap18@psu.edu
 Cell: 814-883-4581
 Office: 814-865-1757

Penn State Athletic Communications: 101D Bryce Jordan Center, University Park, PA 16802 ♦ Office: 814-865-1757 ♦ Fax: 814-863-3165

SCHEDULE/RESULTS

NOVEMBER

Sat. 5	BLOOMSBURG (exh.).....W, 101-81
Lady Lion Classic (University Park, Pa.)	
Fri. 11	WASHINGTON STATE..... W, 72-60
Sun. 13	MIDDLE TENN. (BTN.com)... W, 65-49
Thurs. 17	at DelawareL, 71-80
Sun. 20	at South Carolina (SportSouth).W, 55-50
John Ascuaga's Nugget Classic (Reno, Nev.)	
Fri. 25	vs. Iowa StateW, 66-59
Sat. 26	at NevadaW, 103-65

Big Ten/ACC Challenge

Wed. 30	#14/13 N. CAROLINA (BTN)..W, 103-84
---------	-------------------------------------

DECEMBER

Big 12/Big Ten Challenge

Sat. 3	at #19/25 Texas Tech.....L, 66-70
Tues. 6	VIRGINIA TECH (BTN.com).. W, 66-28
Sun. 11	UMES (BTN.com)..... W, 76-51
Sun. 18	WAGNER (BTN.com)W, 103-42
Wed. 21	at Bucknell.....W, 78-54
Fri. 30	#23/RV NEBRASKA * (BTN.com). L, 63-71

JANUARY

Mon. 2	at Wisconsin *W, 82-49
Sat. 7	MICHIGAN STATE * (CBS)..... L, 65-75
Thurs. 12	MICHIGAN * (BTN) W, 78-63
Sun. 15	at Nebraska * (BTN.com)..... 3:05 p.m.
Thurs. 19	at Illinois * (BTN.com)..... 8 p.m.
Sun. 22	IOWA * (ESPN2) 3 p.m.
Thurs. 26	at Michigan * (BTN.com)..... 7 p.m.
Sun. 29	at Michigan State * (ESPN2) 3 p.m.

FEBRUARY

Thurs. 2	INDIANA * (BTN.com) 7 p.m.
Sun. 5	at Minnesota * (BTN.com) 3 p.m.
Thurs. 9	WISCONSIN * (BTN.com) 7 p.m.
Sun. 12	at Northwestern * (BTN) 1 p.m.
Thurs. 16	at Purdue * (BTN) 6 p.m.
Mon. 20	OHIO STATE * (ESPN2)..... 7 p.m.

WBCA Pink Zone at Penn State

Sun. 26	MINNESOTA * (BTN-WC) ...12/2/4 p.m.
---------	-------------------------------------

MARCH

Thur.-Sun. 1-4	Big Ten Tournament (Indianapolis)
Sat.-Tues. 17-20	NCAA Tourn. 1st & 2nd Round
Sat.-Tues. 24-27	NCAA Tournament Regionals

APRIL

Sun./Tues. 1/3	NCAA Final Four (Denver, Colo.)
----------------	---------------------------------

BOLD CAPS indicates home game.

* - indicates Big Ten game.

All times are Eastern Time.

BTN - Big Ten Network

BTN.com - BigTenNetwork.com

Schedule subject to change. Please visit www.GoPSUsports.com

for up-to-date tip times.

Game #17: #RV/25 Penn State at #15/23 Nebraska

Sun., Jan. 15 ▶ 3:05 p.m. (ET) ▶ Devaney Center ▶ Lincoln, Neb.

		SETTING THE SCENE
Penn State Lady Lions	Nebraska Cornhuskers	The Nebraska Game
Record: 12-4, 2-2 Big Ten	Record: 15-1, 4-0 Big Ten	Series: Penn State leads 2-1
Last Game: PSU 78, Michigan 63 (1/12)	Last Game: Neb. 75, Wisconsin 69 (1/12)	Last Meeting: Nebraska 71, PSU 63 (12/30/11)
Head Coach: Coquese Washington	Head Coach: Connie Yori	Streak: Nebraska - 1 win
Career Record: 78-64 (5th yr.)	Career Record: 376-258 (22nd yr.)	Television: "Student U" re-air on the BTN on Wed., Jan. 18 at 12 p.m.
Record at PSU: 78-64 (5th yr.)	Record at UNL: 181-118 (11th yr.)	Radio: The game is on WRSC locally with Jerry Fisher and Brian Tripp calling the action. The audio feed is available at www.GoPSUsports.com .
Statistical Leaders	Statistical Leaders	Webstream: BTN.com
Points Maggie Lucas (20.1)	Points Jordan Hooper (20.3)	Live Stats: GoPSUsports.com
Rebounds Mia Nickson (8.5)	Rebounds Jordan Hooper (8.8)	
Assists Alex Bentley (5.8)	Assists Lindsey Moore (6.1)	

GAME DAY INFORMATION

SCOUTING NEBRASKA

The Cornhuskers are 15th in this week's Associated Press poll and 23rd in the ESPN/USA Today Coaches' poll with a 15-1 overall record and 4-0 mark in conference play. Jordan Hooper continues to pace Nebraska as she ranks second in the Big Ten in scoring with a 20.3 average to go along with a team-best 8.8 rebounds. Lindsey Moore has also been solid for the Cornhuskers, contributing 16.6 points and 6.1 assists per game.

ALL-TIME VS. THE CORNHUSKERS

The Lady Lions are 2-1 all-time against Nebraska, but suffered their first loss to the Huskers with a 71-63 decision in the Big Ten opener in Happy Valley Dec. 30. This will be Penn State's first-ever trip to Lincoln.

LAST TIME VS. UNL

The Lady Lions scored just seven points over the final 12:53 on the way to a 71-63 loss to Nebraska on Dec. 30 in the Big Ten opener. **Alex Bentley** had 22 points to go along with a career-high eight steals. The eight thefts are the most by a Lady Lion since Kelly Mazzante had eight steals against Fairfield on Dec. 2, 2001. **Maggie Lucas** tallied 18 points to go along with seven rebounds and a pair of assists.

STORYLINES

- ✓ Junior **Alex Bentley** moved into the Top 20 on Penn State's career steals chart with four steals versus Michigan. Bentley has 169 career thefts, which is tied for 19th.
- ✓ Sophomore guard **Maggie Lucas** scored a career-high 33 points in the second half against Michigan State Jan. 7. It's the first 30-point game for a Lady Lion since Grant had 32 tallies versus Iowa in the Big Ten Tournament (3/5/10).
- ✓ **Nikki Greene** recorded nine boards vs. Michigan to move past Kim Calhoun (583) for 22nd place on Penn State's career rebounding list (590).
- ✓ With four points against Michigan State Jan. 7, junior guard **Alex Bentley** moved past Brianne O'Rourke for 29th place on Penn State's career scoring list.
- ✓ Penn State is 26th, just one point out of the Top 25, in Associated Press poll and 25th in the ESPN/USA Today Coaches Poll.
- ✓ The Lady Lions were picked to finish first in the Big Ten in a vote of the coaches and media.
- ✓ Bentley was selected as the Big Ten Preseason Player of the Year in a vote of the league's coaches and media.

UP NEXT

The Lady Lions continue their road swing at Illinois (Jan. 19) before returning to the BJC to face Iowa on Sunday, Jan. 22. The Iowa game is a Subway Full Court 4-pack game and it's Kids Day where all kids that in 8th grade or younger will be admitted for FREE if they wear Lady Lion Basketball gear.



2011-12 ROSTER

PENN STATE LADY LIONS

No.	Name	Pos.	Cl./Elg.	Ht.	Hometown/High School (Previous School)
2	Dara Taylor	G	Jr./Jr.#	5-8	Wilmington, Del./Caravel Academy (Maryland)
5	Talia East *	F/C	So./So.	6-3	Philadelphia, Pa./Friends' Central School
12	Zhaque Gray ***	G	Sr./Sr.	5-8	Chicago, Ill./Prep John Hope
15	Renee Womack ***	G	Sr./Sr.	5-10	Lansdale, Pa./Methacton
20	Alex Bentley **	G	Jr./Jr.	5-7	Indianapolis, Ind./Ben Davis
23	Ariel Edwards *	F	So./So.	6-2	Elmont, N.Y./Christ the King
24	Mia Nickson *	F	Sr./Jr.	6-2	Ashburn, Va./Notre Dame Acad. (Boston College)
25	Gizelle Studevent **	G	Jr./Jr.	5-11	La Jolla, Calif./The Bishop's School
33	Maggie Lucas *	G	So./So.	5-10	Narberth, Pa./Germantown Academy
40	Marisa Wolfe **	F	Jr./Jr.	6-2	Ford City, Pa./Ford City
44	Tori Waldner	F	Fr./Fr.	6-5	Milton, Ga./Milton
54	Nikki Greene **	F/C	Jr./Jr.	6-4	Diboll, Texas/Diboll

Head Coach: Coquese Washington (Notre Dame '92)

Assistant Coaches: Fred Chmiel, Kia Damon, Maren Walseth

Captains: Mia Nickson, Marisa Wolfe

* Indicates letters earned # - Taylor will sit out the 2011-12 season due to NCAA transfer rules.

NEBRASKA CORNHUSKERS

No.	Name	Pos.	Cl.	Ht.	Hometown/High School (Previous School)
00	Lindsey Moore	G	Jr.	5-9	Covington, Wash./Kentwood
3	Hailie Sample	F	Fr.	6-1	Flower Mound, Texas/Marcus
5	Kaitlyn Burke	G	Sr.	5-7	N. Vancouver, B.C./National Elite Dev. Academy
10	Meghin Williams	F	Jr.	6-1	Rancho Cucamonga, Calif./Summit
11	Tear'a Laudermill	G	Fr.	5-9	Riverside, Calif./Canyon Springs
13	Brandi Jeffery	G	Fr.	5-7	Vacherie, La./St. James
14	Katie Simon	F	RS-Fr.	6-2	Roseville, Calif./Roseville
21	Harleen Sidhu	F	Sr.	6-1	Surrey, B.C./Fleetwood
23	Emily Cady	F	Fr.	6-2	Seward, Neb./Seward
33	Rebecca Woodberry	G	RS-Fr.	5-10	Phoenix, Ariz./Tolleson Union
35	Jordan Hooper	F	So.	6-2	Alliance, Neb./Alliance
55	Adrianna Maurer	C	So.	6-3	Shawnee Mission, Kan./Bishop Miege

Head Coach: Connie Yori

Associate Head Coach: Sunny Smallwood

Assistant Coaches: Kellie Lewis-Jay, Dayna Finch

TEAM COMPARISON

PENN STATE		NEBRASKA
Lucas (20.1)	Scoring Leader	Hooper (20.3)
Nickson (8.5)	Rebounding Leader	Hooper (8.8)
Bentley (5.8)	Assist Leader	Moore (6.1)
Bentley (3.2)	Steals Leader	Jeffery (1.5)
East (1.4)	Blocks Leader	Cady (0.8)
75.8	Scoring Offense	75.9
59.4	Scoring Defense	58.1
+16.4	Scoring Margin	+17.8
43.7	Rebounds Per Game	44.9
+2.8	Rebound Margin	+7.4
14.9	Assists Per Game	15.1
10.2	Steals Per Game	9.9
.443	Field Goal Pct.	.414
.324	FG Defense Pct.	.360
.364	3-pt. FG Pct.	.332
.267	3-pt. FG Pct. Def.	.304
.703	Free Throw Pct.	.713
0.9	Assist/Turnover	0.8
Won 1	W/L Streak	Won 9

SERIES HISTORY

Overall:	PSU leads 2-1
Last meeting:	Dec. 30, 2011
Last result:	NEB, 71-63
Current streak:	NEB - 1 win
Last 10:	PSU, 2-1
Last 10 meetings:	
1/2/93	H W, 102-66
12/30/02	N W, 83-64
12/30/11	H L, 63-71

QUICK FACTS

THE UNIVERSITY

Location: University Park, Pa.
 Founded: 1855
 Enrollment: 42,294
 Colors: Blue & White
 Nickname: Lady Lions
 Conference: Big Ten
 President: Dr. Rodney Erickson
 Director of Athletics: Tim Curley
 Acting Director of Athletics: Dr. David Joyner
 Senior Woman Administrator: Charmelle Green
 Facility (cap.): Bryce Jordan Center (15,261)
 All-Time Record at BJC: 182-49 (16 seasons)

ATHLETIC COMMUNICATIONS

WBB Contact: Kristina Petersen
 Phone/Fax: (814) 865-1757/(814) 863-3165
 E-mail: kap18@psu.edu
 Address: 101-D Bryce Jordan Center
 University Park, Pa. 16802
 Press Row Phone: 814-863-3294
 Website: www.GoPSUsports.com
 Twitter: @ladylionsid

TEAM INFORMATION

2011-12 Record: 12-4
 Home: 7-2 Away: 4-2 Neutral: 1-0
 Big Ten Record: 2-2
 Home: 1-2 Away: 1-0
 Letterwinners Returning/Lost: 10/1
 Starters Returning/Lost: 4/1
 Big Ten Tournament: Runner-up
 Postseason: NCAA Second Round

THE HISTORY

First Year of Women's Basketball: 1965
 All-Time Record: 817-377 (47 seasons)
 All-Time Big Ten Rec.: 206-112 (19 seasons)
 NCAA Tournament Appearances: 22
 NCAA Tournament Record: 27-22

WOMEN'S BASKETBALL

Head Coach: Coquese Washington
 Alma Mater: Notre Dame '92
 Overall Record: 78-64 (fifth season)
 School Record: 78-64 (fifth season)
 Basketball Office Phone: 814-863-2672
 Best Time To Reach Coach: Through SID
 Assistant Coaches (Alma Mater):
 Fred Chmiel (Excelsior College)
 Kia Damon (Millersville '97)
 Maren Walseth (Penn State '02)
 Twitter: @pennstatewbb
 Facebook: facebook.com/pennstateladylions

PRONUNCIATIONS

Coquese	ko-KWEES
Chmiel	shuh-MEAL
Maren Walseth	MARR-en WALL-seth
Zhaque	Jacque-QWAY
Gizelle Studevent	juh-ZELL STEW-duh-vent
Talia	tah-LEE-uh
Ariel	AIR-e-I
Dara	DAR-uh



STANDINGS (thru games of 1/12)

Team	Big Ten			Overall		
	W	L	Pct.	W	L	Pct.
Nebraska	4	0	1.000	15	1	.938
Purdue	4	0	1.000	14	3	.824
Michigan State	4	0	1.000	12	5	.706
Ohio State	3	1	.750	16	1	.941
Michigan	2	2	.500	13	4	.765
PENN STATE	2	2	.500	12	4	.750
Iowa	2	2	.500	10	7	.588
Minnesota	2	2	.500	10	8	.556
Northwestern	1	3	.250	11	6	.647
Wisconsin	1	4	.200	5	12	.294
Illinois	0	4	.000	6	11	.353
Indiana	0	5	.000	5	13	.278

BIG TEN SCHEDULE

JANUARY 12

at Penn State 78, Michigan 63
at Michigan State 67, Indiana 47
at Ohio State 82, Northwestern 72
Nebraska 75, at Wisconsin 69
Purdue 72, at Minnesota 55

JANUARY 15

Minnesota at Michigan Noon
Iowa at Purdue 2 p.m.
Penn State at Nebraska 3 p.m.
Ohio State at Michigan State 4 p.m.

JANUARY 16

Illinois at Northwestern 7:30 p.m.

JANUARY 19

Nebraska at Ohio State 6 p.m.
Penn State at Illinois 8 p.m.
Purdue at Indiana 8 p.m.
Wisconsin at Iowa 8 p.m.
Michigan State at Minnesota 8 p.m.
Michigan at Northwestern 8 p.m.

JANUARY 22

Indiana at Michigan 2 p.m.
Illinois at Ohio State 2 p.m.
Iowa at Penn State 3 p.m.
Northwestern at Wisconsin 3 p.m.
Minnesota at Nebraska 6 p.m.

JANUARY 23

Michigan State at Purdue 7:30 p.m.

All times are Eastern.

PROJECTED STARTERS



12 ZHAQUE GRAY G
Sr., 5-8, Chicago, Ill.
11.1 pts., 3.1 rebs., 1.9 asst., .354 3FG%

Notes: Was 6-for-12 from the field en route to 15 pts. vs. Michigan ... Registered 8 points vs. Michigan St. ... Had 13 points & 3 assists in win over Wagner ... Had team-best 25 pts. vs. #13 UNC.



20 ALEX BENTLEY G
Jr., 5-7, Indianapolis, Ind.
14.2 ppg, 5.8 apg, 3.2 spg, .774 FT%

Notes: Tallied 12 pts. & 6 assts. vs. Michigan ... Nabbed a career-high 8 steals with 22 pts. vs. Nebraska ... Tallied 23 pts. versus Wagner ... Wade Trophy, Naismith Award & Wooden Award watch lists.



33 MAGGIE LUCAS G
So., 5-10, Narberth, Pa.
20.1 ppg, 4.6 rpg, .398 3FG%, .843 FT%

Notes: Notched 22 pts. with 5 assts. in win over Michigan ... Scored 28 of her career-high 33 pts. in the 2nd half vs. MSU ... Had 18 pts. & career-best 7 assts. at Wisconsin ... Naismith Award watch list.



24 MIA NICKSON F
Jr., 6-2, Ashburn, Va.
5.4 ppg, 8.5 rpg, .333 FG%

Notes: Tallied 6 pts. & 8 rebs. in win over Michigan ... Posted a double-double with 10 points and 14 rebounds at Wisconsin ... Missed six consecutive games with a concussion (eight overall).



54 NIKKI GREENE C
Jr., 6-4, Diboll, Texas
9.3 ppg, 7.9 rpg, 1.3 bpg, .514 FG%

Notes: Near double-double with 9 pts. & 9 rebs. vs. Michigan ... Pulled in 11 rebounds with three steals vs. MSU ... Notched 14 pts. & 7 rebs. at Wisconsin ... Had 9 pts. and 15 rebounds against Nebraska.

LAST TIME OUT: The Lady Lions shot 55.4% from the field and earned a convincing 78-63 victory against Michigan. **Maggie Lucas** posted her ninth 20-point game of the season with 22 tallies to pace the Lady Lions. She also added five assists and three steals. Lucas has scored 55 points in her last two games with 22 tallies tonight and 33 markers against Michigan State Saturday. **Zhaque Gray** totaled 15 points with four rebounds, while junior **Alex Bentley** had 12 points, a team-best six assists and four steals.

SCOUTING NEBRASKA: The Cornhuskers are 15th in this week's Associated Press poll and 23rd in the ESPN/USA Today Coaches' poll with a 15-1 overall record and 4-0 mark in conference play. Jordan Hooper continues to pace Nebraska as she ranks second in the Big Ten in scoring with a 20.3 average to go along with a team-best 8.8 rebounds. Lindsey Moore has also been solid for the Cornhuskers, contributing 16.6 points and 6.1 assists per game. Nebraska is solid on the glass, outrebounding opponents by a +7.4 per game margin.

ALL-TIME VS. THE CORNHUSKERS: The Lady Lions are 2-1 all-time against Nebraska, but suffered their first loss to the Huskers with a 71-63 decision in the Big Ten opener in Happy Valley Dec. 30. This will be Penn State's first-ever trip to Lincoln.

WHAT'S AT STAKE

A Penn State Win Would:

- Make Penn State 13-4 on the season.
- Improve the Lady Lions to 3-2 in Big Ten play.
- Make Penn State 3-1 all-time vs. Nebraska.
- Make the Lady Lions 1-0 all-time vs. UNL in Lincoln.

LAST TIME VS. UNL: The Lady Lions scored just seven points over the final 12:53 on the way to a 71-63 loss to Nebraska on Dec. 30 in the Big Ten opener. **Alex Bentley** had 22 points to go along with a career-high eight steals. The eight thefts are the most by a Lady Lion since Kelly Mazzante had eight steals against Fairfield on Dec. 2, 2001. **Maggie Lucas** tallied 18 points to go along with seven rebounds.

INITIAL TRIP TO NEBRASKA: The Lady Lions are visiting the state of Nebraska for the first time in program history on Sunday. Of the three times that Penn State has faced the Cornhuskers, two of them took place in Happy Valley and the third was in San Diego, Calif. The Lady Lions have never faced the other Division I schools in the state of Nebraska (Creighton and Nebraska-Omaha).

LAST TIME VS. NEBRASKA DEC. 30, 2011 • UNIVERSITY PARK, PA.

Nebraska 71 - 121, 1-0															
#	Player	Total	3-Pr	Rebounds			PF			TP	A TO	Blk	Stl	Min	
		FG-FGA	FG-FGA	FT-FTA	Off	Def	Total	PF	TP		A TO	Blk	Stl	Min	
00	Moore, Lindsey	4-11	1-4	7-10	0	4	4	1	16	4	7	0	1	24	
08	Stamps, Hailey	2-5	0-0	1-2	1	2	3	1	5	0	1	1	0	25	
09	Burke, Kaitlyn	1-5	1-3	0-0	0	6	6	4	3	6	2	0	0	39	
23	Cady, Emily	2-5	0-0	0-0	5	10	3	4	0	4	2	2	1	29	
05	Hooper, Jordan	11-21	4-11	5-8	1	11	12	1	31	1	4	1	0	33	
10	Williams, Meggin	3-4	0-0	0-0	3	2	5	1	6	1	2	1	0	10	
13	Jeffery, Brandi	0-2	0-1	0-1	1	2	3	0	3	2	0	0	0	14	
14	Simon, Katie	1-1	0-0	2-2	0	1	1	4	0	1	0	0	0	9	
21	Sichu, Harleen	0-0	0-0	0-0	0	1	1	0	0	1	0	0	0	4	
33	Woodberry, Rebecca	1-4	0-3	0-0	0	2	2	1	2	0	1	0	0	13	
	Team	4	3	7											
	Totals	25-58	6-22	15-21	15	38	53	16	71	15	26	5	5	200	
	FG % 1st Half: 16-33 48.0%	2nd half: 9-25 36.0%	Game: 25-58 43.1%	Deadball											
	3FG % 1st Half: 4-14 28.6%	2nd half: 2-8 25.0%	Game: 6-22 27.3%	Rebounds		3									
	FT % 1st Half: 2-2 100.0%	2nd half: 13-19 68.4%	Game: 15-21 71.4%												
Penn State 63 - 10-3, 0-1															
#	Player	Total	3-Pr	Rebounds			PF			TP	A TO	Blk	Stl	Min	
		FG-FGA	FG-FGA	FT-FTA	Off	Def	Total	PF	TP		A TO	Blk	Stl	Min	
12	Gray, Zhaque	0-7	0-3	0-0	0	2	2	0	0	1	1	0	0	21	
20	Bentley, Alex	9-25	1-4	3-5	0	3	3	1	22	3	5	1	8	36	
24	Nickson, Mia	2-9	0-0	0-0	4	3	7	3	4	1	3	0	1	31	
33	Lucas, Maggie	7-22	1-7	3-3	5	2	7	3	18	2	2	0	0	36	
54	Greene, Nikki	4-9	0-0	1-4	7	8	15	3	9	0	2	2	4	20	
05	East, Talia	0-1	0-0	4-4	3	1	4	0	4	0	1	1	0	10	
23	Edwards, Ariel	3-8	0-0	0-1	1	2	3	0	0	1	1	2	0	26	
22	Shadover, Gizelle	0-2	0-0	0-0	0	0	0	0	0	0	0	0	0	5	
40	Wolfe, Marisa	0-0	0-0	0-0	0	0	0	1	0	1	1	0	0	5	
44	Waldner, Tori	0-2	0-0	0-0	0	0	0	1	0	0	0	0	0	2	
	Team	5	1	6											
	Totals	25-85	2-14	11-17	25	21	46	14	63	8	14	5	17	200	
	FG % 1st Half: 15-42 35.7%	2nd half: 10-43 23.3%	Game: 25-85 29.4%	Deadball											
	3FG % 1st Half: 1-7 14.3%	2nd half: 1-7 14.3%	Game: 2-14 14.3%	Rebounds		3									
	FT % 1st Half: 7-10 70.0%	2nd half: 4-7 57.1%	Game: 11-17 64.7%												
Officials: Barb Smith, Bryan Genterline, Bruce Morris															
Technical fouls: Nebraska-None, Penn State-None.															
Attendance: 5118															
Score by periods				1st	2nd	Total									
Nebraska				33	33	71	Points	In	Off	2nd	Fast	Break		Score	
Penn State				33	25	63	NEB	30	14	16	8	12	PSU		15
Last FG - NEB 2nd-00:17, PSU 2nd-05:19															
Largest lead - NEB by 8 2nd-00:03, PSU by 11 1st-15:27.															
Score tied - 8 times															
Lead changed - 7 times.															



PRESS CONFERENCES

Coquese Washington will hold a weekly press conference and the Lady Lions will have media availability on a weekly basis throughout the season. All press conferences will begin at 2:45 p.m. (unless otherwise noted) and go for approximately 15-20 minutes, followed by an open media session prior to practice from 3-3:20 p.m. Press conference will be held in the Media Room at the Bryce Jordan Center (unless otherwise noted).

Press Conference Dates

- Wednesday, Jan. 18
- Wednesday, Jan. 25
- Wednesday, Feb. 1 (location TBA)
- Wednesday, Feb. 8 (location TBA)
- Wednesday, Feb. 15
- Wednesday, Feb. 22
- Wednesday, Feb. 29 (time TBA)

NINTH TIME TO 20: Sophomore guard **Maggie Lucas** turned in her ninth game with 20 or more points with 22 markers in the win over Michigan Jan. 12. Lucas, who had 12 games with 20+ points as a freshman, scored 17 points in the opening half against the Wolverines. Between the second half of the Michigan State game (28 pts.) and the first half against Michigan, Lucas scored 45 points in that two-period span.

BENTLEY ADDS NAME TO THEFTS LIST: With four steals against Michigan Jan. 12, junior guard **Alex Bentley** moved into the Top 20 on Penn State's career steals chart. Her 169 career thefts are tied for 19th with Carla Coleman (1991-95) and Tiffany Longworth (1994-97). Bentley needs five steals to tie Angie Potthoff (174; 193-97) for 18th spot.

GREENE MOVING UP CHARTS: Junior center **Nikki Greene** is steadily moving up the career charts after pulling in nine rebounds against Michigan Jan. 12. Greene now has 590 career rebounds to pass Kim Calhoun (583; 1993-96) for 22nd place on Penn State's career boards chart. Greene needs six rebounds to move past Sue Martin (595; 1977-80) for 21st place. Additionally, Greene is in sixth place on the Penn State career blocks list with 151 rejections. She needs 21 blocks to move into the Top 5 all-time.

LUCAS MATCHES HER NUMBER: Sophomore guard **Maggie Lucas** scored 28 points in the second half en route to a career-high 33 points in the loss to Michigan State Jan. 7. It was the first career 30-point game for the sharp-shooter and are the most points by a Penn State player since Tyra Grant had 33 points at Iowa on Feb. 1, 2009. It was also the first 30-point effort for a Lady Lion since Grant had 32 tallies versus the Hawkeyes in the Big Ten Tournament (3/5/10).

LUCAS EQUALS BJC 3S RECORD: With seven triples against Michigan State Jan. 7, including six in the second half, sophomore guard **Maggie Lucas** tied the BJC record for three-pointers in a game. She equals the mark set by Adrienne Squire (2/12/06), Kelly Mazzante (1/9/03) and Iowa's Kamille Wahlin (12/28/09). The seven triples tie Lucas' career mark, which she also set against Hartford in Mexico on Nov. 27, 2010.

NICKSON HITS 400 IN BLUE & WHITE: Redshirt junior **Mia Nickson** surpassed the 400-point mark for her Penn State career with seven tallies against the Spartans Jan. 7. She has 411 markers as a Lady Lion and 456 points for her collegiate career.

OFFICIAL PINK ZONE T-SHIRTS: The Official 2012 WBCA Pink Zone at Penn State t-shirt is available at all Penn State Bookstore location. This year, there is an official adult shirt that is \$15 with \$5 of every shirt going to the Pink Zone fundraising efforts, as well as an official youth shirt that is \$10 with \$2 of every shirt going to Pink Zone.

LUCAS CHANGES HER GAME: Sophomore guard **Maggie Lucas** has become more than just a three-point threat for the Lady Lions. In a comparison of the first 16 games of her rookie campaign and 16 games this year, Lucas has scored more points (322-258) despite making seven less three-pointers than a year ago (43-50). Additionally, Lucas has been more of a threat off the dribble, making twice as many free throws as she did last season through 16 games (73-34). Here is a 16-game comparison of Lucas' key stats:

Year	Pts.	3FGM	3FGA	FTM	Reb.	Asst.
Frosh.	258	50	120	34	52	23
Soph.	322	43	108	75	73	44

LADY LIONS ON TWITTER & FACEBOOK: The Lady Lions are on Twitter. Follow the Lady Lions and assistant coaches (@pennstatewbb) and sports information contact Kris Petersen (@ladylionsid) to get the inside scoop. The Lady Lions are also on Facebook at www.facebook.com/pennstateladylions.



NEW TICKET PACKAGE: The Lady Lions have introduced the Starting 5 Pack, which is available by calling 800-NITTANY, to go along with to PNC Flex Books and single-game tickets. The Starting 5 Pack is \$49 and features tickets to three games of the buyer's choice, a ticket for the Ohio State ESPN2 Big Monday game on Monday, Feb. 20 and a ticket for the Pink Zone game against Minnesota on Sunday, Feb. 26.

2012 WBCA PINK ZONE: The 2012 WBCA Pink Zone at Penn State will take place on Sunday, Feb. 26 as the Lady Lions take on Minnesota in the BJC. Last year, the Lady Lions donated nearly \$200,000 for breast cancer causes. This year's fundraising efforts will benefit the Mount Nittany Medical Center, Penn State Hershey Cancer Institute, Pennsylvania Breast Cancer Coalition, the Kay Yow Cancer Fund, J.C. Blair Memorial Hospital and Lewistown Hospital. For more information on the Pink Zone at Penn State, visit the official Pink Zone website at www.gopsusports.com/pinkzone or on Facebook at www.facebook.com/pinkzoneatpennstate.

PENN STATE'S OVERALL/BIG TEN YEAR-BY-YEAR REVIEW

Year	Overall	Big Ten	Home	BT Home	Road	BT Road	Neutral
1992-93	22-6	14-4	12-2	9-0	9-4	5-4	0-0
1993-94	28-3	16-2	14-0	9-0	11-2	7-2	3-1
1994-95	26-5	13-3	14-2	8-0	9-3	5-3	3-0
1995-96*	27-7	13-3	14-2	8-0	8-4	5-3	5-1
1996-97	15-12	8-8	9-3	5-3	5-6	3-5	1-3
1997-98	21-13	8-8	10-5	4-4	6-6	4-4	5-2
1998-99	22-8	12-4	9-2	6-2	9-4	6-2	4-2
1999-00	30-5	15-1	14-0	8-0	9-2	7-1	7-3
2000-01	19-10	11-5	11-2	7-1	6-5	4-4	2-3
2001-02	23-12	11-5	10-4	6-2	9-5	5-3	4-3
2002-03	26-9	13-3	16-0	8-0	7-7	5-3	2-2
2003-04	28-6	15-1	12-1	8-0	9-3	7-1	6-2
2004-05	19-11	13-3	12-0	8-0	6-9	5-3	1-2
2005-06	13-16	6-10	8-6	5-3	3-8	1-7	2-2
2006-07	15-16	7-9	12-1	7-1	2-12	0-7	1-3
2007-08	13-18	4-14	10-6	3-6	3-11	1-8	0-1
2008-09	11-18	6-12	8-6	4-5	2-9	2-7	1-3
2009-10	17-14	8-10	9-6	5-4	5-7	3-6	3-1
2010-11	25-10	11-5	14-4	6-2	7-4	5-3	4-2
2011-12	12-4	2-2	7-2	1-2	4-2	1-0	1-0

* First season at the Bryce Jordan Center



PENN STATE'S RECORD WHEN...

Playing at home	7-2
Playing on the road	4-2
Playing at a neutral site	1-0
vs. Top 10 teams	0-0
vs. Top 25 teams	1-2
Games decided by 3 points or less	0-0
Games decided by 4-10 points	2-4
Games decided by 11-19 points	4-0
Games decided by 20 points or more	6-0
Leading at the half	10-3
Tied at the half	0-0
Trailing at the half	2-1
Leading with 5:00 remaining	11-0
Trailing with 5:00 remaining	1-3
Tied with 5:00 remaining	0-1
In overtime	0-0
PSU scores 40-49 points	0-0
PSU scores 50-59 points	1-0
PSU scores 60-69 points	3-3
PSU scores 70-79 points	4-1
PSU scores 80 points or more	4-0
PSU shoots 45% or better	9-0
PSU shoots less than 45%	3-4
PSU shoots better than opponent	12-1
Opponent shoots better than PSU	0-3
Opponent scores less than 39 points	1-0
Opponent scores 40-49 points	3-0
Opponent scores 50-59 points	4-0
Opponent scores 60-69 points	3-0
Opponent scores more than 70 points	1-4
Opponent shoots better than 45%	0-1
Opponent shoots less than 45%	12-3
PSU outrebounds opponent	8-1
Opponent outrebounds PSU or tied	4-3
PSU commits 14 or less turnovers	5-3
PSU commits 15 or more turnovers	7-1
PSU makes at least 5 3-pointers	6-3
PSU makes four 3-pointers or less	6-1
Recording 7 or more steals	10-3
Recording 6 or less steals	2-1
Wearing white uniforms	8-2
Wearing blue uniforms	4-2
Wearing gray uniforms	0-0
Wearing pink uniforms	0-0
Penn State wins the tip	9-2
Penn State loses the tip	3-2
Penn State scores first	8-3
Opponent scores first	4-1
Playing during the day (before 5 p.m.)	6-2
Playing at night	6-2
On Monday	1-0
On Tuesday	1-0
On Wednesday	2-0
On Thursday	1-1
On Friday	2-1
On Saturday	1-2
On Sunday	4-0
In November	6-1
In December	4-2
In January	2-1
In February	0-0
In March	0-0

BENTLEY MOVES INTO 29TH IN SCORING: With four points against Michigan State Jan. 7, junior guard **Alex Bentley** moved past Brianne O'Rourke for 29th place on Penn State's career scoring list. Bentley now has 1,097 career points. She need nine points to tie Missy Masley (1,106; 1992-95) for 28th place.

LADY LIONS IN THE RPI: The Lady Lions are highly ranked in many of the RPI reports across the country. Penn State is 37th in the Jan. 8 NCAA RPI report. The Lady Lions have or will play four teams in the RPI top 25 this season.

GREENE GET REJECTION #150: With a pair of blocks at Wisconsin Jan. 2, junior center **Nikki Greene** became the sixth player in school history with 150 career blocks. She joins a list that includes Kim Calhoun, Mary Donovan, Rashana Barnes, Andrea Garner and Amanda Brown.

BENTLEY MOVES UP HELPERS CHART: Junior guard **Alex Bentley** moved into 11th place on Penn State's career assists chart with eight helpers at Wisconsin Jan. 2. Bentley moved past Corinne Gulas (379). She has 392 career assists and needs 19 dimes to move into the Top 10.

LUCAS LENDS HELPING HAND: Sophomore guard **Maggie Lucas** was in a giving mood to start the New Year with a career-high seven assists in the win at Wisconsin Jan. 2. The seven helpers pass her previous career high of five set against Nevada and Middle Tennessee State earlier this year.

DOUBLE TROUBLE FOR MIA: In just her second game back after missing six games due to a mild concussion, junior **Mia Nickson** posted her first double-double of the season and seventh of her career with 10 points and 14 rebounds at Wisconsin Jan. 2. Nickson dominated the offensive glass, hauling in eight caroms. After struggling from the field early in the season, Nickson was efficient against the Badgers, going 5-for-6 from the floor.

GRAY INTO TOP 10: Senior **Zhaque Gray** moved into eighth place in the Penn State three-point field goals record books with a pair of triples at Wisconsin Jan. 2. Gray passed Brianne O'Rourke for eighth place in all-time three-point field goals made (123). She needs a one triples to tie Tina Nicholson (124) for seventh place.

A THIEF NAMED ALEX: Junior guard **Alex Bentley** registered a career-high eight steals in the Big Ten opener against Nebraska Dec. 30. Her eight thefts are the most by a Lady Lion since Kelly Mazzante had eight steals against Fairfield on Dec. 2, 2001 and were just two shy of the school's single-game record set three times by Suzie McConnell.

LIONS IN THE BIG TEN STATS

A breakdown of where Penn State ranks in the Big Ten's statistical categories. Through games of Jan. 12.

TEAM	
Scoring Offense.....	3rd (75.8)
Scoring Defense.....	6th (59.4)
Scoring Margin.....	3rd (+16.4)
Free Throw Percentage.....	8th (.703)
FG Percentage.....	2nd (.443)
FG Percentage Defense.....	1st (.324)
3-point FG Percentage.....	1st (.364)
3-point FG Pct. Defense.....	1st (.267)
3-point FG Made.....	8th (5.0)
Rebounding Offense.....	2nd (43.7)
Rebounding Defense.....	11th (40.9)
Rebounding Margin.....	4th (+2.8)
Offensive Rebounds.....	5th (13.6)
Defensive Rebounds.....	1st (30.1)
Blocked Shots.....	7th (4.4)
Assists.....	5th (14.9)
Steals.....	3rd (10.2)
Turnover Margin.....	5th (+2.1)
Assist to Turnover Ratio.....	4th (0.9)

INDIVIDUAL	
Scoring.....	3rd - Maggie Lucas (20.1)
.....	14th - Alex Bentley (14.2)
.....	22nd - Zhaque Gray (11.1)
.....	29th - Nikki Greene (9.3)
Rebounding.....	5th - Nikki Greene (7.9)
.....	15th - Talia East (5.9)
FG Percentage.....	4th - Nikki Greene (.514)
.....	15th - Alex Bentley (.451)
Assists.....	3rd - Alex Bentley (5.8)
FT Percentage.....	5th - Maggie Lucas (.843)
Steals.....	1st - Alex Bentley (3.2)
3FG Percentage.....	6th - Maggie Lucas (.398)
.....	15th - Zhaque Gray (.354)
3FG Made.....	2nd - Maggie Lucas (2.7)
Blocked Shots.....	8th - Talia East (1.4)
.....	9th - Nikki Greene (1.3)
Assist-to-TO Ratio.....	5th - Alex Bentley (1.6)
Off. Reb.....	5th - Nikki Greene (2.6)
Def. Reb.....	6th - Nikki Greene (5.3)
.....	15th - Talia East (4.3)
Minutes.....	6th - Maggie Lucas (34.2)

LUCAS SURPASSES 800 POINTS: Sophomore guard **Maggie Lucas** reached the 800-point mark for her career with 18 tallies against Nebraska on Dec. 30. It took Lucas just for games to get from 700 points to 800 markers.



MILESTONE WATCH

Milestone Watch

Milestone	Player	Current Total
1,100 points	Alex Bentley	1,097
900 points	Maggie Lucas	874
800 points	Zhaque Gray	741
700 points	Nikki Greene	665
500 points	Mia Nickson (career)	456
	Mia Nickson (PSU)	411
300 points	Marisa Wolfe	216
	Ariel Edwards	200
200 points	Gizelle Studevent	110
600 rebounds	Nikki Greene	590
400 rebounds	Mia Nickson (career)	359
	Mia Nickson (PSU)	302
300 rebounds	Alex Bentley	221
200 rebounds	Zhaque Gray	193
	Marisa Wolfe	188
	Maggie Lucas	181
	Ariel Edwards	132
400 assists	Alex Bentley	392
200 assists	Zhaque Gray	120
	Maggie Lucas	102
200 steals	Alex Bentley	169
100 steals	Maggie Lucas	77
200 blocks	Nikki Greene	151
200 3-pointers	Maggie Lucas	155
150 3-pointers	Zhaque Gray	124

Milestone Reached

Milestone	Player	Reached
200 points	Ariel Edwards	11/21/12
300 rebounds	Mia Nickson (PSU)	11/21/12
200 assists	Maggie Lucas	11/21/12
400 points	Mia Nickson (PSU)	11/7/12
150 3-pointers	Maggie Lucas	11/7/12
150 blocks	Nikki Greene	11/21/12
800 points	Maggie Lucas	12/30/11
200 points	Marisa Wolfe	12/21/11
150 steals	Alex Bentley	12/21/11
700 points	Zhaque Gray	12/18/11
600 points	Nikki Greene	12/11/11
100 points	Gizelle Studevent	12/11/11
1,000 points	Alex Bentley	12/6/11
700 points	Maggie Lucas	12/6/11
100 rebounds	Ariel Edwards	12/6/11
200 rebounds	Alex Bentley	12/3/11
100 assists	Zhaque Gray	11/30/11
500 rebounds	Nikki Greene	11/25/11
600 points	Zhaque Gray	11/17/11
600 points	Maggie Lucas	11/17/11
900 points	Alex Bentley	11/13/11
400 rebounds	Mia Nickson (career)	11/13/11
300 assists	Alex Bentley	11/11/11
100 points	Ariel Edwards	11/11/11

NICKSON RETURNS: After missing the six games with a concussion, junior **Mia Nickson** returned to the Lady Lion lineup against Nebraska Dec. 30. She accounted for four points, seven rebounds and a steal against the Cornhuskers. Nickson also missed a pair of games earlier in the season with concussion-like symptoms.

STRUGGLES FROM THE FIELD: The Lady Lions were held to just seven points in the final 12:50 in the loss to Nebraska in the Big Ten opener Dec. 30. Penn State shot just 29.4% from the field, including a 23.3% effort in the second half. It was the worst shooting percentage since the Lady Lions connected on just 27.3% of their shots against Wisconsin on Feb. 25, 2010.

20-POINT STREAK FOR LUCAS: Sophomore guard **Maggie Lucas** had her string of four consecutive 20-point games snapped against Nebraska Dec. 30. Lucas had 22 points at Bucknell Dec. 21, 23 markers against Wagner Dec. 18, 20 points each against UMES (Dec. 11) and Virginia Tech (Dec. 6).

PERFECT HOME NON-CON SLATE: The Lady Lions completed a perfect home non-conference schedule with a dominating 103-42 win over Wagner Dec. 18. Penn State was victorious in all six home non-conference games for the first time since going 7-0 in the 2007-08 campaign, **Coquese Washington's** first season.

LUCAS NOTCHES ANOTHER 3S RECORD: **Maggie Lucas** added her name to another Penn State three-pointers record with a perfect 4-for-4 effort from long range against Bucknell Dec. 21 to tie the school record for three-point field goal percentage (min. 4 att.). It was the first perfect performance from downtown (min. 4 att.) for the Lady Lions since Jess Brungo was 5-for-5 at Clemson on Dec. 7, 2002. Lucas shares the record with Brungo's Clemson performance and a 4-for-4 mark versus Illinois (2/15/01) and Lisa Faloon's 4-for-4 day versus Rhode Island (2/28/87).

SOLID NON-CON SEASON: The Lady Lions posted their second consecutive double-digit non-conference win total with a victory at Bucknell Dec. 21. Penn State finished 10-2 in the non-conference slate to post just their third non-conference double figure win total since joining the Big Ten in 1992-93 (10 - 2002-03; 11 - 2010-11).

CENTURY MARK TIMES THREE: The Lady Lions reach the 100-point mark for the third time this season with a 103-42 victory over Wagner Dec. 18. Penn State also posted 103 tallies in wins over North Carolina (103-84) and Nevada (103-65). The three 100-point games are tied for the fourth-most 100-point games in a season in school history. The record for 100-point contests is six by the 1984-85 squad. The 1992-93, 1980-81 and 1978-79 teams each reached the century mark three times in their respective seasons.

WALDNER WAILS ON BOARDS: Freshman post player **Tori Waldner** posted the first double-digit rebounding performance of her career with 10 caroms against Wagner Dec. 18. The rookie hauled in three offensive boards and seven defensive caroms to lead all players. Her previous personal best was nine rebounds against UMES.

GRAY TO 700: With 13 tallies against Wagner Dec. 18, senior guard **Zhaque Gray** reached the 700-point mark for her career. After scoring just 233 markers in her first two seasons in Happy Valley, Gray has become a solid third scorer for the Lady Lions alongside **Maggie Lucas** and **Alex Bentley**.

PERFECT FROM THE FIELD: Junior center **Nikki Greene** made consecutive last 11 shots from the field after going 5-for-5 in the second half against Virginia Tech and 6-for-6 versus UMES. The performance against the Lady Lions was just the second perfect effort from the field by Greene. Her other perfect outing was when she made her only shot from the field against Minnesota her freshman season (Dec. 6, 2009).

THE NICKSON FACTOR: Both the of Lady Lions' non-conference losses came without junior forward **Mia Nickson** in the lineup. In the eight games that PSU has played without Nickson, Penn State has been outrebounded or tied in rebounding in six contests and has a -0.4 rebounding margin in those games (41.2-41.6). The Lions were 6-2 without Nickson.

GRABBING BOARDS: Freshman **Tori Waldner** and sophomore **Ariel Edwards** each snared a career-high nine rebounds in the win over UMES Dec. 11. In addition to her nine caroms, Waldner tied her career-high two blocks and played a personal-best 21 minutes. Edwards also dished out a career-best three assists in the win.

NCAA STATS

TEAM

Scoring Offense23rd (75.8)
Scoring Margin24th (+16.4)
Field Goal Percentage18th (.443)
Field Goal Pct. Defense7th (.324)
3-pt. Field Goal Percentage21st (.364)
3-pt. Field Goal Pct. Defense42nd (.267)
Winning Percentage47th (.750)
Assists54th (14.9)
Blocked Shots80th (4.4)
Steals94th (10.2)
Turnovers65th (15.9)
Assist-to-Turnover Ratio43rd (0.94)
Turnover Margin89th (2.13)

INDIVIDUAL

Scoring17th - Maggie Lucas (20.1)
Assists15th - Alex Bentley (5.8)
Steals26th - Alex Bentley (3.2)
FT Percentage56th - Maggie Lucas (.843)
3-pt. Field Goals/Game26th - Maggie Lucas (2.7)
3-pt. Field Goal Pct.35th - Maggie Lucas (.398)
Assist-to-TO Ratio85th - Alex Bentley (1.55)

SINGLE-GAME

3-pt. Field Goals T-21st - vs. North Carolina (14)
Assists	.. T-1st - Alex Bentley (15 vs. North Carolina)
Blocked Shots	.. T-16th - Talia East (7 at S. Carolina)
Steals T-12th - Alex Bentley (8 vs. Nebraska)
3-pt. FGs T-22nd - Maggie Lucas (7 vs. Mich. St.)

NCAA Statistics as of 1/13



THE LAST TIME PENN STATE...

SCORING

Player scored 20 points: vs. Michigan (22, Maggie Lucas), 1/12/12
Player scored 25 points: vs. Michigan State (33, Maggie Lucas), 1/7/12
Player scored 30 points: vs. Michigan State (33, Maggie Lucas), 1/7/12
Player scored 35 points: vs. Wisconsin (35, Kelly Mazzante), 3/2/03
Player scored 40 points: vs. Minnesota (49, Kelly Mazzante), 12/28/01
Two players scored 20 points: vs. Wagner (23, Maggie Lucas; 23, Alex Bentley), 12/18/11
Three players scored 20 pts.: at Nevada (26, Maggie Lucas; 23, Alex Bentley; 21, Zhaque Gray), 11/26/11
Two players scored 25 points: at Boston College (28, Alex Bentley; 28, Maggie Lucas), 12/2/10
Player scored 25 points/3 consecutive games: Kelly Mazzante (31, vs. Baylor, 12/9/03; 31, vs. Pittsburgh, 12/14/03; 29, Louisiana Tech, 12/21/03)
Five in double figures: vs. North Carolina (25, Zhaque Gray; 21, Maggie Lucas; 15, Alex Bentley; 13, Nikki Greene; 13, Ariel Edwards), 11/30/11
Six in double figures: at Oakland (15, Alex Bentley; 16, Ariel Edwards; 16, Zhaque Gray; 13, Maggie Lucas; 10, Mia Nickson; 10, Gizelle Studevent; 10, Julia Trogele), 11/18/10
Seven in double figures: at Oakland (15, Alex Bentley; 16, Ariel Edwards; 16, Zhaque Gray; 13, Maggie Lucas; 10, Mia Nickson; 10, Gizelle Studevent; 10, Julia Trogele), 11/18/10
PSU scored 50 points in a half: vs. Wagner (57, first half), 12/18/11
PSU scored 55 points in a half: vs. Wagner (57, first half), 12/18/11
PSU scored 60 points in a half: vs. Northwestern (65 points, first half), 1/2/00
PSU scored 100 points: vs. Wagner (W, 103-42), 12/18/11
PSU scored 100 points in Big Ten game: vs. Illinois (W, 101-80), 2/15/01
PSU scored 100 points in a home game: vs. Wagner (W, 103-42), 12/18/11
PSU scored fewer than 15 points in a half: vs. Wisconsin (13, first half), 2/25/10
PSU scored fewer than 20 points in a half: vs. Michigan State (18, first half), 2/10/11
PSU scored fewer than 40 points in a game: vs. Wisconsin (L, 39-71), 2/25/10
PSU scored fewer than 50 points in a game: vs. Purdue (L, 49-60), 2/24/11
PSU scored fewer than 50 points in a Big Ten game: vs. Purdue (L, 49-60), 2/24/11
OPP scored 50 points in a half: vs. Duke (50, second half), 11/18/05
OPP scored 100 points: at Boston College (Lot, 113-104), 12/2/10
OPP scored fewer than 20 points in a game: at Dickinson (W, 57-16), 3/6/71
OPP scored fewer than 30 points in a game: vs. Virginia Tech (W, 66-28), 12/6/11
OPP scored fewer than 40 points in a game: vs. Virginia Tech (W, 66-28), 12/6/11
OPP scored fewer than 50 points in a game: at Wisconsin (W, 82-49), 1/12/12
OPP scored fewer than 50 points in a Big Ten game: at Wisconsin (W, 82-49), 1/12/12

FIELD GOAL SHOOTING

Player made every shot from the field (min. 7): vs. Michigan St. (Amanda Brown, 8-8), 1/25/07
PSU shot 55% in a game: vs. Michigan (.554), 1/12/12
PSU shot 55% in consecutive games: vs. Northwestern (.682), 3/2/96; vs. Ohio St. (.585), 3/3/96
PSU shot 60% in a game: vs. Michigan State (.608), 2/23/96
PSU shot below 25% in a game: at Alabama (.230), 12/19/96
PSU shot below 30% in a game: vs. Nebraska (.294), 12/30/11
PSU shot below 35% in a game and won: vs. Indiana (.321), 1/10/10
PSU shot 55% in a half: vs. Michigan (.571, first half), 1/12/12
PSU shot 60% in a half: vs. Virginia Tech (.714, second half), 12/6/11
PSU shot 65% in a half: vs. Virginia Tech (.714, second half), 12/6/11
PSU shot 70% in a half: vs. Virginia Tech (.714, second half), 12/6/11
PSU shot 55% in both halves: vs. Iowa (.552, first half, .565, second half), 1/26/06
PSU shot below 20% in a half: at Indiana (.231, first half), 2/28/10
PSU shot below 25% in a half: vs. Nebraska (.233, second half), 12/30/11

THREE-POINT SHOOTING

Player made every shot from the field (min. 4): at Bucknell (4-4, Maggie Lucas), 12/21/11
Player made 4 three-pointers in a half: vs. Michigan State (6, Maggie Lucas), 1/7/12
Player made 5 three-pointers in a half: vs. Michigan State (6, Maggie Lucas), 1/7/12
Player made 6 three-pointers in a half: vs. Michigan State (6, Maggie Lucas), 1/7/12
Player made 5 three-pointers in a game: vs. Michigan State (7, Maggie Lucas), 1/7/12
Player made 7 three-pointers in a game: vs. Michigan State (7, Maggie Lucas), 1/7/12
Player made 7 three-pointers in a game: vs. Michigan State (7, Maggie Lucas), 1/7/12
Player made 8 three-pointers in a game: at Minnesota (8, Kelly Mazzante), 12/28/01
Player attempted 10 three-pointers in a game: vs. Michigan State (13, Maggie Lucas), 1/7/12
PSU made 10 three-pointers: vs. North Carolina (14), 11/30/11
PSU did not make a three-pointer: at South Carolina (0-6), 11/20/11
PSU attempted 20 three-pointers: vs. Michigan State (24), 1/7/12
PSU shot 60% 3FG (min. 5 att.): at Bucknell (8-13, .615), 12/21/11

FREE THROW SHOOTING

Player made every shot from FT line (min. 10): vs. Illinois (Julia Trogele, 12-12), 3/5/11
PSU shot 90% (min. 10 att.): vs. North Carolina (14-24, .929), 1/13/01
PSU shot below 50% (min. 10 att.): vs. Holy Cross (9-20, .450), 11/28/09
PSU made 30 free throws: vs. Pittsburgh (34), 11/11/07
PSU made fewer than five FTs: at Michigan (3), 2/3/11
PSU attempted 40 free throws: vs. Pittsburgh (41), 11/11/07
PSU attempted fewer than five FTs: at Michigan (4), 2/3/11

REBOUNDS

Player had 15 rebounds: vs. Nebraska (15, Nikki Greene), 12/30/11
Player had 20 rebounds: vs. Indiana (20, Nikki Greene), 1/23/11
Two players with double-digit rebs.: vs. Middle Tennessee St. (10, Nikki Greene; 10, Mia Nickson), 11/13/11
Three players had double-digit rebounds: at Indiana (11, Nikki Greene; 10, Meredith Monroe; 11, Julia Trogele), 1/10/10
PSU had 60 rebounds: vs. Indiana (61), 1/23/11
PSU had 50 rebounds: vs. Wagner (54), 12/18/11
PSU had 20 or fewer rebounds: vs. Michigan State (20), 1/19/03
OPP had 20 or fewer rebounds: at Indiana (20), 2/13/11
PSU had 20 offensive rebounds: vs. Nebraska (25), 12/30/11
PSU had 25 offensive rebounds: vs. Nebraska (25), 12/30/11

ASSISTS

Player had 10 assists: vs. North Carolina (15, Alex Bentley), 11/30/11
Player had 10 assists/consecutive games: Helen Darling, three games (12 at LaSalle, 12/8/99; 11 vs. Auburn, 12/11/99; 10 vs. Clemson, 12/19/99)
Player had 15 assists: vs. North Carolina (15, Alex Bentley), 11/30/11
PSU had 30 assists: vs. St. Francis (Pa.) (32), 12/2/99
PSU had fewer than 10 assists: vs. Nebraska (8), 12/30/11
PSU had fewer than 5 assists: at Michigan State (4), 2/4/10

BLOCKED SHOTS

Player blocked 5 shots: at South Carolina (7, Talia East), 11/20/11
Player blocked 6 shots: at South Carolina (7, Talia East), 11/20/11
PSU blocked 10 shots: vs. Purdue (11), 1/28/10
PSU blocked 0 shots: vs. Purdue, 2/19/09

STEALS

Player had 7 steals: vs. Nebraska (8, Alex Bentley), 12/30/11
Player had 8 steals: vs. Nebraska (8, Alex Bentley), 12/30/11
PSU had 20 steals: vs. Bucknell (21), 12/28/10

TURNOVERS

PSU committed 25 or more: vs. Michigan State (25), 1/7/12
PSU committed 25 or more and won: vs. Minnesota (26), 1/13/11
PSU committed 10 or fewer: vs. North Carolina (10), 11/30/11
PSU committed 10 or fewer in consecutive games: vs. Minnesota (9), 1/22/04; at Ohio St. (9), 1/25/04
OPP committed 25 or more: vs. Nebraska (26), 12/30/11

DOUBLE-DOUBLES

Points & rebounds: at Wisconsin (Mia Nickson; 10 points, 14 rebounds), 1/2/12
Points & rebounds/consecutive games: Nikki Greene (12 points, 10 rebounds vs. Ohio State, 1/30/11; 16 points, 14 rebounds at Illinois, 1/27/11)
Points & rebounds/3 consecutive games: Amanda Brown (19 pts., 17 rebs. at Northwestern, 2/11/07; 14 pts., 10 rebs. vs. Minnesota, 2/15/07; 14 pts., 11 rebs. at Iowa, 2/18/07)
Points & rebounds/4 consecutive games: Angie Potthoff (vs. Northwestern, 1/31/97; at Illinois, 2/2/97; vs. Michigan, 2/7/97; vs. Indiana, 2/9/97; vs. Iowa, 2/16/97; vs. Michigan State, 2/21/97)
Points & rebounds/5 consecutive games: Angie Potthoff (vs. Northwestern, 1/31/97; at Illinois, 2/2/97; vs. Michigan, 2/7/97; vs. Indiana, 2/9/97; vs. Iowa, 2/16/97; vs. Michigan State, 2/21/97)
Points & assists: vs. North Carolina (Alex Bentley; 15 points, 15 assists), 11/30/11
Points & assists/consecutive games: Helen Darling (12 points, 12 assists at La Salle, 12/8/99; 10 points, 11 assists vs. Auburn, 12/11/99)
Two plys. w/double-doubles: at Illinois (Nikki Greene, 16 pts., 14 rebs.; Julia Trogele, 19 pts., 11 rebs.), 1/27/11
Three players had double-doubles: vs. Coppin State (Brienne O'Rourke, 12 points, 13 assists; Julia Trogele, 12 points, 13 rebounds; Janessa Wolff, 15 points, 10 rebounds), 11/29/08
15 points and 15 rebounds: vs. Indiana (Mia Nickson; 25 points, 17 rebounds), 1/23/11
20 points and 10 rebounds: vs. Indiana (Mia Nickson; 25 points, 17 rebounds), 1/23/11

MARGIN OF VICTORY

PSU won by 20-30 points: at Wisconsin (33), 1/2/12
PSU won by 20-30 points in a Big Ten game: at Wisconsin (33), 1/2/12
PSU won by 31-40 points: at Wisconsin (33), 1/2/12
PSU won by 41-50 points: vs. Wagner (61), 12/18/11
PSU won by 51+ points: vs. Wagner (61), 12/18/11
PSU lost by 20-30 points: at Ohio State (22), 2/17/11
PSU lost by 20-30 points in a Big Ten game: at Ohio State (22), 2/17/11
PSU lost by 31+ points: vs. Wisconsin (32), 2/25/10

MISCELLANEOUS

Led PSU in points/rebounds/assists: Tyra Grant vs. Michigan (25 pts., 9 rebs., 4 asst.), 2/18/10
Hit "final seconds" (under 10 seconds) game-winning shot: Julia Trogele at Illinois (9 sec.), 1/27/11
Hit "final minute" game-winning shot: Nikki Greene vs. Indiana (40 seconds remaining), 2/13/11
Player played every minute: at Illinois (Tyra Grant), 12/31/09
Player played more than 40 min.: at Dayton (Alex Bentley, 46; Zhaque Gray, 44; Mia Nickson, 41), 11/12/10
Committed 10 or fewer fouls: vs. Virginia Tech (9), 12/6/11
Committed 30 or more fouls: vs. Iowa State (32), 11/25/11
PSU rallied from a 10-point deficit to win: vs. Middle Tenn. St. (down 10 15:38 2nd half, won 65-49), 11/13/11
PSU rallied from a 15-point deficit to win: at Indiana (down by 16 at 10:02 in 1st half, won 80-77), 2/13/11
PSU had a 5-game winning streak: 5 games, 1/23/11 - 2/6/11
PSU had a 5-game losing streak: 6 games, 1/28/10 - 2/14/10
PSU went undefeated at home: 2004-05 season
PSU sold out the BJC: Purdue, 2/29/04

OVERTIME

PSU played an OT game: at Boston College (L, 113-104), 12/2/10
PSU won an OT game: at Oakland (96-89), 11/18/10
PSU lost an OT game: at Boston College (L, 113-104), 12/2/10
PSU played two or more OT games in a season: 2010-11 season (three)
PSU won two or more OT games in a season: 2010-11 season (two)

RANKINGS

Played the No. 1 team in the AP poll: vs. Connecticut (L, 77-63), 12/14/08
Played the No. 1 team in the Coaches poll: vs. Connecticut (L, 77-63), 12/14/08
Defeated the No. 1 team in the AP poll: at Virginia (73-71), 1/3/91
Defeated Top 10 opponent: vs. #11/10 Duke (86-84), 12/2/07
Defeated Top 10 opponent on the road: at #7 Purdue (47-42), 1/2/04
Defeated Top 10 opponent by double digits: vs. #10 Minnesota (81-68), 1/30/05
Played consecutive Top 10 teams: at #2/3 Texas 11/14/04, at #6/6 Duke 11/19/04
Defeated Top 25 opponent: vs. #14/13 North Carolina (103-84), 11/30/11
Defeated Top 25 opponent on the road: at No. 20/22 Iowa (82-75), 2/6/11
Defeated Top 25 opponent by double digits: vs. #14/13 North Carolina (103-84), 11/30/11



2011-12 GAME-BY-GAME STARTING LINEUPS

Date	Opponent	Pt Guard	Guard	Guard	Forward	Center
11/5	BLOOMSBURG	Bentley	Gray	Lucas	Nickson	Greene
11/11	WASHINGTON ST.	Bentley	Gray	Lucas	Nickson	Greene
11/13	MIDDLE TENNESSEE	Bentley	Gray	Lucas	Nickson	Greene
11/17	at Delaware	Bentley	Gray	Lucas	Edwards	Greene
11/20	at South Carolina	Bentley	Gray	Lucas	Edwards	Greene
11/25	vs. Iowa State	Bentley	Gray	Lucas	Nickson	Greene
11/26	at Nevada	Bentley	Gray	Lucas	Nickson	Greene
11/30	NORTH CAROLINA	Bentley	Gray	Lucas	Edwards	Greene
12/3	at Texas Tech	Bentley	Gray	Lucas	Edwards	Greene
12/6	VIRGINIA TECH	Bentley	Gray	Lucas	Edwards	Greene
12/11	UMES	Bentley	Gray	Lucas	Edwards	Greene
12/18	WAGNER	Bentley	Gray	Lucas	Edwards	Greene
12/21	at Bucknell	Bentley	Gray	Lucas	Edwards	Greene
12/30	NEBRASKA	Bentley	Gray	Lucas	Nickson	Greene
1/2	at Wisconsin	Bentley	Gray	Lucas	Nickson	Greene
1/7	MICHIGAN STATE	Bentley	Gray	Lucas	Nickson	Greene
1/12	MICHIGAN	Bentley	Gray	Lucas	Nickson	Greene

PSU RECEIVING VOTES IN AP POLL: The Penn State Lady Lions dropped four spots and out of the Top 25 after the loss to Michigan State. The Lady Lions are the first team out of the Jan. 9 Associated Press poll, just one point behind #25 Vanderbilt. The Lady Lions peaked at No. 11 in the Nov. 14 poll, their highest ranking in the AP poll since they were fifth in the final 2004 poll. Additionally, Penn State made its first appearance in the preseason AP poll since the 2003-04 campaign.

LIONS RANKED 25TH IN COACHES POLL: The Lady Lions move down six spots to 25th in the Jan. 10 ESPN/USA Today coaches poll. Penn State peaked at 12th, the highest ranking in the ESPN/USA Today Coaches' Poll for the Lady Lions since they were seventh in the final 2004 poll. Additionally, Penn State appeared in the preseason coaches' poll since starting the 2003-04 campaign eighth.

BENTLEY JOINS 1,000-POINT CLUB: With 11 points versus Virginia Tech Dec. 6, junior guard **Alex Bentley** became the 33rd player in school history with 1,000 points. She is also the 15th junior to reach the milestone and first Lady Lion to accomplish the feat since Tyra Grant reached the 1,000-point plateau in 2008.

STIFLING D: The Lady Lions turned in a stellar defensive performance in a 66-28 win over Virginia Tech Dec. 6. The 28 points were the fewest scored by the Hokies in program history, surpassing the 33 points scored against Tennessee during the 1995 campaign. It is also the fewest points scored by a Penn State opponent since giving up 21 tallies to Rider on Nov. 14, 2010.

STELLAR SHOOTING: The Lady Lions shot a sizzling 71.4% (15-21) from the field in the second half in the win over Virginia Tech Dec. 6. It is the first time a Penn State team shot better than 70% in a half since shooting 70.4% against Ohio State in the Big Ten Tournament on March 4, 2007. It was also the best shooting effort for the Lady Lions in a half since connecting on 72.7% (16-22) in the first half against Northwestern on Jan. 4, 2007.

BENTLEY NAMED TO TRIO OF WATCH LISTS: Junior point guard **Alex Bentley** as been named to a pair of watch lists for National Player of the Year. Bentley is one of 25 players on the WBCA's Wade Trophy Watch List, is among the 30 players on the Wooden Award preseason chart and is on the Naismith Award watch list. Additionally, Maggie Lucas is also on the Naismith Award chart, making the Lady Lions one of 11 schools with multiple players on the list.

LADY LIONS SEASON BESTS

Player	Points	Rebounds	Assists	Blocks	Steals
Alex Bentley	23 (2X)	5 (2X)	15 (N. Carolina)	1 (2X)	8 (Nebraska)
Talia East	8 (2X)	15 (S. Carolina)	2 (Bucknell)	7 (S. Carolina)	2 (Texas Tech)
Ariel Edwards	13 (N. Carolina)	9 (UMES)	3 (4X)	1 (4X)	3 (Texas Tech)
Zhaque Gray	25 (N. Carolina)	6 (Mid. Tenn.)	6 (N. Carolina)	1 (S. Carolina)	2 (4X)
Nikki Greene	14 (2X)	15 (Nebraska)	3 (Michigan)	3 (3X)	4 (Nebraska)
Maggie Lucas	33 (Mich. St.)	9 (Wash. St.)	7 (Wisconsin)	1 (3X)	3 (3X)
Mia Nickson	10 (Wisconsin)	14 (Wisconsin)	2 (2X)	1 (Nevada)	1 (4X)
Gizelle Studevent	8 (UMES)	3 (5X)	4 (Wagner)	-	2 (Va. Tech)
Tori Waldner	6 (2X)	10 (Wagner)	2 (2X)	3 (Wagner)	2 (2X)
Marisa Wolfe	9 (2X)	7 (Wagner)	1 (5X)	2 (UMES)	3 (N. Carolina)
Renee Womack	-	-	-	-	-

2012 RECRUITING CLASS

ESPN/HoopGurlz 34th-ranked recruit Candice Agee signed a National Letter of Intent (NLI) to play of the Lady Lions beginning in the 2012-13 season. The 6-6 center from Silverado High School in Victorville, Calif. signed her NLI in November in a ceremony at her high school. The signing of Agee and addition of transfer Dara Taylor, the Lady Lions have the 18th-ranked recruiting class by Dan Olson's Collegiate Girls Basketball Report.

"We are so excited to have Candice join the Penn State family," Washington said. "She is a very talented player and will complement our current post players in a lot of ways. She adds size, skill and athleticism to our front line, and she has a competitive streak that you love to see. She will definitely be an impact player for us on the court. In addition, she comes from a delightful family and her mom, dad and younger brother will also be wonderful additions to Lady Lion basketball."

Agee is the first commit in the Lady Lions' 2012 recruiting class, averaged 17.0 points, 10.9 rebounds, 7.3 blocks and 2.7 steals per game for the Hawks as a junior. The native of Victorville, Calif. is a highly touted recruit, ranking 34th by ESPN/HoopGurlz, 38th by Collegiate Girls Report, 17th by Blue Star Basketball and 40th by All-Star Girls Report and Peach State. The Hawks finished the season with a 22-6 record with a perfect conference record en route to the Desert Sky title.

Agee is a three-time Desert Sky League first team selection and was the league's Most Valuable Player as a junior. Additionally, she was the Daily Press Girls' Athlete of the Year. Agee begins her senior season with 991 career points, 649 rebounds and 390 blocks. was named to the All-Region first team as a junior. The center plays her AAU ball with West Coast Premier. Agee also plays volleyball at Silverado High School. Agee chose Penn State over Kansas State, Miami, UNLV, UCLA, USC, Tennessee, Vanderbilt, North Carolina, Georgetown, Georgia, Oregon, Oregon State, Washington and Washington State.

PSU IN THE POLLS

	AP	Coaches
Preseason	12	14
Nov. 14/15	11	12
Nov. 21/22	17	16
Nov. 28/29	16	15
Dec. 5/6	17	18
Dec. 12/13	16	17
Dec. 19/20	16	16
Dec. 26/27	16	17
Jan. 2/3	22	19
Jan. 9/10	RV	25



NATIONAL POLLS

ASSOCIATED PRESS (JAN. 9)

No.	Team (1st)	Rec.	Pts.	LW
1.	Baylor (39)	15-0	975	1
2.	Notre Dame	15-1	935	3
3.	Connecticut	12-2	879	2
4.	Stanford	13-1	863	4
5.	Maryland	16-0	825	5
6.	Tennessee	12-3	769	6
7.	Duke	12-2	744	7
8.	Rutgers	13-2	673	10
9.	Kentucky	14-2	631	11
10.	Texas Tech	14-0	609	13
11.	Ohio State	15-1	572	8
12.	Texas A&M	10-3	532	9
13.	Miami (Fla.)	12-3	460	12
14.	UW-Green Bay	13-0	435	17
15.	Nebraska	14-1	389	19
16.	Louisville	13-3	346	14
17.	Purdue	13-3	344	18
18.	Georgetown	13-3	332	15
19.	Georgia	13-3	300	16
20.	Delaware	12-1	285	21
21.	DePaul	14-3	197	20
22.	North Carolina	12-3	180	25
23.	Gonzaga	14-2	106	NR
24.	South Carolina	14-2	93	NR
25.	Vanderbilt	13-2	60	24

Others Receiving Votes: Penn State 59; LSU 34; Georgia Tech 15; Kansas State 13; Michigan State 7; Michigan 4; Kansas 4; St. John's 2; Texas 2; St. Bonaventure 1.

ESPN/USA TODAY TOP 25 (JAN. 10)

No.	Team (1st)	Rec.	Pts.	LW
1.	Baylor (31)	15-0	775	1
2.	Notre Dame	15-1	743	3
3.	Connecticut	12-2	704	2
4.	Stanford	13-1	686	4
5.	Maryland	16-0	655	5
6.	Duke	12-2	612	6
7.	Tennessee	12-3	598	7
8.	Kentucky	14-2	552	9
9.	Rutgers	13-2	527	10
10.	Texas A&M	10-3	477	8
11.	Miami (Fla.)	13-3	452	13
12.	UW-Green Bay	13-0	418	14
13.	Ohio State	15-1	402	11
14.	Texas Tech	14-0	350	17
15.	Louisville	13-3	326	12
16.	Georgia	13-3	311	15
17.	Georgetown	13-3	251	16
18.	Delaware	12-1	241	20
19.	DePaul	14-3	187	18
20.	Purdue	13-3	172	22
21.	North Carolina	12-3	127	23
22.	Gonzaga	14-2	118	24
23.	Nebraska	14-1	112	NR
24.	Vanderbilt	13-2	100	21
25.	PENN STATE	11-4	78	19

Others receiving votes: South Carolina 55; Michigan 19; Kansas State 8; Georgia Tech 5; Kansas 5; Texas 3; Florida Gulf Coast 2; St. John's 2; Middle Tennessee 1; West Virginia 1.

*Bold type indicates 2011-12 Penn State opponent.

STATISTICAL LEADERS

Check here throughout the season for a breakdown of how many times a player leads Penn State in the following statistical categories. (First number is solo, the second is shared.)

Points	Lucas (9/2), Bentley (3/2), Gray (2)
Rebounds	Greene (5/2), East (2/1), Nickson (2/2), Edwards (1/1), Lucas (1/1), Waldner (1/1)
Assists	Bentley (13/1), Lucas (1), Studevent (1), Gray (-/1)
Steals	Bentley (9/2), Greene (2/1), Wolfe (1), Edwards (-/2), Gray (-/1), Lucas (1/2), East (-/1), Studevent (-/1)
Blocks	Greene (4/7), East (4/4), Waldner (-/3), Nickson (-/1), Lucas (-/2), Edwards (-/1), Bentley (-/1)
FG % (min. 4 attempts)	Bentley (2), Gray (2), Edwards (1), East (1/1), Greene (4/1), Studevent (1), Waldner (1), Lucas (2), Nickson (1)
FT % (min 4 attempts)	Bentley (4/2), Lucas (8/2), Gray (1/1), East (1)
3FG % (min. 2 att.)	Bentley (3/2), Lucas (5/3), Gray (4), Edwards (-/1)

PENN STATE VS. THE BIG TEN

Illinois	Overall	27-14	Nebraska	Overall	2-1
	Big Ten Games	20-11		Big Ten Games	0-1
	Big Ten Tournament	4-2		Big Ten Tournament	0-0
	Home	15-2		Home	1-1
	Away	8-10		Away	0-0
	Neutral	4-2		Neutral	1-0
Indiana	Overall	27-9	Northwestern	Overall	29-7
	Big Ten Games	22-8		Big Ten Games	26-6
	Big Ten Tournament	3-1		Big Ten Tournament	2-0
	Home	15-2		Home	16-1
	Away	9-6		Away	11-5
	Neutral	3-1		Neutral	2-1
Iowa	Overall	23-17	Ohio State	Overall	31-21
	Big Ten Games	18-14		Big Ten Games	18-14
	Big Ten Tournament	2-1		Big Ten Tournament	4-5
	Home	13-5		Home	16-6
	Away	7-11		Away	11-9
	Neutral	3-1		Neutral	4-6
Michigan	Overall	27-9	Purdue	Overall	15-25
	Big Ten Games	25-7		Big Ten Games	13-19
	Big Ten Tournament	1-2		Big Ten Tournament	2-3
	Home	14-2		Home	9-8
	Away	12-5		Away	4-14
	Neutral	1-2		Neutral	2-3
Michigan State	Overall	24-12	Wisconsin	Overall	26-10
	Big Ten Games	21-11		Big Ten Games	23-10
	Big Ten Tournament	2-1		Big Ten Tournament	2-0
	Home	14-4		Home	15-2
	Away	8-7		Away	9-8
	Neutral	2-1		Neutral	2-0
Minnesota	Overall	22-11			
	Big Ten Games	20-11			
	Big Ten Tournament	1-0			
	Home	13-3			
	Away	8-8			
	Neutral	1-0			



RECORD BOOK

CAREER SCORING

1. 2,919 Kelly Mazzante, 2001-04
2. 2,253 Susan Robinson, 1989-92
3. 2,044 Tyra Grant, 2007-10
4. 2,025 Kahadeejah Herbert, 1982-85
5. 1,995 Tanisha Wright, 2002-05
6. 1,897 Suzie McConnell, 1985-88
7. 1,725 Angie Potthoff, 1993-97
8. 1,663 Lisa Shepherd, 1998-01
9. 1,619 Andrea Garner, 1997-00
10. 1,538 Tanya Garner, 1988-91
11. 1,514 Vicki Link, 1984-87
12. 1,466 Jess Strom, 2002-05
13. 1,463 Katina Mack, 1992-96
14. 1,428 Jen Bednarek, 1980-83
15. 1,328 Maren Walseth, 1998-01
16. 1,320 Cheryl Ellison, 1980-83
17. 1,295 Kathy Phillips, 1989-92
18. 1,294 Helen Darling, 1997-00
19. 1,288 Carol Walderman, 1981-83
20. 1,280 Louise Leimkuhler, 1980-82
21. 1,240 Tina Nicholson, 1993-96
22. 1,238 Kam Gissendanner, 2006-08
23. 1,233 Amanda Brown, 2004-07
24. 1,186 Bethany Collins, 1985-88
25. 1,162 Lisa Faloon, 1984-87
26. 1,142 Jess Brungo, 2001-04
27. 1,135 Sue Martin, 1976-80
28. 1,106 Missy Masley, 1992-95
29. **1,097 Alex Bentley, 2010-present**
30. 1,084 Brianne O'Rourke, 2005-09
31. 1,061 Nancy Kuhl, 1975-79
32. 1,024 Rashana Barnes, 1999-02
33. 1,022 Helen Holloway, 1991-94

CAREER BLOCKS

1. 268 Kim Calhoun, 1993-96
2. 192 Mary Donovan, 1977-81
3. 189 Rashana Barnes, 1999-02
4. 185 Andrea Garner, 1997-00
5. 172 Amanda Brown, 2004-07
6. **151 Nikki Greene, 2010-present**

CAREER REBOUNDS

1. 1,103 Kahadeejah Herbert, 1982-85
2. 1,070 Susan Robinson, 1989-92
3. 1,016 Andrea Garner, 1997-00
4. 943 Vicki Link, 1984-87
5. 918 Angie Potthoff, 1993-97
6. 820 Mag Strittmatter, 1975-78
7. 818 Cheryl Ellison, 1980-83
8. 808 Amanda Brown, 2004-07
9. 773 Mary Donovan, 1978-81
10. 757 Bethany Collins, 1985-88
11. 728 Rashana Barnes, 1999-02
12. 721 Missy Masley, 1992-95
13. 719 Louise Leimkuhler, 1980-83
14. 717 Kathy Phillips, 1989-92
15. 690 Julia Trogele, 2008-11
16. 672 Helen Darling, 1997-00
17. 649 Jess Brungo, 2001-04
18. 645 Maren Walseth, 1998-01
19. 621 Tanisha Wright, 2002-05
20. 598 Helen Holloway, 1991-94
21. 595 Sue Martin, 1977-80
22. **590 Nikki Greene, 2010-present**

CAREER THREE-POINT FIELD GOALS MADE

1. 357 Kelly Mazzante, 2001-04
2. 230 Lisa Shepherd, 1998-01
3. 191 Jess Strom, 2002-05
4. 179 Tyra Grant, 2007-10
5. 175 Tiffany Longworth, 1994-97
6. **155 Maggie Lucas, 2011-present**
7. **124 Zhaque Gray, 2009-present**
- 124 Tina Nicholson, 1993-96

CAREER ASSISTS

1. 1,307* Suzie McConnell, 1984-88
2. 826 Tina Nicholson, 1993-96
3. 791 Helen Darling, 1997-00
4. 776 Jess Strom, 2002-05
5. 632 Annie Troyan, 1981-83
6. 567 Dana Eikenberg, 1989-92
7. 560 Brianne O'Rourke, 2006-09
8. 528 Nancy Kuhl, 1975-79
9. 484 Tanisha Wright, 2002-05
10. 411 Tanya Garner, 1988-91
11. **392 Alex Bentley, 2010-present**

CAREER STEALS

1. 507 Suzie McConnell, 1985-88
2. 314 Helen Darling, 1997-00
3. 310 Jess Strom, 2002-05
4. 293 Tina Nicholson, 1993-96
5. 289 Kelly Mazzante, 2001-04
6. 267 Tanisha Wright, 2002-05
7. 257 Nancy Kuhl, 1975-79
8. 247 Corinne Gulas, 1980-81
9. 224 Kahadeejah Herbert, 1982-85
10. 223 Tanya Garner, 1987-91
11. 217 Carol Walderman, 1981-83
12. 215 Sue Martin, 1976-80
13. 196 Brianne O'Rourke, 2006-09
14. 187 Annie Troyan, 1981-83
15. 182 Dana Eikenberg, 1989-92
- 182 Vanessa Paynter, 1984-87
17. 180 Susan Robinson, 1989-92
18. 174 Angie Potthoff, 1993-97
19. **169 Alex Bentley, 2010-present**
- 169 Carla Coleman, 1991-95
- 169 Tiffany Longworth, 1994-97

TOPPLING TOP 15 FOE: The Lady Lions shot 48.7% from the field and 58.3% from three-point range en route to a 103-84 win over #14/13 North Carolina in the Big Ten/ACC Challenge Nov. 30. It was the first win over a ranked opponent for Penn State since topping No. 14/13 Iowa (68-59) on Dec. 30, 2010. The 19-point win was the biggest margin of victory over a ranked opponent since a 73-56 win over #8 Michigan State on Jan. 23, 2005.

CONSECUTIVE 100s: The Lady Lions reached 100 points for the second consecutive game with a 103-84 win over #14/13 North Carolina Nov. 30 and a 103-65 victory at Nevada Nov. 26. The last time Penn State scored 100 points in back-to-back games was in 1993 when the Lady Lions defeated Nebraska, 102-66, on Jan. 2 and Illinois, 101-71, on Jan. 7.

SCHOOL RECORD FROM DEEP: The Lady Lions connected on a school record 14 three-pointers in the 103-84 win over North Carolina Nov. 30. Penn State breaks the mark of 13 makes from beyond the arc, which was accomplished twice (at Dayton, 11/21/10; vs. St. Francis (12/2/99)). The 14 threes by PSU also tie for the most by a North Carolina opponent.

LUCAS INTO 6TH ON 3S LIST: Sophomore guard **Maggie Lucas** moved into sixth place on Penn State's career three-pointers list with five triples versus North Carolina Nov. 30. She passed Tina Nicholson (1993-96) with her effort versus the Tar Heels.

Career Three-Point Field Goals Made

1. 357 Kelly Mazzante, 2001-04
2. 230 Lisa Shepherd, 1998-01
3. 191 Jess Strom, 2002-05
4. 179 Tyra Grant, 2007-10
5. 175 Tiffany Longworth, 1994-97
6. **155 Maggie Lucas, 2011-pres.**

BENTLEY'S DOUBLE VISION: Junior **Alex Bentley** posted the first double-double of her career with 15 points and a personal-best 15 assists in the upset win over #14/13 North Carolina Nov. 30. Bentley's 15 assist are a career high and are tied for 11th on Penn State's single-game chart. The 15 helpers also tie the Bryce Jordan Center record, also set by Helen Darling versus Wisconsin on Jan. 29, 1999.

BACK-TO-BACK 20s FOR ZHA ZHA: Senior guard **Zhaque Gray** reached the 20-point for the second-straight game with 25 points on 6-of-10 shooting from long range in the win over #14/13 North Carolina Nov. 30. This is the second time in her career that she had back-to-back 20-point games with the first coming last year against Dayton (27) and Rider (22).

HIGH SCORING HALF: The Lady Lions scored 58 points in the first half of the win over #14/13 North Carolina, marking the first time the Lions have scored more than 55 points in a half since tallying 55 in the second half at Boston College on Dec. 2, 2010.



COURTSIDE WITH COQUESE

Courtside with Coquese, a show that follows the Penn State women's basketball team during the season and takes viewers on an all-access tour of the team. All episodes of Courtside with Coquese can also be viewed online at LadyLions.com. Episodes will also be available on Comcast Video On Demand on Comcast in Pennsylvania on Fridays.

Courtside with Coquese Air Dates

Ep. 3	Thurs., 1/19	10:30 a.m.	BTN
	Thurs., 1/19	6:15 p.m.	PBS World
	Fri., 1/20	8:30 p.m.	WPSU
Ep. 4	Sat., 1/21	11 a.m.	WPSU
	Thurs., 1/26	10:30 a.m.	BTN
	Thurs., 1/26	6:15 p.m.	PBS World
Ep. 5	Fri., 1/27	8:30 p.m.	WPSU
	Sat., 1/28	11 a.m.	WPSU
	Thurs., 2/2	10:30 a.m.	BTN
Ep. 6	Thurs., 2/2	6:15 p.m.	PBS World
	Fri., 2/3	8:30 p.m.	WPSU
	Sat., 2/4	11 a.m.	WPSU
Ep. 7	Thurs., 2/9	10:30 a.m.	BTN
	Thurs., 2/9	6:15 p.m.	PBS World
	Fri., 2/10	8:30 p.m.	WPSU
Ep. 8	Sat., 2/11	11 a.m.	WPSU
	Thurs., 2/16	10:30 a.m.	BTN
	Thurs., 2/16	6:15 p.m.	PBS World
Ep. 9	Fri., 2/17	8:30 p.m.	WPSU
	Sat., 2/18	11 a.m.	WPSU
	Thurs., 2/23	10:30 a.m.	BTN
Ep. 9	Thurs., 2/23	6:15 p.m.	PBS World
	Fri., 2/24	8:30 p.m.	WPSU
	Sat., 2/25	11 a.m.	WPSU
Ep. 9	TBA		

STEALING A BENTLEY: Junior guard **Alex Bentley** worked on her pick-pocketing skills in Nevada with a career-best five steals against the Wolf Pack in the Nugget Classic title game. She also nabbed four steals in the opening round win over Iowa State.

NUGGET CROWN: Penn State claimed the Nugget Classic title over Thanksgiving with wins over Iowa State (66-59) and Nevada (103-65). It is the 28th regular-season tournament title for PSU and the second this season (Lady Lion Classic). **Alex Bentley** was selected as the Tournament MVP after averaging 18.0 points, 4.5 assists and 4.5 steals in two games. She also shot 57.1% from the field. **Maggie Lucas** also collected All-Tournament team accolades as she averaged 22.0 points, 6.5 rebounds and 3.0 assists in the Nugget Classic.

NEWEST 500 BOARD MEMBER: Junior center **Nikki Greene** became the 27th player in school history to reach 500 rebounds with seven caroms against Iowa State on Nov. 25. She joins an elite list that it topped by Kahadeejah Herbert (1,103) and Susan Robinson (1,070).

WALDNER ON THE BOARD: Freshman post player **Tori Waldner** scored her first collegiate points with a 15-foot jumper at Iowa State Nov. 25. She finished the contest with five points and connected on both of her shots from the field. Waldner also blocked her first career shot.

FOUL FACTOR: The Lady Lions were charged with 32 fouls in the win over Iowa State, its most fouls in a game since they committed 30 fouls against UCSB Nov. 20, 2001.

LADYLIONS.COM: LadyLions.com is a website dedicated exclusively to women's basketball at Penn State. The website gives the Lady Lions a chance to showcase the Penn State women's basketball program to potential recruits and fans. The site has been recently enhanced with the addition of a team blog, live chats and an "Ask Coach Quese" mailbag. The team blog has been up and running since August. The blog is regularly updated with entries from Lady Lion basketball players, coaches and staff members. The Lady Lions and the coaching staff interact with fans during a weekly live chat on Mondays from 12:15-1:15. The final new feature on LadyLions.com for this season is the Ask Coach Quese mailbag. Coach Quese will answer fan questions each Tuesday throughout the season. Questions can be submitted to Coach Quese by emailing them to askcoachquese@gmail.com. Be sure to include your name and hometown when submitting a question.

A BLOCK EAST: Sophomore center **Talia East** rejected seven shots in the win at South Carolina Nov. 20. The seven blocks are tied for third on Penn State's single-game charts and are the most since **Nikki Greene** blocked seven shots against Purdue on Jan. 28, 2010. Additionally, East hauled in 15 rebounds against the Gamecocks, the most rebounds for a Penn State player since **Mia Nickson** had 15 caroms at Iowa on Feb. 6, 2011.

THREES STRING STOPPED: The Lady Lions were held without a three-pointer for the first time under Coquese Washington at South Carolina Nov. 20. The last time Penn State did not connect from downtown was Jan. 7, 2007 at Michigan, a string of 143 games.

LATE RALLIES: The Lady Lions used late runs to claim each of their first three wins this season. Penn State needed a 13-0 run against South Carolina (Nov. 20), a 19-0 run against Middle Tennessee (Nov. 13) and a 13-0 spurt versus Washington State (Nov. 11). In the final five minutes of their three wins, the Lady Lions are outscoring their opponents an average of 10-0 and holding them to an 0-for-26 effort from the field.

LATE RALLIES

Team	Run	Length	Deficit
Washington State	13-0	6:53	1
Middle Tennessee	19-0	6:45	3
South Carolina	13-0	5:22	8

EAST HAULS IN BOARDS: **Talia East** continued her solid play with another career-best rebounding effort at Delaware Nov. 17. The sophomore center snared a personal-best 11 rebounds for the first double figure rebounding performance of her career. She also added eight rebounds and a pair of blocked shots versus the Blue Hens.

PAIR REACHES 600 POINTS: Senior guard **Zhaque Gray** and sophomore guard **Maggie Lucas** both reached the 600-point plateau for their careers at Delaware Nov. 17. Gray's 15 points brought her career total to 601, while Lucas' 12 tallies gave her an even 600 markers for her career. Lucas reached 600 points in 38 games, making her the third-fastest player in school history to reach 600 points (Kelly Mazzante and Susan Robinson, 33 games).

EDWARDS GETS THE NOD: Sophomore **Ariel Edwards** earned her first career start at Delaware Nov. 17 in place of an ailing Mia Nickson. Edwards responded with a solid eight-point, eight-rebound night against the Blue Hens. The eight caroms tie her career high set last year against Hartford in the Caribbean Challenge.

LADY LION CLASSIC CROWN: Penn State picked up its 27th regular-season title with wins over Washington State (72-60) and Middle Tennessee (65-49) in the Lady Lion Classic. It is the third regular-season title acquired under Coquese Washington (2006 WBCA Classic, 2009 Dead River Company Classic and 2011 Lady Lion Classic).

LUCAS TABBED TOURNEY MVP: Sophomore guard **Maggie Lucas** was selected as the Lady Lion Classic Tournament MVP after averaging 18.0 points, 5.5 rebounds and 3.5 assists in two games. Additionally senior guard **Zhaque Gray** and junior guard **Alex Bentley** were named to the Lady Lion Classic All-Tournament team.

BENTLEY REACHES MILESTONES: Junior guard **Alex Bentley** reached the 900-point plateau with eight tallies against Middle Tennessee Nov. 13. Additionally, Bentley became the 14th player in school history with 300 assists as she dished out four helpers against Washington State Nov. 11.

EAST'S CAREER NIGHT: Sophomore center **Talia East** turned in a career performance in the season-opening win over Washington State. She was a perfect 3-for-3 from the field on the way to a career-high six points. She also hauled in eight rebounds.

ANOTHER SEASON-OPENING WIN: The Lady Lions collected their fifth-straight season-opening win under head coach Coquese Washington with a 72-60 come-from-behind win over Washington State Nov. 11. Penn State has started each of Washington's four seasons with at least three wins.





COQUESE WASHINGTON

**Head Coach
5th Season**

PENN STATE LADY LION BASKETBALL

Coquese Washington, who helped lead Notre Dame to the 2001 NCAA Championship, was introduced as the fifth head coach of the Penn State women's basketball program on April 23, 2007. Washington is the first female African-American head coach in Penn State history.

The Lady Lions returned to the national stage in Washington's fourth year with a second-place finish in the Big Ten regular season standings, a runner-up finish in the Big Ten Tournament and a berth in the NCAA Tournament. Penn State tallied its most victories since the 2003-04 campaign and 23rd 20-win season with a 25-10 overall record and an 11-5 mark in conference play. The Lady Lions worked their way back to the "Big Dance" for the first time since 2004-05 and advanced to the second round for the first time in seven years with a win over Dayton in the first round in front of a raucous Bryce Jordan Center crowd. After a remarkable season in the books and steps toward returning the Lady Lions to national prominence, Washington was selected as the 2011 BCA Female Coach of the Year.

Penn State was a dominating force from the perimeter as the Lady Lions tied the school record with 228 three-pointers and led NCAA Division I from deep with a .415 three-point field goal percentage. Pacing the Lady Lions from downtown was Maggie Lucas, who broke the Big Ten three-pointers record with 112 triples to go along with a .426 shooting percentage. For her efforts, Lucas was selected as the Big Ten Freshman of the Year and Big Ten Sixth Player of the Year while breaking the Penn State freshman season scoring record (552 pts.). Additionally with Washington's guidance, Alex Bentley became the 11th different player in school history to take home first team All-Big Ten accolades after finishing second in the conference in assists. After outstanding seasons, both Lucas and Bentley were invited to the USA Basketball World University Games Trials.

Washington's third season saw the Lady Lions return to the postseason for the first time since 2004-05 with a WNIT berth. The Lions earned their most overall wins (17) and conference wins (8) since the 2004-05 campaign en route to a sixth-place finish in the Big Ten.

Washington led Tyra Grant to back-to-back first team All-Big Ten honors and *Associated Press* Honorable Mention All-America accolades in her senior season. Grant capped off her career by being selected by the Phoenix Mercury

in the second round of the WNBA Draft. The four-time all-conference pick left Penn State third in school history in scoring with 2,044 points. Washington also guided Bentley to third team All-Big Ten honors, as well as a unanimous selection to the Big Ten All-Freshman team.

That year, Washington and the Lady Lions garnered one of the top recruiting classes in the country, finishing 22nd on the ESPN/HoopGuriz recruiting chart. The class included just the second McDonald's High School All-American in Penn State history in Lucas, WBCA High School All-American Ariel Edwards and All-State selection Talia East.

In Washington's second season, the Lady Lions moved up three positions in the Big Ten standings, finishing in a tie for seventh place. Under Washington's guidance in 2008-09, Grant became the 10th different player in school history to earn first team All-Big Ten honors.

The Coquese Washington era started in style as the Lady Lions won their first three games of the season, including a win over #20/21 Pittsburgh, to claim the WBCA Classic title. Just three weeks later, Washington guided the Lady Lions to their first ever win over perennial contender and 10th-ranked Duke in the inaugural Big Ten/ACC Challenge, a game that was televised on ESPN2.

Washington came to Happy Valley after eight seasons as an associate head coach and assistant coach under Muffet McGraw at Notre Dame, her alma mater. During Washington's eight years on the bench, Notre Dame amassed a 188-69 record with eight NCAA Tournament appearances, including four Sweet Sixteen runs and a National Championship in 2001.

Washington was a four-year starting point guard for Notre Dame under McGraw and was the team captain on Notre Dame's first-ever NCAA Tournament team. She was a two-time All-Midwestern Collegiate Conference (MCC) selection and led Notre Dame to three MCC Tournament titles.

The epitome of a student-athlete, Washington graduated from Notre Dame in 1992, a full year ahead of schedule, with a bachelor's degree in history. She went on to attain "Double Domer" status in 1997 after earning her Juris Doctorate from the Notre Dame Law School.

In addition to assisting with the efforts of the WBCA Pink Zone at Penn State to raise money and awareness for breast cancer, Washington created Coquese's Drive for the

THE WASHINGTON FILE

COACHING RESUME

2007-pres. - Head Coach, Penn State University
 2011-pres. - President, NCAA Women's Basketball Issues Committee
 2010-pres. - Treasurer, WBCA Executive Committee
 2008-pres. - Member, WBCA Board of Directors
 2009-pres. - Member, USA Basketball Women's Junior National Committee
 2005-07 - Assoc. Head Coach, Univ. of Notre Dame
 1999-05 - Assistant Coach, Univ. of Notre Dame

PLAYING EXPERIENCE

2002-03 - WNBA's Indiana Fever
 2000-02 - WNBA's Houston Comets
 1998-99 - WNBA's New York Liberty
 1997-98 - ABL's Portland Power
 1989-93 - University of Notre Dame

EDUCATION

Notre Dame '92, B.A. History
 Notre Dame Law School '97, Juris Doctorate

NOTABLE

- ❖ 2011 BCA Female Coach of the Year.
- ❖ Helped guide Notre Dame to the 2001 NCAA Championship.
- ❖ Eight consecutive recruiting classes at Notre Dame ranked in the Top 25 nationally.
- ❖ Notre Dame had four Sweet Sixteen appearances and eight NCAA Tournament berths during Washington's tenure.
- ❖ Point guard for the 2000 WNBA Champion Houston Comets.
- ❖ Founding President, WNBA Players Association, 1999-01.
- ❖ Actively negotiated first two collective bargaining agreements for the WNBPA.
- ❖ Inducted into the Greater Flint Area Sports Hall of Fame in Dec. 2009.

FAMILY

Husband: Raynell Brown
 Children: Quenton (6), Rhaiyna (2)

Women's Resource Center. The first four Coquese's Drives raised more than \$56,869 for the Centre County Women's Resource Center to aid in the fight against domestic violence.

Washington is currently serving on the 29-member WBCA Board of Directors, where she is the Treasurer of the Executive Committee. Washington is also a member of the USA Basketball Women's Junior National Team Selection Committee.

A native of Flint, Mich., Washington and her husband, Raynell Brown, have a son, Quenton (6), and a daughter, Rhaiyna (2). They reside in Port Matilda, Pa.

Washington's Coaching Record vs. Opponents

Arizona 1-0	DePaul.....0-1	Indiana..... 3-4	Monmouth 1-0	Prairie View A&M 1-0	Wagner 1-0
Army 1-0	Drexel 2-1	Iowa 4-5	Nebraska 0-1	Purdue 1-7	Washington State 1-0
Boston College.....0-1	Duke 1-0	Iowa State..... 1-0	Nevada 1-0	Rider 1-0	Wisconsin 3-5
Bucknell 5-0	Florida State 0-1	Maine 1-0	NJIT 1-0	South Carolina..... 4-1	UW-Green Bay 0-1
Buffalo 1-0	Georgetown 1-0	UMES 1-0	North Carolina 1-0	Stony Brook 1-0	Xavier 0-1
Charlotte 1-0	Georgia Tech 0-1	Michigan 6-3	Northwestern 5-1	Syracuse 0-1	
Connecticut 0-1	Hartford 1-0	Michigan State..... 2-6	Oakland 2-0	Texas A&M 0-1	
Coppin State..... 1-0	Hofstra 0-1	Middle Tennessee 1-0	Ohio State..... 1-6	Texas Tech 1-1	
Dayton 2-1	Holy Cross 1-0	Minnesota 2-6	Old Dominion..... 0-1	Utah 1-0	
Delaware 1-1	Illinois 7-3	Mississippi 1-0	Pittsburgh 2-1	Virginia Tech..... 1-0	





#2 Dara Taylor

Jr. * G * 5-8 * Wilmington, Del./Caraval Acad. (Maryland)

2011-12 Season Notes:

Will sit out the 2011-12 season due to NCAA Transfer policy.

2010-11 (at Maryland):

Had two points, two steals and four assists in the NCAA Tournament game against Georgetown (3/22) ... Tallied three points, three steals and two assists in the NCAA Tournament win over St. Francis (Pa.) ... Made both of her shots from the field en route to four points and two steals versus North Carolina State (2/6) ... Registered six points, four steals and four assists in the win over Saint Joseph's (1/2) ... Dished out four assists against La Salle (12/28) ... Notched five dimes against Delaware State (12/19) ... Was 3-for-4 from the field and finished with seven points and three assists in the win over UMBC (12/10) ... Accounted for four assists and four steals at Purdue (12/2) ... Tallied six points, five assists, four rebounds and a steal in the win over East Carolina (11/26) ... Recorded five points and five assists in the victory over Towson (11/18) ... Opened the season with two points, three assists and a steal in the win over Monmouth (11/13).

2009-10 (at Maryland)

Broke Maryland's freshman season assists record with 171 helpers Recorded more than six assists in 15 of 27 starts ... Finished third in the ACC in assists and sixth in assist-to-turnover ratio (1.2) ... Grabbed career-high eight rebounds in WNIT Second Round win over East Carolina (3/21) ... Contributed 10 points in ACC Tournament win over North Carolina (3/4) ... Netted a career-high 17 points on 7-of-12 shooting against Clemson (2/14) ... Made 7-of-10 free throws to help clinch the win over Wake Forest (2/11) ... Finished the game with nine points and two steals against the Demon Deacons ... Accounted for nine assists at Virginia Tech (1/28) ... Had six points, eight assists and seven rebounds versus Boston College (1/14) ... Notched first career double-double with 10 points and career-high 11 assists at No. 19/21 Virginia (1/11) ... Also added three steals and four rebounds versus the Cavaliers ... Dished out eight assists versus Saint Joseph's (1/3) ... Notched nine points, eight assists and four rebounds versus UNC-Wilmington (12/29) ... Recorded nine points and three rebounds versus Minnesota (12/3) in the Big Ten/ACC Challenge ... Had six points and six assists in the win over Howard (11/27) ... Accounted for 11 points with seven assists in a win over Samford (11/24) ... Tallied nine points, two steals and an assist in her first career start at Mississippi State (11/22) ... Chipped in six points, nine assists and five rebounds against Old Dominion (11/19) ... Had 10 points with five assists in win against New Hampshire (11/16) ... Posted nine points, five assists and career-high six steals in collegiate debut against North Carolina Central (11/14).

HIGH SCHOOL

McDonald's High School All-American ... 52nd-ranked player by ESPN/HoopGurlz out of Caravel Academy ... 2009 Delaware Gatorade Player of the Year ... Two-time All-State selection with a first team berth as a senior and a second team nod as a junior ... 1,192 career points at Caravel Academy ... Averaged 17.8 points, 5.5 assists, 5.0 rebounds and 5.0 steals per game as a senior ... Led the Buccaneers to the Delaware State Quarterfinals as a senior ... Named to the DelawareGirlsBasketball.com All-Decade (2000-09) visitor's poll first team ... Selected to the Delaware's Finest third team All-Decade (2000-09) team ... Played AAU for the Philly Belles alongside Lady Lion teammate Maggie Lucas ... AAU team won the 2007 USJN in Cincinnati and were the 15u and 16u Mid-Atlantic Champions ... Also participated in track & field at Caravel Academy, finishing fifth in the state in the high jump, long jump and 4x100 relay in 2009.

PERSONAL

Full name is Dara Nailah Taylor ... Born January 16, 1991 in Manhattan, New York ... Parents are Jo and Ron Taylor ... Has one brother, Ron Jr. (17) ... Majoring in communication, arts and sciences.

CAREER HIGHS

Points.....	17 vs. Clemson (2/14/10)
Rebs.	8 vs. East Carolina (3/21/10)
Assists	11 at American (12/20/09)
.....	11 at Virginia (1/11/10)
Steals.....	6 vs. N.C. Central (11/14/09)
Blocks	1 (3x) last at St. Joseph's 1/2/11
Minutes	38 at American (12/20/09)
FGM.....	7 vs. Clemson (2/14/10)
FGA	14 at N.C. State (1/17/10)
FG%	1.000 (3x)
.....	last vs. N.C. State (2-2) (2/6/11)
3FGM.....	2 vs. Samford (1/24/09)
.....	2 vs. Clemson (2/14/10)
3FGA	5 at Mississippi State (11/22/09)
3PT %	1.000 (1-1) at Longwood (1/31/10)
.....	1.000 (1-1) vs. Providence (3/25/10)
FTM	7 at Wake Forest (2/11/10)
FTA	10 at Wake Forest (2/11/10)
.....	10 vs. North Carolina (3/4/10)
FT %	1.000 (7x)
.....	last vs. Georgetown (2-2) (3/22/11)
Career Double-Doubles	1





#5 Talia East

So. * F/C * 6-3 * Philadelphia, Pa./The Friends School

2011-12 Highlights:

- ♦ Had arguably the best game of her career, registering in personal bests of 15 rebounds and seven blocks to go along with six points at South Carolina (11/20).
- ♦ Her seven blocks at South Carolina are tied

for the third on the PSU single-game charts and are the most for a Lady Lion since Nikki Greene blocked seven shots against Purdue on Jan. 28, 2010.

2011-12 Season Notes:

- ♦ Grabbed seven rebounds to go along with four points at Wisconsin (1/2).
- ♦ Chipped in six points, eight rebounds, a career-best two assists and three blocks in the win at Bucknell (12/21).
- ♦ Equalled her career high with eight points to compliment six rebounds, two blocks and an assists in the win over Wagner (12/18).
- ♦ Snared five rebounds in eight minutes against UMES (12/11).
- ♦ Had a solid night off the bench with six points, three rebounds, a block and a steal in the win over Virginia Tech (12/6).
- ♦ Accounted for six points, eight rebounds, a blocked shot and a career-high two steals at #19/25 Texas Tech (12/3).
- ♦ Registered a career-best eight points on 4-of-6 shooting to go along with six rebounds in the Nugget Classic Championship game win over Nevada (11/26).
- ♦ Turned in her first career double-digit rebounding performance as she hauled in a personal-best 11 caroms at Delaware (11/17). Also equalled her career scoring mark with six points against the Blue Hens.
- ♦ Notched two points, six rebounds and a blocked shot in the Lady Lion Classic Championship game win over Middle Tennessee (11/13).
- ♦ Had a career night in the season-opening win over Washington State (11/11) with personal bests of six points via a 3-for-3 shooting effort and eight rebounds.
- ♦ Tallied four points, five rebounds and two steals in the exhibition win over Bloomsburg (11/5).

CAREER HIGHS

Points	8 vs. Wagner (12/18/11)
Rebs.	15 at South Carolina (11/20/11)
Assists	2 at Bucknell (12/21/11)
Steals	2 at Texas Tech (12/3/11)
Blocks	7 at South Carolina (11/20/11)
Minutes	29 at South Carolina (11/20/11)
FGM	4 at Nevada (11/26/11)
FGA	7 at Bucknell (12/21/11)
FTM	7 vs. Wagner (12/18/11)
FG%	1.000 (7x)
	last vs. Michigan (1-1) (1/12/12)
3FGM	n/a
3FGA	n/a
3PT %	n/a
FTM	4 vs. Nebraska (12/30/11)
FTA	4 (3x) last vs. Nebraska (12/30/11)
FT %	4 (3x)
	last vs. Nebraska (4-4) (12/30/11)
Career Double-Doubles	n/a

GAME-BY-GAME

	P	R	B
WASH. STATE	6	8	2
MID. TENN.	2	6	1
at Delaware	6	11	2
at South Carolina	6	15	7
vs. Iowa State	0	3	0
at Nevada	8	6	0
NORTH CAROLINA	3	4	0
at Texas Tech	6	8	1
VIRGINIA TECH	6	3	1
UMES	2	5	0
WAGNER	8	6	2
at Bucknell	6	8	3
NEBRASKA	4	4	1
at Wisconsin	4	7	0
MICHIGAN ST.	0	0	2
MICHIGAN	2	1	0
at Nebraska			
at Illinois			
IOWA			
at Michigan			
at Michigan State			
INDIANA			
at Minnesota			
WISCONSIN			
at Northwestern			
at Purdue			
OHIO STATE			
MINNESOTA			

East vs. the Big Ten

Team	G	Pts.-Avg.	Rebs.-Avg.	Assts.-Avg.	Blks.-Avg.
Illinois	3	0-0.0	4-1.3	0-0.0	0-0.0
Indiana	2	4-2.0	2-1.0	0-0.0	0-0.0
Iowa	-	-	-	-	-
Michigan	2	2-1.0	1-0.5	0-0.0	0-0.0
Michigan State	2	2-1.0	0-0.0	0-0.0	2-1.0
Minnesota	-	-	-	-	-
Nebraska	1	4-4.0	4-4.0	0-0.0	1-1.0
Northwestern	2	2-1.0	4-2.0	0-0.0	0-0.0
Ohio State	3	2-0.7	2-0.7	0-0.0	2-0.7
Purdue	2	1-0.5	4-2.0	0-0.0	0-0.0
Wisconsin	1	4-4.0	7-7.0	0-0.0	0-0.0





#12 Zhaque Gray

Sr. * G * 5-8 * Chicago, Ill./Prep John Hope

2011-12 Highlights:

- ♦ Surpassed the 600-point plateau for her career with 15 tallies at Delaware (11/17).
- ♦ Named to Lady Lion Classic All-Tournament team after averaging 11.0 points, 5.0 rebounds in two games.
- ♦ Tied for seventh on Penn State's career three-pointers chart (124).

2011-12 Season Notes:

- ♦ Contributed 15 points on 6-of-12 shooting to go along with four rebounds and an assists versus Michigan (1/12).
- ♦ Registered eight points and four rebounds versus Michigan State (1/7).
- ♦ Recorded eight points at Wisconsin (1/2).
- ♦ Had eight points in the win at Bucknell (12/21).
- ♦ Scored 13 points to go along with three rebounds, three assists and a pair of steals in the win over Wagner (12/18).
- ♦ Chipped in eight points and an assist against UMES (12/11).
- ♦ Tallied eight points and three assists at Texas Tech (12/3).
- ♦ Notched back-to-back 20-point games for the second time in her career with 25 points, four rebounds and a career-high six assists in the upset win over #14/13 North Carolina (11/30).
- ♦ Accounted for 21 points, four rebounds, three assists and two steals in the win at Nevada (11/26).
- ♦ Was 5-for-7 from the field, including makes on both of her three-point attempts, en route to 14 points in the win over Iowa State (11/25).
- ♦ Had a team-best 15 points to go along with six rebounds and two assists in the Lady Lion Classic title game win over Middle Tennessee (11/13).
- ♦ Registered seven points and four rebounds against Washington State (11/11).

CAREER HIGHS

Points.....	27 at Dayton (11/12/10)
Rebs.....	6 at South Carolina (11/22/09)
.....	6 vs. NJIT (11/15/09)
Assists.....	6 vs. North Carolina (11/30/11)
Steals.....	3 vs. Bucknell (12/28/10)
.....	3 vs. Michigan State (12/21/08)
Blocks.....	1 at South Carolina (11/20/11)
.....	1 at Iowa (2/6/11)
Minutes.....	44 at Dayton (11/12/10)
FGM.....	10 at Dayton (11/12/10)
FGA.....	17 at Dayton (11/12/10)
FG%.....	1.000 (3-3) at Indiana (2/13/11)
.....	1.000 (4-4) at Michigan (2/9/09)
3FGM.....	7 at Dayton (11/12/10)
3FGA.....	11 at Dayton (11/12/10)
3PT%.....	1.000 (5x)
.....	last vs. Iowa State (2-2) (11/25/11)
FTM.....	5 at Ohio State (2/17/11)
FTA.....	6 at Ohio State (2/17/11)
FT%.....	1.000 (24x)
.....	last vs. Michigan (2-2) (1/12/12)
Career Double-Doubles.....	n/a

GAME-BY-GAME

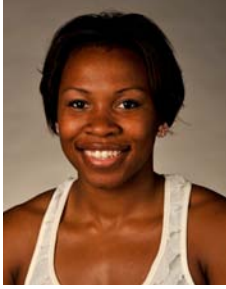
	P	R	A
WASH. STATE	7	4	1
MID. TENN.	15	6	2
at Delaware	15	3	4
at South Carolina	6	4	2
vs. Iowa State	14	3	2
at Nevada	21	4	3
NORTH CAROLINA	25	4	6
at Texas Tech	8	2	3
VIRGINIA TECH	6	5	2
UMES	8	0	1
WAGNER	13	3	3
at Bucknell	8	0	2
NEBRASKA	0	2	1
at Wisconsin	8	1	1
MICHIGAN ST.	8	4	1
MICHIGAN	15	4	1
at Nebraska			
at Illinois			
IOWA			
at Michigan			
at Michigan State			
INDIANA			
at Minnesota			
WISCONSIN			
at Northwestern			
at Purdue			
OHIO STATE			
MINNESOTA			

Gray vs. the Big Ten

Team	G	Pts.-Avg.	Rebs.-Avg.	Assts.-Avg.	Stls.-Avg.
Illinois	8	40-5.0	11-1.4	6-0.8	3-0.4
Indiana	6	39-6.5	9-1.5	6-1.0	2-0.3
Iowa	6	28-4.7	12-2.0	5-0.8	1-0.2
Michigan	6	47-7.8	10-1.7	7-1.2	0-0.0
Michigan State	6	15-2.5	12-2.0	2-0.3	5-0.8
Minnesota	5	21-4.2	5-1.0	4-0.8	0-0.0
Nebraska	1	0-0.0	2-2.0	1-1.0	0-0.0
Northwestern	4	37-9.3	8-2.0	6-1.5	1-0.3
Ohio State	5	37-7.4	8-1.6	7-1.4	3-0.6
Purdue	7	33-4.7	5-0.7	3-0.4	1-0.1
Wisconsin	6	37-6.2	8-1.3	1-0.2	3-0.5

Five-Time Big Ten Champions • Two-Time Big Ten Tournament Champions • 2000 NCAA Final Four • 22 NCAA Tournament Appearances





#15 Renee Womack

Sr. * G * 5-10 * Lansdale, Pa./Methacton

CAREER HIGHS

Points 10 at Wisconsin (1/2/11)
 Rebs. 8 (2x) last vs. Iowa (12/28/09)
 Assists 4 vs. Iowa (12/28/09)
 Steals 4 vs. Bucknell (12/28/10)
 Blocks 3 vs. Iowa (12/28/09)
 Minutes 30 vs. Iowa (12/28/09)
 FGM 4 at Wisconsin (1/2/11)
 4 vs. Stony Brook (11/19/08)
 FGA 8 vs. Army (12/8/10)
 8 vs. Stony Brook (11/19/08)
 FG% 1.000 (8x)
 last vs. Illinois (2-2) (3/5/11)
 3FGM 1 (7x) last at Indiana (2/13/11)
 3FGA 2 (4x) last at Indiana (2/13/11)
 3PT% 1.000 (3x)
 last vs. Illinois (2-2) (1/16/11)
 FTM 3 at Dayton (11/12/10)
 FTA 4 at Ohio State (2/17/11)
 4 at Dayton (11/12/10)
 FT% 1.000 (4x)
 last at Iowa (2-2) (2/6/11)
 Career Double-Doubles n/a

GAME-BY-GAME

	P	R	A
WASH. STATE	DNP		
MID. TENN.	DNP		
at Delaware	DNP		
at South Carolina	DNP		
vs. Iowa State	DNP		
at Nevada	DNP		
NORTH CAROLINA	DNP		
at Texas Tech	DNP		
VIRGINIA TECH	DNP		
UMES	DNP		
WAGNER	DNP		
at Bucknell	DNP		
NEBRASKA	DNP		
at Wisconsin	DNP		
MICHIGAN ST.	DNP		
MICHIGAN	DNP		
at Nebraska			
at Illinois			
IOWA			
at Michigan			
at Michigan State			
INDIANA			
at Minnesota			
WISCONSIN			
at Northwestern			
at Purdue			
OHIO STATE			
MINNESOTA			

Womack vs. the Big Ten

Team	G	Pts.-Avg.	Rebs.-Avg.	Assts.-Avg.	Stls.-Avg.
Illinois	7	15-2.1	14-2.0	4-0.6	5-0.7
Indiana	3	3-1.0	6-2.0	0-0.0	1-0.3
Iowa	5	16-3.2	23-4.6	5-1.0	7-1.4
Michigan	2	7-3.5	5-2.5	0-0.0	3-1.5
Michigan State	3	2-0.7	1-0.3	1-0.3	1-0.3
Minnesota	3	2-0.7	2-0.7	1-0.3	0-0.0
Nebraska	-	-	-	-	-
Northwestern	4	6-1.5	7-1.8	2-0.5	2-0.5
Ohio State	4	7-1.8	6-1.5	3-0.8	1-0.3
Purdue	4	6-1.5	2-0.5	1-0.3	3-0.8
Wisconsin	3	13-4.3	7-2.3	0-0.0	3-1.0





#20 Alex Bentley

Jr. * G * 5-7 * Indianapolis, Ind./Ben Davis

2011-12 Highlights:

- ◆ Became the 33rd Lady Lion and 15th junior to score 1,000 career points with 11 tallies against Virginia Tech (12/6).
- ◆ 11th on Penn State's all-time assists list (386).
- ◆ On Wade Trophy, Wooden Award and Naimsmith Award watch lists.
- ◆ Big Ten Preseason Player of the Year (coaches and media).
- ◆ Selected as Nugget Classic Tournament MVP after averaging 18.0 points, 4.5 assists and 4.5 steals in two games.
- ◆ Named to Lady Lion Classic All-Tournament team after averaging 15.0 points, 3.0 rebounds, 4.0 assists and 2.5 steals in two games.
- ◆ 11th on Penn State's career assists list (392).
- ◆ 29th on Penn State's career scoring chart (1,097).
- ◆ Tied for 19th on Penn State's career steals list (169).

CAREER HIGHS

Points 28 at Boston College (12/2/10)
Rebs 7 vs. Iowa (12/28/09)
Assists 15 vs. North Carolina (11/30/11)
Steals 8 vs. Nebraska (12/30/11)
Blocks 2 (3X) last vs. Drexel (12/21/10)
Minutes 46 at Dayton (11/12/10)
FGM 12 vs. Dayton (3/19/11)
FGA 28 vs. Dayton (3/19/11)
FG% 833 (5-6) at Illinois (12/31/09)
3FGM 4 at Purdue (2/14/10)
3FGA 6 (3x) last at Purdue (2/14/10)
3PT% 1.000 (6x)
..... last vs. Washington State (2-2) (11/11/11)	
FTM 10 at Northwestern (1/6/11)
FTA 12 at Northwestern (1/6/11)
FT% 1.000 (22x)
..... last vs. North Carolina (4-4) (11/30/11)	
Career Double-Doubles 1

GAME-BY-GAME

	P	R	A
WASH. STATE	22	4	4
MID. TENN.	8	2	4
at Delaware	20	3	9
at South Carolina	6	2	3
vs. Iowa State	13	3	3
at Nevada	23	0	6
NORTH CAROLINA	15	5	15
at Texas Tech	18	2	3
VIRGINIA TECH	11	2	5
UMES	11	4	9
WAGNER	23	2	2
at Bucknell	11	0	7
NEBRASKA	22	3	3
at Wisconsin	8	2	8
MICHIGAN ST.	4	2	6
MICHIGAN	12	5	6
at Nebraska			
at Illinois			
IOWA			
at Michigan			
at Michigan State			
INDIANA			
at Minnesota			
WISCONSIN			
at Northwestern			
at Purdue			
OHIO STATE			
MINNESOTA			

2011-12 Season Notes:

- ◆ Accounted for 12 points, five rebounds, six assists and four steals in a solid all-around performance in the win over Michigan (1/12).
- ◆ Nabbed a career-high eight steals to go along with 22 points in the Big Ten opener against Nebraska. The eight thefts are the most for a Lady Lion since Kelly Mazzante had eight steals vs. Fairfield on Dec. 2, 2001.
- ◆ Chipped in 11 points, seven assists and four steals in the non-conference finale at Bucknell (12/21).
- ◆ Was 10-for-14 from the field on the way to 23 points and a personal-best five steals against Wagner (12/18).
- ◆ Just missed out on a double-double with 11 points and nine assists in the win over UMES (12/11).
- ◆ Paced the Lady Lions with 18 points, three assists and a steal at #19/25 Texas Tech (12/3).
- ◆ Posted her first career double-double with 15 points and a personal-best 15 assist in the win over #14/13 North Carolina (11/30).
- ◆ Had a solid all-around game with 23 points on 11-of-15 shooting, six assists and a career-best five steals in the win over Nevada (11/26).
- ◆ Tallied 13 points to go along with three rebounds, three assists and four steals versus Iowa State (11/25).
- ◆ Narrowly missed her first career double-double with a team-best 20 points and a career-high tying nine assists at Delaware (11/17).
- ◆ Surpassed the 900-point mark for her career with eight tallies in the win over Middle Tennessee (11/13).
- ◆ Accounted for 22 points, four rebounds, four assists and a pair of steals in the win over Washington State (11/11).
- ◆ Became the 14th player in school history to record 300 career assists against the Cougars.

Bentley vs. the Big Ten

Team	G	Pts.-Avg.	Rebs.-Avg.	Assts.-Avg.	Stls.-Avg.
Illinois	5	65-13.0	14-2.8	22-4.4	8-1.6
Indiana	4	50-12.5	7-1.8	17-4.3	4-1.0
Iowa	5	87-17.4	18-3.6	24-4.8	6-1.2
Michigan	4	40-10.0	14-3.5	19-4.8	10-2.5
Michigan State	4	37-9.3	9-2.3	13-3.3	7-1.8
Minnesota	4	38-9.5	9-2.3	18-4.5	11-2.8
Nebraska	1	22-22.0	3-3.0	3-3.0	8-8.0
Northwestern	3	45-15.0	8-2.7	14-4.7	6-2.0
Ohio State	4	61-15.3	6-1.5	18-4.5	7-1.8
Purdue	5	84-16.8	14-2.8	19-3.8	13-2.6
Wisconsin	4	28-7.0	8-2.0	16-4.0	5-1.3





#23 Ariel Edwards

So. * G/F * 6-2 * Elmont, N.Y./Christ the King

2011-12 Highlights:

- Accounted for 13 points and career highs of eight rebounds and three assists in the win over #14/13 North Carolina (11/30).
- In her first collegiate start, tallied eight points and equalled her career high with eight rebounds at Delaware (11/17).

CAREER HIGHS

Points	16 at Oakland (11/18/10)
Rebs.	9 vs. UMES (12/11/11)
Assists	4 at Wisconsin (1/2/12)
Steals	3 at Texas Tech (12/3/11)
Blocks	2 at Oakland (11/18/10)
Minutes	38 at Delaware (11/17/11)
FGM	6 vs. North Carolina (11/30/11)
FGA	11 (3x) last vs. UMES (12/11/11)
FG%	1.000 (3x)
.....last vs. DePaul (1-1) (3/21/11)	
3FGM	2 vs. Army (12/8/10)
.....2 vs. Hartford (11/27/10)	
3FGA	4 vs. Army (12/8/10)
.....4 vs. Hartford (11/27/10)	
3PT %	1.000 (3x)
.....last vs. North Carolina (1-1) (11/30/11)	
FTM	7 at Oakland (11/18/10)
FTA	8 at Oakland (11/18/10)
FT %	1.000 (7x)
.....last vs. Michigan (2-2) (1/12/12)	
Career Double-Doubles	n/a

GAME-BY-GAME

	P	R	A
WASH. STATE	4	2	1
MID. TENN.	10	1	1
at Delaware	8	8	0
at South Carolina	10	7	1
vs. Iowa State	0	1	0
at Nevada	2	4	1
NORTH CAROLINA	13	8	3
at Texas Tech	3	5	2
VIRGINIA TECH	3	3	0
UMES	7	9	3
WAGNER	11	6	3
at Bucknell	7	2	3
NEBRASKA	6	2	0
at Wisconsin	6	4	4
MICHIGAN ST.	4	4	0
MICHIGAN	9	5	2
at Nebraska			
at Illinois			
IOWA			
at Michigan			
at Michigan State			
INDIANA			
at Minnesota			
WISCONSIN			
at Northwestern			
at Purdue			
OHIO STATE			
MINNESOTA			

2011-12 Season Notes:

- Accounted for nine points, five rebounds and two assists in 22 minutes of action against Michigan (1/12).
- Dished out a career-high four assists to go along with six points, four rebounds and a steal at Wisconsin (1/2).
- Notched six points with two rebounds and two steals against Nebraska (12/30).
- Tallied 11 points via a 5-for-5 free throw shooting effort, six rebounds and three steals in the win over Wagner (12/18).
- Hauled in a career-high nine rebounds to go along with seven points and three assists in the win over UMES (12/11).
- Registered three points to go along with five rebounds, two assists and a personal-best three steals at #19/25 Texas Tech (12/3).
- Had two points, four rebounds and a pair of steals in the Nugget Classic Championship game win over Nevada (11/26).
- Was 5-for-7 from the field en route to 10 points, seven rebounds and an assist at South Carolina (11/20).
- Scored five of her 10 points in a key Lady Lion run that gave Penn State its first lead of the game against Middle Tennessee (11/13). Also notched a pair of steals against the Blue Raiders.
- Tallied four points and two rebounds in the season-opening win over Washington State (11/11).

Edwards vs. the Big Ten

Team	G	Pts.-Avg.	Rebs.-Avg.	Assts.-Avg.	Stls.-Avg.
Illinois	3	6-2.0	2-0.7	2-0.7	0-0.0
Indiana	2	0-0.0	5-2.5	1-0.5	2-1.0
Iowa	2	4-2.0	0-0.0	0-0.0	0-0.0
Michigan	2	11-5.5	7-3.5	2-1.0	1-0.5
Michigan State	2	4-2.0	4-2.0	0-0.0	0-0.0
Minnesota	1	0-0.0	2-2.0	0-0.0	0-0.0
Nebraska	1	6-6.0	2-2.0	0-0.0	2-2.0
Northwestern	2	0-0.0	2-1.0	0-0.0	0-0.0
Ohio State	1	1-1.0	0-0.0	0-0.0	0-0.0
Purdue	3	2-0.7	2-0.7	1-0.3	0-0.0
Wisconsin	2	6-3.0	4-2.0	4-2.0	1-0.5





#24 Mia Nickson

RS-Jr. * F * 6-2 * Ashburn, Va./Notre Dame Acad. (BC)

2011-12 Highlights:

- ♦ Posted first double-double of the season and seventh of her career with 10 points and 14 rebounds, including eight offensive boards, at Wisconsin (1/2).

- ♦ Missed eight games with concussion-like symptoms.
- ♦ Hauled in 10 rebounds, including five on the offensive glass against Middle Tennessee (11/13).

2011-12 Season Notes:

- ♦ Recorded six points, eight rebounds and a pair of assists in the win over Michigan (1/12).
- ♦ Notched seven points and eight rebounds against Michigan State (1/7).
- ♦ Was back in the lineup after missing six games and contributed four points and seven rebounds against Nebraska (12/30).
- ♦ Returned after missing two games to pull down a team-best 13 rebounds with five points and two assists against Iowa State (11/25).
- ♦ Had six points and seven rebounds in the win over Washington State (11/13) in the opening round of the Lady Lion Classic.

CAREER HIGHS

Points	26 vs. Texas Tech (12/5/10)
Rebs.	17 vs. Indiana (1/23/11)
Assists	4 vs. Maine (12/12/10)
Steals	6 vs. Indiana (1/23/11)
	6 vs. Bucknell (12/28/10)
Blocks	1 (4x) last at Nevada (11/26/11)
Minutes	41 at Dayton (11/12/10)
FGM	9 vs. Indiana (1/23/11)
FGA	16 vs. Indiana (1/23/11)
FG%	1.000 (4X)
	last vs. Minnesota (5-5) (1/13/11)
3FGM	n/a
3FGA	n/a
3PT %	n/a
FTM	10 vs. Michigan State (2/10/11)
	10 vs. Texas Tech (12/5/10)
FTA	11 vs. Michigan State (2/10/11)
	11 vs. Texas Tech (12/5/10)
FT %	1.000 (12X)
	last vs. Dayton (6-6) (3/19/11)
Career Double-Doubles	7

GAME-BY-GAME

	P	R	A
WASH. STATE	6	7	0
MID. TENN.	3	10	0
at Delaware	DNP		
at South Carolina	DNP		
vs. Iowa State	5	13	2
at Nevada	2	1	0
NORTH CAROLINA	DNP		
at Texas Tech	DNP		
VIRGINIA TECH	DNP		
UMES	DNP		
WAGNER	DNP		
at Bucknell	DNP		
NEBRASKA	4	7	1
at Wisconsin	10	14	1
MICHIGAN ST.	7	8	0
MICHIGAN	6	8	2
at Nebraska			
at Illinois			
IOWA			
at Michigan			
at Michigan State			
INDIANA			
at Minnesota			
WISCONSIN			
at Northwestern			
at Purdue			
OHIO STATE			
MINNESOTA			

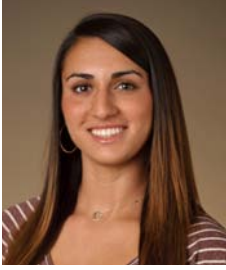
Nickson vs. the Big Ten

Team	G	Pts.-Avg.	Rebs.-Avg.	Assts.-Avg.	Stls.-Avg.
Illinois	3	14-4.7	21-7.0	2-0.7	4-1.3
Indiana	2	37-18.5	23-11.5	2-1.0	7-3.5
Iowa	2	16-8.0	20-10.0	2-1.0	0-0.0
Michigan	2	6-3.0	13-6.5	4-2.0	0-0.0
Michigan State	2	29-14.5	14-7.0	0-0.0	2-1.0
Minnesota *	2	12-6.0	11-5.5	0-0.0	1-0.5
Nebraska	1	4-4.0	7-7.0	1-1.0	1-1.0
Northwestern	2	15-7.5	18-9.0	1-0.5	1-0.5
Ohio State	3	41-13.7	19-6.3	0-0.0	3-1.0
Purdue	3	24-8.0	15-5.0	0-0.0	1-0.3
Wisconsin	2	16-8.0	18-9.0	1-0.5	1-0.5

* - Nickson played vs. Minnesota at Boston College in 2008-09

Five-Time Big Ten Champions • Two-Time Big Ten Tournament Champions • 2000 NCAA Final Four • 22 NCAA Tournament Appearances





#25 Gizelle Studevent

Jr. * G * 5-11 * La Jolla, Calif./The Bishop's School

2011-12 Highlights:

- ♦ Hit a pair of key jumpers en route to four points and three rebounds against Middle Tennessee (11/13).

2011-12 Season Notes:

- ♦ Accounted for four points and three assists at Wisconsin (1/2).
- ♦ Dished out a career-high four assists with two points and three rebounds in the victory over Wagner (12/18).
- ♦ Celebrated her 21st birthday with eight points, three rebounds and an assist in 19 minutes of action in the win over UMES (12/11).
- ♦ Tallied two points and two steals in the win over Virginia Tech (12/6).
- ♦ Nabbed a steal at Texas Tech (12/3).
- ♦ Connected on three of her four shots from the field on the way to six points, three rebounds and a career-high three assists at Nevada (11/26).
- ♦ Was 2-for-3 from the field and finished with four points at Delaware (11/17).
- ♦ Notched two points and a rebound against Washington State (11/11).
- ♦ Had four points and two rebounds in the exhibition win over Bloomsburg (11/5).

CAREER HIGHS

Points.....	10 at Oakland (11/18/10)
Rebs.....	3 (8x) last vs. Wagner (12/17/11)
Assists.....	4 vs. Wagner (12/18/11)
Steals.....	2 vs. Virginia Tech (12/6/11)
Blocks...1 (2x)	last vs. Minnesota (2/11/10)
Minutes....	20 (2x) last vs. Hofstra (3/18/10)
FGM.....	3 (4x) last vs. UMES (12/11/11)
FGA.....	8 vs. Monmouth (12/9/09)
FG%.....	1.000 (3x) last at Ohio State (1-1) (2/17/11)
3FGM....	1 (4x) last vs. Minnesota (1/13/11)
3FGA.....	3 vs. Monmouth (12/9/09)
3PT%.....	1.000 (4x) last vs. Minnesota (1-1) (1/13/11)
FTM.....	3 vs. Maine (12/12/10)
FTA.....	4 vs. Maine (12/12/10)
FT%.....	1.000 (4x) last vs. UMES (2-2) (12/11/11)
Career Double-Doubles	n/a

GAME-BY-GAME

	P	R	A
WASH. STATE	2	1	0
MID. TENN.	4	3	1
at Delaware	4	1	0
at South Carolina	0	1	1
vs. Iowa State	0	0	0
at Nevada	6	3	3
NORTH CAROLINA	0	0	0
at Texas Tech	0	0	0
VIRGINIA TECH	2	0	0
UMES	8	3	1
WAGNER	2	3	4
at Bucknell	2	3	0
NEBRASKA	0	0	0
at Wisconsin	4	1	3
MICHIGAN ST.	0	2	0
MICHIGAN	0	2	0
at Nebraska			
at Illinois			
IOWA			
at Michigan			
at Michigan State			
INDIANA			
at Minnesota			
WISCONSIN			
at Northwestern			
at Purdue			
OHIO STATE			
MINNESOTA			

Studevent vs. the Big Ten

Team	G	Pts.-Avg.	Rebs.-Avg.	Assts.-Avg.	Stls.-Avg.
Illinois	3	0-0.0	3-1.0	0-0.0	0-0.0
Indiana	4	2-0.5	0-0.0	0-0.0	0-0.0
Iowa	3	7-2.3	0-0.0	0-0.0	0-0.0
Michigan	4	1-0.3	6-1.5	1-0.3	0-0.0
Michigan State	3	0-0.0	2-0.7	0-0.0	0-0.0
Minnesota	4	15-3.8	1-0.3	0-0.0	1-0.3
Nebraska	1	0-0.0	0-0.0	0-0.0	0-0.0
Northwestern	1	0-0.0	1-1.0	2-2.0	0-0.0
Ohio State	2	2-1.0	0-0.0	0-0.0	0-0.0
Purdue	2	0-0.0	1-0.5	0-0.0	2-1.0
Wisconsin	4	4-1.0	1-0.3	3-0.8	1-0.3





#33 Maggie Lucas

So. * G * 5-10 * Narberth, Pa./Germantown Academy

2011-12 Highlights:

- ♦ Naismith Award early-season watch list.
- ♦ Sixth on Penn State's career three-pointers list (155).
- ♦ Nine 20-point games.
- ♦ Named to the Nugget Classic All-Tournament team after averaging 22.0 points, 6.5 rebounds and 3.0 assists in two wins.
- ♦ Selected as Lady Lion Classic MVP after averaging 18.0 points, 5.5 rebounds, 3.5 assists and 1.0 steals in a pair of wins.

CAREER HIGHS

Points.....	33 vs. Michigan State (1/7/12)
Rebs.	9 vs. Washington State (11/11/11)
Assists	7 at Wisconsin (1/2/12)
Steals.....	4 (3x) last vs. Iowa (12/30/10)
Blocks	2 vs. Purdue (2/24/11)
Minutes	39 at Delaware (11/17/11)
.....	39 at Boston College (12/2/10)
FGM.....	10 vs. Michigan State (1/7/12)
FGA	21 vs. Michigan State (1/7/12)
FG%714 (5-7) at Northwestern (1/6/11)
3FGM.....	7 vs. Michigan State (1/7/12)
.....	7 vs. Hartford (11/27/10)
3FGA	16 at Boston College (12/2/10)
3PT %...	1.000 (4-4) at Bucknell (12/21/11)
FTM	11 vs. Washington State (11/11/11)
FTA	13 vs. Washington State (11/11/11)
FT %	1.000 (22x)
.....	last at Wisconsin (4-4) (1/2/12)
Career Double-Doubles	n/a

GAME-BY-GAME

	P	R	A
WASH. STATE	22	9	2
MID. TENN.	14	2	5
at Delaware	12	3	2
at South Carolina	18	2	2
vs. Iowa State	18	6	1
at Nevada	26	7	5
NORTH CAROLINA	21	2	1
at Texas Tech	15	1	2
VIRGINIA TECH	20	8	2
UMES	20	5	1
WAGNER	23	4	1
at Bucknell	22	5	3
NEBRASKA	18	7	2
at Wisconsin	18	4	7
MICHIGAN ST.	33	5	3
MICHIGAN	22	3	5
at Nebraska			
at Illinois			
IOWA			
at Michigan			
at Michigan State			
INDIANA			
at Minnesota			
WISCONSIN			
at Northwestern			
at Purdue			
OHIO STATE			
MINNESOTA			

2011-12 Season Notes:

- ♦ Was 6-for-12 from the field en route to 22 points, five assists and three steals in the win over Michigan (1/12).
- ♦ Scored a career-high 33 points via a BJC record seven three-pointers with five rebounds and three assists against Michigan State (1/7).
- ♦ Handed out a career-high seven assists to compliment 18 points and four rebounds at Wisconsin (1/2).
- ♦ Recorded 18 points, seven rebounds and a pair of assists against Nebraska (12/30).
- ♦ Dropped in 22 points on 7-of-10 shooting to go along with five rebounds, three assists and a steal in a road win over Bucknell (12/21).
- ♦ Posted third-straight 20-point game with 23 tallies that included an 8-for-8 day at the free throw line in the win over Wagner (12/18).
- ♦ Reached the 20-point mark for the fourth time in five games with 20 tallies and five rebounds in the win over UMES (12/11).
- ♦ Had a game-high 20 points on 8-of-16 shooting to go along with eight rebounds and a pair of assists in the win over Virginia Tech (12/6).
- ♦ Chipped in 15 points, two assists and three steals at #19/25 Texas Tech (12/3).
- ♦ Posted 21 points in 22 minutes, including five three-pointers, in the win over #14/13 North Carolina (11/30).
- ♦ Tallied 26 points to go along with seven rebounds and a career-high five assists in the Nugget Classic title game against Nevada (11/26).
- ♦ Accounted for a game-high 18 points, including six of Penn State's final nine points, with six rebounds and two steals in the win over Iowa State (11/25).
- ♦ Tallied a team-best 18 points with two assists and two rebounds at South Carolina (11/20).
- ♦ Reached the 600-point plateau with 12 points to go along with three rebounds and two assists at Delaware (11/17). She reaches 600 points in the third-fewest games in school history (Kelly Mazzante & Susan Robinson; 33 games).
- ♦ Connected on a trio of three-pointers en route to 14 points and a career-high five assists in the victory over Middle Tennessee (11/13).
- ♦ Tied for team scoring honors with 22 points, including an 11-for-13 effort from the free throw line, in the season-opening win over Washington State (11/11).
- ♦ Pulled in a personal-best nine rebounds in the win over the Cougars.

Lucas vs. the Big Ten

Team	G	Pts.-Avg.	Rebs.-Avg.	Assts.-Avg.	Stls.-Avg.
Illinois	3	55-18.3	13-4.3	4-1.3	3-1.0
Indiana	2	34-17.0	7-3.5	2-1.0	1-0.5
Iowa	2	27-13.5	6-3.0	2-1.0	5-2.5
Michigan	2	45-22.5	7-3.5	5-2.5	4-2.0
Michigan State	2	48-24.0	7-3.5	5-2.5	4-2.0
Minnesota	1	20-20.0	3-3.0	1-1.0	3-3.0
Nebraska	1	18-18.0	7-7.0	2-2.0	0-0.0
Northwestern	2	41-20.5	3-1.5	7-3.5	3--1.5
Ohio State	3	34-11.3	6-2.0	6-2.0	4-1.3
Purdue	3	35-11.7	6-2.0	6-2.0	6-2.0
Wisconsin	2	24-12.0	6-3.0	9-4.5	1-0.5

Five-Time Big Ten Champions • Two-Time Big Ten Tournament Champions • 2000 NCAA Final Four • 22 NCAA Tournament Appearances





#40 Marisa Wolfe

Jr. * F * 6-2 * Ford City, Pa./Ford City

2011-12 Season Notes:

- Contributed four points, two rebounds and a blocked shot against Michigan State (1/7).
- Had four points and two rebounds at Wisconsin (1/2).
- Was 3-for-5 from the field and 3-for-3 from the free throw line to finish with nine points at Bucknell (12/21).
- Registered nine points on 4-of-6 shooting to compliment seven rebounds, one block and two steals in the win over Wagner (12/18).
- Had two points and three rebounds in the win over Virginia Tech (12/6).
- Drained her fourth career three-pointer and finished the game with seven points, two rebounds and a personal-best three steals versus #14/13 North Carolina (11/30).
- Notched four points with a pair of rebounds and an assist in the win at Nevada (11/26).
- Scored four points to go along with two offensive rebounds and a pair of steals in the win over Iowa State (11/25).
- Was 2-for-3 from the field and finished with four points in her first game of the season at South Carolina (11/20).
- Missed the first three games of the season due to concussion-like symptoms.

CAREER HIGHS

Points13 vs. Michigan (2/18/10)
Rebs. 7 vs. Wagner (12/18/11)
.....	7 vs. Green Bay (11/26/10)
Assists 1 (13x)
.....	last vs. Wagner (12/18/11)
Steals3 vs. North Carolina (11/30/11)
.....	3 at Northwestern (1/3/10)
Blocks 2 (4x)
.....	last at Northwestern (1/6/11)
Minutes30 vs. Green Bay (11/26/10)
FGM5 vs. Michigan (2/18/10)
.....	5 at Northwestern (1/3/10)
FGA8 vs. North Carolina (11/30/11)
FG% 1.000 (8x)
.....	last vs. Virginia Tech (1-1) (12/6/11)
3FGM2 vs. Illinois (1/24/10)
3FGA 3 vs. Illinois (1/24/10)
3PT%667 (2-3) vs. Illinois (1/24/10)
FTM 4 vs. South Carolina (11/21/10)
FTA 4 (3x)
.....	last vs. Green Bay (11/26/10)
FT% 1.000 (15x)
.....	last at Wisconsin (2-2) (1/2/12)
Career Double-Doubles n/a

GAME-BY-GAME

	P	R	A
WASH. STATE	DNP		
MID. TENN.	DNP		
at Delaware	DNP		
at South Carolina	4	0	0
vs. Iowa State	4	2	1
at Nevada	4	2	1
NORTH CAROLINA	7	2	0
at Texas Tech	0	4	0
VIRGINIA TECH	2	3	1
UMES	3	3	1
WAGNER	9	7	1
at Bucknell	9	3	0
NEBRASKA	0	0	1
at Wisconsin	4	2	0
MICHIGAN ST.	4	2	0
MICHIGAN	3	3	0
at Nebraska			
at Illinois			
IOWA			
at Michigan			
at Michigan State			
INDIANA			
at Minnesota			
WISCONSIN			
at Northwestern			
at Purdue			
OHIO STATE			
MINNESOTA			

Wolfe vs. the Big Ten

Team	G	Pts.-Avg.	Rebs.-Avg.	Assts.-Avg.	Stls.-Avg.
Illinois	5	15-3.0	10-2.0	1-0.2	5-1.0
Indiana	3	11-3.7	12-4.0	0-0.0	0-0.0
Iowa	4	10-2.5	12-3.0	0-0.0	2-0.5
Michigan	4	18-4.5	11-2.8	0-0.0	0-0.0
Michigan State	4	8-2.0	7-1.8	0-0.0	1-0.3
Minnesota	4	2-0.5	8-2.0	2-0.5	2-0.5
Nebraska	1	0-0.0	0-0.0	1-1.0	0-0.0
Northwestern	3	18-6.0	9-3.0	1-0.3	4-1.3
Ohio State	4	9-2.3	7-1.8	2-0.5	1-0.3
Purdue	5	10-2.0	12-2.4	0-0.0	1-0.2
Wisconsin	3	4-1.3	8-2.7	0-0.0	1-0.3





#44 Tori Waldner

Fr. * F/C * 6-5 * Milton, Ga./Milton

2011-12 Season Notes:

- ♦ Tied her career high with six points and two assists at Wisconsin (1/2).
- ♦ Snared a career-best 10 rebounds to go along with five points, two assists and a pair of blocks in the win over Wagner (12/18).
- ♦ Pulled in nine rebounds and made both of her shots from the field en route to four points in the win over UMES (12/11).
- ♦ Had five rebounds versus Virginia Tech (12/6).
- ♦ Accounted for five points, three rebounds, an assist and a blocked shot at #19/25 Texas Tech (12/3).
- ♦ Was 3-for-4 from the field and finished with a career-high six points with two rebounds and two blocked shots in the win over #14/13 North Carolina (11/30).
- ♦ Scored her first collegiate points on a 15-footer in the first half en route to five points and a blocked shot in the Nugget Classic win over Iowa State (11/25).
- ♦ Saw her first action of the season at Delaware (11/17) and pulled in a pair of rebounds in eight minutes on the court.
- ♦ Had three points and a rebound in four minutes of action in the exhibition win over Bloomsburg (11/5).

CAREER HIGHS

Points.....	6 at Wisconsin (1/2/12)
.....	6 vs. North Carolina (11/30/11)
Rebs.	10 vs. Wagner (12/18/11)
Assists	2 at Wisconsin (1/2/12)
.....	2 vs. Wagner (12/18/11)
Steals.....	2 at Nevada (11/26/11)
Blocks.....	3 vs. Wagner (12/18/11)
Minutes	21 vs. UMES (12/11/11)
FGM.....	3 at Wisconsin (1/2/12)
.....	3 vs. North Carolina (11/30/11)
FGA	5 at Texas Tech (12/3/11)
FG%	1.000 (2-2) vs. UMES (12/11/11)
.....	1.000 (2-2) vs. Iowa St. (11/25/11)
3FGM.....	n/a
3FGA	n/a
3PT %	n/a
FTM	3 vs. Wagner (12/18/11)
FTA	4 vs. Wagner (12/18/11)
FT %750 (3-4) vs. Wagner (12/18/11)
Career Double-Doubles	n/a

GAME-BY-GAME

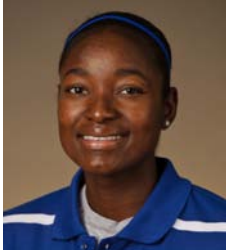
	P	R	B
WASH. STATE ^a	DNP		
MID. TENN.	DNP		
at Delaware	0	2	0
at South Carolina	0	0	0
vs. Iowa State	5	1	1
at Nevada	0	3	0
NORTH CAROLINA	6	2	2
at Texas Tech	5	3	1
VIRGINIA TECH	2	5	0
UMES	4	9	2
WAGNER	5	10	3
at Bucknell	2	3	1
NEBRASKA	0	0	0
at Wisconsin	6	2	0
MICHIGAN ST.	0	1	0
MICHIGAN	0	0	0
at Nebraska			
at Illinois			
IOWA			
at Michigan			
at Michigan State			
INDIANA			
at Minnesota			
WISCONSIN			
at Northwestern			
at Purdue			
OHIO STATE			
MINNESOTA			

Waldner vs. the Big Ten

Team	G	Pts.-Avg.	Rebs.-Avg.	Assts.-Avg.	Stls.-Avg.
Illinois	-	-	-	-	-
Indiana	-	-	-	-	-
Iowa	-	-	-	-	-
Michigan	1	0-0.0	0-0.0	0-0.0	0-0.0
Michigan State	1	0-0.0	1-1.0	0-0.0	1-1.0
Minnesota	-	-	-	-	-
Nebraska	1	0-0.0	0-0.0	0-0.0	2-2.0
Northwestern	-	-	-	-	-
Ohio State	-	-	-	-	-
Purdue	-	-	-	-	-
Wisconsin	1	6-6.0	2-2.0	2-2.0	1-1.0

Five-Time Big Ten Champions • Two-Time Big Ten Tournament Champions • 2000 NCAA Final Four • 22 NCAA Tournament Appearances





#54 Nikki Greene

Jr. * C * 6-4 * Diboll, Texas/Diboll

2011-12 Highlights:

- Sixth on Penn State's career blocks list with 151 rejections.
- 22nd on Penn State's career rebounding list (590).

- Became the 27th member of the Lady Lions' 500-rebound club with seven caroms against Iowa State (11/25).

2011-12 Season Notes:

- Had a near double-double with nine points, nine rebounds, three steals and a career-best three assists against Michigan (1/12).
- Snared 11 rebounds with five points and three steals against Michigan State (1/7).
- Registered 14 points, seven rebounds and two blocks at Wisconsin (1/2).
- Pulled in a season-best 15 rebounds to go along with nine points, a career-high four steals and two blocks in the Big Ten opener versus Nebraska (12/30).
- Just missed out on a double-double with 11 points and nine rebounds at Bucknell (12/21).
- Was a perfect 6-for-6 from the field on the way to 13 points, four rebounds and three blocks in the win over UMES (12/11).
- Tallied 14 points on 6-of-8 shooting with five rebounds, a block and three steals in the win over Virginia Tech (12/6).
- Playing in her home state of Texas for the first time, tallied 11 points, eight rebounds and a block at #19/25 Texas Tech (12/3).
- Accounted for 13 points, six rebounds and three blocked shots in the win over #14/13 North Carolina (11/30).
- Chipped in 11 points and seven rebounds in 16 minutes of action at Nevada (11/26).
- Narrowly missed a double-double with nine points, 10 rebounds and a blocked shot in the Lady Lion Classic Championship game win over Middle Tennessee (11/13).
- Snared a team-best 12 rebounds to go along with three points, two blocks and three steals against Washington State (11/11).

CAREER HIGHS

Points.....	24 vs. Utah (11/25/10)
Rebs.....	20 vs. Indiana (1/23/11)
Assists.....	3 vs. Michigan (1/12/12)
Steals... 4 (3x) last vs. Nebraska (12/30/11)	
Blocks.....	7 vs. Purdue (1/28/10)
Minutes.....	32 vs. Purdue (1/28/10)
FGM.....	9 vs. Utah (11/25/10)
.....	9 at Dayton (11/12/10)
FGA.....	17 at Dayton (11/12/10)
FG%.....	1.000 (6-6) vs. UMES (12/11/11)
.....	1.000 (1-1) at Minnesota (12/6/09)
3FGM.....	n/a
3FGA.....	n/a
3PT%.....	n/a
FTM.....	8 vs. Pittsburgh (12/12/09)
FTA.....	13 vs. Monmouth (12/9/09)
FT%.....	1.000 (10x)
.....last vs. North Carolina (1-1) (11/30/11)	
Career Double-Doubles.....	7

GAME-BY-GAME

	P	R	B
WASH. STATE	3	12	2
MID. TENN.	9	10	1
at Delaware	6	4	0
at South Carolina	5	4	1
vs. Iowa State	7	7	1
at Nevada	11	7	0
NORTH CAROLINA	13	6	3
at Texas Tech	11	8	1
VIRGINIA TECH	14	5	1
UMES	13	4	3
WAGNER	9	8	3
at Bucknell	11	9	0
NEBRASKA	9	15	2
at Wisconsin	14	7	2
MICHIGAN ST.	5	11	0
MICHIGAN	9	9	1
at Nebraska			
at Illinois			
IOWA			
at Michigan			
at Michigan State			
INDIANA			
at Minnesota			
WISCONSIN			
at Northwestern			
at Purdue			
OHIO STATE			
MINNESOTA			

Greene vs. the Big Ten

Team	G	Pts.-Avg.	Rebs.-Avg.	Assts.-Avg.	Blks.-Avg.
Illinois	5	50-10.0	39-7.8	0-0.0	12-2.4
Indiana	4	24-6.0	44-11.0	0-0.0	12-3.0
Iowa	5	33-6.6	35-7.0	1-0.2	11-2.2
Michigan	4	31-7.8	28-7.0	5-1.3	6-1.5
Michigan State	4	23-5.8	32-8.0	0-0.0	1-0.3
Minnesota	4	20-5.0	18-4.5	1-0.3	2-0.5
Nebraska	1	9-9.0	15-15.0	0-0.0	2-2.0
Northwestern	3	14-4.7	18-6.0	2-0.7	4-1.3
Ohio State	4	40-10.0	30-7.5	2-0.5	8-2.0
Purdue	5	34-6.8	41-8.2	3-0.6	14-2.8
Wisconsin	4	50-12.5	27-6.8	2-0.5	9-2.3



#12/14 Penn State 101, Bloomsburg 81 Exhibition Game * Nov. 5, 2011 * University Park, Pa.

Bloomsburg 81

#	Player	Total			3-Ptr			Rebounds			PF	TP	A	TO	Blk	Stl	Min
		FG-FGA	FG-FGA	FT-FTA	FG-FGA	FG-FGA	FT-FTA	Off	Def	Tot							
03	GALLAGHER, Kelsey	8-15	4-5	2-2	1	3	4	1	22	1	4	1	1	25			
20	FLANAGAN, Alyssa	0-2	0-1	2-4	1	3	4	2	2	6	4	2	1	28			
22	OYENRIDER, Kayla	4-11	1-3	5-6	0	3	3	2	14	2	7	1	2	32			
31	ELLIS, Lauren	1-2	0-0	0-0	2	7	9	4	2	3	0	0	0	23			
34	WELLER, Dana	5-10	3-5	3-4	1	3	4	5	16	0	4	0	0	23			
05	DUDECK, Brianna	0-3	0-0	0-0	1	0	1	0	0	0	1	0	0	6			
10	NYCE, Courtney	0-3	0-2	0-0	0	1	1	2	0	2	0	0	0	5			
15	NOACK, Catherine	6-8	5-6	2-2	2	2	4	0	19	1	2	0	0	26			
30	SIMMONS, Marla	2-4	0-1	2-2	1	3	4	1	6	1	2	0	0	11			
32	BORSKI, Maggie	0-0	0-0	0-0	0	0	0	0	1	0	0	0	0	1			
	Team				1	0	1										
	Totals	26-58	13-23	16-20	10	25	35	17	81	15	26	4	4	200			
	FG % 1st Half:	11-26	42.3%	2nd half:	15-32	46.9%	Game:	26-58	44.8%								Deadball Rebounds
	3FG % 1st Half:	7-10	70.0%	2nd half:	6-13	46.2%	Game:	13-23	56.5%								3
	FT % 1st Half:	6-9	66.7%	2nd half:	10-11	90.9%	Game:	16-20	80.0%								

Penn State 101

#	Player	Total			3-Ptr			Rebounds			PF	TP	A	TO	Blk	Stl	Min
		FG-FGA	FG-FGA	FT-FTA	FG-FGA	FG-FGA	FT-FTA	Off	Def	Tot							
12	Gray, Zhaque	4-12	1-4	0-0	0	1	1	4	9	0	1	0	2	30			
20	Bentley, Alex	7-12	0-2	2-2	2	6	8	2	16	9	2	0	7	30			
24	Nickson, Mia	5-9	0-0	4-4	3	1	4	3	14	0	0	1	1	32			
33	Lucas, Maggie	10-15	7-8	8-9	0	3	3	2	35	1	0	1	1	35			
54	Greene, Nikki	6-8	0-0	0-2	4	3	7	3	12	0	2	0	0	16			
05	East, Talia	2-3	0-0	0-0	2	3	5	2	4	0	1	0	2	13			
23	Edwards, Ariel	1-10	0-1	2-3	3	3	6	3	4	0	2	0	1	30			
25	Studevent, Gizelle	2-8	0-1	0-0	1	1	2	1	4	0	2	0	0	20			
44	Waldner, Tori	1-1	0-0	1-1	0	1	1	0	3	0	0	0	0	4			
	Team				2	1	3										
	Totals	38-78	8-16	17-21	17	23	40	20	101	10	12	1	14	200			
	FG % 1st Half:	18-41	43.9%	2nd half:	20-37	54.1%	Game:	38-78	48.7%								Deadball Rebounds
	3FG % 1st Half:	4-11	36.4%	2nd half:	4-5	80.0%	Game:	8-16	50.0%								2
	FT % 1st Half:	7-9	77.8%	2nd half:	10-12	83.3%	Game:	17-21	81.0%								

Officials: Kevin Pethel, Kathy Ridilla, Shannon Feck
Technical fouls: Bloomsburg-None, Penn State-None.
Attendance: 7742

Score by periods	1st	2nd	Total
Bloomsburg	35	46	81
Penn State	47	54	101

Last FG - BLOOM 2nd-01:25, PSU 11:12 2nd-01:08.
Largest lead - BLOOM by 5 1st-18:42, PSU 11:12 by 20 2nd-11:10.

Score tied - 4 times.
Lead changed - 3 times.

Notable

- Sophomore guard **Maggie Lucas** led the Lady Lions' offensive outburst with 35 points, including a 7-for-8 effort from three-point range.
- Alex Bentley** had an all-around performance with 16 points, eight rebounds, nine assists and seven steals.
- Junior forward **Mia Nickson** also reached double figures with 14 points and four rebounds.

#12/14 Penn State 65, Middle Tennessee State 49 Game #2 * Nov. 13, 2011 * University Park, Pa.

Middle Tennessee 49 • 1-1

#	Player	Total			3-Ptr			Rebounds			PF	TP	A	TO	Blk	Stl	Min
		FG-FGA	FG-FGA	FT-FTA	FG-FGA	FG-FGA	FT-FTA	Off	Def	Tot							
01	Brinkley, Janay	0-8	0-3	0-0	1	3	4	1	0	3	0	0	2	24			
13	Elie, Icelyn	5-10	1-4	2-2	3	7	10	5	13	0	1	0	3	37			
21	Rowe, Ebony	4-12	0-0	4-6	5	8	13	1	12	2	3	1	0	40			
24	Jones, Kortni	4-14	3-10	2-2	0	4	4	0	13	3	4	0	0	40			
42	Stewart, KeKe	2-7	2-6	1-2	0	3	3	4	7	2	2	3	0	28			
05	Cason, Shanice	0-3	0-3	2-2	1	1	2	3	2	1	5	0	1	19			
11	Ajanaku, Jamila	1-2	0-1	0-0	1	0	1	1	2	0	1	0	0	5			
23	March, Lauren	0-0	0-0	0-0	0	0	0	0	0	0	0	0	0	2			
52	Leonard, Laken	0-0	0-0	0-0	0	0	0	2	0	1	0	0	0	5			
	Team				1	2	3										
	Totals	16-56	6-27	11-14	12	28	40	17	49	12	18	4	6	200			
	FG % 1st Half:	10-30	33.3%	2nd half:	6-26	23.1%	Game:	16-56	28.6%								Deadball Rebounds
	3FG % 1st Half:	3-17	17.6%	2nd half:	3-10	30.0%	Game:	6-27	22.2%								2
	FT % 1st Half:	9-10	90.0%	2nd half:	3-4	50.0%	Game:	11-14	78.6%								

Penn State 65 • 2-0

#	Player	Total			3-Ptr			Rebounds			PF	TP	A	TO	Blk	Stl	Min
		FG-FGA	FG-FGA	FT-FTA	FG-FGA	FG-FGA	FT-FTA	Off	Def	Tot							
12	Gray, Zhaque	6-13	2-7	1-1	2	4	6	0	15	2	3	0	0	29			
20	Bentley, Alex	2-10	0-3	4-4	1	1	2	2	8	4	3	0	3	35			
24	Nickson, Mia	1-6	0-0	1-2	5	5	10	2	3	0	0	1	0	30			
33	Lucas, Maggie	4-12	3-9	3-4	1	1	2	2	14	5	3	0	2	35			
54	Greene, Nikki	4-9	0-0	1-3	5	5	10	4	9	0	2	1	1	19			
05	East, Talia	1-4	0-0	0-1	2	4	6	3	2	0	0	1	1	19			
23	Edwards, Ariel	4-10	0-2	2-3	0	1	1	1	10	1	1	0	2	22			
25	Studevent, Gizelle	2-5	0-0	0-0	0	3	3	0	4	1	0	0	0	11			
	Team				5	5	10										
	Totals	24-69	5-21	12-18	21	29	50	14	65	13	12	2	10	200			
	FG % 1st Half:	9-33	27.3%	2nd half:	15-36	41.7%	Game:	24-69	34.8%								Deadball Rebounds
	3FG % 1st Half:	0-10	0.0%	2nd half:	5-11	45.5%	Game:	5-21	23.8%								2
	FT % 1st Half:	8-11	72.7%	2nd half:	4-7	57.1%	Game:	12-18	66.7%								

Officials: Mark Zentz, Jennifer Rezac, Kathy Ridilla
Technical fouls: Middle Tennessee-None, Penn State-None.
Attendance: 3238

Score by periods	1st	2nd	Total
Middle Tennessee	32	17	49
Penn State	26	39	65

Last FG - MT 2nd-08:29, PSU 2nd-00:29.
Largest lead - MT by 10 1st-16:57, PSU by 16 2nd-00:29.

Score tied - 3 times.
Lead changed - 3 times.

Notable

- The Lady Lions used a 30-6 run, including a 19-0 spurt in the final seven minutes to erase a 10-point second-half deficit.
- The Lady Lions win their 27th regular-season tournament title and third under head coach **Coquese Washington**.
- Junior guard **Alex Bentley** surpassed the 900-point mark for her career with eight points

#12/14 Penn State 72, Washington 60 Game #1 * Nov. 11, 2011 * University Park, Pa.

Washington State 60 • 0-1

#	Player	Total			3-Ptr			Rebounds			PF	TP	A	TO	Blk	Stl	Min
		FG-FGA	FG-FGA	FT-FTA	FG-FGA	FG-FGA	FT-FTA	Off	Def	Tot							
01	Cook, April	1-5	0-1	0-0	0	3	3	2	1	1	1	1	1	18			
03	Adzasu, Rosetta	2-6	0-0	0-0	1	2	3	4	5	4	1	1	2	28			
11	Perkins, Jazmine	4-17	1-5	0-1	4	9	13	2	9	2	1	0	4	22			
21	Tarnowski, Rosie	3-8	1-4	3-3	1	2	3	3	10	0	0	0	1	18			
33	Noyes, Carly	3-6	0-0	0-0	3	1	4	4	6	3	2	0	0	27			
02	Amojo, Ireti	3-15	2-7	1-2	0	1	1	1	9	1	2	0	0	25			
10	Presley, Tia	1-5	0-2	0-0	0	0	0	1	2	4	2	0	0	14			
22	Romberg, Sage	5-8	2-2	0-0	2	5	7	4	12	0	1	0	1	15			
23	Dheensaw, Shalie	0-1	0-0	0-0	0	2	2	0	0	0	0	0	0	5			
24	Thomas, Brandi	1-4	0-2	0-0	3	2	5	1	2	0	2	0	0	13			
42	Potter, Hana	2-7	0-0	0-1	3	1	4	4	4	0	2	0	1	15			
	Team				2	1	3										
	Totals	25-82	6-23	4-7	19	29	48	26	60	16	17	2	9	200			
	FG % 1st Half:	17-39	43.6%	2nd half:	8-43	18.6%	Game:	25-82	30.5%								Deadball Rebounds
	3FG % 1st																

#11/12 Penn State 55, South Carolina 50

Game #4 * Nov. 20, 2011 * Columbia, S.C.

Penn State 55 • 3-1

#	Player	Total			3-Ptr			Rebounds			PF	TP	A	TO	Blk	Stl	Min
		FG-FGA	FG-FGA	FT-FTA	Off	Def	Total	Off	Def	Total							
23	Edwards, Ariel	f	5-7	0-1	0-0	1	6	7	3	10	1	4	0	1	31		
54	Greene, Nikki	c	2-4	0-0	1-2	1	3	4	4	5	1	3	1	0	19		
12	Gray, Zhaque	g	1-5	0-1	4-4	0	4	4	2	6	1	1	1	1	38		
20	Bentley, Alex	g	1-4	0-0	4-4	0	2	2	2	6	3	7	0	1	32		
33	Lucas, Maggie	g	7-13	0-4	4-4	0	2	2	2	18	2	2	0	1	38		
05	East, Talia		3-6	0-0	0-0	1	14	15	2	6	0	3	7	1	29		
25	Studevent, Gizelle		0-0	0-0	0-0	0	1	1	0	0	1	2	0	1	5		
40	Wolfe, Marisa		2-3	0-0	0-0	0	0	0	1	4	0	0	0	0	7		
44	Waldner, Tori		0-0	0-0	0-0	0	0	0	0	0	1	0	0	0	1		
Team						2	2	4									
Totals			21-42	0-6	13-14	5	34	39	16	55	10	23	9	6	200		

FG % 1st Half: 11-22 50.0% 2nd half: 10-20 50.0% Game: 21-42 50.0%
3FG % 1st Half: 0-2 0.0% 2nd half: 0-4 0.0% Game: 0-6 0.0%
FT % 1st Half: 4-4 100.0% 2nd half: 4-4 100.0% Game: 13-14 92.9%

South Carolina 50 • 3-1

#	Player	Total			3-Ptr			Rebounds			PF	TP	A	TO	Blk	Stl	Min
		FG-FGA	FG-FGA	FT-FTA	Off	Def	Total	Off	Def	Total							
02	STEPHENS, Charenee	f	1-3	0-0	2-3	5	3	8	0	4	0	2	0	1	19		
13	WALKER, Ieasia	g	6-20	3-9	0-0	1	3	4	1	15	1	1	0	5	38		
05	GRANT, Markeshia	g	3-12	1-8	0-0	0	3	4	1	7	2	0	0	1	33		
11	SUTTON, LaKeisha	g	2-17	1-4	2-2	2	0	2	1	7	3	2	1	0	30		
22	NEWTON, Courtney	g	0-1	0-1	0-0	0	0	0	1	0	0	1	0	0	10		
01	WILSON, Ebony		0-0	0-0	0-0	0	0	0	0	0	0	0	0	0	1		
20	WHITE, Sancheon		0-4	0-1	1-2	2	0	2	2	1	0	0	0	0	12		
21	BRUNER, Ashley		4-8	0-0	1-3	9	9	18	3	9	2	2	2	1	30		
23	ROY, Tina		2-7	1-6	0-0	0	0	0	0	5	0	0	0	0	7		
24	WELCH, Aleighsa		1-4	0-0	0-0	6	0	6	2	2	0	0	0	1	20		
Team						0	0	0			2						
Totals			19-76	6-29	6-10	25	15	40	15	50	8	10	3	10	200		

FG % 1st Half: 9-38 23.7% 2nd half: 10-38 26.3% Game: 19-76 25.0%
3FG % 1st Half: 2-12 16.7% 2nd half: 4-17 23.5% Game: 6-29 20.7%
FT % 1st Half: 2-3 66.7% 2nd half: 4-7 57.1% Game: 6-10 60.0%

Officials: Beverly Roberts, Eric Brewton, Felicia Grinter
Technical fouls: Penn State-None, South Carolina-None.
Attendance: 2391

Score by periods	1st	2nd	Total
Penn State	26	29	55
South Carolina	22	28	50

Points	In	Off	2nd	Fast	Bench
PSU	26	8	3	4	10
SC	20	17	16	2	17

Last FG - PSU 2nd-00:23, SC 2nd-05:47.
Largest lead - PSU by 6 1st-00:50, SC by 8 2nd-06:40.
Score tied - 4 times.
Lead changed - 14 times.

Notable

- The Lady Lions used a 13-0 run, including the final six tallies coming from **Maggie Lucas**, over the final 5:22 to earn the come-from-behind win.
- Talia East** rejected a career-high seven shots, which ties her for the third-highest single-game total in school history.
- PSU was held without a three-point field goal for the first time since Jan. 7, 2007 (vs. Michigan).

#17/16 Penn State 103, Nevada 65

Game #6 * Nov. 26, 2011 * Reno, Nev.

Penn State 103 • 5-1

#	Player	Total			3-Ptr			Rebounds			PF	TP	A	TO	Blk	Stl	Min
		FG-FGA	FG-FGA	FT-FTA	Off	Def	Total	Off	Def	Total							
12	Gray, Zhaque	*	9-15	1-4	2-3	3	1	4	2	21	3	1	0	2	35		
20	Bentley, Alex	*	11-15	1-2	0-0	0	0	0	2	23	6	1	0	5	29		
24	Nickson, Mia	*	1-3	0-0	0-0	1	0	1	0	2	0	0	1	0	7		
33	Lucas, Maggie	*	9-16	2-4	6-7	1	6	7	3	26	5	4	1	0	35		
54	Greene, Nikki	*	4-9	0-0	3-3	3	4	7	3	11	0	1	0	0	16		
05	East, Talia		4-6	0-0	0-4	3	3	6	1	8	0	1	0	0	14		
23	Edwards, Ariel		1-3	0-0	0-0	0	4	4	1	2	1	2	0	2	22		
25	Studevent, Gizelle		3-4	0-0	0-0	1	2	3	0	6	3	0	0	0	22		
40	Wolfe, Marisa		1-2	0-0	2-2	0	2	2	3	4	1	2	0	0	8		
44	Waldner, Tori		0-2	0-0	0-0	1	2	3	3	0	1	2	0	2	12		
Team						1	4	5									
Totals			43-75	4-10	13-19	14	28	42	18	103	20	14	2	12	200		

FG % 1st Half: 21-40 52.5% 2nd half: 22-35 62.9% Game: 43-75 57.3%
3FG % 1st Half: 3-7 42.9% 2nd half: 1-3 33.3% Game: 4-10 40.0%
FT % 1st Half: 4-7 57.1% 2nd half: 9-12 75.0% Game: 13-19 68.4%

Nevada 65 • 2-3

#	Player	Total			3-Ptr			Rebounds			PF	TP	A	TO	Blk	Stl	Min
		FG-FGA	FG-FGA	FT-FTA	Off	Def	Total	Off	Def	Total							
03	Sharp, Danika	*	5-13	2-3	2-2	1	1	2	2	14	1	3	0	0	28		
21	Kevoeken, Kate	*	3-10	3-7	5-6	0	2	2	1	14	4	2	0	1	30		
23	Johnson, Amanda	*	3-14	0-5	2-2	0	5	5	3	8	4	5	0	1	39		
32	Wideman, Arielle	*	2-7	1-2	0-0	2	0	2	2	5	2	7	0	0	28		
34	Williams, Kayla	*	5-9	0-1	4-4	1	4	5	14	0	3	3	1	0	20		
05	Brennan, Chanelle		0-0	0-0	0-0	2	1	3	1	0	0	2	0	0	11		
12	Lois, Faith		0-0	0-0	0-0	0	0	0	0	0	0	1	0	0	3		
14	Johnson, Aja		1-2	0-0	0-0	2	3	5	0	2	0	1	0	0	8		
24	Burns, Emily		0-2	0-0	0-1	0	1	1	0	0	0	0	0	0	4		
25	Gough, Christina		2-4	2-4	0-0	0	0	0	0	6	1	0	0	0	6		
44	Smith, Amber		0-1	0-1	0-0	0	1	1	0	0	1	1	0	1	6		
55	Mungedi, Mimi		1-2	0-0	0-0	2	0	2	2	2	0	0	0	0	17		
Team						4	1	5									
Totals			22-64	8-23	13-15	14	19	33	17	65	11	25	3	4	200		

FG % 1st Half: 14-34 41.2% 2nd half: 8-30 26.7% Game: 22-64 34.4%
3FG % 1st Half: 3-9 33.3% 2nd half: 5-14 35.7% Game: 8-23 34.8%
FT % 1st Half: 3-5 60.0% 2nd half: 10-10 100.0% Game: 13-15 86.7%

Officials: Kyle Bacon, Shelley Nakasone, Rick Morris
Technical fouls: Penn State-None, Nevada-None.
Attendance: 759
John Ascuaga's Nugget Classic - Championship

Score by periods	1st	2nd	Total
Penn State	49	54	103
Nevada	34	31	65

Points	In	Off	2nd	Fast	Bench
PSU	62	36	18	34	20
NEVADA	18	10	13	9	10

Last FG - PSU 2nd-01:05, NEVADA 2nd-00:02.
Largest lead - PSU by 42 2nd-07:06, NEVADA None.
Score tied - 1 time.
Lead changed - 0 times.

Notable

- The Lady Lions won their 28th regular-season tournament title with the win in the Nugget Classic title game and the second this season (Lady Lion Classic).
- Alex Bentley** was selected as the Tournament MVP and **Maggie Lucas** was named to the All-Tournament team.
- The Lady Lions had three 20-point scorers for the first time since a win at Dayton on Nov. 12, 2010.

#17/16 Penn State 66, Iowa State 59

Game #5 * Nov. 25, 2011 * Reno, Nev.

Iowa State 59 • 3-1

#	Player	Total			3-Ptr			Rebounds			PF	TP	A	TO	Blk	Stl	Min
		FG-FGA	FG-FGA	FT-FTA	Off	Def	Total	Off	Def	Total							
04	Moody, Nikki	*	1-11	1-7	4-6	1	3	4	0	7	1	3	0	0	33		
05	Christofferson, H.	*	1-5	0-4	4-5	3	2	5	3	6	0	3	2	0	23		
10	Mansfield, Lauren	*	2-6	1-3	0-0	0	4	4	3	5	1	2	0	1	34		
32	Schroll, Jessica	*	3-7	0-1	1-2	1	2	3	3	7	2	1	1	1	29		
33	Poppens, Chelsea	*	3-8	0-0	5-13	6	11	17	4	11	1	3	1	1	16		
03	Harris, Kelsey		0-0	0-0	1-2	0	0	0	1	1	1	1	0	0	5		
21	Mays, Kileah		2-4	0-0	1-2	1	3	4	2	5	0	0	1	0	12		
22	Williamson, Brynn		5-10	4-9	1-2	0	2	2	1	15	0	0	1	1	29		
23	Cole, Chassidy		0-1	0-1	2-3	0	0	0	1	2	1	1	0	0	12		
32	Ellis, Fallon		0-1	0-1	0-0	0	1	1	0	0	0	0	0	0	4		
42	Zimmerman, Amanda		0-0	0-0	0-0	0	1	1	0	0	0	1	0	0	3		
Team						1	2	3									
Totals			17-53	6-26	19-35	13	31	44	18	59	7	16	6	4	200		

FG % 1st Half: 7-25 28.0% 2nd half: 10-28 35.7% Game: 17-53 32.1%
3FG % 1st Half: 2-10 20.0% 2nd half: 4-16 25.0% Game: 6-26 23.1%
FT % 1st Half: 12-24 50.0% 2nd half: 7-11 63.6% Game: 19-35 54.3%

Penn State 66 • 4-1

#	Player	Total			3-Ptr			Rebounds			PF	TP	A	TO	Blk	Stl	Min
		FG-FGA	FG-FGA	FT-FTA	Off	Def	Total	Off	Def	Total							
12	Gray, Zhaque	*	5-7	2-2	2-2	0	3	3	4	14	2	0	0	1	30		
20	Bentley, Alex	*	5-13	2-5	1-2	0	3	3	4	13	3	0	0	4	31		
24	Nickson, Mia	*	2-8	0-0	1-4	4	9	13	4	5	2	1	0	0	26		
33	Lucas, Maggie	*	5-15	1-5	7-10	2	4	6	4	18	1	4	0	2	35		
54	Greene, Nikki	*	2-8	0-0	3-3	3	4	7	3	7	0	0	1	0	15		
05	East, Talia		0-1	0-0	0-0	1	2	3	0	0	0	2	0	0	7		
23	Edwards, Ariel		0-2	0-1	0-1	0	1	1	4	0	1	0	0	0	18		
25	Studevent, Gizelle		0-2	0-0	0-0	0	0	0	0	0	0	1	0	0	12		
40	Wolfe, Marisa		2-5	0-1	0-2	2	0	2	2	4	1	0	0	2	18		
44	Waldner, Tori		2-2	0-0	1-2	0	1	1	3	5	0	1	1	0	8		
Team						3	4	7									
Totals			23-63	5-14	15-26	15	31	46	32	66	9	11	2	9	200		

FG % 1st Half: 15-33 45.5% 2nd half: 8-30 26.7% Game: 23-63 36.5%
3FG % 1st Half: 5-10 50.0% 2nd half: 0-4 0.0% Game: 5-14 35.7%
FT % 1st Half: 2-7 28.6% 2nd half: 13-19 68.4% Game: 15-26 57.7%

Officials: Kyle Bacon, Brad Schmidt, Tiffany Bird
Technical fouls: Iowa State-TEAM, Penn State-East, Talia.
Attendance: 1089
John Ascuaga's Nugget Classic

Score by periods	1st	2nd	Total
Iowa State	28	31	

#19/25 Texas Tech 70, #16/15 Penn State 66

Game #8 * Dec. 3, 2011 * Lubbock, Texas

Penn State 66 • 6-2

#	Player	Total			3-Ptr			Rebounds			PF	TP	A	TO	Blk	Stl	Min
		FG-FGA	FG-FTA	FT-FTA	Off	Def	Tot	Off	Def	Tot							
23	Edwards, Ariel	1-5	0-0	1-2	3	2	5	2	3	2	1	1	3	29			
54	Greene, Nikki	2-4	0-0	7-8	3	5	8	4	11	0	2	1	0	20			
12	Gray, Zhaque	3-8	0-2	2-2	0	2	2	1	8	3	2	0	0	33			
20	Bentley, Alex	6-15	1-2	5-6	0	2	2	3	18	3	2	0	1	38			
33	Lucas, Maggie	5-13	1-5	4-4	0	1	1	1	15	2	3	0	3	33			
05	East, Talia	3-5	0-0	0-2	2	6	8	4	6	0	2	1	2	20			
25	Studevent, Gizelle	0-1	0-0	0-0	0	0	0	0	0	0	0	0	1	8			
40	Wolfe, Marisa	0-2	0-0	0-0	2	2	4	3	0	0	0	0	0	7			
44	Waldner, Tori	2-5	0-0	1-2	1	2	3	4	5	1	1	1	0	12			
	Team				2	1	3										
	Totals	22-58	2-9	20-26	13	23	36	23	66	11	13	4	10	200			

FG % 1st Half: 14-26 53.8% 2nd half: 8-32 25.0% Game: 22-58 37.9%
 3FG % 1st Half: 0-2 0.0% 2nd half: 2-7 28.6% Game: 2-9 22.2%
 FT % 1st Half: 8-12 66.7% 2nd half: 12-14 85.7% Game: 20-26 76.9%

TTU 70 • 7-0

#	Player	Total			3-Ptr			Rebounds			PF	TP	A	TO	Blk	Stl	Min
		FG-FGA	FG-FTA	FT-FTA	Off	Def	Tot	Off	Def	Tot							
20	MALLARD, KIERRA	6-18	2-4	4-4	9	6	15	4	18	3	7	1	3	31			
41	BAKER, KELSI	1-3	0-1	0-2	2	3	5	3	2	1	1	1	0	20			
05	HYDE, CHRISTINE	3-9	0-3	1-3	1	5	6	3	7	2	2	0	1	30			
15	MORRIS, CASEY	4-15	4-10	1-1	2	1	3	1	13	2	1	0	2	37			
23	SMALLS, MONIQUE	3-7	1-2	8-11	2	6	8	2	15	7	0	0	2	38			
00	BROWN, CHYNNNA	1-7	0-3	0-0	0	0	0	2	2	0	3	0	1	11			
01	BARNCASTLE, JORDAN	2-3	2-3	0-0	0	2	2	1	6	1	0	0	0	12			
12	BATTLE, ANBER	0-0	0-0	0-0	0	0	0	0	0	0	0	0	0	2			
24	BOKENKAMP, MARY	0-0	0-0	0-0	0	0	0	0	0	0	0	0	0	2			
33	NOBLES, SHAUNTAL	2-3	0-0	3-5	3	2	5	5	7	0	1	0	0	16			
42	WALKER, EBONY	0-0	0-0	0-0	0	0	0	1	0	0	1	0	0	1			
	Team				3	1	4										
	Totals	22-65	9-26	17-26	22	26	48	22	70	16	18	2	9	200			

FG % 1st Half: 10-33 30.3% 2nd half: 12-32 37.5% Game: 22-65 33.8%
 3FG % 1st Half: 5-15 33.3% 2nd half: 4-11 36.4% Game: 9-26 34.6%
 FT % 1st Half: 9-15 60.0% 2nd half: 8-11 72.7% Game: 17-26 65.4%

Officials: Tina Napier, Felicia Grinter, Jesse Dickerson
 Technical fouls: Penn State-Edwards, Ariel. TTU-BAKER, KELSI.
 Attendance: 8923

Score by periods	1st	2nd	Total
Penn State	36	30	66
TTU	34	36	70

Last FG - PSU 2nd-00:36, TTU 2nd-00:03.
 Largest lead - PSU by 8 1st-09:56, TTU by 7 2nd-03:26.

Score tied - 13 times.
 Lead changed - 17 times.

Notable

- The Lady Lions shot just 25% (8-32) in the second half as the Lady Raiders rallied.
- Jordan Barncastle hit a three-pointer as the shot clock expired with three seconds remaining on the game to seal the win for TTU.
- Penn State falls to 1-1 in Big 12/Big Ten Challenge games.

#17/18 Penn State 76, UMES 51

Game #10 * Dec. 11, 2011 * University Park, Pa.

UMES 51 • 2-5

#	Player	Total			3-Ptr			Rebounds			PF	TP	A	TO	Blk	Stl	Min
		FG-FGA	FG-FTA	FT-FTA	Off	Def	Tot	Off	Def	Tot							
15	MERCER, Kwinnayta	1-9	0-5	0-0	1	5	6	2	2	3	0	0	1	26			
21	COOK, Amber	4-12	0-1	4-6	5	4	9	0	12	1	6	0	0	28			
23	SANDERS, Chelsea	3-15	0-1	0-2	2	2	4	4	6	0	1	0	0	29			
24	ROACH, Karona	4-11	0-2	0-0	4	1	5	2	8	1	2	1	1	24			
25	STEWART, Shanyce	2-7	0-0	4-4	5	10	3	8	1	1	0	3	27				
01	AGBASI, Adobi	4-10	0-0	0-0	0	2	2	5	8	0	0	3	1	22			
03	SWEENEY, Shawnee	0-0	0-0	0-0	0	0	0	0	0	0	0	0	0	4			
04	FINNEY, Sha-Kiyia	2-6	1-5	0-0	0	3	3	1	5	0	0	0	0	15			
12	BRAXTON, Courtney	0-1	0-0	1-2	0	0	0	2	1	2	1	0	1	13			
13	LONG, Jessica	0-1	0-1	1-2	0	0	0	0	1	0	0	0	0	6			
22	BARR, Porsha	0-3	0-0	0-0	0	0	0	0	0	0	0	0	0	4			
35	COLEMAN, Saisha	0-0	0-0	0-0	0	0	0	1	0	0	0	0	0	2			
	Team				5	2	7										
	Totals	20-75	1-15	10-16	22	24	46	20	51	8	13	4	7	200			

FG % 1st Half: 13-36 36.1% 2nd half: 7-39 17.9% Game: 20-75 26.7%
 3FG % 1st Half: 1-6 16.7% 2nd half: 0-9 0.0% Game: 1-15 6.7%
 FT % 1st Half: 3-4 75.0% 2nd half: 7-12 58.3% Game: 10-16 62.5%

Penn State 76 • 8-3

#	Player	Total			3-Ptr			Rebounds			PF	TP	A	TO	Blk	Stl	Min
		FG-FGA	FG-FTA	FT-FTA	Off	Def	Tot	Off	Def	Tot							
12	Gray, Zhaque	2-6	1-2	3-4	0	0	0	4	8	1	0	0	0	22			
20	Bentley, Alex	4-7	0-0	3-4	1	3	4	1	11	9	6	0	0	34			
23	Edwards, Ariel	3-11	0-1	1-2	1	8	9	1	7	3	0	1	1	32			
33	Lucas, Maggie	6-14	3-7	5-6	1	4	5	1	20	1	4	0	3	35			
54	Greene, Nikki	6-6	0-0	1-3	0	4	4	3	13	1	3	3	1	16			
05	East, Talia	0-1	0-0	2-2	1	4	5	0	2	1	0	0	0	8			
25	Studevent, Gizelle	3-7	0-0	2-2	2	1	3	2	8	1	1	0	0	19			
40	Wolfe, Marisa	1-4	0-0	1-2	0	3	3	3	3	1	1	2	0	13			
44	Waldner, Tori	2-2	0-0	0-2	1	8	9	3	4	0	1	2	0	21			
	Team				4	0											
	Totals	27-58	4-10	18-27	11	35	46	18	76	18	16	8	5	200			

FG % 1st Half: 14-31 45.2% 2nd half: 13-27 48.1% Game: 27-58 46.0%
 3FG % 1st Half: 3-7 42.9% 2nd half: 1-3 33.3% Game: 4-10 40.0%
 FT % 1st Half: 9-12 75.0% 2nd half: 9-15 60.0% Game: 18-27 66.7%

Officials: Cameron Inouye, Frank Steratore, Shannon Peck
 Technical fouls: UMES-AGBASI, Adobi. TEAM. Penn State-None.
 Attendance: 3386

Score by periods	1st	2nd	Total
UMES	30	21	51
Penn State	40	36	76

Last FG - UMESW 2nd-03:59, PSU 2nd-02:21.
 Largest lead - UMESW by 2 1st-15:06, PSU by 25 2nd-00:47.

Score tied - 3 times.
 Lead changed - 4 times.

Notable

- The Lady Lions held the Lady Hawks to just a 17.9% (7-39) field goal percentage in the second half and holding them without a field goal for the final 3:59 to secure the win.
- With 13 points, Nikki Greene also surpassed the 600-point plateau for her career (608).
- Senior Zhaque Gray moved into a tie with Jess Brungo for 10th place in all-time three-point field goals made (117).

#17/18 Penn State 66, Virginia Tech 28

Game #9 * Dec. 6, 2011 * University Park, Pa.

Virginia Tech 28 • 2-6

#	Player	Total			3-Ptr			Rebounds			PF	TP	A	TO	Blk	Stl	Min
		FG-FGA	FG-FTA	FT-FTA	Off	Def	Tot	Off	Def	Tot							
03	Aerial Wilson	4-14	1-2	1-2	1	4	5	3	10	4	6	0	0	38			
13	Alyssa Fenyn	1-5	1-4	0-2	3	4	7	1	3	0	6	2	1	35			
21	Britni Montgomery	0-2	0-0	0-0	0	2	2	4	0	0	2	0	0	13			
31	Monet Tellier	2-11	0-3	0-0	1	0	1	3	4	1	5	1	2	27			
43	Latorri Hines-Allen	2-7	0-0	0-0	3	9	12	4	4	0	1	0	1	28			
02	Kerry Sarver	0-0	0-0	0-0	0	0	0	0	0	0	0	0	0	2			
20	Nia Evans	0-2	0-0	0-0	0	1	1	2	0	1	0	0	1	14			
22	Porchia Hadley	1-6	0-0	0-0	1	3	4	1	2	0	1	2	1	25			
27	Larryqua Hall	2-3	1-2	0-0	0	0	0	0	5	0	1	0	1	16			
33	Kelsey Conyers	0-1	0-1	0-0	0	0	0	1	0	0	0	0	0	2			
	Team				1	1	2										
	Totals	12-51	3-12	1-4	10	21	31	19	28	6	23	5	7	200			

FG % 1st Half: 7-27 25.9% 2nd half: 5-24 20.8% Game: 12-51 23.5%
 3FG % 1st Half: 1-5 20.0% 2nd half: 2-7 28.6% Game: 3-12 25.0%
 FT % 1st Half: 0-0 0.0% 2nd half: 1-4 25.0% Game: 1-4 25.0%

Penn State 66 • 7-2

#	Player	Total			3-Ptr			Rebounds			PF	TP	A	TO	Blk	Stl	Min
		FG-FGA	FG-FTA	FT-FTA	Off	Def	Tot	Off	Def	Tot							
12	Gray, Zhaque	1-4	0-1	4-4	1	4	5	3	6	2	3	0	2	28			
20	Bentley, Alex	4-6	0-0	3-5	0	2	2	1	11	5	1	1	3	31			
23	Edwards, Ariel	1-5	0-2	1-2	0	3	3	0	3	0	1	0	1	34			
33	Lucas, Maggie	8-16	2-5	2-4	1	7	8	0	20	2	2	0	1	35			
54	Greene, Nikki	6-8	0-0	2-8	1	4	5	2	14	1	2	1	3	21			
05	East, Talia	3-5	0-0	0-2	0	3	3	1	6	1	1	1	1	12			
25	Studevent, Gizelle	1-2	0-0	0-0	0	0	0	2	2	0	0	0	0	16			

#16/16 Penn State 78, Bucknell 54 Game #12 * Dec. 21, 2011 * Lewisburg, Pa.

Penn State 78 • 10-2

#	Player	Total			3-Ptr			Rebounds			PF	TP	A	TO	Blk	Stl	Min
		FG-FGA	FG-FGA	FT-FTA	FG-FGA	FG-FGA	FT-FTA	Off	Def	Tot							
23	Edwards, Ariel	f	2-4	1-2	2-4	0	2	2	0	7	3	2	0	2	21		
54	Greene, Nikki	f	5-9	0-0	1-2	0	6	9	1	11	1	1	0	1	21		
12	Gray, Zhaque	g	3-8	2-4	0-0	0	0	0	3	8	2	1	0	1	30		
20	Bentley, Alex	g	5-11	1-2	0-0	0	0	0	1	11	7	4	0	4	32		
33	Lucas, Maggie	g	7-10	4-3	4-4	0	5	5	2	22	3	2	0	1	32		
05	East, Talia	g	3-7	0-0	0-0	3	5	8	2	6	2	1	3	1	18		
25	Studevent, Gizelle	g	1-3	0-1	0-0	1	2	3	0	2	0	0	1	1	15		
40	Wolfe, Marisa	g	3-5	0-0	3-3	0	3	3	3	9	0	2	1	2	18		
44	Waldner, Tori	g	1-3	0-0	0-0	0	3	3	1	2	1	3	1	1	13		
	Team		3	2	5												
	Totals		30-60	8-13	10-13	10	28	38	13	78	19	16	5	14	200		

FG % 1st Half: 13-29 44.8% 2nd half: 17-31 54.8% Game: 30-60 50.0%
 3FG % 1st Half: 4-5 80.0% 2nd half: 4-8 50.0% Game: 8-13 61.5%
 FT % 1st Half: 4-4 100.0% 2nd half: 6-9 66.7% Game: 10-13 76.9%

BUCKNELL 54 • 2-10

#	Player	Total			3-Ptr			Rebounds			PF	TP	A	TO	Blk	Stl	Min
		FG-FGA	FG-FGA	FT-FTA	FG-FGA	FG-FGA	FT-FTA	Off	Def	Tot							
00	Mgbada, Felicia	f	6-10	0-0	0-0	2	2	4	3	12	0	4	0	0	23		
12	Voss, Rachel	f	5-9	1-2	0-0	3	2	5	0	11	0	5	0	1	26		
55	Horbatuck, Lindsay	f	1-4	0-0	3-6	4	6	10	2	5	3	4	0	1	29		
15	Romine, Shelby	g	3-16	1-8	0-0	1	1	2	1	7	4	0	1	0	36		
22	Chukwudo, Christina	g	3-8	1-2	0-0	2	1	3	0	7	2	3	0	1	32		
13	Dunn, Alyssa	g	2-7	0-0	0-0	2	2	2	0	4	2	0	1	0	14		
20	Baxter, Ashley	g	0-0	0-0	0-0	0	0	0	0	0	0	0	0	0	1		
31	Harris, Katherine	g	1-3	1-3	0-0	0	0	0	1	2	2	0	0	0	13		
32	Trotter, Shelby	g	0-4	0-3	1-2	1	3	4	1	1	2	1	0	0	12		
33	Heider, Jen	g	1-1	0-0	0-0	0	2	2	0	2	0	0	0	0	3		
44	Dotson, Audrey	g	1-2	0-0	0-0	0	1	1	0	2	1	0	0	1	11		
	Team		4	1	5												
	Totals		23-66	4-18	4-8	17	21	38	8	54	13	20	3	4	200		

FG % 1st Half: 8-34 23.5% 2nd half: 15-32 46.9% Game: 23-66 34.8%
 3FG % 1st Half: 1-10 10.0% 2nd half: 3-8 37.5% Game: 4-18 22.2%
 FT % 1st Half: 1-2 50.0% 2nd half: 3-6 50.0% Game: 4-8 50.0%

Officials: Joseph Vaszily, Mark Resch, Michael Schmidt
 Technical fouls: Penn State-None, BUCKNELL-None.
 Attendance: 1490

Score by periods	1st	2nd	Total
Penn State	34	44	78
BUCKNELL	18	36	54

Last FG - PSU 2nd-01:02, BUCKNELL 2nd-00:13.
 Largest lead - PSU by 28 2nd-01:02, BUCKNELL None.

Score tied - 1 time.
 Lead changed - 0 times.

Notable

- The Lady Lions finish the non-conference portion of their schedule with a 10-2 mark, it is the second consecutive year that Penn State has 10 or more non-conference wins.
- Sophomore guard **Maggie Lucas** posted her fourth consecutive 20-point game and sixth in her last seven games with 22 markers .
- All nine Lady Lions scored for the fourth consecutive game.

#22/17 Penn State 82, Wisconsin 49 Game #14 * Jan. 2, 2012 * Madison, Wis.

Penn State 82 • 11-3, 1-1

#	Player	Total			3-Ptr			Rebounds			PF	TP	A	TO	Blk	Stl	Min
		FG-FGA	FG-FGA	FT-FTA	FG-FGA	FG-FGA	FT-FTA	Off	Def	Tot							
24	Nickson, Mia	f	5-6	0-0	0-0	8	6	14	3	10	1	0	0	1	27		
54	Greene, Nikki	c	6-9	0-0	2-3	1	6	7	2	14	0	0	2	1	21		
12	Gray, Zhaque	g	3-10	2-5	0-0	1	0	1	1	8	1	3	0	1	21		
20	Bentley, Alex	g	4-10	0-0	1-1	0	2	2	8	8	3	0	4	31			
33	Lucas, Maggie	g	6-13	2-6	4-4	1	3	4	1	18	7	4	0	1	31		
05	East, Talia	g	2-2	0-0	0-0	0	7	7	0	4	0	1	0	0	11		
23	Edwards, Ariel	g	2-3	0-0	2-4	1	3	4	1	6	4	0	0	1	25		
25	Studevent, Gizelle	g	2-5	0-0	0-0	0	1	1	0	4	3	0	0	1	12		
40	Wolfe, Marisa	g	1-3	0-0	2-2	0	2	2	1	4	0	1	0	0	9		
44	Waldner, Tori	g	3-4	0-0	0-0	0	2	2	2	6	2	2	0	1	12		
	Team		0	0	0												
	Totals		34-65	4-11	10-14	12	33	45	13	82	26	14	2	11	200		

FG % 1st Half: 16-33 48.5% 2nd half: 18-32 56.3% Game: 34-65 52.3%
 3FG % 1st Half: 3-9 33.3% 2nd half: 1-2 50.0% Game: 4-11 36.4%
 FT % 1st Half: 5-6 83.3% 2nd half: 5-8 62.5% Game: 10-14 71.4%

Wisconsin 49 • 4-10, 0-2

#	Player	Total			3-Ptr			Rebounds			PF	TP	A	TO	Blk	Stl	Min
		FG-FGA	FG-FGA	FT-FTA	FG-FGA	FG-FGA	FT-FTA	Off	Def	Tot							
23	Thomas, Ashley	f	2-5	0-0	0-0	0	1	1	2	4	0	3	0	0	29		
40	Covington, Anya	f	4-10	0-0	0-0	3	2	5	4	8	2	1	1	0	26		
00	Davis, Jade	g	2-6	1-3	0-0	1	3	4	1	5	5	2	0	1	35		
02	Wurtz, Taylor	g	5-13	1-4	6-6	1	6	7	0	17	1	1	0	1	32		
05	Paige, Morgan	g	2-9	0-5	1-2	0	2	2	0	5	0	3	0	0	22		
03	Brown, AnnMarie	g	0-1	0-1	0-0	0	0	0	0	0	0	1	0	0	2		
12	Smith, Lindsay	g	2-7	0-3	0-0	0	3	3	0	4	2	3	0	2	21		
20	Gorman, Lacia	g	0-2	0-2	0-0	0	0	0	0	0	1	0	0	0	5		
24	Stephen, Tiera	g	0-1	0-0	0-0	0	1	1	0	0	0	1	0	0	4		
35	Gulczynski, Jacki	g	0-0	0-0	0-0	0	1	1	1	0	0	0	0	0	5		
43	Roehl, Cassie	g	2-4	0-0	2-2	1	1	2	3	6	0	0	1	0	19		
	Team		0	0	0												
	Totals		19-58	2-18	9-10	7	21	28	11	49	11	15	2	4	200		

FG % 1st Half: 11-31 35.5% 2nd half: 8-27 29.6% Game: 19-58 32.8%
 3FG % 1st Half: 2-9 22.2% 2nd half: 0-10 0.0% Game: 2-18 11.1%
 FT % 1st Half: 1-2 50.0% 2nd half: 8-8 100.0% Game: 9-10 90.0%

Officials: Tina Napier, Felicia Ginter, Amy Bonner
 Technical fouls: Penn State-None, Wisconsin-None.
 Attendance: 4171

Score by periods	1st	2nd	Total
Penn State	40	42	82
Wisconsin	25	24	49

Last FG - PSU 2nd-01:08, WIS 2nd-00:25.
 Largest lead - PSU by 35 2nd-03:42, WIS by 2 1st-12:23.

Score tied - 1 time.
 Lead changed - 2 times.

Notable

- Junior **Nikki Greene** became the sixth player in school history with 150 career blocks (150).
- Alex Bentley** (380) moved into 11th place on PSU's career assists list, passing Corinne Gulas.
- Sophomore **Maggie Lucas** dished out a career-high seven assists.
- All 10 Lady Lions scored for the seventh time this season, but it is the first time that 10 players have accomplished the feat (all other times were with nine player).

#23/RV Nebraska 71, #16/17 Penn State 63 Game #13 * Dec. 30, 2011 * University Park, Pa.

Nebraska 71 • 12-1, 1-0

#	Player	Total			3-Ptr			Rebounds			PF	TP	A	TO	Blk	Stl	Min
		FG-FGA	FG-FGA	FT-FTA	FG-FGA	FG-FGA	FT-FTA	Off	Def	Tot							
00	Moore, Lindsey	*	4-11	1-4	7-10	0	4	4	1	16	4	7	0	1	34		
03	Sample, Hailee	*	2-5	0-0	1-2	1	2	3	1	5	0	1	1	0	25		
05	Burke, Kaitlyn	*	1-5	1-3	0-0	0	6	6	4	3	6	2	0	0	29		
23	Cady, Jordan	*	2-5	0-0	0-0	5	5	10	3	4	0	4	2	1	29		
35	Hooper, Emily	*	11-21	4-11	5-6	1	11	12	1	31	1	4	1	0	33		
10	Williams, Meghin	*	3-4	0-0	0-0	3	2	5	1	6	1	2	0	0	10		
12	Jeffery, Brandi	*	0-2	0-1	0-1	0	1	1	2	3	2	0	0	3	14		
14	Simon, Katie	*	1-1	0-0	2-2	0	1	1	1	4	0	1	0	0	9		
21	Sidhu, Harleen	*	0-0	0-0	0-0	0	1	1	0	0	0	1	0	0	4		
33	Woodberry, Rebecca	*	1-4	0-3	0-0	0	2	2	1	2	0	1	0	0	13		
	Team		4	3	7												
	Totals		25-58	6-22	15-21	15	38	53	16	71	15	26	5	5	200		

FG % 1st Half: 16-33 48.5% 2nd half: 9-25 36.0% Game: 25-58 43.1%
 3FG % 1st Half: 4-14 28.6% 2nd half: 2-8 25.0% Game: 6-22 27.3%
 FT % 1st Half: 2-2 100.0% 2nd half: 13-19 68.4% Game: 15-21 71.4%

Penn State 63 • 10-3, 0-1

#	Player	Total			3-Ptr			Rebounds			PF	TP	A	TO	Blk	Stl	Min
		FG-FGA	FG-FGA	FT-FTA	FG-FGA	FG-FGA	FT-FTA	Off	Def	Tot							
12	Gray, Zhaque	*	0-7	0-3	0-0	0	2	2	0	0	1	1	0	0	21		
20	Bentley, Alex	*	9-25	1-4	3-5	0	3	3	1	22	3	5	1	0	36		
24	Nickson, Mia	*	2-9	0-0	0-0	4	3	7	3	4	1	3	0	1	31		
33	Lucas, Maggie	*	7-22	1-7	3-3	5	2	7	3	18	2	2	0	0	36		
54	Greene, Nikki	*	4-9	0-0	1-4	7	8	15	3	9	0	0	2	4	20		
05	East, Talia	*	0-1	0-0	4-4	3	1	4	0	4	0	1	1	0	10		
23	Edwards, Ariel	*	3-8	0-0	0-1	1	1	2	2	6	0	1	1	2	26		
25	Studevent, Gizelle	*	0-2	0-0	0-0	0	0	0	0	0	0	0	0	0	8		
40	Wolfe, Marisa	*	0-0	0-0	0-0	0	0	0	1	0	1	1	0	0	5		
44	Waldner, Tori	*	0-2	0-0	0-0	0	0	0	1	0	0	0	0	2	7		
	Team		5	1	6												
	Totals		25-85	2-14	11-17	25	21	46	14	63	8	14	5	17	200		

FG % 1st Half: 15-42 35.7% 2nd half: 10-43

#RV/25 Penn State 78, Michigan 63

Game #16 * Jan., 12, 2012 * University Park, Pa.

Michigan 63 • 13-4, 2-2

#	Player	Total			3-Ptr			Rebounds			PF	TP	A	TO	Blk	Stl	Min
		FG-FGA	FG-FGA	FT-FTA	FG-FGA	FG-FGA	FT-FTA	Off	Def	Tot							
02	Boylan,Courtney *	4-10	1-2	1-1	2	3	5	1	10	1	2	0	1	37			
21	Jordan,Nya *	2-6	0-0	0-0	2	2	4	3	4	1	1	0	2	25			
24	Ryan,Jenny *	2-6	1-2	0-0	2	4	6	4	5	6	2	0	1	30			
33	Reynolds,Carmen *	2-10	1-5	0-2	2	0	2	1	5	1	1	0	0	18			
44	Sheffer,Rachel *	3-11	1-5	0-1	1	3	4	2	7	1	3	1	0	25			
01	Harris,Brenae	0-0	0-0	0-0	0	0	0	0	0	0	0	0	0	3			
11	Arnold,Sam	2-3	1-2	0-0	0	2	2	0	5	0	1	0	1	17			
12	Thompson,Kate	6-16	2-6	4-4	0	3	3	3	18	4	1	1	4	31			
14	Elmblad,Nicole	1-4	1-3	4-4	1	1	2	0	7	0	0	0	0	10			
54	Seto,Kendra	1-1	0-0	0-0	1	3	4	1	2	0	2	0	0	4			
Team					1	0	1										
Totals		23-67	8-25	9-12	12	21	33	15	63	14	13	2	9	200			

FG % 1st Half: 12-35 34.3% 2nd half: 11-32 34.4% Game: 23-67 34.3% Deadball
 3FG % 1st Half: 3-13 23.1% 2nd half: 5-12 41.7% Game: 8-25 32.0% Rebounds
 FT % 1st Half: 2-4 50.0% 2nd half: 7-8 87.5% Game: 9-12 75.0%

Penn State 78 • 12-4, 2-2

#	Player	Total			3-Ptr			Rebounds			PF	TP	A	TO	Blk	Stl	Min
		FG-FGA	FG-FGA	FT-FTA	FG-FGA	FG-FGA	FT-FTA	Off	Def	Tot							
12	Gray,Zhaque *	6-12	1-4	2-2	1	3	4	2	15	1	1	0	0	33			
20	Bentley,Alex *	6-10	0-0	0-0	0	5	5	1	12	6	6	0	4	35			
24	Nickson,Mia *	2-3	0-0	2-4	3	5	8	3	6	2	3	0	0	22			
33	Lucas,Maggie *	8-15	3-6	3-4	0	3	3	1	22	5	5	1	3	37			
34	Greene,Nikki *	4-5	0-0	1-2	1	8	9	4	9	3	1	1	3	23			
05	East,Talia	1-1	0-0	0-0	0	1	1	0	2	0	0	0	0	3			
23	Edwards,Ariel	3-6	1-2	2-2	0	5	5	3	9	2	2	0	0	22			
25	Studevent,Gizelle	0-2	0-0	0-0	1	1	2	2	0	0	0	0	0	13			
40	Wolfe,Marisa	1-2	0-0	1-2	1	2	3	2	3	0	0	0	0	11			
44	Waldner,Tori	0-0	0-0	0-0	0	0	0	1	0	0	0	0	0	1			
Team					1	1	2										
Totals		31-56	5-12	11-16	8	34	42	19	78	19	18	2	10	200			

FG % 1st Half: 16-28 57.1% 2nd half: 15-28 53.6% Game: 31-56 55.4% Deadball
 3FG % 1st Half: 4-7 57.1% 2nd half: 1-5 20.0% Game: 5-12 41.7% Rebounds
 FT % 1st Half: 5-8 62.5% 2nd half: 6-8 75.0% Game: 11-16 68.8%

Officials: Laura Morris, Michael McConnell, Rachelle Jones
 Technical fouls: Michigan-None. Penn State-None.
 Attendance: 3567

Score by periods	1st	2nd	Total
Michigan	29	34	63
Penn State	41	37	78

	In	Off	2nd	Fast
Points	24	11	19	3
MICH	36	14	7	24
PSU				14

Last FG - MICH 2nd-00:09, PSU 2nd-01:55.
 Largest lead - MICH by 3 1st-18:55, PSU by 22 2nd-13:41.

Score tied - 0 times.
 Lead changed - 1 time.

Notable

- **Nikki Greene** recorded nine rebounds, moving her past Kim Calhoun (583; 1993-96) and into 22nd all-time at Penn State with 590 career boards
- **Maggie Lucas** posted her ninth 20-point game of the season with 22 tallies to pace the Lady Lions
- Penn State shot 55.4% from the field, the best effort from the field for the Lions since compiling a 57.3 percentage at Nevada on Nov. 26, 2011.



2011-12 RADIO/TV CHART



#2

Dara Taylor
5-8 * Jr./Jr. * G
Wilmington, Del.
Caravel Academy
(Maryland)



#5

Talia East
6-3 * So./So. * F/C
Philadelphia, Pa.
Friends' Central School



#12

Zhaque Gray
5-8 * Sr./Sr. * G
Chicago, Ill.
Prep John Hope



#15

Renee Womack
5-10 * Sr./Sr. * G
Lansdale, Pa.
Methacton



#20

Alex Bentley
5-7 * Jr./Jr. * G
Indianapolis, Ind.
Ben Davis



#23

Ariel Edwards
6-2 * So./So. * F
Elmont, N.Y.
Christ the King



#24

Mia Nickson
6-2 * Sr./Jr. * F
Ashburn, Va.
Notre Dame Academy
(Boston College)



#25

Gizelle Studevent
5-11 * Jr./Jr. * G
La Jolla, Calif.
The Bishop's School



#33

Maggie Lucas
5-10 * So./So. * G
Narberth, Pa.
Germantown Academy



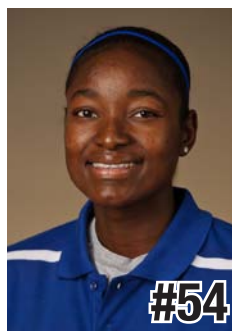
#40

Marisa Wolfe
6-2 * Jr./Jr. * F
Ford City, Pa.
Ford City



#44

Tori Waldner
6-5 * Fr./Fr. * F/C
Milton, Ga.
Milton



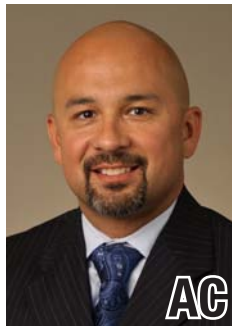
#54

Nikki Greene
6-4 * Jr./Jr. * F/C
Diboll, Texas
Diboll



HC

Coquese Washington
Head Coach
Notre Dame '92
Fifth Season



AC

Fred Chmiel
Assistant Coach
Excelsior College
Second Season



AC

Kia Damon
Assistant Coach
Millersville '97
Fifth Season



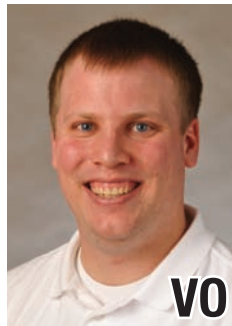
AC

Maren Walseth
Assistant Coach
Penn State '02
Fifth Season



DO

Ethan Gelfand
Director of Basketball
Operations
First Season



VO

Mike Miller
Director of Video &
Technology Operations
Seventh Season





**2011-12 Penn State Lady Lions
Penn State Combined Team Statistics (as of Jan 12, 2012)
All games**



RECORD:	OVERALL	HOME	AWAY	NEUTRAL
ALL GAMES	12-4	7-2	4-2	1-0
CONFERENCE	2-2	1-2	1-0	0-0
NON-CONFERENCE	10-2	6-0	3-2	1-0

#	Player	gp-gs	min	avg	Total		3-Point		F-Throw		Rebounds				pf	dq	a	to	blk	stl	pts	avg
					fg-fga	fg%	3fg-fga	3fg%	ft-fa	ft%	off	def	tot	avg								
33	Lucas, Maggie	16-16	548	34.2	102-231	.442	43-108	.398	75-89	.843	18	55	73	4.6	29	0	44	45	3	20	322	20.1
20	Bentley, Alex	16-16	534	33.4	88-195	.451	10-27	.370	41-53	.774	5	36	41	2.6	33	1	93	60	3	51	227	14.2
12	Gray, Zhaque	16-16	474	29.6	64-156	.410	23-65	.354	26-30	.867	12	37	49	3.1	34	0	31	28	1	15	177	11.1
54	Greene, Nikki	16-16	307	19.2	56-109	.514	0-0	.000	37-62	.597	42	84	126	7.9	52	0	9	32	21	21	149	9.3
23	Edwards, Ariel	16-8	421	26.3	41-99	.414	3-15	.200	18-30	.600	15	56	71	4.4	34	1	24	26	4	17	103	6.4
24	Nickson, Mia	8-8	204	25.5	17-51	.333	0-0	.000	9-20	.450	32	36	68	8.5	21	0	6	11	1	5	43	5.4
05	East, Talia	16-0	221	13.8	29-56	.518	0-0	.000	11-23	.478	26	69	95	5.9	26	1	5	19	22	8	69	4.3
40	Wolfe, Marisa	13-0	159	12.2	21-44	.477	1-4	.250	10-14	.714	11	22	33	2.5	24	0	6	10	5	9	53	4.1
44	Waldner, Tori	14-0	146	10.4	15-31	.484	0-0	.000	5-10	.500	8	33	41	2.9	24	0	8	16	11	9	35	2.5
25	Studevent, Gizelle	16-0	186	11.6	16-41	.390	0-1	.000	2-2	1.000	8	15	23	1.4	10	0	13	7	0	8	34	2.1
Team											40	39	79				1					
Total.....		16	3200		449-1013	.443	80-220	.364	234-333	.703	217	482	699	43.7	287	3	239	255	71	163	1212	75.8
Opponents.....		16	3200		335-1034	.324	92-344	.267	188-269	.699	255	399	654	40.9	279	4	191	289	53	111	950	59.4

TEAM STATISTICS	PSU	OPP	Date	Opponent	Score	Att.
SCORING	1212	950	11/11/11	WASHINGTON STATE	w 72-60	3807
Points per game	75.8	59.4	11/13/11	MIDDLE TENNESSEE	w 65-49	3238
Scoring margin	+16.4	-	11/17/11	at Delaware	L 71-80	3352
FIELD GOALS-ATT	449-1013	335-1034	11/20/11	at South Carolina	w 55-50	2391
Field goal pct	.443	.324	11/25/11	vs Iowa State	w 66-59	1089
3 POINT FG-ATT	80-220	92-344	11/26/11	at Nevada	w 103-65	759
3-point FG pct	.364	.267	11/30/11	NORTH CAROLINA	w 103-84	3963
3-pt FG made per game	5.0	5.8	12/3/11	at Texas Tech	L 66-70	8923
FREE THROWS-ATT	234-333	188-269	12/6/11	VIRGINIA TECH	w 66-28	3236
Free throw pct	.703	.699	12/11/11	UMES	w 76-51	3386
F-Throws made per game	14.6	11.8	12/18/11	WAGNER	w 103-42	7202
REBOUNDS	699	654	12/21/11	at BUCKNELL	w 78-54	1490
Rebounds per game	43.7	40.9	* 12/30/11	NEBRASKA	L 63-71	5116
Rebounding margin	+2.8	-	* 1/2/12	at Wisconsin	w 82-49	4171
ASSISTS	239	191	* 1/7/12	MICHIGAN STATE	L 65-75	4906
Assists per game	14.9	11.9	* 1/12/12	MICHIGAN	w 78-63	3567
TURNOVERS	255	289				
Turnovers per game	15.9	18.1				
Turnover margin	+2.1	-				
Assist/turnover ratio	0.9	0.7				
STEALS	163	111				
Steals per game	10.2	6.9				
BLOCKS	71	53				
Blocks per game	4.4	3.3				
ATTENDANCE	38421	22175				
Home games-Avg/Game	9-4269	6-3514				
Neutral site-Avg/Game	-	1-1089				

Score by Periods	1st	2nd	Totals
Penn State	603	609	1212
Opponents	491	459	950

* - Conference game



**2011-12 Penn State Lady Lions
Penn State Category Leaders (as of Jan 12, 2012)
All games**



Points	G	Pts	Pts/G
Lucas, Maggie	16	322	20.1
Bentley, Alex	16	227	14.2
Gray, Zhaque	16	177	11.1
Greene, Nikki	16	149	9.3
Edwards, Ariel	16	103	6.4
East, Talia	16	69	4.3
Wolfe, Marisa	13	53	4.1
Nickson, Mia	8	43	5.4
Waldner, Tori	14	35	2.5
Studevent, Gizelle	16	34	2.1

FG Percentage	FG	Att	Pct
East, Talia	29	56	.518
Greene, Nikki	56	109	.514
Waldner, Tori	15	31	.484
Wolfe, Marisa	21	44	.477
Bentley, Alex	88	195	.451
Lucas, Maggie	102	231	.442
Edwards, Ariel	41	99	.414
Gray, Zhaque	64	156	.410
Studevent, Gizelle	16	41	.390
Nickson, Mia	17	51	.333

3-Point Percentage	3FG	Att	Pct
Lucas, Maggie	43	108	.398
Bentley, Alex	10	27	.370
Gray, Zhaque	23	65	.354
Wolfe, Marisa	1	4	.250
Edwards, Ariel	3	15	.200
Studevent, Gizelle	0	1	.000

Free Throw Percent	FG	Att	Pct
Studevent, Gizelle	2	2	1.000
Gray, Zhaque	26	30	.867
Lucas, Maggie	75	89	.843
Bentley, Alex	41	53	.774
Wolfe, Marisa	10	14	.714
Edwards, Ariel	18	30	.600
Greene, Nikki	37	62	.597
Waldner, Tori	5	10	.500
East, Talia	11	23	.478
Nickson, Mia	9	20	.450

Scoring Average	G	Pts	Avg/G
Lucas, Maggie	16	322	20.1
Bentley, Alex	16	227	14.2
Gray, Zhaque	16	177	11.1
Greene, Nikki	16	149	9.3
Edwards, Ariel	16	103	6.4
Nickson, Mia	8	43	5.4
East, Talia	16	69	4.3
Wolfe, Marisa	13	53	4.1
Waldner, Tori	14	35	2.5
Studevent, Gizelle	16	34	2.1

Field Goal Attempts	G	Att	Att/G
Lucas, Maggie	16	231	14.4
Bentley, Alex	16	195	12.2
Gray, Zhaque	16	156	9.8
Greene, Nikki	16	109	6.8
Edwards, Ariel	16	99	6.2

Field Goals Made	G	Made	Made/G
Lucas, Maggie	16	102	6.4
Bentley, Alex	16	88	5.5
Gray, Zhaque	16	64	4.0
Greene, Nikki	16	56	3.5
Edwards, Ariel	16	41	2.6

3-Point FG Attempts	G	Att	Att/G
Lucas, Maggie	16	108	6.8
Gray, Zhaque	16	65	4.1
Bentley, Alex	16	27	1.7
Edwards, Ariel	16	15	0.9
Wolfe, Marisa	13	4	0.3

3-Point FG Made	G	Made	Made/G
Lucas, Maggie	16	43	2.7
Gray, Zhaque	16	23	1.4
Bentley, Alex	16	10	0.6
Edwards, Ariel	16	3	0.2
Wolfe, Marisa	13	1	0.1

Free Throw Attempts	G	Att	Att/G
Lucas, Maggie	16	89	5.6
Greene, Nikki	16	62	3.9
Bentley, Alex	16	53	3.3
Edwards, Ariel	16	30	1.9
Gray, Zhaque	16	30	1.9

Free Throws Made	G	Made	Made/G
Lucas, Maggie	16	75	4.7
Bentley, Alex	16	41	2.6
Greene, Nikki	16	37	2.3
Gray, Zhaque	16	26	1.6
Edwards, Ariel	16	18	1.1



**2011-12 Penn State Lady Lions
Penn State Category Leaders (as of Jan 12, 2012)
All games**



Rebounds	G	Reb	Reb/G
Greene, Nikki	16	126	7.9
East, Talia	16	95	5.9
Lucas, Maggie	16	73	4.6
Edwards, Ariel	16	71	4.4
Nickson, Mia	8	68	8.5

Rebound Average	G	Reb	Avg/G
Nickson, Mia	8	68	8.5
Greene, Nikki	16	126	7.9
East, Talia	16	95	5.9
Lucas, Maggie	16	73	4.6
Edwards, Ariel	16	71	4.4

Offensive Rebounds	G	No.	Avg/G
Greene, Nikki	16	42	2.6
Nickson, Mia	8	32	4.0
East, Talia	16	26	1.6
Lucas, Maggie	16	18	1.1
Edwards, Ariel	16	15	0.9

Defensive Rebounds	G	No.	Avg/G
Greene, Nikki	16	84	5.3
East, Talia	16	69	4.3
Edwards, Ariel	16	56	3.5
Lucas, Maggie	16	55	3.4
Gray, Zhaque	16	37	2.3

Fouls	G	No.	Per/G
Greene, Nikki	16	52	3.3
Edwards, Ariel	16	34	2.1
Gray, Zhaque	16	34	2.1
Bentley, Alex	16	33	2.1
Lucas, Maggie	16	29	1.8

Foulsouts	G	No.
Bentley, Alex	16	1
Edwards, Ariel	16	1
East, Talia	16	1

Assists	G	No.	Ast/G
Bentley, Alex	16	93	5.8
Lucas, Maggie	16	44	2.8
Gray, Zhaque	16	31	1.9
Edwards, Ariel	16	24	1.5
Studevent, Gizelle	16	13	0.8

Steals	G	No.	Stl/G
Bentley, Alex	16	51	3.2
Greene, Nikki	16	21	1.3
Lucas, Maggie	16	20	1.3
Edwards, Ariel	16	17	1.1
Gray, Zhaque	16	15	0.9

Blocked Shots	G	No.	Blk/G
East, Talia	16	22	1.4
Greene, Nikki	16	21	1.3
Waldner, Tori	14	11	0.8
Wolfe, Marisa	13	5	0.4
Edwards, Ariel	16	4	0.3

Minutes	G	No.	Min/G
Lucas, Maggie	16	548	34.2
Bentley, Alex	16	534	33.4
Gray, Zhaque	16	474	29.6
Edwards, Ariel	16	421	26.3
Greene, Nikki	16	307	19.2

Turnovers	G	No.	TO/G
Bentley, Alex	16	60	3.8
Lucas, Maggie	16	45	2.8
Greene, Nikki	16	32	2.0
Gray, Zhaque	16	28	1.8
Edwards, Ariel	16	26	1.6



**2011-12 Penn State Lady Lions
Penn State Combined Team Statistics (as of Jan 12, 2012)
Conference games**



RECORD:	OVERALL	HOME	AWAY	NEUTRAL
ALL GAMES	2-2	1-2	1-0	0-0
CONFERENCE	2-2	1-2	1-0	0-0
NON-CONFERENCE	0-0	0-0	0-0	0-0

##	Player	gp-gs	min	avg	Total		3-Point		F-Throw		Rebounds				pf	dq	a	to	blk	stl	pts	avg		
					fg-fga	fg%	3fg-fga	3fg%	ft-fta	ft%	off	def	tot	avg										
33	Lucas, Maggie	4-4	142	35.5	31-71	.437	13-32	.406	16-19	.842	8	11	19	4.8	6	0	17	15	1	5	91	22.8		
20	Bentley, Alex	4-4	136	34.0	21-57	.368	1-7	.143	3-8	.375	0	12	12	3.0	9	1	23	19	1	18	46	11.5		
54	Greene, Nikki	4-4	91	22.8	15-26	.577	0-0	.000	7-15	.467	12	30	42	10.5	13	0	3	7	5	11	37	9.3		
12	Gray, Zhaque	4-4	103	25.8	12-40	.300	4-19	.211	3-4	.750	3	8	11	2.8	6	0	4	7	0	2	31	7.8		
24	Nickson, Mia	4-4	109	27.3	12-27	.444	0-0	.000	3-7	.429	20	17	37	9.3	11	0	4	8	0	3	27	6.8		
23	Edwards, Ariel	4-0	94	23.5	10-20	.500	1-2	.500	4-7	.571	2	13	15	3.8	9	0	6	7	2	3	25	6.3		
40	Wolfe, Marisa	4-0	35	8.8	4-8	.500	0-1	.000	3-4	.750	2	5	7	1.8	4	0	1	3	1	0	11	2.8		
05	East, Talia	4-0	28	7.0	3-5	.600	0-0	.000	4-4	1.000	3	9	12	3.0	0	0	0	3	3	0	10	2.5		
44	Waldner, Tori	4-0	26	6.5	3-7	.429	0-0	.000	0-0	.000	1	2	3	0.8	4	0	2	2	1	4	6	1.5		
25	Studevent, Gizelle	4-0	36	9.0	2-9	.222	0-0	.000	0-0	.000	3	2	5	1.3	2	0	3	0	0	1	4	1.0		
Team											10	6	16											
Total.....		4	800		113-270	.419	19-61	.311	43-68	.632	64	115	179	44.8	64	1	63	71	14	47	288	72.0		
Opponents.....		4	800		90-243	.370	27-88	.307	51-67	.761	46	110	156	39.0	63	0	54	72	11	32	258	64.5		

TEAM STATISTICS	PSU	OPP	Date	Opponent	Score	Att.
SCORING	288	258	* 12/30/11	NEBRASKA	L 63-71	5116
Points per game	72.0	64.5	* 1/2/12	at Wisconsin	w 82-49	4171
Scoring margin	+7.5	-	* 1/7/12	MICHIGAN STATE	L 65-75	4906
FIELD GOALS-ATT	113-270	90-243	* 1/12/12	MICHIGAN	w 78-63	3567
Field goal pct	.419	.370	* - Conference game			
3 POINT FG-ATT	19-61	27-88				
3-point FG pct	.311	.307				
3-pt FG made per game	4.8	6.8				
FREE THROWS-ATT	43-68	51-67				
Free throw pct	.632	.761				
F-Throws made per game	10.8	12.8				
REBOUNDS	179	156				
Rebounds per game	44.8	39.0				
Rebounding margin	+5.8	-				
ASSISTS	63	54				
Assists per game	15.8	13.5				
TURNOVERS	71	72				
Turnovers per game	17.8	18.0				
Turnover margin	+0.3	-				
Assist/turnover ratio	0.9	0.8				
STEALS	47	32				
Steals per game	11.8	8.0				
BLOCKS	14	11				
Blocks per game	3.5	2.8				
ATTENDANCE	13589	4171				
Home games-Avg/Game	3-4530	1-4171				
Neutral site-Avg/Game	-	0-0				

Score by Periods	1st	2nd	Totals
Penn State	143	145	288
Opponents	138	120	258



**2011-12 Penn State Lady Lions
Penn State Category Leaders (as of Jan 12, 2012)
Conference games**



Points	G	Pts	Pts/G
Lucas, Maggie	4	91	22.8
Bentley, Alex	4	46	11.5
Greene, Nikki	4	37	9.3
Gray, Zhaque	4	31	7.8
Nickson, Mia	4	27	6.8
Edwards, Ariel	4	25	6.3
Wolfe, Marisa	4	11	2.8
East, Talia	4	10	2.5
Waldner, Tori	4	6	1.5
Studevent, Gizelle	4	4	1.0

FG Percentage	FG	Att	Pct
East, Talia	3	5	.600
Greene, Nikki	15	26	.577
Wolfe, Marisa	4	8	.500
Edwards, Ariel	10	20	.500
Nickson, Mia	12	27	.444
Lucas, Maggie	31	71	.437
Waldner, Tori	3	7	.429
Bentley, Alex	21	57	.368
Gray, Zhaque	12	40	.300
Studevent, Gizelle	2	9	.222

3-Point Percentage	3FG	Att	Pct
Edwards, Ariel	1	2	.500
Lucas, Maggie	13	32	.406
Gray, Zhaque	4	19	.211
Bentley, Alex	1	7	.143
Wolfe, Marisa	0	1	.000

Free Throw Percent	FG	Att	Pct
East, Talia	4	4	1.000
Lucas, Maggie	16	19	.842
Wolfe, Marisa	3	4	.750
Gray, Zhaque	3	4	.750
Edwards, Ariel	4	7	.571
Greene, Nikki	7	15	.467
Nickson, Mia	3	7	.429
Bentley, Alex	3	8	.375

Scoring Average	G	Pts	Avg/G
Lucas, Maggie	4	91	22.8
Bentley, Alex	4	46	11.5
Greene, Nikki	4	37	9.3
Gray, Zhaque	4	31	7.8
Nickson, Mia	4	27	6.8
Edwards, Ariel	4	25	6.3
Wolfe, Marisa	4	11	2.8
East, Talia	4	10	2.5
Waldner, Tori	4	6	1.5
Studevent, Gizelle	4	4	1.0

Field Goal Attempts	G	Att	Att/G
Lucas, Maggie	4	71	17.8
Bentley, Alex	4	57	14.3
Gray, Zhaque	4	40	10.0
Nickson, Mia	4	27	6.8
Greene, Nikki	4	26	6.5

Field Goals Made	G	Made	Made/G
Lucas, Maggie	4	31	7.8
Bentley, Alex	4	21	5.3
Greene, Nikki	4	15	3.8
Nickson, Mia	4	12	3.0
Gray, Zhaque	4	12	3.0

3-Point FG Attempts	G	Att	Att/G
Lucas, Maggie	4	32	8.0
Gray, Zhaque	4	19	4.8
Bentley, Alex	4	7	1.8
Edwards, Ariel	4	2	0.5
Wolfe, Marisa	4	1	0.3

3-Point FG Made	G	Made	Made/G
Lucas, Maggie	4	13	3.3
Gray, Zhaque	4	4	1.0
Edwards, Ariel	4	1	0.3
Bentley, Alex	4	1	0.3

Free Throw Attempts	G	Att	Att/G
Lucas, Maggie	4	19	4.8
Greene, Nikki	4	15	3.8
Bentley, Alex	4	8	2.0
Nickson, Mia	4	7	1.8
Edwards, Ariel	4	7	1.8

Free Throws Made	G	Made	Made/G
Lucas, Maggie	4	16	4.0
Greene, Nikki	4	7	1.8
Edwards, Ariel	4	4	1.0
East, Talia	4	4	1.0
Wolfe, Marisa	4	3	0.8
Nickson, Mia	4	3	0.8
Bentley, Alex	4	3	0.8
Gray, Zhaque	4	3	0.8



**2011-12 Penn State Lady Lions
Penn State Category Leaders (as of Jan 12, 2012)
Conference games**



Rebounds	G	Reb	Reb/G
Greene, Nikki	4	42	10.5
Nickson, Mia	4	37	9.3
Lucas, Maggie	4	19	4.8
Edwards, Ariel	4	15	3.8
Bentley, Alex	4	12	3.0
East, Talia	4	12	3.0

Rebound Average	G	Reb	Avg/G
Greene, Nikki	4	42	10.5
Nickson, Mia	4	37	9.3
Lucas, Maggie	4	19	4.8
Edwards, Ariel	4	15	3.8
Bentley, Alex	4	12	3.0
East, Talia	4	12	3.0

Offensive Rebounds	G	No.	Avg/G
Nickson, Mia	4	20	5.0
Greene, Nikki	4	12	3.0
Lucas, Maggie	4	8	2.0
Gray, Zhaque	4	3	0.8
Studevent, Gizelle	4	3	0.8
East, Talia	4	3	0.8

Defensive Rebounds	G	No.	Avg/G
Greene, Nikki	4	30	7.5
Nickson, Mia	4	17	4.3
Edwards, Ariel	4	13	3.3
Bentley, Alex	4	12	3.0
Lucas, Maggie	4	11	2.8

Fouls	G	No.	Per/G
Greene, Nikki	4	13	3.3
Nickson, Mia	4	11	2.8
Edwards, Ariel	4	9	2.3
Bentley, Alex	4	9	2.3
Gray, Zhaque	4	6	1.5
Lucas, Maggie	4	6	1.5

Foulsouts	G	No.
Bentley, Alex	4	1

Assists	G	No.	Ast/G
Bentley, Alex	4	23	5.8
Lucas, Maggie	4	17	4.3
Edwards, Ariel	4	6	1.5
Gray, Zhaque	4	4	1.0
Nickson, Mia	4	4	1.0

Steals	G	No.	Stl/G
Bentley, Alex	4	18	4.5
Greene, Nikki	4	11	2.8
Lucas, Maggie	4	5	1.3
Waldner, Tori	4	4	1.0
Edwards, Ariel	4	3	0.8
Nickson, Mia	4	3	0.8

Blocked Shots	G	No.	Blk/G
Greene, Nikki	4	5	1.3
East, Talia	4	3	0.8
Edwards, Ariel	4	2	0.5
Waldner, Tori	4	1	0.3
Lucas, Maggie	4	1	0.3
Wolfe, Marisa	4	1	0.3
Bentley, Alex	4	1	0.3

Minutes	G	No.	Min/G
Lucas, Maggie	4	142	35.5
Bentley, Alex	4	136	34.0
Nickson, Mia	4	109	27.3
Gray, Zhaque	4	103	25.8
Edwards, Ariel	4	94	23.5

Turnovers	G	No.	TO/G
Bentley, Alex	4	19	4.8
Lucas, Maggie	4	15	3.8
Nickson, Mia	4	8	2.0
Gray, Zhaque	4	7	1.8
Edwards, Ariel	4	7	1.8
Greene, Nikki	4	7	1.8