



2016 PENN STATE WOMEN'S SOCCER

2015 NCAA CHAMPIONS
21-STRAIGHT NCAA TOURNAMENT APPEARANCES
17-TIME BIG TEN REGULAR SEASON CHAMPIONS
SIX-TIME BIG TEN TOURNAMENT CHAMPIONS
FIVE COLLEGE CUP APPEARANCES

2016 SCHEDULE

AUGUST

Wed. 9	QUEBEC (Exhibition)	University Park, Pa.	---
Sun. 14	DREXEL (Exhibition)	University Park, Pa.	---

PENN STATE TOURNAMENT (Aug. 19-21)

Fri. 19	No. 6 WEST VIRGINIA	University Park, Pa.	T, 1-1
Sun. 21	HOFSTRA	University Park, Pa.	W, 3-1
Fri. 26	No. 14 BYU	University Park, Pa.	L, 3-2

SEPTEMBER

Fri. 2	at No. 11 UCLA	Los Angeles, Calif.	11 p.m.
Sun. 4	at Long Beach State	Long Beach, Calif.	8 p.m.
Fri. 9	SAN DIEGO STATE	University Park, Pa.	5:30 p.m.
Sun. 11	LA SALLE	University Park, Pa.	1 p.m.
Fri. 16	at Minnesota*	Minneapolis, Minn.	8 p.m.
Sun. 18	at Wisconsin*	Madison, Wis.	2 p.m.
Fri. 23	IOWA*	University Park, Pa.	8 p.m.
Sun. 25	NEBRASKA*	University Park, Pa.	1 p.m.
Fri. 30	ILLINOIS*	University Park, Pa.	6 p.m.

OCTOBER

Thu. 6	at Indiana*	Bloomington, Ind.	7 p.m.
Sun. 9	at Maryland*	College Park, Md.	1 p.m.
Thu. 13	RUTGERS*	University Park, Pa.	7 p.m.
Sun. 16	PURDUE*	University Park, Pa.	1 p.m.
Sat. 22	at Michigan State*	East Lansing, Mich.	Noon
Wed. 26	OHIO STATE*	University Park, Pa.	7 p.m.

BIG TEN TOURNAMENT (Oct. 30-Nov. 6)

Sun. 30	Big Ten Quarterfinals	Campus Sites	TBA
---------	-----------------------	--------------	-----

NOVEMBER

Fri. 4	Big Ten Semifinals	Campus Sites	TBA
Sun. 6	Big Ten Championship	Campus Sites	TBA

NCAA TOURNAMENT (Nov. 12-25)

Sat. 12	NCAA First Round	Campus Sites	TBA
Fri. 18	NCAA Second Round	Campus Sites	TBA
Sun. 20	NCAA Third Round	Campus Sites	TBA
Fri. 25	NCAA Quarterfinals	Campus Sites	TBA

DECEMBER

NCAA WOMEN'S COLLEGE CUP (Dec. 2-4)

Fri. 2	College Cup Semifinals	Cary, N.C.	TBA
Sun. 4	College Cup Championship	Cary, N.C.	TBA

All times are Eastern

Home matches are bold and played at Jeffrey Field

NO. 13 NITTANY LIONS VISIT NO. 11 UCLA, LONG BEACH STATE



	PSU	UCLA	LBSU
RECORD	1-1-1	2-1-0	3-0-1
CONFERENCE RECORD	0-0-0	0-0-0	0-0-0
GOALS	6	9	9
GOALS/GAME	2.00	3.00	2.25
SOG-SHOTS	28-54	25-54	19-38
SHOTS/GAME	18.0	18.0	9.5
SV%	.688	.765	.938
GA	5	4	1
GAA	1.55	1.31	0.24
SHUTOUTS	0	2	3

MATCH DAY 4: NO. 13 PENN STATE AT NO. 11 UCLA

Sept. 2 • 11 p.m. (EDT) • Drake Stadium • Los Angeles, Calif.

Watch: PAC-12 Networks • Stats: UCLABruins.com

MATCH DAY 5: NO. 13 PENN STATE AT LONG BEACH STATE

Sept. 4 • 8 p.m. (EDT) • George Allen Field • Long Beach, Calif.

Stats: LongBeachState.com

NITTANY NOTES

- Penn State clinched win No. 400 in program history against Hofstra (400-104-30)
- Erica Dambach approaching 200 overall wins as a head coach (198-79-14)
- Five Nittany Lions in pursuit of a spot with the U.S. U-20 Women's National Team this fall
- A program record 5,791 fans watched the Nittany Lions host WVU at Jeffrey Field on Aug. 19
- No. 11 UCLA is the third ranked opponent for PSWS this season
- Laura Freigang named Big Ten Freshman of the Week after her season-opening weekend
- Sophomore Charlotte Williams has tied a career-best three goals this season
- Junior Frannie Crouse moved into 20th all-time at PSU in points scored (54 - 22g, 10a)

2016 STAT LEADERS

POINTS		ASSISTS		SHOTS ON GOAL	
Charlotte Williams	6	Four Tied	1	Charlotte Williams	6
Frannie Crouse	3			Haleigh Echard	4
Two Tied	2			Megan Schafer	4
GOALS		SHOTS		GAME-WINNING GOALS	
Charlotte Williams	3	Laura Freigang	11	Charlotte Williams	1
Three Tied	1	Charlotte Williams	10		
		Megan Schafer	7		

2016 PENN STATE WOMEN'S SOCCER

NUMERICAL ROSTER

No.	Name	Pos.	Elig.	Ht.	Hometown/High School (Last College)
0	Sarafina Valenti	GK	FR	5-6	Bechtelsville, Pa./Boyertown
00	Amanda Dennis	GK	FR	6-0	San Diego, Calif./Murrieta Valley
1	Brittany Basinger	D	RS JR	5-7	Purcellville, Va./Woodgrove
2	Grace Fisk	D	FR	5-7	Bromley, London, England/Langley Park
4	Megan Schafer	F	JR	5-7	Langhorne, Pa./Neshaminy
6	Emma Hasco	M	FR	5-8	Upper St. Clair, Pa./Upper St. Clair
7	Elizabeth Ball	D	JR	5-6	Richmond, Va./Deep Run
8	Kristin Schnurr	F	RS FR	5-7	Bristow, Va./Patriot
9	Frannie Crouse	F	JR	5-7	Greensburg, Pa./Greensburg Central Catholic
12	Charlotte Williams	M	SO	5-4	Rochester, N.Y./Brighton
15	Haleigh Echard	M	JR	5-4	Lebanon, Pa./Cedar Crest
16	Becca Hamilton	D	FR	5-8	Howell, N.J./Howell
17	Alina Ortega Jurado	F/M	SO	5-6	Waldgirmes, Germany/Ricarda-Huch Schule
18	Angela Widlacki	D	RS JR	5-5	Naperville, Ill./Naperville North
19	Liisi Vink-Lainas	M	JR	5-5	Wynantskill, N.Y./Troy
20	Salina Williford	M	RS JR	5-4	Wayne, Pa./Conestoga
21	Laura Freigang	M/F	FR	5-8	Oppenheim, Germany/St. Katharinen Gymnasium Oppenheim
22	Isabelle Clauss	D	JR	5-6	Clarks Summit, Pa./Abington Heights
23	Nickolette Driesse	M	SR	5-5	Wayne, N.J./Wayne Hills (Florida State)
24	Cecilia Knaub	M	SO	5-10	Phoenixville, Pa./Phoenixville
25	Taylor Campbell-Phipps	D	SO	5-6	Orlando, Fla./State College Area
27	Marissa Sheva	M	SO	5-3	Sellersville, Pa./Pennridge
28	Bristol Pizzuto	GK	FR	6-1	Whitehouse Station, N.J./Hunterdon Central
30	Rose Chandler	GK	RS SO	5-8	Atlanta, Ga./Atlanta Country Day
33	Laura Suero	D	FR	5-6	Royersford, Pa./Spring-Ford
34	Madison Moroi	F	FR	5-5	New Albany, Ohio/New Albany

ALPHABETICAL ROSTER

No.	Name	Pos.
7	Elizabeth Ball	D
1	Brittany Basinger	D
25	Taylor Campbell-Phipps	D
30	Rose Chandler	GK
22	Isabelle Clauss	D
9	Frannie Crouse	F
00	Amanda Dennis	GK
23	Nickolette Driesse	M
15	Haleigh Echard	M
2	Grace Fisk	D
21	Laura Freigang	M/F
16	Becca Hamilton	D
6	Emma Hasco	M
24	Cecilia Knaub	M
34	Madison Moroi	F
17	Alina Ortega Jurado	F/M
28	Bristol Pizzuto	GK
4	Megan Schafer	F
8	Kristin Schnurr	F
27	Marissa Sheva	M
33	Laura Suero	D
0	Sarafina Valenti	GK
19	Liisi Vink-Lainas	M
18	Angela Widlacki	D
12	Charlotte Williams	M
20	Salina Williford	M

POSITION BREAKDOWN

GOALKEEPERS	DEFENDERS	MIDFIELDERS	FORWARDS
Rose Chandler	Elizabeth Ball	Nickolette Driesse	Frannie Crouse
Amanda Dennis	Brittany Basinger	Haleigh Echard	Laura Freigang
Bristol Pizzuto	Taylor Campbell-Phipps	Laura Freigang	Madison Moroi
Sarafina Valenti	Isabelle Clauss	Emma Hasco	Alina Ortega Jurado
	Grace Fisk	Cecilia Knaub	Megan Schafer
	Becca Hamilton	Alina Ortega Jurado	Kristin Schnurr
	Laura Suero	Marissa Sheva	
	Angela Widlacki	Liisi Vink-Lainas	
		Salina Williford	
		Charlotte Williams	

PENN STATE QUICK FACTS

Location..... University Park, Pa.
 Founded1855
 Enrollment46,068
 Nickname Nittany Lions
 Colors..... Blue and White
 ConferenceBig Ten
 Home Field Jeffrey Field (5,000)
 PresidentEric J. Barron
 Director of Athletics..... Sandy Barbour

PENN STATE STRATEGIC COMMUNICATIONS

Women's Soccer Contact..... Will Rottler
 Office Phone.....814-865-2498
 Cell Phone814-441-9130
 E-mailwdr13@psu.edu
 Fax.....814-863-3165
 Mailing Address..... 101 Bryce Jordan Center
 University Park, Pa. 16802

PENN STATE WOMEN'S SOCCER QUICK FACTS

2015 Overall Record. 22-3-2
 2015 Big Ten Record (Finish) 8-2-1 (T-1st)
 2015 NCAA Tournament. 6-0 (NCAA Champions)
 Letterwinners Returning/Lost. 15/9
 Starters Returning/Lost 5-6
 Newcomers 9
 2016 Captains Brittany Basinger,
 Nickolette Driesse, Megan Schafer
 First Varsity Year 1994
 All-Time Record 400-104-30 (.777)
 All-Time Big Ten Record. 180-26-10 (.856)
 Jeffrey Field Record 216-25-11 (.879)
 NCAA Postseason Appearances 21
 All-Time NCAA Tournament Record. 46-19-2
 NSCAA All-America Honors 33
 NSCAA First Team All-America Honors 24
 M.A.C. Hermann Trophy Winners. 2
 M.A.C. Hermann Trophy Finalists. 9
 M.A.C. Hermann Trophy Semifinalists 17
 Big Ten Players of the Year. 18
 First Team All-Big Ten Selections. 63
 Second Team All-Big Ten Selections 44
 All-Big Ten Freshman Team Selections 41
 Head Coach Erica Dambach (10th year)

PRONUNCIATION GUIDE

Brittany **Basinger**.....BAY-singer
 Taylor Campbell-Phipps..... Fips
 Isabelle **Clauss** Claws
 Erica **Dambach** Rhymes with Wambach
 Nickolette **Driesse** Drees
 Haleigh **Echard**..... ECK-erd
 Laura **Freigang**.....FRY-GANG
 Emma **Hasco**..... HAS-co
 Cecilia **Knaub** Knob
 Madison **Moroi** Ma-roy
 Alina Ortega Jurado AH-lean-AH
OR-tay-gah Her-rah-doh
 Bristol **Pizzuto** Piz-ZOOT-oh
 Kristin **Schnurr** SH-NUR
 Marissa **Sheva**SHE-va
 Laura **Suero**..... Swear-oh
 Sarafina Valenti Sara-V-Nah Va-lent-e
 Liisi Vink-Lainas..... LEE-see Vink-LYE-nuss
 Angela **Widlacki** Wid-lack-e
 Salina **Williford** Will-a-furd
 All Nittany Lion audio pronunciations can be heard
 on the individual bio pages on
 GoPSUsports.com.

2016 PENN STATE WOMEN'S SOCCER

FOLLOW ALONG

Friday's match will be aired live on the Pac-12 Networks with Christian Miles and Tammy Blackburn on the call. Sunday's match against Long Beach State will not be aired online. Fans can follow along with live stats for both matches.

LOOKING AT UCLA

No. 11 UCLA enters the weekend with a 2-1-0 record following a win 1-0 at then-No. 11 Texas A&M on Aug. 26 and then the Bruins returned home and dropped a 4-3 contest in overtime to then-No. 6 Florida on Aug. 28.

The Bruin offense is led by Darian Jenkins and Jessie Fleming. Jenkins has posted seven points on three goals and one assist in three games this season. Fleming made her collegiate debut against Florida after helping Canada to a Bronze medal at the 2016 Summer Olympics. In her debut for UCLA, Fleming scored twice during the second half.

In net for the Bruins, Teagan Micah has played every minute (275:39) on the young season and has made 13 saves while allowing four goals.

LOOKING AT LONG BEACH STATE

Long Beach State received three votes in the most-recent NSCAA Coaches' Poll (Aug. 30).

Prior to Sunday's contest against Penn State, the 49ers are slated to host Loyola Marymount on Friday, Sept. 2. The 49ers head into the weekend following a 1-0 win against USC on Aug. 26 before tallying a 3-0 victory against San Diego State on Aug. 29.

Ashley Gonzales leads the LBSU offense with five points on two goals and one assist.

After allowing a goal against Kentucky in the season-opener, goalkeeper Ashton McKeown has recorded three-straight shutouts. On the year, McKeown has tallied 15 saves, allowed one goal and posted a save percentage of .938.

WEEKEND REWIND

Penn State is coming off a 3-2 loss to then-No. 14 BYU on Aug. 26. In the contest, the Nittany Lions scored twice within a four-minute span to tie the contest at two, but BYU's Ashley Hatch netted her third goal of the game in the 78th minute to secure the win. In the 62nd minute, Fran-nie Crouse scored her first goal of the 2016 season off an assist from Haleigh Echard and then Crouse assisted on Charlotte Williams' third goal of the season during the 66th minute.

BACK TO CALI

The Nittany Lions head back to California for the second-straight season. Last year, the Nittany Lions traveled to No. 2 Stanford and Santa Clara and returned home with a pair of victories. The No. 7 Nittany Lions topped the No. 2 Stanford Cardinal, 2-0, and defeated Santa Clara, 1-0.

Last season's win against Stanford was the first in program history for PSU (1-2-0) and the 2-0 defeat was the first time Stanford lost by more than one goal at home since Nov. 23, 2007 (0-2 UConn).

FOR CLUB AND COUNTRY

The 2016 Penn State women's soccer team will be without the services of five Nittany Lions as they pursue a spot on the United States U-20 Women's National Team that will compete in the FIFA U-20 Women's World Cup, Nov. 13-Dec. 3. Maddie Elliston, Ellie Jean, Emily Ogle and Kaleigh Riehl will not be on the roster this fall, while Rose Chandler will continue to train with the Nittany Lions during the fall semester.

IMMEDIATE IMPACT

Freshman Laura Freigang joined the Nittany Lions on the Monday prior to the season-opener against No. 6 WVU. Freigang made her Nittany Lion debut in the 2016 season-opener. In her debut, Freigang took to the field during the 31st minute and played the final 14 minutes of the first half. Freigang then started the second half and scored her first career goal on

NSCAA COACHES POLL

(Week Two - Aug. 30)

#	Team	1st Votes	W-L-T
1	Florida State	24	3-0-0
2	Stanford	5	3-0-0
3	Virginia	1	4-0-0
4	West Virginia	1	3-0-1
5	Florida	0	3-1-0
6	Clemson	0	3-1-0
7	Duke	0	3-1-0
8	North Carolina	0	3-0-0
9	Minnesota	0	4-0-0
10	Brigham Young	0	2-1-0
11	UCLA	0	2-1-0
12	Rutgers	0	3-0-1
13	PENN STATE	0	1-1-1
14	Texas A&M	0	2-2-0
15	Texas Tech	0	3-0-1
16	Virginia Tech	0	4-0-0
17	Arkansas	0	4-0-0
18	Connecticut	0	3-1-0
19	California	0	3-1-0
20	South Florida	0	4-0-0
21	Auburn	0	3-1-0
22	Santa Clara	0	2-2-0
23	Notre Dame	0	3-1-0
24	Northwestern	0	3-0-0
25	Pepperdine	0	3-1-0

Also receiving votes: South Carolina (58), Southern California (47), Arizona State (31), Ohio State (30), North Carolina-Wilmington (28), Mississippi (23), North Texas (19), Wake Forest (17), Hofstra (13), Washington (11), Michigan (6), Boston College (5), Georgetown (5), Oklahoma (3), Long Beach State (3), TCU (3), Princeton (2), Arizona (1), Northeastern (1)

WEEKLY RANKINGS

Poll	NSCAA	RPI	SA	TDS
PS	2	-	5	4
1	5	-	5	5
2	13	-	13	6
3	-	-	-	-
4	-	-	-	-
5	-	-	-	-
6	-	-	-	-
7	-	-	-	-
8	-	-	-	-
9	-	-	-	-
10	-	-	-	-
11	-	-	-	-
12	-	-	-	-

NSCAA - National Soccer Coaches Association of America

RPI - NCAA RPI

SA - Soccer America

TDS - TopDrawerSoccer.com

2016 PENN STATE WOMEN'S SOCCER

HONORS & AWARDS

BIG TEN

Brittany Basinger	Preseason Honors List
Nickolette Driesse	Preseason Honors List
Laura Freigang	Freshman of the Week (Aug. 23)
Megan Schafer	Preseason Honors List

ESPNW

NSCAA

TOPDRAWERSOCCER

Brittany Basinger	Preseason Top 100 - 88
Frannie Crouse	Preseason Top 100 - 56
Nickolette Driesse	Preseason Top 100 - 55
Megan Schafer	Preseason Top 100 - 42

her first career shot attempt at the 50:50 mark. The No. 2 Nittany Lions and the No. 6 Mountaineers finished in a 1-1 draw.

In a 3-1 win against the Hofstra Pride on Sunday, Aug. 21, Freigang played 48 minutes and paced the Nittany Lion offense with six shot attempts.

For her season-opening performance, Freigang was named the Big Ten Freshman of the Week.

WILLIAMS, WILLIAMS, WILLIAMS

Sophomore Charlotte Williams has netted three goals in as many games to start the 2016 season. Williams tallied a pair of goals in a 3-1 win versus Hofstra on Aug. 21 and she scored her third of the season against No. 14 BYU on Aug. 26. During her freshman campaign in 2015, Williams scored three goals in 27 games played.

SHUTOUT SCORELESS STREAK SNAPPED

Penn State closed out the 2015 season with eight-straight shutouts, which spanned 733:32 of play. During the season opener against No. 6 West Virginia, the Nittany Lions kept the Mountaineers off the board until the 76:59 mark. The WVU goal at 76:59 snapped Penn State's shutout scoreless streak of 810:31, which was the second-best span in program history (1032:33, 2004).

HOME SWEET HOME

The Penn State women's soccer team has a record of 56-5-5 at Jeffrey Field since the start of the 2011 season. Over the past six seasons, Penn State has not lost twice at home in a single season.

All-time at Jeffrey Field the Penn State women's soccer team has an overall record of 216-25-11.

Penn State kicked off the 2016 campaign setting an attendance record against No. 6 WVU. A Penn State women's soccer record 5,791 fans made their way to Jeffrey Field to watch the Nittany Lions and Mountaineers play to a 1-1 draw. The previous mark of 5,117 was set in 2012 against the top-ranked Stanford Cardinal.

Last season, the Nittany Lions finished sixth in overall attendance in the nation with 21,856 fans, which was a program-best.

The 2015 season featured two of the top-10 home field crowds in program history.

Penn State opened the 2015 season with a crowd of 3,175 against Hofstra and 4,207 fans packed into Jeffrey Field to watch the Nittany Lions host Duke.

2016 BIG TEN STANDINGS

Standings	Conf.	Pct.	Pts.	GF	GA	Overall	Pct.	GF	GA	Home	Away	Neutral	Last 10
Ohio State	0-0-0	.000	0	0	0	4-0-0	1.000	10	3	2-0-0	2-0-0	0-0-0	4-0-0
Minnesota	0-0-0	.000	0	0	0	4-0-0	1.000	11	1	3-0-0	1-0-0	0-0-0	4-0-0
Northwestern	0-0-0	.000	0	0	0	3-0-0	1.000	6	1	0-0-0	2-0-0	1-0-0	3-0-0
Rutgers	0-0-0	.000	0	0	0	3-0-1	.875	8	2	1-0-1	2-0-0	0-0-0	3-0-1
Iowa	0-0-0	.000	0	0	0	3-1-0	.750	9	8	1-0-0	1-1-0	1-0-0	3-1-0
Nebraska	0-0-0	.000	0	0	0	3-1-0	.750	5	3	1-0-0	2-1-0	0-0-0	3-1-0
Michigan	0-0-0	.000	0	0	0	2-1-1	.625	9	5	2-0-1	0-1-0	0-0-0	2-1-1
Maryland	0-0-0	.000	0	0	0	2-1-1	.625	8	6	0-1-1	2-0-0	0-0-0	2-1-1
Indiana	0-0-0	.000	0	0	0	2-1-1	.625	5	3	1-1-1	1-0-0	0-0-0	2-1-1
Purdue	0-0-0	.000	0	0	0	2-2-0	.500	6	9	2-1-0	0-1-0	0-0-0	2-2-0
Illinois	0-0-0	.000	0	0	0	2-2-0	.500	5	4	2-0-0	0-2-0	0-0-0	2-2-0
Wisconsin	0-0-0	.000	0	0	0	1-1-2	.500	2	2	0-0-2	1-1-0	0-0-0	1-1-2
Penn State	0-0-0	.000	0	0	0	1-1-1	.500	6	5	1-1-1	0-0-0	0-0-0	1-1-1
Michigan State	0-0-0	.000	0	0	0	1-1-1	.500	1	3	1-0-1	0-1-0	0-0-0	1-1-1

2016 PENN STATE WOMEN'S SOCCER

NIITTANY LIONS WELCOME NINE

Head coach Erica Dambach welcomed nine freshmen to the Penn State women's soccer family for the class of 2020.

Amanda Dennis and Emma Hasco enrolled early to Penn State during the spring of 2016.

Becca Hamilton, Madison Moroi, Bristol Pizzuto, Laura Suero and Sarafina Valenti joined the Nittany Lions back on signing day in February.

Grace Fisk and Laura Freigang were the last to join the Penn State women's soccer family as they joined the program in August.

NIITTANY LION CAPTAINS

Brittany Basinger, Nickolette Driesse and Megan Schafer will captain the Nittany Lions for the 2016 season.

MILESTONE VICTORIES

The 2016 season marks the 23rd year of varsity women's soccer for Penn State. The Nittany Lions captured their 400th program victory with a 3-1 win over the Hofstra Pride on Aug. 21. Overall, the Nittany Lions boast a record of 400-104-30.

Coach Dambach is approaching 200 overall wins as a head coach. During her time as a head coach at Dartmouth (2000-02), Harvard (2006) and Penn State (2007-Present), Coach Dambach has tallied a record of 198-79-14.

PICKED TO DEFEND THE B1G

According to the 2016 Big Ten pre-season coaches' poll, the Penn State women's soccer team was selected to defend its 2015 Big Ten regular season championship.

Since the preseason poll started in 2003, the Nittany Lions have been named the preseason favorites every time.

YOUTH MOVEMENT

The 2016 Penn State women's soccer roster is comprised of nine freshmen, one redshirt freshman, five sophomores, one redshirt sophomore, six juniors, three redshirt juniors and one senior.

MAC HERMANN TROPHY WATCH LIST

Junior forward Megan Schafer was named to the 2016 MAC Hermann Trophy Watch List prior to the start of the 2016 campaign.

During her 2015 season, Schafer led the Nittany Lions in goals (13) and points (30). Six of her 13 goals during 2015 captured a victory for the Blue & White.

As a sophomore, she started 24 of 27 matches and netted at least one point in 11 of the final 17 matches on the year.

CAREER RANKINGS

POINTS

- 19. 68 - Tani Costa (25g, 18a) - 2009-13
- 20. 54 - Frannie Crouse (22g, 10a) - 2014-**
- 21. 52 - Emily Hurd (12g, 28a) - 2010-14
- 22. 49 - Lauren Olmsted (20g, 9a) - 1994-97
- 49 - Liz Vilamil (12g, 25a) - 1994-97
- 24. 47 - Megan Schafer (19g, 9a) - 2014-**

GOALS

- 18. 23 - Raquel Rodriguez - 2012-15
- 19. 22 - Frannie Crouse - 2014-**
- 20. 21 - Stephanie Smith - 2000-03
- 21. 20 - Lauren Olmsted - 1994-97
- 22. 19 - Megan Schafer - 2014-**

GAME-WINNING GOALS

- 15. 9 - Raquel Rodriguez - 2012-15
- 9 - Stephanie Smith - 2000-03
- 17. 8 - Megan Schafer - 2014-**
- 18. 7 - Frannie Crouse - 2014-**
- 7 - Kori Chapic - 2011-14
- 7 - Tani Costa - 2009-13
- 7 - Courtney Lawson - 1996-99

SHOTS ATTEMPTED

- 16. 157 - Courtney Lawson - 1996-99
- 17. 156 - Aubrey Aden-Buie - 2004-07
- 18. 151 - Taylor Schram - 2010-13
- 19. 150 - Tani Costa - 2009-13
- 20. 138 - Frannie Crouse - 2014-**

SHOTS ON GOAL

- 8. 79 - Aubrey Aden-Buie - 2004-07
- 9. 78 - Tani Costa - 2009-13
- 10. 77 - Raquel Rodriguez - 2012-15
- 11. 69 - Frannie Crouse - 2014-**

PENN STATE vs. UCLA Current Nittany Lion Leaders

Points	-
Goals	-
Assists	-
Shots	-
Shots on Goal	-
Wins	-
Saves	-

PENN STATE vs. LBSU Current Nittany Lion Leaders

Points	-
Goals	-
Assists	-
Shots	-
Shots on Goal	-
Wins	-
Saves	-

2016 PENN STATE WOMEN'S SOCCER

SERIES HISTORY VS. UCLA

All-Time Series: PSU Leads, 3-1-0
Current Streak: Two Wins
First Meeting: PSU, 1-0 (OT) (9/8/02)
Last Meeting: PSU, 3-1 (8/25/06)
Last PSU Win: 3-1 (8/25/06)
Last UCLA Win: 4-0 (11/28/03)
NCAA History: 1-0-0 (UCLA)
PSU At Home: 1-0-0
PSU At UCLA: 2-1-0
Neutral Site: --

SERIES HISTORY VS. LBSU

All-Time Series: First Meeting
Current Streak: --
First Meeting: --
Last Meeting: --
Last PSU Win: --
Last LBSU Win: --
NCAA History: --
PSU At Home: --
PSU At LBSU: --
Neutral Site: --

CLIMBING THE CHARTS

Juniors Frannie Crouse and Megan Schafer rank in the top-25 in numerous Nittany Lion all-time standings.

Following her three points against BYU, Crouse moved past Emily Hurd (12g, 28a) for 20th all-time with 54 career points (22g, 10a). Schafer currently ranks 24th in all-time points with 47 (19g, 9a).

Crouse's goal against BYU on Aug. 26 was the 22nd of her career, which moved her into sole possession of 19th place all-time. Crouse is one goal behind Nittany Lion great Raquel Rodriguez (23). Schafer has 19 career goals to her name, which is 22nd-best all-time at PSU.

In game-winning goals, Schafer and Crouse rank 17th (eight) and 18th (seven), respectively.

SCORING IN 2015

The Nittany Lion underclassmen accounted for 46 of the team's 64 goals last season, which also included 17 of the 20 goals scored in the NCAA Tournament.

2015 NCAA TOURNAMENT RUN

During Penn State's run to the National Title last season, the Nittany Lions outscored the opposition, 20-0, and outshot the opposition, 108-43. Only 13 of their opponent's shots during the NCAA Tournament were on goal.

THE POLLS

As of Aug. 30, the Nittany Lions are ranked sixth in the TopDrawerSoccer poll and 13th in both NSCAA and Soccer America polls.

YEAR 10

The 2016 season marks the 10th season for Erica Dambach at the helm of the Penn State women's soccer program. As the head coach of the Nittany Lions, Coach Dambach has an overall record of 158-51-11 and 80-14-3 in Big Ten play.

NITTANY LIONS ON BTN

The Penn State women's soccer team will be featured three times during the regular season on the Big Ten Network.

The BTN regular season matches for the Nittany Lions will be West Virginia (Aug. 19 - 7:30 p.m. EDT), Minnesota (Sept. 16 - 8 p.m. EDT) and Rutgers (Oct. 13 - 7 p.m. EDT).

THE TRIPLE CROWN

The 2015 season was a banner year for the Nittany Lions as they brought home the national championship along with both Big Ten titles.

NEXT UP

The Nittany Lions return home to Jeffrey Field to close out their non-conference slate against San Diego State (Sept. 9) and La Salle (Sept. 11).

2016 PENN STATE WOMEN'S SOCCER

THE LAST TIME

PENN STATE...

Scored 3 goals	8/21/16
Scored 4 goals	11/22/15
Scored 5 goals	11/13/15
Scored 6 goals	11/20/15
Scored 7 goals	9/23/14
Scored 8 goals	10/9/05
Scored 9 goals	9/25/01
Allowed 0 goals	12/6/15
Allowed 1 goal	8/21/16
Allowed 2 goals	8/30/15
Allowed 3 goals	8/26/16
Allowed 4 goals	12/2/12
Allowed 5+ goals	8/30/13
Won in overtime	11/30/12
Lost in overtime	11/6/11
Won in double overtime	9/20/13
Lost in double overtime	9/5/14
Tied after double overtime	8/19/16
Scoreless tie after double overtime	8/28/15
Won by multiple goals at home	8/21/16
Lost by multiple goals at home	11/15/09
Ranked in the NSCAA Top 25	8/30/16
Ranked in the NSCAA Top 10	8/23/16
Played an NSCAA Top 10 Team	8/19/16
Played an NSCAA Top 25 Team	8/26/16
Defeated an NSCAA Top 10 Team	12/4/15
Defeated an NSCAA Top 25 Team	12/6/15
Attempted less than 10 shots	10/18/15
Attempted 10-19 shots	8/26/16
Attempted 20-29 shots	8/21/16
Attempted 30-39 shots	10/11/15
Attempted 40+ shots	11/7/10
Allowed 4 or less shots	8/21/16
Allowed 5-9 shots	12/4/15
Allowed 10-15 shots	8/26/16
Allowed 16+ shots	9/11/15
Scored 15-24 points	11/20/15
Scored 25+ points	9/25/01
Made 10-14 saves	9/5/14
Made 15+ saves	9/2/95
Had 10+ corner kicks	10/15/15
Allowed 10+ corner kicks	9/12/10
Tallied 5-7 assists	11/13/15
Tallied 8+ assists	11/20/15
Won an NCAA Tourney game	12/6/15
Lost an NCAA Tourney game	11/29/14
Won road NCAA Tourney game	11/30/02
Won neutral NCAA Tourney game	12/6/15
Won PK shootout	11/18/12
Lost PK shootout	11/9/07

A PENN STATE PLAYER...

Scored 2 goals	8/21/16
Scored 3 goals	9/4/11
Scored 4 goals	10/7/01
Had 2 assists	11/20/15
Had 3 assists	9/13/13
Had 4 assists	9/17/03
Had 5-9 points	11/13/15
Had 10+ points	10/7/01
Attempted 10+ shots	11/11/11
Made 10-14 saves	9/5/14
Made 15+ saves	9/3/94
Scored in the Big Ten Tourney	11/8/15
Had a Big Ten Tourney shutout	11/8/15
Scored in an NCAA game	12/6/15
Had an NCAA game shutout	12/6/15

vs. Hofstra (3-1)
vs. Ohio State (4-0)
vs. Albany (5-0)
vs. Boston U (6-0)
vs. Bucknell (7-0)
vs. Iowa (8-0)
vs. Bucknell (9-2)
vs. #20 Duke (1-0)
vs. Hofstra (3-1)
vs. Arkansas (4-2)
vs. #14 BYU (2-3)
vs. #13 UNC (1-4)
vs. Virginia (1-5)
vs. #7 Florida State (2-1)
vs. #18 Illinois (1-2)
vs. Northwestern (3-2)
vs. #14 UNC (0-1, 2OT)
vs. #6 WVU (1-1)
vs. #21 Duke (0-0)
vs. Hofstra (3-1)
Virginia (2-6)
13th
5th
vs. #6 WVU (1-1)
vs. #14 BYU (2-3)
vs. #9 Rutgers (2-0)
vs. #20 Duke (1-0)
9 at #25 Rutgers (0-1)
16 vs. #14 BYU (2-3)
21 vs. Hofstra (3-1)
35 vs. Indiana (4-0)
42 vs. Michigan (1-0)
3 vs. Hofstra (3-1)
5 vs. #9 Rutgers (2-0)
13 vs. #14 BYU (2-3)
16 at #2 Stanford (2-0)
22 vs. Boston U (6-0)
26 vs. Bucknell (9-2)
10 vs. #14 UNC (1-0, 2OT)
17 vs. James Madison (4-2)
12 at Purdue (2-1)
10 at #4 Portland (2-4)
5 vs. Albany (5-0)
10 vs. Boston U (6-0)
vs. #20 Duke (1-0)
vs. #5 Texas A&M (1-2)
at Connecticut (2-1)
vs. #20 Duke (1-0)
vs. Michigan (1-1, 3-2 PKs)
vs. Ohio State (2-2, 4-5 PKs)

Charlotte Williams vs. Hofstra (3-1)
Maya Hayes at Pittsburgh (3-0)
Christie Welsh vs. Michigan (6-2)
Basinger, Crouse & Ritchey vs. Boston U (6-0)
Tani Costa at Oklahoma St. (4-2)
Ali Krieger vs. Bucknell (6-0)
5, Emily Ogle vs. Albany (5-0)
10, Christie Welsh vs. Michigan (6-2)
10, Christine Naim vs. Army (1-0)
10, Britt Eckerstrom vs. # 14 UNC (1-0, 2OT)
15, Robin Van Praag at Minnesota (3-2)
Ball & Ogle vs. #7 Rutgers (2-0)
Eckerstrom vs. #7 Rutgers (2-0)
Raquel Rodriguez vs. #20 Duke (1-0)
Britt Eckerstrom vs. #20 Duke (1-0)

MISCELLANEOUS STATISTICS

PENN STATE is...

400-104-30 All-time
216-25-11 All-time at Jeffrey Field
96-6-4 B1G Conference Record at Jeffrey Field

In 2016...

1-1-1 at home
0-0-0 on the road
0-0-0 at neutral site
0-0-1 in overtime
1-0-0 when leading at halftime
0-1-0 when trailing at halftime
0-0-1 when tied at halftime
0-0-1 when scoring first goal
1-1-0 when opponent scores first goal
1-1-1 when out-shooting opponent
0-0-0 when out-shot by opponent
0-0-0 when posting the same # of shots
1-0-0 when taking more corner kicks
0-1-1 when allowing more corner kicks
0-0-0 when taking the same corner kicks
1-0-0 against unranked opponents
0-1-1 against ranked opponents
0-0-0 against higher-ranked opponents
0-1-1 against lower-ranked opponents
0-0-0 when scoring 0 goals
0-0-1 when scoring 1 goal
0-1-0 when scoring 2 goals
1-0-0 when scoring 3+ goals
0-0-0 when allowing 0 goals
1-0-1 when allowing 1 goal
0-0-0 when allowing 2 goals
0-1-0 when allowing 3+ goals
0-0-0 on Wednesday
0-0-0 on Thursday
0-1-1 on Friday
0-0-0 on Saturday
1-0-0 on Sunday
0-1-1 at night
1-0-0 during the day
0-0-1 when a freshman scores
0-1-0 in one-goal games
0-0-0 vs. Atlantic 10
0-0-1 vs. Big 12
0-0-0 vs. Big Ten
0-0-0 vs. Big West
1-0-0 vs. CAA
0-0-0 vs. Mountain West
0-0-0 vs. Pac-12
0-1-0 vs. WCC

2016 PENN STATE WOMEN'S SOCCER



ERICA DAMBACH

Head Coach • Tenth Year
WILLIAM & MARY '97

RECORD AT PSU: 158-51-11 (.743)
Overall Record: 198-79-14 (.704)

2012 & 2015 NSCAA NATIONAL COACH OF THE YEAR
THREE-TIME BIG TEN COACH OF THE YEAR (2009, 2012, 2014)

Head coach Erica (Walsh) Dambach enters her 10th season at the helm of the Penn State women's soccer program in 2016.

Dambach and the Nittany Lions are coming off their best season in program history in 2015. During the fall of 2015, the Penn State women's soccer team recorded a 3.49 GPA in the classroom to go along with the program's first NCAA title and a pair of Big Ten titles.

In program history, the Nittany Lions have advanced to the NCAA Tournament in each of the past 21 seasons, won 17 of the last 18 Big Ten regular season titles and own six Big Ten Tournament titles.

Dambach's squad finished the 2015 season with a 22-3-2 record, its eighth 20-win season, by defeating No. 20 Duke 1-0 in the College Cup Final on Dec. 6, 2015, in Cary, N.C. The NCAA title was the first in program history and the first by a Big Ten women's soccer program.

The Nittany Lions outscored the opposition 20-0 during their 2015 NCAA Tournament run and the Nittany Lions did not allow a goal over the final 733:32 of the season.

Raquel Rodriguez capped off her historic Penn State career by scoring the lone goal in the NCAA title match in the 72nd minute. Rodriguez followed up her game-winner in the title match by claiming the second MAC Hermann Trophy in program history in January 2016 (Welsh – 2001).

To go along with the MAC Hermann Trophy, Rodriguez garnered NSCAA Scholar Player of the Year honors, the Honda Sport Award winner for women's soccer and was named a NSCAA First Team All-American.

Following the 2015 season, Dambach received NSCAA Coach of the Year honors for the second time in her Nittany Lion career (2012).

In January 2016, all three Nittany Lion captains were selected in the National Women's Soccer League (NWSL) draft. Rodriguez was selected with the No. 2 pick by Sky Blue FC, Mallory Weber went to the Western New York Flash at No. 14 and Britt Eckerstrom was the first goalkeeper selected at No. 26 by the Western New York Flash.

In 2014, Dambach led the Blue and White to its 10th NCAA Tournament semifinal appearance and the seventh 20-win season in program history. Penn State, which had an 11-member freshman class, earned its third outright conference title in four years, maintaining a top-11 national ranking throughout the season and defeating five top-25 opponents.

Under Dambach's direction, who picked up her third Big Ten Coach of the Year award, Penn State collected three of four Player of the Year awards. Whitney Church, the conference's Defender of the Year, was named a M.A.C. Hermann Trophy semifinalist and an NSCAA All-America first team selection before she became the 30th overall pick in the NWSL draft by the Washington Spirit. Also earning individual Big Ten awards were Raquel Rodriguez, who bagged Midfielder of the Year honors and Emily Ogle, the Freshman of the Year.

The Nittany Lions appeared in their 19th-straight NCAA Tournament in 2013, due in part to the success of senior Maya Hayes. The sixth-overall selection in the WPSL draft, Hayes set Penn State's single season record for points (79) and finished her career ranked third in goals scored (71) and points (163), sixth in game-winning goals (17) and seventh in shots (291). Hayes also became the seventh M.A.C. Hermann Award Trophy semifinalist in program history.

Dambach's 2012 Nittany Lions were the most successful team in program history after advancing to their first-ever national title game. The Nittany Lions won 21 of 27 games and were unbeaten in Big Ten action with a 10-0-1 record. The Lions registered their 15th consecutive Big Ten title and 18th-straight NCAA Tournament appearance. The 15-title mark stands as the most consecutive Big Ten Championships by a women's program, along with the present Northwestern tennis team.

Senior Christine Nairn became just the seventh Nittany Lion to finish as a finalist for the prestigious Missouri Athletic Club's Hermann Trophy in 2012 under Dambach's tutelage while junior Maya Hayes was named a semifinalist for the award.

Dambach's success was recognized at the conference and national level as she earned Big Ten Coach of the Year and NSCAA National Coach of the Year honors.

Her 2011 team was a dominant force, winning 21 of 26 matches, while outscoring opponents 70-24. The Nittany Lions were 10-1-0 in Big Ten action and posted the seventh undefeated season at Jeffrey Field (9-0). Dambach helped guide the Lions to their 14th-straight Big Ten title and a spot to the NCAA Sweet Sixteen for the first time since 2007.

With Dambach's guidance, sophomore Maya Hayes became the nation's most prolific scorer in soccer in 2011 and was a finalist for the M.A.C. Hermann Trophy. Hayes led the nation with 31 goals and 70 points, breaking the Penn State single-season record for points.

During the 2011 summer, Dambach had an extraordinary experience of being one of the top assistants to Pia Sundhage and the 2011 United State women's national team at the FIFA World Cup in Germany. The U.S. made a sparkling run through knockout play to the final, falling to eventual champion Japan.

During the 2010 season, Dambach's young club made a remarkable turnaround mid-season, overcoming a two-game deficit in the league standings over the final weeks to capture a share of its 13th straight Big Ten title.

DAMBACH'S COLLEGIATE RÉSUMÉ

Head Coach	
Penn State	2007-present <i>2012, 2015 NSCAA National Coach of the Year</i> <i>2009, 2012, 2014 Big Ten Coach of the Year</i>
Harvard	2006
Dartmouth	2000-02
Assistant Coach	
Florida State	2005-06
Dartmouth	1998-99
Graduate Assistant	
Lehigh	2003-04
Dartmouth	1997
Student-Athlete	
William & Mary	1993-97 <i>William & Mary Hall of Fame Inductee</i>

DAMBACH'S NATIONAL RÉSUMÉ

Head Coach	
U.S. Women's Under-17	2004-07
Assistant Coach	
U.S. Women's National Team	2008-11 <i>2008 Olympic Gold Medalists</i> <i>2011 World Cup Silver Medalists</i>
U.S. Women's Under-19	2004
U.S. Women's Under-20	2013-Present

2016 PENN STATE WOMEN'S SOCCER

DAMBACH'S ACCOLADES

- 23 NCAA TOURNAMENT WINS**
- 13 YEARS OF COLLEGE HEAD COACHING EXPERIENCE**
- 13 ALL-AMERICA HONORS**
- 12 NCAA TOURNAMENT APPEARANCES**
- 8 BIG TEN CHAMPIONSHIPS**
- 3 BIG TEN COACH OF THE YEAR AWARDS**
- 2 BIG TEN TOURNAMENT TITLES**
- 2 COLLEGE CUP APPEARANCES**
- 2 NATIONAL CHAMPIONSHIP GAME APPEARANCES**
- 2 NATIONAL COACH OF THE YEAR AWARDS**
- 1 NCAA COLLEGE CUP TITLE**
- 1 OLYMPIC GOLD MEDAL**

After a tough 2-4 start to the 2009 season, Dambach led the Nittany Lions to a remarkable turnaround, going 10-1-2 in the last 13 games of the regular season, earning her the 2009 Big Ten Coach of the Year Award for her efforts.

With the impressive end to the season, Dambach and her charges captured the program's 12th-straight Big Ten Championship. By winning the Big Ten, the Nittany Lions continued their string of NCAA Tournament berths, making their 15th-straight appearance in the 64-team field in 2009. For the second time in three years, Penn State hosted the first and second rounds of tournament play.

Dambach also orchestrated one of the finest awards seasons in Penn State history when Katie Schoepfer, Alyssa Naehner and Christine Nairn swept the year-end Big Ten Player of the Year awards. Schoepfer was named the Offensive Player of the Year, Naehner the Defensive Player of the Year and Nairn the Freshman of the Year. Danielle Toney was named to the All-Big Ten first team, while Lexi Marton garnered second team mention. Dambach has now coached two players of the year to three awards as Naehner was also the 2007 recipient of the Defensive Player of the Year honors in Dambach's first year in Happy Valley.

Dambach continued her success from the 2007 campaign into a 16-8-0 record that saw Penn State capture its 11th-straight Big Ten Championship and the 2008 Big Ten Tournament crown.

Her transition to Penn State was quite smooth as the 2007 team finished 18-4-2, including a 9-1-0 mark in conference play, and was ranked 12th in the final NSCAA poll of the season.

When she came to Penn State, Dambach brought with her a wealth of experience at both the international and collegiate levels. She already has coached at six different universities, including three stints as head coach as well as serving as an assistant for the U.S. U-19 team in 2004. Dambach served as head coach of the U-17 team from December 2004 until her hire at Penn State in February 2007.

As of January 2009, Dambach was appointed as a member of the Panel of Instructors and Lecturers for FIFA Courses. In addition, she was appointed as

the Chairman of the Women's Technical Committee for the period of January 1, 2009 to June 30, 2011.

In January of 2008, Dambach was named as the assistant coach by Pia Sundhage for the U.S. National Team. With Dambach's help and guidance the U.S. team completed its historic run with a gold medal at the 2008 Olympic Games in Beijing, China. Even sweeter was that Dambach's main responsibility was the U.S. Team's defense, which held fellow world power Brazil scoreless in the gold medal game.

The head coach at Harvard University as well as the U.S. Under-17 team prior to her hiring at Penn State, Dambach has consistently been active among the coaching ranks both at the Division I level and the U.S. Youth National Team program for nearly a decade. Prior to her time with the Crimson, she was part of a Florida State staff that led the Seminoles to one of its most successful year to date. FSU joined Penn State in the 2005 Women's Soccer College Cup, with both programs reaching the national semifinals.

Dambach's coaching path began in 1997 as a graduate assistant with Bucknell University. In 1998, she accepted a position at Dartmouth, where she was an assistant coach for two seasons. After helping the team to a final NSCAA ranking of No. 8 at the conclusion of the team's 1998 NCAA quarterfinal run as well as an Ivy League championship in 1999, Dambach assumed head coaching duties before the 2000 season.

As head coach, Dambach led the Big Green to back-to-back Ivy League co-championships in 2000 and 2001. Her squad was ranked in the NSCAA's top 25 each year, rising as high as No. 13 in 2001. In her three seasons as head coach, Dartmouth was invited to the NCAA Tournament each season and reached the round of 16 twice. All three of her teams earned the NSCAA's Academic Team Award.

Dambach left Dartmouth to earn her Master's in business administration at Lehigh University where she served as a graduate assistant from 2003-04.

Beginning in the spring of 2004, Dambach joined the United States Under-19 team as an assistant coach where she helped with preparations for the Under-19 World Cup. The U.S. finished with the bronze medal in Thailand after defeating Brazil in the third place match. After the World Cup, Dambach was appointed the U.S. National Team's U-17 head coach, a position which she held for three years.

As a player, Dambach was an NSCAA All-Region selection at William & Mary. A two-time first team All-CAA pick, she propelled her team to four NCAA Tournament appearances as well as two CAA regular season and two CAA league championships. In March of 2010, Dambach's alma mater, William & Mary, honored her by inducting her into the W&M Athletics Hall of Fame.

A high school All-American at Lower Moreland, she was also a member of the U.S. Under-17 National Team.

Dambach earned her Bachelor of Science degree with a concentration in biology from William & Mary in 1997. The Huntingdon Valley, Pennsylvania, native holds an NSCAA Advanced National Degree and a USSF "A" Coaching License.

The former Erica Walsh married Jason Dambach in January 2016 and they currently reside in State College, Pa.

DAMBACH'S CAREER AT PENN STATE

Season	Overall	Pct.	Big Ten	Pct.	Big Ten Finish	NCAA Finish
2007	18-4-2	.792	9-1-0	.900	1st	Third Round
2008	16-8-0	.667	8-2-0	.800	T-1st	First Round
2009	13-6-2	.667	8-1-1	.850	1st	Second Round
2010	11-9-1	.548	8-2-0	.800	T-1st	Second Round
2011	21-5-0	.808	10-1-0	.909	1st	Third Round
2012	21-4-2	.815	10-0-1	.955	1st	Runner-Up
2013	15-7-1	.674	7-4-0	.636	3rd	Second Round
2014	20-4-0	.833	12-1-0	.923	1st	Quarterfinals
2015	22-3-2	.851	8-2-1	.773	T-1st	Champions
2016	1-1-1	.750				
Penn State	158-51-11	.743	80-14-3	.840	9 NCAAAs (20-8-1)	
Career	198-79-14	.704			12 NCAAAs (23-11-1)	

2016 PENN STATE WOMEN'S SOCCER

2016 Penn State Women's Soccer Penn State Combined Team Statistics (as of Aug 28, 2016) All games

RECORD:	OVERALL	HOME	AWAY	NEUTRAL
ALL GAMES	1-1-1	1-1-1	0-0	0-0
CONFERENCE	0-0	0-0	0-0	0-0
NON-CONFERENCE	1-1-1	1-1-1	0-0	0-0

Date	Opponent	Score	Att.
+ Aug 19	#6 WEST VIRGINIA	To2 1-1	5791
+ Aug 21	HOFSTRA	w 3-1	760
Aug 26	#14 BYU	L 2-3	1405

+ Penn State Invitational

TEAM STATISTICS	PSU	OPP
SHOT STATISTICS		
Goals-Shot attempts	6-54	5-30
Goals scored per game	2.00	1.67
Shot pct.	.111	.167
Shots on goal-Attempts	28-54	16-30
SOG pct.	.519	.533
Shots/Game	18.0	10.0
CORNER KICKS	8	10
PENALTY KICKS	0-0	0-0
PENALTIES		
Yellow cards	2	2
Red cards	0	1
ATTENDANCE		
Total	7956	0
Dates/Avg Per Date	3/2652	0/0
Neutral Site #/Avg	0/0	

#	Player	gp	g	a	pts	sh	sh%	soq	soq%	qw	pk-att
12	Charlotte Williams	3	3	0	6	10	.300	6	.600	1	0-0
9	Frannie Crouse	3	1	1	3	6	.167	3	.500	0	0-0
21	Laura Freigang	3	1	0	2	11	.091	3	.273	0	0-0
20	Salina Williford	3	1	0	2	4	.250	1	.250	0	0-0
15	Haleigh Echard	3	0	1	1	6	.000	4	.667	0	0-0
23	Nickolette Driesse	3	0	1	1	4	.000	2	.500	0	0-0
33	Laura Suero	3	0	1	1	0	.000	0	.000	0	0-0
4	Megan Schafer	3	0	0	0	7	.000	4	.571	0	0-0
2	Grace Fisk	3	0	0	0	3	.000	3	1.000	0	0-0
27	Marissa Sheva	2	0	0	0	1	.000	0	.000	0	0-0
7	Elizabeth Ball	3	0	0	0	1	.000	1	1.000	0	0-0
1	Brittany Basinger	3	0	0	0	1	.000	1	1.000	0	0-0
34	Madison Moroi	1	0	0	0	0	.000	0	.000	0	0-0
25	Taylor Campbell-Phip	2	0	0	0	0	.000	0	.000	0	0-0
24	Cecilia Knaub	2	0	0	0	0	.000	0	.000	0	0-0
19	Liisi Vink-Lainas	1	0	0	0	0	.000	0	.000	0	0-0
17	Alina Ortega-Jurado	3	0	0	0	0	.000	0	.000	0	0-0
16	Becca Hamilton	1	0	0	0	0	.000	0	.000	0	0-0
8	Kristin Schnurr	3	0	0	0	0	.000	0	.000	0	0-0
6	Emma Hasco	1	0	0	0	0	.000	0	.000	0	0-0
Total		3	6	4	16	54	.111	28	.519	1	0-0
Opponents		3	5	6	16	30	.167	16	.533	1	0-0

#	Goalie	GP	Min.	GA	GAAvg	Saves	Pct	W-L-T	Sho
00	Amanda Dennis	3	290:00	5	1.55	11	.688	1-1-1	0/0
Total		3	290:00	5	1.55	11	.688	1-1-1	0
Opponents		3	290:00	6	1.86	22	.786	1-1-1	0

Goals by Period	1st	2nd	OT	OT2	Total
Penn State	2	4	0	0	6
Opponents	2	3	0	0	5

Shots by Period	1st	2nd	OT	OT2	Total
Penn State	26	22	4	2	54
Opponents	11	17	1	1	30

Saves by Period	1st	2nd	OT	OT2	Total
Penn State	6	5	0	0	11
Opponents	13	6	3	0	22

Corners by Period	1st	2nd	OT	OT2	Total
Penn State	5	2	0	1	8
Opponents	2	6	0	2	10

Fouls by Period	1st	2nd	OT	OT2	Total
Penn State	8	11	0	3	22
Opponents	15	6	2	1	24

2016 PENN STATE WOMEN'S SOCCER

2016 Penn State Women's Soccer Penn State Overall Individual Statistics (as of Aug 28, 2016) All games

Overall: 1-1-1 Conf: 0-0-0 Home: 1-1-1 Away: 0-0-0 Neut: 0-0-0

##	Player	gp-gs	min	g	a	pts	sh	sh%	sog	sog%	gwg	pk-att
12	Charlotte Williams	3-3	222	3	0	6	10	.300	6	.600	1	0-0
9	Frannie Crouse	3-3	208	1	1	3	6	.167	3	.500	0	0-0
21	Laura Freigang	3-0	188	1	0	2	11	.091	3	.273	0	0-0
20	Salina Williford	3-1	174	1	0	2	4	.250	1	.250	0	0-0
15	Haleigh Echard	3-3	193	0	1	1	6	.000	4	.667	0	0-0
23	Nickolette Driesse	3-3	218	0	1	1	4	.000	2	.500	0	0-0
33	Laura Suero	3-0	72	0	1	1	0	.000	0	.000	0	0-0
4	Megan Schafer	3-3	217	0	0	0	7	.000	4	.571	0	0-0
2	Grace Fisk	3-3	290	0	0	0	3	.000	3	1.000	0	0-0
27	Marissa Sheva	2-2	126	0	0	0	1	.000	0	.000	0	0-0
7	Elizabeth Ball	3-3	252	0	0	0	1	.000	1	1.000	0	0-0
1	Brittany Basinger	3-3	290	0	0	0	1	.000	1	1.000	0	0-0
34	Madison Moroi	1-0	4	0	0	0	0	.000	0	.000	0	0-0
25	Taylor Campbell-Phip	2-0	13	0	0	0	0	.000	0	.000	0	0-0
24	Cecilia Knaub	2-0	51	0	0	0	0	.000	0	.000	0	0-0
19	Liisi Vink-Lainas	1-0	3	0	0	0	0	.000	0	.000	0	0-0
17	Alina Ortega-Jurado	3-3	290	0	0	0	0	.000	0	.000	0	0-0
16	Becca Hamilton	1-0	4	0	0	0	0	.000	0	.000	0	0-0
8	Kristin Schnurr	3-0	64	0	0	0	0	.000	0	.000	0	0-0
6	Emma Hasco	1-0	20	0	0	0	0	.000	0	.000	0	0-0
	Total	3	-	6	4	16	54	.111	28	.519	1	0-0
	Opponents	3	-	5	6	16	30	.167	16	.533	1	0-0

#	Goalie	gp-gs	Goal Average			Saves		Record			
			min	ga	gaavg	saves	pct	w	l	t	sho/cbo
00	Amanda Dennis	3-3	290:00	5	1.55	11	.688	1	1	1	0/0
	Total	3	290:00	5	1.55	11	.688	1	1	1	0
	Opponents	3	290:00	6	1.86	22	.786	1	1	1	0

Team saves: 0

Goals by Period	1st	2nd	OT	OT2	Total
Penn State	2	4	0	0	6
Opponents	2	3	0	0	5

Corners by Period	1st	2nd	OT	OT2	Total
Penn State	5	2	0	1	8
Opponents	2	6	0	2	10

Shots by Period	1st	2nd	OT	OT2	Total
Penn State	26	22	4	2	54
Opponents	11	17	1	1	30

Fouls by Period	1st	2nd	OT	OT2	Total
Penn State	8	11	0	3	22
Opponents	15	6	2	1	24

Saves by Period	1st	2nd	OT	OT2	Total
Penn State	6	5	0	0	11
Opponents	13	6	3	0	22

Attendance Summary	PSU	Opponent
Total	7956	0
Dates/Avg Per Date	3/2652	0/0
Neutral Site #/Avg	0/0	

2016 PENN STATE WOMEN'S SOCCER

Soccer Box Score (Final) 2016 Penn State Women's Soccer

#6 West Virginia vs #2 Penn State (Aug 19, 2016 at University Park, Pa.)

West Virginia (0-0-1) vs.
Penn State (0-0-1)
Date: Aug 19, 2016 • Attendance: 5791
Weather: 81 degrees, sunny

Po #	Player	Sh	SO	G	A	Fo	Min
gk 25	Rylee Foster	-	-	-	-	-	110
d 4	Bianca St. Georges	2	1	-	-	-	110
f 5	Michaela Abam	5	4	1	-	-	88
m 10	Carla Portillo	-	-	-	-	-	79
f 11	A. Pierre-Louis	1	1	-	-	-	110
m 14	Patricia Fernandez	-	-	-	-	-	44
d 16	Easther Mayi Kith	-	-	-	-	-	110
d 20	Hannah Abraham	-	-	-	-	-	71
m 22	Alli Magaletta	1	-	-	-	-	100
d 24	Carly Black	-	-	-	-	-	110
f 99	Sh'Nia Gordon	3	1	-	-	-	95
-- Substitutes --							
6	Heather Kaleiohi	1	-	-	-	-	42
7	Grace Cutler	-	-	-	-	-	52
18	Ashley Woolpert	-	-	-	-	-	25
26	Vanessa Flores	1	-	-	-	-	64
Totals		14	7	1	2	9	

#	Goalkeepers	Min	GA	Saves
25	Rylee Foster	110:00	1	9

Shots by period	1	2	OT	O2	Total
West Virginia	5	7	1	1	14
Penn State	5	6	4	2	17

Corner kicks	1	2	OT	O2	Total
West Virginia	0	2	0	2	4
Penn State	2	0	0	1	3

Scoring summary:

No.	Time	Team	Goal scorer	Assist	Description
1.	50:50	PSU	Laura Freigang (1)	(unassisted)	16 yards out, center, hit left post and in
2.	76:59	WVU	Michaela Abam (1)	Vanessa Flores A. Pierre-Louis	6 yards out, from left side of the box, und keeper

Cautions and ejections:

YC-WVU #16 (98:06)

West Virginia-Rylee Foster (0-0-1). Penn State-Amanda Dennis (0-0-1).

Stadium: Jeffrey Field

Officials: Referee: Ron Dambrosia; Asst. Referee: Robert Sheker; Paul Wehrman;

Alt. Official: Kyle Petty; Scorer: Will Rottler;

Offsides: West Virginia 5, Penn State 3.

Official's signature

Soccer Box Score (Final) 2016 Penn State Women's Soccer

#14 BYU vs #5 Penn State (Aug 26, 2016 at University Park, Pa.)

BYU (2-1-0) vs.
Penn State (1-1-1)
Date: Aug 26, 2016 • Attendance: 1405
Weather: 84, clear

Po #	Player	Sh	SO	G	A	Fo	Min
gk 1	Rachel Boaz	-	-	-	-	-	23
d 2	Taylor Isom	-	-	-	-	-	90
f 6	Nadia Gomes	1	1	-	-	-	72
f 7	Michele Vasconcelos	2	-	-	-	-	74
d 9	Paige Barker	1	-	-	-	-	59
m 10	Bizzy Bowen	-	-	-	-	-	90
d 14	Danika Bowman	-	-	-	-	-	90
d 24	Stephanie Ney	-	-	-	-	-	68
m 27	Elena Medeiros	2	1	-	-	-	75
d 29	Alyssa Jefferson	-	-	-	-	-	83
f 33	Ashley Hatch	6	5	3	-	-	76
-- Substitutes --							
5	Elise Flake	-	-	-	-	-	22
11	Hannah Clark	-	-	-	-	-	67
19	Lizzy Braby	-	-	-	-	-	24
20	Jocelyn Loomis	1	-	-	-	-	16
21	Madie Siddoway	-	-	-	-	-	10
25	Brynlee Welch	-	-	-	-	-	28
26	Madie Lyons	-	-	-	-	-	21
Totals		13	7	3	4		

#	Goalkeepers	Min	GA	Saves
1	Rachel Boaz	22:53	0	2
11	Hannah Clark	67:07	2	4

Shots by period	1	2	Total
BYU	5	8	13
Penn State	9	7	16

Corner kicks	1	2	Total
BYU	1	3	4
Penn State	0	1	1

Scoring summary:

No.	Time	Team	Goal scorer	Assist	Description
1.	5:35	BYU	Ashley Hatch (3)	Elena Medeiros Paige Barker	33 from 27, 12 yards out, bottom left cor
2.	56:09	BYU	Ashley Hatch (4)	Nadia Gomes	33 from 6, 10 yards out, left side of the bot
3.	61:11	PSU	Frannie Crouse (1)	Haleigh Echard	Header, 6 yards out, top left corner
4.	65:29	PSU	Charlotte Williams (3)	Frannie Crouse	12 yards out, bottom left corner
5.	77:04	BYU	Ashley Hatch (5)	Nadia Gomes	From 6 yards out, bottom right corner

Cautions and ejections:

Win-Hannah Clark (1-0-0). Loss-Amanda Dennis (1-1-1).

Stadium: Jeffrey Field

Officials: Referee: Lee Suckle; Asst. Referee: Michael Matlock; Michael Gorsegner;

Alt. Official: Bruce Shanaman; Scorer: Will Rottler;

Offsides: BYU 4, Penn State 0.

Official's signature

Soccer Box Score (Final) 2016 Penn State Women's Soccer

Hofstra vs #2 Penn State (Aug 21, 2016 at University Park, Pa.)

Hofstra (1-1-0) vs.
Penn State (1-0-1)
Date: Aug 21, 2016 • Attendance: 760
Weather: 75, cloudy

Po #	Player	Sh	SO	G	A	Fo	Min
gk 1	Ashley Wilson	-	-	-	-	-	45
d 2	Madeline Anderson	-	-	-	-	-	90
d 3	Rhian Cleverly	-	-	-	-	-	45
m 5	Jill Mullholland	2	1	-	-	-	90
d 7	Emily Agudelo	-	-	-	-	-	80
f 8	Kristin Desmond	-	-	-	-	-	80
d 11	Emily Hulbert	-	-	-	-	-	90
f 12	Kerri Baum	-	-	-	-	-	21
m 22	Noriana Radwan	1	1	-	-	-	59
d 25	Kelly Gerdes	-	-	-	-	-	80
f 26	Katie Gerdes	-	-	-	-	-	56
-- Substitutes --							
6	Jaimie Layfield	-	-	-	-	-	31
13	Maya Watkins	-	-	-	-	-	50
14	Jamie Delaney	-	-	-	-	-	40
17	Brianna Doran	-	-	-	-	-	14
27	Frederike Mehring	-	-	-	-	-	45
28	Sabrina Barton	-	-	-	-	-	18
Totals		3	2	1	0	9	

#	Goalkeepers	Min	GA	Saves
1	Ashley Wilson	45:00	2	4
27	Frederike Mehring	45:00	1	3

Shots by period	1	2	Total
Hofstra	1	2	3
Penn State	12	9	21

Corner kicks	1	2	Total
Hofstra	1	1	2
Penn State	3	1	4

Scoring summary:

No.	Time	Team	Goal scorer	Assist	Description
1.	7:12	HOFSTR	Noriana Radwan (1)	Corner kick	Off a corner, misplayed and into the net
2.	23:22	PSU	Charlotte Williams (1)	Nickolette Driesse	12 with the rebound off of the post, 6 yar
3.	38:03	PSU	Charlotte Williams (2)	(unassisted)	Free kick, 20 yards out, bottom right cor
4.	83:02	PSU	Salina Williford (1)	Laura Suero	from just inside the penalty area, right sid

Cautions and ejections:

YC-HOFSTRA #11 (28:58); RC-HOFSTRA #3 (38:00); YC-PSU #4 (80:48);

YC-PSU #6 (82:25)

Win-Amanda Dennis (1-0-1). Loss-Ashley Wilson (1-1-0).

Stadium: Jeffrey Field

Officials: Referee: Petar Dhima; Asst. Referee: Robert Sheker; Eric Samples;

Alt. Official: Sergio Gonzalez; Scorer: Will Rottler;

Offsides: Hofstra 6, Penn State 1.

Official's signature

2016 PENN STATE WOMEN'S SOCCER



SARAFINA VALENTI
Freshman • GK
Bechtelsville, Pa.



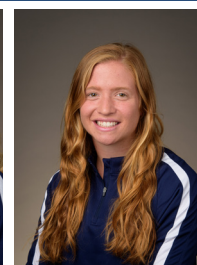
AMANDA DENNIS
Freshman • GK
San Diego, Calif.



BRITTANY BASINGER
RS-Junior • D
Fairfax, Va.



GRACE FISK
Freshman • D
Bromley, London, England



MEGAN SCHAFER
Junior • F
Langhorne, Pa.



EMMA HASCO
Freshman • M
Upper St. Clair, Pa.



ELIZABETH BALL
Junior • D
Richmond, Va.



KRISTIN SCHNURR
RS-Freshman • F
Bristow, Va.



FRANNIE CROUSE
Junior • F
Greensburg, Pa.



CHARLOTTE WILLIAMS
Sophomore • M
Rochester, N.Y.



HALEIGH ECHARD
Junior • M
Lebanon, Pa.



BECCA HAMILTON
Freshman • D
Howell, N.J.



ALINA ORTEGA JURADO
Sophomore • F/M
Waldgimes, Germany



ANGELA WIDLACKI
RS-Junior • D
Naperville, Ill.



LIISI VINK-LAINAS
Junior • M
Wynantskill, N.Y.



SALINA WILLIFORD
RS-Junior • M
Wayne, Pa.



LAURA FREIGANG
Freshman • M/F
Oppenheim, Germany



ISABELLE CLAUSS
Junior • D
Clarks Summit, Pa.



NICKOLETTE DRIESSE
Senior • M
Wayne, N.J.



CECILIA KNAUB
Sophomore • M
Phoenixville, Pa.



TAYLOR CAMPBELL-PHIPPS
Sophomore • D
Orlando, Fla.



MARISSA SHEVA
Sophomore • M
Sellersville, Pa.



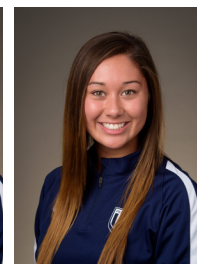
BRISTOL PIZZUTO
Freshman • GK
Whitehouse Station, N.J.



ROSE CHANDLER
RS-Sophomore • GK
Atlanta, Ga.



LAURA SUERO
Freshman • D
Royersford, Pa.



MADISON MOROI
Freshman • F
New Albany, Ohio



ERICA DAMBACH
Head Coach • 10th Year
William & Mary '97



ANN COOK
Associate Head Coach • 10th year
William & Mary '97



TIM WASSELL
Assistant Coach • 7th Year
PSU Altoona '06



KARA LOWERY
Director of Ops. • 4th Year
Southern Nazarene '97



Rafael Amaya, Jr.
Volunteer Assistant Coach • 1st Year
Liberty '13