



PENN STATE

WOMEN'S HOCKEY

POSTSEASON GAME NOTES



2012-13 CHA TOURNAMENT FIRST ROUND MARCH 1-3



2013 CHA TOURNAMENT



LINDENWOOD
St. Charles, Mo.



MERCYHURST
Erie, Pa.



PENN STATE
University Park, Pa.



RIT
Rochester, N.Y.



ROBERT MORRIS
Moon Township, Pa.



SYRACUSE
Syracuse, N.Y.

COLLEGE HOCKEY AMERICA

Penn State—along with Lindenwood and RIT—ushered in a new era of collegiate women's hockey when the three new teams competed in **College Hockey America (CHA)** this season. Now the league boasts six schools: charter member Mercyhurst College, Robert Morris University (joined 2005), Syracuse University (joined 2008), Lindenwood University, Rochester Institute of Technology (RIT) and Penn State University.

For the 2012-13 season, each school played the other five schools four times (two home, two away) for a total of 20 CHA match-ups. The 2013 CHA tournament will run from March 1-9 (see right). The six-team tournament format allows the CHA stability for the long haul and for an automatic bid to the NCAA Tournament. On the current track, the CHA champion would be eligible for the automatic bid during for the 2014-15 season.

The CHA represents all three of Pennsylvania's Division I teams (Mercyhurst, Robert Morris, Penn State), while stretching north to New York (RIT, Syracuse) and west to Missouri (Lindenwood).

Mercyhurst has ruled the roost winning the regular-season CHA title in every campaign for 11 straight years. That dominance continued until the 2012 CHA Tournament when Robert Morris upset the Lakers, 3-2, in the final.

ALL-TIME CHA CHAMPIONS

Year	Regular Season	Tournament
2002-03	Mercyhurst	Mercyhurst
2003-04	Mercyhurst	Mercyhurst
2004-05	Mercyhurst	Mercyhurst
2005-06	Mercyhurst	Mercyhurst
2006-07	Mercyhurst	Mercyhurst
2007-08	Mercyhurst	Mercyhurst
2008-09	Mercyhurst	Mercyhurst
2009-10	Mercyhurst	Mercyhurst
2010-11	Mercyhurst	Mercyhurst
2011-12	Mercyhurst	Robert Morris
2012-13	Mercyhurst	

2012 CHA TOURNAMENT (Neville Island, Pa.)

- #1 Mercyhurst 4, #4 Syracuse 3
- #2 Robert Morris 3, #3 Niagara 2
- #2 Robert Morris 3, #1 Mercyhurst 2

2013 CHA TOURNAMENT SCHEDULE

First Round

Fri. Mar. 1	Penn State at RIT	2:00 p.m.
Fri. Mar. 1	Lindenwood at Robert Morris	3:00 p.m.
Sat. Mar. 2	Penn State at RIT	2:00 p.m.
Fri. Mar. 2	Lindenwood at Robert Morris	2:00 p.m.
Sun. Mar. 3	Penn State at RIT	2:00 p.m.
Sun. Mar. 3	Lindenwood at Robert Morris	2:00 p.m.

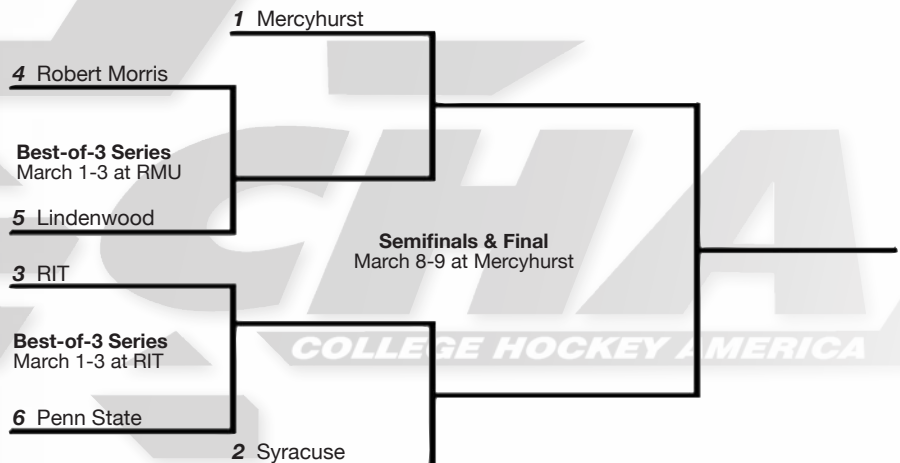
Semifinals

Fri. Mar. 8	RIT/Penn State vs. Syracuse
Fri. Mar. 8	Robert Morris/Lindenwood at Mercyhurst

Final

Sat. Mar. 9	Semifinal winners
-------------	-------------------

2013 CHA TOURNAMENT



Teams will be reseeded after the first round. Mercyhurst faces the lowest remaining seed, Syracuse faces the highest remaining seed in the semifinals.



PENN STATE WOMEN'S HOCKEY

2012-13 NITTANY LIONS

GoPSUsports.com // @PennStateWHKY // Facebook.com/PennStateWomensHockey
 Contact: **Jeremy Fallis** // jeremy.fallis@psu.edu // O: (814) 865-3613 // C: (814) 206-6544

2012-13 SCHEDULE

Overall: 7-24-2 // Home: 4-9-2 // Away: 3-13-0
 CHA: 1-17-2 // Home: 0-8-2 // Away: 1-9-0

Date	Opponent	Result/Time
Oct. 6	at Vermont	W 5-3
Oct. 7	at Vermont	L 1-3
Oct. 13 *	SYRACUSE	L 0-4
Oct. 14 *	SYRACUSE	L 0-6
Oct. 19	at Sacred Heart	L 1-2
Oct. 20	at Sacred Heart	W 6-1
Oct. 25 *	RIT	L 1-4
Oct. 26 *	RIT	T (OT) 2-2
Nov. 2	SACRED HEART	W 6-0
Nov. 3	SACRED HEART	W 8-2
Nov. 10 *	ROBERT MORRIS	L 1-7
Nov. 11 *	ROBERT MORRIS	L 1-4
Nov. 16 *	at Lindenwood	L 1-5
Nov. 17 *	at Lindenwood	W 3-2
Nov. 30 *	at #4 Mercyhurst	L 0-5
Dec. 1 *	at #4 Mercyhurst	L 1-7
Dec. 7	at St. Lawrence	L 1-3
Dec. 8	at St. Lawrence	L 2-4
Jan. 4	CHATHAM	W 10-0
Jan. 5	CHATHAM	W 4-0
Jan. 11	at Union	L 0-1
Jan. 12	at Union	L 1-2
Jan. 25 *	at Syracuse	L 0-1
Jan. 26 *	at Syracuse	L 1-4
Jan. 29	PRINCETON	L 0-3
Feb. 1 *	#7 MERCYHURST	L 2-5
Feb. 2 *	#7 MERCYHURST	L 1-4
Feb. 8 *	LINDENWOOD	L 1-3
Feb. 9 *	LINDENWOOD	T (OT) 3-3
Feb. 15 *	at RIT	L 1-3
Feb. 16 *	at RIT	L 0-4
Feb. 22 *	at Robert Morris	L 1-4
Feb. 23 *	at Robert Morris	L 2-4

2013 CHA TOURNAMENT

Mar. 1	^ at RIT (Game 1)	2:00 p.m.
Mar. 2	^ at RIT (Game 2)	2:00 p.m.
Mar. 3	^ at RIT (Game 3 - if necessary)	2:00 p.m.

Mar. 8	% Semifinals	TBA
Mar. 9	% Final	TBA

All Times Eastern

Home games in **CAPS** at Greenberg Ice Pavilion

* - College Hockey America games

^ - CHA First Round at higher seed

% - CHA Semifinals & Final hosted by Mercyhurst

Rankings based on USA Today/USA Hockey poll



PENN STATE NITTANY LIONS
(7-24-2)



RIT TIGERS
(14-15-5)

CHA FIRST ROUND SERIES: Mar. 1-3, 2013 • 2 p.m. • Frank Ritter Ice Arena • Rochester, N.Y.

GAME DAY

VENUE: Frank Ritter Memorial Ice Arena (2,100)
 STREAMING COVERAGE: AmericaOneSports.com (\$) (0-3-1)
 SERIES RECORD: 2/16/13, RIT 4-0 (at Rochester, N.Y.)
 LAST MEETING: 2/16/13, RIT 4-0 (at Rochester, N.Y.)

GAME NOTES

- Penn State takes part in first CHA Tournament as the sixth seed
- Nittany Lions travel to RIT for three-game series
- Penn State dropped both games at Robert Morris last weekend
- Nittany Lions fell twice at RIT two weekends ago
- RIT owns a 3-0-1 mark against PSU this season
- Freshmen have tallied 75 percent of the team's goals this season

ON THE INSIDE

Page 2: CHA Standings and Team Comparison

Pages 8-11: 2012-13 Penn State Women's Hockey Stats

Page 12: \$90 million Pegula Ice Arena is on target for a Sept. 2013 opening

Pages 13-14: The Nittany Lion Roster & TV/Radio Roster

SEASON STATISTICAL LEADERS

FORWARDS		GP	G	A	PTS	SH	+/-	GWG
40	Shannon Yoxheimer	32	14	15	29	162	-5	3
24	Taylor Gross	32	6	15	21	86	-6	0
15	Jess Desorcie	32	5	13	18	48	-5	0
16	Hannah Hoenshell	27	8	5	13	61	+5	1
19	Jill Holdcroft	33	10	2	12	52	-14	0
20	Emily Laurenzi	33	4	6	10	32	+6	1
23	Birdie Shaw	31	3	4	7	53	-4	0
22	Jenna Welch	33	4	3	7	43	-11	0
10	Micayla Catanzariti	33	3	2	5	53	-13	0
DEFENSE		GP	G	A	PTS	SH	+/-	BLK
4	Jordin Pardoski	33	3	7	10	28	-3	32
17	Paige Jahnke	33	0	8	8	27	-8	38
33	Madison Smiddy	15	1	6	7	13	+3	14
2	Jeanette Bateman	33	1	4	5	20	-9	36
8	Taylor McGee	21	0	2	2	12	-6	17
GOALTENDER		GP-GS	Record	MIN	GA	GAA	SV	SV%
37	Nicole Paniccia	25-25	6-17-2	1423:13	76	3.20	940	.925
30	Celine Whitlinger	10-8	1-7-0	506:04	25	2.96	377	.938



@PennStateWHKY



PennStateWomensHockey



GoPSUTV



NITTANY LION WOMEN'S HOCKEY

GAME NOTES AT CHA FIRST ROUND VS. RIT (MAR. 1-3)

SCOUTING THE TIGERS

RIT (14-15-5, 7-8-5 CHA) swept PSU two weeks ago and put up a valiant effort at Mercyhurst before falling, 4-1 and 5-2. In the second game, RIT led Mercyhurst 2-0, but gave up five unanswered goals.

The Tigers average 2.7 goals a game and allow 2.2 goals a game while outshooting opponents by an average of 6.4 shots a game. At forward, RIT is led by Tenecia Hiller (25 points), who has tallied 14 goals this season, half on the power play. The trio of Kourtney Kunichika (24 points), Ariane Yokoyama (23) and Kim Schlattman (22) rounds out the top four scorers.

In net, Ali Binnington has been remarkable, saving 92.5 percent of the shots she's faced with a 2.03 goals-against average. Her record this season is 9-9-4. Two weeks ago, Laura Chamberlain (5-6-1) won both games vs. Penn State.

LAST TIME OUT VS. RIT

Penn State struggled to find an offensive rhythm on Friday night, falling at RIT's Ritter Arena, 3-1, in a College Hockey America matchup on Friday, Feb. 15. **Nicole Paniccia** was called upon to make 42 saves, while junior captain **Taylor Gross** scored Penn State's lone goal in the third period.

On Saturday night, a barrage of second-period shots from RIT led to a comfortable three-goal margin as the Tigers defeated Penn State 4-0 at Ritter Arena. Paniccia did all she could, stopping 41 shots as PSU was more than doubled in shot attempts, 45-20.

COLONIALS TAKE TWO FROM PSU

A lethal Robert Morris attack was too much to overcome as the Colonials scored four unanswered goals in a 4-1 win over Penn State Friday night (Feb. 22) at 84 Lumber Arena. Freshman **Emily Laurenzi** scored a first-period goal, while junior **Nicole Paniccia** made 59 saves.

The next day, Penn State closed out its first regular season with a 4-1 loss against Robert Morris. **Shannon Yoxheimer** scored for the 14th time this season, while **Celine Whitlinger** made 53 saves. **Taylor Gross** tallied her fifth goal of the season in the third period.

YOUTH MOVEMENT

As is expected with a brand new varsity program, there are many freshmen on the team—17 in all. All 17 freshmen have made an appearance on the ice this season and have accounted for 74.6% of the goals scored (50 of 67).

	GP	G	A	Pts.
Jeanette Bateman	33	1	4	5
Micayla Catanzariti	33	3	2	5
Hannah Hoenshell	27	8	5	13
Jill Holdcroft	33	10	2	12
Paige Jahnke	33	0	8	8
Darby Kern	16	0	1	1
Emily Laurenzi	33	4	6	10

Taylor McGee	21	0	2	2
Jordin Pardoski	33	3	7	10
Kendra Rasmussen	32	3	1	4
Birdie Shaw	31	3	4	7
Stephanie Walkom	6	0	0	0
Sarah Wilkie	25	0	1	1
Shannon Yoxheimer	34	14	16	30
Katie Zinn	12	1	3	4

	GP	GAA	SV	Pct.
Brooke Meyer	3	0.00	17	1.000
Celine Whitlinger	10	2.96	377	.938

PENN STATE FEATURED ON BTN

On Thursday, Feb. 14, the Big Ten Network ran a five-minute feature on the Penn State women's hockey program. Produced and narrated by Kara Lentz, BTN cameras follows the team during its home-opening series against Syracuse and uses footage from Penn State's historic win over Vermont on Oct. 6. Head coach **Josh Brandwene**, junior captain **Taylor Gross**, junior goaltender **Nicole Paniccia** and freshman forward Shannon Yoxheimer recount their experiences through the beginning of the inaugural season.

LIONS MAKE FIRST TV APPEARANCES

Penn State women's hockey appeared on TV for the first time in program history at RIT on Feb. 15-16. Time Warner Cable Sports, channel 26 or channel 1026 in Central New York, broadcasted both games live from Ritter Arena.

LION BATTLE GOES TO LINDENWOOD

Two tight contests with fellow CHA newcomers Lindenwood resulted in three points for the visiting Lions as Penn State fell 3-1 and tied 3-3 on Feb. 8-9. In both games, Penn State scored first, but Lindenwood fought back, earning the win on Friday and forcing overtime on Saturday. **Emily Laurenzi** and **Birdie Shaw** had standout

GAMEDAY COMPARISON

TEAM STATS

Overall record	7-24-2	14-15-5
Conference record	1-17-2	7-8-5
Goals scored	67	91
Goals scored per game	2.0	2.7
Goals allowed	105	75
Goals allowed per game	3.2	2.2
First period goals	23	29
Second period goals	20	31
Third period goals	24	31
Overtime goals	0	0
Shots	836	1134
Shots per game	25.3	33.4
Shot pct.	.080	.080
Assists	102	148
Penalties per game	4.2	5.7
Power plays	17-125	32-157
Power-play pct.	.136	.204
Penalty kills	32-134	31-168
Penalty-kill pct.	.761	.815
Saves	1334	842
Shutouts	3	5

LEADERS

Points	Yoxheimer (30)	Hiller (25)
Goals	Yoxheimer (14)	Two with 14
Assists	Yoxheimer (16)	Yokoyama (15)
Shots	Yoxheimer (162)	Zach (100)
Shot Pct.	Holdcroft (.192)	C. Kunichika (.267)
+/-	Laurenzi (+6)	Fortuna (+20)
Faceoff Pct.	Holdcroft (.527)	n/a
Saves	Paniccia (940)	Binnington (565)
Save Pct.	Whitlinger (.938)	Binnington (.925)
GAA	Whitlinger (2.96)	Binnington (2.03)
Record	Paniccia (6-17-2)	Binnington (9-9-4)

2012-13 COLLEGE HOCKEY AMERICA STANDINGS

(as of Feb. 28, 2013)

	Pts.	CHA	GF	GA	Overall	GF	GA	Last 10
x-Mercyhurst (9/9)	34	17-3-0	96	27	26-6-1	142	56	8-2-0
y-Syracuse	27	13-6-1	54	32	19-14-1	94	69	7-3-0
RIT	19	7-8-5	41	45	14-15-5	91	75	3-5-2
Robert Morris	19	9-10-1	52	50	13-14-3	76	74	3-6-1
Lindenwood	17	7-10-3	41	71	7-24-3	60	147	5-3-2
PENN STATE	4	1-17-2	22	81	7-24-2	67	105	0-9-1

x-clinched No. 1 seed; y-clinched No. 2 seed

PAST RESULTS & UPCOMING SCHEDULE

Friday, Feb. 22 Mercyhurst* 4, RIT 1 Robert Morris* 4, PENN STATE* 1	Tuesday, Feb. 26 Syracuse* 4, Lindenwood 1	Sunday, March 3 (if necessary) #6 PENN STATE at #3 RIT #5 Lindenwood at #4 Robert Morris, 2 p.m.
Saturday, Feb. 23 Mercyhurst* 5, RIT 2 Robert Morris 4, PENN STATE* 2	Friday, March 1 (CHA First Round) #6 PENN STATE at #3 RIT, 2 p.m. #5 Lindenwood at #4 Robert Morris, 3 p.m.	Friday, March 8 (at Erie, Pa.) #3/6 vs. #2 Syracuse #4/5 at #1 Mercyhurst
Tuesday, Feb. 26 Lindenwood 2, Syracuse* 1 (OT)	Saturday, March 2 #6 PENN STATE at #3 RIT, 2 p.m. #5 Lindenwood at #4 Robert Morris, 2 p.m.	Saturday, March 9 (at Erie, Pa.) CHA Championship



NITTANY LION WOMEN'S HOCKEY

weekends, each scoring a goal and an assist. **Jill Holdcroft** and **Shannon Yoxheimer** also tallied goals, while goaltender **Nicole Paniccia** fended off numerous Lindenwood chances, accumulating 86 saves.

PENN STATE FIGHTS, FALLS TO LAKERS

A pair of valiant efforts weren't enough to upset the No. 7 Mercyhurst Lakers this past weekend (Feb. 1-2), falling 5-2 and 4-1. Penn State's three-goal deficit on Friday was too great to overcome, but PSU matched Mercyhurst 2-2 over the course of 56 minutes between the second period of Friday and Saturday's game. **Celine Whitlinger** was outstanding in net on Friday night, making a career-high 59 saves to keep the Lions in it. **Hannah Hoenshell** beat MU's goaltender with a nifty move and **Jordin Pardoski** netted a power-play goal off a Laker skate.

On Saturday, **Nicole Paniccia** was tasked with stopping the Mercyhurst onslaught and saved 46 of 50 shots. **Jill Holdcroft's** late third period goal on the power play ended the shutout and PSU dropped the season series 0-4-0 to the CHA leaders.

LIONS FALL PREY TO TIGERS

Penn State skated against Princeton for the first

time on Tuesday night (Jan. 29) and dropped a 3-0 decision at Greenberg Ice Pavilion. The Tigers tallied a goal in each period, while goaltender **Nicole Paniccia** made 27 saves for the Nittany Lions. Princeton out-shot Penn State 30-19 for the game.

LIONS FALL IN SYRACUSE

Penn State dropped both games to Syracuse in its return to CHA play. In the Friday, Jan. 25 matchup, Nicole Paniccia's 45-save performance wasn't enough as a first-period Orange goal was the difference, 1-0. The next day, Celine Whitlinger had to stand tall in net, making 51 saves in a 4-1 loss to Syracuse. The Orange opened the game with three goals in the first 11:29, but Penn State outscored the Orange 1-0 until a last-minute empty-netter capped the scoring. **Jill Holdcroft** tallied her eighth of the year and her team-leading fourth power-play goal. **Shannon Yoxheimer** and **Jess Desorcie** fed the Holdcroft goal.

PENN STATE'S RECORD IS...

4-9-2 at home
3-15-0 on the road
0-0-2 in overtime
5-5-2 when scoring first
2-19-0 when opponent scores first
5-2-1when leading after the 1st period
1-12-0 when trailing after the 1st period
1-10-1 when tied after the 1st period
6-0-1 when leading after the 2nd period
0-20-0when trailing after the 2nd period
1-4-1 when tied after the 2nd period
6-1-0when out-shooting opponent
1-23-2when out-shot by opponent
0-0-0 when taking same # of shots
7-3-1when winning more faceoffs
0-21-1 when losing more faceoffs
0-0-0 when tied in faceoffs
1-11-1 when taking more penalties
3-9-0when taking fewer penalties
3-4-1	... when taking the same # of penalties
4-8-2 when scoring a power play goal
3-16-0	... when not scoring a power play goal
4-14-2 when allowing a power play goal
3-10-0	...when not allowing a power play goal
0-7-0 when scoring 0 goals
0-14-0 when scoring 1 goal
0-3-1 when scoring 2 goals
1-0-1 when scoring 3 goals
6-0-0 when scoring 4+ goals
3-0-0 when allowing 0 goals
1-2-0when allowing 1 goal
2-2-1 when allowing 2 goals
1-5-1 when allowing 3 goals
0-15-0 when allowing 4+ goals
2-5-1 in October
3-4-0 in November
0-3-0 in December
2-5-0 in January
0-7-1in February
0-0-0in March
0-1-0 on Tuesday
0-1-0on Thursday
2-10-1 on Friday
5-9-1 on Saturday
0-3-0 on Sunday
4-11-1 during the day
3-13-1 at night
1-1-0vs. Hockey East
1-17-2vs. College Hockey America
0-5-0 vs. ECAC Hockey
3-1-0vs. D-I Independents
2-0-0vs. Division III
0-4-0 vs. ranked opponents
7-20-2vs. unranked opponents
5-4-2 when Shannon Yoxheimer scores
6-17-2 when Nicole Paniccia starts
1-4-2 games decided by a goal or less

2012-13 MEDIA INFORMATION

Penn State Athletic Communications

Primary Contact: Jeremy Fallis
 Email: jeremy.fallis@psu.edu
 Secondary Contact: Brian Hoerst
 Email: bjh33@psu.edu
 Office: 814-865-1757

Interviews

Penn State student-athletes and coaches are available for interviews after practice each day. Please contact Jeremy Fallis in advance.

Credentials

Contact Jeremy Fallis for home game credentials at Greenberg Ice Pavilion.

Postgame

Head coach Josh Brandwene and requested student-athletes are available to the media following each game in the studio rink. Please alert Jeremy Fallis or Brian Hoerst during the game of any requests.

Yearbook

The 2012-13 Penn State women's hockey yearbook will be made available to media members at the first home game on Oct. 13. The public may purchase copies for \$6 online.

GoPSUsports.com

[Facebook.com/PennStateWomensHockey](https://www.facebook.com/PennStateWomensHockey)

[@PennStateWHKY](https://twitter.com/PennStateWHKY)

2012-13 WOMEN'S HOCKEY POLLS

USA Today/USA Hockey (Feb. 19, 2013)

1	Minnesota	32-0-0	1
2	Boston College	23-5-2	2
3	Cornell	21-5-1	4
4	Boston University	20-4-3	3
5	Harvard	19-4-2	5
6	Clarkson	24-8-0	6
7	North Dakota	22-10-0	7
8	Wisconsin	19-9-2	9
9	Mercyhurst	24-6-1	8
10	Northeastern	18-10-2	10

Others: Minnesota-Duluth

USCHO.com (Feb. 25, 2013)

1	Minnesota	34-0-0	1
3	Cornell	23-5-1	3
2	Boston College	25-5-3	2
4	Boston University	23-5-3	4
7	Clarkson	26-8-0	7
6	Wisconsin	21-9-2	6
5	Harvard	20-5-3	5
8	North Dakota	23-10-1	8
9	Mercyhurst	26-6-1	9
10	Northeastern	21-10-2	10

Bold indicates 2012-13 opponent



NITTANY LION WOMEN'S HOCKEY

LIONS DROP ONE GOAL GAMES AT UNION

Penn State dropped both ends of a two-game series (Jan. 11-12) at Union in one-goal fashion, 1-0 and 2-1. **Celine Whitlinger's** career-high 48-save performance kept PSU in the opener before a late third-period goal propelled the Dutchwomen. Union took a 2-0 lead in the series finale, but **Jess Desorcie** cut the lead in half. Nevertheless, the Dutchwomen held on for the slim win.

PENN STATE SWEEPS CHATHAM

The Nittany Lions trounced an overmatched Chatham team on Friday-Saturday, Jan. 4-5, winning 10-0 and 4-0. The weekend saw every Nittany Lion see ice time as PSU out-shot Chatham 119-33, scoring 14 times, tallying 22 assists, 36 points and a plus-65 rating. Additionally, Penn State posted back-to-back shutouts for the first time in the young history of the program.

In Friday's game, Penn State scored five in the first, four in the second and added one more for the 10 spot. **Shannon Yoxheimer** scored the first two goals of the game and **Hannah Hoenshell** tallied a school-record four points as Penn State eased by the Division III Cougars.

Penn State set new records for most goals in a game (10), most goals in a period (5, in the first) and most assists in a game (17). Hoenshell tallied a two-goal, two-assist effort, while **Jeanette Bateman** became the first Nittany Lion to register three assists. **Jordin Pardoski** added a three-point game of her own behind a goal and two assists to celebrate her 19th birthday.

The game also featured a couple of firsts as **Tess Weaver** scored her first varsity goal at the end of the first period and freshman **Darby Kern** notched her first point on an assist in the first period. In all, 15 Nittany Lions earned a point.

Kendra Rasmussen tallied her first multi-goal game of her career and **Jill Holdcroft** tallied two points on a goal and an assist. In all, 16 of 18 Nittany Lion skaters tallied a point.

The goaltending trio of **Nicole Paniccia**, **Celine Whitlinger** and **Brooke Meyer** combined for Penn State's second shutout of the year. Paniccia and Meyer made six stops, while Whitlinger saved five.

On Saturday, Junior assistant captain **Jenna Welch** scored twice and linemate **Katie Zinn** posted three points behind her first collegiate goal and two assists.

Penn State out-shot Chatham, 71-16, peppering the Cougar net. Zinn scored the opening goal in the first, Welch doubled the lead in the second and added another in the third before Holdcroft finished off the scoring. **Paige Jahnke** had two helpers and **Madison Smiddy** added her sixth assist of the season in the game.

Whitlinger won her first collegiate game with 12

saves in 52:34 of game time. Meyer polished off the shutout with four stops in the final 7:26.

HOENSHELL EARNS ROOKIE OF THE WEEK

Freshman forward **Hannah Hoenshell** collected College Hockey America Rookie of the Week laurels, the conference office announced Monday, Jan. 7. The award is the first of her career for the Plano, Texas, native, who tallied four points on a pair of goals and assists in a 10-0 win over Chatham Jan. 4.

STROEMEL TO LEAD USA UNIVERSITY TEAM

Penn State women's hockey director of operations and video coach **Mo Stroemel** will lead the 2013 U.S. Women's National University Team at the 2013 World University Games in Italy announced on Jan. 9. Stroemel was also in charge of the inaugural 2011 team that placed fourth in Turkey. Stroemel's 2011 squad featured current Nittany Lion assistant captain **Lindsay Reihl** and current equipment manager **Graham Pepperman**.

SAINTS ESCAPE NITTANY LIONS

Penn State battled St. Lawrence Friday night (Dec. 7), but ultimately fell to the Saints, 3-1, on the road in Canton, N.Y. Freshman **Jill Holdcroft** netted her fifth goal of the season on a power play in the second period, but St. Lawrence responded with a two-goal final frame to put away the Nittany Lions. **Celine Whitlinger**, in her third start of the season, denied a career-high 45 shots in goal, besting her previous record of 40 set against Vermont Oct. 7. Whitlinger was aided by a stingy Nittany Lion defense that totaled 17 blocked shots to hold St. Lawrence to just a pair of goals before an empty-netter sealed the final score at 3-1. **Jenna Welch** led the way by getting in front of three attempts.

On Saturday, Dec. 8, Penn State pulled within one late in the third period, but could not complete the comeback against St. Lawrence as the Saints skated to a 4-2 victory to earn the series sweep. **Jess Desorcie** scored early, assisted by **Taylor Gross** and **Shannon Yoxheimer** for a 1-0 lead. Down 3-1, **Hanna Hoenshell** scored her fifth of the season midway through the third period. SLU managed a power-play goal with less than two minutes to play for the 4-2 final. **Nicole Paniccia** made 54 saves in goal for the Lions.

WHITLINGER NAMED ROOKIE OF THE WEEK

Freshman netminder **Celine Whitlinger's** career night at St. Lawrence on Friday, Dec. 7, translated into her first collegiate honor: College Hockey America Rookie of the Week. Whitlinger earned Penn State's second CHA Rookie of the Week this season after **Micayla Catanzariti's** honor on Oct. 8.

Whitlinger made stop after stop on as the Nittany Lions looked to upset established St. Lawrence. The California native posted 45 saves in all as Penn State fell 3-1. St. Lawrence went to the NCAA Tournament last season and is among the

best teams in the ECAC Hockey.

SET TO JOIN THE NITTANY LIONS

On Nov. 14, head coach **Josh Brandwene** welcomed next year's Nittany Lions. Minnesota natives **Laura Bowman** (Minnetonka, Minn.), **Sarah Nielsen** (Edina, Minn.), **Amy Petersen** (Minnetonka, Minn.) and **New York** product **Kelly Seward** (Williamsville, N.Y.). Bowman and Petersen have led Minnetonka to the last two Minnesota high school state titles.

CHA ROOKIE OF THE MONTH HONORS TO YOXHEIMER

Freshman forward **Shannon Yoxheimer** was named College Hockey America's Rookie of the Month for her performance during November. Yoxheimer led the Nittany Lions with nine points and helped lead Penn State to a 3-4-0 record last month.

Yoxheimer was Penn State's most powerful weapon offensively, accounting for 39 shots, four goals, five points and nine points during the varsity program's second month. Her four goals were tied for a team-high, while her five assists and nine points were each team bests.

AT THE MERCY OF THE LAKERS

Penn State dropped both games at No. 4 Mercyhurst last weekend (Nov. 30-Dec. 1), but still put forth positive efforts. Friday night's 5-0 loss highlight was **Celine Whitlinger's** strong third period that yielded one goal in 29 shots as the freshman netminder made her return to the ice. Her last ap-

HONORS & AWARDS

Micayla Catanzariti

CHA Rookie of the Week (10/8)
Penn State Student-Athlete of the Week (10/9)

Hannah Hoenshell

CHA Rookie of the Week (1/6)

Celine Whitlinger

CHA Rookie of the Week (12/10)

Shannon Yoxheimer

CHA November Rookie of the Month (12/4)
CHA Player of the Week (10/22)
Penn State Student-Athlete of the Week (10/23)

OVER THE AIR

The CHA on AmericaOneSports.com

All Penn State games during CHA play will be streamed live on AmericaOneSports.com. Subscribers can purchase a 1-day package for \$8, 30-day packages for \$30 or a season pass for \$125.

Penn State home games will have Ryan Smith and Jared Abbott on the call.

NITTANY LION WOMEN'S HOCKEY



pearance was Oct. 14 vs. Syracuse.

In Saturday's game, Penn State took a 1-0 lead on a **Jess Desorcie** marker off **Taylor Gross's** breakaway attempt 8:29 into the contest. The play was set up by **Shannon Yoxheimer**, who caused a turnover at the blue line and allowed Gross to streak in uncontested for the second time in minutes. Mercyhurst tied the game 1-1 before the period was out and held a 3-1 advantage after two periods as the Lakers won 7-1. **Nicole Paniccia** was named third star of the game by setting a new school record with 64 saves.

CHA SPLIT AT LINDENWOOD

Penn State women's hockey earned another inaugural milestone on Saturday, Nov. 17, defeating Lindenwood 3-2 for its first College Hockey America victory. Freshman forward **Emily Laurenzi** struck for the game-winning goal to complete a comeback at Lindenwood Ice Arena. Fellow classmate **Jill Holdcroft** and junior captain **Taylor Gross** each notched their fourth goals of the season for the Nittany Lions. Freshman forward **Shannon Yoxheimer** had two assists to aid the Nittany Lion attack.

Penn State found itself down twice to Lindenwood and each time fought back to knot the game. With 5:50 left in the third period in a 2-2 game, Laurenzi tucked home her second goal of the season as the Nittany Lions held off LU for the final portions of the game. **Paige Jahnke** and **Hannah Hoenshell** assisted on the power-play goal.

The previous day did not go as well for the Nittany Lions. Lindenwood scored twice in the second period to break a 1-1 dealock and went on to win, 5-1, for the Lions' first win of the season. Holdcroft scored a power-play goal from Yoxheimer and Gross.

WEEKEND SWEEP BY RMU

Penn State faced the 2012 CHA Tournament champion Robert Morris in a two-game series (Nov. 10-11), falling 7-1 and 4-1. **Shannon Yoxheimer** scored in the opener off a **Taylor Gross** faceoff win, but RMU's Rebecca Vint scored five times to pace the Colonials.

In the second game, it was more of the same early as Robert Morris staked out a 3-0 lead through two periods, but Penn State held the Colonials scoreless in the second. That turned the momentum around as Penn State went toe-to-toe with the defending champions in the third. **Micayla Catanzariti** scored a goal with 6:19 remaining to spark the Lions. **Birdie Shaw** and **Jill Holdcroft** were credited with assists. Twenty-three seconds later, Yoxheimer's shot was saved by Delayne Brian and Taylor Gross's attempt was stopped by Brian to keep it a two-goal game. With 2:23 left, RMU took an interference penalty as Penn State had a 6-on-4, but couldn't convert before RMU tallied an empty-net goal with 13 second remaining. **Nicole Paniccia** made 49 saves in Sunday's loss.

YOXHEIMER FINALLY STOPPED

Penn State's leading scorer, **Shannon Yoxheimer**, has been on a roll over the past four weeks, scoring eight of her team-high 10 goals. In that stretch, Yoxheimer scored in seven-straight games after a three-game drought. The seven-game streak started at Sacred Heart

NCAA TEAM RANKS

(As of Feb. 28, 2013)

Goals Per Game	26th
Goals Against Per Game	28th
Scoring Margin	25th
Most Penalty Minutes Per Game	21st
Power-Play Percentage	27th
Penalty-Kill Percentage	31st
Combined Special Teams	28th
Winning Percentage	29th

NCAA INDIVIDUAL RANKS

(Top 100 as of Feb. 28, 2013)

Taylor Gross

Assists Per Game	T-88th
Power-Play Goals Per Game	T-47th

Jill Holdcroft

Goals Per Game	T-94th
Power-Play Goals Per Game	T-18th

Hannah Hoenshell

Goals Per Game	T-96th
Points Per Game (Rookies)	T-31st

Nicole Paniccia

Goals-Against Average	35th
Save Percentage	12th
Winning Percentage	34th

Shannon Yoxheimer

Points Per Game	T-48th
Goals Per Game	T-44th
Game-Winning Goals	T-36th
Assists Per Game	T-65th
Points Per Game (Rookies)	9th

CHA TEAM RANKS

(As of Feb. 28, 2013)

Goals	5th
Assists	5th
Goals Per Game	5th
Goals Against	5th
Goals-Against Average	5th
Saves	2nd
Save Percentage	1st
Shots on Goal	6th
Least Penalty Minutes	1st
Power-Play Goals	6th
Power-Play Percentage	4th
Power-Play Goals Against	5th
Penalty-Kill Percentage	5th

CHA INDIVIDUAL RANKS

(Top 10 as of Feb. 19, 2013)

Taylor Gross

Power-Play Goals	T-9th
----------------------------	-------

Jill Holdcroft

Power-Play Goals	T-4th
----------------------------	-------

Nicole Paniccia

Games Played	3rd
Games Started	3rd
Minutes Played	3rd
Goals-Against Average	8th
Saves	2nd
Save Percentage	3rd
Wins	T-7th
Win Percentage	9th

Jordin Pardoski

Goals (D)	T-9th
Penalty Minutes	T-7th
Penalty Minutes (D)	T-4th

Celine Whitlinger

Games Played	11th
Games Started	11th
Minutes Played	11th
Saves	7th
Wins	11th

Shannon Yoxheimer

Points	T-7th
Assists	T-9th
Goals	T-5th
Assists	T-9th
Game-Winning Goals	T-6th
Shots	1st





NITTANY LION WOMEN'S HOCKEY

as she scored PSU's only goal and has continued with a career day vs. SHU on Nov. 3 as she scored a goal and career-high two assists. Yoxheimer also accounted for Penn State's first two game-winning goals, notching two goals at Vermont (Oct. 6) and the go-ahead goal at SHU (Oct. 20). Yoxheimer scored against Robert Morris on Saturday, but we held scoreless for the first time since Oct. 14 in the Sunday matchup.

EIGHT FROM EIGHT IN WIN OVER SHU

Penn State earned its first series sweep in program history, defeating Sacred Heart, 8-2, on Saturday (Nov. 3) afternoon at Greenberg Ice Pavilion. Eight different Nittany Lions tallied a goal with **Jess Desorcie**, **Taylor Gross** and **Shannon Yoxheimer** notching three-point days.

Yoxheimer opened the scoring before SHU tied it up early in the second period before Gross, **Kendra Rasmussen** and **Jill Holdcroft** scored successive goals for a 4-1 lead midway through the period.

After another SHU tally, PSU would rally off the last four goals, this time coming from Desorcie, **Jenna Welch**, **Madison Smiddy** and **Emily Laurenzi**. Welch, Smiddy and Laurenzi scored their first goals of the season for Penn State.

Nicole Paniccia made 23 saves in net for the Nittany Lions to improve to 4-3-1 on the season. Penn State dominated the game in the faceoff circle, 54-25, which led to a 64-25 shot advantage.

FIRST HOME WIN, SHUTOUT & HAT TRICK

Friday night, Nov. 2 at Greenberg Ice Pavilion was historic for Penn State as the women's hockey team won its first home game, 6-0, over Sacred Heart. The program's first shutout featured the first hat trick by **Hannah Hoenshell**. **Shannon Yoxheimer** scored twice and **Jill Holdcroft** scored her first ever goal in the rout.

Hoenshell opened the game's scoring seven minutes into the contest, which highlighted a 22-2 Penn State advantage in shots over the Pioneers.

The Nittany Lions would light the lamp three times in the second as Hoenshell, Yoxheimer and Holdcroft stretched the lead to 4-0.

In the third, Penn State would make it 5-0 just 10 seconds into the period on a Yoxheimer laser from the left wing and Hoenshell would cap her hat trick five minutes later for the 6-0 final score.

The Nittany Lions out-shot the Pioneers 66-18 as goaltenders **Nicole Paniccia** (11 saves) and **Brooke Meyer** (7 saves) combined for the school's first shutout.

PSU EARNS FIRST CHA POINT

Penn State was 89 seconds away from its first CHA victory on Friday, Oct. 26 vs. RIT, but had to settle with a hard-fought 2-2 tie. After a 4-1 loss to RIT on Thursday, Penn State fell to 0-3-1 in CHA play. Goaltender **Nicole Paniccia** and forward **Shannon Yoxheimer** shined for Penn State, providing outstanding defense and offense, respectively. Paniccia made 93 saves last week, including a school-record 59 stops in the 2-2 tie. Paniccia finished the weekend with a .939 save percentage after a 34-save effort in Thursday's matchup.

Yoxheimer scored Penn State's lone goal in the opener and

THE LAST TIME

PENN STATE...

Scored 0 goals	2/16/13 at RIT (0-4)
Scored 3 goals	2/9/13 vs. Lindenwood (3-3)
Scored 4 goals	1/5/13 vs. Chatham (4-0)
Scored 5 goals	10/6/12 at Vermont (5-3)
Scored 6 goals	11/2/12 vs. Sacred Heart (6-0)
Scored 7 goals	Never
Scored 8 goals	11/3/12 vs. Sacred Heart (8-2)
Scored 9 goals	Never
Scored 10 goals	1/4/13 vs. Chatham (10-0)
Allowed 0 goals	1/5/13 vs. Chatham (4-0)
Allowed 1 goal	1/25/13 at Syracuse (0-1)
Allowed 2 goals	1/12/13 at Union (1-2)
Allowed 3 goals	2/15/13 at RIT (1-3)
Allowed 4 goals	2/23/13 at Robert Morris (2-4)
Allowed 5 goals	2/1/13 vs. #7 Mercyhurst (2-5)
Allowed 6+ goals	12/1/12 at #4 Mercyhurst (1-7)
Won in overtime	Never
Lost in overtime	Never
Tied in overtime	2/9/13 vs. Lindenwood (3-3)
Played a ranked team	2/2/13 vs. #7 Mercyhurst (1-4)
Attempted 10-19 shots	2/23/13 12 at Robert Morris (2-4)
Attempted 20-29 shots	2/16/13 20 at RIT (0-4)
Attempted 30-39 shots	2/8/13 36 vs. Lindenwood (1-3)
Attempted 40-49 shots	1/4/13 48 vs. Chatham (10-0)
Attempted 50-59 shots	Never
Attempted 60-69 shots	11/3/12 64 vs. Sacred Heart (8-2)
Attempted 70+ shots	1/5/13 71 vs. Chatham (4-0)
Allowed 10-19 shots	1/5/13 16 vs. Chatham (4-0)
Allowed 20-29 shots	11/3/12 25 vs. Sacred Heart (8-2)
Allowed 30-39 shots	1/29/13 30 vs. Princeton (0-3)
Allowed 40-49 shots	2/16/13 45 at RIT (0-4)
Allowed 50-59 shots	2/23/13 57 at Robert Morris (2-4)
Allowed 60-69 shots	2/22/13 63 at Robert Morris (1-4)
Allowed 70+ shots	12/1/12 71 at #4 Mercyhurst (1-7)
Tallied 5-9 assists	1/5/13 5 vs. Chatham (4-0)
Tallied 10-15 assists	11/3/12 12 vs. Sacred Heart (8-2)
Tallied 15+ assists	1/4/13 17 vs. Chatham (10-0)
Scored 10-19 points	11/2/12 12 vs. Sacred Heart (6-0)
Scored 20+ points	1/4/13 27 vs. Chatham (10-0)
Scored 2 power-play goals	11/17/12 at Lindenwood (3-2)
Scored 3 power-play goals	10/20/12 at Sacred Heart (6-1)
Allowed 0 power-play goals	2/2/13 vs. #7 Mercyhurst (1-4)
Allowed 2 power-play goals	2/23/13 at Robert Morris (2-4)
Had 5 different goal scorers	Never
Had 6 different goal scorers	10/20/12 at Sacred Heart (6-1)
Had 7 different goal scorers	1/4/13 vs. Chatham (10-0)
Had 8 different goal scorers	11/3/12 vs. Sacred Heart (8-2)

A PENN STATE PLAYER...

Scored 2 goals	1/5/13 J. Welch vs. Chatham (4-0)
Scored 3 goals	11/2/12 H. Hoenshell vs. Sacred Heart (6-0)
Scored 4 goals	Never
Had 3 assists	1/4/13 J. Bateman vs. Chatham (10-0)
Had 5 points	Never
Had 10+ shots	1/5/13 12, T. Weaver vs. Chatham (4-0)
Saved 40-49 shots	2/16/13 41, N. Paniccia at RIT (0-4)
Saved 50-59 shots	2/23/13 53, C. Whitlinger at Robert Morris (2-4)
Saved 60+ shots	12/1/12 64, N. Paniccia at #4 Mercyhurst (1-7)
Had a shutout	1/5/13 C. Whitlinger/B. Meyer vs. Chatham (4-0)
Scored an empty-net goal	10/6/12 B. Shaw at Vermont (5-3)
Scored a short-handed goal	Never

NITTANY LION WOMEN'S HOCKEY



opened the scoring on Friday before Taylor Gross made it 2-0 just seconds later. **Paige Jahnke**, **Madison Smiddy**, Yoxheimer and Gross each had an assist in the tie as the Tigers scored once in the first and another in the third. RIT held a 99-36 shot advantage in the series.

YOX NAMED CHA PLAYER OF THE WEEK

For her efforts against Sacred Heart, **Shannon Yoxheimer** was named CHA Player of the Week for a three-point weekend and a game-winning goal over the Pioneers (Oct. 19-20). Yoxheimer leads the team with four goals and is tied with Taylor Gross for points with five. Yoxheimer is the first Nittany Lion to receive CHA Offensive Player of the Weeks honors and joins fellow classmate **Micayla Catanzariti** (Rookie of the Week, Oct. 8) on the honor roll.

ANOTHER WEEKEND OF FIRSTS

The second road trip in Penn State women's hockey history resulted in another split result, but it was not without some firsts. The Nittany Lions tallied six goals in a victory at Sacred Heart (Oct. 20), the most in the short history of the program and the largest margin of victory (5). Additionally, the Lions tallied eight assists, which matched the inaugural game.

Individually, **Jeanette Bateman**, **Jordin Pardoski** and **Hannah Hoenshell** scored their first collegiate goals on Oct. 20. **Jess Desorcie** tallied her first Penn State varsity goal, while **Lindsay Reihl** and **Jenna Welch** recorded their first Penn State points on assists. Welch had a two-helper game as did **Madison Smiddy**, who notched her first multi-point game. **Cara Mendelson** and **Hoenshell** hit the ice for the first time, bringing the total number of Nittany Lions to see ice time to 23.

HISTORIC FIRST WIN

Penn State women's hockey made history on Saturday, Oct. 6 at Vermont's Gutterson Fieldhouse by winning its inaugural game, 5-3. The Nittany Lions scored five goals from three freshmen making their respective debuts as junior goaltender **Nicole Paniccia** made 31 saves in her PSU opener. **Shannon Yoxheimer** and **Micayla Catanzariti** each scored twice for the Nittany Lions.

Down 2-1, Penn State was not to be deterred, reeling off three straight goals to take a 4-2 lead midway through the third period. Despite a Vermont goal with 6:34 left in the third, **Birdie Shaw** scored an empty-net goal to seal the Nittany Lion victory. Junior captain **Taylor Gross** made her Penn State debut known with two assists and was named the first star of the game, Yoxheimer was second.

FIRST TIME FOR EVERYTHING

Penn State had a varsity team debut for the first time since 1994 (women's soccer) when the women's hockey team defeated Vermont, 5-3 on Oct. 6. The successful debut was the first since 1977 when the men's volleyball team defeated East Stroudsburg.

Game: Oct. 6, 2012 at Vermont, 2:00 p.m.

Win: Nicole Paniccia, Oct. 6 at Vermont, 5-3

Goal: Shannon Yoxheimer

Multi-Goal Game: Micayla Catanzariti

Game-Winning Goal: Shannon Yoxheimer

Assists: Taylor Gross, Emily Laurenzi

Multi-Assist Game: Jess Desorcie

Faceoff: Emily Laurenzi

Faceoff win: Emily Laurenzi

Shot: Katie Zinn

Save: Nicole Paniccia

Empty-Net Goal: Birdie Shaw

CATANZARITI HONORED

Freshman forward **Micayla Catanzariti** was named College Hockey America's Rookie of the Week on Oct. 8. Catanzariti led the Nittany Lions to a win in their inaugural opener on Saturday with two goals and an assist at Vermont. Catanzariti was also named Highmark's Penn State Women's Student-Athlete of the Week.

FIRST HEAD COACH

A 1991 graduate of Penn State, head coach **Josh Brandwene** is the first to lead the Nittany Lions. A four-year hockey player at PSU, Brandwene brings 20 years of coaching experience to Happy Valley. Brandwene picked up his first win in the team's debut on Saturday, Oct. 6 at Vermont.

CAPTAIN, OUR CAPTAIN

Junior forward **Taylor Gross** leads Penn State as its first captain. The University of Connecticut transfer appeared in 48 games for the Huskies before joining Penn State's club side in January 2012. In September, the team voted fellow UConn transfer **Jenna Welch** and senior defender **Lindsay Reihl** as assistant captains.

CONTINUING PENN STATE HOCKEY

Eight members of the current varsity team played for the women's club team at some point. Seniors **Lindsay Reihl** and **Kate Christoffersen** and sophomores **Cara Mendelson**, **Katie Murphy**, **Madison Smiddy** and **Tess Weaver** played all of last season for head coach **Josh Brandwene** in Penn State's last year at the club level. Reihl and Christoffersen played three years for the PSU club team as well. **Taylor Gross** and **Jess Desorcie** joined the six players midway through the season in preparation of the 2012-13 season.

PEGULA ICE ARENA ON SCHEDULE

Pegula Ice Arena, a \$90 million state-of-the-art facility, will serve as the home of the Penn State hockey programs in 2012-13. As of Jan. 10, 2013, all the steel has been put in place for the project with installation of glass and some brick on the outside. Additionally, portions of the center-hung scoreboard have been assembled.

The building held its official topping off ceremony on Friday, Nov. 9, 2012. Construction is set to conclude in time for the 2012-13 season as the building will open Sept. 5, 2013.

For more information on Pegula Ice Arena, visit page 12 of the game notes.



NITTANY LION WOMEN'S HOCKEY

LAST TIME VS. RIT

RIT 3, PENN STATE 1 (Feb. 15, 2013)

Penn State (7-21-2, 1-14-2 CHA) vs. RIT (13-13-5, 6-6-5 CHA)
Date: Feb 15, 2013 • Location: Rochester, NY • Arena: Ritter Arena
Attendance: 792 • Start time: 7:05 pm • End time: 9:15 pm • Total time: 2:10

Prd Time Team Scored by Assists Vis. on ice Home on ice Goals by Period

TEAM SUMMARY # Penn State G A PI Sh +/- BI # RIT G A PI Sh +/- BI

GOALTENDERS ## Penn State Dec Min GA 1 2 3 Saves ## RIT Dec Min GA 1 2 3 Saves

PENALTY SUMMARY Prd Player Team MinOffense Time Prd Player Team MinOffense Time

Win-CHAMBERLAIN, Laura (4-6-1). Loss-Paniccia, Nicole (6-15-2).

RIT 4, PENN STATE 0 (Feb. 16, 2013)

Penn State (7-22-2, 1-15-2 CHA) vs. RIT (14-13-5, 7-6-5 CHA)
Date: Feb 16, 2013 • Location: Rochester, NY • Arena: Ritter Arena
Attendance: 650 • Start time: 7:13 pm • End time: 9:11 pm • Total time: 1:58

Prd Time Team Scored by Assists Vis. on ice Home on ice Goals by Period

TEAM SUMMARY # Penn State G A PI Sh +/- BI # RIT G A PI Sh +/- BI

GOALTENDERS ## Penn State Dec Min GA 1 2 3 Saves ## RIT Dec Min GA 1 2 3 Saves

PENALTY SUMMARY Prd Player Team MinOffense Time Prd Player Team MinOffense Time

Win-CHAMBERLAIN, Laura (5-6-1). Loss-Paniccia, Nicole (6-16-2).

LAST TWO GAMES

ROBERT MORRIS 4, PENN STATE 1 (Feb. 22, 2013)

Penn State (7-23-2, 1-16-2 CHA) vs. Robert Morris (12-14-3, 8-10-1 CHA)
Date: Feb 22, 2013 • Location: Neville Island, Pa. • Arena: 84 Lumber Arena
Attendance: 257 • Start time: 7:05 pm • End time: 8:59 pm • Total time: 1:54

Prd Time Team Scored by Assists Vis. on ice Home on ice Goals by Period

TEAM SUMMARY # Penn State G A PI Sh +/- BI # Robert Morris G A PI Sh +/- BI

GOALTENDERS ## Penn State Dec Min GA 1 2 3 Saves ## Robert Morris Dec Min GA 1 2 3 Saves

PENALTY SUMMARY Prd Player Team MinOffense Time Prd Player Team MinOffense Time

Win-Kristen DiCiocco (10-12-3). Loss-Paniccia, Nicole (6-17-2).

ROBERT MORRIS 4, PENN STATE 2 (Feb. 23, 2013)

Penn State (7-24-2, 1-17-2 CHA) vs. Robert Morris (13-14-3, 9-10-1 CHA)
Date: Feb 23, 2013 • Location: Neville Island, Pa. • Arena: 84 Lumber Arena
Attendance: 237 • Start time: 3:13 pm • End time: 5:10 pm • Total time: 1:58

Prd Time Team Scored by Assists Vis. on ice Home on ice Goals by Period

TEAM SUMMARY # Penn State G A PI Sh +/- BI # Robert Morris G A PI Sh +/- BI

GOALTENDERS ## Penn State Dec Min GA 1 2 3 Saves ## Robert Morris Dec Min GA 1 2 3 Saves

PENALTY SUMMARY Prd Player Team MinOffense Time Prd Player Team MinOffense Time

Win-Kristen DiCiocco (11-12-3). Loss-Whitlinger, Celine (1-7-0).

NITTANY LION WOMEN'S HOCKEY



2012-13 Penn State Women's Hockey Penn State Combined Team Statistics (as of Feb 26, 2013) All games

Date	Opponent	Score	Att.	Record:	Overall	Home	Away	Neutral
Oct 06	at Vermont	w 5-3	785	ALL GAMES	7-24-2	4-9-2	3-15-0	0-0-0
Oct 07	at Vermont	L 1-3	326	CONFERENCE	1-17-2	0-8-2	1-9-0	0-0-0
* Oct 13	SYRACUSE	L 0-4	408	NON-CONFERENCE	6-7-0	4-1-0	2-6-0	0-0-0
* Oct 14	SYRACUSE	L 0-6	285					
Oct 19	at Sacred Heart	L 1-2	123					
Oct 20	at Sacred Heart	w 6-1	213					
* Oct 25	RIT	L 1-4	229					
* Oct 26	RIT	Tot 2-2	238					
Nov 02	SACRED HEART	w 6-0	231					
Nov 03	SACRED HEART	w 8-2	127					
* Nov 10	ROBERT MORRIS	L 1-7	152					
* Nov 11	ROBERT MORRIS	L 1-4	127					
* Nov 16	at Lindenwood	L 1-5	150					
* Nov 17	at Lindenwood	w 3-2	122					
* Nov 30	at #4 Mercyhurst	L 0-5	925					
* Dec 01	at #4 Mercyhurst	L 1-7	725					
Dec 07	at St. Lawrence	L 1-3	236					
Dec 08	at St. Lawrence	L 2-4	244					
Jan 04	CHATHAM	w 10-0	293					
Jan 05	CHATHAM	w 4-0	207					
Jan 11	at Union	L 0-1	106					
Jan 12	at Union	L 1-2	131					
* Jan 25	at Syracuse	L 0-1	132					
* Jan 26	at Syracuse	L 1-4	257					
Jan 29	PRINCETON	L 0-3	237					
* Feb 01	#7 MERCYHURST	L 2-5	201					
* Feb 02	#7 MERCYHURST	L 1-4	251					
* Feb 08	LINDENWOOD	L 1-3	189					
* Feb 09	LINDENWOOD	Tot 3-3	388					
* Feb 15	at RIT	L 1-3	792					
* Feb 16	at RIT	L 0-4	650					
* Feb 22	at Robert Morris	L 1-4	257					
* Feb 23	at Robert Morris	L 2-4	237					

TEAM STATISTICS	PSU	OPP
SHOT STATISTICS		
Goals-Shot attempts	67-836	105-1439
Shot pct.	.080	.073
Goals/Game	2.0	3.2
Shots/Game	25.3	43.6
POWER PLAYS		
Goals-Power Plays	17-125	32-134
Conversion Percent	.136	.239
GOAL BREAKDOWN		
Power Play	17	32
Short-handed	0	2
Empty net	1	4
Penalty	0	0
Unassisted	7	10
Overtime	0	0
PENALTIES		
Number	139	135
Minutes	278	286
Penalties/Game	4.2	4.1
Pen minutes/Game	8.4	8.7
FACEOFFS (W-L)	878-1050	1050-878
Faceoff W-L Pct.	.455	.545

#	Player	gp	g	a	pts	sh	sh%	pen-min	pp	sh
40	Yoxheimer, Shannon	32	14	16	30	162	.086	5-10	3	0
24	Gross, Taylor	32	6	15	21	86	.070	5-10	4	0
15	Desorcie, Jess	32	5	13	18	48	.104	6-12	0	0
27	Hoenshell, Hannah	27	8	5	13	61	.131	5-10	0	0
19	Holdcroft, Jill	33	10	2	12	52	.192	2-4	6	0
20	Laurenzi, Emily	33	4	6	10	32	.125	6-12	1	0
4	Pardoski, Jordin	33	3	7	10	28	.107	19-38	1	0
17	Jahnke, Paige	33	0	8	8	27	.000	11-22	0	0
22	Welch, Jenna	33	4	3	7	43	.093	15-30	0	0
31	Shaw, Birdie	31	3	4	7	53	.057	10-20	0	0
33	Smiddy, Madison	15	1	6	7	13	.077	5-10	1	0
10	Catanzariti, Micayla	33	3	2	5	53	.057	15-30	0	0
2	Bateman, Jeanette	33	1	4	5	20	.050	6-12	1	0
13	Rasmussen, Kendra	32	3	1	4	42	.071	3-6	0	0
11	Zinn, Katie	12	1	3	4	18	.056	1-2	0	0
36	Weaver, Tess	27	1	2	3	35	.029	2-4	0	0
8	McGee, Taylor	21	0	2	2	12	.000	8-16	0	0
14	Kern, Darby	16	0	1	1	9	.000	2-4	0	0
6	Reihl, Lindsay	33	0	1	1	12	.000	7-14	0	0
21	Wilkie, Sarah	25	0	1	1	14	.000	2-4	0	0
12	Christoffersen, Kate	3	0	0	0	6	.000	0-0	0	0
3	Mendelson, Cara	2	0	0	0	3	.000	0-0	0	0
25	Murphy, Katie	12	0	0	0	4	.000	0-0	0	0
5	Walkom, Stephanie	6	0	0	0	3	.000	2-4	0	0
TM	TEAM	18	0	0	0	0	.000	2-4	0	0
	Total	33	67	102	169	836	.080	139-278	17	0
	Opponents	33	105	174	279	1439	.073	135-286	32	2

#	Goalie	gp	min	ga	gaavg	saves	save%	w-l-t
31	Meyer, Brooke	3	47:26	0	0.00	17	1.000	0-0-0
30	Whitlinger, Celine	10	506:04	25	2.96	377	.938	1-7-0
37	Paniccia, Nicole	25	1423:13	76	3.20	940	.925	6-17-2
TM	EMPTY NET	18	13:17	4	-	0	.000	0-0-0
	Total	33	1990:00	105	3.17	1334	.927	7-24-2
	Opponents	33	1990:00	67	2.02	769	.920	24-7-2

Attendance Summary	PSU	Opponent
Total	3563	6411
Dates/Avg Per Date	15/238	18/356
Neutral Site #/Avg	0/0	

Goals by Period	1st	2nd	3rd	Total
Penn State	23	20	24	67
Opponents	30	35	40	105

Saves by Period	1st	2nd	3rd	Total
Penn State	402	465	458	1334
Opponents	258	239	269	769

NITTANY LION WOMEN'S HOCKEY



**2012-13 Penn State Women's Hockey
Penn State High/Low Analysis (as of Feb 26, 2013)
All games**

Penn State - TEAM GAME HIGHS

POINTS	27	vs Chatham (Jan 04, 2013)
GOALS	10	vs Chatham (Jan 04, 2013)
ASSISTS	17	vs Chatham (Jan 04, 2013)
SHOTS ON GOAL	71	vs Chatham (Jan 05, 2013)
SAVES	64	at Mercyhurst (Dec 01, 2012)
PENALTIES	9	vs Mercyhurst (Feb 01, 2013)
PENALTY MINUTES	18	vs Mercyhurst (Feb 01, 2013)

Opponent - GAME HIGHS

POINTS	19	at Mercyhurst (Dec 01, 2012)
GOALS	19	vs Robert Morris (Nov 10, 2012)
ASSISTS	7	at Mercyhurst (Dec 01, 2012)
SHOTS ON GOAL	12	vs Robert Morris (Nov 10, 2012)
SAVES	12	at Mercyhurst (Dec 01, 2012)
PENALTIES	10	at Lindenwood (Nov 17, 2012)
PENALTY MINUTES	20	at RIT (Feb 15, 2013)

Penn State - GAME LOWS

POINTS	0	vs Syracuse (Oct 13, 2012)
GOALS	0	vs Syracuse (Oct 14, 2012)
ASSISTS	0	at Mercyhurst (Nov 30, 2012)
SHOTS ON GOAL	0	at Union (Jan 11, 2013)
SAVES	0	at Syracuse (Jan 25, 2013)
PENALTIES	0	vs Princeton (Jan 29, 2013)
PENALTY MINUTES	0	at RIT (Feb 16, 2013)
POINTS	0	vs Syracuse (Oct 13, 2012)
GOALS	0	vs Syracuse (Oct 14, 2012)
ASSISTS	0	at Mercyhurst (Nov 30, 2012)
SHOTS ON GOAL	0	at Union (Jan 11, 2013)
SAVES	0	at Syracuse (Jan 25, 2013)
PENALTIES	0	vs Princeton (Jan 29, 2013)
PENALTY MINUTES	0	at RIT (Feb 16, 2013)
POINTS	10	at Mercyhurst (Nov 30, 2012)
GOALS	10	at Mercyhurst (Dec 01, 2012)
ASSISTS	16	vs Chatham (Jan 05, 2013)
SHOTS ON GOAL	1	vs Chatham (Jan 05, 2013)
SAVES	1	at Union (Jan 12, 2013)
PENALTIES	1	vs Princeton (Jan 29, 2013)
PENALTY MINUTES	2	vs Chatham (Jan 05, 2013)
	2	at Union (Jan 12, 2013)
	2	vs Princeton (Jan 29, 2013)

Opponent - GAME LOWS

POINTS	0	vs Sacred Heart (Nov 02, 2012)
GOALS	0	vs Chatham (Jan 04, 2013)
ASSISTS	0	vs Chatham (Jan 05, 2013)
SHOTS ON GOAL	0	vs Sacred Heart (Nov 02, 2012)
SAVES	0	vs Chatham (Jan 04, 2013)
PENALTIES	0	vs Chatham (Jan 05, 2013)
PENALTY MINUTES	0	vs Sacred Heart (Nov 02, 2012)
	0	vs Chatham (Jan 04, 2013)
	0	vs Chatham (Jan 05, 2013)
	0	vs Chatham (Jan 05, 2013)
	16	vs Chatham (Jan 05, 2013)
	9	at Mercyhurst (Dec 01, 2012)
	1	at Mercyhurst (Nov 30, 2012)
	1	vs Chatham (Jan 05, 2013)
	1	at Union (Jan 12, 2013)
	2	at Mercyhurst (Nov 30, 2012)
	2	vs Chatham (Jan 05, 2013)
	2	at Union (Jan 12, 2013)



NITTANY LION WOMEN'S HOCKEY

PEGULA ICE ARENA FUTURE HOME OF PENN STATE HOCKEY

FACTS

Construction Groundbreaking: January 2012

Ceremonial Groundbreaking: April 20, 2012

Projected Opening: September 5, 2013

Capacity: 6,000 (Arena rink); 300 (Community rink)

Size: 200,000 square feet

AMENITIES

Two NHL-sized (200' x 85') ice surfaces

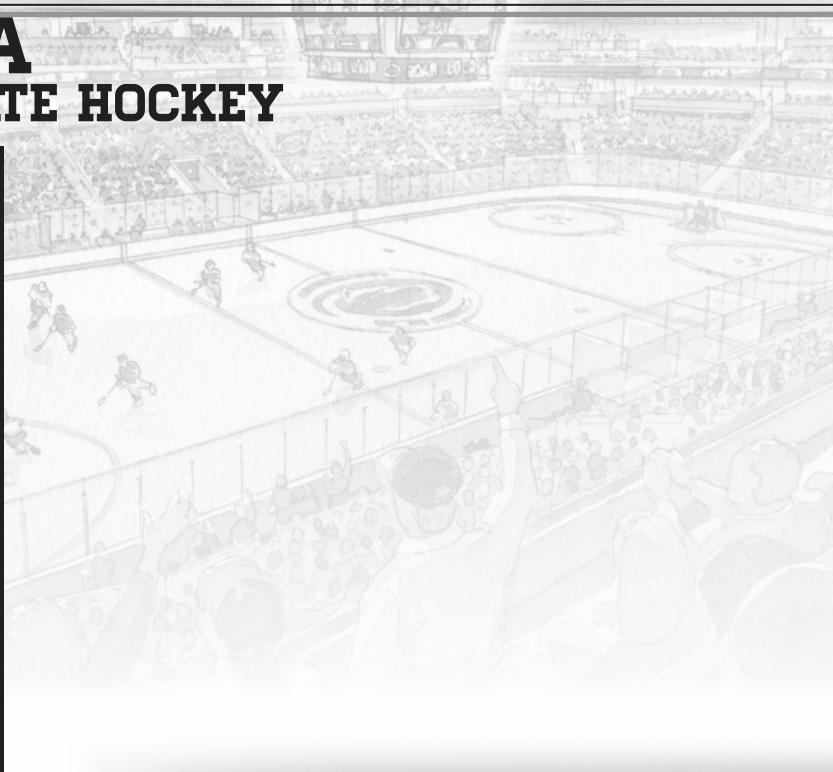
Arena rink will offer:

- 6,000-seat overall capacity
- 1,000-seat student section
- First-rate varsity locker rooms
- Team lounges and dry changing room
- Strength and conditioning center
- Shooting gallery
- Suites, loge boxes and club seats
- State-of-the-art television and radio broadcasting facilities
- Press box and media center
- Concession stands with café
- Videoboard

Community rink will offer:

- 300-seat capacity
- Eight locker rooms
- Skate rental center

Pegula Ice Arena will have the ability to host National Hockey League and American Hockey League games, as well as professional ice shows, local hockey and figure skating programs.



Left to Right: Kim and Terry Pegula, Dr. Rodney Erickson, The Nittany Lion, Joe Battista and Karen Peetz at the Pegula Ice Arena ceremonial groundbreaking.



NITTANY LION WOMEN'S HOCKEY



2012-13 PENN STATE WOMEN'S HOCKEY NUMERICAL ROSTER

No.	Name	Yr.	Pos.	Ht.	S/C	Hometown	Last Team
2	Jeanette Bateman	Fr.	F/D	5-6	R	Greeley, Colo.	Colorado Select
3	Cara Mendelson	So.	F/D	5-6	R	Pittsburgh, Pa.	Steel City Selects
4	Jordin Pardoski	Fr.	D	5-5	R	Rochester Hills, Mich.	Detroit Honeybaked
5	Stephanie Walkom	Fr.	D	5-7	R	Moon Township, Pa.	Pittsburgh Penguins Elite
6	Lindsay Reihl	Sr.	D	5-4	R	Cheshire, Conn.	Connecticut Polar Bears
8	Taylor McGee	Fr.	D	5-3	R	Pearl River, N.Y.	Taft School (Conn.)
10	Micayla Catanzariti	Fr.	F	5-4	R	Rancho Santa Margarita, Calif.	Gilmour Academy (Ohio)
11	Katie Zinn	Fr.	F	5-7	R	Coquitlam, B.C.	Gilmour Academy (Ohio)
12	Kate Christoffersen	Sr.	F	5-3	R	Trumbull, Conn.	Connecticut Polar Bears
13	Kendra Rasmussen	Fr.	F	5-5	L	Sartell, Minn.	Sartell/Sauk Rapids HS
14	Darby Kern	Fr.	F	5-11	R	Venetia, Pa.	Pittsburgh Penguins Elite
15	Jess Desorcie	So.	F	5-4	L	Westford, Vt.	Connecticut College
16	Hannah Hoenshell	Fr.	F	5-3	R	Plano, Texas	Texas Alliance
17	Paige Jahnke	Fr.	D	5-6	R	Oakdale, Minn.	Roseville HS/Minnesota Jr. Whitecaps
19	Jill Holdcroft	Fr.	F	5-1	R	Pennsylvania Furnace, Pa.	Pittsburgh Penguins Elite
20	Emily Laurenzi	Fr.	F	5-2	R	Townsend, Del.	National Sports Academy (N.Y.)
21	Sarah Wilkie	Fr.	D	5-6	R	Ashby, Mass.	Williston Northampton School
22	Jenna Welch	Jr.	F	5-8	R	Austin, Texas	Connecticut
23	Birdie Shaw	Fr.	F	5-2	L	Troy, Mich.	Detroit Honeybaked
24	Taylor Gross	Jr.	F	5-1	R	Colorado Springs, Colo.	Connecticut
25	Katie Murphy	So.	F	5-4	L	Novi, Mich.	Detroit Honeybaked
30	Celine Whitlinger	Fr.	G	5-8	L	Garden Grove, Calif.	Gilmour Academy (Ohio)
31	Brooke Meyer	Fr.	G	5-7	L	Naperville, Ill.	Chicago Huskies
33	Madison Smiddy	So.	D	5-7	L	Grand Rapids, Mich.	Detroit Honeybaked
36	Tess Weaver	So.	F	5-5	R	Windber, Pa.	Pittsburgh Penguins Elite
37	Nicole Paniccia	Jr.	G	5-5	L	Oakville, Ont.	Connecticut
40	Shannon Yoxheimer	Fr.	F	5-7	L	Jackson, Mich.	North American Hockey Academy (Vt.)

Head Coach: Josh Brandwene (First Year)

Assistant Coaches: Gina Kearns (First Year), Casey McCullion (First Year); **Director of Operations/Video Coach:** Mo Stroemel (First Year)

Captain: Taylor Gross; **Assistant Captains:** Lindsay Reihl, Jenna Welch

ALPHABETICAL ROSTER		PRONUNCIATION GUIDE		LIONS BY STATE		LIONS BY POSITION	
No.	Name	Brandwene	BRAND-ween	California (2):	Catanzariti, Whitlinger	Forward (17):	Bateman, Catanzariti
2	Jeanette Bateman	Catanzariti	Cah-TAN-zah-REE-tee	Colorado (2):	Bateman, Gross		Christoffersen, Desorcie, Gross,
10	Micayla Catanzariti	Jahnke	YAWN-kee	Connecticut (2):	Christoffersen, Reihl		Hoenshell, Holdcroft, Kern, Laurenzi,
12	Kate Christoffersen	Jeanette	Jeh-NETT				Mendelson, Murphy, Rasmussen,
15	Jess Desorcie	Kearns	KERNS	Delaware (1):	Laurenzi		Shaw, Weaver, Welch, Yoxheimer,
24	Taylor Gross	McCullion	Mick-CULL-yon	Illinois (1):	Meyer		Zinn
16	Hannah Hoenshell	Paniccia	Pah-NEE-cha	Massachusetts (1):	Wilkie		
19	Jill Holdcroft	Reihl	RILE	Michigan (5):	Murphy, Pardoski, Shaw, Smiddy, Yoxheimer	Defense (9):	Bateman, Jahnke, McGee, Mendelson, Pardoski, Reihl, Smiddy, Walkom, Wilkie
17	Paige Jahnke	Stroemel	STRAW-mull	Minnesota (2):	Jahnke, Rasmussen		
14	Darby Kern			New York (1):	McGee		
20	Emily Laurenzi			Pennsylvania (5):	Holdcroft, Kern, Mendelson, Walkom, Weaver	Goalie (3):	Meyer, Paniccia, Whitlinger
8	Taylor McGee			Texas (2):	Hoenshell, Welch		
3	Cara Mendelson			Vermont (1):	Desorcie		
31	Brooke Meyer						
25	Katie Murphy						
37	Nicole Paniccia						
4	Jordin Pardoski						
13	Kendra Rasmussen						
6	Lindsay Reihl						
23	Birdie Shaw						
33	Madison Smiddy						
5	Stephanie Walkom						
36	Tess Weaver						
22	Jenna Welch						
30	Celine Whitlinger						
21	Sara Wilkie						
40	Shannon Yoxheimer						
11	Katie Zinn						





NITTANY LION WOMEN'S HOCKEY



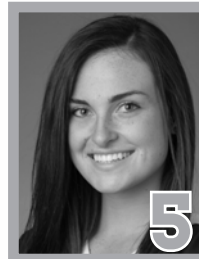
2
JEANNETTE BATEMAN
Freshman • F/D
Greeley, Colo.



3
CARA MENDELSON
Sophomore • F/D
Pittsburgh, Pa.



4
JORDIN PARDOSKI
Freshman • D
Rochester Hills, Mich.



5
STEPHANIE WALKOM
Freshman • D
Moon Township, Pa.



6 **A**
LINDSAY REIHL
Senior • D
Cheshire, Conn.



8
TAYLOR MCGEE
Freshman • D
Pearl River, N.Y.



10
MICAYLA CATANZARITI
Freshman • F
Rancho Santa Margarita, Calif.



11
KATIE ZINN
Freshman • F
Coquitlam, B.C.



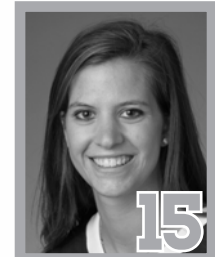
12
KATE CHRISTOFFERSEN
Senior • F
Trumbull, Conn.



13
KENDRA RASMUSSEN
Freshman • F
Sartell, Minn.



14
DARBY KERN
Freshman • F
Venetia, Pa.



15
JESS DESORCIE
Sophomore • F
Westford, Vt.



16
HANNAH HOENSHELL
Freshman • F
Plano, Texas



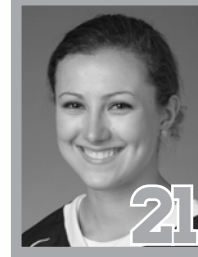
17
PAIGE JAHNKE
Freshman • D
Oakdale, Minn.



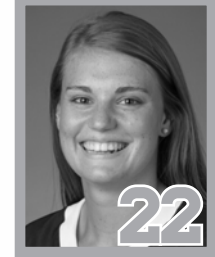
19
JILL HOLDCROFT
Freshman • F
Pennsylvania Furnace, Pa.



20
EMILY LAURENZI
Freshman • F
Townsend, Del.



21
SARAH WILKIE
Freshman • D
Ashby, Mass.



22 **A**
JENNA WELCH
Junior • F
Austin, Texas



23
BIRDIE SHAW
Freshman • F
Troy, Mich.



24 **C**
TAYLOR GROSS
Junior • F
Colorado Springs, Colo.



25
KATIE MURPHY
Sophomore • F
Novi, Mich.



30
CELINE WHITLINGER
Freshman • G
Garden Grove, Calif.



31
BROOKE MEYER
Freshman • G
Naperville, Ill.



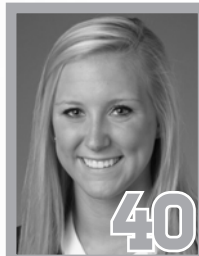
33
MADISON SMIDDY
Sophomore • D
Grand Rapids, Mich.



36
TESS WEAVER
Sophomore • F
Windber, Pa.



37
NICOLE PANICCIA
Junior • G
Oakville, Ont.



40
SHANNON YOXHEIMER
Freshman • F
Jackson, Mich.