



PENN STATE WOMEN'S HOCKEY

2012-13 NITTANY LIONS

GoPSUsports.com // @PennStateWHKY // Facebook.com/PennStateWomensHockey
 Contact: **Jeremy Fallis** // jeremy.fallis@psu.edu // O: (814) 865-3613 // C: (814) 206-6544

2012-13 SCHEDULE

Overall // Home: 0-0-0 // Away: 0-0-0

CHA // Home: 0-0-0 // Away: 0-0-0

Date	Opponent	Time
Oct. 6	at Vermont	2:00 p.m.
Oct. 7	at Vermont	2:00 p.m.
Oct. 13	* SYRACUSE	7:00 p.m.
Oct. 14	* SYRACUSE	2:00 p.m.
Oct. 19	at Sacred Heart	7:00 p.m.
Oct. 20	at Sacred Heart	2:00 p.m.
Oct. 25	* RIT	7:00 p.m.
Oct. 26	* RIT	7:30 p.m.
Nov. 2	SACRED HEART	7:30 p.m.
Nov. 3	SACRED HEART	2:00 p.m.
Nov. 10	* ROBERT MORRIS	2:00 p.m.
Nov. 11	* ROBERT MORRIS	2:00 p.m.
Nov. 16	* at Lindenwood	8:00 p.m.
Nov. 17	* at Lindenwood	3:00 p.m.
Nov. 30	* at #10 Mercyhurst	7:00 p.m.
Dec. 1	* at #10 Mercyhurst	2:00 p.m.
Dec. 7	at #8 St. Lawrence	7:00 p.m.
Dec. 8	at #8 St. Lawrence	2:00 p.m.
Jan. 4	CHATHAM	7:30 p.m.
Jan. 5	CHATHAM	7:00 p.m.
Jan. 11	at Union	7:00 p.m.
Jan. 12	at Union	4:00 p.m.
Jan. 25	* at Syracuse	7:00 p.m.
Jan. 26	* at Syracuse	2:00 p.m.
Jan. 29	PRINCETON	7:00 p.m.
Feb. 1	* #10 MERCYHURST	2:00 p.m.
Feb. 2	* #10 MERCYHURST	2:00 p.m.
Feb. 8	* LINDENWOOD	2:00 p.m.
Feb. 9	* LINDENWOOD	2:00 p.m.
Feb. 15	* at RIT	7:00 p.m.
Feb. 16	* at RIT	7:00 p.m.
Feb. 22	* at Robert Morris	7:00 p.m.
Feb. 23	* at Robert Morris	3:00 p.m.
2013 CHA TOURNAMENT		
Mar. 1	^ First Round - Game 1	TBA
Mar. 2	^ First Round - Game 2	TBA
Mar. 3	^ First Round - Game 3 (if necessary)	TBA
Mar. 8	% Semifinals	TBA
Mar. 9	% Final	TBA

All Times Eastern

Home games in **CAPS** at Greenberg Ice Pavilion

* - College Hockey America games

^ - CHA First Round at higher seed

% - CHA Semifinals & Final hosted by No. 1 seed

Rankings based on USA Today/USA Hockey poll



PENN STATE NITTANY LIONS

(0-0-0)

VERMONT CATAMOUNTS

(0-0-0)

Games 1-2: October 6-7, 2012 • 2 p.m. // 2 p.m. • Gutterson Fieldhouse • Burlington, Vt.

GAME DAY

VENUE
 STREAMING COVERAGE
 SERIES RECORD
 LAST MEETING
 NEXT GAME

Gutterson Fieldhouse (4,007)
 UVMsports.com Video
 0-0-0
 First Meeting, 10/6
 10/13 vs. Syracuse, 7:00 p.m.

GAME NOTES

- Penn State plays its first varsity hockey game on Saturday at Vermont
- Vermont coming off 2-1 exhibition loss to University of Montreal
- The Catamounts went 4-22-6 last season
- Women's hockey is the first PSU varsity sport to be added since 1994 (women's soccer); Penn State men's hockey opens Oct. 12 vs. AIC
- Head coach **Josh Brandwene** leads Nittany Lions in first year
- Nittany Lions led by captain **Taylor Gross**, and assistant captains **Lindsay Reihl** and **Jenna Welch**
- Nittany Lions skate with four collegiate transfers—**Jess Desorcie**, **Taylor Gross**, **Nicole Paniccia** and **Jenna Welch**
- Gross, Paniccia and Welch bring 137 games of Division I experience
- Westford, Vt. native **Jess Desorcie** returns home for the inaugural game
- Penn State's roster has 17 freshmen of 27 members, eight former club members

ON THE INSIDE

Page 4: **The Penn State Hockey Story** began on Sept. 17, 2010
 Page 5: \$90 million **Pegula Ice Arena** is on target for a Sept. 2013 opening
 Pages 6-7: **The Nittany Lion Roster & TV/Radio Roster**

CAREER STATISTICS

FOWARDS		GP	G	A	PTS	SH	+/-	GWG
24	Taylor Gross	46	13	12	25	101	-8	2
22	Jenna Welch	67	3	4	7	43	-13	1
15	Jess Desorcie	7	2	4	6	-	-	0
GOALTENDER		GP-GS	Record	MIN	GA	GAA	SV	SV%
37	Nicole Paniccia	24-21	7-10-3	1313:28	55	2.51	668	.924



@PennStateWHKY



PennStateWomensHockey



GoPSUTV



NITTANY LION WOMEN'S HOCKEY

GAME NOTES AT VERMONT (OCT. 6-7)

SCOUTING VERMONT

The Catamounts open the 2012-13 season with a new head coach in Jim Plumer, who previously spent nine seasons at Amherst College going 127-30-14. Last season, Vermont went 4-22-6 (3-16-2 Hockey East) en route to an eighth-place finish in the conference.

Despite the numerous setbacks, the Catamounts return 19 of 21 letterwinners. Vermont has 86 percent of its scoring back with Amanda Pelkey (14 points), Emily Walsh (13), Kellie Dineen (12) and Erin Wente (12) leading the way. In net, junior Roxanne Douville is the projected starter after appearing in 26 games last year with a 3-17-5 record. Douville posted a .901 save percentage.

FIRST HEAD COACH

A 1991 graduate of Penn State, head coach **Josh Brandwene** is the first to lead the Nittany Lions. A four-year hockey player at PSU, Brandwene brings 20 years of coaching experience to Happy Valley.

CAPTAIN, OUR CAPTAIN

Junior forward **Taylor Gross** will lead Penn State as its first captain. The University of Connecticut transfer appeared in 48 games for the Huskies before joining Penn State's club side in January 2012. In September, the team voted fellow UConn transfer **Jenna Welch** and senior defender **Lindsay Reihl** as assistant captains.

MAKING HISTORY

When the puck drops at 2 p.m. on Saturday, Oct. 6 at Gutterson Fieldhouse, Penn State will initiate its first varsity program in 18 years. The last Penn State sport to be added was women's soccer in 1994, which was the year 11 Nittany Lions were born. Many things have changed since then.

	1994	2012
U.S. President	Clinton	Obama
PSU President	Thomas	Erickson
NHL Champs	N.Y. Rangers	L.A. Kings
PSU Undergrads	30,900	38,594
Beaver Stadium	93,967	106,572
Olympics	Winter, Lillehammer	Summer, London
Postage Stamp	\$0.29	\$0.45
Gallon of Milk	\$2.29	\$3.41
Gallon of Gas	\$1.09	\$3.71

PREVIOUS VARSITY EXPERIENCE

Taylor Gross, **Jenna Welch** and goaltender **Nicole Paniccia** played at Connecticut from 2010-12, while sophomore **Jess Desorcie** played seven games at Division III Connecticut College. The trio of former Huskies played a combined 137 games at the Division I level.

Forwards	GP	G	A	Pts.
Taylor Gross	46	13	12	25
Jenna Welch	67	3	4	7

Goalie	GP-GS	GAA	Sv.%	Rec.
Nicole Paniccia	24-21	2.51	.924	7-10-3

HOMECOMING

While Penn State football celebrates its homecoming at Beaver Stadium on Saturday, the Nittany Lion women's hockey program will have a homecoming of its own. **Jess Desorcie** (Westford, Vt.) will usher in Penn State's inaugural season by playing in front of her hometown friends and family. Desorcie grew up just 20 miles from Gutterson Fieldhouse and the campus of the University of Vermont.

Desorcie won't be the only one celebrating a homecoming of sorts throughout the season. Penn State's second road trip of the year to Sacred Heart will bring the Lions to southern Connecticut, the home of senior **Kate Christoffersen** (Trumbull, Conn.) and **Lindsay Reihl** (Cheshire, Conn.).

2012-13 WOMEN'S HOCKEY POLLS

(as of Oct. 2, 2012)

USA Today/USA Hockey Poll

1	Minnesota	2-0-0	1
2	Cornell	0-0-0	3
3	Wisconsin	1-0-1	2
4	Boston College	0-0-0	4
5	North Dakota	0-0-0	5
6	Boston University	0-0-0	6
7	Minnesota Duluth	0-0-0	7
8	St. Lawrence	0-0-0	8
9	Harvard	0-0-0	9
10	Mercyhurst	2-0-0	10

Others receiving votes: Northeastern, Ohio State, Quinnipiac, Clarkson, Providence

USCHO.com Poll

1	Minnesota	2-0-0	1
2	Cornell	0-0-0	3
3	Boston College	0-0-0	4
4	Wisconsin	1-0-1	2
5	North Dakota	0-0-0	5
6	Boston University	0-0-0	6
7	St. Lawrence	0-0-0	7
8	Minnesota Duluth	0-0-0	8
9	Mercyhurst	2-0-0	10
10	Northeastern	0-0-0	9

Others receiving votes: Harvard, Clarkson, Quinnipiac, Providence
Bold indicates 2012-13 opponent

2012-13 COLLEGE HOCKEY AMERICA STANDINGS

	Pts.	CHA	GF	GA	Overall	GF	GA	Last 10
Mercyhurst (10/9)	4	2-0-0	13	2	2-0-0	13	2	2-0-0
Penn State	0	0-0-0	-	-	0-0-0	-	-	-
Robert Morris	0	0-0-0	-	-	0-0-0	-	-	-
Syracuse	0	0-0-0	-	-	0-0-0	-	-	-
Lindenwood	0	0-0-0	-	-	0-2-0	2	11	0-2-0
RIT	0	0-2-0	2	13	0-2-0	2	13	0-2-0

UPCOMING SCHEDULE

Friday, Oct. 5

New Hampshire at Syracuse, 4 p.m.
 Mercyhurst at Quinnipiac, 7 p.m.
 RIT at Sacred Heart, 7 p.m.
 Wisconsin at Lindenwood, 8 p.m.

Saturday, Oct. 6

Mercyhurst at Quinnipiac, 1 p.m.
PENN STATE at Vermont, 2 p.m.
 RIT at Sacred Heart, 2 p.m.
 Wisconsin at Lindenwood, 3 p.m.
 Northeastern at Syracuse, 4 p.m.

Saturday, Oct. 6

PENN STATE at Vermont, 2 p.m.

NITTANY LION WOMEN'S HOCKEY



YOUTH MOVEMENT

As is expected with a brand new varsity program, there are a lot of freshmen on the team—17 in all.

Jeanette Bateman
Micayla Catanzariti
Hannah Hoenshell
Jill Holdcroft
Paige Jahnke
Darby Kern
Emily Laurenzi
Taylor McGee
Brooke Meyer
Jordin Pardoski
Kendra Rasmussen
Birdie Shaw
Stephanie Walkom
Celine Whitlinger
Sarah Wilkie
Shannon Yoxheimer
Katie Zinn

CONTINUING PENN STATE HOCKEY

Eight members of the current varsity team played for the women's club team at some point. Seniors **Lindsay Reihl** and **Kate Christoffersen** and sophomores **Cara Mendelson**, **Katie Murphy**, **Madison Smiddy** and **Tess Weaver** played all of last season for head coach **Josh Brandwene** in Penn State's last year at the club level. Reihl and Christoffersen played three years for the PSU club team as well. **Taylor Gross** and **Jess Desorcie** joined the six players midway through the season in preparation of the 2012-13 season.

ON SCHEDULE

Pegula Ice Arena, a \$90 million state-of-the-art facility, will serve as the home of the Penn State hockey programs in 2012-13. As of Oct. 1, 2012, almost all the steel has been put in place for the project. Construction is set to conclude in time for the 2012-13 season.

For more information on Pegula Ice Arena, visit page 5 of the game notes.

NEXT TIME OUT

The Nittany Lions return to Happy Valley for its first home game when it hosts Syracuse on Saturday, Oct. 13 (7 p.m.). The game will also serve as the first conference game in Penn State hockey history. The two-game series wraps up on Sunday, Oct. 14 (2 p.m.).

2012-13 MEDIA INFORMATION

Penn State Athletic Communications

Primary Contact Jeremy Fallis
Email jeremy.fallis@psu.edu
Secondary Contact Brian Hoerst
Email bjh33@psu.edu
Office 814-865-1757

Interviews

Penn State student-athletes and coaches are available for interviews after practice each day. Please contact Jeremy Fallis in advance.

Credentials

Contact Jeremy Fallis for home game credentials at Greenberg Ice Pavilion.

Postgame

Head coach Josh Brandwene and requested student-athletes are available to the media following each game, outside the locker room. Please alert Jeremy Fallis or Brian Hoerst during the game of any requests.

Yearbook

The 2012-13 Penn State women's hockey yearbook will be made available to media members at the first home game on Oct. 13. The public may purchase copies for \$6.

GoPSUsports.com

[Facebook.com/PennStateWomensHockey](https://www.facebook.com/PennStateWomensHockey)

[@PennStateWHKY](https://twitter.com/PennStateWHKY)

OVER THE AIR

This Week

This weekend's Nittany Lion contests at Vermont will be streamed live through UVMsports.com. UVM will also be providing live stats of the two games.

The CHA on AmericaOneSports.com

All Penn State games during CHA play will be streamed live on AmericaOneSports.com. Subscribers can purchase 30-day packages for \$30 or a season pass for \$125.

Non-Conference Home Action

Penn State's non-conference home games will be shown on a game-to-game basis.



PENN STATE HOCKEY STORY

Leading up to the historic 2010 announcement of Penn State varsity hockey, PSU fielded a club program that participated in the American Collegiate Hockey Association (ACHA) since 1996.

Sept. 17, 2010: Terry and Kim Pegula (pictured below) commit the largest private gift in University history of \$88 million dollars for the formation of a varsity men's hockey team and a state-of-the-art, multi-purpose ice arena. The gift paved the way for the creation of an NCAA Division I women's ice hockey team to begin participation in 2012-13.



Sept. 20, 2010: Longtime Penn State intercollegiate athletics employee Joe Battista assumes position as associate athletic director of ice arena and hockey development.

Feb. 15, 2011: Paul and Nancy Silvis of State College, Pa. pledge \$1 million to the Pegula Ice Arena project. The main lobby of the new facility will be named after the Silvises. The couple will also co-chair the Penn State Ice Campaign Committee, which will help raise an additional funds for scholarship and program endowments.

May 31, 2011: Josh Brandwene is named the first head coach of the Penn State women's varsity ice hockey team. A coach with over 20 years of coaching experience, Brandwene returns to his alma mater (1990) after stints at Delaware, Northfield Mount Hermon School (Mass.) and Kingswood Oxford School (Conn.).



June 21, 2011: Brandwene begins the formation of a coaching staff with the additions of long time women's club head coach Mo Stromel and Boston University standout Gina Kearns.

Sept. 6, 2011: Nearly a year after the announcement of varsity women's ice hockey being added at Penn State, the Nittany Lions find conference allegiance with College Hockey America (CHA). It is announced Penn State will compete in its inaugural season in 2012-13.

Nov. 21, 2011: Penn State women's hockey announces the first signing class in varsity history with 13 future Lions joining the squad for 2012-13 as freshmen.

Apr. 20, 2012: Penn State president Rodney Erickson, acting director of athletics Dave Joyner and the Pegulas ceremonially break ground on Pegula Ice Arena. It is also announced by Terry Pegula that the original \$88 million donation would become \$102 million to further Penn State hockey.

May 31, 2012: Brandwene announces the first varsity roster with 12 additions to the program, including naming Taylor Gross as captain. The UConn transfer is joined by teammates Nicole Paniccia and Jenna Welch from the Hockey

East school. The 25-woman roster is expanded to 27 prior to the puck dropping.

June 4, 2012: Casey McCullion rounds out Brandwene's coaching staff as an assistant. McCullion was a goalie at Holy Cross and former assistant at Kingswood Oxford.

June 7, 2012: Penn State announces its first-ever schedule with 33 games on the slate. Also announced is a new format for the CHA Tournament where all six teams will compete for the conference title.

Sept. 11, 2012: Penn State unveils its first jerseys in front of the media and fans at Beaver Stadium. Taylor Gross and Lindsay Reihl model the jerseys for the assembled media and fans in attendance. The story is picked up by dozens of media outlets around the country.

Sept. 18, 2012: Senior Lindsay Reihl, a three-year defenseman of the year for Penn State's club program, and junior Jenna Welch are named assistant captains.

Sept. 22, 2012: The Nittany Lions participate in their first varsity team practice at Greenberg Ice Pavilion.

Oct. 6, 2012: Penn State and Vermont square off for the program's inaugural game in Burlington, Vt.



NITTANY LION WOMEN'S HOCKEY



PEGULA ICE ARENA FUTURE HOME OF PENN STATE HOCKEY

FACTS

- Construction Groundbreaking:** February 2012
- Ceremonial Groundbreaking:** April 20, 2012
- Projected Opening:** September 2013
- Capacity:** 6,000 (Arena rink); 300 (Community rink)
- Size:** 200,000 square feet

AMENITIES

Two NHL-sized (200' x 85') ice surfaces

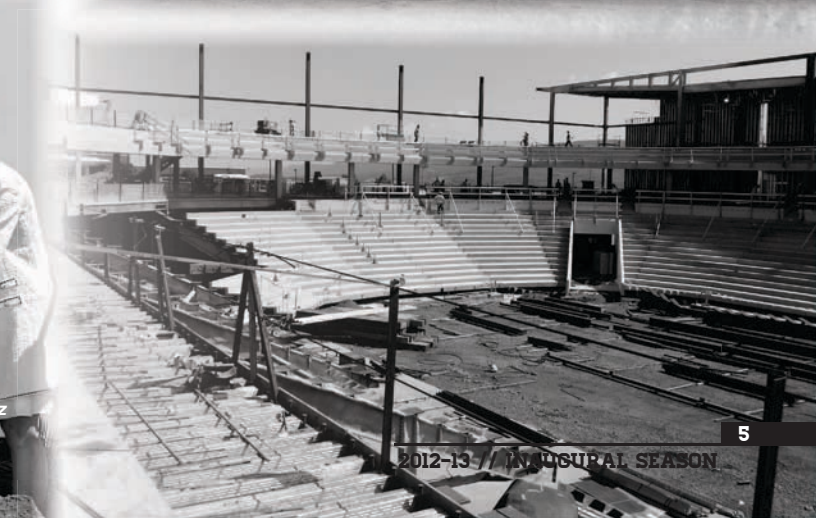
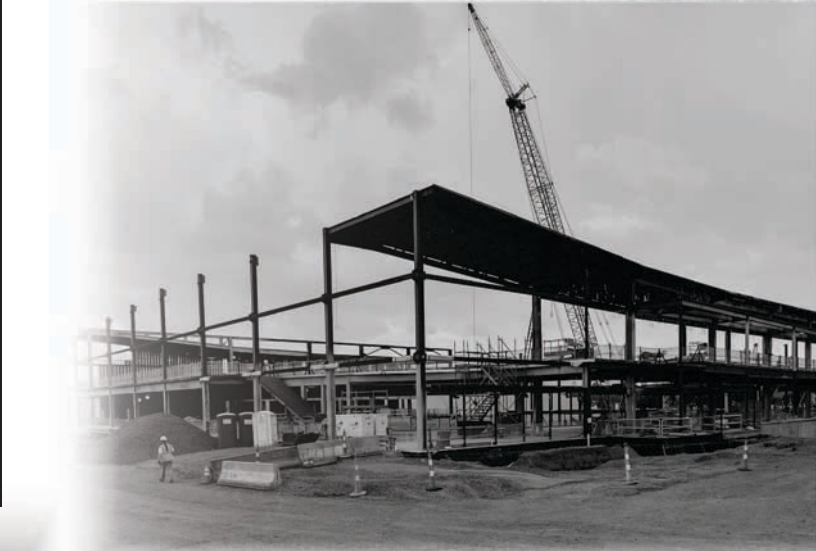
Arena rink will offer:

- 6,000-seat overall capacity
- 1,000-seat student section
- First-rate varsity locker rooms
- Team lounges and dry changing room
- Strength and conditioning center
- Shooting gallery
- Suites, loge boxes and club seats
- State-of-the-art television and radio broadcasting facilities
- Press box and media center
- Concession stands with café
- Videoboard

Community rink will offer:

- 300-seat capacity
- Eight locker rooms
- Skate rental center

Pegula Ice Arena will have the ability to host National Hockey League and American Hockey League games, as well as professional ice shows, local hockey and figure skating programs.



Left to Right: Kim and Terry Pegula, Dr. Rodney Erickson, The Nittany Lion, Joe Battista and Karen Peetz at the Pegula Ice Arena ceremonial groundbreaking.



NITTANY LION WOMEN'S HOCKEY

2012-13 PENN STATE WOMEN'S HOCKEY NUMERICAL ROSTER

No.	Name	Yr.	Pos.	Ht.	S/C	Hometown	Last Team
2	Jeanette Bateman	Fr.	F/D	5-6	R	Greeley, Colo.	Colorado Select
3	Cara Mendelson	So.	F/D	5-6	R	Pittsburgh, Pa.	Steel City Selects
4	Jordin Pardoski	Fr.	D	5-5	R	Rochester Hills, Mich.	Detroit Honeybaked
5	Stephanie Walkom	Fr.	D	5-7	R	Moon Township, Pa.	Pittsburgh Penguins Elite
6	Lindsay Reihl	Sr.	D	5-4	R	Cheshire, Conn.	Connecticut Polar Bears
8	Taylor McGee	Fr.	D	5-3	R	Pearl River, N.Y.	Taft School (Conn.)
10	Micayla Catanzariti	Fr.	F	5-4	R	Rancho Santa Margarita, Calif.	Gilmour Academy (Ohio)
11	Katie Zinn	Fr.	F	5-7	R	Coquitlam, B.C.	Gilmour Academy (Ohio)
12	Kate Christoffersen	Sr.	F	5-3	R	Trumbull, Conn.	Connecticut Polar Bears
13	Kendra Rasmussen	Fr.	F	5-5	L	Sartell, Minn.	Sartell/Sauk Rapids HS
14	Darby Kern	Fr.	F	5-11	R	Venetia, Pa.	Pittsburgh Penguins Elite
15	Jess Desorcie	So.	F	5-4	L	Westford, Vt.	Connecticut College
16	Hannah Hoenshell	Fr.	F	5-3	R	Plano, Texas	Texas Alliance
17	Paige Jahnke	Fr.	D	5-6	R	Oakdale, Minn.	Roseville HS/Minnesota Jr. Whitecaps
19	Jill Holdcroft	Fr.	F	5-1	R	Pennsylvania Furnace, Pa.	Pittsburgh Penguins Elite
20	Emily Laurenzi	Fr.	F	5-2	R	Townsend, Del.	National Sports Academy (N.Y.)
21	Sarah Wilkie	Fr.	D	5-6	R	Ashby, Mass.	Williston Northampton School
22	Jenna Welch	Jr.	F	5-8	R	Austin, Texas	Connecticut
23	Birdie Shaw	Fr.	F	5-2	L	Troy, Mich.	Detroit Honeybaked
24	Taylor Gross	Jr.	F	5-1	R	Colorado Springs, Colo.	Connecticut
25	Katie Murphy	So.	F	5-4	L	Novi, Mich.	Detroit Honeybaked
30	Celine Whitlinger	Fr.	G	5-8	L	Garden Grove, Calif.	Gilmour Academy (Ohio)
31	Brooke Meyer	Fr.	G	5-7	L	Naperville, Ill.	Chicago Huskies
33	Madison Smiddy	So.	D	5-7	L	Grand Rapids, Mich.	Detroit Honeybaked
36	Tess Weaver	So.	F	5-5	R	Windber, Pa.	Pittsburgh Penguins Elite
37	Nicole Paniccia	Jr.	G	5-5	L	Oakville, Ont.	Connecticut
40	Shannon Yoxheimer	Fr.	F	5-7	L	Jackson, Mich.	North American Hockey Academy (Vt.)

Head Coach: Josh Brandwene (First Year)

Assistant Coaches: Gina Kearns (First Year), Casey McCullion (First Year); **Director of Operations/Video Coach:** Mo Stroemel (First Year)

Captain: Taylor Gross; **Assistant Captains:** Lindsay Reihl, Jenna Welch

ALPHABETICAL ROSTER		PRONUNCIATION GUIDE		LIONS BY STATE		LIONS BY POSITION	
No.	Name	Brandwene	BRAND-ween	California (2):	Catanzariti, Whitlinger	Forward (17):	Bateman*, Catanzariti
2	Jeanette Bateman	Catanzariti	Cah-TAN-zah-REE-tee	Colorado (2):	Bateman, Gross		Christoffersen, Desorcie, Gross,
10	Micayla Catanzariti	Jahnke	YAWN-kee	Connecticut (2):	Christoffersen, Reihl		Hoenshell, Holdcroft, Kern, Laurenzi,
12	Kate Christoffersen	Jeanette	Jeh-NETT	Delaware (1):	Laurenzi		Mendelson, Murphy, Rasmussen,
15	Jess Desorcie	Kearns	KERNS	Illinois (1):	Meyer		Shaw, Weaver, Welch, Yoxheimer,
24	Taylor Gross	McCullion	Mick-CULL-yon	Massachusetts (1):	Wilkie		Zinn
16	Hannah Hoenshell	Paniccia	Pah-NEE-chee-ah	Michigan (5):	Murphy, Pardoski, Shaw, Smiddy, Yoxheimer	Defense (9):	Bateman, Jahnke, McGee, Mendelson*, Pardoski, Reihl,
19	Jill Holdcroft	Reihl	RILE	Minnesota (2):	Jahnke, Rasmussen		Smiddy, Walkom, Wilkie
17	Paige Jahnke	Stroemel	STRAW-mull	New York (1):	McGee	Goalie (3):	Meyer, Paniccia, Whitlinger
14	Darby Kern	LIONS BY ELIGIBILITY		Pennsylvania (5):	Holdcroft, Kern, Mendelson, Walkom, Weaver		
20	Emily Laurenzi	Seniors (2):		Texas (2):	Hoenshell, Welch		
8	Taylor McGee	Juniors (3):		Vermont (1):	Desorcie		
3	Cara Mendelson	Sophomores (5):		LIONS BY PROVINCE			
31	Brooke Meyer	Mendelson, Murphy, Smiddy, Weaver		British Columbia (1):	Zinn		
25	Katie Murphy	Freshmen (17):		Ontario (1):	Paniccia		
37	Nicole Paniccia	Bateman, Catanzariti, Hoenshell, Holdcroft, Jahnke, Kern, Laurenzi, McGee, Meyer, Pardoski, Rasmussen, Shaw, Walkom, Whitlinger, Wilkie, Yoxheimer, Zinn					
4	Jordin Pardoski						
13	Kendra Rasmussen						
6	Lindsay Reihl						
23	Birdie Shaw						
33	Madison Smiddy						
5	Stephanie Walkom						
36	Tess Weaver						
22	Jenna Welch						
30	Celine Whitlinger						
21	Sara Wilkie						
40	Shannon Yoxheimer						
11	Katie Zinn						



NITTANY LION WOMEN'S HOCKEY



2
JEANNETTE BATEMAN
 Freshman • F/D
 Greeley, Colo.



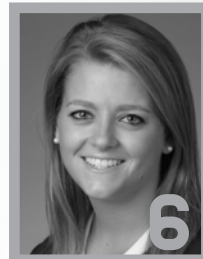
3
CARA MENDELSON
 Sophomore • F/D
 Pittsburgh, Pa.



4
JORDIN PARDOSKI
 Freshman • D
 Rochester Hills, Mich.



5
STEPHANIE WALKOM
 Freshman • D
 Moon Township, Pa.



6 **A**
LINDSAY REIHL
 Senior • D
 Cheshire, Conn.



8
TAYLOR MCGEE
 Freshman • D
 Pearl River, N.Y.



10
MICAYLA CATANZARITI
 Freshman • F
 Rancho Santa Margarita, Calif.



11
KATIE ZINN
 Freshman • F
 Coquitlam, B.C.



12
KATE CHRISTOFFERSEN
 Senior • F
 Trumbull, Conn.



13
KENDRA RASMUSSEN
 Freshman • F
 Sartell, Minn.



14
DARBY KERN
 Freshman • F
 Venetia, Pa.



15
JESS DESORCIE
 Sophomore • F
 Westford, Vt.



18
HANNAH HOENSHELL
 Freshman • F
 Plano, Texas



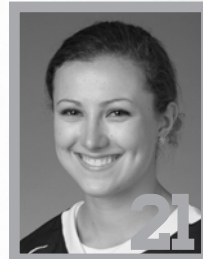
17
PAIGE JAHNKE
 Freshman • D
 Oakdale, Minn.



19
JILL HOLDCROFT
 Freshman • F
 Pennsylvania Furnace, Pa.



20
EMILY LAURENZI
 Freshman • F
 Townsend, Del.



21
SARAH WILKIE
 Freshman • D
 Ashby, Mass.



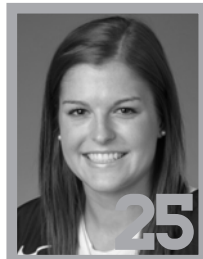
22 **A**
JENNA WELCH
 Junior • F
 Austin, Texas



23
BIRDIE SHAW
 Freshman • F
 Troy, Mich.



24 **C**
TAYLOR GROSS
 Junior • F
 Colorado Springs, Colo.



25
KATIE MURPHY
 Sophomore • F
 Novi, Mich.



30
CELINE WHITLINGER
 Freshman • G
 Garden Grove, Calif.



31
BROOKE MEYER
 Freshman • G
 Naperville, Ill.



33
MADISON SMIDDY
 Sophomore • D
 Grand Rapids, Mich.



36
TESS WEAVER
 Sophomore • F
 Windber, Pa.



37
NICOLE PANICCIA
 Junior • G
 Oakville, Ont.



40
SHANNON YOXHEIMER
 Freshman • F
 Jackson, Mich.