



# 2011-12 PENN STATE LADY LION BASKETBALL

**WOMEN'S BASKETBALL CONTACT:**  
 Kristina Petersen  
 Twitter: @ladylionsid  
 Website: www.GoPSUsports.com  
 Email: kap18@psu.edu  
 Cell: 814-883-4581  
 Office: 814-865-1757

Penn State Athletic Communications: 101D Bryce Jordan Center, University Park, PA 16802 ♦ Office: 814-865-1757 ♦ Fax: 814-863-3165

## SCHEDULE/RESULTS

NOVEMBER	
Sat. 5	BLOOMSBURG (exh.).....W, 101-81 Lady Lion Classic (University Park, Pa.)
Fri. 11	WASHINGTON STATE..... W, 72-60
Sun. 13	MIDDLE TENN. (BTN.com)... W, 65-49
Thurs. 17	at Delaware .....L, 71-80
Sun. 20	at South Carolina (SportSouth).W, 55-50 John Ascuaga's Nugget Classic (Reno, Nev.)
Fri. 25	vs. Iowa State .....W, 66-59
Sat. 26	at Nevada .....W, 103-65

Big Ten/ACC Challenge	
Wed. 30	#14/13 N. CAROLINA (BTN)..W, 103-84

DECEMBER	
Big 12/Big Ten Challenge	
Sat. 3	at #19/25 Texas Tech.....L, 66-70
Tues. 6	VIRGINIA TECH (BTN.com).. W, 66-28
Sun. 11	UMES (BTN.com)..... W, 76-51
Sun. 18	WAGNER (BTN.com) .....W, 103-42
Wed. 21	at Bucknell.....W, 78-54
Fri. 30	#23/RV NEBRASKA * (BTN.com). L, 63-71

JANUARY	
Mon. 2	at Wisconsin * .....W, 82-49
Sat. 7	MICHIGAN STATE * (CBS)..... L, 65-75
Thurs. 12	MICHIGAN * (BTN) ..... W, 78-63
Sun. 15	at #15/23 Nebraska * (BTN.com).W, 93-73
Thurs. 19	at Illinois * (BTN.com)..... 8 p.m.
Sun. 22	IOWA * (ESPN2) ..... 3 p.m.
Thurs. 26	at Michigan * (BTN.com)..... 7 p.m.
Sun. 29	at Michigan State * (ESPN2) ..... 3 p.m.

FEBRUARY	
Thurs. 2	INDIANA * (BTN.com) ..... 7 p.m.
Sun. 5	at Minnesota * (BTN.com) ..... 3 p.m.
Thurs. 9	WISCONSIN * (BTN.com) ..... 7 p.m.
Sun. 12	at Northwestern * (BTN) ..... 1 p.m.
Thurs. 16	at Purdue * (BTN) ..... 6 p.m.
Mon. 20	OHIO STATE * (ESPN2)..... 7 p.m.

WBCA Pink Zone at Penn State	
Sun. 26	MINNESOTA * (BTN-WC) ...12/2/4 p.m.

MARCH	
Thur.-Sun. 1-4	Big Ten Tournament (Indianapolis)
Sat.-Tues. 17-20	NCAA Tourn. 1st & 2nd Round
Sat.-Tues. 24-27	NCAA Tournament Regionals

APRIL	
Sun./Tues. 1/3	NCAA Final Four (Denver, Colo.)

BOLD CAPS indicates home game.  
 \* - indicates Big Ten game.  
 All times are Eastern Time.  
 BTN - Big Ten Network  
 BTN.com - BigTenNetwork.com  
 Schedule subject to change. Please visit [www.GoPSUsports.com](http://www.GoPSUsports.com) for up-to-date tip times.

### Game #18: #22/21 Penn State at Illinois Thurs., Jan. 19 ▶ 8 p.m. (ET) ▶ Assembly Hall ▶ Champaign, Ill.

		<b>SETTING THE SCENE</b>
<b>Penn State Lady Lions</b>	<b>Illinois Fighting Illini</b>	<b>The Illinois Game</b>
<b>Record:</b> 13-4, 3-2 Big Ten <b>Last Game:</b> PSU 93, Nebraska 73 (1/15) <b>Head Coach:</b> Coquese Washington <b>Career Record:</b> 79-64 (5th yr.) <b>Record at PSU:</b> 79-64 (5th yr.)	<b>Record:</b> 6-12, 0-5 Big Ten <b>Last Game:</b> Northwestern 59, ILL 58 (1/16) <b>Head Coach:</b> Jollette Law <b>Career Record:</b> 64-86 (5th yr.) <b>Record at ILL:</b> 64-86 (5th yr.)	<b>Series:</b> Penn State leads 27-14 <b>Last Meeting:</b> PSU 79, Illinois 64 (3/5/11) <b>Streak:</b> Penn State - 4 wins <b>Television:</b> "Student U" re-air on the BTN on Fri., Jan. 19 at 4 p.m. <b>Radio:</b> The game is on WRSC locally with Jerry Fisher and Brian Tripp calling the action. The audio feed is available at <a href="http://www.GoPSUsports.com">www.GoPSUsports.com</a> . <b>Webstream:</b> BTN.com <b>Live Stats:</b> GoPSUsports.com
<b>Statistical Leaders</b>	<b>Statistical Leaders</b>	
<b>Points</b> Maggie Lucas (20.4) <b>Rebounds</b> Mia Nickson (8.8) <b>Assists</b> Alex Bentley (5.6)	<b>Points</b> Karisma Penn (14.9) <b>Rebounds</b> Karisma Penn (8.1) <b>Assists</b> Lydia McCully (3.5)	

## GAME DAY INFORMATION

### SCOUTING ILLINOIS

The Fighting Illini are 6-12 overall and 0-5 in Big Ten play after a tough loss at Northwestern Monday night. Karisma Penn leads the Illini attack with a 14.9 scoring mark and 8.1 rebounding average. She also averages 2.1 blocks per game. Kersten Magrum is second on the team in scoring with a 12.2 mark.

### ALL-TIME VS. THE ILLINI

The Lady Lions are 27-14 all-time against Illinois, but are just 8-10 in games in Champaign. Penn State has won the last four games against the Illini, including a 79-64 win in the Big Ten Tournament semifinals last year. However, Illinois has won four of the last six games played at Assembly Hall.

### LAST TIME VS. ILL

The Lady Lions used a record-breaking performance by **Maggie Lucas** and the first career 20-point performance by **Julia Trogele** to earn a 79-64 win over Illinois in the Big Ten Tournament semifinals. Lucas finished the game with 23 points and in the process broke the Big Ten three-pointers record. Trogele scored 18 of her 20 points in the second half. Her 12-for-12 performance from the free throw line tied the Big Ten Tournament record.

## STORYLINES

- ✓ The Lady Lions' 93 points in a 93-73 win over Nebraska Jan. 15 are the most points scored by a Penn State team against a Big Ten foe since a 95-62 win at Ohio State on Feb. 3, 2002.
- ✓ The 20-point win over the #15/23 Huskers was the largest margin of victory over a ranked team since a 23-point win (77-54) over #23 Purdue on Jan. 20, 2005.
- ✓ With 23 points against Nebraska Jan. 15, junior guard **Alex Bentley** moved past Missy Masley (1,106; 1992-95) for 28th place on Penn State's career scoring list.
- ✓ Junior **Mia Nickson** posted her second double-double of the year and eighth of her career with 12 points and 11 rebounds at Nebraska Jan. 15.
- ✓ Junior center **Nikki Greene** is tied with Helen Holloway (598; 1991-94) for 20th spot on Penn State's career rebounding chart.
- ✓ Penn State is 22nd in the Associated Press poll and 21st in the ESPN/USA Today Coaches Poll.
- ✓ The Lady Lions were picked to finish first in the Big Ten in a vote of the coaches and media.

## UP NEXT

The Lady Lions return to the BJC to face Iowa on Sunday. It is a Subway Full Court 4-pack game and it's Kids Day where all kids that in 8th grade or younger will be admitted for FREE if they wear Lady Lion Basketball gear. Fans that donate a coat for Operation Warm can participate in a postgame autograph session with four Lady Lions.



# 2011-12 ROSTER

## PENN STATE LADY LIONS

No.	Name	Pos.	Cl./Elg.	Ht.	Hometown/High School (Previous School)
2	Dara Taylor	G	Jr./Jr.#	5-8	Wilmington, Del./Caravel Academy (Maryland)
5	Talia East *	F/C	So./So.	6-3	Philadelphia, Pa./Friends' Central School
12	Zhaque Gray ***	G	Sr./Sr.	5-8	Chicago, Ill./Prep John Hope
15	Renee Womack ***	G	Sr./Sr.	5-10	Lansdale, Pa./Methacton
20	Alex Bentley **	G	Jr./Jr.	5-7	Indianapolis, Ind./Ben Davis
23	Ariel Edwards *	F	So./So.	6-2	Elmont, N.Y./Christ the King
24	Mia Nickson *	F	Sr./Jr.	6-2	Ashburn, Va./Notre Dame Acad. (Boston College)
25	Gizelle Studevent **	G	Jr./Jr.	5-11	La Jolla, Calif./The Bishop's School
33	Maggie Lucas *	G	So./So.	5-10	Narberth, Pa./Germantown Academy
40	Marisa Wolfe **	F	Jr./Jr.	6-2	Ford City, Pa./Ford City
44	Tori Waldner	F	Fr./Fr.	6-5	Milton, Ga./Milton
54	Nikki Greene **	F/C	Jr./Jr.	6-4	Diboll, Texas/Diboll

**Head Coach:** Coquese Washington (Notre Dame '92)

**Assistant Coaches:** Fred Chmiel, Kia Damon, Maren Walseth

**Captains:** Mia Nickson, Marisa Wolfe

\* Indicates letters earned # - Taylor will sit out the 2011-12 season due to NCAA transfer rules.

## ILLINOIS FIGHTING ILLINI

No.	Name	Pos.	Cl.	Ht.	Hometown/High School (Previous School)
00	Karisma Penn	F	Jr.	6-2	Shaker Heights, Ohio/Shaker Heights
2	Centrese McGee	G	So.	5-8	Calumet City, Ill./Thornton Fractional North
3	Taylor Tuck	F	Fr.	6-0	Bolingbrook, Ill./Bolingbrook
5	Nia Oden	F	Fr.	5-10	Brooklyn, N.Y./Christ The King
11	Eboni Mitchell	G	Sr.	5-7	Decatur, Ga./Southwest DeKalb
12	Lydia McCully	G	Sr.	5-9	Bedford Heights, Ohio/Bedford
20	Alexis Burke	F	So.	5-11	Bainbridge, Ga./Bainbridge
21	Macie Blinn	G	Sr.	5-11	Greenville, Ohio/Greenville
22	Ivory Crawford	G	Fr.	5-10	Chicago, Ill./Proviso East
23	Alexis Smith	G	Fr.	5-9	West Islip, N.Y./St. John the Baptist
24	Adrienne GodBold	G	Jr.	5-11	Chicago, Ill./Marshall
32	Kierra Morris	C	Fr.	6-4	Chicago, Ill./Morgan Park Academy
34	Lana Rukavina	F	Sr.	6-3	Wheeling, Ill./Wheeling
42	Amber Moore	G	So.	5-11	Detroit, Mich./Country Day
44	Kersten Magrum	F	So.	6-1	Mokena, Ill./Lincoln-Way East

**Head Coach:** Jolette Law

**Assistant Coaches:** Lisa Cermignano, Michael Peck, Usha Gilmore

## TEAM COMPARISON

PENN STATE		ILLINOIS
Lucas (20.4)	Scoring Leader	Penn (14.9)
Nickson (8.8)	Rebounding Leader	Penn (8.1)
Bentley (5.6)	Assist Leader	McCully (3.5)
Bentley (3.2)	Steals Leader	McCully (2.0)
East (1.5)	Blocks Leader	Penn (2.1)
76.8	Scoring Offense	63.2
60.2	Scoring Defense	64.7
+16.6	Scoring Margin	-1.6
43.9	Rebounds Per Game	38.6
+3.7	Rebound Margin	+0.8
14.4	Assists Per Game	12.4
10.0	Steals Per Game	8.6
.449	Field Goal Pct.	.407
.326	FG Defense Pct.	.399
.372	3-pt. FG Pct.	.296
.272	3-pt. FG Pct. Def.	.284
.711	Free Throw Pct.	.666
0.9	Assist/Turnover	0.7
Won 2	W/L Streak	Lost 5

## SERIES HISTORY

Overall:	PSU leads 27-14	
Last meeting:	Mar. 5, 2011	
Last result:	PSU, 79-64	
Current streak:	PSU - 4 wins	
Last 10:	PSU, 7-3	
Last 10 meetings:		
1/2/08	H	W, 49-48
2/21/08	A	L, 49-69
12/28/08	H	W, 54-51
2/22/09	A	W, 67-56
3/5/09	N	L, 49-58
12/31/09	A	L, 60-69
1/24/10	H	W, 70-66
1/16/11	H	W, 83-62
1/27/11	A	W, 67-65
3/5/11	N	W, 79-64

## QUICK FACTS

### THE UNIVERSITY

Location: University Park, Pa.  
 Founded: 1855  
 Enrollment: 42,294  
 Colors: Blue & White  
 Nickname: Lady Lions  
 Conference: Big Ten  
 President: Dr. Rodney Erickson  
 Director of Athletics: Tim Curley  
 Acting Director of Athletics: Dr. David Joyner  
 Senior Woman Administrator: Charmelle Green  
 Facility (cap.): Bryce Jordan Center (15,261)  
 All-Time Record at BJC: 182-49 (16 seasons)

### ATHLETIC COMMUNICATIONS

WBB Contact: Kristina Petersen  
 Phone/Fax: (814) 865-1757/(814) 863-3165  
 E-mail: kap18@psu.edu  
 Address: 101-D Bryce Jordan Center  
 University Park, Pa. 16802  
 Press Row Phone: 814-863-3294  
 Website: www.GoPSUsports.com  
 Twitter: @ladylionsid

### TEAM INFORMATION

2011-12 Record: 13-4  
 Home: 7-2 Away: 5-2 Neutral: 1-0  
 Big Ten Record: 3-2  
 Home: 1-2 Away: 2-0  
 Letterwinners Returning/Lost: 10/1  
 Starters Returning/Lost: 4/1  
 Big Ten Tournament: Runner-up  
 Postseason: NCAA Second Round

### THE HISTORY

First Year of Women's Basketball: 1965  
 All-Time Record: 818-377 (47 seasons)  
 All-Time Big Ten Rec.: 207-112 (19 seasons)  
 NCAA Tournament Appearances: 22  
 NCAA Tournament Record: 27-22

### WOMEN'S BASKETBALL

Head Coach: Coquese Washington  
 Alma Mater: Notre Dame '92  
 Overall Record: 79-64 (fifth season)  
 School Record: 79-64 (fifth season)  
 Basketball Office Phone: 814-863-2672  
 Best Time To Reach Coach: Through SID  
 Assistant Coaches (Alma Mater):  
 Fred Chmiel (Excelsior College)  
 Kia Damon (Millersville '97)  
 Maren Walseth (Penn State '02)  
 Twitter: @pennstatewbb  
 Facebook: facebook.com/pennstateladylions

### PRONUNCIATIONS

Coquese	ko-KWEES
Chmiel	shuh-MEAL
Maren Walseth	MARR-en WALL-seth
Zhaque	Jacque-QWAY
Gizelle Studevent	juh-ZELL STEW-duh-vent
Talia	tah-LEE-uh
Ariel	AIR-e-I
Dara	DAR-uh





## STANDINGS (thru games of 1/16)

Team	Big Ten			Overall		
	W	L	Pct.	W	L	Pct.
Purdue	5	0	1.000	15	3	.833
Ohio State	4	1	.800	17	1	.944
Nebraska	4	1	.800	15	2	.882
Michigan State	4	1	.800	12	6	.667
Michigan	3	2	.600	14	4	.778
<b>PENN STATE</b>	<b>3</b>	<b>2</b>	<b>.600</b>	<b>13</b>	<b>4</b>	<b>.765</b>
Northwestern	2	3	.400	12	6	.667
Iowa	2	3	.400	10	8	.556
Minnesota	2	3	.400	10	9	.526
Wisconsin	1	4	.200	5	12	.294
Illinois	0	5	.000	6	12	.333
Indiana	0	5	.000	5	13	.278

## BIG TEN SCHEDULE

### JANUARY 16

at Northwestern 59, Illinois 58

### JANUARY 19

Nebraska at Ohio State 6 p.m.  
 Penn State at Illinois 8 p.m.  
 Purdue at Indiana 8 p.m.  
 Wisconsin at Iowa 8 p.m.  
 Michigan State at Minnesota 8 p.m.  
 Michigan at Northwestern 8 p.m.

### JANUARY 22

Indiana at Michigan 2 p.m.  
 Illinois at Ohio State 2 p.m.  
 Iowa at Penn State 3 p.m.  
 Northwestern at Wisconsin 3 p.m.  
 Minnesota at Nebraska 6 p.m.

### JANUARY 23

Michigan State at Purdue 7:30 p.m.

All times are Eastern.

## PROJECTED STARTERS



**12 ZHAQUE GRAY** G  
 Sr., 5-8, Chicago, Ill.  
 11.4 pts., 3.2 rebs., 1.8 asst., .368 3FG%

**Notes:** Was 7-for-11 from the field en route to 16 points & 6 rebounds at Nebraska ... Was 6-for-12 from the field en route to 15 pts. vs. Michigan ... Registered 8 points vs. Michigan State.



**20 ALEX BENTLEY** G  
 Jr., 5-7, Indianapolis, Ind.  
 14.7 ppg, 5.6 apg, 3.2 spg, .793 FT%

**Notes:** Scored 16 of her 23 points at Nebraska in the 2nd half ... Tallied 12 pts. & 6 assts. vs. Michigan ... Nabbed 8 steals with 22 pts. vs. Nebraska ... Wade Trophy, Naismith Award & Wooden Award watch lists.



**33 MAGGIE LUCAS** G  
 So., 5-10, Narberth, Pa.  
 20.4 ppg, 4.6 rpg, .412 3FG%, .853 FT%

**Notes:** Had 24 pts. and 6 rebs. in win at Nebraska ... Notched 22 pts. with 5 assts. in win over Michigan ... Scored 28 of her career-high 33 pts. in the 2nd half vs. MSU ... Naismith Award watch list.



**24 MIA NICKSON** F  
 Jr., 6-2, Ashburn, Va.  
 6.1 ppg, 8.8 rpg, .356 FG%

**Notes:** Earned 2nd double-double with 12 pts. & 10 rebs. at Nebraska ... Tallied 6 pts. & 8 rebs. in win over Michigan ... Posted a double-double with 10 points and 14 rebounds at Wisconsin.



**54 NIKKI GREENE** C  
 Jr., 6-4, Diboll, Texas  
 9.5 ppg, 7.9 rpg, 1.3 bpg, .525 FG%

**Notes:** Scored all 12 of her points in the second half at Nebraska ... Near double-double with 9 pts. & 9 rebs. vs. Michigan ... Pulled in 11 rebounds with three steals vs. MSU.

**LAST TIME OUT:** The Lady Lions shot 53.7% from the field and **Maggie Lucas** and **Alex Bentley** each reached the 20-point mark as the Lady Lions earned a 93-73 win at No. 15/23 Nebraska to hand the Huskers their first-ever Big Ten loss. Lucas led all scorers with 24 points on 7-for-15 shooting en route to her 10th 20-point game of the season. She also contributed six rebounds and a steal in the win. Bentley accounted for 23 tallies via a 9-for-17 shooting effort to surpass the 1,100-point mark for her career. Bentley also contributed four steals and five rebounds.

**SCOUTING ILLINOIS:** The Fighting Illini are 6-12 overall and 0-5 in Big Ten play after a tough loss at Northwestern Monday night. Karisma Penn leads the Illini attack with a 14.9 scoring mark and 8.1 rebounding average. She also averages 2.1 blocks per game. Kersten Magrum is second on the team in scoring with a 12.2 mark, while Amber Moore accounts for 9.1 points per outing.

**ALL-TIME VS. THE ILLINI:** The Lady Lions are 27-14 all-time against Illinois, but are just 8-10 in games in Champaign. Penn State has won the last four games against the Illini, including a 79-64 win in the Big Ten Tournament semifinals last year. However, Illinois has won four of the last six games played at Assembly Hall.

## WHAT'S AT STAKE

A Penn State Win Would:

- Make Penn State 14-4 on the season.
- Improve the Lady Lions to 4-2 in Big Ten play.
- Make Penn State 28-14 all-time vs. Illinois.
- Make the Lady Lions 9-10 all-time in Champaign.
- Be Coquese Washington's 80th career win.

**LAST TIME VS. ILL:** The Lady Lions used a record-breaking performance by **Maggie Lucas** and the first career 20-point performance by **Julia Trogele** to earn a 79-64 win over Illinois in the Big Ten Tournament semifinals. Lucas finished the game with 23 points and in the process broke the Big Ten single-season three-pointers record. She also pulled in five rebounds with two steals. Trogele scored 18 of her 20 points in the second half. Her 12-for-12 performance from the free throw line tied the Big Ten Tournament record.

**BIG TEN, BIG POINTS:** The Lady Lions' 93 points in a 93-73 win over Nebraska Jan. 15 are the most points scored by a Penn State team against a Big Ten foe since a 95-62 win at Ohio State on Feb. 3, 2002. The 93 tallies were also the most points scored against Nebraska in the Devaney Center since giving up 94 points to Kansas State in the 2005 season.

## LAST TIME VS. ILLINOIS MAR. 5, 2011 • INDIANAPOLIS, IND.

Illinois 64 - 9-23		Total		3 Pt		Rebounds		FT		PF		TP		A TO		Blk St		Min	
Player	FG	FGA	FG%	3P	3PA	3P%	FT	FTA	FT%	Off	Def	Total	PF	TP	A	TO	Blk	St	Min
00 Fern, Kansas	4-10	0-0	0-0	3-4	2	8	10	4	11	1	5	5	1	30					
02 McClos, Corliss	0-3	0-0	0-0	1	5	0	2	0	2	3	0	1	28						
09 McCurdy, Lydia	5-13	0-1	1-1	1	4	0	3	11	7	4	1	0	30						
04 Polakivska, Lana	2-3	1-2	0-0	1	1	2	1	5	0	2	0	1	18						
02 Moore, Amber	7-17	5-14	0-0	0	1	1	1	19	0	1	0	1	38						
11 Mitchell, Ebony	1-2	0-0	0-0	0	0	0	2	2	1	1	0	0	8						
00 Burke, Alexis	0-3	0-1	0-0	0	1	2	0	0	1	1	0	0	9						
21 Blinn, Macie	0-1	0-1	0-0	0	0	0	0	0	0	0	0	0	5						
04 Goodkind, Adrevious	4-6	2-2	0-0	0	1	1	5	10	0	2	0	0	29						
Team	5	1	6																
Totals	23-68	8-21	10-15	10	22	32	22	64	12	17	7	7	200						
FG % 1st half	13-29	41.4%	2nd half	11-29	37.9%	Game	23-68	33.8%	Double										
3PT % 1st half	4-12	33.3%	2nd half	4-9	44.4%	Game	8-21	38.1%	Rebounds										
FT % 1st half	5-8	62.5%	2nd half	5-7	71.4%	Game	10-15	66.7%											

Penn State 79 - 24-6		Total		3 Pt		Rebounds		FT		PF		TP		A TO		Blk St		Min	
Player	FG	FGA	FG%	3P	3PA	3P%	FT	FTA	FT%	Off	Def	Total	PF	TP	A	TO	Blk	St	Min
11 Trogele, Julia	4-10	0-0	10-12	2	7	0	3	20	2	1	0	2	25						
02 Gray, Zhaque	3-7	1-4	1-0	0	3	0	2	6	2	1	0	2	32						
00 Bentley, Alex	4-11	0-1	3-4	0	0	0	0	11	3	2	0	2	28						
04 Nickson, Mia	0-3	0-0	0-0	0	3	0	1	3	2	4	0	1	19						
04 Croonen, Nikki	2-5	0-0	0-1	0	3	0	3	4	0	1	2	0	22						
00 East, Talia	0-2	0-0	0-0	2	2	4	1	0	0	0	0	0	11						
05 Winicki, Renee	2-2	0-0	0-0	0	0	1	4	1	0	0	0	2	13						
03 Edwards, Arjel	0-0	0-0	2-2	1	0	1	2	2	2	0	0	0	8						
05 Stuberent, Gizelle	0-0	0-0	0-0	0	1	0	0	0	0	0	0	0	3						
00 Lucas, Maggie	7-14	5-6	4-4	0	5	0	23	1	4	0	0	2	29						
00 Wade, Marissa	2-3	0-0	0-0	0	2	1	4	0	0	1	0	1	10						
Team	5	3	8																
Totals	24-67	0-14	25-30	12	29	41	17	79	13	15	2	12	200						
FG % 1st half	12-29	41.4%	2nd half	10-28	42.9%	Game	24-67	42.1%	Double										
3PT % 1st half	3-8	37.5%	2nd half	3-6	50.0%	Game	6-14	42.9%	Rebounds										
FT % 1st half	8-10	80.0%	2nd half	17-20	85.0%	Game	25-30	83.3%											

Officials: Ron Owsenbender, Felicia Gruber & Bryan Entenline  
 Technical fouls: Illinois-none, Penn State-none.  
 Attendance: 6757

Score by periods	1st	2nd	Total
Illinois	33	31	64
Penn State	39	40	79

Lead PG - A.J. Smead (34, PSU) 2nd (23:36)  
 Lead Def - L.L. Taylor (17, PSU) 18:20 (11:10)

Score by 30 min: Penn State 39, Illinois 33  
 Lead changes: 6 times



## PRESS CONFERENCES

Coquese Washington will hold a weekly press conference and the Lady Lions will have media availability on a weekly basis throughout the season. All press conferences will begin at 2:45 p.m. (unless otherwise noted) and go for approximately 15-20 minutes, followed by an open media session prior to practice from 3-3:20 p.m. Press conference will be held in the Media Room at the Bryce Jordan Center (unless otherwise noted).

### Press Conference Dates

- Wednesday, Jan. 25
- Wednesday, Feb. 1 (location TBA)
- Wednesday, Feb. 8 (location TBA)
- Wednesday, Feb. 15
- Wednesday, Feb. 22
- Wednesday, Feb. 29 (time TBA)

**ANOTHER RANKED WIN:** The 93-73 win at Nebraska Jan. 15 marked the second win over a ranked opponent for the Lady Lions this season (#14/13 North Carolina). It was also the largest margin of victory over a ranked team since a 23-point win (77-54) over #23 Purdue on Jan. 20, 2005.

**MIA DOUBLES AGAIN:** Junior forward **Mia Nickson** posted her second double-double of the season and eighth of her career with 12 points and 11 rebounds in 36 minutes at Nebraska Jan. 15. Nickson also added a pair of assists and a block in the win.

**HUSKER HISTORY QUESTION:** With their win over Nebraska Jan. 15, the Lady Lions handed the Huskers their first Big Ten Conference loss. That win, coupled with the first-ever Big Ten win for Nebraska on Dec. 30, has made the Lady Lions an interesting trivia fact of being the team to give Nebraska its first Big Ten win and Big Ten loss.

**BENTLEY MOVES INTO 28TH IN SCORING:** With 23 points against Nebraska Jan. 15, junior guard **Alex Bentley** moved past Missy Masley (1,106; 1992-95) for 28th place on Penn State's career scoring list. Bentley now has 1,120 career points. She need 15 points to tie Sue Martin (1,135; 1977-80) for 27th place.

**TENTH TIME TO 20:** Sophomore guard **Maggie Lucas** turned in her 10th game with 20 or more points with 24 markers in the win at Nebraska Jan. 15. Lucas, who had 12 games with 20+ points as a freshman, scored 16 points in the closing half against the Cornhuskers to help spark the comeback. Lucas needs two points to reach the 900-point mark for her career.

**BENTLEY CLIMBS THEFTS LIST:** With four steals at Nebraska Jan. 15, junior guard **Alex Bentley** moved into 19th place on Penn State's career steals chart with 173 career steals. She needs one steal to tie Angie Potthoff (174; 193-97) for 18th spot.

**GREENE MOVING UP CHARTS:** Junior center **Nikki Greene** is steadily moving up the career charts after pulling in eight rebounds at Nebraska Jan. 15. Greene now has 598 career rebounds to pass Sue Martin (595; 1977-80) for 21st place on Penn State's career boards chart and tie Helen Holloway (598; 1991-94) for 20th spot. Greene needs 23 rebounds to move past Tanisha Wright (621; 2002-05) for 19th place. Additionally, Greene is in sixth place on the Penn State career blocks list with 152 rejections. She needs 20 blocks to move into the Top 5 all-time.

**LUCAS MATCHES HER NUMBER:** Sophomore guard **Maggie Lucas** scored 28 points in the second half en route to a career-high 33 points in the loss to Michigan State Jan. 7. It was the first career 30-point game for the sharp-shooter and are the most points by a Penn State player since Tyra Grant had 33 points at Iowa on Feb. 1, 2009. It was also the first 30-point effort for a Lady Lion since Grant had 32 tallies versus the Hawkeyes in the Big Ten Tournament (3/5/10).

**LUCAS EQUALS BJC 3S RECORD:** With seven triples against Michigan State Jan. 7, including six in the second half, sophomore guard **Maggie Lucas** tied the BJC record for three-pointers in a game. She equals the mark set by Adrienne Squire (2/12/06), Kelly Mazzante (1/9/03) and Iowa's Kamille Wahlin (12/28/09). The seven triples tie Lucas' career mark, which she also set against Hartford in Mexico on Nov. 27, 2010.

**NICKSON HITS 400 IN BLUE & WHITE:** Redshirt junior **Mia Nickson** surpassed the 400-point mark for her Penn State career with seven tallies against the Spartans Jan. 7. She has 424 markers as a Lady Lion and 468 points for her collegiate career.

**LADY LIONS ON TWITTER & FACEBOOK:** The Lady Lions are on Twitter. Follow the Lady Lions and assistant coaches (@pennstatewbb) and sports information contact Kris Petersen (@ladylionsid) to get the inside scoop. The Lady Lions are also on Facebook at [www.facebook.com/pennstateladylions](http://www.facebook.com/pennstateladylions).



**LUCAS CHANGES HER GAME:** Sophomore guard **Maggie Lucas** has become more than just a three-point threat for the Lady Lions. In a comparison of the first 17 games of her rookie campaign and 17 games this year, Lucas has scored more points (346-278) despite making eight less three-pointers than a year ago (47-55). Additionally, Lucas has been more of a threat off the dribble, making twice as many free throws as she did last season through 17 games (81-39). Here is a 17-game comparison of Lucas' key stats:

Year	Pts.	3FGM	3FGA	FTM	Reb.	Asst.
Frosh.	278	55	126	39	54	26
Soph.	346	47	114	81	79	45

**OFFICIAL PINK ZONE T-SHIRTS:** The Official 2012 WBCA Pink Zone at Penn State t-shirt is available at all Penn State Bookstore location. This year, there is an official adult shirt that is \$15 with \$5 of every shirt going to the Pink Zone fundraising efforts, as well as an official youth shirt that is \$10 with \$2 of every shirt going to Pink Zone.

## PENN STATE'S OVERALL/BIG TEN YEAR-BY-YEAR REVIEW

Year	Overall	Big Ten	Home	BT Home	Road	BT Road	Neutral
1992-93	22-6	14-4	12-2	9-0	9-4	5-4	0-0
1993-94	28-3	16-2	14-0	9-0	11-2	7-2	3-1
1994-95	26-5	13-3	14-2	8-0	9-3	5-3	3-0
1995-96*	27-7	13-3	14-2	8-0	8-4	5-3	5-1
1996-97	15-12	8-8	9-3	5-3	5-6	3-5	1-3
1997-98	21-13	8-8	10-5	4-4	6-6	4-4	5-2
1998-99	22-8	12-4	9-2	6-2	9-4	6-2	4-2
1999-00	30-5	15-1	14-0	8-0	9-2	7-1	7-3
2000-01	19-10	11-5	11-2	7-1	6-5	4-4	2-3
2001-02	23-12	11-5	10-4	6-2	9-5	5-3	4-3
2002-03	26-9	13-3	16-0	8-0	7-7	5-3	2-2
2003-04	28-6	15-1	12-1	8-0	9-3	7-1	6-2
2004-05	19-11	13-3	12-0	8-0	6-9	5-3	1-2
2005-06	13-16	6-10	8-6	5-3	3-8	1-7	2-2
2006-07	15-16	7-9	12-1	7-1	2-12	0-7	1-3
2007-08	13-18	4-14	10-6	3-6	3-11	1-8	0-1
2008-09	11-18	6-12	8-6	4-5	2-9	2-7	1-3
2009-10	17-14	8-10	9-6	5-4	5-7	3-6	3-1
2010-11	25-10	11-5	14-4	6-2	7-4	5-3	4-2
2011-12	13-4	3-2	7-2	1-2	5-2	2-0	1-0

\* First season at the Bryce Jordan Center



## PENN STATE'S RECORD WHEN...

Playing at home	7-2
Playing on the road	5-2
Playing at a neutral site	1-0
vs. Top 10 teams	0-0
vs. Top 25 teams	2-2
Games decided by 3 points or less	0-0
Games decided by 4-10 points	2-4
Games decided by 11-19 points	4-0
Games decided by 20 points or more	7-0
Leading at the half	10-3
Tied at the half	0-0
Trailing at the half	3-1
Leading with 5:00 remaining	12-0
Trailing with 5:00 remaining	1-3
Tied with 5:00 remaining	0-1
In overtime	0-0
PSU scores 40-49 points	0-0
PSU scores 50-59 points	1-0
PSU scores 60-69 points	3-3
PSU scores 70-79 points	4-1
PSU scores 80 points or more	5-0
PSU shoots 45% or better	10-0
PSU shoots less than 45%	3-4
PSU shoots better than opponent	13-1
Opponent shoots better than PSU	0-3
Opponent scores less than 39 points	1-0
Opponent scores 40-49 points	3-0
Opponent scores 50-59 points	4-0
Opponent scores 60-69 points	3-0
Opponent scores more than 70 points	2-4
Opponent shoots better than 45%	0-1
Opponent shoots less than 45%	13-3
PSU outrebounds opponent	9-1
Opponent outrebounds PSU or tied	4-3
PSU commits 14 or less turnovers	6-3
PSU commits 15 or more turnovers	7-1
PSU makes at least 5 3-pointers	7-3
PSU makes four 3-pointers or less	6-1
Recording 7 or more steals	11-3
Recording 6 or less steals	2-1
Wearing white uniforms	8-2
Wearing blue uniforms	5-2
Wearing pink uniforms	0-0
Penn State wins the tip	10-2
Penn State loses the tip	3-2
Penn State scores first	8-3
Opponent scores first	5-1
Playing during the day (before 5 p.m.)	7-2
Playing at night	6-2
On Monday	1-0
On Tuesday	1-0
On Wednesday	2-0
On Thursday	1-1
On Friday	2-1
On Saturday	1-2
On Sunday	5-0
In November	6-1
In December	4-2
In January	3-1
In February	0-0
In March	0-0

**NEW TICKET PACKAGE:** The Lady Lions have introduced the Starting 5 Pack, which is available by calling 800-NITTANY, to go along with to PNC Flex Books and single-game tickets. The Starting 5 Pack is \$49 and features tickets to three games of the buyer's choice, a ticket for the Ohio State ESPN2 Big Monday game on Monday, Feb. 20 and a ticket for the Pink Zone game against Minnesota on Sunday, Feb. 26.

**2012 WBCA PINK ZONE:** The 2012 WBCA Pink Zone at Penn State will take place on Sunday, Feb. 26 as the Lady Lions take on Minnesota in the BJC. Last year, the Lady Lions donated nearly \$200,000 for breast cancer causes. This year's fundraising efforts will benefit the Mount Nittany Medical Center, Penn State Hershey Cancer Institute, Pennsylvania Breast Cancer Coalition, the Kay Yow Cancer Fund, J.C. Blair Memorial Hospital and Lewistown Hospital. For more information on the Pink Zone at Penn State, visit the official Pink Zone website at [www.gopsusports.com/pinkzone](http://www.gopsusports.com/pinkzone) or on Facebook at [www.facebook.com/pinkzoneatpennstate](http://www.facebook.com/pinkzoneatpennstate).

**LADY LIONS IN THE RPI:** The Lady Lions are highly ranked in many of the RPI reports across the country. Penn State is 28th in the Jan. 15 NCAA RPI report with a strength of schedule of 31. The Lady Lions have or will play four teams in the RPI top 25 this season.

**GREENE GET REJECTION #150:** With a pair of blocks at Wisconsin Jan. 2, junior center **Nikki Greene** became the sixth player in school history with 150 career blocks. She joins a list that includes Kim Calhoun, Mary Donovan, Rashana Barnes, Andrea Garner and Amanda Brown.

**BENTLEY MOVES UP HELPERS CHART:** Junior guard **Alex Bentley** moved into 11th place on Penn State's career assists chart with eight helpers at Wisconsin Jan. 2. Bentley moved past Corinne Gulas (379). She has 395 career assists and needs 16 dimes to move into the Top 10.

**LUCAS LENDS HELPING HAND:** Sophomore guard **Maggie Lucas** was in a giving mood to start the New Year with a career-high seven assists in the win at Wisconsin Jan. 2. The seven helpers pass her previous career high of five set against Nevada and Middle Tennessee State earlier this year.

**DOUBLE TROUBLE FOR MIA:** In just her second game back after missing six games due to a mild concussion, junior **Mia Nickson** posted her first double-double of the season and seventh of her career with 10 points and 14 rebounds at Wisconsin Jan. 2. Nickson dominated the offensive glass, hauling in eight caroms. After struggling from the field early in the season, Nickson was efficient against the Badgers, going 5-for-6 from the floor.

## LIONS IN THE BIG TEN STATS

A breakdown of where Penn State ranks in the Big Ten's statistical categories. Through games of Jan. 16.

TEAM	
Scoring Offense.....	2nd (76.8)
Scoring Defense.....	T-6th (60.2)
Scoring Margin.....	2nd (+16.6)
Free Throw Percentage.....	7th (.711)
FG Percentage.....	2nd (.449)
FG Percentage Defense.....	1st (.326)
3-point FG Percentage.....	1st (.372)
3-point FG Pct. Defense.....	1st (.272)
3-point FG Made.....	8th (5.1)
Rebounding Offense.....	2nd (43.9)
Rebounding Defense.....	11th (40.2)
Rebounding Margin.....	4th (+3.7)
Offensive Rebounds.....	6th (13.5)
Defensive Rebounds.....	1st (30.5)
Blocked Shots.....	6th (4.5)
Assists.....	5th (14.4)
Steals.....	3rd (10.0)
Turnover Margin.....	5th (+1.9)
Assist to Turnover Ratio.....	5th (0.9)

INDIVIDUAL	
Scoring.....	2nd - Maggie Lucas (20.4)
.....	13th - Alex Bentley (14.7)
.....	21st - Zhaque Gray (11.4)
.....	T-28th - Nikki Greene (9.5)
Rebounding.....	5th - Nikki Greene (7.9)
.....	16th - Talia East (5.8)
FG Percentage.....	3rd - Nikki Greene (.525)
.....	11th - Alex Bentley (.458)
.....	15th - Maggie Lucas (.443)
Assists.....	3rd - Alex Bentley (5.6)
FT Percentage.....	4th - Maggie Lucas (.853)
.....	12th - Alex Bentley (.793)
Steals.....	2nd - Alex Bentley (3.2)
3FG Percentage.....	3rd - Maggie Lucas (.412)
.....	10th - Zhaque Gray (.368)
3FG Made.....	2nd - Maggie Lucas (2.8)
Blocked Shots.....	T-6th - Talia East (1.5)
.....	10th - Nikki Greene (1.3)
Assist-to-TO Ratio.....	5th - Alex Bentley (1.5)
Off. Reb. ....	T-4th - Nikki Greene (2.6)
Def. Reb.....	6th - Nikki Greene (5.3)
Minutes.....	6th - Maggie Lucas (34.2)



## MILESTONE WATCH

### Milestone Watch

Milestone	Player	Current Total
1,200 points	Alex Bentley	1,120
900 points	Maggie Lucas	898
800 points	Zhaque Gray	757
700 points	Nikki Greene	677
500 points	Mia Nickson (career)	468
	Mia Nickson (PSU)	423
300 points	Marisa Wolfe	220
	Ariel Edwards	202
200 points	Gizelle Studevent	110
100 points	Talia East	81
600 rebounds	Nikki Greene	598
400 rebounds	Mia Nickson (career)	370
	Mia Nickson (PSU)	313
300 rebounds	Alex Bentley	226
200 rebounds	Zhaque Gray	199
	Marisa Wolfe	191
	Maggie Lucas	187
	Ariel Edwards	134
	Talia East	118
400 assists	Alex Bentley	395
200 assists	Zhaque Gray	120
	Maggie Lucas	101
200 steals	Alex Bentley	173
100 steals	Maggie Lucas	78
200 blocks	Nikki Greene	152
200 3-pointers	Maggie Lucas	159
150 3-pointers	Zhaque Gray	126

### Milestone Reached

Milestone	Player	Reached
1,100 points	Alex Bentley	1/15/12
200 points	Ariel Edwards	1/12/12
300 rebounds	Mia Nickson (PSU)	1/12/12
200 assists	Maggie Lucas	1/12/12
400 points	Mia Nickson (PSU)	1/7/12
150 3-pointers	Maggie Lucas	1/7/12
150 blocks	Nikki Greene	1/2/12
800 points	Maggie Lucas	12/30/11
200 points	Marisa Wolfe	12/21/11
150 steals	Alex Bentley	12/21/11
700 points	Zhaque Gray	12/18/11
600 points	Nikki Greene	12/11/11
100 points	Gizelle Studevent	12/11/11
1,000 points	Alex Bentley	12/6/11
700 points	Maggie Lucas	12/6/11
100 rebounds	Ariel Edwards	12/6/11
200 rebounds	Alex Bentley	12/3/11
100 assists	Zhaque Gray	11/30/11
500 rebounds	Nikki Greene	11/25/11
600 points	Zhaque Gray	11/17/11
600 points	Maggie Lucas	11/17/11
900 points	Alex Bentley	11/13/11
400 rebounds	Mia Nickson (career)	11/13/11
300 assists	Alex Bentley	11/11/11
100 points	Ariel Edwards	11/11/11

**GRAY INTO TOP 10:** Senior **Zhaque Gray** moved into eighth place in the Penn State three-point field goals record books with a pair of triples at Wisconsin Jan. 2. Gray passed Brianne O'Rourke for eighth place in all-time three-point field goals made (123). She needs a one triple to tie Tina Nicholson (124) for seventh place.

**A THIEF NAMED ALEX:** Junior guard **Alex Bentley** registered a career-high eight steals in the Big Ten opener against Nebraska Dec. 30. Her eight thefts are the most by a Lady Lion since Kelly Mazzante had eight steals against Fairfield on Dec. 2, 2001 and were just two shy of the school's single-game record set three times by Suzie McConnell.

**LUCAS SURPASSES 800 POINTS:** Sophomore guard **Maggie Lucas** reached the 800-point mark for her career with 18 tallies against Nebraska on Dec. 30. It took Lucas just for games to get from 700 points to 800 markers.

**NICKSON RETURNS:** After missing the six games with a concussion, junior **Mia Nickson** returned to the Lady Lion lineup against Nebraska Dec. 30. She accounted for four points, seven rebounds and a steal against the Cornhuskers. Nickson also missed a pair of games earlier in the season with concussion-like symptoms.

**STRUGGLES FROM THE FIELD:** The Lady Lions were held to just seven points in the final 12:50 in the loss to Nebraska in the Big Ten opener Dec. 30. Penn State shot just 29.4% from the field, including a 23.3% effort in the second half. It was the worst shooting percentage since the Lady Lions connected on just 27.3% of their shots against Wisconsin on Feb. 25, 2010.

**20-POINT STREAK FOR LUCAS:** Sophomore guard **Maggie Lucas** had her string of four consecutive 20-point games snapped against Nebraska Dec. 30. Lucas had 22 points at Bucknell Dec. 21, 23 markers against Wagner Dec. 18, 20 points each against UMES (Dec. 11) and Virginia Tech (Dec. 6).

**PERFECT HOME NON-CON SLATE:** The Lady Lions completed a perfect home non-conference schedule with a dominating 103-42 win over Wagner Dec. 18. Penn State was victorious in all six home non-conference games for the first time since going 7-0 in the 2007-08 campaign, **Coquese Washington's** first season.

**LUCAS NOTCHES ANOTHER 3S RECORD:** **Maggie Lucas** added her name to another Penn State three-pointers record with a perfect 4-for-4 effort from long range against Bucknell Dec. 21 to tie the school record for three-point field goal percentage (min. 4 att.). It was the first perfect performance from downtown (min. 4 att.) for the Lady Lions since Jess Brungo was 5-for-5 at Clemson on Dec. 7, 2002. Lucas shares the record with Brungo's Clemson performance and a 4-for-4 mark versus Illinois (2/15/01) and Lisa Faloon's 4-for-4 day versus Rhode Island (2/28/87).

**SOLID NON-CON SEASON:** The Lady Lions posted their second consecutive double-digit non-conference win total with a victory at Bucknell Dec. 21. Penn State finished 10-2 in the non-conference slate to post just their third non-conference double figure win total since joining the Big Ten in 1992-93 (10 - 2002-03; 11 - 2010-11).

**CENTURY MARK TIMES THREE:** The Lady Lions reach the 100-point mark for the third time this season with a 103-42 victory over Wagner Dec. 18. Penn State also posted 103 tallies in wins over North Carolina (103-84) and Nevada (103-65). The three 100-point games are tied for the fourth-most 100-point games in a season in school history. The record for 100-point contests is six by the 1984-85 squad. The 1992-93, 1980-81 and 1978-79 teams each reached the century mark three times in their respective seasons.

**WALDNER WAILS ON BOARDS:** Freshman post player **Tori Waldner** posted the first double-digit rebounding performance of her career with 10 caroms against Wagner Dec. 18. The rookie hauled in three offensive boards and seven defensive caroms to lead all players. Her previous personal best was nine rebounds against UMES.

## NCAA STATS

### TEAM

Scoring Offense	13th (76.8)
Scoring Margin	21st (+16.6)
Field Goal Percentage	14th (.449)
Field Goal Pct. Defense	6th (.326)
Rebounding Margin	81st (+3.7)
3-pt. Field Goal Percentage	15th (.372)
3-pt. Field Goal Pct. Defense	51st (.272)
Winning Percentage	41st (.765)
Assists	65th (14.4)
Blocked Shots	66th (4.5)
Turnovers	59th (15.8)
Assist-to-Turnover Ratio	48th (0.91)
Turnover Margin	95th (1.88)

### INDIVIDUAL

Scoring	13th - Maggie Lucas (20.4)
Assists	22nd - Alex Bentley (5.6)
Steals	21st - Alex Bentley (3.2)
FT Percentage	45th - Maggie Lucas (.853)
3-pt. Field Goals/Game	21st - Maggie Lucas (2.8)
3-pt. Field Goal Pct.	24th - Maggie Lucas (.412)
Assist-to-TO Ratio	85th - Alex Bentley (1.55)

### SINGLE-GAME

3-pt. Field Goals	T-21st - vs. North Carolina (14)
Assists	T-1st - Alex Bentley (15 vs. North Carolina)
Blocked Shots	T-17th - Talia East (7 at S. Carolina)
Steals	T-12th - Alex Bentley (8 vs. Nebraska)
3-pt. FGs	T-22nd - Maggie Lucas (7 vs. Mich. St.)

NCAA Statistics as of 1/15



# THE LAST TIME PENN STATE...

## SCORING

**Player scored 20 points:** at Nebraska (24, Maggie Lucas; 23, Alex Bentley), 1/15/12  
**Player scored 25 points:** vs. Michigan State (33, Maggie Lucas), 1/7/12  
**Player scored 30 points:** vs. Michigan State (33, Maggie Lucas), 1/7/12  
**Player scored 35 points:** vs. Wisconsin (35, Kelly Mazzante), 3/2/03  
**Player scored 40 points:** vs. Minnesota (49, Kelly Mazzante), 12/28/01  
**Two players scored 20 points:** at Nebraska (24, Maggie Lucas; 23, Alex Bentley), 1/15/12  
**Three players scored 20 pts.:** at Nevada (26, Maggie Lucas; 23, Alex Bentley; 21, Zhaque Gray), 11/26/11  
**Two players scored 25 points:** at Boston College (28, Alex Bentley; 28, Maggie Lucas), 12/2/10  
**Player scored 25 points/3 consecutive games:** Kelly Mazzante (31, vs. Baylor, 12/9/03; 31, vs. Pittsburgh, 12/14/03; 29, Louisiana Tech, 12/21/03)  
**Five in double figures:** at Nebraska (24, Maggie Lucas; 23, Alex Bentley; 16, Zhaque Gray; 12, Nikki Greene; 12, Mia Nickson), 1/15/12  
**Six in double figures:** at Oakland (15, Alex Bentley; 16, Ariel Edwards; 16, Zhaque Gray; 13, Maggie Lucas; 10, Mia Nickson; 10, Gizelle Studevent; 10, Julia Trogele), 11/18/10  
**Seven in double figures:** at Oakland (15, Alex Bentley; 16, Ariel Edwards; 16, Zhaque Gray; 13, Maggie Lucas; 10, Mia Nickson; 10, Gizelle Studevent; 10, Julia Trogele), 11/18/10  
**PSU scored 50 points in a half:** at Nebraska (55, second half), 1/15/12  
**PSU scored 55 points in a half:** at Nebraska (55, second half), 1/15/12  
**PSU scored 60 points in a half:** vs. Northwestern (65 points, first half), 1/2/00  
**PSU scored 100 points:** vs. Wagner (W, 103-42), 12/18/11  
**PSU scored 100 points in Big Ten game:** vs. Illinois (W, 101-80), 2/15/01  
**PSU scored 100 points in a home game:** vs. Wagner (W, 103-42), 12/18/11  
**PSU scored fewer than 15 points in a half:** vs. Wisconsin (13, first half), 2/25/10  
**PSU scored fewer than 20 points in a half:** vs. Michigan State (18, first half), 2/10/11  
**PSU scored fewer than 40 points in a game:** vs. Wisconsin (L, 39-71), 2/25/10  
**PSU scored fewer than 50 points in a game:** vs. Purdue (L, 49-60), 2/24/11  
**PSU scored fewer than 50 points in a Big Ten game:** vs. Purdue (L, 49-60), 2/24/11  
**OPP scored 50 points in a half:** vs. Duke (50, second half), 11/18/05  
**OPP scored 100 points:** at Boston College (Lot, 113-104), 12/2/10  
**OPP scored fewer than 20 points in a game:** at Dickinson (W, 57-16), 3/6/71  
**OPP scored fewer than 30 points in a game:** vs. Virginia Tech (W, 66-28), 12/6/11  
**OPP scored fewer than 40 points in a game:** vs. Virginia Tech (W, 66-28), 12/6/11  
**OPP scored fewer than 50 points in a game:** at Wisconsin (W, 82-49), 1/12/12  
**OPP scored fewer than 50 points in a Big Ten game:** at Wisconsin (W, 82-49), 1/12/12

## FIELD GOAL SHOOTING

**Player made every shot from the field (min. 7):** vs. Michigan St. (Amanda Brown, 8-8), 1/25/07  
**PSU shot 55% in a game:** vs. Michigan (.554), 1/12/12  
**PSU shot 55% in consecutive games:** vs. Northwestern (.682), 3/2/96; vs. Ohio St. (.585), 3/3/96  
**PSU shot 60% in a game:** vs. Michigan State (.608), 2/23/96  
**PSU shot below 25% in a game:** at Alabama (.230), 12/19/96  
**PSU shot below 30% in a game:** vs. Nebraska (.294), 12/30/11  
**PSU shot below 35% in a game and won:** vs. Indiana (.321), 1/10/10  
**PSU shot 55% in a half:** at Nebraska (.606, second half), 1/15/12  
**PSU shot 60% in a half:** at Nebraska (.606, second half), 1/15/12  
**PSU shot 65% in a half:** vs. Virginia Tech (.714, second half), 12/6/11  
**PSU shot 70% in a half:** vs. Virginia Tech (.714, second half), 12/6/11  
**PSU shot 55% in both halves:** vs. Iowa (.552, first half, .565, second half), 1/26/06  
**PSU shot below 20% in a half:** at Indiana (.231, first half), 2/28/10  
**PSU shot below 25% in a half:** vs. Nebraska (.233, second half), 12/30/11

## THREE-POINT SHOOTING

**Player made every shot from the field (min. 4):** at Bucknell (4-4, Maggie Lucas), 12/21/11  
**Player made 4 three-pointers in a half:** vs. Michigan State (6, Maggie Lucas), 1/7/12  
**Player made 5 three-pointers in a half:** vs. Michigan State (6, Maggie Lucas), 1/7/12  
**Player made 6 three-pointers in a half:** vs. Michigan State (6, Maggie Lucas), 1/7/12  
**Player made 5 three-pointers in a game:** vs. Michigan State (7, Maggie Lucas), 1/7/12  
**Player made 6 three-pointers in a game:** vs. Michigan State (7, Maggie Lucas), 1/7/12  
**Player made 7 three-pointers in a game:** vs. Michigan State (7, Maggie Lucas), 1/7/12  
**Player made 8 three-pointers in a game:** at Minnesota (8, Kelly Mazzante), 12/28/01  
**Player attempted 10 three-pointers in a game:** vs. Michigan State (13, Maggie Lucas), 1/7/12  
**PSU made 10 three-pointers:** vs. North Carolina (14), 11/30/11  
**PSU did not make a three-pointer:** at South Carolina (0-6), 11/20/11  
**PSU attempted 20 three-pointers:** vs. Michigan State (24), 1/7/12  
**PSU shot 60% 3FG (min. 5 att.):** at Bucknell (8-13, .615), 12/21/11

## FREE THROW SHOOTING

**Player made every shot from FT line (min. 10):** vs. Illinois (Julia Trogele, 12-12), 3/5/11  
**PSU shot 90% (min. 10 att.):** vs. North Carolina (14-24, .929), 1/13/01  
**PSU shot below 50% (min. 10 att.):** vs. Holy Cross (9-20, .450), 11/28/09  
**PSU made 30 free throws:** vs. Pittsburgh (34), 11/11/07  
**PSU made fewer than five FTs:** at Michigan (3), 2/3/11  
**PSU attempted 40 free throws:** vs. Pittsburgh (41), 11/11/07  
**PSU attempted fewer than five FTs:** at Michigan (4), 2/3/11

## REBOUNDS

**Player had 15 rebounds:** vs. Nebraska (15, Nikki Greene), 12/30/11  
**Player had 20 rebounds:** vs. Indiana (20, Nikki Greene), 1/23/11  
**Two players with double-digit rebs.:** vs. Middle Tennessee St. (10, Nikki Greene; 10, Mia Nickson), 11/13/11  
**Three players had double-digit rebounds:** at Indiana (11, Nikki Greene; 10, Meredith Monroe; 11, Julia Trogele), 1/10/10  
**PSU had 60 rebounds:** vs. Indiana (61), 1/23/11  
**PSU had 50 rebounds:** vs. Wagner (54), 12/18/11  
**PSU had 20 or fewer rebounds:** vs. Michigan State (20), 1/19/03  
**OPP had 20 or fewer rebounds:** at Indiana (20), 2/13/11  
**PSU had 20 offensive rebounds:** vs. Nebraska (25), 12/30/11  
**PSU had 25 offensive rebounds:** vs. Nebraska (25), 12/30/11

## ASSISTS

**Player had 10 assists:** vs. North Carolina (15, Alex Bentley), 11/30/11  
**Player had 10 assists/consecutive games:** Helen Darling, three games (12 at LaSalle, 12/8/99; 11 vs. Auburn, 12/11/99; 10 vs. Clemson, 12/19/99)  
**Player had 15 assists:** vs. North Carolina (15, Alex Bentley), 11/30/11  
**PSU had 30 assists:** vs. St. Francis (Pa.) (32), 12/2/99  
**PSU had fewer than 10 assists:** vs. Nebraska (8), 12/30/11  
**PSU had fewer than 5 assists:** at Michigan State (4), 2/4/10

## BLOCKED SHOTS

**Player blocked 5 shots:** at South Carolina (7, Talia East), 11/20/11  
**Player blocked 6 shots:** at South Carolina (7, Talia East), 11/20/11  
**PSU blocked 10 shots:** vs. Purdue (11), 1/28/10  
**PSU blocked 0 shots:** vs. Purdue, 2/19/09

## STEALS

**Player had 7 steals:** vs. Nebraska (8, Alex Bentley), 12/30/11  
**Player had 8 steals:** vs. Nebraska (8, Alex Bentley), 12/30/11  
**PSU had 20 steals:** vs. Bucknell (21), 12/28/10

## TURNOVERS

**PSU committed 25 or more:** vs. Michigan State (25), 1/7/12  
**PSU committed 25 or more and won:** vs. Minnesota (26), 1/13/11  
**PSU committed 10 or fewer:** vs. North Carolina (10), 11/30/11  
**PSU committed 10 or fewer in consecutive games:** vs. Minnesota (9), 1/22/04; at Ohio St. (9), 1/25/04  
**OPP committed 25 or more:** vs. Nebraska (26), 12/30/11

## DOUBLE-DOUBLES

**Points & rebounds:** at Nebraska (Mia Nickson; 12 points, 11 rebounds), 1/15/12  
**Points & rebounds/consecutive games:** Nikki Greene (12 points, 10 rebounds vs. Ohio State, 1/30/11; 16 points, 14 rebounds at Illinois, 1/27/11)  
**Points & rebounds/3 consecutive games:** Amanda Brown (19 pts., 17 rebs. at Northwestern, 2/11/07; 14 pts., 10 rebs. vs. Minnesota, 2/15/07; 14 pts., 11 rebs. at Iowa, 2/18/07)  
**Points & rebounds/4 consecutive games:** Angie Potthoff (vs. Northwestern, 1/31/97; at Illinois, 2/2/97; vs. Michigan, 2/7/97; vs. Indiana, 2/9/97; vs. Iowa, 2/16/97; vs. Michigan State, 2/21/97)  
**Points & rebounds/5 consecutive games:** Angie Potthoff (vs. Northwestern, 1/31/97; at Illinois, 2/2/97; vs. Michigan, 2/7/97; vs. Indiana, 2/9/97; vs. Iowa, 2/16/97; vs. Michigan State, 2/21/97)  
**Points & assists:** vs. North Carolina (Alex Bentley; 15 points, 15 assists), 11/30/11  
**Points & assists/consecutive games:** Helen Darling (12 points, 12 assists at La Salle, 12/8/99; 10 points, 11 assists vs. Auburn, 12/11/99)  
**Two plyrs. w/double-doubles:** at Illinois (Nikki Greene, 16 pts., 14 rebs.; Julia Trogele, 19 pts., 11 rebs.), 1/27/11  
**Three players had double-doubles:** vs. Coppin State (Brienne O'Rourke, 12 points, 13 assists; Julia Trogele, 12 points, 13 rebounds; Janessa Wolff, 15 points, 10 rebounds), 11/29/08  
**15 points and 15 rebounds:** vs. Indiana (Mia Nickson; 25 points, 17 rebounds), 1/23/11  
**20 points and 10 rebounds:** vs. Indiana (Mia Nickson; 25 points, 17 rebounds), 1/23/11

## MARGIN OF VICTORY

**PSU won by 20-30 points:** at Nebraska (20), 1/15/12  
**PSU won by 20-30 points in a Big Ten game:** at Nebraska (20), 1/15/12  
**PSU won by 31-40 points:** at Wisconsin (33), 1/12/12  
**PSU won by 41-50 points:** vs. Wagner (61), 12/18/11  
**PSU won by 51+ points:** vs. Wagner (61), 12/18/11  
**PSU lost by 20-30 points:** at Ohio State (22), 2/17/11  
**PSU lost by 20-30 points in a Big Ten game:** at Ohio State (22), 2/17/11  
**PSU lost by 31+ points:** vs. Wisconsin (32), 2/25/10

## MISCELLANEOUS

**Led PSU in points/rebounds/assists:** Tyra Grant vs. Michigan (25 pts., 9 rebs., 4 asst.), 2/18/10  
**Hit "final seconds" (under 10 seconds) game-winning shot:** Julia Trogele at Illinois (9 sec.), 1/27/11  
**Hit "final minute" game-winning shot:** Nikki Greene vs. Indiana (40 seconds remaining), 2/13/11  
**Player played every minute:** at Illinois (Tyra Grant), 12/31/09  
**Player played more than 40 min.:** at Dayton (Alex Bentley, 46; Zhaque Gray, 44; Mia Nickson, 41), 11/12/10  
**Committed 10 or fewer fouls:** vs. Virginia Tech (9), 12/6/11  
**Committed 30 or more fouls:** vs. Iowa State (32), 11/25/11  
**PSU rallied from a 10-point deficit to win:** at Nebraska (down 11 at 12:20 in first half, won 93-73), 1/15/12  
**PSU rallied from a 15-point deficit to win:** at Indiana (down by 16 at 10:02 in 1st half, won 80-77), 2/13/11  
**PSU had a 5-game winning streak:** 5 games, 1/23/11 - 2/6/11  
**PSU had a 5-game losing streak:** 6 games, 1/28/10 - 2/14/10  
**PSU went undefeated at home:** 2004-05 season  
**PSU sold out the BJC:** Purdue, 2/29/04

## OVERTIME

**PSU played an OT game:** at Boston College (L, 113-104), 12/2/10  
**PSU won an OT game:** at Oakland (96-89), 11/18/10  
**PSU lost an OT game:** at Boston College (L, 113-104), 12/2/10  
**PSU played two or more OT games in a season:** 2010-11 season (three)  
**PSU won two or more OT games in a season:** 2010-11 season (two)

## RANKINGS

**Played the No. 1 team in the AP poll:** vs. Connecticut (L, 77-63), 12/14/08  
**Played the No. 1 team in the Coaches poll:** vs. Connecticut (L, 77-63), 12/14/08  
**Defeated the No. 1 team in the AP poll:** at Virginia (73-71), 1/3/91  
**Defeated Top 10 opponent:** vs. #11/10 Duke (86-84), 12/2/07  
**Defeated Top 10 opponent on the road:** at #7 Purdue (47-42), 1/2/04  
**Defeated Top 10 opponent by double digits:** vs. #10 Minnesota (81-68), 1/30/05  
**Played consecutive Top 10 teams:** at #2/3 Texas 11/14/04, at #6/6 Duke 11/19/04  
**Defeated Top 25 opponent:** at #15/23 Nebraska (93-73), 1/15/12  
**Defeated Top 25 opponent on the road:** at #15/23 Nebraska (93-73), 1/15/12  
**Defeated Top 25 opponent by double digits:** at #15/23 Nebraska (93-73), 1/15/12



## 2011-12 GAME-BY-GAME STARTING LINEUPS

Date	Opponent	Pt Guard	Guard	Guard	Forward	Center
11/5	BLOOMSBURG	Bentley	Gray	Lucas	Nickson	Greene
11/11	WASHINGTON ST.	Bentley	Gray	Lucas	Nickson	Greene
11/13	MIDDLE TENNESSEE	Bentley	Gray	Lucas	Nickson	Greene
11/17	at Delaware	Bentley	Gray	Lucas	Edwards	Greene
11/20	at South Carolina	Bentley	Gray	Lucas	Edwards	Greene
11/25	vs. Iowa State	Bentley	Gray	Lucas	Nickson	Greene
11/26	at Nevada	Bentley	Gray	Lucas	Nickson	Greene
11/30	NORTH CAROLINA	Bentley	Gray	Lucas	Edwards	Greene
12/3	at Texas Tech	Bentley	Gray	Lucas	Edwards	Greene
12/6	VIRGINIA TECH	Bentley	Gray	Lucas	Edwards	Greene
12/11	UMES	Bentley	Gray	Lucas	Edwards	Greene
12/18	WAGNER	Bentley	Gray	Lucas	Edwards	Greene
12/21	at Bucknell	Bentley	Gray	Lucas	Edwards	Greene
12/30	NEBRASKA	Bentley	Gray	Lucas	Nickson	Greene
1/2	at Wisconsin	Bentley	Gray	Lucas	Nickson	Greene
1/7	MICHIGAN STATE	Bentley	Gray	Lucas	Nickson	Greene
1/12	MICHIGAN	Bentley	Gray	Lucas	Nickson	Greene
1/15	at Nebraska	Bentley	Gray	Lucas	Nickson	Greene

**GRAY TO 700:** With 13 tallies against Wagner Dec. 18, senior guard **Zhaque Gray** reached the 700-point mark for her career. After scoring just 233 markers in her first two seasons in Happy Valley, Gray has become a solid third scorer for the Lady Lions alongside **Maggie Lucas** and **Alex Bentley**.

**PERFECT FROM THE FIELD:** Junior center **Nikki Greene** made consecutive last 11 shots from the field after going 5-for-5 in the second half against Virginia Tech and 6-for-6 versus UMES. The performance against the Lady Lions was just the second perfect effort from the field by Greene. Her other perfect outing was when she made her only shot from the field against Minnesota her freshman season (Dec. 6, 2009).

**THE NICKSON FACTOR:** Both the of Lady Lions' non-conference losses came without junior forward **Mia Nickson** in the lineup. In the eight games that PSU has played without Nickson, Penn State has been outbalanced or tied in rebounding in six contests and has a -0.4 rebounding margin in those games (41.2-41.6). The Lions were 6-2 without Nickson.

**GRABBING BOARDS:** Freshman **Tori Waldner** and sophomore **Ariel Edwards** each snared a career-high nine rebounds in the win over UMES Dec. 11. In addition to her nine caroms, Waldner tied her career-high two blocks and played a personal-best 21 minutes. Edwards also dished out a career-best three assists in the win.

**PSU 22ND IN AP POLL:** The Penn State Lady Lions moved back in to the Associated Press Top 25 after wins over Michigan and Nebraska. The Lady Lions are 22nd the Jan. 16 Associated Press poll. The Lady Lions peaked at No. 11 in the Nov. 14 poll, their highest ranking in the AP poll since they were fifth in the final 2004 poll. Additionally, Penn State made its first appearance in the preseason AP poll since the 2003-04 campaign.

**LIONS RANKED 21st IN COACHES POLL:** The Lady Lions move up four to 21st in the Jan. 17 ESPN/USA Today coaches poll. Penn State peaked at 12th, the highest ranking in the ESPN/USA Today Coaches' Poll for the Lady Lions since they were seventh in the final 2004 poll. Additionally, Penn State appeared in the preseason coaches' poll since starting the 2003-04 campaign eighth.

## 2012 RECRUITING CLASS

ESPN/HoopGurlz 34th-ranked recruit Candice Agee signed a National Letter of Intent (NLI) to play of the Lady Lions beginning in the 2012-13 season. The 6-6 center from Silverado High School in Victorville, Calif. signed her NLI in November in a ceremony at her high school. The signing of Agee and addition of transfer Dara Taylor, the Lady Lions have the 18th-ranked recruiting class by Dan Olson's Collegiate Girls Basketball Report.

"We are so excited to have Candice join the Penn State family," Washington said. "She is a very talented player and will complement our current post players in a lot of ways. She adds size, skill and athleticism to our front line, and she has a competitive streak that you love to see. She will definitely be an impact player for us on the court. In addition, she comes from a delightful family and her mom, dad and younger brother will also be wonderful additions to Lady Lion basketball."

Agee is the first commit in the Lady Lions' 2012 recruiting class, averaged 17.0 points, 10.9 rebounds, 7.3 blocks and 2.7 steals per game for the Hawks as a junior. The native of Victorville, Calif. is a highly touted recruit, ranking 34th by ESPN/HoopGurlz, 38th by Collegiate Girls Report, 17th by Blue Star Basketball and 40th by All-Star Girls Report and Peach State. The Hawks finished the season with a 22-6 record with a perfect conference record en route to the Desert Sky title.

Agee is a three-time Desert Sky League first team selection and was the league's Most Valuable Player as a junior. Additionally, she was the Daily Press Girls' Athlete of the Year. Agee begins her senior season with 991 career points, 649 rebounds and 390 blocks. was named to the All-Region first team as a junior. The center plays her AAU ball with West Coast Premier. Agee also plays volleyball at Silverado High School. Agee chose Penn State over Kansas State, Miami, UNLV, UCLA, USC, Tennessee, Vanderbilt, North Carolina, Georgetown, Georgia, Oregon, Oregon State, Washington and Washington State.

## LADY LIONS SEASON BESTS

Player	Points	Rebounds	Assists	Blocks	Steals
Alex Bentley	23 (3X)	5 (3X)	15 (N. Carolina)	1 (3X)	8 (Nebraska)
Talia East	8 (2X)	15 (S. Carolina)	2 (Bucknell)	7 (S. Carolina)	2 (Texas Tech)
Ariel Edwards	13 (N. Carolina)	9 (UMES)	3 (4X)	1 (4X)	3 (Texas Tech)
Zhaque Gray	25 (N. Carolina)	6 (2X)	6 (N. Carolina)	1 (S. Carolina)	2 (4X)
Nikki Greene	14 (2X)	15 (Nebraska)	3 (Michigan)	3 (3X)	4 (Nebraska)
Maggie Lucas	33 (Mich. St.)	9 (Wash. St.)	7 (Wisconsin)	1 (3X)	3 (3X)
Mia Nickson	12 (Nebraska)	14 (Wisconsin)	2 (3X)	1 (2X)	1 (4X)
Gizelle Studevent	8 (UMES)	3 (5X)	4 (Wagner)	-	2 (Va. Tech)
Tori Waldner	6 (2X)	10 (Wagner)	2 (2X)	3 (Wagner)	2 (2X)
Marisa Wolfe	9 (2X)	7 (Wagner)	1 (5X)	2 (UMES)	3 (N. Carolina)
Renee Womack	-	-	-	-	-

## PSU IN THE POLLS

	AP	Coaches
Preseason	12	14
Nov. 14/15	11	12
Nov. 21/22	17	16
Nov. 28/29	16	15
Dec. 5/6	17	18
Dec. 12/13	16	17
Dec. 19/20	16	16
Dec. 26/27	16	17
Jan. 2/3	22	19
Jan. 9/10	RV	25
Jan. 16/17	22	21





## NATIONAL POLLS

### ASSOCIATED PRESS (JAN. 16)

No.	Team (1st)	Rec.	Pts.	LW
1.	Baylor (39)	17-0	975	1
2.	Notre Dame	17-1	936	2
3.	Connecticut	14-2	887	3
4.	Stanford	15-1	865	4
5.	Duke	14-2	797	7
6.	Kentucky	16-2	739	9
7.	Rutgers	15-2	719	8
8.	Maryland	16-1	718	5
9.	Tennessee	13-4	667	6
<b>10.</b>	<b>Ohio State</b>	<b>17-1</b>	<b>630</b>	<b>11</b>
11.	Miami (Fla.)	15-3	606	13
12.	UW-Green Bay	15-0	500	14
<b>13.</b>	<b>Purdue</b>	<b>15-3</b>	<b>424</b>	<b>17</b>
14.	Texas A&M	11-4	413	12
15.	Georgia	15-3	403	19
<b>16.</b>	<b>Delaware</b>	<b>14-1</b>	<b>367</b>	<b>20</b>
<b>17.</b>	<b>Texas Tech</b>	<b>14-2</b>	<b>355</b>	<b>10</b>
18.	Louisville	14-4	342	16
19.	Georgetown	14-4	285	18
<b>20.</b>	<b>Nebraska</b>	<b>15-2</b>	<b>282</b>	<b>15</b>
21.	DePaul	15-3	249	21
<b>22.</b>	<b>PENN STATE</b>	<b>13-4</b>	<b>180</b>	<b>NR</b>
23.	Kansas State	13-3	132	NR
<b>24.</b>	<b>North Carolina</b>	<b>12-4</b>	<b>60</b>	<b>22</b>
25.	Vanderbilt	14-3	50	25

Others Receiving Votes: Gonzaga 41; LSU 20; Georgia Tech 10; **South Carolina 7**; Kansas 4; Oklahoma 2; St. Bonaventure 2; **Michigan State 2**; Hofstra 2; USC 1; St. Mary's 1; BYU 1; Princeton 1.

### ESPN/USA TODAY TOP 25 (JAN. 17)

No.	Team (1st)	Rec.	Pts.	LW
1.	Baylor (31)	17-0	775	1
2.	Notre Dame	17-1	741	2
3.	Connecticut	15-2	713	3
4.	Stanford	15-1	684	4
5.	Duke	14-2	634	6
6.	Kentucky	16-2	608	8
7.	Maryland	17-1	592	5
8.	Rutgers	15-2	548	9
9.	Tennessee	13-4	546	7
10.	Miami (Fla.)	15-3	501	11
11.	UW-Green Bay	15-0	442	12
<b>12.</b>	<b>Ohio State</b>	<b>17-1</b>	<b>430</b>	<b>13</b>
13.	Texas A&M	11-4	389	10
14.	Georgia	15-3	369	16
15.	Louisville	14-4	326	15
<b>16.</b>	<b>Delaware</b>	<b>14-1</b>	<b>284</b>	<b>18</b>
17.	Georgetown	14-4	265	17
<b>18.</b>	<b>Purdue</b>	<b>15-3</b>	<b>241</b>	<b>20</b>
19.	DePaul	15-3	237	19
<b>20.</b>	<b>Texas Tech</b>	<b>14-2</b>	<b>180</b>	<b>14</b>
<b>21.</b>	<b>PENN STATE</b>	<b>13-4</b>	<b>157</b>	<b>25</b>
22t.	Kansas State	13-3	86	NR
22t.	Vanderbilt	14-3	86	24
<b>24.</b>	<b>Nebraska</b>	<b>15-2</b>	<b>85</b>	<b>23</b>
25.	Gonzaga	15-3	63	22

Others receiving votes: Georgia Tech 27; Kansas 21; **North Carolina 13**; Middle Tennessee 10; Florida Gulf Coast 6; **South Carolina 6**; **Michigan 4**; Florida 3; Texas 2; USC 1.

\*Bold type indicates 2011-12 Penn State opponent.

## STATISTICAL LEADERS

Check here throughout the season for a breakdown of how many times a player leads Penn State in the following statistical categories. (First number is solo, the second is shared.)

<b>Points</b> .....	Lucas (10/2), Bentley (3/2), Gray (2)
<b>Rebounds</b> .....	Greene (5/2), East (2/1), Nickson (3/2), Edwards (1/1), Lucas (1/1), Waldner (1/1)
<b>Assists</b> .....	Bentley (14/1), Lucas (1), Studevent (1), Gray (-/1)
<b>Steals</b> .....	Bentley (10/2), Greene (2/1), Wolfe (1), Edwards (-/2), Gray (-/1), Lucas (1/2), East (-/1), Studevent (-/1)
<b>Blocks</b> .....	Greene (4/7), East (5/4), Waldner (-/3), Nickson (-/1), Lucas (-/2), Edwards (-/1), Bentley (-/1)
<b>FG % (min. 4 attempts)</b> .....	Bentley (2), Gray (2), Edwards (1), East (1/1), Greene (5/1), Studevent (1), Waldner (1), Lucas (2), Nickson (1)
<b>FT % (min 4 attempts)</b> .....	Bentley (4/3), Lucas (8/3), Gray (1/1), East (1)
<b>3FG % (min. 2 att.)</b> .....	Bentley (3/2), Lucas (5/4), Gray (4/1), Edwards (-/1)

## PENN STATE VS. THE BIG TEN

Illinois	Overall .....	27-14	Nebraska	Overall .....	3-1
	Big Ten Games .....	20-11		Big Ten Games .....	1-1
	Big Ten Tournament .....	4-2		Big Ten Tournament .....	0-0
	Home .....	15-2		Home .....	1-1
	Away .....	8-10		Away .....	1-0
	Neutral .....	4-2		Neutral .....	1-0
Indiana	Overall .....	27-9	Northwestern	Overall .....	29-7
	Big Ten Games .....	22-8		Big Ten Games .....	26-6
	Big Ten Tournament .....	3-1		Big Ten Tournament .....	2-0
	Home .....	15-2		Home .....	16-1
	Away .....	9-6		Away .....	11-5
	Neutral .....	3-1		Neutral .....	2-1
Iowa	Overall .....	23-17	Ohio State	Overall .....	31-21
	Big Ten Games .....	18-14		Big Ten Games .....	18-14
	Big Ten Tournament .....	2-1		Big Ten Tournament .....	4-5
	Home .....	13-5		Home .....	16-6
	Away .....	7-11		Away .....	11-9
	Neutral .....	3-1		Neutral .....	4-6
Michigan	Overall .....	27-9	Purdue	Overall .....	15-25
	Big Ten Games .....	25-7		Big Ten Games .....	13-19
	Big Ten Tournament .....	1-2		Big Ten Tournament .....	2-3
	Home .....	14-2		Home .....	9-8
	Away .....	12-5		Away .....	4-14
	Neutral .....	1-2		Neutral .....	2-3
Michigan State	Overall .....	24-12	Wisconsin	Overall .....	26-10
	Big Ten Games .....	21-11		Big Ten Games .....	23-10
	Big Ten Tournament .....	2-1		Big Ten Tournament .....	2-0
	Home .....	14-4		Home .....	15-2
	Away .....	8-7		Away .....	9-8
	Neutral .....	2-1		Neutral .....	2-0
Minnesota	Overall .....	22-11			
	Big Ten Games .....	20-11			
	Big Ten Tournament .....	1-0			
	Home .....	13-3			
	Away .....	8-8			
	Neutral .....	1-0			



# RECORD BOOK

## CAREER SCORING

1. 2,919 Kelly Mazzante, 2001-04
2. 2,253 Susan Robinson, 1989-92
3. 2,044 Tyra Grant, 2007-10
4. 2,025 Kahadeejah Herbert, 1982-85
5. 1,995 Tanisha Wright, 2002-05
6. 1,897 Suzie McConnell, 1985-88
7. 1,725 Angie Potthoff, 1993-97
8. 1,663 Lisa Shepherd, 1998-01
9. 1,619 Andrea Garner, 1997-00
10. 1,538 Tanya Garner, 1988-91
11. 1,514 Vicki Link, 1984-87
12. 1,466 Jess Strom, 2002-05
13. 1,463 Katina Mack, 1992-96
14. 1,428 Jen Bednarek, 1980-83
15. 1,328 Maren Walseth, 1998-01
16. 1,320 Cheryl Ellison, 1980-83
17. 1,295 Kathy Phillips, 1989-92
18. 1,294 Helen Darling, 1997-00
19. 1,288 Carol Walderman, 1981-83
20. 1,280 Louise Leimkuhler, 1980-82
21. 1,240 Tina Nicholson, 1993-96
22. 1,238 Kam Gissendanner, 2006-08
23. 1,233 Amanda Brown, 2004-07
24. 1,186 Bethany Collins, 1985-88
25. 1,162 Lisa Faloon, 1984-87
26. 1,142 Jess Brungo, 2001-04
27. 1,135 Sue Martin, 1976-80
28. **1,120 Alex Bentley, 2010-present**
29. 1,106 Missy Masley, 1992-95
30. 1,084 Brianne O'Rourke, 2005-09
31. 1,061 Nancy Kuhl, 1975-79
32. 1,024 Rashana Barnes, 1999-02
33. 1,022 Helen Holloway, 1991-94

## CAREER BLOCKS

1. 268 Kim Calhoun, 1993-96
2. 192 Mary Donovan, 1977-81
3. 189 Rashana Barnes, 1999-02
4. 185 Andrea Garner, 1997-00
5. 172 Amanda Brown, 2004-07
6. **152 Nikki Greene, 2010-present**

## CAREER REBOUNDS

1. 1,103 Kahadeejah Herbert, 1982-85
2. 1,070 Susan Robinson, 1989-92
3. 1,016 Andrea Garner, 1997-00
4. 943 Vicki Link, 1984-87
5. 918 Angie Potthoff, 1993-97
6. 820 Mag Strittmatter, 1975-78
7. 818 Cheryl Ellison, 1980-83
8. 808 Amanda Brown, 2004-07
9. 773 Mary Donovan, 1978-81
10. 757 Bethany Collins, 1985-88
11. 728 Rashana Barnes, 1999-02
12. 721 Missy Masley, 1992-95
13. 719 Louise Leimkuhler, 1980-83
14. 717 Kathy Phillips, 1989-92
15. 690 Julia Trogele, 2008-11
16. 672 Helen Darling, 1997-00
17. 649 Jess Brungo, 2001-04
18. 645 Maren Walseth, 1998-01
19. 621 Tanisha Wright, 2002-05
20. **598 Nikki Greene, 2010-present**
- 598 Helen Holloway, 1991-94

## CAREER THREE-POINT FIELD GOALS MADE

1. 357 Kelly Mazzante, 2001-04
2. 230 Lisa Shepherd, 1998-01
3. 191 Jess Strom, 2002-05
4. 179 Tyra Grant, 2007-10
5. 175 Tiffany Longworth, 1994-97
6. **159 Maggie Lucas, 2011-present**
7. **126 Zhaque Gray, 2009-present**

## CAREER ASSISTS

1. 1,307\* Suzie McConnell, 1984-88
2. 826 Tina Nicholson, 1993-96
3. 791 Helen Darling, 1997-00
4. 776 Jess Strom, 2002-05
5. 632 Annie Troyan, 1981-83
6. 567 Dana Eikenberg, 1989-92
7. 560 Brianne O'Rourke, 2006-09
8. 528 Nancy Kuhl, 1975-79
9. 484 Tanisha Wright, 2002-05
10. 411 Tanya Garner, 1988-91
11. **395 Alex Bentley, 2010-present**

## CAREER STEALS

1. 507 Suzie McConnell, 1985-88
2. 314 Helen Darling, 1997-00
3. 310 Jess Strom, 2002-05
4. 293 Tina Nicholson, 1993-96
5. 289 Kelly Mazzante, 2001-04
6. 267 Tanisha Wright, 2002-05
7. 257 Nancy Kuhl, 1975-79
8. 247 Corinne Gulas, 1980-81
9. 224 Kahadeejah Herbert, 1982-85
10. 223 Tanya Garner, 1987-91
11. 217 Carol Walderman, 1981-83
12. 215 Sue Martin, 1976-80
13. 196 Brianne O'Rourke, 2006-09
14. 187 Annie Troyan, 1981-83
15. 182 Dana Eikenberg, 1989-92
- 182 Vanessa Paynter, 1984-87
17. 180 Susan Robinson, 1989-92
18. 174 Angie Potthoff, 1993-97
19. **173 Alex Bentley, 2010-present**

**BENTLEY JOINS 1,000-POINT CLUB:** With 11 points versus Virginia Tech Dec. 6, junior guard **Alex Bentley** became the 33rd player in school history with 1,000 points. She is also the 15th junior to reach the milestone and first Lady Lion to accomplish the feat since Tyra Grant reached the 1,000-point plateau in 2008.

**STIFLING D:** The Lady Lions turned in a stellar defensive performance in a 66-28 win over Virginia Tech Dec. 6. The 28 points were the fewest scored by the Hokies in program history, surpassing the 33 points scored against Tennessee during the 1995 campaign. It is also the fewest points scored by a Penn State opponent since giving up 21 tallies to Rider on Nov. 14, 2010.

**STELLAR SHOOTING:** The Lady Lions shot a sizzling 71.4% (15-21) from the field in the second half in the win over Virginia Tech Dec. 6. It is the first time a Penn State team shot better than 70% in a half since shooting 70.4% against Ohio State in the Big Ten Tournament on March 4, 2007. It was also the best shooting effort for the Lady Lions in a half since connecting on 72.7% (16-22) in the first half against Northwestern on Jan. 4, 2007.

**BENTLEY NAMED TO TRIO OF WATCH LISTS:** Junior point guard **Alex Bentley** as been named to a pair of watch lists for National Player of the Year. Bentley is one of 25 players on the WBCA's Wade Trophy Watch List, is among the 30 players on the Wooden Award preseason chart and is on the Naismith Award watch list. Additionally, Maggie Lucas is also on the Naismith Award chart, making the Lady Lions one of 11 schools with multiple players on the list.

**TOPPLING TOP 15 FOE:** The Lady Lions shot 48.7% from the field and 58.3% from three-point range en route to a 103-84 win over #14/13 North Carolina in the Big Ten/ACC Challenge Nov. 30. It was the first win over a ranked opponent for Penn State since topping No. 14/13 Iowa (68-59) on Dec. 30, 2010.

**CONSECUTIVE 100s:** The Lady Lions reached 100 points for the second consecutive game with a 103-84 win over #14/13 North Carolina Nov. 30 and a 103-65 victory at Nevada Nov. 26. The last time Penn State scored 100 points in back-to-back games was in 1993 when the Lady Lions defeated Nebraska, 102-66, on Jan. 2 and Illinois, 101-71, on Jan. 7.

**SCHOOL RECORD FROM DEEP:** The Lady Lions connected on a school record 14 three-pointers in the 103-84 win over North Carolina Nov. 30. Penn State breaks the mark of 13 makes from beyond the arc, which was accomplished twice (at Dayton, 11/21/10; vs. St. Francis (12/2/99). The 14 threes by PSU also tie for the most by a North Carolina opponent.



## COURTSIDE WITH COQUESE

Courtside with Coquese, a show that follows the Penn State women's basketball team during the season and takes viewers on an all-access tour of the team. All episodes of Courtside with Coquese can also be viewed online at LadyLions.com. Episodes will also be available on Comcast Video On Demand on Comcast in Pennsylvania on Fridays.

### Courtside with Coquese Air Dates

Ep. 3	Thurs., 1/19	10:30 a.m.	BTN
	Thurs., 1/19	6:15 p.m.	PBS World
	Fri., 1/20	8:30 p.m.	WPSU
Ep. 4	Sat., 1/21	11 a.m.	WPSU
	Thurs., 1/26	10:30 a.m.	BTN
	Thurs., 1/26	6:15 p.m.	PBS World
Ep. 5	Fri., 1/27	8:30 p.m.	WPSU
	Sat., 1/28	11 a.m.	WPSU
	Thurs., 2/2	10:30 a.m.	BTN
Ep. 6	Thurs., 2/2	6:15 p.m.	PBS World
	Fri., 2/3	8:30 p.m.	WPSU
	Sat., 2/4	11 a.m.	WPSU
Ep. 7	Thurs., 2/9	10:30 a.m.	BTN
	Thurs., 2/9	6:15 p.m.	PBS World
	Fri., 2/10	8:30 p.m.	WPSU
Ep. 8	Sat., 2/11	11 a.m.	WPSU
	Thurs., 2/16	10:30 a.m.	BTN
	Thurs., 2/16	6:15 p.m.	PBS World
Ep. 9	Fri., 2/17	8:30 p.m.	WPSU
	Sat., 2/18	11 a.m.	WPSU
	Thurs., 2/23	10:30 a.m.	BTN
Ep. 9	Thurs., 2/23	6:15 p.m.	PBS World
	Fri., 2/24	8:30 p.m.	WPSU
	Sat., 2/25	11 a.m.	WPSU

**LUCAS INTO 6TH ON 3S LIST:** Sophomore guard **Maggie Lucas** moved into sixth place on Penn State's career three-pointers list with five triples versus North Carolina Nov. 30. She passed Tina Nicholson (1993-96) with her effort versus the Tar Heels.

### Career Three-Point Field Goals Made

- 357 Kelly Mazzante, 2001-04
- 230 Lisa Shepherd, 1998-01
- 191 Jess Strom, 2002-05
- 179 Tyra Grant, 2007-10
- 175 Tiffany Longworth, 1994-97
- 159 Maggie Lucas, 2011-pres.**

**BENTLEY'S DOUBLE VISION:** Junior **Alex Bentley** posted the first double-double of her career with 15 points and a personal-best 15 assists in the upset win over #14/13 North Carolina Nov. 30. Bentley's 15 assists are a career high and are tied for 11th on Penn State's single-game chart. The 15 helpers also tie the Bryce Jordan Center record, also set by Helen Darling versus Wisconsin on Jan. 29, 1999.

**BACK-TO-BACK 20s FOR ZHA ZHA:** Senior guard **Zhaque Gray** reached the 20-point for the second-straight game with 25 points on 6-of-10 shooting from long range in the win over #14/13 North Carolina Nov. 30. This is the second time in her career that she had back-to-back 20-point games with the first coming last year against Dayton (27) and Rider (22).

**HIGH SCORING HALF:** The Lady Lions scored 58 points in the first half of the win over #14/13 North Carolina, marking the first time the Lions have scored more than 55 points in a half since tallying 55 in the second half at Boston College on Dec. 2, 2010.

**LADYLIONS.COM:** LadyLions.com is a website dedicated exclusively to women's basketball at Penn State. The website gives the Lady Lions a chance to showcase the Penn State women's basketball program to potential recruits and fans. The site has been recently enhanced with the addition of a team blog, live chats and an "Ask Coach Quese" mailbag. The team blog has been up and running since August. The blog is regularly updated with entries from Lady Lion basketball players, coaches and staff members. The Lady Lions and the coaching staff interact with fans during a weekly live chat on Mondays from 12:15-1:15. The final new feature on LadyLions.com for this season is the Ask Coach Quese mailbag. Coach Quese will answer fan questions each Tuesday throughout the season. Questions can be submitted to Coach Quese by emailing them to askcoachquese@gmail.com. Be sure to include your name and hometown when submitting a question.

**STEALING A BENTLEY:** Junior guard **Alex Bentley** worked on her pick-pocketing skills in Nevada with a career-best five steals against the Wolf Pack in the Nugget Classic title game. She also nabbed four steals in the opening round win over Iowa State.

**NUGGET CROWN:** Penn State claimed the Nugget Classic title over Thanksgiving with wins over Iowa State (66-59) and Nevada (103-65). It is the 28th regular-season tournament title for PSU and the second this season (Lady Lion Classic). **Alex Bentley** was selected as the Tournament MVP after averaging 18.0 points, 4.5 assists and 4.5 steals in two games. She also shot 57.1% from the field. **Maggie Lucas** also collected All-Tournament team accolades as she averaged 22.0 points, 6.5 rebounds and 3.0 assists in the Nugget Classic.

**NEWEST 500 BOARD MEMBER:** Junior center **Nikki Greene** became the 27th player in school history to reach 500 rebounds with seven caroms against Iowa State on Nov. 25. She joins an elite list that it topped by Kahadeejah Herbert (1,103) and Susan Robinson (1,070).

**WALDNER ON THE BOARD:** Freshman post player **Tori Waldner** scored her first collegiate points with a 15-foot jumper at Iowa State Nov. 25. She finished the contest with five points and connected on both of her shots from the field. Waldner also blocked her first career shot.

**FOUL FACTOR:** The Lady Lions were charged with 32 fouls in the win over Iowa State, its most fouls in a game since they committed 30 fouls against UCSB Nov. 20, 2001.

**A BLOCK EAST:** Sophomore center **Talia East** rejected seven shots in the win at South Carolina Nov. 20. The seven blocks are tied for third on Penn State's single-game charts and are the most since **Nikki Greene** blocked seven shots against Purdue on Jan. 28, 2010. Additionally, East hauled in 15 rebounds against the Gamecocks, the most rebounds for a Penn State player since **Mia Nickson** had 15 caroms at Iowa on Feb. 6, 2011.

**THREES STRING STOPPED:** The Lady Lions were held without a three-pointer for the first time under Coquese Washington at South Carolina Nov. 20. The last time Penn State did not connect from downtown was Jan. 7, 2007 at Michigan, a string of 143 games.

**LATE RALLIES:** The Lady Lions used late runs to claim each of their first three wins this season. Penn State needed a 13-0 run against South Carolina (Nov. 20), a 19-0 run against Middle Tennessee (Nov. 13) and a 13-0 spurt versus Washington State (Nov. 11). In the final five minutes of their three wins, the Lady Lions are outscoring their opponents an average of 10-0 and holding them to an 0-for-26 effort from the field.

### LATE RALLIES

Team	Run	Length	Deficit
Washington State	13-0	6:53	1
Middle Tennessee	19-0	6:45	3
South Carolina	13-0	5:22	8

**EAST HAULS IN BOARDS:** **Talia East** continued her solid play with another career-best rebounding effort at Delaware Nov. 17. The sophomore center snared a personal-best 11 rebounds for the first double figure rebounding performance of her career. She also added eight rebounds and a pair of blocked shots versus the Blue Hens.

**PAIR REACHES 600 POINTS:** Senior guard **Zhaque Gray** and sophomore guard **Maggie Lucas** both reached the 600-point plateau for their careers at Delaware Nov. 17. Gray's 15 points brought her career total to 601, while Lucas' 12 tallies gave her an even 600 markers for her career. Lucas reached 600 points in 38 games, making her the third-fastest player in school history to reach 600 points (Kelly Mazzante and Susan Robinson, 33 games).

**EDWARDS GETS THE NOD:** Sophomore **Ariel Edwards** earned her first career start at Delaware Nov. 17 in place of an ailing Mia Nickson. Edwards responded with a solid eight-point, eight-rebound night against the Blue Hens. The eight caroms tie her career high set last year against Hartford in the Caribbean Challenge.





# COQUESE WASHINGTON

**Head Coach  
5th Season**

## PENN STATE LADY LION BASKETBALL

Coquese Washington, who helped lead Notre Dame to the 2001 NCAA Championship, was introduced as the fifth head coach of the Penn State women's basketball program on April 23, 2007. Washington is the first female African-American head coach in Penn State history.

The Lady Lions returned to the national stage in Washington's fourth year with a second-place finish in the Big Ten regular season standings, a runner-up finish in the Big Ten Tournament and a berth in the NCAA Tournament. Penn State tallied its most victories since the 2003-04 campaign and 23rd 20-win season with a 25-10 overall record and an 11-5 mark in conference play. The Lady Lions worked their way back to the "Big Dance" for the first time since 2004-05 and advanced to the second round for the first time in seven years with a win over Dayton in the first round in front of a raucous Bryce Jordan Center crowd. After a remarkable season in the books and steps toward returning the Lady Lions to national prominence, Washington was selected as the 2011 BCA Female Coach of the Year.

Penn State was a dominating force from the perimeter as the Lady Lions tied the school record with 228 three-pointers and led NCAA Division I from deep with a .415 three-point field goal percentage. Pacing the Lady Lions from downtown was Maggie Lucas, who broke the Big Ten three-pointers record with 112 triples to go along with a .426 shooting percentage. For her efforts, Lucas was selected as the Big Ten Freshman of the Year and Big Ten Sixth Player of the Year while breaking the Penn State freshman season scoring record (552 pts.). Additionally with Washington's guidance, Alex Bentley became the 11th different player in school history to take home first team All-Big Ten accolades after finishing second in the conference in assists. After outstanding seasons, both Lucas and Bentley were invited to the USA Basketball World University Games Trials.

Washington's third season saw the Lady Lions return to the postseason for the first time since 2004-05 with a WNIT berth. The Lions earned their most overall wins (17) and conference wins (8) since the 2004-05 campaign en route to a sixth-place finish in the Big Ten.

Washington led Tyra Grant to back-to-back first team All-Big Ten honors and *Associated Press* Honorable Mention All-America accolades in her senior season. Grant capped off her career by being selected by the Phoenix Mercury

in the second round of the WNBA Draft. The four-time all-conference pick left Penn State third in school history in scoring with 2,044 points. Washington also guided Bentley to third team All-Big Ten honors, as well as a unanimous selection to the Big Ten All-Freshman team.

That year, Washington and the Lady Lions garnered one of the top recruiting classes in the country, finishing 22nd on the ESPN/HoopGuriz recruiting chart. The class included just the second McDonald's High School All-American in Penn State history in Lucas, WBCA High School All-American Ariel Edwards and All-State selection Talia East.

In Washington's second season, the Lady Lions moved up three positions in the Big Ten standings, finishing in a tie for seventh place. Under Washington's guidance in 2008-09, Grant became the 10th different player in school history to earn first team All-Big Ten honors.

The Coquese Washington era started in style as the Lady Lions won their first three games of the season, including a win over #20/21 Pittsburgh, to claim the WBCA Classic title. Just three weeks later, Washington guided the Lady Lions to their first ever win over perennial contender and 10th-ranked Duke in the inaugural Big Ten/ACC Challenge, a game that was televised on ESPN2.

Washington came to Happy Valley after eight seasons as an associate head coach and assistant coach under Muffet McGraw at Notre Dame, her alma mater. During Washington's eight years on the bench, Notre Dame amassed a 188-69 record with eight NCAA Tournament appearances, including four Sweet Sixteen runs and a National Championship in 2001.

Washington was a four-year starting point guard for Notre Dame under McGraw and was the team captain on Notre Dame's first-ever NCAA Tournament team. She was a two-time All-Midwestern Collegiate Conference (MCC) selection and led Notre Dame to three MCC Tournament titles.

The epitome of a student-athlete, Washington graduated from Notre Dame in 1992, a full year ahead of schedule, with a bachelor's degree in history. She went on to attain "Double Domer" status in 1997 after earning her Juris Doctorate from the Notre Dame Law School.

In addition to assisting with the efforts of the WBCA Pink Zone at Penn State to raise money and awareness for breast cancer, Washington created Coquese's Drive for the

## THE WASHINGTON FILE

### COACHING RESUME

2007-pres. - Head Coach, Penn State University  
 2011-pres. - President, NCAA Women's Basketball Issues Committee  
 2010-pres. - Treasurer, WBCA Executive Committee  
 2008-pres. - Member, WBCA Board of Directors  
 2009-pres. - Member, USA Basketball Women's Junior National Committee  
 2005-07 - Assoc. Head Coach, Univ. of Notre Dame  
 1999-05 - Assistant Coach, Univ. of Notre Dame

### PLAYING EXPERIENCE

2002-03 - WNBA's Indiana Fever  
 2000-02 - WNBA's Houston Comets  
 1998-99 - WNBA's New York Liberty  
 1997-98 - ABL's Portland Power  
 1989-93 - University of Notre Dame

### EDUCATION

Notre Dame '92, B.A. History  
 Notre Dame Law School '97, Juris Doctorate

### NOTABLE

- ❖ 2011 BCA Female Coach of the Year.
- ❖ Helped guide Notre Dame to the 2001 NCAA Championship.
- ❖ Eight consecutive recruiting classes at Notre Dame ranked in the Top 25 nationally.
- ❖ Notre Dame had four Sweet Sixteen appearances and eight NCAA Tournament berths during Washington's tenure.
- ❖ Point guard for the 2000 WNBA Champion Houston Comets.
- ❖ Founding President, WNBA Players Association, 1999-01.
- ❖ Actively negotiated first two collective bargaining agreements for the WNBPA.
- ❖ Inducted into the Greater Flint Area Sports Hall of Fame in Dec. 2009.

### FAMILY

Husband: Raynell Brown  
 Children: Quenton (6), Rhaiyna (2)

Women's Resource Center. The first four Coquese's Drives raised more than \$56,869 for the Centre County Women's Resource Center to aid in the fight against domestic violence.

Washington is currently serving on the 29-member WBCA Board of Directors, where she is the Treasurer of the Executive Committee. Washington is also a member of the USA Basketball Women's Junior National Team Selection Committee.

A native of Flint, Mich., Washington and her husband, Raynell Brown, have a son, Quenton (6), and a daughter, Rhaiyna (2). They reside in Port Matilda, Pa.

### Washington's Coaching Record vs. Opponents

Arizona ..... 1-0	DePaul.....0-1	Indiana..... 3-4	Monmouth ..... 1-0	Prairie View A&M ..... 1-0	Wagner ..... 1-0
Army ..... 1-0	Drexel ..... 2-1	Iowa ..... 4-5	Nebraska ..... 1-1	Purdue ..... 1-7	Washington State ..... 1-0
Boston College.....0-1	Duke ..... 1-0	Iowa State..... 1-0	Nevada ..... 1-0	Rider ..... 1-0	Wisconsin ..... 3-5
Bucknell ..... 5-0	Florida State ..... 0-1	Maine ..... 1-0	NJIT ..... 1-0	South Carolina..... 4-1	UW-Green Bay ..... 0-1
Buffalo ..... 1-0	Georgetown ..... 1-0	UMES ..... 1-0	North Carolina ..... 1-0	Stony Brook ..... 1-0	Xavier ..... 0-1
Charlotte ..... 1-0	Georgia Tech ..... 0-1	Michigan ..... 6-3	Northwestern ..... 5-1	Syracuse ..... 0-1	
Connecticut ..... 0-1	Hartford ..... 1-0	Michigan State..... 2-6	Oakland ..... 2-0	Texas A&M ..... 0-1	
Coppin State..... 1-0	Hofstra ..... 0-1	Middle Tennessee ..... 1-0	Ohio State..... 1-6	Texas Tech ..... 1-1	
Dayton ..... 2-1	Holy Cross ..... 1-0	Minnesota ..... 2-6	Old Dominion..... 0-1	Utah ..... 1-0	
Delaware ..... 1-1	Illinois ..... 7-3	Mississippi ..... 1-0	Pittsburgh ..... 2-1	Virginia Tech..... 1-0	





# #2 Dara Taylor

Jr. \* G \* 5-8 \* Wilmington, Del./Caraval Acad. (Maryland)

### 2011-12 Season Notes:

Will sit out the 2011-12 season due to NCAA Transfer policy.

### 2010-11 (at Maryland):

Had two points, two steals and four assists in the NCAA Tournament game against Georgetown (3/22) ... Tallied three points, three steals and two assists in the NCAA Tournament win over St. Francis (Pa.) ... Made both of her shots from the field en route to four points and two steals versus North Carolina State (2/6) ... Registered six points, four steals and four assists in the win over Saint Joseph's (1/2) ... Dished out four assists against La Salle (12/28) ... Notched five dimes against Delaware State (12/19) ... Was 3-for-4 from the field and finished with seven points and three assists in the win over UMBC (12/10) ... Accounted for four assists and four steals at Purdue (12/2) ... Tallied six points, five assists, four rebounds and a steal in the win over East Carolina (11/26) ... Recorded five points and five assists in the victory over Towson (11/18) ... Opened the season with two points, three assists and a steal in the win over Monmouth (11/13).

### 2009-10 (at Maryland)

Broke Maryland's freshman season assists record with 171 helpers .... Recorded more than six assists in 15 of 27 starts ... Finished third in the ACC in assists and sixth in assist-to-turnover ratio (1.2) ... Grabbed career-high eight rebounds in WNIT Second Round win over East Carolina (3/21) ... Contributed 10 points in ACC Tournament win over North Carolina (3/4) ... Netted a career-high 17 points on 7-of-12 shooting against Clemson (2/14) ... Made 7-of-10 free throws to help clinch the win over Wake Forest (2/11) ... Finished the game with nine points and two steals against the Demon Deacons ... Accounted for nine assists at Virginia Tech (1/28) ... Had six points, eight assists and seven rebounds versus Boston College (1/14) ... Notched first career double-double with 10 points and career-high 11 assists at No. 19/21 Virginia (1/11) ... Also added three steals and four rebounds versus the Cavaliers ... Dished out eight assists versus Saint Joseph's (1/3) ... Notched nine points, eight assists and four rebounds versus UNC-Wilmington (12/29) ... Recorded nine points and three rebounds versus Minnesota (12/3) in the Big Ten/ACC Challenge ... Had six points and six assists in the win over Howard (11/27) ... Accounted for 11 points with seven assists in a win over Samford (11/24) ... Tallied nine points, two steals and an assist in her first career start at Mississippi State (11/22) ... Chipped in six points, nine assists and five rebounds against Old Dominion (11/19) ... Had 10 points with five assists in win against New Hampshire (11/16) ... Posted nine points, five assists and career-high six steals in collegiate debut against North Carolina Central (11/14).

### HIGH SCHOOL

McDonald's High School All-American ... 52nd-ranked player by ESPN/HoopGurlz out of Caravel Academy ... 2009 Delaware Gatorade Player of the Year ... Two-time All-State selection with a first team berth as a senior and a second team nod as a junior ... 1,192 career points at Caravel Academy ... Averaged 17.8 points, 5.5 assists, 5.0 rebounds and 5.0 steals per game as a senior ... Led the Buccaneers to the Delaware State Quarterfinals as a senior ... Named to the DelawareGirlsBasketball.com All-Decade (2000-09) visitor's poll first team ... Selected to the Delaware's Finest third team All-Decade (2000-09) team ... Played AAU for the Philly Belles alongside Lady Lion teammate Maggie Lucas ... AAU team won the 2007 USJN in Cincinnati and were the 15u and 16u Mid-Atlantic Champions ... Also participated in track & field at Caravel Academy, finishing fifth in the state in the high jump, long jump and 4x100 relay in 2009.

### PERSONAL

Full name is Dara Nailah Taylor ... Born January 16, 1991 in Manhattan, New York ... Parents are Jo and Ron Taylor ... Has one brother, Ron Jr. (17) ... Majoring in communication, arts and sciences.

### CAREER HIGHS

Points.....	17 vs. Clemson (2/14/10)
Rebs. ....	8 vs. East Carolina (3/21/10)
Assists .....	11 at American (12/20/09)
.....	11 at Virginia (1/11/10)
Steals.....	6 vs. N.C. Central (11/14/09)
Blocks.....	1 (3x) last at St. Joseph's 1/2/11
Minutes .....	38 at American (12/20/09)
FGM.....	7 vs. Clemson (2/14/10)
FGA.....	14 at N.C. State (1/17/10)
FG% .....	1.000 (3x)
.....	last vs. N.C. State (2-2) (2/6/11)
3FGM.....	2 vs. Samford (1/24/09)
.....	2 vs. Clemson (2/14/10)
3FGA .....	5 at Mississippi State (11/22/09)
3PT % .....	1.000 (1-1) at Longwood (1/31/10)
.....	1.000 (1-1) vs. Providence (3/25/10)
FTM .....	7 at Wake Forest (2/11/10)
FTA .....	10 at Wake Forest (2/11/10)
.....	10 vs. North Carolina (3/4/10)
FT % .....	1.000 (7x)
.....	last vs. Georgetown (2-2) (3/22/11)
Career Double-Doubles .....	1





# #5 Talia East

So. \* F/C \* 6-3 \* Philadelphia, Pa./The Friends School

## 2011-12 Highlights:

- ♦ Had arguably the best game of her career, registering in personal bests of 15 rebounds and seven blocks to go along with six points at South Carolina (11/20).
- ♦ Her seven blocks at South Carolina are tied

for the third on the PSU single-game charts and are the most for a Lady Lion since Nikki Greene blocked seven shots against Purdue on Jan. 28, 2010.

## 2011-12 Season Notes:

- ♦ Grabbed seven rebounds to go along with four points at Wisconsin (1/2).
- ♦ Chipped in six points, eight rebounds, a career-best two assists and three blocks in the win at Bucknell (12/21).
- ♦ Equalled her career high with eight points to compliment six rebounds, two blocks and an assists in the win over Wagner (12/18).
- ♦ Snared five rebounds in eight minutes against UMES (12/11).
- ♦ Had a solid night off the bench with six points, three rebounds, a block and a steal in the win over Virginia Tech (12/6).
- ♦ Accounted for six points, eight rebounds, a blocked shot and a career-high two steals at #19/25 Texas Tech (12/3).
- ♦ Registered a career-best eight points on 4-of-6 shooting to go along with six rebounds in the Nugget Classic Championship game win over Nevada (11/26).
- ♦ Turned in her first career double-digit rebounding performance as she hauled in a personal-best 11 caroms at Delaware (11/17). Also equalled her career scoring mark with six points against the Blue Hens.
- ♦ Notched two points, six rebounds and a blocked shot in the Lady Lion Classic Championship game win over Middle Tennessee (11/13).
- ♦ Had a career night in the season-opening win over Washington State (11/11) with personal bests of six points via a 3-for-3 shooting effort and eight rebounds.
- ♦ Tallied four points, five rebounds and two steals in the exhibition win over Bloomsburg (11/5).

## CAREER HIGHS

Points	8 vs. Wagner (12/18/11)
Rebs.	15 at South Carolina (11/20/11)
Assists	2 at Bucknell (12/21/11)
Steals	2 at Texas Tech (12/3/11)
Blocks	7 at South Carolina (11/20/11)
Minutes	29 at South Carolina (11/20/11)
FGM	4 at Nevada (11/26/11)
FGA	7 at Bucknell (12/21/11)
FTM	7 vs. Wagner (12/18/11)
FG%	1.000 (7x)
	last vs. Michigan (1-1) (1/12/12)
3FGM	n/a
3FGA	n/a
3PT %	n/a
FTM	4 vs. Nebraska (12/30/11)
FTA	4 (3x) last vs. Nebraska (12/30/11)
FT %	4 (3x)
	last vs. Nebraska (4-4) (12/30/11)
Career Double-Doubles	n/a

## GAME-BY-GAME

	P	R	B
WASH. STATE	6	8	2
MID. TENN.	2	6	1
at Delaware	6	11	2
at South Carolina	6	15	7
vs. Iowa State	0	3	0
at Nevada	8	6	0
NORTH CAROLINA	3	4	0
at Texas Tech	6	8	1
VIRGINIA TECH	6	3	1
UMES	2	5	0
WAGNER	8	6	2
at Bucknell	6	8	3
NEBRASKA	4	4	1
at Wisconsin	4	7	0
MICHIGAN ST.	0	0	2
MICHIGAN	2	1	0
at Nebraska	0	4	3
at Illinois			
IOWA			
at Michigan			
at Michigan State			
INDIANA			
at Minnesota			
WISCONSIN			
at Northwestern			
at Purdue			
OHIO STATE			
MINNESOTA			

## East vs. the Big Ten

Team	G	Pts.-Avg.	Rebs.-Avg.	Assts.-Avg.	Blks.-Avg.
Illinois	3	0-0.0	4-1.3	0-0.0	0-0.0
Indiana	2	4-2.0	2-1.0	0-0.0	0-0.0
Iowa	-	-	-	-	-
Michigan	2	2-1.0	1-0.5	0-0.0	0-0.0
Michigan State	2	2-1.0	0-0.0	0-0.0	2-1.0
Minnesota	-	-	-	-	-
Nebraska	2	4-2.0	8-4.0	0-0.0	4-2.0
Northwestern	2	2-1.0	4-2.0	0-0.0	0-0.0
Ohio State	3	2-0.7	2-0.7	0-0.0	2-0.7
Purdue	2	1-0.5	4-2.0	0-0.0	0-0.0
Wisconsin	1	4-4.0	7-7.0	0-0.0	0-0.0





# #12 Zhaque Gray

Sr. \* G \* 5-8 \* Chicago, Ill./Prep John Hope

## 2011-12 Highlights:

- Named to Lady Lion Classic All-Tournament team after averaging 11.0 points, 5.0 rebounds in two games.
- Seventh on Penn State's career three-pointers chart (126).

## CAREER HIGHS

Points.....	27 at Dayton (11/12/10)
Rebs. ....	6 (3x) last at Nebraska (1/15/12)
Assists .....	6 vs. North Carolina (11/30/11)
Steals.....	3 vs. Bucknell (12/28/10)
.....	3 vs. Michigan State (12/21/08)
Blocks.....	1 at South Carolina (11/20/11)
.....	1 at Iowa (2/6/11)
Minutes.....	44 at Dayton (11/12/10)
FGM.....	10 at Dayton (11/12/10)
FGA.....	17 at Dayton (11/12/10)
FG% .....	1.000 (3-3) at Indiana (2/13/11)
.....	1.000 (4-4) at Michigan (2/9/09)
3FGM.....	7 at Dayton (11/12/10)
3FGA.....	11 at Dayton (11/12/10)
3PT%.....	1.000 (5x)
.....	last vs. Iowa State (2-2) (11/25/11)
FTM.....	5 at Ohio State (2/17/11)
FTA.....	6 at Ohio State (2/17/11)
FT% .....	1.000 (24x)
.....	last vs. Michigan (2-2) (1/12/12)
Career Double-Doubles .....	n/a

## GAME-BY-GAME

	P	R	A
WASH. STATE	7	4	1
MID. TENN.	15	6	2
at Delaware	15	3	4
at South Carolina	6	4	2
vs. Iowa State	14	3	2
at Nevada	21	4	3
NORTH CAROLINA	25	4	6
at Texas Tech	8	2	3
VIRGINIA TECH	6	5	2
UMES	8	0	1
WAGNER	13	3	3
at Bucknell	8	0	2
NEBRASKA	0	2	1
at Wisconsin	8	1	1
MICHIGAN ST.	8	4	1
MICHIGAN	15	4	1
at Nebraska	16	6	0
at Illinois			
IOWA			
at Michigan			
at Michigan State			
INDIANA			
at Minnesota			
WISCONSIN			
at Northwestern			
at Purdue			
OHIO STATE			
MINNESOTA			

## 2011-12 Season Notes:

- Was 7-for-11 from the field on the way to 16 points and a career-high six rebounds in the win at Nebraska (1/15).
- Contributed 15 points on 6-of-12 shooting to go along with four rebounds and an assists versus Michigan (1/12).
- Registered eight points and four rebounds versus Michigan State (1/7).
- Recorded eight points at Wisconsin (1/2).
- Had eight points in the win at Bucknell (12/21).
- Scored 13 points to go along with three rebounds, three assists and a pair of steals in the win over Wagner (12/18).
- Chipped in eight points and an assist against UMES (12/11).
- Tallied eight points and three assists at Texas Tech (12/3).
- Notched back-to-back 20-point games for the second time in her career with 25 points, four rebounds and a career-high six assists in the upset win over #14/13 North Carolina (11/30).
- Accounted for 21 points, four rebounds, three assists and two steals in the win at Nevada (11/26).
- Was 5-for-7 from the field, including makes on both of her three-point attempts, en route to 14 points in the win over Iowa State (11/25).
- Surpassed the 600-point plateau for her career with 15 tallies at Delaware (11/17).
- Had a team-best 15 points to go along with six rebounds and two assists in the Lady Lion Classic title game win over Middle Tennessee (11/13).
- Registered seven points and four rebounds against Washington State (11/11).

## Gray vs. the Big Ten

Team	G	Pts.-Avg.	Rebs.-Avg.	Assts.-Avg.	Stls.-Avg.
Illinois	8	40-5.0	11-1.4	6-0.8	3-0.4
Indiana	6	39-6.5	9-1.5	6-1.0	2-0.3
Iowa	6	28-4.7	12-2.0	5-0.8	1-0.2
Michigan	6	47-7.8	10-1.7	7-1.2	0-0.0
Michigan State	6	15-2.5	12-2.0	2-0.3	5-0.8
Minnesota	5	21-4.2	5-1.0	4-0.8	0-0.0
Nebraska	2	16-8.0	8-4.0	1-0.5	0-0.0
Northwestern	4	37-9.3	8-2.0	6-1.5	1-0.3
Ohio State	5	37-7.4	8-1.6	7-1.4	3-0.6
Purdue	7	33-4.7	5-0.7	3-0.4	1-0.1
Wisconsin	6	37-6.2	8-1.3	1-0.2	3-0.5

Five-Time Big Ten Champions • Two-Time Big Ten Tournament Champions • 2000 NCAA Final Four • 22 NCAA Tournament Appearances





# #15 Renee Womack

Sr. \* G \* 5-10 \* Lansdale, Pa./Methacton

## CAREER HIGHS

Points ..... 10 at Wisconsin (1/2/11)  
 Rebs. .... 8 (2x) last vs. Iowa (12/28/09)  
 Assists ..... 4 vs. Iowa (12/28/09)  
 Steals ..... 4 vs. Bucknell (12/28/10)  
 Blocks ..... 3 vs. Iowa (12/28/09)  
 Minutes ..... 30 vs. Iowa (12/28/09)  
 FGM ..... 4 at Wisconsin (1/2/11)  
 ..... 4 vs. Stony Brook (11/19/08)  
 FGA ..... 8 vs. Army (12/8/10)  
 ..... 8 vs. Stony Brook (11/19/08)  
 FG% ..... 1.000 (8x)  
 ..... last vs. Illinois (2-2) (3/5/11)  
 3FGM ..... 1 (7x) last at Indiana (2/13/11)  
 3FGA ..... 2 (4x) last at Indiana (2/13/11)  
 3PT% ..... 1.000 (3x)  
 ..... last vs. Illinois (2-2) (1/16/11)  
 FTM ..... 3 at Dayton (11/12/10)  
 FTA ..... 4 at Ohio State (2/17/11)  
 ..... 4 at Dayton (11/12/10)  
 FT% ..... 1.000 (4x)  
 ..... last at Iowa (2-2) (2/6/11)  
 Career Double-Doubles ..... n/a

## GAME-BY-GAME

	P	R	A
WASH. STATE	DNP		
MID. TENN.	DNP		
at Delaware	DNP		
at South Carolina	DNP		
vs. Iowa State	DNP		
at Nevada	DNP		
NORTH CAROLINA	DNP		
at Texas Tech	DNP		
VIRGINIA TECH	DNP		
UMES	DNP		
WAGNER	DNP		
at Bucknell	DNP		
NEBRASKA	DNP		
at Wisconsin	DNP		
MICHIGAN ST.	DNP		
MICHIGAN	DNP		
at Nebraska	DNP		
at Illinois			
IOWA			
at Michigan			
at Michigan State			
INDIANA			
at Minnesota			
WISCONSIN			
at Northwestern			
at Purdue			
OHIO STATE			
MINNESOTA			

## Womack vs. the Big Ten

Team	G	Pts.-Avg.	Rebs.-Avg.	Assts.-Avg.	Stls.-Avg.
Illinois	7	15-2.1	14-2.0	4-0.6	5-0.7
Indiana	3	3-1.0	6-2.0	0-0.0	1-0.3
Iowa	5	16-3.2	23-4.6	5-1.0	7-1.4
Michigan	2	7-3.5	5-2.5	0-0.0	3-1.5
Michigan State	3	2-0.7	1-0.3	1-0.3	1-0.3
Minnesota	3	2-0.7	2-0.7	1-0.3	0-0.0
Nebraska	-	-	-	-	-
Northwestern	4	6-1.5	7-1.8	2-0.5	2-0.5
Ohio State	4	7-1.8	6-1.5	3-0.8	1-0.3
Purdue	4	6-1.5	2-0.5	1-0.3	3-0.8
Wisconsin	3	13-4.3	7-2.3	0-0.0	3-1.0







# #20 Alex Bentley

Jr. \* G \* 5-7 \* Indianapolis, Ind./Ben Davis

## 2011-12 Highlights:

- ◆ Became the 33rd Lady Lion and 15th junior to score 1,000 career points with 11 tallies against Virginia Tech (12/6).
- ◆ On Wade Trophy, Wooden Award and Naimsmith Award watch lists.
- ◆ Big Ten Preseason Player of the Year (coaches and media).
- ◆ Selected as Nugget Classic Tournament MVP after averaging 18.0 points, 4.5 assists and 4.5 steals in two games.
- ◆ Named to Lady Lion Classic All-Tournament team after averaging 15.0 points, 3.0 rebounds, 4.0 assists and 2.5 steals in two games.
- ◆ 11th on Penn State's career assists list (395).
- ◆ 28th on Penn State's career scoring chart (1,120).
- ◆ 19th on Penn State's career steals list (173).

## CAREER HIGHS

Points	..... 28 at Boston College (12/2/10)
Rebs	..... 7 vs. Iowa (12/28/09)
Assists	..... 15 vs. North Carolina (11/30/11)
Steals	..... 8 vs. Nebraska (12/30/11)
Blocks	..... 2 (3X) last vs. Drexel (12/21/10)
Minutes	..... 46 at Dayton (11/12/10)
FGM	..... 12 vs. Dayton (3/19/11)
FGA	..... 28 vs. Dayton (3/19/11)
FG%	..... 833 (5-6) at Illinois (12/31/09)
3FGM	..... 4 at Purdue (2/14/10)
3FGA	..... 6 (3x) last at Purdue (2/14/10)
3PT%	..... 1.000 (6x)
..last vs.	Washington State (2-2) (11/11/11)
FTM	..... 10 at Northwestern (1/6/11)
FTA	..... 12 at Northwestern (1/6/11)
FT%	..... 1.000 (23x)
.....last at	Nebraska (5-5) (1/15/12)
Career Double-Doubles	..... 1

## GAME-BY-GAME

	P	R	A
WASH. STATE	22	4	4
MID. TENN.	8	2	4
at Delaware	20	3	9
at South Carolina	6	2	3
vs. Iowa State	13	3	3
at Nevada	23	0	6
NORTH CAROLINA	15	5	15
at Texas Tech	18	2	3
VIRGINIA TECH	11	2	5
UMES	11	4	9
WAGNER	23	2	2
at Bucknell	11	0	7
NEBRASKA	22	3	3
at Wisconsin	8	2	8
MICHIGAN ST.	4	2	6
MICHIGAN	12	5	6
at Nebraska	23	5	3
at Illinois			
IOWA			
at Michigan			
at Michigan State			
INDIANA			
at Minnesota			
WISCONSIN			
at Northwestern			
at Purdue			
OHIO STATE			
MINNESOTA			

## 2011-12 Season Notes:

- ◆ Scored 16 of her season-high 23 points in the first half in the win at Nebraska (1/15).
- ◆ Accounted for 12 points, five rebounds, six assists and four steals in a solid all-around performance in the win over Michigan (1/12).
- ◆ Nabbed a career-high eight steals to go along with 22 points in the Big Ten opener against Nebraska. The eight thefts are the most for a Lady Lion since Kelly Mazzante had eight steals vs. Fairfield on Dec. 2, 2001.
- ◆ Chipped in 11 points, seven assists and four steals in the non-conference finale at Bucknell (12/21).
- ◆ Was 10-for-14 from the field on the way to 23 points and a personal-best five steals against Wagner (12/18).
- ◆ Just missed out on a double-double with 11 points and nine assists in the win over UMES (12/11).
- ◆ Paced the Lady Lions with 18 points, three assists and a steal at #19/25 Texas Tech (12/3).
- ◆ Posted her first career double-double with 15 points and a personal-best 15 assist in the win over #14/13 North Carolina (11/30).
- ◆ Had a solid all-around game with 23 points on 11-of-15 shooting, six assists and a career-best five steals in the win over Nevada (11/26).
- ◆ Tallied 13 points to go along with three rebounds, three assists and four steals versus Iowa State (11/25).
- ◆ Narrowly missed her first career double-double with a team-best 20 points and a career-high tying nine assists at Delaware (11/17).
- ◆ Surpassed the 900-point mark for her career with eight tallies in the win over Middle Tennessee (11/13).
- ◆ Accounted for 22 points, four rebounds, four assists and a pair of steals in the win over Washington State (11/11).
- ◆ Became the 14th player in school history to record 300 career assists against the Cougars.

## Bentley vs. the Big Ten

Team	G	Pts.-Avg.	Rebs.-Avg.	Assts.-Avg.	Stls.-Avg.
Illinois	5	65-13.0	14-2.8	22-4.4	8-1.6
Indiana	4	50-12.5	7-1.8	17-4.3	4-1.0
Iowa	5	87-17.4	18-3.6	24-4.8	6-1.2
Michigan	4	40-10.0	14-3.5	19-4.8	10-2.5
Michigan State	4	37-9.3	9-2.3	13-3.3	7-1.8
Minnesota	4	38-9.5	9-2.3	18-4.5	11-2.8
Nebraska	2	55-22.5	8-4.0	6-3.0	12-6.0
Northwestern	3	45-15.0	8-2.7	14-4.7	6-2.0
Ohio State	4	61-15.3	6-1.5	18-4.5	7-1.8
Purdue	5	84-16.8	14-2.8	19-3.8	13-2.6
Wisconsin	4	28-7.0	8-2.0	16-4.0	5-1.3

Five-Time Big Ten Champions • Two-Time Big Ten Tournament Champions • 2000 NCAA Final Four • 22 NCAA Tournament Appearances





# #23 Ariel Edwards

So. \* G/F \* 6-2 \* Elmont, N.Y./Christ the King

## 2011-12 Highlights:

- Accounted for 13 points and career highs of eight rebounds and three assists in the win over #14/13 North Carolina (11/30).
- In her first collegiate start, tallied eight points and equalled her career high with eight rebounds at Delaware (11/17).

## CAREER HIGHS

Points	16 at Oakland (11/18/10)
Rebs.	9 vs. UMES (12/11/11)
Assists	4 at Wisconsin (1/2/12)
Steals	3 at Texas Tech (12/3/11)
Blocks	2 at Oakland (11/18/10)
Minutes	38 at Delaware (11/17/11)
FGM	6 vs. North Carolina (11/30/11)
FGA	11 (3x) last vs. UMES (12/11/11)
FG%	1.000 (3x)
	.....last vs. DePaul (1-1) (3/21/11)
3FGM	2 vs. Army (12/8/10)
	.....2 vs. Hartford (11/27/10)
3FGA	4 vs. Army (12/8/10)
	.....4 vs. Hartford (11/27/10)
3PT %	1.000 (3x)
	.....last vs. North Carolina (1-1) (11/30/11)
FTM	7 at Oakland (11/18/10)
FTA	8 at Oakland (11/18/10)
FT %	1.000 (7x)
	.....last vs. Michigan (2-2) (1/12/12)
Career Double-Doubles	n/a

## GAME-BY-GAME

	P	R	A
WASH. STATE	4	2	1
MID. TENN.	10	1	1
at Delaware	8	8	0
at South Carolina	10	7	1
vs. Iowa State	0	1	0
at Nevada	2	4	1
NORTH CAROLINA	13	8	3
at Texas Tech	3	5	2
VIRGINIA TECH	3	3	0
UMES	7	9	3
WAGNER	11	6	3
at Bucknell	7	2	3
NEBRASKA	6	2	0
at Wisconsin	6	4	4
MICHIGAN ST.	4	4	0
MICHIGAN	9	5	2
at Nebraska	2	1	0
at Illinois			
IOWA			
at Michigan			
at Michigan State			
INDIANA			
at Minnesota			
WISCONSIN			
at Northwestern			
at Purdue			
OHIO STATE			
MINNESOTA			

## 2011-12 Season Notes:

- Accounted for nine points, five rebounds and two assists in 22 minutes of action against Michigan (1/12).
- Dished out a career-high four assists to go along with six points, four rebounds and a steal at Wisconsin (1/2).
- Notched six points with two rebounds and two steals against Nebraska (12/30).
- Tallied 11 points via a 5-for-5 free throw shooting effort, six rebounds and three steals in the win over Wagner (12/18).
- Hauled in a career-high nine rebounds to go along with seven points and three assists in the win over UMES (12/11).
- Registered three points to go along with five rebounds, two assists and a personal-best three steals at #19/25 Texas Tech (12/3).
- Had two points, four rebounds and a pair of steals in the Nugget Classic Championship game win over Nevada (11/26).
- Was 5-for-7 from the field en route to 10 points, seven rebounds and an assist at South Carolina (11/20).
- Scored five of her 10 points in a key Lady Lion run that gave Penn State its first lead of the game against Middle Tennessee (11/13). Also notched a pair of steals against the Blue Raiders.
- Tallied four points and two rebounds in the season-opening win over Washington State (11/11).

## Edwards vs. the Big Ten

Team	G	Pts.-Avg.	Rebs.-Avg.	Assts.-Avg.	Stls.-Avg.
Illinois	3	6-2.0	2-0.7	2-0.7	0-0.0
Indiana	2	0-0.0	5-2.5	1-0.5	2-1.0
Iowa	2	4-2.0	0-0.0	0-0.0	0-0.0
Michigan	2	11-5.5	7-3.5	2-1.0	1-0.5
Michigan State	2	4-2.0	4-2.0	0-0.0	0-0.0
Minnesota	1	0-0.0	2-2.0	0-0.0	0-0.0
Nebraska	2	8-4.0	3-1.5	0-0.0	3-1.5
Northwestern	2	0-0.0	2-1.0	0-0.0	0-0.0
Ohio State	1	1-1.0	0-0.0	0-0.0	0-0.0
Purdue	3	2-0.7	2-0.7	1-0.3	0-0.0
Wisconsin	2	6-3.0	4-2.0	4-2.0	1-0.5





# #24 Mia Nickson

RS-Jr. \* F \* 6-2 \* Ashburn, Va./Notre Dame Acad. (BC)

## 2011-12 Highlights:

- ♦ Earned her second double-double of the year with 12 points and 11 rebounds in the win at Nebraska (1/15).
- ♦ Posted first double-double of the season and seventh of her career with 10 points and 14 rebounds, including eight offensive boards, at Wisconsin (1/2).
- ♦ Missed eight games with concussion-like symptoms.
- ♦ Hauled in 10 rebounds, including five on the offensive glass against Middle Tennessee (11/13).

## 2011-12 Season Notes:

- ♦ Recorded six points, eight rebounds and a pair of assists in the win over Michigan (1/12).
- ♦ Notched seven points and eight rebounds against Michigan State (1/7).
- ♦ Was back in the lineup after missing six games and contributed four points and seven rebounds against Nebraska (12/30).
- ♦ Returned after missing two games to pull down a team-best 13 rebounds with five points and two assists against Iowa State (11/25).
- ♦ Had six points and seven rebounds in the win over Washington State (11/13) in the opening round of the Lady Lion Classic.

## CAREER HIGHS

Points.....	26 vs. Texas Tech (12/5/10)
Rebs.....	17 vs. Indiana (1/23/11)
Assists.....	4 vs. Maine (12/12/10)
Steals.....	6 vs. Indiana (1/23/11)
.....	6 vs. Bucknell (12/28/10)
Blocks.....	1 (5x) last at Nebraska (1/15/12)
Minutes.....	41 at Dayton (11/12/10)
FGM.....	9 vs. Indiana (1/23/11)
FGA.....	16 vs. Indiana (1/23/11)
FG%.....	1.000 (4X)
.....	last vs. Minnesota (5-5) (1/13/11)
3FGM.....	n/a
3FGA.....	n/a
3PT %.....	n/a
FTM.....	10 vs. Michigan State (2/10/11)
.....	10 vs. Texas Tech (12/5/10)
FTA.....	11 vs. Michigan State (2/10/11)
.....	11 vs. Texas Tech (12/5/10)
FT %.....	1.000 (12X)
.....	last vs. Dayton (6-6) (3/19/11)
Career Double-Doubles.....	8

## GAME-BY-GAME

	P	R	A
WASH. STATE	6	7	0
MID. TENN.	3	10	0
at Delaware	DNP		
at South Carolina	DNP		
vs. Iowa State	5	13	2
at Nevada	2	1	0
NORTH CAROLINA	DNP		
at Texas Tech	DNP		
VIRGINIA TECH	DNP		
UMES	DNP		
WAGNER	DNP		
at Bucknell	DNP		
NEBRASKA	4	7	1
at Wisconsin	10	14	1
MICHIGAN ST.	7	8	0
MICHIGAN	6	8	2
at Nebraska	12	11	2
at Illinois			
IOWA			
at Michigan			
at Michigan State			
INDIANA			
at Minnesota			
WISCONSIN			
at Northwestern			
at Purdue			
OHIO STATE			
MINNESOTA			

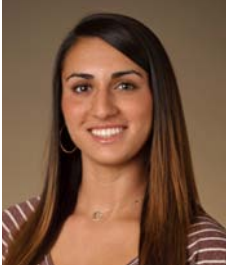
## Nickson vs. the Big Ten

Team	G	Pts.-Avg.	Rebs.-Avg.	Assts.-Avg.	Stls.-Avg.
Illinois	3	14-4.7	21-7.0	2-0.7	4-1.3
Indiana	2	37-18.5	23-11.5	2-1.0	7-3.5
Iowa	2	16-8.0	20-10.0	2-1.0	0-0.0
Michigan	2	6-3.0	13-6.5	4-2.0	0-0.0
Michigan State	2	29-14.5	14-7.0	0-0.0	2-1.0
Minnesota *	2	12-6.0	11-5.5	0-0.0	1-0.5
Nebraska	2	16-8.0	18-9.0	3-1.5	1-0.5
Northwestern	2	15-7.5	18-9.0	1-0.5	1-0.5
Ohio State	3	41-13.7	19-6.3	0-0.0	3-1.0
Purdue	3	24-8.0	15-5.0	0-0.0	1-0.3
Wisconsin	2	16-8.0	18-9.0	1-0.5	1-0.5

\* - Nickson played vs. Minnesota at Boston College in 2008-09

Five-Time Big Ten Champions • Two-Time Big Ten Tournament Champions • 2000 NCAA Final Four • 22 NCAA Tournament Appearances





# #25 Gizelle Studevent

Jr. \* G \* 5-11 \* La Jolla, Calif./The Bishop's School

## 2011-12 Highlights:

- ♦ Hit a pair of key jumpers en route to four points and three rebounds against Middle Tennessee (11/13).

## 2011-12 Season Notes:

- ♦ Accounted for four points and three assists at Wisconsin (1/2).
- ♦ Dished out a career-high four assists with two points and three rebounds in the victory over Wagner (12/18).
- ♦ Celebrated her 21st birthday with eight points, three rebounds and an assist in 19 minutes of action in the win over UMES (12/11).
- ♦ Tallied two points and two steals in the win over Virginia Tech (12/6).
- ♦ Nabbed a steal at Texas Tech (12/3).
- ♦ Connected on three of her four shots from the field on the way to six points, three rebounds and a career-high three assists at Nevada (11/26).
- ♦ Was 2-for-3 from the field and finished with four points at Delaware (11/17).
- ♦ Notched two points and a rebound against Washington State (11/11).
- ♦ Had four points and two rebounds in the exhibition win over Bloomsburg (11/5).

## CAREER HIGHS

Points.....	10 at Oakland (11/18/10)
Rebs.....	3 (8x) last vs. Wagner (12/17/11)
Assists.....	4 vs. Wagner (12/18/11)
Steals.....	2 vs. Virginia Tech (12/6/11)
Blocks...1 (2x)	last vs. Minnesota (2/11/10)
Minutes.....	20 (2x) last vs. Hofstra (3/18/10)
FGM.....	3 (4x) last vs. UMES (12/11/11)
FGA.....	8 vs. Monmouth (12/9/09)
FG%.....	1.000 (3x) last at Ohio State (1-1) (2/17/11)
3FGM.....	1 (4x) last vs. Minnesota (1/13/11)
3FGA.....	3 vs. Monmouth (12/9/09)
3PT%.....	1.000 (4x) last vs. Minnesota (1-1) (1/13/11)
FTM.....	3 vs. Maine (12/12/10)
FTA.....	4 vs. Maine (12/12/10)
FT%.....	1.000 (4x) last vs. UMES (2-2) (12/11/11)
Career Double-Doubles.....	n/a

## GAME-BY-GAME

	P	R	A
WASH. STATE	2	1	0
MID. TENN.	4	3	1
at Delaware	4	1	0
at South Carolina	0	1	1
vs. Iowa State	0	0	0
at Nevada	6	3	3
NORTH CAROLINA	0	0	0
at Texas Tech	0	0	0
VIRGINIA TECH	2	0	0
UMES	8	3	1
WAGNER	2	3	4
at Bucknell	2	3	0
NEBRASKA	0	0	0
at Wisconsin	4	1	3
MICHIGAN ST.	0	2	0
MICHIGAN	0	2	0
at Nebraska	0	1	0
at Illinois			
IOWA			
at Michigan			
at Michigan State			
INDIANA			
at Minnesota			
WISCONSIN			
at Northwestern			
at Purdue			
OHIO STATE			
MINNESOTA			

## Studevent vs. the Big Ten

Team	G	Pts.-Avg.	Rebs.-Avg.	Assts.-Avg.	Stls.-Avg.
Illinois	3	0-0.0	3-1.0	0-0.0	0-0.0
Indiana	4	2-0.5	0-0.0	0-0.0	0-0.0
Iowa	3	7-2.3	0-0.0	0-0.0	0-0.0
Michigan	4	1-0.3	6-1.5	1-0.3	0-0.0
Michigan State	3	0-0.0	2-0.7	0-0.0	0-0.0
Minnesota	4	15-3.8	1-0.3	0-0.0	1-0.3
Nebraska	2	0-0.0	1-0.5	0-0.0	0-0.0
Northwestern	1	0-0.0	1-1.0	2-2.0	0-0.0
Ohio State	2	2-1.0	0-0.0	0-0.0	0-0.0
Purdue	2	0-0.0	1-0.5	0-0.0	2-1.0
Wisconsin	4	4-1.0	1-0.3	3-0.8	1-0.3





# #33 Maggie Lucas

So. \* G \* 5-10 \* Narberth, Pa./Germantown Academy

## 2011-12 Highlights:

- ♦ Naismith Award early-season watch list.
- ♦ Sixth on Penn State's career three-pointers list (159).
- ♦ Ten 20-point games.
- ♦ Named to the Nugget Classic All-Tournament team after averaging 22.0 points, 6.5 rebounds and 3.0 assists in two wins.
- ♦ Selected as Lady Lion Classic MVP after averaging 18.0 points, 5.5 rebounds, 3.5 assists and 1.0 steals in a pair of wins.

## 2011-12 Season Notes:

- ♦ Tallied 24 points, including a 4-for-6 effort from three-point range, six rebounds and a steal in the win at #15/23 Nebraska (1/15).
- ♦ Was 6-for-12 from the field en route to 22 points, five assists and three steals in the win over Michigan (1/12).
- ♦ Scored a career-high 33 points via a BJC record seven three-pointers with five rebounds and three assists against Michigan State (1/7).
- ♦ Handed out a career-high seven assists to compliment 18 points and four rebounds at Wisconsin (1/2).
- ♦ Recorded 18 points, seven rebounds and a pair of assists against Nebraska (12/30).
- ♦ Dropped in 22 points on 7-of-10 shooting to go along with five rebounds, three assists and a steal in a road win over Bucknell (12/21).
- ♦ Posted third-straight 20-point game with 23 tallies that included an 8-for-8 day at the free throw line in the win over Wagner (12/18).
- ♦ Reached the 20-point mark for the fourth time in five games with 20 tallies and five rebounds in the win over UMES (12/11).
- ♦ Had a game-high 20 points on 8-of-16 shooting to go along with eight rebounds and a pair of assists in the win over Virginia Tech (12/6).
- ♦ Chipped in 15 points, two assists and three steals at #19/25 Texas Tech (12/3).
- ♦ Posted 21 points in 22 minutes, including five three-pointers, in the win over #14/13 North Carolina (11/30).
- ♦ Tallied 26 points to go along with seven rebounds and a career-high five assists in the Nugget Classic title game against Nevada (11/26).
- ♦ Accounted for a game-high 18 points, including six of Penn State's final nine points, with six rebounds and two steals in the win over Iowa State (11/25).
- ♦ Tallied a team-best 18 points with two assists and two rebounds at South Carolina (11/20).
- ♦ Reached the 600-point plateau with 12 points to go along with three rebounds and two assists at Delaware (11/17). She reaches 600 points in the third-fewest games in school history (Kelly Mazzante & Susan Robinson; 33 games).
- ♦ Connected on a trio of three-pointers en route to 14 points and a career-high five assists in the victory over Middle Tennessee (11/13).
- ♦ Tied for team scoring honors with 22 points, including an 11-for-13 effort from the free throw line, in the season-opening win over Washington State (11/11).
- ♦ Pulled in a personal-best nine rebounds in the win over the Cougars.

## CAREER HIGHS

Points.....	33 vs. Michigan State (1/7/12)
Rebs. ....	9 vs. Washington State (11/11/11)
Assists .....	7 at Wisconsin (1/2/12)
Steals.....	4 (3x) last vs. Iowa (12/30/10)
Blocks .....	2 vs. Purdue (2/24/11)
Minutes .....	39 at Delaware (11/17/11)
.....	39 at Boston College (12/2/10)
FGM.....	10 vs. Michigan State (1/7/12)
FGA .....	21 vs. Michigan State (1/7/12)
FG% .....	.714 (5-7) at Northwestern (1/6/11)
3FGM.....	7 vs. Michigan State (1/7/12)
.....	7 vs. Hartford (11/27/10)
3FGA .....	16 at Boston College (12/2/10)
3PT %...	1.000 (4-4) at Bucknell (12/21/11)
FTM ....	11 vs. Washington State (11/11/11)
FTA .....	13 vs. Washington State (11/11/11)
FT % .....	1.000 (23x)
.....	last at Nebraska (6-6) (1/15/12)
Career Double-Doubles .....	n/a

## GAME-BY-GAME

	P	R	A
WASH. STATE	22	9	2
MID. TENN.	14	2	5
at Delaware	12	3	2
at South Carolina	18	2	2
vs. Iowa State	18	6	1
at Nevada	26	7	5
NORTH CAROLINA	21	2	1
at Texas Tech	15	1	2
VIRGINIA TECH	20	8	2
UMES	20	5	1
WAGNER	23	4	1
at Bucknell	22	5	3
NEBRASKA	18	7	2
at Wisconsin	18	4	7
MICHIGAN ST.	33	5	3
MICHIGAN	22	3	5
at Nebraska	24	6	1
at Illinois			
IOWA			
at Michigan			
at Michigan State			
INDIANA			
at Minnesota			
WISCONSIN			
at Northwestern			
at Purdue			
OHIO STATE			
MINNESOTA			

## Lucas vs. the Big Ten

Team	G	Pts.-Avg.	Rebs.-Avg.	Assts.-Avg.	Stls.-Avg.
Illinois	3	55-18.3	13-4.3	4-1.3	3-1.0
Indiana	2	34-17.0	7-3.5	2-1.0	1-0.5
Iowa	2	27-13.5	6-3.0	2-1.0	5-2.5
Michigan	2	45-22.5	7-3.5	5-2.5	4-2.0
Michigan State	2	48-24.0	7-3.5	5-2.5	4-2.0
Minnesota	1	20-20.0	3-3.0	1-1.0	3-3.0
Nebraska	2	42-21.0	13-6.5	3-1.5	1-0.5
Northwestern	2	41-20.5	3-1.5	7-3.5	3-1.5
Ohio State	3	34-11.3	6-2.0	6-2.0	4-1.3
Purdue	3	35-11.7	6-2.0	6-2.0	6-2.0
Wisconsin	2	24-12.0	6-3.0	9-4.5	1-0.5

Five-Time Big Ten Champions • Two-Time Big Ten Tournament Champions • 2000 NCAA Final Four • 22 NCAA Tournament Appearances





# #40 Marisa Wolfe

Jr. \* F \* 6-2 \* Ford City, Pa./Ford City

## 2011-12 Season Notes:

- ♦ Was a spark off the bench for the Lady Lions with four points, three rebounds and a steal in nine minutes at Nebraska (1/15).
- ♦ Contributed four points, two rebounds and a blocked shot against Michigan State (1/7).
- ♦ Had four points and two rebounds at Wisconsin (1/2).
- ♦ Was 3-for-5 from the field and 3-for-3 from the free throw line to finish with nine points at Bucknell (12/21).
- ♦ Registered nine points on 4-of-6 shooting to compliment seven rebounds, one block and two steals in the win over Wagner (12/18).
- ♦ Had two points and three rebounds in the win over Virginia Tech (12/6).
- ♦ Drained her fourth career three-pointer and finished the game with seven points, two rebounds and a personal-best three steals versus #14/13 North Carolina (11/30).
- ♦ Notched four points with a pair of rebounds and an assist in the win at Nevada (11/26).
- ♦ Scored four points to go along with two offensive rebounds and a pair of steals in the win over Iowa State (11/25).
- ♦ Was 2-for-3 from the field and finished with four points in her first game of the season at South Carolina (11/20).
- ♦ Missed the first three games of the season due to concussion-like symptoms.

## CAREER HIGHS

Points	.....13 vs. Michigan (2/18/10)
Rebs.	..... 7 vs. Wagner (12/18/11)
	..... 7 vs. Green Bay (11/26/10)
Assists	..... 1 (13x)
	..... last vs. Wagner (12/18/11)
Steals	.....3 vs. North Carolina (11/30/11)
	..... 3 at Northwestern (1/3/10)
Blocks	..... 2 (4x)
	..... last at Northwestern (1/6/11)
Minutes	.....30 vs. Green Bay (11/26/10)
FGM	.....5 vs. Michigan (2/18/10)
	..... 5 at Northwestern (1/3/10)
FGA	.....8 vs. North Carolina (11/30/11)
FG%	..... 1.000 (8x)
	..... last vs. Virginia Tech (1-1) (12/6/11)
3FGM	.....2 vs. Illinois (1/24/10)
3FGA	..... 3 vs. Illinois (1/24/10)
3PT%	.....667 (2-3) vs. Illinois (1/24/10)
FTM	..... 4 vs. South Carolina (11/21/10)
FTA	..... 4 (3x)
	..... last vs. Green Bay (11/26/10)
FT%	..... 1.000 (15x)
	..... last at Wisconsin (2-2) (1/2/12)
Career Double-Doubles	..... n/a

## GAME-BY-GAME

	P	R	A
WASH. STATE	DNP		
MID. TENN.	DNP		
at Delaware	DNP		
at South Carolina	4	0	0
vs. Iowa State	4	2	1
at Nevada	4	2	1
NORTH CAROLINA	7	2	0
at Texas Tech	0	4	0
VIRGINIA TECH	2	3	1
UMES	3	3	1
WAGNER	9	7	1
at Bucknell	9	3	0
NEBRASKA	0	0	1
at Wisconsin	4	2	0
MICHIGAN ST.	4	2	0
MICHIGAN	3	3	0
at Nebraska	4	3	0
at Illinois			
IOWA			
at Michigan			
at Michigan State			
INDIANA			
at Minnesota			
WISCONSIN			
at Northwestern			
at Purdue			
OHIO STATE			
MINNESOTA			

## Wolfe vs. the Big Ten

Team	G	Pts.-Avg.	Rebs.-Avg.	Assts.-Avg.	Stls.-Avg.
Illinois	5	15-3.0	10-2.0	1-0.2	5-1.0
Indiana	3	11-3.7	12-4.0	0-0.0	0-0.0
Iowa	4	10-2.5	12-3.0	0-0.0	2-0.5
Michigan	4	18-4.5	11-2.8	0-0.0	0-0.0
Michigan State	4	8-2.0	7-1.8	0-0.0	1-0.3
Minnesota	4	2-0.5	8-2.0	2-0.5	2-0.5
Nebraska	2	4-2.0	3-1.5	1-0.5	1-0.5
Northwestern	3	18-6.0	9-3.0	1-0.3	4-1.3
Ohio State	4	9-2.3	7-1.8	2-0.5	1-0.3
Purdue	5	10-2.0	12-2.4	0-0.0	1-0.2
Wisconsin	3	4-1.3	8-2.7	0-0.0	1-0.3





# #44 Tori Waldner

Fr. \* F/C \* 6-5 \* Milton, Ga./Milton

## GAME-BY-GAME

	P	R	B
WASH. STATE <sup>a</sup>	DNP		
MID. TENN.	DNP		
at Delaware	0	2	0
at South Carolina	0	0	0
vs. Iowa State	5	1	1
at Nevada	0	3	0
NORTH CAROLINA	6	2	2
at Texas Tech	5	3	1
VIRGINIA TECH	2	5	0
UMES	4	9	2
WAGNER	5	10	3
at Bucknell	2	3	1
NEBRASKA	0	0	0
at Wisconsin	6	2	0
MICHIGAN ST.	0	1	0
MICHIGAN	0	0	0
at Nebraska	0	0	0
at Illinois			
IOWA			
at Michigan			
at Michigan State			
INDIANA			
at Minnesota			
WISCONSIN			
at Northwestern			
at Purdue			
OHIO STATE			
MINNESOTA			

### 2011-12 Season Notes:

- ♦ Tied her career high with six points and two assists at Wisconsin (1/2).
- ♦ Snared a career-best 10 rebounds to go along with five points, two assists and a pair of blocks in the win over Wagner (12/18).
- ♦ Pulled in nine rebounds and made both of her shots from the field en route to four points in the win over UMES (12/11).
- ♦ Had five rebounds versus Virginia Tech (12/6).
- ♦ Accounted for five points, three rebounds, an assist and a blocked shot at #19/25 Texas Tech (12/3).
- ♦ Was 3-for-4 from the field and finished with a career-high six points with two rebounds and two blocked shots in the win over #14/13 North Carolina (11/30).
- ♦ Scored her first collegiate points on a 15-footer in the first half en route to five points and a blocked shot in the Nugget Classic win over Iowa State (11/25).
- ♦ Saw her first action of the season at Delaware (11/17) and pulled in a pair of rebounds in eight minutes on the court.
- ♦ Had three points and a rebound in four minutes of action in the exhibition win over Bloomsburg (11/5).

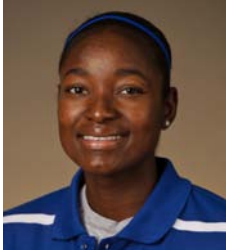
### CAREER HIGHS

Points.....	6 at Wisconsin (1/2/12)
.....	6 vs. North Carolina (11/30/11)
Rebs. ....	10 vs. Wagner (12/18/11)
Assists .....	2 at Wisconsin (1/2/12)
.....	2 vs. Wagner (12/18/11)
Steals.....	2 at Nevada (11/26/11)
Blocks.....	3 vs. Wagner (12/18/11)
Minutes .....	21 vs. UMES (12/11/11)
FGM.....	3 at Wisconsin (1/2/12)
.....	3 vs. North Carolina (11/30/11)
FGA .....	5 at Texas Tech (12/3/11)
FG% .....	1.000 (2-2) vs. UMES (12/11/11)
.....	1.000 (2-2) vs. Iowa St. (11/25/11)
3FGM.....	n/a
3FGA .....	n/a
3PT % .....	n/a
FTM .....	3 vs. Wagner (12/18/11)
FTA .....	4 vs. Wagner (12/18/11)
FT % .....	.750 (3-4) vs. Wagner (12/18/11)
Career Double-Doubles .....	n/a

### Waldner vs. the Big Ten

Team	G	Pts.-Avg.	Rebs.-Avg.	Assts.-Avg.	Stls.-Avg.
Illinois	-	-	-	-	-
Indiana	-	-	-	-	-
Iowa	-	-	-	-	-
Michigan	1	0-0.0	0-0.0	0-0.0	0-0.0
Michigan State	1	0-0.0	1-1.0	0-0.0	1-1.0
Minnesota	-	-	-	-	-
Nebraska	2	0-0.0	0-0.0	0-0.0	2-1.0
Northwestern	-	-	-	-	-
Ohio State	-	-	-	-	-
Purdue	-	-	-	-	-
Wisconsin	1	6-6.0	2-2.0	2-2.0	1-1.0





# #54 Nikki Greene

Jr. \* C \* 6-4 \* Diboll, Texas/Diboll

## 2011-12 Highlights:

- ♦ Sixth on Penn State's career blocks list with 152 rejections.
- ♦ Tied for 20th on Penn State's career rebounding list (598).

- ♦ Became the 27th member of the Lady Lions' 500-rebound club with seven caroms against Iowa State (11/25).

## 2011-12 Season Notes:

- ♦ Scored all 12 of her points in the second half to help the Lady Lions rally for the win at #15/23 Nebraska (1/15).
- ♦ Had a near double-double with nine points, nine rebounds, three steals and a career-best three assists against Michigan (1/12).
- ♦ Snared 11 rebounds with five points and three steals against Michigan State (1/7).
- ♦ Registered 14 points, seven rebounds and two blocks at Wisconsin (1/2).
- ♦ Pulled in a season-best 15 rebounds to go along with nine points, a career-high four steals and two blocks in the Big Ten opener versus Nebraska (12/30).
- ♦ Just missed out on a double-double with 11 points and nine rebounds at Bucknell (12/21).
- ♦ Was a perfect 6-for-6 from the field on the way to 13 points, four rebounds and three blocks in the win over UMES (12/11).
- ♦ Tallied 14 points on 6-of-8 shooting with five rebounds, a block and three steals in the win over Virginia Tech (12/6).
- ♦ Playing in her home state of Texas for the first time, tallied 11 points, eight rebounds and a block at #19/25 Texas Tech (12/3).
- ♦ Accounted for 13 points, six rebounds and three blocked shots in the win over #14/13 North Carolina (11/30).
- ♦ Chipped in 11 points and seven rebounds in 16 minutes of action at Nevada (11/26).
- ♦ Narrowly missed a double-double with nine points, 10 rebounds and a blocked shot in the Lady Lion Classic Championship game win over Middle Tennessee (11/13).
- ♦ Snared a team-best 12 rebounds to go along with three points, two blocks and three steals against Washington State (11/11).

## CAREER HIGHS

Points.....	24 vs. Utah (11/25/10)
Rebs.....	20 vs. Indiana (1/23/11)
Assists.....	3 vs. Michigan (1/12/12)
Steals... 4 (3x) last vs. Nebraska (12/30/11)	
Blocks.....	7 vs. Purdue (1/28/10)
Minutes.....	32 vs. Purdue (1/28/10)
FGM.....	9 vs. Utah (11/25/10)
.....	9 at Dayton (11/12/10)
FGA.....	17 at Dayton (11/12/10)
FG%.....	1.000 (6-6) vs. UMES (12/11/11)
.....	1.000 (1-1) at Minnesota (12/6/09)
3FGM.....	n/a
3FGA.....	n/a
3PT%.....	n/a
FTM.....	8 vs. Pittsburgh (12/12/09)
FTA.....	13 vs. Monmouth (12/9/09)
FT%.....	1.000 (10x)
.....last vs. North Carolina (1-1) (11/30/11)	
Career Double-Doubles.....	7

## GAME-BY-GAME

	P	R	B
WASH. STATE	3	12	2
MID. TENN.	9	10	1
at Delaware	6	4	0
at South Carolina	5	4	1
vs. Iowa State	7	7	1
at Nevada	11	7	0
NORTH CAROLINA	13	6	3
at Texas Tech	11	8	1
VIRGINIA TECH	14	5	1
UMES	13	4	3
WAGNER	9	8	3
at Bucknell	11	9	0
NEBRASKA	9	15	2
at Wisconsin	14	7	2
MICHIGAN ST.	5	11	0
MICHIGAN	9	9	1
at Nebraska	12	8	1
at Illinois			
IOWA			
at Michigan			
at Michigan State			
INDIANA			
at Minnesota			
WISCONSIN			
at Northwestern			
at Purdue			
OHIO STATE			
MINNESOTA			

## Greene vs. the Big Ten

Team	G	Pts.-Avg.	Rebs.-Avg.	Assts.-Avg.	Blks.-Avg.
Illinois	5	50-10.0	39-7.8	0-0.0	12-2.4
Indiana	4	24-6.0	44-11.0	0-0.0	12-3.0
Iowa	5	33-6.6	35-7.0	1-0.2	11-2.2
Michigan	4	31-7.8	28-7.0	5-1.3	6-1.5
Michigan State	4	23-5.8	32-8.0	0-0.0	1-0.3
Minnesota	4	20-5.0	18-4.5	1-0.3	2-0.5
Nebraska	2	21-10.5	23-11.5	0-0.0	3-1.5
Northwestern	3	14-4.7	18-6.0	2-0.7	4-1.3
Ohio State	4	40-10.0	30-7.5	2-0.5	8-2.0
Purdue	5	34-6.8	41-8.2	3-0.6	14-2.8
Wisconsin	4	50-12.5	27-6.8	2-0.5	9-2.3





# #12/14 Penn State 101, Bloomsburg 81

## Exhibition Game \* Nov. 5, 2011 \* University Park, Pa.

### Bloomsburg 81

#	Player	Total			3-Ptr			Rebounds			PF	TP	A	TO	Blk	Stl	Min
		FG-FGA	FG-FGA	FT-FTA	FG-FGA	FG-FGA	FT-FTA	Off	Def	Tot							
03	GALLAGHER, Kelsey	8-15	4-5	2-2	1	3	4	1	22	1	4	1	1	1	25		
20	FLANAGAN, Alyssa	0-2	0-1	2-4	1	3	4	2	2	6	4	2	1	28			
22	OYENRIDER, Kayla	4-11	1-3	5-6	0	3	3	2	14	2	7	1	2	32			
31	ELLIS, Lauren	1-2	0-0	0-0	2	7	9	4	2	3	0	0	0	23			
34	WELLER, Dana	5-10	3-5	3-4	1	3	4	5	16	0	4	0	0	23			
05	DUDECK, Brianna	0-3	0-0	0-0	1	0	1	0	0	0	1	0	0	6			
10	NYCE, Courtney	0-3	0-2	0-0	0	1	1	2	0	0	2	0	0	5			
15	NOACK, Catherine	6-8	5-6	2-2	2	2	4	0	19	1	2	0	0	26			
30	SIMMONS, Marla	2-4	0-1	2-2	1	3	4	1	6	1	2	0	0	11			
32	BORSKI, Maggie	0-0	0-0	0-0	0	0	0	0	1	0	0	0	0	11			
Team						1		0									
Totals		26-58	13-23	16-20	10	25	35	17	81	15	26	4	4	200			
FG % 1st Half: 11-26		42.3%	2nd half: 15-32	46.9%	Game: 26-58		44.8%	Deadball									
3FG % 1st Half: 7-10		70.0%	2nd half: 6-13	46.2%	Game: 13-23		56.5%	Rebounds									
FT % 1st Half: 6-9		66.7%	2nd half: 10-11	90.9%	Game: 16-20		80.0%	3									

### Penn State 101

#	Player	Total			3-Ptr			Rebounds			PF	TP	A	TO	Blk	Stl	Min
		FG-FGA	FG-FGA	FT-FTA	FG-FGA	FG-FGA	FT-FTA	Off	Def	Tot							
12	Gray, Zhaque	4-12	1-4	0-0	0	1	1	4	9	0	1	0	2	30			
20	Bentley, Alex	7-12	0-2	2-2	2	6	8	2	16	9	2	0	7	30			
24	Nickson, Mia	5-9	0-0	4-4	3	1	4	3	14	0	0	1	1	22			
33	Lucas, Maggie	10-15	7-8	8-9	0	3	3	2	35	1	0	1	1	35			
54	Greene, Nikki	6-8	0-0	0-2	4	3	7	3	12	0	2	0	0	16			
05	East, Talia	2-3	0-0	0-0	2	3	5	2	4	0	1	0	2	13			
23	Edwards, Ariel	1-10	0-1	2-3	3	3	6	3	4	0	2	0	1	30			
25	Studevent, Gizelle	2-8	0-1	0-0	1	1	2	1	4	0	2	0	0	20			
44	Waldner, Tori	1-1	0-0	1-1	0	1	1	0	3	0	0	0	0	4			
Team						2		1									
Totals		38-78	8-16	17-21	17	23	40	20	101	10	12	1	14	200			
FG % 1st Half: 18-41		43.9%	2nd half: 20-37	54.1%	Game: 38-78		48.7%	Deadball									
3FG % 1st Half: 4-11		36.4%	2nd half: 4-5	80.0%	Game: 8-16		50.0%	Rebounds									
FT % 1st Half: 7-9		77.8%	2nd half: 10-12	83.3%	Game: 17-21		81.0%	2									

Officials: Kevin Pethel, Kathy Ridilla, Shannon Feck  
 Technical fouls: Bloomsburg-None, Penn State-None.  
 Attendance: 7742

Score by periods	1st	2nd	Total
Bloomsburg	35	46	81
Penn State	47	54	101

Last FG - BLOOM 2nd-01:25, PSU1112 2nd-01:08.  
 Largest lead - BLOOM by 5 1st-18:42, PSU1112 by 20 2nd-11:10.

Score tied - 4 times.  
 Lead changed - 3 times.

### Notable

- Sophomore guard **Maggie Lucas** led the Lady Lions' offensive outburst with 35 points, including a 7-for-8 effort from three-point range.
- Alex Bentley** had an all-around performance with 16 points, eight rebounds, nine assists and seven steals.
- Junior forward **Mia Nickson** also reached double figures with 14 points and four rebounds.

# #12/14 Penn State 65, Middle Tennessee State 49

## Game #2 \* Nov. 13, 2011 \* University Park, Pa.

### Middle Tennessee 49 • 1-1

#	Player	Total			3-Ptr			Rebounds			PF	TP	A	TO	Blk	Stl	Min
		FG-FGA	FG-FGA	FT-FTA	FG-FGA	FG-FGA	FT-FTA	Off	Def	Tot							
01	Brinkley, Janay	0-8	0-3	0-0	1	3	4	1	0	3	0	0	2	24			
13	Elie, Icelyn	5-10	1-4	2-2	3	7	10	5	13	0	1	0	3	37			
21	Rowe, Ebony	4-12	0-0	4-6	5	8	13	1	12	2	3	1	0	40			
24	Jones, Kortni	4-14	3-10	2-2	0	4	4	0	13	3	4	0	0	40			
42	Stewart, KeKe	2-7	2-6	1-2	0	3	3	4	7	2	2	3	0	28			
05	Cason, Shanice	0-3	0-3	2-2	1	1	2	3	2	1	5	0	1	19			
11	Ajanaku, Jamila	1-2	0-1	0-0	1	0	1	1	2	0	1	0	0	5			
23	March, Lauren	0-0	0-0	0-0	0	0	0	0	0	0	0	0	0	2			
52	Leonard, Laken	0-0	0-0	0-0	0	0	0	2	0	1	0	0	0	5			
Team						1		2									
Totals		16-56	6-27	11-14	12	28	40	17	49	12	18	4	6	200			
FG % 1st Half: 10-30		33.3%	2nd half: 6-26	23.1%	Game: 16-56		28.6%	Deadball									
3FG % 1st Half: 3-17		17.6%	2nd half: 3-10	30.0%	Game: 6-27		22.2%	Rebounds									
FT % 1st Half: 9-10		90.0%	2nd half: 2-4	50.0%	Game: 11-14		78.6%	2									

### Penn State 65 • 2-0

#	Player	Total			3-Ptr			Rebounds			PF	TP	A	TO	Blk	Stl	Min
		FG-FGA	FG-FGA	FT-FTA	FG-FGA	FG-FGA	FT-FTA	Off	Def	Tot							
12	Gray, Zhaque	6-13	2-7	1-1	2	4	6	0	15	2	3	0	0	29			
20	Bentley, Alex	2-10	0-3	4-4	1	1	2	2	8	4	3	0	3	35			
24	Nickson, Mia	1-6	0-0	1-2	5	5	10	2	3	0	0	0	1	30			
33	Lucas, Maggie	4-12	3-9	3-4	1	1	2	2	14	5	3	0	2	35			
54	Greene, Nikki	4-9	0-0	1-3	5	5	10	4	9	0	2	1	1	19			
05	East, Talia	1-4	0-0	0-1	2	4	6	3	2	0	0	1	1	19			
23	Edwards, Ariel	4-10	0-2	2-3	0	1	1	1	10	1	1	0	2	22			
25	Studevent, Gizelle	2-5	0-0	0-0	0	3	3	0	4	1	0	0	0	11			
Team						5		10									
Totals		24-69	5-21	12-18	21	29	50	14	65	13	12	2	10	200			
FG % 1st Half: 9-33		27.3%	2nd half: 15-36	41.7%	Game: 24-69		34.8%	Deadball									
3FG % 1st Half: 0-10		0.0%	2nd half: 5-11	45.5%	Game: 5-21		23.8%	Rebounds									
FT % 1st Half: 8-11		72.7%	2nd half: 4-7	57.1%	Game: 12-18		66.7%	2									

Officials: Mark Zentz, Jennifer Rezac, Kathy Ridilla  
 Technical fouls: Middle Tennessee-None, Penn State-None.  
 Attendance: 3238

Score by periods	1st	2nd	Total
Middle Tennessee	32	17	49
Penn State	26	39	65

Last FG - MT 2nd-08:29, PSU 2nd-00:29.  
 Largest lead - MT by 10 1st-16:57, PSU by 16 2nd-00:29.

Score tied - 3 times.  
 Lead changed - 3 times.

### Notable

- The Lady Lions used a 30-6 run, including a 19-0 spurt in the final seven minutes to erase a 10-point second-half deficit.
- The Lady Lions win their 27th regular-season tournament title and third under head coach **Coquese Washington**.
- Junior guard **Alex Bentley** surpassed the 900-point mark for her career with eight points.

# #12/14 Penn State 72, Washington 60

## Game #1 \* Nov. 11, 2011 \* University Park, Pa.

### Washington State 60 • 0-1

#	Player	Total			3-Ptr			Rebounds			PF	TP	A	TO	Blk	Stl	Min
		FG-FGA	FG-FGA	FT-FTA	FG-FGA	FG-FGA	FT-FTA	Off	Def	Tot							
01	Cook, April	1-5	0-1	0-0	0	3	3	3	2	1	1	1	1	18			
03	Adzasu, Rosetta	2-6	0-0	0-0	1	2	3	4	5	4	1	1	22				
11	Perkins, Jazmine	4-17	1-5	0-1	4	9	13	2	9	2	1	0	4	28			
21	Tarnowski, Rosie	3-8	1-4	3-3	1	2	3	3	10	0	0	0	1	18			
33	Noyes, Carly	3-6	0-0	0-0	3	1	4	4	6	3	2	0	0	27			
02	Amojo, Ireti	3-15	2-7	1-2	0	1	1	1	9	1	2	0	0	25			
10	Presley, Tia	1-5	0-2	0-0	0	0	0	1	2	4	2	0	0	14			
22	Romberg, Sage	5-8	2-2	0-0	2	5	7	4	12	0	1	0	1	15			
23	Dheensaw, Shalie	0-1	0-0	0-0	0	2	2	0	0	0	0	0	0	5			
24	Thomas, Brandi	1-4	0-2	0-0	3	2	5	1	2	0	2	0	0	13			
42	Potter, Hana	2-7	0-0	0-1	3	1	4	4	4	0	2	0	1	15			
Team						2		1									
Totals		25-82	6-23	4-7	19	29	48	26	60	16	17	2	9	200			
FG % 1st Half: 17-39		43.6%	2nd half: 8-43	18.6%	Game: 25-82		30.5%	Deadball									
3FG % 1st Half: 1-8		12.5%	2nd half: 5-15	33.3%	Game: 6-23		26.1%	Rebounds									
FT % 1st Half: 3-4		75.0%	2nd half: 1-3	33.3%	Game: 4-7		57.1%	1									

### Penn State 72 • 1-0

#	Player	Total			3-Ptr			Rebounds			PF	TP	A	TO	Blk	Stl	Min
		FG-FGA	FG-FGA	FT-FTA	FG-FGA	FG-FGA	FT-FTA	Off	Def	Tot							
12	Gray, Zhaque	3-11	1-4	0-1	0	4	4	4	7	1	2	0	1	28			
20	Bentley, Alex	7-13	2-2	6-6	0	4	4	3	22	4	8	0	2	36			
24	Nickson, Mia	1-7	0-0	4-7	2	5											

# #11/12 Penn State 55, South Carolina 50

## Game #4 \* Nov. 20, 2011 \* Columbia, S.C.

### Penn State 55 • 3-1

#	Player	Total			3-Ptr			Rebounds			PF	TP	A	TO	Blk	Stl	Min
		FG-FGA	FG-FGA	FT-FTA	Off	Def	Total	Off	Def	Total							
23	Edwards, Ariel	f	5-7	0-1	0-0	1	6	7	3	10	1	4	0	1	31		
54	Greene, Nikki	c	2-4	0-0	1-2	1	3	4	4	5	1	3	1	0	19		
12	Gray, Zhaque	g	1-5	0-1	4-4	0	4	4	2	6	2	1	1	1	38		
20	Bentley, Alex	g	1-4	0-0	4-4	0	2	2	2	6	3	7	0	1	32		
33	Lucas, Maggie	g	7-13	0-4	4-4	0	2	2	2	18	2	2	0	1	38		
05	East, Talia		3-6	0-0	0-0	1	14	15	2	6	0	3	7	1	29		
25	Studevent, Gizelle		0-0	0-0	0-0	0	1	1	0	0	1	2	0	1	5		
40	Wolfe, Marisa		2-3	0-0	0-0	0	0	0	1	4	0	0	0	7			
44	Waldner, Tori		0-0	0-0	0-0	0	0	0	0	0	1	0	0	1			
Team						2	2	4									
Totals			21-42	0-6	13-14	5	34	39	16	55	10	23	9	6	200		

### South Carolina 50 • 3-1

#	Player	Total			3-Ptr			Rebounds			PF	TP	A	TO	Blk	Stl	Min
		FG-FGA	FG-FGA	FT-FTA	Off	Def	Total	Off	Def	Total							
12	STEPHENS, Charenee	f	1-3	0-0	2-3	5	3	8	0	4	0	2	0	1	19		
03	WALKER, Ieasia	g	6-20	3-9	0-0	1	3	4	1	15	1	1	0	5	38		
05	GRANT, Markeshia	g	3-12	1-8	0-0	0	0	0	3	7	2	0	0	1	33		
11	SUTTON, LaKeisha	g	2-17	1-4	2-2	2	2	0	2	1	7	3	2	1	30		
22	NEWTON, Courtney	g	0-1	0-1	0-0	0	0	0	1	0	0	1	0	0	10		
01	WILSON, Ebony		0-0	0-0	0-0	0	0	0	2	0	0	0	0	1			
20	WHITE, Sancheon		0-4	0-1	1-2	2	0	2	2	1	0	0	0	1	12		
21	BRUNER, Ashley		4-8	0-0	1-3	9	9	18	3	9	2	2	2	1	30		
23	ROY, Tina		2-7	1-6	0-0	0	0	0	0	5	0	0	0	7			
24	WELCH, Aleighsa		1-4	0-0	0-0	6	0	6	2	2	0	0	0	1	20		
Team						0	0	0									
Totals			19-76	6-29	6-10	25	15	40	15	50	8	10	3	10	200		

FG % 1st Half: 9-38 23.7% 2nd half: 10-38 26.3% Game: 19-76 25.0%  
 3FG % 1st Half: 2-12 16.7% 2nd half: 4-17 23.5% Game: 6-29 20.7%  
 FT % 1st Half: 2-3 66.7% 2nd half: 4-7 57.1% Game: 6-10 60.0%

Score by periods	1st	2nd	Total
Penn State	26	29	55
South Carolina	22	28	50

Officials: Beverly Roberts, Eric Brewton, Felicia Grinter  
 Technical fouls: Penn State-None, South Carolina-None.  
 Attendance: 2391

Points	In	Off	2nd	Fast	Bench
PSU	26	8	3	4	10
SC	20	17	16	2	17

Last FG - PSU 2nd-00:23, SC 2nd-05:47.  
 Largest lead - PSU by 6 1st-00:50, SC by 8 2nd-06:40.  
 Score tied - 4 times.  
 Lead changed - 14 times.

### Notable

- The Lady Lions used a 13-0 run, including the final six tallies coming from **Maggie Lucas**, over the final 5:22 to earn the come-from-behind win.
- Talia East** rejected a career-high seven shots, which ties her for the third-highest single-game total in school history.
- PSU was held without a three-point field goal for the first time since Jan. 7, 2007 (vs. Michigan).

# #17/16 Penn State 103, Nevada 65

## Game #6 \* Nov. 26, 2011 \* Reno, Nev.

### Penn State 103 • 5-1

#	Player	Total			3-Ptr			Rebounds			PF	TP	A	TO	Blk	Stl	Min
		FG-FGA	FG-FGA	FT-FTA	Off	Def	Total	Off	Def	Total							
12	Gray, Zhaque	*	9-15	1-4	2-3	3	1	4	2	21	3	1	0	2	35		
20	Bentley, Alex	*	11-15	1-2	0-0	0	0	0	2	23	6	1	0	5	29		
24	Nickson, Mia	*	1-3	0-0	0-0	1	0	1	0	2	0	0	1	0	7		
33	Lucas, Maggie	*	9-16	2-4	6-7	1	6	7	3	26	5	4	1	0	35		
54	Greene, Nikki	*	4-9	0-0	3-3	3	4	7	3	11	0	1	0	0	16		
05	East, Talia		4-6	0-0	0-4	3	3	6	1	8	0	1	0	1	22		
23	Edwards, Ariel		1-3	0-0	0-0	0	4	4	1	2	1	2	0	2	22		
25	Studevent, Gizelle		3-4	0-0	0-0	1	2	3	0	6	3	0	0	0	14		
40	Wolfe, Marisa		1-2	0-0	2-2	0	2	2	3	4	1	2	0	0	8		
44	Waldner, Tori		0-2	0-0	0-0	1	2	3	3	0	1	2	0	2	12		
Team						1	4	5									
Totals			43-75	4-10	13-19	14	28	42	18	103	20	14	2	12	200		

FG % 1st Half: 21-40 52.5% 2nd half: 22-35 62.9% Game: 43-75 57.3%  
 3FG % 1st Half: 3-7 42.9% 2nd half: 1-3 33.3% Game: 4-10 40.0%  
 FT % 1st Half: 4-7 57.1% 2nd half: 9-12 75.0% Game: 13-19 68.4%

### Nevada 65 • 2-3

#	Player	Total			3-Ptr			Rebounds			PF	TP	A	TO	Blk	Stl	Min
		FG-FGA	FG-FGA	FT-FTA	Off	Def	Total	Off	Def	Total							
03	Sharp, Danika	*	5-13	2-3	2-2	1	1	2	2	14	1	3	0	0	28		
21	Kevorcken, Kate	*	3-10	3-7	5-6	0	2	2	1	14	4	2	0	1	30		
23	Johnson, Amanda	*	3-14	0-5	2-2	0	5	3	8	4	5	0	1	39			
32	Wideman, Arielle	*	2-7	1-2	0-0	2	0	2	2	5	2	7	0	0	28		
34	Williams, Kayla	*	5-9	0-1	4-4	1	4	5	14	0	3	3	1	20			
05	Brennan, Chanelle		0-0	0-0	0-0	2	1	3	1	0	0	2	0	0	11		
12	Lois, Faith		0-0	0-0	0-0	0	0	0	0	0	0	1	0	3			
14	Johnson, Aja		1-2	0-0	0-0	2	3	5	0	2	0	1	0	0	8		
24	Burns, Emily		0-2	0-0	0-1	0	1	1	0	0	0	0	0	0	4		
25	Gough, Christina		2-4	2-4	0-0	0	0	0	6	1	0	0	0	0	6		
44	Smith, Amber		0-1	0-1	0-0	0	1	1	0	0	1	0	1	1			
55	Mungedi, Mimi		1-2	0-0	0-0	2	0	2	2	2	0	0	0	0	17		
Team						4	1	5									
Totals			22-64	8-23	13-15	14	19	33	17	65	11	25	3	4	200		

Score by periods	1st	2nd	Total
Penn State	49	54	103
Nevada	34	31	65

Officials: Kyle Bacon, Shelley Nakasone, Rick Morris  
 Technical fouls: Penn State-None, Nevada-None.  
 Attendance: 759  
 John Ascuaga's Nugget Classic - Championship

Points	In	Off	2nd	Fast	Bench
PSU	62	36	18	34	20
NEVADA	18	10	13	9	10

Last FG - PSU 2nd-01:05, NEVADA 2nd-00:02.  
 Largest lead - PSU by 42 2nd-07:06, NEVADA None.  
 Score tied - 1 time.  
 Lead changed - 0 times.

### Notable

- The Lady Lions won their 28th regular-season tournament title with the win in the Nugget Classic title game and the second this season (Lady Lion Classic).
- Alex Bentley** was selected as the Tournament MVP and **Maggie Lucas** was named to the All-Tournament team.
- The Lady Lions had three 20-point scorers for the first time since a win at Dayton on Nov. 12, 2010.

# #17/16 Penn State 66, Iowa State 59

## Game #5 \* Nov. 25, 2011 \* Reno, Nev.

### Iowa State 59 • 3-1

#	Player	Total			3-Ptr			Rebounds			PF	TP	A	TO	Blk	Stl	Min
		FG-FGA	FG-FGA	FT-FTA	Off	Def	Total	Off	Def	Total							
04	Moody, Nikki	*	1-11	1-7	4-6	1	3	4	0	7	1	3	0	0	33		
05	Christofferson, H.	*	1-5	0-4	4-5	3	2	5	3	6	0	3	2	0	23		
10	Marsfield, Lauren	*	2-6	1-3	0-0	0	4	4	3	5	1	2	0	1	34		
32	Schroll, Jessica	*	3-7	0-1	1-2	1	2	3	3	7	2	1	1	1	29		
33	Poppens, Chelsea	*	3-8	0-0	5-13	6	11	17	4	11	1	3	1	1	16		
03	Harris, Kelsey		0-0	0-0	1-2	0	0	0	1	1	1	1	0	0	5		
21	Mays, Kileah		2-4	0-0	1-2	1	3	4	2	5	0	0	1	0	12		
22	Williamson, Brynn		5-10	4-9	1-2	0	2	2	1	15	0	0	1	1	29		
23	Cole, Chassidy		0-1	0-1	2-3	0	0	0	1	2	1	1	0	0	12		
32	Ellis, Fallon		0-1	0-1	0-0	0	1	1	0	0	0	0	0	0	4		
42	Zimmerman, Amanda		0-0	0-0	0-0	0	1	1	0	0	0	1	0	0	3		
Team						1	2	3									
Totals			17-53	6-26	19-35	13	31	44	18	59	7	16	6	4	200		

FG % 1st Half: 7-25 28.0% 2nd half: 10-28 35.7% Game: 17-53 32.1%  
 3FG % 1st Half: 2-10 20.0% 2nd half: 4-16 25.0% Game: 6-26 23.1%  
 FT % 1st Half: 12-24 50.0% 2nd half: 7-11 63.6% Game: 19-35 54.3%

### Penn State 66 • 4-1

#	Player	Total			3-Ptr			Rebounds			PF	TP	A	TO	Blk	Stl	Min
		FG-FGA	FG-FGA	FT-FTA	Off	Def	Total	Off	Def	Total							
12	Gray, Zhaque	*	5-7	2-2	2-2	0	3	3	4	14	2	0	0	1	30		
20	Bentley, Alex	*	5-13	2-5	1-2	0	3	3	4	13	3	0	0	4	31		
24	Nickson, Mia	*	2-8	0-0	1-4	4	9	13	4	5	2	1	0	0	26		
33	Lucas, Maggie	*	5-15	1-5	7-10	2	4	6	4								

# #19/25 Texas Tech 70, #16/15 Penn State 66

## Game #8 \* Dec. 3, 2011 \* Lubbock, Texas

Penn State 66 • 6-2

#	Player	Total			3-Ptr			Rebounds			PF	TP	A	TO	Blk	Stl	Min				
		FG	FGA	FT	FTA	Off	Def	Off	Def	Tot											
23	Edwards, Ariel	1-5	0-0	1-2	3	2	5	2	3	2	1	1	3	29							
54	Greene, Nikki	2-4	0-0	7-8	3	5	8	4	11	0	2	1	0	20							
12	Gray, Zhaque	3-8	0-2	2-2	0	2	2	1	8	3	2	0	0	33							
20	Bentley, Alex	6-15	1-2	5-6	0	2	2	3	18	3	2	0	1	38							
33	Lucas, Maggie	5-13	1-5	4-4	0	1	1	1	15	2	3	0	3	33							
05	East, Talia	3-5	0-0	0-2	2	6	8	4	6	0	2	1	2	20							
25	Studevent, Gizelle	0-1	0-0	0-0	0	0	0	1	0	0	0	0	1	8							
40	Wolfe, Marisa	0-2	0-0	0-0	2	2	4	3	0	0	0	0	0	7							
44	Waldner, Tori	2-5	0-0	1-2	1	2	3	4	5	1	1	1	0	12							
Team		2-13		1-3		2-3		23		66		11		13		4		10		200	

TTU 70 • 7-0

#	Player	Total			3-Ptr			Rebounds			PF	TP	A	TO	Blk	Stl	Min				
		FG	FGA	FT	FTA	Off	Def	Off	Def	Tot											
20	MALLARD, KIERRA	6-18	2-4	4-4	9	6	15	4	18	3	7	1	3	31							
41	BAKER, KELSI	1-3	0-1	0-2	2	3	5	3	2	1	1	1	0	20							
05	HYDE, CHRISTINE	3-9	0-3	1-3	1	5	6	3	7	2	2	0	1	30							
15	MORRIS, CASEY	4-15	4-10	1-1	2	1	3	1	13	2	1	0	2	37							
23	SMALLS, MONIQUE	3-7	1-2	8-11	2	6	8	2	15	7	0	0	2	38							
00	BROWN, CHYNNIA	1-7	0-3	0-0	0	0	0	2	2	0	3	0	1	11							
01	BARNCastle, JORDAN	2-3	2-3	0-0	0	2	2	1	6	1	0	0	0	12							
12	BATTLE, ANBER	0-0	0-0	0-0	0	0	0	0	0	0	0	0	0	2							
24	BOKENKAMP, MARY	0-0	0-0	0-0	0	0	0	0	0	0	0	0	0	2							
33	NOBLES, SHAUNTAL	2-3	0-0	3-5	3	2	5	5	7	0	1	0	0	16							
42	WALKER, EBONY	0-0	0-0	0-0	0	0	0	1	0	0	1	0	0	1							
Team		22-65		9-26		17-26		22		70		16		18		2		9		200	

Officials: Tina Napier, Felicia Grinter, Jesse Dickerson  
 Technical fouls: Penn State-Edwards, Ariel. TTU-BAKER, KELSI.  
 Attendance: 8923

Score by periods	1st	2nd	Total
Penn State	36	30	66
TTU	34	36	70

Last FG - PSU 2nd-00:36, TTU 2nd-00:03.  
 Largest lead - PSU by 8 1st-09:56, TTU by 7 2nd-03:26.

### Notable

- The Lady Lions shot just 25% (8-32) in the second half as the Lady Raiders rallied.
- Jordan Barncastle hit a three-pointer as the shot clock expired with three seconds remaining on the game to seal the win for TTU.
- Penn State falls to 1-1 in Big 12/Big Ten Challenge games.

# #17/18 Penn State 76, UMES 51

## Game #10 \* Dec. 11, 2011 \* University Park, Pa.

UMES 51 • 2-5

#	Player	Total			3-Ptr			Rebounds			PF	TP	A	TO	Blk	Stl	Min				
		FG	FGA	FT	FTA	Off	Def	Off	Def	Tot											
15	MERCER, Kwinnyata	1-9	0-5	0-0	1	5	6	2	2	3	0	0	1	26							
21	COOK, Amber	4-12	0-1	4-6	5	4	9	0	12	1	6	0	0	28							
23	SANDERS, Chelsea	3-15	0-1	0-2	2	2	4	4	6	0	1	0	0	29							
24	ROACH, Karona	4-11	0-2	0-0	4	1	5	2	8	1	2	1	1	24							
25	STEWART, Shanyce	2-7	0-0	4-4	5	10	3	8	1	1	0	3	27								
01	AGBASI, Adobi	4-10	0-0	0-0	0	2	2	5	8	0	0	3	1	22							
03	SWEENEY, Shawnee	0-0	0-0	0-0	0	0	0	0	0	0	0	0	0	4							
04	FINNEY, Sha-Kiyia	2-6	1-5	0-0	0	3	3	1	5	0	0	0	0	15							
12	BRAXTON, Courtney	0-1	0-0	1-2	0	0	0	2	1	2	1	0	1	13							
13	LONG, Jessica	0-1	0-1	1-2	0	0	0	0	1	0	0	0	0	6							
22	BARR, Porsha	0-3	0-0	0-0	0	0	0	0	0	0	0	0	0	4							
35	COLEMAN, Saisha	0-0	0-0	0-0	0	0	0	1	0	0	0	0	0	2							
Team		20-75		1-15		10-16		22		51		8		13		4		7		200	

UMES 51 • 2-5

#	Player	Total			3-Ptr			Rebounds			PF	TP	A	TO	Blk	Stl	Min						
		FG	FGA	FT	FTA	Off	Def	Off	Def	Tot													
12	Gray, Zhaque	2-6	1-2	3-4	0	0	0	4	8	1	0	0	0	22									
20	Bentley, Alex	4-7	0-0	3-4	1	3	4	1	11	9	6	0	0	34									
23	Edwards, Ariel	3-11	0-1	1-2	1	8	9	1	7	3	0	1	1	32									
33	Lucas, Maggie	6-14	3-7	5-6	1	4	5	1	20	1	4	0	3	35									
54	Greene, Nikki	6-6	0-0	1-3	0	4	4	3	13	1	3	3	1	16									
05	East, Talia	0-1	0-0	2-2	1	4	5	0	2	1	0	0	0	8									
25	Studevent, Gizelle	3-7	0-0	2-2	2	1	3	2	8	1	1	0	0	19									
40	Wolfe, Marisa	1-4	0-0	1-2	0	3	3	3	3	1	1	2	0	13									
44	Waldner, Tori	2-2	0-0	0-2	1	8	9	3	4	0	1	2	0	21									
Team		27-58		4-10		18-27		11		35		46		18		76		16		8		200	

Officials: Cameron Inouye, Frank Steratore, Shannon Peck  
 Technical fouls: UMES-AGBASI, Adobi. TEAM. Penn State-None.  
 Attendance: 3386

Score by periods	1st	2nd	Total
UMES	30	21	51
Penn State	40	36	76

Last FG - UMESW 2nd-03:59, PSU 2nd-02:21.  
 Largest lead - UMESW by 2 1st-15:36, PSU by 25 2nd-00:47.

### Notable

- The Lady Lions held the Lady Hawks to just a 17.9% (7-39) field goal percentage in the second half and holding them without a field goal for the final 3:59 to secure the win.
- With 13 points, Nikki Greene also surpassed the 600-point plateau for her career (608).
- Senior Zhaque Gray moved into a tie with Jess Brungo for 10th place in all-time three-point field goals made (117).

# #17/18 Penn State 66, Virginia Tech 28

## Game #9 \* Dec. 6, 2011 \* University Park, Pa.

Virginia Tech 28 • 2-6

#	Player	Total			3-Ptr			Rebounds			PF	TP	A	TO	Blk	Stl	Min										
		FG	FGA	FT	FTA	Off	Def	Off	Def	Tot																	
03	Aerial Wilson	4-14	1-2	1-2	1	4	5	3	10	4	6	0	0	38													
13	Alyssa Fenyn	1-5	1-4	0-2	3	4	7	1	3	0	6	2	1	35													
21	Britni Montgomery	0-2	0-0	0-0	0	2	2	4	0	0	2	0	0	13													
31	Monet Tellier	2-11	0-3	0-0	1	0	1	3	4	1	5	1	2	27													
43	Latorri Hines-Allen	2-7	0-0	0-0	3	9	12	4	4	0	1	0	1	28													
02	Kerry Sarver	0-0	0-0	0-0	0	0	0	0	0	0	0	0	0	2													
20	Nia Evans	0-2	0-0	0-0	0	1	1	2	0	1	0	0	1	14													
22	Porschia Hadley	1-6	0-0	0-0	1	3	4	1	2	0	1	2	1	25													
23	Larryqua Hall	2-3	1-2	0-0	0	0	0	0	5	0	1	0	1	16													
33	Kelsey Conyers	0-1	0-1	0-0	0	0	0	1	0	0	0	0	0	2													
Team		1-11		1-2		1-2		10		21		31		19		28		6		23		5		7		200	

FG % 1st Half: 7.27 25.0% 2nd half: 5.24 20.8% Game: 12-51 23.5%  
 3FG % 1st Half: 1-5 20.0% 2nd half: 2-7 28.6% Game: 3-12 25.0%  
 FT % 1st Half: 0-0 0.0% 2nd half: 1-4 25.0% Game: 1-4 25.0%

Penn State 66 • 7-2

#	Player	Total			3-Ptr			Rebounds			PF	TP	A	TO	Blk	Stl	Min										
		FG	FGA	FT	FTA	Off	Def	Off	Def	Tot																	
12	Gray, Zhaque	1-4	0-1	4-4	1	4	5	3	6	2	3	0	2	28													
20	Bentley, Alex	4-6	0-0	3-5	0	2	2	1	11	5	1	1	3	31													
23	Edwards, Ariel	1-5	0-2	1-2	0	3	3	0	3	0	1	0	1	34													
33	Lucas, Maggie	8-16	2-5	2-4	1	7	8	0	20	2	2	0	1	35													
54	Greene, Nikki	6-8	0-0	2-8	1	4	5	2	14	1	2	1	3	21													
05	East, Talia	3-5	0-0	0-2	0	3	3	1	6	1	1	1	1	12													
25	Studevent, Gizelle	1-2	0-0	0-0	0	0	0	2	2	0	0	0	0	2													
40	Wolfe, Marisa	1-1	0-0	0-0	1	2	3	0	2	1	2	0	0	12													
44	Waldner, Tori	1-2	0-0	0-0	1	4	5	0	2	1	3	0	1	11													
Team		26-49		2-8		12-25		9		30		39		9		66		13		15		3		14		200	

Officials: Lisa Mattingly, Felicia Grinter, Sue Blauch  
 Technical fouls: Virginia Tech-None. Penn State-None.  
 Attendance: 3236

Score by periods	1st	2nd	Total
Virginia Tech	15	13	28
Penn State	27	39	66

Last FG - VT 2nd-13:55, PSU 2nd-01:13.  
 Largest lead - VT None, PSU by 38 2nd-00:28.

### Notable

- The Lady Lions went on a 26-0 run over the final 13 minutes to seal the win.
- Alex Bentley became the 33rd Lady Lion to reach 1,000 career points and the 15th to reach the milestone as a junior.
- The 28 points were the fewest scored by the Hokies in program history, surpassing the 33 points scored against Tennessee during the 1995 campaign.

# #16/17 Penn State 103, Wagner 42

## Game #11 \* Dec. 18, 2011 \* University Park, Pa.

Wagner 42

#	Player	Total			3-Ptr</		
---	--------	-------	--	--	---------	--	--

## #16/16 Penn State 78, Bucknell 54 Game #12 \* Dec. 21, 2011 \* Lewisburg, Pa.

### Penn State 78 • 10-2

#	Player	Total			3-Ptr			Rebounds			PF	TP	A	TO	Blk	Stl	Min
		FG-FGA	FG-FGA	FT-FTA	FG-FGA	FG-FGA	FT-FTA	Off	Def	Tot							
23	Edwards, Ariel	f	2-4	1-2	2-4	0	2	2	0	7	3	2	0	2	21		
54	Greene, Nikki	f	5-9	0-0	1-2	3	6	9	1	11	1	1	0	1	21		
12	Gray, Zhaque	g	3-8	2-4	0-0	0	0	0	3	8	2	1	0	1	30		
20	Bentley, Alex	g	5-11	1-2	0-0	0	0	0	1	11	7	4	0	4	32		
33	Lucas, Maggie	g	7-10	4-4	4-4	0	5	5	2	22	3	2	0	1	32		
05	East, Talia	g	3-7	0-0	0-0	3	5	8	2	6	2	1	3	1	18		
25	Studevent, Gizelle	g	1-3	0-1	0-0	1	2	3	0	2	0	0	1	1	15		
40	Wolfe, Marisa	g	3-5	0-0	3-3	0	3	3	3	9	0	2	1	2	18		
44	Waldner, Tori	g	1-3	0-0	0-0	0	3	3	1	2	1	3	1	1	13		
	Team					3	2	5									
	Totals		30-60	8-13	10-13	10	28	38	13	78	19	16	5	14	200		

FG % 1st Half: 13-29 44.8% 2nd half: 17-31 54.8% Game: 30-60 50.0%  
3FG % 1st Half: 4-5 80.0% 2nd half: 4-8 50.0% Game: 8-13 61.5%  
FT % 1st Half: 4-4 100.0% 2nd half: 6-9 66.7% Game: 10-13 76.9%

### BUCKNELL 54 • 2-10

#	Player	Total			3-Ptr			Rebounds			PF	TP	A	TO	Blk	Stl	Min
		FG-FGA	FG-FGA	FT-FTA	FG-FGA	FG-FGA	FT-FTA	Off	Def	Tot							
00	Mgbada, Felicia	f	6-10	0-0	0-0	2	2	4	3	12	0	4	0	0	23		
12	Voss, Rachel	f	5-9	1-2	0-0	3	2	5	0	11	0	5	0	1	26		
55	Horbatuck, Lindsay	f	1-4	0-0	3-6	4	6	10	2	5	3	4	0	1	29		
15	Romine, Shelby	g	3-16	1-8	0-0	1	1	2	1	7	4	0	1	0	36		
22	Chukwudo, Christina	g	3-8	1-2	0-0	2	1	3	0	7	2	3	0	1	32		
13	Dunn, Alyssa	g	2-7	0-0	0-0	0	2	2	0	4	2	0	1	0	14		
20	Baxter, Ashley	g	0-0	0-0	0-0	0	0	0	0	0	0	0	0	0	1		
31	Harris, Katherine	g	1-3	1-3	0-0	0	0	0	1	3	2	0	0	0	13		
32	Trotter, Shelby	g	0-4	0-3	1-2	1	3	4	1	1	1	2	1	0	12		
33	Heider, Jen	g	1-1	0-0	0-0	0	2	2	0	2	0	0	0	0	3		
44	Dotson, Audrey	g	1-2	0-0	0-0	0	1	1	0	2	1	0	0	1	11		
	Team					4	1	5									
	Totals		23-66	4-18	4-8	17	21	38	8	54	13	20	3	4	200		

FG % 1st Half: 8-34 23.5% 2nd half: 15-32 46.9% Game: 23-66 34.8%  
3FG % 1st Half: 1-10 10.0% 2nd half: 3-8 37.5% Game: 4-18 22.2%  
FT % 1st Half: 1-2 50.0% 2nd half: 3-6 50.0% Game: 4-8 50.0%

Officials: Joseph Vaszily, Mark Resch, Michael Schmidt  
Technical fouls: Penn State-None, BUCKNELL-None.  
Attendance: 1490

Score by periods	1st	2nd	Total
Penn State	34	44	78
BUCKNELL	18	36	54

Last FG - PSU 2nd-01:02, BUCKNELL 2nd-00:13.  
Largest lead - PSU by 28 2nd-01:02, BUCKNELL None.

Points In Off 2nd Fast  
PSU 32 Paint T/O Chance Break Bench  
BUCKNELL 26 11 13 2 12

Score tied - 1 time.  
Lead changed - 0 times.

### Notable

- The Lady Lions finish the non-conference portion of their schedule with a 10-2 mark, it is the second consecutive year that Penn State has 10 or more non-conference wins.
- Sophomore guard **Maggie Lucas** posted her fourth consecutive 20-point game and sixth in her last seven games with 22 markers.
- All nine Lady Lions scored for the fourth consecutive game.

## #22/17 Penn State 82, Wisconsin 49 Game #14 \* Jan. 2, 2012 \* Madison, Wis.

### Penn State 82 • 11-3, 1-1

#	Player	Total			3-Ptr			Rebounds			PF	TP	A	TO	Blk	Stl	Min
		FG-FGA	FG-FGA	FT-FTA	FG-FGA	FG-FGA	FT-FTA	Off	Def	Tot							
24	Nickson, Mia	f	5-6	0-0	0-0	8	6	14	3	10	1	0	0	1	27		
54	Greene, Nikki	c	6-9	0-0	2-3	1	6	7	2	14	0	0	2	1	21		
12	Gray, Zhaque	g	3-10	2-5	0-0	1	0	1	1	8	1	3	0	1	21		
20	Bentley, Alex	g	4-10	0-0	1-1	0	2	2	8	8	3	0	4	31			
33	Lucas, Maggie	g	6-13	2-6	4-4	1	3	4	1	18	7	4	0	1	31		
05	East, Talia	g	2-2	0-0	0-0	0	7	7	0	4	0	1	0	0	11		
23	Edwards, Ariel	g	2-3	0-0	2-4	1	3	4	1	6	4	0	0	1	25		
25	Studevent, Gizelle	g	2-5	0-0	0-0	0	1	1	0	4	3	0	0	1	12		
40	Wolfe, Marisa	g	1-3	0-0	2-2	0	2	2	1	4	0	1	0	0	9		
44	Waldner, Tori	g	3-4	0-0	0-0	0	2	2	2	6	2	2	0	1	12		
	Team					0	1	1									
	Totals		34-65	4-11	10-14	12	33	45	13	82	26	14	2	11	200		

FG % 1st Half: 16-33 48.5% 2nd half: 18-32 56.3% Game: 34-65 52.3%  
3FG % 1st Half: 3-9 33.3% 2nd half: 1-2 50.0% Game: 4-11 36.4%  
FT % 1st Half: 5-6 83.3% 2nd half: 5-8 62.5% Game: 10-14 71.4%

### Wisconsin 49 • 4-10, 0-2

#	Player	Total			3-Ptr			Rebounds			PF	TP	A	TO	Blk	Stl	Min
		FG-FGA	FG-FGA	FT-FTA	FG-FGA	FG-FGA	FT-FTA	Off	Def	Tot							
23	Thomas, Ashley	f	2-5	0-0	0-0	0	1	1	2	4	0	3	0	0	29		
40	Covington, Anya	f	4-10	0-0	0-0	3	2	5	4	8	2	1	1	0	26		
00	Davis, Jade	g	2-6	1-3	0-0	1	3	4	1	5	2	2	0	1	32		
02	Wurtz, Taylor	g	5-13	1-4	6-6	1	6	7	0	17	1	1	0	1	35		
05	Paige, Morgan	g	2-9	0-5	1-2	0	2	2	0	5	0	3	0	0	22		
03	Brown, AnnMarie	g	0-1	0-1	0-0	0	0	0	0	0	0	1	0	0	2		
12	Smith, Lindsay	g	2-7	0-3	0-0	0	3	3	0	4	2	3	0	2	21		
20	Gorman, Lacia	g	0-2	0-2	0-0	0	0	0	0	0	1	0	0	0	5		
24	Stephen, Tiera	g	0-1	0-0	0-0	0	1	1	0	0	0	1	0	0	4		
35	Gulczynski, Jacki	g	0-0	0-0	0-0	0	1	1	1	0	0	0	0	0	5		
43	Roehl, Cassie	g	2-4	0-0	2-2	1	1	2	3	6	0	0	1	0	19		
	Team					1	1	2									
	Totals		19-58	2-18	9-10	7	21	28	11	49	11	15	2	4	200		

FG % 1st Half: 11-31 35.5% 2nd half: 8-27 29.6% Game: 19-58 32.8%  
3FG % 1st Half: 2-9 25.0% 2nd half: 0-10 0.0% Game: 2-18 11.1%  
FT % 1st Half: 1-2 50.0% 2nd half: 8-8 100.0% Game: 9-10 90.0%

Officials: Tina Napier, Felicia Ginter, Amy Bonner  
Technical fouls: Penn State-None, Wisconsin-None.  
Attendance: 4171

Score by periods	1st	2nd	Total
Penn State	40	42	82
Wisconsin	25	24	49

Last FG - PSU 2nd-01:08, WIS 2nd-00:25.  
Largest lead - PSU by 35 2nd-03:42, WIS by 2 1st-12:23.

Points In Off 2nd Fast  
PSU 46 24 13 19 24  
WIS 24 18 6 8 20

Score tied - 1 time.  
Lead changed - 2 times.

### Notable

- Junior **Nikki Greene** became the sixth player in school history with 150 career blocks (150).
- Alex Bentley** (380) moved into 11th place on PSU's career assists list, passing Corinne Gulas.
- Sophomore **Maggie Lucas** dished out a career-high seven assists.
- All 10 Lady Lions scored for the seventh time this season, but it is the first time that 10 players have accomplished the feat (all other times were with nine players).

## #23/RV Nebraska 71, #16/17 Penn State 63 Game #13 \* Dec. 30, 2011 \* University Park, Pa.

### Nebraska 71 • 12-1, 1-0

#	Player	Total			3-Ptr			Rebounds			PF	TP	A	TO	Blk	Stl	Min
		FG-FGA	FG-FGA	FT-FTA	FG-FGA	FG-FGA	FT-FTA	Off	Def	Tot							
00	Moore, Lindsey	*	4-11	1-4	7-10	0	4	4	1	16	4	7	0	1	34		
03	Sample, Hailee	*	2-5	0-0	1-2	1	2	3	1	5	0	1	1	0	25		
05	Burke, Kaitlyn	*	1-5	1-3	0-0	0	6	6	4	3	6	2	0	0	29		
23	Cady, Jordan	*	2-5	0-0	0-0	5	5	10	3	4	0	4	2	1	29		
35	Hooper, Emily	*	11-21	4-11	5-6	1	11	12	1	31	1	4	1	0	33		
10	Williams, Meghin	*	3-4	0-0	0-0	3	2	5	1	6	1	2	0	0	10		
14	Jeffery, Brandi	*	0-2	0-1	0-0	1	1	2	3	0	3	2	0	3	14		
14	Simon, Katie	*	1-1	0-0	2-2	0	1	1	1	4	0	1	0	0	9		
21	Sidhu, Harleen	*	0-0	0-0	0-0	0	1	1	0	0	0	1	0	0	4		
33	Woodberry, Rebecca	*	1-4	0-3	0-0	0	2	2	1	2	0	1	0	0	13		
	Team					4	3	7									
	Totals		25-58	6-22	15-21	15	38	53	16	71	15	26	5	5	200		

FG % 1st Half: 16-33 48.5% 2nd half: 9-25 36.0% Game: 25-58 43.1%  
3FG % 1st Half: 4-14 28.6% 2nd half: 2-8 25.0% Game: 6-22 27.3%  
FT % 1st Half: 2-2 100.0% 2nd half: 13-19 68.4% Game: 15-21 71.4%

### Penn State 63 • 10-3, 0-1

#	Player	Total			3-Ptr			Rebounds			PF	TP	A	TO	Blk	Stl	Min
		FG-FGA	FG-FGA	FT-FTA	FG-FGA	FG-FGA	FT-FTA	Off	Def	Tot							
12	Gray, Zhaque	*	0-7	0-3	0-0	0	2	2	0	0	1	1	0	0	21		
20	Bentley, Alex	*	9-25	1-4	3-5	0	3	3	1	22	3	5	1	0	36		
24	Nickson, Mia	*	2-9	0-0	0-0	4	3	7	3	4	1	3	0	1	31		
33	Lucas, Maggie	*	7-22	1-7	3-3	5	2	7	3	18	2	2	0	0	36		
54	Greene, Nikki	*	4-9	0-0	1-4	7	8	15	3	9	0	0	2	4	20		
05	East, Talia	*	0-1	0-0	4-4	3	1	4	0	4	0	1	1	0	10		
23	Edwards, Ariel	*	3-8	0-0	0-1	1	1	2	2	6	0	1	1	2	26		
25	Studevent, Gizelle	*	0-2	0-0	0-0	0	0	0	0	0	0	0	0	0	8		
40	Wolfe, Marisa	*	0-0	0-0	0-0	0	0	0	1	0	1	1	0	0	5		
44	Waldner, Tori	*	0-2	0-0	0-0	0	0	0	1	0	0	0	0	2	7		
	Team					5	1	6									
	Totals		25-85	2-14	11-17	25	21	46	14	63	8	14					

## #RV/25 Penn State 78, Michigan 63 Game #16 \* Jan., 12, 2012 \* University Park, Pa.

Michigan 63 • 13-4, 2-2

#	Player	Total			3-Ptr			Rebounds			PF	TP	A	TO	Blk	Stl	Min
		FG	FGA	FT	FTA	Off	Def	Tot									
02	Boylan, Courtney	4	10	1	2	3	5	1	10	1	2	0	1	37			
21	Jordan, Nya	2	6	0	0	2	2	4	3	4	1	1	0	25			
24	Ryan, Jenny	2	6	1	2	4	6	4	5	6	2	0	1	30			
33	Reynolds, Carmen	2	10	1	5	2	2	1	5	1	1	0	0	18			
44	Sheffer, Rachel	3	11	0	1	3	4	2	7	1	3	1	0	25			
01	Harris, Brenae	0	0	0	0	0	0	0	0	0	0	0	0	3			
11	Arnold, Sam	2	3	1	2	0	2	0	5	0	1	0	1	17			
12	Thompson, Kate	6	16	2	4	4	3	3	18	4	1	1	4	31			
14	Elmblad, Nicole	1	4	1	1	2	0	7	0	0	0	0	10				
54	Seto, Kendra	1	1	0	4	1	3	4	1	2	0	2	0	4			
	Team	1	0	1	0	1	0	1	0	0	0	0	0	4			
	Totals	23	67	8	25	9	12	21	33	15	63	14	13	2	9	200	

FG % 1st Half: 12-35 34.3% 2nd half: 11-32 34.4% Game: 23-67 34.3% Deadball Rebounds 1  
3FG % 1st Half: 3-13 23.1% 2nd half: 5-12 41.7% Game: 8-25 32.0%  
FT % 1st Half: 2-4 50.0% 2nd half: 7-8 87.5% Game: 9-12 75.0%

Penn State 78 • 12-4, 2-2

#	Player	Total			3-Ptr			Rebounds			PF	TP	A	TO	Blk	Stl	Min
		FG	FGA	FT	FTA	Off	Def	Tot									
12	Gray, Zhaque	6	12	1	4	2	1	3	4	2	15	1	1	0	0	33	
20	Bentley, Alex	6	10	0	0	2	0	5	5	1	12	6	6	0	4	35	
24	Nickson, Mia	2	3	0	0	3	5	8	3	6	2	3	0	0	22		
33	Lucas, Maggie	8	15	3	6	3	4	0	3	3	1	22	5	5	1	37	
54	Greene, Nikki	4	5	0	0	1	2	8	9	4	9	3	1	1	3	23	
05	East, Talia	1	1	0	0	0	0	1	1	0	2	0	0	0	3		
23	Edwards, Ariel	3	6	1	2	2	2	5	3	9	2	2	0	0	22		
25	Studevent, Gizelle	0	2	0	0	0	1	1	2	2	0	0	0	0	13		
40	Wolfe, Marisa	1	2	0	0	1	2	3	2	3	0	0	0	0	11		
44	Waldner, Tori	0	0	0	0	0	0	0	1	0	0	0	0	0	1		
	Team	1	1	2	1	2	1	2	1	0	0	0	0	0	1		
	Totals	31	56	5	12	11	16	8	34	42	19	78	19	18	2	10	200

FG % 1st Half: 16-28 57.1% 2nd half: 15-28 53.6% Game: 31-56 55.4% Deadball Rebounds 1  
3FG % 1st Half: 4-7 57.1% 2nd half: 1-5 20.0% Game: 5-12 41.7%  
FT % 1st Half: 5-8 62.5% 2nd half: 6-8 75.0% Game: 11-16 68.8%

Officials: Laura Morris, Michael McConnell, Rachelle Jones  
Technical fouls: Michigan-None, Penn State-None.  
Attendance: 3567

Score by periods	1st	2nd	Total
Michigan	29	34	63
Penn State	41	37	78

Last FG - MICH 2nd-00:09, PSU 2nd-01:55.  
Largest lead - MICH by 3 1st-18:55, PSU by 22 2nd-13:41.

### Notable

- Nikki Greene recorded nine rebounds, moving her past Kim Calhoun (583; 1993-96) and into 22nd all-time at Penn State with 590 career boards
- Maggie Lucas posted her ninth 20-point game of the season with 22 tallies to pace the Lady Lions
- Penn State shot 55.4% from the field, the best effort from the field for the Lions since compiling a 57.3 percentage at Nevada on Nov. 26, 2011.

## #RV/25 Penn State 93, #15/23 Nebraska 73 Game #17 \* Jan. 15, 2012 \* Lincoln, Neb.

Penn State 93 • 13-4 (3-2)

#	Player	Total			3-Ptr			Rebounds			PF	TP	A	TO	Blk	Stl	Min
		FG	FGA	FT	FTA	Off	Def	Tot									
33	Lucas, Maggie	7	15	4	6	6	0	6	6	2	24	1	1	0	1	34	
54	Greene, Nikki	6	9	0	0	0	2	6	8	4	12	0	0	1	0	24	
12	Gray, Zhaque	7	11	2	3	0	0	2	4	6	4	16	0	1	0	35	
20	Bentley, Alex	9	17	0	2	5	5	2	3	5	2	23	3	2	1	4	
24	Nickson, Mia	4	8	0	0	4	6	3	8	11	1	12	2	2	1	36	
05	East, Talia	0	3	0	0	0	1	3	4	1	0	0	1	3	10		
23	Edwards, Ariel	1	2	0	0	0	1	0	1	4	2	0	3	0	1	9	
25	Studevent, Gizelle	0	0	0	0	0	1	1	1	0	0	0	1	0	4		
40	Wolfe, Marisa	2	3	0	0	3	3	2	4	0	0	0	1	0	9		
44	Waldner, Tori	0	0	0	0	0	0	0	0	0	0	0	0	0	4		
	Team	1	2	3	2	4	2	2	2	0	0	0	0	0	4		
	Totals	36	68	6	11	15	17	12	36	48	20	93	6	13	6	7	200

FG % 1st Half: 16-35 45.7% 2nd half: 20-33 60.6% Game: 36-68 52.9% Deadball Rebounds 1  
3FG % 1st Half: 4-8 50.0% 2nd half: 2-3 66.7% Game: 6-11 54.5%  
FT % 1st Half: 2-2 100.0% 2nd half: 13-15 86.7% Game: 15-17 88.2%

Nebraska 73 • 15-2 (4-1)

#	Player	Total			3-Ptr			Rebounds			PF	TP	A	TO	Blk	Stl	Min
		FG	FGA	FT	FTA	Off	Def	Tot									
23	Cady, Emily	4	12	1	4	6	0	2	2	3	15	1	0	2	1	35	
35	Hooper, Jordan	4	18	1	6	4	6	3	5	8	4	13	0	1	0	30	
00	Moore, Lindsey	4	13	1	4	7	9	1	2	3	1	16	3	3	1	38	
03	Sample, Hallie	2	5	0	0	0	1	1	2	0	4	0	0	0	1	16	
05	Burke, Kaitlyn	3	3	1	1	2	2	3	1	8	4	4	0	0	34		
10	Williams, Meghin	2	3	1	1	0	1	2	3	1	5	0	1	1	0	15	
11	Laudermill, Tear'a	2	4	1	2	2	4	0	2	2	1	7	0	0	0	11	
13	Jeffery, Brandi	1	2	1	2	0	0	1	1	3	3	0	1	0	1	13	
14	Simon, Katie	0	1	0	0	0	0	0	2	2	0	1	0	0	8		
	Team	2	4	6	2	4	6	0	0	0	0	0	0	0	0	8	
	Totals	22	61	7	20	22	30	9	21	30	16	73	8	11	4	4	200

FG % 1st Half: 15-32 46.9% 2nd half: 7-29 24.1% Game: 22-61 36.1% Deadball Rebounds 2  
3FG % 1st Half: 5-9 55.6% 2nd half: 2-11 18.2% Game: 7-20 35.0%  
FT % 1st Half: 9-12 75.0% 2nd half: 13-18 72.2% Game: 22-30 73.3%

Officials: Amy Bonner, John Whitson, Angie Enlund  
Technical fouls: Penn State-East, Talia, Nebraska-None.  
Attendance: 7752  
Technical foul on Talia East

Score by periods	1st	2nd	Total
Penn State	38	55	93
Nebraska	44	29	73

Last FG - PSU 2nd-01:27, NEB 2nd-00:53.  
Largest lead - PSU by 22 2nd-00:58, NEB by 11 1st-12:20.

### Notable

- The 93 points scored by the Lady Lions at Nebraska are the most scored vs. a Big Ten team since a 95-62 win at Ohio St. (2/3/02).
- Alex Bentley reached the 1,100-point mark for her career with 23 markers. She moved past Missy Masley (1,106; 1992-95) for 28th place on Penn State's career scoring chart (1,120).
- Maggie Lucas turned in her 10th 20-point game of the season with 24 tallies.



## 2011-12 RADIO/TV CHART



#2

**Dara Taylor**  
5-8 \* Jr./Jr. \* G  
Wilmington, Del.  
Caravel Academy  
(Maryland)



#5

**Talia East**  
6-3 \* So./So. \* F/C  
Philadelphia, Pa.  
Friends' Central School



#12

**Zhaque Gray**  
5-8 \* Sr./Sr. \* G  
Chicago, Ill.  
Prep John Hope



#15

**Renee Womack**  
5-10 \* Sr./Sr. \* G  
Lansdale, Pa.  
Methacton



#20

**Alex Bentley**  
5-7 \* Jr./Jr. \* G  
Indianapolis, Ind.  
Ben Davis



#23

**Ariel Edwards**  
6-2 \* So./So. \* F  
Elmont, N.Y.  
Christ the King



#24

**Mia Nickson**  
6-2 \* Sr./Jr. \* F  
Ashburn, Va.  
Notre Dame Academy  
(Boston College)



#25

**Gizelle Studevent**  
5-11 \* Jr./Jr. \* G  
La Jolla, Calif.  
The Bishop's School



#33

**Maggie Lucas**  
5-10 \* So./So. \* G  
Narberth, Pa.  
Germantown Academy



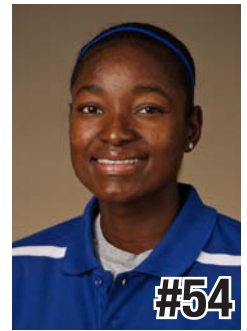
#40

**Marisa Wolfe**  
6-2 \* Jr./Jr. \* F  
Ford City, Pa.  
Ford City



#44

**Tori Waldner**  
6-5 \* Fr./Fr. \* F/C  
Milton, Ga.  
Milton



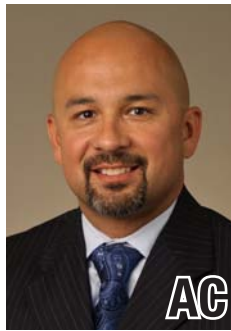
#54

**Nikki Greene**  
6-4 \* Jr./Jr. \* F/C  
Diboll, Texas  
Diboll



HC

**Coquese Washington**  
Head Coach  
Notre Dame '92  
Fifth Season



AC

**Fred Chmiel**  
Assistant Coach  
Excelsior College  
Second Season



AC

**Kia Damon**  
Assistant Coach  
Millersville '97  
Fifth Season



AC

**Maren Walseth**  
Assistant Coach  
Penn State '02  
Fifth Season



DO

**Ethan Gelfand**  
Director of Basketball  
Operations  
First Season



VO

**Mike Miller**  
Director of Video &  
Technology Operations  
Seventh Season



2011-12 Penn State Lady Lions  
Penn State Combined Team Statistics (as of Jan 15, 2012)  
All games

RECORD:	OVERALL	HOME	AWAY	NEUTRAL
ALL GAMES	13-4	7-2	5-2	1-0
CONFERENCE	3-2	1-2	2-0	0-0
NON-CONFERENCE	10-2	6-0	3-2	1-0

##	Player	gp-gs	min	avg	Total		3-Point		F-Throw		Rebounds				pf	dq	a	to	blk	stl	pts	avg		
					fg-fga	fg%	3fg-fga	3fg%	ft-fta	ft%	off	def	tot	avg										
33	Lucas, Maggie	17-17	582	34.2	109-246	.443	47-114	.412	81-95	.853	18	61	79	4.6	31	0	45	46	3	21	346	20.4		
20	Bentley, Alex	17-17	569	33.5	97-212	.458	10-29	.345	46-58	.793	7	39	46	2.7	35	1	96	62	4	55	250	14.7		
12	Gray, Zhaque	17-17	509	29.9	71-167	.425	25-68	.368	26-30	.867	14	41	55	3.2	38	0	31	29	1	15	193	11.4		
54	Greene, Nikki	17-17	331	19.5	62-118	.525	0-0	.000	37-62	.597	44	90	134	7.9	56	0	9	32	22	21	161	9.5		
23	Edwards, Ariel	17-8	430	25.3	42-101	.416	3-15	.200	18-30	.600	16	56	72	4.2	38	1	24	29	4	18	105	6.2		
24	Nickson, Mia	9-9	240	26.7	21-59	.356	0-0	.000	13-26	.500	35	44	79	8.8	22	0	8	13	2	5	55	6.1		
40	Wolfe, Marisa	14-0	168	12.0	23-47	.489	1-4	.250	10-14	.714	11	25	36	2.6	26	0	6	10	5	10	57	4.1		
05	East, Talia	17-0	231	13.6	29-59	.492	0-0	.000	11-23	.478	27	72	99	5.8	27	1	5	20	25	8	69	4.1		
44	Waldner, Tori	15-0	150	10.0	15-31	.484	0-0	.000	5-10	.500	8	33	41	2.7	24	0	8	16	11	9	35	2.3		
25	Studevent, Gizelle	17-0	190	11.2	16-41	.390	0-1	.000	2-2	1.000	8	16	24	1.4	10	0	13	8	0	8	34	2.0		
Team											41	41	82											
Total.....		17	3400		485-1081	.449	86-231	.372	249-350	.711	229	518	747	43.9	307	3	245	268	77	170	1305	76.8		
Opponents.....		17	3400		357-1095	.326	99-364	.272	210-299	.702	264	420	684	40.2	295	4	199	300	57	115	1023	60.2		

TEAM STATISTICS	PSU	OPP	Date	Opponent	Score	Att.
SCORING	1305	1023	11/11/11	WASHINGTON STATE	w 72-60	3807
Points per game	76.8	60.2	11/13/11	MIDDLE TENNESSEE	w 65-49	3238
Scoring margin	+16.6	-	11/17/11	at Delaware	L 71-80	3352
FIELD GOALS-ATT	485-1081	357-1095	11/20/11	at South Carolina	w 55-50	2391
Field goal pct	.449	.326	11/25/11	vs Iowa State	w 66-59	1089
3 POINT FG-ATT	86-231	99-364	11/26/11	at Nevada	w 103-65	759
3-point FG pct	.372	.272	11/30/11	NORTH CAROLINA	w 103-84	3963
3-pt FG made per game	5.1	5.8	12-03-11	at TTU	L 66-70	8923
FREE THROWS-ATT	249-350	210-299	12/6/11	VIRGINIA TECH	w 66-28	3236
Free throw pct	.711	.702	12/11/11	UMES	w 76-51	3386
F-Throws made per game	14.6	12.4	12/18/11	WAGNER	w 103-42	7202
REBOUNDS	747	684	12/21/11	at BUCKNELL	w 78-54	1490
Rebounds per game	43.9	40.2	* 12/30/11	NEBRASKA	L 63-71	5116
Rebounding margin	+3.7	-	* 01/02/12	at Wisconsin	w 82-49	4171
ASSISTS	245	199	* 1/7/12	MICHIGAN STATE	L 65-75	4906
Assists per game	14.4	11.7	* 1/12/12	MICHIGAN	w 78-63	3567
TURNOVERS	268	300	* 01/15/12	at Nebraska	w 93-73	7752
Turnovers per game	15.8	17.6	* - Conference game			
Turnover margin	+1.9	-				
Assist/turnover ratio	0.9	0.7				
STEALS	170	115				
Steals per game	10.0	6.8				
BLOCKS	77	57				
Blocks per game	4.5	3.4				
ATTENDANCE	38421	29927				
Home games-Avg/Game	9-4269	7-4120				
Neutral site-Avg/Game	-	1-1089				

Score by Periods	1st	2nd	Totals
Penn State	641	664	1305
Opponents	535	488	1023

2011-12 Penn State Lady Lions  
Penn State Category Leaders (as of Jan 15, 2012)  
All games

Points	G	Pts	Pts/G
Lucas, Maggie	17	346	20.4
Bentley, Alex	17	250	14.7
Gray, Zhaque	17	193	11.4
Greene, Nikki	17	161	9.5
Edwards, Ariel	17	105	6.2
East, Talia	17	69	4.1
Wolfe, Marisa	14	57	4.1
Nickson, Mia	9	55	6.1
Waldner, Tori	15	35	2.3
Studevent, Gizelle	17	34	2.0

FG Percentage	FG	Att	Pct
Greene, Nikki	62	118	.525
East, Talia	29	59	.492
Wolfe, Marisa	23	47	.489
Waldner, Tori	15	31	.484
Bentley, Alex	97	212	.458
Lucas, Maggie	109	246	.443
Gray, Zhaque	71	167	.425
Edwards, Ariel	42	101	.416
Studevent, Gizelle	16	41	.390
Nickson, Mia	21	59	.356

3-Point Percentage	3FG	Att	Pct
Lucas, Maggie	47	114	.412
Gray, Zhaque	25	68	.368
Bentley, Alex	10	29	.345
Wolfe, Marisa	1	4	.250
Edwards, Ariel	3	15	.200
Studevent, Gizelle	0	1	.000

Free Throw Percent	FG	Att	Pct
Studevent, Gizelle	2	2	1.000
Gray, Zhaque	26	30	.867
Lucas, Maggie	81	95	.853
Bentley, Alex	46	58	.793
Wolfe, Marisa	10	14	.714
Edwards, Ariel	18	30	.600
Greene, Nikki	37	62	.597
Waldner, Tori	5	10	.500
Nickson, Mia	13	26	.500
East, Talia	11	23	.478

Scoring Average	G	Pts	Avg/G
Lucas, Maggie	17	346	20.4
Bentley, Alex	17	250	14.7
Gray, Zhaque	17	193	11.4
Greene, Nikki	17	161	9.5
Edwards, Ariel	17	105	6.2
Nickson, Mia	9	55	6.1
Wolfe, Marisa	14	57	4.1
East, Talia	17	69	4.1
Waldner, Tori	15	35	2.3
Studevent, Gizelle	17	34	2.0

Field Goal Attempts	G	Att	Att/G
Lucas, Maggie	17	246	14.5
Bentley, Alex	17	212	12.5
Gray, Zhaque	17	167	9.8
Greene, Nikki	17	118	6.9
Edwards, Ariel	17	101	5.9

Field Goals Made	G	Made	Made/G
Lucas, Maggie	17	109	6.4
Bentley, Alex	17	97	5.7
Gray, Zhaque	17	71	4.2
Greene, Nikki	17	62	3.6
Edwards, Ariel	17	42	2.5

3-Point FG Attempts	G	Att	Att/G
Lucas, Maggie	17	114	6.7
Gray, Zhaque	17	68	4.0
Bentley, Alex	17	29	1.7
Edwards, Ariel	17	15	0.9
Wolfe, Marisa	14	4	0.3

3-Point FG Made	G	Made	Made/G
Lucas, Maggie	17	47	2.8
Gray, Zhaque	17	25	1.5
Bentley, Alex	17	10	0.6
Edwards, Ariel	17	3	0.2
Wolfe, Marisa	14	1	0.1

Free Throw Attempts	G	Att	Att/G
Lucas, Maggie	17	95	5.6
Greene, Nikki	17	62	3.6
Bentley, Alex	17	58	3.4
Edwards, Ariel	17	30	1.8
Gray, Zhaque	17	30	1.8

Free Throws Made	G	Made	Made/G
Lucas, Maggie	17	81	4.8
Bentley, Alex	17	46	2.7
Greene, Nikki	17	37	2.2
Gray, Zhaque	17	26	1.5
Edwards, Ariel	17	18	1.1



2011-12 Penn State Lady Lions  
 Penn State Category Leaders (as of Jan 15, 2012)  
 All games

<u>Rebounds</u>	<u>G</u>	<u>Reb</u>	<u>Reb/G</u>
Greene, Nikki	17	134	7.9
East, Talia	17	99	5.8
Nickson, Mia	9	79	8.8
Lucas, Maggie	17	79	4.6
Edwards, Ariel	17	72	4.2

<u>Assists</u>	<u>G</u>	<u>No.</u>	<u>Ast/G</u>
Bentley, Alex	17	96	5.6
Lucas, Maggie	17	45	2.6
Gray, Zhaque	17	31	1.8
Edwards, Ariel	17	24	1.4
Studevent, Gizelle	17	13	0.8

<u>Rebound Average</u>	<u>G</u>	<u>Reb</u>	<u>Avg/G</u>
Nickson, Mia	9	79	8.8
Greene, Nikki	17	134	7.9
East, Talia	17	99	5.8
Lucas, Maggie	17	79	4.6
Edwards, Ariel	17	72	4.2

<u>Steals</u>	<u>G</u>	<u>No.</u>	<u>Stl/G</u>
Bentley, Alex	17	55	3.2
Lucas, Maggie	17	21	1.2
Greene, Nikki	17	21	1.2
Edwards, Ariel	17	18	1.1
Gray, Zhaque	17	15	0.9

<u>Offensive Rebounds</u>	<u>G</u>	<u>No.</u>	<u>Avg/G</u>
Greene, Nikki	17	44	2.6
Nickson, Mia	9	35	3.9
East, Talia	17	27	1.6
Lucas, Maggie	17	18	1.1
Edwards, Ariel	17	16	0.9

<u>Blocked Shots</u>	<u>G</u>	<u>No.</u>	<u>Blk/G</u>
East, Talia	17	25	1.5
Greene, Nikki	17	22	1.3
Waldner, Tori	15	11	0.7
Wolfe, Marisa	14	5	0.4
Edwards, Ariel	17	4	0.2
Bentley, Alex	17	4	0.2

<u>Defensive Rebounds</u>	<u>G</u>	<u>No.</u>	<u>Avg/G</u>
Greene, Nikki	17	90	5.3
East, Talia	17	72	4.2
Lucas, Maggie	17	61	3.6
Edwards, Ariel	17	56	3.3
Nickson, Mia	9	44	4.9

<u>Minutes</u>	<u>G</u>	<u>No.</u>	<u>Min/G</u>
Lucas, Maggie	17	582	34.2
Bentley, Alex	17	569	33.5
Gray, Zhaque	17	509	29.9
Edwards, Ariel	17	430	25.3
Greene, Nikki	17	331	19.5

<u>Fouls</u>	<u>G</u>	<u>No.</u>	<u>Per/G</u>
Greene, Nikki	17	56	3.3
Edwards, Ariel	17	38	2.2
Gray, Zhaque	17	38	2.2
Bentley, Alex	17	35	2.1
Lucas, Maggie	17	31	1.8

<u>Turnovers</u>	<u>G</u>	<u>No.</u>	<u>TO/G</u>
Bentley, Alex	17	62	3.6
Lucas, Maggie	17	46	2.7
Greene, Nikki	17	32	1.9
Edwards, Ariel	17	29	1.7
Gray, Zhaque	17	29	1.7

<u>Foulsouts</u>	<u>G</u>	<u>No.</u>
Bentley, Alex	17	1
Edwards, Ariel	17	1
East, Talia	17	1

2011-12 Penn State Lady Lions  
Penn State Combined Team Statistics (as of Jan 15, 2012)  
Conference games

RECORD:	OVERALL	HOME	AWAY	NEUTRAL
ALL GAMES	3-2	1-2	2-0	0-0
CONFERENCE	3-2	1-2	2-0	0-0
NON-CONFERENCE	0-0	0-0	0-0	0-0

##	Player	gp-gs	min	avg	Total		3-Point		F-Throw		Rebounds				pf	dq	a	to	blk	stl	pts	avg		
					fg-fga	fg%	3fg-fga	3fg%	ft-fta	ft%	off	def	tot	avg										
33	Lucas, Maggie	5-5	176	35.2	38-86	.442	17-38	.447	22-25	.880	8	17	25	5.0	8	0	18	16	1	6	115	23.0		
20	Bentley, Alex	5-5	171	34.2	30-74	.405	1-9	.111	8-13	.615	2	15	17	3.4	11	1	26	21	2	22	69	13.8		
54	Greene, Nikki	5-5	115	23.0	21-35	.600	0-0	.000	7-15	.467	14	36	50	10.0	17	0	3	7	6	11	49	9.8		
12	Gray, Zhaque	5-5	138	27.6	19-51	.373	6-22	.273	3-4	.750	5	12	17	3.4	10	0	4	8	0	2	47	9.4		
24	Nickson, Mia	5-5	145	29.0	16-35	.457	0-0	.000	7-13	.538	23	25	48	9.6	12	0	6	10	1	3	39	7.8		
23	Edwards, Ariel	5-0	103	20.6	11-22	.500	1-2	.500	4-7	.571	3	13	16	3.2	13	0	6	10	2	4	27	5.4		
40	Wolfe, Marisa	5-0	44	8.8	6-11	.545	0-1	.000	3-4	.750	2	8	10	2.0	6	0	1	3	1	1	15	3.0		
05	East, Talia	5-0	38	7.6	3-8	.375	0-0	.000	4-4	1.000	4	12	16	3.2	1	0	0	4	6	0	10	2.0		
44	Waldner, Tori	5-0	30	6.0	3-7	.429	0-0	.000	0-0	.000	1	2	3	0.6	4	0	2	2	1	4	6	1.2		
25	Studevent, Gizelle	5-0	40	8.0	2-9	.222	0-0	.000	0-0	.000	3	3	6	1.2	2	0	3	1	0	1	4	0.8		
Team											11	8	19											
Total.....		5	1000		149-338	.441	25-72	.347	58-85	.682	76	151	227	45.4	84	1	69	84	20	54	381	76.2		
Opponents.....		5	1000		112-304	.368	34-108	.315	73-97	.753	55	131	186	37.2	79	0	62	83	15	36	331	66.2		

TEAM STATISTICS	PSU	OPP	Date	Opponent	Score	Att.
SCORING	381	331	* 12/30/11	NEBRASKA	L 63-71	5116
Points per game	76.2	66.2	* 01/02/12	at Wisconsin	w 82-49	4171
Scoring margin	+10.0	-	* 1/7/12	MICHIGAN STATE	L 65-75	4906
FIELD GOALS-ATT	149-338	112-304	* 1/12/12	MICHIGAN	w 78-63	3567
Field goal pct	.441	.368	* 01/15/12	at Nebraska	w 93-73	7752
3 POINT FG-ATT	25-72	34-108	* - Conference game			
3-point FG pct	.347	.315				
3-pt FG made per game	5.0	6.8				
FREE THROWS-ATT	58-85	73-97				
Free throw pct	.682	.753				
F-Throws made per game	11.6	14.6				
REBOUNDS	227	186				
Rebounds per game	45.4	37.2				
Rebounding margin	+8.2	-				
ASSISTS	69	62				
Assists per game	13.8	12.4				
TURNOVERS	84	83				
Turnovers per game	16.8	16.6				
Turnover margin	-0.2	-				
Assist/turnover ratio	0.8	0.7				
STEALS	54	36				
Steals per game	10.8	7.2				
BLOCKS	20	15				
Blocks per game	4.0	3.0				
ATTENDANCE	13589	11923				
Home games-Avg/Game	3-4530	2-5962				
Neutral site-Avg/Game	-	0-0				

Score by Periods	1st	2nd	Totals
Penn State	181	200	381
Opponents	182	149	331

2011-12 Penn State Lady Lions  
Penn State Category Leaders (as of Jan 15, 2012)  
Conference games

Points	G	Pts	Pts/G
Lucas, Maggie	5	115	23.0
Bentley, Alex	5	69	13.8
Greene, Nikki	5	49	9.8
Gray, Zhaque	5	47	9.4
Nickson, Mia	5	39	7.8
Edwards, Ariel	5	27	5.4
Wolfe, Marisa	5	15	3.0
East, Talia	5	10	2.0
Waldner, Tori	5	6	1.2
Studevent, Gizelle	5	4	0.8

FG Percentage	FG	Att	Pct
Greene, Nikki	21	35	.600
Wolfe, Marisa	6	11	.545
Edwards, Ariel	11	22	.500
Nickson, Mia	16	35	.457
Lucas, Maggie	38	86	.442
Waldner, Tori	3	7	.429
Bentley, Alex	30	74	.405
East, Talia	3	8	.375
Gray, Zhaque	19	51	.373
Studevent, Gizelle	2	9	.222

3-Point Percentage	3FG	Att	Pct
Edwards, Ariel	1	2	.500
Lucas, Maggie	17	38	.447
Gray, Zhaque	6	22	.273
Bentley, Alex	1	9	.111
Wolfe, Marisa	0	1	.000

Free Throw Percent	FG	Att	Pct
East, Talia	4	4	1.000
Lucas, Maggie	22	25	.880
Gray, Zhaque	3	4	.750
Wolfe, Marisa	3	4	.750
Bentley, Alex	8	13	.615
Edwards, Ariel	4	7	.571
Nickson, Mia	7	13	.538
Greene, Nikki	7	15	.467

Scoring Average	G	Pts	Avg/G
Lucas, Maggie	5	115	23.0
Bentley, Alex	5	69	13.8
Greene, Nikki	5	49	9.8
Gray, Zhaque	5	47	9.4
Nickson, Mia	5	39	7.8
Edwards, Ariel	5	27	5.4
Wolfe, Marisa	5	15	3.0
East, Talia	5	10	2.0
Waldner, Tori	5	6	1.2
Studevent, Gizelle	5	4	0.8

Field Goal Attempts	G	Att	Att/G
Lucas, Maggie	5	86	17.2
Bentley, Alex	5	74	14.8
Gray, Zhaque	5	51	10.2
Greene, Nikki	5	35	7.0
Nickson, Mia	5	35	7.0

Field Goals Made	G	Made	Made/G
Lucas, Maggie	5	38	7.6
Bentley, Alex	5	30	6.0
Greene, Nikki	5	21	4.2
Gray, Zhaque	5	19	3.8
Nickson, Mia	5	16	3.2

3-Point FG Attempts	G	Att	Att/G
Lucas, Maggie	5	38	7.6
Gray, Zhaque	5	22	4.4
Bentley, Alex	5	9	1.8
Edwards, Ariel	5	2	0.4
Wolfe, Marisa	5	1	0.2

3-Point FG Made	G	Made	Made/G
Lucas, Maggie	5	17	3.4
Gray, Zhaque	5	6	1.2
Edwards, Ariel	5	1	0.2
Bentley, Alex	5	1	0.2

Free Throw Attempts	G	Att	Att/G
Lucas, Maggie	5	25	5.0
Greene, Nikki	5	15	3.0
Nickson, Mia	5	13	2.6
Bentley, Alex	5	13	2.6
Edwards, Ariel	5	7	1.4

Free Throws Made	G	Made	Made/G
Lucas, Maggie	5	22	4.4
Bentley, Alex	5	8	1.6
Greene, Nikki	5	7	1.4
Nickson, Mia	5	7	1.4
East, Talia	5	4	0.8
Edwards, Ariel	5	4	0.8

2011-12 Penn State Lady Lions  
Penn State Category Leaders (as of Jan 15, 2012)  
Conference games

<u>Rebounds</u>	<u>G</u>	<u>Reb</u>	<u>Reb/G</u>
Greene, Nikki	5	50	10.0
Nickson, Mia	5	48	9.6
Lucas, Maggie	5	25	5.0
Bentley, Alex	5	17	3.4
Gray, Zhaque	5	17	3.4

<u>Assists</u>	<u>G</u>	<u>No.</u>	<u>Ast/G</u>
Bentley, Alex	5	26	5.2
Lucas, Maggie	5	18	3.6
Edwards, Ariel	5	6	1.2
Nickson, Mia	5	6	1.2
Gray, Zhaque	5	4	0.8

<u>Rebound Average</u>	<u>G</u>	<u>Reb</u>	<u>Avg/G</u>
Greene, Nikki	5	50	10.0
Nickson, Mia	5	48	9.6
Lucas, Maggie	5	25	5.0
Bentley, Alex	5	17	3.4
Gray, Zhaque	5	17	3.4

<u>Steals</u>	<u>G</u>	<u>No.</u>	<u>Stl/G</u>
Bentley, Alex	5	22	4.4
Greene, Nikki	5	11	2.2
Lucas, Maggie	5	6	1.2
Edwards, Ariel	5	4	0.8
Waldner, Tori	5	4	0.8

<u>Offensive Rebounds</u>	<u>G</u>	<u>No.</u>	<u>Avg/G</u>
Nickson, Mia	5	23	4.6
Greene, Nikki	5	14	2.8
Lucas, Maggie	5	8	1.6
Gray, Zhaque	5	5	1.0
East, Talia	5	4	0.8

<u>Blocked Shots</u>	<u>G</u>	<u>No.</u>	<u>Blk/G</u>
East, Talia	5	6	1.2
Greene, Nikki	5	6	1.2
Edwards, Ariel	5	2	0.4
Bentley, Alex	5	2	0.4
Wolfe, Marisa	5	1	0.2
Lucas, Maggie	5	1	0.2
Nickson, Mia	5	1	0.2
Waldner, Tori	5	1	0.2

<u>Defensive Rebounds</u>	<u>G</u>	<u>No.</u>	<u>Avg/G</u>
Greene, Nikki	5	36	7.2
Nickson, Mia	5	25	5.0
Lucas, Maggie	5	17	3.4
Bentley, Alex	5	15	3.0
Edwards, Ariel	5	13	2.6

<u>Minutes</u>	<u>G</u>	<u>No.</u>	<u>Min/G</u>
Lucas, Maggie	5	176	35.2
Bentley, Alex	5	171	34.2
Nickson, Mia	5	145	29.0
Gray, Zhaque	5	138	27.6
Greene, Nikki	5	115	23.0

<u>Fouls</u>	<u>G</u>	<u>No.</u>	<u>Per/G</u>
Greene, Nikki	5	17	3.4
Edwards, Ariel	5	13	2.6
Nickson, Mia	5	12	2.4
Bentley, Alex	5	11	2.2
Gray, Zhaque	5	10	2.0

<u>Turnovers</u>	<u>G</u>	<u>No.</u>	<u>TO/G</u>
Bentley, Alex	5	21	4.2
Lucas, Maggie	5	16	3.2
Nickson, Mia	5	10	2.0
Edwards, Ariel	5	10	2.0
Gray, Zhaque	5	8	1.6

<u>Foulsouts</u>	<u>G</u>	<u>No.</u>
Bentley, Alex	5	1