

PENN STATE

WOMEN'S SOCCER



2014

GoPSUsports.com

Twitter: @PennStateWSOC

Instagram: PennStateWSOC

Facebook: PSUWomensSoccer

AUGUST

PENN STATE INVITATIONAL (Aug. 22-24)

Fri. 22	#12 WEST VIRGINIA	University Park, Pa.	W, 3-1
Sun. 24	SYRACUSE	University Park, Pa.	W, 2-0
Fri. 29	CONNECTICUT	University Park, Pa.	W, 3-1

SEPTEMBER

DUKE NIKE CLASSIC (Sept. 5-7)

Fri. 5	vs. #14 North Carolina	Durham, N.C.	L, 1-0 (2OT)
Sun. 7	at Duke	Durham, N.C.	W, 4-3
Fri. 12	at Purdue*	West Lafayette, Ind.	W, 1-0
Sun. 14	at Indiana*	Bloomington, Ind.	W, 3-0
Fri. 19	OHIO STATE*	University Park, Pa.	W, 5-1
Tue. 23	BUCKNELL	University Park, Pa.	W, 7-0
Fri. 26	NORTHWESTERN*	University Park, Pa.	W, 4-1
Sun. 28	#19 ILLINOIS*	University Park, Pa.	W, 2-1

OCTOBER

Fri. 3	at Minnesota*	Minneapolis, Minn.	W, 1-0
Sun. 5	at #13 Wisconsin*	Madison, Wis.	W, 2-0
Sat. 11	#20 RUTGERS*	University Park, Pa.	L, 1-0
Thu. 16	at #24 Michigan*	Ann Arbor, Mich.	W, 1-0
Sun. 19	at Michigan State*	East Lansing, Mich.	W, 2-1
Fri. 24	NEBRASKA*	University Park, Pa.	W, 3-1
Sun. 26	IOWA*	University Park, Pa.	W, 2-1
Thu. 30	MARYLAND*	University Park, Pa.	W, 1-0

NOVEMBER

BIG TEN TOURNAMENT

Wed. 5	No. 8 Northwestern	West Lafayette, Ind.	L, 1-0
--------	--------------------	----------------------	--------

NCAA TOURNAMENT (Nov. 14-30)

Fri. 14	BUFFALO	University Park, Pa.	W, 4-1
Fri. 21	UCONN	University Park, Pa.	W, 1-0
Sun. 23	VIRGINIA TECH	University Park, Pa.	W, 2-1
Sat. 30	at Texas A&M	College Station, Texas	6 p.m.

DECEMBER

NCAA WOMEN'S COLLEGE CUP (Dec. 5-7)

Fri. 5	College Cup Semifinals	Boca Raton, Fla.	
Sun. 7	College Cup Championship	Boca Raton, Fla.	

* - Big Ten match; Home matches in **CAPS** at Jeffrey Field;
All times Eastern



NCAA TOURNAMENT QUARTERFINALS: TEXAS A&M

VENUES: Jeffrey Field, College Station, Texas

COVERAGE: GameTracker, Video (SEC Network +), Audio (<http://v6.player.abacast.net/689>)

	TXAM	PSU	
RECORD	21-2-2	20-3	
GOALS	68	53	
GOALS/GAME	2.72	2.30	
SHOTS	518	342	TEXAS A&M
SHOTS/GAME	20.72	14.9	SAT. NOV. 30 - 7 P.M. (CT)
PENALTY KICKS	1-2	1-2	SERIES: Penn State, 3-0-2
SV%	.763	.810	LAST MEETING: Nov. 19, 2005
GA	23	16	W, 4-1
GAA	0.90	0.69	
SHUTOUTS	9	9	

ON THE PITCH

No. 2-seed Penn State travels to No. 1-seed Texas A&M for the Nittany Lions' 10th Elite Eight appearance in program history on Sat., Nov. 29 at 7 p.m. (CT).

Live streaming is available to SEC Network subscribers via SEC Network Plus on WatchESPN and ESPN3.com. Live stats are available on GoPSUsports.com and the match will be broadcasted on SportsRadio 1150AM out of College Station, Texas, at <http://v6.player.abacast.net/689>.

Tickets for the match can be purchased online at AggieAthletics.com, in person at the Kyle Field box office or over the phone at 1-888-99-Aggie. Reserved tickets are \$18 (west midfield), \$15 (west sideline) or \$9 (west goal line). General admission tickets are \$7 for adults and \$3 for youth and students.

IN THE ELITE EIGHT

The Nittany Lions will appear in their 10th Elite Eight in program history at Texas A&M, boasting a 4-5 record and moving on to the College Cup in 1999, 2002, 2005 and

2014 STAT LEADERS

POINTS		ASSISTS	
Mallory Weber	22	Emily Hurd	8
Frannie Crouse	21	Four Players	6
Megan Schafer	18		
GOALS		SAVES	
Frannie Crouse	10	Britt Eckerstrom	60
Mallory Weber	8	Meghan Kaminski	7
Raquel Rodriguez	7		
GAME-WINNING GOALS		WINS	
Four Players	3	Britt Eckerstrom	30
Two Players	2	SHUTOUTS	
		Britt Eckerstrom	8/1

Contact: Jen Heisel • jrh67@psu.edu
O: (814) 865-3613 • C: (814) 321-5119



TOP-25 NCAA RANKS

(As of 11/16/14)

TEAM

Won-Lost-Tied Percentage	6th
Total Assists	9th
Total Points	11th
Total Goals	14th
Scoring Offense	20th

BRITT ECKERSTROM

Goals Against Average	17th
-----------------------------	------

INDIVIDUAL HONORS

Erica Walsh

Big Ten Coach of the Year

Kori Chapic

All-Big Ten Second Team
 Nov. 24 - Top Drawer Soccer Team of the Week
 Oct. 29 - ESPNW National Player of the Week
 Oct. 28 - Top Drawer Soccer Team of the Week
 Oct. 27 - Big Ten Offensive Player of the Week

Whitney Church

Big Ten Defender of the Year
 All-Big Ten First Team
 MAC Hermann Trophy Watch List

Frannie Crouse

All-Big Ten Second Team
 All-Big Ten Freshman Team
 Sept. 22 - Big Ten Freshman of the Week
 Sept. 29 - Big Ten Freshman of the Week
 Nov. 3 - Big Ten Co-Freshman of the Week

Maddie Elliston

All-Big Ten Freshman Team
 Oct. 6 - Top Drawer Soccer Team of the Week

Britt Eckerstrom

All-Big Ten Second Team
 Oct. 6 - Big Ten Co-Defensive Player of the Week
 Oct. 6 - Top Drawer Soccer Team of the Week

Emily Hurd

All-Big Ten Second Team
 Sept. 9 - Top Drawer Soccer Team of the Week

Emily Ogle

Big Ten Freshman of the Year
 All-Big Ten Freshman Team
 Aug. 25 - Top Drawer Soccer Team of the Week

Raquel Rodriguez

Big Ten Midfielder of the Year
 All-Big Ten First Team
 Nov. 18 - Top Drawer Soccer Team of the Week

Megan Schafer

Sept. 3 - Big Ten Co-Freshman of the Week
 Oct. 20 - Big Ten Freshman of the Week

Salina Williford

Sept. 30 - Top Drawer Soccer Team of the Week
 Sept. 30 - CS360 National Player of the Week

2012. In 1999, Penn State topped Hartford, 2-0, beat UConn in the 2002 quarterfinals, 2-1, in 2005, bested Santa Clara, 2-1, and shut out Duke, 1-0, in 2012.

Penn State's 10 quarterfinal appearances is among the best in the nation. The Nittany Lions have the fourth most Elite Eight appearances of any team in the 2014 field, the most among Big Ten teams all-time and the eighth most all-time since 1982 (28 - UNC; 18 - UConn; 15 - Notre Dame; 14 - Santa Clara, Portland; 13 - UCLA; 12 - Stanford; 11 - Florida State; 10 - Penn State and UMass).

SCORE!

In Penn State's 60 NCAA Tournament matches, the team has outscored its opponents, 126-67. The Nittany Lions' 4-1 win over Buffalo on Nov. 14 marked the 12th time in program history the team has scored four-or-more goals in an NCAA Tournament match.

FEELING FRESH

All season, Penn State's 11 freshmen have made huge contributions to the team's success and the postseason has been no exception. Frannie Crouse scored the gamewinner against UConn, the lone goal against the Huskies and improved Penn State's record to 12-0 when a first-year Nittany Lion scores. Against Buffalo, Megan Schafer scored her sixth goal of the season.

SIMPLY THE BEST

Penn State women's soccer maintained its standing as one of the top programs in collegiate soccer this season. The Nittany Lions won their 16th conference title in 17 years, a record unmatched by any Division I program (North Carolina won 13 of 14 ACC titles from 1998-2008). Since the program began in 1994, Penn State has appeared in every Big Ten Tournament and each season from 1995 on, the team competed in the NCAA postseason.

PARK AVENUE PROTECTORS

The Nittany Lions take home field advantage to the next level. After sweeping the first three rounds of the NCAA Tournament at Jeffrey Field, the women's soccer team moved to 202-22-9 all-time at The Jeff, losing just two matches in the past three seasons and shutting out visitors in 20 of 40 matches. Additionally, the team's 4-1 victory over Buffalo marked the 200th win at Jeffrey Field.

BIG TEN CHAMPIONS

The Nittany Lions secured their 16th Big Ten Championship and third outright in four seasons with a 2-1 win over Iowa. On Senior Day, senior Kori Chapic (Russell, Ohio) led the team to victory, scoring both of Penn State's goals in a five-minute span to come from behind and beat the Hawkeyes.

HONORS ABOUND

After winning its 16th Big Ten Championship and maintaining a top-11 ranking every week of the season, the Nittany Lions were rewarded generously with the conference's individual awards. Erica Walsh earned her third Big Ten Coach of the Year title, Whitney Church (Ashburn, Virginia) was named the Big Ten Defensive Player of the Year for the second time in her career (2012), 2012 Big Ten Freshman of the Year Raquel Rodriguez (San Jose, Costa Rica) is the 2014 Big Ten Midfielder of the Year and garnering Big Ten Freshman of the Year accolades is Emily Ogle (Strongsville, Ohio).

Joining Church and Rodriguez on the All-Big Ten team are second team honorees Emily Hurd (Sammamish, Washington), Frannie Crouse (Greensburg, Pennsylvania) Kori Chapic (Russell, Ohio) and Britt Eckerstrom (Germantown, Maryland). Maddie Elliston (Omaha, Nebraska)



joins Ogle and Crouse on the All-Freshman Team. Additionally, Kindrah Kohne (Homer, New York) was honored as Penn State's Sportsmanship Award winner.

COACH OF THE YEAR - WALSH

Walsh captured the third Big Ten Coach of the Year honor of her eight-year Penn State career. At the helm of the Blue and White, she led the 2014 team to the program's third outright conference championship in four years and 16th Big Ten title in 17 seasons. Walsh's young club maintained a top-11 ranking every week during the regular season, besting five top-25 opponents en route to a 17-2 regular season record.

DEFENDER OF THE YEAR - CHURCH

Church's second Defender of the Year honor makes her one of the most decorated defenders in Penn State history. She becomes just the second Nittany Lion to capture two Defender of the Year awards after anchoring an outstanding Penn State backline that has posted eight shutouts and a total 0.70 goals against average (14 goals against). Over her four-year career, Church earned All-Big Ten honors every season and two NSCAA All-Great Lakes selections.

MIDFIELDER OF THE YEAR - RODRIGUEZ

Rodriguez earned her second player of the year honor after being named the 2012 Big Ten Freshman of the Year. The junior sets the tempo of the Nittany Lions' hugely successful midfield; in 949 minutes on the pitch over 14 games played, she has netted five goals and posted 28 shots. The Costa Rican Women's National Team member recently helped Las Ticas make history by becoming the first Central American team to earn a Women's World Cup bid.

FRESHMAN OF THE YEAR - OGLE

Ogle, who becomes Penn State's first Freshman of the Year honoree since Rodriguez, has been one of the most integral Nittany Lions in her first collegiate season. Logging 1,585 minutes and starting every Penn State match, the midfielder has scored a trio of goals and posted five assists with four of her helpers coming in Big Ten play.

BEAUTIES ON BOTH SIDES

The statistics certainly support a No. 8 national ranking for the Blue and White. Offensively, Penn State has been held to one-or-fewer goal just eight times this season, netting 49. On the other side of the field, the Nittany Lions have only allowed more than one goal once this season for the team's best season defensively since 2007.

Nationally, the Nittany Lions are sixth in won-lost-tied percentage, have the ninth-most assists, rank 11th in total points, 14th in total goals and 20th in scoring offense. Also, Britt Eckerstrom's 0.60 goals against average is 17th in the NCAA.

SHUTTING OUT THE COMPETITION

The 2014 Nittany Lions have proven to be one of the best defensive teams in recent history, maintaining the third-lowest goals against average in program history (0.69). They became the first team in program history to shut out opponents in a two-game Big Ten opening weekend. The 2014 team is also the first squad since 2008 to open Big Ten play with consecutive shutouts after its 1-0 and 3-0 wins over Purdue and Indiana. Additionally, the Blue and White have only allowed more than one goal in a match once, and in each Penn State's losses, the team fell by just a 1-0 margin.

NSCAA COACHES POLL

(as of Nov. 11)

#	Team	W-L-T	1st Votes
1	UCLA	18-0-2	32
2	Florida State	18-1-1	1
3	Stanford	17-1-2	0
4	Virginia	18-2-0	0
5	Texas A&M	18-2-2	0
6	North Carolina	12-3-2	0
7	West Virginia	16-2-3	0
8	Penn State	17-3-0	0
9	Wisconsin	18-2-2	0
10	Florida	14-4-1	0
11	Pepperdine	15-2-3	0
12	Notre Dame	12-5-2	0
13	DePaul	16-0-4	0
14	Virginia Tech	14-5-0	0
15	BYU	13-4-2	0
16	Texas Tech	14-3-2	0
17	Kentucky	14-6-0	0
18	South Carolina	13-5-3	0
19	Kansas	15-5-0	0
20	California	13-5-2	0
21	Central Florida	16-4-0	0
22	Clemson	13-3-2	0
23	Washington State	10-4-4	0
24	Washington	12-6-2	0
25	Rutgers	12-5-1	0

Also receiving votes: UConn (29), Michigan (21), FGCU (15), Northeastern (15), Santa Clara (14), Buffalo (12), Arizona State (10), Iowa (7), Oklahoma (6), Southern California (6), Georgetown (3), Texas (3), Boston (3), La Salle (2), Colgate (2), San Diego (1)

GAMEDAY CENTRAL

SCOUTING THE AGGIES

Texas A&M's No. 1 seed was well-deserved. In the midst of a 13-match undefeated streak, and seven-match win streak, the Aggies have generated an outstanding offensive attack in the NCAA Tournament. They shut out Houston Baptist, 5-0, in the first round and topped Arizona, 7-2 in the second round. In the third round against Notre Dame, Kelly Monogue scored the 2-1 gamewinner in the 82nd minute. Monogue, who has 44 points on the season, is Texas A&M's active leading scorer in NCAA Tournament play, boasting eight goals. Also leading the Aggies is SEC Offensive Player of the Year and Capital One Academic All-American Shea Groom, who has scored 16 goals with seven assists this year.

SERIES HISTORY vs. TEXAS A&M

The Nittany Lions are undefeated against Texas A&M, going 3-0-2 with three of the matches coming in NCAA postseason action. In their last meeting, the teams tied 1-1 with current Boston Breakers forward Katie Schoepfer scoring Penn State's goal.



CAREER RANKINGS

Kori Chapic

Minutes Played 2nd 7,439

Whitney Church

Minutes Played 1st 8,153

Britt Eckerstrom

Games Played 2nd 57

Wins T-3rd 39

Saves 5th 183

GK Minutes 5th 4,494

GK Games Started 5th 49

Shutouts 6th 12.6

Goals Against Average 6th 0.84

Emily Hurd

Assists 7th 28

Minutes Played 6th 6,194

Mallory Weber

Shots on Goal 7th 71

Game-Winning Goals T-10th 10

RODRIGUEZ HELPS NATIONAL TEAM REWRITE HISTORY

Junior Raquel Rodriguez (San Jose, Costa Rica) and the Costa Rica Women's National Team made history by becoming the first Central American country to qualify for the FIFA Women's World Cup after beating Trinidad & Tobago on penalty kicks in the CONCACAF Women's Championship semifinal match Oct. 24. The match marked the first time in CONCACAF Women's Championship history a match was decided on penalty kicks. During the tournament, Rodriguez scored three goals.

HIGH FLYING FRANNIE

Freshman Frannie Crouse (Greensburg, Pa.) has been a major reason for Penn State's success this season, making her mark in the program record books. The Nittany Lions' most prolific scorer this season, her 19 points and nine goals lead the team. For netting her ninth tally this season, She won her third Big Ten Freshman of the Week award for the final week of the regular season on Nov. 3, the most for any conference first-year this season. Crouse is also the first freshman in Penn State history to win back-to-back Big Ten Freshman of the Week titles after scoring five goals in one week against Bucknell, Northwestern and No. 19 Illinois for her Sept. 29 honor and netted a pair against Ohio State to garner her first Freshman of the Week title on Sept. 22. Crouse's offensive prowess has proven to be historic. She is the first freshman since 2003 to score seven-or-more goals in the opening 11 games of her collegiate career.

CHAPIC CHURNS OUT HONORS

After a career match on Senior Day to help Penn State win the Big Ten Championship, senior Kori Chapic (Russell, Ohio) was named the ESPNW National Player of the Week, the Big Ten Women's Soccer Offensive Player of the Week and was listed on the Top Drawer Soccer Team of the Week. In wins over Iowa and Nebraska this weekend, she had a six-point outing, having a hand in four of five Penn State goals scored to help the Blue and White secure its 16th Big Ten championship. Against the Hawkeyes on Senior Day, Chapic scored a pair of goals five-and-a-half minutes apart, leading Penn State to a come-from-behind 2-1 win over Iowa to capture the Conference title. It was the first two-goal match of her career, leading her to a career mark in single season goals (5). She also took a team-best five shots in that match. Versus the Huskers, Chapic assisted on the Nittany Lions' first and third goals. Overall, she played all 180 minutes of Penn State's matches over the weekend.

VIRGINIA IS FOR CENTERBACKS

The Nittany Lions' backline has been one of its strongest attributes this season, led by centerbacks and Virginia natives Whitney Church (Ashburn, Va.) and Elizabeth Ball (Richmond, Va.). Church was named the Big Ten Defender of the Year for the second time in her career. Ball, who came to University Park as two-time All-American striker, has logged 1,411 minutes in 18 starts.

WILLIFORD ISN'T WILLY NILLY

Sophomore Salina Williford (Wayne, Pa.) has emerged as an integral part of Penn State's attack. After playing in the back last season, Williford has started every 2014 match in the midfield and has more than tripled her shot total from her freshman year (28 in 2014, 9 in 2013). She scored the first four goals of her career in a six-game span (against Ohio State, Northwestern, No. 19 Illinois and No. 13 Wisconsin), including game-winners against Ohio State and Illinois.

SOCIAL MEDIA

For complete coverage of Penn State women's soccer, please visit <http://www.GoPSUsports.com/sports/w-soccer>. Follow PSU women's soccer on Twitter and Instagram: @PennStateWSOC. Penn State women's soccer is also on Facebook: www.facebook.com/PSUWomensSoccer.

COMPLETE WEEKLY RANKINGS

	PS	8/25	9/1	9/8	9/15	9/23	9/30	10/6	10/13	10/20	10/27	11/4	11/11
NSCAA	24	8	7	8	8	8	7	6	11	7	6	6	8
NCAA RPI	-	-	-	-	-	8	7	6	7	4	3	4	6
Soccer America	9	8	7	11	10	10	7	7	10	6	6	6	10
Top Drawer Soccer	11	9	8	9	8	8	7	5	11	7	7	7	7



PENN STATE NCAA TOURNAMENT HISTORY

Date	Round	Seed	Opponent	Result	PSU	OPP
Nov. 11, 1995	First	-	JAMES MADISON	L	1	2
Nov. 17, 1996	First	-	at #19 George Mason	W	2	0
Nov. 24, 1996	Second	-	at #6 Santa Clara	L	1	3
Nov. 16, 1997	First	-	#7 WILLIAM & MARY	L (2OT)	2	3
Nov. 15, 1998	Second	#7	INDIANA	W	2	1
Nov. 21, 1998	Third	-	CLEMSON	W	1	0
Nov. 29, 1998	Quarterfinals	-	at #2 Florida	L	1	3
Nov. 14, 1999	Second	#6	#25 MARYLAND	W	3	2
Nov. 21, 1999	Third	-	#19 SO. METHODIST	W	5	0
Nov. 27, 1999	Quarterfinals	-	HARTFORD	W	2	0
Dec. 3, 1999	Semifinals	-	vs. #2 North Carolina ¹	L	0	2
Nov. 12, 2000	Second	#7	ILLINOIS (OT)	W	1	0
Nov. 17, 2000	Third	-	DARTMOUTH	W	4	0
Nov. 25, 2000	Quarterfinals	-	#12 PORTLAND	L (OT)	0	1
Nov. 16, 2001	First	-	BUCKNELL	W	3	1
Nov. 18, 2001	Second	-	VILLANOVA	W	3	0
Nov. 24, 2001	Third	-	at #13 Connecticut	W	2	0
Nov. 30, 2001	Quarterfinals	-	at #1 North Carolina	L	1	2
Nov. 15, 2002	First	-	vs. Princeton ²	W	2	0
Nov. 17, 2002	Second	-	at #17 Maryland	W	2	1
Nov. 24, 2002	Third	-	#23 VIRGINIA	W	3	0
Nov. 30, 2002	Quarterfinals	-	at #7 Connecticut	W	2	1
Dec. 6, 2002	Semifinals	-	vs. #9 Portland ³	L	0	2
Nov. 14, 2003	First	#5	NAVY	W	5	0
Nov. 16, 2003	Second	-	RUTGERS	W	3	1
Nov. 22, 2003	Third	-	#23 TEXAS A&M	W	3	0
Nov. 28, 2003	Quarterfinals	-	at #2 UCLA	L	0	4
Nov. 12, 2004	First	#2	BINGHAMTON	W	6	1
Nov. 14, 2004	Second	-	MARYLAND	L	0	1
Nov. 11, 2005	First	#1	BUCKNELL	W	6	0
Nov. 13, 2005	Second	-	#21 WEST VIRGINIA	W	5	2
Nov. 19, 2005	Third	-	#9 TEXAS A&M	W	4	1
Nov. 25, 2005	Quarterfinals	-	#8 SANTA CLARA	W	2	1
Dec. 2, 2005	Semifinals	-	vs. #1 Portland ⁴	T (2OT*)	0	0
Nov. 10, 2006	First	#2	NIAGARA	W	3	1
Nov. 12, 2006	Second	-	VILLANOVA	W	2	0
Nov. 17, 2006	Third	-	#13 BOSTON COLLEGE	W	1	0
Nov. 24, 2006	Quarterfinals	-	at #1 Notre Dame	L	0	4
Nov. 16, 2007	First	#1	MONMOUTH	W	4	0
Nov. 18, 2007	Second	-	HOFSTRA	W (OT)	2	1
Nov. 24, 2007	Third	-	#12 WEST VIRGINIA	L	0	1
Nov. 14, 2008	First	-	at Rutgers	L (2OT)	1	2
Nov. 13, 2009	First	#4	COLGATE	W	5	0
Nov. 15, 2009	Second	-	VIRGINIA	L	2	6
Nov. 12, 2010	First	-	vs. Penn ⁵	W	1	0
Nov. 14, 2010	Second	-	at #14 West Virginia	L	1	2
Nov. 11, 2011	First	#4	ARMY	W	1	0
Nov. 18, 2011	Second	-	vs. #12 Marquette ⁶	W	4	1
Nov. 20, 2011	Third	-	at #6 Wake Forest	L	2	4
Nov. 10, 2012	First	#1	LIU BROOKLYN	W	4	0
Nov. 16, 2012	Second	-	BOSTON COLLEGE	W	5	2
Nov. 18, 2012	Third	-	MICHIGAN	T (2OT)**	1	1
Nov. 23, 2012	Quarterfinals	-	DUKE	W	1	0
Nov. 30, 2012	Semifinals	-	vs. Florida State ⁷	W (OT)	2	1
Dec. 2, 2012	Championship	-	vs. North Carolina ⁷	L	1	4
Nov. 15, 2013	First	-	MONMOUTH	W	3	0
Nov. 22, 2013	Second	-	Wake Forest ⁸	L	0	1
Nov. 14, 2014	First	#2	BUFFALO	W	4	1
Nov. 21, 2014	Second	-	UCONN	W	1	0
Nov. 23, 2014	Third	-	VIRGINIA TECH	W	2	1
Totals	20 Appearances (58 games)			40-18-2	124	66

CAPS indicate home contests

1 - San Jose, Calif.; 2 - College Park, Md.; 3 - Austin, Texas; 4 - College Station, Texas; 5 - Morgantown, W.Va.; 6 - Winston-Salem, N.C.; 7 - San Diego, Calif.; 8 - Charlottesville, Va.

* - Portland advanced on penalty kicks, 4-3

** -- Penn State advanced on penalty kicks, 3-2

Note: From 2005-present, the top four teams in each region were seeded 1-4

NCAA TOURNAMENT HISTORY

Penn State is taking part in its 20th NCAA Tournament, all consecutive appearances since 1995.

Overall, the Nittany Lions are 14-3 in first round games (PSU received byes from the first round in 1998, 1999 and 2000). Penn State is in the midst of a six-game first round win streak.

Penn State is a four-time College Cup participant (1999, 2002, 2005, 2012), while advancing to the quarterfinals 10 times, posting a 4-5 record.

Penn State has amassed an impressive record of 33-6-1 at Jeffrey Field, out-scoring opponents 98-30 in NCAA Play.

Penn State has hosted the first and second rounds in the pod format 11 of the last 14 years. In those 11 seasons in which PSU hosted, the Nittany Lions went 17-2.

APPEARANCES BY ROUND

NATIONAL CHAMPIONSHIP GAME 2012

COLLEGE CUP 1999, 2002, 2005, 2012

QUARTERFINALS 1997, 1999, 2000, 2001, 2002, 2003, 2005, 2006, 2012, 2014

THIRD ROUND 1998, 1999, 2000, 2001, 2002, 2003, 2005, 2006, 2007, 2011, 2012, 2014

SECOND ROUND 1996, 1998, 1999, 2000, 2001, 2002, 2003, 2004, 2005, 2006, 2007, 2009, 2010, 2011, 2012, 2013, 2014

NCAA TOURNAMENT RECORD

	Record	GF	GA
Record at Jeffrey Field	33-6-1	98	30
Away Record	4-8-0	15	26
Neutral Record	4-4-1	10	11
Overtime Games	2-3-2	8	9



THE LAST TIME

PENN STATE...

Scored 3 goals	10/24/14	Allowed 10-15 shots	11/23/14
	vs. Nebraska (3-1)		11 vs. Virginia Tech (2-1)
Scored 4 goals	11/14/14	Allowed 16+ shots	9/7/14
	vs. Buffalo (4-1)		20 at Duke (4-3)
Scored 5 goals	9/19/14	Scored 15-24 points	9/23/14
	vs. Ohio State (5-1)		18 vs. Bucknell (7-0)
Scored 6 goals	9/26/13	Scored 25+ points	9/25/01
	vs. Purdue (6-1)		26 vs. Bucknell (9-2)
Scored 7 goals	9/23/14	Made 10-14 saves	9/5/14
	vs. Bucknell (7-0)		10 vs. #14 UNC (1-0, 2OT)
Scored 8 goals	10/9/05	Made 15+ saves	9/2/95
	vs. Iowa (8-0)		17 vs. James Madison (4-2)
Scored 9 goals	9/25/01	Had 10+ corner kicks	11/14/14
	vs. Bucknell (9-2)		11 vs. Buffalo (4-1)
Allowed 0 goals	11/21/14	Allowed 10+ corner kicks	9/12/10
	vs. UConn (1-0)		10 at #4 Portland (2-4)
Allowed 1 goal	11/23/14	Tallied 5-7 assists	11/7/12
	vs. Virginia Tech (2-1)		5 vs. Buffalo (4-1)
Allowed 2 goals	10/17/13	Tallied 8+ assists	11/14/14
	vs. Ohio State (4-2)		8 at Bucknell (6-0)
Allowed 3 goals	9/7/14	Won NCAA Tourney game	11/23/14
	at Duke (4-3)		vs. Virginia Tech (2-1)
Allowed 4 goals	12/2/12	Lost an NCAA Tourney game	11/22/13
	vs. #13 UNC (1-4)		vs. #13 Wake Forest (1-0)
Allowed 5+ goals	8/30/13	Won road NCAA Tourney game	11/30/02
	vs. Virginia (1-5)		at Connecticut (2-1)
Won in overtime	11/30/12	Won neutral NCAA Tourney game	11/30/12
	vs. #7 Florida State (2-1)		vs. #7 Florida State (2-1)
Lost in overtime	11/6/11	Won PK shootout	11/18/12
	vs. #18 Illinois (1-2)		vs. Michigan (1-1, 3-2 PKs)
Won in double overtime	9/20/13	Lost PK shootout	11/9/07
	vs. Northwestern (3-2)		vs. Ohio State (2-2, 4-5 PKs)
Lost in double overtime	9/5/14		
	vs. #14 UNC (0-1, 2OT)		
Tied after double overtime	8/23/12		
	vs. West Virginia (2-2, 2OT)		
Ranked in the NSCAA Top 25	11/11/14	Scored 2 goals	10/26/14
	8th		Kori Chapic vs. Iowa (2-1)
Ranked in the NSCAA Top 10	11/11/14	Scored 3 goals	9/4/11
	8th		Maya Hayes at Pittsburgh (3-0)
Played an NSCAA Top 10 Team	8/30/13	Scored 4 goals	10/7/01
	vs. #5 Virginia (1-5)		Christie Welsh vs. Michigan (6-2)
Played an NSCAA Top 25 Team	10/11/14	Had 2 assists	11/14/14
	vs. #20 Rutgers (0-1)		Salina Williford vs. Buffalo (4-1)
Defeated an NSCAA Top 10 Team	11/30/12	Had 3 assists	9/13/13
	vs. #7 Florida State (2-1)		Tani Costa at Oklahoma St. (4-2)
Defeated an NSCAA Top 25 Team	8/22/14	Had 4 assists	9/17/03
	vs. #13 Wisconsin (2-0)		Ali Krieger vs. Bucknell (6-0)
Attempted less than 10 shots	8/22/14	Had 5-9 points	9/23/14
	9 vs. #12 West Virginia (3-1)		Frannie Crouse 5 vs. Bucknell (7-0)
Attempted 10-19 shots	11/23/14	Had 10+ points	10/7/01
	11 vs. Virginia Tech (2-1)		10, Christie Welsh vs. Michigan (6-2)
Attempted 20-29 shots	11/14/14	Attempted 10+ shots	11/11/11
	23 vs. Buffalo (4-1)		10, Christine Nairn vs. Army (1-0)
Attempted 30-39 shots	9/10/13	Made 10-14 saves	9/5/14
	30 at Bucknell (6-0)		10, Britt Eckerstrom vs. #14 UNC (1-0, 2OT)
Attempted 40+ shots	11/7/10	Made 15+ saves	9/3/94
	42 vs. Michigan (1-0)		15, Robin Van Praag at Minnesota (3-2)
Allowed 4 or less shots	9/19/14	Scored in the Big Ten Tourney	11/6/13
	4 vs. Ohio State (5-1)		Mallory Weber vs. Wisconsin (2-0)
Allowed 5-9 shots	11/14/14	Had a Big Ten Tourney shutout	11/6/13
	5 vs. Buffalo (4-1)		Britt Eckerstrom vs. Wisconsin (2-0)
		Scored in an NCAA game	11/23/14
			Rodriguez, Weber vs. Virginia Tech (2-1)
		Had an NCAA game shutout	11/21/13
			Britt Eckerstrom vs. UConn (1-0)

A PENN STATE PLAYER...

Scored 2 goals	10/26/14
	Kori Chapic vs. Iowa (2-1)
Scored 3 goals	9/4/11
	Maya Hayes at Pittsburgh (3-0)
Scored 4 goals	10/7/01
	Christie Welsh vs. Michigan (6-2)
Had 2 assists	11/14/14
	Salina Williford vs. Buffalo (4-1)
Had 3 assists	9/13/13
	Tani Costa at Oklahoma St. (4-2)
Had 4 assists	9/17/03
	Ali Krieger vs. Bucknell (6-0)
Had 5-9 points	9/23/14
	Frannie Crouse 5 vs. Bucknell (7-0)
Had 10+ points	10/7/01
	10, Christie Welsh vs. Michigan (6-2)
Attempted 10+ shots	11/11/11
	10, Christine Nairn vs. Army (1-0)
Made 10-14 saves	9/5/14
	10, Britt Eckerstrom vs. #14 UNC (1-0, 2OT)
Made 15+ saves	9/3/94
	15, Robin Van Praag at Minnesota (3-2)
Scored in the Big Ten Tourney	11/6/13
	Mallory Weber vs. Wisconsin (2-0)
Had a Big Ten Tourney shutout	11/6/13
	Britt Eckerstrom vs. Wisconsin (2-0)
Scored in an NCAA game	11/23/14
	Rodriguez, Weber vs. Virginia Tech (2-1)
Had an NCAA game shutout	11/21/13
	Britt Eckerstrom vs. UConn (1-0)

MISCELLANEOUS STATISTICS

PENN STATE is...

198-22-11 All-time at Jeffrey Field
 97-4-4 ... All-time vs. Big Ten at Jeffrey Field

In 2014...

13-1-0 at home
 7-0-0 on the road
 0-2-0 at neutral site
 0-1-0 in overtime
 14-0-0 when leading at halftime
 1-1-0 when trailing at halftime
 5-2-0 when tied at halftime
 18-0-0 when scoring first goal
 2-3-0 when opponent scores first goal
 17-1-0 when out-shooting opponent
 2-1-0 when out-shot by opponent
 5-1-0 when posting the same # of shots
 11-2-0 when taking more corner kicks
 7-1-0 when allowing more corner kicks
 2-0-0 ... when taking the same corner kicks
 4-2-0 against ranked opponents
 8-0-0 against unranked opponents
 1-0-0 against higher-ranked opponents
 3-2-0 against lower-ranked opponents
 0-3-0 when scoring 0 goals
 4-0-0 when scoring 1 goal
 5-0-0 when scoring 2 goals
 9-0-0 when scoring 3+ goals
 7-0-0 when allowing 0 goals
 8-3-0 when allowing 1 goal
 0-0-0 when allowing 2 goals
 1-0-0 when allowing 3+ goals
 1-0-0 on Tuesday
 0-1-0 on Wednesday
 1-0-0 on Thursday
 8-1-0 on Friday
 0-1-0 on Saturday
 7-0-0 on Sunday
 5-1-0 at night
 7-2-0 during the day
 2-0-0 vs. American Athletic Conference
 3-1-0 vs. ACC
 1-0-0 vs. Big 12
 10-2-0 vs. Big Ten
 1-0-0 vs. MAC
 12-0-0 when a freshman scores
 7-3-0 in one-goal games

2014 Penn State Women's Soccer Penn State Combined Team Statistics (as of Nov 23, 2014) All games

RECORD:	OVERALL	HOME	AWAY	NEUTRAL
ALL GAMES	20-3	13-1	7-0	0-2
CONFERENCE	12-1	6-1	6-0	0-0
NON-CONFERENCE	8-2	7-0	1-0	0-2

Date	Opponent	Score	Att.	#	Player	gp	g	a	pts	sh	sh%	sog	sog%	qw	pk-att	
Aug 22	#12 WVU	w	3-1	3007	16	Weber, Mallory	22	8	6	22	47	.170	22	.468	3	0-0
Aug 24	SYRACUSE	w	2-0	1278	9	Crouse, Frannie	23	10	1	21	53	.189	25	.472	3	0-0
Aug 29	UCONN	w	3-1	2013	4	Schafer, Megan	23	6	6	18	26	.231	14	.538	2	0-0
Sep 05	vs #14 North Carolina	Lo2	0-1	1249	11	Rodriguez, Raquel	17	7	3	17	34	.206	16	.471	3	0-1
^ Sep 07	at #22/-- Duke	w	4-3	1405	14	Chapic, Kori	23	5	5	15	24	.208	8	.333	3	0-0
* Sep 12	at Purdue	w	1-0	383	20	Williford, Salina	23	4	6	14	51	.078	22	.431	2	0-0
* Sep 14	at Indiana	w	3-0	513	10	Ogle, Emily	23	3	6	12	17	.176	8	.471	1	1-1
* Sep 19	OHIO STATE	w	5-1	2021	3	Hurd, Emily	23	2	8	12	30	.067	15	.500	1	0-0
Sep 23	BUCKNELL	w	7-0	684	25	Peterson, Mallory	13	3	0	6	9	.333	6	.667	0	0-0
* Sep 26	NORTHWESTERN	w	4-1	1741	15	Echard, Haleigh	23	1	4	6	18	.056	9	.500	0	0-0
* Sep 28	#19 ILLINOIS	w	2-1	1602	17	Church, Whitney	23	1	1	3	11	.091	3	.273	0	0-0
* Oct. 3	at Minnesota	w	1-0	954	6	Witte, Anna	6	1	1	3	2	.500	2	1.000	0	0-0
* Oct 05	at #13 Wisconsin	w	2-0	598	7	Ball, Elizabeth	23	1	0	2	4	.250	2	.500	1	0-0
* Oct 11	#20 RUTGERS	L	0-1	1651	8	Keen, Katy	21	0	2	2	10	.000	1	.100	0	0-0
* Oct 16	at #24 Michigan	w	1-0	927	5	Elliston, Maddie	23	0	2	2	1	.000	1	1.000	0	0-0
* Oct 19	at Michigan State	w	2-1	1112	12	Kohne, Kindrah	15	0	1	1	4	.000	0	.000	0	0-0
* Oct 24	NEBRASKA	w	3-1	1276	2	Ritchey, Megan	6	0	0	0	1	.000	1	1.000	0	0-0
* Oct 26	IOWA	w	2-1	1387	28	Eckerstrom, Britt	23	0	0	0	0	.000	0	.000	0	0-0
* Oct 30	MARYLAND	w	1-0	620	24	Holderby, Britne	4	0	0	0	0	.000	0	.000	0	0-0
Nov 05	vs Northwestern	L	0-1	0	22	Clauss, Isabelle	3	0	0	0	0	.000	0	.000	0	0-0
Nov 14	BUFFALO	w	4-1	633	21	Chase, Teddy	5	0	0	0	0	.000	0	.000	0	0-0
Nov 21	UCONN	w	1-0	468	0	Kaminski, Meghan	5	0	0	0	0	.000	0	.000	0	0-0
Nov 23	VIRGINIA TECH	w	2-1	653												
Total						23	53	52	158	342	.155	156	.456	20	1-2	
Opponents						23	16	10	42	192	.083	84	.438	3	2-2	

TEAM STATISTICS	PSU	OPP
SHOT STATISTICS		
Goals-Shot attempts	53-342	16-192
Goals scored per game	2.30	0.70
Shot pct.	.155	.083
Shots on goal-Attempts	156-342	84-192
SOG pct.	.456	.438
Shots/Game	14.9	8.3
CORNER KICKS		
Goals off corners	3	1
PENALTY KICKS		
OFFSIDES	24	29
PENALTIES		
Fouls	152	168
Yellow cards	6	7
Red cards	0	0
ATTENDANCE		
Total	19034	5892
Dates/Avg Per Date	14/1360	7/842
Neutral Site #/Avg	2/624	

#	Goalie	GP	Min.	GA	GAAvg	Saves	Pct	W-L-T	Sho
28	Eckerstrom, Britt	23	1963:27	13	0.60	60	.822	20-3-0	8/1
0	Kaminski, Meghan	5	118:40	3	2.28	7	.700	0-0-0	0/1
Total		23	2082:07	16	0.69	68	.810	20-3-0	9
Opponents		23	2082:07	53	2.29	103	.660	3-20-0	3

Goals by Period	1st	2nd	OT	OT2	Total
Penn State	25	28	0	0	53
Opponents	5	10	0	1	16

Shots by Period	1st	2nd	OT	OT2	Total
Penn State	164	176	2	0	342
Opponents	96	90	5	1	192

Saves by Period	1st	2nd	OT	OT2	Total
Penn State	36	30	2	0	68
Opponents	50	53	0	0	103

Corners by Period	1st	2nd	OT	OT2	Total
Penn State	50	67	1	0	118
Opponents	41	35	2	0	78

Fouls by Period	1st	2nd	OT	OT2	Total
Penn State	67	84	1	0	152
Opponents	90	77	1	0	168



2014 Penn State Women's Soccer Penn State Combined Team Statistics (as of Nov 03, 2014) Conference games

RECORD:	OVERALL	HOME	AWAY	NEUTRAL
ALL GAMES	12-1	6-1	6-0	0-0
CONFERENCE	12-1	6-1	6-0	0-0
NON-CONFERENCE	0-0	0-0	0-0	0-0

Date	Opponent	Score	Att.
* Sep 12	at Purdue	w 1-0	383
* Sep 14	at Indiana	w 3-0	513
* Sep 19	OHIO STATE	w 5-1	2021
* Sep 26	NORTHWESTERN	w 4-1	1741
* Sep 28	#19 ILLINOIS	w 2-1	1602
* Oct. 3	at Minnesota	w 1-0	954
* Oct 05	at #13 Wisconsin	w 2-0	598
* Oct 11	#20 RUTGERS	L 0-1	1651
* Oct 16	at #24 Michigan	w 1-0	927
* Oct 19	at Michigan State	w 2-1	1112
* Oct 24	NEBRASKA	w 3-1	1276
* Oct 26	IOWA	w 2-1	1387
* Oct 30	MARYLAND	w 1-0	620

TEAM STATISTICS	PSU	OPP
SHOT STATISTICS		
Goals-Shot attempts	27-183	7-98
Goals scored per game	2.08	0.54
Shot pct.	.148	.071
Shots on goal-Attempts	83-183	36-98
SOG pct.	.454	.367
Shots/Game	14.1	7.5
CORNER KICKS		
Goals off corners	1	0
PENALTY KICKS		
	0-0	0-0
OFFSIDES		
	18	16
PENALTIES		
Fouls	91	92
Yellow cards	3	4
Red cards	0	0
ATTENDANCE		
Total	10298	4487
Dates/Avg Per Date	7/1471	6/748
Neutral Site #/Avg	0/0	

#	Player	gp	g	a	pts	sh	sh%	sog	sog%	gw	pk-alt
20	Williford,Salina	13	4	3	11	23	.174	12	.522	2	0-0
14	Chapic,Kori	13	4	3	11	15	.267	6	.400	2	0-0
9	Crouse,Frannie	13	5	0	10	28	.179	13	.464	2	0-0
4	Schafer,Megan	13	2	5	9	17	.118	9	.529	1	0-0
11	Rodriguez,Raquel	8	4	0	8	18	.222	7	.389	1	0-0
16	Weber,Mallory	12	1	5	7	22	.045	10	.455	0	0-0
3	Hurd,Emily	13	1	5	7	21	.048	9	.429	1	0-0
10	Ogle,Emily	13	1	4	6	7	.143	3	.429	1	0-0
15	Echard,Haleigh	13	1	3	5	10	.100	5	.500	0	0-0
17	Church,Whitney	13	1	1	3	5	.200	2	.400	0	0-0
25	Peterson,Mallory	8	1	0	2	5	.200	3	.600	0	0-0
7	Ball,Elizabeth	13	1	0	2	3	.333	2	.667	1	0-0
5	Elliston,Maddie	13	0	2	2	1	.000	1	1.000	0	0-0
12	Kohne,Kindrah	9	0	1	1	2	.000	0	.000	0	0-0
8	Keen,Katy	12	0	0	0	6	.000	0	.000	0	0-0
28	Eckerstrom,Britt	13	0	0	0	0	.000	0	.000	0	0-0
24	Holderby,Britne	2	0	0	0	0	.000	0	.000	0	0-0
22	Clauss,Isabelle	1	0	0	0	0	.000	0	.000	0	0-0
21	Chase,Teddy	2	0	0	0	0	.000	0	.000	0	0-0
6	Witte,Anna	3	0	0	0	0	.000	0	.000	0	0-0
2	Ritchey,Megan	3	0	0	0	0	.000	0	.000	0	0-0
0	Kaminski,Meghan	2	0	0	0	0	.000	0	.000	0	0-0
Total		13	27	32	86	183	.148	83	.454	12	0-0
Opponents		13	7	5	19	98	.071	36	.367	1	0-0

#	Goalie	GP	Min.	GA	GAAvg	Saves	Pct	W-L-T	Sho
28	Eckerstrom,Britt	13	1140:43	6	0.47	28	.824	12-1-0	6/0
0	Kaminski,Meghan	2	29:17	1	3.07	1	.500	0-0-0	0/0
Total		13	1170:00	7	0.54	29	.806	12-1-0	6
Opponents		13	1170:00	27	2.08	56	.675	1-12-0	1

Goals by Period	1st	2nd	Total
Penn State	11	16	27
Opponents	4	3	7

Shots by Period	1st	2nd	Total
Penn State	90	93	183
Opponents	58	40	98

Saves by Period	1st	2nd	Total
Penn State	15	14	29
Opponents	29	27	56

Corners by Period	1st	2nd	Total
Penn State	24	35	59
Opponents	22	21	43

Fouls by Period	1st	2nd	Total
Penn State	40	51	91
Opponents	52	40	92



**2012 NSCAA NATIONAL COACH OF THE YEAR
 2009, 2012, 2014 BIG TEN COACH OF THE YEAR**

Three-time Big Ten Coach of the year Erica Walsh is in her eighth season at the helm of the Penn State women's soccer program in 2014.

The Nittany Lions appeared in their 19th-straight NCAA Tournament in 2013, due in part to the success of senior Maya Hayes. The sixth-overall selection in the WPSL draft, Hayes set Penn State's single season record for points (79) in 2011 and finished her career ranked third in goals scored (71) and points (163), sixth in game-winning goals (17) and seventh in shots (291). Hayes was a M.A.C. Hermann Award Trophy semifinalist for the second straight year.

Walsh's 2012 Nittany Lions were the most successful team in program history after advancing to their first-ever national title game. The Nittany Lions won 21 of 27 games and were unbeaten in Big Ten action with a 10-0-1 record. The Lions registered their 15th consecutive Big Ten title and 18th-straight NCAA Tournament appearance. The 15-title mark is the second-most consecutive Big Ten Championships by a women's program, behind Northwestern's women's tennis team (16).

Senior Christine Nairn became just the seventh Nittany Lion to finish as a finalist for the prestigious Missouri Athletic Club's Hermann Trophy in 2012 under Walsh's tutelage while junior Maya Hayes was named a semifinalist for the award.

Walsh's success was recognized at the conference and national level as she earned Big Ten Coach of the Year and NSCAA National Coach of the Year honors.

Her 2011 team was a dominant force, winning 21 of 26 matches, while outscoring opponents 70-24. The Nittany Lions were 10-1-0 in Big Ten action and posted the seventh undefeated season at Jeffrey Field (9-0). Walsh helped guide the Lions to their 14th-straight Big Ten title and a spot to the NCAA Sweet Sixteen for the first time since 2007.

With Walsh's guidance, as a sophomore, Hayes became the nation's most prolific scorer in soccer in 2011 and was a finalist for the M.A.C. Hermann Trophy. Hayes led the nation with 31 goals and 70 points, breaking the then-Penn State single-season record for points.

During the 2011 summer, Walsh had an extraordinary experience of being one of the top assistants to Pia Sundhage and the 2011 United State women's national team at the FIFA World Cup in Germany. The U.S. made a sparkling run through knockout play to the final, falling to eventual champion Japan.

The 2010 campaign saw Walsh's young club make a remarkable turnaround mid-season, overcoming a two-game deficit in the league standings over the final weeks to capture a share of its 13th straight Big Ten title.

After a tough 2-4 start to the 2009 season, Walsh led the Nittany Lions to a remarkable turnaround, going 10-1-2 in the last 13 games of the regular season, earning her the 2009 Big Ten Coach of the Year Award for her efforts. With the impressive end to the season, Walsh and her charges captured the program's 12th-straight Big Ten Championship. By winning the Big Ten, the Nittany Lions continued their string of NCAA Tournament berths, making their 15th-straight appearance in the 64-team field in 2009. For the second time in three years, Penn State hosted the first and second rounds of tournament play.

Walsh also orchestrated one of the finest awards seasons in Penn State history when Katie Schoepfer, Alyssa Naehner and Christine Nairn swept the year-end Big Ten Player of the

WALSH'S COLLEGIATE RÉSUMÉ

Head Coach	
Penn State	2007-present <i>2012 NSCAA National Coach of the Year</i> <i>2012 Big Ten Coach of the Year</i> <i>2009 Big Ten Coach of the Year</i>
Harvard	2006
Dartmouth	2000-02
Assistant Coach	
Florida State	2005-06
Dartmouth	1998-99
Graduate Assistant	
Lehigh	2003-04
Dartmouth	1997
Student-Athlete	
William & Mary	1993-97 <i>William & Mary Hall of Fame Inductee</i>

WALSH'S NATIONAL RÉSUMÉ

Head Coach	
U.S. Women's Under-17	2004-07
Assistant Coach	
U.S. Women's National Team	2008-11 <i>2008 Olympic Gold Medalists</i> <i>2011 World Cup Silver Medalists</i>
U.S. Women's Under-19	2004
U.S. Women's Under-20	2013-Present



WALSH'S ACCOLADES

- 12 YEARS OF COLLEGE HEAD COACHING EXPERIENCE**
- 1 COLLEGE CUP APPEARANCE**
- 1 NATIONAL CHAMPIONSHIP GAME APPEARANCE**
- 14 NCAA TOURNAMENT WINS**
- 10 NCAA TOURNAMENT APPEARANCES**
- 10 ALL-AMERICA HONORS**
- 7 BIG TEN CHAMPIONSHIPS**
- 1 OLYMPIC GOLD MEDAL**
- 1 NATIONAL COACH OF THE YEAR AWARD**
- 3 BIG TEN COACH OF THE YEAR AWARDS**

Year awards. Schoepfer was named the Offensive Player of the Year, Naeher the Defensive Player of the Year and Nairn the Freshman of the Year. Danielle Toney was named to the All-Big Ten first team, while Lexi Marton garnered a second team mention.

Walsh continued her success from the 2007 campaign into a 16-8-0 record that saw Penn State capture its 11th-straight Big Ten Championship and the 2008 Big Ten Tournament crown. Her transition to Penn State was quite smooth as the 2007 team finished 18-4-2, including a 9-1-0 mark in conference play, and was ranked 12th in the final NSCAA poll of the season.

When she came to Penn State, Walsh brought with her a wealth of experience at both the international and collegiate levels. She already has coached at six different universities, including three stints as head coach as well as serving as an assistant for the U.S. U-19 team in 2004. Walsh served as head coach of the U-17 team from December 2004 until her hire at Penn State in February 2007.

In January 2009, Walsh was appointed as a member of the Panel of Instructors and Lecturers for FIFA Courses. In addition, she was appointed as the Chairman of the Women's Technical Committee for the period of January 1, 2009 to June 30, 2011.

In January of 2008, Walsh was named as the assistant coach by Pia Sundhage for the U.S. National Team. With Walsh's help and guidance the U.S. team completed its historic run with a gold medal at the 2008 Olympic Games in Beijing, China. Even sweeter was that Walsh's main responsibility was the U.S. Team's defense, which held fellow world power

Brazil scoreless in the gold medal game.

The head coach at Harvard University as well as the U.S. U-17 team prior to her hiring at Penn State, Walsh has consistently been active among the coaching ranks both at the Division I level and the U.S. Youth National Team program for nearly a decade. Prior to her time with the Crimson, she was part of a Florida State staff that led the Seminoles to one of its most successful year to date. FSU joined Penn State in the 2005 Women's Soccer College Cup, with both programs reaching the national semifinals.

Walsh's coaching path began in 1997 as a graduate assistant with Bucknell University. In 1998, she accepted a position at Dartmouth, where she was an assistant coach for two seasons. After helping the team to a final NSCAA ranking of No. 8 at the conclusion of the team's 1998 NCAA quarterfinal run as well as an Ivy League championship in 1999, Walsh assumed head coaching duties before the 2000 season.

As head coach, Walsh led the Big Green to back-to-back Ivy League co-championships in 2000 and 2001. Her squad was ranked in the NSCAA's top 25 each year, rising as high as No. 13 in 2001. In her three seasons as head coach, Dartmouth was invited to the NCAA Tournament each season and reached the round of 16 twice. All three of her teams earned the NSCAA's Academic Team Award.

Walsh left Dartmouth to earn her Master's in business administration at Lehigh University where she served as a graduate assistant from 2003-04. Beginning in the spring of 2004, Walsh joined the United States U-19 team as an assistant coach where she helped with preparations for the U-19 World Cup. The U.S. finished with the bronze medal in Thailand after defeating Brazil in the third place match. After the World Cup, Walsh was appointed the U.S. National Team's U-17 head coach, a position which she held for three years.

As a player, Walsh was an NSCAA All-Region selection at William & Mary. A two-time first team All-CAA pick, she propelled her team to four NCAA Tournament appearances as well as two CAA regular season and two CAA league championships. In March of 2010, Walsh's alma mater, William & Mary, honored her by inducting her into the W&M Athletics Hall of Fame.

A high school All-American at Lower Moreland, she was also a member of the U.S. U-17 National Team.

Walsh earned her Bachelor of Science degree with a concentration in biology from William & Mary in 1997. The Huntingdon Valley, Pa., native holds an NSCAA Advanced National Degree and a USSF "A" Coaching License.

WALSH'S CAREER AT PENN STATE

Season	Overall	Pct.	Big Ten	Pct.	Finish	NCAA
2007	18-4-2	.792	9-1-0	.900	1st	Third Round
2008	16-8-0	.667	8-2-0	.800	T-1st	First Round
2009	13-6-2	.667	8-1-1	.850	1st	Second Round
2010	11-9-1	.548	8-2-0	.800	T-1st	Second Round
2011	21-5-0	.808	10-1-0	.909	1st	Third Round
2012	21-4-2	.815	10-0-1	.955	1st	Runner-Up
2013	15-7-1		7-4-0		3rd	Second Round
Penn State	115-43-8	.717	61-11-2	.838	7 NCAAAs (11-7)	
Career	155-71-11	.677			10 NCAAAs (14-10)	

NUMERICAL ROSTER

No.	Name	Pos.	Elig.	Ht.	Hometown	High School	Pronunciation
0	Meghan Kaminski	GK	Jr.	6-1	Doylestown, Pa.	Central Bucks South	
1	Brittany Basinger	D	So.	5-7	Fairfax, Va.	Woodgrove	BAY-singer
2	Megan Ritchey	MF	Jr.	5-3	State College, Pa.	State College Area	
3	Emily Hurd	MF	R-Sr.	5-7	Sammamish, Wash.	Eastlake	
4	Megan Schafer	F	Fr.	5-7	Langhorne, Pa.	Neshaminy	
5	Maddie Elliston	D	Fr.	5-3	Omaha, Neb.	Marian	
6	Anna Witte	D	So.	5-4	Morrisville, N.C.	Cary	WITT-ee
7	Elizabeth Ball	F	Fr.	5-6	Richmond, Va.	Deep Run	
8	Katy Keen	MF	Fr.	5-8	Zionsville, Ind.	Zionsville	
9	Frannie Crouse	F	Fr.	5-7	Greensburg, Pa.	Greensburg Catholic	
10	Emily Ogle	MF	Fr.	5-5	Strongsville, Ohio	Strongsville	OH-gle
11	Raquel Rodriguez	F/MF	Jr.	5-6	San Jose, Costa Rica	International Christian	
12	Kindrah Kohne	M	Sr.	5-5	Homer, N.Y.	Homer	KIN-drah KOH-nee
14	Kori Chapic	F/MF	Sr.	5-7	Russell, Ohio	West Geauga	CHAP-ick
15	Haleigh Echard	MF	Fr.	5-4	Lebanon, Pa.	Cedar Crest	ECK-ard
16	Mallory Weber	F	Jr.	5-6	Novi, Mich.	Northville	WEB-ber
17	Whitney Church	D	Sr.	5-5	Ashburn, Va.	Broad Run	
18	Angela Widlacki	D	R-Fr.	5-5	Naperville, Ill.	Naperville North	
19	Liisi Vink-Lainas	MF	Fr.	5-5	Wynantskill, N.Y.	Troy	LEE-see Vink-LYNus
20	Salina Williford	MF	So.	5-4	Wayne, Pa.	Conestoga	Suh-LEE-nah
21	Teddy Chase	D	Jr.	5-7	Wayne, Pa.	The Shipley School	
24	Britne Holderby	D	Fr.	5-5	Chelsea, Ala.	Chelsea	BRITT-nee Holder-BEE
25	Mallory Peterson	F/MF	Jr.	5-5	Clinton Corner, N.Y.	Millbrook	
28	Britt Eckerstrom	GK	R-Jr.	5-10	Germantown, Md.	Northwest	
30	Rose Chandler	GK	Fr.	5-7	Atlanta, Ga.	Atlanta Country Day	

ALPHABETICAL ROSTER

No.	Name	Pos.	El.	Ht.	Hometown	High School (Last College)	Pronunciation
7	Elizabeth Ball	F	Fr.	5-6	Richmond, Va.	Deep Run	
1	Brittany Basinger	D	So.	5-7	Fairfax, Va.	Woodgrove	BAY-singer
30	Rose Chandler	GK	Fr.	5-7	Atlanta, Ga.	Atlanta Country Day	
14	Kori Chapic	F/MF	Sr.	5-7	Russell, Ohio	West Geauga	CHAP-ick
21	Teddy Chase	D	Jr.	5-7	Wayne, Pa.	The Shipley School	
17	Whitney Church	D	Sr.	5-5	Ashburn, Va.	Broad Run	
22	Isabelle Clauss	D	Fr.	5-6	Clarks Summit, Pa.	Abington Heights	
9	Frannie Crouse	F	Fr.	5-7	Greensburg, Pa.	Greensburg Catholic	
15	Haleigh Echard	MF	Fr.	5-4	Lebanon, Pa.	Cedar Crest	ECK-ard
28	Britt Eckerstrom	GK	R-Jr.	5-10	Germantown, Md.	Northwest	
5	Maddie Elliston	D	Fr.	5-3	Omaha, Neb.	Marian	
24	Britne Holderby	D	Fr.	5-5	Chelsea, Ala.	Chelsea	BRITT-nee Holder-BEE
3	Emily Hurd	MF	R-Sr.	5-7	Sammamish, Wash.	Eastlake	
0	Meghan Kaminski	GK	Jr.	6-1	Doylestown, Pa.	Central Bucks South	
8	Katy Keen	MF	Fr.	5-8	Zionsville, Ind.	Zionsville	
12	Kindrah Kohne	MF	Sr.	5-5	Homer, N.Y.	Homer	KIN-drah KOH-nee
10	Emily Ogle	MF	Fr.	5-5	Strongsville, Ohio	Strongsville	OH-gle
25	Mallory Peterson	F/MF	Jr.	5-5	Clinton Corners, N.Y.	Millbrook	
2	Megan Ritchey	MF	Jr.	5-3	State College, Pa.	State College Area	
11	Raquel Rodriguez	F/MF	Jr.	5-6	San Jose, Costa Rica	International Christian	
4	Megan Schafer	F	Fr.	5-7	Langhorne, Pa.	Neshaminy	
19	Liisi Vink-Lainas	MF	Fr.	5-5	Wynantskill, N.Y.	Troy	LEE-see Vink-LYE-nuss
16	Mallory Weber	F	Jr.	5-6	Novi, Mich.	Northville	
18	Angela Widlacki	D	R-Fr.	5-5	Naperville, Ill.	Naperville North	
20	Salina Williford	MF	So.	5-4	Wayne, Pa.	Conestoga	
6	Anna Witte	D	So.	5-4	Morrisville, N.C.	Cary	WITT-ee

Head Coach: Erica Walsh (Eighth year)
Associate Head Coach: Ann Cook (Seventh year)
Assistant Coach: Tim Wassell (Fifth year)
Director of Operations: Kara Lowery (Second year)
Undergraduate Assistant: Maya Hayes (First year)




1

**MEGHAN
KAMINSKI**
Doylestown, Pa.
CENTRAL BUCKS SOUTH

Junior • **GOALKEEPER** • 6-1

SEASON STATS

Season	GP-GS	Min.	GA	GAA	Svs	Sv%	W-L-T	Sho
2014	5-0	119	3	2.28	7	.700	0-0-0	0/1



4

**MEGAN
SCHAFFER**
Langhorne, Pa.
NESHAMINY

Freshman • **FORWARD** • 5-7

SEASON STATS

Season	GP-GS	G	A	PTS	GWG	SH
2014	23-8	6	6	18	2	26



2

**MEGAN
RITCHEY**
State College, Pa.
STATE COLLEGE AREA

Junior • **MIDFIELD** • 5-3

SEASON STATS

Season	GP-GS	G	A	PTS	GWG	SH
2014	6-0	0	0	0	0	1



5

**MADDIE
ELLISTON**
Omaha, Neb.
Marian

All-Big Ten Freshman Team

Freshman • **MIDFIELD/DEFENSE** • 5-3

SEASON STATS

Season	GP-GS	G	A	PTS	GWG	SH
2014	23-23	0	2	2	0	1



3

**EMILY
HURD**
Sammamish, Wash.
EASTLAKE

All-Big Ten Second Team

Redshirt Senior • **MIDFIELD** • 5-7

SEASON STATS

Season	GP-GS	G	A	PTS	GWG	SH
2014	23-23	2	8	12	1	30



6

**ANNA
WITTE**
Morrisville, N.C.
Cary

Sophomore • **DEFENSE** • 5-4

SEASON STATS

Season	GP-GS	G	A	PTS	GWG	SH
2014	5-0	1	1	3	0	2



7

ELIZABETH BALL
 Richmond, Va.
DEEP RUN

Freshman • **FORWARD** • 5-6

SEASON STATS

Season	GP-GS	G	A	PTS	GWG	SH
2014	23-22	1	0	2	1	4



10

EMILY OGLE
 Strongsville, Ohio
STRONGSVILLE

Big Ten Freshman of the Year

Freshman • **MIDFIELD** • 5-5

SEASON STATS

Season	GP-GS	G	A	PTS	GWG	SH
2014	23-23	3	6	12	1	17



8

KATY KEEN
 Zionsville, Ind.
ZIONSVILLE

Freshman • **MIDFIELD** • 5-8

SEASON STATS

Season	GP-GS	G	A	PTS	GWG	SH
2014	21-4	0	2	2	0	10



11

RAQUEL RODRIGUEZ
 San Jose, Costa Rica
INTERNATIONAL CHRISTIAN

Big Ten Midfielder of the Year

Junior • **FORWARD/MIDFIELD** • 5-6

SEASON STATS

Season	GP-GS	G	A	PTS	GWG	SH
2014	17-15	7	3	17	3	34



9

FRANNIE CROUSE
 Greensburg, Pa.
GREENSBURG CATHOLIC

All-Big Ten Freshman, Second Team

Freshman • **FORWARD** • 5-7

SEASON STATS

Season	GP-GS	G	A	PTS	GWG	SH
2014	23-20	10	1	21	3	53



12

KINDRAH KOHNE
 Homer, N.Y.
HOMER

Senior • **MIDFIELD** • 5-5

SEASON STATS

Season	GP-GS	G	A	PTS	GWG	SH
2014	15-1	0	1	1	0	4




14

KORI CHAPIC
Russell, Ohio
WEST GEAUGA

All-Big Ten Second Team

Senior • **FORWARD/MIDFIELD** • 5-7

SEASON STATS

Season	GP-GS	G	A	PTS	GWG	SH
2014	23-23	5	5	15	3	24



17

WHITNEY CHURCH
Ashburn, Va.
BROAD RUN

Big Ten Defender of the Year

Senior • **DEFENSE** • 5-5

SEASON STATS

Season	GP-GS	G	A	PTS	GWG	SH
2014	23-23	1	1	3	0	11



15

HALEIGH ECHARD
Lebanon, Pa.
CEDAR CREST

Freshman • **FORWARD** • 5-7

SEASON STATS

Season	GP-GS	G	A	PTS	GWG	SH
2014	23-1	1	4	6	0	18



20

SALINA WILLIFORD
Wayne, Pa.
CONESTOGA

Sophomore • **MIDFIELD/DEFENSE** • 5-4

SEASON STATS

Season	GP-GS	G	A	PTS	GWG	SH
2014	23-23	4	6	14	2	51




16

MALLORY WEBER
Novi, Mich.
NORTHVILLE

Junior • **FORWARD** • 5-6

SEASON STATS

Season	GP-GS	G	A	PTS	GWG	SH
2014	22-21	8	6	22	3	47



21

TEDDY CHASE
Wayne, Pa.
THE SHIPLEY SCHOOL

Junior • **DEFENSE** • 5-7

SEASON STATS

Season	GP-GS	G	A	PTS	GWG	SH
2014	5-0	0	0	0	0	0



22

**ISABELLE
CLAUSS**
Clarks Summit, Pa.
ABINGTON HEIGHTS

Freshman • **DEFENSE** • 5-6

SEASON STATS

Season	GP-GS	G	A	PTS	GWG	SH
2014	3-0	0	0	0	0	0



28

**BRITT
ECKERSTROM**
Germantown, Md.
NORTHWEST

All-Big Ten Second Team

Redshirt Junior • **GOALKEEPER** • 5-10

SEASON STATS

Season	GP-GS	Min.	GA	GAA	Svs	Sv%	W-L-T	Sho
2014	23-23	1964	13	0.60	60	.822	20-3-0	8/1



24

**BRITNE
HOLDERBY**
Chelsea, Ala.
CHELSEA

Freshman • **DEFENSE** • 5-5

SEASON STATS

Season	GP-GS	G	A	PTS	GWG	SH
2014	4-0	0	0	0	0	0



25

**MALLORY
PETERSON**
Clinton Corner, N.Y.
MILLBROOK

Junior • **FORWARD/MIDFIELD** • 5-5

SEASON STATS

Season	GP-GS	G	A	PTS	GWG	SH
2014	13-0	3	0	6	0	9



2014 PENN STATE WOMEN'S SOCCER

Soccer Box Score (Final)

2014 Penn State Women's Soccer

#12 WVU vs #24 Penn State (Aug 22, 2014 at UNIVERSITY PARK, Pa.)

WVU (0-1-0) vs. Penn State (1-0-0)
Date: Aug 22, 2014 • Attendance: 2007
Weather: Partly cloudy, humid, High 70's

WVU	PSU
12:00	12:00
13:00	13:00
14:00	14:00
15:00	15:00
16:00	16:00
17:00	17:00
18:00	18:00
19:00	19:00
20:00	20:00
21:00	21:00
22:00	22:00
Totals	3 2 1 1 12

Goals by period	1	2	Total
WVU	0	1	1
Penn State	3	0	3

PSU	WVU
28	28
29	29
30	30
31	31
32	32
33	33
34	34
35	35
36	36
37	37
38	38
39	39
40	40
Totals	5 4 3 2 10

# Goalskeepers	Min	GA	Saves
30	Staudman, Hannah	90:00	3 1

# Goalskeepers	Min	GA	Saves
28	Eksteinson, Briti	90:00	1 1

Scoring summary:

No.	Time	Team	Goal scorer	Assist	Description
1.	12:05	PSU	Crosson, Franise (1)	Hurd, Emily	In the box
2.	19:50	PSU	Chapic, Kori (1)	Ogle, Emily	header from outside post after corner
3.	48:09	PSU	Ogle, Emily (1)	Penalty kick	
4.	71:36	WVU	Buchanan, Kadeisha (1)	Maloney, Kaitie	off a corner

Conditions and ejections:
VC: PSU #16 (76:28)

Officials: Referee: Tim DeGanovics; Ass. Referee: Eric Semples; Ronald Davis; Alt. Officials: Steve Luzzo; Timekeeper: Debra Soderstrom; Scorekeeper: Jon Tocco; Officials: WVU 1, Penn State 3.

Official's signature

Soccer Box Score (Final)

2014 Penn State Women's Soccer

UConn vs #8 Penn State (Aug 29, 2014 at UNIVERSITY PARK, Pa.)

UConn (2-0-0) vs. Penn State (2-0-0)
Date: Aug 29, 2014 • Attendance: 600
Weather: Mid 70s, sunny

UConn	PSU
12:00	12:00
13:00	13:00
14:00	14:00
15:00	15:00
16:00	16:00
17:00	17:00
18:00	18:00
19:00	19:00
20:00	20:00
21:00	21:00
22:00	22:00
Totals	4 4 1 0 7

Goals by period	1	2	Total
UConn	0	1	1
Penn State	2	0	2

PSU	UConn
28	28
29	29
30	30
31	31
32	32
33	33
34	34
35	35
36	36
37	37
38	38
39	39
40	40
Totals	14 9 3 2 3

# Goalskeepers	Min	GA	Saves
1	McGowan, Emily	90:00	2 5

# Goalskeepers	Min	GA	Saves
28	Eksteinson, Briti	90:00	0 2
0	Kaninski, Meghan	24:01	1 0

Scoring summary:

No.	Time	Team	Goal scorer	Assist	Description
1.	4:48	UConn	Waller, Rachel (1)	Chapic, Kori	cross from left and deflected in the net
2.	27:47	PSU	Schuler, Megan (1)	(unassisted)	offender kicked into the str. #4 out to
3.	43:49	PSU	Schuler, Megan (2)	Rodriguez, Rachel	
4.	90:04	UConn	HILL, Rachel	(unassisted)	got a pass and put it past the goalie

Conditions and ejections:

Officials: Referee: Ron Esposito; Ass. Referee: John Anderson; Carlos Di Leo; Alt. Officials: Jason Finner; Timekeeper: Kyle Gabel; Scorekeeper: Jon Hoesel; Officials: UConn 2, Penn State 1.

Official's signature

Soccer Box Score (Final)

2014 Penn State Women's Soccer

SYRACUSE vs #24 Penn State (Aug 24, 2014 at UNIVERSITY PARK, Pa.)

SYRACUSE (0-0-2) vs. Penn State (2-0-0)
Date: Aug 24, 2014 • Attendance: 1278
Weather: Sunny and 75

SYRACUSE	PSU
12:00	12:00
13:00	13:00
14:00	14:00
15:00	15:00
16:00	16:00
17:00	17:00
18:00	18:00
19:00	19:00
20:00	20:00
21:00	21:00
22:00	22:00
Totals	2 1 0 0 8

Goals by period	1	2	Total
SYRACUSE	0	0	0
Penn State	0	2	2

PSU	SYRACUSE
28	28
29	29
30	30
31	31
32	32
33	33
34	34
35	35
36	36
37	37
38	38
39	39
40	40
Totals	17 9 3 1 6

# Goalskeepers	Min	GA	Saves
21	MacKenzie Moore	90:00	2 7

# Goalskeepers	Min	GA	Saves
28	Eksteinson, Briti	90:00	0 1

Scoring summary:

No.	Time	Team	Goal scorer	Assist	Description
1.	47:44	PSU	Weber, Mallory (1)	(unassisted)	from the near side post off of the rebound
2.	51:15	PSU	Weber, Mallory (2)	Rodriguez, Rachel	got a pass in front of the net and buried it

Conditions and ejections:
VC: SU #12 (21:42); VC: PSU #17 (23:50)

Officials: Referee: Paul Williams; Ass. Referee: Carl Dewhart; Michael Gerninger; Alt. Officials: Stan Latta; Officials: SYRACUSE 2, Penn State 0.

Official's signature

Soccer Box Score (Final)

2014 Duke Women's Soccer

#8/7 Penn State vs #14/14 N.Carolina (Sep 05, 2014 at Durham, N.C.)

#8/7 Penn State (1-1-0) vs. #14/14 N.Carolina (2-2-1)
Date: Sep 05, 2014 • Attendance: 600
Weather: Clear, 70 degrees

#8/7 Penn State	#14/14 N.Carolina
12:00	12:00
13:00	13:00
14:00	14:00
15:00	15:00
16:00	16:00
17:00	17:00
18:00	18:00
19:00	19:00
20:00	20:00
21:00	21:00
22:00	22:00
Totals	11 3 0 0 1

Goals by period	1	2	OT	Total
#8/7 Penn State	0	0	0	0
#14/14 N.Carolina	0	0	1	1

#8/7 Penn State	#14/14 N.Carolina
28	28
29	29
30	30
31	31
32	32
33	33
34	34
35	35
36	36
37	37
38	38
39	39
40	40
Totals	20 11 1 1 8

# Goalskeepers	Min	GA	Saves
28	Eksteinson, Briti	100:47	1 0

# Goalskeepers	Min	GA	Saves
1	Bryson Healden	45:00	0 0
23	Linley Harris	57:47	0 3

Scoring summary:

No.	Time	Team	Goal scorer	Assist	Description
1.	102:37	NC	Anders Husevold (1)	James Smith	Free kick - right side, left header, 16 ft corner

Conditions and ejections:
VC: NC #71 (80:43)

Officials: Referee: Bruce Thomas; Ass. Referee: Michael Whitworth; Ronit Schmitt; Alt. Officials: Raymond Thomas; Timekeeper: Tom Nuccio; Scorekeeper: Chris White; Officials: #8/7 Penn State 2, #14/14 N.Carolina 1.

Official's signature



Soccer Box Score (Final) 2014 Duke Women's Soccer

#07/7 Penn State vs #22/- Duke (Sep 07, 2014 at Durham, N.C.)

#07/7 Penn State (4-1) vs
#22/- Duke (2-3)
Date: Sep 07, 2014 • Attendance: 1400
Weather: 79 degrees, cloudy

#07/7 Penn State	Sh	SO	G	A	Fo	Mis
DC 20 Britt Eckerman	-	-	-	-	-	50
DF 3 Emily Hand	1	1	1	2	-	50
D 5 Kayla Elshen	-	-	-	-	-	50
F 7 Bethany Ball	-	-	-	-	-	50
F 9 Franee Cruise	2	1	1	-	-	50
MF 10 Emily Ogilvie	1	-	-	-	-	50
MF 11 Rangel Rodriguez	3	3	1	-	-	70
MF 14 Karl Chapic	1	-	-	-	-	43
F 16 Mallory Walker	1	1	1	-	-	77
F 17 Whitney Church	1	-	-	-	-	50
MF 20 Salina Williams	2	2	-	-	-	50
-- Substitutes --						
4 Megan Schuler	-	-	-	-	-	43
8 Katy Koen	-	-	-	-	-	40
12 Kinshah Kohn	1	-	-	-	-	34
15 Hannah Eshard	-	-	-	-	-	14
Totals	14	8	4	3	7	

# Goalskeepers	Mis	GA	Saves
20 Britt Eckerman	95:00	3	3

Shots by period	1	2	Total
#07/7 Penn State	7	7	14
#22/- Duke	10	10	20

Corner kicks	1	2	Total
#07/7 Penn State	2	4	6
#22/- Duke	4	2	6

Scoring summary:	No.	Time	Team	Goal scorer	Assist	Description
1.	07:40	PSU	Rangel Rodriguez (1)	Megan Koen	Left side, crossed into left post F	
2.	21:00	DUKE	Kelly Cobb (1)	Megan Koen	Over top (goalkeeper's head from 10 yard short range)	
3.	31:46	PSU	Mallory Walker (1)	Katy Koen	Goal keeper by Walker, bottom left corner F	
4.	33:48	DUKE	Rebecca Quinn (1)	Schuler/Mallory	Over top by Quinn, bottom left corner F	
5.	56:00	PSU	Franee Cruise (2)	Emily Hand	Over top by Cruise through goalkeeper's right side	
6.	56:10	DUKE	Christina Gibson (1)	Penalty kick	Penalty kick	
7.	56:27	PSU	Rangel Rodriguez (2)	Emily Hand	Refined in right corner	

Officials and ejections:
VC: PSU #1N (76-01)
Win: Britt Eckerman (4-1), Loss: All Kershner (2-3).
Stadium: Kaulbach Stadium
Officials: Referee: Tom Miller; Ass. Referee: Benjamin Westery; Goats: Salina Williams; AB: Official: Brian Sosa; Timekeeper: Tara Williams; Scorekeeper: Carley Mulligan.
Officials: #07/7 Penn State 1, #22/- Duke 2.

Official's signature

Soccer Box Score (Final) 2014 Penn State Women's Soccer

#08 Penn State vs Indiana (Sep 14, 2014 at Bloomington, Ind.)

Penn State (4-1, 2-0 Big Ten) vs
Indiana (4-4, 0-2 Big Ten)
Date: Sep 14, 2014 • Attendance: 113
Weather: 63, mostly sunny, slight breeze

Penn State	Sh	SO	G	A	Fo	Mis
DF 21 Eckerman/Ball	-	-	-	-	-	50
DF 3 Hand/Emily	4	1	1	-	-	33
D 1 Elshen/Mallory	-	-	-	-	-	50
F 7 Ball/Elizabeth	-	-	-	-	-	20
F 9 Cruise/Franee	2	1	-	-	-	54
MF 10 Ogilvie/Emily	-	-	-	-	-	84
MF 11 Rodriguez/Rangel	2	1	1	-	-	79
MF 14 Chapic/Karl	-	-	-	-	-	87
F 16 Walker/Mallory	3	-	1	-	-	41
F 17 Church/Whitney	-	-	-	-	-	50
MF 20 Williams/Salina	2	1	-	-	-	50
-- Substitutes --						
4 Schuler/Megan	1	1	-	-	-	62
6 Wills/Katy	-	-	-	-	-	3
8 Koen/Katy	-	-	-	-	-	43
12 Kohn/Kinshah	1	-	-	-	-	36
15 Eshard/Hannah	-	-	-	-	-	35
18 Peterson/Mallory	1	1	1	-	-	23
Totals	17	6	3	3	4	

# Goalskeepers	Mis	GA	Saves
20 Eckerman/Ball	90:00	0	3

Shots by period	1	2	Total
Penn State	8	7	15
Indiana	6	3	9

Corner kicks	1	2	Total
Penn State	2	2	4
Indiana	0	1	1

Scoring summary:	No.	Time	Team	Goal scorer	Assist	Description
1.	13:00	PSU	Walker/Mallory (1)	Whitney Church	Left side, crossed into left post	
2.	56:14	PSU	Rangel Rodriguez (1)	Walker/Mallory	Over top from right to top of box, shot from 11 yards and near post	
3.	56:50	PSU	Peterson/Mallory (1)	Eshard/Hannah Schuler/Megan	Over top left header at back post	

Officials and ejections:
Win: Eckerman/Ball (4-1), Loss: Gibson, Smith (2-4).
Stadium: Armstrong Stadium
Officials: Referee: Greg Aversa; Ass. Referee: Joe Brian Ryan; AB: Official: Tony Acosta
Scorekeeper: Nathan Wechsler
Officials: Penn State 1, Indiana 1.

Official's signature



Soccer Box Score (Final) 2014 Purdue Women's Soccer

#08 Penn State vs Purdue (Sep 12, 2014 at West Lafayette, Ind.)

Penn State (4-1, 1-0 Big Ten) vs
Purdue (4-3-1, 0-1 Big Ten)
Date: Sep 12, 2014 • Attendance: 303
Weather: Cloudy, cooler, 80s

Penn State	Sh	SO	G	A	Fo	Mis
DF 20 Eckerman/Ball	-	-	-	-	-	50
DF 3 Hand/Emily	4	3	-	-	-	50
D 4 Schuler/Megan	1	1	1	-	-	40
D 5 Elshen/Mallory	-	-	-	-	-	50
F 7 Ball/Elizabeth	-	-	-	-	-	50
F 9 Cruise/Franee	1	1	-	-	-	53
MF 10 Ogilvie/Emily	1	1	-	-	-	23
MF 11 Rodriguez/Rangel	6	2	1	-	-	81
MF 14 Chapic/Karl	-	-	-	-	-	80
F 17 Church/Whitney	1	-	-	-	-	50
MF 20 Williams/Salina	2	1	-	-	-	60
-- Substitutes --						
8 Koen/Katy	-	-	-	-	-	51
12 Kohn/Kinshah	-	-	-	-	-	0
15 Eshard/Hannah	-	-	-	-	-	10
18 Walker/Mallory	-	-	-	-	-	50
Totals	18	6	1	3	0	

# Goalskeepers	Mis	GA	Saves
20 Eckerman/Ball	90:00	0	1

Shots by period	1	2	Total
Penn State	5	11	16
Purdue	1	0	1

Corner kicks	1	2	Total
Penn State	1	4	5
Purdue	0	2	2

Scoring summary:	No.	Time	Team	Goal scorer	Assist	Description
1.	56:04	PSU	Rangel Rodriguez (2)	Walker/Mallory	Inside edge of 10 yard box on right back header left post	

Officials and ejections:
Win: Eckerman/Ball, Loss: YCHN, Erika
Stadium: Soccer Stadium
Officials: Referee: Gregory Danks; Ass. Referee: George Chast; State Referee: AB: Official: Christine Spradlin; Timekeeper: Student SA's; Scorekeeper: Sam Tamm; Officials: Penn State 1, Purdue 1.

Official's signature

Soccer Box Score (Final) 2014 Penn State Women's Soccer

Ohio State vs #08 Penn State (Sep 19, 2014 at UNIVERSITY PARK, Pa.)

Ohio State (4-3, 2-2 Big Ten) vs
Penn State (7-1, 3-0 Big Ten)
Date: Sep 19, 2014 • Attendance: 2021
Weather: Low 60s, breezy

Ohio State	Sh	SO	G	A	Fo	Mis
DF 20 Eckerman/Ball	-	-	-	-	-	50
DF 3 Hand/Emily	-	-	-	-	-	50
D 4 Elshen/Mallory	-	-	-	-	-	53
F 7 Ball/Elizabeth	-	-	-	-	-	77
F 9 Cruise/Franee	1	-	-	-	-	50
MF 10 Ogilvie/Emily	-	-	-	-	-	50
MF 11 Rodriguez/Rangel	1	1	1	-	-	42
MF 14 Chapic/Karl	-	-	-	-	-	74
F 16 Walker/Mallory	2	1	-	-	-	50
F 17 Church/Whitney	1	1	-	-	-	45
MF 20 Williams/Salina	1	1	1	-	-	50
-- Substitutes --						
8 Koen/Katy	-	-	-	-	-	54
12 Kohn/Kinshah	-	-	-	-	-	40
15 Eshard/Hannah	-	-	-	-	-	21
Totals	4	2	1	0	0	

# Goalskeepers	Mis	GA	Saves
20 Eckerman/Ball	90:00	1	3

Shots by period	1	2	Total
Ohio State	1	3	4
Penn State	7	7	14

Corner kicks	1	2	Total
Ohio State	1	1	2
Penn State	0	0	0

Scoring summary:	No.	Time	Team	Goal scorer	Assist	Description
1.	26:01	PSU	Williams/Salina (1)	Walker/Mallory	Over top 14 and also put it past the goal and the ball off a turnover and dribbled out and 8 yard penalty	
2.	50:04	OSU	Dudley, Sydney	(unassisted)	Header off cross into box	
3.	54:41	PSU	Cruise/Franee (4)	Chapic/Karl	Breakaway goal	
4.	73:44	PSU	Rangel Rodriguez (4)	Eshard/Hannah	Over side into Rodriguez in box	

Officials and ejections:
Win: Eckerman/Ball (7-1), Loss: Goldnick, Megan (4-5).
Stadium: Joffe Field
Officials: Referee: Peter Dineen; Ass. Referee: Mike Lehen; AB: Robert Shuler
AB: Official: Stan Lucas; Timekeeper: Steve Fisher; Scorekeeper: Jan Heibel
Officials: Ohio State 1, Penn State 0.

Official's signature



Soccer Box Score (Final)

2014 Penn State Women's Soccer

#7 Penn State vs #13 Wisconsin (Oct 05, 2014 at Madison, Wis.)

Penn State (12-1-0, 7-0) vs. Wisconsin (11-2-0, 3-2)
Date: Oct 05, 2014 • Attendance: 398
Weather:

Penn State	Sh	SO	G	A	Fo	Mis
ak 28 Eckstrom,Britt	-	-	-	-	-	90
m 3 Hurd,Emily	-	-	-	-	-	72
d 5 Ellison,Maddie	-	-	1	-	-	90
f 7 Bell,Elizabeth	-	-	-	-	-	90
f 9 Crouse,Francie	2	-	-	-	-	48
m 10 Ogle,Emily	1	1	1	-	-	74
f 11 Rodriguez,Karol	2	-	-	-	-	82
f 14 Chapic,Kori	-	-	-	-	-	90
f 16 Weber,Mallory	1	-	1	-	-	78
d 17 Church,Whitney	1	1	-	-	-	90
d 20 Wilford,Saina	1	1	1	-	-	90
Substitutes --						
4 Schuler,Megan	-	-	1	-	-	58
8 Keen,Katy	-	-	-	-	-	8
18 Edward,Haleigh	1	-	-	-	-	18
25 Peterson,Mallory	1	1	-	-	-	11
Totals	10	4	2	3	3	

# Goalkeepers	Min	CA	Saves
28 Eckstrom,Britt	90:00	0	4

Shots by period	1	2	Total
Penn State	5	5	10
Wisconsin	6	3	9

Corner kicks	1	2	Total
Penn State	4	3	8
Wisconsin	4	3	8

Scoring summary:	No.	Time	Team	Goal scorer	Assist	Description
1.	26:16	PSU	Ogle,Emily (1)	Weber,Mallory	own free kick into net	Pen: 11' var
2.	89:16	PSU	Wilford,Saina (4)	Schuler,Megan		

Goalkeepers and ejections:
YC-PSU #2 (27:02); YC-WIS #2 (41:42)

Wn-Eckstrom,Britt (12-1-0). Loo-Richard, Genevieve (11-2-0).
Stadium: McCloskey Complex
Officials: Referee: Terry Vaughn; Asst. Referee: Tyler Turner; Andrew Rednair;
Alt. Official: Kurt Zipp
Officials: Penn State 0, Wisconsin 4.

Official's signature

Soccer Box Score (Final)

2014 Michigan Women's Soccer

#11 Penn State vs #24 Michigan (Oct 16, 2014 at Ann Arbor, Mich.)

Penn State (13-3-0, 8-1 B1G) vs. Michigan (11-4-0, 2-2-0 B1G)
Date: Oct 16, 2014 • Attendance: 527
Weather: 60, clear

Penn State	Sh	SO	G	A	Fo	Mis
ak 28 Eckstrom,Britt	-	-	-	-	-	90
m 3 Hurd,Emily	-	-	-	1	-	71
f 4 Schuler,Megan	2	2	1	-	-	70
d 5 Ellison,Maddie	-	-	-	-	-	90
m 8 Keen,Katy	1	-	-	-	-	76
f 9 Crouse,Francie	1	-	-	-	-	52
m 10 Ogle,Emily	-	-	-	-	-	90
f 14 Chapic,Kori	1	-	-	-	-	90
f 16 Weber,Mallory	1	1	1	-	-	83
d 17 Church,Whitney	-	-	-	-	-	90
m 20 Wilford,Saina	-	-	-	-	-	70
Substitutes --						
7 Bell,Elizabeth	1	-	-	-	-	24
12 Kohn,Kendrah	-	-	-	-	-	24
18 Edward,Haleigh	1	-	-	-	-	40
Totals	11	4	1	3		

# Goalkeepers	Min	CA	Saves
28 Eckstrom,Britt	90:00	0	3

Shots by period	1	2	Total
Penn State	3	5	8
Michigan	14	4	18

Corner kicks	1	2	Total
Penn State	0	3	3
Michigan	3	5	11

Scoring summary:	No.	Time	Team	Goal scorer	Assist	Description
1.	28:31	PSU	Schuler,Megan (2)	Weber,Mallory	own free kick into net	Pen: 11' var

Goalkeepers and ejections:
YC-PSU #2 (43:40)
Wn-Eckstrom,Britt (12-2-0). Loo-HENK, MEGAN (10-2-0).
Stadium: D-M Soccer Stadium
Officials: Referee: Nicola Aklewa; Asst. Referee: Chahab Al-Latayfeh;
Richard Alley; Alt. Official: N.Grace Valencia; Timekeeper: Lee Kottmann;
Bryan Whitney; Discus:
Officials: Penn State 1, Michigan 4.

Official's signature

Soccer Box Score (Final)

2014 Penn State Women's Soccer

#20 Rutgers vs #6 Penn State (Oct 11, 2014 at UNIVERSITY PARK, Pa.)

Rutgers (10-1-1, 6-1-1 B1G) vs. Penn State (12-2-0, 7-1 Big Ten)
Date: Oct 11, 2014 • Attendance: 1651
Weather: Mid 60s, partly cloudy, breezy

Rutgers	Sh	SO	G	A	Fo	Mis
ak 24 Murphy, Casey	-	-	-	-	-	90
f 3 Strick, Erica	-	-	-	-	-	90
f 9 Schick, Stefanie	4	-	-	-	-	64
m 11 Kachowski, Hayley	-	-	-	-	-	90
d 13 Marozzi, Mowen	-	-	-	-	-	62
m 14 Vallant, Samantha	-	-	-	-	-	56
d 18 Smith, Eric	-	-	-	-	-	90
f 16 Inacio, Cassie	1	1	-	-	-	38
f 21 Petrangola, Amy	-	-	-	-	-	65
d 22 Reed, Brianna	-	-	-	-	-	90
m 23 Tierney, Madison	2	3	1	-	-	82
Substitutes --						
4 DeWick, Amanda	1	-	-	-	-	42
5 Cole, Rachel	1	-	-	-	-	25
6 Ryan, Allison	-	-	-	-	-	2
8 Benintente, Cassidy	-	-	-	-	-	28
12 Sexton, Jennie	-	-	-	-	-	21
20 Hudson, Nikki	-	-	-	-	-	3
24 Parshadi, Jenica	-	-	-	-	-	23
26 Abde, Torie	-	-	-	-	-	0
28 Prager, Teri	-	-	-	-	-	46
Totals	10	2	1	0	6	

# Goalkeepers	Min	CA	Saves
23 Murphy, Casey	90:00	0	3

Shots by period	1	2	Total
Rutgers	7	3	10
Penn State	2	8	10

Corner kicks	1	2	Total
Rutgers	0	0	0
Penn State	1	7	8

Scoring summary:	No.	Time	Team	Goal scorer	Assist	Description
1.	28:16	PSU	Tierney, Madison (2)	(unassisted)	shot from flyback	

Goalkeepers and ejections:
Wn-Murphy, Casey (10-1-1). Loo-Eckstrom,Britt (12-2).
Stadium: Solovy Field
Officials: Referee: Keith Angel; Asst. Referee: Sal Saitz; Eric Blackburn;
Alt. Official: Kater Cortez; Timekeeper: Steve Fickler; Scorekeeper: Jon Hestor;
Officials: Rutgers 2, Penn State 1.

Official's signature

Soccer Box Score (Final)

2014 Penn State Women's Soccer

#7 PSU vs MSU (Oct 19, 2014 at East Lansing, Mich.)

PSU (14-2-0, 9-2-0 B1G) vs. MSU (9-6-1, 2-6-1 B1G)
Date: Oct 19, 2014 • Attendance: 1112
Weather: Mostly sunny, 45 degrees

PSU	Sh	SO	G	A	Fo	Mis
ak 28 Eckstrom,Britt	-	-	-	-	-	90
m 3 Hurd,Emily	-	-	-	-	-	71
f 4 Schuler,Megan	3	3	-	-	-	82
d 5 Ellison,Maddie	1	1	-	-	-	90
d 7 Bell,Elizabeth	2	2	1	-	-	67
m 8 Keen,Katy	3	-	-	-	-	58
m 10 Ogle,Emily	1	3	-	-	-	90
f 14 Chapic,Kori	2	1	-	-	-	90
f 16 Weber,Mallory	1	3	-	-	-	84
d 17 Church,Whitney	1	-	-	-	-	90
m 20 Wilford,Saina	1	3	-	-	-	78
Substitutes --						
9 Crouse,Francie	2	3	-	-	-	25
12 Kohn,Kendrah	1	-	-	-	-	28
18 Edward,Haleigh	1	-	-	-	-	44
Totals	20	9	2	2	12	

# Goalkeepers	Min	CA	Saves
28 Eckstrom,Britt	90:00	1	3

Shots by period	1	2	Total
PSU	11	9	20
MSU	4	5	9

Corner kicks	1	2	Total
PSU	3	3	6
MSU	1	0	1

Scoring summary:	No.	Time	Team	Goal scorer	Assist	Description
1.	19:07	MSU	Murack, Megan (2)	Chadik, Jane	free kick	
2.	26:11	PSU	Chapic,Kori (2)	Edward,Haleigh		
3.	88:11	PSU	Bell,Elizabeth (1)	Ogle,Emily		

Goalkeepers and ejections:
Wn-Eckstrom,Britt (14-2-0). Loo-Clem, Courtney (9-5-1).
Stadium: DeMartin
Officials: Referee: Christopher Kiofany; Asst. Referee: Sulejka Wilschke;
Anthony Mazoli; Alt. Official: Doreen Puritz; Scorekeeper: Brock Longwood;
Officials: PSU 0, MSU 0.

Official's signature



2014 PENN STATE WOMEN'S SOCCER

Soccer Box Score (Final) 2014 Penn State Women's Soccer Nebraska vs #7 Penn State (Oct 24, 2014 at University Park, Pa.)

Nebraska (7-8-2, 2-4-2 Big Ten) vs.
Penn State (15-2, 10-1 Big Ten)
Date: Oct 24, 2014 • Attendance: 1276
Weather: Cool, slight breeze

Nebraska	Sh	SO	G	A	Fo	Mis
Pl # Player						
1 Schatz, Kelly	-	-	-	-	-	50
4 Krasomer, Kacie	1	-	-	-	-	87
11 Hanson, Haley	-	-	-	-	-	73
13 Cooney, Mayme	2	1	1	-	-	86
12 Gray, Caroline	1	-	-	-	-	86
13 Odehmann, Ja'ven	-	-	-	-	-	90
10 Johnson, Jaycie	-	-	-	-	-	83
20 Cooney, Jordan	-	-	-	-	-	63
21 Flynn, Caroline	3	-	-	-	-	73
22 Peterson, Allie	-	-	-	-	-	90
-- Substitutes --						
9 Mrazova, Sydney	1	-	-	-	-	35
10 Glasson, Courtney	-	-	-	-	-	13
24 Luebel, Nichole	-	-	-	-	-	4
24 Olszak, Hannah	-	-	-	-	-	21
Totals	9	1	1	0	0	

# Goalskeepers	Min	GA	Saves
1 Schatz, Kelly	90:00	3	2

Shots by period	1	2	Total
Nebraska	3	4	8
Penn State	8	7	15

Corner kicks	1	2	Total
Nebraska	1	1	2
Penn State	4	1	5

No.	Time	Team	Goal scorer	Assist	Description
1.	3:05	PSU	Crouse, Franise (8)	Chapic, Kori	1 long ball from 14, dropped to 12 in box
2.	39:29	PSU	Crouse, Franise (8)	Church, Whitney	off of a corner, 17 header to cross 14 ft
3.	40:34	NEB	Cooney, Mayme (18)	(unassisted)	
4.	89:34	PSU	Edwards, Haleigh (1)	Hurd, Emily	Chapic, Kori

Officials and ejections:
IC: PSU #10 (45:49)
Min-Eckstrom, Britt (15-2-4). Low-Schultz, Emily (7-8-2).
Stadium: Jeffrey Field
Officials: Referee: Terry Rocco; Asst. Referee: Tim DeJongewere; Michael Matlock
M: Official: Alan Robinson; Timekeeper: Steve Fildner; Score: Jon Heibel
Weather: Nebraska 2, Penn State 4.

Official's signature

Soccer Box Score (Final) 2014 Penn State Women's Soccer Maryland vs #6 Penn State (Oct 30, 2014 at University Park, Pa.)

Maryland (5-7-6, 3-5-5 B1G) vs.
Penn State (17-2-0, 12-1 B1G)
Date: Oct 30, 2014 • Attendance: 620
Weather: Cold, Partly Cloudy

Maryland	Sh	SO	G	A	Fo	Mis
Pl # Player						
11 Beardsley, Kacielle	-	-	-	-	-	90
2 Fichter, Sarah	-	-	-	-	-	77
3 Bizer, Aubrey	1	-	-	-	-	71
10 Ranger, Riley	-	-	-	-	-	29
12 Shea, Kayla	-	-	-	-	-	90
15 Nelson, Erica	-	-	-	-	-	90
18 Moore-Kouss, Natasha	1	-	-	-	-	65
20 Molina, Sarah	-	-	-	-	-	90
21 Griffin, Amanda	-	-	-	-	-	90
22 Pratt, Shade	1	1	-	-	-	90
23 Collins, Shannon	1	-	-	-	-	90
-- Substitutes --						
17 Gidari, Gabby	2	1	-	-	-	54
19 Anthony, Alex	-	-	-	-	-	41
25 Turner, Madison	-	-	-	-	-	13
Totals	6	2	0	0	1	

# Goalskeepers	Min	GA	Saves
23 Beardsley, Kacielle	90:00	1	4

Shots by period	1	2	Total
Maryland	3	3	6
Penn State	6	7	13

Corner kicks	1	2	Total
Maryland	2	4	6
Penn State	1	4	5

No.	Time	Team	Goal scorer	Assist	Description
1.	1:44	PSU	Crouse, Franise	Edwards, Haleigh	5 set pieces, through ball to 9.

Officials and ejections:
Win-Eckstrom, Britt (17-2-0). Low-Beardsley, Kacielle (5-7-6).
Stadium: Jeffrey Field
Officials: Referee: Lee Gao; Asst. Referee: Robert Gheddes; Jeffrey Gonzalez
M: Official: Sean Lator; Timekeeper: Steve Fichter; Score: Jon Heibel
Weather: Maryland 1, Penn State 0.

Official's signature

Soccer Box Score (Final) 2014 Penn State Women's Soccer Iowa vs #7 Penn State (Oct 26, 2014 at University Park, Pa.)

Iowa (10-4-1, 3-4-1 B1G) vs.
Penn State (14-2, 11-1 B1G)
Date: Oct 26, 2014 • Attendance: 1387
Weather: Rainy, partly cloudy

Iowa	Sh	SO	G	A	Fo	Mis
Pl # Player						
1 Clark, Hannah	-	-	-	-	-	90
3 Brown, Corbin	-	-	-	-	-	90
7 Urban, Nicole	-	-	-	-	-	71
9 Lusk, Amanda	-	-	-	-	-	90
11 Tackie, Bri	2	2	-	-	-	90
14 Scott, Emily	1	-	-	-	-	90
16 Thomas, Aerie Marie	-	-	-	-	-	60
17 Laczosa, Cice	-	-	-	-	-	90
22 Ricourt, Melanie	1	1	-	-	-	90
23 Ingber, Bethany	-	-	-	-	-	83
24 Burns, Casey	1	1	1	-	-	80
-- Substitutes --						
18 Hart, Marissa	-	-	-	-	-	20
17 Macay, Sarah	-	-	-	-	-	3
19 Stankic, Kerli	-	-	-	-	-	3
22 Woodruff, Katherine	-	-	-	-	-	10
18 Hammond, Terry	-	-	-	-	-	11
Totals	5	4	1	0	12	

# Goalskeepers	Min	GA	Saves
1 Clark, Hannah	90:00	2	7

Shots by period	1	2	Total
Iowa	3	2	5
Penn State	10	7	17

Corner kicks	1	2	Total
Iowa	2	0	2
Penn State	0	3	3

No.	Time	Team	Goal scorer	Assist	Description
1.	5:36	IOWA	Burns, Casey	Chapic, Kori (4)	corner
2.	53:28	PSU	Chapic, Kori (4)	Edwards, Haleigh	25 yards set for sideline, crossed and high
3.	58:58	PSU	Chapic, Kori	Edwards, Haleigh	Edwards, Haleigh

Officials and ejections:
VC-SOMA #14 (81:39)
Min-Eckstrom, Britt (14-2). Low-Clark, Hannah (7-4-1).
Stadium: Jeffrey Field
Officials: Referee: Ted Perrow; Asst. Referee: Anasua Das; Lucas Feathers;
M: Official: Tim DeJongewere; Timekeeper: Steve Fichter; Score: Jon Heibel
Weather: Iowa 0, Penn State 1.

Official's signature

Soccer Box Score (Final) 2014 Big Ten Tournament Northwestern vs #6 Penn State (Nov 05, 2014 at West Lafayette, Ind.)

Northwestern (9-7-1) vs.
Penn State (17-2)
Date: Nov 05, 2014 • Attendance:
Weather: Clear, sunny, 54 degrees, SW wind of 7 mph

Northwestern	Sh	SO	G	A	Fo	Mis
Pl # Player						
11 Chen, Lauren	-	-	-	-	-	80
8 Gorman, Cassidy	-	-	-	-	-	90
9 Sells, Mi	-	-	-	-	-	83
12 McInry, Margo	-	-	-	-	-	90
14 Schalko, Sami	1	-	-	-	-	22
15 Waddie, Georgia	-	-	-	-	-	88
16 Mehta, Mandi	2	-	-	-	-	88
20 Smith, Mikia	-	-	-	-	-	80
21 Stewart, Abbie	2	-	-	-	-	22
22 Bart, KK	-	-	-	-	-	83
24 Alyson, Justin	-	-	-	-	-	80
-- Substitutes --						
3 Lamberton, Kala	-	-	-	-	-	7
11 Fajardo, Maria	1	-	-	-	-	25
13 Manning, Michelle	1	1	1	-	-	88
17 Jaramonki, Kim	-	-	-	-	-	26
Totals	7	1	1	0	3	

# Goalskeepers	Min	GA	Saves
1 Chen, Lauren	90:00	8	7

Shots by period	1	2	Total
Northwestern	2	4	7
Penn State	6	10	16

Corner kicks	1	2	Total
Northwestern	3	1	4
Penn State	2	3	5

No.	Time	Team	Goal scorer	Assist	Description
1.	45:28	MU	Manning, Michelle (2)	(unassisted)	Goalkeeper pressure in left back 16 ft, in mid-air right post

Officials and ejections:
Win-Chen, Lauren. Low-Eckstrom, Britt.
Stadium: Boji Soccer Complex
Officials: Referee: Marly Lou; Asst. Referee: Terry Vaughn; Cesar Baura;
M: Official: Nathaniel Pagan; Timekeeper: Student Sells; Score: Ben Turner.
Big Ten Tournament Game #16
#1 Penn State vs. #8 Northwestern - MU advances to Semis

Official's signature

2014 PENN STATE WOMEN'S SOCCER



Soccer Box Score (Final) 2014 Penn State Women's Soccer Buffalo vs #8 Penn State (Nov 14, 2014 at University Park, Pa.)

Buffalo (16-3-3) vs.
Penn State (18-3-9)
Date: Nov 14, 2014 • Attendance: 633
Weather: Mostly cold.

Po #	Player	Sh	SO	G	A	Fo	Min
gk 1	DONAGALL, Laura	-	-	-	-	-	90
d 3	MURPHY, Kristin	-	-	-	-	-	90
d 4	HART, Reggi	-	-	-	-	-	90
d 8	HALL, Jackie	-	-	-	-	-	90
m 9	KEEN, Katie	-	-	-	-	-	64
f 8	ROBERTS, Katie	2	2	1	-	-	70
m 11	KIDD, Katelyn	3	2	-	-	-	78
f 14	CAPRIC, Kori	-	-	-	-	-	79
d 17	TREREM, Sophie	-	-	-	-	-	90
m 21	OBESON, Megan	-	-	-	-	-	73
m 22	MANN, Courtney	-	-	-	-	-	90
-- Substitutes --							
13	LYTLE, Dana	-	-	-	-	-	11
12	LAMBERT, Alexandra	-	-	-	-	-	13
16	COOK, Rachel	-	-	-	-	-	9
19	ADAMS, Megan	-	-	-	-	-	20
20	EVANS, Ashley	-	-	-	-	-	29
24	NECK, Andrea	-	-	-	-	-	52
Totals		5	4	1	0	6	

Goals by period	1	2	Total
Buffalo	0	1	1
Penn State	1	1	2

Po #	Player	Sh	SO	G	A	Fo	Min
gk 28	Eckerstrom,Britt	-	-	-	-	-	90
m 3	Hurd,Emily	-	-	-	-	-	67
d 5	Elliston,Maddie	-	-	-	-	-	77
d 7	Ball,Elizabeth	-	-	-	-	-	77
f 9	Crouse,Frannie	2	-	-	-	-	58
m 10	Ogle,Emily	-	-	-	-	-	67
m 11	Rodriguez,Raquel	1	1	1	-	-	79
d 14	Chapic,Kori	2	-	-	-	-	77
f 16	Weber,Mallory	4	1	-	-	-	85
d 17	Church,Whitney	2	-	-	-	-	79
m 20	Williford,Salina	2	-	-	-	-	49
-- Substitutes --							
5	Kaniadka,Meghan	-	-	-	-	-	20
2	Ritchy,Megan	1	1	-	-	-	13
4	Schafer,Megan	2	1	1	-	-	30
8	Keen,Katy	1	1	-	-	-	13
8	Keen,Katy	1	-	-	-	-	33
12	Kahne,Kindrah	-	-	-	-	-	20
15	Echard,Haleigh	2	1	-	-	-	44
21	Chase,Teddy	-	-	-	-	-	13
22	Cross,Baekle	-	-	-	-	-	11
24	Webster,Bryna	-	-	-	-	-	13
25	Detomasi,Melany	1	1	1	-	-	23
Totals		23	9	4	5	4	

#	Goalkeepers	Min	GA	Saves
1	DONAGALL, Laura	90:00	4	3

Shots by period	1	2	Total
Buffalo	2	3	5
Penn State	9	14	23

Corner kicks	1	2	Total
Buffalo	0	1	1
Penn State	3	6	11

No.	Time	Team	Goal scorer	Assist	Description
1.	14:59	PSU	Weber, Mallory (7)	Rodriguez, Raquel	breaks thru 1-0 players, cross at 10
2.	60:34	PSU	Rodriguez, Raquel (8)	Williford, Salina	collected own rebound, off of cross
3.	81:11	PSU	Schafer, Megan (7)	Williford, Salina	long service from 30 draw GK out,
4.	80:23	PSU	ROBERTS, Katie (12)	Pemsky, Jack	
5.	85:30	PSU	Peerson, Mallory (2)	Neck, Andrea	

Cautions and ejections:

Win-Eckerstrom,Britt (18-3-0). Loss-DONAGALL, Laura (16-3-2).
Stadium: Jeffrey Field

Officials: Referee: Tim DeJernigan; Asst. Referee: Ross Kleinschmidt; John Greff;
Alt. Official: John Woodruff; Timekeeper: Steve Fishler; Scorer: Jen Heisel;
Offsides: Buffalo 0, Penn State 0.

Official's signature

Soccer Box Score (Final) 2014 Penn State Women's Soccer UConn vs #8 Penn State (Nov 21, 2014 at University Park, Pa.)

UConn (14-5-5) vs.
Penn State (19-3-0)
Date: Nov 21, 2014 • Attendance: 468
Weather: 25 degrees, breezy

Po #	Player	Sh	SO	G	A	Fo	Min
gk 4	SAUCIER, Allison	-	-	-	-	-	45
f 3	HILL, Rachel	1	-	-	-	-	90
f 11	HUBBARD, Julie	3	3	-	-	-	60
d 13	PATTERSON, Toriana	-	-	-	-	-	90
m 14	MCGUIRE, Samantha	1	-	-	-	-	90
d 17	HUNTSBERGER, Mega	-	-	-	-	-	90
m 21	BUTLER, Brianna	-	-	-	-	-	90
m 22	HOULE, Riley	3	2	-	-	-	86
f 30	WATKINS, Lindsey	-	-	-	-	-	15
d 37	ROMA, Gianna	-	-	-	-	-	90
d 50	CHARNO, Gabrielle	-	-	-	-	-	90
-- Substitutes --							
1	ARMSTRONG, Emily	-	-	-	-	-	45
6	PLUCENIK, Andrea	2	-	-	-	-	36
7	HINDS, Liana	-	-	-	-	-	25
23	MOREAU, Brittany	-	-	-	-	-	14
25	GOTTWIK, Danielle	-	-	-	-	-	23
29	ALTRUI, Tanya	-	-	-	-	-	11
Totals		10	5	0	0	9	

#	Goalkeepers	Min	GA	Saves
4	SAUCIER, Allison	45:00	1	2
1	ARMSTRONG, Emily	45:00	0	2

Shots by period	1	2	Total
UConn	2	8	10
Penn State	10	9	19

Corner kicks	1	2	Total
UConn	0	1	1
Penn State	3	6	9

Scoring summary:

No.	Time	Team	Goal scorer	Assist	Description
1.	6:36	PSU	Crouse,Frannie (10)	Chapic,Kori	header in the box

Cautions and ejections:

Win-Eckerstrom,Britt (18-3-0). Loss-SAUCIER, Allison (8-3-2).

Stadium: Jeffrey Field
Officials: Referee: Ian Bongaardt; Asst. Referee: Fahrudin Sejdic; Joseph Cimino;
Alt. Official: Michael Thuma; Timekeeper: Steve Fishler; Scorer: Jen Heisel;
Offsides: UConn 2, Penn State 0.

Official's signature

Soccer Box Score (Final) 2014 Penn State Women's Soccer Virginia Tech vs #8 Penn State (Nov 23, 2014 at University Park, Pa.)

Virginia Tech (16-6-0) vs.
Penn State (20-3-0)
Date: Nov 23, 2014 • Attendance: 653
Weather: 50 degrees, partly cloudy

Po #	Player	Sh	SO	G	A	Fo	Min
gk 1	Kaylyn Smith	-	-	-	-	-	90
m 3	Katie Zelenky	-	-	-	-	-	90
d 6	Jodie Zelenky	-	-	-	-	-	90
d 8	Danielle King	1	-	-	-	-	90
m 15	Ashley Meier	4	2	1	-	-	83
m 18	Candace Cephers	1	-	-	-	-	90
d 19	Jordan Coburn	-	-	-	-	-	90
f 20	Murielle Tiernan	1	1	-	-	-	55
m 21	Madi Conyers	-	-	-	-	-	70
d 22	Morgan Conklin	2	2	-	-	-	80
f 23	Kallie Peunfroy	-	-	-	-	-	17
-- Substitutes --							
4	Shannon Mayrose	-	-	-	-	-	64
7	Ellie Zoepfl	-	-	-	-	-	12
13	Alani Johnson	1	-	-	-	-	25
14	Sydney Curtis	-	-	-	-	-	0
17	Bria Dixon	1	-	-	-	-	42
27	Laila Gray	-	-	-	-	-	7
Totals		11	5	1	1	11	

#	Goalkeepers	Min	GA	Saves
1	Kaylyn Smith	90:00	2	5

Shots by period	1	2	Total
Virginia Tech	6	5	11
Penn State	4	7	11

Corner kicks	1	2	Total
Virginia Tech	5	0	5
Penn State	0	3	3

Scoring summary:

No.	Time	Team	Goal scorer	Assist	Description
1.	39:59	PSU	Rodriguez,Raquel (7)	Keen,Katy	cross from 8 at center, breakawa
2.	52:42	VT	Ashley Meier (7)	Danielle King	
3.	70:39	PSU	Weber, Mallory (8)	Ogle,Emily	off of free kick, header

Cautions and ejections:

YC-VT #8 (84:12)

Win-Eckerstrom,Britt (20-3-0). Loss-Kaylyn Smith (5-3-0).

Stadium: Jeffrey Field

Officials: Referee: Charles Murphy; Asst. Referee: Brian Miller; Jason Cullum;

Alt. Official: Eric Samples; Timekeeper: Steve Fishler; Scorer: Jen Heisel;

Offsides: Virginia Tech 1, Penn State 0.

Official's signature



2014 PENN STATE WOMEN'S SOCCER



MEGHAN KAMINSKI
Junior • GK
Doylestown, Pa.



BRITTANY BASINGER
Sophomore • D
Fairfax, Va.



MEGHAN RITCHEY
Junior • M
State College, Pa.



EMILY HURD
R - Senior • M
Sammamish, Wash.



MEGAN SCHAFER
Freshman • F
Langhorne, Pa.



MADDIE ELLISTON
Freshman • MF/D
Omaha, Neb.



ANNA WITTE
Sophomore • D
Morrisville, N.C.



ELIZABETH BALL
Freshman • F
Richmond, Va.



KATY KEEN
Freshman • M
Zionsville, Ind.



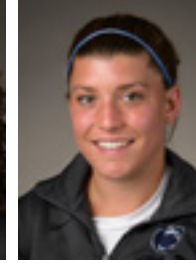
FRANNIE CROUSE
Freshman • F
Greensburg, Pa.



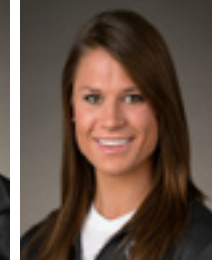
EMILY OGLE
Freshman • MF
Strongsville, Ohio



RAQUEL RODRIGUEZ
Junior • F/M
San Jose, Costa Rica



KINDRAH KOHNE
Senior • D
Homer, N.Y.



KORI CHAPIC
Senior • D
Russell, Ohio



HALEIGH ECHARD
Freshman • M
Lebanon, Pa.



MALLERY WEBER
Junior • F
Novi, Mich.



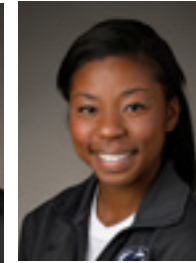
WHITNEY CHURCH
Senior • D
Ashburn, Va.



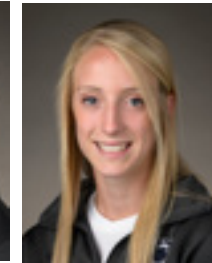
ANGELA WIDLACKI
R - Freshman • D
Naperville, Ill.



LIISI VINK-LAINAS
Freshman • M
Wynantskill, N.Y.



SALINA WILLIFORD
Sophomore • M/D
Wayne, Pa.



TEDDY CHASE
Junior • D
Wayne, Pa.



ISABELLE CLAUSS
Freshman • D
Clarks Summit, Pa.



BRITNE HOLDERBY
Freshman • D
Chelsea, Ala.



MALLERY PETERSON
Junior • F/M
Clinton Corners, N.Y.



BRITT ECKERSTROM
R - Junior • GK
Germantown, Md.



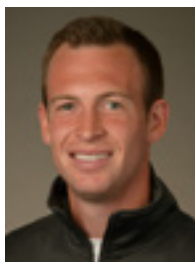
ROSE CHANDLER
Freshman • D
Atlanta, Ga.



ERICA WALSH
Head Coach • 8th Year
William & Mary '97



ANN COOK
Assistant Coach • 8th year
William & Mary '97



TIM WASSELL
Assistant Coach • 5th Year
PSU Altoona '06



KARA LOWERY
Director of Ops. • 2nd Year
Southern Nazarene '97