



PENN STATE WOMEN'S HOCKEY

2013-14 NITTANY LIONS

GoPSUsports.com • Twitter & Instagram: [PennStateWHKY](#) • Facebook.com/[PennStateWomensHockey](#)
 Contact: **Jeremy Fallis** • jeremy.fallis@psu.edu • O: (814) 863-1388 • C: (814) 206-6544

2013-14 SCHEDULE

Overall: 2-7-1 • Home: 1-5-0 • Away: 1-2-1
 CHA: 0-2-0 • Home: 0-2-0 • Away: 0-0-0

Date	Opponent	Result/Time
Oct. 4	at Vermont	T (OT) 3-3
Oct. 5	at Vermont	W 4-2
Oct. 11	at Quinnipiac	L 1-5
Oct. 12	at Quinnipiac	L 0-4
Oct. 18	UNION	L 1-2
Oct. 19	UNION	W 2-1
Oct. 26	NEW HAMPSHIRE	L 5-8
Oct. 27	NEW HAMPSHIRE	L 1-3
Oct. 31	* ROBERT MORRIS	L 0-4
Nov. 1	* ROBERT MORRIS	L 0-6
Nov. 9	* SYRACUSE	2:00 p.m.
Nov. 10	* SYRACUSE	2:00 p.m.
Nov. 15	* at RIT	7:00 p.m.
Nov. 16	* at RIT	3:00 p.m.
Nov. 22	* at Lindenwood	8:00 p.m.
Nov. 23	* at Lindenwood	3:00 p.m.
Nov. 30	MAINE	2:00 p.m.
Dec. 6	* at #9 Mercyhurst	3:00 p.m.
Dec. 7	* at #9 Mercyhurst	2:00 p.m.
Jan. 3	at Ohio State	7:07 p.m.
Jan. 4	at Ohio State	4:07 p.m.
Jan. 10	COLGATE	7:00 p.m.
Jan. 11	COLGATE	2:00 p.m.
Jan. 24	* at Syracuse	7:00 p.m.
Jan. 25	* at Syracuse	2:00 p.m.
Jan. 28	at Princeton	7:00 p.m.
Jan. 31	* RIT	7:00 p.m.
Feb. 1	* RIT	2:00 p.m.
Feb. 8	* LINDENWOOD	Noon
Feb. 9	* LINDENWOOD	Noon
Feb. 15	* #9 MERCYHURST	8:00 p.m.
Feb. 16	* #9 MERCYHURST	1:00 p.m.
Feb. 21	* at Robert Morris	3:00 p.m.
Feb. 22	* at Robert Morris	3:00 p.m.
2014 CHA TOURNAMENT		
Feb. 28	^ CHA First Round - Game 1	TBA
March 1	^ CHA First Round - Game 2	TBA
March 2	^ CHA First Round - Game 3	TBA
March 7	% CHA Semifinals	TBA
March 8	% CHA Final	TBA

All Times Eastern

Home games in **CAPS** at Pegula Ice Arena

* - College Hockey America games

^ - CHA First Round at higher seed

% - CHA Semifinals & Final hosted by No. 1 seed

Rankings based on USA Today/USA Hockey poll

Streaming on AmericaOneSports.com; live stream



PENN STATE NITTANY LIONS
 (2-7-1, 0-2-0 CHA)

SYRACUSE ORANGE
 (4-4-0, 0-0-0 CHA)

Games 11-12: Nov. 9-10, 2013 • Pegula Ice Arena • University Park, Pa.

GAME DAY

VENUE
 STREAMING COVERAGE
 SERIES RECORD
 LAST MEETING
 NEXT TIME OUT

Pegula Ice Arena (5,782)
 AmericaOneSports.com (\$) 0-4-0
 Jan. 26, 2013; SU 4-1 (at Syracuse)
 Nov. 15-16 at RIT

GAME NOTES

- Penn State welcomes Syracuse to cap eight-game home stand
- Nittany Lions have dropped last four games to New Hampshire and Robert Morris
- Penn State's home attendance ranks first in CHA, fifth in NCAA Division I
- Nittany Lion freshmen & sophomores have tallied 35 of team's 44 points
- Balanced Penn State offense touts eight different goal scorers this season
- Syracuse has won three straight entering this weekend's series

ON THE INSIDE

- Page 2: **CHA Standings and Team Comparison**
- Page 7: **The Nittany Lion Roster & Pronunciation Guide**
- Page 8: **2013-14 Penn State Box Scores**
- Page 9: **2013-14 Penn State Women's Hockey Stats**
- Page 10: **The Nittany Lion TV/Radio Roster**

STATISTICAL LEADERS

FORWARDS		GP	G	A	PTS	SH	+/-	GWG
40	Shannon Yoxheimer	10	3	5	8	50	-1	0
24	Taylor Gross	10	3	4	7	32	-4	0
16	Hannah Hoenshell	10	1	4	5	20	-3	1
12	Sarah Nielsen	10	1	4	5	10	-1	0
18	Laura Bowman	10	4	0	4	24	-2	1
9	Amy Petersen	10	0	3	3	8	-1	0
19	Jill Holdcroft	10	1	0	1	15	-7	0
15	Jess Desorcie	10	1	0	1	8	-5	0
DEFENSE		GP	G	A	PTS	SH	+/-	BLK
27	Kelly Seward	10	3	0	3	10	0	20
4	Jordin Pardoski	10	0	3	3	6	-3	12
6	Lindsay Riehl	10	0	1	1	0	0	18
21	Sarah Wilkie	10	0	0	0	8	-1	12
21	Paige Jahnke	8	0	1	1	3	-6	13
2	Jeanette Bateman	9	0	1	1	7	-11	11
GOALTENDER		GP-GS	Record	MIN	GA	GAA	SV	SV%
30	Celine Whitlinger	5-5	2-3-0	298:01	16	3.22	187	.921
37	Nicole Paniccia	5-5	0-4-1	302:29	21	4.17	168	.889



@PennStateWHKY



PennStateWomensHockey



GoPSUTV





NITTANY LION WOMEN'S HOCKEY

GAME NOTES VS. SYRACUSE (Nov. 9-10)

AMONG THE BEST FAN SUPPORT

The Penn State faithful have supported the Nittany Lions well in the first six games at Pegula Ice Arena with 4,566 fans going through the turnstiles. Currently, Penn State ranks fifth in average attendance (761) behind national title contenders Minnesota (1,928), Wisconsin (1,590), Minnesota Duluth (1,397) and North Dakota (1,074). Penn State also tops the CHA.

Division I Women's Hockey Attendance

1. Minnesota	1,928
2. Wisconsin	1,590
3. Minnesota Duluth	1,397
4. North Dakota	1,074
5. PENN STATE	761
6. RIT	729
7. Mercyhurst	713
8. Cornell	692
9. Dartmouth	711
10. Colgate	497

PICK YOUR POISON

Penn State has had the fortune of multiple contributors on the offensive end. Eight Nittany Lions have scored a goal this season, while 14 have registered a point. **Shannon Yoxheimer** leads the team with 8 points, while linemate **Taylor Gross** has 7 and **Sarah Nielsen** has 5. **Hannah Hoenshell** also has 5 points, including a two-assist game on Saturday against UNH. The Minnetonka connection of **Laura Bowman** and **Amy Petersen** have combined for 4 goals (Bowman) and 3 assists (Petersen), while defenders **Kelly Seward** (3 goals) and **Jordin Pardoski** (3 assists) have supplied some offense.

YOUTH SUPPLIES THE OFFENSE

The addition of four freshmen: **Laura Bowman**, **Amy Petersen**, **Sarah Nielsen** and **Kelly Seward** have injected an instant bump in scoring production with 15 of the team's 44 points. Nielsen leads the newcomers with 5 points, Bowman has tallied 4 goals, Seward has notched 3 goals, while Petersen has dished 3 assists. To prove the youth of the team, 35 of the team's 44 points (79.6%) were collectively tallied by freshmen and sophomores.

WHITLINGER STANDS TALL

Celine Whitlinger, a 5-9 Californian goaltender, has been outstanding in net for Penn State. Whitlinger (2-3-0) has already surpassed her win total from a year ago and has stopped 92.1 percent of the shots she's seen. In 15 appearances for Penn State, Whitlinger has a career .932 save percentage and a 3-10-0 record.

UPGRADED SCHEDULE

For the fourth time in five weeks, the Nittany Lions will face a team receiving votes in the national rankings. Quinnipiac is now ranked in

both polls, while Robert Morris and Syracuse are both receiving votes this week. New Hampshire was also receiving votes when the Wildcats came to Hockey Valley. Last season, Penn State played just one ranked opponent, Mercyhurst (four times), while Robert Morris earned votes during the first series in Nov. 2012.

SCOUTING THE ORANGE

Facing a challenging schedule, Syracuse (4-4-0, 0-0-0 CHA) has won its past three games over Providence (4-1), then-No. 4 Boston College (4-1) and Union (5-2). That came on the coat tails of a four-game losing streak to UNH, then-No. 3 Clarkson (twice) and Providence. The Orange also bagged a 4-1 win at then-No. 10 Northeastern. Away from Tenny Ice Pavilion, the Orange are 2-3-0.

The strong goaltending duo of Kallie Billadeau (.943 save percentage) and Jenesica Drinkwater (.940) have steadied Syracuse's tough slate. Billadeau has played 355 minutes allowing a 2.03 GAA, while Drinkwater has seen 120 minutes in net with a 1.50 GAA. Offensively, Nicole Renault has dished 8 assists and scored once from the blue line for a team-best 9 points. Forward Margo Scharfe (4 goals), Jessica Sibley (3) and Allie LaCombe (3) lead the team in scoring. Melissa Piacentini has also scored once, but earned 5 assists. Ten Orange skaters have netted 21 goals this season.

GAMEDAY COMPARISON

TEAM STATS	PSU	SYR
Overall record	2-7-1	4-4-0
Conference record	0-2-0	0-0-0
Goals scored	17	21
Goals scored per game	1.7	2.6
Goals allowed	38	16
Goals allowed per game	3.8	2.0
First period goals	4	4
Second period goals	7	9
Third period goals	5	8
Overtime goals	0	0
Shots	226	202
Shots per game	22.6	25.3
Shot pct.	.075	.104
Assists	27	36
Penalties per game	4.1	6.4
Power plays	5-37	11-44
Power-play pct.	.135	.250
Penalty kills	13-38	4-46
Penalty-kill pct.	.658	.913
Saves	355	246
Shutouts	0	0

LEADERS

Points	Yoxheimer (8)	Renault (9)
Goals	Bowman (4)	Scharfe (4)
Assists	Yoxheimer (5)	Renault (8)
Shots	Yoxheimer (50)	Sibley (36)
Shot Pct.	Seward (.300)	Scharfe (.286)
+/-	Two tied at 0	Roach (+3)
Faceoff Pct.	Yoxheimer (.750)	n/a
Saves	Whitlinger (187)	Billadeau (199)
Save Pct.	Whitlinger (.921)	Billadeau (.943)
GAA	Whitlinger (3.22)	Drinkwater (1.50)
Record	Whitlinger (2-3-0)	Drinkwater (2-0-0)

2013-14 COLLEGE HOCKEY AMERICA STANDINGS

(as of Nov. 7, 2013)

	Pts.	CHA	GF	GA	Overall	GF	GA	Last 10
Robert Morris (rv/rv)	4	2-0-0	10	0	8-2-0	33	18	8-2-0
Mercyhurst (9/9)	0	0-0-0	0	0	5-3-1	25	15	5-3-1
Syracuse (rv/rv)	0	0-0-0	0	0	4-4-0	21	16	4-4-0
RIT	0	0-0-0	0	0	4-5-0	22	29	4-5-0
Lindenwood	0	0-0-0	0	0	0-9-1	10	43	0-9-1
PENN STATE	0	0-2-0	0	10	2-7-1	17	38	2-7-1

PAST RESULTS & UPCOMING SCHEDULE

Thursday, Oct. 31 Robert Morris 6, PENN STATE* 0	Friday, Nov. 8 Mercyhurst at Robert Morris, 3 p.m. RIT at Lindenwood, 8 p.m.	Sunday, Nov. 10 Syracuse at PENN STATE, 2 p.m.
Friday, Nov. 1 Robert Morris 4, PENN STATE* 0	Saturday, Nov. 9 Syracuse at PENN STATE, 2 p.m. Mercyhurst at Robert Morris, 3 p.m. RIT at Lindenwood, 8 p.m.	* home team





NITTANY LION WOMEN'S HOCKEY

SERIES HISTORY vs. SYRACUSE

All-Time Series	SU leads 4-0-0
PSU Streak	4 losses
First Meeting	10/13/12, SU 4-0
Last Meeting	1/26/13, SU 4-1
Last PSU Win	n/a
Last SU Win	1/26/13, 4-1
Largest PSU Win	n/a
Largest SU Win	6-0, 10/14/12

LAST FOUR MEETINGS vs. SU

1/26/13	L	1-4	A
1/25/13	L	0-1	A
10/14/13	L	0-6	H
10/13/13	L	0-4	H

COMMON ENEMIES

Penn State and Syracuse have both played New Hampshire and Union this season. The Nittany Lions went 1-3-0 in their games against UNH and UC, while Syracuse went 1-1.

	UNH	Union
Penn State	5-8, 1-3	1-2, 2-1
Syracuse	2-3	5-2

SCORING DROUGHT

Penn State ran into a tough Robert Morris team last week, falling 4-0 and 6-0. The back-to-back shutouts by the Colonials were just the second instance a team pulled off the task against PSU. In last year's CHA opening series, Syracuse won by identical scores of 4-0 and 6-0. Penn State's scoring drought has extended to 141 minutes, 43 seconds with the last 50 Nittany Lion shots stopped by opposing goalies.

NITTANY LIONS BATTLE, FALL TO UNH

Penn State dropped two games in hard-fought fashion to New Hampshire (Oct. 26-27) this past weekend, 8-5 and 3-1.

On Saturday night, five different Nittany Lions registered goals as the two teams combined to score 13 goals in the contest, the most in PSU program history. Penn State had leads of 1-0 and 4-3, but couldn't hold on as New Hampshire scored five of the final six goals in the game. UNH pulled away by breaking a 5-5 deadlock with three straight goals over the last 3:39. **Laura Bowman, Sarah Nielsen, Jess**

PENN STATE'S RECORD IS...

1-5-0 at home
1-2-1 on the road
0-0-1 in overtime
1-1-1 when scoring first
1-6-0 when opponent scores first
2-0-0 when leading after the 1st period
0-5-0 when trailing after the 1st period
0-2-1 when tied after the 1st period
1-0-0 when leading after the 2nd period
0-5-0 when trailing after the 2nd period
1-2-1 when tied after the 2nd period
1-0-0 when out-shooting opponent
1-7-1 when out-shot by opponent
0-0-0 when taking same # of shots
1-1-0 when winning more faceoffs
1-6-1 when losing more faceoffs
0-0-0 when tied in faceoffs
1-2-1 when taking more penalties
1-2-0 when taking fewer penalties
0-3-0 when taking the same # of penalties
1-2-1 when scoring a power play goal
1-5-0 when not scoring a power play goal
1-6-1 when allowing a power play goal
1-1-0 when not allowing a power play goal
0-3-0 when scoring 0 goals
0-3-0 when scoring 1 goal
1-0-0 when scoring 2 goals
0-0-1 when scoring 3 goals
1-1-0 when scoring 4+ goals
0-0-0 when allowing 0 goals
1-0-0 when allowing 1 goal
1-1-0 when allowing 2 goals
0-1-1 when allowing 3 goals
0-5-0 when allowing 4+ goals
2-6-1 in October
0-1-0 in November
0-0-0 in December
0-0-0 in January
0-0-0 in February
0-0-0 in March
0-0-0 on Tuesday
0-1-0 on Thursday
0-3-1 on Friday
2-2-0 on Saturday
0-1-0 on Sunday
2-3-0 during the day
0-4-1 at night
1-2-1 vs. Hockey East
0-2-0 vs. College Hockey America
1-3-0 vs. ECAC Hockey
0-0-0 vs. WCHA
0-0-0 vs. ranked opponents
2-7-1 vs. unranked opponents
0-2-1 when Shannon Yoxheimer scores
0-4-1 when Nicole Paniccia starts
2-1-1 when a freshman scores
1-0-1 games decided by a goal or less

2013-14 WOMEN'S HOCKEY POLLS

USA Today/USA Hockey (Nov. 5, 2013)

1	Minnesota	8-0-0	1
2	Wisconsin	6-2-0	2
3	Cornell	4-0-0	3
4	North Dakota	6-1-1	4
5	Boston College	5-2-0	6
6	Clarkson	6-2-1	5
7	Quinnipiac	6-1-1	10
8	Harvard	2-0-0	7
9	Mercyhurst	5-3-1	8
10	Boston University	6-1-1	RV

Others: **Robert Morris, Ohio State, Providence, Syracuse**

USCHO.com (Nov. 4, 2013)

1	Minnesota	10-0-0	1
2	Wisconsin	8-2-0	2
3	Cornell	5-0-1	3
4	North Dakota	8-1-1	4
5	Boston College	7-2-0	6
6	Clarkson	7-2-2	5
7	Quinnipiac	7-1-2	9
8	Harvard	3-1-0	7
9	Mercyhurst	5-3-1	8
10	Boston University	6-1-1	RV

Others: **Ohio State, Robert Morris, Syracuse**

Bold indicates 2013-14 opponent

2013-14 MEDIA INFORMATION

Penn State Athletic Communications

Primary Contact: Jeremy Fallis
 Email: jeremy.fallis@psu.edu
 Office: 814-865-1757

Interviews

Penn State student-athletes and coaches are available for interviews after practice each day. Please contact Jeremy Fallis in advance.

Credentials

Contact Jeremy Fallis for home game credentials at Pegula Ice Arena.

Postgame

Head coach Josh Brandwene and requested student-athletes are available to the media following each game in the studio rink. Please alert Jeremy Fallis during the game of any requests.

Yearbook

A complimentary copy of the 2013-14 Penn State women's hockey yearbook will be made available to members of the media. The public may purchase copies for \$6 online.

GoPSUsports.com

[Facebook.com/PennStateWomensHockey](https://www.facebook.com/PennStateWomensHockey)

[@PennStateWHKY](https://twitter.com/PennStateWHKY)





NITTANY LION WOMEN'S HOCKEY

Desorcie, Kelly Seward and Taylor Gross tallied goals for Penn State.

Sunday's game was played at a completely different pace, which included scoreless periods in the first and third. All four goals by both teams came in the second as **Taylor Gross's** third goal of the year cut the UNH lead in half. The Wildcats increased its lead to two with 29 seconds left and held on for the sweep. **Celine Whitlinger** made 32 saves, her third game with at least 30 saves this season. **Shannon Yoxheimer** notched three points on three assists during the weekend set.

RECORD-SETTING SATURDAY

Multiple records were set at Pegula Ice Arena on Saturday night (Oct. 26) against New Hampshire.

- Fastest goal by PSU: Laura Bowman, :40**
- Most combined goals in a game: 13**
- Most goals allowed in a game: 8**

PENN STATE HAS A #NEWDEN

The Nittany Lions opened its new \$90 million home, Pegula Ice Arena, on Oct. 18 against Union in a 2-1 loss. The next day, PSU would earn a 2-1 victory for the program's first win at Pegula. In all, Penn State will host 17 games in the state-of-the-art arena that seats 5,782. The team's first season at PIA begins with an eight-game home stand over 23 days.

HOENSHELL, SEWARD EARN CHA AWARDS

Penn State forward **Hannah Hoenshell** and defender **Kelly Seward** were named College Hockey America's Player and Rookie of the Week, respectively, on Monday, Oct. 7.

A crafty forward with incredible stick skills, Hoenshell propelled Penn State to an undefeated weekend at Vermont, supplying three points and a game-high plus-four rating in Saturday's 4-2 win. Hoenshell was involved in three of Penn State's four goals, tallying a goal and two assists. Her goal was her second career game-winning goal.

Seward was fantastic on both sides of the ice this weekend as she tallied two goals, which ties for the team high after two games. Seward posted a plus-two rating and seven blocked shots for the weekend as well. In both games, Seward scored Penn State's first goal. On Friday it was a power-play tally and Saturday it was a game-tying goal in the first period.

BRING 'EM BACK

Penn State brings back 24 of its 27 members from last year's team. In those 24 student-athletes, Penn State returns its top 14 scorers and almost 99 percent of its offense along with every member of its stout goaltending corps.

YOXHEIMER MAKES HER MARK

Leading the team in scoring last season was **Shannon Yoxheimer**, a left-handed forward. Yoxheimer buried 14 goals with 17 assists for a grand total of 31 points, all team highs. She led College Hockey America in shots (169) and put away three power play goals as well as a team-high three game-winning goals. Yoxheimer's numbers ranked her in the top 10 nationally in goals, points and assists for rookies. The CHA coaches named Yoxheimer to the All-Rookie team.

THE PANICCIA WALL

Senior goaltender **Nicole Paniccia** excelled between the pipes for the Blue and White last year, stopping 1,028 shots with a 92.8 save percentage. Paniccia's save tally was second in all of NCAA Division I, topped only by fellow CHA upstart Lindenwood's Nicole Hensley. Paniccia was in net for six of PSU's seven victories last year as well as both of Penn State's ties.

POWER-PLAY HOLDCROFT

Sophomore forward **Jill Holdcroft** was lethal on the power play last season, scoring six of her 10 goals last year on the advantage. Despite missing the CHA playoffs at RIT, Holdcroft still ranked second on the team in scoring (10 goals) and added two assists for good measure.

IN THE THICK OF THINGS

Penn State's record of 7-26-2 last season is a little deceiving when considering how close the Nittany Lions were in many of their losses. In fact, 12 of the 26 losses were decided by two goals or less. This year, the Nittany Lions look to change their fortunes in spite of a 1-6-2 record games decided by less than a goal.

CAPTAINS' CORNER

Senior forward **Taylor Gross** once again leads Penn State as its first captain following her first year with the letter in 2012-13. Gross was second on the team in points (22) and assists (15) last season with 34 appearances. The University of Connecticut transfer appeared in 48 games for the Huskies before joining Penn State's club side in January 2012. Senior forward **Jenna Welch** and **Lindsay Reihl**, a graduate student defender, reprise their roles as assistant captains this year. Joining the veteran trio is **Jordin Pardoski**, a vocal sophomore defender who is a first-year assistant captain.

NEW NITTANY LIONS

Four freshmen join the Nittany Lions for the 2013-14 campaign. Minnesota forwards **Laura Bowman**, **Amy Petersen** and **Sarah Nielsen** provide an instant dose of goal scoring from their high school success. Defender **Kelly Seward** of New York is the tallest Nittany Lion blueliner.

FIRST HEAD COACH

A 1991 graduate of Penn State, head coach **Josh Brandwene** is the first to lead the Nittany Lions. Brandwene compiled a 7-26-2 record last season with 17 freshmen on the team. A four-year hockey player at PSU, Brandwene brings 20 years of coaching experience to Happy Valley.

CONTINUING PENN STATE HOCKEY

Seven members of the current varsity team played for the women's club team at some point. Graduate student **Lindsay Reihl** along with juniors **Cara Mendelson**, **Katie Murphy**, **Madison Smiddy** and **Tess Weaver** played all of the 2011-12 season for head coach **Josh Brandwene** in Penn State's last year at the club level. **Taylor Gross** and **Jess Desorcie** joined the five aforementioned players midway through the season in preparation of the 2012-13 season.

NEXT TIME OUT

Penn State hits the road for a two-game series at RIT Friday-Saturday. The road series is the first for Penn State since Oct. 11-12, a two-game set at Quinipiac. The Friday game at RIT is set for 7 p.m., while Saturday's contest will commence at 3 p.m.

2012-13 HONORS & AWARDS

Hannah Hoenshell
CHA Player of the Week (10/7)

Kelly Seward
CHA Rookie of the Week (10/7)

OVER THE AIR

Both games this weekend against Syracuse will be featured on AmericaOneSports.com.

The CHA on AmericaOneSports.com
Penn State home & away games during CHA play will be streamed live on AmericaOneSports.com. Subscribers can purchase a 1-day package for \$8, 30-day packages for \$30 or a season pass for \$125.



NITTANY LION WOMEN'S HOCKEY



NCAA TEAM RANKS

(Out of 34 teams as of Nov. 7, 2013)

Goals Per Game	T-29th
Goals Against Per Game	T-32nd
Scoring Margin	T-31st
Power-Play Percentage	T-22nd
Penalty-Kill Percentage.	33rd
Winning Percentage	T-27th

NCAA INDIVIDUAL RANKS

(Top 100 as of Nov. 7, 2013)

Laura Bowman

Goals per game.	T-59th
Game-winning goals.	T-21st
Points per game (Rookies)	T-41st

Taylor Gross

Points per game	T-95th
Power play goals.	T-12th

Hannah Hoenshell

Game-winning goals.	T-21st
-----------------------------	--------

Sarah Nielsen

Points per game (Rookies)	T-26th
-------------------------------------	--------

Nicole Paniccia

Goals-against average	38th
Save percentage	37th
Saves	23rd
Minutes Played	27th

Lindsay Reihl

Blocks	T-23rd
------------------	--------

Kelly Seward

Blocks	T-11th
------------------	--------

Celine Whitlinger

Goals-against average	31st
Save percentage	15th
Saves	18th
Minutes Played	29th

Shannon Yoxheimer

Points per game	T68th
Assists per game.	T-72nd

CHA TEAM RANKS

Goals	n/a
Assists	n/a
Goals Per Game	n/a
Goals Against	n/a
Goals-Against Average.	n/a
Saves	n/a
Save Percentage.	n/a
Shots on Goal	n/a
Least Penalty Minutes.	n/a
Power-Play Goals	n/a
Power-Play Percentage	n/a
Power-Play Goals Against	n/a
Penalty-Kill Percentage.	n/a

CHA INDIVIDUAL RANKS





NITTANY LION WOMEN'S HOCKEY

THE LAST TIME

PENN STATE...

Scored 0 goals	11/1/13 vs. Robert Morris (0-6)
Scored 3 goals	10/4/13 at Vermont (3-3)
Scored 4 goals	10/5/13 at Vermont (4-2)
Scored 5 goals	10/26/13 vs. New Hampshire (5-8)
Scored 6 goals	11/2/12 vs. Sacred Heart (6-0)
Scored 7 goals	Never
Scored 8 goals	11/3/12 vs. Sacred Heart (8-2)
Scored 9 goals	Never
Scored 10 goals	1/4/13 vs. Chatham (10-0)
Allowed 0 goals	1/5/13 vs. Chatham (4-0)
Allowed 1 goal	10/19/13 vs. Union (2-1)
Allowed 2 goals	10/18/13 vs. Union (1-2)
Allowed 3 goals	10/27/13 vs. New Hampshire (1-3)
Allowed 4 goals	10/31/13 vs. Robert Morris (0-4)
Allowed 5 goals	10/11/13 at Quinnipiac (1-5)
Allowed 6+ goals	11/1/13 vs. Robert Morris (0-6)
Won in overtime	Never
Lost in overtime	3/2/13 at RIT (2-3)
Tied in overtime	10/4/13 at Vermont (3-3)
Played a ranked team	2/2/13 vs. #7 Mercyhurst (1-4)
Attempted 10-19 shots	10/31/13 18 vs. Robert Morris (0-4)
Attempted 20-29 shots	11/1/13 22 vs. Robert Morris (0-6)
Attempted 30-39 shots	10/19/13 34 vs. Union (2-1)
Attempted 40-49 shots	1/4/13 48 vs. Chatham (10-0)
Attempted 50-59 shots	Never
Attempted 60-69 shots	11/3/12 64 vs. Sacred Heart (8-2)
Attempted 70+ shots	1/5/13 71 vs. Chatham (4-0)
Allowed 10-19 shots	1/5/13 16 vs. Chatham (4-0)
Allowed 20-29 shots	10/19/13 21 vs. Union (2-1)
Allowed 30-39 shots	10/31/13 37 vs. Robert Morris (0-4)
Allowed 40-49 shots	11/1/13 49 vs. Robert Morris (0-6)
Allowed 50-59 shots	10/12/13 59 at Quinnipiac (0-4)
Allowed 60-69 shots	2/22/13 63 at Robert Morris (1-4)
Allowed 70+ shots	12/1/12 71 at #4 Mercyhurst (1-7)
Tallied 5-9 assists	10/26/13 8 vs. New Hampshire (5-8)
Tallied 10-15 assists	11/3/12 12 vs. Sacred Heart (8-2)
Tallied 15+ assists	1/4/13 17 vs. Chatham (10-0)
Scored 10-19 points	10/26/13 13 vs. New Hampshire (5-8)
Scored 20+ points	1/4/13 27 vs. Chatham (10-0)
Scored 2 power-play goals	10/26/13 vs. New Hampshire (5-8)
Scored 3 power-play goals	10/20/12 at Sacred Heart (6-1)
Allowed 0 power-play goals	10/31/13 vs. Robert Morris (0-4)
Allowed 2 power-play goals	10/27/13 vs. New Hampshire (1-3)
Had 5 different goal scorers	10/26/13 vs. New Hampshire (5-8)
Had 6 different goal scorers	10/20/12 at Sacred Heart (6-1)
Had 7 different goal scorers	1/4/13 vs. Chatham (10-0)
Had 8 different goal scorers	11/3/12 vs. Sacred Heart (8-2)

A PENN STATE PLAYER...

Scored 2 goals	10/5/13 L. Bowman at Vermont (4-2)
Scored 3 goals	11/2/12 H. Hoenshell vs. Sacred Heart (6-0)
Scored 4 goals	Never
Had 3 assists	1/4/13 J. Bateman vs. Chatham (10-0)
Had 5 points	Never
Had 10+ shots	1/5/13 12, T. Weaver vs. Chatham (4-0)
Saved 40-49 shots	11/1/13 43, C. Whitlinger vs. Robert Morris (0-6)
Saved 50-59 shots	10/12/13 55, C. Whitlinger at Quinnipiac (0-4)
Saved 60+ shots	12/1/12 64, N. Paniccia at #4 Mercyhurst (1-7)
Had a shutout	1/5/13 C. Whitlinger/B. Meyer vs. Chatham (4-0)
Scored an empty-net goal	10/6/12 B. Shaw at Vermont (5-3)
Scored a short-handed goal	Never



NITTANY LION WOMEN'S HOCKEY



2013-14 PENN STATE WOMEN'S HOCKEY NUMERICAL ROSTER

No.	Name	Yr.	Pos.	Ht.	S/C	Hometown	Last Team
2	Jeanette Bateman	So.	D	5-6	R	Greeley, Colo.	Colorado Select
3	Cara Mendelson	Jr.	F	5-6	R	Pittsburgh, Pa.	Steel City Selects
4	Jordin Pardoski	So.	D	5-5	R	Rochester Hills, Mich.	Detroit Honeybaked
5	Stephanie Walkom	So.	D	5-7	R	Moon Township, Pa.	Pittsburgh Penguins Elite
6	Lindsay Reihl	Gr.	D	5-4	R	Cheshire, Conn.	Connecticut Polar Bears
9	Amy Petersen	Fr.	F	5-4	R	Minnetonka, Minn.	Minnetonka HS
10	Micayla Catanzariti	So.	F	5-4	R	Rancho Santa Margarita, Calif.	Gilmour Academy (Ohio)
12	Sarah Nielsen	Fr.	F	5-6	L	Edina, Minn.	Edina HS
13	Kendra Rasmussen	So.	F	5-5	L	Sartell, Minn.	Sartell/Sauk Rapids HS
14	Darby Kern	So.	F	5-11	R	Venetia, Pa.	Pittsburgh Penguins Elite
15	Jess Desorcie	Jr.	F	5-4	L	Westford, Vt.	Connecticut College
16	Hannah Hoenshell	So.	F	5-3	R	Plano, Texas	Texas Alliance
17	Paige Jahnke	So.	D	5-6	R	Oakdale, Minn.	Roseville HS / Minnesota Jr. Whitecaps
18	Laura Bowman	Fr.	F	5-7	R	Minnetonka, Minn.	Minnetonka HS
19	Jill Holdcroft	So.	F	5-1	R	Pennsylvania Furnace, Pa.	Pittsburgh Penguins Elite
20	Emily Laurenzi	So.	F	5-2	R	Townsend, Del.	National Sports Academy (N.Y.)
21	Sarah Wilkie	So.	D	5-6	R	Ashby, Mass.	Williston Northampton School
22	Jenna Welch	Sr.	F	5-8	R	Austin, Texas	Connecticut
23	Birdie Shaw	So.	F	5-2	L	Troy, Mich.	Detroit Honeybaked
24	Taylor Gross	Sr.	F	5-1	R	Colorado Springs, Colo.	Connecticut
25	Katie Murphy	Jr.	F	5-4	L	Novi, Mich.	Detroit Honeybaked
27	Kelly Seward	Fr.	D	5-9	L	Williamsville, N.Y.	Nichols School / Buffalo Bisons
30	Celine Whitlinger	So.	G	5-8	L	Garden Grove, Calif.	Gilmour Academy (Ohio)
31	Brooke Meyer	So.	G	5-7	L	Naperville, Ill.	Chicago Huskies
33	Madison Smiddy	Jr.	D	5-7	L	Grand Rapids, Mich.	Detroit Honeybaked
36	Tess Weaver	Jr.	F	5-5	R	Windber, Pa.	Pittsburgh Penguins Elite
37	Nicole Paniccia	Sr.	G	5-5	L	Oakville, Ont.	Connecticut
40	Shannon Yoxheimer	So.	F	5-7	L	Jackson, Mich.	North American Hockey Academy (Vt.)

Head Coach: Josh Brandwene (Second Year)

Assistant Coaches: Gina Kearns (Second Year), Casey McCullion (Second Year); **Director of Operations** Alex Dawes (First Year)

Captain: Taylor Gross; **Assistant Captains:** Jordin Pardoski, Lindsay Reihl, Jenna Welch

ALPHABETICAL ROSTER		PRONUNCIATION GUIDE		LIONS BY STATE		LIONS BY POSITION	
No.	Name	Brandwene	BRAND-ween	California (2):	Catanzariti, Whitlinger	Forward (17):	Bowman, Catanzariti, Desorcie, Gross, Hoenshell, Holdcroft, Kern, Laurenzi, Mendelson, Murphy, Nielsen, Petersen, Rasmussen, Shaw, Weaver, Welch, Yoxheimer
2	Jeanette Bateman	Catanzariti	Cah-TAN-zah-REE-tee	Colorado (2):	Bateman, Gross	Defense (8):	Bateman, Jahnke, Pardoski, Reihl, Seward, Smiddy, Walkom, Wilkie
18	Laura Bowman	Desorcie	Deh-SORE-see	Connecticut (1):	Reihl	Goalie (3):	Meyer, Paniccia, Whitlinger
10	Micayla Catanzariti	Jahnke	YAWN-kee	Delaware (1):	Laurenzi		
15	Jess Desorcie	Jeanette	Jeh-NETT	Illinois (1):	Meyer		
24	Taylor Gross	Kearns	KERNS	Massachusetts (1):	Wilkie		
16	Hannah Hoenshell	McCullion	Mick-CULL-yon	Michigan (5):	Murphy, Pardoski, Shaw, Smiddy, Yoxheimer		
19	Jill Holdcroft	Paniccia	Pah-NEE-cha	Minnesota (5):	Bowman, Jahnke, Nielsen, Petersen, Rasmussen		
17	Paige Jahnke	Reihl	RILE	New York (1):	Seward		
14	Darby Kern	LIONS BY ELIGIBILITY		Pennsylvania (5):	Holdcroft, Kern, Mendelson, Walkom, Weaver		
20	Emily Laurenzi	Graduate Student (1):	Reihl	Texas (2):	Hoenshell, Welch		
3	Cara Mendelson	Seniors (3):	Gross, Paniccia, Welch	Vermont (1):	Desorcie		
31	Brooke Meyer	Juniors (5):	Desorcie, Mendelson, Murphy, Smiddy, Weaver	LIONS BY PROVINCE			
25	Katie Murphy	Sophomores (15):	Bateman, Catanzariti, Hoenshell, Holdcroft, Jahnke, Kern, Laurenzi, Meyer, Pardoski, Rasmussen, Shaw, Walkom, Whitlinger, Wilkie, Yoxheimer	Ontario (1):	Paniccia		
12	Sarah Nielsen						
37	Nicole Paniccia						
4	Jordin Pardoski						
9	Amy Petersen						
13	Kendra Rasmussen						
6	Lindsay Reihl						
27	Kelly Seward						
23	Birdie Shaw						
33	Madison Smiddy						
5	Stephanie Walkom						
36	Tess Weaver						
22	Jenna Welch						
30	Celine Whitlinger						
21	Sarah Wilkie						
40	Shannon Yoxheimer						





NITTANY LION WOMEN'S HOCKEY

OCT. 6, 2013: PENN STATE 3, VERMONT 3 (OT)

Penn State (0-0-1, 0-0-0 CHA) vs. Vermont (0-0-1, 0-0-0 WHEA)
Date: Oct 04, 2013 • Location: Burlington, Vt. • Arena: Gutterson Fieldhouse
Attendance: 435 • Start time: 7:00 pm • End time: 9:15 pm • Total time: 2:15

Table with columns: Prd Time, Team, Scored by, Assists, Vis. on ice, Home on ice. Rows include game details for various periods and players.

TEAM SUMMARY table with columns: #, Penn State, G, A, PI, Sh +/-, BI. Rows list player statistics for both teams.

GOALTENDERS table with columns: #, Penn State, Dec, Min, GA, 1, 2, 3, OT, Saves. Rows list goalie statistics.

PENALTY SUMMARY table with columns: Prd, Player, Team, Min/Offense, Time. Rows list penalty details.

Penn State-Paniccia, Nicole (0-0-1). Vermont-Douville, Roxanne (0-0-1).

OCT. 11, 2013: QUINNIPIAC 5, PENN STATE 1

Penn State (1-1-1, 0-0-0 CHA) vs. Quinnipiac (2-0-1, 0-0-0 ECAC)
Date: Oct 11, 2013 • Location: Hamden, Conn. • Arena: High Point Solutions
Attendance: 505 • Start time: 7:00 pm • End time: 8:47 pm • Total time: 1:47

Table with columns: Prd Time, Team, Scored by, Assists, Vis. on ice, Home on ice. Rows include game details for various periods and players.

TEAM SUMMARY table with columns: #, Penn State, G, A, PI, Sh +/-, BI. Rows list player statistics for both teams.

GOALTENDERS table with columns: #, Penn State, Dec, Min, GA, 1, 2, 3, OT, Saves. Rows list goalie statistics.

PENALTY SUMMARY table with columns: Prd, Player, Team, Min/Offense, Time. Rows list penalty details.

Win-LADEN, Chelsea (2-0-1). Loss-Paniccia, Nicole (0-1-1).

OCT. 7, 2013: PENN STATE 4, VERMONT 2

Penn State (1-0-1, 0-0-0 CHA) vs. Vermont (0-1-1, 0-0-0 WHEA)
Date: Oct 05, 2013 • Location: Burlington, Vt. • Arena: Gutterson Fieldhouse
Attendance: 760 • Start time: 2:30 pm • End time: 4:25 pm • Total time: 1:55

Table with columns: Prd Time, Team, Scored by, Assists, Vis. on ice, Home on ice. Rows include game details for various periods and players.

TEAM SUMMARY table with columns: #, Penn State, G, A, PI, Sh +/-, BI. Rows list player statistics for both teams.

GOALTENDERS table with columns: #, Penn State, Dec, Min, GA, 1, 2, 3, OT, Saves. Rows list goalie statistics.

PENALTY SUMMARY table with columns: Prd, Player, Team, Min/Offense, Time. Rows list penalty details.

Win-Whitlinger, Celine (1-0-0). Loss-Douville, Roxanne (0-1-1).

OCT. 12, 2013: QUINNIPIAC 4, PENN STATE 0

Penn State (1-2-1, 0-0-0 CHA) vs. Quinnipiac (3-0-1, 0-0-0 ECAC)
Date: Oct 12, 2013 • Location: Hamden, Conn. • Arena: High Point Solutions
Attendance: 213 • Start time: 4:00 PM • End time: 5:48 PM • Total time: 1:48

Table with columns: Prd Time, Team, Scored by, Assists, Vis. on ice, Home on ice. Rows include game details for various periods and players.

TEAM SUMMARY table with columns: #, Penn State, G, A, PI, Sh +/-, BI. Rows list player statistics for both teams.

GOALTENDERS table with columns: #, Penn State, Dec, Min, GA, 1, 2, 3, OT, Saves. Rows list goalie statistics.

PENALTY SUMMARY table with columns: Prd, Player, Team, Min/Offense, Time. Rows list penalty details.

Win-LADEN, Chelsea (3-0-1). Loss-Whitlinger, Celine (1-1-0).



NITTANY LION WOMEN'S HOCKEY



OCT. 18, 2013: UNION 5, PENN STATE 1

Union (3-3-0) vs. Penn State (1-3-1)
Date: Oct 18, 2013 • Location: University Park, Pa. • Arena: Pegula Ice Arena
Attendance: 1424 • Start time: 7:00 pm • End time: 8:52 pm • Total time: 1:52

Prd	Time	Team	Scored by	Assists	Vis. on ice	Home on ice
1	1st 14:48	UNIO	PP Turner, Courtney/3	Norton, Maddy/3	13,32,20,21,27	20,19,17,2
2	2nd 03:57	PSU	EV Yoxheimer, Shannon/3	Panchuk, Bryanne/3 Gross, Taylor/3	9,13,11,24,22	40,24,4,21,12
3	3rd 04:17	UNIO	PP Thomson, Stefanie/1	Johnston, Ashley/2 Valente, Christine/2	26,10,8,7,15	9,18,21,4

TEAM SUMMARY

#	Union	G	A	PI	Sh	+/-	BI	#	Penn State	G	A	PI	Sh	+/-	BI
3	Turner, Courtney	1	0	0	3	0	0	2	Bateman, Jeanet	0	0	0	2	0	2
7	Kaminsky, Jessic	0	0	0	0	0	3	4	Pardoski, Jordin	0	1	0	1	+1	0
8	Tancrèl-Fountain	0	0	2	3	0	1	6	Reihl, Lindsay	0	0	0	0	0	1
9	Devin, All	0	0	0	-1	0	0	9	Petersen, Amy	0	0	0	1	0	1
10	Johnston, Ashley	0	1	2	0	0	0	12	Nielsen, Sarah	0	0	0	0	+1	1
11	McGrath, Kelly	0	0	0	1	-1	2	15	Desorcic, Jess	0	0	0	0	0	1
13	Norton, Maddy	0	1	0	3	-1	3	16	Hoenshell, Hann	0	0	0	4	+1	0
14	Welch, Haley	0	0	0	2	0	2	17	Jahnke, Paige	0	0	2	0	0	0
15	Valente, Christine	0	1	0	1	0	2	18	Bowman, Laura	0	0	2	2	0	1
17	Smith, Jamie	0	0	0	2	0	0	19	Holdcroft, Jill	0	0	0	1	0	0
18	Purvis, Mac	0	0	0	0	0	0	20	Laurenzi, Emily	0	0	0	2	0	0
19	Babiak, Rebecca	0	0	0	1	0	1	21	Wilkie, Sarah	0	0	0	0	+1	1
20	Davis, Kathryn	0	0	0	0	0	1	22	Welch, Jenna	0	0	0	1	0	0
21	Panchuk, Bryann	0	1	0	6	0	0	23	Shaw, Birdie	0	0	0	0	0	0
22	Erickson, Emily	0	0	0	0	-1	2	24	Gross, Taylor	0	1	0	2	+1	1
24	Bruestle, Elsa	0	0	0	-1	0	0	27	Seward, Kelly	0	0	0	0	0	0
26	Thomson, Stefan	0	1	0	2	0	0	36	Weaver, Tess	0	0	0	0	0	0
27	Tomaselli, Kath	0	0	0	2	0	0	40	Yoxheimer, Shan	0	0	7	1	+1	0
33	Dahl, Madeleine	dnp						30	Whittinger, Celin	dnp					
35	Pincott, Emma	dnp						31	Meyer, Brooke	dnp					
Totals		2	4	6	26	-19	19	Totals		1	2	4	24	+5	10

GOALTENDERS

#	Union	Dec	Min	GA	1	2	3	Saves	#	Penn State	Dec	Min	GA	1	2	3	Saves
1	Lundberg, Shenae	W	60:00	1	7	10	6	23	37	Paniccia, Nicole	L	59:13	2	7	7	10	24
																	0

PENALTY SUMMARY

Prd	Player	Team	Min	Offense	Time	Prd	Player	Team	Min	Offense	Time
1st	Bowman, Laura	PSU	2:00	Checking	19:17	PP	Tancrèl-Fontaine, A	UNIO	2:00	Cross-Checking	19:17
1st	Thomson, Stefanie	UNIO	2:00	Checking	09:00	PP	3rd Jahnke, Paige	PSU	2:00	Tripping	04:05
2nd	Johnston, Ashley	UNIO	2:00	Hooking	05:30	PP					

Win-Lundberg, Shenae (3-3-0). Loss-Paniccia, Nicole (0-2-1).

OCT. 26, 2013: NEW HAMPSHIRE 8, PENN STATE 5

New Hampshire (4-2-1, 1-0-1 WHEA) vs. Penn State (2-4-1, 0-0-0 CHA)
Date: Oct 26, 2013 • Location: University Park, Pa. • Arena: Pegula Ice Arena
Attendance: 493 • Start time: 7:00 pm • End time: 9:01 pm • Total time: 2:01

Prd	Time	Team	Scored by	Assists	Vis. on ice	Home on ice
1	1st 00:40	PSU	EV Bowman, Laura/4	Pardoski, Jordin/3	17,16,19,27	18,4,22,9,21
2	1st 06:07	UNH	EV Kashaan, Heather/3	Armstrong, Hanna/3	4,27,24,30	15,4,20,17,12
3	1st 09:27	UNH	PP Broderick, Caroline/4	Mork, Kayla/2		
4	2nd 00:40	PSU	EV Nielsen, Sarah/1	Hitchcock, Jessi/3	22,20,17,4,8	12,24,4,21
5	2nd 04:00	UNH	EV Mork, Kayla/1	Yoxheimer, Shann/3	17,22,22,16	12,40,21,17,2
6	2nd 11:20	PSU	EV Desorcic, Jess/1	Kashman, Heather/3	15,17,27,16,8	15,23,16,27,6
7	3rd 00:31	PSU	PP Seward, Kelly/3	Hoenshell, Hannah/1	21,27,22,24	27,4,40,24,16
8	3rd 00:45	UNH	EV Vilgrain, Cassandra/3	Carlson, Sara/4	7,14,19,8,4	40,12,24,17,2
9	3rd 09:01	UNH	PP O'Neill, Arielle/2	Lascelle, Jenna/2	8,17,22,20,4	18,9,27,4
10	3rd 11:20	PSU	PP Gross, Taylor/2	Hoenshell, Hanna/2	15,8,22,22,27	24,40,16,27,4
11	3rd 16:21	UNH	EV Lascelle, Jenna/2	Armstrong, Hanna/4	17,22,22,16	19,20,16,17,2
12	3rd 17:39	UNH	PP O'Neill, Arielle/3	Lascelle, Jenna/3	8,17,22,20,4	20,19,27,2
13	3rd 19:33	UNH	EN Gifford, Nicole/4	Broderick, Caroline/2	16,427,20,14	27,216,40,12,24

TEAM SUMMARY

#	New Hampshire	G	A	PI	Sh	+/-	BI	#	Penn State	G	A	PI	Sh	+/-	BI
3	Bredlove, Haley	0	0	0	2	+2	2	2	Bateman, Jeanet	0	0	0	2	3	-4
4	Kashaan, Heath	1	1	0	2	+3	1	4	Pardoski, Jordin	0	1	0	0	+1	2
7	Carlson, Sara	0	1	2	0	0	1	6	Reihl, Lindsay	0	0	0	0	+1	3
8	O'Neill, Arielle	2	0	2	7	0	0	9	Petersen, Amy	0	0	0	0	+1	0
10	Armstrong, Meg	0	0	2	0	+4	1	10	Catanzariti, Mica	0	0	0	0	-1	1
15	Redlick, Brittney	0	0	0	1	0	0	12	Nielsen, Sarah	1	0	0	1	-2	0
16	Gifford, Nicole	1	0	2	3	-1	0	15	Desorcic, Jess	1	0	0	1	0	0
17	Lascelle, Jenna	1	2	1	2	-0	16	Hoenshell, Hann	0	2	0	3	-1	0	
19	Vilgrain, Cassan	1	0	0	6	0	1	17	Jahnke, Paige	0	0	2	0	-1	1
20	Hitchcock, Jessic	0	2	0	3	+2	1	18	Bowman, Laura	1	0	0	4	+1	1
21	Ryan, Jess	0	0	0	1	0	2	19	Holdcroft, Jill	0	0	0	2	-1	0
22	Broderick, Carol	1	1	0	2	0	2	20	Laurenzi, Emily	0	0	0	0	-1	1
24	Mork, Kayla	1	2	4	2	+2	0	21	Wilkie, Sarah	0	0	2	1	+2	0
27	Armstrong, Han	0	2	0	6	0	0	22	Welch, Jenna	0	0	2	0	+1	0
1	Jean, Marie-Eve	dnp						23	Shaw, Birdie	0	1	0	1	0	0
2	Wilkes, Ashley	dnp						24	Gross, Taylor	1	1	0	4	-2	1
Totals		8	11	12	36	+1	11	27	Seward, Kelly	1	0	2	0	3	3
								40	Yoxheimer, Shan	0	2	0	6	-2	0
								1	TEAM	0	0	4	0	0	0
								30	Whittinger, Celin	dnp					
								31	Meyer, Brooke	dnp					
Totals		5	8	12	28	-11	16	Totals		5	8	12	28	-11	16

GOALTENDERS

#	New Hampshire	Dec	Min	GA	1	2	3	Saves	#	Penn State	Dec	Min	GA	1	2	3	Saves
35	Vaattovaara, Vilma	W	60:00	5	6	11	6	23	37	Paniccia, Nicole	L	58:16	7	13	5	10	28
																	0

PENALTY SUMMARY

Prd	Player	Team	Min	Offense	Time	Prd	Player	Team	Min	Offense	Time
1st	Welch, Jenna	PSU	2:00	Hooking	03:11	PP	2nd TEAM	UNH	2:00	Many Players	08:13
1st	Bateman, Jeanette	PSU	2:00	Checking	08:39	PP	2nd Mork, Kayla	UNH	2:00	Hooking	18:26
1st	TEAM	PSU	2:00	Many Players	08:42	PP	2nd Gifford, Nicole	UNH	2:00	Hooking	19:21
1st	Carlson, Sara	UNH	2:00	Checking	18:26	PP	3rd Wilkie, Sarah	PSU	2:00	Hooking	07:09
2nd	Armstrong, Megan	UNH	2:00	Hooking	13:10	PP	3rd Mork, Kayla	UNH	2:00	Tripping	10:54
2nd	O'Neill, Arielle	UNH	2:00	Tripping	17:14	PP	3rd Jahnke, Paige	PSU	2:00	Hooking	16:21

Win-Vaattovaara, Vilma (4-0-1). Loss-Paniccia, Nicole (0-3-1).

OCT. 19, 2013: PENN STATE 2, UNION 1

Union (3-4-0) vs. Penn State (2-3-1)
Date: Oct 19, 2013 • Location: University Park, Pa. • Arena: Pegula Ice Arena
Attendance: 814 • Start time: 2:00 pm • End time: 3:59 • Total time: 1:59

Prd	Time	Team	Scored by	Assists	Vis. on ice	Home on ice
1	1st 12:28	PSU	EV Holdcroft, Jill/1	Panchuk, Bryanne/4	13,32,13,10,27	19,16,20,17,27
2	2nd 17:18	UNIO	PP Turner, Courtney/4	Norton, Maddy/4	8,10,15,15,26	18,9,19,17,12
3	3rd 14:31	PSU	PP Bowman, Laura/3	Petersen, Amy/3		

TEAM SUMMARY

#	Union	G	A	PI	Sh	+/-	BI	#	Penn State	G	A	PI	Sh	+/-	BI
3	Turner, Courtney	1	0	0	1	0	0	2	Bateman, Jeanet	0	0	0	1	0	0
5	Otten, Elizabeth	0	0	0	-1	0	0	4	Pardoski, Jordin	0	0	0	0	0	1
7	Kaminsky, Jessic	0	0	0	0	0	2	6	Reihl, Lindsay	0	0	0	0	0	1
8	Tancrèl-Fountain	0	0	0	0	0	0	9	Petersen, Amy	0	1	0	1	0	0
9	Devin, All	0	0	0	-1	0	0	10	Catanzariti, Mica	0	0	0	1	0	1
10	Johnston, Ashley	0	0	0	3	-1	0	12	Nielsen, Sarah	0	0	2	3	0	0
11	McGrath, Kelly	0	0	2	0	0	4	15	Desorcic, Jess	0	0	0	1	0	0
13	Norton, Maddy	0	1	0	5	2	16	Hoenshell, Hann	0	0	4	+1	0	0	
14	Welch, Haley	0	0	0	0	1	1	17	Jahnke, Paige</						



NITTANY LION WOMEN'S HOCKEY

OCT. 31, 2013: ROBERT MORRIS 4, PENN STATE 0

Robert Morris (7-2-0, 1-0-0 CHA) vs. Penn State (2-6-1, 0-1-0 CHA)
 Date: Oct 31, 2013 • Location: University Park, Pa. • Arena: Pegula Ice Arena
 Attendance: 513 • Start time: 7:00 pm • End time: 8:50 pm • Total time: 1:50

Prd	Time	Team	Scored by	Assists	Vis. on ice	Home on ice	Goals by Period			
Team	1	2	3	Tot	Team	1	2	3	Tot	
1.	1st 02:17	RMU	EV Katie Fergus/1	Mackenzie Johnston/1	27,26,28,14,19	13,23,15,21,4	RMU 1	2	1	4
2.	2nd 07:10	RMU	EV Rebecca Vint/4	Thea Imbrogno/3	24,6,16,15,26	13,9,2,18,33	PSU 0	0	0	0
3.	2nd 10:34	RMU	EV Maeve Garvey/5	Mackenzie Johnston/ Kristen Richards/7	15,11,3,16,6	24,15,12,2,33	PSU 0	0	0	0
4.	3rd 17:24	RMU	EV Brittany Howard/4	Brittany Howard/10	3,26,19,14,28	24,12,40,21,4	PSU 0	0	0	0

TEAM SUMMARY															
#	Robert Morris	G	A	Pi	Sh +/-	BI	#	Penn State	G	A	Pi	Sh +/-	BI		
3	Brittany Howard	1	1	0	3	+2	0	2	Bateman, Jeanet	0	0	0	0	-2	0
4	Katelyn Scott	0	0	0	3	0	0	4	Pardoski, Jordin	0	0	0	1	-2	1
5	Anneline Lauzier	0	0	0	3	0	0	6	Reihl, Lindsay	0	0	0	0	0	0
6	Kelsey Gunn	0	1	2	3	+2	3	9	Petersen, Amy	0	0	0	3	-1	2
9	Kylie St. Louis	0	0	0	3	0	2	12	Nielsen, Sarah	0	0	0	1	-2	0
10	Rikki Meilleur	0	0	0	1	0	0	13	Rasmussen, Ken	0	0	0	1	-2	0
11	Kristen Richards	0	1	0	1	+1	3	15	Desorcie, Jess	0	0	0	1	-2	1
14	Mikaela Lowater	0	0	0	1	+2	1	16	Hoensheli, Hann	0	0	0	2	0	0
15	Maeve Garvey	1	0	0	2	+2	0	18	Bowman, Laura	0	0	0	2	-1	0
16	Erin Staniewski	0	0	0	2	+2	2	19	Holdcroft, Jill	0	0	0	0	0	1
17	Anissa Gamble	0	0	2	1	0	0	20	Laurenzi, Emily	0	0	0	1	0	0
19	Thea Imbrogno	0	1	0	3	+2	0	21	Wilkie, Sarah	0	0	0	0	-2	0
21	Maddie Collias	0	0	0	0	0	1	22	Welch, Jenna	0	0	0	1	0	2
22	Ashley Vesci	0	0	0	2	0	0	23	Shaw, Birdie	0	0	2	0	-1	1
24	Rebecca Vint	1	0	0	5	+1	1	24	Gross, Taylor	0	0	0	1	-2	0
26	Mackenzie Johns	0	2	0	1	+3	1	27	Seward, Kelly	0	0	0	0	0	0
27	Katie Fergus	1	0	0	2	+1	0	33	Smiddy, Madison	0	0	0	0	-2	0
28	Brandi Pollock	0	0	0	1	+2	0	40	Voxheimer, Shan	0	0	0	4	-1	1
1	Jessica Dodds	dnp						30	Whitlinger, Celin	dnp					
29	Carley Catherine	dnp						31	Meyer, Brooke	dnp					
Totals		4	6	4	37	+2	14	Totals		0	0	4	18	-20	9

GOALTENDERS																	
##	Robert Morris	Dec	Min	GA	1	2	3	Saves	##	Penn State	Dec	Min	GA	1	2	3	Saves
31	Courtney Vinet	W	60:00	0	4	4	10	18	37	Paniccia, Nicole	L	60:00	4	14	11	8	33

PENALTY SUMMARY													
Prd	Player	Team	Min	Offense	Time	Prd	Player	Team	Min	Offense	Time		
1st	Shaw, Birdie	PSU	2:00	Hooking	10:53	PP	3rd	Anissa Gamble	RMU	2:00	Tripping	03:22	PP
2nd	Bowman, Laura	PSU	2:00	Hooking	12:14	PP	3rd	Kelsey Gunn	RMU	2:00	Slashing	14:39	PP

Win-Courtney Vinet (2-2-0). Loss-Paniccia, Nicole (0-4-1).

NOV. 1, 2013: ROBERT MORRIS 6, PENN STATE 0

Robert Morris (8-2-0, 2-0-0 CHA) vs. Penn State (2-7-1, 0-2-0 CHA)
 Date: Nov 01, 2013 • Location: University Park, Pa. • Arena: Pegula Ice Arena
 Attendance: 771 • Start time: 4:00 pm • End time: 5:58 pm • Total time: 1:58

Prd	Time	Team	Scored by	Assists	Vis. on ice	Home on ice	Goals by Period			
Team	1	2	3	Tot	Team	1	2	3	Tot	
1.	1st 05:53	RMU	EV Richards, Kristen/2	Lauziere, Annelin/3	11,5,15,3,9	16,19,12,17,27	RMU 2	2	2	6
2.	1st 10:13	RMU	EV Gamble, Anissa/3	Howard, Brittany/11	17,27,5,9,22	4,21,20,19,16	PSU 0	0	0	0
3.	2nd 05:21	RMU	PP Imbrogno, Thea/5	Howard, Brittany/12	19,3,11,24,5	17,2,24	PSU 0	0	0	0
4.	2nd 11:00	RMU	EV Vint, Rebecca/5	Lauziere, Annelin/5	24,19,5,9,26	19,16,20,217	RMU 13	18	18	49
5.	3rd 06:15	RMU	EV Vesci, Ashley/5	Imbrogno, Thea/4	22,9,5,27,17	6,19,16,27,20	PSU 6	8	8	22
6.	3rd 18:25	RMU	EV Richards, Kristen/2	Louie, Kylie St/11	11,3,15,28,14	4,21,22,18,9	PSU 0	0	0	0

TEAM SUMMARY															
#	Robert Morris	G	A	Pi	Sh +/-	BI	#	Penn State	G	A	Pi	Sh +/-	BI		
3	Howard, Brittany	0	3	2	2	+2	0	2	Bateman, Jeanet	0	0	0	0	-1	0
4	Scott, Katelyn	0	0	0	4	0	0	4	Pardoski, Jordin	0	0	2	0	-2	1
5	Lauziere, Annelin	0	4	0	2	+4	0	6	Reihl, Lindsay	0	0	0	0	-1	1
6	Gunn, Kelsey	0	0	0	0	0	5	9	Petersen, Amy	0	0	0	0	-1	0
9	Louis, Kylie St	0	1	0	2	+4	1	12	Nielsen, Sarah	0	0	0	0	-1	1
10	Meilleur, Rikki	0	0	0	2	0	0	13	Rasmussen, Ken	0	0	0	0	0	0
11	Richards, Kristen	2	0	2	11	+2	3	15	Desorcie, Jess	0	0	2	1	0	0
14	Lowater, Mikaela	0	0	0	1	+1	0	16	Hoensheli, Hann	0	0	0	2	-4	0
15	Garvey, Maeve	0	0	0	0	+2	1	17	Jahnke, Paige	0	0	0	0	-2	1
16	Staniewski, Erin	0	0	0	0	0	2	18	Bowman, Laura	0	0	2	1	-1	0
17	Gamble, Anissa	1	0	0	3	+2	0	19	Holdcroft, Jill	0	0	0	4	-4	0
19	Imbrogno, Thea	1	1	0	5	+1	0	20	Laurenzi, Emily	0	0	2	1	-3	1
21	Collias, Maddie	0	0	0	4	0	2	21	Wilkie, Sarah	0	0	0	0	-2	2
22	Vesci, Ashley	1	0	0	4	+2	0	22	Welch, Jenna	0	0	0	0	-1	1
24	Vint, Rebecca	1	0	0	6	+1	1	23	Shaw, Birdie	0	0	0	0	0	0
26	Johnston, Macken	0	0	2	0	+1	1	24	Gross, Taylor	0	0	0	6	0	0
27	Fergus, Katie	0	1	0	2	+2	0	27	Seward, Kelly	0	0	0	1	-2	1
28	Pollock, Brandi	0	0	2	1	+1	0	40	Voxheimer, Shan	0	0	0	6	0	0
29	Catherine, Carley	dnp						31	Meyer, Brooke	dnp					
31	Vinet, Courtney	dnp						37	Paniccia, Nicole	dnp					
Totals		6	10	8	49	+2	16	Totals		0	0	8	22	-25	10

GOALTENDERS																	
##	Robert Morris	Dec	Min	GA	1	2	3	Saves	##	Penn State	Dec	Min	GA	1	2	3	Saves
1	Dodds, Jessica	W	60:00	0	6	8	8	22	30	Whitlinger, Celine	L	60:00	6	11	16	16	43

PENALTY SUMMARY													
Prd	Player	Team	Min	Offense	Time	Prd	Player	Team	Min	Offense	Time		
1st	Howard, Brittany	RMU	2:00	Hooking	17:52	PP	2nd	Richards, Kristen	RMU	2:00	Goaltender Interfere	15:34	PP
2nd	Bowman, Laura	PSU	2:00	Roughing	03:26	PP	2nd	Desorcie, Jess	PSU	2:00	Tripping	17:55	PP
2nd	Laurenzi, Emily	PSU	2:00	Tripping	06:23	PP	3rd	Johnston, Mackenzie	RMU	2:00	Tripping	08:22	PP
2nd	Pollock, Brandi	RMU	2:00	Slashing	06:44	PP	3rd	Pardoski, Jordin	PSU	2:00	Hooking	18:25	PP

Win-Dodds, Jessica (6-0-0). Loss-Whitlinger, Celine (2-3-0).



NITTANY LION WOMEN'S HOCKEY



2013-14 Penn State Women's Hockey Penn State Combined Team Statistics (as of Nov 05, 2013) All games

Date	Opponent	Score	Att.	Record:	Overall	Home	Away	Neutral
Oct 04	at Vermont	Tot 3-3	435	ALL GAMES	2-7-1	1-5-0	1-2-1	0-0-0
Oct 05	at Vermont	w 4-2	760	CONFERENCE	0-2-0	0-2-0	0-0-0	0-0-0
Oct 11	at Quinnipiac	L 1-5	505	NON-CONFERENCE	2-5-1	1-3-0	1-2-1	0-0-0
Oct 12	at Quinnipiac	L 0-4	213					
Oct 18	UNION	L 1-2	1424					
Oct 19	UNION	w 2-1	814					
Oct 26	NEW HAMPSHIRE	L 5-8	493					
Oct 27	NEW HAMPSHIRE	L 1-3	552					
* Oct 31	ROBERT MORRIS	L 0-4	513					
* Nov 01	ROBERT MORRIS	L 0-6	771					

TEAM STATISTICS	PSU	OPP
SHOT STATISTICS		
Goals-Shot attempts	17-226	38-393
Shot pct.	.075	.097
Goals/Game	1.7	3.8
Shots/Game	22.6	39.3
POWER PLAYS		
Goals-Power Plays	5-37	13-38
Conversion Percent	.135	.342
GOAL BREAKDOWN		
Power Play	5	13
Short-handed	0	0
Empty net	0	1
Penalty	0	0
Unassisted	1	4
Overtime	0	0
PENALTIES		
Number	41	38
Minutes	82	76
Penalties/Game	4.1	3.8
Pen minutes/Game	8.2	7.6
FACEOFFS (W-L)		
Faceoff W-L Pct.	244-292	292-244
	.455	.545

#	Player	gp	g	a	pts	sh	sh%	pen-min	pp	sh
40	Yoxheimer, Shannon	10	3	5	8	50	.060	2-4	0	0
24	Gross, Taylor	10	3	4	7	32	.094	0-0	2	0
16	Hoenshell, Hannah	10	1	4	5	20	.050	2-4	0	0
12	Nielsen, Sarah	10	1	4	5	10	.100	2-4	0	0
18	Bowman, Laura	10	4	0	4	24	.167	5-10	1	0
27	Seward, Kelly	10	3	0	3	10	.300	2-4	2	0
4	Pardoski, Jordin	10	0	3	3	6	.000	3-6	0	0
9	Petersen, Amy	10	0	3	3	8	.000	0-0	0	0
15	Desorcie, Jess	10	1	0	1	8	.125	2-4	0	0
19	Holdcroft, Jill	10	1	0	1	15	.067	1-2	0	0
2	Bateman, Jeanette	9	0	1	1	7	.000	1-2	0	0
17	Jahnke, Paige	8	0	1	1	3	.000	6-12	0	0
6	Reihl, Lindsay	10	0	1	1	0	.000	2-4	0	0
23	Shaw, Birdie	9	0	1	1	3	.000	1-2	0	0
10	Catanzariti, Micayla	4	0	0	0	1	.000	1-2	0	0
20	Laurenzi, Emily	10	0	0	0	9	.000	1-2	0	0
13	Rasmussen, Kendra	4	0	0	0	1	.000	0-0	0	0
33	Smiddy, Madison	2	0	0	0	0	.000	0-0	0	0
5	Walkom, Stephanie	1	0	0	0	0	.000	0-0	0	0
36	Weaver, Tess	3	0	0	0	1	.000	1-2	0	0
22	Welch, Jenna	10	0	0	0	10	.000	5-10	0	0
21	Wilkie, Sarah	10	0	0	0	8	.000	1-2	0	0
TM	TEAM	3	0	0	0	0	.000	3-6	0	0
	Total	10	17	27	44	226	.075	41-82	5	0
	Opponents	10	38	60	98	393	.097	38-76	13	0

#	Goalie	gp	min	ga	gaavg	saves	save%	w-l-t
30	Whitlinger, Celine	5	298:01	16	3.22	187	.921	2-3-0
37	Paniccia, Nicole	5	302:29	21	4.17	168	.889	0-4-1
TM	EMPTY NET	3	4:30	1	-	0	.000	0-0-0
	Total	10	605:00	38	3.77	355	.903	2-7-1
	Opponents	10	605:00	17	1.69	209	.925	7-2-1

#	Goalie	gp	min	ga	gaavg	saves	save%	w-l-t
30	Whitlinger, Celine	5	298:01	16	3.22	187	.921	2-3-0
37	Paniccia, Nicole	5	302:29	21	4.17	168	.889	0-4-1
TM	EMPTY NET	3	4:30	1	-	0	.000	0-0-0
	Total	10	605:00	38	3.77	355	.903	2-7-1
	Opponents	10	605:00	17	1.69	209	.925	7-2-1

Attendance Summary	PSU	Opponent
Total	4567	1913
Dates/Avg Per Date	6/761	4/478
Neutral Site #/Avg	0/0	

Goals by Period	1st	2nd	3rd	Total
Penn State	4	8	5	17
Opponents	8	14	16	38

Saves by Period	1st	2nd	3rd	Total
Penn State	124	116	111	355
Opponents	64	67	76	209





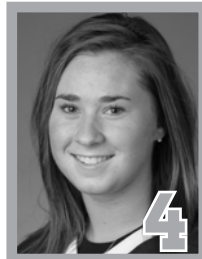
NITTANY LION WOMEN'S HOCKEY



JEANNETTE BATEMAN
Sophomore • D
Greeley, Colo.



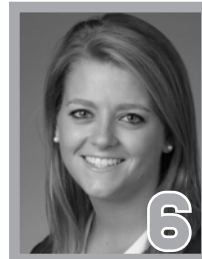
CARA MENDELSON
Junior • F
Pittsburgh, Pa.



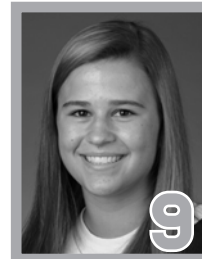
JORDIN PARDOSKI
Sophomore • D **A**
Rochester Hills, Mich.



STEPHANIE WALKOM
Sophomore • D
Moon Township, Pa.



LINDSAY REIHL **A**
Grad Student • D
Cheshire, Conn.



AMY PETERSEN
Freshman • F
Minnetonka, Minn.



MICAYLA CATANZARITI
Sophomore • F
Rancho Santa Margarita, Calif.



SARAH NIELSEN
Freshman • F
Edina, Minn.



KENDRA RASMUSSEN
Sophomore • F
Sartell, Minn.



DARBY KERN
Sophomore • F
Venetia, Pa.



JESS DESORCIE
Junior • F
Westford, Vt.



HANNAH HOENSHELL
Sophomore • F
Plano, Texas



PAIGE JAHNKE
Sophomore • D
Oakdale, Minn.



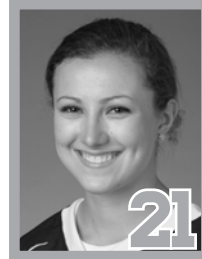
LAURA BOWMAN
Freshman • F
Minnetonka, Minn.



JILL HOLDCROFT
Sophomore • F
Pennsylvania Furnace, Pa.



EMILY LAURENZI
Sophomore • F
Townsend, Del.



SARAH WILKIE
Sophomore • D
Ashby, Mass.



JENNA WELCH **A**
Senior • F
Austin, Texas



BIRDIE SHAW
Sophomore • F
Troy, Mich.



TAYLOR GROSS **C**
Senior • F
Colorado Springs, Colo.



KATIE MURPHY
Junior • F
Novi, Mich.



KELLY SEWARD
Freshman • D
Williamsville, N.Y.



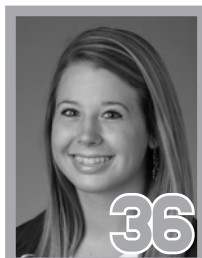
CELINE WHITLINGER
Sophomore • G
Garden Grove, Calif.



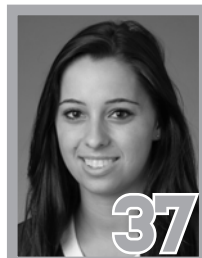
BROOKE MEYER
Sophomore • G
Naperville, Ill.



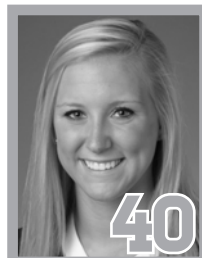
MADISON SMIDDY
Junior • D
Grand Rapids, Mich.



TESS WEAVER
Junior • F
Windber, Pa.



NICOLE PANICCIA
Senior • G
Oakville, Ont.



SHANNON YOXHEIMER
Sophomore • F
Jackson, Mich.

