

PENN STATE

WOMEN'S SOCCER



2013

GoPSUsports.com // ONE TEAM

AUGUST

23	WEST VIRGINIA ¹	T, 2-2 (2OT)
25	HOFSTRA ¹	W, 2-1
30	at No. 5 Virginia	L, 5-1

SEPTEMBER

1	LA SALLE	W, 5-1
6	BOSTON UNIVERSITY	7:00 p.m.
10	at Bucknell	7:00 p.m.
13	at Oklahoma State	8:00 p.m.
15	at Tulsa	2:00 p.m.
20	NORTHWESTERN*	7:00 p.m.
26	PURDUE*	7:00 p.m.
29	INDIANA*	12:00 p.m.

OCTOBER

4	at Wisconsin*	8:00 p.m.
6	at Minnesota*	2:00 p.m.
13	MICHIGAN*	1:00 p.m.
17	OHIO STATE*	3:00 p.m.
20	ILLINOIS	12:00 p.m.
25	at Iowa*	8:00 p.m.
27	at Nebraska*	2:00 p.m.

NOVEMBER

1	at Michigan State*	3:00 p.m.
6	Big Ten Quarterfinals ²	TBA
8	Big Ten Semifinals ²	TBA
10	Big Ten Championship ²	TBA
15-17	NCAA First Round	TBA
22	NCAA Second Round	TBA
24	NCAA Third Round	TBA
29-30	NCAA Quarterfinals	TBA

DECEMBER

1	NCAA Quarterfinals	TBA
6	College Cup Semifinals	TBA
8	College Cup Championship	TBA

* - Big Ten match

1-Penn State Invitational, University Park, Pa.

2 - Big Ten Tournament, Champaign, Ill.

Home matches in **CAPS** at Jeffrey Field

All times Eastern

#14 PENN STATE NITTANY LIONS

(2-1-1)

BOSTON TERRIERS

(2-1-1)



Sept. 6, 2013 • 7:00 p.m. • Jeffrey Field • University Park, Pa.

MATCH DAY (vs. BOSTON U)

VENUE

Jeffrey Field (Grass - 5,000)

ONLINE COVERAGE

GameTracker

SERIES RECORD

Penn State leads, 1-0-0

LAST MEETING

Sept. 13, 2009 (PSU Won, 3-0)

WEEKEND STORIES

- Penn State hosts Boston U in its final non-conference home match of the season
- PSU is 1-0 against the Terriers all-time
- The Nittany Lions depart for a three-match road swing next week
- Maya Hayes leads the B1G in points/is tied for first in goals
- The Blue and White defeated La Salle 5-1 last Sunday
- Penn State fell to No. 5 Virginia 5-1 last Friday
- Hayes moves into fourth place in the PSU career goals ledger
- Penn State No. 14 in NSCAA poll

ON THE PITCH

The 14th-ranked Penn State women's soccer team (2-1-1) will host the Boston University Terriers in its final non-conference home match of the season on Friday. The game is slated for a 7 p.m. start at Jeffrey Field.

IN THE BOOKS

Forward Maya Hayes solidified her place in the Penn State record books after notching the second most goals (31) and most points (70) in a single season during her sophomore season but she is not stopping there. The senior moved into the No. 4 spot on the career goals ledger after netting three last weekend, bringing her total to 57 in just 70 games.

Hayes needs just two more goals to bump Rachel Hoffman (1994-97) out of the No. 3 spot. All-American Tiffany Weimer (2002-05) and MAC Hermann Trophy winner Christie Welsh (1999-02) are atop the standings with an impressive 91 and 82 goals, respectively.

Contact: Kellie O'Brien • kbo2@psu.edu
O: (814) 863-1377 • C: (814) 321-5119



PSUWomensSoccer



@PennStateWSOC



2013 STAT LEADERS

POINTS

Maya Hayes	12
Taylor Schram	4
Mallory Weber	4

GOALS

Maya Hayes	5
Taylor Schram	2
Tani Costa	1
Raquel Rodriguez	1
Mallory Weber	1

ASSISTS

Maya Hayes	2
Mallory Weber	2
Emily Carrollo	1
Kori Chapic	1
Raquel Rodriguez	1

GAME-WINNING GOALS

Mallory Weber	1
Raquel Rodriguez	1

SAVES

Britt Eckerstrom	19
------------------	----



GAMEDAY CENTRAL

SCOUTING THE TERRIERS

Boston is coming off a successful weekend after tying South Carolina and defeating Northwestern. The Terriers battled South Carolina to a 0-0 draw on Friday before shutting out Northwestern, 2-0, on Sunday. Ana Cuffia, Jenna Fisher and Madison Clemens have each scored one goal for BU with Clare Pleuler, Taylor Krebs and Kylie Strom registering assists.

SERIES HISTORY vs. BOSTON U

Penn State is 1-0 against Boston all-time. The Blue and White overpowered the Terriers by a count of 3-0 in their only previous meeting on Sept. 13, 2009. The Nittany Lions are a dominant 27-1-1 against current Patriot League opponents, most recently defeating Bucknell, 3-1, on Oct. 2, 2012.

Hayes is also in the top-five for career points with 131. Eight more points would move her into the fourth position, ahead of Heidi Drummond (2000-03), and 17 additional points would put her in third, replacing Hoffman. Welsh leads the category with a remarkable 216 points and Weimer follows closely with 214.

FRONT-RUNNER

Maya Hayes currently leads the Big Ten in total points and points per game and is tied for first in goals. The senior has tallied 12 points (3.0/game) on five goals and two assists in just four games.

HITTING THE ROAD

The Blue and White will close our their non-conference schedule with three-straight road matches. PSU travels to Bucknell on Tuesday before heading to Oklahoma State on Friday and Tulsa on Sunday.

The Nittany Lions will be facing Oklahoma State and Tulsa for the first time in program history.

PENN STATE NO. 14 IN NSCAA POLL

After two weeks of action, the Penn State women's soccer team ranks 14th overall according to the NSCAA rankings. Three of PSU's remaining

opponents in 2013 are featured on the poll. Big Ten rival Michigan is just ahead of the Lions in the 11th spot while Ohio State (21st) and Wisconsin (23rd) also cracked into the Top 25. Boston University, Oklahoma State and Illinois are just outside of the Top 25 as they received votes.

LIONS ROAR PAST LA SALLE

The Penn State women's soccer team earned its second victory of the season with a 5-1 win over La Salle on Sunday afternoon at Jeffrey Field. Senior forward Maya Hayes netted two goals for the Nittany Lions while seniors Taylor Schram and Tani Costa and sophomore Raquel Rodriguez posted one apiece.

Hayes got things started for the Nittany Lions in the 34th minute, finding the ball after a free kick was deflected and drilling it into the back of the net to give Penn State a 1-0 advantage. The Lions extended their lead to 2-0 just five minutes later as Rodriguez made a quick move around a La Salle defender and put one in from the edge of the box.

A goal by Kelsey Haycock got the Explorers on the board at the 58:48 mark. The junior knocked the ball into the net on a cross from teammate Maryam Huseini to bring the score to 2-1 in PSU's favor.

Costa gave the Lions their third goal of the game at the 70:31 mark. The forward got the ball from Hayes, who stole it from a defender, and fired it past La Salle keeper Katie Getzinger to give Penn State a 3-1 lead.

The Blue and White were awarded a corner kick just three minutes later and were able to capitalize as Hayes scored off a Kori Chapic header from a Rodriguez cross, putting the score at 4-1.

Penn State capped the scoring in the 84th minute as Schram stole the ball and hammered it into the back of the net, bringing the score to 5-1.

CAVALIERS DOWN PSU

Penn State dropped its first road match of the season to No. 5 Virginia, 5-1, on Friday, Aug. 30 at Klöckner Stadium. The Nittany Lions led 1-0 early on before UVA took control, netting three goals in the first half and two in the second.

Maya Hayes notched the lone goal for PSU, tapping one in on a cross from sophomore Mallory Weber in the sixth minute to give the Blue and White a 1-0 lead.

The Cavaliers responded seven minutes later as

junior Morgan Brian drilled one in from 18 yards out on an assist from sophomore Makenzy Doniak to tie the match up at one goal apiece.

UVA controlled the momentum for the rest of the half, taking a 2-1 lead in the 18th minute on a goal by Doniak, assisted by Gloria Douglas and Danielle Colaprico. Senior Kate Norbo extended the Wahoos' lead to 3-1 in the 21st minute, netting one from 15 yards out on a breakaway.

Virginia showed no signs of letting up in the second half as senior Shasta Fisher knocked one in at the far post from 15 yards out just two minutes in, giving the Cavaliers a 4-1 advantage.

Keeper Britt Eckerstrom came up with two nice saves in the 72nd and 73rd minutes before Cavalier sophomore Brittany Ratcliffe nudged one past her on an assist from Kailie Torres in the 77th minute to cap the scoring at 5-1.

LIONS CLAW THE PRIDE

The Penn State women's soccer team posted its first win of the 2013 campaign with a 2-1 victory over Hofstra on Sunday, Aug. 25 in the Penn State Invitational. Senior forward Maya Hayes and sophomore forward Mallory Weber led the way for the Nittany Lions with both netting goals in the first half of the contest.

Hayes took the initiative early in the match, sending the ball in to the back of the net in the 11th minute on a low cross from Emily Carrollo to give PSU an early 1-0 lead. Weber extended the Lions' lead to 2-0 in the 19th minute, stealing the ball off a goal kick and putting it into the top of the net. Hofstra got three clean looks in the first half but all were stopped by goalkeeper Britt Eckerstrom, leaving the Pride scoreless in the first half.

Hofstra didn't waste any time in the second half as Leah Galton netted an unassisted goal from 12 yards out in the 51st minute to bring the Pride within one. Hofstra registered three more shots on goal in the second half but could not get by Eckerstrom, who totaled six saves in the match.

PSU DRAWS WITH MOUNTAINEERS

The Penn State women's soccer team kicked off the 2013-14 PSU Athletics campaign with a 2-2 tie against non-conference foe West Virginia on Friday, Aug. 23 in the Penn State Invitational. Despite being down 0-2 late in the contest, seniors Taylor Schram and Maya Hayes rallied to tie it up with 10 minutes to go in regulation.

West Virginia came out hot, netting a goal in the fourth minute. WVU senior Frances Silva put one in on a cross from sophomore Kelsie Maloney. PSU sophomore Mallory Weber and Hayes had clean looks early on but could not capitalize as the Nittany Lions trailed 0-1 at the end of the first half.

With 20 minutes remaining in regulation, Maloney extended the Mountaineers lead, heading one in to put WVU up 2-0. Penn State responded 10 minutes later when Schram ripped one into the back corner of the net on an assist from Hayes, putting the score at 2-1 in West Virginia's favor. Just over a minute later Hayes added another goal for the Nittany Lions, scoring on a cross from Weber to even the score at 2-2.

INDIVIDUAL HONORS & AWARDS

Brittany Basinger

TopDrawerSoccer Best XI all-freshman team

Whitney Church

MAC Hermann Trophy Watch List
TopDrawerSoccer Best XI second team
Big Ten Player to Watch

Maya Hayes

MAC Hermann Trophy Watch List
Senior CLASS Award Candidate
Soccer America Preseason All-American
TopDrawerSoccer Best XI first team
Big Ten Player to Watch

Raquel Rodriguez

Big Ten Player to Watch



PSU and WVU registered three shots each in overtime but neither were able to capitalize, leaving the score at an even 2-2.

PACKING THE JEFF

The Blue and White opened the 2013 campaign on Friday, Aug. 23 at Jeffrey Field in front of a crowd of 3,742 fans, the third most in program history and second most for a homer opener.

In 2012, the capacity of Jeffrey was exceeded when 5,117 fans flooded into the stands to watch the Nittany Lions take on then-No. 1 Stanford.

PRESEASON PROWESS

The Nittany Lions opened the 2013-14 Penn State Athletics Campaign with a 5-2 exhibition win over Navy on Friday, Aug. 16 at Jeffrey Field. The two squads played three 30 minute periods.

Penn State dominated the match, tallying 21 shots versus Navy's seven. Senior Maya Hayes and sophomore Mallory Weber netted two goals apiece while senior Tani Costa notched one. The Lions were dangerous from the start, putting up three goals in the first period while holding the Midshipmen scoreless.

PSU put two more in the net in the second period and Navy got on the board in the 52nd minute with a goal from Lexi Ricketts. Navy notched the final point of the contest in the 76th minute to put the score at 5-2.

LIONS PICKED TO WIN BIG TEN

The 15-time defending Big Ten Champion Nittany Lions were selected by conference coaches to win yet another Big Ten title. The Michigan Wolverines were tabbed to finish second and Illinois rounded out the top three.

THE SCHEDULE

Penn State holds a record of 213-35-16 all-time against its 2013 opponents for an .837 winning percentage. Additionally, PSU is 180-27-14 (.846) against Big Ten foes, which includes last year's 11-1-1 mark when the Big Ten Tournament is factored in.

The Lions boast a winning or tied record against each of their 2013 adversaries. The Nittany Lions will face seven teams that made it to the NCAA Tournament in 2012, including Illinois, LaSalle, Michigan, Ohio State, Virginia, West Virginia and Wisconsin.

BACK FOR MORE

The Nittany Lions return 8-of-11 starters and 21 letterwinners from last season's national runner-up squad, including two-time NSCAA first team All-American Maya Hayes, Big Ten Defender of the Year Whitney Church, Big Ten Freshman of the Year Raquel Rodriguez, Emily Hurd, Taylor Schram, Bri Hovington, Kori Chapic and Mallory Weber.

Senior Tani Costa and sophomore Mallory Peterson join Hayes, Rodriguez, Hurd, Schram and Weber as returning members of the Nittany

Lion offensive attack that tallied 48 goals and 36 assists (132 points) in 2012.

FRESH FACES

Fans can expect to see several new faces on the field this season as Penn State has added 10 newcomers to the roster for the 2013 campaign, including graduate student Emily Carrollo who transferred from Virginia. Nine freshmen fill out the rest of the roster, adding depth for the Nittany Lions.

NEW COMPETITION

The Lions will face three new opponents in 2013, going up against LaSalle on Sept. 1, Oklahoma State on Sept. 13 and Tulsa on Sept. 15. The three new additions will bring Penn State's all-time opponent list to 80 teams since the program's inception in 1994.

HAYES, CHURCH NAMED TO MAC HERMANN WATCH LIST

Penn State women's soccer senior forward Maya Hayes and junior defender Whitney Church have been named to the Missouri Athletic Club's Hermann Trophy Watch List for the 2013 season.

The MAC Hermann Trophy is collegiate soccer's most prestigious award presented annually to one male and one female athlete. The winners will be announced Friday, Jan. 10, 2014 at the trophy presentation banquet at the Missouri Athletic Club in St. Louis. Christie Welsh is the only Penn State athlete to win the award (2001).

2013 PENN STATE WOMEN'S SOCCER ROSTER

No.	Name	Pos.	Elig.	Ht.	Hometown	High School	Pronunciation
0	Meghan Kaminski	GK	So.	6-1	Doylestown, Pa.	Central Bucks South	
00	Lexi Golestani	GK	Fr.	5-6	Montgomery, N.J.	The Hun School of Princeton	GOAL-es-tawn-EE
1	Brittany Basinger	D	Fr.	5-7	Fairfax, Va.	Woodgrove	BAY-singer
2	Megan Ritchey	M	So.	5-3	State College, Pa.	State College Area	
3	Emily Hurd	M	R-Jr.	5-7	Sammamish, Wash.	Eastlake	
4	Lexi Marton	D	R-Sr.	5-11	Aurora, Ontario	The Country Day School	
5	Maya Hayes	F	Sr.	5-7	West Orange, N.J.	Newark Academy	
6	Anna Witte	D	Fr.	5-4	Morrisville, N.C.	Cary	witt-EE
7	Corey Persson	M	So.	5-3	Danvers, Mass.	Danvers	
8	Jenna Kalwa	D/M	So.	5-5	Pennington, N.J.	Hopewell Valley Central	
9	Andrea Gunderson	D	Fr.	5-6	West Chester, Pa.	WC Rustin	
11	Raquel Rodriguez	F/M	So.	5-6	San Jose, Costa Rica	International Christian	
12	Kindrah Kohne	M	Jr.	5-5	Homer, N.Y.	Homer	KO-nee
14	Kori Chapic	F/M	Jr.	5-7	Noely, Ohio	West Geauga	CHAP-ick
15	Erin Kehoe	D	Sr.	5-4	Crystal Lake, Ill.	Prairie Ridge	
16	Mallory Weber	F	So.	5-6	Novi, Mich.	Northville	
17	Whitney Church	D	Jr.	5-5	Ashburn, Va.	Broad Run	
18	Angela Widlacki	D	Fr.	5-5	Naperville, Ill.	Naperville North	
19	Taylor Schram	F/M	Sr.	5-5	Canonsburg, Pa.	Canon-McMillan	SHRAM
20	Salina Williford	M/D	Fr.	5-4	Wayne, Pa.	Conestoga	
21	Teddy Chase	D	So.	5-7	Wayne, Pa.	The Shipley School	
22	Tani Costa	F	R-Sr.	5-8	Honolulu, Hawaii	Kalani	TAH-nee
23	Bri Hovington	D	Sr.	5-4	Lothian, Md.	Southern	
24	Liv Brandy	D	Fr.	5-4	Gibsonia, Pa.	Home Schooled	
25	Mallory Peterson	F/M	So.	5-5	Clinton Corner, N.Y.	Millbrook	
26	Emily Carrollo	F/M	GS	5-5	Sussex, N.J.	Pope John Regional	KA-roll-oh
27	Maggie Chapman	M	Fr.	5-4	Dumfries, Va.	Forest Park	
28	Britt Eckerstrom	GK	R-So.	5-10	Germantown, Md.	Northwest	
30	Chloe Buehler	GK	Fr.	5-7	Perrysburg, Ohio	Perrysburg	BYOO-lur

Head Coach: Erica Walsh (Seventh year)
Assistant Coaches: Ann Cook (Seventh year), Tim Wassell (Fourth year)
Director of Operations: Kara Lowery (First year)
Volunteer Assistant: Mike Eckberg (First Year)



This is Hayes' second consecutive year on the watch list and Church's first appearance. Hayes was a finalist for the award in 2011 and a semifinalist in 2012. Hayes and Church are joined by Illinois' Vanessa DiBernardo as Big Ten honorees for the award.

Hayes is a two-time NSCAA first team All-America selection and has earned back-to-back Big Ten Forward of the Year honors. She finished second on the team in goals (16) and points (38) in 2012, despite missing the first seven games of the season while participating in the U20 World Cup with the U.S. U20 National Team.

Church received NSCAA first team All-Great Lakes recognition and Big Ten Defender of the Year honors in 2012. She led the Nittany Lion defensive attack, starting all 27 contests and logging over 2,000 minutes.

HAYES SELECTED AS SENIOR CLASS AWARD CANDIDATE

Penn State senior forward Maya Hayes has been selected as one of thirty candidates for the 2013 Senior CLASS Award in collegiate soccer.

The Senior CLASS (Celebrating Loyalty and Achievement for Staying in School) Award is presented yearly to a Division I senior student-athlete who has notable achievements in four areas of excellence - community, classroom, character and competition.

Hayes has excelled both on and off the field, earning several academic awards during her time at Penn State. The kinesiology major was a 2011 CoSIDA/Captial One third-team Academic All-America selection and CoSIDA/Capital One first team All-District selection. Hayes was included on the Dean's List for the spring 2013 semester and was inducted into Penn State's Athletic Honor Society, Spiritus Leoninus. She is also a two-time Academic All-Big Ten selection.

The 30-member candidate pool will be narrowed to 10 finalists midway through the regular season, and those 10 finalists will be placed on the official ballot. Ballots will be distributed through a nationwide voting system to media, coaches and fans, who will select the female candidate who best exemplifies excellence in community, classroom, character and competition. The Senior CLASS Award winner will be announced during the 2013 NCAA Women's College Cup in Cary, N.C. in December.

BEST XI

Senior forward Maya Hayes, junior defender Whitney Church and freshman defender Brittany Basinger (Fairfax, Va.) were named to the 2013 preseason TopDrawerSoccer Best XI teams. Hayes made the first team while Church was named to the second and Basinger was selected to the all-freshman team.

TOP 100

Penn State had five players named to the TopDrawerSoccer preseason women's top 100 player rankings. Senior forward Maya Hayes leads the way for the Nittany Lions with a No. 6 ranking. Junior Whitney Church sits at No. 13, sophomore Mallory Weber ranks 58th, senior Taylor Schram comes in at No. 77 and sophomore Raquel Rodriguez was tabbed No. 86.

HOME FIELD DOMINANCE

The Lions are a force to be reckoned with when playing at Jeffrey Field, having amassed a home record of 184-21-11 (.877). At 91-3-4 (.949), the Nittany Lions have the best Big Ten home record in the conference. In 2012, a PSU-record 5,117 fans packed the stands to watch Penn State play then-No. 1 Stanford. The Lions are currently riding a five-game unbeaten streak at Jeffrey.

LIONS ON THE BTN

Penn State's 15-time Big Ten Champion women's soccer team will be featured on the BTN at least twice this season. The Nittany Lions' home contests against Ohio State on Thursday, Oct. 17 at 3 p.m. and Illinois on Sunday, Oct. 20 at 12 p.m. will air on the BTN. Additionally, both Big Ten Tournament semifinal matches and the championship game will be aired live on the BTN.

SOCIAL MEDIA

For complete coverage of Penn State women's soccer, please visit <http://www.GoPSUsports.com/sports/w-soccer>. Follow PSU women's soccer on Twitter and Instagram: @PennStateWSOC. Penn State women's soccer is also on Facebook: www.facebook.com/PSUWomensSoccer.

PENN STATE CAREER RECORDS

SHOTS

1.	431	Christie Welsh	97 gms.	1999-02
2.	381	Katie Schoepfer	92 gms.	2006-09
3.	356	Tiffany Weimer	97 gms.	2002-05
4.	347	Joanna Lohman	101 gms.	2000-03
5.	317	Rachel Hoffman	87 gms.	1994-97
6.	314	Christine Nairn	94 gms.	2009-12
7.	283	Heidi Drummond	98 gms.	2000-03
8.	253	Danielle Toney	99 gms.	2007-10
9.	231	Maya Hayes	70 gms.	2010-
10.	230	Kelly Convey	93 gms.	1996-99

GOALS

1.	91	Tiffany Weimer	97 gms.	2002-05
2.	82	Christie Welsh	97 gms.	1999-02
3.	58	Rachel Hoffman	87 gms.	1994-97
4.	57	Maya Hayes	70 gms.	2010-
5.	56	Heidi Drummond	98 gms.	2000-03
6.	48	Katie Schoepfer	92 gms.	2006-09
7.	44	Carole Dutchka	87 gms.	1995-98
8.	41	Joanna Lohman	101 gms.	2000-03
9.	38	Danielle Toney	99 gms.	2007-10
10.	34	Christine Nairn	93 gms.	2009-12

GAME-WINNING GOALS

1.	27	Christie Welsh	97 gms.	1999-02
	27	Tiffany Weimer	97 gms.	2002-05
3.	19	Heidi Drummond	98 gms.	2000-03
4.	18	Katie Schoepfer	92 gms.	2006-09
	18	Rachel Hoffman	87 gms.	1994-97
6.	17	Carole Dutchka	87 gms.	1995-98
7.	15	Joanna Lohman	101 gms.	2000-03
8.	13	Maya Hayes	70 gms.	2010-
9.	12	Danielle Toney	99 gms.	2007-10
10.	12	Christine Nairn	93 gms.	2009-12

ASSISTS

1.	52	Christie Welsh	97 gms.	1999-02
2.	41	Christine Nairn	94 gms.	2009-12
3.	37	Joanna Lohman	101 gms.	2000-03
4.	32	Tiffany Weimer	97 gms.	2002-05
5.	31	Rachel Hoffman	87 gms.	1994-97
6.	29	Stephanie Smith	101 gms.	2000-03
7.	26	Katie Schoepfer	92 gms.	2006-09
		Heidi Drummond	98 gms.	2000-03
		Kelly Convey	93 gms.	1996-99
10.	26	Liz Villamil	87 gms.	1994-97

POINTS

1.	216	Christie Welsh	97 gms.	1999-02
2.	214	Tiffany Weimer	97 gms.	2002-05
3.	147	Rachel Hoffman	87 gms.	1994-97
4.	138	Heidi Drummond	98 gms.	2000-03
5.	131	Maya Hayes	70 gms.	2010-
6.	122	Katie Schoepfer	92 gms.	2006-09
7.	119	Joanna Lohman	101 gms.	2000-03
8.	108	Carole Dutchka	87 gms.	1995-98
	109	Christine Nairn	94 gms.	2009-12
10.	96	Danielle Toney	99 gms.	2007-10

GAMES PLAYED

1.	104	Bonnie Young		1997-01
2.	103	Megan Mills		1998-01
3.	101	Joanna Lohman		2000-03
	101	Stephanie Smith		2000-03
5.	100	Emily Oleksiuk		1998-01
6.	99	Danielle Toney		2007-10
7.	97	Luanne Strom		1997-00
	97	Tiffany Weimer		2002-05
	97	Christie Welsh		1999-02
10.	96	Courtney Lawson		1996-99

GAMES STARTED

1.	103	Megan Mills		1997-01
	103	Bonnie Young		1997-01
3.	101	Joanna Lohman		2000-03
	101	Stephanie Smith		2000-03
5.	100	Emily Oleksiuk		1998-01



THE LAST TIME

PENN STATE...

Scored 3 goals	10/2/12..... vs. Bucknell (3-1)
Scored 4 goals	11/10/12..... vs. LIU Brooklyn (4-0)
Scored 5 goals	9/1/13..... vs. La Salle (5-1)
Scored 6 goals	10/31/10..... at Purdue (6-1)
Scored 7 goals	9/1/02..... vs. Pittsburgh (7-2)
Scored 8 goals	10/9/05..... vs. Iowa (8-0)
Scored 9 goals	9/25/01..... vs. Bucknell (9-2)
Allowed 0 goals	11/23/12..... vs. #19 Duke (1-0)
Allowed 1 goal	11/30/12..... vs. #7 Florida State (2-1)
Allowed 2 goals	11/16/12..... vs. Boston College (5-2)
Allowed 3 goals	9/30/12..... vs. Minnesota (4-3)
Allowed 4 goals	12/2/12..... vs. #13 North Carolina (1-4)
Allowed 5+ goals	8/30/13..... vs. Virginia (1-5)
Won in overtime	11/30/12..... vs. #7 Florida State (2-1)
Lost in overtime	11/6/11..... vs. #18 Illinois (1-2)
Won in double overtime	8/31/13..... at West Virginia (2-1)
Lost in double overtime	9/9/11..... vs. Central Florida (1-2)
Tied in double overtime	8/23/12..... vs. West Virginia (2-2, 2OT)
Was ranked in the NSCAA Top 25	9/3/13..... 14th
Was ranked in the NSCAA Top 10	8/27/13..... 9th
Played a NSCAA Top 10 Team	8/30/13..... vs. #5 Virginia (1-5)
Played a NSCAA Top 25 Team	8/30/13..... vs. #5 Virginia (1-5)
Defeated a NSCAA Top 10 Team	11/30/12..... vs. #7 Florida State (2-1)
Defeated a NSCAA Top 25 Team	11/23/12..... vs. #19 Duke (1-0)
Attempted less than 10 shots	8/30/13..... vs. #5 Virginia (1-5)
Attempted 10-19 shots	8/25/13..... 14 vs. Hofstra (2-1)
Attempted 20-29 shots	9/1/13..... 21 vs. La Salle (5-1)
Attempted 30-39 shots	10/31/12..... 33 vs. Iowa (2-0)
Attempted 40+ shots	11/7/10..... 42 vs. Michigan (1-0)
Allowed 4 or less shots	11/10/12..... 3 vs. LIU Brooklyn (4-0)
Allowed 5-9 shots	8/25/13..... 9 vs. Hofstra (2-1)
Allowed 10-15 shots	9/1/13..... 12 vs. La Salle (5-1)
Allowed 16+ shots	8/30/13..... 27 vs. #5 Virginia (1-5)
Scored 15-24 points	10/7/12..... 15 vs. Indiana (5-2)
Scored 25+ points	9/25/01..... 26 vs. Bucknell (9-2)
Made 10-14 saves	10/31/12..... 14 vs. Iowa (2-0)
Made 15+ saves	9/2/95..... 17 vs. James Madison (4-2)
Had 10+ corner kicks	8/23/13..... 11 vs. West Virginia (2-2, 2OT)
Allowed 10+ corner kicks	9/12/10..... 10 at #4 Portland (2-4)
Tallied 5-7 assists	10/7/12..... 5 vs. Indiana (5-2)
Tallied 9+ assists	8/26/11..... 9 vs. #17 West Virginia (5-0)
Won an NCAA Tourney game	11/30/12..... vs. #7 Florida State (2-1)
Lost an NCAA Tourney game	12/2/12..... vs. #13 North Carolina (1-4)
Won a road NCAA Tourney game	11/30/02..... at Connecticut (2-1)
Won a neutral NCAA Tourney game	11/30/12..... vs. #7 Florida State (2-1)
Won penalty kick shootout	11/18/12..... vs. Michigan (1-1, 3-2 PKs)
Lost penalty kick shootout	11/9/07..... vs. Ohio State (2-2, 4-5 PKs)

A PENN STATE PLAYER...

Scored 2 goals	9/1/13..... Maya Hayes vs. La Salle (5-1)
Scored 3 goals	9/4/11..... Maya Hayes at Pittsburgh (3-0)
Scored 4 goals	10/7/01..... Christie Welsh vs. Michigan (6-2)
Had 2 assists	10/7/12..... Hurd/Nairn vs. Indiana (5-2)
Had 3 assists	9/29/11..... Maya Hayes vs. Ohio State (3-1)
Had 4 assists	9/17/03..... Ali Krieger vs. Bucknell (6-0)
Had 5-9 points	9/1/13..... Maya Hayes 5 vs. La Salle (5-1)
Had 10+ points	10/7/01..... 10, Christie Welsh vs. Michigan (6-2)
Attempted 10+ shots	11/11/11..... 10, Christine Nairn vs. Army (1-0)
Made 10-14 saves	10/31/12..... 14, Erin McNulty vs. Iowa (2-0)
Made 15+ saves	9/3/94..... 15, Robin Van Praag at Minnesota (3-2)
Scored in the Big Ten Tournament	10/31/12..... Maddy Evans vs. Iowa (2-0)
Had a Big Ten Tourney shutout	10/31/12..... McNulty vs. Iowa (2-0)
Scored in an NCAA game	12/2/12 Taylor Schram vs. #13 North Carolina (1-4)
Had an NCAA game shutout	11/23/12..... Erin McNulty vs. #19 Duke (1-0)

MISCELLANEOUS STATISTICS

PENN STATE is...

184-21-11 All-time at Jeffrey Field
 91-3-4 All-time vs. Big Ten at Jeffrey Field

In 2013...

2-0-1 at home
0-1-0 on the road
0-0-0 at neutral site
0-0-1 in overtime
2-0-1 when wearing white
0-1-0 when wearing blue
2-0-0 when leading at halftime
0-1-1 when trailing at halftime
0-0-0 when tied at halftime
2-1-0 when scoring first goal
0-0-1 when opponent scores first goal
2-0-1 when out-shooting opponent
0-1-0 when out-shot by opponent
0-0-0 when shooting the same # of shots
1-0-1 when taking more corner kicks
1-1-0 when allowing more corner kicks
0-0-0 when taking the same corner kicks
0-1-0 against ranked opponents
2-0-1 against unranked opponents
0-1-0 against higher-ranked opponents
0-0-0 against lower-ranked opponents
0-0-0 when scoring 0 goals
0-1-0 when scoring 1 goal
1-0-1 when scoring 2 goals
1-0-0 when scoring 3+ goals
0-0-0 when allowing 0 goals
2-0-0 when allowing 1 goal
0-0-1 when allowing 2 goals
0-1-0 when allowing 3+ goals
0-0-0 on Tuesday
0-0-0 on Wednesday
0-0-0 on Thursday
0-1-1 on Friday
0-0-0 on Saturday
2-0-0 on Sunday
2-1-1 on grass
0-0-0 on turf
0-1-1 at night
2-0-0 during the day
1-0-0 vs. Atlantic 10
0-1-0 vs. ACC
0-0-0 vs. Big East
0-0-0 vs. Big Ten
0-0-1 vs. Big 12
0-0-0 vs. Conference USA
0-0-0 vs. Mountain West
0-0-0 vs. Pac-12
0-0-0 vs. Patriot League
0-0-0 vs. WAC
0-0-0 vs. MAC
0-0-0 vs. NEC
0-0-0 when a freshman scores
0-0-0 in one-goal games



PENN STATE SEASON RECORDS

SHOTS				GAME-WINNING GOALS			
124	Tiffany Weimer	23 gms.	2004	13	Tiffany Weimer	25 gms.	2005
123	Christie Welsh	26 gms.	2001	9	Maya Hayes	26 gms.	2011
115	Joanna Lohman	25 gms.	2003	9	Christie Welsh	26 gms.	1999
114	Christie Welsh	24 gms.	2002	8	Joanna Lohman	25 gms.	2003
104	Katie Schoepfer	24 gms.	2008	7	Katie Schoepfer	24 gms.	2007
104	Katie Schoepfer	24 gms.	2007	7	Christie Welsh	21 gms.	2000
				7	Carole Dutchka	26 gms.	1998
GOALS				SAVES			
32	Tiffany Weimer	25 gms.	2005	132	Emily Oleksiuk	25 gms.	1998
31	Maya Hayes	26 gms.	2011	115	Emily Oleksiuk	26 gms.	1999
27	Christie Welsh	26 gms.	1999	115	Emily Oleksiuk	24 gms.	2000
26	Tiffany Weimer	23 gms.	2004	SHUTOUTS			
25	Christie Welsh	26 gms.	2001	15.4	Emily Oleksiuk	24 gms.	2000
21	Tiffany Weimer	25 gms.	2003	11	Erin McLeod	21 gms.	2004
ASSISTS				10	Amanda Brown	23 gms.	2003
18	Christie Welsh	26 gms.	2001	9.85	Emily Oleksiuk	26 gms.	1999
14	Joanna Lohman	26 gms.	2001	9	Erin McLeod	24 gms.	2005
13	Christine Nairn	25 gms.	2011	WINS			
13	Christie Welsh	26 gms.	1999	22	Erin McLeod	24 gms.	2005
12	Christine Nairn	27 gms.	2012	21	Erin McNulty	26 gms.	2011
12	Taylor Schram	24 gms.	2011	21	Emily Oleksiuk	25 gms.	1999
12	Tiffany Weimer	23 gms.	2004	20	Emily Oleksiuk	26 gms.	2001
12	Stephanie Smith	26 gms.	2000	20	Emily Oleksiuk	26 gms.	2000
POINTS				GOALS AGAINST AVG.			
70	Maya Hayes	26 gms.	2011	0.41	Emily Oleksiuk	2222:40	10 GA 2000
69	Tiffany Weimer	25 gms.	2005	0.43	Erin McLeod	1885:59	9 GA 2004
68	Christie Welsh	26 gms.	2001	0.62	Alyssa Naeher	2176:18	15 GA 2007
67	Christie Welsh	26 gms.	1999	0.75	Emily Oleksiuk	2168:52	18 GA 2001
64	Tiffany Weimer	23 gms.	2004				
51	Tiffany Weimer	25 gms.	2003				
46	Christine Nairn	27 gms.	2012				

NSCAA COACHES POLL

(as of Sept. 3)

#	Team	Record	Last
1	North Carolina	4-0-0	1
2	Florida State	4-0-0	3
3	UCLA	4-0-0	4
4	Stanford	2-0-1	2
5	Virginia	4-0-0	5
6	BYU	2-0-0	6
7	Wake Forest	3-0-0	10
8	Notre Dame	3-1-0	7
9	Baylor	4-0-0	11
10	Florida	3-1-0	8
11	Michigan	4-0-0	14
12	Duke	3-1-0	12
13	Georgetown	4-0-0	13
14	Penn State	2-1-1	9
15	Portland	2-0-1	16
16	Maryland	4-0-0	15
17	USC	3-0-0	22
18	California	3-0-1	18
19	West Virginia	3-0-1	RV
20	Denver	4-0-0	25
21	Ohio State	3-0-1	24
22	Pepperdine	2-0-1	NR
23	Wisconsin	3-0-1	RV
24	Texas A&M	2-2-0	19
25	Marquette	2-2-0	RV

Also receiving votes: *South Carolina (62), UCF (49), Texas Tech (33), Virginia Tech (33), Arkansas (25), Tennessee (22), Illinois (21), Oklahoma State (14), Boston College (13), Santa Clara (11), Missouri (10), Washington State (7), LSU (7), Arizona State (5), Mississippi (5), Rutgers (5), Colorado (4), Kansas (3), San Diego State (1), Boston University (1), North Texas (1)*

NITTANY LIONS IN THE POLLS

NSCAA: 14
 TopDrawerSoccer.com: 9
 SoccerTimes.com: 14
 Soccer America: 16



ERICA WALSH

Head Coach • Seventh Year
WILLIAM & MARY '97

PSU RECORD: 102-37-8 (.724)
Overall Record: 141-64-11 (.678)

**2012 NSCAA NATIONAL COACH OF THE YEAR
TWO-TIME BIG TEN COACH OF THE YEAR (2009, 2012)**

Head coach Erica Walsh enters her seventh season at the helm of the Penn State women's soccer program in 2013. Walsh's 2012 Nittany Lions were the most successful team in program history after advancing to their first-ever national title game. The Nittany Lions won 21 of 27 games and were unbeaten in Big Ten action with a 10-0-1 record. The Lions registered their 15th consecutive Big Ten title and 18th-straight NCAA Tournament appearance. The 15-title mark stands as the most consecutive Big Ten Championships by a women's program, along with the present Northwestern tennis team.

WALSH'S COLLEGIATE RÉSUMÉ	
Head Coach	
PENN STATE	2007-present
<i>2012 NSCAA National Coach of the Year</i>	
<i>2012 Big Ten Coach of the Year</i>	
<i>2009 Big Ten Coach of the Year</i>	
Harvard	2006
Dartmouth	2000-02
Assistant Coach	
Florida State	2005-06
Dartmouth	1998-99
Graduate Assistant	
Lehigh	2003-04
Dartmouth	1997
Student-Athlete	
William & Mary	1993-97
<i>William & Mary Hall of Fame Inductee</i>	
WALSH'S NATIONAL RÉSUMÉ	
Head Coach	
U.S. Women's Under-17	2004-07
Assistant Coach	
U.S. Women's National Team	2008-present
<i>2008 Olympic Gold Medalists</i>	
<i>2011 World Cup Silver Medalists</i>	
U.S Women's Under-19	2004

Senior Christine Nairn became just the seventh Nittany Lion to finish as a finalist for the prestigious Missouri Athletic Club's Hermann Trophy in 2012 under Walsh's tutelage while junior Maya Hayes was named a semifinalist for the award.

Walsh's success was recognized at the conference and national level as she earned Big Ten Coach of the Year and NSCAA Coach of the Year honors.

Her 2011 team was a dominant force, winning 21 of 26 matches, while out-scoring opponents 70-24. The Nittany Lions were 10-1-0 in Big Ten action and posted the seventh undefeated season at Jeffrey Field (9-0). Walsh helped guide the Lions to their 14th-straight Big Ten title and a spot to the NCAA Sweet Sixteen

for the first time since 2007.

With Walsh's guidance, sophomore Maya Hayes became the nation's most prolific scorer in soccer in 2011. Hayes was a finalist for the M.A.C. Hermann Trophy. Hayes led the nation with 31 goals and 70 points. The sophomore phenom broke single-season record at Penn State for goals and points.

During the 2011 summer, Walsh had an extraordinary experience of being one of the top assistants to Pia Sundhage and the 2011 United State women's national team at the FIFA World Cup in

Germany. The U.S. made a sparkling run through knockout play to the final, falling to eventual champions Japan.

During the 2010 season, Walsh's young club made a remarkable turnaround mid-season, overcoming a two-game deficit in the league standings over the final weeks to capture a share of a record-breaking 13th straight Big Ten title.

After a tough 2-4 start to the 2009 season, Walsh led the Nittany Lions to a remarkable turnaround, going 10-1-2 in the last 13 games of the regular season, earning her the 2009 Big Ten Coach of the Year Award for her efforts. In March of 2010, Walsh's alma mater, William & Mary, honored her by inducting her into the W&M Athletics Hall of Fame.

With the impressive end to the season, Walsh and her charges captured the program's 12th-straight Big Ten Championship, tying a record for most consecutive women's Big Ten titles won held by the Michigan swimming & diving program. By winning the Big Ten, the Nittany Lions continued their string of NCAA Tournament berths, making their 15th-straight appearance in the 64-team field in 2009. For the second time in three years, Penn State hosted the first and second rounds of tournament play.

Walsh also orchestrated one of the finest awards seasons in Penn State history when Katie Schoepfer, Alyssa Naeher and Christine Nairn swept the year-end Big Ten Player of the Year awards. Schoepfer was named the Offensive Player of the Year, Naeher the Defensive Player of the Year and Nairn the Freshman of the Year. Danielle Toney was named to the All-Big Ten First Team, while Lexi Marton garnered Second Team mention. Walsh has now coached two players of the year to three awards as Naeher was also the 2007 recipient of the Defensive Player of the Year honors in Walsh's first year in Happy Valley.

Walsh continued her success from the 2007 campaign into a 16-8-0 record that saw Penn State capture its 11th-straight Big Ten Championship and the 2008 Big Ten Tournament crown.

Her transition to Penn State was quite smooth as the 2007 team finished 18-4-2, including a 9-1-0 mark in conference play, and was ranked 12th in the final NSCAA poll of the season.

When she came to Penn State, Walsh brought with her a wealth of experience at both the international and collegiate levels. She already has coached at six different universities, including three stints as head coach as well as serving as an assistant for the U.S. U-19 team in 2004. Walsh served as head coach of the U-17 team from December 2004 until her hire at Penn State in February of 2007.

As of January 2009, Walsh was appointed as a member of the Panel of Instructors and Lecturers for FIFA Courses. In addition, she was appointed as the Chairman of the Women's Technical Committee for the period of January 1, 2009 to June 30, 2011.

In January of 2008, Walsh was named as the assistant coach by Pia Sundhage for the U.S. National Team. With Walsh's help and guidance the U.S. team completed its historic run with a gold medal at the 2008 Olympic Games in Beijing, China. Even sweeter was that Walsh's main responsibility was the U.S. Team's defense, which held fellow world power Brazil scoreless in the gold medal game.

The head coach at Harvard University as well as the U.S. Under-17 team prior to her hiring at Penn State, Walsh has consistently been active among the coaching ranks both at the Division I level and the U.S. Youth National Team program for nearly a decade. Prior to her time with the Crimson, she was part of a Florida State staff that led the Seminoles to one of its most successful year to date. FSU joined Penn State in the 2005 Women's Soccer College Cup, with both programs reaching the national semifinals.

Walsh's coaching path began in 1997 as a graduate assistant with Bucknell University. In 1998, she accepted a position at Dartmouth, where she was an assistant coach for two seasons. After helping the team to a final NSCAA ranking of No. 8 at the conclusion of the team's 1998 NCAA quarterfinal run as well as an



Ivy League championship in 1999, Walsh assumed head coaching duties before the 2000 season.

As head coach, Walsh led the Big Green to back-to-back Ivy League co-championships in 2000 and 2001. Her squad was ranked in the NSCAA's top 25 each year, rising as high as No. 13 in 2001. In her three seasons as head coach, Dartmouth was invited to the NCAA Tournament each season and reached the round of 16 twice. All three of her teams earned the NSCAA's Academic Team Award.

Walsh left Dartmouth to earn her Master's in business administration at Lehigh University where she served as a graduate assistant from 2003-04.

Beginning in the spring of 2004, Walsh joined the United States Under-19 team as an assistant coach where she helped with preparations for the Under-19 World Cup. The U.S. finished with the bronze medal in Thailand after defeating Brazil in the third place match. After the World Cup, Walsh was appointed the U.S. National Team's U-17 head coach, a position which she held for three years.

As a player, Walsh was an NSCAA All-Region selection at William & Mary. A two-time first team All-CAA pick, she propelled her team to four NCAA Tournament appearances as well as two CAA regular season and two CAA league championships.

A high school All-American at Lower Moreland, she was also a member of the U.S. Under-17 National Team.

Walsh earned her Bachelor of Science degree with a concentration in biology from William & Mary in 1997 and resides in State College, Pa.

WALSH'S ACCOLADES

10 YEARS OF COLLEGE HEAD COACHING EXPERIENCE

1 COLLEGE CUP **APPEARANCE**

1 NATIONAL CHAMPIONSHIP **APPEARANCE**

13 NCAA TOURNAMENT **WINS**

9 NCAA TOURNAMENT **APPEARANCES**

10 ALL-AMERICA **HONORS**

6 BIG TEN **CHAMPIONSHIPS**

1 OLYMPIC **GOLD MEDAL**

1 NATIONAL COACH OF THE YEAR **AWARD**

2 BIG TEN COACH OF THE YEAR **AWARDS**

WALSH'S CAREER AT PENN STATE

Season	Overall	Pct.	Big Ten	Pct.	Finish	NCAA
2007	18-4-2	.792	9-1-0	.900	1st	Third Round
2008	16-8-0	.667	8-2-0	.800	T-1st	First Round
2009	13-6-2	.667	8-1-1	.850	1st	Second Round
2010	11-9-1	.548	8-2-0	.800	T-1st	Second Round
2011	21-5-0	.808	10-1-0	.909	1st	Third Round
2012	21-4-2	.815	10-0-1	.955	1st	Second Place
2013	2-1-1	.625	0-0-0	.000	--	--
Penn State	102-37-8	.721	53-7-2	.871		6 NCAAAs (10-6)
Career	141-64-11	.678				9 NCAAAs (13-9)



2013 Penn State Women's Soccer PSU Combined Team Statistics (as of Sep 01, 2013) All games

RECORD:	OVERALL	HOME	AWAY	NEUTRAL
ALL GAMES	2-1-1	2-0-1	0-1	0-0
CONFERENCE	0-0	0-0	0-0	0-0
NON-CONFERENCE	2-1-1	2-0-1	0-1	0-0

Date	Opponent	Score	Att.
Aug 23	WVU	To2 2-2	3742
Aug 25	HOFSTRA	w 2-1	732
Aug 30	at #6 Virginia	L 1-5	2609
Sep 01	LASALLE	w 5-1	1012

TEAM STATISTICS	PSU	OPP
SHOT STATISTICS		
Goals-Shot attempts	10-65	9-60
Goals scored per game	2.50	2.25
Shot pct.	.154	.150
Shots on goal-Attempts	33-65	28-60
SOG pct.	.508	.467
Shots/Game	16.2	15.0
CORNER KICKS	23	20
PENALTY KICKS	0-0	0-0
PENALTIES		
Yellow cards	1	0
Red cards	0	0
ATTENDANCE		
Total	5486	2609
Dates/Avg Per Date	3/1829	1/2609
Neutral Site #/Avg	0/0	

#	Player	gp	g	a	pts	sh	sh%	sog	sog%	gw	pk-att
5	Hayes, Maya	4	5	2	12	19	.263	13	.684	0	0-0
19	Schram, Taylor	4	2	0	4	9	.222	4	.444	0	0-0
22	Costa, Tani	4	1	0	2	7	.143	4	.571	0	0-0
11	Rodriguez, Raquel	4	1	1	3	7	.143	4	.571	1	0-0
16	Weber, Mallory	4	1	2	4	5	.200	3	.600	1	0-0
14	Chapic, Kori	4	0	1	1	4	.000	0	.000	0	0-0
3	Hurd, Emily	4	0	0	0	3	.000	1	.333	0	0-0
20	Williford, Salina	4	0	0	0	3	.000	1	.333	0	0-0
26	Carrollo, Emily	4	0	1	1	2	.000	2	1.000	0	0-0
1	Basinger, Brittany	4	0	0	0	2	.000	1	.500	0	0-0
17	Church, Whitney	4	0	0	0	1	.000	0	.000	0	0-0
12	Kohne, Kindrah	3	0	0	0	1	.000	0	.000	0	0-0
3	Peterson, Mallory	3	0	0	0	1	.000	0	.000	0	0-0
15	Kehoe, Erin	2	0	0	0	1	.000	0	.000	0	0-0
21	Chase, Teddy	2	0	0	0	0	.000	0	.000	0	0-0
8	Kalwa, Jenna	1	0	0	0	0	.000	0	.000	0	0-0
6	Witte, Anna	1	0	0	0	0	.000	0	.000	0	0-0
4	Marton, Lexi	1	0	0	0	0	.000	0	.000	0	0-0
7	Persson, Corey	4	0	0	0	0	.000	0	.000	0	0-0
23	Hovington, Bri	4	0	0	0	0	.000	0	.000	0	0-0
Total		4	10	7	27	65	.154	33	.508	2	0-0
Opponents		4	9	10	28	60	.150	28	.467	1	0-0

#	Goalie	GP	Min.	GA	GAAvg	Saves	Pct	W-L-T	Sho
28	Eckerstrom, Britt	4	380:00	9	2.13	19	.679	2-1-1	0/0
Total		4	380:00	9	2.13	19	.679	2-1-1	0
Opponents		4	380:00	10	2.37	23	.697	1-2-1	0

Goals by Period	1st	2nd	OT	OT2	Total
PSU	5	5	0	0	10
Opponents	4	5	0	0	9

Shots by Period	1st	2nd	OT	OT2	Total
PSU	29	33	1	2	65
Opponents	23	34	2	1	60

Saves by Period	1st	2nd	OT	OT2	Total
PSU	7	10	1	1	19
Opponents	10	11	1	1	23

Corners by Period	1st	2nd	OT	OT2	Total
PSU	6	17	0	0	23
Opponents	6	12	2	0	20

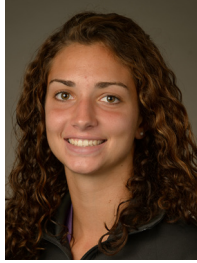
Fouls by Period	1st	2nd	OT	OT2	Total
PSU	18	15	1	1	35
Opponents	14	19	2	3	38



2013 PENN STATE WOMEN'S SOCCER



LEXI GOLESTANI
Freshman • GK
Montgomery, N.J.



MEGHAN KAMINSKI
Sophomore • GK
Doylestown, Pa.



BRITTANY BASINGER
Freshman • D
Fairfax, Va.



MEGHAN RITCHEY
Sophomore • M
State College, Pa.



EMILY HURD
R - Junior • M
Sammamish, Wash.



LEXI MARTON
R - Senior • D
Aurora, Ontario



MAYA HAYES
Senior • F
West Orange, N.J.



ANNA WITTE
Freshman • D
Morrisville, N.C.



COREY PERSSON
Freshman • M
Danvers, Mass.



JENNA KALWA
Sophomore • M/D
Pennington, N.J.



ANDREA GUNDERSON
Freshman • D
West Chester, Pa.



RAQUEL RODRIGUEZ
Sophomore • F/M
San Jose, Costa Rica



KINDRAH KOHNE
Junior • D
Homer, N.Y.



KORI CHAPIC
Sophomore • D
Homer, N.Y.



ERIN KEHOE
Senior • M
Crystal, Ill.



MALLORY WEBER
Sophomore • F
Novi, Mich.



WHITNEY CHURCH
Junior • D
Ashburn, Va.



ANGELA WIDLACKI
Freshman • D
Naperville, Ill.



TAYLOR SCHRAM
Senior • F
Canonsburg, Pa.



SALINA WILLIFORD
Freshman • M/D
Wayne, Pa.



TEDDY CHASE
Sophomore • D
Wayne, Pa.



TANI COSTA
R - Senior • F
Honolulu, Hawaii



BRI HOVINGTON
Senior • D
Lothian, Md.



LIV BRANDY
Freshman • D
Gibsonia, Pa.



MALLORY PETERSON
Sophomore • F/M
Clinton Corners, N.Y.



EMILY CORROLLO
Grad. Student • F/M
Sussex, N.J.



MAGGIE CHAPMAN
Freshman • M
Dumfries, Va.



BRITT ECKERSTROM
R - Sophomore • GK
Germantown, Md.



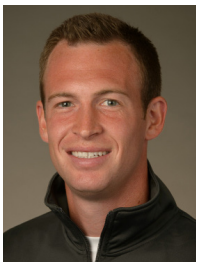
CHLOE BUEHLER
Freshman • GK
Perrysburg, Ohio



ERICA WALSH
Head Coach • 7th Year
William & Mary '97



ANN COOK
Assistant Coach • 7th Year
William & Mary '97



TIM WASSELL
Assistant Coach • 4th Year
PSU Altoona '06



KARA LOWERY
Director of Ops. • 1st Year
Southern Nazarene '97



MIKE ECKBERG
Volunteer Asst. • 1st Year
Luther College '07