



# MARYLAND TERRAPINS GYMNASTICS

## 2017 SCHEDULE AND RESULTS

Overall: 1-3 | Big Ten: 0-1

Home: 1-3 | Away: 0-0 | Neutral: 0-0

Jan. 8	#29 WEST VIRGINIA L, 194.400-193.950	
Jan. 14	ARIZONA L, 193.225-192.350	
	MINNESOTA * L, 194.900-192.350	
	ALASKA W, 192.350-188.175	
Jan. 21	at Penn State *	4 p.m.
Jan. 29	at Iowa *	2 p.m.
Feb. 5	MICHIGAN *	Noon
Feb. 11	at Rutgers *	7 p.m.
	Yale	
	Penn	
Feb. 17	at George Washington vs. Iowa * vs. Pittsburgh	7 p.m.
Feb. 19	WILLIAM & MARY PENN KENTUCKY	2 p.m.
Feb. 24	at Temple vs. George Washington vs. West Chester vs. Southern Connecticut State	5 p.m.
Feb. 26	at West Virginia vs. Iowa State	1 p.m.
March 1	NEW HAMPSHIRE TEMPLE WEST CHESTER	7 p.m.
March 11	B1G Five (Champaign, Ill.)	TBA
March 18	Big Ten Championships (Piscataway, N.J.)	TBA
April 1	NCAA Regionals	TBA

Home meets in **CAPS**; All times Eastern; \* Big Ten meet

### MEDIA RELATIONS

Gymnastics Contact: Anna LaBonte  
 Email Address: [alabonte@umd.edu](mailto:alabonte@umd.edu)  
 Office Phone: (301) 314-7068  
 Cell Phone: (443) 254-4883  
 Website: [umterps.com](http://umterps.com)

## PENN STATE

Overall Record: 3-1, 0-1 Big Ten

Series Record: Penn State, 19-1

Last Meeting: Feb. 22, 2016 (PSU, 196.350-195.350)

Live Stream: [GoPSUSports.com](http://GoPSUSports.com)

Live Results: [GoPSUSports.com](http://GoPSUSports.com)

## NOTES

The Maryland gymnastics team travels to Penn State for the team's first road trip of the season this Saturday at 4 p.m.

### LAST TIME OUT

Freshman **Alecia Farina** tied for the bars title with a career-high 9.850. She also notched a career high on vault with a 9.750. The Terps posted a 192.350, picking up their first win of the season over Alaska-Anchorage (188.175) and falling to Arizona (193.225) and Minnesota (194.900). For the second straight meet, seniors **Emily Brauckmuller** and **Sarah Faller** led the Terps on vault, each posting a 9.775. Junior **Evelyn Nee** notched a 9.825 on beam while Brauckmuller anchored floor with a 9.825.

### IN THE RANKINGS

The Terps currently rank No. 43 with an average score of 193.150. Penn State currently ranks No. 32 with an average score of 193.763. For complete rankings, visit [roadtonationals.com](http://roadtonationals.com).

### SENIORS LEAD TERPS ON VAULT

Seniors **Emily Brauckmuller** and **Sarah Faller** have led Maryland on vault this season. In the season opener against West Virginia, the duo each posted 9.750s, the highest scores on the team. In the Maryland quad meet, the seniors tallied 9.775s, which placed fourth in the meet.

### YOUTH MOVEMENT

Maryland welcomed one of the top freshman classes in program history this season, and the newest Terps have made an immediate impact. Five freshmen have found their way into the Maryland lineup this season. **Alecia Farina**, **Kirsten Peterman** and **Deanna Magro** have been important members of the vault lineup while Farina has been a force on bars. Magro posted a 9.750 on beam in her debut. Sophomores **Shynelle Agaran**, **Amanda Bertorello** and **Megan McClelland** have also been key for the Terps. Agaran notched a team-high 9.800 on bars in Maryland's first meet vs. West Virginia. In the Maryland quad meet, Bertorello set career highs on bars (9.750) and floor (9.800). McClelland has been a mainstay in the floor lineup since her freshman season. Ten of Maryland's 17 gymnasts are underclassmen.

## ROADTONATIONALS RANKINGS

Rk.	Team	Avg.
1	Oklahoma	197.888
2	LSU	197.700
3	Florida	197.350
4	Alabama	196.900
5	Utah	196.763
6	UCLA	196.263
7	Denver	196.113
8	Missouri	196.100
9	Kentucky	196.013
10	Nebraska	195.700
11	Auburn	195.675
12	Michigan	195.625
13	California	195.438
14	George Washington	195.388
15	Boise State	195.300
16	Georgia	195.200
17	Washington	195.175
18	Ohio State	195.088
19(t)	Oregon State	195.050
19(t)	Illinois-Champaign	195.050
21	Minnesota	194.813
22	Iowa	194.692
23	Arkansas	194.650
24	Sacramento State	194.438
25	North Carolina State	194.413
26(t)	BYU	194.200
26(t)	Northern Illinois	194.200
28	West Virginia	194.138
29	Iowa State	194.063
30	Michigan State	194.025
31	Ball State	193.900
32	Penn State	193.763
33	New Hampshire	193.700
34	Arizona	193.625
35	UC Davis	193.575
36	Stanford	193.525

## BIG TEN PRESEASON POLL

- Michigan
- Nebraska
- Minnesota
- Illinois
- Iowa
- Penn State
- Ohio State
- Michigan State
- Maryland
- Rutgers

## FALLER, FARINA NAMED BIG TEN GYMNASTS TO WATCH

Senior **Sarah Faller** and freshman **Alecia Farina** were selected as Maryland's Big Ten Gymnasts to Watch in December. Faller has been a consistent performer for the Terps since her first season, competing on vault, bars and beam. Last season, Faller set a new career-high with a 9.850 on bars and tied a career high 9.800 on beam. The Raleigh, N.C., native is a two-time Big Ten All-Academic selection. Farina is a member of one of Maryland's strongest freshmen classes to date. She was the only gymnast in Ohio high school history to earn a perfect 10.0 on vault, which she did three times. Farina finished second on floor, 10th on vault and 23rd in the all-around at the 2016 U.S. Junior Olympic National Championship. The Terps were picked to finish ninth in the Big Ten preseason coaches poll.

## TERPS TO APPEAR ON BIG TEN NETWORK THREE TIMES

The Maryland gymnastics team will be featured on the Big Ten Network three times this season. The Terps' meet vs. Michigan in the XFINITY Center on Sunday, Feb. 5 will be aired live on BTN Plus at noon. Fans can catch a replay of the meet at 4 p.m. on the Big Ten Network. Maryland will compete in one of two Big 5 meets at Illinois on Saturday, March 11. The meet will be aired live on BTN at 3 p.m. The Big 5 meets featured all Big Ten teams and serve as qualifiers for the conference championship. Both sessions of the Big Ten Championships will be aired live on BTN. All Maryland home meets will be featured on BTN Plus.

## NELLIGAN ANNOUNCES STAFF ADDITIONS

In the offseason, the Terps welcomed **Evan Eigner** as an assistant coach. Eigner serves as Maryland's primary vault and floor coach. A 2016 graduate of Ohio State, he helped the Buckeyes to the 2016 Big Ten Championship and a third place finish at the NCAA Championship. Maryland also welcomed back former GymtTep standout **Ally Krikorian**. A 2013 graduate, Krikorian helped lead the Terps to four straight NCAA Regionals appearances, and Maryland finished her senior season ranked No. 22.

## MEET-BY-MEET SCORES

Meet	VT	UB	BB	FX	TOTAL
WVU	48.525	48.725	48.775	47.925	193.950
Arizona, Minn., Alaska	48.675	48.025	47.500	48.150	192.350
@Penn State					
@Iowa					
Michigan					
@Rutgers, Penn, Yale					
@GWU, Iowa, Pitt					
W&M, Penn, Kentucky					
@Temple, GWU, WCU, SCSU					
@WVU, Iowa State					
NHU, Temple, WCU					
@Big Five					
@Big Ten Championships					

## QUICK FACTS

### UNIVERSITY

Location ..... College Park, Md.  
 Founded..... 1856  
 Enrollment.....37,272  
 Nickname..... Terrapins, Terps  
 Colors .....Red, White, Black and Gold  
 Affiliation ..... NCAA Division I  
 Conference .....Big Ten  
 President..... Wallace D. Loh  
 Director of Athletics.....Kevin Anderson  
 Athletics Website ..... www.umterps.com  
 University Website ..... www.umd.edu

### COACHING STAFF

Head Coach.. Brett Nelligan (Eighth Season)  
 Alma Mater ..... Massachusetts '03  
 Career Record .....110-72-2  
 Maryland Record .....110-72-2  
 Assistant Coach..... Erinn Dooley  
 Alma Mater .....Florida '00  
 Assistant Coach..... Evan Eigner  
 Alma Mater ..... Ohio State '16  
 Volunteer Assistant .....Ally Krikorian  
 Alma Mater ..... Maryland '13

### TEAM INFORMATION

2016 Overall Record.....7-15  
 2016 Big Ten Record .....1-9  
 Starters Returning/Lost.....4+libero/2  
 Gymnasts Returning/Lost ..... 11/5  
 Newcomers.....6  
 Home Arena.....XFINITY Center (17,950)

### PROGRAM INFORMATION

First Year of Gymnastics..... 1976  
 All-Time Program Record ..625-543-7 (.535)  
 NCAA Regional Appearances.....21  
 All-Americans.....7

### SOCIAL MEDIA

Gymnastics Twitter..... @TerpsGymnastics  
 Gymnastics Instagram..... TerpsGymnastics  
 Gymnastics Facebook...../MarylandGymnastics  
 Athletics Twitter ..... @umterps  
 Athletics Instagram..... marylandterrapins  
 Athletics Facebook...../marylandterrapins

## 2017 ROSTER

Name	Yr.	Hgt.	Hometown/High School
Shynelle Agaran	5-1	So.	Coral Springs, Fla./Marjory Stoneman Douglas
Amanda Bertorello	5-7	So.	St John's, Fla./Bartram Trail
Morgan Bixler	5-8	Fr.	Hanover, Pa./South Western
Emily Brauckmuller	5-1	Sr.	Auburndale, Fla./Auburndale Senior High
Nicole Dragon	5-1	Sr.	Woodcliff Lake, N.J./Immaculate Heart Academy
Sarah Faller	5-6	Sr.	Raleigh, N.C./Sanderson
Alecia Farina	5-4	Fr.	Broadview Heights, Ohio/Brecksville-Broadview Heights
Rachel Gurnett	5-2	Jr.	Rochester, N.Y./Our Lady of Mercy
Emma Johnson	5-3	Fr.	Wyckoff, N.J./Ramapo
Deanna Magro	5-4	Fr.	Bethel, Conn./Bethel
Megan McClelland	5-1	So.	Rock Hill, S.C./Charlotte Latin
Evelyn Nee	5-3	Jr.	Vienna, Va./Madison
Jen O'Neill	5-8	Fr.	Fairfield, Conn./Fairfield Ludlowe
Kirsten Peterman	5-3	Fr.	Cambridge, Ontario/St. David Catholic
Alex Robinson	5-0	So.	Centennial, Colo./Denver School of the Arts
Leah Slobodin	5-0	Sr.	Alexandria, Va./West Potomac
Dominiquea Trotter	5-4	Jr.	Middletown, N.J./Middletown North

## PRONUNCIATION GUIDE

Agaran	A-ga-RAN	Deanna Magro	de-ANNA mah-gro
Brauckmuller	BRAHK-muller	Kirsten	KIHR-sten
Faller	FAH-ler	Slobodin	sla-BOH-den
Alecia Farina	ah-LECIA fah-RINA		

## ROSTER BREAKDOWNS

LOCATION	CLASS
<b>Canada (1):</b> Peterman	<b>Seniors (4):</b> Brauckmuller, Dragon, Faller, Slobodin
<b>Colorado (1):</b> Robinson	<b>Juniors (3):</b> Gurnett, Nee, Trotter
<b>Connecticut (2):</b> Magro, O'Neill	<b>Sophomores (4):</b> Agaran, Bertorello, McClelland, Robinson
<b>Florida (3):</b> Agaran, Bertorello, Brauckmuller	<b>Freshmen (6):</b> Bixler, Farina, Johnson, Magro, O'Neill, Peterman
<b>New Jersey (3):</b> Dragon, Johnson, Trotter	
<b>New York (1):</b> Gurnett	
<b>North Carolina (1):</b> Faller	
<b>Ohio (1):</b> Farina	
<b>Pennsylvania (1):</b> Bixler	
<b>South Carolina (1):</b> McClelland	
<b>Virginia (2):</b> Nee, Slobodin	

## PROJECTED LINEUP

VAULT	BARS	BEAM	FLOOR
Magro	Faller	Magro	McClelland
Johnson	McClelland	Bertorello	Johnson
Peterman	Bertorello	Trotter	Peterman
Brauckmuller	Agaran	Nee	Slobodin
Farina	Nee	Agaran	Bertorello
Faller	Farina	Faller	Brauckmuller



## SHYNELLE AGARAN

AA | 5-1 | Sophomore  
Coral Springs, Fla.

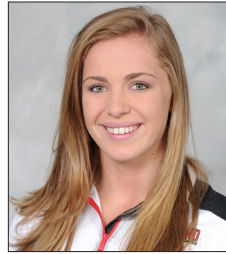
### AGARAN Career Highs

**BARS** 9.800 (vs. West Virginia, 1/8/17)  
**BEAM** 9.850 (vs. Penn State, 2/22/16)

### 2017 MEET-BY-MEET

	VT	UB	BB	FX	AA
WVU (1/8)	--	9.800	9.750	--	--
UAA, ARIZ, MINN (1/14)	--	8.875	9.250	--	--
PSU (1/21)					
Iowa (1/29)					
MICH (2/5)					
Penn, RU, Yale (2/11)					
Pitt, GWU, W&M, Iowa (2/17)					
Penn, W&M, KEN (2/19)					
TU, GWU, WCU, SCSU (2/24)					
WVU, ISU (2/26)					
NHU, WCU, TU (3/1)					
Big Five (3/11)					
Big Ten Champs. (3/18)					

**Notes:** Posted a career-high 9.800 on bars vs. West Virginia (1/8/17) ... as a freshman, competed in six meets on bars and five meets on beam ... notched a season high 9.850 on beam and 9.675 on bars vs. Penn State (2/22/16) ... majoring in biology.



## AMANDA BERTORELLO

AA | 5-7 | Sophomore  
St. John's, Fla.

### BERTORELLO Career Highs

**BARS** 9.750 (vs. MINN, ARIZ, UAA, 1/14/17)  
**BEAM** 9.600 (2x, last vs. MINN, ARIZ, UAA, 1/14/17)  
**FLOOR** 9.800 (vs. MINN, ARIZ, UAA, 1/14/17)

### 2017 MEET-BY-MEET

	VT	UB	BB	FX	AA
WVU (1/8)	--	9.725	9.600	9.700	--
UAA, ARIZ, MINN (1/14)	--	9.750	9.600	9.800	--
PSU (1/21)					
Iowa (1/29)					
MICH (2/5)					
Penn, RU, Yale (2/11)					
Pitt, GWU, W&M, Iowa (2/17)					
Penn, W&M, KEN (2/19)					
TU, GWU, WCU, SCSU (2/24)					
WVU, ISU (2/26)					
NHU, WCU, TU (3/1)					
Big Five (3/11)					
Big Ten Champs. (3/18)					

**Notes:** Set new career highs on bars and floor in the Maryland Quad Meet (1/14/17) ... posted career highs on bars (9.725), beam (9.600) and floor (9.700) vs. West Virginia (1/8/17) ... made career beam debut vs. West Virginia ... as a freshman, competed on bars in three meets ... notched a 9.575 in the Big Five meet (3/12/16) ... majoring in bioengineering.



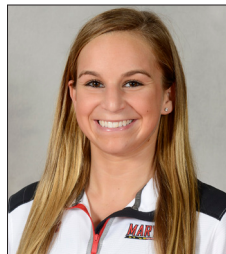
## MORGAN BIXLER

AA | 5-8 | Freshman  
Hanover, Pa.

### 2017 MEET-BY-MEET

	VT	UB	BB	FX	AA
WVU (1/8)	--	--	--	--	--
UAA, ARIZ, MINN (1/14)	--	--	--	--	--
PSU (1/21)					
Iowa (1/29)					
MICH (2/5)					
Penn, RU, Yale (2/11)					
Pitt, GWU, W&M, Iowa (2/17)					
Penn, W&M, KEN (2/19)					
TU, GWU, WCU, SCSU (2/24)					
WVU, ISU (2/26)					
NHU, WCU, TU (3/1)					
Big Five (3/11)					
Big Ten Champs. (3/18)					

**Notes:** Hasn't competed in 2017 ... placed second on vault and Maryland states in 2015 ... 2015 NIT competitor ... majoring in architecture.



## EMILY BRAUCKMULLER

AA | 5-1 | Senior  
Auburndale, Fla.

### BRAUCKMULLER Career Highs

**VAULT** 9.775 (vs. MINN, ARIZ, UAA, 1/14/17)  
**BEAM** 9.725 (vs. West Virginia, 1/8/17)  
**FLOOR** 9.850 (Big Five, 3/12/16)

### 2017 MEET-BY-MEET

	VT	UB	BB	FX	AA
WVU (1/8)	9.750	--	--	9.800	--
UAA, ARIZ, MINN (1/14)	9.775	--	--	9.825	--
PSU (1/21)					
Iowa (1/29)					
MICH (2/5)					
Penn, RU, Yale (2/11)					
Pitt, GWU, W&M, Iowa (2/17)					
Penn, W&M, KEN (2/19)					
TU, GWU, WCU, SCSU (2/24)					
WVU, ISU (2/26)					
NHU, WCU, TU (3/1)					
Big Five (3/11)					
Big Ten Champs. (3/18)					

**Notes:** Became the Terps' anchor on floor as a senior ... competed in 12 meets on vault and floor as as junior ... tallied a career-high on floor at the Big Five meet (3/12/16).



## SARAH FALLER

AA | 5-6 | Senior  
Raleigh, N.C.

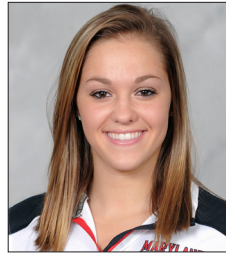
### FALLER Career Highs

**VAULT** 9.800 (3x, last in GWU Quad Meet, 2/28/16)  
**BARS** 9.850 (2x, last vs. Michigan, EMU, 2/8/16)  
**BEAM** 9.800 (3x, last at B1G Championship, 3/21/15)

### 2017 MEET-BY-MEET

	VT	UB	BB	FX	AA
WVU (1/8)	9.750	9.725	9.750	--	--
UAA, ARIZ, MINN (1/14)	9.775	9.750	9.200	--	--
PSU (1/21)					
Iowa (1/29)					
MICH (2/5)					
Penn, RU, Yale (2/11)					
Pitt, GWU, W&M, Iowa (2/17)					
Penn, W&M, KEN (2/19)					
TU, GWU, WCU, SCSU (2/24)					
WVU, ISU (2/26)					
NHU, WCU, TU (3/1)					
Big Five (3/11)					
Big Ten Champs. (3/18)					

**Notes:** Has been in the vault, bars and beam lineup since freshman season ... tied a career high with 9.800 on vault at the GWU Quad Meet (2/28/16) ... tied a career high with a 9.850 vs Michigan and EMU (2/8/16) ... majoring in studio art.



## ALECIA FARINA

AA | 5-4 | Freshman  
Broadview Heights, Ohio

### FARINA Career Highs

**VAULT** 9.750 (vs. MINN, ARIZ, UAA, 1/14/17)  
**BARS** 9.850 (vs. MINN, ARIZ, UAA, 1/14/17)  
**FLOOR** 9.000 (vs. West Virginia, 1/8/17)

### 2017 MEET-BY-MEET

	VT	UB	BB	FX	AA
WVU (1/8)	9.725	9.700	--	9.000	--
UAA, ARIZ, MINN (1/14)	9.750	9.850	--	--	--
PSU (1/21)					
Iowa (1/29)					
MICH (2/5)					
Penn, RU, Yale (2/11)					
Pitt, GWU, W&M, Iowa (2/17)					
Penn, W&M, KEN (2/19)					
TU, GWU, WCU, SCSU (2/24)					
WVU, ISU (2/26)					
NHU, WCU, TU (3/1)					
Big Five (3/11)					
Big Ten Champs. (3/18)					

**Notes:** Tallied a meet-high 9.850 on bars at the Maryland Quad Meet (1/14/17) ... made collegiate debut vs. West Virginia, anchoring on vault and bars ... most decorated gymnast in Ohio high school history.



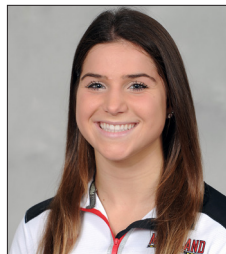
## RACHEL GURNETT

AA | 5-2 | Junior  
Rochester, N.Y.

### 2017 MEET-BY-MEET

	VT	UB	BB	FX	AA
WVU (1/8)	--	--	--	--	--
UAA, ARIZ, MINN (1/14)	--	--	--	--	--
PSU (1/21)					
Iowa (1/29)					
MICH (2/5)					
Penn, RU, Yale (2/11)					
Pitt, GWU, W&M, Iowa (2/17)					
Penn, W&M, KEN (2/19)					
TU, GWU, WCU, SCSU (2/24)					
WVU, ISU (2/26)					
NHU, WCU, TU (3/1)					
Big Five (3/11)					
Big Ten Champs. (3/18)					

**Notes:** Hasn't competed.



## EMMA JOHNSON

AA | 5-1 | Freshman  
Wyckoff, N.J.

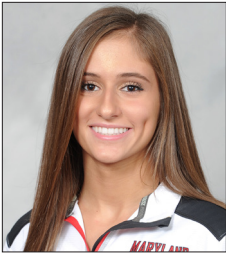
### JOHNSON Career Highs

**VAULT** 9.650 (vs. West Virginia, 1/8/17)  
**FLOOR** 9.100 (vs. MINN, ARIZ, UAA, 1/14/17)

### 2017 MEET-BY-MEET

	VT	UB	BB	FX	AA
WVU (1/8)	9.650	--	--	--	--
UAA, ARIZ, MINN (1/14)	9.475	--	--	9.100	--
PSU (1/21)					
Iowa (1/29)					
MICH (2/5)					
Penn, RU, Yale (2/11)					
Pitt, GWU, W&M, Iowa (2/17)					
Penn, W&M, KEN (2/19)					
TU, GWU, WCU, SCSU (2/24)					
WVU, ISU (2/26)					
NHU, WCU, TU (3/1)					
Big Five (3/11)					
Big Ten Champs. (3/18)					

**Notes:** Made collegiate debut on vault vs. West Virginia (1/8).



## DEANNA MAGRO

AA | 5-4 | Freshman  
Bethel, Conn.

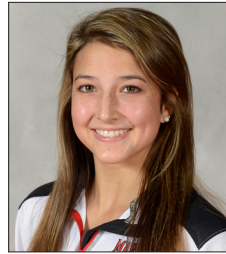
### MAGRO Career Highs

**VAULT** 9.650 (2x, last vs. MINN, ARIZ, UAA, 1/14/17)  
**BEAM** 9.750 (vs. West Virginia, 1/8/17)

### 2017 MEET-BY-MEET

	VT	UB	BB	FX	AA
WVU (1/8)	9.650	--	9.750	--	--
UAA, ARIZ, MINN (1/14)	9.650	--	9.125	--	--
PSU (1/21)					
Iowa (1/29)					
MICH (2/5)					
Penn, RU, Yale (2/11)					
Pitt, GWU, W&M, Iowa (2/17)					
Penn, W&M, KEN (2/19)					
TU, GWU, WCU, SCSU (2/24)					
WVU, ISU (2/26)					
NHU, WCU, TU (3/1)					
Big Five (3/11)					
Big Ten Champs. (3/18)					

**Notes:** Made collegiate debut on vault and beam vs. West Virginia (1/8).



## MEGAN MCCLELLAND

AA | 5-1 | Sophomore  
Rock Hill, S.C.

### MCCLELLAND Career Highs

**BARS** 9.850 (vs. Pitt, Towson, EMU, 1/10/16)  
**BEAM** 9.750 (vs. Penn State, 2/22/16)  
**FLOOR** 9.800 (3x, last at B1G Championships, 3/19/16)

### 2017 MEET-BY-MEET

	VT	UB	BB	FX	AA
WVU (1/8)	--	9.775	--	9.675	--
UAA, ARIZ, MINN (1/14)	--	8.475	--	9.600	--
PSU (1/21)					
Iowa (1/29)					
MICH (2/5)					
Penn, RU, Yale (2/11)					
Pitt, GWU, W&M, Iowa (2/17)					
Penn, W&M, KEN (2/19)					
TU, GWU, WCU, SCSU (2/24)					
WVU, ISU (2/26)					
NHU, WCU, TU (3/1)					
Big Five (3/11)					
Big Ten Champs. (3/18)					

**Notes:** Competed on bars and floor in every meet in 2016 ... tied a career-high with a 9.800 at the Big Ten Championship on floor (3/19/16) ... tallied a career-high 9.800 on beam in collegiate debut (1/10/16).



## EVELYN NEE

AA | 5-3 | Junior  
Vienna, Va.

### NEE Career Highs

**VAULT** 9.750 (Big Five Meet, 3/12/16)  
**BARS** 9.875 (vs. Iowa, 1/31/16)  
**BEAM** 9.875 (vs. Pitt, Towson, EMU, 1/10/16)

### 2017 MEET-BY-MEET

	VT	UB	BB	FX	AA
WVU (1/8)	--	9.675	9.800	--	--
UAA, ARIZ, MINN (1/14)	--	9.775	9.825	--	--
PSU (1/21)					
Iowa (1/29)					
MICH (2/5)					
Penn, RU, Yale (2/11)					
Pitt, GWU, W&M, Iowa (2/17)					
Penn, W&M, KEN (2/19)					
TU, GWU, WCU, SCSU (2/24)					
WVU, ISU (2/26)					
NHU, WCU, TU (3/1)					
Big Five (3/11)					
Big Ten Champs. (3/18)					

**Notes:** One of the Terps' most consistent performers on beam ... posted a career high 9.875 on beam in the 2016 season opener (1/10/16) ... majoring in kinesiology.



## JEN O'NEILL

AA | 5-8 | Freshman  
Fairfield, Conn.

### O'NEILL Career Highs

**VAULT** 9.650 (vs. West Virginia, 1/8/17)

### 2017 MEET-BY-MEET

	VT	UB	BB	FX	AA
WVU (1/8)	9.650	--	--	--	--
UAA, ARIZ, MINN (1/14)					
PSU (1/21)					
Iowa (1/29)					
MICH (2/5)					
Penn, RU, Yale (2/11)					
Pitt, GWU, W&M, Iowa (2/17)					
Penn, W&M, KEN (2/19)					
TU, GWU, WCU, SCSU (2/24)					
WVU, ISU (2/26)					
NHU, WCU, TU (3/1)					
Big Five (3/11)					
Big Ten Champs. (3/18)					

**Notes:** Made collegiate debut vs. West Virginia (1/8/17) ... 2015 Level 10 Vault Northeast Regional medalist ... majoring in marketing.



## KIRSTEN PETERMAN

AA | 5-3 | Freshman  
Cambridge, Ontario

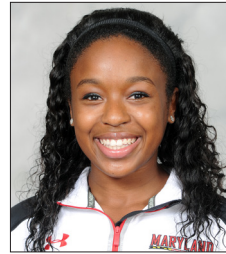
### PETERMAN Career Highs

**VAULT** 9.725 (vs. MINN, ARIZ, UAA, 1/14/17)  
**FLOOR** 9.175 (vs. MINN, ARIZ, UAA, 1/14/17)

### 2017 MEET-BY-MEET

	VT	UB	BB	FX	AA
WVU (1/8)	9.625	--	--	--	--
UAA, ARIZ, MINN (1/14)	9.725	--	--	9.175	--
PSU (1/21)					
Iowa (1/29)					
MICH (2/5)					
Penn, RU, Yale (2/11)					
Pitt, GWU, W&M, Iowa (2/17)					
Penn, W&M, KEN (2/19)					
TU, GWU, WCU, SCSU (2/24)					
WVU, ISU (2/26)					
NHU, WCU, TU (3/1)					
Big Five (3/11)					
Big Ten Champs. (3/18)					

**Notes:** Made collegiate debut on vault vs. West Virginia (1/8/17) ... member of the Canadian National Team since 2012 and senior national team member since 2014 ... posted five top-10 finishes at the 2016 Canadian Championships ... helped Canada to a second place finish at the 2016 Pacific Rim Championships ... intends to major in biology.



## ALEX ROBINSON

AA | 5-0 | Sophomore  
Centennial, Colo.

### ROBINSON Career Highs

**VAULT** 9.525 (vs. Pitt, TU, EMU, 1/10/16)  
**BARS** 9.750 (vs. Pitt, TU, EMU, 1/10/16)

### 2017 MEET-BY-MEET

	VT	UB	BB	FX	AA
WVU (1/8)	--	--	--	--	--
UAA, ARIZ, MINN (1/14)					
PSU (1/21)					
Iowa (1/29)					
MICH (2/5)					
Penn, RU, Yale (2/11)					
Pitt, GWU, W&M, Iowa (2/17)					
Penn, W&M, KEN (2/19)					
TU, GWU, WCU, SCSU (2/24)					
WVU, ISU (2/26)					
NHU, WCU, TU (3/1)					
Big Five (3/11)					
Big Ten Champs. (3/18)					

**Notes:** Hasn't competed yet this season ... competed on vault in two meets and bars in three meets last season ... majoring in business.



## LEAH SLOBODIN

AA | 5-0 | Senior  
Alexandria, Va.

### SLOBODIN Career Highs

**VAULT** 9.775 (NCAA Regional, 4/8/15)  
**BEAM** 9.850 (Big Ten Championships, 3/21/15)  
**FLOOR** 9.825 (NCAA Regional, 4/8/15)

### 2017 MEET-BY-MEET

	VT	UB	BB	FX	AA
WVU (1/8)	--	--	--	9.750	--
UAA, ARIZ, MINN (1/14)	--	--	--	9.750	--
PSU (1/21)					
Iowa (1/29)					
MICH (2/5)					
Penn, RU, Yale (2/11)					
Pitt, GWU, W&M, Iowa (2/17)					
Penn, W&M, KEN (2/19)					
TU, GWU, WCU, SCSU (2/24)					
WVU, ISU (2/26)					
NHU, WCU, TU (3/1)					
Big Five (3/11)					
Big Ten Champs. (3/18)					

**Notes:** Regular beam and floor competitor since sophomore season ... tied career high on floor twice in 2016 (vs. New Hampshire, 2/26; Big Five, 3/12) ... set career highs on vault and floor at the NCAA Regional (4/8/15).



## DOMINIQUEA TROTTER

AA | 5-4 | Junior  
Middletown, N.J.

### TROTTER Career Highs

**VAULT** 9.825 (4x, last vs. GWU, RU, TU, 2/28/16)  
**BEAM** 9.825 (vs. GWU, RU, TU, 2/28/16)  
**FLOOR** 9.800 (vs. GWU, WVU, 1/9/15)

### 2017 MEET-BY-MEET

	VT	UB	BB	FX	AA
WVU (1/8)	--	--	9.725	9.000	--
UAA, ARIZ, MINN (1/14)	--	--	9.625	--	--
PSU (1/21)					
Iowa (1/29)					
MICH (2/5)					
Penn, RU, Yale (2/11)					
Pitt, GWU, W&M, Iowa (2/17)					
Penn, W&M, KEN (2/19)					
TU, GWU, WCU, SCSU (2/24)					
WVU, ISU (2/26)					
NHU, WCU, TU (3/1)					
Big Five (3/11)					
Big Ten Champs. (3/18)					

**Notes:** Regular competitor on vault and beam ... competed in every meet on vault and floor as a freshman ... tied a career high on vault and set a career high on beam vs. George Washington, Rutgers and Towson (2/28/16) ... majoring in criminology and criminal justice.

## 2017 Vault Lineup Meet-by-Meet

Meet	1	2	3	4	5	6
WVU	Magro (9.650)	<del>Peterman (9.625)</del>	Johnson (9.650)	Brauckmuller (9.750)	Faller (9.750)	Farina (9.725)
Arizona, Minn., Alaska	Magro (9.650)	<del>Johnson (9.475)</del>	Peterman (9.725)	Brauckmuller (9.775)	Farina (9.750)	Faller (9.775)
@Penn State						
@Iowa						
Michigan						
@Rutgers, Penn, Yale						
@GWU, Iowa, Pitt						
W&M, Penn, Kentucky						
@Temple, GWU, WCU, SCSU						
@WVU, Iowa State						
NHU, Temple, WCU						
@Big Five						
@Big Ten Championships						

## 2017 Uneven Bars Lineup Meet-by-Meet

Meet	1	2	3	4	5	6
WVU	Faller (9.725)	McClelland (9.775)	Bertorello (9.725)	Agaran (9.800)	<del>Nee (9.675)</del>	Farina (9.700)
Arizona, Minn., Alaska	Faller (9.775)	<del>McClelland (8.475)</del>	Bertorello (9.750)	Agaran (8.875)	Nee (9.775)	Farina (9.850)
@Penn State						
@Iowa						
Michigan						
@Rutgers, Penn, Yale						
@GWU, Iowa, Pitt						
W&M, Penn, Kentucky						
@Temple, GWU, WCU, SCSU						
@WVU, Iowa State						
NHU, Temple, WCU						
@Big Five						
@Big Ten Championships						

## 2017 Balance Beam Lineup Meet-by-Meet

Meet	1	2	3	4	5	6
WVU	Magro (9.750)	<del>Bertorello (9.600)</del>	Trotter (9.725)	Nee (9.675)	Agaran (9.750)	Faller (9.750)
Arizona, Minn., Alaska	<del>Magro (9.125)</del>	Bertorello (9.600)	Trotter (9.625)	Nee (9.825)	Agaran (9.250)	Faller (9.200)
@Penn State						
@Iowa						
Michigan						
@Rutgers, Penn, Yale						
@GWU, Iowa, Pitt						
W&M, Penn, Kentucky						
@Temple, GWU, WCU, SCSU						
@WVU, Iowa State						
NHU, Temple, WCU						
@Big Five						
@Big Ten Championships						

## 2017 Floor Lineup Meet-by-Meet

Meet	1	2	3	4	5	6
WVU	McClelland (9.675)	Trotter (9.000)	Slobodin (9.750)	Bertorello (9.700)	Brauckmuller (9.800)	<del>Farina (9.000)</del>
Arizona, Minn., Alaska	McClelland (9.600)	<del>Johnson (9.100)</del>	Peterman (9.175)	Slobodin (9.750)	Bertorello (9.800)	Brauckmuller (9.825)
@Penn State						
@Iowa						
Michigan						
@Rutgers, Penn, Yale						
@GWU, Iowa, Pitt						
W&M, Penn, Kentucky						
@Temple, GWU, WCU, SCSU						
@WVU, Iowa State						
NHU, Temple, WCU						
@Big Five						
@Big Ten Championships						