



2011-12 PENN STATE LADY LION BASKETBALL

WOMEN'S BASKETBALL CONTACT:
 Kristina Petersen
 Twitter: @ladylionsid
 Website: www.GoPSUsports.com
 Email: kap18@psu.edu
 Cell: 814-883-4581
 Office: 814-865-1757

Penn State Athletic Communications: 101D Bryce Jordan Center, University Park, PA 16802 ♦ Office: 814-865-1757 ♦ Fax: 814-863-3165

SCHEDULE/RESULTS

NOVEMBER	
Sat. 5	BLOOMSBURG (exh.).....W, 101-81 Lady Lion Classic (University Park, Pa.)
Fri. 11	WASHINGTON STATE..... W, 72-60
Sun. 13	MIDDLE TENN. (BTN.com)... W, 65-49
Thurs. 17	at DelawareL, 71-80
Sun. 20	at South Carolina (SportSouth).W, 55-50 John Ascuaga's Nugget Classic (Reno, Nev.)
Fri. 25	vs. Iowa StateW, 66-59
Sat. 26	at NevadaW, 103-65

Big Ten/ACC Challenge	
Wed. 30	#14/13 N. CAROLINA (BTN)..W, 103-84

DECEMBER	
Big 12/Big Ten Challenge	
Sat. 3	at #19/25 Texas Tech.....L, 66-70
Tues. 6	VIRGINIA TECH (BTN.com)..... 7 p.m.
Sun. 11	UMES (BTN.com)..... 2 p.m.
Sun. 18	WAGNER (BTN.com)..... 1 p.m.
Wed. 21	at Bucknell..... 7 p.m.
Fri. 30	NEBRASKA * (BTN.com)..... 7 p.m.

JANUARY	
Mon. 2	at Wisconsin * (BTN-WC) 1/3 p.m.
Sat. 7	MICHIGAN STATE * (CBS)..... 2 p.m.
Thurs. 12	MICHIGAN * (BTN) 6 p.m.
Sun. 15	at Nebraska * (BTN.com)..... 3:05 p.m.
Thurs. 19	at Illinois * (BTN.com)..... 8 p.m.
Sun. 22	IOWA * (ESPN2) 3 p.m.
Thurs. 26	at Michigan * (BTN.com)..... 7 p.m.
Sun. 29	at Michigan State * (ESPN2) 3 p.m.

FEBRUARY	
Thurs. 2	INDIANA * (BTN.com) 7 p.m.
Sun. 5	at Minnesota * (BTN.com) 3 p.m.
Thurs. 9	WISCONSIN * (BTN.com) 7 p.m.
Sun. 12	at Northwestern * (BTN) 1 p.m.
Thurs. 16	at Purdue * (BTN)..... 6 p.m.
Mon. 20	OHIO STATE * (ESPN2)..... 7 p.m.

WBCA Pink Zone at Penn State	
Sun. 26	MINNESOTA * (BTN-WC) ...12/2/4 p.m.

MARCH	
Thur.-Sun. 1-4	Big Ten Tournament (Indianapolis)
Sat.-Tues. 17-20	NCAA Tourn. 1st & 2nd Round
Sat.-Tues. 24-27	NCAA Tournament Regionals

APRIL	
Sun./Tues. 1/3	NCAA Final Four (Denver, Colo.)

BOLD CAPS indicates home game.
 * - indicates Big Ten game.
 All times are Eastern Time.
 BTN - Big Ten Network
 BTN.com - BigTenNetwork.com
 Schedule subject to change. Please visit www.GoPSUsports.com for up-to-date tip times.

Game #9: Virginia Tech at #17/15 Penn State Tues., Dec. 6 ▶ 7 p.m. ▶ Bryce Jordan Center ▶ University Park, Pa.

		SETTING THE SCENE
Penn State Lady Lions	Virginia Tech Hokies	The Virginia Tech Game
Record: 6-2, 0-0 Big Ten Last Game: Texas Tech 70, PSU 66 (12/3) Head Coach: Coquese Washington Career Record: 72-62 (5th yr.) Record at PSU: 72-62 (5th yr.)	Record: 2-5, 0-0 ACC Last Game: Iowa 58, VT 47 (11/30) Head Coach: Dennis Wolff Career Record: 279-220 (18th yr.) Record at VT: 2-5 (1st yr.)	Series: PSU leads 1-0 Last Meeting: PSU 61, VT 48 (3/23/04) Streak: Penn State - 1 win Television: "Student U" re-air on the BTN on Wed., Dec. 7 at 3:30 p.m. Radio: The game is on the Penn State Sports Network and ESPN 1450 locally with Jerry Fisher and Brian Tripp calling the action. The audio feed is available at www.GoPSUsports.com . Webstream: BTN.com Live Stats: GoPSUsports.com
Statistical Leaders Points Maggie Lucas (18.3) Rebounds Mia Nickson (7.8) Assists Alex Bentley (5.9)	Statistical Leaders Points Monet Tellier (18.9) Rebounds Alyssa Fenyn (5.9) Assists Aerial Wilson (4.6)	

GAME DAY INFORMATION

SCOUTING VIRGINIA TECH

The Hokies are 2-5 on the season with wins over Old Dominion and George Washington on the season. Monet Tellier leads three Hokies averaging double figures with an 18.9 scoring average. Aerial Wilson accounts for 12.1 points and a team-best 4.6 assists per game, while Alyssa Fenyn averages 10.1 points and 5.9 rebounds.

ALL-TIME VS. THE HOKIES

The Lady Lions claimed the win in the only previous meetings between the schools with a 61-48 decision in the 2004 NCAA Tournament in Blacksburg. The Hokies have never played in State College. Penn State is 34-25 all-time against ACC opponents.

LAST TIME VS. VT

The Lady Lions earned a 61-48 win over Virginia Tech in Blacksburg in the second round of the 2004 NCAA Tournament. Tanisha Wright was 12-for-18 from the field and finished with a game-high 28 points and a pair of steals. Jess Strom added 17 points, seven rebounds and five assists in the win. The Hokies held PSU's all-time leading scorer, Kelly Mazzante, to just nine points.

STORYLINES

- ✓ Alex Bentley is five points away from becoming the 33rd member of a Penn State's 1,000-point club.
- ✓ With 139 rejections, Nikki Greene needs two blocks to pass Tina Henry (140) for sixth place on PSU's all-time blocks chart.
- ✓ Lucas moved into sixth place on Penn State's career three-pointers list (130).
- ✓ The Lady Lions broke the school record with 14 three-points in the win over #14/13 North Carolina Nov. 30.
- ✓ Penn State scored 100 or more points in consecutive games for the first time since 1992-93 with a 103-84 win over North Carolina and a 103-65 victory at Nevada.
- ✓ Penn State's 19-point win over #14/13 North Carolina was the biggest margin of victory over a ranked opponent since a 73-56 win over #8 Michigan State on Jan. 23, 2005.
- ✓ Penn State is 17th in Associated Press poll and 15th in the ESPN/USA Today Coaches Poll.
- ✓ The Lady Lions were picked to finish first in the Big Ten in a vote of the coaches and media.

UP NEXT

The Lady Lions continue their homestand with their first-ever meeting with UMES on Sunday at 2 p.m. The game is a Subway Full Court 4-Pack, fans get four reserved game tickets, one voucher good for four 6-inch subs at any of seven State College Subway locations, and one voucher good for four soft drinks at the BJC, for just \$40.



2011-12 ROSTER

PENN STATE LADY LIONS

No.	Name	Pos.	Cl./Elg.	Ht.	Hometown/High School (Previous School)
2	Dara Taylor	G	Jr./Jr.#	5-8	Wilmington, Del./Caravel Academy (Maryland)
5	Talia East *	F/C	So./So.	6-3	Philadelphia, Pa./Friends' Central School
12	Zhaque Gray ***	G	Sr./Sr.	5-8	Chicago, Ill./Prep John Hope
15	Renee Womack ***	G	Sr./Sr.	5-10	Lansdale, Pa./Methacton
20	Alex Bentley **	G	Jr./Jr.	5-7	Indianapolis, Ind./Ben Davis
23	Ariel Edwards *	F	So./So.	6-2	Elmont, N.Y./Christ the King
24	Mia Nickson *	F	Sr./Jr.	6-2	Ashburn, Va./Notre Dame Acad. (Boston College)
25	Gizelle Studevent **	G	Jr./Jr.	5-11	La Jolla, Calif./The Bishop's School
33	Maggie Lucas *	G	So./So.	5-10	Narberth, Pa./Germantown Academy
40	Marisa Wolfe **	F	Jr./Jr.	6-2	Ford City, Pa./Ford City
44	Tori Waldner	F	Fr./Fr.	6-5	Milton, Ga./Milton
54	Nikki Greene **	F/C	Jr./Jr.	6-4	Diboll, Texas/Diboll

Head Coach: Coquese Washington (Notre Dame '92)

Assistant Coaches: Fred Chmiel, Kia Damon, Maren Walseth

Captains: Mia Nickson, Marisa Wolfe

* Indicates letters earned # - Taylor will sit out the 2011-12 season due to NCAA transfer rules.

VIRGINIA TECH HOKIES

No.	Name	Pos.	Cl.	Ht.	Hometown/High School (Previous School)
2	Kerry Sarver	G	Jr.	5-5	Leesburg, Va./Loudoun County
3	Aerial Wilson	G	Jr.	5-8	Cocoa, Fla./Rockledge
12	Rachel Nichols	G	Jr.	5-10	Richmond, Va./Mills E. Godwin
13	Alyssa Fenyn	G	Jr.	6-0	Newark, N.Y./Newark
20	Nia Evans	F	So.	6-0	Decatur, Ga./Redan
21	Brittini Montgomery	F	So.	6-3	Ft. Pierce, Fla./Ft. Pierce Central
22	Porschia Hadley	F/C	R-So.	6-3	Montezuma, Ga./Macon County
23	Larryqua Hall	G	Fr.	5-10	Marietta, Ga./Hillgrove
31	Monet Tellier	G	So.	5-11	Charlotte, N.C./East Mecklenburg
33	Kelsey Conyers	G	Fr.	5-9	Chesterfield, Va./Cosby
43	Latorri Hines-Allen	F	So.	6-1	Montclair, N.J./Montclair

Head Coach: Dennis Wolff

Assistant Coaches: Billi Godsey, Chantelle Anderson, Thomas Joyce

TEAM COMPARISON

PENN STATE		VIRGINIA TECH
Lucas (18.3)	Scoring Leader	Tellier (18.9)
Nickson (7.8)	Rebounding Leader	Fenyn (5.9)
Bentley (5.9)	Assist Leader	Wilson (4.6)
Bentley (2.6)	Steals Leader	Tellier (2.1)
East (1.6)	Blocks Leader	Evans (0.6)
75.1	Scoring Offense	59.1
64.6	Scoring Defense	63.6
+10.5	Scoring Margin	-4.4
42.9	Rebounds Per Game	34.7
+0.3	Rebound Margin	-3.6
13.6	Assists Per Game	13.1
8.9	Steals Per Game	8.7
.426	Field Goal Pct.	.404
.333	FG Defense Pct.	.389
.361	3-pt. FG Pct.	.389
.277	3-pt. FG Pct. Def.	.312
.747	Free Throw Pct.	.633
0.9	Assist/Turnover	0.8
Lost 1	W/L Streak	Lost 4

SERIES HISTORY

Overall:	PSU lead 1-0
Last meeting:	3/23/04
Last result:	PSU, 61-48
Current streak:	PSU - 1 win
Last 10:	PSU, 1-0
Last 10 meetings:	3/23/04 A W, 61-48

QUICK FACTS

THE UNIVERSITY

Location: University Park, Pa.
 Founded: 1855
 Enrollment: 42,294
 Colors: Blue & White
 Nickname: Lady Lions
 Conference: Big Ten
 President: Dr. Rodney Erickson
 Director of Athletics: Tim Curley
 Acting Director of Athletics: Dr. David Joyner
 Senior Woman Administrator: Charmelle Green
 Facility (cap.): Bryce Jordan Center (15,261)
 All-Time Record at BJC: 178-47 (16 seasons)

ATHLETIC COMMUNICATIONS

WBB Contact: Kristina Petersen
 Phone/Fax: (814) 865-1757/(814) 863-3165
 E-mail: kap18@psu.edu
 Address: 101-D Bryce Jordan Center
 University Park, Pa. 16802
 Press Row Phone: 814-863-3294
 Website: www.GoPSUsports.com
 Twitter: @ladylionsid

TEAM INFORMATION

2011-12 Record: 6-2
 Home: 3-0 Away: 2-2 Neutral: 1-0
 Big Ten Record: 0-0
 Home: 0-0 Away: 0-0
 Letterwinners Returning/Lost: 10/1
 Starters Returning/Lost: 4/1
 Big Ten Tournament: Runner-up
 Postseason: NCAA Second Round

THE HISTORY

First Year of Women's Basketball: 1965
 All-Time Record: 811-375 (47 seasons)
 All-Time Big Ten Rec.: 204-110 (19 seasons)
 NCAA Tournament Appearances: 22
 NCAA Tournament Record: 27-22

WOMEN'S BASKETBALL

Head Coach: Coquese Washington
 Alma Mater: Notre Dame '92
 Overall Record: 72-62 (fifth season)
 School Record: 72-62 (fifth season)
 Basketball Office Phone: 814-863-2672
 Best Time To Reach Coach: Through SID
 Assistant Coaches (Alma Mater):
 Fred Chmiel (Excelsior College)
 Kia Damon (Millersville '97)
 Maren Walseth (Penn State '02)
 Twitter: @pennstatewbb
 Facebook: facebook.com/pennstateladylions

PRONUNCIATIONS

Coquese ko-KWEES
 Chmiel shuh-MEAL
 Maren Walseth MARR-en WALL-seth
 Zhaque Jacque-QWAY
 Gizelle Studevent juh-ZELL STEW-duh-vent
 Talia tah-LEE-uh
 Ariel AIR-e-I
 Dara DAR-uh



STANDINGS (thru games of 12/4)

Team	Big Ten			Overall		
	W	L	Pct.	W	L	Pct.
Ohio State	0	0	.000	7	0	1.000
Michigan	0	0	.000	8	1	.889
Nebraska	0	0	.000	7	1	.875
Purdue	0	0	.000	7	1	.875
Northwestern	0	0	.000	6	1	.857
PENN STATE	0	0	.000	6	2	.750
Michigan State	0	0	.000	6	3	.667
Iowa	0	0	.000	5	3	.625
Minnesota	0	0	.000	4	5	.444
Illinois	0	0	.000	3	5	.375
Wisconsin	0	0	.000	3	5	.375
Indiana	0	0	.000	2	5	.286

BIG TEN SCHEDULE

DECEMBER 5

Saint Louis at Wisconsin 8 p.m.

DECEMBER 6

Detroit at Michigan State 7 p.m.

Virginia Tech at Penn State 7 p.m.

DECEMBER 7

Illinois at Illinois State 8 p.m.

Indiana at St. Bonaventure 7 p.m.

Iowa at Iowa State 8 p.m.

Air Force at Minnesota 8 p.m.

DECEMBER 8

Michigan at Detroit TBA

Creighton at Nebraska 8 p.m.

Wisconsin at Kansas 8 p.m.

DECEMBER 9

Western Illinois at Iowa 8 p.m.

DECEMBER 10

Michigan State at Texas 3 p.m.

Harvard at Minnesota 5 p.m.

Nebraska at Northern Arizona 4:30 p.m.

Northwestern at Loyola (Ill.) 3 p.m.

Canisius at Ohio State Noon

Notre Dame at Purdue Noon

DECEMBER 11

Indiana at IUPUI 2 p.m.

Michigan at Eastern Michigan 2 p.m.

Alcorn State at Minnesota 3 p.m.

UMES at Penn State 2 p.m.

Purdue at Central Michigan 2 p.m.

Drake at Wisconsin 3 p.m.

All times are Eastern.

PROJECTED STARTERS



12 ZHAQUE GRAY G
Sr., 5-8, Chicago, Ill.
13.9 pts., 3.8 rebs., 2.4 asst., .405 3FG%

Notes: Was 8-for-16 from the field en route to team-best 25 pts. vs. #13 UNC ... Notched 21 points and two steals at Nevada ... Had 14 points vs. Iowa St. ... Named to Lady Lion Classic All-Tournament Team.



20 ALEX BENTLEY G
Jr., 5-7, Indianapolis, Ind.
15.6 ppg, 5.9 apg, 2.6 spg, .906 FT%

Notes: Had 18 points at #19 Texas Tech ... First double-double with 15 pts., 15 assts. vs. UNC ... Nugget Classic Tournament MVP ... Wade Trophy, Naismith Award & Wooden Award watch lists.



33 MAGGIE LUCAS G
So., 5-10, Narberth, Pa.
18.3 ppg, 4.0 rpg, .333 3FG%, .833 FT%

Notes: Tallied 15 pts. at #19 Texas Tech ... Had 21 points in 22 minutes vs. #13 UNC ... Nugget Classic All-Tournament team ... Naismith Award watch list ... 2011 Big Ten Freshman of the Year.



23 ARIEL EDWARDS F
So., 6-2, Elmont, N.Y.
6.3 ppg, 4.5 rpg, 1.1 apg

Notes: Had 3 steals at Texas Tech ... Recorded 13 points, 8 rebs., 3 assts. in win over #13 UNC ... Was 5-for-7 from the field en route to 10 pts., 7 rebs. at South Carolina.



54 NIKKI GREENE C
Jr., 6-4, Diboll, Texas
8.1 ppg, 7.3 rpg, 1.1 bpg, .808 FT%

Notes: Recorded 11 pts. and 8 rebs. at #19 Texas Tech ... Notched 13 pts., 6 rebs. and 3 blks. in win over #13 UNC ... 2011 All-Big Ten honorable mention selection.

LAST TIME OUT: The Lady Lions struggled from the field in the second half, shooting just 25% (8-32), as #19/25 Texas Tech used the energy from the 8,923 fans in attendance to claim a 70-66 win over the Lady Lions Saturday. The Lady Lions closed within one point late, but a three-pointer by Jordan Barncastle as the shot clock expired sealed the four-point win for the Lady Raiders. **Alex Bentley** had a game-high 18 points to go along with two rebounds, three assists and a steal, while sophomore guard **Maggie Lucas** added 15 points and three steals. Junior center **Nikki Greene**, playing in her home state of Texas for the first time, staved off foul trouble to register 11 points and eight rebounds.

SCOUTING VIRGINIA TECH: The Hokies are 2-5 on the season with wins over Old Dominion and George Washington on the season. Monet Tellier leads three Hokies averaging double figures with an 18.9 scoring average. She also averages 5.1 rebounds per outing. Aerial Wilson accounts for 12.1 points and a team-best 4.6 assists per game, while Alyssa Fenyn averages 10.1 points and 5.9 rebounds.

ALL-TIME VS. THE HOKIES: The Lady Lions claimed the win in the only previous meetings between the schools with a 61-48 decision in the 2004 NCAA Tournament in Blacksburg. The Hokies have never played in State College. Penn State is 34-25 all-time against ACC opponents.

WHAT'S AT STAKE

A Penn State Win Would:

- Make Penn State 7-2 on the season.
- Improve the Lady Lions to 2-0 all-time vs. VT.

LAST TIME VS. VT: The Lady Lions earned a 61-48 win over Virginia Tech in Blacksburg in the second round of the 2004 NCAA Tournament. Tanisha Wright was 12-for-18 from the field and finished with a game-high 28 points and a pair of steals. Jess Strom added 17 points, seven rebounds and five assists in the win. The Hokies held PSU's all-time leading scorer, Kelly Mazzante, to just nine points.

THE NICKSON FACTOR: Both the of Lady Lions' losses this season have come without junior forward **Mia Nickson** in the lineup. In the four games that PSU has played without Nickson, Penn State has been outrebounded in all four contests and has a -5.7 rebounding margin in those games (38.2-44.0). The Lions have split their four games without Nickson. With Nickson in the lineup, the Lady Lions have a +18.3 rebounding margin (47.5-41.2).

LAST TIME VS. VIRGINIA TECH

MAR. 23, 2004 • BLACKSBURG, VA.

Virginia Tech 48 • 23-8		Total	3-Pr	Rebounds										Off	Def	TP	PF	TP	A	TO	BLK	STL	Min
#	Player	FG	FGA	FG-FTA	FT	FTA	Off	Def	Total	PF	TP	A	TO	BLK	STL	Min	Rebounds	Points	Assists	Blocks	Steals	Minutes	
14	KUBLINA, Ieva	f	5-15	2-3	3-4	2	5	7	1	15	0	2	1	2	38								
32	GARDIN, Kerri	f	4-9	0-0	0-1	0	4	4	2	8	3	2	3	0	37								
54	GIBSON, Erin	c	4-9	0-0	1-4	5	3	8	3	9	1	2	1	0	37								
23	CHRIST, Dawn	g	0-5	0-1	0-0	0	5	5	3	0	1	3	0	0	28								
24	MASON, Carrie	g	5-9	2-3	4-4	0	3	3	1	16	2	4	0	2	40								
05	COPELAND, Kirby	g	0-3	0-0	0-0	1	1	2	1	0	1	0	1	0	9								
10	RECCHIA, Fran	g	0-0	0-0	0-0	0	0	0	0	0	0	0	0	0	0								
25	ANDERSON, Britney	g	0-0	0-0	0-0	1	1	2	0	0	0	1	0	0	6								
42	SIMMONS, Davina	g	0-0	0-0	0-0	1	0	1	1	0	0	0	0	0	5								
45	FINNERTY, Megan	g	0-0	0-0	0-0	0	0	0	0	0	0	0	0	0	0								
Team		18-50		4-7	8-13	12	23	35	12	48	7	16	5	4	200								
Totals		18-50		4-7	8-13	12	23	35	12	48	7	16	5	4	200								
FG % 1st Half:		12-30		40.0%	2nd half:		6-20		30.0%		Game:		18-50		36.0%		Deadball						
3FG % 1st Half:		2-4		50.0%	2nd half:		2-3		66.7%		Game:		4-7		57.1%		Rebounds						
FT % 1st Half:		2-3		66.7%	2nd half:		6-10		60.0%		Game:		8-13		61.5%								
Penn State 61 • 27-5		Total	3-Pr	Rebounds										Off	Def	TP	PF	TP	A	TO	BLK	STL	Min
#	Player	FG	FGA	FG-FTA	FT	FTA	Off	Def	Total	PF	TP	A	TO	BLK	STL	Min	Rebounds	Points	Assists	Blocks	Steals	Minutes	
13	Mazzante, Kelly	f	4-16	1-5	0-0	1	3	4	2	9	0	1	0	0	36								
22	Brungo, Jess	f	1-8	0-4	2-2	2	3	5	4	0	0	0	0	1	29								
50	Russell, Rechina	c	0-2	0-0	0-0	4	1	5	4	0	0	1	1	24									
23	Strom, Jess	g	7-13	2-6	1-1	1	6	7	2	17	5	4	0	2	40								
33	Wright, Tanisha	g	12-18	0-1	4-4	0	4	4	1	28	2	2	1	2	39								
15	Brown, Amanda	g	0-1	0-0	0-0	0	1	1	4	0	0	0	0	3	17								
20	Joseph, Hazel	g	0-0	0-0	0-0	0	0	0	0	0	0	0	0	0	0								
01	Schwab, Ashli	g	0-2	0-0	0-0	0	1	1	0	0	0	0	0	0	0								
33	Harris, Jennifer	g	1-1	0-0	1-2	0	0	0	3	0	0	0	0	0	6								
Team		25-61		3-16	8-9	11	24	35	16	61	7	8	8	6	200								
Totals		25-61		3-16	8-9	11	24	35	16	61	7	8	8	6	200								
FG % 1st Half:		10-29		34.5%	2nd half:		15-32		46.9%		Game:		25-61		41.0%		Deadball						
3FG % 1st Half:		1-8		12.5%	2nd half:		2-8		25.0%		Game:		3-16		18.8%		Rebounds						
FT % 1st Half:		4-5		80.0%	2nd half:		4-4		100.0%		Game:		8-9		88.9%								
Official:		Scott Yarbrough, Lawson Newton, Felicia Grinier		Technical Fouls:		Virginia Tech-None, Penn State-TEAK		Attendance:		7128		NCAA Women's Basketball Championships		Second Round - #1 Penn State vs. #8 Virginia Tech		Tonight's Attendance of 7,128 is the 8th largest crowd in Cassell Coliseum for a women's basketball game.							
Score by periods		1st		2nd		Total																	
Virginia Tech		28		20		48																	
Penn State		25		36		61																	
Last FG - VT 2nd-00:13, PSU 2nd-02:42.		Largest lead - VT by 5, 2nd-37:01, PSU by 18 2nd-02:51.		Score tied - 6 times.		Lead changed - 11 times.																	



BENTLEY CLOSING IN ON 1,000: Junior guard **Alex Bentley** needs five points to become the 33rd player in school history with 1,000 points. She will be the 15th junior to reach the milestone and first Lady Lion to accomplish the feat since Tyra Grant reached the 1,000-point plateau in 2008.

TOPPLING TOP 15 FOE: The Lady Lions shot 48.7% from the field and 58.3% from three-point range en route to a 103-84 win over #14/13 North Carolina in the Big Ten/ACC Challenge Nov. 30. It was the first win over a ranked opponent for Penn State since topping No. 14/13 Iowa (68-59) on Dec. 30, 2010. The 19-point win was the biggest margin of victory over a ranked opponent since a 73-56 win over #8 Michigan State on Jan. 23, 2005.

CONSECUTIVE 100s: The Lady Lions reached 100 points for the second consecutive game with a 103-84 win over #14/13 North Carolina Nov. 30 and a 103-65 victory at Nevada Nov. 26. The last time Penn State scored 100 points in back-to-back games was in 1993 when the Lady Lions defeated Nebraska, 102-66, on Jan. 2 and Illinois, 101-71, on Jan. 7.

SCHOOL RECORD FROM DEEP: The Lady Lions connected on a school record 14 three-pointers in the 103-84 win over North Carolina Nov. 30. Penn State breaks the mark of 13 makes from beyond the arc, which was accomplished twice (at Dayton, 11/21/10; vs. St. Francis (12/2/99)). The 14 threes by PSU also tie for the most by a North Carolina opponent.

BENTLEY'S DOUBLE VISION: Junior **Alex Bentley** posted the first double-double of her career with 15 points and a personal-best 15 assists in the upset win over #14/13 North Carolina Nov. 30. Bentley's 15 assists are a career high and are tied for 11th on Penn State's single-game chart.

BACK-TO-BACK 20s FOR ZHA ZHA: Senior guard **Zhaque Gray** reached the 20-point for the second-straight game with 25 points on 6-of-10 shooting from long range in the win over #14/13 North Carolina Nov. 30. This is the second time in her career that she had back-to-back 20-point games with the first coming last year against Dayton (27) and Rider (22).

LUCAS INTO 6TH ON 3S LIST: Sophomore guard **Maggie Lucas** moved into sixth place on Penn State's career three-pointers list with five triples versus North Carolina Nov. 30. She passed Tina Nicholson (1993-96) with her effort versus the Tar Heels.

Career Three-Point Field Goals Made

1. 357 Kelly Mazzante, 2001-04
2. 230 Lisa Shepherd, 1998-01
3. 191 Jess Strom, 2002-05
4. 179 Tyra Grant, 2007-10
5. 175 Tiffany Longworth, 1994-97
6. **130 Maggie Lucas, 2011-pres.**

HIGH SCORING HALF: The Lady Lions scored 58 points in the first half of the win over #14/13 North Carolina, marking the first time the Lions have scored more than 55 points in a half since tallying 55 in the second half at Boston College on Dec. 2, 2010.

NUGGET CROWN: Penn State claimed the Nugget Classic title with Thanksgiving weekend wins over Iowa State (66-59) and host Nevada (103-65). It is the 28th all-time regular-season tournament title for the Lady Lions and the second this season (Lady Lion Classic). Junior guard **Alex Bentley** was selected as the Tournament MVP after averaging 18.0 points, 4.5 assists and 4.5 steals in two games. She also shot 57.1% from the field. Sophomore guard **Maggie Lucas** also collected All-Tournament team accolades as she averaged 22.0 points, 6.5 rebounds and 3.0 assists in the Nugget Classic.

STEALING BENTLEY: Junior guard **Alex Bentley** worked on her pick-pocketing skills in Nevada with a career-best five steals against the Wolf Pack in the Nugget Classic title game. She also nabbed four steals in the opening round win over Iowa State.

NEWEST 500 BOARD MEMBER: Junior center **Nikki Greene** became the 27th player in school history to reach 500 rebounds with seven caroms against Iowa State on Nov. 25. She joins an elite list that it topped by Kahadeejah Herbert (1,103) and Susan Robinson (1,070).

WALDNER ON THE BOARD: Freshman post player **Tori Waldner** scored her first collegiate points with a 15-foot jumper at Iowa State Nov. 25. She finished the contest with five points and connected on both of her shots from the field. Waldner also blocked her first career shot.

NICKSON RETURNS: Junior post player **Mia Nickson** returned after missing two games with concussion-like symptoms. She hauled in 13 rebounds to go along with five points and two assists in the win over Iowa State in the Nugget Classic.

FOUL FACTOR: The Lady Lions were charged with 32 fouls in the win over Iowa State, its most fouls in a game since they committed 30 fouls against UCSB Nov. 20, 2001.

PSU 17TH IN AP POLL: The Penn State Lady Lions slipped one to 17th in the Dec. 5 Associated Press poll. The Lady Lions peaked at No. 11 in the Nov. 14 poll, their highest ranking in the AP poll since they were fifth in the final 2004 poll. Additionally, Penn State made its first appearance in the preseason AP poll since the 2003-04 campaign.

LIONS RANKED 15TH IN COACHES POLL: The Lady Lions moved up one spot to 15th in the Nov. 29 ESPN/USA Today coaches poll. Penn State peaked at 12th, the highest ranking in the ESPN/USA Today Coaches' Poll for the Lady Lions since they were seventh in the final 2004 poll. Additionally, Penn State appeared in the preseason coaches' poll since starting the 2003-04 campaign eighth.

A BLOCK EAST: Sophomore center **Talia East** rejected seven shots in the win at South Carolina Nov. 20. The seven blocks are tied for third on Penn State's single-game charts and are the most since **Nikki Greene** blocked seven shots against Purdue on Jan. 28, 2010. Additionally, East hauled in 15 rebounds against the Gamecocks, the most rebounds for a Penn State player since **Mia Nickson** had 15 caroms at Iowa on Feb. 6, 2011.

PENN STATE'S OVERALL/BIG TEN YEAR-BY-YEAR REVIEW

Year	Overall	Big Ten	Home	BT Home	Road	BT Road	Neutral
1992-93	22-6	14-4	12-2	9-0	9-4	5-4	0-0
1993-94	28-3	16-2	14-0	9-0	11-2	7-2	3-1
1994-95	26-5	13-3	14-2	8-0	9-3	5-3	3-0
1995-96*	27-7	13-3	14-2	8-0	8-4	5-3	5-1
1996-97	15-12	8-8	9-3	5-3	5-6	3-5	1-3
1997-98	21-13	8-8	10-5	4-4	6-6	4-4	5-2
1998-99	22-8	12-4	9-2	6-2	9-4	6-2	4-2
1999-00	30-5	15-1	14-0	8-0	9-2	7-1	7-3
2000-01	19-10	11-5	11-2	7-1	6-5	4-4	2-3
2001-02	23-12	11-5	10-4	6-2	9-5	5-3	4-3
2002-03	26-9	13-3	16-0	8-0	7-7	5-3	2-2
2003-04	28-6	15-1	12-1	8-0	9-3	7-1	6-2
2004-05	19-11	13-3	12-0	8-0	6-9	5-3	1-2
2005-06	13-16	6-10	8-6	5-3	3-8	1-7	2-2
2006-07	15-16	7-9	12-1	7-1	2-12	0-7	1-3
2007-08	13-18	4-14	10-6	3-6	3-11	1-8	0-1
2008-09	11-18	6-12	8-6	4-5	2-9	2-7	1-3
2009-10	17-14	8-10	9-6	5-4	5-7	3-6	3-1
2010-11	25-10	11-5	14-4	6-2	7-4	5-3	4-2
2011-12	6-2	0-0	3-0	0-0	2-2	0-0	1-0

* First season at the Bryce Jordan Center



PENN STATE'S RECORD WHEN...

Playing at home	3-0
Playing on the road	2-2
Playing at a neutral site	1-0
vs. Top 10 teams	0-0
vs. Top 25 teams	1-1
Games decided by 3 points or less	0-0
Games decided by 4-10 points	2-2
Games decided by 11-19 points	3-0
Games decided by 20 points or more	1-0
Leading at the half	4-2
Tied at the half	0-0
Trailing at the half	2-0
Leading with 5:00 remaining	5-0
Trailing with 5:00 remaining	1-2
Tied with 5:00 remaining	0-0
In overtime	0-0
PSU scores 40-49 points	0-0
PSU scores 50-59 points	1-0
PSU scores 60-69 points	2-1
PSU scores 70-79 points	1-1
PSU scores 80 points or more	2-0
PSU shoots 45% or better	3-0
PSU shoots less than 45%	3-2
PSU shoots better than opponent	6-1
Opponent shoots better than PSU	0-1
Opponent scores less than 39 points	0-0
Opponent scores 40-49 points	1-0
Opponent scores 50-59 points	2-0
Opponent scores 60-69 points	2-0
Opponent scores more than 70 points	1-2
Opponent shoots better than 45%	0-1
Opponent shoots less than 45%	6-1
PSU outrebounds opponent	4-0
Opponent outrebounds PSU or tied	2-2
PSU commits 14 or less turnovers	4-2
PSU commits 15 or more turnovers	2-0
PSU makes at least 5 3-pointers	4-2
PSU makes four 3-pointers or less	2-0
Recording 7 or more steals	5-1
Recording 6 or less steals	1-1
Wearing white uniforms	4-0
Wearing blue uniforms	2-2
Wearing gray uniforms	0-0
Wearing pink uniforms	0-0
Penn State wins the tip	4-0
Penn State loses the tip	2-2
Penn State scores first	4-1
Opponent scores first	2-1
Playing during the day (before 5 p.m.)	3-1
Playing at night	3-1
On Monday	0-0
On Tuesday	0-0
On Wednesday	1-0
On Thursday	0-1
On Friday	2-0
On Saturday	1-1
On Sunday	2-0
In November	6-1
In December	0-1
In January	0-0
In February	0-0
In March	0-0

LATE RALLIES: The Lady Lions used late runs to claim each of their first three wins this season. Penn State needed a 13-0 run against South Carolina (Nov. 20), a 19-0 run against Middle Tennessee (Nov. 13) and a 13-0 spurt versus Washington State (Nov. 11). In the final five minutes of their three wins, the Lady Lions are outscoring their opponents an average of 10-0 and holding them to an 0-for-26 effort from the field.

LATE RALLIES

Team	Run	Length	Deficit
Washington State	13-0	6:53	1
Middle Tennessee	19-0	6:45	3
South Carolina	13-0	5:22	8

THREES STRING STOPPED: The Lady Lions were held without a three-pointer for the first time under Coquese Washington at South Carolina Nov. 20. The last time Penn State did not connect from downtown was Jan. 7, 2007 at Michigan, a string of 143 games.

WOLFE RETURNS: After missing the first three games of the season due to concussion-like symptoms, junior post player **Marisa Wolfe** returned to go 2-for-3 from the field and tally four points in the win at South Carolina Nov. 20.

EAST HAULS IN BOARDS: **Talia East** continued her solid play with another career-best rebounding effort at Delaware Thursday. The sophomore center snared a personal-best 11 rebounds for the first double figure rebounding performance of her career. She also added eight rebounds and a pair of blocked shots versus the Blue Hens.

EDWARDS GETS THE NOD: Sophomore **Ariel Edwards** earned her first career start at Delaware Thursday in place of an ailing Mia Nickson. Edwards responded with a solid eight-point, eight-rebound night against the Blue Hens. The eight caroms tie her career high set last year against Hartford in the Caribbean Challenge.

PAIR REACHES 600 POINTS: Senior guard **Zhaque Gray** and sophomore guard **Maggie Lucas** both reached the 600-point plateau for their careers at Delaware Thursday. Gray's 15 points brought her career total to 601, while Lucas' 12 tallies gave her an even 600 markers for her career. Lucas reached 600 points in 38 games, making her the third-fastest player in school history to reach 600 points (Kelly Mazzante and Susan Robinson, 33 games).

BENTLEY TIES PERSONAL ASSISTS MARK: Junior guard **Alex Bentley** narrowly missed out on her first career double-double with 20 points and nine assists at Delaware Thursday. The nine helpers tie Bentley's career high, which she has reached four times in her career. She also added three steals and three rebounds on the night.

LIONS IN THE BIG TEN STATS

A breakdown of where Penn State ranks in the Big Ten's statistical categories. Through games of Dec. 4.

TEAM

Scoring Offense.....	2nd (75.1)
Scoring Defense.....	10th (64.6)
Scoring Margin.....	5th (+10.5)
Free Throw Percentage.....	5th (.747)
FG Percentage.....	3rd (.426)
FG Percentage Defense.....	2nd (.333)
3-point FG Percentage.....	1st (.361)
3-point FG Pct. Defense.....	5th (.277)
3-point FG Made.....	7th (5.4)
Rebounding Offense.....	3rd (42.9)
Rebounding Defense.....	12th (42.6)
Rebounding Margin.....	10th (+0.2)
Offensive Rebounds.....	7th (13.5)
Defensive Rebounds.....	2nd (29.4)
Blocked Shots.....	8th (4.0)
Assists.....	7th (13.6)
Steals.....	7th (8.9)
Turnover Margin.....	4th (+2.0)
Assist to Turnover Ratio.....	3rd (0.9)

INDIVIDUAL

Scoring.....	3rd - Maggie Lucas (18.3)
.....	8th - Alex Bentley (15.6)
.....	T-12th - Zhaque Gray (13.9)
Rebounding.....	6th - Talia East (7.6)
.....	10th - Nikki Greene (7.3)
FG Percentage.....	T-13th - Zhaque Gray (.455)
Assists.....	4th - Alex Bentley (5.9)
FT Percentage.....	3rd - Alex Bentley (.906)
.....	4th - Zhaque Gray (.889)
.....	11th - Maggie Lucas (.833)
.....	14th - Nikki Greene (.808)
Steals.....	5th - Alex Bentley (2.6)
3FG Percentage.....	5th - Alex Bentley (.444)
.....	7th - Zhaque Gray (.405)
.....	T-15th - Maggie Lucas (.333)
3FG Made.....	T-3rd - Maggie Lucas (2.3)
.....	T-9th - Zhaque Gray (1.9)
Blocked Shots.....	T-4th - Talia East (1.6)
.....	T-13th - Nikki Greene (1.1)
Assist-to-TO Ratio.....	4th - Alex Bentley (1.7)
Off. Reb.....	9th - Nikki Greene (2.9)
Def. Reb.....	T-3rd - Talia East (5.5)
.....	15th - Nikki Greene (4.4)
Minutes.....	T-4th - Maggie Lucas (34.4)
.....	6th - Alex Bentley (34.2)



MILESTONE WATCH

Milestone Watch

Milestone	Player	Current Total
1,000 points	Alex Bentley	995
700 points	Maggie Lucas	698
	Zhaque Gray	675
600 points	Nikki Greene	581
500 points	Mia Nickson (career)	429
400 points	Mia Nickson (PSU)	384
200 points	Marisa Wolfe	182
	Renee Womack	164
	Ariel Edwards	147
100 points	Gizelle Studevent	92
600 rebounds	Nikki Greene	522
400 rebounds	Mia Nickson (career)	322
300 rebounds	Mia Nickson (PSU)	265
	Alex Bentley	201
200 rebounds	Renee Womack	174
	Zhaque Gray	174
	Marisa Wolfe	165
	Maggie Lucas	140
100 rebounds	Ariel Edwards	98
400 assists	Alex Bentley	346
200 assists	Zhaque Gray	108
100 assists	Maggie Lucas	76
150 steals	Alex Bentley	139
100 steals	Maggie Lucas	66
150 blocks	Nikki Greene	139
150 3-pointers	Maggie Lucas	130
	Zhaque Gray	116

Milestone Reached

Milestone	Player	Reached
200 rebounds	Alex Bentley	12/3/11
100 assists	Zhaque Gray	11/30/11
500 rebounds	Nikki Greene	11/25/11
600 points	Zhaque Gray	11/17/11
600 points	Maggie Lucas	11/17/11
900 points	Alex Bentley	11/13/11
400 rebounds	Mia Nickson (career)	11/13/11
300 assists	Alex Bentley	11/11/11
100 points	Ariel Edwards	11/11/11

LADY LION CLASSIC CROWN: Penn State picked up its 27th regular-season title with wins over Washington State (72-60) and Middle Tennessee (65-49) in the Lady Lion Classic. It is the third regular-season title acquired under Coquese Washington (2006 WBCA Classic, 2009 Dead River Company Classic and 2011 Lady Lion Classic).

LUCAS TABBED TOURNEY MVP: Sophomore guard **Maggie Lucas** was selected as the Lady Lion Classic Tournament MVP after averaging 18.0 points, 5.5 rebounds and 3.5 assists in two games. Additionally senior guard **Zhaque Gray** and junior guard **Alex Bentley** were named to the Lady Lion Classic All-Tournament team.

BENTLEY REACHES MILESTONES: Junior guard **Alex Bentley** reached the 900-point plateau with eight tallies against Middle Tennessee Nov. 13. Additionally, Bentley became the 14th player in school history with 300 assists as she dished out four helpers against Washington State Nov. 11.

EAST'S CAREER NIGHT: Sophomore center **Talia East** turned in a career performance in the season-opening win over Washington State. She was a perfect 3-for-3 from the field on the way to a career-high six points. She also hauled in a personal-best eight rebounds against the Cougars.

ANOTHER SEASON-OPENING WIN: The Lady Lions collected their fifth-straight season-opening win under head coach Coquese Washington with a 72-60 come-from-behind win over Washington State Nov. 11. Penn State has started each of Washington's four seasons with at least three wins.

AGEE SIGNS NLI: ESPN/HoopGurlz 34th-ranked recruit **Candice Agee** signed a National Letter of Intent (NLI) to play of the Lady Lions beginning in the 2012-13 season. The signing of Agee and addition of transfer **Dara Taylor**, the Lady Lions have the 18th-ranked recruiting class by Dan Olson's Collegiate Girls Basketball Report. Agee is the first commit in the Lady Lions' 2012 recruiting class, averaged 17.0 points, 10.9 rebounds, 7.3 blocks and 2.7 steals per game for the Hawks as a junior. The native of Victorville, Calif. is a highly touted recruit, ranking 34th by ESPN/HoopGurlz, 38th by Collegiate Girls Report, 17th by Blue Star Basketball and 40th by All-Star Girls Report and Peach State. The Hawks finished the season with a 22-6 record with a perfect conference record en route to the Desert Sky title.

PENN STATE BIG TEN FAVORITES: With 10 returning letterwinners from a team that posted a second place regular-season finish and a runner-up effort in the Big Ten Tournament, the Lady Lions were selected to finish first in the Big Ten Conference in a vote of the league's coaches and media. PSU finished ahead of Purdue and Iowa in the coaches' vote and Purdue and Michigan State in the media poll.

BENTLEY BIG TEN PRESEASON POY: Junior point guard Alex Bentley was selected as the conference's Preseason Player of the Year by both the coaches and the media. She shared the coaches' Preseason Player of the Year with Ohio State's Samantha Prahalis.

VETERANS RETURN: The Lady Lions return 10 letterwinners and four starters, including All-Big Ten first team selection **Alex Bentley**, Big Ten Freshman of the Year and Sixth Player of the Year **Maggie Lucas** and Big Ten All-Defensive choice **Nikki Greene**.

PRESS CONFERENCES

Coquese Washington will hold a weekly press conference and the Lady Lions will have media availability on a weekly basis throughout the season. All press conferences will begin at 2:45 p.m. (unless otherwise noted) and go for approximately 15-20 minutes, followed by an open media session prior to practice from 3-3:20 p.m. Press conference will be held in the Media Room at the Bryce Jordan Center (unless otherwise noted).

Press Conference Dates

Wednesday, Dec. 7
Wednesday, Dec. 14
Tuesday, Dec. 20
Thursday, Dec. 29
Wednesday, Jan. 4
Wednesday, Jan. 11
Wednesday, Jan. 18
Wednesday, Jan. 25
Wednesday, Feb. 1 (location TBA)
Wednesday, Feb. 8 (location TBA)
Wednesday, Feb. 15
Wednesday, Feb. 22
Wednesday, Feb. 29 (time TBA)

LADY LIONS 12TH IN SPORTING NEWS

PRESEASON POLL: The Lady Lions are ranked 12th in the "Sporting News" preseason poll and sophomore guard **Maggie Lucas** is a preseason third team All-American, according to the magazine. Penn State is the highest ranked of the three Big Ten teams (Purdue, Michigan State) in the preseason Top 25.

LIONS ARE 16TH IN ATHLON PRESEASON POLL:

In addition to their #12 ranking in the "Sporting News" preseason poll, the Lady Lions are 16th in the "Athlon" preseason rankings. Penn State is the highest ranked of the two Big Ten teams (Ohio State) in the preseason Top 25.

NCAA STATS

TEAM	
Scoring Offense	58th (72.0)
Scoring Margin	65th (+11.5)
Field Goal Percentage	83rd (.421)
Field Goal Pct. Defense	24th (.323)
Free Throw Percentage	83rd (.722)
Winning Percentage	35th (.833)
Turnovers	91st (16.3)
3-pt. Field Goal Pct. Defense	61st (.243)
Assist to Turnover Ratio	4th (0.84)
INDIVIDUAL	
Scoring	63rd - Maggie Lucas (18.3)
Assists	61st - Alex Bentley (4.8)
Blocked Shots	53rd - Talia East (2.0)
Steals	65th - Alex Bentley (3.0)
FT Percentage	37th - Alex Bentley (.909)
NCAA Statistics as of 11/27	



THE LAST TIME PENN STATE...

SCORING

Player scored 20 points: vs. North Carolina (25, Zhaque Gray; 21, Maggie Lucas), 11/30/11
Player scored 25 points: vs. North Carolina (25, Zhaque Gray), 11/30/11
Player scored 30 points: vs. Iowa (32, Tyra Grant), 3/5/10
Player scored 35 points: vs. Wisconsin (35, Kelly Mazzante), 3/2/03
Player scored 40 points: vs. Minnesota (49, Kelly Mazzante), 12/28/01
Two players scored 20 points: vs. North Carolina (25, Zhaque Gray; 21, Maggie Lucas), 11/30/11
Three players scored 20 pts.: at Nevada (26, Maggie Lucas; 23, Alex Bentley; 21, Zhaque Gray), 11/26/11
Two players scored 25 points: at Boston College (28, Alex Bentley; 28, Maggie Lucas), 12/2/10
Player scored 25 points/3 consecutive games: Kelly Mazzante (31, vs. Baylor, 12/9/03; 31, vs. Pittsburgh, 12/14/03; 29, Louisiana Tech, 12/21/03)
Five in double figures: vs. North Carolina (25, Zhaque Gray; 21, Maggie Lucas; 15, Alex Bentley; 13, Nikki Greene; 13, Ariel Edwards), 11/30/11
Six in double figures: at Oakland (15, Alex Bentley; 16, Ariel Edwards; 16, Zhaque Gray; 13, Maggie Lucas; 10, Mia Nickson; 10, Gizelle Studevent; 10, Julia Trogele), 11/18/10
Seven in double figures: at Oakland (15, Alex Bentley; 16, Ariel Edwards; 16, Zhaque Gray; 13, Maggie Lucas; 10, Mia Nickson; 10, Gizelle Studevent; 10, Julia Trogele), 11/18/10
PSU scored 50 points in a half: vs. North Carolina (58 points, first half), 11/30/11
PSU scored 55 points in a half: vs. North Carolina (58 points, first half), 11/30/11
PSU scored 60 points in a half: vs. Northwestern (65 points, first half), 1/2/00
PSU scored 100 points: vs. North Carolina (W, 103-84), 11/30/11
PSU scored 100 points in Big Ten game: vs. Illinois (W, 101-80), 2/15/01
PSU scored 100 points in a home game: vs. Maryland (W, 101-74), 12/4/02
PSU scored fewer than 15 points in a half: vs. Wisconsin (13, first half), 2/25/10
PSU scored fewer than 20 points in a half: vs. Michigan State (18, first half), 2/10/11
PSU scored fewer than 40 points in a game: vs. Wisconsin (L, 39-71), 2/25/10
PSU scored fewer than 50 points in a game: vs. Purdue (L, 49-60), 2/24/11
PSU scored fewer than 50 points in a Big Ten game: vs. Purdue (L, 49-60), 2/24/11
OPP scored 50 points in a half: vs. Duke (50, second half), 11/18/05
OPP scored 100 points: at Boston College (Lot, 113-104), 12/2/10
OPP scored fewer than 20 points in a game: at Dickinson (W, 57-16), 3/6/71
OPP scored fewer than 30 points in a game: vs. Rider (W, 95-21), 11/14/10
OPP scored fewer than 40 points in a game: vs. Rider (W, 95-21), 11/14/10
OPP scored fewer than 50 points in a game: vs. Middle Tennessee State (W, 65-49), 11/13/11
OPP scored fewer than 50 points in a Big Ten game: at Wisconsin (W, 54-43), 1/21/10

FIELD GOAL SHOOTING

Player made every shot from the field (min. 7): vs. Michigan St. (Amanda Brown, 8-8), 1/25/07
PSU shot 55% in a game: at Nevada (.573), 11/26/11
PSU shot 55% in consecutive games: vs. Northwestern (.682), 3/2/96; vs. Ohio St. (.585), 3/3/96
PSU shot 60% in a game: vs. Michigan State (.608), 2/23/96
PSU shot below 25% in a game: at Alabama (.230), 12/19/96
PSU shot below 30% in a game: vs. Wisconsin (.273), 2/25/10
PSU shot below 35% in a game and won: vs. Indiana (.321), 1/10/10
PSU shot 55% in a half: at Nevada (.629, second half), 11/26/11
PSU shot 60% in a half: at Nevada (.629, second half), 11/26/11
PSU shot 65% in a half: at Michigan (.679, second half), 2/3/11
PSU shot 70% in a half: vs. Ohio State (.704, second half), 3/4/07
PSU shot 55% in both halves: vs. Iowa (.552, first half, .565, second half), 1/26/06
PSU shot below 20% in a half: at Indiana (.231, first half), 2/28/10
PSU shot below 25% in a half: at Texas Tech (.250, second half), 12/3/11

THREE-POINT SHOOTING

Player made every shot from the field (min. 4): at Clemson (5-5, Jessica Brungo), 12/7/02
Player made 4 three-pointers in a half: vs. North Carolina (4, Maggie Lucas), 11/30/11
Player made 5 three-pointers in a half: vs. Bucknell (6, Maggie Lucas), 12/28/10
Player made 6 three-pointers in a half: vs. Bucknell (6, Maggie Lucas), 12/28/10
Player made 5 three-pointers in a game: vs. North Carolina (6, Zhaque Gray; 5, Maggie Lucas), 11/30/11
Player made 6 three-pointers in a game: vs. North Carolina (6, Zhaque Gray), 11/30/11
Player made 7 three-pointers in a game: vs. Hartford (7, Maggie Lucas), 11/27/10
Player made 8 three-pointers in a game: at Minnesota (8, Kelly Mazzante), 12/28/01
Player attempted 10 three-pointers in a game: vs. North Carolina (10, Zhaque Gray), 11/30/11
PSU made 10 three-pointers: vs. North Carolina (14), 11/30/11
PSU did not make a three-pointer: at South Carolina (0-6), 11/20/11
PSU attempted 20 three-pointers: vs. North Carolina (24), 11/30/11
PSU shot 60% 3FG (min. 5 att.): vs. Illinois (12-20, .600), 1/16/11

FREE THROW SHOOTING

Player made every shot from FT line (min. 10): vs. Illinois (Julia Trogele, 12-12), 3/5/11
PSU shot 90% (min. 10 att.): vs. North Carolina (14-24, .929), 11/30/11
PSU shot below 50% (min. 10 att.): vs. Holy Cross (9-20, .450), 11/28/09
PSU made 30 free throws: vs. Pittsburgh (34), 11/11/07
PSU made fewer than five FTs: at Michigan (3), 2/3/11
PSU attempted 40 free throws: vs. Pittsburgh (41), 11/11/07
PSU attempted fewer than 5 FTs: at Michigan (4), 2/3/11

REBOUNDS

Player had 15 rebounds: at South Carolina (15, Talia East), 11/20/11
Player had 20 rebounds: vs. Indiana (20, Nikki Greene), 1/23/11
Two players with double-digit rebs.: vs. Middle Tennessee St. (10, Nikki Greene; 10, Mia Nickson), 11/13/11
Three players had double-digit rebounds: at Indiana (11, Nikki Greene; 10, Meredith Monroe; 11, Julia Trogele), 1/10/10
PSU had 60 rebounds: vs. Indiana (61), 1/23/11
PSU had 50 rebounds: vs. Middle Tennessee State (50), 11/13/11
PSU had 20 or fewer rebounds: vs. Michigan State (20), 1/19/03
OPP had 20 or fewer rebounds: at Indiana (20), 2/13/11
PSU had 20 offensive rebounds: vs. Middle Tennessee State (21), 11/13/11
PSU had 25 offensive rebounds: vs. Indiana (33), 1/23/11

ASSISTS

Player had 10 assists: vs. North Carolina (15, Alex Bentley), 11/30/11
Player had 10 assists/consecutive games: Helen Darling, three games (12 at LaSalle, 12/8/99; 11 vs. Auburn, 12/11/99; 10 vs. Clemson, 12/19/99)
Player had 15 assists: vs. North Carolina (15, Alex Bentley), 11/30/11
PSU had 30 assists: vs. St. Francis (Pa.) (32), 12/2/99
PSU had fewer than 10 assists: vs. Washington State (9), 11/11/11
PSU had fewer than 5 assists: at Michigan State (4), 2/4/10

BLOCKED SHOTS

Player blocked 5 shots: at South Carolina (7, Talia East), 11/20/11
Player blocked 6 shots: at South Carolina (7, Talia East), 11/20/11
PSU blocked 10 shots: vs. Purdue (11), 1/28/10
PSU blocked 0 shots: vs. Purdue, 2/19/09

STEALS

Player had 7 steals: vs. Michigan (7, Brianne O'Rourke), 2/2/06
Player had 8 steals: vs. Fairfield (8, Kelly Mazzante), 12/2/01
PSU had 20 steals: vs. Bucknell (21), 12/28/10

TURNOVERS

PSU committed 25 or more: at Ohio State (27), 2/17/11
PSU committed 25 or more and won: vs. Minnesota (26), 1/13/11
PSU committed 10 or fewer: vs. North Carolina (10), 11/30/11
PSU committed 10 or fewer in consecutive games: vs. Minnesota (9), 1/22/04; at Ohio St. (9), 1/25/04
OPP committed 25 or more: Maine (26), 12/12/10

DOUBLE-DOUBLES

Points & rebounds: vs. DePaul (Julia Trogele; 14 points, 11 rebounds), 3/21/11
Points & rebounds/consecutive games: Nikki Greene (12 points, 10 rebounds vs. Ohio State, 1/30/11; 16 points, 14 rebounds at Illinois, 1/27/11)
Points & rebounds/3 consecutive games: Amanda Brown (19 pts., 17 rebs. at Northwestern, 2/11/07; 14 pts., 10 rebs. vs. Minnesota, 2/15/07; 14 pts., 11 rebs. at Iowa, 2/18/07)
Points & rebounds/4 consecutive games: Angie Potthoff (vs. Northwestern, 1/31/97; at Illinois, 2/2/97; vs. Michigan, 2/7/97; vs. Indiana, 2/9/97; vs. Iowa, 2/16/97; vs. Michigan State, 2/21/97)
Points & rebounds/5 consecutive games: Angie Potthoff (vs. Northwestern, 1/31/97; at Illinois, 2/2/97; vs. Michigan, 2/7/97; vs. Indiana, 2/9/97; vs. Iowa, 2/16/97; vs. Michigan State, 2/21/97)
Points & assists: vs. North Carolina (Alex Bentley; 15 points, 15 assists), 11/30/11
Points & assists/consecutive games: Helen Darling (12 points, 12 assists at La Salle, 12/8/99; 10 points, 11 assists vs. Auburn, 12/11/99)
Two plyrs. w/double-doubles: at Illinois (Nikki Greene, 16 pts., 14 rebs.; Julia Trogele, 19 pts., 11 rebs.), 1/27/11
Three players had double-doubles: vs. Coppin State (Brianne O'Rourke, 12 points, 13 assists; Julia Trogele, 12 points, 13 rebounds; Janessa Wolff, 15 points, 10 rebounds), 11/29/08
15 points and 15 rebounds: vs. Indiana (Mia Nickson; 25 points, 17 rebounds), 1/23/11
20 points and 10 rebounds: vs. Indiana (Mia Nickson; 25 points, 17 rebounds), 1/23/11

MARGIN OF VICTORY

PSU won by 20-30 points: vs. Illinois (21), 1/16/11
PSU won by 20-30 points in a Big Ten game: vs. Illinois (21), 1/16/11
PSU won by 31-40 points: at Nevada (38), 11/26/11
PSU won by 41-50 points: vs. Bucknell (48), 12/28/10
PSU won by 51+ points: vs. Rider (74), 11/14/10
PSU lost by 20-30 points: at Ohio State (22), 2/17/11
PSU lost by 20-30 points in a Big Ten game: at Ohio State (22), 2/17/11
PSU lost by 31+ points: vs. Wisconsin (32), 2/25/10

MISCELLANEOUS

Led PSU in points/rebounds/assists: Tyra Grant vs. Michigan (25 pts., 9 rebs., 4 asst.), 2/18/10
Hit "final seconds" (under 10 seconds) game-winning shot: Julia Trogele at Illinois (9 sec.), 1/27/11
Hit "final minute" game-winning shot: Nikki Greene vs. Indiana (40 seconds remaining), 2/13/11
Player played every minute: at Illinois (Tyra Grant), 12/31/09
Player played more than 40 min.: at Dayton (Alex Bentley, 46; Zhaque Gray, 44; Mia Nickson, 41), 11/12/10
Committed 10 or fewer fouls: vs. Wisconsin (10), 2/25/10
Committed 30 or more fouls: vs. Iowa State (32), 11/25/11
PSU rallied from a 10-point deficit to win: vs. Middle Tenn. St. (down 10 15:38 2nd half, won 65-49), 11/13/11
PSU rallied from a 15-point deficit to win: at Indiana (down by 16 at 10:02 in 1st half, won 80-77), 2/13/11
PSU had a 5-game winning streak: 5 games, 1/23/11 - 2/6/11
PSU had a 5-game losing streak: 6 games, 1/28/10 - 2/14/10
PSU went undefeated at home: 2004-05 season
PSU sold out the BJC: Purdue, 2/29/04

OVERTIME

PSU played an OT game: at Boston College (L, 113-104), 12/2/10
PSU won an OT game: at Oakland (96-89), 11/18/10
PSU lost an OT game: at Boston College (L, 113-104), 12/2/10
PSU played two or more OT games in a season: 2010-11 season (three)
PSU won two or more OT games in a season: 2010-11 season (two)

RANKINGS

Played the No. 1 team in the AP poll: vs. Connecticut (L, 77-63), 12/14/08
Played the No. 1 team in the Coaches poll: vs. Connecticut (L, 77-63), 12/14/08
Defeated the No. 1 team in the AP poll: at Virginia (73-71), 1/3/91
Defeated Top 10 opponent: vs. #11/10 Duke (86-84), 12/2/07
Defeated Top 10 opponent on the road: at #7 Purdue (47-42), 1/2/04
Defeated Top 10 opponent by double digits: vs. #10 Minnesota (81-68), 1/30/05
Played consecutive Top 10 teams: at #2/3 Texas 11/14/04, at #6/6 Duke 11/19/04
Defeated Top 25 opponent: vs. #14/13 North Carolina (103-84), 11/30/11
Defeated Top 25 opponent on the road: at No. 20/22 Iowa (82-75), 2/6/11
Defeated Top 25 opponent by double digits: vs. #14/13 North Carolina (103-84), 11/30/11



2011-12 GAME-BY-GAME STARTING LINEUPS

Date	Opponent	Pt Guard	Guard	Guard	Forward	Center
11/5	BLOOMSBURG	Bentley	Gray	Lucas	Nickson	Greene
11/11	WASHINGTON ST.	Bentley	Gray	Lucas	Nickson	Greene
11/13	MIDDLE TENNESSEE	Bentley	Gray	Lucas	Nickson	Greene
11/17	at Delaware	Bentley	Gray	Lucas	Edwards	Greene
11/20	at South Carolina	Bentley	Gray	Lucas	Edwards	Greene
11/25	vs. Iowa State	Bentley	Gray	Lucas	Nickson	Greene
11/26	at Nevada	Bentley	Gray	Lucas	Nickson	Greene
11/30	NORTH CAROLINA	Bentley	Gray	Lucas	Edwards	Greene
12/3	at Texas Tech	Bentley	Gray	Lucas	Edwards	Greene

BENTLEY NAMED TO PAIR OF WATCH LISTS:

Junior point guard **Alex Bentley** as been named to a pair of preseason watch lists for National Player of the Year. Bentley is one of 25 players on the WBCA's Wade Trophy Watch List and is among the 30 players on the Wooden Award preseason chart. Bentley was instrumental in helping the Lady Lions return NCAA Tournament for the first time since 2005 with a 25-10 record. She became the 11th different Lady Lion to garner All-Big Ten first team honors last season after finishing in the Top 15 in the Big Ten in scoring (12th/14.4), assists (2nd/5.0), field goal percentage (14th/.446), free throw percentage (11th/.798) and assist-to-turnover ratio (4th/1.7). Bentley, who participated in USA Basketball World University Games trials in Colorado this summer, is the 14th player in school history with 300 career assists.

LADY LIONS ON TWITTER & FACEBOOK:

The Lady Lions are on Twitter. Follow the Lady Lions and assistant coaches (@pennstatewbb) and sports information contact Kris Petersen (@ladylionsid) to get the inside scoop. The Lady Lions are also on Facebook at www.facebook.com/pennstateladylions.

BENTLEY AND LUCAS PARTICIPATE IN USA BASKETBALL TRIALS:

Guards **Alex Bentley** and **Maggie Lucas** participated in the 2011 USA Basketball World University Game Trials this past spring. The pair were part of the group of 35 of the nation's top collegiate players that accepted invitations to attend the 2011 USA Basketball Women's World University Games Team Trials. Former Lady Lion standouts Terri Williams-Flournoy and Suzie McConnell-Serio were assistant coaches for the World University Games team.

TEAM CAPTAINS:

Junior **Mia Nickson** and **Marisa Wolfe** have been selected as the team captains for the 2011-12 Lady Lions. Nickson, who is a team captain for the second consecutive year, accounted for 10.5 points and 6.7 rebounds per game. She was ninth in the Big Ten in rebounding and 14th in free throw percentage (.795). Wolfe earned her first eight collegiate starts last season and finished the year averaging 2.6 points and 2.4 rebounds per game. The junior was outstanding from the free throw line, going 17-for-20 (.850). Wolfe also tallied 12 steals.

WALDNER LONE FRESHMAN:

The lone freshman of the Lady Lions' roster this season is rookie post player **Tori Waldner** from Milton, Ga. Waldner earned All-Region 6AAAAA first team honors as a senior at Milton High School and was a 2011 McDonald's All-American nominee. She chipped in 12.0 points and 8.0 rebounds as a senior to lead the Eagles to a 22-5 record and the Elite 8 in the State Championship playoffs in 2011.

TAYLOR TRANSFERS TO PSU:

The Lady Lions added 5-7 transfer **Dara Taylor** to the roster during the summer. Taylor, who will sit out the 2011-12 season due to NCAA transfer rules, will have two years of eligibility remaining when she begins competing for the Lady Lions in 2012-13. Taylor comes to Penn State after playing the first two years of her collegiate career at Maryland. As a freshman, she accounted for 5.5 points and 5.0 assists per game. Taylor, who broke the Maryland freshman season record for assists with 171 helpers, finished third in the ACC in assists and sixth in assist-to-turnover ratio (1.2) as a rookie. Last season, Taylor appeared in 32 games and tallied 1.7 points and 2.2 assists per game.

2012 RECRUITING CLASS

ESPN/HoopGurlz 34th-ranked recruit Candice Agee signed a National Letter of Intent (NLI) to play of the Lady Lions beginning in the 2012-13 season. The 6-6 center from Silverado High School in Victorville, Calif. signed her NLI in November in a ceremony at her high school. The signing of Agee and addition of transfer Dara Taylor, the Lady Lions have the 18th-ranked recruiting class by Dan Olson's Collegiate Girls Basketball Report.

"We are so excited to have Candice join the Penn State family," Washington said. "She is a very talented player and will complement our current post players in a lot of ways. She adds size, skill and athleticism to our front line, and she has a competitive streak that you love to see. She will definitely be an impact player for us on the court. In addition, she comes from a delightful family and her mom, dad and younger brother will also be wonderful additions to Lady Lion basketball."

Agee is the first commit in the Lady Lions' 2012 recruiting class, averaged 17.0 points, 10.9 rebounds, 7.3 blocks and 2.7 steals per game for the Hawks as a junior. The native of Victorville, Calif. is a highly touted recruit, ranking 34th by ESPN/HoopGurlz, 38th by Collegiate Girls Report, 17th by Blue Star Basketball and 40th by All-Star Girls Report and Peach State. The Hawks finished the season with a 22-6 record with a perfect conference record en route to the Desert Sky title.

Agee is a three-time Desert Sky League first team selection and was the league's Most Valuable Player as a junior. Additionally, she was the Daily Press Girls' Athlete of the Year. Agee begins her senior season with 991 career points, 649 rebounds and 390 blocks. was named to the All-Region first team as a junior. The center plays her AAU ball with West Coast Premier. Agee also plays volleyball at Silverado High School. Agee chose Penn State over Kansas State, Miami, UNLV, UCLA, USC, Tennessee, Vanderbilt, North Carolina, Georgetown, Georgia, Oregon, Oregon State, Washington and Washington State.

LADY LIONS SEASON BESTS

Player	Points	Rebounds	Assists	Blocks	Steals
Alex Bentley	23 (Nevada)	5 (N. Carolina)	15 (N. Carolina)	1 (Delaware)	5 (Nevada)
Talia East	8 (Nevada)	15 (S. Carolina)	-	7 (S. Carolina)	2 (Texas Tech)
Ariel Edwards	13 (N. Carolina)	8 (2X)	3 (N. Carolina)	1 (Texas Tech)	3 (Texas Tech)
Zhaque Gray	25 (N. Carolina)	6 (Mid. Tenn.)	6 (N. Carolina)	1 (S. Carolina)	2 (2X)
Nikki Greene	13 (N. Carolina)	12 (Wash. St.)	1 (3X)	3 (N. Carolina)	3 (Wash. St.)
Maggie Lucas	26 (Nevada)	9 (Wash. St.)	5 (2X)	1 (2X)	3 (Texas Tech)
Mia Nickson	6 (Wash. St.)	13 (Iowa State)	2 (Iowa State)	1 (Nevada)	1 (2X)
Gizelle Studevent	6 (Nevada)	3 (2X)	3 (Nevada)	-	1 (3X)
Tori Waldner	6 (N. Carolina)	3 (2X)	1 (2X)	2 (N. Carolina)	2 (Nevada)
Marisa Wolfe	7 (N. Carolina)	4 (Texas Tech)	1 (2X)	-	3 (N. Carolina)
Renee Womack	-	-	-	-	-

PSU IN THE POLLS

	AP	Coaches
Preseason	12	14
Nov. 14/15	11	12
Nov. 21/22	17	16
Nov. 28/29	16	15
Dec. 5/6	17	



NATIONAL POLLS

ASSOCIATED PRESS (DEC. 5)

No.	Team (1st)	Rec.	Pts.	LW
1.	Baylor (39)	8-0	975	1
2.	Connecticut	7-0	928	2
3.	Notre Dame	7-1	895	3
4.	Stanford	6-1	855	5
5.	Maryland	9-0	792	6
6.	Duke	6-1	750	7
7.	Tennessee	4-2	729	8
8.	Texas A&M	6-1	698	4
9.	Miami (Fla.)	6-1	671	9
10.	Kentucky	8-0	597	12
11.	Rutgers	8-0	595	11
12.	Purdue	7-1	554	13
13.	Ohio State	7-0	449	17
14.	Georgia	7-1	430	15
15.	Louisville	7-2	428	10
16.	Texas Tech	7-0	395	19
17.	PENN STATE	6-2	324	16
18.	North Carolina	5-1	287	14
19.	Georgetown	7-2	267	20
20.	DePaul	6-1	211	22
21.	UW-Green Bay	7-0	194	23
22.	Delaware	6-0	156	24
23.	Vanderbilt	9-0	155	25
24.	Oklahoma	3-2	154	18
25.	Texas	5-2	87	21

Others receiving votes: Michigan 17; Nebraska 14; USC 13; LSU 12; Florida State 9; Virginia 9; California 8; Arkansas 5; Tulane 3; Arizona State 3; Gonzaga 2; Georgia Tech 2; Northwestern 2.

ESPN/USA TODAY TOP 25 (NOV. 29)

No.	Team (1st)	Rec.	Pts.	LW
1.	Baylor (29)	6-0	773	1
2.	Connecticut (2)	6-0	744	2
3.	Notre Dame	5-1	704	3
4.	Texas A&M	6-0	688	4
5.	Stanford	4-1	655	5
6.	Duke	4-1	597	6
7.	Maryland	7-0	582	8
8.	Tennessee	2-2	561	7
9.	Miami (Fla.)	5-1	520	9
10.	Kentucky	7-0	481	11
11.	Louisville	6-1	461	12
12.	Rutgers	6-0	441	13
13.	North Carolina	5-0	369	15
14.	Georgia	5-1	364	10
15.	PENN STATE	5-1	297	16
16.	Purdue	6-0	293	17
17.	UW-Green Bay	5-0	262	18
18t.	Ohio State	5-0	228	19
18t.	Oklahoma	3-1	228	14
20.	Georgetown	5-2	172	21
21.	DePaul	5-1	170	20
22t.	Texas	5-1	139	22
22t.	Vanderbilt	6-0	139	NR
24.	Gonzaga	3-1	42	NR
25.	Texas Tech	5-0	37	NR

Others receiving votes: Georgia Tech 21; Delaware 16; Iowa State 15; Michigan 15; Syracuse 15; Nebraska 13; Kansas 11; Princeton 11; LSU 4; Tulane 2; UNLV 2; Iowa 1; James Madison 1; Middle Tennessee 1.

*Bold type indicates 2011-12 Penn State opponent.

STATISTICAL LEADERS

Check here throughout the season for a breakdown of how many times a player leads Penn State in the following statistical categories. (First number is solo, the second is shared.)

Points	Lucas (3/1), Bentley (2/1), Gray (2)
Rebounds	Greene (1/2), East (2/1), Nickson (1/2), Edwards (1), Lucas (-/1)
Assists	Bentley (6/1), Lucas (1), Gray (-/1)
Steals	Bentley (4/1), Greene (1), Wolfe (1), Edwards (-/2), Gray (-/1), Lucas (-/2), East (-/1), Studevent (-/1)
Blocks	Greene (1/4), East (2/3), Waldner (-/2), Nickson (-/1), Lucas (-/1), Edwards (-/1)
FG % (min. 4 attempts)	Bentley (1), Gray (2), Edwards (1), East (1/1), Greene (-/1), Studevent (1), Waldner (1)
FT % (min 4 attempts)	Bentley (4/2), Lucas (2/2), Gray (-/1)
3FG % (min. 2 att.)	Bentley (2/1), Lucas (2/1), Gray (2)

PENN STATE VS. THE BIG TEN

Illinois	Overall	27-14	Nebraska	Overall	2-0
	Big Ten Games	20-11		Big Ten Games	0-0
	Big Ten Tournament	4-2		Big Ten Tournament	0-0
	Home	15-2		Home	1-0
	Away	8-10		Away	0-0
	Neutral	4-2		Neutral	1-0
Indiana	Overall	27-9	Northwestern	Overall	29-7
	Big Ten Games	22-8		Big Ten Games	26-6
	Big Ten Tournament	3-1		Big Ten Tournament	2-0
	Home	15-2		Home	16-1
	Away	9-6		Away	11-5
	Neutral	3-1		Neutral	2-1
Iowa	Overall	23-17	Ohio State	Overall	31-21
	Big Ten Games	18-14		Big Ten Games	18-14
	Big Ten Tournament	2-1		Big Ten Tournament	4-5
	Home	13-5		Home	16-6
	Away	7-11		Away	11-9
	Neutral	3-1		Neutral	4-6
Michigan	Overall	26-9	Purdue	Overall	15-25
	Big Ten Games	24-7		Big Ten Games	13-19
	Big Ten Tournament	1-2		Big Ten Tournament	2-3
	Home	13-2		Home	9-8
	Away	12-5		Away	4-14
	Neutral	1-2		Neutral	2-3
Michigan State	Overall	24-11	Wisconsin	Overall	25-10
	Big Ten Games	21-10		Big Ten Games	22-10
	Big Ten Tournament	2-1		Big Ten Tournament	2-0
	Home	14-3		Home	15-2
	Away	8-7		Away	8-8
	Neutral	2-1		Neutral	2-0
Minnesota	Overall	22-11			
	Big Ten Games	20-11			
	Big Ten Tournament	1-0			
	Home	13-3			
	Away	8-8			
	Neutral	1-0			





COQUESE WASHINGTON

Head Coach
5th Season

PENN STATE LADY LION BASKETBALL

Coquese Washington, who helped lead Notre Dame to the 2001 NCAA Championship, was introduced as the fifth head coach of the Penn State women's basketball program on April 23, 2007. Washington is the first female African-American head coach in Penn State history.

The Lady Lions returned to the national stage in Washington's fourth year with a second-place finish in the Big Ten regular season standings, a runner-up finish in the Big Ten Tournament and a berth in the NCAA Tournament. Penn State tallied its most victories since the 2003-04 campaign and 23rd 20-win season with a 25-10 overall record and an 11-5 mark in conference play. The Lady Lions worked their way back to the "Big Dance" for the first time since 2004-05 and advanced to the second round for the first time in seven years with a win over Dayton in the first round in front of a raucous Bryce Jordan Center crowd. After a remarkable season in the books and steps toward returning the Lady Lions to national prominence, Washington was selected as the 2011 BCA Female Coach of the Year.

Penn State was a dominating force from the perimeter as the Lady Lions tied the school record with 228 three-pointers and led NCAA Division I from deep with a .415 three-point field goal percentage. Pacing the Lady Lions from downtown was Maggie Lucas, who broke the Big Ten three-pointers record with 112 triples to go along with a .426 shooting percentage. For her efforts, Lucas was selected as the Big Ten Freshman of the Year and Big Ten Sixth Player of the Year while breaking the Penn State freshman season scoring record (552 pts.). Additionally with Washington's guidance, Alex Bentley became the 11th different player in school history to take home first team All-Big Ten accolades after finishing second in the conference in assists. After outstanding seasons, both Lucas and Bentley were invited to the USA Basketball World University Games Trials.

Washington's third season saw the Lady Lions return to the postseason for the first time since 2004-05 with a WNIT berth. The Lions earned their most overall wins (17) and conference wins (8) since the 2004-05 campaign en route to a sixth-place finish in the Big Ten.

Washington led Tyra Grant to back-to-back first team All-Big Ten honors and *Associated Press* Honorable Mention All-America accolades in her senior season. Grant capped off her career by being selected by the Phoenix Mercury in the second round of the WNBA Draft. The four-time all-

conference pick left Penn State third in school history in scoring with 2,044 points. Washington also guided Bentley to third team All-Big Ten honors, as well as a unanimous selection to the Big Ten All-Freshman team.

That year, Washington and the Lady Lions garnered one of the top recruiting classes in the country, finishing 22nd on the ESPN/HoopGurlz recruiting chart. The class included just the second McDonald's High School All-American in Penn State history in Lucas, WBCA High School All-American Ariel Edwards and All-State selection Talia East.

In Washington's second season, the Lady Lions moved up three positions in the Big Ten standings, finishing in a tie for seventh place. Under Washington's guidance in 2008-09, Grant became the 10th different player in school history to earn first team All-Big Ten honors.

The Coquese Washington era started in style as the Lady Lions won their first three games of the season, including a win over #20/21 Pittsburgh, to claim the WBCA Classic title. Just three weeks later, Washington guided the Lady Lions to their first ever win over perennial contender and 10th-ranked Duke in the inaugural Big Ten/ACC Challenge, a game that was televised on ESPN2.

Washington came to Happy Valley after eight seasons as an associate head coach and assistant coach under Muffet McGraw at Notre Dame, her alma mater. During Washington's eight years on the bench, Notre Dame amassed a 188-69 record with eight NCAA Tournament appearances, including four Sweet Sixteen runs and a National Championship in 2001.

Washington was a four-year starting point guard for Notre Dame under McGraw and was the team captain on Notre Dame's first-ever NCAA Tournament team. She was a two-time All-Midwestern Collegiate Conference (MCC) selection and led Notre Dame to three MCC Tournament titles.

The epitome of a student-athlete, Washington graduated from Notre Dame in 1992, a full year ahead of schedule, with a bachelor's degree in history. She went on to attain "Double Domer" status in 1997 after earning her Juris Doctorate from the Notre Dame Law School.

In addition to assisting with the efforts of the WBCA Pink Zone at Penn State to raise money and awareness for breast cancer, Washington created Coquese's Drive for the Women's Resource Center. The first four Coquese's Drives raised more than \$56,869 for the Centre County Women's

THE WASHINGTON FILE

COACHING RESUME

2007-pres. - Head Coach, Penn State University
 2011-pres. - President, NCAA Women's Basketball Issues Committee
 2010-pres. - Treasurer, WBCA Executive Committee
 2008-pres. - Member, WBCA Board of Directors
 2009-pres. - Member, USA Basketball Women's Junior National Committee
 2005-07 - Assoc. Head Coach, Univ. of Notre Dame
 1999-05 - Assistant Coach, Univ. of Notre Dame

PLAYING EXPERIENCE

2002-03 - WNBA's Indiana Fever
 2000-02 - WNBA's Houston Comets
 1998-99 - WNBA's New York Liberty
 1997-98 - ABL's Portland Power
 1989-93 - University of Notre Dame

EDUCATION

Notre Dame '92, B.A. History
 Notre Dame Law School '97, Juris Doctorate

NOTABLE

- ❖ 2011 BCA Female Coach of the Year.
- ❖ Helped guide Notre Dame to the 2001 NCAA Championship.
- ❖ Eight consecutive recruiting classes at Notre Dame ranked in the Top 25 nationally.
- ❖ Notre Dame had four Sweet Sixteen appearances and eight NCAA Tournament berths during Washington's tenure.
- ❖ Point guard for the 2000 WNBA Champion Houston Comets.
- ❖ Founding President, WNBA Players Association, 1999-01.
- ❖ Actively negotiated first two collective bargaining agreements for the WNBPA.
- ❖ Inducted into the Greater Flint Area Sports Hall of Fame in Dec. 2009.

FAMILY

Husband: Raynell Brown
 Children: Quenton (6), Rhaiyna (2)

Resource Center to aid in the fight against domestic violence.

Washington is currently serving on the 29-member WBCA Board of Directors, where she is the Treasurer of the Executive Committee. Washington is also a member of the USA Basketball Women's Junior National Team Selection Committee.

A native of Flint, Mich., Washington and her husband, Raynell Brown, have a son, Quenton (6), and a daughter, Rhaiyna (2). They reside in Port Matilda, Pa.

Washington's Coaching Record vs. Opponents

Arizona 1-0	Delaware 1-1	Holy Cross 1-0	Minnesota 2-6	Old Dominion 0-1	Texas Tech 1-1
Army 1-0	DePaul 0-1	Illinois 7-3	Mississippi 1-0	Pittsburgh 2-1	Utah 1-0
Boston College 0-1	Drexel 2-1	Indiana 3-4	Monmouth 1-0	Prairie View A&M 1-0	Washington State 1-0
Bucknell 4-0	Duke 1-0	Iowa 4-5	Nevada 1-0	Purdue 1-7	Wisconsin 2-5
Buffalo 1-0	Florida State 0-1	Iowa State 1-0	NJIT 1-0	Rider 1-0	UW-Green Bay 0-1
Charlotte 1-0	Georgetown 1-0	Maine 1-0	North Carolina 1-0	South Carolina 4-1	Xavier 0-1
Connecticut 0-1	Georgia Tech 0-1	Michigan 5-3	Northwestern 5-1	Stony Brook 1-0	
Coppin State 1-0	Hartford 1-0	Michigan State 2-5	Oakland 2-0	Syracuse 0-1	
Dayton 2-1	Hofstra 0-1	Middle Tennessee 1-0	Ohio State 1-6	Texas A&M 0-1	





#2 Dara Taylor

Jr. * G * 5-8 * Wilmington, Del./Caraval Acad. (Maryland)

2011-12 Season Notes:

Will sit out the 2011-12 season due to NCAA Transfer policy.

2010-11 (at Maryland):

Had two points, two steals and four assists in the NCAA Tournament game against Georgetown (3/22) ... Registered six points, four steals and four assists in the win over Saint Joseph's (1/2)

... Dished out four assists against La Salle (12/28) ... Notched five dimes against Delaware State (12/19) ... Was 3-for-4 from the field and finished with seven points and three assists in the win over UMBC (12/10) ... Accounted for four assists and four steals at Purdue (12/2) ... Tallied six points, five assists, four rebounds and a steal in the win over East Carolina (11/26) ... Recorded five points and five assists in the victory over Towson (11/18).

2009-10 (at Maryland)

Broke Maryland's freshman season assists record with 171 helpers Recorded more than six assists in 15 of 27 starts ... Finished third in the ACC in assists and sixth in assist-to-turnover ratio (1.2) ... Grabbed career-high eight rebounds in WNIT Second Round win over East Carolina (3/21) ... Contributed 10 points in ACC Tournament win over North Carolina (3/4) ... Netted a career-high 17 points on 7-of-12 shooting against Clemson (2/14) ... Made 7-of-10 free throws to help clinch the win over Wake Forest (2/11) ... Finished the game with nine points and two steals against the Demon Deacons

... Accounted for nine assists at Virginia Tech (1/28) ... Had six points, eight assists and seven rebounds versus Boston College (1/14) ... Notched first career double-double with 10 points and career-high 11 assists at No. 19/21 Virginia (1/11) ... Dished out eight assists versus Saint Joseph's (1/3) ... Notched nine points, eight assists and four rebounds versus UNC-Wilmington (12/29) ... Accounted for 11 points with seven assists in a win over Samford (11/24) ... Chipped in six points, nine assists and five rebounds against Old Dominion (11/19) ... Had 10 points with five assists in win against New Hampshire (11/16).

CAREER HIGHS

Points 17 vs. Clemson (2/14/10)
Rebs. 8 vs. East Carolina (3/21/10)
Assists 11 at American (12/20/09)
 11 at Virginia (1/11/10)
Steals 6 vs. N.C. Central (11/14/09)
Blocks 1 (3x) last at St. Joseph's 1/2/11
Minutes 38 at American (12/20/09)
FGM 7 vs. Clemson (2/14/10)
FGA 14 at N.C. State (1/17/10)
FG% 1.000 (3x)
 last vs. N.C. State (2-2) (2/6/11)
3FGM 2 vs. Samford (1/24/09)
 2 vs. Clemson (2/14/10)
3FGA 5 at Mississippi State (11/22/09)
3PT % 1.000 (1-1) at Longwood (1/31/10)
 1.000 (1-1) vs. Providence (3/25/10)
FTM 7 at Wake Forest (2/11/10)
FTA 10 at Wake Forest (2/11/10)
 10 vs. North Carolina (3/4/10)
FT % 1.000 (7x)
 last vs. Georgetown (2-2) (3/22/11)
Career Double-Doubles 1

HIGH SCHOOL

McDonald's High School All-American ... 52nd-ranked player by ESPN/HoopGurlz out of Caravel Academy ... 2009 Delaware Gatorade Player of the Year ... Two-time All-State selection with a first team berth as a senior and a second team nod as a junior ... 1,192 career points at Caravel Academy ... Averaged 17.8 points, 5.5 assists, 5.0 rebounds and 5.0 steals per game as a senior ... Selected to the Delaware's Finest third team All-Decade (2000-09) team ... Played AAU for the Philly Belles alongside Lady Lion teammate Maggie Lucas.



#5 Talia East

So. * F/C * 6-3 * Philadelphia, Pa./The Friends School

2011-12 Highlights:

- Had arguably the best game of her career, registering in personal bests of 15 rebounds and seven blocks to go along with six points at South Carolina (11/20).
- Her seven blocks at South Carolina are tied for

the third on the PSU single-game charts and are the most for a Lady Lion since Nikki Greene blocked seven shots against Purdue on Jan. 28, 2010.

2011-12 Season Notes:

- Accounted for six points, eight rebounds, a blocked shot and a career-high two steals at #19/25 Texas Tech (12/3).
- Registered a career-best eight points on 4-of-6 shooting to go along with six rebounds in the Nugget Classic Championship game win over Nevada (11/26).
- Turned in her first career double-digit rebounding performance as she hauled in a personal-best 11 caroms at Delaware (11/17). Also equalled her career scoring mark with six points against the Blue Hens.
- Notched two points, six rebounds and a blocked shot in the Lady Lion Classic Championship game win over Middle Tennessee (11/13).
- Had a career night in the season-opening win over Washington State (11/11) with personal bests of six points via a 3-for-3 shooting effort and eight rebounds.
- Tallied four points, five rebounds and two steals in the exhibition win over Bloomsburg (11/5).

CAREER HIGHS

Points 8 at Nevada (11/26/11)
Rebs. 15 at South Carolina (11/20/11)
Assists n/a
Steals 2 at Texas Tech (12/3/11)
Blocks 7 at South Carolina (11/20/11)
Minutes 29 at South Carolina (11/20/11)
FGM 4 at Nevada (11/26/11)
FGA 6 at Nevada (11/26/11)
 6 at South Carolina (11/20/11)
FG% 1.000 (5x)
	...last vs. Washington State (3-3) (11/11/11)
3FGM n/a
3FGA n/a
3PT % n/a
FTM 2 at Delaware (11/17/11)
FTA 4 at Nevada (11/26/11)
FT % 1.000 (2-2) at Delaware (11/17/11)
Career Double-Doubles n/a

GAME-BY-GAME

	P	R	B
WASH. STATE	6	8	2
MID. TENN.	2	6	1
at Delaware	6	11	2
at South Carolina	6	15	7
vs. Iowa State	0	3	0
at Nevada	8	6	0
NORTH CAROLINA	3	4	0
at Texas Tech	6	8	1
VIRGINIA TECH			
UMES			
WAGNER			
at Bucknell			
NEBRASKA			
at Wisconsin			
MICHIGAN ST.			
MICHIGAN			
at Nebraska			
at Illinois			
IOWA			
at Michigan			
at Michigan State			
INDIANA			
at Minnesota			
WISCONSIN			
at Northwestern			
at Purdue			
OHIO STATE			
MINNESOTA			

Five-Time Big Ten Champions • Two-Time Big Ten Tournament Champions • 2000 NCAA Final Four • 22 NCAA Tournament Appearances





#12 Zhaque Gray

Sr. * G * 5-8 * Chicago, Ill./Prep John Hope

2011-12 Highlights:

- Surpassed the 600-point plateau for her career with 15 tallies at Delaware (11/17).
- Named to Lady Lion Classic All-Tournament team after averaging 11.0 points, 5.0 rebounds in two games.

2011-12 Season Notes:

- Tallied eight points and three assists at Texas Tech (12/3).
- Notched back-to-back 20-point games for the second time in her career with 25 points, four rebounds and a career-high six assists in the upset win over #14/13 North Carolina (11/30).
- Accounted for 21 points, four rebounds, three assists and two steals in the win at Nevada (11/26).
- Was 5-for-7 from the field, including makes on both of her three-point attempts, en route to 14 points in the win over Iowa State (11/25).
- Had a team-best 15 points to go along with six rebounds and two assists in the Lady Lion Classic title game win over Middle Tennessee (11/13).
- Registered seven points and four rebounds against Washington State (11/11).

CAREER HIGHS

Points.....	27 at Dayton (11/12/10)
Rebs.....	6 at South Carolina (11/22/09)
.....	6 vs. NJIT (11/15/09)
Assists.....	6 vs. North Carolina (11/30/11)
Steals.....	3 vs. Bucknell (12/28/10)
.....	3 vs. Michigan State (12/21/08)
Blocks.....	1 at South Carolina (11/20/11)
.....	1 at Iowa (2/6/11)
Minutes.....	44 at Dayton (11/12/10)
FGM.....	10 at Dayton (11/12/10)
FGA.....	17 at Dayton (11/12/10)
FG%.....	1.000 (3-3) at Indiana (2/13/11)
.....	1.000 (4-4) at Michigan (2/9/09)
3FGM.....	7 at Dayton (11/12/10)
3FGA.....	11 at Dayton (11/12/10)
3PT%.....	1.000 (5x)
.....	last vs. Iowa State (2-2) (11/25/11)
FTM.....	5 at Ohio State (2/17/11)
FTA.....	6 at Ohio State (2/17/11)
FT%.....	1.000 (22x)
.....	last at Texas Tech (2-2) (12/3/11)
Career Double-Doubles.....	n/a

GAME-BY-GAME

	P	R	A
WASH. STATE	7	4	1
MID. TENN.	15	6	2
at Delaware	15	3	4
at South Carolina	6	4	2
vs. Iowa State	14	3	2
at Nevada	21	4	3
NORTH CAROLINA	25	4	6
at Texas Tech	8	2	3
VIRGINIA TECH			
UMES			
WAGNER			
at Bucknell			
NEBRASKA			
at Wisconsin			
MICHIGAN ST.			
MICHIGAN			
at Nebraska			
at Illinois			
IOWA			
at Michigan			
at Michigan State			
INDIANA			
at Minnesota			
WISCONSIN			
at Northwestern			
at Purdue			
OHIO STATE			
MINNESOTA			



#15 Renee Womack

Sr. * G * 5-10 * Lansdale, Pa./Methacton

CAREER HIGHS

Points.....	10 at Wisconsin (1/2/11)
Rebs.....	8 (2x) last vs. Iowa (12/28/09)
Assists.....	4 vs. Iowa (12/28/09)
Steals.....	4 vs. Bucknell (12/28/10)
Blocks.....	3 vs. Iowa (12/28/09)
Minutes.....	30 vs. Iowa (12/28/09)
FGM.....	4 at Wisconsin (1/2/11)
.....	4 vs. Stony Brook (11/19/08)
FGA.....	8 vs. Army (12/8/10)
.....	8 vs. Stony Brook (11/19/08)
FG%.....	1.000 (8x)
.....	last vs. Illinois (2-2) (3/5/11)
3FGM.....	1 (7x) last at Indiana (2/13/11)
3FGA.....	2 (4x) last at Indiana (2/13/11)
3PT%.....	1.000 (3x)
.....	last vs. Illinois (2-2) (1/16/11)
FTM.....	3 at Dayton (11/12/10)
FTA.....	4 at Ohio State (2/17/11)
.....	4 at Dayton (11/12/10)
FT%.....	1.000 (4x)
.....	last at Iowa (2-2) (2/6/11)
Career Double-Doubles.....	n/a

GAME-BY-GAME

	P	R	A
WASH. STATE	DNP		
MID. TENN.	DNP		
at Delaware	DNP		
at South Carolina	DNP		
vs. Iowa State	DNP		
at Nevada	DNP		
NORTH CAROLINA	DNP		
at Texas Tech	DNP		
VIRGINIA TECH			
UMES			
WAGNER			
at Bucknell			
NEBRASKA			
at Wisconsin			
MICHIGAN ST.			
MICHIGAN			
at Nebraska			
at Illinois			
IOWA			
at Michigan			
at Michigan State			
INDIANA			
at Minnesota			
WISCONSIN			
at Northwestern			
at Purdue			
OHIO STATE			
MINNESOTA			





#20 Alex Bentley

Jr. * G * 5-7 * Indianapolis, Ind./Ben Davis

2011-12 Highlights:

- Needs five points to become the 33rd Lady Lion to score 1,000 career points.
- On Wade Trophy, Wooden Award and Naimsmith Award watch lists.
- Big Ten Preseason Player of the Year (coaches and media).
- Selected as Nugget Classic Tournament MVP after averaging 18.0 points, 4.5 assists and 4.5 steals in two games.
- Named to Lady Lion Classic All-Tournament team after averaging 15.0 points, 3.0 rebounds, 4.0 assists and 2.5 steals in two games.

2011-12 Season Notes:

- Paced the Lady Lions with 18 points, three assists and a steal at #19/25 Texas Tech (12/3).
- Posted her first career double-double with 15 points and a personal-best 15 assist in the win over #14/13 North Carolina (11/30).
- Had a solid all-around game with 23 points on 11-of-15 shooting, six assists and a career-best five steals in the win over Nevada (11/26).
- Tallied 13 points to go along with three rebounds, three assists and four steals versus Iowa State (11/25).
- Narrowly missed her first career double-double with a team-best 20 points and a career-high tying nine assists at Delaware (11/17).
- Surpassed the 900-point mark for her career with eight tallies in the win over Middle Tennessee (11/13).
- Accounted for 22 points, four rebounds, four assists and a pair of steals in the win over Washington State (11/11).
- Became the 14th player in school history to record 300 career assists against the Cougars.

CAREER HIGHS

Points.....	28 at Boston College (12/2/10)
Rebs.....	7 vs. Iowa (12/28/09)
Assists.....	15 vs. North Carolina (11/30/11)
Steals.....	5 at Nevada (11/26/11)
Blocks.....	2 (3X) last vs. Drexel (12/21/10)
Minutes.....	46 at Dayton (11/12/10)
FGM.....	12 vs. Dayton (3/19/11)
FGA.....	28 vs. Dayton (3/19/11)
FG%.....	.833 (5-6) at Illinois (12/31/09)
3FGM.....	4 at Purdue (2/14/10)
3FGA.....	6 (3x) last at Purdue (2/14/10)
3PT%.....	1.000 (6x)
.....last vs. Washington State (2-2) (11/11/11)	
FTM.....	10 at Northwestern (1/6/11)
FTA.....	12 at Northwestern (1/6/11)
FT%.....	1.000 (22x)
.....last vs. North Carolina (4-4) (11/30/11)	
Career Double-Doubles.....	1

GAME-BY-GAME

	P	R	A
WASH. STATE	22	4	4
MID. TENN.	8	2	4
at Delaware	20	3	9
at South Carolina	6	2	3
vs. Iowa State	13	3	3
at Nevada	23	0	6
NORTH CAROLINA	15	5	15
at Texas Tech	18	2	3
VIRGINIA TECH			
UMES			
WAGNER			
at Bucknell			
NEBRASKA			
at Wisconsin			
MICHIGAN ST.			
MICHIGAN			
at Nebraska			
at Illinois			
IOWA			
at Michigan			
at Michigan State			
INDIANA			
at Minnesota			
WISCONSIN			
at Northwestern			
at Purdue			
OHIO STATE			
MINNESOTA			



#23 Ariel Edwards

So. * G/F * 6-2 * Elmont, N.Y./Christ the King

2011-12 Highlights:

- Accounted for 13 points and career highs of eight rebounds and three assists in the win over #14/13 North Carolina (11/30).
- In her first collegiate start, tallied eight points and equalled her career high with eight rebounds at Delaware (11/17).

2011-12 Season Notes:

- Registered three points to go along with five rebounds, two assists and a personal-best three steals at #19/25 Texas Tech (12/3).
- Had two points, four rebounds and a pair of steals in the Nugget Classic Championship game win over Nevada (11/26).
- Was 5-for-7 from the field en route to 10 points, seven rebounds and an assist at South Carolina (11/20).
- Scored five of her 10 points in a key Lady Lion run that gave Penn State its first lead of the game against Middle Tennessee (11/13). Also notched a pair of steals against the Blue Raiders.
- Tallied four points and two rebounds in the season-opening win over Washington State (11/11).

CAREER HIGHS

Points.....	16 at Oakland (11/18/10)
Rebs.....	8 (3x)
.....last vs. North Carolina (11/30/11)	
Assists.....	3 vs. North Carolina (11/30/11)
Steals.....	3 at Texas Tech (12/3/11)
Blocks.....	2 at Oakland (11/18/10)
Minutes.....	38 at Delaware (11/17/11)
FGM.....	6 vs. North Carolina (11/30/11)
FGA.....	11 vs. North Carolina (11/30/11)
.....	11 at Delaware (11/17/11)
FG%.....	1.000 (3X)
.....last vs. DePaul (1-1) (3/21/11)	
3FGM.....	2 vs. Army (12/8/10)
.....	2 vs. Hartford (11/27/10)
3FGA.....	4 vs. Army (12/8/10)
.....	4 vs. Hartford (11/27/10)
3PT %.....	1.000 (3X)
.....last vs. North Carolina (1-1) (11/30/11)	
FTM.....	7 at Oakland (11/18/10)
FTA.....	8 at Oakland (11/18/10)
FT %.....	1.000 (5x)
.....last vs. Illinois (2-2) (3/5/11)	
Career Double-Doubles.....	n/a

GAME-BY-GAME

	P	R	A
WASH. STATE	4	2	1
MID. TENN.	10	1	1
at Delaware	8	8	0
at South Carolina	10	7	1
vs. Iowa State	0	1	0
at Nevada	2	4	1
NORTH CAROLINA	13	8	3
at Texas Tech	3	5	2
VIRGINIA TECH			
UMES			
WAGNER			
at Bucknell			
NEBRASKA			
at Wisconsin			
MICHIGAN ST.			
MICHIGAN			
at Nebraska			
at Illinois			
IOWA			
at Michigan			
at Michigan State			
INDIANA			
at Minnesota			
WISCONSIN			
at Northwestern			
at Purdue			
OHIO STATE			
MINNESOTA			





#24 Mia Nickson

RS-Jr. * F * 6-2 * Ashburn, Va./Notre Dame Acad. (BC)

2011-12 Highlights:

- ♦ Hauled in 10 rebounds, including five on the offensive glass against Middle Tennessee (11/13).

2011-12 Season Notes:

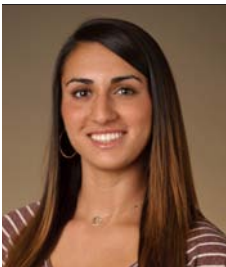
- ♦ Returned after missing two games to pull down a team-best 13 rebounds with five points and two assists against Iowa State (11/25).
- ♦ Had six points and seven rebounds in the win over Washington State (11/13) in the opening round of the Lady Lion Classic.

CAREER HIGHS

Points 26 vs. Texas Tech (12/5/10)
Rebs. 17 vs. Indiana (1/23/11)
Assists 4 vs. Maine (12/12/10)
Steals 6 vs. Indiana (1/23/11)
..... 6 vs. Bucknell (12/28/10)
Blocks 1 (4x) last at Nevada (11/26/11)
Minutes 41 at Dayton (11/12/10)
FGM 9 vs. Indiana (1/23/11)
FGA 16 vs. Indiana (1/23/11)
FG% 1.000 (4X)
..... last vs. Minnesota (5-5) (1/13/11)
3FGM n/a
3FGA n/a
3PT % n/a
FTM 10 vs. Michigan State (2/10/11)
..... 10 vs. Texas Tech (12/5/10)
FTA 11 vs. Michigan State (2/10/11)
..... 11 vs. Texas Tech (12/5/10)
FT % 1.000 (12X)
..... last vs. Dayton (6-6) (3/19/11)
Career Double-Doubles 6

GAME-BY-GAME

	P	R	A
WASH. STATE	6	7	0
MID. TENN.	3	10	0
at Delaware	DNP		
at South Carolina	DNP		
vs. Iowa State	5	13	2
at Nevada	2	1	0
NORTH CAROLINA	DNP		
at Texas Tech	DNP		
VIRGINIA TECH			
UMES			
WAGNER			
at Bucknell			
NEBRASKA			
at Wisconsin			
MICHIGAN ST.			
MICHIGAN			
at Nebraska			
at Illinois			
IOWA			
at Michigan			
at Michigan State			
INDIANA			
at Minnesota			
WISCONSIN			
at Northwestern			
at Purdue			
OHIO STATE			
MINNESOTA			



#25 Gizelle Studevent

Jr. * G * 5-11 * La Jolla, Calif./The Bishop's School

2011-12 Highlights:

- ♦ Hit a pair of key jumpers en route to four points and three rebounds against Middle Tennessee (11/13).

2011-12 Season Notes:

- ♦ Nabbed a steal at Texas Tech (12/3).
- ♦ Connected on three of her four shots from the field on the way to six points, three rebounds and a career-high three assists at Nevada (11/26).
- ♦ Was 2-for-3 from the field and finished with four points at Delaware (11/17).
- ♦ Notched two points and a rebound against Washington State (11/11).
- ♦ Had four points and two rebounds in the exhibition win over Bloomsburg (11/5).

CAREER HIGHS

Points 10 at Oakland (11/18/10)
Rebs. 3 (6x)
..... last at Nevada (11/26/11)
Assists 3 at Nevada (11/26/11)
Steals 2 vs. Rider (11/14/10)
Blocks 1 (2x) last vs. Minnesota (2/11/10)
Minutes 20 (2x) last vs. Hofstra (3/18/10)
FGM 3 (3X) last at Nevada (11/26/11)
FGA 8 vs. Monmouth (12/9/09)
FG% 1.000 (3x)
..... last at Ohio State (1-1) (2/17/11)
3FGM 1 (4x) last vs. Minnesota (1/13/11)
3FGA 3 vs. Monmouth (12/9/09)
3PT% 1.000 (4x)
..... last vs. Minnesota (1-1) (1/13/11)
FTM 3 vs. Maine (12/12/10)
..... 3 at Oakland (11/18/10)
FTA 4 vs. Maine (12/12/10)
..... 4 at Oakland (11/18/10)
FT% 1.000 (3x)
..... last vs. Army (2-2) (12/8/10)
Career Double-Doubles n/a

GAME-BY-GAME

	P	R	A
WASH. STATE	2	1	0
MID. TENN.	4	3	1
at Delaware	4	1	0
at South Carolina	0	1	1
vs. Iowa State	0	0	0
at Nevada	6	3	3
NORTH CAROLINA	0	0	0
at Texas Tech	0	0	0
VIRGINIA TECH			
UMES			
WAGNER			
at Bucknell			
NEBRASKA			
at Wisconsin			
MICHIGAN ST.			
MICHIGAN			
at Nebraska			
at Illinois			
IOWA			
at Michigan			
at Michigan State			
INDIANA			
at Minnesota			
WISCONSIN			
at Northwestern			
at Purdue			
OHIO STATE			
MINNESOTA			





#33 Maggie Lucas

So. * G * 5-10 * Narberth, Pa./Germantown Academy

2011-12 Highlights:

- On the Naismith Award early-season watch list.
- Sixth on Penn State's career three-pointers list (130).
- Named to the Nugget Classic All-Tournament team after averaging 22.0 points, 6.5 rebounds and 3.0 assists in two wins.
- Selected as Lady Lion Classic MVP after averaging 18.0 points, 5.5 rebounds, 3.5 assists and 1.0 steals in a pair of wins.

CAREER HIGHS

Points.....	28 at Boston College (12/2/10)
Rebs.	9 vs. Washington State (11/11/11)
Assists	5 at Nevada (11/26/11)
.....	5 vs. Middle Tennessee (11/13/11)
Steals.....	4 (3x) last vs. Iowa (12/30/10)
Blocks	2 vs. Purdue (2/24/11)
Minutes	39 at Delaware (11/17/11)
.....	39 at Boston College (12/2/10)
FGM.....	9 (3x) last at Michigan (2/3/11)
FGA	18 at Boston College (12/2/10)
FG%714 (5-7) at Northwestern (1/6/11)
3FGM.....	7 vs. Hartford (11/27/10)
3FGA	16 at Boston College (12/2/10)
3PT %833 (5-6) at Northwestern (1/6/11)
FTM	11 vs. Washington State (11/11/11)
FTA	13 vs. Washington State (11/11/11)
FT %	1.000 (18x)
.....	last at Texas Tech (4-4) (12/3/11)
Career Double-Doubles	n/a

GAME-BY-GAME

	P	R	A
WASH. STATE	22	9	2
MID. TENN.	14	2	5
at Delaware	12	3	2
at South Carolina	18	2	2
vs. Iowa State	18	6	1
at Nevada	26	7	5
NORTH CAROLINA	21	2	1
at Texas Tech	15	1	2
VIRGINIA TECH			
UMES			
WAGNER			
at Bucknell			
NEBRASKA			
at Wisconsin			
MICHIGAN ST.			
MICHIGAN			
at Nebraska			
at Illinois			
IOWA			
at Michigan			
at Michigan State			
INDIANA			
at Minnesota			
WISCONSIN			
at Northwestern			
at Purdue			
OHIO STATE			
MINNESOTA			

2011-12 Season Notes:

- Chipped in 15 points, two assists and three steals at #19/25 Texas Tech (12/3).
- Posted 21 points in 22 minutes, including five three-pointers, in the win over #14/13 North Carolina (11/30).
- Tallied 26 points to go along with seven rebounds and a career-high five assists in the Nugget Classic title game against Nevada (11/26).
- Accounted for a game-high 18 points, including six of Penn State's final nine points, with six rebounds and two steals in the win over Iowa State (11/25).
- Tallied a team-best 18 points with two assists and two rebounds at South Carolina (11/20).
- Reached the 600-point plateau with 12 points to go along with three rebounds and two assists at Delaware (11/17). She reaches 600 points in the third-fewest games in school history (Kelly Mazzante & Susan Robinson; 33 games).
- Connected on a trio of three-pointers en route to 14 points and a career-high five assists in the victory over Middle Tennessee (11/13).
- Tied for team scoring honors with 22 points, including an 11-for-13 effort from the free throw line, in the season-opening win over Washington State (11/11).
- Pulled in a personal-best nine rebounds in the win over the Cougars.



#40 Marisa Wolfe

Jr. * F * 6-2 * Ford City, Pa./Ford City

2011-12 Season Notes:

- Drained her fourth career three-pointer and finished the game with seven points, two rebounds and a personal-best three steals versus #14/13 North Carolina (11/30).
- Notched four points with a pair of rebounds and an assist in the win at Nevada (11/26).
- Scored four points to go along with two offensive rebounds and a pair of steals in the win over Iowa State (11/25).
- Was 2-for-3 from the field and finished with four points in her first game of the season at South Carolina (11/20).
- Missed the first three games of the season due to concussion-like symptoms.

CAREER HIGHS

Points.....	13 vs. Michigan (2/18/10)
Rebs.	7 vs. Green Bay (11/26/10)
Assists	1 (11x)
.....	last at Nevada (11/26/11)
Steals.....	3 vs. North Carolina (11/30/11)
.....	3 at Northwestern (1/3/10)
Blocks	2 (4x)
.....	last at Northwestern (1/6/11)
Minutes	30 vs. Green Bay (11/26/10)
FGM.....	5 vs. Michigan (2/18/10)
.....	5 at Northwestern (1/3/10)
FGA	8 vs. North Carolina (11/30/11)
FG%	1.000 (7x)
.....	last at Iowa (1-1) (2/6/11)
3FGM.....	2 vs. Illinois (1/24/10)
3FGA	3 vs. Illinois (1/24/10)
3PT%667 (2-3) vs. Illinois (1/24/10)
FTM	4 vs. South Carolina (11/21/10)
FTA	4 (3x)
.....	last vs. Green Bay (11/26/10)
FT%	1.000 (12x)
.....	last at Nevada (2-2) (11/26/11)
Career Double-Doubles	n/a

GAME-BY-GAME

	P	R	A
WASH. STATE	DNP		
MID. TENN.	DNP		
at Delaware	DNP		
at South Carolina	4	0	0
vs. Iowa State	4	2	1
at Nevada	4	2	1
NORTH CAROLINA	7	2	0
at Texas Tech	0	4	0
VIRGINIA TECH			
UMES			
WAGNER			
at Bucknell			
NEBRASKA			
at Wisconsin			
MICHIGAN ST.			
MICHIGAN			
at Nebraska			
at Illinois			
IOWA			
at Michigan			
at Michigan State			
INDIANA			
at Minnesota			
WISCONSIN			
at Northwestern			
at Purdue			
OHIO STATE			
MINNESOTA			





#44 Tori Waldner

Fr. * F/C * 6-5 * Milton, Ga./Milton

2011-12 Season Notes:

- Accounted for five points, three rebounds, an assist and a blocked shot at #19/25 Texas Tech (12/3).
- Was 3-for-4 from the field and finished with a career-high six points with two rebounds and two blocked shots in the win over #14/13 North Carolina (11/30).
- Scored her first collegiate points on a 15-footer in the first half en route to five points and a blocked shot in the Nugget Classic win over Iowa State (11/25).
- Saw her first action of the season at Delaware (11/17) and pulled in a pair of rebounds in eight minutes on the court.
- Had three points and a rebound in four minutes of action in the exhibition win over Bloomsburg (11/5).

CAREER HIGHS

Points.....	6 vs. North Carolina (11/30/11)
Rebs.....	3 at Texas Tech (12/3/11)
.....	3 at Nevada (11/26/11)
Assists.....	1 at Texas Tech (12/3/11)
.....	1 at Nevada (11/26/11)
Steals.....	2 at Nevada (11/26/11)
Blocks.....	2 vs. North Carolina (11/30/11)
Minutes.....	17 vs. North Carolina (11/30/11)
FGM.....	3 vs. North Carolina (11/30/11)
FGA.....	5 at Texas Tech (12/3/11)
FG%.....	1.000 (2-2) vs. Iowa St. (11/25/11)
3FGM.....	n/a
3FGA.....	n/a
3PT%.....	n/a
FTM.....	1 at Texas Tech (12/3/11)
.....	1 vs. Iowa State (11/25/11)
FTA.....	2 at Texas Tech (12/3/11)
.....	2 vs. Iowa State (11/25/11)
FT%.....	.500 (1-2) at Texas Tech (12/3/11)
.....	.500 (1-2) vs. Iowa State (11/25/11)
Career Double-Doubles.....	n/a

GAME-BY-GAME

	P	R	B
WASH. STATE	DNP		
MID. TENN.	DNP		
at Delaware	0	2	0
at South Carolina	0	0	0
vs. Iowa State	5	1	1
at Nevada	0	3	0
NORTH CAROLINA	6	2	2
at Texas Tech	5	3	1
VIRGINIA TECH			
UMES			
WAGNER			
at Bucknell			
NEBRASKA			
at Wisconsin			
MICHIGAN ST.			
MICHIGAN			
at Nebraska			
at Illinois			
IOWA			
at Michigan			
at Michigan State			
INDIANA			
at Minnesota			
WISCONSIN			
at Northwestern			
at Purdue			
OHIO STATE			
MINNESOTA			



#54 Nikki Greene

Jr. * C * 6-4 * Diboll, Texas/Diboll

2011-12 Highlights:

- Seventh on Penn State's career blocks list with 139 rejections.
- Became the 27th member of the Lady Lions' 500-rebound club with seven caroms against Iowa State (11/25).

2011-12 Season Notes:

- Playing in her home state of Texas for the first time, tallied 11 points, eight rebounds and a block at #19/25 Texas Tech (12/3).
- Accounted for 13 points, six rebounds and three blocked shots in the win over #14/13 North Carolina (11/30).
- Chipped in 11 points and seven rebounds in 16 minutes of action at Nevada (11/26).
- Narrowly missed a double-double with nine points, 10 rebounds and a blocked shot in the Lady Lion Classic Championship game win over Middle Tennessee (11/13).
- Snared a team-best 12 rebounds to go along with three points, two blocks and three steals against Washington State (11/11).

CAREER HIGHS

Points.....	24 vs. Utah (11/25/10)
Rebs.....	20 vs. Indiana (1/23/11)
Assists.....	2 (2x) last vs. Purdue (1/28/10)
Steals.....	4 vs. Maine (12/12/10)
.....	4 vs. Hofstra (3/18/10)
Blocks.....	7 vs. Purdue (1/28/10)
Minutes.....	32 vs. Purdue (1/28/10)
FGM.....	9 vs. Utah (11/25/10)
.....	9 at Dayton (11/12/10)
FGA.....	17 at Dayton (11/12/10)
FG%.....	1.000 (1-1) at Minnesota (12/6/09)
3FGM.....	n/a
3FGA.....	n/a
3PT%.....	n/a
FTM.....	8 vs. Pittsburgh (12/12/09)
FTA.....	13 vs. Monmouth (12/9/09)
FT%.....	1.000 (10x)
.....	last vs. North Carolina (1-1) (11/30/11)
Career Double-Doubles.....	7

GAME-BY-GAME

	P	R	B
WASH. STATE	3	12	2
MID. TENN.	9	10	1
at Delaware	6	4	0
at South Carolina	5	4	1
vs. Iowa State	7	7	1
at Nevada	11	7	0
NORTH CAROLINA	13	6	3
at Texas Tech	11	8	1
VIRGINIA TECH			
UMES			
WAGNER			
at Bucknell			
NEBRASKA			
at Wisconsin			
MICHIGAN ST.			
MICHIGAN			
at Nebraska			
at Illinois			
IOWA			
at Michigan			
at Michigan State			
INDIANA			
at Minnesota			
WISCONSIN			
at Northwestern			
at Purdue			
OHIO STATE			
MINNESOTA			



#12/14 Penn State 101, Bloomsburg 81

Exhibition Game * Nov. 5, 2011 * University Park, Pa.

Bloomsburg 81

#	Player	Total			3-Ptr			Rebounds			PF	TP	A	TO	Blk	Stl	Min
		FG-FGA	FG-FGA	FT-FTA	FG-FGA	FG-FGA	FT-FTA	Off	Def	Tot							
03	GALLAGHER, Kelsey	* 8-15	4-5	2-2	1	3	4	1	22	1	4	1	1	1	25		
20	FLANAGAN, Alyssa	* 0-2	0-1	2-4	1	3	4	2	2	6	4	2	1	28			
22	OXENRIDER, Kayla	* 4-11	1-3	5-6	0	3	3	2	14	2	7	1	2	33			
34	ELLIS, Lauren	* 1-2	0-0	0-0	2	7	9	4	2	3	0	0	0	32			
31	WIELLE, Dana	* 5-10	3-5	3-4	1	3	4	1	16	0	4	0	0	23			
04	DUDECK, Brianna	* 0-3	0-0	0-0	1	0	1	0	0	0	1	0	0	6			
10	NYCE, Courtney	* 0-3	0-2	0-0	0	1	1	2	0	0	2	0	0	5			
15	NOACK, Catherine	* 6-8	5-6	2-2	2	2	4	0	19	1	2	0	0	26			
30	SIMMONS, Marla	* 2-4	0-1	2-2	1	3	4	1	6	1	2	0	0	11			
32	BORSKI, Maggie	* 0-0	0-0	0-0	0	0	0	0	0	1	0	0	0	11			
	Team				1	0	1										
	Totals	26-58	13-23	16-20	10	25	35	17	81	15	26	4	4	200			

FG % 1st Half: 11-26 42.3% 2nd half: 15-32 46.9% Game: 26-58 44.8% Deadball Rebounds
 3FG % 1st Half: 7-10 70.0% 2nd half: 6-13 46.2% Game: 13-23 56.5%
 FT % 1st Half: 6-9 66.7% 2nd half: 10-11 90.9% Game: 16-20 80.0%

Penn State 101

#	Player	Total			3-Ptr			Rebounds			PF	TP	A	TO	Blk	Stl	Min
		FG-FGA	FG-FGA	FT-FTA	FG-FGA	FG-FGA	FT-FTA	Off	Def	Tot							
12	Gray, Zhaque	* 4-12	1-4	0-0	0	1	1	4	9	0	1	0	2	30			
20	Bentley, Alex	* 7-12	0-2	2-2	2	6	8	2	16	9	2	0	7	30			
24	Nickson, Mia	* 5-9	0-0	4-4	3	1	4	3	14	0	0	1	1	22			
33	Lucas, Maggie	* 10-15	7-8	8-9	0	3	3	2	35	1	1	0	1	35			
04	Greene, Nikki	* 6-8	0-0	0-2	4	3	7	3	12	0	2	0	0	16			
05	East, Talia	* 2-3	0-0	0-0	2	3	5	2	4	0	1	0	2	13			
23	Edwards, Ariel	* 1-10	0-1	2-3	3	3	6	3	4	0	2	0	1	30			
25	Studevent, Gizelle	* 2-8	0-1	0-0	1	1	2	1	4	0	2	0	0	20			
44	Waldner, Tori	* 1-1	0-0	1-1	0	1	1	0	3	0	0	0	0	4			
	Team				2	1	3			1							
	Totals	38-78	8-16	17-21	17	23	40	20	101	10	12	1	14	200			

FG % 1st Half: 18-41 43.9% 2nd half: 20-37 54.1% Game: 38-78 48.7% Deadball Rebounds
 3FG % 1st Half: 4-11 36.4% 2nd half: 4-5 80.0% Game: 8-16 50.0%
 FT % 1st Half: 7-9 77.8% 2nd half: 10-12 83.3% Game: 17-21 81.0%

Officials: Kevin Pethel, Kathy Ridilla, Shannon Feck
 Technical fouls: Bloomsburg-None. Penn State-None.
 Attendance: 7742

Score by periods	1st	2nd	Total
Bloomsburg	35	46	81
Penn State	47	54	101

Last FG - BLOOM 2nd-01:25, PSU 11:2 2nd-01:08.
 Largest lead - BLOOM by 5 1st-16:42, PSU 11:12 by 20 2nd-11:10.

Score tied - 4 times.
 Lead changed - 3 times.

Notable

- Sophomore guard **Maggie Lucas** led the Lady Lions' offensive outburst with 35 points, including a 7-for-8 effort from three-point range.
- Alex Bentley** had an all-around performance with 16 points, eight rebounds, nine assists and seven steals.
- Junior forward **Mia Nickson** also reached double figures with 14 points and four rebounds.

#12/14 Penn State 65, Middle Tennessee State 49

Game #2 * Nov. 13, 2011 * University Park, Pa.

Middle Tennessee 49 - 1-1

#	Player	Total			3-Ptr			Rebounds			PF	TP	A	TO	Blk	Stl	Min
		FG-FGA	FG-FGA	FT-FTA	FG-FGA	FG-FGA	FT-FTA	Off	Def	Tot							
01	Brinkley, Janay	* 0-8	0-3	0-0	1	3	4	1	0	3	0	0	2	24			
13	Ellie, Icelyn	* 5-10	1-4	2-2	3	7	10	5	13	0	1	0	3	37			
21	Rowe, Ebony	* 4-12	0-0	4-6	5	8	13	1	12	2	3	1	0	40			
24	Jones, Kortni	* 4-14	3-10	2-2	0	4	4	0	13	3	4	0	0	40			
02	Stewart, KeKe	* 2-7	2-6	1-2	0	3	3	4	7	2	2	3	0	28			
05	Cason, Shanice	* 0-3	0-3	2-2	1	1	2	3	2	1	5	0	1	19			
11	Ajanaku, Jamila	* 1-2	0-1	0-0	1	0	1	1	2	0	1	0	0	5			
23	March, Lauren	* 0-0	0-0	0-0	0	0	0	0	0	0	0	0	0	2			
52	Leonard, Laken	* 0-0	0-0	0-0	0	0	0	0	0	1	0	0	0	5			
	Team				1	2	3			2							
	Totals	16-56	6-27	11-14	12	28	40	17	49	12	18	4	6	200			

FG % 1st Half: 10-30 33.3% 2nd half: 6-26 23.1% Game: 16-56 28.6% Deadball Rebounds
 3FG % 1st Half: 3-17 17.6% 2nd half: 3-10 30.0% Game: 6-27 22.2%
 FT % 1st Half: 9-10 90.0% 2nd half: 2-4 50.0% Game: 11-14 78.6%

Penn State 65 - 2-0

#	Player	Total			3-Ptr			Rebounds			PF	TP	A	TO	Blk	Stl	Min
		FG-FGA	FG-FGA	FT-FTA	FG-FGA	FG-FGA	FT-FTA	Off	Def	Tot							
12	Gray, Zhaque	* 6-13	2-7	1-1	2	4	6	0	15	2	3	0	0	29			
20	Bentley, Alex	* 2-10	0-3	4-4	1	1	2	2	8	4	3	0	3	30			
24	Nickson, Mia	* 1-6	0-0	1-2	5	5	10	2	3	0	0	0	1	35			
33	Lucas, Maggie	* 4-12	3-9	3-4	1	1	2	2	14	5	3	0	2	35			
04	Greene, Nikki	* 4-9	0-0	1-3	5	5	10	4	9	0	2	1	1	19			
05	East, Talia	* 1-4	0-0	0-1	2	4	6	3	2	0	0	1	1	19			
23	Edwards, Ariel	* 4-10	0-2	2-3	0	1	1	1	10	1	1	0	2	22			
25	Studevent, Gizelle	* 2-5	0-0	0-0	0	3	3	0	4	1	0	0	0	11			
	Team				5	5	10										
	Totals	24-69	5-21	12-18	21	29	50	14	65	13	12	2	10	200			

FG % 1st Half: 9-33 27.3% 2nd half: 15-36 41.7% Game: 24-69 34.8% Deadball Rebounds
 3FG % 1st Half: 0-10 0.0% 2nd half: 5-11 45.5% Game: 5-21 23.8%
 FT % 1st Half: 8-11 72.7% 2nd half: 4-7 57.1% Game: 12-18 66.7%

Officials: Mark Zentz, Jennifer Rezac, Kathy Ridilla
 Technical fouls: Middle Tennessee-None. Penn State-None.
 Attendance: 3238

Score by periods	1st	2nd	Total
Middle Tennessee	32	17	49
Penn State	26	39	65

Last FG - MT 2nd-08:29, PSU 2nd-00:29.
 Largest lead - MT by 10 1st-16:57, PSU by 16 2nd-00:29.

Score tied - 3 times.
 Lead changed - 3 times.

Notable

- The Lady Lions used a 30-6 run, including a 19-0 spurt in the final seven minutes to erase a 10-point second-half deficit.
- The Lady Lions win their 27th regular-season tournament title and third under head coach **Coquese Washington**.
- Junior guard **Alex Bentley** surpassed the 900-point mark for her career with eight points.

#12/14 Penn State 72, Washington 60

Game #1 * Nov. 11, 2011 * University Park, Pa.

Washington State 60 - 0-1

#	Player	Total			3-Ptr			Rebounds			PF	TP	A	TO	Blk	Stl	Min
		FG-FGA	FG-FGA	FT-FTA	FG-FGA	FG-FGA	FT-FTA	Off	Def	Tot							
01	Cook, April	* 1-5	0-1	0-0	0	3	3	3	2	1	1	1	1	18			
03	Adzasu, Rosetta	* 2-6	0-0	0-0	1	2	3	3	4	5	4	1	1	22			
11	Perkins, Jazmine	* 4-17	1-5	0-1	4	9	13	2	9	2	1	0	4	28			
21	Tarnowski, Rosie	* 3-8	1-4	3-3	1	2	3	3	10	0	0	0	1	18			
33	Noyes, Carly	* 3-6	0-0	0-0	3	1	4	4	6	3	2	0	0	27			
02	Amajo, Ireti	* 3-15	2-7	1-2	0	1	1	1	9	1	2	0	0	25			
10	Presley, Tia	* 1-5	0-2	0-0	0	0	0	1	2	4	2	0	0	14			
22	Romberg, Sage	* 5-8	2-2	0-0	2	5	7	4	12	0	1	0	1	15			
23	Dheensaw, Shalie	* 0-1	0-0	0-0	0	2	2	0	0	0	0	0	0	5			
24	Thomas, Brandi	* 1-4	0-2	0-0	3	2	5	1	2	0	2	0	0	13			
42	Potter, Hana	* 2-7	0-0	0-1	3	1	4	4	4	0	2	0	1	15			
	Team				2	1	3										
	Totals	25-82	6-23	4-7	19	29	48	26	60	16	17	2	9	200			

FG % 1st Half: 17-39 43.6% 2nd half: 8-43 18.6% Game: 25-82 30.5% Deadball Rebounds
 3FG % 1st Half: 1-8 12.5% 2nd half: 5-15 33.3% Game: 6-23 26.1%
 FT % 1st Half: 3-4 75.0% 2nd half: 1-3 33.3% Game: 4-7 57.1%

Penn State 72 - 1-0

#	Player	Total			3-Ptr			Rebounds			PF	TP	A	TO	Blk	Stl	Min
		FG-FGA	FG-FGA	FT-FTA	FG-FGA	FG-FGA	FT-FTA	Off	Def	Tot							
12	Gray, Zhaque	* 3-11	1-4	0-1	0	4	4	4	7	1	2	0	1	28			
20	Bentley, Alex	* 7-13	2-2	6-6	0	4	4	3	22	4	8	0	2	36			
24	Nickson, Mia	* 1-7	0-0	4-7	2	5	7	4	6	0	2	0	1	32			
33	Lucas, Maggie	* 4-10	3-7	11-13	2	7	9	1	22	2	3	1	0	38			
04	Greene, Nikki	* 0-5	0-0	3-4	3	9	12	4	3	1	4	2	3	22			
05	East, Talia	* 3-3	0-0	0-0	4	4	8	1	6	0	2	0	1	19			
23	Edwards, Ariel	* 1-3	0-1	2-4	0	2	2	2	4	1	2	0	1	19			
25	Studevent, Gizelle	* 1-2	0-0	0-0	1	0	1	0	2	0	1	0	0	6			
	Team				0	5	5										
	Totals	20-56	6-14	26-35	12	40	52	19	72	9	24	5	8	200			

FG % 1st Half: 10-24 41.7% 2nd half: 10-32 31.3% Game: 20-56 35.7% Deadball Rebounds
 3FG % 1st Half: 3-6 50.0% 2nd half: 3-9 37.5% Game: 6-14 42.9%
 FT % 1st Half: 12-16 75.0% 2nd half: 14-19 73.7% Game: 26-35 74.3%

Officials: Dennis DeMayo, Kevin Pethell, Marissa Whaley
 Technical fouls: Washington State-None. Penn State-None.
 Attendance: 3807

Score by periods	1st	2nd	Total
Washington State	38	22	60
Penn State	35	37	72

Last FG - WSU 2nd-07:12, PSU 2nd-00:00.
 Largest lead - WSU by 6 1st-02:57, PSU by 12 2nd-00:00.

Score tied - 7 times.
 Lead changed - 12 times.

Notable

- The Lady Lions used a 13-0 run over the final seven minutes to seal the victory.
- Alex Bentley** becomes the 14th player in school history to reach 300 assists with four helpers.
- The Lady Lions win their fifth consecutive season-opener under **Coquese Washington**.
- Sophomore **Talia East** hits career highs with six points and eight rebounds.

Delaware 80, #11/12 Penn State 71

Game #3 * Nov. 17, 2011 * Newark, Del.

Penn State 71 - 2-1

#	Player	Total			3-Ptr			Rebounds			PF	TP	A	TO	Blk	Stl	Min
		FG-FGA	FG-FGA	FT-FTA	FG-FGA	FG-FGA	FT-FTA	Off	Def	Tot							
23	Edwards, Ariel	f															

#11/12 Penn State 55, South Carolina 50

Game #4 * Nov. 20, 2011 * Columbia, S.C.

Penn State 55 • 3-1

#	Player	Total			3-Ptr			Rebounds			PF	TP	A	TO	Blk	Stl	Min
		FG-FGA	FT-FTA	Reb Tot	FG-FGA	FT-FTA	Off	Def	Off	Def							
23	Edwards, Ariel	f	5-7	0-1	0-0	1	6	7	3	10	1	4	0	1	0	31	
54	Greene, Nikki	c	2-4	0-0	1-2	1	3	4	4	5	1	3	1	0	19		
12	Gray, Zhaque	g	1-5	0-1	4-4	0	4	4	2	6	2	1	1	1	38		
20	Bentley, Alex	g	1-4	0-0	4-4	0	2	2	2	6	3	7	0	1	32		
33	Lucas, Maggie	g	7-13	0-4	4-4	0	2	2	2	18	2	2	0	1	38		
05	East, Talia	g	3-6	0-0	0-0	1	14	15	2	6	0	3	7	1	29		
25	Studevent, Gizelle	g	2-3	0-0	0-0	0	1	1	0	0	1	2	0	1	5		
40	Wolfe, Marisa	g	3-3	0-0	0-0	0	0	0	1	4	0	0	0	0	7		
44	Waldner, Tori	g	0-0	0-0	0-0	0	0	0	0	0	0	1	0	0	1		
Team			21-42	0-6	13-14	5	34	39	16	55	10	23	9	6	200		

FG % 1st Half: 11-22 50.0% 2nd half: 10-20 50.0% Game: 21-42 50.0% Deadball Rebounds: 0
 3FG % 1st Half: 0-2 0.0% 2nd half: 0-4 0.0% Game: 0-6 0.0%
 FT % 1st Half: 4-4 100.0% 2nd half: 9-10 90.0% Game: 13-14 92.9%

South Carolina 50 • 3-1

#	Player	Total			3-Ptr			Rebounds			PF	TP	A	TO	Blk	Stl	Min
		FG-FGA	FT-FTA	Reb Tot	FG-FGA	FT-FTA	Off	Def	Off	Def							
12	STEPHENS, Charenee	f	1-3	0-0	2-3	5	3	8	0	4	0	2	0	1	19		
03	WALKER, Ieasia	g	6-20	3-9	0-0	0	3	4	1	15	2	1	0	5	38		
05	GRANT, Markeshia	g	3-12	1-8	0-0	0	0	0	3	7	2	0	0	1	33		
11	SUTTON, La'Keisha	g	2-17	1-4	2-2	2	0	0	1	0	3	2	1	0	30		
22	NEWTON, Courtney	g	0-1	0-1	0-0	0	0	0	1	0	0	1	0	0	10		
01	WILSON, Ebony	g	0-0	0-0	0-0	0	0	0	2	0	0	0	0	0	1		
20	WHITE, Sancheon	g	0-4	0-1	1-2	2	0	2	2	1	0	0	0	1	12		
21	BRUNER, Ashley	g	4-8	0-0	1-3	9	9	18	3	9	2	2	2	1	30		
23	ROY, Tina	g	2-7	1-6	0-0	0	0	0	0	5	0	0	0	0	7		
24	WELCH, Aleighsa	g	1-4	0-0	0-0	6	0	6	2	2	0	0	0	1	20		
Team			19-76	6-29	6-10	25	15	40	15	50	8	10	3	10	200		

FG % 1st Half: 9-38 23.7% 2nd half: 10-38 26.3% Game: 19-76 25.0% Deadball Rebounds: 2.2
 3FG % 1st Half: 2-12 16.7% 2nd half: 4-17 23.5% Game: 6-29 20.7%
 FT % 1st Half: 2-3 66.7% 2nd half: 4-7 57.1% Game: 6-10 60.0%

Officials: Beverly Roberts, Eric Brewton, Felicia Grinter
 Technical fouls: Penn State-None, South Carolina-None.
 Attendance: 2391

Score by periods	1st	2nd	Total
Penn State	26	29	55
South Carolina	22	28	50

Points	In	Off	2nd	Fast	Bench
PSU	26	8	3	4	10
SC	20	17	16	2	17

Last FG - PSU 2nd-00:23, SC 2nd-05:47.
 Largest lead - PSU by 6 1st-00:50, SC by 8 2nd-06:40.

Notable

- The Lady Lions used a 13-0 run, including the final six tallies coming from Maggie Lucas, over the final 5:22 to earn the come-from-behind win.
- Talia East rejected a career-high seven shots, which ties her for the third-highest single-game total in school history.
- PSU was held without a three-point field goal for the first time since Jan. 7, 2007 (vs. Michigan).

#17/16 Penn State 103, Nevada 65

Game #6 * Nov. 26, 2011 * Reno, Nev.

Penn State 103 • 5-1

#	Player	Total			3-Ptr			Rebounds			PF	TP	A	TO	Blk	Stl	Min
		FG-FGA	FT-FTA	Reb Tot	FG-FGA	FT-FTA	Off	Def	Off	Def							
12	Gray, Zhaque	* 9-15	1-4	2-3	3	1	4	2	21	3	1	0	2	35			
20	Bentley, Alex	* 11-15	1-2	0-0	0	0	0	2	23	6	1	0	5	29			
24	Nickson, Mia	* 1-3	0-0	0-0	1	0	1	0	2	0	0	1	0	7			
33	Lucas, Maggie	* 9-16	2-4	6-7	1	6	7	3	26	5	4	1	0	35			
54	Greene, Nikki	* 4-9	0-0	3-3	3	4	7	3	11	0	1	0	0	16			
05	East, Talia	4-6	0-0	0-4	3	3	6	1	8	0	1	0	1	14			
23	Edwards, Ariel	1-3	0-0	0-0	0	4	4	1	2	1	2	0	2	22			
25	Studevent, Gizelle	3-4	0-0	0-0	1	2	3	0	6	3	0	0	0	22			
40	Wolfe, Marisa	1-2	0-0	2-2	0	2	2	3	4	1	2	0	0	8			
44	Waldner, Tori	0-2	0-0	0-0	1	2	3	3	0	1	2	0	2	12			
Team					1	4	5										
Totals			43-75	4-10	13-19	14	28	42	18	103	20	14	2	12	200		

FG % 1st Half: 21-40 52.5% 2nd half: 22-35 62.9% Game: 43-75 57.3% Deadball Rebounds: 4.1
 3FG % 1st Half: 3-7 42.9% 2nd half: 1-3 33.3% Game: 4-10 40.0%
 FT % 1st Half: 4-7 57.1% 2nd half: 9-12 75.0% Game: 13-19 68.4%

Nevada 65 • 2-3

#	Player	Total			3-Ptr			Rebounds			PF	TP	A	TO	Blk	Stl	Min
		FG-FGA	FT-FTA	Reb Tot	FG-FGA	FT-FTA	Off	Def	Off	Def							
03	Sharp, Danika	* 5-13	2-3	2-2	1	1	2	2	14	1	3	0	0	28			
21	Kevorken, Kate	* 3-10	3-7	5-6	0	2	2	1	4	4	2	0	1	30			
23	Johnson, Amanda	* 3-14	0-5	2-2	0	5	5	3	8	4	5	0	1	39			
32	Wideman, Arielle	* 2-7	1-2	0-0	2	0	2	2	5	2	7	0	0	28			
34	Williams, Kayla	* 5-9	0-1	4-4	1	4	5	14	0	3	3	1	0	20			
05	Brennan, Chanelle	0-0	0-0	0-0	2	1	3	1	0	0	2	0	0	11			
12	Lois, Faith	0-0	0-0	0-0	0	0	0	0	0	0	1	0	0	3			
14	Johnson, Aja	1-2	0-0	0-0	2	3	5	0	2	0	1	0	0	8			
25	Burns, Emily	0-2	0-0	0-1	0	1	1	0	0	0	0	0	0	4			
25	Cough, Christina	2-4	2-4	0-0	0	0	0	0	6	0	0	0	0	6			
44	Smith, Amber	0-1	0-1	0-0	0	1	1	0	0	0	1	0	1	6			
55	Mungedi, Mimi	1-2	0-0	0-0	2	0	2	2	2	0	0	0	0	17			
Team					4	1	5										
Totals			22-64	8-23	13-15	14	19	33	17	65	11	25	3	4	200		

FG % 1st Half: 14-34 41.2% 2nd half: 8-30 26.7% Game: 22-64 34.4% Deadball Rebounds: 1.1
 3FG % 1st Half: 3-9 33.3% 2nd half: 5-14 35.7% Game: 8-23 34.8%
 FT % 1st Half: 3-5 60.0% 2nd half: 10-10 100.0% Game: 13-15 86.7%

Officials: Kyle Bacon, Shelley Nakasone, Rick Morris
 Technical fouls: Penn State-None, Nevada-None.
 Attendance: 759
 John Ascuaga's Nugget Classic - Championship

Score by periods	1st	2nd	Total
Penn State	49	54	103
Nevada	34	31	65

Points	In	Off	2nd	Fast	Bench
PSU	62	36	18	34	20
NEVADA	18	10	13	9	10

Last FG - PSU 2nd-01:05, NEVADA 2nd-00:22.
 Largest lead - PSU by 42 2nd-07:06, NEVADA None.

Notable

- The Lady Lions won their 28th regular-season tournament title with the win in the Nugget Classic title game and the second this season (Lady Lion Classic).
- Alex Bentley was selected as the Tournament MVP and Maggie Lucas was named to the All-Tournament team.
- The Lady Lions had three 20-point scorers for the first time since a win at Dayton on Nov. 12, 2010.

#17/16 Penn State 66 Iowa State 59

Game #5 * Nov. 25, 2011 * Reno, Nev.

Iowa State 59 • 3-1

#	Player	Total			3-Ptr			Rebounds			PF	TP	A	TO	Blk	Stl	Min
		FG-FGA	FT-FTA	Reb Tot	FG-FGA	FT-FTA	Off	Def	Off	Def							
04	Moody, Nikki	* 1-11	1-7	4-6	1	3	4	0	7	1	3	0	0	33			
05	Christofferson, H.	* 1-5	0-4	4-5	3	2	5	3	6	0	3	2	0	23			
10	Mansfield, Lauren	* 2-6	1-3	0-0	0	4	4	3	5	1	2	0	1	34			
12	Schroll, Jessica	* 3-7	1-2	1-2	1	2	3	3	7	2	1	1	1	29			
33	Poppens, Chelsea	* 3-8	0-0	5-13	4	11	17	4	11	1	3	1	1	16			
03	Harris, Kelsey	0-0	0-0	1-2	0	0	0	1	1	1	1	0	0	5			
21	Mays, Kileah	2-4	0-0	1-2	1	3	4	2	5	0	0	1	0	12			
22	Williamson, Brynn	5-10	4-9	1-2	0	2	2	1	15	0	0	1	1	29			
23	Cole, Chassidy	0-1	0-1	2-3	0	0	0	1	2	1	1	0	0	12			
32	Ellis, Fallon	0-1	0-1	0-0	0	1	1	0	0	0	0	0	0	4			
42	Zimmerman, Amanda	0-0	0-0	0-0	0	1	1	0	0	0	1	0	0	3			
Team					1	2	3										
Totals			17-53	6-26	19-35	13	31	44	18	59	7	16	6	4	200		

FG % 1st Half: 7-25 28.0% 2nd half: 10-28 35.7% Game: 17-53 32.1% Deadball Rebounds: 8
 3FG % 1st Half: 2-10 20.0% 2nd half: 4-16 25.0% Game: 6-26 23.1%
 FT % 1st Half: 12-24 50.0% 2nd half: 7-11 63.6% Game: 19-35 54.3%

Penn State 66 • 4-1

#	Player	Total			3-Ptr			Rebounds			PF	TP	A	TO	Blk	Stl	Min
		FG-FGA	FT-FTA	Reb Tot	FG-FGA	FT-FTA	Off	Def	Off	Def							
12	Gray, Zhaque	* 5-7	2-2	2-2	0	3	3	4	14	3	0	0	1	30			
20	Bentley, Alex	* 5-13	2-5	1-2	0	3	3	4	13	2							

#19/25 Texas Tech 70, #16/15 Penn State 66

Game #8 * Dec. 3, 2011 * Lubbock, Texas

Penn State 66 • 6-2

##	Player	Total			3-Ptr			Rebounds			PF	TP	A	TO	Blk	Stl	Min
		FG-FGA	FG-FGA	FT-FTA	FG-FGA	FG-FGA	FT-FTA	Off	Def	Tot							
23	Edwards, Ariel	f	1-5	0-0	1-2	3	2	5	2	3	2	1	1	3	29		
54	Greene, Nikki	f	2-4	0-0	7-8	3	5	8	4	11	0	2	1	0	20		
12	Gray, Zhaque	g	3-8	0-2	2-2	0	2	2	1	8	3	2	0	0	33		
20	Bentley, Alex	g	6-15	1-2	5-6	0	2	2	3	18	3	2	0	1	38		
33	Lucas, Maggie	g	5-13	1-5	4-4	0	1	1	1	15	2	3	0	3	33		
05	East, Talia		3-5	0-0	0-2	2	6	8	4	6	0	2	1	2	20		
25	Studevent, Gizelle		0-1	0-0	0-0	0	0	0	1	0	0	0	0	1	8		
40	Wolfe, Marisa		0-2	0-0	0-0	2	2	4	3	0	0	0	0	0	7		
44	Waldner, Tori		2-5	0-0	1-2	1	2	3	4	5	1	1	1	0	12		
Team						2	1	3									
Totals			22-58	2-9	20-26	13	23	36	23	66	11	13	4	10	200		

FG % 1st Half: 14-26 53.8% 2nd half: 8-32 25.0% Game: 22-58 37.9% Deadball Rebounds 3
 3FG % 1st Half: 0-2 0.0% 2nd half: 2-7 28.6% Game: 2-9 22.2%
 FT % 1st Half: 8-12 66.7% 2nd half: 12-14 85.7% Game: 20-26 76.9%

TTU 70 • 7-0

##	Player	Total			3-Ptr			Rebounds			PF	TP	A	TO	Blk	Stl	Min
		FG-FGA	FG-FGA	FT-FTA	FG-FGA	FG-FGA	FT-FTA	Off	Def	Tot							
20	MALLARD, KIERRA	f	6-18	2-4	4-4	9	6	15	4	18	3	7	1	3	31		
41	BAKER, KELSI	f	1-3	0-1	0-2	2	3	5	3	2	1	1	1	0	20		
05	HYDE, CHRISTINE	g	3-9	0-3	1-3	1	5	6	3	7	2	2	0	1	30		
15	MORRIS, CASEY	g	4-15	4-10	1-1	2	1	3	1	13	2	1	0	2	37		
23	SMALLS, MONIQUE	g	3-7	1-2	8-11	2	6	8	2	15	7	0	0	2	38		
00	BROWN, CHYNNA		1-7	0-3	0-0	0	0	0	2	2	0	3	0	1	11		
01	BARNCASTLE, JORDAN		2-3	2-3	0-0	0	2	2	1	6	1	0	0	0	12		
12	BATTLE, AMBER		0-0	0-0	0-0	0	0	0	0	9	0	0	0	0	2		
24	BOKENKAMP, MARY		0-0	0-0	0-0	0	0	0	0	0	0	0	0	0	2		
33	NOBLES, SHAUNTAL		2-3	0-0	3-5	3	2	5	5	7	0	1	0	0	16		
42	WALKER, EBONY		0-0	0-0	0-0	0	0	0	1	0	0	1	0	0	1		
Team						3	1	4									
Totals			22-65	9-26	17-26	22	26	48	22	70	16	18	2	9	200		

FG % 1st Half: 10-33 30.3% 2nd half: 12-32 37.5% Game: 22-65 33.8% Deadball Rebounds 7
 3FG % 1st Half: 5-15 33.3% 2nd half: 4-11 36.4% Game: 9-26 34.6%
 FT % 1st Half: 9-15 60.0% 2nd half: 8-11 72.7% Game: 17-26 65.4%

Officials: Tina Napier, Felicia Grinter, Jesse Dickerson
 Technical fouls: Penn State-Edwards, Ariel. TTU-BAKER, KELSI.
 Attendance: 8923

Score by periods	1st	2nd	Total
Penn State	36	30	66
TTU	34	36	70

	In	Off	2nd	Fast	Bench
Points					
PSU	28	20	14	8	11
TTU	20	12	16	6	15

Last FG - PSU 2nd-00:36, TTU 2nd-00:03.
 Largest lead - PSU by 8 1st-09:56, TTU by 7 2nd-03:26.
 Score tied - 13 times.
 Lead changed - 17 times.

Notable

- The Lady Lions shot just 25% (8-32) in the second half as the Lady Raiders rallied.
- Jordan Barncastle hit a three-pointer as the shot clock expired with three seconds remaining on the game to seal the win for TTU.
- Penn State falls to 1-1 in Big 12/Big Ten Challenge games.



2011-12 RADIO/TV CHART



#2

Dara Taylor
5-8 * Jr./Jr. * G
Wilmington, Del.
Caravel Academy
(Maryland)



#5

Talia East
6-3 * So./So. * F/C
Philadelphia, Pa.
Friends' Central School



#12

Zhaque Gray
5-8 * Sr./Sr. * G
Chicago, Ill.
Prep John Hope



#15

Renee Womack
5-10 * Sr./Sr. * G
Lansdale, Pa.
Methacton



#20

Alex Bentley
5-7 * Jr./Jr. * G
Indianapolis, Ind.
Ben Davis



#23

Ariel Edwards
6-2 * So./So. * F
Elmont, N.Y.
Christ the King



#24

Mia Nickson
6-2 * Sr./Jr. * F
Ashburn, Va.
Notre Dame Academy
(Boston College)



#25

Gizelle Studevent
5-11 * Jr./Jr. * G
La Jolla, Calif.
The Bishop's School



#33

Maggie Lucas
5-10 * So./So. * G
Narberth, Pa.
Germantown Academy



#40

Marisa Wolfe
6-2 * Jr./Jr. * F
Ford City, Pa.
Ford City



#44

Tori Waldner
6-5 * Fr./Fr. * F/C
Milton, Ga.
Milton



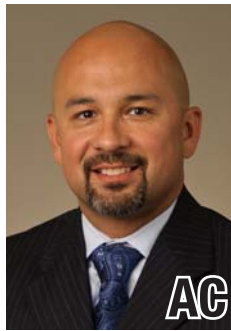
#54

Nikki Greene
6-4 * Jr./Jr. * F/C
Diboll, Texas
Diboll



HC

Coquese Washington
Head Coach
Notre Dame '92
Fifth Season



AC

Fred Chmiel
Assistant Coach
Excelsior College
Second Season



AC

Kia Damon
Assistant Coach
Millersville '97
Fifth Season



AC

Maren Walseth
Assistant Coach
Penn State '02
Fifth Season



DO

Ethan Gelfand
Director of Basketball
Operations
First Season



VO

Mike Miller
Director of Video &
Technology Operations
Seventh Season



2011-12 Penn State Lady Lions
Penn State Combined Team Statistics (as of Dec 03, 2011)
All games

RECORD:	OVERALL	HOME	AWAY	NEUTRAL
ALL GAMES	6-2	3-0	2-2	1-0
CONFERENCE	0-0	0-0	0-0	0-0
NON-CONFERENCE	6-2	3-0	2-2	1-0

##	Player	gp-gs	min	avg	Total		3-Point		F-Throw		Rebounds				pf	dq	a	to	blk	stl	pts	avg		
					fg-fga	fg%	3fg-fga	3fg%	ft-fta	ft%	off	def	tot	avg										
33	Lucas, Maggie	8-8	275	34.4	44-108	.407	18-54	.333	40-48	.833	7	25	32	4.0	19	0	20	21	2	9	146	18.3		
20	Bentley, Alex	8-8	274	34.2	44-100	.440	8-18	.444	29-32	.906	4	17	21	2.6	20	0	47	27	1	21	125	15.6		
12	Gray, Zhaque	8-8	262	32.8	40-88	.455	15-37	.405	16-18	.889	7	23	30	3.8	17	0	19	14	1	8	111	13.9		
54	Greene, Nikki	8-8	143	17.9	22-53	.415	0-0	.000	21-26	.808	23	35	58	7.3	30	0	3	17	9	5	65	8.1		
23	Edwards, Ariel	8-4	215	26.9	22-54	.407	1-7	.143	5-10	.500	11	25	36	4.5	21	1	9	16	1	9	50	6.3		
05	East, Talia	8-0	135	16.9	17-31	.548	0-0	.000	3-11	.273	17	44	61	7.6	21	1	0	10	13	6	37	4.6		
24	Nickson, Mia	4-4	95	23.8	5-24	.208	0-0	.000	6-13	.462	12	19	31	7.8	10	0	2	3	1	2	16	4.0		
40	Wolfe, Marisa	5-0	59	11.8	8-20	.400	1-3	.333	2-4	.500	5	5	10	2.0	13	0	2	2	0	5	19	3.8		
44	Waldner, Tori	6-0	58	9.7	7-14	.500	0-0	.000	2-4	.500	2	9	11	1.8	13	0	2	5	4	3	16	2.7		
25	Studevent, Gizelle	8-0	84	10.5	8-17	.471	0-0	.000	0-0	.000	2	7	9	1.1	3	0	5	5	0	3	16	2.0		
Team											18	26	44											
Total.....		8	1600		217-509	.426	43-119	.361	124-166	.747	108	235	343	42.9	167	2	109	121	32	71	601	75.1		
Opponents.....		8	1600		176-529	.333	52-188	.277	113-161	.702	140	201	341	42.6	144	3	99	137	27	53	517	64.6		

TEAM STATISTICS	PSU	OPP	Date	Opponent	Score	Att.
SCORING	601	517	11/11/11	WASHINGTON STATE	w 72-60	3807
Points per game	75.1	64.6	11/13/11	MIDDLE TENNESSEE	w 65-49	3238
Scoring margin	+10.5	-	11/17/11	at Delaware	L 71-80	3352
FIELD GOALS-ATT	217-509	176-529	11/20/11	at South Carolina	w 55-50	2391
Field goal pct	.426	.333	11/25/11	vs Iowa State	w 66-59	1089
3 POINT FG-ATT	43-119	52-188	11/26/11	at Nevada	w 103-65	759
3-point FG pct	.361	.277	11/30/11	NORTH CAROLINA	w 103-84	3963
3-pt FG made per game	5.4	6.5	12-03-11	at TTU	L 66-70	8923
FREE THROWS-ATT	124-166	113-161	* - Conference game			
Free throw pct	.747	.702				
F-Throws made per game	15.5	14.1				
REBOUNDS	343	341				
Rebounds per game	42.9	42.6				
Rebounding margin	+0.3	-				
ASSISTS	109	99				
Assists per game	13.6	12.4				
TURNOVERS	121	137				
Turnovers per game	15.1	17.1				
Turnover margin	+2.0	-				
Assist/turnover ratio	0.9	0.7				
STEALS	71	53				
Steals per game	8.9	6.6				
BLOCKS	32	27				
Blocks per game	4.0	3.4				
ATTENDANCE	11008	16514				
Home games-Avg/Game	3-3669	4-3856				
Neutral site-Avg/Game	-	1-1089				

Score by Periods	1st	2nd	Totals
Penn State	302	299	601
Opponents	271	246	517

2011-12 Penn State Lady Lions
Penn State Category Leaders (as of Dec 03, 2011)
All games

Points	G	Pts	Pts/G
Lucas, Maggie	8	146	18.3
Bentley, Alex	8	125	15.6
Gray, Zhaque	8	111	13.9
Greene, Nikki	8	65	8.1
Edwards, Ariel	8	50	6.3
East, Talia	8	37	4.6
Wolfe, Marisa	5	19	3.8
Nickson, Mia	4	16	4.0
Studevent, Gizelle	8	16	2.0
Waldner, Tori	6	16	2.7

FG Percentage	FG	Att	Pct
East, Talia	17	31	.548
Waldner, Tori	7	14	.500
Studevent, Gizelle	8	17	.471
Gray, Zhaque	40	88	.455
Bentley, Alex	44	100	.440
Greene, Nikki	22	53	.415
Edwards, Ariel	22	54	.407
Lucas, Maggie	44	108	.407
Wolfe, Marisa	8	20	.400
Nickson, Mia	5	24	.208

3-Point Percentage	3FG	Att	Pct
Bentley, Alex	8	18	.444
Gray, Zhaque	15	37	.405
Wolfe, Marisa	1	3	.333
Lucas, Maggie	18	54	.333
Edwards, Ariel	1	7	.143

Free Throw Percent	FG	Att	Pct
Bentley, Alex	29	32	.906
Gray, Zhaque	16	18	.889
Lucas, Maggie	40	48	.833
Greene, Nikki	21	26	.808
Waldner, Tori	2	4	.500
Wolfe, Marisa	2	4	.500
Edwards, Ariel	5	10	.500
Nickson, Mia	6	13	.462
East, Talia	3	11	.273

Scoring Average	G	Pts	Avg/G
Lucas, Maggie	8	146	18.3
Bentley, Alex	8	125	15.6
Gray, Zhaque	8	111	13.9
Greene, Nikki	8	65	8.1
Edwards, Ariel	8	50	6.3
East, Talia	8	37	4.6
Nickson, Mia	4	16	4.0
Wolfe, Marisa	5	19	3.8
Waldner, Tori	6	16	2.7
Studevent, Gizelle	8	16	2.0

Field Goal Attempts	G	Att	Att/G
Lucas, Maggie	8	108	13.5
Bentley, Alex	8	100	12.5
Gray, Zhaque	8	88	11.0
Edwards, Ariel	8	54	6.8
Greene, Nikki	8	53	6.6

Field Goals Made	G	Made	Made/G
Lucas, Maggie	8	44	5.5
Bentley, Alex	8	44	5.5
Gray, Zhaque	8	40	5.0
Edwards, Ariel	8	22	2.8
Greene, Nikki	8	22	2.8

3-Point FG Attempts	G	Att	Att/G
Lucas, Maggie	8	54	6.8
Gray, Zhaque	8	37	4.6
Bentley, Alex	8	18	2.3
Edwards, Ariel	8	7	0.9
Wolfe, Marisa	5	3	0.6

3-Point FG Made	G	Made	Made/G
Lucas, Maggie	8	18	2.3
Gray, Zhaque	8	15	1.9
Bentley, Alex	8	8	1.0
Wolfe, Marisa	5	1	0.2
Edwards, Ariel	8	1	0.1

Free Throw Attempts	G	Att	Att/G
Lucas, Maggie	8	48	6.0
Bentley, Alex	8	32	4.0
Greene, Nikki	8	26	3.3
Gray, Zhaque	8	18	2.3
Nickson, Mia	4	13	3.3

Free Throws Made	G	Made	Made/G
Lucas, Maggie	8	40	5.0
Bentley, Alex	8	29	3.6
Greene, Nikki	8	21	2.6
Gray, Zhaque	8	16	2.0
Nickson, Mia	4	6	1.5

2011-12 Penn State Lady Lions
Penn State Category Leaders (as of Dec 03, 2011)
All games

<u>Rebounds</u>	<u>G</u>	<u>Reb</u>	<u>Reb/G</u>
East, Talia	8	61	7.6
Greene, Nikki	8	58	7.3
Edwards, Ariel	8	36	4.5
Lucas, Maggie	8	32	4.0
Nickson, Mia	4	31	7.8

<u>Assists</u>	<u>G</u>	<u>No.</u>	<u>Ast/G</u>
Bentley, Alex	8	47	5.9
Lucas, Maggie	8	20	2.5
Gray, Zhaque	8	19	2.4
Edwards, Ariel	8	9	1.1
Studevent, Gizelle	8	5	0.6

<u>Rebound Average</u>	<u>G</u>	<u>Reb</u>	<u>Avg/G</u>
Nickson, Mia	4	31	7.8
East, Talia	8	61	7.6
Greene, Nikki	8	58	7.3
Edwards, Ariel	8	36	4.5
Lucas, Maggie	8	32	4.0

<u>Steals</u>	<u>G</u>	<u>No.</u>	<u>Stl/G</u>
Bentley, Alex	8	21	2.6
Edwards, Ariel	8	9	1.1
Lucas, Maggie	8	9	1.1
Gray, Zhaque	8	8	1.0
East, Talia	8	6	0.8

<u>Offensive Rebounds</u>	<u>G</u>	<u>No.</u>	<u>Avg/G</u>
Greene, Nikki	8	23	2.9
East, Talia	8	17	2.1
Nickson, Mia	4	12	3.0
Edwards, Ariel	8	11	1.4
Lucas, Maggie	8	7	0.9
Gray, Zhaque	8	7	0.9

<u>Blocked Shots</u>	<u>G</u>	<u>No.</u>	<u>Blk/G</u>
East, Talia	8	13	1.6
Greene, Nikki	8	9	1.1
Waldner, Tori	6	4	0.7
Lucas, Maggie	8	2	0.3
Bentley, Alex	8	1	0.1
Nickson, Mia	4	1	0.3
Edwards, Ariel	8	1	0.1
Gray, Zhaque	8	1	0.1

<u>Defensive Rebounds</u>	<u>G</u>	<u>No.</u>	<u>Avg/G</u>
East, Talia	8	44	5.5
Greene, Nikki	8	35	4.4
Edwards, Ariel	8	25	3.1
Lucas, Maggie	8	25	3.1
Gray, Zhaque	8	23	2.9

<u>Minutes</u>	<u>G</u>	<u>No.</u>	<u>Min/G</u>
Lucas, Maggie	8	275	34.4
Bentley, Alex	8	274	34.2
Gray, Zhaque	8	262	32.8
Edwards, Ariel	8	215	26.9
Greene, Nikki	8	143	17.9

<u>Fouls</u>	<u>G</u>	<u>No.</u>	<u>Per/G</u>
Greene, Nikki	8	30	3.8
Edwards, Ariel	8	21	2.6
East, Talia	8	21	2.6
Bentley, Alex	8	20	2.5
Lucas, Maggie	8	19	2.4

<u>Turnovers</u>	<u>G</u>	<u>No.</u>	<u>TO/G</u>
Bentley, Alex	8	27	3.4
Lucas, Maggie	8	21	2.6
Greene, Nikki	8	17	2.1
Edwards, Ariel	8	16	2.0
Gray, Zhaque	8	14	1.8

<u>Foulsouts</u>	<u>G</u>	<u>No.</u>
East, Talia	8	1
Edwards, Ariel	8	1