



2012-13 PENN STATE LADY LION BASKETBALL

WOMEN'S BASKETBALL CONTACT:
 Kristina Petersen
 Twitter: @ladylionsid
 Website: www.GoPSUsports.com
 Email: kap18@psu.edu
 Cell: 814-883-4581
 Office: 814-865-1757

Penn State Athletic Communications: 101D Bryce Jordan Center, University Park, PA 16802 ♦ Office: 814-865-1757 ♦ Fax: 814-863-3165

SCHEDULE/RESULTS

NOVEMBER	
Sat. 3	CALIFORNIA (PA.) (ex.).....W, 95-39
Sun. 11	HOWARD (BTN.com)..... W, 72-61
Wed. 14	at #16/13 Texas A&M (FSN) W, 63-58
Sun. 18	LAFAYETTE (BTN.com) 2 p.m.

Radisson Hotel Chatsworth Thanksgiving Basketball Tournament	
Fri. 23	vs. Detroit 5:30 p.m.
Sat. 24	vs. CS-Northridge/S. Ala. ... 3/5:30 p.m.

Big Ten/ACC Challenge	
Thurs. 29	at Miami (Fla.) 7:05 p.m.

DECEMBER	
Sun. 2	FAIR. DICKINSON (BTN.com) ..2 p.m.
Thurs. 6	at Connecticut (SNY) 7 p.m.
Sun. 9	GEORGETOWN (BTN) noon
Wed. 12	at Virginia Tech 7 p.m.
Sun. 16	SOUTH DAKOTA STATE 2 p.m.
Sun. 23	NJIT (BTN.com) 1:30 p.m.

JANUARY	
Thurs. 3	NORTHWESTERN * (BTN.com) . 7 p.m.
Sun. 6	at Michigan State * (BTN) TBA
Sun. 13	NEBRASKA * (ESPN2) 2 p.m.
Thurs. 17	WISCONSIN * (BTN.com) 7 p.m.
Mon. 21	at Michigan * (BTN) 6:30 p.m.
Thurs. 24	MINNESOTA * (BTN) 6:30 p.m.
Sun. 27	at Ohio State * (BTN) 1 p.m.
Thurs. 31	at Wisconsin * (BTN.com) 8 p.m.

FEBRUARY	
Mon. 4	PURDUE * (ESPN2) 7 p.m.
Thurs. 7	at Indiana * (BTN) 6:30 p.m.
Sun. 10	MICHIGAN STATE * (ESPN2) ... 2 p.m.
Thurs. 14	at Iowa * (BTN.com) 8 p.m.
Wed. 20	ILLINOIS * (BTN.com) 7 p.m.

Seventh Annual Pink Zone at Penn State	
Sun. 24	MICHIGAN * (BTN) 1 p.m.
Thurs. 28	at Minnesota * (BTN-WC) TBA

MARCH	
Sun. 3	at Nebraska * (BTN-WC) TBA
Th.-Su. 7-10 Big Ten Tournament (BTN/ESPN2) (Hoffman Estates, Ill.)

Sa.-Tu. 23-26 NCAA 1st & 2nd Round
Sa.-Tu. 30-Apr. 2 NCAA Regionals

APRIL	
Su./Tu. 7/9	...NCAA Final Four (New Orleans, La.)

BOLD CAPS indicates home game.
 * - indicates Big Ten game.
 All times are Eastern Time.
 BTN - Big Ten Network
 BTN.com - BigTenNetwork.com

Schedule subject to change. Please visit www.GoPSUsports.com for up-to-date tip times.

Game #3: Lafayette at #9/9 Penn State

Sun., Nov. 18 ▶ 2 p.m. ▶ Bryce Jordan Center ▶ University Park, Pa.

		SETTING THE SCENE
Penn State Lady Lions	Lafayette Leopards	The Lafayette Game
Record: 2-0, 0-0 Big Ten Last Game: PSU 63, Texas A&M 58 (11/14) Head Coach: Coquese Washington Career Record: 94-67 (6th yr.) Record at PSU: 94-67 (6th yr.)	Record: 1-2, 0-0 Patriot Last Game: Villanova 73, LC 34 (11/14) Head Coach: Diane Nolan Career Record: 548-478 (36th yr.) Record at LC: 20-43 (3rd yr.)	Series: First Meeting Last Meeting: First Meeting Streak: n/a Television: none Radio: The game is on the Penn State Sports Network and WRSC 1390 locally with Jerry Fisher calling the action. The audio feed is available at www.GoPSUsports.com. Webstream: BTN.com Live Stats: GoPSUsports.com
Statistical Leaders Points Maggie Lucas (21.5) Rebounds Mia Nickson (10.5) Assists Alex Bentley (4.0)	Statistical Leaders Points Danielle Fiacco (11.0) Rebounds Danielle Fiacco (10.0) Assists Two with 2.0	

GAME DAY INFORMATION

SCOUTING LAFAYETTE

The Leopards are 1-2 on the season with a win over Loyola Chicago and losses to Big East foes Seton Hall and Villanova. Danielle Fiacco paces Lafayette, averaging 11.0 points, 10.0 rebounds and 4.0 blocks per game. Madeline Fahan is accounting for 8.3 points per outing for the Leopards.

ALL-TIME VS. THE LEOPARDS

The Lady Lions have never faced Lafayette on the hardwood. Penn State is a perfect 19-0 against Patriot League schools, including a 78-54 win at Bucknell last season.

NON-CON HOME WINNING STREAK

The Lady Lions have won their last eight non-conference home games, dating back to the 2010-11 season. Penn State last lost a home non-conference game against Drexel on Dec. 21, 2010. The streak is tied for the ninth-longest in school history.

STORYLINES

- ✓ The Lady Lions earned their first road victory over a ranked non-conference opponent since defeating #19 Texas on December 21, 2001.
- ✓ The win at Texas A&M snapped the Aggies' 58-game non-conference home court winning streak, dating back to Dec. 30, 2003.
- ✓ The Lady Lions are ninth in the Nov. 12 AP and ninth in the preseason USA Today Sports/ESPN Coaches' poll.
- ✓ Penn State returns 86% of its scoring offense and 93.2% of its rebounding from the Big Ten Championship team a year ago.
- ✓ Bentley and Lucas are among players named to the "Wade Watch" list for the State Farm® Wade Trophy, the Naismith Early Season Watch List and the Wooden Award Top 30.
- ✓ With four steals at Texas A&M, **Alex Bentley** passed Kahadeejah Herbert for ninth on Penn State's career steals list with 227.
- ✓ Junior guard **Maggie Lucas** is third on Penn State's career three-pointers list (199), 24th in career scoring list (1,237).
- ✓ **Nikki Greene** is fifth in PSU history in blocks (176) and 11th in rebounds (734).

UP NEXT

Penn State heads to California for the Radisson Hotel Chatsworth Thanksgiving Tournament in Northridge. PSU faces Detroit in the first round on Friday and will face either the host Matadors or South Alabama on Saturday. Go to www.GoPSUsports.com/promotions/wbb.html for complete promotions information.



2012-13 ROSTER

PENN STATE LADY LIONS

No.	Name	Pos.	Cl./Elg.	Ht.	Hometown/High School (Previous School)
1	Candice Agee	C	Fr./Fr.	6-6	Victorville, Calif./Silverado
2	Dara Taylor	G	Sr./Jr.	5-8	Wilmington, Del./Caravel Academy (Maryland)
5	Talia East **	F/C	Jr./Jr.	6-3	Philadelphia, Pa./Friends' Central School
20	Alex Bentley ***	G	Sr./Sr.	5-7	Indianapolis, Ind./Ben Davis
23	Ariel Edwards **	G/F	Jr./Jr.	6-3	Elmont, N.Y./Christ the King
24	Mia Nickson **	F	Gr./Sr.	6-2	Ashburn, Va./Notre Dame Acad. (Boston College)
25	Gizelle Studevent ***	G	Sr./Sr.	5-11	La Jolla, Calif./The Bishop's School
33	Maggie Lucas **	G	Jr./Jr.	5-10	Narberth, Pa./Germantown Academy
40	Marisa Wolfe ***	F	Sr./Sr.	6-2	Ford City, Pa./Ford City
44	Tori Waldner *	F	So./So.	6-5	Milton, Ga./Milton
54	Nikki Greene ***	F/C	Sr./Sr.	6-4	Diboll, Texas/Diboll

Head Coach: Coquese Washington (Notre Dame '92)

Asst. Coaches: Fred Chmiel, Kia Damon, Maren Walseth

Captains: Alex Bentley, Mia Nickson, Marisa Wolfe

* Indicates letters earned

LAFAYETTE LEOPARDS

No.	Name	Pos.	Cl.	Ht.	Hometown/High School (Previous School)
2	Maddie Peabody	G	So.	5-5	Louisville, Ky./Sacred Heart Academy
3	Jazmin Hayes	F	Fr.	6-1	Cincinnati, Ohio/Mount Notre Dame
5	Brya Freeland	G	So.	5-5	Pasadena, Md./Archbishop Spalding
10	Annette Snow	F	Fr.	5-11	Manalapan, N.J./Blair Academy
11	Kristan Liddle	F	Jr.	6-0	Irvine, Calif./Irvine
12	Linnel Macklin	G	So.	5-9	Bowie, Md./Bowie
13	Jamie O'Hare	G	Fr.	5-6	Staten Island, N.Y./St. Peter's
14	Samantha Jordan	F	Sr.	5-11	Manassas, Va./Stonewall Jackson
15	Emily Homan	F	So.	6-3	Upper Darby, Pa./Delaware County Christian
21	Ashley Springer	G	Sr.	5-8	Columbus, Wis./Deforest
22	Madelaine Fahan	G	Jr.	5-11	Ventura, Calif./Ventura
23	Alicia Manning	G	Sr.	5-10	Newtown Square, Pa./Cardinal O'Hara
24	Morgan Miller	G	Fr.	5-10	Cranford, N.J./Cranford
25	Danielle Fiacco	C	Jr.	6-7	Brewster, N.Y./North Salem
45	Kelly Loughney	F	Jr.	6-0	Ciinton, N.J./North Hunterdon

Head Coach: Dianne Nolan

Asst. Coaches: Kim Foley, Shireyll Moore, Kim Benton

TEAM COMPARISON

PENN STATE		LAFAYETTE
Lucas (21.5)	Scoring Leader	Fiacco (11.0)
Nickson (10.5)	Rebounding Leader	Fiacco (10.0)
Bentley (4.0)	Assist Leader	Two with 2.0
Bentley (5.5)	Steals Leader	Two with 1.7
Nickson/Edwards (1.5)	Blocks Leader	Fiacco (4.0)
67.5	Scoring Offense	50.0
59.5	Scoring Defense	61.3
+8.0	Scoring Margin	-11.3
42.0	Rebounds Per Game	38.7
+2.0	Rebound Margin	0.0
11.0	Assists Per Game	11.0
12.0	Steals Per Game	6.0
.410	Field Goal Pct.	.347
.353	FG Defense Pct.	.389
.292	3-pt. FG Pct.	.220
.368	3-pt. FG Pct. Def.	.327
.683	Free Throw Pct.	.719
0.6	Assist/Turnover	0.6
Won 2	W/L Streak	Lost 2

SERIES HISTORY

Overall:	First Meeting
Last meeting:	n/a
Last result:	n/a
Current streak:	n/a
Last 10:	n/a

QUICK FACTS

THE UNIVERSITY

Location: University Park, Pa.
 Founded: 1855
 Enrollment: 42,294
 Colors: Blue & White
 Nickname: Lady Lions
 Conference: Big Ten
 President: Dr. Rodney Erickson
 Acting Athletics Director: Dr. David Joyner
 Facility (cap.): Bryce Jordan Center (15,261)
 All-Time Record at BJC: 188-49 (19th season)

ATHLETIC COMMUNICATIONS

WBB Contact: Kristina Petersen
 Phone/Fax: (814) 865-1757/(814) 863-3165
 E-mail: kap18@psu.edu
 Address: 101-D Bryce Jordan Center
 University Park, Pa. 16802
 Press Row Phone: 814-863-3294
 Website: www.GoPSUsports.com
 Twitter: @ladylionsid

TEAM INFORMATION

2012-13 Record: 2-0
 Home: 1-0 Away: 1-0 Neutral: 0-0
 Big Ten Record: 0-0
 Home: 0-0 Away: 0-0
 Letterwinners Returning/Lost: 9/1
 Starters Returning/Lost: 4/1
 Big Ten Tournament: Semifinals
 Postseason: NCAA Sweet Sixteen

THE HISTORY

First Year of Women's Basketball: 1965
 All-Time Record: 833-380 (48 seasons)
 All-Time Big Ten Rec.: 217-117 (20 seasons)
 NCAA Tournament Appearances: 23
 NCAA Tournament Record: 29-23

WOMEN'S BASKETBALL

Head Coach: Coquese Washington
 Alma Mater: Notre Dame '92
 Overall Record: 94-67 (6th season)
 School Record: 94-67 (6th season)
 Basketball Office Phone: 814-863-2672
 Best Time To Reach Coach: Through SID
 Assistant Coaches (Alma Mater):
 Fred Chmiel (Excelsior College)
 Kia Damon (Millersville '97)
 Maren Walseth (Penn State '02)
 Twitter: @pennstatewbb
 Facebook: facebook.com/pennstateladylions
 YouTube: YouTube.com/pennstateladylions
 Instagram: pennstateladylions

PRONUNCIATIONS

Agee	A-jee
Coquese	ko-KWEES
Chmiel	shuh-MEAL
Maren Walseth	MARR-en WALL-seth
Gizelle Studevent	juh-ZELL STEW-duh-vent
Talia	tah-LEE-uh
Ariel	AIR-e-I
Dara	DAR-uh





PROJECTED STARTERS



20 ALEX BENTLEY G
Sr., 5-7, Indianapolis, Ind.
17.5 ppg, 4.0 apg, 5.5 spg, .448 FG%

Notes: Posted 20th career 20-point game with 21 tallies at TAMU ... On 2013 Wade Watch and Wooden Top 30 Lists ... 2012 WBCA Honorable Mention All-America ... Big Ten Preseason Co-Player of the Year.



23 ARIEL EDWARDS G/F
Jr., 6-3, Elmont, N.Y.
2.5 ppg, 4.5 rpg, 1.5 bpg

Notes: Set personal bests in points (202), rebounds (125), assists (32), steals (22) and blocks (5) last season ... Had 15 pts. in 18 min. in NCAA Tournament 2nd round win over LSU.



24 MIA NICKSON F
Sr., 6-2, Ashburn, Va.
10.0 ppg, 10.5 rpg, .400 FG%, 1.5 bpg

Notes: Posted her 11th career double-double with 14 points and 10 rebounds in win over Howard ... 2012 All-Big Ten honorable mention ... 2012 NCAA Tournament Kingston All-Region Team.



33 MAGGIE LUCAS G
Jr., 5-10, Narberth, Pa.
21.5 ppg, 3.0 rpg, .357 3FG%, .857 FT%

Notes: Tallied 25 pts. in win over Howard ... On 2013 Wade Watch and Wooden Top 30 Lists ... 2012 AP All-America Vote Getter ... 2012 All-Big Ten first team choice ... 24th on PSU's career scoring chart.



54 NIKKI GREENE C
Sr., 6-4, Diboll, Texas
5.5 ppg, 5.5 rpg, 1.0 spg, .667 FG%

Notes: Had 8 pts., 7 rebs. at Texas A&M ... All-Big Ten third team selection ... Fifth on PSU's blocked shots list (176) ... 11th on PSU's career rebounding chart (734) ... Academic All-Big Ten choice.

STANDINGS (as of Nov. 15)

Team	Big Ten			Overall		
	W	L	Pct.	W	L	Pct.
Iowa	0	0	.000	3	0	1.000
Michigan	0	0	.000	2	0	1.000
Michigan State	0	0	.000	2	0	1.000
Minnesota	0	0	.000	2	0	1.000
Nebraska	0	0	.000	2	0	1.000
Northwestern	0	0	.000	2	0	1.000
PENN STATE	0	0	.000	2	0	1.000
Purdue	0	0	.000	1	0	1.000
Wisconsin	0	0	.000	1	0	1.000
Illinois	0	0	.000	1	1	.500
Indiana	0	0	.000	1	1	.500
Ohio State	0	0	.000	1	1	.500

BIG TEN SCHEDULE

NOVEMBER 12

Indiana 63, at Murray State 62
Michigan 62, at Xavier 53

NOVEMBER 14

at Iowa 69, Middle Tennessee St. 63
at Ohio State 87, Cincinnati 49
Penn State 63, at Texas A&M 58

NOVEMBER 15

Bradley 83, at Illinois 77
Michigan State 60, at Eastern Michigan 49

NOVEMBER 16

Indiana State at Indiana 7 p.m.
Michigan at Utah 6:30 p.m.
Northern Arizona at Nebraska 8 p.m.
Wisconsin at Gonzaga 9 p.m.

NOVEMBER 17

Ohio at Minnesota 1 p.m.
Winthrop at Ohio State 2 p.m.
Purdue at SIU-Edwardsville 8 p.m.

NOVEMBER 18

Cleveland State at Illinois 3 p.m.
TBA at Iowa TBA
Virginia Tech at Michigan State 4 p.m.
TBA at Minnesota TBA
Nebraska at South Dakota State 3 p.m.
Lafayette at Penn State 2 p.m.
Wisconsin at Washington State 4 p.m.

All times are Eastern.

LAST TIME OUT: The Lady Lions held #16/13 Texas A&M to just two points in the final 6:23 en route to a 63-58 win in College Station. The loss is the first non-conference home loss for Texas A&M since Dec. 30, 2003, a string of 58 games. Senior Alex Bentley battled foul trouble in the first half, but rebounded in the second half to score 14 of her game-high 21 points. She also accounted for four assists and four steals in the win. **Maggie Lucas** added 18 points with four rebounds, while **Nikki Greene** scored all eight of her points and had six of her seven rebounds in the second half, playing in front on several family members and friends.

SCOUTING LAFAYETTE: The Leopards are 1-2 on the season with a win over Loyola Chicago and losses to Big East foes Seton Hall and Villanova. Danielle Fiacco paces Lafayette, averaging 11.0 points, 10.0 rebounds and 4.0 blocks per game. Madeline Fahan is accounting for 8.3 points per outing for the Leopards.

ALL-TIME VS. THE LEOPARDS: The Lady Lions have never faced Lafayette on the hardwood. Penn State is a perfect 19-0 against Patriot League schools, including a 78-54 win at Bucknell last season.

WHAT'S AT STAKE

A Penn State Win Would:

- Make Penn State 3-0 on the season for the sixth time in the last seven years.
- Give PSU a 1-0 series lead against Lafayette.
- Be the fifth time PSU has started 3-0 under Coquese Washington.
- Make the Lions a perfect 20-0 against Patriot League teams.
- Extend Penn State's home court non-conference winning streak to nine games.

TOP 10 RECRUITING CLASS: **Coquese Washington** has landed a Top 10 recruiting class with the addition of seven players for the 2013 class. Penn State's class is ranked No. 6 by Collegiate Girls Basketball Report, No. 7 Blue Star Basketball and No. 9 by All-Star Girls Report. Guards **Lindsey Spann** (Laurel, Md./Good Counsel) and **KeKe Sevillian** (Goodrich, Mich./Goodrich), swing players **Jenny DeGraaf** (Springboro, Ohio/Springboro), **Kaliyah Mitchell** (Stone Mountain, Ga./Stephenson), **Peyton Whitted** (Suwanee, Ga./North Gwinnett) and post players **Alex Harris** (Lorain, Ohio/Lorain Southview) and **Infiniti Alston** (Baltimore, Md./Digital Harbor) signed National Letters of Intent and will start their Lady Lion careers in 2013-14. The seven-player class is the largest in school history and includes six players that are in the Collegiate Girls Basketball Report Top 100.

RANKED NON-CON ROAD WIN: Penn State picked up the 63-58 win over #16/13 Texas A&M in College Station Wednesday to give the Lady Lions their first road victory over a ranked non-conference opponent since defeating #19 Texas on December 21, 2001. In that game, the Lady Lions topped the Longhorns, 67-65.

LIONS SNAP AGGIES' STREAK: The Lady Lions picked up a 63-58 victory over #16/13 Texas A&M Wednesday night to snap the Aggies' first 58-game non-conference home court winning streak. Texas A&M last lost a home non-conference game to Houston on Dec. 30, 2003.



PRESS CONFERENCES

Coquese Washington will hold a weekly press conference and the Lady Lions will have media availability on a weekly basis throughout the season. All press conferences will begin at 2:30 p.m. (unless otherwise noted) and go for approximately 15-20 minutes, followed by a 20-minute open media session prior to practice. Press conference will be held in the Media Room at the Bryce Jordan Center (unless otherwise noted).

Press Conference Dates

Wednesday, Nov. 28
 Wednesday, Dec. 5
 Tuesday, Dec. 11

Press conference dates and times for the spring semester will be announced at a later date.

2-0 UNDER COQUESE: With wins over Howard and #16/13 Texas A&M to start the season, the Lady Lions have started each of **Coquese Washington's** seasons at the helm with at least a 2-0 record. Penn State's best start under Washington was a 5-0 mark to open the 2010-11 campaign. The Lady Lions have started off 2-0 each of the last seven seasons.

LUCAS CLIMBS SCORING CHART: With 18 points in the win at Texas A&M, junior guard **Maggie Lucas** passed Amanda Brown (1,233; 2004-07), who happened to be in attendance, for 24th place on Penn State's career scoring chart (1,237). She needs one point to tie Kam Gissendanner (1,238; 2006-08) for 23rd place.

GREENE JUMPS BOARDS LIST: Senior center **Nikki Greene** moved up to 11th place on Penn State's career rebounding chart with seven boards at Texas A&M Nov. 14. She now has 734 caroms, passing Rashana Barnes (728; 1999-02) for 11th spot. Greene needs 23 rebounds to tie Bethany Collins (757; 1985-89) for the 10th position.

THEFT BY A BENTLEY: Senior guard **Alex Bentley** nabbed four steals at Texas A&M into ninth place on Penn State's all-time steals chart, passing Kahadeejah Herbert (224; 1982-85). Bentley has 227 career thefts and needs 20 steals to tie Corinne Gulas (247; 1980-81) for eighth place all-time.

BENTLEY AND LUCAS ON WATCH LISTS: Senior point guard **Alex Bentley** and junior guard **Maggie Lucas** have been named to the three preseason watch lists for National Player of the Year: the Wade Trophy, Wooden Award and Naismith Trophy. Bentley and Lucas are among 25 players that have been named to the "Wade Watch" list for the State Farm® Wade Trophy. Additionally, the pair are among the 30 players listed on the Wooden Award preseason chart. To complete the trifecta, the duo was named to the Naismith Women's Early Season Watch List. Bentley and Lucas are two of the five Big Ten players on the preseason lists, which also includes Ohio State's Taylor Hill and the Nebraska duo of Jordan Hooper and Lindsey Moore.

SEASON OPENING Ws: Penn State has won its last seven season opener after a 72-61 decision over Howard on Nov. 11. The Lady Lions are a perfect 6-0 in the first game of the season under head coach Coquese Washington. Overall, Penn State is now 37-12 all-time in season openers.

LUCAS HITS 20 TO START THE YEAR: Junior guard **Maggie Lucas** was 9-for-17 from the field en route to 25 points in the season-opening win over Howard. It was Lucas' 32nd game with 20 or more points in her career. Lucas also surpassed the 1,200-point mark in the win over the Bison.

MIA DOUBLES UP: Senior forward **Mia Nickson** notched her 11th career double-double with 14 points and 10 rebounds in the win over Howard Nov. 11. Nickson was 6-for-10 from the field and made both of her free throw attempts in the victory.

TORI TIES CAREER MARK: Sophomore forward/center **Tori Waldner** tied her career high with six points, all of which came from the free throw line, in the victory over Howard Nov. 11. She also pulled in six rebounds and rejected on shot in just 12 minutes of action. This is the fifth time in Waldner's career that she has tallied six points in a game.

NON-CON HOME WINNING STREAK: The Lady Lions have won their last eight non-conference home games, dating back to the 2010-11 season. Penn State last lost a home non-conference game against Drexel on Dec. 21, 2010. The streak is tied for the ninth-longest in school history.

MAGS IN THE ESPNW BLOGOSPHERE: Junior guard **Maggie Lucas** is a weekly contributing blogger for espnW. Lucas will be blogging about various topics all year long. Her blogs can be found at espn.go.com/espnw/blog/category/maggie-lucas/.

LADY LIONS ON TWITTER & FACEBOOK: The Lady Lions are on Twitter. Follow the Lady Lions and assistant coaches (@pennstatewbb) and sports information contact Kris Petersen (@ladylionsid) to get the inside scoop. The Lady Lions are also on Facebook at www.facebook.com/pennstateladylions.



GREENE HITS THE STARTS CENTURY MARK: Senior center **Nikki Greene** made her 100th career start against Howard on Nov. 11. The Diboll, Texas native has started every game in her career and will have a chance to break Kelly Mazzante's school record of 130 starts. Greene will be the 11th player in school history with 100 career starts.

PSU 9TH IN AP POLL: The Penn State Lady Lions dropped to ninth in the Nov. 12 Associated Press poll after starting the year eighth. The preseason ranking of eighth was the highest ranking in the AP poll for the Lady Lions since they were fifth in the final 2004 poll. The Lady Lions were ranked in the AP poll every week last season, finishing the year 11th.

LIONS RANKED 9TH IN COACHES POLL: The Lady Lions are ranked ninth in the Nov. 13 USA Today Sports/ESPN coaches' poll. Penn State's preseason ranking of eighth was the highest ranking in the Coaches' Poll for the Lady Lions since they were seventh in the final 2004 poll. Penn State was ranked for 18 of the 19 weeks last season, peaking at ninth in the final poll.

PENN STATE'S OVERALL/BIG TEN YEAR-BY-YEAR REVIEW

Year	Overall	Big Ten	Home	BT Home	Road	BT Road	Neutral
1992-93	22-6	14-4	12-2	9-0	9-4	5-4	0-0
1993-94	28-3	16-2	14-0	9-0	11-2	7-2	3-1
1994-95	26-5	13-3	14-2	8-0	9-3	5-3	3-0
1995-96*	27-7	13-3	14-2	8-0	8-4	5-3	5-1
1996-97	15-12	8-8	9-3	5-3	5-6	3-5	1-3
1997-98	21-13	8-8	10-5	4-4	6-6	4-4	5-2
1998-99	22-8	12-4	9-2	6-2	9-4	6-2	4-2
1999-00	30-5	15-1	14-0	8-0	9-2	7-1	7-3
2000-01	19-10	11-5	11-2	7-1	6-5	4-4	2-3
2001-02	23-12	11-5	10-4	6-2	9-5	5-3	4-3
2002-03	26-9	13-3	16-0	8-0	7-7	5-3	2-2
2003-04	28-6	15-1	12-1	8-0	9-3	7-1	6-2
2004-05	19-11	13-3	12-0	8-0	6-9	5-3	1-2
2005-06	13-16	6-10	8-6	5-3	3-8	1-7	2-2
2006-07	15-16	7-9	12-1	7-1	2-12	0-7	1-3
2007-08	13-18	4-14	10-6	3-6	3-11	1-8	0-1
2008-09	11-18	6-12	8-6	4-5	2-9	2-7	1-3
2009-10	17-14	8-10	9-6	5-4	5-7	3-6	3-1
2010-11	25-10	11-5	14-4	6-2	7-4	5-3	4-2
2011-12	26-7	13-3	12-2	6-2	11-3	7-1	3-2
2012-13	2-0	0-0	1-0	0-0	1-0	0-0	0-0

* First season at the Bryce Jordan Center



PENN STATE'S RECORD WHEN...

Playing at home	1-0
Playing on the road	1-0
Playing at a neutral site	0-0
vs. Top 10 teams	0-0
vs. Top 25 teams	1-0
Games decided by 3 points or less	0-0
Games decided by 4-10 points	1-0
Games decided by 11-19 points	1-0
Games decided by 20 points or more	0-0
Leading at the half	1-0
Tied at the half	0-0
Trailing at the half	1-0
Leading with 5:00 remaining	1-0
Trailing with 5:00 remaining	1-0
Tied with 5:00 remaining	0-0
In overtime	0-0
PSU scores 40-49 points	0-0
PSU scores 50-59 points	0-0
PSU scores 60-69 points	1-0
PSU scores 70-79 points	1-0
PSU scores 80 points or more	0-0
PSU shoots 45% or better	0-0
PSU shoots less than 45%	2-0
PSU shoots better than opponent	2-0
Opponent shoots better than PSU or tied	0-0
Opponent scores less than 39 points	0-0
Opponent scores 40-49 points	0-0
Opponent scores 50-59 points	1-0
Opponent scores 60-69 points	1-0
Opponent scores more than 70 points	0-0
Opponent shoots better than 45%	0-0
Opponent shoots less than 45%	2-0
PSU outrebounds opponent	1-0
Opponent outrebounds PSU or tied	1-0
PSU commits 14 or less turnovers	0-0
PSU commits 15 or more turnovers	2-0
PSU makes at least 5 3-pointers	0-0
PSU makes four 3-pointers or less	2-0
Recording 7 or more steals	2-0
Recording 6 or less steals	0-0
Wearing white uniforms	1-0
Wearing blue uniforms	1-0
Wearing pink uniforms	0-0
Penn State wins the tip	1-0
Penn State loses the tip	1-0
Penn State scores first	1-0
Opponent scores first	1-0
Playing during the day (before 5 p.m.)	1-0
Playing at night	1-0
On Monday	0-0
On Tuesday	0-0
On Wednesday	1-0
On Thursday	0-0
On Friday	0-0
On Saturday	0-0
On Sunday	1-0
In November	2-0
In December	0-0
In January	0-0
In February	0-0
In March	0-0

PENN STATE BIG TEN FAVORITES: With nine returning letterwinners from a team that claimed its sixth Big Ten regular-season title and advanced to the Sweet Sixteen for the first time since 2004, the Penn State Lady Lions were selected to finish first in the Big Ten Conference in a vote of the league's coaches and media. PSU finished ahead of Nebraska and Purdue in the coaches vote and Nebraska and Ohio State in the media poll.

BENTLEY & LUCAS WIN PRESEASON HONORS: Senior point guard **Alex Bentley** was selected as the coaches' preseason Co-Player of the Year and to the preseason All-Big Ten first team by the media, while junior shooting guard **Maggie Lucas** was named to the All-Big Ten first team by both the coaches and media. Bentley shared Player of the Year accolades with Tayler Hill.

LUCAS EARNS VOTES FOR PRESEASON AP ALL-AMERICA: Junior guard **Maggie Lucas** was among the players to receive votes for the Associated Press Preseason All-America team. She earned AP All-America honorable mention honors as a sophomore. She is one of three Big Ten players getting votes for the preseason honor, joining Ohio State's Tayler Hill and Nebraska's Jordan Hooper.

2013 WBCA PINK ZONE: The 2013 Pink Zone at Penn State will take place on Sunday, Feb. 24 as the Lady Lions take on Michigan in the Bryce Jordan Center. Last year, the Lady Lions donated nearly \$203,000 for breast cancer causes. This year's fundraising efforts will benefit the Mount Nittany Medical Center, Penn State Hershey Cancer Institute, Pennsylvania Breast Cancer Coalition, the Kay Yow Cancer Fund, J.C. Blair Memorial Hospital and Lewistown Hospital. For more information on the Pink Zone at Penn State, visit the official Pink Zone website at www.pennsylvaniapinkzone.org.

VETERANS RETURN: The Lady Lions return nine letterwinners and four starters, including All-Big Ten first team selections **Alex Bentley** and **Maggie Lucas**, as well as All-Big Ten honorable mention choices **Nikki Greene** and **Mia Nickson**. Penn State returns 86% of its scoring offense and 93.2% of its rebounding from the Big Ten Championship team a year ago.

TRIO OF McDONALD'S ALL-AMERICANS: Prior to **Coquese Washington's** tenure, the Lady Lions had only one McDonald's High School All-American in program history, but with the addition of **Candice Agee**, Penn State will tout three McDonald's High School All-Americans on their roster this season. Agee joins **Maggie Lucas** and **Dara Taylor** as honorees of the prestigious All-America team.

TEAM CAPTAINS: Seniors **Alex Bentley**, **Mia Nickson** and **Marisa Wolfe** will serve as team captains for the 2012-13 season. Nickson will serve in the captain role for the third consecutive season, while Wolfe is a captain for the second-straight season. Bentley claims her first team captain honor.

LIONS IN THE BIG TEN STATS

A breakdown of where Penn State ranks in the Big Ten's statistical categories. Through game of Nov. 15.

TEAM	
Scoring Offense.....	9th (67.5)
Scoring Defense.....	8th (59.5)
Scoring Margin	11th (+8.0)
Free Throw Percentage.....	5th (.683)
FG Percentage	9th (.410)
FG Percentage Defense.....	5th (.353)
3-point FG Percentage.....	7th (.292)
3-point FG Pct. Defense.....	11th (.368)
3-point FG Made.....	T-10th (3.5)
Rebounding Offense.....	6th (42.0)
Rebounding Defense.....	9th (40.0)
Rebounding Margin	8th (+2.0)
Offensive Rebounds.....	6th (15.0)
Defensive Rebounds	T-6th (27.0)
Blocked Shots.....	T-4th (5.0)
Assists	12th (11.0)
Steals.....	T-1st (12.0)
Turnover Margin.....	8th (+1.5)
Assist to Turnover Ratio.....	11th (0.6)

INDIVIDUAL	
Scoring	3rd - Maggie Lucas (21.5)
.....	T-9th - Alex Bentley (17.5)
Rebounding	T-3rd - Mia Nickson (10.5)
FG Percentage	T-15th - Dara Taylor (.500)
Assists	T-12th - Alex Bentley (4.0)
FT Percentage.....	T-1st - Tori Waldner (1.000)
.....	T-10th - Alex Bentley (.875)
.....	12th - Maggie Lucas (.857)
Steals.....	2nd - Alex Bentley (5.5)
.....	T-6th - Dara Taylor (2.5)
.....	T-12th - Maggie Lucas (2.0)
3FG Made.....	T-6th - Maggie Lucas (2.5)
Blocked Shots.....	T-9th - Ariel Edwards (1.5)
.....	T-9th - Mia Nickson (1.5)
.....	T-13th - Candice Agee (1.0)
Assist/TO Ratio	10th - Alex Bentley (2.7)
Off. Reb.	T-2nd - Mia Nickson (5.0)
Def. Reb.....	T-12th - Mia Nickson (5.5)
Minutes Played	T-10th - Maggie Lucas (36.5)



MILESTONE WATCH**Milestone Watch**

Milestone	Player	Current Total
1,400 points	Alex Bentley	1,370
1,300 points	Maggie Lucas	1,237
900 points	Nikki Greene	850
700 points	Mia Nickson (career)	636
600 points	Mia Nickson (PSU)	591
400 points	Ariel Edwards	304
300 points	Dara Taylor (career)	255
	Marisa Wolfe	242
200 points	Gizelle Studevent	135
	Talia East	125
100 points	Tori Waldner	71
800 rebounds	Nikki Greene	734
500 rebounds	Mia Nickson (career)	498
	Mia Nickson (PSU)	441
300 rebounds	Alex Bentley	276
	Maggie Lucas	268
200 rebounds	Ariel Edwards	196
	Talia East	195
100 rebounds	Gizelle Studevent	77
	Tori Waldner	76
500 assists	Alex Bentley	463
300 assists	Dara Taylor (career)	248
200 assists	Maggie Lucas	151
250 steals	Alex Bentley	227
150 steals	Maggie Lucas	108
100 steals	Nikki Greene	98
	Dara Taylor (career)	80
200 blocks	Nikki Greene	176
50 blocks	Talia East	36
200 3-pt FGs	Maggie Lucas	199

Milestone Reached

Milestone	Player	Reached
1,200 points	Maggie Lucas	11/11/12
300 points	Ariel Edwards	11/11/12

BENTLEY SENIOR CLASS AWARD CANDIDATE: Senior guard **Alex Bentley** has been selected as one of the 30 candidates for the 2012-13 Senior CLASS Award, given to the student-athletes that have notable achievements in four areas of excellence – community, classroom, character and competition. Midway through the year, the 10 finalists will be announced and give media, coaches and fans the opportunity to vote on the student-athletes the exemplifies the four Cs of community, classroom, character and competition. An acronym for Celebrating Loyalty and Achievement for Staying in School®, the Senior CLASS Award focuses on the total student-athlete and encourages students to use their platform in athletics to make a positive impact as leaders in their communities.

BENTLEY IN THE RECORD BOOKS: Senior guard **Alex Bentley** opens her senior season in the Top 15 in the Penn State record books in several categories. The Indianapolis native is 15th in scoring (1,370), 10th in assists (463), ninth in steals (227) and ninth in field goals attempted (1,274).

LUCAS LOADS UP IN RECORD BOOKS: Despite only being a junior, **Maggie Lucas** has etched her name into the Penn State record books in a short amount of time. The guard is 24th in career scoring (1,237), third in all-time three-point field goals made (199) and sixth in career three-point field goals attempted (477). Lucas also is also in the top five on Penn State's all-time free throw percentage list and three-point field goal percentage chart.

GREENE GOING FOR 1,000s: Senior center **Nikki Greene** will have a shot at becoming just the fourth player in school history to be a part of an elite club with 1,000 points and 1,000 rebounds. The Diboll, Texas native needs 150 points to reach the 1,000-point mark and 267 rebounds for 1,000 career caroms. Greene would need to average 5.4 points and 9.2 rebounds in a 30-game season to accomplish the milestone. The members of the 1,000-1,000 club are Susan Robinson (2,253-1,070), Kahadeejah Herbert (2,025-1,103) and Andrea Garner (1,619-1,016).

2012 EUROPEAN TOUR: The Lady Lions enjoyed a 10-day European Tour in August. The team traveled to France and Italy, visiting six cities along the way. The Lady Lions played and won three games and saw many of the famous sites, including the Colosseum, the Vatican, the Eiffel Tower and the Mediterranean Sea.

LADY LIONS 10TH IN ATHLON PRESEASON POLL:

The Lady Lions are ranked 10th in the Athlon preseason poll and sophomore guard **Maggie Lucas** is a preseason second team All-American, according to the magazine. Penn State is among four Big Ten teams (Ohio State - 4th; Nebraska - 21st; Michigan - 22nd) in Athlon's preseason Top 25.

LADY LIONS 8TH IN LINDY'S PRESEASON POLL:

The Lady Lions are ranked eighth in the Lindy's preseason poll to pace the three Big Ten teams in the preseason rankings. Joining Penn State the preseason Top 25 are Purdue and Nebraska.

AGEE IS LONE FRESHMAN:

Center **Candice Agee** is the lone freshman on the Penn State roster this season. The 6-6 rookie was a McDonald's High School All-America, bringing the total to three McDonald's selections on this season's roster. Agee was the 34th-ranked recruit by ESPN/HoopGurlz as a senior in high school. She averaged 15.9 points, 8.3 rebounds, 3.5 blocks and 3.4 steals per game at Silverado High School in California.

STRONG SENIOR CLASS:

Coquese Washington's first Top 25 recruiting class is now the Lady Lions' senior class. The grouping of **Alex Bentley**, **Nikki Greene**, **Mia Nickson**, **Gizelle Studevent** and **Marisa Wolfe** have been huge contributors in Penn State's return to national prominence. The quintet has accounted for 3,188 points and 1,736 rebounds with 261 starts in 428 games played. Last season, the five seniors accounted for 45.1% of the team's offense and 44.9% of its rebounds.

TAYLOR TURNED LOOSE: After having sit out last season due to the NCAA Transfer Policy, junior guard **Dara Taylor** is ready to return to the court, this time in a Lady Lion uniform. She broke the Maryland freshman assists record with 171 helpers in 2009-10 season. As a sophomore, she averaged 2.2 assists per game.

AGEE WINS GOLD MEDAL WITH USA BASKETBALL U18 TEAM:

Freshman center **Candice Agee** helped the USA Basketball U18 National Team to a gold medal at the FIBA Americas Championship in Puerto Rico in August. Agee averaged 5.4 points, 3.0 rebounds, 1.4 steals and 1.2 blocks in Team USA's five games. The rookie was 13-for-21 from the field en route to a team-best .619 field goal percentage. Agee had an 11-point and four-rebound performance in dominating 99-26 victory over Puerto Rico.

COQUESE'S DRIVE A SUCCESS:

The fifth annual Coquese's Drive for the Women's Resource Center golf tournament was another great fundraising event. The tournament, held on August 31, 2012, had 128 golfers participate and raised \$24,000 for the Centre County Women's Resource Center (CCWRC).

LADYLIONS.COM:

LadyLions.com is a website dedicated exclusively to women's basketball at Penn State. The website gives the Lady Lions a chance to showcase the Penn State women's basketball program to potential recruits and fans. The site has a team blog, live chats and an "Ask Coach Quese" mailbag. The blog is regularly updated with entries from Lady Lion basketball players, coaches and staff members. Coach Quese will answer fan questions each Tuesday throughout the season. Questions can be submitted to Coach Quese by emailing them to askcoachquese@gmail.com. Be sure to include your name and hometown when submitting a question.

LADY LIONS ON THE TUBE & WEB:

The Lady Lions will have at least 11 games broadcast nationally on ESPN2 and the Big Ten Network. Additionally, Penn State will have nine games streamed on www.btn.com, many of which will be broadcast on the Big Ten Network as "Student U" productions. Penn State will appear on ESPN2 three times this year against Nebraska (Sun., Jan. 13), Purdue (Mon., Feb. 4) and Michigan State (Sun., Feb. 10). The Lions will also appear on the Big Ten Network against Georgetown (Sun., Dec. 9), at Michigan State (Sun., Jan. 6), at Michigan (Mon., Jan. 21), versus Minnesota (Thurs., Jan. 24), at Ohio State (Sun., Jan. 27), at Indiana (Thurs., Feb. 7) and versus Michigan (Sun., Feb. 24). Penn State also has a chance to be part of the Big Ten Network Wildcard games at Minnesota (Thurs., Feb. 28) and at Nebraska (Sun., Mar. 3). Additionally, Penn State will appear on FSN at Texas A&M (Wed., Nov. 14) and SNY when it travels to Connecticut (Thurs., Dec. 6).



THE LAST TIME PENN STATE...

SCORING

Player scored 20 points: at Texas A&M (21, Alex Bentley), 11/14/12
Player scored 25 points: vs. Howard (25, Maggie Lucas), 11/11/12
Player scored 30 points: vs. LSU (30, Maggie Lucas), 3/20/12
Player scored 35 points: vs. Wisconsin (35, Kelly Mazzante), 3/2/03
Player scored 40 points: vs. Minnesota (49, Kelly Mazzante), 12/28/01
Two players scored 20 points: vs. UTEP (23, Maggie Lucas; 21, Alex Bentley), 3/18/12
Three players scored 20 pts.: at Nevada (26, Maggie Lucas; 23, Alex Bentley; 21, Zhaque Gray), 11/26/11
Two players scored 25 points: at Boston College (28, Alex Bentley; 28, Maggie Lucas), 12/2/10
Player scored 25 points/3 consecutive games: Kelly Mazzante (31, vs. Baylor, 12/9/03; 31, vs. Pittsburgh, 12/14/03; 29, Louisiana Tech, 12/21/03)
Five in double figures: vs. LSU (30, Maggie Lucas; 15, Ariel Edwards; 14, Mia Nickson; 10, Zhaque Gray; 10, Alex Bentley), 3/20/12
Six in double figures: at Oakland (15, Alex Bentley; 16, Ariel Edwards; 16, Zhaque Gray; 13, Maggie Lucas; 10, Mia Nickson; 10, Gizelle Studevent; 10, Julia Trogele), 11/18/10
Seven in double figures: at Oakland (15, Alex Bentley; 16, Ariel Edwards; 16, Zhaque Gray; 13, Maggie Lucas; 10, Mia Nickson; 10, Gizelle Studevent; 10, Julia Trogele), 11/18/10
PSU scored 50 points in a half: vs. LSU (54, second half), 3/20/12
PSU scored 55 points in a half: at Nebraska (55, second half), 1/15/12
PSU scored 60 points in a half: vs. Northwestern (65 points, first half), 1/2/00
PSU scored 100 points: vs. Wagner (W, 103-42), 12/18/11
PSU scored 100 points in Big Ten game: vs. Illinois (W, 101-80), 2/15/01
PSU scored 100 points in a home game: vs. Wagner (W, 103-42), 12/18/11
PSU scored fewer than 15 points in a half: vs. Wisconsin (13, first half), 2/25/10
PSU scored fewer than 20 points in a half: vs. Michigan State (18, first half), 2/10/11
PSU scored fewer than 40 points in a game: vs. Wisconsin (L, 39-71), 2/25/10
PSU scored fewer than 50 points in a game: vs. Purdue (L, 49-60), 2/24/11
PSU scored fewer than 50 points in a Big Ten game: vs. Purdue (L, 49-60), 2/24/11
OPP scored 50 points in a half: vs. Duke (50, second half), 11/18/05
OPP scored 100 points: at Boston College (Lot, 113-104), 12/2/10
OPP scored fewer than 20 points in a game: at Dickinson (W, 57-16), 3/6/71
OPP scored fewer than 30 points in a game: vs. Virginia Tech (W, 66-28), 12/6/11
OPP scored fewer than 40 points in a game: vs. Virginia Tech (W, 66-28), 12/6/11
OPP scored fewer than 50 points in a game: vs. Indiana (W, 76-44), 2/2/12
OPP scored fewer than 50 points in a Big Ten game: vs. Indiana (W, 76-44), 2/2/12

FIELD GOAL SHOOTING

Player made every shot from the field (min. 7): vs. Michigan St. (Amanda Brown, 8-8), 1/25/07
PSU shot 55% in a game: at Michigan (.561), 1/26/12
PSU shot 55% in consecutive games: vs. Northwestern (.682), 3/2/96; vs. Ohio St. (.585), 3/3/96
PSU shot 60% in a game: vs. Michigan State (.608), 2/23/96
PSU shot below 25% in a game: at Alabama (.230), 12/19/96
PSU shot below 30% in a game: vs. Nebraska (.294), 12/30/11
PSU shot below 35% in a game and won: vs. Iowa (.338), 1/22/12
PSU shot 55% in a half: at Northwestern (.571, second half), 2/12/12
PSU shot 60% in a half: at Michigan (.667, second half), 1/26/12
PSU shot 65% in a half: at Michigan (.667, second half), 1/26/12
PSU shot 70% in a half: vs. Virginia Tech (.714, second half), 12/6/11
PSU shot 55% in both halves: vs. Iowa (.552, first half; .565, second half), 1/26/06
PSU shot below 20% in a half: at Indiana (.231, first half), 2/28/10
PSU shot below 25% in a half: vs. Nebraska (.233, second half), 12/30/11

THREE-POINT SHOOTING

Player made every shot from the field (min. 4): at Bucknell (4-4, Maggie Lucas), 12/21/11
Player made 4 three-pointers in a half: vs. LSU (5 in first, Maggie Lucas), 3/20/12
Player made 5 three-pointers in a half: vs. LSU (5 in first, Maggie Lucas), 3/20/12
Player made 6 three-pointers in a half: vs. Michigan State (6 in second, Maggie Lucas), 1/7/12
Player made 5 three-pointers in a game: vs. LSU (5, Maggie Lucas), 3/20/12
Player made 6 three-pointers in a game: vs. Michigan State (7, Maggie Lucas), 1/7/12
Player made 7 three-pointers in a game: vs. Michigan State (7, Maggie Lucas), 1/7/12
Player made 8 three-pointers in a game: at Minnesota (8, Kelly Mazzante), 12/28/01
Player attempted 10 three-pointers in a game: vs. Connecticut (11, Maggie Lucas), 3/25/12
PSU made 10 three-pointers: vs. North Carolina (14), 11/30/11
PSU did not make a three-pointer: at South Carolina (0-6), 11/20/11
PSU attempted 20 three-pointers: vs. Michigan State (24), 1/7/12
PSU shot 60% 3FG (min. 5 att.): at Bucknell (8-13, .615), 12/21/11

FREE THROW SHOOTING

Player made every shot from FT line (min. 10): vs. LSU (11-11, Maggie Lucas), 3/20/12
PSU shot 90% (min. 10 att.): vs. North Carolina (14-24, .929), 11/30/11
PSU shot below 50% (min. 10 att.): vs. Holy Cross (9-20, .450), 11/28/09
PSU made 30 free throws: vs. Pittsburgh (34), 11/11/07
PSU made fewer than five FTs: at Michigan (3), 2/3/11
PSU attempted 40 free throws: vs. Pittsburgh (41), 11/11/07
PSU attempted fewer than five FTs: at Michigan (4), 2/3/11

REBOUNDS

Player had 15 rebounds: vs. Ohio State (15, Nikki Greene; 15, Mia Nickson), 2/20/12
Player had 20 rebounds: vs. Indiana (20, Nikki Greene), 1/23/11
Two players with double-digit rebs.: vs. Ohio State (15, Nikki Greene; 15, Mia Nickson), 2/20/12
Three players had double-digit rebounds: vs. Ohio State (15, Nikki Greene; 15, Mia Nickson; 10, Maggie Lucas), 2/20/12
PSU had 60 rebounds: vs. Ohio State (60), 2/20/12
PSU had 50 rebounds: vs. Ohio State (60), 2/20/12
PSU had 20 or fewer rebounds: vs. Michigan State (20), 1/19/03
OPP had 20 or fewer rebounds: at Indiana (20), 2/13/11
PSU had 20 offensive rebounds: vs. Ohio State (29), 2/20/12
PSU had 25 offensive rebounds: vs. Ohio State (29), 2/20/12

ASSISTS

Player had 10 assists: vs. North Carolina (15, Alex Bentley), 11/30/11
Player had 10 assists/consecutive games: Helen Darling (12 at LaSalle, 12/8/99; 11 vs. Auburn, 12/11/99; 10 vs. Clemson, 12/19/99)
Player had 15 assists: vs. North Carolina (15, Alex Bentley), 11/30/11
PSU had 30 assists: vs. St. Francis (Pa.) (32), 12/2/99
PSU had fewer than 10 assists: vs. Connecticut (8), 3/25/12
PSU had fewer than 5 assists: at Michigan State (4), 2/4/10

BLOCKED SHOTS

Player blocked 5 shots: at South Carolina (7, Talia East), 11/20/11
Player blocked 6 shots: at South Carolina (7, Talia East), 11/20/11
PSU blocked 10 shots: vs. Purdue (11), 1/28/10
PSU blocked 0 shots: vs. Purdue, 2/19/09

STEALS

Player had 7 steals: vs. Howard (7, Alex Bentley), 11/11/12
Player had 8 steals: vs. Nebraska (8, Alex Bentley), 12/30/11
PSU had 20 steals: vs. Bucknell (21), 12/28/10

TURNOVERS

PSU committed 25 or more: vs. Michigan State (25), 1/7/12
PSU committed 25 or more and won: vs. Minnesota (26), 1/13/11
PSU committed 10 or fewer: vs. Purdue (8), 3/3/12
PSU committed 10 or fewer in consecutive games: vs. Minnesota (9), 1/22/04; at Ohio St. (9), 1/25/04
OPP committed 25 or more: vs. Nebraska (26), 12/30/11

DOUBLE-DOUBLES

Points & rebounds: vs. Howard (Mia Nickson, 14 pts., 10 rebs.), 11/11/12
Points & rebounds/consecutive games: Nikki Greene (12 points, 10 rebounds vs. Ohio State, 1/30/11; 16 points, 14 rebounds at Illinois, 1/27/11)
Points & rebounds/3 consecutive games: Amanda Brown (19 pts., 17 rebs. at Northwestern, 2/11/07; 14 pts., 10 rebs. vs. Minnesota, 2/15/07; 14 pts., 11 rebs. at Iowa, 2/18/07)
Points & rebounds/4 consecutive games: Angie Potthoff (vs. Northwestern, 1/31/97; at Illinois, 2/2/97; vs. Michigan, 2/7/97; vs. Indiana, 2/9/97; vs. Iowa, 2/16/97; vs. Michigan State, 2/21/97)
Points & rebounds/5 consecutive games: Angie Potthoff (vs. Northwestern, 1/31/97; at Illinois, 2/2/97; vs. Michigan, 2/7/97; vs. Indiana, 2/9/97; vs. Iowa, 2/16/97; vs. Michigan State, 2/21/97)
Points & assists: vs. North Carolina (Alex Bentley; 15 points, 15 assists), 11/30/11
Points & assists/consecutive games: Helen Darling (12 pts., 12 assts. at La Salle, 12/8/99; 10 pts., 11 assts. vs. Auburn, 12/11/99)
Two players had double-doubles: vs. Ohio State (Nikki Greene, 25 pts., 15 rebs.; Mia Nickson, 18 pts., 15 rebs.; Maggie Lucas, 12 pts., 10 rebs.), 2/20/12
Three players had double-doubles: vs. Ohio State (Nikki Greene, 25 pts., 15 rebs.; Mia Nickson, 18 pts., 15 rebs.; Maggie Lucas, 12 pts., 10 rebs.), 2/20/12
15 points & 15 rebounds: vs. Ohio St. (Nikki Greene, 25 pts., 15 rebs.; Mia Nickson, 18 pts., 15 rebs.), 2/20/12
20 points and 10 rebounds: vs. Ohio State (Nikki Greene, 25 pts., 15 rebs.), 2/20/12

MARGIN OF VICTORY

PSU won by 20-30 points: vs. Minnesota (23), 2/26/12
PSU won by 20-30 points in a Big Ten game: vs. Minnesota (23), 2/26/12
PSU won by 31-40 points: vs. Indiana (32), 2/2/12
PSU won by 41-50 points: vs. Wagner (61), 12/18/11
PSU won by 51+ points: vs. Wagner (61), 12/18/11
PSU lost by 20-30 points: at Ohio State (22), 2/17/11
PSU lost by 20-30 points in a Big Ten game: at Ohio State (22), 2/17/11
PSU lost by 31+ points: vs. Wisconsin (32), 2/25/10

MISCELLANEOUS

Led PSU in points/rebounds/assists: Tyra Grant vs. Michigan (25 pts., 9 rebs., 4 asst.), 2/18/10
Hit "final seconds" (under 10 seconds) game-winning shot: Julia Trogele at Illinois (9 sec.), 1/27/11
Hit "final minute" game-winning shot: Alex Bentley at Minnesota (3-ptr. with :38.9 remaining), 2/5/12
Player played every minute: vs. Connecticut (Maggie Lucas), 3/25/12
Player played more than 40 min.: at Dayton (Alex Bentley, 46; Zhaque Gray, 44; Mia Nickson, 41), 11/12/10
Committed 10 or fewer fouls: vs. Virginia Tech (9), 12/6/11
Committed 30 or more fouls: vs. Iowa State (32), 11/25/11
PSU rallied from a 10-point deficit to win: vs. Minnesota (down 13 at 7:55 in first half, won 78-74), 3/2/12
PSU rallied from a 15-point deficit to win: at Minnesota (down by 15 at 4:52 in first half, won 68-65), 2/5/12
PSU had a 5-game winning streak: 8 games, 2/2/12 - 3/2/12
PSU had a 5-game losing streak: 6 games, 1/28/10 - 2/14/10
PSU went undefeated at home: 2004-05 season
PSU sold out the BJC: Purdue, 2/29/04

OVERTIME

PSU played an OT game: at Boston College (L, 113-104), 12/2/10
PSU won an OT game: at Oakland (96-89), 11/18/10
PSU lost an OT game: at Boston College (L, 113-104), 12/2/10
PSU played two or more OT games in a season: 2010-11 season (three)
PSU won two or more OT games in a season: 2010-11 season (two)

RANKINGS

Played the No. 1 team in the AP poll: vs. Connecticut (L, 77-63), 12/14/08
Played the No. 1 team in the Coaches poll: vs. Connecticut (L, 77-63), 12/14/08
Defeated the No. 1 team in the AP poll: at Virginia (73-71), 1/3/91
Defeated Top 10 opponent: vs. #8/11 Ohio State (84-66), 2/20/12
Defeated Top 10 opponent on the road: at #7 Purdue (47-42), 1/2/04
Defeated Top 10 opponent by double digits: vs. #8/11 Ohio State (84-66), 2/20/12
Played consecutive Top 10 teams: at #2/3 Texas 11/14/04, at #6/6 Duke 11/19/04
Defeated Top 25 opponent: vs. #16/13 Texas A&M (63-58), 11/14/12
Defeated Top 25 opponent on the road: vs. #16/13 Texas A&M (63-58), 11/14/12
Defeated Top 25 opponent by double digits: vs. #8/11 Ohio State (84-66), 2/20/12



2012-13 GAME-BY-GAME STARTING LINEUPS

Date	Opponent	Pt Guard	Guard	Guard	Forward	Center
11/3	CALIFORNIA (Pa.)	Bentley	Lucas	Edwards	Nickson	Greene
11/11	HOWARD	Bentley	Lucas	Edwards	Nickson	Greene
11/14	at Texas A&M	Bentley	Lucas	Edwards	Nickson	Greene

2011-12 SEASON AT A GLANCE: There are several highlights for the Lady Lions to look back on following the 2011-12 season, a Big Ten Championship, a return to the NCAA Sweet Sixteen and back-to-back 25-win seasons. Let's take a look back at the 2011-12 campaign.

BIG TEN CHAMPIONS: The Lady Lions clinched the Big Ten regular-season title outright for the first time since 2004 with a 74-51 win over Minnesota Feb. 26. It was the sixth overall regular-season crown for the Lady Lions and fourth outright (2000, 2003, 2004). Penn State served as the top seed in the Big Ten Tournament for the first time since 2004 and the fifth time in program history (1995, 2000, 2003, 2004).

PSU 11TH IN AP POLL: The Lady Lions finished 11th in the final Associated Press Top 25 of the season. Penn State finished ranked in the AP Top 25 for the first time since finishing 22nd in the 2005 final AP poll. The Lady Lions peaked at ninth in the Feb. 27 poll, the highest ranking for a Penn State team in the AP poll since PSU was fifth in the final 2004 poll. Additionally, Penn State made its first appearance in the preseason AP poll since the 2003-04 campaign.

LIONS RANKED 9TH IN COACHES POLL: The Lady Lions were ninth in the final regular-season ESPN/USA Today coaches poll. The ranking was Penn State's best of the season and is the highest ranking in the ESPN/USA Today Coaches' Poll for the Lady Lions since they were seventh in the final 2004 poll. Additionally, Penn State appeared in the preseason coaches' poll for the first time since starting the 2003-04 campaign eighth.

SWEET SIXTEEN: With wins over #13 UTEP and #5 LSU, the Lady Lions advanced to the Sweet Sixteen for the first time since 2004 and the 12th time in program history.

23RD NCAA TOURNAMENT BERTH: Penn State made its 23rd NCAA Tournament appearance and second-straight. The Lady Lions are one of only 12 teams to earn 23 or more NCAA Tournament berths. The Lady Lions are 29-23 all-time in the NCAA Tournament.

COQUESE WBCA REGIONAL COY: Head coach **Coquese Washington** was selected as the 2012 Russell Athletic/WBCA Region 6 Coach of the Year. Washington was one of eight finalists for the 2012 Russell Athletic/WBCA National Coach of the Year. Washington is the first Lady Lion coach to earn Regional Coach of the Year honors since Rene Portland won the WBCA National Coach of the Year award in 2004.

ALEX WBCA ALL-AMERICAN: Junior guard **Alex Bentley** was named to the 2012 Women's Basketball Coaches Association (WBCA) Division I Coaches' All-America Honorable Mention Team. She is the first Lady Lion to garner WBCA All-America honors since Kelly Mazzante was a first team selection in 2004. Bentley is the sixth different Penn State player to earn WBCA All-American accolades, joining Suzie McConnell, Susan Robinson, Tina Nicholson, Angie Potthoff, Helen Darling and Kelly Mazzante. Those six Lady Lions have combined for 10 total WBCA All-America honors in program history.

LUCAS EARNS AP ALL-AMERICA HONORS: Sophomore guard **Maggie Lucas** capped off an outstanding sophomore campaign by taking home Associated Press (AP) All-America honorable mention accolades. She is the first Lady Lion to garner AP honors since Tyra Grant was also an honorable mention selection in 2010. She is the 15th Lady Lion to earn AP All-America honors since the award began in 1995. Lucas is the fourth Penn State sophomore to claim AP accolades, joining Angie Potthoff (1995 - honorable mention), Kelly Mazzante (2002 - 2nd team) and Tanisha Wright (2003 - honorable mention).

FOURTH TO 600: Guard **Maggie Lucas** became the fourth different Lady Lion to score more than 600 points in a season with 642 tallies in her sophomore season. It is the sixth time in program history a player has surpassed the 600-point mark in a season. Lucas joins Kelly Mazzante (three times; 872, 2001-02; 837, 2002-03; 681, 2003-04), Suzie McConnell (682, 1987-88) and Susan Robinson (633, 1989-90) as the only players in program history to accomplish the feat.

ROAD WARRIORS: The Lady Lions picked up their 11th road win of the season with a 90-80 win over fifth-seeded LSU in the second round of the NCAA Tournament. The 11 road victories were the most by a Penn State team since the 1993-94 team also won 11 contests away from Happy Valley.

BACK-TO-BACK 25-WIN SEASONS: With the March 18 win over UTEP, the Lady Lions claimed their second-straight 25-win season for the first time since the 2002-03 and 2003-04 seasons. Penn State was 25-10 a year ago and finished 2011-12 with a 26-7 this season. Overall, the Lady Lions have 12 25-win campaigns overall. Penn State's 26 wins are the most since the 2004 squad went 28-6.

BIG TEN WINS: The Lady Lions picked up their 13th Big Ten win of the season against the Gophers in the regular-season finale. The 13 conference victories are the most by a Penn State team since the 2004-05 squad went 13-3 in conference play.

WASHINGTON NAMED COACH OF THE YEAR: After leading the Lady Lions to their first Big Ten regular-season title since 2004, **Coquese Washington** was selected as the Big Ten Coach of the Year by both the coaches and the media. Washington joins four-time winner Rene Portland (1994, 2000, 2003, 2004) on the list of Penn State mentors to win top conference coaching honors. The Lady Lions started conference play 1-2, but rallied to win 12 of their next 13 games to claim the crown.

DUO NAMED TO FIRST TEAM: Junior guard **Alex Bentley** and sophomore guard **Maggie Lucas** were both named to the All-Big Ten first team after stellar seasons. A first team choice last season, Bentley becomes the ninth different Lady Lion to earn first team accolades twice, while Lucas is the 12th different Penn State player to earn top all-conference honors. The Lady Lions have 26 All-Big Ten first team selections, the most of any team in the Big Ten since joining the conference in 1992-93. Bentley was also named to the Big Ten All-Defensive team.

LADY LIONS SEASON BESTS

Player	Points	Rebounds	Assists	Blocks	Steals
Candice Agee	-	3 (Texas A&M)	-	1 (2X)	-
Alex Bentley	21 (Texas A&M)	6 (Howard)	4 (2X)	-	7 (Howard)
Talia East	-	2 (Howard)	1 (Howard)	-	-
Ariel Edwards	5 (Howard)	5 (Howard)	1 (Howard)	2 (Howard)	-
Nikki Greene	8 (Texas A&M)	7 (Texas A&M)	-	-	1 (2X)
Maggie Lucas	25 (Howard)	4 (Texas A&M)	3 (Howard)	-	3 (Howard)
Mia Nickson	14 (Howard)	11 (Texas A&M)	2 (Texas A&M)	2 (Texas A&M)	1 (Texas A&M)
Gizelle Studevent	-	1 (Howard)	-	1 (Howard)	-
Dara Taylor	8 (Texas A&M)	4 (Howard)	3 (2X)	-	5 (Texas A&M)
Tori Waldner	6 (Howard)	6 (Howard)	-	1 (Howard)	1 (Howard)
Marisa Wolfe	-	-	-	-	-

PSU IN THE POLLS

	AP	Coaches
Preseason	8	8
Nov. 12	9	9



NATIONAL POLLS

ASSOCIATED PRESS (NOV. 12)

No.	Team (1st)	Rec.	Pts.	LV
1.	Baylor (39)	1-0	975	1
2.	Connecticut	1-0	931	2
3.	Duke	0-0	883	3
4.	Stanford	2-0	838	4
5.	Maryland	2-0	812	5
6.	Kentucky	1-0	766	6
7.	Notre Dame	1-0	743	7
8.	Louisville	2-0	677	9
9.	PENN STATE	1-0	665	8
10.	Georgia	1-0	615	10
11.	Oklahoma	1-0	548	12
12.	California	1-0	518	13
13.	Vanderbilt	1-0	426	16
14.	West Virginia	1-0	407	17
15.	Nebraska	2-0	375	18
16.	Texas A&M	0-1	331	15
17.	Delaware	1-1	285	11
18.	Purdue	1-0	271	21
19.	Texas	2-0	224	NR
20t.	St. John's	1-1	198	14
20t.	Ohio State	0-1	198	19
22.	Oklahoma State	1-0	164	23
23.	Miami (Fla.)	1-0	139	24
24.	Tennessee	1-1	125	20
25.	Georgetown	2-0	112	NR

Others Receiving Votes: Kansas 103; Middle Tennessee State 82; Iowa State 52; Georgia Tech 42; UCLA 26; Green Bay 22; DePaul 17; Virginia 16; North Carolina 14; San Diego State 13; Florida State 12; Rutgers 10; Chattanooga 10; Dayton 9; LSU 8; Princeton 4; **Michigan State 4**; Gonzaga 3; South Carolina 2.

USA TODAY/ESPN TOP 25 (NOV. 13)

No.	Team (1st)	Rec.	Pts.	LV
1.	Baylor (31)	1-0	775	1
2.	Connecticut	1-0	741	2
3.	Duke	0-0	687	3
4.	Stanford	2-0	683	4
5.	Maryland	2-0	650	5
6.	Notre Dame	1-0	610	6
7.	Kentucky	1-0	599	7
8.	Louisville	2-0	555	9
9.	PENN STATE	1-0	531	8
10.	Georgia	1-0	472	11
11.	Oklahoma	1-0	426	14
12.	California	1-0	389	15
13.	Texas A&M	0-1	353	12
14.	Purdue	1-0	314	18
15.	Nebraska	2-0	307	19
16.	Vanderbilt	2-0	265	17
17.	Delaware	1-1	264	10
18.	St. John's	1-1	220	13
19.	West Virginia	2-0	191	22
20.	Tennessee	1-1	158	16
21.	Ohio State	0-1	144	21
22.	Oklahoma State	1-0	132	24
23.	Miami (Fla.)	2-0	123	23
24.	Texas	2-0	88	NR
25.	Kansas	1-0	79	25

Others Receiving Votes: **Georgetown 59**, Georgia Tech 58, Middle Tennessee State 33, South Carolina 30, Iowa State 25, Gonzaga 24, Green Bay 18, DePaul 13, Syracuse 10, Rutgers 9, Virginia 8, Marist 7, **Iowa 5**, BYU 5, UCLA 4, LSU 4, Dayton 4, Arkansas 2, Chattanooga 1.

*Bold type indicates 2012-13 Penn State opponent.

STATISTICAL LEADERS

Check here throughout the season for a breakdown of how many times a player leads Penn State in the following statistical categories. (First number is solo, the second is shared.)

Points	Bentley (1), Lucas (1)
Rebounds	Nickson (2)
Assists	Bentley (2)
Steals	Bentley (1), Taylor (1)
Blocks	Edwards (1), Nickson (1)
FG % (min. 4 attempts)	Nickson (1), Greene (1)
FT % (min 4 attempts)	Waldner (1), Bentley (1)
3FG % (min. 2 att.)	Lucas (1), Bentley (1)

PENN STATE VS. THE BIG TEN

Illinois	Overall	28-14	Nebraska	Overall	3-1
	Big Ten Games	21-11		Big Ten Games	1-1
	Big Ten Tournament	4-2		Big Ten Tournament	0-0
	Home	15-2		Home	1-1
	Away	9-10		Away	1-0
	Neutral	4-2		Neutral	1-0
Indiana	Overall	28-9	Northwestern	Overall	30-7
	Big Ten Games	23-8		Big Ten Games	27-6
	Big Ten Tournament	3-1		Big Ten Tournament	2-0
	Home	16-2		Home	16-1
	Away	9-6		Away	12-5
	Neutral	3-1		Neutral	2-1
Iowa	Overall	24-17	Ohio State	Overall	32-21
	Big Ten Games	19-14		Big Ten Games	19-14
	Big Ten Tournament	2-1		Big Ten Tournament	4-5
	Home	14-5		Home	17-6
	Away	7-11		Away	11-9
	Neutral	3-1		Neutral	4-6
Michigan	Overall	28-9	Purdue	Overall	16-26
	Big Ten Games	26-7		Big Ten Games	14-19
	Big Ten Tournament	1-2		Big Ten Tournament	2-4
	Home	14-2		Home	9-8
	Away	13-5		Away	5-14
	Neutral	1-2		Neutral	2-4
Michigan State	Overall	24-13	Wisconsin	Overall	27-10
	Big Ten Games	21-12		Big Ten Games	24-10
	Big Ten Tournament	2-1		Big Ten Tournament	2-0
	Home	14-4		Home	16-2
	Away	8-8		Away	9-8
	Neutral	2-1		Neutral	2-0
Minnesota	Overall	25-11			
	Big Ten Games	22-11			
	Big Ten Tournament	2-0			
	Home	14-3			
	Away	9-8			
	Neutral	2-0			



RECORD BOOK

CAREER SCORING

1. 2,919 Kelly Mazzante, 2001-04
2. 2,253 Susan Robinson, 1989-92
3. 2,044 Tyra Grant, 2007-10
4. 2,025 Kahadeejah Herbert, 1982-85
5. 1,995 Tanisha Wright, 2002-05
6. 1,897 Suzie McConnell, 1985-88
7. 1,725 Angie Potthoff, 1993-97
8. 1,663 Lisa Shepherd, 1998-01
9. 1,619 Andrea Garner, 1997-00
10. 1,538 Tanya Garner, 1988-91
11. 1,514 Vicki Link, 1984-87
12. 1,466 Jess Strom, 2002-05
13. 1,463 Katina Mack, 1992-96
14. 1,428 Jen Bednarek, 1977-80
15. **1,370 Alex Bentley, 2010-present**
16. 1,328 Maren Walseth, 1998-01
17. 1,320 Cheryl Ellison, 1980-83
18. 1,295 Kathy Phillips, 1989-92
19. 1,294 Helen Darling, 1997-00
20. 1,288 Carol Walderman, 1981-83
21. 1,280 Louise Leimkuhler, 1980-82
22. 1,240 Tina Nicholson, 1993-96
23. 1,238 Kam Gissendanner, 2006-08
24. **1,237 Maggie Lucas, 2011-present**
25. 1,233 Amanda Brown, 2004-07

CAREER BLOCKS

1. 268 Kim Calhoun, 1993-96
2. 192 Mary Donovan, 1977-81
3. 189 Rashana Barnes, 1999-02
4. 185 Andrea Garner, 1997-00
5. **180 Nikki Greene, 2010-present**

CAREER REBOUNDS

1. 1,103 Kahadeejah Herbert, 1982-85
2. 1,070 Susan Robinson, 1989-92
3. 1,016 Andrea Garner, 1997-00
4. 943 Vicki Link, 1984-87
5. 918 Angie Potthoff, 1993-97
6. 820 Mag Strittmatter, 1975-78
7. 818 Cheryl Ellison, 1980-83
8. 808 Amanda Brown, 2004-07
9. 773 Mary Donovan, 1978-81
10. 757 Bethany Collins, 1985-88
11. **734 Nikki Greene, 2010-present**
12. 728 Rashana Barnes, 1999-02
13. 721 Missy Masley, 1992-95
14. 719 Louise Leimkuhler, 1980-83
15. 717 Kathy Phillips, 1989-92
16. 690 Julia Trogele, 2008-11
17. 672 Helen Darling, 1997-00
18. 649 Jess Brungo, 2001-04
19. 645 Maren Walseth, 1998-01
20. 621 Tanisha Wright, 2002-05

CAREER THREE-POINT FIELD GOALS MADE

1. 357 Kelly Mazzante, 2001-04
2. 230 Lisa Shepherd, 1998-01
3. **199 Maggie Lucas, 2011-present**
4. 191 Jess Strom, 2002-05
5. 179 Tyra Grant, 2007-10

CAREER FIELD GOALS MADE

1. 1,051 Kelly Mazzante, 2001-04
2. 866 Susan Robinson, 1989-92
3. 771 Tanisha Wright, 2002-05
4. 757 Kahadeejah Herbert, 1982-85
5. 729 Suzie McConnell, 1985-88
6. 709 Angie Potthoff, 1993-97
7. 687 Tyra Grant, 2007-10
8. 668 Jen Bednarek, 1977-80
9. 660 Andrea Garner, 1997-00
10. 598 Vicki Link, 1984-87
- **558 Alex Bentley, 2010-present**

CAREER FIELD GOALS ATTEMPTED

1. 2,430 Kelly Mazzante, 2001-04
2. 1,755 Tyra Grant, 2007-10
3. 1,672 Susan Robinson, 1989-92
4. 1,667 Tanisha Wright, 2002-05
5. 1,526 Suzie McConnell, 1985-88
6. 1,365 Andrea Garner, 1997-00
7. 1,347 Kahadeejah Herbert, 1982-85
8. 1,329 Jen Bednarek, 1977-80
9. **1,274 Alex Bentley, 2010-present**
10. 1,260 Lisa Shepherd, 1999-01

CAREER ASSISTS

1. 1,307* Suzie McConnell, 1984-88
2. 826 Tina Nicholson, 1993-96
3. 791 Helen Darling, 1997-00
4. 776 Jess Strom, 2002-05
5. 632 Annie Troyan, 1981-83
6. 567 Dana Eikenberg, 1989-92
7. 560 Brianna O'Rourke, 2006-09
8. 528 Nancy Kuhl, 1975-79
9. 484 Tanisha Wright, 2002-05
10. **463 Alex Bentley, 2010-present**

CAREER STEALS

1. 507 Suzie McConnell, 1985-88
2. 314 Helen Darling, 1997-00
3. 310 Jess Strom, 2002-05
4. 293 Tina Nicholson, 1993-96
5. 289 Kelly Mazzante, 2001-04
6. 267 Tanisha Wright, 2002-05
7. 257 Nancy Kuhl, 1975-79
8. 247 Corinne Gulas, 1980-81
9. **227 Alex Bentley, 2010-present**
10. 224 Kahadeejah Herbert, 1982-85

as of Nov. 14, 2012



2013 RECRUITING CLASS

Coquese Washington announced her 2013 recruiting class, which is ranked No. 6 by Collegiate Girls Basketball Report, No. 7 Blue Star Basketball and No. 9 by All-Star Girls Report. Guards **Lindsey Spann** (Laurel, Md./Good Counsel) and **KeKe Sevillian** (Goodrich, Mich./Goodrich), swing players **Jenny DeGraaf** (Springboro, Ohio/Springboro), **Kalayah Mitchell** (Stone Mountain, Ga./Stephenson), **Peyton Whitted** (Suwanee, Ga./North Gwinnett) and post players **Alex Harris** (Lorain, Ohio/Lorain Southview) and **Infiniti Alston** (Baltimore, Md./Digital Harbor) signed National Letters of Intent and will start their Lady Lion careers in 2013-14. The seven-player class is the largest in school history and includes six players that are in the Collegiate Girls Basketball Report Top 100.

Spann, who is the 22nd-ranked player by Collegiate Girls Basketball Report and 88th-rated player by Blue Star Basketball, led Good Counsel, to the 2012 Washington Catholic Athletic Conference (WCAC) Championship and became the first team in league history to finish with an undefeated record (18-0). The 5-6 guard averaged 15.0 points, 5.4 assists, 2.0 steals and 3.0 rebounds as a junior en route to first team All-WCAC honors. She was also a first team All-Gazette, All-Sentinel and All-DCSportsfan selection and was a second team All-Met honoree. Spann participated in USA Basketball's U16 Trials in May 2011. She played her AAU ball for the Maryland Lady Terps.

Sevillian is a two-time All-State point guard, who led Goodrich High School in Michigan to their first-ever Class B State Championship in 2011-12 with a perfect 28-0 record. Sevillian, a 5-6 guard, is a three-time first team all-conference choice for the Martians, who averaged 13.5 points and 3.6 assists per game during her junior season. She also snatched 107 steals in 28 contests a year ago. For her career, Sevillian has 916 points, 237 assists, 283 steals and 130 blocks. Sevillian is also an outstanding track athlete, earning four varsity letters at Goodrich. She holds the school record in the 300-meter hurdles and 200-meter dash and finished second in the state championships in the 300-meters hurdles her freshman and sophomore seasons. She was unable to compete last season due to an injury. She played AAU ball for the Michigan Crossover.

DeGraaf, 87th-rated recruit by Collegiate Girls Basketball Report, averaged 15.0 points, 6.1 rebounds and 1.9 blocks per game as she led Springboro to a 22-2 record. The 6-1 forward led the Greater Western Ohio Conference (GWOC) with a .548 field goal percentage and accounted for a .747 effort from the free throw line. DeGraaf was a first team All-GWOC, Dayton Daily News D-I All-Area team and first team Associated Press D-I All-Southwestern District honoree as a junior. Additionally, she garnered special mention All-Ohio accolades in 2011-12. As a sophomore, she averaged 9.3 points and 7.1 rebounds per game en route to All-GWOC South Division first team honors. DeGraaf is also a standout volleyball player for Springboro. She played her AAU ball for Sports City U.

Mitchell, who is the 54th-ranked recruit by Collegiate Girls Basketball Report and 40th-ranked recruit by All-Star Girls Report, accounted for 12.9 points, 8.3 rebounds, 3.2 steals, 4.0 assists and 2.0 blocks per game as a junior for Stephenson High School. The 6-2 forward shot 46% from the field and 68% from the free throw line last season on her way to All-DeKalb County accolades. Mitchell is a two-time All-Metro third team honoree, an Atlanta Journal Constitution DeKalb County second team choice and honorable mention All-State selection. She played her AAU ball for the Georgia Hoopstars Black.

Whitted is the 71st-ranked recruit by Collegiate Girls Basketball Report and 60th-ranked player by All-Star Girls Report after averaging 11.6 points and 6.3 rebounds per game for North Gwinnett her junior season. The 6-2 forward guided the Bulldogs to their first state semifinal appearance since 1963 as she averaged a double-double in state playoff games (14.8 pts., 10.0 rebs.). She was a second team All-County selection by the Daily Post. In two seasons at North Gwinnett, Whitted has 551 points, 279 rebounds and 89 steals. She also has experience on the national level, participating in USA Basketball's U16 Trials in May 2011.

Harris, who is the 49th-ranked recruit by Collegiate Girls Basketball Report and All-Star Girls Report, averaged a double-double for Lorain Southview in Ohio. The 6-3 forward tallied 12.1 points and 11.7 rebounds in 2011-12 as the Titans went 17-5. She also accounted for 5.0 blocks per game a year ago on her way to honorable mention All-State and first team All-County and All-District honors. She also earned honorable mention All-State accolades and first team All-Lorain County honors as a sophomore. In her freshman year, Harris was All-Lorain County first team and Lake Erie League first team while playing at Admiral King. In her high school career, Harris has 233 blocks and 741 rebounds as a defensive stalwart. She played her AAU ball for TNBA.

Alston is the 48th-ranked recruit by Collegiate Girls Basketball Report and 96th-rated recruit by All-Star Girls Report. The 6-5 center averaged 14.0 points, 11.0 rebounds, 3.0 blocks and 2.0 assists for Digital Harbor High School as a junior. She was a member of the Philly Belles AAU squad last summer and played for Boo Williams' top team as a freshman in high school. Alston participated in Nike Skills Academy in 2011.

MORE BIG TEN HONORS: Junior center **Nikki Greene** earned third team All-Big Ten honors from the media and an honorable mention nod from the coaches. It is the second time that Greene has earned All-Big Ten honors after an honorable mention appearance a year ago. Additionally, senior guard **Zhaque Gray** and junior forward **Mia Nickson** were named Honorable Mention All-Big Ten. It is the first all-conference honors for the pair.

PERFECT FOR FEBRUARY: The Lions finished February with a perfect 7-0 record. It is Penn State's first undefeated month since 2003-04 when that squad was 9-0 in January.

4TH LARGEST CROWD: The Lady Lions packed the Bryce Jordan Center for the Sixth Annual WBCA Pink Zone at Penn State with 13,849 fans, including a record 505 survivors, in attendance. The crowd is the fourth-largest in school history, trailing the two sellouts in 2004 and one near-sellout on Senior Day in 2005.

BACK-TO-BACK TOP 20 WINS: The Purdue and Ohio State wins gave the Lady Lions back-to-back victories over Top 20 opponents for the first time since the 1999-00 season. The 1999-00 squad defeated #10 Iowa State (March 25) and #3 Louisiana Tech (March 23) in the NCAA Tournament.

LUCAS REACHES 1,000: Sophomore guard **Maggie Lucas** became the third sophomore and 34th player overall in Penn State history to reach the 1,000-point plateau with 10 tallies at Minnesota Feb. 5. She joins Kelly Mazzante (47 games) and Susan Robinson (53 games) as the only Lady Lions to get 1,000 points as a sophomore. Lucas reached the milestone in 58 career games, making her the 11th-fastest player in the 30-year history of the Big Ten to tally 1,000 points. Lucas is the second Lady Lions to reach the 1,000-point mark this season, joining **Alex Bentley**.

NEWEST 500 BOARD MEMBER: Junior center **Nikki Greene** became the 27th player in school history to reach 500 rebounds with seven caroms against Iowa State on Nov. 25. She joins an elite list that is topped by Kahadeejah Herbert (1,103) and Susan Robinson (1,070).

BENTLEY JOINS 1,000-POINT CLUB: With 11 points versus Virginia Tech Dec. 6, junior guard **Alex Bentley** became the 33rd player in school history with 1,000 points. She is also the 15th junior to reach the milestone and first Lady Lion to accomplish the feat since Tyra Grant reached 1,000 points in 2008.





COQUESE WASHINGTON

Head Coach 6th Season

PENN STATE LADY LION BASKETBALL

Coquese Washington, who helped lead Notre Dame to the 2001 NCAA Championship, was introduced as the fifth head coach of the Penn State women's basketball program on April 23, 2007. Washington is the first female African-American head coach in Penn State history.

Washington returned the Lady Lions to Big Ten prominence in her fifth season as she guided Penn State to the Big Ten regular-season title with a 13-3 record in conference play. Additionally, the Lady Lions advanced to the NCAA Tournament Sweet Sixteen with wins over UTEP and LSU en route to a 26-7 overall record. The Lady Lions posted back-to-back 20-win seasons for the first time since 2002-03 and 2003-04. It was also the first Big Ten crown and Sweet Sixteen berth for the Lady Lions since 2003-04. The Lady Lions were ranked throughout the season and finished ninth in the ESPN/USA Today Coaches' Poll and 11th in the Associated Press Top 25.

For her efforts in rebuilding the Penn State program, Washington was honored as the Big Ten Coach of the Year and the WBCA Region 6 Coach of the Year, making her a finalist for WBCA National Coach of the Year. The accolades were not just limited to Washington; all five Lady Lion starters earned All-Big Ten recognition, including first team bids for Alex Bentley and Maggie Lucas. Both Bentley

and Lucas also garnered honorable mention All-America honors from the WBCA and Associated Press, respectively. Bentley became the 33rd player in school history to reach the 1,000-point plateau and just the 15th junior to reach the milestone. Lucas also joined the 1,000-point club in 2011-12, becoming just the third sophomore in program history to accomplish the feat.

On the recruiting trail, the Lady Lions' 2012 class earned a Top 20 class from Dan Olson's Collegiate Girls Basketball Report. The class includes transfer Dara Taylor, who sat out the 2011-12 season due to NCAA transfer rules, and McDonald's High School All-American Candice Agee from California. The addition of Taylor, who was a 2009 McDonald's All-American, and Agee gives the Lady Lions three McDonald's All-Americans on the roster heading into the 2012-13 campaign, joining 2010 honoree Lucas. Additionally, Agee earned a gold medal with the USA Basketball U18 National Team Trials at the 2012 FIBA Americas Championship in August.

The Lady Lions returned to the national stage in Washington's fourth year with a second-place finish in the Big Ten regular season standings, a runner-up finish in the Big Ten Tournament and a berth in the NCAA Tournament. Penn State tallied its 23rd 20-win season with a 25-10 overall record and an 11-5 mark in conference play. The Lady Lions worked their way back to the "Big Dance" for the first time since 2004-05 and advanced to the second round for the first time in seven years with a win over Dayton in the first round in front of a raucous BJC crowd.

Penn State was a dominating force from the perimeter as the Lady Lions tied the school record with 228 three-pointers and led NCAA Division I from deep with a .415 three-point field goal percentage. Pacing the Lady Lions from downtown was Lucas, who broke the Big Ten three-pointers record with 112 triples to go along with a .426 shooting percentage. For her efforts, Lucas was selected as the Big Ten Freshman of the Year and Big Ten Sixth Player of the Year while breaking the Penn State freshman season scoring record (552 pts.). Additionally with Washington's guidance, Bentley became the 11th different player in school history to take home first team All-Big Ten accolades after finishing second in the conference in assists. After outstanding seasons, both Lucas and Bentley were invited to the USA Basketball World University Games Trials.

Washington's third season saw the Lady Lions return to the postseason for the first time since 2004-05 with a WNIT berth. The Lions earned their most overall wins (17) and conference wins (8) since the 2004-05 campaign en route to a sixth-place finish in the Big Ten. Penn State picked up a pair of wins over ranked opponents in #15/15 Pittsburgh and #20/23 Michigan State.

In Washington's second season, the Lady Lions moved up three positions in the Big Ten standings, finishing in a tie for seventh place. Under Washington's guidance in 2008-

THE WASHINGTON FILE

COACHING RESUME

2007-pres. - Head Coach, Penn State
 2012-pres. - Kay Yow Cancer Fund Board of Directors
 2011-pres. - NCAA WBB Issues Committee
 2010-pres. - Treasurer, WBCA Executive Committee
 2008-pres. - WBCA Board of Directors
 2009-12 - USA Basketball Women's Jr. National Committee
 2005-07 - Associate Head Coach, Notre Dame
 1999-05 - Assistant Coach, Notre Dame

PLAYING EXPERIENCE

2002-03 - WNBA's Indiana Fever
 2000-02 - WNBA's Houston Comets
 1998-99 - WNBA's New York Liberty
 1997-98 - ABL's Portland Power
 1989-93 - University of Notre Dame

EDUCATION

Notre Dame '92, B.A. History
 Notre Dame Law School '97, Juris Doctorate

AWARDS

- ❖ 2012 Big Ten Coach of the Year
- ❖ 2012 WBCA Region 6 Coach of the Year
- ❖ 2012 WBCA National Coach of the Year Finalist
- ❖ 2011 BCA Female Coach of the Year
- ❖ 2009 Greater Flint Hall of Fame Inductee
- ❖ 2008 WBCA "Rising Star" Award Winner

FAMILY

Husband: Raynell Brown
 Children: Quenton (7), Rhaiyna (3)

09, Grant became the 10th different player in school history to earn first team All-Big Ten honors. Grant was also a semifinalist for the Naismith Player of the Year award.

In her first season at the helm, Washington and the Lady Lions picked up two nationally-televised wins, downed two nationally-ranked foes and took home the 25th regular-season tournament crown in program history.

Washington came to Happy Valley after eight seasons as an associate head coach and assistant coach under Muffet McGraw at Notre Dame, her alma mater. During Washington's eight years on the bench, Notre Dame amassed a 188-69 record with eight NCAA Tournament appearances, including four Sweet Sixteen runs and a National Championship in 2001.

One of the top recruiters in the country, Washington was instrumental in helping the Irish to secure eight consecutive Top 25 recruiting classes, according to "Blue Star Index," a feat only accomplished by two other programs in the country (Connecticut and Tennessee).

Washington was a four-year starting point guard for Notre Dame under McGraw and was the team captain on Notre Dame's first-ever NCAA Tournament team. She was a two-time All-Midwestern Collegiate Conference (MCC) selection and led Notre Dame to three MCC Tournament titles.

The epitome of a student-athlete, Washington graduated from Notre Dame in 1992, a full year ahead of schedule, with a bachelor's degree in history. She went on to attain "Double Domer" status in 1997 after earning her Juris Doctorate from the Notre Dame Law School.

Washington is currently serving on the 29-member WBCA Board of Directors, where she is the Treasurer of the Executive Committee. Washington is also a member of the Kay Yow Cancer Fund Board of Directors and the NCAA Women's Basketball Issues Committee.

A native of Flint, Mich., Washington and her husband, Raynell Brown, have a son, Quenton (7), and a daughter, Rhaiyna (3). They reside in Port Matilda, Pa.

Washington's Coaching Record vs. Opponents

Arizona	1-0	Middle Tennessee	1-0
Army	1-0	Minnesota	5-6
Boston College	0-1	Mississippi	1-0
Bucknell	5-0	Monmouth	1-0
Buffalo	1-0	Nebraska	1-1
Charlotte	1-0	Nevada	1-0
Connecticut	0-2	NJIT	1-0
Coppin State	1-0	North Carolina	1-0
Dayton	2-1	Northwestern	6-1
Delaware	1-1	Oakland	2-0
DePaul	0-1	Ohio State	2-6
Drexel	2-1	Old Dominion	0-1
Duke	1-0	Pittsburgh	2-1
Florida State	0-1	Prairie View A&M	1-0
Georgetown	1-0	Purdue	2-8
Georgia Tech	0-1	Rider	1-0
Hartford	1-0	South Carolina	4-1
Hofstra	0-1	Stony Brook	1-0
Holy Cross	1-0	Syracuse	0-1
Howard	1-0	Texas A&M	1-1
Illinois	8-3	UTEP	1-0
Indiana	4-4	Texas Tech	1-1
Iowa	5-5	Utah	1-0
Iowa State	1-0	Virginia Tech	1-0
LSU	1-0	Wagner	1-0
Maine	1-0	Washington State	1-0
UMES	1-0	Wisconsin	4-5
Michigan	7-3	UW-Green Bay	0-1
Michigan State	2-7	Xavier	0-1





#1 Candice Agee

Fr. * F/C * 6-6 * Victorville, Calif./Silverado

2012-13 Season Notes:

- ♦ Snagged three rebounds with one blocked shot in the win at #16/13 Texas A&M (11/14).
- ♦ Recorded her first collegiate block against Howard (11/11), just 45 seconds after entering the game.

CAREER HIGHS

Points.....	n/a
Rebs.....	3 at Texas A&M, 11/14/12
Assists.....	n/a
Steals.....	n/a
Blocks.....	1 at Texas A&M, 11/14/12
.....	1 vs. Howard, 11/11/12
Minutes.....	11 at Texas A&M, 11/14/12
FGM.....	n/a
FGA.....	3 vs. Howard, 11/11/12
FG%.....	n/a
3FGM.....	n/a
3FGA.....	n/a
3PT %.....	n/a
FTM.....	n/a
FTA.....	1 vs. Howard, 11/11/12
FT %.....	n/a
Career Double-Doubles.....	n/a
Career 20-point games.....	n/a



#2 Dara Taylor

Jr. * G * 5-8 * Wilmington, Del./Caraval Acad. (Maryland)

2012-13 Season Notes:

- ♦ Was 4-for-8 from the field en route to eight points with three assists and five steals in the victory at #16/13 Texas A&M (11/14).
- ♦ Registered five points, four rebounds and three assists in her first game as a Lady Lion against Howard (11/11).

CAREER HIGHS

Points.....	17 vs. Clemson (2/14/10)
Rebs.....	8 vs. East Carolina (3/21/10)
Assists.....	11 at American (12/20/09)
.....	11 at Virginia (1/11/10)
Steals.....	6 vs. N.C. Central (11/14/09)
Blocks.....	1 (3x) last at St. Joseph's 1/2/11
Minutes.....	38 at American (12/20/09)
FGM.....	7 vs. Clemson (2/14/10)
FGA.....	14 at N.C. State (1/7/10)
FG%.....	1.000 (3x)
.....	last vs. N.C. State (2-2) (2/6/11)
3FGM.....	2 vs. Samford (1/24/09)
.....	2 vs. Clemson (2/14/10)
3FGA.....	5 at Mississippi State (11/22/09)
3PT %.....	1.000 (1-1) at Longwood (1/31/10)
.....	1.000 (1-1) vs. Providence (3/25/10)
FTM.....	7 at Wake Forest (2/11/10)
FTA.....	10 at Wake Forest (2/11/10)
.....	10 vs. North Carolina (3/4/10)
FT %.....	1.000 (7x)
.....	last vs. Georgetown (2-2) (3/22/11)
Career Double-Doubles.....	1
Career 20-point games.....	n/a





#5 Talia East

Jr. * F/C * 6-3 * Philadelphia, Pa./Friends' Central

2012-13 Season Notes:

- Had two rebounds in the win over Howard (11/11).

CAREER HIGHS

Points 9 vs. Indiana (2/2/12)
Rebs. 15 at South Carolina (11/20/11)
Assists 2 vs. Minnesota (2/26/12)
..... 2 at Bucknell (12/21/11)
Steals 2 (5x)
..... last vs. Connecticut (3/25/12)
Blocks 7 at South Carolina (11/20/11)
Minutes 29 at South Carolina (11/20/11)
FGM 4 (2x) last vs. Indiana (2/2/12)
FGA 7 (3x) last vs. Indiana (2/2/12)
FG% 1.000 (5x)
..... last vs. Michigan (1-1) (1/12/12)
3FGM n/a
3FGA n/a
3PT % n/a
FTM 4 vs. Nebraska (12/30/11)
FTA 4 (3x) last vs. Nebraska (12/30/11)
FT % 1.000 (4x)
..... last vs. Indiana (1-1) (2/2/12)
Career Double-Doubles n/a
Career 20-point games n/a



#20 Alex Bentley

Sr. * G * 5-7 * Indianapolis, Ind./Ben Davis

2012-13 Highlights:

- Team captain
- On 2013 preseason Wade Trophy Watch List, Wooden Award Top 30 and Naismith Early Season Watch List.
- 2013 Big Ten Preseason Co-Player of the Year (coaches); first team preseason All-Big Ten (coaches & media).

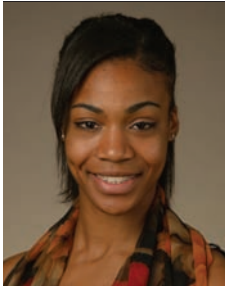
2012-13 Season Notes:

- Scored 14 of her game-high 21 points in the second half after battling foul trouble in the opening frame at #16/13 Texas A&M (11/14). Also tallied four assists and four steals against the Aggies.
- Accounted for 14 points, six rebounds and seven steals in the season opening win over Howard (11/11). The seven steals are one off her career high, set against Nebraska (12/30/11).

CAREER HIGHS

Points 28 at Boston College (12/2/10)
Rebs. 7 vs. Iowa (1/22/12)
..... 7 vs. Iowa (12/28/09)
Assists 15 vs. North Carolina (11/30/11)
Steals 8 vs. Nebraska (12/30/11)
Blocks 2 (3x) last vs. Drexel (12/21/10)
Minutes 46 at Dayton (11/12/10)
FGM 12 vs. Dayton (3/19/11)
..... 12 vs. Purdue (1/28/10)
FGA 28 vs. Dayton (3/19/11)
FG%833 (5-6) at Illinois (12/31/09)
3FGM 4 at Purdue (2/14/10)
3FGA 6 (4x)
..... last vs. Ohio State (3/6/11)
3PT % 1.000 (6x)
..... last vs. Washington State (2-2) (11/11/11)
FTM 10 at Northwestern (1/6/11)
FTA 12 at Northwestern (1/6/11)
FT % 1.000 (26x)
..... last vs. Howard (2-2) (11/11/12)
Career Double-Doubles 1
Career 20-point games 20





#23 Ariel Edwards

Jr. * G/F * 6-3 * Elmont, N.Y./Christ the King

2012-13 Season Notes:

- ♦ Chipped in five points, five rebounds and tied her career high with two blocks in the win over Howard (11/11).

CAREER HIGHS

Points	17 vs. Iowa (1/22/12)
Rebs.	11 vs. Iowa (1/22/12)
Assists	4 at Wisconsin (1/2/12)
Steals	3 at Texas Tech (12/3/11)
Blocks	2 vs. Howard (11/11/12)
	2 at Oakland (11/18/10)
Minutes	38 at Delaware (11/17/11)
FGM	6 vs. Wisconsin (2/9/12)
	6 vs. North Carolina (11/30/11)
FGA	11 (3x) last vs. UMES (12/11/11)
FG%	1.000 (3x)
	last DePaul (1-1) (3/21/11)
3FGM	2 vs. Army (12/8/10)
	2 vs. Hartford (11/27/10)
3FGA	4 vs. Army (12/8/10)
	4 vs. Hartford (11/27/10)
3PT %	1.000 (4x)
	last vs. UTEP (1-1) (3/18/12)
FTM	9 vs. Iowa (1/22/12)
FTA	10 vs. Iowa (1/22/12)
FT %	1.000 (10x)
	last vs. Connecticut (2-2) (3/25/12)
Career Double-Doubles	1
Career 20-point games	n/a



#24 Mia Nickson

Sr. * F * 6-2 * Ashburn, Va./Notre Dame Academy (B.C.)

2012-13 Highlights:

- ♦ Team captain for the third consecutive season.
- ♦ Recorded a double-double in the season-opener against Howard (11/11) with 14 points, including a 6-for-10 effort from the field, and 10 rebounds.

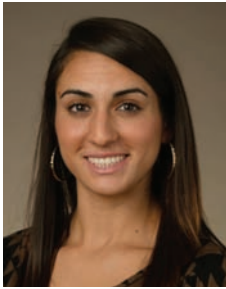
2012-13 Season Notes:

- ♦ Accounted for six points, 11 rebounds and two blocks in the win at #16/13 Texas A&M (11/14).

CAREER HIGHS

Points	26 vs. Texas Tech (12/5/10)
Rebs.	17 vs. Indiana (1/23/11)
Assists	4 vs. Maine (12/12/10)
Steals	6 vs. Indiana (1/23/11)
	6 vs. Bucknell (12/28/10)
Blocks	3 vs. Purdue (3/3/12)
Minutes	41 at Dayton (11/12/10)
FGM	9 vs. Indiana (1/23/11)
FGA	16 vs. Indiana (1/23/11)
FG%	1.000 (4X)
	last vs. Minnesota (5-5) (1/13/11)
3FGM	n/a
3FGA	n/a
3PT %	n/a
FTM	10 (3x) last at Minnesota (2/5/12)
FTA	12 at Minnesota (2/5/12)
FT %	1.000 (19X)
	last vs. Howard (2-2) (11/11/12)
Career Double-Doubles	11
Career 20-point games	5





#25 Gizelle Studevent
Sr. * G * 5-11 * La Jolla, Calif./The Bishop's School

2012-13 Season Notes:

- ♦ Pulled in a rebound and blocked a shot against Howard (11/11).

CAREER HIGHS

Points 10 vs. Indiana (2/2/12)
.....	10 at Oakland (11/18/10)
Rebs. 3 (8x) last vs. Minnesota (2/26/12)
Assists 4 vs. Wagner (12/18/11)
Steals 2 vs. Virginia Tech (12/6/11)
.....	2 vs. Rider (11/14/10)
Blocks 1 (3x) last vs. Howard (11/11/12)
Minutes 25 vs. Minnesota (2/26/12)
FGM 5 vs. Indiana (2/2/12)
FGA 8 vs. Monmouth (12/9/09)
FG% 1.000 (3x)
.....	last at Ohio State (1-1) (2/17/11)
3FGM 1 (4x) last vs. Minnesota (1/13/11)
3FGA 3 vs. Monmouth (12/9/09)
3PT% 1.000 (4x)
.....	last vs. Minnesota (1-1) (1/13/11)
FTM 3 vs. Maine (12/12/10)
.....	3 at Oakland (11/18/10)
FTA 4 vs. Maine (12/12/10)
.....	4 at Oakland (11/18/10)
FT% 1.000 (6x)
.....	last vs. Minnesota (2-2) (2/26/12)
Career Double-Doubles n/a
Career 20-point games n/a



#33 Maggie Lucas
Jr. * G * 5-10 * Narberth, Pa./Germantown Academy

2012-13 Highlights:

- ♦ On 2013 preseason Wade Trophy Watch List, Wooden Award Top 30 and Naismith Early Season Watch List.
- ♦ 2013 first team preseason All-Big Ten (coaches & media).

2012-13 Season Notes:

- ♦ Tallied 18 points to go along with four rebounds and a steal at #16/13 Texas A&M (11/14).
- ♦ Posted her 32nd career 20-point game with a team-best 25 points on 9-of-17 shooting in the season-opening win over Howard (11/11). Also had three assists and three steals in the win.

CAREER HIGHS

Points 33 vs. Michigan State (1/7/12)
Rebs. 10 vs. Ohio State (2/20/12)
Assists 8 vs. Minnesota (2/26/12)
Steals 4 (4x)
.....	last at Northwestern (2/12/12)
Blocks 2 vs. Indiana (2/2/12)
.....	2 vs. Purdue (2/24/11)
Minutes 40 (3x)
.....	last vs. Connecticut (3/25/12)
FGM 10 (3x) last at Purdue (2/16/12)
FGA 22 vs. Nebraska (12/30/11)
FG%769 (10-13) at Michigan (1/26/12)
3FGM 7 vs. Michigan State (1/7/12)
.....	7 vs. Hartford (11/27/10)
3FGA 13 vs. Michigan State (1/7/12)
.....	13 at Boston College (12/2/10)
3PT % 1.000 (4-4) at Bucknell (12/21/11)
FTM 11 at LSU (3/20/12)
.....	11 vs. Washington State (11/11/11)
FTA 13 vs. Washington State (11/11/11)
FT % 1.000 (34x)
.....	last at Texas A&M (3-3) (11/14/12)
Career Double-Doubles 1
Career 20-point games 32
Career 30-point games 2





#40 Marisa Wolfe
Sr. * F * 6-2 * Ford City, Pa./Ford City

2012-13 Highlights:

- ♦ Team captain for the second-straight season.
- ♦ Currently sidelined with concussion-like symptoms.

CAREER HIGHS

Points.....	13 vs. Michigan (2/18/10)
Rebs.....	7 vs. Wagner (12/18/11)
.....	7 vs. Green Bay (11/26/10)
Assists.....	1 (19x)
.....	last at Michigan (1/26/12)
Steals.....	3 vs. North Carolina (11/30/11)
.....	3 at Northwestern (1/3/10)
Blocks.....	2 (5x)
.....	last vs. UMES (12/11/11)
Minutes.....	30 vs. Green Bay (11/26/10)
FGM.....	5 vs. Michigan (2/18/10)
.....	5 at Northwestern (1/3/10)
FGA.....	8 vs. North Carolina (11/30/11)
FG%.....	1.000 (10x)
.....	last vs. UTEP (1-1) (3/18/12)
3FGM.....	2 vs. Illinois (1/24/10)
3FGA.....	3 vs. Illinois (1/24/10)
3PT%.....	1.000 (1-1) vs. Ohio State (3/6/11)
FTM.....	4 vs. South Carolina (11/21/10)
FTA.....	4 (3x)
.....	last vs. Green Bay (11/26/10)
FT%.....	1.000 (18x)
.....	last vs. UTEP (1-1) (3/18/12)
Career Double-Doubles.....	n/a
Career 20-point games.....	n/a



#44 Tori Waldner
So. * F * 6-5 * Milton, Ga./Milton

2012-13 Highlights:

- ♦ Chipped in two points and three rebounds in the win over #16/13 Texas A&M (11/14).
- ♦ Tied her career high with six points, all of which came from the free throw line, and six rebounds in just 12 minutes in the season-opening win over Howard (11/11).

CAREER HIGHS

Points.....	6 (5x)
.....	last vs. Howard (11/11/12)
Rebs.....	10 vs. Wagner (12/18/11)
Assists.....	4 vs. Indiana (2/2/12)
Steals.....	2 vs. Nebraska (12/30/11)
.....	2 at Nevada (11/26/11)
Blocks.....	3 vs. Wagner (12/18/11)
Minutes.....	21 vs. UMES (12/11/11)
FGM.....	3 (3x) last at Minnesota (2/5/12)
FGA.....	5 (3x) last at Minnesota (2/5/12)
FG%.....	1.000 (4x)
.....	last at Purdue (1-1) (2/16/12)
3FGM.....	n/a
3FGA.....	1 at LSU (3/20/12)
3PT %.....	n/a
FTM.....	6 vs. Howard (11/11/12)
FTA.....	6 vs. Howard (11/11/12)
FT %.....	1.000 (3x)
.....	last vs. Howard (6-6) (11/11/12)
Career Double-Doubles.....	n/a
Career 20-point games.....	n/a





#54 Nikki Greene
Sr. * F/C * 6-4 * Diboll, Texas/Diboll

2012-13 Season Notes:

- Playing in front of several friends and family members, scored all eight of her points and pulled in six of her seven rebounds in the second half at #16/13 Texas A&M (11/14).
- Had three points and four rebounds in the win over Howard (11/11).

CAREER HIGHS

Points	25 vs. Ohio State (2/20/12)
Rebs.	20 vs. Indiana (1/23/11)
Assists	3 vs. Michigan (1/12/12)
Steals	4 (3x)
	last vs. Nebraska (12/30/11)
Blocks	7 vs. Purdue (1/28/10)
Minutes	37 at Boston College (12/2/10)
FGM	9 vs. Utah (11/25/10)
	9 at Dayton (11/12/10)
FGA	17 vs. Ohio State (2/20/12)
	17 at Dayton (11/12/10)
FG%	1.000 (3x)
	last at Michigan (4-4) (1/26/12)
3FGM	n/a
3FGA	n/a
3PT%	n/a
FTM	9 vs. Ohio State (2/20/12)
FTA	14 vs. Ohio State (2/20/12)
FT%	1.000 (13x)
	last at Northwestern (4-4) (2/12/12)
Career Double-Doubles	9
Career 20-point games	3



No. 12/14 Penn State 101, Bloomsburg 81 Exhibition Game * Nov. 5, 2011 * University Park, Pa.

Bloomsburg 81

#	Player	Total		3-Ptr		Rebounds			PF	TP	A	TO	Blk	Stl	Min
		FG-FGA	FG-FGA	FT-FTA	Off	Def	Tot								
03	GALLAGHER, Kelsey	* 8-15	4-5	2-2	1	3	4	1	22	1	4	1	1	25	
20	FLANAGAN, Alyssa	* 0-2	0-1	2-4	1	3	4	2	2	6	4	2	1	28	
22	OXENRIDER, Kayla	* 4-11	1-3	5-6	0	3	3	2	14	2	7	1	2	33	
31	ELLIS, Lauren	* 1-2	0-0	0-0	2	7	9	4	2	3	0	0	0	32	
34	WIELER, Dana	* 5-10	3-5	3-4	1	3	4	5	16	0	4	0	0	23	
44	DUDECK, Brianna	* 0-3	0-0	0-0	1	0	1	0	0	0	1	0	0	6	
10	NYCE, Courtney	* 0-3	0-2	0-0	0	1	1	2	0	0	2	0	0	5	
15	NOACK, Catherine	* 6-8	5-6	2-2	2	2	4	2	19	1	2	0	0	26	
30	SIMMONS, Marla	* 2-4	0-1	2-2	1	3	4	1	6	1	2	0	0	11	
32	BORSKI, Maggie	* 0-0	0-0	0-0	0	0	0	0	0	1	0	0	0	11	
	Team				1	0	1								
	Totals	26-58	13-23	16-20	10	25	35	17	81	15	26	4	4	200	
	FG % 1st Half:	11-26	42.3%	2nd half:	15-32	46.9%	Game:	26-58	44.8%					Deadball	
	3FG % 1st Half:	7-10	70.0%	2nd half:	6-13	46.2%	Game:	13-23	56.5%					Rebounds	
	FT % 1st Half:	6-9	66.7%	2nd half:	10-11	90.9%	Game:	16-20	80.0%					3	

Penn State 101

#	Player	Total		3-Ptr		Rebounds			PF	TP	A	TO	Blk	Stl	Min
		FG-FGA	FG-FGA	FT-FTA	Off	Def	Tot								
12	Gray, Zhaque	* 4-12	1-4	0-0	0	1	1	4	9	0	1	0	2	30	
20	Bentley, Alex	* 7-12	0-2	2-2	2	6	8	2	16	9	2	0	7	30	
24	Nickson, Mia	* 5-9	0-0	4-4	3	1	4	3	14	0	0	1	1	22	
33	Lucas, Maggie	* 10-15	7-8	8-9	0	3	3	2	35	1	1	0	1	35	
54	Greene, Nikki	* 6-8	0-0	0-2	4	3	7	3	12	0	2	0	0	16	
05	East, Talia	* 2-3	0-0	0-0	2	3	5	2	4	0	1	0	2	13	
23	Edwards, Ariel	* 1-10	0-1	2-3	3	3	6	3	4	0	2	0	1	30	
25	Studevent, Gizelle	* 2-8	0-1	0-0	1	1	2	1	4	0	2	0	0	20	
44	Waldner, Tori	* 1-1	0-0	1-1	0	1	1	0	3	0	0	0	0	4	
	Team				2	1	3								
	Totals	38-78	8-16	17-21	17	23	40	20	101	10	12	1	14	200	
	FG % 1st Half:	18-41	43.9%	2nd half:	20-37	54.1%	Game:	38-78	48.7%					Deadball	
	3FG % 1st Half:	4-11	36.4%	2nd half:	4-5	80.0%	Game:	8-16	50.0%					Rebounds	
	FT % 1st Half:	7-9	77.8%	2nd half:	10-12	83.3%	Game:	17-21	81.0%					2	

Officials: Kevin Pethel, Kathy Ridilla, Shannon Feck
Technical fouls: Bloomsburg-None. Penn State-None.
Attendance: 7742

Score by periods	1st	2nd	Total
Bloomsburg	35	46	81
Penn State	47	54	101

Last FG - BLOOM 2nd-01:25, PSU 11:22 2nd-01:06.
Largest lead - BLOOM by 5 1st-18:42, PSU 11:12 by 20 2nd-11:10.

In Paint: BLOOM 20, PSU 11:12
Off T/O: 20, 33
2nd Chance: 18, 23
Fast Break: 3, 16
Bench: 25, 15
Score tied - 4 times.
Lead changed - 3 times.

Notable

- Sophomore guard **Maggie Lucas** led the Lady Lions' offensive outburst with 35 points, including a 7-for-8 effort from three-point range.
- Alex Bentley** had an all-around performance with 16 points, eight rebounds, nine assists and seven steals.
- Junior forward **Mia Nickson** also reached double figures with 14 points and four rebounds.

No. 9/9 63, No. 16/13 Texas A&M 58 Game #2 * Nov. 14, 2012 * College Station, Texas

Penn State 63 • 2-0

#	Player	Total		3-Ptr		Rebounds			PF	TP	A	TO	Blk	Stl	Min
		FG-FGA	FG-FGA	FT-FTA	Off	Def	Tot								
20	Bentley, Alex	* 7-15	2-3	5-6	0	2	2	4	21	4	0	0	4	26	
23	Edwards, Ariel	* 0-3	0-0	0-0	0	4	4	1	0	0	4	1	0	17	
24	Nickson, Mia	* 2-10	0-0	2-6	5	6	11	2	6	2	2	2	1	34	
33	Lucas, Maggie	* 7-16	1-6	3-3	0	4	4	2	18	1	4	0	1	38	
54	Greene, Nikki	* 4-6	0-0	0-0	2	5	7	4	8	0	1	0	1	20	
01	Agee, Candice	* 0-2	0-0	0-0	1	2	3	1	0	0	0	1	0	11	
02	Taylor, Dara	* 4-8	0-1	0-0	0	3	3	4	8	3	5	0	5	29	
05	East, Talia	* 0-2	0-0	0-0	0	1	1	3	0	0	2	0	0	9	
25	Studevent, Gizelle	* 0-1	0-0	0-0	0	0	0	0	0	0	0	0	0	10	
44	Waldner, Tori	* 1-2	0-0	0-0	3	0	3	0	2	0	1	0	0	6	
	Team				4	0	4								
	Totals	25-65	3-10	10-15	15	27	42	21	63	10	19	4	12	200	
	FG % 1st Half:	11-29	37.9%	2nd half:	14-36	38.9%	Game:	25-65	38.5%					Deadball	
	3FG % 1st Half:	2-5	40.0%	2nd half:	1-5	20.0%	Game:	3-10	30.0%					Rebounds	
	FT % 1st Half:	4-6	66.7%	2nd half:	6-9	66.7%	Game:	10-15	66.7%					1	

Texas A&M 58 • 0-2

#	Player	Total		3-Ptr		Rebounds			PF	TP	A	TO	Blk	Stl	Min
		FG-FGA	FG-FGA	FT-FTA	Off	Def	Tot								
03	Kelsey Bone	* 7-11	0-0	2-4	6	9	15	2	16	3	5	0	1	36	
05	Kristi Bellock	* 3-6	0-0	0-0	3	7	10	3	6	2	4	0	0	18	
10	Alexia Standish	* 1-5	0-1	3-3	0	0	0	4	5	2	4	0	0	28	
15	Tori Scott	* 0-2	0-1	1-2	1	0	1	1	1	0	2	0	0	15	
33	Courtney Walker	* 3-14	0-0	0-1	3	2	5	3	6	1	2	0	4	39	
01	Courtney Williams	* 1-7	0-0	1-1	1	1	2	1	3	0	0	0	1	15	
20	Peyton Little	* 2-7	2-5	0-0	0	1	1	0	6	0	1	0	0	13	
24	Jordan Jones	* 1-3	1-1	0-0	1	0	1	0	3	0	2	0	0	5	
32	Adrienne Pratcher	* 1-4	0-1	0-0	0	1	1	0	2	4	0	0	1	14	
34	Karla Gilbert	* 3-5	0-0	4-8	3	3	6	3	10	1	3	2	1	17	
	Team				2	5	7								
	Totals	22-64	3-9	11-19	20	29	49	17	58	13	23	2	8	200	
	FG % 1st Half:	12-35	34.3%	2nd half:	10-29	34.5%	Game:	22-64	34.4%					Deadball	
	3FG % 1st Half:	2-6	33.3%	2nd half:	1-3	33.3%	Game:	3-9	33.3%					Rebounds	
	FT % 1st Half:	7-13	53.8%	2nd half:	4-6	66.7%	Game:	11-19	57.9%					3	

Officials: Bob Trammel, Tina Napier, Jesse Dickerson
Technical fouls: Penn State-None. Texas A&M-None.
Attendance: 4756

Score by periods	1st	2nd	Total
Penn State	28	35	63
Texas A&M	33	25	58

Last FG - PSU 2nd-00:49, TAMU 2nd-06:24.
Largest lead - PSU by 5 1st-09:44, TAMU by 7 2nd-18:46.

Notable

- The Lady Lions earn their first victory over a ranked non-conference opponent on the road since defeating #19 Texas on December 21, 2001.
- The win snapped Texas A&M's 58-game non-conference home court winning streak, dating back to Dec. 30, 2003.
- With seven rebounds, **Nikki Greene** moves into 11th place all-time on PSU's rebounding chart (734).

No. 8/8 Penn State 72, Howard 61 Game #1 * Nov. 11, 2012 * University Park, Pa.

#	Player	Total		3-Ptr		Rebounds			PF	TP	A	TO	Blk	Stl	Min
		FG-FGA	FG-FGA	FT-FTA	Off	Def	Tot								
05	CURLY-PAYNE, Cheyenn	* 2-8	0-3	0-2	0	2	2	4	4	3	3	0	3	35	
10	GORHAM, Jerrelle	* 2-10	0-2	1-2	0	6	6	4	5	4	10	1	4	36	
13	DOYLE, Saadia	* 9-21	1-1	17-23	1	5	6	2	36	1	2	0	3	39	
32	DETERVILLE, Nicole	* 1-2	0-0	1-2	2	0	2	5	3	0	0	0	1	21	
44	SMITH, Kara	* 3-6	1-1	0-0	2	2	4	3	7	0	1	0	1	22	
14	JOHNSON, Cabria	* 2-3	2-2	0-0	3	1	4	4	6	0	1	0	0	13	
24	BAILEY, Imani	* 0-2	0-1	0-0	0	0	0	0	0	2	1	1	2	14	
34	DETERVILLE, Portia	* 0-0	0-0	0-0	0	2	2	1	0	0	1	0	0	20	
	Team				2	3	5								
	Totals	19-52	4-10	19-29	10	21	31	23	61	10	19	2	14	200	

FG % 1st Half: 11-26 42.3% 2nd half: 8-26 30.8% Game: 19-52 36.5% Deadball
3FG % 1st Half: 3-6 50.0% 2nd half: 1-4 25.0% Game: 4-10 40.0% Rebounds
FT % 1st Half: 6-7 85.7% 2nd half: 13-22 59.1% Game: 19-29 65.5%

Penn State 72 • 1-0

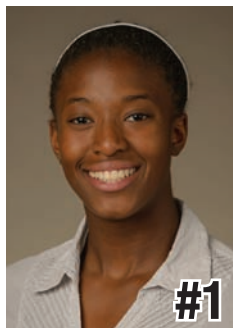
#	Player	Total		3-Ptr		Rebounds			PF	TP	A	TO	Blk	Stl	Min
		FG-FGA	FG-FGA	FT-FTA	Off	Def	Tot								
20	Bentley, Alex	* 6-14	0-3	2-2	2	4	6	3	14	4	3	0	7	32	
23	Edwards, Ariel	* 2-6	0-2	1-2	1	4	5	5	1	0	2	0	23		
24	Nickson, Mia	* 6-10	0-0	2-2	5	5	10	1	14	0	4	1	0	30	
33	Lucas, Maggie	* 9-17	4-8	3-4	0	2	2	2	25	3	2	0	3	35	
54	Greene, Nikki	* 0-0	0-0	3-6	1	3	4	4	3	0	2	0	1	17	
01	Agee, Candice	* 0-3	0-0	0-1	0	0	0	2	0	0	1	1	0	7	
02	Taylor, Dara	* 2-4	0-1	1-2	1	3	4	4	5	3	3	0	0	21	
05	East, Talia	* 0-1	0-0	0-1	0	2	2	2	0	1	3	0	0	9	
25	Studevent, Gizelle	* 0-1	0-0	0-0	1	0	1	1	0	0	1	1	0	14	
44	Waldner, Tori	* 0-1	0-0	0-0	2	4	6	2	6	0	1	1	1	12	
	Team				2	0	2								
	Totals	25-57	4-14	18-26	15	27	42	26	72	12	20	6	12	200	

FG % 1st Half: 14-29 48.3% 2nd half: 11-28 39.3% Game: 25-57 43.9% Deadball
3FG % 1st Half: 2-8 25.0% 2nd half: 2-6 33.3% Game: 4-14 28.6% Rebounds
FT % 1st Half: 9-15 60.0% 2nd half: 9-11 81.8% Game: 18-26 69.2%

Officials: Dennis Brooks, Frank Steratore, Bruce Morris
Technical fouls: Howard-None. Penn State-None.
Attendance: 3655

Score by periods	1st	2nd	Total
Howard	31	30	61
Penn State	39	33	72

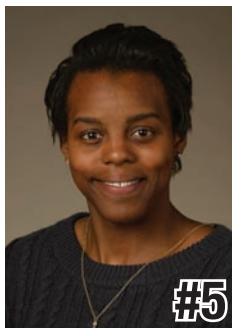
2012-13 RADIO/TV CHART



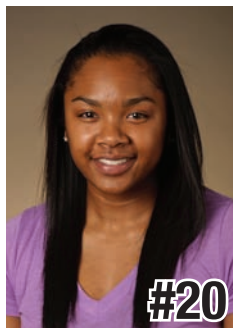
#1
Candice Agee
 6-6 * Fr./Fr. * F/C
 Victorville, Calif.
 Silverado



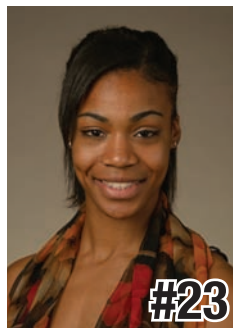
#2
Dara Taylor
 5-8 * Sr./Jr. * G
 Wilmington, Del.
 Caravel Academy
 (Maryland)



#5
Talia East
 6-3 * Jr./Jr.* F/C
 Philadelphia, Pa.
 Friends' Central School



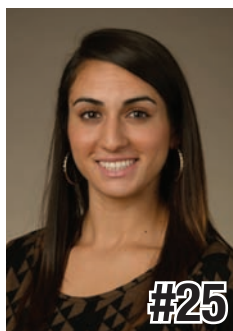
#20
Alex Bentley
 5-7 * Sr./Sr. * G
 Indianapolis, Ind.
 Ben Davis



#23
Ariel Edwards
 6-3 * Jr./Jr. * F
 Elmont, N.Y.
 Christ the King



#24
Mia Nickson
 6-2 * Gr./Sr. * F
 Ashburn, Va.
 Notre Dame Academy
 (Boston College)



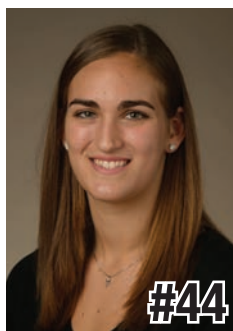
#25
Gizelle Studevent
 5-11 * Sr./Sr. * G
 La Jolla, Calif.
 The Bishop's School



#33
Maggie Lucas
 5-10 * Jr./Jr. * G
 Narberth, Pa.
 Germantown Academy



#40
Marisa Wolfe
 6-2 * Sr./Sr. * F
 Ford City, Pa.
 Ford City



#44
Tori Waldner
 6-5 * So./So. * F/C
 Milton, Ga.
 Milton



#54
Nikki Greene
 6-4 * Sr./Sr. * F/C
 Diboll, Texas
 Diboll



HC
Coquese Washington
 Head Coach
 Notre Dame '92
 Sixth Season



AC
Fred Chmiel
 Assistant Coach
 Excelsior College
 Third Season



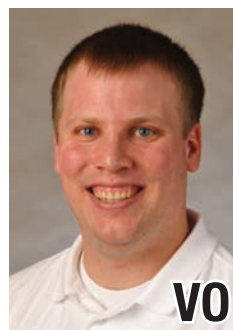
AC
Kia Damon
 Assistant Coach
 Millersville '97
 Sixth Season



AC
Maren Walseth
 Assistant Coach
 Penn State '02
 Sixth Season



DO
Ethan Gelfand
 Director of Basketball
 Operations
 Second Season



VO
Mike Miller
 Director of Video &
 Technology Operations
 Eighth Season





2012-13 Penn State Lady Lions
 Penn State Combined Team Statistics (as of Nov 14, 2012)
 All games



RECORD:	OVERALL	HOME	AWAY	NEUTRAL
ALL GAMES	2-0	1-0	1-0	0-0
CONFERENCE	0-0	0-0	0-0	0-0
NON-CONFERENCE	2-0	1-0	1-0	0-0

##	Player	gp-gs	min	avg	Total		3-Point		F-Throw		Rebounds				pf	dq	a	to	blk	stl	pts	avg
					fg-fga	fg%	3fg-fga	3fg%	ft-fta	ft%	off	def	tot	avg								
33	Lucas, Maggie	2-2	73	36.5	16-33	.485	5-14	.357	6-7	.857	0	6	6	3.0	4	0	4	6	0	4	43	21.5
20	Bentley, Alex	2-2	58	29.0	13-29	.448	2-6	.333	7-8	.875	2	6	8	4.0	7	0	8	3	0	11	35	17.5
24	Nickson, Mia	2-2	64	32.0	8-20	.400	0-0	.000	4-8	.500	10	11	21	10.5	3	0	2	6	3	1	20	10.0
02	Taylor, Dara	2-0	50	25.0	6-12	.500	0-2	.000	1-2	.500	1	6	7	3.5	8	0	6	8	0	5	13	6.5
54	Greene, Nikki	2-2	37	18.5	4-6	.667	0-0	.000	3-6	.500	3	8	11	5.5	8	0	0	3	0	2	11	5.5
44	Waldner, Tori	2-0	18	9.0	1-3	.333	0-0	.000	6-6	1.000	5	4	9	4.5	2	0	0	2	1	1	8	4.0
23	Edwards, Ariel	2-2	40	20.0	2-9	.222	0-2	.000	1-2	.500	1	8	9	4.5	6	1	1	4	3	0	5	2.5
25	Studevent, Gizelle	2-0	24	12.0	0-2	.000	0-0	.000	0-0	.000	1	0	1	0.5	1	0	0	1	1	0	0	0.0
05	East, Talia	2-0	18	9.0	0-3	.000	0-0	.000	0-1	.000	0	3	3	1.5	5	0	1	5	0	0	0	0.0
01	Agee, Candice	2-0	18	9.0	0-5	.000	0-0	.000	0-1	.000	1	2	3	1.5	3	0	0	1	2	0	0	0.0
Team											6	0	6									
Total.....		2	400		50-122	.410	7-24	.292	28-41	.683	30	54	84	42.0	47	1	22	39	10	24	135	67.5
Opponents.....		2	400		41-116	.353	7-19	.368	30-48	.625	30	50	80	40.0	40	1	23	42	4	22	119	59.5

TEAM STATISTICS	PSU	OPP	Date	Opponent	Score	Att.
SCORING	135	119	11/11/12	HOWARD	w 72-61	3655
Points per game	67.5	59.5	11/14/12	at Texas A&M	w 63-58	4756
Scoring margin	+8.0	-	* - Conference game			
FIELD GOALS-ATT	50-122	41-116				
Field goal pct	.410	.353				
3 POINT FG-ATT	7-24	7-19				
3-point FG pct	.292	.368				
3-pt FG made per game	3.5	3.5				
FREE THROWS-ATT	28-41	30-48				
Free throw pct	.683	.625				
F-Throws made per game	14.0	15.0				
REBOUNDS	84	80				
Rebounds per game	42.0	40.0				
Rebounding margin	+2.0	-				
ASSISTS	22	23				
Assists per game	11.0	11.5				
TURNOVERS	39	42				
Turnovers per game	19.5	21.0				
Turnover margin	+1.5	-				
Assist/turnover ratio	0.6	0.5				
STEALS	24	22				
Steals per game	12.0	11.0				
BLOCKS	10	4				
Blocks per game	5.0	2.0				
ATTENDANCE	3655	4756				
Home games-Avg/Game	1-3655	1-4756				
Neutral site-Avg/Game	-	0-0				

Score by Periods	1st	2nd	Totals
Penn State	67	68	135
Opponents	64	55	119



2012-13 Penn State Lady Lions
Penn State Category Leaders (as of Nov 14, 2012)
All games



Points	G	Pts	Pts/G
Lucas, Maggie	2	43	21.5
Bentley, Alex	2	35	17.5
Nickson, Mia	2	20	10.0
Taylor, Dara	2	13	6.5
Greene, Nikki	2	11	5.5
Waldner, Tori	2	8	4.0
Edwards, Ariel	2	5	2.5

FG Percentage	FG	Att	Pct
Greene, Nikki	4	6	.667
Taylor, Dara	6	12	.500
Lucas, Maggie	16	33	.485
Bentley, Alex	13	29	.448
Nickson, Mia	8	20	.400
Waldner, Tori	1	3	.333
Edwards, Ariel	2	9	.222
Studevent, Gizelle	0	2	.000
Agee, Candice	0	5	.000
East, Talia	0	3	.000

3-Point Percentage	3FG	Att	Pct
Lucas, Maggie	5	14	.357
Bentley, Alex	2	6	.333
Taylor, Dara	0	2	.000
Edwards, Ariel	0	2	.000

Free Throw Percent	FG	Att	Pct
Waldner, Tori	6	6	1.000
Bentley, Alex	7	8	.875
Lucas, Maggie	6	7	.857
Greene, Nikki	3	6	.500
Edwards, Ariel	1	2	.500
Nickson, Mia	4	8	.500
Taylor, Dara	1	2	.500
Agee, Candice	0	1	.000
East, Talia	0	1	.000

Scoring Average	G	Pts	Avg/G
Lucas, Maggie	2	43	21.5
Bentley, Alex	2	35	17.5
Nickson, Mia	2	20	10.0
Taylor, Dara	2	13	6.5
Greene, Nikki	2	11	5.5
Waldner, Tori	2	8	4.0
Edwards, Ariel	2	5	2.5
Studevent, Gizelle	2	0	0.0
East, Talia	2	0	0.0
Agee, Candice	2	0	0.0

Field Goal Attempts	G	Att	Att/G
Lucas, Maggie	2	33	16.5
Bentley, Alex	2	29	14.5
Nickson, Mia	2	20	10.0
Taylor, Dara	2	12	6.0
Edwards, Ariel	2	9	4.5

Field Goals Made	G	Made	Made/G
Lucas, Maggie	2	16	8.0
Bentley, Alex	2	13	6.5
Nickson, Mia	2	8	4.0
Taylor, Dara	2	6	3.0
Greene, Nikki	2	4	2.0

3-Point FG Attempts	G	Att	Att/G
Lucas, Maggie	2	14	7.0
Bentley, Alex	2	6	3.0
Edwards, Ariel	2	2	1.0
Taylor, Dara	2	2	1.0

3-Point FG Made	G	Made	Made/G
Lucas, Maggie	2	5	2.5
Bentley, Alex	2	2	1.0

Free Throw Attempts	G	Att	Att/G
Bentley, Alex	2	8	4.0
Nickson, Mia	2	8	4.0
Lucas, Maggie	2	7	3.5
Greene, Nikki	2	6	3.0
Waldner, Tori	2	6	3.0

Free Throws Made	G	Made	Made/G
Bentley, Alex	2	7	3.5
Lucas, Maggie	2	6	3.0
Waldner, Tori	2	6	3.0
Nickson, Mia	2	4	2.0
Greene, Nikki	2	3	1.5



2012-13 Penn State Lady Lions
Penn State Category Leaders (as of Nov 14, 2012)
All games



Rebounds	G	Reb	Reb/G
Nickson, Mia	2	21	10.5
Greene, Nikki	2	11	5.5
Edwards, Ariel	2	9	4.5
Waldner, Tori	2	9	4.5
Bentley, Alex	2	8	4.0

Rebound Average	G	Reb	Avg/G
Nickson, Mia	2	21	10.5
Greene, Nikki	2	11	5.5
Waldner, Tori	2	9	4.5
Edwards, Ariel	2	9	4.5
Bentley, Alex	2	8	4.0

Offensive Rebounds	G	No.	Avg/G
Nickson, Mia	2	10	5.0
Waldner, Tori	2	5	2.5
Greene, Nikki	2	3	1.5
Bentley, Alex	2	2	1.0
Edwards, Ariel	2	1	0.5
Agee, Candice	2	1	0.5
Taylor, Dara	2	1	0.5
Studevent, Gizelle	2	1	0.5

Defensive Rebounds	G	No.	Avg/G
Nickson, Mia	2	11	5.5
Greene, Nikki	2	8	4.0
Edwards, Ariel	2	8	4.0
Lucas, Maggie	2	6	3.0
Bentley, Alex	2	6	3.0
Taylor, Dara	2	6	3.0

Fouls	G	No.	Per/G
Greene, Nikki	2	8	4.0
Taylor, Dara	2	8	4.0
Bentley, Alex	2	7	3.5
Edwards, Ariel	2	6	3.0
East, Talia	2	5	2.5

Foulsouts	G	No.
Edwards, Ariel	2	1

Assists	G	No.	Ast/G
Bentley, Alex	2	8	4.0
Taylor, Dara	2	6	3.0
Lucas, Maggie	2	4	2.0
Nickson, Mia	2	2	1.0
East, Talia	2	1	0.5
Edwards, Ariel	2	1	0.5

Steals	G	No.	Stl/G
Bentley, Alex	2	11	5.5
Taylor, Dara	2	5	2.5
Lucas, Maggie	2	4	2.0
Greene, Nikki	2	2	1.0
Waldner, Tori	2	1	0.5
Nickson, Mia	2	1	0.5

Blocked Shots	G	No.	Blk/G
Edwards, Ariel	2	3	1.5
Nickson, Mia	2	3	1.5
Agee, Candice	2	2	1.0
Waldner, Tori	2	1	0.5
Studevent, Gizelle	2	1	0.5

Minutes	G	No.	Min/G
Lucas, Maggie	2	73	36.5
Nickson, Mia	2	64	32.0
Bentley, Alex	2	58	29.0
Taylor, Dara	2	50	25.0
Edwards, Ariel	2	40	20.0

Turnovers	G	No.	TO/G
Taylor, Dara	2	8	4.0
Lucas, Maggie	2	6	3.0
Nickson, Mia	2	6	3.0
East, Talia	2	5	2.5
Edwards, Ariel	2	4	2.0