

PENN STATE

SOFTBALL



2014

GoPSUsports.com | ONE TEAM

2014 SCHEDULE

FEBRUARY

Fri. 7	!	vs. Oregon State	L, 12-10
	!	vs. Appalachian State	W, 10-6
Sat. 8	!	vs. Bradley	W, 5-3
	!	at No. 7 Arizona State	L, 9-1 [6]
Sun. 9	!	vs. Seattle	W, 6-1
Sun. 16	@	vs. George Washington	W, 9-1 [5]
	@	vs. Northwestern	L, 11-1 [5]
Mon. 17	@	at No. 21 LSU (DH)	L, 11-3 [5]
	@	at No. 21 LSU (DH)	W, 6-5
Fri. 21	#	vs. Kentucky	L, 5-0
	#	at Florida Atlantic	L, 3-2 (8)
Sat. 22	#	vs. Pitt	L, 3-1
	#	at Florida Atlantic	L, 3-2
Sun. 23	#	vs. Kentucky	L, 8-1

MARCH

Sat. 1	\$	vs. Kent State	L, 9-1 [5]
	\$	vs. Dartmouth	L, 6-3
Sun. 2	\$	vs. Fairfield	Cancelled
	\$	at James Madison	Cancelled
Fri. 14	%	vs. Rutgers	L, 4-3
	%	vs. Central Connecticut St.	L, 1-0
Sat. 15	%	vs. Wagner	L, 4-2
	%	vs. Yale	W, 5-0
	%	vs. Baylor	L, 8-1
Fri. 21	*	PURDUE	L, 10-3
Sat. 22	*	PURDUE	L, 9-2
	*	PURDUE	L, 13-4 [5]
Fri. 28	*	No. 6 MICHIGAN	L, 6-0
Sat. 29	*	No. 6 MICHIGAN	L, 22-0 [5]
Sun. 30	*	No. 6 MICHIGAN	L, 12-4 [5]

APRIL

Wed. 2		SAINT FRANCIS (Pa.) (DH)	L, 4-2 (8)
		SAINT FRANCIS (Pa.) (DH)	W, 9-1 [6]
Fri. 4	*	at Michigan State	W, 9-3
Sat. 5	*	at Michigan State	W, 7-3
Sun. 6	*	at Michigan State	W, 6-0
Fri. 11	*	at Indiana	W, 4-1
Sat. 12	*	at Indiana	W, 2-1
Sun. 13	*	at Indiana	L, 8-7 (8)
Wed. 16	*	BUCKNELL (DH)	W, 6-3
	*	BUCKNELL (DH)	W, 10-5
Fri. 18	*	WISCONSIN	L, 6-3
Sat. 19	*	WISCONSIN (DH)	L, 4-0
	*	WISCONSIN (DH)	L, 5-2
Wed. 23	*	at Ohio State (DH)	L, 3-1
	*	at Ohio State (DH)	L, 3-0
Fri. 25	*	at Minnesota	L, 1-0
Sat. 26	*	at Minnesota	L, 9-0 (5)
Sun. 27	*	at Minnesota	L, 16-2 (5)
Wed. 30		PITT (DH)	Cancelled
		PITT (DH)	Cancelled

MAY

Fri. 2	*	ILLINOIS	L, 5-0
Sat. 3	*	ILLINOIS	L, 6-1
Sun. 4	*	ILLINOIS	L, 6-1
Thurs. 8		vs. Ohio State^	2:30 p.m.

! Kajikawa Classic, Tempe, Ariz.
 @ Tiger Invitational, Baton Rouge, La.
 # FAU Tournament, Boca Raton, Fla.
 \$ JMU Tournament, Harrisonburg, Va.
 % USF Tournament, Clearwater, Fla.
 ^ Big Ten Tournament, Evanston, Ill.
 * Big Ten contest | All times Eastern

Home games in CAPS at Nittany Lion Softball Park

PENN STATE NITTANY LIONS

(14-34, 5-18 B1G)

OHIO STATE BUCKEYES

(28-24, 13-10 B1G)



Game 49 • May 8 • Sharon J. Drysdale Field • Evanston, Ill.

SERIES INFORMATION

VENUE

Sharon J. Drysdale Field

COVERAGE

Big Ten Digital Network

GoPSUsports.com (GameTracker)

Penn State trails 29-47

SERIES RECORD

LAST MEETING

April 23, 2014 Ohio State won 3-0

SERIES NOTES

- PSU opens postseason play on Thursday in the first round of the Big Ten Tournament
- The 10th-seeded Lions face seventh-seeded Ohio State at 2:30 p.m. (ET)
- Penn State is 11-12 all-time in Big Ten Tournament contests
- The Nittany Lions trail Ohio State 29-47 in the all-time series
- The Blue and White finished the Big Ten regular season at 5-18
- PSU is 1-2 all-time in neutral site games vs. the Buckeyes
- Thursday will be the first postseason meeting between PSU and OSU since 2007
- Penn State leads the Big Ten in triples with 16
- Kasie Hatfield is tied for 6th in single-season doubles in the PSU record books with 13
- Hatfield is also tied for 6th in the Big Ten standings in doubles
- Lexi Knief leads the Big Ten & is fourth in the NCAA with six triples
- Knief also ranks in the top 12 in the league in batting average (10th, .382) and on base pct. (11th, .457)
- Macy Jones ranks 10th in the Big Ten with 26 walks this season and is tied for 10th in PSU's single-season walks ledger

2014 STAT LEADERS

RUNS

Lexi Knief	37
Alyssa Sovereign	22
Macy Jones	22

WALKS

Macy Jones	26
Lexi Knief	20
Reina Furuya	18

HITS

Lexi Knief	58
Kasie Hatfield	42
Karlie Habitz	40

ERA

Marlaina Laubach	3.39
Macy Jones	5.63
Christy Von Pusch	7.53

RBI

Karlie Habitz	34
Kasie Hatfield	27
Macy Jones	21

STRIKEOUTS

Marlaina Laubach	67
Macy Jones	41
Marissa Diescher	30

BATTING AVG (2.0 AB/Game)

Lexi Knief	.382
Shelby Miller	.316
Kasie Hatfield	.309

INNINGS PITCHED

Marlaina Laubach	128.0
Macy Jones	69.2
Christy Von Pusch	48.1



QUICK FACTS

ATHLETIC COMMUNICATIONS

Softball Contact Kellie O'Brien
 Office Phone 814-863-1377
 Cell Phone 814-321-5119
 Email kbo2@psu.edu
 Fax 814-863-3165
 Mailing Address 101 Bryce Jordan Center
 University Park, Pa. 16802

COACHING STAFF

Head Coach Amanda Lehotak (1st Year)
 Alma Mater Nebraska-Omaha '03
 Overall Record 188-206 (.477)
 Record at Penn State 0-0 (.000)
 Email ajl22@psu.edu
 Assistant Coach Megan Gibson (1st Year)
 Alma Mater Texas A&M '08
 Email mlg36@psu.edu
 Assistant Coach Joe Guthrie (First Year)
 Alma Mater Alabama '01
 Email jwg23@psu.edu
 Office Phone (814) 865-0936
 Office Fax (814) 863-8120
 Office 302 Nittany Lion Softball Park
 Park Avenue
 University Park, Pa. 16802

TEAM INFORMATION

2013 Overall Record 16-34
 2013 Big Ten Record (Finish) 5-17 (11th)
 Starters Returning/Lost 4/5
 Position Players Returning/Lost 10/7
 Pitchers Returning/Lost 3/2
 Letterwinners Returning/Lost 14/8
 Newcomers 5
 Facebook PennStateSoftball
 Twitter/Instagram @PennStateSB

PROGRAM HISTORY

First Varsity Year 1965
 All-Time Record 921-877-3 (.512)
 All-Time Big Ten Record 173-299-1 (.348)
 NCAA Postseason Appearances 10
 All-Time NCAA Tournament Record 12-20
 NFCA All-Americans 4
 Academic All-Americans 13
 First Team All-Big Ten Selections 10
 Second Team All-Big Ten Selections 20
 Third Team All-Big Ten Selections 22

PENN STATE UNIVERSITY

Location University Park, Pa.
 Founded 1855
 Enrollment 44,679
 Nickname Nittany Lions
 Colors Blue and White
 Conference Big Ten Conference
 Home Facility .. Nittany Lion Softball Park (1,084)
 President Dr. Rodney Erickson
 Director of Athletics Dr. Dave Joyner
 Senior Women's Administrator Charmelle Green
 Faculty Representative Dr. Linda Caldwell
 Athletics Website www.GoPSUsports.com

UP TO BAT

Penn State softball opens the 2014 postseason on Thursday in the first round of the Big Ten Tournament, hosting by Northwestern. The 10th-seeded Nittany Lions are set to take on seventh-seeded Ohio State in a 2:30 p.m. (ET) matchup.

Thursday's game will be streamed live on the Big Ten Digital Network with Tommy Thiel and Julie Dunn on the call. If Penn State wins, the Lions will advance to take on second-seeded Nebraska on Friday at 2:30 p.m.

A PENN STATE SUMMARY

Penn State enters the tournament at 14-34 overall and went 5-18 in Big Ten play, tying for 11th place with Indiana. PSU claimed the 10th seed in the tournament based on taking two of three games against the Hoosiers during the regular season.

Sophomore Lexi Knief leads the Nittany Lions' offensive attack with a batting average of .382. The outfielder is 58-for-152 at the plate with 37 runs scored, 12 RBI, six triples and seven doubles. Freshman Shelby Miller (.316), senior Kasie Hatfield (.309) and sophomore Karlie Habitz (.301) are also hitting well for the Blue and White.

Freshman Marlaina Laubach is the top pitcher for Penn State. The rookie hurler owns a 9-17 record with a 3.55 ERA and has struck out 74 opponents.

SERIES HISTORY vs. OHIO STATE

The Nittany Lions are 29-47 in the all-time series vs. Ohio State and 1-3 against the Buckeyes in neutral site matchups with its only win coming in a 5-4 decision in the 2001 Big Ten Tournament.

The Lions and the Buckeyes last met on neutral ground in the 2006 Big Ten Tournament, which was also held at Northwestern, as Ohio State claimed a 9-6 victory over PSU.

Penn State dropped a doubleheader at OSU earlier this season, falling 3-1 and 3-0 in Columbus on April 23.

CRACKING THE BUCKEYES

Ohio State finished out the regular season 28-24 overall and 13-10 against Big Ten opponents. The Buckeyes have won eight of their last nine contests, including two wins over Penn State, a three-game sweep of Northwestern and a pair of victories over Iowa.

Senior Evelyn Carrillo has set the pace for the OSU offense. Carrillo leads the team in hits with 62, has driven in 34 runs while scoring 20 and is hitting at a .380 clip.

The OSU pitching staff has combined for 241 strikeouts this season and owns an ERA of 3.91. Olivia O'Reilly and Shelby Hursh lead Ohio State in the circle. O'Reilly has an ERA of 3.01 through 146.1 innings, has struck out 87 opponents and it 15-8 on the year. Hursh leads the Big Ten in saves with seven and has doled out 86 strikeouts in 87.2 innings.

CONFERENCE COMMENDATION

After a breakout sophomore campaign, outfielder Lexi Knief has been named to the All-Big Ten second team. Knief was formidable at the plate this season, leading Penn State in seven different offensive categories.

The sophomore has hit at a clip of .382 in 2014, which stands as the eighth best in a single season in program history. She also leads the team in runs (37), hits (58), triples (6), total bases (80), slugging percentage (.526) and on base percentage (.457). The centerfielder totaled 17 multi-hit performances and, at one point, extended her hitting streak to 12 straight games.

Knief, who moved to center field in the off-season, has been tremendous for the Lions defensively, posting a perfect fielding percentage of 1.000. She has recorded 69 putouts and five assists on the year without committing a single error.

TRIPLES CROWN

The Nittany Lions lead the Big Ten in triples with 16 on the year. PSU has registered two more than the No. 2 team, Northwestern, and five more than the No. 3 team, Minnesota.

The Lions trailed the Wildcats until posting five triples in the doubleheader vs. Bucknell (4/16).

Lexi Knief has set the pace for PSU, turning in six triple thus far. She needs just one more to enter the Penn State single season record books.



DOUBLING UP

Senior Kasie Hatfield continues to move up in the Penn State record books for single-season doubles. The infielder moved into a tie for the No. 6 spot after registering her 13th double of the year in the series finale at Minnesota (4/26)

The Tampa, Fla. product is also tied for 6th in the Big Ten in doubles.

LAU OF THE LAND

Freshman pitcher Marlaina Laubach has done the bulk of the work in the circle for Penn State, earning wins in nine of PSU's 14 victories, including a signature win over No. 21 LSU and three conference wins. The Northampton, Pa. native has a team-best ERA of 3.55 through 142 innings. She has thrown 74 strikeouts on the season, including a season-high six vs. FAU (2/21), MSU (4/4), Bucknell (4/16) and Illinois (5/2).

Laubach gave on of her best performances of the season in the series opener at No. 12 Minneosta, holding the Golden Gophers to just four hits while not allowing a single earned run through six innings.

FORMING GOOD HABITZ

Sophomore Karlie Habitz has been one of the top hitters for PSU all season and is currently fourth on the team with a batting average of .301. The Newhall, Calif. product leads the Lions with 34 RBI and needs to drive in just two more runs to enter the PSU record books for single-season RBI.

She has registered eight doubles and a team-best four home runs. Habitz also posted six RBI in the season opener vs. Oregon State (2/7), a mark that ties for the second most in program history.

MAGNIFICENT MILLER

Shelby Miller has turned in an impressive rookie campaign thus far for Penn State. The freshman has the second best batting average on the team at .316 and has been churning out the hits, posting a 37-for-117 mark at the dish through 43 games.

Miller has six extra-base hits under her belt with three doubles and three triples.

BREAKING BUCKNELL

The Nittany Lions returned to the win column last Wednesday, claiming a doubleheader sweep of Bucknell. PSU defeated the Bison 6-3 in the first game before taking a 10-5 victory in the nightcap.

Freshman Shelby Miller led the Nittany Lion offense with a 5-for-6 effort at the plate, driving in five runs and scoring once with a triple and four base hits. Lexi Knief also turned in an impressive performance, registering four hits, including two triples, with one RBI and three runs scored.

Freshman pitcher Marlaina Laubach earned the win in the early game, tying her season-high with six strikeouts while giving up just one walk in her eighth complete game to improve to 9-10 on the season. Macy Jones picked up her first win of the year in game two after striking out three opponents in 3.1 innings.

BIG WINS IN BLOOMINGTON

Penn State found success for the second straight weekend, taking two of three games to claim the series at Indiana from April 11-13. The Nittany Lions defeated the Hoosiers, 4-1, in the series opener on Friday and won 2-1 on Saturday before falling in, 8-7, in eight innings in the series finale on Sunday.

Kasie Hatfield paced PSU's offensive strike, going 7-for-10 at the plate with two doubles and her first home run of the year. The senior drove in seven runs and scored twice over the weekend.

SERIES HISTORY vs. OHIO STATE

All-Time Series		PSU trails 29-47	
PSU Streak			L6
First Meeting		5/10/75, W	12-4
Last Meeting		4/23/14, L	3-0
Last PSU Win		5/11/13, 6-5	(8)
Previous Five Meetings			
4/23/14	A	L	0-3
4/23/14	A	L	1-3
4/14/13	A	L	3-4 (8)
4/13/13	A	L	7-16 (5)
4/12/13	A	L	0-2

BIG RECOGNITION

Center fielder Lexi Knief pulled in the first Big Ten honor of her career on April 7 as she was named the conference's Player of the Week for her efforts on the field. The sophomore went 10-for-18 at the plate through five games last week, registering seven runs, three RBI, a double, a triple and her first collegiate home run to help the Nittany Lions to four straight wins.

Knief posted at least one hit in all five games and multiple hits in four of the contests against Saint Francis (Pa.) and conference foe Michigan State, helping the Blue and White to a 4-for-5 effort on the week and a series sweep of the Spartans. She was a single away from hitting for the cycle in the final game at MSU as she turned in each of her extra-base hits in one contest.

SWEEPING THE SPARTANS

Penn State posted its first series sweep since 2012 last weekend with three-game sweep of Michigan State. The Lions opened the series with a 9-3 victory on Friday and followed with a 7-3 win on Saturday and a 6-0 shutout win on Sunday.

Freshman pitcher Marlaina Laubach picked up wins for Friday and Sunday's contest while sophomore Marissa Diescher earned the W for Saturday's victory.

Lexi Knief led the charge for PSU offensively, posting multiple hits in each of the games. She was a single away from hitting for the cycle in the series finale, turning in a double, a triple and her first collegiate home run.



2014 PENN STATE SOFTBALL



2014 FINAL BIG TEN STANDINGS

Pl.	Team	Conference				Overall			
		W	L	T	Pct.	W	L	T	Pct.
1.	MICHIGAN	18	5	0	.783	40	11	0	.784
	NEBRASKA	18	5	0	.783	40	24	0	.741
3.	MINNESOTA	16	6	0	.737	38	9	0	.809
4.	WISCONSIN	15	7	0	.682	33	17	0	.660
5.	NORTHWESTERN	14	9	0	.609	32	15	0	.681
6.	PURDUE	13	10	0	.565	28	24	0	.538
	OHIO STATE	13	10	0	.565	28	24	0	.538
8.	IOWA	9	14	0	.391	16	29	1	.359
9.	ILLINOIS	7	16	0	.304	23	25	0	.479
10.	PENN STATE	5	18	0	.217	14	34	0	.292
	INDIANA	5	18	0	.217	17	38	1	.312
12.	MICHIGAN STATE	4	19	0	.174	12	36	0	.250

PENN STATE IN THE BIG TEN TOURNAMENT

Season/Site	Seed	Opponent	Result	Score	Champion
1999 at Michigan	#3	vs. #2 Minnesota	L	1-2	Minnesota
		vs. #5 Iowa	W	1-0	
		at #1 Michigan	L	0-11	
2000 at Iowa	#3	vs. #6 Purdue	W	4-3	Michigan
		vs. #2 Michigan	L	0-2	
		vs. #5 Wisconsin	W	10-1	
		vs. #4 Northwestern	W	3-1	
		vs. #2 Michigan	L	0-2	
2001 at Michigan	#5	vs. #4 Illinois	W	6-1	Iowa
		at #1 Michigan	L	0-2	
		vs. #3 Ohio State	W	5-4	
		vs. #4 Illinois	L	1-4	
2002 at Michigan	#5	vs. #4 Wisconsin	W	3-0	Michigan
		at #1 Michigan	L	3-4	
		vs. #3 Iowa	W	6-0	
		vs. #6 Illinois	W	5-3	
		vs. #2 Ohio State	L	3-4	
2004 at Michigan	#7	vs. #2 Illinois	L	0-1	Michigan State
2005 at Michigan	#6	vs. #3 Iowa	L	0-1	Michigan
2006 at Northwestern	#5	vs. #4 Ohio State	L	6-9	Michigan
2007 at Ohio State	#8	at #1 Ohio State	L	2-10	Ohio State
2013 at Nebraska	#11	vs. #7 Illinois	W	5-2	Michigan
		vs. #3 Minnesota	L	0-4	
Totals (9 appearances)		(23 games)	11-12		

Note: No Big Ten tournaments were held in 2009-12. Also, the 2004-08, 2013 tournaments were held under a single-elimination format. Previously, the tournament was held with a double-elimination format.



2014 PENN STATE SOFTBALL



IN-STATE SPLIT

The Nittany Lions gained their first home win of the season on April 2 as they turned in a split effort vs. Saint Francis (Pa.). After failing to take game one, Penn State roared back in the late game to best the Red Flash, 9-1, in six innings.

Senior Alyssa Sovereign led the PSU offense with a 4-for-8 effort at the plate and scored one run. Freshman Shelby Miller also gave the Lions a spark, going a perfect 3-for-3 in the second game with a single, a two-RBI double and two runs.

TAKING DOWN THE TIGERS

The Nittany Lions earned their biggest win of the season on Feb. 17 as they took down No. 21 LSU in the second game of a doubleheader. Sophomore Macy Jones posted two RBI and one run in the win and freshman Shelby Miller went 2-for-4 at the plate with one run to lead Penn State to a 6-5 victory over the Tigers.

Pitcher Marlaina Laubach also played a significant role in the victory, recording three strikeouts in her third complete game for PSU. The freshman moved to a perfect 4-0 on the season with the win.

WALK IT OUT

Penn State registered a new single-game record in the win over George Washington on Feb. 16 as the Lions were walked a total of 15 times in just five innings.

The 15 walks crushed the previous record of 11 free passes set last season against Northwestern (4/20). Penn State has already amassed 60 walks in 14 games this season, more than one third of the total from 2013 (151).

FIERCE COMPETITION

Six of Penn State's 2014 opponents are listed in the current USA Today/NFCA poll, including No. 10 Michigan. Other opponents include Arizona State (No. 3), Minnesota (No. 15), Kentucky (No. 16), Baylor (No. 17) and LSU (No. 25) while Wisconsin and Northwestern have received votes. All six programs are also represented in the current ESPN.com/USA Softball rankings.

2014 PENN STATE RECORDS

(As of 5/2/14)

Total	14-34
Conference	5-18
Non-Conf	9-16
Home	3-13
Away	6-10
Neutral	5-11
Day	8-23
Night	6-11
vs Left	2-6
vs Right	12-28
1-Run games	2-6
2-Run games	1-5
5+Run games	8-18
Extra inns	0-3
Shutouts	2-9
Scoring 0-2 runs	1-25
Scoring 3-5 runs	3-7
Scoring 6-9 runs	8-1
Scoring 10+ runs	2-1
Opponent 0-2 runs	7-2
Opponent 3-5 runs	7-12
Opponent 6-9 runs	0-12
Opponent 10+ runs	0-8
Scored in 1st inning	8-10
Scores first	11-8
Opp. scores first	3-26
After 4 leading	11-5
After 4 trailing	3-26
After 4 tied	0-3
After 5 leading	11-3
After 5 trailing	2-20
After 5 tied	0-3
After 6 leading	12-1
After 6 trailing	0-22
After 6 tied	0-2
Hit 0 home runs	10-26
Hit 1 home run	3-8
Hit 2+ home runs	1-0
Opponent 0 home runs	10-10
Opponent 1 home run	2-11
Opponent 2+ HRs	2-13
Made 0 errors	7-9
Made 1 error	5-12
Made 2+ errors	2-13
Opp. made 0 errors	4-15
Opp. made 1 error	6-13
Opp. made 2+ errors	4-6
Out-hit opponent	10-6
Out-hit by opponent	2-27
Hits are tied	2-1
vs. AAC	0-1
vs. ACC	0-1
vs. Atlantic 10	1-0
vs. Big 12	0-1
vs. Big East	0-0
vs. Big Ten	5-18
vs. Conference USA	0-2
vs. Ivy	1-1
vs. Mid-American	0-1
vs. Missouri Valley	1-0
vs. Mountain West	0-0
vs. North East Conference	1-3
vs. Pac-12	0-2
vs. Patriot League	2-0
vs. SEC	1-3
vs. Southern	1-0
vs. WAC	1-0
Monday	1-1
Wednesday	3-3
Friday	3-11
Saturday	4-14
Sunday	3-5



2014 PENN STATE SOFTBALL



USA TODAY/NFCA May 6, 2014

No.	Team	Record	Last
1	Oregon (29)	47-6-1	1
2	UCLA (3)	46-5	2
3	Arizona State	43-8-1	3
4	Florida State	47-6	4
5	Florida	45-10	5
6	Alabama	44-10	6
7	Tennessee	42-9	8
8	Washington	30-13	11
9	Arizona	40-11	9
10	Michigan	40-11	7
11	Georgia	42-12	16
12	Louisiana-Lafayette	41-7-1	14
13	Oklahoma	43-10	15
14	Missouri	41-15	13
15	Minnesota	38-9	12
16	Kentucky	41-14	10
17	Baylor	41-12	17
18	Nebraska	40-14	19
19	Tulsa	47-7	18
20	Notre Dame	37-10	22
21	USC Upstate	44-5	23
22	Auburn	38-16-1	20
23	South Alabama	38-11	21
24	Texas A&M	35-20	24
25	LSU	34-21	25

RV: Wisconsin (18), DePaul (16), James Madison (11), **Northwestern** (11), Mississippi State (7), UCF (5), NC State (2), IPFW (1), Lipscomb (1) USF (1)

ESPN.COM/USA SOFTBALL April 29, 2014

No.	Team	Record	Last
1	Oregon (17)	47-6-1	1
2	UCLA (1)	46-5	2
3	Arizona State	43-8-1	3
4	Florida State (1)	47-6	4
5	Alabama (1)	44-10	5
6	Florida	45-10	7
7	Tennessee	42-9	9
8	Washington	30-13	10
9	Arizona	40-11	8
10	Oklahoma	43-10	12
11	Michigan	40-11	6
12	Louisiana-Lafayette	41-7-1	13
13	Missouri	41-15	15
14	Georgia	42-12	18
15	Kentucky	41-14	11
16	Minnesota	38-9	14
17	Baylor	41-12	17
18	Nebraska	40-14	19
19	Tulsa	47-7	16
20	Notre Dame	37-10	22
21	Auburn	38-16-1	20
22	South Alabama	38-11	21
23	LSU	34-21	23
24	South Carolina Upstate	44-5	24
25	Texas A&M	35-20	25

RV: Wisconsin, DePaul, South Florida, Texas, UCF, **Northwestern**, Mississippi State, NC State, Lipscomb

Bold indicates 2014 opponent

PENN STATE SEASON RECORD BOOK WATCH

BATTING AVERAGE (Min. 90 At-Bats)

1. Cassidy Bell	.456	2013
2. Cassidy Bell	.423	2012
3. Nan Sichler	.413	1988
4. Ashley Esparza	.402	2005
5. Karen Gulini	.400	2000
6. Geri Saya	.386	1983
7. Nan Sichler	.385	1987
8. Lexi Knief	.382	2014
9. Michelle Turk	.381	1984

HITS

1. Nan Sichler	74	1988
2. Jen Acunto	72	2005
3. Ashley Esparza	70	2005
4. Gina Bianchini	67	2002
5. Jen Williams	66	2004
6. Karen Gulini	65	2001
7. Karen Gulini	64	2000
8. Erin Norton	63	2002
9. Cassidy Bell	62	2013
Allison Medellin	62	2001
Jodi Ricciardi	62	1999
Lexi Knief	58	2014

RUNS BATTED IN

1. Jennifer Tripken	49	2002
Nan Sichler	49	1988
3. Michelle Turk	43	1984
4. Cassidy Bell	42	2013
5. Jen Acunto	38	2005
Shannon Salsburg	38	1996
7. Kelley Galigher	37	2003
8. Hollee Haines	36	2005
Joyce Tinner	36	1990
Val Serpico	36	1995
Karlie Habitz	34	2014
Kasie Hatfield	27	2014

RUNS SCORED

1. Cassidy Bell	55	2013
2. Jennifer Tripken	45	2002
3. Gina Bianchini	44	2002
Deb Bryan	44	1988
5. Nan Sichler	40	1988
6. Gina Bianchini	39	2000
Lexi Knief	37	2014

DOUBLES

1. Danielle Kinley	18	2007
Jen Acunto	18	2005
3. Cassidy Bell	15	2011
Megan Humphrey	15	2001
5. Ashley Esparza	14	2005
6. Kasie Hatfield	13	2014
Cassidy Bell	13	2014
Danielle Kinley	13	2008
Erin Norton	13	2002
Joyce Tinner	13	1990
9. Seven tied	12	

TRIPLES

1. Carol Fultz	9	1983
2. Donna Devanney	8	1988
Donna Devanney	8	1985
Nan Schiler	8	1985
5. Michelle Turk	7	1981
Nan Schiler	7	1988
Lexi Knief	6	2014

WALKS

1. Cassidy Bell	42	2013
2. Danielle Kinley	36	2008
3. Kailyn Johnson	35	2011
4. Jennifer Tripken	33	2002
5. Ashley Esparza	30	2006
Megan Humphrey	30	2001
7. Shannon Salsburg	29	1996
8. Ashley Griffith	27	2010
Gina Bianchini	27	2000
10. Macy Jones	26	2014
Rebecca Winsoff	26	1994
Shannon Salsburg	26	1997
Ashley Esparza	26	2008
Kailyn Johnson	26	2012



2014 PENN STATE SOFTBALL



2014 PENN STATE SOFTBALL NUMERICAL ROSTER

No.	Name	Pos.	Year	Height	B/T	Hometown	High School
2	Taylor Abeyta	OF	So.	5-6	L/R	San Diego, Calif.	Mt. Carmel
3	Liz Presto	INF	Sr.	5-7	R/R	Bethlehem, Pa.	Bethlehem Catholic
4	Marissa Diescher	P	Jr.	5-10	R/R	Livingston Manor, N.Y.	Livingston Manor Central
5	Christy Von Pusch	P	So.	5-10	R/R	Bryn Mawr, Pa.	Radnor
7	Kasie Hatfield	C/INF	Sr.	5-5	R/R	Tampa, Fla.	Chamberlain
8	Reina Furuya	INF	So.	5-7	R/R	Waipahu, Hawaii	Punahou
10	Lexi Knief	INF/OF	So.	5-6	L/R	Ramsey, N.J.	Ramsey
11	Sam Shanahan	INF	Fr.	5-5	R/R	Seattle, Wash.	Bishop Blanchet
12	Macy Jones	OF/P	So.	5-4	L/L	Ashburn, Va.	Briar Woods
13	Maegan Tupinio	INF/OF	So.	5-4	L/R	Wahiawa, Hawaii	Leilehua
17	Marlaina Laubach	P	Fr.	5-8	R/R	Northampton, Pa.	Northampton
18	Alicia Walker	UTL	Jr.	5-6	R/R	Los Alamitos, Calif.	Los Alamitos
22	Alyssa Sovereign	OF	Sr.	5-5	L/R	La Canada, Calif.	Crescenta Valley
24	Mary Ward	OF	Fr.	5-3	L/L	Greencastle, Pa.	Greencastle-Antrim
25	Meghan Bradley	OF	Jr.	5-7	L/L	Santa Monica, Calif.	Santa Monica
28	Shannon Good	OF	So.	5-7	R/R	Horseheads, N.Y.	Horseheads
30	Karlie Habitz	C	So.	5-11	R/R	Newhall, Calif.	Valencia
52	Kristina Brackpool	OF/INF	Fr.	5-8	R/R	Valencia, Calif.	Valencia
77	Shelby Miller	INF	Fr.	5-8	L/R	Sugar Land, Texas	Kempner

Head Coach: Amanda Lehotak (First Season)
Assistant Coach: Megan Gibson (First Season)
Assistant Coach: Joe Guthrie (First Season)

2014 PENN STATE SOFTBALL ALPHABETICAL ROSTER

No.	Name	Pos.	Year	Height	B/T	Hometown	High School
20	Taylor Abeyta	OF	So.	5-6	L/R	San Diego, Calif.	Mt. Carmel
52	Kristina Brackpool	OF/INF	Fr.	5-8	R/R	Valencia, Calif.	Valencia
25	Meghan Bradley	OF	Jr.	5-7	L/L	Santa Monica, Calif.	Santa Monica
4	Marissa Diescher	P	Jr.	5-10	R/R	Livington Manor, N.Y.	Livingston Manor
8	Reina Furuya	INF	So.	5-7	R/R	Waipahu, Hawaii	Punahou
28	Shannon Good	OF	So.	5-7	R/R	Horseheads, N.Y.	Horseheads
30	Karlie Habitz	C	So.	5-11	R/R	Newhall, Calif.	Valencia
7	Kasie Hatfield	C/INF	Sr.	5-5	R/R	Tampa, Fla.	Chamberlain
12	Macy Jones	OF/P	So.	5-4	L/L	Ashburn, Va.	Briar Woods
10	Lexi Knief	INF/OF	So.	5-6	L/R	Ramsey, N.J.	Ramsey
17	Marlaina Laubach	P	Fr.	5-8	R/R	Northampton, Pa.	Northampton HS
77	Shelby Miller	INF	Fr.	5-8	L/R	Sugar Land, Texas	Kempner
3	Liz Presto	INF	Sr.	5-7	R/R	Bethlehem, Pa.	Bethlehem Catholic
11	Sam Shanahan	INF	Fr.	5-5	R/R	Seattle, Wash.	Bishop Blanchet
22	Alyssa Sovereign	OF	Sr.	5-5	L/R	La Canada, Calif.	Crescenta Valley
13	Maegan Tupinio	INF/OF	So.	5-4	L/R	Wahiawa, Hawaii	Leilehua
5	Christy Von Pusch	P	So.	5-10	R/R	Bryn Mawr, Pa.	Radnor
18	Alicia Walker	UTL	Jr.	5-6	R/R	Los Alamitos, Calif.	Los Alamitos
24	Mary Ward	OF	Fr.	5-3	L/L	Greencastle, Pa.	Greencastle-Antrim

PRONUNCIATION GUIDE

Taylor Abeyta	uh-BAY-teh
Marissa Diescher	DEE-sheer
Reina Furuya	RAIN-eh fa-ROO-yah
Kasie Hatfield	KAY-see
Lexi Knief	kuh-NEEF
Marlaina Laubach	LAW-bok
Lehotak	leh-HOE-tack
M. Tupinio	two-PEEN-ee-yo
C. Von Pusch	von POOSH

LIONS BY ELIGIBILITY

Seniors (3): Hatfield, Presto, Sovereign
Juniors (3): Bradley, Diescher, Walker
Sophomores (8): Abeyta, Furuya, Good, Habitz, Jones, Knief, Tupinio, Von Pusch
Freshmen (5): Brackpool, Laubach, Miller, Shanahan, Ward

LIONS BY POSITION

Catchers (3): Habitz, Hatfield, Presto
Infielders (9): Brackpool, Furuya, Habitz, Hatfield, Knief, Miller, Shanahan, Tupinio
Outfielders (9): Abeyta, Brackpool, Bradley, Good, Jones, Knief, Sovereign, Tupinio, Ward
Pitchers (5): Diescher, Jones, Laubach, Shanahan, Von Pusch
Utility Players (1): Walker

LIONS BY STATE

California (6): Abeyta, Brackpool, Bradley, Habitz, Sovereign, Walker
Florida (1): Hatfield
Hawaii (2): Furuya, Tupinio
New Jersey (1): Knief
New York (2): Diescher, Good
Pennsylvania (4): Laubach, Presto, Von Pusch, Ward
Texas (1): Miller
Virginia (1): Jones
Washington (1): Shanahan



2014 PENN STATE SOFTBALL



2014 Penn State Softball Overall Statistics for Penn State (as of May 04, 2014) (All games Sorted by Batting avg)

Record: 14-34 Home: 3-13 Away: 6-10 Neutral: 5-11 Big Ten: 5-18

Player	avg	gp-gs	ab	r	h	2b	3b	hr	rbi	tb	slg%	bb	hp	so	gdp	ob%	sf	sh	sb-att	po	a	e	fld%
10 Knief, Lexi	.382	48-48	152	37	58	7	6	1	12	80	.526	20	1	13	0	.457	0	2	3-3	69	5	0	1.000
77 Miller, Shelby	.316	43-42	117	12	37	3	3	0	15	46	.393	6	0	21	0	.350	0	0	2-2	61	71	7	.950
7 Hatfield, Kasie	.309	48-47	136	12	42	13	3	2	27	67	.493	12	5	11	0	.386	0	4	2-3	201	19	8	.965
30 Habitz, Karlie	.301	47-45	133	10	40	8	0	4	34	60	.451	11	2	14	0	.361	1	1	0-0	108	11	3	.975
12 Jones, Macy	.232	48-47	125	22	29	2	4	3	21	48	.384	26	2	23	0	.368	2	1	6-7	85	18	3	.972
22 Sovereign, Alyssa	.230	48-48	135	22	31	4	0	0	9	35	.259	14	2	14	0	.309	1	3	0-0	105	30	3	.978
52 Brackpool, Kristina	.200	29-25	75	2	15	4	0	2	13	25	.333	1	1	20	1	.213	3	0	0-0	151	3	2	.987
18 Walker, Alicia	.190	38-26	58	4	11	1	0	0	8	12	.207	5	5	11	0	.309	0	2	1-1	20	2	1	.957
8 Furuya, Reina	.182	48-48	121	16	22	1	0	0	10	23	.190	18	4	34	1	.306	1	10	6-6	54	103	15	.913
3 Presto, Liz	.122	21-16	41	3	5	1	0	1	1	9	.220	8	1	9	0	.280	0	5	0-0	15	17	1	.970
11 Shanahan, Sam	.113	40-35	62	5	7	1	0	0	1	8	.129	3	0	17	0	.154	0	0	0-0	37	42	5	.940
25 Bradley, Meghan	.100	13-5	20	0	2	0	0	0	0	2	.100	0	0	8	0	.100	0	0	0-0	1	0	0	1.000
13 Tupinio, Maegan	.077	22-3	13	7	1	0	0	0	0	1	.077	0	0	6	0	.077	0	0	0-0	0	0	0	.000
28 Good, Shannon	.000	9-1	11	0	0	0	0	0	0	0	.000	0	1	4	0	.083	0	0	0-0	0	0	0	.000
2 Abeyta, Taylor	.000	17-5	6	1	0	0	0	0	0	0	.000	0	0	4	0	.000	0	0	0-0	3	0	1	.750
24 Ward, Mary	.000	20-1	4	4	0	0	0	0	0	0	.000	0	1	2	0	.200	0	0	0-0	0	1	0	1.000
5 Von Pusch, Christy	.000	3-3	0	0	0	0	0	0	0	0	.000	0	0	0	0	.000	0	0	0-0	1	15	1	.941
Totals	.248	48	1209	157	300	45	16	13	151	416	.344	124	25	211	2	.329	8	28	20-22	917	386	53	.961
Opponents	.319	48	1268	276	405	73	9	47	249	637	.502	149	34	174	3	.402	13	35	35-49	936	410	42	.970

LOB - Team (302), Opp (307). DPs turned - Team (9), Opp (18). IBB - Team (3), Jones 1, Habitz 1, Knief 1, Opp (2).

(All games Sorted by Earned run avg)

Player	era	w-l	app	gs	cg	sho	sv	ip	h	r	er	bb	so	2b	3b	hr	b/avg	wp	hp	bk	sfa	sha
17 Laubach, Marlaina	3.55	9-17	29	23	14	0/1	1	142.0	172	89	72	47	74	26	1	21	.304	4	5	1	5	21
12 Jones, Macy	5.35	1-11	19	11	5	0/0	2	73.1	95	65	56	17	41	14	6	14	.309	1	15	0	3	4
5 Von Pusch, Christy	7.45	2-2	22	7	2	1/1	0	51.2	74	65	55	47	29	18	1	8	.338	12	6	0	4	7
4 Diescher, Marissa	9.41	2-4	17	7	0	0/0	1	38.2	64	57	52	38	30	15	1	4	.362	7	8	1	1	3
Totals	5.38	14-34	48	48	21	2/1	4	305.2	405	276	235	149	174	73	9	47	.319	24	34	2	13	35
Opponents	3.03	34-14	48	48	31	9/0	0	312.0	300	157	135	124	211	45	16	13	.248	9	25	0	8	28

PB - Team (15), Habitz 9, Hatfield 6, Opp (11). Pickoffs - Team (3), Hatfield 2, Laubach 1. SBA/ATT - Habitz (21-26), Hatfield (14-22), Laubach (10-17), Von Pusch (10-14), Jones (8-9), Diescher (7-9).



2014 PENN STATE SOFTBALL



2014 RESULTS 14-34 OVERALL • 5-18 BIG TEN • 3-13 HOME • 6-10 AWAY • 5-11 NEUTRAL

Date	Event	Opponent	W/L/T	Score	R-H-E	R-H-E	Inn.	Overall	Big Ten	Pitcher (Record)	Attend.	Time
2/7	!	vs. Oregon State	L	10-12	10-11-0	12-12-1	7	0-1	0-0	Jones (L 0-1)	-	2:20
2/7	!	vs. Appalachian St.	W	10-4	10-10-2	4-10-2	7	1-1	0-0	Diescher (W 1-0)	210	1:30
2/8	!	vs. Bradley	W	5-3	5-10-0	3-7-1	7	2-1	0-0	Laubach (W 1-0)	397	2:00
2/8	!	at No. 7 Arizona St.	L	1-9	1-5-1	9-14-1	[6]	2-2	0-0	Jones (L 0-2)	943	1:55
2/9	!	vs. Seattle	W	6-1	6-11-1	1-4-0	7	3-2	0-0	Laubach (W 2-0)	209	1:30
2/16	@	vs. George Washington	W	9-1	9-8-0	1-4-1	[5]	4-2	0-0	Laubach (W 3-0)	-	1:53
2/16	@	vs. Northwestern	L	1-11	1-2-2	11-10-1	[5]	4-3	0-0	Diescher (L 1-1)	-	1:51
2/17	@	at No. 21 LSU	L	3-11	3-2-0	11-12-0	[5]	4-4	0-0	Jones (L 0-3)	1071	1:42
2/17	@	at No. 21 LSU	W	6-5	6-8-0	5-12-1	7	5-4	0-0	Laubach (W 4-0)	1071	2:18
2/21	#	vs. No. 5 Kentucky	L	5-0	0-2-3	5-6-0	7	5-5	0-0	Diescher (L 1-2)	319	1:49
2/21	#	vs. FAU	L	3-2	2-8-1	3-9-0	(8)	5-6	0-0	Laubach (L 4-1)	319	2:00
2/22	#	vs. Pitt	L	3-1	1-9-1	3-9-1	7	5-7	0-0	Laubach (L 4-2)	346	1:46
2/22	#	at FAU	L	3-2	2-7-0	3-5-0	7	5-8	0-0	Diescher (L 1-3)	346	1:47
2/23	#	vs. No. 5 Kentucky	L	8-1	1-4-1	8-13-1	7	5-9	0-0	Laubach (L 4-3)	358	2:02
3/1	\$	vs. Kent State	L	9-1	1-4-1	9-8-2	[5]	5-10	0-0	Laubach (L 4-4)	65	1:42
3/1	\$	vs. Dartmouth	L	6-3	3-10-3	6-9-0	7	5-11	0-0	Von Pusch (L 0-1)	65	1:51
3/14	%	vs. Rutgers	L	4-3	3-7-1	4-5-1	7	5-12	0-0	Jones (L, 0-4)	33	1:55
3/14	%	vs. Central Conn. St.	L	1-0	0-4-0	1-7-1	7	5-13	0-0	Laubach (L, 4-5)	53	2:00
3/15	%	vs. Wagner	L	4-2	2-5-3	4-8-0	7	5-14	0-0	Laubach (L, 4-6)	85	2:15
3/15	%	vs. Yale	W	5-0	5-5-0	0-1-0	7	6-14	0-0	Von Pusch (W, 1-1)	90	1:20
3/16	%	vs. No. 12 Baylor	L	8-1	1-5-3	8-12-0	7	6-15	0-0	Diescher (L, 1-4)	100	1:40
3/21	*	Purdue	L	10-3	3-9-2	10-10-2	7	6-16	0-1	Laubach (L, 4-7)	170	2:40
3/22	*	Purdue	L	9-2	2-4-1	9-10-0	7	6-17	0-2	Jones (L, 0-5)	427	1:53
3/22	*	Purdue	L	13-4	4-5-0	13-15-3	[5]	6-18	0-3	Laubach (L, 4-8)	427	2:04
3/28	*	No. 6 Michigan	L	6-0	0-1-1	6-8-0	7	6-19	0-4	Jones (L, 0-6)	181	1:30
3/28	*	No. 6 Michigan	L	22-0	0-4-2	22-16-0	[5]	6-20	0-5	Laubach (L, 4-9)	181	1:57
3/29	*	No. 6 Michigan	L	12-4	4-3-2	12-15-2	[5]	6-21	0-6	Jones (L, 0-7)	310	1:56
4/2		Saint Francis (Pa.)	L	4-2	2-7-0	4-5-1	(8)	6-22	0-6	Jones (L, 0-8)	328	2:00
4/2		Saint Francis (Pa.)	W	9-1	9-10-0	1-3-3	[6]	7-22	0-6	Laubach (W, 5-9)	328	1:23
4/4	*	at Michigan State	W	9-3	9-9-0	3-7-2	7	8-22	1-6	Laubach (W, 6-9)	138	2:20
4/5	*	at Michigan State	W	7-3	7-9-1	3-6-1	7	9-22	2-6	Diescher (W, 2-4)	289	2:17
4/6	*	at Michigan State	W	6-0	6-9-1	0-3-1	7	10-22	3-6	Laubach (W, 7-9)	766	1:37
4/11	*	at Indiana	W	4-1	4-7-1	1-7-2	7	11-22	4-6	Laubach (W, 8-9)	306	1:48
4/12	*	at Indiana	W	2-1	2-4-0	1-9-0	7	12-22	5-6	Von Pusch (W, 2-1)	487	2:02
4/13	*	at Indiana	L	8-7	7-11-0	8-13-1	(8)	12-23	5-7	Laubach (L, 8-10)	415	2:27
4/16		Bucknell	W	6-3	6-9-1	3-8-0	7	13-23	5-7	Laubach (W, 9-10)	236	2:02
4/16		Bucknell	W	10-5	10-11-3	5-7-1	7	14-23	5-7	Jones (W, 1-8)	236	2:05
4/18	*	Wisconsin	L	6-3	3-5-1	6-9-0	7	14-24	5-8	Laubach (L, 9-11)	548	1:53
4/19	*	Wisconsin	L	4-0	0-3-0	4-5-1	7	14-25	5-9	Jones (L, 1-9)	723	1:51
4/19	*	Wisconsin	L	5-2	2-5-3	5-6-1	7	14-26	5-10	Laubach (L, 9-12)	723	1:43
4/23	*	at Ohio State	L	3-1	1-8-1	3-7-1	7	14-27	5-11	Laubach (L, 9-13)	220	1:55
4/23	*	at Ohio State	L	3-0	0-3-0	3-7-0	7	14-28	5-12	Jones (L, 1-10)	298	1:42
4/25	*	at No. 12 Minnesota	L	1-0	0-5-1	1-4-2	7	14-29	5-13	Laubach (L, 9-14)	288	1:47
4/26	*	at No. 12 Minnesota	L	9-0	0-0-2	9-9-1	[5]	14-30	5-14	Jones (L, 1-11)	583	1:25
4/26	*	at No. 12 Minnesota	L	16-2	2-7-2	16-14-0	[5]	14-31	5-15	Laubach (L, 9-15)	583	1:47
5/2	*	Illinois	L	5-0	0-5-2	5-9-3	7	14-32	5-16	Laubach (L, 9-16)	331	1:38
5/3	*	Illinois	L	6-1	1-6-2	6-7-0	7	14-33	5-17	Von Pusch (L, 2-2)	656	1:45
5/4	*	Illinois	L	6-1	1-4-1	6-9-0	7	14-34	5-18	Laubach (L, 9-17)	442	1:35

! Kajikawa Classic, Tempe, Ariz. | @ Tiger Invitational, Baton Rouge, La. | # FAU Invitational, Boca Raton, Fla. |
 \$ JMU Invitational, Harrisonburg, Va. | % Michele Smith Spring Break Tournament, Clearwater, Fla. | * Big Ten Game
 () Extra inning game | [] Shortened game (eight-run rule)



2014 PENN STATE SOFTBALL



2014 Defensive Lineup by Game

Date	Opponent	Pitcher	Catcher	First	Second	Third	Short	Left	Center	Right	DP
2/7	Oregon State	Jones	Habitz	Brackpool	Sovereign	Shanahan	Furuya	Walker	Knief	Good	Miller
2/7	Appalachian State	Diescher	Habitz	Brackpool	Sovereign	Shanahan	Furuya	Jones	Knief	Walker	Hatfield
2/8	Bradley	Laubach	Habitz	Hatfield	Sovereign	Shanahan	Furuya	Jones	Knief	Walker	Bradley
2/8	at Arizona State	Jones	Habitz	Hatfield	Sovereign	Shanahan	Furuya	Abeyta	Knief	Walker	Bradley
2/9	Seattle	Laubach	Hatfield	Brackpool	Sovereign	Shanahan	Furuya	Jones	Knief	Walker	Habitz
2/16	George Washington	Laubach	Habitz	Hatfield	Sovereign	Presto	Furuya	Jones	Knief	Miller	Brackpool
2/16	Northwestern	Diescher	Habitz	Hatfield	Sovereign	Shanahan	Furuya	Jones	Knief	Miller	Presto
2/17	at LSU	Jones	Habitz	Hatfield	Sovereign	Shanahan	Furuya	Abeyta	Knief	Miller	Presto
2/17	at LSU	Laubach	Habitz	Hatfield	Sovereign	Shanahan	Furuya	Jones	Knief	Miller	Walker
2/21	Kentucky	Diescher	Habitz	Hatfield	Sovereign	Shanahan	Furuya	Jones	Knief	Miller	Walker
2/21	at FAU	Laubach	Hatfield	Brackpool	Sovereign	Presto	Furuya	Jones	Knief	Abeyta	Habitz
2/22	Pitt	Laubach	Hatfield	Brackpool	Sovereign	Shanahan	Furuya	Jones	Knief	Miller	Habitz
2/22	at FAU	Diescher	Habitz	Brackpool	Sovereign	Shanahan	Furuya	Jones	Knief	Miller	Hatfield
2/23	Kentucky	Laubach	Habitz	Brackpool	Sovereign	Shanahan	Furuya	Jones	Knief	Miller	Hatfield
3/1	Kent State	Laubach	Habitz	Hatfield	Sovereign	Shanahan	Furuya	Jones	Knief	Miller	Walker
3/1	Dartmouth	Von Pusch	Habitz	Hatfield	Sovereign	Shanahan	Furuya	Abeyta	Knief	Ward	Presto
3/14	Rutgers	Jones	Habitz	Brackpool	Miller	Shanahan	Furuya	Sovereign	Knief	Walker	Hatfield
3/14	Central Conn. St.	Laubach	Habitz	Brackpool	Miller	Presto	Furuya	Sovereign	Knief	Jones	Hatfield
3/15	Wagner	Diescher	Hatfield	Brackpool	Miller	Presto	Furuya	Sovereign	Knief	Jones	Habitz
3/15	Yale	Von Pusch	Hatfield	Brackpool	Miller	Shanahan	Furuya	Sovereign	Knief	Jones	Habitz
3/16	Baylor	Diescher	Hatfield	Brackpool	Miller	Shanahan	Furuya	Sovereign	Knief	Jones	Habitz
3/21	PURDUE	Laubach	Habitz	Hatfield	Miller	Shanahan	Furuya	Sovereign	Knief	Jones	Brackpool
3/22	PURDUE	Jones	Hatfield	Brackpool	Miller	Shanahan	Furuya	Sovereign	Knief	Abeyta	Habitz
3/22	PURDUE	Laubach	Hatfield	Brackpool	Miller	Shanahan	Furuya	Sovereign	Knief	Jones	Habitz
3/28	MICHIGAN	Jones	Habitz	Brackpool	Miller	Shanahan	Furuya	Sovereign	Knief	Abeyta	Hatfield
3/28	MICHIGAN	Laubach	Habitz	Brackpool	Miller	Shanahan	Furuya	Sovereign	Knief	Jones	Hatfield
3/28	MICHIGAN	Jones	Habitz	Hatfield	Miller	Shanahan	Furuya	Sovereign	Knief	Walker	Brackpool
4/2	SAINT FRANCIS	Jones	Hatfield	Brackpool	Miller	Presto	Furuya	Sovereign	Knief	Walker	Habitz
4/2	SAINT FRANCIS	Laubach	Hatfield	Jones	Miller	Presto	Furuya	Sovereign	Knief	Walker	Tupinio
4/4	at Michigan State	Laubach	Hatfield	Jones	Miller	Presto	Furuya	Sovereign	Knief	Walker	Tupinio
4/5	at Michigan State	Von Pusch	Hatfield	Brackpool	Miller	Shanahan	Furuya	Sovereign	Knief	Jones	Habitz
4/6	at Michigan State	Von Pusch	Hatfield	Brackpool	Miller	Shanahan	Furuya	Sovereign	Knief	Jones	Habitz
4/11	at Indiana	Laubach	Hatfield	Brackpool	Miller	Shanahan	Furuya	Sovereign	Knief	Jones	Habitz
4/12	at Indiana	Diescher	Habitz	Hatfield	Miller	Presto	Furuya	Sovereign	Knief	Jones	Walker
4/13	at Indiana	Von Pusch	Hatfield	Jones	Miller	Presto	Furuya	Sovereign	Knief	Walker	Habitz
4/16	BUCKNELL	Laubach	Habitz	Hatfield	Miller	Presto	Furuya	Sovereign	Knief	Jones	Walker
4/16	BUCKNELL	Von Pusch	Habitz	Hatfield	Miller	Presto	Furuya	Sovereign	Knief	Jones	Bradley
4/18	WISCONSIN	Laubach	Hatfield	Jones	Miller	Shanahan	Furuya	Sovereign	Knief	Walker	Habitz
4/19	WISCONSIN	Jones	Habitz	Hatfield	Miller	Shanahan	Furuya	Sovereign	Knief	Walker	Bradley
4/19	WISCONSIN	Laubach	Hatfield	Jones	Miller	Shanahan	Furuya	Sovereign	Knief	Walker	Habitz
4/23	at Ohio State	Laubach	Hatfield	Jones	Miller	Shanahan	Furuya	Sovereign	Knief	Walker	Habitz
4/23	at Ohio State	Jones	Hatfield	Brackpool	Miller	Shanahan	Furuya	Sovereign	Knief	Walker	Tupinio
4/25	at Minnesota	Laubach	Hatfield	Brackpool	Miller	Shanahan	Furuya	Sovereign	Knief	Jones	Habitz
4/26	at Minnesota	Jones	Habitz	Hatfield	Miller	Shanahan	Furuya	Sovereign	Knief	Walker	Von Pusch
4/26	at Minnesota	Laubach	Hatfield	Jones	Miller	Shanahan	Furuya	Sovereign	Knief	Walker	Habitz
5/2	ILLINOIS	Laubach	Hatfield	Jones	Miller	Shanahan	Furuya	Sovereign	Knief	Walker	Habitz
5/3	ILLINOIS	Von Pusch	Hatfield	Jones	Miller	Presto	Furuya	Sovereign	Knief	Walker	Habitz
5/4	ILLINOIS	Laubach									



AMANDA LEHOTAK

Head Coach • First Year
NEBRASKA-OMAHA '03

RECORD: 202-239 (.458)

Amanda Lehotak enters her first season as the Penn State softball head coach. She was named the seventh coach in program history on July 22, 2013. Lehotak comes to Penn State with seven years of head coaching experience under her belt, including the last two seasons at Texas-San Antonio.

Lehotak guided the Roadrunners to a 27-26 overall record in 2013 to give the program just their second winning overall record in the last seven years. She also led the team to a fifth-place finish and a berth in the WAC Tournament in UTSA's first season in the conference. Additionally, Darian Blake was named to the All-WAC first team.

In her first season at UTSA, Lehotak and the Roadrunners posted a 24-28 overall record and 12-8 mark in Southland Conference play en route to a third-place finish, which was the program's highest finish since 2009. She had five players earn All-Southland honors in 2012, including Freshman of the Year Megan Low.

Prior to her time at UTSA, Lehotak spent six seasons at Jacksonville University, including five as the head coach. The Dolphins improved their win total each of Lehotak's five seasons at the helm, culminating in a 44-16 overall record and 18-2 conference mark in 2011.

That season, Jacksonville won the Atlantic Sun regular-season and tournament titles on its way to the first NCAA Tournament appearance in school history. Lehotak was selected as the 2011 Atlantic Sun Coach of the Year as her squad set school records for home runs, earned run average, shutouts and fielding percentage. Lehotak left Jacksonville with a school-record 137 wins.

In 2010, Lehotak led the Dolphins to a then-second-best win total in program history with a 33-23 overall record. Additionally, a then-program-record five student-athletes earned All-Atlantic Sun recognition under her guidance in 2010.

Lehotak owns a 188-206 record in seven seasons as a collegiate head coach at UTSA and Jacksonville. In addition to her one season as an assistant coach at Jacksonville, Lehotak was also an assistant coach at Missouri Western State for one season where she was responsible for recruiting, working with the outfielders, hitting instruction, coordinating camps and clinics, as well as managing the team's travel schedule.

She also served as an assistant coach at Daniel J. Gross High School in Bellevue, Neb. and was an interim assistant coach at College of Saint Mary in Omaha (2004).

A native of Omaha, Neb., Lehotak played collegiately at the University of Mississippi for two seasons (2000-01) before finishing her career at Nebraska-Omaha (2002-03). She set the single-season hits record in 2001 at Ole Miss and was a third team All-American at UNO with a pair of first team All-North Central Conference selections. Lehotak earned her bachelor's degree in family science from Nebraska-Omaha in 2003.

LEHOTAK'S COLLEGIATE RÉSUMÉ

Head Coach	
Penn State	2014
Texas-San Antonio	2012-13
Jacksonville	2007-11
<i>2011 Atlantic Sun Coach of the Year</i>	
Assistant Coach	
Jacksonville	2006
Missouri Western State	2005
College of St. Mary (Neb.)	2004
Student-Athlete	
Nebraska-Omaha	2002-03
Mississippi	2000-01

CAREER RECORD

Season	School	Overall Record	Pct.	Conf. Record	Pct.	Finish	NCAA
2014	Penn State	14-34	.292	5-18	.217	T11th	--
2013	Texas-San Antonio	27-26	.509	9-12	.429	5th	--
2012	Texas-San Antonio	24-28	.462	12-8	.600	T3rd	--
2011	Jacksonville	44-16	.733	18-2	.900	1st	Regionals
2010	Jacksonville	33-23	.589	10-10	.500	6th	--
2009	Jacksonville	24-31	.436	7-13	.350	7th	--
2008	Jacksonville	21-39	.350	5-17	.227	11th	--
2007	Jacksonville	15-43	.259	4-14	.222	10th	--



2014 PENN STATE SOFTBALL



#2 TAYLOR ABEYTA



OF • So. • San Diego, Calif. Mt. Carmel

- Has seen action in 17 games in 2014
- Has started five contests at right field
- Earned her first at-bat of the season vs. Oregon St. (2/7)

ABEYTA'S CAREER HIGHS

AT BATS	4	vs. South Carolina	3/10/13
RUNS	1	6x, last vs. Northwestern	2/16/14
HITS	2	vs. DePaul	3/16/13
RBI	3	2x, last vs. DePaul	3/16/13
WALKS	3	vs. Missouri-KC	2/17/13
STOLEN BASES	1	3x, last vs. Maine	3/9/13
TOTAL BASES	2	vs. Ohio State	5/11/12

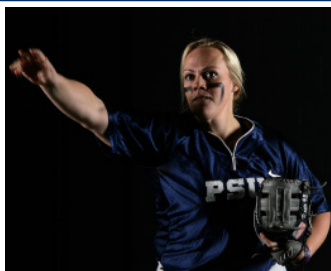
2014 SEASON HIGHS

AT BATS	2	vs. Dartmouth	3/1/14
RUNS	1	at Michigan State	4/5/14
HITS	-	-	-
RBI	-	-	-
WALKS	-	-	-
STOLEN BASES	-	-	-
TOTAL BASES	-	-	-

CAREER HITTING STATISTICS

Year	AVG.	GP-GS	AB	R	H	2B	3B	HR	RBI	TB	SLG	BB	HBP	SO	GDP	OBP	SF-SH	SB-ATT	PO-A-E	FLD%
2013	.229	36-14	35	5	8	1	0	1	7	23	.343	3	0	14	0	.289	0-0	3-3	55-2-2	.966
2014	.000	17-5	6	1	0	0	0	0	0	0	.000	0	0	4	0	.000	0-0	0-0	3-0-1	.750
Total	.195	53-19	41	6	8	1	0	1	7	12	.293	3	0	18	0	.250	0-0	3-3	58-2-3	.952

#3 LIZ PRESTO



C • Sr. • Bethlehem, Pa. Bethlehem Catholic

- Has seen action in 21 games in 2014, starting 16
- Notched her first HR of the season vs. Saint Francis (4/2)
- Posted her first hit of the season at FAU (2/21)
- Earned her first start of the season vs. George Washington (2/16)
- Registered two walks vs. George Washington

PRESTO'S CAREER HIGHS

AT BATS	4	2x, last vs. Minnesota	4/28/12
RUNS	2	vs. Michigan State	4/7/12
HITS	3	vs. Michigan State	4/7/12
RBI	4	vs. Minnesota	4/28/12
WALKS	2	5x, last vs. George Washington	2/16/14
STOLEN BASES	-	-	-
TOTAL BASES	4	3x, last vs. Texas	3/15/13

2014 SEASON HIGHS

AT BATS	3	5x, last at Indiana	4/13/14
RUNS	1	3x, last vs. Illinois	5/3/14
HITS	1	5x, last vs. Illinois	5/4/14
RBI	1	vs. Saint Francis	4/2/14
WALKS	2	vs. George Washington	2/16/14
STOLEN BASES	-	-	-
TOTAL BASES	4	vs. Saint Francis	4/2/14

CAREER HITTING STATISTICS

Year	AVG.	GP-GS	AB	R	H	2B	3B	HR	RBI	TB	SLG	BB	HBP	SO	GDP	OBP	SF-SH	SB-ATT	PO-A-E	FLD%
2011	.067	16-4	15	4	1	1	0	0	1	2	.133	5	0	5	0	.300	0-0	0-0	0-0-0	.000
2012	.190	38-35	79	6	15	3	0	1	7	21	.266	20	2	18	1	.366	0-3	0-0	83-34-4	.967
2013	.222	17-5	18	1	4	0	0	1	3	7	.389	6	0	7	0	.417	0-0	0-0	0-1-0	1.000
2014	.122	21-16	41	3	5	1	0	1	1	9	.220	8	1	9	0	.280	0-5	0-0	15-17-1	.970
Total	.163	92-60	153	14	25	5	0	3	12	39	.255	39	3	39	1	.344	0-8	0-0	98-52-5	.968



2014 PENN STATE SOFTBALL



#4 MARISSA DIESCHER



RHP • Jr. • Livingston Manor, N.Y. Livingston Manor Central

- Pitched a season-high 5.0 innings vs. Wagner (3/15) and No. 5 Kentucky (2/21)
- Started her first game of the year vs. Appalachian St. (2/7)
- Notched her first win of 2014 vs. Appalachian St.
- Registered her first save of the season vs. Bradley (2/8)
- Matched career-high with five strikeouts vs. Wagner in four innings
- Gave up just two walks in four innings vs. Bradley

DIESCHER'S CAREER PITCHING HIGHS

INNINGS.....7.0 5x, last vs. Indiana 4/15/12
 STRIKEOUTS.....5 vs. LIU-Brooklyn 3/2/12
 WALKS10 at Michigan 3/24/12

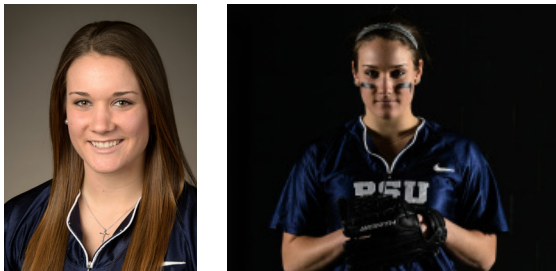
2014 SEASON PITCHING HIGHS

INNINGS.....5.0 2x, last vs. Wagner 3/15/14
 STRIKEOUTS.....5 vs. Wagner 3/15/14
 WALKS5 3x, last at Minnesota 4/26/14

CAREER PITCHING STATISTICS

Year	ERA	W-L	APP	GS	CG	SHO/C	SV	IP	H	R	ER	BB	SO	2B	3B	HR	BF	BAA	WP	HBP	BK	SFA	SHA
2012	5.52	5-9	22	19	6	1/0	0	78.2	94	76	62	88	33	8	0	7	429	.295	20	6	0	3	13
2013	10.21	1-7	17	11	0	0/0	0	36.1	37	57	53	69	21	4	0	2	225	.255	4	7	1	0	4
2014	9.41	2-4	17	7	0	0/0	1	38.2	64	57	52	38	30	15	1	4	227	.362	7	8	1	1	3
Total	7.61	8-20	56	37	6	1/0	1	153.2	195	190	167	195	84	27	1	13	881	.304	31	21	2	4	20

#5 CHRISTY VON PUSCH



RHP • So. • Bryn Mawr, Pa. Radnor

- Doled out a career-high four strikeouts at MSU (4/5)
- Earned her first collegiate victory vs. Yale (3/14)
- Pitched her first complete game vs. Dartmouth (3/1)
- Made her first start of the season vs. Dartmouth
- Has seen action in 16 games in 2014
- Gave up just one walk in 2.2 innings vs. Arizona State

VON PUSCH'S CAREER PITCHING BESTS

INNINGS.....7.0 2x, last vs. Yale 3/14/14
 STRIKEOUTS.....3 vs. Kentucky 2/23/14
 WALKS11 vs. Texas Tech 2/16/13

VON PUSCH'S 2014 SEASON PITCHING BESTS

INNINGS.....7.0 2x, last vs. Yale 3/15/14
 STRIKEOUTS.....4 at Michigan State 4/5/14
 WALKS5 vs. Purdue 3/22/14

CAREER PITCHING STATISTICS

Year	ERA	W-L	APP	GS	CG	SHO/C	SV	IP	H	R	ER	BB	SO	2B	3B	HR	BF	BAA	WP	HBP	BK	SFA	SHA
2013	17.02	0-6	12	7	0	0/1	0	19.1	34	54	47	50	2	4	1	3	141	.386	19	0	0	0	3
2014	7.45	2-2	22	7	2	1/1	0	51.2	74	65	55	47	29	18	1	8	283	.338	12	6	0	4	7
Total	10.06	2-8	34	14	2	1/2	0	71.0	108	119	102	97	31	22	2	11	424	.352	31	6	0	4	10



2014 PENN STATE SOFTBALL



#7 KASIE HATFIELD



C/INF • Sr. • Tampa, Fla. Chamberlain

- Has started all but one game for PSU this season
- Leads the team and is tied for sixth in the Big Ten in doubles with 13
- Sits at No. 6 in PSU's record books on the single season doubles list
- Went 7-for-10 at the plate in the series at Indiana with seven RBI and two runs on two double and a HR
- Notched her first triple of the year at MSU (4/4)
- Drove in a season-high three runs vs. George Washington (2/16)

HATFIELD'S CAREER HIGHS

AT BATS	7	vs. Fordham	5/21/11
RUNS	2	5x, last vs. Northwestern	4/20/13
HITS	4	vs. Michigan State	4/7/12
RBI	5	vs. Indiana	4/15/12
WALKS	2	2x, last vs. Bradley	2/8/14
STOLEN BASES	1	vs. Texas A&M	3/3/13
TOTAL BASES	8	vs. Ohio State	5/11/12

2014 SEASON HIGHS

AT BATS	4	6x, last vs. Bucknell	4/16/14
RUNS	1	12x, last vs. Illinois	5/4/14
HITS	3	2x, last at Indiana	4/11/14
RBI	3	2x, last at Indiana	4/13/14
WALKS	2	vs. Bradley	2/8/14
STOLEN BASES	--	--	--
TOTAL BASES	7	at Indiana	4/11/14

CAREER HITTING STATISTICS

Year	AVG.	GP-GS	AB	R	H	2B	3B	HR	RBI	TB	SLG	BB	HBP	SO	GDP	OBP	SF-SH	SB-ATT	PO-A-E	FLD%
2011	.223	49-45	130	10	29	6	1	1	10	40	.308	6	3	23	2	.273	0-3	0-0	218-16-2	.992
2012	.252	48-48	131	16	33	8	0	5	26	56	.427	10	0	22	3	.305	0-2	0-1	156-45-6	.971
2013	.181	45-42	105	5	19	0	0	2	6	25	.238	5	0	21	0	.218	0-3	1-1	149-25-6	.967
2014	.309	48-47	136	12	42	13	3	2	27	67	.493	12	5	11	0	.386	0-4	2-3	201-19-8	.965
Total	.245	190-182	502	43	123	27	4	10	69	188	.375	33	8	77	5	.302	0-12	3-5	724-105-22	.974

#8 REINA FURUYA



INF • So. • Waipahu, Hawaii Punahou

- Has started all 48 games for PSU in 2014 at SS
- Notched her first double of 2014 in game two vs. UW (4/19)
- Scored two runs and drove in two runs in the series at IU
- Went 2-for-5 at the plate in the series at MSU
- Third on team in walks with 18
- Tied for first on the team in stolen bases with six
- Went 2-for-2 at the plate vs. Appalachian State (2/7) with an RBI and two runs

FURUYA'S CAREER HIGHS

AT BATS	4	9x, last vs. Saint Francis	4/2/14
RUNS	3	vs. Bucknell	4/16/14
HITS	2	8x, last vs. Bucknell	4/16/14
RBI	4	vs. Northwestern	4/20/13
WALKS	2	3x, last vs. George Washington	2/16/14
STOLEN BASES	1	8x, last vs. Bucknell	4/16/14
TOTAL BASES	5	at Pitt	4/10/13

2014 SEASON HIGHS

AT BATS	4	6x, last at Ohio State	4/23/14
RUNS	3	vs. Bucknell	4/16/14
HITS	2	4x, last vs. Wisconsin	4/19/14
RBI	2	vs. Bucknell	4/16/14
WALKS	2	3x, last vs. George Washington	2/16/14
STOLEN BASES	1	6x, last vs. Bucknell	4/16/14
TOTAL BASES	3	vs. Wisconsin	4/19/14

CAREER HITTING STATISTICS

Year	AVG.	GP-GS	AB	R	H	2B	3B	HR	RBI	TB	SLG	BB	HBP	SO	GDP	OBP	SF-SH	SB-ATT	PO-A-E	FLD%
2013	.224	43-41	107	8	24	5	0	4	20	41	.383	7	0	21	1	.270	1-4	2-2	50-66-8	.935
2014	.182	48-48	121	16	22	1	0	0	10	23	.190	18	4	34	1	.306	1-10	6-6	54-103-15	.913
Total	.202	91-89	228	24	46	6	0	4	30	64	.281	25	4	55	2	.290	2-14	8-8	104-169-23	.922



2014 PENN STATE SOFTBALL



#10 LEXI KNIEF



CF • So. • Ramsey, N.J. Ramsey

- Earned second team All-Big Ten honors
- Leads team in 8 different offensive categories
- Team-best and B1G 10th best batting avg. of .382
- Is 2nd in the B1G and is 4th in the NCAA in triples with six
- Leads PSU and is 11th in the Big Ten with OBP of .457
- Named B1G Player of the Week on April 7 after stellar series at MSU
- Posted a double, a triple & first collegiate HR at MSU (4/6)
- Drove in career-best two runs at FAU (2/22)
- Scored career-high four runs vs. Oregon State (2/7)

KNIEF'S CAREER HIGHS

AT BATS	4	22x, last vs. Wisconsin	4/19/14
RUNS	4	vs. Oregon State	2/7/14
HITS	3	3x, last at Michigan State	4/2/13
RBI	2	2x, last vs. Wisconsin	4/19/14
WALKS	2	8x, last at Michigan State	4/2/14
STOLEN BASES	1	3x, last vs. Purdue	3/22/13
TOTAL BASES	9	at Michigan State	4/6/14

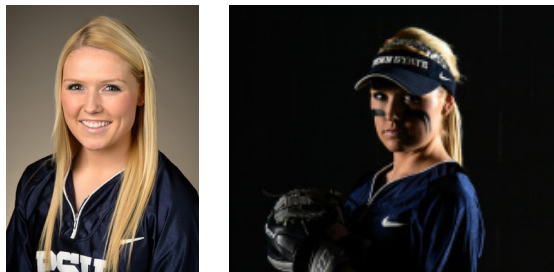
2014 SEASON HIGHS

AT BATS	4	15x, last vs. Wisconsin	4/19/14
RUNS	4	vs. Oregon State	2/7/14
HITS	3	3x, last vs. Bucknell	4/16/14
RBI	2	2x, last vs. Wisconsin	4/19/14
WALKS	2	6x, last at Michigan State	4/4/14
STOLEN BASES	1	2x, last vs. Purdue	3/22/14
TOTAL BASES	9	at Michigan State	4/6/14

CAREER HITTING STATISTICS

Year	AVG.	GP-GS	AB	R	H	2B	3B	HR	RBI	TB	SLG	BB	HBP	SO	GDP	OBP	SF-SH	SB-ATT	PO-A-E	FLD%
2013	.224	38-26	76	11	17	1	0	0	3	18	.237	10	4	15	1	.344	0-1	1-3	39-32-8	.899
2014	.382	48-48	152	37	58	7	6	1	12	80	.526	20	1	13	0	.457	0-2	3-3	69-5-0	1.000
Total	.329	86-74	228	48	75	8	6	1	15	98	.430	30	5	28	1	.418	0-3	4-6	108-37-8	.948

#11 SAM SHANAHAN



3B • Fr. • Seattle, Wash. Bishop Blanchet

- Has started 35 games for PSU in 2014
- Turned in a 2-for-3 effort at the plate vs. Dartmouth (3/1)
- Registered her first collegiate double vs. Dartmouth
- Made first collegiate start in season-opener vs. Oregon State (2/7) and has started all but one game in 2014
- Recorded her first collegiate RBI at No. 21 LSU (2/17)
- Notched a season-high two runs vs. Oregon State
- Registered her first collegiate hit vs. Oregon State

SHANAHAN'S 2014 SEASON HIGHS

AT BATS	3	5x, last vs. Dartmouth	3/1/14
RUNS	2	vs. Oregon State	2/7/14
HITS	2	vs. Dartmouth	3/1/14
RBI	1	at LSU	2/17/14
WALKS	1	3x, last vs. Kentucky	2/23/14
STOLEN BASES	-	-	-
TOTAL BASES	3	vs. Dartmouth	3/1/14

CAREER HITTING STATISTICS

Year	AVG.	GP-GS	AB	R	H	2B	3B	HR	RBI	TB	SLG	BB	HBP	SO	GDP	OBP	SF-SH	SB-ATT	PO-A-E	FLD%
2014	.113	40-35	62	5	7	1	0	0	1	8	.129	3	0	17	0	.154	0-0	0-0	37-42-5	.940
Total	.113	40-35	62	5	7	1	0	0	1	8	.129	3	0	17	0	.154	0-0	0-0	37-42-5	.940



2014 PENN STATE SOFTBALL



#12 MACY JONES



OF/LHP • So. • Ashburn, Va. Briar Woods

- Has started all but one game for PSU in 2014
- Has allowed less walks than any other B1G pitcher (17)
- Tied for 3rd in the B1G with 4 triples
- Notched a season-high 7 K's vs. SFU (4/2)
- Stole a career-best two bases vs. Saint Francis
- Notched HR's in back-to-back games vs. Wagner (3/15) and Yale (3/15)
- Posted her first HR of 2014 vs. Pitt (2/22)
- Posted 3-for-3 efforts vs. Seattle (2/9) and GWU (2/16)

JONES' CAREER HITTING HIGHS

AT BATS	5	2x, last vs. Appalachian State	2/7/14
RUNS	3	at Pitt	4/10/13
HITS	3	3x, last vs. Saint Francis	4/9/13
RBI	6	at New Mexico State	2/16/13
WALKS	2	5x, last vs. Bucknell	4/16/14
STOLEN BASES	2	vs. Saint Francis	4/2/14
TOTAL BASES	7	2x, last vs. Yale	3/15/13

2014 HITTING HIGHS

AT BATS	5	vs. Appalachian State	2/7/14
RUNS	2	2x, last vs. Bucknell	4/16/14
HITS	3	2x, last vs. George Washington	2/16/14
RBI	2	vs. Seattle	2/9/14
WALKS	2	4x, last vs. Bucknell	4/16/14
STOLEN BASES	2	vs. Saint Francis	4/2/14
TOTAL BASES	7	vs. Yale	3/15/14

JONES' CAREER PITCHING HIGHS

INNINGS	8.0	vs. Saint Francis	4/2/14
STRIKEOUTS	12	vs. Maine	3/9/13
COMPLETE GAMES	18	last vs. Wisconsin	4/19/14
SHUTOUTS	1	vs. Maine	3/9/13

2014 PITCHING HIGHS

INNINGS	8.0	vs. Saint Francis	4/2/14
STRIKEOUTS	7	vs. Saint Francis	4/2/14
WALKS	3	vs. Rutgers	3/14/14
COMPLETE GAMES	5	last vs. Wisconsin	4/19/14

CAREER PITCHING STATISTICS

Year	ERA	W-L	APP	GS	CG	SHO/C	SV	IP	H	R	ER	BB	SO	2B	3B	HR	BF	BAA	WP	HBP	BK	SFA	SHA
2013	3.84	13-17	36	22	14	1/1	1	175.0	196	111	96	60	000	40	3	29	785	.286	2	11	0	11	17
2014	5.35	1-11	19	11	5	0/0	2	73.1	95	65	56	17	41	14	6	14	346	.309	1	15	0	3	4
Total	4.28	14-28	55	33	19	1/1	3	248.1	291	176	152	77	142	54	9	43	1131	.293	3	26	0	14	21

CAREER HITTING STATISTICS

Year	AVG.	GP-GS	AB	R	H	2B	3B	HR	RBI	TB	SLG	BB	HBP	SO	GDP	OBP	SF-SH	SB-ATT	PO-A-E	FLD%
2013	.274	49-49	146	20	40	8	2	5	28	67	.459	13	5	38	0	.349	2-2	3-4	21-29-4	.926
2014	.232	48-47	125	22	29	2	4	3	21	48	.384	26	2	23	0	.368	2-1	6-7	85-18-3	.972
Total	.255	97-96	271	42	69	10	6	8	49	115	.424	39	7	61	0	.358	4-3	9-11	106-47-7	.956

#13 MAEGAN TUPINIO



INF/OF • So. • Wahiawa, Hawaii Leilehua

- Has seen action in 22 games for PSU in 2014
- Earned her first start of the year vs. Saint Francis (4/2)
- Posted her first collegiate hit in the win over Saint Francis and scored her fourth run of the season
- Registered her first at-bat as a Nittany Lion at Florida Atlantic (2/22)
- Scored as a pinch runner vs. George Washington (2/16)
- Notched her first run of the season vs. Appalachian State (2/7) as a pinch runner

TUPINIO'S CAREER HIGHS

AT BATS	3	vs. Saint Francis	4/2/14
RUNS	1	16x, last at Indiana	4/13/14
HITS	1	vs. Saint Francis	4/2/14
RBI	--	--	--
WALKS	--	--	--
STOLEN BASES	1	3x, last at Indiana	4/6/13
TOTAL BASES	1	vs. Saint Francis	4/2/14

TUPINIO'S 2014 SEASON HIGHS

AT BATS	3	vs. Saint Francis	4/2/14
RUNS	1	7x, last at Indiana	4/13/14
HITS	1	vs. Saint Francis	4/2/14
RBI	--	--	--
WALKS	--	--	--
STOLEN BASES	--	--	--
TOTAL BASES	1	vs. Saint Francis	4/2/14

CAREER HITTING STATISTICS

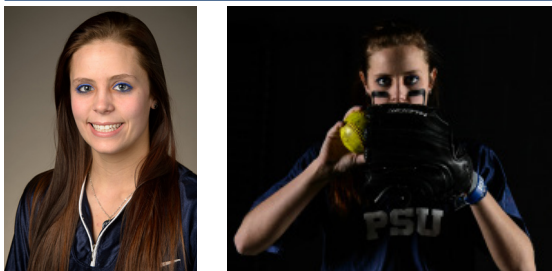
Year	AVG.	GP-GS	AB	R	H	2B	3B	HR	RBI	TB	SLG	BB	HBP	SO	GDP	OBP	SF-SH	SB-ATT	PO-A-E	FLD%
2013	.000	24-1	0	9	0	0	0	0	0	0	.000	0	0	0	0	.000	0-0	3-3	0-0-0	.000
2014	.077	22-3	13	7	1	0	0	0	0	1	.077	0	0	6	0	.077	0-0	0-0	0-0-0	.000
Total	.077	46-4	13	16	1	0	0	0	0	1	.077	0	0	6	0	.077	0-0	3-3	0-0-0	.000



2014 PENN STATE SOFTBALL



#17 MARLAINA LAUBACH



RHP • Fr. • Northampton, Pa. Northampton

- Has thrown a season-high six K's four times, vs. Illinois (5-2), Bucknell (4/16), at MSU (4/4) and at FAU (2/21)
- Pitched a season-high eight innings at FAU (2/21)
- Earned her first collegiate save in game two at Indiana (4/12)
- Led the Nittany Lions to a win over No. 21 LSU (2/17)
- Allowed just four hits and did not give up a single walk vs. George Washington (2/16)
- Picked up a win against Bradley (2/8) in her collegiate debut
- Pitched her first complete game as a Nittany Lion vs. Seattle (2/9)
- Allowed just four hits in seven innings vs. Seattle
- Struck out five Bradley hitters & four Seattle hitters

INNINGS.....	8.0.....	at Florida Atlantic.....	2/21/14
STRIKEOUTS.....	6.....	4x, last vs. Illinois.....	5/2/14
WALKS.....	6.....	vs. Purdue.....	3/21/14
COMPLETE GMS.....	14.....	last vs. Wisconsin.....	4/19/14

Year	ERA	W-L	APP	GS	CG	SHO/C	SV	IP	H	R	ER	BB	SO	2B	3B	HR	BF	BAA	WP	HBP	BK	SFA	SHA
2014	3.55	9-17	29	23	14	0/1	1	142.0	172	89	72	47	74	26	1	21	643	.304	4	5	1	5	21
Total	3.55	9-17	29	23	14	0/1	1	142.0	172	89	72	47	74	26	1	21	643	.304	4	5	1	5	21

#18 ALICIA WALKER



UTL • Jr. • Los Alamitos, Calif. Los Alamitos

- Has started 26 games for the Nittany Lions in 2014
- Drove in two runs in the win over Saint Francis (4/2)
- Hit her first-career double vs. Oregon State (2/7)
- Drove in two runs vs. Appalachian State (2/7)
- Scored once vs. Appalachian State

AT BATS.....	4.....	vs. Appalachian State.....	2/7/14
RUNS.....	2.....	vs. Western Michigan.....	3/8/13
HITS.....	2.....	vs. Ohio State.....	5/11/12
RBI.....	2.....	2x, last vs. Saint Francis.....	4/2/14
WALKS.....	2.....	vs. Illinois.....	5/3/14
STOLEN BASES.....	2.....	vs. Ohio State.....	5/12/12
TOTAL BASES.....	2.....	2x, last vs. Oregon State.....	2/7/14

AT BATS.....	4.....	vs. Appalachian State.....	2/7/14
RUNS.....	1.....	4x, last vs. Bucknell.....	4/16/14
HITS.....	1.....	11x, last at Ohio State.....	4/23/14
RBI.....	2.....	2x, last vs. Saint Francis.....	4/2/14
WALKS.....	2.....	vs. Illinois.....	5/3/14
STOLEN BASES.....	--	--	--
TOTAL BASES.....	2.....	vs. Oregon State.....	2/7/14

Year	AVG.	GP-GS	AB	R	H	2B	3B	HR	RBI	TB	SLG	BB	HBP	SO	GDP	OBP	SF-SH	SB-ATT	PO-A-E	FLD%
2012	.207	39-15	29	9	6	0	0	0	3	6	.207	1	2	9	0	.265	2-4	5-7	19-0-2	.905
2013	.059	38-4	17	17	1	0	0	0	0	1	.059	2	1	4	0	.200	0-1	6-7	2-0-0	1.000
2014	.190	38-26	58	4	11	1	0	0	8	12	.207	5	5	11	0	.309	0-2	1-1	20-2-1	.957
Total	.173	115-45	104	30	18	1	0	0	11	19	.183	8	8	24	0	.279	2-7	12-15	41-2-3	.935



2014 PENN STATE SOFTBALL



#22 ALYSSA SOVEREIGN



2B • Sr. • La Canada, Calif. Crescenta Valley

- Has started all 48 games for PSU in 2014
- Went 4-for-8 in the DH vs. Saint Francis (4/2)
- Drove in two runs vs. No. 6 Michigan with her second double of the year
- Third on team in at-bats (114)
- Scored two runs in the win over No. 21 LSU (2/17)
- Registered a career-high four hits in a 4-for-5 effort vs. Oregon State (2/7)

SOVEREIGN'S CAREER HIGHS

AT BATS	7	vs. Fordham	5/21/11
HITS	4	vs. Oregon State	2/7/14
RUNS	3	vs. James Madison	2/26/12
RBI	3	vs. Northwestern	4/20/13
STOLEN BASES	1	2x, last vs. DePaul	3/16/13
WALKS	2	8x, last at LSU	2/17/14
TOTAL BASES	6	vs. LIU-Brooklyn	3/2/12

2014 SEASON HIGHS

AT BATS	5	vs. Oregon State	2/7/14
HITS	4	vs. Oregon State	2/7/14
RUNS	2	6x, last vs. Wisconsin	4/18/14
RBI	2	vs. No. 6 Michigan	3/29/14
STOLEN BASES	0		--
WALKS	2	3x, last at LSU	2/17/14
TOTAL BASES	4	vs. Oregon State	2/7/14

CAREER HITTING STATISTICS

Year	AVG.	GP-GS	AB	R	H	2B	3B	HR	RBI	TB	SLG	BB	HBP	SO	GDP	OBP	SF-SH	SB-ATT	PO-A-E	FLD%
2011	.257	56-55	167	11	43	9	1	5	26	69	.413	9	2	38	1	.302	1-4	0-1	56-6-0	1.000
2012	.209	50-50	153	21	32	5	0	4	17	49	.320	19	0	27	0	.297	0-1	1-1	51-1-1	.981
2013	.248	42-35	109	15	27	8	0	0	11	35	.321	11	0	21	0	.314	1-0	1-1	53-7-1	.984
2014	.230	48-48	135	22	31	4	0	0	9	35	.259	14	2	14	0	.309	1-3	0-0	105-30-3	.978
Total	.236	196-188	564	69	133	26	1	9	63	188	.333	53	4	100	1	.304	3-8	2-3	265-44-5	.984

#24 MARY WARD



OF • Fr. • Greencastle, Pa. Greencastle-Antrim

- Has seen action in 20 games in her rookie campaign
- Earned her first collegiate start vs. Dartmouth (3/1)
- Scored as a pinch runner vs. No. 6 Michigan (3/29)
- Scored one run vs. George Washington (2/16)
- Notched her first collegiate run vs. Oregon State (2/7) as a pinch runner
- Also crossed the plate once vs. Seattle (2/9)

WARD'S SEASON HIGHS

AT BATS	1	4x, last vs. Michigan	3/28/14
RUNS	1	4x, last vs. Michigan	3/29/14
HITS	--		--
RBI	--		--
WALKS	--		--
STOLEN BASES	--		--
TOTAL BASES	--		--

CAREER HITTING STATISTICS

Year	AVG.	GP-GS	AB	R	H	2B	3B	HR	RBI	TB	SLG	BB	HBP	SO	GDP	OBP	SF-SH	SB-ATT	PO-A-E	FLD%
2014	.000	20-1	4	4	0	0	0	0	0	0	.000	0	1	2	0	.200	0-0	0-0	0-1-0	1.000
Total	.000	20-1	4	4	0	0	0	0	0	0	.000	0	1	2	0	.200	0-0	0-0	0-1-0	1.000



2014 PENN STATE SOFTBALL



#25 MEGHAN BRADLEY



OF • Jr. • Santa Monica, Calif. Santa Monica

- Has seen action in 13 games in 2014
- Registered her first hit as a Nittany Lion vs. Bradley (2/8)
- Put together a 2-for-4 effort vs. Bradley
- Earned her first collegiate start vs. Bradley as the DP

BRADLEY'S CAREER HIGHS		
AT BATS	4	vs. Bradley 2/8/14
RUNS	1	3x, last vs. Indiana 4/15/12
HITS	2	vs. Bradley 2/8/14
RBI	-	-
WALKS	-	-
STOLEN BASES	-	-
TOTAL BASES	2	vs. Bradley 2/8/14

2014 SEASON HIGHS		
AT BATS	4	vs. Bradley 2/8/14
RUNS	-	-
HITS	2	vs. Bradley 2/8/14
RBI	-	-
WALKS	-	-
STOLEN BASES	-	-
TOTAL BASES	2	vs. Bradley 2/8/14

CAREER HITTING STATISTICS																				
Year	AVG.	GP-GS	AB	R	H	2B	3B	HR	RBI	TB	SLG	BB	HBP	SO	GDP	OBP	SF-SH	SB-ATT	PO-A-E	FLD%
2012	.000	14-0	0	3	0	0	0	0	0	0	.000	0	1	0	0	1.000	0-0	0-0	0-0-0	.000
2013	.000	1-0	0	0	0	0	0	0	0	0	.000	0	0	0	0	.000	0-0	0-0	0-0-0	.000
2014	.100	13-5	20	0	2	0	0	0	0	2	.100	0	0	8	0	.100	0-0	0-0	1-0-0	1.000
Total	.100	28-5	20	3	2	0	0	0	0	2	.100	0	1	8	0	.143	0-0	0-0	1-0-0	1.000

#28 SHANNON GOOD



OF • So. • Horseheads, N.Y. Horseheads

- Has seen action in nine games in 2014
- Earned a start in the season opener vs. Oregon State (2/7)
- Registered four at-bats vs. the Beavers in her first appearance at th plate

GOOD'S CAREER HIGHS		
AT BATS	4	vs. Oregon State 2/7/14
RUNS	-	-
HITS	-	-
RBI	-	-
WALKS	-	-
STOLEN BASES	-	-
TOTAL BASES	-	-

2014 SEASON HIGHS		
AT BATS	4	vs. Oregon State 2/7/14
RUNS	-	-
HITS	-	-
RBI	-	-
WALKS	-	-
STOLEN BASES	-	-
TOTAL BASES	-	-

CAREER HITTING STATISTICS																				
Year	AVG.	GP-GS	AB	R	H	2B	3B	HR	RBI	TB	SLG	BB	HBP	SO	GDP	OBP	SF-SH	SB-ATT	PO-A-E	FLD%
2013	.000	8-5	0	0	0	0	0	0	0	0	.000	0	0	0	0	.000	0-0	0-0	0-0-0	.000
2014	.000	9-1	11	0	0	0	0	0	0	0	.000	0	1	4	0	.083	0-0	0-0	0-0-0	.000
TOTAL	.000	17-6	11	0	0	0	0	0	0	0	.000	0	1	4	0	.083	0-0	0-0	0-0-0	.000



2014 PENN STATE SOFTBALL



#30 KARLIE HABITZ



C • So. • Newhall, Calif. Valencia

- Has started all but three games for PSU in 2014
- Leads team with 34 RBI
- Drove in five runs on four hits in the series at Michigan State
- Went 4-for-8 in the series vs. No. 6 Michigan
- Notched her fourth HR of 2014 vs. Purdue (3/22)
- Turned in a perfect 3-for-3 effort vs. Dartmouth
- Hit her first-career grand slam vs. Oregon State (2/7)
- Drove in a career-high six RBIs vs. Oregon State
- Went a perfect 3-for-3 at the plate vs. Bucknell (4/16) and Bradley (2/8)

HABITZ'S CAREER HIGHS

AT BATS	4	11x, last vs. Bucknell	4/16/14
RUNS	2	vs. Yale	3/15/14
HITS	3	2x, last vs. Dartmouth	3/1/14
RBI	6	vs. Oregon State	2/7/14
WALKS	3	vs. George Washington	2/16/14
STOLEN BASES	-	-	-
TOTAL BASES	7	vs. Dartmouth	3/1/14

2014 SEASON HIGHS

AT BATS	4	4x, last vs. Bucknell	4/16/14
RUNS	2	vs. Yale	3/15/14
HITS	3	3x, last vs. Bucknell	4/16/14
RBI	6	vs. Oregon State	2/7/14
WALKS	3	vs. George Washington	2/16/14
STOLEN BASES	-	-	-
TOTAL BASES	7	vs. Dartmouth	3/1/14

CAREER HITTING STATISTICS

Year	AVG.	GP-GS	AB	R	H	2B	3B	HR	RBI	TB	SLG	BB	HBP	SO	GDP	OBP	SF-SH	SB-ATT	PO-A-E	FLD%
2013	.210	36-32	100	4	21	7	0	3	16	37	.370	7	0	17	0	.259	1-1	0-0	60-4-1	.985
2014	.301	47-45	133	10	40	8	0	4	34	60	.451	11	2	14	0	.361	1-1	0-0	108-11-3	.975
Total	.262	83-77	233	14	61	15	0	7	50	97	.416	18	2	31	0	.318	2-2	0-0	168-15-4	.979

#52 KRISTINA BRACKPOOL



1B • Fr. • Valencica, Calif. Valencia

- Has started 25 games for PSU in 2014
- Registered her second HR of the season at OSU (4/23)
- Drove in five runs on five hits in the series at Michigan State
- Put together a 2-for-3 effort vs. Pitt (2/22)
- Drove in one run vs. George Washington (2/16)
- Notched her first hit as a Nittany Lion vs. Seattle (2/9)
- Hit her first-collegiate homerun vs. Seattle
- Drove in three runs vs. SU
- Went 2-for-3 at the plate vs. SU

BRACKPOOL'S SEASON HIGHS

AT BATS	4	2x, last vs. George Washington	2/16/14
RUNS	1	2x, last at Ohio State	4/23/14
HITS	2	2x, last vs. Pitt	2/22/14
RBI	3	vs. Seattle	2/7/14
WALKS	1	vs. Appalachian State	2/7/14
STOLEN BASES	-	-	-
TOTAL BASES	5	vs. Seattle	2/9/14

CAREER HITTING STATISTICS

Year	AVG.	GP-GS	AB	R	H	2B	3B	HR	RBI	TB	SLG	BB	HBP	SO	GDP	OBP	SF-SH	SB-ATT	PO-A-E	FLD%
2014	.200	29-25	75	2	15	4	0	2	13	25	.333	1	1	20	1	.213	3-0	0-0	151-3-2	.987
Total	.200	29-25	75	2	15	4	0	2	13	25	.333	1	1	20	1	.213	3-0	0-0	151-3-2	.987



2014 PENN STATE SOFTBALL



#77 SHELBY MILLER



INF • Fr. • Sugar Land, Texas Kempner

- Has started 42 games for PSU in her rookie campaign
- Turned in a 5-for-6 performance at the dish in the DH vs. Bucknell (4/16)
- Drove in a season-best four runs in the second game vs. Bucknell
- Turned in a perfect 3-for-3 effort in the win over Saint Francis (4/2) with a double, two RBI and two runs
- Registered first collegiate triples in the series vs. Purdue
- Registered her first collegiate double vs. No. 12 Baylor (3/16)
- Went 2-for-3 at the plate vs. Baylor
- Turned in a 2-for-3 performance vs. Wagner (3/15)
- Put together a 2-for-3 effort vs. No. 5 Kentucky (2/23)

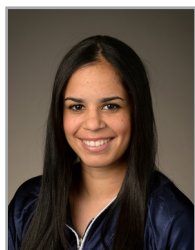
AT BATS	44x, last at Michigan State	4/6/14
RUNS	2vs. Saint Francis	4/2/14
HITS	32x, last vs. Bucknell	4/16/14
RBI	4vs. Bucknell	4/16/14
WALKS	3vs. George Washington	2/16/14
STOLEN BASES	12x, last vs. Yale	3/15/14
TOTAL BASES	36x, last vs. Bucknell	4/16/14

- Went 2-for-4 at the plate in the win over No. 21 LSU (2/17)
- Drove in two runs in game one at No. 21 LSU
- Registered her first collegiate hit in her first at-bat as a Nittany Lion vs. Seattle (2/9)

Year	AVG.	GP-GS	AB	R	H	2B	3B	HR	RBI	TB	SLG	BB	HBP	SO	GDP	OBP	SF-SH	SB-ATT	PO-A-E	FLD%
2014	.316	43-42	117	12	37	3	3	0	15	46	.393	6	0	21	0	.350	0-0	2-2	61-71-7	.950
TOTAL	.316	43-42	117	12	37	3	3	0	15	46	.393	6	0	21	0	.350	0-0	2-2	61-71-7	.950



TV/RADIO ROSTER



TAYLOR ABEYTA
Sophomore • OF
San Diego, Calif.



LIZ PRESTO
Senior • C
Bethlehem, Pa.



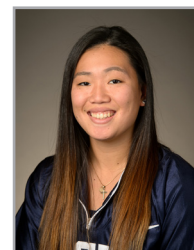
MARISSA DIESCHER
Junior • RHP
Livingston Manor, N.Y.



CHRISTY VON PUSCH
Sophomore • RHP/INF
Bryn Mawr, Pa.



KASIE HATFIELD
Senior • C/INF
Tampa, Fla.



REINA FURUYA
Sophomore • INF
Waipahu, Hawaii



LEXI KNIEF
Sophomore • INF/OF
Ramsey, N.J.



SAM SHANAHAN
Freshman • INF
Seattle, Wash.



MACY JONES
Sophomore • OF/LHP
Ashburn, Va.



MAEGAN TUPINIO
Sophomore • INF/OF
Wahiawa, Hawaii



MARLAINA LAUBACH
Freshman • RHP
Northampton, Pa.



ALICIA WALKER
Junior • UTL
Los Alamitos, Calif.



ALYSSA SOVEREIGN
Senior • OF
La Canada, Calif.



MARY WARD
Freshman • OF
Greencastle, Pa.



MEGHAN BRADLEY
Junior • OF
Santa Monica, Calif.



SHANNON GOOD
Sophomore • OF
Horseheads, N.Y.



KARLIE HABITZ
Sophomore • C/INF
Newhall, Calif.



KRISTINA BRACKPOOL
Freshman • OF/INF
Valencia, Calif.



SHELBY MILLER
Freshman • INF
Sugar Land, Texas



AMANDA LEHOTAK
Head Coach



MEGAN GIBSON
Assist Coach



JOE GUTHRIE
Assistant Coach