



2022-23 LADY LION BASKETBALL

UNLEASH
THE PRIDE

GAME 3 | PENN STATE VS. YOUNGSTOWN STATE | November 15, 2022 | BRYCE JORDAN CENTER

2022-23 SCHEDULE

Date Opponent (Broadcast) Time/Result

NOVEMBER

9	Norfolk State (B1G+)	W, 67-61
11	Fairfield (B1G+)	W, 77-49
15	Youngstown State (B1G+)	7 p.m.
18	Bryant (B1G+)	7 p.m.
21	Syracuse (B1G+)	7 p.m.
25	vs. Toledo! (FloHoops)	1:15 p.m.
26	at Fresno State! (Flo Hoops)	11 a.m.
30	Virginia (B1G/ACC Challenge) (B1G+)	7 p.m.

DECEMBER

3	at Minnesota (Big Ten Network)	6 or 8:30 p.m.
8	Indiana (B1G+)	7 p.m.
11	West Virginia (B1G+)	4 p.m.
18	at Drexel (FloHoops)	2 p.m.
21	Cornell (B1G+)	12 p.m.
30	Rutgers (B1G+)	5 p.m.

JANUARY

3	at Michigan* (B1G+)	1 p.m.
7	Purdue (B1G+)	2 p.m.
11	at Nebraska (B1G+)	8 p.m.
14	at Iowa* (Big Ten Network)	11:30 a.m.
18	Minnesota	7 p.m.
22	Wisconsin (Big Ten Network)	4 or 5 p.m.
26	at Rutgers (B1G+)	7 p.m.
30	at Maryland (Big Ten Network)	6 p.m.

FEBRUARY

2	Northwestern (B1G+)	7 p.m.
5	Iowa (Big Ten Network)	12 p.m.
12	at Michigan State (B1G+)	3 p.m.
16	Ohio State (B1G+)	7 p.m.
19	at Illinois (B1G+)	3 p.m.
22	at Purdue (B1G+)	7 p.m.
25	Michigan State (B1G+)	2 p.m.

MARCH

1-5	Big Ten Tournament!	TBD
-----	---------------------	-----

* Big Ten Opponent
! Daytona Beach Invitational (Daytona Beach, Fla.)
^ ACC/Big Ten Challenge
! Big Ten Tournament (Minneapolis)
All times Eastern Standard Time

STRATEGIC COMMUNICATIONS

WBB Primary Contact..... Korey Blucas
Office Phone 814-865-1757
Cell Phone 724-799-4480
Email kvb5992@psu.edu

WBB Secondary Contact Krista Pylant
Email kqp5592@psu.edu



PENN STATE LADY LIONS

(2-0, 0-0 BIG TEN)

vs.

YOUNGSTOWN STATE PENGUINS

(1-0, 0-0 HORIZON LEAGUE)



VIDEO | Big Ten +

RADIO | Penn State Sports Network - 93.3 FM & 1390 AM - Justin Antweil & Joe Putnam

ONLINE | Links to live video, live audio and live stats available at GoPSUSports.com

OPENING TIP

- Penn State won both its games at home in the season-opening week, 77-49 against Fairfield Friday and 67-61 over Norfolk State Wednesday.
- Makenna Marisa recorded a double-double in each contest: 24 points and 11 rebounds against the Spartans and 14 points and 10 assists against the Stags.
- Leilani Kapinus notched 11 points, nine steals (one short of the school record) and eight boards in Friday's win.
- The Lady Lions have won the first two games in each of the last three seasons.
- The Lady Lions are in the fourth year of the Carolyn Kieger era.
- In her first three seasons, the win total has improved every year – seven in 2019-20, nine in 2020-21, to 11 in 2021-22.
- Under Kieger's guidance in the 2021-22 season, Penn State led the Big Ten in steals with 269 and improved in five other statistical categories, including field goal percentage, free throw percentage, field goal percentage defense, blocks per game and steals per game.
- The Lady Lions return four starters from last year – Makenna Marisa, Leilani Kapinus, Anna Camden and Ali Brigham.

LAST GAME STARTERS



#2 Shay Ciezki PPG RPG APG MPG
Sr. | F | 6-1 4.0 2.0 0.5 16.0



#5 Leilani Kapinus PPG RPG APG MPG
R-So. | G | 5-10 10.0 8.0 2.5 29.0



#11 Anna Camden PPG RPG APG MPG
Sr. | F | 6-3 3.0 2.0 0.5 22.0



#20 Mackenna Marisa PPG RPG APG MPG
Sr. | G | 5-11 19.0 7.5 7.0 36.5



#24 Alexa Williamson PPG RPG APG MPG
Gr. | F | 6-2 11.0 4.0 0.5 22.0

PENN STATE RESERVES

No.	Name	Pos.	Ht.	Cl.	PPG	RPG	APG	MPG
1	Ali Brigham	F	6-4	Jr.	2.0	2.0	1.0	8.5
10	Chanaya Pinto	F	5-10	Sr.	2.5	3.0	0.5	13.0
12	Kayla Thomas	F	6-3	So.	0.0	1.4	1.7	1.0
22	Ali Campbell	G	6-0	R-So.	6.5	0.5	0.5	15.5
23	Tanyiah Thompson*	G	5-11	Sr.	10.5	3.0	0.5	24.0
33	Johnasia Cash	F	6-3	Gr.	3.5	2.5	0.5	11.5

ONE OF THE TOP POINT GUARDS IN THE NATION

- Senior Makenna Marisa was one of 20 point guards selected to the Nancy Lieberman Award Watch List heading into the season and was named to the All-Big Ten Preseason Team by the coaches and media.
- Marisa is off to a stellar start this season, recording a double-double in each contest: 24 points and 11 rebounds against Norfolk State and 14 points and 10 assists against Fairfield.
- Through two games, she leads the team in scoring (19.0 ppg), free throws made (10) and assists (7.0 apg) in addition to two steals per game.
- As a junior, she was a consensus All-Big Ten First-Team pick by the coaches and media last year.
- She ranked second in the Big Ten and sixth in the country in scoring at 22.2 points per game, third-highest average by a Lady Lion in a single season.
- She scored double-digit points in all 29 games last season, one of only two Division I players to notch the feat, including 19 20-point games, 13 25-point games and five 30-point performances.
- Her 30-point games included a career-high 33 at Duquesne (12/18), 32 vs. Iowa (1/25) and at Michigan State (2/21), 31 at Purdue (2/9) and 30-point triple-double vs. Delaware State (11/16).
- She had four 20-point halves, coming against Delaware State (20, 1st), Maryland (24, 2nd), Purdue (25, 2nd) and Minnesota (20, 2nd).
- Marisa's 645 total points in the regular season ranked fourth in the Big Ten and 15th in the country and ninth in a season at Penn State.
- In conference games, including six against ranked opponents, she averaged 23.0 points per game, good for second in the conference.
- She also averaged 19.9 in seven games against ranked foes, also second in the Big Ten.
- She was 28th in the country in field goals made (224) and 29th in free throws made (138), while holding seventh in the Big Ten in assists per game (4.2) and total assists (123).
- The CoSIDA Academic All-American has 1,282 career points, ranking 23rd all-time at Penn State.
- She needs seven more to pass Carol Walderman (1980-83) for 22nd, 13 to pass Helen Darling (1996-00) for 21st and 14 to advance ahead of Kathy Phillips (1988-92) for 20th.
- In program history she also ranks fifth in career free throw percentage (83.3%) and 30-point games (five), ninth in career scoring average (15.1 ppg), tied for ninth in career double-digit assist games (three), 11th in career three-point field goals made (129) and 14th in career assists (326).

LOOKING FOR 1,000 POINTS

- Johnasia Cash is just five points away from 1,000 in her career.
- Cash has produced 336 combined from the 2020-21 and 2022-23 seasons as a Lady Lion for an average of 12.9 ppg.
- She produced 659 in her seasons at SMU.
- She would join teammates Makenna Marisa (1,282) and Taniyah Thompson (1,232) in the 1,000-point club.
- Thompson accomplished the feat in her three seasons at East Carolina.
- Among active career scoring leaders in Division I, Marisa ranks 100th and Thompson is 126th.

SOPHMORE CAMPAIGN FOR ALL-FRESHMAN KAPINUS

- After redshirting the 2019-20 season, Leilani Kapinus earned All-Big Ten Freshman-Team honors last years.
- Kapinus averaged 9.6 points and 5.7 rebounds per game, tallied 46 assists, 33 blocks and 59 steals, shot 43 percent from the floor and collected 16 double-figure games (two with 20+ points and three double-doubles)
- She was one of eight Division I players with 30+ blocks and 55+ steals.
- She ranked third in the Big Ten in blocks per game (1.14), third in the Big Ten in steals per game (2.03) and fourth in total steals (59)
- She led Big Ten freshmen in steals, sitting 13th among all Division I freshmen and held second among Big Ten freshmen in blocks, ranking 13th among all Division I freshmen.

EXPERIENCED NEW FACES

- Penn State has seven newcomers on the team with four players with Division I

PENN STATE QUICK FACTS

University Information

Location..... University Park, Pa.
 Founded..... 1855
 Enrollment (University Park campus)45,901
 ColorsBlue & White
 Nickname.....Lady Lions
 ConferenceBig Ten
 President Dr. Neeli Bendapudi
 VP for Intercollegiate Athletics Dr. Patrick Kraft
 Deputy AD/SWA (WBB Administrator)... Lynn Holleran
 Facility (cap.)Bryce Jordan Center (15,104)
 All-Time Record at BJC 281-111 (28 seasons)

Basketball Staff

Head Coach..... Carolyn Kieger (Marquette '06)
 Penn State Record: 29-56 (4th season)
 Career Record: 128-121 (8th season)
 Postseason Appearances - Three (3 NCAA)
 Assistant CoachTerri Williams (Penn State '91)
 Assistant Coach Sharnee Zoll-Norman (Virginia '08)
 Assistant CoachMaggie Lucas (Penn State '14)
 Director of Operations Pam Brown (Charlotte '06)
 Chief of StaffMaryLynne Schaefer (Hartford '06)
 Dir. of Video & AnalyticsEric Gracia (Texas-PA '13)
 Dir. of Player Development.....Natisha Heideman (Marquette '19)
 Graduate AssistantAmari Boyd (Penn State '19)
 Graduate Assistant ..Courtney Roman (Penn State '22)
 Athletic Trainer.....Claire Peters (Northern Arizona '11)
 Strength Coach..... Rhian Davis (Florida '08)

Program History

First Year of Women's Basketball 1965
 All-Time Record977-538 (59th season)
 All-Time Big Ten Record.....285-217 (31th season)
 NCAA Tournament App./Last25/2014
 NCAA Tournament Record32-25
 NCAA Regional App./Last 13/2014
 NCAA Final Four App./Last One/2000
 Big Ten Reg. Season Championships.....Eight
 Big Ten Tournament ChampionshipsTwo

Team Information

2021-22 Record 11-18
 Home7-6
 Away3-9
 Neutral1-3
 Big Ten Record (finish)5-13 (11)
 Home3-6
 Away2-7
 Letterwinners Returning/Lost5/6
 Starters Returning/Lost4/1
 Big Ten Tournament First Round
 Postseasonn/a

#UnleashThePRIDE

Women's Basketball Twitter.....@PennStateWBB
 Women's Basketball Instagram..... pennstateWBB
 Women's Basketball Facebook..... Penn State Lady
 Lion Basketball
 Penn State Athletics Twitter.....@GoPSUSports
 Penn State Athletics Website gopsusports.com
 Hashtags..... #UnleashThePRIDE
 #WeAre

GAME 3 | PENN STATE VS. YOUNGSTOWN STATE | November 15, 2022 | BRYCE JORDAN CENTER

- experience: Chaya Pinto (Oregon), Taniyah Thompson (East Carolina), Alexa Williamson (Temple) and Johnasia Cash (Penn State and SMU).
- Thompson was named the American Athletic Conference's Most Improved Player and all-conference first-team.
- She notched 1,189 points, 230 rebounds, 81 assists and 120 steals as a Pirate.
- Last year she averaged 18.5 points per game, ranking second in the AAC, and 4.3 rebounds per game, collected 36 assists and 43 steals and ranked in the conference in field goals made (199) and ranked eighth in free-throw percentage (78.4).
- She had 27 games scoring in double-figures, including 12 games with 20+ points and a career-high 31 points against UNC Wilmington
- Williamson was a three-year starter and four-year letterwinner for the Owls.
- She collected 788 points, 504 rebounds and 92 blocks while shooting 44.5 percent from the floor.
- Pinto played all 30 games for the Ducks last year and tallied 86 points, 73 rebounds, 19 assists and 18 steals, while averaging 11.4 minutes per game.
- Prior to Oregon, she led Northwest Florida State College to its first ever NJCAA Women's Basketball National Championship as a sophomore and earned second-team All-America honors.
- Cash returns to the Lady Lions after sitting out last season.
- In 2020-21, she was named all-Big Ten Second-Team (media) after averaging 13.7 points per game and a team-best 8.8 rebounds per game while shooting 47.1 percent from the field.
- She ranked in the league third in rebounds per game (8.8), fourth in double-doubles (10) and eighth in blocks (26).

NONCONFERENCE HOME WINNING STREAK

- Penn State is currently on a 11-game non-conference home winning streak, tied for the fifth-longest in program history (12/12/15-3/19/17 and 1/24/78-1/6/79).
- The streak began Dec. 3, 2019 with a 78-73 win over Pitt in the Big Ten/ACC Challenge and had one more win that season, 88-65 over Sacred Heart.
- The Lady Lions racked up three-straight of these victories in the 2020-21 season: 84-65 over Coppin State, 87-54 against Saint Francis (Pa.) and 70-69 over Rhode Island.
- Penn State went 4-4 last year in Bryce Jordan Center: 85-66 over LIU, 83-69 against Rider, 120-51 versus Rider and 78-58 over Youngstown State.
- A win against Youngstown State would tie for the fourth-longest streak, done once (12/0/91-2/16/93).

THE OPPOSITION

Scouting Youngstown State

- Opened its season last Monday with a 81-72 at home against Wofford.
- Senior forward Lilly Ritz, a Preseason All-Horizon League First-Team selection, posted 27 points and 20 rebounds in the victory, which was the only 20-20 game in the country last week.
- The Horizon League preseason favorite, the Penguins return five members from last year's regular season conference championship squad that started at least 20 games.

Against The Penguins

- Penn State has won all four meetings against Youngstown State.
- The Lady Lions defeated the Penguins 78-58 last year on Dec. 12.

BY THE NUMBERS

	Penn State	Youngstown St.
Scoring Offense	72	81.0
Scoring Defense	55.0	72.0
Field Goal Pct.	45.5	45.8
Field Goal Pct. Defense	37.8	33.3
Free Throw Pct.	72.1	63.6
3FG Made Per Game	5.5	6.0
3FG Pct.	29.7	23.1
3FG Pct. Defense	28.6	30.0
Rebounding	38.5	42.0
Rebounding Allowed	31.0	34.0
Assists	14.0	17.0
Turnovers	22.5	11.0
Assist/Turnover Ratio	0.6	1.5
Steals	12.0	2.0

INSIDE THE SERIES

Overall:		4-0
Last Meeting:		12/12/21
Current Streak:		4
At Home:		4-0
Away:		0-0
Neutral Site:		0-0
Last Five Meetings:		
3/16/96	H	W, 94-71
3/17/00	H	W, 83-63
12/8/15	H	W, 68-51
12/12/21	H	W, 78-58

Marisa Climbing Points List

- On a fourth quarter layup against Iowa, junior guard Makenna Marisa reached the 1,000 career point mark.
- She became the 40th Lady Lion to score 1,000 career points.
- Marisa is the 21st Penn State player to reach 1,000 points before the end of their junior season.
- Marisa is one of six Big Ten underclassmen with 1,000 career points.
- She currently sits at 1,229 career points, 27th all-time at Penn State, in 82 career games.
- Marisa also reached the 600-point mark for the season at Ohio State (2/24), becoming the sixth Lady Lion (10 occasions) to accomplish the feat.
- With 630 points this season, Marisa ranks ninth at Penn State.

Hagans Forcing Takeaways

- Junior guard Shay Hagans has been a force on the defensive end this season.
- She ranks sixth in the Big Ten in steals per game (1.79) and fifth in total steals (50).
- Hagans has recorded at least one steal in 24 games and has multiple steals in 15 games.
- The junior notched a career-high six steals against Youngstown State. She also recorded five steals against Delaware State and four in each game against Illinois and Wisconsin.

Multiple Contributors

- Penn State has six players averaging at least 6.2 points this season, led by Marisa's 22.5 average.
- Leilani Kapinus, owning two 20-point games, is averaging 9.4, while Ali Brigham is averaging 8.6 and reached the 20-point mark in two games.
- Shay Hagans is averaging 6.6 points per contest, Niya Beverley is averaging 6.5 and Anna Camden is averaging 6.2.
- Penn State has also balanced out its minutes with nine players averaging at least 14.3 minutes per game.

Record-Setting Night Vs. Delaware State

- Penn State achieved multiple records and milestones in its Delaware State game.
- The Lady Lions set a record for their most points in a game with 120, topping the previous record of 118, accomplished three times, last against Morgan state in 1993.
- The 120 points are the third-most by a Big Ten team.
- Penn State matched the program record for made field goals with 50, tying 50 vs. Morgan State in 1993.
- The 50 field goals are tied for the third-most in Big Ten history.
- The Lady Lions tallied a program-record 37 assists, which also matched the Big Ten record set by Maryland in 2017 (vs. Loyola (Md.)).
- Penn State's 25 steals are the most in a game at the Bryce Jordan Center and are tied for eighth-most by a Big Ten team.
- The Lady Lions reached the 100-point mark for the 50th time in program history and had five players in double-figures (Makenna Marisa 30, Niya Beverley 17, Tova Sabel 17, Anna Camden 14, Shay Hagans 12).
- The Lady Lions scored 56 points in the first half and 64 in the second half.
- Penn State finished the game shooting 56.2 percent and was above 50 percent in each quarter.
- Marisa recorded a triple-double in Penn State's 120-51 win over Delaware State on November 16, notching 30 points, on 12-of-16 shooting, 11 assists and 10 steals against the Hornets. Her points, assists and steals totals were all career highs.
- Marisa's triple-double was Penn State's first since Suzie McConnell on January 3, 1988 (22 points, 13 rebounds, 10 assists in a 74-63 win vs. Western Kentucky).
- Marisa's triple-double is the 25th Points-Assists-Steals triple-double and 20th 30-point triple-double in NCAA Division I history. It's also the third 30-point triple-double and second Points-Assists-Steals triple-double in Big Ten history.
- Marisa was named Co-Big Ten Player of the Week on November 22. It was Marisa's first career Big Ten weekly honor.

MEDIA INFORMATION**KIEGER AVAILABILITY**

All interview requests for head coach Carolyn Kieger should be directed to Corey Blucas (kvb5992@psu.edu) in the Strategic Communications Office. Coach Kieger will hold weekly press conferences during the season. A schedule is available by contacting the Strategic Communications Office. Coach Kieger will not be available on game day prior to tip-off. Postgame press conferences will be held after each game, home and away.

PLAYER INTERVIEWS

All student-athlete interviews must be arranged through Corey Blucas at least 72 hours in advance. Interviews will not be granted on game day prior to tip-off. Player phone numbers will not be released. Following games, requested Penn State student-athletes will be available in the BJC Green Room after home games. The Penn State locker room is closed.

CREDENTIALS

Single game press credentials are issued to accredited members of the working media only. Requests for credentials should be directed to Corey Blucas at least one week in advance of each game. Press credentials can be picked up at Media Will Call, which is located at the Media/Team entrance, on the south side of the Bryce Jordan Center, across from the Panzer Lacrosse Stadium.

PHOTOGRAPHERS

A photo pass must be issued to gain access courtside in the Bryce Jordan Center. Please contact Corey Blucas one week in advance for photo passes. Courtside photographers must follow NCAA guidelines.

RADIO NETWORKS

The Penn State Sports Network originates from the first row of Booth C23 in the press area. Visiting radio stations are located on the first row of Booth C21 in the press area. Visiting radio is provided Ethernet, POTS and ISDN connections.

PRESS ROW SEATING

The press seating area is located atop section 122 and 123 of the Bryce Jordan Center. Please allow several minutes when taking the elevator to the press room or media seating areas.

GAME NOTES

Game notes will be provided at least 24 hours in advance of each game. Penn State, Big Ten and opposing team game notes will be available in the Media Central Box folder. If you would like to receive game notes via email, please contact Corey Blucas in the Strategic Communications office.

NATIONAL POLLS

AP TOP 25 (Week 1)

Rank	Team	Record	Pts.	Prev.
1.	South Carolina (30)	2-0	750	1
2.	Stanford	4-0	716	2
3.	Texas	1-0	660	3
4.	Iowa	3-0	637	3
5.	UConn	1-0	614	6
6.	Louisville	3-0	580	7
7.	Iowa State	2-0	543	8
8.	Ohio State	2-0	509	14
9.	Notre Dame	2-0	493	9
10.	NC State	3-0	478	10
11.	Tennessee	1-1	441	5
12.	Indiana	2-0	415	11
13.	North Carolina	2-0	401	12
14.	Virginia Tech	2-0	365	13
15.	LSU	3-0	336	16
16.	Oklahoma	20	316	15
17.	Baylor	2-0	275	18
18.	Arizona	2-0	243	19
19.	Maryland	2-1	219	17
20.	Creighton	2-0	187	21
21.	Oregon	2-0	180	20
22.	Nebraska	2-0	91	22
23.	Michigan	2-0	73	25
24.	Villanova	2-0	60	NR
25.	Utah	3-0	40	NR

Others receiving votes: UCLA 31, South Dakota State 15, Kansas 13, Miami (FL) 11, Belmont 7, Gonzaga 5, Ole Miss 5, South Florida 4, Princeton 4, DePaul 4, Georgia 4, Florida 3, Kansas State 3, Duke 2, Drake 2, Washington State 2, Alabama 2, UCF 1

COACHES POLL (PRESEASON)

Rank	Team	Record	Pts.	Prev.
1.	South Carolina (30)	35-2	798	-
2.	Stanford (1)	28-3	762	-
3.	Texas	26-6	703	-
4.	Tennessee	23-8	655	-
5.	Louisville	25-4	642	-
T6	Iowa	23-7	614	-
T6	UConn	25-5	614	-
8.	NC State	29-3	530	-
9.	Iowa State	26-6	521	-
10.	Notre Dame	22-8	492	-
11.	Indiana	22-8	457	-
12.	North Carolina	23-6	428	-
13.	Virginia Tech	23-9	398	-
14.	LSU	25-5	360	-
15.	Ohio State	23-6	341	-
16.	Oklahoma	24-8	318	-
17.	Baylor	27-6	309	-
18.	Maryland	21-8	303	-
19.	Arizona	20-7	233	-
20.	Oregon	20-12	181	-
21.	Creighton	23-10	153	-
22.	Nebraska	24-9	100	-
23.	Michigan	22-6	88	-
24.	South Dakota State	29-9	85	-
25.	Princeton	24-4	66	-

Others receiving votes: Florida Gulf Coast (30-3) 28; Texas A&M (14-15) 23; Utah (21-12) 20; Brigham Young (26-4) 19; UCLA (18-13) 18; South Dakota (29-6) 16; Oregon State (17-14) 14; Kansas (21-10) 13; Kentucky (19-12) 13; UCF (26-4) 10; Yale (16-11) 10; Belmont (23-8) 9; Villanova (24-9) 9; USF (24-9) 8; Arkansas (18-14) 7; USC (12-16) 5; Houston (18-16) 4; San Diego State (15-16) 4; Georgia (21-10) 3; Mississippi (23-9) 3; North Dakota State (11-18) 3; DePaul (22-11) 2; Gonzaga (27-7) 2; Miami (Fla.) (21-13) 2; San Jose State (5-25) 2; Massachusetts (22-7) 1; SMU (14-15) 1.

MISCELLANEOUS STATISTICS

Games Led Penn State in Scoring*	
Marisa.....	1
Williamson.....	1
Games Led Penn State in Rebounds*	
Kapinus.....	1
Marisa.....	1
Games Led Penn State in Assists*	
Marisa.....	2
Games Double-Figure Scoring	
Marisa.....	2
Campbell.....	1
Kapinus.....	1
Thompson.....	1
Williamson.....	1
Games With 20 or more Points	
Marisa.....	1
Games With 30 or more Points	
Games With 10 or more Rebounds	
Marisa.....	1
Games With 5 or more Assists	
Marisa.....	1
Games With 10 or more Assists	
Marisa.....	1
Games With 5 or more Steals	
Kapinus.....	1
Double-Doubles	
Marisa.....	2
Triple-Doubles	

* - includes tied for the team lead

PENN STATE WHEN...

LADY LIONS...

Played at home	2-0
Played on the road	0-0
Played at a neutral location	0-0
vs. Top 10 teams	0-0
vs. Top 25 teams	0-0
Games decided by 3 points or less	0-0
Games decided by 4-10 points	1-0
Games decided by 11-19 points	0-0
Games decided by 20 points or more	1-0
Led at the half	2-0
Trailed at the half	0-0
Was tied at the half	0-0
Went to overtime	0-0
Went to double overtime	0-0
Scored 90 or more points	0-0
Scored 80-89 points	0-0
Scored 70-79 points	1-0
Scored 60-69 points	1-0
Scored 50-59 points	0-0
Scored fewer than 50 points	0-0
Allowed 90 or more points	0-0
Allowed 80-89	0-0
Allowed 70-79	0-0
Allowed 60-69	1-0
Allowed 50-59	1-0
Allowed fewer than 50 points	0-0
Shot 50% or more	1-0
Shot 40-49%	0-0
Shot 30-39%	1-0
Shot under 30%	0-0
Allowed 50% or more	0-0
Allowed 40-49%	0-0
Allowed 30-39%	2-0
Allowed under 30%	0-0
Shot better from the field	2-0
Shot same/worse from the field	0-0
Shot better from the FT line	2-0
Shot same/worse from the FT line	0-0
Outrebounded opponents	2-0
Was outrebounded	0-0
Tied opponent in rebounding	0-0
Committed fewer turnovers	1-0
Committed more turnovers	1-0
Turnovers are even	0-0
Committed 15 or more turnovers	2-0
Committed 14 or less turnovers	0-0
Records 7 or more steals	2-0
Records 6 or less steals	0-0
PSU wins the tip	2-0
Opponent wins the tip	0-0

By Time		
Day Game (before 5 p.m. local)	0-0	
Night Game	0-0	2-0
By Month		
November	0-0	2-0
By Day		
Sunday	0-0	0-0
Monday	0-0	0-0
Tuesday	0-0	0-0
Wednesday	1-0	1-0
Thursday	0-0	0-0
Friday	1-0	1-0
Saturday	0-0	0-0
Vs. The Conferences		
MAAC	1-0	
MEAC	1-0	

**BIG TEN STANDINGS
(as of 11/13/22)**

	Big Ten		Overall	
	W-L	Pct.	W-L	Pct.
Iowa	0-0	.000	3-0	1.000
Michigan St.	0-0	.000	3-0	1.000
Illinois	0-0	.000	2-0	1.000
Indiana	0-0	.000	2-0	1.000
Michigan	0-0	.000	2-0	1.000
Minnesota	0-0	.000	2-0	1.000
Nebraska	0-0	.000	2-0	1.000
Ohio State	0-0	.000	2-0	1.000
Penn State	0-0	.000	2-0	1.000
Purdue	0-0	.000	0-0	.000
Maryland	0-0	.000	2-1	.667
Rutgers	0-0	.000	2-1	.667
Wisconsin	0-0	.000	2-1	.667
Northwestern	0-0	.000	1-1	.500



This Week Around the BIG

Monday 11/14

Indiana at Tennessee6 p.m.

Tuesday 11/15

Youngstown State at Penn State7 p.m.

Nebraska at Creighton7 p.m.

Oakland at Michigan State7 p.m.

Wednesday 11/16

Davidson at Maryland11 a.m.

McNeese State at Illinois12 p.m.

Western Michigan at Michigan7 p.m.

North Carolina Central at Rutgers7 p.m.

Bradley at Wisconsin7:30 p.m.

Notre Dame at Northwestern9 p.m.

BIG Media Services

Big Ten Weekly Release/Statistics

The Big Ten Conference women's basketball release, with standings and statistics, is available at www.bigten.org.

Big Ten Player of the Week

The Big Ten Conference announced Players of the Week every Monday during the regular season.

Big Ten Tournament

The 2022 Big Ten Women's Basketball Tournament is scheduled for March 2-6 at Bankers Life Fieldhouse in Indianapolis, Ind. For media credential information, contact the Big Ten Conference office at (847) 696-1010 ext. 146.

GAME 3 | PENN STATE VS. YOUNGSTOWN STATE | November 15, 2022 | BRYCE JORDAN CENTER

THE LAST TIME...

SCORING

Player scored 20 points: Makenna Marisa (24); Norfolk State, 11/9/22
 Player scored 25 points: Makenna Marisa (28); Minnesota, 2/27/22
 Player scored 30 points: Makenna Marisa (32); at Michigan State, 2/21/22
 Player scored 35 points: Kamaria McDaniel (35); at Purdue, 1/26/20
 Player scored 40 points: Kamaria McDaniel (40); Pittsburgh, 12/5/19
 Two players w/ 20 points: Ali Brigham (23), Niya Beverley (20), Makenna Marisa (20); Rider, 11/11/21
 Three players w/ 20 points: Ali Brigham (23), Niya Beverley (20), Makenna Marisa (20); Rider, 11/11/21
 Two players w/ 25 points: Kamaria McDaniel (27) & Siyeh Frazier (25); at Michigan State, 3/1/20
 Player scored 25 points/3 consecutive games: Makenna Marisa
 27, Nebraska, 2/3/22; 25, Northwestern, 2/6/22; 31, at Purdue, 2/9/22

Five in double figures: Delaware State, 11/16/21
 Makenna Marisa (30), Niya Beverley (17), Tova Sabel (17), Anna Camden (14), Shay Hagans (12)
 Six in double figures: at Oakland, 11/18/10
 Alex Bentley (15), Ariel Edwards (16), Zhaque Gray (16), Maggie Lucas (13), Mia Nickson (10), Gizelle Studevent (10), Julia Trogele (10)

Seven in double figures: at Oakland, 11/18/10
 Alex Bentley (15), Ariel Edwards (16), Zhaque Gray (16), Maggie Lucas (13), Mia Nickson (10), Gizelle Studevent (10), Julia Trogele (10)

PSU scored 50 points in a half: 55 (2nd); Minnesota, 2/27/22
 PSU scored 55 points in a half: 55 (2nd); Minnesota, 2/27/22
 PSU scored 60 points in a half: 64 (2nd); Delaware State, 11/16/21
 PSU scored 50 points in both halves: 56 (1st)/64 (2nd); Delaware State, 11/16/21
 PSU scored 55 points in both halves: 56 (1st)/64 (2nd); Delaware State, 11/16/21
 PSU scored fewer than 20 points in a half: 19 (2nd); at Indiana, 12/6/21
 PSU scored fewer than 15 points in a half: 11 (1st & 2nd); at Rutgers, 3/2/22

PSU scored 100 points: 120; Delaware State, 11/16/21
 PSU scored 100 points in Big Ten game: 101; Illinois, 1/25/01
 PSU scored 100 points in a home game: 120; Delaware State, 11/16/21
 PSU scored 90 points: 90; Illinois, 1/16/22
 PSU scored fewer than 50 points in a game: 40; at Indiana, 12/6/21
 PSU scored fewer than 50 points in a Big Ten game: 39; at Rutgers, 2/6/20
 PSU scored fewer than 40 points in a game: 39; at Rutgers, 2/6/20

OPP scored 50 points in a half: 56 (2nd); Minnesota, 2/27/22
 OPP scored 100 points: 107; Iowa, 1/25/22
 OPP scored 100 points in Big Ten game: 107; Iowa, 1/25/22
 OPP scored fewer than 50 points in a game: 48; Rutgers, 12/9/21
 OPP scored fewer than 50 points in a Big Ten game: 48; Rutgers, 12/9/21
 OPP scored 40 or fewer points in a game: 40; Wisconsin, 1/17/13
 OPP scored 30 or fewer points in a game: 28; Virginia Tech, 12/6/11
 OPP scored 20 or fewer points in a game: 16; at Fairleigh Dickinson, 3/6/71

FIELD GOAL SHOOTING

Player made every shot from the field (min. 7): Amanda Brown (8-8); Michigan State, 1/25/07
PSU shot 50% or better in a game: .525; Fairfield, 11/11/22
 PSU shot 55% or better in a game: .592; Maryland, 1/30/22
 PSU shot 50% or better in consecutive games: .562 vs. Delaware State, 11/16/21 & .532 vs. Rider, 11/11/21
 PSU shot 55% or better in consecutive games: .682 vs. Northwestern, 3/2/96 & .585 vs. Ohio State, 3/3/96
 PSU shot 60% in a game: .611; Illinois, 2/20/13
 PSU shot below 30% in a game: .292; #24 Cal, 11/11/18
 PSU shot below 25% in a game: .237; at Rutgers, 3/2/22
 PSU shot below 35% in a game and won: .333; at Towson, 11/5/19
 PSU shot below 30% in a game and won: .288; Wake Forest, 11/30/17
 PSU shot 70% in a half: .714 (2nd); Virginia Tech, 12/6/11
 PSU shot 65% in a half: .654 (2nd); Maryland, 1/30/22
 PSU shot 60% in a half: .654 (2nd); Maryland, 1/30/22
PSU shot 55% in a half: .563 (2nd); Fairfield, 11/1/22
 PSU shot 55% in both halves: .556 (1st) & .576 (2nd); Saint Francis, 11/30/20
 PSU shot below 25% in a half: .217 (1st); Rutgers, 2/28/21
 PSU shot below 20% in a half: .186 (2nd); at Rutgers, 3/2/22

THREE-POINT SHOOTING

Player made every shot from the field (min. 4): Anna Camden (4-4); Fordham, 11/13/19
 Player made 5 three-pointers in a game: Makenna Marisa (5); vs. Delaware State, 11/16/21
 Player made 6 three-pointers in a game: Maddie Burke (6); vs. Michigan State, 3/10/21
 Player made 7 three-pointers in a game: Maddie Burke (7); Maryland, 12/31/20
 Player made 8 three-pointers in a game: Maggie Lucas (8); at Nebraska, 3/3/13
 Player made 4 three-pointers in a half: Maddie Burke (4, 2nd); Illinois, 1/16/22
 Player made 5 three-pointers in a half: Maddie Burke (5, 1st); at Iowa, 2/18/21
 Player made 6 three-pointers in a half: Jaida Travascio-Green (6, 2nd); Drexel, 11/12/17
 Player attempted 10 three-pointers in a game: Makenna Marisa (11); at Duquesne, 12/18/21
 PSU made 10 three-pointers: 12; Nebraska, 2/17/22
 PSU did not make a three-pointer: at Maryland (0-5), 2/23/15
 PSU attempted 20 three-pointers: 23; at Rutgers, 3/2/22
 PSU attempted 25 three-pointers: 25; Norfolk State, 11/9/22

PSU attempted 30 three-pointers: 30; Nebraska, 2/17/22
 PSU shot 60% 3FG (min. 5 att.): .636 (7-11); at Northwestern, 2/17/16

FREE THROW SHOOTING

Player made every shot from FT line (min. 10): Makenna Marisa (10-10); at Northwestern, 1/20/22
 PSU shot 100% (min. 10 att.): 1.000 (14-14); at Northwestern, 1/20/22
 PSU shot below 50% (min. 10 att.): .462 (6-13); at Rutgers, 3/2/21
 PSU made 30 free throws: 37; Saint Francis, 11/8/13
 PSU made fewer than five FTs: 0; at Indiana, 12/6/21
 PSU attempted 40 free throws: 40; Pittsburgh, 12/5/19
 PSU attempted fewer than five FTs: 0; at Indiana, 12/6/21

REBOUNDS

Player had 15 rebounds: Johnasia Cash (19); Nebraska, 2/4/21
 Player had 20 rebounds: Nikki Greene (20); at Cal State Northridge, 11/24/12
 Two players w/ 10-plus rebounds: at Syracuse, 12/6/20; Makenna Marisa (11) & Johnasia Cash (10)
 Three players w/ 10-plus rebounds: Northwestern, 12/31/15; Candice Agee (13), Peyton Whitted (13), Kaliyah Mitchell (11)
 PSU had 60 rebounds: 62; Northwestern, 12/31/15
 PSU had 50 rebounds: 50; Nebraska, 2/4/21
 PSU had 20 or fewer rebounds: 18; Michigan State, 1/27/22
 PSU had 25 offensive rebounds: 25; at Iowa, 2/18/21
 PSU had 20 offensive rebounds: 20; Delaware State, 11/16/21
 OPP had 20 or fewer rebounds: 20; at Indiana, 2/13/11

BLOCKED SHOTS

Player blocked 5 shots: Anna Camden (7); at Michigan State, 2/21/22
 Player blocked 6 shots: Anna Camden (7); at Michigan State, 2/21/22
 Player blocked 7 shots: Anna Camden (7); at Michigan State, 2/21/22
 PSU blocked 10 or more shots: 10, vs. Youngstown State, 12/13/21
 PSU blocked 0 shots: at Minnesota, 1/10/21

ASSISTS

Player had 10 assists: Makenna Marisa (10); Fairfield, 11/11/22
 Player had 15 assists: Alex Bentley (15); North Carolina, 11/30/11
 Player had 10 assists/consecutive games: Helen Darling
 at LaSalle, 12/8/99 (12), vs. Auburn, 12/11/99 (11), vs. Clemson, 12/19/99 (10)
 PSU had 20 assists: 20; at Boston College, 12/2/21
 PSU had 25 assists: 37; Delaware State, 11/16/21
 PSU had 30 assists: 37; Delaware State, 11/16/21
 PSU had fewer than 10 assists: 8; at Rutgers, 3/2/22
 PSU had fewer than 5 assists: 4; at St. Bonaventure, 12/12/15

STEALS

Player had 7 steals: Leilani Kapinus (9); Fairfield, 11/11/22
 Player had 10 steals: Makenna Marisa (10); Delaware State, 11/16/21
 PSU had 20 steals: 25; Delaware State, 11/16/21

TURNOVERS

PSU committed 20 or more: 23; Norfolk State, 11/9/22
 PSU committed 30 or more: 38; Rutgers, 1/10/15
PSU committed 20 or more and won: 23; Norfolk State, 11/9/22
 PSU committed 10 or fewer: 10; at Rutgers, 3/2/22
 PSU committed 5 or fewer: 3; Wisconsin, 2/7/21
 PSU committed 10 or fewer in consecutive games: at Illinois (10), 1/28/21; at Purdue (9), 1/31/21, Nebraska (9), 2/4/21, Wisconsin (3), 2/7/21
 PSU committed 10 or fewer in three-straight games: at Illinois (10), 1/28/21; at Purdue (9), 1/31/21, Nebraska (9), 2/4/21, Wisconsin (3), 2/7/21
 PSU committed 10 or fewer in four-straight games: at Illinois (10), 1/28/21; at Purdue (9), 1/31/21, Nebraska (9), 2/4/21, Wisconsin (3), 2/7/21
OPP committed 25 or more: 27; Fairfield, 11/11/22

THE LAST TIME...

DOUBLE-DOUBLES

Points & rebounds: Makenna Marisa (24 p, 11 r); Norfolk State, 11/9/22
 Points & rebounds/consecutive games: Johnasia Cash
 Minnesota 1/25/21 (22 p, 15 r); at Illinois, 1/28/21 (14 p, 10 r); at Purdue, 1/31/21 (28 p, 12 r);
 Nebraska, 2/4/21 (27 p, 19 r)
 Points & rebounds/3 consecutive games: Johnasia Cash
 Minnesota 1/25/21 (22 p, 15 r); at Illinois, 1/28/21 (14 p, 10 r); at Purdue, 1/31/21 (28 p, 12 r);
 Nebraska, 2/4/21 (27 p, 19 r)
 Points & rebounds/4 consecutive games: Johnasia Cash
 Minnesota 1/25/21 (22 p, 15 r); at Illinois, 1/28/21 (14 p, 10 r); at Purdue, 1/31/21 (28 p, 12 r);
 Nebraska, 2/4/21 (27 p, 19 r)
 Points & rebounds/5 consecutive games: Angie Potthoff
 vs. Northwestern, 1/31/97; at Illinois, 2/2/97; Michigan, 2/7/97; Indiana, 2/9/97; Iowa, 2/16/97;
 Michigan State, 2/21/97

DOUBLE-DOUBLES CONT'D

Points & assists: Makenna Marisa (14 p, 10 a); Fairfield, 11/11/22
 Points & assists/consecutive games: Helen Darling
 at La Salle, 12/8/99 (12 p, 12 a), vs. Auburn, 12/11/99 (10 p, 11 a)
 Points & Steals: Makenna Marisa (30 p, 11 a, 10 s); Delaware State, 11/16/21
 Two players had double-doubles: Coppin State, 11/25/20
 Anna Camden (13 p, 10 r) & Kelly Jekot (11 p, 11 r)
 Three players had double-doubles: Ohio State, 2/20/12
 Nikki Greene (25 p, 15 r), Mia Nickson (18 p, 15 r), Maggie Lucas (12 p, 10 r)
 15 points & 15 rebounds: Johnasia Cash (22 p, 16 r); Minnesota, 1/25/21
 20 points and 10 rebounds: Leilani Kapinus (23 p, 12 r); at Rutgers, 2/13/21
 Triple-Double: Makenna Marisa (30 p, 11 a, 10 s); Delaware State, 11/16/21
 Triple-Double with Steals: Makenna Marisa (30 p, 11 a, 10 s); Delaware State, 11/16/21
 Triple-Double with 30+ points: Makenna Marisa (30 p, 11 a, 10 s); Delaware State, 11/16/21

MARGIN OF VICTORY

PSU won by 20-30 points: Fairfield (28), 11/11/22
 PSU won by 31-40 points: Delaware State (69), 11/16/21
 PSU won by 41-50 points: Delaware State (69), 11/16/21
 PSU won by 51+ points: Delaware State (69), 11/16/21
 PSU won by 20-29 points in a Big Ten game: Wisconsin (24), 2/7/21
 PSU won by 30-39 points in a Big Ten game: Wisconsin (30), 1/16/17
 PSU won by 40+ points in a Big Ten game: Wisconsin (44), 1/17/13
 PSU won consecutive Big Ten games by 20+ pts.:
 Wisconsin (44), 1/17/13; Nebraska (22), 1/13/13; at Michigan State (21), 1/6/13
 PSU lost by 20-29 points: at Ohio State (23), 2/24/22
 PSU lost by 30+ points: at Indiana (30), 12/6/21
 PSU lost by 20-29 points in a Big Ten game: at Ohio State (23), 2/24/22
 PSU lost by 30+ points in a Big Ten game: at Indiana (30), 12/6/21

MISCELLANEOUS

Led PSU in points/rebounds/assists: Makenna Marisa (24 p, 11 r, 4 a); Norfolk State, 11/9/22
 Scored game-winning points w/ less than 10 seconds: Makenna Marisa; Rhode Island, 12/3/20
 Down 69-68; Hit layup at the buzzer
 Hit game-winning field goal w/ less than 10 seconds: Makenna Marisa; Rhode Island, 12/3/20
 Down 69-68; Hit layup at the buzzer
 Player played every minute: Makenna Marisa (40); at Northwestern, 1/20/22
 Player played more than 40 minutes: Teniya Page (42); Ohio State, 1/17/19
 Player scored 20+ points in a half: Makenna Marisa (20); Minnesota, 2/27/22
 Committed 10 or fewer fouls: Maryland (9), 1/30/22
 Committed 30 or more fouls: at Indiana (33), 12/31/18
 PSU rallied from a 10-pt. deficit to win: Nebraska, 2/17/22
 Down 13 at 7:25 in 4th quarter -- won 83-76
 Providence, 11/8/18
 PSU rallied from a 15-pt. deficit to win: Down 15 at 2:30 in 3rd quarter -- won 74-72
 Northwestern; 2/6/22
 OPP rallied from a 10-pt. deficit to beat PSU: PSU led by 10 at 9:48 in 2nd quarter -- Northwestern won, 78-72
 OPP rallied from a 15-pt. deficit to beat PSU: George Mason, 11/24/19
 PSU led by 15 at 8:29 in 3rd quarter -- George Mason won, 78-68
 PSU had a 5-game winning streak: 11/10/17-11/20/17 (Five Games)
 PSU had a 10-game winning streak: 12/9/12 - 1/27/13 (11 Games)
 PSU had a 5-game losing streak: 1/23/22-2/13/22 (8 Games)
 PSU went undefeated at home: 14-0; 2012-13 season
 PSU sold out the BJC: Purdue, 2/29/04

2022-23 Penn State Women's Basketball Roster

No.	Name	Class	Pos.	Ht.	Hometown	High School (Previous School)
0	Ivane Tensaie	So.	G	5-7	Roseville, Minn.	Concordia Academy (North Dakota School of Science)
1	Ali Brigham	Jr.	F	6-4	Franklin, Mass.	Franklin
2	Aicha Dia	Fr.	F	6-1	Montreal, Quebec, Canada	Dawson College
3	Ymke Brouwer	R-Fr.	G	6-0	Zurich, Switzerland	United School of Sports
4	Shay Ciezki	Fr.	G	5-7	Lancaster, N.Y.	St. Mary's
5	Leilani Kapinus	R-So.	G	5-10	Madison, Wis.	James Madison Memorial
10	Chanaya Pinto	Sr.	F	6-1	Maputo, Mozambique	Escola Secundaria De Carcavelos (Oregon/Northwest Florida State College)
11	Anna Camden	Sr.	F	6-3	Downingtown, Pa.	The Shipley School
12	Kayla Thomas	So.	F	6-3	Beltsville, Md.	Emerge Christian Academy
20	Makenna Marisa	Sr.	G	5-11	McMurray, Pa.	Peters Township
22	Alli Campbell	R-So.	G	6-0	Altoona, Pa.	Bellwood-Antis (Notre Dame)
23	Taniyah Thompson	Sr.	G	5-11	Hamden, Conn.	Hamden (East Carolina)
24	Alexa Williamson	Gr.	F	6-2	Houston, Pa.	Chartiers-Houston (Temple)
33	Johnasia Cash	Gr.	F	6-3	McKeesport, Pa.	McKeesport (SMU)

Head Coach: Carolyn Kieger (Marquette '06), 4th season

Assistant Coaches: Terri Williams (Penn State '91), Sharnee Zoll-Norman (Virginia '08), Maggie Lucas (Penn State '14), 1st season

Director of Basketball Operations: Pam Brown (Charlotte '06), 4th season

Chief of Staff: MaryLynne Schaefer (Hartford '09), 4th season

Director of Video and Analytics: Eric Gracia (Texas-Pan American, '13), 2nd season

Director of Player Development: Natisha Heideman (Marquette '19), 1st season

Graduate Assistants: Amari Boyd (Penn State '19), 2nd season, Courtney Roman (Penn State '22), 1st season

Athletic Trainer: Claire Peters (Northern Arizona '11), 2nd season

Performance Enhancement Coach: Rhian Davis (Florida '08), 4th season

PRONUNCIATIONS

Ymke Brouwer	em-kay
Johnasia Cash	John-asia
Shay Ciezki	Shay Ches-kee
Aicha Dia	Eye-sha Dee-uh
Leilani Kapinus	Lay-lon-ee
Makenna Marisa	ma-REE-suh
Chanaya Pinto	Sha-Ni-Uh Pin-to
Taniyah Thompson	Tah-ni-uh Thompson

Coaches

Carolyn Kieger

KEY-grr



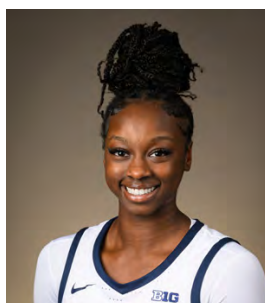
0 | IVANE TENSAIE

G | So. | 5-7
Roseville, Minn.



1 | ALI BRIGHAM

F | Jr. | 6-4
Franklin, Mass.



2 | AICHA DIA

F | Fr. | 6-1
Montreal, Quebec, Canada



3 | YMKE BROUWER

F | R-Fr. | 6-0
Zurich, Switzerland



4 | SHAY CIEZKI

G | Fr. | 5-7
Lancaster, N.Y.



5 | LEILANI KAPINUS

G | R-So. | 5-10
Madison, Wis.



10 | CHANAYA PINITO

G | Sr. | 6-1
Maputo, Mozambique



11 | ANNA CAMDEN

F | Sr. | 6-3
Downingtown, Pa.



12 | KAYLA THOMAS

F | So. | 6-3
Beltsville, Md.



20 | MAKENNA MARISA

G | Sr. | 5-11
McMurray, Pa.



22 | ALLI CAMPBELL

G | R-So. | 5-11
Altoona, Pa.



23 | TANIYAH THOMPSON

G | Sr. | 5-11
Hamden, Conn.



24 | ALEXA WILLIAMSON

F | Gr. | 6-2
Houston, Pa.



33 | JOHNASIA CASH

F | Gr. | 6-3
McKeesport, Pa.



CAROLYN KIEGER

Assistant Coach
Fourth Season
Marquette '06



TERRI WILLIAMS

Assistant Coach
First Season
Penn State '91



SHARNEE ZOLL-NORMAN

Assistant Coach
First Season
Virginia '08



MAGGIE LUCAS

Assistant Coach
Third Season
Penn State '14

HEAD COACH CAROLYN KIEGER

Second Season • Marquette '06

Overall Career Record: 126-121

Penn State Record: 27-56

Carolyn Kieger (pronounced KEY-grr) enters her fourth season at the helm of the Lady Lions for the 2022-23 season. Former Penn State and Vice President of Athletics Sandy Barbour announced the selection of Kieger as the sixth head coach of the women's basketball program on April 3, 2019.

In her first three seasons, the win total has improved every year – seven in 2019-20, nine in 2020-21, to 11 in 2021-22.

Under Kieger's guidance in the 2021-22 season, Penn State led the Big Ten in steals with 269 and improved in five other statistical categories, including field goal percentage, free throw percentage, field goal percentage defense, blocks per game and steals per game.

Kieger also helped coach Makenna Marisa to her first consensus first-team All-Big Ten selection. Marisa became the 40th Lady Lion to pass the 1,000-point career mark after averaging 22.2 points per game, eighth in the nation. Along with Marisa, Leilani Kapinus was named to the conference All-Freshman team after finishing first in steals, second in rebounds per game and blocks, and third in points per game.

In Kieger's second season in Happy Valley, she mentored three Nittany Lions to All-Big Ten honors. Freshman Maddie Burke was the consensus pick for the Big Ten Sixth Player of the Year and the All-Freshman team by the coaches and media. Burke was a unanimous selection All-Freshman team by the coaches and was Penn State's first selection to the All-Freshman Team since 2016.

Burke became the second Penn State player to earn Big Ten Sixth Player of the Year honors in program history. Along with Burke, Johnasia Cash earned Second Team All-Big Ten honors by the media and Honorable Mention All-Big Ten honors by the conference coaches. Makenna Marisa earned Honorable Mention All-Big Ten honors by the coaches and media.

Under Kieger's direction, the Lady Lions improved in nearly every offensive category from year one to year two. The youngest team in the Big Ten and ninth-youngest in the country in 2020-21, the Lady Lions increased their offensive output in points per game, assists per game, three-point field goal percentage, three-point field goals made per game and field goal percentage.

The Lady Lions battled 10 ranked teams, the most among Big Ten teams, during the 2020-21 season. Kieger led the Lady Lions to its first win over an AP ranked Top-15 team since 2016 with a 69-67 victory over No. 15 Ohio State on February 24.

In her first season leading the Lady Lions, Kieger coached Kamaria McDaniel to a First Team All-Big Ten selection as the conference's second-leading scorer with an average of 19.8 points per game, also a top-15 mark in the nation (13). She also developed an aggressive up-tempo offense whose speed got the Lady Lions to the charity stripe 553 times during the 2019-20 season.

Kieger, a 2006 Marquette graduate, came to Happy Valley after five years at the helm of her alma mater, posting a 99-64 overall record. During the past three seasons, Kieger led the Golden Eagles to sparkling 76-26 mark (43-11 in Big East), which included a pair of Big East regular-season championships and a Big East Tournament Championship. Marquette made three consecutive NCAA Tournament appearances for the first time in 20 years, advancing to the round of 32 the past two seasons.

Widely regarded as one of the nation's brightest and rising coaching stars, Kieger's first



Marquette team in 2014-15 won nine games. She proceeded to lead the Golden Eagles to 14, 25, 24 and a program-record 27 victories over the next four seasons.

Kieger was named a semifinalist for the 2019 Naismith Women's Coach of the Year Award after leading the Golden Eagles to one of the best seasons in program history in 2018-19. Marquette captured its second consecutive, but first-ever outright Big East regular-season title and posted a school-best 27-8 record. The Golden Eagles were ranked in every Associated Press poll of the season for the first time in school history.

Marquette earned its third-straight NCAA Tournament berth in 2018-19, advancing to the second round for the second consecutive year. The Golden Eagles garnered a No. 5 seed and defeated Rice before dropping a two-point decision at No. 4 seed Texas A&M in the second round. The three consecutive NCAA Tournament appearances were Marquette's first since a three-year run from 1997-99.

Kieger mentored Allazia Blockton and Natisha Hiedeman to become Marquette's first Big East Players of the Year in 2017-18 and 2018-19, respectively. Kieger coached nine All-Big East selections in the last three seasons.

The 2017-18 campaign was another banner year as Kieger was named Big East Co-Coach of the Year after guiding the Golden Eagles to a program-record 15-3 conference mark and their first Big East regular season title. Kieger earned her first NCAA Tournament coaching victory with a first-round win over Dayton before falling at No. 1 seed Louisville.

Kieger coached Marquette to new heights in 2016-17 as the Golden Eagles won the Big East Tournament title for the first time in program history, while also earning a program-best No. 5 seed in the NCAA Tournament. She directed MU to the Big Dance for the first time since 2011. Kieger led Marquette to a 25-8 record in 2016-17, finishing with a 6-0 mark against teams ranked in the Top 25.

In her second year at the helm of the Golden Eagles, Kieger had the youngest program in NCAA Division I with eight freshmen on the roster in 2015-16, as MU improved its win total by five games. She made her collegiate head coaching debut on Nov. 15, 2014 against Green Bay and earned her first career victory on Nov. 17, 2014 when Marquette defeated Loyola-Chicago.

Prior to being named head coach at her alma mater, Kieger spent six seasons as an assistant coach at the University of Miami from 2008-14. Following graduation, she was at Miami as the coordinator of basketball operations (2006-07) and then served as director of operations at Marquette in 2007-08.

Kieger returned to Miami as an assistant coach in 2008-09 and was primarily responsible for guard development with the Hurricanes. She helped advance the skills of Miami guard Shenise Johnson, who earned All-America and ACC Player of the Year honors in 2010-11, while the squad was crowned ACC regular-season champions. She also helped guard Riquna Williams earn All-ACC first team accolades and finish as the ACC scoring leader with 21.7 points per game. Miami made three NCAA Tournament appearances and two in the WNIT during Kieger's last five seasons with the Hurricanes.

Kieger was a four-year starter at Marquette, a three-year captain and is MU's all-time assists leader. She is the only player in program history with at least 1,200 career points, 400 career rebounds and 600 assists. Kieger averaged 10.3 points per game during her career and was a second-team All-Big East selection in 2005-06, as well as, a second-team All-Conference USA selection for the 2003-04 and 2004-05 seasons.

During her senior campaign, Kieger was a finalist for the Nancy Lieberman Award, presented to the nation's top point guard. In addition to her athletic accomplishments, Kieger received the Big East Conference's Sportsmanship award as a senior.

A native of Roseville, Minnesota, Kieger graduated Cum Laude from Marquette with a bachelor's degree in broadcasting and electronic communications in 2006. She received the McCahill Award in 2007, presented to a graduated MU senior student-athlete who demonstrated the highest performance in scholarship, leadership and athletics.

THE KIEGER FILE

BORN: Roseville, Minn.

UNDERGRADUATE: Marquette, 2006 - Bachelor's degree in broadcasting and electronic communications

PLAYING CAREER: Marquette's all-time assists leader. Only player in Marquette history with at least 1,200 career points, 400 career rebounds and 600 assists. Three-time All-Conference pick who averaged 10.3 points per game over her career.

NAMED PENN STATE HEAD COACH: April 3, 2019

COACHING CAREER:

Penn State, 2019-present - Head Coach

Marquette, 2014-19 - Head Coach

Miami, 2008-14 - Assistant Coach

Marquette, 2007-08 - Director of Operations

Miami, 2006-07 - Coordinator of Basketball Operations

HEAD COACHING CAREER RECORD:

Year	School	Record	Postseason
2014-15	Marquette	9-23	--
2015-16	Marquette	14-16	--
2016-17	Marquette	25-8	NCAA First Round
2017-18	Marquette	24-10	NCAA Second Round
2018-19	Marquette	27-8	NCAA Second Round
2019-20	Penn State	7-23	--
2020-21	Penn State	9-15	--
2021-22	Penn State	11-18	--
2022-23	Penn State	2-0	--
Totals	Overall: 128-121		Penn State: 29-56

MILESTONE WINS

First career win as head coach: Nov. 17, 2014 - Marquette's 86-71 win over Loyola Chicago

First win at Penn State: Nov. 5, 2019 - 73-67 at Towson

100th career head coaching victory: Nov. 5, 2019 - 73-67 at Towson

First Big Ten win: Jan. 9, 2020 - 86-73 over Michigan State

First win vs. Top 25 opponent at Penn State: Feb. 24, 2021 - 69-67 win vs. #15 Ohio State

GAME 3 | PENN STATE VS. YOUNGSTOWN STATE | November 15, 2022 | BRYCE JORDAN CENTER

GAME 1: NORFOLK STATE

Official Basketball Box Score - Final
Norfolk St. at Penn St.
 11/09/22 Bryce Jordan Center, State College
 2022-23 Women's Basketball

Game Time: 7:00 PM
 Game Duration: 3:28
 Attendance: 1,777

Officials: Felicia Girler, Ashlee Goodie, Brad Maxey

Norfolk St. - 61		Record: 1-1														
NO. Name	Min	FG M/A	3P M/A	FT M/A	Rebounds OR DR TOT	Fouls PF FD	TP	AS	TO	ST	Blocks BS BA	±/∓	Shooting By Period			
10 Mahogany Williams	12:21	0-1	0-0	0-0	1 1 2	3 0 0	0	0	1	0	0	0	-40	1st FG%	3-11	27.3%
50 Kierra Wheeler	26:25	3-5	0-0	1-5	3 7 10	2 4 7	0	0	2	0	0	0	-14	3PT%	1-6	16.7%
1 Deja Francis	32:54	3-8	1-3	6-7	0 4 4	3 5 13	1	8	2	0	0	0	-13	FT%	1-3	33.3%
2 Nya Fields	24:09	3-7	1-5	0-0	0 1 1	4 0 7	3	1	1	0	0	0	-7	2nd FG%	6-19	31.6%
5 Camille Downs	26:10	4-13	2-5	0-0	1 5 6	5 2 10	4	6	6	0	1	0	0	3PT%	0-7	0.0%
0 Crystal White	22:42	4-8	3-7	0-0	1 0 1	1 0 11	2	0	0	0	0	0	4	FT%	2-3	66.7%
12 Makoye Diawara	27:11	4-7	1-3	0-0	4 4 8	4 2 9	1	1	1	0	0	0	7	3rd FG%	7-16	43.8%
13 Skye Robinson	11:01	1-1	0-0	0-0	1 1 2	1 2 0	0	0	1	0	0	0	1	3PT%	6-7	85.7%
24 Danajah Williams	13:51	1-6	0-2	0-0	0 0 0	0 0 0	2	0	0	0	0	0	4	FT%	1-2	50%
3 Alana Swift	03:16	0-2	0-0	0-0	0 0 0	0 0 0	0	1	0	0	0	0	-2	4th FG%	1-2	50%
Team					3 4 4	0 0 0	0	2						GMFG%	23-58	39.7%
Totals	23:58	8-25	7-12	12 24 36	24 14	61	12	22	11	0	2	-6		3PT%	8-25	32.0%

Technical Fouls: NONE
 Dead Ball Rebounds: 1, 0
 FT% 7-12 58.3%

GAME 2: FAIRFIELD

Official Basketball Box Score - Final
Fairfield at Penn St.
 11/11/22 Bryce Jordan Center, State College
 2022-23 Women's Basketball

Game Time: 7:00 PM
 Game Duration: 1:51
 Attendance: 1,959

Officials: Brian Gardan, Kate Entering, Kyle Galway



Fairfield - 49		Record: 1-1														
NO. Name	Min	FG M/A	3P M/A	FT M/A	Rebounds OR DR TOT	Fouls PF FD	TP	AS	TO	ST	Blocks BS BA	±/∓	Shooting By Period			
23 Callie Cavanaugh	30:41	6-10	0-0	1-2	3 0 3	3 3 13	2	3	1	0	1	-23	1st FG%	4-11	36.4%	
41 Andrea Hernandez	30:39	1-5	0-0	0-0	2 4 6	3 2 2	0	2	1	0	0	-15	3PT%	0-4	0.0%	
2 Mimi Rubino	34:26	0-10	0-4	2-4	1 2 3	0 3 2	4	3	1	0	0	-22	FT%	0-1	0%	
3 Janelle Brown	16:06	3-7	2-5	0-0	0 2 2	4 2 8	2	6	4	0	0	-16	2nd FG%	5-15	33.3%	
10 Izabela Nicoletti-Leite	28:44	5-12	1-6	3-4	2 3 5	3 3 14	3	5	1	1	0	-18	3PT%	2-4	50.0%	
15 Lauren Beach	28:34	2-4	1-2	0-1	1 1 1	1 1 5	1	2	0	0	0	-29	FT%	1-2	50%	
42 Mackenzie Martin	10:28	2-3	0-0	0-0	1 0 1	1 3 4	0	2	0	0	0	-19	3rd FG%	6-14	42.9%	
11 Anna Eng	07:27	0-0	0-0	0-0	0 1 1	0 1 0	0	0	0	0	0	-5	3PT%	2-6	33.3%	
33 Brooke Tatarian	03:34	0-0	0-0	0-0	0 0 0	0 0 0	0	0	0	0	0	0	2	FT%	4-6	66.7%
34 Dayra Tirado	03:16	0-0	0-0	0-0	0 0 0	0 0 0	0	0	0	0	0	0	2	4th FG%	4-13	30.8%
22 Jocelyn Potansky	02:40	0-1	0-0	0-0	0 0 0	0 0 0	0	0	0	0	0	0	2	3PT%	0-3	0.0%
25 Mackenzie Daleba	02:40	0-1	0-0	1-4	1 1 2	1 2 1	0	0	0	0	0	0	-1	FT%	2-6	33.3%
12 Kate Peek	00:45	0-0	0-0	0-0	0 0 0	0 0 0	0	0	0	0	0	0	1	GMFG%	19-53	35.8%
Team					2 0 2	0 0 0	0	1						3PT%	4-17	23.5%
Totals	19:53	4-17	7-15	12 14 26	16 20	49	12	27	9	1	1	-28		FT%	7-15	46.7%

Technical Fouls: NONE
 Dead Ball Rebounds: 7, 1

Penn St. - 67		Record: 1-0														
NO. Name	Min	FG M/A	3P M/A	FT M/A	Rebounds OR DR TOT	Fouls PF FD	TP	AS	TO	ST	Blocks BS BA	±/∓	Shooting By Period			
11 Anna Camden	25:40	2-9	2-9	0-2	2 0 2	3 1 6	1	3	0	1	0	4	1st FG%	4-9	44.4%	
24 Alexa Williamson	22:02	3-6	0-0	0-0	2 5 7	2 0 6	0	1	0	0	0	4	3PT%	3-6	50.0%	
5 Lelani Kapinus	30:46	1-4	1-3	6-6	3 5 8	3 7 9	3	6	1	0	0	9	FT%	2-4	50%	
20 Makenna Marisa	39:02	8-16	2-4	6-8	3 8 11	2 7 24	4	4	1	1	0	4	2nd FG%	4-16	25.0%	
23 Taniyah Thompson	28:58	5-11	2-6	3-3	0 2 2	0 3 15	1	2	3	0	0	2	3PT%	1-9	11.1%	
10 Chanaya Pinto	16:18	0-3	0-2	3-6	1 3 4	2 4 3	0	5	0	0	0	3	FT%	6-6	100%	
22 Ali Campbell	11:47	0-2	0-1	0-0	0 0 0	0 0 0	0	0	0	0	0	-1	3rd FG%	8-15	53.3%	
33 Johnasia Cash	14:18	-1-1	0-0	-1-2	2 0 2	1 1 3	0	1	1	0	0	6	3PT%	2-7	28.6%	
4 Shay Ciezki	08:08	0-1	0-0	-1-2	0 0 0	1 1 1	1	1	0	1	0	-1	FT%	6-11	54.5%	
1 Ali Brigham	03:01	0-0	0-0	0-0	1 0 1	0 0 0	0	0	0	0	0	0	7	4th FG%	4-13	30.8%
Team					1 4 5	0 1 0	0	1						3PT%	1-3	33.3%
Totals	20:53	7-25	20-29	15 27 42	14 24	67	10	23	7	2	0	6		GMFG%	20-53	37.7%

Technical Fouls: NONE
 Dead Ball Rebounds: 3, 0
 FT% 20-29 69.0%

Penn St. - 77		Record: 2-0														
NO. Name	Min	FG M/A	3P M/A	FT M/A	Rebounds OR DR TOT	Fouls PF FD	TP	AS	TO	ST	Blocks BS BA	±/∓	Shooting By Period			
11 Anna Camden	18:59	0-1	0-0	0-0	1 1 2	1 0 0	0	2	1	0	0	16	1st FG%	8-14	57.1%	
24 Alexa Williamson	21:07	7-10	0-0	2-3	1 1 2	3 3 16	1	2	0	0	0	15	3PT%	1-3	33.3%	
4 Shay Ciezki	31:00	1-7	0-0	2 2 4	2 0 0	7 0 2	2	2	0	0	0	2	FT%	4-4	100%	
5 Lelani Kapinus	28:18	5-8	0-0	1-1	2 6 8	1 2 11	2	3	9	1	0	29	2nd FG%	5-13	38.5%	
20 Makenna Marisa	33:39	5-10	0-0	4-5	1 3 4	2 5 14	10	5	3	0	1	32	3PT%	1-3	33.3%	
23 Taniyah Thompson	18:57	2-5	0-0	2-2	1 3 4	3 1 6	0	2	1	0	0	8	FT%	1-2	50%	
33 Johnasia Cash	08:38	2-2	0-0	0-1	0 3 3	3 2 4	1	0	1	0	0	8	3rd FG%	9-17	52.9%	
22 Ali Campbell	19:13	5-7	3-5	0-0	0 1 1	1 1 13	1	1	0	0	0	22	3PT%	0-3	0.0%	
1 Ali Brigham	13:57	2-4	0-0	0-0	2 1 3	4 1 4	2	2	0	0	0	9	FT%	2-4	50%	
10 Chanaya Pinto	10:05	0-1	0-0	2-2	0 2 0	1 2 1	2	0	0	0	0	5	4th FG%	9-15	60.0%	
2 Alcha Dia	02:00	0-1	0-0	0-0	1 0 1	0 0 0	0	0	0	0	0	-1	3PT%	2-3	66.7%	
12 Kayla Thomas	01:31	0-0	0-0	0-0	0 0 0	0 0 0	0	0	0	0	0	-1	FT%	4-4	100%	
0 Ivane Tensale	01:21	0-0	0-0	0-0	0 0 0	0 0 0	0	0	0	0	0	-1	GMFG%	31-59	52.5%	
Team					0 2 2	0 0 0	0	1						3PT%	4-12	33.3%
Totals	31:59	4-12	11-14	13 22 35	20 16	77	18	22	17	1	1	28		FT%	11-14	78.6%

Technical Fouls: NONE
 Dead Ball Rebounds: 3, 1

	NSU	PSU
Biggest lead	0 (1 st 10:00)	12 (3 rd 0:47)
Best Scoring Run	8 (4 th 1:43)	9 (1 st 7:08)
Lead Changes	0	
Times Tied	0	
Time with Lead	00:00	39:13

	NSU	PSU
Points from	NSU	PSU
Turnovers	16	17
Paint	26	20
Second Chance	12	21
Fast Breaks	9	5
Bench	24	7

	Period by Period Scoring				
	1st	2nd	3rd	4th	TOT
NSU	8	14	21	18	61
PSU	13	15	24	15	67

	FF	PSU
Biggest lead	0 (1 st 10:00)	30 (4 th 3:36)
Best Scoring Run	7 (2 nd 2:56)	15 (4 th 4:23)
Lead Changes	0	
Times Tied	0	
Time with Lead	00:00	39:46

	FF	PSU
Points from	FF	PSU
Turnovers	9	33
Paint	20	48
Second Chance	7	11
Fast Breaks	7	18
Bench	10	29

	Period by Period Scoring				
	1st	2nd	3rd	4th	TOT
FF	8	13	18	10	49
PSU	21	12	20	24	77

GAME 3 | PENN STATE VS. YOUNGSTOWN STATE | November 15, 2022 | BRYCE JORDAN CENTER

NCAA Statistics

Penn St. - 2022-23 Women's Basketball Ranking Summary thru games 11/11/2022

Statistic	National Rank	Conference Rank	Value	National Leader	Value	Conference Leader	Value
Assist/Turnover Ratio (345 ranked)	241	14	0.62	Murray St. UC Irvine	5.20 5.20	Nebraska	2.76
Assists Per Game (345 ranked)	154	12	14.0	Grand Canyon Hampton	30.0 30.0	Michigan	24.0
Blocks Per Game (329 ranked)	274	14	1.5	Campbell	11.0	Illinois	6.0
Field Goal Percentage (345 ranked)	107	8	45.5	Jacksonville St.	60.3	Iowa	58.4
Field Goal Percentage Defense (345 ranked)	159	10	37.8	UNC Asheville	16.7	Illinois	23.7
Fouls Per Game (345 ranked)	136	10	17.0	DePaul	6.0	Michigan St.	11.5
Free Throw Attempts Per Game (345 ranked)	109	5	21.50	Northern Ky.	53.00	Ohio St.	31.00
Free Throw Percentage (344 ranked)	132	5	72.1	Pittsburgh Green Bay American	100.0 100.0 100.0	Michigan	83.3
Free Throws Made Per Game (343 ranked)	94	4	15.50	LSU	31.50	Iowa	18.50
Rebound Margin (345 ranked)	117	8	7.5	San Diego	34.0	Iowa	28.5
Rebounds (Defensive) Per Game (25 ranked)				Northern Ky.	44.0	Minnesota	42.0
Rebounds (Offensive) Per Game (23 ranked)				FIU	33.0	Illinois	21.0
Rebounds Per Game (345 ranked)	173	9	38.50	FIU	69.00	Minnesota	54.00
Scoring Defense (345 ranked)	97	8	55.0	UNC Asheville	25.0	Michigan	33.0
Scoring Margin (345 ranked)	118	8	17.0	Hampton	84.0	Michigan	54.0
Scoring Offense (345 ranked)	143	10	72.0	LSU	118.0	Iowa	101.0
Steals Per Game (344 ranked)	71	6	12.0	Hampton	32.0	Ohio St.	16.0
Three Point Attempts Per Game (148 ranked)	121	8	37.0	Stanford	81.0	Michigan	63.0
Three Point Percentage (345 ranked)	182	9	29.7	Mercer	66.7	Maryland	42.9
Three Point Percentage Defense (343 ranked)	164	7	28.6	Robert Morris	5.0	Illinois	13.0
Three Pointers Per Game (340 ranked)	193	10	5.5	Jacksonville	17.5	Nebraska	12.0
Turnover Margin (345 ranked)	164	9	2.00	Hampton	35.00	Michigan	18.50
Turnovers Forced Per Game (345 ranked)	43	4	24.50	Hampton	48.00	Michigan	30.00
Turnovers Per Game (345 ranked)	304	14	22.5	Murray St. UC Irvine	5.0 5.0	Nebraska	8.5
Winning Percentage (246 ranked)	1	1	100.0	159 teams tied	100.0	10 teams tied	100.0

GAME 3 | PENN STATE VS. YOUNGSTOWN STATE | November 15, 2022 | BRYCE JORDAN CENTER

Statistic	Player	National Rank	Conference Rank	Value	National Leader	Value	Conference Leader	Value
Assist/Turnover Ratio (221 ranked)					Jireh Washington, UT Arlington	11.00	Greta Kampschroeder, Michigan	8.00
Assists (150 ranked)	Makenna Marisa	14	2	14	Taina Mair, Boston College	21	Jaz Shelley, Nebraska	18
Assists Per Game (166 ranked)	Makenna Marisa	21	4	7.0	Kennedy Taylor, Texas St.	12.0	Jeanae Terry, Purdue	10.0
Blocks (85 ranked)					Cameron Brink, Stanford	12	Alyssa Crockett, Michigan Caitlyn Harper, Purdue Laila Phelia, Michigan	4 4 4
Blocks Per Game (171 ranked)					Christabel Ezumah, Campbell Taylor Jones, Texas	5.00 5.00	Caitlyn Harper, Purdue	4.00
Double Doubles (15 ranked)	Makenna Marisa	1	1	2	14 players tied	2	Makenna Marisa, Penn St.	2
Field Goal Attempts (147 ranked)	Makenna Marisa	97	2	26	Ta'Niya Latson, Florida St.	46	Abby Meyers, Maryland	36
Field Goal Percentage (248 ranked)	Alexa Williamson	117	16	62.5	Kamaria Gipson, UT Arlington Rhyle McKinney, Texas Tech Taylor Thierry, Ohio St.	100.0 100.0 100.0	Taylor Thierry, Ohio St.	100.0
Field Goals (149 ranked)	Makenna Marisa	77	7	13	Ta'Niya Latson, Florida St.	23	Laila Phelia, Michigan Allison Weidner, Nebraska	17 17
Free Throw Attempts (141 ranked)	Makenna Marisa	53	2	13	Lindsey Duvall, Northern Ky.	27	Caitlin Clark, Iowa	16
Free Throw Percentage (205 ranked)	Leilani Kapinus Tanyiah Thompson	1 1	1 1	100.0 100.0	110 players tied	100.0	4 players tied	100.0
Free Throws (107 ranked)	Makenna Marisa	57	2	10	Jewel Spear, Wake Forest	18	Caitlin Clark, Iowa	13
Minutes Per Game (150 ranked)	Makenna Marisa	80	7	36.35	Lindsey Duvall, Northern Ky.	51.52	Jacy Sheldon, Ohio St.	39.15
Points (177 ranked)	Makenna Marisa	54	6	38	Ta'Niya Latson, Florida St.	62	Caitlin Clark, Iowa	46
Points Per Game (232 ranked)	Makenna Marisa	109	8	19.0	Domonique Davis, Southern Miss. Lindsey Duvall, Northern Ky.	36.0 36.0	Taylor Mikesell, Ohio St.	25.0
Rebounds (142 ranked)	Leilani Kapinus Makenna Marisa	107 142	3 7	16 15	Lex Therien, Loyola Maryland Dani Winslow, Kansas City	33 33	Awa Sidibe, Rutgers	19
Rebounds (Defensive) Per Game (28 ranked)					Malia Fisher, Rice	16.0	Alanna Micheaux, Minnesota	10.0
Rebounds (Offensive) Per Game (30 ranked)					Asia Broughton, Southern Miss. DeAnna Wilson, Illinois St.	10.0 10.0	Brynn Shoup-Hill, Illinois	6.0
Rebounds Per Game (192 ranked)	Leilani Kapinus	192	7	8.0	Malia Fisher, Rice Lilly Ritz, Youngstown St.	20.0 20.0	Alanna Micheaux, Minnesota	13.0
Steals (111 ranked)	Leilani Kapinus	6	1	10	Asiah Dingle, Fordham	15	Leilani Kapinus, Penn St.	10
Steals Per Game (117 ranked)	Leilani Kapinus	29	2	5.00	Victoria Mason, Hampton Aarion Nichols, San Jose St. Jacy Sheldon, Ohio St.	8.00 8.00 8.00	Jacy Sheldon, Ohio St.	8.00
Three Point Attempts (121 ranked)					Isabella Mauricio, Brown	26	Greta Kampschroeder, Michigan	16
Three Point Percentage (249 ranked)					22 players tied	100.0	Laila Phelia, Michigan	77.8
Three Pointers (128 ranked)					Brittany Davis, Alabama	12	Abby Meyers, Maryland Laila Phelia, Michigan	7 7
Three Pointers Per Game (209 ranked)					Mary Crompton, Illinois St. Shy Tuelle, Campbell	7.00 7.00	Katie Borowicz, Minnesota Taylor Mikesell, Ohio St.	4.00 4.00
Triple Doubles (1 ranked)					Megan McConnell, Duquesne	1		



**2022-23 Penn St. Women's Basketball
Combined Team Statistics
All games**

Game Records

Record	Overall	Home	Away	Neutral
ALL GAMES	2-0	2-0	0-0	0-0
CONFERENCE	0-0	0-0	0-0	0-0
NON-CONFERENCE	2-0	2-0	0-0	0-0

Score by Periods

Team	1st	2nd	3rd	4th	OT	TOT
Penn St.	34	27	44	39	0	144
Opponents	16	27	39	28	0	110

Team Box Score

No.	Player	Total					3-Point		F-Throw		Rebounds				Other							
		GP-GS	MIN	AVG	FG-FGA	FG%	3FG-3FGA	3FG%	FT-FTA	FT%	OFF	DEF	TOT	AVG	PF	DQ	A	TO	BLK	STL	PTS	AVG
20	MARISA, Makenna	2-2	72:41	36.3	13-26	.500	2-4	.500	10-13	.769	4	11	15	7.5	4	0	14	9	1	4	38	19.0
24	WILLIAMSON, Alexa	2-2	43:10	21.6	10-16	.625	0-0	.000	2-3	.667	3	5	8	4.0	4	0	1	3	0	0	22	11.0
23	THOMPSON, Taniyah	2-1	47:56	24.0	7-16	.438	2-6	.333	5-5	1.000	1	5	6	3.0	3	0	1	4	0	4	21	10.5
5	KAPINUS, Leilani	2-2	59:04	29.5	6-12	.500	1-3	.333	7-7	1.000	5	11	16	8.0	4	0	5	9	1	10	20	10.0
22	CAMPBELL, Alli	2-0	30:60	15.5	5-9	.556	3-6	.500	0-0	.000	0	1	1	0.5	1	0	1	1	0	0	13	6.5
4	CIEZKI, Shay	2-1	30:23	15.2	3-11	.273	1-7	.143	1-2	.500	2	2	4	2.0	3	0	1	2	0	3	8	4.0
33	CASH, Johnasia	2-0	22:56	11.5	3-3	1.000	0-0	.000	1-3	.333	2	3	5	2.5	4	0	1	1	0	2	7	3.5
11	CAMDEN, Anna	2-2	44:39	22.3	2-10	.200	2-9	.222	0-2	.000	3	1	4	2.0	4	0	1	5	1	1	6	3.0
10	PINTO, Chanaya	2-0	26:23	13.2	0-4	.000	0-2	.000	5-8	.625	3	3	6	3.0	2	0	1	7	0	0	5	2.5
1	BRIGHAM, Ali	2-0	16:58	8.5	2-4	.500	0-0	.000	0-0	.000	3	1	4	2.0	4	0	2	2	0	0	4	2.0
2	DIA, Aicha	1-0	02:00	2.0	0-1	.000	0-0	.000	0-0	.000	1	0	1	1.0	0	0	0	0	0	0	0	0.0
12	THOMAS, Kayla	1-0	01:31	1.5	0-0	.000	0-0	.000	0-0	.000	0	0	0	0.0	1	0	0	0	0	0	0	0.0
0	TENSAIE, Ivane	1-0	01:21	1.4	0-0	.000	0-0	.000	0-0	.000	0	0	0	0.0	0	0	0	0	0	0	0	0.0
Team											1	6	7				2					
Total		2	400		51-112	.455	11-37	.297	31-43	.721	28	49	77	38.5	34	0	28	45	3	24	144	72.0
Opponents		2	400		42-111	.378	12-42	.286	14-27	.519	24	38	62	31.0	40	1	24	49	1	20	110	55.0

Team Statistics

	PSU	OPP
Scoring	144	110
Points per game	72.0	55.0
Scoring margin	+17.0	-
Field goals-att	51-112	42-111
Field goal pct	.455	.378
3 point fg-att	11-37	12-42
3-point FG pct	.297	.286
3-pt FG made per game	5.5	6.0
Free throws-att	31-43	14-27
Free throw pct	.721	.519
F-Throws made per game	15.5	7.0
Rebounds	77	62
Rebounds per game	38.5	31.0
Rebounding margin	+7.5	-
Assists	28	24
Assists per game	14.0	12.0
Turnovers	45	49
Turnovers per game	22.5	24.5
Turnover margin	+2.0	-
Assist/turnover ratio	0.6	0.5
Steals	24	20
Steals per game	12.0	10.0
Blocks	3	1
Blocks per game	1.5	0.5
Winning streak	2	-
Home win streak	2	-
Attendance	3736	0
Home games-Avg/Game	2-1868	0-0
Neutral site-Avg/Game	-	0-0

Team Results

Date	Opponent		Score	Att.
11/09/2022	Norfolk St.	W	67-61	1777
11/11/2022	Fairfield	W	77-49	1959



**2022-23 Penn St. Women's Basketball
Season Schedule/Results & Leaders
All games**

Game Records

Record	Overall	Home	Away	Neutral
ALL GAMES	2-0	2-0	0-0	0-0
CONFERENCE	0-0	0-0	0-0	0-0
NON-CONFERENCE	2-0	2-0	0-0	0-0

Team Results

Date	Opponent		Score	Att.	High Points	High Rebounds
11/09/2022	Norfolk St.	W	67-61	1777	(24) MARISA, Makenna	(11) MARISA, Makenna
11/11/2022	Fairfield	W	77-49	1959	(16) WILLIAMSON, Alexa	(8) KAPINUS, Leilani

Attendance Summary

	Games	Attend	Avg/Game
Home	2	3736	1868
Away	0	0	0
Neutral	0	0	0
Total	2	3736	1868



**2022-23 Penn St. Women's Basketball
Team Game-by-Game
All games**

Page 1/1
as of Nov 12, 2022

Opponent	Date	Score	W	Total		3-Pointers		Free throws		Rebounds				PF	A	TO	BLK	STL	PTS	AVG
				FG-FGA	PCT	3FG-3FGA	PCT	FT-FTA	PCT	OFF	DEF	TOT	AVG							
Norfolk St.	11/09/2022	67-61	W	20-53	.377	7-25	.280	20-29	.690	15	27	42	42.0	14	10	23	2	7	67	67.0
Fairfield	11/11/2022	77-49	W	31-59	.525	4-12	.333	11-14	.786	13	22	35	38.5	20	18	22	1	17	77	72.0
Total		144		51-112	.455	11-37	.297	31-43	.721	28	49	77	38.5	34	28	45	3	24	144	72.0
Opponents		110		42-111	.378	12-42	.286	14-27	.519	24	38	62	31.0	40	24	49	1	20	110	55.0

Penn St. Averages

Games Played	Points/game	FG Pct	3FG Pct	FT Pct	Rebounds/game	Assists/game	Turnovers/game	Assist/Turnover ratio	Steals/game	Blocks/game
2	72.0	45.5	29.7	72.1	38.5	14.0	22.5	0.6	12.0	1.5



**2022-23 Penn St. Women's Basketball
Team High/Low Analysis
All games**

Penn St. - Game Highs

POINTS	77		Fairfield (11/11/2022)
	67		Norfolk St. (11/09/2022)
FIELD GOALS MADE	31		Fairfield (11/11/2022)
	20		Norfolk St. (11/09/2022)
FIELD GOAL ATTEMPTS	59		Fairfield (11/11/2022)
	53		Norfolk St. (11/09/2022)
FIELD GOAL PERCENTAGE	.525	(31-59)	Fairfield (11/11/2022)
	.377	(20-53)	Norfolk St. (11/09/2022)
3 PT FG MADE	7		Norfolk St. (11/09/2022)
	4		Fairfield (11/11/2022)
3 PT FG ATTEMPTS	25		Norfolk St. (11/09/2022)
	12		Fairfield (11/11/2022)
3 PT FG PERCENTAGE	.333	(4-12)	Fairfield (11/11/2022)
	.280	(7-25)	Norfolk St. (11/09/2022)
FREE THROWS MADE	20		Norfolk St. (11/09/2022)
	11		Fairfield (11/11/2022)
FREE THROW ATTEMPTS	29		Norfolk St. (11/09/2022)
	14		Fairfield (11/11/2022)
FREE THROW PERCENTAGE	.786	(11-14)	Fairfield (11/11/2022)
	.690	(20-29)	Norfolk St. (11/09/2022)
REBOUNDS	42		Norfolk St. (11/09/2022)
	35		Fairfield (11/11/2022)
ASSISTS	18		Fairfield (11/11/2022)
	10		Norfolk St. (11/09/2022)
STEALS	17		Fairfield (11/11/2022)
	7		Norfolk St. (11/09/2022)
BLOCKED SHOTS	2		Norfolk St. (11/09/2022)
	1		Fairfield (11/11/2022)
TURNOVERS	23		Norfolk St. (11/09/2022)
	22		Fairfield (11/11/2022)
FOULS	20		Fairfield (11/11/2022)
	14		Norfolk St. (11/09/2022)



**2022-23 Penn St. Women's Basketball
Player Highs Analysis
All games**

Penn St. - Individual Game Highs

POINTS	24		Makenna Marisa vs Norfolk St. (11/09/2022)
	16		Alexa Williamson vs Fairfield (11/11/2022)
	15		Taniyah Thompson vs Norfolk St. (11/09/2022)
	14		Makenna Marisa vs Fairfield (11/11/2022)
	13		Alli Campbell vs Fairfield (11/11/2022)
FIELD GOALS MADE	8		Makenna Marisa vs Norfolk St. (11/09/2022)
	7		Alexa Williamson vs Fairfield (11/11/2022)
FIELD GOAL ATTEMPTS	16		Makenna Marisa vs Norfolk St. (11/09/2022)
	11		Taniyah Thompson vs Norfolk St. (11/09/2022)
FIELD GOAL PERCENTAGE (min 5 made)	.714	(5-7)	Alli Campbell vs Fairfield (11/11/2022)
	.700	(7-10)	Alexa Williamson vs Fairfield (11/11/2022)
3 PT FG MADE	3		Alli Campbell vs Fairfield (11/11/2022)
	2		Makenna Marisa vs Norfolk St. (11/09/2022)
	2		Anna Camden vs Norfolk St. (11/09/2022)
	2		Taniyah Thompson vs Norfolk St. (11/09/2022)
3 PT FG ATTEMPTS	9		Anna Camden vs Norfolk St. (11/09/2022)
	7		Shay Ciezki vs Fairfield (11/11/2022)
3 PT FG PERCENTAGE (min 2 made)	.600	(3-5)	Alli Campbell vs Fairfield (11/11/2022)
	.500	(2-4)	Makenna Marisa vs Norfolk St. (11/09/2022)
FREE THROWS MADE	6		Makenna Marisa vs Norfolk St. (11/09/2022)
	6		Leilani Kapinus vs Norfolk St. (11/09/2022)
FREE THROW ATTEMPTS	8		Makenna Marisa vs Norfolk St. (11/09/2022)
	6		Leilani Kapinus vs Norfolk St. (11/09/2022)
	6		Chanaya Pinto vs Norfolk St. (11/09/2022)
FREE THROW PERCENTAGE (min 3 made)	1.000	(6-6)	Leilani Kapinus vs Norfolk St. (11/09/2022)
	1.000	(3-3)	Taniyah Thompson vs Norfolk St. (11/09/2022)
REBOUNDS	11		Makenna Marisa vs Norfolk St. (11/09/2022)
	8		Leilani Kapinus vs Fairfield (11/11/2022)
	8		Leilani Kapinus vs Norfolk St. (11/09/2022)
ASSISTS	10		Makenna Marisa vs Fairfield (11/11/2022)
	4		Makenna Marisa vs Norfolk St. (11/09/2022)
STEALS	9		Leilani Kapinus vs Fairfield (11/11/2022)
	3		Makenna Marisa vs Fairfield (11/11/2022)
	3		Taniyah Thompson vs Norfolk St. (11/09/2022)
BLOCKED SHOTS	1		Leilani Kapinus vs Fairfield (11/11/2022)
	1		Makenna Marisa vs Norfolk St. (11/09/2022)
	1		Anna Camden vs Norfolk St. (11/09/2022)
TURNOVERS	6		Leilani Kapinus vs Norfolk St. (11/09/2022)
	5		Makenna Marisa vs Fairfield (11/11/2022)
	5		Chanaya Pinto vs Norfolk St. (11/09/2022)
FOULS	4		Ali Brigham vs Fairfield (11/11/2022)
	3		Johnasia Cash vs Fairfield (11/11/2022)
	3		Taniyah Thompson vs Fairfield (11/11/2022)
	3		Leilani Kapinus vs Norfolk St. (11/09/2022)
	3		Anna Camden vs Norfolk St. (11/09/2022)



2022-23 Penn St. Women's Basketball
Category Leaders
All games

Points

##	Player	G	Pts	Pts/G
20	Marisa, Makenna	2	38	19.0
24	Williamson, Alexa	2	22	11.0
23	Thompson, Taniyah	2	21	10.5
5	Kapinus, Leilani	2	20	10.0
22	Campbell, Alli	2	13	6.5
4	Ciezki, Shay	2	8	4.0
33	Cash, Johnasia	2	7	3.5
11	Camden, Anna	2	6	3.0
10	Pinto, Chanaya	2	5	2.5
1	Brigham, Ali	2	4	2.0

Scoring Average

##	Player	G	Pts	Pts/G
20	Marisa, Makenna	2	38	19.0
24	Williamson, Alexa	2	22	11.0
23	Thompson, Taniyah	2	21	10.5
5	Kapinus, Leilani	2	20	10.0
22	Campbell, Alli	2	13	6.5
4	Ciezki, Shay	2	8	4.0
33	Cash, Johnasia	2	7	3.5
11	Camden, Anna	2	6	3.0
10	Pinto, Chanaya	2	5	2.5
1	Brigham, Ali	2	4	2.0

Field Goal Percentage

##	Player	FG	Att	Pct
33	Cash, Johnasia	3	3	1.000
24	Williamson, Alexa	10	16	.625
22	Campbell, Alli	5	9	.556
20	Marisa, Makenna	13	26	.500
5	Kapinus, Leilani	6	12	.500
1	Brigham, Ali	2	4	.500
23	Thompson, Taniyah	7	16	.438
4	Ciezki, Shay	3	11	.273
11	Camden, Anna	2	10	.200

Field Goal Attempts

##	Player	G	Att	Att/G
20	Marisa, Makenna	2	26	13.0
24	Williamson, Alexa	2	16	8.0
23	Thompson, Taniyah	2	16	8.0
5	Kapinus, Leilani	2	12	6.0
4	Ciezki, Shay	2	11	5.5

Field Goals Made

##	Player	G	Made	Made/G
20	Marisa, Makenna	2	13	6.5
24	Williamson, Alexa	2	10	5.0
23	Thompson, Taniyah	2	7	3.5
5	Kapinus, Leilani	2	6	3.0
22	Campbell, Alli	2	5	2.5

3-Point FG Percentage

##	Player	3FG	Att	Pct
20	Marisa, Makenna	2	4	.500
22	Campbell, Alli	3	6	.500
23	Thompson, Taniyah	2	6	.333
5	Kapinus, Leilani	1	3	.333
11	Camden, Anna	2	9	.222
4	Ciezki, Shay	1	7	.143

3-Point FG Attempts

##	Player	G	Att	Att/G
11	Camden, Anna	2	9	4.5
4	Ciezki, Shay	2	7	3.5
23	Thompson, Taniyah	2	6	3.0
22	Campbell, Alli	2	6	3.0
20	Marisa, Makenna	2	4	2.0

3-Point FG Made

##	Player	G	Made	Made/G
22	Campbell, Alli	2	3	1.5
20	Marisa, Makenna	2	2	1.0
23	Thompson, Taniyah	2	2	1.0
11	Camden, Anna	2	2	1.0
5	Kapinus, Leilani	2	1	0.5

Free Throw Percentage

##	Player	Made	Att	Pct
23	Thompson, Taniyah	5	5	1.000
5	Kapinus, Leilani	7	7	1.000
20	Marisa, Makenna	10	13	.769
24	Williamson, Alexa	2	3	.667
10	Pinto, Chanaya	5	8	.625
4	Ciezki, Shay	1	2	.500
33	Cash, Johnasia	1	3	.333

Free Throw Attempts

##	Player	G	Att	Att/G
20	Marisa, Makenna	2	13	6.5
10	Pinto, Chanaya	2	8	4.0
5	Kapinus, Leilani	2	7	3.5
23	Thompson, Taniyah	2	5	2.5
24	Williamson, Alexa	2	3	1.5

Free Throws Made

##	Player	G	Made	Made/G
20	Marisa, Makenna	2	10	5.0
5	Kapinus, Leilani	2	7	3.5
23	Thompson, Taniyah	2	5	2.5
10	Pinto, Chanaya	2	5	2.5
24	Williamson, Alexa	2	2	1.0

Rebounds

##	Player	G	Reb	Reb/G
5	Kapinus, Leilani	2	16	8.0
20	Marisa, Makenna	2	15	7.5
24	Williamson, Alexa	2	8	4.0
23	Thompson, Taniyah	2	6	3.0
10	Pinto, Chanaya	2	6	3.0

Assists

##	Player	G	Ast	Ast/G
20	Marisa, Makenna	2	14	7.0
5	Kapinus, Leilani	2	5	2.5
1	Brigham, Ali	2	2	1.0
24	Williamson, Alexa	2	1	0.5
23	Thompson, Taniyah	2	1	0.5

Rebounds Average

##	Player	G	Reb	Reb/G
5	Kapinus, Leilani	2	16	8.0
20	Marisa, Makenna	2	15	7.5
24	Williamson, Alexa	2	8	4.0
23	Thompson, Taniyah	2	6	3.0
10	Pinto, Chanaya	2	6	3.0

Steals

##	Player	G	Stl	Stl/G
5	Kapinus, Leilani	2	10	5.0
20	Marisa, Makenna	2	4	2.0
23	Thompson, Taniyah	2	4	2.0
4	Ciezki, Shay	2	3	1.5
33	Cash, Johnasia	2	2	1.0

Offensive Rebounds

##	Player	G	OReb	OReb/G
5	Kapinus, Leilani	2	5	2.5
20	Marisa, Makenna	2	4	2.0
24	Williamson, Alexa	2	3	1.5
11	Camden, Anna	2	3	1.5
10	Pinto, Chanaya	2	3	1.5

Blocked Shots

##	Player	G	Blk	Blk/G
20	Marisa, Makenna	2	1	0.5
5	Kapinus, Leilani	2	1	0.5
11	Camden, Anna	2	1	0.5

Defensive Rebounds

##	Player	G	DReb	DReb/G
20	Marisa, Makenna	2	11	5.5
5	Kapinus, Leilani	2	11	5.5
24	Williamson, Alexa	2	5	2.5
23	Thompson, Taniyah	2	5	2.5
33	Cash, Johnasia	2	3	1.5

Minutes

##	Player	G	Min	Min/G
20	Marisa, Makenna	2	73	36:21
5	Kapinus, Leilani	2	59	29:32
23	Thompson, Taniyah	2	48	23:58
11	Camden, Anna	2	45	22:19
24	Williamson, Alexa	2	43	21:35

0 Ivane Tensaie

G • 5-7 • So.
 Roseville, Minn. • Concordia Academy
 North Dakota State School of Science
 Major: Liberal Arts



2022-23 GAME-BY-GAME STATS

Opponent	Date	GS	MIN	Total		3-Pointers		Free throws		Rebounds				Other							
				FG-FGA	PCT	3FG-3FGA	PCT	FT-FTA	PCT	OFF	DEF	TOT	AVG	PF	A	TO	BLK	STL	PTS	AVG	
Fairfield	11/11/2022		01:21	0-0	.000	0-0	.000	0-0	.000	0	0	0	0.0	0	0	0	0	0	0	0	0.0
Totals		0	01:21	0-0	.000	0-0	.000	0-0	.000	0	0	0	0.0	0	0	0	0	0	0	0	0.0

Player Averages

Games Played	Minutes/game	Points/game	FG Pct	3FG Pct	FT Pct	Rebounds/game	Assists/game	Turnovers/game	Assist/Turnover ratio	Steals/game	Blocks/game
1	1.4	0.0	0.0	0.0	0.0	0.0	0.0	0.0	0.0	0.0	0.0

SEASON/CAREER HIGHS

Points	
Season	-
Career	-
Big Ten	-
Rebounds	
Season	-
Career	-
Big Ten	-
Assists	
Season	-
Career	-
Big Ten	-
Steals	
Season	-
Career	-
Big Ten	-
Blocks	
Season	-
Career	-
Big Ten	-
Field Goals Made	
Season	-
Career	-
Big Ten	-
3-Point Field Goals Made	
Season	-
Career	-
Big Ten	-
Free Throws Made	
Season	-
Career	-
Big Ten	-
Minutes	
Season	1, Fairfield (11/11/22)
Career	1, Fairfield (11/11/22)
Big Ten	-
Career	
10-point games	-
20-point games	-
Double-Doubles	-

1 Ali Brigham

F • 6-4 • Jr.
Franklin, Mass. • Franklin • George Washington
Major: Communications



CAREER STATS

SEASON	TEAM	GP-GS	MIN/AVG	Field Goals		3-Point		F-Throws		Rebounds				Scoring						
				FG-FGA	FG%	3FG-3FGA	3FG%	FT-FTA	FT%	OFF	DEF	TOT	AVG	PF-FO	A	TO	BLK	STL	PTS	AVG
2020-21	GWU	23-19	529/23.0	122-242	.504	1-10	.100	28-43	.651	50	57	107	4.7	42-1	18	53	26	13	273	11.9
2021-22	PSU	28-17	509/18.2	103-186	.554	0-1	.000	28-38	.737	54	62	116	4.1	74-2	29	60	30	13	234	8.4
2022-23	PSU	2-0	17/8.5	2-4	.500	0-0	.000	0-0	.000	3	1	4	2.0	4-0	2	2	0	0	4	2.0
TOTAL FOR PSU		30-17	526/17.5	105-190	.553	0-1	.000	28-38	.737	57	63	120	4.0	78-2	31	62	30	13	238	7.9
TOTAL		53-36	1054/19.9	227-432	.525	1-11	.091	56-81	.691	107	120	227	4.3	120-3	49	115	56	26	511	9.6

2022-23 GAME-BY-GAME STATS

Opponent	Date	GS	MIN	Total		3-Pointers		Free throws		Rebounds				PF	A	TO	BLK	STL	PTS	AVG
				FG-FGA	PCT	3FG-3FGA	PCT	FT-FTA	PCT	OFF	DEF	TOT	AVG							
Norfolk St.	11/09/2022		03:01	0-0	.000	0-0	.000	0-0	.000	1	0	1	1.0	0	0	0	0	0	0.0	
Fairfield	11/11/2022		13:57	2-4	.500	0-0	.000	0-0	.000	2	1	3	2.0	4	2	2	0	4	2.0	
Totals		0	16:58	2-4	.500	0-0	.000	0-0	.000	3	1	4	2.0	4	2	0	0	4	2.0	

Player Averages

Games Played	Minutes/game	Points/game	FG Pct	3FG Pct	FT Pct	Rebounds/game	Assists/game	Turnovers/game	Assist/Turnover ratio	Steals/game	Blocks/game
2	8.5	2.0	50.0	0.0	0.0	2.0	1.0	1.0	1.0	0.0	0.0

SEASON/CAREER HIGHS

Points
Season 4, Fairfield (11/11/22)
Career 26 at VCU (1/27/21)*
Big Ten 13 vs. Rutgers (12/9/21)

Rebounds
Season 3, Fairfield (11/11/22)
Career 11 at Howard (12/13/20)*
Big Ten 8 vs. Michigan (1/13/22)

Assists
Season 2, Fairfield (11/11/22)
Career 6 vs. Rider (11/11/21)
Big Ten 3 vs. Northwestern (2/6/22)

Steals
Season -
Career 2 - 5 times
Big Ten 2 - 2 times

Blocks
Season -
Career 4 vs. VCU (2/1/21)*
Big Ten 3 - 2 times

Field Goals Made
Season 2, Fairfield (11/11/22)
Career 12 at VCU (1/27/21)*
Big Ten 6 vs. Rutgers (12/9/21)

3-Point Field Goals Made
Season -
Career 1 at James Madison (12/9/20)*
Big Ten -

Free Throws Made
Season -
Career 6 at Saint Joseph's (1/24/21)*
Big Ten 5 vs. Minnesota (2/27/22)

Minutes
Season 14, Fairfield (11/11/22)
Career 32 at Clemson (11/21/21)
Big Ten 26 at Indiana (12/6/21)

Career
10-point games 24 (9 at PSU)
20-point games 3 (2 at PSU)
Double-Doubles 1 (1 at PSU)

*At George Washington (2020-21)

2 Aicha Dia

F • 6-1 • Fr.
 Montreal, Quebec, Canada • Dawson College
 Major: Liberal Arts



2022-23 GAME-BY-GAME STATS

Opponent	Date	GS	MIN	Total		3-Pointers		Free throws		Rebounds				PF	A	TO	BLK	STL	PTS	AVG
				FG-FGA	PCT	3FG-3FGA	PCT	FT-FTA	PCT	OFF	DEF	TOT	AVG							
Fairfield	11/11/2022		02:00	0-1	.000	0-0	.000	0-0	.000	1	0	1	1.0	0	0	0	0	0	0	0.0
Totals		0	02:00	0-1	.000	0-0	.000	0-0	.000	1	0	1	1.0	0	0	0	0	0	0	0.0

Player Averages

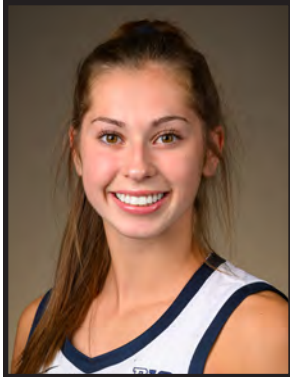
Games Played	Minutes/game	Points/game	FG Pct	3FG Pct	FT Pct	Rebounds/game	Assists/game	Turnovers/game	Assist/Turnover ratio	Steals/game	Blocks/game
1	2.0	0.0	0.0	0.0	0.0	1.0	0.0	0.0	0.0	0.0	0.0

SEASON/CAREER HIGHS

Points	
Season	-
Career	-
Big Ten	-
Rebounds	
Season	1, Fairfield (11/11/22)
Career	1, Fairfield (11/11/22)
Big Ten	-
Assists	
Season	-
Career	-
Big Ten	-
Steals	
Season	-
Career	-
Big Ten	-
Blocks	
Season	-
Career	-
Big Ten	-
Field Goals Made	
Season	-
Career	-
Big Ten	-
3-Point Field Goals Made	
Season	-
Career	-
Big Ten	-
Free Throws Made	
Season	-
Career	-
Big Ten	-
Minutes	
Season	2, Fairfield (11/11/22)
Career	2, Fairfield (11/11/22)
Big Ten	-
Career	
10-point games	-
20-point games	-
Double-Doubles	-

4 Shay Ciezki

G • 5-7 • Fr.
Lancaster, N.Y. • St. Mary's
Major: Division of Undergraduate Studies



2022-23 GAME-BY-GAME STATS

Opponent	Date	GS	MIN	Total		3-Pointers		Free throws		Rebounds				PF	A	TO	BLK	STL	PTS	AVG
				FG-FGA	PCT	3FG-3FGA	PCT	FT-FTA	PCT	OFF	DEF	TOT	AVG							
Norfolk St.	11/09/2022		08:08	0-1	.000	0-0	.000	1-2	.500	0	0	0	0.0	1	1	0	0	1	1	1.0
Fairfield	11/11/2022	*	22:15	3-10	.300	1-7	.143	0-0	.000	2	2	4	2.0	2	0	2	0	2	7	4.0
Totals		1	30:23	3-11	.273	1-7	.143	1-2	.500	2	2	4	2.0	3	1	2	0	3	8	4.0

Player Averages

Games Played	Minutes/game	Points/game	FG Pct	3FG Pct	FT Pct	Rebounds/game	Assists/game	Turnovers/game	Assist/Turnover ratio	Steals/game	Blocks/game
2	15.2	4.0	27.3	14.3	50.0	2.0	0.5	1.0	0.5	1.5	0.0

SEASON/CAREER HIGHS

Points

Season 7, Fairfield (11/11/22)

Career 7, Fairfield (11/11/22)

Big Ten -

Rebounds

Season 4, Fairfield (11/11/22)

Career 4, Fairfield (11/11/22)

Big Ten -

Assists

Season 1, Norfolk State (11/9/22)

Career 1, Norfolk State (11/9/22)

Big Ten -

Steals

Season 2, Fairfield (11/11/22)

Career 2, Fairfield (11/11/22)

Big Ten -

Blocks

Season -

Career -

Big Ten -

Field Goals Made

Season 3, Fairfield (11/11/22)

Career 3, Fairfield (11/11/22)

Big Ten -

3-Point Field Goals Made

Season 1, Fairfield (11/11/22)

Career 1, Fairfield (11/11/22)

Big Ten -

Free Throws Made

Season 1, Norfolk State (11/9/22)

Career 1, Norfolk State (11/9/22)

Big Ten -

Minutes

Season 8, Norfolk State (11/9/22)

Career 8, Norfolk State (11/9/22)

Big Ten -

Career

10-point games -

20-point games -

Double-Doubles -

5 Leilani Kapinus

G • 5-10 • R-So.
 Madison, Wis. • James Madison Memorial
 Major: Kinesiology (Applied Exercise and Health)



CAREER STATS

SEASON	TEAM	GP-GS	MIN/AVG	Field Goals		3-Point		F-Throws		Rebounds				Scoring						
				FG-FGA	FG%	3FG-3FGA	3FG%	FT-FTA	FT%	OFF	DEF	TOT	AVG	PF-FO	A	TO	BLK	STL	PTS	AVG
2021-22	PSU	29-29	746/25.7	104-242	.430	13-56	.232	57-85	.671	45	120	165	5.7	85-2	46	74	33	59	278	9.6
2022-23	PSU	2-2	59/29.5	6-12	.500	1-3	.333	7-7	1.000	5	11	16	8.0	4-0	5	9	1	10	20	10.0
TOTAL		31-31	805/26.0	110-254	.433	14-59	.237	64-92	.696	50	131	181	5.8	89-2	51	83	34	69	298	9.6

2022-23 GAME-BY-GAME STATS

Opponent	Date	GS	MIN	Total		3-Pointers		Free throws		Rebounds				PF	A	TO	BLK	STL	PTS	AVG
				FG-FGA	PCT	3FG-3FGA	PCT	FT-FTA	PCT	OFF	DEF	TOT	AVG							
Norfolk St.	11/09/2022	*	30:46	1-4	.250	1-3	.333	6-6	1.000	3	5	8	8.0	3	3	6	0	1	9	9.0
Fairfield	11/11/2022	*	28:18	5-8	.625	0-0	.000	1-1	1.000	2	6	8	8.0	1	2	3	1	9	11	10.0
Totals			2 59:04	6-12	.500	1-3	.333	7-7	1.000	5	11	16	8.0	4	5	9	1	10	20	10.0

Player Averages

Games Played	Minutes/game	Points/game	FG Pct	3FG Pct	FT Pct	Rebounds/game	Assists/game	Turnovers/game	Assist/Turnover ratio	Steals/game	Blocks/game
2	29.5	10.0	50.0	33.3	100.0	8.0	2.5	4.5	0.6	5.0	0.5

SEASON/CAREER HIGHS

Points
 Season 11, Fairfield (11/11/22)
 Career 23 at Rutgers (2/13/22)
 Big Ten 23 at Rutgers (2/13/22)

Rebounds
 Season 8, two times
 Career 13 vs. Rutgers (3/2/22)
 Big Ten 12 - 2 times

Assists
 Season 3, Norfolk State (11/9/22)
 Career 4 - 3 times
 Big Ten 3 - 4 times

Steals
 Season 9, Fairfield (11/11/22)
 Career 9, Fairfield (11/11/22)
 Big Ten 5 - 2 times

Blocks
 Season 1, Fairfield (11/11/22)
 Career 4 vs. Youngstown St. (12/12/21)
 Big Ten 3 vs. Maryland (1/30/22)

Field Goals Made
 Season 5, Fairfield (11/11/22)
 Career 9 - 2 times
 Big Ten 9 at Rutgers (2/13/22)

3-Point Field Goals Made
 Season 1, Norfolk State (11/9/22)
 Career 2 vs. Youngstown St. (12/12/21)
 Big Ten 1 - 5 times

Free Throws Made
 Season 6, Norfolk State (11/9/22)
 Career 9 vs. Rutgers (3/2/22)
 Big Ten 6 vs. Michigan State (1/27/22)

Minutes
 Season 30, Norfolk State (11/9/22)
 Career 36 vs. Rutgers (3/2/22)
 Big Ten 35 - 2 times

Career
 10-point games 17
 20-point games 2
 Double-Doubles 3

10 Chanaya Pinto

F • 6-1 • Sr.

Maputo, Mozambique • Escola Secundaria de Carcavelos

Major: Sociology



CAREER STATS

SEASON	TEAM	GP-GS	MIN/AVG	Field Goals		3-Point		F-Throws		Rebounds				Scoring						
				FG-FGA	FG%	3FG-3FGA	3FG%	FT-FTA	FT%	OFF	DEF	TOT	AVG	PF	FO	A	TO	BLK	STL	PTS
2021-22	Oregon	30-0	343/11.4	30-64	.469	5-14	.357	21-38	.553	20	53	73	2.4	39-1	19	22	0	18	86	2.9
2022-23	PSU	2-0	26/13.2	0-4	.000	0-2	.000	5-8	.625	3	3	6	3.0	2-0	1	7	0	0	5	2.5
TOTAL FOR PSU		2-0	26/13.2	0-4	.000	0-2	.000	5-8	.625	3	3	6	3.0	2-0	1	7	0	0	5	2.5
TOTAL		32-0	370/11.5	30-68	.441	5-16	.313	26-46	.565	23	56	79	2.5	41-1	20	29	0	18	91	2.8

2022-23 GAME-BY-GAME STATS

Opponent	Date	GS	MIN	Total		3-Pointers		Free throws		Rebounds				PF	A	TO	BLK	STL	PTS	AVG
				FG-FGA	PCT	3FG-3FGA	PCT	FT-FTA	PCT	OFF	DEF	TOT	AVG							
Norfolk St.	11/09/2022		16:18	0-3	.000	0-2	.000	3-6	.500	1	3	4	4.0	2	0	5	0	0	3	3.0
Fairfield	11/11/2022		10:05	0-1	.000	0-0	.000	2-2	1.000	2	0	2	3.0	0	1	2	0	0	2	2.5
Totals		0	26:23	0-4	.000	0-2	.000	5-8	.625	3	3	6	3.0	2	1	7	0	0	5	2.5

Player Averages

Games Played	Minutes/game	Points/game	FG Pct	3FG Pct	FT Pct	Rebounds/game	Assists/game	Turnovers/game	Assist/Turnover ratio	Steals/game	Blocks/game
2	13.2	2.5	0.0	0.0	62.5	3.0	0.5	3.5	0.1	0.0	0.0

SEASON/CAREER HIGHS

Points

Season 3, Norfolk State (11/9/22)

Career 12, South Carolina (11/21/21)*

Big Ten -

Rebounds

Season 4, Norfolk State (11/9/22)

Career 9 vs. Dixie State (11/14/21)*

Big Ten -

Assists

Season 1, Fairfield (11/11/22)

Career 4 vs. Oklahoma (11/20/21)*

Big Ten -

Steals

Season -

Career 4 at Washington (1/21/22)*

Big Ten -

Blocks

Season -

Career -

Big Ten -

Field Goals Made

Season -

Career 4, two times*

Big Ten -

3-Point Field Goals Made

Season -

Career 2 vs. Dixie State (11/14/21)*

Big Ten -

Free Throws Made

Season 2, Norfolk State (11/9/22)

Career 4, two times*

Big Ten -

Minutes

Season 16, Norfolk State (11/9/22)

Career 30 vs USF (11/22/21)*

Big Ten -

Career

10-point games 3*

20-point games -

Double-Doubles -

*At Oregon (2021-22)

11 Anna Camden | F • 6-3 • Sr.

Downingtown, Pa. • The Shipley School
Major: Broadcast Journalism



CAREER STATS

SEASON TEAM	GP-GS	MIN/AVG	Field Goals		3-Point		F-Throws		Rebounds				Scoring						
			FG-FGA	FG%	3FG-3FGA	3FG%	FT-FTA	FT%	OFF	DEF	TOT	AVG	PF-FO	A	TO	BLK	STL	PTS	AVG
2019-20 PSU	30-8	492/16.4	52-136	.382	39-106	.368	5-6	.833	19	40	59	2.0	30-0	11	15	14	13	148	4.9
2020-21 PSU	24-23	584/24.3	72-181	.398	24-90	.267	18-21	.857	31	47	78	3.3	54-0	21	35	12	25	186	7.8
2021-22 PSU	29-20	660/22.8	68-176	.386	29-88	.330	11-15	.733	31	112	143	4.9	62-2	27	34	28	28	176	6.1
2022-23 PSU	2-2	45/22.3	2-10	.200	2-9	.222	0-2	.000	3	1	4	2.0	4-0	1	5	1	1	6	3.0
TOTAL	85-53	1780/20.9	194-503	.386	94-293	.321	34-44	.773	84	200	284	3.3	150-2	60	89	55	67	516	6.1

2022-23 GAME-BY-GAME STATS

Opponent	Date	GS	MIN	Total		3-Pointers		Free throws		Rebounds				PF A TO BLK STL PTS AVG						
				FG-FGA	PCT	3FG-3FGA	PCT	FT-FTA	PCT	OFF	DEF	TOT	AVG	PF	A	TO	BLK	STL	PTS	AVG
Norfolk St.	11/09/2022	*	25:40	2-9	.222	2-9	.222	0-2	.000	2	0	2	2.0	3	1	3	1	0	6	6.0
Fairfield	11/11/2022	*	18:59	0-1	.000	0-0	.000	0-0	.000	1	1	2	2.0	1	0	2	0	1	0	3.0
Totals			2 44:39	2-10	.200	2-9	.222	0-2	.000	3	1	4	2.0	4	1	5	1	1	6	3.0

Player Averages

Games Played	Minutes/ game	Points/ game	FG Pct	3FG Pct	FT Pct	Rebounds/ game	Assists/ game	Turnovers/ game	Assist/Turnover ratio	Steals/ game	Blocks/ game
2	22.3	3.0	20.0	22.2	0.0	2.0	0.5	2.5	0.2	0.5	0.5

SEASON/CAREER HIGHS	
Points	
Season	6, Norfolk State (11/9/22)
Career	18 at Iowa (2/18/21)
Big Ten	18 at Iowa (2/18/21)
Rebounds	
Season	2, two times
Career	10 - 2 times
Big Ten	8 - 3 times
Assists	
Season	1, Norfolk State (11/9/22)
Career	3 - 5 times
Big Ten	3 - 3 times
Steals	
Season	1, Fairfield (11/11/22)
Career	4 - 2 times
Big Ten	4 - 2 times
Blocks	
Season	1, Norfolk State (11/9/22)
Career	7 at Michigan St. (2/21/22)
Big Ten	7 at Michigan St. (2/21/22)
Field Goals Made	
Season	2, Norfolk State (11/9/22)
Career	8 at Iowa (2/18/21)
Big Ten	8 at Iowa (2/18/21)
3-Point Field Goals Made	
Season	2, Norfolk State (11/9/22)
Career	4 - 3 times
Big Ten	4 at Rutgers (3/2/21)
Free Throws Made	
Season	-
Career	4 vs. Purdue (12/20/20)
Big Ten	4 vs. Purdue (12/20/20)
Minutes	
Season	26, Norfolk State (11/9/22)
Career	35 - 2 times
Big Ten	35 at Iowa (2/18/21)
Career	
10-point games	17
20-point games	--
Double-Doubles	2

12 Kayla Thomas

F • 6-3 • So.
 Beltsville, Pa. • Emerge Christian Academy
 Major: Criminology



CAREER STATS

SEASON	TEAM	GP-GS	MIN	AVG	Field Goals		3-Point		F-Throws		Rebounds				Scoring						
					FG-FGA	FG%	3FG-3FGA	3FG%	FT-FTA	FT%	OFF	DEF	TOT	AVG	PF	FO	A	TO	BLK	STL	PTS
2021-22	PSU	18-0	137	7.6	13-29	.448	0-0	.000	6-8	.750	13	12	25	1.4	13-0	3	11	5	4	32	1.8
2022-23	PSU	1-0	2	1.5	0-0	.000	0-0	.000	0-0	.000	0	0	0	0.0	1-0	0	0	0	0	0	0.0
TOTAL		19-0	138	7.3	13-29	.448	0-0	.000	6-8	.750	13	12	25	1.3	14-0	3	11	5	4	32	1.7

2022-23 GAME-BY-GAME STATS

Opponent	Date	GS	MIN	Total		3-Pointers		Free throws		Rebounds				PF		TO		BLK		STL		PTS		AVG	
				FG-FGA	PCT	3FG-3FGA	PCT	FT-FTA	PCT	OFF	DEF	TOT	AVG	A	A	TO	BLK	STL	PTS	AVG					
Fairfield	11/11/2022		01:31	0-0	.000	0-0	.000	0-0	.000	0	0	0	0.0	1	0	0	0	0	0	0	0	0	0.0		
Totals		0	01:31	0-0	.000	0-0	.000	0-0	.000	0	0	0	0.0	1	0	0	0	0	0	0	0	0	0.0		

Player Averages

Games Played	Minutes/game	Points/game	FG Pct	3FG Pct	FT Pct	Rebounds/game	Assists/game	Turnovers/game	Assist/Turnover ratio	Steals/game	Blocks/game
1	1.5	0.0	0.0	0.0	0.0	0.0	0.0	0.0	0.0	0.0	0.0

SEASON/CAREER HIGHS

Points	
Season	-
Career	8 at Purdue (2/9/22)
Big Ten	8 at Purdue (2/9/22)
Rebounds	
Season	-
Career	4, two times
Big Ten	4 at Nebraska (2/3/22)
Assists	
Season	-
Career	1 - 3 times
Big Ten	1 - 2 times
Steals	
Season	-
Career	1 - 4 times
Big Ten	1 - 3 times
Blocks	
Season	-
Career	1 - 5 times
Big Ten	1 - 3 times
Field Goals Made	
Season	-
Career	3 - 2 times
Big Ten	3 - 2 times
3-Point Field Goals Made	
Season	-
Career	-
Big Ten	-
Free Throws Made	
Season	-
Career	3 at Maryland (1/6/22)
Big Ten	3 at Maryland (1/6/22)
Minutes	
Season	2, Fairfield (11/11/22)
Career	16 vs. Maryland (1/30/22)
Big Ten	16 vs. Maryland (1/30/22)
Career	
10-point games	-
20-point games	-
Double-Doubles	-

20 Makenna Marisa | G • 5-11 • Sr.

McMurray, Pa. • Peters Township
Major: Elementary and Early Childhood Education



CAREER STATS

SEASON	TEAM	GP-GS	MIN/AVG	Field Goals		3-Point		F-Throws		Rebounds				Scoring						
				FG-FGA	FG%	3FG-3FGA	3FG%	FT-FTA	FT%	OFF	DEF	TOT	AVG	PF-FO	A	TO	BLK	STL	PTS	AVG
2019-20	PSU	30-29	979/32.6	95-280	.339	39-121	.322	48-57	.842	35	99	134	4.5	71-2	66	75	9	38	277	9.2
2020-21	PSU	24-24	765/31.9	120-312	.385	29-95	.305	53-64	.828	30	89	119	5.0	51-2	121	63	4	25	322	13.4
2021-22	PSU	29-29	1039/35.8	224-523	.428	59-173	.341	138-165	.836	20	103	123	4.2	61-2	123	105	7	47	645	22.2
2022-23	PSU	2-2	73/36.3	13-26	.500	2-4	.500	10-13	.769	4	11	15	7.5	4-0	14	9	1	4	38	19.0
TOTAL		85-84	2857/33.6	452-1141	.396	129-393	.328	249-299	.833	89	302	391	4.6	187-6	324	252	21	114	1282	15.1

2022-23 GAME-BY-GAME STATS

Opponent	Date	GS	MIN	Total		3-Pointers		Free throws		Rebounds				PF	A	TO	BLK	STL	PTS	AVG	
				FG-FGA	PCT	3FG-3FGA	PCT	FT-FTA	PCT	OFF	DEF	TOT	AVG								
Norfolk St.	11/09/2022	*	39:02	8-16	.500	2-4	.500	6-8	.750	3	8	11	11.0	2	4	4	1	1	24	24.0	
Fairfield	11/11/2022	*	33:39	5-10	.500	0-0	.000	4-5	.800	1	3	4	7.5	2	10	5	0	3	14	19.0	
Totals			2	72:41	13-26	.500	2-4	.500	10-13	.769	4	11	15	7.5	4	14	9	1	4	38	19.0

Player Averages

Games Played	Minutes/ game	Points/ game	FG Pct	3FG Pct	FT Pct	Rebounds/ game	Assists/ game	Turnovers/ game	Assist/Turnover ratio	Steals/ game	Blocks/ game
2	36.3	19.0	50.0	50.0	76.9	7.5	7.0	4.5	1.6	2.0	0.5

SEASON/CAREER HIGHS

Points
Season 24, Norfolk State (11/9/22)
Career 33 at Duquesne (12/18/21)
Big Ten 32 - 2 times

Rebounds
Season 11, Norfolk State (11/9/22)
Career 11, two times
Big Ten 10 at Iowa (2/18/21)

Assists
Season 10, Fairfield (11/11/22)
Career 11 vs. Delaware State (11/16/21)
Big Ten 10 vs. Illinois (1/16/22)

Steals
Season 3, Fairfield (11/11/22)
Career 10 vs. Delaware State (11/16/21)
Big Ten 3 - 5 times

Blocks
Season 1, Norfolk State (11/9/22)
Career 2 vs. NWestern (2/2/20)
Big Ten 2 vs. NWestern (2/2/20)

Field Goals Made
Season 8, Norfolk State (11/9/22)
Career 12 - 4 times
Big Ten 12 - 2 times

3-Point Field Goals Made
Season 2, Norfolk State (11/9/22)
Career 5 vs. Delaware State (11/16/21)
Big Ten 4 - 3 times

Free Throws Made
Season 6, Norfolk State (11/9/22)
Career 14 at Michigan St. (2/21/22)
Big Ten 14 at Michigan St. (2/21/22)

Minutes
Season 39, Norfolk State (11/9/22)
Career 40 at Northwestern (1/20/22)
Big Ten 40 at Northwestern (1/20/22)

Career
10-point games 59
20-point games 25
30-point games 5
Double-Doubles 4
Triple-Doubles 1

22 Alli Campbell

G • 6-1 • R-So.
 Altoona, Pa. • Bellwood-Antis • Notre Dame
 Major: Communications



CAREER STATS

SEASON	TEAM	GP-GS	MIN/AVG	Field Goals		3-Point		F-Throws		Rebounds				Scoring						
				FG-FGA	FG%	3FG-3FGA	3FG%	FT-FTA	FT%	OFF	DEF	TOT	AVG	PF	FO	A	TO	BLK	STL	PTS
2020-21	ND	6-0	73/12.2	5-9	.556	1-3	.333	2-4	.500	2	8	10	1.7	5-0	2	2	4	2	13	2.2
2022-23	PSU	2-0	31/15.5	5-9	.556	3-6	.500	0-0	.000	0	1	1	0.5	1-0	1	1	0	0	13	6.5
TOTAL FOR PSU		2-0	31/15.5	5-9	.556	3-6	.500	0-0	.000	0	1	1	0.5	1-0	1	1	0	0	13	6.5
TOTAL		8-0	104/13.1	10-18	.556	4-9	.444	2-4	.500	2	9	11	1.4	6-0	3	4	2	26	3.3	

2022-23 GAME-BY-GAME STATS

Opponent	Date	GS	MIN	Total		3-Pointers		Free throws		Rebounds				PF				PTS	AVG		
				FG-FGA	PCT	3FG-3FGA	PCT	FT-FTA	PCT	OFF	DEF	TOT	AVG	A	TO	BLK	STL				
Norfolk St.	11/09/2022		11:47	0-2	.000	0-1	.000	0-0	.000	0	0	0	0.0	0	0	0	0	0	0	0	0.0
Fairfield	11/11/2022		19:13	5-7	.714	3-5	.600	0-0	.000	0	1	1	0.5	1	1	1	0	0	13	6.5	
Totals		0	30:60	5-9	.556	3-6	.500	0-0	.000	0	1	1	0.5	1	1	1	0	0	13	6.5	

Player Averages

Games Played	Minutes/game	Points/game	FG Pct	3FG Pct	FT Pct	Rebounds/game	Assists/game	Turnovers/game	Assist/Turnover ratio	Steals/game	Blocks/game
2	15.5	6.5	55.6	50.0	0.0	0.5	0.5	0.5	1.0	0.0	0.0

SEASON/CAREER HIGHS

Points

Season 13, Fairfield (11/11/22)

Career 13, Fairfield (11/11/22)

Big Ten -

Rebounds

Season 1, Fairfield (11/11/22)

Career 3 - 2 times*

Big Ten -

Assists

Season 1, Fairfield (11/11/22)

Career 2 vs. Ohio (11/27/20)*

Big Ten -

Steals

Season -

Career 1 - 2 times*

Big Ten -

Blocks

Season -

Career 2 - 2 times*

Big Ten -

Field Goals Made

Season 5, Fairfield (11/11/22)

Career 5, Fairfield (11/11/22)

Big Ten -

3-Point Field Goals Made

Season 3, Fairfield (11/11/22)

Career 1 vs. Miami Ohio (11/29/20)*

Big Ten -

Free Throws Made

Season -

Career 1 - 2 times*

Big Ten -

Minutes

Season 19, Fairfield (11/11/22)

Career 28 - 2 times*

Big Ten --

Career

10-point games 1

20-point games -

Double-Doubles -

*At Notre Dame (2020-21)

23 Taniyah Thompson

G • 5-11 • Sr.
Hamden, Conn. • Hamden • ECU
Major: Communications



CAREER STATS

SEASON	TEAM	GP-GS	MIN/AVG	Field Goals		3-Point		F-Throws		Rebounds				Scoring						
				FG-FGA	FG%	3FG-3FGA	3FG%	FT-FTA	FT%	OFF	DEF	TOT	AVG	PF-FO	A	TO	BLK	STL	PTS	AVG
2019-20	ECU	30-30	1045/34.8	162-501	.323	42-164	.256	46-67	.687	57	41	98	3.3	63-0	31	78	1	57	412	13.7
2020-21	ECU	22-22	669/30.4	105-300	.350	25-97	.258	28-43	.651	33	30	63	2.9	25-0	18	33	2	28	263	12.0
2021-22	ECU	29-29	929/32.0	199-500	.398	47-147	.320	91-116	.784	49	77	126	4.3	40-0	36	64	0	43	536	18.5
2022-23	PSU	2-1	48/24.0	7-16	.438	2-6	.333	5-5	1.000	1	5	6	3.0	3-0	1	4	0	4	21	10.5
TOTAL FOR PSU		2-1	48/24.0	7-16	.438	2-6	.333	5-5	1.000	1	5	6	3.0	3-0	1	4	0	4	21	10.5
TOTAL		83-82	2690/32.4	473-1317	.359	116-414	.280	170-231	.736	140	153	293	3.5	131-0	86	179	3	132	1232	14.8

2022-23 GAME-BY-GAME STATS

Opponent	Date	GS	MIN	Total		3-Pointers		Free throws		Rebounds				Other						
				FG-FGA	PCT	3FG-3FGA	PCT	FT-FTA	PCT	OFF	DEF	TOT	AVG	PF	A	TO	BLK	STL	PTS	AVG
Norfolk St.	11/09/2022	*	28:58	5-11	.455	2-6	.333	3-3	1.000	0	2	2	2.0	0	1	2	0	3	15	15.0
Fairfield	11/11/2022		18:58	2-5	.400	0-0	.000	2-2	1.000	1	3	4	3.0	3	0	2	0	1	6	10.5
Totals		1	47:56	7-16	.438	2-6	.333	5-5	1.000	1	5	6	3.0	3	1	4	0	4	21	10.5

Player Averages

Games Played	Minutes/game	Points/game	FG Pct	3FG Pct	FT Pct	Rebounds/game	Assists/game	Turnovers/game	Assist/Turnover ratio	Steals/game	Blocks/game
2	24.0	10.5	43.8	33.3	100.0	3.0	0.5	2.0	0.3	2.0	0.0

SEASON/CAREER HIGHS

Points
Season 15, Norfolk State (11/9/22)
Career 31 at UNCW (12/19/21)*
Big Ten -

Rebounds
Season 4, Fairfield (11/11/22)
Career 8, two times*
Big Ten -

Assists
Season 1, Norfolk State (11/9/22)
Career 4 vs. Coppin State (11/23/21)*
Big Ten -

Steals
Season 3, Norfolk State (11/9/22)
Career 4, two times*
Big Ten -

Blocks
Season -
Career 1, three times*
Big Ten -

Field Goals Made
Season 5, Norfolk State (11/9/22)
Career 13 at UNCW (12/19/21)*
Big Ten -

3-Point Field Goals Made
Season 2, Norfolk State (11/9/22)
Career 6 at High Point (11/12/21)*
Big Ten -

Free Throws Made
Season 3, Norfolk State (11/9/22)
Career 13 at UNCW (12/19/21)*
Big Ten -

Minutes
Season 29, Norfolk State (11/9/22)
Career 40 at Houston (2/16/22)*
Big Ten -

Career
10-point games 63 (1 at PSU)
20-point games 20*

*At Notre Dame (2020-21)

24 Alexa Williamson

F • 6-2 • Gr.
Houston, Pa. • Chartiers-Houston • Temple
Graduate Program: Organization Development



CAREER STATS

SEASON	TEAM	GP-GS	MIN/AVG	Field Goals		3-Point		F-Throws		Rebounds				Scoring						
				FG-FGA	FG%	3FG-3FGA	3FG%	FT-FTA	FT%	OFF	DEF	TOT	AVG	PF-FO	A	TO	BLK	STL	PTS	AVG
2018-19	Temple	25-7	377/15.1	47-114	.412	0-0	.000	24-39	.615	37	58	95	3.8	51-0	5	19	13	19	118	4.7
2019-20	Temple	30-24	560/18.7	72-173	.416	0-1	.000	41-66	.621	48	86	134	4.5	82-1	9	35	17	19	185	6.2
2020-21	Temple	21-21	570/27.1	101-206	.490	0-0	.000	61-104	.587	48	93	141	6.7	65-1	12	49	26	21	263	12.5
2021-22	Temple	27-17	544/20.1	85-192	.443	0-0	.000	52-80	.650	57	78	135	5.0	68-4	7	29	37	23	222	8.2
2022-23	PSU	2-2	43/21.6	10-16	.625	0-0	.000	2-3	.667	3	5	8	4.0	4-0	1	3	0	0	22	11.0
TOTAL FOR PSU		2-2	43/21.6	10-16	.625	0-0	.000	2-3	.667	3	5	8	4.0	4-0	1	3	0	0	22	11.0
TOTAL		105-71	2094/19.9	315-701	.449	0-1	.000	180-292	.616	193	320	513	4.9	270-6	34	135	93	82	810	7.7

2022-23 GAME-BY-GAME STATS

Opponent	Date	GS	MIN	Total		3-Pointers		Free throws		Rebounds				PF	A	TO	BLK	STL	PTS	AVG
				FG-FGA	PCT	3FG-3FGA	PCT	FT-FTA	PCT	OFF	DEF	TOT	AVG							
Norfolk St.	11/09/2022	*	22:02	3-6	.500	0-0	.000	0-0	.000	2	5	7	7.0	2	0	1	0	0	6	6.0
Fairfield	11/11/2022	*	21:08	7-10	.700	0-0	.000	2-3	.667	1	0	1	4.0	2	1	2	0	0	16	11.0
Totals		2	43:10	10-16	.625	0-0	.000	2-3	.667	3	5	8	4.0	4	1	3	0	0	22	11.0

Player Averages

Games Played	Minutes/game	Points/game	FG Pct	3FG Pct	FT Pct	Rebounds/game	Assists/game	Turnovers/game	Assist/Turnover ratio	Steals/game	Blocks/game
2	21.6	11.0	62.5	0.0	66.7	4.0	0.5	1.5	0.3	0.0	0.0

SEASON/CAREER HIGHS

Points

Season 16, Fairfield (11/11/22)

Career 29 at Houston (3/2/21)*

Big Ten -

Rebounds

Season 7, Norfolk State (11/9/22)

Career 8, two times*

Big Ten -

Assists

Season 1, Fairfield (11/11/22)

Career 3 vs. Memphis (3/2/21)*

Big Ten -

Steals

Season -

Career 4, two times*

Big Ten -

Blocks

Season -

Career 4, three times*

Big Ten -

Field Goals Made

Season 37, Fairfield (11/11/22)

Career 11, two times*

Big Ten -

3-Point Field Goals Made

Season -

Career 6 at High Point (11/12/21)*

Big Ten -

Free Throws Made

Season 2, Fairfield (11/11/22)

Career 7, two times*

Big Ten -

Minutes

Season 22, Norfolk State (11/9/22)

Career 39 at USF (1/22/22)*

Big Ten -

Career

10-point games 30 (1 at PSU)

20-point games 5*

*At Temple (2018-22)

33 Johnasia Cash

F • 6-3 • Gr.
McKeesport, Pa. • McKeesport • SMU
Graduate Program: Homeland Security



CAREER STATS

SEASON	TEAM	GP-GS	MIN/AVG	Field Goals		3-Point		F-Throws		Rebounds				Scoring						
				FG-FGA	FG%	3FG-3FGA	3FG%	FT-FTA	FT%	OFF	DEF	TOT	AVG	PF-FO	A	TO	BLK	STL	PTS	AVG
2017-18	SMU	29-10	508/17.5	58-175	.331	3-19	.158	29-49	.592	52	118	170	5.9	83-4	8	59	9	15	148	5.1
2018-19	SMU	29-17	552/19.0	78-228	.342	4-17	.235	28-55	.509	73	120	193	6.7	63-0	20	71	27	26	188	6.5
2019-20	SMU	29-28	705/24.3	130-335	.388	1-7	.143	62-104	.596	94	179	273	9.4	103-4	28	84	40	52	323	11.1
2020-21	PSU	24-17	574/23.9	136-289	.471	1-3	.333	56-111	.505	63	148	211	8.8	84-5	22	75	26	30	329	13.7
2022-23	PSU	2-0	23/11.5	3-3	1.000	0-0	.000	1-3	.333	2	3	5	2.5	4-0	1	1	0	2	7	3.5
TOTAL FOR PSU	26-17	597/22.9	139-292	.476	1-3	.333	57-114	.500	65	151	216	8.3	88-5	23	76	26	32	336	12.9	
TOTAL	113-72	2362/20.9	405-1030	.393	9-46	.196	176-322	.547	284	568	852	7.5	337-13	79	290	102	125	995	8.8	

2022-23 GAME-BY-GAME STATS

Opponent	Date	GS	MIN	Total		3-Pointers		Free throws		Rebounds				PF A TO BLK STL				PTS		AVG
				FG-FGA	PCT	3FG-3FGA	PCT	FT-FTA	PCT	OFF	DEF	TOT	AVG	PF	A	TO	BLK	STL	PTS	
Norfolk St.	11/09/2022		14:18	1-1	1.000	0-0	.000	1-2	.500	2	0	2	2.0	1	0	1	0	1	3	3.0
Fairfield	11/11/2022		08:38	2-2	1.000	0-0	.000	0-1	.000	0	3	3	2.5	3	1	0	0	1	4	3.5
Totals		0	22:56	3-3	1.000	0-0	.000	1-3	.333	2	3	5	2.5	4	1	1	0	2	7	3.5

Player Averages

Games Played	Minutes/game	Points/game	FG Pct	3FG Pct	FT Pct	Rebounds/game	Assists/game	Turnovers/game	Assist/Turnover ratio	Steals/game	Blocks/game
2	11.5	3.5	100.0	0.0	33.3	2.5	0.5	0.5	1.0	1.0	0.0

SEASON/CAREER HIGHS

Points
Season 4, Fairfield (11/11/22)
Career 28 at Purdue (1/31/21)
Big Ten 28 at Purdue (1/31/21)

Rebounds
Season 3, Fairfield (11/11/22)
Career 19 vs. Nebraska (2/4/21)
Big Ten 19 vs. Nebraska (2/4/21)

Assists
Season 1, Fairfield (11/11/22)
Career 3 - 5 times
Big Ten 3 vs. Wisconsin (2/7/21)

Steals
Season 1, two times
Career 6 vs. Memphis (3/2/20)
Big Ten 4 vs. Wisconsin (2/7/21)

Blocks
Season -
Career 4 - 3 times
Big Ten 3 - 2 times

Field Goals Made
Season 2, Fairfield (11/11/22)
Career 13 at Purdue (1/31/21)
Big Ten 13 at Purdue (1/31/21)

3-Point Field Goals Made
Season -
Career 1 - 9 times
Big Ten 1 vs. Nebraska (2/4/21)

Free Throws Made
Season 1, Norfolk State (11/9/22)
Career 8 vs. Nebraska (2/4/21)
Big Ten 8 vs. Nebraska (2/4/21)

Minutes
Season 14, Norfolk State (11/9/22)
Career 34 - 2 times
Big Ten 34 vs. Rutgers (2/28/21)