

# 2023-24 SCHEDULE (0-3, 0-0 NEC)

Home: 0-0 | Away: 0-3 | Neutral: 0-0 | NEC: 0-0 | Non-Conference: 0-3

NOV.	OPPONENT	TIME/RESULT (TV)	DEC.	OPPONENT	TIME/RESULT (TV)	JAN.	OPPONENT	TIME/RESULT (TV)	FEB.	OPPONENT	TIME/RESULT (TV)
6	at UCLA	L, 44-75	2	at American	2:00 (ESPN+)	4	at Sacred Heart*	7:00 (NEC FR)	1	at CCSU*	7:00 (NEC FR)
9	at San Francisco	L, 52-84	10	at Iona	5:00 (ESPN+)	6	at Wagner*	1:00 (NEC FR)	3	at LIU*	7:00 (NEC FR)
11	at Santa Clara	L, 59-82	15	<b>MOUNT ST. MARY'S</b>	7:00 (NEC FR)	13	<b>CCSU*</b>	4:00 (NEC FR)	10	<b>STONEHILL*</b>	4:00 (NEC FR)
14	at Penn State	7:00 (BTN)	20	<b>ROBERT MORRIS</b>	7:00 (NEC FR)	15	<b>FDU*</b>	7:00 (NEC FR)	15	<b>WAGNER*</b>	7:00 (NEC FR)
20	<b>PITT GREENSBURG</b>	7:00 (NEC FR)	30	<b>CAMPBELL</b>	4:00 (NEC FR)	19	<b>LIU*</b>	7:00 (NEC FR)	17	at FDU*	1:00 (NEC FR)
22	<b>FRANCISCAN</b>	7:00 (NEC FR)				21	at Le Moyne	2:00 (NEC FR)	22	at Merrimack*	TBA (NEC FR)
25	<b>NIAGARA</b>	4:00 (NEC FR)				25	<b>SACRED HEART*</b>	7:00 (NEC FR)	24	at Stonehill*	2:00 (NEC FR)
29	at Lehigh	7:00 (ESPN+)				27	<b>MERRIMACK*</b>	4:00 (NEC FR)		<b>MAR 2 LE MOYNE*</b>	4:00 (NEC FR)

## FRANKIE'S TIDBITS IN A FLASH

- Tuesday's game between Saint Francis and Penn State marks the 13th meeting in the all-time series dating back to the 1949-50 season.
- It is the first meeting between the two schools since the season-opener of the 2012-13 season, which was also the first game as head coach for **Rob Krimmel**, who grew up in State College.
- It will be sixth game between the two teams at the Bryce Jordan Center with the Red Flash looking for its first win in the arena.
- The last win for Saint Francis in the series was at Rec Hall with a 68-63 overtime win in the 1978-79 campaign. It was also the only win for the Frankies in State College in the series.
- It will be the 25th time Krimmel has faced a Power 6 opponent with wins against Pittsburgh and Rutgers on his resume.
- Krimmel is 1-5 against the Big 10. Along with the win against Rutgers, his team played Penn State, Maryland, Indiana, Illinois and Ohio State. The last time the Red Flash played a Big 10 opponent was last season at then No. 25 Ohio State on December 3, 2022.
- It will be the second Power 6 team the squad has played this season after falling 75-45 in the season opener at UCLA on November 6.
- Bill Walton was the color analyst for the Pac-12 Network game against the Bruins and was at both the team's practice on November 5 and shootaround on November 6. He talked to the team on November 5, and sang Happy Birthday to freshman **Aaron Humphrey, Jr.**, who shared a birthday with Walton despite the 52 year age difference. Krimmel found out that it was Walton's birthday after the practice on November 5, but present Walton with a cake and the team sang Happy Birthday at the shootaround practice on November 6.
- Saint Francis just traveled 5,987 miles (5,278 miles by plane and 709 miles by bus) for its last three games, but will only travel 63.1 miles down to Penn State and 126 miles round trip for its next contest at Penn State.

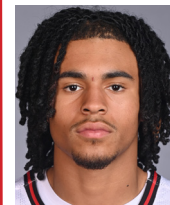
- The Red Flash left Loretto, Pennsylvania and traveled to Baltimore/Washington Thurgood Marshall International (189 miles by bus) for Los Angeles International Airport on Sunday, November 5 and played UCLA on November 6. The team then took a bus 378 miles to San Francisco on November 7, played at San Francisco on November 9, drove to Santa Clara on November 10 (47.8 miles), played Santa Clara on November 11. The team flew back to Pennsylvania to the Pittsburgh Invtational Airport via the San Jose Mineta International Airport on Sunday and drove home to Loretto (95.1 miles).
- Saint Francis is 337-313-2 against all the teams in the state of Pennsylvania. The Red Flash is 86-238 against NCAA Division I teams and 251-75-2 against non-NCAA Division I teams.
- For the second-straight season, the squad will play four fellow Keystone state teams this season. Along with Penn State, Saint Francis will host Pitt Greensburg (November 21) and Robert Morris (December 20), while also traveling to Lehigh (November 29).
- Krimmel is 22-22 against the state of Pennsylvania.
- Saint Francis has played its most games against teams from the western part of the state in program history. The Red Flash have tangled with Robert Morris the most in the state with 91 meetings. Duquesne has been on the squad 75 times, Saint Vincent 65 times, Westminster 43 times, Geneva 39 times and Pittsburgh 30 times.
- The Red Flash, who opens the season with four-straight games on the road for the first time since 2003-04, makes its 2023-24 home debut and starts a three-game home-stand against Pitt Greensburg on November 20 in the first-ever meeting between the two teams.
- Saint Francis will host an open practice at the Jaffa Shrine Center on Wednesday from 6-8 p.m. The Jaffa is were the Red Flash played games before the Maurice Stokes Athletic Center opened in 1972-73. Among the great Frankies that played at Jaffa were Maurice Stokes, Norm Van Lier and Kevin Porter in the Golden Era of basketball in Loretto.

## SAINT FRANCIS PROJECTED STARTING FIVE



**0**  
**CAM GREGORY**  
G | 6-5 | 165  
ACCOKEEK, MD.  
**9.7 PPG | 1.0 RPG | 34.6 FG %**

**GREGORY TIDBITS:** Most experienced returner from last season... Scored 10+ points in each of his last two games.



**4**  
**CARLOS LOPEZ, JR.**  
G | 6-2 | 170  
EGG HARBOR, N.J.  
**4.7 PPG | 0.7 RPG | 21.1 FG %**

**LOPEZ TIDBITS:** Registered eight points against UCLA in his collegiate debut on Monday... Started all three games this season.



**11**  
**CHRIS MONCRIEF**  
G | 6-6 | 190  
TURTLE CREEK, PA.  
**5.0 PPG | 2.0 RPG | 50.0 FG %**

**MONCRIEF TIDBITS:** Notched his first points in a Red Flash uniform and tied his career high with nine points at San Francisco on November 9.



**3**  
**MILES WEBB**  
F | 6-8 | 190  
ARLINGTON, VA.  
**3.7 PPG | 3.3 RPG | 25.0 FG %**

**WEBB TIDBITS:** Recorded first career 10+ point game with 11 points at San Francisco on Thursday... Has started his first three games of his career this season.



**5**  
**ELI WILBORN**  
F | 6-8 | 215  
MIDDLETOWN, CONN.  
**3.7 PPG | 3.3 RPG | 50.0 FG %**

**WILBORN TIDBITS:** Notched a career-high nine points, four rebounds and two blocks in first career start on Saturday at Santa Clara.

## GAME FOUR: SAINT FRANCIS AT PENN STATE

**DATE:** Tuesday, November 14, 2023  
**TIPOFF:** 7:00 p.m.  
**LOCATION:** State College, Pa.  
**ARENA:** Bryce Jordan Center

**SERIES BREAKDOWN**  
**OVERALL:** Penn State leads 9-3  
**IN STATE COLLEGE:** Penn St leads 9-3  
**KRIMMEL VS PSU:** 0-1  
**RHOADES VS SFU:** 1-0  
**CURRENT SFU STREAK:** L5

**LAST MEETING:** PSU (65-58) 2012-13  
**FIRST MEETING:** PSU (67-62) 1949-50  
**LAST SFU WIN:** (66-63) 1978-79

**LAST FIVE MEETINGS**  
Penn State 74, Saint Francis 55 (2002-03)  
Penn State 67, Saint Francis 58 (2003-04)  
Penn State 88, Saint Francis 74 (2005-06)  
Penn State 74, Saint Francis 64 (2007-08)  
Penn State 65, Saint Francis 58 (2012-13)



**HEAD COACH:** Rob Krimmel (Saint Francis '00)  
**RECORD:** 147-191, 97-97 NEC (11th season)



**PENN STATE (2-0)**

**HEAD COACH:** Mike Rhoades (Lebanon Valley '95)  
**RECORD:** 357-189 overall (1st season at Penn State)

**PENN STATE PROBABLE STARTERS**

Pos.#	Name	Ht	Wt
G 0	Kanye Clary	5-11	195
21.0 PPG	4.5 RPG   60.0 FG %		
G 2	D'Marco Dunn	6-5	195
6.0 PPG	1.5 RPG   45.5 FG %		
G 3	Nick Kern, Jr.	6-6	200
5.0 PPG	4.5 RPG   50.0 FG %		
F 22	Qudus Wahab	6-11	245
9.0 PPG	15.5 RPG   70.0 FG %		
F 24	Zach Hicks	6-8	200
7.0 PPG	2.5 RPG   25.0 FG %		


**STATISTICS OVERVIEW SFU**

Statistic	PSUI
Points Per Game	76.5
Opp Points Per Game	55.0
Rebounds Per Game	39.5
Rebound Margin	+0.0
Field Goal %	47.1
Opp Field Goal %	33.3
3-Pt Field Goal %	34.5
Opp 3-Pt Field Goal %	13.8
Free Throw %	66.7
Turnovers Per Game	18.0
Opp Turnovers Per Game	18.5

**Housekeeping Item:** We are **SAINT FRANCIS UNIVERSITY**. We are a proud to have our address in Pennsylvania, but we would prefer to be known as Saint Francis University without the state affiliation in all announcements and written pieces. Please abbreviate us as **SFU** and not SFPA. There used to be two Division I schools named Saint Francis, but we are now the only one left so do not need the **STATE** tags.

**QUICK FACTS**

Saint Francis University  
Loretto, PA 15940



Founded 1847  
Enrollment 2,289  
Nickname Red Flash  
Colors Red, White, & Black  
Affiliation NCAA Division I  
Conference Northeast  
President Very Rev. Malachi Van Tassell, T.O.R.  
Director of Athletics James Downer  
Website SFUathletics.com  
Twitter @RedFlashMBB  
Instagram redflashmbb  
Facebook /RedFlashMBB

**HEAD COACH - ROB KRIMMEL**

Seasons 12th Season  
Overall Record 147-191  
Record at Saint Francis same  
NEC Record 97-97  
Postseason Record 1-4 (CIT/NIT)

**DEGOL ARENA**

Opened December 4, 1972  
Capacity 3,500  
Krimmel at DeGol Arena 88-59

**ALL-TIME RECORD**

118th season of Saint Francis Basketball  
Years 1905 to present  
Overall Record 1,047-1186  
Retired Jerseys Kevin Porter (10),  
Norm Van Lier (12), Maurice Stokes (26)

**DRAFTED NBA PLAYERS (\* PLAYED IN NBA)**

- Maurice Stokes (Rochester, 1955) \*
- Jim McCellan (Cincinnati, 1958)
- Wilbur Trosch (Syracuse, 1960)
- Sandy Williams (Baltimore, 1964)
- Larry Lewis (Philadelphia, 1969)
- Norm Van Lier (Chicago, 1969) \*
- Kevin Porter (Baltimore, 1972) \*
- Rick Hockenos (Chicago, 1974) \*
- Jack Phelan (Golden State, 1977)
- Joe Schoen (Detroit, 1981)
- Mike Iuzzolino (Dallas, 1991) \*

**POST SEASON HISTORY**

NIT Appearances 1954, 1955, 1958, 2019  
NCAA Tournament Appearance 1991  
CIT Appearances 2015, 2017, 2018

**2023-24 SAINT FRANCIS BASKETBALL ROSTER**



**CAM GREGORY**  
G | So. | 6-5 | 165  
Accokeek, Md.



**BRAYLEN BLUE**  
G | Fr. | 6-5 | 180  
Sun Prairie, Wis.



**AARON "ACE" TALBERT**  
G | Fr. | 6-0 | 185  
Wyandanch, N.Y.



**MILES WEBB**  
F | So. | 6-8 | 190  
Arlington, Va.



**CARLOS LOPEZ, JR.**  
G | Fr. | 6-2 | 170  
Egg Harbor, N.J.



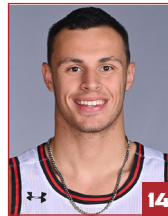
**ELI WILBORN**  
F | So. | 6-8 | 215  
Middletown, Conn.



**CHRIS MONCRIEF**  
G | So. | 6-6 | 190  
Turtle Creek, Pa.



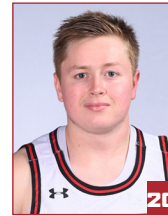
**BLAZE ANGELOTTI**  
G | Fr. | 6-4 | 195  
Julian, Pa.



**BOBBY ROSENBERGER III**  
G | Fr. | 6-5 | 205  
Quakertown, Pa.



**AARON HUMPHREY, JR.**  
G | Jr. | 6-7 | 210  
Indianapolis, Ind.



**BRENDAN SCANLON**  
G | Jr. | 5-8 | 175  
State College, Pa.



**GESTIN LIBERIS**  
F | So. | 6-9 | 215  
Havertown, Pa.



**RYEN GRESKO**  
G | So. | 5-11 | 170  
Penn Run, Pa.



**WISLER SANON, II**  
G | So. | 6-4 | 190  
Sicklerville, N.J.



**KESHAWN MCNEILL**  
G | R-Fr. | 6-1 | 100  
Camp Zama, Japan



**KJ SWAIN, JR.**  
G | Jr. | 6-0 | 155  
Hamilton, Ohio



**AIDAN HARRIS**  
F | Fr. | 6-7 | 205  
Annapolis, Md.



**WILL HELTON**  
G | Jr. | 6-4 | 175  
Hollidaysburg, Pa.



**DARIC DANCHANKO**  
F | So. | 6-8 | 220  
Johnstown, Pa.



**ROB KRIMMEL**  
Head Coach | 12th Season  
Saint Francis '00



**ANDREW HELTON**  
Assoc. HC | 8th Season  
Miami (Ohio) '92



**ERIC TAYLOR**  
Asst. Coach | 11th Season  
Saint Francis '98



**LUKE MCCONNELL**  
Asst. Coach | 10th Season  
Saint Francis '12



**JOE CAUSGROVE**  
D0B0 | 3rd Season  
Penn State Behrend '14

#	NAME	CL	POS	HT	WT	HOMETOWN / HIGH SCHOOL (PREV.)
0	Cam Gregory	G	6-5	165	So.	Accokeek, Md. / The Steward School (Va.)
1	Braylen Blue	G	6-5	180	Fr.	Sun Prairie, Wis. / James Madison Memorial
2	Aaron "Ace" Talbert	G	6-0	185	Fr.	Wyandanch, N.Y. / Scotland Campus (Pa.) / Combine Academy (N.C.)
3	Miles Webb	F	6-8	190	So.	Arlington, Va. / St. Stephens & St. Agnes
4	Carlos Lopez, Jr.	G	6-2	170	Fr.	Egg Harbor, N.J. / Egg Harbor Township / Feltrim Academy (Fla.)
5	Eli Wilborn	F	6-8	215	Fr.	Middletown, Conn. / Middletown / South Kent Preparatory School
11	Chris Moncrief	G	6-6	190	So.	Turtle Creek, Pa. / The Kiski School / University of Evansville
13	Blaze Angelotti	G	6-4	195	Fr.	Julian, Pa. / Bald Eagle Area
14	Bobby Rosenberger III	G	6-5	205	Fr.	Quakertown, Pa. / Perkiomen School
15	Aaron Humphrey, Jr.	F	6-7	210	Fr.	Indianapolis, Ind. / Charles A. Tindley / Don Bosco Institute
20	Brendan Scanlon	G	5-8	175	Jr.	State College, Pa. / Saint Joseph's
21	Gestin Liberis	F	6-9	215	So.	Havertown, Pa. / The George School
22	Ryen Gresko	G	5-11	170	Fr.	Penn Run, Pa. / Penns Manor
23	Wisler Sanon II	G	6-4	190	So.	Sicklerville, N.J. / Paul VI
24	Keshawn McNeill	G	6-1	180	R-Fr.	Camp Zama, Japan / Zama American Middle High School
30	KJ Swain, Jr.	G	6-0	155	Jr.	Hamilton, Ohio / Cincinnati Christian
32	Aidan Harris	F	6-7	205	Fr.	Annapolis, Md. / Saint Mary's
33	Will Helton	G	6-4	175	Jr.	Hollidaysburg, Pa. / Bishop Guilfoyle / Penn State DuBois
42	Daric Danchanko	F	6-8	220	So.	Johnstown, Pa. / Central Cambria

**COACHING STAFF**

Head Coach  
Associate Head Coach  
Assistant Coaches  
Director of Operations  
Graduate Assistants

Rob Krimmel (Saint Francis '00, 12th season)  
Andrew Helton (Miami (Ohio) '92, eighth season)  
Eric Taylor (Saint Francis '98, 12th season), Luke McConnell (Saint Francis '12, 11th season)  
Joe Causgrove (Penn State Behrend '14, third season)  
Oliver Allen (Vermont '22, second season), Denzel Mobley (Saint Francis '22, second season)



### KRIMMEL RECORD WHEN

	2023-24	Career
<b>Overall</b>	0-3	147-191
Home	0-0	88-59
Away	0-3	59-132
<b>NEC Reg. Season</b>	0-0	97-97
Home	0-0	59-37
Away	0-0	38-60
<b>Conference Tournament</b>		9-11
<b>NIT</b>		0-1
<b>CIT</b>		1-4
<b>Reg. Season NC</b>	0-3	41-83
Home	0-0	26-17
Away	0-3	15-66
<b>Leading At Half</b>	0-0	121-34
<b>Trailing At Half</b>	0-3	22-155
<b>Tied At Half</b>	0-0	4-2
<b>Shoots 50%+</b>	0-0	62-18
<b>Shoots &lt;35%</b>	0-1	5-50
<b>Holds Opp &lt; 35%</b>	0-0	24-2
<b>Outrebounds Opp</b>	0-0	100-46
<b>20+ Assists</b>	0-0	8-1
<b>10+ 3FG</b>	0-0	40-17
<b>&gt; FT Than Opp</b>	0-2	103-66
<b>Overtime</b>	0-0	5-12
<b>vs. Ranked Opponent</b>	0-0	0-13
<b>In November</b>	0-3	22-45
<b>In December</b>	0-0	17-43
<b>In January</b>	0-0	47-49
<b>In February</b>	0-0	51-35
<b>In March</b>	0-0	10-11
<b>Scores 59 or less</b>	0-3	2-69
<b>Scores 60-69</b>	0-0	25-66
<b>Scores 70-79</b>	0-0	48-42
<b>Scores 80-89</b>	0-0	45-14
<b>Scores 90-99</b>	0-0	13-2
<b>Scores 100+</b>	0-0	11-0
<b>Allows 59 or less</b>	0-0	24-13
<b>Allows 60-69</b>	0-0	68-36
<b>Allows 70-79</b>	0-1	33-67
<b>Allows 80-89</b>	0-2	16-56
<b>Allows 90-99</b>	0-0	0-13
<b>Allows 100+</b>	0-0	0-5

**an sfu win would...** Be the squad's first win of the season

- Be the squad's first win against Penn State since a 66-63 win in 1978-89
- Be the team's second win under head coach **Rob Krimmel** against a Big 10 opponent (Rutgers, 2014-15) and third win against a Power 6 Conference team (Rutgers and Pittsburgh, 2020-21)
- Be Krimmel's 148th career victory

**last time out...** Saint Francis lost 82-59 to Santa Clara on Saturday.

- Sophomore **Cam Gregory** fueled the Red Flash with a season-high 12 points and four rebounds
- Freshman Eli Wilborn added a career-best nine points and five rebounds in his first career start, while fellow freshmen Aaron "Ace" Talbert (seven points) and Braylen Blue (six points) also had a career high in the final game in California.

**road trips and homestands...** Saint Francis will not play only one game on the road or at home with the exception of its two games against Le Moyne. The rest of the schedule the team will play at least two games at home or at least two games on the road in a row.

- The Red Flash starts the season with a four-game road trip at UCLA (L, 44-75), San Francisco (L, 52-84), Santa Clara (L, 59-82) and Penn State (November 14).
- The four-game road trip to start the season is the longest to start the season since the 2003-04 campaign.
- Saint Francis will then have three-game packaged together three times in a row to end the non-conference slate.
- The squad will host Pitt Greensburg (November 20), Franciscan (November 22) and Niagara (November 25) in a three-game homestand before hitting the road at Lehigh (November 29), American (December 2) and Iona (December 10). The team then comes back for a three-game homestand to wrap up non-conference play against Mount St. Mary's (December 15), Robert Morris (December 20) and Campbell (December 30).
- The Red Flash will also have a three-game homestand and a three-game road trip in Northeast Conference play along with two sets of two homestands and road trips.
- A Le Moyne game on January 21 and a return home game on March 2 being the only single games on the slate.

**trending up...** Sophomore **Cam Gregory** registered his second-straight double-figure performance of the season and his team-leading sixth of his career.

- It marks the second time in his career that he has registered back-to-back 10+ scoring games after posting three-straight games toward the end of his freshman year. Gregory is averaging 10.6 points per game in his last five games away from DeGol Arena dating back to last season with four double-figure point games to his credit. The sophomore has notched five of his six 10+ games on the road, including a career-high 15 points at Ohio State on December 3, 2022.
- Freshmen **Eli Wilborn** notched a career-best nine points, five rebounds and two blocks against Santa Clara. The points and the blocks are the most by a freshmen this season, while Wilborn and fellow freshman Aidan Harris had five boards at UCLA on November 6.
- Saint Francis increased its point total in each of its three games on the West Coast, going from 44 points (at UCLA), 52 points (at San Francisco) and 59 points (at Santa Clara). In addition, the team turnover number has dropped from 21 to 16 to 14 in the three tilts.

**looking down the road to state college and following in his father's footsteps with a new path...** Saint Francis and Penn State are only separated by 61.8 miles and head coach **Rob Krimmel** grew up in State College before coming to Saint Francis.

- It is only the second time that the Red Flash will face Penn State in Krimmel's 12 years as a head coach and the first since Krimmel's head coaching debut on November 9, 2012.
- Krimmel's father, Bob, was a 1973 graduate of Penn State and spent 36 years as a student-athlete, swimming assistant/head coach and an assistant athletic director before coming to Saint Francis as the director of athletics for 11 years and retired in 2006.

- Rob Krimmel followed a similar path to his father, but at Saint Francis. He is entering his 28th year associated with Saint Francis as either a student-athlete, assistant coach or head coach.
- The connection between father and son continues as both men met their wife while in college with Bob meeting Rob's mother at Penn State and Rob meeting his wife, Aileen, at Saint Francis.

**debut in red...** Freshmen **Braylen Blue**, **Aaron Humphrey, Jr.**, **Aidan Harris**, **Carlos Lopez, Jr.**, **Bobby Rosenberger III**, **Aaron "Ace" Talbert** and **Eli Wilborn** and redshirt freshman **Keshawn McNeill** each made their collegiate debut in the contest against UCLA on November 6, while **Chris Moncrief** made his Saint Francis debut after playing last season at the University of Evansville.

- Harris (four points), Lopez (eight points) and Talbert (five points) each notched their first collegiate points against UCLA.
- Lopez, Moncrief, and sophomores **Gestin Liberis** and **Miles Webb** all made their first career start against the Bruins.
- Sophomore **Cam Gregory** was the only player in the starting lineup that started a game in his career prior to the season opener.
- Blue, Rosenberger and Wilborn registered their first collegiate points against San Francisco on Nov. 9.

**playing the percentages...** Saint Francis is returning 13.8 percent of its scoring from last season, 15.6 percent of its rebounds, 23.5 percent of its assists, 20.4 percent of its steals and 18.8 percent of its blocks from its Northeast Conference semifinal team last year.

- Sophomore **Cam Gregory** is the team's top returner in points (142), points per game (5.1), assists (74), steals (14) and blocks (7).
- Sophomore **Wisler Sanon II** is the team's top returner in rebounds (54) and rebounds per game (1.8).
- Junior **Brendan Scanlon** and sophomores **Daric Danchanko**, **Gestin Liberis** and **Miles Webb** are the other players on the team that registered statistics last year for the Red Flash and are returning in 2023-24.

**did you say yutes... what is a yute?...** Saint Francis will be one of the youngest teams in the country with all of its scholarship players being freshmen or sophomores.

- The Red Flash is the second youngest teams in NCAA Division I with an average age of 19.6 for its scholarship players. VMI is the youngest at 19.0, while Siena (19.8) and Kentucky (20.0) the only other teams averaging 20 years or younger.
- In addition, the Red Flash are one of only four teams in NCAA Division I not to have a senior on the team. Air Force, Siena and UMES are the other teams that do not have a senior on this year's team.
- The Loretto team is comprised of three juniors (all three are walk-ons), six sophomores (one walk-on) and 10 freshman (two walk-ons).
- With the youth movement, the Red Flash will have only one scholarship player that will be 18 years old by the season opener, but will also have a freshman that will 21 years of age by the opener too.

**krimmel the dean of coaching...** Head coach **Rob Krimmel** currently sits at 147 career wins. He needs three wins to become 180th active head coach to reach 150 wins in his career. Central Michigan's Tony Barbee is also chasing the mark and currently sits one ahead of Krimmel at 148 victories.

- Currently there are 782 head coaches that have ever reached 150 career wins.
- Krimmel also sits at 97 wins in Northeast Conference play. Krimmel, who became the dean of the NEC this season, is the NEC active leader in wins and will become the 12th head coach in league history with 100 wins with three victories.
- The 12th year head coach is scheduled to coach his 350th game as a head coach at Wagner on January 6. With that game, dating back to his time as a player, assistant coach and head coach Krimmel will have been on the Saint Francis sideline for nearly 800 contests. He has missed a game or two in his time on the sidelines, but that all since he stepped onto the Saint Francis campus in the fall of 1996.

**preseason poll...** Saint Francis was picked to finish eighth according to the Northeast Conference Coaches Preseason Poll.

- Sacred Heart received seven first-place votes to be selected as the preseason favorite, while Central Connecticut State and FDU each garnered a first-place nod to finish 2-3 in the poll. Defending NEC regular season and tournament champion Merrimack finishes fourth and was followed by Wagner, Stonehill, LIU, Saint Francis and Le Moyne in the nine-team poll.

- Twice under Krimmel the Red Flash has been picked in the bottom half of the poll and finished at least two spots better than the poll. In 2015-16, the Frankies were picked eighth and placed sixth, while the 2016-17 was picked ninth and finished fourth. That season, the Red Flash advanced to its first of three NEC Championship games. In addition, last year FDU was picked seventh and ended up earning the second-ever No. 16 upset over a No. 1 win against Purdue in the NCAA Tournament.

**20-point club...** For the first time since the 2001-02 season, the Frankies are not returning a 20-point scorer from the previous team.

- It did not take long for someone to join the 20-point club in the 2001-02 season after Rahsaan Benton posted exactly 20 points in the season opener against Wright State.
- Sophomore **Cam Gregory** had a career-high 15 points at Ohio State on December 3, 2022 for the team's current high in points.

- Saint Francis had three players register at least 20 points in a game 24 times last season., including a player that had two 30-point games and two 40-point performances.

**boards up...** Similar to 20-point game returning players, the team also does not have a player on the team that hauled in 10 rebounds or more in a game.

- Sophomore **Gestin Liberis** registered seven rebounds against Franciscan on November 23, 2022, to notch the single-game high among the returners.

- The Red Flash had two players reach double digits in rebounds in a game last season and had a total of nine times in 2022-23.

**double vision...** Saint Francis will also be looking for a

player to post his first career double-double during the 2022-23 season.

- Sophomores **Cam Gregory** and **Gestin Liberis** are the returners that came closest to registering a double-double in their freshman year. Gregory had nine points and seven assists against St. Vincent on December 8, 2022, while Liberis had nine points and seven boards against Franciscan on November 23, 2022.

- The Frankies had two players accomplish double-doubles last season for a total of 11 double-doubles.

**looking to make a spa-flash...** Head coach **Rob Krimmel** has added 12 players to his team in 2023-24.

- Sophomore transfer **Chris Moncrief** comes to Loretto after playing last season at the University of Evansville.

- Freshmen **Braylen Blue**, **Aaron "Ace" Talbert**, **Carlos Lopez, Jr.**, **Eli Wilborn**, **Bobby Rosenberger III**, **Aaron Humphrey, Jr.** and **Aidan Harris** also joined the team on scholarships.

- Redshirt junior **Will Helton**, junior **KJ Swain** and freshmen **Blaze Angellotti** and **Ryen Gresko** also joined the Frankies as walk-ons for the 2022-23 season. Helton played three years at the NCAA Division III level, while Swain attended Xavier but did not suit up for the men's basketball team.

**familiar faces...** Saint Francis sophomore **Wisler Sanon II** and freshman **Carlos Lopez, Jr.** were familiar with each other before becoming teammates this season. Sanon played with Lopez's older brother on the same AAU team. Lopez was around a lot of the practices and the two did team up for the same AAU team on occasion.

- Freshman **Ryen Gresko** is the third Gresko wear the black and red uniform in his family. His brother, Aric, appeared in 16 games with one start from 2012-15 on the hardwood for the Red Flash. He registered a career-high three points and two rebounds against Keystone in his senior year. In addition, his sister, Katee, was a four-year letterwinner on the cross country and track and field team from 2012-15.

- Redshirt junior **Will Helton** joins his father Associate Head Coach **Andrew Helton** on the team in 2023-24 after playing at Waynesburg, Lebanon Valley and Penn State DuBois at the NCAA Division III level for the last three seasons.

**cambridia county family connection...** Freshman **Aidan Harris'** father, Quinn, is in the Pitt Johnstown Hall of Fame for men's basketball.

- Quinn Harris (1988-93) left the Mountain Cats as the program's all-time leading scorer with 1,490 points, a record that stood until 2000. He currently ranks fifth in scoring and 10th in rebounding and was inducted into the Pitt Johnstown Hall of Fame in 2012.

- Pitt Johnstown is an NCAA Division II program, located in the same county as Saint Francis and the two campuses are separated by just 25.5 miles.

**from the land of the rising sun to loretto...** Redshirt freshman **Keshawn McNeill** joined the Red Flash basketball team from Camp Zama, Japan in 2022-23.

- The redshirt freshman was born and raised in Japan and his father played semipro football in Japan.

- McNeill played four games for Team Japan in the FIBA U18 Championship in Iran in August.

- McNeill has also joined the ROTC on campus with the satellite campus at Indiana University of Pennsylvania.

**coaches dream team...** Head coach **Rob Krimmel** has assembled a coaching staff with strong ties to Saint Francis.

- Krimmel, a 2000 graduate of Saint Francis, was an Academic All-American.

- Assistant coach **Eric Taylor**, a 1998 graduate, was a three-time All-NEC selection, ranks 23rd in program history in points (1,287) and fifth in rebounding (967). Taylor was inducted into the Saint Francis Athletics Hall of Fame in the summer of 2022.

- Assistant coach **Luke McConnell**, a 2012 Saint Francis graduate, played on the Red Flash football team as a student-athlete. McConnell is the son of former Saint Francis men's basketball head coach Tom McConnell (1992-99), while his cousin T.J. McConnell is in his ninth season in the NBA.

- Associate head coach **Andrew Helton** did not graduate from Saint Francis but has strong ties in his two stints in Loretto. Helton was originally an assistant coach under Tom McConnell and recruited both Krimmel and Taylor to play at Saint Francis.

- **Denzel Mobley** is in his second season as a graduate assistant. A 2022 graduate of Saint Francis, Mobley also served as a team manager as an undergraduate.

## SAINT FRANCIS SIGNS PARTNERSHIP WITH READY

The Saint Francis University athletics department entered into a three-year partnership with Ready (@ready\_nutrition) to be the official Sports Drink for the athletic department.

As Saint Francis Athletics' Official Sports Drink, Ready will be the exclusive provider of sports drinks to over 600 student athletes in 25 Red Flash programs. Those beverages include Ready's regular Sports Drinks and Sports Drinks-Light in RTD and sideline powder formulations. The partnership will also include Ready's full line of performance products including protein powder, bars and protein infused drinks and snacks.

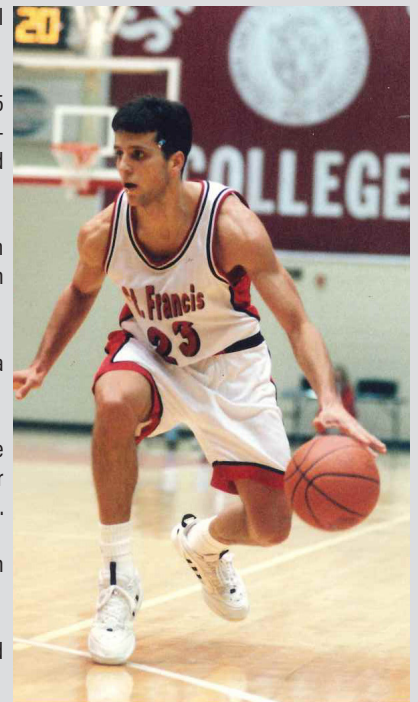
Ready has fueled student athletes at over 200 colleges and universities across America including a number of Power 5 schools. In addition, besides Aaron Donald and Giannis Antetokounmpo, the United States top ranked tennis player, Jessica Pegula, and Pittsburgh Steelers starting QB Kenny Pickett are Ready athletes.

A connection between Ready and Saint Francis is Sotiris Aggelou, the Vice President of Global Brand Partnership for the company, is a 1998 graduate of Saint Francis University and a former men's basketball player.

Aggelou transferred to Saint Francis after playing two seasons at the University of Pittsburgh for the 1996-97 and 1997-98 seasons. He registered 528 points, 147 rebounds, 88 assists and 56 steals in his two seasons in Loretto. He posted three 20-point games in his career with a career-high 28 points against Mount St. Mary's on February 22, 1997 and also had 27 points against Monmouth on January 10, 1998.

Head coach Rob Krimmel and assistant coach Eric Taylor played with Aggelou for two seasons. In addition, current associate head coach Andrew Helton was an assistant coach on those teams as well.

Another Saint Francis connection to Aggelou is that his nephew, Georgios, was a four-year letterwinner for Saint Francis from 2013-17 and was coached by Krimmel, Taylor and Helton.



**2023-24 STATISTICS****season box score****overall record: 0-3 (home: 0-0 // away: 0-3 // neutral: 0-0)**

No.	Player				Total		3-Point		F-Throw		Rebounds											
		GP-GS	MIN	AVG	FG-FGA	FG%	3FG-3FGA	3FG%	FT-FTA	FT%	OFF	DEF	TOT	AVG	PF	DQ	A	TO	BLK	STL	PTS	AVG
0	GREGORY, Cam	3-3	88:44	29.6	9-26	.346	3-9	.333	8-9	.889	0	3	3	1.0	3	0	6	6	0	3	29	9.7
21	LIBERIS, Gestin	3-2	62:51	20.9	8-17	.471	0-0	.000	6-8	.750	1	9	10	3.3	6	0	1	4	0	0	22	7.3
23	SANON, Wisler	3-0	58:18	19.4	6-10	.600	1-4	.250	5-7	.714	2	3	5	1.7	6	0	3	5	0	3	18	6.0
11	MONCRIEF, Chris	3-3	66:31	22.2	6-12	.500	3-4	.750	0-3	.000	1	5	6	2.0	1	0	3	5	1	2	15	5.0
4	LOPEZ, JR., Carlos	3-3	56:15	18.8	4-19	.211	1-14	.071	5-6	.833	0	2	2	0.7	4	0	3	6	0	2	14	4.7
2	TALBERT, Aaron	3-0	47:59	16.0	4-8	.500	2-5	.400	2-5	.400	1	2	3	1.0	4	0	3	5	0	1	12	4.0
5	WILBORN, Eli	3-1	50:34	16.9	4-8	.500	0-2	.000	3-7	.429	3	6	9	3.0	12	0	0	7	2	1	11	3.7
3	WEBB, Miles	3-3	47:41	15.9	5-20	.250	0-5	.000	1-2	.500	3	7	10	3.3	8	0	1	3	1	1	11	3.7
1	BLUE, Braylen	3-0	21:43	7.2	3-6	.500	3-6	.500	1-2	.500	1	0	1	0.3	0	0	1	3	0	0	10	3.3
32	HARRIS, Aidan	3-0	50:56	17.0	3-10	.300	1-3	.333	2-2	1.000	3	4	7	2.3	6	0	0	2	1	0	9	3.0
14	ROSENBERGER, Bobby	3-0	29:53	10.0	2-7	.286	0-4	.000	0-0	.000	0	1	1	0.3	2	0	2	1	0	0	4	1.3
15	HUMPHRIES, JR., Aaron	2-0	11:03	5.5	0-0	.000	0-0	.000	0-0	.000	0	1	1	0.5	3	0	1	1	0	1	0	0.0
24	MCNEILL, Keshawn	3-0	07:32	2.5	0-2	.000	0-2	.000	0-0	.000	1	0	1	0.3	1	0	0	1	0	0	0	0.0
Team											1	7	8					2				
<b>Total</b>		<b>3</b>	<b>600</b>		<b>54-145</b>	<b>.372</b>	<b>14-58</b>	<b>.241</b>	<b>33-51</b>	<b>.647</b>	<b>17</b>	<b>50</b>	<b>67</b>	<b>22.3</b>	<b>56</b>	<b>0</b>	<b>24</b>	<b>51</b>	<b>5</b>	<b>14</b>	<b>155</b>	<b>51.7</b>
<b>Opponents</b>		<b>3</b>	<b>600</b>		<b>95-179</b>	<b>.531</b>	<b>17-50</b>	<b>.340</b>	<b>34-54</b>	<b>.630</b>	<b>37</b>	<b>79</b>	<b>116</b>	<b>38.7</b>	<b>46</b>	<b>0</b>	<b>60</b>	<b>35</b>	<b>14</b>	<b>25</b>	<b>241</b>	<b>80.3</b>

**2022-23 STATISTICS****northeast conference only box score****overall record: 9-7 (home: 6-2 // away: 3-5 // neutral: 0-0)**

No.	Player				Total		3-Point		F-Throw		Rebounds											
		GP-GS	MIN	AVG	FG-FGA	FG%	3FG-3FGA	3FG%	FT-FTA	FT%	OFF	DEF	TOT	AVG	PF	DQ	A	TO	BLK	STL	PTS	AVG
33	COHEN, Josh	16-16	553:46	34.6	128-231	.554	0-0	.000	90-145	.621	32	96	128	8.0	39	0	44	31	17	17	346	21.6
14	MOORE, Landon	4-4	130:12	32.5	22-35	.629	9-14	.643	19-22	.864	1	15	16	4.0	5	0	17	12	0	4	72	18.0
11	LAND, Maxwell	16-16	530:03	33.1	82-184	.446	29-76	.382	27-32	.844	21	69	90	5.6	16	0	29	25	3	8	220	13.8
4	GILES, JR., Ronell	16-13	434:46	27.2	35-107	.327	18-46	.391	24-32	.750	7	39	46	2.9	35	0	42	33	3	10	112	7.0
31	MCCABE, Brad	16-15	355:42	22.2	32-69	.464	20-48	.417	22-32	.688	18	53	71	4.4	47	1	19	12	7	6	106	6.6
3	RUGGERY, Luke	16-8	343:41	21.5	30-67	.448	25-59	.424	9-12	.750	1	27	28	1.8	26	1	13	13	0	12	94	5.9
0	GREGORY, Cam	14-7	331:09	23.7	27-58	.466	7-24	.292	13-17	.765	3	20	23	1.6	20	0	40	29	6	6	74	5.3
13	HARGIS, Marlon	16-1	244:26	15.3	29-68	.426	12-33	.364	8-11	.727	19	30	49	3.1	36	0	9	15	2	3	78	4.9
23	SANON, Wisler	16-0	198:49	12.4	12-26	.462	7-13	.538	13-13	1.000	1	29	30	1.9	22	0	8	14	1	5	44	2.8
21	LIBERIS, Gestin	15-0	90:01	6.0	13-20	.650	0-0	.000	4-7	.571	7	15	22	1.5	17	0	0	17	0	1	30	2.0
15	DERKITS, Alexander	2-0	03:07	1.6	1-2	.500	0-0	.000	0-0	.000	0	1	1	0.5	1	0	0	2	0	0	2	1.0
20	SCANLON, Brendan	3-0	04:47	1.6	0-0	.000	0-0	.000	2-2	1.000	0	2	2	0.7	0	0	1	2	0	0	2	0.7
42	DANCHANKO, Daric	1-0	02:16	2.3	0-0	.000	0-0	.000	0-0	.000	0	0	0	0.0	0	0	0	0	0	0	0	0.0
22	CALLAWAY, Darian	1-0	02:16	2.3	0-0	.000	0-0	.000	0-0	.000	0	0	0	0.0	0	0	0	0	0	0	0	0.0
Team											17	17	34					9				
<b>Total</b>		<b>16</b>	<b>3225</b>		<b>411-867</b>	<b>.474</b>	<b>127-313</b>	<b>.406</b>	<b>231-325</b>	<b>.711</b>	<b>127</b>	<b>413</b>	<b>540</b>	<b>33.8</b>	<b>264</b>	<b>2</b>	<b>222</b>	<b>214</b>	<b>39</b>	<b>72</b>	<b>1180</b>	<b>73.8</b>
<b>Opponents</b>		<b>16</b>	<b>3225</b>		<b>413-963</b>	<b>.429</b>	<b>121-364</b>	<b>.332</b>	<b>199-285</b>	<b>.698</b>	<b>152</b>	<b>370</b>	<b>522</b>	<b>32.6</b>	<b>289</b>	<b>6</b>	<b>202</b>	<b>172</b>	<b>37</b>	<b>123</b>	<b>1146</b>	<b>71.6</b>

# GAME-BY-GAME STATISTICS

Opponent	W/L	FG-FGA	PCT.	3PT-3A	PCT.	FT-FTA	PCT.	OR	DR	TOT	AST	TO	BLK	STL	1H	2H	OT	PTS
Saint Francis	L	14-42	33.3	2-16	12.5	14-20	70.0	9	21	30	6	21	3	1	22	22	-	44
at UCLA	W	29-57	44.6	2-9	22.2	15-24	62.5	10	22	32	18	7	6	9	32	43	-	75
Saint Francis	L	18-47	38.3	5-17	29.4	11-15	73.3	2	11	13	8	16	2	6	27	26	-	52
at San Francisco	W	31-55	56.4	9-22	40.9	13-17	76.5	9	24	33	20	15	6	11	41	43	-	84
Saint Francis	L	22-56	39.3	7-25	28.0	8-16	50.0	6	18	24	10	14	2	5	24	35	-	59
at Santa Clara	W	35-67	52.2	6-19	31.6	6-13	46.2	18	33	51	22	13	2	5	46	36	-	82

Saint Francis  
at Penn State

---

Pitt Greenburg  
at Saint Francis

---

Franciscan  
at Saint Francis

---

Niagara  
at Saint Francis

---

Saint Francis  
at Lehigh

---

Saint Francis  
at American

---

Saint Francis  
at Iona

---

Mount St. Mary's  
at Saint Francis

---

Robert Morris  
at Saint Francis

---

Campbell  
at Saint Francis

---

Saint Francis  
at Sacred Heart

---

Saint Francis  
at Wagner

---

CCSU  
at Saint Francis

---

FDU  
at Saint Francis

---

LIU  
at Saint Francis

---

Saint Francis  
at Le Moyne

---

Sacred Heart  
at Saint Francis

---

Merrimack  
at Saint Francis

---

Saint Francis  
at CCSU

---

Saint Francis  
at LIU

---

Stonehill  
at Saint Francis

---

Wagner  
at Saint Francis

---

Saint Francis  
at FDU

---

Saint Francis  
at Merrimack

---

Saint Francis  
at Stonehill

---

LeMoyne  
at Saint Francis

---

# INDIVIDUAL POINTS-ASSISTS-REBOUNDS

Opponent	#0	#1	#2	#3	#4	#5	#11	#13	#14	#15	#21	#22	#23	#24	#30	#32	#33	#42
@UCLA	6-2-0	0-0-0	5-1-1	0-4-0	8-1-0	0-3-0	0-2-1	DND	0-1-1	0-1-1	12-3-0	DND	9-3-2	0-0-0	DND	4-5-0	DND	DND
@San Francisco	11-0-2	4-0-0	0-0-1	11-4-1	2-0-1	2-1-0	9-1-1	DND	2-0-1	0-0-0	5-5-0	DND	4-1-1	0-0-0	DND	2-1-0	DND	DND
@Santa Clara	12-1-4	6-1-1	7-2-1	0-2-0	4-1-2	9-5-0	6-3-1	DND	2-0-0	DND	5-2-1	DND	5-1-0	0-1-0	DND	3-1-0	DND	DND
@Penn State																		
Pitt Greenburg																		
Franciscan																		
Niagara																		
@Lehigh																		
@American																		
@Iona																		
Mount St. Mary's																		
Robert Morris																		
Campbell																		
@Sacred Heart																		
@Wagner																		
CCSU																		
FDU																		
LIU																		
@Le Moyne																		
Sacred Heart																		
Merrimack																		
@CCSU																		
@LIU																		
Stonehill																		
Wagner																		
@FDU																		
@Merrimack																		
S@tonehill																		
Le Moyne																		

# BIGGEST LEAD / TIME IN LEAD / SPECIALTY STATS

Date	Opponent	W/L	Score	SFU Big		Opp Big	Ties	LC	SFU in		Opp in	Tied	Paint		Off TOs		2nd Chance		Fast Break		Bench	
				Lead	Lead				Lead	Lead			SFU	Opp	SFU	Opp	SFU	Opp	SFU	Opp	SFU	Opp
11/6	@UCLA	L	44-75	1	31	4	2	0:39	35:00	4:21	12	48	5	28	4	7	5	8	18	13		
11/9	@San Francisco	L	52-84	2	35	3	6	1:05	35:18	3:37	20	40	8	26	0	7	4	12	14	27		
11/11	@Santa Clara	L	59-82	3	36	0	1	0:52	37:59	1:09	28	50	19	16	0	19	6	16	28	34		
11/14	@Penn State																					
11/20	Pitt Greenburg																					
11/22	Franciscan																					
11/25	Niagara																					
11/29	@Lehigh																					
12/2	@American																					
12/10	@Iona																					
12/15	Mount St. Mary's																					
12/20	Robert Morris																					
12/30	Campbell																					
1/4	@Sacred Heart																					
1/6	@Wagner																					
1/13	CCSU																					
1/15	FDU																					
1/19	LIU																					
1/21	@Le Moyne																					
1/25	Sacred Heart																					
1/27	Merrimack																					
2/1	@CCSU																					
2/3	@LIU																					
2/10	Stonehill																					
2/15	Wagner																					
2/17	@FDU																					
2/22	@Merrimack																					
2/24	S@tonehill																					
3/2	Le Moyne																					

# 2023-24 results

**overall record: 0-3 (home: 0-0 // away: 0-3 // neutral: 0-0)****nec record: 0-0 (home: 0-0 // away: 0-0 // neutral: 0-0)**

Date	Opponent	W/L	Score	Rec. [NEC]	High Scorer	High Rebounds	High Assists	High Steals	High Blocks	Attend.
11/6	@UCLA	L	44-75	0-1	Liberis (12)	Harris (5)	Sanon (2)	Sanon (2)	Harris (1)	6,783
11/9	@San Francisco	L	52-84	0-2	Gregory/Webb (11)	Liberis (5)	Gregory (2)	Gregory/Moncrief (2)	Moncrief/Webb (1)	NA
11/11	@Santa Clara	L	59-82	0-3	Gregory (12)	Wilborn (5)	Gregory (4)	Lopez (2)	Wilborn (2)	1,245
11/14	@Penn State									
11/20	Pitt Greenburg									
11/22	Franciscan									
11/25	Niagara									
11/29	@Lehigh									
12/2	@American									
12/10	@Iona									
12/15	Mount St. Mary's									
12/20	Robert Morris									
12/30	Campbell									
1/4	@Sacred Heart									
1/6	@Wagner									
1/13	CCSU									
1/15	FDU									
1/19	LIU									
1/21	@Le Moyne									
1/25	Sacred Heart									
1/27	Merrimack									
2/1	@CCSU									
2/3	@LIU									
2/10	Stonehill									
2/15	Wagner									
2/17	@FDU									
2/22	@Merrimack									
2/24	S@tonehill									
3/2	Le Moyne									

## STARTING LINEUP

Date	Opponent	W/L	Score	1	2	3	4	5	Line Up Record
11/6	@UCLA	L	44-75	Gregory	Lopez, Jr.	Moncrief	Webb	Liberis	0-1
11/9	@San Francisco	L	52-84	Gregory	Lopez, Jr.	Moncrief	Webb	Liberis	0-2
11/11	@Santa Clara	L	59-82	Gregory	Lopez, Jr.	Moncrief	Webb	Wilborn	0-1
11/14	@Penn State								
11/20	Pitt Greenburg								
11/22	Franciscan								
11/25	Niagara								
11/29	@Lehigh								
12/2	@American								
12/10	@Iona								
12/15	Mount St. Mary's								
12/20	Robert Morris								
12/30	Campbell								
1/4	@Sacred Heart								
1/6	@Wagner								
1/13	CCSU								
1/15	FDU								
1/19	LIU								
1/21	@Le Moyne								
1/25	Sacred Heart								
1/27	Merrimack								
2/1	@CCSU								
2/3	@LIU								
2/10	Stonehill								
2/15	Wagner								
2/17	@FDU								
2/22	@Merrimack								
2/24	S@tonehill								
3/2	Le Moyne								



# 2023-24 SUPERLATIVES

Category	Saint Francis	Opponent
Points Scored	12, 2x(Cam Gregory, at Santa Clara, 11-11-23)	28, Adem Bona, at UCLA, 11-6-23
Field Goal	5, Cam Gregory, at San Francisco, 11-9-23	10, 2x(Carlos Marshall, Jr., at Santa Clara, 11-11-23)
Field Goals Attempted	11, Miles Webb, at San Francisco, 11-9-23	16, Adem Bona, at UCLA, 11-6-23
3-Pt Field Goals Made	3, Chris Moncrief, at San Francisco, 11-9-23	3, 3x(Carlos Marshall, Jr., at Santa Clara, 11-11-23)
3-Pt Field Goals Attempted	6, Cam Gregory, at Santa Clara, 11-11-23	5, 2x(Johnny O'Neil, at Santa Clara, 11-11-23)
Free Throws Made	4, Gestin Liberis, at UCLA, 11-6-23	8, Adem Bona, at UCLA, 11-6-23
Free Throws Attempted	5, Gestin Liberis/Wisler Sanon II, at UCLA, 11-6-23	11, Adem Bona, at UCLA, 11-6-23
Offensive Rebounds	2, 4x(Eli Wilborn, at Santa Clara, 11-11-23)	5, Camaron Tongue, at Santa Clara, 11-11-23
Defensive Rebounds	5, Gestin Liberis, at San Francisco, 11-9-23	6, Adem Bona, at UCLA, 11-6-23
Total Rebounds	5, 2x(Gestin Liberis, at San Francisco, 11-9-23)	9, Adem Bona, at UCLA, 11-6-23
Assists	4, Cam Gregory, at Santa Clara, 11-11-23	5, 2x(Sharavjamts/Williams, at San Francisco, 11-11-23)
Blocks	2, Eli Wilborn, at Santa Clara, 11-11-23	4, Adem Bona, at UCLA, 11-6-23
Steals	2, 4x(Carlos Lopez, Jr., at Santa Clara, 11-22-23)	3, Lazar Stefanovic, at UCLA, 11-6-23

## TEAM

SFU High	SFU Low	Category	Opponent High	Opponent Low
59, at Santa Clara, 11-11-23	44, at UCLA, 11-6-23	Points Scored	84, at San Francisco, 11-9-23	75, at UCLA, 11-6-23
22, at Santa Clara, 11-11-23	14, at UCLA, 11-6-23	FG Made	35, at Santa Clara, 11-11-23	29, at UCLA, 11-6-23
56, at Santa Clara, 11-11-23	42, at UCLA, 11-6-23	FG Attempted	67, at Santa Clara, 11-11-23	55, at San Francisco, 11-9-23
7, at Santa Clara, 11-11-23	2, at UCLA, 11-6-23	3-Pt. FG Made	9, at San Francisco, 11-9-23	2, at UCLA, 11-6-23
25, at Santa Clara, 11-11-23	16, at UCLA, 11-6-23	3-Pt. FG Attempted	22, at San Francisco, 11-9-23	9, at UCLA, 11-6-23
14, at UCLA, 11-6-23	8, at Santa Clara, 11-11-23	Free Throws	15, at UCLA, 11-6-23	6, at Santa Clara, 11-11-23
20, at UCLA, 11-6-23	15, at San Francisco, 11-9-23	Free Throws Attempted	24, at UCLA, 11-6-23	13, at Santa Clara, 11-11-23
9, at UCLA, 11-6-23	2, at San Francisco, 11-9-23	Offensive Rebounds	18, at Santa Clara, 11-11-23	9, at San Francisco, 11-9-23
21, at UCLA, 11-6-23	11, at San Francisco, 11-9-23	Defensive Rebounds	33, at Santa Clara, 11-11-23	22, at UCLA, 11-6-23
30, at UCLA, 11-6-23	13, at San Francisco, 11-9-23	Total Rebounds	51, at Santa Clara, 11-11-23	32, at UCLA, 11-6-23
10, at Santa Clara, 11-11-23	6, at UCLA, 11-6-23	Assists	22, at Santa Clara, 11-11-23	18, at UCLA, 11-6-23
21, at UCLA, 11-6-23	14, at Santa Clara, 11-11-23	Turnovers	15, at San Francisco, 11-9-23	7, at UCLA, 11-6-23
6, at San Francisco, 11-9-23	3, at UCLA, 11-6-23	Steals	11, at San Francisco, 11-9-23	5, at Santa Clara, 11-11-23
2, 2x(at Santa Clara, 11-11-23)	1, at UCLA, 11-6-23	Blocked Shots	6, 2x(at San Francisco, 11-9-23)	2, at Santa Clara, 11-11-23
27, at San Francisco, 11-9-23	22, at UCLA, 11-6-23	Points/1st Half	46, at Santa Clara, 11-11-23	32, at UCLA, 11-6-23
39.3, at Santa Clara, 11-11-23	29.2, at UCLA, 11-6-23	FG Percentage/1st Half	54.3, at Santa Clara, 11-11-23	44.8, at UCLA, 11-6-23
35, at Santa Clara, 11-11-23	22, at UCLA, 11-6-23	Points/2nd Half	43, 2x(at San Francisco, 11-9-23)	36, at Santa Clara, 11-11-23
46.4, at Santa Clara, 11-11-23	38.3, at San Francisco, 11-9-23	FG Percentage/2nd Half	60.0, at San Francisco, 11-9-23	57.1, at UCLA, 11-6-23

## WIN/LOSS MARGIN

	1	2	3	4	5	6	7	8	9	10	11	12	13	14	15	16	17	18	19	20-24	25+	
Wins (0)																						
Losses (3)																				1		2

## LARGEST LEADS/DEFICITS

### when leading...

Largest Margin of Victory	0
Largest Overall Lead	3, at Santa Clara, 11-11-23
Largest Halftime Lead	0
Largest Lead in a Loss	3, at Santa Clara, 11-11-23
Largest Halftime Lead in a Loss	0
Best SFU Scoring Run	7, at Santa Clara, 11-11-23

### when trailing...

Largest Margin in Defeat	32, at San Francisco, 11-9-23
Largest Overall Deficit	36, at Santa Clara, 11-11-23
Largest Halftime Deficit	22, at Santa Clara, 11-11-23
Largest Deficit Overcome in A Win	0
Largest Halftime Deficit in a Win	0
Best Opponent Scoring Run	13, at San Francisco, 11-9-23

### top scoring performances

- 12, Cam Gregory, at Santa Clara, 11-11-23
- 12, Gestin Liberis, at UCLA, 11-6-23
- 11, Cam Gregory, at San Francisco, 11-9-23
- 11, Miles Webb, at San Francisco, 11-9-23
- 9, Eli Wilborn, at Santa Clara, 11-11-23
- 9, Chris Moncrief, at San Francisco, 11-9-23
- 9, Wisler Sanon, II, at UCLA, 11-6-23

### top rebounding performances

- 5, Eli Wilborn, at Santa Clara, 11-11-23
- 5, Gestin Liberis, at San Francisco, 11-9-23
- 5, Aidan Harris, at UCLA, II, 11-6-23

### top assists performances

- 4, Cam Gregory, at Santa Clara, 11-11-23
- 2, Cam Gregory, at San Francisco, 11-9-23
- 2, Wisler Sanon, II, at UCLA, 11-6-23

### top steals performances

- 2, Carlos Lopez, Jr., at Santa Clara, 11-11-23
- 2, Cam Gregory, at San Francisco, 11-9-23
- 2, Chris Moncrief, at San Francisco, 11-9-23
- 2, Wisler Sanon, II, at UCLA, 11-6-23

### top blocks performances

- 2, Eli Wilborn, 11-11-23
- 1, Chris Moncrief, at San Francisco, 11-9-23
- 1, Miles Webb, at San Francisco, 11-9-23
- 1, Aidan Harris, at UCLA, II, 11-6-23

# 2023-24 NORTHEAST CONFERENCE HEADQUARTERS

## nec schedule/results

### Monday, November 13, 2023

Framingham State at CCSU, 7:00  
 SUNY Canton at Le Moyne, 7:00  
 LIU at Pepperdine, 10:00

### Tuesday, November 14, 2023

Stonehill at Saint Joseph's, 7:00  
 Saint Francis at Penn State, 7:00  
 Wagner at Rhode Island, 7:00  
 Sacred Heart at Holy Cross, 7:00

### Wednesday, November 15, 2023

Merrimack at Ohio State, 7:00  
 Saint Peter's at FDU, 7:00  
 LIU at UCLA, 10:00

### Friday, November 17, 2023

Sacred Heart at UMBC, 11:00 a.m.  
 Stonehill at Kentucky, 7:00  
 Le Moyne at San Diego, 10:00

### Saturday, November 18, 2023

Sacred Heart at Loyola, 11:00 a.m.  
 Wagner at Seton Hall, 12:00  
 Penn State Schuylkill at FDU, 2:00

### Sunday, November 19, 2023

Manhattan at CCSU, 1:00  
 Le Moyne at Cal Santa Barbara, 10:00



## northeast conference standings (as of 11/11/23)

Team	NEC	Pct.	Overall Pct.	Streak	Home	Away	Neutral
FDU	0-0	.000	2-0 .667	L1	1-0	1-1	0-0
Merrimack	0-0	.000	1-1 .500	W1	1-0	0-1	0-0
Sacred Heart	0-0	.000	1-2 .500	L1	1-0	0-1	0-0
Wagner	0-0	.000	1-1 .500	W1	1-0	0-1	0-0
Stonehill	0-0	.000	1-2 .333	L1	1-0	0-2	0-0
LIU	0-0	.000	0-1 .000	L1	0-1	0-0	0-0
CCSU	0-0	.000	0-2 .000	L2	0-0	0-2	0-0
Le Moyne	0-0	.000	0-2 .000	L2	0-0	0-2	0-0
Saint Francis U	0-0	.000	0-3 .000	L3	0-0	0-3	0-0

## all-time team vs. northeast conference (regular season games only)

Opponent	All-Time	Streak	NEC Tournament	Under Krimmel
Central Connecticut St.	24-24	W1	1-0	17-6
Fairleigh Dickinson	36-43	L1	1-6	12-9
Long Island	37-40	W2	2-2	9-11
Merrimack	1-6	L3	0-0	1-6
Sacred Heart	24-17	W1	1-0	13-7
St Francis Brooklyn	39-39	W2	2-1	10-10
Stonehill	1-1	L1	0-0	1-1
Wagner	37-41	L1	1-2	7-13

### HEAD-TO-HEAD 2023-24 HOME REGULAR SEASON

Home	Game Date/Result
CCSU	1/13
FDU	1/15
LIU	1/19
Sacred Heart	1/25
Merrimack	1/27
Stonehill	2/10
Wagner	2/15
Le Moyne	3/2

### HEAD-TO-HEAD 2023-24 AWAY REGULAR SEASON

Away	Game Date/Result
Sacred Heart	1/4
Wagner	1/6
Le Moyne	1/21
CCSU	2/1
LIU	2/3
FDU	2/17
Merrimack	2/22
Stonehill	2/24



# THE LAST TIME THE RED FLASH...

## scoring

**Scored 20 or more points:** Josh Cohen (25)/Maxwell Land (23), CCSU (3/1/23)  
**Reserve scored 20 or more points:** Josh Cohen (25 pts), St. Francis Brooklyn (2/19/22)  
**Freshman scored 20 or more points:** Landon Moore (22) LIU (1/14/23)  
**Scored 25 or more points:** Josh Cohen (25), CCSU (3/1/23)  
**Scored 30 or more points:** Josh Cohen (31 pts) FDU (2/23/22)  
**Scored 35 or more points:** Josh Cohen (40 pts), Hawai'i (12/11/22)  
**Scored 40 or more points:** Josh Cohen (40 pts), Hawai'i (12/11/22)  
**Scored 45 or more points:** Larry Lewis (46 pts) St. Vincent (2/10/69)  
**Two or more Red Flash players scored 20 points in the same game:**  
 Josh Cohen (25)/Maxwell Land (23) CCSU (3/1/23)  
**One Red Flash player scored 30 points, and another scored 20 points in the same game:**  
 Josh Cohen (31 pts), Maxwell Land (24 pts), FDU (2/23/23)  
**Scored 20 points/two straight games:**  
 Josh Cohen (31 pts), FDU (2/23/23), (29 pts), Wagner (2/25/23), (25 pts), CCSU, 3/1/23  
**Scored 20 points/three straight games:** Josh Cohen (31 pts), FDU (2/23/23), (29 pts), Wagner (2/25/23), (25 pts), CCSU, 3/1/23  
**No Red Flash players in double figures:** at UCLA 11/16/18  
**One Red Flash player in double figures:** Josh Cohen, Hawai'i (12/11/22)  
**Four Red Flash players in double figures:** Cohen (21 pts), Land (16 pts), Giles (10 pts), Gregory (10 pts), at St. Francis Brooklyn (2/16/23)  
**Five Red Flash players in double figures:** Land (21), Cohen (16), McCabe (14), Gregory (13), Liberis (10), at LIU (2/18/23)  
**All five starters scored in double figures:** Land (20), Thompson (17), Dixon-Conover (15), Hargis (13), Cohen (12), Sacred Heart (1/23/22)  
**SFU scored 70-79 points:** W, 72-64, St. Francis Brooklyn (2/16/23)  
**SFU scored 80-89 points:** W, 83-69, CCSU (3/1/23)  
**SFU scored 90-99 points:** W, 93-82, at LIU (2/18/23)  
**SFU scored 100 or more points:** W, 120-53 Franciscan (11/23/22)

## shooting

**Made 20 or more field goals:** Jack Phelan (20) vs Duquesne (1/14/77)  
**Made 10 or more field goals:** Josh Cohen (10), CCSU (3/1/23)  
**Attempted 20 or more field goals:** Josh Cohen (20), CCSU (3/1/23)  
**Hit 10 or more 3-pointers:** Never  
**Hit nine 3-pointers:** Andre Wolford (9) vs Lehigh (12/21/17)  
**Hit eight 3-pointers:** Isaiah Blackmon (8) at Central Connecticut State (1/4/20)  
**Hit seven 3-pointers:** Isaiah Blackmon (8) at Central Connecticut State (1/4/20)  
**Hit six 3-pointers:** Maxwell Land (6) at CCSU (2/24/22)  
**Hit five 3-pointers:** Luke Ruggery (5) CCSU (12/29/22)  
**Made 10 or more free throws:** Josh Cohen (10), Lehigh (11/21/22)

## double-double / triple double

**Had a triple double:** Keith Braxton (12 pts, 16 rebs, 10 asts) FDU (2/1/18)  
**Had a double-double (Pts./Rebs):** Josh Cohen (29 pts, 12 rebs) Wagner (2/25/23)  
**Had a double-double (Pts./Asts):** Ramiir Dixon Conover (11 pts, 10 asts) Bryant (1/14/21)  
**Had a double-double in consecutive games:** Josh Cohen (18 pts, 10 rebs) at No. 25 Ohio State (12/3/21), (14 pts, 12 rebs) Saint Vincent (12/8/22)  
**Two players with a double-double:** Mark Flagg (11 pts, 10 rebs)/Josh Cohen (11 pts, 11 rebs) vs. Franciscan (11/15/21)

## rebouncing

**Had 10 or more rebounds:** Josh Cohen (12 rebs) CCSU (3/1/23)  
**Had 15 or more rebounds:** Mark Flagg (17 rebs) at George Washington (11/9/21)  
**Had 20 or more rebounds:** Ronnie Drinnon FDU (3/2/16)  
**Had 10 or more rebounds in consecutive games:**  
 Josh Cohen (12 rebs) Wagner (2/25/23), (12 rebs) CCSU (3/1/23)  
**Multiple players had 10 or more rebounds in a game:**  
 Mark Flagg (10 rebs)/Josh Cohen (11 rebs) vs. Franciscan (11/15/21)  
**SFU had 20 or more offensive rebounds:** at Lehigh (20) 12/22/18)  
**SFU had 30 or more defensive rebounds:** Franciscan (37) (11/23/22)  
**SFU had 40 or rebounds:** Franciscan (50-) (11/23/22)

## assists

**Had 7 or more assists:** Brad McCabe (7 assists) Wagner (1/7/23)  
**Had 10 or more assists:** Ramiir Dixon-Conover (10 assists) Bryant (1/14/21)  
**Had 15 or more assists:** Never  
**SFU had 20 more assists:** (25) Franciscan (11/23/22)

## blocked shots

**Had five or more blocked shots:** Mark Flagg (5 blocks) Bryant (2/9/19)  
**SFU had 5 or more blocked shots:** (6) St. Francis Brooklyn (2/11/21)  
**SFU had 10 or more blocked shots:** (10) at Youngstown State (11/26/11)

## steals

**Had five or more steals:** Ramiir Dixon-Conover (6 steals) Hartford (12/14/21)  
**Had 10 or more steals:** Never  
**SFU had 10 or more steals:** (11) at Cornell (11/24/21)

## overtime

**Played an overtime game:** Sacred Heart (2/9/23)  
**Played an overtime game at home:** Sacred Heart (2/9/23)  
**Won an overtime game:** W, 78-76 Sacred Heart (2/9/23)  
**Played a 2-overtime game:** at Central Connecticut State (2/28/13)  
**Played a 3-overtime game:** St. Francis Brooklyn (1/24/08)  
**Played in consecutive overtime games:** Dayton (3/17/55), Cincinnati (3/19/55)

## winning streaks

**SFU won a game:** W, 83-69, CCSU (3/1/23)  
**SFU won consecutive games:** W, 72-64, at St. Francis Brooklyn (2/16/23), W, 93-82, at LIU (2/18/23), W, 82-72 FDU (2/23/23)  
**SFU won 4 consecutive games:** W, 80-72, CCSU (12/29/22), W, 73-72, Stonehill (12/31/22), W, 68-63, Wagner (1/7/23), W, 87-68 LIU (1/14/23)  
**SFU had 5 or more game winning streak:**  
 W, 80-72, CCSU (12/29/22), W, 73-72, Stonehill (12/31/22), W, 68-63, Wagner (1/7/23), W, 87-68 LIU (1/14/23)  
**SFU had a 10 or more game winning streak:**  
 11 games, Texas Wesleyan (1/21/51) to at Alliance (2/23/51)

## miscellaneous

**Hit a buzzer beater:** W, 70-68 at Sacred Heart (2/6/20)



## HEAD COACH ROB KRIMMEL

Head coach **Rob Krimmel** has been associated with Saint Francis basketball since he stepped on the Loretto campus as freshman in the fall of 1996 and has never left.

Krimmel is the second winningest coach in program history with 147 wins, trailing Saint Francis Hall of Famer Skip Hughes (293-206-1, 1945-66).

Under Krimmel's tutelage, the Red Flash has posted two wins against Power 6 Conference opponents after defeating Rutgers 73-68 on December 20, 2014 and Pittsburgh 80-70 on November 20, 2020.

The Red Flash has advanced to the NEC Championship Game three times in the last six years and the NEC Semi-

finals six times in his first 11 seasons at the helm.

Krimmel's teams have done just as much good on the court as it has off it as he was named the recipient of the 2019 NABC Guardians of the Game Award for Service for his dedication to the sport. In addition, the Red Flash has won the NEC Sportsmanship Award eight times in the 16-year history of the award.

Since Krimmel took over as head coach, 13 players have gone on to sign professional contracts: Earl Brown, Greg Brown, Ben Millaud-Meunier, Ronnie Drinnon, Georgios Angelou, Pat Wrencher, Deon Baker, Jamaal King, Andre Wolford, Isaiah Blackmon, Keith Braxton, Ramiir Dixon-Conover and Tyler Stewart.

### THE KRIMMEL FILE

**Career Record (12th season):** 147-191  
**NEC Record:** 97-97  
**Hometown:** State College, Pa.  
**Alma Mater:** Saint Francis, 2000 (Secondary Ed/History)  
 Master's: Saint Francis, 2003 (Education-Leadership)  
**Family:** Wife: Aileen; Children: Alex, Thomas

### COACHING EXPERIENCE

Position	School	Years
Assistant Coach	Saint Francis	2000-12
Head Coach	Saint Francis	2012-present

### CAREER HIGHLIGHTS

Date	Highlight
April 19, 2012	Named 21st head coach in program history
November 9, 2012	Made head coaching debut at Penn State
January 3, 2013	Defeated CCSU 67-60 for first win as a head coach
March 5, 2014	Defeated Bryant 55-54 in NEC Quarterfinals for first NEC Tournament win as head coach (first win for SFU in NEC Tournament since 1995)
December 20, 2014	Defeated Rutgers 73-68 for first win vs Power 6 Conference team
December 19, 2015	Coached his 100th game as a head coach at Albany
January 19, 2017	Defeated Bryant 75-61 for 50th career win as head coach
March 14, 2017	Defeated Jacksonville 78-76 in College Insider Tournament
January 5, 2019	Coached his 200th game as a head coach at FDU
March 2, 2019	Won the Northeast Conference Regular Season title
March 5, 2019	Named the Jim Phelan NEC Coach of the Year
March 21, 2019	Named NABC All-District 18 Coach of the Year
November 30, 2019	Defeats Saint Joseph's 79-68 for 100th career win as head coach
January 1, 2020	2019 NABC Guardians of the Game Award for Service Award
November 25, 2020	Defeated Pittsburgh 80-70 for second win against a Power 6 Conference
February 17, 2022	Coached his 300th game as a head coach against LIU (been on the SFU sideline for nearly 750 games to this point as a player or a coach)

Year	Overall		NEC		Conf. Tourn		RS Non-Conf.		Home		Away	
	W-L	Pct.	W-L	Pct.	W-L	Pct.	W-L	Pct.	W-L	Pct.	W-L	Pct.
2012-13	5-24	.172	5-13	.278	0-0	.000	0-12	.000	3-10	.231	2-14	.125
2013-14	10-21	.323	7-9	.438	1-1	.500	2-11	.154	5-8	.385	5-13	.278
2014-15	16-16	.500	9-9	.500	1-1	.500	6-5	.545	10-3	.769	6-13	.316
2015-16	13-17	.433	9-9	.500	0-1	.500	4-7	.364	8-5	.615	5-11	.312
2016-17	17-17	.500	11-7	.611	2-1	.667	3-8	.273	8-6	.571	9-11	.450
2017-18	18-13	.591	12-6	.667	0-1	.000	6-5	.545	11-3	.786	7-10	.700
2018-19	18-15	.545	12-6	.667	2-1	.667	4-7	.364	12-4	.750	6-11	.353
2019-20	22-10	.688	13-5	.722	2-1	.667	7-4	.636	13-2	.867	9-9	.500
2020-21	6-16	.273	5-13	.278	0-0	.000	1-3	.250	4-6	.400	2-10	.167
2021-22	9-21	.300	5-13	.278	0-1	.000	4-7	.363	4-7	.363	5-14	.263
2022-23	13-18	.433	9-7	.562	1-1	.500	4-11	.285	10-5	.667	3-12	.200
2023-24	0-3	.000	0-0	.000	0-0	.000	0-3	.000	0-0	.000	0-3	.000
CAREER	147-191	.435	97-97	.500	9-9	.500	40-82	.328	88-59	.599	60-132	.313

### KRIMMEL VS. OPPONENTS

Team	Home	Away	Neutral	Total	Team	Home	Away	Neutral	Total
Albany	1-0	0-1	0-0	1-1	Louisville	0-0	0-1	0-0	0-0
<b>AMERICAN</b>	<b>3-2</b>	<b>1-4</b>	<b>0-0</b>	<b>4-6</b>	Marquette	0-0	0-1	0-0	0-0
Bethany	1-0	0-0	0-0	1-0	Maryland	0-0	0-1	0-0	0-1
Binghamton	0-1	1-0	0-0	1-1	<b>MERRIMACK</b>	<b>0-3</b>	<b>1-3</b>	<b>0-0</b>	<b>1-6</b>
Bloomsburg	1-0	0-0	0-0	1-0	Miami	0-0	0-1	0-0	0-1
Bryant	10-3	2-9	0-0	12-11	<b>MOUNT ST. MARY'S</b>	<b>3-7</b>	<b>3-8</b>	<b>0-0</b>	<b>6-15</b>
Bucknell	1-1	0-2	0-0	1-3	Ohio State	0-0	0-1	0-0	0-1
Buffalo	0-0	0-1	0-0	0-1	Ohio U	0-0	0-1	0-0	0-1
Butler	0-0	0-1	0-0	0-1	Navy	1-0	1-0	0-0	2-0
<b>CAMPBELL</b>	<b>0-0</b>	<b>0-0</b>	<b>0-0</b>	<b>0-0</b>	<b>NIAGARA</b>	<b>1-0</b>	<b>1-1</b>	<b>0-0</b>	<b>2-1</b>
CCSU	11-2	6-4	0-0	17-6	NJIT	0-2	0-2	0-0	0-4
Chatham	1-0	0-0	0-0	1-0	<b>PENN STATE</b>	<b>0-0</b>	<b>0-1</b>	<b>0-1</b>	<b>0-0</b>
Cincinnati	0-0	0-1	0-0	0-0	Pittsburgh	0-0	1-0	0-0	1-0
Colgate	0-1	0-1	0-0	0-2	<b>PITT GREENBURG</b>	<b>0-0</b>	<b>0-0</b>	<b>0-0</b>	<b>0-0</b>
Cornell	0-2	1-1	0-0	1-3	Quinnipiac	0-1	0-1	0-0	0-2
Dayton	0-0	0-1	0-0	0-0	Richmond	0-0	0-1	0-0	0-1
Delaware	0-1	0-1	0-0	0-2	<b>ROBERT MORRIS</b>	<b>6-3</b>	<b>4-7</b>	<b>0-0</b>	<b>10-10</b>
Denver	0-0	0-1	0-0	0-1	Rutgers	0-0	1-0	0-0	0-0
Drexel	0-0	0-1	0-0	0-1	<b>SACRED HEART</b>	<b>10-1</b>	<b>5-6</b>	<b>0-0</b>	<b>15-7</b>
Duke	0-0	0-1	0-0	0-1	<b>SAN FRANCISCO</b>	<b>0-0</b>	<b>0-2</b>	<b>0-0</b>	<b>0-2</b>
Duquesne	0-2	1-2	0-0	1-4	<b>SANTA CLARA</b>	<b>0-0</b>	<b>0-1</b>	<b>0-0</b>	<b>0-1</b>
<b>FDU</b>	<b>7-6</b>	<b>5-6</b>	<b>0-0</b>	<b>12-12</b>	Saint Bonaventure	0-0	0-2	0-0	0-2
Florida State	0-0	0-1	0-0	0-1	St. Francis Brooklyn	4-4	6-8	0-0	10-12
Fordham	0-0	0-1	0-0	0-1	St. Mary's	0-0	0-1	0-0	0-1
<b>FRANCISCAN</b>	<b>5-0</b>	<b>5-0</b>	<b>0-0</b>	<b>5-0</b>	Saint Joseph's	0-0	1-0	0-0	1-0
Illinois	0-0	0-1	0-0	0-1	St. Vincent	1-0	0-0	0-0	1-0
George Mason	0-0	0-1	0-0	0-1	<b>STONEHILL</b>	<b>1-0</b>	<b>0-1</b>	<b>0-0</b>	<b>1-1</b>
George Washington	0-0	0-1	0-0	0-0	Stony Brook	0-1	0-1	0-0	0-1
Hartford	1-0	1-0	0-0	2-0	Texas	0-0	0-1	0-0	0-1
Hawaii	0-0	0-1	0-0	0-1	Texas A&M	0-0	0-1	0-0	0-1
Ill.-Chicago	0-0	0-1	0-0	0-0	<b>UCLA</b>	<b>0-0</b>	<b>0-2</b>	<b>0-0</b>	<b>0-2</b>
Indiana	0-0	0-1	0-0	0-0	UMBC	0-1	1-0	0-1	1-2
<b>IONA</b>	<b>0-0</b>	<b>0-0</b>	<b>0-0</b>	<b>0-0</b>	UMES	1-0	0-1	0-0	1-1
Jacksonville	0-0	0-0	1-0	1-0	Virginia Tech	0-0	0-2	0-0	0-2
Kent State	0-0	0-2	0-0	0-2	VCU	0-0	0-1	0-0	0-0
Keystone	1-0	0-0	0-0	1-0	<b>WAGNER</b>	<b>3-7</b>	<b>5-8</b>	<b>0-0</b>	<b>8-15</b>
Lafayette	0-0	0-1	0-0	0-1	Westminster	1-0	0-0	0-0	1-0
<b>LEHIGH</b>	<b>3-3</b>	<b>1-3</b>	<b>0-0</b>	<b>4-6</b>	William & Mary	0-0	0-0	1-0	1-0
<b>LE MOYNE</b>	<b>0-0</b>	<b>0-0</b>	<b>0-0</b>	<b>0-0</b>	Youngstown State	0-0	0-1	0-0	0-1
Liberty	0-0	0-1	0-0	0-1					
<b>LIU</b>	<b>5-5</b>	<b>5-7</b>	<b>0-0</b>	<b>10-12</b>					
Longwood	1-0	1-0	0-0	2-0					

# 0 CAM GREGORY

SOPHOMORE | GUARD | 6-5 | 165 |  
ACCOKEEK, MD. | THE STEWART SCHOOL



X: [\\_cam1k](#) | IG: [@\\_cam1k](#)

## SEASON HIGHS

POINTS:	12	at Santa Clara, 11-11-23
FIELD GOALS:	4	at San Francisco, 11-9-23
FG ATTEMPTS:	10	at San Francisco, 11-9-23
3-POINT FGS:	2	at Santa Clara, 11-11-23
3-POINT FGAS:	6	at Santa Clara, 11-11-23
FREE THROWS:	4	at Santa Clara, 11-11-23
FT ATTEMPTS:	4	at Santa Clara, 11-11-23
REBOUNDS:	2	at UCLA, 11-6-23
ASSISTS:	4	at Santa Clara, 11-11-23
BLOCKS:	0	
STEALS:	2	at San Francisco, 11-9-23
MINUTES:	32	at San Francisco, 11-9-23

## CAREER HIGHS

POINTS:	15	at Ohio State, 12-3-22
FIELD GOALS:	6	at Ohio State, 12-3-22
FG ATTEMPTS:	11	at Ohio State, 12-3-22
3-POINT FGS:	3	at Ohio State, 12-3-22
3-POINT FGAS:	4	4 times
FREE THROWS:	6	vs. FDU, 2-23-23
FT ATTEMPTS:	7	vs. FDU, 2-23-23
REBOUNDS:	4	3x(vs. Merrimack, 2-11-23)
ASSISTS:	7	vs. Saint Vincent, 12-8-22
BLOCKS:	1	7 times
STEALS:	3	at FDU, 1/26/23
MINUTES:	36	at Hawaii, 12-11-22

## NEC CAREER HIGHS

POINTS:	13	at LIU, 2-18-23
FIELD GOALS:	5	at LIU, 2-18-23
FG ATTEMPTS:	7	at LIU, 2-18-23
3-POINT FGS:	1	7x(vs. FDU, 2-23-23)
3-POINT FGAS:	4	vs. Merrimack, 2-11-23
FREE THROWS:	6	vs. FDU, 2-23-23
FT ATTEMPTS:	7	vs. FDU, 2-23-23
REBOUNDS:	4	vs. Merrimack, 2-11-23
ASSISTS:	5	2x(vs. Merrimack, 2-11-23)
BLOCKS:	1	5x(vs. Wagner, 2-25-23)
STEALS:	3	at FDU, 1/26/23
MINUTES:	30	at Wagner, 1-7-23

## TOP CAREER PERFORMANCES

- at Ohio State (12/03/22): Scored a career-high 15 points, shooting 3-8 FG; 1-2 3FG; 1-9 FT

## INDIVIDUAL BENCHMARKS

	SEASON	CAREER
GP/GS:	3/3	31/22
10+ POINTS:	2	6
20+ POINTS:	0	0
5+ REBOUNDS:	0	0
DOUBLE-DOUBLES:	0	0
3+ 3PT FG:	0	1
3+ ASSISTS:	1	12
2+ STEALS:	1	1
LED SFU IN PTS:	2	2
LED SFU IN REBS:	0	0

## GET TO KNOW CAM

### Who Is Your Mount Rushmore of Players?

Len Bias, Kevin Durant,  
Michael Jordan, LeBron James

### Who Is Your Game Modeled After?

Shay Murphy

The first time I picked up a basketball and was in love with the game was... around the age of seven is when I really picked it up, began to love it and want to be around it every day.

## SEASON STATISTICS

Date	Opponent	Start	Min	FG-A	3FG-A	FT-A	O-D-T	A	TO	Blk	Stl	Pts
Nov. 6	at UCLA	Y	18	2-7	0-1	2-2	0-2-2	0	4	0	0	6
Nov. 9	at San Francisco	Y	32	4-10	1-2	2-3	0-0-0	2	2	0	2	11
Nov. 11	at Santa Clara	Y	28	3-9	2-6	4-4	0-1-1	4	0	0	1	12

## CAREER STATISTICS

		Field Goals		3-Point		F-Throws		Rebounds				Scoring								
SEASON	TEAM	GP-GS	MIN/AVG	FG-FGA	FG%	3FG-3FGA	3FG%	FT-FTA	FT%	OFF	DEF	TOT	AVG	PF-FO	A	TO	BLK	STL	PTS	AVG
2022-23	SF-PA	28-19	680/24.3	54-131	.412	19-57	.333	15-21	.714	3	39	42	1.5	48-0	74	53	7	14	142	5.1
2023-24	SF-PA	3-3	89/29.6	9-26	.346	3-9	.333	8-9	.889	0	3	3	1.0	3-0	6	6	0	3	29	9.7
<b>TOTAL</b>		<b>31-22</b>	<b>769/24.8</b>	<b>63-157</b>	<b>.401</b>	<b>22-66</b>	<b>.333</b>	<b>23-30</b>	<b>.767</b>	<b>3</b>	<b>42</b>	<b>45</b>	<b>1.5</b>	<b>51-0</b>	<b>80</b>	<b>59</b>	<b>7</b>	<b>17</b>	<b>171</b>	<b>5.5</b>

# 1 BRAYLEN BLUE

FRESHMAN | GUARD | 6-5 | 180 |  
SUN PRAIRIE, WISC. | JAMES MADISON MEMORIAL



X: braylenblue | IG: braylenblue

## SEASON HIGHS

POINTS: 6 at Santa Clara, 11-11-23  
 FIELD GOALS: 2 at Santa Clara, 11-11-23  
 FG ATTEMPTS: 4 at Santa Clara, 11-11-23  
 3-POINT FGS: 2 at Santa Clara, 11-11-23  
 3-POINT FGAS: 4 at Santa Clara, 11-11-23  
 FREE THROWS: 1 at San Francisco, 11-9-23  
 FT ATTEMPTS: 1 at San Francisco, 11-9-23  
 REBOUNDS: 1 at Santa Clara, 11-11-23  
 ASSISTS: 0  
 BLOCKS: 0  
 STEALS: 0  
 MINUTES: 15 at Santa Clara, 11-11-23

## CAREER HIGHS

POINTS: 6 at Santa Clara, 11-11-23  
 FIELD GOALS: 2 at Santa Clara, 11-11-23  
 FG ATTEMPTS: 4 at Santa Clara, 11-11-23  
 3-POINT FGS: 2 at Santa Clara, 11-11-23  
 3-POINT FGAS: 4 at Santa Clara, 11-11-23  
 FREE THROWS: 1 at San Francisco, 11-9-23  
 FT ATTEMPTS: 1 at San Francisco, 11-9-23  
 REBOUNDS: 1 at Santa Clara, 11-11-23  
 ASSISTS: 0  
 BLOCKS: 0  
 STEALS: 0  
 MINUTES: 15 at Santa Clara, 11-11-23

## NEC CAREER HIGHS

POINTS: 0  
 FIELD GOALS: 0  
 FG ATTEMPTS: 0  
 3-POINT FGS: 0  
 3-POINT FGAS: 0  
 FREE THROWS: 0  
 FT ATTEMPTS: 0  
 REBOUNDS: 0  
 ASSISTS: 0  
 BLOCKS: 0  
 STEALS: 0  
 MINUTES: 0

### TOP CAREER PERFORMANCES

- at San Francisco (11/09/23): Scored a career-high four points, shooting 1-1 FG; 1-1 3FG; 1-2 FT

## INDIVIDUAL BENCHMARKS

	SEASON	CAREER
GP/GS:	3/0	3/0
10+ POINTS:	0	0
20+ POINTS:	0	0
5+ REBOUNDS:	0	0
DOUBLE-DOUBLES:	0	0
3+ 3PT FG:	0	0
3+ ASSISTS:	0	0
2+ STEALS:	0	0
LED SFU IN PTS:	0	0
LED SFU IN REBS:	0	0

## GET TO KNOW BRAYLEN

### Who Is Your Mount Rushmore of Players?

Michael Jordan, Steph Curry, Kevin Durant, Durant, , Giannis Antetokounmpo

### Who Is Your Game Modeled After?

I take pieces of Steph Curry, Tyler Burton, LaMelo Ball's game

**The first time I picked up a basketball and was in love with the game was...** at a young age, probably three or four. My sister also plays so we have always been in a gym.

## SEASON STATISTICS

Date	Opponent	Start	Min	FG-A	3FG-A	FT-A	O-D-T	A	TO	Blk	Stl	Pts
Nov. 6	at UCLA	N	3	0-1	0-1	0-0	0-0-0	0	1	0	0	0
Nov. 9	at San Francisco	N	4	1-1	1-1	1-2	0-0-0	0	0	0	0	4
Nov. 11	at Santa Clara	N	15	2-4	2-4	0-0	1-0-1	1	2	0	0	6

## CAREER STATISTICS

SEASON	TEAM	GP-GS	MIN/AVG	Field Goals		3-Point		F-Throws		Rebounds				Scoring						
				FG-FGA	FG%	3FG-3FGA	3FG%	FT-FTA	FT%	OFF	DEF	TOT	AVG	PF-FO	A	TO	BLK	STL	PTS	AVG
2023-24	SF-PA	3-0	22/7.2	3-6	.500	3-6	.500	1-2	.500	1	0	1	0.3	0-0	1	3	0	0	10	3.3
<b>TOTAL</b>		<b>3-0</b>	<b>22/7.2</b>	<b>3-6</b>	<b>.500</b>	<b>3-6</b>	<b>.500</b>	<b>1-2</b>	<b>.500</b>	<b>1</b>	<b>0</b>	<b>1</b>	<b>0.3</b>	<b>0-0</b>	<b>1</b>	<b>3</b>	<b>0</b>	<b>0</b>	<b>10</b>	<b>3.3</b>

# 2 AARON "ACE" TALBERT

FRESHMAN | GUARD | 6-0 | 185 |  
 WYANDANCH, N.Y. | SCOTLAND CAMPUS (PA.) | COMBINE ACAD (N.C.)



X: ace\_9rem3 | IG: ace\_9rem3

## SEASON HIGHS

POINTS:	7	at Santa Clara, 11-11-23
FIELD GOALS:	2	2x(at Santa Clara, 11-11-23)
FG ATTEMPTS:	3	2x(at Santa Clara, 11-11-23)
3-POINT FGS:	1	2x(at Santa Clara, 11-11-23)
3-POINT FGAS:	2	2x(at Santa Clara, 11-11-23)
FREE THROWS:	2	at Santa Clara, 11-11-23
FT ATTEMPTS:	3	at Santa Clara, 11-11-23
REBOUNDS:	2	at Santa Clara, 11-11-23
ASSISTS:	1	2x(at Santa Clara, 11-11-23)
BLOCKS:	0	
STEALS:	1	at San Francisco, 11-9-23
MINUTES:	18	2x(at Santa Clara, 11-11-23)

## CAREER HIGHS

POINTS:	7	at Santa Clara, 11-11-23
FIELD GOALS:	2	2x(at Santa Clara, 11-11-23)
FG ATTEMPTS:	3	2x(at Santa Clara, 11-11-23)
3-POINT FGS:	1	2x(at Santa Clara, 11-11-23)
3-POINT FGAS:	2	2x(at Santa Clara, 11-11-23)
FREE THROWS:	2	at Santa Clara, 11-11-23
FT ATTEMPTS:	3	at Santa Clara, 11-11-23
REBOUNDS:	2	at Santa Clara, 11-11-23
ASSISTS:	1	2x(at Santa Clara, 11-11-23)
BLOCKS:	0	
STEALS:	1	at San Francisco, 11-9-23
MINUTES:	18	2x(at Santa Clara, 11-11-23)

## NEC CAREER HIGHS

POINTS:	0
FIELD GOALS:	0
FG ATTEMPTS:	0
3-POINT FGS:	0
3-POINT FGAS:	0
FREE THROWS:	0
FT ATTEMPTS:	0
REBOUNDS:	0
ASSISTS:	0
BLOCKS:	0
STEALS:	0
MINUTES:	0

### TOP CAREER PERFORMANCES

- at UCLA (11/06/23): Scored a career-high five points, shooting 2-3 FG; 1-2 3FG

## INDIVIDUAL BENCHMARKS

	SEASON	CAREER
GP/GS:	3/0	3/0
10+ POINTS:	0	0
20+ POINTS:	0	0
5+ REBOUNDS:	0	0
DOUBLE-DOUBLES:	0	0
3+ 3PT FG:	0	0
3+ ASSISTS:	0	0
2+ STEALS:	0	0
LED SFU IN PTS:	0	0
LED SFU IN REBS:	0	0

## GET TO KNOW ACE

### Who Is Your Mount Rushmore of Players?

Michael Jordan, Kobe Bryant,  
 Magic Johnson, Shaquille O'Neal

### Who Is Your Game Modeled After?

I don't really model my game after anyone

The first time I picked up a basketball and was in love with the game was...

## SEASON STATISTICS

Date	Opponent	Start	Min	FG-A	3FG-A	FT-A	O-D-T	A	TO	Blk	Stl	Pts
Nov. 6	at UCLA	N	18	2-3	1-2	0-2	1-0-1	1	2	0	0	5
Nov. 9	at San Francisco	N	13	0-2	0-1	0-0	0-0-0	1	1	0	1	0
Nov. 11	at Santa Clara	N	18	2-3	1-2	2-3	0-2-2	1	2	0	0	7

## CAREER STATISTICS

SEASON	TEAM	GP-GS	MIN/AVG	Field Goals		3-Point		F-Throws		Rebounds				Scoring						
				FG-FGA	FG%	3FG-3FGA	3FG%	FT-FTA	FT%	OFF	DEF	TOT	AVG	PF-FO	A	TO	BLK	STL	PTS	AVG
2023-24	SF-PA	3-0	48/16.0	4-8	.500	2-5	.400	2-5	.400	1	2	3	1.0	4-0	3	5	0	1	12	4.0
<b>TOTAL</b>		<b>3-0</b>	<b>48/16.0</b>	<b>4-8</b>	<b>.500</b>	<b>2-5</b>	<b>.400</b>	<b>2-5</b>	<b>.400</b>	<b>1</b>	<b>2</b>	<b>3</b>	<b>1.0</b>	<b>4-0</b>	<b>3</b>	<b>5</b>	<b>0</b>	<b>1</b>	<b>12</b>	<b>4.0</b>

# 3 MILES WEBB

SOPHOMORE | FORWARD | 6-8 | 190 |  
ARLINGTON, VA. | ST. STEPHEN'S & ST. AGNES



X: MilesWebb5 | IG: m.wv3bb

## SEASON HIGHS

POINTS:	11	at San Francisco, 11-9-23
FIELD GOALS:	5	at San Francisco, 11-9-23
FG ATTEMPTS:	11	at San Francisco, 11-9-23
3-POINT FGS:	0	
3-POINT FGAS:	3	2x(at San Francisco, 11-9-23)
FREE THROWS:	1	at San Francisco, 11-9-23
FT ATTEMPTS:	2	at San Francisco, 11-9-23
REBOUNDS:	4	2x(at San Francisco, 11-9-23)
ASSISTS:	1	at San Francisco, 11-9-23
BLOCKS:	1	at San Francisco, 11-9-23
STEALS:	1	at San Francisco, 11-9-23
MINUTES:	23	at San Francisco, 11-9-23

## CAREER HIGHS

POINTS:	11	at San Francisco, 11-9-23
FIELD GOALS:	5	at San Francisco, 11-9-23
FG ATTEMPTS:	11	at San Francisco, 11-9-23
3-POINT FGS:	0	
3-POINT FGAS:	3	2x(at San Francisco, 11-9-23)
FREE THROWS:	1	at San Francisco, 11-9-23
FT ATTEMPTS:	2	at San Francisco, 11-9-23
REBOUNDS:	4	2x(at San Francisco, 11-9-23)
ASSISTS:	1	2x(at San Francisco, 11-9-23)
BLOCKS:	1	2x(at San Francisco, 11-9-23)
STEALS:	1	at San Francisco, 11-9-23
MINUTES:	23	at San Francisco, 11-9-23

## NEC CAREER HIGHS

POINTS:	0
FIELD GOALS:	0
FG ATTEMPTS:	0
3-POINT FGS:	0
3-POINT FGAS:	0
FREE THROWS:	0
FT ATTEMPTS:	0
REBOUNDS:	0
ASSISTS:	0
BLOCKS:	0
STEALS:	0
MINUTES:	0

### TOP CAREER PERFORMANCES

- **at San Francisco (11-9-23):** Scored a career-high 11 points, shooting 5-11 FG, 1-2 FT in 23 minutes
- **vs. Saint Vincent (12-8-22):** Had 8 points, shooting 4-7 FG in 13 minutes

## INDIVIDUAL BENCHMARKS

	SEASON	CAREER
GP/GS:	3/3	7/3
10+ POINTS:	1	1
20+ POINTS:	0	0
5+ REBOUNDS:	0	0
DOUBLE-DOUBLES:	0	0
3+ 3PT FG:	0	0
3+ ASSISTS:	0	0
2+ STEALS:	0	0
LED SFU IN PTS:	0	0
LED SFU IN REBS:	0	0

## GET TO KNOW MILES

### Who Is Your Mount Rushmore of Players?

Michael Jordan, LeBron James, Miles Webb, Kobe Bryant

### Who Is Your Game Modeled After?

Brandon Ingram, Makal Bridges, Jeremy Grant

**The first time I picked up a basketball and was in love with the game was...** I probably like six, but really started to take it seriously in ninth grade.

## SEASON STATISTICS

Date	Opponent	Start	Min	FG-A	3FG-A	FT-A	O-D-T	A	TO	Blk	Stl	Pts
Nov. 6	at UCLA	Y	13	0-1	0-0	0-0	2-2-4	0	2	0	0	0
Nov. 9	at San Francisco	Y	23	5-11	0-3	1-2	1-3-4	1	1	1	1	11
Nov. 11	at Santa Clara	Y	12	0-6	0-1	0-0	0-2-2	0	0	0	0	0

## CAREER STATISTICS

SEASON	TEAM	GP-GS	MIN/AVG	Field Goals			3-Point		F-Throws		Rebounds				Scoring					
				FG-FGA	FG%	3FG-3FGA	3FG%	FT-FTA	FT%	OFF	DEF	TOT	AVG	PF-FO	A	TO	BLK	STL	PTS	AVG
2022-23	SF-PA	4-0	34/8.6	5-11	.455	0-0	.000	0-1	.000	1	7	8	2.0	1-0	1	4	1	0	10	2.5
2023-24	SF-PA	3-3	48/15.9	5-20	.250	0-5	.000	1-2	.500	3	7	10	3.3	8-0	1	3	1	1	11	3.7
<b>TOTAL</b>		<b>7-3</b>	<b>82/11.7</b>	<b>10-31</b>	<b>.323</b>	<b>0-5</b>	<b>.000</b>	<b>1-3</b>	<b>.333</b>	<b>4</b>	<b>14</b>	<b>18</b>	<b>2.6</b>	<b>9-0</b>	<b>2</b>	<b>7</b>	<b>2</b>	<b>1</b>	<b>21</b>	<b>3.0</b>



# 4 CARLOS LOPEZ, JR.

FRESHMAN | GUARD | 6-2 | 170 |  
EGG HARBOR, N.J. | EGG HARBOR TOWNSHIP | FELTRIM ACAD. (FLA.)



X: clopez | IG: clopez

## SEASON HIGHS

POINTS:	8	at UCLA, 11-6-23
FIELD GOALS:	2	2x(at Santa Clara, 11-11-23)
FG ATTEMPTS:	9	at Santa Clara, 11-11-23
3-POINT FGS:	1	at UCLA, 11-6-23
3-POINT FGAS:	6	at Santa Clara, 11-11-23
FREE THROWS:	3	at UCLA, 11-6-23
FT ATTEMPTS:	4	at UCLA, 11-6-23
REBOUNDS:	1	2x(at Santa Clara, 11-11-23)
ASSISTS:	2	at Santa Clara, 11-11-23
BLOCKS:	0	
STEALS:	2	at Santa Clara, 11-11-23
MINUTES:	23	at Santa Clara, 11-11-23

## CAREER HIGHS

POINTS:	8	at UCLA, 11-6-23
FIELD GOALS:	2	2x(at Santa Clara, 11-11-23)
FG ATTEMPTS:	9	at Santa Clara, 11-11-23
3-POINT FGS:	1	at UCLA, 11-6-23
3-POINT FGAS:	6	at Santa Clara, 11-11-23
FREE THROWS:	3	at UCLA, 11-6-23
FT ATTEMPTS:	4	at UCLA, 11-6-23
REBOUNDS:	1	2x(at Santa Clara, 11-11-23)
ASSISTS:	2	at Santa Clara, 11-11-23
BLOCKS:	0	
STEALS:	2	at Santa Clara, 11-11-23
MINUTES:	23	at Santa Clara, 11-11-23

## NEC CAREER HIGHS

POINTS:	0
FIELD GOALS:	0
FG ATTEMPTS:	0
3-POINT FGS:	0
3-POINT FGAS:	0
FREE THROWS:	0
FT ATTEMPTS:	0
REBOUNDS:	0
ASSISTS:	0
BLOCKS:	0
STEALS:	0
MINUTES:	0

### TOP CAREER PERFORMANCES

- at UCLA (11-6-23): Scored career-high 8 points, shooting 2-for-7 FG; 1-5 3FG

## INDIVIDUAL BENCHMARKS

	SEASON	CAREER
GP/GS:	3/3	3/3
10+ POINTS:	0	0
20+ POINTS:	0	0
5+ REBOUNDS:	0	0
DOUBLE-DOUBLES:	0	0
3+ 3PT FG:	0	0
3+ ASSISTS:	0	0
2+ STEALS:	0	0
LED SFU IN PTS:	0	0
LED SFU IN REBS:	0	0

## GET TO KNOW CARLOS

### Who Is Your Mount Rushmore of Players?

Lebron James, Kyrrie Irving,  
Kobe Bryant, Kevin Durant

### Who Is Your Game Modeled After?

I do not model my game after anyone, but do take pieces of James Harden, Kyrrie Irving and Steph Curry's game

The first time I picked up a basketball and was in love with the game was...

## SEASON STATISTICS

Date	Opponent	Start	Min	FG-A	3FG-A	FT-A	O-D-T	A	TO	Blk	Stl	Pts
Nov. 6	at UCLA	Y	18	2-7	1-5	3-4	0-1-1	0	3	0	0	8
Nov. 9	at San Francisco	Y	15	0-3	0-3	2-2	0-0-0	1	2	0	0	2
Nov. 11	at Santa Clara	Y	23	2-9	0-6	0-0	0-1-1	2	1	0	2	4

## CAREER STATISTICS

SEASON	TEAM	GP-GS	MIN/AVG	Field Goals			3-Point		F-Throws		Rebounds				Scoring					
				FG-FGA	FG%	3FG-3FGA	3FG%	FT-FTA	FT%	OFF	DEF	TOT	AVG	PF-FO	A	TO	BLK	STL	PTS	AVG
2023-24	SF-PA	3-3	56/18.8	4-19	.211	1-14	.071	5-6	.833	0	2	2	0.7	4-0	3	6	0	2	14	4.7
<b>TOTAL</b>		<b>3-3</b>	<b>56/18.8</b>	<b>4-19</b>	<b>.211</b>	<b>1-14</b>	<b>.071</b>	<b>5-6</b>	<b>.833</b>	<b>0</b>	<b>2</b>	<b>2</b>	<b>0.7</b>	<b>4-0</b>	<b>3</b>	<b>6</b>	<b>0</b>	<b>2</b>	<b>14</b>	<b>4.7</b>

# 5 ELI WILBORN

FRESHMAN | FORWARD | 6-8 | 215 |  
MIDDLETOWN, CONN. | MIDDLETOWN | SOUTH KENT PREPARATORY



IG: showtime.eliiii

## SEASON HIGHS

**POINTS:** 9 at Santa Clara, 11-11-23  
**FIELD GOALS:** 4 at Santa Clara, 11-11-23  
**FG ATTEMPTS:** 5 at Santa Clara, 11-11-23  
**3-POINT FGS:** 0  
**3-POINT FGAS:** 1 2x(at San Francisco, 11-9-23)  
**FREE THROWS:** 2 at San Francisco, 11-9-23  
**FT ATTEMPTS:** 4 at Santa Clara, 11-11-23  
**REBOUNDS:** 5 at Santa Clara, 11-11-23  
**ASSISTS:** 0  
**BLOCKS:** 2 at Santa Clara, 11-11-23  
**STEALS:** 1 at Santa Clara, 11-11-23  
**MINUTES:** 20 at Santa Clara, 11-11-23

## CAREER HIGHS

**POINTS:** 9 at Santa Clara, 11-11-23  
**FIELD GOALS:** 4 at Santa Clara, 11-11-23  
**FG ATTEMPTS:** 5 at Santa Clara, 11-11-23  
**3-POINT FGS:** 0  
**3-POINT FGAS:** 1 2x(at San Francisco, 11-9-23)  
**FREE THROWS:** 2 at San Francisco, 11-9-23  
**FT ATTEMPTS:** 4 at Santa Clara, 11-11-23  
**REBOUNDS:** 5 at Santa Clara, 11-11-23  
**ASSISTS:** 0  
**BLOCKS:** 2 at Santa Clara, 11-11-23  
**STEALS:** 1 at Santa Clara, 11-11-23  
**MINUTES:** 20 at Santa Clara, 11-11-23

## NEC CAREER HIGHS

**POINTS:** 0  
**FIELD GOALS:** 0  
**FG ATTEMPTS:** 0  
**3-POINT FGS:** 0  
**3-POINT FGAS:** 0  
**FREE THROWS:** 0  
**FT ATTEMPTS:** 0  
**REBOUNDS:** 0  
**ASSISTS:** 0  
**BLOCKS:** 0  
**STEALS:** 0  
**MINUTES:** 0

### TOP CAREER PERFORMANCES

- **at Santa Clara (11-11-23):** Registered career-high nine points and four rebounds in first career start, shooting 4-5 FG; 1-4 FT

## INDIVIDUAL BENCHMARKS

	SEASON	CAREER
GP/GS:	3/1	3/1
10+ POINTS:	0	0
20+ POINTS:	0	0
5+ REBOUNDS:	0	0
DOUBLE-DOUBLES:	0	0
3+ 3PT FG:	0	0
3+ ASSISTS:	0	0
2+ STEALS:	0	0
LED SFU IN PTS:	0	0
LED SFU IN REBS:	1	1

## GET TO KNOW ELI

### Who Is Your Mount Rushmore of Players?

Michael Jordan, Kobe Bryant  
Lebron James, Wilt Chamberlain

### Who Is Your Game Modeled After?

The first time I picked up a basketball and was in love with the game was...

## SEASON STATISTICS

Date	Opponent	Start	Min	FG-A	3FG-A	FT-A	O-D-T	A	TO	Blk	Stl	Pts
Nov. 6	at UCLA	N	14	0-1	0-1	0-0	0-3-3	0	0	0	0	0
Nov. 9	at San Francisco	N	16	0-2	0-1	2-3	1-0-1	0	4	0	0	2
Nov. 11	at Santa Clara	Y	20	4-5	0-0	1-4	2-3-5	0	3	2	1	9

## CAREER STATISTICS

SEASON	TEAM	Field Goals				3-Point		F-Throws		Rebounds				Scoring						
		GP-GS	MIN/AVG	FG-FGA	FG%	3FG-3FGA	3FG%	FT-FTA	FT%	OFF	DEF	TOT	AVG	PF-FO	A	TO	BLK	STL	PTS	AVG
2023-24	SF-PA	3-1	51/16.9	4-8	.500	0-2	.000	3-7	.429	3	6	9	3.0	12-0	0	7	2	1	11	3.7
<b>TOTAL</b>		<b>3-1</b>	<b>51/16.9</b>	<b>4-8</b>	<b>.500</b>	<b>0-2</b>	<b>.000</b>	<b>3-7</b>	<b>.429</b>	<b>3</b>	<b>6</b>	<b>9</b>	<b>3.0</b>	<b>12-0</b>	<b>0</b>	<b>7</b>	<b>2</b>	<b>1</b>	<b>11</b>	<b>3.7</b>

# 11 CHRIS MONCRIEF

SOPHOMORE | GUARD | 6-6 | 190 |  
TURTLE CREEK, PA. | KISKI SCHOOL | UNIV. OF EVANSVILLE



IG: moncriefxchris

## SEASON HIGHS

**POINTS:** 9 at San Francisco, 11-9-23  
**FIELD GOALS:** 3 2x(at Santa Clara, 11-11-23)  
**FG ATTEMPTS:** 6 2x(at Santa Clara, 11-11-23)  
**3-POINT FGS:** 3 at San Francisco, 11-9-23  
**3-POINT FGAS:** 3 at San Francisco, 11-9-23  
**FREE THROWS:** 0  
**FT ATTEMPTS:** 3 at Santa Clara, 11-11-23  
**REBOUNDS:** 3 at Santa Clara, 11-11-23  
**ASSISTS:** 1 2x(at Santa Clara, 11-11-23)  
**BLOCKS:** 1 at San Francisco, 11-9-23  
**STEALS:** 2 at San Francisco, 11-9-23  
**MINUTES:** 28 at San Francisco, 11-9-23

## CAREER HIGHS

**POINTS:** 9 2x(at San Francisco, 11-9-23)  
**FIELD GOALS:** 4 vs. Indiana State, 3-2-23 \*  
**FG ATTEMPTS:** 11 vs. Indiana State, 3-2-23 \*  
**3-POINT FGS:** 3 at San Francisco, 11-9-23  
**3-POINT FGAS:** 4 vs. Indiana State, 3-2-23 \*  
**FREE THROWS:** 2 3x(at Illinois State, 2-26-23) \*  
**FT ATTEMPTS:** 4 vs. Valparaiso, 1-14-23 \*  
**REBOUNDS:** 3 4x(at Santa Clara, 11-11-23)  
**ASSISTS:** 5 at Southern Illinois, 1-17-23 \*  
**BLOCKS:** 2 2x(vs. Valparaiso, 1-14-23) \*  
**STEALS:** 4 at Southern Illinois, 1-17-23 \*  
**MINUTES:** 29 at Illinois State, 2-26-23 \*

## NEC CAREER HIGHS

**POINTS:** 0  
**FIELD GOALS:** 0  
**FG ATTEMPTS:** 0  
**3-POINT FGS:** 0  
**3-POINT FGAS:** 0  
**FREE THROWS:** 0  
**FT ATTEMPTS:** 0  
**REBOUNDS:** 0  
**ASSISTS:** 0  
**BLOCKS:** 0  
**STEALS:** 0  
**MINUTES:** 0

\* set at University of Evansville

### TOP CAREER PERFORMANCES

- **at San Francisco (11-9-23):** Matched career-high of nine points, shooting 3-5 FG; 3-3 3FG
- **vs. Indiana State (3-2-23):** Scored a career-high nine points, shooting 4-11 FG; 1-4 3FG
- **at Southern Illinois (1-17-23):** Tallied career-high five assists and four steals and then career high six points

## INDIVIDUAL BENCHMARKS

	SEASON	CAREER
GP/GS:	3/3	22/3
10+ POINTS:	1	1
20+ POINTS:	0	0
5+ REBOUNDS:	0	0
DOUBLE-DOUBLES:	0	0
3+ 3PT FG:	0	0
3+ ASSISTS:	0	3
2+ STEALS:	1	6
LED SFU IN PTS:	0	0
LED SFU IN REBS:	0	0

## GET TO KNOW CHRIS

### Who Is Your Mount Rushmore of Players?

Lebron James, Michael Jordan,  
Kobe Bryant, Steph Curry

### Who Is Your Game Modeled After?

I do not model my game after anyone in particular, but have bits and pieces of DeMar DeRozan, Andrew Wiggins, Khris Middleton, Cade Cunningham

**The first time I picked up a basketball and was in love with the game was...** around the age of three. My dad had me in sports at a young age.

## SEASON STATISTICS

Date	Opponent	Start	Min	FG-A	3FG-A	FT-A	O-D-T	A	TO	Blk	Stl	Pts
Nov. 6	at UCLA	Y	19	0-1	0-0	0-0	0-2-2	0	0	0	0	0
Nov. 9	at San Francisco	Y	28	3-5	3-3	0-0	0-1-1	1	3	1	2	9
Nov. 11	at Santa Clara	Y	19	3-6	0-1	0-3	1-2-3	1	2	0	0	6

## CAREER STATISTICS

SEASON	TEAM	GP-GS	MIN/AVG	Field Goals			3-Point		F-Throws		Rebounds				Scoring					
				FG-FGA	FG%	3FG-3FGA	3FG%	FT-FTA	FT%	OFF	DEF	TOT	AVG	PF-FO	A	TO	BLK	STL	PTS	AVG
2022-23	Evans	28-0	357/12.8	28-74	.378	2-12	.167	10-20	.500	9	23	32	1.1	17-0	25	22	9	16	68	2.4
2023-24	SF-PA	3-3	67/22.2	6-12	.500	3-4	.750	0-3	.000	1	5	6	2.0	1-0	3	5	1	2	15	5.0
<b>TOTAL FOR SF-PA</b>		<b>3-3</b>	<b>67/22.2</b>	<b>6-12</b>	<b>.500</b>	<b>3-4</b>	<b>.750</b>	<b>0-3</b>	<b>.000</b>	<b>1</b>	<b>5</b>	<b>6</b>	<b>2.0</b>	<b>1-0</b>	<b>3</b>	<b>5</b>	<b>1</b>	<b>2</b>	<b>15</b>	<b>5.0</b>
<b>TOTAL</b>		<b>31-3</b>	<b>424/13.7</b>	<b>34-86</b>	<b>.395</b>	<b>5-16</b>	<b>.313</b>	<b>10-23</b>	<b>.435</b>	<b>10</b>	<b>28</b>	<b>38</b>	<b>1.2</b>	<b>18-0</b>	<b>28</b>	<b>27</b>	<b>10</b>	<b>18</b>	<b>83</b>	<b>2.7</b>

# 13 BLAZE ANGELLOTTI

FRESHMAN | GUARD | 6-4 | 195 |  
JULIAN, PA. | BALD EAGLE AREA



X: AngelottiBlaze | IG: blaze\_a13

## SEASON HIGHS

POINTS: 0  
FIELD GOALS: 0  
FG ATTEMPTS: 0  
3-POINT FGS: 0  
3-POINT FGAS: 0  
FREE THROWS: 0  
FT ATTEMPTS: 0  
REBOUNDS: 0  
ASSISTS: 0  
BLOCKS: 0  
STEALS: 0

## CAREER HIGHS

POINTS: 0  
FIELD GOALS: 0  
FG ATTEMPTS: 0  
3-POINT FGS: 0  
3-POINT FGAS: 0  
FREE THROWS: 0  
FT ATTEMPTS: 0  
REBOUNDS: 0  
ASSISTS: 0  
BLOCKS: 0  
STEALS: 0  
MINUTES: 0

## NEC CAREER HIGHS

POINTS: 0  
FIELD GOALS: 0  
FG ATTEMPTS: 0  
3-POINT FGS: 0  
3-POINT FGAS: 0  
FREE THROWS: 0  
FT ATTEMPTS: 0  
REBOUNDS: 0  
ASSISTS: 0  
BLOCKS: 0  
STEALS: 0  
MINUTES: 0

## TOP CAREER PERFORMANCES

## INDIVIDUAL BENCHMARKS

	SEASON	CAREER
GP/GS:	0/0	0/0
10+ POINTS:	0	0
20+ POINTS:	0	0
5+ REBOUNDS:	0	0
DOUBLE-DOUBLES:	0	0
3+ 3PT FG:	0	0
3+ ASSISTS:	0	0
2+ STEALS:	0	0
LED SFU IN PTS:	0	0
LED SFU IN REBS:	0	0

## GET TO KNOW BLAZE

### Who Is Your Mount Rushmore of Players?

Lebron James, Michael Jordan,  
Steph Curry, Shaquille O'Neal

### Who Is Your Game Modeled After?

Jalen Pickett

**The first time I picked up a basketball and was in love with the game was...** at the age of four, but didn't play organized basketball until fifth grade

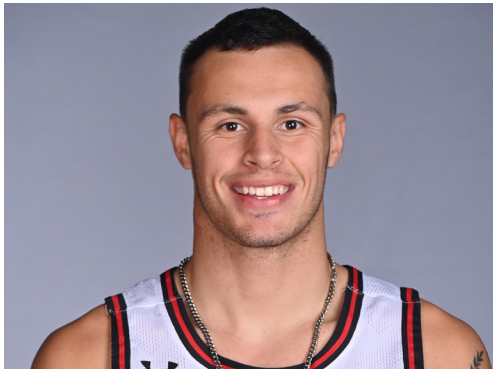
## SEASON STATISTICS

Date	Opponent	Start	Min	FG-A	3FG-A	FT-A	O-D-T	A	TO	Blk	Stl	Pts
Nov. 6	at UCLA											Did Not Travel
Nov. 9	at San Francisco											Did Not Travel
Nov. 11	at Santa Clara											Did Not Travel

## CAREER STATISTICS

# 14 BOBBY ROSENBERGER III

FRESHMAN | GUARD | 6-5 | 205 |  
QUAKERTOWN, PA. | PERKIOMEN SCHOOL



X: brosenberger\_ | IG: \_\_bobbyrosenberger\_

## SEASON HIGHS

**POINTS:** 2 2x(at Santa Clara, 11-11-23)  
**FIELD GOALS:** 1 2x(at Santa Clara, 11-11-23)  
**FG ATTEMPTS:** 3 at Santa Clara, 11-11-23  
**3-POINT FGS:** 0  
**3-POINT FGAS:** 2 at UCLA, 11-6-23  
**FREE THROWS:** 0  
**FT ATTEMPTS:** 0  
**REBOUNDS:** 1, at UCLA, 11-6-23  
**ASSISTS:** 1 2x(at San Francisco, 11-9-23)  
**BLOCKS:** 0  
**STEALS:** 0  
**MINUTES:** 11 at Santa Clara, 11-11-23

## CAREER HIGHS

**POINTS:** 2 2x(at Santa Clara, 11-11-23)  
**FIELD GOALS:** 1 2x(at Santa Clara, 11-11-23)  
**FG ATTEMPTS:** 3 at Santa Clara, 11-11-23  
**3-POINT FGS:** 0  
**3-POINT FGAS:** 2 at UCLA, 11-6-23  
**FREE THROWS:** 0  
**FT ATTEMPTS:** 0  
**REBOUNDS:** 1, at UCLA, 11-6-23  
**ASSISTS:** 1 2x(at San Francisco, 11-9-23)  
**BLOCKS:** 0  
**STEALS:** 0  
**MINUTES:** 11 at Santa Clara, 11-11-23

## NEC CAREER HIGHS

**POINTS:** 0  
**FIELD GOALS:** 0  
**FG ATTEMPTS:** 0  
**3-POINT FGS:** 0  
**3-POINT FGAS:** 0  
**FREE THROWS:** 0  
**FT ATTEMPTS:** 0  
**REBOUNDS:** 0  
**ASSISTS:** 0  
**BLOCKS:** 0  
**STEALS:** 0  
**MINUTES:** 0

## TOP CAREER PERFORMANCES

## INDIVIDUAL BENCHMARKS

	SEASON	CAREER
GP/GS:	3/0	3/0
10+ POINTS:	0	0
20+ POINTS:	0	0
5+ REBOUNDS:	0	0
DOUBLE-DOUBLES:	0	0
3+ 3PT FG:	0	0
3+ ASSISTS:	0	0
2+ STEALS:	0	0
LED SFU IN PTS:	0	0
LED SFU IN REBS:	0	0

## GET TO KNOW BOBBY

### Who Is Your Mount Rushmore of Players?

Michael Jordan, Wilt Chamberlain  
Kobe Bryant, Steph Curry

### Who Is Your Game Modeled After?

I don't model my game anyone, but I model my mentality after Kobe Bryant

**The first time I picked up a basketball and was in love with the game was...** I was like four years old playing at the YMCA, in front of my house with my siblings and haven't look back.

## SEASON STATISTICS

Date	Opponent	Start	Min	FG-A	3FG-A	FT-A	O-D-T	A	TO	Blk	Stl	Pts
Nov. 6	at UCLA	N	9	0-2	0-2	0-0	0-1-1	1	0	0	0	0
Nov. 9	at San Francisco	N	10	1-2	0-1	0-0	0-0-0	1	0	0	0	2
Nov. 11	at Santa Clara	N	11	1-3	0-1	0-0	0-0-0	0	1	0	0	2

## CAREER STATISTICS

SEASON	TEAM	GP-GS	MIN/AVG	Field Goals		3-Point		F-Throws		Rebounds				Scoring						
				FG-FGA	FG%	3FG-3FGA	3FG%	FT-FTA	FT%	OFF	DEF	TOT	AVG	PF-FO	A	TO	BLK	STL	PTS	AVG
2023-24	SF-PA	3-0	30/10.0	2-7	.286	0-4	.000	0-0	.000	0	1	1	0.3	2-0	2	1	0	0	4	1.3
<b>TOTAL</b>		<b>3-0</b>	<b>30/10.0</b>	<b>2-7</b>	<b>.286</b>	<b>0-4</b>	<b>.000</b>	<b>0-0</b>	<b>.000</b>	<b>0</b>	<b>1</b>	<b>1</b>	<b>0.3</b>	<b>2-0</b>	<b>2</b>	<b>1</b>	<b>0</b>	<b>0</b>	<b>4</b>	<b>1.3</b>

# 15 AARON HUMPHREY, JR.

FRESHMAN | FORWARD | 6-7 | 210 |  
 INDIANAPOLIS, IND. | CHARLES A. TINDLEY | DON BOSCO INSTITUTE



X: aaronhumphreyjr | IG: aaronhumphreyjr

## SEASON HIGHS

POINTS: 0  
 FIELD GOALS: 0  
 FG ATTEMPTS: 0  
 3-POINT FGS: 0  
 3-POINT FGAS: 0  
 FREE THROWS: 0  
 FT ATTEMPTS: 0  
 REBOUNDS: 1 at UCLA, 11-6-23  
 ASSISTS: 1 at UCLA, 11-6-23  
 BLOCKS: 0  
 STEALS: 1 at UCLA, 11-6-23  
 MINUTES: 8 at UCLA, 11-6-23

## CAREER HIGHS

POINTS: 0  
 FIELD GOALS: 0  
 FG ATTEMPTS: 0  
 3-POINT FGS: 0  
 3-POINT FGAS: 0  
 FREE THROWS: 0  
 FT ATTEMPTS: 0  
 REBOUNDS: 1 at UCLA, 11-6-23  
 ASSISTS: 1 at UCLA, 11-6-23  
 BLOCKS: 0  
 STEALS: 1 at UCLA, 11-6-23  
 MINUTES: 8 at UCLA, 11-6-23

## NEC CAREER HIGHS

POINTS: 0  
 FIELD GOALS: 0  
 FG ATTEMPTS: 0  
 3-POINT FGS: 0  
 3-POINT FGAS: 0  
 FREE THROWS: 0  
 FT ATTEMPTS: 0  
 REBOUNDS: 0  
 ASSISTS: 0  
 BLOCKS: 0  
 STEALS: 0  
 MINUTES: 0

## TOP CAREER PERFORMANCES

## INDIVIDUAL BENCHMARKS

	SEASON	CAREER
GP/GS:	2/0	2/0
10+ POINTS:	0	0
20+ POINTS:	0	0
5+ REBOUNDS:	0	0
DOUBLE-DOUBLES:	0	0
3+ 3PT FG:	0	0
3+ ASSISTS:	0	0
2+ STEALS:	0	0
LED SFU IN PTS:	0	0
LED SFU IN REBS:	0	0

## GET TO KNOW AARON

### Who Is Your Mount Rushmore of Players?

Michael Jordan, Kevin Durant, Shaquille O'Neal, Carmello Anthony

### Who Is Your Game Modeled After?

Carmello Anthony, Draymond Green

**FUN FACT:** Wears No. 15 because of Carmello Anthony

**The first time I picked up a basketball and was in love with the game was...** from the age of three my pops always had me around the game and I fell in love with it.

## SEASON STATISTICS

Date	Opponent	Start	Min	FG-A	3FG-A	FT-A	O-D-T	A	TO	Blk	Stl	Pts
Nov. 6	at UCLA	N	8	0-0	0-0	0-0	0-1-1	1	1	0	1	0
Nov. 9	at San Francisco	N	4	0-0	0-0	0-0	0-0-0	0	0	0	0	0
Nov. 11	at Santa Clara											Did Not Dress

## CAREER STATISTICS

SEASON	TEAM	GP-GS	MIN/AVG	Field Goals		3-Point		F-Throws		Rebounds				Scoring						
				FG-FGA	FG%	3FG-3FGA	3FG%	FT-FTA	FT%	OFF	DEF	TOT	AVG	PF-FO	A	TO	BLK	STL	PTS	AVG
2023-24	SF-PA	2-0	11/5.5	0-0	.000	0-0	.000	0-0	.000	0	1	1	0.5	3-0	1	1	0	1	0	0.0
<b>TOTAL</b>		<b>2-0</b>	<b>11/5.5</b>	<b>0-0</b>	<b>.000</b>	<b>0-0</b>	<b>.000</b>	<b>0-0</b>	<b>.000</b>	<b>0</b>	<b>1</b>	<b>1</b>	<b>0.5</b>	<b>3-0</b>	<b>1</b>	<b>1</b>	<b>0</b>	<b>1</b>	<b>0</b>	<b>0.0</b>

# 21 GESTIN LIBERIS

SOPHOMORE | FORWARD | 6-9 | 215 |  
HAVERTOWN, PA. | THE GEORGE SCHOOL



IG: gezlo

## SEASON HIGHS

POINTS:	12	at UCLA, 11-6-23
FIELD GOALS:	4	at UCLA, 11-6-23
FG ATTEMPTS:	7	at UCLA, 11-6-23
3-POINT FGS:	0	
3-POINT FGAS:	0	
FREE THROWS:	4	at UCLA, 11-6-23
FT ATTEMPTS:	5	at UCLA, 11-6-23
REBOUNDS:	5	at San Francisco, 11-9-23
ASSISTS:	1	at Santa Clara, 11-11-23
BLOCKS:	0	
STEALS:	0	
MINUTES:	23	at UCLA, 11-6-23

## CAREER HIGHS

POINTS:	12	at UCLA, 11-6-23
FIELD GOALS:	4	3x(at UCLA, 11-6-23)
FG ATTEMPTS:	7	2x(at UCLA, 11-6-23)
3-POINT FGS:	0	
3-POINT FGAS:	0	
FREE THROWS:	4	at UCLA, 11-6-23
FT ATTEMPTS:	5	at UCLA, 11-6-23
REBOUNDS:	7	vs. Franciscan, 11-23-22
ASSISTS:	1	2x(at Santa Clara, 11-11-23)
BLOCKS:	0	
STEALS:	1	2x(at Stonehill, 2-2-23)
MINUTES:	23	at UCLA, 11-6-23

## NEC CAREER HIGHS

POINTS:	10	at LIU, 2-18-23
FIELD GOALS:	4	at LIU, 2-18-23
FG ATTEMPTS:	4	at LIU, 2-18-23
3-POINT FGS:	0	
3-POINT FGAS:	0	
FREE THROWS:	2	2x(CCSU, 3-1-23)
FT ATTEMPTS:	3	at LIU, 2-18-23
REBOUNDS:	5	Sacred Heart, 2-9-23
ASSISTS:	0	
BLOCKS:	0	
STEALS:	1	at Stonehill, 2-2-23
MINUTES:	11	at LIU, 2-18-23

## TOP CAREER PERFORMANCES

- **at UCLA (11-6-23):** Scored a career-high 12 points, shooting 4-7 FG; 4-5 FT
- **at LIU (2-18-23):** Scored a career-high 10 points, shooting 4-4 FG; 2-3 FT
- **vs. Franciscan (11-23-22):** Registered nine points and seven rebounds

## INDIVIDUAL BENCHMARKS

	SEASON	CAREER
GP/GS:	3/2	33/2
10+ POINTS:	1	2
20+ POINTS:	0	0
5+ REBOUNDS:	1	4
DOUBLE-DOUBLES:	0	0
3+ 3PT FG:	0	0
3+ ASSISTS:	0	0
2+ STEALS:	0	0
LED SFU IN PTS:	1	1
LED SFU IN REBS:	1	1

## GET TO KNOW GESTIN

### Who Is Your Mount Rushmore of Players?

Michael Jordan, Shaquille O'Neal,  
Kobe Bryant, Wilt Chamberlain

### Who Is Your Game Modeled After?

Tim Duncan, Joel Embiid, Giannis Antetokounmpo

**The first time I picked up a basketball and was in love with the game was...** fourth grade, but I really took it seriously in seventh or eighth grade and that's when I knew I wanted to pursue it

## SEASON STATISTICS

Date	Opponent	Start	Min	FG-A	3FG-A	FT-A	O-D-T	A	TO	Blk	Stl	Pts
Nov. 6	at UCLA	Y	23	4-7	0-0	4-5	1-2-3	0	3	0	0	12
Nov. 9	at San Francisco	Y	21	2-5	0-0	1-1	0-5-5	0	1	0	0	5
Nov. 11	at Santa Clara	N	18	2-5	0-0	1-2	0-2-2	1	0	0	0	5

## CAREER STATISTICS

SEASON	TEAM	GP-GS	MIN/AVG	Field Goals		3-Point		F-Throws		Rebounds				Scoring						
				FG-FGA	FG%	3FG-3FGA	3FG%	FT-FTA	FT%	OFF	DEF	TOT	AVG	PF-FO	A	TO	BLK	STL	PTS	AVG
2022-23	SF-PA	30-0	186/6.2	24-43	.558	0-0	.000	13-22	.591	18	31	49	1.6	36-0	1	22	0	2	61	2.0
2023-24	SF-PA	3-2	63/20.9	8-17	.471	0-0	.000	6-8	.750	1	9	10	3.3	6-0	1	4	0	0	22	7.3
<b>TOTAL</b>		<b>33-2</b>	<b>249/7.5</b>	<b>32-60</b>	<b>.533</b>	<b>0-0</b>	<b>.000</b>	<b>19-30</b>	<b>.633</b>	<b>19</b>	<b>40</b>	<b>59</b>	<b>1.8</b>	<b>42-0</b>	<b>2</b>	<b>26</b>	<b>0</b>	<b>2</b>	<b>83</b>	<b>2.5</b>

# 22 RYEN GRESKO

FRESHMAN | GUARD | 5-11 | 170 |  
PENN RUN, PA. | PENNS MANOR



IG: ryen\_gresko\_20

## SEASON HIGHS

POINTS: 0  
FIELD GOALS: 0  
FG ATTEMPTS: 0  
3-POINT FGS: 0  
3-POINT FGAS: 0  
FREE THROWS: 0  
FT ATTEMPTS: 0  
REBOUNDS: 0  
ASSISTS: 0  
BLOCKS: 0  
STEALS: 0

## CAREER HIGHS

POINTS: 0  
FIELD GOALS: 0  
FG ATTEMPTS: 0  
3-POINT FGS: 0  
3-POINT FGAS: 0  
FREE THROWS: 0  
FT ATTEMPTS: 0  
REBOUNDS: 0  
ASSISTS: 0  
BLOCKS: 0  
STEALS: 0  
MINUTES: 0

## NEC CAREER HIGHS

POINTS: 0  
FIELD GOALS: 0  
FG ATTEMPTS: 0  
3-POINT FGS: 0  
3-POINT FGAS: 0  
FREE THROWS: 0  
FT ATTEMPTS: 0  
REBOUNDS: 0  
ASSISTS: 0  
BLOCKS: 0  
STEALS: 0  
MINUTES: 0

## TOP CAREER PERFORMANCES

.

## INDIVIDUAL BENCHMARKS

	SEASON	CAREER
GP/GS:	0/0	0/0
10+ POINTS:	0	0
20+ POINTS:	0	0
5+ REBOUNDS:	0	0
DOUBLE-DOUBLES:	0	0
3+ 3PT FG:	0	0
3+ ASSISTS:	0	0
2+ STEALS:	0	0
LED SFU IN PTS:	0	0
LED SFU IN REBS:	0	0

## GET TO KNOW RYEN

### Who Is Your Mount Rushmore of Players?

Larry Bird, Michael Jordan,  
Kobe Bryant, Seth Curry

### Who Is Your Game Modeled After?

J.J. Reddick

**The first time I picked up a basketball and was in love with the game was...** when I was four years old I was in a basketball league and from that moment on I just fell in love with the game.

## SEASON STATISTICS

Date	Opponent	Start	Min	FG-A	3FG-A	FT-A	O-D-T	A	TO	Blk	Stl	Pts
Nov. 6	at UCLA											Did Not Travel
Nov. 9	at San Francisco											Did Not Travel
Nov. 11	at Santa Clara											Did Not Travel

## CAREER STATISTICS



# 23 WISLER SANON II

SOPHOMORE | GUARD | 6-4 | 190 |  
SICKLERVILLE, N.J. | PAUL VI



X: wislersanonjr | IG: wislersanonjr

## SEASON HIGHS

POINTS:	9	at UCLA, 11-6-23
FIELD GOALS:	3	at UCLA, 11-6-23
FG ATTEMPTS:	4	at UCLA, 11-6-23
3-POINT FGS:	0	
3-POINT FGAS:	1	at UCLA, 11-6-23
FREE THROWS:	3	at UCLA, 11-6-23
FT ATTEMPTS:	5	at UCLA, 11-6-23
REBOUNDS:	3	at UCLA, 11-6-23
ASSISTS:	2	at UCLA, 11-6-23
BLOCKS:	0	
STEALS:	2	at UCLA, 11-6-23
MINUTES:	25	at UCLA, 11-6-23

## CAREER HIGHS

POINTS:	11	vs. Saint Vincent, 12-8-22
FIELD GOALS:	3	4x(at UCLA, 11-6-23)
FG ATTEMPTS:	5	2x(at Ohio State, 12-3-22)
3-POINT FGS:	3	vs. Saint Vincent, 12-8-22
3-POINT FGAS:	3	3x(vs. Merrimack, 2-11-23)
FREE THROWS:	5	at FDU, 1-26-23
FT ATTEMPTS:	5	2x(at UCLA, 11-6-23)
REBOUNDS:	4	5x(at Stonehill, 2-2-23)
ASSISTS:	6	vs. Hartford, 11-12-22
BLOCKS:	1	5x(vs. LIU, 1-14-23)
STEALS:	3	at Butler, 11-17-22
MINUTES:	26	Sacred Heart, 2-9-23

## NEC CAREER HIGHS

POINTS:	8	at FDU, 1-26-23
FIELD GOALS:	3	at Stonehill, 2-2-23
FG ATTEMPTS:	4	2x(Merrimack, 2-11-23)
3-POINT FGS:	2	2x(Merrimack, 2-11-23)
3-POINT FGAS:	3	Merrimack, 2-11-23
FREE THROWS:	5	at FDU, 1-26-23
FT ATTEMPTS:	5	at FDU, 1-26-23
REBOUNDS:	4	2x(at Stonehill, 2-2-23)
ASSISTS:	2	2x(at LIU, 2-18-23)
BLOCKS:	1	LIU, 1-14-23
STEALS:	1	5x(at St. Francis Brooklyn, 2-16-23)
MINUTES:	26	Sacred Heart, 2-9-23

## TOP CAREER PERFORMANCES

- **vs. Saint Vincent (12-8-22):** Scored a career-high 11 points, shooting 3-3 FG; 3-3 3FG, 2-2 FT in first career start
- **at UCLA (11-6-23):** Tallied nine points, shooting 3-4 FG, 0-1 3FG; 3-5 FT
- **at FDU (1-26-23):** Tallied eight points including 5-5 FT along with four rebounds

## INDIVIDUAL BENCHMARKS

	SEASON	CAREER
GP/GS:	3/0	33/1
10+ POINTS:	0	0
20+ POINTS:	0	0
5+ REBOUNDS:	0	0
DOUBLE-DOUBLES:	0	0
3+ 3PT FG:	0	0
3+ ASSISTS:	0	1
2+ STEALS:	1	2
LED SFU IN PTS:	0	0
LED SFU IN REBS:	0	0

## GET TO KNOW WISLER

### Who Is Your Mount Rushmore of Players?

Kevin Durant, Kobe Bryant,  
Shaquille O'Neal, LeBron James

### Who Is Your Game Modeled After?

Jimmy Butler

**The first time I picked up a basketball and was in love with the game was...** was when I was 10 and after a football game. My coach brought me to the outside court and said come and shoot around with the team and after that I loved it.

## SEASON STATISTICS

Date	Opponent	Start	Min	FG-A	3FG-A	FT-A	O-D-T	A	TO	Blk	Stl	Pts
Nov. 6	at UCLA	N	25	3-4	0-1	3-5	2-1-3	2	4	0	2	9
Nov. 9	at San Francisco	N	20	1-3	0-1	2-2	0-1-1	1	1	0	0	2
Nov. 11	at Santa Clara	N	14	2-3	1-2	0-0	0-1-1	0	0	0	1	5

## CAREER STATISTICS

SEASON	TEAM	GP-GS	MIN/AVG	Field Goals		3-Point		F-Throws		Rebounds				Scoring						
				FG-FGA	FG%	3FG-3FGA	3FG%	FT-FTA	FT%	OFF	DEF	TOT	AVG	PF-FO	A	TO	BLK	STL	PTS	AVG
2022-23	SF-PA	30-1	397/13.2	31-61	.508	12-26	.462	22-25	.880	8	46	54	1.8	52-1	23	22	5	12	96	3.2
2023-24	SF-PA	3-0	58/19.4	6-10	.600	1-4	.250	5-7	.714	2	3	5	1.7	6-0	3	5	0	3	18	6.0
<b>TOTAL</b>		<b>33-1</b>	<b>455/13.8</b>	<b>37-71</b>	<b>.521</b>	<b>13-30</b>	<b>.433</b>	<b>27-32</b>	<b>.844</b>	<b>10</b>	<b>49</b>	<b>59</b>	<b>1.8</b>	<b>58-1</b>	<b>26</b>	<b>27</b>	<b>5</b>	<b>15</b>	<b>114</b>	<b>3.5</b>

# 24 KESHAWN MCNEILL

REDSHIRT FRESHMAN | GUARD | 6-1 | 180 |  
CAMP ZAMA, JAPAN | ZAMA AMERICAN MIDDLE HS



X: McNeillKeshawn | IG: keshawnmcneill

## SEASON HIGHS

POINTS: 0  
FIELD GOALS: 0  
FG ATTEMPTS: 1 2x(at San Francisco, 11-9-23)  
3-POINT FGS: 0  
3-POINT FGAS: 1 2x(at San Francisco, 11-9-23)  
FREE THROWS: 0  
FT ATTEMPTS: 0  
REBOUNDS: 1 at Santa Clara, 11-11-23  
ASSISTS: 0  
BLOCKS: 0  
STEALS: 0  
MINUTES: 3 2x(at Santa Clara, 11-11-23)

## CAREER HIGHS

POINTS: 0  
FIELD GOALS: 0  
FG ATTEMPTS: 1 2x(at San Francisco, 11-9-23)  
3-POINT FGS: 0  
3-POINT FGAS: 1 2x(at San Francisco, 11-9-23)  
FREE THROWS: 0  
FT ATTEMPTS: 0  
REBOUNDS: 1 at Santa Clara, 11-11-23  
ASSISTS: 0  
BLOCKS: 0  
STEALS: 0  
MINUTES: 3 2x(at Santa Clara, 11-11-23)

## NEC CAREER HIGHS

POINTS: 0  
FIELD GOALS: 0  
FG ATTEMPTS: 0  
3-POINT FGS: 0  
3-POINT FGAS: 0  
FREE THROWS: 0  
FT ATTEMPTS: 0  
REBOUNDS: 0  
ASSISTS: 0  
BLOCKS: 0  
STEALS: 0  
MINUTES: 0

## TOP CAREER PERFORMANCES

## INDIVIDUAL BENCHMARKS

	SEASON	CAREER
GP/GS:	3/0	3/0
10+ POINTS:	0	0
20+ POINTS:	0	0
5+ REBOUNDS:	0	0
DOUBLE-DOUBLES:	0	0
3+ 3PT FG:	0	0
3+ ASSISTS:	0	0
2+ STEALS:	0	0
LED SFU IN PTS:	0	0
LED SFU IN REBS:	0	0

## GET TO KNOW KESHAWN

### Who Is Your Mount Rushmore of Players?

Rui Hachimura, Allen Iverson, Michael Jordan, Kobe Bryant

### Who Is Your Game Modeled After?

Jrue Holliday

The first time I picked up a basketball and was in love with the game was... in third grade, but probably never really took it serious until eighth grade

## SEASON STATISTICS

Date	Opponent	Start	Min	FG-A	3FG-A	FT-A	O-D-T	A	TO	Blk	Stl	Pts
Nov. 6	at UCLA	N	2	0-1	0-1	0-0	0-0-0	0	0	0	0	0
Nov. 9	at San Francisco	N	3	0-1	0-1	0-0	0-0-0	0	0	0	0	0
Nov. 11	at Santa Clara	N	3	0-0	0-0	0-0	1-0-1	0	0	0	0	0

## CAREER STATISTICS

SEASON	TEAM	GP-GS	MIN/AVG	Field Goals		3-Point		F-Throws		Rebounds				Scoring						
				FG-FGA	FG%	3FG-3FGA	3FG%	FT-FTA	FT%	OFF	DEF	TOT	AVG	PF-FO	A	TO	BLK	STL	PTS	AVG
2023-24	SF-PA	3-0	8/2.5	0-2	.000	0-2	.000	0-0	.000	1	0	1	0.3	1-0	0	1	0	0	0	0.0
<b>TOTAL</b>		<b>3-0</b>	<b>8/2.5</b>	<b>0-2</b>	<b>.000</b>	<b>0-2</b>	<b>.000</b>	<b>0-0</b>	<b>.000</b>	<b>1</b>	<b>0</b>	<b>1</b>	<b>0.3</b>	<b>1-0</b>	<b>0</b>	<b>1</b>	<b>0</b>	<b>0</b>	<b>0</b>	<b>0.0</b>

# 30 KJ SWAIN, JR.

JUNIOR | GUARD | 6-0 | 155 |  
HAMILTON, OHIO | CINCINNATI CHRISTIAN



X: frescoswain | IG: frescoswain

## SEASON HIGHS

POINTS: 0  
FIELD GOALS: 0  
FG ATTEMPTS: 0  
3-POINT FGS: 0  
3-POINT FGAS: 0  
FREE THROWS: 0  
FT ATTEMPTS: 0  
REBOUNDS: 0  
ASSISTS: 0  
BLOCKS: 0  
STEALS: 0

## CAREER HIGHS

POINTS: 0  
FIELD GOALS: 0  
FG ATTEMPTS: 0  
3-POINT FGS: 0  
3-POINT FGAS: 0  
FREE THROWS: 0  
FT ATTEMPTS: 0  
REBOUNDS: 0  
ASSISTS: 0  
BLOCKS: 0  
STEALS: 0  
MINUTES: 0

## NEC CAREER HIGHS

POINTS: 0  
FIELD GOALS: 0  
FG ATTEMPTS: 0  
3-POINT FGS: 0  
3-POINT FGAS: 0  
FREE THROWS: 0  
FT ATTEMPTS: 0  
REBOUNDS: 0  
ASSISTS: 0  
BLOCKS: 0  
STEALS: 0  
MINUTES: 0

### TOP CAREER PERFORMANCES

## INDIVIDUAL BENCHMARKS

	SEASON	CAREER
GP/GS:	0/0	0/0
10+ POINTS:	0	0
20+ POINTS:	0	0
5+ REBOUNDS:	0	0
DOUBLE-DOUBLES:	0	0
3+ 3PT FG:	0	0
3+ ASSISTS:	0	0
2+ STEALS:	0	0
LED SFU IN PTS:	0	0
LED SFU IN REBS:	0	0

## GET TO KNOW KJ

### Who Is Your Mount Rushmore of Players?

Kobe Bryant, Michael Jordan  
Lebron James, Kareem Abdul-Jabbar

### Who Is Your Game Modeled After?

Chris Paul/Kyrie Irving

**The first time I picked up a basketball and was in love with the game was...** was probably about three. My parents keep a scrapbook of everything when I was growing up and my first word was ball.

## SEASON STATISTICS

Date	Opponent	Start	Min	FG-A	3FG-A	FT-A	O-D-T	A	TO	Blk	Stl	Pts
Nov. 6	at UCLA											Did Not Travel
Nov. 9	at San Francisco											Did Not Travel
Nov. 11	at Santa Clara											Did Not Travel

## CAREER STATISTICS

# 32 AIDAN HARRIS

FRESHMAN | FORWARD | 6-7 | 205 |  
ANNAPOLIS, MD. | SAINT MARY'S



X: aidanharris0 | IG: aidan\_harris4

## SEASON HIGHS

**POINTS:** 4 at UCLA, 11-6-23  
**FIELD GOALS:** 1 3x(at Santa Clara, 11-11-23)  
**FG ATTEMPTS:** 5 at UCLA, 11-6-23  
**3-POINT FGS:** 1 at Santa Clara, 11-11-23  
**3-POINT FGAS:** 2 at Santa Clara, 11-11-23  
**FREE THROWS:** 2 at UCLA, 11-6-23  
**FT ATTEMPTS:** 2 at UCLA, 11-6-23  
**REBOUNDS:** 5 at UCLA, 11-6-23  
**ASSISTS:** 0  
**BLOCKS:** 1 at UCLA, 11-6-23  
**STEALS:** 0  
**MINUTES:** 20 at UCLA, 11-6-23

## CAREER HIGHS

**POINTS:** 4 at UCLA, 11-6-23  
**FIELD GOALS:** 1 3x(at Santa Clara, 11-11-23)  
**FG ATTEMPTS:** 5 at UCLA, 11-6-23  
**3-POINT FGS:** 1 at Santa Clara, 11-11-23  
**3-POINT FGAS:** 2 at Santa Clara, 11-11-23  
**FREE THROWS:** 2 at UCLA, 11-6-23  
**FT ATTEMPTS:** 2 at UCLA, 11-6-23  
**REBOUNDS:** 5 at UCLA, 11-6-23  
**ASSISTS:** 0  
**BLOCKS:** 1 at UCLA, 11-6-23  
**STEALS:** 0  
**MINUTES:** 20 at UCLA, 11-6-23

## NEC CAREER HIGHS

**POINTS:** 0  
**FIELD GOALS:** 0  
**FG ATTEMPTS:** 0  
**3-POINT FGS:** 0  
**3-POINT FGAS:** 0  
**FREE THROWS:** 0  
**FT ATTEMPTS:** 0  
**REBOUNDS:** 0  
**ASSISTS:** 0  
**BLOCKS:** 0  
**STEALS:** 0  
**MINUTES:** 0

### TOP CAREER PERFORMANCES

- at UCLA (11-6-23): Registered a career-high four points and five rebounds in collegiate debut

## INDIVIDUAL BENCHMARKS

	SEASON	CAREER
GP/GS:	3/0	3/0
10+ POINTS:	0	0
20+ POINTS:	0	0
5+ REBOUNDS:	1	1
DOUBLE-DOUBLES:	0	0
3+ 3PT FG:	0	0
3+ ASSISTS:	0	0
2+ STEALS:	0	0
LED SFU IN PTS:	0	0
LED SFU IN REBS:	1	1

## GET TO KNOW AIDAN

### Who Is Your Mount Rushmore of Players?

Kevin Durant, Kobe Bryant, Shaquille O'Neal, Steph Curry

### Who Is Your Game Modeled After?

Larry Bird

The first time I picked up a basketball and was in love with the game was... in first grade when my AAU team won a national title

## SEASON STATISTICS

Date	Opponent	Start	Min	FG-A	3FG-A	FT-A	O-D-T	A	TO	Blk	Stl	Pts
Nov. 6	at UCLA	N	20	1-5	0-1	2-2	2-3-5	0	0	1	0	4
Nov. 9	at San Francisco	N	12	1-2	0-0	0-0	0-1-1	1	1	0	0	2
Nov. 11	at Santa Clara	N	19	1-3	1-2	0-0	1-0-1	0	1	0	0	3

## CAREER STATISTICS

SEASON		GP-GS	MIN/AVG	FG-FGA	FG%	3FG-3FGA	3FG%	FT-FTA	FT%	OFF	DEF	TOT	AVG	PF	FO	A	TO	BLK	STL	PTS	AVG
2023-24	SF-PA	3-0	51/17.0	3-10	.300	1-3	.333	2-2	1.000	3	4	7	2.3	6-0	0	2	1	0	9	3.0	
<b>TOTAL</b>		<b>3-0</b>	<b>51/17.0</b>	<b>3-10</b>	<b>.300</b>	<b>1-3</b>	<b>.333</b>	<b>2-2</b>	<b>1.000</b>	<b>3</b>	<b>4</b>	<b>7</b>	<b>2.3</b>	<b>6-0</b>	<b>0</b>	<b>2</b>	<b>1</b>	<b>0</b>	<b>9</b>	<b>3.0</b>	

# 33 WILL HELTON

JUNIOR | GUARD | 6-4 | 175 |  
 HOLLIDAYSBURG, PA. | BISHOP GUILFOYLE | PENN STATE DUBOIS



X: willhelt | IG: willhelt

## SEASON HIGHS

POINTS: 0  
 FIELD GOALS: 0  
 FG ATTEMPTS: 0  
 3-POINT FGS: 0  
 3-POINT FGAS: 0  
 FREE THROWS: 0  
 FT ATTEMPTS: 0  
 REBOUNDS: 0  
 ASSISTS: 0  
 BLOCKS: 0  
 STEALS: 0

## CAREER HIGHS

POINTS: 0  
 FIELD GOALS: 0  
 FG ATTEMPTS: 0  
 3-POINT FGS: 0  
 3-POINT FGAS: 0  
 FREE THROWS: 0  
 FT ATTEMPTS: 0  
 REBOUNDS: 0  
 ASSISTS: 0  
 BLOCKS: 0  
 STEALS: 0  
 MINUTES: 0

## NEC CAREER HIGHS

POINTS: 0  
 FIELD GOALS: 0  
 FG ATTEMPTS: 0  
 3-POINT FGS: 0  
 3-POINT FGAS: 0  
 FREE THROWS: 0  
 FT ATTEMPTS: 0  
 REBOUNDS: 0  
 ASSISTS: 0  
 BLOCKS: 0  
 STEALS: 0  
 MINUTES: 0

## TOP CAREER PERFORMANCES

## INDIVIDUAL BENCHMARKS

	SEASON	CAREER
GP/GS:	0/0	0/0
10+ POINTS:	0	0
20+ POINTS:	0	0
5+ REBOUNDS:	0	0
DOUBLE-DOUBLES:	0	0
3+ 3PT FG:	0	0
3+ ASSISTS:	0	0
2+ STEALS:	0	0
LED SFU IN PTS:	0	0
LED SFU IN REBS:	0	0

## GET TO KNOW WILL

### Who Is Your Mount Rushmore of Players?

Steve Nash, Rajon Rondo,  
 Devin Booker, Paul Pierce

### Who Is Your Game Modeled After?

Devin Booker

**The first time I picked up a basketball and was in love with the game was...** second grade I picked up a basketball and loved it and wanted to keep on shooting and never wanted to let the ball go.

## SEASON STATISTICS

Date	Opponent	Start	Min	FG-A	3FG-A	FT-A	O-D-T	A	TO	Blk	Stl	Pts
Nov. 6	at UCLA											Did Not Travel
Nov. 9	at San Francisco											Did Not Travel
Nov. 11	at Santa Clara											Did Not Travel

## CAREER STATISTICS

# 42 DARIC DANCHANKO

SOPHOMORE | FORWARD | 6-8 | 220 |  
JOHNSTOWN, PA. | CENTRAL CAMBRIA



X: Derk\_72 | IG: @dchankoo

## SEASON HIGHS

POINTS: 0  
FIELD GOALS: 0  
FG ATTEMPTS: 0  
3-POINT FGS: 0  
3-POINT FGAS: 0  
FREE THROWS: 0  
FT ATTEMPTS: 0  
REBOUNDS: 0  
ASSISTS: 0  
BLOCKS: 0  
STEALS: 0

## CAREER HIGHS

POINTS: 0  
FIELD GOALS: 0  
FG ATTEMPTS: 0  
3-POINT FGS: 0  
3-POINT FGAS: 0  
FREE THROWS: 0  
FT ATTEMPTS: 0  
REBOUNDS: 0  
ASSISTS: 0  
BLOCKS: 0  
STEALS: 0  
MINUTES: 0

## NEC CAREER HIGHS

POINTS: 0  
FIELD GOALS: 0  
FG ATTEMPTS: 0  
3-POINT FGS: 0  
3-POINT FGAS: 0  
FREE THROWS: 0  
FT ATTEMPTS: 0  
REBOUNDS: 0  
ASSISTS: 0  
BLOCKS: 0  
STEALS: 0  
MINUTES: 0

## TOP CAREER PERFORMANCES

## INDIVIDUAL BENCHMARKS

	SEASON	CAREER
GP/GS:	0/0	0/0
10+ POINTS:	0	0
20+ POINTS:	0	0
5+ REBOUNDS:	0	0
DOUBLE-DOUBLES:	0	0
3+ 3PT FG:	0	0
3+ ASSISTS:	0	0
2+ STEALS:	0	0
LED SFU IN PTS:	0	0
LED SFU IN REBS:	0	0

## GET TO KNOW DARIC

### Who Is Your Mount Rushmore of Players?

Michael Jordan, Kobe Bryant,  
Lebron James, Kevin Durant

### Who Is Your Game Modeled After?

Zach Randolph

**The first time I picked up a basketball and was in love with the game was...** in fifth grade. My dad made me pick up the ball because I was the tallest. I made a layup and liked it.

## SEASON STATISTICS

Date	Opponent	Start	Min	FG-A	3FG-A	FT-A	O-D-T	A	TO	Blk	Stl	Pts
Nov. 6	at UCLA											Did Not Play
Nov. 9	at San Francisco											Did Not Play
Nov. 11	at Santa Clara											Did Not Travel

## CAREER STATISTICS

SEASON	TEAM	GP-GS	MIN/AVG	Field Goals		3-Point		F-Throws		Rebounds				Scoring						
				FG-FGA	FG%	3FG-3FGA	3FG%	FT-FTA	FT%	OFF	DEF	TOT	AVG	PF-FO	A	TO	BLK	STL	PTS	AVG
2022-23	SF-PA	3-0	9/3.2	2-4	.500	0-0	.000	1-2	.500	3	2	5	1.7	1-0	0	1	0	0	5	1.7
<b>TOTAL</b>		<b>3-0</b>	<b>9/3.2</b>	<b>2-4</b>	<b>.500</b>	<b>0-0</b>	<b>.000</b>	<b>1-2</b>	<b>.500</b>	<b>3</b>	<b>2</b>	<b>5</b>	<b>1.7</b>	<b>1-0</b>	<b>0</b>	<b>1</b>	<b>0</b>	<b>0</b>	<b>5</b>	<b>1.7</b>



Official Basketball Box Score - Final  
**Saint Francis (PA) at UCLA**  
 11/09/23 Pauley Pavilion, Los Angeles  
 2023-24 Men's Basketball

Game Time: 8:30 PM  
 Game Duration: 2:05  
 Attendance: 6,783

Officials: Michael Irving, Scott Brown, Courtney Holmes

Saint Francis (PA) - 44

Record: 0-1

NO.	Name	Min	FG		3P		FT		Rebounds		Fouls		TP	AS	TO	ST	Blocks		+/-	
			M-A	M-A	M-A	M-A	OR	DR	FF	FD	BS	BA								
3	Miles Webb	13:06	0-3	0-1	0-0	2	2	4	3	0	0	0	2	0	0	0	1	1	-16	
21	Gestin Liberis	23:17	4-7	0-0	4-5	1	2	3	4	12	0	3	0	0	0	2	0	-31		
0	Cam Gregory	28:29	2-7	0-1	2-2	0	2	3	3	1	6	0	4	0	0	1	0	-10		
4	Carlos Lopez, Jr.	18:00	2-7	1-5	3-4	0	1	1	2	2	0	0	3	0	0	0	0	-27		
11	Chris Moncrief	19:01	0-1	0-0	0-0	0	2	2	0	0	0	0	1	0	0	0	1	-28		
5	Eli Wilborn	14:14	0-1	0-1	0-0	0	3	3	4	1	0	0	0	0	0	0	0	-19		
32	Aidan Harris	19:52	1-5	0-1	2-2	2	3	5	1	2	4	0	0	0	1	1	0	-9		
2	Aaron Talbert	17:37	2-3	1-2	0-2	0	1	1	1	1	5	1	2	0	0	0	0	-2		
14	Bobby Rosenberger	09:00	0-2	0-2	0-0	1	1	1	0	0	0	0	1	0	0	0	0	11		
23	Wisler Sanon	24:56	3-4	0-1	3-5	2	1	3	4	5	9	2	4	2	0	0	0	-8		
15	Aaron Humphries, Jr.	07:32	0-0	0-0	0-0	0	1	1	2	0	0	0	1	1	0	0	0	0		
1	Braylen Blue	02:57	0-1	0-1	0-0	0	0	0	0	0	0	0	1	0	0	0	0	-8		
24	Keshawn McNeill	01:59	0-1	0-1	0-0	0	0	0	0	0	0	0	0	0	0	0	0	-8		
Team									1 3 4		0		1							
<b>Totals</b>			14-42	2-16	14-20	9	21	30	23	16	44	6	21	3	1	6	3	1	-31	

Technical Fouls: NONE

Shooting By Period		
1 <sup>st</sup> FG%	7-24	29.2%
3PT%	2-8	25.0%
FT%	6-8	75%
2 <sup>nd</sup> FG%	7-18	38.9%
3PT%	0-8	0.0%
FT%	8-12	66.7%
GM FG%	14-42	33.3%
3PT%	2-16	12.5%
FT%	14-20	70.0%

Dead Ball Rebounds: 3, 1



Official Basketball Box Score - Final  
**Saint Francis (PA) at San Francisco**  
 11/09/23 War Memorial at the Sobrato Center, San Francisco  
 2023-24 Men's Basketball

Game Time: 7:00 PM  
 Game Duration: 2:00

Officials: Michael Reed, Tony Padilla, Eric Curry

Saint Francis (PA) - 52

Record: 0-2

NO.	Name	Min	FG		3P		FT		Rebounds		Fouls		TP	AS	TO	ST	Blocks		+/-	
			M-A	M-A	M-A	M-A	OR	DR	FF	FD	BS	BA								
3	Miles Webb	22:45	5-11	0-3	1-2	1	3	4	4	1	1	1	1	1	1	1	1	1	-14	
21	Gestin Liberis	21:26	2-5	0-0	1-1	0	5	5	2	2	5	0	1	0	0	2	0	-14		
0	Cam Gregory	31:54	4-10	1-2	2-3	0	0	0	0	1	1	1	2	2	2	0	0	-19		
4	Carlos Lopez, Jr.	15:27	0-3	0-3	2-2	0	0	0	2	2	0	2	1	2	0	0	0	-17		
11	Chris Moncrief	28:23	3-5	3-3	0-0	0	1	1	1	0	9	1	3	2	1	1	0	-21		
23	Wisler Sanon	19:52	1-3	0-1	2-2	0	1	1	1	2	4	1	1	0	0	1	0	-22		
32	Aidan Harris	11:36	1-2	0-0	0-0	0	1	1	3	0	2	0	1	0	0	0	0	-20		
5	Eli Wilborn	15:57	0-2	0-1	2-3	1	0	1	4	4	2	0	4	0	0	0	0	-13		
2	Aaron Talbert	12:32	0-2	0-1	0-0	0	0	0	0	1	0	0	1	1	0	0	0	-9		
14	Bobby Rosenberger	10:10	1-2	0-1	0-0	0	0	0	0	0	2	1	0	0	0	0	0	-13		
1	Braylen Blue	03:31	1-1	1-1	1-2	0	0	0	0	0	1	4	0	0	0	0	0	1		
15	Aaron Humphries, Jr.	03:31	0-0	0-0	0-0	0	0	0	0	1	0	0	0	0	0	0	0	1		
24	Keshawn McNeill	02:56	0-1	0-1	0-0	0	0	0	0	0	0	0	0	0	0	0	0	0		
Team									0 0 0		0		0							
<b>Totals</b>			18-47	5-17	11-15	2	11	13	20	15	52	8	16	6	2	6	3	1	-32	

Technical Fouls: NONE

Shooting By Period		
1 <sup>st</sup> FG%	8-22	36.4%
3PT%	4-8	50.0%
FT%	7-9	77.8%
2 <sup>nd</sup> FG%	10-25	40.0%
3PT%	1-9	11.1%
FT%	4-6	66.7%
GM FG%	18-47	38.3%
3PT%	5-17	29.4%
FT%	11-15	73.3%

Dead Ball Rebounds: 4, 5

UCLA - 75

Record: 1-0

NO.	Name	Min	FG		3P		FT		Rebounds		Fouls		TP	AS	TO	ST	Blocks		+/-	
			M-A	M-A	M-A	M-A	OR	DR	FF	FD	BS	BA								
3	Adem Bona	31:33	10-16	0-1	8-11	3	6	9	3	8	28	2	1	1	4	0	0	22		
14	Kenneth Nwuba	24:14	4-4	0-0	2-3	1	0	1	2	4	10	1	0	1	1	0	0	18		
2	Dylan Andrews	29:17	2-8	0-3	0-1	0	2	2	2	3	4	3	1	1	0	0	0	24		
10	Lazar Stefanovic	36:29	5-10	1-3	0-1	3	5	8	2	2	11	4	0	3	0	0	0	25		
12	Sebastian Mack	25:42	4-7	0-0	1-2	1	0	1	3	2	9	2	1	2	0	0	0	15		
4	Will McClendon	25:00	1-3	1-1	2-2	0	0	0	0	0	5	3	0	1	0	1	0	35		
15	Aday Mara	05:24	1-1	0-0	0-2	0	0	0	0	3	1	2	2	0	1	0	0	-1		
22	Devin Williams	04:02	1-1	0-0	0-0	1	2	3	0	0	2	0	1	0	0	0	0	8		
27	Jan Vide	03:32	0-3	0-0	0-0	0	0	0	0	0	0	0	0	0	0	0	0	-6		
8	Ilane Fibuleil	00:19	0-0	0-0	0-0	0	0	0	0	0	0	0	0	0	0	0	0	-1		
5	Brandon Williams	14:28	1-4	0-1	2-2	1	4	5	1	4	2	0	0	0	0	0	0	16		
Team									0 1 1		0		1							
<b>Totals</b>			29-57	2-9	15-24	10	22	32	16	23	75	18	7	9	6	1	3	1	39	

Technical Fouls: NONE

Shooting By Period		
1 <sup>st</sup> FG%	13-29	44.8%
3PT%	1-4	25.0%
FT%	5-10	50%
2 <sup>nd</sup> FG%	16-28	57.1%
3PT%	1-5	20.0%
FT%	10-14	71.4%
GM FG%	29-57	50.9%
3PT%	2-9	22.2%
FT%	15-24	62.5%

Dead Ball Rebounds: 5, 0

San Francisco - 84

Record: 2-0

NO.	Name	Min	FG		3P		FT		Rebounds		Fouls		TP	AS	TO	ST	Blocks		+/-	
			M-A	M-A	M-A	M-A	OR	DR	FF	FD	BS	BA								
3	Isaiah Hawthorne	20:08	4-5	3-4	0-1	1	1	2	0	2	11	0	1	2	0	0	0	20		
10	Jonathan Mogbo	23:49	8-9	0-0	0-0	3	5	8	3	2	16	4	2	1	2	0	0	22		
21	Ndeweddo Nwbury	18:32	4-6	0-1	1-2	1	0	1	1	1	9	1	2	2	3	1	0	23		
5	Mike Sharavjams	25:47	3-6	0-1	1-2	0	1	1	3	2	7	5	2	2	1	0	0	13		
55	Marcus Williams	23:27	5-12	1-5	3-3	1	1	2	3	14	5	1	1	0	1	0	0	25		
0	Ryan Beasley	15:19	1-3	0-1	2-2	0	3	3	1	5	4	3	1	1	0	0	0	14		
7	Stefan Todorovic	14:40	3-5	3-5	2-2	0	2	2	0	0	1	1	1	0	0	0	0	11		
11	Josh Kunen	15:09	0-0	0-0	0-0	0	5	5	0	0	0	0	0	0	0	0	0	0		
1	Malik Thomas	17:13	3-7	2-3	3-3	1	2	3	3	11	0	2	1	0	0	0	0	9		
35	Junjie Wang	10:36	0-2	0-2	1-2	0	3	3	0	1	1	0	0	1	0	0	0	1		
33	Volodymyr Markovetsky	06:12	0-0	0-0	0-0	0	1	1	0	0	0	1	1	0	0	0	0	2		
12	Justin Bleker	05:52	0-0	0-0	0-0	0	1	1	0	0	0	0	0	0	0	0	0	2		
45	Jake Cioe	03:16	0-0	0-0	0-0	0	0	0	0	0	0	0	0	0	0	0	0	-1		
Team									1 0 1		0		1							
<b>Totals</b>			31-55	9-22	13-17	9	24	33	15	20	84	20	15	11	6	2	3	2	32	

Technical Fouls: Sharavjams 1<sup>st</sup> 3:57

Shooting By Period		
1 <sup>st</sup> FG%	16-30	53.3%

# notebook: quotable red flash...

**SANTA CLARA 82,, SAINT FRANCIS 59 - NOVEMBER 11, 2023**

"I thought we took a huge step offensively tonight against a very strong Santa Clara team. That's a physical discipline, very good defensive team, and I thought we did a really good job of getting the shots that we wanted and we took care of the basketball. For the most part, we we made some shots we had some guys make some plays off the bench. And that's progress. Let's dive into some areas that we need to clean up as we work to establish our identity and with this group. It's still a work in progress with that identity, but I'm proud of the way they competed." - head coach Rob Krimmel on the game

"We talked to our guys after the first two about continuing to grow together. And I thought we saw some growth. I gave them a gardening analogy that when you plant a seed in a garden, you don't always see the results right away. It takes time, need to water it, fertilize it, the sun is going shine so that seed grows and right now we're in a situation where the seeds have been planted. Now we got to continue to fertilize, water that thing and do the things that we know will impact winning down the road. You just don't see the results right away. And that sense of urgency that our guys have and they want to win a basketball. We need to continue to work on the things that will put us in a position to win those basketball games as we grow together as a team. Any good gardener knows you don't know when that seed is going walk through that soil. We just have to be patient and continue to do the things that we know what helped that seed grow. These guys in that locker room have the heart, passion what it takes when you plant that seed. We need to continue to fertilize and foster that so that when the opportunity to win a basketball game emerges, we're prepared for it and that's what we're working on our mission." - Krimmel comparing his team's growth process to gardening

"I had a lot of great memories going to Penn State basketball games. It'll be an opportunity for our guys to go out and compete against the Big 10 team. I was never able to play at Penn State as a player, but as a coach, it will certainly be a lot of fun to go back and be able to coach against the team that I watched growing up." - Krimmel on playing Penn State, where he grew up as a kid

**SAN FRANCISCO 84, SAINT FRANCIS 52 - NOVEMBER 9, 2023**

"I just told the team that we have to work on some consistency and consistency with some things off the court, and certainly some consistency with some things on the court. We've shown flashes and glimpses and it's a matter of putting 20 minutes of basketball together. Then let's worry about 25 and then 30 and then get to the point where we can put together 40 minutes of basketball. The thing these guys need to understand is the attention to detail that it takes to win a basketball game. The thing that we are going to continue to work on control the things and get better at things that impact winning a basketball game." - head coach Rob Krimmel on what the team needs to work on to get better

"We knew it was going to be a rough start to the season with the teams we scheduled, but you also find out who we are as a team and the individuals you have in the locker room with your backs against the wall. There is a lot of basketball ahead of us. Our challenge is to take it one day at a time, but be a little bit better each time we step on the court." - Krimmel on the schedule and growing as a team

**UCLA 75, SAINT FRANCIS 44 - NOVEMBER 6, 2023**

"I thought we got off to a slow start. You can tell we had a few jitters but I think the effort was good. I thought they competed after that initial four-minute stretch where there were a lot of nerves. It's the first step. I didn't expect us to show up and arrive as a basketball team and be perfect in game one. I'm pleased with the effort, just need to clean up some execution things." - head coach Rob Krimmel on the game

## Saint Francis Men's Basketball To Hold Open Practice At The Jaffa Shrine On November 15

The Saint Francis University men's basketball team is returning to its roots with an open practice at the Jaffa Shrine Center on Wednesday, November 15 from 6-8 p.m. The event is free to the public.

"One of the things we've tried to do with the Saint Francis basketball program is connect the past with the present," said head coach Rob Krimmel. "Tradition is a big reason why we are here today. I believe that. Maurice Stokes and the power of his message and story is something our team aspires to live up to."

The Shriners will be selling drinks and snacks at the concession stand during the open practice where fans can get an up-close look at the latest edition of Red Flash men's basketball. The Shriners are known for their philanthropic efforts across the country, including the Shriners Hospital for Children that helps children in the United States and internationally.

"We are very appreciative of the Jaffa and the Shriners for allowing us to this return to this special building," said Krimmel. "It will be an exciting night for our players and fans."

The Jaffa Shrine was one of the places that Saint Francis men's basketball played its home games before the opening of the Maurice Stokes Athletic Center on December 4, 1972 against Saint Vincent. The last full season the Red Flash played at the then called Jaffa Mosque was the 1969-70 season, but played a contest against Kings in 1971-72 before playing its final competition in the building in the 1989-90 season. Saint Francis defeated Youngstown State 97-85 in that contest on January 2, 1989.

The rich Saint Francis "Golden Era" tradition of players that called the Jaffa Mosque home includes NBA Hall of Famer Maurice Stokes along with Norm Van Lier and Kevin Porter, who also played in the NBA.





# 2023-24 SAINT FRANCIS BASKETBALL INFORMATION

## SCHEDULE

## SAINT FRANCIS' LAST GAME BOX

## 23-24 SAINT FRANCIS STATISTICS

DATE, OPPONENT	TIME/RESULT
N6, at UCLA	L, 44-75
N9, at San Francisco	L, 52-85
N11, at Santa Clara	L, 59-82
N14, at Penn State	7:00
N20, PITT GREENSBURG	7:00
N22, FRANCISCAN	7:00
N25, NIAGARA	4:00
N29, at Lehigh	7:00
D2, at American	2:00
D10, at Iona	5:00
D15, MOUNT ST. MARY'S	7:00
D20, ROBERT MORRIS	7:00
D30, CAMPBELL	4:00

Saint Francis (PA) - 59      Record: 0-3

NO.	Name	Min	FG M/A	3P M/A	FT M/A	Rebounds		Fouls PF	TP	AS	TO	ST	Blocks		PTS				
						OR	DR						BS	BA					
3	Miles Webb	11:50	0-6	0-1	0-0	0	2	1	0	0	0	0	0	0	0	-19			
5	Eli Wilborn	20:23	4-5	0-0	1-4	2	3	5	4	3	9	0	3	1	2	0			
0	Cam Gregory	0	28:21	3-9	2-6	4-4	0	1	1	0	3	12	4	0	1	-23			
4	Carlos Lopez, Jr.	22:48	2-9	0-6	0-0	0	1	1	0	0	4	2	1	2	0	0			
11	Chris Moncrief	19:07	3-6	0-1	0-3	1	2	3	0	2	6	1	2	0	0	-14			
23	Wisler Sanon	13:30	2-3	1-2	0-0	0	1	1	1	5	0	0	1	0	0	-8			
14	Bobby Rosenberger	10:43	1-3	0-1	0-0	0	0	0	2	0	2	0	1	0	0	-16			
21	Gestin Liberis	18:08	2-5	0-0	1-2	2	2	2	1	3	5	1	0	0	0	-18			
32	Aidan Harris	19:28	1-3	1-2	0-0	1	0	1	2	0	3	0	1	0	0	1			
2	Aaron Talbert	17:50	2-3	1-2	2-3	0	2	2	2	3	7	1	2	0	0	-14			
1	Braylen Blue	15:15	2-4	2-4	0-0	1	0	1	0	0	6	1	2	0	0	-2			
24	Keshawn McNeill	02:37	0-0	0-0	0-0	1	0	1	0	0	1	0	0	0	0	3			
Team						4		4		1									
Totals			22-56			7-25		8-16		6		18		24		13		59	

Technical Fouls: NONE

Game Records	Overall	Home	Away	Neutral	Score by Periods							
Record					1st	2nd	OT	TOT				
ALL GAMES	0-3	0-0	0-3	0-0	73	82	0	155				
CONFERENCE	0-0	0-0	0-0	0-0								
NON-CONFERENCE	0-3	0-0	0-3	0-0								

Team Box Score	GP	GS	MIN	AVG	Total	3-Point	F-Throw	Rebounds										
No. Player	GP-GS	MIN	AVG	FG	FGA	FTS	FTA	ORB	DRB	REB	PF	Q	TS	BLK	STL	PTS		
0 GREGORY, Cam	3-3	28:44	29.6	9-26	34.6	3-9	33.3	8.0	8.9	16.9	0	3	1	0	3	29		
21 LIBERIS, Gestin	3-2	62:51	20.9	8-17	47.1	0-0	0.0	6.8	7.5	14.3	1	9	10	3	6	22		
23 SANON, Wisler	3-0	58:18	19.4	6-10	60.0	1-4	25.0	5.7	7.1	12.8	2	3	5	1	7	18		
11 MONCRIEF, Chris	3-3	66:31	22.2	6-12	50.0	3-4	75.0	0.3	0.0	0.3	5	6	2	0	1	15		
4 LOPEZ, JR., Carlos	3-3	56:15	18.8	4-19	21.1	1-14	0.7	5.6	8.3	13.9	0	2	2	0	7	14		
2 TALBERT, Aaron	3-0	47:59	16.0	4-8	50.0	2-5	40.0	2.5	4.0	6.5	1	2	3	1	0	12		
5 WILBORN, Eli	3-1	50:34	16.9	4-8	50.0	0-2	0.0	3.7	4.2	7.9	3	6	3	0	12	11		
3 WEBB, Miles	3-3	47:41	15.9	5-20	25.0	0-5	0.0	1.2	5.0	6.2	3	7	10	3	8	11		
1 BLUE, Braylen	3-0	21:43	7.2	3-6	50.0	3-6	50.0	1.2	5.0	6.2	0	1	0	0	3	3		
32 HARRIS, Aidan	3-0	50:56	17.0	3-10	30.0	1-3	33.3	2-2	1.0	3.0	4	7	2	3	0	9		
14 ROSENBERGER, Bobby	3-0	29:53	10.0	2-7	28.6	0-4	0.0	0.0	0.0	0.0	0	1	1	0	2	4		
15 HUMPHRIES, JR., Aaron	2-0	11:03	5.5	0-0	0.0	0-0	0.0	0.0	0.0	0.0	0	1	1	0	0	0		
24 MCNEILL, Keshawn	3-0	07:32	2.5	0-2	0.0	0-2	0.0	0-0	0.0	0.0	1	0	1	0	1	0		
Team				1		7		8		21								
Total	3	600	54-145	372	14-58	241	33-51	647	17	50	67	22	33	56	0	24	51	
Opponents	3	600	95-179	531	17-30	34-54	630	37	79	116	37	46	0	60	35	14	25	



### 0 CAM GREGORY

G | So. | 6-5 | 165  
Accokeek, Md.



### 1 BRAYLEN BLUE

G | Fr. | 6-5 | 180  
Sun Prairie, Wisc.



### 2 AARON "ACE" TALBERT

G | Fr. | 6-0 | 185  
Wyandanch, N.Y.



### 3 MILES WEBB

F | So. | 6-8 | 190  
Arlington, Va.



### 4 CARLOS LOPEZ, JR.

G | Fr. | 6-2 | 170  
Egg Harbor, N.J.

**CAREER HIGHS**  
**PTS 15**, at Ohio State, 12-3-22  
**REB 4**, 3x(vs. Merrimack, 2-11-23)  
**AST 7**, vs. Saint Vincent, 12-8-22

- Season-high 12 points and 4 rebounds at Santa Clara (11-9-23)
- Most experienced player on the roster
- Scored double figures five times in career

GP-GS	MIN/G	FG-3FG-FT	PTS/PG	REB/PG
3-3	89/29.6	34.6-33.3-88.9	29/9.7	3/1.0
31-22	769/24.8	40.1-33.3-76.7	17/15.5	45/1.5

23-24 First Line | Career Numbers Second Line

**CAREER HIGHS**  
**PTS 6**, at Santa Clara, 11-11-23  
**REB 1**, at Santa Clara, 11-11-23  
**AST 0**

- Had career-high six pts at Santa Clara (11-11-23)
- Ended his HS career ranked fourth in career 3-pointers and 10th in both steals and assists in program history

GP-GS	MIN/G	FG-3FG-FT	PTS/PG	REB/PG
3-0	22/7.2	50.0-50.0-50.0	10/3.3	1/0.3
3-0	22/7.2	50.0-50.0-50.0	10/3.3	1/0.3

23-24 First Line | Career Numbers Second Line



### 2 AARON "ACE" TALBERT

G | Fr. | 6-0 | 185  
Wyandanch, N.Y.

**CAREER HIGHS**  
**PTS 7**, at Santa Clara, 11-11-23  
**REB 2**, at Santa Clara, 11-11-23  
**AST 1**, 2x(, at Santa Clara, 11-11-23)

- Career high seven pts at Santa Clara (11-11-23)
- Played 3 years at the Knox School in NY before graduating from the Scotland Campus in PA and played 1 year at Combine Academy in NC

GP-GS	MIN/G	FG-3FG-FT	PTS/PG	REB/PG
3-0	48/16.0	50.0-40.0-0.0	12/4.0	3/1.0
3-0	48/16.0	50.0-40.0-0.0	12/4.0	3/1.0

23-24 First Line | Career Numbers Second Line



### 3 MILES WEBB

F | So. | 6-8 | 190  
Arlington, Va.

**CAREER HIGHS**  
**PTS 11**, at San Francisco, 11-9-23  
**REB 4**, 2x(at San Francisco, 11-9-23)  
**AST 1**, 2x(at San Francisco, 11-9-23)

- Registered a career-high 11 points and four rebounds vs. San Francisco (11-9-23)
- Earned first career start against UCLA (11-6-23)
- Appeared in four games in his first season

GP-GS	MIN/G	FG-3FG-FT	PTS/PG	REB/PG
3-3	48/15.9	25.0-00.0-33.3	11/3.7	10/3.3
7-3	82/11.7	32.3-0.0-33.3	21/3.0	18/2.6

23-24 First Line | Career Numbers Second Line



### 4 CARLOS LOPEZ, JR.

G | Fr. | 6-2 | 170  
Egg Harbor, N.J.

**CAREER HIGHS**  
**PTS 8**, at UCLA, 11-6-23  
**REB 1**, 2x(, at Santa Clara, 11-11-23)  
**AST 2**, at Santa Clara, 11-11-23

- Scored eight points in debut at UCLA (11-6-23)
- Finalist for the 2023 Florida Sun Bowl Con. POY and garnered first-team honors after averaging 25.6 points per game at the Feltrium Academy

GP-GS	MIN/G	FG-3FG-FT	PTS/PG	REB/PG
3-3	56/18.8	21.1-7.1-83.3	14/4.7	2/0.7
3-3	56/18.8	21.1-7.1-83.3	14/4.7	2/0.7

23-24 First Line | Career Numbers Second Line



### 5 ELI WILBORN

F | So. | 6-8 | 215  
Middletown, Conn.

**CAREER HIGHS**  
**PTS 9**, at Santa Clara, 11-11-23  
**REB 5**, at Santa Clara, 11-11-23  
**AST 0**

- Career-high 9 pts, 5 rebounds at Santa Clara (11-11-23)
- Had three rebounds in debut at UCLA (11-6-23)
- Ranked as the No. 26 best player in 2023 class in CT and No. 79 in New England

GP-GS	MIN/G	FG-3FG-FT	PTS/PG	REB/PG
3-0	51/16.9	50.0-00.0-42.9	11/3.7	9/3.0
3-0	51/16.9	50.0-00.0-42.9	11/3.7	9/3.0

23-24 First Line | Career Numbers Second Line



### 11 CHRIS MONCRIEF

G | So. | 6-6 | 190  
Turtle Creek, Pa.

**CAREER HIGHS** \* (at Evansville)  
**PTS 9**, 2x(at San Francisco, 11-9-23)  
**REB 3**, 4x(at Santa Clara)  
**AST 5**, at Southern Illinois, 1-17-23

- Matched his career-high 9 points vs. San Francisco (11-9-23)
- Made first career start at UCLA (11-6-23)
- Played at the Univ. of Evansville last season

GP-GS	MIN/G	FG-3FG-FT	PTS/PG	REB/PG
3-3	67/22.2	50.0-75.0-0.0	15/5.0	6/2.0
31-3	424/13.7	39.5-31.3-43.5	83/2.7	38/1.2

23-24 First Line | Career Numbers Second Line



### 13 BLAZE ANGELLOTTI

G | Fr. | 6-4 | 195  
Julian, Pa.

**CAREER HIGHS**  
**PTS 0**  
**REB 0**  
**AST 0**

- Looking to make his collegiate debut
- Walk-on
- Named all-conference twice and all-county one time in HS career

GP-GS	MIN/G	FG-3FG-FT	PTS/PG	REB/PG
0-0	0/0/0	00.0-00.0-00.0	0/0/0	0/0/0
0-0	0/0/0	00.0-00.0-00.0	0/0/0	0/0/0

23-24 First Line | Career Numbers Second Line



### 14 BOBBY ROSENBERGER III

G | Fr. | 6-5 | 205  
Quakertown, Pa.

**CAREER HIGHS**  
**PTS 2**, 2x(at Santa Clara, 11-11-23)  
**REB 1**, at UCLA, 11-6-23  
**AST 1**, at UCLA, 11-6-23

- Had first career points at USF (11-9-23)
- Helped HS to first PASIAA state title in program history with basket to send game to OT, and then winning free throws in OT

GP-GS	MIN/G	FG-3FG-FT	PTS/PG	REB/PG
3-0	30/10.0	28.6-0.0-0.0	4/1.3	1/0.3
3-0	30/10.0	28.6-0.0-0.0	4/1.3	1/0.3

23-24 First Line | Career Numbers Second Line



### 15 AARON HUMPREY, JR.

G | Fr. | 6-7 | 210  
Indianapolis, Ind.

**CAREER HIGHS**  
**PTS 0**  
**REB 1**, at UCLA, 11-6-23  
**AST 1**, at UCLA, 11-6-23

- Made collegiate debut against UCLA (11-6-23)
- Attended Don Bosco Prep last season and registered 19 points to help the team defeat Dohn Prep 90-74 in the North American Cup

GP-GS	MIN/G	FG-3FG-FT	PTS/PG	REB/PG
2-0	11/5.5	0.0-0.0-0.0	0/0.0	1/0.5
2-0	11/5.5	0.0-0.0-0.0	0/0.0	1/0.5

23-24 First Line | Career Numbers Second Line



### 20 BRENDAN SCANLON

G | Jr. | 5-8 | 175  
State College, Pa.

**CAREER HIGHS**  
**PTS 2**, 3x(at LIU, 2-18-23)  
**REB 2**, vs. Franciscan, 11-15-21  
**AST 1**, 3x(vs. St. Francis Brooklyn, 1-20-23)