

2011-12 NITTANY LION BASKETBALL

PENN STATE

GAME 16

GAME INFO

TELEVISION: BTN: Tom Hart & Keno Davis
RADIO: Penn State Sports Network
 Local: 1450 AM; Sirius: CH 92; XM; CH 192
 Steve Jones (p-by-p) & Dick Jerardi (analyst)
WEB: Gametracker & Audio at: GoPSUsports.com
COACHES:
 PENN STATE: Patrick Chambers – 8-7 (1st at PSU); 50-35 (3rd Overall)
 PURDUE: Matt Painter – 150-67 (7th at Purdue); 175-72 (8th overall)
RPI: Penn State: #151; Purdue: #47
NEXT UP: Penn State will look to continue recent success vs. Indiana when the teams meet Sunday in the BJC. PSU has won two straight and six of the last seven in the series. Indiana leads the series 28-9 and is 11-5 in State College, including a 67-61 victory in their last trip to the BJC in 2010. The Lions won at IU in last year's Big Ten opener and downed the Hoosiers in the Big Ten Tournament first round.

PENN STATE (8-7; 0-2 Big Ten) PURDUE (12-3; 2-0 Big Ten)

THURSDAY, JAN. 5, 2012 @ 8:00 P.M. (ET)
 BRYCE JORDAN CENTER (15,261)
 UNIVERSITY PARK, PA.

STORYLINES:

- Lions seek first Big Ten win of Chambers Era in first Big Ten home game under coach.
- Tim Frazier only Div. I player averaging 17+ ppg & 6.5+ apg. Leads Big Ten in assists, 3rd in scoring.
- Big Ten leads nation in RPI and Sagarin ratings, tied for lead with five ranked teams.



Follow Nittany Lion Basketball on Twitter: twitter.com/GoPSUHoops



Follow Nittany Lion Basketball on Facebook: facebook.com/pennstatebasketball

2011-12 SCHEDULE

Record: 8-7 (0-2 Big Ten) **Home:** 6-2; **Road:** 1-4; **N:** 1-1
Date **Opponent** **Time (ET)** **TV/Result**

NOVEMBER

Sat. 12	HARTFORD	BTN.com	W, 70-55
Mon. 14	RADFORD (HOFT)	BTN.com	W, 62-46
Wed. 16	LONG ISLAND (HOFT)	BTN.com	W, 77-68
<i>@ Hall of Fame Tip-off Tournament, Mohegan Sun, Uncasville, Conn.</i>			
Sat. 19	vs. #2/2 Kentucky	ESPN3	L, 85-47
Sun. 20	vs. S. Florida/Old Dominion	ESPN3	W, 53-49

Wed. 23	YOUNGSTOWN STATE	BTN.com	W, 82-71
Sat. 26	@ Saint Joseph's		L, 47-65
Wed. 30	@ Boston College	ESPNU	W, 62-54

DECEMBER

Sun. 4	MISSISSIPPI	BTN	L, 70-72
Wed. 7	LAFAYETTE	BTN.com	L, 57-61
Sat. 10	@ Duquesne (Consol Energy)		L, 59-66
Sun. 18	MOUNT ST. MARY'S (DH)	BTN	W, 72-43
Wed. 21	CORNELL	BTN	W, 74-67
Thur. 29	@#18/16 Michigan	BTN	L, 53-71

JANUARY

Sun. 1	@Northwestern	ESPNU	L, 56-68
Thur. 5	PURDUE	8:00 p.m.	BTN
Sun. 8	INDIANA	12:00 p.m.	BTN
Wed. 11	@Nebraska	8:30 p.m.	BTN
Sun. 15	MINNESOTA	4:00 p.m.	BTN
Thur. 19	ILLINOIS	9:00 p.m.	ESPN2
Sun. 22	@Indiana	12:00 p.m.	BTN
Wed. 25	@Ohio State	6:30 p.m.	BTN
Tues. 31	WISCONSIN	8:00 p.m.	BTN

FEBRUARY

Sat. 4	@Iowa	3:00 p.m.	ESPNU
Wed. 8	@Michigan State	6:30 p.m.	BTN
Sat. 11	NEBRASKA (CVC Day)	1:00 p.m.	ESPNU
Thur. 16	IOWA	8:00 p.m.	ESPNU
Sun. 19	@Wisconsin	1/4/6 p.m.	CBS/BTN
Sat. 25	NORTHWESTERN	9:00 p.m.	ESPNU
Wed. 29	@Purdue	6:30 p.m.	BTN

MARCH

Sun. 4	MICHIGAN (Senior Day)	12/1/4 p.m.	TBA
2012 Big Ten Tournament, Indianapolis, Ind.			
Thur. 8	First Round		
Fri. 9	Quarterfinals		
Sat. 10	Semifinals		
Sun. 11	Championship		

All times Eastern; BTN: Big Ten Network;
 Rank: #AP/ESPN/USATODAY

THE GAME: Penn State will return to the Jordan Center for a pair of games vs. schools from Indiana starting Jan. 5 vs. Purdue. The Boilermakers lead the series 26-10 and are 10-8 in State College. Penn State has dropped the last six games and 10 of the last 11 in the series, including a 63-62 heartbreaker in West Lafayette last year. Big Ten Player-of-the-Year JaJuan Johnson buried an 18-footer with three seconds to play to win that game. The Lions' Jermaine Marshall had a then career-high 18 points in last year's meeting in State College. The Lions last win came 67-64 in the Jordan Center in 2009. Penn State will be playing Purdue for the fourth straight year at home with the Penn State student body on a break. The teams also met last year on Jan. 5 in the BJC. Penn State returns to classes on Jan. 9 and has been off since Dec. 18.

MARSHALL'S GREAT EIGHT: Jermaine Marshall has established himself as a consistent scorer over the last eight games posting seven double-digit outings and 109 total points and 45 rebounds. He entered the eight-game stretch having posted a total of 98 points and 24 rebounds in the previous 34 games on his career. Marshall is averaging 13.6 ppg and 5.6 rpg over the stretch while shooting a team-best 14-of-33 (42%) from three, having twice hit a career-high three treys in a game and made multiple threes in five games. Marshall was 8-of-43 (18%) from three on his career prior to the stretch. He will look to continue his productive run vs. Purdue. Marshall posted a then career-high 18 points on 6-of-10 shooting (2-4 from three) on Jan. 5 last year vs. Purdue in the Jordan Center.

FRAZIER COLLECTING THEFTS: Tim Frazier posted four steals in the Lions' last outing vs. Northwestern, his 11th game with multiple steals on the year, including a career-best five in the season-opener. With 33 steals, he has nearly eclipsed his team-leading total of 35 posted last year. Frazier ranks second in the Big Ten posting 2.2 spg, many coming while playing on the back end of the Lions' 1-2-2 press. Frazier is currently on pace for a Penn State top 10 season steal total of 70+ steals, which would be the most for a Lion in a decade. Stanley Pringle's 49 steals in 2009 are the most by a Lion in the last 10 years.

FRAZIER FILLING STAT LINES LIKE FEW OTHERS: Leading Penn State in scoring, rebounding, assists and steals, Tim Frazier is currently on pace to become the first Lion ever to post a top 10 season in scoring, assists and steals in the same year. At his current pace, he could become the first Lion ever to eclipse 500 points, 150 assists and 50 steals in the same year. Currently fourth among active career assist leaders in the Big Ten behind Wisconsin's Jordan Taylor, Purdue's Lewis Jackson and Iowa's Bryce Cartwright, Frazier's 17.3 points and 6.7 assists per game have him on pace to become just the fifth Lion ever to eclipse 300 points and 150 assists in a season. The feat has been accomplished six times total, the last by Talor Battle with 635 points and 189 assists in 2009.

FORCING TURNOVERS: Penn State grabbed eight steals at Northwestern, the Lions' sixth game of the year with eight or more. Northwestern had 12 turnovers in the game, eight in the first half, after entering the game averaging 9.9 per contest.

TICKETS: Nittany Lion Basketball single-game tickets can be purchased by calling 1-800-NITTANY, visiting GoPSUsports.com or through Ticketmaster. Single-game tickets are \$18 for the lower bowl and \$15 for upper level tickets for adults. Youth tickets (18 and under) are \$7 for the lower bowl and \$5 for upper level seating, while Penn State student tickets (University Park or branch campus) are \$5.

PENN STATE ATHLETIC COMMUNICATIONS:

Brian Siegrist, Associate Director of Athletic Communications/BASKETBALL
E-mail: tbs1@psu.edu **Cell Phone:** 814-777-5126 **Office:** 814-865-1757
Press Row: 814-863-3294 **Twitter:** @PSUSTRETCH **Website:** GoPSUsports.com
Address: 101 D. Bryce Jordan Center, University Park, Pa., 16802



LAST TIME OUT

Northwestern 68, Penn State 56 Jan. 1 • Evanston, Ill.

Penn State led 26-23 at the half despite shooting just 25.8% in the first 20 minutes, but saw Northwestern hit 10 of its first 11 in the second half and torch the nets at 71% in the second 20 minutes to run away with a 68-56 victory. The win snapped a six-game Lion win streak over Northwestern. The game was tied at 40 with 13:13 to play when NU went on an 8-0 run sparked by a pair of threes. The Wildcats would out-score Penn State 23-10 over the next 10 minutes to take a 63-50 lead with 4:51 to play. The game had seen nine ties and nine lead changes to that point. Penn State got no closer than nine the rest of the way. Tim Frazier led Penn State with 16 points. The Lions shot 34% and had 15 turnovers. Drew Crawford (21) and Dave Sobolewski (20) paced NU.

STATISTICAL COMPARISONS

PENN STATE		PURDUE	
Frazier (17.3)	SCORING LEADER	Hummel (16.5)	
Frazier (5.6)	REBOUND LEADER	Hummel (6.2)	
Frazier (6.7)	ASSIST LEADER	Jackson (4.0)	
62.7	SCORING OFFENSE	74.5	
62.7	SCORING DEFENSE	60.7	
+0.0	SCORING MARGIN	+13.8	
37.1	REBOUNDS PER GAME	35.5	
+5.9	REBOUND MARGIN	+1.5	
11.5	ASSISTS PER GAME	14.4	
7.1	STEALS PER GAME	7.9	
39.0	FIELD GOAL %	45.4	
41.3	FG% DEFENSE	40.2	
31.3	3PT FG%	36.5	
35.3	3PT FG% DEFENSE	32.5	
63.3	FREE THROW %	61.7	
0.8	ASSIST TO TURNOVER	1.5	
13.7	TURNOVERS	9.7	
L2	W/L STREAK	W3	

SERIES VS PURDUE

OVERALL:	Purdue leads, 26-10
LAST MEETING:	L, 63-62 @ Purdue, 1/19/11
CURRENT STREAK:	L6
AT PSU:	8-10
AT PURDUE:	2-15
NEUTRAL SITE:	0-1
CHAMBERS VS. NORTHWESTERN:	first meeting
LAST 10 MEETINGS:	1-9
2/3/07	H 59 69 L
1/23/08	H 42 64 L
2/15/08	A 53 67 L
1/6/09	H 67 64 W
2/11/09	A 47 61 L
3/13/09	N 65 79 L-B10
1/31/10	A 46 66 L
3/6/10	H 60 64 L
1/5/11	H 68 83 L
1/19/11	A 62 63 L

DID YOU KNOW?


- Three Nittany Lions own a 3.2 GPA or better (Tim Frazier, Billy Oliver & Sasa Borovnjak)
- Tim Frazier owns a team-best 34-inch vertical
- Nittany Lions Billy Oliver and Trey Lewis are both accomplished piano players. Oliver is partial to Billy Joel tunes while Lewis is partial to jazz and classical.
- Jon Graham is the son of Maryland great and former Philadelphia 76er, Ernest Graham.
- Tim Frazier's sister, Krystal, was an All-Conference USA selection in basketball at Rice.
- Matt Glover is the fifth junior college player to play for Penn State in the last decade.
- Sasa Borovnjak's father, Zoran, played professionally in Europe and his brother, Dejan, currently plays professionally in Italy

PENN STATE PLAYERS

Website: GoPSUsports.com; Roster Size: 15; Letterman Returning/Lost: 5/4; Starters Returning/Lost: 1/4


PROJECTED STARTERS:

23 Tim Frazier **G**
 captain
 Jr. ■ 6-1 ■ 170 ■ Houston, Texas
PTS REB AST MIN
 17.3 5.6 6.7 35.7
CAREER 627 288 346 (11th)



NOTES: Posted Big Ten leading SIXTH 20-point game of year at Michigan...3rd in Big Ten in scoring, 1st in assists (9th in NCAA) and 2nd in steals...4 double-doubles on year...On pace for PSU season assist record...5 games with 9+ assists on year...Career-best 11 assists vs. YSU...Career-best 11 rebounds twice...Career-high 27 pts vs. USF...11th all-time at PSU in assists...173 assists in 2010-11, 5th best in PSU history...3.2 GPA.

5 Matt Glover **G**
 So. ■ 6-4 ■ 210 ■ Orange, Calif.
PTS REB AST MIN
 3.4 4.2 1.4 23.3




NOTES: Started 11 games on year...2nd on team in assists...Seeing spot time at point-guard...9 pts on 3 treys vs. Kentucky...Hit big 3 with 5:00 to play vs. LIU...7 points & 6 rebounds in 31 minutes in opener vs. Hartford...Transfer from Sheridan CC (Wyo)...Leads team with 27 reps on 185-pound bench press...Posted 11.8 ppg, 5.3 rpg & 3.8 apg at Sheridan CC last year.

11 Jermaine Marshall **G**
 So. ■ 6-4 ■ 200 ■ Etters, Pa.
PTS REB AST MIN
 9.8 3.7 1.2 23.9




NOTES: Double-digit scoring in 7 of last 8 games...13.6 ppg & 14-of-33 (42%) from three in last 8 games...two 20-pt games...Posted career high 22 pts & 8 rebs in win at B.C...20 pts & career-high 9 rebs vs. Lafayette...Scored Lions last 10 pts of 1st half in win at B.C...14 points off the bench vs. USF...Played in 28 games last year (2.5 ppg)...scored a then career-high 18 points vs. Purdue last year.

24 Cammeron Woodyard **G**
 captain
 Sr. ■ 6-5 ■ 210 ■ Westminster, Md.
PTS REB AST MIN
 8.2 4.5 0.3 25.4



NOTES: 11 career starts...Double-digit scoring in 5 of last 7 games...3-for-3 from three vs. Cornell...Tied career high 14pts vs. Mt. St. Mary's...Career high seven rounds in FIVE games on year...Leads team in career games played (91) and career threes (48)...Posted career highs in points (14), rebounds (7), threes (4) and steals (4) in season-opener...13 points and 6 rebs vs. LIU...Led team with 7 boards vs. Radford.


35 Billy Oliver **F**
 captain
 Jr. ■ 6-8 ■ 230 ■ Chatham, N.J.
PTS REB AST MIN
 6.9 3.9 0.3 25.4



NOTES: Leads team with 23 threes...Career high 13 pts vs. Mt. St. Mary's...12 pts & 4 threes at St. Joe's...Career high 10 rebounds vs. LIU...Played in 32 games last year, his first healthy season...In 4th year with program after missing two seasons with concussions and chronic headaches...Added 30 pounds since freshman year...Owns a 3.2 GPA in Finance...An accomplished piano player...School-record 1,300 points at Chatham

OFF THE BENCH

3 Trey Lewis **G**
 Fr. ■ 6-1 ■ 180 ■ Garfield Heights, Ohio
PTS REB AST MIN
 6.1 1.6 1.1 21.1




NOTES: 19 threes, 35.8% from three...4-of-6 from three for 13 pts vs. Cornell...started first four games...Led team with 17 points in season opener...2011 Ohio Division I Co-Player-of-the-Year...Runner-up for "Mr. Basketball" in Ohio...Cleveland Plain Dealer Player-of-the-Year...Led Garfield Heights to 24-2 record and state final four...Set school's season three-point record...48 percent three-point shooter in high school.

21 Sasa Borovnjak **F**
 So. ■ 6-9 ■ 240 ■ Belgrade, Serbia
PTS REB AST MIN
 5.3 3.9 0.1 19.3



NOTES: Career-high 15 pts vs. Mississippi...10 pts vs. Mt. St. Mary's...Leads team shooting 58.3%...Career-high 6 rebounds vs. Kentucky...Missed 2010-11 season with a torn ACL (right knee) suffered in the first pre-season practice...Saw action in 18 games as a true-freshman, scoring in eight games...Added five pounds of muscle and is in the best shape of his career...Owns better than a 3.2 GPA in Marketing.

43 Ross Travis **F**
 Fr. ■ 6-6 ■ 230 ■ Chaska, Minn.
PTS REB AST MIN
 4.4 4.3 0.4 16.9




NOTES: Career highs of 12 pts & 8 rebs vs. Lafayette...started 7 games on the year, including the season opener...Scored 10 points at St. Joe's...10 points and 8 rebs vs. Kentucky...2nd on the team in rebounding...Led team with 7 rebounds in season-opener...Added 20 pounds of muscle since arriving on campus...Called a "junkydog" by Coach Chambers...3-star recruit by ESPN.com.

25 Jon Graham **F**
 Fr. ■ 6-8 ■ 240 ■ Baltimore, Md.
PTS REB AST MIN
 3.1 3.3 0 13.2



NOTES: Career-best 6 rebounds at Michigan (12/29)...returned to court at Michigan after missing six games after being diagnosed with mononucleosis on Nov. 28...Returned to practice Dec. 16...was inactive for 3 weeks...6-point, 5-rebound outings vs. Kentucky and LIU...2010-11 redshirt...Calvert Hall HS 2nd all-time leading scorer (1,670)...son of Maryland great and former Philadelphia 76er Ernest Graham.

20 Nick Colella **G**
 Jr. ■ 6-3 ■ 195 ■ New Castle, Pa.
PTS REB AST MIN
 0.8 0.7 0 5.4



NOTES: Walk-on who played two years at Penn State-Behrend campus...Has seen action in nine games this season...solid left-handed perimeter shooter.

#	PLAYER	P	CL	HT	PPG	RPG	NOTES
14	Kevin Montminy	G	Fr.	6-3	0.7	0.3	Played in three games...Walk-on from nearby Penns Valley HS
32	Patrick Ackerman	F	Fr.	6-11	0.0	0.6	Played in seven games...Ranked a three-star recruit by Rivals.com
34	Alan Wisniewski	F	So.	6-9	0.0	0.0	Walk-on, joined the team in October of 2010
52	Peter Alexis	F	Fr.	6-10	20.2*	10.4	Set Holy Redeemer HS records for career and game scoring (41) Has not played on the season
2	D.J. Newbill	G	So.	6-4	9.2*	6.2*	Transfer from Southern Mississippi...sitting out 2011-12 season



OUTLET PASSES

■ ESPN's Stephen Bardo named Tim Frazier among his "Big Ten Top 5 Players" during a Dec. 31 broadcast.

■ Northwestern shot 71% in the 2nd half and an opponent season-high 55% for the game in Penn State's loss in Evanston on Jan. 1.

■ Redshirt freshman Jon Graham had a career-best six rebounds in his first Big Ten game at Michigan.

■ Penn State's eight non-conference wins surpassed its total of seven from last year's NCAA Tournament team.

■ Six underclassmen (3 freshmen & 3 sophomores) are averaging at least 13 minutes per game and have made a total of 33 starts. True freshmen Trey Lewis (5) and Ross Travis (7) have 12 starts.

■ Jermaine Marshall has been the Lions leading three point shooter over the last 8 games, hitting 14-of-33 (42%) and one in 7-of-8 games and two or more in 5.

■ Tim Frazier is the **ONLY PLAYER IN NCAA DIV. I** averaging 17+ points and 6.5+ assists per game.

■ Tim Frazier is the **ONLY Big Ten player** ranked in the top 10 of scoring and assists and one of two in the top 15 of scoring, rebounds and assists.

■ Tim Frazier is tied for fourth in the Big Ten with four double-doubles on the year, **the most for a Nittany Lion in a season since Janelle Cornley had four in 2008-09.**

■ Penn State scored 70+ points for the sixth time on the year in the win over Cornell (74-67), surpassing its total of 5 such games in 34 contests last year.

■ On the year, PSU is shooting 45.4% in the second half and 33.3% in the first. PSU shot a season-high 66.7% in the second half vs. Mt. St. Mary's.

■ Penn State has won the rebounding battle in 12 games on the year. The Lions rank 1st in offensive boards and 3rd in total rebounding in the Big Ten.

■ Jermaine Marshall has scored in double-digits in 7 of the last 8 games, including two 20-point outings, and is posting 13.6 ppg over that stretch. He had a career-high 22 pts and 8 rebs at B.C. and 20 pts and career-best 9 rebs vs. Lafayette.

■ Tim Frazier is 3rd in the Big Ten in scoring (17.3), 1st in assists (6.7), 2nd in steals (2.2) and 11th in rebounding (5.6). He ranks 9th in the NCAA in assists. Frazier led Penn State last season with 35 steals and 173 assists. He has raised his scoring average by 11 ppg from last season (6.3 to 17.3).

■ Tim Frazier is on pace to break the PSU season assist record of 189 set by Talor Battle in 2009. He moved into 11th on the Penn State career assist charts (346) and is 4 shy of the top 10.

■ Penn State got 20+ points from its bench for the eighth time on the season vs. Cornell, tying a season-high with 30. The Lions are averaging 21.2 ppg off the bench.

■ Cam Woodyard has scored in double-digits in 5 of the last 6 games and is averaging 11.3 ppg at home on the year.

■ Forward Billy Oliver is 6-of-12 (50%) from three in his last four games and leads the team with 23 three-pointers. He totalled 11 in 32 games last year. Oliver scored a career-best 13 points vs. Mt. St. Mary's and had a career-best 4 threes at St. Joe's.

■ Patrick Chambers, 41, is the youngest coach in the Big Ten edging out Purdue's Matt Painter by about three months. Both were born in 1970 – Painter on Aug. 27 and Chambers on Dec. 13.

SCOUTING PURDUE: The Boilermakers (12-3) bring a three-game win streak into Thursday after posting wins at Iowa (79-76) and vs. Illinois (75-60) to open the Big Ten season. This will be just their third road game of the season, having previously won at Iowa and dropped a close 66-63 game at Xavier. Their other losses on the year have come to Alabama (65-56) and Butler (67-65). Senior Robbie Hummel leads the team and is fourth in the Big Ten posting 16.5 ppg. He is also eighth in rebounding at 6.5 rpg. Ryne Smith leads the Big Ten hitting 2.9 threes per game and is shooting 46% from three. He joins guard Lewis Jackson posting just over 10 points per game. The Boilers are second in the Big Ten with a +5.5 turnover margin and commit just 9.7 turnovers per game. They are scoring 74.5 ppg while giving up just 60.7. Ryne Smith.

LAST YEAR VS PURDUE: Penn State lost a heartbreaker last year in West Lafayette in the last meeting between the teams, as Big Ten Player of the Year JaJuan Johnson buried an 18-footer with three seconds to play for a 63-62 win. Johnson had 25 points in the game, which #14 Purdue led by 14 early after hitting six of its first eight from three. Jeff Brooks had 19 to lead Penn State, which took a 62-61 lead on a David Jackson three with 18 seconds left. Then No. 10-ranked Purdue posted an 83-68 victory in State College behind 20 points on 5-of-5 from three from Ryne Smith. Jermaine Marshall scored a then career-high 18 points of the bench for PSU. Talor Battle had 18 and Jeff Brooks a double-double with 15 points and 10 boards. Purdue dominated the boards in the second half 28-12 to open up a five-point halftime lead.

PLAYER NOTES:

FRAZIER LEADS BIG TEN IN ASSISTS (7TH IN NCAA), 3RD IN SCORING:

Junior guard Tim Frazier ranks 1ST in the Big Ten in assists (6.7), 3RD in rebounding (17.3), 2ND in steals (2.2), 11TH in rebounding (5.6) and 1ST in minutes (35.7).

- **ONLY Division I player** averaging 17+ points and 6.5+ assists per game.
- **ONE of two Big Ten players** ranked in top 15 of scoring, rebounding and assists in the conference, joining Draymond Green (Michigan State).
- **NINTH IN THE NCAA in assists.**
- Tied for the Big Ten LEAD posting SIX 20-point outings on year, including two career-high point totals. He has raised his scoring average by 11 ppg from last year (6.3).
- Tied for FOURTH in the Big Ten posting FOUR double-doubles on the year, the last coming with 17 points and 11 rebounds vs. Cornell (12/21).
- Has FIVE games of 9+ assists on the year and has posted a career high in either scoring, assists (three times reaching 10 or more) or rebounding in five games on the year.
- Leads Penn State in points, rebounds, assists and steals. Frazier has 100 assists (the next closest Lion 21) and 33 steals (next closest Lion 17) on the year.
- **Named to Collegehoopsnet.com November All-Big Ten team.** Joined by Drew Crawford (NU), John Shurna (NU), Jared Sullinger (OSU) and Robbie Hummel (PU).
- Carries a 3.2 grade-point average in Supply Chain and Information Systems in Penn State's Smeal College of Business.

FRAZIER SERVING ASSISTS AT RECORD PACE:

Tim Frazier is on pace to break the Lions' single-season assist record of 189 set by Talor Battle in 38 games in 2008-09. Frazier's Big Ten leading 6.7 apg is nearly one assist per game higher than the PSU record season average of 6.1 set by Fred-



STANDINGS (Jan. 2)

Team	BIG TEN			OVERALL	
	W-L	%	W-L	%	
1. Michigan State	2-0	1.000	13-2	.867	
Michigan	2-0	1.000	12-2	.857	
Purdue	2-0	1.000	12-3	.800	
4. Indiana	1-1	.500	13-1	.929	
Ohio State	1-1	.500	13-2	.867	
Illinois	1-1	.500	12-3	.800	
Wisconsin	1-1	.500	12-2	.800	
Northwestern	1-1	.500	11-3	.786	
Iowa	1-1	.500	9-6	.600	
10. Minnesota	0-2	.000	12-3	.800	
Nebraska	0-2	.000	8-5	.615	
Penn State	0-2	.000	8-7	.533	

SCHEDULE:

JAN. 3

Nebraska at Ohio State - 6:30 p.m. - BTN
Michigan State at Wisconsin - 7 p.m. - ESPN2

JAN. 4

Illinois at Northwestern - 7 p.m. - BTN
Iowa at Minnesota - 9 p.m. - BTN

JAN. 5

Purdue at Penn State - 8 p.m. - BTN
Michigan at Indiana - 9 p.m. - ESPN2

RESULTS:

JAN. 1

#18/16 MICHIGAN def. MINNESOTA, 61-56
NORTHWESTERN def. PENN STATE, 68-56

DEC. 31

IOWA def. #11/11/ WISCONSIN, 72-65
#16/17 MICHIGAN STATE def. NEBRASKA, 68-55
PURDUE def. ILLINOIS (rv/rv), 75-60
#13/15 INDIANA def. #2/2 OHIO STATE, 74-70

PENN STATE IN THE BIG TEN

FIRST YEAR: 1992-93 Season
REGULAR SEASON RECORD: 103-220 (20th Season)
ROAD RECORD: 32-131
HOME RECORD: 71-89
MOST WINS IN A SEASON: 12-6 (1996), 10-8 (2009), 9-9 (2011), 9-9 (1995), 8-8 (1998), 7-9 (2001), 7-11 (2008), 6-10 (2006)
BEST SEASON: 12-6 mark and second place conference finish in the 1995-96 season.
.500+ SEASONS: 5, last coming in 2010-11
LAST YEAR: 9-9 (T4th)
BEST START: 4-0 in 1995-96 season.
LONGEST WIN STREAK: 4, twice, 1996 & 2009
LONGEST HOME WIN STREAK: 9 (one season), 1996, 12 (two seasons) 1995 & 1996
MOST ROAD WINS IN A SEASON: 3, 7 times, last 2011
LONGEST ROAD WIN STREAK: 2, 3 times, last 2010



PENN STATE BASKETBALL SHOW



The "Penn State Basketball Show," Coach Patrick Chambers' weekly call-in radio show, will be broadcast live from Damon's Grill in State College this season.

Hosted by Steve Jones, the "Penn State Basketball Show" will air live from the clubhouse at Damon's (1031 E. College Ave.) Thursday nights from 6:05 to 7:00 p.m. Fans are encouraged to ask questions of the coach live and in-person or by calling 1-800-52LIONS (525-4667). Questions will also be taken via twitter at @GoPSUHoops. The first "Basketball Show" will be broadcast live from Damon's on Thursday, Dec. 1. The show can be heard on almost 50 radio stations on the Penn State Sports Network and on-line at GoPSUsports.com.

MEDIA INFORMATION

Penn State will hold in-person press conferences with head coach **Patrick Chambers at 2:30 p.m. on Mondays** (with some exceptions) and **phone only teleconferences at 11:00 a.m. on Fridays** throughout the year. **Penn State players** will be available immediately following most Monday press conferences for 15-20 minutes prior to practice and at selected times throughout the week. Coach Chambers will also be available **Monday mornings at 10:40 a.m. (ET) via the Big Ten teleconference.**

PRESS CONFERENCES

Mon. Jan. 9	2:30 p.m.	BJC Green Room
Tue. Jan. 17	2:30 p.m.	BJC Green Room
Mon. Jan. 23	2:30 p.m.	BJC Green Room
Mon. Jan. 30	2:30 p.m.	BJC Green Room
Mon. Feb. 6	2:30 p.m.	(Location TBA)
Mon. Feb. 13	2:30 p.m.	BJC Green Room
Thur. Feb. 23	2:30 p.m.	BJC Green Room
Mon. Feb. 27	2:30 p.m.	BJC Green Room
Mon. March 5	2:30 p.m.	BJC Green Room

TELECONFERENCES

**FRIDAY'S AT 11:00 A.M.
CALL IN #: 1-866-493-5099**

Wed. Jan. 4	1:15 p.m.
Fri. Jan. 13	11:00 a.m.
Fri. Jan. 20	11:00 a.m.
Fri. Feb. 3	11:00 a.m.
Fri. Feb. 10	11:00 a.m.
Fri. Feb. 17	11:00 a.m.
Fri. March 2	11:00 a.m.

BIG TEN COACHES TELECONFERENCES

WEEKLY: Monday's 10 a.m. - 11:50 a.m ET
Coach Chambers @ 10:40 a.m. (ET)
Call In#: 1-800-762-8779.
Weekly passcode e-mailed each Sunday.
Available for play-back for 24 hours following call.
To access the play-back:
dial: 1-800-406-7325; PASSCODE: 121473#

die Barnes (1992) and Tom Wilkinson (1978) and two ahead of his team leading 5.1 apg last year. At his current pace he would log more than 200 assists by season's end. Frazier has posted career-best assist totals in three games this year, posting at least 10 on each occasion, and has logged five games of 9+ assists. He had a career-best 11 assists vs YSU (11/23). Frazier's 173 assists last year rank as the fifth best season mark in PSU history. He ranks 11th on the PSU career assist chart, four shy the Top 10.

FRAZIER POSTS 6TH 20-POINT GAME: Tim Frazier posted his Big Ten LEADING sixth 20-point outing with 20 in the Lions' Big Ten opening loss at Michigan (12/29). Frazier has led the Lions in scoring in 12 games and scored in double-digits in 13 games on the year. He accomplished that just 10 times in his first two seasons, reaching the 20-point mark once with 22 in the Lions' Big Ten Tournament semifinal win over Michigan State last year.

FRAZIER NAMED COUSY CANDIDATE: Tim Frazier was named by the Naismith Memorial Basketball Hall of Fame among the candidates for the 2012 Bob Cousy Collegiate Point Guard of the Year Award. Frazier was one of five Big Ten players named to the list, which will be narrowed to 30 players in January and a final five on March 1. Frazier joined Big Ten players Trey Burke (Michigan), Aaron Craft (Ohio State), Lewis Jackson (Purdue) and Jordan Taylor (Wisconsin) on the list.

MARSHALL EMERGES:

Redshirt sophomore Jermaine Marshall has been a scoring spark early this season.

- Lions leading three-point shooter over last eight games hitting 14-of-33 (42%) from the arc, with at least one three in 7 games and two or more in 5.
- Posted six-straight double-figure scoring outings, with two 20-point games in that span, to close out the non-conference season.
- Averaging 13.6 ppg and team-high 5.6 rpg over the last eight games.
- Second on the team scoring 9.8 ppg and getting to the foul line 48 times on the year.
- EIGHT double-digit scoring outings on the year, had one entering the season.
- Led Penn State with 20 points and a career-high 9 rebounds in a loss to Lafayette (12/7) at the BJC. Hit a career-best 9-of-11 at the foul line in the game.
- Made first career start vs. Ole Miss (12/4).
- Scored 15 first half points, including the Lions' last 10 of the half, on his way to a career-high 22 points and eight rebounds in Penn State's win at Boston College (11/30). Marshall hit 8-of-16 from the floor and a career-best 3-of-6 from three in the game.
- Posted eight first half points on his way to 14 in Penn State's victory over USF (11/20).

WOODYARD'S SENIOR SUCCESS: Penn State's lone senior, Cammeron Woodyard, spent his first three seasons playing an average of just 8.7 minutes per game (including a high of 10.4 mpg last year) and never averaged more than the 2.2 ppg he posted in 24 contests as a freshman.

- Averaging 10.6 ppg over the last seven games, with five double-digit scoring outings in that span.
- EIGHT double-digit scoring games on the year,

had one on his career entering the season.

- Hit 3-of-3 from three and 4-of-4 at the foul line for 13 points vs. Cornell (12/21).
- Averaging 11.3 ppg in home games on the year.
- Equaled his **CAREER HIGH** with 14 points in just 20 minutes of action vs. Mt. St. Mary's (12/18).
- Posted career highs in points (14), rebounds (7), threes (4) and steals (4) off the bench in Penn State's season opening victory over Hartford.
- Hit a career-best 4-of-7 from three vs. Hartford and tied for the team lead in rebounding.
- He has led Penn State in rebounding in three games this season and has posted a career-best equaling seven boards on five occasions.
- Missed the first two weeks of practice after having minor surgery on his left knee.

OLIVER LEADS LIONS WITH 23 THREES: After missing his first two seasons as a Nittany Lion due to concussions and chronic exercise induced headaches and taking a total of 76 shots last year, his first full healthy season, junior Billy Oliver has a much more integral offensive role in his fourth season in the program.

- **Oliver leads the Lions with 23 threes on the year & 70 attempts.**
- Had a career-high 13 points and three blocks in just 20 minutes of win over Mt. St. Mary's (12/18). Shot 4-of-5 (2-of-3 from three) in the game.
- Oliver made a career-best four threes and posted a then career-high 12 points while taking 13 shots (10 from three) in the Lions' loss at St. Joe's (11/26).
- Hit two clutch threes late in the second half to finish with nine points and a career-high 10 rebounds in PSU's win over LIU (11/16).
- **Entered the season as a career 23.9 percent shooter from three having hit 11-of-46 career three-point attempts.**
- Last year, Oliver posted a career-best 10 points on six shots in the Lions' season-opening win vs. Lehigh, but only reached that career-high shot total twice more the rest of the year.
- An Academic All-Big Ten honoree who carries over a 3.2 grade-point average in finance in Penn State's Smeal College of Business.

TRAVIS POSTS CAREER HIGHS:

Freshman Ross Travis has been referred to by coach Patrick Chambers as his "junkyard dog" for the energy level he brings to the court and his willingness to mix it up and sacrifice his body.

- Posted career highs of 12 points and 8 rebounds vs. Lafayette (12/7).
- Has started seven games.
- Team's third leading rebounder, leading the team on the boards in three games on the year.
- Scored all of his then career high point total in the second half vs. Kentucky, hitting a pair of threes on his way to 10 points and eight rebounds to lead the Lions on the boards.
- Struggling hitting 6-of-22 at the foul line.

BOROVNJAK GOES FOR CAREER HIGH:

Redshirt sophomore Sasa Borovnjak is developing into a solid low-post scoring threat for Penn State after missing last season with an ACL injury.

- Shooting a team-high 58.3 percent from the floor on the year.
- Came off the bench to go a perfect 7-of-7 from the

LOOKING AHEAD

Wed., Jan. 4	Thur., Jan. 5	Sun., Jan. 8	Mon., Jan. 9	Tues., Jan. 10	Wed., Jan. 11	Fri., Jan. 13
Patrick Chamber's Teleconference 1:15 p.m.	vs. Purdue @ 8:00 p.m. BTN Penn State Basketball Show Live @ Damon's 6:05 p.m.	vs. Indiana @ 12:00 p.m. BTN Alumni Day	Big Ten Teleconference 10:40 a.m. Patrick Chamber's Press Conference 2:30 p.m.	Depart for Lincoln, Neb.	@ Nebraska @ 8:30 p.m. (ET) BTN	Patrick Chamber's Teleconference 11:00 a.m.



SEASON HONORS

Tim Frazier

- HOF Tip-off Tournament All-Tourney Team
- November All-Big Ten Team (Collegehoops.net)
- Named a Cousy Award Candidate
- Pre-conf. All-Big Ten Team (Collegehoops.net)
- Named a "Big Ten Top 5 Player" by ESPN's Stephen Bardo, Dec. 31

DOUBLE-FIGURE SCORING

	CAREER	SEASON
Tim Frazier	23	13
Cammeron Woodyard	9	8
Jermaine Marshall	9	8
Ross Travis	3	3
Trey Lewis	3	3
Billy Oliver	3	2
Sasa Borovnjak	2	2

CHAMBERS BIG TEN'S YOUNGEST HEAD COACH:

Patrick Chambers begins his first season at Penn State as the youngest head coach in the Big Ten. Chambers and Purdue head coach Matt Painter are the only two Big Ten head coaches born in the 1970's. Chambers, born Dec. 13, 1970, is 108 days younger than Painter, in his seventh season as head coach at Purdue, who was born on Aug. 27, 1970.

ROAD RECORD:

ON THE YEAR: 1-4 (0-2 Big Ten)
Previous 2 Years: 6-16 (5-13 Big Ten)
Previous 4 Years: 14-30 (13-27 Big Ten)
Big Ten Road Games: 32-131 overall
Most Big Ten Road Games Won In A Season: 3 (seven occasions, last in 2011). The Lions reached the post-season in all but one of those seasons (1999).

CAREER & SEASON HIGHS

SCORING	CAREER	SEASON
Tim Frazier	27	27 (USF)
Jermaine Marshall	22	22 (B.C.)
Trey Lewis	17	17 (HART)
Sasa Borovnjak	15	15 (MISS)
Cammeron Woodyard	14	14 (2X MSM)
Billy Oliver	13	13 (MSM)
Ross Travis	12	12 (LAF)
Matt Glover	9	9 (KEN)
Jon Graham	7	7 (RAD)
Nick Colella	3	3 (HART)
Kevin Montminy	2	2 (KEN)

REBOUNDING	CAREER	SEASON
Tim Frazier	11	11 (2X COR)
Billy Oliver	10	10 (LIU)
Jermaine Marshall	9	9 (LAF)
Matt Glover	9	9 (LAF)
Ross Travis	8	8 (2X LAF)
Cammeron Woodyard	7	7 (5X LAF)
Sasa Borovnjak	7	7 (DUQ)
Jon Graham	6	6 (@MICH)
Trey Lewis	4	4 (2X @NU)
Nick Colella	1	1 (3X KEN)
Kevin Montminy	1	1 (KEN)

ASSISTS	CAREER	SEASON
Tim Frazier	11	11 (YSU)
Trey Lewis	4	4 (HART)
Matt Glover	4	4 (DUQ)
Ross Travis	3	3 (LAF)
Jermaine Marshall	3	3 (2X @NU)
Billy Oliver	2	2 (3X MISS)
Sasa Borovnjak	2	2 (2X LIU)
Cammeron Woodyard	2	2 (HART)

QUICK FACTS

UNIVERSITY

Name: The Pennsylvania State University
Location: University Park, Pa. 16802
Founded: 1855
Enrollment: 44,034 (38,594 undergraduate)
Nickname: Nittany Lions
Colors: Blue & White
Conference: Big Ten Conference
Division: NCAA Division I
Home Court: Bryce Jordan Center (15,261)
President: Dr. Rodney Erickson
Athletic Director: Tim Curley
Acting Director of Athletics: Dave Joyner, Penn State BS '71, MD '76

BASKETBALL HISTORY

First Year of Basketball: 1897
All-time MBB Record: 1,358-1,052 (116th Season)
Record in Jordan Center: 161-95 (16th Season)
NCAA Tourn. Years (Record)/Last: 9 (9-11), 2011
NIT Years (Record)/Last: 10 (22-9), 2009 NIT Champions
Head Coach: Patrick Chambers (Philadelphia U. '94)
Overall Record (yrs): 50-35 (3rd year)
Record at Penn State: 8-7 (1st year)

2011-12 TEAM

Letterwinners Returning/Lost: 5/4
Starters Returning/Lost: 1/4
Captains: Cammeron Woodyard (Sr.), Tim Frazier (Jr.) & Billy Oliver (Jr.)
2010-11: 19-15 (H: 13-5; A: 3-8; N: 3-2); NCAA Rd. of 64
2011 Big Ten Finish: T4th (9-9)
2011 Big Ten Tournament: 3-1; Reached Final;
2011 NCAA Tournament: 0-1; L, 64-66 (7) Temple
Notable: Reached program's first-ever Big Ten Tournament championship game and made first NCAA Tournament appearance since 2001.

2011-12 NITTANY LION ROSTER

NUMERICAL

NO.	NAME	POS.	HT.	WT.	YR./ELIG.	HOMETOWN/HIGH SCHOOL
2	D.J. Newbill**	G	6-4	210	So./So.	Philadelphia, Pa./Strawberry Mansion
3	Trey Lewis	G	6-1	180	Fr./Fr.	Garfield Heights, Ohio/Garfield Heights
5	Matt Glover	G	6-4	210	So./So.	Orange, Calif./Sheridan CC/Tustin
11	Jermaine Marshall•	G/F	6-4	200	Jr./So.	Etters, Pa./Red Land
14	Kevin Montminy	G	6-3	185	Fr./Fr.	Centre Hall, Pa./Penns Valley Area
20	Nick Colella	G	6-3	195	Sr./Jr.	New Castle, Pa./New Castle/PSU-Behrend
21	Sasa Borovnjak•	F	6-9	240	Jr./So.	Belgrade, Serbia/Veritas Christian (N.C.)
23	Tim Frazier••	G	6-1	170	Jr./Jr.	Houston, Texas/Strake Jesuit
24	Cammeron Woodyard•••	G	6-5	210	Sr./Sr.	Westminster, Md./Winters Mill
25	Jon Graham	F	6-8	240	So./Fr.	Baltimore, Md./Calvert Hall
32	Patrick Ackerman	F	6-11	230	Fr./Fr.	Rutland, Mass./Worcester Academy
34	Alan Wisniewski	F	6-9	230	So./So.	Sterling Heights, Mich./Bishop Foley
35	Billy Oliver•	F	6-8	230	Sr./Jr.	Chatham, N.J./Chatham
43	Ross Travis	F	6-6	220	Fr./Fr.	Chaska, Minn./Chaska
52	Peter Alexis	F	6-10	255	Fr./Fr.	Wilkes-Barre, Pa./Holy Redeemer

• = Letters Earned ** = Transfer sitting out 2011-12 season

COACHING & SUPPORT STAFF

Head Coach: Patrick Chambers (1st at PSU, 3rd overall, Philadelphia University, '94)
Associate Head Coach: Eugene Burroughs (Richmond, ' 94)
Assistant Coaches: Keith Urgo (Fairfield, '02) & Brian Daly (Saint Joseph's, ' 92)
Director of Basketball Operations: Ross Condon (Villanova, '07)
Strength Coach: Brad Pantall (Penn State, '96)
Athletic Trainer: Jon Salazer (Penn State, '93)
Video Coordinator: Adam Fisher (Penn State, '06)

BY ELIGIBILITY

SENIORS (1)	
24	Cammeron Woodyard••• _____ G
JUNIORS (3)	
20	Nick Colella _____ G
23	Tim Frazier•• _____ G
35	Billy Oliver• _____ F
SOPHOMORES (5)	
2	D.J. Newbill _____ G
5	Matt Glover _____ G
11	Jermaine Marshall• _____ G/F
21	Sasa Borovnjak• _____ F
34	Alan Wisniewski _____ F
FRESHMEN (6)	
5	Trey Lewis _____ G
14	Kevin Montminy _____ G
25	Jonathan Graham _____ F
32	Patrick Ackerman _____ F
43	Ross Travis _____ F
52	Peter Alexis _____ F

PRONUNCIATIONS

SASA BOROVNJAK
 SAW-sha BOE-rov-KNEE-yak
CAMMERON WOODYARD
 WOOD-yard
ALAN WISNIEWSKI
 WIZ-new-SKI



NATIONAL RANKINGS

AP TOP 25 (Jan. 1)

1	Syracuse (60)	15-0	1,618
2	Kentucky (5)	13-1	1,554
3	North Carolina	13-2	1,451
4	Baylor	13-0	1,389
5	Duke	12-1	1,354
6	Ohio State	13-2	1,277
7	Missouri	13-0	1,255
8	Connecticut	12-1	1,199
9	Georgetown	12-1	1,072
10	Michigan State	13-2	992
11	Louisville	12-2	977
12	Indiana	13-1	974
13	Florida	11-3	753
14	Kansas	10-3	663
15	Mississippi State	13-2	644
16	Michigan	12-2	641
17	UNLV	15-2	611
18	Wisconsin	12-3	506
19	Murray State	14-0	454
20	Marquette	12-2	447
21	Virginia	12-1	292
22	Harvard	12-1	269
23	Kansas State	11-1	229
24	San Diego State	12-2	196
25	Gonzaga	11-2	121

USA TODAY/ESPN TOP 25

1	Syracuse (30)	15-0	774
2	Kentucky (1)	13-1	739
3	Duke	12-1	679
4	North Carolina	13-2	670
5	Baylor	13-0	638
6	Missouri	13-0	620
7	Ohio State	13-2	593
8	Connecticut	12-1	580
9	Georgetown	12-1	515
10	Louisville	12-2	454
11	Michigan State	13-2	442
12	Indiana	13-1	423
13	Michigan	12-2	368
14	Florida	11-3	367
15	Kansas	10-3	318
16	Mississippi State	13-2	300
17	UNLV	15-2	263
18	Murray State	14-0	236
19	Wisconsin	12-3	230
20	Marquette	12-2	196
21	Harvard	12-1	156
22	Kansas State	11-1	127
23	Virginia	12-1	125
24	Creighton	11-2	67
25	San Diego State	12-2	60



PENN STATE IN THE RPI

Date	Rank	RPI	SOS
11/28	#77	.585	#99
12/1	#70	.585	#125
12/5	#93	.551	#121
12/7	#134	.518	#140
12/13	#157	.500	#164
12/20	#192	.485	#237
12/27	#174	.488	#240
12/29	#155	.496	#189
1/1	#151	.500	#159

PENN STATE IN THE RANKINGS

Date **AP** **COACHES**

Last ranked 25th in the final ESPN/USA Today Coaches Poll of the 2000-01 season (April 4, 2001). Penn State received votes in the national polls on Feb. 2, 2009. The Lions got votes in the Coaches Poll each of the four following weeks.

PENN STATE VS. RANKED

ON THE YEAR: 0-2
2010-11: 4-8 (wins over:#18 MSU, #16 ILL, #15 WISC, #13 WISC)
Last WIN vs. RANKED team: 36-33 vs. #13 Wisconsin (3/11/11)
Last ROAD win: 38-33 @ #16/18 Illinois (2/18/09)
Last HOME win: 56-52 vs. #15 Wisconsin (1/29/11)
In the Jordan Center: 14-31
Last NEUTRAL win: 36-33 vs. #13 Wisconsin (3/11/11)
WIN vs. Highest Ranked in BJC: #5 Purdue, 74-63, 2/21/98)
WIN vs. Highest Ranked On Road: 66-65 at #6/6 Illinois (2/4/06)
WIN vs. Highest Ranked Overall: 65-63 vs. #2/3 Michigan State (3/9/01) Big Ten Turn.
Under Patrick Chambers: 0-2 (1st season)
Since joining BIG TEN (1992-93): 26-102
OVERALL Streak: Lost 3
HOME Streak: Lost 1

STARTS CHART

CAREER STARTS

PLAYER	09-10	10-11	11-12	CAREER	CONS	GAMES
#23 Tim Frazier	10	33	15	58	21	80
#35 Billy Oliver			15	15	15	52
#24 Cam Woodyard	--	3	8	11	2	91
#5 Matt Glover			11	11	11	15
#11 Jermaine Marshall	-	7	7	7	7	42
#21 Sasa Borovnjak		7	7	-	-	31
#43 Ross Travis		7	7	-	-	14
#3 Trey Lewis		5	5	-	-	13

2011-12 SEASON

GAME	POSITION					LINE-UP RECORD
	1	2	3	4	5	
HARTFORD	23	3	43	35	21	1-0
RADFORD	23	3	24	35	21	
LONG ISLAND	23	3	24	35	21	
vs Kentucky	23	3	24	35	21	2-1
vs. South Florida	23	5	24	35	21	
YOUNGSTOWN ST	23	5	24	35	21	
@ St. Joe's	23	5	24	35	21	2-1
@ Boston College	23	3	5	43	35	1-0
OLE MISS	23	5	11	43	35	
LAFAYETTE	23	5	11	43	35	
@Duquesne	23	5	11	43	35	
MT. ST. MARY'S	23	5	11	43	35	
CORNELL	23	5	11	43	35	2-3
@ Michigan	23	5	11	24	35	
@ Northwestern	23	5	11	24	35	0-2

BENCH SCORING

SEASON HIGH: 30 vs. Cornell & YSU
20+ POINTS: 8 games
AVERAGE: 21.2 ppg

HARTFORD	25
RADFORD	17
LONG ISLAND	17
vs Kentucky	27
vs. South Florida	21
YOUNGSTOWN ST	30
@ St. Joe's	17
@ Boston College	26
MISSISSIPPI	25
LAFAYETTE	14
@ Duquesne	17
MT. ST. MARY'S	29
CORNELL	30
@ Michigan	14
@ Northwestern	9

NINE MAN ROTATION: Patrick Chambers has employed a nine-man rotation for most of the season. NINE Lions are averaging 14.0+ minutes per game or better.

floor for a career-high 15 points in a loss to Ole Miss (12/4). Scored most of his baskets going strong on the block vs. a long, athletic and tall Rebel front line.

- Posted 10 points on 5-of-5 shooting in a win over Mt. St. Mary's (12/18).
- Tore the ACL in his right knee in Penn State's very first pre-season practice of 2010-11.

GLOVER GETS TO THE POINT: The fifth junior college transfer in the last decade for Penn State, Matt Glover leads the team with 27 reps on the 185-pound bench and has been a strong presence on the floor as well.

- Has seen spot action at point-guard in the last few games allowing Tim Frazier to play off the ball.
- Second on the team with 21 assists.
- Led Penn State in rebounding posting nine vs. Lafayette and six vs. Mt. St. Mary's
- Has started the last 11 straight games.
- Hit his first three three-point attempts of the second half on his way to nine points, all in the second half, vs. Kentucky.

LEWIS FINDS THREE RANGE: Freshman Trey Lewis, the runner-up for Ohio's "Mr. Basketball" award in 2011, has proven to be a very effective three-point threat for the Lions.

- Third on the team with 19 threes and shooting 35.8% from three.
- Hit a **CAREER-BEST** 4-of-6 from three for 13 points in win over Cornell (12/21)
- Outstanding in his first collegiate game leading Penn State to a season-opening victory with a team-high 17 points on 3-of-6 from three. Scored 14 of his 17 points in the second half as Penn State pushed a 10-point halftime lead to as much as 26. He scored 10-straight points, hitting a pair of threes.
- Missed the Lafayette game with after re-aggravating a pre-season injury to his right ankle in practice.



FRAZIER'S FOUR DOUBLE-DOUBLES: Tim Frazier has posted four double-doubles on the season, **TIED FOR FOURTH MOST IN THE BIG TEN**. Three came with points and assists and one with points and rebounds.

- His four double-doubles are the most for a Nittany Lion in a season since Janelle Cornley had four in 2008-09.
- Has FIVE career double-doubles posting one last year (10 points & 10 rebounds) at Northwestern. His five career double-doubles are one shy of the most ever for a Penn State guard set by Talor Battle with six between 2008-2011.
- Posted double-double No. 4 on the year with a team-high 17 points and career-best equaling 11 rebounds while adding six assists in a win over Cornell (12/21).
- Led Penn State with 26 points on 8-of-11 shooting and a career-high 11 assists in a victory over Youngstown State (11/23).
- Posted back-to-back double-doubles, 20-point games and career-best assist totals in two outings vs. Radford and LIU.
- The first PSU player to post back-to-back double-doubles since Geary Claxton posted three straight in January of 2008.
- Frazier was spectacular in the Lions' win over Long Island (11/16) posting a then career-high 26 points on 9-of-18 shooting and logging a career-best 10 assists for the second-straight game.
- Frazier went for 20 points, 10 assists, six rebounds and three steals in the Lions previous victory vs. Radford (11/14).

FRAZIER GOES FOR 20 & 10 AGAIN! Three times in the first six games of the season, junior Tim Frazier posted at least 20 points and 10 assists in a game. Against Youngstown State (11/23), Frazier shot 8-of-11 for a team-high 26 points and added a career-best 11 assists, tying the eighth best game total in Penn State history.

FRAZIER LOOKING TO SCORE:

- Frazier is THIRD in the Big Ten scoring 17.3 ppg and is tied for the Big Ten LEAD with SIX 20-point games (7 career) while leading the Lions in scoring in 12 games.
- Frazier is averaging 13.5 shots and 5.5 field goals made per game. Coach Patrick Chambers would like Frazier to take between 15-20 shots per game.
- Frazier took just 4.8 shot attempts per contest to average 6.3 ppg last year.
- Frazier averaged just 4.6 shots per game while playing in every one of Penn State's 65 games over his first two seasons.
- He showed glimpses of his scoring ability in the Lions' run to the 2011 NCAA Tournament, including a then career-high 22 points on nine field goals and 13 field goal attempts vs. Michigan State in a Big Ten Tournament semifinal victory. Frazier followed that up with 15 points vs. Temple in the Lions' NCAA Tournament loss to the Owls.

PENN STATE RECORD WHEN:

	09-10	10-11	11-12	Last 5 Yrs
At Home	7-9	13-5	6-2	56-23
Road	3-8	3-8	1-4	15-34
Neutral	1-3	3-2	1-1	9-12
vs. Ranked	0-8	3-6	0-2	9-25
Decided by 3 points or less	2-7	4-4	0-1	13-14
Decided by 4-10 points	1-7	7-4	4-2	30-23
Decided by 11-19 points	6-4	6-5	3-3	24-21
Decided by 20+ points	2-2	2-2	1-1	13-11
Overtime/Double OT (0-1)	0-1	0-0	-	3-2
Leading at HALF	9-4	13-1	4-1	59-9
Tied at HALF	1-2	2-1	2-0	8-6
Trailing at HALF	1-14	4-12	2-6	13-53
Leading with 5:00 TO PLAY	11-4	17-1	7-1	66-9
Tied with 5:00 TO PLAY	0-0	0-1	-	0-1
Trailing with 5:00 TO PLAY	0-16	0-13	1-6	12-58
PSU SHOOTS 45%+	8-5	10-6	3-1	47-16
PSU SHOOTS Less Than 45%	3-15	9-9	5-6	33-54
PSU SHOOTS better than OPP	10-4	14-2	6-2	63-9
OPP SHOOTS 45%+	2-11	2-12	0-4	18-49
OPP SHOOTS Less Than 45%	9-8	17-1	8-3	52-18
PSU SHOOTS 40%+ FROM 3PT	6-5	5-3	3-0	33-13
PSU OUT-REBOUNDS Opp	9-11	15-4	8-4	60-28
OPP OUT-REBOUNDS or EVEN	2-9	4-11	0-3	20-41
PSU FREE THROW% 70%+	4-10	10-8	2-1	30-28
PSU Has MORE FT ATTS	8-8	16-4	5-2	69-21
OPP Has MORE OR = FT ATTS	3-12	4-11	2-5	11-48
PSU Has 15 OR FEWER TOs	11-17	18-15	7-5	76-59
PSU Has LESS TOs THAN OPP	4-5	9-8	7-1	39-24
PSU SCORES 70+	7-2	4-1	5-1	36-8
PSU SCORES 69 OR LESS	4-18	14-14	3-6	43-61
OPP SCORES 70+	2-7	1-9	1-3	10-36
OPP SCORES 69 OR LESS	7-11	18-6	6-4	65-31
OPP SCORES 59 OR LESS	5-0	11-0	4-0	39-2
OPP SCORES 49 OR LESS	1-1	5-0	3-0	16-1
In NOVEMBER	5-2	5-1	6-2	25-9
In DECEMBER	3-3	3-3	2-4	19-12
In JANUARY	0-8	5-4	0-1	10-22
In FEBRUARY	3-4	3-5	-	13-17
In MARCH	0-3	4-3	-	12-10
In APRIL	0-0	0-0	-	1-0
In TOURNAMENTS	0-1	3-2	1-1	13-9
ON TELEVISION	8-18	15-12	3-3	62-58
vs. BIG TEN	3-16	12-10	0-2	33-49
vs. ACC	1-1	0-2	1-0	-
vs. A-10	0-1	2-1	0-2	-
vs. AMERICAN EAST	1-0	0-1	1-0	-
vs. BIG EAST	0-0	0-0	1-0	-
vs. BIG SOUTH	0-0	0-0	1-0	-
vs. BIG 12	0-0	0-0	-	-
vs. COLONIAL	0-1	0-0	-	-
vs. CONFERENCE USA	0-1	0-0	-	-
vs. HORIZON	0-0	0-0	1-0	-
vs. IVY LEAGUE	1-0	0-0	1-0	-
vs. MID AMERICAN	0-0	0-0	-	-
vs. METRO ATLANTIC	0-0	1-0	-	-
vs. MCC	0-0	0-0	-	-
vs. MID EASTERN ATHLETIC	0-0	0-0	-	-
vs. MOUNTAIN WEST	0-0	0-0	-	-
vs. NEC	2-0	2-0	2-0	-
vs. OHIO VALLEY	0-0	0-0	-	-
vs. PATRIOT	1-0	1-0	0-1	-
vs. SEC	0-0	0-1	0-2	-
vs. SOUTHLAND	1-0	0-0	-	-
vs. SOUTHERN	1-0	1-0	-	-
vs. SUN BELT	0-0	0-0	-	-

NOTING THE JORDAN CENTER

RECORD IN BJC: 161-94 (17th Season) (62%) (255 games)

OPENED: January 11, 1996 vs. Minnesota (W, 76-51)

CAPACITY: 15,261

MOST CONTESTS IN A SEASON: 20 (2008-09)

100TH WIN: 56-55 over Hartford, Dec. 6, 2006

LONGEST WIN STREAK: 14; Jan. 11, 1996-Dec. 27, 1996

SEASON HOME WINS RECORD: 17-3 (2008-09)

SEASON BEST START: 8-0, 2007-08 & 1996

TOP SEASON WIN MARKS: 17-3 (2008-09); 13-4 (2007-08); 13-4 (1999-2000); 13-5 (2010-11); 12-2 (1997-98);

TOP SEASON WIN PERCENTAGES: 100.0, 8-0 (1996);

.862, 17-3 (2008-09); .857, 12-2 (1997-98);

TOP 10 CROWDS:

- 15,472 vs. Purdue, 2/1/1997
- 15,464 vs. Indiana, 1/26/1997
- 15,455 vs. Ohio State, 3/1/1999
- 15,435 vs. Ohio State, 2/27/1999
- 15,420 vs. Indiana, 1/8/2000
- 15,403 vs. No. 1 Ohio State 3/1/2011
- 15,389 vs. Northwestern, 2/15/1997
- 15,377 vs. Michigan State, 2/24/2001
- 15,355 vs. Indiana, 1/31/1999
- 15,232 vs. Indiana, 2/3/2001

TOP 2010-11 CROWD: 15,403 vs. No. 1 Ohio State, 3/1

TOP 2009-10 CROWD: 14,017 vs. Michigan State, 2/13

TOP 2008-09 CROWD: 15,035 vs. Indiana, 2/28

TOP 2007-08 CROWD: 11,159 vs. Michigan State, 2/2

TOP 2006-07 CROWD: 13,347 vs. Michigan State, 1/20



THE LAST TIME:

BEAT at TOP 25 Team	3/11/11 vs. #13 Wisconsin (36-33)
BEAT at TOP 10 Team	2/1/09 @#9 Michigan State (72-68)
BEAT at TOP 5 Team	3/18/01 vs. #5 North Carolina (NCAA) (82-74)
BEAT a BIG TEN TEAM by 20+	2/13/11 vs. Northwestern (65-41)
WON in OVERTIME	3/17/09 vs. George Mason (77-73)
LOST in OVERTIME	1/2/4/10 @Wisconsin (79-71)
PLAYED DOUBLE OVERTIME	3/7/09 @Iowa (L, 75-67)
Came From 10+DOWN TO WIN	1/29/11 vs. #15 Wisconsin (-13) (56-52)
WON NON-CON ROAD	11/30/11 @Boston College (62-54)
WON BIG TEN ROAD	3/6/11 @Minnesota (66-63)
LOST AT HOME	12/7/11 vs. Lafayette (61-57)
LOST NON-CON HOME	12/7/11 vs. Lafayette (61-57)
SCORED 100+	12/19/09 vs. Gardner-Webb (104)
ALLOWED 100+	12/3/06 vs. VMI (111)
SCORED 90+	12/19/09 vs. Gardner-Webb (104)
ALLOWED 90+	3/3/07 @Indiana (94)
SCORED 80+	11/23/11 vs. YSU (82)
SCORED 80+ IN BIG TEN	2/17/10 @Northwestern (81)
SCORED UNDER 50	11/20/11 vs. Kentucky (47)
SCORED UNDER 40	3/11/11 @ BTT v. Wisconsin (36)
SCORED 60+ IN A HALF	12/19/09 vs. Gardner-Webb (60 2nd)
SCORED 50+ IN A HALF	12/19/09 vs. Gardner-Webb (60 2nd)
BENCH Scored 50+	12/7/05 vs. UMKC (50)
OPP SCORED 50 OR LESS	12/18/12 vs. Mt. St. Mary's (43)
CONSECUTIVE OPP BELOW 50	2009 @Temple (45) & UMBC (42)
OPP SCORED 40 OR LESS	3/11/11 @ BTT v. #13 Wisconsin (33)
CONSECUTIVE OPP BELOW 40	2007 vs. Princeton (38) & Denver (39)
OPP SCORED 10 OR LESS IN HALF	12/15/07 Denver (10)
OPP SHOT BELOW 30%	11/29/08 vs. Towson (29.4)
SHOT 60%+ FG	11/25/09 vs. Sacred Heart (63.8)
SHOT 60%+ FG IN BIG TEN	1/3/06 vs Northwestern (64.0)
SHOT 50%+ FG IN BIG TEN	2/24/11 @ Northwestern (56.5)
OPP SHOT 60%+	1/11/09 @Minnesota (62.5)
SHOT 70% IN HALF	12/30/06 vs. VMI (70.3, 26-37)
SHOT UNDER 30%	11/26/11 @ St. Joe's (19-71; 26.8%)
SHOT 70%+ FROM 3PT	12/28/05 vs. St. Francis (75.0, 9-12)
SHOT 60%+ FROM 3PT	11/28/10 vs. Furman (12-19, 63.2%)
SHOT 50%+ FROM 3PT	11/23/11 vs. YSU (11-22, 50%)
SHOT 95%+ FROM FT	3/13/11 vs Ohio State (9-9, 100%)
SHOT 85%+ FROM FT	3/11/11 vs. Wisconsin (87.5, 7-8)
SHOT 50% OR LESS FT	11/26/11 @ St. Joe's (2-7; 28.6%)
50+ REBOUNDS	11/28/09 vs. UMBC (52)
45+ REBOUNDS	12/7/11 vs. Lafayette (47)
20+ OFFENSIVE REBS	12/7/11 vs. Lafayette (20)
20 OR LESS REBOUNDS	1/20/07 vs. Michigan State (19)
OPP LESS THAN 20 REBS	1/19/11 vs. Purdue (19)
15+ STEALS	11/12/11 vs. Hartford (15)
10+ STEALS	11/20/11 vs. USF (12)
30+ ASSISTS	12/30/06 vs. VMI (36)
20+ ASSISTS	2/17/10 @ Northwestern (21)
5 OR LESS TURNOVERS	2/17/11 vs. Minnesota (5)
20 + TURNOVERS	12/10/11 @ Duquesne (23)
OPP 25+ TURNOVERS	11/12/11 vs. Hartford (26)
PLAYER 40+ POINTS	Jesse Arnette (40) vs. Temple, 1/29/1955
PLAYER 35+ POINTS	Pete Lisicky (35) vs. Penn, 12/9/1995
PLAYER 30+ POINTS	Talor Battle (31), vs. Michigan, 2/6/11
3 PLAYERS 20+ POINTS	Claxton, Cornley, Hassell vs. VMI, 12/30/06
2 PLAYERS 20+ POINTS	Frazier & Marshall @ B.C., 11/30/11
6+ PLAYERS 10+ POINTS	12/19/09 vs. Gardner-Webb (6)
5+ PLAYERS 10+ POINTS	12/18/12 vs. Mt. St. Mary's (5)
10 PLAYERS 10+ MINUTES	12/19/09 vs. Gardner-Webb (10)
PLAYER 20+ REBOUNDS	A. Johnson (20) vs. Sacred Heart, 11/27/04
PLAYER 15+ REBOUNDS	G. Claxton (15) @Purdue, 2/18/06
PLAYER 10+ ASSISTS	Tim Frazier (11) vs. YSU (11/23/11)
PLAYER 5+ STEALS	Tim Frazier (5) vs. Hartford, 11/12/11
PLAYER 5+ BLOCKS	Jeff Brooks (5) vs. Lehigh, 11/12/10

TEAM NOTES:

YOUNG LIONS: Senior Cammeron Woodyard and junior Tim Frazier are the only Lions that have seen more than one season of competition prior to this year. Penn State's six underclassmen playing at least 10 minutes per game ranks tied for the most among Big Ten teams. Illinois, Minnesota and Ohio State also play six underclassmen significant minutes. Penn State truly has seven players in their first or second year of Big Ten competition. Three freshmen and three sophomores are averaging at least 13 minutes per game for Penn State and have made a total of 32 starts. True-freshmen Trey Lewis (5) and Ross Travis (7) have combined for 12 starts. The Lions have just three upper-classmen playing more than 10 minutes per game. Among those, Billy Oliver is a junior who sat out his first two years with concussions and migraines and is seeing just his second season of actual competition on the floor.

TALE OF TWO HALVES: Penn State is shooting 45.4 percent in the second half of games, including a season-best 66.7 percent in its win over Mt. St. Mary's (12/18). The Lions are averaging 35.2 ppg in the second half. Penn State is posting just 27.5 ppg in the first halves of games while shooting 33.1 percent from the floor, hitting less than 30 percent in the first half in SIX games, including 26 percent in the first half of the Lions last outing, a 68-56 loss at Northwestern (1/1).

BENCH PRODUCTION: Led by four threes and 13 points from freshman Trey Lewis, the Penn State bench posted a season-high 30 points for the second time on the year in its victory over Cornell (12/21). Cam Woodyard's career-high equaling 14 points led Penn State's bench which produced 29 points in the previous game vs. Mount St. Mary's. The PSU bench has produced EIGHT games of 20+ points and has out-scored the opponent's bench TEN times. Penn State's bench in averaging 21.2 ppg. Penn State averaged 6.0 ppg from its bench last year led by 75 points from Billy Oliver. The last time the Lion bench produced better than 20 ppg was in 2007-08 (20.3).

D'ING UP: Penn State has held EIGHT opponents to less than 40 percent shooting on the year and five to 55 points or less.

BOARDIN': Penn State leads the Big Ten posting 14.1 offensive rebounds per game and is third pulling 37.1 boards per game overall and third with a +5.9 rebound margin. **The Lions have won the rebounding battle in 12 games, going 8-4 in those games.** The Lions posted season highs of 20 offensive boards vs. Lafayette and 18 vs. Kentucky. The 20 offensive boards were the Lions most since posting 20 vs. Maryland in 2010. The Lions have surpassed 40 boards in a game three times on the season. Penn State posted a season-high 47 rebounds vs. Lafayette. It was their highest total since logging 52 rebounds in a win over UMBC in December of 2009. Penn State out-rebounded the Leopards 47-26.

GET TO 60: Penn State is 7-1 when reaching 60 points on the year with its one loss coming in one of the Lions' most well played games of the year, a close 72-70 loss to Mississippi. Penn State has failed to score at least 60 points in seven games on the year going 1-6 in those contests with the lone victory coming 53-49 over South Florida.

SHOOTING WOES: Penn State has shot less than 45% from the floor in 11 games on the year going 5-6 in those contests. Penn State is shooting a combined 35% from the floor, 24% from three and 59% from the foul line in its seven losses on the year, shooting less than 30% in two games and less than 32% from three in all seven. The Lions are shooting nearly 10% better in every category, 42.7% from the floor, 36.2% from three and 66.1% from the foul line, in eight wins.

OFFENSIVE BALANCE EMERGES IN FINAL FIVE NON-CON GAMES: After early season scoring dominated by Tim Frazier as the only player averaging double-digits, Penn State saw the emergence of guards Jermaine Marshall and Cammeron Woodyard and forward Billy Oliver over the final five non-conference games to give the offense more balance. Marshall posted six-straight double-digit scoring games and Woodyard reached double-digits in four of the last five non-con outings, scoring nine in the other. Marshall (12.8 ppg) and Woodyard (11.2 ppg) joined Frazier (13.4 ppg) in averaging double-digits over the final five non-con games, while Oliver was just behind at 9.2 ppg. Woodyard hit 50 percent from the floor and 8-of-18 from three during the stretch, while Marshall got to the foul line 29 times, making 20. Oliver made eight threes over the stretch combining with Marshall (6) and Woodyard (8) for 22 of the Lions 31 threes over the five games.

FOUR SCORERS/70+: Penn State displayed its most balanced offensive attack of the season with a season-high five players reaching double-figures in a victory over Mt. St. Mary's (12/18). The Lions have had four or more players reach double-figures in three games. Tim Frazier (15), Cam Woodyard (14), Billy Oliver (13), Sasa Borovnjak (10) and Jermaine Marshall (10) turned the trick vs. The Mount. **The Lions have posted 70+ points six times on the year.** Penn State reached that mark just five times last year.

YOUNG STAFF: Penn State head coach Patrick Chambers turned 41 on Dec. 13 and is the youngest head coach in the Big Ten. No member of the Penn State coaching staff is older than 41 and the average age of Penn State's head coach, associate head coach, two assistants and director of operations is 36.

NON-CON ROAD WIN: Penn State's victory at B.C. snapped a string of four-straight non-conference road losses (going 0-2 last year at Mississippi and Virginia Tech) and was its first non-con road win since winning at Virginia (69-66) as part of the 2009 Challenge.



PATRICK CHAMBERS

HEAD COACH
1ST SEASON
PHILADELPHIA UNIVERSITY, '94

WHAT THEY ARE SAYING

CAREER HIGHLIGHTS

- Led Boston University to the 2011 NCAA Tournament – the program's first NCAA berth since 2002.
- Led BU to the 2011 America East Tournament Title.
- Posted back-to-back 21-win seasons at BU – the only coach in BU history to earn 20 wins in each of his first two seasons and the fastest to earn a conference championship.
- 42-28 record in two seasons as head coach at BU, leading the Terriers into the post-season both years.
- Associate head coach at Villanova's during the Wildcats 2009 NCAA Final Four run.
- Five seasons on Villanova staff under Jay Wright – helped lead the Wildcats to a 126-45 record (.737), five NCAA Tournament appearances, four NCAA Sweet 16 appearances, a school record 30 wins in 2008-09, won at least 22 games every year.
- Instrumental in building Villanova's 2009 recruiting class which was ranked No. 3 in the nation by ESPN.com.
- Four players coached at Villanova played in the NBA.
- Recruited four McDonald's All-Americans to Villanova.

NOTABLE

- The youngest of 12 siblings (nine boys, three girls)
- The youngest coach in the Big Ten.
- Three siblings are Penn State graduates
- Worked for 10 years in family printing business in Philadelphia.
- Played for 2011 Naismith Basketball Hall of Fame inductee Herb Magee at Philadelphia University. Magee, also known as "The Shot Doctor," is college basketball's all-time victories leader (922).
- Began his career at Philadelphia U. as a walk-on and went on to become the school's all-time leader in assists.
- Played for and coached with legendary Philadelphia coach Dan Dougherty at Episcopal Academy. Dougherty posted 621 wins at Episcopal, most of any high school coach in Philadelphia history.

"Penn State and Pat Chambers are a perfect match - class, pride and integrity. Pat is a talented coach and an outstanding recruiter.

I watched him interact with people and I just liked him, liked his energy. I remember seeing him come in from work and into practice in his shirt and tie (at Episcopal). I remember thinking, 'Man, this guy's rushing in from work, coming on the court, bringing energy.' I just really like his passion. As soon as we got him in here, I could tell he was gonna be outstanding. Very detailed, very organized, a relentless worker and a lot of passion."

- Jay Wright, Villanova Head Basketball Coach

"It was clear right away he had a little something extra you don't find in a lot of guys. He wasn't a scoring threat at all. But, I had scorers. But, his ability to lead and defend and do all the things on and off the court that coaches need made me fall in love with the kid. Once he got the job, he never relinquished it."

- Herb Magee, Philadelphia University Head Basketball Coach, NCAA All-time Victories Leader 2011 Naismith Basketball Hall of Fame inductee

"He was selling for the family business and doing well. But, I just had that feeling he would make a great coach. He was one of those people who love the game so much and know the game so well. He had that Philly ability to recognize situations and know what people should be doing and know what to do with the ball and that intense desire to win. I loved the way he interacted with the players. He's quick to jump on them if they're not doing everything exactly the right way. There are no short-cuts with him."

- Dan Dougherty, Former Episcopal Academy Head Coach

"Pat Chambers has been fortunate enough to play for and work for some of the most successful coaches in the Philadelphia area – long-time coach Dan Dougherty at celebrated Episcopal Academy, Naismith Hall of Fame coach Herb Magee from Philadelphia University and 2008 NABC National Coach of the Year Jay Wright from Villanova.

- Dick "Hoops" Weiss, New York Daily News

"It's hard to imagine Penn State finding a more promising coach and better fit than Patrick Chambers. It certainly helps that he worked for one of the best, classiest coaches in Jay Wright, but Patrick showed in his two years at BU that he could stand on his own as a coach. Penn State has every reason to be thrilled about its basketball future."

- Mike DeCourcy, Sporting News/Big Ten Network

"Before I joined ESPN.com, I worked in Philadelphia and watched Chambers tutor alongside Villanova coach Jay Wright. His passion for basketball and his eagerness was so overwhelming that more than one person asked, 'Is this guy for real?' The implication being that Chambers' personality might be somewhat disingenuous. It is not. It is who he is.

- Dana O'Neil, ESPN.com

"Chambers to Penn State' is bigger news in Philadelphia than just a Philly guy getting a job – and relevant right now, not just in the winter – because every Division I coach in Philadelphia knows Chambers is at Penn State...Chambers can walk into any gym in this city and find people he knows. He has relationships with virtually all the AAU movers and shakers."

- Mike Jensen, Philadelphia Inquirer

CHAMBERS COACHING RECORD

YEAR	OVERALL	PCT.	CONF.	PCT.	FINISH	POST-SEASON
BOSTON UNIVERSITY						
2009-10	21-14	.600	11-5	.688	4th/2nd in Tourn.	CBI Semifinals
2010-11	21-14	.600	12-4	.750	2nd/Won Tourn.	NCAA 2nd Round
PENN STATE						
2011-12	8-7	-	0-2			
TOTALS						
2 Years	50-35	.593	23-11		1 Tournament Title	1 NCAA

CHAMBERS FILE

Family: Wife: Courtney; Daughter: Grace; Son: Ryan
Hometown: Newtown Square, Pa.
College: Philadelphia University, 1994
Date of Birth: Dec. 13, 1970
Hired At Penn State: June 6, 2011
Overall Record: 50-35 (3 years)
Post-Season Appearances: 2
Record At Penn State: First Year

Collegiate Coaching Experience:
 1995-96 Delaware Valley (PA) College (Asst)
 2004-05 Villanova (Dir. Ops)
 2005-08 Villanova (Asst.)
 2008-09 Villanova (Assoc. Head Coach)
 2009-11 Boston University (Head Coach)
 2011-present Penn State (Head Coach)

Playing Experience:
 1991-94 Philadelphia University
 All-time career assist record

- Patrick Chambers traveled 10,500 miles visiting players in his first eight days on the job at Penn State
- Patrick Chambers is the youngest of 12 children
- Three of Patrick Chambers 11 siblings graduated from Penn State and he has a nephew, Patrick Flanagan, on the Nittany Lion football team.
- Patrick Chambers spent 10 years as a highly successful salesman and part owner of his family's printing business in Philadelphia.
- Patrick Chambers was in collegiate coaching just five years before earning his first head coaching position at Boston University.
- Patrick Chambers played in college for 2011 Naismith Hall of Fame inductee Herb Magee, also known as "The Shot Doctor."
- Patrick Chambers helped lead Villanova to five straight NCAA Tournament appearances and the 2009 Final Four.
- Patrick Chambers was instrumental in bringing the No. 3 ranked recruiting class in the nation, according to ESPN.com, to Villanova in 2009
- Patrick Chambers older brother, Tim, was the 1984 Ivy League Player of the Year in football and led Penn to three-straight Ivy League titles. He is now a writer, producer and director and just released the film "Mighty Macs" about the Immaculata women's 1972 NCAA championship team.
- Patrick Chambers older brother, Paul, was a three-year starter at point guard for the Penn Quakers.



PENN STATE RADIO NETWORK

Entering his 29th season, Steve Jones handles the play-by-play for Nittany Lion basketball and is joined by nationally respected Philadelphia Daily News sportswriter Dick Jerardi. Broadcasts begin 30 minutes prior to tipoff with the "Patrick Chambers Pregame Show." Game telecasts as well as "The Nittany Lion Hotline" call-in show, which airs each Thursday during basketball season, can both also be heard via GoPSUsports.com

WEAB (790 AM)	Allentown/Bethlehem/Easton
WVAM (1430 AM)	Altoona
WILK (103.1 FM)	Avoca
WAYC (1600 AM)	Bedford
WISR (680 AM)	Butler**
WCPA (900 AM)	Clearfield
WZDB (95.9 FM)	DuBois/Sykesville
WPSE (1450 AM)	Erie
WFRA (1450 AM)	Franklin
WGET (1320 AM)	Gettysburg
WHVR (1280 AM)	Hanover**
WHGB (1400 AM)	Harrisburg
ESPN RADIO (95.3 FM)	Harrisburg
WKZN (1300 AM)	Hazleton
WLAK (103.5 FM)	Huntingdon
WLPA (1490 AM)	Lancaster
WNPV (1440 AM)	Lansdale
WLBR (1270 AM)	Lebanon
WMRF (95.7 FM)	Lewiston
WMGW (1490 AM)	Meadville
WJST (1280 AM)	New Castle/Sharon**
WVNJ (1160 AM)	New York Metro**
WBYY (96.7 FM)	Olean, NY
WNTP (990 AM)	Philadelphia
KQV (1410 AM)	Pittsburgh
WPPA (1360 AM)	Pottsville
WRAW (1340 AM)	Reading
WBZU (910 AM)	Scranton
WYGL (1240 AM)	Selinsgrove
WBYY (95.3 FM)	Smethport
WQWK (1450 AM)	State College
WKOK (1070 AM)	Sunbury
WTIV (1230 AM)	Titusville
WFTZ (1310 AM)	Troy
WTRN (1304 AM)	Tyrone
WTRN (100.7 FM)	Tyrone
WNAE (1301 AM)	Warren
WNBT (104.5 FM)	Wellsboro
WNBQ (92.3 FM)	Wellsboro/Mansfield
WILK (980 AM)	Wilkes-Barre
WRAK (1400 AM)	Williamsport
WRKK (1200 AM)	Williamsport/Hughesville
WSBA (910 AM)	York
WJST (1280 AM)	Youngstown, Ohio

** Carries only partial schedule

SEASON SUPERLATIVES

- Posted seventh-straight season opening win a victory over Hartford.
- Posted fourth 3-0 start in the last 12 years and eighth since joining the Big Ten in 1993. The Lions have reached the post-season following each of their previous 3-0 starts since joining the Big Ten.
- Posted fourth Big Ten/ACC Challenge win in last five Challenges and third-straight in a Challenge road game.
- Logged eight non-conference wins surpassing the total of seven posted by last year's NCAA Tournament team.

LIONS WIN 4TH BIG TEN/ACC CHALLENGE GAME IN LAST FIVE:

Penn State improved to 5-6 overall in Big Ten/ACC Challenge games and posted its fourth win in its last five Challenge contests with a 62-54 victory at Boston College, Nov. 30, which gave the Eagles their first-ever Challenge loss in six games. It marked Penn State's third-straight win in a Challenge road game, having also won at Georgia Tech (2008) and at Virginia (2009). Penn State, which was the first Big Ten team to claim a Challenge victory in three-straight seasons, now ranks sixth among Big Ten teams with five Challenge wins. **The Big Ten won the Challenge for the third-straight year** posting an 8-4 edge, the Big Ten's largest-ever winning margin and equaling the most number of wins in a season in the series. The ACC also won eight in 2006 and 2007 and won the initial 10 Challenges.

20th BIG TEN SEASON: Penn State opened its 20th season of Big Ten Conference play with a pair of road games at Michigan (Dec. 29) and at Northwestern (Jan. 1). It marked the second straight season Penn State opened the Big Ten with a pair of road games and the third straight season opening the Big Ten with a road game. Penn State posted a 9-9 mark during the Big Ten regular season last year to finish in a tie for fourth place. The nine wins marked the fifth time Penn State posted a .500 or better record in Big Ten play and tied for Penn State's third best Big Ten record ever. It marked the second time in the last three seasons Penn State finished fourth in the Big Ten regular season. Penn State's best Big Ten finish came in 1996 as the Lions went 12-6 to finish second in the conference.

CHAMBERS ERA BEGINS: Patrick Chambers was introduced as the 12th head coach in Nittany Lion basketball history on Monday, June 6, shortly after the departure of Penn State alumnus and eight-year head coach Ed DeChellis for the Navy head job in late May. Chambers introduction took place in front of more than 300 fans and supporters described a "less an introduction than a passionate call to arms," by local media. Chambers wasted little time connecting with the Penn State fan base far and wide. He ordered a pair of golf carts and began making spur-of-the-moment trips around the Penn State campus distributing t-shirts and his infectious energy. He visited amusement parks, pep rallies, student groups, classes, threw out the first pitch for the State College Spikes and even donned a Penn State football jersey and helmet to fire up the famed "Paternoville" student campout just prior to the clash of Joe Paterno's football team with Alabama. He was seemingly everywhere in his first four months on the job, most importantly the recruiting trail, and showed no signs of slowing down.

FRAZIER STEPS INTO LEADERSHIP ROLE: Junior guard Tim Frazier took his game to a higher level in Penn State's 2011 run to the NCAA Tournament as he averaged 10.0 ppg, 5.9 apg and 4.6 rpg over the final 11 games, including a career-best 22-point, eight-

CAREER ASSISTS

ASST APG

1.	600	4.7	Freddie Barnes, 1989-92
7.	443	3.4	Titus Ivory, 1997-2001
8.	418	3.9	Ben Luber, 2004-07
9.	385	3.7	Dwight Gibson, 1982-85
10.	350	4.8	Ron Brown, 1972-74
11.	346	-	TIM FRAZIER, 2010-12
12.	331	3.6	Tony Ward, 1985-88
13.	291	2.5	Pete Lisicky, 1994-98

SEASON ASSISTS

ASST APG

1.	189	5.0	Talor Battle, 2009
2.	181	5.7	Dan Earl, 1995
3.	178	5.1	Joe Crispin, 2000
4.	177	6.1	Freddie Barnes, 1992
5.	173	5.2	Tim Frazier, 2011
6.	165	6.1	Tom Wilkinson, 1978
7.	159	4.7	Freddie Barnes, 1990
8.	153	5.7	Tom Wilkinson, 1979
9.	152	4.8	Freddie Barnes, 1991
10.	150	4.7	Monroe Brown, 1991
	150	5.4	Dan Earl, 1996
	100	6.7	TIM FRAZIER, 2012

GAME ASSISTS

ASST

1.	15	Tom Doaty, Syracuse, 1975
2.	14	Ron Brown, Bucknell, 1973
3.	13	Dan Earl, at Iowa, 1995
4.	12	Tom Wilkinson, Rochester, 1978
	12	Tom Wilkinson, Marquette, 1978
	12	Dan Earl, Pennsylvania, 1996
	12	Dan Earl, at Iowa, 1996
8.	11	14 times
		last, TIM FRAZIER, vs. YSU, 2011

rebound, six-assist effort in the Lions' Big Ten Tournament semifinal win over Michigan State. With the graduation of four senior starters, Frazier entered the season the most experienced Nittany Lion having played in every game over the previous two seasons and started 43.

CHAMBERS HITS THE GROUND RUNNING: Coach Chambers wasted no time in getting to know his first Penn State team as **HE LOGGED 10,500 MILES IN HIS FIRST EIGHT DAYS ON THE JOB** traveling from coast-to-coast to visit current Penn State players and incoming freshmen and their families. Chambers traveled from Massachusetts to California, Minnesota to Texas as he met with every player except Sasa Borovnjak who was at home in Serbia.

GET ON THE FLOOR: Patrick Chambers places an emphasis on "dives" during a basketball game and has his staff chart them with a goal of achieving at least 14 "dives" per game. The Nittany Lions achieved that goal in their exhibition game recording 18 "dives," 13 of which came in the second half. Chambers has established an "Attitude Club" in which players attempt to record enough hustle points during practices to become a member. Penn State charts "Attitude Points" during every practice and announces winners at the end of every practice. Modeled after similar programs used by longtime NBA coach Pat Riley and Chambers' mentor, Villanova's Jay Wright, the club charts hustle plays, extra passes, charges drawn, dives on the floor.

SEASON OUTLOOK NOTES

- Juniors Tim Frazier and Billy Oliver are expected to step to the forefront as scoring options for Penn State after averaging 6.3 and 2.3 ppg, respectively, last season.
- Penn State graduated players that accounted for 80% of the scoring and nearly 70% of the rebounding from last year's NCAA Tournament team.
- Five senior graduates from the 2010-11 team accounted for 432 career starts and 581 career games played. Among them was all-time leading scorer Talor Battle who posted 2,213 points and led the Lions in scoring each of the past four seasons.
- Tim Frazier leads all returners having started 43 career games (33 of 34 games last year) and played in every game in the last three seasons.
- Penn State returned five players with experience in a Penn State uniform (Frazier, Sasa Borovnjak, Jermaine Marshall, Billy Oliver and Cammeron Woodyard).



2011 EARLY SIGNEE

Penn State signed one player in the 2011 NCAA Early Signing Period that began Nov. 9

BRANDON TAYLOR 6-8, 235, F, Tabernacle, N.J., Trenton Catholic Academy (N.J.)

Taylor helped lead his AAU squad, Team Philly, to several tournament titles over the summer and saw his stock rise as he diversified his game and excelled in several head-to-head battles with other high Division I recruits. His size and strength on the block as well as his ability to stretch defenses on the perimeter and score off the dribble or from the three-point line were on display. He is described as a "prototypical mismatch problem" with "the physical tools and basketball skills to score both inside and out" by ESPN.com. Dave Telep of ESPN.com added, "Penn State has itself a legitimate scoring option on its way to Happy Valley." Taylor helped Trenton Catholic Academy (N.J.) to a 2010 New Jersey Non-Public B State Championship with a victory over perennial powerhouse St. Anthony and an eventual championship crown in the NJSIAA (all classes) Tournament of Champions as a sophomore. He averaged 11.7 points per game last year as a junior at Trenton Catholic as he helped lead the team to a 19-6 record.

CHAMBERS LEADS COACHES VS CANCER:

Patrick Chambers immediately embraced the mantle of leadership of Coaches vs. Cancer-Penn State when he took over the Nittany Lion program.

- CVC-Penn State has raised more than \$1.7 million in the last 15 years to fight cancer and help support those affected by the disease.
- The organization raised over \$200,000 for the second-straight year in 2010-11 and has raised more than \$175,000 each of the last five years ranking it among the top six CVC organizations in the nation.
- CVC-Penn State has grown from an annual golf tournament started in the summer of 1996 to a year-round schedule of seven events, which includes the Coaches Vs. Cancer Celebrity Golf Tournament, CVC Reverse Car Drawing, CVC "Band Together" Day, Spikes Fest, CVC 5k Fun Run/Walk, Brewer's Expo and Bestwick Foundation Bike For Life.
- CVC-Penn State keeps a portion of the money raised in the Centre Region to provide direct assistance through the Bob Perks Fund (BPF). CVC has donated more than \$35,000 to BPF each of the last four years and more than \$190,000 total. Funds are also donated directly to the American Cancer Society.

CVC "BAND TOGETHER" DAY FEB. 11: The event, which raised more than \$23,000 last year, is slated for a 1:00 p.m Saturday tip vs. Nebraska. It is a bringing together of survivors and their families, fans, Penn State coaches and players and cancer fighting organizations from around the community. Penn State donates \$3 from every single-game ticket sold to the contest.

STAFF TIES: Patrick Chambers began forming his first Penn State coaching staff by naming his former Episcopal Academy high school teammate Eugene Burroughs as associate head coach, the first of three assistants with strong ties to Philadelphia. Chambers and Burroughs both played for legendary coach Dan Dougherty in Philadelphia in the late 80's early 90's. Burroughs previously had worked as associate head coach at Navy. Former Villanova assistant Keith Urgo also joined the staff as an assistant. The pair worked together on Villanova's 2009 NCAA Final Four staff and Urgo worked under Jay Wright for four seasons. Brian Daly followed Chambers from Boston University where he was associate head coach under Chambers. Daly is a former Philadelphia high school standout and player at Saint Joseph's and was a highly successful high school coach at his alma mater, Monsignor Bonner HS in Philadelphia.

LIONS PLAYING PROFESSIONALLY: All four senior starters from Penn State's 2011 NCAA Tournament team are currently playing professionally in Europe or South America. Penn State currently has 11 former players active in pro leagues around the world, six of which have graduated in the last three years.

Nittany Lions Currently Playing Professionally

Player (year graduated or left PSU)	Team	Country	League
Talor Battle (2011)	Telekom Baskets Bonn	Germany	Germany-1.Bundesliga
Jeff Brooks (2011)	Fileni BPA	Italy	Italian Lega 2
David Jackson (2011)	Barreirense CEPESA	Portugal	Portugeuse-LPB
Andrew Jones (2011)	Nova Ves	Slovakia	Slovakia-Extraliga
Jamelle Cornley (2009)	Lev Hasharon	Isreal	Isreal-National League
Stanley Pringel (2009)	Dnipro Azot	Ukraine	Ukranian-Superleague
David "Mooch" Jackson (2007)	Flamengo	Brazil	Brazil-NBB
Jan Jagla (2004)	FC Bayern Muenchen	Germany	Germany-1.Bundesliga
Tyler Smith (2002) - INJURED	Tohigi Brex	Japan	Japan-JBL
Joe Crispin (2001)	Azovmash Mariupol	Ukraine	Ukraine-Superleague
DeRon Hayes (1993)	Orchesien BC	France	France-NM1

GREAT GRAD RATE: Penn State basketball's NCAA four-year Academic Progress Rate (APR) score of 995 through 2009-10 tied for the best among men's basketball teams in the Big Ten and was well above the national average of 945. Penn State and Michigan State tied for the Big Ten's highest APR figure, marking the fourth consecutive year the Nittany Lions have ranked among the top three in the Big Ten. Penn State student-athletes also earned a Graduation Success Rate (GSR) of 88 percent compared to the 80 percent average for all Division I institutions for students entering from 2001-02 through 2004-05. The 88 percent figure was third to Northwestern (96) and Illinois (89) among Big Ten Conference institutions. Coach Patrick Chambers' Nittany Lions ranked second in the Big Ten with their 90 percent GSR score. The four-year federal graduation rate average for University Park student-athletes was 79 percent, second to Northwestern (88) among Big Ten schools, and significantly above the 64 percent Division I average.

IN THE BIG TEN STAT RANKINGS

INDIVIDUAL (Jan. 2)

SCORING:	OVERALL	Big Ten
Tim Frazier	3rd, 17.3	4th, 18.0
REBOUNDING:		
Tim Frazier	11th, 5.6	
FIELD GOAL %:		
-		
ASSISTS		
Tim Frazier	1st, 6.7 (7th NCAA)	8th, 3.5
FREE THROW %:		
Cammeron Woodyard		15th, 83.3
3-POINT %:		
Jermaine Marshall		8th, 50.0
BLOCKED SHOTS:		
-		
STEALS:		
Tim Frazier	2nd, 2.2	2nd, 2.5
3-POINTERS MADE:		
Billy Oliver	15th, 1.5	
Jermaine Marshall		1st, 2.5
ASSIST TO TURNOVER:		
Tim Frazier	10th, 1.7	
OFFENSIVE REBOUNDS:		
Sasa Borovnjak	15th, 1.9	
Matt Glover		8th, 2.5
Cammeron Woodyard		13th, 2.0
DEFENSIVE REBOUNDS:		
Tim Frazier	11th, 3.9	
MINUTES PLAYED:		
Tim Frazier	1st, 35.7	

TEAM RANKINGS

SCORING OFFENSE:	12th, 62.7	11th, 54.5
SCORING DEFENSE:	10th, 62.7	7th, 69.5
FREE THROW %:	11th, 63.3	11th, 60.0
FIELD GOAL %:	12th, 39.0	11th, 36.8
FIELD GOAL% DEFENSE:	9th, 41.3	11th, 50.5
3-POINT FG % :	12th, 31.3	8th, 29.4
3-POINT FG % DEFENSE:	9th, 35.3	9th, 37.0
REBOUNDING OFFENSE:	3rd, 37.1	6th, 34.0
REBOUNDING DEFENSE:	8th, 31.2	3rd, 29.5
ASSISTS:	12th, 11.5	11th, 8.5
ASSIST TO TURNOVER:	12th, 0.8	12th, 0.6
STEALS:	7th, 7.1	4th, 6.0
TURNOVER MARGIN:	8th, +1.3	11th, -3.5
OFFENSIVE REBOUNDS:	1st, 14.1	1st, 14.5
OFFENSIVE REBOUND %:	3rd, 38.0	1st, 38.2
DEFENSIVE REBOUNDS:	10th, 22.9	10th, 19.5
3-POINT FG MADE:	5th, 6.9	9th, 5.0



2011-12 PENN STATE RESULTS

DATE	RANK	RANK	W/L	SCORE	RECORD	PSU HIGH SCORER	OPP HIGH SCORER	HIGH REBS	HIGH ASST	ATTENDANCE
11/12	HARTFORD	-	-	W 70-55	1-0	Lewis (17)	Cole (12)	Travis/Woodyard (7)	Frazier (6)	4,152
11/14	RADFORD	-	-	W 62-46	2-0	Frazier (20)	Smith (16)	Woodyard (7)	Frazier (10)	4,916
11/16	LONG ISLAND	-	-	W 77-68	3-0	Frazier (26)	Boyd & Culpo (15)	Oliver (10)	Frazier (10)	5,258
11/19	vs Kentucky	-	2/2	L 47-85	3-1	Frazier (11)	Lamb (26)	Travis (8)	Frazier (6)	4,755
11/20	vs. South Florida	-	-	W 53-49	4-1	Frazier (27)	Blake (14)	Woodyard (7)	5 with (1)	4,755
11/23	YOUNGSTOWN ST	-	-	W 82-71	5-1	Frazier (26)	Allen (25)	four with (5)	Frazier (11)	4,461
11/26	@ St. Joseph's	-	-	L 47-65	5-2	Oliver (12)	Galloway (17)	Frazier (11)	Frazier (6)	4,200
11/30	@ Boston College	-	-	W 62-54	6-2	Frazier/Marshall (22)	Humphrey (15)	Marshall (8)	Frazier (5)	4,326
12/4	MISSISSIPPI	-	-	L 70-72	6-3	Frazier (17)	Summers (27)	Marshall (7)	Frazier (9)	6,001
12/7	LAFAYETTE	-	-	L 57-61	6-4	Marshall (20)	Hinrichs(22)	Glover/Marshall (9)	Frazier (9)	5,462
12/10	@ Duquesne	-	-	L 59-66	6-5	Frazier (15)	Evans (20)	Frazier/Borovnjak (7)	Frazier (6)	7,046
12/18	MT. ST. MARY'S	-	-	W 72-43	7-5	Frazier (15)	Barber (11)	Glover (6)	Frazier (8)	7,202
12/21	CORNELL	-	-	W 72-67	8-5	Frazier (17)	Ferry (20)	Frazier (11)	Frazier (6)	4,414
12/29	@ Michigan	-	18/16	L 53-71	8-6	Frazier (20)	Hardaway (26)	Graham (6)	Frazier (4)	12,721
1/1	@ Northwestern	-	-	L 56-68	8-7	Frazier (16)	Crawford (21)	Glover (8)	three with (3)	5,389

DOUBLE-FIGURES

POINTS	11-12	CAREER	CONSECUTIVE
Frazier	13	24	5
Woodyard	8	9	1
Marshall	8	9	1
Oliver	3	4	-
Travis	3	3	-
Lewis	2	2	-
Borovnjak	2	2	-
REBOUNDS	11-12	CAREER	
Frazier	2	2	-
Oliver	1	1	-
ASSISTS	11-12	CAREER	
Frazier	3	3	-

DOUBLE-DOUBLES

POINTS	11-12	CAREER	CONSECUTIVE
Frazier	3	4	-

Last: 26 pts, 11 asst vs. YSU (11/23/11)

20-POINT GAMES

POINTS	11-12	CAREER	CONSECUTIVE
Frazier	6	7	-

Last: 20 pts at Michigan (12/29)

POINTS	11-12	CAREER	CONSECUTIVE
Marshall	2	2	-

Last: 20 pts vs. LAFAYETTE (12/7)

30-POINT GAMES

POINTS	11-12	CAREER	CONSECUTIVE
-	-	-	-

Last: -

2011-12 RECORD

	OVERALL	HOME	AWAY	NEUTRAL
ALL GAMES	8-7	6-2	1-4	1-1
CONFERENCE	0-2	-	0-2	-
NON-CON	8-5	6-2	1-2	1-1
TOURNAMENT	-	-	-	-

SCORE BY PERIODS

	1ST	2ND	OT	2OT	TOTAL
PENN STATE	413	528			941
OPPONENTS	446	495			941

MARGINS OF VICTORY

1	2	3	4	5	6	7	8	9	10	11	12	13	14	15+
1	1						1	1						3

LARGEST: 29 vs. Mount St. Mary's (12/18)

MARGINS OF DEFEAT

1	2	3	4	5	6	7	8	9	10	11	12	13	14	15+
1	1										1			3

LARGEST: 38 vs Kentucky (11/19)

LARGEST NON-CON LEAD: 31 (2nd) vs. Mt. St. Mary's
 LARGEST NON-CON DEFICIT: 41 (2nd) vs. Kentucky
 LARGEST BIG TEN LEAD: 4 (1st) at Northwestern
 LARGEST BIG TEN DEFICIT: 22 (2nd) at Michigan
 LARGEST DEFICIT OVERCOME TO WIN: 8 (1st) at B.C.
 8 (1st) vs. Cornell
 LARGEST BIG TEN DEFICIT OVERCOME TO WIN:
 -

2011-12 ATTENDANCE

	G	TOTAL	HIGH	AVERAGE
HOME	8	41,866	7,202	5,233
AWAY	5	33,712	12,721	6,742
NEUTRAL	2	9,510	4,755	4,755
TOTAL	15	85,088	12,721	5,673

LED PENN STATE IN:

POINTS	10-11	11-12	CAREER
Frazier	1	12	15
Marshall	-	2	2
Lewis	-	1	1
Oliver	-	1	1
REBOUNDS	10-11	11-12	CAREER
Frazier	8	4	12
Woodyard	1	3	4
Glover	-	4	4
Marshall	-	3	3
Borovnjak	-	2	2
Travis	-	2	2
Graham	-	2	2
Oliver	-	1	1
ASSISTS	10-11	11-12	CAREER
Frazier	28	15	50
Marshall	-	2	2
Glover & Lewis	-	1	1
Oliver & Travis	-	1	1
STEALS	10-11	11-12	CAREER
Frazier	15	9	33
Marshall	5	3	8
Oliver	3	2	5
Woodyard	1	1	3
Travis	-	3	3
Lewis	-	2	2
Glover	-	2	2
Borovnjak, Graham & Colella	1		1
BLOCKS	10-11	11-12	CAREER
Oliver	4	5	9
Frazier	2	2	5
Marshall	-	4	4
Woodyard	-	3	4
Borovnjak	-	3	3
Graham	-	2	2
Glover & Travis	-	1	1



2011-12 GAME-BY-GAME STATISTICS

OPPONENT	DATE	TOTAL		3-POINT				REBOUNDS				PF	ASST	TO	BLK	STL	POINTS
		SCORE	W/L	FG-FGA	PCT	FG-FGA	PCT	FT-FTA	PCT	OFF-DEF	TOTAL						
PENN STATE	11/12	70-55	W	23-64	.359	10-23	.435	14-26	.538	17-23	40	22	12	12	1	15	70
HARTFORD				19-44	.432	8-26	.308	9-16	.563	6-28	34	24	13	26	6	5	55
PENN STATE	11/14	62-46	W	24-53	.453	7-25	.280	7-12	.583	15-23	38	15	11	12	4	7	62
RADFORD				16-47	.340	9-26	.346	5-8	.625	9-16	25	16	9	16	3	3	46
PENN STATE	11/16	77-68	W	27-65	.415	9-27	.333	14-18	.778	15-22	37	25	17	8	5	8	77
LONG ISLAND				17-47	.362	7-20	.350	27-35	.772	11-23	34	19	11	13	2	6	68
PENN STATE	11/19	47-85	L	18-16	.269	7-27	.259	4-12	.333	18-21	39	22	9	12	3	4	47
vs Kentucky				28-53	.528	10-20	.500	19-29	.655	10-35	45	16	19	10	8	7	85
PENN STATE	11/20	53-49	W	17-45	.378	5-20	.250	14-21	.667	11-19	30	19	5	15	1	12	53
vs. S. Florida				14-41	.341	5-20	.250	16-20	.800	11-18	29	23	4	19	2	6	49
PENN STATE	11/23	82-71	W	26-46	.565	11-22	.500	19-31	.613	11-24	35	11	15	18	3	7	82
YOUNGSTOWN ST.				24-61	.393	14-27	.519	9-9	1.000	11-15	26	25	15	15	5	7	71
PENN STATE	11/26	47-65	L	19-71	.268	7-28	.250	2-7	.286	15-23	38	20	11	11	3	6	47
@ St. Joseph's				20-49	.408	6-16	.375	19-25	.760	7-38	45	14	17	16	12	2	65
PENN STATE	11/30	62-54	W	21-54	.388	7-24	.292	13-20	.650	12-26	38	23	7	14	2	7	62
@ Boston College				16-44	.364	8-24	.333	14-22	.636	6-23	29	22	10	18	5	3	54
PENN STATE	12/4	70-72	L	26-54	.481	6-19	.316	12-19	.632	12-22	34	13	16	15	1	2	70
MISSISSIPPI				27-59	.458	11-24	.458	7-10	.700	10-20	30	23	14	12	4	10	72
PENN STATE	12/7	57-61	L	19-58	.328	3-23	.130	16-26	.615	20-27	47	18	14	13	1	6	57
LAFAYETTE				18-47	.383	9-30	.300	16-20	.800	4-22	26	19	15	10	3	7	61
PENN STATE	12/10	59-66	L	21-49	.429	4-16	.250	13-16	.813	11-28	39	21	13	23	3	3	59
@ Duquesne				22-53	.415	5-24	.208	17-23	.739	8-20	28	18	15	14	3	11	66
PENN STATE	12/18	72-43	W	27-53	.509	8-20	.400	10-13	.769	10-23	33	15	14	11	3	9	72
MT. ST. MARY'S				17-47	.362	3-17	.176	6-9	.667	8-17	25	14	6	18	3	4	43
PENN STATE	12/21	72-67	W	21-56	.375	10-24	.417	22-30	.733	16-24	40	13	10	12	5	9	72
CORNELL				20-53	.377	11-28	.393	16-17	.941	9-24	33	29	14	16	4	3	67
PENN STATE	12/29	53-71	L	21-53	.396	4-15	.267	7-12	.583	11-21	32	17	6	13	1	4	53
@ Michigan				25-53	.472	8-25	.320	13-15	.867	8-24	32	13	15	9	3	7	71
PENN STATE	1/1	56-68	L	18-53	.340	6-19	.316	14-23	.609	18-18	36	23	11	15	0	8	56
@ Northwestern				22-40	.550	9-21	.429	15-25	.600	4-23	27	16	13	12	5	6	68



2011-12 SEASON SUPERLATIVES

PENN STATE

TEAM GAME HIGHS			TEAM GAME LOWS			INDIVIDUAL GAME HIGHS		
POINTS	82	YOUNGSTOWN ST. (11/23/11)	47	vs KENTUCKY (11/19/11)	27	Frazier, Tim	vs SOUTH FLORIDA (11/20/11)	
	77	LONG ISLAND (11/16/11)	47	at Saint Joseph's (11/26/11)	26	Frazier, Tim	vs Youngstown State (11/23/11)	
					26	Frazier, Tim	vs Long Island (11/16/11)	
FIELD GOALS MADE	27	MOUNT ST. MARY'S (12/18/11)	17	vs SOUTH FLORIDA (11/20/11)	9	Frazier, Tim	vs Long Island (11/16/11)	
	27	LONG ISLAND (11/16/11)			9	Frazier, Tim	vs RADFORD (11/14/11)	
FIELD GOAL ATTEMPTS	71	at Saint Joseph's (11/26/11)	45	vs SOUTH FLORIDA (11/20/11)	19	Frazier, Tim	at Saint Joseph's (11/26/11)	
	67	vs KENTUCKY (11/19/11)						
FIELD GOAL %	.565 (26-46)	YOUNGSTOWN ST. (11/23/11)	.268 (19-71)	at Saint Joseph's (11/26/11)	1.000 (7-7)	Borovnjak, Sasa	vs Mississippi (12/4/11)	
	.509 (27-53)	MOUNT ST. MARY'S (12/18/11)			1.000 (5-5)	Borovnjak, Sasa	vs MSM (12/18/11)	
					1.000 (5-5)	Travis, Ross	vs LAFAYETTE (12/07/11)	
3 PT FG MADE	11	YOUNGSTOWN ST. (11/23/11)	3	LAFAYETTE (12/07/11)	4	Lewis, Trey	vs Cornell (12/21/11)	
					4	Oliver, Billy	at Saint Joseph's (11/26/11)	
					4	Woodyard, Cammeron	vs Hartford	
3 PT FG ATTEMPTS	28	at Saint Joseph's (11/26/11)	15	at Michigan (12/29/11)	10	Oliver, Billy	at Saint Joseph's (11/26/11)	
					10	Oliver, Billy	vs RADFORD (11/14/11)	
3 PT FG %	.500 (11-22)	YOUNGSTOWN ST. (11/23/11)	.130 (3-23)	LAFAYETTE (12/07/11)	1.000 (3-3)	Woodyard, Cammeron	vs Cornell (12/21/11)	
FT MADE	22	CORNELL (12/21/11)	2	at Saint Joseph's (11/26/11)	10	Frazier, Tim	vs SOUTH FLORIDA (11/20/11)	
FT ATTEMPTS	31	YOUNGSTOWN ST. (11/23/11)	7	at Saint Joseph's (11/26/11)	15	Frazier, Tim	vs SOUTH FLORIDA (11/20/11)	
FT %	.813 (13-16)	at Duquesne (12/10/11)	.286 (2-7)	at Saint Joseph's (11/26/11)	1.000 (4-4)	Woodyard, Cammeron	vs Cornell (12/21/11)	
	.778 (14-18)	LONG ISLAND (11/16/11)			1.000 (4-4)	Woodyard, Cammeron	vs LIU (11/16/11)	
REBOUNDS	47	LAFAYETTE (12/07/11)	30	vs SOUTH FLORIDA (11/20/11)	11	Frazier, Tim	vs Cornell (12/21/11)	
	40	CORNELL (12/21/11)			11	Frazier, Tim	at Saint Joseph's (11/26/11)	
	40	HARTFORD (11/12/11)						
ASSISTS	17	LONG ISLAND (11/16/11)	5	vs SOUTH FLORIDA (11/20/11)	11	Frazier, Tim	vs Youngstown State (11/23/11)	
STEALS	15	HARTFORD (11/12/11)	2	MISSISSIPPI (12/4/11)	5	Frazier, Tim	vs Hartford (11/12/11)	
BLOCKED SHOTS	5	CORNELL (12/21/11)	0	at Northwestern (1/1/12)	3	Marshall, Jermaine	vs Cornell (12/21/11)	
	5	LONG ISLAND (11/16/11)			3	Oliver, Billy	vs Mount St. Mary's (12/18/11)	
					3	Graham, Jon	vs Long Island (11/16/11)	
TURNOVERS	23	at Duquesne (12/10/11)	8	LONG ISLAND (11/16/11)	7	Frazier, Tim	at Boston College (11-30-11)	
FOULS	25	LONG ISLAND (11/16/11)	11	YOUNGSTOWN ST. (11/23/11)				

OPPONENT

TEAM GAME HIGHS			TEAM GAME LOWS			INDIVIDUAL GAME HIGHS		
POINTS	85	vs KENTUCKY (11/19/11)	43	MOUNT ST. MARY'S (12/18/11)	27	Summers, Jarvis	vs Mississippi (12/4/11)	
	72	MISSISSIPPI (12/4/11)	46	RADFORD (11/14/11)	26	Lamb, Doron	vs KENTUCKY (11/19/11)	
					26	Tim Hardaway, Jr.,	at Michigan (12/29/11)	
FIELD GOALS MADE	28	vs KENTUCKY (11/19/11)	14	vs SOUTH FLORIDA (11/20/11)	11	Tim Hardaway, Jr.,	at Michigan (12/29/11)	
FIELD GOAL ATTEMPTS	61	YOUNGSTOWN ST. (11/23/11)	41	vs SOUTH FLORIDA (11/20/11)	18	Tim Hardaway, Jr.,	at Michigan (12/29/11)	
FIELD GOAL %	.550 (22-40)	at Northwestern (1/1/12)	.340 (16-47)	RADFORD (11/14/11)	.750 (6-8)	AIKEN, C.J.	at Saint Joseph's (11/26/11)	
					.750 (6-8)	Jones, Terrence	vs KENTUCKY (11/19/11)	
3 PT FG MADE	14	YOUNGSTOWN ST. (11/23/11)	3	MOUNT ST. MARY'S (12/18/11)	7	ALLEN, Blake	vs Youngstown St. (11/23/11)	
3 PT FG ATTEMPTS	30	LAFAYETTE (12/07/11)	16	at Saint Joseph's (11/26/11)	12	ALLEN, Blake	vs Youngstown St. (11/23/11)	
3 PT FG %	.519 (14-27)	YOUNGSTOWN ST. (11/23/11)	.176 (3-17)	MOUNT ST. MARY'S (12/18/11)	1.000 (3-3)	Teague, Marquis	vs KENTUCKY (11/19/11)	
					1.000 (3-3)	MARTIN, Gerrell	vs Long Island (11/16/11)	
FT MADE	27	LONG ISLAND (11/16/11)	5	RADFORD (11/14/11)	9	EVANS, Eric	at Duquesne (12/10/11)	
FT ATTEMPTS	35	LONG ISLAND (11/16/11)	8	RADFORD (11/14/11)	11	EVANS, Eric	at Duquesne (12/10/11)	
FT %	1.000 (9-9)	YOUNGSTOWN ST. (11/23/11)	.563 (9-16)	HARTFORD (11/12/11)	1.000 (7-7)	Lamb, Doron	vs KENTUCKY (11/19/11)	
					1.000 (7-7)	Tre Burke	at Michigan (12/29/11)	
REBOUNDS	45	at Saint Joseph's (11/26/11)	25	RADFORD (11/14/11)	11	Miller, Shonn	vs Cornell (12/21/11)	
	45	vs KENTUCKY (11/19/11)	25	MOUNT ST. MARY'S (12/18/11)	11	Holloway, Murphy	vs Mississippi (12/4/11)	
					11	Luka Mirkovic	at Northwestern (1/1/12)	
ASSISTS	19	vs KENTUCKY (11/19/11)	4	vs SOUTH FLORIDA (11/20/11)	9	Delaney, Rob	vs LAFAYETTE (12/07/11)	
STEALS	11	at Duquesne (12/10/11)	2	at Saint Joseph's (11/26/11)	5	Holloway, Murphy	vs Mississippi (12/4/11)	
BLOCKED SHOTS	12	at Saint Joseph's (11/26/11)	2	LONG ISLAND (11/16/11)	4	KANACEVIC, Halil	at SJU (11/26/11)	
			2	vs SOUTH FLORIDA (11/20/11)	4	AIKEN, C.J.	at Saint Joseph's (11/26/11)	
					4	Mark Nwakamma	vs Hartford (11/12/11)	
TURNOVERS	26	HARTFORD (11/12/11)	9	at Michigan (12/29/11)	6	Cancer, Galal	vs Cornell (12/21/11)	
FOULS	29	CORNELL (12/21/11)	13	at Michigan (12/29/11)				



#5 • MATT GLOVER

So. • GUARD • 6-4 • 210
ORANGE, CALIF • SHERIDAN CC (WY.) • TUSTIN HS
UNDECIDED



NOTABLE/2011-12 SEASON HIGHLIGHTS

- One of the strongest players on the team putting up a team high 27 reps on the 185-pound bench press.
- Averaged 11.8 ppg, 5.3 rpg and 3.8 apg while shooting 48 percent from the floor at Sheridan CC last year.
- Posted 18.6 ppg, 7.5 rpg and 6.1 apg in senior year at Tustin HS.
- --

2011-12 SEASON HIGHLIGHTS

- Scored seven points and grabbed six rebounds and two steals in his first career game at Penn State in the Lions' season-opening win over Hartford.
- Hit a big three with 5:00 to play to give Penn State a 66-62 lead and posted seven points in a 77-68 win over LIU (11/16)
- Hit three second half three-pointers on his way to a career-high nine points and 3-of-4 from three vs. Kentucky (11/19).
- Started his first career game vs. South Florida (11/19).
- Scored the Lions first five points of the game on his way to eight in a loss to Ole Miss (12/4).
- Grabbed a career-high nine rebounds in a loss to Lafayette (12/7)
- Led Penn State with eight rebounds in a loss at Northwestern (1/1).
- --
- --
- --
- --
- --
- --
- --
- --
- --

CAREER HIGHS

POINTS:	9
	vs. Kentucky (11/19/11)
REBOUNDS:	9
	vs. Lafayette (12/7/11)
ASSISTS:	4
	at Duquesne (12/10/11)
STEALS:	3
	vs. Cornell (12/21)
BLOCKS:	1
	vs. Radford (11/14/11)
MINUTES:	31
	vs. Hartford (11/12/11)
FIELD GOALS:	3
	vs. Kentucky (11/19/11)
FG ATTEMPTS:	8
	vs. Hartford (11/12/11)
FG PERCENTAGE:	.600 (3-5)
	vs. Kentucky (11/19/11)
3-POINTERS:	3
	vs. Kentucky (11/19/11)
3PT ATTEMPTS:	4, three times
	last at St. Joe's (11/26/11)
3PT PERCENTAGE:	.750 (3-4)
	vs. Kentucky (11/19/11)
FREE THROWS:	2
	vs. Hartford (11/12/11)
FT ATTEMPTS:	7
	vs. Hartford (11/12/11)
FT PERCENTAGE:	1.000 (2-2)
	at Duquesne (12/10/11)

2011-12 GAME-BY-GAME

OPPONENT	DATE	GS	TOTAL			3-POINT		FREE THROWS		REBOUNDS			PF	A	TO	BLK	STL	PTS
			MIN	FG-FGA	PCT	FG-FGA	PCT	FT-FTA	PCT	O-D	TOTAL							
HARTFORD	11/12		31	2-8	.250	1-4	.250	2-7	.286	3-3	6	1	1	1	0	2	7	
RADFORD	11/14		22	1-3	.333	0-2	.000	0-0	.000	1-3	4	2	0	2	1	0	2	
LONG ISLAND	11/16		19	2-4	.500	1-3	.333	2-3	.667	1-0	1	4	1	1	0	1	7	
vs. Kentucky	11/19		21	3-5	.600	3-4	.750	0-0	.000	0-1	1	3	1	4	0	0	9	
vs. S. Florida	11/20	*	27	0-2	.000	0-2	.000	1-2	.500	0-2	2	3	1	0	0	1	1	
YSU	11/23	*	23	0-2	.000	0-1	.000	1-2	.500	1-4	5	2	1	0	0	1	1	
@ St. Joe's	11/26	*	22	2-6	.333	1-4	.250	0-0	.000	3-1	4	1	2	1	0	1	5	
@ Boston Coll.	11/30	*	19	0-1	.000	0-1	.000	0-0	.000	1-0	1	4	0	1	0	1	0	
MISSISSIPPI	12/4	*	3-6	2-4	.500	2-4	.500	0-0	.000	1-1	2	2	3	1	0	0	8	
LAFAYETTE	12/7	*	27	0-6	.000	0-2	.000	1-2	.500	3-6	9	2	1	3	0	1	1	
@ Duquesne	12/10	*	23	0-0	.000	0-0	.000	2-2	1.000	0-4	4	5	4	3	0	0	2	
MT. ST. MARY'S	12/18	*	29	0-4	.000	0-1	.000	0-0	.000	1-5	6	1	2	3	0	1	0	
CORNELL	12/21	*	25	2-7	.286	0-4	.000	0-0	.000	1-5	6	1	2	1	0	3	4	
@ Michigan	12/29	*	14	0-2	.000	0-1	.000	0-2	.000	1-1	2	2	0	2	0	2	0	
@ Northwestern	1/1	*	28	2-5	.400	0-0	.000	0-0	.000	4-4	8	5	2	2	0	0	4	

PERSONAL FILE

BIRTHDAY: 10/5/1991
FAMILY: Nancy Willson (mother); no siblings

CAREER STATISTICS

Season	gp-gs	min/avg	Total		3-Point		F-Throws		Rebounds				Scoring							
			fg-fga	pct	fg-fga	pct	ft-fta	pct	off	def	tot	avg	pf	fo	ast	to	blk	stl	pts	avg
2011-12	15-11	350/23.3	17-61	.279	8-33	.242	9-20	.450	21	42	63	4.2	38	2	21	25	1	13	51	3.4
TOTAL	15-11	350/23.3	17-61	.279	8-33	.242	9-20	.450	21	42	63	4.2	38	2	21	25	1	13	51	3.4



#11 • JERMAINE MARSHALL

RS-SO • GUARD • 6-4 • 200
 ETTERS, PA. • RED LAND
 UNDECIDED



NOTABLE/CAREER HIGHLIGHTS

- Posting 13.6 ppg and 5.6 rpg over last eight games, posting double-digit scoring in seven games.
- Has posted TWO 20-point games on the year
- SECOND leading scorer on team (9.8 ppg)
- Totaled 26 points in back-to-back games vs. #10 Purdue and #18 Michigan State last year, including a career-best 18 vs. Purdue

- Missed senior season of high school with a torn patella tendon.
- Redshirted freshman season as he rehabbed the knee injury and added 15 pounds of muscle.
- --
- --

2011-12 SEASON HIGHLIGHTS

- Suspended prior to the start of pre-season practice for a violation of team rules. Returned to practice on Nov. 10. Dressed for the first time and saw his first action of the season vs. Radford on Nov. 14
- Made a pair of three-point plays for eight first half points on his way to 14 points and a career-high three steals on 5-of-9 shooting in 19 minutes vs. South Florida.
- Came off the bench to hit a pair of threes and score eight points in a victory over YSU (11/23).
- Scored 15 first half points, including Penn State last 10 of the half, to keep Penn State close on his way to a career-best 22 points and eight rebounds in a victory at Boston College

- (11/30). Made a career-best 3-of-6 from three in the game.
- Led Penn State with 20 points and a career-high nine rebounds in a loss to Lafayette (12/7).
- Posted 12 points and six boards in a loss at Duquesne (12/10)
- --
- --
- --
- --
- --
- --
- --
- --
- --

CAREER HIGHS

POINTS:	22
	vs. BC (11/30/11)
REBOUNDS:	9
	vs. Lafayette (12/7/11)
ASSISTS:	3, twice
	last at Northwestern (1/1/12)
STEALS:	3, twice
	last vs. Lafayette (12/7/11)
BLOCKS:	3
	vs. Cornell (12/21)
MINUTES:	38
	at Duquesne (12/10/11)
FIELD GOALS:	8
	vs. BC (11/30/11)
FG ATTEMPTS:	16
	vs. BC (11/30/11)
FG PERCENTAGE:	75.0 (3-4), twice
	last @ Michigan (12/29/11)
3-POINTERS:	3, twice
	last at Northwestern (1/1/12)
3PT ATTEMPTS:	5, twice
	vs. YSU (11/23/11)
3PT PERCENTAGE:	50.0 (3-6)
	vs. BC (11/30/11)
FREE THROWS:	9
	vs. Lafayette (12/7/11)
FT ATTEMPTS:	11
	vs. Lafayette (12/7/11)
FT PERCENTAGE:	81.8 (9-11)
	vs. Lafayette (12/7/11)

PERSONAL FILE

BIRTHDAY:	11/7/90
FAMILY:	Jacke (mother), Jerome (father); Curtis (brother), Taehee (brother)

2011-12 GAME-BY-GAME

OPPONENT	DATE	GS	MIN	TOTAL		3-POINT		FREE THROWS		REBOUNDS		PF	A	TO	BLK	STL	PTS
				FG-FGA	PCT	FG-FGA	PCT	FT-FTA	PCT	O-D	TOTAL						
HARTFORD				DNP													
RADFORD	11/14	10	1-1	1.0	1-1	1.0	1-2	.500	0-0	0	1	0	2	0	1	4	
LONG ISLAND	11/16	19	0-4	.000	0-3	.000	2-2	1.000	1-0	1	3	2	2	0	0	2	
vs. Kentucky	11/19	17	0-4	.000	0-3	.000	0-0	.000	1-0	1	1	0	1	0	1	0	
vs. S. Florida	11/20	19	5-9	.556	2-5	.400	2-2	1.000	0-2	2	3	1	1	1	3	14	
YSU	11/23	18	2-6	.333	2-5	.400	2-4	.500	0-1	1	2	0	3	0	1	8	
@ St. Joe's	11/26	5	0-4	.000	0-1	.000	0-0	.000	1-1	2	1	0	1	0	0	0	
@ Boston Coll	11/30	35	8-16	.500	3-6	.500	3-4	.750	0-8	8	1	0	1	0	1	22	
MISSISSIPPI	12/4	*	30	4-7	.571	1-3	.333	1-3	.333	0-7	7	3	2	4	1	0	10
LAFAYETTE	12/7	*	32	5-13	.385	1-4	.250	9-11	.818	2-7	9	4	1	3	1	3	20
@ Duquesne	12/10	*	38	5-13	.385	2-4	.500	0-1	.000	2-4	6	3	3	4	0	1	12
MT. ST. MARY'S	12/18	*	31	3-7	.429	2-4	.500	2-3	.667	0-4	4	1	2	0	0	2	10
CORNELL	12/21	*	27	2-9	.222	0-2	.000	8-11	.727	2-2	4	3	2	3	3	2	12
@ Michigan	12/29	*	22	3-4	.750	2-2	1.000	1-1	1.000	0-4	4	4	1	3	0	0	9
@ Northwestern	1/1	*	31	5-14	.357	3-8	.375	1-4	.250	0-3	3	2	3	5	0	2	14

CAREER STATISTICS

Season	gp-gs	min/avg	Total		3-Point		F-Throws		Rebounds				Scoring							
			fg-fga	pct	fg-fga	pct	ft-fga	pct	off	def	tot	avg	pf	fo	ast	to	blk	stl	pts	avg
2010-11	28-0	251/9.0	25-63	.397	6-25	.240	14-22	.636	3	14	17	0.6	35	1	12	13	3	15	70	2.5
2011-12	14-7	334/23.9	43-111	.387	19-51	.373	32-48	.667	9	43	52	3.7	32	0	17	33	6	17	137	9.8
TOTAL	42-7	585/13.9	68-174	.391	25-76	.329	46-70	.657	12	57	69	1.6	67	1	29	46	9	32	207	4.9



#20 • NICK COLELLA

Jr. • GUARD • 6-3 • 195
 NEW CASTLE, PA. • NEW CASTLE HS
 PENN STATE - BEHREND



NOTABLE/CAREER HIGHLIGHTS

- Played two seasons at the Penn State - Behrend campus before transferring to the main campus.
- Averaged 9.8 ppg and 4.4 rpg playing in 16 games as a sophomore at Penn State - Behrend.

■ --
■ --
■ --
■ --
■ --

2011-12 SEASON HIGHLIGHTS

- Played in his first career game in the season-opening win over Hartford, scoring three points and grabbing one rebound in 14 minutes.
- Played eight minutes and scored two points in a loss to Lafayette (12/7).

■ --
■ --
■ --
■ --
■ --

CAREER HIGHS

- POINTS:** 3
vs. Hartford (11/12/11)
- REBOUNDS:** 1, four times
at Duquesne (12/10/11)
- ASSISTS:** -
- STEALS:** 1
vs. Hartford (11/12/11)
- BLOCKS:** 1
vs. Radford (11/14/11)
- MINUTES:** 14
vs. Hartford (11/12/11)
- FIELD GOALS:** 1, twice
last vs. Lafayette (12/7/11)
- FG ATTEMPTS:** 4, twice
last vs. Lafayette (12/7/11)
- FG PERCENTAGE:** .250 (1-4), twice
last vs. Lafayette (12/7/11)
- 3-POINTERS:** 1
vs. Hartford (11/12/11)
- 3PT ATTEMPTS:** 3
vs. Lafayette (12/7/11)
- 3PT PERCENTAGE:** 50.0 (1-2)
vs. Hartford (11/12/11)
- FREE THROWS:** 2
at St. Joe's (11/26/11)
- FT ATTEMPTS:** 2
at St. Joe's (11/26/11)
- FT PERCENTAGE:** 1.000 (2-2)
at St. Joe's (11/26/11)

2011-12 GAME-BY-GAME

OPPONENT	DATE	GS	MIN	TOTAL		3-POINT		FREE THROWS		REBOUNDS		PF	A	TO	BLK	STL	PTS
				FG-FGA	PCT	FG-FGA	PCT	FT-FTA	PCT	O-D	TOTAL						
HARTFORD	11/12	14	1-4	.250	1-2	.500	0-0	.000	0-1	1	0	0	1	0	1	0	3
RADFORD	11/14	2	0-0	.000	0-0	.000	0-0	.000	1-0	1	0	0	0	1	0	0	0
LONG ISLAND	11/16	1	0-0	.000	0-0	.000	0-0	.000	0-0	0	0	0	0	0	0	0	0
vs. Kentucky	11/19	9	0-2	.000	0-1	.000	0-0	.000	1-0	1	2	0	0	0	0	1	0
vs. S. Florida	11/20	DNP															
YSU	11/23	DNP															
@ St. Joe's	11/26	2	0-0	.000	0-0	.000	2-2	1.000	0-0	0	0	0	0	0	0	0	2
@ Boston Coll.	11/30	6	0-1	.000	0-1	.000	0-0	.000	0-1	1	0	0	0	0	0	0	0
MISSISSIPPI	12/4	DNP															
LAFAYETTE	12/7	8	1-4	.250	0-3	.000	0-0	.000	0-0	0	2	0	0	0	0	0	2
@ Duquesne	12/10	5	0-1	.000	0-1	.000	0-1	.000	0-1	1	0	0	1	0	0	0	0
MT. ST. MARY'S	12/18	2	0-1	.000	0-1	.000	0-0	.000	0-1	1	1	0	0	0	0	0	0

PERSONAL FILE

- BIRTHDAY:** 11/10/1989
- FAMILY:** Linda (mother), David (father);
Brothers: David Jr. & Michael

CAREER STATISTICS

Season	gp-gs	min/avg	Total		3-Point		F-Throws		Rebounds				Scoring							
			fg-fga	pct	fg-fga	pct	ft-fta	pct	off	def	tot	avg	pf	fo	ast	to	blk	stl	pts	avg
2011-12	9-0	49/5.4	2-13	.154	1-9	.111	2-3	.667	2	4	6	0.7	5	0	0	2	1	2	7	0.8
TOTAL	9-0	49/5.4	2-13	.154	1-9	.111	2-3	.667	2	4	6	0.7	5	0	0	2	1	2	7	0.8



#23 • TIM FRAZIER

Jr. • GUARD • 6-1 • 170
HOUSTON, TEXAS • STRAKE JESUIT
SUPPLY CHAIN & INFORMATION SYSTEMS

DOUBLE-DOUBLES: 5	10+ ASSISTS: 3
20-POINT GAMES: 7	5+ ASSISTS: 23
30-POINT GAMES: -	3+ STEALS: 5
DOUBLE-DIGITS: 23	40-MINUTES: 3



CAREER HIGHS

POINTS:	27
	vs. S. Florida (11/20/11)
REBOUNDS:	11, twice
	last vs. Cornell (12/21)
ASSISTS:	11
	vs. YSU (11/23/11)
STEALS:	5
	vs. Hartford (11/12/11)
BLOCKS:	1, eight times
	last at Duquesne (12/10/11)
MINUTES:	40, twice
	last at Duquesne (12/10/11)
FIELD GOALS:	9, three
	vs. LIU (11/16/11)
FG ATTEMPTS:	19
	at St. Joe's (11/26/11)
FG PERCENTAGE:	.727 (8-11)
	YSU (11/23/11)
	.833 (5-6)
	vs. Temple (NCAA) (3/17/11)
3-POINTERS:	4
	vs. Robert Morris (11/16/09)
3PT ATTEMPTS:	5, three times
	last vs. Lafayette (12/7/11)
3PT PERCENTAGE:	80.0 (4-5)
	vs. Robert Morris (11/16/09)
FREE THROWS:	10
	vs. Northwestern, (2/13/11)
FT ATTEMPTS:	15
	vs. S. Florida (11/20/11)
FT PERCENTAGE:	1.000 (6-6)
	@ Northwestern (2/24/11)

PERSONAL FILE

BIRTHDAY: 11/1/1990
FAMILY: Janice (mother), Billy (father), William (brother), Krystal (sister)

NOTABLE/CAREER HIGHLIGHTS

- 3rd the Big Ten in scoring (17.3), 1st in assists (6.7), 2nd in steals (2.2), 11th in rebounding (5.6). Leads the Lions in every category. **9th in NCAA in assists.**
- Has reached career highs twice in scoring, three times in assists and twice in rebounding on the year.
- Has SIX 20-point games and FIVE games of 9+ assists on the year.
- 346 career assists rank 11th all-time in Penn State history.
- Ranked 5th in Big Ten with 5.1 assists per game in 2010-11
- His 173 assists in 2010-11 rank as the fifth-best season mark in Penn State history.
- Posted then career-best 22 points and had 8 boards and 6 assists in 2011 Big Ten Tourn. semifinal win over Michigan State.
- Has played in every game the last three seasons.

2011-12 SEASON HIGHLIGHTS

- 16 points, team-high six assists and career-best five steals in season opener despite foul trouble limiting him to 28 minutes.
- Posted his second career double-double and tied his career record in assists with a 20-point, 10-assist, 6-rebound effort in Penn State's victory over Radford (11/14).
- Posted a then career-high 26 points on 9-of-18 shooting and equaled his career-best 10 assists to log his second-straight double-double and lead Penn State over LIU (11/16).
- Scored 19 of his career-high 27 points in the second half to lead Penn State from behind to a victory over S. Florida (11/20).
- Had eight assists in the first half on his way to a career-best 11 to go with a game-high 26 points vs. YSU (11/23) for his third double-double of the year. Hit 8-of-11 from the floor and from the line.
- Scored 20 of his 22 points in the second half to lead Penn State from a 29-26 halftime deficit to victory at Boston College (11/30).
- Led Penn State with 17 points and nine assists in a loss to Ole Miss (12/4).
- Posted his fourth double-double of the year with a team-high 17 points and career-best equaling 11 rebounds in a win over Cornell (12/21).
- Logged his sixth 20-point game of the season leading Penn State with 20 points and four assists at Michigan (12/29).
- --
- --

2011-12 GAME-BY-GAME

OPPONENT	DATE	GS	MIN	TOTAL		3-POINT		FREE THROWS		REBOUNDS		PF	A	TO	BLK	STL	PTS
				FG-FGA	PCT	FG-FGA	PCT	FT-FTA	PCT	O-D	TOTAL						
HARTFORD	11/12	*	28	4-11	.364	0-1	.000	8-9	.889	0-4	4	4	6	4	0	5	16
RADFORD	11/14	*	34	9-14	.643	0-0	.000	2-3	.667	2-4	6	2	10	3	1	3	20
LONG ISLAND	11/16	*	35	9-18	.500	3-4	.750	5-6	.833	1-4	5	3	10	4	1	2	26
vs. Kentucky	11/19	*	36	4-14	.286	0-1	.000	3-9	.333	1-5	6	3	6	2	0	0	11
vs. S. Florida	11/20	*	38	8-15	.533	1-3	.333	10-15	.667	2-4	6	3	1	4	0	3	27
YSU	11/23	*	38	8-11	.727	2-2	1.000	8-11	.727	2-2	4	0	11	2	0	2	26
@ St. Joe's	11/26	*	37	4-19	.210	0-3	.000	0-1	.000	3-8	11	3	6	4	0	2	8
@ Boston Coll.	11/30	*	29	7-12	.583	3-5	.600	5-6	.833	3-1	4	4	5	7	0	3	22
MISSISSIPPI	12/4	*	39	5-13	.385	0-3	.000	7-10	.700	3-3	6	2	9	5	0	1	17
LAFAYETTE	12/7	*	34	0-12	.000	0-5	.000	3-4	.750	1-2	3	4	9	5	0	2	3
@ Duquesne	12/10	*	40	4-9	.444	0-2	.000	7-8	.875	0-7	7	1	6	3	1	2	15
MT. ST. MARY'S	12/18	*	38	5-13	.385	0-2	.000	5-7	.714	0-2	2	1	8	1	0	2	15
CORNELL	12/21	*	39	4-12	.333	0-2	.000	9-13	.692	3-8	11	3	6	5	1	1	17
@ Michigan	12/29	*	35	8-18	.444	0-2	.000	4-6	.666	1-3	4	3	4	5	0	1	20
@ Northwestern	1/1	*	35	5-11	.455	0-2	.000	6-9	.667	3-2	5	3	3	4	0	4	16

CAREER STATISTICS

Season	gp-gs	min/avg	Total		3-Point		F-Throws		Rebounds				Scoring							
			fg-fga	pct	fg-fga	pct	ft-fa	pct	off	def	tot	avg	pf	fo	ast	to	blk	stl	pts	avg
2009-10	31-10	570/18.4	51-132	.386	9-24	.375	43-64	.672	11	61	72	2.3	64	0	73	52	2	23	154	5.0
2010-11	34-33	1048/30.8	71-165	.430	11-32	.344	61-81	.753	21	111	132	3.9	89	1	173	82	4	35	214	6.3
2011-12	15-15	535/35.7	84-202	.416	9-37	.243	82-117	.701	25	59	84	5.6	39	0	100	58	4	33	259	17.3
TOTAL	80-58	2153/26.9	206-499	.413	29-93	.312	186-262	.710	57	231	288	3.6	192	1	346	192	10	91	627	7.8



#24 • CAMMERON WOODYARD

Sr. • GUARD • 6-5 • 210
WESTMINSTER, MD. • WINTERS MILL
COMMUNICATION



NOTABLE/CAREER HIGHLIGHTS

- Double-digit scoring in five of his last seven games. Has eight double-digit scoring games on the year. Entered the season with one on his career.
- Has posted a career-best equaling seven rebounds in FIVE games on the season.
- Averaging 11.3 ppg at home on the season, with seven double-digit scoring games.

■ --
■ --
■ --
■ --
■ --
■ --

2011-12 SEASON HIGHLIGHTS

- Came off the bench to post career highs in points (14), rebounds (7), threes (4) and steals (4) in the season-opening victory over Hartford (11/12). Hit 4-of-7 from three on the day.
- Equaled his career high in rebounds for the second straight game posting a team-high seven in win over Radford (11/14).
- Scored seven-straight points midway through the second half to steady Penn State and finished with 13 points and six rebounds in a victory over LIU (11/16).
- Scored 10 points on a career-best equaling 4-of-5 from the floor in a victory over YSU (11/23).
- Scored 10 points and tied a career-high with seven rebounds in a loss to Lafayette (12/7).

- Equaled his career high with 14 points in just 20 minutes in a win over Mt. St. Mary's (12/18).
- Hit two big second half threes back-to-back to help the Lions maintain the lead in a victory over Cornell. Posted 13 points on 3-of-3 from three.

■ --
■ --
■ --
■ --
■ --
■ --

CAREER HIGHS

POINTS:	14, twice
	last vs. Mt. St. Mary's (12/18/12)
REBOUNDS:	7, five times
	last vs. Lafayette(12/7/11)
ASSISTS:	2, three times
	vs. Hartford (11/12/11)
STEALS:	4
	vs. Hartford (11/12/11)
BLOCKS:	1, three times
	vs. Radford (11/14/11)
MINUTES:	37
	vs. Michigan (2/6/11)
FIELD GOALS:	6
	vs. Mt. St. Mary's (12/18/12)
FG ATTEMPTS:	13, twice
	last at Northwestern (1/1/12)
FG PERCENTAGE:	80.0 (4-5), twice
	last vs. YSU (11/23/11)
3-POINTERS:	4
	vs. Hartford (11/12/11)
3PT ATTEMPTS:	8
	vs. Michigan (2/6/11)
3PT PERCENTAGE:	1.000 (3-3)
	vs. Cornell (12/21)
FREE THROWS:	5
	vs. St. Joseph's (11/16/10)
FT ATTEMPTS:	6
	vs. St. Joseph's (11/16/10)
FT PERCENTAGE:	1.000 (4-4)
	vs. LIU (11/16/11)

2011-12 GAME-BY-GAME

OPPONENT	DATE	GS	MIN	TOTAL		3-POINT		FREE THROWS		REBOUNDS		PF	A	TO	BLK	STL	PTS
				FG-FGA	PCT	FG-FGA	PCT	FT-FTA	PCT	O-D	TOTAL						
HARTFORD	11/12		27	4-13	.308	4-7	.571	2-4	.500	2-5	7	2	2	0	0	4	14
RADFORD	11/14	*	26	2-6	.333	2-5	.400	0-0	.000	2-5	7	2	0	1	1	1	6
LONG ISLAND	11/16	*	35	4-9	.444	1-6	.167	4-4	1.000	0-6	6	2	0	0	0	2	13
vs. Kentucky	11/19	*	18	0-6	.000	0-2	.000	0-0	.000	0-2	2	3	0	0	1	0	0
vs. S. Florida	11/20	*	24	0-5	.000	0-3	.000	1-2	.500	3-4	7	0	0	0	0	2	1
YSU	11/23	*	16	4-5	.800	2-2	1.000	0-0	.000	0-2	2	0	0	3	0	0	10
@ St. Joe's	11/26	*	25	1-6	.166	1-3	.333	0-0	.000	1-2	3	0	0	1	0	0	3
@ Boston Coll.	11/30	*	23	0-5	.000	0-3	.000	2-2	1.000	3-4	7	1	1	0	0	0	2
MISSISSIPPI	12/4	*	26	4-10	.400	2-5	.400	0-1	.000	1-1	2	0	1	1	0	0	10
LAFAYETTE	12/7		29	4-7	.571	0-3	.000	2-2	1.000	4-3	7	0	0	0	0	0	10
@ Duquesne	12/10		32	3-8	.375	1-3	.333	2-2	1.000	2-2	4	3	0	3	0	0	9
MT. ST. MARY'S	12/18		20	6-10	.600	2-4	.500	0-0	.000	4-0	4	2	0	2	0	1	14
CORNELL	12/21		24	3-5	.600	3-3	1.000	4-4	1.000	0-1	1	0	0	1	0	0	13
@ Michigan	12/29	*	28	2-6	.333	1-2	.500	2-2	1.000	2-1	3	0	0	2	1	0	7
@ Northwestern	1/1	*	28	3-13	.231	2-5	.400	3-4	.750	2-4	6	1	0	0	0	2	11

PERSONAL FILE

BIRTHDAY:	2/19/1990
FAMILY:	Cynthia (mother), Bruce (father), Rashad (brother), Kanisha Frisby (sister)

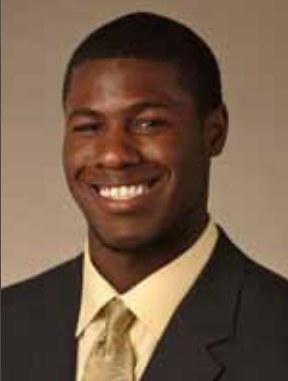
CAREER STATISTICS

Season	gp-gs	min/avg	Total		3-Point		F-Throws		Rebounds				Scoring							
			fg-fga	pct	fg-fga	pct	ft-fta	pct	off	def	tot	avg	pf	fo	ast	to	blk	stl	pts	avg
2008-09	24-0	161/6.7	18-41	.439	12-27	.444	4-6	.667	5	16	21	0.9	8	0	6	9	1	4	52	2.2
2009-10	24-0	210/8.8	16-54	.296	8-38	.211	0-1	.000	5	13	18	0.8	14	0	10	6	0	5	40	1.7
2010-11	28-3	292/10.4	17-68	.250	7-37	.189	10-12	.833	10	28	38	1.4	5	0	7	9	2	5	51	1.8
2011-12	15-8	381/25.4	40-114	.351	21-57	.368	22-27	.815	26	42	68	4.5	16	0	4	14	3	12	123	8.2
TOTAL	91-11	1044/11.5	91-277	.329	48-159	.302	36-46	.783	46	99	145	1.6	43	0	27	38	6	26	266	2.9



#25 • JON GRAHAM

R-Fr. • FORWARD • 6-8 • 240
BALTIMORE, MD. • CALVERT HALL
UNDECIDED



NOTABLE/CAREER HIGHLIGHTS

- The son of Maryland great and former Philadelphia 76er Ernest Graham.
- Two-time All-Metro selection
- Calvert Hall's second all-time leading scorer with 1,670 points
- Added 30 pounds of muscle during his redshirt season.
- --
- --

- --
- --
- --
- --

2011-12 SEASON HIGHLIGHTS

- Posted seven points and four rebounds in a career high 20 minutes in a victory over Radford (11/14)
- Recorded a career-best three blocks and recorded six points and five rebounds, all in the first half, in a victory over LIU (11/16).
- Diagnosed with mononucleosis on Nov. 28 and missed the following five games.
- Returned to the court at Michigan and logged a career-best six rebounds in 14 minutes of action.
- --
- --

CAREER HIGHS

POINTS:	7
	vs. Radford (11/14/11)
REBOUNDS:	6
	@ Michigan (12/29/11)
ASSISTS:	-
STEALS:	2
	vs. Radford (11/14/11)
BLOCKS:	3
	vs. LIU (11/16/11)
MINUTES:	20
	vs. Radford (11/14/11)
FIELD GOALS:	3, twice
	vs. LIU (11/16/11)
FG ATTEMPTS:	6, twice
	last vs. Kentucky (11/19/11)
FG PERCENTAGE:	.600 (3-5), twice
	vs. LIU (11/16/11)
3-POINTERS:	-
3PT ATTEMPTS:	-
3PT PERCENTAGE:	-
FREE THROWS:	1, twice
	vs. Radford (11/14/11)
FT ATTEMPTS:	3
	vs. Radford (11/14/11)
FT PERCENTAGE:	-

2011-12 GAME-BY-GAME

OPPONENT	DATE	GS	MIN	TOTAL		3-POINT		FREE THROWS		REBOUNDS		PF	A	TO	BLK	STL	PTS
				FG-FGA	PCT	FG-FGA	PCT	FT-FTA	PCT	O-D	TOTAL						
HARTFORD	11/12	9	0-6	.000	0-0	.000	1-2	.500	3-0	3	2	0	2	0	0	0	1
RADFORD	11/14	20	3-5	.600	0-0	.000	1-3	.333	3-1	4	1	0	1	0	2	7	
LONG ISLAND	11/16	13	3-5	.600	0-0	.000	0-0	.000	3-2	5	2	0	0	3	0	6	
vs. Kentucky	11/19	19	3-6	.500	0-0	.000	0-0	.000	3-2	5	1	0	0	1	1	6	
vs. S.Florida	11/20	11	1-3	.333	0-0	.000	0-0	.000	2-0	2	2	0	0	0	0	2	
YSU	11/23	18	2-3	.667	0-0	.000	0-0	.000	2-3	5	1	0	3	0	0	4	
@ St. Joe's	11/26	9	0-2	.000	0-0	.000	0-0	.000	0-0	0	2	0	0	0	0	0	
@ Boston Coll.	11/30	DNP															
Ole Miss	12/4	DNP															
LAFAYETTE	12/7	DNP															
@ Duquesne	12/10	DNP															
MT. ST. MARY'S	12/18	DNP															
@ Michigan	12/29	14	1-3	.333	0-0	.000	0-1	.000	1-5	6	1	0	0	0	0	2	
@ Northwestern	1/1	6	0-1	.000	0-0	.000	0-0	.000	0-0	0	0	0	0	0	0	0	

PERSONAL FILE

BIRTHDAY: 10/15/1991
FAMILY: Karen (mother), Ernest (father); Brother: Ernest, Jr.

CAREER STATISTICS

Season	gp-gs	min/avg	Total		3-Point		F-Throws		Rebounds				Scoring							
			fg-fga	pct	fg-fga	pct	ft-fta	pct	off	def	tot	avg	pf	fo	ast	to	blk	stl	pts	avg
2011-12	9-0	119/13.2	13-34	.382	0-0	.000	2-6	.333	17	13	30	3.3	12	0	0	6	4	3	28	3.1
TOTAL	9-0	119/13.2	13-34	.382	0-0	.000	2-6	.333	17	13	30	3.3	12	0	0	6	4	3	28	3.1



#35 • BILLY OLIVER

R-Jr. • FORWARD • 6-8 • 230
CHATHAM, N.J. • CHATHAM HS
FINANCE



NOTABLE/CAREER HIGHLIGHTS

■ Leads team with 23 threes on the year.

■ Missed two seasons due to head injuries. A pair of preseason concussions sidelined him and moved him to redshirt his true-freshman year. Chronic exercise induced headaches caused him to miss all but five games of the 2009-10 season and to be held out of all physical activity from late December through

April.

■ Eligible to apply for another year of eligibility through a medical-redshirt following the completion of his current eligibility.

■ Has added 30 pounds of muscle since arriving on campus.

■ --

■ --

■ --

2011-12 SEASON HIGHLIGHTS

■ Hit two big second half threes to finish with nine points and added a career-best 10 rebounds and two assists in a victory over LIU (11/16).

■ Posted a career-best 12 points on a career-high four threes and added five boards and two blocks in a loss at St. Joe's (11/26)

■ Scored a career-high 13 points on 4-of-5 from the floor in just 20 minutes of a win over Mt. St. Mary's (12/18). Added a career-best three blocks and two steals.

■ Hit 3-of-6 from three for nine points and added five board in a victory over Cornell (12/21).

■ --

■ --

■ --

■ --

■ --

■ --

■ --

■ --

■ --

■ --

■ --

■ --

■ --

■ --

CAREER HIGHS

POINTS: 13

vs. Mt. St. Mary's (12/18/11)

REBOUNDS: 10

vs. LIU (11/16/11)

ASSISTS: 2, four times

vs. YSU (11/23/11)

STEALS: 2

vs. Ohio State (3/1/11)

BLOCKS: 2, three times

last at St. Joe's (11/26/11)

MINUTES: 37

vs. LIU (11/16/11)

FIELD GOALS: 4, three times

last vs. Mt. St. Mary's (12/18/11)

FG ATTEMPTS: 13

at St. Joe's (11/26/11)

FG PERCENTAGE: .800 (4-5)

vs. Mt. St. Mary's (12/18/11)

3-POINTERS: 4

at St. Joe's (11/26/11)

3PT ATTEMPTS: 11

vs. Radford (11/14/11)

3PT PERCENTAGE: .667 (2-3)

vs. Mt. St. Mary's (12/18/11)

FREE THROWS: 3, twice

last vs. YSU (11/23/11)

FT ATTEMPTS: 5

at Michigan (1/2/11)

FT PERCENTAGE: 1.000 (3-3)

vs. Mt. St. Mary's (12/18/11)

PERSONAL FILE

BIRTHDAY: 5/12/1990

FAMILY: Laura (mother), Bill (father), Brian (brother), Kate (sister), Sarah (sister).

2011-12 GAME-BY-GAME

OPPONENT	DATE	GS	MIN	TOTAL		3-POINT		FREE THROWS		REBOUNDS		PF	A	TO	BLK	STL	PTS
				FG-FGA	PCT	FG-FGA	PCT	FT-FTA	PCT	O-D	TOTAL						
HARTFORD	11/12	*	20	2-4	.500	1-3	.333	1-1	1.000	0-3	3	4	0	0	0	1	6
RADFORD	11/14	*	26	3-11	.272	2-10	.200	0-0	.000	0-2	2	3	0	1	0	0	8
LONG ISLAND	11/16	*	37	3-10	.300	3-8	.375	0-0	.000	5-5	10	1	2	1	0	1	9
vs. Kentucky	11/19	*	16	1-5	.200	1-4	.250	0-0	.000	3-3	6	4	0	1	1	0	3
vs. S. Florida	11/20	*	28	1-4	.250	1-3	.333	0-0	.000	0-2	2	2	1	1	0	0	3
YSU	11/23	*	26	2-7	.286	2-7	.286	3-4	.750	1-3	4	2	2	2	2	0	9
@ St. Joe's	11/26	*	28	4-13	.307	4-10	.400	0-0	.000	1-4	5	5	0	0	2	1	12
@ Boston Coll.	11/30	*	15	1-2	.500	0-1	.000	0-0	.000	1-1	2	4	0	3	0	0	2
MISSISSIPPI	12/4	*	32	2-5	.400	1-3	.333	3-4	.750	3-1	4	3	1	2	0	0	8
LAFAYETTE	12/7	*	32	3-7	.429	1-5	.200	0-0	.000	3-3	6	4	0	1	0	0	7
@ Duquesne	12/10	*	20	4-9	.444	1-4	.250	0-0	.000	1-3	4	4	0	4	1	0	9
MT. ST. MARY'S	12/18	*	20	4-5	.800	2-3	.667	3-3	1.000	0-1	1	1	0	0	3	2	13
CORNELL	12/21	*	27	3-8	.375	3-6	.500	0-0	.000	3-2	5	2	0	0	1	0	9
@ Michigan	12/29	*	26	1-3	.333	1-3	.333	0-0	.000	0-2	2	4	0	0	0	0	3
@ Northwestern	1/1	*	18	0-0	.000	0-0	.000	2-4	.500	1-1	2	5	0	1	0	0	2

CAREER STATISTICS

Season	gp-gs	min/avg	Total		3-Point		F-Throws		Rebounds				Scoring							
			fg-fga	pct	fg-fga	pct	ft-fta	pct	off	def	tot	avg	pf	fo	ast	to	blk	stl	pts	avg
2009-10	5-0	24/4.8	1-4	.250	0-2	.000	1-4	.250	3	3	6	1.2	3	0	2	0	0	1	3	0.6
2010-11	32-0	457/14.3	24-76	.316	11-44	.250	16-24	.667	24	21	45	1.4	74	1	13	24	9	9	75	2.3
2011-12	15-15	372/24.8	34-93	.366	23-70	.329	12-16	.750	22	36	58	3.9	48	2	6	17	10	5	103	6.9
TOTAL	52-15	853/16.4	59-173	.341	34-116	.293	29-44	.659	49	60	109	2.1	125	3	21	41	19	15	181	3.5



#43 • ROSS TRAVIS

Fr. • FORWARD • 6-6 • 220
CHASKA, MINN. • CHASKA HS



CAREER HIGHS

POINTS: 12
vs. Lafayette (12/7/11)

REBOUNDS: 8, twice
vs. Lafayette (12/7/11)

ASSISTS: 3
vs. Lafayette (12/7/11)

STEALS: 3
vs. YSU (11/23/11)

BLOCKS: 1, twice
vs. YSU (11/23/11)

MINUTES: 25, twice
last vs. Lafayette (12/7/11)

FIELD GOALS: 5, twice
last vs. Lafayette (12/7/11)

FG ATTEMPTS: 10
vs. Kentucky (11/19/11)

FG PERCENTAGE: 1.000 (5-5)
vs. Lafayette (12/7/11)

3-POINTERS: 2
vs. Kentucky (11/19/11)

3PT ATTEMPTS: 5
vs. Kentucky (11/19/11)

3PT PERCENTAGE: 1.000 (1-1)
vs. Lafayette (12/7/11)

FREE THROWS: 2, twice
last at Duquesne (12/10/11)

FT ATTEMPTS: 7
vs. Lafayette (12/7/11)

FT PERCENTAGE: 1.000 (2-2)
at Duquesne (12/10/11)

PERSONAL FILE

BIRTHDAY: 1/9/1993

FAMILY: Debbie (mother), John (father); Sister: Brittany

NOTABLE/CAREER HIGHLIGHTS

- Added 20 pounds of muscle since arriving on campus.
- Tabbed as the top prospect in Minnesota for the class of 2011
- 20 ppg, 12 rpg in senior season of HS
- --
- --
- --

2011-12 SEASON HIGHLIGHTS

- Started in his first collegiate game and tied for the team lead with seven rebounds in Penn State's season-opening victory over Hartford (11/12).
- Scored all of his career-high 10 points in the second half on a career-best two threes and added a career-best eight rebounds vs. Kentucky (11/19).
- Posted a career-high three steals and tied for the team high with five boards to go with six points in a win vs. YSU (11/23).
- Equaled a career-high with 10 points and added six rebounds in a loss at St. Joe's (11/26)
- Posted career highs with 12 points, going 5-of-5 from the floor, eight rebounds and three assists in a loss to Lafayette (12/7).

2011-12 GAME-BY-GAME

OPPONENT	DATE	GS	MIN	TOTAL		3-POINT		FREE THROWS		REBOUNDS		PF	A	TO	BLK	STL	PTS
				FG-FGA	PCT	FG-FGA	PCT	FT-FTA	PCT	O-D	TOTAL						
HARTFORD	11/12	*	13	1-3	.333	0-0	.000	0-0	.000	3-4	7	5	0	1	0	0	2
RADFORD	11/14		18	2-4	.500	0-2	.000	0-0	.000	1-4	5	2	0	0	0	0	4
LONG ISLAND	11/16		10	1-2	.500	0-1	.000	0-1	.000	0-2	2	1	0	0	1	0	2
vs. Kentucky	11/19		25	4-10	.400	2-5	.400	0-1	.000	2-6	8	1	2	1	0	1	10
vs. S. Florida	11/20		14	0-3	.000	0-1	.000	0-0	.000	2-2	4	2	1	1	0	2	0
YSU	11/23		22	2-3	.667	0-0	.000	2-5	.400	2-3	5	2	0	3	1	3	6
@ St. Joe's	11/26		28	5-9	.555	0-2	.000	0-4	.000	3-3	6	3	0	2	1	0	10
@ Boston Coll.	11/30	*	23	3-9	.333	0-3	.000	1-2	.500	1-4	5	3	0	0	1	0	7
MISSISSIPPI	12/4	*	21	1-6	.167	0-1	.000	0-0	.000	1-1	2	0	0	1	0	1	2
LAFAYETTE	12/7	*	25	5-5	1.000	1-1	1.000	1-7	.143	4-4	8	2	3	0	0	0	12
@ Duquesne	12/10	*	9	1-2	.500	0-1	.000	2-2	1.000	1-1	2	2	0	2	0	0	4
MT. ST. MARY'S	12/18	*	14	2-4	.500	1-2	.500	0-0	.000	2-3	5	4	0	2	0	1	5
CORNELL	12/21	*	9	1-2	.500	0-1	.000	0-0	.000	1-2	3	1	0	0	0	1	2
@ Michigan	12/29		18	0-4	.000	0-2	.000	0-0	.000	1-1	2	1	1	0	0	0	0
@ Northwestern	1/1		5	0-0	.000	0-0	.000	0-0	.000	0-0	0	2	0	0	0	0	0

CAREER STATISTICS

Season	gp-gs	min/avg	Total		3-Point		F-Throws		Rebounds				Scoring							
			fg-fga	pct	fg-fga	pct	ft-fta	pct	off	def	tot	avg	pf	fo	ast	to	blk	stl	pts	avg
2011-12	15-7	254/16.9	28-66	.424	4-22	.182	6-22	.273	24	40	64	4.3	31	1	7	13	4	9	66	4.4
TOTAL	15-7	254/16.9	28-66	.424	4-22	.182	6-22	.273	24	40	64	4.3	31	1	7	13	4	9	66	4.4



PENN STATE 70 HARTFORD 55

Nov. 12, 2011 @ University Park, Pa.

PENN STATE LEADERS Scoring Leader:

Rebounding Leader: Woodyard/Travis (7) Assist Leader: Frazier (6)

Freshman Trey Lewis led Penn State with 17 points, 14 in the second half, in his first career game as the Lions extended a 10-point halftime lead (32-22) to as much as 26 with 2:21 to play. Tim Frazier added 16 points and Cammeron Woodyard posted career highs in points (14), rebounds (7), threes (4) and steals (4). Frazier's career-best five steals led a 15 steal effort for the Lions, the most by a PSU team since 2001, and helped cause 26 Hartford turnovers, the most for a PSU opponent since 2005. Penn State shot just 36 percent but turned 17 offensive rebounds into a 20-2 edge in second chance points and got 20 more shots (64-44) than Hartford, which was led by 12 points from Wes Cole.

Hartford 55 - 0-2

Box score for Hartford 55 - 0-2, including player names, stats, and team totals.

FG % 1st Half: 8-17 47.1%, 2nd half: 11-27 40.7%, Game: 19-44 43.2%
3FG % 1st Half: 4-12 33.3%, 2nd half: 4-14 28.6%, Game: 8-26 30.8%
FT % 1st Half: 2-4 50.0%, 2nd half: 7-12 58.3%, Game: 9-16 56.3%

Penn State 70 - 1-0

Box score for Penn State 70 - 1-0, including player names, stats, and team totals.

FG % 1st Half: 9-32 28.1%, 2nd half: 14-32 43.8%, Game: 23-64 35.9%
3FG % 1st Half: 5-11 45.5%, 2nd half: 5-12 41.7%, Game: 10-23 43.5%
FT % 1st Half: 9-17 52.9%, 2nd half: 5-9 55.6%, Game: 14-26 53.8%

Officials: Ed Hightower, Larry Sciorra, Ron Tylbrsky
Technical fouls: Hartford-None, Penn State-None.
Attendance: 4152

Score by periods table for Hartford vs Penn State.

PENN STATE 62 RADFORD 46

Nov. 14, 2011 @ University Park, Pa.

PENN STATE LEADERS Scoring Leader:

Rebounding Leader: Woodyard (7) Assist Leader: Frazier (10)

Junior Tim Frazier posted his second career double-double and equaled a career high in assists as he led Penn State with 20 points and 10 assists and added six rebounds and three steals. Frazier was the only Lion in double-figures. Penn State used a 14-0 run and an 8:25 Radford drought to come from 11-5 down to a 19-11 lead in the first half and would never trail again. Leading 29-20 at the half, Penn State got three straight treys from Billy Oliver, Trey Lewis and Cam Woodyard to push it's lead to 16. Penn State led by double-digits the rest of the way and by as much as 22. Radford shot just 26.9 percent in the first half and 34 percent for the game and was led by 16 points from Jareal Smith who scored the Highlanders' first 11 points of the game.

Radford 46 - 2-1

Box score for Radford 46 - 2-1, including player names, stats, and team totals.

FG % 1st Half: 7-26 26.9%, 2nd half: 9-21 42.9%, Game: 16-47 34.0%
3FG % 1st Half: 5-14 35.7%, 2nd half: 4-12 33.3%, Game: 9-26 34.6%
FT % 1st Half: 1-1 100.0%, 2nd half: 4-7 57.1%, Game: 5-8 62.5%

Penn State 62 - 2-0

Box score for Penn State 62 - 2-0, including player names, stats, and team totals.

FG % 1st Half: 11-28 39.3%, 2nd half: 13-25 52.0%, Game: 24-53 45.3%
3FG % 1st Half: 1-9 11.1%, 2nd half: 6-16 37.5%, Game: 7-25 28.0%
FT % 1st Half: 6-8 75.0%, 2nd half: 1-4 25.0%, Game: 7-12 58.3%

Officials: Lamont Simpson, Terry Olesby, Gerald Williams
Technical fouls: Radford-None, Penn State-None.
Attendance: 4916

Score by periods table for Radford vs Penn State.

PENN STATE 77 LONG ISLAND 68

Nov. 16, 2011 @ University Park, Pa.

PENN STATE LEADERS Scoring Leader:

Rebounding Leader: Oliver (10) Assist Leader: Frazier (10)

Trailing 60-56 with 8:22 to play and threatened for the first time on the year, Penn State responded with a 16-4 run to seize control and outscored LIU 21-8 the rest of the way to improve to 3-0. Tim Frazier was again spectacular posting his second-straight double-double with a career-best 26 points and career-best equaling 10 assists. Senior Cam Woodyard added 13 points and six boards and scored seven straight midway through the second half to steady the Penn State ship. Billy Oliver had a career-high 10 rebounds and nine points, including two big threes late. The Lions held LIU to 36% shooting, but LIU hit 27-of-35 at the foul line for a 13-point advantage at the charity stripe. Julian Boyd (15) and Michael Culp (15) led LIU. Penn State shot 41.5% and 9-of-27 from three.

Long Island 68 - 0-3

Box score for Long Island 68 - 0-3, including player names, stats, and team totals.

FG % 1st Half: 9-23 39.1%, 2nd half: 8-24 33.3%, Game: 17-47 36.2%
3FG % 1st Half: 4-12 33.3%, 2nd half: 3-8 37.5%, Game: 7-20 35.0%
FT % 1st Half: 14-19 73.7%, 2nd half: 13-16 81.3%, Game: 27-35 77.1%

Penn State 77 - 3-0

Box score for Penn State 77 - 3-0, including player names, stats, and team totals.

FG % 1st Half: 13-33 39.4%, 2nd half: 14-32 43.8%, Game: 27-65 41.5%
3FG % 1st Half: 3-11 27.3%, 2nd half: 6-16 37.5%, Game: 9-27 33.3%
FT % 1st Half: 7-9 77.8%, 2nd half: 7-9 77.8%, Game: 14-18 77.8%

Officials: Mike Eades, Gene Stratoro, Steve McClunkins
Technical fouls: Long Island-None, Penn State-TIAM
Attendance: 8254

Score by periods table for Long Island vs Penn State.

Last FG: LIU 2nd-08:22, PSU 2nd-01:31.
Largest lead: LIU by 4, 1st-18:44, PSU by 11 2nd-01:00.
Score tied 9 times.
Lead changed - 11 times.

#2 KENTUCKY 85 PENN STATE 47

Nov. 19, 2011 @ Uncasville, Conn.

PENN STATE LEADERS Scoring Leader:

Rebounding Leader: Travis (8) Assist Leader: Frazier (6)

Penn State missed 25 straight shots over 11 minutes of the first half and hit just 16 percent in the first stanza vs. a Kentucky team that was shooting 68 percent midway through the first 20 and raced to a 47-15 halftime lead. Penn State hit just 27 percent for the game, including 7-of-27 from three, and 4-of-12 from the foul line and trailed by as much as 41 midway through the second half. Tim Frazier led Penn State with 11 points and six assists and added six boards, but went 4-of-14 from the floor and 3-of-9 from the line. Freshman Ross Travis had career highs of 10 points, all in the second half, and eight rebounds. Doron Lamb led UK with 26 points and Kyle Wiltjer put in 19 off the bench as Kentucky shot 53 percent and 10-of-20 from three. The 38-point loss marked the Lions' largest since falling by 43 at Illinois in 2004.

Penn State 47 - 3-1

Box score for Penn State 47 - 3-1, including player names, stats, and team totals.

FG % 1st Half: 6-37 16.2%, 2nd half: 12-30 40.0%, Game: 18-67 26.9%
3FG % 1st Half: 1-15 6.7%, 2nd half: 6-12 50.0%, Game: 7-27 25.9%
FT % 1st Half: 2-9 22.2%, 2nd half: 2-3 66.7%, Game: 4-12 33.3%

KENTUCKY 85 - 3-0

Box score for Kentucky 85 - 3-0, including player names, stats, and team totals.

FG % 1st Half: 15-28 53.6%, 2nd half: 13-25 52.0%, Game: 28-53 52.8%
3FG % 1st Half: 6-10 60.0%, 2nd half: 4-10 40.0%, Game: 10-20 50.0%
FT % 1st Half: 11-13 84.6%, 2nd half: 8-14 57.1%, Game: 19-29 65.5%

Officials: Bob Adams, Gary Tracy, Kevin Ferguson
Technical fouls: Penn State-None, KENTUCKY-None.
Attendance: 2011 Hall of Fame Tip-Off Tournament

Score by periods table for Kentucky vs Penn State.



PENN STATE 53 SOUTH FLORIDA 49

Nov. 20, 2011 @ Uncasville, Conn.

PENN STATE LEADERS Scoring Leader: Battle (26) Rebounding Leader: Brooks (9) Assist Leader: Frazier (6)

Trailing 43-38 with 5:07 to play, Penn State employed a trapping 1-2-2 press to create a pair of turnovers and reel of a 12-1 run to seize a 50-44 lead after a Billy Oliver top of the key three with 3:03 left. USF got back within three, 50-47, with 1:47 to go but would get no closer. Tim Frazier led Penn State with a career-high 27 points, 19 in the second half. Jermaine Marshall sparked PSU with eight first half points on his way to 14. The Lions shot 52 percent in the second half after both teams struggled at less than 30 percent shooting in the first. Penn State logged 12 steals, led by three each from Frazier and Marshall, and caused 19 USF turnovers. Victor Rudd, Jr. entered the game leading USF averaging 16.5 ppg but was held to just four on 2-of-10 shooting.

SOUTH FLORIDA 49 • 3-2

Table with columns: #, Player, FG-FGA, 3-FGA, FT-FTA, Rebounds (Off, Def, Tot), PF, TP, A, TO, Blk, Stl, Min. Includes players like ANDERSON Jr., RUDD Jr., DORITY, etc.

FG % 1st Half: 4-15 26.7% 2nd half: 10-26 38.5% Game: 14-41 34.1% 3FG % 1st Half: 1-5 20.0% 2nd half: 4-15 26.7% Game: 5-20 25.0% FT % 1st Half: 8-10 80.0% 2nd half: 8-10 80.0% Game: 16-20 80.0%

Penn State 53 • 4-1

Table with columns: #, Player, FG-FGA, 3-FGA, FT-FTA, Rebounds (Off, Def, Tot), PF, TP, A, TO, Blk, Stl, Min. Includes players like Glover, Borovnjak, Frazier, etc.

FG % 1st Half: 5-22 22.7% 2nd half: 13-23 52.2% Game: 17-45 37.8% 3FG % 1st Half: 1-12 8.3% 2nd half: 4-8 50.0% Game: 5-20 25.0% FT % 1st Half: 6-8 75.0% 2nd half: 8-13 61.5% Game: 14-21 66.7%

Officials: Paul Fala, John Gaffney, Ken Clark Technical fouls: SOUTH FLORIDA-None. Penn State-None.

Score by periods table with columns: 1st, 2nd, Total. Shows scores for South Florida and Penn State.

PENN STATE 82 YOUNGSTOWN STATE 71

Nov. 23, 2011 @ University Park, Pa.

PENN STATE LEADERS Scoring Leader: Frazier (26) Rebounding Leader: Four with (5) Assist Leader: Frazier (11)

Penn State shot 60 percent from the floor and 7-of-10 from three in the first half to roll to as much as a 21-point first half leading before holding off a hot-shooting YSU team in the second half. The Penguins shot 10-of-15 from three in the second half to get within nine three times, but would get no closer as Penn State hit a season-best 56.5 percent from the floor and 11-of-22 (50%) from three. Tim Frazier logged eight first half assists on his way to a career-high 11 and his third double-double of the season as he led all scorers with 26 points on 8-of-11 from the floor. Penn State got to the foul line 31 times (hitting 19) and got 30 points off its bench, led by 12 on 3-of-5 from three from freshman Trey Lewis.

Youngstown State 71 • 3-1

Table with columns: #, Player, FG-FGA, 3-FGA, FT-FTA, Rebounds (Off, Def, Tot), PF, TP, A, TO, Blk, Stl, Min. Includes players like EARGLE, BROOKS, ALLEN, etc.

FG % 1st Half: 10-32 31.3% 2nd half: 14-29 48.3% Game: 24-61 39.3% 3FG % 1st Half: 7-10 70.0% 2nd half: 4-12 33.3% Game: 14-27 51.9% FT % 1st Half: 2-2 100.0% 2nd half: 7-7 100.0% Game: 9-9 100.0%

Penn State 82 • 5-1

Table with columns: #, Player, FG-FGA, 3-FGA, FT-FTA, Rebounds (Off, Def, Tot), PF, TP, A, TO, Blk, Stl, Min. Includes players like Borovnjak, Oliver, Frazier, etc.

FG % 1st Half: 15-25 60.0% 2nd half: 11-21 52.4% Game: 26-46 56.5% 3FG % 1st Half: 7-10 70.0% 2nd half: 4-12 33.3% Game: 11-22 50.0% FT % 1st Half: 7-10 70.0% 2nd half: 12-21 57.1% Game: 19-31 61.3%

Officials: Mike Kitts, Ray Perone, Donnie Epley Technical fouls: Youngstown State-TEAM. Penn State-None.

Score by periods table with columns: 1st, 2nd, Total. Shows scores for Youngstown State and Penn State.

ST. JOSEPH'S 65 PENN STATE 47

Nov. 26, 2011 @ Philadelphia, Pa.

PENN STATE LEADERS Scoring Leader: Billy Oliver (12) Rebounding Leader: Frazier (11) Assist Leader: Frazier (6)

Penn State suffered through an 0-for-16 start and never recovered, trailing 22-0 before getting on the board for the first time nearly nine minutes into the game. The Lions struggled shooting just 4-of-38 in the first half and trailed 33-10 at the half. St. Joe's hit 7-of-9 to start to leap to a 22-0 lead before Tim Frazier fed Ross Travis for a dunk at 11:25. PSU's would hold St. Joe's to just one point over then next nine minutes, but the Lions got just one basket over that stretch, a three from Billy Oliver, and trailed 23-5. PSU got within 16 late in the second after warming up to 45 percent in the second half, but got no closer. The Lions finished shooting 27 percent and had 12 shots blocked. A career-high 12 points on a career-best four threes from Oliver led PSU.

Penn State 47 • 5-2

Table with columns: #, Player, FG-FGA, 3-FGA, FT-FTA, Rebounds (Off, Def, Tot), PF, TP, A, TO, Blk, Stl, Min. Includes players like BOROVNJAK, OLIVER, GLOVER, etc.

FG % 1st Half: 4-38 10.5% 2nd half: 16-33 48.5% Game: 19-71 26.8% 3FG % 1st Half: 2-15 13.3% 2nd half: 5-13 38.5% Game: 7-28 25.0% FT % 1st Half: 0-3 0.0% 2nd half: 2-4 50.0% Game: 2-7 28.6%

Saint Joseph's 65 • 4-2

Table with columns: #, Player, FG-FGA, 3-FGA, FT-FTA, Rebounds (Off, Def, Tot), PF, TP, A, TO, Blk, Stl, Min. Includes players like QUARLES, KANACEVIC, AKEN, etc.

FG % 1st Half: 12-27 44.4% 2nd half: 8-22 36.4% Game: 20-49 40.8% 3FG % 1st Half: 4-10 40.0% 2nd half: 2-6 33.3% Game: 6-18 33.3% FT % 1st Half: 5-6 83.3% 2nd half: 14-19 73.7% Game: 19-25 76.0%

Officials: Lamar Simpson, D.J. Carstensen, Jim Burr Technical fouls: Penn State-TRAVIS, Ross. Saint Joseph's-JONES, Carl.

Score by periods table with columns: 1st, 2nd, Total. Shows scores for Penn State and Saint Joseph's.

Table with columns: Points, In Paint, Off TO, 2nd Chance, Fast Break, Bench. Shows statistics for Penn State and Saint Joseph's.

PENN STATE 62 BOSTON COLLEGE 54

Nov. 30, 2011 @ Chestnut Hill, Mass.

PENN STATE LEADERS Scoring Leader: Frazier & Marshall (22) Rebounding Leader: Marshall (8) Assist Leader: Frazier (5)

Penn State got 44 points on a combined 15-28 shooting from Tim Frazier and Jermaine Marshall to overcome a 39 percent shooting night and win at Boston College, 62-54. Frazier scored 20 of his 22 points in the second half, his fifth 20-point game of the season, and Marshall logged career highs with 22 points, 15 in the first half, and eight rebounds. The Lions used a 1-2-2 press to force 18 B.C. turnovers and held the Eagles to 36 percent shooting, 27 percent in the second half. The Lions trailed 29-26 at the half after starting 1-of-9 from the floor and trailing 12-4 early. A 10-0 run put PSU in front briefly. Trailing 45-42 with 9:43 to play, PSU held B.C. without a field goal for nine minutes down the stretch and built a nine-point lead in the closing seconds.

Boston College 54 • 2-5

Table with columns: #, Player, FG-FGA, 3-FGA, FT-FTA, Rebounds (Off, Def, Tot), PF, TP, A, TO, Blk, Stl, Min. Includes players like Anderson, Hill, Moton, etc.

FG % 1st Half: 11-30 36.7% 2nd half: 10-24 41.7% Game: 21-54 38.9% 3FG % 1st Half: 4-14 28.6% 2nd half: 3-10 30.0% Game: 7-24 29.2% FT % 1st Half: 0-2 0.0% 2nd half: 13-18 72.2% Game: 13-20 65.0%

Boston College 54 • 2-5

Table with columns: #, Player, FG-FGA, 3-FGA, FT-FTA, Rebounds (Off, Def, Tot), PF, TP, A, TO, Blk, Stl, Min. Includes players like Daniels, Jackson, Clifford, etc.

FG % 1st Half: 10-22 45.5% 2nd half: 6-22 27.3% Game: 16-44 36.4% 3FG % 1st Half: 4-13 30.8% 2nd half: 4-11 36.4% Game: 8-24 33.3% FT % 1st Half: 5-9 55.6% 2nd half: 9-13 69.2% Game: 14-22 63.6%

Officials: Mike Eades, James Luckie, Raymond Styon Technical fouls: Penn State-None. Boston College-None.

Score by periods table with columns: 1st, 2nd, Total. Shows scores for Boston College and Penn State.

Table with columns: Points, In Paint, Off TO, 2nd Chance, Fast Break, Bench. Shows statistics for Boston College and Penn State.



OLE MISS 72 PENN STATE 70

Dec. 4, 2011 @ University Park, Pa.

PENN STATE LEADERS

Scoring Leader: Frazier 17
Rebounding Leader: Marshall 7
Assist Leader: Frazier (9)

Penn State won the rebounding battle (34-30), got 25 points off its bench, including a career-high 15 from Sasa Borovnjak and got off to a good first half start, shooting 52 percent, but couldn't overcome an unusually hot shooting Rebel team or make the plays down the stretch to win. The game saw nine ties and nine lead changes with neither team leading by more than eight. Ole Miss hit 11-of-24 (46%) from three led by a career-best 27 points on 4-of-5 from three from freshman Jarvis Summers. Tim Frazier had 17 points and nine assists for PSU, which led for nearly all of the final 17 minutes before a Summers three-point play gave the Rebels the final margin. Cam Woodyard missed a baseline three that would have given PSU the win.

Mississippi 72 - 71

#	Player	Total		3-Ptr			Rebounds			PF			TP			A	To	Blk	Stl	Min
		FG	FGA	FG-FTA	FT	FTA	Off	Def	Tot	Off	Def	Tot	PF	TP						
01	Henry, Terrance	3	6	2	3	1	1	1	0	2	2	5	9	1	2	0	0	0	0	21
23	Buckner, Reginald	1	3	0	0	0	0	2	2	4	2	4	2	2	2	0	0	0	0	28
31	Holloway, Murphy	1	4	0	0	2	3	5	6	11	2	10	3	3	0	0	0	0	0	34
32	Williams, Noe	4	9	2	4	0	0	2	2	10	5	2	2	0	0	0	0	0	0	33
32	Summers, Jarvis	g	10-16	4-5	3-4	2	2	4	27	3	2	0	1	1	1	1	1	0	0	36
04	Cox, Demarco	1	1	0	0	0	0	1	1	2	0	0	0	0	0	0	0	0	6	
05	Nelson, Dundreous	5	14	3	10	1	2	0	3	3	3	14	1	1	1	1	1	0	0	22
12	Aniefok, Maurice	0	3	0	0	0	0	0	1	1	0	0	0	0	0	0	0	0	0	8
34	Jones, Aaron	0	0	0	0	0	0	0	1	1	0	0	0	0	0	0	0	0	0	12
	Team	27-59	11-24	7-10	10	20	30	23	72	14	12	4	10	20	0	0	0	0	0	

FG % 1st Half:	13-31	41.9%	2nd half:	14-28	50.0%	Game:	27-59	45.8%	Deadball Rebounds:	2, 1
3FG % 1st Half:	6-11	54.5%	2nd half:	5-13	38.5%	Game:	11-24	45.8%		
FT % 1st Half:	3-4	75.0%	2nd half:	4-6	66.7%	Game:	7-10	70.0%		

Penn State 70 - 6-3

#	Player	Total		3-Ptr			Rebounds			PF			TP			A	To	Blk	Stl	Min
		FG	FGA	FG-FTA	FT	FTA	Off	Def	Tot	Off	Def	Tot	PF	TP						
35	Oliver, Billy	f	2-5	1-3	3-4	3	1	4	3	8	1	2	0	0	0	1	0	0	0	32
43	Travis, Ross	f	1-6	0-1	0-0	1	1	2	0	2	0	1	0	1	0	0	0	0	0	27
05	Glover, Matt	g	3-6	2-4	0-0	1	3	4	2	8	3	1	0	0	0	0	0	0	20	
11	Marshall, Jermaine	g	4-7	1-3	1-3	0	7	7	3	10	2	4	1	0	0	0	0	0	30	
23	Frazier, Tim	g	5-13	0-3	7-10	3	3	6	2	17	9	5	0	1	1	1	1	0	39	
03	Lewis, Trey	0	0	0	0	0	0	0	0	1	0	0	0	0	0	0	0	0	5	
21	Borovnjak, Sasa	1	7	0	0	1-1	1	3	4	2	15	0	1	0	1	0	0	0	27	
24	Woodyard, Cammeron	0	4-10	2-5	0-0	1	1	2	0	10	1	1	0	0	0	0	0	0	26	
	Team	26-54	6-19	12-19	12	22	34	13	70	16	15	1	2	20	0	0	0	0		

FG % 1st Half:	14-27	51.9%	2nd half:	12-27	44.4%	Game:	26-54	48.1%	Deadball Rebounds:	2, 1
3FG % 1st Half:	3-10	30.0%	2nd half:	3-9	33.3%	Game:	6-19	31.6%		
FT % 1st Half:	3-6	50.0%	2nd half:	9-13	69.2%	Game:	12-19	63.2%		

Officials: Mike Kitts, Ted Valentine, Bert Smith
Technical fouls: Mississippi-None, Penn State-None.
Attendance: 6001

Score by periods	1st	2nd	Total
Mississippi	35	37	72
Penn State	34	36	70

Points	In	Off	2nd	Fast	Bench
MISS	28	17	6	6	14
PSU	32	8	13	6	25

LAFAYETTE 61 PENN STATE 57

Dec. 7, 2011 @ University Park, Pa.

PENN STATE LEADERS

Scoring Leader: Marshall (20)
Rebounding Leader: Marshall & Glover (9)
Assist Leader: Frazier (9)

Penn State hit just 3-of-23 from three and 33 percent from the floor in falling to the Dukes who hit 9-of-30 threes and 16-of-20 at the foul line. The Lions almost managed to pull out a win by dominating the boards, 47-26, and pulling down 20 offensive rebounds, but shot just 28 percent in the second half and saw leading scorer Tim Frazier go 0-of-12 for three points. Jermaine Marshall posted a game-high 20 points and career-best nine boards. Ross Travis added career highs of 12 points and eight boards. Penn State jumped to an early 7-0 lead, but trailed 37-32 at the half and by as many as eight with 14:04 to play. The Dukes led the final 30 minutes of the game. Penn State got within two four times in the final four minutes, but could not tie the game.

Lafayette 61 - 4-5

#	Player	Total		3-Ptr			Rebounds			PF			TP			A	To	Blk	Stl	Min
		FG	FGA	FG-FTA	FT	FTA	Off	Def	Tot	Off	Def	Tot	PF	TP						
13	Willen, Ryan	f	1-3	0-1	1-2	1	0	1	4	3	0	1	4	0	0	1	0	0	0	26
44	Pelham, J.D.	c	0-0	0-0	0-0	0	0	2	2	0	0	0	1	0	0	0	0	0	9	
12	Hirrichs, Seth	g	4-9	4-9	2-3	1	4	5	3	14	2	2	0	0	0	0	0	0	25	
33	Frazier, Tim	g	3-8	0-3	8-9	3	2	2	0	12	1	2	0	0	0	0	0	0	34	
32	Delaney, Rob	g	0-7	0-4	2-2	0	2	2	2	2	2	9	1	0	0	0	0	0	36	
05	Ptasinski, Joey	3	3	1	3	0	0	0	1	1	2	7	0	0	0	0	0	0	22	
20	Trist, Dan	0	3	0	0	2-2	1	1	2	3	8	0	0	0	0	0	0	0	13	
22	Flannigan, Alan	0	0-0	0-0	0-0	0	1	1	0	0	0	0	0	0	0	0	0	0	7	
23	Smith, Les	0	0	0	0	0	0	0	0	0	0	0	0	0	0	0	0	0	4	
33	Petkovich, Nick	0	1-1	0-0	1-2	1	7	8	3	13	0	0	0	0	0	0	0	0	24	
	Team	18-47	9-30	16-20	4	22	26	19	61	15	10	3	7	20	0	0	0	0		

FG % 1st Half:	12-28	42.9%	2nd half:	6-19	31.6%	Game:	18-47	38.3%	Deadball Rebounds:	2
3FG % 1st Half:	7-17	41.2%	2nd half:	2-13	15.4%	Game:	9-30	30.0%		
FT % 1st Half:	8-9	88.9%	2nd half:	10-13	76.9%	Game:	18-20	90.0%		

Penn State 57 - 6-4

#	Player	Total		3-Ptr			Rebounds			PF			TP			A	To	Blk	Stl	Min
		FG	FGA	FG-FTA	FT	FTA	Off	Def	Tot	Off	Def	Tot	PF	TP						
35	Oliver, Billy	f	3-7	1-5	0-0	3	3	6	4	7	0	1	0	0	0	0	0	0	0	32
43	Travis, Ross	f	5-5	1-1	1-7	4	4	8	2	12	3	0	0	0	0	0	0	0	27	
05	Glover, Matt	g	0-6	0-2	1-2	3	6	9	2	1	3	0	0	0	0	0	0	0	27	
11	Marshall, Jermaine	g	5-13	1-4	9-11	2	7	9	4	20	1	3	1	3	3	3	3	0	32	
23	Frazier, Tim	g	0-12	0-5	3-4	1	2	3	4	3	9	5	0	2	0	0	0	0	34	
20	Colella, Nick	0	1-4	0-3	0-0	0	0	0	0	2	0	0	0	0	0	0	0	0	8	
21	Borovnjak, Sasa	1	4	0	0	0	1	1	2	0	2	0	0	0	0	0	0	0	13	
24	Woodyard, Cammeron	0	4-7	0-3	2-2	4	3	7	0	10	0	0	0	0	0	0	0	0	29	
	Team	19-58	3-23	16-26	20	27	47	18	57	14	13	1	2	20	0	0	0	0		

FG % 1st Half:	11-30	36.7%	2nd half:	9-28	28.6%	Game:	19-58	32.8%	Deadball Rebounds:	2
3FG % 1st Half:	1-13	7.7%	2nd half:	2-10	20.0%	Game:	3-28	13.0%		
FT % 1st Half:	9-17	52.9%	2nd half:	7-9	77.8%	Game:	16-26	61.5%		

Officials: Jim Burr, Tim Clougherty, Jim Schipper
Technical fouls: LAFAYETTE-TEAM, Penn State-Travis, Ross.
Attendance: 5482
Lafayette charged with technical foul with 10 seconds remaining for calling a timeout without having a timeout.

Score by periods	1st	2nd	Total
LAFAYETTE	37	24	61
Penn State	32	25	57

Points	In	Off	2nd	Fast	Bench
LAFAYETTE	28	13	15	7	14
PSU	28	13	15	7	14

Last FG - LAFAYETTE 2nd-03:17, PSU 2nd-02:12.
Largest lead - LAFAYETTE by 10 2nd-11:40, PSU by 7 1st-18:01.
Score tied - 1 time.
Lead changed - 1 time.

DUQUESNE 66 PENN STATE 59

Dec. 10, 2011 @ Pittsburgh, Pa.

PENN STATE LEADERS

Scoring Leader: Tim Frazier (15)
Rebound Leader: Frazier & Borovnjak (7)
Assist Leader: Frazier (6)

Penn State committed a season-high 23 turnovers and gave up a 32-29 half-time lead falling at Duquesne 66-59. Penn State saw the Dukes shoot 52 percent in the second half and use a 16-3 run to go from down two, 39-37, at the 16-minute mark to an 11-point lead, 53-42, with 10:18 to play. Penn State would get no closer than five the rest of the way. The Dukes logged 11 steals and scored 22 points off turnovers. Penn State won the rebounding battle, 39-28, but hit just 4-of-16 from three. Tim Frazier posted 15 points and Jermaine Marshall 12 for the Lions. Eric Evans won 9-of-11 at the foul line and scored 15 second half points on his way to a game-high 20 for the Dukes. Penn State led for much of the first half in a game with 10 ties and nine lead changes.

Penn State 59 - 6-5

#	Player	Total		3-Ptr			Rebounds			PF			TP			A	To	Blk	Stl	Min
		FG	FGA	FG-FTA	FT	FTA	Off	Def	Tot	Off	Def	Tot	PF	TP						
11	Marshall, Jermaine	f	5-13	2-4	0-1	2	4	6	3	12	3	4	0	1	0	1	0	0	38	
3																				



PENN STATE 72 CORNELL 67

Dec. 21, 2011 @ University Park, Pa.

PENN STATE LEADERS

Scoring Leader: Frazier (17)
Rebounding Leader: Frazier (11)
Assist Leader: Frazier (6)

Penn State hit 7-of-14 from three in the second half to turn a 31-30 halftime deficit into a 72-67 victory over Cornell behind Tim Frazier's fourth double-double of the season.

Cornell 67 • 4-6

Table with columns: #, Player, Total, FG-FGA, 3-Ptr, FT-FTA, Rebounds, PF, TP, A TO Blk Stl Min. Includes player stats for Miller, Shonn, Frazier, etc.

Penn State 74 • 8-5

Table with columns: #, Player, Total, FG-FGA, 3-Ptr, FT-FTA, Rebounds, PF, TP, A TO Blk Stl Min. Includes player stats for Oliver, Billy, Travis, Ross, etc.

Officials: Tom O'Neill, Eric Curry, Bo Boroski
Technical fouls: Cornell-TEAM, Penn State-None.

Score by periods table with columns: 1st, 2nd, Total. Penn State 30, 44, 74.

Last FG - COR 2nd-00:22, PSU 2nd-00:35.
Largest lead - COR by 9 1st-09:53, PSU by 7 2nd-12:13.

MICHIGAN 71 PENN STATE 53

Dec. 29, 2011 @ Ann Arbor, Mich.

PENN STATE LEADERS

Scoring Leader: Tim Frazier (20)
Rebounding Leader: Graham (6)
Assist Leader: Frazier (4)

Michigan followed an early 9-0 run with an 8-0 spurt to open up a 10-point lead midway through the first half. Penn State was within six, 23-17, with 6:34 to play in the first when Michigan closed the half on a 13-5 run pushing its lead to 36-22 at the half.

Penn State 53 • 8-6 (0-1)

Table with columns: #, Player, Total, FG-FGA, 3-Ptr, FT-FTA, Rebounds, PF, TP, A TO Blk Stl Min. Includes player stats for Oliver, Billy, Glover, Matt, Marshall, Jermaine, etc.

Michigan 71 • 11-2 (1-0)

Table with columns: #, Player, Total, FG-FGA, 3-Ptr, FT-FTA, Rebounds, PF, TP, A TO Blk Stl Min. Includes player stats for Smotrycz, Evan, Morgan, Jordan, Novak, Zack, etc.

Officials: Mike Kitts, Mike Eades, Eric Curry
Technical fouls: Penn State-None, Michigan-None.

Score by periods table with columns: 1st, 2nd, Total. Penn State 22, 31, 53; Michigan 36, 35, 71.

Last FG - PSU 2nd-01:58, MICH 2nd-00:58.
Largest lead - PSU by 3 1st-16:46, MICH by 22 2nd-13:49.

NORTHWESTERN 68 PENN STATE 56

Jan. 1, 2012 @ Evanston, Ill.

PENN STATE LEADERS

Scoring Leader: Frazier (16)
Rebounding Leader: Glover (8)
Assist Leader: Three with 3

Penn State led 26-23 at the half despite shooting just 26% in the first 20 minutes, but saw Northwestern hit 10 of its first 11 in the second half and torch the nets at 71% in the second 20 minutes to run away with a 68-56 victory.

Penn State 56 • 8-7, 0-2

Table with columns: #, Player, Total, FG-FGA, 3-Ptr, FT-FTA, Rebounds, PF, TP, A TO Blk Stl Min. Includes player stats for Oliver, Billy, Frazier, Tim, Marshall, Jermaine, etc.

Northwestern 68 • 11-3, 1-1

Table with columns: #, Player, Total, FG-FGA, 3-Ptr, FT-FTA, Rebounds, PF, TP, A TO Blk Stl Min. Includes player stats for Crawford, Drew, Shurna, John, Mirkovic, Luka, etc.

Officials: Tom O'Neill, Scott Thornley, Larry Sciroto
Technical fouls: Penn State-None, Northwestern-None.

Score by periods table with columns: 1st, 2nd, Total. Penn State 26, 30, 56; Northwestern 23, 45, 68.

Last FG - PSU 2nd-01:45, NU 2nd-04:51.
Largest lead - PSU by 6 1st-10:53, NU by 13 2nd-04:51.

PENN STATE vs. PURDUE

Jan. 5, 2012 @ University Park, Pa.

PENN STATE LEADERS

Scoring Leader:
Rebounding Leader:
Assist Leader:

-



2011-12 Penn State Men's Basketball
Penn State Combined Team Statistics (as of Jan 02, 2012)
All games



RECORD:	OVERALL	HOME	AWAY	NEUTRAL
ALL GAMES	8-7	6-2	1-4	1-1
CONFERENCE	0-2	0-0	0-2	0-0
NON-CONFERENCE	8-5	6-2	1-2	1-1

#	Player	gp-gs	min	avg	Total		3-Point		F-Throw		Rebounds				Other				pts	avg		
					fg-fga	fg%	3fg-fga	3fg%	ft-fa	ft%	off	def	tot	avg	pf	dq	a	to			blk	stl
23	Frazier, Tim	15-15	535	35.7	84-202	.416	9-37	.243	82-117	.701	25	59	84	5.6	39	0	100	58	4	33	259	17.3
11	Marshall, Jermaine	14-7	334	23.9	43-111	.387	19-51	.373	32-48	.667	9	43	52	3.7	32	0	17	33	6	17	137	9.8
24	Woodyard, Cammeron	15-8	381	25.4	40-114	.351	21-57	.368	22-27	.815	26	42	68	4.5	16	0	4	14	3	12	123	8.2
35	Oliver, Billy	15-15	372	24.8	34-93	.366	23-70	.329	12-16	.750	22	36	58	3.9	48	2	6	17	10	5	103	6.9
03	Lewis, Trey	14-5	295	21.1	31-84	.369	19-53	.358	5-8	.625	9	14	23	1.6	28	0	15	15	0	7	86	6.1
21	Borovnjak, Sasa	15-7	289	19.3	35-60	.583	0-0	.000	9-19	.474	28	30	58	3.9	24	1	2	17	3	6	79	5.3
43	Travis, Ross	15-7	254	16.9	28-66	.424	4-22	.182	6-22	.273	24	40	64	4.3	31	1	7	13	4	9	66	4.4
05	Glover, Matt	15-11	350	23.3	17-61	.279	8-33	.242	9-20	.450	21	42	63	4.2	38	2	21	25	1	13	51	3.4
25	Graham, Jon	9-0	119	13.2	13-34	.382	0-0	.000	2-6	.333	17	13	30	3.3	12	0	0	6	4	3	28	3.1
20	Colella, Nick	9-0	49	5.4	2-13	.154	1-9	.111	2-3	.667	2	4	6	0.7	5	0	0	2	1	2	7	0.8
14	Montminy, Kevin	3-0	4	1.3	1-1	1.000	0-0	.000	0-0	.000	1	0	1	0.3	0	0	0	0	0	0	2	0.7
34	Wisniewski, Alan	2-0	0	0.0	0-0	.000	0-0	.000	0-0	.000	0	0	0	0.0	0	0	0	1	0	0	0	0.0
32	Ackerman, Pat	7-0	17	2.4	0-2	.000	0-0	.000	0-0	.000	0	4	4	0.6	3	0	0	3	0	0	0	0.0
Team											28	17	45		1		1					
Total.....		15	2999		328-841	.390	104-332	.313	181-286	.633	212	344	556	37.1	277	6	172	205	36	107	941	62.7
Opponents.....		15	3000		305-738	.413	123-348	.353	208-283	.735	122	346	468	31.2	291	5	190	224	68	87	941	62.7

TEAM STATISTICS	PSU	OPP	Date	Opponent	Score	Att.
SCORING	941	941	11/12/11	HARTFORD	w 70-55	4152
Points per game	62.7	62.7	11/14/11	RADFORD	w 62-46	4916
Scoring margin	+0.0	-	11/16/11	LONG ISLAND	w 77-68	5258
FIELD GOALS-ATT	328-841	305-738	11/19/11	vs KENTUCKY	L 47-85	4755
Field goal pct	.390	.413	11/20/11	vs SOUTH FLORIDA	w 53-49	4755
3 POINT FG-ATT	104-332	123-348	11/23/11	YOUNGSTOWN STATE	w 82-71	4461
3-point FG pct	.313	.353	11/26/11	at Saint Joseph's	L 47-65	4200
3-pt FG made per game	6.9	8.2	11-30-11	at Boston College	w 62-54	4326
FREE THROWS-ATT	181-286	208-283	12/4/11	MISSISSIPPI	L 70-72	6001
Free throw pct	.633	.735	12/07/11	LAFAYETT	L 57-61	5462
F-Throws made per game	12.1	13.9	12/10/11	at Duquesne	L 59-66	7046
REBOUNDS	556	468	12/18/11	MOUNT ST. MARY'S	w 72-43	7202
Rebounds per game	37.1	31.2	12/21/11	CORNELL	w 74-67	4414
Rebounding margin	+5.9	-	* 12/29/11	at Michigan	L 53-71	12751
ASSISTS	172	190	* 01/01/12	at Northwestern	L 56-68	5389
Assists per game	11.5	12.7				
TURNOVERS	205	224				
Turnovers per game	13.7	14.9				
Turnover margin	+1.3	-				
Assist/turnover ratio	0.8	0.8				
STEALS	107	87				
Steals per game	7.1	5.8				
BLOCKS	36	68				
Blocks per game	2.4	4.5				
ATTENDANCE	41866	43222				
Home games-Avg/Game	8-5233	5-6742				
Neutral site-Avg/Game	-	2-4755				

* = Conference game

Score by Periods	1st	2nd	Totals
Penn State	413	528	941
Opponents	446	495	941



**2011-12 Penn State Men's Basketball
Penn State Combined Team Statistics (as of Jan 02, 2012)
Conference games**



RECORD:	OVERALL	HOME	AWAY	NEUTRAL
ALL GAMES	0-2	0-0	0-2	0-0
CONFERENCE	0-2	0-0	0-2	0-0
NON-CONFERENCE	0-0	0-0	0-0	0-0

#	Player	gp-gs	min	avg	Total		3-Point		F-Throw		Rebounds				pf	dq	a	to	blk	stl	pts	avg
					fg-fga	fg%	3fg-fga	3fg%	ft-fa	ft%	off	def	tot	avg								
23	Frazier, Tim	2-2	70	35.0	13-29	.448	0-4	.000	10-15	.667	4	5	9	4.5	6	0	7	9	0	5	36	18.0
11	Marshall, Jermaine	2-2	53	26.5	8-18	.444	5-10	.500	2-5	.400	0	7	7	3.5	6	0	4	8	0	2	23	11.5
24	Woodyard, Cammeron	2-2	56	28.0	5-19	.263	3-7	.429	5-6	.833	4	5	9	4.5	1	0	0	2	1	2	18	9.0
21	Borovnjak, Sasa	2-0	36	18.0	5-8	.625	0-0	.000	2-2	1.000	4	3	7	3.5	3	0	0	2	0	0	12	6.0
03	Lewis, Trey	2-0	56	28.0	4-14	.286	1-7	.143	0-0	.000	3	3	6	3.0	4	0	3	2	0	1	9	4.5
35	Oliver, Billy	2-2	44	22.0	1-3	.333	1-3	.333	2-4	.500	1	3	4	2.0	9	1	0	1	0	0	5	2.5
05	Glover, Matt	2-2	42	21.0	2-7	.286	0-1	.000	0-2	.000	5	5	10	5.0	7	1	2	4	0	2	4	2.0
25	Graham, Jon	2-0	20	10.0	1-4	.250	0-0	.000	0-1	.000	1	5	6	3.0	1	0	0	0	0	0	2	1.0
43	Travis, Ross	2-0	23	11.5	0-4	.000	0-2	.000	0-0	.000	1	1	2	1.0	3	0	1	0	0	0	0	0.0
Team											6	2	8									
Total.....		2	400		39-106	.368	10-34	.294	21-35	.600	29	39	68	34.0	40	2	17	28	1	12	109	54.5
Opponents.....		2	400		47-93	.505	17-46	.370	28-40	.700	12	47	59	29.5	29	1	28	21	8	13	139	69.5

TEAM STATISTICS	PSU	OPP	Date	Opponent	Score	Att.
SCORING	109	139	* 12/29/11	at Michigan	L 53-71	12751
Points per game	54.5	69.5	* 01/01/12	at Northwestern	L 56-68	5389
Scoring margin	-15.0	-	* = Conference game			
FIELD GOALS-ATT	39-106	47-93				
Field goal pct	.368	.505				
3 POINT FG-ATT	10-34	17-46				
3-point FG pct	.294	.370				
3-pt FG made per game	5.0	8.5				
FREE THROWS-ATT	21-35	28-40				
Free throw pct	.600	.700				
F-Throws made per game	10.5	14.0				
REBOUNDS	68	59				
Rebounds per game	34.0	29.5				
Rebounding margin	+4.5	-				
ASSISTS	17	28				
Assists per game	8.5	14.0				
TURNOVERS	28	21				
Turnovers per game	14.0	10.5				
Turnover margin	-3.5	-				
Assist/turnover ratio	0.6	1.3				
STEALS	12	13				
Steals per game	6.0	6.5				
BLOCKS	1	8				
Blocks per game	0.5	4.0				
ATTENDANCE	0	18140				
Home games-Avg/Game	0-0	2-9070				
Neutral site-Avg/Game	-	0-0				

Score by Periods	1st	2nd	Totals
Penn State	48	61	109
Opponents	59	80	139