



2012-13 PENN STATE LADY LION BASKETBALL

WOMEN'S BASKETBALL CONTACT:
 Kristina Petersen
 Twitter: @ladylionsid
 Website: www.GoPSUsports.com
 Email: kap18@psu.edu
 Cell: 814-883-4581
 Office: 814-865-1757

Penn State Athletic Communications: 101D Bryce Jordan Center, University Park, PA 16802 ♦ Office: 814-865-1757 ♦ Fax: 814-863-3165

SCHEDULE/RESULTS

NOVEMBER

Sat. 3	CALIFORNIA (PA.) (ex.).....W, 95-39
Sun. 11	HOWARD (BTN.com).....W, 72-61
Wed. 14	at #16/13 Texas A&M (FSN)W, 63-58
Sun. 18	LAFAYETTE (BTN.com)W, 75-34

Radisson Hotel Chatsworth Thanksgiving Basketball Tournament

Fri. 23	vs. Detroit.....W, 80-72
Sat. 24	vs. CS-Northridge.....W, 85-73

Big Ten/ACC Challenge

Thurs. 29	at Miami (Fla.).....L, 65-69
-----------	------------------------------

DECEMBER

Sun. 2	F. DICKINSON (BTN.com) ..W, 101-44
Thurs. 6	at #2/2 Connecticut (SNY).....L, 52-67
Sun. 9	GEORGETOWN (BTN).....W, 97-74
Wed. 12	at Virginia Tech.....W, 60-41
Sun. 16	SOUTH DAKOTA STATE 2 p.m.
Sun. 23	NJIT (BTN.com).....1:30 p.m.

JANUARY

Thurs. 3	NORTHWESTERN* (BTN.com) . 7 p.m.
Sun. 6	at Michigan State* (BTN)TBA
Sun. 13	NEBRASKA* (ESPN2)..... 2 p.m.
Thurs. 17	WISCONSIN* (BTN.com) 7 p.m.
Mon. 21	at Michigan* (BTN).....6:30 p.m.
Thurs. 24	MINNESOTA* (BTN)6:30 p.m.
Sun. 27	at Ohio State* (BTN)1 p.m.
Thurs. 31	at Wisconsin* (BTN.com).....8 p.m.

FEBRUARY

Mon. 4	PURDUE* (ESPN2) 7 p.m.
Thurs. 7	at Indiana* (BTN) 6:30 p.m.
Sun. 10	MICHIGAN STATE* (ESPN2)... 2 p.m.
Thurs. 14	at Iowa* (BTN.com).....8 p.m.
Wed. 20	ILLINOIS* (BTN.com)..... 7 p.m.

Seventh Annual Pink Zone at Penn State

Sun. 24	MICHIGAN* (BTN) 1 p.m.
Thurs. 28	at Minnesota* (BTN-WC)TBA

MARCH

Sun. 3	at Nebraska* (BTN-WC)TBA
Th.-Su. 7-10 Big Ten Tournament (BTN/ESPN2) (Hoffman Estates, Ill.)
Sa.-Tu. 23-26 NCAA 1st & 2nd Round
Sa.-Tu. 30-Apr. 2 NCAA Regionals

APRIL

Su./Tu. 7/9	...NCAA Final Four (New Orleans, La.)
-------------	---------------------------------------

BOLD CAPS indicates home game.

* - indicates Big Ten game.

All times are Eastern Time.

BTN - Big Ten Network

BTN.com - BigTenNetwork.com

Schedule subject to change. Please visit www.GoPSUsports.com for up-to-date tip times.

Game #11: South Dakota State at #11/10 Penn State

Sun., Dec. 16 ▶ 2 p.m. ▶ Bryce Jordan Center ▶ University Park, Pa.

		SETTING THE SCENE
Penn State Lady Lions	South Dakota St. Jackrabbits	The South Dakota St. Game
Record: 8-2, 0-0 Big Ten	Record: 6-4, 0-0 Summit	Series: First Meeting
Last Game: PSU 60, Virginia Tech 41 (12/12)	Last Game: SDSU 61, UNI 49 (12/8)	Last Meeting: n/a
Head Coach: Coquese Washington	Head Coach: Aaron Johnston	Streak: n/a
Career Record: 100-69 (6th yr.)	Career Record: 296-103 (13th yr.)	Television: none
Record at PSU: 100-69 (6th yr.)	Record at SDSU: 296-103 (13th yr.)	Radio: The game is on the Penn State Sports Network and ESPN Radio 1450 locally with Jerry Fisher calling the action. The audio feed is available at www.GoPSUsports.com.
Statistical Leaders	Statistical Leaders	Webstream: none
Points: Maggie Lucas (22.1)	Points: Megan Waytashek (13.4)	Live Stats: GoPSUsports.com
Rebounds: Nikki Greene (8.1)	Rebounds: Leah Deitel (5.5)	
Assists: Alex Bentley (4.3)	Assists: Gabrielle Boever (2.9)	

GAME DAY INFORMATION

SCOUTING SOUTH DAKOTA STATE

The Jackrabbits are 6-4 on the season and have wins over Nebraska, Washington State and Middle Tennessee State. Megan Waytashek leads SDSU with a 13.4 scoring average to go along with 3.8 rebounds and 1.5 steals per game. Ashley Eide is also averaging double figures for South Dakota State at a 13.3 clip. The Jackrabbits are strong from long range with 63 triples in 10 games this season.

ALL-TIME VS. THE JACKRABBITS

This will be the first-ever meeting between the Lady Lions and South Dakota State on the hardwood. Penn State is 3-0 all-time against Summit League teams with the last win coming at Oakland (96-89 in OT) Nov. 18, 2010.

LUCAS WINS NATIONAL PLAYER OF THE WEEK

Junior guard Maggie Lucas claimed the Dec. 11 Ann Meyers Drysdale National Player of the Week award from the USBWA. She is the first Lady Lion on record to win the award. Lucas poured in a career-high and Bryce Jordan Center record 39 points to go along with a career-best six steals in the win over Georgetown. Additionally, Lucas tallied 15 points in the loss at #2 UConn on Dec. 6.

STORYLINES

- ✓ Head coach Coquese Washington earned her 100th career win at Virginia Tech Dec. 12. She is the second coach in school history with 100 wins.
- ✓ Senior forward Mia Nickson posted her second double-double of the season with 10 points and 10 rebounds at Virginia Tech Dec. 12.
- ✓ Junior guard Maggie Lucas was selected as the Ann Meyers Drysdale National Player of the Week by the USBWA.
- ✓ Lucas broke the BJC scoring record (men or women) with her 39-point performance against Georgetown Dec. 9.
- ✓ Senior Nikki Greene surpassed the 800-rebound plateau for her career against Georgetown.
- ✓ Senior Alex Bentley tallied a season-high 23 points in the win over Georgetown Dec. 9.
- ✓ The Lady Lions are 11th in the Dec. 10 AP and 10th in the Dec. 11 USA Today Sports/ESPN Coaches' poll.
- ✓ Bentley and Lucas are among players named to the "Wade Watch" list for the State Farm® Wade Trophy, the Naismith Early Season Watch List and the Wooden Award Top 30.

UP NEXT

The Lady Lions continue their season-long three-game homestand against NJIT on Dec. 23 at 1:30 p.m. The game is a doubleheader with the men's team (vs. New Hampshire at 11 a.m.). It will be a \$5 general admission ticket for both games. Go to www.GoPSUsports.com/promotions/wbb.html for complete promotions information.



2012-13 ROSTER

PENN STATE LADY LIONS

No.	Name	Pos.	Cl./Elg.	Ht.	Hometown/High School (Previous School)
1	Candice Agee	C	Fr./Fr.	6-6	Victorville, Calif./Silverado
2	Dara Taylor	G	Sr./Jr.	5-8	Wilmington, Del./Caravel Academy (Maryland)
5	Talia East **	F/C	Jr./Jr.	6-3	Philadelphia, Pa./Friends' Central School
20	Alex Bentley ***	G	Sr./Sr.	5-7	Indianapolis, Ind./Ben Davis
23	Ariel Edwards **	G/F	Jr./Jr.	6-3	Elmont, N.Y./Christ the King
24	Mia Nickson **	F	Gr./Sr.	6-2	Ashburn, Va./Notre Dame Acad. (Boston College)
25	Gizelle Studevent ***	G	Sr./Sr.	5-11	La Jolla, Calif./The Bishop's School
33	Maggie Lucas **	G	Jr./Jr.	5-10	Narberth, Pa./Germantown Academy
40	Marisa Wolfe ***	F	Sr./Sr.	6-2	Ford City, Pa./Ford City
44	Tori Waldner *	F	So./So.	6-5	Milton, Ga./Milton
54	Nikki Greene ***	F/C	Sr./Sr.	6-4	Diboll, Texas/Diboll

Head Coach: Coquese Washington (Notre Dame '92)

Asst. Coaches: Fred Chmiel, Kia Damon, Maren Walseth

Captains: Alex Bentley, Mia Nickson, Marisa Wolfe

* Indicates letters earned

SOUTH DAKOTA STATE JACKRABBITS

No.	Name	Pos.	Cl.	Ht.	Hometown/High School (Previous School)
3	Megan Stuart	F	So.	6-2	Roseville, Minn./Roseville Area
4	Gabrielle Boever	G	So.	5-9	Worthington, Minn./Worthington
12	Tara Heiser	G	Jr.	5-9	Watertown, S.D./Watertown
13	Jessica Hart	G	Fr.	5-9	Eagan, Minn./Eagan
14	Hannah Strop	F	Jr.	6-0	New Prague, Minn./New Prague
15	Steph Paluch	G	Sr.	5-10	Pierre, S.D./T.F. Riggs
21	Leah Dietel	F	Sr.	6-1	Jordan, Minn./Jordan
22	Chloe Cornemann	G	Fr.	5-8	Yankton, S.D./Yankton
23	Rachel Walters	G/F	So.	6-1	Sioux Falls, S.D./Washington
24	Megan Waytashe	G/F	So.	6-0	Lino Lakes, Minn./Centennial
25	Anne Aamlid	F	So.	6-1	Sioux Falls, S.D./Roosevelt
30	Ashley Eide	G/F	Sr.	5-9	Sioux Falls, S.D./Washington
40	Mariah Clarin	F	So.	6-1	Princeton, Minn./Princeton
42	Katie Lingle	C	Sr.	6-2	Pierre, S.D./T.F. Riggs

Head Coach: Aaron Johnston

Asst. Coaches: Katie Falco, Mike Jewett, Carissa Nord

TEAM COMPARISON

PENN STATE		SOUTH DAKOTA ST.	
Lucas (22.1)	Scoring Leader	Waytashek (13.4)	
Greene (8.1)	Rebounding Leader	Deitel (5.5)	
Bentley (4.3)	Assist Leader	Boever (2.9)	
Bentley (3.7)	Steals Leader	Boever (1.9)	
Greene (1.2)	Blocks Leader	Lingle (0.7)	
75.0	Scoring Offense	61.1	
59.3	Scoring Defense	63.8	
+15.7	Scoring Margin	-2.7	
44.7	Rebounds Per Game	37.4	
+8.2	Rebound Margin	+2.7	
13.7	Assists Per Game	12.6	
10.6	Steals Per Game	8.4	
.422	Field Goal Pct.	.397	
.347	FG Defense Pct.	.411	
.388	3-pt. FG Pct.	.328	
.307	3-pt. FG Pct. Def.	.337	
.749	Free Throw Pct.	.660	
0.8	Assist/Turnover	0.6	
Won 2	W/L Streak	Won 3	

SERIES HISTORY

Overall:	First Meeting
Last meeting:	n/a
Last result:	n/a
Current streak:	n/a
Last 10:	n/a

QUICK FACTS

THE UNIVERSITY

Location: University Park, Pa.
 Founded: 1855
 Enrollment: 42,294
 Colors: Blue & White
 Nickname: Lady Lions
 Conference: Big Ten
 President: Dr. Rodney Erickson
 Acting Athletics Director: Dr. David Joyner
 Facility (cap.): Bryce Jordan Center (15,261)
 All-Time Record at BJC: 191-49 (19th season)

ATHLETIC COMMUNICATIONS

WBB Contact: Kristina Petersen
 Phone/Fax: (814) 865-1757/(814) 863-3165
 E-mail: kap18@psu.edu
 Address: 101-D Bryce Jordan Center
 University Park, Pa. 16802
 Press Row Phone: 814-863-3294
 Website: www.GoPSUsports.com
 Twitter: @ladylionsid

TEAM INFORMATION

2012-13 Record: 8-2
 Home: 4-0 Away: 3-2 Neutral: 1-0
 Big Ten Record: 0-0
 Home: 0-0 Away: 0-0
 Letterwinners Returning/Lost: 9/1
 Starters Returning/Lost: 4/1
 Big Ten Tournament: Semifinals
 Postseason: NCAA Sweet Sixteen

THE HISTORY

First Year of Women's Basketball: 1965
 All-Time Record: 839-382 (48 seasons)
 All-Time Big Ten Rec.: 217-117 (20 seasons)
 NCAA Tournament Appearances: 23
 NCAA Tournament Record: 29-23

WOMEN'S BASKETBALL

Head Coach: Coquese Washington
 Alma Mater: Notre Dame '92
 Overall Record: 100-69 (6th season)
 School Record: 100-69 (6th season)
 Basketball Office Phone: 814-863-2672
 Best Time To Reach Coach: Through SID
 Assistant Coaches (Alma Mater):
 Fred Chmiel (Excelsior College)
 Kia Damon (Millersville '97)
 Maren Walseth (Penn State '02)
 Twitter: @pennstatewbb
 Facebook: facebook.com/pennstateladylions
 YouTube: YouTube.com/pennstateladylions
 Instagram: pennstateladylions

PRONUNCIATIONS

Agee	A-jee
Coquese	ko-KWEES
Chmiel	shuh-MEAL
Maren Walseth	MARR-en WALL-seth
Gizelle Studevent	juh-ZELL STEW-duh-vent
Talia	tah-LEE-uh
Ariel	AIR-e-I
Dara	DAR-uh





STANDINGS (as of Dec. 12)

Team	Big Ten			Overall		
	W	L	Pct.	W	L	Pct.
Purdue	0	0	.000	9	1	.900
Michigan State	0	0	.000	8	1	.889
Michigan	0	0	.000	8	2	.800
PENN STATE	0	0	.000	8	2	.800
Minnesota	0	0	.000	9	3	.750
Ohio State	0	0	.000	6	2	.750
Iowa	0	0	.000	7	3	.700
Nebraska	0	0	.000	7	3	.700
Northwestern	0	0	.000	6	3	.667
Wisconsin	0	0	.000	6	3	.667
Illinois	0	0	.000	6	4	.600
Indiana	0	0	.000	6	4	.600

BIG TEN SCHEDULE

DECEMBER 10

at Wisconsin 82, Florida Atlantic 73 (OT)

DECEMBER 11

Michigan 55, at Eastern Michigan 43

DECEMBER 12

at Illinois 80, Oregon 62
Penn State 60, at Virginia Tech 41

DECEMBER 15

Western Michigan at Michigan 2 p.m.
Ohio State at Washington State 3 p.m.
Eastern Illinois at Wisconsin 3 p.m.

DECEMBER 16

SIU-Edwardsville at Indiana 2 p.m.
Iowa at Drake 3 p.m.
IPFW at Michigan State 2 p.m.
Nebraska at South Florida 2 p.m.
South Dakota State at Penn State 2 p.m.
Purdue at Oakland 3 p.m.

All times are Eastern.

PROJECTED STARTERS



2 DARA TAYLOR G
Jr., 5-8, Wilmington, Del.
7.3 ppg, 3.6 rpg, 2.9 apg, 1.9 spg

Notes: Knocked down three triples en route to 15 pts at VA Tech ... Recorded eight points with 4 rebs. & 2 assts. at UConn ... Had her best scoring night as a Penn Stater with 15 points against FDU.



20 ALEX BENTLEY G
Sr., 5-7, Indianapolis, Ind.
12.6 ppg, 4.3 apg, 3.7 spg, .402 FG%

Notes: Notched season-best 23 pts. vs. Georgetown ... Had 14 points & 4 steals at Miami ... On 2013 Wade, Naismith and Wooden watch lists ... Big Ten Preseason Co-Player of the Year.



24 MIA NICKSON F
Sr., 6-2, Ashburn, Va.
8.7 ppg, 6.6 rpg, .406 FG%, 0.7 bpg

Notes: Posted her 2nd double-double of the season with 10 pts. & 10 rebs. at Virginia Tech ... Notched 8 pts. & 8 rebs. at UConn ... Had 8 pts. & 3 rebs. in the win over CSUN.



33 MAGGIE LUCAS G
Jr., 5-10, Narberth, Pa.
22.1 ppg, 4.6 rpg, .548 3FG%, .907 FT%

Notes: USBWA National Player of the Week (Dec. 11) ... Posted a career-best & BJC record 39 pts. on 7 threes with a career-high 6 steals vs. Georgetown ... On 2013 Wade, Naismith and Wooden watch lists.



54 NIKKI GREENE C
Sr., 6-4, Diboll, Texas
6.9 ppg, 8.1 rpg, 1.2 bpg, .697 FT%

Notes: Pulled in 13 rebs. against Georgetown ... Notched a 20-20 with 21 pts. & 20 rebs. at CSUN ... Named to CSUN All-Tournament team ... 3rd player at PSU with multiple 20-rebound games.

LAST TIME OUT: Penn State head coach Coquese Washington collected her 100th career coaching win as the Lady Lions earned the 60-41 win at Virginia Tech Wednesday. Junior guard **Maggie Lucas** was a stellar 7-for-9 from the field en route to a team-best 17 points to go along with four rebounds and two assists. Fellow junior guard **Dara Taylor** tied her best scoring performance as a Penn Stater with 15 tallies, including a career-high three makes from beyond the arc. She also had three rebounds and a steal. Senior forward **Mia Nickson** notched her second double-double of the season with 10 points and 10 rebounds.

SCOUTING SOUTH DAKOTA STATE: The Jackrabbits are 6-4 on the season and have wins over Nebraska, Washington State and Middle Tennessee State. Megan Waytashek leads SDSU with a 13.4 scoring average to go along with 3.8 rebounds and 1.5 steals per game. Ashley Eide is also averaging double figures for South Dakota State at a 13.3 clip. The Jackrabbits are strong from long range with 63 triples in 10 games this season and a .328 shooting percentage from beyond the arc.

ALL-TIME VS. THE JACKRABBITS: This will be the first-ever meeting between the Lady Lions and South Dakota State on the hardwood. Penn State is 3-0 all-time against Summit League teams with the last win coming at Oakland (96-89 in OT) Nov. 18, 2010.

WHAT'S AT STAKE

A Penn State Win Would:

- Make Penn State 9-2 on the season.
- Give PSU a 1-0 series lead over South Dakota State.
- Extend the Lady Lions' non-conference home court winning streak to 12 games, tied for the third-longest in school history.

WASHINGTON WINS #100: Lady Lion head coach **Coquese Washington** earned her 100th career coaching win as Penn State topped Virginia Tech, 60-41, in Blacksburg Dec. 12. Washington is just the second the second coach in program history to accomplish the feat (Rene Portland; 606).

LUCAS PASSES 1,400: Junior guard **Maggie Lucas** surpassed the 1,400-point plateau for her career with 17 markers at Virginia Tech Dec. 12. Lucas attained her 17 points via the best shooting performance of her career, going 7-for-9 as the Hokie defense honed in on her. Accomplishing the feat in 78 games, she is the third-fastest player in school history to reach the 1,400-point mark behind Kelly Mazzante (64 games) and Susan Robinson (75 games).

TAYLOR EQUAL PSU CAREER HIGH: Junior guard **Dara Taylor** matched her best scoring performance in a Penn State uniform with 15 points at Virginia Tech Dec. 12. She matches the mark she set against Fairleigh Dickinson Dec. 2. Taylor connected on a career-best three shots from beyond the arc, passing her previous mark of two three-pointers, set twice as a Maryland Terp.

LUCAS WINS NATIONAL PLAYER OF THE WEEK: Junior guard **Maggie Lucas** claimed the Dec. 11 Ann Meyers Drysdale National Player of the Week award from the USBWA. She is the first Lady Lion on record to win the award. Lucas poured in a career-high and Bryce Jordan Center record (men or women) 39 points to go along with a career-best six steals in the Dec. 9 win over Georgetown. Additionally, Lucas tallied 15 points in the loss at #2 UConn on Dec. 6.



PRESS CONFERENCES

Coquese Washington will hold a weekly press conference and the Lady Lions will have media availability on a weekly basis throughout the season. All press conferences will begin at 2:45 p.m. (unless otherwise noted) and go for approximately 15 minutes, followed by a 15-minute open media session prior to practice. Press conference will be held in the Media Room at the Bryce Jordan Center (unless otherwise noted).

Press Conference Dates

Tuesday, Jan. 1 (11:30 a.m.)
 Wednesday, Jan. 9
 Wednesday, Jan. 16
 Wednesday, Jan. 23
 Wednesday, Jan. 30
 Wednesday, Feb. 6
 Wednesday, Feb. 13
 Monday, Feb. 18 (2:30)
 Wednesday, Feb. 27
 Monday, Mar. 4 (2:30)

ANOTHER POW AWARD FOR MAGS: Junior guard Maggie Lucas picked up her second Big Ten Player of the Week award of the season after averaging 27.0 points, 4.5 rebounds, 1.5 assists and 3.5 steals in a pair of games for the Lady Lions last week. Lucas shared the award for the week-ending Dec. 9 with Minnesota's Rachel Banham. Lucas is the first Lady Lion to garner multiple Player of the Week awards in a season since Amanda Brown won two weekly honors in the 2006-07 campaign.

RECORD BREAKER IN THE BJC: Junior guard Maggie Lucas was 11-for-21 from the field and 7-for-13 from three-point range en route to a career-high 39 points in the win over Georgetown Dec. 9. Her 39 tallies broke the Bryce Jordan Center record for points in a game (men's or women's), surpassing the previous mark of 38 points, set by Kelly Mazzante twice. Lucas is the first Lady Lion to break the 35-point mark since Kelly Mazzante had 35 against Wisconsin on March 2, 2003. Lucas' three career 30-point games are tied for the sixth-most by a Penn State player. Additionally, Lucas tied the women's BJC record for three-pointers in a game with seven triples, equaling the mark she set against Michigan State (1/7/12) and also held by Adrienne Squire, Kelly Mazzante and Iowa's Kamille Wahlin. Lucas was also stellar on the defensive end against the Hoyas, recording a career-high six steals.

GREENE PULLS IN #800: With 13 rebounds in the win over Georgetown Dec. 9, senior center Nikki Greene reached the 800-rebound mark for her career. She is the ninth player in school history to snag 800 caroms and is the first player to join the 800-rebound club since Amanda Brown in the 2006-07 season.

NON-CON HOME WINNING STREAK: The Lady Lions have won their last 11 non-conference home games, dating back to the 2010-11 season. The streak is tied for the fourth-longest non-conference home court winning streak in school history. Penn State last lost a home non-conference game against Drexel on Dec. 21, 2010.

THEFT BY A BENTLEY: Senior guard Alex Bentley nabbed a pair of steals against Georgetown on Dec. 9 to moved into eighth place on Penn State's all-time steals chart, passing Corinne Gulas (247; 1980-81). Bentley has 253 career thefts and needs four steals to tie Nancy Kuhl (257; 1975-79) for seventh place all-time.

RACKING UP THE FREQUENT FLYER MILES: The Lady Lions have racked up the frequent flyer miles since August. Including the team's trip to Europe and the non-conference slate, Penn State has traveled a total of 23,487 miles. Here is a breakdown of the Lions' travel:

European Tour: 10,711 miles
 Texas A&M: 2,906 miles
 Cal State Northridge: 5,884 miles
 Miami: 2,522 miles
 Storrs: 728 miles
 Blacksburg: 760 miles
Total: 23,511 miles

SPELL RELIEF A-R-I: Junior guard/forward Ariel Edwards has supplied a spark off the bench for the Lady Lions in her first three games (Fairleigh Dickinson, Connecticut and Georgetown) after being replaced by Dara Taylor in the starting lineup. Edwards averaged 13.0 points and 4.3 rebounds. She also shoot 73.9% (17-of-23) in those contests. Edwards is third on the team in scoring this season at an 8.8 per game rate.

LADY LIONS ON TWITTER & FACEBOOK: The Lady Lions are on Twitter. Follow the Lady Lions and assistant coaches (@pennstatewbb) and sports information contact Kris Petersen (@ladylionsid) to get the inside scoop. The Lady Lions are also on Facebook at www.facebook.com/pennstateladylions.



GREENE GETS #900: Senior center Nikki Greene surpassed the 900-point plateau at #2/2 Connecticut Dec. 6. Greene's two points against the Huskies brought her career total to 908 markers. With 92 more tallies, she will be the 35th player in school history to reach 1,000 points.

LEADING THE HUSKIES: The Lady Lions led the second-ranked Connecticut Huskies on two occasions for a total of 31 seconds in their Dec. 6 game. To that point, the Huskies had only trailed for a total of 17 seconds in their season opener against College of Charleston. Penn State also forced UConn into a season-high 20 turnovers.

FIRST STARTS: Juniors Dara Taylor and Talia East made their first career starts in a Penn State uniform against Fairleigh Dickinson on Dec. 2 and they both responded with their best days in the Blue & White. Taylor, who had 28 collegiate starts at Maryland, tallied 15 points against the Knights for her best scoring performance as a Lady Lion. East notched a career-best 11 points to go along with three blocks in her first career start.

PENN STATE'S OVERALL/BIG TEN YEAR-BY-YEAR REVIEW

Year	Overall	Big Ten	Home	BT Home	Road	BT Road	Neutral
1992-93	22-6	14-4	12-2	9-0	9-4	5-4	0-0
1993-94	28-3	16-2	14-0	9-0	11-2	7-2	3-1
1994-95	26-5	13-3	14-2	8-0	9-3	5-3	3-0
1995-96*	27-7	13-3	14-2	8-0	8-4	5-3	5-1
1996-97	15-12	8-8	9-3	5-3	5-6	3-5	1-3
1997-98	21-13	8-8	10-5	4-4	6-6	4-4	5-2
1998-99	22-8	12-4	9-2	6-2	9-4	6-2	4-2
1999-00	30-5	15-1	14-0	8-0	9-2	7-1	7-3
2000-01	19-10	11-5	11-2	7-1	6-5	4-4	2-3
2001-02	23-12	11-5	10-4	6-2	9-5	5-3	4-3
2002-03	26-9	13-3	16-0	8-0	7-7	5-3	2-2
2003-04	28-6	15-1	12-1	8-0	9-3	7-1	6-2
2004-05	19-11	13-3	12-0	8-0	6-9	5-3	1-2
2005-06	13-16	6-10	8-6	5-3	3-8	1-7	2-2
2006-07	15-16	7-9	12-1	7-1	2-12	0-7	1-3
2007-08	13-18	4-14	10-6	3-6	3-11	1-8	0-1
2008-09	11-18	6-12	8-6	4-5	2-9	2-7	1-3
2009-10	17-14	8-10	9-6	5-4	5-7	3-6	3-1
2010-11	25-10	11-5	14-4	6-2	7-4	5-3	4-2
2011-12	26-7	13-3	12-2	6-2	11-3	7-1	3-2
2012-13	8-2	0-0	4-0	0-0	3-2	0-0	1-0

* First season at the Bryce Jordan Center



PENN STATE'S RECORD WHEN...

Playing at home	4-0
Playing on the road	3-2
Playing at a neutral site	1-0
vs. Top 10 teams	0-1
vs. Top 25 teams	1-1
Games decided by 3 points or less	0-0
Games decided by 4-10 points	2-1
Games decided by 11-19 points	3-1
Games decided by 20 points or more	3-0
Leading at the half	6-0
Tied at the half	0-0
Trailing at the half	2-2
Leading with 5:00 remaining	6-0
Trailing with 5:00 remaining	2-2
Tied with 5:00 remaining	0-0
In overtime	0-0
PSU scores 40-49 points	0-0
PSU scores 50-59 points	0-1
PSU scores 60-69 points	2-1
PSU scores 70-79 points	2-0
PSU scores 80 points or more	4-0
PSU shoots 45% or better	2-0
PSU shoots less than 45%	6-2
PSU shoots better than opponent	7-0
Opponent shoots better than PSU or tied	1-2
Opponent scores less than 39 points	1-0
Opponent scores 40-49 points	2-0
Opponent scores 50-59 points	1-0
Opponent scores 60-69 points	1-2
Opponent scores more than 70 points	3-0
Opponent shoots better than 45%	0-0
Opponent shoots less than 45%	8-2
PSU outrebounds opponent	6-2
Opponent outrebounds PSU or tied	2-0
PSU commits 14 or less turnovers	2-0
PSU commits 15 or more turnovers	6-2
PSU makes at least 5 3-pointers	3-1
PSU makes four 3-pointers or less	5-1
Recording 7 or more steals	8-2
Recording 6 or less steals	0-0
Wearing white uniforms	5-0
Wearing blue uniforms	3-2
Wearing pink uniforms	0-0
Penn State wins the tip	5-1
Penn State loses the tip	3-1
Penn State scores first	4-0
Opponent scores first	4-2
Playing during the day (before 5 p.m.)	6-0
Playing at night	2-2
On Monday	0-0
On Tuesday	0-0
On Wednesday	2-0
On Thursday	0-2
On Friday	1-0
On Saturday	1-0
On Sunday	4-0
In November	5-1
In December	3-1
In January	0-0
In February	0-0
In March	0-0

AB DISHING HER WAY UP THE ASSISTS CHART:

Senior guard **Alex Bentley** handed out eight assists in the win over FDU Dec. 2 to move into ninth place on Penn State's career helpers chart. With 498 career dimes, Bentley passed Tanisha Wright (484; 2002-05) for the ninth spot. Bentley needs 30 assists to tie Nancy Kuhl (528; 1975-79) for eighth place.

POST DUO HITS CAREER MARKS:

Freshman **Candice Agee** and sophomore **Tori Waldner** each had career days in the win over Fairleigh Dickinson Dec. 2. Agee tallied personal bests of eight points, nine rebounds and 20 minutes played, while Waldner notched a career-high seven points with five rebounds and two blocks. Waldner's previous career high was six points, established three times, including twice this season.

C-NOTE:

With a 101-44 win over Fairleigh Dickinson Dec. 2, Penn State surpassed the 100-point plateau for the first time since scoring 103 tallies against Wagner last season (12/18/11). It was the 47th time in program history that the Lions have scored 100 or more points. Additionally, the 57-point win was the biggest margin of victory since the 103-42 win over Wagner.

LUCAS CLIMBS SCORING CHART:

With 24 points against Fairleigh Dickinson Dec. 2, junior guard **Maggie Lucas** moved into 16th place on Penn State's career scoring chart (1,415), passing Lady Lion assistant coach Maren Walseth (1,328; 1998-01). She needs 13 points to tie Jen Bednarek (1,428; 1977-80) for 14th spot.

PSU 11TH IN AP POLL:

The Penn State Lady Lions dropped one spot to 11th place in the Dec. 10 Associated Press poll. The Lady Lions peaked at sixth spot, the highest ranking in the AP poll for the Lady Lions since they were fifth in the final 2004 poll. The Lady Lions were ranked in the AP poll every week last season, finishing the year 11th.

LIONS RANKED 10TH IN COACHES POLL:

The Lady Lions remained 10th in the Dec. 11 USA Today Sports coaches' poll. Penn State peaked at No. 7 on Nov. 27, tying the highest ranking in the Coaches' Poll for the Lady Lions since they were seventh in the final 2004 poll.

MAGS IN THE ESPNW BLOGOSPHERE:

Junior guard **Maggie Lucas** is a weekly contributing blogger for espnW. Lucas will be blogging about various topics all year long. Her blogs can be found at espn.com/espnw/blog/category/maggie-lucas/.

GREENE JUMPS BOARDS LIST:

Senior center **Nikki Greene** moved up to ninth place on Penn State's career rebounding chart with seven boards at Miami Nov. 29. She now has 804 caroms, passing Mary Donovan (773; 1978-81) for the ninth position. Greene needs four rebounds to tie Amanda Brown (808; 2004-07) for the eighth spot.

LUCAS TABBED PLAYER OF THE WEEK:

Junior guard **Maggie Lucas** was selected as the Big Ten Player of the Week for the week-ending Nov. 25. It is the second career Big Ten Player of the Week award for Lucas; she also won it on Feb. 21, 2012. Lucas was named the Radisson Hotel Chatsworth Thanksgiving Tournament MVP after averaging 25.5 points, 3.5 rebounds, 3.0 assists and 2.5 steals in two games. The junior shot 53.3% (16-30) from the field with an amazing 75% (6-8) from long range.

LIONS IN THE BIG TEN STATS

A breakdown of where Penn State ranks in the Big Ten's statistical categories. Through game of Dec. 10.

TEAM	
Scoring Offense.....	1st (75.0)
Scoring Defense.....	6th (59.3)
Scoring Margin.....	3rd (+15.7)
Free Throw Percentage.....	3rd (.749)
FG Percentage.....	6th (.422)
FG Percentage Defense.....	5th (.347)
3-point FG Percentage.....	4th (.388)
3-point FG Pct. Defense.....	9th (.307)
3-point FG Made.....	T-8th (4.7)
Rebounding Offense.....	1st (44.7)
Rebounding Defense.....	8th (36.5)
Rebounding Margin.....	2nd (+8.2)
Offensive Rebounds.....	1st (16.9)
Defensive Rebounds.....	4th (27.8)
Blocked Shots.....	5th (4.6)
Assists.....	11th (13.7)
Steals.....	T-1st (10.6)
Turnover Margin.....	4th (+2.5)
Assist to Turnover Ratio.....	10th (0.8)
INDIVIDUAL	
Scoring.....	1st - Maggie Lucas (22.1)
.....	20th - Alex Bentley (12.6)
Rebounding.....	4th - Nikki Greene (8.1)
.....	T-15th - Mia Nickson (6.6)
FG Percentage.....	8th - Ariel Edwards (.507)
.....	10th - Maggie Lucas (.500)
Assists.....	9th - Alex Bentley (4.3)
FT Percentage.....	2nd - Maggie Lucas (.907)
.....	5th - Alex Bentley (.862)
Steals.....	1st - Alex Bentley (3.7)
.....	5th - Maggie Lucas (2.3)
.....	T-12th - Dara Taylor (1.9)
3FG Percentage.....	1st - Maggie Lucas (.548)
3FG Made.....	2nd - Maggie Lucas (3.4)
Blocked Shots.....	10th - Nikki Greene (1.2)
Assist/TO Ratio.....	8th - Alex Bentley (1.7)
Off. Reb.	2nd - Mia Nickson (3.3)
.....	T-4th - Nikki Greene (2.9)
Def. Reb.....	9th - Nikki Greene (5.2)



MILESTONE WATCH

Milestone Watch

Milestone	Player	Current Total
1,500 points	Alex Bentley	1,463
	Maggie Lucas	1,415
1,000 points	Nikki Greene	908
700 points	Mia Nickson (career)	694
	Mia Nickson (PSU)	649
400 points	Ariel Edwards	387
	Dara Taylor (career)	315
300 points	Marisa Wolfe	242
200 points	Gizelle Studevent	158
	Talia East	153
100 points	Tori Waldner	88
900 rebounds	Nikki Greene	804
600 rebounds	Mia Nickson (career)	536
500 rebounds	Mia Nickson (PSU)	479
400 rebounds	Maggie Lucas	308
	Alex Bentley	307
300 rebounds	Ariel Edwards	227
	Talia East	211
100 rebounds	Tori Waldner	99
	Gizelle Studevent	80
500 assists	Alex Bentley	498
300 assists	Dara Taylor (career)	271
200 assists	Maggie Lucas	171
250 steals	Alex Bentley	253
150 steals	Maggie Lucas	127
	Nikki Greene	103
100 steals	Dara Taylor (career)	94
200 blocks	Nikki Greene	188
50 blocks	Talia East	43
250 3-pt FGs	Maggie Lucas	228

Milestone Reached

Milestone	Player	Reached
1,400 points	Maggie Lucas	12/12/12
300 points	Dara Taylor (career)	12/9/12
800 rebounds	Nikk Greene	12/9/12
300 rebounds	Alex Bentley	12/9/12
300 rebounds	Maggie Lucas	12/9/12
900 points	Nikki Greene	12/6/12
1,400 points	Alex Bentley	11/24/12
1,300 points	Maggie Lucas	11/24/12
200 rebounds	Talia East	11/23/12
100 steals	Nikki Greene	11/23/12
600 points	Mia Nickson (PSU)	11/18/12
500 rebounds	Mia Nickson (career)	11/18/12
200 rebounds	Ariel Edwards	11/18/12
200 3-pt FGs	Maggie Lucas	11/18/12
1,200 points	Maggie Lucas	11/11/12
300 points	Ariel Edwards	11/11/12

GOBBLING UP TOURNEY AWARDS: Junior guard **Maggie Lucas** was selected as the Radisson Hotel Chatsworth Thanksgiving Tournament MVP, while senior center **Nikki Greene** was named to the All-Tournament team. Lucas averaged 25.5 points, 3.5 rebounds, 3.0 assists and 2.5 steals in two games, while Greene averaged a double-double with 13.5 points and 13.5 rebounds per game.

20-20 VISION: Senior center **Nikki Greene** posted her first double-double of the season and 10th of her career with 21 points and 20 rebounds in the win over Cal State Northridge on Nov. 24. The 20 boards tie Greene's career high, which she also set against Indiana on Jan. 23, 2011. She is just the third player in school history to have multiple 20-rebound games in her career, joining Mag Strittmatter (1975-78) and Mary Donovan (1978-81).

CAREER DAY FOR ARI: **Ariel Edwards** had a career day against Detroit on Nov. 23. The junior guard/forward tallied 24 points on 11-of-16 shooting in just 25 minutes of action. In fact, Edwards had 19 tallies in the first half, which eclipsed her previous career high of 17 points against Iowa on Jan. 22, 2012.

5-0 UNDER COQUESE: The Lady Lions started the season 5-0 for the second time under **Coquese Washington**. The mark equals the best start under Washington during the 2010-11 campaign.

MAGS DRAINS #200 FROM DEEP: Junior guard **Maggie Lucas** connected on her 200th career three-pointer in the win over Lafayette on Nov. 18. She is the third player in school history to reach 200 triples, joining Kelly Mazzante and Lisa Shepherd.

AB REACHES 100 STARTS: For the second time this season, the Lady Lions have had a player reach the century mark for starts. This time it was **Alex Bentley**, who earned the nod against Lafayette on Nov. 18, joining **Nikki Greene** among those Lady Lions with 100 or more starts. She is the 12th player in school history to accomplish the feat. She has started all but two of the games that she has played in the Blue & White.

MIA MEETS MILESTONES: In the Nov. 18 win over Lafayette, senior forward **Mia Nickson** reached a pair of milestones. The Ashburn, Va. native tallied 12 points to surpass the 600-point mark for her Penn State career. Additionally, Nickson snagged six rebounds to surpass the 500-career mark for her collegiate career.

RANKED NON-CON ROAD WIN: Penn State picked up the 63-58 win over #16/13 Texas A&M in College Station Nov. 14 to give the Lady Lions their first road victory over a ranked non-conference opponent since defeating #19 Texas on December 21, 2001. In that game, the Lady Lions topped the Longhorns, 67-65.

LIONS SNAP AGGIES' STREAK: The Lady Lions picked up a 63-58 victory over #16/13 Texas A&M Nov. 14 to snap the Aggies' first 58-game non-conference home court winning streak. Texas A&M last lost a home non-conference game to Houston on Dec. 30, 2003.

TOP 10 RECRUITING CLASS: Coquese Washington has landed a Top 10 recruiting class with the addition of seven players for the 2013 class. Penn State's class is ranked No. 6 by Collegiate Girls Basketball Report, No. 7 Blue Star Basketball and No. 9 by All-Star Girls Report. Guards **Lindsey Spann** (Laurel, Md./Good Counsel) and **KeKe Sevillian** (Goodrich, Mich./Goodrich), swing players **Jenny DeGraaf** (Springboro, Ohio/Springboro), **Kaliyah Mitchell** (Stone Mountain, Ga./Stephenson), **Peyton Whitted** (Suwanee, Ga./North Gwinnett) and post players **Alex Harris** (Lorain, Ohio/Lorain Southview) and **Infiniti Alston** (Baltimore, Md./Digital Harbor) signed National Letters of Intent and will start their Lady Lion careers in 2013-14. The seven-player class is the largest in school history and includes six players that are in the Collegiate Girls Basketball Report Top 100.

SEASON OPENING Ws: Penn State has won its last seven season opener after a 72-61 decision over Howard on Nov. 11. The Lady Lions are a perfect 6-0 in the first game of the season under head coach Coquese Washington. Overall, Penn State is now 37-12 all-time in season openers.

NCAA STATS

TEAM

Scoring Offense	19th (76.7)
Scoring Margin	35th (+15.3)
Field Goal Percentage	56th (.426)
Field Goal Percentage Defense	80th (.356)
Free Throw Percentage	31st (.747)
Rebounding Margin	55th (+7.0)
3FG Percentage	9th (.394)
Win-Loss Percentage	T-48th (.778)
Assists	89th (14.3)
Blocked Shots	48th (4.8)
Steals	79th (10.9)
Turnover Margin	80th (2.89)

INDIVIDUAL

Scoring	8th - Maggie Lucas (22.7)
Assists	94th - Alex Bentley (4.3)
Steals	25th - Alex Bentley (3.56)
FT Percentage	24th - Maggie Lucas (.902)
	60th - Alex Bentley (.862)
3FG Percentage	3rd - Maggie Lucas (.550)
3FG Made	2nd - Maggie Lucas (3.67)
Assist-to-TO	85th - Alex Bentley (1.7)

SINGLE GAME

Scoring	T-16th - vs. Fairleigh Dickinson (101)
Points	T-4th - Maggie Lucas (39 vs. G-town)
Rebounds	T-9th - Nikki Greene (20 vs. CSUN)
FT Pct.	T-10th - Nikki Greene (.929 vs. CSUN)
3FG	T-8th - Maggie Lucas (7 vs. G-town)
3FG Pct.	T-13th - Maggie Lucas (.538 vs. G-town)

NCAA Statistics as of 12/10



THE LAST TIME PENN STATE...

SCORING

Player scored 20 points: vs. Georgetown (39, Maggie Lucas; 23, Alex Bentley), 12/9/12
Player scored 25 points: vs. Georgetown (39, Maggie Lucas), 12/9/12
Player scored 30 points: vs. Georgetown (39, Maggie Lucas), 12/9/12
Player scored 35 points: vs. Georgetown (39, Maggie Lucas), 12/9/12
Player scored 40 points: vs. Minnesota (49, Kelly Mazzante), 12/28/01
Two players scored 20 points: vs. Georgetown (39, Maggie Lucas; 23, Alex Bentley), 12/9/12
Three players scored 20 pts.: at Nevada (26, Maggie Lucas; 23, Alex Bentley; 21, Zhaque Gray), 11/26/11
Two players scored 25 points: at Boston College (28, Alex Bentley; 28, Maggie Lucas), 12/2/10
Player scored 25 points/3 consecutive games: Kelly Mazzante (31, vs. Baylor, 12/9/03; 31, vs. Pittsburgh, 12/14/03; 29, Louisiana Tech, 12/21/03)
Five in double figures: vs. Fairleigh Dickinson (24, Maggie Lucas; 18, Ariel Edwards; 15, Dara Taylor; 11 Talia East; 10, Nikki Greene), 12/2/12
Six in double figures: at Oakland (15, Alex Bentley; 16, Ariel Edwards; 16, Zhaque Gray; 13, Maggie Lucas; 10, Mia Nickson; 10, Gizelle Studevent; 10, Julia Trogele), 11/18/10
Seven in double figures: at Oakland (15, Alex Bentley; 16, Ariel Edwards; 16, Zhaque Gray; 13, Maggie Lucas; 10, Mia Nickson; 10, Gizelle Studevent; 10, Julia Trogele), 11/18/10
PSU scored 50 points in a half: vs. Georgetown (52, first half), 12/9/12
PSU scored 55 points in a half: at Nebraska (55, second half), 1/15/12
PSU scored 60 points in a half: vs. Northwestern (65 points, first half), 1/2/00
PSU scored 100 points: vs. Fairleigh Dickinson (W, 101-44), 12/2/12
PSU scored 100 points in Big Ten game: vs. Illinois (W, 101-80), 2/15/01
PSU scored 100 points in a home game: vs. Fairleigh Dickinson (W, 101-44), 12/2/12
PSU scored fewer than 15 points in a half: vs. Wisconsin (13, first half), 2/25/10
PSU scored fewer than 20 points in a half: vs. Michigan State (18, first half), 2/10/11
PSU scored fewer than 40 points in a game: vs. Wisconsin (L, 39-71), 2/25/10
PSU scored fewer than 50 points in a game: vs. Purdue (L, 49-60), 2/24/11
PSU scored fewer than 50 points in a Big Ten game: vs. Purdue (L, 49-60), 2/24/11
OPP scored 50 points in a half: vs. Duke (50, second half), 11/18/05
OPP scored 100 points: at Boston College (Lot, 113-104), 12/2/10
OPP scored fewer than 20 points in a game: at Dickinson (W, 57-16), 3/6/71
OPP scored fewer than 30 points in a game: vs. Virginia Tech (W, 66-28), 12/6/11
OPP scored fewer than 40 points in a game: vs. Lafayette (W, 75-34), 11/18/12
OPP scored fewer than 50 points in a game: at Virginia Tech (W, 60-41), 12/12/12
OPP scored fewer than 50 points in a Big Ten game: vs. Indiana (W, 76-44), 2/2/12

FIELD GOAL SHOOTING

Player made every shot from the field (min. 7): vs. Michigan St. (Amanda Brown, 8-8), 1/25/07
PSU shot 55% in a game: at Michigan (.561), 1/26/12
PSU shot 55% in consecutive games: vs. Northwestern (.682), 3/2/96; vs. Ohio St. (.585), 3/3/96
PSU shot 60% in a game: vs. Michigan State (.608), 2/23/96
PSU shot below 25% in a game: at Alabama (.230), 12/19/96
PSU shot below 30% in a game: vs. Nebraska (.294), 12/30/11
PSU shot below 35% in a game and won: vs. Iowa (.338), 1/22/12
PSU shot 55% in a half: vs. Fairleigh Dickinson (.552, first half), 12/2/12
PSU shot 60% in a half: at Michigan (.667, second half), 1/26/12
PSU shot 65% in a half: at Michigan (.667, second half), 1/26/12
PSU shot 70% in a half: vs. Virginia Tech (.714, second half), 12/6/11
PSU shot 55% in both halves: vs. Iowa (.552, first half; .565, second half), 1/26/06
PSU shot below 20% in a half: at Indiana (.231, first half), 2/28/10
PSU shot below 25% in a half: vs. Nebraska (.233, second half), 12/30/11

THREE-POINT SHOOTING

Player made every shot from the field (min. 4): at Bucknell (4-4, Maggie Lucas), 12/21/11
Player made 4 three-pointers in a half: vs. Georgetown (5 in first, Maggie Lucas), 12/9/12
Player made 5 three-pointers in a half: vs. Georgetown (5 in first, Maggie Lucas), 12/9/12
Player made 6 three-pointers in a half: vs. Michigan State (6 in second, Maggie Lucas), 1/7/12
Player made 5 three-pointers in a game: vs. Georgetown (7, Maggie Lucas), 12/9/12
Player made 6 three-pointers in a game: vs. Georgetown (7, Maggie Lucas), 12/9/12
Player made 7 three-pointers in a game: vs. Georgetown (7, Maggie Lucas), 12/9/12
Player made 8 three-pointers in a game: at Minnesota (8, Kelly Mazzante), 12/28/01
Player attempted 10 three-pointers in a game: vs. Georgetown (13, Maggie Lucas), 12/9/12
PSU made 10 three-pointers: vs. North Carolina (14), 11/30/11
PSU did not make a three-pointer: at South Carolina (0-6), 11/20/11
PSU attempted 20 three-pointers: vs. Michigan State (24), 1/7/12
PSU shot 60% 3FG (min. 5 att.): at Cal State Northridge (5-8, .625), 11/24/12

FREE THROW SHOOTING

Player made every shot from FT line (min. 10): vs. LSU (11-11, Maggie Lucas), 3/20/12
PSU shot 90% (min. 10 att.): vs. North Carolina (14-24, .929), 11/30/11
PSU shot below 50% (min. 10 att.): vs. Holy Cross (9-20, .450), 11/28/09
PSU made 30 free throws: vs. Pittsburgh (34), 11/11/07
PSU made fewer than five FTs: at Michigan (3), 2/3/11
PSU attempted 40 free throws: vs. Pittsburgh (41), 11/11/07
PSU attempted fewer than five FTs: at Michigan (4), 2/3/11

REBOUNDS

Player had 15 rebounds: at Cal State Northridge (20, Nikki Greene), 11/24/12
Player had 20 rebounds: at Cal State Northridge (20, Nikki Greene), 11/24/12
Two players with double-digit rebs.: vs. Ohio State (15, Nikki Greene; 15, Mia Nickson), 2/20/12
Three players had double-digit rebounds: vs. Ohio State (15, Nikki Greene; 15, Mia Nickson; 10, Maggie Lucas), 2/20/12
PSU had 60 rebounds: vs. Ohio State (60), 2/20/12
PSU had 50 rebounds: vs. Fairleigh Dickinson (52), 12/2/12
PSU had 20 or fewer rebounds: vs. Michigan State (20), 1/19/03
OPP had 20 or fewer rebounds: at Indiana (20), 2/13/11
PSU had 20 offensive rebounds: vs. Fairleigh Dickinson (24), 12/2/12
PSU had 25 offensive rebounds: vs. Ohio State (29), 2/20/12

ASSISTS

Player had 10 assists: vs. North Carolina (15, Alex Bentley), 11/30/11
Player had 10 assists/consecutive games: Helen Darling (12 at LaSalle, 12/8/99; 11 vs. Auburn, 12/11/99; 10 vs. Clemson, 12/19/99)
Player had 15 assists: vs. North Carolina (15, Alex Bentley), 11/30/11
PSU had 30 assists: vs. St. Francis (Pa.) (32), 12/2/99
PSU had fewer than 10 assists: at Virginia Tech (8), 12/12/12
PSU had fewer than 5 assists: at Michigan State (4), 2/4/10

BLOCKED SHOTS

Player blocked 5 shots: at South Carolina (7, Talia East), 11/20/11
Player blocked 6 shots: at South Carolina (7, Talia East), 11/20/11
PSU blocked 10 shots: vs. Purdue (11), 1/28/10
PSU blocked 0 shots: vs. Purdue, 2/19/09

STEALS

Player had 7 steals: vs. Howard (7, Alex Bentley), 11/11/12
Player had 8 steals: vs. Nebraska (8, Alex Bentley), 12/30/11
PSU had 20 steals: vs. Bucknell (21), 12/28/10

TURNOVERS

PSU committed 25 or more: at Connecticut (26), 12/6/12
PSU committed 25 or more and won: vs. Minnesota (26), 1/13/11
PSU committed 10 or fewer: vs. Fairleigh Dickinson (8), 12/2/12
PSU committed 10 or fewer in consecutive games: vs. Minnesota (9), 1/22/04; at Ohio St. (9), 1/25/04
OPP committed 25 or more: vs. Lafayette (27), 11/18/12

DOUBLE-DOUBLES

Points & rebounds: at Virginia Tech (Mia Nickson, 10 pts., 10 rebs.), 12/12/12
Points & rebounds/consecutive games: Nikki Greene (12 points, 10 rebounds vs. Ohio State, 1/30/11; 16 points, 14 rebounds at Illinois, 1/27/11)
Points & rebounds/3 consecutive games: Amanda Brown (19 pts., 17 rebs. at Northwestern, 2/11/07; 14 pts., 10 rebs. vs. Minnesota, 2/15/07; 14 pts., 11 rebs. at Iowa, 2/18/07)
Points & rebounds/4 consecutive games: Angie Potthoff (vs. Northwestern, 1/31/97; at Illinois, 2/2/97; vs. Michigan, 2/7/97; vs. Indiana, 2/9/97; vs. Iowa, 2/16/97; vs. Michigan State, 2/21/97)
Points & rebounds/5 consecutive games: Angie Potthoff (vs. Northwestern, 1/31/97; at Illinois, 2/2/97; vs. Michigan, 2/7/97; vs. Indiana, 2/9/97; vs. Iowa, 2/16/97; vs. Michigan State, 2/21/97)
Points & assists: vs. North Carolina (Alex Bentley, 15 points, 15 assists), 11/30/11
Points & assists/consecutive games: Helen Darling (12 pts., 12 assts. at La Salle, 12/8/99; 10 pts., 11 assts. vs. Auburn, 12/11/99)
Two players had double-doubles: vs. Ohio State (Nikki Greene, 25 pts., 15 rebs.; Mia Nickson, 18 pts., 15 rebs.; Maggie Lucas, 12 pts., 10 rebs.), 2/20/12
Three players had double-doubles: vs. Ohio State (Nikki Greene, 25 pts., 15 rebs.; Mia Nickson, 18 pts., 15 rebs.; Maggie Lucas, 12 pts., 10 rebs.), 2/20/12
15 points & 15 rebounds: at Cal State Northridge (Nikki Greene, 21 pts., 20 rebs.), 11/24/12
20 points and 10 rebounds: at Cal State Northridge (Nikki Greene, 21 pts., 20 rebs.), 11/24/12

MARGIN OF VICTORY

PSU won by 20-30 points: vs. Georgetown (23), 12/9/12
PSU won by 20-30 points in a Big Ten game: vs. Minnesota (23), 2/26/12
PSU won by 31-40 points: vs. Fairleigh Dickinson (57), 12/2/12
PSU won by 41-50 points: vs. Fairleigh Dickinson (57), 12/2/12
PSU won by 51+ points: vs. Fairleigh Dickinson (57), 12/2/12
PSU lost by 20-30 points: at Ohio State (22), 2/17/11
PSU lost by 20-30 points in a Big Ten game: at Ohio State (22), 2/17/11
PSU lost by 31+ points: vs. Wisconsin (32), 2/25/10

MISCELLANEOUS

Led PSU in points/rebounds/assists: Tyra Grant vs. Michigan (25 pts., 9 rebs., 4 asst.), 2/18/10
Hit "final seconds" (under 10 seconds) game-winning shot: Julia Trogele at Illinois (9 sec.), 1/27/11
Hit "final minute" game-winning shot: Alex Bentley at Minnesota (3-ptr. with :38.9 remaining), 2/5/12
Player played every minute: vs. Connecticut (Maggie Lucas), 3/25/12
Player played more than 40 min.: at Dayton (Alex Bentley, 46; Zhaque Gray, 44; Mia Nickson, 41), 11/12/10
Committed 10 or fewer fouls: vs. Virginia Tech (9), 12/6/11
Committed 30 or more fouls: vs. Iowa State (32), 11/25/11
PSU rallied from a 10-pt. deficit to win: at CS-Northridge (down by 17 at 5:52 in 1st half, won 85-73), 11/24/12
PSU rallied from a 15-pt. deficit to win: at CS-Northridge (down by 17 at 5:52 in 1st half, won 85-73), 11/24/12
PSU had a 5-game winning streak: 5 games, 11/11/12 - 11/29/12
PSU had a 5-game losing streak: 6 games, 1/28/10 - 2/14/10
PSU went undefeated at home: 2004-05 season
PSU sold out the BJC: Purdue, 2/29/04

OVERTIME

PSU played an OT game: at Boston College (L, 113-104), 12/2/10
PSU won an OT game: at Oakland (96-89), 11/18/10
PSU lost an OT game: at Boston College (L, 113-104), 12/2/10
PSU played two or more OT games in a season: 2010-11 season (three)
PSU won two or more OT games in a season: 2010-11 season (two)

RANKINGS

Played the No. 1 team in the AP poll: vs. Connecticut (L, 77-63), 12/14/08
Played the No. 1 team in the Coaches poll: vs. Connecticut (L, 77-63), 12/14/08
Defeated the No. 1 team in the AP poll: at Virginia (73-71), 1/3/91
Defeated Top 10 opponent: vs. #8/11 Ohio State (84-66), 2/20/12
Defeated Top 10 opponent on the road: at #7 Purdue (47-42), 1/2/04
Defeated Top 10 opponent by double digits: vs. #8/11 Ohio State (84-66), 2/20/12
Played consecutive Top 10 teams: at #2/3 Texas 11/14/04, at #6/6 Duke 11/19/04
Defeated Top 25 opponent: vs. #16/13 Texas A&M (63-58), 11/14/12
Defeated Top 25 opponent on the road: vs. #16/13 Texas A&M (63-58), 11/14/12
Defeated Top 25 opponent by double digits: vs. #8/11 Ohio State (84-66), 2/20/12



2012-13 GAME-BY-GAME STARTING LINEUPS

Date	Opponent	Pt Guard	Guard	Guard	Forward	Center
11/3	CALIFORNIA (Pa.)	Bentley	Lucas	Edwards	Nickson	Greene
11/11	HOWARD	Bentley	Lucas	Edwards	Nickson	Greene
11/14	at Texas A&M	Bentley	Lucas	Edwards	Nickson	Greene
11/18	LAFAYETTE	Bentley	Lucas	Edwards	Nickson	Greene
11/23	vs. Detroit	Bentley	Lucas	Edwards	Nickson	Greene
11/24	at Cal State Northridge	Bentley	Lucas	Edwards	Nickson	Greene
11/24	at Miami (Fla.)	Bentley	Lucas	Edwards	Nickson	Greene
12/2	FAIR. DICKINSON	Bentley	Lucas	Taylor	East	Greene
12/6	at Connecticut	Bentley	Lucas	Taylor	Nickson	Greene
12/9	GEORGETOWN	Bentley	Lucas	Taylor	Nickson	Greene
12/12	at Virginia Tech	Bentley	Lucas	Taylor	Nickson	Greene

LUCAS HITS 20 TO START THE YEAR: Junior guard **Maggie Lucas** was 9-for-17 from the field en route to 25 points in the season-opening win over Howard. It was Lucas' 32nd game with 20 or more points in her career. Lucas also surpassed the 1,200-point mark in the win over the Bison.

MIA DOUBLES UP: Senior forward **Mia Nickson** notched her 11th career double-double with 14 points and 10 rebounds in the win over Howard Nov. 11. Nickson was 6-for-10 from the field and made both of her free throw attempts in the victory.

GREENE HITS THE STARTS CENTURY MARK: Senior center **Nikki Greene** made her 100th career start against Howard on Nov. 11. The Diboll, Texas native has started every game in her career and will have a chance to break Kelly Mazzante's school record of 130 starts. Greene is the 11th player in school history with 100 career starts.

LUCAS EARNS VOTES FOR PRESEASON AP ALL-AMERICA: Junior guard **Maggie Lucas** was among the players to receive votes for the Associated Press Preseason All-America team. She earned AP All-America honorable mention honors as a sophomore. She is one of three Big Ten players getting votes for the preseason honor, joining Ohio State's Tayler Hill and Nebraska's Jordan Hooper.

PENN STATE BIG TEN FAVORITES: With nine returning letterwinners from a team that claimed its sixth Big Ten regular-season title and advanced to the Sweet Sixteen for the first time since 2004, the Penn State Lady Lions were selected to finish first in the Big Ten Conference in a vote of the league's coaches and media. PSU finished ahead of Nebraska and Purdue in the coaches vote and Nebraska and Ohio State in the media poll.

BENTLEY & LUCAS WIN PRESEASON HONORS: Senior point guard **Alex Bentley** was selected as the coaches' preseason Co-Player of the Year and to the preseason All-Big Ten first team by the media, while junior shooting guard **Maggie Lucas** was named to the All-Big Ten first team by both the coaches and media. Bentley shared Player of the Year accolades with Tayler Hill.

BENTLEY AND LUCAS ON WATCH LISTS: Senior point guard **Alex Bentley** and junior guard **Maggie Lucas** have been named to the three preseason watch lists for National Player of the Year: the Wade Trophy, Wooden Award and Naismith Trophy. Bentley and Lucas are among 25 players that have been named to the "Wade Watch" list for the State Farm® Wade Trophy. Additionally, the pair are among the 30 players listed on the Wooden Award preseason chart. To complete the trifecta, the duo was named to the Naismith Women's Early Season Watch List. Bentley and Lucas are two of the five Big Ten players on the preseason lists, which also includes Ohio State's Tayler Hill and the Nebraska duo of Jordan Hooper and Lindsey Moore.

VETERANS RETURN: The Lady Lions return nine letterwinners and four starters, including All-Big Ten first team selections **Alex Bentley** and **Maggie Lucas**, as well as All-Big Ten honorable mention choices **Nikki Greene** and **Mia Nickson**. Penn State returns 86% of its scoring offense and 93.2% of its rebounding from the Big Ten Championship team a year ago.

TRIO OF McDONALD'S ALL-AMERICANS: Prior to **Coquese Washington's** tenure, the Lady Lions had only one McDonald's High School All-American in program history, but with the addition of **Candice Agee**, Penn State will tout three McDonald's High School All-Americans on their roster this season. Agee joins **Maggie Lucas** and **Dara Taylor** as honorees of the prestigious All-America team.

2013 WBCA PINK ZONE: The 2013 Pink Zone at Penn State will take place on Sunday, Feb. 24 as the Lady Lions take on Michigan in the Bryce Jordan Center. Last year, the Lady Lions donated nearly \$203,000 for breast cancer causes. This year's fundraising efforts will benefit the Mount Nittany Medical Center, Penn State Hershey Cancer Institute, Pennsylvania Breast Cancer Coalition, the Kay Yow Cancer Fund, J.C. Blair Memorial Hospital and Lewistown Hospital. For more information on the Pink Zone at Penn State, visit the official Pink Zone website at www.pennsylvaniapinkzone.org.

TEAM CAPTAINS: Seniors **Alex Bentley**, **Mia Nickson** and **Marisa Wolfe** will serve as team captains for the 2012-13 season. Nickson will serve in the captain role for the third consecutive season, while Wolfe is a captain for the second-straight season. Bentley claims her first team captain honor.

BENTLEY SENIOR CLASS AWARD CANDIDATE: Senior guard **Alex Bentley** has been selected as one of the 30 candidates for the 2012-13 Senior CLASS Award, given to the student-athletes that have notable achievements in four areas of excellence – community, classroom, character and competition. Midway through the year, the 10 finalists will be announced and give media, coaches and fans the opportunity to vote on the student-athletes the exemplifies the four Cs of community, classroom, character and competition. An acronym for Celebrating Loyalty and Achievement for Staying in School®, the Senior CLASS Award focuses on the total student-athlete and encourages students to use their platform in athletics to make a positive impact as leaders in their communities.

LADY LIONS SEASON BESTS

Player	Points	Rebounds	Assists	Blocks	Steals
Candice Agee	8 (FDU)	9 (FDU)	1 (2X)	1 (6X)	1 (Georgetown)
Alex Bentley	23 (Georgetown)	6 (Howard)	8 (2X)	1 (UConn)	7 (Howard)
Talia East	11 (FDU)	3 (Lafayette)	2 (Georgetown)	3 (FDU)	1 (4X)
Ariel Edwards	24 (Detroit)	7 (FDU)	2 (CSUN)	2 (Howard)	1 (3X)
Nikki Greene	21 (CSUN)	20 (CSUN)	3 (Detroit)	3 (Lafayette)	1 (5X)
Maggie Lucas	39 (Georgetown)	9 (Lafayette)	4 (FDU)	1 (Detroit)	6 (Georgetown)
Mia Nickson	14 (Howard)	11 (Texas A&M)	2 (5X)	2 (Texas A&M)	1 (4X)
Gizelle Studevent	7 (Lafayette)	1 (5X)	3 (Detroit)	1 (Howard)	1 (Miami)
Dara Taylor	15 (2X)	6 (Miami)	6 (Lafayette)	1 (CSUN)	5 (Texas A&M)
Tori Waldner	7 (FDU)	6 (2X)	2 (Lafayette)	2 (FDU)	1 (3X)
Marisa Wolfe	-	-	-	-	-

PSU IN THE POLLS

Week of	AP	Coaches
Preseason	8	8
Nov. 12	9	9
Nov. 19	6	7
Nov. 26	6	7
Dec. 3	10	10
Dec. 10	11	10



NATIONAL POLLS

ASSOCIATED PRESS (DEC. 10)

No.	Team (1st)	Rec.	Pts.	LW
1.	Stanford (22)	8-0	978	1
2.	Connecticut (16)	8-0	968	2
3.	Baylor (2)	7-1	930	3
4.	Duke	8-0	884	4
5.	Notre Dame	6-1	806	5
6.	Georgia	10-0	790	6
7.	Kentucky	8-1	783	7
8.	Louisville	9-1	713	8
9.	California	7-1	614	11
10.	Maryland	6-2	610	9
11.	PENN STATE	7-2	564	10
12.	Oklahoma	8-1	514	13
13.	Tennessee	6-1	512	14
14.	UCLA	5-1	485	17
15.	Purdue	9-1	450	15
16.	Oklahoma State	7-0	392	16
17.	Dayton	10-0	334	19
18.	Texas	5-1	326	12
19.	North Carolina	8-1	230	21
20.	Ohio State	6-2	223	20
21.	Miami (Fla.)	7-1	211	23
22.	Kansas	8-1	180	17
23.	Texas A&M	5-3	83	NR
24.	South Carolina	10-0	75	NR
25.	West Virginia	6-2	73	NR

Others Receiving Votes: Florida State 64; Arkansas 58; **Nebraska 55**; Iowa State 53; Delaware 15; St. John's 6; Chattanooga 6; Syracuse 4; Duquesne 4; **Iowa 3**; **Michigan State 2**; Gonzaga 1; Colorado 1.

USA TODAY/ESPN TOP 25 (DEC. 11)

No.	Team (1st)	Rec.	Pts.	LW
1.	Stanford (24)	8-0	742	1
2.	Connecticut (6)	8-0	722	2
3.	Baylor	7-1	693	3
4.	Duke	8-0	657	4
5.	Notre Dame	6-1	610	5
6.	Kentucky	8-1	603	6
7.	Georgia	10-0	572	7
8.	Louisville	9-1	530	8
9.	Maryland	6-2	484	9
10.	PENN STATE	7-2	451	10
11.	California	7-1	441	11
12.	Tennessee	6-1	408	13
13.	Oklahoma	8-1	371	12
14.	Purdue	9-1	363	14
15.	Oklahoma State	7-0	329	15
16.	Dayton	10-0	283	18
17.	UCLA	5-1	271	19
18.	South Carolina	10-0	208	21
19.	Ohio State	6-2	197	20
20.	Texas	5-1	152	16
21.	Kansas	8-1	141	17
22.	West Virginia	6-2	100	23
23.	Miami (Fla.)	7-1	72	NR
24.	Nebraska	7-3	70	22
25.	Texas A&M	5-3	64	NR

Others Receiving Votes: Florida State 55; North Carolina 46; Syracuse 25; St. Johns 19; Arkansas 16; South Florida 16; Gonzaga 15; Iowa State 15; Chattanooga 6; DePaul 2; **Iowa 1**.

*Bold type indicates 2012-13 Penn State opponent

STATISTICAL LEADERS

Check here throughout the season for a breakdown of how many times a player leads Penn State in the following statistical categories. (First number is solo, the second is shared.)

Points	Lucas (8/1), Bentley (1), Nickson (-/1)
Rebounds	Nickson (4), Greene (4), Lucas (1), Agee (1)
Assists	Bentley (6), Taylor (2/2), Lucas (-/1), Nickson (-/1)
Steals	Bentley (6/1), Taylor (1), Nickson (1), Lucas (1/1)
Blocks	Greene (4/1), Edwards (1), Nickson (1/2), East (1/1), Agee (-/2), Bentley (-/1)
FG % (min. 4 attempts)	Nickson (2), Greene (1), Edwards (4), Lucas (2), Agee (-/1), Studevent (-/1)
FT % (min 4 attempts)	Lucas (2/1), Greene (1), Waldner (1), Bentley (2), Nickson (3), Taylor (-/1)
3FG % (min. 2 att.)	Lucas (8/1), Bentley (1), Taylor (-/1)

PENN STATE VS. THE BIG TEN

Illinois	Overall	28-14	Nebraska	Overall	3-1
	Big Ten Games	21-11		Big Ten Games	1-1
	Big Ten Tournament	4-2		Big Ten Tournament	0-0
	Home	15-2		Home	1-1
	Away	9-10		Away	1-0
	Neutral	4-2		Neutral	1-0
Indiana	Overall	28-9	Northwestern	Overall	30-7
	Big Ten Games	23-8		Big Ten Games	27-6
	Big Ten Tournament	3-1		Big Ten Tournament	2-0
	Home	16-2		Home	16-1
	Away	9-6		Away	12-5
	Neutral	3-1		Neutral	2-1
Iowa	Overall	24-17	Ohio State	Overall	32-21
	Big Ten Games	19-14		Big Ten Games	19-14
	Big Ten Tournament	2-1		Big Ten Tournament	4-5
	Home	14-5		Home	17-6
	Away	7-11		Away	11-9
	Neutral	3-1		Neutral	4-6
Michigan	Overall	28-9	Purdue	Overall	16-26
	Big Ten Games	26-7		Big Ten Games	14-19
	Big Ten Tournament	1-2		Big Ten Tournament	2-4
	Home	14-2		Home	9-8
	Away	13-5		Away	5-14
	Neutral	1-2		Neutral	2-4
Michigan State	Overall	24-13	Wisconsin	Overall	27-10
	Big Ten Games	21-12		Big Ten Games	24-10
	Big Ten Tournament	2-1		Big Ten Tournament	2-0
	Home	14-4		Home	16-2
	Away	8-8		Away	9-8
	Neutral	2-1		Neutral	2-0
Minnesota	Overall	25-11			
	Big Ten Games	22-11			
	Big Ten Tournament	2-0			
	Home	14-3			
	Away	9-8			
	Neutral	2-0			



RECORD BOOK

CAREER SCORING

1. 2,919 Kelly Mazzante, 2001-04
2. 2,253 Susan Robinson, 1989-92
3. 2,044 Tyra Grant, 2007-10
4. 2,025 Kahadeejah Herbert, 1982-85
5. 1,995 Tanisha Wright, 2002-05
6. 1,897 Suzie McConnell, 1985-88
7. 1,725 Angie Potthoff, 1993-97
8. 1,663 Lisa Shepherd, 1998-01
9. 1,619 Andrea Garner, 1997-00
10. 1,538 Tanya Garner, 1988-91
11. 1,514 Vicki Link, 1984-87
12. 1,466 Jess Strom, 2002-05
13. 1,463 Katina Mack, 1992-96
14. **1,461 Alex Bentley, 2010-present**
15. 1,428 Jen Bednarek, 1977-80
16. **1,415 Maggie Lucas, 2011-present**
17. 1,328 Maren Walseth, 1998-01
18. 1,320 Cheryl Ellison, 1980-83
19. 1,295 Kathy Phillips, 1989-92
20. 1,294 Helen Darling, 1997-00
21. 1,288 Carol Walderman, 1981-83
22. 1,280 Louise Leimkuhler, 1980-82
23. 1,240 Tina Nicholson, 1993-96
24. 1,238 Kam Gissendanner, 2006-08
25. 1,233 Amanda Brown, 2004-07

CAREER BLOCKS

1. 268 Kim Calhoun, 1993-96
2. 192 Mary Donovan, 1977-81
3. 189 Rashana Barnes, 1999-02
4. **188 Nikki Greene, 2010-present**
5. 185 Andrea Garner, 1997-00

CAREER REBOUNDS

1. 1,103 Kahadeejah Herbert, 1982-85
2. 1,070 Susan Robinson, 1989-92
3. 1,016 Andrea Garner, 1997-00
4. 943 Vicki Link, 1984-87
5. 918 Angie Potthoff, 1993-97
6. 820 Mag Strittmatter, 1975-78
7. 818 Cheryl Ellison, 1980-83
8. 808 Amanda Brown, 2004-07
9. **804 Nikki Greene, 2010-present**
10. 773 Mary Donovan, 1978-81
11. 757 Bethany Collins, 1985-88
12. 728 Rashana Barnes, 1999-02
13. 721 Missy Masley, 1992-95
14. 719 Louise Leimkuhler, 1980-83
15. 717 Kathy Phillips, 1989-92
16. 690 Julia Trogele, 2008-11
17. 672 Helen Darling, 1997-00
18. 649 Jess Brungo, 2001-04
19. 645 Maren Walseth, 1998-01
20. 621 Tanisha Wright, 2002-05

CAREER THREE-POINT FIELD GOALS MADE

1. 357 Kelly Mazzante, 2001-04
2. 230 Lisa Shepherd, 1998-01
3. **228 Maggie Lucas, 2011-present**
4. 191 Jess Strom, 2002-05
5. 179 Tyra Grant, 2007-10

CAREER THREE-POINT FIELD GOALS ATTEMPTED

1. 1,019 Kelly Mazzante, 2001-04
2. 583 Lisa Shepherd, 1998-01
3. 531 Tyra Grant, 2007-10
4. **525 Maggie Lucas, 2011-present**
- 525 Jess Strom, 2002-05

CAREER FIELD GOALS MADE

1. 1,051 Kelly Mazzante, 2001-04
2. 866 Susan Robinson, 1989-92
3. 771 Tanisha Wright, 2002-05
4. 757 Kahadeejah Herbert, 1982-85
5. 729 Suzie McConnell, 1985-88
6. 709 Angie Potthoff, 1993-97
7. 687 Tyra Grant, 2007-10
8. 668 Jen Bednarek, 1977-80
9. 660 Andrea Garner, 1997-00
10. 598 Vicki Link, 1984-87
- **592 Alex Bentley, 2010-present**

CAREER FIELD GOALS ATTEMPTED

1. 2,430 Kelly Mazzante, 2001-04
2. 1,755 Tyra Grant, 2007-10
3. 1,672 Susan Robinson, 1989-92
4. 1,667 Tanisha Wright, 2002-05
5. 1,526 Suzie McConnell, 1985-88
6. 1,365 Andrea Garner, 1997-00
7. **1,362 Alex Bentley, 2010-present**
8. 1,347 Kahadeejah Herbert, 1982-85
9. 1,329 Jen Bednarek, 1977-80
10. 1,260 Lisa Shepherd, 1999-01

CAREER ASSISTS

1. 1,307* Suzie McConnell, 1984-88
2. 826 Tina Nicholson, 1993-96
3. 791 Helen Darling, 1997-00
4. 776 Jess Strom, 2002-05
5. 632 Annie Troyan, 1981-83
6. 567 Dana Eikenberg, 1989-92
7. 560 Brianne O'Rourke, 2006-09
8. 528 Nancy Kuhl, 1975-79
9. **498 Alex Bentley, 2010-present**
10. 484 Tanisha Wright, 2002-05

CAREER STEALS

1. 507 Suzie McConnell, 1985-88
2. 314 Helen Darling, 1997-00
3. 310 Jess Strom, 2002-05
4. 293 Tina Nicholson, 1993-96
5. 289 Kelly Mazzante, 2001-04
6. 267 Tanisha Wright, 2002-05
7. 257 Nancy Kuhl, 1975-79
8. **253 Alex Bentley, 2010-present**
9. 247 Corinne Gulas, 1980-81
10. 224 Kahadeejah Herbert, 1982-85

as of Dec. 12, 2012

GREENE GOING FOR 1,000s: Senior center **Nikki Greene** will have a shot at becoming just the fourth player in school history to be a part of an elite club with 1,000 points and 1,000 rebounds. The Diboll, Texas native needs 92 points to reach the 1,000-point mark and 196 rebounds for 1,000 career caroms. Greene would need to average 5.4 points and 9.2 rebounds in a 30-game season to accomplish the milestone. The members of the 1,000-1,000 club are Susan Robinson (2,253-1,070), Kahadeejah Herbert (2,025-1,103) and Andrea Garner (1,619-1,016).

2012 EUROPEAN TOUR: The Lady Lions enjoyed a 10-day European Tour in August. The team traveled to France and Italy, visiting six cities along the way. The Lady Lions played and won three games and saw many of the famous sites, including the Colosseum, the Vatican, the Eiffel Tower and the Mediterranean Sea.

LADY LIONS 10TH IN ATHLON PRESEASON POLL: The Lady Lions are ranked 10th in the Athlon preseason poll and sophomore guard **Maggie Lucas** is a preseason second team All-American, according to the magazine. Penn State is among four Big Ten teams (Ohio State - 4th; Nebraska - 21st; Michigan - 22nd) in Athlon's preseason Top 25.

LADY LIONS 8TH IN LINDY'S PRESEASON POLL: The Lady Lions are ranked eighth in the Lindy's preseason poll to pace the three Big Ten teams in the preseason rankings. Joining Penn State the preseason Top 25 are Purdue and Nebraska.

AGEE IS LONE FRESHMAN: Center **Candice Agee** is the lone freshman on the Penn State roster this season. The 6-6 rookie was a McDonald's High School All-America, bringing the total to three McDonald's selections on this season's roster. Agee was the 34th-ranked recruit by ESPN/HoopGurlz as a senior in high school. She averaged 15.9 points, 8.3 rebounds, 3.5 blocks and 3.4 steals per game at Silverado High School in California.



2013 RECRUITING CLASS

Coquese Washington announced her 2013 recruiting class, which is ranked No. 6 by Collegiate Girls Basketball Report, No. 7 Blue Star Basketball and No. 9 by All-Star Girls Report. Guards **Lindsey Spann** (Laurel, Md./Good Counsel) and **KeKe Sevillian** (Goodrich, Mich./Goodrich), swing players **Jenny DeGraaf** (Springboro, Ohio/Springboro), **Kalayah Mitchell** (Stone Mountain, Ga./Stephenson), **Peyton Whitted** (Suwanee, Ga./North Gwinnett) and post players **Alex Harris** (Lorain, Ohio/Lorain Southview) and **Infiniti Alston** (Baltimore, Md./Digital Harbor) signed National Letters of Intent and will start their Lady Lion careers in 2013-14. The seven-player class is the largest in school history and includes six players that are in the Collegiate Girls Basketball Report Top 100.

Spann, who is the 22nd-ranked player by Collegiate Girls Basketball Report and 88th-rated player by Blue Star Basketball, led Good Counsel, to the 2012 Washington Catholic Athletic Conference (WCAC) Championship and became the first team in league history to finish with an undefeated record (18-0). The 5-6 guard averaged 15.0 points, 5.4 assists, 2.0 steals and 3.0 rebounds as a junior en route to first team All-WCAC honors. She was also a first team All-Gazette, All-Sentinel and All-DCSportsfan selection and was a second team All-Met honoree. Spann participated in USA Basketball's U16 Trials in May 2011. She played her AAU ball for the Maryland Lady Terps.

Sevillian is a two-time All-State point guard, who led Goodrich High School in Michigan to their first-ever Class B State Championship in 2011-12 with a perfect 28-0 record. Sevillian, a 5-6 guard, is a three-time first team all-conference choice for the Martians, who averaged 13.5 points and 3.6 assists per game during her junior season. She also snatched 107 steals in 28 contests a year ago. For her career, Sevillian has 916 points, 237 assists, 283 steals and 130 blocks. Sevillian is also an outstanding track athlete, earning four varsity letters at Goodrich. She holds the school record in the 300-meter hurdles and 200-meter dash and finished second in the state championships in the 300-meters hurdles her freshman and sophomore seasons. She was unable to compete last season due to an injury. She played AAU ball for the Michigan Crossover.

DeGraaf, 87th-rated recruit by Collegiate Girls Basketball Report, averaged 15.0 points, 6.1 rebounds and 1.9 blocks per game as she led Springboro to a 22-2 record. The 6-1 forward led the Greater Western Ohio Conference (GWOC) with a .548 field goal percentage and accounted for a .747 effort from the free throw line. DeGraaf was a first team All-GWOC, Dayton Daily News D-I All-Area team and first team Associated Press D-I All-Southwestern District honoree as a junior. Additionally, she garnered special mention All-Ohio accolades in 2011-12. As a sophomore, she averaged 9.3 points and 7.1 rebounds per game en route to All-GWOC South Division first team honors. DeGraaf is also a standout volleyball player for Springboro. She played her AAU ball for Sports City U.

Mitchell, who is the 54th-ranked recruit by Collegiate Girls Basketball Report and 40th-ranked recruit by All-Star Girls Report, accounted for 12.9 points, 8.3 rebounds, 3.2 steals, 4.0 assists and 2.0 blocks per game as a junior for Stephenson High School. The 6-2 forward shot 46% from the field and 68% from the free throw line last season on her way to All-DeKalb County accolades. Mitchell is a two-time All-Metro third team honoree, an Atlanta Journal Constitution DeKalb County second team choice and honorable mention All-State selection. She played her AAU ball for the Georgia Hoopstars Black.

Whitted is the 71st-ranked recruit by Collegiate Girls Basketball Report and 60th-ranked player by All-Star Girls Report after averaging 11.6 points and 6.3 rebounds per game for North Gwinnett her junior season. The 6-2 forward guided the Bulldogs to their first state semifinal appearance since 1963 as she averaged a double-double in state playoff games (14.8 pts., 10.0 rebs.). She was a second team All-County selection by the Daily Post. In two seasons at North Gwinnett, Whitted has 551 points, 279 rebounds and 89 steals. She also has experience on the national level, participating in USA Basketball's U16 Trials in May 2011.

Harris, who is the 49th-ranked recruit by Collegiate Girls Basketball Report and All-Star Girls Report, averaged a double-double for Lorain Southview in Ohio. The 6-3 forward tallied 12.1 points and 11.7 rebounds in 2011-12 as the Titans went 17-5. She also accounted for 5.0 blocks per game a year ago on her way to honorable mention All-State and first team All-County and All-District honors. She also earned honorable mention All-State accolades and first team All-Lorain County honors as a sophomore. In her freshman year, Harris was All-Lorain County first team and Lake Erie League first team while playing at Admiral King. In her high school career, Harris has 233 blocks and 741 rebounds as a defensive stalwart. She played her AAU ball for TNBA.

Alston is the 48th-ranked recruit by Collegiate Girls Basketball Report and 96th-rated recruit by All-Star Girls Report. The 6-5 center averaged 14.0 points, 11.0 rebounds, 3.0 blocks and 2.0 assists for Digital Harbor High School as a junior. She was a member of the Philly Belles AAU squad last summer and played for Boo Williams' top team as a freshman in high school. Alston participated in Nike Skills Academy in 2011.

STRONG SENIOR CLASS: Coquese Washington's first Top 25 recruiting class is now the Lady Lions' senior class. The grouping of **Alex Bentley**, **Nikki Greene**, **Mia Nickson**, **Gizelle Studevent** and **Marisa Wolfe** have been huge contributors in Penn State's return to national prominence. The quintet has accounted for 3,418 points and 1,878 rebounds with 284 starts in 459 games played. Last season, the five seniors accounted for 45.1% of the team's offense and 44.9% of its rebounds.

AGEE WINS GOLD MEDAL WITH USA BASKETBALL U18 TEAM: Freshman center **Candice Agee** helped the USA Basketball U18 National Team to a gold medal at the FIBA Americas Championship in Puerto Rico in August. Agee averaged 5.4 points, 3.0 rebounds, 1.4 steals and 1.2 blocks in Team USA's five games. The rookie was 13-for-21 from the field en route to a team-best .619 field goal percentage. Agee had an 11-point and four-rebound performance in dominating 99-26 victory over Puerto Rico.

COQUESE'S DRIVE A SUCCESS: The fifth annual Coquese's Drive for the Women's Resource Center golf tournament was another great fundraising event. The tournament, held on August 31, 2012, had 128 golfers participate and raised \$24,000 for the Centre County Women's Resource Center (CCWRC).

LADYLIONS.COM: LadyLions.com is a website dedicated exclusively to women's basketball at Penn State. The website gives the Lady Lions a chance to showcase the Penn State women's basketball program to potential recruits and fans. The site has a team blog, live chats and an "Ask Coach Quese" mailbox. The blog is regularly updated with entries from Lady Lion basketball players, coaches and staff members. Coach Quese will answer fan questions each Tuesday throughout the season. Questions can be submitted to Coach Quese by emailing them to askcoachquese@gmail.com. Be sure to include your name and hometown when submitting a question.

LADY LIONS ON THE TUBE & WEB: The Lady Lions will have at least 11 games broadcast nationally on ESPN2 and the Big Ten Network. Additionally, Penn State will have nine games streamed on www.btn.com, many of which will be rebroadcast on the Big Ten Network as "Student U" productions. Penn State will appear on ESPN2 three times this year against Nebraska (Sun., Jan. 13), Purdue (Mon., Feb. 4) and Michigan State (Sun., Feb. 10). The Lions will also appear on the Big Ten Network against Georgetown (Sun., Dec. 9), at Michigan State (Sun., Jan. 6), at Michigan (Mon., Jan. 21), versus Minnesota (Thurs., Jan. 24), at Ohio State (Sun., Jan. 27), at Indiana (Thurs., Feb. 7) and versus Michigan (Sun., Feb. 24). Penn State also has a chance to be part of the Big Ten Network Wildcard games at Minnesota (Thurs., Feb. 28) and at Nebraska (Sun., Mar. 3). Additionally, Penn State will appear on FSN at Texas A&M (Wed., Nov. 14) and SNY when it travels to Connecticut (Thurs., Dec. 6).





COQUESE WASHINGTON

Head Coach
6th Season

PENN STATE
LADY LION BASKETBALL

Coquese Washington, who helped lead Notre Dame to the 2001 NCAA Championship, was introduced as the fifth head coach of the Penn State women's basketball program on April 23, 2007. Washington is the first female African-American head coach in Penn State history.

Washington returned the Lady Lions to Big Ten prominence in her fifth season as she guided Penn State to the Big Ten regular-season title with a 13-3 record in conference play. Additionally, the Lady Lions advanced to the NCAA Tournament Sweet Sixteen with wins over UTEP and LSU en route to a 26-7 overall record. The Lady Lions posted back-to-back 20-win seasons for the first time since 2002-03 and 2003-04. It was also the first Big Ten crown and Sweet Sixteen berth for the Lady Lions since 2003-04. The Lady Lions were ranked throughout the season and finished ninth in the ESPN/USA Today Coaches' Poll and 11th in the Associated Press Top 25.

For her efforts in rebuilding the Penn State program, Washington was honored as the Big Ten Coach of the Year and the WBCA Region 6 Coach of the Year, making her a finalist for WBCA National Coach of the Year. The

accolades were not just limited to Washington; all five Lady Lion starters earned All-Big Ten recognition, including first team bids for Alex Bentley and Maggie Lucas. Both Bentley and Lucas also garnered honorable mention All-America honors from the WBCA and Associated Press, respectively. Bentley became the 33rd player in school history to reach the 1,000-point plateau and just the 15th junior to reach the milestone. Lucas also joined the 1,000-point club in 2011-12, becoming just the third sophomore in program history to accomplish the feat.

On the recruiting trail, the Lady Lions' 2012 class earned a Top 20 class from Dan Olson's Collegiate Girls Basketball Report. The class includes transfer Dara Taylor, who sat out the 2011-12 season due to NCAA transfer rules, and McDonald's High School All-American Candice Agee from California. The addition of Taylor, who was a 2009 McDonald's All-American, and Agee gives the Lady Lions three McDonald's All-Americans on the roster heading into the 2012-13 campaign, joining 2010 honoree Lucas. Additionally, Agee earned a gold medal with the USA Basketball U18 National Team Trials at the 2012 FIBA Americas Championship in August.

The Lady Lions returned to the national stage in Washington's fourth year with a second-place finish in the Big Ten regular season standings, a runner-up finish in the Big Ten Tournament and a berth in the NCAA Tournament. Penn State tallied its 23rd 20-win season with a 25-10 overall record and an 11-5 mark in conference play. The Lady Lions worked their way back to the "Big Dance" for the first time since 2004-05 and advanced to the second round for the first time in seven years with a win over Dayton in the first round in front of a raucous BJC crowd.

Penn State was a dominating force from the perimeter as the Lady Lions tied the school record with 228 three-pointers and led NCAA Division I from deep with a .415 three-point field goal percentage. Pacing the Lady Lions from downtown was Lucas, who broke the Big Ten three-pointers record with 112 triples to go along with a .426 shooting percentage. For her efforts, Lucas was selected as the Big Ten Freshman of the Year and Big Ten Sixth Player of the Year while breaking the Penn State freshman season scoring record (552 pts.). Additionally with Washington's guidance, Bentley became the 11th different player in school history to take home first team All-Big Ten accolades after finishing second in the conference in assists. After outstanding seasons, both Lucas and Bentley were invited to the USA Basketball World University Games Trials.

Washington's third season saw the Lady Lions return to the postseason for the first time since 2004-05 with a WNIT berth. The Lions earned their most overall wins (17) and conference wins (8) since the 2004-05 campaign en route to a sixth-place finish in the Big Ten. Penn State picked up a pair of wins over ranked opponents in #15/15 Pittsburgh and #20/23 Michigan State.

In Washington's second season, the Lady Lions moved up three positions in the Big Ten standings, finishing in a tie

THE WASHINGTON FILE

COACHING RESUME

2007-pres. - Head Coach, Penn State
2012-pres. - Kay Yow Cancer Fund Board of Directors
2011-pres. - NCAA WBB Issues Committee
2010-pres. - Treasurer, WBCA Executive Committee
2008-pres. - WBCA Board of Directors
2009-12 - USA Basketball Women's Jr. National Committee
2005-07 - Associate Head Coach, Notre Dame
1999-05 - Assistant Coach, Notre Dame

PLAYING EXPERIENCE

2002-03 - WNBA's Indiana Fever
2000-02 - WNBA's Houston Comets
1998-99 - WNBA's New York Liberty
1997-98 - ABL's Portland Power
1989-93 - University of Notre Dame

EDUCATION

Notre Dame '92, B.A. History
Notre Dame Law School '97, Juris Doctorate

AWARDS

- ❖ 2012 Big Ten Coach of the Year
- ❖ 2012 WBCA Region 6 Coach of the Year
- ❖ 2012 WBCA National Coach of the Year Finalist
- ❖ 2011 BCA Female Coach of the Year
- ❖ 2009 Greater Flint Hall of Fame Inductee
- ❖ 2008 WBCA "Rising Star" Award Winner

FAMILY

Husband: Raynell Brown
Children: Quenton (7), Rhaiyna (3)

for seventh place. Under Washington's guidance in 2008-09, Grant became the 10th different player in school history to earn first team All-Big Ten honors. Grant was also a semifinalist for the Naismith Player of the Year award.

In her first season at the helm, Washington and the Lady Lions picked up two nationally-televised wins, downed two nationally-ranked foes and took home the 25th regular-season tournament crown in program history.

Washington came to Happy Valley after eight seasons as an associate head coach and assistant coach under Muffet McGraw at Notre Dame, her alma mater. During Washington's eight years on the bench, Notre Dame amassed a 188-69 record with eight NCAA Tournament appearances, including four Sweet Sixteen runs and a National Championship in 2001.

One of the top recruiters in the country, Washington was instrumental in helping the Irish to secure eight consecutive Top 25 recruiting classes, according to "Blue Star Index," a feat only accomplished by two other programs in the country (Connecticut and Tennessee).

Washington was a four-year starting point guard for Notre Dame under McGraw and was the team captain on Notre Dame's first-ever NCAA Tournament team. She was a two-time All-Midwestern Collegiate Conference (MCC) selection and led Notre Dame to three MCC Tournament titles.

The epitome of a student-athlete, Washington graduated from Notre Dame in 1992, a full year ahead of schedule, with a bachelor's degree in history. She went on to attain "Double Domer" status in 1997 after earning her Juris Doctorate from the Notre Dame Law School.

Washington is currently serving on the 29-member WBCA Board of Directors, where she is the Treasurer of the Executive Committee. Washington is also a member of the Kay Yow Cancer Fund Board of Directors and the NCAA Women's Basketball Issues Committee.

A native of Flint, Mich., Washington and her husband, Raynell Brown, have a son, Quenton (7), and a daughter, Rhaiyna (3). They reside in Port Matilda, Pa.

Washington's Coaching Record vs. Opponents

Arizona	1-0	Michigan	7-3
Army	1-0	Michigan State	2-7
Boston College	0-1	Middle Tennessee	1-0
Bucknell	5-0	Minnesota	5-6
Buffalo	1-0	Mississippi	1-0
CS-Northridge	1-0	Monmouth	1-0
Charlotte	1-0	Nebraska	1-1
Connecticut	0-3	Nevada	1-0
Coppin State	1-0	NJIT	1-0
Dayton	2-1	North Carolina	1-0
Delaware	1-1	Northwestern	6-1
DePaul	0-1	Oakland	2-0
Detroit	1-0	Ohio State	2-6
Drexel	2-1	Old Dominion	0-1
Duke	1-0	Pittsburgh	2-1
Fair Dickinson	1-0	Prairie View A&M	1-0
Florida State	0-1	Purdue	2-8
Georgetown	2-0	Rider	1-0
Georgia Tech	0-1	South Carolina	4-1
Hartford	1-0	Stony Brook	1-0
Hofstra	0-1	Syracuse	0-1
Holy Cross	1-0	Texas A&M	1-1
Howard	1-0	UTEP	1-0
Illinois	8-3	Texas Tech	1-1
Indiana	4-4	Utah	1-0
Iowa	5-5	Virginia Tech	2-0
Iowa State	1-0	Wagner	1-0
Lafayette	1-0	Washington State	1-0
LSU	1-0	Wisconsin	4-5
Maine	1-0	UW-Green Bay	0-1
UMES	1-0	Xavier	0-1
Miami	0-1		





#1 Candice Agee

Fr. * F/C * 6-6 * Victorville, Calif./Silverado

2012-13 Season Notes:

- ♦ Pulled in six rebounds in 11 minutes off of the bench at Virginia Tech (12/12).
- ♦ Was solid with personal bests of eight points and nine rebounds in the win over Fairleigh Dickinson (12/2).
- ♦ Recorded two points, two rebounds and a blocked shot at Miami (11/29).
- ♦ Tallied two points and three rebounds in the winover Detroit (11/23).
- ♦ Accounted for seven points on 3-of-5 shooting, four rebounds and a blocked shot in the win over Lafayette (11/18).
- ♦ Snagged three rebounds with one blocked shot in the win at #16/13 Texas A&M (11/14).
- ♦ Recorded her first collegiate block against Howard (11/11), just 45 seconds after entering the game.

CAREER HIGHS

Points.....	8 vs. Fairleigh Dickinson (12/2/12)
Rebs.	9 vs. Fairleigh Dickinson (12/2/12)
Assists	1 at Miami (11/29/12)
.....	1 vs. Detroit (11/23/12)
Steals.....	1 vs. Georgetown (12/9/12)
Blocks	1 (6x)
.....	last at Virginia Tech (12/12/12)
Minutes	20 vs. Fair. Dickinson (12/2/12)
FGM.....	3 vs. Fairleigh Dickinson (12/2/12)
.....	3 vs. Lafayette (11/18/12)
FGA	6 vs. Fairleigh Dickinson (12/2/12)
FG%	1.000 (1.000) at Miami (11/29/12)
3FGM.....	n/a
3FGA	n/a
3PT %	n/a
FTM	2 vs. Fairleigh Dickinson (12/2/12)
FTA	3 vs. Fairleigh Dickinson (12/2/12)
FT %667 (2-3) vs. Fair. Dickinson (12/2/12)
Career Double-Doubles	n/a
Career 20-point games	n/a

GAME-BY-GAME

	P	R	B
HOWARD	0	0	1
Texas A&M	0	3	1
LAFAYETTE	7	4	1
Detroit	2	3	0
CS-Northridge	0	0	0
Miami (Fla.)	2	2	1
FAIR. DICKINSON	8	9	1
Connecticut	DNP		
GEORGETOWN	0	1	0
Virginia Tech	0	6	1
SOUTH DAKOTA ST.			
NJIT			
NORTHWESTERN			
Michigan State			
NEBRASKA			
WISCONSIN			
Michigan			
MINNESOTA			
Ohio State			
Wisconsin			
PURDUE			
Indiana			
MICHIGAN ST.			
Iowa			
ILLINOIS			
MICHIGAN			
Minnesota			
Nebraska			



#2 Dara Taylor

Jr. * G * 5-8 * Wilmington, Del./Caraval Acad. (Maryland)

2012-13 Season Highlights:

- ♦ Knocked down a career-high three shots from beyond the arc en route to 15 points, which ties her career high as a Penn Stater in the win at Virginia Tech (12/12).
- ♦ Had her biggest scoring output in a Penn State uniform with 15 points to go along with three rebounds and five assists in her first PSU start against FDU (12/2).

2012-13 Season Notes:

- ♦ Chipped in seven points, five rebounds, five assists and two steals in the win over Georgetown (12/9).
- ♦ Tallied eight points, four rebounds and two assists at #2 Connecticut (12/6).
- ♦ Notched six points, six rebounds, three assists and a pair of steals in 33 minutes of action at Miami (11/29).
- ♦ Accounted for four points, two assists and three steals in the win over Detroit (11/23).
- ♦ Filled the stat sheet with three points, five rebounds, six assists and two steals against Lafayette (11/18).
- ♦ Was 4-for-8 from the field en route to eight points with three assists and five steals in the victory at #16/13 Texas A&M (11/14).
- ♦ Registered five points, four rebounds and three assists in her first game as a Lady Lion against Howard (11/11).

CAREER HIGHS

Points.....	17 vs. Clemson (2/14/10)
Rebs.	8 vs. East Carolina (3/21/10)
Assists	11 at American (12/20/09)
.....	11 at Virginia (1/11/10)
Steals.....	6 vs. N.C. Central (11/14/09)
Blocks	1 (3x) last at St. Joseph's 1/2/11)
Minutes	38 at American (12/20/09)
FGM.....	7 vs. Clemson (2/14/10)
FGA	14 at Connecticut (12/6/12)
.....	14 at N.C. State (1/7/10)
FG%	1.000 (3x)
.....	last vs. N.C. State (2-2) (2/6/11)
3FGM.....	3 at Virginia Tech (12/12/12)
3FGA	6 at Virginia Tech (12/12/12)
3PT %	1.000 (1-1) at Longwood (1/31/10)
.....	1.000 (1-1) vs. Providence (3/25/10)
FTM	7 at Wake Forest (2/11/10)
FTA	10 at Wake Forest (2/11/10)
.....	10 vs. North Carolina (3/4/10)
FT %	1.000 (8x)
..last vs. Fairleigh Dickinson (4-4) (12/2/12)	
Career Double-Doubles	1
Career 20-point games	n/a

GAME-BY-GAME

	P	R	A
HOWARD	5	4	3
Texas A&M	8	3	3
LAFAYETTE	3	5	6
Detroit	4	0	2
CS-Northridge	2	3	0
Miami (Fla.)	6	6	3
FAIR. DICKINSON	15	3	5
Connecticut	8	4	2
GEORGETOWN	7	5	5
Virginia Tech	15	3	0
SOUTH DAKOTA ST.			
NJIT			
NORTHWESTERN			
Michigan State			
NEBRASKA			
WISCONSIN			
Michigan			
MINNESOTA			
Ohio State			
Wisconsin			
PURDUE			
Indiana			
MICHIGAN ST.			
Iowa			
ILLINOIS			
MICHIGAN			
Minnesota			
Nebraska			





#5 Talia East

Jr. * F/C * 6-3 * Philadelphia, Pa./Friends' Central

2012-13 Highlights:

- Made her first career start and responded with a career-high 11 points to go along with three blocks and a pair of rebounds in the win over Fairleigh Dickinson (12/2).

2012-13 Season Notes:

- Chipped in two points and three rebounds at Miami (11/29).
- Recorded four points and a blocked shot in the victory at Cal State Northridge (11/24).
- Was 2-for-3 from the field en route to five points and three rebounds in the win over Lafayette (11/18).
- Had two rebounds in the win over Howard (11/11).

CAREER HIGHS

Points.....	11 vs. Fairleigh Dickinson (12/2/12)
Rebs.	15 at South Carolina (11/20/11)
Assists	2 (3x)
..... last vs. Georgetown (12/9/12)	
Steals.....	2 (5x)
..... last vs. Connecticut (3/25/12)	
Blocks	7 at South Carolina (11/20/11)
Minutes	29 at South Carolina (11/20/11)
FGM.....	4 (3x)
..... last vs. Fairleigh Dickinson (12/2/12)	
FGA	10 vs. Fairleigh Dickinson (12/2/12)
FG%	1.000 (7x)
..... last vs. Georgetown (1-1) (12/9/12)	
3FGM.....	n/a
3FGA	n/a
3PT %	n/a
FTM	4 vs. Nebraska (12/30/11)
FTA	4 (4x)
..... last vs. Fairleigh Dickinson (12/2/12)	
FT %	1.000 (6x)
.....last at Miami (2-2) (11/29/12)	
Career Double-Doubles	n/a
Career 20-point games	n/a

GAME-BY-GAME

	P	R	B
HOWARD	0	2	0
Texas A&M	0	1	0
LAFAYETTE	5	3	0
Detroit	2	2	1
CS-Northridge	4	1	1
Miami (Fla.)	2	3	0
FAIR. DICKINSON	11	2	3
Connecticut	2	1	1
GEORGETOWN	2	2	2
Virginia Tech	0	2	0
SOUTH DAKOTA ST.			
NJIT			
NORTHWESTERN			
Michigan State			
NEBRASKA			
WISCONSIN			
Michigan			
MINNESOTA			
Ohio State			
Wisconsin			
PURDUE			
Indiana			
MICHIGAN ST.			
Iowa			
ILLINOIS			
MICHIGAN			
Minnesota			
Nebraska			



#20 Alex Bentley

Sr. * G * 5-7 * Indianapolis, Ind./Ben Davis

2012-13 Highlights:

- Team captain
- On 2013 preseason Wade Trophy Watch List, Wooden Award Top 30 and Naismith Early Season Watch List.
- 2013 Big Ten Preseason Co-Player of the Year (coaches); first team preseason All-Big Ten (coaches & media).

2012-13 Season Notes:

- Notched 10 points, including eight in the second half, to go along with four assists and five steals at Virginia Tech (12/12).
- Registered 23 points via an 8-for-14 shooting performance with five rebounds, four assists and two steals against Georgetown (12/9).
- Had 14 points, two rebounds, two assists and four steals at Miami (11/29).
- Collected 19 points to go along with three rebounds, eight assists and three steals in the Cal State Northridge game (11/24).
- Scored 14 of her game-high 21 points in the second half after battling foul trouble in the opening frame at #16/13 Texas A&M (11/14). Also tallied four assists and four steals against the Aggies.
- Accounted for 14 points, six rebounds and seven steals in the season opening win over Howard (11/11). The seven steals are one off her career high, set against Nebraska (12/30/11).

CAREER HIGHS

Points.....	28 at Boston College (12/2/10)
Rebs.	7 vs. Iowa (1/22/12)
.....	7 vs. Iowa (12/28/09)
Assists	15 vs. North Carolina (11/30/11)
Steals.....	8 vs. Nebraska (12/30/11)
Blocks	2 (3x) last vs. Drexel (12/21/10)
Minutes	46 at Dayton (11/12/10)
FGM.....	12 vs. Dayton (3/19/11)
.....	12 vs. Purdue (1/28/10)
FGA	28 vs. Dayton (3/19/11)
FG%833 (5-6) at Illinois (12/31/09)
3FGM.....	4 at Purdue (2/14/10)
3FGA	6 (4x)
..... last vs. Ohio State (3/6/11)	
3PT %	1.000 (6x)
..last vs. Washington State (2-2) (11/11/11)	
FTM	10 at Northwestern (1/6/11)
FTA	12 at Northwestern (1/6/11)
FT %	1.000 (30x)
.....last at Virginia Tech (2-2) (12/12/12)	
Career Double-Doubles	1
Career 20-point games	21

GAME-BY-GAME

	P	R	A
HOWARD	14	6	4
Texas A&M	21	2	4
LAFAYETTE	8	5	2
Detroit	4	3	6
CS-Northridge	19	3	8
Miami (Fla.)	14	2	2
FAIR. DICKINSON	6	5	8
Connecticut	7	5	1
GEORGETOWN	23	5	4
Virginia Tech	10	3	4
SOUTH DAKOTA ST.			
NJIT			
NORTHWESTERN			
Michigan State			
NEBRASKA			
WISCONSIN			
Michigan			
MINNESOTA			
Ohio State			
Wisconsin			
PURDUE			
Indiana			
MICHIGAN ST.			
Iowa			
ILLINOIS			
MICHIGAN			
Minnesota			
Nebraska			





#23 Ariel Edwards

Jr. * G/F * 6-3 * Elmont, N.Y./Christ the King

2012-13 Season Highlights:

- Was 11-for-16 from the field en route to a career-high 24 points, including 19 tallies in the first half, against Detroit (11/23).

2012-13 Season Notes:

- Provided 11 points, two rebounds and an assist off of the bench in the win over Georgetown (12/9).
- Recorded 10 points on 5-of-7 shooting with four rebounds and a steal off the bench at #2 Connecticut (12/6).
- Scored all 18 of her points in the second half via a 7-for-10 shooting night against Fairleigh Dickinson (12/2).
- Tallied nine points with six rebounds and a blocked shot against Lafayette (11/18).
- Chipped in five points, five rebounds and tied her career high with two blocks in the win over Howard (11/11).

CAREER HIGHS

Points.....	24 vs. Detroit (11/23/12)
Rebs.....	11 vs. Iowa (1/22/12)
Assists.....	4 at Wisconsin (1/2/12)
Steals.....	3 at Texas Tech (12/3/11)
Blocks.....	2 vs. Howard (11/11/12)
.....	2 at Oakland (11/18/10)
Minutes.....	38 at Delaware (11/17/11)
FGM.....	11 vs. Detroit (11/23/12)
FGA.....	16 vs. Detroit (11/23/12)
FG%.....	1.000 (3x)
.....	last DePaul (1-1) (3/21/11)
3FGM.....	2 vs. Army (12/8/10)
.....	2 vs. Hartford (11/27/10)
3FGA.....	4 vs. Army (12/8/10)
.....	4 vs. Hartford (11/27/10)
3PT %.....	1.000 (6x)
.....	last vs. Georgetown (1-1) (12/9/12)
FTM.....	9 vs. Iowa (1/22/12)
FTA.....	10 vs. Iowa (1/22/12)
FT %.....	1.000 (13x)
.....	last vs. Fairleigh Dickinson (3-3) (12/2/12)
Career Double-Doubles.....	1
Career 20-point games.....	1

GAME-BY-GAME

	P	R	A
HOWARD	5	5	1
Texas A&M	0	4	0
LAFAYETTE	9	6	1
Detroit	24	2	1
CS-Northridge	4	2	2
Miami (Fla.)	3	4	0
FAIR. DICKINSON	18	7	0
Connecticut	10	4	0
GEORGETOWN	11	2	1
Virginia Tech	4	4	0
SOUTH DAKOTA ST.			
NJIT			
NORTHWESTERN			
Michigan State			
NEBRASKA			
WISCONSIN			
Michigan			
MINNESOTA			
Ohio State			
Wisconsin			
PURDUE			
Indiana			
MICHIGAN ST.			
Iowa			
ILLINOIS			
MICHIGAN			
Minnesota			
Nebraska			



#24 Mia Nickson

Sr. * F * 6-2 * Ashburn, Va./Notre Dame Academy (B.C.)

2012-13 Highlights:

- Team captain for the third consecutive season.
- Posted her second double-double of the season with 10 points and a game-high 10 rebounds at Virginia Tech (12/12).

- Recorded a double-double in the season-opener against Howard (11/11) with 14 points, including a 6-for-10 effort from the field, and 10 rebounds.

2012-13 Season Notes:

- Notched six points, three rebounds and a pair of assists in the win over Big East foe Georgetown (12/9).
- Found continued success against Connecticut with eight points, eight rebounds, two assists and three steals in Storrs (12/6).
- Tallied eight points, four rebounds and a block at Miami (11/29).
- Chipped in eight points and three rebounds in the win at Cal State Northridge (11/24).
- Had a game-high points 12 to go along with six rebounds, two assists a block and a steal against Lafayette (11/18).
- Accounted for six points, 11 rebounds and two blocks in the win at #16/13 Texas A&M (11/14).

CAREER HIGHS

Points.....	26 vs. Texas Tech (12/5/10)
Rebs.....	17 vs. Indiana (1/23/11)
Assists.....	4 vs. Maine (12/12/10)
Steals.....	6 vs. Indiana (1/23/11)
.....	6 vs. Bucknell (12/28/10)
Blocks.....	3 vs. Purdue (3/3/12)
Minutes.....	41 at Dayton (11/12/10)
FGM.....	9 vs. Indiana (1/23/11)
FGA.....	16 vs. Indiana (1/23/11)
FG%.....	1.000 (4x)
.....	last vs. Minnesota (5-5) (1/13/11)
3FGM.....	n/a
3FGA.....	n/a
3PT %.....	n/a
FTM.....	10 (3x) last at Minnesota (2/5/12)
FTA.....	12 at Minnesota (2/5/12)
FT %.....	1.000 (20x)
.....	last vs. Detroit (2-2) (11/23/12)
Career Double-Doubles.....	12
Career 20-point games.....	5

GAME-BY-GAME

	P	R	A
HOWARD	14	10	0
Texas A&M	6	11	2
LAFAYETTE	12	6	2
Detroit	6	4	2
CS-Northridge	8	3	0
Miami (Fla.)	8	4	1
FAIR. DICKINSON	DNP		
Connecticut	8	8	2
GEORGETOWN	6	3	2
Virginia Tech	10	10	2
SOUTH DAKOTA ST.			
NJIT			
NORTHWESTERN			
Michigan State			
NEBRASKA			
WISCONSIN			
Michigan			
MINNESOTA			
Ohio State			
Wisconsin			
PURDUE			
Indiana			
MICHIGAN ST.			
Iowa			
ILLINOIS			
MICHIGAN			
Minnesota			
Nebraska			





#25 Gizelle Studevent

Sr. * G * 5-11 * La Jolla, Calif./The Bishop's School

2012-13 Season Notes:

- Made both of her shots from the field en route to four points with one assist and one steal in eight minutes of action at Miami (11/29)
- Tallied four points against Cal State Northridge (11/24).
- Recorded two points and three assists in the win over Detroit (11/23).
- Was 3-for-5 from the field on the way to seven points in the win over Lafayette (11/18).
- Pulled in a rebound and blocked a shot against Howard (11/11).

CAREER HIGHS

Points.....	10 vs. Indiana (2/2/12)
.....	10 at Oakland (11/18/10)
Rebs.	3 (8x) last vs. Minnesota (2/26/12)
Assists.....	4 vs. Wagner (12/18/11)
Steals.....	2 vs. Virginia Tech (12/6/11)
.....	2 vs. Rider (11/14/10)
Blocks.....	1 (3x) last vs. Howard (11/11/12)
Minutes.....	25 vs. Minnesota (2/26/12)
FGM.....	5 vs. Indiana (2/2/12)
FGA.....	9 vs. Detroit (11/23/12)
FG%.....	1.000 (4x)
.....	last at Miami (2-2) (11/29/12)
3FGM.....	1 (4x) last vs. Minnesota (1/13/11)
3FGA.....	3 vs. Monmouth (12/9/09)
3PT%.....	1.000 (4x)
.....	last vs. Minnesota (1-1) (1/13/11)
FTM.....	3 vs. Maine (12/12/10)
.....	3 at Oakland (11/18/10)
FTA.....	4 vs. Maine (12/12/10)
.....	4 at Oakland (11/18/10)
FT%.....	1.000 (7x)
.....	last vs. Georgetown (2-2) (12/9/12)
Career Double-Doubles.....	n/a
Career 20-point games.....	n/a

GAME-BY-GAME

	P	R	A
HOWARD	0	1	0
Texas A&M	0	0	0
LAFAYETTE	7	1	0
Detroit	2	0	3
CS-Northridge	4	0	0
Miami (Fla.)	4	1	1
FAIR. DICKINSON	2	0	2
Connecticut	0	0	0
GEORGETOWN	2	0	1
Virginia Tech	2	1	0
SOUTH DAKOTA ST.			
NJIT			
NORTHWESTERN			
Michigan State			
NEBRASKA			
WISCONSIN			
Michigan			
MINNESOTA			
Ohio State			
Wisconsin			
PURDUE			
Indiana			
MICHIGAN ST.			
Iowa			
ILLINOIS			
MICHIGAN			
Minnesota			
Nebraska			



#33 Maggie Lucas

Jr. * G * 5-10 * Narberth, Pa./Germantown Academy

2012-13 Highlights:

- Dec. 11 Ann Myers Drysdale National Player of the Week award winner, presented by the USBWA.
- Two-time Big Ten Player of the Week (Nov. 26, Dec. 10).
- On 2013 preseason Wade Trophy Watch List, Wooden Award Top 30 and Naismith Early Season Watch List.
- Became the third player in school history with 200 career three-pointers with a pair of triple against Lafayette (11/18).
- 2013 first team preseason All-Big Ten (coaches & media).
- Selected as the Radisson Chatsworth Thanksgiving Tournament MVP after averaging 25.5 points, 3.0 rebounds, 3.0 assists and 2.5 steals in two games.
- Broke the Bryce Jordan Center scoring record (men or women) with 39 points, including a BJC record-tying seven three-pointers, in the win over Georgetown (12/9).

2012-13 Season Notes:

- Had the best shooting performance of her career, going 7-for-9 en route to 17 points with four rebounds and two assists at Virginia Tech (12/12).
- Recorded a BJC record 39 points via a 7-for-13 shooting night from three-point range and a career-best six steals in the win over Georgetown (12/9).
- Drained six of her nine three-point attempts and finished with a game-best 24 points with six rebounds, four assists and three steals in the win over FDU (12/2).
- Connected on four three-pointers en route to 20 points, five rebounds and three assists on her 21st birthday at Miami (11/29).
- Notched 23 points, three rebounds, three assists and pair of steals in the win at Cal State Northridge (11/24).
- Scored 23 of her game-high 28 points in the second half and added four rebounds, three assists and three steals in the win over Detroit (11/23)
- Tallied 18 points to go along with four rebounds and a steal at #16/13 Texas A&M (11/14).
- Posted her 32nd career 20-point game with a team-best 25 points on 9-of-17 shooting in the season-opening win over Howard (11/11). Also had three assists and three steals in the win.

CAREER HIGHS

Points.....	39 vs. Georgetown (12/9/12)
Rebs.	10 vs. Ohio State (2/20/12)
Assists.....	8 vs. Minnesota (2/26/12)
Steals.....	6 vs. Georgetown (12/9/12)
Blocks.....	2 vs. Indiana (2/2/12)
.....	2 vs. Purdue (2/24/11)
Minutes.....	40 (3x)
.....	last vs. Connecticut (3/25/12)
FGM.....	11 vs. Georgetown (12/9/12)
FGA.....	22 vs. Nebraska (12/30/11)
FG%778 (7-9) at Virginia Tech (12/12/12)
3FGM.....	7 (3x)
.....	last vs. Georgetown (12/9/12)
3FGA.....	13 (3x)
.....	last vs. Georgetown (12/9/12)
3PT %...	1.000 (4-4) at Bucknell (12/21/11)
FTM.....	11 at LSU (3/20/12)
.....	11 vs. Washington State (11/11/11)
FTA.....	13 vs. Washington State (11/11/11)
FT %.....	1.000 (39x)
.....	last at Virginia Tech (2-2) (12/12/12)
Career Double-Doubles.....	1
Career 20-point games.....	37
Career 30-point games.....	3

GAME-BY-GAME

	P	R	A
HOWARD	25	2	3
Texas A&M	18	4	1
LAFAYETTE	12	9	2
Detroit	28	4	3
CS-Northridge	23	3	3
Miami (Fla.)	20	5	3
FAIR. DICKINSON	24	6	4
Connecticut	15	4	1
GEORGETOWN	39	5	2
Virginia Tech	17	4	2
SOUTH DAKOTA ST.			
NJIT			
NORTHWESTERN			
Michigan State			
NEBRASKA			
WISCONSIN			
Michigan			
MINNESOTA			
Ohio State			
Wisconsin			
PURDUE			
Indiana			
MICHIGAN ST.			
Iowa			
ILLINOIS			
MICHIGAN			
Minnesota			
Nebraska			





#40 Marisa Wolfe

Sr. * F * 6-2 * Ford City, Pa./Ford City

2012-13 Highlights:

- ♦ Team captain for the second-straight season.
- ♦ Currently sidelined with concussion-like symptoms.

CAREER HIGHS

Points.....	13 vs. Michigan (2/18/10)
Rebs.....	7 vs. Wagner (12/18/11)
.....	7 vs. Green Bay (11/26/10)
Assists.....	1 (19x)
.....	last at Michigan (1/26/12)
Steals.....	3 vs. North Carolina (11/30/11)
.....	3 at Northwestern (1/3/10)
Blocks.....	2 (5x)
.....	last vs. UMES (12/11/11)
Minutes.....	30 vs. Green Bay (11/26/10)
FGM.....	5 vs. Michigan (2/18/10)
.....	5 at Northwestern (1/3/10)
FGA.....	8 vs. North Carolina (11/30/11)
FG%.....	1.000 (10x)
.....	last vs. UTEP (1-1) (3/18/12)
3FGM.....	2 vs. Illinois (1/24/10)
3FGA.....	3 vs. Illinois (1/24/10)
3PT%.....	1.000 (1-1) vs. Ohio State (3/6/11)
FTM.....	4 vs. South Carolina (11/21/10)
FTA.....	4 (3x)
.....	last vs. Green Bay (11/26/10)
FT%.....	1.000 (18x)
.....	last vs. UTEP (1-1) (3/18/12)
Career Double-Doubles.....	n/a
Career 20-point games.....	n/a

GAME-BY-GAME

	P	R	A
HOWARD	DNP		
Texas A&M	DNP		
LAFAYETTE	DNP		
Detroit	DNP		
CS-Northridge	DNP		
Miami (Fla.)	DNP		
FAIR. DICKINSON	DNP		
Connecticut	DNP		
GEORGETOWN	DNP		
Virginia Tech	DNP		
SOUTH DAKOTA ST.			
NJIT			
NORTHWESTERN			
Michigan State			
NEBRASKA			
WISCONSIN			
Michigan			
MINNESOTA			
Ohio State			
Wisconsin			
PURDUE			
Indiana			
MICHIGAN ST.			
Iowa			
ILLINOIS			
MICHIGAN			
Minnesota			
Nebraska			



#44 Tori Waldner

So. * F * 6-5 * Milton, Ga./Milton

2012-13 Highlights:

- ♦ Established a career-high with seven points to go along with five rebounds, two blocks and a steal in the win over Fairleigh Dickinson (12/2).

CAREER HIGHS

Points.....	7 vs. Fairleigh Dickinson (12/2/12)
Rebs.....	10 vs. Wagner (12/18/11)
Assists.....	4 vs. Indiana (2/2/12)
Steals.....	2 vs. Nebraska (12/30/11)
.....	2 at Nevada (11/26/11)
Blocks.....	3 vs. Wagner (12/18/11)
Minutes.....	21 vs. UMES (12/11/11)
FGM.....	3 (5x)
.....	last vs. Fairleigh Dickinson (12/2/12)
FGA.....	10 vs. Lafayette (11/18/12)
FG%.....	1.000 (4x)
.....	last at Purdue (1-1) (2/16/12)
3FGM.....	n/a
3FGA.....	1 at LSU (3/20/12)
3PT %.....	n/a
FTM.....	6 vs. Howard (11/11/12)
FTA.....	6 vs. Howard (11/11/12)
FT %.....	1.000 (3x)
.....	last vs. Howard (6-6) (11/11/12)
Career Double-Doubles.....	n/a
Career 20-point games.....	n/a

GAME-BY-GAME

	P	R	B
HOWARD	6	6	1
Texas A&M	2	3	0
LAFAYETTE	6	4	0
Detroit	2	6	1
CS-Northridge	DNP		
Miami (Fla.)	0	0	0
FAIR. DICKINSON	7	5	2
Connecticut	DNP		
GEORGETOWN	2	4	0
Virginia Tech	0	4	0
SOUTH DAKOTA ST.			
NJIT			
NORTHWESTERN			
Michigan State			
NEBRASKA			
WISCONSIN			
Michigan			
MINNESOTA			
Ohio State			
Wisconsin			
PURDUE			
Indiana			
MICHIGAN ST.			
Iowa			
ILLINOIS			
MICHIGAN			
Minnesota			
Nebraska			

2012-13 Season Notes:

- ♦ Had two points and four rebounds in the win over Georgetown (12/9).
- ♦ Pulled down six rebounds and had two points against Detroit (11/23).
- ♦ Tallied six points with four rebounds and two assists in the win over Lafayette (11/18).
- ♦ Chipped in two points and three rebounds in the win over #16/13 Texas A&M (11/14).
- ♦ Notched six points, all of which came from the free throw line, and six rebounds in just 12 minutes in the season-opening win over Howard (11/11).





#54 Nikki Greene

Sr. * F/C * 6-4 * Diboll, Texas/Diboll

2012-13 Season Highlights:

- Is just the third player in school history with multiple 20-rebound games in their career (Mary Donovan & Mag Strittmatter).

2012-13 Season Notes:

- Snagged 13 rebounds in the win over Georgetown (12/9).
- Accounted for 10 points, six rebounds, two blocks and a steal in the win over Fairleigh Dickinson (12/2).
- Posted a 20-20 for her 10th career double-double and first of the season with 21 points and 20 boards in the win at Cal State Northridge (11/24).
- Was 13-for-14 from the free throw line, including 11-for-12 in the final five minutes, against the Matadors.
- Recorded six points, six rebounds and three blocks in just 10 minutes of action against Lafayette (11/18).
- Playing in front of several friends and family members, scored all eight of her points and pulled in six of her seven rebounds in the second half at #16/13 Texas A&M (11/14).
- Had three points and four rebounds in the win over Howard (11/11).

CAREER HIGHS

Points	25 vs. Ohio State (2/20/12)
Rebs.	20 at CS-Northridge (11/24/12)
.....	20 vs. Indiana (1/23/11)
Assists	3 vs. Detroit (11/23/12)
.....	3 vs. Michigan (1/12/12)
Steals	4 (3x)
.....	last vs. Nebraska (12/30/11)
Blocks	7 vs. Purdue (1/28/10)
Minutes	37 at Boston College (12/2/10)
FGM	9 vs. Utah (11/25/10)
.....	9 at Dayton (11/12/10)
FGA	17 vs. Ohio State (2/20/12)
.....	17 at Dayton (11/12/10)
FG%	1.000 (3x)
.....	last at Michigan (4-4) (1/26/12)
3FGM	n/a
3FGA	n/a
3PT%	n/a
FTM	13 at CS-Northridge (11/24/12)
FTA	14 at CS-Northridge (11/24/12)
.....	14 vs. Ohio State (2/20/12)
FT%	1.000 (14x)
.....	last vs. Detroit (2-2) (11/23/12)
Career Double-Doubles	10
Career 20-point games	4

GAME-BY-GAME

	P	R	B
HOWARD	3	4	0
Texas A&M	8	7	0
LAFAYETTE	6	6	3
Detroit	6	7	2
CS-Northridge	21	20	2
Miami (Fla.)	6	7	0
FAIR. DICKINSON	10	6	2
Connecticut	2	7	0
GEORGETOWN	5	13	2
Virginia Tech	2	4	1
SOUTH DAKOTA ST.			
NJIT			
NORTHWESTERN			
Michigan State			
NEBRASKA			
WISCONSIN			
Michigan			
MINNESOTA			
Ohio State			
Wisconsin			
PURDUE			
Indiana			
MICHIGAN ST.			
Iowa			
ILLINOIS			
MICHIGAN			
Minnesota			
Nebraska			



No. 8/8 Penn State 95, California (Pa.) 39 Exhibition Game * Nov. 3, 2012 * University Park, Pa.

California (Pa.) 39

#	Player	Total		3-Ptr		Rebounds			PF	TP	A	TO	Blk	Stl	Min
		FG-FGA	FG-FGA	FT-FTA	FT-FTA	Off	Def	Tot							
02	MAHADY, Emma	* 4-24	2-9	0-0	5	3	8	3	10	0	7	0	1	33	
03	MICHAEL, Stephanie	* 3-15	3-11	2-2	2	2	4	4	11	0	6	0	2	25	
12	SEBOHM, Kate	* 1-5	0-1	0-0	1	1	2	3	2	2	3	1	2	32	
22	KUKOLI, Irina	* 1-3	0-1	0-0	0	1	1	1	2	1	4	1	1	16	
25	ANTONENKO, Elena	* 0-2	0-1	0-0	1	0	1	3	0	0	2	0	1	12	
05	MCKNIGHT, Chelsea	3-9	1-4	2-2	4	2	6	1	9	1	1	0	1	26	
10	GADSON, Ryah	0-6	0-0	0-0	0	0	0	2	0	2	0	0	1	15	
11	HILL, Jasmine	0-0	0-0	0-0	0	0	0	0	0	0	0	0	0	2	
34	RICHARDSON, Ayonna	0-2	0-0	0-1	1	0	1	4	0	0	1	0	0	12	
45	HINES, Ashley	1-6	0-0	3-4	5	2	7	2	5	2	1	0	3	27	
	Team				4	5	9								
	Totals	13-72	6-27	7-9	23	16	39	23	39	6	27	2	12	200	

FG % 1st Half: 7-35 20.0% 2nd half: 6-37 16.2% Game: 13-72 18.1% Deadball Rebounds 0
 3FG % 1st Half: 4-12 33.3% 2nd half: 2-15 13.3% Game: 6-27 22.2%
 FT % 1st Half: 5-7 71.4% 2nd half: 2-2 100.0% Game: 7-9 77.8%

Penn State 95

#	Player	Total		3-Ptr		Rebounds			PF	TP	A	TO	Blk	Stl	Min
		FG-FGA	FG-FGA	FT-FTA	FT-FTA	Off	Def	Tot							
20	Bentley, Alex	* 5-10	1-1	5-6	2	2	4	1	16	4	2	0	3	26	
23	Edwards, Ariel	* 4-6	0-0	4-6	1	6	7	1	12	2	1	0	4	24	
24	Nickson, Mia	* 4-7	0-0	1-3	1	6	7	0	9	3	3	0	0	20	
33	Lucas, Maggie	* 7-11	2-3	3-3	1	4	5	1	19	4	4	0	4	31	
54	Greene, Nikki	* 7-10	0-0	4-6	3	8	11	3	18	0	4	2	1	21	
02	Taylor, Dara	3-4	0-0	1-1	1	3	4	2	7	5	4	0	3	30	
05	East, Talia	1-3	0-0	0-3	3	1	4	1	2	1	4	3	0	15	
25	Studevent, Gizelle	3-6	0-0	2-3	0	2	2	1	8	0	1	1	1	21	
44	Waldner, Tori	2-3	0-0	0-0	1	2	3	2	4	1	2	0	1	12	
	Team				2	4	6								
	Totals	36-60	3-4	20-31	15	38	53	12	95	20	25	6	17	200	

FG % 1st Half: 16-28 57.1% 2nd half: 20-32 62.5% Game: 36-60 60.0% Deadball Rebounds 4
 3FG % 1st Half: 3-4 75.0% 2nd half: 0-0 0.0% Game: 3-4 75.0%
 FT % 1st Half: 13-17 76.5% 2nd half: 7-14 50.0% Game: 20-31 64.5%

Officials: Michael McConnell, Kathy Ridilla, Kevin Pethel
 Technical fouls: California (Pa.)-None. Penn State-None.
 Attendance: 4756

Score by periods	1st	2nd	Total
California (Pa.)	23	16	39
Penn State	48	47	95

Points	In	Off	2nd	Fast	Bench
CAL	10	13	12	0	14
PSU	52	41	12	17	21

Last FG - CAL 2nd-00:33, PSU 2nd-00:49.
 Largest lead - CAL by 1 1st-19:41, PSU by 59 2nd-00:49.

Score tied - 1 time.
 Lead changed - 2 times.

Notable

- Junior guard **Maggie Lucas** led the Lady Lions' offensive with 19 points on 7-for-11 shooting.
- Nikki Greene** notched a double-double with 18 points and 11 rebounds.
- The Vulcans are led by former Lady Lion Jess Strom, who is in her first season as head coach after serving in the interim role last season.

No. 9/9 Penn State 63, No. 16/13 Texas A&M 58 Game #2 * Nov. 14, 2012 * College Station, Texas

Penn State 63 • 2-0

#	Player	Total		3-Ptr		Rebounds			PF	TP	A	TO	Blk	Stl	Min
		FG-FGA	FG-FGA	FT-FTA	FT-FTA	Off	Def	Tot							
20	Bentley, Alex	* 7-15	2-3	5-6	0	2	4	2	4	21	4	0	0	4	26
23	Edwards, Ariel	* 0-3	0-0	0-0	0	4	4	1	0	0	4	1	0	17	
24	Nickson, Mia	* 2-10	0-0	2-6	5	6	11	2	6	2	2	2	1	34	
33	Lucas, Maggie	* 7-16	1-6	3-3	0	4	4	2	18	1	4	0	1	38	
54	Greene, Nikki	* 4-6	0-0	0-0	2	5	7	4	8	0	1	0	1	20	
01	Agee, Candice	0-2	0-0	0-0	1	2	3	1	0	0	0	1	0	11	
02	Taylor, Dara	4-8	0-1	0-0	0	3	3	4	8	3	5	0	5	29	
05	East, Talia	0-2	0-0	0-0	0	1	1	3	0	0	2	0	0	9	
25	Studevent, Gizelle	0-1	0-0	0-0	0	0	0	0	0	0	0	0	0	10	
44	Waldner, Tori	1-2	0-0	0-0	3	0	3	0	2	0	1	0	0	6	
	Team				4	0	4								
	Totals	25-65	3-10	10-15	15	27	42	21	63	10	19	4	12	200	

FG % 1st Half: 11-29 37.9% 2nd half: 14-36 38.9% Game: 25-65 38.5% Deadball Rebounds 1
 3FG % 1st Half: 2-5 40.0% 2nd half: 1-5 20.0% Game: 3-10 30.0%
 FT % 1st Half: 4-6 66.7% 2nd half: 6-9 66.7% Game: 10-15 66.7%

Texas A&M 58 • 0-2

#	Player	Total		3-Ptr		Rebounds			PF	TP	A	TO	Blk	Stl	Min
		FG-FGA	FG-FGA	FT-FTA	FT-FTA	Off	Def	Tot							
03	Kelsey Bone	* 7-11	0-0	2-4	6	9	15	2	16	3	5	0	1	36	
05	Kristi Bellock	* 3-6	0-0	0-0	3	7	10	3	6	2	4	0	0	18	
10	Alexia Standish	* 1-5	0-1	3-3	0	0	0	4	5	2	4	0	0	28	
15	Tori Scott	* 0-2	0-1	1-2	1	0	1	1	1	0	2	0	0	15	
33	Courtney Walker	* 3-14	0-0	0-1	3	2	5	3	6	1	2	0	4	39	
01	Courtney Williams	1-7	0-0	1-1	1	1	2	1	3	0	0	0	1	15	
20	Peyton Little	2-7	2-5	0-0	0	1	1	0	6	0	1	0	0	13	
24	Jordan Jones	1-3	1-1	0-0	1	0	1	0	3	0	2	0	0	5	
32	Adrienne Pratcher	1-4	0-1	0-0	0	1	1	0	2	4	0	0	1	14	
34	Karla Gilbert	3-5	0-0	4-8	3	3	6	3	10	1	3	2	1	17	
	Team				2	5	7								
	Totals	22-64	3-9	11-19	20	29	49	17	58	13	23	2	8	200	

FG % 1st Half: 12-35 34.3% 2nd half: 10-29 34.5% Game: 22-64 34.4% Deadball Rebounds 3
 3FG % 1st Half: 2-6 33.3% 2nd half: 1-3 33.3% Game: 3-9 33.3%
 FT % 1st Half: 7-13 53.8% 2nd half: 4-6 66.7% Game: 11-19 57.9%

Officials: Bob Trammel, Tina Napier, Jesse Dickerson
 Technical fouls: Penn State-None. Texas A&M-None.
 Attendance: 4756

Score by periods	1st	2nd	Total
Penn State	28	35	63
Texas A&M	33	25	58

Last FG - PSU 2nd-00:49, TAMU 2nd-06:24.
 Largest lead - PSU by 5 1st-09:44, TAMU by 7 2nd-18:46.

Score tied - 6 times.
 Lead changed - 7 times.

Notable

- The Lady Lions earn their first victory over a ranked non-conference opponent on the road since defeating #19 Texas on December 21, 2001.
- The win snapped Texas A&M's 58-game non-conference home court winning streak, dating back to Dec. 30, 2003.
- With seven rebounds, **Nikki Greene** moves into 11th place all-time on PSU's rebounding chart (734).

No. 8/8 Penn State 72, Howard 61 Game #1 * Nov. 11, 2012 * University Park, Pa.

Howard 61 • 0-2

#	Player	Total		3-Ptr		Rebounds			PF	TP	A	TO	Blk	Stl	Min
		FG-FGA	FG-FGA	FT-FTA	FT-FTA	Off	Def	Tot							
05	CURLY-PAYNE, Cheyenn	* 2-8	0-3	0-2	0	2	2	4	4	3	3	0	3	35	
10	GORHAM, Janelle	* 2-10	0-2	1-2	0	6	6	4	5	4	10	1	4	36	
13	DOYLE, Saadia	* 9-21	1-1	17-23	1	5	6	2	36	1	2	0	3	39	
32	DETERVILLE, Nicole	* 1-2	0-0	1-2	2	0	2	5	3	0	0	0	1	21	
44	SMITH, Kara	* 3-6	1-1	0-0	2	2	4	3	7	0	1	0	1	22	
14	JOHNSON, Cabria	2-3	2-2	0-0	3	1	4	4	6	0	1	0	0	13	
24	BAILEY, Imani	0-2	0-1	0-0	0	0	0	0	0	2	1	1	2	14	
34	DETERVILLE, Portia	0-0	0-0	0-0	0	2	2	1	0	0	1	0	0	20	
	Team				2	3	5								
	Totals	19-52	4-10	19-29	10	21	31	23	61	10	19	2	14	200	

FG % 1st Half: 11-26 42.3% 2nd half: 8-26 30.8% Game: 19-52 36.5% Deadball Rebounds 5
 3FG % 1st Half: 3-6 50.0% 2nd half: 1-4 25.0% Game: 4-10 40.0%
 FT % 1st Half: 6-7 85.7% 2nd half: 13-22 59.1% Game: 19-29 65.5%

Penn State 72 • 1-0

#	Player	Total		3-Ptr		Rebounds			PF	TP	A	TO	Blk	Stl	Min
		FG-FGA	FG-FGA	FT-FTA	FT-FTA	Off	Def	Tot							
20	Bentley, Alex	* 6-14	0-3	2-2	2	4	6	3	14	4	3	0	7	32	
23	Edwards, Ariel	* 2-6	0-2	1-2	1	4	5	5	5	1	0	2	0	23	
24	Nickson, Mia	* 6-10	0-0	2-2	5	5	10	1	14	0	4	1	0	30	
33	Lucas, Maggie	* 9-17	4-8	3-4	0	2	2	2	25	3	2	0	3	35	
54	Greene, Nikki	* 0-0	0-0	3-6	1	3	4	4	3	0	2	0	1	17	
01	Agee, Candice	0-3	0-0	0-1	0	0	0	0	2	0	1	1	0	7	
02	Taylor, Dara	2-4	0-1	1-2	1	3	4	4	5	3	3	0	0	21	
05	East, Talia	0-1	0-0	0-1	0	2	2	2	0	1	3	0	0	9	
25	Studevent, Gizelle	0-1	0-0	0-0	1	0	1	1	0	0	1	1	0	14	
44	Waldner, Tori	0-1	0-0	0-6	2	4	6	2	6	0	1	1	1	12	
	Team				2	0	2								
	Totals	25-57	4-10	18-26	15	27	42	26	72	12	20	6	12	200	

FG % 1st Half: 14-29 48.3% 2nd half: 11-28 39.3% Game: 25-57 43.2% Deadball Rebounds 4
 3FG % 1st Half: 2-8 25.0% 2nd half: 2-6 33.3% Game: 4-14 28.6%
 FT % 1st Half: 9-15 60.0% 2nd half: 9-11 81.8% Game: 18-26 69.2%

Officials: Dennis Brooks, Frank Steratore, Bruce Morris
 Technical fouls: Howard-None. Penn State-None.
 Attendance: 3655

Score by periods	1st	2nd	Total
Howard	31	30	61
Penn State	39	33	72

Points	In	Off	2nd	Fast	Bench
HOW	16	26	9	21	6
PSU	26	15	21	11	11

Last FG - HOW 2nd-00:24, PSU 2nd-01:17.
 Largest lead - HOW by 6 1st-17:02, PSU by 19 2nd-04:18.

Score tied - 4 times.
 Lead changed - 4 times.

No. 6/7 Penn State 80, Detroit 72 Game #4 * Nov. 23, 2012 * Northridge, Calif.

Detroit 72 • 2-2

#	Player	Total		3-Ptr		Rebounds			PF	TP	A	TO	Blk	Stl	Min
		FG	FGA	FT	FTA	Off	Def	Tot							
20	HATTER, Megan	f	1-4	0-2	0-0	4	1	5	1	2	2	0	0	1	21
24	BROWN, Sharetta	f	3-7	0-0	10-12	6	9	15	3	16	0	2	0	1	34
25	SHAYOK, Yar	f	2-5	1-1	2-2	1	9	10	2	7	2	0	0	0	30
11	REYNOLDS, Rosanna	g	4-9	1-2	1-2	0	1	1	5	10	6	7	0	1	39
21	MATTESON, Audrey	g	7-16	4-11	2-2	0	5	5	3	20	4	7	0	2	40
12	FAMBRO, Demeisha	g	6-13	2-3	3-4	1	5	6	3	17	2	5	0	0	35
33	LAVITA-STEPHENS, De	g	0-0	0-0	0-0	0	0	0	0	0	0	0	0	0	1
	Team					4	0	4							
	Totals		23-54	8-19	18-22	16	30	46	17	72	16	25	0	5	200

FG % 1st Half: 12-28 42.9% 2nd half: 11-26 42.3% Game: 23-54 42.6%
 3FG % 1st Half: 4-9 44.4% 2nd half: 4-10 40.0% Game: 8-19 42.1%
 FT % 1st Half: 10-10 100.0 2nd half: 8-12 66.7% Game: 18-22 81.8%

Penn State 80 • 4-0

#	Player	Total		3-Ptr		Rebounds			PF	TP	A	TO	Blk	Stl	Min
		FG	FGA	FT	FTA	Off	Def	Tot							
24	Nickson, Mia	f	2-7	0-0	2-2	3	1	4	3	6	2	1	0	1	21
54	Greene, Nikki	f	2-7	0-0	2-2	3	4	7	3	6	3	2	2	1	28
20	Bentley, Alex	f	2-4	0-0	0-0	1	2	3	0	4	6	0	0	4	35
23	Edwards, Ariel	g	11-16	1-2	1-1	1	2	2	24	1	0	0	0	25	
33	Lucas, Maggie	g	8-14	3-4	9-10	0	4	4	3	28	3	5	1	3	34
01	Agee, Candice	g	1-3	0-0	0-0	1	2	3	2	1	0	0	0	11	
02	Taylor, Dara	g	1-8	0-5	2-3	0	0	0	3	4	2	0	0	3	
05	East, Talia	g	1-2	0-0	0-0	2	0	2	1	2	0	0	1	1	
25	Studevent, Gizelle	g	1-9	0-1	0-0	0	0	0	1	2	3	0	0	0	
44	Waldner, Tori	g	1-2	0-0	0-0	3	3	6	0	2	0	2	0	1	
	Team					0	0	0							
	Totals		30-72	4-12	16-18	14	17	31	18	80	23	10	4	14	200

FG % 1st Half: 17-40 42.5% 2nd half: 13-32 40.6% Game: 30-72 41.7%
 3FG % 1st Half: 2-7 28.6% 2nd half: 2-5 40.0% Game: 4-12 33.3%
 FT % 1st Half: 6-6 100.0 2nd half: 10-12 83.3% Game: 16-18 88.9%

Officials: Melissa Hoyt, Norma Leibfried, Janetta Graham
 Technical fouls: Detroit-None. Penn State-None.
 Attendance: 479
 Game 1 of Radisson Hotel Chatsworth Thanksgiving Basketball Classic 2012

Score by periods	1st	2nd	Total
Detroit	38	34	72
Penn State	42	38	80

Points	In	Off	2nd	Fast	Bench
PSU	Paint	T/O	Chance	Break	
DETROIT	28	9	16	7	17
PSU	32	25	15	7	12

Last FG - DETROIT 2nd-01:14, PSU 2nd-01:31.
 Largest lead - DETROIT by 5 1st-05:13, PSU by 14 2nd-03:39.

Score tied - 4 times.
 Lead changed - 4 times.

Notable

- Junior Ariel Edwards had a career-high 24 points, surpassing her previous personal best of 17 points set against Iowa on Jan. 22, 2012.
- With two blocks, senior center Nikki Greene moved into a tie for fourth place on Penn State's career rejections list with Andrea Garner (185; 1997-00).
- Penn State starts 4-0 for the second time under Coquese Washington.

Miami 69, No. 6/7 Penn State 65 Game #6 * Nov. 29, 2012 * Coral Gables, Fla.

Penn State 65 • 1-1

#	Player	Total		3-Ptr		Rebounds			PF	TP	A	TO	Blk	Stl	Min
		FG	FGA	FT	FTA	Off	Def	Tot							
23	Edwards, Ariel	f	1-3	1-1	0-0	0	4	4	0	3	0	3	0	1	15
24	Nickson, Mia	f	3-10	0-0	2-4	2	2	4	3	8	1	1	1	0	32
54	Greene, Nikki	c	3-9	0-0	0-0	2	5	7	4	6	0	4	0	0	20
20	Bentley, Alex	g	6-13	0-3	2-3	0	2	2	4	14	2	5	0	4	26
33	Lucas, Maggie	g	7-13	4-6	2-2	1	4	5	2	20	3	4	0	0	40-
01	Agee, Candice	g	1-1	0-0	0-0	0	2	2	1	2	1	0	1	0	3
02	Taylor, Dara	g	3-11	0-1	0-0	2	4	6	0	6	3	6	0	2	33
05	East, Talia	g	0-1	0-0	2-2	0	3	3	0	2	0	3	0	0	20
25	Studevent, Gizelle	g	2-2	0-0	0-0	0	1	1	0	4	1	0	0	1	8
44	Waldner, Tori	g	0-0	0-0	0-0	0	0	0	1	0	0	1	0	0	3
	Team					10	1	11							
	Totals		26-63	5-11	8-11	17	28	45	15	65	11	29	2	8	200

FG % 1st Half: 11-25 44.0% 2nd half: 15-38 39.5% Game: 26-63 41.3%
 3FG % 1st Half: 3-5 60.0% 2nd half: 2-6 33.3% Game: 5-11 45.5%
 FT % 1st Half: 4-4 100.0 2nd half: 4-7 57.1% Game: 8-11 72.7%

Miami 69 • 5-1

#	Player	Total		3-Ptr		Rebounds			PF	TP	A	TO	Blk	Stl	Min
		FG	FGA	FT	FTA	Off	Def	Tot							
22	Morgan Stroman	f	6-8	0	3-4	1	3	4	3	15	0	6	1	5	29
50	Maria Brown	f	0-4	0-0	2-2	3	1	4	3	2	1	3	1	1	27
03	Stefanie Yderstrom	g	6-15	1-3	0-0	1	0	1	2	13	7	1	0	4	34
10	Michelle Woods	g	3-8	0-2	5-6	0	5	5	1	11	1	5	2	4	32
33	Suriya McGuire	g	4-10	0-0	0-0	0	1	1	1	8	2	2	1	2	23
01	Caprice Dennis	g	2-4	0-1	0-0	0	0	0	0	1	4	0	0	1	11
12	Krystal Saunders	g	3-7	1-5	1-1	1	1	2	1	8	1	0	0	1	21
20	Keyona Hayes	g	2-5	0-0	0-0	0	6	6	1	4	0	3	1	1	15
25	Jessica Capers	g	1-1	0-0	0-0	0	1	1	0	2	0	0	0	0	1
40	Shawnice Wilson	g	1-2	0-0	0-0	1	1	2	1	2	0	0	0	0	7
	Team					3	1	4							
	Totals		28-64	2-11	11-13	10	22	32	14	69	12	21	6	19	200

FG % 1st Half: 15-36 41.7% 2nd half: 13-28 46.4% Game: 28-64 43.8%
 3FG % 1st Half: 1-7 14.3% 2nd half: 1-4 25.0% Game: 2-11 18.2%
 FT % 1st Half: 5-6 83.3% 2nd half: 6-7 85.7% Game: 11-13 84.6%

Officials: Denise Brooks, Susan Blauch, Karen Preato
 Technical fouls: Penn State-None. Miami-None.
 Attendance: 1286
 2012 ACC/Big Ten Challenge

Score by periods	1st	2nd	Total
Penn State	29	36	65
Miami	36	33	69

Points	In	Off	2nd	Fast	Bench
PSU	Paint	T/O	Chance	Break	
PSU	44	23	13	12	20

Last FG - PSU 2nd-00:23, UM 2nd-00:14.
 Largest lead - PSU by 4 2nd-08:21, UM by 10 1st-10:39.

Score tied - 6 times.
 Lead changed - 2 times.

Notable

- Penn State is now 2-4 in ACC/Big Ten Challenge games and 0-3 in Challenge road games.
- Junior guard Maggie Lucas moved into a tie for 17th place on Penn State's career scoring list with Cheryl Ellison (1980-83) at 1,320 career points.
- Senior center Nikki Greene moved into ninth place on Penn State's career rebounding list, passing Mary Donovan (1978-81) with 774 career caroms.

No. 6/7 Penn State 85, Cal State Northridge 73 Game #5 * Nov. 24, 2012 * Northridge, Calif.

Penn State 85 • 5-0

#	Player	Total		3-Ptr		Rebounds			PF	TP	A	TO	Blk	Stl	Min
		FG	FGA	FT	FTA	Off	Def	Tot							
24	Nickson, Mia	f	4-7	0-0	0-0	1	2	3	5	8	0	3	0	1	20
54	Greene, Nikki	f	4-9	0-0	13-14	10	10	20	3	21	0	1	2	1	24
20	Bentley, Alex	g	8-18	2-4	1-2	0	3	3	3	19	8	2	1	3	33
23	Edwards, Ariel	g	1-6	0-0	2-2	0	2	2	1	4	2	2	0	0	32
33	Lucas, Maggie	g	8-16	3-4	4-5	1	2	3	1	23	3	4	0	2	35
01	Agee, Candice	g	0-0	0-0	0-0	0	0	0	0	0	0	0	0	0	3
02	Taylor, Dara	g	1-4	0-0	0-0	1	2	3	2	2	0	3	1	2	24
05	East, Talia	g	1-1	0-0	2-2	0	1	1	0	4	1	0	1	0	14
25	Studevent, Gizelle	g	2-4	0-0	0-0	0	0	0	0	4	0	1	0	0	15
	Team					3	4	7							
	Totals		29-65	5-8	22-27	16	26	42	15	85	14	16	5	9	200

FG % 1st Half: 13-33 39.4% 2nd half: 16-32 50.0% Game: 29-65 44.6%
 3FG % 1st Half: 3-5 60.0% 2nd half: 2-3 66.7% Game: 5-8 62.5%
 FT % 1st Half: 6-7 85.7% 2nd half: 16-20 80.0% Game: 22-27 81.5%

Cal State Northridge 73 • 3-2

#	Player	Total		3-Ptr		Rebounds			PF	TP	A	TO	Blk	Stl	Min
		FG	FGA	FT	FTA	Off	Def	Tot							
23	Alama, Violet	f	5-8	0-1	1-2	2	2	4	4	11	1	1	0	0	34
04	Mahiknecht, Camille	c	3-9	1-2	1-3	2	11	13	5	8	2	2	2	2	32
05	Guay, Ashlee	g	6-15	0-1	3-4	2	3	5	3	15	12	5	0	3	37
22	Friess, Randi	g	3-6	3-6	1-2	0	1	1	1	10	3	3	0	1	34
24	Masoni, Marta	g	7-18	5-14	3-5	1	2	3	2	22	2	3	2	0	37

No. 2/2 Connecticut 67, No. 10/10 Penn State 52 Game #8 * Dec. 6, 2012 * Storrs, Conn.

Penn State 52 • 6-2

#	Player	Total		3-Ptr		Rebounds			PF	TP	A	TO	Blk	Stl	Min
		FG-FGA	FG-FGA	FT-FTA	FT-FTA	Off	Def	Tot							
24	Nickson, Mia	f	4-7	0-0	0-0	2	6	8	4	8	2	6	0	3	34
54	Greene, Nikki	f	1-6	0-0	0-2	2	5	7	4	2	1	3	0	1	25
02	Taylor, Dara	g	3-14	0-2	2-4	2	2	4	1	8	2	4	0	1	34
20	Bentley, Alex	g	1-11	1-5	4-4	1	4	5	4	7	1	4	0	0	28
33	Lucas, Maggie	g	5-12	3-6	2-2	1	3	4	5	15	1	3	0	1	39
05	East, Talia	g	1-2	0-0	0-0	1	0	1	3	2	0	1	0	15	
23	Edwards, Ariel	g	5-7	0-0	0-1	2	2	4	1	10	0	2	0	1	23
25	Studevent, Gizelle	g	0-0	0-0	0-0	0	0	0	0	0	0	0	0	2	
Team						4	1	5			3				
Totals			20-59	4-13	8-13	15	23	38	22	52	7	26	2	7	200

FG % 1st Half: 9-30 30.0% 2nd half: 11-29 37.9% Game: 20-59 33.9%
 3FG % 1st Half: 2-8 25.0% 2nd half: 2-5 40.0% Game: 4-13 30.8%
 FT % 1st Half: 2-2 100.0% 2nd half: 6-11 54.5% Game: 8-13 61.5%

UCONN 67 • 8-0

#	Player	Total		3-Ptr		Rebounds			PF	TP	A	TO	Blk	Stl	Min
		FG-FGA	FG-FGA	FT-FTA	FT-FTA	Off	Def	Tot							
23	MOSQUEDA-Lewis, K.	f	8-13	4-7	5-5	2	3	5	5	25	1	6	0	4	35
30	STEWART, Breanna	f	1-3	0-1	5-6	3	4	7	1	7	2	0	2	0	20
31	DOLSON, Stefanie	c	3-8	0-0	0-0	3	2	5	3	6	1	3	0	1	30
14	HARTLEY, Bria	g	3-10	1-5	1-2	1	4	5	2	8	3	2	1	0	28
34	FARIS, Kelly	g	2-7	0-2	1-2	1	1	2	3	5	3	1	1	5	36
03	TUCK, Morgan	g	0-1	0-0	2-4	0	3	3	0	2	0	0	0	1	6
04	JEFFERSON, Moriah	g	2-5	0-2	0-0	0	0	0	1	4	0	2	0	2	12
05	DOTY, Caroline	g	0-1	0-1	0-2	0	0	0	0	0	0	2	0	0	7
13	BANKS, Brianna	g	4-7	0-1	2-2	1	1	2	1	10	1	2	0	2	18
41	STOKES, Kiah	g	0-1	0-0	0-0	0	1	1	0	0	0	2	1	0	8
Team						2	5	7							
Totals			23-56	5-19	16-23	13	24	37	16	67	11	20	5	15	200

FG % 1st Half: 8-21 38.1% 2nd half: 15-35 42.9% Game: 23-56 41.1%
 3FG % 1st Half: 3-8 37.5% 2nd half: 2-11 18.2% Game: 5-19 26.3%
 FT % 1st Half: 9-12 75.0% 2nd half: 7-11 63.6% Game: 16-23 69.6%

Officials: Barbara Jo Smith, Bryan Enterline, Jesse Dickerson
 Technical fouls: Penn State-None. UCONN-Texas.
 Attendance: 8072

Score by periods	1st	2nd	Total
Penn State	22	30	52
UCONN	28	39	67

Last FG - PSU 2nd-00:27, UCONN 2nd-02:21.
 Largest lead - PSU by 2 1st-10:46, UCONN by 21 2nd-04:51.

In	Off	2nd	Fast	Bench
Points	Paint	T/O	Chance	Break
PSU	28	10	12	8
UCONN	26	20	16	6

Score tied - 3 times.
 Lead changed - 2 times.

No. 10/10 Penn State 97, Georgetown 74 Game #9 * Dec. 9, 2012 * University Park, Pa.

Georgetown 74 • 7-3

#	Player	Total		3-Ptr		Rebounds			PF	TP	A	TO	Blk	Stl	Min
		FG-FGA	FG-FGA	FT-FTA	FT-FTA	Off	Def	Tot							
11	WHITE, Andrea	*	2-10	0-0	2-2	4	2	6	4	6	1	4	0	3	25
13	WILSON, Sydney	*	4-10	0-0	3-4	2	6	8	3	11	0	1	0	0	30
14	RODGERS, Sugar	*	8-22	3-9	5-6	3	4	7	4	24	3	3	1	1	35
23	POWELL, Samisha	*	3-8	0-2	1-1	1	1	2	3	7	3	2	0	3	25
42	Moore, Vanessa	*	0-1	0-0	0-0	1	0	1	1	0	0	0	0	0	22
00	RAFIU, Ki-KE		0-1	0-0	0-0	1	0	1	0	0	0	0	0	0	1
21	JACKSON, Jasmine		3-12	1-3	3-5	1	0	1	2	10	0	2	0	2	17
22	BATTLE, Logan		2-4	0-0	3-5	1	2	3	1	7	0	1	0	2	13
33	HORNE, Brittany		0-4	0-2	3-4	2	1	3	2	3	1	4	1	1	22
35	VITALIS, Dominique		1-1	0-0	4-4	0	1	1	1	6	0	0	0	1	10
Team						2	3	5							
Totals			23-73	4-16	24-31	18	20	38	21	74	8	17	2	13	200

FG % 1st Half: 9-34 26.5% 2nd half: 14-39 35.9% Game: 23-73 31.5%
 3FG % 1st Half: 3-11 27.3% 2nd half: 1-5 20.0% Game: 4-16 25.0%
 FT % 1st Half: 4-5 80.0% 2nd half: 20-26 76.9% Game: 24-31 77.4%

Penn State 97 • 8-0

#	Player	Total		3-Ptr		Rebounds			PF	TP	A	TO	Blk	Stl	Min
		FG-FGA	FG-FGA	FT-FTA	FT-FTA	Off	Def	Tot							
02	Taylor, Dara	*	2-4	0-0	3-4	1	4	5	3	7	5	6	0	2	27
20	Bentley, Alex	*	8-14	0-0	7-7	2	3	5	2	23	4	5	0	2	34
24	Nickson, Mia	*	1-2	0-0	4-6	2	1	3	2	6	2	0	1	0	24
33	Lucas, Maggie	*	11-21	7-13	10-11	0	5	5	2	39	2	6	0	6	33
54	Greene, Nikki	*	1-8	0-0	3-5	3	10	13	3	5	0	1	2	0	23
01	Agee, Candice		0-1	0-0	0-0	0	1	1	3	0	0	0	0	1	10
05	East, Talia		1-1	0-0	0-0	1	1	2	2	2	0	1	1	14	
23	Edwards, Ariel		5-6	1-1	0-0	0	2	2	5	11	1	1	0	0	16
25	Studevent, Gizelle		0-2	0-0	2-2	0	0	0	0	2	1	2	0	0	8
44	Waldner, Tori		1-3	0-0	0-0	1	3	4	4	2	0	1	1	0	11
Team						5	4	9							
Totals			30-62	8-14	29-35	15	34	49	26	97	17	22	5	12	200

FG % 1st Half: 18-35 51.4% 2nd half: 12-27 44.4% Game: 30-62 48.4%
 3FG % 1st Half: 5-10 50.0% 2nd half: 3-4 75.0% Game: 8-14 57.1%
 FT % 1st Half: 12-15 80.0% 2nd half: 17-20 85.0% Game: 29-35 82.9%

Officials: Felicia Grinter, Frank Steratore, Kathy Ridilla
 Technical fouls: Georgetown-None. Penn State-None.
 Attendance: 4059

Score by periods	1st	2nd	Total
Georgetown	25	49	74
Penn State	53	44	97

Last FG - GU 2nd-02:19, PSU 2nd-00:15.
 Largest lead - GU by 3 1st-19:29, PSU by 35 2nd-12:48.

In	Off	2nd	Fast	Bench
Points	Paint	T/O	Chance	Break
GU	24	19	15	6
PSU	32	20	20	16

Score tied - 4 times.
 Lead changed - 3 times.

Notable

- Maggie Lucas had a career-high 39 points and broke the Bryce Jordan Center record for points in a game (men's or women's).
- Lucas also tied a BJC record for three-pointers in a game with seven triples, equaling the mark she set against Michigan State (17/12) and also held by Adrienne Squire and Kelly Mazzante.
- Senior center Nikki Greene reached the 800-rebound mark for her career (800).

No. 11/10 Penn State 60, Virginia Tech 41 Game #10 * Dec. 12, 2012 * Blacksburg, Va.

Penn State 60 • 8-2

#	Player	Total		3-Ptr		Rebounds			PF	TP	A	TO	Blk	Stl	Min
		FG-FGA	FG-FGA	FT-FTA	FT-FTA	Off	Def	Tot							
24	Nickson, Mia	f	2-5	0-0	6-9	5	5	10	1	10	2	0	1	1	31
54	Greene, Nikki	f	1-6	0-0	0-0	2	2	4	2	2	0	2	1	0	18
02	Taylor, Dara	g	6-10	3-6	0-0	0	3	3	4	15	0	3	0	1	29
20	Bentley, Alex	g	4-13	0-4	2-2	1	2	3	2	10	4	2	0	5	32
33	Lucas, Maggie	g	7-9	1-2	2-2	0	4	4	1	17	2	1	0	0	33
01	Agee, Candice		0-1	0-0	0-0	2	4	6	1	0	0	2	1	0	11
05	East, Talia		0-1	0-0	0-0	0	2	2	0	0	0	1	0	1	9
23	Edwards, Ariel		2-9	0-0	0-0	1	3	4	1	4	0	3	0	0	20
25	Studevent, Gizelle		1-5	0-0	0-0	0	1	1	0	2	0	1	0	0	8
44	Waldner, Tori		0-1	0-0	0-0	1	3	4	1	0	0	1	0	0	9
Team						4	4	8			1				
Totals			23-60	4-12	10-13	16	33	49	13	60	8	17	3	8	200

FG % 1st Half: 11-32 34.4% 2nd half: 12-28 42.9% Game: 23-60 38.3%
 3FG % 1st Half: 1-7 14.3% 2nd half: 3-5 60.0% Game: 4-12 33.3%
 FT % 1st Half: 5-6 83.3% 2nd half: 5-7 71.4% Game: 10-13 76.9%

Virginia Tech 41 • 4-4

#	Player	Total		3-Ptr		Rebounds			PF	TP	A	TO	Blk	Stl	Min
		FG-FGA	FG-FGA	FT-FTA	FT-FTA	Off	Def	Tot							
21	Alex Kiss-Rusk	f	3-14	2-4	0-0	1	2	3	3	8	0	1	3	1	37
22	Porschia Hadley	c	1-5	0-1	0-0	1	2	3	0	2	0	1	1	1	25
10	Lauren Evans	g	2-3	0-1	0-0	0	2	2	3	4	0	1	1	1	26
13	Alyssa Fenyn	g	1-5	0-1	0-0	1	5	6	1	2	1	4	1	0	21
31	Monet Tellier	g	5-14	0-1	8-9	2	3	5	1	18	2				

2012-13 RADIO/TV CHART



#1

Candice Agee
6-6 * Fr./Fr. * F/C
Victorville, Calif.
Silverado



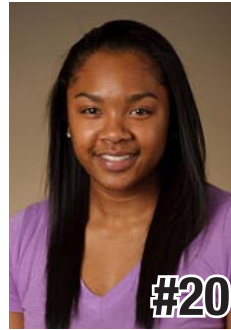
#2

Dara Taylor
5-8 * Sr./Jr. * G
Wilmington, Del.
Caravel Academy
(Maryland)



#5

Talia East
6-3 * Jr./Jr. * F/C
Philadelphia, Pa.
Friends' Central School



#20

Alex Bentley
5-7 * Sr./Sr. * G
Indianapolis, Ind.
Ben Davis



#23

Ariel Edwards
6-3 * Jr./Jr. * F
Elmont, N.Y.
Christ the King



#24

Mia Nickson
6-2 * Gr./Sr. * F
Ashburn, Va.
Notre Dame Academy
(Boston College)



#25

Gizelle Studevent
5-11 * Sr./Sr. * G
La Jolla, Calif.
The Bishop's School



#33

Maggie Lucas
5-10 * Jr./Jr. * G
Narberth, Pa.
Germantown Academy



#40

Marisa Wolfe
6-2 * Sr./Sr. * F
Ford City, Pa.
Ford City



#44

Tori Waldner
6-5 * So./So. * F/C
Milton, Ga.
Milton



#54

Nikki Greene
6-4 * Sr./Sr. * F/C
Diboll, Texas
Diboll



HC

Coquese Washington
Head Coach
Notre Dame '92
Sixth Season



AC

Fred Chmiel
Assistant Coach
Excelsior College
Third Season



AC

Kia Damon
Assistant Coach
Millersville '97
Sixth Season



AC

Maren Walseth
Assistant Coach
Penn State '02
Sixth Season



DO

Ethan Gelfand
Director of Basketball
Operations
Second Season



VO

Mike Miller
Director of Video &
Technology Operations
Eighth Season

Six-Time Big Ten Champions • Two-Time Big Ten Tournament Champions • 2000 NCAA Final Four • 23 NCAA Tournament Appearances





2012-13 Penn State Lady Lions
 Penn State Combined Team Statistics (as of Dec 12, 2012)
 All games



RECORD:	OVERALL	HOME	AWAY	NEUTRAL
ALL GAMES	8-2	4-0	3-2	1-0
CONFERENCE	0-0	0-0	0-0	0-0
NON-CONFERENCE	8-2	4-0	3-2	1-0

##	Player	gp-gs	min	avg	Total		3-Point		F-Throw		Rebounds				pf	dq	a	to	blk	stl	pts	avg
					fg-fga	fg%	3fg-fga	3fg%	ft-fa	ft%	off	def	tot	avg								
33	Lucas, Maggie	10-10	343	34.3	74-148	.500	34-62	.548	39-43	.907	6	40	46	4.6	20	1	24	31	1	23	221	22.1
20	Bentley, Alex	10-10	302	30.2	47-117	.402	5-27	.185	27-31	.871	7	32	39	3.9	23	0	43	25	2	37	126	12.6
23	Edwards, Ariel	10-6	215	21.5	37-73	.507	4-10	.400	10-15	.667	9	31	40	4.0	21	2	6	18	4	3	88	8.8
24	Nickson, Mia	9-9	248	27.6	28-69	.406	0-0	.000	22-34	.647	30	29	59	6.6	24	1	13	20	7	8	78	8.7
02	Taylor, Dara	10-4	264	26.4	28-73	.384	4-20	.200	13-21	.619	10	26	36	3.6	25	0	29	32	1	19	73	7.3
54	Greene, Nikki	10-10	205	20.5	23-67	.343	0-0	.000	23-33	.697	29	52	81	8.1	30	0	5	19	12	7	69	6.9
44	Waldner, Tori	8-0	83	10.4	9-25	.360	0-0	.000	7-8	.875	16	16	32	4.0	12	0	2	7	5	3	25	3.1
05	East, Talia	10-1	135	13.5	10-24	.417	0-0	.000	8-12	.667	6	13	19	1.9	16	0	6	11	7	4	28	2.8
25	Studevent, Gizelle	10-0	111	11.1	10-31	.323	0-2	.000	3-4	.750	1	3	4	0.4	5	0	7	7	1	1	23	2.3
01	Agee, Candice	9-0	94	10.4	8-22	.364	0-0	.000	3-6	.500	11	17	28	3.1	11	0	2	6	6	1	19	2.1
Team											44	19	63				6					
Total.....		10	2000		274-649	.422	47-121	.388	155-207	.749	169	278	447	44.7	187	4	137	182	46	106	750	75.0
Opponents.....		10	2000		205-590	.347	46-150	.307	137-193	.710	133	232	365	36.5	182	4	118	207	42	101	593	59.3

TEAM STATISTICS	PSU	OPP	Date	Opponent	Score	Att.
SCORING	750	593	11/11/12	HOWARD	w 72-61	3655
Points per game	75.0	59.3	11/14/12	at Texas A&M	w 63-58	4756
Scoring margin	+15.7	-	11/18/12	LAFAYETTE	w 75-34	3700
FIELD GOALS-ATT	274-649	205-590	11/23/12	vs Detroit	w 80-72	479
Field goal pct	.422	.347	11/24/12	at Cal State Northridge	w 85-73	568
3 POINT FG-ATT	47-121	46-150	11/29/12	at Miami	L 65-69	1286
3-point FG pct	.388	.307	12/2/12	FAIRLEIGH DICKINSON	w 101-44	4072
3-pt FG made per game	4.7	4.6	12-06-12	at UCONN	L 52-67	8072
FREE THROWS-ATT	155-207	137-193	12/9/12	GEORGETOWN	w 97-74	4059
Free throw pct	.749	.710	12/12/12	at Virginia Tech	w 60-41	3587
F-Throws made per game	15.5	13.7				
REBOUNDS	447	365				
Rebounds per game	44.7	36.5				
Rebounding margin	+8.2	-				
ASSISTS	137	118				
Assists per game	13.7	11.8				
TURNOVERS	182	207				
Turnovers per game	18.2	20.7				
Turnover margin	+2.5	-				
Assist/turnover ratio	0.8	0.6				
STEALS	106	101				
Steals per game	10.6	10.1				
BLOCKS	46	42				
Blocks per game	4.6	4.2				
ATTENDANCE	15486	18748				
Home games-Avg/Game	4-3872	5-3654				
Neutral site-Avg/Game	-	1-479				

* - Conference game

Score by Periods	1st	2nd	Totals
Penn State	368	382	750
Opponents	288	305	593



2012-13 Penn State Lady Lions
Penn State Category Leaders (as of Dec 12, 2012)
All games



Points	G	Pts	Pts/G
Lucas, Maggie	10	221	22.1
Bentley, Alex	10	126	12.6
Edwards, Ariel	10	88	8.8
Nickson, Mia	9	78	8.7
Taylor, Dara	10	73	7.3
Greene, Nikki	10	69	6.9
East, Talia	10	28	2.8
Waldner, Tori	8	25	3.1
Studevent, Gizelle	10	23	2.3
Agee, Candice	9	19	2.1

FG Percentage	FG	Att	Pct
Edwards, Ariel	37	73	.507
Lucas, Maggie	74	148	.500
East, Talia	10	24	.417
Nickson, Mia	28	69	.406
Bentley, Alex	47	117	.402
Taylor, Dara	28	73	.384
Agee, Candice	8	22	.364
Waldner, Tori	9	25	.360
Greene, Nikki	23	67	.343
Studevent, Gizelle	10	31	.323

3-Point Percentage	3FG	Att	Pct
Lucas, Maggie	34	62	.548
Edwards, Ariel	4	10	.400
Taylor, Dara	4	20	.200
Bentley, Alex	5	27	.185
Studevent, Gizelle	0	2	.000

Free Throw Percent	FG	Att	Pct
Lucas, Maggie	39	43	.907
Waldner, Tori	7	8	.875
Bentley, Alex	27	31	.871
Studevent, Gizelle	3	4	.750
Greene, Nikki	23	33	.697
Edwards, Ariel	10	15	.667
East, Talia	8	12	.667
Nickson, Mia	22	34	.647
Taylor, Dara	13	21	.619
Agee, Candice	3	6	.500

Scoring Average	G	Pts	Avg/G
Lucas, Maggie	10	221	22.1
Bentley, Alex	10	126	12.6
Edwards, Ariel	10	88	8.8
Nickson, Mia	9	78	8.7
Taylor, Dara	10	73	7.3
Greene, Nikki	10	69	6.9
Waldner, Tori	8	25	3.1
East, Talia	10	28	2.8
Studevent, Gizelle	10	23	2.3
Agee, Candice	9	19	2.1

Field Goal Attempts	G	Att	Att/G
Lucas, Maggie	10	148	14.8
Bentley, Alex	10	117	11.7
Taylor, Dara	10	73	7.3
Edwards, Ariel	10	73	7.3
Nickson, Mia	9	69	7.7

Field Goals Made	G	Made	Made/G
Lucas, Maggie	10	74	7.4
Bentley, Alex	10	47	4.7
Edwards, Ariel	10	37	3.7
Nickson, Mia	9	28	3.1
Taylor, Dara	10	28	2.8

3-Point FG Attempts	G	Att	Att/G
Lucas, Maggie	10	62	6.2
Bentley, Alex	10	27	2.7
Taylor, Dara	10	20	2.0
Edwards, Ariel	10	10	1.0
Studevent, Gizelle	10	2	0.2

3-Point FG Made	G	Made	Made/G
Lucas, Maggie	10	34	3.4
Bentley, Alex	10	5	0.5
Edwards, Ariel	10	4	0.4
Taylor, Dara	10	4	0.4

Free Throw Attempts	G	Att	Att/G
Lucas, Maggie	10	43	4.3
Nickson, Mia	9	34	3.8
Greene, Nikki	10	33	3.3
Bentley, Alex	10	31	3.1
Taylor, Dara	10	21	2.1

Free Throws Made	G	Made	Made/G
Lucas, Maggie	10	39	3.9
Bentley, Alex	10	27	2.7
Greene, Nikki	10	23	2.3
Nickson, Mia	9	22	2.4
Taylor, Dara	10	13	1.3



2012-13 Penn State Lady Lions
 Penn State Category Leaders (as of Dec 12, 2012)
 All games



Rebounds	G	Reb	Reb/G
Greene, Nikki	10	81	8.1
Nickson, Mia	9	59	6.6
Lucas, Maggie	10	46	4.6
Edwards, Ariel	10	40	4.0
Bentley, Alex	10	39	3.9

Rebound Average	G	Reb	Avg/G
Greene, Nikki	10	81	8.1
Nickson, Mia	9	59	6.6
Lucas, Maggie	10	46	4.6
Edwards, Ariel	10	40	4.0
Waldner, Tori	8	32	4.0

Offensive Rebounds	G	No.	Avg/G
Nickson, Mia	9	30	3.3
Greene, Nikki	10	29	2.9
Waldner, Tori	8	16	2.0
Agee, Candice	9	11	1.2
Taylor, Dara	10	10	1.0

Defensive Rebounds	G	No.	Avg/G
Greene, Nikki	10	52	5.2
Lucas, Maggie	10	40	4.0
Bentley, Alex	10	32	3.2
Edwards, Ariel	10	31	3.1
Nickson, Mia	9	29	3.2

Fouls	G	No.	Per/G
Greene, Nikki	10	30	3.0
Taylor, Dara	10	25	2.5
Nickson, Mia	9	24	2.7
Bentley, Alex	10	23	2.3
Edwards, Ariel	10	21	2.1

Foulouts	G	No.
Edwards, Ariel	10	2
Nickson, Mia	9	1
Lucas, Maggie	10	1

Assists	G	No.	Ast/G
Bentley, Alex	10	43	4.3
Taylor, Dara	10	29	2.9
Lucas, Maggie	10	24	2.4
Nickson, Mia	9	13	1.4
Studevent, Gizelle	10	7	0.7

Steals	G	No.	Stl/G
Bentley, Alex	10	37	3.7
Lucas, Maggie	10	23	2.3
Taylor, Dara	10	19	1.9
Nickson, Mia	9	8	0.9
Greene, Nikki	10	7	0.7

Blocked Shots	G	No.	Blk/G
Greene, Nikki	10	12	1.2
East, Talia	10	7	0.7
Nickson, Mia	9	7	0.8
Agee, Candice	9	6	0.7
Waldner, Tori	8	5	0.6

Minutes	G	No.	Min/G
Lucas, Maggie	10	343	34.3
Bentley, Alex	10	302	30.2
Taylor, Dara	10	264	26.4
Nickson, Mia	9	248	27.6
Edwards, Ariel	10	215	21.5

Turnovers	G	No.	TO/G
Taylor, Dara	10	32	3.2
Lucas, Maggie	10	31	3.1
Bentley, Alex	10	25	2.5
Nickson, Mia	9	20	2.2
Greene, Nikki	10	19	1.9