

PENN STATE



2013-14 LADY LION BASKETBALL

Penn State Athletic Communications: 101D Bryce Jordan Center, University Park, PA 16802 Office: 814-865-1757 Fax: 814-863-3165

Women's Basketball Contact: Kristina Petersen Twitter: @ladylionsid Website: www.GoPSUsports.com Email: kap18@psu.edu Cell: 814-883-4581 Office: 814-865-1757

SCHEDULE/RESULTS

OCTOBER	
Sun. 27	LOCK HAVEN (ex.)..... W, 102-51
NOVEMBER	
Fri. 8	ST. FRANCIS (PA.)..... 7 p.m.
Sun. 10	FORDHAM..... 2 p.m.
Sun. 17	CONNECTICUT (BTN)..... noon
Wed. 20	BUCKNELL (BTDN)..... 7 p.m.
Junkanoo Jam (Grand Island, Bahamas)	
Fri. 29	vs. Oregon State 1 p.m.
Sat. 30	vs. Florida/Illinois St.... 11:30 a.m./1:45 p.m.

DECEMBER	
Big Ten/ACC Challenge	
Wed. 4	NOTRE DAME (BTN)..... 7:30 p.m.
Sun. 8	at Georgetown..... 2 p.m.
Wed. 11	at South Dakota State 8 p.m.
Sun. 15	TEXAS A&M (BTDN)..... 2 p.m.
Sun. 22	ALCORN STATE 11 a.m.
Sun. 29	HARTFORD (BTDN) 2 p.m.

JANUARY	
Sun. 5	at Iowa * 3 p.m.
Thurs. 9	at Illinois * (BTN) 9 p.m.
Sun. 12	PURDUE * (ESPN2) 2 p.m.
Thurs. 16	OHIO STATE * (BTN) 7 p.m.
Sun. 19	at Michigan State * (ESPN2) 5 p.m.
Wed. 22	INDIANA * (BTDN) 7 p.m.
Sun. 26	MINNESOTA * (CBS) 1 p.m.
Thurs. 30	at Purdue * (BTN) 6 p.m.

FEBRUARY	
Sun. 2	at Northwestern * (BTDN) 2 p.m.
Thurs. 6	IOWA * (BTN) 6 p.m.
Sun. 9	at Ohio State * (ESPN2) 2 p.m.
Thurs. 13	at Indiana * (BTDN) 7 p.m.
Eighth Annual Pink Zone at Penn State	
Sun. 16	WISCONSIN * (ESPN2) 1 p.m.
Thurs. 20	NORTHWESTERN * (BTN) 7 p.m.
Mon. 24	at Nebraska * (ESPN2) 7 p.m.

MARCH	
Sat. 1	MICHIGAN * (BTN) 3:30 p.m.
Th.-Su. 6-9 Big Ten Tournament (Indianapolis, Ind.)	
Sa.-Tu. 22-25.. NCAA Tournament 1st & 2nd Round (University Park, Pa.)	
Sa.-Tu. 29-Apr. 1..... NCAA Tournament Regionals	

APRIL	
Su./Tu. 6/8 NCAA Final Four (Nashville, Tenn.)	

BOLD CAPS indicates home game.
* - indicates Big Ten game.
All times are Eastern Time.
BTN - Big Ten Network
BTDN - BigTenNetwork.com
Schedule subject to change. Please visit www.GoPSUsports.com for up-to-date tip times.

Game #1: St. Francis (Pa.) at #15/13 Penn State

Fri., Nov. 8 ▶ 7 p.m. ▶ Bryce Jordan Center ▶ University Park, Pa.

		SETTING THE SCENE
Penn State Lady Lions	St. Francis (Pa.) Red Flash	The St. Francis (Pa.) Game
Record: 26-6, 14-2 Big Ten Last Game: LSU 71, PSU 66 (3/26/13) Head Coach: Coquese Washington Career Record: 118-73 (7th yr.) Record at PSU: 118-73 (7th yr.)	Record: 17-16, 11-8 NEC Last Game: Fairfield 71, SFU 51 (3/21/13) Head Coach: Joe Haigh Career Record: 17-16 (2nd yr.) Record at SFU: 17-16 (2nd yr.)	Series: Penn State leads 5-1 Last Meeting: SFU 74, PSU 69 (11/28/06) Streak: St. Francis - 1 win Television: none Radio: The game is on the Penn State Sports Network and WRSC 1390 locally with Jerry Fisher and Julia Trogele calling the action. The audio feed is available at www.GoPSUsports.com. Webstream: none Live Stats: GoPSUsports.com
Returning Statistical Leaders Points Maggie Lucas (20.1) Rebounds Maggie Lucas (4.5) Assists Dara Taylor (3.4)	Returning Statistical Leaders Points Alli Williams (17.0) Rebounds Alli Williams (10.7) Assists Alli Williams (2.3)	

STORYLINES

- ✓ Penn State won its second-straight Big Ten regular season title since 2002-03 and 2003-04 and seventh overall with a 14-3 mark in conference play.
- ✓ The Lady Lions return six letterwinners, led by reigning Big Ten Player of the Year **Maggie Lucas** and Big Ten All-Defensive Team selection **Dara Taylor**.
- ✓ Penn State adds eighth newcomers that compiled the 14th-ranked recruiting class from last year.
- ✓ The Lady Lions made their 24th overall NCAA Tournament appearance. Penn State is one of only 11 teams to earn 24 or more NCAA Tournament berths.
- ✓ Senior guard **Maggie Lucas** is second on Penn State's career three-pointers list (292), eighth in career scoring list (1,838) and first in career free throw percentage list (.887) entering her senior year.
- ✓ Lucas is among 25 players named to the "Wade Watch" list for the State Farm® Wade Trophy.
- ✓ The Lady Lions enter the 2013-14 campaign riding a 20-game home court winning streak, which is tied for the third-longest active streak in NCAA Division I, behind Baylor (57) and Tennessee-Chattanooga (26).
- ✓ The Lady Lions have put together arguably one of the best non-conference schedules in Bryce Jordan Center history with previous National Champions Connecticut, Notre Dame and Texas A&M slated to visit Happy Valley this season.
- ✓ Penn State's non-conference opponents have a combined 109 NCAA Tournament appearances, 20 Final Four appearances and 10 National Championships.
- ✓ The Lady Lions are ranked is 14th in the Lindy's preview magazine, 16th by USA Today Sports, 18th by the Sporting News and 21st by Athlon Sports. Lucas was selected to the All-America first team in the Lindy's, Athlon Sports and Sporting News publications (USA Today Sports doesn't have an All-America team).
- ✓ The Lady Lions will make a school-record 14 appearances on national television in the regular season. PSU will appear on CBS once, ESPN2 five times and the Big Ten Network eight times during the 2013-14 slate.
- ✓ Senior center **Talia East** and junior center **Tori Waldner** have made it tough for opponents to find success in the lane as the pair have moved into the Top 20 in school history in blocks. East ranks 19th with 57 career rejections, while Waldner is 20th with 50 blocks.
- ✓ Last year, the Lady Lions posted their third consecutive season 25-win season. It is only the second time in program history that the Lady Lions have posted three-straight 25-win seasons (1993-94 - 1995-96).

UP NEXT

Penn State hosts Fordham Sunday at 2 p.m. to close out the opening weekend. It's "We Back Pat" Alzheimer's Awareness Day, as well as Father-Daughter Day. Dads can bring their daughters to the game for free. The Lady Lions' homestand continues against #1 Connecticut on Sunday, Nov. 17 at noon.

Nine-Time Big Ten Champions • Two-Time Big Ten Tournament Champions • 2000 NCAA Final Four • 24 NCAA Tournament Appearances



2013-14 ROSTERS

PENN STATE LADY LIONS

No.	Name	Pos.	Cl./Elg.	Ht.	Hometown/High School (Previous School)
1	Candice Agee *	C	So./So.	6-6	Victorville, Calif./Silverado
2	Dara Taylor *	G	5th/Sr.	5-8	Wilmington, Del./Caravel Academy (Maryland)
5	Talia East ***	F/C	Sr./Sr.	6-3	Philadelphia, Pa./Friends' Central School
10	Keke Sevillian	G	Fr./Fr.	5-7	Goodrich, Mich./Goodrich
11	Alex Harris	F	Fr./Fr.	6-3	Lorain, Ohio/Lorain
12	Lindsey Spann	G	Fr./Fr.	5-6	Laurel, Md./Good Counsel
15	Kaliyah Mitchell	G/F	Fr./Fr.	6-2	Stone Mountain, Ga./Stephenson
20	Infiniti Alston	C	Fr./Fr.	6-6	Baltimore, Md./Digital Harbor
23	Ariel Edwards ***	G/F	Sr./Sr.	6-3	Elmont, N.Y./Christ the King
25	Peyton Whitted	G/F	Fr./Fr.	6-3	Suwanee, Ga./North Gwinnett
33	Maggie Lucas ***	G	Sr./Sr.	5-10	Narberth, Pa./Germantown Academy
35	Sierra Moore	G	So./--^	5-11	Hanover, Pa./Delone Catholic (Duke)
41	Jenny DeGraaf	G/F	Fr./Fr.	6-1	Springboro, Ohio/Springboro
44	Tori Waldner **	F	Jr./Jr.	6-5	Milton, Ga./Milton

Head Coach: Coquese Washington (Notre Dame '92)

Asst. Coaches: Fred Chmiel, Kia Damon, Maren Walseth

Captains: Talia East, Ariel Edwards, Maggie Lucas, Dara Taylor

* Indicates letters earned

ST. FRANCIS (PA.) RED FLASH

No.	Name	Pos.	Cl.	Ht.	Hometown/High School (Previous School)
2	Erin Blaine	F	Fr.	6-0	Washington, D.C./H.D. Woodson
10	Brooklyn Taylor	G	So.	6-0	Greenville, Pa./Greenville
11	Shaqiea Stokes	F	Jr.	6-1	Cincinnati, Ohio/Winton Woods
12	Aisha Brock	G	So.	5-6	Jacksonville, Fla./Potter's House Christian Acad.
14	Taylor Allison	G	Fr.	5-7	State College, Pa./State College
15	Sierra Clark	F	Fr.	6-0	Upper Marlboro, Md./Archbishop Spalding
20	Bridget Murphy	G	Fr.	5-9	Bethlehem, N.Y./Bethlehem Central
22	Alexa Hayward	G	Jr.	5-8	Beaver Falls, Pa./Blackhawk
23	Corissa Archer	F	Jr.	6-0	Clermont, Fla./East Ridge
24	Allison Thompson	C	Fr.	6-2	Morgantown, W. Va./Morgantown
31	Rebecca Keegan	C	Sr.	6-2	Jessup, Pa./Valley View
40	Alli Williams	F	Sr.	6-0	Altoona, Pa./Bishop Guilfoyle
45	Hope Phillips	C	Jr.	6-2	Marlton, N.J./Bishop Eustace Prep
50	Samiah Bethel	G	Fr.	5-9	Jacksonville, Fla./Potter's House Christian Acad.

Head Coach: Joe Haigh

Associate Head Coach: Adam Barrett

Assistant Coaches: Danielle Hemerka, La'Tavia Rorie

TEAM COMPARISON

PENN STATE		ST. FRANCIS
Lucas (20.1)	Returning Scoring Leader	Williams (17.0)
Lucas (4.5)	Returning Rebounding Leader	Williams (10.7)
Taylor (3.4)	Returning Assist Leader	Williams (2.3)
Taylor (2.4)	Returning Steals Leader	Williams (3.6)
Waldner (1.1)	Returning Blocks Leader	Keegan (0.7)
73.6	Scoring Offense	64.5
59.1	Scoring Defense	68.3
+14.6	Scoring Margin	-3.8
41.5	Rebounds Per Game	39.0
+5.2	Rebound Margin	-3.1
12.1	Assists Per Game	14.4
11.3	Steals Per Game	11.3
.426	Field Goal Pct.	.347
.367	FG Defense Pct.	.409
.392	3-pt. FG Pct.	.293
.308	3-pt. FG Pct. Def.	.291
.735	Free Throw Pct.	.642
0.8	Assist/Turnover	0.7
Lost 1	W/L Streak	Lost 2

SERIES HISTORY

Overall:	PSU leads 5-1	
Last meeting:	Nov. 28, 2006	
Last result:	SFU, 74-69	
Current streak:	SFU - 1 win	
Last 10:	PSU, 5-1	
Last 10 meetings:		
12/18/94	H	PSU, 91-35
11/27/95	A	PSU, 92-82
12/2/99	H	PSU, 101-62
1/2/02	A	PSU, 79-40
12/22/05	H	PSU, 89-43
11/28/06	A	SFU, 74-69

QUICK FACTS

THE UNIVERSITY

Location: University Park, Pa.
 Founded: 1855
 Enrollment: 42,294
 Colors: Blue & White
 Nickname: Lady Lions
 Conference: Big Ten
 President: Dr. Rodney Erickson
 Director of Athletics: Dr. David Joyner
 Senior Woman Administrator: Charmelle Green
 Facility (cap.): Bryce Jordan Center (15,104)
 All-Time Record at BJC: 201-49 (19 seasons)

ATHLETIC COMMUNICATIONS

WBB Contact: Kristina Petersen
 Phone/Fax: (814) 865-1757/(814) 863-3165
 E-mail: kap18@psu.edu
 Press Row Phone: 814-863-3294
 Website: www.GoPSUsports.com
 Twitter: @ladylionsid

TEAM INFORMATION

2012-13 Record: 26-6
 Home: 14-0 Away: 9-5 Neutral: 3-1
 Big Ten Record (finish): 14-2 (1st)
 Home: 8-0 Away: 6-2
 Letterwinners Returning/Lost: 6/5
 Starters Returning/Lost: 2/3
 Big Ten Tournament: Semifinals
 Postseason: NCAA Second Round

THE HISTORY

First Year of Women's Basketball: 1965
 All-Time Record: 857-386 (49 seasons)
 All-Time Big Ten Rec.: 231-119 (21 seasons)
 NCAA Tournament Appearances: 24
 NCAA Tournament Record: 30-24

WOMEN'S BASKETBALL

Head Coach: Coquese Washington
 Alma Mater: Notre Dame '92
 Overall Record: 118-73 (six seasons)
 School Record: 118-73 (six seasons)
 Twitter: @coquesewashing
 Best Time To Reach Coach: Through SID
 Assistant Coaches (Alma Mater):
 Fred Chmiel (Excelsior College)
 Kia Damon (Millersville '97)
 Maren Walseth (Penn State '02)
 Twitter: @pennstatewbb
 Facebook: facebook.com/pennstateladylions
 YouTube: YouTube.com/pennstateladylions
 Instagram: pennstatewbb

PRONUNCIATIONS

Coquese	ko-KWEES
Chmiel	shuh-MEAL
Maren Walseth	MARR-en WALL-seth
Talia	tah-LEE-uh
Ariel	AIR-e-I
Dara	DAR-uh
Agee	AYE-gee
Kaliyah	kah-LEE-uh
Sevillian	civilian
Whitted	WIT-tid





2012-13 STANDINGS (FINAL)

Team	Big Ten			Overall		
	W	L	Pct.	W	L	Pct.
PENN STATE	14	2	.875	26	6	.813
Nebraska	12	4	.750	25	9	.735
Purdue	10	6	.625	25	9	.735
Michigan State	10	6	.625	25	9	.735
Michigan	9	7	.563	22	11	.667
Illinois	9	7	.563	19	14	.576
Iowa	8	8	.500	21	13	.618
Ohio State	7	9	.438	18	13	.581
Minnesota	7	9	.438	18	14	.563
Northwestern	5	11	.313	13	17	.433
Wisconsin	3	13	.188	12	19	.387
Indiana	2	14	.125	11	19	.367

BIG TEN SCHEDULE

NOVEMBER 8

Illinois at Bradley	noon
UC Riverside at Iowa	7 p.m.
Bowling Green vs. Michigan	4 p.m.
UCLA at Nebraska	1 p.m.
Ohio State at West Virginia	5:30 p.m.
Saint Francis (Pa.) at Penn State	7 p.m.

NOVEMBER 9

Oakland at Indiana	7 p.m.
Arizona/Iona vs. Michigan	TBA
Minnesota at Northern Iowa	1 p.m.

NOVEMBER 10

Dayton at Iowa	1 p.m.
UIC at Northwestern	6 p.m.
Florida Atlantic at Ohio State	2 p.m.
Fordham at Penn State	2 p.m.
Ball State at Purdue	2 p.m.
Drake at Wisconsin	3 p.m.

All times are Eastern.

PROJECTED STARTERS



1 CANDICE AGEE C
So., 6-6, Victorville, Calif.
2.0 ppg, 1.8 rpg, 0.5 bpg

Notes: Won a gold medal with the U19 USA Basketball team in the FIBA U19 World Championship ... Had a career-high eight points and three blocks versus Illinois (2/20/13).



2 DARA TAYLOR G
Sr., 5-8, Wilmington, Del.
7.0 ppg, 3.2 rpg, 3.4 apg, 2.4 spg

Notes: Big Ten All-Defensive team ... Ranks seventh in PSU history in career steals average (2.4) ... Named team's Collegiate Pride Defensive Player of the Year ... Academic All-Big Ten selection.



23 ARIEL EDWARDS G/F
Sr., 6-3, Elmont, N.Y.
7.9 ppg, 3.2 rpg, .464 FG%, .746 FT%

Notes: Posted a career-best scoring average at 7.9 points per game last year ... Is tied for fifth on Penn State career three-point field goal percentage list (.400; 30-75) ... Academic All-Big Ten selection.



33 MAGGIE LUCAS G
Sr., 5-10, Narberth, Pa.
20.1 ppg, 4.5 rpg, .462 3FG%, .900 FT%

Notes: 2013 Big Ten Player of the Year ... Two-time first team All-Big Ten choice ... 7th on Penn State's career scoring list (1,838) ... 2nd in PSU history in 3-pointers (292) ... On preseason Wade Watch list.



44 TORI WALDNER F/C
Jr., 6-5, Milton, Ga.
1.6 ppg, 2.8 rpg, 1.1 bpg, .769 FT%

Notes: Ranks 20th on Penn State's all-time blocked shots list (50) ... Pulled in a career-best 85 rebounds last season ... Blocked five shots vs. Minnesota (1/24/13) ... Academic All-Big Ten choice.

LAST TIME OUT

- Senior guard/forward **Ariel Edwards** registered 21 points to pace the Penn State Lady Lions to a 102-51 exhibition win over Division II Lock Haven on Oct. 27.
- Every Penn State player scored against the Eagles, including five players with nine or more points.
- Edwards also added five rebounds, two assists and two steals for a complete all-around performance.
- Fellow senior **Maggie Lucas** scored 19 points, including three makes from distance and an 8-for-8 performance from the free throw line.
- The third Lady Lion in double figures on the afternoon was freshman **Peyton Whitted**, who scored 11 points on 4-for-7 shooting.

SCOUTING ST. FRANCIS (PA.)

- The Red Flash went 17-16 overall and 10-8 in Northeast Conference play a year ago. They did reach the postseason, playing in the Women's Basketball Invitational where they fell to Fairfield in the first round.
- Senior Alli Williams is a solid all-around player for SFU out of Altoona. She averaged a double-double a year ago with 17.0 points and 10.7 rebounds per game. She is also the top returning assist producers for the Flash, accounting for 2.3 helpers per outings a year ago.
- Alexa Hayward also returns for the Red Flash after averaging 8.1 points a year ago. She was SFU's top three-point threat last season, knocking down 55 shots from beyond the arc.
- This will be a homecoming for freshman Taylor Allison, who played at State College High.

ALL-TIME VERSUS THE RED FLASH

- The Lady Lions are 5-1 all-time against St. Francis (Pa.).
- Penn State won the first five games of the series, before falling in the most recent meeting on Nov. 28, 2006.
- Penn State is 8-1 all-time against current Northeast Conference members.

LAST TIME VS. SFU

- The Lady Lions dropped a heartbreaking 74-69 decision to St. Francis (Pa.) in Loretto, Pa. on Nov. 28, 2006.
- Amanda Brown was 8-for-9 from the field and 6-for-8 from the free throw line en route to a game-high 22 points.
- Adrienne Squire knocked down five three-pointers and finished with 18 points, while Charity Renfro also reached double figures with 10 tallies to go along with eight rebounds.

BIG TEN PRESEASON HONORS

- Senior guard **Maggie Lucas** was selected as the Big Ten Preseason Player of the Year by both the league's coaches and media.
- Lucas was a unanimous selection to the preseason All-Big Ten first team by both the coaches and media.
- This is the second-straight season that Lucas has been named to the preseason All-Big Ten first team.
- The Lady Lions were picked to finish second in the conference by both groups.



POLLING AROUND

- The Lady Lions begin the season ranked 15th in the preseason USA Today Sports Coaches' Poll.
- Penn State will also open the year ranked 13th in the preseason Associated Press Poll.
- This is the third-straight season that the Lady Lions have started the season ranked.

"WATCHING" LUCAS

- Senior guard **Maggie Lucas** is among the 25 players that have been named to the preseason WBCA's Wade Watch list for National Player of the Year.
- Additionally, Lucas is among the honorees on the John R. Wooden Award preseason Top 30 list.
- Lucas was a finalist for both the WBCA's Wade Trophy and the John R. Wooden Award as a junior.
- The Narberth, Pa. native is also among the 30 candidates for the Senior CLASS Award, which recognizes student-athletes that have notable achievements in four areas of excellence – community, classroom, character and competition.

PRESEASON HONORS

- The Lady Lions are ranked in several preseason publications heading into the 2013-14 campaign.
- Penn State is 14th in the Lindy's preview, 16th by USA Today Sports, 18th by the Sporting News and 21st by Athlon Sports.
- Senior guard **Maggie Lucas** was selected to the All-America first team in the Lindy's, Athlon Sports and Sporting News publications (USA Today Sports did not have an All-America team).
- For the second-straight season, Lucas was among the players receiving votes for the five-player Associated Press Preseason All-America team.

FANTASTIC NON-CONFERENCE SLATE AWAITS

- The Lady Lions have put together arguably one of the best non-conference schedules in Bryce Jordan Center history with previous National Champions Connecticut, Notre Dame and Texas A&M slated to visit Happy Valley this season.
- Penn State's non-conference opponents have a combined 109 NCAA Tournament appearances, 20 Final Four appearances and 10 National Championships.
- Every PSU non-conference foe has made at least one NCAA Tournament appearance in their program history.
- The Lady Lions are 33-11 all-time against their 2013 non-conference opponents for a 75% winning percentage.
- Defending National Champion Connecticut will visit Penn State for Jan. 8, 1983, although the Huskies did play in the 2006 NCAA Tournament first and second rounds at the BJC.
- The non-conference slate will also mark the first time that head coach **Coquese Washington** will meet her mentor and former coach Muffet McGraw and Notre Dame in the Big Ten/ACC Challenge.

PROTECTING THE BJC

- The Lady Lions enter the 2013-14 campaign riding a 20-game home court winning streak, which is tied for the third-longest active streak in NCAA Division I, behind Baylor (57) and Tennessee-Chattanooga (26).
- Penn State last lost at home to Michigan State on Jan. 7, 2012.
- The home court win streak is also tied for the fifth-longest in school history.
- Additionally, Penn State has won its last 13 non-conference home games, dating back to Dec. 28, 2010.
- In 2012-13, the Lady Lions posted a perfect 14-0 record at home for the fourth unbeaten home campaign in BJC history.

LADY LIONS GET SOCIAL: The Lady Lions are on several social media sites, including Twitter, Instagram and Facebook. Follow the Lady Lions and assistant coaches (@pennstatewbb), head coach Coquese Washington (@coquesewashing) and sports information contact Kris Petersen (@ladylionsid) on Twitter to get the inside scoop. The Lady Lions are also on Instagram (@pennstatewbb) and Facebook at www.facebook.com/pennstateladylions.



LUCAS LOOKING FOR LONG RANGE RECORD

- Senior guard **Maggie Lucas** also ranks second in Penn State history and third in Big Ten history in three-point field goals made.
- Lucas has 292 triples in her collegiate career, trailing Kelly Mazzante's Big Ten and Penn State record of 357 three-pointers.
- Lucas needs a pair of three-pointers to tie Michigan State's Lindsey Bowen for second place on the Big Ten's career chart.
- Last season, Lucas tied the NCAA record for consecutive games with a made three-pointer in a season with 32.
- Lucas has made a triple in each of her last 35 contests, which is a school record.
- For her career, Lucas has connected on 43.3% of her shots from downtown, which ranks second in school history overall and first among Lady Lions with 75 or more career attempts.

MAGGIE MARCHING UP CAREER SCORING LIST

- Senior guard **Maggie Lucas** starts her senior season seventh on Penn State's all-time scoring chart with 1,838 points.
- She needs 59 points to tie Suzie McConnell for sixth place.
- Lucas needs 162 tallies to become the fifth player in school history with 2,000 points, joining Kelly Mazzante, Susan Robinson, Tyra Grant and Kahadeejah Herbert.

PENN STATE'S OVERALL/BIG TEN YEAR-BY-YEAR REVIEW

Year	Overall	Big Ten	Home	BT Home	Road	BT Road	Neutral
1992-93	22-6	14-4	12-2	9-0	9-4	5-4	0-0
1993-94	28-3	16-2	14-0	9-0	11-2	7-2	3-1
1994-95	26-5	13-3	14-2	8-0	9-3	5-3	3-0
1995-96*	27-7	13-3	14-2	8-0	8-4	5-3	5-1
1996-97	15-12	8-8	9-3	5-3	5-6	3-5	1-3
1997-98	21-13	8-8	10-5	4-4	6-6	4-4	5-2
1998-99	22-8	12-4	9-2	6-2	9-4	6-2	4-2
1999-00	30-5	15-1	14-0	8-0	9-2	7-1	7-3
2000-01	19-10	11-5	11-2	7-1	6-5	4-4	2-3
2001-02	23-12	11-5	10-4	6-2	9-5	5-3	4-3
2002-03	26-9	13-3	16-0	8-0	7-7	5-3	2-2
2003-04	28-6	15-1	12-1	8-0	9-3	7-1	6-2
2004-05	19-11	13-3	12-0	8-0	6-9	5-3	1-2
2005-06	13-16	6-10	8-6	5-3	3-8	1-7	2-2
2006-07	15-16	7-9	12-1	7-1	2-12	0-7	1-3
2007-08	13-18	4-14	10-6	3-6	3-11	1-8	0-1
2008-09	11-18	6-12	8-6	4-5	2-9	2-7	1-3
2009-10	17-14	8-10	9-6	5-4	5-7	3-6	3-1
2010-11	25-10	11-5	14-4	6-2	7-4	5-3	4-2
2011-12	26-7	13-3	12-2	6-2	11-3	7-1	3-2
2012-13	26-6	14-2	14-0	8-0	9-5	6-2	3-1
2013-14	0-0	0-0	0-0	0-0	0-0	0-0	0-0

* First season at the Bryce Jordan Center



PENN STATE'S RECORD WHEN...

Playing at home	0-0
Playing on the road	0-0
Playing at a neutral site	0-0
vs. Top 10 teams	0-0
vs. Top 25 teams	0-0
Games decided by 3 points or less	0-0
Games decided by 4-10 points	0-0
Games decided by 11-19 points	0-0
Games decided by 20 points or more	0-0
Leading at the half	0-0
Tied at the half	0-0
Trailing at the half	0-0
Leading with 5:00 remaining	0-0
Trailing with 5:00 remaining	0-0
Tied with 5:00 remaining	0-0
In overtime	0-0
PSU scores 40-49 points	0-0
PSU scores 50-59 points	0-0
PSU scores 60-69 points	0-0
PSU scores 70-79 points	0-0
PSU scores 80 points or more	0-0
PSU shoots 45% or better	0-0
PSU shoots less than 45%	0-0
PSU shoots better than opponent	0-0
Opponent shoots better than PSU or tied	0-0
Opponent scores less than 39 points	0-0
Opponent scores 40-49 points	0-0
Opponent scores 50-59 points	0-0
Opponent scores 60-69 points	0-0
Opponent scores more than 70 points	0-0
Opponent shoots better than 45%	0-0
Opponent shoots less than 45%	0-0
PSU outrebounds opponent	0-0
Opponent outrebounds PSU or tied	0-0
PSU commits 14 or less turnovers	0-0
PSU commits 15 or more turnovers	0-0
PSU makes at least 5 3-pointers	0-0
PSU makes four 3-pointers or less	0-0
Recording 7 or more steals	0-0
Recording 6 or less steals	0-0
Wearing white uniforms	0-0
Wearing blue uniforms	0-0
Wearing white and pink uniforms	0-0
Penn State wins the tip	0-0
Penn State loses the tip	0-0
Penn State scores first	0-0
Opponent scores first	0-0
Playing during the day (before 5 p.m.)	0-0
Playing at night	0-0
On Monday	0-0
On Tuesday	0-0
On Wednesday	0-0
On Thursday	0-0
On Friday	0-0
On Saturday	0-0
On Sunday	0-0
In November	0-0
In December	0-0
In January	0-0
In February	0-0
In March	0-0

LUCAS LOADING UP THE RECORD BOOKS

- In addition to her scoring and three-point prowess, senior guard **Maggie Lucas** has also etched her name on several other career charts for the Lady Lions.
- The Narberth, Pa. native starts her final season in Happy Valley atop the career free throw percentage list with an .887 mark.
- Lucas is also 10th in program history in free throws made with 362 shots made from the charity stripe.
- She needs nine makes from the free throw line to tie Suzie McConnell (371; 1985-88) for ninth place all-time.
- Lucas has also moved into the career steals list, where she ranks 19th with 176 career thefts.
- She needs four steals to move into a tie for 18th all-time with Susan Robinson (176; 1989-92) and six thefts to move into a tie for 16th with Dana Eikenberg (182; 1989-92) and Vanessa Paynter (182; 1984-87).

LADY LIONS ON TV

- The Lady Lions will make at least 14 appearances on national television this season.
- The Lady Lions will appear on CBS once, ESPN2 five times and the Big Ten Network eight times during the 2013-14 slate.
- The 14 regular-season national TV appearances are the most in program history.
- Penn State's first TV game of the season will air on the Big Ten Network when the Lady Lions host defending National Champion UConn on Sun., Nov. 17 at noon.
- The Lady Lions will have a game on CBS for the second time in three years when they host Minnesota on Jan. 26 at 1 p.m.
- Additionally, the Eighth Annual Pink Zone at Penn State will air on ESPN2 when the Lady Lions host Wisconsin on Sun., Feb. 16 at 1 p.m.

14TH-RANKED RECRUITING CLASS JOINS LIONS

- The Lady Lions welcome eight newcomers to the fold this season in freshmen **Infiniti Alston**, **Jenny DeGraaf**, **Alex Harris**, **Kalayah Mitchell**, **Keke Sevillian**, **Lindsey Spann** and **Peyton Whitted** and as well as Duke transfer **Sierra Moore**.
- The recruiting class was ranked 14th by ESPN/HoopGuriz.
- Spann was the highest ranked player in the class as she was the 22nd-rated recruit by Collegiate Girls Basketball.
- Harris was also in the Top 50, ranking 49th by both Collegiate Girls Basketball and All-Star Girls Report.
- Moore will have to sit out the 2013-14 season due to NCAA Transfer Rules, while Spann will likely miss the 2013-14 campaign after tearing her right ACL during a summer practice.

DUO BLOCKING THE LANE

- Senior center **Talia East** and junior center **Tori Waldner** have made it tough for opponents to find success in the lane as the pair have moved into the Top 20 in school history in blocks.
- East ranks 19th in program history with 57 career rejections.
- She needs four blocks to move into a tie for 18th place with Tanisha Wright (61; 2002-05).
- Waldner has 50 career blocks to sit 20th on the Lady Lions' career blocks list.
- She needs seven rejections to tie East for 19th place.

FOUR McDONALD'S ALL-AMERICANS

- The Lady Lions tout four McDonald's High School All-Americans on their roster this season in **Maggie Lucas**, **Dara Taylor**, **Candice Agee** and **Sierra Moore**.
- Taylor played in the 2009 game, Lucas was in the 2010 contest and Agee and Moore were in the 2012 game.
- Lucas won the Powerade Three-Point Shootout as part of the McDonald's All-America celebration in 2010.
- Prior to **Coquese Washington** taking over the reigns, the Lady Lions only had one McDonald's High School All-American in program history.

HOOPIN' FOR THE USA

- Head coach **Coquese Washington** and sophomore center **Candice Agee** spent their summers winning gold medals with USA Basketball.
- Washington was an assistant coach on the USA Basketball Women's World University Games Team, serving under head coach Sherri Coale of Oklahoma.
- The United States took home the gold medal at the World University Games, which took place in Kazan, Russia July 8-15.
- Agee claimed her second gold medal as a member of USA Basketball, earning it at the FIBA U19 World Championship. She previously won a gold medal at the U18 FIBA Americas in the summer of 2012.



NATIONAL POLLS

ASSOCIATED PRESS (PRESEASON)

No.	Team (1st)	Rec.	Pts.	LW
1.	Connecticut (36)	0-0	900	1
2.	Duke	0-0	860	2
3.	Stanford	0-0	799	3
4.	Tennessee	0-0	752	4
5.	Louisville	0-0	714	5
6.	Notre Dame	0-0	705	6
7.	Kentucky	0-0	678	7
8.	Maryland	0-0	668	8
9.	California	0-0	662	9
10.	Baylor	0-0	569	10
11.	Oklahoma	0-0	461	11
12.	North Carolina	0-0	452	12
13.	PENN STATE	0-0	392	13
14.	Dayton	0-0	368	14
15.	LSU	0-0	365	15
16.	Texas A&M	0-0	363	16
17.	Nebraska	0-0	340	17
18.	Purdue	0-0	225	18
19.	Colorado	0-0	205	19
20.	Michigan State	0-0	177	20
21.	Oklahoma State	0-0	144	21
22.	South Carolina	0-0	143	22
23.	Iowa State	0-0	126	23
24.	Georgia	0-0	99	24
25.	Gonzaga	0-0	81	25

Others Receiving Votes: West Virginia 77; UCLA 70; Vanderbilt 61; Green Bay 48; DePaul 44; Chattanooga 41; Georgia Tech 39; Creighton 21; Middle Tenn. St. 11; Missouri 10; Marist 10; Texas 7; Washington 6; Florida St. 2; Quinnipiac 2; Tenn-Martin 1; James Madison 1; South Florida 1.

USA TODAY COACHES' TOP 25 (PRESEASON)

No.	Team (1st)	Rec.	Pts.	LW
1.	Connecticut (31)	0-0	799	1
2.	Duke	0-0	735	2
3.	Stanford	0-0	714	3
4.	Tennessee (1)	0-0	663	4
5.	Louisville	0-0	631	5
6.	Maryland	0-0	630	6
7.	Notre Dame	0-0	624	7
8.	Kentucky	0-0	621	8
9.	California	0-0	490	9
10.	Baylor	0-0	407	10
11.	North Carolina	0-0	387	11
12.	Nebraska	0-0	381	12
13.	Texas A&M	0-0	368	13
14.	Oklahoma	0-0	354	14
15.	PENN STATE	0-0	313	15
16.	Dayton	0-0	307	16
17.	LSU	0-0	276	17
18.	Michigan State	0-0	185	18
19.	Colorado	0-0	172	19
20.	Iowa State	0-0	163	20
21.	South Carolina	0-0	158	21
22.	Georgia	0-0	152	22
23.	Purdue	0-0	129	23
24.	Oklahoma State	0-0	127	24
25.	UCLA	0-0	114	25

Others Receiving Votes: Vanderbilt 99; Gonzaga 68; DePaul 54; West Virginia 53; South Florida 37; Georgia Tech 34; Kansas 32; Florida State 18; Green Bay 18; Marist 17; Rutgers 11; Creighton 10; Syracuse 8; St. Mary's 8; Toledo 6; Middle Tennessee State 6; Quinnipiac 4; San Diego 4; Iowa 4; Delaware 2; **Minnesota 2**; SMU 1; Pacific 1; Florida 1; BYU 1; St. John's 1.

*Bold type indicates 2013-14 Penn State opponent

THE NCAA TOURNEY RETURNS TO THE BJC

- Penn State has been selected as one of 16 universities to host the 2014 NCAA Women's Basketball Championship First and Second Round games.
- The First Round will take place on Sunday, March 23 at 12:30 and 3 p.m., while the Second Round game will be played on Tuesday, March 25 at 7 p.m.
- This will be Penn State's 15th time hosting the NCAA First and Second Rounds.
- Penn State last hosted the First and Second Rounds in 2011 when the Lady Lions, DePaul, Dayton and Navy competed in the Bryce Jordan Center.
- The Lady Lions have won nine of its last 10 home NCAA Tournament games, posting a 17-5 overall record.

2014 PINK ZONE AT PENN STATE

- The Eighth Annual Pink Zone at Penn State will be held Sunday, Feb. 16 in the Bryce Jordan Center at 1 p.m. when the Lady Lions take on Wisconsin.
- Last year, the Lady Lions donated a record \$260,000 to breast cancer causes.
- All totalled, the Lady Lions have donated more than \$825,300 for breast cancer research and awareness in the first seven years.
- This year's fundraising efforts will benefit the Mount Nittany Medical Center, Penn State Hershey Cancer Institute, Pennsylvania Breast Cancer Coalition, the Kay Yow Cancer Fund, J.C. Blair Memorial Hospital and Lewistown Hospital.
- For more information on the Pink Zone at Penn State, visit the official Pink Zone website at www.pennsylvaniapinkzone.org.

SPANN TEARS ACL

- Freshman guard indsey Spann will be sidelined after tearing her right anterior cruciate ligament (ACL) during a workout during the summer.
- Spann had successful surgery to repair her knee in July.
- A timetable for Spann's return has not been set.

LADY LIONS EXCELLING AT THE NEXT LEVEL

- Former Penn State Lady Lions Alex Bentley and Tanisha Wright were among the players honored by the WNBA this season. Bentley was part of the five-player WNBA All-Rookie Team, while Wright took home her fourth WNBA All-Defensive first team selection.
- In her first season in the WNBA, Bentley averaged 8.3 points, 2.8 assists and 1.0 steals per game for the Atlanta Dream.
- Bentley ranked third in the league in assists per turnover (2.4), 18th in total assists (95) and 19th in three-point field goal percentage (.329).
- Earlier in the season, Bentley broke the WNBA record for consecutive three-pointers made with 10.
- Wright, who finished her ninth season in the Seattle Storm, accounted for 11.9 points, 4.1 assists, 3.7 rebounds and 1.1 steals per game.
- She was eight in the league in total assists (130), sixth in total minutes played (1,016) and 10th in assists per game and 14th in free throw percentage (.855).
- Wright surpassed the 2,000-point mark for her WNBA career earlier this season.

The Lady Lions continued their return to national prominence last season with a second-straight Big Ten regular-season title and third straight NCAA Tournament berth. Here are some highlights from 2012-13:

BIG TEN CHAMPIONS

- The Lady Lions clinched the Big Ten regular-season title outright for the second-straight year with an 82-67 win at Nebraska on Mar. 3.
- The back-to-back titles are the first for the program since the 2002-03 and 2003-04 squads accomplished the feat.
- This is the fifth outright regular-season title for the Lady Lions (2000, 2003, 2004, 2012).
- PSU is the ninth team to claim consecutive championships in Big Ten history.
- Penn State has won seven overall regular season crowns (1994, 1995, 2000, 2003, 2004, 2012).
- The Lady Lions earned the No. 1 overall seed in the Big Ten Tournament for the sixth time in program history (1995, 2000, 2003, 2004, 2012).
- Penn State's 14-2 Big Ten record is the best since the 2003-04 squad went 15-1.

THREE CONSECUTIVE 25-WIN SEASONS

- With a 76-66 win over Ohio State in the Big Ten Tournament quarterfinals, the Lady Lions notched their 25th win of the season.
- This is the third consecutive season that Penn State has reached the 25-win mark.
- It is the 13th 25-win campaign in program history.
- This is only the second time in program history that the Lady Lions have posted three consecutive 25-win seasons, joining the 1993-94, 1994-95 and 1995-96 campaigns.



THE LAST TIME PENN STATE...

SCORING

Player scored 20 points: vs. Michigan State (23, Maggie Lucas), 3/9/13
Player scored 25 points: at Nebraska (34, Maggie Lucas), 3/3/13
Player scored 30 points: at Nebraska (34, Maggie Lucas), 3/3/13
Player scored 35 points: vs. Georgetown (39, Maggie Lucas), 12/9/12
Player scored 40 points: vs. Minnesota (49, Kelly Mazzante), 12/28/01
Two players scored 20 points: vs. Illinois (22, Maggie Lucas; 20, Alex Bentley), 2/20/13
Three players scored 20 pts.: at Nevada (26, Maggie Lucas; 23, Alex Bentley; 21, Zhaque Gray), 11/26/11
Two players scored 25 points: at Boston College (28, Alex Bentley; 28, Maggie Lucas), 12/2/10
Player scored 25 points/3 consecutive games: Kelly Mazzante (31, vs. Baylor, 12/9/03; 31, vs. Pittsburgh, 12/14/03; 29, Louisiana Tech, 12/21/03)
Five in double figures: vs. Fairleigh Dickinson (24, Maggie Lucas; 18, Ariel Edwards; 15, Dara Taylor; 11 Talia East; 10, Nikki Greene), 12/2/12
Six in double figures: at Oakland (15, Alex Bentley; 16, Ariel Edwards; 16, Zhaque Gray; 13, Maggie Lucas; 10, Mia Nickson; 10, Gizelle Studevent; 10, Julia Trogele), 11/18/10
Seven in double figures: at Oakland (15, Alex Bentley; 16, Ariel Edwards; 16, Zhaque Gray; 13, Maggie Lucas; 10, Mia Nickson; 10, Gizelle Studevent; 10, Julia Trogele), 11/18/10
PSU scored 50 points in a half: vs. Illinois (54, first half), 2/20/13
PSU scored 55 points in a half: at Nebraska (55, second half), 1/15/12
PSU scored 60 points in a half: vs. Northwestern (65 points, first half), 1/20/00
PSU scored 100 points: vs. Fairleigh Dickinson (W, 101-44), 12/2/12
PSU scored 100 points in Big Ten game: vs. Illinois (W, 101-80), 2/15/01
PSU scored 100 points in a home game: vs. Fairleigh Dickinson (W, 101-44), 12/2/10
PSU scored fewer than 15 points in a half: vs. Wisconsin (13, first half), 2/25/10
PSU scored fewer than 20 points in a half: vs. Michigan State (19, first half), 3/9/13
PSU scored fewer than 40 points in a game: vs. Wisconsin (L, 39-71), 2/25/10
PSU scored fewer than 50 points in a game: vs. Michigan State (L, 46-54), 12/9/13
PSU scored fewer than 50 points in a Big Ten game: vs. Purdue (L, 49-60), 2/24/11
OPP scored 50 points in a half: at Minnesota (52, second half), 2/28/13
OPP scored 100 points: at Boston College (L, 113-104), 12/2/10
OPP scored fewer than 20 points in a game: at Dickinson (W, 57-16), 3/6/71
OPP scored fewer than 30 points in a game: vs. Virginia Tech (W, 66-28), 12/6/11
OPP scored fewer than 40 points in a game: vs. Wisconsin (W, 84-40), 1/17/13
OPP scored fewer than 50 points in a game: at Michigan (W, 59-49), 1/21/13
OPP scored fewer than 50 points in a Big Ten game: at Michigan (W, 59-49), 1/21/13

FIELD GOAL SHOOTING

Player made every shot from the field (min. 7): vs. Michigan St. (Amanda Brown, 8-8), 1/25/07
PSU shot 55% in a game: vs. Illinois (.611), 2/20/13
PSU shot 55% in consecutive games: vs. Northwestern (.682), 3/2/96; vs. Ohio St. (.585), 3/3/96
PSU shot 60% in a game: vs. Illinois (.611), 2/20/13
PSU shot below 25% in a game: vs. Michigan State (.224), 3/9/13
PSU shot below 30% in a game: vs. Michigan State (.224), 3/9/13
PSU shot below 35% in a game and won: vs. Northwestern (.299), 1/3/13
PSU shot below 30% in a game and won: vs. Northwestern (.299), 1/3/13
PSU shot 55% in a half: vs. Ohio State (.625, second half), 3/8/13
PSU shot 60% in a half: vs. Ohio State (.625, second half), 3/8/13
PSU shot 65% in a half: at Nebraska (.692, second half), 3/3/13
PSU shot 70% in a half: vs. Virginia Tech (.714, second half), 12/6/11
PSU shot 55% in both halves: vs. Illinois (.586, first half; .640, second half), 2/20/13
PSU shot 20% or below in a half: vs. Michigan State (.200, first half), 3/9/13
PSU shot below 25% in a half: vs. Michigan State (.200, first half; .243, second half), 3/9/13

THREE-POINT SHOOTING

Player made every shot from the field (min. 4): at Bucknell (4-4, Maggie Lucas), 12/21/11
Player made 4 three-pointers in a half: vs. Michigan State (5 in the second, Maggie Lucas), 3/9/13
Player made 5 three-pointers in a half: vs. Michigan State (5 in the second, Maggie Lucas), 3/9/13
Player made 6 three-pointers in a half: vs. Michigan State (5 in the second, Maggie Lucas), 3/9/13
Player made 5 three-pointers in a game: vs. Michigan State (7, Maggie Lucas), 3/9/13
Player made 6 three-pointers in a game: vs. Michigan State (7, Maggie Lucas), 3/9/13
Player made 7 three-pointers in a game: vs. Michigan State (7, Maggie Lucas), 3/9/13
Player made 8 three-pointers in a game: at Nebraska (8, Maggie Lucas), 3/3/13
Player attempted 10 three-pointers in a game: vs. Michigan State (13, Maggie Lucas), 3/9/13
PSU made 10 three-pointers: vs. North Carolina (14), 11/30/11
PSU did not make a three-pointer: at South Carolina (0-6), 11/20/11
PSU attempted 20 three-pointers: vs. Michigan State (23), 3/9/13
PSU shot 60% 3FG (min. 5 att.): vs. Illinois (.667; 6-9), 2/20/13

FREE THROW SHOOTING

Player made every shot from FT line (min. 10): at LSU (11-11, Maggie Lucas), 3/20/12
PSU shot 90% (min. 10 att.): vs. North Carolina (13-14, .929), 11/30/11
PSU shot below 50% (min. 10 att.): vs. Holy Cross (9-20, .450), 11/28/09
PSU made 30 free throws: vs. Pittsburgh (34), 11/11/07
PSU made fewer than five FTs: at Michigan (3), 2/3/11
PSU attempted 40 free throws: vs. Pittsburgh (41), 11/11/07
PSU attempted fewer than five FTs: at Michigan (4), 2/3/11

REBOUNDS

Player had 15 rebounds: at LSU (16, Nikki Greene), 3/26/13
Player had 20 rebounds: at Cal State Northridge (20, Nikki Greene), 11/24/12
Two players with double-digit rebs.: vs. Cal Poly (13, Mia Nickson; 12, Talia East), 3/24/13
Three players had double-digit rebounds: vs. Ohio State (15, Nikki Greene; 15, Mia Nickson; 10, Maggie Lucas), 2/20/12
PSU had 60 rebounds: vs. Ohio State (60), 2/20/12
PSU had 50 rebounds: vs. Cal Poly (52), 3/24/13
PSU had 20 or fewer rebounds: vs. Michigan State (20), 1/19/03
OPP had 20 or fewer rebounds: at Indiana (20), 2/13/11
PSU had 20 offensive rebounds: at Minnesota (22), 2/28/13
PSU had 25 offensive rebounds: vs. Ohio State (29), 2/20/12

ASSISTS

Player had 10 assists: vs. North Carolina (15, Alex Bentley), 11/30/11
Player had 10 assists/consecutive games: Helen Darling (12 at LaSalle, 12/8/99; 11 vs. Auburn, 12/11/99; 10 vs. Clemson, 12/19/99)
Player had 15 assists: vs. North Carolina (15, Alex Bentley), 11/30/11
PSU had 30 assists: vs. St. Francis (Pa.) (32), 12/2/99
PSU had fewer than 10 assists: vs. Michigan State (8), 3/9/13
PSU had fewer than 5 assists: at Michigan State (4), 2/4/10

BLOCKED SHOTS

Player blocked 5 shots: vs. Minnesota (5, Tori Waldner), 1/24/13
Player blocked 6 shots: at South Carolina (7, Talia East), 11/20/11
PSU blocked 10 shots: vs. Illinois (10), 2/20/13
PSU blocked 0 shots: vs. Purdue, 2/19/09

STEALS

Player had 7 steals: vs. Northwestern (7, Dara Taylor), 1/3/13
Player had 8 steals: vs. NJIT (8, Alex Bentley), 12/23/12
PSU had 20 steals: vs. Bucknell (21), 12/28/10

TURNOVERS

PSU committed 25 or more: vs. Illinois (29), 2/20/13
PSU committed 25 or more and won: vs. Illinois (29), 2/20/13
PSU committed 10 or fewer: vs. Michigan State (8), 3/9/13
PSU committed 10 or fewer in consecutive games: vs. Minnesota (9), 1/22/04; at Ohio St. (9), 1/25/04
OPP committed 25 or more: vs. Lafayette (27), 11/18/12

DOUBLE-DOUBLES

Points & rebounds: at LSU (Nikki Greene, 16 pts., 16 rebs), 3/26/13
Points & rebounds/consecutive games: Nikki Greene (12 points, 10 rebounds vs. Ohio State, 1/30/11; 16 points, 14 rebounds at Illinois, 1/27/11)
Points & rebounds/3 consecutive games: Amanda Brown (19 pts., 17 rebs. at Northwestern, 2/11/07; 14 pts., 10 rebs. vs. Minnesota, 2/15/07; 14 pts., 11 rebs. at Iowa, 2/18/07)
Points & rebounds/4 consecutive games: Angie Potthoff (vs. Northwestern, 1/31/97; at Illinois, 2/2/97; vs. Michigan, 2/7/97; vs. Indiana, 2/9/97; vs. Iowa, 2/16/97; vs. Michigan State, 2/21/97)
Points & rebounds/5 consecutive games: Angie Potthoff (vs. Northwestern, 1/31/97; at Illinois, 2/2/97; vs. Michigan, 2/7/97; vs. Indiana, 2/9/97; vs. Iowa, 2/16/97; vs. Michigan State, 2/21/97)
Points & assists: vs. North Carolina (Alex Bentley; 15 points, 15 assists), 11/30/11
Points & assists/consecutive games: Helen Darling (12 pts., 12 assts. at La Salle, 12/8/99; 10 pts., 11 assts. vs. Auburn, 12/11/99)
Two players had double-doubles: vs. Ohio State (Nikki Greene, 25 pts., 15 rebs.; Mia Nickson, 18 pts., 15 rebs.; Maggie Lucas, 12 pts., 10 rebs.), 2/20/12
Three players had double-doubles: vs. Ohio State (Nikki Greene, 25 pts., 15 rebs.; Mia Nickson, 18 pts., 15 rebs.; Maggie Lucas, 12 pts., 10 rebs.), 2/20/12
15 points & 15 rebounds: at LSU (Nikki Greene, 16 pts., 16 rebs), 3/26/13
20 points and 10 rebounds: vs. Wisconsin (Nikki Greene, 23 pts., 14 rebs.), 1/17/13

MARGIN OF VICTORY

PSU won by 20-30 points: vs. Cal Poly (30), 3/24/13
PSU won by 20-30 points in a Big Ten game: vs. Illinois (33), 2/20/13
PSU won consecutive Big Ten games by 20+ pts.: vs. Wisconsin (44), 1/17/13; vs. Nebraska (22), 1/13/13; at Michigan St. (21), 1/6/13
PSU won by 31-40 points: vs. Illinois (33), 2/20/13
PSU won by 41-50 points: vs. Wisconsin (44), 1/17/13
PSU won by 51+ points: vs. Fairleigh Dickinson (57), 12/2/12
PSU lost by 20-30 points: at Ohio State (22), 2/17/11
PSU lost by 20-30 points in a Big Ten game: at Ohio State (22), 2/17/11
PSU lost by 31+ points: vs. Wisconsin (32), 2/25/10

MISCELLANEOUS

Led PSU in points/rebounds/assists: Tyra Grant vs. Michigan (25 pts., 9 rebs., 4 asst.), 2/18/10
Hit "final seconds" (under 10 seconds) game-winning shot: Julia Trogele at Illinois (9 sec.), 1/27/11
Hit "final minute" game-winning shot: Alex Bentley at Minnesota (3-ptr. with :38.9 remaining), 2/5/12
Player played every minute: at LSU (Maggie Lucas), 3/26/13
Player played more than 40 min.: at Dayton (Alex Bentley, 46; Zhaque Gray, 44; Mia Nickson, 41), 11/12/10
Committed 10 or fewer fouls: vs. Virginia Tech (9), 12/6/11
Committed 30 or more fouls: vs. Iowa State (32), 11/25/11
PSU rallied from a 10-pt. deficit to win: at Ohio State (down by 11 at 19:10 in 2nd half, won 155-73), 1/27/13
PSU rallied from a 15-pt. deficit to win: at CS-Northridge (down by 17 at 5:52 in 1st half, won 85-73), 11/24/12
PSU had a 5-game winning streak: 6 games, 2/4/13 - 2/24/13
PSU had a 10-game winning streak: 11 games, 12/9/12 - 1/27/13
PSU had a 5-game losing streak: 6 games, 1/28/10 - 2/14/10
PSU went undefeated at home: 2012-13 season
PSU sold out the BJC: Purdue, 2/29/04

OVERTIME

PSU played an OT game: at Boston College (L, 113-104), 12/2/10
PSU won an OT game: at Oakland (96-89), 11/18/10
PSU lost an OT game: at Boston College (L, 113-104), 12/2/10
PSU played two or more OT games in a season: 2010-11 season (three)
PSU won two or more OT games in a season: 2010-11 season (two)

RANKINGS

Played the No. 1 team in the AP poll: vs. Connecticut (L, 77-63), 12/14/08
Played the No. 1 team in the Coaches poll: vs. Connecticut (L, 77-63), 12/14/08
Defeated the No. 1 team in the AP poll: at Virginia (73-71), 1/3/91
Defeated Top 10 opponent: vs. #8/11 Ohio State (84-66), 2/20/12
Defeated Top 10 opponent on the road: at #7 Purdue (47-42), 1/2/04
Defeated Top 10 opponent by double digits: vs. #8/11 Ohio State (84-66), 2/20/12
Played consecutive Top 10 teams: at #2/3 Texas 11/14/04, at #6/6 Duke 11/19/04
Defeated Top 25 opponent: at #20/25 Nebraska (82-67), 3/3/13
Defeated Top 25 opponent on the road: at #20/25 Nebraska (82-67), 3/3/13
Defeated Top 25 opponent by double digits: at #20/25 Nebraska (82-67), 3/3/13



2013-14 GAME-BY-GAME STARTING LINEUPS

Date	Opponent	Pt Guard	Guard	Guard	Forward	Center
10/27	LOCK HAVEN	Taylor	Lucas	Edwards	Waldner	Agee

LUCAS = PLAYER OF THE YEAR

- **Maggie Lucas** was selected as the 2013 Big Ten Player of the Year by both the coaches and the media.
- Lucas is the third Lady Lion (Kelly Mazzante and Helen Darling) to win Player of the Year and the first since Kelly Mazzante won back-to-back honors in 2003 and 2004.
- Lucas is the first junior to win Player of the Year accolades since Ohio State's Jantel Lavender in 2010.

BACKCOURT NAMED TO FIRST TEAM

- **Maggie Lucas** and **Alex Bentley** were named to the All-Big Ten first team. Lucas was a unanimous selection by the coaches.
- Bentley garnered first team accolades for the third time in her career, making her the fifth player in program history to earn the honor three or more times.
- She joins Tina Nicholson (1994, 1995, 1996), Angie Potthoff (1995, 1996, 1997), Kelly Mazzante (2001, 2002, 2003, 2004) and Tanisha Wright (2003, 2004, 2005) as the only players to garner first team honors three or more times in their career.
- Lucas was the first unanimous selection for the Lady Lions since Tanisha Wright in 2005.
- Lucas was also the 10th Lady Lion to win first team accolades multiple times in a career.

MORE BIG TEN ACCOLADES

- Senior center **Nikki Greene** was selected third team All-Big Ten by the coaches and honorable mention All-Big Ten by the media.
- It is the third all-conference selection for Greene, who was a media third team choice and coaches honorable mention choice last year and an honorable mention recipient in 2011 by the media.
- Guards **Alex Bentley** and **Dara Taylor** were named to the Big Ten All-Defensive team.
- It is Bentley's second consecutive berth on the defensive squad. PSU has had a representative on the team each of the last three seasons.
- Senior guard **Gizelle Studevent** was Penn State's Sportsmanship Award recipient.

DUO DRAFTED

- **Alex Bentley** and **Nikki Greene** were among the 36 players selected in the 2013 WNBA Draft presented by State Farm.
- Bentley, who was one of the 12 players in attendance at the WNBA Draft at ESPN Headquarters in Bristol, Conn., was the first to hear her name called by the Atlanta Dream with the 13th overall pick.
- Greene then added her name to the long line of Lady Lions to be selected in the WNBA Draft when she was selected 26th by the Phoenix Mercury.
- Bentley and Greene are the first tandem of Lady Lion players selected in the draft since 2004 (Jess Brungo and Kelly Mazzante).
- Additionally, Bentley's selection with the 13th choice is the highest pick for a Lady Lion since Tanisha Wright was the 12th overall selection by the Seattle Storm.
- Penn State has now had 14 players drafted by WNBA teams since 1997, the most in the Big Ten Conference.

COQUESE WINS COACH OF THE YEAR, AGAIN

- Penn State mentor **Coquese Washington** won her second consecutive Big Ten Coach of the Year award from the media.
- She is the first PSU coach to win back-to-back COY honors since Rene Portland won the award in 2003 and 2004.
- This is the fifth time in Big Ten history that a coach has won back-to-back Coach of the Year accolades.

LUCAS HAULS IN NATIONAL HONORS

- **Maggie Lucas** popped up on several All-America lists last season.
- She was named to the Associated Press All-America second team, USBWA All-America squad, WBCA All-America honorable mention and Full Court All-America second team.
- Lucas was one of 12 finalists for the prestigious State Farm Wade Trophy as the Women's Basketball Coaches Association's (WBCA) National Player of the Year.
- She was the first Lady Lion to be a State Farm Wade Trophy Finalist since Kelly Mazzante in 2004 and it was the seventh time that a Lady Lion has been on the elite list.
- Additionally, Lucas was one of 15 finalists for the John R. Wooden Award.
- She was also selected as the PremierPlayers.com Women's Player of the Year in a fan vote.

BENTLEY WINS POMEROY

- **Alex Bentley** was selected as the 2013 recipient of the Frances Pomeroy Naismith Award, which is presented annually by the Naismith Memorial Basketball Hall of Fame, to the nation's outstanding female collegian 5-8 and under who has excelled both athletically and academically.
- She is the third Lady Lion to win the honor, joining Suzie McConnell (1988) and Helen Darling (2000) as Penn Staters to win the award.
- Penn State is the only school to have three Frances Pomeroy Naismith Award winners.

BENTLEY'S AWARDS PILE UP

- **Alex Bentley** took home a pair of All-America honors last season, earning honorable mention selections from the WBCA and the Associated Press.
- Bentley appeared on the WBCA All-America list for the second consecutive season, making her the first Lady Lion since Kelly Mazzante (2002-04) to win WBCA All-America honors in back-to-back seasons.
- Bentley was also a finalist for the Nancy Lieberman Award for the nation's top point guard.

MILESTONE WATCH

Milestone Watch

Milestone	Player	Current Total
1,900 points	Maggie Lucas	1,838
600 points	Ariel Edwards	551
500 points	Dara Taylor (career)	465
300 points	Dara Taylor (PSU)	223
200 points	Talia East	194
	Tori Waldner	111
100 points	Candice Agee	51
500 rebounds	Maggie Lucas	406
300 rebounds	Talia East	289
	Ariel Edwards	289
	Dara Taylor (career)	252
200 rebounds	Tori Waldner	152
100 rebounds	Candice Agee	48
400 assists	Dara Taylor (career)	350
250 assists	Maggie Lucas	216
200 assists	Dara Taylor (PSU)	108
100 assists	Ariel Edwards	68
200 steals	Maggie Lucas	176
	Dara Taylor (career)	152
100 steals	Dara Taylor (PSU)	77
50 steals	Ariel Edwards	41
75 blocks	Talia East	57
	Tori Waldner	50
300 3-pointers	Maggie Lucas	292
50 3-pointers	Ariel Edwards	30



RECORD BOOK

CAREER SCORING

1.	2,919	Kelly Mazzante, 2001-04
2.	2,253	Susan Robinson, 1989-92
3.	2,044	Tyra Grant, 2007-10
4.	2,025	Kahadeejah Herbert, 1982-85
5.	1,995	Tanisha Wright, 2002-05
6.	1,897	Suzie McConnell, 1985-88
7.	1,838	Maggie Lucas, 2011-pres.
8.	1,786	Alex Bentley, 2010-13
9.	1,725	Angie Potthoff, 1993-97
10.	1,663	Lisa Shepherd, 1998-01
11.	1,619	Andrea Garner, 1997-00
12.	1,538	Tanya Garner, 1988-91
13.	1,514	Vicki Link, 1984-87
14.	1,466	Jess Strom, 2002-05
15.	1,463	Katina Mack, 1992-96
16.	1,428	Jen Bednarek, 1977-80
17.	1,328	Maren Walseth, 1998-01
18.	1,320	Cheryl Ellison, 1980-83
19.	1,295	Kathy Phillips, 1989-92
20.	1,294	Helen Darling, 1997-00
21.	1,288	Carol Walderman, 1981-83
22.	1,280	Louise Leimkuhler, 1980-82
23.	1,240	Tina Nicholson, 1993-96
24.	1,238	Kam Gissendanner, 2006-08
25.	1,233	Amanda Brown, 2004-07
26.	1,186	Bethany Collins, 1985-88
27.	1,162	Lisa Faloon, 1984-87
28.	1,142	Jess Brungo, 2001-04
29.	1,135	Sue Martin, 1976-80
30.	1,132	Nikki Greene, 2010-13
31.	1,106	Missy Masley, 1992-95
32.	1,084	Brianne O'Rourke, 2005-09
33.	1,061	Nancy Kuhl, 1975-79
34.	1,024	Rashana Barnes, 1999-02
35.	1,022	Helen Holloway, 1991-94

CAREER BLOCKS

1.	268	Kim Calhoun, 1993-96
2.	215	Nikki Greene, 2010-13
3.	192	Mary Donovan, 1977-81
4.	189	Rashana Barnes, 1999-02
5.	185	Andrea Garner, 1997-00
6.	172	Amanda Brown, 2004-07
7.	140	Tina Henry, 1990-93
8.	94	Jess Brungo, 2001-04
9.	92	Bethany Collins, 1985-88
10.	89	Kathy Phillips, 1989-92
11.	87	Reicina Russell, 2003-04
	87	Vicki Link, 1984-87
13.	81	Kahadeejah Herbert, 1982-85
14.	75	Tyra Grant, 2007-10
15.	68	Kelly Mazzante, 2001-04
16.	67	Janessa Wolff, 2008-10
17.	66	Adrie DeVries, 1987-90
18.	61	Tanisha Wright, 2002-05
19.	57	Talia East, 2011-pres.
20.	50	Tori Waldner, 2012-pres.

CAREER REBOUNDS

1.	1,103	Kahadeejah Herbert, 1982-85
2.	1,070	Susan Robinson, 1989-92
3.	1,016	Andrea Garner, 1997-00
4.	994	Nikki Greene, 2010-13
5.	943	Vicki Link, 1984-87
6.	918	Angie Potthoff, 1993-97
7.	820	Mag Strittmatter, 1975-78
8.	818	Cheryl Ellison, 1980-83
9.	808	Amanda Brown, 2004-07
10.	773	Mary Donovan, 1978-81
11.	757	Bethany Collins, 1985-88
12.	728	Rashana Barnes, 1999-02
13.	721	Missy Masley, 1992-95
14.	719	Louise Leimkuhler, 1980-83
15.	717	Kathy Phillips, 1989-92
16.	690	Julia Trogele, 2008-11
17.	672	Helen Darling, 1997-00
18.	649	Jess Brungo, 2001-04
19.	645	Maren Walseth, 1998-01
20.	632	Mia Nickson, 2011-13
21.	621	Tanisha Wright, 2002-05
22.	598	Helen Holloway, 1991-94
23.	595	Sue Martin, 1977-80
24.	583	Kim Calhoun, 1993-96
25.	563	Kelly Mazzante, 2001-04
26.	531	Lorraine McGirt, 1983-85
27.	530	Ashli Schwab, 2002-05
28.	526	Adrie DeVries, 1987-90

CAREER 3-POINT FIELD GOALS MADE

1.	357	Kelly Mazzante, 2001-04
2.	292	Maggie Lucas, 2011-pres.
3.	230	Lisa Shepherd, 1998-01
4.	191	Jess Strom, 2002-05
5.	179	Tyra Grant, 2007-10

CAREER 3-POINT FGS ATTEMPTED

1.	1,019	Kelly Mazzante, 2001-04
2.	675	Maggie Lucas, 2011-pres.
3.	583	Lisa Shepherd, 1998-01
4.	531	Tyra Grant, 2007-10
5.	525	Jess Strom, 2002-05

CAREER FIELD GOALS ATTEMPTED

1.	2,430	Kelly Mazzante, 2001-04
2.	1,755	Tyra Grant, 2007-10
3.	1,685	Alex Bentley, 2010-13
4.	1,672	Susan Robinson, 1989-92
5.	1,667	Tanisha Wright, 2002-05
6.	1,526	Suzie McConnell, 1985-88
7.	1,370	Maggie Lucas, 2011-pres.
8.	1,365	Andrea Garner, 1997-00
9.	1,347	Kahadeejah Herbert, 1982-85
10.	1,329	Jen Bednarek, 1977-80

CAREER FREE THROWS MADE

1.	512	Kahadeejah Herbert, 1982-85
2.	491	Tyra Grant, 2007-10
3.	487	Susan Robinson, 1989-92
4.	478	Helen Darling, 1997-00
5.	460	Kelly Mazzante, 2001-04
6.	439	Tanisha Wright, 2002-05
7.	387	Jess Strom, 2002-05
	387	Lisa Shepherd, 1998-01
9.	371	Suzie McConnell, 1985-88
10.	362	Maggie Lucas, 2011-pres.

CAREER STEALS

1.	507	Suzie McConnell, 1985-88
2.	325	Alex Bentley, 2010-13
3.	314	Helen Darling, 1997-00
4.	310	Jess Strom, 2002-05
5.	293	Tina Nicholson, 1993-96
6.	289	Kelly Mazzante, 2001-04
7.	267	Tanisha Wright, 2002-05
8.	257	Nancy Kuhl, 1975-79
9.	247	Corinne Gulas, 1980-81
10.	224	Kahadeejah Herbert, 1982-85
11.	223	Tanya Garner, 1978-91
12.	217	Carol Walderman, 1981-83
13.	215	Sue Martin, 1976-80
14.	196	Brianne O'Rourke, 2006-09
15.	187	Annie Troyan, 1981-83
16.	182	Dana Eikenberg, 1989-92
	182	Vanessa Paynter, 1984-87
18.	180	Susan Robinson, 1989-92
19.	176	Maggie Lucas, 2011-pres.
20.	174	Angie Potthoff, 1993-97

as of start of 2013-14 season.

BIG TEN CAREER RECORDS

THREE-POINT FIELD GOALS - CAREER

1.	357	Kelly Mazzante, PSU	2001-04
2.	294	Lindsay Bowen, MSU	2003-06
3.	292	MAGGIE LUCAS, PSU	2011-pres.
4.	270	Caity Matter, OSU	2001-05
5.	261	Lindsey Meder, IOWA	1999-02

3-POINT FIELD GOAL PERCENTAGE - CAREER

1.	.432	MAGGIE LUCAS, PSU	2011-pres.
2.	.428	Brittany Johnson, OSU	2008-11
3.	.425	Jodi Howell, PUR	2006-10
4.	.411	Caity Matter, OSU	2001-05
5.	.407	Wendy Ausdemore, IOWA	2006-09
		Kristi Smith, IOWA	2006-09

FREE THROW PERCENTAGE - CAREER

1.	.900	Courtney Moses, PUR	2011-pres.
2.	.892	Wendy Ausdemore, IOWA	2006-09
3.	.890	Jamie Printy, IOWA	2010-13
4.	.887	MAGGIE LUCAS, PSU	2011-pres.
5.	.881	Cyndi Valentin, IND	2003-06



Player Performance Charts

#1 CANDICE AGEE

CAREER HIGHS

Points	8 (3x) last vs. Illinois (2/20/13)
Rebs.	9 vs. Fairleigh Dickinson (12/2/12)
Assists	1 at Miami (11/29/12)
	1 vs. Detroit (11/23/12)
Steals	2 vs. NJIT (12/23/12)
Blocks	3 vs. Illinois (2/20/13)
Minutes	20 vs. Fair. Dickinson (12/2/12)
FGM	3 (3x) last vs. NJIT (12/23/23)
FGA	8 vs. NJIT (12/23/12)
FG%	1.000 (1-1) at Ohio State (1/27/13)
	1.000 (1-1) at Miami (11/29/12)
3FGM	n/a
3FGA	n/a
3PT %	n/a
FTM	4 vs. Illinois (2/20/13)
FTA	8 vs. Illinois (2/20/13)
FT %	1.000 (2-2) vs. NJIT (12/23/12)
Career Double-Doubles	n/a
Career 20-point games	n/a

SEASON HIGHS

Points	n/a
Rebs.	n/a
Assists	n/a
Steals	n/a
Blocks	n/a
Minutes	n/a
FGM	n/a
FGA	n/a
FG%	n/a
3FGM	n/a
3FGA	n/a
3PT%	n/a
FTM	n/a
FTA	n/a
FT%	n/a
Double-Doubles	n/a
20-point games	n/a

BIG TEN CONFERENCE CAREER HIGHS

Points	8 vs. Illinois (2/20/13)
Rebs.	3 at Ohio State (1/27/13)
Assists	n/a
Steals	n/a
Blocks	3 vs. Illinois (2/20/13)
Minutes	16 vs. Illinois (2/20/13)
FGM	2 (3x) last vs. Illinois (2/20/13)
FGA	4 (3x) last vs. Illinois (2/20/13)
FG%	1.000 (1-1) at Ohio State (1/27/13)
3FGM	n/a
3FGA	n/a
3PT%	n/a
FTM	4 vs. Illinois (2/20/13)
FTA	8 vs. Illinois (2/20/13)
FT%	.500 (4-8) vs. Illinois (2/20/13)
	.500 (1-2) at Iowa (2/14/13)
Double-Doubles	n/a
20-point games	n/a

#2 DARA TAYLOR

CAREER HIGHS

Points	18 at Michigan State (1/6/13)
Rebs.	8 vs. East Carolina (3/21/10)
Assists	11 at American (12/20/09)
	11 at Virginia (1/11/10)
Steals	7 vs. Northwestern (1/3/13)
Blocks	1 (6x) last vs. Cal Poly (3/24/13)
Minutes	38 at American (12/20/09)
FGM	7 at Michigan State (1/6/13)
	7 vs. Clemson (2/14/10)
FGA	14 at Connecticut (12/6/12)
	14 at N.C. State (1/7/10)
FG%	1.000 (3x) last vs. N.C. State (2-2) (2/6/11)
3FGM	3 at Michigan State (1/6/13)
	3 at Virginia Tech (12/12/12)
3FGA	6 at Virginia Tech (12/12/12)
3PT %	1.000 (8x) last vs. Cal Poly (1-1) (3/24/13)
FTM	7 at Wake Forest (2/11/10)
FTA	10 at Wake Forest (2/11/10)
	10 vs. North Carolina (3/4/10)
FT %	1.000 (12x) last vs. Cal Poly (4-4) (3/24/13)
Career Double-Doubles	1
Career 20-point games	n/a

SEASON HIGHS

Points	n/a
Rebs.	n/a
Assists	n/a
Steals	n/a
Blocks	n/a
Minutes	n/a
FGM	n/a
FGA	n/a
FG%	n/a
3FGM	n/a
3FGA	n/a
3PT%	n/a
FTM	n/a
FTA	n/a
FT%	n/a
Double-Doubles	n/a
20-point games	n/a

BIG TEN CONFERENCE CAREER HIGHS

Points	18 at Michigan State (1/6/13)
Rebs.	7 at Iowa (2/14/13)
	7 vs. Wisconsin (1/17/13)
Assists	8 vs. Nebraska (1/13/13)
Steals	7 vs. Northwestern (1/3/13)
Blocks	1 vs. Minnesota (1/24/13)
	1 vs. Nebraska (1/13/13)
Minutes	34 at Michigan State (1/6/13)
FGM	7 at Michigan State (1/6/13)
FGA	12 vs. Northwestern (1/3/13)
FG%	.700 (7-10) at Michigan State (1/6/13)
3FGM	3 at Michigan State (1/6/13)
3FGA	4 at Michigan State (1/6/13)
3PT%	1.000 (4x) last at Iowa (1-1) (2/14/13)
FTM	2 at Indiana (2/7/13)
	2 vs. Purdue (2/4/13)
FTA	4 at Indiana (2/7/13)
FT%	1.000 (3x) last at Ohio State (1-1) (1/27/13)
Double-Doubles	n/a
20-point games	n/a

#5 TALIA EAST

CAREER HIGHS

Points	11 vs. Fairleigh Dickinson (12/2/12)
Rebs.	15 at South Carolina (11/20/11)
Assists	2 (4x) last vs. Georgetown (12/9/12)
Steals	2 (6x) last at Indiana (2/7/13)
Blocks	7 at South Carolina (11/20/11)
Minutes	29 at South Carolina (11/20/11)
FGM	4 (3x) last vs. Fairleigh Dickinson (12/2/12)
FGA	10 vs. Fairleigh Dickinson (12/2/12)
FG%	1.000 (12x) last at Nebraska (1-1) (3/3/13)
3FGM	n/a
3FGA	n/a
3PT %	n/a
FTM	5 vs. Purdue (2/4/13)
FTA	7 vs. Purdue (2/4/13)
FT %	1.000 (7x) last at Iowa (2-2) (2/14/13)
Career Double-Doubles	n/a
Career 20-point games	n/a

SEASON HIGHS

Points	n/a
Rebs.	n/a
Assists	n/a
Steals	n/a
Blocks	n/a
Minutes	n/a
FGM	n/a
FGA	n/a
FG%	n/a
3FGM	n/a
3FGA	n/a
3PT%	n/a
FTM	n/a
FTA	n/a
FT%	n/a
Double-Doubles	n/a
20-point games	n/a

BIG TEN CONFERENCE CAREER HIGHS

Points	9 vs. Purdue (2/4/13)
Rebs.	9 vs. Indiana (2/2/12)
	10 at Northwestern (2/12/12)
Assists	2 vs. Minnesota (2/26/12)
Steals	2 (3x) last at Indiana (2/7/13)
Blocks	3 at Nebraska (1/15/12)
Minutes	24 vs. Indiana (2/2/12)
FGM	4 vs. Indiana (2/2/12)
FGA	7 vs. Indiana (2/2/12)
FG%	1.000 (11x) at Nebraska (1-1) (3/3/13)
3FGM	n/a
3FGA	n/a
3PT%	n/a
FTM	5 vs. Purdue (2/4/13)
FTA	7 vs. Purdue (2/4/13)
FT%	1.000 (3x) last at Iowa (2-2) (2/14/13)
Double-Doubles	n/a
20-point games	n/a



Player Performance Charts

#10 KEKE SEVILLIAN	
CAREER HIGHS	
Points.....	n/a
Rebs.....	n/a
Assists.....	n/a
Steals.....	n/a
Blocks.....	n/a
Minutes.....	n/a
FGM.....	n/a
FGA.....	n/a
FG%.....	n/a
3FGM.....	n/a
3FGA.....	n/a
3PT%.....	n/a
FTM.....	n/a
FTA.....	n/a
FT%.....	n/a
Double-Doubles.....	n/a
20-point games.....	n/a
SEASON HIGHS	
Points.....	n/a
Rebs.....	n/a
Assists.....	n/a
Steals.....	n/a
Blocks.....	n/a
Minutes.....	n/a
FGM.....	n/a
FGA.....	n/a
FG%.....	n/a
3FGM.....	n/a
3FGA.....	n/a
3PT%.....	n/a
FTM.....	n/a
FTA.....	n/a
FT%.....	n/a
Double-Doubles.....	n/a
20-point games.....	n/a
BIG TEN CONFERENCE CAREER HIGHS	
Points.....	n/a
Rebs.....	n/a
Assists.....	n/a
Steals.....	n/a
Blocks.....	n/a
Minutes.....	n/a
FGM.....	n/a
FGA.....	n/a
FG%.....	n/a
3FGM.....	n/a
3FGA.....	n/a
3PT%.....	n/a
FTM.....	n/a
FTA.....	n/a
FT%.....	n/a
Double-Doubles.....	n/a
20-point games.....	n/a

#11 ALEX HARRIS	
CAREER HIGHS	
Points.....	n/a
Rebs.....	n/a
Assists.....	n/a
Steals.....	n/a
Blocks.....	n/a
Minutes.....	n/a
FGM.....	n/a
FGA.....	n/a
FG%.....	n/a
3FGM.....	n/a
3FGA.....	n/a
3PT%.....	n/a
FTM.....	n/a
FTA.....	n/a
FT%.....	n/a
Double-Doubles.....	n/a
20-point games.....	n/a
SEASON HIGHS	
Points.....	n/a
Rebs.....	n/a
Assists.....	n/a
Steals.....	n/a
Blocks.....	n/a
Minutes.....	n/a
FGM.....	n/a
FGA.....	n/a
FG%.....	n/a
3FGM.....	n/a
3FGA.....	n/a
3PT%.....	n/a
FTM.....	n/a
FTA.....	n/a
FT%.....	n/a
Double-Doubles.....	n/a
20-point games.....	n/a
BIG TEN CONFERENCE CAREER HIGHS	
Points.....	n/a
Rebs.....	n/a
Assists.....	n/a
Steals.....	n/a
Blocks.....	n/a
Minutes.....	n/a
FGM.....	n/a
FGA.....	n/a
FG%.....	n/a
3FGM.....	n/a
3FGA.....	n/a
3PT%.....	n/a
FTM.....	n/a
FTA.....	n/a
FT%.....	n/a
Double-Doubles.....	n/a
20-point games.....	n/a

#15 KALIYAH MITCHELL	
CAREER HIGHS	
Points.....	n/a
Rebs.....	n/a
Assists.....	n/a
Steals.....	n/a
Blocks.....	n/a
Minutes.....	n/a
FGM.....	n/a
FGA.....	n/a
FG%.....	n/a
3FGM.....	n/a
3FGA.....	n/a
3PT%.....	n/a
FTM.....	n/a
FTA.....	n/a
FT%.....	n/a
Double-Doubles.....	n/a
20-point games.....	n/a
SEASON HIGHS	
Points.....	n/a
Rebs.....	n/a
Assists.....	n/a
Steals.....	n/a
Blocks.....	n/a
Minutes.....	n/a
FGM.....	n/a
FGA.....	n/a
FG%.....	n/a
3FGM.....	n/a
3FGA.....	n/a
3PT%.....	n/a
FTM.....	n/a
FTA.....	n/a
FT%.....	n/a
Double-Doubles.....	n/a
20-point games.....	n/a
BIG TEN CONFERENCE CAREER HIGHS	
Points.....	n/a
Rebs.....	n/a
Assists.....	n/a
Steals.....	n/a
Blocks.....	n/a
Minutes.....	n/a
FGM.....	n/a
FGA.....	n/a
FG%.....	n/a
3FGM.....	n/a
3FGA.....	n/a
3PT%.....	n/a
FTM.....	n/a
FTA.....	n/a
FT%.....	n/a
Double-Doubles.....	n/a
20-point games.....	n/a

Nine-Time Big Ten Champions • Two-Time Big Ten Tournament Champions • 2000 NCAA Final Four • 24 NCAA Tournament Appearances



Player Performance Charts

#20 INFINITI ALSTON	
CAREER HIGHS	
Points	n/a
Rebs	n/a
Assists	n/a
Steals	n/a
Blocks	n/a
Minutes	n/a
FGM	n/a
FGA	n/a
FG%	n/a
3FGM	n/a
3FGA	n/a
3PT%	n/a
FTM	n/a
FTA	n/a
FT%	n/a
Double-Doubles	n/a
20-point games	n/a
SEASON HIGHS	
Points	n/a
Rebs	n/a
Assists	n/a
Steals	n/a
Blocks	n/a
Minutes	n/a
FGM	n/a
FGA	n/a
FG%	n/a
3FGM	n/a
3FGA	n/a
3PT%	n/a
FTM	n/a
FTA	n/a
FT%	n/a
Double-Doubles	n/a
20-point games	n/a
BIG TEN CONFERENCE CAREER HIGHS	
Points	n/a
Rebs	n/a
Assists	n/a
Steals	n/a
Blocks	n/a
Minutes	n/a
FGM	n/a
FGA	n/a
FG%	n/a
3FGM	n/a
3FGA	n/a
3PT%	n/a
FTM	n/a
FTA	n/a
FT%	n/a
Double-Doubles	n/a
20-point games	n/a

#23 ARIEL EDWARDS	
CAREER HIGHS	
Points	24 vs. Detroit (11/23/12)
Rebs	11 vs. Iowa (1/22/12)
Assists	4 at Wisconsin (1/2/12)
Steals	3 at Texas Tech (12/3/11)
Blocks	2 (3x) last vs. Nebraska (1/13/13)
Minutes	38 at Delaware (11/17/11)
FGM	11 vs. Detroit (11/23/12)
FGA	16 vs. Detroit (11/23/12)
FG%	1.000 (3x) last DePaul (1-1) (3/21/11)
3FGM	2 (3x) last at Michigan State (1/6/13)
3FGA	4 vs. Army (12/8/10)
	4 vs. Hartford (11/27/10)
3PT %	1.000 (11x) last vs. Cal Poly (1-1) (3/24/13)
FTM	9 vs. Iowa (1/22/12)
FTA	10 vs. Iowa (1/22/12)
FT %	1.000 (20x) last vs. Michigan State (2-2) (3/9/13)
Career Double-Doubles	1
Career 20-point games	1
SEASON HIGHS	
Points	n/a
Rebs	n/a
Assists	n/a
Steals	n/a
Blocks	n/a
Minutes	n/a
FGM	n/a
FGA	n/a
FG%	n/a
3FGM	n/a
3FGA	n/a
3PT%	n/a
FTM	n/a
FTA	n/a
FT%	n/a
Double-Doubles	n/a
20-point games	n/a
BIG TEN CONFERENCE CAREER HIGHS	
Points	17 vs. Iowa (1/22/12)
Rebs	11 vs. Iowa (1/22/12)
Assists	4 at Wisconsin (1/2/12)
Steals	2 vs. Nebraska (12/30/11)
	2 vs. Indiana (1/23/11)
Blocks	2 vs. Nebraska (1/13/13)
Minutes	34 vs. Iowa (1/22/12)
FGM	6 vs. Nebraska (1/13/13)
	6 vs. Wisconsin (2/9/12)
FGA	11 vs. Northwestern (1/3/13)
FG% .	1.000 (5x) last vs. Michigan (2-2) (2/24/13)
3FGM	2 vs. Michigan (2/24/13)
	2 at Michigan State (1/6/13)
3FGA	3 vs. Wisconsin (2/9/12)
3PT% .	1.000 (5x) last vs. Michigan (2-2) (2/24/13)
FTM	9 vs. Iowa (1/22/12)
FTA	10 vs. Iowa (1/22/12)
FT% .	1.000 (9x) last at Minnesota (2-2) (2/28/13)
Double-Doubles	1
20-point games	n/a

#25 PEYTON WHITTED	
CAREER HIGHS	
Points	n/a
Rebs	n/a
Assists	n/a
Steals	n/a
Blocks	n/a
Minutes	n/a
FGM	n/a
FGA	n/a
FG%	n/a
3FGM	n/a
3FGA	n/a
3PT%	n/a
FTM	n/a
FTA	n/a
FT%	n/a
Double-Doubles	n/a
20-point games	n/a
SEASON HIGHS	
Points	n/a
Rebs	n/a
Assists	n/a
Steals	n/a
Blocks	n/a
Minutes	n/a
FGM	n/a
FGA	n/a
FG%	n/a
3FGM	n/a
3FGA	n/a
3PT%	n/a
FTM	n/a
FTA	n/a
FT%	n/a
Double-Doubles	n/a
20-point games	n/a
BIG TEN CONFERENCE CAREER HIGHS	
Points	n/a
Rebs	n/a
Assists	n/a
Steals	n/a
Blocks	n/a
Minutes	n/a
FGM	n/a
FGA	n/a
FG%	n/a
3FGM	n/a
3FGA	n/a
3PT%	n/a
FTM	n/a
FTA	n/a
FT%	n/a
Double-Doubles	n/a
20-point games	n/a



Player Performance Charts

#33 MAGGIE LUCAS

CAREER HIGHS

Points	39 vs. Georgetown (12/9/12)
Rebs	10 vs. Ohio State (2/20/12)
Assists	8 vs. Minnesota (2/26/12)
Steals	6 vs. Georgetown (12/9/12)
Blocks	4 vs. South Dakota St. (12/16/12)
Minutes	40 (5x) last at LSU (3/26/13)
FGM	11 at Nebraska (3/3/13)
FGA	11 vs. Georgetown (12/9/12)
FG%	24 at Minnesota (2/28/13)
3FGM	778 (7-9) at Virginia Tech (12/12/12)
3FGA	8 at Nebraska (3/3/13)
3PT%	13 (5x) last vs. Michigan State (3/9/13)
FTM	1.000 (3-3) vs. Michigan St. (2/10/13)
FTA	1.000 (4-4) at Bucknell (12/21/11)
FT%	11 at LSU (3/20/12)
FTM	11 vs. Washington State (11/11/11)
FTA	13 vs. Washington State (11/11/11)
FT %	1.000 (52x) last vs. LSU (4-4) (3/26/13)
Career Double-Doubles	1
Career 20-point games	46
Career 30-point games	4

SEASON HIGHS

Points	n/a
Rebs	n/a
Assists	n/a
Steals	n/a
Blocks	n/a
Minutes	n/a
FGM	n/a
FGA	n/a
FG%	n/a
3FGM	n/a
3FGA	n/a
3PT%	n/a
FTM	n/a
FTA	n/a
FT%	n/a
Double-Doubles	n/a
20-point games	n/a

BIG TEN CONFERENCE CAREER HIGHS

Points	34 at Nebraska (3/3/13)
Rebs	10 vs. Ohio State (2/20/12)
Assists	8 vs. Minnesota (2/26/12)
Steals	5 vs. Northwestern (1/3/13)
Blocks	2 (3x) last vs. Northwestern (1/3/13)
Minutes	40 at Nebraska (3/3/13)
FGM	40 at Michigan State (1/29/12)
FGA	11 at Nebraska (3/3/13)
FG%	24 at Minnesota (2/28/13)
3FGM	769 (10-13) at Michigan (1/26/12)
3FGA	8 at Nebraska (3/3/13)
3PT%	13 at Nebraska (3/3/13)
FTM	13 vs. Michigan State (1/7/12)
FTA	1.000 (3-3) vs. Michigan State (2/10/13)
FT%	9 vs. Northwestern (1/3/13)
FTM	12 vs. Northwestern (1/3/13)
FTA	1.000 (20x) last at Nebraska (4-4) (3/3/13)
Double-Doubles	1
20-point games	21
30-point games	2

#41 JENNY DeGRAAF

CAREER HIGHS

Points	n/a
Rebs	n/a
Assists	n/a
Steals	n/a
Blocks	n/a
Minutes	n/a
FGM	n/a
FGA	n/a
FG%	n/a
3FGM	n/a
3FGA	n/a
3PT%	n/a
FTM	n/a
FTA	n/a
FT%	n/a
Double-Doubles	n/a
20-point games	n/a

SEASON HIGHS

Points	n/a
Rebs	n/a
Assists	n/a
Steals	n/a
Blocks	n/a
Minutes	n/a
FGM	n/a
FGA	n/a
FG%	n/a
3FGM	n/a
3FGA	n/a
3PT%	n/a
FTM	n/a
FTA	n/a
FT%	n/a
Double-Doubles	n/a
20-point games	n/a

BIG TEN CONFERENCE CAREER HIGHS

Points	n/a
Rebs	n/a
Assists	n/a
Steals	n/a
Blocks	n/a
Minutes	n/a
FGM	n/a
FGA	n/a
FG%	n/a
3FGM	n/a
3FGA	n/a
3PT%	n/a
FTM	n/a
FTA	n/a
FT%	n/a
Double-Doubles	n/a
20-point games	n/a

#44 TORI WALDNER

CAREER HIGHS

Points	7 vs. Fairleigh Dickinson (12/2/12)
Rebs	10 vs. Wagner (12/18/11)
Assists	4 vs. Indiana (2/2/12)
Steals	3 vs. Michigan State (2/10/13)
Blocks	5 vs. Minnesota (1/24/13)
Minutes	21 vs. UMES (12/11/11)
FGM	3 (5x) last vs. Fairleigh Dickinson (12/2/12)
FGA	10 vs. Lafayette (11/18/12)
FG%	1.000 (8x) last vs. Michigan State (1-1) (3/9/13)
3FGM	n/a
3FGA	1 vs. Wisconsin (1/17/13)
3PT%	1 at LSU (3/20/12)
FTM	n/a
FTA	6 vs. Howard (11/11/12)
FT%	1.000 (4x) last vs. Illinois (2-2) (2/20/13)
Career Double-Doubles	n/a
Career 20-point games	n/a

SEASON HIGHS

Points	n/a
Rebs	n/a
Assists	n/a
Steals	n/a
Blocks	n/a
Minutes	n/a
FGM	n/a
FGA	n/a
FG%	n/a
3FGM	n/a
3FGA	n/a
3PT%	n/a
FTM	n/a
FTA	n/a
FT%	n/a
Double-Doubles	n/a
20-point games	n/a

BIG TEN CONFERENCE CAREER HIGHS

Points	6 (3x) last at Minnesota (2/5/12)
Rebs	8 vs. Illinois (2/20/13)
Assists	4 vs. Indiana (2/2/12)
Steals	3 vs. Michigan State (2/10/13)
Blocks	5 vs. Minnesota (1/24/13)
Minutes	17 vs. Wisconsin (1/17/13)
FGM	3 at Minnesota (2/5/12)
FGA	3 at Wisconsin (1/2/12)
FG%	5 at Minnesota (2/5/12)
3FGM	5 at Illinois (1/19/12)
3FGA	1.000 (6x) last vs. Purdue (1-1) (2/4/13)
3PT%	n/a
FTM	1 vs. Wisconsin (1/17/13)
FTA	n/a
FT%	2 (3x) last vs. Illinois (2/20/13)
Double-Doubles	3 at Michigan State (1/6/13)
20-point games	1.000 (3x) last vs. Illinois (2-2) (2/20/13)
	n/a
	n/a





COQUESE WASHINGTON

Head Coach
7th Season

PENN STATE LADY LION BASKETBALL

Coquese Washington was introduced as the fifth head coach of the Penn State women's basketball program on April 23, 2007. Washington is the first female African-American head coach in Penn State history.

The Lady Lions continued their return to the national spotlight in 2012-13 as they collected their second-straight Big Ten regular-season title and seventh overall with a 26-6 overall record and 14-2 mark in conference play. In each of Washington's first six years, Penn State has improved their Big Ten win total. The Lady Lions posted their third consecutive 25-win season, joining the 1993-94, 1994-95 and 1995-96 squads as the only teams in program history to accomplish the feat. Penn State also advanced to the second round of the NCAA Tournament with a win over Cal Poly. The Lady Lions were consistently ranked in the Top 10 for most of the season and finished eighth in the Associated Press Top 25 and 12th in the USA Today Sports Coaches' Poll.

With another stellar campaign, the accolades continued to roll in for the Lady Lions. Washington was selected as the Big Ten Coach of the Year by the media for the second-

straight season and became just the fifth mentor in Big Ten history to win back-to-back Coach of the Year accolades. She was also the WBCA Region 6 Coach of the Year and a finalist for WBCA National Coach of the Year for the second-straight season. The awards also piled up for Penn State's dynamic backcourt of Maggie Lucas and Alex Bentley. Lucas was selected as the Big Ten Player of the Year, was a Wade Trophy Finalist and was an All-America choice by four outlets, including the WBCA (honorable mention), Associated Press (second team), USBWA (first team) and Full Court (second team). She is just the third Lady Lion in program history to win Big Ten Player of the Year honors, joining Helen Darling and Kelly Mazzante. Bentley earned her third-straight first team All-Big Ten award and honorable mention All-America bids from the WBCA and Associated Press. She was also selected as the 2013 recipient of the Frances Pomeroy Naismith Award, which is presented to the nation's outstanding female collegian 5-8 and under. Bentley is the third Lady Lion to win the honor, joining Darling and Suzie McConnell. Nikki Greene also capped a stellar career for the Lady Lions with third team All-Big Ten accolades. She also became the first player in school history to accumulate 1,000 points, 900 rebounds and 200 blocks.

Both Bentley and Greene heard their names called on WNBA Draft night. Bentley was selected with the 13th overall pick by the Atlanta Dream to become the highest draft pick for the Lady Lions since Tanisha Wright (12th) in 2005. Greene was the 26th overall selection by the Phoenix Mercury to give Penn State two draft picks for the first time since 2004 (Mazzante, Jess Brungo).

With five graduating seniors in 2012-13, Penn State was stout on the recruiting trail, bringing in a seven-member class that was ranked 14th by ESPN/HoopGurlz. The Lady Lions also added transfer Sierra Moore from Duke to complete the eight-player class. The addition of Moore gives the Lady Lions four McDonald's All-Americans on the roster heading into the 2013-14 campaign, joining Dara Taylor (2009), Lucas (2010) and Candice Agee (2012).

Washington returned the Lady Lions to Big Ten prominence in her fifth season as she guided Penn State to the Big Ten regular-season title with a 13-3 record in conference play. Additionally, the Lady Lions advanced to the NCAA Tournament Sweet Sixteen with wins over UTEP and LSU en route to a 26-7 overall record. The Lady Lions posted back-to-back 20-win seasons for the first time since 2002-03 and 2003-04. It was also the first Big Ten crown and Sweet Sixteen berth for the Lady Lions since 2003-04. The Lady Lions were ranked throughout the season and finished ninth in the ESPN/USA Today Coaches' Poll and 11th in the Associated Press Top 25.

For her efforts in rebuilding the Penn State program, Washington was honored as the Big Ten Coach of the Year and the WBCA Region 6 Coach of the Year, making her a finalist for WBCA National Coach of the Year. The accolades were not just limited to Washington; all five Lady

THE WASHINGTON FILE

COACHING RESUME

2007-pres. - Head Coach, Penn State
2013 - Asst. Coach, USA Basketball World U. Games
2013-pres. - Vice President/President-Elect, WBCA
2012-pres. - Kay Yow Cancer Fund Board of Directors
2011-pres. - NCAA WBB Issues Committee
2010-13 - Treasurer, WBCA Executive Committee
2008-pres. - WBCA Board of Directors
2009-12 - USA Basketball Women's Jr. National Committee
2005-07 - Associate Head Coach, Notre Dame
1999-05 - Assistant Coach, Notre Dame

PLAYING EXPERIENCE

2002-03 - WNBA's Indiana Fever
2000-02 - WNBA's Houston Comets
1998-99 - WNBA's New York Liberty
1997-98 - ABL's Portland Power
1989-93 - University of Notre Dame

EDUCATION

Notre Dame '92, B.A. History
Notre Dame Law School '97, Juris Doctorate

AWARDS

- ❖ 2012, 2013 Big Ten Coach of the Year
- ❖ 2012, 2013 WBCA Region 6 Coach of the Year
- ❖ 2012, 2013 WBCA National Coach of the Year Finalist
- ❖ 2011, 2013 BCA Female Coach of the Year
- ❖ 2009 Greater Flint Hall of Fame Inductee
- ❖ 2008 WBCA "Rising Star" Award Winner

FAMILY

Husband: Raynell Brown
Children: Quenton (8), Rhaiyna (4)

Lion starters earned All-Big Ten recognition, including first team bids for Bentley and Lucas. Both Bentley and Lucas also garnered honorable mention All-America honors from the WBCA and Associated Press, respectively. Bentley became the 33rd player in school history to reach the 1,000-point plateau and just the 15th junior to reach the milestone. Lucas also joined the 1,000-point club in 2011-12, becoming just the third sophomore in program history to accomplish the feat.

On the recruiting trail, the Lady Lions' 2012 class earned a Top 20 class from Dan Olson's Collegiate Girls Basketball Report. The class included transfer Taylor, who sat out the 2011-12 season due to NCAA transfer rules, and McDonald's High School All-American Agee from California. Additionally, Agee earned a gold medal with the USA Basketball U18 National Team Trials at the 2012 FIBA Americas Championship in August.

Washington came to Happy Valley after eight seasons as an associate head coach and assistant coach under Muffet McGraw at Notre Dame, her alma mater. During Washington's eight years on the bench, Notre Dame amassed a 188-69 record with eight NCAA Tournament appearances, including four Sweet Sixteen runs and a National Championship in 2001.

Washington was a four-year starting point guard for Notre Dame under McGraw and was the team captain on Notre Dame's first-ever NCAA Tournament team. She was a two-time All-Midwestern Collegiate Conference (MCC) selection and led Notre Dame to three MCC Tournament titles.

The epitome of a student-athlete, Washington graduated from Notre Dame in 1992, a full year ahead of schedule, with a bachelor's degree in history. She went on to attain "Double Domer" status in 1997 after earning her Juris Doctorate from the Notre Dame Law School.

A native of Flint, Mich., Washington and her husband, Raynell Brown, have a son, Quenton (8), and a daughter, Rhaiyna (4). They reside in Port Matilda, Pa.

Washington's Coaching Record vs. Opponents

Arizona	1-0	Michigan	9-3
Army	1-0	Michigan State	4-8
Boston College	0-1	Middle Tennessee	1-0
Bucknell	5-0	Minnesota	6-7
Buffalo	1-0	Mississippi	1-0
Cal Poly	1-0	Monmouth	1-0
CS-Northridge	1-0	Nebraska	3-1
Charlotte	1-0	Nevada	1-0
Connecticut	0-3	NJIT	2-0
Coppin State	1-0	North Carolina	1-0
Dayton	2-1	Northwestern	7-1
Delaware	1-1	Oakland	2-0
DePaul	0-1	Ohio State	4-6
Detroit	1-0	Old Dominion	0-1
Drexel	2-1	Pittsburgh	2-1
Duke	1-0	Prairie View A&M	1-0
Fair Dickinson	1-0	Purdue	3-8
Florida State	0-1	Rider	1-0
Georgetown	2-0	South Carolina	4-1
Georgia Tech	0-1	South Dakota St.	1-0
Hartford	1-0	Stony Brook	1-0
Hofstra	0-1	Syracuse	0-1
Holy Cross	1-0	Texas A&M	1-1
Howard	1-0	UTEP	1-0
Illinois	9-3	Texas Tech	1-1
Indiana	5-4	Utah	1-0
Iowa	6-5	Virginia Tech	2-0
Iowa State	1-0	Wagner	1-0
Lafayette	1-0	Washington State	1-0
LSU	1-1	Wisconsin	5-6
Maine	1-0	UW-Green Bay	0-1
UMES	1-0	Xavier	0-1
Miami (Fla.)	0-1		





#1 Candice Agee

So. * F/C * 6-6 * Victorville, Calif./Silverado

2013-14 Season Notes:

- ♦ Posted six points and eight rebounds in the exhibition win over Lock Haven (10/27).



#2 Dara Taylor

Sr. * G * 5-8 * Wilmington, Del./Caravel Academy (Maryland)

2013-14 Season Notes:

- ♦ Dished six assists to go along with nine points, six rebounds and two steals in the exhibition win over Lock Haven (10/27).





#5 Talia East

Sr. * F/C * 6-3 * Philadelphia, Pa./Friends' Central School

2013-14 Highlights:

- ♦ Ranks 19th in Penn State history in blocked shots (57).

2013-14 Season Notes:

- ♦ Was 3-for-4 from the field en route to seven points in 13 minutes in the exhibition win over Lock Haven (10/27).



#10 Keke Sevillian

Fr. * G * 5-7 * Goodrich, Mich./Goodrich

2013-14 Season Notes:

- ♦ Had four points and two assists against Lock Haven (10/27).





#11 Alex Harris

Fr. * F * 6-3 * Lorain, Ohio/Lorain

2013-14 Season Notes:

- ♦ Pulled in seven rebounds and blocked two shots in the exhibition game against Lock Haven (10/27).



#12 Lindsey Spann

Fr. * G * 5-6 * Laurel, Md./Good Counsel

2013-14 Season Notes:

- ♦ Will miss 2013-14 campaign after tearing her right ACL in a practice during the summer.





#15 Kaliyah Mitchell
Fr. * G/F * 6-2 * Stone Mountain, Ga./Stephenson

2013-14 Season Notes:

- ♦ Nearly posted a double-double with nine points and 10 rebounds in the exhibition win over Lock Haven (10/27).



#20 Infiniti Alston
Fr. * F/C * 6-6 * Baltimore, Md./Digital Harbor

2013-14 Season Notes:

- ♦ Had four points, three rebounds and two blocks in seven minutes against Lock Haven (10/27).

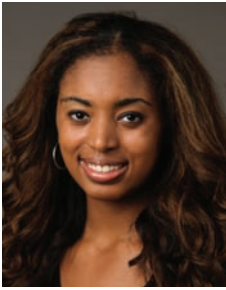




#23 Ariel Edwards
 Sr. * G/F * 6-3 * Elmont, N.Y./Christ the King

2013-14 Season Notes:

- ♦ Drained 7-of-10 shots from the field and was a perfect 7-for-7 from the free throw line en route to a game-high 21 points in the exhibition win over Lock Haven (10/27).



#25 Peyton Whitted
 Fr. * G/F * 6-3 * Suwanee, Ga./North Gwinnett

2013-14 Season Notes:

- ♦ Connected on 4-of-7 shots from the field en route to 11 points in exhibition action against Lock Haven (10/27).





#33 Maggie Lucas
 Sr. * G * 5-10 * Narberth, Pa./Germantown Academy

2013-14 Highlights:

- ♦ 2013 Big Ten Preseason Player of the Year.
- ♦ On the Wade Trophy and Wooden Award Preseason Watch Lists.
- ♦ Seventh in school history in scoring (1,838).
- ♦ Second in Penn State history and third in Big Ten history in three-point field goals made (292).
- ♦ 19th in program history in steals (176).

2013-14 Season Notes:

- ♦ Had 19 points, four assists and three steals in the exhibition win over Lock Haven (10/27).



#35 Sierra Moore
 RS-So. * G * 5-11 * Hanover, Pa./Delone Catholic (Duke)

2013-14 Season Notes:

- ♦ Will sit out the 2013-14 season due to NCAA transfer rules after transferring from Duke.





#41 Jenny DeGraaf
Fr. * G/F * 6-1 * Springboro, Ohio/Springboro

2013-14 Season Notes:

- ♦ Scored four points and had two blocks in the exhibition game against Lock Haven (10/27).



#44 Tori Waldner
Jr. * F * 6-5 * Milton, Ga./Milton

2013-14 Highlights:

- ♦ 20th in program history in blocked shots (50).

2013-14 Season Notes:

- ♦ Had six points and six boards against Lock Haven in exhibition action (10/27).



#15/13 Penn State 102, Lock Haven 51

Exhibition Game * Oct. 27, 2013 * University Park, Pa.

Lock Haven 51 • 0-0

#	Player	Total			3-Ptr			Rebounds			PF	TP	A	TO	Blk	Stl	Min
		FG-FGA	FG-FGA	FT-FTA	FG-FGA	FG-FGA	FT-FTA	Off	Def	Tot							
15	LANE, Sami	* 3-14	1-3	1-2	0	1	1	2	8	2	5	0	1	34			
21	McDANIEL, Syvae	* 1-2	0-0	1-2	5	2	7	3	3	1	0	0	0	29			
24	MOYER, Marraya	* 5-14	2-4	5-10	1	6	7	3	17	2	3	0	0	37			
30	McDANIEL, Rachael	* 3-11	1-5	0-0	0	1	1	2	7	0	4	1	0	19			
32	GILDEA, Hannah	* 1-6	0-1	2-4	1	2	3	3	4	0	1	0	0	26			
01	HEYWARD, Shaleta	0-1	0-1	0-0	0	0	0	1	0	0	0	0	0	3			
02	RYAN, Kelsey	0-0	0-0	2-2	2	0	2	1	2	1	0	0	0	4			
04	WARD, Marissa	0-2	0-0	0-0	1	0	1	0	0	0	1	0	0	2			
23	HILLIARD, JJ	1-6	0-3	8-9	1	0	1	4	10	0	3	0	0	15			
25	BREHONY, Alex	0-2	0-0	0-0	0	1	1	0	0	1	0	0	0	14			
40	MORSE, Sydney	0-2	0-0	0-2	0	2	2	4	0	0	1	0	0	13			
44	FARMERY, Dakota	0-0	0-0	0-0	0	1	1	1	0	0	0	0	0	4			
	Team				5	4	9				1						
	Totals	14-60	4-17	19-31	16	20	36	24	51	7	19	1	1	200			

FG % 1st Half: 7-27 25.9% 2nd half: 7-33 21.2% Game: 14-60 23.3% Deadball Rebounds 8
 3FG % 1st Half: 0-2 0.0% 2nd half: 4-15 26.7% Game: 4-17 23.5%
 FT % 1st Half: 11-19 57.9% 2nd half: 8-12 66.7% Game: 19-31 61.3%

Penn State 102 • 0-0

#	Player	Total			3-Ptr			Rebounds			PF	TP	A	TO	Blk	Stl	Min
		FG-FGA	FG-FGA	FT-FTA	FG-FGA	FG-FGA	FT-FTA	Off	Def	Tot							
01	Agee, Candice	* 3-9	0-0	0-0	6	2	8	2	6	0	3	1	0	17			
02	Taylor, Dara	* 4-10	0-2	1-1	3	3	6	2	9	6	1	0	2	27			
23	Edwards, Ariel	* 7-10	0-0	7-7	1	4	5	0	21	2	1	0	2	23			
33	Lucas, Maggie	* 4-11	3-8	8-8	0	4	4	0	19	4	1	1	3	21			
44	Waldner, Tori	* 2-4	0-0	2-2	5	1	6	3	6	0	2	1	0	12			
05	East, Talia	3-4	0-0	1-2	1	2	3	1	7	0	1	0	0	13			
10	Sevillian, Keke	1-6	0-1	2-2	0	0	0	3	4	2	1	0	1	16			
11	Harris, Alex	0-1	0-0	2-3	1	6	7	2	2	1	1	2	0	17			
15	Mitchell, Kaliyah	3-5	0-1	3-6	3	7	10	4	9	1	3	1	2	15			
20	Alston, Infiniti	2-2	0-0	0-1	2	1	3	2	4	0	1	2	0	7			
25	Whitted, Peyton	4-7	1-3	2-2	1	1	2	1	11	1	0	0	2	19			
41	DeGraaf, Jenny	2-6	0-0	0-0	0	2	2	1	4	0	0	2	0	13			
	Team				2	1	3										
	Totals	35-75	4-15	28-34	25	34	59	21	102	17	15	10	12	200			

FG % 1st Half: 17-43 39.5% 2nd half: 18-32 56.3% Game: 35-75 46.7% Deadball Rebounds 1
 3FG % 1st Half: 3-10 30.0% 2nd half: 1-5 20.0% Game: 4-15 26.7%
 FT % 1st Half: 16-17 94.1% 2nd half: 12-17 70.6% Game: 28-34 82.4%

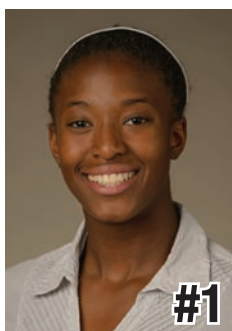
Officials: Michael McConnell, Shannon Feck, Kathy Ridilla
 Technical fouls: Lock Haven-McDANIEL, Syvae. Penn State-None.
 Attendance: 3443

Notable

- Senior guard/forward **Ariel Edwards** registered 21 points to pace the Lady Lions. She scored 14 of her game-best 21 points in the first half.
- Freshman **Peyton Whitted** also reached double figures with 11 points on 4-for-7 shooting.
- Fellow freshman **Kaliyah Mitchell** nearly tallied a double-double with nine points and 10 boards in 15 minutes of action.



2013-14 RADIO/TV CHART



Candice Agee
6-6 * So./So. * F/C
Victorville, Calif.
Silverado



Dara Taylor
5-8 * 5th-Sr./Sr. * G
Wilmington, Del.
Caravel Academy
(Maryland)



Talia East
6-3 * Sr./Sr. * F/C
Philadelphia, Pa.
Friends' Central School



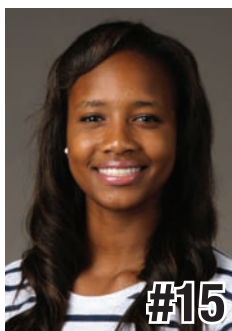
Keke Sevillian
5-7 * Fr./Fr. * G
Goodrich, Mich.
Goodrich



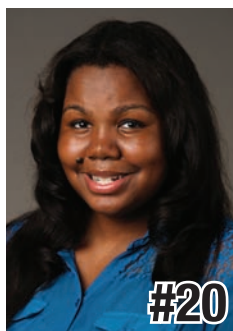
Alex Harris
6-3 * Fr./Fr. * F
Lorain, Ohio
Lorain Southview



Lindsey Spann
5-6 * Fr./Fr. * G
Laurel, Md.
Good Counsel



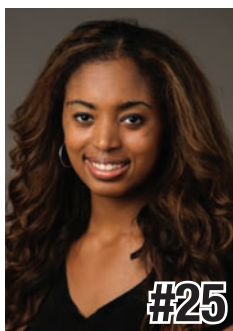
Kaliyah Mitchell
6-2 * Fr./Fr. * G/F
Stone Mountain, Ga.
Stephenson



Infiniti Alston
6-6 * Fr./Fr. * C
Baltimore, Md.
Digital Harbor



Ariel Edwards
6-3 * Sr./Sr. * G/F
Elmont, N.Y.
Christ the King



Peyton Whitted
6-3 * Fr./Fr. * G/F
Suwanee, Ga.
North Gwinnett



Maggie Lucas
5-9 * Sr./Sr. * G
Narberth, Pa.
Germantown Academy



Sierra Moore
5-11 * So./-- * G
Hanover, Pa.
Delone Catholic
Duke



Jenny DeGraaf
6-1 * Fr./Fr. * G/F
Springboro, Ohio
Spring Boro



Tori Waldner
6-5 * Jr./Jr. * F/C
Milton, Ga.
Milton



Coquese Washington
Head Coach
Notre Dame '92
Seventh Season



Fred Chmiel
Assistant Coach
Excelsior College
Fourth Season



Kia Damon
Assistant Coach
Millersville '97
Seventh Season



Maren Walseth
Assistant Coach
Penn State '02
Seventh Season

Nine-Time Big Ten Champions • Two-Time Big Ten Tournament Champions • 2000 NCAA Final Four • 24 NCAA Tournament Appearances





2012-13 Penn State Lady Lions
Penn State Combined Team Statistics (FINAL)
All games



RECORD:	OVERALL	HOME	AWAY	NEUTRAL
ALL GAMES	26-6	14-0	9-5	3-1
CONFERENCE	14-2	8-0	6-2	0-0
NON-CONFERENCE	12-4	6-0	3-3	3-1

##	Player	gp-gs	min	avg	Total		3-Point		F-Throw		Rebounds			pf	dq	a	to	blk	stl	pts	avg	
					fg-fga	fg%	3fg-fga	3fg%	ft-fa	ft%	off	def	tot									avg
33	Lucas, Maggie	32-31	1106	34.6	210-476	.441	98-212	.462	126-140	.900	25	119	144	4.5	63	1	69	88	10	72	644	20.1
20	Bentley, Alex	32-32	996	31.1	180-440	.409	25-89	.281	66-81	.815	14	94	108	3.4	71	1	112	62	8	109	451	14.1
54	Greene, Nikki	32-32	695	21.7	112-231	.485	0-0	.000	69-106	.651	118	153	271	8.5	104	1	11	69	39	26	293	9.2
24	Nickson, Mia	31-31	902	29.1	93-218	.427	0-0	.000	78-113	.690	97	115	212	6.8	70	2	31	46	13	32	264	8.5
23	Edwards, Ariel	32-6	666	20.8	96-207	.464	13-26	.500	47-63	.746	25	77	102	3.2	71	2	23	48	10	10	252	7.9
02	Taylor, Dara	32-25	871	27.2	86-225	.382	18-61	.295	33-53	.623	28	73	101	3.2	80	1	108	89	4	77	223	7.0
05	East, Talia	31-1	387	12.5	23-51	.451	0-0	.000	23-40	.575	35	62	97	3.1	61	3	10	24	21	13	69	2.2
01	Agee, Candice	26-0	204	7.8	20-54	.370	0-0	.000	11-20	.550	17	31	48	1.8	33	0	2	13	13	4	51	2.0
25	Studevent, Gizelle	32-1	297	9.3	28-75	.373	0-4	.000	5-8	.625	2	19	21	0.7	10	0	13	13	2	6	61	1.9
44	Waldner, Tori	30-0	275	9.2	19-59	.322	0-1	.000	10-13	.769	31	54	85	2.8	47	0	8	22	32	11	48	1.6
40	Wolfe, Marisa	1-1	1	1.0	0-0	.000	0-0	.000	0-0	.000	0	0	0	0.0	0	0	0	0	0	0	0	0.0
Team											87	52	139				13					
Total.....		32	6400		867-2036	.426	154-393	.392	468-637	.735	479	849	1328	41.5	610	11	387	487	152	360	2356	73.6
Opponents.....		32	6400		658-1792	.367	152-494	.308	422-608	.694	384	777	1161	36.3	566	-	383	623	115	241	1890	59.1

TEAM STATISTICS	PSU	OPP	Date	Opponent	Score	Att.	
SCORING	2356	1890	11/11/12	HOWARD	w 72-61	3655	
Points per game	73.6	59.1	11/14/12	at Texas A&M	w 63-58	4756	
Scoring margin	+14.6	-	11/18/12	LAFAYETTE	w 75-34	3700	
FIELD GOALS-ATT	867-2036	658-1792	11/23/12	vs Detroit	w 80-72	479	
Field goal pct	.426	.367	11/24/12	at Cal State Northridge	w 85-73	568	
3 POINT FG-ATT	154-393	152-494	11/29/12	at Miami	L 65-69	1286	
3-point FG pct	.392	.308	12/2/12	FAIRLEIGH DICKINSON	w 101-44	4072	
3-pt FG made per game	4.8	4.8	12-06-12	at UCONN	L 52-67	8072	
FREE THROWS-ATT	468-637	422-608	12/9/12	GEORGETOWN	w 97-74	4059	
Free throw pct	.735	.694	12/12/12	at Virginia Tech	w 60-41	3587	
F-Throws made per game	14.6	13.2	12/16/12	SOUTH DAKOTA STATE	w 60-50	4747	
REBOUNDS	1328	1161	12/23/12	NJIT	w 82-37	7852	
Rebounds per game	41.5	36.3	* 1/3/13	NORTHWESTERN	w 73-69	3863	
Rebounding margin	+5.2	-	* 01/06/13	at Michigan State	w 76-55	6818	
ASSISTS	387	383	* 1/13/13	NEBRASKA	w 80-58	6098	
Assists per game	12.1	12.0	* 1/17/13	WISCONSIN	w 84-40	3848	
TURNOVERS	487	623	* 01/21/13	at Michigan	w 59-49	2842	
Turnovers per game	15.2	19.5	* 1/24/13	MINNESOTA	w 64-59	4089	
Turnover margin	+4.3	-	* 01/27/13	at Ohio State	w 71-56	6802	
Assist/turnover ratio	0.8	0.6	* 01/31/13	at Wisconsin	L 61-63	3602	
STEALS	360	241	* 2/4/13	PURDUE	w 69-61	5030	
Steals per game	11.3	7.5	* 2/7/13	at Indiana	w 76-54	1799	
BLOCKS	152	115	* 2/10/13	MICHIGAN STATE	w 71-56	6325	
Blocks per game	4.8	3.6	* 2/14/13	at Iowa	w 81-69	5783	
ATTENDANCE	76050	63089	* 2/20/13	ILLINOIS	w 95-62	4539	
Home games-Avg/Game	14-5432	14-4472	* 2/24/13	MICHIGAN	w 68-57	14173	
Neutral site-Avg/Game	-	4-120	* 02/28/13	at Minnesota	L 81-89	2808	
Score by Periods	1st	2nd	Totals	* 03/03/13	at Nebraska	w 82-67	10832
Penn State	1153	1203	2356	3/8/13	vs Ohio State	w 76-66	0
Opponents	905	985	1890	3/9/13	vs Michigan State	L 46-54	0
				03/24/13	vs Cal Poly	w 85-55	0
				03/26/13	at LSU	L 66-71	3055

* - Conference game



2012-13 Penn State Lady Lions
 Penn State Combined Team Statistics (FINAL)
 Conference games



RECORD:	OVERALL	HOME	AWAY	NEUTRAL
ALL GAMES	14-2	8-0	6-2	0-0
CONFERENCE	14-2	8-0	6-2	0-0
NON-CONFERENCE	0-0	0-0	0-0	0-0

##	Player	gp-gs	min	avg	Total		3-Point		F-Throw		Rebounds				pf	dq	a	to	blk	stl	pts	avg
					fg-fga	fg%	3fg-fga	3fg%	ft-fa	ft%	off	def	tot	avg								
33	Lucas, Maggie	16-15	561	35.1	104-243	.428	46-107	.430	70-77	.909	15	53	68	4.3	35	0	32	46	5	34	324	20.3
20	Bentley, Alex	16-16	504	31.5	101-247	.409	13-46	.283	27-34	.794	5	39	44	2.8	35	1	47	28	4	55	242	15.1
54	Greene, Nikki	16-16	353	22.1	57-110	.518	0-0	.000	33-57	.579	71	74	145	9.1	55	1	3	32	21	12	147	9.2
24	Nickson, Mia	16-16	489	30.6	50-111	.450	0-0	.000	46-64	.719	51	62	113	7.1	35	0	12	20	5	18	146	9.1
23	Edwards, Ariel	16-0	320	20.0	44-93	.473	7-12	.583	27-34	.794	13	30	43	2.7	31	0	11	20	4	7	122	7.6
02	Taylor, Dara	16-15	443	27.7	48-116	.414	11-29	.379	11-21	.524	12	35	47	2.9	37	1	52	47	2	50	118	7.4
05	East, Talia	16-0	181	11.3	9-16	.563	0-0	.000	12-20	.600	15	34	49	3.1	39	3	2	9	11	6	30	1.9
25	Studevent, Gizelle	16-1	130	8.1	12-31	.387	0-1	.000	2-4	.500	0	10	10	0.6	3	0	4	4	1	1	26	1.6
01	Agee, Candice	12-0	71	5.9	7-17	.412	0-0	.000	5-10	.500	5	8	13	1.1	17	0	0	6	5	0	19	1.6
44	Waldner, Tori	16-0	147	9.2	7-26	.269	0-1	.000	3-5	.600	15	30	45	2.8	28	0	4	11	22	5	17	1.1
40	Wolfe, Marisa	1-1	1	1.0	0-0	.000	0-0	.000	0-0	.000	0	0	0	0.0	0	0	0	0	0	0	0	0.0
Team											32	26	58				5					
Total.....		16	3200		439-1010	.435	77-196	.393	236-326	.724	234	401	635	39.7	315	6	167	228	80	188	1191	74.4
Opponents.....		16	3200		332-865	.384	84-266	.316	216-312	.692	185	386	571	35.7	293	-	195	315	46	106	964	60.2

TEAM STATISTICS	PSU	OPP	Date	Opponent	Score	Att.
SCORING	1191	964	* 1/3/13	NORTHWESTERN	w 73-69	3863
Points per game	74.4	60.2	* 01/06/13	at Michigan State	w 76-55	6818
Scoring margin	+14.2	-	* 1/13/13	NEBRASKA	w 80-58	6098
FIELD GOALS-ATT	439-1010	332-865	* 1/17/13	WISCONSIN	w 84-40	3848
Field goal pct	.435	.384	* 01/21/13	at Michigan	w 59-49	2842
3 POINT FG-ATT	77-196	84-266	* 1/24/13	MINNESOTA	w 64-59	4089
3-point FG pct	.393	.316	* 01/27/13	at Ohio State	w 71-56	6802
3-pt FG made per game	4.8	5.3	* 01/31/13	at Wisconsin	L 61-63	3602
FREE THROWS-ATT	236-326	216-312	* 2/4/13	PURDUE	w 69-61	5030
Free throw pct	.724	.692	* 2/7/13	at Indiana	w 76-54	1799
F-Throws made per game	14.8	13.5	* 2/10/13	MICHIGAN STATE	w 71-56	6325
REBOUNDS	635	571	* 2/14/13	at Iowa	w 81-69	5783
Rebounds per game	39.7	35.7	* 2/20/13	ILLINOIS	w 95-62	4539
Rebounding margin	+4.0	-	* 2/24/13	MICHIGAN	w 68-57	14173
ASSISTS	167	195	* 02/28/13	at Minnesota	L 81-89	2808
Assists per game	10.4	12.2	* 03/03/13	at Nebraska	w 82-67	10832
TURNOVERS	228	315	* - Conference game			
Turnovers per game	14.3	19.7				
Turnover margin	+5.4	-				
Assist/turnover ratio	0.7	0.6				
STEALS	188	106				
Steals per game	11.8	6.6				
BLOCKS	80	46				
Blocks per game	5.0	2.9				
ATTENDANCE	47965	41286				
Home games-Avg/Game	8-5996	8-5161				
Neutral site-Avg/Game	-	0-0				

Score by Periods	1st	2nd	Totals
Penn State	584	607	1191
Opponents	472	492	964