



2012-13 PENN STATE LADY LION BASKETBALL

WOMEN'S BASKETBALL CONTACT:
 Kristina Petersen
 Twitter: @ladylionsid
 Website: www.GoPSUsports.com
 Email: kap18@psu.edu
 Cell: 814-883-4581
 Office: 814-865-1757

Penn State Athletic Communications: 101D Bryce Jordan Center, University Park, PA 16802 ♦ Office: 814-865-1757 ♦ Fax: 814-863-3165

SCHEDULE/RESULTS

NOVEMBER

Sat. 3	CALIFORNIA (PA.) (ex.).....W, 95-39
Sun. 11	HOWARD (BTN.com).....W, 72-61
Wed. 14	at #16/13 Texas A&M (FSN)W, 63-58
Sun. 18	LAFAYETTE (BTN.com)W, 75-34

Radisson Hotel Chatsworth Thanksgiving Basketball Tournament

Fri. 23	vs. Detroit.....W, 80-72
Sat. 24	vs. CS-Northridge.....W, 85-73

Big Ten/ACC Challenge

Thurs. 29	at Miami (Fla.).....L, 65-69
-----------	------------------------------

DECEMBER

Sun. 2	F. DICKINSON (BTN.com) ..W, 101-44
Thurs. 6	at #2/2 Connecticut (SNY).....L, 52-67
Sun. 9	GEORGETOWN (BTN).....W, 97-74
Wed. 12	at Virginia Tech.....W, 60-41
Sun. 16	SOUTH DAKOTA STATEW, 60-50
Sun. 23	NJIT (BTN.com).....W, 82-37

JANUARY

Thurs. 3	N-WESTERN * (BTN.com).....W, 73-69
Sun. 6	at Michigan State * (BTN)W, 76-55
Sun. 13	#RV/23 NEBRASKA * (ESPN2) .W, 80-58
Thurs. 17	WISCONSIN * (BTN.com)W, 84-40
Mon. 21	at #23/RV Michigan * (BTN) ...W, 59-49
Thurs. 24	MINNESOTA * (BTN).....W, 64-59
Sun. 27	at Ohio State * (BTN).....W, 71-56
Thurs. 31	at Wisconsin * (BTN.com).....8 p.m.

FEBRUARY

Mon. 4	PURDUE * (ESPN2) 7 p.m.
Thurs. 7	at Indiana * (BTN) 6:30 p.m.
Sun. 10	MICHIGAN STATE * (ESPN2)... 2 p.m.
Thurs. 14	at Iowa * (BTN.com).....8 p.m.
Wed. 20	ILLINOIS * (BTN.com)..... 7 p.m.

Seventh Annual Pink Zone at Penn State

Sun. 24	MICHIGAN * (BTN) 1 p.m.
Thurs. 28	at Minnesota * (BTN-WC)TBA

MARCH

Sun. 3	at Nebraska * (BTN-WC)TBA
Th.-Su. 7-10 Big Ten Tournament (BTN/ESPN2) (Hoffman Estates, Ill.)
Sa.-Tu. 23-26 NCAA 1st & 2nd Round
Sa.-Tu. 30-Apr. 2 NCAA Regionals

APRIL

Su./Tu. 7/9	...NCAA Final Four (New Orleans, La.)
-------------	---------------------------------------

BOLD CAPS indicates home game.
 * - indicates Big Ten game.
 All times are Eastern Time.
 BTN - Big Ten Network
 BTN.com - BigTenNetwork.com

Schedule subject to change. Please visit www.GoPSUsports.com for up-to-date tip times.

Game #20: #7/8 Penn State at Wisconsin

Thurs., Jan. 31 ▶ 8 p.m. (ET) ▶ Kohl Center ▶ Madison, Wis.

		SETTING THE SCENE
Penn State Lady Lions	Wisconsin Badgers	The Wisconsin Game
Record: 17-2, 6-0 Big Ten Last Game: PSU 71, Ohio State 56 (1/31) Head Coach: Coquese Washington Career Record: 109-69 (6th yr.) Record at PSU: 109-69 (6th yr.)	Record: 9-11, 1-6 Big Ten Last Game: Iowa 71, Wisconsin 60 (1/24) Head Coach: Bobbie Kelsey Career Record: 18-31 (2nd yr.) Record at UW: 18-31 (2nd yr.)	Series: Penn State leads 28-10 Last Meeting: PSU 84, Wisconsin 40 (1/17/13) Streak: Penn State - 3 wins Television: Student "U" Replay - Friday, Feb. 1 at 10:30 a.m. Radio: The game is on WRSC 1390 locally with Jerry Fisher and Brian Tripp calling the action. The audio feed is available at www.GoPSUsports.com. Webstream: BTDN on Penn State All-Access (btn.com) Live Stats: GoPSUsports.com
Statistical Leaders Points Maggie Lucas (20.0) Rebounds Nikki Greene (8.8) Assists Alex Bentley (3.7)	Statistical Leaders Points Morgan Paige (16.4) Rebounds Cassie Rochel (8.2) Assists Tiera Stephen (5.7)	

GAME DAY INFORMATION

SCOUTING WISCONSIN

The Badgers are 9-11 on the year and 1-6 in conference play. Morgan Paige leads Wisconsin with a 16.4 scoring average to go along with 31 assists and 18 steals on the year. Jacki Gulczynski also accounts for double figures at 11.3 points per game, while Cassie Rochel leads the team with 8.2 rebounds per game.

ALL-TIME VS. THE BADGERS

The Lady Lions are 28-10 all-time against Wisconsin. However, Penn State is just 9-8 in road games versus the Badgers, but is just 2-4 in the last six contests played at the Kohl Center. The Lady Lions earned an 84-40 on Jan. 17 to extend their win streak over the Badgers to three games after a season sweep last year.

LAST TIME VS. UW

The Lady Lions jumped out to an 11-0 lead and never looked back in an 84-40 wire-to-wire victory over Wisconsin Jan. 17. Leading the way for the Lady Lions was senior **Nikki Greene**, who scored 23 points to go along with 14 rebounds for her 12th career double-double. Senior **Alex Bentley** was one of four Lady Lions who scored in double figures, as she chipped in 14 points to go along with six steals and five assists.

STORYLINES

- ✓ The Lady Lions are riding a 11-game winning streak, the sixth longest in school history and third longest active streak in the NCAA.
- ✓ Penn State improves to 7-0 in Big Ten play for the first time since 2004-05.
- ✓ Penn State has won its last 14 Big Ten games, breaking the school record set over the 1992-93 and 1993-94 seasons.
- ✓ With a 17-2 start, Penn State is off to its best start since the 1993-94 season (22-2).
- ✓ Senior **Nikki Greene** became the 35th player in school history with 1,000 points vs. Minnesota.
- ✓ Greene posted her fourth double-double of the year and 13th of her career with 11 points and 13 rebounds at Ohio State.
- ✓ **Maggie Lucas** is in fifth place on the Big Ten's career three-pointers list (252).
- ✓ With two steals at OSU, **Alex Bentley** is tied for fifth on PSU's career steals list with Kelly Mazzante.
- ✓ The Lady Lions are 7th in the Jan. 28 AP and 8th in the Jan. 29 USA Today Sports Coaches' poll.
- ✓ Bentley and Lucas are among players named to the Wade Watch List, the Naismith Early Season Watch List and the Wooden Award Top 20.

UP NEXT

The Lady Lions return home on Monday to face Purdue in a Big Monday battle on ESPN2. Monday is Centre County Women's Resource Night and fans that bring an item off of the CCWRC's needed items list will receive \$5 off their ticket. Go to www.GoPSUsports.com/promotions/wbb.html for complete promotions information.



2012-13 ROSTER

PENN STATE LADY LIONS

No.	Name	Pos.	Cl./Elg.	Ht.	Hometown/High School (Previous School)
1	Candice Agee	C	Fr./Fr.	6-6	Victorville, Calif./Silverado
2	Dara Taylor	G	Sr./Jr.	5-8	Wilmington, Del./Caravel Academy (Maryland)
5	Talia East **	F/C	Jr./Jr.	6-3	Philadelphia, Pa./Friends' Central School
20	Alex Bentley ***	G	Sr./Sr.	5-7	Indianapolis, Ind./Ben Davis
23	Ariel Edwards **	G/F	Jr./Jr.	6-3	Elmont, N.Y./Christ the King
24	Mia Nickson **	F	Gr./Sr.	6-2	Ashburn, Va./Notre Dame Acad. (Boston College)
25	Gizelle Studevent ***	G	Sr./Sr.	5-11	La Jolla, Calif./The Bishop's School
33	Maggie Lucas **	G	Jr./Jr.	5-10	Narberth, Pa./Germantown Academy
40	Marisa Wolfe ***	F	Sr./Sr.	6-2	Ford City, Pa./Ford City
44	Tori Waldner *	F	So./So.	6-5	Milton, Ga./Milton
54	Nikki Greene ***	F/C	Sr./Sr.	6-4	Diboll, Texas/Diboll

Head Coach: Coquese Washington (Notre Dame '92)

Asst. Coaches: Fred Chmiel, Kia Damon, Maren Walseth

Captains: Alex Bentley, Mia Nickson, Marisa Wolfe

* Indicates letters earned

WISCONSIN BADGERS

No.	Name	Pos.	Cl.	Ht.	Hometown/High School (Previous School)
00	Shannon Malone	F	Fr.	6-1	Flower Mound, Texas/Marcus
2	Taylor Wurtz	G	Sr.	6-0	Brandon, Wis./Ripon
3	AnnMarie Brown	G/F	So.	6-0	St. Peter, Minn./St. Peter
4	Nicole Bauman	G	Fr.	5-10	New Berlin, Wis./Eisenhower
5	Morgan Paige	G	Jr.	5-9	Marion, Iowa/Marion
10	Dakota Whyte	G	Fr.	5-8	Ajax, Ontario/Notre Dame Catholic
22	Tessa Cichy	G	Fr.	6-0	Somerset, Wis./Hill-Murray
23	Daria Kryuchkova	F	Jr.	6-3	Moscow, Russia/H.S. No. 232 (Jacksonville Coll.)
24	Tiera Stephen	G	RS-Sr.	5-7	Dayton, Ohio/Chaminade-Julienne Cath. (Louisville)
25	Michala Johnson	F	Jr.	6-3	Bellwood, Ill./Montini (Connecticut)
35	Jacki Gulczynski	G/F	So.	6-1	Carol Stream, Ill./Bartlett
43	Cassie Rochel	F/C	Jr.	6-4	Lakeville, Minn./Lakeville North

Head Coach: Bobbie Kelsey

Asst. Coaches: Jayme Callahan, Stacy Cantley, Alysiah Bond

TEAM COMPARISON

PENN STATE		WISCONSIN	
Lucas (20.0)	Scoring Leader	Paige (16.4)	
Greene (8.8)	Rebounding Leader	Rochel (8.2)	
Bentley (3.7)	Assist Leader	Stephen (5.7)	
Bentley (3.8)	Steals Leader	Stephen (3.3)	
Waldner (1.2)	Blocks Leader	Rochel (2.4)	
73.6	Scoring Offense	59.1	
56.1	Scoring Defense	59.5	
+17.5	Scoring Margin	-0.3	
43.0	Rebounds Per Game	36.7	
+5.7	Rebound Margin	-1.0	
12.8	Assists Per Game	13.7	
11.7	Steals Per Game	7.9	
.417	Field Goal Pct.	.388	
.340	FG Defense Pct.	.371	
.380	3-pt. FG Pct.	.290	
.271	3-pt. FG Pct. Def.	.314	
.753	Free Throw Pct.	.777	
0.8	Assist/Turnover	0.8	
Won 11	W/L Streak	Lost 1	

SERIES HISTORY

Overall:	PSU leads 28-10	
Last meeting:	Jan. 17, 2013	
Last result:	PSU, 84-40	
Current streak:	PSU - 3 wins	
Last 10:	Tied 5-5	
Last 10 meetings:		
1/24/08	A	WIS, 52-79
2/3/08	H	WIS, 59-77
1/22/09	H	PSU, 58-56 (OT)
2/12/09	A	WIS, 52-58
1/21/10	A	PSU, 54-43
2/25/10	H	WIS, 39-71
1/2/11	A	WIS, 62-77
1/2/12	A	PSU, 82-49
2/9/12	H	PSU, 69-54
1/17/13	H	PSU, 84-40

QUICK FACTS

THE UNIVERSITY

Location: University Park, Pa.
 Founded: 1855
 Enrollment: 42,294
 Colors: Blue & White
 Nickname: Lady Lions
 Conference: Big Ten
 President: Dr. Rodney Erickson
 Director of Athletics: Dr. David Joyner
 Facility (cap.): Bryce Jordan Center (15,261)
 All-Time Record at BJC: 196-49 (19th season)

ATHLETIC COMMUNICATIONS

WBB Contact: Kristina Petersen
 Phone/Fax: (814) 865-1757/(814) 863-3165
 E-mail: kap18@psu.edu
 Address: 101-D Bryce Jordan Center
 University Park, Pa. 16802
 Press Row Phone: 814-863-3294
 Website: www.GoPSUsports.com
 Twitter: @ladylionsid

TEAM INFORMATION

2012-13 Record: 17-2
 Home: 10-0 Away: 6-2 Neutral: 1-0
 Big Ten Record: 7-0
 Home: 4-0 Away: 3-0
 Letterwinners Returning/Lost: 9/1
 Starters Returning/Lost: 4/1
 Big Ten Tournament: Semifinals
 Postseason: NCAA Sweet Sixteen

THE HISTORY

First Year of Women's Basketball: 1965
 All-Time Record: 848-382 (48 seasons)
 All-Time Big Ten Rec.: 224-117 (20 seasons)
 NCAA Tournament Appearances: 23
 NCAA Tournament Record: 29-23

WOMEN'S BASKETBALL

Head Coach: Coquese Washington
 Alma Mater: Notre Dame '92
 Overall Record: 109-69 (6th season)
 School Record: 109-69 (6th season)
 Basketball Office Phone: 814-863-2672
 Best Time To Reach Coach: Through SID
 Assistant Coaches (Alma Mater):
 Fred Chmiel (Excelsior College)
 Kia Damon (Millersville '97)
 Maren Walseth (Penn State '02)
 Twitter: @pennstatewbb
 Facebook: facebook.com/pennstateladylions
 YouTube: YouTube.com/pennstateladylions
 Instagram: pennstateladylions

PRONUNCIATIONS

Agee	A-jee
Coquese	ko-KWEES
Chmiel	shuh-MEAL
Maren Walseth	MARR-en WALL-seth
Gizelle Studevent	juh-ZELL STEW-duh-vent
Talia	tah-LEE-uh
Ariel	AIR-e-I
Dara	DAR-uh



STANDINGS (as of Jan. 28)

Team	Big Ten			Overall		
	W	L	Pct.	W	L	Pct.
PENN STATE	7	0	1.000	17	2	.895
Purdue	6	1	.857	17	3	.850
Michigan	5	2	.714	16	4	.800
Iowa	5	2	.714	16	5	.762
Michigan State	4	3	.571	16	4	.800
Nebraska	4	3	.571	14	6	.700
Illinois	4	3	.571	11	8	.579
Minnesota	2	5	.286	13	8	.619
Northwestern	2	5	.286	10	10	.500
Ohio State	1	6	.143	11	9	.550
Indiana	1	6	.143	10	10	.500
Wisconsin	1	6	.143	9	11	.450

BIG TEN SCHEDULE

JANUARY 31

Michigan at Minnesota	8 p.m.
Michigan State at Northwestern	8 p.m.
Indiana at Purdue	6:30 p.m.
Iowa at Illinois	8 p.m.
Nebraska at Ohio State	8:30 p.m.
Penn State at Wisconsin	8 p.m.

FEBRUARY 3

Ohio State at Indiana	2 p.m.
Minnesota at Nebraska	3 p.m.
Illinois at Wisconsin	3 p.m.
Northwestern at Iowa	2 p.m.

FEBRUARY 4

Purdue at Penn State	7 p.m.
Michigan at Michigan State	7:30 p.m.

FEBRUARY 7

Wisconsin at Ohio State	7 p.m.
Iowa at Minnesota	8:30 p.m.
Illinois at Michigan	7 p.m.
Nebraska at Northwestern	8 p.m.
Penn State at Indiana	6:30 p.m.

FEBRUARY 10

Michigan at Purdue	Noon
Michigan State at Penn State	2 p.m.
Indiana at Wisconsin	3 p.m.
Ohio State at Northwestern	4 p.m.
Minnesota at Illinois	2 p.m.

FEBRUARY 11

Nebraska at Iowa	8:30 p.m.
------------------	-----------

All times are Eastern.

PROJECTED STARTERS



2 DARA TAYLOR G
Jr., 5-8, Wilmington, Del.
7.2 ppg, 3.3 rpg, 3.5 apg, 2.4 spg

Notes: Had 5 pts., 6 rebs. & 2 steals at Michigan ... Recorded 8 pts., 7 rebs., 6 assts., 4 steals vs. Wisconsin ... Had 7 pts., 8 assts., 3 steals vs. Nebraska ... Tallied career-high 18 pts. with 3 steals at MSU.



20 ALEX BENTLEY G
Sr., 5-7, Indianapolis, Ind.
13.1 ppg, 3.7 apg, 3.8 spg, .800 FT%

Notes: Registered 16 pts., 2 assts. & 2 steals in win at Ohio State ... Had 12 pts. & 3 assts. vs. Minnesota ... Tallied 16 pts. & 5 steals at Michigan ... On 2013 Wade, Naismith and Wooden watch lists.



24 MIA NICKSON F
Sr., 6-2, Ashburn, Va.
7.7 ppg, 6.4 rpg, .405 FG%, 0.6 bpg

Notes: Joined PSU's 500-rebound club at MSU ... Earned her 3rd double-double with 14 pts. & 13 rebs. vs. Northwestern ... Posted her double-double with 10 pts. & 10 rebs. at Virginia Tech.



33 MAGGIE LUCAS G
Jr., 5-10, Narberth, Pa.
20.0 ppg, 4.3 rpg, .500 3FG%, .887 FT%

Notes: Posted 18 pts. with 4 rebs. at Ohio State ... Tallied 26 pts. with 6 rebs., 4 assts., 3 steals vs. Minnesota ... Notched 19 pts & 4 rebs. at Michigan ... On 2013 Wade, Naismith and Wooden watch lists.



54 NIKKI GREENE C
Sr., 6-4, Diboll, Texas
9.3 ppg, 8.8 rpg, 1.1 bpg, .450 FG%

Notes: Had double-double with 11 pts. & 13 rebs. at OSU ... Recorded her 1,000th career point with 9 tallies vs. Minnesota ... Dec. 22 Big Ten Player of the Week ... 2nd on PSU's career blocks list.

LAST TIME OUT: The Lady Lions rallied from an 11-point deficit early in the second half on the way to a 71-56 win at Ohio State Sunday. Senior center **Nikki Greene** continued her solid play with her fourth double-double of the season and 13th of her career with 11 points and 13 rebounds. Junior guard **Maggie Lucas** scored 14 of her team-high 18 points in the second half and also added four rebounds, two assists and one steal. Senior guard **Alex Bentley** chipped in 16 points, three rebounds, two assists and two steals in the win.

SCOUTING WISCONSIN: The Badgers are 9-11 on the year and 1-6 in conference play. Morgan Paige leads Wisconsin with a 16.4 scoring average to go along with 31 assists and 18 steals on the year. Jacki Gulczynski also accounts for double figures at 11.3 points per game, while Cassie Rochel leads the team with 8.2 rebounds per game. The Badgers are without senior Taylor Wurtz, who was averaging 12.6 points and 7.0 rebounds, after a season-ending back injury.

ALL-TIME VS. THE BADGERS: The Lady Lions are 28-10 all-time against Wisconsin. However, Penn State is just 9-8 in road games versus the Badgers, but is just 2-4 in the last six contests played at the Kohl Center. The Lady Lions earned an 84-40 on Jan. 17 to extend their win streak over the Badgers to three games after a season sweep last year.

LAST TIME VS. UW: The Lady Lions jumped out to an 11-0 lead and never looked back in an 84-40 wire-to-wire victory over Wisconsin Jan. 17. Leading the way for the Lady Lions was senior **Nikki Greene**, who scored 23 points to go along with 14 rebounds for her 12th career double-double. Senior **Alex Bentley** was one of four Lady Lions who scored in double figures, as she chipped in 14 points to go along with six steals and five assists. Juniors **Maggie Lucas** and **Ariel Edwards** tallied 11 and 10 points, respectively.

WHAT'S AT STAKE

A Penn State Win Would:

- Make Penn State 18-2 on the season and 8-0 in Big Ten play.
- Make Penn State 29-10 all-time vs. Wisconsin.
- Extend the Lady Lions' winning streak to 12 games, which would be tied for the third-longest streak in school history.
- Be Penn State's first 12-game winning streak since the 1999-00 season.
- Make Penn State 8-0 in Big Ten play for the first time since 2003-04 (10-0).
- Be Penn State its best start since the 1993-94 season (22-2).
- Extend PSU's school-record Big Ten regular-season win streak to 15 games.

LAST TIME VS. WISCONSIN JAN. 17, 2013 • UNIVERSITY PARK, PA.

Wisconsin 40 • 8-10, 0-5															
#	Player	Total			3-Pr			Rebounds			PF	TP	A TO Bk	Stl	Min
		FG	FGA	FT	FTA	Off	Def	Total							
04	Bauman, Nicole	* 2-6	2-4	0-0	0	1	1	3	6	0	4	0	1	27	
05	Paige, Morgan	* 5-15	2-11	2-2	0	1	1	14	0	4	0	0	34		
24	Stephens, Tiera	* 1-7	0-1	2-4	2	5	7	2	4	7	8	0	36		
25	Gulczynski, Jacki	* 3-13	2-6	2-2	1	9	10	10	10	1	4	0	40		
43	Rochel, Cassie	* 2-5	0-0	0-0	1	5	6	4	4	1	3	3	31		
00	Malone, Shannon	0-0	0-0	0-0	0	0	0	0	0	0	0	0	0		
10	Wright, Dakota	1-6	0-2	0-0	0	1	3	2	1	3	0	2	22		
22	Cichy, Tessa	0-0	0-0	0-0	0	0	0	0	0	0	0	0	1		
23	Kryuchkova, Daria	0-1	0-0	0-0	0	0	0	2	0	0	0	1	9		
Team		14-53													
Totals		14-53	6-24	6-8	6	25	31	17	40	10	24	4	8	200	
FG % 1st Half:		7-23	30.4%	2nd half:		7-30	23.3%	Game:		14-53	26.4%	Double			
3FG % 1st Half:		3-11	27.3%	2nd half:		3-13	23.1%	Game:		6-24	25.0%	Rebounds		0	
FT % 1st Half:		4-5	80.0%	2nd half:		2-3	66.7%	Game:		6-8	75.0%	Points		40	

Penn State 84 • 14-2, 4-0															
#	Player	Total			3-Pr			Rebounds			PF	TP	A TO Bk	Stl	Min
		FG	FGA	FT	FTA	Off	Def	Total							
02	Taylor, Dara	* 3-5	2-3	0-0	2	5	7	3	8	6	5	0	4	22	
20	Bentley, Alex	* 5-14	0-2	4-6	0	1	1	2	14	5	1	0	6	25	
24	Nickson, Mia	* 3-6	0-0	2-2	5	4	9	3	8	1	0	0	2	25	
33	Lucas, Maggie	* 8-11	2-4	3-4	0	4	4	1	11	1	4	0	3	31	
54	Greene, Nikki	* 9-16	0-0	5-7	7	14	2	23	0	1	2	0	27		
05	East, Talia	1-3	0-0	1-2	2	2	4	5	3	0	1	0	12		
23	Edwards, Ariel	5-9	0-0	0-0	0	3	3	10	1	0	0	0	26		
25	Stuevevent, Gizelle	2-5	0-0	1-2	0	3	3	0	5	0	1	0	15		
44	Waldner, Tori	1-4	0-1	0-0	2	2	4	1	2	1	0	1	17		
Team		32-73													
Totals		32-73	4-10	16-23	20	35	55	17	84	15	13	3	17	200	
FG % 1st Half:		16-36	44.4%	2nd half:		16-36	44.4%	Game:		32-73	43.8%	Double			
3FG % 1st Half:		4-7	57.1%	2nd half:		0-3	0.0%	Game:		4-10	40.0%	Rebounds		3	
FT % 1st Half:		10-13	76.9%	2nd half:		6-10	60.0%	Game:		16-23	69.6%	Points		84	

Officials: Lisa Mattingly, Cameron Inouye, Jesse Dickerson
 Technical Fouls: Wisconsin=None, Penn State=None
 Attendance: 3848

Score by periods	1st	2nd	Total
Wisconsin	21	19	40
Penn State	46	38	84

Last FG - WIS 2nd-05:11, PSU 2nd-00:00.
 Largest lead - WIS none, PSU by 44 2nd-00:00.
 In Off 2nd Fast
 Points Point T/O Chance Break Bench
 WIS 52 29 15 20 20
 PSU 52 29 15 20 20
 Score tied - 0 times.
 Lead changed - 0 times.



PRESS CONFERENCES

Coquese Washington will hold a weekly press conference and the Lady Lions will have media availability on a weekly basis throughout the season. All press conferences will begin at 2:45 p.m. (unless otherwise noted) and go for approximately 15 minutes, followed by a 15-minute open media session prior to practice. Press conference will be held in the Media Room at the Bryce Jordan Center (unless otherwise noted).

Press Conference Dates

Wednesday, Feb. 6
 Wednesday, Feb. 13
 Monday, Feb. 18 (2:30)
 Wednesday, Feb. 27
 Monday, Mar. 4 (2:30)

GREENE SPORTS DOUBLE-DOUBLE: Senior center Nikki Greene registered her fourth double-double of the season and 13th of her career with 11 points and 13 rebounds at Ohio State on Jan. 27. The game-high 13 rebounds also mark the sixth consecutive double-digit rebounding performance for Greene.

EAST JOINS BLOCKS LIST: With a pair of rejections at Ohio State on Jan. 27, junior forward/center Talia East moved into the Top 20 in Penn State history in blocks. With 48 career rejections, East is tied with former teammate Julia Trogele (48; 2008-11) for 19th place and passes Jacquelynn Shook (47; 2001-02) for 20th spot. She needs 13 blocks to tie Tanisha Wright (61; 2002-05) for 18th place.

BEST START SINCE 1993-94: With a 17-2 record, the Lady Lions are off to their best start since the 1993-94 season. The 1993-94 squad won 18 consecutive games to start the season and went 22-2 in their first 24 games. That team tied for the Big Ten regular-season title with a 16-2 conference record and won the inaugural Big Ten Tournament before advancing to the Elite Eight.

STREAKING: The Lady Lions are riding an 11-game winning streak after a 71-56 win at Ohio State on Jan. 27. The streak is the sixth longest streak in school history and is the third-longest active streak in NCAA Division I.

RECORD-BREAKING BIG STREAK: Penn State has won a school record 14 consecutive Big Ten regular-season games, dating back to last season. The streak breaks the previous school mark for consecutive Big Ten wins of 13 over the 1992-93 and 1993-94 seasons. The Lady Lions last lost in Big Ten play on Jan. 29, 2012 at Michigan State. The overall school record for consecutive conference victories is 16 as the 1990-91 squad won 14 straight Atlantic 10 games and the 1992-93 team won its first two games as a member of the Big Ten (PSU did not play in a conference in 1991-92) to account for the record.

BIG TEN START: With a 71-56 win at Ohio State Jan. 24, the Lady Lions moved to 7-0 in conference play. It was the first time since the 2004-05 season that Penn State has won its first four games. The 2004-05 squad opened league play with a 7-0 mark.

THEFT BY A BENTLEY: With a two-steal performance at Ohio State Jan. 27, senior guard **Alex Bentley** moved into a tie for fifth place place on Penn State's all-time steals chart, tying Kelly Mazzante (289; 2001-04). Bentley has 289 career thefts and needs four steals to tie Tina Nicholson (293; 1993-96) for fourth place all-time.

NICKSON ON BOARDS LIST: With four caroms at Ohio State Jan. 27, senior **Mia Nickson** moved into 25th place on Penn State's career rebounds list with 535 caroms. With her performance against Ohio State, Nickson broke a tie with Lorraine McGirt (531; 1983-85) for 25th spot. Nickson needs 28 rebounds to tie Kelly Mazzante (563; 2001-04) for 24th place.

PSU 7TH IN AP POLL: The Penn State Lady Lions moved up one spot to the seventh position in the Jan. 28 Associated Press poll. The Lady Lions peaked at sixth spot, the highest ranking in the AP poll for the Lady Lions since they were fifth in the final 2004 poll. The Lady Lions were ranked in the AP poll every week last season, finishing the year 11th.

LIONS RANKED 8TH IN COACHES POLL: The Lady Lions remained eighth in the Jan. 29 USA Today Sports coaches' poll. Penn State peaked at No. 7 on Nov. 27, tying the highest ranking in the Coaches' Poll for the Lady Lions since they were seventh in the final 2004 poll.

LADY LIONS ON TWITTER & FACEBOOK: The Lady Lions are on Twitter. Follow the Lady Lions and assistant coaches (@pennstatewbb) and sports information contact Kris Petersen (@ladylionsid) to get the inside scoop. The Lady Lions are also on Facebook at www.facebook.com/pennstateladylions.



NIKKI HITS 1,000 POINTS: Senior center **Nikki Greene** became the 35th player in school history with 1,000 career points after tallying nine markers against Minnesota on Jan. 24. Greene now has 1,015 career tallies to rank 35th in program history. She is one of three currently Lady Lions in the 1,000-point club, joining Alex Bentley and Maggie Lucas. Greene needs 18 points to tie Helen Holloway (1,022; 1991-94) for 34th place on PSU's all-time scoring chart.

LUCAS CLIMBS ONE SPOT IN ALL-TIME SCORING: Junior **Maggie Lucas** moved up one spot on Penn State's career scoring list with her 26-point performance versus Minnesota Jan. 24. The 26 tallies push Lucas past Tanya Garner (1,538; 1988-91) for 11th place on PSU's career list. Lucas' career total is now at 1,574 points. Lucas is chasing teammate Alex Bentley (1,583) for the 10th spot and needs 45 points to tie Andrea Garner (1,619; 1997-00) for ninth place.

WASHINGTON ON PRESIDENTIAL COMMITTEE: Lady Lion head coach **Coquese Washington** will serve on the 18-person search committee for the next Penn State president. Current president Dr. Rodney Erickson will retire by June 30, 2014.

PENN STATE'S OVERALL/BIG TEN YEAR-BY-YEAR REVIEW

Year	Overall	Big Ten	Home	BT Home	Road	BT Road	Neutral
1992-93	22-6	14-4	12-2	9-0	9-4	5-4	0-0
1993-94	28-3	16-2	14-0	9-0	11-2	7-2	3-1
1994-95	26-5	13-3	14-2	8-0	9-3	5-3	3-0
1995-96*	27-7	13-3	14-2	8-0	8-4	5-3	5-1
1996-97	15-12	8-8	9-3	5-3	5-6	3-5	1-3
1997-98	21-13	8-8	10-5	4-4	6-6	4-4	5-2
1998-99	22-8	12-4	9-2	6-2	9-4	6-2	4-2
1999-00	30-5	15-1	14-0	8-0	9-2	7-1	7-3
2000-01	19-10	11-5	11-2	7-1	6-5	4-4	2-3
2001-02	23-12	11-5	10-4	6-2	9-5	5-3	4-3
2002-03	26-9	13-3	16-0	8-0	7-7	5-3	2-2
2003-04	28-6	15-1	12-1	8-0	9-3	7-1	6-2
2004-05	19-11	13-3	12-0	8-0	6-9	5-3	1-2
2005-06	13-16	6-10	8-6	5-3	3-8	1-7	2-2
2006-07	15-16	7-9	12-1	7-1	2-12	0-7	1-3
2007-08	13-18	4-14	10-6	3-6	3-11	1-8	0-1
2008-09	11-18	6-12	8-6	4-5	2-9	2-7	1-3
2009-10	17-14	8-10	9-6	5-4	5-7	3-6	3-1
2010-11	25-10	11-5	14-4	6-2	7-4	5-3	4-2
2011-12	26-7	13-3	12-2	6-2	11-3	7-1	3-2
2012-13	17-2	7-0	10-0	4-0	6-2	3-0	1-0

* First season at the Bryce Jordan Center



PENN STATE'S RECORD WHEN...

Playing at home	10-0
Playing on the road	6-2
Playing at a neutral site	1-0
vs. Top 10 teams	0-1
vs. Top 25 teams	3-1
Games decided by 3 points or less	0-0
Games decided by 4-10 points	6-1
Games decided by 11-19 points	4-1
Games decided by 20 points or more	7-0
Leading at the half	12-0
Tied at the half	1-0
Trailing at the half	4-2
Leading with 5:00 remaining	14-0
Trailing with 5:00 remaining	3-2
Tied with 5:00 remaining	0-0
In overtime	0-0
PSU scores 40-49 points	0-0
PSU scores 50-59 points	1-1
PSU scores 60-69 points	4-1
PSU scores 70-79 points	5-0
PSU scores 80 points or more	7-0
PSU shoots 45% or better	5-0
PSU shoots less than 45%	12-2
PSU shoots better than opponent	14-0
Opponent shoots better than PSU or tied	3-2
Opponent scores less than 39 points	2-0
Opponent scores 40-49 points	4-0
Opponent scores 50-59 points	6-0
Opponent scores 60-69 points	2-2
Opponent scores more than 70 points	3-0
Opponent shoots better than 45%	0-0
Opponent shoots less than 45%	17-2
PSU outrebounds opponent	10-2
Opponent outrebounds PSU or tied	7-0
PSU commits 14 or less turnovers	10-0
PSU commits 15 or more turnovers	7-2
PSU makes at least 5 3-pointers	7-1
PSU makes four 3-pointers or less	10-1
Recording 7 or more steals	16-2
Recording 6 or less steals	1-0
Wearing white uniforms	11-0
Wearing blue uniforms	6-2
Wearing pink uniforms	0-0
Penn State wins the tip	14-1
Penn State loses the tip	3-1
Penn State scores first	8-0
Opponent scores first	9-2
Playing during the day (before 5 p.m.)	11-0
Playing at night	6-2
On Monday	1-0
On Tuesday	0-0
On Wednesday	2-0
On Thursday	3-2
On Friday	1-0
On Saturday	1-0
On Sunday	9-0
In November	5-1
In December	5-1
In January	7-0
In February	0-0
In March	0-0

GREENE CLAIMS WEEKLY HONOR: Senior **Nikki Greene** was named Big Ten Player of the Week for the week-ending Jan. 21. It is the first career Player of the Week award for Greene and it is the third Player of the Week honor for the Lady Lions this season (Maggie Lucas, twice). Previously, Greene earned conference accolades as the Big Ten Freshman of the Week on Dec. 14, 2009. Greene averaged 15.5 points, 12.5 rebounds, 2.5 blocks and shot 59.1% from the field in wins over Wisconsin and #23/RV Michigan.

DUO ON WOODEN TOP 20 LIST: Senior point guard **Alex Bentley** and junior guard **Maggie Lucas** are two of 20 players that have been named to the John R. Wooden Award Midseason list. The list is comprised of players who based on their performances in November, December and January, are the frontrunners for selection to the ballot of college basketball's top award. Lucas and Bentley are two of three players from the Big Ten on the list, joining Tayler Hill from Ohio State. Penn State is additionally one of six schools to have multiple candidates on the list.

LUCAS MOVING UP BIG TEN THREES LIST: With a trio of three-pointers at Michigan Jan. 21, junior guard **Maggie Lucas** moved into fifth place on the Big Ten history in three-pointers list. She passed Wisconsin's Jolene Anderson (248; 2005-08) for fifth position. Lucas needs nine triples to tie Iowa's Lindsey Meder (261; 1999-02) for fourth place. PSU's Kelly Mazzante holds the Big Ten record with 357 makes from beyond the arc.

Big Ten Three-Point Field Goals Made

1. 357 Kelly Mazzante, PSU
2. 294 Lindsay Bowen, MSU
3. 270 Caity Matter, OSU
4. 261 Lindsey Meder, Iowa
5. **252 Maggie Lucas, PSU**

KEEPING IT BELOW 50: The Lady Lions have held their last two opponents, Wisconsin (40) and Michigan (49) to less than 50 points en route to wins. It is the first time since the 2004-05 slate that PSU has held back-to-back foes to less than 50 points. That year, the Lions held Illinois to 41 tallies on Jan. 13 and Indiana to 44 points on Jan. 16 for a pair of wins.

STRONG SENIOR CLASS: Coquese Washington's first Top 25 recruiting class is now the Lady Lions' senior class. The grouping of **Alex Bentley, Nikki Greene, Mia Nickson, Gizelle Studevent** and **Marisa Wolfe** have been huge contributors in Penn State's return to national prominence. The quintet has accounted for 3,732 points and 2,066 rebounds with 302 starts in 484 games played. Last season, the five seniors accounted for 45.1% of the team's offense and 44.9% of its rebounds.

RACKING UP STEALS: The Lady Lions have recorded at least 17 steals in four contests this year. By comparison, the season-high for steals in a game for last year's squad was 17. The four games with 17 or more steals are the most since the 1993-94 squad had six games with 17 or more thefts.

LIONS IN THE BIG TEN STATS

A breakdown of where Penn State ranks in the Big Ten's statistical categories. Through game of Jan. 28.

TEAM	
Scoring Offense	1st (73.6)
Scoring Defense	3rd (56.1)
Scoring Margin	1st (+17.5)
Free Throw Percentage	5th (.753)
FG Percentage	6th (.417)
FG Percentage Defense	1st (.340)
3-point FG Percentage	2nd (.380)
3-point FG Pct. Defense	3rd (.272)
3-point FG Made	11th (4.6)
Rebounding Offense	1st (43.0)
Rebounding Defense	8th (37.3)
Rebounding Margin	2nd (+5.7)
Offensive Rebounds	1st (15.6)
Defensive Rebounds	4th (27.4)
Blocked Shots	3rd (5.3)
Assists	11th (12.8)
Steals	2nd (11.7)
Turnover Margin	1st (+4.8)
Assist to Turnover Ratio	9th (0.8)

INDIVIDUAL	
Scoring	3rd - Maggie Lucas (20.0) 15th - Alex Bentley (13.1)
Rebounding	3rd - Nikki Greene (8.8) 15th - Mia Nickson (6.4)
FG Percentage	10th - Ariel Edwards (.470)
Assists	9th - Alex Bentley (3.7) 10th - Dara Taylor (3.5)
FT Percentage	5th - Maggie Lucas (.887) 10th - Alex Bentley (.800)
Steals	1st - Alex Bentley (3.8) T-5th - Maggie Lucas (2.4) T-5th - Dara Taylor (2.4)
3FG Percentage	1st - Maggie Lucas (.500)
3FG Made	2nd - Maggie Lucas (3.1)
Blocked Shots	11th - Tori Waldner (1.2) 12th - Nikki Greene (1.1)
Assist/TO Ratio	2nd - Alex Bentley (1.8) 10th - Dara Taylor (1.2)
Off. Reb.	2nd - Nikki Greene (3.8) 4th - Mia Nickson (3.2)
Def. Reb.	5th - Nikki Greene (5.1)



MILESTONE WATCH

Milestone Watch

Milestone	Player	Current Total
1,600 points	Alex Bentley	1,583
	Maggie Lucas	1,574
1,100 points	Nikki Greene	1,015
800 points	Mia Nickson (career)	754
	Mia Nickson (PSU)	709
500 points	Ariel Edwards	453
400 points	Dara Taylor (career)	379
300 points	Marisa Wolfe	242
200 points	Gizelle Studevent	183
	Talia East	166
100 points	Tori Waldner	99
900 rebounds	Nikki Greene	891
600 rebounds	Mia Nickson (career)	592
	Mia Nickson (PSU)	535
400 rebounds	Maggie Lucas	344
	Alex Bentley	343
300 rebounds	Ariel Edwards	259
	Talia East	237
200 rebounds	Tori Waldner	125
100 rebounds	Gizelle Studevent	89
600 assists	Alex Bentley	526
400 assists	Dara Taylor (career)	308
200 assists	Maggie Lucas	192
300 steals	Alex Bentley	289
150 steals	Maggie Lucas	150
	Dara Taylor (career)	121
	Nikki Greene	110
200 blocks	Nikki Greene	197
50 blocks	Talia East	49
	Tori Waldner	39
300 3-pt FGs	Maggie Lucas	252

Milestone Reached

Milestone	Player	Reached
1,000 points	Nikki Greene	1/24/13
700 points	Mia Nickson (PSU)	1/21/13
300 assists	Dara Taylor (career)	1/17/13
1,500 points	Maggie Lucas	1/13/13
1,500 points	Alex Bentley	1/6/13
500 rebounds	Mia Nickson (PSU)	1/6/13
100 steals	Dara Taylor (career)	1/3/13
400 points	Ariel Edwards	12/23/12
700 points	Mia Nickson (career)	12/16/12
500 assists	Alex Bentley	12/16/12
100 rebounds	Tori Waldner	12/16/12
1,400 points	Maggie Lucas	12/12/12
300 points	Dara Taylor (career)	12/9/12
800 rebounds	Nikki Greene	12/9/12
300 rebounds	Alex Bentley	12/9/12
300 rebounds	Maggie Lucas	12/9/12
900 points	Nikki Greene	12/6/12
1,400 points	Alex Bentley	11/24/12
1,300 points	Maggie Lucas	11/24/12
200 rebounds	Talia East	11/23/12
100 steals	Nikki Greene	11/23/12
600 points	Mia Nickson (PSU)	11/18/12
500 rebounds	Mia Nickson (career)	11/18/12
200 rebounds	Ariel Edwards	11/18/12
200 3-pt FGs	Maggie Lucas	11/18/12
1,200 points	Maggie Lucas	11/11/12

RACKING UP THE FREQUENT FLYER MILES:

The Lady Lions have racked up the frequent flyer miles since August. Including the team's trip to Europe, the non-conference slate and Big Ten play, Penn State will travel a total of 35,219 miles. Here is a breakdown of the Lions' travel:

European Tour:	10,711 miles
Texas A&M:	2,906 miles
Cal State Northridge:	5,884 miles
Miami:	2,522 miles
Storrs:	728 miles
Blacksburg:	760 miles
East Lansing:	906 miles
Ann Arbor:	780 miles
Columbus:	654 miles
Madison:	1,428 miles
Bloomington:	1,096 miles
Iowa City:	1,550 miles
Minneapolis:	1,944 miles
Lincoln:	2,146 miles
Hoffman Estates:	1,204 miles
Total:	35,219 miles

BIG BIG TEN WIN: The Lady Lions claimed an 84-40 win over Wisconsin Jan. 17 to move to 4-0 in conference play. Penn State's 44-point win is the biggest margin of victory over a Big Ten opponent since topping Michigan State by 48 points (97-49) on Jan. 28, 2001. Additionally, the 44-point win also marked the first time that Penn State defeated a Big Ten opponent by 40 or more points since a 43-point win over Northwestern (91-48; 1/22/06). The margin of victory for the Lions also marked the worst loss for the Badgers since falling to Purdue (93-45) on March 6, 1994.

NIKKI DOUBLES DOWN: Senior center **Nikki Greene** recorded her 12th career double-double and her third double-double of the season with 23 points and 14 rebounds in the win over Wisconsin Jan. 17. Greene's 23 points are a season-high and mark her second 20-point game of the season and fifth of her career.

GREENE GOING FOR 1,000s: Senior center **Nikki Greene** will have a shot at becoming just the fourth player in school history to be a part of an elite club with 1,000 points and 1,000 rebounds. The Diboll, Texas native reached the 1,000-point mark with nine tallies against Minnesota Jan. 24 and 109 rebounds for 1,000 career caroms. Greene would need to average 5.4 points and 9.2 rebounds in a 30-game season to accomplish the milestone. The members of the 1,000-1,000 club are Susan Robinson (2,253-1,070), Kahadeejah Herbert (2,025-1,103) and Andrea Garner (1,619-1,016).

DT DISHES OUT #300: Redshirt junior guard **Dara Taylor** recorded her 300th career assist with six helpers in the win over Wisconsin Jan. 17. Taylor has 66 helpers as a Lady Lion, but accumulated 242 dimes at Maryland before transferring after her sophomore season.

AB CLIMBS INTO SCORING TOP 10: Senior point guard **Alex Bentley** tallied 14 points against Wisconsin Jan. 17 and in the process, moved into the Top 10 on Penn State's career scoring list, passing Tanya Garner (1,538; 1988-91) for the 10th spot. Bentley has 1,583 career points and needs 36 tallies to tie Andrea Garner (1,619; 1997-00) for ninth place.

GREENE MOVES UP BLOCKS LIST: Senior center **Nikki Greene** moved into second place on Penn State's career rejections chart after recording two rejections against Wisconsin Jan. 17. With 197 career blocks, Greene passes Mary Donovan (192; 1977-81) for second spot. Greene is 71 blocks away from Kim Calhoun's record of 268 set from 1993-96.

20-POINT BIG TEN WINS: With a 76-55 win over Michigan State Jan. 6, an 80-58 victory over Nebraska Jan. 13 and an 84-40 win over Wisconsin Jan. 17, the Lady Lions earned three consecutive Big Ten wins of 20 or more points for the first time since the 2004-05 season. In that season, the Lady Lions topped 76-41 win over Illinois (76-41; 1/13/05), Indiana (65-44; 1/16/05) and Purdue (77-54; 1/20/05).

NCAA STATS

TEAM

Scoring Offense	18th (73.6)
Scoring Defense	62nd (56.1)
Scoring Margin	15th (+17.5)
Field Goal Percentage	64th (.417)
Field Goal Percentage Defense	17th (.340)
Free Throw Percentage	23rd (.753)
Rebounding Margin	44th (+5.7)
3FG Percentage	7th (.380)
3FG Percentage Defense	55th (.272)
Win-Loss Percentage	T-9th (.895)
Blocked Shots	20th (5.3)
Steals	32nd (11.7)
Turnovers	82nd (15.8)
Turnover Margin	30th (4.84)

INDIVIDUAL

Scoring	18th - Maggie Lucas (20.0)
Rebounds	84th - Nikki Greene (8.8)
Steals	2nd - Alex Bentley (3.84)
FT Percentage	14th - Maggie Lucas (.887)
3FG Percentage	1st - Maggie Lucas (.500)
3FG Made	10th - Maggie Lucas (3.05)
Assist-to-TO	51st - Alex Bentley (1.82)

SINGLE GAME

Winning Streak	3rd - 11 wins
Home Court Winning Streak	5th - 16 wins
Points	T-7th - Maggie Lucas (39 vs. G-town)
Rebounds	T-18th - Nikki Greene (20 at CSUN)
FT Pct.	T-20th - Nikki Greene (.929 at CSUN)
Steals	T-25th - Alex Bentley (8 vs. NJIT)
3FG	T-14th - Maggie Lucas (7 vs. G-town)

NCAA Statistics as of 1/28



THE LAST TIME PENN STATE...

SCORING

Player scored 20 points: vs. Minnesota (26, Maggie Lucas), 1/24/13
Player scored 25 points: vs. Minnesota (26, Maggie Lucas), 1/24/13
Player scored 30 points: vs. Georgetown (39, Maggie Lucas), 12/9/12
Player scored 35 points: vs. Georgetown (39, Maggie Lucas), 12/9/12
Player scored 40 points: vs. Minnesota (49, Kelly Mazzante), 12/28/01
Two players scored 20 points: vs. Georgetown (39, Maggie Lucas; 23, Alex Bentley), 12/9/12
Three players scored 20 pts.: at Nevada (26, Maggie Lucas; 23, Alex Bentley; 21, Zhaque Gray), 11/26/11
Two players scored 25 points: at Boston College (28, Alex Bentley; 28, Maggie Lucas), 12/2/10
Player scored 25 points/3 consecutive games: Kelly Mazzante (31, vs. Baylor, 12/9/03; 31, vs. Pittsburgh, 12/14/03; 29, Louisiana Tech, 12/21/03)
Five in double figures: vs. Fairleigh Dickinson (24, Maggie Lucas; 18, Ariel Edwards; 15, Dara Taylor; 11 Talia East; 10, Nikki Greene), 12/2/12
Six in double figures: at Oakland (15, Alex Bentley; 16, Ariel Edwards; 16, Zhaque Gray; 13, Maggie Lucas; 10, Mia Nickson; 10, Gizelle Studevent; 10, Julia Trogele), 11/18/10
Seven in double figures: at Oakland (15, Alex Bentley; 16, Ariel Edwards; 16, Zhaque Gray; 13, Maggie Lucas; 10, Mia Nickson; 10, Gizelle Studevent; 10, Julia Trogele), 11/18/10
PSU scored 50 points in a half: vs. Georgetown (52, first half), 12/9/12
PSU scored 55 points in a half: at Nebraska (55, second half), 1/15/12
PSU scored 60 points in a half: vs. Northwestern (65 points, first half), 1/2/00
PSU scored 100 points: vs. Fairleigh Dickinson (W, 101-44), 12/2/12
PSU scored 100 points in Big Ten game: vs. Illinois (W, 101-80), 2/15/01
PSU scored 100 points in a home game: vs. Fairleigh Dickinson (W, 101-44), 12/2/12
PSU scored fewer than 15 points in a half: vs. Wisconsin (13, first half), 2/25/10
PSU scored fewer than 20 points in a half: vs. Michigan State (18, first half), 2/10/11
PSU scored fewer than 40 points in a game: vs. Wisconsin (L, 39-71), 2/25/10
PSU scored fewer than 50 points in a game: vs. Purdue (L, 49-60), 2/24/11
PSU scored fewer than 50 points in a Big Ten game: vs. Purdue (L, 49-60), 2/24/11
OPP scored 50 points in a half: vs. Duke (50, second half), 11/18/05
OPP scored 100 points: at Boston College (Lot, 113-104), 12/2/10
OPP scored fewer than 20 points in a game: at Dickinson (W, 57-16), 3/6/71
OPP scored fewer than 30 points in a game: vs. Virginia Tech (W, 66-28), 12/6/11
OPP scored fewer than 40 points in a game: vs. Wisconsin (W, 84-40), 1/17/13
OPP scored fewer than 50 points in a game: at Michigan (W, 59-49), 1/21/13
OPP scored fewer than 50 points in a Big Ten game: at Michigan (W, 59-49), 1/21/13

FIELD GOAL SHOOTING

Player made every shot from the field (min. 7): vs. Michigan St. (Amanda Brown, 8-8), 1/25/07
PSU shot 55% in a game: at Michigan (.561), 1/26/12
PSU shot 55% in consecutive games: vs. Northwestern (.682), 3/2/96; vs. Ohio St. (.585), 3/3/96
PSU shot 60% in a game: vs. Michigan State (.608), 2/23/96
PSU shot below 25% in a game: at Alabama (.230), 12/19/96
PSU shot below 30% in a game: vs. Northwestern (.299), 1/3/13
PSU shot below 35% in a game and won: vs. Northwestern (.299), 1/3/13
PSU shot below 30% in a game and won: vs. Northwestern (.299), 1/3/13
PSU shot 55% in a half: at Michigan State (.567, second half), 1/6/13
PSU shot 60% in a half: at Michigan (.667, second half), 1/26/12
PSU shot 65% in a half: at Michigan (.667, second half), 1/26/12
PSU shot 70% in a half: vs. Virginia Tech (.714, second half), 12/6/11
PSU shot 55% in both halves: vs. Iowa (.552, first half; .565, second half), 1/26/06
PSU shot below 20% in a half: at Indiana (.231, first half), 2/28/10
PSU shot below 25% in a half: vs. Nebraska (.233, second half), 12/30/11

THREE-POINT SHOOTING

Player made every shot from the field (min. 4): at Bucknell (4-4, Maggie Lucas), 12/21/11
Player made 4 three-pointers in a half: vs. Northwestern (4 in first, Maggie Lucas), 1/3/13
Player made 5 three-pointers in a half: vs. Georgetown (5 in first, Maggie Lucas), 12/9/12
Player made 6 three-pointers in a half: vs. Michigan State (6 in second, Maggie Lucas), 1/7/12
Player made 5 three-pointers in a game: vs. NJIT (5, Maggie Lucas), 12/23/12
Player made 6 three-pointers in a game: vs. Georgetown (7, Maggie Lucas), 12/9/12
Player made 7 three-pointers in a game: vs. Georgetown (7, Maggie Lucas), 12/9/12
Player made 8 three-pointers in a game: at Minnesota (8, Kelly Mazzante), 12/28/01
Player attempted 10 three-pointers in a game: vs. Georgetown (13, Maggie Lucas), 12/9/12
PSU made 10 three-pointers: vs. North Carolina (14), 11/30/11
PSU did not make a three-pointer: at South Carolina (0-6), 11/20/11
PSU attempted 20 three-pointers: vs. Michigan State (24), 1/7/12
PSU shot 60% 3FG (min. 5 att.): vs. NJIT (7-10, .700), 12/23/12

FREE THROW SHOOTING

Player made every shot from FT line (min. 10): vs. LSU (11-11, Maggie Lucas), 3/20/12
PSU shot 90% (min. 10 att.): vs. North Carolina (13-14, .929), 11/30/11
PSU shot below 50% (min. 10 att.): vs. Holy Cross (9-20, .450), 11/28/09
PSU made 30 free throws: vs. Pittsburgh (34), 11/11/07
PSU made fewer than five FTs: at Michigan (3), 2/3/11
PSU attempted 40 free throws: vs. Pittsburgh (41), 11/11/07
PSU attempted fewer than five FTs: at Michigan (4), 2/3/11

REBOUNDS

Player had 15 rebounds: at Cal State Northridge (20, Nikki Greene), 11/24/12
Player had 20 rebounds: at Cal State Northridge (20, Nikki Greene), 11/24/12
Two players with double-digit rebs.: vs. Nebraska (11, Mia Nickson; 10, Nikki Greene), 1/13/13
Three players had double-digit rebounds: vs. Ohio State (15, Nikki Greene; 15, Mia Nickson; 10, Maggie Lucas), 2/20/12
PSU had 60 rebounds: vs. Ohio State (60), 2/20/12
PSU had 50 rebounds: vs. Wisconsin (55), 1/17/13
PSU had 20 or fewer rebounds: vs. Michigan State (20), 1/19/03
OPP had 20 or fewer rebounds: at Indiana (20), 2/13/11
PSU had 20 offensive rebounds: vs. Wisconsin (20), 1/17/13
PSU had 25 offensive rebounds: vs. Ohio State (29), 2/20/12

ASSISTS

Player had 10 assists: vs. North Carolina (15, Alex Bentley), 11/30/11
Player had 10 assists/consecutive games: Helen Darling (12 at LaSalle, 12/8/99; 11 vs. Auburn, 12/11/99; 10 vs. Clemson, 12/19/99)
Player had 15 assists: vs. North Carolina (15, Alex Bentley), 11/30/11
PSU had 30 assists: vs. St. Francis (Pa.) (32), 12/2/99
PSU had fewer than 10 assists: at Michigan (5), 1/21/13
PSU had fewer than 5 assists: at Michigan State (4), 2/4/10

BLOCKED SHOTS

Player blocked 5 shots: vs. Minnesota (5, Tori Waldner), 1/24/13
Player blocked 6 shots: at South Carolina (7, Talia East), 11/20/11
PSU blocked 10 shots: vs. Purdue (11), 1/28/10
PSU blocked 0 shots: vs. Purdue, 2/19/09

STEALS

Player had 7 steals: vs. Northwestern (7, Dara Taylor), 1/3/13
Player had 8 steals: vs. NJIT (8, Alex Bentley), 12/23/12
PSU had 20 steals: vs. Bucknell (21), 12/28/10

TURNOVERS

PSU committed 25 or more: at Connecticut (26), 12/6/12
PSU committed 25 or more and won: vs. Minnesota (26), 1/13/11
PSU committed 10 or fewer: vs. Fairleigh Dickinson (8), 12/2/12
PSU committed 10 or fewer in consecutive games: vs. Minnesota (9), 1/22/04; at Ohio St. (9), 1/25/04
OPP committed 25 or more: vs. Lafayette (27), 11/18/12

DOUBLE-DOUBLES

Points & rebounds: at Ohio State (Nikki Greene, 11 pts., 18 rebs.), 1/27/13
Points & rebounds/consecutive games: Nikki Greene (12 points, 10 rebounds vs. Ohio State, 1/30/11; 16 points, 14 rebounds at Illinois, 1/27/11)
Points & rebounds/3 consecutive games: Amanda Brown (19 pts., 17 rebs. at Northwestern, 2/11/07; 14 pts., 10 rebs. vs. Minnesota, 2/15/07; 14 pts., 11 rebs. at Iowa, 2/18/07)
Points & rebounds/4 consecutive games: Angie Potthoff (vs. Northwestern, 1/31/97; at Illinois, 2/2/97; vs. Michigan, 2/7/97; vs. Indiana, 2/9/97; vs. Iowa, 2/16/97; vs. Michigan State, 2/21/97)
Points & rebounds/5 consecutive games: Angie Potthoff (vs. Northwestern, 1/31/97; at Illinois, 2/2/97; vs. Michigan, 2/7/97; vs. Indiana, 2/9/97; vs. Iowa, 2/16/97; vs. Michigan State, 2/21/97)
Points & assists: vs. North Carolina (Alex Bentley; 15 points, 15 assists), 11/30/11
Points & assists/consecutive games: Helen Darling (12 pts., 12 assts. at La Salle, 12/8/99; 10 pts., 11 assts. vs. Auburn, 12/11/99)
Two players had double-doubles: vs. Ohio State (Nikki Greene, 25 pts., 15 rebs.; Mia Nickson, 18 pts., 15 rebs.; Maggie Lucas, 12 pts., 10 rebs.), 2/20/12
Three players had double-doubles: vs. Ohio State (Nikki Greene, 25 pts., 15 rebs.; Mia Nickson, 18 pts., 15 rebs.; Maggie Lucas, 12 pts., 10 rebs.), 2/20/12
15 points & 15 rebounds: at Cal State Northridge (Nikki Greene, 21 pts., 20 rebs.), 11/24/12
20 points and 10 rebounds: vs. Wisconsin (Nikki Greene, 23 pts., 14 rebs.), 1/17/13

MARGIN OF VICTORY

PSU won by 20-30 points: vs. Wisconsin (44), 1/17/13
PSU won by 20-30 points in a Big Ten game: vs. Wisconsin (44), 1/17/13
PSU won consecutive Big Ten games by 20+ pts.: vs. Wisconsin (44), 1/17/13; vs. Nebraska (22), 1/13/13; at Michigan St. (21), 1/6/13
PSU won by 31-40 points: vs. Wisconsin (44), 1/17/13
PSU won by 41-50 points: vs. Wisconsin (44), 1/17/13
PSU won by 51+ points: vs. Fairleigh Dickinson (57), 12/2/12
PSU lost by 20-30 points: at Ohio State (22), 2/17/11
PSU lost by 20-30 points in a Big Ten game: at Ohio State (22), 2/17/11
PSU lost by 31+ points: vs. Wisconsin (32), 2/25/10

MISCELLANEOUS

Led PSU in points/rebounds/assists: Tyra Grant vs. Michigan (25 pts., 9 rebs., 4 asst.), 2/18/10
Hit "final seconds" (under 10 seconds) game-winning shot: Julia Trogele at Illinois (9 sec.), 1/27/11
Hit "final minute" game-winning shot: Alex Bentley at Minnesota (3-plt. with :38.9 remaining), 2/5/12
Player played every minute: vs. Connecticut (Maggie Lucas), 3/25/12
Player played more than 40 min.: at Dayton (Alex Bentley, 46; Zhaque Gray, 44; Mia Nickson, 41), 11/12/10
Committed 10 or fewer fouls: vs. Virginia Tech (9), 12/6/11
Committed 30 or more fouls: vs. Iowa State (32), 11/25/11
PSU rallied from a 10-pt. deficit to win: at Ohio State (down by 11 at 19:10 in 2nd half, won 155-73), 1/27/13
PSU rallied from a 15-pt. deficit to win: at CS-Northridge (down by 17 at 5:52 in 1st half, won 85-73), 11/24/12
PSU had a 5-game winning streak: 11 games, 12/9/12 - present
PSU had a 5-game losing streak: 6 games, 1/28/10 - 2/14/10
PSU went undefeated at home: 2004-05 season
PSU sold out the BJC: Purdue, 2/29/04

OVERTIME

PSU played an OT game: at Boston College (L, 113-104), 12/2/10
PSU won an OT game: at Oakland (96-89), 11/18/10
PSU lost an OT game: at Boston College (L, 113-104), 12/2/10
PSU played two or more OT games in a season: 2010-11 season (three)
PSU won two or more OT games in a season: 2010-11 season (two)

RANKINGS

Played the No. 1 team in the AP poll: vs. Connecticut (L, 77-63), 12/14/08
Played the No. 1 team in the Coaches poll: vs. Connecticut (L, 77-63), 12/14/08
Defeated the No. 1 team in the AP poll: at Virginia (73-71), 1/3/91
Defeated Top 10 opponent: vs. #8/11 Ohio State (84-66), 2/20/12
Defeated Top 10 opponent on the road: at #7 Purdue (47-42), 1/2/04
Defeated Top 10 opponent by double digits: vs. #8/11 Ohio State (84-66), 2/20/12
Played consecutive Top 10 teams: at #2/3 Texas 11/14/04, at #6/6 Duke 11/19/04
Defeated Top 25 opponent: vs. #23/RV Michigan (59-49), 1/21/13
Defeated Top 25 opponent on the road: vs. #23/RV Michigan (59-49), 1/21/13
Defeated Top 25 opponent by double digits: vs. #23/RV Michigan (59-49), 1/21/13



2012-13 GAME-BY-GAME STARTING LINEUPS

Date	Opponent	Pt Guard	Guard	Guard	Forward	Center
11/3	CALIFORNIA (Pa.)	Bentley	Lucas	Edwards	Nickson	Greene
11/11	HOWARD	Bentley	Lucas	Edwards	Nickson	Greene
11/14	at Texas A&M	Bentley	Lucas	Edwards	Nickson	Greene
11/18	LAFAYETTE	Bentley	Lucas	Edwards	Nickson	Greene
11/23	vs. Detroit	Bentley	Lucas	Edwards	Nickson	Greene
11/24	at Cal State Northridge	Bentley	Lucas	Edwards	Nickson	Greene
11/24	at Miami (Fla.)	Bentley	Lucas	Edwards	Nickson	Greene
12/2	FAIR. DICKINSON	Bentley	Lucas	Taylor	East	Greene
12/6	at Connecticut	Bentley	Lucas	Taylor	Nickson	Greene
12/9	GEORGETOWN	Bentley	Lucas	Taylor	Nickson	Greene
12/12	at Virginia Tech	Bentley	Lucas	Taylor	Nickson	Greene
12/16	SOUTH DAKOTA ST.	Bentley	Lucas	Taylor	Nickson	Greene
12/23	NJIT	Bentley	Lucas	Taylor	Nickson	Greene
1/3	NORTHWESTERN	Bentley	Lucas	Taylor	Nickson	Greene
1/6	Michigan State	Bentley	Lucas	Taylor	Nickson	Greene
1/13	NEBRASKA	Bentley	Lucas	Taylor	Nickson	Greene
1/17	WISCONSIN	Bentley	Lucas	Taylor	Nickson	Greene
1/21	at Michigan	Bentley	Lucas	Taylor	Nickson	Greene
1/24	MINNESOTA	Bentley	Lucas	Taylor	Nickson	Greene
1/27	at Ohio State	Bentley	Lucas	Taylor	Nickson	Greene

PICKING UP Ws IN THE BJC: With the win over Minnesota Jan. 24, the Lady Lions extended their home court winning streak to 16 games, which is the fifth-longest active streak in NCAA Division I and the seventh-longest streak in school history. The Lady Lions last lost at home Jan. 7, 2012 to Michigan State.

LUCAS PASSES 1,500: Junior guard **Maggie Lucas** surpassed the 1,500-point plateau for her career with 19 markers against Nebraska Jan. 13. Accomplishing the feat in 82 games, she is the third-fastest player in school history to reach the 1,500-point mark behind Kelly Mazzante (68 games) and Susan Robinson (80 games).

MIA JOINS 500-BOARD CLUB: Senior forward **Mia Nickson** became the 28th member of the Lady Lions' 500-rebound club with six caroms at Michigan State Jan. 26. She has accumulated 535 rebounds in her three seasons in the Blue & White since transferring from Boston College after her freshman season.

BENTLEY IN GREAT COMPANY: With 13 points at Michigan State Jan. 6, **Alex Bentley** surpassed the 1,500-point plateau and became the fifth player in Big Ten history and second player in Lady Lion history to accumulate 1,500 points, 500 assists and 250 steals. Bentley joins the Big Ten list that includes: Stephanie White, Purdue (1996-99; 2,182-578-277), Yvette Angel, Ohio State (1982-85; 1,563-562-326), Tamara Moore, Wisconsin (1999-02; 1,662-554-353) and Katie Douglas, Purdue (1998-01; 1,965-526-327). Additionally, Bentley joins Suzie McConnell (1985-88; 1,897-1,307-507) as the only Lady Lions to accomplish the feat. Bentley has 1,583 points, 526 assists and 289 steals in her career.

GREENE & TAYLOR LEAD LIONS: Senior center **Nikki Greene** and junior guard **Dara Taylor** led the way for the Lady Lions in the road win at Michigan State Jan. 6. Greene posted her second double-double of the season with 14 points, including 10 markers in the second half, and 10 rebounds. Taylor posted a career-high 18 points in the win, surpassing her previous mark of 17 vs. Clemson of Feb. 14, 2010 while she was with Maryland. Taylor was 7-for-10 from the field, including hitting three of her four attempts from three-point range.

GREENE CLIMBS BOARDS LIST: Senior center **Nikki Greene** moved into sixth place on Penn State's career rebounding chart with 10 boards at Michigan State Jan. 6. With 891 career caroms, she passes Mag Strittmatter (820; 1975-78) for sixth position. Greene needs 27 rebounds to tie Angie Potthoff (918; 1993-97) for fifth place.

NOW YOU SEE IT, NOW YOU DON'T: The Lady Lions recorded a season-best 19 steals in the Big Ten opener against Northwestern. The 19 thefts are the most by the Lady Lions since registering 21 thefts against Bucknell Dec. 28, 2010. Junior guard **Dara Taylor** had seven of those steals to establish a personal best mark, surpassing her previous career mark of six thefts against N.C. Central (11/14/09) as a member of the Maryland Terrapins. Taylor also surpassed the 100-steal mark for her career against the Wildcats.

MAGS IN THE ESPNW BLOGOSPHERE: Junior guard **Maggie Lucas** is a weekly contributing blogger for espnW. Lucas will be blogging about various topics all year long. Her blogs can be found at espn.go.com/espnw/blog/category/maggie-lucas/.

MIA IS DOUBLE TROUBLE: Senior forward **Mia Nickson** posted her third double-double of the season and 13th of her career with season-bests of 14 points and 13 rebounds in the win over Northwestern Jan. 3.

FINDING A WAY TO WIN: In the Big Ten opener against Northwestern Jan. 3, the Lady Lions shot just 29.9% (20-67) for the game, but managed to pull out the 73-69 win. It was the first time that Penn State has shot below 30% and won since shooting 22.4% (15-67) at Minnesota on Jan. 3, 1999.

DOUBLE DIGITS IN NON-CON: With a win over NJIT to close out the non-conference season Dec. 23, the Lady Lions secured double digit non-conference wins for the third-straight season.

AB EQUALS STEALS HIGH: On Dec. 23, **Alex Bentley** registered a career high eight steals against NJIT. The eight thefts ties her career mark set against Nebraska Dec. 30, 2011.

LADY LIONS SEASON BESTS

Player	Points	Rebounds	Assists	Blocks	Steals
Candice Agee	8 (2X)	9 (FDU)	1 (2X)	1 (8X)	2 (NJIT)
Alex Bentley	23 (Georgetown)	9 (SDSU)	8 (2X)	1 (3X)	8 (NJIT)
Talia East	11 (FDU)	6 (2X)	2 (Georgetown)	3 (FDU)	1 (6X)
Ariel Edwards	24 (Detroit)	7 (FDU)	2 (2X)	2 (2X)	1 (5X)
Nikki Greene	23 (Wisconsin)	20 (CSUN)	3 (Detroit)	3 (Lafayette)	2 (2X)
Maggie Lucas	39 (Georgetown)	9 (Lafayette)	4 (3X)	4 (SDSU)	6 (Georgetown)
Mia Nickson	14 (2X)	13 (Nwestern)	3 (MSU)	2 (Texas A&M)	2 (3X)
Gizelle Studevent	7 (Lafayette)	3 (Wisconsin)	3 (Detroit)	1 (2X)	1 (3X)
Dara Taylor	18 (MSU)	7 (Wisconsin)	8 (2X)	1 (2X)	7 (Nwestern)
Tori Waldner	7 (FDU)	6 (2X)	2 (2X)	5 (Minnesota)	2 (NJIT)
Marisa Wolfe	-	-	-	-	-

PSU IN THE POLLS

Week of	AP	Coaches
Preseason	8	8
Nov. 12	9	9
Nov. 19	6	7
Nov. 26	6	7
Dec. 3	10	10
Dec. 10	11	10
Dec. 17	11	10
Dec. 24	10	10
Dec. 31	9	9
Jan. 7	8	8
Jan. 14	8	8
Jan. 21	8	8
Jan. 28	7	8



NATIONAL POLLS

ASSOCIATED PRESS (JAN. 28)

No.	Team (1st)	Rec.	Pts.	LW
1.	Baylor (37)	18-1	997	1
2.	Notre Dame	18-1	953	2
3.	Connecticut (3)	18-1	930	3
4.	Stanford	18-2	853	6
5.	Duke	18-1	834	4
6.	California	17-2	790	7
7.	PENN STATE	17-2	768	8
8.	Kentucky	19-2	695	5
9.	Tennessee	16-3	691	9
10.	Maryland	17-3	674	10
11.	North Carolina	19-2	495	11
12.	Louisville	17-4	491	13
13.	Georgia	17-3	470	14
14.	Purdue	17-3	446	15
15.	South Carolina	18-3	442	18
16.	Texas A&M	16-5	435	16
17.	Dayton	17-1	357	17
18.	UCLA	15-4	339	19
19.	Oklahoma State	15-3	315	12
20.	Florida State	17-3	253	22
21.	Oklahoma	15-4	211	20t
22.	Colorado	15-4	205	20t
23.	Iowa State	14-4	102	24
24.	Iowa	16-5	79	NR
25.	Delaware	15-3	66	NR

Others Receiving Votes: Michigan 42; UTEP 21; Villanova 11; Texas Tech 10; Syracuse 6; Green Bay 4; Michigan State 4; Duquesne 4; Vanderbilt 2; Nebraska 2; Kansas 2; LSU 1.

USA TODAY/ESPN TOP 25 (JAN. 22)

No.	Team (1st)	Rec.	Pts.	LW
1.	Baylor (25)	18-1	743	1
2.	Connecticut (4)	18-1	717	2
3.	Notre Dame (1)	19-1	699	3
4.	Duke	18-1	639	5
5.	Stanford	18-2	631	6
6.	California	17-2	589	7
7.	Kentucky	19-2	576	4
8.	PENN STATE	17-2	543	8
9.	Maryland	17-3	500	10
10.	Tennessee	16-4	492	9
11.	Purdue	17-3	400	13
12.	Louisville	17-4	398	12
13.	South Carolina	18-3	378	14
14.	Georgia	17-3	362	14
15.	Dayton	17-1	319	16
16t.	Texas A&M	16-5	297	18
16t.	Oklahoma State	15-3	297	11
18.	North Carolina	19-2	230	16
19.	UCLA	15-4	201	20
20.	Oklahoma	15-4	188	19
21.	Florida State	17-3	176	21
22.	Iowa State	14-4	85	24
23.	Colorado	15-4	64	23
24.	Syracuse	16-3	58	22
25.	Iowa	16-5	37	NR

Others Receiving Votes: Villanova 28; Delaware 22; Middle Tennessee State 18; Michigan 16; UTEP 15; DePaul 9; Green Bay 7; Nebraska 7; Vanderbilt 3; Texas Tech 3; Miami (Fla.) 2; Pacific 1.

*Bold type indicates 2012-13 Penn State opponent

STATISTICAL LEADERS

Check here throughout the season for a breakdown of how many times a player leads Penn State in the following statistical categories. (First number is solo, the second is shared.)

Points	Lucas (13/2), Bentley (1/1), Greene (2), Taylor (1), Nickson (-/1)
Rebounds	Nickson (6), Greene (9), Lucas (2), Bentley (1), Agee (1)
Assists	Bentley (8/1), Taylor (6/3), Lucas (1/3), Nickson (-/1)
Steals	Bentley (10/2), Taylor (3/2), Nickson (1), Lucas (2/2)
Blocks	Greene (6/2), Edwards (2/1), Nickson (1/2), East (2/1), Lucas (1/1), Agee (-/2), Bentley (-/1), Waldner (2/2)
FG % (min. 4 attempts)	Edwards (5), Nickson (2), Greene (3/1), Lucas (4), Agee (1/1), Taylor (2), Bentley (-/1), Studevent (-/1)
FT % (min 4 attempts)	Lucas (7/2), Greene (1), Waldner (1), Bentley (4), Nickson (3), Taylor (-/2), Edwards (-/2)
3FG % (min. 2 att.)	Lucas (15/1), Bentley (1), Edwards (1), Taylor (1/1)

PENN STATE VS. THE BIG TEN

Illinois	Overall	28-14	Nebraska	Overall	4-1
	Big Ten Games	21-11		Big Ten Games	2-1
	Big Ten Tournament	4-2		Big Ten Tournament	0-0
	Home	15-2		Home	2-1
	Away	9-10		Away	1-0
	Neutral	4-2		Neutral	1-0
Indiana	Overall	28-9	Northwestern	Overall	31-7
	Big Ten Games	23-8		Big Ten Games	27-6
	Big Ten Tournament	3-1		Big Ten Tournament	2-0
	Home	16-2		Home	17-1
	Away	9-6		Away	12-5
	Neutral	3-1		Neutral	2-1
Iowa	Overall	24-17	Ohio State	Overall	33-21
	Big Ten Games	19-14		Big Ten Games	20-14
	Big Ten Tournament	2-1		Big Ten Tournament	4-5
	Home	14-5		Home	17-6
	Away	7-11		Away	12-9
	Neutral	3-1		Neutral	4-6
Michigan	Overall	29-9	Purdue	Overall	16-26
	Big Ten Games	27-7		Big Ten Games	14-19
	Big Ten Tournament	1-2		Big Ten Tournament	2-4
	Home	14-2		Home	9-8
	Away	14-5		Away	5-14
	Neutral	1-2		Neutral	2-4
Michigan State	Overall	25-13	Wisconsin	Overall	28-10
	Big Ten Games	22-12		Big Ten Games	25-10
	Big Ten Tournament	2-1		Big Ten Tournament	2-0
	Home	14-4		Home	17-2
	Away	9-8		Away	9-8
	Neutral	2-1		Neutral	2-0
Minnesota	Overall	26-11			
	Big Ten Games	23-11			
	Big Ten Tournament	2-0			
	Home	15-3			
	Away	9-8			
	Neutral	2-0			



RECORD BOOK

CAREER SCORING

1. 2,919 Kelly Mazzante, 2001-04
2. 2,253 Susan Robinson, 1989-92
3. 2,044 Tyra Grant, 2007-10
4. 2,025 Kahadeejah Herbert, 1982-85
5. 1,995 Tanisha Wright, 2002-05
6. 1,897 Suzie McConnell, 1985-88
7. 1,725 Angie Potthoff, 1993-97
8. 1,663 Lisa Shepherd, 1998-01
9. 1,619 Andrea Garner, 1997-00
10. **1,583 Alex Bentley, 2010-present**
11. **1,574 Maggie Lucas, 2011-present**
12. 1,538 Tanya Garner, 1988-91
13. 1,514 Vicki Link, 1984-87
14. 1,466 Jess Strom, 2002-05
15. 1,463 Katina Mack, 1992-96
16. 1,428 Jen Bednarek, 1977-80
17. 1,328 Maren Walseth, 1998-01
18. 1,320 Cheryl Ellison, 1980-83
19. 1,295 Kathy Phillips, 1989-92
20. 1,294 Helen Darling, 1997-00
21. 1,288 Carol Walderman, 1981-83
22. 1,280 Louise Leimkuhler, 1980-82
23. 1,240 Tina Nicholson, 1993-96
24. 1,238 Kam Gissendanner, 2006-08
25. 1,233 Amanda Brown, 2004-07
26. 1,186 Bethany Collins, 1985-88
27. 1,162 Lisa Faloon, 1984-87
28. 1,142 Jess Brungo, 2001-04
29. 1,135 Sue Martin, 1976-80
30. 1,106 Missy Masley, 1992-95
31. 1,084 Brianna O'Rourke, 2005-09
32. 1,061 Nancy Kuhl, 1975-79
33. 1,024 Rashana Barnes, 1999-02
34. 1,022 Helen Holloway, 1991-94
35. **1,015 Nikki Greene, 2010-present**

CAREER BLOCKS

1. 268 Kim Calhoun, 1993-96
2. **197 Nikki Greene, 2010-present**
3. 192 Mary Donovan, 1977-81
4. 189 Rashana Barnes, 1999-02
5. 185 Andrea Garner, 1997-00
6. 172 Amanda Brown, 2004-07
7. 140 Tina Henry, 1990-93
8. 94 Jess Brungo, 2001-04
9. 92 Bethany Collins, 1985-88
10. 89 Kathy Phillips, 1989-92
11. 87 Reicina Russell, 2003-04
- 87 Vicki Link, 1984-87
13. 81 Kahadeejah Herbert, 1982-85
14. 75 Tyra Grant, 2007-10
15. 68 Kelly Mazzante, 2001-04
16. 67 Janessa Wolff, 2008-10
17. 66 Adrie DeVries, 1987-90
18. 61 Tanisha Wright, 2002-05
19. **48 Talia East, 2011-present**
- 48 Julia Trogele, 2008-11
- **39 Tori Waldner, 2012-present**

CAREER REBOUNDS

1. 1,103 Kahadeejah Herbert, 1982-85
2. 1,070 Susan Robinson, 1989-92
3. 1,016 Andrea Garner, 1997-00
4. 943 Vicki Link, 1984-87
5. 918 Angie Potthoff, 1993-97
6. **891 Nikki Greene, 2010-present**
7. 820 Mag Strittmatter, 1975-78
8. 818 Cheryl Ellison, 1980-83
9. 808 Amanda Brown, 2004-07
10. 773 Mary Donovan, 1978-81
11. 757 Bethany Collins, 1985-88
12. 728 Rashana Barnes, 1999-02
13. 721 Missy Masley, 1992-95
14. 719 Louise Leimkuhler, 1980-83
15. 717 Kathy Phillips, 1989-92
16. 690 Julia Trogele, 2008-11
17. 672 Helen Darling, 1997-00
18. 649 Jess Brungo, 2001-04
19. 645 Maren Walseth, 1998-01
20. 621 Tanisha Wright, 2002-05
21. 598 Helen Holloway, 1991-94
22. 595 Sue Martin, 1977-80
23. 583 Kim Calhoun, 1993-96
24. 563 Kelly Mazzante, 2001-04
25. **535 Mia Nickson, 2011-present**
26. 531 Lorraine McGirt, 1983-85
27. 530 Ashli Schwab, 2002-05
28. 526 Adrie DeVries, 1987-90

CAREER THREE-POINT FIELD GOALS MADE

1. 357 Kelly Mazzante, 2001-04
2. **253 Maggie Lucas, 2011-present**
3. 230 Lisa Shepherd, 1998-01
4. 191 Jess Strom, 2002-05
5. 179 Tyra Grant, 2007-10

CAREER THREE-POINT FIELD GOALS ATTEMPTED

1. 1,019 Kelly Mazzante, 2001-04
2. 583 Lisa Shepherd, 1998-01
3. **579 Maggie Lucas, 2011-present**
4. 531 Tyra Grant, 2007-10
5. 525 Jess Strom, 2002-05

CAREER FIELD GOALS MADE

1. 1,051 Kelly Mazzante, 2001-04
2. 866 Susan Robinson, 1989-92
3. 771 Tanisha Wright, 2002-05
4. 757 Kahadeejah Herbert, 1982-85
5. 729 Suzie McConnell, 1985-88
6. 709 Angie Potthoff, 1993-97
7. 687 Tyra Grant, 2007-10
8. 668 Jen Bednarek, 1977-80
9. 660 Andrea Garner, 1997-00
10. **642 Alex Bentley, 2010-present**

CAREER FIELD GOALS ATTEMPTED

1. 2,430 Kelly Mazzante, 2001-04
2. 1,755 Tyra Grant, 2007-10
3. 1,672 Susan Robinson, 1989-92
4. 1,667 Tanisha Wright, 2002-05
5. 1,526 Suzie McConnell, 1985-88
6. **1,495 Alex Bentley, 2010-present**
7. 1,365 Andrea Garner, 1997-00
8. 1,347 Kahadeejah Herbert, 1982-85
9. 1,329 Jen Bednarek, 1977-80
10. 1,260 Lisa Shepherd, 1999-01

CAREER ASSISTS

1. 1,307* Suzie McConnell, 1984-88
2. 826 Tina Nicholson, 1993-96
3. 791 Helen Darling, 1997-00
4. 776 Jess Strom, 2002-05
5. 632 Annie Troyan, 1981-83
6. 567 Dana Eikenberg, 1989-92
7. 560 Brianna O'Rourke, 2006-09
8. 528 Nancy Kuhl, 1975-79
9. **526 Alex Bentley, 2010-present**
10. 484 Tanisha Wright, 2002-05

CAREER STEALS

1. 507 Suzie McConnell, 1985-88
2. 314 Helen Darling, 1997-00
3. 310 Jess Strom, 2002-05
4. 293 Tina Nicholson, 1993-96
5. **289 Alex Bentley, 2010-present**
- 289 Kelly Mazzante, 2001-04
7. 267 Tanisha Wright, 2002-05
8. 257 Nancy Kuhl, 1975-79
9. 247 Corinne Gulas, 1980-81
10. 224 Kahadeejah Herbert, 1982-85

as of Jan. 27, 2013



2013 RECRUITING CLASS

Coquese Washington announced her 2013 recruiting class, which is ranked No. 6 by Collegiate Girls Basketball Report, No. 7 Blue Star Basketball and No. 9 by All-Star Girls Report. Guards **Lindsey Spann** (Laurel, Md./Good Counsel) and **KeKe Sevillian** (Goodrich, Mich./Goodrich), swing players **Jenny DeGraaf** (Springboro, Ohio/Springboro), **Kalayah Mitchell** (Stone Mountain, Ga./Stephenson), **Peyton Whitted** (Suwanee, Ga./North Gwinnett) and post players **Alex Harris** (Lorain, Ohio/Lorain Southview) and **Infiniti Alston** (Baltimore, Md./Digital Harbor) signed National Letters of Intent and will start their Lady Lion careers in 2013-14. The seven-player class is the largest in school history and includes six players that are in the Collegiate Girls Basketball Report Top 100.

Spann, who is the 22nd-ranked player by Collegiate Girls Basketball Report and 88th-rated player by Blue Star Basketball, led Good Counsel, to the 2012 Washington Catholic Athletic Conference (WCAC) Championship and became the first team in league history to finish with an undefeated record (18-0). The 5-6 guard averaged 15.0 points, 5.4 assists, 2.0 steals and 3.0 rebounds as a junior en route to first team All-WCAC honors. She was also a first team All-Gazette, All-Sentinel and All-DCSportsfan selection and was a second team All-Met honoree. Spann participated in USA Basketball's U16 Trials in May 2011. She played her AAU ball for the Maryland Lady Terps.

Sevillian is a two-time All-State point guard, who led Goodrich High School in Michigan to their first-ever Class B State Championship in 2011-12 with a perfect 28-0 record. Sevillian, a 5-6 guard, is a three-time first team all-conference choice for the Martians, who averaged 13.5 points and 3.6 assists per game during her junior season. She also snatched 107 steals in 28 contests a year ago. For her career, Sevillian has 916 points, 237 assists, 283 steals and 130 blocks. Sevillian is also an outstanding track athlete, earning four varsity letters at Goodrich. She holds the school record in the 300-meter hurdles and 200-meter dash and finished second in the state championships in the 300-meters hurdles her freshman and sophomore seasons. She was unable to compete last season due to an injury. She played AAU ball for the Michigan Crossover.

DeGraaf, 87th-rated recruit by Collegiate Girls Basketball Report, averaged 15.0 points, 6.1 rebounds and 1.9 blocks per game as she led Springboro to a 22-2 record. The 6-1 forward led the Greater Western Ohio Conference (GWOC) with a .548 field goal percentage and accounted for a .747 effort from the free throw line. DeGraaf was a first team All-GWOC, Dayton Daily News D-I All-Area team and first team Associated Press D-I All-Southwestern District honoree as a junior. Additionally, she garnered special mention All-Ohio accolades in 2011-12. As a sophomore, she averaged 9.3 points and 7.1 rebounds per game en route to All-GWOC South Division first team honors. DeGraaf is also a standout volleyball player for Springboro. She played her AAU ball for Sports City U.

Mitchell, who is the 54th-ranked recruit by Collegiate Girls Basketball Report and 40th-ranked recruit by All-Star Girls Report, accounted for 12.9 points, 8.3 rebounds, 3.2 steals, 4.0 assists and 2.0 blocks per game as a junior for Stephenson High School. The 6-2 forward shot 46% from the field and 68% from the free throw line last season on her way to All-DeKalb County accolades. Mitchell is a two-time All-Metro third team honoree, an Atlanta Journal Constitution DeKalb County second team choice and honorable mention All-State selection. She played her AAU ball for the Georgia Hoopstars Black.

Whitted is the 71st-ranked recruit by Collegiate Girls Basketball Report and 60th-ranked player by All-Star Girls Report after averaging 11.6 points and 6.3 rebounds per game for North Gwinnett her junior season. The 6-2 forward guided the Bulldogs to their first state semifinal appearance since 1963 as she averaged a double-double in state playoff games (14.8 pts., 10.0 rebs.). She was a second team All-County selection by the Daily Post. In two seasons at North Gwinnett, Whitted has 551 points, 279 rebounds and 89 steals. She also has experience on the national level, participating in USA Basketball's U16 Trials in May 2011.

Harris, who is the 49th-ranked recruit by Collegiate Girls Basketball Report and All-Star Girls Report, averaged a double-double for Lorain Southview in Ohio. The 6-3 forward tallied 12.1 points and 11.7 rebounds in 2011-12 as the Titans went 17-5. She also accounted for 5.0 blocks per game a year ago on her way to honorable mention All-State and first team All-County and All-District honors. She also earned honorable mention All-State accolades and first team All-Lorain County honors as a sophomore. In her freshman year, Harris was All-Lorain County first team and Lake Erie League first team while playing at Admiral King. In her high school career, Harris has 233 blocks and 741 rebounds as a defensive stalwart. She played her AAU ball for TNBA.

Alston is the 48th-ranked recruit by Collegiate Girls Basketball Report and 96th-rated recruit by All-Star Girls Report. The 6-5 center averaged 14.0 points, 11.0 rebounds, 3.0 blocks and 2.0 assists for Digital Harbor High School as a junior. She was a member of the Philly Belles AAU squad last summer and played for Boo Williams' top team as a freshman in high school. Alston participated in Nike Skills Academy in 2011.

LUCAS PASSES SHEPHERD ON 3S CHART: With five three-pointers against NJIT Dec. 23, **Maggie Lucas** passed Lisa Shepherd (230; 1998-01) for second place all-time in three-pointers made chart. With 252 career three-pointers made, Lucas now sets her sights on Kelly Mazzante, who holds the all-time three-pointers record with 357 career triples.

BENTLEY JOINS ELITE CLUB: With five assists in the Dec. 16 win over South Dakota State, senior guard **Alex Bentley** became just the sixth player in program history to record 1,000 points, 500 assists and 250 steals in their career. Bentley joins Nancy Kuhl, Tina Nicholson, Jess Strom, Helen Darling and Suzie McConnell in the elite club. Additionally, Bentley became just the ninth player in school history to eclipse the 500-assist mark.

NON-CON HOME WINNING STREAK: The Lady Lions have won their last 13 non-conference home games, dating back to the 2010-11 season. The streak is the third-longest non-conference home court winning streak in school history. Penn State last lost a home non-conference game against Drexel on Dec. 21, 2010.

WASHINGTON WINS #100: Lady Lion head coach **Coquese Washington** earned her 100th career coaching win as Penn State topped Virginia Tech, 60-41, in Blacksburg Dec. 12. Washington is just the second coach in program history to accomplish the feat (Rene Portland; 606).

TAYLOR EQUALS PSU CAREER HIGH: Junior guard **Dara Taylor** matched her best scoring performance in a Penn State uniform with 15 points at Virginia Tech Dec. 12. She matched the mark she set against Fairleigh Dickinson Dec. 2. Taylor connected on a career-best three shots from beyond the arc, passing her previous mark of two three-pointers, set twice as a Maryland Terp.

LUCAS WINS NATIONAL PLAYER OF THE WEEK: Junior guard **Maggie Lucas** claimed the Dec. 11 Ann Meyers Drysdale National Player of the Week award from the USBWA. She is the first Lady Lion on record to win the award. Lucas poured in a career-high and Bryce Jordan Center record (men or women) 39 points to go along with a career-best six steals in the Dec. 9 win over Georgetown. Additionally, Lucas tallied 15 points in the loss at #2 UConn on Dec. 6.

ANOTHER POW AWARD FOR MAGS: Junior guard Maggie Lucas picked up her second Big Ten Player of the Week award of the season after averaging 27.0 points, 4.5 rebounds, 1.5 assists and 3.5 steals in a pair of games for the Lady Lions last week. Lucas shared the award for the week-ending Dec. 9 with Minnesota's Rachel Banham. Lucas is the first Lady Lion to garner multiple Player of the Week awards in a season since Amanda Brown won two weekly honors in the 2006-07 campaign.



RECORD BREAKER IN THE BJC: Junior guard **Maggie Lucas** was 11-for-21 from the field and 7-for-13 from three-point range en route to a career-high 39 points in the win over Georgetown Dec. 9. Her 39 tallies broke the Bryce Jordan Center record for points in a game (men's or women's), surpassing the previous mark of 38 points, set by Kelly Mazzante twice. Lucas is the first Lady Lion to break the 35-point mark since Kelly Mazzante had 35 against Wisconsin on March 2, 2003. Lucas' three career 30-point games are tied for the sixth-most by a Penn State player. Additionally, Lucas tied the women's BJC record for three-pointers in a game with seven triples, equaling the mark she set against Michigan State (1/7/12) and also held by Adrienne Squire, Kelly Mazzante and Iowa's Kamille Wahlin. Lucas was also stellar on the defensive end against the Hoyas, recording a career-high six steals.

GREENE PULLS IN #800: With 13 rebounds in the win over Georgetown Dec. 9, senior center **Nikki Greene** reached the 800-rebound mark for her career. She is the ninth player in school history to snag 800 caroms and is the first player to join the 800-rebound club since Amanda Brown in the 2006-07 season.

2013 WBCA PINK ZONE: The 2013 Pink Zone at Penn State will take place on Sunday, Feb. 24 as the Lady Lions take on Michigan in the Bryce Jordan Center. Last year, the Lady Lions donated nearly \$203,000 for breast cancer causes. This year's fundraising efforts will benefit the Mount Nittany Medical Center, Penn State Hershey Cancer Institute, Pennsylvania Breast Cancer Coalition, the Kay Yow Cancer Fund, J.C. Blair Memorial Hospital and Lewistown Hospital. For more information on the Pink Zone at Penn State, visit the official Pink Zone website at www.pennsylvaniapinkzone.org.

LEADING THE HUSKIES: The Lady Lions led the second-ranked Connecticut Huskies on two occasions for a total of 31 seconds in their Dec. 6 game. To that point, the Huskies had only trailed for a total of 17 seconds in their season opener against College of Charleston. Penn State also forced UConn into a season-high 20 turnovers.

GREENE GETS #900: Senior center **Nikki Greene** surpassed the 900-point plateau at #2/2 Connecticut Dec. 6. Greene has 955 career tallies in the Blue & White. With 45 more tallies, she will be the 35th player in school history to reach 1,000 points.

FIRST STARTS: Juniors **Dara Taylor** and **Talia East** made their first career starts in a Penn State uniform against Fairleigh Dickinson on Dec. 2 and they both responded with their best days in the Blue & White. Taylor, who had 28 collegiate starts at Maryland, tallied 15 points against the Knights for her best scoring performance as a Lady Lion. East notched a career-best 11 points to go along with three blocks in her first career start.

AB DISHING HER WAY UP THE ASSISTS CHART: Senior guard **Alex Bentley** handed out eight assists in the win over FDU Dec. 2 to move into ninth place on Penn State's career helpers chart. With 521 career dimes, Bentley passed Tanisha Wright (484; 2002-05) for the ninth spot. Bentley needs seven assists to tie Nancy Kuhl (528; 1975-79) for eighth place.

POST DUO HITS CAREER MARKS: Freshman **Candice Agee** and sophomore **Tori Waldner** each had career days in the win over Fairleigh Dickinson Dec. 2. Agee tallied personal bests of eight points, nine rebounds and 20 minutes played, while Walder notched a career-high seven points with five rebounds and two blocks. Waldner's previous career high was six points, established three times, including twice this season.

C-NOTE: With a 101-44 win over Fairleigh Dickinson Dec. 2, Penn State surpassed the 100-point plateau for the first time since scoring 103 tallies against Wagner last season (12/18/11). It was the 47th time in program history that the Lions have scored 100 or more points. Additionally, the 57-point win was the biggest margin of victory since the 103-42 win over Wagner.

LUCAS TABBED PLAYER OF THE WEEK: Junior guard **Maggie Lucas** was selected as the Big Ten Player of the Week for the week-ending Nov. 25. It is the second career Big Ten Player of the Week award for Lucas; she also won it on Feb. 21, 2012. Lucas was named the Radisson Hotel Chatsworth Thanksgiving Tournament MVP after averaging 25.5 points, 3.5 rebounds, 3.0 assists and 2.5 steals in two games. The junior shot 53.3% (16-30) from the field with an amazing 75% (6-8) from long range.

GOBBLING UP TOURNAMENT AWARDS: Junior guard **Maggie Lucas** was selected as the Radisson Hotel Chatsworth Thanksgiving Tournament MVP, while senior center **Nikki Greene** was named to the All-Tournament team. Lucas averaged 25.5 points, 3.5 rebounds, 3.0 assists and 2.5 steals in two games, while Greene averaged a double-double with 13.5 points and 13.5 rebounds per game.

20-20 VISION: Senior center **Nikki Greene** posted her first double-double of the season and 10th of her career with 21 points and 20 rebounds in the win over Cal State Northridge on Nov. 24. The 20 boards tie Greene's career high, which she also set against Indiana on Jan. 23, 2011. She is just the third player in school history to have multiple 20-rebound games in her career, joining Mag Strittmatter (1975-78) and Mary Donovan (1978-81).

CAREER DAY FOR ARI: **Ariel Edwards** had a career day against Detroit on Nov. 23. The junior guard/forward tallied 24 points on 11-of-16 shooting in just 25 minutes of action. In fact, Edwards had 19 tallies in the first half, which eclipsed her previous career high of 17 points against Iowa on Jan. 22, 2012.

COURTSIDE WITH COQUESE

Courtside with Coquese, a show that follows the Penn State women's basketball team during the season and takes viewers on an all-access tour of the team. All episodes of Courtside with Coquese can also be viewed online on ladylions.com or youtube.com/pennstateladylions.

All episodes of *Courtside with Coquese* are available on BTN2GO and on Comcast on Demand in State College.

Courtside with Coquese Air Dates

Ep. 4	Fri., 2/1	6:15 p.m.	PBS World
	Sun., 2/3	12:30 p.m.	WPSU
	Sun., 2/3	11:30 p.m.	WPSU
Ep. 5	Fri., 2/8	6:15 p.m.	PBS World
	Sun., 2/10	12:30 p.m.	WPSU
	Sun., 2/10	11:00 p.m.	WPSU
Ep. 6	Fri., 2/15	6:15 p.m.	PBS World
	Sun., 2/17	12:30 p.m.	WPSU
	Sun., 2/17	11:30 p.m.	WPSU
Ep. 7	Fri., 2/22	6:15 p.m.	PBS World
	Sun., 2/24	12:30 p.m.	WPSU
	Sun., 2/24	11:00 p.m.	WPSU
Ep. 8	TBA		
Ep. 9	TBA		

5-0 UNDER COQUESE: The Lady Lions started the season 5-0 for the second time under **Coquese Washington**. The mark equals the best start under Washington during the 2010-11 campaign.

MAGS DRAINS #200 FROM DEEP: Junior guard **Maggie Lucas** connected on her 200th career three-pointer in the win over Lafayette on Nov. 18. She is the third player in school history to reach 200 triples, joining Kelly Mazzante and Lisa Shepherd.

AB REACHES 100 STARTS: For the second time this season, the Lady Lions have had a player reach the century mark for starts. This time it was **Alex Bentley**, who earned the nod against Lafayette on Nov. 18, joining **Nikki Greene** among those Lady Lions with 100 or more starts. She is the 12th player in school history to accomplish the feat. She has started all but two of the games that she has played in the Blue & White.

MIA MEETS MILESTONES: In the Nov. 18 win over Lafayette, senior forward **Mia Nickson** reached a pair of milestones. The Ashburn, Va. native tallied 12 points to surpass the 600-point mark for her Penn State career. Additionally, Nickson snagged six rebounds to surpass the 500-carom mark for her collegiate career.

RANKED NON-CON ROAD WIN: Penn State picked up the 63-58 win over #16/13 Texas A&M in College Station Nov. 14 to give the Lady Lions their first road victory over a ranked non-conference opponent since defeating #19 Texas on December 21, 2001. In that game, the Lady Lions topped the Longhorns, 67-65.





COQUESE WASHINGTON

Head Coach
6th Season

PENN STATE
LADY LION BASKETBALL

Coquese Washington, who helped lead Notre Dame to the 2001 NCAA Championship, was introduced as the fifth head coach of the Penn State women's basketball program on April 23, 2007. Washington is the first female African-American head coach in Penn State history.

Washington returned the Lady Lions to Big Ten prominence in her fifth season as she guided Penn State to the Big Ten regular-season title with a 13-3 record in conference play. Additionally, the Lady Lions advanced to the NCAA Tournament Sweet Sixteen with wins over UTEP and LSU en route to a 26-7 overall record. The Lady Lions posted back-to-back 20-win seasons for the first time since 2002-03 and 2003-04. It was also the first Big Ten crown and Sweet Sixteen berth for the Lady Lions since 2003-04. The Lady Lions were ranked throughout the season and finished ninth in the ESPN/USA Today Coaches' Poll and 11th in the Associated Press Top 25.

For her efforts in rebuilding the Penn State program, Washington was honored as the Big Ten Coach of the Year and the WBCA Region 6 Coach of the Year, making her a finalist for WBCA National Coach of the Year. The

accolades were not just limited to Washington; all five Lady Lion starters earned All-Big Ten recognition, including first team bids for Alex Bentley and Maggie Lucas. Both Bentley and Lucas also garnered honorable mention All-America honors from the WBCA and Associated Press, respectively. Bentley became the 33rd player in school history to reach the 1,000-point plateau and just the 15th junior to reach the milestone. Lucas also joined the 1,000-point club in 2011-12, becoming just the third sophomore in program history to accomplish the feat.

On the recruiting trail, the Lady Lions' 2012 class earned a Top 20 class from Dan Olson's Collegiate Girls Basketball Report. The class includes transfer Dara Taylor, who sat out the 2011-12 season due to NCAA transfer rules, and McDonald's High School All-American Candice Agee from California. The addition of Taylor, who was a 2009 McDonald's All-American, and Agee gives the Lady Lions three McDonald's All-Americans on the roster heading into the 2012-13 campaign, joining 2010 honoree Lucas. Additionally, Agee earned a gold medal with the USA Basketball U18 National Team Trials at the 2012 FIBA Americas Championship in August.

The Lady Lions returned to the national stage in Washington's fourth year with a second-place finish in the Big Ten regular season standings, a runner-up finish in the Big Ten Tournament and a berth in the NCAA Tournament. Penn State tallied its 23rd 20-win season with a 25-10 overall record and an 11-5 mark in conference play. The Lady Lions worked their way back to the "Big Dance" for the first time since 2004-05 and advanced to the second round for the first time in seven years with a win over Dayton in the first round in front of a raucous BJC crowd.

Penn State was a dominating force from the perimeter as the Lady Lions tied the school record with 228 three-pointers and led NCAA Division I from deep with a .415 three-point field goal percentage. Pacing the Lady Lions from downtown was Lucas, who broke the Big Ten three-pointers record with 112 triples to go along with a .426 shooting percentage. For her efforts, Lucas was selected as the Big Ten Freshman of the Year and Big Ten Sixth Player of the Year while breaking the Penn State freshman season scoring record (552 pts.). Additionally with Washington's guidance, Bentley became the 11th different player in school history to take home first team All-Big Ten accolades after finishing second in the conference in assists. After outstanding seasons, both Lucas and Bentley were invited to the USA Basketball World University Games Trials.

Washington's third season saw the Lady Lions return to the postseason for the first time since 2004-05 with a WNIT berth. The Lions earned their most overall wins (17) and conference wins (8) since the 2004-05 campaign en route to a sixth-place finish in the Big Ten. Penn State picked up a pair of wins over ranked opponents in #15/15 Pittsburgh and #20/23 Michigan State.

In Washington's second season, the Lady Lions moved up three positions in the Big Ten standings, finishing in a tie

THE WASHINGTON FILE

COACHING RESUME

2007-pres. - Head Coach, Penn State
2012-pres. - Kay Yow Cancer Fund Board of Directors
2011-pres. - NCAA WBB Issues Committee
2010-pres. - Treasurer, WBCA Executive Committee
2008-pres. - WBCA Board of Directors
2009-12 - USA Basketball Women's Jr. National Committee
2005-07 - Associate Head Coach, Notre Dame
1999-05 - Assistant Coach, Notre Dame

PLAYING EXPERIENCE

2002-03 - WNBA's Indiana Fever
2000-02 - WNBA's Houston Comets
1998-99 - WNBA's New York Liberty
1997-98 - ABL's Portland Power
1989-93 - University of Notre Dame

EDUCATION

Notre Dame '92, B.A. History
Notre Dame Law School '97, Juris Doctorate

AWARDS

- ❖ 2012 Big Ten Coach of the Year
- ❖ 2012 WBCA Region 6 Coach of the Year
- ❖ 2012 WBCA National Coach of the Year Finalist
- ❖ 2011 BCA Female Coach of the Year
- ❖ 2009 Greater Flint Hall of Fame Inductee
- ❖ 2008 WBCA "Rising Star" Award Winner

FAMILY

Husband: Raynell Brown
Children: Quenton (7), Rhaiyna (3)

for seventh place. Under Washington's guidance in 2008-09, Grant became the 10th different player in school history to earn first team All-Big Ten honors. Grant was also a semifinalist for the Naismith Player of the Year award.

In her first season at the helm, Washington and the Lady Lions picked up two nationally-televised wins, downed two nationally-ranked foes and took home the 25th regular-season tournament crown in program history.

Washington came to Happy Valley after eight seasons as an associate head coach and assistant coach under Muffet McGraw at Notre Dame, her alma mater. During Washington's eight years on the bench, Notre Dame amassed a 188-69 record with eight NCAA Tournament appearances, including four Sweet Sixteen runs and a National Championship in 2001.

One of the top recruiters in the country, Washington was instrumental in helping the Irish to secure eight consecutive Top 25 recruiting classes, according to "Blue Star Index," a feat only accomplished by two other programs in the country (Connecticut and Tennessee).

Washington was a four-year starting point guard for Notre Dame under McGraw and was the team captain on Notre Dame's first-ever NCAA Tournament team. She was a two-time All-Midwestern Collegiate Conference (MCC) selection and led Notre Dame to three MCC Tournament titles.

The epitome of a student-athlete, Washington graduated from Notre Dame in 1992, a full year ahead of schedule, with a bachelor's degree in history. She went on to attain "Double Domer" status in 1997 after earning her Juris Doctorate from the Notre Dame Law School.

Washington is currently serving on the 29-member WBCA Board of Directors, where she is the Treasurer of the Executive Committee. Washington is also a member of the Kay Yow Cancer Fund Board of Directors and the NCAA Women's Basketball Issues Committee.

A native of Flint, Mich., Washington and her husband, Raynell Brown, have a son, Quenton (7), and a daughter, Rhaiyna (3). They reside in Port Matilda, Pa.

Washington's Coaching Record vs. Opponents

Arizona	1-0	Michigan	8-3
Army	1-0	Michigan State.....	3-7
Boston College.....	0-1	Middle Tennessee	1-0
Bucknell.....	5-0	Minnesota.....	6-6
Buffalo	1-0	Mississippi.....	1-0
CS-Northridge.....	1-0	Monmouth.....	1-0
Charlotte.....	1-0	Nebraska.....	1-1
Connecticut.....	0-3	Nevada.....	2-0
Coppin State.....	1-0	NJIT.....	2-0
Dayton.....	2-1	North Carolina.....	1-0
Delaware.....	1-1	Northwestern.....	7-1
DePaul.....	0-1	Oakland.....	2-0
Detroit.....	1-0	Ohio State.....	3-6
Drexel.....	2-1	Old Dominion.....	0-1
Duke.....	1-0	Pittsburgh.....	2-1
Fair. Dickinson.....	1-0	Prairie View A&M.....	1-0
Florida State.....	0-1	Purdue.....	2-8
Georgetown.....	2-0	Rider.....	1-0
Georgia Tech.....	0-1	South Carolina.....	4-1
Hartford.....	1-0	South Dakota St.	1-0
Hofstra.....	0-1	Stony Brook.....	1-0
Holy Cross.....	1-0	Syracuse.....	0-1
Howard.....	1-0	Texas A&M.....	1-1
Illinois.....	8-3	UTEP.....	1-0
Indiana.....	4-4	Texas Tech.....	1-1
Iowa.....	5-5	Utah.....	1-0
Iowa State.....	1-0	Virginia Tech.....	2-0
Lafayette.....	1-0	Wagner.....	1-0
LSU.....	1-0	Washington State.....	1-0
Maine.....	1-0	Wisconsin.....	5-5
UMES.....	1-0	UW-Green Bay.....	0-1
Miami.....	0-1	Xavier.....	0-1





#1 Candice Age

Fr. * F/C * 6-6 * Victorville, Calif./Silverado

2012-13 Season Notes:

- Had two points and three rebounds in the win at Ohio State (1/27)
- Chipped in four points in the win at Michigan State (1/6).
- Notched four points and a blocked shot in the Big Ten opener against Northwestern (1/3).
- Tied her career high with eight points to go along with two rebounds and two steals in the win over NJIT (12/23).
- Connected on a pair of layups and finished with four points against South Dakota State (12/16).
- Pulled in six rebounds in 11 minutes off of the bench at Virginia Tech (12/12).
- Was solid with personal bests of eight points and nine rebounds in the win over Fairleigh Dickinson (12/2).
- Recorded two points, two rebounds and a blocked shot at Miami (11/29).
- Tallied two points and three rebounds in the win over Detroit (11/23).
- Accounted for seven points on 3-of-5 shooting, four rebounds and a blocked shot in the win over Lafayette (11/18).
- Snagged three rebounds with one blocked shot in the win at #16/13 Texas A&M (11/14).
- Recorded her first collegiate block against Howard (11/11), just 45 seconds after entering the game.

CAREER HIGHS

Points.....	8 vs. NJIT (12/23/12)
.....	8 vs. Fairleigh Dickinson (12/2/12)
Rebs.	9 vs. Fairleigh Dickinson (12/2/12)
Assists	1 at Miami (11/29/12)
.....	1 vs. Detroit (11/23/12)
Steals.....	2 vs. NJIT (12/23/12)
Blocks	1 (8x)
.....	last vs. Northwestern (1/3/13)
Minutes	20 vs. Fair. Dickinson (12/2/12)
FGM.....	3 (3x) last vs. NJIT (12/23/12)
FGA	8 vs. NJIT (12/23/12)
FG%	1.000 (1-1) at Ohio State (1/27/13)
.....	1.000 (1-1) at Miami (11/29/12)
3FGM.....	n/a
3FGA	n/a
3PT %	n/a
FTM	2 vs. NJIT (12/23/12)
.....	2 vs. Fairleigh Dickinson (12/2/12)
FTA	3 vs. Fairleigh Dickinson (12/2/12)
FT %	1.000 (2-2) vs. NJIT (12/23/12)
Career Double-Doubles	n/a
Career 20-point games	n/a

GAME-BY-GAME

	P	R	B
HOWARD	0	0	1
Texas A&M	0	3	1
LAFAYETTE	7	4	1
Detroit	2	3	0
CS-Northridge	0	0	0
Miami (Fla.)	2	2	1
FAIR. DICKINSON	8	9	1
Connecticut	DNP		
GEORGETOWN	0	1	0
Virginia Tech	0	6	1
SOUTH DAKOTA ST.	4	1	1
NJIT	8	2	0
NORTHWESTERN	4	1	1
Michigan State	4	0	0
NEBRASKA	0	0	0
WISCONSIN	DNP		
Michigan	DNP		
MINNESOTA	0	1	0
Ohio State	2	3	0
Wisconsin			
PURDUE			
Indiana			
MICHIGAN ST.			
Iowa			
ILLINOIS			
MICHIGAN			
Minnesota			
Nebraska			





#2 Dara Taylor

Jr. * G * 5-8 * Wilmington, Del./Caraval Acad. (Maryland)

2012-13 Season Highlights:

- Surpassed the 300-assist mark for her collegiate career with six helpers against Wisconsin (1/17).
- Registered a career-high 18 points via a 7-for-10 shooting night, including make three of her four attempts from downtown, in the win at Michigan State (1/6).
- Knocked down a career-high three shots from beyond the arc en route to 15 points, which ties her career high as a Penn Stater in the win at Virginia Tech (12/12).
- Had her biggest scoring output in a Penn State uniform with 15 points to go along with three rebounds and five assists in her first PSU start against FDU (12/2).

2012-13 Season Notes:

- Tallied five points to go along with six rebounds, two assists and a pair of steals in the win at Michigan (1/21).
- Was 3-for-5 from the field, including 2-for-3 from three-point range, en route to eight points, a Penn State career-high seven rebounds, six assists and four steals against Wisconsin (1/17).
- Had seven points to go along with three rebounds, eight assists and a trio of steals in the win over Nebraska (1/13).
- Nabbed a career-high seven steals, which pushed her over the 100-steal mark for her career, to go along with nine points in the Big Ten opener against Northwestern (1/3).
- Recorded six points, two rebounds and a PSU career best eight assists in the win over NJIT (12/23).
- Chipped in seven points, five rebounds, five assists and two steals in the win over Georgetown (12/9).
- Tallied eight points, four rebounds and two assists at #2 Connecticut (12/6).
- Notched six points, six rebounds, three assists and a pair of steals in 33 minutes of action at Miami (11/29).
- Accounted for four points, two assists and three steals in the win over Detroit (11/23).
- Filled the stat sheet with three points, five rebounds, six assists and two steals against Lafayette (11/18).
- Was 4-for-8 from the field en route to eight points with three assists and five steals in the victory at #16/13 Texas A&M (11/14).
- Registered five points, four rebounds and three assists in her first game as a Lady Lion against Howard (11/11).

CAREER HIGHS

Points.....	18 at Michigan State (1/6/13)
Rebs.....	8 vs. East Carolina (3/21/10)
Assists.....	11 at American (12/20/09)
.....	11 at Virginia (1/11/10)
Steals.....	7 vs. Northwestern (1/3/13)
Blocks...1 (5x) last vs. Minnesota (1/24/13)	
Minutes.....	38 at American (12/20/09)
FGM.....	7 at Michigan State (1/6/13)
.....	7 vs. Clemson (2/14/10)
FGA.....	14 at Connecticut (12/6/12)
.....	14 at N.C. State (1/17/10)
FG%.....	1.000 (3x)
.....	last vs. N.C. State (2-2) (2/6/11)
3FGM.....	3 at Michigan State (1/6/13)
.....	3 at Virginia Tech (12/12/12)
3FGA.....	6 at Virginia Tech (12/12/12)
3PT %.....	1.000 (4x)
.....	last vs. Minnesota (1-1) (1/24/12)
FTM.....	7 at Wake Forest (2/11/10)
FTA.....	10 at Wake Forest (2/11/10)
.....	10 vs. North Carolina (3/4/10)
FT %.....	1.000 (11x)
.....	last at Ohio State (1-1) (1/27/13)
Career Double-Doubles.....	1
Career 20-point games.....	n/a

GAME-BY-GAME

	P	R	A
HOWARD	5	4	3
Texas A&M	8	3	3
LAFAYETTE	3	5	6
Detroit	4	0	2
CS-Northridge	2	3	0
Miami (Fla.)	6	6	3
FAIR. DICKINSON	15	3	5
Connecticut	8	4	2
GEORGETOWN	7	5	5
Virginia Tech	15	3	0
SOUTH DAKOTA ST.	2	4	3
NJIT	6	2	8
NORTHWESTERN	9	1	1
Michigan State	18	3	4
NEBRASKA	7	3	8
WISCONSIN	8	7	6
Michigan	5	6	2
MINNESOTA	4	1	4
Ohio State	5	0	1
Wisconsin			
PURDUE			
Indiana			
MICHIGAN ST.			
Iowa			
ILLINOIS			
MICHIGAN			
Minnesota			
Nebraska			





#5 Talia East

Jr. * F/C * 6-3 * Philadelphia, Pa./Friends' Central

2012-13 Highlights:

- Made her first career start and responded with a career-high 11 points to go along with three blocks and a pair of rebounds in the win over Fairleigh Dickinson (12/2).

2012-13 Season Notes:

- Was a solid spark off of the bench with four points, four rebounds and two blocks in the win at Ohio State (1/27).
- Pulled in six rebounds off of the bench at Michigan (1/21).
- Accounted for two points and four rebounds against Wisconsin (1/17).
- Tallied three points, two rebounds and a blocked shot in the win over Northwestern (1/3).
- Chipped in two points and three rebounds at Miami (11/29).
- Recorded four points and a blocked shot in the victory at Cal State Northridge (11/24).
- Was 2-for-3 from the field en route to five points and three rebounds in the win over Lafayette (11/18).
- Had two rebounds in the win over Howard (11/11).

CAREER HIGHS

Points..	11 vs. Fairleigh Dickinson (12/2/12)
Rebs.	15 at South Carolina (11/20/11)
Assists	2 (3x)
.....last vs. Georgetown (12/9/12)	
Steals.....	2 (5x)
.....last vs. Connecticut (3/25/12)	
Blocks.....	7 at South Carolina (11/20/11)
Minutes.....	29 at South Carolina (11/20/11)
FGM.....	4 (3x)
.....last vs. Fairleigh Dickinson (12/2/12)	
FGA	10 vs. Fairleigh Dickinson (12/2/12)
FG%	1.000 (8x)
.....last at Ohio State (2-2) (1/27/13)	
3FGM.....	n/a
3FGA	n/a
3PT %	n/a
FTM	4 vs. Nebraska (12/30/11)
FTA	6 vs. Northwestern (1/3/13)
FT %	1.000 (6x)
.....last at Miami (2-2) (11/29/12)	
Career Double-Doubles	n/a
Career 20-point games	n/a

GAME-BY-GAME

	P	R	B
HOWARD	0	2	0
Texas A&M	0	1	0
LAFAYETTE	5	3	0
Detroit	2	2	1
CS-Northridge	4	1	1
Miami (Fla.)	2	3	0
FAIR. DICKINSON	11	2	3
Connecticut	2	1	1
GEORGETOWN	2	2	2
Virginia Tech	0	2	0
SOUTH DAKOTA ST. DNP			
NJIT	3	6	0
NORTHWESTERN	3	2	1
Michigan State	0	3	1
NEBRASKA	0	0	1
WISCONSIN	2	4	0
Michigan	0	6	1
MINNESOTA	0	1	0
Ohio State	4	4	2
Wisconsin			
PURDUE			
Indiana			
MICHIGAN ST.			
Iowa			
ILLINOIS			
MICHIGAN			
Minnesota			
Nebraska			





#20 Alex Bentley

Sr. * G * 5-7 * Indianapolis, Ind./Ben Davis

2012-13 Highlights:

- Is the fifth player in Big Ten history and second player in school history (Suzie McConnell) with 1,500 points, 500 assists and 250 steals.
- On 2013 Wade Trophy Watch List, Wooden Award Top 20 and Naismith Early Season Watch List.
- 2013 Big Ten Preseason Co-Player of the Year (coaches); first team preseason All-Big Ten (coaches & media).
- Tied for fifth in school history in steals (289).
- Ninth in PSU history in assists (526).
- 10th in program history in scoring (1,583).
- Is the ninth player in school history with 500 assists.
- Team captain

2012-13 Season Notes:

- Tallied 16 points, three rebounds, two assists and two steals in the win at Ohio State (1/27).
- Chipped in 12 points, two rebounds and three assists against Minnesota (1/24).
- Accounted for 16 points, two rebounds, three assists and five steals in the win at Michigan (1/21).
- Solid on both sides of the ball with 14 points, five assists and game-high six steals in the win over Wisconsin (1/17).
- Contributed a game-high 19 points to go along with five rebounds and five steals against Nebraska (1/13).
- Controlled the pace for the Lady Lions with 13 points, three rebounds and a steal at Michigan State (1/6).
- Tied her career high with eight steals in the victory over NJIT (12/23).
- Recorded 13 points to go along with a career-high nine rebounds, five assists and three steals in the win over South Dakota State (12/16).
- Notched 10 points, including eight in the second half, to go along with four assists and five steals at Virginia Tech (12/12).
- Registered 23 points via an 8-for-14 shooting performance with five rebounds, four assists and two steals against Georgetown (12/9).
- Had 14 points, two rebounds, two assists and four steals at Miami (11/29).
- Collected 19 points to go along with three rebounds, eight assists and three steals in the Cal State Northridge game (11/24).
- Scored 14 of her game-high 21 points in the second half after battling foul trouble in the opening frame at #16/13 Texas A&M (11/14). Also tallied four assists and four steals against the Aggies.
- Accounted for 14 points, six rebounds and seven steals in the season opening win over Howard (11/11).

CAREER HIGHS

Points	28	at Boston College (12/2/10)
Rebs.	9	vs. South Dakota State (12/16/12)
Assists	15	vs. North Carolina (11/30/11)
Steals	8	vs. NJIT (12/23/12)
	8	vs. Nebraska (12/30/11)
Blocks	2 (3x)	last vs. Drexel (12/21/10)
Minutes	46	at Dayton (11/12/10)
FGM	12	vs. Dayton (3/19/11)
	12	vs. Purdue (1/28/10)
FGA	28	vs. Dayton (3/19/11)
FG%	.833 (5-6)	at Illinois (12/31/09)
3FGM	4	at Purdue (2/14/10)
3FGA	8	vs. Nebraska (1/13/13)
3PT %	1.000 (6x)	..last vs. Washington State (2-2) (11/11/11)
FTM	10	at Northwestern (1/6/11)
FTA	12	at Northwestern (1/6/11)
FT %	1.000 (31x)last vs. Northwestern (6-6) (1/3/13)
Career Double-Doubles	1	
Career 20-point games	21	

GAME-BY-GAME

	P	R	A
HOWARD	14	6	4
Texas A&M	21	2	4
LAFAYETTE	8	5	2
Detroit	4	3	6
CS-Northridge	19	3	8
Miami (Fla.)	14	2	2
FAIR. DICKINSON	6	5	8
Connecticut	7	5	1
GEORGETOWN	23	5	4
Virginia Tech	10	3	4
SOUTH DAKOTA ST.	13	9	5
NJIT	10	5	6
NORTHWESTERN	9	6	3
Michigan State	13	3	0
NEBRASKA	19	5	1
WISCONSIN	14	1	5
Michigan	16	2	3
MINNESOTA	12	2	3
Ohio State	16	3	2
Wisconsin			
PURDUE			
Indiana			
MICHIGAN ST.			
Iowa			
ILLINOIS			
MICHIGAN			
Minnesota			
Nebraska			





#23 Ariel Edwards

Jr. * G/F * 6-3 * Elmont, N.Y./Christ the King

2012-13 Season Highlights:

- Was 11-for-16 from the field en route to a career-high 24 points, including 19 tallies in the first half, against Detroit (11/23).

2012-13 Season Notes:

- Scored all nine of her points in the second half to go along with four rebounds in the win at Ohio State (1/27).
- Had 10 points on 5-of-9 shooting with three rebounds and an assist in the victory over Wisconsin (1/17).
- Was a spark off of the bench with 15 points on 6-of-8 shooting, six rebounds and a pair of blocks against Nebraska (1/13).
- Connected on both of her three-point attempts en route to six points, three rebounds, two assists and a block at Michigan State (1/6).
- Registered six points and four rebounds off of the bench versus Northwestern (1/3).
- Accounted for 10 points, four rebounds and a blocked shot against NJIT (12/23).
- Provided 11 points, two rebounds and an assist off of the bench in the win over Georgetown (12/9).
- Recorded 10 points on 5-of-7 shooting with four rebounds and a steal off the bench at #2 Connecticut (12/6).
- Scored all 18 of her points in the second half via a 7-for-10 shooting night against Fairleigh Dickinson (12/2).
- Tallied nine points with six rebounds and a blocked shot against Lafayette (11/18).
- Chipped in five points, five rebounds and tied her career high with two blocks in the win over Howard (11/11).

CAREER HIGHS

Points	24 vs. Detroit (11/23/12)
Rebs	11 vs. Iowa (1/22/12)
Assists	4 at Wisconsin (1/2/12)
Steals	3 at Texas Tech (12/3/11)
Blocks	2 (3x)last vs. Nebraska (1/13/13)
Minutes	38 at Delaware (11/17/11)
FGM	11 vs. Detroit (11/23/12)
FGA	16 vs. Detroit (11/23/12)
FG%	1.000 (3x)last DePaul (1-1) (3/21/11)
3FGM	2 (3x)last at Michigan State (1/6/13)
3FGA	4 vs. Army (12/8/10)
3PT %	1.000 (9x)last vs. Nebraska (1-1) (1/13/13)
FTM	9 vs. Iowa (1/22/12)
FTA	10 vs. Iowa (1/22/12)
FT %	1.000 (15x)last at Ohio State (5-5) (1/27/13)
Career Double-Doubles	1
Career 20-point games	1

GAME-BY-GAME

	P	R	A
HOWARD	5	5	1
Texas A&M	0	4	0
LAFAYETTE	9	6	1
Detroit	24	2	1
CS-Northridge	4	2	2
Miami (Fla.)	3	4	0
FAIR. DICKINSON	18	7	0
Connecticut	10	4	0
GEORGETOWN	11	2	1
Virginia Tech	4	4	0
SOUTH DAKOTA ST.	4	6	1
NJIT	10	4	0
NORTHWESTERN	6	4	0
Michigan State	6	3	2
NEBRASKA	15	6	1
WISCONSIN	10	3	1
Michigan	0	1	0
MINNESOTA	6	1	0
Ohio State	9	4	0
Wisconsin			
PURDUE			
Indiana			
MICHIGAN ST.			
Iowa			
ILLINOIS			
MICHIGAN			
Minnesota			
Nebraska			





#24 Mia Nickson

Sr. * F * 6-2 * Ashburn, Va./Notre Dame Academy (B.C.)

2012-13 Highlights:

- Team captain for the third consecutive season.
- Became the 28th member of Penn State's 500-rebound club with six caroms at Michigan State (1/6).
- 25th on Penn State's career rebounding chart (535).
- Registered a double-double with 14 points, including going 8-for-10 from the free throw line, and 13 rebounds in the win over Northwestern (1/3).
- Posted her second double-double of the season with 10 points and a game-high 10 rebounds at Virginia Tech (12/12).
- Recorded a double-double in the season-opener against Howard (11/11) with 14 points, including a 6-for-10 effort from the field, and 10 rebounds.

2012-13 Season Notes:

- Just missed out on a double-double with eight points and nine rebounds in the win over Wisconsin (1/17).
- Corralled a game-high 11 rebounds to go with seven points and a block in the win over Nebraska (1/13).
- Accounted for nine points, five rebounds and a steal against South Dakota State (12/16).
- Notched six points, three rebounds and a pair of assists in the win over Big East foe Georgetown (12/9).
- Found continued success against Connecticut with eight points, eight rebounds, two assists and three steals in Storrs (12/6).
- Tallied eight points, four rebounds and a block at Miami (11/29).
- Chipped in eight points and three rebounds in the win at Cal State Northridge (11/24).
- Had a game-high points 12 to go along with six rebounds, two assists a block and a steal against Lafayette (11/18).
- Accounted for six points, 11 rebounds and two blocks in the win at #16/13 Texas A&M (11/14).

CAREER HIGHS

Points	26 vs. Texas Tech (12/5/10)
Rebs.	17 vs. Indiana (1/23/11)
Assists	4 vs. Maine (12/12/10)
Steals	6 vs. Indiana (1/23/11)
	6 vs. Bucknell (12/28/10)
Blocks	3 vs. Purdue (3/3/12)
Minutes	41 at Dayton (11/12/10)
FGM	9 vs. Indiana (1/23/11)
FGA	16 vs. Indiana (1/23/11)
FG%	1.000 (4X)
	last vs. Minnesota (5-5) (1/13/11)
3FGM	n/a
3FGA	n/a
3PT %	n/a
FTM	10 (3x) last at Minnesota (2/5/12)
FTA	12 at Minnesota (2/5/12)
FT %	1.000 (24X)
	last at Michigan (1-1) (1/21/13)
Career Double-Doubles	13
Career 20-point games	5

GAME-BY-GAME

	P	R	A
HOWARD	14	10	0
Texas A&M	6	11	2
LAFAYETTE	12	6	2
Detroit	6	4	2
CS-Northridge	8	3	0
Miami (Fla.)	8	4	1
FAIR. DICKINSON	DNP		
Connecticut	8	8	2
GEORGETOWN	6	3	2
Virginia Tech	10	10	2
SOUTH DAKOTA ST.	9	5	0
NJIT	4	1	2
NORTHWESTERN	14	13	0
Michigan State	6	6	3
NEBRASKA	7	11	0
WISCONSIN	8	9	1
Michigan	7	4	0
MINNESOTA	3	3	1
Ohio State	2	4	0
Wisconsin			
PURDUE			
Indiana			
MICHIGAN ST.			
Iowa			
ILLINOIS			
MICHIGAN			
Minnesota			
Nebraska			





#25 Gizelle Studevent

Sr. * G * 5-11 * La Jolla, Calif./The Bishop's School

2012-13 Season Notes:

- Continued to provide a solid spark off of the bench with four points on 2-of-3 shooting at Ohio State (1/27).
- Hit a pair of back-to-back baskets and finished with four points against Minnesota (1/24).
- Knocked down a jumper to start a 12-0 run to seal the win at Michigan (1/21).
- Contributed five points, three rebounds and one steal off of the bench against Wisconsin (1/17).
- Registered four points and a blocked shot in 10 minutes of action against Nebraska (1/13).
- Went 3-for-5 from the field en route to six points and two rebounds against NJIT (12/23).
- Made both of her shots from the field en route to four points with one assist and one steal in eight minutes of action at Miami (11/29).
- Tallied four points against Cal State Northridge (11/24).
- Recorded two points and three assists in the win over Detroit (11/23).
- Was 3-for-5 from the field on the way to seven points in the win over Lafayette (11/18).
- Pulled in a rebound and blocked a shot against Howard (11/11).

CAREER HIGHS

Points.....	10 vs. Indiana (2/2/12)
.....	10 at Oakland (11/18/10)
Rebs.	3 (9x) last vs. Wisconsin (1/17/13)
Assists.....	4 vs. Wagner (12/18/11)
Steals.....	2 vs. Virginia Tech (12/6/11)
.....	2 vs. Rider (11/14/10)
Blocks....	1 (4x) last vs. Nebraska (1/13/13)
Minutes.....	25 vs. Minnesota (2/26/12)
FGM.....	5 vs. Indiana (2/2/12)
FGA.....	9 vs. Detroit (11/23/12)
FG%.....	1.000 (4x)
.....	last at Miami (2-2) (11/29/12)
3FGM....	1 (4x) last vs. Minnesota (1/13/11)
3FGA.....	3 vs. Monmouth (12/9/09)
3PT%.....	1.000 (4x)
.....	last vs. Minnesota (1-1) (1/13/11)
FTM.....	3 vs. Maine (12/12/10)
.....	3 at Oakland (11/18/10)
FTA.....	4 vs. Maine (12/12/10)
.....	4 at Oakland (11/18/10)
FT%.....	1.000 (7x)
.....	last vs. Georgetown (2-2) (12/9/12)
Career Double-Doubles	n/a
Career 20-point games	n/a

GAME-BY-GAME

	P	R	A
HOWARD	0	1	0
Texas A&M	0	0	0
LAFAYETTE	7	1	0
Detroit	2	0	3
CS-Northridge	4	0	0
Miami (Fla.)	4	1	1
FAIR. DICKINSON	2	0	2
Connecticut	0	0	0
GEORGETOWN	2	0	1
Virginia Tech	2	1	0
SOUTH DAKOTA ST.	0	2	0
NJIT	6	2	1
NORTHWESTERN	0	0	0
Michigan State	0	1	0
NEBRASKA	4	0	0
WISCONSIN	5	3	0
Michigan	2	1	0
MINNESOTA	4	0	0
Ohio State	4	0	0
Wisconsin			
PURDUE			
Indiana			
MICHIGAN ST.			
Iowa			
ILLINOIS			
MICHIGAN			
Minnesota			
Nebraska			





#33 Maggie Lucas

Jr. * G * 5-10 * Narberth, Pa./Germantown Academy

GAME-BY-GAME

	P	R	A
HOWARD	25	2	3
Texas A&M	18	4	1
LAFAYETTE	12	9	2
Detroit	28	4	3
CS-Northridge	23	3	3
Miami (Fla.)	20	5	3
FAIR. DICKINSON	24	6	4
Connecticut	15	4	1
GEORGETOWN	39	5	2
Virginia Tech	17	4	2
SOUTH DAKOTA ST.	9	5	2
NJIT	21	8	3
NORTHWESTERN	24	2	4
Michigan State	12	1	3
NEBRASKA	19	2	2
WISCONSIN	11	4	1
Michigan	19	4	0
MINNESOTA	26	6	4
Ohio State	18	4	2
Wisconsin			
PURDUE			
Indiana			
MICHIGAN ST.			
Iowa			
ILLINOIS			
MICHIGAN			
Minnesota			
Nebraska			

2012-13 Highlights:

- ♦ Dec. 11 Ann Myers Drysdale National Player of the Week award winner, presented by the USBWA.
- ♦ Two-time Big Ten Player of the Week (Nov. 26, Dec. 10).
- ♦ On 2013 Wade Trophy Watch List, Wooden Award Top 20 and Naismith Early Season Watch List.
- ♦ Second in Penn State history in three-point field goals made (252).
- ♦ Fifth in Big Ten history in three-point field goals made (252).
- ♦ 12th in program history in scoring (1,574).
- ♦ Third-fastest player in school history to reach 1,500 points (Kelly Mazzante and Susan Robinson).
- ♦ Became the third player in school history with 200 career three-pointers with a pair of triples against Lafayette (11/18).
- ♦ 2013 first team preseason All-Big Ten (coaches & media).
- ♦ Selected as the Radisson Chatsworth Thanksgiving Tournament MVP after averaging 25.5 points, 3.0 rebounds, 3.0 assists and 2.5 steals in two games.
- ♦ Broke the Bryce Jordan Center scoring record (men or women) with 39 points, including a BJC record-tying seven three-pointers, in the win over Georgetown (12/9).

CAREER HIGHS

Points	39 vs. Georgetown (12/9/12)
Rebs.	10 vs. Ohio State (2/20/12)
Assists	8 vs. Minnesota (2/26/12)
Steals	6 vs. Georgetown (12/9/12)
Blocks	4 vs. South Dakota St. (12/16/12)
Minutes	40 (3x)
	last vs. Connecticut (3/25/12)
FGM	11 vs. Georgetown (12/9/12)
FGA	22 vs. Nebraska (12/30/11)
FG%	.778 (7-9) at Virginia Tech (12/12/12)
3FGM	7 (3x)
	last vs. Georgetown (12/9/12)
3FGA	13 (3x)
	last vs. Georgetown (12/9/12)
3PT %	1.000 (4-4) at Bucknell (12/21/11)
FTM	11 at LSU (3/20/12)
	11 vs. Washington State (11/11/11)
FTA	13 vs. Washington State (11/11/11)
FT %	1.000 (44x)
	last at Ohio State (4-4) (1/27/13)
Career Double-Doubles	1
Career 20-point games	40
Career 30-point games	3

2012-13 Season Notes:

- ♦ Scored 14 of her team-best 18 points in the second half at Ohio State (1/27). Also had four rebounds and two assists against the Buckeyes.
- ♦ Filled the stat sheet with 26 points, six rebounds, four assists, three steals and one blocked shot in the win over Minnesota (1/24).
- ♦ Registered 19 points to go along with four rebounds and a steal at Michigan (1/21).
- ♦ Eclipsed the 1,500-point plateau for her career in her 82nd career game with 19 tallies with two rebounds, two assists and three steals in the win over Nebraska (1/13).
- ♦ Knocked down five of her seven shots from beyond the arc en route to 24 points to compliment four assists, five steals and two blocks in the Big Ten opener against Northwestern (1/3).
- ♦ Collected 21 points via a 7-for-11 shooting effort, including a 5-for-8 mark from three-point range, on the way to 21 points with eight rebounds and three assists in the win over NJIT (12/23).
- ♦ Had the best shooting performance of her career, going 7-for-9 en route to 17 points with four rebounds and two assists at Virginia Tech (12/12).
- ♦ Recorded a BJC record 39 points via a 7-for-13 shooting night from three-point range and a career-best six steals in the win over Georgetown (12/9).
- ♦ Drained six of her nine three-point attempts and finished with a game-best 24 points with six rebounds, four assists and three steals in the win over FDU (12/2).
- ♦ Connected on four three-pointers en route to 20 points, five rebounds and three assists on her 21st birthday at Miami (11/29).
- ♦ Notched 23 points, three rebounds, three assists and pair of steals in the win at Cal State Northridge (11/24).
- ♦ Scored 23 of her game-high 28 points in the second half and added four rebounds, three assists and three steals in the win over Detroit (11/23).
- ♦ Tallied 18 points to go along with four rebounds and a steal at #16/13 Texas A&M (11/14).
- ♦ Posted her 32nd career 20-point game with a team-best 25 points on 9-of-17 shooting in the season-opening win over Howard (11/11). Also had three assists and three steals in the win.





#40 Marisa Wolfe

Sr. * F * 6-2 * Ford City, Pa./Ford City

2012-13 Highlights:

- ♦ Team captain for the second-straight season.
- ♦ Currently sidelined with concussion-like symptoms.

CAREER HIGHS

Points.....	13 vs. Michigan (2/18/10)
Rebs.	7 vs. Wagner (12/18/11)
.....	7 vs. Green Bay (11/26/10)
Assists	1 (19x)
.....	last at Michigan (1/26/12)
Steals.....	3 vs. North Carolina (11/30/11)
.....	3 at Northwestern (1/3/10)
Blocks	2 (5x)
.....	last vs. UMES (12/11/11)
Minutes	30 vs. Green Bay (11/26/10)
FGM.....	5 vs. Michigan (2/18/10)
.....	5 at Northwestern (1/3/10)
FGA	8 vs. North Carolina (11/30/11)
FG%	1.000 (10x)
.....	last vs. UTEP (1-1) (3/18/12)
3FGM.....	2 vs. Illinois (1/24/10)
3FGA	3 vs. Illinois (1/24/10)
3PT%....	1.000 (1-1) vs. Ohio State (3/6/11)
FTM	4 vs. South Carolina (11/21/10)
FTA	4 (3x)
.....	last vs. Green Bay (11/26/10)
FT%	1.000 (18x)
.....	last vs. UTEP (1-1) (3/18/12)
Career Double-Doubles	n/a
Career 20-point games	n/a

GAME-BY-GAME

	P	R	A
HOWARD	DNP		
Texas A&M	DNP		
LAFAYETTE	DNP		
Detroit	DNP		
CS-Northridge	DNP		
Miami (Fla.)	DNP		
FAIR. DICKINSON	DNP		
Connecticut	DNP		
GEORGETOWN	DNP		
Virginia Tech	DNP		
SOUTH DAKOTA ST.	DNP		
NJIT	DNP		
NORTHWESTERN	DNP		
Michigan State	DNP		
NEBRASKA	DNP		
WISCONSIN	DNP		
Michigan	DNP		
MINNESOTA	DNP		
Ohio State	DNP		
Wisconsin			
PURDUE			
Indiana			
MICHIGAN ST.			
Iowa			
ILLINOIS			
MICHIGAN			
Minnesota			
Nebraska			





#44 Tori Waldner

So. * F * 6-5 * Milton, Ga./Milton

2012-13 Highlights:

- Recorded a career-high five blocked shots to go along with four rebounds in the win over Minnesota (1/24).
- Established a career-high with seven points to go along with five rebounds, two blocks and a steal in the win over Fairleigh Dickinson (12/2).

CAREER HIGHS

Points	7 vs. Fairleigh Dickinson (12/2/12)
Rebs.	10 vs. Wagner (12/18/11)
Assists	4 vs. Indiana (2/2/12)
Steals	2 (3x)
	last vs. NJIT (12/23/12)
Blocks	5 vs. Minnesota (1/24/13)
Minutes	21 vs. UMES (12/11/11)
FGM	3 (5x)
	last vs. Fairleigh Dickinson (12/2/12)
FGA	10 vs. Lafayette (11/18/12)
FG%	1.000 (6x)
	last at Michigan (1-1) (1/21/13)
3FGM	n/a
3FGA	1 vs. Wisconsin (1/17/13)
	1 at LSU (3/20/12)
3PT %	n/a
FTM	6 vs. Howard (11/11/12)
FTA	6 vs. Howard (11/11/12)
FT %	1.000 (3x)
	last vs. Howard (6-6) (11/11/12)
Career Double-Doubles	n/a
Career 20-point games	n/a

GAME-BY-GAME

	P	R	B
HOWARD	6	6	1
Texas A&M	2	3	0
LAFAYETTE	6	4	0
Detroit	2	6	1
CS-Northridge	DNP		
Miami (Fla.)	0	0	0
FAIR. DICKINSON	7	5	2
Connecticut	DNP		
GEORGETOWN	2	4	0
Virginia Tech	0	4	0
SOUTH DAKOTA ST.	2	1	3
NJIT	2	5	1
NORTHWESTERN	0	0	2
Michigan State	3	5	2
NEBRASKA	0	1	0
WISCONSIN	2	4	1
Michigan	2	4	2
MINNESOTA	0	4	5
Ohio State	0	2	0
Wisconsin			
PURDUE			
Indiana			
MICHIGAN ST.			
Iowa			
ILLINOIS			
MICHIGAN			
Minnesota			
Nebraska			

2012-13 Season Notes:

- Registered two points, four rebounds and a pair of blocks at Michigan (1/21).
- Notched two points, four rebounds, one block and one steal in the win over Wisconsin (1/17).
- Recorded three points, five rebounds and two blocks at Michigan State (1/6).
- Accounted for two points, five rebounds, two assists and two steals in the win over NJIT (12/23).
- Tied her career high with three blocks against South Dakota State (12/16).
- Had two points and four rebounds in the win over Georgetown (12/9).
- Pulled down six rebounds and had two points against Detroit (11/23).
- Tallied six points with four rebounds and two assists in the win over Lafayette (11/18).
- Chipped in two points and three rebounds in the win over #16/13 Texas A&M (11/14).
- Notched six points, all of which came from the free throw line, and six rebounds in just 12 minutes in the season-opening win over Howard (11/11).





#54 Nikki Greene

Sr. * F/C * 6-4 * Diboll, Texas/Diboll

2012-13 Season Highlights:

- ♦ Jan. 22 Big Ten Player of the Week.
- ♦ Second in school history in blocked shots (197).
- ♦ Sixth in Penn State history in rebounding (891).
- ♦ Became the 35th player in school history with 1,000 points with a nine-point performance against Minnesota (1/24).
- ♦ 35th on Penn State's career scoring list (1,015).
- ♦ Is just the third player in school history with multiple 20-rebound games in their career (Mary Donovan & Mag Strittmatter).

2012-13 Season Notes:

- ♦ Notched her fourth double-double of the season with 11 points and 13 rebounds in the win at Ohio State (1/27).
- ♦ Tallied her fourth-straight double digit rebounding performance with 11 boards to go along with eight points and three blocks at Michigan (1/21).
- ♦ Posted her third double-double of the year with a season-best 23 points to go along with 14 points and two blocks versus Wisconsin (1/17).
- ♦ Just missed out on a double-double with nine points and 10 rebounds against Nebraska (1/13).
- ♦ Earned a double-double with 14 points, including 10 tallies in the second half, and 10 rebounds at Michigan State (1/6).
- ♦ Registered 12 points, six rebounds, two steals and one block in the win over NJIT (12/23).
- ♦ Accumulated a game-best 17 points on 7-of-11 shooting with six rebounds and a steal against South Dakota State (12/16).
- ♦ Snagged 13 rebounds in the win over Georgetown (12/9).
- ♦ Accounted for 10 points, six rebounds, two blocks and a steal in the win over Fairleigh Dickinson (12/2).
- ♦ Posted a 20-20 for her 10th career double-double and first of the season with 21 points and 20 boards in the win at Cal State Northridge (11/24).
- ♦ Was 13-for-14 from the free throw line, including 11-for-12 in the final five minutes, against the Matadors.
- ♦ Recorded six points, six rebounds and three blocks in just 10 minutes of action against Lafayette (11/18).
- ♦ Playing in front of several friends and family members, scored all eight of her points and pulled in six of her seven rebounds in the second half at #16/13 Texas A&M (11/14).
- ♦ Had three points and four rebounds in the win over Howard (11/11).

CAREER HIGHS

Points	25 vs. Ohio State (2/20/12)
Rebs.	20 at CS-Northridge (11/24/12)
	20 vs. Indiana (1/23/11)
Assists	3 vs. Detroit (11/23/12)
	3 vs. Michigan (1/12/12)
Steals	4 (3x)
	last vs. Nebraska (12/30/11)
Blocks	7 vs. Purdue (1/28/10)
Minutes	37 at Boston College (12/2/10)
FGM	9 (3x)
	last vs. Wisconsin (1/17/13)
FGA	17 vs. Ohio State (2/20/12)
	17 at Dayton (11/12/10)
FG%	1.000 (4x)
	last vs. Northwestern (2-2) (1/3/13)
3FGM	n/a
3FGA	n/a
3PT%	n/a
FTM	13 at CS-Northridge (11/24/12)
FTA	14 at CS-Northridge (11/24/12)
	14 vs. Ohio State (2/20/12)
FT%	1.000 (16x)
	last vs. NJIT (2-2) (12/23/12)
Career Double-Doubles	13
Career 20-point games	5

GAME-BY-GAME

	P	R	B
HOWARD	3	4	0
Texas A&M	8	7	0
LAFAYETTE	6	6	3
Detroit	6	7	2
CS-Northridge	21	20	2
Miami (Fla.)	6	7	0
FAIR. DICKINSON	10	6	2
Connecticut	2	7	0
GEORGETOWN	5	13	2
Virginia Tech	2	4	1
SOUTH DAKOTA ST.	17	6	0
NJIT	12	6	1
NORTHWESTERN	4	4	0
Michigan State	14	10	1
NEBRASKA	9	10	1
WISCONSIN	23	14	2
Michigan	8	11	3
MINNESOTA	9	13	1
Ohio State	11	13	0
Wisconsin			
PURDUE			
Indiana			
MICHIGAN ST.			
Iowa			
ILLINOIS			
MICHIGAN			
Minnesota			
Nebraska			



No. 8/8 Penn State 95, California (Pa.) 39 Exhibition Game * Nov. 3, 2012 * University Park, Pa.

California (Pa.) 39

#	Player	Total		3-Ptr		Rebounds			PF	TP	A	TO	Blk	Stl	Min
		FG-FGA	FG-FGA	FT-FTA	FT-FTA	Off	Def	Tot							
02	MAHADY, Emma	* 4-24	2-9	0-0	5	3	8	3	10	0	7	0	1	33	
03	MICHAEL, Stephanie	* 3-15	3-11	2-2	2	2	4	4	11	0	6	0	2	25	
12	SEEBOHM, Kate	* 1-5	0-1	0-0	1	1	2	3	2	2	3	1	2	32	
22	KUKOLJ, Irina	* 1-3	0-1	0-0	0	1	1	1	2	1	4	1	1	16	
25	ANTONENKO, Elena	* 0-2	0-1	0-0	1	0	1	3	0	0	2	0	1	12	
05	McKNIGHT, Chelsea	3-9	1-4	2-2	4	2	6	1	9	1	1	0	1	26	
10	GADSON, Ryah	0-6	0-0	0-0	0	0	0	2	0	0	2	0	1	15	
11	HILL, Jasmine	0-0	0-0	0-0	0	0	0	0	0	0	0	0	0	2	
34	RICHARDSON, Ayonna	* 0-2	0-0	0-1	1	0	1	4	0	0	1	0	0	12	
45	HINES, Ashley	* 1-6	0-0	3-4	5	2	7	2	5	2	1	0	3	27	
	Team				4	5	9								
	Totals	13-72	6-27	7-9	23	16	39	23	39	6	27	2	12	200	

FG % 1st Half: 7-35 20.0% 2nd half: 6-37 16.2% Game: 13-72 18.1%
 3FG % 1st Half: 4-12 33.3% 2nd half: 2-15 13.3% Game: 6-27 22.2%
 FT % 1st Half: 5-7 71.4% 2nd half: 2-2 100.0% Game: 7-9 77.8%

Penn State 95

#	Player	Total		3-Ptr		Rebounds			PF	TP	A	TO	Blk	Stl	Min
		FG-FGA	FG-FGA	FT-FTA	FT-FTA	Off	Def	Tot							
20	Bentley, Alex	* 5-10	1-1	5-6	2	2	4	1	16	4	2	0	3	26	
23	Edwards, Ariel	* 4-6	0-0	4-6	1	6	7	1	12	2	1	0	4	24	
24	Nickson, Mia	* 4-7	0-0	1-3	1	6	7	0	9	3	3	0	0	20	
33	Lucas, Maggie	* 7-11	2-3	3-3	1	4	5	1	19	4	4	0	4	31	
54	Greene, Nikki	* 7-10	0-0	4-6	3	8	11	3	18	0	4	2	1	21	
02	Taylor, Dara	* 3-4	0-0	1-1	3	4	2	7	5	4	0	3	30		
05	East, Talia	* 1-3	0-0	0-3	3	1	4	1	2	1	4	3	0	15	
25	Studevent, Gizelle	* 3-6	0-0	2-3	0	2	2	1	8	0	1	1	1	21	
44	Waldner, Tori	* 2-3	0-0	0-0	1	2	3	2	4	1	2	0	1	12	
	Team				2	4	6								
	Totals	36-60	3-4	20-31	15	38	53	12	95	20	25	6	17	200	

FG % 1st Half: 16-28 57.1% 2nd half: 20-32 62.5% Game: 36-60 60.0%
 3FG % 1st Half: 3-4 75.0% 2nd half: 0-0 0.0% Game: 3-4 75.0%
 FT % 1st Half: 13-17 76.5% 2nd half: 7-14 50.0% Game: 20-31 64.5%

Officials: Michael McConnell, Kathy Ridilla, Kevin Pethel
 Technical fouls: California (Pa.)-None. Penn State-None.
 Attendance: 4

Score by periods	1st	2nd	Total
California (Pa.)	23	16	39
Penn State	48	47	95

Last FG - CAL 2nd-00:33, PSU 2nd-00:49.
 Largest lead - CAL by 1 1st-19:41, PSU by 59 2nd-00:49.

Points	In	Off	2nd	Fast	Bench
CAL	10	13	12	0	14
PSU	52	41	12	17	21

Score tied - 1 time.
 Lead changed - 2 times.

Notable

- Junior guard **Maggie Lucas** led the Lady Lions' offensive with 19 points on 7-for-11 shooting.
- Nikki Greene** notched a double-double with 18 points and 11 rebounds.
- The Vulcans are led by former Lady Lion Jess Strom, who is in her first season as head coach after serving in the interim role last season.

No. 9/9 Penn State 63, No. 16/13 Texas A&M 58 Game #2 * Nov. 14, 2012 * College Station, Texas

Penn State 63 • 2-0

#	Player	Total		3-Ptr		Rebounds			PF	TP	A	TO	Blk	Stl	Min
		FG-FGA	FG-FGA	FT-FTA	FT-FTA	Off	Def	Tot							
20	Bentley, Alex	* 7-15	2-3	5-6	0	2	2	4	21	4	0	0	0	17	
23	Edwards, Ariel	* 0-3	0-0	0-0	0	4	4	1	0	0	4	1	0	17	
24	Nickson, Mia	* 2-10	0-0	2-6	5	6	11	2	6	2	2	2	1	34	
33	Lucas, Maggie	* 7-16	1-6	3-3	0	4	4	2	18	1	4	0	1	38	
54	Greene, Nikki	* 4-6	0-0	0-0	2	5	7	4	8	0	1	0	1	20	
01	Agee, Candice	* 0-2	0-0	0-0	1	2	3	1	0	0	0	1	0	11	
02	Taylor, Dara	* 4-8	0-1	0-0	0	3	3	4	8	3	5	0	5	29	
05	East, Talia	* 0-2	0-0	0-0	0	1	1	3	0	0	2	0	0	9	
25	Studevent, Gizelle	* 0-1	0-0	0-0	0	0	0	0	0	0	0	0	0	10	
44	Waldner, Tori	* 1-2	0-0	0-0	3	0	3	0	2	0	1	0	0	6	
	Team				4	0	4								
	Totals	25-65	3-10	10-15	15	27	42	21	63	10	19	4	12	200	

FG % 1st Half: 11-29 37.9% 2nd half: 14-36 38.9% Game: 25-65 38.5%
 3FG % 1st Half: 2-5 40.0% 2nd half: 1-5 20.0% Game: 3-10 30.0%
 FT % 1st Half: 4-6 66.7% 2nd half: 6-9 66.7% Game: 10-15 66.7%

Texas A&M 58 • 0-2

#	Player	Total		3-Ptr		Rebounds			PF	TP	A	TO	Blk	Stl	Min
		FG-FGA	FG-FGA	FT-FTA	FT-FTA	Off	Def	Tot							
03	Kelsey Bone	* 7-11	0-0	2-4	6	9	15	2	16	3	5	0	1	36	
05	Kristi Bellock	* 3-6	0-0	0-0	3	7	10	3	6	2	4	0	0	18	
10	Alexia Standish	* 1-5	0-1	3-3	0	4	0	4	5	2	4	0	0	28	
15	Tori Scott	* 0-2	0-1	1-2	1	0	1	1	1	0	2	0	0	15	
33	Courtney Walker	* 3-14	0-0	0-1	3	2	5	3	6	1	2	0	4	39	
01	Courtney Williams	* 1-7	0-0	1-1	1	1	2	1	3	0	0	0	0	15	
20	Peyton Little	* 2-7	2-5	0-0	0	1	1	0	6	0	1	0	0	13	
24	Jordan Jones	* 1-3	1-1	0-0	1	0	1	0	3	0	2	0	0	5	
32	Adrienne Pratcher	* 1-4	0-1	0-0	0	1	1	0	2	4	0	0	1	14	
34	Karla Gilbert	* 3-5	0-0	4-8	3	3	6	3	10	1	3	2	1	17	
	Team				2	5	7								
	Totals	22-64	3-9	11-19	20	29	49	17	58	13	23	2	8	200	

FG % 1st Half: 12-35 34.3% 2nd half: 10-29 34.5% Game: 22-64 34.4%
 3FG % 1st Half: 2-6 33.3% 2nd half: 1-3 33.3% Game: 3-9 33.3%
 FT % 1st Half: 7-13 53.8% 2nd half: 4-6 66.7% Game: 11-19 57.9%

Officials: Bob Trammel, Tina Napier, Jesse Dickerson
 Technical fouls: Penn State-None. Texas A&M-None.
 Attendance: 4756

Score by periods	1st	2nd	Total
Penn State	28	35	63
Texas A&M	33	25	58

Last FG - PSU 2nd-00:49, TAMU 2nd-06:24.
 Largest lead - PSU by 5 1st-09:44, TAMU by 7 2nd-18:46.

Points	In	Off	2nd	Fast	Bench
PSU	28	16	19	16	10
TAMU	28	20	16	6	24

Score tied - 6 times.
 Lead changed - 7 times.

Notable

- The Lady Lions earn their first victory over a ranked non-conference opponent on the road since defeating #19 Texas on December 21, 2001.
- The win snapped Texas A&M's 58-game non-conference home court winning streak, dating back to Dec. 30, 2003.
- With seven rebounds, **Nikki Greene** moves into 11th place all-time on PSU's rebounding chart (734).

No. 8/8 Penn State 72, Howard 61 Game #1 * Nov. 11, 2012 * University Park, Pa.

Howard 61 • 0-2

#	Player	Total		3-Ptr		Rebounds			PF	TP	A	TO	Blk	Stl	Min
		FG-FGA	FG-FGA	FT-FTA	FT-FTA	Off	Def	Tot							
05	CURLY-PAYNE, Cheyenn	* 2-8	0-3	0-2	0	2	2	4	4	4	3	3	0	35	
10	GORHAM, Jerrelle	* 2-10	0-2	1-2	0	6	6	4	5	4	10	1	4	36	
13	DOYLE, Saadia	* 9-21	1-1	17-23	1	5	6	2	36	1	2	0	3	39	
32	DETERVILLE, Nicole	* 1-2	0-0	1-2	2	0	2	5	3	0	0	0	1	21	
44	SMITH, Kara	* 3-6	1-1	0-0	2	2	4	3	7	0	1	0	1	22	
14	JOHNSON, Gabria	* 2-3	2-2	0-0	3	1	4	4	6	0	1	0	0	13	
24	BAILEY, Imani	* 0-2	0-1	0-0	0	0	0	0	0	2	1	1	2	14	
34	DETERVILLE, Portia	* 0-0	0-0	0-0	0	2	2	1	0	0	1	0	0	20	
	Team				2	3	5								
	Totals	19-52	4-10	19-29	10	21	31	23	61	10	19	2	14	200	

FG % 1st Half: 11-26 42.3% 2nd half: 8-26 30.8% Game: 19-52 36.5%
 3FG % 1st Half: 3-6 50.0% 2nd half: 1-4 25.0% Game: 4-10 40.0%
 FT % 1st Half: 6-7 85.7% 2nd half: 13-22 59.1% Game: 19-29 65.5%

Penn State 72 • 1-0

#	Player	Total		3-Ptr		Rebounds			PF	TP	A	TO	Blk	Stl	Min
		FG-FGA	FG-FGA	FT-FTA	FT-FTA	Off	Def	Tot							
20	Bentley, Alex	* 6-14	0-3	2-2	2	4	6	3	14	4	3	0	7	32	
23	Edwards, Ariel	* 2-6	0-2	1-2	1	4	5	5	5	1	0	2	0	23	
24	Nickson, Mia	* 6-10	0-0	2-2	5	5	10	1	14	0	4	1	0	30	
33	Lucas, Maggie	* 9-17	4-8	3-4	0	2	2	2	25	3	2	0	3	35	
54	Greene, Nikki	* 0-0	0-0	3-6	1	3	4	4	3	0	2	0	1	17	
01	Agee, Candice	* 0-3	0-0	0-1	0	0	0	2	0	0	1	1	0	7	
02	Taylor, Dara	* 2-4	0-1	1-2	1	3	4	4	5	3	3	0	0	21	
05	East, Talia	* 0-1	0-0	0-1	0	2	2	2	0	1	3	0	0	9	
25	Studevent, Gizelle	* 0-1	0-0	0-0	1	0	1	1	0	0	1	1	1	14	
44	Waldner, Tori	* 0-1	0-0	6-6	2	4	6	2	6	0	1	1	1	12	
	Team				2	0	2								
	Totals	25-57	4-14	18-26	15	27	42	26	72	12	20	6	12	200	

FG % 1st Half: 14-29 48.3% 2nd half: 11-28 39.3% Game: 25-57 43.9%
 3FG % 1st Half: 2-8 25.0% 2nd half: 2-6 33.3% Game: 4-14 28.6%
 FT % 1st Half: 9-15 60.0% 2nd half: 9-11 81.8% Game: 18-26 69.2%

Officials: Dennis Brooks, Frank Steratore, Bruce Morris
 Technical fouls: Howard-None. Penn State-None.
 Attendance: 3655

Score by periods	1st	2nd	Total
Howard	31	30	61
Penn State	39	33	72

Last FG - HOW 2nd-00:24, PSU 2nd-01:17.
 Largest lead - HOW by 6 1st-17:02, PSU by 19 2nd-04:18.

Points	In	Off	2nd	Fast	Bench
HOW	16	24	9	15	21
PSU	26	24	15		

No. 6/7 Penn State 80, Detroit 72 Game #4 * Nov. 23, 2012 * Northridge, Calif.

Detroit 72 • 2-2

#	Player	Total			3-Ptr			Rebounds			PF	TP	A	TO	Blk	Stl	Min
		FG-FGA	FG-FGA	FT-FTA	FG-FGA	FG-FGA	FT-FTA	Off	Def	Tot							
20	HATTER, Megan	f	1-4	0-2	0-0	0	4	1	5	1	2	2	2	0	1	21	
24	BROWN, Shareta	f	3-7	0-0	10-12	6	9	15	3	16	0	2	0	1	34		
25	SHAYOK, Yar	f	2-5	1-1	2-2	1	9	10	2	7	2	2	0	0	30		
11	REYNOLDS, Rosanna	g	4-9	1-2	1-2	0	1	1	5	10	6	7	0	1	39		
21	MATTESON, Audrey	g	7-16	4-11	2-2	0	5	5	3	20	4	7	0	2	40		
12	FAMBRO, Demeisha	g	6-13	2-3	3-4	1	5	6	3	17	2	5	0	0	35		
33	LAVITA-STEPHENS, De	g	0-0	0-0	0-0	0	0	0	0	0	0	0	0	0	1		
	Team					4	0	4	0								
	Totals		23-54	8-19	18-22	16	30	46	17	72	16	25	0	5	200		

FG % 1st Half: 12-28 42.9% 2nd half: 11-26 42.3% Game: 23-54 42.6% Deadball Rebounds
 3FG % 1st Half: 4-9 44.4% 2nd half: 4-10 40.0% Game: 8-19 42.1%
 FT % 1st Half: 10-10 100.0 2nd half: 8-12 66.7% Game: 18-22 81.8%

Penn State 80 • 4-0

#	Player	Total			3-Ptr			Rebounds			PF	TP	A	TO	Blk	Stl	Min
		FG-FGA	FG-FGA	FT-FTA	FG-FGA	FG-FGA	FT-FTA	Off	Def	Tot							
24	Nickson, Mia	f	2-7	0-0	2-2	3	4	4	3	6	2	1	0	1	21		
54	Greene, Nikki	f	2-7	0-0	2-2	3	4	7	3	6	3	2	2	1	28		
20	Bentley, Alex	g	2-4	0-0	0-0	1	2	3	0	4	6	0	0	4	35		
23	Edwards, Ariel	g	11-16	1-2	1-1	1	1	2	2	24	1	0	0	0	25		
33	Lucas, Maggie	g	8-14	3-4	9-10	0	4	4	3	28	3	5	1	3	34		
01	Agee, Candice	g	1-3	0-0	0-0	1	2	3	2	1	0	0	0	0	11		
02	Taylor, Dara	g	1-8	0-5	2-3	0	0	0	3	4	2	0	0	3	14		
05	East, Talia	g	1-2	0-0	0-0	2	0	2	1	2	2	0	1	1	8		
25	Studevent, Gizelle	g	1-9	0-1	0-0	0	0	0	1	2	3	0	0	0	13		
44	Waldner, Tori	g	1-2	0-0	0-0	3	3	6	0	2	0	2	0	1	11		
	Team					0	0	0	0								
	Totals		30-72	4-12	16-18	14	17	31	18	80	23	10	4	14	200		

FG % 1st Half: 17-40 42.5% 2nd half: 13-32 40.6% Game: 30-72 41.7% Deadball Rebounds
 3FG % 1st Half: 2-7 28.6% 2nd half: 2-5 40.0% Game: 4-12 33.3%
 FT % 1st Half: 6-6 100.0 2nd half: 10-12 83.3% Game: 16-18 88.9%

Officials: Melissa Holt, Norma Leibfried, Janetta Graham
 Technical fouls: Detroit-None. Penn State-None.
 Attendance: 479
 Game 1 of Radisson Hotel Chatsworth Thanksgiving Basketball Classic 2012

Score by periods	1st	2nd	Total	In	Off	2nd	Fast	Bench
Detroit	38	34	72	28	9	16	7	17
Penn State	42	38	80	32	25	15	17	12

Last FG - DETROIT 2nd-01:14, PSU 2nd-01:31. Score tied - 4 times. Lead changed - 4 times.
 Largest lead - DETROIT by 5 1st-05:13, PSU by 14 2nd-03:39.

Notable

- Junior Ariel Edwards had a career-high 24 points, surpassing her previous personal best of 17 points set against Iowa on Jan. 22, 2012.
- With two blocks, senior center Nikki Greene moved into a tie for fourth place on Penn State's career rejections list with Andrea Garner (185; 1997-00).
- Penn State starts 4-0 for the second time under Coquese Washington.

Miami 69, No. 6/7 Penn State 65 Game #6 * Nov. 29, 2012 * Coral Gables, Fla.

Penn State 65 • 5-1

#	Player	Total			3-Ptr			Rebounds			PF	TP	A	TO	Blk	Stl	Min
		FG-FGA	FG-FGA	FT-FTA	FG-FGA	FG-FGA	FT-FTA	Off	Def	Tot							
23	Edwards, Ariel	f	1-3	1-1	0-0	0	4	4	0	3	0	3	0	1	15		
24	Nickson, Mia	f	3-10	0-0	2-4	2	2	4	3	8	1	1	1	0	32		
54	Greene, Nikki	c	3-9	0-0	0-0	2	5	7	4	6	0	4	0	0	20		
20	Bentley, Alex	g	6-13	0-3	2-3	0	2	2	4	14	2	5	0	4	26		
33	Lucas, Maggie	g	7-13	4-6	2-2	1	4	5	2	20	3	4	0	0	40-		
01	Agee, Candice	g	1-1	0-0	0-0	0	2	2	1	2	1	0	1	0	3		
02	Taylor, Dara	g	3-11	0-1	0-0	2	4	6	0	6	3	6	0	2	33		
05	East, Talia	g	0-1	0-0	2-2	0	3	3	0	2	0	3	0	0	7		
25	Studevent, Gizelle	g	2-2	0-0	0-0	0	1	1	0	4	1	0	0	1	8		
44	Waldner, Tori	g	0-0	0-0	0-0	0	0	0	1	0	0	1	0	0	3		
	Team					10	1	11	1	0	2						
	Totals		26-63	5-11	8-11	17	28	45	15	65	11	29	2	8	200		

FG % 1st Half: 11-25 44.0% 2nd half: 15-38 39.5% Game: 26-63 41.3% Deadball Rebounds
 3FG % 1st Half: 3-5 60.0% 2nd half: 2-6 33.3% Game: 5-11 45.5%
 FT % 1st Half: 4-4 100.0 2nd half: 4-7 57.1% Game: 8-11 72.7%

Miami 69 • 5-1

#	Player	Total			3-Ptr			Rebounds			PF	TP	A	TO	Blk	Stl	Min
		FG-FGA	FG-FGA	FT-FTA	FG-FGA	FG-FGA	FT-FTA	Off	Def	Tot							
32	Morgan Stroman	f	6-8	0-0	3-4	1	3	4	3	15	0	6	1	5	29		
50	Maria Brown	f	0-4	0-0	2-2	3	3	6	3	2	1	1	1	1	27		
03	Stefanie Yderstrom	g	6-15	1-3	0-0	1	0	1	2	13	7	1	0	4	34		
10	Michelle Woods	g	3-8	0-2	5-6	0	5	5	1	11	1	5	2	4	32		
33	Suriya McGuire	g	4-10	0-0	0-0	0	1	1	1	8	2	2	1	2	23		
01	Caprice Dennis	g	2-4	0-1	0-0	0	0	0	1	4	0	0	0	1	11		
12	Krystal Saunders	g	3-7	1-5	1-1	1	1	2	1	8	1	0	0	1	21		
20	Keyona Hayes	g	2-5	0-0	0-0	0	6	6	1	4	0	3	1	1	15		
25	Jessica Capers	g	1-1	0-0	0-0	0	1	1	0	2	0	0	0	0	1		
40	Shawnice Wilson	g	1-2	0-0	0-0	1	1	2	1	2	0	0	0	0	7		
	Team					3	1	4	1								
	Totals		28-64	2-11	11-13	10	22	32	14	69	12	21	6	19	200		

FG % 1st Half: 15-36 41.7% 2nd half: 13-28 46.4% Game: 28-64 43.8% Deadball Rebounds
 3FG % 1st Half: 1-7 14.3% 2nd half: 1-4 25.0% Game: 2-11 18.2%
 FT % 1st Half: 5-6 83.3% 2nd half: 6-7 85.7% Game: 11-13 84.6%

Officials: Denise Brooks, Susan Blauch, Karen Preato
 Technical fouls: Penn State-None. Miami-None.
 Attendance: 1286
 2012 ACC/Big Ten Challenge

Score by periods	1st	2nd	Total	In	Off	2nd	Fast	Bench
Penn State	29	36	65	26	19	12	5	14
Miami	36	33	69	44	23	13	12	20

Last FG - PSU 2nd-00:23, UM 2nd-00:14. Score tied - 6 times. Lead changed - 2 times.
 Largest lead - PSU by 4 2nd-08:21, UM by 10 1st-10:39.

Notable

- Penn State is now 2-4 in ACC/Big Ten Challenge games and 0-3 in Challenge road games.
- Junior guard Maggie Lucas moved into a tie for 17th place on Penn State's career scoring list with Cheryl Ellison (1980-83) at 1,320 career points.
- Senior center Nikki Greene moved into ninth place on Penn State's career rebounding list, passing Mary Donovan (1978-81) with 774 career caroms.

No. 6/7 Penn State 85, Cal State Northridge 73 Game #5 * Nov. 24, 2012 * Northridge, Calif.

Penn State 85 • 5-0

#	Player	Total			3-Ptr			Rebounds			PF	TP	A	TO	Blk	Stl	Min
		FG-FGA	FG-FGA	FT-FTA	FG-FGA	FG-FGA	FT-FTA	Off	Def	Tot							
24	Nickson, Mia	f	4-7	0-0	0-0	1	2	3	5	8	0	3	0	1	20		
54	Greene, Nikki	f	4-9	0-0	13-14	10	10	20	3	21	0	1	2	1	24		
20	Bentley, Alex	g	8-18	2-4	1-2	0	3	3	3	19	8	2	1	3	33		
23	Edwards, Ariel	g	1-6	0-0	2-2	0	2	2	1	4	2	2	0	0	32		
33	Lucas, Maggie	g	8-16	3-4	4-5	1	2	3	1	23	3	4	0	2	35		
01	Agee, Candice	g	0-0	0-0	0-0	0	0	0	0	0	0	0	0	0	3		
02	Taylor, Dara	g	1-4	0-0	0-0	1	2	3	2	2	0	3	1	2	24		
05	East, Talia	g	1-1	0-0	2-2	0	1	1	0	4	1	0	1	0	14		
25	Studevent, Gizelle	g	2-4	0-0	0-0	0	0	0	0	4	0	1	0	0	15		
	Team					3	4	7									
	Totals		29-65	5-8	22-27	16	26	42	15	85	14	16	5	9	200		

FG % 1st Half: 13-33 39.4% 2nd half: 16-32 50.0% Game: 29-65 44.6% Deadball Rebounds
 3FG % 1st Half: 3-5 60.0% 2nd half: 2-3 66.7% Game: 5-8 62.5%
 FT % 1st Half: 6-7 85.7% 2nd half: 16-20 80.0% Game: 22-27 81.5%

Cal State Northridge 73 • 3-2

#	Player	Total			3-Ptr			Rebounds			PF	TP	A	TO	Blk	Stl	Min
		FG-FGA	FG-FGA	FT-FTA	FG-FGA	FG-FGA	FT-FTA	Off	Def	Tot							
23	Alama, Violet	f	5-8	0-1	1-2	2	2	4	4	11	1	1	0	0	34		
04	Mahlknecht, Camille	c	3-9	1-2	1-2	2	11	13	5	8	2	2	2	2	32		
05	Guay, Ashlee	g	6-15	0-1	3-4	2	3	5	3	15	5	0	3	3	37		
22	Friess, Randi	g	3-6	3-6	1-2	0	1	1	1	10	3	3	0	1	34		
24	Masoni, Marta	g	7-18	5-14	3-5	1	2	3	2	22	2	3	2	0	37		
00	Alexander, Breyon	g	0-0	0-0	0-0	0	0	0	0	0	0	0	0	0	3		
02	White, Haley	g	1-2	1-1	2-0	1	1	1	1	5	2	3	0	1	9		
21	Jackson, Jianni	g	1-4	0-1	0-0	2	2	4	1	2	1	0	0	1	12		
32	Walker, Felicia	g	0-0	0-0	0-0	0	0	0	1	0	0	0	1	0	2		
	Team					2	1	3									
	Totals		26-62	10-26	11-18	12	23	35	18	73	23	18	5	8	200		

FG % 1st Half: 16-31 51.6% 2nd half: 10-31 32.3% Game: 26-62 41.9% Deadball Rebounds
 3FG % 1st Half: 5-14 35.7% 2nd half: 5-12 41.7% Game: 10-26 38.5%
 FT % 1st Half: 4-7 57.1% 2nd half: 7-11 63.6% Game: 11-18 61.1%

Officials: Melissa Banal Hoyt, Mark Penafior, Betty Cardenas
 Technical fouls: Penn State-TEAM. Cal State Northridge-None.
 Attendance: 568
 Championship of Radisson Hotel Chatsworth Thanksgiving Basketball Classic

Score by periods	1st	2nd	Total	In	Off	2nd	Fast	Bench
Penn State	35	50	85	38	17	21	8	10

No. 2/2 Connecticut 67, No. 10/10 Penn State 52 Game #8 * Dec. 6, 2012 * Storrs, Conn.

Penn State 52 • 6-2

#	Player	F	Total			3-Ptr			Rebounds			PF	TP	A	TO	Blk	Stl	Min
			FG-FGA	FG-FGA	FT-FTA	FG-FGA	FG-FGA	FT-FTA	Off	Def	Tot							
24	Nickson, Mia	f	4-7	0-0	0-0	2	6	8	4	8	2	6	0	3	3	34		
54	Greene, Nikki	f	1-6	0-0	0-2	2	5	7	4	2	1	3	0	1	25			
02	Taylor, Dara	g	3-14	0-2	2-4	2	2	4	1	8	2	4	0	1	34			
20	Bentley, Alex	g	1-11	1-5	4-4	1	4	5	4	7	1	4	0	0	28			
33	Lucas, Maggie	g	5-12	3-6	2-2	1	3	4	5	15	1	3	0	1	39			
05	East, Talia	g	1-2	0-0	0-0	1	0	1	3	2	0	1	1	0	15			
23	Edwards, Ariel	g	5-7	0-0	0-1	2	2	4	1	10	0	2	0	1	23			
25	Studevent, Gizelle	g	0-0	0-0	0-0	0	0	0	0	0	0	0	0	0	2			
Team						4	1	5		3								
Totals			20-59	4-13	8-13	15	23	38	22	52	7	26	2	7	200			

FG % 1st Half: 9-30 30.0% 2nd half: 11-29 37.9% Game: 20-59 33.9%
 3FG % 1st Half: 2-8 25.0% 2nd half: 2-5 40.0% Game: 4-13 30.8%
 FT % 1st Half: 2-2 100.0% 2nd half: 6-11 54.5% Game: 8-13 61.5%

UCONN 67 • 8-0

#	Player	F	Total			3-Ptr			Rebounds			PF	TP	A	TO	Blk	Stl	Min
			FG-FGA	FG-FGA	FT-FTA	FG-FGA	FG-FGA	FT-FTA	Off	Def	Tot							
23	MOSQUEDA-Lewis, K.	f	8-13	4-7	5-5	2	3	5	5	25	1	6	0	4	35			
30	STEWART, Breanna	f	1-3	0-1	5-6	3	4	7	1	7	2	0	2	0	20			
31	DOLSON, Stefanie	c	3-8	0-0	0-0	3	2	5	3	6	1	3	0	1	30			
14	HARTLEY, Bria	g	3-10	1-5	1-2	1	4	5	2	8	3	2	1	0	28			
3	FARIS, Kelly	g	2-7	0-2	1-2	1	1	2	3	5	3	1	1	5	36			
04	TUCK, Morgan	g	0-1	0-0	2-4	0	3	3	0	2	0	0	0	1	6			
03	JEFFERSON, Moriah	g	2-5	0-2	0-0	0	0	0	1	4	0	2	0	2	12			
05	DOTY, Caroline	g	0-1	0-1	0-2	0	0	0	0	0	0	2	0	0	7			
13	BANKS, Brianna	g	4-7	0-1	2-2	1	1	2	1	10	1	2	0	2	18			
41	STOKES, Kiah	g	0-1	0-0	0-0	0	1	1	0	0	0	2	1	0	8			
Team						2	5	7		16								
Totals			23-56	5-19	16-23	13	24	37	16	67	11	20	5	15	200			

FG % 1st Half: 8-21 38.1% 2nd half: 15-35 42.9% Game: 23-56 41.1%
 3FG % 1st Half: 3-8 37.5% 2nd half: 2-11 18.2% Game: 5-19 26.3%
 FT % 1st Half: 9-12 75.0% 2nd half: 7-11 63.6% Game: 16-23 69.6%

Officials: Barbara Jo Smith, Bryan Enterline, Jesse Dickerson
 Technical fouls: Penn State-None. UCONN-TEAM.
 Attendance: 8072

Score by periods	1st	2nd	Total
Penn State	22	30	52
UCONN	28	39	67

Points	In	Off	2nd	Fast	Bench
PSU	Paint	T/O	Chance	Break	
UCONN	28	10	12	8	12
PSU	26	20	16	6	16

Last FG - PSU 2nd-00:27, UCONN 2nd-02:21.
 Largest lead - PSU by 2 1st-10:46, UCONN by 21 2nd-04:51.

Score tied - 3 times.
 Lead changed - 2 times.

Notable

- Senior center **Nikki Greene** scored her 900th career point.
- The Lady Lions forced 20 UConn turnovers, a season-high for the Huskies. Previously, UConn had 17 turnovers against #9/10 Maryland and #16/13 Texas A&M.
- Penn State led the Huskies on two occasions for a total of 31 seconds, UConn had previously trailed for just 17 seconds in the season opener vs. College of Charleston.

No. 11/10 Penn State 60, Virginia Tech 41 Game #10 * Dec. 12, 2012 * Blacksburg, Va.

Penn State 60 • 8-2

#	Player	F	Total			3-Ptr			Rebounds			PF	TP	A	TO	Blk	Stl	Min
			FG-FGA	FG-FGA	FT-FTA	FG-FGA	FG-FGA	FT-FTA	Off	Def	Tot							
24	Nickson, Mia	f	2-5	0-0	6-9	5	5	10	1	10	2	0	1	1	31			
54	Greene, Nikki	f	1-6	0-0	0-0	2	2	4	2	2	0	2	1	0	18			
02	Taylor, Dara	g	6-10	3-6	0-0	0	3	3	4	15	0	3	1	1	29			
20	Bentley, Alex	g	4-13	0-4	2-2	1	2	3	2	10	4	2	0	5	32			
33	Lucas, Maggie	g	7-9	1-2	2-2	0	4	4	1	17	2	1	0	0	33			
01	Agee, Candice	g	0-1	0-0	0-0	2	4	6	1	0	0	2	1	0	11			
05	East, Talia	g	0-1	0-0	0-0	0	2	2	0	0	0	1	0	1	9			
23	Edwards, Ariel	g	2-9	0-0	0-0	1	3	4	1	4	0	3	0	0	20			
25	Studevent, Gizelle	g	1-5	0-0	0-0	0	1	1	0	2	0	1	0	0	8			
44	Waldner, Tori	g	0-1	0-0	0-0	1	3	4	1	0	0	1	0	0	9			
Team						4	4	8		1								
Totals			23-60	4-12	10-13	16	33	49	13	60	8	17	3	8	200			

FG % 1st Half: 11-32 34.4% 2nd half: 12-28 42.9% Game: 23-60 38.3%
 3FG % 1st Half: 1-7 14.3% 2nd half: 3-5 60.0% Game: 4-12 33.3%
 FT % 1st Half: 5-6 83.3% 2nd half: 5-7 71.4% Game: 10-13 76.9%

Virginia Tech 41 • 4-4

#	Player	F	Total			3-Ptr			Rebounds			PF	TP	A	TO	Blk	Stl	Min
			FG-FGA	FG-FGA	FT-FTA	FG-FGA	FG-FGA	FT-FTA	Off	Def	Tot							
21	Alex Kiss-Rusk	f	3-14	2-4	0-0	1	2	3	3	8	0	1	3	1	37			
22	Porschia Hadley	c	1-5	0-1	0-0	1	2	3	0	2	0	1	1	1	25			
10	Lauren Evans	g	2-3	0-1	0-0	0	2	2	3	4	0	1	1	1	26			
13	Alyssa Fenyn	g	1-5	0-1	0-0	1	5	6	1	2	1	4	1	0	21			
01	Monet Tellier	g	5-14	0-1	8-9	2	3	5	1	18	2	2	0	1	38			
03	Aerial Wilson	g	0-3	0-1	2-2	1	2	3	1	2	3	4	0	1	20			
20	Nia Evans	g	0-4	0-0	0-0	0	1	1	4	0	0	1	0	1	19			
23	Larryqua Hall	g	0-0	0-0	0-0	0	0	0	0	0	0	0	0	0	1			
32	Alexis Lloyd	g	2-6	1-3	0-1	0	1	1	0	5	1	2	0	1	13			
Team						3	3	6		1								
Totals			14-54	3-12	10-12	9	21	30	13	41	7	16	6	7	200			

FG % 1st Half: 9-27 33.3% 2nd half: 5-27 18.5% Game: 14-54 25.9%
 3FG % 1st Half: 1-3 33.3% 2nd half: 2-9 22.2% Game: 3-12 25.0%
 FT % 1st Half: 2-3 66.7% 2nd half: 8-9 88.9% Game: 10-12 83.3%

Officials: Brian Enterline, Wesley Dean, Timothy Bryant
 Technical fouls: Penn State-None. Virginia Tech-None.
 Attendance: 3587
 Penn State is ranked #11 in the AP and #10 in the Coaches' Poll.

Score by periods	1st	2nd	Total
Penn State	28	32	60
Virginia Tech	21	20	41

Points	In	Off	2nd	Fast	Bench
PSU	Paint	T/O	Chance	Break	
VT	16	10	8	9	5
PSU	16	10	8	9	5

Last FG - PSU 2nd-01:41, VT 2nd-00:54.
 Largest lead - PSU by 23 2nd-01:41, VT by 4 1st-17:33.

Score tied - 0 times.
 Lead changed - 1 time.

Notable

- Coquese Washington** earned her 100th victory as a head coach, becoming the second coach in program history to accomplish the feat (Rene Portland; 606).
- Maggie Lucas** eclipsed the 1,400-point mark with her 17 points, giving her 1,415 for her career.
- Dara Taylor** matched her best scoring performance in a Penn State uniform with 15 points. Taylor connected on a career-best three shots from beyond the arc.

No. 10/10 Penn State 97, Georgetown 74 Game #9 * Dec. 9, 2012 * University Park, Pa.

Georgetown 74 • 7-3

#	Player	F	Total			3-Ptr			Rebounds			PF	TP	A	TO	Blk	Stl	Min
			FG-FGA	FG-FGA	FT-FTA	FG-FGA	FG-FGA	FT-FTA	Off	Def	Tot							
11	WHITE, Andrea	**	2-10	0-0	2-2	4	2	6	4	6	1	4	0	3	25			
13	WILSON, Sydney	**	4-10	0-0	3-4	2	6	8	3	11	0	1	0	0	30			
14	RODGERS, Sugar	**	8-22	3-9	5-6	3	4	7	3	24	3	3	1	1	35			
23	POWELL, Samisha	**	3-8	0-2	1-1	1	1	2	3	7	0	2	0	0	25			
42	Moore, Vanessa	**	0-1	0-0	0-0	1	0	1	1	0	0	0	0	0	22			
00	RAFIU, Ki-Ke	**	0-1	0-0	0-0	1	0	1	0	0	0	0	0	0	1			
21	JACKSON, Jasmine	**	3-12	1-3	3-5	1	0	1	0	12	0	2	0	2	17			
22	BATTLE, Logan	**	2-4	0-0	3-5	1	2	3	1	7	0	1	0	2	13			
33	HORNE, Brittany	**	0-4	0-2	3-4	2	1	3	2	3	1	4	1	1	22			
35	VITALIS, Dominique	**	1-1	0-0	4-4	0	1	1	1	6	0	0	0	1	10			
Team						2	3	5		3								
Totals			23-73	4-16	24-31	18	20	38	21	74	8	17	2	13	200			

FG % 1st Half: 9-34 26.5% 2nd half: 14-39 35.9% Game: 23-73 31.5%
 3FG % 1st Half: 3-11 27.3% 2nd half: 1-5 20.0% Game: 4-16 25.0%
 FT % 1st Half: 4-5 80.0% 2nd half: 20-26 76.9% Game: 24-31 77.4%

Penn State 97 • 7-2

#	Player	F	Total			3-Ptr			Rebounds			PF	TP	A	TO	Blk	Stl	Min
			FG-FGA	FG-FGA	FT-FTA	FG-FGA	FG-FGA	FT-FTA	Off	Def	Tot							
02	Taylor, Dara	**	2-4	0-0	3-4	1	4	5	3	7	5	6	0	2	27			
20	Bentley, Alex	**	8-14	0-0	7-7	2	3	5	2	23	4	5	0	2	34			

No. 11/10 Penn State 82, NJIT 37

Game #12 * Dec. 23, 2012 * University Park, Pa.

NJIT 37 • 6-7

#	Player	Total			3-Ptr			Rebounds			PF	TP	A	TO	Blk	Stl	Min
		FG	FGA	FT	FTA	Off	Def	Off	Def	Def							
04	Sarah Olson	f	1-5	0-0	0-0	1	0	1	0	3	0	3	0	0	0	23	
50	Uju Nwankwo	f	1-3	0-0	5-7	3	5	8	5	7	1	5	3	0	31		
05	Rayven Johnson	g	2-16	0-1	0-1	1	2	3	2	4	0	0	1	1	36		
10	Melanie Griffin	g	3-8	1-2	3-3	0	2	2	4	10	2	3	0	1	30		
12	Kimberly Dweck	g	3-4	0-0	0-0	0	1	1	2	6	0	3	0	0	16		
02	Kim Tullis	g	0-1	0-1	0-0	0	2	2	0	0	1	0	0	0	6		
03	Alyssa Albanese	g	1-2	0-0	0-0	0	3	3	1	2	2	2	0	0	22		
11	Nicole Maticka	g	2-3	0-0	0-0	0	0	0	0	4	0	2	3	0	15		
13	Denisa Domiterova	g	0-0	0-0	0-0	0	0	0	0	0	1	0	0	0	2		
14	Martina Matejckikova	g	0-3	0-2	1-2	0	5	2	1	3	0	0	0	0	14		
15	Jelena Zoric	g	0-0	0-0	0-0	0	0	0	0	0	0	0	0	0	2		
22	Nyasia Davis	g	0-1	0-0	0-0	0	0	0	0	0	0	0	0	0	3		
Team						2	1	3									
Totals			13-47	2-12	9-13	7	21	28	16	37	6	24	7	2	200		

FG % 1st Half: 4-23 17.4% 2nd half: 9-24 37.5% Game: 13-47 27.7%
 3FG % 1st Half: 1-7 14.3% 2nd half: 1-5 20.0% Game: 2-12 16.7%
 FT % 1st Half: 0-1 0.0% 2nd half: 9-12 75.0% Game: 9-13 69.2%

Penn State 82 • 10-2

#	Player	Total			3-Ptr			Rebounds			PF	TP	A	TO	Blk	Stl	Min
		FG	FGA	FT	FTA	Off	Def	Off	Def	Def							
24	Nickson, Mia	f	1-3	0-0	2-2	1	0	1	2	4	2	2	0	1	18		
54	Greene, Nikki	c	5-9	0-0	2-2	3	3	6	3	12	0	2	1	2	19		
02	Taylor, Dara	f	1-2	1-1	3-4	0	2	2	4	6	2	0	0	0	24		
20	Bentley, Alex	g	3-9	0-0	4-5	0	5	0	10	6	0	0	8	24			
33	Lucas, Maggie	g	7-11	5-8	2-2	2	6	8	0	21	3	1	0	1	26		
01	Agee, Candice	g	3-8	0-0	2-2	0	2	2	8	0	0	0	0	2	12		
05	East, Talia	g	1-4	0-0	1-2	2	4	6	2	3	0	2	0	1	24		
23	Edwards, Ariel	g	3-6	1-1	3-4	2	2	4	3	10	0	0	1	0	17		
25	Studevent, Gizelle	g	3-5	0-0	0-0	0	2	2	0	6	1	0	0	0	19		
44	Waldner, Tori	g	1-4	0-0	0-0	0	5	5	2	2	1	1	2	17			
Team						1	0	1									
Totals			28-61	7-10	19-24	11	31	42	18	82	22	11	3	17	200		

FG % 1st Half: 16-33 48.5% 2nd half: 12-28 42.9% Game: 28-61 45.9%
 3FG % 1st Half: 4-6 66.7% 2nd half: 3-4 75.0% Game: 7-10 70.0%
 FT % 1st Half: 8-10 80.0% 2nd half: 11-14 78.6% Game: 19-24 79.2%

Officials: Denise Brooks, Michael McConnell, Shannon Feck
 Technical fouls: NJIT-None, Penn State-None.
 Attendance: 7852

Score by periods	1st	2nd	Total
NJIT	9	28	37
Penn State	44	38	82

Last FG - NJIT 2nd-00:28, PSU 2nd-02:13.
 Largest lead - NJIT None, PSU by 49 2nd-02:13.

Score tied - 0 times.
 Lead changed - 0 times.

Notable

- Penn State held NJIT to nine first half points, the fewest allowed by the Lady Lions in a half since giving up seven to Rider back on Nov. 14, 2010.
- With 21 points, **Maggie Lucas** moved into 15th place on Penn State's career scoring chart (1,445).
- Lucas passed Lisa Shepherd for second place all-time in three-pointers made (234).
- **Nikki Greene's** block moved her into a tie for third on Penn State's all-time blocks chart (189).

No. 9/9 Penn State 76, Michigan State 55

Game #14 * Jan. 6, 2013 * East Lansing, Mich.

Penn State 76 • 12-2, 2-0

#	Player	Total			3-Ptr			Rebounds			PF	TP	A	TO	Blk	Stl	Min
		FG	FGA	FT	FTA	Off	Def	Off	Def	Def							
02	Taylor, Dara	*	7-10	3-4	1-1	0	3	3	0	18	4	2	0	3	34		
20	Bentley, Alex	*	6-14	1-2	0-2	0	3	3	2	13	0	2	0	1	31		
24	Nickson, Mia	*	3-7	0-0	0-0	1	5	6	2	6	3	0	1	2	28		
33	Lucas, Maggie	*	2-7	1-4	7-7	1	0	1	4	12	3	1	1	1	28		
54	Greene, Nikki	*	6-9	0-0	2-3	4	6	10	3	14	1	1	1	0	21		
01	Agee, Candice	*	2-4	0-0	0-0	0	0	0	2	4	0	1	0	0	10		
05	East, Talia	*	0-0	0-0	0-0	0	3	3	5	0	0	2	1	0	8		
23	Edwards, Ariel	*	2-4	2-2	0-0	1	2	3	1	6	2	3	1	0	20		
25	Studevent, Gizelle	*	0-0	0-0	0-0	0	1	1	0	0	0	0	0	0	9		
44	Waldner, Tori	*	1-1	0-0	1-3	1	4	5	2	3	0	0	1	2	11		
Team						0	1	1									
Totals			29-56	7-12	11-16	8	28	36	21	76	13	13	7	7	200		

FG % 1st Half: 12-26 46.2% 2nd half: 17-30 56.7% Game: 29-56 51.8%
 3FG % 1st Half: 3-6 50.0% 2nd half: 4-6 66.7% Game: 7-12 58.3%
 FT % 1st Half: 7-7 100.0 2nd half: 4-9 44.4% Game: 11-16 68.8%

Michigan State 55 • 13-2, 1-1

#	Player	Total			3-Ptr			Rebounds			PF	TP	A	TO	Blk	Stl	Min
		FG	FGA	FT	FTA	Off	Def	Off	Def	Def							
01	Thomas, Jasmine	*	2-8	0-0	0-1	5	3	8	2	4	3	2	0	1	34		
11	Pickrel, Annalise	*	2-6	1-4	0-0	1	4	5	1	5	2	1	0	0	31		
21	Bell, Klarissa	*	3-9	0-2	2-3	5	4	9	3	8	3	2	0	0	36		
24	Schiffauer, Courtney	*	1-6	0-3	0-0	1	1	2	5	2	2	1	0	0	15		
52	Mills, Becca	*	5-16	3-8	4-6	0	5	5	2	17	1	0	1	1	34		
00	Johnson, Kiana	*	1-5	0-1	5-6	2	3	5	0	7	1	5	0	1	27		
04	Hines, Jasmine	*	3-8	0-0	6-10	3	2	5	4	12	0	3	0	1	23		
Team						1	1	2									
Totals			17-58	4-18	17-26	18	23	41	17	55	12	14	1	4	200		

FG % 1st Half: 8-23 34.8% 2nd half: 9-35 25.7% Game: 17-58 29.3%
 3FG % 1st Half: 3-7 42.9% 2nd half: 1-11 9.1% Game: 4-18 22.2%
 FT % 1st Half: 6-8 75.0% 2nd half: 11-18 61.1% Game: 17-26 65.4%

Officials: Barb Smith, Bryan Enterline, Kevin Dillard
 Technical fouls: Penn State-None, Michigan State-None.
 Attendance: 6818

Score by periods	1st	2nd	Total
Penn State	34	42	76
Michigan State	25	30	55

Last FG - PSU 2nd-01:23, MSU 2nd-01:04.
 Largest lead - PSU by 26 2nd-04:29, MSU None.

Score tied - 0 times.
 Lead changed - 0 times.

Notable

- The Lady Lions open Big Ten play 2-0 for the first time since the 2004-05 season.
- With 12 points, **Alex Bentley** became the fifth player in Big Ten history with 1,500 points, 500 assists and 250 steals. She is the second Lady Lion to accomplish the feat.
- **Mia Nickson** became the 28th member of the Lady Lions' 500-rebound club with six caroms.
- **Dara Taylor** posted a career-high 18 points, surpassing her previous mark of 17 at Maryland.

No. 9/9 Penn State 73, Northwestern 69

Game #13 * Jan. 3, 2013 * University Park, Pa.

Northwestern 69 • 8-6, 0-1 B1G

#	Player	Total			3-Ptr			Rebounds			PF	TP	A	TO	Blk	Stl	Min
		FG	FGA	FT	FTA	Off	Def	Off	Def	Def							
04	Hackney, Kendall	*	4-7	2-4	2-2	0	11	11	5	12	3	2	0	1	27		
11	Douglas, Lauren	*	3-12	0-4	1-2	0	6	6	4	7	1	4	0	2	37		
25	Lyon, Maggie	*	3-16	0-4	1-2	3	4	7	4	7	3	3	0	2	38		
31	Diamant, Dannielle	*	3-6	1-2	2-2	2	5	7	5	9	1	5	3	0	20		
02	Roser, Karly	*	5-7	0-0	6-10	0	2	2	3	16	3	9	0	1	39		
05	Cohen, Alex	*	3-3	1-1	2-2	2	5	7	1	9	0	1	1	1	18		
13	Kedern, Nef	*	0-0	0-0	0-0	0	0	0	0	0	0	0	0	0	1		
33	Brookshire, Devon	*	0-0	0-0	0-0	0	1	1	0	0	0	1	0	0	4		
40	Popovec, Kate	*	4-5	0-0	1-1	1	1	2	3	9	0	3	0	1	16		
Team						3	4	7									
Totals			25-56	4-15	15-21	11	39	50	25	69	11	28	4	8	200		

FG % 1st Half: 15-29 51.7% 2nd half: 10-27 37.0% Game: 25-56 44.6%
 3FG % 1st Half: 3-8 37.5% 2nd half: 1-7 14.3% Game: 4-15 26.7%
 FT % 1st Half: 5-7 71.4% 2nd half: 10-14 71.4% Game: 15-21 71.4%

Penn State 73 • 11-2, 1-0 B1G

#	Player	Total			3-Ptr			Rebounds			PF	TP	A	TO	Blk	Stl	Min
		FG	FGA	FT	FTA	Off	Def	Off	Def	Def							
02	Taylor, Dara	*	4-12	0-3	1-3	0	1	1	3	9	1	4	0	7	26		
20	Bentley, Alex	*	1-11	1-3	6-6	0	6	6	0	9	3	1	0	6	34		
24	Nickson, Mia	*	3-8	0-0	8-10	7	6	13	2	14	0	1	1	0	34		
33	Lucas, Maggie	*	5-16	5-7	9-12	1	1	2	3	24	4	2	2	5	38		
54	Greene, Nikki	*	2-2	0-0	0-0	2	2	4	5	4	0	1	0	0	9		
01	Agee, Candice	*	2-4	0-0	0-0	1	0	1	2	4	0	0	1	0	8		
05	East, Talia	*	0-1	0-0	3-6	0	2	2	3	3							

No. 8/8 Penn State 84, Wisconsin 40 Game #16 * Jan. 17, 2013 * University Park, Pa.

Wisconsin 40 • 8-10, 0-5

#	Player	Total			3-Ptr			Rebounds			PF	TP	A	TO	Blk	Stl	Min
		FG-FGA	FG-FGA	FT-FTA	FG-FGA	FG-FGA	FT-FTA	Off	Def	Tot							
04	Bauman, Nicole	* 2-6	2-4	0-0	0	1	1	3	6	0	4	0	0	0	0	27	
05	Paige, Morgan	* 5-15	2-11	2-2	0	1	1	14	0	4	0	0	0	0	34		
24	Stephen, Tiera	* 1-7	0-1	2-4	2	5	7	2	4	7	8	0	3	3	36		
35	Gulczynski, Jacki	* 3-13	2-6	2-2	1	9	10	2	10	1	2	0	1	40-			
43	Rochel, Cassie	* 2-5	0-0	0-0	1	5	6	4	4	1	3	3	1	31			
00	Malone, Shannon	0-0	0-0	0-0	0	0	0	0	0	0	0	0	0	0+			
10	Whyte, Dakota	1-6	0-2	0-0	0	1	1	3	2	1	3	0	2	22			
22	Cichy, Tessa	0-0	0-0	0-0	0	0	0	0	0	0	0	0	0	1			
23	Kryuchkova, Daria	0-1	0-0	0-0	0	0	0	2	0	0	0	1	0	9			
	Team				2	3	5										
	Totals	14-53	6-24	6-8	6	25	31	17	40	10	24	4	8	200			

FG % 1st Half: 7-23 30.4% 2nd half: 7-30 23.3% Game: 14-53 26.4%
 3FG % 1st Half: 3-11 27.3% 2nd half: 3-13 23.1% Game: 6-24 25.0%
 FT % 1st Half: 4-5 80.0% 2nd half: 2-3 66.7% Game: 6-8 75.0%

Penn State 84 • 14-2, 4-0

#	Player	Total			3-Ptr			Rebounds			PF	TP	A	TO	Blk	Stl	Min
		FG-FGA	FG-FGA	FT-FTA	FG-FGA	FG-FGA	FT-FTA	Off	Def	Tot							
02	Taylor, Dara	* 3-5	2-3	0-0	2	5	7	3	8	6	5	0	4	22			
20	Bentley, Alex	* 5-14	0-2	4-6	0	1	1	2	14	5	1	0	6	25			
24	Nickson, Mia	* 3-6	0-0	2-2	5	4	9	3	8	1	0	0	2	25			
33	Lucas, Maggie	* 3-11	2-4	3-4	0	4	4	1	11	1	4	0	3	31			
54	Greene, Nikki	* 9-16	0-0	5-7	7	7	14	2	23	0	1	2	0	27			
05	East, Talia	1-3	0-0	1-2	2	2	4	5	3	0	1	0	0	12			
23	Edwards, Ariel	5-9	0-0	0-0	0	3	3	0	10	1	0	0	0	26			
25	Studevent, Gizelle	2-5	0-0	1-2	0	3	3	0	5	0	1	0	1	15			
44	Waldner, Tori	1-4	0-1	0-0	2	4	6	1	2	1	0	1	1	17			
	Team				2	4	6										
	Totals	32-73	4-10	16-23	20	35	55	17	84	15	13	3	17	200			

FG % 1st Half: 16-37 43.2% 2nd half: 16-36 44.4% Game: 32-73 43.8%
 3FG % 1st Half: 4-7 57.1% 2nd half: 0-3 0.0% Game: 4-10 40.0%
 FT % 1st Half: 10-13 76.9% 2nd half: 6-10 60.0% Game: 16-23 69.6%

Officials: Lisa Mattingly, Cameron Inouye, Jesse Dickerson
 Technical fouls: Wisconsin-None. Penn State-None.
 Attendance: 3848

Score by periods	1st	2nd	Total
Wisconsin	21	19	40
Penn State	46	38	84

Last FG - WIS 2nd-05:11, PSU 2nd-00:00.
 Largest lead - WIS None, PSU by 44 2nd-00:00.

Score tied - 0 times.
 Lead changed - 0 times.

Notable

- Penn State's 44-point win is the biggest margin of victory over a Big Ten opponent since topping Michigan State by 48 points (97-49) on Jan. 28, 2001.
- PSU has earned 3-straight wins in Big Ten play by 20 or more points for the first time since 2004-05.
- Alex Bentley passed Tanya Garner for 10th place on PSU's career scoring list with 1,539 tallies.
- Nikki Greene passed Mary Donovan for second in school history for career blocks with 193.

No. 8/8 Penn State 64, Minnesota 59 Game #19 * Jan. 24, 2013 * University Park, Pa.

Minnesota 59 • 13-7, 2-4

#	Player	Total			3-Ptr			Rebounds			PF	TP	A	TO	Blk	Stl	Min
		FG-FGA	FG-FGA	FT-FTA	FG-FGA	FG-FGA	FT-FTA	Off	Def	Tot							
01	Banham, Rachel	* 6-17	1-4	6-6	0	3	3	2	19	3	5	0	0	0	38		
03	Mullaney, Shayne	* 2-5	0-1	1-1	0	4	4	2	5	4	4	0	2	37			
05	Kellogg, Kionna	* 3-7	0-1	2-4	2	4	6	2	8	1	7	0	1	35			
15	Riche, Micaela	* 5-7	0-0	2-2	0	2	2	4	12	1	2	2	1	23			
21	Noga, Sari	* 1-3	0-2	2-2	0	4	4	2	4	0	1	0	1	28			
11	Cotton, Leah	3-5	0-0	1-2	0	4	4	5	7	0	1	0	0	15			
20	Hirt, Kayla	1-3	0-0	0-0	0	2	2	0	2	0	1	0	0	6			
24	Bailey, Mikayla	0-0	0-0	0-0	0	0	0	1	0	0	0	1	1	2			
25	Loberg, Katie	1-2	0-0	0-1	2	4	6	2	2	0	0	1	0	16			
	Team				5	3	8										
	Totals	22-49	1-8	14-18	9	30	39	20	59	9	23	4	6	200			

FG % 1st Half: 12-26 46.2% 2nd half: 10-23 43.5% Game: 22-49 44.9%
 3FG % 1st Half: 1-3 33.3% 2nd half: 0-5 0.0% Game: 1-8 12.5%
 FT % 1st Half: 4-6 66.7% 2nd half: 10-12 83.3% Game: 14-18 77.8%

Penn State 64 • 16-2, 6-0

#	Player	Total			3-Ptr			Rebounds			PF	TP	A	TO	Blk	Stl	Min
		FG-FGA	FG-FGA	FT-FTA	FG-FGA	FG-FGA	FT-FTA	Off	Def	Tot							
02	Taylor, Dara	* 1-3	1-1	1-2	1	0	1	4	4	2	4	0	3	28			
20	Bentley, Alex	* 6-16	0-1	0-0	1	1	2	1	12	3	2	0	0	31			
24	Nickson, Mia	* 1-7	0-0	1-2	2	1	3	0	3	1	2	0	1	32			
33	Lucas, Maggie	* 9-18	1-5	7-7	1	5	6	1	26	4	4	1	3	35			
54	Greene, Nikki	* 3-11	0-0	3-4	5	8	13	3	9	0	1	1	2	28			
01	Agee, Candice	0-1	0-0	0-0	0	1	1	2	0	0	0	0	0	5			
05	East, Talia	0-0	0-0	0-0	1	0	1	1	0	1	0	0	1	7			
23	Edwards, Ariel	2-6	0-0	2-4	0	1	1	2	6	0	0	0	1	19			
25	Studevent, Gizelle	2-3	0-0	0-0	0	0	0	0	4	0	0	0	0	7			
44	Waldner, Tori	0-3	0-0	0-0	3	1	4	2	0	0	1	5	0	8			
	Team				4	1	5										
	Totals	24-68	2-7	14-19	18	19	37	16	64	13	12	8	11	200			

FG % 1st Half: 12-34 35.3% 2nd half: 12-34 35.3% Game: 24-68 35.3%
 3FG % 1st Half: 2-5 40.0% 2nd half: 0-2 0.0% Game: 2-7 28.6%
 FT % 1st Half: 5-8 62.5% 2nd half: 9-11 81.8% Game: 14-19 73.7%

Officials: Laura Morris, Mark Zentz, Michael McConnell
 Technical fouls: Minnesota-None. Penn State-None.
 Attendance: 4089

Score by periods	1st	2nd	Total
Minnesota	29	30	59
Penn State	31	33	64

Last FG - MINN 2nd-00:58, PSU 2nd-00:58.
 Largest lead - MINN by 4 2nd-10:02, PSU by 5 2nd-05:28.

Score tied - 12 times.
 Lead changed - 13 times.

Notable

- With nine points, senior center **Nikki Greene** became the 35th player in Penn State history with 1,000 career points.
- The Lady Lions have now won 13 consecutive Big Ten regular-season games, tying a school record.
- **Maggie Lucas** netted her 250th career three-pointer and moved into 11th on Penn State's career scoring list with 1,556 pts., passing Tanya Garner (1,538).

No. 8/8 Penn State 59, No. 23/RV Michigan 49 Game #17 * Jan. 21, 2013 * Ann Arbor, Mich.

Penn State 59 • 15-2 (5-0)

#	Player	Total			3-Ptr			Rebounds			PF	TP	A	TO	Blk	Stl	Min
		FG-FGA	FG-FGA	FT-FTA	FG-FGA	FG-FGA	FT-FTA	Off	Def	Tot							
24	Nickson, Mia	f 3-6	0-0	1-1	2	2	4	3	7	0	1	2	0	23			
54	Greene, Nikki	c 4-6	0-0	0-0	4	7	11	4	8	0	3	3	0	18			
02	Taylor, Dara	g 2-6	0-1	1-1	1	5	6	1	5	2	4	0	2	28			
20	Bentley, Alex	g 8-21	0-7	0-0	0	2	2	3	16	3	3	0	5	37			
33	Lucas, Maggie	g 5-16	3-7	6-6	2	2	4	4	19	0	3	0	1	37			
05	East, Talia	0-1	0-0	0-0	2	4	6	0	0	0	0	0	0	13			
23	Edwards, Ariel	0-3	0-0	0-0	0	1	1	1	0	0	0	0	1	19			
25	Studevent, Gizelle	1-2	0-0	0-0	0	1	1	0	2	0	0	0	0	9			
44	Waldner, Tori	1-1	0-0	0-0	0	4	4	2	0	0	0	2	0	16			
	Team				2	2	2										
	Totals	24-62	3-15	8-8	13	28	41	20	59	5	15	7	11	200			

FG % 1st Half: 13-32 40.6% 2nd half: 11-30 36.7% Game: 24-62 38.7%
 3FG % 1st Half: 2-10 20.0% 2nd half: 1-5 20.0% Game: 3-15 20.0%
 FT % 1st Half: 4-4 100.0 2nd half: 4-4 100.0 Game: 8-8 100.0

Michigan 49 • 15-3 (4-1)

#	Player	Total			3-Ptr			Rebounds			PF	TP	A	TO	Blk	Stl	Min
		FG-FGA	FG-FGA	FT-FTA	FG-FGA	FG-FGA	FT-FTA	Off	Def	Tot							
44	Sheffer, Rachel	f 5-15	1-5	9-12	2	8	10	1	20	1	6	0	2	35			
12	Thompson, Kate	g 3-16	3-14	0-0	1	1	2	1	9	1	1	2	0	37			
14	Elmblad, Nicole	g 1-4	0-2	0-0	4	1	5	2	2	2	0	0	1	30			
21	Jordan, Nya	g 1-2	0-0	1-2	2	5	7	3	3	0	1	0	2	28			
24	Ryan, Jenny	g 3-10	1-3	0-0	1	2	3	0	7	6	6	0	1	40			
01	Harris, Brenae	0-1	0-0	0-0	0	0	0	0	0	0	0	0	0	7			
05	Ristovski, Madison	1-2	0-1	3-4	0	0	0	0	5	0	1	0	0	6			
11	Arnold, Sam	1-4	1-1	0-0	1	2	3	3	0	0	1	0	1	17			
	Team				1	3	4										
	Totals	15-54	6-26	13-18	12	22	34	10	49	10	15	3	7	200			

2012-13 RADIO/TV CHART



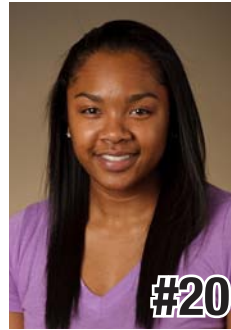
#1
Candice Agee
 6-6 * Fr./Fr. * F/C
 Victorville, Calif.
 Silverado



#2
Dara Taylor
 5-8 * Sr./Jr. * G
 Wilmington, Del.
 Caravel Academy
 (Maryland)



#5
Talia East
 6-3 * Jr./Jr. * F/C
 Philadelphia, Pa.
 Friends' Central School



#20
Alex Bentley
 5-7 * Sr./Sr. * G
 Indianapolis, Ind.
 Ben Davis



#23
Ariel Edwards
 6-3 * Jr./Jr. * F
 Elmont, N.Y.
 Christ the King



#24
Mia Nickson
 6-2 * Gr./Sr. * F
 Ashburn, Va.
 Notre Dame Academy
 (Boston College)



#25
Gizelle Studevent
 5-11 * Sr./Sr. * G
 La Jolla, Calif.
 The Bishop's School



#33
Maggie Lucas
 5-10 * Jr./Jr. * G
 Narberth, Pa.
 Germantown Academy



#40
Marisa Wolfe
 6-2 * Sr./Sr. * F
 Ford City, Pa.
 Ford City



#44
Tori Waldner
 6-5 * So./So. * F/C
 Milton, Ga.
 Milton



#54
Nikki Greene
 6-4 * Sr./Sr. * F/C
 Diboll, Texas
 Diboll



HC
Coquese Washington
 Head Coach
 Notre Dame '92
 Sixth Season



AC
Fred Chmiel
 Assistant Coach
 Excelsior College
 Third Season



AC
Kia Damon
 Assistant Coach
 Millersville '97
 Sixth Season



AC
Maren Walseth
 Assistant Coach
 Penn State '02
 Sixth Season



DO
Ethan Gelfand
 Director of Basketball
 Operations
 Second Season



VO
Mike Miller
 Director of Video &
 Technology Operations
 Eighth Season

Six-Time Big Ten Champions • Two-Time Big Ten Tournament Champions • 2000 NCAA Final Four • 23 NCAA Tournament Appearances





2012-13 Penn State Lady Lions
 Penn State Combined Team Statistics (as of Jan 27, 2013)
 All games



RECORD:	OVERALL	HOME	AWAY	NEUTRAL
ALL GAMES	17-2	10-0	6-2	1-0
CONFERENCE	7-0	4-0	3-0	0-0
NON-CONFERENCE	10-2	6-0	3-2	1-0

##	Player	gp-gs	min	avg	Total		3-Point		F-Throw		Rebounds				pf	dq	a	to	blk	stl	pts	avg
					fg-fga	fg%	3fg-fga	3fg%	ft-fa	ft%	off	def	tot	avg								
33	Lucas, Maggie	19-19	645	33.9	118-271	.435	58-116	.500	86-97	.887	15	67	82	4.3	42	1	45	54	9	46	380	20.0
20	Bentley, Alex	19-19	589	31.0	97-250	.388	10-55	.182	44-55	.800	9	66	75	3.9	38	0	71	39	4	73	248	13.1
54	Greene, Nikki	19-19	399	21.0	67-149	.450	0-0	.000	42-60	.700	72	96	168	8.8	61	1	7	37	21	14	176	9.3
23	Edwards, Ariel	19-6	413	21.7	62-132	.470	8-18	.444	22-30	.733	15	57	72	3.8	37	2	11	26	8	7	154	8.1
24	Nickson, Mia	18-18	498	27.7	49-121	.405	0-0	.000	40-56	.714	57	58	115	6.4	40	1	20	32	11	17	138	7.7
02	Taylor, Dara	19-13	500	26.3	52-127	.409	11-36	.306	22-35	.629	16	47	63	3.3	50	1	66	57	3	46	137	7.2
01	Agee, Candice	16-0	148	9.3	18-46	.391	0-0	.000	5-8	.625	14	22	36	2.3	22	0	2	7	8	3	41	2.6
25	Studevent, Gizelle	19-0	201	10.6	22-54	.407	0-3	.000	4-6	.667	2	11	13	0.7	5	0	8	10	2	3	48	2.5
05	East, Talia	18-1	225	12.5	14-35	.400	0-0	.000	13-22	.591	16	29	45	2.5	35	2	7	17	13	6	41	2.3
44	Waldner, Tori	17-0	182	10.7	14-44	.318	0-1	.000	8-11	.727	23	35	58	3.4	24	0	7	12	21	7	36	2.1
Team											58	32	90				10					
Total.....		19	3800		513-1229	.417	87-229	.380	286-380	.753	297	520	817	43.0	354	8	244	301	100	222	1399	73.6
Opponents.....		19	3800		368-1082	.340	83-305	.272	247-349	.708	243	465	708	37.3	328	-	206	393	77	149	1066	56.1

TEAM STATISTICS	PSU	OPP	Date	Opponent	Score	Att.
SCORING	1399	1066	11/11/12	HOWARD	w 72-61	3655
Points per game	73.6	56.1	11/14/12	at Texas A&M	w 63-58	4756
Scoring margin	+17.5	-	11/18/12	LAFAYETTE	w 75-34	3700
FIELD GOALS-ATT	513-1229	368-1082	11/23/12	vs Detroit	w 80-72	479
Field goal pct	.417	.340	11/24/12	at Cal State Northridge	w 85-73	568
3 POINT FG-ATT	87-229	83-305	11/29/12	at Miami	L 65-69	1286
3-point FG pct	.380	.272	12/2/12	FAIRLEIGH DICKINSON	w 101-44	4072
3-pt FG made per game	4.6	4.4	12-06-12	at UCONN	L 52-67	8072
FREE THROWS-ATT	286-380	247-349	12/9/12	GEORGETOWN	w 97-74	4059
Free throw pct	.753	.708	12/12/12	at Virginia Tech	w 60-41	3587
F-Throws made per game	15.1	13.0	12/16/12	SOUTH DAKOTA STATE	w 60-50	4747
REBOUNDS	817	708	12/23/12	NJIT	w 82-37	7852
Rebounds per game	43.0	37.3	* 1/3/13	NORTHWESTERN	w 73-69	3863
Rebounding margin	+5.7	-	* 01/06/13	at Michigan State	w 76-55	6818
ASSISTS	244	206	* 1/13/13	NEBRASKA	w 80-58	6098
Assists per game	12.8	10.8	* 1/17/13	WISCONSIN	w 84-40	3848
TURNOVERS	301	393	* 01/21/13	at Michigan	w 59-49	2842
Turnovers per game	15.8	20.7	* 1/24/13	MINNESOTA	w 64-59	4089
Turnover margin	+4.8	-	* 01/27/13	at Ohio State	w 71-56	6802
Assist/turnover ratio	0.8	0.5				
STEALS	222	149				
Steals per game	11.7	7.8				
BLOCKS	100	77				
Blocks per game	5.3	4.1				
ATTENDANCE	45983	35210				
Home games-Avg/Game	10-4598	8-4341				
Neutral site-Avg/Game	-	1-479				

Score by Periods	1st	2nd	Totals
Penn State	680	719	1399
Opponents	523	543	1066



2012-13 Penn State Lady Lions
Penn State Category Leaders (as of Jan 27, 2013)
All games



Points	G	Pts	Pts/G
Lucas, Maggie	19	380	20.0
Bentley, Alex	19	248	13.1
Greene, Nikki	19	176	9.3
Edwards, Ariel	19	154	8.1
Nickson, Mia	18	138	7.7
Taylor, Dara	19	137	7.2
Studevent, Gizelle	19	48	2.5
East, Talia	18	41	2.3
Agee, Candice	16	41	2.6
Waldner, Tori	17	36	2.1

FG Percentage	FG	Att	Pct
Edwards, Ariel	62	132	.470
Greene, Nikki	67	149	.450
Lucas, Maggie	118	271	.435
Taylor, Dara	52	127	.409
Studevent, Gizelle	22	54	.407
Nickson, Mia	49	121	.405
East, Talia	14	35	.400
Agee, Candice	18	46	.391
Bentley, Alex	97	250	.388
Waldner, Tori	14	44	.318

3-Point Percentage	3FG	Att	Pct
Lucas, Maggie	58	116	.500
Edwards, Ariel	8	18	.444
Taylor, Dara	11	36	.306
Bentley, Alex	10	55	.182
Waldner, Tori	0	1	.000
Studevent, Gizelle	0	3	.000

Free Throw Percent	FG	Att	Pct
Lucas, Maggie	86	97	.887
Bentley, Alex	44	55	.800
Edwards, Ariel	22	30	.733
Waldner, Tori	8	11	.727
Nickson, Mia	40	56	.714
Greene, Nikki	42	60	.700
Studevent, Gizelle	4	6	.667
Taylor, Dara	22	35	.629
Agee, Candice	5	8	.625
East, Talia	13	22	.591

Scoring Average	G	Pts	Avg/G
Lucas, Maggie	19	380	20.0
Bentley, Alex	19	248	13.1
Greene, Nikki	19	176	9.3
Edwards, Ariel	19	154	8.1
Nickson, Mia	18	138	7.7
Taylor, Dara	19	137	7.2
Agee, Candice	16	41	2.6
Studevent, Gizelle	19	48	2.5
East, Talia	18	41	2.3
Waldner, Tori	17	36	2.1

Field Goal Attempts	G	Att	Att/G
Lucas, Maggie	19	271	14.3
Bentley, Alex	19	250	13.2
Greene, Nikki	19	149	7.8
Edwards, Ariel	19	132	6.9
Taylor, Dara	19	127	6.7

Field Goals Made	G	Made	Made/G
Lucas, Maggie	19	118	6.2
Bentley, Alex	19	97	5.1
Greene, Nikki	19	67	3.5
Edwards, Ariel	19	62	3.3
Taylor, Dara	19	52	2.7

3-Point FG Attempts	G	Att	Att/G
Lucas, Maggie	19	116	6.1
Bentley, Alex	19	55	2.9
Taylor, Dara	19	36	1.9
Edwards, Ariel	19	18	0.9
Studevent, Gizelle	19	3	0.2

3-Point FG Made	G	Made	Made/G
Lucas, Maggie	19	58	3.1
Taylor, Dara	19	11	0.6
Bentley, Alex	19	10	0.5
Edwards, Ariel	19	8	0.4

Free Throw Attempts	G	Att	Att/G
Lucas, Maggie	19	97	5.1
Greene, Nikki	19	60	3.2
Nickson, Mia	18	56	3.1
Bentley, Alex	19	55	2.9
Taylor, Dara	19	35	1.8

Free Throws Made	G	Made	Made/G
Lucas, Maggie	19	86	4.5
Bentley, Alex	19	44	2.3
Greene, Nikki	19	42	2.2
Nickson, Mia	18	40	2.2
Taylor, Dara	19	22	1.2
Edwards, Ariel	19	22	1.2



2012-13 Penn State Lady Lions
 Penn State Category Leaders (as of Jan 27, 2013)
 All games



Rebounds	G	Reb	Reb/G
Greene, Nikki	19	168	8.8
Nickson, Mia	18	115	6.4
Lucas, Maggie	19	82	4.3
Bentley, Alex	19	75	3.9
Edwards, Ariel	19	72	3.8

Rebound Average	G	Reb	Avg/G
Greene, Nikki	19	168	8.8
Nickson, Mia	18	115	6.4
Lucas, Maggie	19	82	4.3
Bentley, Alex	19	75	3.9
Edwards, Ariel	19	72	3.8

Offensive Rebounds	G	No.	Avg/G
Greene, Nikki	19	72	3.8
Nickson, Mia	18	57	3.2
Waldner, Tori	17	23	1.4
Taylor, Dara	19	16	0.8
East, Talia	18	16	0.9

Defensive Rebounds	G	No.	Avg/G
Greene, Nikki	19	96	5.1
Lucas, Maggie	19	67	3.5
Bentley, Alex	19	66	3.5
Nickson, Mia	18	58	3.2
Edwards, Ariel	19	57	3.0

Fouls	G	No.	Per/G
Greene, Nikki	19	61	3.2
Taylor, Dara	19	50	2.6
Lucas, Maggie	19	42	2.2
Nickson, Mia	18	40	2.2
Bentley, Alex	19	38	2.0

Foulsouts	G	No.
Edwards, Ariel	19	2
East, Talia	18	2
Lucas, Maggie	19	1
Nickson, Mia	18	1
Taylor, Dara	19	1
Greene, Nikki	19	1

Assists	G	No.	Ast/G
Bentley, Alex	19	71	3.7
Taylor, Dara	19	66	3.5
Lucas, Maggie	19	45	2.4
Nickson, Mia	18	20	1.1
Edwards, Ariel	19	11	0.6

Steals	G	No.	Stl/G
Bentley, Alex	19	73	3.8
Lucas, Maggie	19	46	2.4
Taylor, Dara	19	46	2.4
Nickson, Mia	18	17	0.9
Greene, Nikki	19	14	0.7

Blocked Shots	G	No.	Blk/G
Waldner, Tori	17	21	1.2
Greene, Nikki	19	21	1.1
East, Talia	18	13	0.7
Nickson, Mia	18	11	0.6
Lucas, Maggie	19	9	0.5

Minutes	G	No.	Min/G
Lucas, Maggie	19	645	33.9
Bentley, Alex	19	589	31.0
Taylor, Dara	19	500	26.3
Nickson, Mia	18	498	27.7
Edwards, Ariel	19	413	21.7

Turnovers	G	No.	TO/G
Taylor, Dara	19	57	3.0
Lucas, Maggie	19	54	2.8
Bentley, Alex	19	39	2.1
Greene, Nikki	19	37	1.9
Nickson, Mia	18	32	1.8



2012-13 Penn State Lady Lions
 Penn State Combined Team Statistics (as of Jan 27, 2013)
 Conference games



RECORD:	OVERALL	HOME	AWAY	NEUTRAL
ALL GAMES	7-0	4-0	3-0	0-0
CONFERENCE	7-0	4-0	3-0	0-0
NON-CONFERENCE	0-0	0-0	0-0	0-0

##	Player	gp-gs	min	avg	Total		3-Point		F-Throw		Rebounds				pf	dq	a	to	blk	stl	pts	avg		
					fg-fga	fg%	3fg-fga	3fg%	ft-fta	ft%	off	def	tot	avg										
33	Lucas, Maggie	7-7	239	34.1	35-100	.350	18-40	.450	41-46	.891	7	16	23	3.3	19	0	16	21	4	17	129	18.4		
20	Bentley, Alex	7-7	226	32.3	42-111	.378	5-26	.192	10-14	.714	1	21	22	3.1	12	0	17	12	1	25	99	14.1		
54	Greene, Nikki	7-7	154	22.0	32-62	.516	0-0	.000	14-22	.636	35	40	75	10.7	24	1	2	9	8	4	78	11.1		
02	Taylor, Dara	7-7	187	26.7	22-46	.478	6-14	.429	6-10	.600	5	16	21	3.0	17	1	26	21	2	24	56	8.0		
23	Edwards, Ariel	7-0	149	21.3	20-47	.426	3-5	.600	9-11	.818	3	19	22	3.1	10	0	4	5	3	4	52	7.4		
24	Nickson, Mia	7-7	199	28.4	16-43	.372	0-0	.000	15-18	.833	23	27	50	7.1	13	0	5	8	4	7	47	6.7		
25	Studevent, Gizelle	7-0	64	9.1	9-18	.500	0-1	.000	1-2	.500	0	5	5	0.7	0	0	0	2	1	1	19	2.7		
01	Agee, Candice	5-0	32	6.4	5-11	.455	0-0	.000	0-0	.000	2	3	5	1.0	7	0	0	1	1	0	10	2.0		
05	East, Talia	7-0	76	10.9	3-7	.429	0-0	.000	4-8	.500	8	12	20	2.9	17	2	1	4	6	1	10	1.4		
44	Waldner, Tori	7-0	74	10.6	3-13	.231	0-1	.000	1-3	.333	7	13	20	2.9	10	0	3	4	12	1	7	1.0		
Team											13	12	25											
Total.....		7	1400		187-458	.408	32-87	.368	101-134	.754	104	184	288	41.1	129	4	74	90	42	84	507	72.4		
Opponents.....		7	1400		133-391	.340	31-129	.240	89-124	.718	89	186	275	39.3	116	-	73	139	25	40	386	55.1		

TEAM STATISTICS	PSU	OPP	Date	Opponent	Score	Att.
SCORING	507	386	* 1/3/13	NORTHWESTERN	w 73-69	3863
Points per game	72.4	55.1	* 01/06/13	at Michigan State	w 76-55	6818
Scoring margin	+17.3	-	* 1/13/13	NEBRASKA	w 80-58	6098
FIELD GOALS-ATT	187-458	133-391	* 1/17/13	WISCONSIN	w 84-40	3848
Field goal pct	.408	.340	* 01/21/13	at Michigan	w 59-49	2842
3 POINT FG-ATT	32-87	31-129	* 1/24/13	MINNESOTA	w 64-59	4089
3-point FG pct	.368	.240	* 01/27/13	at Ohio State	w 71-56	6802
3-pt FG made per game	4.6	4.4	* - Conference game			
FREE THROWS-ATT	101-134	89-124				
Free throw pct	.754	.718				
F-Throws made per game	14.4	12.7				
REBOUNDS	288	275				
Rebounds per game	41.1	39.3				
Rebounding margin	+1.9	-				
ASSISTS	74	73				
Assists per game	10.6	10.4				
TURNOVERS	90	139				
Turnovers per game	12.9	19.9				
Turnover margin	+7.0	-				
Assist/turnover ratio	0.8	0.5				
STEALS	84	40				
Steals per game	12.0	5.7				
BLOCKS	42	25				
Blocks per game	6.0	3.6				
ATTENDANCE	17898	16462				
Home games-Avg/Game	4-4474	3-5487				
Neutral site-Avg/Game	-	0-0				

Score by Periods	1st	2nd	Totals
Penn State	243	264	507
Opponents	201	185	386



2012-13 Penn State Lady Lions
Penn State Category Leaders (as of Jan 27, 2013)
Conference games



Points	G	Pts	Pts/G
Lucas, Maggie	7	129	18.4
Bentley, Alex	7	99	14.1
Greene, Nikki	7	78	11.1
Taylor, Dara	7	56	8.0
Edwards, Ariel	7	52	7.4
Nickson, Mia	7	47	6.7
Studevent, Gizelle	7	19	2.7
East, Talia	7	10	1.4
Agee, Candice	5	10	2.0
Waldner, Tori	7	7	1.0

FG Percentage	FG	Att	Pct
Greene, Nikki	32	62	.516
Studevent, Gizelle	9	18	.500
Taylor, Dara	22	46	.478
Agee, Candice	5	11	.455
East, Talia	3	7	.429
Edwards, Ariel	20	47	.426
Bentley, Alex	42	111	.378
Nickson, Mia	16	43	.372
Lucas, Maggie	35	100	.350
Waldner, Tori	3	13	.231

3-Point Percentage	3FG	Att	Pct
Edwards, Ariel	3	5	.600
Lucas, Maggie	18	40	.450
Taylor, Dara	6	14	.429
Bentley, Alex	5	26	.192
Waldner, Tori	0	1	.000
Studevent, Gizelle	0	1	.000

Free Throw Percent	FG	Att	Pct
Lucas, Maggie	41	46	.891
Nickson, Mia	15	18	.833
Edwards, Ariel	9	11	.818
Bentley, Alex	10	14	.714
Greene, Nikki	14	22	.636
Taylor, Dara	6	10	.600
Studevent, Gizelle	1	2	.500
East, Talia	4	8	.500
Waldner, Tori	1	3	.333

Scoring Average	G	Pts	Avg/G
Lucas, Maggie	7	129	18.4
Bentley, Alex	7	99	14.1
Greene, Nikki	7	78	11.1
Taylor, Dara	7	56	8.0
Edwards, Ariel	7	52	7.4
Nickson, Mia	7	47	6.7
Studevent, Gizelle	7	19	2.7
Agee, Candice	5	10	2.0
East, Talia	7	10	1.4
Waldner, Tori	7	7	1.0

Field Goal Attempts	G	Att	Att/G
Bentley, Alex	7	111	15.9
Lucas, Maggie	7	100	14.3
Greene, Nikki	7	62	8.9
Edwards, Ariel	7	47	6.7
Taylor, Dara	7	46	6.6

Field Goals Made	G	Made	Made/G
Bentley, Alex	7	42	6.0
Lucas, Maggie	7	35	5.0
Greene, Nikki	7	32	4.6
Taylor, Dara	7	22	3.1
Edwards, Ariel	7	20	2.9

3-Point FG Attempts	G	Att	Att/G
Lucas, Maggie	7	40	5.7
Bentley, Alex	7	26	3.7
Taylor, Dara	7	14	2.0
Edwards, Ariel	7	5	0.7
Waldner, Tori	7	1	0.1
Studevent, Gizelle	7	1	0.1

3-Point FG Made	G	Made	Made/G
Lucas, Maggie	7	18	2.6
Taylor, Dara	7	6	0.9
Bentley, Alex	7	5	0.7
Edwards, Ariel	7	3	0.4

Free Throw Attempts	G	Att	Att/G
Lucas, Maggie	7	46	6.6
Greene, Nikki	7	22	3.1
Nickson, Mia	7	18	2.6
Bentley, Alex	7	14	2.0
Edwards, Ariel	7	11	1.6

Free Throws Made	G	Made	Made/G
Lucas, Maggie	7	41	5.9
Nickson, Mia	7	15	2.1
Greene, Nikki	7	14	2.0
Bentley, Alex	7	10	1.4
Edwards, Ariel	7	9	1.3



2012-13 Penn State Lady Lions
Penn State Category Leaders (as of Jan 27, 2013)
Conference games



Rebounds	G	Reb	Reb/G
Greene, Nikki	7	75	10.7
Nickson, Mia	7	50	7.1
Lucas, Maggie	7	23	3.3
Bentley, Alex	7	22	3.1
Edwards, Ariel	7	22	3.1

Rebound Average	G	Reb	Avg/G
Greene, Nikki	7	75	10.7
Nickson, Mia	7	50	7.1
Lucas, Maggie	7	23	3.3
Bentley, Alex	7	22	3.1
Edwards, Ariel	7	22	3.1

Offensive Rebounds	G	No.	Avg/G
Greene, Nikki	7	35	5.0
Nickson, Mia	7	23	3.3
East, Talia	7	8	1.1
Lucas, Maggie	7	7	1.0
Waldner, Tori	7	7	1.0

Defensive Rebounds	G	No.	Avg/G
Greene, Nikki	7	40	5.7
Nickson, Mia	7	27	3.9
Bentley, Alex	7	21	3.0
Edwards, Ariel	7	19	2.7
Lucas, Maggie	7	16	2.3
Taylor, Dara	7	16	2.3

Fouls	G	No.	Per/G
Greene, Nikki	7	24	3.4
Lucas, Maggie	7	19	2.7
East, Talia	7	17	2.4
Taylor, Dara	7	17	2.4
Nickson, Mia	7	13	1.9

Foulsouts	G	No.
East, Talia	7	2
Taylor, Dara	7	1
Greene, Nikki	7	1

Assists	G	No.	Ast/G
Taylor, Dara	7	26	3.7
Bentley, Alex	7	17	2.4
Lucas, Maggie	7	16	2.3
Nickson, Mia	7	5	0.7
Edwards, Ariel	7	4	0.6

Steals	G	No.	Stl/G
Bentley, Alex	7	25	3.6
Taylor, Dara	7	24	3.4
Lucas, Maggie	7	17	2.4
Nickson, Mia	7	7	1.0
Greene, Nikki	7	4	0.6
Edwards, Ariel	7	4	0.6

Blocked Shots	G	No.	Blk/G
Waldner, Tori	7	12	1.7
Greene, Nikki	7	8	1.1
East, Talia	7	6	0.9
Nickson, Mia	7	4	0.6
Lucas, Maggie	7	4	0.6

Minutes	G	No.	Min/G
Lucas, Maggie	7	239	34.1
Bentley, Alex	7	226	32.3
Nickson, Mia	7	199	28.4
Taylor, Dara	7	187	26.7
Greene, Nikki	7	154	22.0

Turnovers	G	No.	TO/G
Taylor, Dara	7	21	3.0
Lucas, Maggie	7	21	3.0
Bentley, Alex	7	12	1.7
Greene, Nikki	7	9	1.3
Nickson, Mia	7	8	1.1